

Global hourly, 5 km, all-sky land surface temperature data from 2011 to 2021 based on integrating geostationary and polar-orbiting satellite data

Aolin Jia¹, Shunlin Liang², Dongdong Wang¹, Lei Ma¹, Zhihao Wang¹, Shuo Xu¹

5 ¹Department of Geographical Sciences, University of Maryland, College Park, MD, 20742, USA

²Department of Geography, University of Hong Kong, Hong Kong, 999077, China

Correspondence to: Shunlin Liang (shunlin@hku.hk)

Abstract. Land surface temperature (LST) plays a dominant role in the surface energy budget (SEB) and hydrological cycling. Thermal infrared (TIR) remote sensing is the primary method of estimating LST globally. However, cloud cover leaves numerous data gaps in satellite LST products, which seriously restricts their applications. Efforts have been made to produce gap-free LST products from polar-orbiting satellites (e.g., Terra and Aqua); however, satellite data from limited overpasses are not suitable for characterizing the diurnal temperature cycle (DTC), which is directly related to heat waves, plant water stress, and soil moisture. Considering the high temporal variability of LST and the importance of the DTC, we refined the SEB-based cloudy-sky LST recovery method by improving its feasibility and efficiency and produced a global hourly, 5 km, all-sky land surface temperature (GHA-LST) dataset from 2011 to 2021. The GHA-LST product was generated using TIR LST products from geostationary and polar-orbiting satellite data from the Copernicus Global Land Service (CGLS) and Moderate Resolution Imaging Spectroradiometer (MODIS). Based on the ground measurements at the ~~197-201~~ global sites from the Surface Radiation Budget (SURFRAD), Baseline Surface Radiation Network (BSRN), Fluxnet, AmeriFlux, Heihe River Basin (HRB), and Tibet Plateau (TP) networks, the overall root mean square error (RMSE) of the hourly GHA-LST product ~~was 3.38-31~~ K, with a bias of ~~-0.53-57~~ K and R^2 of 0.95-. ~~Thus, this product was and it was~~ more accurate than the clear-sky CGLS and MODIS MYD21C1 LST samples. The RMSE value of the daily mean LST was ~~1.67-76~~ K. Validation results at individual sites indicate that the GHA-LST dataset has relatively larger RMSEs for ~~high-high~~-elevation regions, which can be attributed to high surface heterogeneity and input data uncertainty. Temporal and spatial analyses suggested that GHA-LST has satisfactory spatiotemporal continuity and reasonable variation and matches the reference data well at hourly and daily scales. Furthermore, the regional comparison of GHA-LST with other gap-free hourly datasets (ERA5 and Global Land Data Assimilation System, GLDAS) demonstrated that GHA-LST can provide more spatial texture information. The monthly anomaly analysis suggests that GHA-LST couples well with global surface air temperature datasets and other LST datasets at daily mean and minimum temperature scales, whereas the maximum temperature and diurnal temperature range of LST and air temperature (AT) have different anomalous magnitudes. The GHA-LST dataset is the first global gap-free LST dataset at an hourly, 5 km scale with high accuracy, and it can be used to estimate global evapotranspiration, monitor extreme

weather, and advance meteorological forecasting models. GHA-LST is freely available at <https://doi.org/10.5281/zenodo.74872846981704> (Jia et al., 2022c) and glass.umd.edu/allsky_LST/GHA-LST.

1 Introduction

35 Land surface temperature (LST) is an essential component of the surface radiation budget and a dominant driving force in atmospheric cycling and hydrological balance (Li et al., 2022b; Li et al., 2013b). LST directly reflects the thermal feedback of various land covers towards incoming solar radiation and atmospheric longwave radiation (Liang et al., 2019), and it is employed as an important variable for urban heat island analysis (Liu et al., 2022), permafrost mapping (Zou et al., 2017), and hazard forecasting (Bhardwaj et al., 2017; Mudele et al., 2020; Quintano et al., 2015). Therefore, LST has been extensively utilized as a vital indicator for characterizing regional and global climate change (Zhou et al., 2012; Jin, 2004; Peng et al., 40 2014). This parameter can be obtained by ground measurements, model simulations, and remote sensing retrievals. However, given the high spatiotemporal heterogeneity caused by various land covers, soil types, topographies, and meteorological conditions (Zhan et al., 2013; Liu et al., 2006; Ma et al., 2021), remote sensing has become the only feasible solution for monitoring LST globally.

45 LST can be retrieved using thermal infrared (TIR) observations from both polar-orbiting (Wan, 2008; Hulley and Hook, 2009) and geostationary (GEO) satellites (Yu et al., 2008; Freitas et al., 2009). In comparison, GEO satellites provide sub-hourly observations; thus, they can precisely capture the diurnal temperature cycles (DTCs) of the land surface. DTCs characterize the strong temporal variability of LST in a day, which is an important surface thermal property that responds to local environmental changes (Hansen et al., 1995; Sun et al., 2006). Studies have suggested that DTCs are directly related to plant 50 water stress and soil drought (Fensholt et al., 2011; Stisen et al., 2008; Hernandez-Barrera et al., 2017); thus, such a relationship has been utilized for mapping evapotranspiration (Anderson et al., 2011) and soil moisture (Piles et al., 2016). In addition, it helps improve meteorological forecasting through data assimilation (Orth et al., 2017), extreme heat wave assessments (Hrisko et al., 2020; Jiang et al., 2015), crop yield estimations (Anderson et al., 2016), LST spatiotemporal scale conversions (Hu et al., 2020), orbit drift corrections of advanced very high-resolution radiometer (AVHRR) LST data (Jin and Treadon, 2003), 55 and vegetation phenology analyses (Piao et al., 2015). Considering the great potential of DTCs in scientific applications and the high temporal variability of LSTs, accurate diurnal LST datasets are crucial for the research community and public (Chang et al., 2021; Hrisko et al., 2020; Pinker et al., 2019).

TIR sensors on board GEO satellites, such as the Geostationary Operational Environmental Satellites (GOES)-R Advanced 60 Baseline Imager (ABI) and the Meteosat Second Generation (MSG) Spinning Enhanced Visible and InfraRed Imager (SEVIRI), provide exceptional opportunities to record DTCs. However, ~~there are~~ two inevitable flaws occur while-when using GEO satellites to observe diurnal LST variations globally: namely, data gaps caused by cloud cover and limited spatial view

65 fields of individual GEO satellites, which seriously limit the availability of hourly all-sky LST datasets at the global scale. Methods of recovering hourly LSTs have been developed and comprehensively reviewed by Jia et al. (2022a). The eCurrently available gap-free satellite-derived LST products are summarized in Table 1. Some gap-free LST datasets are not listed in the table, such as skin temperature from reanalysis datasets (e.g., ERA5 and MERRA2) (Muñoz-Sabater et al., 2021; Molod et al., 2015), and the results of Coccia et al. (2015) as they assumed that the surface broadband emissivity was equal to 1.

Table 1: Summary of publicly available gap-free LST products.

Study	Spatial coverage	Temporal coverage	Spatial resolution	Temporal resolution	Methodology	Access
Zhang et al. (2022)	global land	2003 – 2020	1 km	13:30 and 01:30 Local Time (LT)	spatiotemporal interpolation	https://doi.org/10.25380/iastate.c_5078492
Hong et al. (2022)	global land	2003 – 2019	0.5°	daily mean	annual temperature cycle (ATC) model and DTC model	https://doi.org/10.5281/zenodo.6287052
Yu et al. (2022)	global land	2002 – 2020	0.05°	01:30, 10:30, 13:30, and 22:30 LT	fusion of TIR and reanalysis LSTs	https://www.tpdac.ac.cn/en/data/8e975056-a612-4a4f-b7ef-772720145bf0/
Rains et al. (2022)	<u>Europe</u>	<u>2018 – 2019</u>	<u>1 km</u>	<u>daily</u>	<u>fusion of polar-orbiting and SEVIRI LST data</u>	https://doi.org/10.5281/zenodo.7026612
Jia et al. (2022a)	United States and Mexico	2017 – 2021	2 km	hourly	data fusion and surface energy balance (SEB) correction	http://glass.umd.edu/allsky_LST/ABI/
Xu and Cheng (2021)	China	2002 – 2020	1 km	13:30 and 01:30 LT	data fusion of TIR and PMW LSTs	https://www.tpdac.ac.cn/en/data/7e5333df-0208-4c4e-ae7e-16dcd29e4aa7/
Zhang et al. (2021)	mainland China	2000 – 2021	1 km	13:30 and 01:30 LT	data fusion of TIR and reanalysis LSTs	https://www.tpdac.ac.cn/en/data/20aa5af9-a4f8-49e5-9aa6-3a753b4c7815/
Shiff et al. (2021)	global land	2002 – 2019	1 km	13:30 and 01:30 LT, and daily mean	fusion of TIR LST and modeled temperature	https://zenodo.org/record/3952604#.YnhyrOjMIuU
Hong et al. (2021)	global land	2003 – 2019	1 km	daily mean	ATC model and DTC model	http://www.nesdc.org.cn/sdo/detail?id=60f4e35e7e28173cf0c8a771
Li et al. (2021)	United States	2000 – 2015	1 km	01:30, 10:30, 13:30, and 22:30 LT	data fusion of MODIS TIR and reanalysis LSTs using random forest	http://glass.umd.edu/us_allsky_lst_1km.html
Zhao et al. (2020)	China	2003 – 2017	0.05°	monthly	geographically weighted interpolation and fusion with ground measurement	https://doi.org/10.5281/zenodo.3528024
Yan et al. (2020)	North America	2002 – 2018	0.05°	monthly	elevation-based interpolation	https://doi.org/10.5281/zenodo.4184160
Zhang et al. (2019)	Tibet Plateau	2000 – 2021	1 km	13:30 and 01:30 LT	data fusion of TIR and reanalysis LSTs	https://www.tpdac.ac.cn/en/data/76006ce7-b8dc-4add-bbb5-93f36f4bd26c/

Martins et al. (2019)	Europe and Africa	2021 – now	3 km	30 min	SEB-constrained optimization method	https://landsaf.ipma.pt/en/products/land-surface-temperature/mlstas/
Duan et al. (2017)	China	2002 – 2011	1 km	13:30 LT	data fusion of TIR and PMW LSTs	http://www.geodata.cn/data/data/details.html?dataguid=398357&docId=1934
Chen et al. (2017)	global land	2000 – 2020	1 km	monthly	mean of daytime and nighttime clear-sky LSTs	https://www.tpdc.ac.cn/en/data/8caced1f-e10b-41a9-87e1-5001ab432844/
Metz et al. (2017)	global land	2003 – 2016	1 km	monthly	spatiotemporal interpolation	https://doi.org/10.5281/zenodo.1115666
André et al. (2015)	latitude > 45 ° N	2000 – 2011	25 km	daily	empirical retrieval from PMW BT	https://doi.pangaea.de/10.1594/PANGAEA.833409
Metz et al. (2014)	Europe	2000 – now	250 m	01:30, 10:30, 13:30, and 22:30 LT	spatiotemporal interpolation and regression-based downscaling	https://www.geodati.fmach.it/eurolst.html
Boukabara et al. (2011)	global land	2014 – now	0.09 – 0.5°	13:30 and 01:30 LT	iterative physical inversion from PMW observations	https://www.avl.class.noaa.gov/saa/products/search?datatype_family=JPSS_SND

70

Table 1 reveals that only a few hourly all-sky LST datasets are currently available, ~~and thus~~ an all-sky hourly LST dataset at the global scale is urgently required. In Table 1, the products were divided into three categories based on their associated methodologies~~methodology~~: data fusion, mathematical interpolation, and cloudy-sky LST estimation based on the surface energy balance (SEB) theory.

75

Land surface models and reanalysis datasets release simulated hourly skin temperatures continuously, which have been fused with satellite-retrieved LSTs to generate gap-free LSTs (Dumitrescu et al., 2020; Long et al., 2020; Marullo et al., 2014; Ma et al., 2022; Muñoz-Sabater et al., 2021); however, the accuracy of the recovered LSTs is highly dependent on simulation accuracy, especially for continuous cloudy days. In addition, passive microwave (PMW) observations can penetrate clouds and estimate LSTs in all-sky conditions (Zhang et al., 2019; Wu et al., 2022), and studies have explored fusing such data with TIR LSTs from sensors of polar-orbiting satellites (Zhang et al., 2020; Xu and Cheng, 2021). However, PMW data have limited passing times in a day; thus, they cannot match well with GEO observations. Mathematical interpolation is a popular method of reconstructing hourly LST because an ideal DTC can be parameterized by a harmonic function in the daytime and an exponential function in the nighttime (Duan et al., 2012). However, such parameterization requires at least four observations per day. Researchers have also tried to improve the feasibility of obtaining gap-free LSTs by combining DTC models with spatial interpolation (Liu et al., 2017) or utilizing a convolutional neural network (CNN) to predict missing values from neighboring clear-sky pixels and texture information (Wu et al., 2019). However, interpolating adjacent clear-sky samples can only obtain theoretical ‘clear-sky’ LSTs; ~~whereas because~~ actual LSTs under clouds are impacted by frequent meteorological changes and cloud cooling/warming effects in the daytime/nighttime (Jin, 2000; Jia et al., 2020).

90

In comparison, cloudy-sky LST estimates based on SEB exhibit advantages in generating all-sky diurnal LST products at large scales. SEB-based methods include two steps. The first step is to reconstruct theoretical ‘clear-sky’ LST values for cloudy time points, and the second step is to superpose the cloud effect based on the SEB equation (Jin and Dickinson, 2000; Lu et al., 2011). However, traditional SEB-based methods have limited feasibility because of the high input requirements, and they can only be used during the daytime. Therefore, Jia et al. (2021) considerably improved upon these methods by incorporating modeling data into the process, and the improved methods can be applied to larger spatial scales. ERA5 surface longwave radiation data were used to build a spatiotemporally evolving model, and the clear-sky GEO LSTs were assimilated to the evolving model to correct its predictions on cloudy days. Moreover, an optimization method was used to compute the cloud effect during both the daytime and nighttime, and complete DTCs could be recovered for hourly LSTs (Jia et al., 2022a).

100

The latest SEB scheme has produced all-sky hourly LSTs over the contiguous US (CONUS) and Mexico from ABI data; however, it has a relatively lower computational efficiency owing to the spatiotemporal assimilation framework, which is not easy to apply globally. Furthermore, single GEO data points have a limited spatial view field, which can be solved by combining data from multiple GEO satellites at mid and low latitudes and polar-orbiting satellites (Terra + Aqua) at high latitudes. Two polar-orbiting satellites pass high latitudes subhourly and provide frequent observations as GEO satellites. This strategy has been successfully utilized to generate global hourly Clouds and Earth's Radiant Energy System (CERES) radiation products (Loeb et al., 2018); however, few studies have focused on estimating all-sky LSTs by combining polar-orbiting and GEO satellites.

110 In this study, we produced a global, hourly, all-sky LST dataset (GHA-LST) from 2011 to 2021 at a 5 km scale, and a comprehensive assessment was implemented using ~~197-201~~ ground sites worldwide. Global clear-sky LSTs were obtained by combining GEO LSTs from the Copernicus Global Land Service (CGLS) and Moderate Resolution Imaging Spectroradiometer (MODIS) MxD21 LST swath products, and a more efficient spatiotemporal assimilation scheme was proposed. It represents the first available global all-sky LST scheme on an hourly time scale with satisfactory accuracy based on global site validation; thus, it has great potential for use in analyzing global thermal dynamics, atmospheric cycling, and hydrological budgets.

115

2 Data and Method

2.1 Data

The proposed GHA-LST dataset was recovered from a combination of clear-sky LST products, including the CGLS hourly LSTs, which cover mid and low latitudes, and MOD/MYD21 instantaneous swath LSTs, which cover high latitudes. ERA5 provides dynamic surface temperature signals for building a temperature-time-evolving model, and CERES global hourly surface radiation products were used to compute the cloud effect. In addition, the all-sky LST data were comprehensively

120

assessed based on globally distributed sites collected from the Surface Radiation Budget (SURFRAD), Baseline Surface Radiation Network (BSRN), Fluxnet, AmeriFlux, Heihe River Basin (HRB), and Tibetan Plateau (TP) networks.

2.1.1 Input data

125 CGLS LST provides hourly clear-sky LST retrievals from a constellation of GEO satellites, including multiple generations of
130 Meteosat Second Generation (MSG), Multifunctional Transport Satellite (MTSAT)/Himawari, MSG Indian Ocean Data
Coverage (IODC), and GOES. The product is released as a global product that covers land surfaces worldwide within the -60°
S to 70° N latitudes. The generalized split window (GSW) algorithm and dual algorithm (DA) in mono- and dual-channel
forms were used to retrieve LST from top-of-atmosphere (TOA) brightness temperatures (BTs) in thermal infrared window
channels (Freitas et al., 2013). Based on the ground validation, the accuracy ranges from 1.83 K to 3.70 K.

MOD/MYD21 swath instantaneous LST products (Hulley et al., 2016) were used to provide LST over the rest of the land
surface, which mainly covered high latitudes. A temperature/emissivity separation (TES) algorithm was used to retrieve the
LST in the MOD/MYD21 products. It showed comparable accuracy to that of MOD/MYD11 (Wan, 2008) for most land cover
135 types and performed better in bare land regions (Li et al., 2020; Yao et al., 2020). Level 3 MOD/MYD21 LST products provide
gridded LST data in sinusoidal projection such that LST images were available four times a day and pixel locations were fixed.
This data format is convenient for users; however, ~~the most~~many valid retrieval values are lost at higher latitudes due to
reprojection. In fact, dozens of times can be recorded by combining two polar-orbiting satellites, which is comparable to GEO
observations at mid and low latitudes. Therefore, to fully incorporate the available clear-sky retrievals, MOD/MYD21 swath
140 instantaneous LST data were used in this study. All swath images were converted to the Climate Modeling Grid (CMG)
individually and then aggregated to the same spatial resolution as CGLS LST. The instantaneous observations were used for
averaging only when they were within a 30-minute window centered at the CGLS recording time (UTC standard time). In
addition, to minimize the impact of retrieval uncertainty, records with a view zenith angle greater than 40° were not used in
this study (Li et al., 2014; Guillevic et al., 2013). By using this strategy, we can obtain a recording frequency over polar regions
145 that is comparable to that of the CGLS LST data; however, using this strategy does not mean that significantly more clear-sky
LST samples will be obtained because cloud cover persists at high latitudes (King et al., 2013). This process only ensures that
clear-sky LSTs at high latitudes are included in as many observations as possible.

To obtain continuous surface thermal variational signals, surface upward longwave radiation (ULW) and downward longwave
150 radiation (DLW) simulated by ERA5 were used to build the LST time-evolving model. Satellite-derived broadband emissivity
(BBE) was obtained from the Global LAnd Surface Satellite (GLASS) (Liang et al., 2021). We calculated the LST series using
ERA5 DLW and ULW data simulated using clear-sky scenarios, which were generated based on real atmospheric and
meteorological conditions, although clouds were assumed to be absent. The ERA5 clear-sky scenario was used because
utilizing cloud radiative forcing calculated from global satellite data is more accurate than using the simulated results from the

155 reanalysis (Wang and Dickinson, 2013). The clear-sky LST retrievals were then assimilated into the time-evolving model to
obtain continuous LSTs without cloud gaps, and the cloud cooling/warming effect was then estimated and superposed from
satellite radiation products. Essentially, in this revised SEB-based recovery method, the temperature change signals under
cloud cover were divided into two parts: the evolving model provided the LST variations due to real-time meteorological
changes under clouds, and satellite radiation products estimated the cloud cooling and warming effects caused by cloud
160 radiative forcing.

Global hourly surface DLW and downward shortwave radiation (DSR) from CERES satellite products were used to estimate
the cloud effect. ~~To analyze monitor cloud radiative forcing, the CERES datasets project retrieved global, gap-free, hourly DSR
and DLW in both all-sky (realistic) and theoretical cloud-free conditions (Doelling et al., 2016). CERES utilized the same~~
165 ~~strategy as this study to generate global hourly radiation products by combining remote sensing observations from multiple
GEO sensors and two MODIS sensors. The CERES surface shortwave radiation and longwave radiation (Doelling et al., 2013)
were estimated based on the Langley Fu–Liou radiative transfer theory (Fu et al., 1997), the cloud properties were obtained
from microwave cloud products (Minnis et al., 2020), and the aerosol optical depth was based on the MODIS aerosol product
(Remer et al., 2006). Surface CERES downward radiation fluxes have an overall bias (standard deviation) of 3.0 W m^{-2} (5.7%)
170 for shortwave and -4.0 W m^{-2} (2.9%) for longwave radiation, which have been validated based on 85 sites (Rutan et al., 2015).~~
CERES has been extensively evaluated and is generally considered a benchmark for satellite radiation products for assessments
and inter-comparisons (Jia et al., 2018; Li et al., 2022a; Wang and Dickinson, 2013). ~~To analyze cloud radiative forcing,
CERES datasets retrieved global gap free DSR and DLW in both all sky (realistic) and theoretical cloud free conditions.~~
Therefore,

175
~~To improve the production efficiency, we the complicated downward longwave parameterization schemes in Jia et al. (2022a)
were replaced by directly exploited exploiting the CERES dataset and converted converting the its cloud radiative forcing into
the corresponding cloud cooling/warming effect. Specifically, the CERES DSR difference between all-sky and clear-sky
schemes was considered cloud DSR forcing, and combined with the GLASS surface albedo data, the cloud net shortwave
180 forcing was computed. Cloud DLR forcing represents the difference between CERES all-sky and clear-sky DLR products, and
the corresponding net longwave forcing was estimated using an optimization method (Section 2.2.4).~~ In addition, according to
previous studies (Wang and Dickinson, 2013; Zhang et al., 2015), the impact of the coarse spatial resolution of CERES
downward radiation can be ignored because it has less heterogeneity than surface variables. ~~CERES products were bilinearly
interpolated to match the spatial scale of the CGLS LST. However, this assumption may introduce a certainty degree of
185 uncertainty in areas with rugged terrain because complicated terrain in a coarse pixel may still affect the downward radiation
components and increase the heterogeneity.~~

190 The GLASS 0.05° land surface albedo and BBE were used for the net radiation calculation (Liang et al., 2021), and the GLASS leaf area index (LAI) was used for computing ground heat flux from the net radiation (Liang et al., 2021). All input data were preprocessed using bilinear resampling to match the CGLS LST. The input metadata are listed in Table 2.

Table 2: Metadata input for production.

Product	Variable	Temporal Resolution (°)	Spatial Resolution (°)	Usage
CGLS	clear-sky LST	hourly	0.045	LST for recovery
Swath MOD/MYD21	clear-sky LST	instantaneous	1 km	LST for recovery
ERA5	clear-sky DLW & ULW	hourly	0.25	time-evolving model
GLASS	BBE	8-day	0.05	time-evolving model
CERES	all-sky and clear-sky DSR and DLW	hourly	1	cloud effect
GLASS	surface albedo	8-day	0.05	cloud effect
GLASS	LAI	daily	0.05	cloud effect

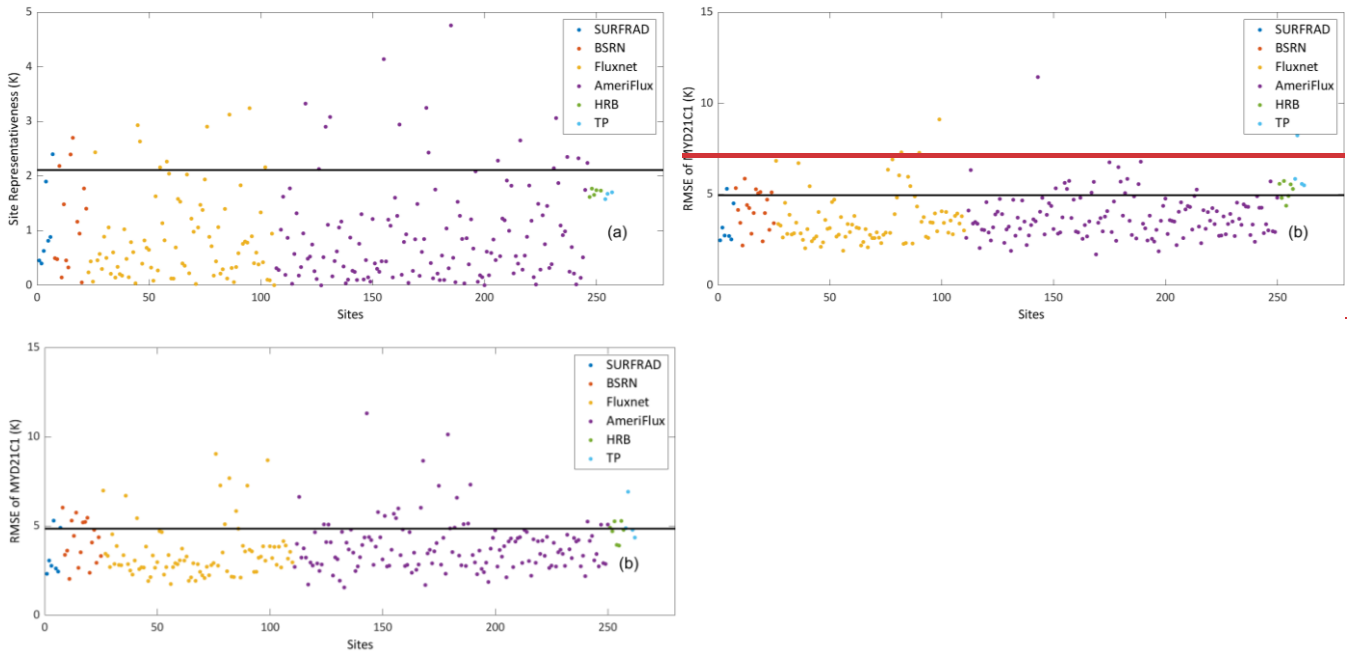
2.1.2 Ground measurement

195 To comprehensively assess the accuracy of the proposed GHA-LST dataset, globally distributed in situ sites must be collected for ground validation. We processed the records from SURFRAD, BSRN, Fluxnet, AmeriFlux, HRB, and TP networks. SURFRAD was established in 1993 and consistently provides long-term ground measurements of the surface radiation components over CONUS for climate research and remote sensing retrieval validation (Augustine et al., 2000). The BSRN is a combined network of globally distributed sites from several projects (Driemel et al., 2018), and it provides records with strict data quality maintenance; thus, it is usually used as a reference dataset for radiation product validation at the global scale. 200 Fluxnet includes hundreds of ground sites that have been utilized for global LST validation and analysis (Xing et al., 2021). AmeriFlux measures radiation and carbon fluxes over South and North America (Novick et al., 2018). The HRB network is from the Chinese Heihe Watershed Allied Telemetry Experimental Research (HiWATER) project (Li et al., 2013a), and the TP network is from the Third Tibetan Plateau Atmospheric Scientific Experiment (TIPEX-III) (Zhao et al., 2018), and these 205 datasets have been used for LST validation at the kilometer scale (Xing et al., 2021).

In addition, only raw observations marked as ‘good quality’ were used for validation. Site-measured ULW and DLW were used to compute LSTs with a GLASS BBE based on the Stefan–Boltzmann law. LST raw records within a 30-minute window

centered at each UTC time period were then aggregated for hourly LST validation. The daily mean LST was further aggregated
210 as long as 24 hourly LSTs were available in a day, which is sufficient to represent the entire DTC based on Jia et al. (2022a).
The validation period was 2011–2020. The following validation metrics are used in this study: N is the sample amount; bias, also called mean bias error (MBE), represents the systematic errors/differences between LST products and ground measurements; root-mean-square-error (RMSE) characterizes the actual uncertainty caused by bias and random error; and R^2 indicates the overall goodness of fit based on a 1:1 line. These metrics are commonly used for LST validation. The standard
215 deviation (SD) of the differences between LST products and site measurements was not used because it provides similar information as the RMSE but cannot reflect errors caused by systematic bias; thus, the SD is generally smaller than the RMSE.Jia et al. (2018b, 2018a)

The proposed GHA-LST dataset has a spatial resolution of approximately 5 km, although some sites may not be representative
220 of the corresponding pixels. To remove sites with higher heterogeneity, we utilized two removal strategies. The first is based
on 30 m LSTs from the United States Geological Survey (USGS) Landsat 8 Level 2 Collection 2, in which clear-sky Landsat
LSTs were extracted from all site locations from 2013 to 2020 and the average 30 m LSTs were extracted within the
corresponding 5 km pixel range; then, the ~~root-mean-square-error (RMSE)~~ at each site was computed as the site
representativeness using the 30 m LSTs paired with the averaged 5 km LSTs. One site was marked if it had a considerably
225 larger RMSE, indicating that there were larger LST differences between the 30 m and 5 km scales. The second strategy
considered the MYD21C1 0.05° LST as a benchmark LST product on a 0.05° spatial scale. As MYD21 has been
comprehensively validated and produces results with high and stable accuracy at a global scale (Li et al., 2020; Yao et al.,
2020; Hulley, 2015), we argue that if one site has a significantly larger RMSE in the validation of MYD21C1 samples with
good quality, then ~~it~~ the site will have low representativeness at the 5 km spatial scale. Pre-processed sites detected by either
230 of these two strategies were excluded from this study, and the analysis results are shown in Figure 1. The selection threshold
of each strategy was equal to the average RMSE + 2 × standard deviation for all sites.



235 **Figure 1. LST site selection results based on the (a) site representativeness calculated by Landsat samples and (b) site RMSEs of MYD21C1. The thresholds are the black lines, and sites with RMSEs higher than the line were masked out. Abbreviations: SURFRAD, Surface Radiation Budget; BSRN, Baseline Surface Radiation Network; HRB, Heihe River Basin (HRB); TP, Tibetan Plateau.**

240 Based on Figure 1, 497-201 global sites were included in this study, including five SURFRAD sites, 11 BSRN sites, 90-91 Fluxnet sites, 86-89 AmeriFlux sites, three HRB sites, and two TP sites. The distribution of sites is shown in Figure 2. Additionally, as site selection influences the final validation statistics, we also validated samples from clear-sky MYD21C1 and CGLS for accuracy comparisons, and the accuracy level of the validation results can be used as the reference for GHA-LST.

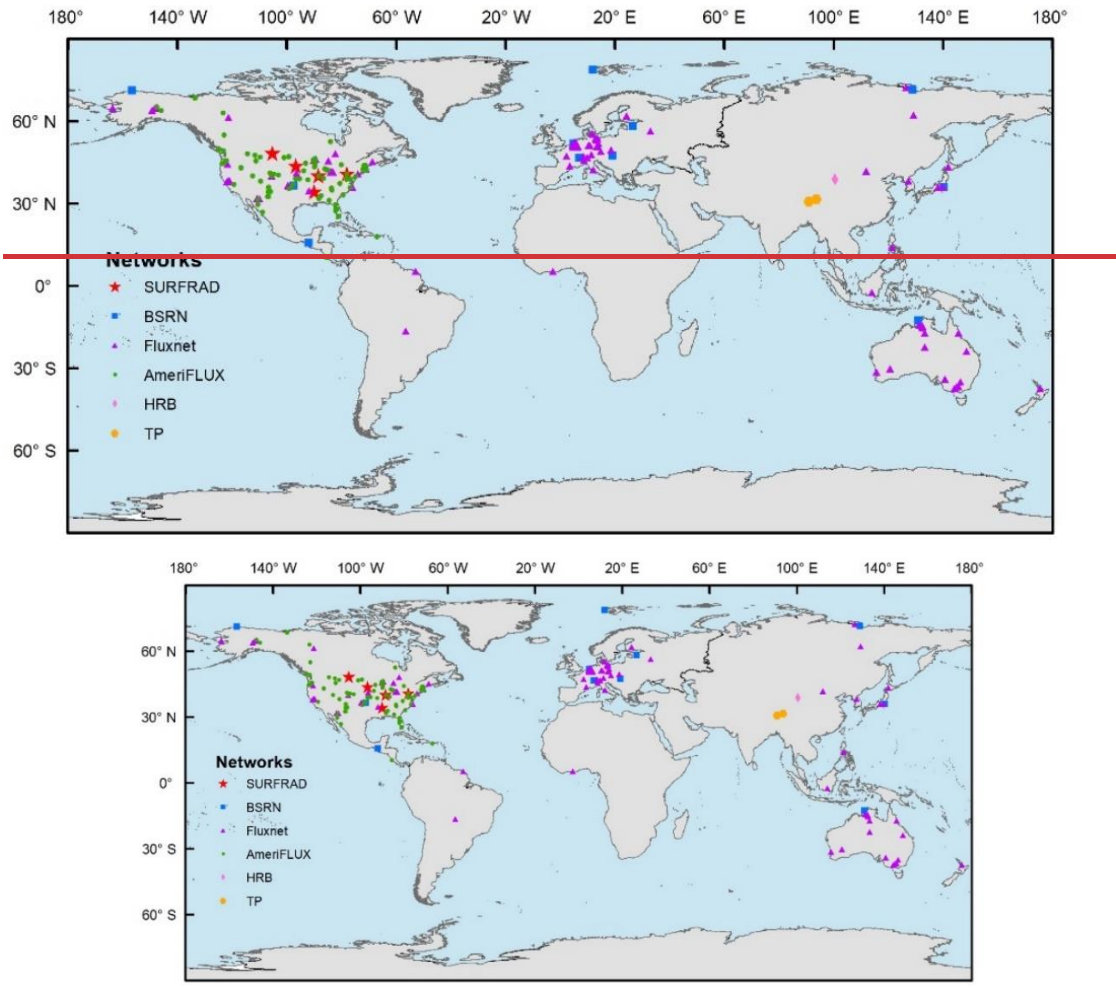
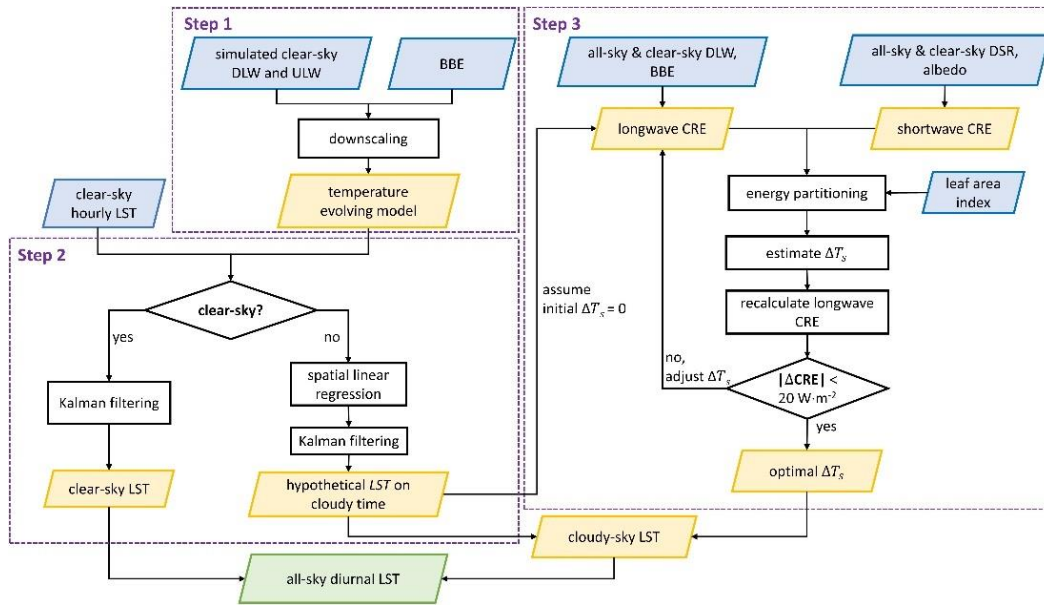


Figure 2. Global distribution of the utilized 197–201 LST sites. Abbreviations: SURFRAD, Surface Radiation Budget; BSRN, Baseline Surface Radiation Network; HRB, Heihe River Basin (HRB); TP, Tibetan Plateau.

2.2 Methods

2.2.1 Production framework

Jia et al. (2022a) developed a three-step framework to generate all-sky hourly LSTs on a regional scale. In this study, we revised this framework to improve its efficiency and feasibility worldwide. A flowchart of the framework is shown in Figure 3.



255 **Figure 3. Flowchart of the proposed GHA-LST dataset production. Abbreviations: DLW, downward longwave radiation; ULW, upward longwave radiation; DSR, downward shortwave radiation; BBE, broadband emissivity; LST, land surface temperature; CRE, cloud radiative effect.**

260 FirstIn the first step, a time-evolving model of clear-sky LSTs was designed based on the ERA5 LST series at each pixel location (Sect. 2.2.2). The ERA5 LST series was computed from the DLW and ULW from the clear-sky simulation scenarios, and it provides continuous variational information on LST without considering the cloud cooling/warming effect. Such variational information under clouds can be attributed to advective meteorological changes and air movement. The ERA5 skin temperature was not involved because we calculated the cloud effect based on satellite-derived radiation products, which are more reliable at a global scale.

265

In the second step, the Kalman filter (KF) was used to assimilate available clear-sky LST retrievals into the time-evolving model to correct the predictions for times with cloud cover and then theoretical ‘clear-sky’ LSTs were reconstructed. In the original framework of Jia et al. (2022a), three-dimensional data assimilation was utilized to generate a spatiotemporally dynamic model; however, this process is time-consuming, particularly when working at a large spatial scale. We replaced the spatial module in the assimilation by linear regression, which still works well to incorporate spatially adjacent clear-sky retrievals (Sect. 2.2.3). After this step, hypothetical LSTs were reconstructed during times with cloud cover. The cloud effect was further superimposed in the final step.

275 In the third step, the cloud effect was estimated from the satellite radiation products (Section 2.2.4). In the original framework, cloud longwave radiative forcing was computed based on a series of parameterization schemes; however, the scheme was not

well assessed at the global scale. Therefore, to simplify the calculation and improve the feasibility filling gaps over a large spatial scale, we replaced the DLW parameterization with CERES clear-sky and all-sky DLW products that have been assessed globally (Wang and Dickinson, 2013). The cloud effects at daytime and nighttime were determined by searching for the optimal cloud radiative effect (CRE) values to meet the SEB. The final clear-sky LSTs are the assimilated results at the clear-sky time, and the cloudy-sky LSTs are the reconstructed LSTs from the second step plus the optimal cloud effect.

2.2.2 Time-evolving model

A time-evolving model describes how LSTs change at a certain pixel over time, ~~and it~~. ~~This model~~ characterizes relative variation based on the ERA5 LST rather than ~~the~~ absolute magnitudes. The ERA5 LST series was initially downscaled to match the CGLS LST using elevation (Duan et al., 2017). The evolving model can be mathematically represented by Eq. 1-2:

$$LST_{t,d} = F_{t,d} \times LST_{t,d-1}, \quad (1)$$

$$F_{t,d} = \left(1 + \frac{1}{Z_{t,d} + \delta}\right) \frac{dZ_{t,d}}{dt}, \quad (2)$$

where $LST_{t,d}$ is the LST predicted by the model on day d at hour t and $F_{t,d}$ is the prediction operator, which is generated based on the temperature temporal profile $Z_{t,d}$ (temperature difference between d and $d-1$ at hour t , i.e., the difference with the LST 24 h before), ~~and $\delta = 0.01$ avoids a null denominator~~. The model evolves from day to day for each hour of the day (HOD) because the modeling bias is self-correlated at the same HOD on different days (Marullo et al., 2014). The correction of the data assimilation can be better inherited based on the evolving structure of Eq. 1-2. In addition, only the difference information was used in the study, which can minimize the impact of the uncertainty of ERA5 LST, especially from its systemic bias (Nogueira et al., 2021).

The time-evolving model provides continuous temperature variation; however, the modeling process must be consistently corrected by assimilating available clear-sky retrievals. In addition, partially cloud-covered yet retrieved ('likely cloud contaminated') pixels were masked out before assimilation. The detection method follows Jia et al. (2022a). One clear-sky retrieval is excluded if it has a substantially larger absolute difference with the modeled LST (three standard deviations) than neighboring days within ± 15 days, which assumes that modeled LSTs have fewer anomalies than directly retrieved values. It should be noted that some input data (e.g., CERES and reanalysis data) are not available at near real time (NRT); moreover, this 'likely cloud contamination' detection method also requires a 30-day time window for high-quality clear-sky LST selection, which means that the proposed cloudy-sky LST recovery method cannot be used for NRT all-sky LST production.

2.2.3 Kalman filter

The KF was used to assimilate clear-sky LST retrievals to correct the evolving model prediction because real-time retrievals are discontinuous while the evolving model prediction is continuous. When a retrieval value is available, a weighted average is implemented between the prediction and the observation based on their individual uncertainties, and then the prediction is

corrected. When observations are not available, the prediction will be implemented based on the updated prediction from the former step. Therefore, a continuous LST series can be generated using this iterative process. The KF can be mathematically represented as follows:

310 $\hat{T}_{t,d}^- = A_{d-1}^t \hat{T}_{t,d-1} + \omega_{d-1}^t, (3)$

$$\hat{T}_{t,d} = \hat{T}_{t,d}^- + K_d^t (T_{t,d} - \hat{T}_{t,d}^-), (4)$$

$$K_{t,d} = P_{t,d}^- (P_{t,d}^- + R)^{-1}, (5)$$

$$P_{t,d} = (I - K_{t,d}) P_{t,d}^-, (6)$$

where $\hat{T}_{t,d}^-$ is the temperature prediction at time t on day d from the prediction of $d-1$ and A_{d-1}^t is the prediction process (Sect. 2.2.2) with a prediction error of ω_{d-1}^t . The symbol "-" next to a variable indicates that the variable is an initial prediction without assimilation correction. The modeling prediction is propagated to $P_{t,d}^-$ after this prediction.

If an observation ($T_{t,d}$) is available, $\hat{T}_{t,d}^-$ will be corrected using the Kalman gain K_d^t (Eq. 4), which was determined by the relative magnitude of the squared uncertainty of the model prediction $P_{t,d}^-$ and the satellite retrieval R ~~(set to 9, squared RMSE, based on the official validation report)~~. R is the squared retrieval uncertainty at each pixel of CGLS and MODIS, and it is calculated based on the 'ERRORBAR LST' or 'LST_err' information in the files. The initial modeling uncertainty was calculated based on a comparison between the ERA5 and satellite retrievals at clear-sky time in the data series. The assimilation started in October 2010, and the model prediction reached a stable status before the product release date; thus, the initial value did not affect the output. The prediction error of d will also be corrected to $P_{t,d}$ (Eq. 5). The next day will then be iteratively predicted. If there are no observations, then the LST will be automatically predicted on *day d* without correction.

320

325

Jia et al. (2022a) used a spatial KF module that can assimilate spatially adjacent clear-sky pixels into the evolving model; however, this process is time-consuming and impractical for global production. In this study, if an observation on d was available, then the time-evolving model was corrected by KF normally; otherwise, a 30×30 [~ 150 km, referred to Jia et al. (2022a)] spatial window was set for the time-evolving model, and clear-sky pixels and their corresponding ERA5 LST within the spatial window will regress a linear conversion model, and the missing LST at the center pixel on d will be predicted from its corresponding ERA5 LST using such a linear relationship. Essentially, a local linear relationship replaced the spatial KF module, although it still effectively incorporated the adjacent clear-sky retrieval, and the computation efficiency was significantly improved. After the center LST was estimated by linear regression, it was considered the available retrieval for KF correction on d . If the spatial window did not have available clear-sky retrievals, then the time-evolving model predicted the LST on d based on the results on $d-1$.

330

335

2.2.4 Cloud effect estimation

After data assimilation, the LSTs under clouds was initially predicted without considering the cloud effect. The cloud effect is the temperature warming/cooling effect caused by changing the SEB from clouds, which can be estimated using cloud radiative forcing. The SEB equation is as follows:

$$R_n = R_s^d(1 - \alpha) + \varepsilon R_l^d - \sigma \varepsilon T^4 = G + LE + H, \quad (7)$$

where R_n is the surface net radiation, R_s^d is the DSR, α is the surface albedo, ε is the surface broadband emissivity (BBE), R_l^d is the DLW, σ is the Stefan–Boltzmann constant, and T is the LST. R_n is partitioned into latent heat (LE), sensible heat (H) and ground heat (G). Cloud coverage changes R_n , which is called cloud radiative forcing. By following the land surface analysis (LSA SAF) GEO evapotranspiration product, G can be parameterized as follows:

$$G = R_n \times 0.5 \exp(-2.13(0.88 - 0.78 \exp(-0.6LAI))), \quad (8)$$

where the G is set to ~~the~~ 0.15 (0.05) R_n for bare land (permanent snow/ice). Based on the conventional force-restore method (Jin and Dickinson, 2000), G can be represented as follows:

$$G = k_g \frac{\partial T}{\Delta Z} = k_g \frac{T - T_d}{\Delta Z}, \quad (9)$$

where k_g ~~is called~~ represents surface thermal conductivity ($\text{W m}^{-1} \text{K}^{-1}$) and ΔZ is the responding surface depth, which is set to 0.1 m. The deep layer temperature (T_d) is assumed to have little response towards SEB; thus, Eq. 9 can be rewritten as follows:

$$\frac{\partial G}{\partial T_s} = \frac{\partial}{\partial T_s} \left[k_g \frac{T_s - T_d}{\Delta Z} \right] \approx \frac{k_g}{\Delta Z}, \quad (10)$$

Accordingly, the change in G (∂G) caused by cloud coverage can be directly converted into the variation in LST, and ∂G is determined by partitioned cloud radiative forcing. That is, by knowing any two of the three variables (∂G , ΔT_s , and k_g), the other can be estimated. According to Jia et al. (2022a), k_g was predetermined based on a continuous temperature series from the assimilation results and corresponding radiation data:

$$k_g = \Delta h \frac{\overline{G_{noon}} - \overline{G_{sr}}}{\overline{T_{noon}} - \overline{T_{sr}}}, \quad (11)$$

where $\overline{G_{noon}}$ ($\overline{T_{noon}}$) and $\overline{G_{sr}}$ ($\overline{T_{sr}}$) are the monthly averaged ground heat (clear-sky LST) within ± 15 days at noon and sunrise ~~time~~, respectively, which are considered because morning warming can mainly be attributed to the SEB. The continuous data series from the data assimilation step ensures sufficient sampling for the k_g calculation. Monthly means were used to minimize the disturbance of daily variation. Then, the cloud radiative forcing needs to be determined to estimate ΔT_s :

$$R_c = (1 - \alpha) (R_{s,clد}^d - R_{s,clr}^d) + \varepsilon (R_{l,clد}^d - \sigma T_{clد}^4) - \varepsilon (R_{l,clr}^d - \sigma T_{clr}^4), \quad (12)$$

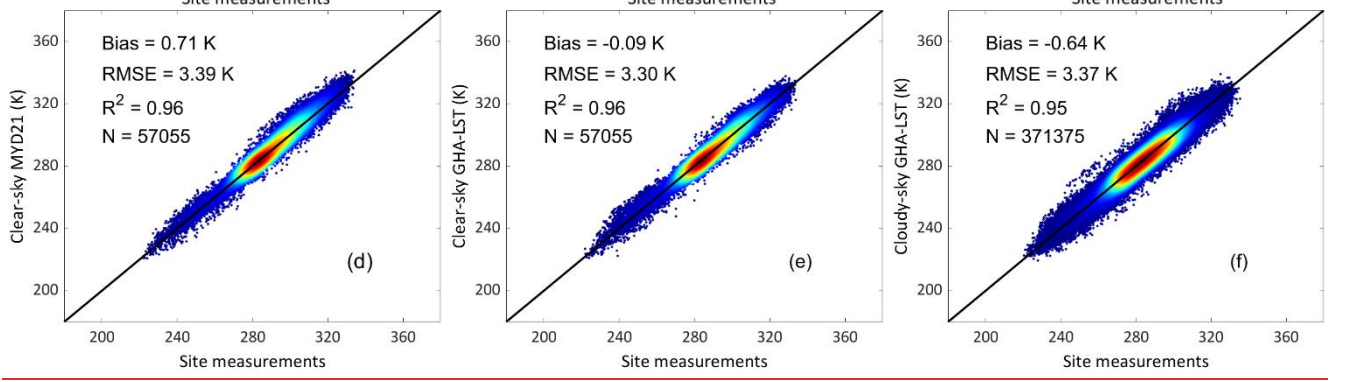
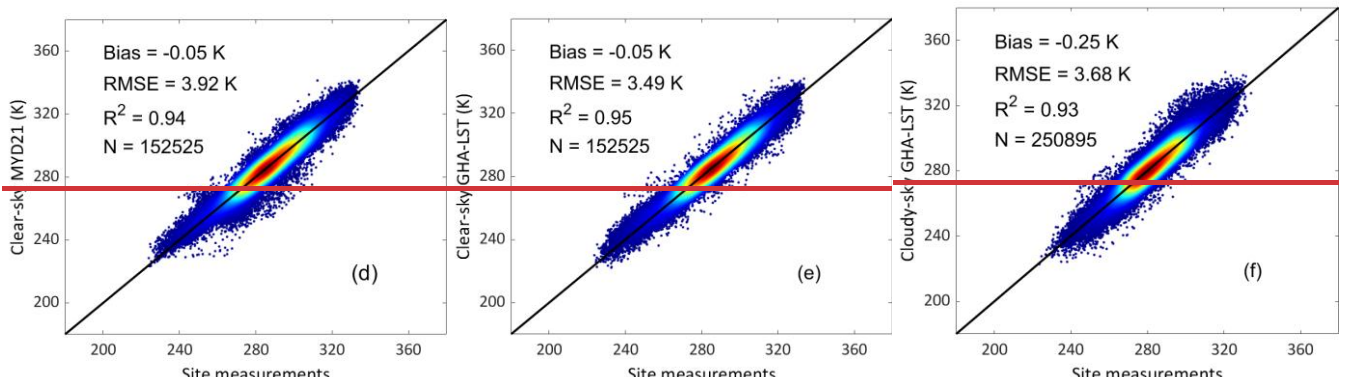
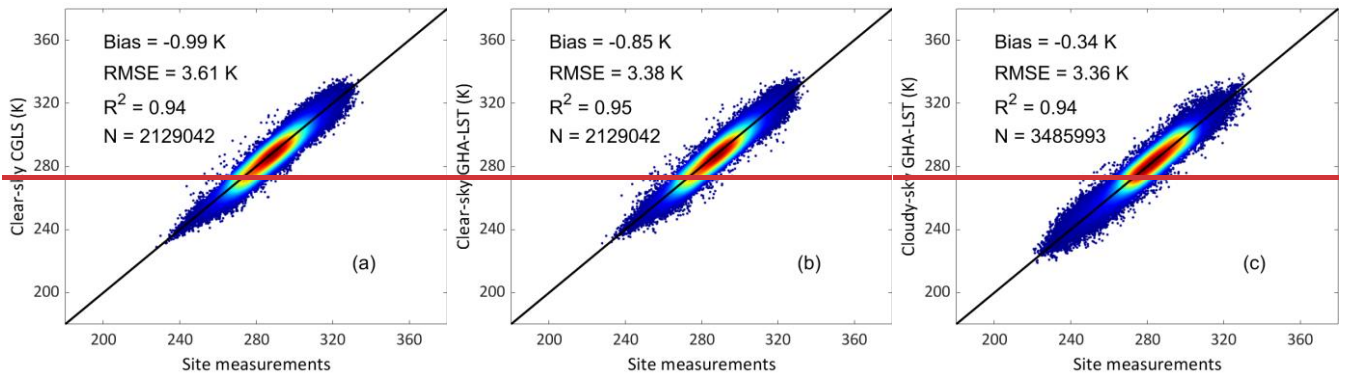
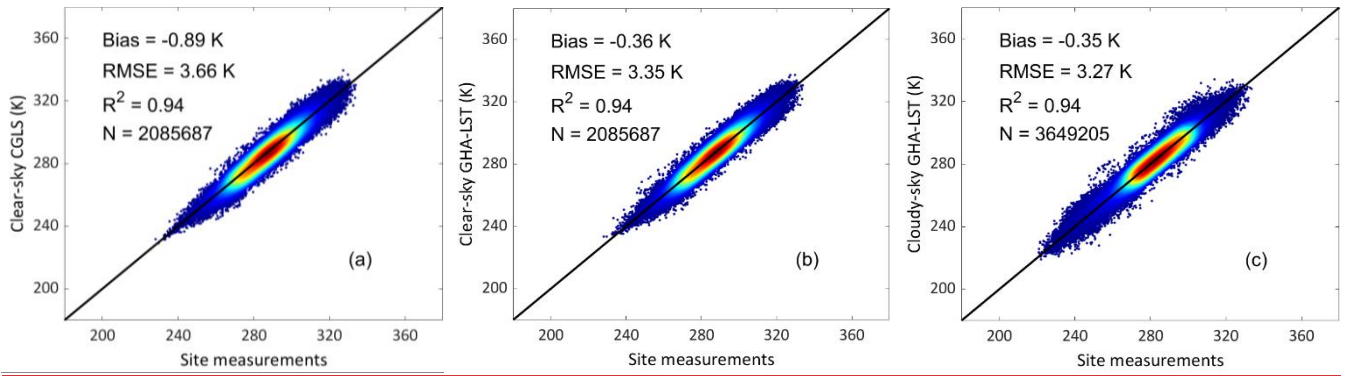
where R_c is the cloud radiative forcing, $R_{s,clد}^d$ ($R_{s,clr}^d$) is the cloudy-sky (clear-sky) DSR, and $R_{l,clد}^d$ ($R_{l,clr}^d$) is the cloudy-sky (clear-sky) DLW. The shortwave variables, BBE, and DLW can be obtained from the global radiation products.

The cloudy-sky LST (T_{cl}) equals the reconstructed LST (T_{clr}) plus the cloud effect (ΔT_s), and T_{clr} is reconstructed from step two. ΔT_s is unknown for the radiative forcing calculation and represents the ultimate target of this step. Therefore, the optimal ΔT_s must be determined based on the optimization method to satisfy the SEB. Following Jia et al. (2022a), ΔT_s was initially assumed to be 0 K and the initial R_c was obtained based on Eq. 12. After energy partitioning through the LAI, G is computed and the updated ΔT_s is estimated using k_g ; thus, R_c can be recomputed. By iteratively comparing the R_c differences and adjusting ΔT_s (step = 0.05 K), the surface energy budget is balanced ($|\Delta CRE| < 20 \text{ W}\cdot\text{m}^{-2}$, see Figure 3). The threshold of $20 \text{ W}\cdot\text{m}^{-2}$ is the current accuracy level of the longwave radiation products (Wang et al., 2020).

375 3 Results and discussion

3.1 Overall assessment

Based on all paired samples from the proposed GHA-LST dataset and ~~197-201~~ sites from 2011-2020, the overall RMSE of the all-sky GHA-LST is ~~3.38-31~~ K, with a bias of ~~-0.53-57~~ K and R^2 of 0.95. As site selection may influence the accuracy statistics, the accuracy of GHA-LST was also compared with that of the CGLS and MYD21C1 data ~~under clear sky and cloudy sky conditions~~ (Figure 4). Figure 4a shows the extracted clear-sky samples from the CGLS, whereas the corresponding clear-sky results from GHA-LST are shown in Figure 4b, which has the same sampling amount as Figure 4a. The recovered cloudy-sky LST at the corresponding CGLS cloudy time ~~of Figure 4a~~ was validated in Figure 4c. Such an accuracy comparison between the GHA-LST and CGLS data is sufficiently fair; thus, we also compared the accuracies between GHA-LST and MYD21C1 (Figure 4d-4f). ~~As-Because~~ MYD21C1 may have a slightly different observation time (~~< 0.5 h~~) ~~from relative to~~ GHA-LST, ~~it was converted to the nearest UTC o'clock based on the diurnal cycle recorded by site observations to match the GHA-LST recording time.~~ ~~we paired the corresponding GHA-LST samples at the nearest time relative to the MYD21C1 samples.~~ Jia et al. (2022a)



390

Figure 4. Density scatterplots of hourly LST samples from (a) CGLS clear-sky retrievals, (b) GHA-LST clear-sky samples corresponding to (a), (c) GHA-LST cloudy-sky samples corresponding to CGLS cloudy time, (d) MYD21C1 clear-sky retrievals, (e) GHA-LST clear-sky samples corresponding to (d), and (f) GHA-LST cloudy-sky samples corresponding to MYD21C1 cloudy time.

395

The proposed GHA-LST dataset had better accuracy than the CGLS and MYD21C1 data under both clear-sky and cloudy-sky conditions (Figure 4). Compared to the CGLS (Figure 4a), the clear-sky GHA-LST had a similar RMSE (~~3.383.35~~ K, Figure 4b), which is reasonable because most of the clear-sky GHA-LST samples were derived from clear-sky retrievals from the CGLS. ~~The CGLS data have fewer partially cloud contaminated pixels because they include a cloud contamination mark in the product; therefore, w~~The partially cloud-excluded these contaminated samples were marked during production (Section 2.2.2) and considered cloudy pixels. The results of MYD21C1 (Figure 4d)- only utilized samples that were marked as ‘good quality’ and passed a cloud contamination test (Section 3.6 in Ma et al. (2020))~~has more scattered samples that are located in mid and low value regions with a large negative bias based on the density scatterplot (Figure 4d); thus, these data are more likely to be cloud contaminated because MYD21C1 doesn’t provide a quality mark for filtering out partially contaminated samples.~~ In comparison, ~~the~~ GHA-LST ~~process detected these cases and reconstructed them well (Figure 4e)~~produced similar accuracy with high-quality MODIS samples (Figure 4e) and represented a stable accuracy (RMSE = ~3.3 K with few biases) under both clear-sky and cloud-sky conditions. Based on the sampling amount ~~of the two groups~~ (Figure 4a–c and 4d–f), the number of cloudy pixels ~~is was~~ nearly 1.5 times higher than the number of the clear-sky pixels, indicating the importance and necessity of the proposed GHA-LST dataset. ~~In addition, GHA-LST has a stable accuracy (RMSE = ~3.4 K with few biases) under both clear sky and cloud sky conditions.~~ As MYD21C1 (Figure 4d–f) only includes samples from noon and midnight, it has significantly fewer samples than the CGLS group (Figure 4a–c). ~~The LST validation at noon suffers from more site heterogeneity issues (Jia et al., 2022a); thus, the GHA-LST in the MYD21C1 group (Figure 4e) has a slightly larger RMSE and bias than the GHA-LST in the CGLS group (Figure 4b). Other similar s~~Studies on similar topics, such as the recovery of all-sky MSG/SEVIRI LST (Martins et al., 2019), produced RMSEs of 2.1~3.7 K at 3 sites. However, direct comparisons of the validation statistics are difficult because substantially different sites and sampling amounts were utilized in this study.

Figure 5 illustrates that the GHA-LST process has a considerably higher performance in obtaining daily mean LSTs. GHA-LST has a similar RMSE to the daily mean CGLS, with 24 values in a day retrieved by satellites (Figure 5a and b); however, GHA-LST has substantially more available samples than the CGLS clear-sky results. In comparison, the daily mean computed from the average of the paired daytime/nighttime MYD21C1 has the largest RMSE, with a clear bias of ~~2.232.41~~ K. However, MODIS LSTs have been more widely used than GEO LSTs, and many studies have obtained daily mean LSTs by simply averaging two instantaneous Aqua retrievals at noon and midnight (Ouyang et al., 2012; Chen et al., 2017; Zou et al., 2017). This study suggests that the proposed GHA-LST dataset can significantly improve the accuracy and data availability of the daily mean LST.

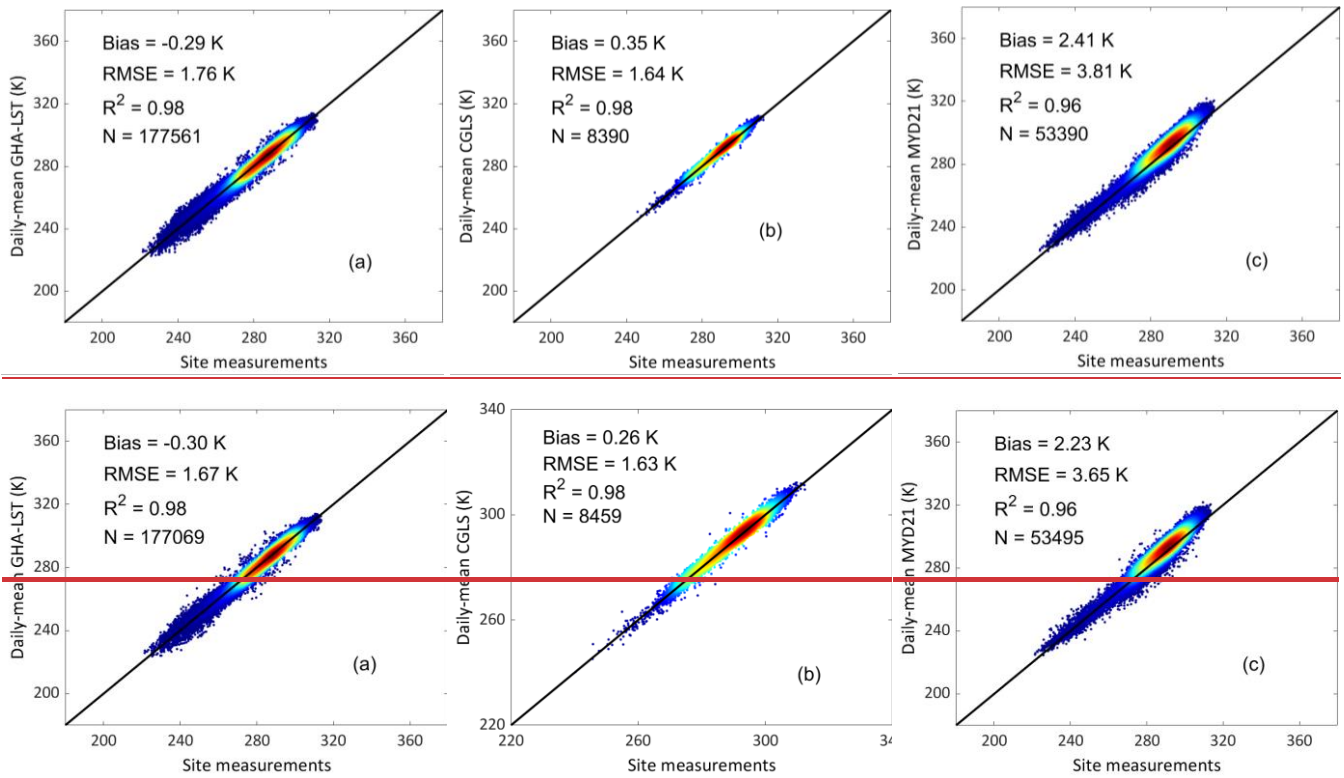


Figure 5. Density scatterplots of the daily mean LST samples from (a) GHA-LST, (b) CGLS, and (c) average daytime and nighttime MYD21C1 pairs.

To demonstrate the accuracy and stability of the GHA-LST under different surface conditions, the hourly samples were further differentiated based on land cover types. Land cover data are obtained from the MCD12Q1 International Geosphere-Biosphere Programme (IGBP) classification. The validation statistics are listed in Table 3.

Table 3: Validation statistics for different land cover types.

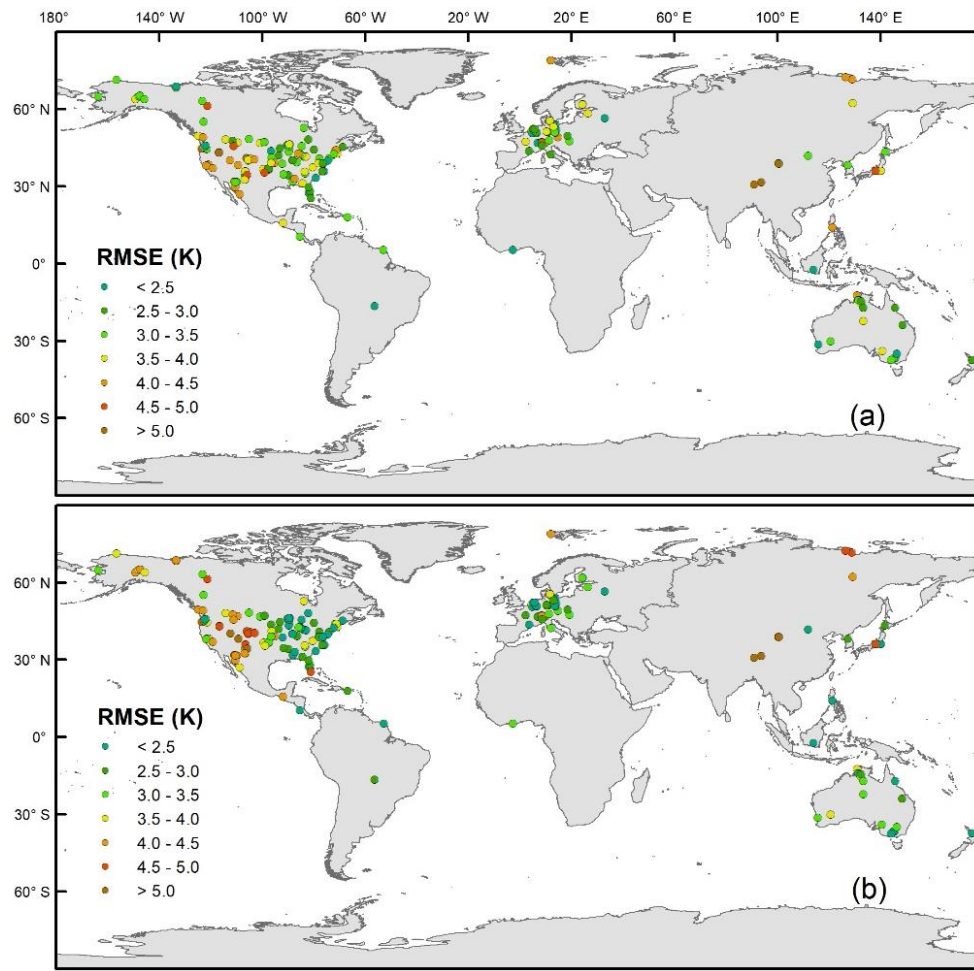
<u>Land Cover</u>	<u>Clear-sky Samples</u>				<u>Cloudy-sky Samples</u>			
	<u>Bias (K)</u>	<u>RMSE (K)</u>	<u>R²</u>	<u>N</u>	<u>Bias (K)</u>	<u>RMSE (K)</u>	<u>R²</u>	<u>N</u>
<u>Evergreen needleleaf forests</u>	<u>0.03</u>	<u>3.29</u>	<u>0.90</u>	<u>187,100</u>	<u>0.50</u>	<u>2.78</u>	<u>0.89</u>	<u>281,421</u>
<u>Evergreen broadleaf forests</u>	<u>0.22</u>	<u>3.03</u>	<u>0.89</u>	<u>37,907</u>	<u>1.34</u>	<u>2.27</u>	<u>0.95</u>	<u>39,350</u>
<u>Deciduous broadleaf forests</u>	<u>-1.26</u>	<u>3.26</u>	<u>0.94</u>	<u>190,753</u>	<u>-0.54</u>	<u>2.61</u>	<u>0.94</u>	<u>275,551</u>
<u>Mixed forests</u>	<u>-1.03</u>	<u>2.97</u>	<u>0.96</u>	<u>90,369</u>	<u>0.19</u>	<u>2.83</u>	<u>0.95</u>	<u>176,405</u>

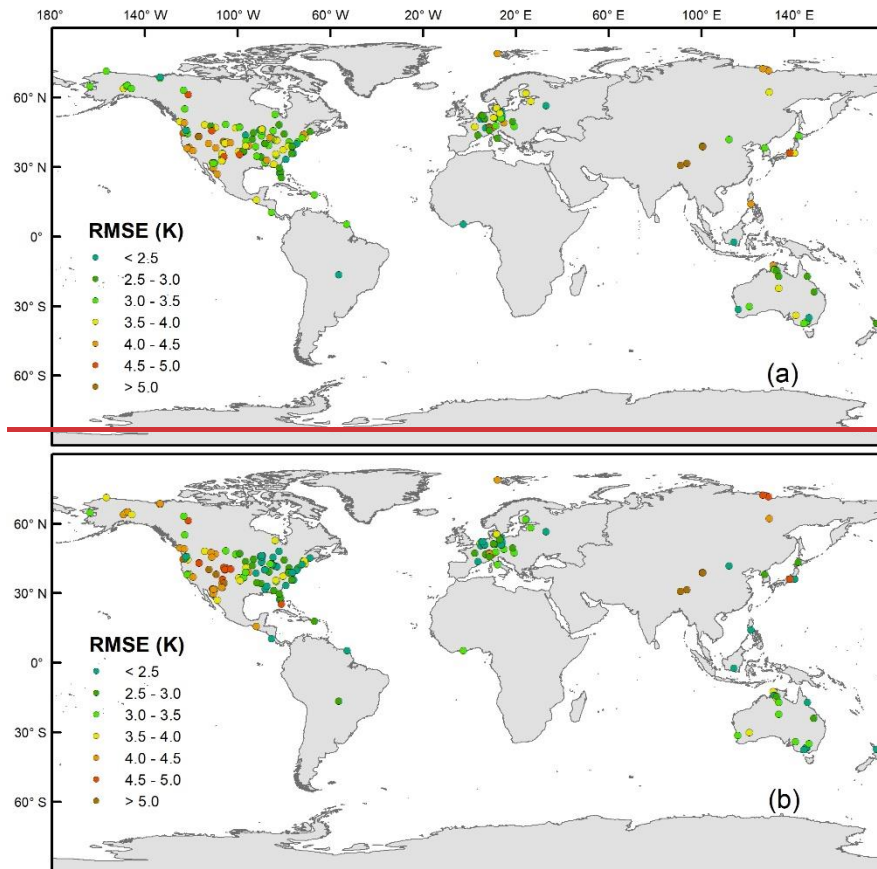
<u>Closed shrublands</u>	<u>1.19</u>	<u>3.80</u>	<u>0.94</u>	<u>21,781</u>	<u>0.61</u>	<u>3.21</u>	<u>0.91</u>	<u>12,760</u>
<u>Open shrublands</u>	<u>-0.49</u>	<u>2.87</u>	<u>0.97</u>	<u>124,904</u>	<u>-0.28</u>	<u>4.07</u>	<u>0.96</u>	<u>184,840</u>
<u>Woody savannas</u>	<u>-0.20</u>	<u>3.26</u>	<u>0.93</u>	<u>263,142</u>	<u>0.34</u>	<u>3.63</u>	<u>0.94</u>	<u>602,743</u>
<u>Savannas</u>	<u>-0.56</u>	<u>3.06</u>	<u>0.95</u>	<u>182,085</u>	<u>0.06</u>	<u>3.03</u>	<u>0.96</u>	<u>318,231</u>
<u>Grasslands</u>	<u>-0.25</u>	<u>3.66</u>	<u>0.84</u>	<u>571,722</u>	<u>0.19</u>	<u>3.95</u>	<u>0.92</u>	<u>552,178</u>
<u>Permanent wetlands</u>	<u>1.29</u>	<u>3.81</u>	<u>0.91</u>	<u>11,265</u>	<u>0.13</u>	<u>3.35</u>	<u>0.96</u>	<u>72,375</u>
<u>Croplands</u>	<u>-0.28</u>	<u>3.10</u>	<u>0.95</u>	<u>522,715</u>	<u>0.15</u>	<u>2.72</u>	<u>0.94</u>	<u>790,227</u>
<u>Urban</u>	<u>-0.61</u>	<u>3.80</u>	<u>0.94</u>	<u>59,698</u>	<u>-0.44</u>	<u>3.11</u>	<u>0.92</u>	<u>88,839</u>
<u>Barren</u>	<u>-2.01</u>	<u>4.02</u>	<u>0.98</u>	<u>3,925</u>	<u>-1.95</u>	<u>4.59</u>	<u>0.94</u>	<u>4,812</u>

435 Table 3 indicates that the GHA-LST has stable accuracy under both clear-sky and cloudy-sky conditions for various land cover types. However, some clear biases were found for the forest and barren land cover types, which could be caused by split-window retrieval errors under clear-sky conditions due to the large emissivity uncertainty (Li et al., 2022b). In comparison, high R² values in these regions reflect the ability of the GHA-LST to capture regional temperature variations.

3.2 Individual site validation

440 Considering that 197-201 global sites were utilized, the RMSEs at individual sites can reflect the spatial pattern of GHA-LST accuracy; therefore, site RMSE maps under clear-sky and cloudy-sky conditions are illustrated in Figure 6.





445 **Figure 6. Global RMSE statistics at individual sites under (a) clear-sky and (b) cloudy-sky conditions.**

The GHA-LST had similar accuracy patterns under both clear-sky and cloudy-sky conditions, and it had lower RMSEs (< 3.5 K) in eastern America, Europe, and Australia but variable RMSEs from 3.5 to 5 K in western America and the TP. The median site RMSE under clear-sky conditions was 3.32-18 K, with a standard deviation of 0.74-81 K, and the median site RMSE under cloudy-sky conditions was 2.972-97 K, with a standard deviation of 0.981-01 K, indicating that cloudy-sky results had a slightly larger spatial variance of accuracy. Validation statistics for each site are listed in the Appendix. Furthermore, the site RMSE statistics were compared with the corresponding site elevations and latitudes to detect the potential factors that impact the validation statistics (Figure 7).

450

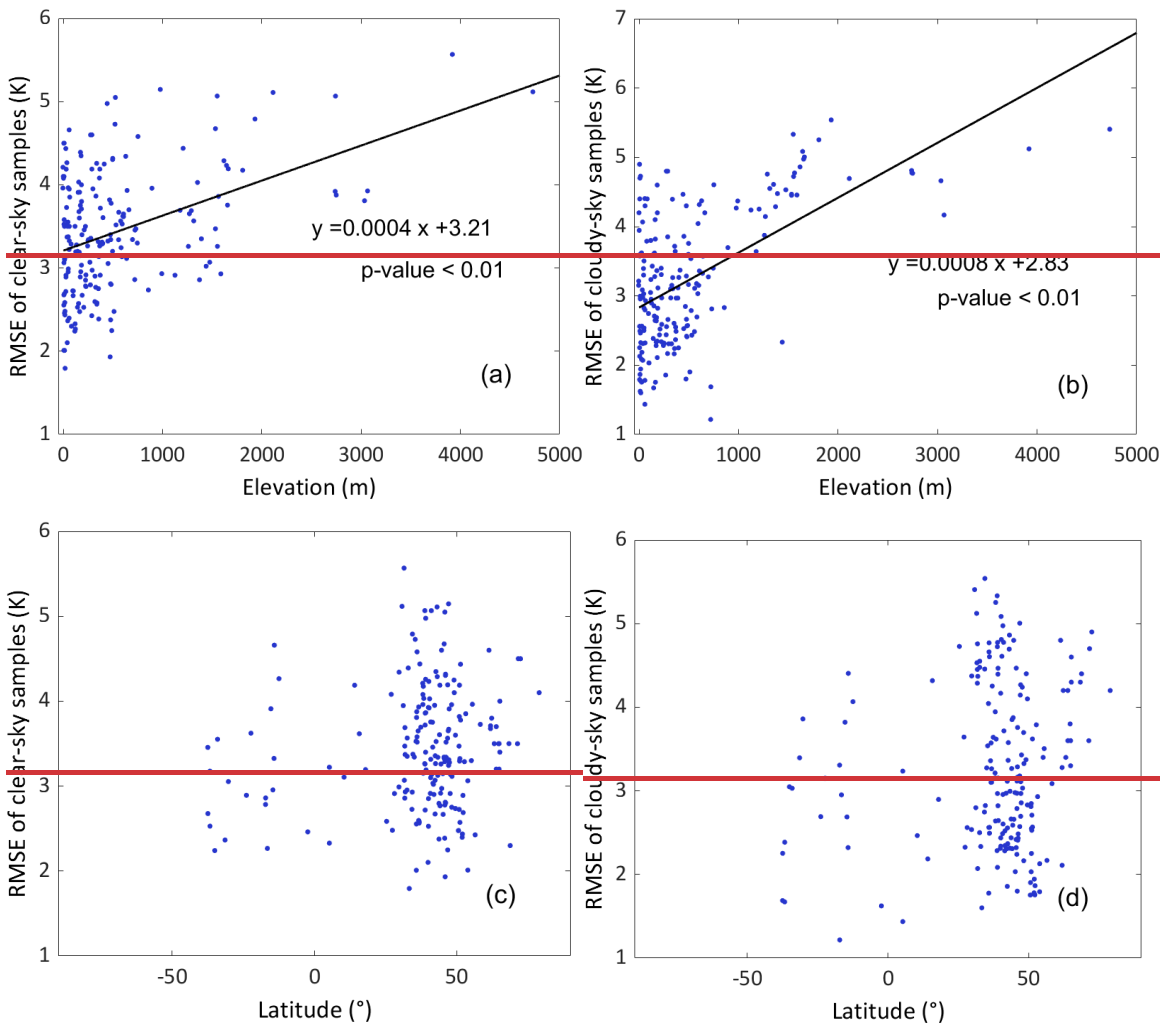


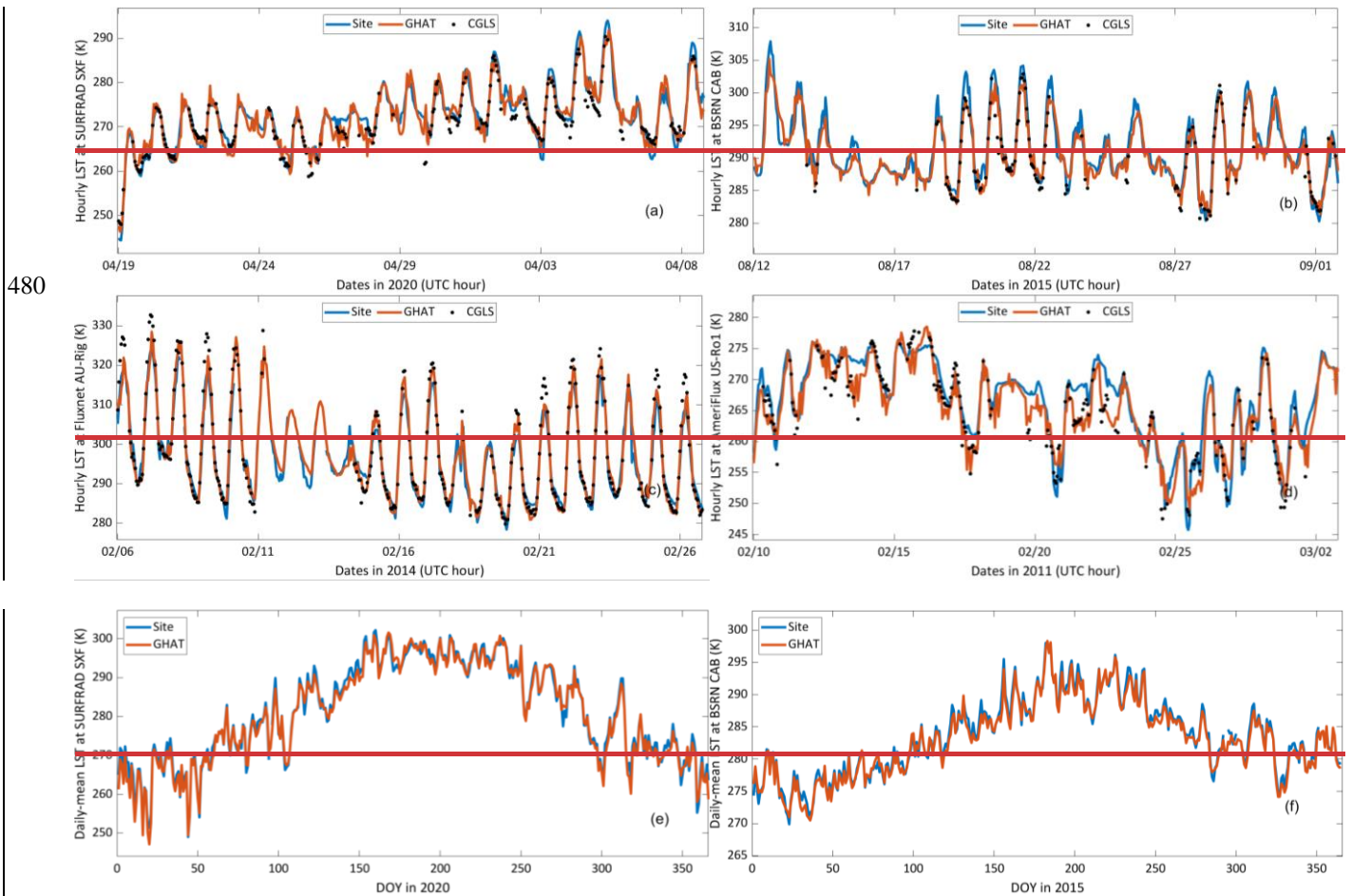
Figure 7. Scatter plots between the site RMSE and (a, b) elevation and (c, d) latitude under (a, c) clear sky and (b, d) cloudy-sky conditions. The significant linear relationship (p -values < 0.01) is drawn (a, b).

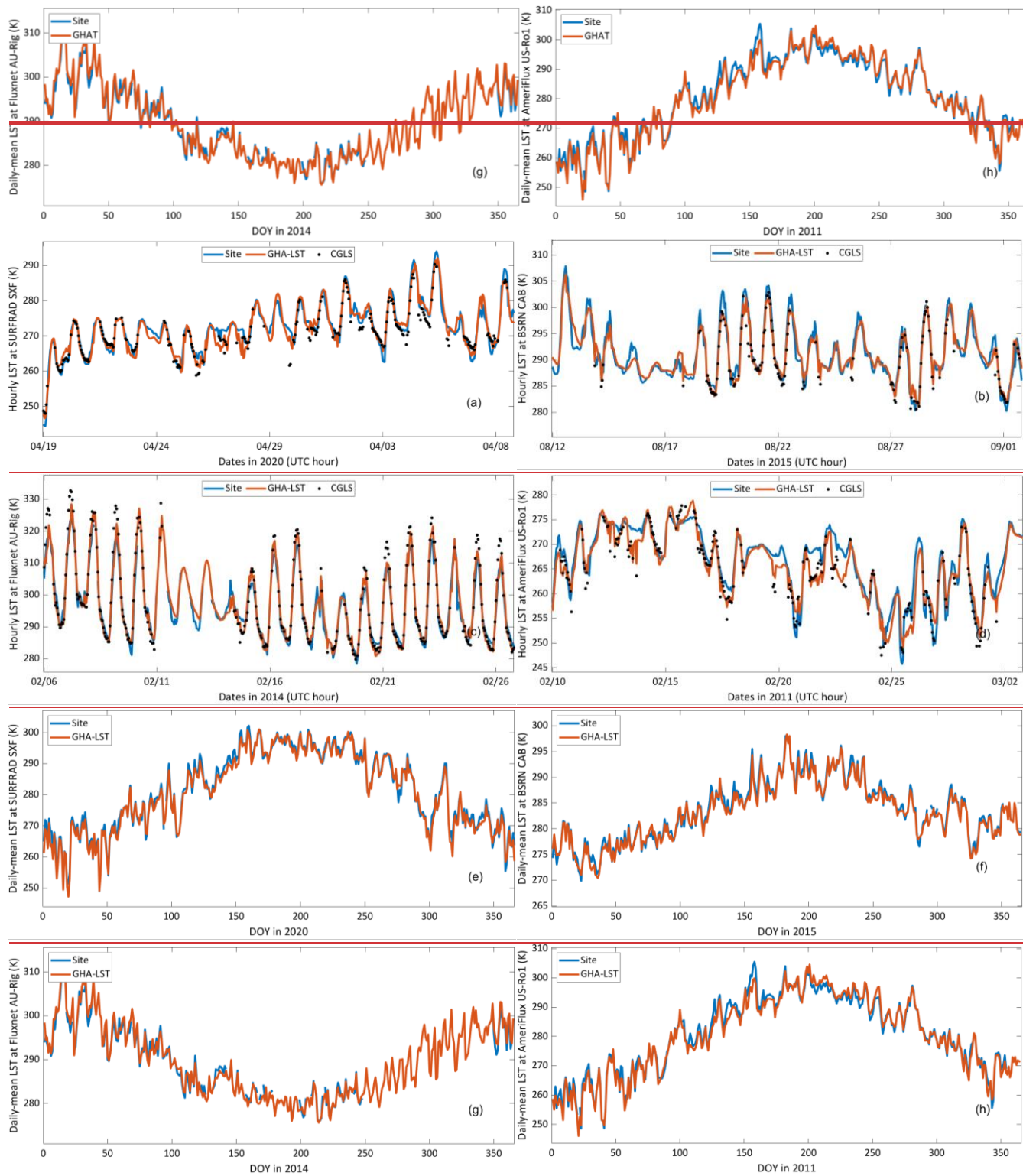
The RMSE statistics at each site were mainly affected by the site elevation (Figure 7). Based on the scatterplots of site RMSE and site elevation under clear sky and cloud sky conditions (Figures 7a and b), the linear relationship was statistically significant (p value < 0.01). We suppose that increasing elevation will decrease the spatial representativeness of the sites; therefore, the RMSEs of the clear-sky results showed an increasing trend. In addition, the cloudy sky results had a larger slope (Figure 7b), indicating that they were more sensitive to elevation variations. Thus, we inferred that elevation was an essential factor affecting LST recovery. In these regions with high elevations, clear-sky LSTs with larger RMSEs were assimilated to the time evolving model, thus affecting the cloudy sky results. In addition, modeled temperature series include higher

470 uncertainty in these regions, and a relevant ‘cool bias’ issue in highlands was found in regional simulation models and global reanalysis datasets (Jia et al., 2022b; Meng et al., 2018). Although the relationship between the site RMSE and site latitude was not statistically significant (Figure 7c and d), the GHA LST data at higher latitudes produced higher RMSEs, especially under cloudy sky conditions; thus, we inferred that high latitudes were frequently covered by clouds and fewer clear-sky LSTs could be used in the data assimilation. In addition, sites at higher latitudes are usually located in coastal areas (Figure 6a), which may limit their spatial representativeness at the 5 km scale.

3.3 Temporal and spatial analysis

475 To evaluate the temporal continuity of the proposed GHA-LST dataset, the temporal LST variations from GHA-LST, CGLS, and corresponding ground measurements were compared at hourly and daily mean scales. In Figure 8, four global sites are shown as the representative sites from SURFRAD (SXF, 43.74° N, -96.62° W), BSRN (CAB, 51.97° N, 4.93° E), Fluxnet (AU-Rig, -36.65° S, 145.58° E), and AmeriFlux (US-Ro1, 44.71° N, -93.09° W). The study period was randomly chosen for different years.





490 **Figure 87.** Temporal variation of (a - d) hourly LST and (e - h) daily mean LST at four sites: (a, e) SURFRAD SXF, (b, f) BSRN CAB, (c, g) Fluxnet AU-Rig, and (d, h) AmeriFlux US-Ro1. Abbreviations: SURFRAD SXF, Surface Radiation Budget Sioux Falls; BSRN CAB, Baseline Surface Radiation Network Cabauw; Fluxnet AU-Rig, Australia- Riggs Creek; AmeriFlux US-Ro1, United States-US-Ro1; GHAT, global hourly, 5 km, all-sky land surface temperature; CGLS, Copernicus Global Land Service.

495 The GHA-LST data have satisfactory temporal continuity and correspond to the ground measurements at hourly and daily mean scales. At the hourly scale, the hourly LST exhibits harmonic diurnal variations under clear-sky conditions, especially at Fluxnet AU-Rig (Figure 8e7c), where the climate is dry and cloud cover is low. In comparison, a more complicated temporal pattern of LSTs is observed for continuous cloudy time (e.g., BSRN CAB, Figure 8b7b), indicating that the harmonic function-based DTC models may not work well in these cases. The GHA-LST data can capture the DTCs under both clear-sky and cloudy-sky conditions and correspond to the ground measurements and clear-sky CGLS. Certain clear-sky CGLS points are
500 scattered and have a clear negative bias (Figure 8a7a) because they were detected as partially covered pixels; thus, they were not used in the data assimilation. At AmeriFlux US-Ro1 (Figure 8d7d), GHA-LST is more consistent with CGLS than the ground measurements on clear-sky days; thus, we infer that US-Ro1 has a larger heterogeneity issue than the other sites.

505 After temporal aggregation, the daily mean LST variation in different years also demonstrated the continuity and stable accuracy of the GHA-LST. The relatively larger differences between the satellite datasets and ground measurements at noon (hourly scale) and during summer (daily mean scale) can be explained by site representativeness. A temporal variation analysis of accuracy (Jia et al., 2022a) suggests that ground measurements generally have the lowest representativeness at noon and the RMSE statistics of hourly LST products can increase by more than 1 K from nighttime to noon. As solar radiation increases in the morning, LST has distinct warming responses over different land cover types in a pixel; thus, the spatial heterogeneity
510 of the pixel is enhanced during daytime.

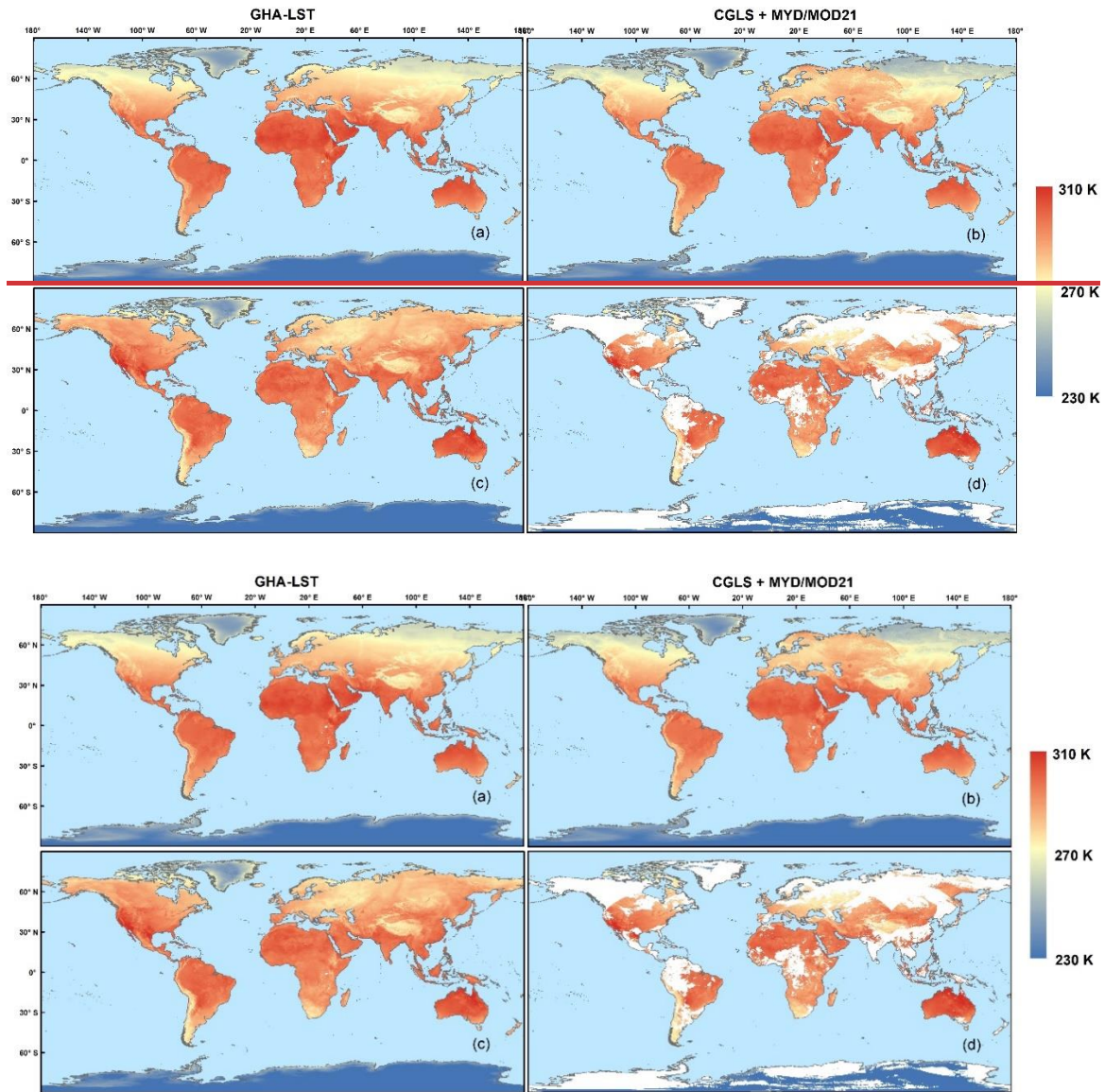


Figure 98. Global LST maps of (a) GHA-LST annual mean in 2021, (b) CGLS + MYD/MOD21 annual mean in 2021; hourly LST maps at 02:00 UTC on September 07, 2021, of (c) GHA-LST and (d) CGLS + MYD/MOD21. Abbreviations: GHA-LST, global hourly, 5 km, all-sky land surface temperature; CGLS, Copernicus Global Land Service.

515

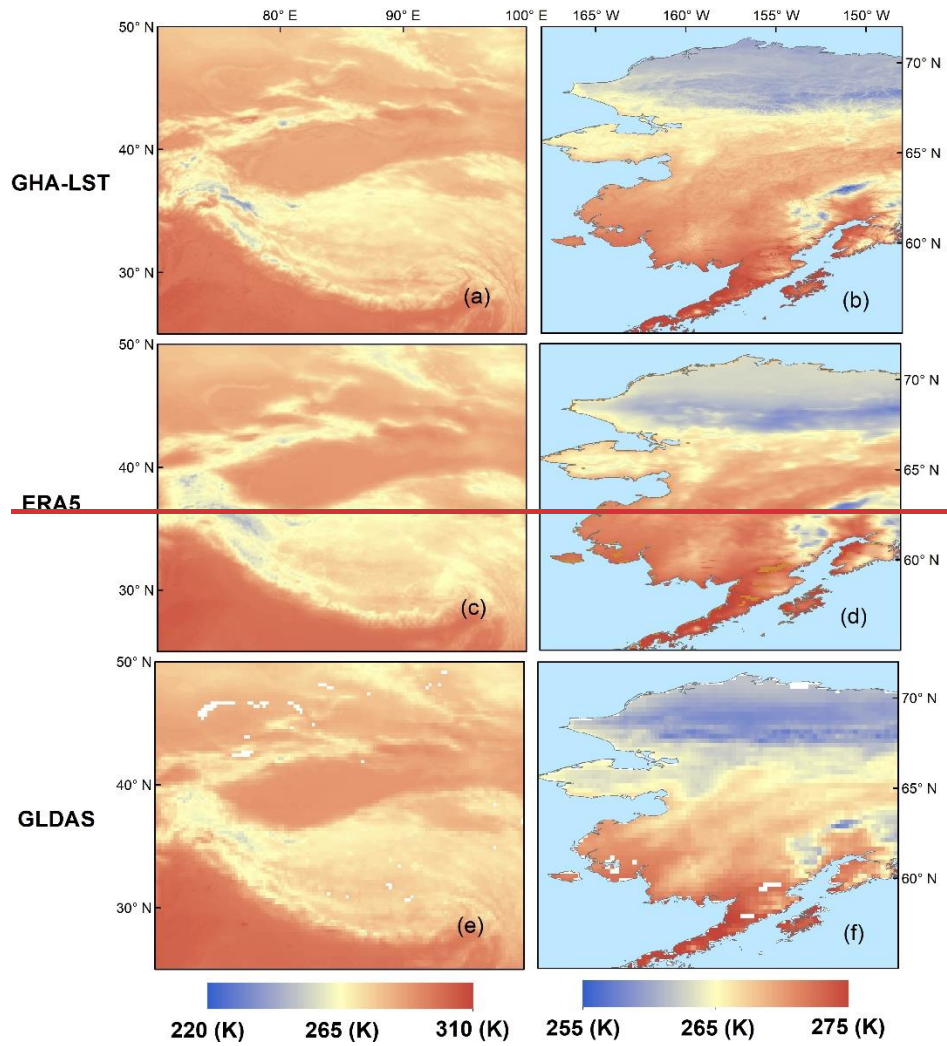
A global all-sky LST map was analyzed to demonstrate the spatial continuity of the proposed GHA-LST dataset. The global annual mean maps of all-sky LST from GHA-LST and clear-sky LST from CGLS+MYD/MOD21 were compared (Figure 98). Overall, the GHA-LST data exhibit high spatial continuity across the globe at different time scales. The annual mean GHA-LST for 2021 (Figure 9a8a) illustrates a reasonable spatial pattern. The annual LSTs from CGLS+MYD/MOD21 (Figure 9b8b)

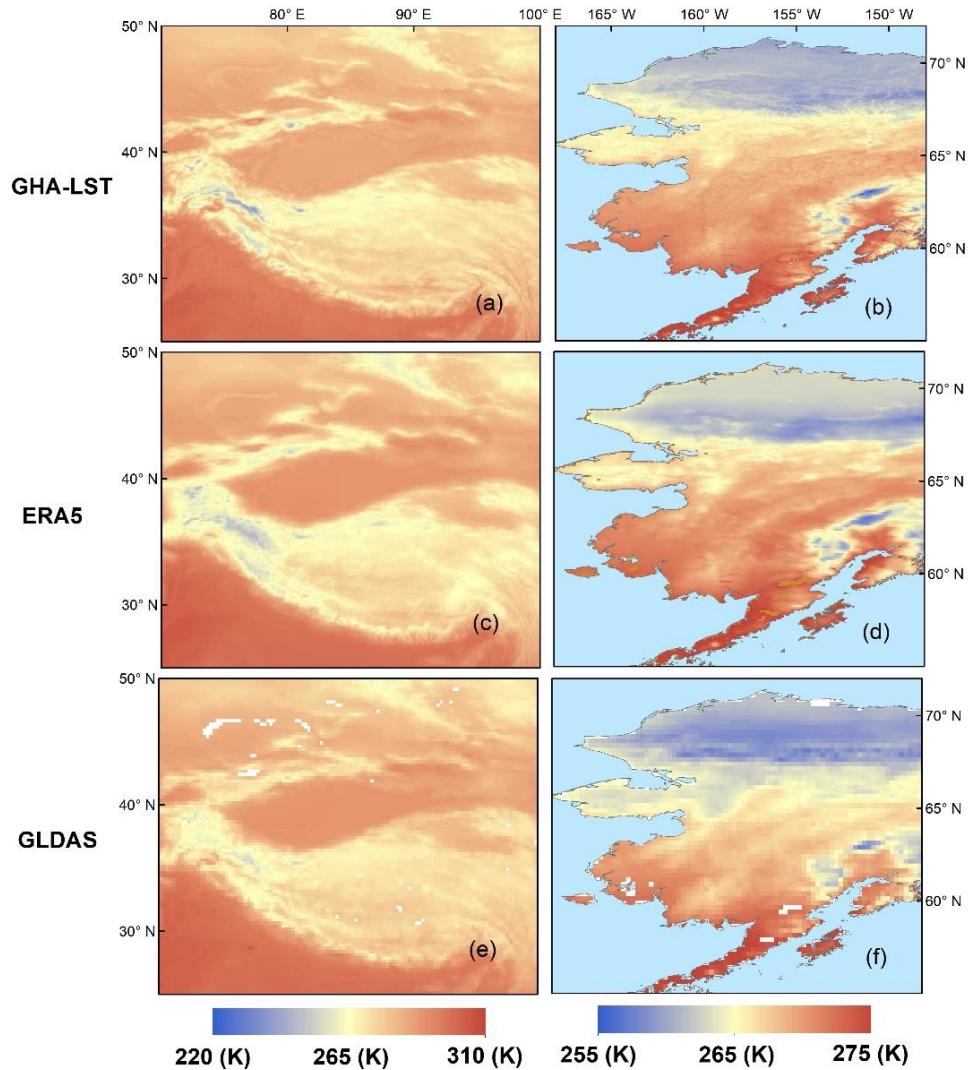
520

present a systematic clear-sky bias (Ermida et al., 2019), especially in the connection regions of the CGLS and MODIS data (southwestern Canada and Siberia), where clear artificial lines are shown. In comparison, assimilating the clear-sky results to the time-evolving model can produce more spatially consistent LST maps.

525 At the hourly scale, the GHA-LST map (Figure 9e8c) can also produce the reasonable spatial variation in LST ~~without artificial~~
~~textures~~. Compared with the clear-sky pixels in Figure 9d8d, the cloudy-sky pixels of the GHA-LST data (Figure 9e8c) were
well recovered. It should be noted that the clear-sky map (Figure 9b8b) had more spatial textures than the all-sky annual mean
map (Figure 9a8a) because clear-sky LSTs have higher spatial heterogeneity due to solar heating. Furthermore, the various
530 numbers of available clear-sky days in different locations may cause spurious spatial textures (e.g., lines at the connection
region of CGLS and MODIS). Additionally, the GHA-LST spatiotemporally filtered clear-sky satellite LSTs using the
simulated model series, which may sacrifice spatial textures for data fusion.

To evaluate the ability of GHA-LST to capture spatial textures at regional scales, the GHA-LST annual means in the Alaska
and TP regions are shown in Figure 409. These two areas were selected because they are hot spot regions in terms of their
535 response to climate change (Kuang and Jiao, 2016; Melvin et al., 2017), and GHA-LST was recovered in these two regions
from MODIS and CGLS, respectively. The corresponding annual mean skin temperatures of ERA5 and the Global Land Data
Assimilation System (GLDAS) were also included for comparison. ERA5 and GLDAS were employed because global hourly
all-sky LST is currently only available from reanalysis datasets and both ~~of them~~ are widely used in the relevant research
(Muñoz-Sabater et al., 2021; Rodell et al., 2004). GHA-LST has a spatial pattern similar to that of the two reanalysis datasets
540 but produces many more spatial details. GHA-LST has a spatial resolution of ~5 km; therefore, it can provide more spatial
texture information than the ERA5 (0.1°) and GLDAS (0.25°) data. GLDAS data have invalid pixels, mainly because it ignores
all inland lakes.





545 **Figure 109. Regional-Temporally averaged** all-sky LST maps in 2021 from (a, b) GHA-LST, (c, d) ERA5, and (e, f) GLDAS (a, c, e) over the Tibetan Plateau and (b, d, f) Alaska. Abbreviations: GHA-LST, global hourly, 5 km, all-sky land surface temperature; GLDAS, Global Land Data Assimilation System.

3.4 Global anomaly analysis

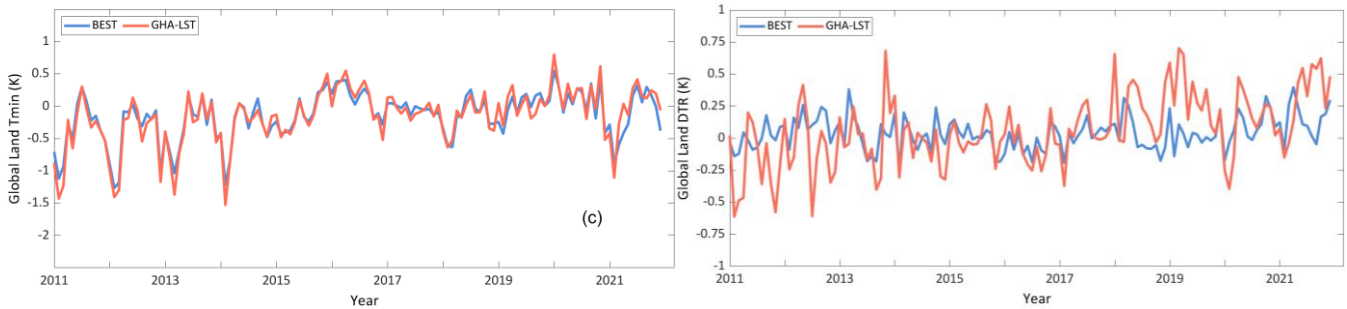
550 To justify the potential use of LST in climate warming-related issues, the relationship between LST and surface air temperature (AT) has recently been discussed. However, previous studies have either focused on local site scales (Hachem et al., 2012; Good, 2016; Sohrabinia et al., 2015; Mutiibwa et al., 2015) or ignored the clear-sky LST bias (Good et al., 2017). In comparison, the proposed GHA-LST provides an exceptional opportunity to spatiotemporally upscale the all-sky hourly LST

to allow for comparisons with AT climate datasets. Monthly anomaly variations in global LST and AT are shown in Figure 44-10 by removing the seasonal cycle in the daily mean (Tmean), daily minimum temperature (Tmin), daily maximum temperature (Tmax), and diurnal temperature range (DTR).

Berkeley Earth Surface Temperatures (BEST, Rohde et al. (2013)), NASA Goddard Institute for Space Studies Surface Temperature Analysis version 4 (GISTEMP v4, Lenssen et al. (2019)), and Climatic Research Unit Temperature, version 4 (CRUTEM4, Osborn and Jones (2014)) were used to characterize the AT variation (Figure 44-10a). Other all-sky LST datasets were averaged and shown to verify the GHA-LST anomaly, including two MODIS-derived gap-free results, as shown in Table 1 (Hong et al., 2022; Zhang et al., 2022), and the ERA5-Land reanalysis skin temperature. Only BEST and GHA-LST can provide Tmax and Tmin; thus, they were used in Figure 44-10 b-d. The reference time period was 2015-2017, and the uncertainty shadow in Figure 44-10a is the standard deviation of the averaged LST/AT datasets.

565





570 **Figure 11.10.** Monthly anomaly variation of globally geographical weighted LST and land surface air temperature (AT) at different scales: (a) mean temperature (Tmean), (b) maximum temperature (Tmax), (c) minimum temperature (Tmin), and (d) diurnal temperature range (DTR). Abbreviations: GHA-LST, global hourly, 5 km, all-sky land surface temperature; BEST, Berkeley Earth Surface Temperatures.

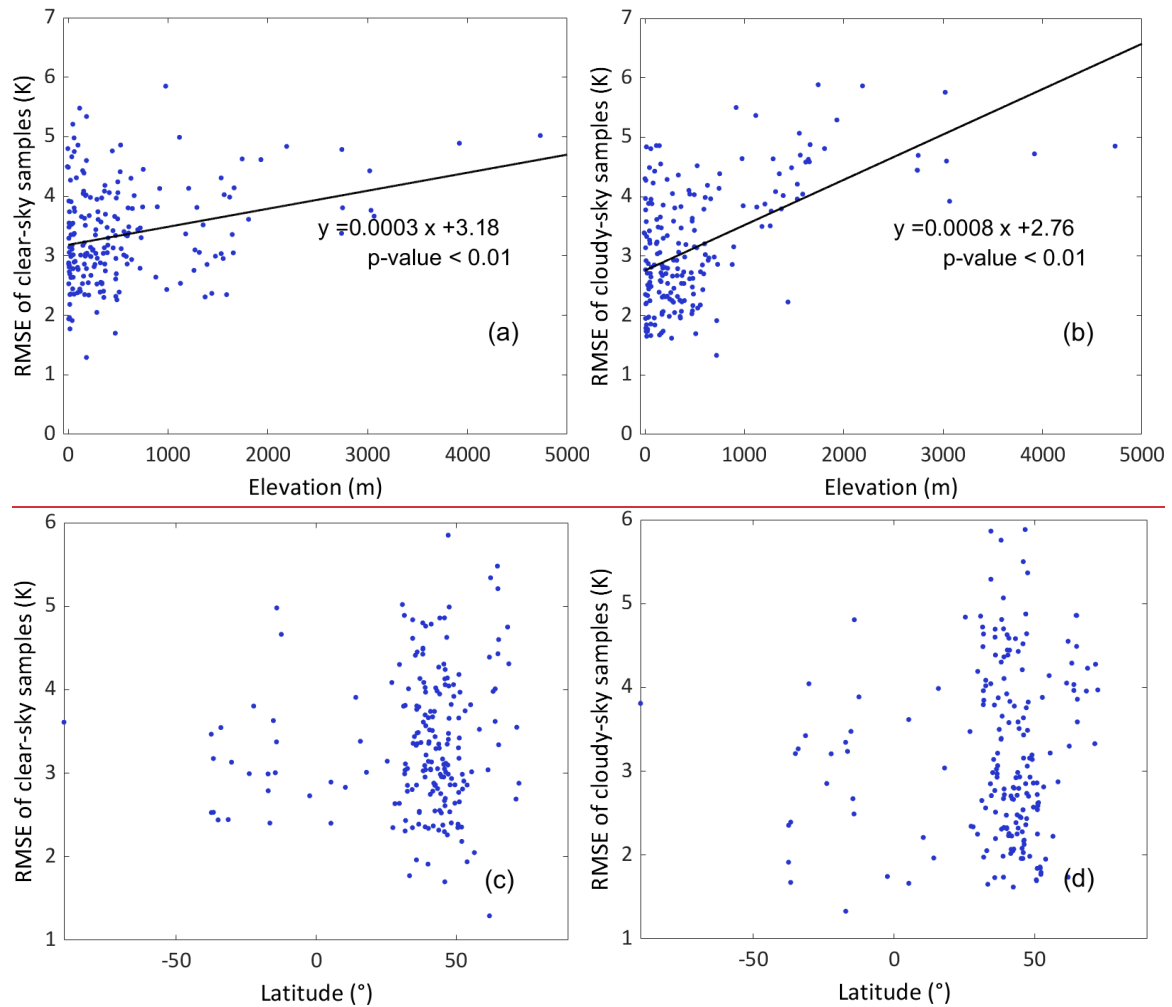
575 The LST anomaly couples well with the global AT anomaly at the Tmean and Tmin scales, and LST has a slightly larger amplitude than AT, whereas the Tmax and DTR of the two variables can only match the anomalous direction and the magnitude is quite different. At the Tmean scale, anomalies of GHA-LST and other LSTs have very similar variations with the AT datasets, even though they have completely different data sources (Figure 11.10a). These findings are consistent with the trend comparison between the ERA5-Land skin temperature and AT (Wang et al., 2022). Both datasets have limited uncertainty

580 (shadowed areas), indicating that they can accurately characterize the land surface thermal dynamics. In comparison, LST had a slightly larger anomaly amplitude than AT, which was mainly caused by the daytime LST. Solar heating increases the temperature difference between LSTs and ATs over different surface land cover types (Good et al., 2017). Accordingly, Tmax exhibited the largest difference (Figure 11.10b), especially in years with large anomalies, thus indicating that LST Tmax had a stronger response to heat anomalies. Tmin showed a higher correlation between the two variables (Figure 11.10c). LST has

585 a considerably stronger DTR disturbance than AT owing to the difference in Tmax (Figure 11.10d). We did not quantify the trend magnitude because the time span was only 11 years and the overall trend was affected by the value in one specific year. This analysis demonstrates the potential usefulness of GHA-LST in climate studies and global hourly AT estimates.

4 Discussion

590 The site RMSE statistics were compared with the corresponding site elevations and latitudes to detect the potential factors that impact the accuracy of the results (Figure 11).



595 **Figure 11. Scatter plots between the site RMSE and (a, b) elevation and (c, d) latitude under (a, c) clear-sky and (b, d) cloudy-sky conditions. The significant linear relationship (p-values < 0.01) is drawn (a, b).**

600 The RMSE statistics at each site were mainly affected by the site elevation (Figure 11). The scatterplots of site RMSE and site elevation under clear-sky and cloud-sky conditions (Figures 7a and b) show that the linear relationship was statistically significant (p-value < 0.01). We suppose that increasing elevation will decrease the spatial representativeness of the sites; therefore, the RMSEs of the clear-sky results showed an increasing trend. In addition, the cloudy-sky results had a larger slope (Figure 11b), indicating that they were more sensitive to elevation variations. Thus, we inferred that elevation was an essential factor affecting LST recovery. In these regions with high elevation, clear-sky LSTs with larger RMSEs were assimilated in the time-evolving model, thus affecting the cloudy-sky results. In addition, modeled temperature series include higher uncertainty in these regions, and a relevant ‘cool bias’ issue in highlands was found in regional simulation models and global reanalysis datasets (Jia et al., 2022b; Meng et al., 2018). Although the relationship between the site RMSE and site latitude

605

was not statistically significant (Figure 11c and d), the GHA-LST data at higher latitudes produced higher RMSEs than the data at lower latitudes, especially under cloudy-sky conditions; thus, we inferred that high latitudes were frequently covered by clouds and fewer clear-sky LSTs could be used in the data assimilation. In addition, sites at higher latitudes are usually located in coastal areas (Figure 6a), which may limit their spatial representativeness at the 5 km scale.

Furthermore, the spatial continuity at regional scale was evaluated. A detailed mapping examination suggests that no artificial textures occurred under most conditions at mid- and low latitudes; however, at high latitudes where MODIS swath data are the basic input data, swath edges are observed on the map in some cases (Figure 12).

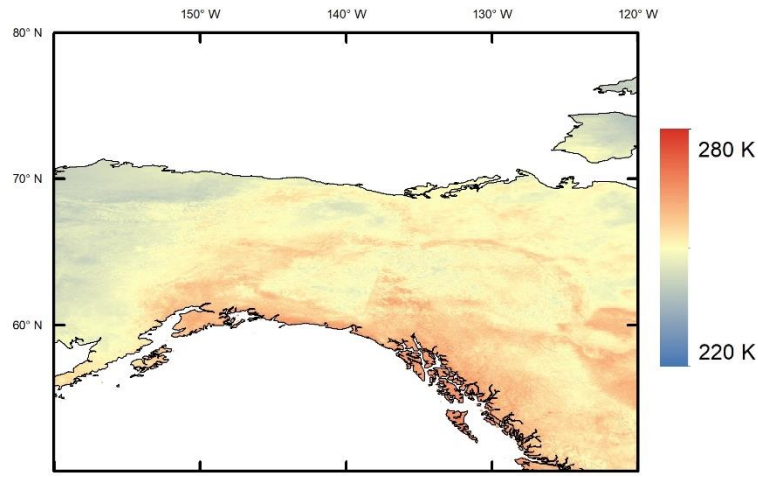


Figure 12. Case showing the artificial texture (middle of the image) at Northwestern Canada at 05:00 UTC on January 02, 2012.

Such spatial discontinuity occurs when the clear-sky LST retrievals within a swath have considerable temperature differences compared to that of spatially neighboring pixels that are not covered by the swath. Regions at high latitude experience longer cloud durations than those at lower latitudes; thus, pixels that are not covered by the swath might accumulate high uncertainties compared to the adjacent clear-sky retrievals. Therefore, an artificial texture remained after the data assimilation. Based on the literature review, spatial continuity is also a major issue for current MODIS LST products due to substantially different view zenith angles and view times of neighboring swaths after reprojection (Figures 14 and 17 in Li et al. (2022b)). To address such discontinuity issues, machine learning methods that incorporate additional variables for estimating cloudy-sky LST can be used in the future (Zhao et al., 2019).

4.5 Data Availability

The global hourly, 5 km, all-sky land surface temperature dataset (GHA-LST) dataset from 2011 to 2021 is freely available at <https://doi.org/10.5281/zenodo.74872846981704> (Jia et al., 2022c), and the full dataset is also accessible from

glass.umd.edu/allsky_LST/GHA-LST. ~~Quality Check (QC) flags are also included: the Bit 0 indicates the sky condition mask (1: clear-sky, 0: cloudy-sky), and the Bit 1 is the cloud duration that represents the uncertainty level (0: <=10 days, 1: >10 days). The algorithm produced a stable accuracy within 10 days as indicated by Jia et al. (2022a). For users' convenience, the dataset is released as a Climate Modeling Grid (CMG) in the 'geotiff' file format, and the images include geolocation information.~~

5.6 Conclusions

LST is an essential driving factor in the surface radiation budget and hydrological cycling, and TIR-based satellite retrieval is the primary method used to obtain LST globally. However, TIR-derived LST has numerous data gaps, mainly due to cloud cover, which seriously restricts the application of current LST products. Studies have focused on producing all-sky LST products; nevertheless, global all-sky LSTs on an hourly scale are still unavailable. Considering the high temporal variability of LST and the importance of the DTC in ET estimation, drought detection, and heatwave monitoring, we produced a global hourly, 5 km, all-sky land surface temperature dataset (GHA-LST) from 2011 to 2021. The data are recovered using CGLS LST products from geostationary satellites and the MYD/MOD21 products from polar-orbiting satellites. Moreover, GHA-LST represents the first global gap-free LST product at an hourly scale, and it has been comprehensively validated by in situ measurements at ~~197-201~~ global sites in this study.

Based on the ground measurements from the SURFRAD, BSRN, Fluxnet, AmeriFlux, HRB, and TP networks, the overall RMSE of GHA-LST is ~~3.38-31~~ K, with a bias of ~~-0.53-57~~ K and R^2 of 0.95. The comparisons of individual accuracy suggest that the proposed GHA-LST dataset has better accuracy than the CGLS and MYD21C1 data under both clear-sky and cloudy-sky conditions. In addition, the accuracy is stable under both clear-sky and cloudy-sky conditions (RMSEs = ~~~3.4-3~~ K with few biases based on different sampling groups). The overall sampling amount was more than 5 million, and we suppose that the overall validation can represent the general accuracy of GHA-LST globally. In addition, after temporal aggregation to the daily mean scale, the GHA-LST dataset produced an RMSE of ~~1.767-6~~ K and significantly improved the accuracy and data availability of the global daily mean LST.

The individual site validation indicated that the GHA-LST dataset has similar accuracy in terms of spatial patterns under different sky conditions. ~~It had lower RMSEs (< 3.5 K) in eastern America, Europe, and Australia but varying RMSEs from 3.5 to 5 K in western America and the TP. In comparison, the cloudy-sky results had a larger spatial variance in accuracy. Furthermore, the analysis between the site RMSE and the corresponding site elevation and latitude suggested that the RMSE statistics at each site were mainly affected by site elevation.~~

660 Temporal analyses were performed for four representative sites, and the GHA-LST dataset had a high temporal continuity and was consistent with the ground measurements at hourly and daily mean scales. The temporal variation in hourly LST also illustrated that mathematically predictable DTCs cannot be obtained for locations with continuous cloudy days, thus highlighting the advantage of the time-evolving model-based method used for the GHA-LST product. Spatial analysis suggested that the GHA-LST dataset has satisfactory spatial continuity over clear-sky and cloudy-sky regions, and artificial textures were not observed. Regional mapping analysis of the TP and Alaska regions demonstrated that GHA-LST can capture greater spatial details than reanalysis datasets, which were the only data source for obtaining hourly gap-free LSTs before this study. The monthly anomaly analysis indicated that the GHA-LST anomalies are consistent with global AT datasets and other LST datasets at the Tmean and Tmin scales, whereas the Tmax and DTR of the LSTs and ATs are only consistent with the anomalous direction while-when the magnitudes are different.

670

In the future, ~~passive microwave based LSTs can be used to improve the recovery accuracies over high elevation regions.~~ Additional clear-sky LST products, such as the visible infrared imaging radiometer suite (VIIRS) and advanced very high-resolution radiometer (AVHRR), can also be assimilated to increase the time span and spatial resolution of the proposed dataset. Machine learning can be employed to effectively incorporate information from ground measurements, spatial textures, and related factors (e.g., elevation, soil moisture, land cover, and wind speed). GHA-LST represents the first gap-free LST dataset at an hourly, 5 km scale over the globe, and it has satisfactory accuracy and great potential for use in estimating global plant water stress, monitoring extreme weather, and advancing meteorological forecasting models.

675

Appendix

680

Table: Validation statistics of each site.

<u>Network</u>	<u>Site</u>	<u>Clear-sky Samples</u>				<u>Cloudy-sky Samples</u>			
		<u>bias</u>	<u>RMSE</u>	<u>R²</u>	<u>N</u>	<u>bias</u>	<u>RMSE</u>	<u>R²</u>	<u>N</u>
<u>SURFRA D</u>	<u>BND</u>	<u>-0.34</u>	<u>2.34</u>	<u>0.97</u>	<u>36983</u>	<u>0.90</u>	<u>2.32</u>	<u>0.96</u>	<u>50266</u>
	<u>FPK</u>	<u>-1.17</u>	<u>2.94</u>	<u>0.97</u>	<u>36910</u>	<u>-0.17</u>	<u>2.93</u>	<u>0.96</u>	<u>50501</u>
	<u>GWN</u>	<u>0.64</u>	<u>2.80</u>	<u>0.95</u>	<u>42136</u>	<u>0.64</u>	<u>2.85</u>	<u>0.91</u>	<u>44621</u>
	<u>PSU</u>	<u>-0.81</u>	<u>2.75</u>	<u>0.96</u>	<u>34317</u>	<u>-0.50</u>	<u>2.23</u>	<u>0.96</u>	<u>52809</u>
	<u>SXF</u>	<u>-0.42</u>	<u>2.32</u>	<u>0.98</u>	<u>37649</u>	<u>0.39</u>	<u>2.48</u>	<u>0.96</u>	<u>49400</u>
<u>BSRN</u>	<u>bar</u>	<u>0.11</u>	<u>2.69</u>	<u>0.97</u>	<u>25941</u>	<u>-0.12</u>	<u>3.33</u>	<u>0.94</u>	<u>48341</u>

	<u>bud</u>	<u>0.87</u>	<u>3.66</u>	<u>0.94</u>	<u>4942</u>	<u>-0.92</u>	<u>3.49</u>	<u>0.91</u>	<u>7939</u>
	<u>cab</u>	<u>-0.53</u>	<u>2.18</u>	<u>0.95</u>	<u>22129</u>	<u>0.28</u>	<u>1.84</u>	<u>0.93</u>	<u>40650</u>
	<u>dar</u>	<u>-2.38</u>	<u>4.66</u>	<u>0.86</u>	<u>14516</u>	<u>-1.18</u>	<u>3.89</u>	<u>0.48</u>	<u>20617</u>
	<u>e13</u>	<u>-0.31</u>	<u>2.39</u>	<u>0.97</u>	<u>37930</u>	<u>0.93</u>	<u>2.93</u>	<u>0.94</u>	<u>35193</u>
	<u>pay</u>	<u>0.79</u>	<u>2.26</u>	<u>0.96</u>	<u>29785</u>	<u>-0.42</u>	<u>2.36</u>	<u>0.92</u>	<u>54290</u>
	<u>sel</u>	<u>-1.55</u>	<u>3.38</u>	<u>0.90</u>	<u>3605</u>	<u>-2.95</u>	<u>3.99</u>	<u>0.84</u>	<u>4843</u>
	<u>spo</u>	<u>0.45</u>	<u>3.61</u>	<u>0.92</u>	<u>2681</u>	<u>0.22</u>	<u>3.81</u>	<u>0.91</u>	<u>5810</u>
	<u>tat</u>	<u>0.01</u>	<u>3.35</u>	<u>0.95</u>	<u>36718</u>	<u>0.03</u>	<u>2.51</u>	<u>0.93</u>	<u>50949</u>
	<u>tik</u>	<u>0.05</u>	<u>3.55</u>	<u>0.97</u>	<u>12411</u>	<u>-0.65</u>	<u>4.28</u>	<u>0.94</u>	<u>57405</u>
	<u>tor</u>	<u>-1.13</u>	<u>3.53</u>	<u>0.95</u>	<u>12559</u>	<u>-0.80</u>	<u>2.87</u>	<u>0.93</u>	<u>70797</u>
<u>Fluxnet</u>	<u>AU-ASM</u>	<u>1.59</u>	<u>3.80</u>	<u>0.94</u>	<u>21781</u>	<u>0.61</u>	<u>3.21</u>	<u>0.90</u>	<u>12760</u>
	<u>AU-Cpr</u>	<u>0.20</u>	<u>3.55</u>	<u>0.96</u>	<u>19103</u>	<u>1.74</u>	<u>3.27</u>	<u>0.93</u>	<u>14607</u>
	<u>AU-DaP</u>	<u>3.36</u>	<u>4.98</u>	<u>0.89</u>	<u>11696</u>	<u>3.95</u>	<u>4.81</u>	<u>0.80</u>	<u>11099</u>
	<u>AU-DaS</u>	<u>0.59</u>	<u>3.37</u>	<u>0.89</u>	<u>17051</u>	<u>1.07</u>	<u>2.49</u>	<u>0.85</u>	<u>16929</u>
	<u>AU-Dry</u>	<u>-1.96</u>	<u>3.63</u>	<u>0.92</u>	<u>14357</u>	<u>-2.27</u>	<u>3.48</u>	<u>0.86</u>	<u>11939</u>
	<u>AU-Emr</u>	<u>0.94</u>	<u>2.99</u>	<u>0.95</u>	<u>13603</u>	<u>0.95</u>	<u>2.85</u>	<u>0.89</u>	<u>8054</u>
	<u>AU-Gin</u>	<u>0.50</u>	<u>2.44</u>	<u>0.95</u>	<u>15637</u>	<u>0.45</u>	<u>3.42</u>	<u>0.87</u>	<u>9008</u>
	<u>AU-GWW</u>	<u>0.71</u>	<u>3.13</u>	<u>0.98</u>	<u>6328</u>	<u>1.70</u>	<u>4.04</u>	<u>0.92</u>	<u>3712</u>
	<u>AU-RDF</u>	<u>0.23</u>	<u>3.01</u>	<u>0.91</u>	<u>7611</u>	<u>0.17</u>	<u>2.67</u>	<u>0.83</u>	<u>6871</u>
	<u>AU-Rig</u>	<u>-0.01</u>	<u>2.53</u>	<u>0.96</u>	<u>17709</u>	<u>0.28</u>	<u>2.39</u>	<u>0.92</u>	<u>12438</u>
	<u>AU-Rob</u>	<u>-0.15</u>	<u>2.79</u>	<u>0.73</u>	<u>4762</u>	<u>0.54</u>	<u>1.33</u>	<u>0.88</u>	<u>3864</u>
	<u>AU-Stp</u>	<u>0.92</u>	<u>2.99</u>	<u>0.94</u>	<u>18748</u>	<u>0.50</u>	<u>3.34</u>	<u>0.84</u>	<u>14097</u>
	<u>AU-Whr</u>	<u>0.50</u>	<u>3.17</u>	<u>0.94</u>	<u>14734</u>	<u>0.25</u>	<u>1.67</u>	<u>0.95</u>	<u>12076</u>
	<u>AU-Wom</u>	<u>0.35</u>	<u>3.47</u>	<u>0.89</u>	<u>16156</u>	<u>1.04</u>	<u>1.91</u>	<u>0.93</u>	<u>17560</u>
	<u>AU-Ync</u>	<u>0.64</u>	<u>2.44</u>	<u>0.97</u>	<u>10896</u>	<u>1.26</u>	<u>3.21</u>	<u>0.92</u>	<u>7989</u>
	<u>BE-Lon</u>	<u>-0.60</u>	<u>2.35</u>	<u>0.94</u>	<u>9418</u>	<u>0.55</u>	<u>1.70</u>	<u>0.95</u>	<u>24109</u>

<u>CA-Gro</u>	<u>-0.86</u>	<u>2.40</u>	<u>0.98</u>	<u>10517</u>	<u>0.85</u>	<u>1.99</u>	<u>0.98</u>	<u>19025</u>
<u>CH-Cha</u>	<u>2.15</u>	<u>3.48</u>	<u>0.94</u>	<u>5909</u>	<u>-0.41</u>	<u>2.73</u>	<u>0.92</u>	<u>11457</u>
<u>CH-Dav</u>	<u>-0.63</u>	<u>4.14</u>	<u>0.90</u>	<u>4289</u>	<u>-0.55</u>	<u>4.88</u>	<u>0.77</u>	<u>4412</u>
<u>CH-Fru</u>	<u>3.50</u>	<u>5.85</u>	<u>0.75</u>	<u>368</u>	<u>3.21</u>	<u>4.64</u>	<u>0.85</u>	<u>90</u>
<u>CN-Sw2</u>	<u>1.31</u>	<u>2.37</u>	<u>0.97</u>	<u>36</u>	<u>-0.29</u>	<u>2.23</u>	<u>0.46</u>	<u>11</u>
<u>CZ-BK1</u>	<u>0.02</u>	<u>2.64</u>	<u>0.94</u>	<u>9109</u>	<u>1.16</u>	<u>2.86</u>	<u>0.91</u>	<u>20696</u>
<u>CZ-wet</u>	<u>1.64</u>	<u>4.06</u>	<u>0.88</u>	<u>7983</u>	<u>0.27</u>	<u>3.19</u>	<u>0.86</u>	<u>11327</u>
<u>DE-Akm</u>	<u>0.54</u>	<u>1.94</u>	<u>0.96</u>	<u>9771</u>	<u>1.21</u>	<u>1.95</u>	<u>0.96</u>	<u>20507</u>
<u>DE-Geb</u>	<u>-0.28</u>	<u>2.66</u>	<u>0.94</u>	<u>9599</u>	<u>-0.18</u>	<u>2.59</u>	<u>0.92</u>	<u>25439</u>
<u>DE-Gri</u>	<u>2.31</u>	<u>4.18</u>	<u>0.92</u>	<u>9857</u>	<u>0.94</u>	<u>2.54</u>	<u>0.93</u>	<u>24950</u>
<u>DE-Hai</u>	<u>-0.77</u>	<u>3.42</u>	<u>0.89</u>	<u>4910</u>	<u>0.80</u>	<u>2.62</u>	<u>0.90</u>	<u>12100</u>
<u>DE-Kli</u>	<u>-0.96</u>	<u>3.66</u>	<u>0.89</u>	<u>9558</u>	<u>0.18</u>	<u>2.72</u>	<u>0.90</u>	<u>24733</u>
<u>DE-Lnf</u>	<u>-0.71</u>	<u>3.97</u>	<u>0.84</u>	<u>4835</u>	<u>0.74</u>	<u>2.63</u>	<u>0.89</u>	<u>11927</u>
<u>DE-Obe</u>	<u>-1.56</u>	<u>3.30</u>	<u>0.93</u>	<u>10758</u>	<u>0.60</u>	<u>2.86</u>	<u>0.89</u>	<u>23689</u>
<u>DE-RuR</u>	<u>0.02</u>	<u>2.39</u>	<u>0.93</u>	<u>7775</u>	<u>0.17</u>	<u>1.69</u>	<u>0.95</u>	<u>22683</u>
<u>DE-RuS</u>	<u>0.22</u>	<u>2.77</u>	<u>0.92</u>	<u>5938</u>	<u>0.30</u>	<u>1.84</u>	<u>0.94</u>	<u>16662</u>
<u>DE-SfN</u>	<u>0.70</u>	<u>2.86</u>	<u>0.94</u>	<u>5497</u>	<u>-1.18</u>	<u>2.70</u>	<u>0.92</u>	<u>15626</u>
<u>DE-Spw</u>	<u>-0.50</u>	<u>2.35</u>	<u>0.95</u>	<u>9326</u>	<u>1.01</u>	<u>1.86</u>	<u>0.97</u>	<u>23628</u>
<u>DE-Tha</u>	<u>-1.68</u>	<u>3.18</u>	<u>0.94</u>	<u>9873</u>	<u>0.20</u>	<u>2.25</u>	<u>0.93</u>	<u>25184</u>
<u>DE-Zrk</u>	<u>-1.33</u>	<u>2.86</u>	<u>0.91</u>	<u>4559</u>	<u>0.00</u>	<u>1.95</u>	<u>0.93</u>	<u>9525</u>
<u>DK-Sor</u>	<u>-0.94</u>	<u>3.02</u>	<u>0.91</u>	<u>7224</u>	<u>1.09</u>	<u>3.22</u>	<u>0.84</u>	<u>17380</u>
<u>FI-Hyy</u>	<u>-0.65</u>	<u>1.29</u>	<u>0.99</u>	<u>24</u>	<u>-0.38</u>	<u>1.74</u>	<u>0.97</u>	<u>264</u>
<u>FR-Pue</u>	<u>1.41</u>	<u>3.35</u>	<u>0.92</u>	<u>14666</u>	<u>0.24</u>	<u>2.25</u>	<u>0.92</u>	<u>17435</u>
<u>GF-Guy</u>	<u>-0.16</u>	<u>2.89</u>	<u>0.33</u>	<u>7675</u>	<u>0.95</u>	<u>1.66</u>	<u>0.41</u>	<u>9819</u>
<u>GH-Ank</u>	<u>0.50</u>	<u>2.40</u>	<u>0.57</u>	<u>9314</u>	<u>2.86</u>	<u>3.62</u>	<u>0.49</u>	<u>8107</u>
<u>IT-CA1</u>	<u>-0.61</u>	<u>2.55</u>	<u>0.96</u>	<u>12906</u>	<u>-1.64</u>	<u>2.81</u>	<u>0.92</u>	<u>11233</u>

<u>IT-Isp</u>	<u>-0.17</u>	<u>2.67</u>	<u>0.93</u>	<u>7082</u>	<u>-1.10</u>	<u>2.54</u>	<u>0.91</u>	<u>10436</u>
<u>IT-Ren</u>	<u>2.31</u>	<u>4.63</u>	<u>0.87</u>	<u>9756</u>	<u>2.95</u>	<u>5.88</u>	<u>0.71</u>	<u>12239</u>
<u>IT-SR2</u>	<u>3.21</u>	<u>4.27</u>	<u>0.91</u>	<u>3492</u>	<u>1.56</u>	<u>2.71</u>	<u>0.90</u>	<u>17518</u>
<u>NL-Hor</u>	<u>0.55</u>	<u>2.81</u>	<u>0.86</u>	<u>2969</u>	<u>0.32</u>	<u>1.79</u>	<u>0.92</u>	<u>5737</u>
<u>NL-Loo</u>	<u>-0.69</u>	<u>2.99</u>	<u>0.90</u>	<u>9372</u>	<u>0.76</u>	<u>1.77</u>	<u>0.95</u>	<u>15435</u>
<u>RU-Fyo</u>	<u>-0.46</u>	<u>2.05</u>	<u>0.96</u>	<u>238</u>	<u>0.77</u>	<u>2.22</u>	<u>0.96</u>	<u>7008</u>
<u>RU-Sam</u>	<u>-0.76</u>	<u>2.88</u>	<u>0.98</u>	<u>1644</u>	<u>0.81</u>	<u>3.97</u>	<u>0.95</u>	<u>9583</u>
<u>RU-SkP</u>	<u>-3.05</u>	<u>5.34</u>	<u>0.97</u>	<u>864</u>	<u>-1.63</u>	<u>3.30</u>	<u>0.98</u>	<u>1971</u>
<u>US-AR1</u>	<u>-1.31</u>	<u>3.49</u>	<u>0.96</u>	<u>10508</u>	<u>-0.24</u>	<u>3.03</u>	<u>0.95</u>	<u>6996</u>
<u>US-AR2</u>	<u>-0.83</u>	<u>3.79</u>	<u>0.95</u>	<u>7432</u>	<u>-0.11</u>	<u>2.97</u>	<u>0.96</u>	<u>5464</u>
<u>US-CRT</u>	<u>-0.83</u>	<u>2.78</u>	<u>0.96</u>	<u>10347</u>	<u>0.43</u>	<u>2.07</u>	<u>0.97</u>	<u>15745</u>
<u>US-Los</u>	<u>-0.08</u>	<u>2.70</u>	<u>0.97</u>	<u>3021</u>	<u>0.15</u>	<u>2.17</u>	<u>0.97</u>	<u>4542</u>
<u>US-Me2</u>	<u>0.34</u>	<u>2.75</u>	<u>0.95</u>	<u>12973</u>	<u>0.23</u>	<u>3.51</u>	<u>0.90</u>	<u>19078</u>
<u>US-Ne1</u>	<u>0.92</u>	<u>3.13</u>	<u>0.96</u>	<u>10294</u>	<u>2.62</u>	<u>3.83</u>	<u>0.95</u>	<u>10852</u>
<u>US-NR1</u>	<u>-1.02</u>	<u>3.66</u>	<u>0.92</u>	<u>16549</u>	<u>0.47</u>	<u>3.92</u>	<u>0.86</u>	<u>18482</u>
<u>US-Oho</u>	<u>-0.40</u>	<u>3.67</u>	<u>0.95</u>	<u>10223</u>	<u>1.16</u>	<u>2.70</u>	<u>0.96</u>	<u>16047</u>
<u>US-Prr</u>	<u>1.73</u>	<u>4.60</u>	<u>0.93</u>	<u>863</u>	<u>0.11</u>	<u>3.86</u>	<u>0.94</u>	<u>3674</u>
<u>US-SRC</u>	<u>-0.58</u>	<u>2.43</u>	<u>0.98</u>	<u>15668</u>	<u>-0.47</u>	<u>3.85</u>	<u>0.91</u>	<u>11042</u>
<u>US-SRG</u>	<u>2.25</u>	<u>3.81</u>	<u>0.95</u>	<u>21746</u>	<u>2.24</u>	<u>4.64</u>	<u>0.89</u>	<u>12345</u>
<u>US-Syv</u>	<u>-2.01</u>	<u>3.01</u>	<u>0.98</u>	<u>7748</u>	<u>-0.66</u>	<u>2.18</u>	<u>0.97</u>	<u>11231</u>
<u>US-Tw1</u>	<u>2.85</u>	<u>4.50</u>	<u>0.92</u>	<u>14013</u>	<u>2.39</u>	<u>3.39</u>	<u>0.92</u>	<u>7556</u>
<u>US-UMB</u>	<u>-1.62</u>	<u>3.11</u>	<u>0.97</u>	<u>11318</u>	<u>0.48</u>	<u>2.28</u>	<u>0.97</u>	<u>20943</u>
<u>US-Var</u>	<u>-1.56</u>	<u>4.09</u>	<u>0.94</u>	<u>21334</u>	<u>-1.75</u>	<u>3.66</u>	<u>0.92</u>	<u>13087</u>
<u>US-WCr</u>	<u>-2.47</u>	<u>4.86</u>	<u>0.95</u>	<u>220</u>	<u>-1.56</u>	<u>4.52</u>	<u>0.95</u>	<u>2110</u>
<u>US-Whs</u>	<u>-1.15</u>	<u>2.31</u>	<u>0.98</u>	<u>19711</u>	<u>-0.19</u>	<u>3.79</u>	<u>0.92</u>	<u>14735</u>
<u>US-Wkg</u>	<u>-0.98</u>	<u>3.04</u>	<u>0.97</u>	<u>20263</u>	<u>-0.26</u>	<u>3.96</u>	<u>0.91</u>	<u>13703</u>

	<u>US-WPT</u>	<u>-2.00</u>	<u>3.51</u>	<u>0.95</u>	<u>10666</u>	<u>-0.21</u>	<u>2.02</u>	<u>0.96</u>	<u>14589</u>
	<u>BR-Npw</u>	<u>0.76</u>	<u>2.40</u>	<u>0.91</u>	<u>8409</u>	<u>2.01</u>	<u>3.24</u>	<u>0.72</u>	<u>12547</u>
	<u>CA-SCB</u>	<u>0.86</u>	<u>3.04</u>	<u>0.96</u>	<u>18819</u>	<u>0.49</u>	<u>4.05</u>	<u>0.93</u>	<u>26292</u>
	<u>DE-Dgw</u>	<u>-1.49</u>	<u>3.75</u>	<u>0.87</u>	<u>6103</u>	<u>-0.36</u>	<u>2.81</u>	<u>0.87</u>	<u>17270</u>
	<u>FI-Sii</u>	<u>-1.14</u>	<u>4.39</u>	<u>0.87</u>	<u>655</u>	<u>-0.44</u>	<u>4.55</u>	<u>0.88</u>	<u>19230</u>
	<u>FR-LGt</u>	<u>2.16</u>	<u>4.04</u>	<u>0.91</u>	<u>3863</u>	<u>1.50</u>	<u>3.06</u>	<u>0.90</u>	<u>6792</u>
	<u>ID-Pag</u>	<u>1.29</u>	<u>2.73</u>	<u>0.61</u>	<u>1361</u>	<u>0.66</u>	<u>1.74</u>	<u>0.65</u>	<u>3877</u>
	<u>JP-BBY</u>	<u>0.25</u>	<u>3.05</u>	<u>0.95</u>	<u>10928</u>	<u>0.27</u>	<u>2.92</u>	<u>0.94</u>	<u>23698</u>
	<u>JP-Mse</u>	<u>-0.27</u>	<u>3.48</u>	<u>0.94</u>	<u>3501</u>	<u>0.69</u>	<u>2.20</u>	<u>0.95</u>	<u>5199</u>
	<u>JP-SwL</u>	<u>-2.00</u>	<u>4.45</u>	<u>0.84</u>	<u>3522</u>	<u>-1.53</u>	<u>4.39</u>	<u>0.77</u>	<u>4334</u>
	<u>KR-CRK</u>	<u>-0.87</u>	<u>3.03</u>	<u>0.95</u>	<u>16752</u>	<u>-0.79</u>	<u>2.31</u>	<u>0.96</u>	<u>15019</u>
	<u>NZ-Kop</u>	<u>-0.50</u>	<u>2.53</u>	<u>0.90</u>	<u>16963</u>	<u>0.72</u>	<u>2.36</u>	<u>0.88</u>	<u>18010</u>
	<u>PH-RiF</u>	<u>-2.70</u>	<u>3.91</u>	<u>0.75</u>	<u>2213</u>	<u>-0.35</u>	<u>1.96</u>	<u>0.72</u>	<u>6215</u>
	<u>US-Bi1</u>	<u>2.98</u>	<u>4.49</u>	<u>0.90</u>	<u>12504</u>	<u>2.92</u>	<u>4.30</u>	<u>0.84</u>	<u>8264</u>
	<u>US-BZB</u>	<u>2.51</u>	<u>5.48</u>	<u>0.93</u>	<u>8946</u>	<u>1.45</u>	<u>4.86</u>	<u>0.92</u>	<u>23668</u>
	<u>US-EML</u>	<u>-0.98</u>	<u>4.01</u>	<u>0.93</u>	<u>4492</u>	<u>-0.81</u>	<u>3.96</u>	<u>0.92</u>	<u>19278</u>
	<u>US-Ho1</u>	<u>-1.28</u>	<u>2.38</u>	<u>0.98</u>	<u>23048</u>	<u>0.81</u>	<u>1.96</u>	<u>0.97</u>	<u>30691</u>
	<u>US-HRA</u>	<u>-0.01</u>	<u>3.36</u>	<u>0.78</u>	<u>1582</u>	<u>0.39</u>	<u>2.71</u>	<u>0.73</u>	<u>1645</u>
	<u>US-MRM</u>	<u>1.63</u>	<u>3.74</u>	<u>0.90</u>	<u>851</u>	<u>1.28</u>	<u>3.58</u>	<u>0.91</u>	<u>8514</u>
	<u>US-NC4</u>	<u>-0.14</u>	<u>1.96</u>	<u>0.95</u>	<u>6969</u>	<u>0.29</u>	<u>1.73</u>	<u>0.94</u>	<u>7481</u>
	<u>US-NGC</u>	<u>1.05</u>	<u>5.21</u>	<u>0.45</u>	<u>1226</u>	<u>-1.40</u>	<u>4.49</u>	<u>0.65</u>	<u>4598</u>
	<u>US-Sne</u>	<u>2.23</u>	<u>4.80</u>	<u>0.88</u>	<u>13559</u>	<u>1.92</u>	<u>3.38</u>	<u>0.90</u>	<u>9069</u>
	<u>US-Uaf</u>	<u>2.23</u>	<u>4.43</u>	<u>0.95</u>	<u>21801</u>	<u>1.87</u>	<u>4.86</u>	<u>0.93</u>	<u>69880</u>
<u>AmeriFlux</u>	<u>CA-ARB</u>	<u>-0.74</u>	<u>2.91</u>	<u>0.98</u>	<u>14549</u>	<u>1.34</u>	<u>3.88</u>	<u>0.95</u>	<u>26437</u>
	<u>CA-Ca3</u>	<u>0.45</u>	<u>2.86</u>	<u>0.98</u>	<u>22291</u>	<u>1.05</u>	<u>2.57</u>	<u>0.89</u>	<u>80737</u>
	<u>CA-Cbo</u>	<u>-0.10</u>	<u>2.99</u>	<u>0.96</u>	<u>30675</u>	<u>1.55</u>	<u>2.80</u>	<u>0.96</u>	<u>53145</u>

<u>CA-DB2</u>	<u>1.34</u>	<u>3.92</u>	<u>0.91</u>	<u>2069</u>	<u>-0.29</u>	<u>3.14</u>	<u>0.84</u>	<u>9357</u>
<u>CA-HPC</u>	<u>2.12</u>	<u>4.75</u>	<u>0.92</u>	<u>1246</u>	<u>0.43</u>	<u>3.96</u>	<u>0.90</u>	<u>5235</u>
<u>CA-LP1</u>	<u>-0.84</u>	<u>3.82</u>	<u>0.93</u>	<u>21152</u>	<u>-0.76</u>	<u>4.14</u>	<u>0.91</u>	<u>85705</u>
<u>CA-SMC</u>	<u>1.44</u>	<u>3.98</u>	<u>0.94</u>	<u>1584</u>	<u>-0.50</u>	<u>4.29</u>	<u>0.92</u>	<u>6376</u>
<u>CA-TVC</u>	<u>0.77</u>	<u>4.31</u>	<u>0.96</u>	<u>597</u>	<u>0.44</u>	<u>4.23</u>	<u>0.93</u>	<u>7059</u>
<u>CR-Fsc</u>	<u>-1.69</u>	<u>2.83</u>	<u>0.89</u>	<u>4375</u>	<u>-1.10</u>	<u>2.21</u>	<u>0.79</u>	<u>5075</u>
<u>MX-Aog</u>	<u>0.68</u>	<u>4.09</u>	<u>0.82</u>	<u>13245</u>	<u>-0.40</u>	<u>3.47</u>	<u>0.76</u>	<u>9890</u>
<u>MX-Ray</u>	<u>-0.81</u>	<u>4.30</u>	<u>0.82</u>	<u>1696</u>	<u>-0.58</u>	<u>4.19</u>	<u>0.74</u>	<u>1369</u>
<u>PR-xGU</u>	<u>-1.30</u>	<u>3.01</u>	<u>0.84</u>	<u>8677</u>	<u>0.99</u>	<u>3.04</u>	<u>0.64</u>	<u>5644</u>
<u>US-A32</u>	<u>0.58</u>	<u>2.54</u>	<u>0.97</u>	<u>8069</u>	<u>1.23</u>	<u>3.07</u>	<u>0.94</u>	<u>7247</u>
<u>US-A74</u>	<u>0.47</u>	<u>2.53</u>	<u>0.96</u>	<u>5684</u>	<u>1.46</u>	<u>3.21</u>	<u>0.91</u>	<u>5129</u>
<u>US-ALQ</u>	<u>0.24</u>	<u>4.24</u>	<u>0.92</u>	<u>6691</u>	<u>0.02</u>	<u>3.16</u>	<u>0.93</u>	<u>9417</u>
<u>US-Aud</u>	<u>1.54</u>	<u>2.99</u>	<u>0.98</u>	<u>3896</u>	<u>2.09</u>	<u>4.49</u>	<u>0.88</u>	<u>2342</u>
<u>US-Br1</u>	<u>-0.45</u>	<u>2.88</u>	<u>0.96</u>	<u>3189</u>	<u>0.85</u>	<u>2.67</u>	<u>0.96</u>	<u>4219</u>
<u>US-BRG</u>	<u>1.03</u>	<u>3.22</u>	<u>0.94</u>	<u>15519</u>	<u>0.98</u>	<u>2.72</u>	<u>0.94</u>	<u>21042</u>
<u>US-CPk</u>	<u>-0.70</u>	<u>4.79</u>	<u>0.86</u>	<u>9156</u>	<u>-0.19</u>	<u>4.44</u>	<u>0.85</u>	<u>11985</u>
<u>US-CS1</u>	<u>-0.04</u>	<u>2.55</u>	<u>0.97</u>	<u>2503</u>	<u>0.56</u>	<u>2.32</u>	<u>0.97</u>	<u>4840</u>
<u>US-Cwt</u>	<u>-0.34</u>	<u>3.44</u>	<u>0.87</u>	<u>18318</u>	<u>-2.15</u>	<u>2.98</u>	<u>0.93</u>	<u>21479</u>
<u>US-DFC</u>	<u>-0.87</u>	<u>2.82</u>	<u>0.96</u>	<u>4238</u>	<u>0.22</u>	<u>2.39</u>	<u>0.95</u>	<u>6946</u>
<u>US-HB2</u>	<u>0.19</u>	<u>1.77</u>	<u>0.96</u>	<u>3965</u>	<u>0.63</u>	<u>1.65</u>	<u>0.95</u>	<u>4221</u>
<u>US-HBK</u>	<u>-2.43</u>	<u>3.30</u>	<u>0.97</u>	<u>8713</u>	<u>-1.81</u>	<u>2.99</u>	<u>0.95</u>	<u>12407</u>
<u>US-HWB</u>	<u>-1.67</u>	<u>3.04</u>	<u>0.95</u>	<u>11420</u>	<u>-1.09</u>	<u>2.26</u>	<u>0.96</u>	<u>15504</u>
<u>US-Jo1</u>	<u>-1.30</u>	<u>2.85</u>	<u>0.98</u>	<u>30406</u>	<u>-0.74</u>	<u>4.02</u>	<u>0.92</u>	<u>24292</u>
<u>US-KFS</u>	<u>0.12</u>	<u>3.97</u>	<u>0.91</u>	<u>25297</u>	<u>1.03</u>	<u>4.36</u>	<u>0.87</u>	<u>29666</u>
<u>US-KM4</u>	<u>0.96</u>	<u>3.44</u>	<u>0.93</u>	<u>33623</u>	<u>1.31</u>	<u>2.66</u>	<u>0.96</u>	<u>48132</u>
<u>US-Kon</u>	<u>0.11</u>	<u>4.76</u>	<u>0.89</u>	<u>12873</u>	<u>0.84</u>	<u>4.11</u>	<u>0.89</u>	<u>14146</u>

<u>US-MC2</u>	<u>0.91</u>	<u>3.82</u>	<u>0.84</u>	<u>1515</u>	<u>-0.88</u>	<u>3.16</u>	<u>0.80</u>	<u>1551</u>
<u>US-MH1</u>	<u>2.40</u>	<u>4.13</u>	<u>0.91</u>	<u>864</u>	<u>3.32</u>	<u>5.50</u>	<u>0.87</u>	<u>1469</u>
<u>US-Mj1</u>	<u>0.77</u>	<u>3.10</u>	<u>0.93</u>	<u>903</u>	<u>0.91</u>	<u>3.76</u>	<u>0.85</u>	<u>818</u>
<u>US-MOz</u>	<u>-1.07</u>	<u>3.09</u>	<u>0.95</u>	<u>32259</u>	<u>0.46</u>	<u>1.99</u>	<u>0.97</u>	<u>38554</u>
<u>US-Mpj</u>	<u>1.14</u>	<u>4.84</u>	<u>0.93</u>	<u>49525</u>	<u>2.19</u>	<u>5.86</u>	<u>0.87</u>	<u>36528</u>
<u>US-MRf</u>	<u>0.37</u>	<u>2.52</u>	<u>0.91</u>	<u>1220</u>	<u>1.38</u>	<u>2.93</u>	<u>0.84</u>	<u>2455</u>
<u>US-MSR</u>	<u>0.72</u>	<u>4.99</u>	<u>0.82</u>	<u>1056</u>	<u>0.20</u>	<u>5.37</u>	<u>0.72</u>	<u>1383</u>
<u>US-MVF</u>	<u>0.65</u>	<u>2.54</u>	<u>0.97</u>	<u>1237</u>	<u>-0.14</u>	<u>3.83</u>	<u>0.89</u>	<u>1807</u>
<u>US-MWA</u>	<u>-1.89</u>	<u>3.74</u>	<u>0.93</u>	<u>7021</u>	<u>-0.32</u>	<u>2.05</u>	<u>0.97</u>	<u>13027</u>
<u>US-MWF</u>	<u>-1.28</u>	<u>2.85</u>	<u>0.95</u>	<u>6609</u>	<u>0.01</u>	<u>1.62</u>	<u>0.98</u>	<u>12025</u>
<u>US-MWW</u>	<u>-2.13</u>	<u>4.02</u>	<u>0.91</u>	<u>7136</u>	<u>-1.70</u>	<u>2.80</u>	<u>0.95</u>	<u>11146</u>
<u>US-NC1</u>	<u>1.91</u>	<u>2.86</u>	<u>0.96</u>	<u>8453</u>	<u>1.84</u>	<u>2.77</u>	<u>0.94</u>	<u>9058</u>
<u>US-ONA</u>	<u>-0.41</u>	<u>2.35</u>	<u>0.93</u>	<u>20058</u>	<u>0.85</u>	<u>2.34</u>	<u>0.89</u>	<u>19570</u>
<u>US-PFb</u>	<u>0.49</u>	<u>2.61</u>	<u>0.80</u>	<u>839</u>	<u>2.72</u>	<u>3.64</u>	<u>0.84</u>	<u>846</u>
<u>US-PFk</u>	<u>-0.89</u>	<u>1.70</u>	<u>0.94</u>	<u>845</u>	<u>1.44</u>	<u>2.03</u>	<u>0.96</u>	<u>885</u>
<u>US-PHM</u>	<u>-1.02</u>	<u>3.29</u>	<u>0.90</u>	<u>11040</u>	<u>-0.16</u>	<u>3.78</u>	<u>0.77</u>	<u>25556</u>
<u>US-Rls</u>	<u>0.47</u>	<u>3.99</u>	<u>0.93</u>	<u>24093</u>	<u>-0.39</u>	<u>4.58</u>	<u>0.86</u>	<u>27506</u>
<u>US-Ro1</u>	<u>0.08</u>	<u>2.96</u>	<u>0.96</u>	<u>18488</u>	<u>0.00</u>	<u>2.46</u>	<u>0.96</u>	<u>24116</u>
<u>US-Rpf</u>	<u>-0.48</u>	<u>3.34</u>	<u>0.95</u>	<u>2054</u>	<u>0.28</u>	<u>3.59</u>	<u>0.94</u>	<u>63663</u>
<u>US-Seg</u>	<u>-0.31</u>	<u>2.35</u>	<u>0.98</u>	<u>46399</u>	<u>-0.20</u>	<u>4.04</u>	<u>0.92</u>	<u>38404</u>
<u>US-Skr</u>	<u>1.46</u>	<u>3.14</u>	<u>0.77</u>	<u>3282</u>	<u>3.46</u>	<u>4.84</u>	<u>0.65</u>	<u>2707</u>
<u>US-Slt</u>	<u>-0.30</u>	<u>1.91</u>	<u>0.97</u>	<u>8329</u>	<u>1.59</u>	<u>2.48</u>	<u>0.96</u>	<u>9199</u>
<u>US-TrB</u>	<u>-3.27</u>	<u>4.06</u>	<u>0.93</u>	<u>2256</u>	<u>-2.62</u>	<u>3.43</u>	<u>0.94</u>	<u>2715</u>
<u>US-Tur</u>	<u>-1.52</u>	<u>4.31</u>	<u>0.71</u>	<u>509</u>	<u>-0.19</u>	<u>4.21</u>	<u>0.68</u>	<u>1687</u>
<u>US-UiA</u>	<u>1.49</u>	<u>3.14</u>	<u>0.96</u>	<u>3830</u>	<u>1.01</u>	<u>2.33</u>	<u>0.96</u>	<u>4907</u>
<u>US-Vcm</u>	<u>0.10</u>	<u>3.76</u>	<u>0.90</u>	<u>45014</u>	<u>0.64</u>	<u>4.60</u>	<u>0.80</u>	<u>34198</u>

<u>US-Vcs</u>	<u>-1.09</u>	<u>3.81</u>	<u>0.90</u>	<u>24731</u>	<u>-1.23</u>	<u>4.69</u>	<u>0.79</u>	<u>18661</u>
<u>US-Wgr</u>	<u>0.14</u>	<u>3.17</u>	<u>0.92</u>	<u>3108</u>	<u>-0.35</u>	<u>2.45</u>	<u>0.90</u>	<u>4191</u>
<u>US-Wjs</u>	<u>0.59</u>	<u>4.62</u>	<u>0.93</u>	<u>42573</u>	<u>1.16</u>	<u>5.29</u>	<u>0.88</u>	<u>34057</u>
<u>US-Wpp</u>	<u>1.26</u>	<u>4.86</u>	<u>0.77</u>	<u>2723</u>	<u>0.82</u>	<u>4.43</u>	<u>0.70</u>	<u>3381</u>
<u>US-Wrc</u>	<u>-0.80</u>	<u>3.05</u>	<u>0.92</u>	<u>13709</u>	<u>-1.57</u>	<u>2.54</u>	<u>0.93</u>	<u>25363</u>
<u>US-xAB</u>	<u>-0.32</u>	<u>2.30</u>	<u>0.94</u>	<u>9821</u>	<u>-0.19</u>	<u>1.96</u>	<u>0.91</u>	<u>18766</u>
<u>US-xAE</u>	<u>-2.71</u>	<u>4.41</u>	<u>0.94</u>	<u>15088</u>	<u>-0.99</u>	<u>3.14</u>	<u>0.94</u>	<u>13825</u>
<u>US-xBL</u>	<u>-1.88</u>	<u>3.04</u>	<u>0.96</u>	<u>12366</u>	<u>-1.01</u>	<u>2.33</u>	<u>0.96</u>	<u>17532</u>
<u>US-xBR</u>	<u>-3.18</u>	<u>3.95</u>	<u>0.97</u>	<u>14553</u>	<u>-2.78</u>	<u>3.59</u>	<u>0.96</u>	<u>20114</u>
<u>US-xCP</u>	<u>-2.19</u>	<u>3.05</u>	<u>0.98</u>	<u>15172</u>	<u>-0.96</u>	<u>4.59</u>	<u>0.90</u>	<u>18990</u>
<u>US-xDC</u>	<u>-2.22</u>	<u>3.41</u>	<u>0.97</u>	<u>12281</u>	<u>-1.30</u>	<u>2.74</u>	<u>0.97</u>	<u>16593</u>
<u>US-xDJ</u>	<u>-0.72</u>	<u>3.62</u>	<u>0.94</u>	<u>1186</u>	<u>-1.59</u>	<u>4.03</u>	<u>0.94</u>	<u>32892</u>
<u>US-xDL</u>	<u>-0.55</u>	<u>2.78</u>	<u>0.91</u>	<u>14189</u>	<u>1.05</u>	<u>2.56</u>	<u>0.92</u>	<u>17607</u>
<u>US-xDS</u>	<u>-1.30</u>	<u>2.64</u>	<u>0.94</u>	<u>16311</u>	<u>-0.71</u>	<u>2.34</u>	<u>0.88</u>	<u>17426</u>
<u>US-xGR</u>	<u>-1.52</u>	<u>3.33</u>	<u>0.91</u>	<u>11223</u>	<u>-2.71</u>	<u>3.79</u>	<u>0.91</u>	<u>16486</u>
<u>US-xHA</u>	<u>-2.01</u>	<u>2.86</u>	<u>0.97</u>	<u>13716</u>	<u>-0.65</u>	<u>2.07</u>	<u>0.96</u>	<u>18138</u>
<u>US-xJE</u>	<u>-1.73</u>	<u>3.80</u>	<u>0.88</u>	<u>15472</u>	<u>-0.20</u>	<u>2.65</u>	<u>0.90</u>	<u>16721</u>
<u>US-xJR</u>	<u>-1.19</u>	<u>3.06</u>	<u>0.97</u>	<u>17076</u>	<u>-0.54</u>	<u>4.09</u>	<u>0.92</u>	<u>11774</u>
<u>US-xKA</u>	<u>-2.16</u>	<u>3.57</u>	<u>0.96</u>	<u>13431</u>	<u>-0.84</u>	<u>2.79</u>	<u>0.95</u>	<u>14802</u>
<u>US-xLE</u>	<u>-1.53</u>	<u>3.11</u>	<u>0.92</u>	<u>11741</u>	<u>0.34</u>	<u>1.98</u>	<u>0.94</u>	<u>13226</u>
<u>US-xMB</u>	<u>-2.54</u>	<u>3.61</u>	<u>0.98</u>	<u>15039</u>	<u>-2.31</u>	<u>4.81</u>	<u>0.93</u>	<u>13100</u>
<u>US-xML</u>	<u>-1.75</u>	<u>3.37</u>	<u>0.92</u>	<u>12540</u>	<u>-0.63</u>	<u>3.50</u>	<u>0.87</u>	<u>16124</u>
<u>US-xNG</u>	<u>-1.91</u>	<u>3.35</u>	<u>0.97</u>	<u>10233</u>	<u>-0.15</u>	<u>2.85</u>	<u>0.96</u>	<u>16173</u>
<u>US-xNQ</u>	<u>-1.90</u>	<u>3.36</u>	<u>0.97</u>	<u>13902</u>	<u>-1.44</u>	<u>4.63</u>	<u>0.91</u>	<u>14718</u>
<u>US-xRM</u>	<u>-1.61</u>	<u>3.38</u>	<u>0.93</u>	<u>14558</u>	<u>-1.59</u>	<u>4.45</u>	<u>0.84</u>	<u>16957</u>
<u>US-xSB</u>	<u>-1.61</u>	<u>2.64</u>	<u>0.94</u>	<u>15547</u>	<u>-1.02</u>	<u>2.25</u>	<u>0.90</u>	<u>17909</u>

	US-xSC	-1.32	3.70	0.91	13934	-1.00	2.67	0.94	20575
	US-xSE	-0.91	2.36	0.96	14088	-0.11	1.74	0.96	18191
	US-xSL	-1.83	3.52	0.96	14314	-0.63	4.39	0.89	15042
	US-xSP	-3.52	4.13	0.96	16381	-2.63	3.88	0.90	10012
	US-xST	-2.19	2.95	0.98	10986	-0.55	2.08	0.97	17499
	US-xTA	-3.32	4.01	0.94	13180	-0.40	2.05	0.94	15434
	US-xUN	-2.53	3.12	0.98	13573	-1.09	2.13	0.98	20054
	US-xWD	-1.76	2.99	0.98	11784	-0.53	2.44	0.97	17020
HRB	ArouCJZ	-0.26	4.43	0.93	3624	-0.65	5.76	0.79	5111
	BajitanGB	-2.72	4.03	0.98	3925	-2.35	4.70	0.93	4812
	DamanCJZ	-0.03	2.95	0.96	3815	1.62	5.07	0.89	4729
TP	biru	-0.76	4.89	0.89	3451	-0.45	4.72	0.87	3584
	namucuo	-0.23	4.01	0.90	3321	0.12	4.22	0.90	3412

Author Contributions

685 Aolin Jia: Conceptualization, data curation, formal analysis, investigation, methodology, software, validation, visualization, writing—original draft, writing—review, and editing. Shunlin Liang: Conceptualization, resources, funding acquisition, project administration, supervision, writing, review, and editing. Dongdong Wang: project administration, resources, formal analysis, investigation, methodology, writing, review, and editing. Lei Ma, Zhihao Wang, and Shuo Xu: Data curation, writing review, and editing.

Competing Interests

690 The authors declare that they have no conflicts of interest.

Acknowledgments

The authors acknowledge Zenodo for publishing the dataset. We ~~are gratefully grateful to thank~~ the Copernicus Global Land Service and NASA Earthdata platforms for providing satellite LST products, the ECMWF for providing the ERA5 reanalysis data, and the CERES and GLASS teams for providing the surface radiation products. We also acknowledge SURFRAD, 695 BSRN, Fluxnet, AmeriFlux, HiWATER, and TIPEX-III for providing the field measurements. We acknowledge the insightful suggestions from João P. A. Martins and the other anonymous referee.

References

- Anderson, M. C., Zolin, C. A., Sentelhas, P. C., Hain, C. R., Semmens, K., Yilmaz, M. T., Gao, F., Otkin, J. A., and Tetrault, 700 R.: The Evaporative Stress Index as an indicator of agricultural drought in Brazil: An assessment based on crop yield impacts, Remote Sensing of Environment, 174, 82-99, 2016.
- Anderson, M. C., Kustas, W. P., Norman, J. M., Hain, C. R., Mecikalski, J. R., Schultz, L., González-Dugo, M., Cammalleri, C., d'Urso, G., and Pimstein, A.: Mapping daily evapotranspiration at field to continental scales using geostationary and polar orbiting satellite imagery, Hydrology and Earth System Sciences, 15, 223-239, 2011.
- 705 André, C., Otlé, C., Royer, A., and Maignan, F.: Land surface temperature retrieval over circumpolar Arctic using SSM/I–SSMIS and MODIS data, Remote Sensing of Environment, 162, 1-10, 2015.
- Augustine, J. A., DeLuisi, J. J., and Long, C. N.: SURFRAD - A national surface radiation budget network for atmospheric research, Bulletin of the American Meteorological Society, 81, 2341-2357, Doi 10.1175/1520-0477(2000)081<2341:Sansrb>2.3.Co;2, 2000.
- 710 Bhardwaj, A., Singh, S., Sam, L., Bhardwaj, A., Martín-Torres, F. J., Singh, A., and Kumar, R.: MODIS-based estimates of strong snow surface temperature anomaly related to high altitude earthquakes of 2015, Remote Sensing of Environment, 188, 1-8, 2017.
- Boukabara, S.-A., Garrett, K., Chen, W., Iturbide-Sanchez, F., Grassotti, C., Kongoli, C., Chen, R., Liu, Q., Yan, B., and 715 Weng, F.: MiRS: An all-weather 1DVAR satellite data assimilation and retrieval system, IEEE Transactions on Geoscience and Remote Sensing, 49, 3249-3272, 2011.
- Chang, Y., Xiao, J., Li, X., Frohling, S., Zhou, D., Schneider, A., Weng, Q., Yu, P., Wang, X., and Li, X.: Exploring diurnal cycles of surface urban heat island intensity in Boston with land surface temperature data derived from GOES-R geostationary satellites, Sci Total Environ, 763, 144224, 2021.
- Chen, X., Su, Z., Ma, Y., Cleverly, J., and Liddell, M.: An accurate estimate of monthly mean land surface temperatures from 720 MODIS clear-sky retrievals, Journal of hydrometeorology, 18, 2827-2847, 2017.

- Coccia, G., Siemann, A. L., Pan, M., and Wood, E. F.: Creating consistent datasets by combining remotely-sensed data and land surface model estimates through Bayesian uncertainty post-processing: The case of Land Surface Temperature from HIRS, *Remote Sensing of Environment*, 170, 290-305, 10.1016/j.rse.2015.09.010, 2015.
- 725 Doelling, D. R., Sun, M., Nordeen, M. L., Haney, C. O., Keyes, D. F., and Mlynyczak, P. E.: Advances in geostationary-derived longwave fluxes for the CERES synoptic (SYN1deg) product, *Journal of Atmospheric and Oceanic Technology*, 33, 503-521, 2016.
- Doelling, D. R., Loeb, N. G., Keyes, D. F., Nordeen, M. L., Morstad, D., Nguyen, C., Wielicki, B. A., Young, D. F., and Sun, M.: Geostationary enhanced temporal interpolation for CERES flux products, *Journal of Atmospheric and Oceanic Technology*, 30, 1072-1090, 2013.
- 730 Driemel, A., Augustine, J., Behrens, K., Colle, S., Cox, C., Cuevas-Agulló, E., Denn, F. M., Duprat, T., Fukuda, M., and Grobe, H.: Baseline Surface Radiation Network (BSRN): structure and data description (1992–2017), *Earth Syst Sci Data*, 10, 1491-1501, 2018.
- Duan, S.-B., Li, Z.-L., Wang, N., Wu, H., and Tang, B.-H.: Evaluation of six land-surface diurnal temperature cycle models using clear-sky in situ and satellite data, *Remote Sensing of Environment*, 124, 15-25, 2012.
- 735 Duan, S. B., Li, Z. L., and Leng, P.: A framework for the retrieval of all-weather land surface temperature at a high spatial resolution from polar-orbiting thermal infrared and passive microwave data, *Remote Sensing of Environment*, 195, 107-117, 10.1016/j.rse.2017.04.008, 2017.
- Dumitrescu, A., Brabec, M., and Cheval, S.: Statistical Gap-Filling of SEVIRI Land Surface Temperature, *Remote Sensing*, 12, 1423, ARTN 1423
740 10.3390/rs12091423, 2020.
- Ermida, S. L., Trigo, I. F., DaCamara, C. C., Jimenez, C., and Prigent, C.: Quantifying the clear-sky bias of satellite land surface temperature using microwave-based estimates, *Journal of Geophysical Research: Atmospheres*, 124, 844-857, 2019.
- Fensholt, R., Anyamba, A., Huber, S., Proud, S. R., Tucker, C. J., Small, J., Pak, E., Rasmussen, M. O., Sandholt, I., and Shisanya, C.: Analysing the advantages of high temporal resolution geostationary MSG SEVIRI data compared to Polar
745 Operational Environmental Satellite data for land surface monitoring in Africa, *International Journal of Applied Earth Observation and Geoinformation*, 13, 721-729, 2011.
- Freitas, S. C., Trigo, I. F., Bioucas-Dias, J. M., and Gottsche, F.-M.: Quantifying the uncertainty of land surface temperature retrievals from SEVIRI/Meteosat, *IEEE Transactions on Geoscience and Remote Sensing*, 48, 523-534, 2009.
- Freitas, S. C., Trigo, I. F., Macedo, J., Barroso, C., Silva, R., and Perdigão, R.: Land surface temperature from multiple
750 geostationary satellites, *International Journal of Remote Sensing*, 34, 3051-3068, 2013.
- Fu, Q., Liou, K., Cribb, M., Charlock, T., and Grossman, A.: Multiple scattering parameterization in thermal infrared radiative transfer, *Journal of the atmospheric sciences*, 54, 2799-2812, 1997.

- Good, E. J.: An in situ-based analysis of the relationship between land surface “skin” and screen-level air temperatures, *Journal of Geophysical Research: Atmospheres*, 121, 8801-8819, 2016.
- 755 Good, E. J., Ghent, D. J., Bulgin, C. E., and Remedios, J. J.: A spatiotemporal analysis of the relationship between near-surface air temperature and satellite land surface temperatures using 17 years of data from the ATSR series, *Journal of Geophysical Research: Atmospheres*, 122, 9185-9210, 2017.
- 760 Guillevic, P. C., Bork-Unkelbach, A., Göttsche, F. M., Hulley, G., Gastellu-Etchegorry, J.-P., Olesen, F. S., and Privette, J. L.: Directional viewing effects on satellite land surface temperature products over sparse vegetation canopies—A multisensor analysis, *IEEE Geoscience and Remote Sensing Letters*, 10, 1464-1468, 2013.
- Hachem, S., Duguay, C., and Allard, M.: Comparison of MODIS-derived land surface temperatures with ground surface and air temperature measurements in continuous permafrost terrain, *The Cryosphere*, 6, 51-69, 2012.
- Hansen, J., Sato, M., and Ruedy, R.: Long-term changes of the diurnal temperature cycle: implications about mechanisms of global climate change, *Atmospheric Research*, 37, 175-209, 1995.
- 765 Hernandez-Barrera, S., Rodriguez-Puebla, C., and Challinor, A.: Effects of diurnal temperature range and drought on wheat yield in Spain, *Theoretical and Applied Climatology*, 129, 503-519, 2017.
- Hong, F., Zhan, W., Göttsche, F.-M., Liu, Z., Dong, P., Fu, H., Huang, F., and Zhang, X.: A global dataset of spatiotemporally seamless daily mean land surface temperatures: generation, validation, and analysis, *Earth Syst Sci Data*, 14, 3091-3113, 2022.
- 770 Hong, F., Zhan, W., Göttsche, F.-M., Lai, J., Liu, Z., Hu, L., Fu, P., Huang, F., Li, J., and Li, H.: A simple yet robust framework to estimate accurate daily mean land surface temperature from thermal observations of tandem polar orbiters, *Remote Sensing of Environment*, 264, 112612, 2021.
- Hrisko, J., Ramamurthy, P., Yu, Y., Yu, P., and Melecio-Vázquez, D.: Urban air temperature model using GOES-16 LST and a diurnal regressive neural network algorithm, *Remote Sensing of Environment*, 237, 111495, 10.1016/j.rse.2019.111495, 2020.
- 775 Hu, L., Sun, Y., Collins, G., and Fu, P.: Improved estimates of monthly land surface temperature from MODIS using a diurnal temperature cycle (DTC) model, *ISPRS Journal of Photogrammetry and Remote Sensing*, 168, 131-140, 2020.
- Hulley, G.: MYD21 MODIS/Aqua land surface Temperature/3-Band emissivity 5-Min L2 1km V006, NASA EOSDIS L. Process. DAAC, 10, 2015.
- 780 Hulley, G., Malakar, N., and Freepartner, R.: Moderate Resolution Imaging Spectroradiometer (MODIS) land surface temperature and emissivity product (MxD21) algorithm theoretical basis document collection-6, JPL Publication, 12-17, 2016.
- Hulley, G. C. and Hook, S. J.: Intercomparison of versions 4, 4.1 and 5 of the MODIS Land Surface Temperature and Emissivity products and validation with laboratory measurements of sand samples from the Namib desert, Namibia, *Remote Sensing of Environment*, 113, 1313-1318, 2009.

- 785 Jia, A., Liang, S., and Wang, D.: Generating a 2-km, all-sky, hourly land surface temperature product from Advanced Baseline Imager data, *Remote Sensing of Environment*, 278, 113105, 2022a.
- Jia, A., Ma, H., Liang, S., and Wang, D.: Cloudy-sky land surface temperature from VIIRS and MODIS satellite data using a surface energy balance-based method, *Remote Sensing of Environment*, 263, 112566, 10.1016/j.rse.2021.112566, 2021.
- Jia, A., Liang, S., Jiang, B., Zhang, X., and Wang, G.: Comprehensive assessment of global surface net radiation products and uncertainty analysis, *Journal of Geophysical Research: Atmospheres*, 123, 1970-1989, 2018.
- 790 Jia, A., Liang, S., Wang, D., Jiang, B., and Zhang, X.: Air pollution slows down surface warming over the Tibetan Plateau, *Atmospheric Chemistry and Physics*, 20, 881-899, 2020.
- Jia, A., Wang, D., Liang, S., Peng, J., and Yu, Y.: Global daily actual and snow-free blue-sky land surface albedo climatology from 20-year MODIS products, *Journal of Geophysical Research: Atmospheres*, e2021JD035987, 2022b.
- 795 Jia, A., Liang, S., Wang, D., Ma, L., Wang, Z., and Xu, S.: Global Hourly, 5-km, All-sky Land Surface Temperature (GHA-LST) (V01), Zenodo [dataset], <https://doi.org/10.5281/zenodo.7487284>, 2022c.
- Jiang, Y., Fu, P., and Weng, Q.: Downscaling GOES land surface temperature for assessing heat wave health risks, *IEEE Geoscience and Remote Sensing Letters*, 12, 1605-1609, 2015.
- Jin, M.: Interpolation of surface radiative temperature measured from polar orbiting satellites to a diurnal cycle: 2. Cloudy-pixel treatment, *Journal of Geophysical Research: Atmospheres*, 105, 4061-4076, 2000.
- 800 Jin, M.: Analysis of land skin temperature using AVHRR observations, *Bulletin of the American Meteorological Society*, 85, 587-600, 2004.
- Jin, M. and Dickinson, R. E.: A generalized algorithm for retrieving cloudy sky skin temperature from satellite thermal infrared radiances, *Journal of Geophysical Research: Atmospheres*, 105, 27037-27047, 2000.
- 805 Jin, M. and Treadon, R.: Correcting the orbit drift effect on AVHRR land surface skin temperature measurements, *International Journal of Remote Sensing*, 24, 4543-4558, 2003.
- King, M. D., Platnick, S., Menzel, W. P., Ackerman, S. A., and Hubanks, P. A.: Spatial and temporal distribution of clouds observed by MODIS onboard the Terra and Aqua satellites, *IEEE transactions on geoscience and remote sensing*, 51, 3826-3852, 2013.
- 810 Kuang, X. and Jiao, J. J.: Review on climate change on the Tibetan Plateau during the last half century †, *Journal of Geophysical Research Atmospheres*, 121, 2016.
- Lenssen, N. J., Schmidt, G. A., Hansen, J. E., Menne, M. J., Persin, A., Ruedy, R., and Zyss, D.: Improvements in the GISTEMP uncertainty model, *Journal of Geophysical Research: Atmospheres*, 124, 6307-6326, 2019.

- Li, B., Liang, S., Liu, X., Ma, H., Chen, Y., Liang, T., and He, T.: Estimation of all-sky 1 km land surface temperature over the conterminous United States, *Remote Sensing of Environment*, 266, 112707, 2021.
- 815 Li, H., Li, R., Yang, Y., Cao, B., Bian, Z., Hu, T., Du, Y., Sun, L., and Liu, Q.: Temperature-based and radiance-based validation of the collection 6 MYD11 and MYD21 land surface temperature products over barren surfaces in northwestern China, *IEEE Transactions on Geoscience and Remote Sensing*, 59, 1794-1807, 2020.
- Li, H., Sun, D., Yu, Y., Wang, H., Liu, Y., Liu, Q., Du, Y., Wang, H., and Cao, B.: Evaluation of the VIIRS and MODIS LST products in an arid area of Northwest China, *Remote Sensing of Environment*, 142, 111-121, 2014.
- 820 Li, R., Wang, D., Liang, S., Jia, A., and Wang, Z.: Estimating global downward shortwave radiation from VIIRS data using a transfer-learning neural network, *Remote Sensing of Environment*, 274, 112999, 2022a.
- Li, X., Cheng, G., Liu, S., Xiao, Q., Ma, M., Jin, R., Che, T., Liu, Q., Wang, W., and Qi, Y.: Heihe watershed allied telemetry experimental research (HiWATER): Scientific objectives and experimental design, *Bulletin of the American Meteorological Society*, 94, 1145-1160, 2013a.
- 825 Li, Z.-L., Tang, B.-H., Wu, H., Ren, H., Yan, G., Wan, Z., Trigo, I. F., and Sobrino, J. A.: Satellite-derived land surface temperature: Current status and perspectives, *Remote Sensing of Environment*, 131, 14-37, 10.1016/j.rse.2012.12.008, 2013b.
- Li, Z.-L., Wu, H., Duan, S.-B., Zhao, W., Ren, H., Liu, X., Leng, P., Tang, R., Ye, X., Zhu, J., Sun, Y., Si, S., Liu, M., Li, J., Zhang, X., Shang, G., Tang, B.-H., Yan, G., and Zhou, C.: Satellite Remote Sensing of Global Land Surface Temperature: Definition, Methods, Products, and Applications, *Reviews of Geophysics*, e2022RG000777, 2022b. <https://doi.org/10.1029/2022RG000777>
- 830 Liang, S., Wang, D., He, T., and Yu, Y.: Remote sensing of earth's energy budget: synthesis and review, *International Journal of Digital Earth*, 1-44, 10.1080/17538947.2019.1597189, 2019.
- Liang, S., Cheng, J., Jia, K., Jiang, B., Liu, Q., Xiao, Z., Yao, Y., Yuan, W., Zhang, X., and Zhao, X.: The global land surface satellite (GLASS) product suite, *Bulletin of the American Meteorological Society*, 102, E323-E337, 2021.
- 835 Liu, Y., Hiyama, T., and Yamaguchi, Y.: Scaling of land surface temperature using satellite data: A case examination on ASTER and MODIS products over a heterogeneous terrain area, *Remote Sensing of Environment*, 105, 115-128, 2006.
- Liu, Z., Zhan, W., Lai, J., Bechtel, B., Lee, X., Hong, F., Li, L., Huang, F., and Li, J.: Taxonomy of seasonal and diurnal clear-sky climatology of surface urban heat island dynamics across global cities, *ISPRS Journal of Photogrammetry and Remote Sensing*, 187, 14-33, 2022.
- 840 Liu, Z. H., Wu, P. H., Duan, S. B., Zhan, W. F., Ma, X. S., and Wu, Y. L.: Spatiotemporal Reconstruction of Land Surface Temperature Derived From FengYun Geostationary Satellite Data, *Ieee Journal of Selected Topics in Applied Earth Observations and Remote Sensing*, 10, 4531-4543, 10.1109/Jstars.2017.2716376, 2017.

- Loeb, N. G., Doelling, D. R., Wang, H. L., Su, W. Y., Nguyen, C., Corbett, J. G., Liang, L. S., Mitrescu, C., Rose, F. G., and Kato, S.: Clouds and the Earth's Radiant Energy System (CERES) Energy Balanced and Filled (EBAF) Top-of-Atmosphere (TOA) Edition-4.0 Data Product, *Journal of Climate*, 31, 895-918, 10.1175/Jcli-D-17-0208.1, 2018.
- Long, D., Yan, L., Bai, L., Zhang, C., Li, X., Lei, H., Yang, H., Tian, F., Zeng, C., and Meng, X.: Generation of MODIS-like land surface temperatures under all-weather conditions based on a data fusion approach, *Remote Sensing of Environment*, 246, 111863, 2020.
- Lu, L., Venus, V., Skidmore, A., Wang, T., and Luo, G.: Estimating land-surface temperature under clouds using MSG/SEVIRI observations, *International Journal of Applied Earth Observation and Geoinformation*, 13, 265-276, 2011.
- Ma, J., Shen, H., Wu, P., Wu, J., Gao, M., and Meng, C.: Generating gapless land surface temperature with a high spatio-temporal resolution by fusing multi-source satellite-observed and model-simulated data, *Remote Sensing of Environment*, 278, 113083, 2022.
- Ma, J., Zhou, J., Göttsche, F.-M., Liang, S., Wang, S., and Li, M.: A global long-term (1981–2000) land surface temperature product for NOAA AVHRR, *Earth Syst Sci Data*, 12, 3247-3268, 10.5194/essd-12-3247-2020, 2020.
- Ma, J., Zhou, J., Liu, S., Göttsche, F.-M., Zhang, X., Wang, S., and Li, M.: Continuous evaluation of the spatial representativeness of land surface temperature validation sites, *Remote Sensing of Environment*, 265, 112669, 2021.
- Martins, J., Trigo, I. F., Ghilain, N., Jimenez, C., Göttsche, F.-M., Ermida, S. L., Olesen, F.-S., Gellens-Meulenberghs, F., and Arboleda, A.: An All-Weather Land Surface Temperature Product Based on MSG/SEVIRI Observations, *Remote Sensing*, 11, 3044, 2019.
- Marullo, S., Santoleri, R., Ciani, D., Le Borgne, P., Pere, S., Pinardi, N., Tonani, M., and Nardone, G.: Combining model and geostationary satellite data to reconstruct hourly SST field over the Mediterranean Sea, *Remote Sensing of Environment*, 146, 11-23, 10.1016/j.rse.2013.11.001, 2014.
- Melvin, A. M., Larsen, P., Boehlert, B., Neumann, J. E., Chinowsky, P., Espinet, X., Martinich, J., Baumann, M. S., Rennels, L., and Bothner, A.: Climate change damages to Alaska public infrastructure and the economics of proactive adaptation, *Proceedings of the National Academy of Sciences*, 114, E122-E131, 2017.
- Meng, X., Lyu, S., Zhang, T., Zhao, L., Li, Z., Han, B., Li, S., Ma, D., Chen, H., Ao, Y., Luo, S., Shen, Y., Guo, J., and Wen, L.: Simulated cold bias being improved by using MODIS time-varying albedo in the Tibetan Plateau in WRF model, *Environmental Research Letters*, 13, 044028, 10.1088/1748-9326/aab44a, 2018.
- Metz, M., Andreo, V., and Neteler, M.: A new fully gap-free time series of land surface temperature from MODIS LST data, *Remote sensing*, 9, 1333, 2017.
- Metz, M., Rocchini, D., and Neteler, M.: Surface temperatures at the continental scale: tracking changes with remote sensing at unprecedented detail, *Remote Sensing*, 6, 3822-3840, 2014.

- 875 Minnis, P., Sun-Mack, S., Chen, Y., Chang, F.-L., Yost, C. R., Smith, W. L., Heck, P. W., Arduini, R. F., Bedka, S. T., and Yi, Y.: CERES MODIS cloud product retrievals for edition 4—Part I: Algorithm changes, *IEEE Transactions on Geoscience and Remote Sensing*, 59, 2744-2780, 2020.
- Molod, A., Takacs, L., Suarez, M., and Bacmeister, J.: Development of the GEOS-5 atmospheric general circulation model: evolution from MERRA to MERRA2, *Geoscientific Model Development*, 8, 1339-1356, 2015.
- 880 Mudele, O., Bayer, F. M., Zanandrez, L. F., Eiras, A. E., and Gamba, P.: Modeling the Temporal Population Distribution of *Ae. aegypti* Mosquito Using Big Earth Observation Data, *Ieee Access*, 8, 14182-14194, 2020.
- Muñoz-Sabater, J., Dutra, E., Agustí-Panareda, A., Albergel, C., Arduini, G., Balsamo, G., Boussetta, S., Choulga, M., Harrigan, S., and Hersbach, H.: ERA5-Land: A state-of-the-art global reanalysis dataset for land applications, *Earth Syst Sci Data*, 13, 4349-4383, 2021.
- 885 Mutiibwa, D., Strachan, S., and Albright, T.: Land surface temperature and surface air temperature in complex terrain, *IEEE Journal of Selected Topics in Applied Earth Observations and Remote Sensing*, 8, 4762-4774, 2015.
- Nogueira, M., Boussetta, S., Balsamo, G., Albergel, C., Trigo, I. F., Johannsen, F., Miralles, D. G., and Dutra, E.: Upgrading Land-Cover and Vegetation Seasonality in the ECMWF Coupled System: Verification With FLUXNET Sites, METEOSAT Satellite Land Surface Temperatures, and ERA5 Atmospheric Reanalysis, *Journal of Geophysical Research: Atmospheres*, 126, e2020JD034163, 2021.
- 890 Novick, K. A., Biederman, J., Desai, A., Litvak, M., Moore, D. J., Scott, R., and Torn, M.: The AmeriFlux network: A coalition of the willing, *Agricultural and Forest Meteorology*, 249, 444-456, 2018.
- Orth, R., Dutra, E., Trigo, I. F., and Balsamo, G.: Advancing land surface model development with satellite-based Earth observations, *Hydrology and Earth System Sciences*, 21, 2483-2495, 2017.
- 895 Osborn, T. and Jones, P.: The CRUTEM4 land-surface air temperature data set: construction, previous versions and dissemination via Google Earth, *Earth Syst Sci Data*, 6, 61-68, 2014.
- Ouyang, B., Che, T., DAI, L.-y., and WANG, Z.-y.: Estimating Mean Daily Surface Temperature over the Tibetan Plateau Based on MODIS LST Products [J], *Journal of Glaciology and Geocryology*, 2, 296-303, 2012.
- Peng, S.-S., Piao, S., Zeng, Z., Ciais, P., Zhou, L., Li, L. Z., Myneni, R. B., Yin, Y., and Zeng, H.: Afforestation in China cools local land surface temperature, *Proceedings of the National Academy of Sciences*, 111, 2915-2919, 2014.
- 900 Piao, S., Tan, J., Chen, A., Fu, Y. H., Ciais, P., Liu, Q., Janssens, I. A., Vicca, S., Zeng, Z., and Jeong, S.-J.: Leaf onset in the northern hemisphere triggered by daytime temperature, *Nat Commun*, 6, 1-8, 2015.
- Piles, M., Petropoulos, G. P., Sánchez, N., González-Zamora, Á., and Ireland, G.: Towards improved spatio-temporal resolution soil moisture retrievals from the synergy of SMOS and MSG SEVIRI spaceborne observations, *Remote Sensing of Environment*, 180, 403-417, 2016.

- 905 Pinker, R. T., Ma, Y., Chen, W., Hulley, G., Borbas, E., Islam, T., Hain, C., Cawse-Nicholson, K., Hook, S., and Basara, J.: Towards a unified and coherent land surface temperature earth system data record from geostationary satellites, *Remote Sensing*, 11, 1399, 2019.
- Quintano, C., Fernández-Manso, A., Calvo, L., Marcos, E., and Valbuena, L.: Land surface temperature as potential indicator of burn severity in forest Mediterranean ecosystems, *International Journal of Applied Earth Observation and Geoinformation*, 36, 1-12, 2015.
- 910 Rains, D., Trigo, I., Dutra, E., Ermida, S., Ghent, D., Hulsman, P., Gómez-Dans, J., and Miralles, D. G.: High-resolution all-sky land surface temperature and net radiation over Europe, *Earth System Science Data Discussions*, 1-22, 2022.
- Remer, L. A., Tanre, D., Kaufman, Y. J., Levy, R., and Mattoo, S.: Algorithm for Remote Sensing of Tropospheric Aerosol from MODIS: Collection 5–Product ID: MOD04/MYD04, NASA. Disponível em:< http://MODIS-atmos.gsfc.nasa.gov/_docs/MOD04-MYD04_ATBD_C005.pdf, 2006.
- 915 Rodell, M., Houser, P., Jambor, U., Gottschalck, J., Mitchell, K., Meng, C.-J., Arsenault, K., Cosgrove, B., Radakovich, J., and Bosilovich, M.: The global land data assimilation system, *Bulletin of the American Meteorological society*, 85, 381-394, 2004.
- Rohde, R., Muller, R., Jacobsen, R., Perlmutter, S., Rosenfeld, A., Wurtele, J., Curry, J., Wickhams, C., and Mosher, S.: Berkeley Earth Temperature Averaging Process, *Geoinfor. Geostat.-An Overview*, 1, 2, *Geoinformatics Geostatistics An Overview*, 1, 20-100, 2013.
- 920 Rutan, D. A., Kato, S., Doelling, D. R., Rose, F. G., Nguyen, L. T., Caldwell, T. E., and Loeb, N. G.: CERES synoptic product: Methodology and validation of surface radiant flux, *Journal of Atmospheric and Oceanic Technology*, 32, 1121-1143, 2015.
- Shiff, S., Helman, D., and Lensky, I. M.: Worldwide continuous gap-filled MODIS land surface temperature dataset, *Sci Data*, 8, 1-10, 2021.
- 925 Sohrabinia, M., Zawar-Reza, P., and Rack, W.: Spatio-temporal analysis of the relationship between LST from MODIS and air temperature in New Zealand, *Theoretical and applied climatology*, 119, 567-583, 2015.
- Stisen, S., Sandholt, I., Nørgaard, A., Fensholt, R., and Jensen, K. H.: Combining the triangle method with thermal inertia to estimate regional evapotranspiration—Applied to MSG-SEVIRI data in the Senegal River basin, *Remote Sensing of Environment*, 112, 1242-1255, 2008.
- 930 Sun, D., Pinker, R. T., and Kafatos, M.: Diurnal temperature range over the United States: A satellite view, *Geophysical research letters*, 33, 2006.
- Wan, Z.: New refinements and validation of the MODIS land-surface temperature/emissivity products, *Remote sensing of Environment*, 112, 59-74, 2008.
- 935 Wang, K. and Dickinson, R. E.: Global atmospheric downward longwave radiation at the surface from ground-based observations, satellite retrievals, and reanalyses, *Reviews of Geophysics*, 51, 150-185, 2013.

- Wang, T., Shi, J., Ma, Y., Letu, H., and Li, X.: All-sky longwave downward radiation from satellite measurements: General parameterizations based on LST, column water vapor and cloud top temperature, *ISPRS Journal of Photogrammetry and Remote Sensing*, 161, 52-60, 10.1016/j.isprsjprs.2020.01.011, 2020.
- 940 Wang, Y.-R., Hessen, D. O., Samset, B. H., and Stordal, F.: Evaluating global and regional land warming trends in the past decades with both MODIS and ERA5-Land land surface temperature data, *Remote Sensing of Environment*, 280, 113181, 2022.
- 945 Wu, P., Su, Y., Duan, S.-b., Li, X., Yang, H., Zeng, C., Ma, X., Wu, Y., and Shen, H.: A two-step deep learning framework for mapping gapless all-weather land surface temperature using thermal infrared and passive microwave data, *Remote Sensing of Environment*, 277, 113070, 2022.
- Wu, P. H., Yin, Z. X., Yang, H., Wu, Y. L., and Ma, X. S.: Reconstructing Geostationary Satellite Land Surface Temperature Imagery Based on a Multiscale Feature Connected Convolutional Neural Network, *Remote Sensing*, 11, ARTN 300 10.3390/rs11030300, 2019.
- 950 Xing, Z., Li, Z.-L., Duan, S.-B., Liu, X., Zheng, X., Leng, P., Gao, M., Zhang, X., and Shang, G.: Estimation of daily mean land surface temperature at global scale using pairs of daytime and nighttime MODIS instantaneous observations, *ISPRS Journal of Photogrammetry and Remote Sensing*, 178, 51-67, 2021.
- Xu, S. and Cheng, J.: A new land surface temperature fusion strategy based on cumulative distribution function matching and multiresolution Kalman filtering, *Remote Sensing of Environment*, 254, 112256, 10.1016/j.rse.2020.112256, 2021.
- 955 Yan, Y., Mao, K., Shi, J., Piao, S., Shen, X., Dozier, J., Liu, Y., Ren, H.-l., and Bao, Q.: Driving forces of land surface temperature anomalous changes in North America in 2002–2018, *Sci Rep-Uk*, 10, 1-13, 2020.
- Yao, R., Wang, L., Wang, S., Wang, L., Wei, J., Li, J., and Yu, D.: A detailed comparison of MYD11 and MYD21 land surface temperature products in mainland China, *International Journal of Digital Earth*, 13, 1391-1407, 2020.
- Yu, P., Zhao, T., Shi, J., Ran, Y., Jia, L., Ji, D., and Xue, H.: Global spatiotemporally continuous MODIS land surface temperature dataset, *Sci Data*, 9, 1-15, 2022.
- 960 Yu, Y., Tarpley, D., Privette, J. L., Goldberg, M. D., Raja, M. R. V., Vinnikov, K. Y., and Xu, H.: Developing algorithm for operational GOES-R land surface temperature product, *IEEE Transactions on Geoscience and Remote Sensing*, 47, 936-951, 2008.
- 965 Zhan, W., Chen, Y., Zhou, J., Wang, J., Liu, W., Voogt, J., Zhu, X., Quan, J., and Li, J.: Disaggregation of remotely sensed land surface temperature: Literature survey, taxonomy, issues, and caveats, *Remote Sensing of Environment*, 131, 119-139, 2013.
- Zhang, Q., Wang, N., Cheng, J., and Xu, S.: A stepwise downscaling method for generating high-resolution land surface temperature from AMSR-E data, *IEEE Journal of Selected Topics in Applied Earth Observations and Remote Sensing*, 13, 5669-5681, 2020.

- 970 Zhang, T., Zhou, Y., Zhu, Z., Li, X., and Asrar, G. R.: A global seamless 1 km resolution daily land surface temperature dataset (2003–2020), *Earth Syst Sci Data*, 14, 651-664, 2022.
- Zhang, X., Liang, S., Wild, M., and Jiang, B.: Analysis of surface incident shortwave radiation from four satellite products, *Remote Sensing of Environment*, 165, 186-202, 2015.
- 975 Zhang, X., Zhou, J., Liang, S., and Wang, D.: A practical reanalysis data and thermal infrared remote sensing data merging (RTM) method for reconstruction of a 1-km all-weather land surface temperature, *Remote Sensing of Environment*, 260, 112437, 2021.
- Zhang, X., Zhou, J., Gottsche, F.-M., Zhan, W., Liu, S., and Cao, R.: A Method Based on Temporal Component Decomposition for Estimating 1-km All-Weather Land Surface Temperature by Merging Satellite Thermal Infrared and Passive Microwave Observations, *IEEE Transactions on Geoscience and Remote Sensing*, 57, 4670-4691, 10.1109/tgrs.2019.2892417, 2019.
- 980 Zhao, B., Mao, K., Cai, Y., Shi, J., Li, Z., Qin, Z., Meng, X., Shen, X., and Guo, Z.: A combined Terra and Aqua MODIS land surface temperature and meteorological station data product for China from 2003 to 2017, *Earth Syst Sci Data*, 12, 2555-2577, 2020.
- Zhao, P., Xu, X., Chen, F., Guo, X., Zheng, X., Liu, L., Hong, Y., Li, Y., La, Z., and Peng, H.: The third atmospheric scientific experiment for understanding the earth–atmosphere coupled system over the Tibetan Plateau and its effects, *Bulletin of the American Meteorological Society*, 99, 757-776, 2018.
- 985 Zhao, W., Wu, H., Yin, G., and Duan, S.-B.: Normalization of the temporal effect on the MODIS land surface temperature product using random forest regression, *ISPRS Journal of Photogrammetry and Remote Sensing*, 152, 109-118, 2019.
- Zhou, L., Tian, Y., Baidya Roy, S., Thorncroft, C., Bosart, L. F., and Hu, Y.: Impacts of wind farms on land surface temperature, *Nature Climate Change*, 2, 539-543, 2012.
- 990 Zou, D., Zhao, L., Sheng, Y., Chen, J., Hu, G., Wu, T., Wu, J., Xie, C., Wu, X., Pang, Q., Wang, W., Du, E., Li, W., Liu, G., Li, J., Qin, Y., Qiao, Y., Wang, Z., Shi, J., and Cheng, G.: A new map of permafrost distribution on the Tibetan Plateau, *The Cryosphere*, 11, 2527-2542, 10.5194/tc-11-2527-2017, 2017.