

SDUST2021GRA: Global marine gravity anomaly model recovered from Ka-band and Ku-band satellite altimeter data

Chengcheng Zhu^{1,2}, Jinyun Guo¹, Jiajia Yuan^{1,3}, Zhen Li¹, Xin Liu¹, Jinyao Gao⁴

¹College of Geodesy and Geomatics, Shandong University of Science and Technology, Qingdao, Shandong, China

5 ²School of Surveying and Geo-Informatics, Shandong Jianzhu University, Jinan, Shandong, China

³School of Geomatics, Anhui University of Science and Technology, Huainan, Anhui, China

⁴Second Institute of Oceanography of MNR, Hangzhou, Zhejiang, China

Correspondence to: Jinyun Guo (jinyunguo1@126.com)

Abstract. With the launch of altimetry satellites with different observation frequencies and different survey missions, it is necessary to integrate multi-satellites altimeter data to establish a new global marine gravity anomaly model. Based on Ka-band SSHs from SARAL/AltiKA and Ku-band SSHs from other satellites (including HY-2A) in geodetic missions and exact repeat missions, the global marine gravity anomaly model of SDUST2021GRA on a 1'×1' grid is derived. Gridded deflections of vertical (DOVs) are determined from along-track geoid gradients by the least-squares collocation method, in which the noise variances of along-track geoid gradients are obtained by the iteration method for Ka-band geodetic mission and by the SSH crossover discrepancies for other altimetry missions. SDUST2021GRA is recovered from the gridded DOVs by the inverse Vening-Meinesz formula, and analyzed by comparing with the recognized marine gravity anomaly models of DTU17 and SIO V30.1. Final, the accuracy of SDUST2021GRA, DTU17 and SIO V30.1 is assessed by preprocessed shipborne gravity anomalies. In conclusion, the differences between SDUST2021GRA and recognized models are small, indicating the reliability of SDUST2021GRA. The differences are mainly concentrated between -5 mGal and 5 mGal, which accounts for more than 95% of the total number. Assessed by shipborne gravity, the accuracy of SDUST2021GRA is 2.37 mGal in the global, which is higher than that of DTU17 (2.74 mGal) and SIO V30.1(2.69 mGal). The precision advantage of SDUST2021GRA is mainly concentrated in offshore areas. [HY-2A-measured altimeter data have an important role on gravity anomaly recovery in areas with complex coastlines and many islands.](#) SDUST2021GRA is concluded to reach an international advanced level for the altimeter-derived marine gravity model, especially in the offshore area. The SDUST2021GRA model are freely available at the site of <https://doi.org/10.5281/zenodo.6668159> (Zhu et al., 2022).

1 Introduction

Accurate marine gravity anomalies play an important role in the fields of submarine topography (Sun et al., 2021), oceanic lithosphere (Kim and Wessel, 2011; Shahraki et al., 2018; Gozzard et al., 2019), Earth structure (Ebbing et al., 2018) and submarine exploitation (Sun et al., 2018). The technique of satellite altimetry is widely applied to construct local and global marine gravity anomaly models (Andersen and Knudsen, 2019; Zhu et al., 2020; Sandwell et al., 2021; Guo et al., 2022).

With the launch of different altimetry satellites, a large number of altimeter data have been obtained. With the performance of the geodetic mission (GM) of altimeter satellite, the density of altimeter data can meet the requirements of inversion of high-resolution and high-precision gravity anomaly models, e.g., CryoSat-2 provided a nominal track spacing of less than 2.5 km (Sandwell et al., 2014b; Ji et al., 2021b) after about 10 years in orbit. Meanwhile, different observation techniques are used in different altimetry satellites, e.g., the Ka-band altimeter is first carried on SARAL/AltiKA (SRL) (CNES, 2016a). Ka-band altimeter data are different with Ku-band data, which has been proved by several researches, including absolute calibrations, observation assessments, retracking methods, geoid derivation and gravity anomaly recovery (Babu et al., 2015; Smith, 2015; Zhang and Sandwell, 2017; Zhu et al., 2020; Zhu et al., 2021). However, Ka-band data are hardly specifically processed in the construction of the recognized global marine gravity models. Moreover, HY-2A, China's first ocean dynamical satellite, was launched on August 16, 2011. A microwave imager, a dual-frequency (Ku band and C band) radar altimeter and a Ku-band scatterometer on HY-2A are used to obtain brightness temperature, monitor basic ocean elements (sea level, significant wave height and wind speed) and determine sea surface vector wind field. Radar altimeter on HY-2A has perform geodetic mission for about four years. HY-2A has been proved to play an important role in determining deflections of vertical (DOVs) and recovering gravity anomalies (Rapp, 1979; Zhu et al., 2019; Wan et al., 2020; Ji et al., 2021a; Guo et al., 2022). However, but HY-2A-measured altimeter data are rarely used for published global models of gravity anomalies.

Accuracy of altimeter-derived gravity anomalies in offshore waters is low because of the waveform contamination by land. Compared with traditional Ku/C-band altimeters, Ka-band altimeter with higher frequency has a smaller altimeter footprint (CNES, 2016a), which leads to the smaller contamination radius of land. Moreover, the gravity anomaly model derived from more altimeter data is more accurate. For the recognized marine gravity anomaly models, HY-2A-measured altimeter data are not used, and Ka-band data are hardly specifically processed. Therefore, we will construct the global marine gravity anomaly model (SDUST2021GRA) on a 1'×1' grid from multi-satellite altimeter data including HY-2A-measured data. In the processing, noise variance of Ka-band along-track geoid gradients is determined by the different method from those of Ku-band observations. We will construct the global marine gravity anomaly model (SDUST2021GRA) on a 1'×1' grid from multi satellite altimeter data including HY 2A measured data.

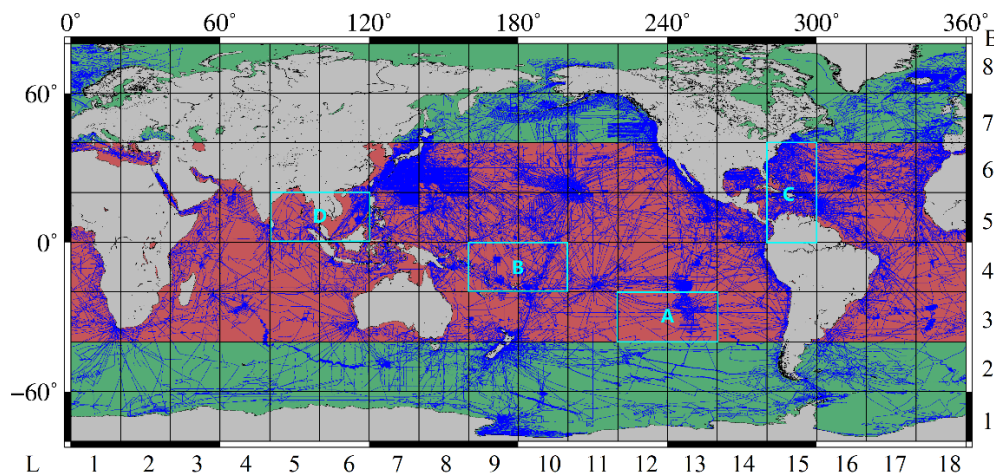
First, along-track geoid gradients are calculated from altimeter-measured sea surface heights (SSHs). Second, gridded DOVs are determined by the least-squares collocation (LSC) method (Rapp, 1979). Final, gravity anomalies are derived from gridded DOVs by the inverse Vening-Meinesz formula (IVM) (Hwang, 1998). In the process of calculating gridded DOVs, the noise variance of Ka-band along-track geoid gradients for GM in LSC is determined by the iteration method which is proposed by Zhu et al. (2020). In Section 2, the research area and data are introduced. In Section 3, the methods of data preprocessing, calculating gridded DOV and derived gravity anomalies are presented in detail, respectively. In Section 4, the

65 global marine gravity model is analyzed by comparing with other models. Meanwhile, the accuracy of the model is assessed by shipborne gravity data. The conclusion is given in Section 5.

2 Research data and area

2.1 Study area

70 The ocean covering $0^{\circ}\sim 360^{\circ}\text{E}$ and $80^{\circ}\text{S}\sim 80^{\circ}\text{N}$ is selected as the study area. The study area is divided into 144 regions to derive gravity anomalies due to the limited memory of the computer, ~~as shown in~~ (Figure 1). From 0° to 360°E , regions are marked from L1 to L18. Meanwhile, from 80°S to 80°N , regions are marked from B1 to B8.



75 **Figure 1. Division map for deriving gravity anomalies and tracks of NCEI shipborne data. The red and green areas means that the reference gravity anomalies are obtained from XGM2019e and EGM2008, respectively. The lines in blue present the cruises of shipborne gravity. The areas in cyan boxes are the special areas for analysis. From 0° to 360°E , regions are marked from L1 to L18; from 80°S to 80°N , regions are marked from B1 to B8.**

2.2 Altimeter Data.

80 Non-time critical Level 2 Plus (L2P) Version 3.0 products of altimeter data released by archiving validation and interpretation of satellite oceanographic data (AVISO) (<ftp://ftp-access.aviso.altimetry.fr>) are used to construct the gravity anomaly model. ~~The lasted version of L2P products is Version 3.0.~~ The reference ellipsoid used for L2P Version 3.0 products is the World Geodetic System (WGS) 84 reference ellipsoid. The L2P products at the 1-Hz sampling frequency are along-track products that contain only data relating to marine surfaces. They have a homogenized format and content for all altimeter missions (CNES, 2020). Since L2P products of Jason-2 for GM have only a few cycles of data, the altimeter data at
85 the 1-Hz sampling frequency from geophysical data records (GDRs) of Jason-2/GM are used.

The accuracy of SSHs from altimetry data is gradually improved- ~~through the years with the increased time~~. ERS-1 ~~wasis~~ launched before 1990, and ERS-1/GM-measured altimeter data play little role in deriving gravity anomalies from multi-satellite altimeter data (Zhu et al., 2020; Sandwell et al., 2021). Therefore, the GM data used for constructing the gravity model only contain the altimeter data of satellites launched after 1990, as listed in Table 1. Although the exact repeat mission (ERM) provides the sparse track coverage, accurate average SSHs can be obtained from long-term ERM data. The ERM data ~~listed~~ in Table 1 are also used to derive gravity anomalies.

For Topex/Poseidon (T/P), Jason-1, Jason-2 and Jason-3, satellites are firstly located on their nominal orbit for an ERM, and then swift to the interleaved orbit for the other ERM (CNES, 2016c, 2017, 2021). The first ERM is marked with an '_A' after the satellite name, e.g., T/P_A, and the second ERM is marked with an '_B' after the satellite name, ~~as listed in (Table 1)~~. Envisat is marked in the same way.

~~The study area is divided into multiple regions.~~ In order to ensure the continuity of gravity anomalies between regions, altimeter data in the areas extending outward 1 degree from these regions are used for deriving gravity, e.g., altimeter data in the area of 59°~81°E and 41°S~19°S are used for deriving gravity in the region of L4B3 (60°~80°E and 40°S~20°S).

Table 1. Information of altimetry satellites used for deriving gravity field

Mission	Satellite	Period	Cycles	Latitude range (°)	Cycle duration (d)	Inter-track distance at equator (km)
Geodetic mission	Jason-1	12.05-13.06	500-537	±66	406	~7.5
	HY-2A	16.03-20.06	118-288	±81	168	~15
	CryoSat-2	10.07-20.05	007-130	±88	369	~2.5
	SRL	16.07-20.08	100-142	±81.5	-	~5
	Jason-2	17.07-19.10	500-537/ 600-644	±66	369	~7
Exact repeat mission	T/P_A	92.09-02.08	001-364			
	Jason-1_A	02.01-09.01	001-259			
	Jason-2_A	08.07-16.10	001-303			
	Jason-3_A	16.02-20.09	001-169	±66	10	~315
	T/P_B	02.09-05.09	369-479			
	Jason-1_B	09.02-12.03	262-374			
	Jason-2_B	16.10-17.05	305-327			
	Envisat_A	02.05-10.10	006-093			
	Envisat_B	10.11-12.04	097-113	±81.5	35	~80
	HY-2A	14.04-16.03	067-117	±81.5	14	~210
SRL	13.03-15.03	001-021	±81.5	35	~80	

2.3 Gravity data and other data

2.3.1 Reference gravity anomalies

Gravity anomalies on regular grids can be obtained by the calculation function of gravity field functionals on ellipsoidal grids provided by International Centre for Global Earth Models (ICGEM) (<http://icgem.gfz-potsdam.de/calgrid>). Earth Gravitational Field Model 2008 (EGM2008) (Pavlis et al., 2012) and XGM2019e (Zingerle et al., 2020) are the recognized high-precision Earth Gravitational Field models.

Earth Gravitational Field Model 2008 (EGM2008) (Pavlis et al., 2012) is a recognized high precision Earth Gravitational Field model (<http://earth-info.nga.mil/GandG/wgs84/gravitymod/egm2008>), which is complete to degree and order 2159, with additional coefficients up to degree 2190 and order 2159. Its half-wavelength resolution is about 9 km.

XGM2019e (Zingerle et al., 2020) is a combined global gravity field model complete to degree and order 5399. Its half-wavelength resolution is about 4 km. XGM2019e is mainly constructed from the GOCO06s satellite-only gravity field model, 15' ground gravity dataset provided by the US National Geospatial-Intelligence Agency and 1' augmentation dataset.

Since ICGEM only provides the calculation for XGM2019e up to degree and order 2159 (marked as the XGM2019e_2159 model), XGM2019e up to degree and order 2159 is used as the reference gravity field model. Compared with shipborne gravity anomalies, the differences for XGM2019e are greater than those for EGM2008 in some sea areas of the middle to high latitudes. Therefore, EGM2008 up to the order 2160 is used as the reference gravity field model in the areas between 40°S~80°S or 40°N~80°N referring to previous studies (Sandwell et al., 2014a; Shih et al., 2015). As shown in Figure 1, the reference gravity field model of the regions in red is XGM2019e up to degree and order 2159, and that in green is EGM2008 up to the order 2160.

Gravity anomalies on regular grids can be obtained by the calculation function of gravity field functionals on ellipsoidal grids provided by International Centre for Global Earth Models (ICGEM) (<http://icgem.gfz-potsdam.de/calgrid>). Since ICGEM only provides the calculation for XGM2019e up to degree and order 2159 (marked as the XGM2019e_2159 model), XGM2019e up to degree and order 2159 is used as the reference gravity field model. Compared with shipborne gravity anomalies, the differences for XGM2019e are greater than those for EGM2008 in some sea areas of the middle to high latitudes. Therefore, EGM2008 up to the order 2160 is used as the reference gravity field model in the areas between 40°S~80°S or 40°N~80°N referring to previous studies (Sandwell et al., 2014a; Shih et al., 2015). As shown in Figure 1, the reference gravity field model of the regions in red is XGM2019e up to degree and order 2159, and that in green is EGM2008 up to the order 2160.

2.3.2 Altimeter-derived gravity anomaly model

140 ~~Recognized global marine gravity models can be used for analyzing the quality of the global marine gravity model in the paper.~~ According to the altimetry data used for deriving SDUST2021GRA, we select the model SIO V30.01 (Sandwell et al., 2021) on 1'×1' grids established from altimeter data in the similar period released by the Scripps Institution of Oceanography (SIO). ~~The marine gravity model of DTU17 (Andersen and Knudsen, 2019) released by Technical University of Denmark (DTU) The lasted marine gravity released by Technical University of Denmark (DTU) is DTU 17 (Andersen and Knudsen,~~
145 ~~2019), which~~ is also used to be compared with SDUST2021GRA. The GM altimeter data in Table 2 are used in the global marine gravity models ~~are listed in Table 2.~~

Table 2. Altimeter GM data used for deriving marine gravity anomaly models (Unit: month)

	Geosat	ERS-1	Jason-1	Jason-2	CryoSat-2	SRL	HY-2A
DTU17	18	12	14	0	~84	~12	0
SIO V30.1	18	12	14	20	114+	50+	0
SDUST2021GRA	0	0	14	20	118	49	51

2.3.3 Shipborne gravity anomalies

The shipborne gravity data used ~~for~~ assessing the accuracy of gravity models are shown in blue in Figure 1, which are
150 provide by US National Centers for Environmental Information (NCEI) (<https://www.ncei.noaa.gov/maps/geophysics/>). There are about 2000 cruises which are measured by different instruments from different countries and institutions in different time: a feature that requires some processing, ~~which should be preprocessed.~~

2.3.4 Mean dynamic topography model

Geoid heights can be calculated from SSHs by ~~subtracting minus~~ dynamic topography. However, accurate dynamic
155 topography is difficult to obtain, so the mean dynamic topography (MDT) model is used in the paper. MDT-CNES-CLS18 (Mulet et al., 2021) is the most updated ~~lasted~~ MDT model released by AVISO (<https://www.aviso.altimetry.fr/en/data/products/auxiliary-products/mdt/mdt-global-cnes-cls18.html>), which is a global model on 0.125°×0.125° grids of ~~the differences~~ between mean sea level heights and geoid heights from 1993 to 2012. The data used for establishing the model mainly include the mean sea surface model of CNES-CLS15 (Pujol et al., 2018), the
160 geoid model of GOCO05S (Mayergürr et al., 2015), hydrological data and drifter data.

3 Methodology

3.1 Preprocessing Method

3.1.1 Shipborne data preprocessing

165 Since shipborne gravity data in different reference systems provided by NCEI were measured by different organizations, the reference datum of shipborne data should be unified. ~~Moreover~~Meanwhile, there are some long-wavelength errors in shipborne gravity, which ~~are is~~ caused by drifts in gravimeter readings, off-leveling, incorrect ties to base stations, and different reference fields (Wessel and Watts, 1988).

170 First, the gross errors are excluded by the 3 sigma rules. The mean value and STD of gravity anomalies ~~for of~~ each cruise are calculated. Mean removal gravity anomalies are obtained ~~from gravity anomalies by subtracting the mean value. differences between gravity anomalies and the mean value.~~ If the difference between the mean removal gravity anomaly and reference gravity anomaly at a point is greater than three times of the STD, the observation of the point is rejected.

175 Then, the quadratic polynomial ~~can be is~~ used for unifying the gravity reference datum and correcting long-wavelength errors (Hwang and Parsons, 1995; Guo et al., 2022). The differences between gravity anomalies from the reference gravity field model and those from NCEI can be presented by

$$\Delta dg_i(t) = a_i + b_i \Delta t + c_i \Delta t^2 \quad (1)$$

180 where i is the ID of a shipborne cruise, and Δdg_i are the differences between reference and shipborne gravity anomalies at the observation points of the cruise. Δt is computed from the observation time t minus the departure time. a_i , b_i and c_i ~~are parameters obtained, for each cruise, by least-square fitting from Equation (1). are parameters for the cruise.~~

~~As Δdg_i and Δt at the observation points of a shipborne cruise are calculated from shipborne data and reference gravity anomalies, parameters for the cruise can be obtained by the least squares (LS) fitting method. Then, corrections for shipborne gravity are calculation by Equation (1) based on parameters and observation time.~~

185

Finally, corrected shipborne gravity anomalies can be ~~obtained gotten~~ from original shipborne gravity anomalies ~~by adding plus~~ corrections. The shipborne gravity anomaly discrepancies at crossovers of different cruises are obviously decreased after the adjustment than those before the adjustment (Zhu et al., 2019; Ji et al., 2021b; Guo et al., 2022).

190

3.1.2 Altimeter data preprocessing

There are some errors in SSH observations of altimeter data, including instrument errors, propagation errors and geophysical errors. Corrections for the errors are provided in L2P products. The final SSHs are calculated from original SSHs plus the corrections. The reference ellipsoid used for Jason-2/GM altimeter data are from GDRs whose reference ellipsoid is different from WGS84 used for L2P products. The reference ellipsoid is the first-order definition of the non-spherical shape of Earth with equatorial radius of 6378.1363 km and flattening coefficient of 1/298.257 (CNES, 2016b), named T/P ellipsoid. Jason-2/GM-measured SSHs in the T/P ellipsoid should be transformed to those in WGS84 ellipsoid by

$$\begin{aligned} B_w &= B + \frac{N}{(M+h)^2} e^2 \sin B \cos B d\alpha + \frac{N(2-e^2 \sin^2 B)}{(M+h)(1-\alpha)} \sin B \cos B d\alpha \\ L_w &= L \\ h_w &= h - \frac{N}{a} (1-e^2 \sin^2 B) d\alpha + \frac{M}{(1-\alpha)} (1-e^2 \sin^2 B) \sin^2 B d\alpha \end{aligned} \quad (2)$$

where, da is the difference between semimajor axis of WGS84 ellipsoid and that of T/P ellipsoid, and dα is the difference between flattening of the two ellipsoids. a and e are the semimajor axis and first eccentricity of T/P ellipsoid. B , L and h are the latitude, longitude and SSH in the T/P ellipsoid, respectively. B_w , L_w and h_w are the corresponding data in the WGS84 ellipsoid. N and M are the radius of curvature in prime vertical and meridian in the T/P ellipsoid. ~~da is the difference between semimajor axis of WGS84 ellipsoid and that of T/P ellipsoid, and dα is the difference between flattening of the two ellipsoids.~~

Sea surface temporal variability and high-frequency noise affect the accuracy of SSHs, so Gaussian filtering is used for the along-track GM-measured SSHs. The corresponding response function is

$$f(r) = \exp\left(-\frac{S^2}{2r_c^2}\right) \quad (3)$$

where, S is the sphere distance between substellar points, and r_c is the radius of the convolution window. Following our previous study (Zhu et al., 2020), the value of r_c is 7 km in the paper.

The amount of ERM-measured SSHs is too large to be processed in the same way with GM-measured SSHs. Due to the repeated tracks, the ground track control band of ERM is 1~2 km. The simplified collinear adjustment method (Figure 2) is used to reduce high-frequency noise of ERM-measured SSHs (Jin et al., 2016; Yuan et al., 2020). First, the track with the largest amount of observed data among all repeated tracks is selected as the reference track. Second, SSHs of other tracks are interpolated into the reference track. Final, the interpolated SSHs are averaged to obtain the mean SSH on the reference track. As shown in In Figure 2, R_i is the observation point on the reference track, and P_k and P_{k+1} are the observation points on

the other track. The SSH on point R_i' whose latitude is the same with R_i can be interpolated from SSHs on points P_k and P_{k+1} . The mean value of SSHs on R_i , R_i' and interpolated points on other tracks is the adjusted SSH on R_i of the reference track.

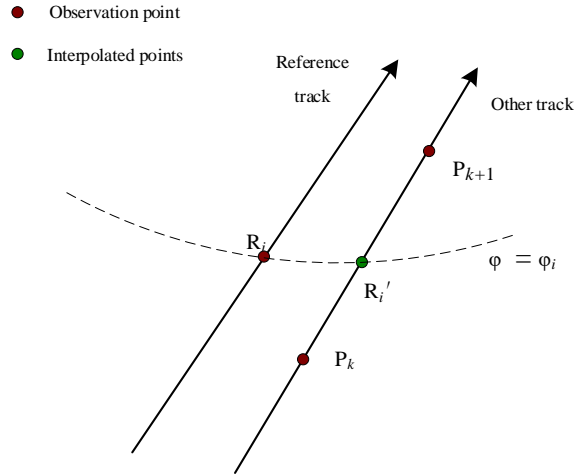


Figure 2. Simplified collinear adjustment method. R_i is the observation point on the reference track. P_k and P_{k+1} are the observation points on the other track. The latitude of R_i' is the same as that of R_i . The dashed line indicates the parallel.

The amount of ERM measured SSHs is too large to be processed in the same way with GM measured SSHs. Due to the repeated tracks, the ground track control band of ERM is 1–2 km. The simplified collinear adjustment method is used to reduce high frequency noise of ERM measured SSHs (Jin et al., 2016; Yuan et al., 2020). First, the track with the largest amount of observed data among all repeated tracks is selected as the reference track. Second, SSHs of other tracks are interpolated into the reference track. Final, the interpolated SSHs are averaged to obtain the mean SSH on the reference track. As shown in Figure 2, R_i is the observation point on the reference track, and P_k and P_{k+1} are the observation points on the other track. The SSH on point R_i' whose latitude is the same with R_i can be interpolated from SSHs on points P_k and P_{k+1} . The mean value of SSHs on R_i , R_i' and interpolated points on other tracks is the adjusted SSH on R_i of the reference track.

3.2 Method of gridding DOV

3.2.1 Along-track geoid gradient calculation

Dynamic topography is the difference between the geoid height and the SSH. Therefore, the geoid height is calculated from the adjusted SSH minus the MDT (from MDT-CNES-CLS18). Based on the remove-restore method, geoid heights from

SSHs minus those from the reference gravity model are residual geoid heights ([Sansò and Sideris, 2013](#)). Then, the residual along-track geoid gradient is

$$e_{res} = \frac{dN_{res}}{dS} \quad (4)$$

240 where, dS is the sphere distance between two adjacent substellar points, and dN_{res} is the difference between residual geoid heights at the two points.

3.2.2 Gridded DOV calculation

The LSC method has been proved useful in DOV determination, so DOV on regular grids can be obtained by

$$\begin{pmatrix} \xi_{res} \\ \eta_{res} \end{pmatrix} = \begin{pmatrix} C_{\xi e} \\ C_{\eta e} \end{pmatrix} (C_{ee} + C_n)^{-1} e_{res} \quad (5)$$

245 ~~w~~Where, ξ_{res} and η_{res} are the residual meridian and prime vertical components of the DOV, respectively. C_{ee} is the covariance matrix for e_{res} . $C_{\xi e}$ and $C_{\eta e}$ are the covariance matrices for $\xi_{res} - e_{res}$ and $\eta_{res} - e_{res}$, respectively. C_n is the diagonal matrix of noise variances of along-track geoid gradients.

As covariance functions of disturbing potentials are isotropic, the covariance function of residual disturbing potentials at the
250 given distance can be calculated by (Tscherning and Rapp, 1974; Hwang, 1989)

$$K_{res}(P, Q) = \sum_{n=2}^{N_{max}} \delta\sigma_n s^{n+1} P_n(\cos\psi_{PQ}) + \sum_{n=N_{max}+1}^{\infty} \sigma_n s^{n+1} P_n(\cos\psi_{PQ}) \quad (6)$$

~~w~~Where, N_{max} is the maximum degree of the reference gravity model, and s is obtained from mean radius of Bjerhammar sphere and Earth sphere. σ_n is the degree variance of disturbing potentials, which is calculated based on Model 4 proposed by Tscherning and Rapp (1974). $\delta\sigma_n$ is the error degree variance of disturbing potentials (Hwang, 1989), which is obtained
255 from errors of coefficients in the potential set of the reference gravity model.

As all data related to gravity can be expressed as functionals of disturbing potentials, covariance functions of residual DOV components can be calculated from the covariance function of residual disturbing potentials. The covariance functions of deflection components ξ and η are not isotropic, but the longitude and transvers components are isotropic. The geoid gradient has the same value and opposite sign as the DOV, so covariance functions of longitude components l and transvers components m of the residual geoid (C_{ll} , C_{mm}) have simple relations to $K_{res}(P, Q)$. Therefore, C_{ee} , $C_{\xi e}$ and $C_{\eta e}$ can be
260 obtained from C_{ll} and C_{mm} by

$$\begin{aligned}
C_{ee} &= C_{ll} \cos(\alpha_{ep} - \alpha_{pQ}) \cos(\alpha_{eQ} - \alpha_{pQ}) + C_{mm} \sin(\alpha_{ep} - \alpha_{pQ}) \sin(\alpha_{eQ} - \alpha_{pQ}) \\
C_{\xi_e} &= -C_{ll} \cos \alpha_{pQ} \cos(\alpha_{eQ} - \alpha_{QP}) + C_{mm} \sin \alpha_{pQ} \sin(\alpha_{eQ} - \alpha_{QP}) \\
C_{\eta_e} &= -C_{ll} \sin \alpha_{pQ} \cos(\alpha_{eQ} - \alpha_{QP}) - C_{mm} \cos \alpha_{pQ} \sin(\alpha_{eQ} - \alpha_{QP})
\end{aligned} \tag{7}$$

Where, α_{ep} and α_{eQ} are azimuths of ground track at points P and Q , respectively. α_{pQ} is the azimuth from P to Q , and α_{QP} is that from Q to P .

265 3.2.3 Noise variances of Ka-band and Ku-band geoid gradients

As C_{ee} , C_{ξ_e} , C_{η_e} and e_{res} in Equation (5) can be obtained referring to Section 3.2.2, noise variances of along-track geoid gradients are needed for calculating gridded DOVs. The noise variance of SSHs can be ~~gotten~~ obtained by calculating the STD of SSHs at 20-Hz (40-Hz for SRL) sampling frequency, but there are no 20-Hz SSH data in L2P products. Therefore, SSH crossover discrepancies are used to assess the accuracy of SSHs.

270

Since residual along-track geoid gradients are obtained by Equation (4), the difference between SSHs at two adjacent points can effectively weaken the effect of long wavelength errors of SSHs on geoid gradients (Mcadoo et al., 2008), e.g., such as satellite orbit errors, propagation errors, and dynamic topography errors. SSH crossover adjustment can reduce the radial orbit errors (Yuan et al., 2021). Ignoring errors of distance between two adjacent ground points, noise variances of along-track geoid gradients are computed from crossover discrepancies of SSHs after the crossover adjustment by

275

$$D_e = \frac{2D_{SSH}}{dS^2} = \frac{D_{\Delta SSH}}{dS^2} \tag{8}$$

Where D_{SSH} is the covariance of adjusted SSHs, and $D_{\Delta SSH}$ is the covariance of crossover discrepancies of adjusted SSHs.

In offshore waters covering $0^\circ \sim 30^\circ \text{N}$ and $105^\circ \text{E} \sim 125^\circ \text{E}$, the accuracy of SSHs from SRL is improved by about 10% compared with that from HY-2A, and the accuracy of along-track geoid gradients is improved by about 30%. This is because that SSHs from Ka-band altimeter are more sensitive to rainy and cloudy conditions than those from Ku-band to have larger propagation errors. The differentiation in Equation (4) can effectively weaken the effects of propagation errors on along-track geoid gradients. However, the SSH crossover adjustment cannot effectively reduce propagation errors, so the iteration method for assessing accuracy of along-track geoid gradients from SRL is are proposed by Zhu et al. (2020).

285

~~First-t~~ The precision of along-track geoid gradients in Ku-band GM missions (Jason-1/GM, Jason-2/GM, CryoSat-2 and HY-2A/GM) is assessed by the Equation (8) from crossover discrepancies of SSHs after the crossover adjustment. Gridded DOVs of each satellite are determined by Equation (5), which are used to derive gravity anomalies by IVM method

presented in Section 3.3. The accuracy of altimeter-derived gravity anomalies can be assessed by shipborne gravity data and SIO V30.1 (Zhu et al., 2020).

Supposing that shipborne gravity, SIO V30.1 and altimetric gravity are dependent of each other, we can obtain

$$\begin{aligned} D_m &= D_i + D_n \\ \cancel{D_{is}} &= \cancel{D_i} + \cancel{D_s} \\ D_{ns} &= D_n + D_s \end{aligned} \quad (9)$$

where $i=1-4$, presenting gravity anomalies recovered from Jason 1/GM, Jason 2/GM, CryoSat 2 and HY 2A/GM. n presents the shipborne gravity, and s presents gravity anomalies from SIO V30.1. D_m , D_{is} , and D_{ns} are variances of i , n (difference between altimetric gravity and shipborne gravity), i , s and n , s , respectively. Variances of altimetric, shipborne and SIO V30.1 gravity (D_i , D_n and D_s) can be determined by the LS method based on the Equation (9).

The relationship among the precision of altimetric gravity, precision of geoid gradients, and density of geoid gradients can be presented by (Zhu et al., 2020)

$$D_{\Delta g} = \beta_0 + \beta_1 \frac{\rho}{D_e} \quad (24)$$

where, $D_{\Delta g}$ is the variance of altimetric gravity, and ρ is the average number of along-track geoid gradients in $1' \times 1'$ area.

Parameters of β_0 and β_1 can be calculated by the LS fitting method.

The accuracy of along-track geoid gradients of SRL/DP can be obtained following the method in Figure 3. First, Second, initial precision of along-track geoid gradients of SRL/DP is also assessed by the Equation (8). Gravity anomalies are derived from SRL/DP-measured SSHs based on the initial precision.

ThirdSecond, the precision of SRL/DP-derived gravity is assessed by shipborne gravity and SIO V30.1 model, thenand used to calculate the new precision of along-track geoid gradient from SRL/DP by Equation (409). The new SRL/DP gravity anomalies are derived based on the new precision of along-track geoid gradients.

Final, the calculation of step third is repeated, and terminated when the difference in precision of altimetric gravity between adjacent times is less than 0.02 mGal.

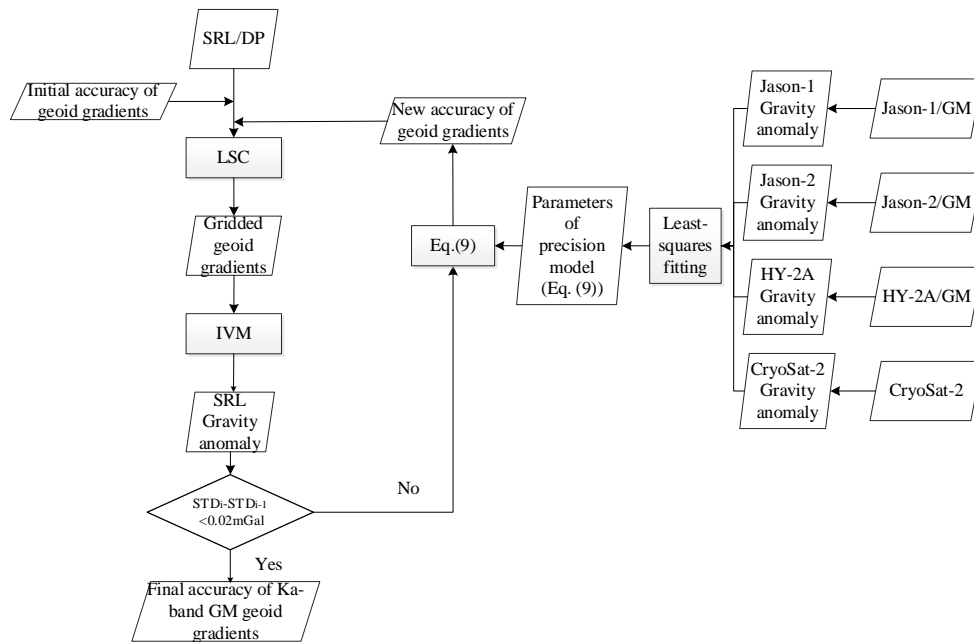


Figure 3. Iterative method of assessing the accuracy of SRL/DP-measured along-track geoid gradients. Initial accuracy of along-track geoid gradients is only used for the first calculation of gravity, and new accuracy is used for other calculations.

320

As the simplified collinear adjustment is used for altimeter data in ERM, the influence of cloud and rain condition on adjusted SSHs of SRL/ERM is weakened by the average calculation. Therefore, the accuracy of Ka-band along-track geoid gradients in ERM can be directly determined by crossover discrepancies.

325

In conclusion, the precision of along-track geoid gradients in Ku band for all missions and in Ka band for ERM is assessed by Equation (8) from crossover discrepancies of SSHs after the crossover adjustment, and that in Ka band for GM is assessed by the iteration method.

3.3 Method of deriving gravity anomalies

330

Vening-Meinesz Formula can be used to determine DOVs from gravity anomalies, so the inverse of Vening-Meinesz formula is used to derive gravity anomalies from DOVs with the development of altimetry technology (Hwang, 1998; Ji et al., 2021a). Hwang (1998) derived the inverse Vening-Meinesz formula and the kernel function based on the spherical harmonic expansion of disturbing potential (Heiskanen and Moritz, 1967), Green's formula (Meissl, 1971), Laplace surface operator (Courant and Hilbert, 1953), orthogonality relationship of fully normalized spherical harmonics (Heiskanen and Moritz, 1967) and the kernel function by Meissl (1971). Gravity anomalies can be derived by inverse Vening-Meinesz

335

formula:

$$\Delta g(p) = \frac{\gamma_0}{4\pi} \iint_{\sigma} H'(\psi) (\xi_q \cos \alpha_{qp} + \eta_q \sin \alpha_{qp}) d\sigma_q \quad (104)$$

where, γ_0 is the normal gravity at point p. $H'(\psi)$ is the kernel function relating to the sphere distance ψ between points p and q, which is obtained by

$$H' = -\frac{\cos \frac{\psi}{2}}{2 \sin^2 \frac{\psi}{2}} + \frac{\cos \frac{\psi}{2} \left(2 \sin \frac{\psi}{2} + 3 \right)}{2 \sin \frac{\psi}{2} \left(\sin \frac{\psi}{2} + 1 \right)} \quad (112)$$

340 As the meridian and prime vertical components of DOVs are given on a regular grid, one-dimensional fast Fourier transform (1D-FFT) is used for the calculation of IVM formula, that is, gravity anomalies at the same parallel are computed simultaneously.

The kernel function $H'(\psi)$ is singular when the distance ψ is zero, the innermost zone effect should be considered. The shape of the innermost zone is assumed as a circle, a square and a rectangle in different researches (Hwang, 1998; Li et al., 345 2018). In this study, we use the circular innermost zone following Hwang (1998).

4 Gravity anomaly results

Remove-restore method is used for constructing the global marine gravity anomaly model. Following the method (Figure 4) presented in Section 3, as shown in Figure 3, gridded residual DOVs are determined from along-track geoid gradients by LSC method, in which the precision of along-track geoid gradients in Ka band for GM is assessed by the iteration method (Figure 3) and that of the other along-track geoid gradients is assessed by crossover discrepancies of SSHs. Then, residual gravity anomalies are derived from gridded residual DOVs by 1D-FFT based on IVM formula. The global marine gravity anomaly model (SDUST2021GRA) shown in Figure 45 is established from the residual gravity anomalies by restoring the reference gravity anomalies.

355

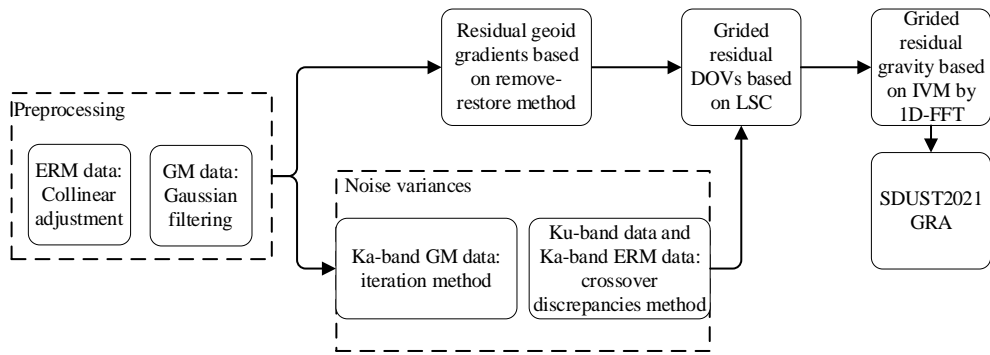


Figure 43. Method for establishing ocean gravity anomaly model from multi-satellite altimeter data

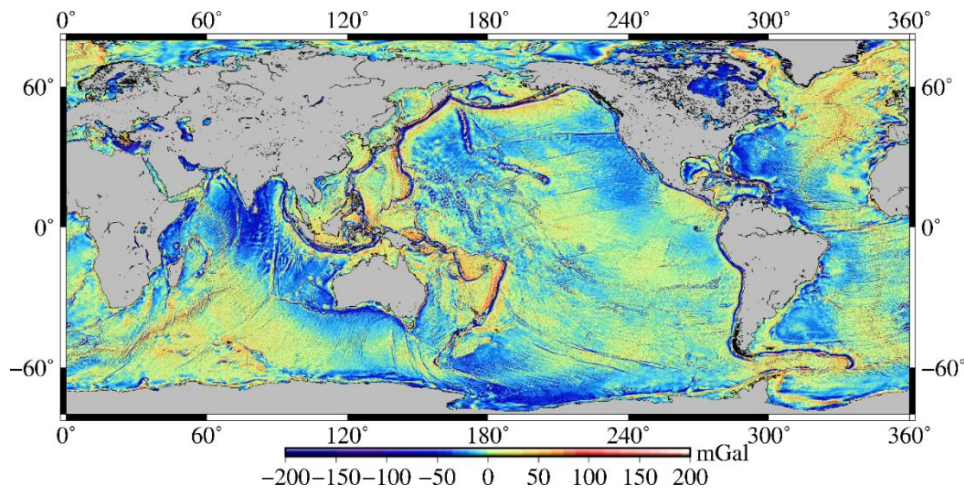


Figure 54. The marine gravity anomaly model of SDUST2021GRA

360 ~~Remove-restore method is used for constructing the global marine gravity anomaly model. Following the method presented in Section 3, as shown in Figure 3, gridded residual DOVs are determined from along-track geoid gradients by LSC method, in which the precision of along-track geoid gradients in Ka-band for GM is assessed by the iteration method and that of the other along-track geoid gradients is assessed by crossover discrepancies of SSHs. Then, residual gravity anomalies are derived from gridded residual DOVs by 1D-FFT based on IVM formula. The global marine gravity anomaly model (SDUST2021GRA) shown in Figure 4 is established from the residual gravity anomalies by restoring the reference gravity anomalies.~~

365

4.1 Comparison with SIO V30.1 and DTU17

Recognized marine gravity anomaly models of SIO V30.1 and DTU17 are used for verify the reliability of SDUST2021GRA. The differences between SDUST2021GRA and recognized models are shown in Figure 65. The differences in coastal areas

370 (e.g., the Aleutian Islands and the Philippine Islands) are greater than those in open oceans, which is caused by the
waveform contamination by land and islands. Moreover ~~eanwhile~~, the differences in areas with rapidly changing special
submarine topography are greater than those in areas with flat submarine topography, e.g., the South Sandwich Trench
~~shown~~ in Figure 76. Therefore, gravity anomaly models can be used for construction of submarine topography models.
Moreover, compared with SDUST2021GRA, the differences for DTU 17 ~~shown~~ in Figure 65(b) are smaller than those for
375 SIO V30.1 ~~shown~~ in Figure 56(a). The distribution of differences between DTU17 and SIO V30.1 in Figure 6(c) is similar to
that between SDUST2021GRA and SIO V30.1.

Histograms of the differences between altimeter-derived gravity anomaly models are shown in Figure 8. In Figure 8(a), the
differences between DTU17 and SIO V30.1 are mainly concentrated between -5 mGal and 5 mGal, which accounts for about
380 95% of the total number. The distribution of differences between SDUST2021GRA and SIO V30.1 in Figure 8(b) is similar
to that in Figure 8(a). In Figure 8(c), compared with DTU17, the differences for SDUST2021GRA between -5 mGal and 5
mGal account for about 98% of the total number, and those between -3 mGal and 3 mGal account for about 93%. This also
shows that compared with SDUST2021GRA, the differences for DTU17 are smaller than those for SIO V30.1. Based on the
small differences between SDUST2021GRA and recognized models, we can conclude that SDUST2021GRA is reliable.

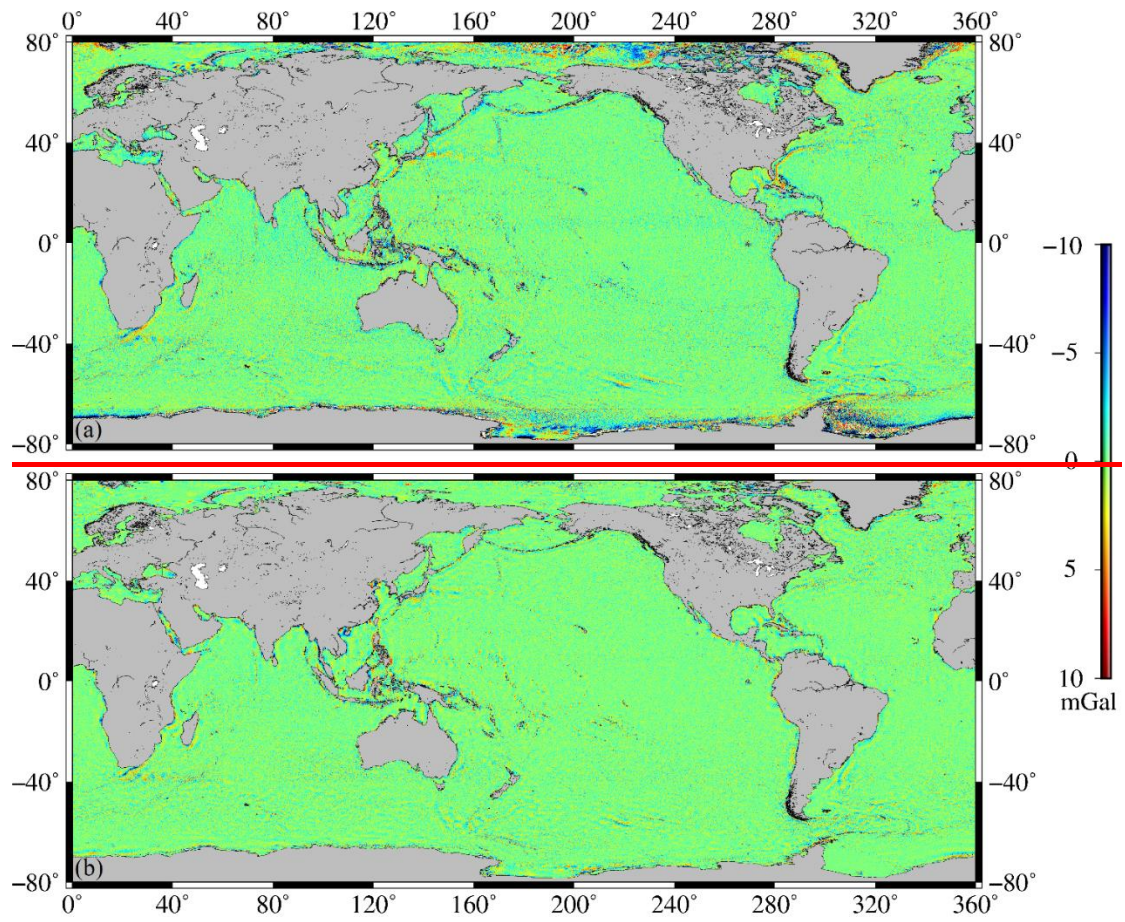


Figure 5 Different between SDUST2021GRA and recognized marine gravity models:(a) is for SIO V30.1, and (b) is for DTU 17.

385

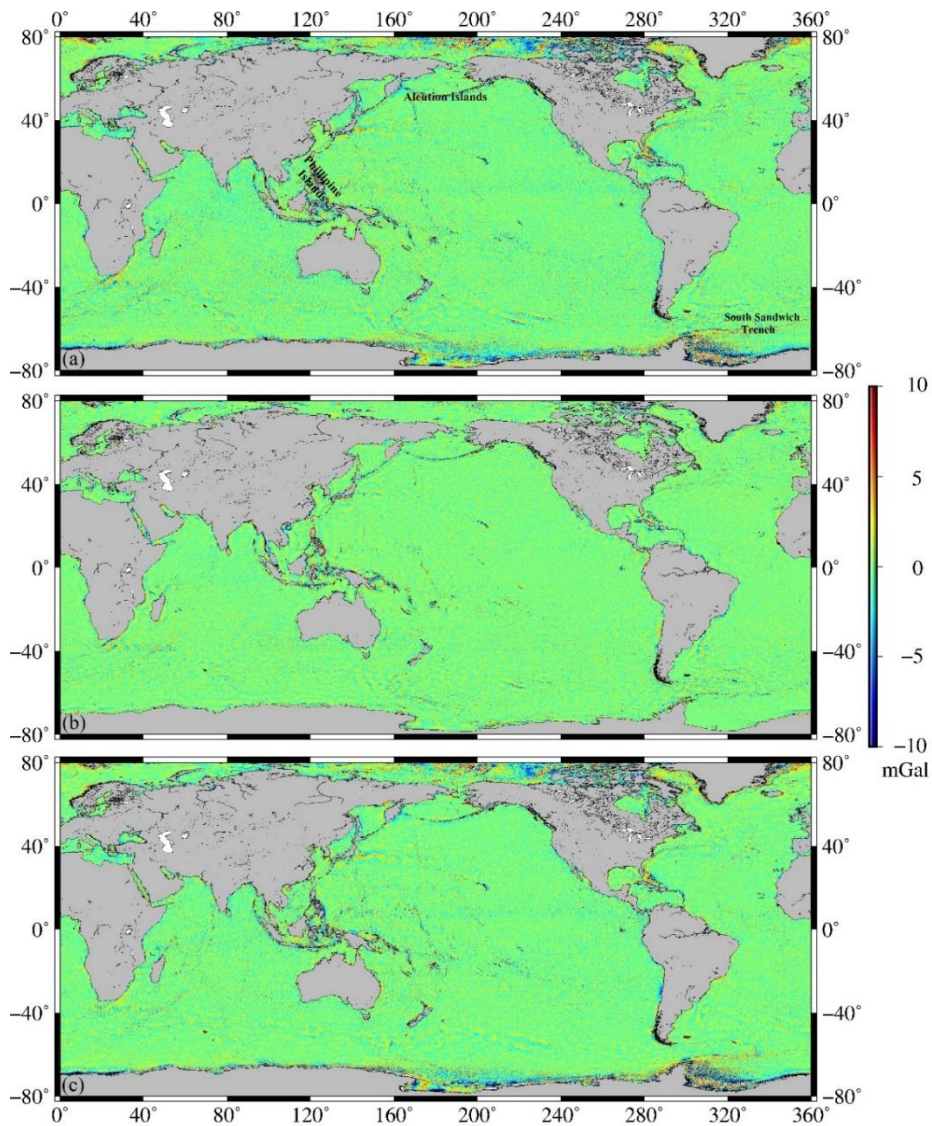
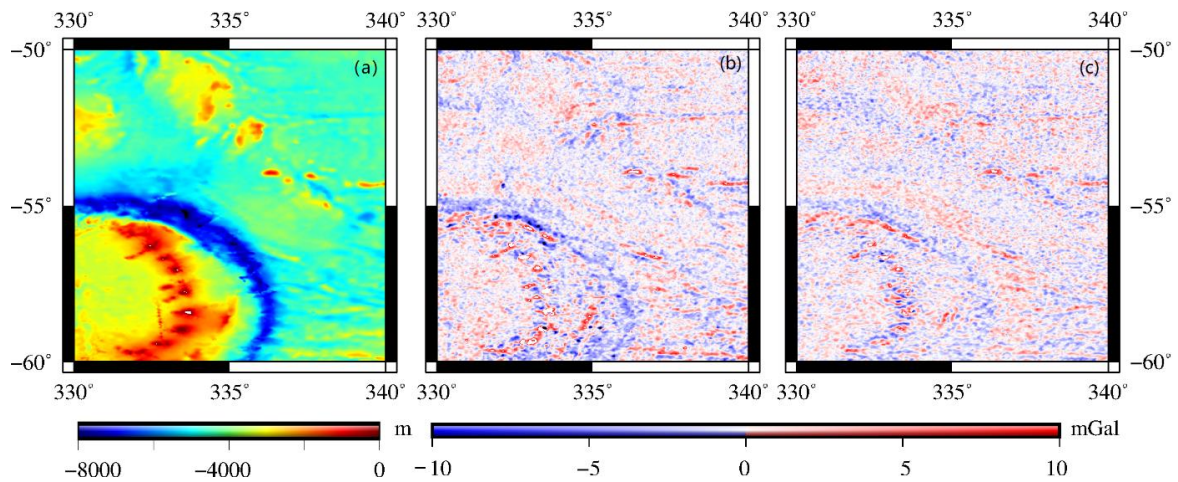
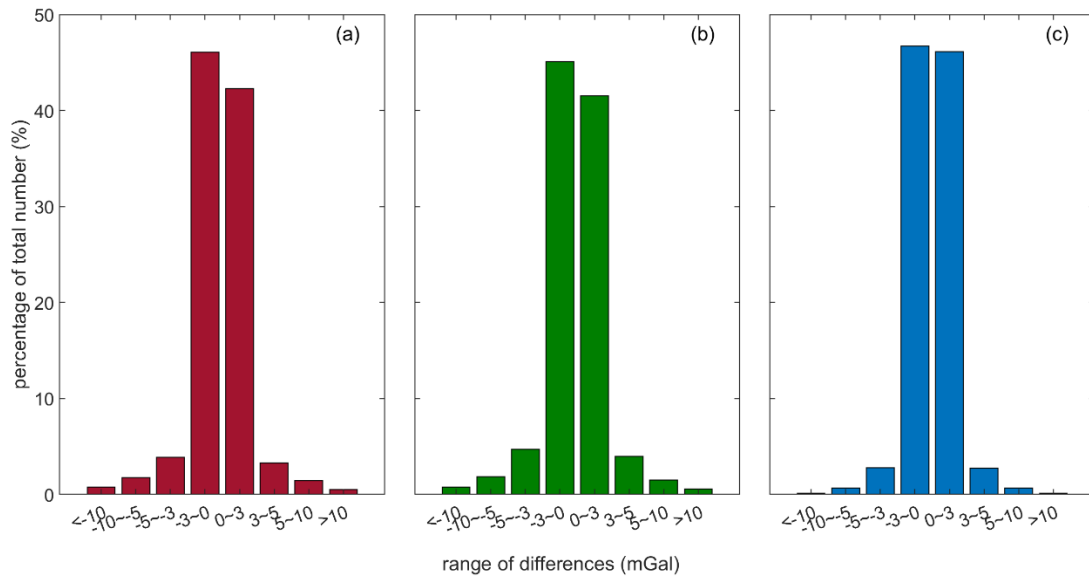


Figure 6. Different between SDUST2021GRA and recognized marine gravity models: (a) is for SDUST2021GRA and SIO V30.1, (b) is for SDUST2021GRA and DTU17, and (c) is for DTU17 and SIO V30.1.



390

Figure 6 Topography and gravity information around South Sandwich Trench: (a) is the submarine topography. (b) is the figure of differences between SDUST2021GRA and SIO V30.1, and (c) is for SDUST2021GRA and DTU17.



395

Figure 8. Histograms of different between altimeter-derived oceanic gravity anomaly models: (a) is for DTU17 and SIO V30.1, (b) is for SDUST2021GRA and SIO V30.1, and (c) is for SDUST2021GRA and DTU17.

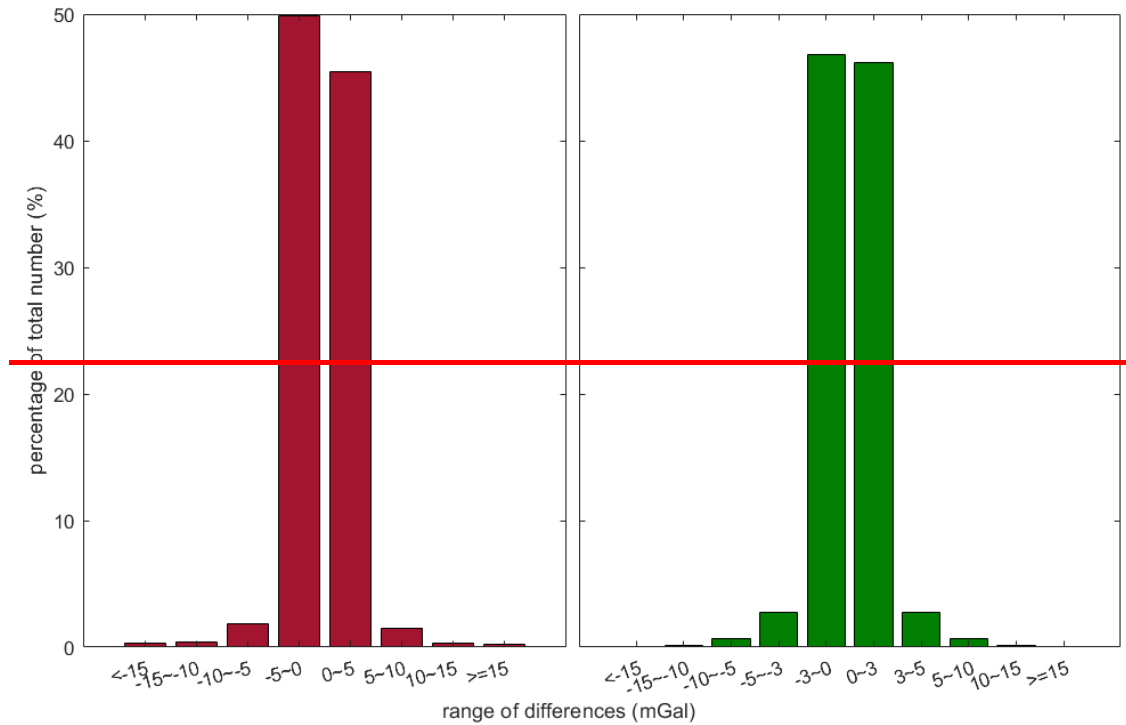
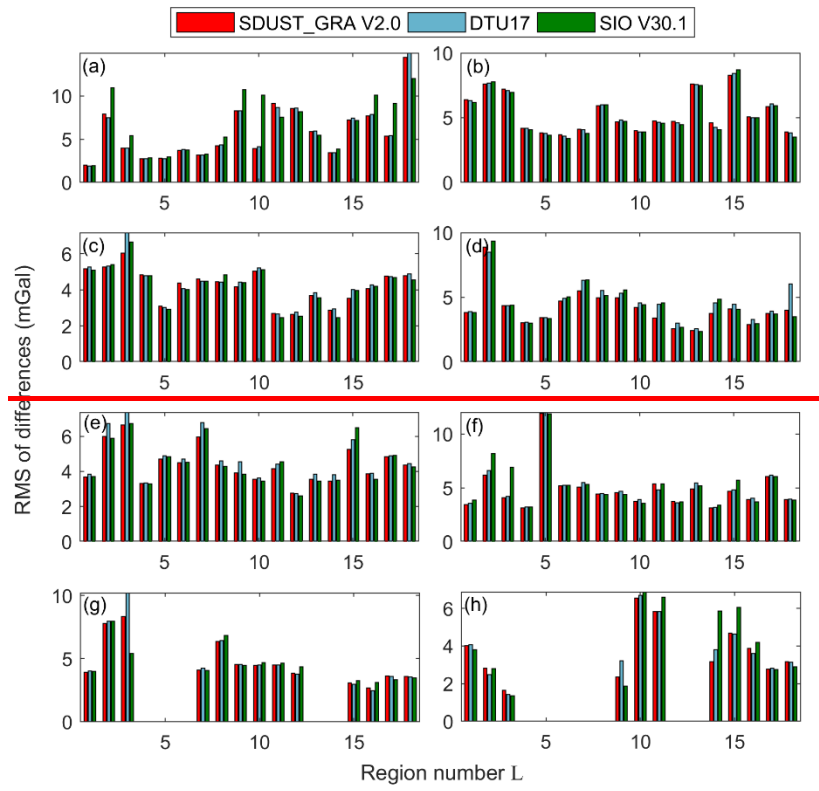


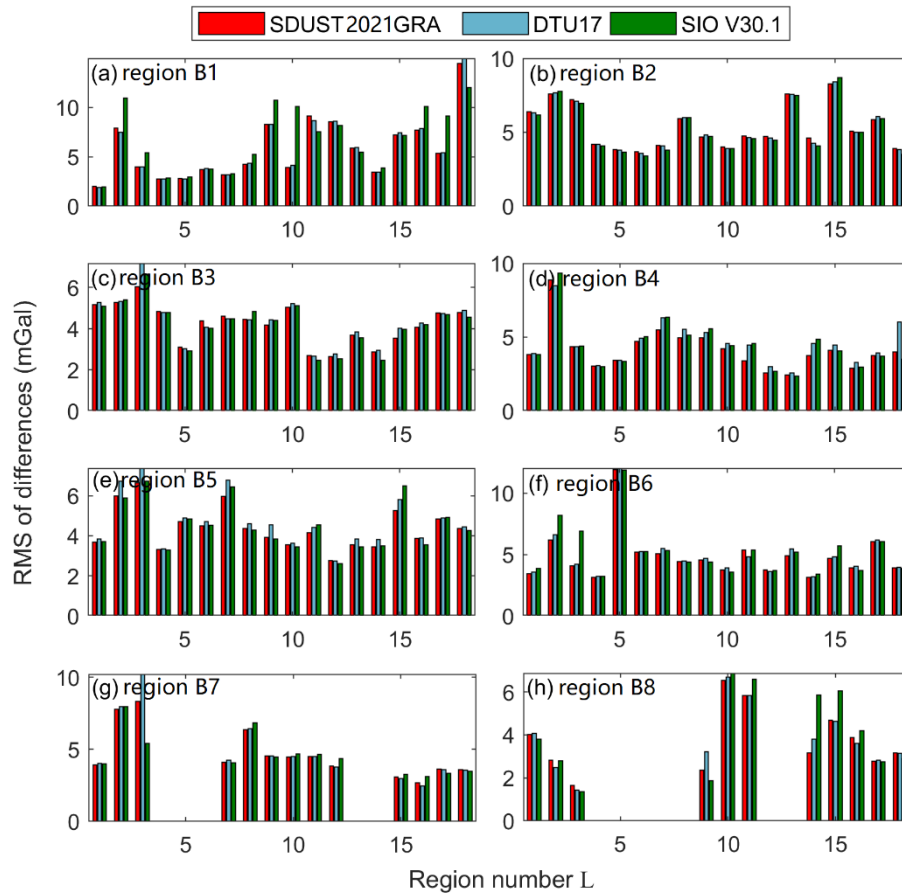
Figure 7 Histograms of different between SDUST2021GRA and recognized marine gravity models:(a) is for SIO V30.1, and (b) is for DTU 17.

400 Histograms of the differences are shown in Figure 7. In Figure 7(a), the differences between SDUST2021GRA and SIO V30.1 are mainly concentrated between -5 mGal and 5 mGal, which accounts for about 95% of the total number. In Figure 7(b), compared with DTU 17, the differences for SDUST2021GRA between -5 mGal and 5 mGal account for about 98% of the total number, and those between -3 mGal and 3 mGal account for about 93%. This also shows that compared with SDUST2021GRA, the differences for DTU 17 are smaller than those for SIO V30.1. Based on the small differences between SDUST2021GRA and recognized models, we can conclude that SDUST2021GRA is reliable.

405 **4.2 Shipborne gravity data assessment Assessed by shipborne gravity data**

Shipborne gravity data are adjusted by the quadratic polynomial based on the reference gravity model. It can be considered that the adjusted shipborne data are independent of altimeter-derived gravity models, so the shipborne data are used to assess the accuracy of gravity models.





410

Figure 98. RMS of differences between altimeter-derived gravity models and shipborne data: Figures from (a) to (h) present the RMSs in areas from B1 to B8.

415

First, the RMSs of differences between altimeter-derived gravity models and shipborne data in the 144 regions in Figure 1 are listed in Table A1 and shown in Figure 9. In Figure 9, there is no data in region L4B7, L5B7, L6B7 and L13B7, which is because that these areas have no sea. There is no data in other regions in Figure 9, which is caused by no shipborne gravity data in these areas.

420

8. We can see that the three models show different levels of accuracy in different regions. In order to further compare the accuracy of each model, The differences between RMSs for the three models in Figure 9(b) in each region are calculated (Figure 10(a)). If the difference is greater than 0, it means that the accuracy of the former model is lower than that of the latter model. Therefore, In the 18 regions marked B2, the accuracy of SIO V30.1 are higher than that of SDUST2021GRA in 13 regions, and higher than that of DTU17 in 15 regions. Moreover, the differences between RMSs for the three models in 8 regions marked L15 (region L15 in Figure 9(a)~9(h)) are shown in Figure 10(b). The accuracy of SDUST2021GRA is higher than that of SIO V30.1 in 6 regions, and higher than that for DTU17 in 6 regions. For the 18 regions marked B2, the RMSs

425 of differences for SIO V30.1 are smaller than those for SDUST2021GRA in 13 regions, and smaller than those for DTU17 in
 430 15 regions. Moreover, for the 8 regions marked L15, the RMSs of differences for SDUST2021GRA are smaller than those
 for SIO V30.1 in 6 regions, and smaller than those for DTU17 in 6 regions. It can be seen from Figure 1 that the regions
 marked B2 are mainly the open sea areas and the regions marked L15 have complex coastlines and are mainly the offshore areas.
 Therefore, the accuracy of SDUST2021GRA is slightly higher than that of DTU17 and SIO V30.1 in sea areas with complex
 coastlines and islands. In the open ocean, SIO V30.1 has the best accuracy.

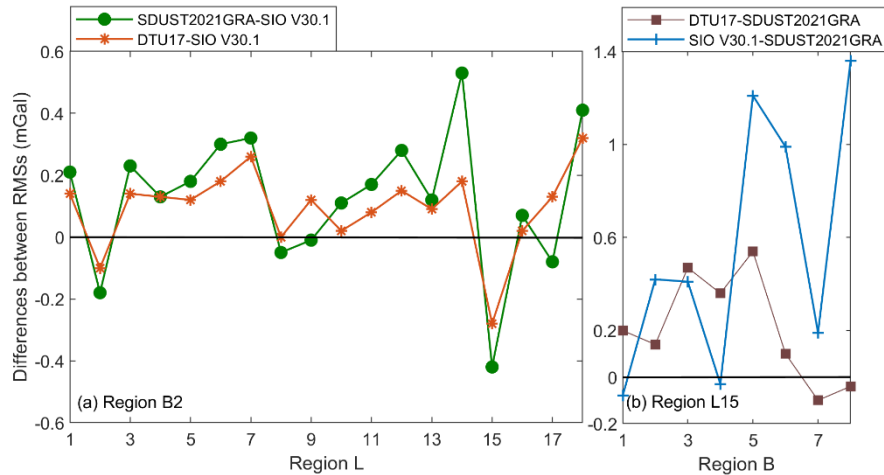


Figure 10. Differences between RMSs. The RMSs are statistics of differences between altimeter-derived gravity models and shipborne data: (a) for region L1B2, L2B2, ..., L18B2; (b) for region L15B1, L15B2, ..., L15B8.

435 Second, four typical ocean areas, marked as A ~D, including area A ~D are selected for analyzing the accuracy of altimeter-
 derived models, as shown in Figure 1. Area A is the open ocean without special submarine topography. There are many
 islands in area B, including Solomon Islands, Tuvalu Islands, Phoenix Islands and Cook Islands. Area C and D have the
 complex coastline and many islands. Compared with shipborne gravity data, the statistical information of differences for
 altimeter-derived gravity models is listed in Table 3. Assessed by the gravity crossover discrepancies after excluding the
 440 value greater than 20 mGal, accuracy of shipborne data in different areas is listed in Table 4. The accuracy of altimeter-
 derived gravity models is calculated by the law of error propagation (and also listed in Table 4).

As listed in Table 3 and Table 4, the accuracy of SIO V30.1 is highest in area A, and that of SDUST2021GRA is highest in
 area B, area C and area D. These indicate that SIO V30.1 has the best accuracy in the open ocean and SDUST2021GRA has
 445 the best accuracy in the offshore areas and the areas with many islands. The conclusion is consistent with the analysis of
 altimeter-derived models by Figure 9 and Figure 10. Moreover, accuracy of SDUST2021GRA in the open oceans and areas

with many islands are better than 2 mGal, which is consistent with that of modern shipborne gravity (1~2 mGal) (Ling et al., 2021).

450 HY-2A-measured altimeter data are excluded from the multi-satellite altimeter dataset, and the residual altimeter data are used to derived gravity anomalies marked SDUST(no HY-2A), as listed in Table 4. Compared with the accuracy of SDUST2021GRA, that of SDUST(no HY-2A) reduces by 3.8%, 1.2% and 2.7% in Area B, C and D, respectively. These indicate that HY-2A has an important role in gravity anomaly recovery in areas with complex coastline and many islands.

Table 3. Statistics of differences between altimeter-derived and shipborne gravity data in different areas (Unit: mGal)

		Min	Max	Mean	STD	RMS
Area A	SDUST	-37.15	41.87	-0.01	3.58	3.58
	DTU	-36.62	41.08	0.00	3.72	3.72
	SIO	-37.55	41.70	0.13	3.44	3.44
Area B	SDUST	-43.20	49.41	-0.05	4.43	4.43
	DTU	-46.33	50.66	-0.17	4.77	4.77
	SIO	-71.40	52.86	-0.08	4.76	4.76
Area C	SDUST	-52.05	48.19	0.01	4.97	4.97
	DTU	-51.15	50.14	0.07	5.30	5.30
	SIO	-70.85	114.21	0.43	6.06	6.07
Area D	SDUST	-48.73	40.96	0.01	4.53	4.53
	DTU	-49.24	42.96	-0.04	4.73	4.73
	SIO	-49.65	46.83	0.32	4.57	4.58

455 **Table 4. Accuracy of altimeter-derived and shipborne gravity data in different areas (Unit: mGal)**

	Area A	Area B	Area C	Area D
SDUST	1.39	1.82	3.34	2.22
DTU	1.72	2.54	3.81	2.60
SIO	0.97	2.52	4.81	2.30
NCEI	3.30	4.04	3.68	3.95
	Area A	Area B	Area C	Area D
SDUST	1.39	1.82	3.34	2.22
DTU	1.72	2.54	3.81	2.60
SIO	0.97	2.52	4.81	2.30
NCEI	3.30	4.04	3.68	3.95
SDUST(no HY-2A)	1.39	1.89	3.38	2.28

Final, SDUST2021GRA, DTU17 and SIO V30.1 are compared with shipborne data ~~in the global area~~~~in the global~~. The RMSs of corresponding differences are 4.42 mGal, 4.63 mGal, and 4.60 mGal. The STD of gravity crossover discrepancies of shipborne data ~~in all domain~~~~in the global~~ is 5.27 mGal, so the accuracy of shipborne data is 3.73 mGal. Therefore, the accuracy of SDUST2021GRA, DTU17 and SIO V30.1 is 2.37 mGal, 2.74 mGal and 2.69 mGal, respectively.

460 Considering the accuracy of altimeter-derived gravity are efficiently affected by the coastline, the statistical information of differences between altimeter-derived models and shipborne data in different distances from the coastline is listed in Table 5.

465 **Table 5. Statistics of differences between altimetric and shipborne gravity in differences distances from coastline (Unit: mGal)**

Distance from coastline (km)	Gravity model	Mean	STD	RMS	Precision of gravity model
0~10	SDUST	-0.90	8.11	8.16	7.20
	DTU	-1.84	9.12	9.31	8.32
	SIO	-0.56	11.00	11.00	10.35
10~20	SDUST	-0.39	5.83	5.84	4.48
	DTU	-0.21	6.34	6.34	5.13
	SIO	0.64	6.50	6.53	5.32
20~30	SDUST	-0.12	5.03	5.04	3.37
	DTU	0.23	5.44	5.44	3.96
	SIO	0.42	5.22	5.24	3.65
30~40	SDUST	0.10	4.76	4.76	2.96
	DTU	0.02	5.09	5.09	3.46
	SIO	0.58	4.83	5.86	3.07
40~50	SDUST	0.10	4.57	4.57	2.64
	DTU	0.14	4.89	4.89	3.16
	SIO	0.63	4.59	4.63	2.67
>50	SDUST	0.03	4.04	4.04	1.55
	DTU	0.08	4.14	4.14	1.80
	SIO	0.18	3.96	3.96	1.33

As the accuracy of shipborne data ~~in all domain in the global~~ is 3.73 mGal and is rarely affected by the coastline, that of shipborne data can be considered of 3.73 mGal in different distances from the coastline. Thus, the accuracy of altimeter-derived models can be obtained from the differences in Table 5. ~~As listed in Table 5,~~ the accuracy of SIO V30.1 is the highest and that of SDUST2021GRA is about 1.5 mGal, when the distance from the coastline is greater than 50 km. The accuracy of SDUST2021GRA is the highest within 50 km from the coastline, especially within 20 km.

In conclusion, the accuracy of SDUST2021GRA ~~in all domain in the global~~ is 2.37 mGal, which is better than that of DTU 17 and SIO V30.1, especially in offshore areas and areas with islands. There are three reasons for the high accuracy of SDUST2021GRA. First, HY-2A-measured altimeter data which are proved to have the important role in gravity anomaly recovery are used to derive gravity anomalies. Second, in areas between 40°S~40°N, XGM2019e up to degree and order 2159 is used as the reference gravity field model, which is from DTU13 over the oceans (Zingerle et al., 2020). The reference gravity field model of DTU17 and SIO V30.1 is EGM2008, which is from DNSC07 over the oceans (Pavlis et al., 2012). DTU13 is the successor model to DNSC07, and have the better accuracy and resolution (Andersen et al., 2014). Final, accurate L2p Version 3.0 products are used. Corrections (ancillary data and models) are updated and quality controls are performed for L2p products (CNES, 2020), making the high quality of L2p products. Moreover, ~~the~~ the accuracy of SDUST2021GRA in the open oceans and areas with many islands is consistent with that of modern shipborne gravity.

4.3 Error information on grids of SDUST2021GRA

485 High-resolution error information of SDUST2021GRA is useful for potential users. Therefore, following the method
proposed by Sandwell et al. (2021), first, for each mission of each satellite, the median absolute deviation of the along-track
geoid gradients with respect to gridded DOVs in a block (10 min longitude and 6 min latitude) is calculated. The median is
presumed related to the noise in the along-track geoid gradients. Then, the average of median for all missions of all satellites
490 is divided that by the square root of the number of observations in every block. These values can be used to approximate the
accuracy of gravity anomalies, because that accuracy of along-track geoid gradients is approximately proportional to that of
altimeter-derived gravity anomalies (Sandwell et al., 2013). Final, the overall map of approximate precision of
SDUST2021GRA in Figure 10 is calibrated using a scaling factor that makes the value in Area A equal to the 1.39 mGal.

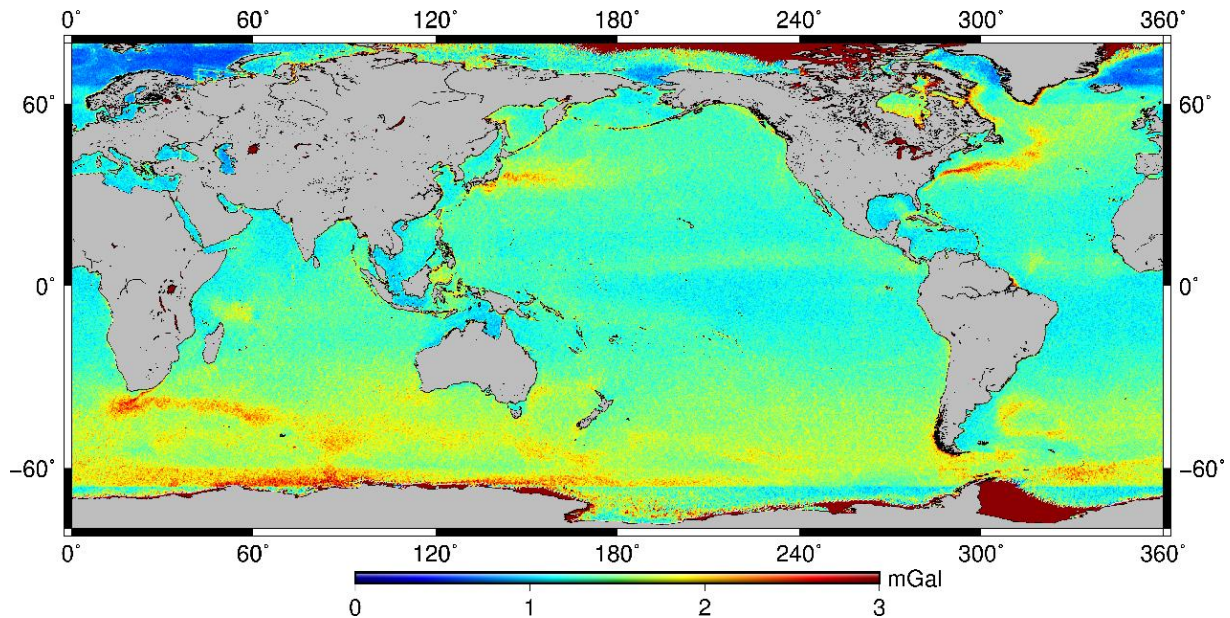


Figure 10. Map of gravity anomaly error based on deviations of along-track geoid gradients from all altimeters.

495 In order to compared with the results assessed by shipborne gravity, the accuracy of SDUST2021GRA in Area A, B, C and
D is calculated by averaging values at the shipborne observation points by interpolation of the gridded errors in Figure 10,
respectively. The corresponding accuracy is 1.39 mGal, 2.66 mGal, 3.47 mGal and 1.72 mGal. The accuracy of gravity in
Area C is the lowest and that in Area A is the highest, which is the same as that evaluated using shipborne data. However,
500 the accuracy in Area B is lower than that in Area D, which is different from that evaluated using shipborne data. This is
because that Area D has the larger land area and more complex coastlines than those in Area B. Gravity anomaly in a grid
point is derived from along-track geoid gradients in a large area around the point, so the land and coastlines have more
effects on gravity anomalies than those on along-track geoid gradients. The accuracy of along-track geoid gradients can only
be used to assess approximately that of altimeter-derived gravity anomalies.

505 4.43 Data Availability

The global marine gravity anomaly model (SDUST2021GRA) is available on the web site of <https://doi.org/10.5281/zenodo.6668159> (last access: 27 June 2022) (Zhu et al., 2022). The dataset includes geospatial information (latitude, longitude) and free-air gravity anomalies.

5 Conclusions

510 During the processing of constructing the recognized global marine gravity anomaly models (DTU17 and SIO V30.1), HY-2A-measured altimeter data are not used, and Ka-band data are hardly specifically processed. Therefore, for improving the accuracy of gravity anomalies in offshore waters, multi-satellite altimeter data including HY-2A-measured SSHs are used to construct the global gravity anomaly model of SDUST2021GRA on 1'×1' grids. In the processing, noise variance of Ka-band along-track geoid gradients in GM is determined by the different method from those of Ku-band observations. Multi-satellite
515 altimeter data including HY 2A measured SSHs are used for construct the global gravity anomaly model of SDUST2021GRA on 1'×1' grids. First, the SSH measurements are preprocessed, including Gaussian filtering for GM and simplified collinear adjustment for ERM. Second, along-track geoid gradients are calculated from preprocessed SSHs, and their accuracy is assessed by different methods, including the iteration method for Ka-band GM and crossover discrepancies of SSHs for other missions. Third, gridded DOVs are calculated by the LSC method based on the along-track geoid gradients
520 and their accuracy. Final, SDUST2021GRA is derived from gridded DOVs by IVM. SDUST2021GRA is compared with DTU17 and SIO V30.1. Meanwhile, Shipborne gravity from NCEI is adjusted by the quadratic polynomial and used for assess the altimeter-derived gravity models.

The following conclusions can be drawn. The differences between SDUST2021GRA and DTU17 are slightly smaller than
525 that when replacing DTU17 with SIO V30.1, and the differences between SDUST2021GRA and the two models are mainly small than 5 mGal. These indicates that SDUST2021GRA is reliable. Assessed by the shipborne gravity, the accuracy of SDUST2021GRA in the global is 2.37 mGal, which is better than that of DTU 17 (2.74 mGal) and SIO V30.1 (2.69 mGal). In different distances from the coastline, the accuracy of SDUST2021GRA is more than 1 mGal higher than that of the two models within 10 km, and more than 0.6 mGal higher from 10 km to 20 km. HY-2A-measured altimeter data have an
530 important role on gravity anomaly recovery in areas with complex coastlines and many islands. The accuracy of gravity anomalies derived from multi-satellite altimeter data without HY-2A in the areas is about 2.5% lower than that with HY-2A.

All these verifications show that SDUST2021GRA reaches an international advanced level of altimeter-derived gravity anomaly models. The accuracy of SDUST2021GRA is better than that of DTU 17 and SIO V30.1 in the global area,
535 especially in the offshore area and the area with many islands. Moreover, the accuracy of SDUST2021GRA is consistent

with that of modern shipborne gravity in the open ocean and the area with islands, and better than that of NCEI shipborne gravity.

540

Appendix A: RMS of differences between altimeter-derived and shipborne gravity data

Table A1. RMS of differences between altimeter-derived and shipborne gravity data (mGal)

		B1	B2	B3	B4	B5	B6	B7	B8
L1	SDUST	1.98	6.40	5.17	3.81	3.68	3.43	3.93	4.01
	DTU	1.90	6.33	5.26	3.88	3.85	3.59	4.04	4.07
	SIO	1.94	6.19	5.09	3.81	3.72	3.89	4.01	3.81
L2	SDUST	7.93	7.60	5.25	8.88	6.00	6.18	7.77	2.82
	DTU	7.48	7.68	5.3	8.48	6.74	6.61	7.98	2.49
	SIO	10.96	7.78	5.39	9.35	5.88	8.18	7.98	2.8
L3	SDUST	3.96	7.19	6.02	4.35	6.66	4.10	8.33	1.65
	DTU	3.96	7.10	7.16	4.37	7.37	4.21	10.21	1.43
	SIO	5.42	6.96	6.65	4.39	6.73	6.92	5.40	1.36
L4	SDUST	2.76	4.19	4.82	3.04	3.31	3.16	- *	-
	DTU	2.73	4.19	4.79	3.07	3.34	3.23	-	-
	SIO	2.84	4.06	4.78	3.02	3.28	3.21	-	-
L5	SDUST	2.78	3.84	3.10	3.42	4.71	11.90	-	-
	DTU	2.76	3.78	3.02	3.44	4.88	12.02	-	-
	SIO	2.97	3.66	2.92	3.35	4.83	11.85	-	-
L6	SDUST	3.72	3.70	4.36	4.72	4.49	5.19	-	-
	DTU	3.78	3.58	4.06	4.93	4.70	5.24	-	-
	SIO	3.76	3.40	4.01	5.03	4.53	5.24	-	-
L7	SDUST	3.18	4.12	4.61	5.50	5.96	5.08	4.11	-
	DTU	3.17	4.06	4.47	6.30	6.79	5.48	4.25	-
	SIO	3.25	3.80	4.47	6.35	6.43	5.34	4.05	-
L8	SDUST	4.25	5.94	4.44	4.96	4.37	4.44	6.37	-
	DTU	4.32	5.99	4.42	5.55	4.60	4.46	6.44	-
	SIO	5.23	5.99	4.84	5.15	4.30	4.40	6.82	-
L9	SDUST	8.26	4.69	4.16	4.96	3.91	4.56	4.54	2.36
	DTU	8.30	4.82	4.43	5.32	4.55	4.67	4.54	3.21
	SIO	10.74	4.70	4.39	5.56	3.83	4.39	4.47	1.88
L10	SDUST	3.92	4.00	5.04	4.22	3.55	3.76	4.48	6.53
	DTU	4.13	3.91	5.20	4.56	3.63	3.91	4.52	6.68
	SIO	10.11	3.89	5.12	4.43	3.44	3.56	4.68	6.87
L11	SDUST	9.15	4.74	2.70	3.41	4.15	5.38	4.50	5.82
	DTU	8.66	4.65	2.66	4.46	4.43	4.80	4.51	5.83
	SIO	7.53	4.57	2.47	4.58	4.55	5.38	4.65	6.60
L12	SDUST	8.56	4.73	2.64	2.59	2.76	3.73	3.84	-
	DTU	8.62	4.60	2.76	3.01	2.74	3.60	3.78	-

	SIO	8.16	4.45	2.54	2.69	2.61	3.72	4.37	-
	SDUST	5.88	7.60	3.69	2.45	3.55	4.88	-	-
L13	DTU	5.94	7.57	3.84	2.57	3.84	5.47	-	-
	SIO	5.44	7.48	3.55	2.35	3.45	5.20	-	-
	SDUST	3.43	4.61	2.86	3.76	3.45	3.13	-	3.17
L14	DTU	3.42	4.26	2.94	4.58	3.81	3.18	-	3.81
	SIO	3.86	4.08	2.46	4.86	3.50	3.40	-	5.86
	SDUST	7.24	8.28	3.54	4.11	5.27	4.70	3.08	4.68
L15	DTU	7.44	8.42	4.01	4.47	5.81	4.80	2.98	4.64
	SIO	7.16	8.70	3.95	4.08	6.48	5.69	3.27	6.04
	SDUST	7.68	5.06	4.06	2.89	3.88	3.93	2.68	3.87
L16	DTU	7.83	5.01	4.28	3.30	3.90	4.05	2.47	3.60
	SIO	10.11	4.99	4.19	2.96	3.55	3.71	3.13	4.19
	SDUST	5.36	5.84	4.74	3.76	4.85	6.05	3.64	2.77
L17	DTU	5.39	6.05	4.72	3.94	4.90	6.18	3.58	2.83
	SIO	9.12	5.92	4.67	3.73	4.91	6.04	3.33	2.76
	SDUST	14.45	3.90	4.79	3.99	4.38	3.90	3.60	3.17
L18	DTU	14.96	3.81	4.88	6.04	4.45	3.97	3.54	3.15
	SIO	12.02	3.49	4.55	3.49	4.26	3.89	3.47	2.89

* The signal of – means that there is no shipborne data in the region.

545

Author contributions. All authors have contributed to designing the approach and writing the manuscript.

Competing interests. The contact author has declared that neither they nor their co-authors have any competing interests.

550 **Disclaimer.** Publisher's note: Copernicus Publications remains neutral with regard to jurisdictional claims in published maps and institutional affiliations.

555 **Acknowledgments.** We are very grateful to AVISO for providing the altimeter data, and NCEI for providing ship-borne gravity. We are also thankful to SIO and DTU for marine gravity anomaly models. Tanks to ICGEM for providing reference gravity field.

Financial support. This work was partially supported by the National Natural Science Foundation of China (grants 41774001), the SDUST Research Fund (grant 2014TDJH101), and the Autonomous and Controllable Project for Surveying and Mapping of China (grant No. 816-517).

560 References

- [Andersen, O. B., Knudsen, P., Kenyon, S., and Holmes, S.: Global and Arctic marine gravity field from recent satellite altimetry \(DTU13\), Proceedings 76th EAGE conference and exhibition 2014, Amsterdam RAI, The Netherlands. \[https://doi.org/10.3997/2214-4609.20140897_2014\]\(https://doi.org/10.3997/2214-4609.20140897_2014\)](https://doi.org/10.3997/2214-4609.20140897_2014)
- Andersen, O. B. and Knudsen, P.: The DTU17 global marine gravity field: First validation results, in: Fiducial reference measurements for altimetry, edited by: Mertikas, S., and Pail, R., International Association of Geodesy Symposia, 83-87, https://doi.org/10.1007/1345_2019_65, 2019.
- Babu, K. N., Shukla, A. K., Suchandra, A. B., Arun Kumar, S. V. V., Bonnefond, P., Testut, L., Mehra, P., and Laurain, O.: Absolute calibration of SARAL/AltiKa in Kavaratti during its initial calibration-validation phase, Marine Geodesy, 38(Sup1), 156-170, <https://doi.org/10.1080/01490419.2015.1045639>, 2015.
- 570 CNES: SARAL/AltiKa products handbook. SALP-MU-M-OP-15984-CN, Issue 2.5, https://www.aviso.altimetry.fr/fileadmin/documents/data/tools/SARAL_Altika_products_handbook.pdf, 2016a
- CNES: Jason-1 products handbook. SALP-MU-M5-OP-13184-CN, Issue 5.1, https://www.aviso.altimetry.fr/fileadmin/documents/data/tools/hdbk_j1_gdr.pdf, 2016b.
- CNES: OSTM/Jason-2 Products Handbook. SALP-MU-M-OP-15815-CN, Issue 1.10, https://www.aviso.altimetry.fr/fileadmin/documents/data/tools/hdbk_j2.pdf, 2017.
- 575 CNES: Along-track level-2+ (L2P) SLA product handbook. SALP-MU-P-EA-23150-CLS, Issue 2.0, [Along-track Level-2+ \(L2P\) SLA Product Handbook \(altimetry.fr\)](https://www.aviso.altimetry.fr/fileadmin/documents/data/tools/hdbk_j2.pdf), 2020.
- CNES: Jason-3 products handbook. SALP-MU-M-OP-16118-CN, Issue 2.1, https://www.aviso.altimetry.fr/fileadmin/documents/data/tools/hdbk_j3.pdf, 2021.
- 580 Courant, R. and Hilbert, D.: Methods of mathematical physics Volume I, Interscience Publishers, New York, 1953.
- Ebbing, J., Haas, P., Ferraccioli, F., Pappa, F., Szwillus, W., and Bouman, J.: Earth tectonics as seen by GOCE - Enhanced satellite gravity gradient imaging, Scientific Reports, 8, 16356, <https://doi.org/10.1038/s41598-018-34733-9>, 2018.
- Gozzard, S., Kuszniir, N., Franke, D., Cullen, A., Reemst, P., and Henstra, G.: South China Sea crustal thickness and oceanic lithosphere distribution from satellite gravity inversion, Petroleum Geoscience, 25(1), 112-128, <https://doi.org/10.1144/petgeo2016-162>, 2019.
- 585 Guo, J., Luo, H., Zhu, C., Ji, H., Li, G., and Liu, X.: Accuracy comparison of marine gravity derived from HY-2A/GM and CryoSat-2 altimetry data: a case study in the Gulf of Mexico, Geophysical Journal International, 230(2), 1267-1279, <https://doi.org/10.1093/gji/ggac114>, 2022.
- Heiskanen, W. A. and Moritz, H., Gilluly, J., and Woodford, A. O. (Eds.): Physical Geodesy, W. H. Freeman and Company, San Francisco, 1967.
- 590 Hwang, C.: High precision gravity anomaly and sea surface height estimation from Geo-3/Seasat altimeter data Department of Geodetic Science and Surveying, Ohio State University, Columbus, Report 399, 1989.

- Hwang, C.: Inverse Vening Meinesz formula and deflection-geoid formula: applications to the predictions of gravity and geoid over the South China Sea, *Journal of Geodesy*, 72(5), 304-312, <https://doi.org/10.1007/s001900050169>, 1998.
- 595 Hwang, C. and Parsons, B.: Gravity anomalies derived from Seasat, Geosat, ERS-1 and TOPEX/POSEIDON altimetry and ship gravity: a case study over the Reykjanes Ridge, *Geophysical Journal International*, 122(2), 551-568, <https://doi.org/10.1111/j.1365-246X.1995.tb07013.x>, 1995.
- Ji, H., Guo, J., Zhu, C., Yuan, J., Liu, X., and Li, G.: On Deflections of Vertical Determined From HY-2A/GM Altimetry Data in the Bay of Bengal, *IEEE Journal of Selected Topics in Applied Earth Observations and Remote Sensing*, 14, 12048-600 12060, <https://doi.org/10.1109/JSTARS.2021.3129273>, 2021a.
- Ji, H., Liu, X., Zhu, C., Yuan, J., Ji, B., and Guo, J.: On performance of CryoSat-2 altimeter data in deriving marine gravity over the Bay of Bengal, *Marine Geophysical Research*, 42, 39, <https://doi.org/10.1007/s11001-021-09461-x>, 2021b.
- Jin, T., Li, J., and Jiang, W.: The global mean sea surface model WHU2013, *Geodesy and Geodynamics*, 7(3), 202-209, <https://doi.org/10.1016/j.geog.2016.04.006>, 2016.
- 605 Kim, S. S. and Wessel, P.: New global seamount census from altimetry-derived gravity data, *Geophysical Journal International*, 186(2), 615-631, <https://doi.org/10.1111/j.1365-246X.2011.05076.x>, 2011.
- Li, H., Shaofeng, B., Bing, J., and Yongbing, C.: Precise calculation of innermost area effects in altimetry gravity based on the Inverse Vening-Meinesz formula, *Geomatics and Information Science of Wuhan University*, 44(4), 200-205, <https://doi.org/10.13203/j.whugis20150744> shu, 2018.
- 610 Ling, Z., Zhao, L., Zhang, T., Zhai, G., and Yang, F.: Comparison of marine gravity measurements from shipborne and satellite altimetry in the Arctic Ocean, *Remote Sensing*, 14(1), 41, <https://doi.org/10.3390/rs14010041>, 2021.
- Mayergürr, T., Pail, R., Fecher, R., Gruber, T., and Goco, T.: The combined satellite gravity field model GOCO05S, EGU, General Assembly Conference, Vienna, 2015.
- McAdoo, D. C., Farrell, S. L., Laxon, S. W., Zwally, H. J., Yi, D., and Ridout, A. L.: Arctic Ocean gravity field derived from ICESat and ERS-2 altimetry: Tectonic implications, *Journal of Geophysical Research: Solid Earth*, 113 (B5), B05408, <https://doi.org/10.1029/2007JB005217>, 2008.
- Meissl, P.: A study of covariance functions related to the earth's disturbing potential, Ohio State University, Columbus, Report 151, 1971.
- Mulet, S., Rio, M. H., Etienne, H., Artana, C., Cancet, M., Dibarboure, G., Feng, H., Husson, R., Picot, N., Provost, C., and 620 Strub, P. T.: The new CNES-CLS18 global mean dynamic topography, *Ocean Science*, 17(3), 789-808, <https://doi.org/10.5194/os-17-789-2021>, 2021.
- Pavlis, N. K., Holmes, S. A., Kenyon, S. C., and Factor, J. K.: The development and evaluation of the Earth Gravitational Model 2008 (EGM2008), *Journal of Geophysical Research: Solid Earth*, 117, <https://doi.org/10.1029/2011jb008916>, 2012.
- Pujol, M. I., Schaeffer, P., Faugère, Y., Raynal, M., Dibarboure, G., and Picot, N.: Gauging the improvement of recent mean 625 sea surface models: A new approach for identifying and quantifying their errors, *Journal of Geophysical Research: Oceans*, 123(8), 5889-5911, <https://doi.org/10.1029/2017jc013503>, 2018.

- Rapp, R. H.: Global anomaly and undulation recovery using GEOS-3 altimeter data, Ohio State University, Columbus, 1979.
- Sandwell, D. T., Garcia, E. S. M., and Smith, W. H. F.: Recent improvements in Arctic and Antarctic marine gravity: Unique contributions from CryoSat-2, Jason-1, Envisat, Geosat, and ERS-1/2, AGU Fall Meeting, 2014a.
- 630 [Sandwell, D. T., Garcia, E. S. M., Soofi K., Wessel P., Chandler M., Smith W. H. F.: Toward 1-mGal accuracy in global marine gravity from CryoSat-2, Envisat, and Jason-1, The Leading Edge, 32\(8\), 892-899. <https://doi.org/10.1190/tle32080892.1>, 2013](#)
- Sandwell, D. T., Harper, H., Tozer, B., and Smith, W. H. F.: Gravity field recovery from geodetic altimeter missions, *Advances in Space Research*, 68(2), 1059-1072, <https://doi.org/10.1016/j.asr.2019.09.011>, 2021.
- 635 Sandwell, D. T., Muller, R. D., Smith, W. H. F., Garcia, E., and Francis, R.: New global marine gravity model from CryoSat-2 and Jason-1 reveals buried tectonic structure, *Science*, 346(6205), 65-67, <https://doi.org/10.1126/science.1258213>, 2014b.
- [Sansò, F., Sideris, M.: Observables of physical geodesy and their analytical representation. In: Sansò, F., Sideris, M. \(eds\) Geoid Determination, Lecture Notes in Earth System Sciences, vol 110. Springer, Berlin, Heidelberg. \[https://doi.org/10.1007/978-3-540-74700-0_2\]\(https://doi.org/10.1007/978-3-540-74700-0_2\), 2013.](#)
- 640 Shahraki, M., Schmeling, H., and Haas, P.: Lithospheric thickness jumps at the S-Atlantic continental margins from satellite gravity data and modelled isostatic anomalies, *Tectonophysics*, 722(1), 106-117, <https://doi.org/10.1016/j.tecto.2017.10.027>, 2018.
- Shih, H. C., Hwang, C., Barriot, J. P., Mouyen, M., Corrêia, P., Lequeux, D., and Sichoix, L.: High-resolution gravity and geoid models in Tahiti obtained from new airborne and land gravity observations: data fusion by spectral combination, *Earth, Planets and Space*, 67(1), 124, <https://doi.org/10.1186/s40623-015-0297-9>, 2015.
- Smith, W. H. F.: Resolution of Seamount Geoid Anomalies Achieved by the SARAL/AltiKa and Envisat RA2 Satellite Radar Altimeters, *Marine Geodesy*, 38(Sup1), 644-671, <https://doi.org/10.1080/01490419.2015.1014950>, 2015.
- Sun, C. F., Wu, Z. C., Tao, C. H., Ruan, A. G., Zhang, G. Y., Guo, Z. K., and Huang, E. X.: The deep structure of the Duanqiao hydrothermal field at the Southwest Indian Ridge, *Acta Oceanologica Sinica*, 37(3), 73-79, <https://doi.org/10.1007/s13131-017-0986-2>, 2018.
- Sun, Y. J., Zheng, W., Li, Z. W., and Zhou, Z. Q.: Improved the Accuracy of Seafloor Topography from Altimetry-Derived Gravity by the Topography Constraint Factor Weight Optimization Method, *Remote Sensing*, 13(12), 2277, <https://doi.org/10.3390/rs13122277>, 2021.
- 655 Tscherning, C. C. and Rapp, R. H.: Closed covariance expressions for gravity anomalies, geoid undulations, and deflections of the vertical implied by anomaly degree variance models, Department of Geodetic Science, Ohio State University, Columbus, Report 208, 1974.
- Wan, X., Annan, R. F., Jin, S., and Gong, X.: Vertical deflections and gravity disturbances derived from HY-2A data, *Remote Sensing*, 12(14), 2287, <https://doi.org/10.3390/rs12142287>, 2020.

- 660 Wessel, P. and Watts, A. B.: On the accuracy of marine gravity measurements, *Journal of Geophysical Research: Solid Earth*, 93(B1), 393-413, <https://doi.org/10.1029/JB093iB01p00393>, 1988.
- Yuan, J., Guo, J., Zhu, C., Hwang, C., Yu, D., Sun, M., and Mu, D.: High-resolution sea level change around China seas revealed through multi-satellite altimeter data, *International Journal of Applied Earth Observation and Geoinformation*, 102, 102433, <https://doi.org/10.1016/j.jag.2021.102433>, 2021.
- 665 Yuan, J., Guo, J., Liu, X., Zhu, C., Niu, Y., Li, Z., Ji, B., and Ouyang, Y.: Mean sea surface model over China seas and its adjacent ocean established with the 19-year moving average method from multi-satellite altimeter data, *Continental Shelf Research*, 192(1), 104009, <https://doi.org/10.1016/j.csr.2019.104009>, 2020.
- Zhang, S. and Sandwell, D. T.: Retracking of SARAL/AltiKa radar altimetry waveforms for optimal gravity field recovery, *Marine Geodesy*, 40(1), 40-56, <https://doi.org/10.1080/01490419.2016.1265032>, 2017.
- 670 Zhu, C., Guo, J., Hwang, C., Gao, J., Yuan, J., and Liu, X.: How HY-2A/GM altimeter performs in marine gravity derivation: assessment in the South China Sea, *Geophysical Journal International*, 219(2), 1056-1064, <https://doi.org/10.1093/gji/ggz330>, 2019.
- Zhu, C., Liu, X., Guo, J., Yu, S., Niu, Y., Yuan, J., Li, Z., and Gao, Y.: Sea surface heights and marine gravity determined from SARAL/AltiKa Ka-band altimeter over South China Sea, *Pure and Applied Geophysics*, 178(4), 1513-1527, <https://doi.org/10.1007/s00024-021-02709-y>, 2021.
- 675 Zhu, C., Guo, J., Gao, J., Liu, X., Hwang, C., Yu, S., Yuan, J., Ji, B., and Guan, B.: Marine gravity determined from multi-satellite GM/ERM altimeter data over the South China Sea: SCSGA V1.0, *Journal of Geodesy*, 94, 50, <https://doi.org/10.1007/s00190-020-01378-4>, 2020.
- Zhu, C., Guo, J., Yuan, J., Li, Z., Liu, X., and Gao, J.: SDUST2021GRA: Global marine gravity anomaly model recovered from Ka-band and Ku-band satellite altimeter data[Data set], Zenodo, <https://doi.org/10.5281/zenodo.6668159>, 2022.
- 680 Zingerle, P., Pail, R., Gruber, T., and Oikonomidou, X.: The combined global gravity field model XGM2019e, *Journal of Geodesy*, 94, 66, <https://doi.org/10.1007/s00190-020-01398-0>, 2020.