

Deep water hydrodynamic observations of two moorings sites on the continental slope of the Southern Adriatic Sea (Mediterranean Sea)

5 Francesco Paladini de Mendoza¹, Katrin Schroeder¹, Leonardo Langone², Jacopo Chiggiato¹, Mireno Borghini³, Patrizia Giordano², Giulio Verazzo², Stefano Miserocchi²

¹CNR-ISMAR, Arsenale Castello, 2737/F, 30122 Venezia (VE), Italy.

²CNR-ISP, Via P. Gobetti, 101 - 40129 Bologna (BO), Italy.

³CNR-ISMAR, Pozzuolo di Lerici, 19032 La Spezia, (SP), Italy.

Correspondence to: Francesco Paladini de Mendoza (francesco.mendoza@ve.ismar.cnr.it)

10 Abstract.

This work presents an 8-years long dataset of monitoring activities conducted on the western margin of the Southern Adriatic Sea, where two moorings have been placed since 2012 in sites that are representative of different morpho-dynamic conditions of the continental slope (open slope vs. submarine canyon). The dataset includes measurements conducted with both current meters and CTD probes, and provides information about the hydrodynamics and thermohaline properties of the last 100 m of the water column. The hydrodynamics in both sites is dominated by weak currents ($<0.1 \text{ ms}^{-1}$), which undergo yearly to episodic pulsation able to exceed intensity greater than 0.5 ms^{-1} which are linked to the passage of dense waters. The 8-years records presented here, represents a starting point for the continuous observation activity set up on occasion of the "Operation Dense Water" in 2012, focused on the Southern Adriatic deep-water dynamics. Since then the observatory has been on-going since 2012 and the database is regularly updated. All the data described here are made publicly available from <https://doi.org/10.5281/zenodo.6770202> (Paladini de Mendoza et al., 2022) and are compliant with the FAIR principles (findable, accessible, interoperable and reusable).

1 Introduction

The Adriatic Sea is a sub-basin of the eastern Mediterranean Sea, with unique characteristics from the geological and oceanographic points of view. The basin is enclosed between two mountain chains (The Apennines and Dinaric Alps) to the west and to the east and with an elongated shape (the axis is oriented from SE to NW), a length of 800 km and an average width of 180 km. In the south, the Adriatic Sea is connected with the Ionian Sea through the Strait of Otranto.

The Southern Adriatic Margin was built during the last half million years and its structure is a result of eustatic depositional cycles and complex quaternary uplift and deformation patterns (Bertotti et al., 1999; Ridente and Trincardi, 2002) well summarized by Bonaldo et al. (2016). The north-western sector of the slope is constituted by the south Gargano system which is the main deformation zone that extends offshore with the Gondola Deformation Belt (GDB, see [figureFig.-1](#)). In this sector there is a complex bedforms system where large sediment drift and furrow field give evidence of a strong bottom currents

activity (Minisini et al., 2006; Martorelli et al., 2010) as well as asymmetric upstream migrating mud-waves indicates a depositional environment (Verdicchio and Trincardi, 2006; Trincardi et al., 2007a,b; Verdicchio et al., 2007). To the south, the major conduit influencing off-shelf fluxes and deep circulation is provided by the Bari Canyon System engraved in the continental margin with two main branches with a total length of about 30 km along the W-E direction (Turchetto et al., 2007; Rubino et al., 2012). During the sea-level low stand of the last glacial maximum, sediments were supplied into the canyon directly from river deltas or longshore drift, but at present the canyon head is far from the coastal sediments and can be fed only by shelf currents or episodic density currents.

The Adriatic Sea is one of the three Mediterranean sites where density currents can be originated and are essentially of two types:

the North Adriatic Dense Water (NAADW) a cold and dense shelf water that forms in the northern sector during intense and cold outbreaks in winter (Hendershott and Malanotte-Rizzoli, 1976; Franco et al., 1982) and the Adriatic Deep Water (ADW) which forms by open ocean convection, between late winter and early spring, in the center of the permanent cyclonic gyre of the Southern Adriatic and vertically mixes the water column up to a variable depth (Vilibić and Orlić, 2002; Gačić et al., 2002; Manca et al., 2002; Civitarese et al., 2005).

In February 2012 the European region experienced a two weeks severe cold period that heavily impacted the northern Adriatic Sea. Immediately a rapid response experiment, called Operation Dense Water, was conducted in the southern Adriatic to observe the dense water masses dynamics (Chiggiato et al., 2016b). These activities funded by the Italian research program RITMARE (<https://maritime-spatial-planning.ec.europa.eu/projects/la-ricerca-italiana-il-mare>) spanned from oceanographic

modeling, physical and biogeochemical oceanographic observations to sedimentological analyses of the erosional and depositional bedforms. In this context moorings were placed along the southern Adriatic basin and the location of the mooring sites was chosen on the basis of the most prospective passage of dense shelf water obtained through an integrated approach between modeling-based predictions and geology-driven inferences. From 2012 the monitoring was continued, leading to the collection of 8-years datasets of two sites placed in two different areas along the continental slope of the southern Adriatic Sea.

The moorings are equipped with an ADCP-RDI system and CTD probes which measure currents along the last 100 meters of the water column and thermohaline properties. The moorings sites are in the western sector of the continental margin respectively at 700 m and 600 m depth in an open furrow area of the continental slopes and in the main channel of the Bari Canyon System. The two different morphologies of the mooring site make the datasets representative of two different dynamic conditions of the continental slope of the southern

60 basin.

In this work the collected data from 2012 to 2020 are presented. Previous studies (Mihanovic et al., 2013; Chiggiato et al., 2016; Langone et al., 2016; Marini et al., 2016; Fogliani et al., 2015; Carniel et al., 2016; Bonaldo et al., 2016; Cantoni et al., 2016) focused on the events of 2012 and short segments of the dataset have been used for the analysis of physical processes (Chiggiato et al., 2016) and dynamic of particles (Langone et al., 2016) induced by the cascading events of 2012. but the extended time-series presented here broadens these observations The collected moorings data are part of IFONM network

65

ha formattato: Non Evidenziato

(Italian Fixed-Point Observatory Network, Ravaoli et al., 2016) and the observatory of the Southern Adriatic Sea of EMSO-
Italia Joint Research Unit (<https://www.emsoitalia.it/south-adriatic-sea>) and the observatory of the southern-Adriatic
submarine Sea observatory of EMSO-ERIC-Italia Joint Research Unit (<https://www.emsoitalia.it/south-adriatic-sea>) European
Consortium and the continuous data collection provides a unique observatory about hydrodynamic processes along the
southern slope with a direct implication on the water renewal and the transfers of organic and inorganic particulate from the
shelf to deep sea.

2. Setting, instruments, data and methods

The data come from two moorings located along the continental slope of the Southern Adriatic Sea (Figure 1a). The mooring
sites are placed in two different locations that differ from a geomorphological point of view. The mooring site called BB is
placed at 600 m depth on the main branch of Bari Canyon System (BCS) at 41°20.456'N, 17°11.639'E while the mooring site
FF is placed at 41°48.396'N, 17°02.217'E on open slope furrow area of the continental slope at 700 m depth. The stand-alone
moorings are equipped with an ADCP system which measures currents along the last 100 meters of the water column and a
CTD probe located approximately 10 m above the bottom. Moorings, still operative, were configured and maintained for
continuous long-term monitoring following the approach of the CIESM Hydrochanges Program
(www.ciesm.org/marine/programs/hydrochanges.html; Schroeder et al., 2013). The 110 m long mooring scheme is represented
in Figure 1b. The ADCP system measures the intensity and directions of currents along the water column and has a temperature
sensor in its transducer head. The CTD probe provides measurements of temperature and salinity (along with pressure). The
measurements are extended from 2012 until 2020 and divided in separated deployments interspersed approximately every 6
months for instrumentation recovery, data downloading and maintenance.

The ADCP used is of the type RDI Workhorse (Teledyne RD Instruments USA, Poway, California), using a four-beam, convex
configuration with a beam angle of 20° and a working frequency of 307 kHz. The instrument is moored at a mean nominal
depth of 500 m (BB) and 600 m (FF) in downward-looking mode at roughly 100 m from the seabed. The number of depth
cells is set to 27 with a cell size of 4 m. The sampling interval is set to 1800 seconds with 45 ping per ensemble. An ADCP
computes sound speed based on an assumed salinity and transducer depth and on the temperature measured at the transducer.
The system measures water temperature at the depth of the transducer by means of a thermistor embedded in the transducer
head between the four beams. The sensor provides measurements in a range between -5 - 45 °C, with a precision of ± 0.4 °C
and resolution of 0.01 °C.

Approximately at 10 meters above the seabed there is a CTD probe, SBE 16plus V2 SeaCAT to record thermohaline
parameters. The SBE 16plus V2 SeaCAT is a high-accuracy CTD recorder designed for moorings or other long-duration,
fixed-site deployments. In addition, the probe is equipped with optional pump for bio-fouling protection. Data of water
conductivity was measured by sensor, with a resolution of 0.00005 S/m; the water temperature by means of a thermometer,
with resolution of 0.0001 °C; the water pressure by means a pressure strain gauge sensor with an accuracy of 0.002% of full-
scale range. The accuracy of the probe is ± 0.0005 S/m for conductivity sensor and ± 0.005 °C for temperature sensor. The

ha formattato: Non Evidenziato

ha formattato: Non Evidenziato

ha formattato: Non Evidenziato

ha formattato: Non Evidenziato

ha formattato: Non Evidenziato

100 probe is also equipped with a pressure Strain gauge with an accuracy of $\pm 0.1\%$ of full-scale range. The available resolution for conductivity is ± 0.0005 S/m, ± 0.005 °C for temperature and 0.002% of full-scale range for a pressure sensor.

The resulting dataset covers the period from 8 March 2012 to 26 June 2020 for both moorings (details about surveys are reported in Table 1 where there is the description about the temporal extensions of each measuring period, the mooring location, depth and S/N of the ADCP system used. The instrumentation recovery consists on data downloading, battery replacing and sensor checking together with maintenance operations. Every mooring component (ropes, chains and hooks) are checked to ensure the functionality, durability and resistance during surveying period. The probes are cleaned from fouling and sensor state is checked. In Table 1 is reported the S/N of instrumentation used in each deployment useful to know when some probes have been replaced. The probes were calibrated at Sea-Bird Europe - European Calibration and Repair Center and in Table 2 is reported the date of calibration of each CTD probe. During the cruise of October 2018 and 2019 (detailed in the cruise report of Cardin et al., 2018 and Bubbi et al., 2019) a comparison profiles are carried out with a calibrated onboard CTD probe, in order to ensure the measurement agreement. The onboard CTD is a SeaBird SBE911plus equipped with dual sensors of temperature, conductivity. The pressure, temperature and conductivity sensors were calibrated at Sea-Bird Europe in September 2016. The CTD was attached to a SBE32 Carousel Water Sampler with 24 bottles (10 lt) together with an altimeter. From three depth levels, depending on the vertical profile of the stations, water samples were taken, also for calibration purposes of the salinity values and they were analysed in laboratory using a Guildline Autosal Salinometer.

ha formattato: Non Evidenziato

ha formattato: Non Evidenziato

ha formattato: Non Evidenziato

ha formattato: Non Evidenziato

115 The distances between the deployment points of the moorings during the different time period did not exceed 140 m for BB and 306 m for FF.

The ADCP time series is not fully continuous not for instrument failures but for operational reasons linked to recovering and sailing during maintenance surveys. Interruptions occurred twice a year approximately every six months (at the end of winter and in autumn), trying to make them as short as possible. The CTD time-series follows the deployment of ADCP but sampling strategy is not always in agreement with ADCP time-series as well as the continuity of the dataset.

120 The sampling interval in the BB site was always at 1800 s and continuity of the data reflected those of ADCP records except for a data gap, due to battery discharge, that extended from 31 July 2015 to 09 November 2015. In the FF site the sampling interval in the first survey was 600 s, in the 5th, 9th, 10th and 11th surveys the sampling interval was 3600 and in the 7th survey the sampling interval was 10800 s. The continuity of the data reflects those of ADCP records except for two data gaps, due to malfunctioning and battery discharge, that extended from 14 August 2013 to 08 November 2013 and from 30 May 2014 to 02 November 2014.

2.2 Dataset and Metadata description

130 The dataset is composed by 4 files in NetCDF format containing observational data and related metadata from the two mooring sites, (BB and FF) for the period March 2012 - June 2020. Each mooring site has two datasets respectively one for ADCP data and for CTD data and each file name specifies the mooring site name, the probe and its depth.

135 The Metadata contain information about Global Attributes, Dimensions and Variables. Global Attributes contain a summary description of the dataset and details about their geospatial position, temporal extension and data interval, the institution responsible of measurements, principal investigator name and contact, the observational network to which the mooring belongs, the conventions and keywords vocabulary used. Dimensions have the available structure of variables. For each variable is reported the size, the dimensions, the datatype and attributes which last give specific information about each variable such as the measured parameter, the unit, the sensor, the data value range etc.

140 The Metadata report Dataset Information (DI) and Variables in Dataset (VD). DI contain a brief summary description of the dataset and details about their geospatial position, temporal extension and data interval, the institution responsible of measurements, principal investigator name and contact, the observational network to which the mooring belongs, the keywords vocabulary used. VD contains specific information about the data structure and variables. Regarding the ADCP dataset it is provided details about the station name, the probe serial numbers, the geographical position, the time, the depth, the cell depth and the component east, north and vertical of the current speed. The ADCP and CTD variables in the dataset are reported both raw and filtered. The filtered data are relative to the results of QC procedure reported in the next chapter. The headers of filtered ADCP variables are followed by suffix “-pg80” for the components of speed while for Temperature by the suffix “-QC”. Regarding CTD the headers of filtered variables are followed by the suffix “-qc”. Regarding CTD are reported the raw data and qualifiers flag which define the quality of temperature and salinity data. The headers of quality flag assigned for each variable are followed by the suffix “- qc”.

150 It is ensured that all data described here are findable, accessible, interoperable and reusable (according to the FAIR principles, Tanhua et al., 2019), since they are identified by a unique persistent identifier (see abstract and Data Availability section), which also allows them to be retrievable, with all metadata records being accessible as well. Data and metadata use standardized vocabularies and are sufficiently well described to be readily integrated with other data sources. Permanent DOI and Metadata ensure Findability of the dataset. The permanent Accessibility of the dataset is allowed by the use of Zenodo public repository. The data are available in NetCDF format which ensure the Interoperability with other platforms. Data and metadata use standardized vocabularies. In the Metadata global attributes are specified the source of the keywords vocabulary (SeaDataNet parameter discovery vocabulary) and also conventions used (OceanSITES v1.4, SeaDataNet_1.0, COARDS, CF-1.6) and are sufficiently well described to be readily integrated with other data sources. Metadata accurately describes data ensuring the Reusability of the dataset in future research integrating also with other compatible data sources.

2.3.2 Data quality check

160 First check of ADCP and CTD data is a general screening-view; the plot of parameters measured over the time gives a quick idea about whether the data looks reasonable or not judging by the average values of the parameter measured and the overall ‘noisiness’ of the plot. This screening phase allows to detect anomalous values which are those out of range with the rest of the series and helps to exclude from the time series data when systems are outside the water determining the corrected start

and end of the time series. Applying these checks, a maximum of 1.95% of data of BB and 1.48% of data of FF were removed from the dataset.

165 Regarding ADCP data a second step consists of the determination of the seabed and the portion of the water column with good data. The seabed is detected by a specified filter algorithm named as “side lobe interference” which is based on the principle that the echo through the side lobe facing the surface or the bottom returns to the ADCP at the same time as the echo from the main lobe at certain distance to the surface that depends on the beam angle. In the case of a beam with an angle of 20° this means data from the last 6% of the range to the bottom can be contaminated. When looking down, as in our case, the
170 contamination from bottom echoes usually biases velocity data toward zero. The next data processing consists of the application of a data quality control criteria which is a parameter available in the system obtained from records and estimated automatically by the system, named as “percentage good”, which indicates the fraction of data passed a variety of criteria which include low correlation, large error velocity and fish detection (false target threshold). To ensure the robustness of the collected data we have used a threshold of 80% to define good data (PG80). The data matrix structure explained in the metadata of the published database is composed both by data not subjected to quality control and by data adjusted after quality control. For
175 each observation is available a quality flag coded following the Quality Control Standard of SeaDataNet Quality Control procedures (detailed in the SeaDataNet, 2010) and in particular referred to the L20 Seadatanet Measurand Qualifier Flags (last update at address http://seadatanet.maris2.nl/v_bodc_vocab_v2/browse.asp?order=conceptid&formname=search&screen=0&lib=120) as reported in Table 3. For example, when hydrodynamic data exceed PG80 threshold they are changed to NaN value and quality flag assigned correspond to 5 while when the data pass the quality control the assigned flag is 1. In the dataset are also reported the original data without quality control procedure applied corresponding to flag code 0.-

180 Regarding CTD measurements the data were quality checked and processed by the SBE Data Processing™ software to correct the coarse errors and after visual inspection, quality control (QC) tests are applied to data according to SeaDataNet guidelines (SeaDataNet, 2010), which rely on a -Spike (ST) and a Gradient Test (GT):

185 In the ST is evaluated if the differences between sequential measurements are too large (ST>6°C for temperature, ST>0.9 for salinity)

$$ST = |V2 - (V3 + V1)/2| - |(V3 - V1) / 2|$$

where V2 is the measurement being tested as a spike, and V1 and V3 are the previous and next value

190 In the GT is evaluated if the gradient between adjacent salinity and temperature measurements are too steep (GT<9°C for temperature, GT>1.5 for salinity):

$$GT = |V2 - (V3 + V1)/2|$$

where V2 is the measurement being tested, and V1 and V3 are the previous and next values.

195 When QC computation is completed the time-series is organized with every observation followed by specific flag code according to the SeaDataNet qualifier flag: data that pass QC test are flagged with code 1, data that do not pass the test are flagged with code 4.

~~Applying these guidelines, no anomalies and spikes were found in the dataset. In the dataset all data are reported except when the probe is outside the water and not at the correct mooring depth. The flag 9 is assigned when data is missing. Applying these guidelines, no anomalies and spikes were found in the dataset.~~

200 3. Results

3.1 Thermohaline records

Temperature is measured by ADCP and CTD at two different depths along the water column respectively at roughly 100 m above the bottom (mab) and 10 mab. The time series shown in Fig. [ure 2](#) in both sites starts in March 2012 after the cold air outbreak occurred in the northern Adriatic and the time series starts during cascading events well known in literature (Chiggiato et al., 2016b).

In the upper layer (100 mab) the temperature recorded by ADCP in the canyon site has a mean value of $14.02 \pm 0.27^\circ\text{C}$ with a minimum temperature of 12.93°C and maximum of 14.95°C . In the lower layer (10 mab) the CTD highlighted an average temperature of 13.92 ± 0.24 with a minimum temperature of 12.57°C and maximum of 14.78°C .

210 In the open slope at 100 mab the mean recorded temperature is $13.89 \pm 0.19^\circ\text{C}$ with a minimum temperature of 13.12°C and maximum of 14.49°C while near the bottom (10 mab) the measurements indicate average value of $13.64 \pm 0.26^\circ\text{C}$ with a minimum temperature of 12.10°C and maximum of 14.17°C .

Observing the total time-series of Fig. [ure 2](#) the two sites have synchronous fluctuations more marked in the canyon site. In addition, in the canyon site the temperature slight differences can be appreciated between the two measurements depth while in the open slope the temperature closest to the bottom is generally lower and has more pronounced variations. The time-series show a periodicity of water-cooling with an almost constant annual frequency but variable between years. The most marked events besides 2012 are 2013, 2017 and 2018.

Regarding salinity measurements in the canyon site in the lower layer the average salinity is about 38.81 ± 0.04 , (minimum of about 38.59 and maximum 38.97). In the open slope site, the salinity records at 10 mab have a mean value of 38.78 ± 0.05 PSU (minimum of about 38.64 PSU and maximum of 38.95 PSU).

220 The total time-series of salinity in Fig. [ure 3](#) has more marked variations in the canyon site where the salinity is generally higher than the open slope site. From 2018 a positive trend is appreciable in both sites and less differences between sites occur.

The temperature data in Fig. [ure 4a](#) are represented to give a quick overview of the inter- and intra-annual variability of the data. In the scatter plot the temperature is distributed along the x-axis and separates different months by colors. In the upper layer of the open slope site, the variations are restricted in a narrow range while in the lower layer wide temperature fluctuations are visible and always concentrated between February and June. In the canyon the vertical variability is less marked but the time-window when temperature decreases coincides. Statistics about temperature records grouped by months and years are reported in Tables 3 and 4 analyzing mean and maximum differences between upper (ADCP) and lower (CTD) layers. Generally, vertical temperature gradient is constrained around 0.05°C and 0.2°C in both sites and experience from January to

230 May largest decrease of water temperature especially close to the seabed. While in the canyon site the maximum temperature gradient is 0.73°C in the open slope exceeds 1°C. The most intense cooling of water occurs in both sites during 2012, 2013, 2017 and 2018 when vertical gradients increase. During 2019 only in the canyon site cool events occur with less intensity than the others. On annual scale large vertical temperature differences occur in the open slope while in the canyon the vertical gradient is less evident.

235 Salinity data are represented in Fig. 5 in the same way as temperature. In this case observations are limited only to the layer close to the seabed where the CTD probe is moored. In the open slope sites the variations are restricted in a narrow range except during 2012 but in both sites the salinity decrease is always concentrated between February and June. Statistics about salinity records grouped by months and years are reported in Table 5. Generally, the variation of mean salinity between months is very narrow (<0.02) in both sites but between February and June salinity has got the maximum decrease of more than 0.1. On an annual scale the largest variations occur in both sites during 2012, 2013, 2017 and 2018. In the canyon site high variability of salinity is also observed in 2015 and 2016.

3.2 Hydrodynamic records

245 In this section we present the hydrodynamic measurements along the water section measured by the ADCP from 2012 to 2020 in BB site and in the FF site. In order to detail the dynamic variability along the water column the water column is separated in the three vertical layers (roughly to 1/3 of the measured water column): Upper Layer (UL), Intermediate Layer (IL) and Lower Layer (LL). In the polar histogram the directions are binned every 5° and speed is divided in three classes.

BB site

250 Figure 6 shows the 8-years-long ADCP records at the BB site as vertical distribution of the speed module along the 23 layers of the water column (Fig. 6a), as polar histograms (Fig. 6b) and as polar scatterplots (Fig. 6c) which represent the direction and intensity of currents along the water column. Generally, the current field is very weak ($0.07 \pm 0.01 \text{ ms}^{-1}$) but during episodic energetic events the flow may exceed 0.5 ms^{-1} . The polar histograms represent hydrodynamic climate (Fig. 6b) where speed and directional class are clustered to represent the occurrence probability of the events while in Fig. 6c it is possible to observe the magnitude and direction of every single event scattered on a polar diagram. The hydrodynamic field of the three layers highlights currents which spread between 100° and 225°N with a reigning directional sector in the upper layer between 170 and 200°N. The directional spreading of currents assumes a clear bimodal behavior approaching toward the seabed with reigning currents SSW oriented and dominant currents oriented toward SE. This behavior is more marked at the bottom and indicates a flow oriented toward the canyon axis to 110° or southward along the direction of the isobath (Chiggiato et al., 2016). This is a robust feature of this location (Turchetto et al., 2007) where currents directed along canyon are directly associated to cascading flow while southward flow is indirectly associated to cascading as geostrophically adjusted downslope flow (Chiggiato et al., 2016). The diagrams b and c of the LL explain clearly the dynamic of along canyon axis currents which dominate in terms of intensity despite their low contribution in terms of frequency.

Figure 7 shows the time series of the upper and lower layer by applying a “moving average” daily smoothing. The average speed of the currents is $0.069\pm 0.005\text{ ms}^{-1}$ in the UL and 0.079 ± 0.006 in the LL. The maximum speed recorded is 0.76 ms^{-1} (LL) and 0.58 ms^{-1} (UL) and the vertical gradient between UL and LL reaches a maximum value of 0.38ms^{-1} .

265 An acceleration of the flow occurs approximately every year between February and May. The intensification of the current field varies year by year and reaches the greatest magnitude in 2012 and 2018 on the contrary of the weakest during 2014 and 2015. During energetic events a general increase of the current speed toward the seabed is visible and the components of flows have positive values for the east component and negative for the northern. The vertical component has small values in a range of $-0.01 - 0.05\text{ ms}^{-1}$ and is mainly directed toward the bottom during current pulses. The behavior of components reflects the
270 direction of flow appreciable in the polar plots (Fig. 6c) which are directed mainly toward S and SE.

FF Site

In the site FF, the 8-years records show an average weak hydrodynamic field with value of $0.05\pm 0.01\text{ ms}^{-1}$ able to reach speed until 0.79 ms^{-1} during the episodic strong current pulses (Fig. 8a). As observed in the canyon site, the pulses of
275 currents in FF recur in a temporal window every year (between February and May). The three layers represented in the polar histogram plots of Fig. 8b (constructed in the same way of BB) details the vertical variability of the flow along the water column. The flow in the UL is southward within a directional range centered to 180°N with more than 99% of the datasets below the intensity of 0.2 ms^{-1} . Proceeding down in the IL the directional spreading of currents becomes narrow (always centered to 180°N) and the intensity slightly increases, remaining always below 0.4 ms^{-1} . In the LL intense currents are clearly
280 visible (magnitude greater than 0.6 ms^{-1}) directed toward south-east (150°N) in addition to the contour-parallel background current regime directed southwards. These intense events, with a very scarce frequency, indicates ageostrophic dynamics determined by the steepness of the continental margin which allows to break the geostrophic constraints (Chiggiato et al., 2016) flowing downward on open slopes responsible of the origin of furrow marks reported in this site by Trincardi et al. (2007a). In the time-series of the upper and lower layers, the currents speed (Fig. 9) has an average value very similar
285 $0.049\pm 0.003\text{ ms}^{-1}$ (UL) and $0.057\pm 0.012\text{ ms}^{-1}$ (LL) but during pulses the speed increase concentrate at the bottom. During these events the vertical velocity gradient between LL and UL can reach 0.51 ms^{-1} .

During the acceleration phases of currents, the components of flow have a positive increment of eastern component together with a greater negative acceleration of the northern component. The eastern component in the UL never increases sensibly, while near the seabed it has the greatest increment. The vertical component is very weak ($<0.05\text{ ms}^{-1}$) but during the flow
290 acceleration in the bottom layer its positive values suggest a flow directed toward the seabed.

4. Conclusions

The data presented here are the results of 8-years monitoring activities conducted on the western margin of the Southern Adriatic Sea where two moorings have been placed since 2012 in two sites of the continental slope representative of two different morpho-dynamic conditions of the Southern Adriatic Margin influenced by the passage of dense shelf water.

295 Long-term high-resolution monitoring in sensitive area such as zones of dense water passage and deep waters constitute a key element in the monitoring network of the current context of global climate change, improve the oceans understanding and shed light on its complexity. The measurement site of this dataset represents a stable node of the European observatory system EMSO-ERIC consortium. The measurement site is one of the EMSO regional facility for the South Adriatic Sea located in the western part of the basin with the objective to assess the Adriatic's response to climate forcing.

300 The moorings, equipped with ADCP and CTD probes, provide measures of hydrodynamic and thermohaline parameters on a section of the water column extended for the last 100 m from the seabed.

In occasion of the extreme severe cold outbreak in north Adriatic occurred in 2012 was set up the "Operation Dense Water" which have produced wide literature about the dynamic of cascading events (great part grouped in the special issue edited by Chiggiato et al., 2016b) and their linked processes. The observatory has been continued until today with the aim to answer the

305 several questions unaddressed. Some open questions are related to the frequency of cascading events and their magnitude variability in a long-time scale. This data block extended from 2012 to 2020, to represent a starting point for broadening the knowledge and thus giving even more robustness to previous research results about the Southern Adriatic deep-water dynamic.

Generally speaking, the 8-years' time-series are characterized in both sites by reigning weak currents ($<0.1 \text{ ms}^{-1}$) which undergo yearly to episodic pulsation able to exceed intensity greater than 0.5 ms^{-1} . These pulsations are linked to the passage

310 of dense waters with low temperature and salinity which exhibit in both sites an intra- and inter-annual variability. During the year, the oceanographic effects of the passage of these currents are extended over a six months window where the core is concentrated between February and May. These dense water masses that originated several months earlier (Vilibic and Orlic, 2002; Vilibic and Supic, 2005; Chiggiato et al., 2016) can flow along the slope in the southern sector until June with a progressive weakening of the intensity. Due to the distance from the generation area the Adriatic dense water propagation,

315 unlike other sites of dense water generation (i.e Gulf of Lion), requires more time to reach the southern slope where cascading may occur and the start of passage of dense water flow depends on the onset of the generation. For example, in 2012 first pulses of dense water were observed as early as three weeks after its generation in February (Benetazzo et al., 2014).

In the open slope the flow has a clear dominant direction ($140\text{-}150^\circ\text{N}$) especially in the bottom layer. Along the profile the currents undergo sharp intensification and rotate toward the main direction which takes a definite direction only in the lower

320 layers. The dynamic observed in the open slope is already described as a peculiar site behavior where the dense water flow is organized in multiple short-lived pulses with short duration (Chiggiato et al., 2016). This dynamic leave traces in the morphology of the open slope site where extensive presence of abyssal furrow, documented by Verdicchio et al., 2007, are indicator of strong and directionally currents (Bonaldo et al., 2016), are oriented (145°N) according to the direction of the currents. The time-series can contribute to answer still open questions about deep water dynamic and in particular to processes

related to dense water passage. The continuous monitoring is fundamental to improve the knowledge about the dense water formation processes, water mass properties, biogeochemical cycles, and cascading in the southern Adriatic, understanding ecosystem function especially in relation to carbon sequestration dynamics and acidification processes in deep waters and in

325 future releases we plan to include comparison with other existing data and climatology. The collected parameters are of great

330 interest for different disciplines, ranging from geosciences to physical oceanography, to biogeochemistry and marine ecology
and recorded variables can be used to compare different sites and other project can benefit from this monitoring site for the
configuration of new monitoring stations.

5. Data availability

335 All data is made publicly available through the Zenodo repository. The registered database DOI is
doi.org/10.5281/zenodo.6770202 (Paladini Mendoza, et al., 2022).~~All data is made publicly available through~~
~~https://zenodo.org/record/6770202#.YrrsInZBxD8. The registered database DOI is doi.org/10.5281/zenodo.6770202 (Paladini~~
~~Mendoza, et al., 2022).~~

340 This paper describes in detail the temporal coverage of the dataset which is constituted by quite continuous high temporal
resolution time series of currents, temperature and salinity from 2012 to 2020. The adopted methodology about mooring
configuration and data records, quality control procedures ensure compliance and consistency of the dataset and represent the
largest deep-water observatory of current and thermohaline data of the Southern Adriatic Sea. The dataset presented conclude
in 2020 but monitoring activities are still in progress and future data collected by these stations will be added to an updated
version of the repository as advancing of the data collection to convey the progress of oceanographic observations to the
scientific community.

6. Acknowledgements

345 This paper is realised in the context of PRIN-PASS project. The maintenance of BB and FF fixed moorings over time was
only possible thanks to the support of various projects: European Community's Seventh Framework Programme projects
HERMIONE (Grant agreement No. 226354) and COCONET (Grant agreement No.287844) of the European Commission, the
Flagship project RITMARE SP5_WP3_AZ1 (the Italian Research for the Sea). This work was supported also by the EMSO-
Italia Joint Research Unit (JRU). The authors thank the cruise participants who helped us with the mooring servicing, in
350 particular the captain and the crew members of the R/V's Urania, Minerva Uno, G. Dallaporta, Laura Bassi and OGS Explora,
and of the fishing boats Pasquale & Cristina, and Attila.

References

355 Bertotti, G., Casolari, E., Picotti, V., The Gargano Promontory: a Neogene contractional belt within the Adriatic plate. *Terra*
Nova 11 (4), 168–173, 1999;

Benetazzo, A., Bergamasco, A., Bonaldo, D., Falcieri, F.M., Scavo, M., Langone, L., Carniel, S. Response of the Adriatic Sea
to an intense cold air outbreak: dense water dynamics and wave-induced transport. *Prog. Oceanogr.* 128, 115–138, 2014.

360 <http://dx.doi.org/10.1016/j.pocean.2014.08.015>.

ha formattato: Italiano (Italia)

Bignami, F., Salusti, E., Schiarini, S. Observations on a bottom vein of dense water in the Southern Adriatic and Ionian Seas. *J Geophys Res* 95, 7249–7259, 1990.

365 Bonaldo, D., Benetazzo, A., Bergamasco, A., Campiani, E., Foglini, F., Sclavo, M., Trincardi, F., Carniel, S., 2016. Interactions among Adriatic continental margin morphology, deep circulation and bedform patterns. *Mar. Geol.* 375, 82–98.

[Bubbi A., Cabrini M., Corbo A., Fachin L., Giordano P., Kuchler S., Langone L., Mansutti P., Miserocchi S., Reyes Suarez C., Siena G., Urbini L., Visnovic P., Wirth A., 2019. Multidisciplinary Approach to Research in Permanent Oceanographic Sites. Cruise Report, FIXO³-09. Cruise Report N. 2020 / 14 Sez. OCE 4 EXO](#)

370 Cantoni, C., Luchetta, A., Chiggiato, J., Cozzi, S., Schroeder, K., Langone, L. Dense water flow and carbonate system in the southern Adriatic: A focus on the 2012 event. *Mar. Geol.* 375, 15–27, 2016.

375 [Cardin V., Brunetti F., Giani M., Giordano P., Kovacevic V., Kuckler S., Langone L., Mansutti P., Canu D. M., Miserocchi S., Reyes Suarez C., Siena G., Urbini L., Visnovic G., 2018. Multidisciplinary Approach to Research in Permanent Oceanographic Sites. Cruise Report, FIXO³-08. Cruise Report N. 2019 / 10 Sez. OCE 1 EXO](#)

380 [Carniel, S., Bonaldo, D., Benetazzo, A., Bergamasco, A., Boldrin, A., Falcieri, F.M., Sclavo, M., Trincardi, F., Langone, L., 2016. Off-shelf fluxes across the southern Adriatic margin: factors controlling dense-water-driven transport phenomena. *Mar. Geol.* 375, 44–63. <https://doi.org/10.1016/j.margeo.2015.08.016>](#)

385 Chiggiato, J., Bergamasco, A., Borghini, M., Falcieri, F.M., Falco, P., Langone, L., Miserocchi, S., Russo, A., Schroeder, K. Dense-water bottom currents in the Southern Adriatic Sea in spring 2012. *Mar. Geol.* 375, 134–145. <https://doi.org/10.1016/j.margeo.2015.09.005>, 2016.

Chiggiato, J., Schroeder K., Trincardi F. Cascading dense shelf-water during the extremely cold winter of 2012 in the Adriatic, Mediterranean Sea: Formation, flow, and seafloor impact - Preface. *Marine Geology*, 375, 1-4 2016b.

390 [Civitaresi, G., Gacić, M., Cardin, V., and Ibello, V., 2005. Winter Convection Continues in the Warming Southern Adriatic. *EOS T. Am. Geophys. Un.*, 86\(45\), 445 and 451.](#)

Franco, P., Lj. Jeftic, P. Malanotte-Rizzoli, A. Mihalato and M. Orlic. Descriptive model of the Northern Adriatic. *Oceanologica Acta*, 5, 379-389, 1982.

ha formattato	...
ha formattato	...
ha formattato	...
ha formattato	...
ha formattato	...
ha formattato	...
ha formattato	...
ha formattato	...
ha formattato	...
ha formattato	...
ha formattato	...
ha formattato	...
ha formattato	...
ha formattato	...
ha formattato	...
ha formattato	...
ha formattato	...
ha formattato	...
ha formattato	...
ha formattato	...
ha formattato	...
ha formattato	...
ha formattato	...
ha formattato	...
ha formattato	...
ha formattato	...
ha formattato	...
ha formattato	...
ha formattato	...
ha formattato	...
ha formattato	...
ha formattato	...
ha formattato	...
ha formattato	...
ha formattato	...
ha formattato	...

395

Foglini, F., Campiani, E., Trincardi, F. The reshaping of the South West Adriatic margin by cascading of dense shelf waters. *Mar. Geol.* 2015.

ha formattato: Italiano (Italia)

400

[Gacic, M., Civitarese, G., Miserocchi, S., Cardin, V., Crise, A., and Mauri, E., 2002. The open-ocean convection in the Southern Adriatic: a controlling mechanism of the spring phytoplankton bloom, *Cont. Shelf. Res.*, 22, 1897–1908.](#)

Hendershott, M. C., and P. Rizzoli. The winter circulation of the Adriatic Sea. *Deep-Sea Res.*, 23, 353-370, 1976.

405

Langone, L., Conese, I., Miserocchi, S., Boldrin, A., Bonaldo, D., Carniel, S., Chiggiato, J., Turchetto, M., Borghini, M., Tesi, T. Dynamics of particles along the western margin of the Southern Adriatic: processes involved in transferring particulate matter to the deep basin. *Mar. Geol.* 375, 28–43, . <https://doi.org/10.1016/j.margeo.2015.09.004>, 2016.

Manca, B.B., Kovačević, V., Gačić, M., Viezzoli, D. Dense water formation in the Southern Adriatic Sea and spreading into the Ionian Sea in the period 1997–1999. *Journal of Marine Systems* 33–34, 133-154, 2002.

410

Marini, M., Maselli, V., Campanelli, A., Foglini F., Grilli, F. Role of the Mid-Adriatic deep in dense water interception and modification. *Marine Geology* 375, 5–14, 2016. <https://doi.org/10.1016/j.margeo.2015.08.015>

415

Martorelli, E., Falcini, F., Salusti, E., Chiocci, F. Analysis and modeling of contourite drifts and contour currents off promontories in the Italian Seas (Mediterranean Sea). *Mar. Geol.* 278 (1–4), 19–30, 2010.

[Mihanović, H., Vilibić, I., Carniel, S., Tudor, M., Russo, A., Bergamasco, A., Bubić, N., Ljubešić, Z., Viličić, D., Boldrin, A., Malačić, V., Celio, M., Comici, C., Raicich, F., 2013. Exceptional dense water formation on the Adriatic shelf in the winter of 2012. *Ocean Sci.* 9, 561–572](#)

420

Minisini, D., Trincardi, F., Asioli, A. Evidence of slope instability in the Southwestern Adriatic Margin. *Nat. Hazards Earth Syst. Sci.* 6, 1–20, 2006.

Paladini de Mendoza F.; Schroeder K.; Langone L.; Chiggiato J.; Borghini M.; Giordano P., Verazzo G.; Miserocchi S., 2022.

425

Moored current and temperature measurements in the Southern Adriatic Sea at mooring site BB and FF, March 2012-June 2020 [dataset]. Zenodo. <https://doi.org/10.5281/zenodo.6770202>.

[Ravaoli, M., Bergami, C., Riminucci, F., Langone, L., Cardin, V., Di Sarra, A., Aracri, S., Bastianini, M., Bensi](#)

ha formattato: Italiano (Italia)

430 [M., Bergamasco, A., Bommarito, C., Borghini, M., Bortoluzzi G., Bozzano R., Cantoni, C., Chiggato, J., Crisafi, E., D'Adamo, R., Durante, S., Fanara, C., Grilli F., Lipizer M., Marini, M., Miserochi S., Paschini E., Penna P., Pensieri S., Pugnetti, A., Raicich F., Schroeder K., Siena G., Specchiulli, A., Stanghellini G., Vetrano, A. Crise, A., 2016. The RITMARE Italian Fixed-Point Observatory Network \(IFON\) for marine environmental monitoring: a case study. *Journal of Operational Oceanography*, 9, S1, s202–s214. <http://dx.doi.org/10.1080/1755876X.2015.1114806>](#)

435 Rubino, A., Romanenkov, D., Zanchettin, D., Cardin, V., Hainbucher, D., Bensi, M., Boldrin, A., Langone, L., Miserochi, S., Turchetto, M. On the descent of dense water on a complex canyon system in the southern Adriatic basin. *Cont. Shelf Res.* 44, 20–29, 2012.

Ridente, D., Trincardi, F. Eustatic and tectonic control on deposition and lateral variability of Quaternary regressive sequences in the Adriatic basin (Italy). *Mar. Geol.* 184 (3–4), 273–293, 2002.

Schroeder K., Millot C., Bengara L., Ben Ismail S., Bensi M., Borghini M., Budillon G., Cardin V., Coppola L., Curtil C., Drago A., El Moumni B., Font J., Fuda J.L., García-Lafuente J., Gasparini G.P., Kontoyiannis H., Lefevre D., Puig P., Raimbault P., Rougier G., Salat J., Sammari C., Sánchez Garrido J.C., Sanchez-Roman A., Sparnocchia S., Tamburini C.,
445 Taupier-Letage I., Theocharis A., Vargas-Yáñez M. and Vetrano A. Long-term monitoring programme of the hydrological variability in the Mediterranean Sea: a first overview of the HYDROCHANGES network. *Ocean Sci.*, 9: 301-324, 2013 doi:10.5194/os-9-301.

[SeaDataNet, 2010. Data Quality Control Procedures. 6th Framework of EC DG Research. Version 2.0. May](#)
450 <https://www.seadatanet.org/Standards/Data-Quality-Control>

Tanhua T., Pouliquen S., Hausman J., O'Brien K., Bricher P., de Bruin T., Buck Justin J. H., Burger E. F., Carval T., Casey Kenneth S., Diggs S., Giorgetti A., Glaves H., Harscoat V., Kinkade D., Muelbert J. H., Novellino A., Pfeil B., Pulsifer P. L., Van de Putte A., Robinson E., Schaap D., Smirnov A., Smith N., Snowden D., Spears T., Stall S., Tacoma M., Thijsse P.,
455 Tronstad S., Vandenbergh T., Wengren M., Wyborn L., Zhao Z. Ocean FAIR Data Services. *Frontiers in Marine Science*, 6, 2019 doi:10.3389/fmars.2019.00440

Trincardi, F., Verdicchio, G., Miserochi, S. Seafloor evidence for the interaction between cascading and along-slope bottom water masses. *J. Geophys. Res.* 112 (F3), F03011, 2007a.

460

Trincardi, F., Fogliani, F., Verdicchio, G., Asioli, A., Correggiari, A., Minisini, S., Piva, A., Remia, A., Ridente, D., Taviani, M. The impact of cascading currents on the Bari Canyon System, SW-Adriatic Margin (Central Mediterranean). *Mar. Geol.* 246, 208–23, 2007b.

465 Turchetto, M., Boldrin, A., Langone, L., Misericocchi, S., Tesi, T., Fogliani, F. Particle transport in the Bari Canyon (southern Adriatic Sea). *Mar. Geol.* 246, 231–247, 2007. <https://doi.org/10.1016/j.margeo.2007.02.007>.

Verdicchio, G., Trincardi, F. Short-distance variability in slope bed-forms along the Southwestern Adriatic Margin (Central Mediterranean). *Mar. Geol.* 234 (1–4), 271–292, 2006.

470

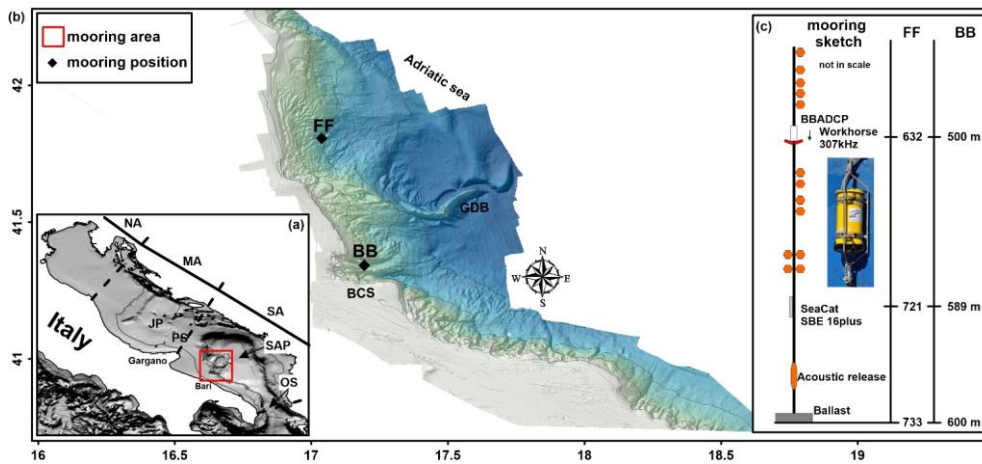
Verdicchio, G., Trincardi, F., Asioli, A. Mediterranean bottom-current deposits: an example from the Southwestern Adriatic Margin. *Geol. Soc. Lond. Spec. Publ.* 276, 199–224, 2007.

Vilibić, I., Orlić, M. Adriatic water masses, their rates of formation and transport through the Otranto Strait. *Deep Sea Research* I 49, 1321–1340, 2002.

475

[Vilibić, I. and Supić, N., 2005. Dense water generation on a shelf: the case of the Adriatic Sea, *Ocean Dynamic*, 55, 403–415.](#)

ha formattato: Non Evidenziato



480

Figure 1: Study Area. panel (a) represents the Adriatic Sea divided by dotted lines in the three sub sectors North Adriatic (NA), Middle Adriatic (MA) and South Adriatic. JP indicates Jabuka Pit, PS the Pelagosa Sill, SAP is South Adriatic Pit and OS is the Otranto Strait. The red box encloses the western margin where moorings are deployed detailed in panel; bathymetry is provided by EMODNET portal (<https://portal.emodnet-bathymetry.eu/>) (b) where BB and FF are respectively the mooring site in the Bari Canyon System (BCS) and in the Open Slope. The GDB is the Gondola Deformation Belt. The high-resolution bathymetry is obtained from EMODNET portal. The panel (c) represents the sketch not in scale of mooring structure.

485

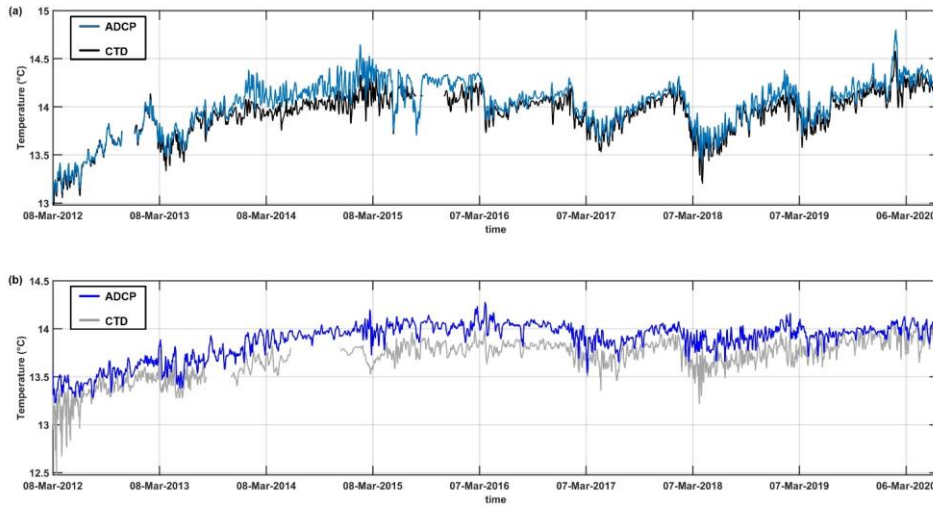


Figure 2: ADCP and CTD temperature records on mooring sites (a) Canyon, (b) Open Slope. The data are presented with a 3-day smoothing window.

490

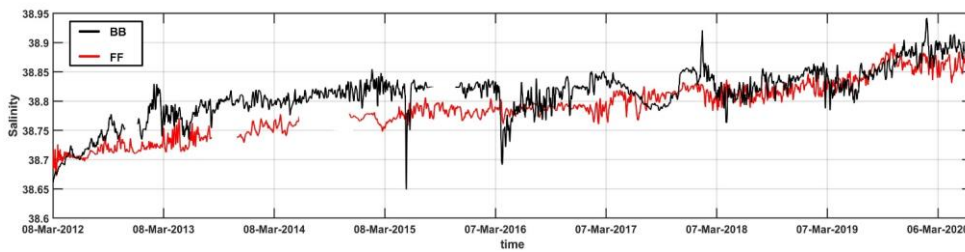
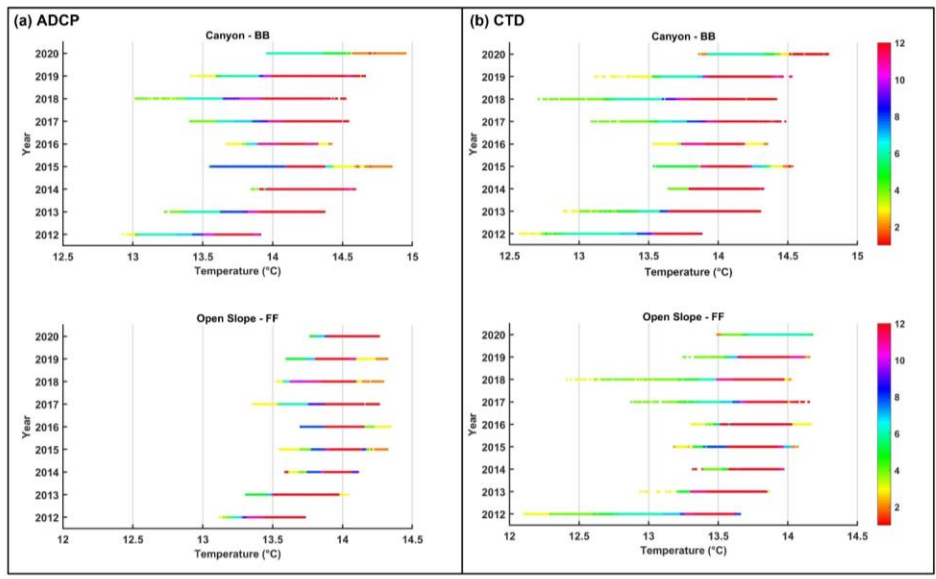


Figure 3: ADCP Salinity records on two mooring sites. The data are presented with a 3-day smoothing window.



495 Figure 4: Scatterplot of ADCP (a) and CTD (b) temperature grouped by years (y-axis) and months (colorscale)

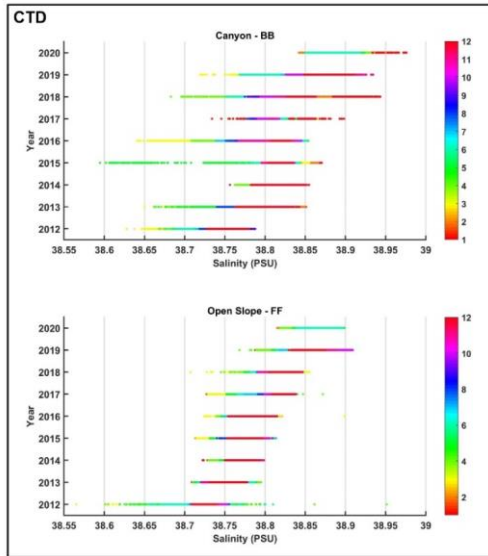
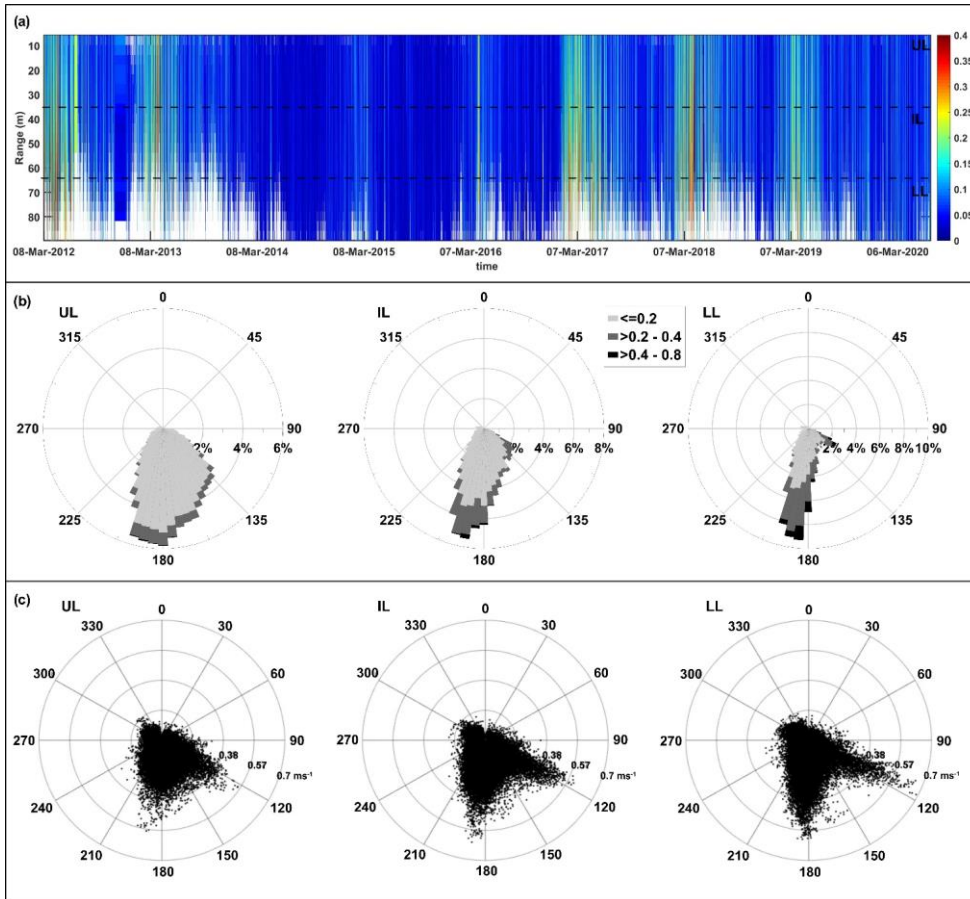
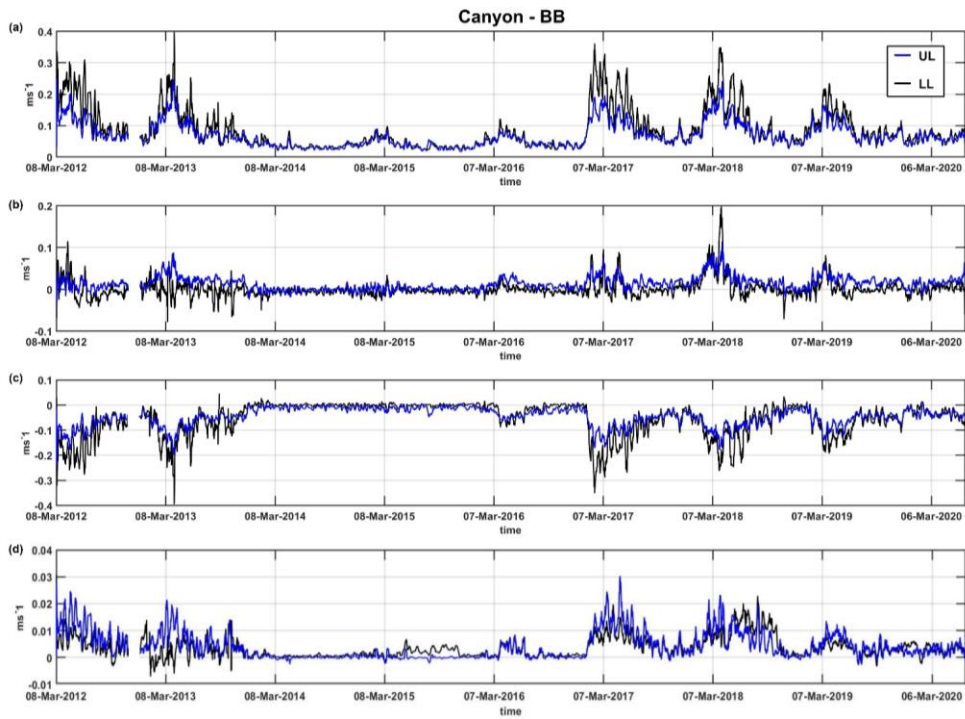


Figure 5: Scatterplot of salinity records grouped by years (y-axis) and months (colorscale)



500 Figure 6: (a) Currents speed records along the water column (data represented are filtered by 80% percent good), dotted box indicates the water column corresponding to the three layers used for polar plot representation; (b) polar probability plot of current velocity in the three layers of the water column (ms⁻¹); (c) polar scatter plot of observed directional current velocity (ms⁻¹). (UL: Upper Layer; IL: Intermediate Layer; LL: Lower Layer)–BB

505



510 Figure 7. Time series in the upper (UL) and lower layer (LL) of the water column of the module of currents speed (a), east (b), north (c) and vertical (d) component – BB. The data for a better visualization are presented with a 7-day smoothing window.

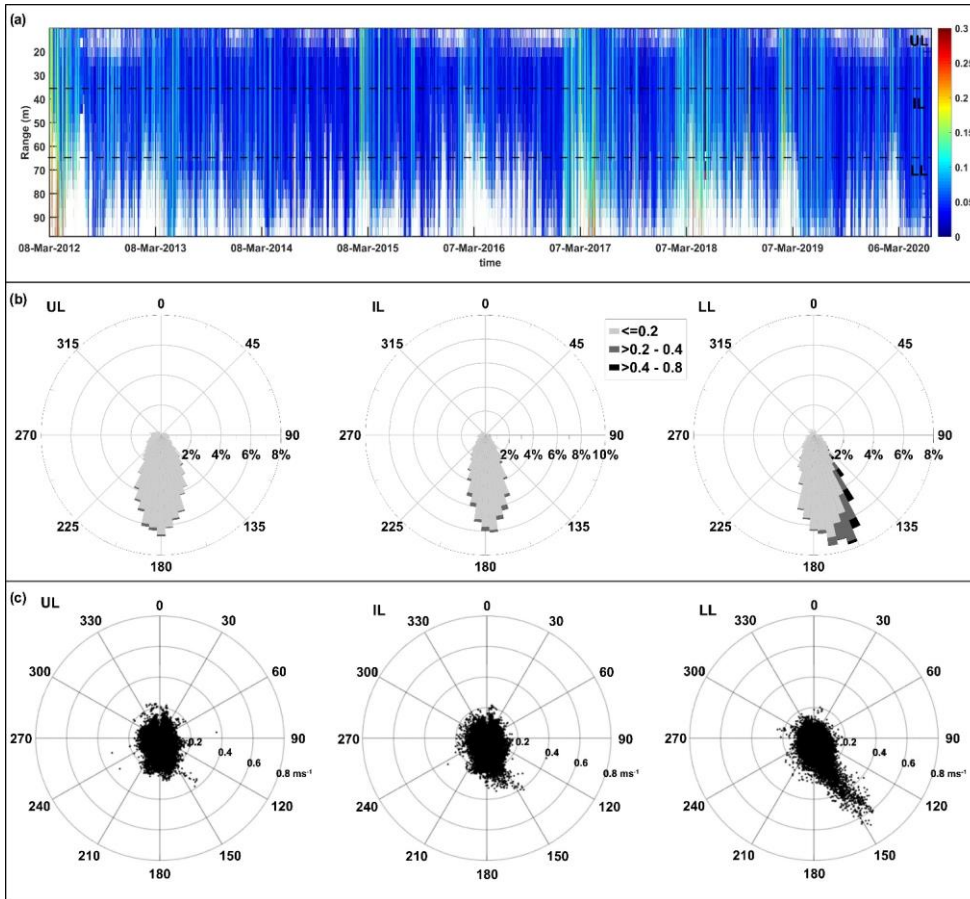


Figure 8: (a) Currents speed records along the water column (data filtered by 80% percent good), dotted box indicates the water column corresponding to the three layers used for polar plot representation; (b) polar probability plot of current velocity in the three layers of the water column (ms^{-1}); (c) polar scatter plot of observed directional current velocity (ms^{-1}). (UL: Upper Layer; IL: Intermediate Layer; LL: Lower Layer)– FF.

515

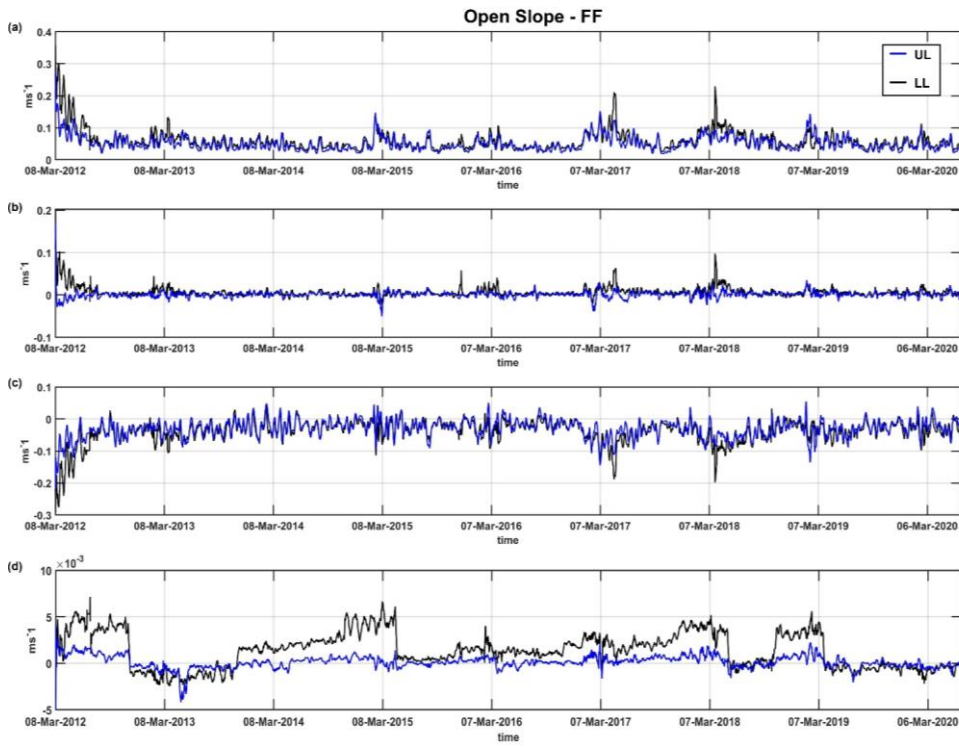


Figure 9. Time series in the upper and lower layer of the water column of the module of currents speed, east, north and vertical component -FF. The data for a better visualization are presented with a 7-day smoothing window.

520

525

Tabella formattata

N	Mooring BB						Mooring FF					
	start	end	Lat	Lon	dept h	ADC P-S/N	start	end	Lat	Lon	dept h	ADC P-S/N
1	08/03/1 2	21/06/1 2	41°20.475 2	17°11.625 2	504	1805	08/03/1 2	21/06/1 2	41°48.36 4	17°02.29 2	631	6422
2	29/06/1 2	06/11/1 2	41°20.478 2	17°11.611 2	504	1805	30/06/1 2	09/11/1 2	41°48.37 3	17°02.29 2	631	6422
3	13/12/1 2	18/04/1 3	41°20.478 2	17°11.605 2	504	6422	09/11/1 2	14/04/1 3	41°48.36 7	17°02.29 6	632	1805
4	18/04/1 3	08/11/1 3	41°20.481 2	17°11.623 2	504	1465	15/04/1 3	08/11/1 3	41°48.36 0	17°02.29 2	632	1805
5	09/11/1 3	09/03/1 4	41°20.471 2	17°11.604 2	504	17316	08/11/1 3	09/03/1 4	41°48.39 0	17°02.27 3	632	17315
6	09/03/1 4	01/11/1 4	41°20.471 2	17°11.628 2	504	17316	10/03/1 4	02/11/1 4	41°48.39 0	17°02.28 4	632	17315
7	01/11/1 4	20/04/1 5	41°20.474 2	17°11.622 2	500	17316	02/11/1 4	22/04/1 5	41°48.35 7	17°02.29 7	632	17315
8	23/04/1 5	09/11/1 5	41°20.456 2	17°11.639 2	500	17315	22/04/1 5	06/11/1 5	41°48.39 6	17°02.24 4	636	17316
9	09/11/1 5	01/04/1 6	41°20.456 2	17°11.639 2	503	17316	09/11/1 5	02/04/1 6	41°48.39 6	17°02.21 7	632	17315
10	05/04/1 6	23/10/1 6	41°20.456 2	17°11.639 2	497	17316	04/04/1 6	23/10/1 6	41°48.39 6	17°02.21 7	632	17315
11	24/10/1 6	23/04/1 7	41°20.456 2	17°11.639 2	497	17316	24/10/1 6	23/04/1 7	41°48.39 6	17°02.21 7	632	17315
12	25/04/1 7	02/11/1 7	41°20.446 2	17°11.620 2	497	17316	24/04/1 7	02/11/1 7	41°48.40 2	17°02.18 0	632	17315
13	04/11/1 7	09/05/1 8	41°20.455 2	17°11.622 2	497	17316	03/11/1 7	09/05/1 8	41°48.40 7	17°02.18 6	632	17315
14	14/05/1 8	07/10/1 8	41°20.471 2	17°11.638 2	496	17315	09/05/1 8	09/10/1 8	41°48.35 0	17°02.29 4	632	17316
15	10/10/1 8	25/03/1 9	41°20.498 2	17°11.617 2	500	17316	09/10/1 8	24/03/1 9	41°48.22 4	17°02.28 2	632	17315
16	25/03/1 9	19/10/1 9	41°20.491 2	17°11.637 2	498	17316	24/03/1 9	20/10/1 9	41°48.35 0	17°02.29 2	632	6422
17	20/10/1 9	25/06/2 0	41°20.518 2	17°11.645 2	505	17315	20/10/1 9	26/06/2 0	41°48.31 6	17°02.35 4	632	6422

Mooring BB						Mooring FF					
------------	--	--	--	--	--	------------	--	--	--	--	--

<u>N</u>	<u>start</u>	<u>end</u>	<u>Lat</u>	<u>Lon</u>	<u>dept</u> <u>h</u>	<u>ADC</u> <u>P</u> <u>S/N</u>	<u>CT</u> <u>D</u> <u>S/N</u>	<u>start</u>	<u>end</u>	<u>Lat</u>	<u>Lon</u>	<u>dept</u> <u>h</u>	<u>ADC</u> <u>P</u> <u>S/N</u>	<u>CT</u> <u>D</u> <u>S/N</u>
1	08/03/1	21/06/1	41°20.47	17°11.62	504	1805	6134	08/03/1	21/06/1	41°48.3	17°02.2	631	6422	1709
2	29/06/1	06/11/1	41°20.47	17°11.61	504	1805	7041	30/06/1	09/11/1	41°48.3	17°02.2	631	6422	7040
3	13/12/1	18/04/1	41°20.47	17°11.60	504	6422	7040	09/11/1	14/04/1	41°48.3	17°02.2	632	1805	7041
4	18/04/1	08/11/1	41°20.48	17°11.62	504	1465	7041	15/04/1	08/11/1	41°48.3	17°02.2	632	1805	7266
5	09/11/1	09/03/1	41°20.47	17°11.60	504	17316	7041	08/11/1	09/03/1	41°48.3	17°02.2	632	17315	7266
6	09/03/1	01/11/1	41°20.47	17°11.62	504	17316	7040	10/03/1	02/11/1	41°48.3	17°02.2	632	17315	7266
7	01/11/1	20/04/1	41°20.47	17°11.62	500	17316	7040	02/11/1	22/04/1	41°48.3	17°02.2	632	17315	7266
8	23/04/1	09/11/1	41°20.45	17°11.63	500	17315	7266	22/04/1	06/11/1	41°48.3	17°02.2	636	17316	7040
9	09/11/1	01/04/1	41°20.45	17°11.63	503	17316	7041	09/11/1	02/04/1	41°48.3	17°02.2	632	17315	7266
10	05/04/1	23/10/1	41°20.45	17°11.63	497	17316	6134	04/04/1	23/10/1	41°48.3	17°02.2	632	17315	7266
11	24/10/1	23/04/1	41°20.45	17°11.63	497	17316	6134	24/10/1	23/04/1	41°48.3	17°02.2	632	17315	7266
12	25/04/1	02/11/1	41°20.44	17°11.62	497	17316	7041	24/04/1	02/11/1	41°48.4	17°02.1	632	17315	7266
13	04/11/1	09/05/1	41°20.45	17°11.62	497	17316	7266	03/11/1	09/05/1	41°48.4	17°02.1	632	17315	7041
14	14/05/1	07/10/1	41°20.47	17°11.63	496	17315	6134	09/05/1	09/10/1	41°48.3	17°02.2	632	17316	7266
15	10/10/1	25/03/1	41°20.49	17°11.61	500	17316	7266	09/10/1	24/03/1	41°48.2	17°02.2	632	17315	6134
16	25/03/1	19/10/1	41°20.49	17°11.63	498	17316	7266	24/03/1	20/10/1	41°48.3	17°02.2	632	6422	6134
17	20/10/1	25/06/2	41°20.51	17°11.64	505	17315	7266	20/10/1	26/06/2	41°48.3	17°02.3	632	6422	6134

530 Table 1. Survey details about the two mooring sites

<u>CTD S/N</u>	<u>Calibration date</u>
----------------	-------------------------

ha formattato: Non Evidenziato

ha formattato: Non Evidenziato

ha formattato: Non Evidenziato

ha formattato: Non Evidenziato

ha formattato: Non Evidenziato

ha formattato: Non Evidenziato

ha formattato: Non Evidenziato

ha formattato: Non Evidenziato

ha formattato: Non Evidenziato

ha formattato: Non Evidenziato

ha formattato: Non Evidenziato

ha formattato: Non Evidenziato

ha formattato: Non Evidenziato

ha formattato: Non Evidenziato

ha formattato: Non Evidenziato

ha formattato: Non Evidenziato

ha formattato: Non Evidenziato

ha formattato: Non Evidenziato

ha formattato: Non Evidenziato

ha formattato: Non Evidenziato

ha formattato: Non Evidenziato

ha formattato: Non Evidenziato

ha formattato: Non Evidenziato

ha formattato: Non Evidenziato

ha formattato: Non Evidenziato

ha formattato: Non Evidenziato

ha formattato: Non Evidenziato

ha formattato: Non Evidenziato

ha formattato: Non Evidenziato

ha formattato: Non Evidenziato

ha formattato: Non Evidenziato

ha formattato: Non Evidenziato

ha formattato: Non Evidenziato

ha formattato: Non Evidenziato

ha formattato: Non Evidenziato

ha formattato: Non Evidenziato

ha formattato: Non Evidenziato

<u>6134</u>	<u>09/2013 – 04/2014</u>
<u>7041</u>	<u>03/2012 – 02/2014</u>
<u>7040</u>	<u>03/2012 – 11/2016</u>
<u>7266</u>	<u>01/2013</u>

Table 2. Calibration date of the CTD probes

535

540

Key	Entry Term	Term definition
0	No quality control	No quality control procedure has been applied
1	good	Good quality data value. Verified as consistent during quality control process
2	Probably good value	Data value probably consistent but this is unconfirmed
3	Probably bad value	Data value recognised inconsistent after quality control
4	Bad value	An obviously erroneous data value
5	Changed value	Data value changed after quality control
6	Value below detection	The level of the measured phenomenon was too small to be quantified by the

		technique employed to measure it
7	Value in excess	The level of the measured phenomenon was too large to be quantified by the technique employed to measure it
8	Interpolated value	This value has been derived by interpolation from other values in the data object
9	Missing value	The data value is missing

Table 32. Code of data qualifiers flags: **;** are reported the relevant codes to this work. The full list is available at the address:

http://seadatanet.maris2.nl/v_bodc_vocab_v2/browse.asp?order=conceptid&formname=search&screen=0&lib=120

ha formattato: Non Evidenziato

ha formattato: Non Evidenziato

ha formattato: Non Evidenziato

MOORING BB										
Month	Mean (°C)		SD		Min (°C)		Max (°C)		Δ (°C)	Δ_{max} (°C)
	ADCP	CTD	ADCP	CTD	ADCP	CTD	ADCP	CTD		
1	14.20	14.07	0.20	0.17	13.69	13.35	14.89	14.79	0.13	0.60
2	14.15	14.02	0.22	0.18	13.38	13.17	14.95	14.62	0.13	0.73
3	13.95	13.83	0.34	0.33	12.93	12.58	14.65	14.50	0.11	0.53
4	13.88	13.79	0.34	0.33	13.02	12.71	14.51	14.44	0.10	0.66
5	13.89	13.8	0.31	0.28	13.03	12.75	14.55	14.4	0.09	0.61
6	13.93	13.86	0.28	0.26	13.05	12.87	14.41	14.37	0.07	0.34
7	13.95	13.89	0.24	0.21	13.32	13.3	14.37	14.31	0.06	0.29
8	13.98	13.90	0.20	0.17	13.43	13.42	14.36	14.17	0.06	0.52
9	14.06	13.95	0.20	0.14	13.51	13.49	14.41	14.25	0.08	0.37
10	14.06	13.97	0.20	0.16	13.51	13.53	14.52	14.26	0.06	0.46
11	14.16	14.04	0.14	0.12	13.69	13.65	14.59	14.53	0.12	0.49
12	14.13	14.03	0.16	0.14	13.59	13.55	14.54	14.48	0.11	0.41
MOORING FF										
Month	Mean (°C)		SD		Min (°C)		Max (°C)		Δ (°C)	Δ_{max} (°C)
	ADCP	CTD	ADCP	CTD	ADCP	CTD	ADCP	CTD		

1	13.97	13.76	0.14	0.14	13.50	13.25	14.29	14.15	0.19	0.63
2	13.95	13.71	0.16	0.16	13.51	13.18	14.49	14.15	0.21	0.93
3	13.86	13.53	0.23	0.23	13.12	12.11	14.34	14.17	0.22	1.23
4	13.85	13.50	0.20	0.20	13.15	12.29	14.22	14.08	0.22	1.19
5	13.82	13.53	0.23	0.23	13.22	12.61	14.18	14.18	0.18	0.77
6	13.88	13.60	0.20	0.20	13.21	12.76	14.15	14.15	0.18	0.54
7	13.86	13.66	0.20	0.20	13.27	13.11	14.17	14.02	0.16	0.51
8	13.89	13.70	0.17	0.17	13.41	13.23	14.18	14.01	0.16	0.57
9	13.91	13.72	0.18	0.18	13.29	13.26	14.17	14.05	0.17	0.44
10	13.92	13.74	0.17	0.17	13.36	13.27	14.21	14.05	0.17	0.51
11	13.92	13.74	0.17	0.17	13.32	13.26	14.26	14.11	0.16	0.49
12	13.93	13.75	0.16	0.16	13.45	13.33	14.25	14.03	0.16	0.54

545

Table 3. Statistical parameters of temperature records grouped by months. SD indicates Standard Deviation and Δ is the mean difference between temperature measured by ADCP and CTD and Δ_{\max} is the maximum difference. The value reported in the table refer to original data (not smoothed)

550

MOORING BB										
Month	Mean (°C)		SD		Min (°C)		Max (°C)		Δ (°C)	Δ_{\max} (°C)
	ADCP	CTD	ADCP	CTD	ADCP	CTD	ADCP	CTD		
2012	13.47	13.46	0.19	0.22	12.93	12.58	13.91	13.88	0.02	0.45
2013	13.87	13.79	0.17	0.18	13.23	13.89	14.37	14.30	0.07	0.61
2014	14.16	13.99	0.11	0.09	13.85	13.64	14.59	14.32	0.17	0.56
2015	14.25	14.10	0.17	0.12	13.55	13.54	14.85	14.53	0.16	0.57
2016	14.11	14.04	0.12	0.11	13.67	13.54	14.42	14.35	0.08	0.46
2017	13.98	13.92	0.16	0.16	13.41	13.09	14.54	14.48	0.07	0.50
2018	13.91	13.83	0.21	0.22	13.02	12.71	14.52	14.42	0.08	0.66
2019	14.10	14.01	0.16	0.16	13.42	13.12	14.66	14.53	0.09	0.56
2020	14.33	14.22	0.15	0.12	13.96	13.86	14.95	14.79	0.11	0.73
MOORING FF										
Month	Mean (°C)		SD		Min (°C)		Max (°C)		Δ (°C)	Δ_{\max} (°C)
	ADCP	CTD	ADCP	CTD	ADCP	CTD	ADCP	CTD		

2012	13.48	13.26	0.11	0.19	13.12	12.11	13.73	13.66	0.16	1.23
2013	13.68	13.48	0.12	0.12	13.31	12.94	14.04	13.87	0.17	0.64
2014	13.93	13.67	0.07	0.11	13.59	13.32	14.11	13.97	0.23	0.63
2015	14.01	13.79	0.08	0.10	13.55	13.18	14.32	14.07	0.24	0.93
2016	14.04	13.82	0.08	0.09	13.70	13.31	14.34	14.17	0.22	1.01
2017	13.91	13.74	0.10	0.13	13.36	12.88	14.26	14.15	0.17	1.05
2018	13.90	13.69	0.10	0.15	13.53	12.41	14.29	14.03	0.21	1.23
2019	14.96	13.82	0.08	0.12	13.60	13.25	14.32	14.15	0.14	0.69
2020	14.05	13.91	0.08	0.12	13.77	13.49	14.26	14.18	0.11	0.47

Table 4. Statistical parameters of temperature records grouped by years. SD indicates Standard Deviation and Δ is the mean difference between temperature measured by ADCP and CTD and Δ_{\max} il the maximum difference. The value reported in the table refer to original data (not smoothed)

555

Month	MOORING BB				MOORING FF			
	Mean	SD	Min	Max	Mean	SD	Min	Max
1	38.84	0.04	38.73	38.98	38.80	0.05	38.71	38.89
2	38.84	0.03	38.75	38.95	38.80	0.05	38.71	38.89
3	38.81	0.06	38.63	38.93	38.77	0.06	38.57	38.90
4	38.80	0.06	38.66	38.93	38.77	0.06	38.60	38.95
5	38.80	0.05	38.60	38.92	38.77	0.06	38.62	38.90
6	38.81	0.04	38.68	38.92	38.78	0.05	38.63	38.90
7	38.80	0.03	38.71	38.87	38.78	0.04	38.64	38.86
8	38.80	0.04	38.72	38.87	38.79	0.04	38.71	38.87
9	38.81	0.03	38.74	38.89	38.80	0.05	38.71	38.90
10	38.81	0.03	38.73	38.89	38.80	0.05	38.71	38.91
11	38.83	0.03	38.75	38.93	38.80	0.05	38.71	38.89
12	38.83	0.04	38.73	38.91	38.80	0.05	38.71	38.89
Year	Mean	SD	Min	Max	Mean	SD	Min	Max
2012	38.73	0.03	38.63	38.79	38.71	0.01	38.57	38.95
2013	38.79	0.02	38.65	38.85	38.73	0.02	38.71	38.80
2014	38.81	0.01	38.76	38.86	38.76	0.01	38.72	38.80
2015	38.82	0.03	38.60	38.87	38.78	0.01	38.71	38.81

2016	38.80	0.03	38.64	38.85	38.79	0.01	38.72	38.90
2017	38.82	0.02	38.73	38.90	38.81	0.02	38.73	38.87
2018	38.83	0.02	38.68	38.94	38.81	0.01	38.71	38.86
2019	38.85	0.03	38.72	38.93	38.85	0.03	38.64	38.91
2020	38.89	0.02	38.84	38.98	38.86	0.01	38.82	38.90

Table 5. Statistical parameters of salinity records grouped by years. SD indicates Standard Deviation and Δ is the mean difference between temperature measured by ADCP and CTD and Δ_{\max} is the maximum difference. The value reported in the table refer to original data (not smoothed)