

A strontium isoscape of inland southeastern Australia

Patrice de Caritat¹, Anthony Dosseto², Florian Dux²

¹Geoscience Australia, GPO Box 378, Canberra ACT 2601, Australia

²Wollongong Isotope Geochronology Laboratory, School of Earth, Atmospheric and Life Sciences, University of Wollongong, Wollongong NSW 2522, Australia

Correspondence to: Patrice de Caritat (Patrice.deCaritat@ga.gov.au)

Abstract

The values and distribution patterns of the strontium (Sr) isotope ratio $^{87}\text{Sr}/^{86}\text{Sr}$ in Earth surface materials is of use in the geological, environmental and social sciences. Ultimately, the $^{87}\text{Sr}/^{86}\text{Sr}$ ratio of soil and everything that lives in and on it is inherited from the ~~rocks~~ that ~~is its~~ parent ~~material~~ materials of the soil's components. In Australia, there are few large-scale surveys of $^{87}\text{Sr}/^{86}\text{Sr}$ available, and here we report on a new, low-density dataset using 112 catchment outlet (floodplain) sediment samples covering 529,000 km² of inland southeastern Australia (South Australia, New South Wales, Victoria). The coarse (<2 mm) fraction of bottom sediment samples (depth ~0.6–0.8 m) from the National Geochemical Survey of Australia were milled and fully digested before Sr separation by chromatography and $^{87}\text{Sr}/^{86}\text{Sr}$ determination by multicollector-inductively coupled plasma-mass spectrometry. The results show a wide range of $^{87}\text{Sr}/^{86}\text{Sr}$ values from a minimum of 0.7089 to a maximum of 0.7511 (range 0.0422). The median $^{87}\text{Sr}/^{86}\text{Sr}$ (\pm ~~robust standard~~ median absolute deviation) is 0.7199 (\pm 0.0112 0071), and the mean (\pm standard deviation) is 0.7220 (\pm 0.0106). The spatial patterns of the Sr isoscape observed are described and attributed to various geological sources and processes. Of note are the elevated (radiogenic) values (\geq –0.7270; top quartile) contributed by (1) the Palaeozoic sedimentary country rock and (mostly felsic) igneous intrusions of the Lachlan geological region to the east of the study area; (2) the Palaeoproterozoic metamorphic rocks of the central Broken Hill region; both these sources contribute radiogenic material mainly by fluvial processes; and (3) the Proterozoic to Palaeozoic rocks of the Kanmantoo, Adelaide, Gawler and Painter geological regions to the west of the area; these sources contribute radiogenic material mainly by aeolian processes. Regions of low $^{87}\text{Sr}/^{86}\text{Sr}$ (\leq –0.7130; bottom quartile) belong mainly to (1) a few central Murray Basin catchments; (2) some Darling Basin catchments in the northeast; and (3) a few Eromanga geological region-influenced catchments in the northwest of the study area; these sources contribute radiogenic material mainly by fluvial processes.

1 Introduction

Strontium (Sr) isotopes in Earth systems are useful to elucidate geoscientific, environmental and societal issues, including mineralisation (e.g., Zhao et al., 2021), hydrology (e.g., Christensen et al., 2018), food tracing (e.g., Vinciguerra et al., 2015)

- 30), dust provenancing/sourcing (e.g., Revel-Rolland et al., 2006; De Deckker et al., 2020), and historic migrations of people and animals (e.g., Price et al., 2017; Madgwick et al., 2019, 2021). Whilst ~~several countries have developed detailed~~ large-scale Sr isotopic maps (Sr isoscapes) ~~of their territory, have been developed for several countries (and even larger areas around the world),~~ recent examples of which include Italy (Lugli et al., 2022) ~~and~~, Ireland (Snoeck et al., 2020), Europe (Hoogewerff et al., 2019), and even a world model (Bataille et al., 2020), no ~~such~~ national-scale Sr isotope dataset currently exists for Australia.
- 35 The largest Sr isoscape to-date in this country is for the Cape York Peninsula in northern Queensland (Adams et al., 2019), which covers approximately 300,000 km². In this contribution we publish a new Sr isotopic dataset and isoscape for a part of inland southeastern Australia, across three states, covering agricultural land and remote and arid ‘outback’ deserts. Additional parts of Australia currently are being investigated to expand this isoscape further.

2 Setting

- 40 The study area, the Darling-Curnamona-Delamerian (DCD) area, is located in inland southeastern Australia, across parts of the states of South Australia, New South Wales and Victoria (hereafter abbreviated to SA, NSW and Vic, respectively) between 28 and 37 °South and 138 and 146 °East (Figure 1). The DCD area is one of the ‘deep-dive’ focus areas targeted for geoscientific data acquisition (<https://www.ga.gov.au/eftf/projects/darling-curnamona-delamerian>) under the Exploring for the Future program (<https://www.ga.gov.au/eftf>), a major Australian Government research funding initiative.

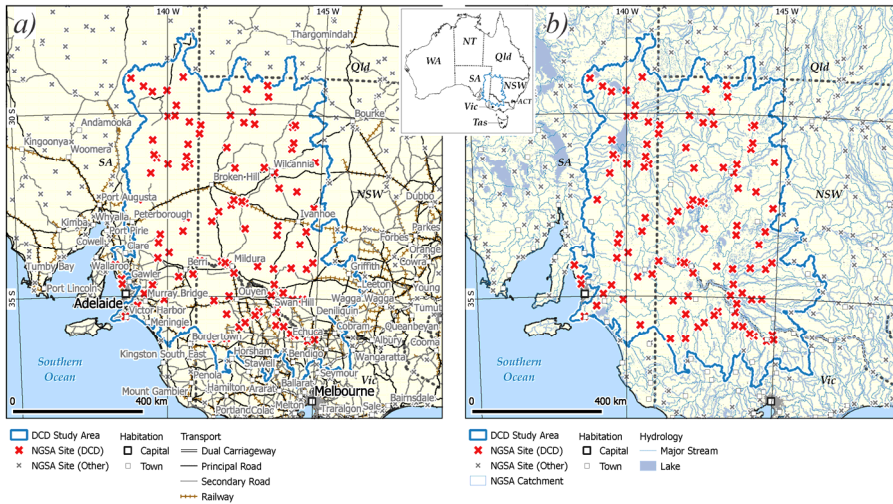


Figure 1: The Darling-Curnamona-Delamerian (DCD) Sr isotope study area (dark blue outline, see inset for location: WA – Western Australia, NT – Northern Territory, Qld – Queensland, NSW – New South Wales, ACT – Australian Capital Territory, Vic – Victoria, Tas – Tasmania, and SA – South Australia) and National Geochemical Survey of Australia (NGSA) sample locations (crosses) overlain on (a) a topographic map showing townships (squares), roads (black or grey) and railway (brown), lakes (pale blue), vegetated areas (green) and deserts (red-brown); and (b) on hydrology map showing NGSA catchment boundaries, (medium blue), major streams and lakes: (pale blue). Map projection: Albers equal area.

The main climate zones in the area are described as ‘Warm summer, cold winter’ along the southern/southwestern coastal fringe to ‘Hot dry summer, cold winter’ over the remainder of the inland area (BOM, 2021a). The vegetation/Köppen zones are dominated by ‘Grassland/Warm (persistently dry)’ and ‘Desert/Warm (persistently dry)’ in the south, and ‘Grassland/Hot (persistently dry)’ and ‘Desert/Hot (persistently dry)’ in the north (BOM, 2021b). The 30-year (1976–2005) average minimum temperatures and maximum temperatures mostly range 3–18 °C and 18–33 °C (both increasing south to north), respectively (BOM, 2021c,d). Average annual rainfall over the latest 30-year period available (1986–2015) mostly ranges 50–400 mm/yr (BOM, 2021e) with precipitation falling mostly in winter along the southern fringe of the area whilst the central and northern parts are equally arid year-round. Long-term weather patterns are strongly affected by El Niño/La Niña cycles.

Physiographically the study area includes, clockwise from the southwest, the Adelaide Hills, North St Vincent-Spencer Gulf, Lower Murray, Lake Frome, Cooper Creek, Bulloo-Bancannia, Warrego, Menindee Lakes, Lachlan, Murrumbidgee, Mid-Murray, Goulburn-Loddon, Wimmera-Mallee and Millicent Coast physiographic regions (Pain et al., 2011). (Locations of geographical entities named in this paper are given in the Supplementary Material.) The Murray River is Australia’s longest river, with its source in the Australian Alps at 1430 m above sea level (asl) (on the border between NSW and Vic) being

65 approximately 2500 km upstream of its mouth ~~at Goolwa~~ near Victor Harbour (SA) where it enters the Southern Ocean. The combined catchments of the Murray River and that of its northern tributary, the Darling River (the country's third longest river), define the Murray-Darling Basin, a vast (~1 million km²), low-relief Cenozoic depression formed in dynamic topographic response to continental plate motion (Schellart and Spakman, 2015). The Murray-Darling Basin is one of Australia's most productive agricultural areas where water management, critical to support communities and the environment across its mega-catchment, is overseen by the Murray-Darling Basin Authority (MDBA, 2022). Topographic elevation (GA, 2008) in the DCD area ranges from sea level, along the Great Australian Bight region of the Southern Ocean to the southwest, to 1206 m asl, with the highest elevations (>900 m asl) observed both to the southeast, in the Victorian highlands, and to the northwest, in the Flinders Ranges ~~of SA~~; the mean altitude is 139 m asl.

70 The study area comprises a wide range of geological regions (Blake and Kilgour, 1998; Figure 2a), the main ones ranging from the Palaeoproterozoic Broken Hill region and Palaeoproterozoic to Mesoproterozoic Mount Painter region, through the Palaeoproterozoic to Devonian Wonominta and Tiboooburra regions, the Neoproterozoic to Cambrian Stuart and Adelaide regions, the Neoproterozoic to Ordovician Caloola region, the Cambrian Arrowie, Cambrian to Ordovician Kanmantoo and Cambrian to Devonian Bancannia regions, the Ordovician to Early Carboniferous Lachlan region, the Devonian to Carboniferous Darling region, the Jurassic to Tertiary Eromanga regions, ~~through~~ to the Late Mesozoic to Quaternary Murray region. The most dominant surface lithological type is undoubtedly regolith (Eggleton, 2001), the commonly loose (though in places highly indurated), transported or in-situ weathering product of primary bedrock, locally modified by aeolian processes. Regolith covers over 85% of Australia (Wilford, 2012) due to relative tectonic stability, low relief, ~~lack~~absence of Quaternary glaciation, low rainfall and resistant rocks (Pain et al., 2012). Comparatively minor areas of outcrop dot and surround the study area, most notably metamorphic rocks in the central Broken Hill region, sedimentary and felsic to intermediate igneous rocks in the Lachlan region to the east and south, felsic to mafic igneous rocks and metamorphic rocks in the Mount Painter region to the ~~west~~northwest, siliciclastic sediments in the Adelaide and Arrowie regions to the ~~east~~west, and carbonate sediments in the Eromanga region to the north. Very few mafic or ultramafic rocks crop out in the study area, with the main occurrences belonging to the Lachlan region in the southeast.

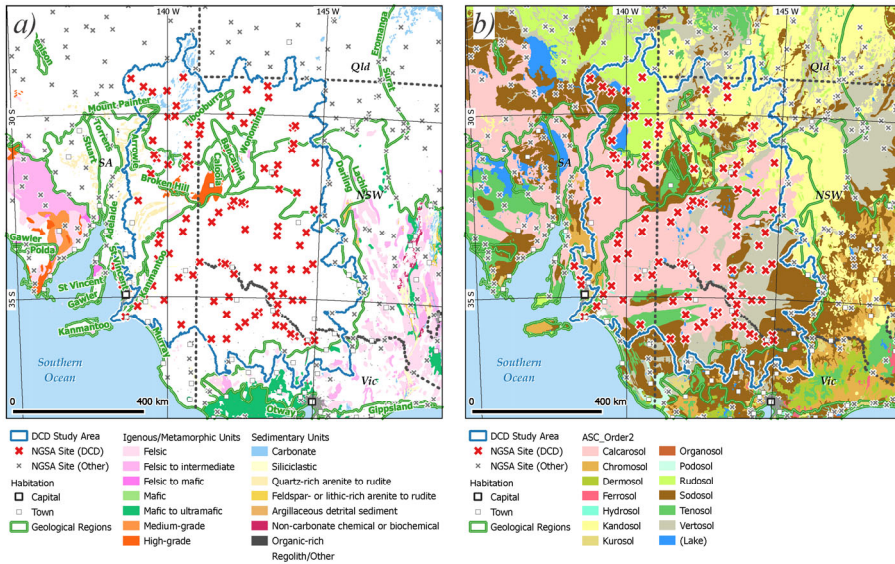


Figure 2: The Darling-Curnamona-Delamerian (DCD) Sr isotope study area (dark blue outline), National Geochemical Survey of Australia (NGSA) sample locations (crosses) and geological regions (double green outlines) from Blake and Kilgour (1998) overlain on (a) surface geology from Raymond et al. (2012); and (b) Australian Soil Classification soil orders from Isbell et al. (2021). Map projection: Albers equal area.

The soil types (Orders) encountered in the study area are most commonly calcarosol and vertosol (at 41% and 33% of the sample sites, respectively), followed by sodosol, kandosol and rudosol (8%, 7%, and 5%), and minor chromosol, podosol, and tenosol (~3% to <1%), using the Australian Soil Classification scheme (Isbell et al., 2021; ASRIS, 2021a) (Figure 2b). The major river basins that divide the area mostly belong, clockwise from the southwest, to the Murray-Darling, Lake Eyre, and Bulloo-Bancannia drainage divisions, and (in greater detail) to the Lower Murray, Lake Frome, Bulloo-Bancannia, Warrego, Menindee Lakes, Lachlan, Murrumbidgee, Mid-Murray, Goulburn-Loddon, and Wimmera-Mallee water regions (GA, 1997). Land use over the area is overwhelmingly grazing native vegetation, with minor nature conservation, grazing modified pastures, and dryland cropping (ASRIS, 2021b), the latter two occurring exclusively in the southern part of the study area.

When mapping and interpreting $^{87}\text{Sr}/^{86}\text{Sr}$ ratios, it is important to bear in mind the likely processes to may affect them. Pedogenic processes can offset the $^{87}\text{Sr}/^{86}\text{Sr}$ of soil compared to that of its parent material, as a result of differential dissolution of minerals such as plagioclase and K-feldspar (Blum et al., 1993; Bullen et al., 1997). Here, sediments Although soils in this study were collected between 0.6 and 0.8 m below the surface in an attempt to minimise the effect of pedogenic processes on the $^{87}\text{Sr}/^{86}\text{Sr}$ of sediments post-deposition, however same parent material, namely fluvial sediment, this effect cannot be

excluded. In the same way, it is possible that there is an offset between soils in the sediment source region and the parent rocks they derive from. Dust deposition can also affect the soil Sr budget and shift the $^{87}\text{Sr}/^{86}\text{Sr}$ composition of soil compared to that of its parent material (Stewart et al., 1998; Chadwick et al., 2009). Previous work on soils in the study area has shown that in some cases atmospheric deposition contributes significantly to the soil Sr budget (Green et al., 2004; Mee et al., 2004); in this case, the Sr isotope composition of the soil is not a direct reflection of that of the parent material. However, in other regions of the study area (e.g., Clare Valley), atmospheric deposition plays a much smaller role (Bestland et al., 2003).

3 Material and Methods

3.1 Material

This study utilises archive ‘catchment outlet sediment’ samples collected during the National Geochemical Survey of Australia (NGSA), which covered ~80% of Australia (Caritat and Cooper, 2011, 2016). The sampling philosophy of the NGSA was to collect naturally mixed and fine-grained fluvial/alluvial sediments from large catchments, thereby obtaining representative averages of the main soil and rock types contributing sediment through weathering. This allowed the ultralow sampling density (~1 sample per catchment, which on average is 5200 km²) to remain representative of large-scale natural variations (Caritat and Cooper, 2011). Catchment outlet sediments are similar to floodplain sediments in the sense that they are deposited during receding floodwaters outside the riverbanks, but with the added complexity that, in Australia, many areas can also experience addition (or loss) of material through aeolian processes. The sampled floodplain geomorphological entities are typically vegetated and biologically active (shrubs, grasses, worms, ants, etc.) thereby making the collected materials true soils, albeit soils developed on transported alluvium parent material.

The sampling medium and density were both strategically chosen in the NGSA project to prioritise coverage over resolution. This was justified by the fact that the NGSA was Australia’s first, and to date only, fully integrated, internally consistent geochemical survey with a truly national scope. In terms of the DCD, it is clear that these choices have implications on the granularity of the patterns revealed by the Sr isoscape; as the collection of Sr isotope data in Australia using NGSA samples grows in the future, it is hoped the value of coverage will prevail over a relative low resolution of detailed features.

The NGSA collected samples at two depths, a ‘top outlet sediment’ (TOS) from a shallow (0.1 m) soil pit approximately 0.8 m x 0.8 m in area, and a ‘bottom outlet sediment’ (BOS) from a minimum of three auger holes generally drilled within ~10 m of the TOS pit. The auger holes were drilled to refusal or to maximum depth of ~1 m, and the BOS sample was collected, on average, from a top depth of 0.6 m to bottom depth of 0.8 m from all augered holes. A field manual (Lech et al., 2007) was compiled to record all sample collection method details, including the site selection process. Sampling for the NGSA took place between July 2007 and November 2009, and the field data were recorded in Cooper et al. (2010).

In the laboratory, the samples were air dried at 40 °C for a minimum of 48 h (or to constant mass), homogenised and reduced by riffle splitting, sieved to two different grain-size fractions (a coarse fraction of <2 mm and a fine fraction of <75 µm), and further prepared (see Caritat et al., 2009) for the comprehensive geochemical analysis program of the NGSA (see Caritat et al.,

2010). For [this](#) Sr isotope analysis, an aliquot of minimum ~1 g of sample was milled to a fine powder using a carbon steel ring mill or, for a few samples only, an agate micromill. The main sample type selected ~~for the present Sr isotope study~~ was BOS <2 mm to be as representative as possible of the geogenic background unaffected by modern landuse practices and inputs (e.g., fertilizers).

Overall 112 NGSA BOS <2 mm samples were analysed for Sr isotopes as detailed in the Methods Subsection below. Those samples originate from within 102 NGSA catchments, which together cover 529,000 km² of inland southeastern Australia (see Figure 1).

3.2 Methods

Samples were prepared and analysed for Sr isotopes (⁸⁷Sr/⁸⁶Sr) at the Wollongong Isotope Geochronology Laboratory (WIGL). Approximately 50 mg of sample was weighed and digested in a 2:1 mixture of hydrofluoric and nitric acids. All reagents used were Seastar Baseline® grade with Sr concentrations typically <10 parts per trillion. Following digestion, samples were re-dissolved in aqua regia (twice if needed) in order to eliminate any fluorides, followed by nitric acid twice. Finally, samples were re-dissolved in 2M nitric acid prior to ion exchange chromatography. Strontium was isolated from the sample matrix using automated, low-pressure chromatographic system Elemental Scientific prepFAST-MCTM and a 1 mL Sr-Ca column (EichromTM) (Romaniello et al., 2015). The Sr elutions were re-dissolved in 0.3M HNO₃. Strontium isotope analysis was performed on a Thermo Scientific Neptune Plus multicollector-inductively coupled plasma-mass spectrometryspectrometer (MC-ICP-MS) at WIGL. The sample introduction system consists of an ESI Apex-ST PFA MicroFlow nebulizer with an uptake rate of ~0.1 mL/min, an SSI Quartz dual cyclonic spray chamber, jet sample and X skimmer cones. Measurements were performed in low-resolution mode. The instrument was tuned at the start of each session with a 20 parts per billion Sr solution, and sensitivity for ⁸⁸Sr was typically around 4 V. Masses 88, 87, 86, 85, 84 and 83 were collected on Faraday cups. Instrumental mass bias was internally corrected using measured ⁸⁸Sr/⁸⁶Sr. Masses 85 and 83 were used to correct for the isobaric interference of ⁸⁷Rb and ⁸⁶Kr, respectively.

Maps were prepared using the open software QGIS (version 3.16.14-Hannover) and applying an Albers equal area projection. Symbolology for displaying ⁸⁷Sr/⁸⁶Sr data was either point data classified ~~by~~in eight ~~quantile~~equal quantile classes (12.5% of the data each; green = low to high = red) at the sampling site, or attributing this same value and colour to the whole catchment from which the outlet sediment comes, reflecting the sampling medium, catchment outlet sediment, being a representative sample of the average materials in the catchment (see Subsection 3.1).

3.3 Quality Assessment

NIST SRM987 was used as a secondary standard and measured after every five samples to assess accuracy during analysis. Accuracy of the whole procedure was assessed by processing USGS reference material BCR-2 (Plumlee, 1998). The mean ± 2se ⁸⁷Sr/⁸⁶Sr for BCR-2 in this study is 0.704961 ± 35 (n = 13), within error of the value in Jweda et al. (2016) (0.704500 ± 11). Total procedure blanks ranged between 0.025 and 0.245 ng Sr (n = 12).

Ten field duplicate sample pairs (collected at a median distance of ~80 m from one another on the same landscape unit, see Lech et al., 2007) were analysed for $^{87}\text{Sr}/^{86}\text{Sr}$ in the BOS <2 mm sample and returned a median relative standard deviation of 0.10%. The relative standard deviation from field duplicates includes natural variability (mineralogical/chemical heterogeneity of the alluvial deposit), as well as sample collection, preparation and analysis uncertainties.

Overall, we feel that the quality of the $^{87}\text{Sr}/^{86}\text{Sr}$ data presented herein is adequate for the purpose of regional mapping and that reporting $^{87}\text{Sr}/^{86}\text{Sr}$ data to the third decimal place with an indicative fourth decimal place is appropriate for this work. This relatively low precision is attributed to heterogeneity of the alluvial deposits, since precision relating to sample preparation and analysis for Sr isotopes is at the fifth decimal place (see results for BCR-2 above).

4 Results and Discussion

The DCD region $^{87}\text{Sr}/^{86}\text{Sr}$ results are summarised in Table 1 and the full dataset (n = 112) is available from <https://portal.ga.gov.au/xxxxxx>. The observed $^{87}\text{Sr}/^{86}\text{Sr}$ values range from a minimum of 0.7089 to a maximum of 0.7511 (range 0.0422). The median $^{87}\text{Sr}/^{86}\text{Sr}$ (\pm ~~robust standard~~ median absolute deviation) result is 0.7199 (\pm ~~0.0142~~ 0.0071), and the mean (\pm standard deviation) is 0.7220 (\pm 0.0106). Kurtosis and skewness are 0.28576 and 1.0285, respectively. The whole-dataset distribution characteristics indicate a bimodal ~~to polymodal~~ platykurtic (i.e., displaying few outliers) distribution with a heavy positive (high) tail (Figure 3). Indeed, the Tukey boxplot (Tukey, 1977), shows only one structural outlier at the maximum value. The modes of the two main ~~populations are at ~0.712 and ~0.721~~ subpopulations are ~0.712 and ~0.721, with several smaller subpopulations having more radiogenic values. We note that other large-scale $^{87}\text{Sr}/^{86}\text{Sr}$ datasets have a similar range to the DCD region, are also at least bimodal, and also have heavily right-hand (positively) skewed distributions (e.g., Bataille et al., 2019). Statistics for individual geological regions are also shown in Table 1.

Table 1: Summary statistics (count, minimum, 25th percentile, median, ~~robust~~ median absolute deviation, mean, standard deviation, 75th percentile, maximum, range, variance, inter-quartile range, kurtosis, skewness) of the $^{87}\text{Sr}/^{86}\text{Sr}$ data from the Darling-Curnamona-Delamerian (DCD) Sr isotope study area, southeastern Australia. NA: not available.

<u>Georegi</u> <u>on</u>	n	Min	25% _ _ _	Med	Rob <u>SDMA</u> <u>D</u>	Mea n	SD	75% _ _ _	Max	Ran ge	Var	<u>IQR</u>	Kurt	Ske w
<u>All</u>	11 2	0.70 89	0.71307 <u>129</u>	0.71 99	0.01420 <u>071</u>	0.72 20	0.01 06	0.72747 <u>281</u>	0.75 11	0.04 22	1.14 <u>E-</u> <u>40.0</u> <u>001</u>	<u>0.01</u> <u>52</u>	0.28 56	1.02 85

Inserted Cells
Inserted Cells

Adelaide	7	0.7162	0.7200	0.7244	0.0062	0.7264	0.0082	0.7325	0.7402	0.0240	0.0001	0.0124	-	0.6163
Arrowie	2	0.7201	0.7201	0.7248	0.0043	0.7248	0.0066	0.7294	0.7294	0.0093	4.35E-5	0.0093	NA	NA
Bancania	1	0.7180	0.7180	0.7180	NA	0.7180	NA	0.7180	0.7180	NA	NA	NA	NA	NA
Broken Hill	4	0.7239	0.7267	0.7365	0.0070	0.7369	0.0109	0.7474	0.7506	0.0266	0.0001	0.0207	1.1939	0.1979
Darling	8	0.7102	0.7113	0.7152	0.0035	0.7152	0.0040	0.7189	0.7212	0.0110	1.57E-5	0.0076	-	0.2907
Eromanga	26	0.7089	0.7115	0.7142	0.0034	0.7178	0.0093	0.7220	0.7445	0.0356	0.0001	0.0105	2.1347	1.6451
Kanmantoo	2	0.7495	0.7495	0.7497	0.0002	0.7497	0.0003	0.7499	0.7499	0.0004	9.33E-8	0.0004	NA	NA
Lachlan	5	0.7246	0.7254	0.7284	0.0023	0.7320	0.0109	0.7403	0.7511	0.0265	0.0001	0.0149	4.4042	2.0653
Murray	54	0.7095	0.7129	0.7195	0.0065	0.7214	0.0094	0.7261	0.7419	0.0324	0.0001	0.0133	-	0.8889
St Vincent	1	0.7312	0.7312	0.7312	NA	0.7312	NA	0.7312	0.7312	NA	NA	NA	NA	NA

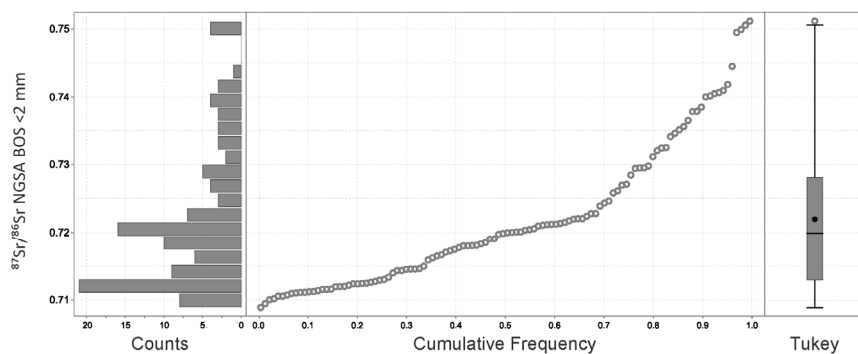


Figure 3: Univariate distribution of the $^{87}\text{Sr}/^{86}\text{Sr}$ data from the Darling-Curnamona-Delamerian (DCD) Sr isotope study area: (left) histogram (20 bins 0.002 wide); (middle) cumulative frequency plot; and (right) Tukey boxplot (mean = black dot).

The observed $^{87}\text{Sr}/^{86}\text{Sr}$ values range from close to modern seawater $^{87}\text{Sr}/^{86}\text{Sr}$ (0.709), also reflecting modern [marine](#) carbonate rock and mudstone, to values characteristic of older, Rb-rich felsic igneous rocks, such as granite and rhyolite; the median and mean values are typical of monzogranite to quartzite main rock types (Bataille and Bowen, 2012, figure 5). In the following Subsections we discuss potential sources for the more elevated $^{87}\text{Sr}/^{86}\text{Sr}$ values ([top quartile](#)) in the area, followed by an analysis of potential depleted sources; ([bottom quartile](#)), the variation of $^{87}\text{Sr}/^{86}\text{Sr}$ along the Murray River corridor, the variation of $^{87}\text{Sr}/^{86}\text{Sr}$ in different geological regions within the DCD area, and finally compare the $^{87}\text{Sr}/^{86}\text{Sr}$ data to existing geochemical and mineralogical data for the same NGSA sites.

4.1 Sr isoscape mapping

From the $^{87}\text{Sr}/^{86}\text{Sr}$ value reported at any given sampling location; ([Figure 4a](#)), we can infer a representative catchment $^{87}\text{Sr}/^{86}\text{Sr}$ composition for the drainage area directly upstream of it ([Figure 4b](#)) because sediments sampled at this location (outlet of catchment) represent an average of sediments eroded upstream and transported to the sampling location (Ottesen et al., 1989; Bølviken et al., 2004). This approach allows [Sr isoscape cost-effective geochemical or isotopic](#) mapping of a large area despite a low sampling resolution. However, in addition to the limitations relating to weathering and aeolian inputs mentioned above, one needs to bear in mind that this method assumes that all areas of the landscape draining into the sampling location contribute equally to the sediment budget, which may not be accurate. These limitations need to be taken into consideration before [taking using](#) the reported $^{87}\text{Sr}/^{86}\text{Sr}$ [at face value](#) as proxies for the Sr isotope composition of the basement in the mapped region. If using this dataset to study past or present animal mobility, another limitation is that we measured the isotopic composition of bulk Sr in sediments, not the bioavailable Sr. Nevertheless, the dataset presented here can still be used as a guide, or indeed an input to machine learning models, for geological, archaeological, palaeontological and ecological studies.

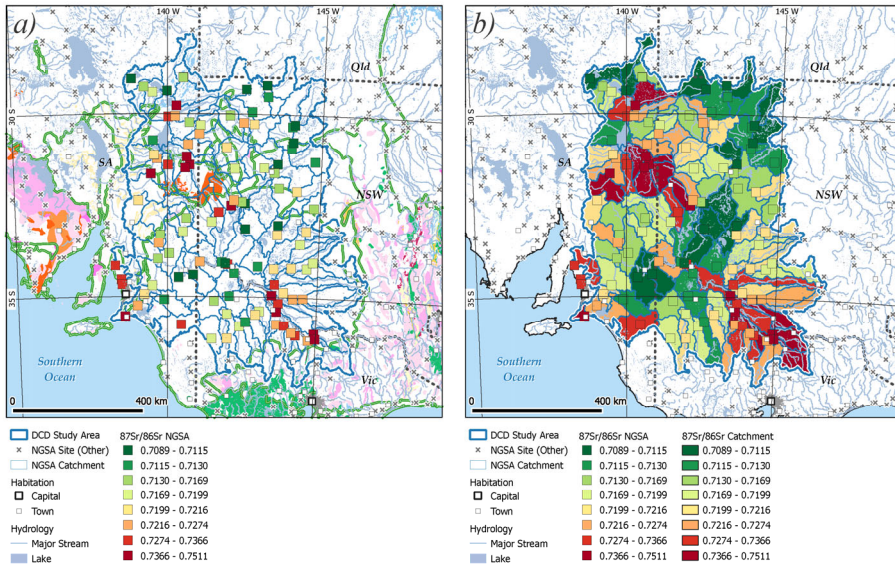


Figure 4: Strontium isoscape for the Darling-Curnamona-Delamerian (DCD) Sr isotope study area with data points classed by quantiles and overlain (a) on geological regions (double green outlines) from Blake and Kilgour (1998) and surface geology from Raymond et al. (2012) (see Fig. 2a for geology legend); and (b) on catchments coloured by same colour ramp. Data are classified in eight equal quantile classes. Map projection: Albers equal area.

4.2 Identification of radiogenic $^{87}\text{Sr}/^{86}\text{Sr}$ source regions

Spatial patterns observed on the $^{87}\text{Sr}/^{86}\text{Sr}$ map (Figure 4) indicate inputs and transport of elevated $^{87}\text{Sr}/^{86}\text{Sr}$ signatures down several waterways. The most prominent such ‘train’ of dispersion is along the Murray River that forms the state border between NSW and Vic in the southeastern part of the study area. Here several $^{87}\text{Sr}/^{86}\text{Sr}$ values range from 0.7274 to 0.7511 (i.e., in the top quartile of the dataset), including the maximum value from this survey. On closer inspection, it is evident that the elevated $^{87}\text{Sr}/^{86}\text{Sr}$ signatures come down not only the Murray River (three samples), but also from tributaries that join the Murray River and carry sediments down catchments from upland areas both south and north of the border river. Examples of such streams are (from east to west) the Goulburn, Bendigo, and Loddon rivers/creeks located south of the Murray River, and the Wakool, Edward, and Murrumbidgee rivers/creeks to the north of it (see Supplementary Material). Both the Murray and tributary rivers drain abundant felsic igneous rocks hosted in the Ordovician turbidites of the Lachlan Fold Belt to the east and in the Victorian highlands to the south and southeast (both part of the Lachlan geological region), which are likely candidates for sourcing the elevated $^{87}\text{Sr}/^{86}\text{Sr}$ minerals transported down catchment. Present-day $^{87}\text{Sr}/^{86}\text{Sr}$ ratios for those sediments and intrusions have

indeed been reported around and over 0.72 (e.g., Keay et al., 1997; Chappell et al., 2000; Hergt et al., 2007). Minor mafic lithologies, e.g. at Dookie east of Shepparton (Broken Creek catchment) with lower $^{87}\text{Sr}/^{86}\text{Sr}$ reported values of 0.704 to 0.707 (Foster et al., 2009), are not of sufficient extent to significantly dampen the elevated $^{87}\text{Sr}/^{86}\text{Sr}$ signature at the catchment outlet. A lone similarly elevated (top-quartile) sample is located in the south central part of the study area and comes from a dune-dominated landscape devoid of principal drainage (Ngarkat Conservation Park in SA). Only a couple of very small areas of Cambrian-Ordovician felsic igneous rocks crop out in the west of this catchment, possibly suggesting that the elevated $^{87}\text{Sr}/^{86}\text{Sr}$ signal is inherited by aeolian input from source region(s) further afield. Indeed, the strongest average winds over the period 2004-2008 at this site, which tend to occur in winter, are from the northwest (BOM, 2021f). This upwind direction has abundant Adelaidean-age (meta)sediments, felsic and intermediate igneous rocks as well as medium- and high-grade metamorphic rocks ($^{87}\text{Sr}/^{86}\text{Sr}$ commonly >0.73), e.g., on the Yorke and Eyre peninsulas and in the Gawler geological region, which are ~~potential~~possible sources of elevated $^{87}\text{Sr}/^{86}\text{Sr}$ mineral grains potentially transported as windblown dust (Figure 4; Foden et al., 2001; Bestland and Forbes, 2009).

Along the Southern Ocean coast, both north and south of Adelaide, four top-quartile samples occur along the Inman, Gawler, Light, and Wakefield rivers, which are in more urbanised/industrialised environments compared to the rest of the study area. These samples are likely also influenced by aeolian transport and deposition of radiogenic material from the Yorke, Eyre and Gawler source areas mentioned above.

South and north of the Broken Hill geological region, near the centre of the study area, similarly elevated $^{87}\text{Sr}/^{86}\text{Sr}$ values (≥ 0.7274) are observed in several catchments: Pine and Stephens creeks to the south, and Siccus River, and Digby, Jack, and Childs dam channels (the latter three are from low-relief and featureless landscapes with poorly defined natural drainages), and Eurinilla Creek to the north. All of these catchments drain felsic igneous and/or high-grade metamorphic lithologies in the Palaeoproterozoic Broken Hill domain that would likely be the sources of elevated $^{87}\text{Sr}/^{86}\text{Sr}$ signatures (Pidgeon, 1967; Page and Laing, 1992) in those sediments. The radiogenic signature of the Broken Hill basement rocks can also be recognised in the regional groundwater (Caritat et al., 2005).

Two samples north of Lake Frome also have top-quartile $^{87}\text{Sr}/^{86}\text{Sr}$ signatures. One of them is located at the bottom of the catchment draining Mount Painter in the northeastern Flinders Ranges, an area of felsic igneous and medium-grade metamorphic rocks, which would contain prime candidate lithologies to produce sediment with a radiogenic Sr isotope signature (Elburg et al., 2003; McLaren et al., 2006). The second sample, located near Bakers Bore at the edge of the Strzelecki Desert, in a field of southwest-northeast oriented linear dunes, likely represents the $^{87}\text{Sr}/^{86}\text{Sr}$ signature of wind-transported material from the same Mount Painter source region and/or the outcropping Proterozoic rocks of the Broken Hill Domain discussed above, broadly consistent with dominant wind directions (BOM, 2021f).

4.3 Identification of unradiogenic $^{87}\text{Sr}/^{86}\text{Sr}$ source regions

Whereas ~~much of the~~ attention above has been paid to identifying the potential source rocks or regions for the more radiogenic $^{87}\text{Sr}/^{86}\text{Sr}$ catchment sediment signatures observed in the DCD study, it is also instructive to look at the catchments with lower

$^{87}\text{Sr}/^{86}\text{Sr}$. Catchments with $^{87}\text{Sr}/^{86}\text{Sr}$ values $< \sim 0.7130$ (lower i.e., in the bottom quartile of the dataset) occur in the central Murray Basin away from the main Murray River. To the south of the river, several low-relief (essentially internally draining) catchments with virtually no bedrock outcrop have $^{87}\text{Sr}/^{86}\text{Sr}$ values (from west to east) at 0.7129 and 0.7126 (field duplicates; Karoonda catchment), 0.7112 (Buniyp Plain catchment), 0.7095 (Berri catchment), and 0.7120 (Callaghan Plain catchment). The Callaghan Plain catchment is abutted to the south by the Ouyen catchment ($^{87}\text{Sr}/^{86}\text{Sr} = 0.7116$) and the Woomelang catchment to its south (0.7122); both of which are also low relief, locally featuring dunes and/or man-made drainage channels rather than natural stream lines. All of these $^{87}\text{Sr}/^{86}\text{Sr}$ values are at the lower end of the typical Murray River sediments as discussed in the next Subsection.

To the north of the Murray River, the Great Darling Anabranch and Darling River have signatures of 0.7120, and 0.7116 and 0.7114 (field duplicates), respectively. The Arumpo catchment has a value of 0.7127, whilst to its north the Karoola, Garpung, and Talyawalka catchments have $^{87}\text{Sr}/^{86}\text{Sr}$ values of 0.7114, 0.7110, and 0.7112, respectively. All of these catchments lack mapped rock outcrop and consist therefore almost entirely of Darling Basin sediment, with an unknown potential contribution from aeolian material in places. This is entirely consistent with the assessment of Gingele and De Deckker (2005) that typical source rocks in the New England Fold Belt (where Darling River tributaries mainly originate from) are Tertiary basalts with $^{87}\text{Sr}/^{86}\text{Sr}$ ratios of 0.703–0.705 and Permian granites with ratios around 0.7127.

In the northeast of the DCD study area, there are several catchments also with low $^{87}\text{Sr}/^{86}\text{Sr}$ signatures: 0.7102 (Paroo Overflow), 0.7124 (Tambua), 0.7116 (Paroo Overflow 2), 0.7108 (Cuttaburra), 0.7125 (Paroo), and 0.7106 (Cuttaburra Channels) toward the north-northeast from Wilcannia. In the central north, four further catchments have lower quartile $^{87}\text{Sr}/^{86}\text{Sr}$ values: Caryapundy (0.7111), Bootra (0.7120), Feeder (0.7125), and Berawinnia (0.7106) catchments.

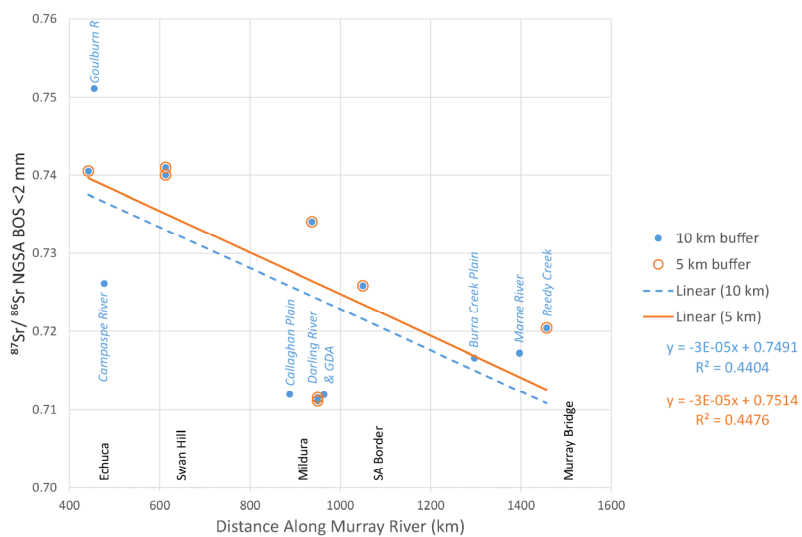
Finally, in the northwest of the study area where the Eromanga geological region encroaches onto the DCD area, a sand dune-dominated catchment on the edge of the Strzelecki Desert east of Lake Blanche has low $^{87}\text{Sr}/^{86}\text{Sr}$ (0.7100), as does the Cooryanna catchment (0.7089) further west.

As the Murray-Darling Basin is a region of locally intense agricultural activity, the possibility of fertilizers affecting the present $^{87}\text{Sr}/^{86}\text{Sr}$ results needs to be considered. Fertilizers used in a subcatchment of the Namoi River basin, located in the eastern Murray-Darling Basin (to the east of the DCD study area), have been documented to have $^{87}\text{Sr}/^{86}\text{Sr}$ values in the range 0.7081 to 0.7090 and application rates up to 30 to 60 kg/ha/y (Martin and McCulloch, 1999). These values fall within the lowest 12.5 % of our dataset (darkest green colour in Fig 4). Although we cannot rule out some localised influence of fertilizers on the documented $^{87}\text{Sr}/^{86}\text{Sr}$ patterns, it is worth remembering that (1) the dominant landuses in the DCD region are overwhelmingly grazing native vegetation (with minor nature conservation, grazing modified pastures, and dryland cropping) as noted in Section 2 above, and (2) our choice of sampling subsoil rather than topsoil material to reduce the impact anthropogenic actions and practices, together, should minimise that potential influence.

To close this Subsection, we note that the unradiogenic $^{87}\text{Sr}/^{86}\text{Sr}$ regolith values discussed above are consistent with regional, background $^{87}\text{Sr}/^{86}\text{Sr}$ groundwater values reported from shallow aquifers in the Flinders Ranges, Lake Frome and Eromanga Basin regions (Ullman and Collerson, 1994; Caritat et al., 2005).

4.4 Murray River profile

A profile of the catchment sediments' $^{87}\text{Sr}/^{86}\text{Sr}$ value along the Murray River (and tributaries) is shown in Figure 5 for sampling sites within a 5 km buffer and a 10 km buffer from the ~~Murray River~~river. The profile indicates a marked decrease in $^{87}\text{Sr}/^{86}\text{Sr}$ from the highlands (0.74-0.75) to near the mouth of the river (~ 0.71), spanning nearly the whole data range for the DCD study area. The 5 km and the 10 km buffered sampling points give linear regressions with similar correlation coefficients ($R = -0.669067$ and -0.663666 , respectively) and identical slopes (both -3×10^{-5}). Both regressions also suggest a primary $^{87}\text{Sr}/^{86}\text{Sr}$ of source material at the ~~source~~headwaters of the Murray River (intercept) of 0.749-0.751, ~~which is in agreement~~consistent with the isotopic signature of felsic igneous and sedimentary rocks in the ~~surrounding~~ Lachlan geological region (e.g., Keay et al., 1997; Chappell et al., 2000; Hergt et al., 2007).



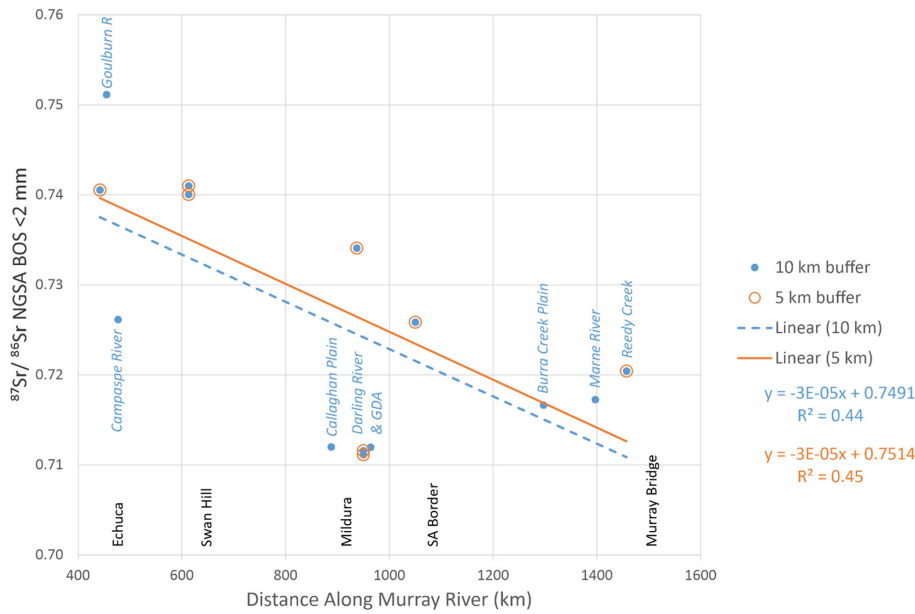


Figure 5: $^{87}\text{Sr}/^{86}\text{Sr}$ profile of NGSa catchment sediment at sampling sites located within 5 km and 10 km buffers of the Murray River (open and closed circles, respectively) vs downstream distance along the Murray River (east to west). Sites not directly sampling a Murray River catchment are labelled (in *italics*) with the name of the tributary (R = River; GDA = Great Darling Anabranch) or geomorphic entity. Least squares regression lines for the 5 km and 10 km buffers are shown as solid and dashed lines, respectively, and equations are given. Township and South Australia (SA) border positions are shown on the X-axis.

Along this profile, a few tributaries have clearly anomalous $^{87}\text{Sr}/^{86}\text{Sr}$ signatures, for instance the Goulburn River and the Campaspe River in the highlands are much higher (~ 0.751) and lower (~ 0.726), respectively, than the Murray River sediment signature in this part of the Basin (~ 0.740). Further downstream, the numerous channels and low-relief landscape from the Callaghan Plain contribute low $^{87}\text{Sr}/^{86}\text{Sr}$ material to the main Murray valley from the south. Next, the Darling River confluence also contributes less radiogenic sediments (~ 0.711) from the north.

These findings are consistent with the study of the fluvial suspended particulate matter by Douglas et al. (1995), which found more radiogenic values in clay and coarser ($>0.2 \mu\text{m}$) fraction material from the Murray River (~ 0.722 to 0.760) than from the Darling River (~ 0.709 – 0.711). Gingele and De Deckker (2005) studied the Sr isotopic composition of fluvial clay-sized sediments ($<2 \mu\text{m}$) of the Murray and Darling Basins, and also found the former to be more radiogenic and variable (0.726 – 0.775) than the latter (0.708 – 0.717). Aeolian dust collected in the Murray and Darling Basins (De Deckker et al., 2014)

similarly shows a radiogenic divide between these source regions, with Murray Basin dust spanning a wide range of more radiogenic $^{87}\text{Sr}/^{86}\text{Sr}$ (0.716-0.776) compared to the Darling Basin dust (0.708-0.714).

Further downstream, closest to the mouth of the river, sediments are being transported down from the west with a more radiogenic signature (~ 0.720) relative to the Murray River sample(s) further upstream; this signature is consistent with rocks from the Kanmantoo geological region (Gray, 1990; Bestland and Forbes, 2009; Haines et al., 2009) shedding sediment down Reedy Creek.

4.5 Isotopic signature of the geological regions

In consideration of the above discussion on more radiogenic and less radiogenic source regions for the minerals found in the NGSa sediments of the DCD, Figure 6 shows a clear split between these regions in the $^{87}\text{Sr}/^{86}\text{Sr}$ vs $1000/\text{Sr}$ variable space. By and large, the sediments provenanced from, or deposited in, the Darling Basin and Eromanga Basin (only the southern part of which is considered in this study) appear to have relatively low $^{87}\text{Sr}/^{86}\text{Sr}$ ratios (mostly < 0.7250), in agreement with previous studies cited above. At the same time, these sediments have a widely variable Sr content ($1000/\text{Sr}$ ranging from 1.2 to 33.6 $\text{g}\cdot\mu\text{g}^{-1}$). In contrast, NGSa sediments collected in catchments draining¹ the other main geological regions represented in the DCD area (Adelaide, Arrowie, Broken Hill, Kanmantoo, Lachlan, and Murray geological regions; open symbols in Figure 6) can have more radiogenic $^{87}\text{Sr}/^{86}\text{Sr}$ signatures (up to 0.750). These sediments also have a lower and more limited Sr content range ($1000/\text{Sr}$ ranging mostly from 0.4 to ~ 21 $\text{g}\cdot\mu\text{g}^{-1}$). Generalised trends for these two populations have been suggested by the qualitative arrows in the scatterplot.

¹ Samples are attributed a geological region here (Figures 6 and 7) not based on which region they are necessarily located in (sample site), but based on which region is most represented in their catchment

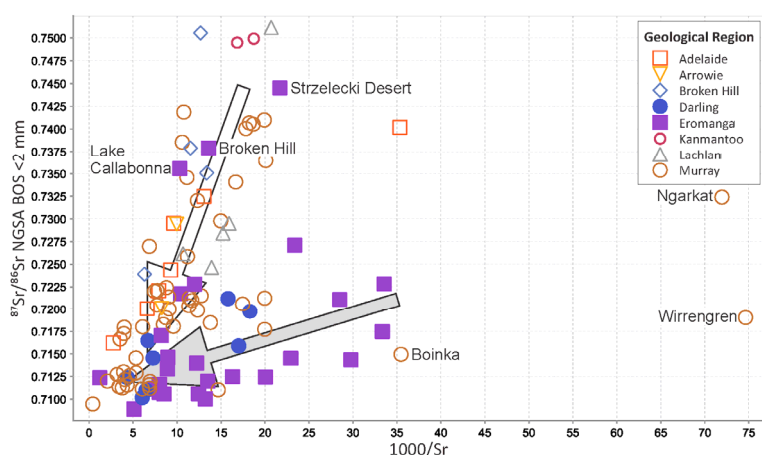


Figure 6: Scatterplot of $^{87}\text{Sr}/^{86}\text{Sr}$ vs $1000/\text{Sr}$ in the NGSA BOS <2 mm samples from the Darling-Curnamona-Delamerian (DCD) Sr isotope study area, grouped by main geological region each catchment is draining.

Three samples from the Murray geological region, however, have much lower Sr contents ($1000/\text{Sr}$ between 35 and $75 \text{ g} \cdot \mu\text{g}^{-1}$) than the others (Figure 6); closer examination of these unusual cases indicates that they are from sandy deserts near the Vic-SA border in the southwestern DCD area (Boinka at the southern edge of Sunset National Park, Ngarkat in the Ngarkat Conservation Park, and Wirrengren in the Big Desert). Here, aeolian input of quartz grains may be or may have been likely active, diluting the geochemical and mineralogical concentrations of Sr-bearing components in the samples. Indeed these three sites contain over 90 wt% SiO_2 , which is over the 75th percentile nationally for the NGSA (Caritat and Cooper, 2011) and among the highest silica content of all the DCD samples. Since the aeolian quartz input is likely exogenous (from a different source to the provenance of the silt and clay material in the sample), we can reasonably speculate that the fluvial component of these materials would be significantly richer in Sr and therefore have lower $1000/\text{Sr}$ values.

Three catchment samples draining mainly the Eromanga geological region, conversely, fall within the general Adelaide-Broken Hill-etc. trend (open symbols and arrow in Figure 6). These come from the Broken Hill, Lake Callabonna, and Strzelecki Desert catchments in the central-northern part of the study area. The samples are located either downstream from the Broken Hill highlands or downwind from the Mount Painter and Adelaide regions. They are thus likely influenced by these more radiogenic source regions even though physically located in the Eromanga geological region, which typically has a lower $^{87}\text{Sr}/^{86}\text{Sr}$ sediment signature.

To refine the differentiation of $^{87}\text{Sr}/^{86}\text{Sr}$ signature for the various geological regions, boxplots of the data ~~sub-grouped~~subgrouped by these regions ~~is~~are presented in Figure 7. In Figure 7a, Tukey boxplots are shown first for the whole dataset ($n = 112$), then in succession by the drained geological region in order of increasing median (or, in two cases, unique)

365 value: Darling (n = 8), Wonominta (2), Eromanga (26), Bancannia (1), Murray (54), Arrowie (2), Adelaide (7), St Vincent (1),
Lachlan (5), Broken Hill (4), and Kanmantoo (2) geological regions. A histogram indicating the contribution of each geological
region to the general population distribution is shown in Figure 7b. With the few exceptions explained above, both diagrams
support a general model with two main sources of fluvial and aeolian sediment in the DCD area, a more radiogenic source
($^{87}\text{Sr}/^{86}\text{Sr}$ between 0.720 and 0.751) consisting generally of the older (Palaeoproterozoic to Early Carboniferous) geological
370 regions (Kanmantoo, Broken Hill, Lachlan, Adelaide and Arrowie) versus a less radiogenic source ($^{87}\text{Sr}/^{86}\text{Sr}$ between 0.709
and 0.722) consisting of generally younger (Devonian to Tertiary) geological regions (Eromanga and Darling). The most
expansive and youngest (Late Mesozoic-Quaternary) Murray geological region represents a transition between these two
endmembers, as, depending on sampling location, it is the depositional site for material mainly contributed by either the
radiogenic or the unradiogenic endmember source.

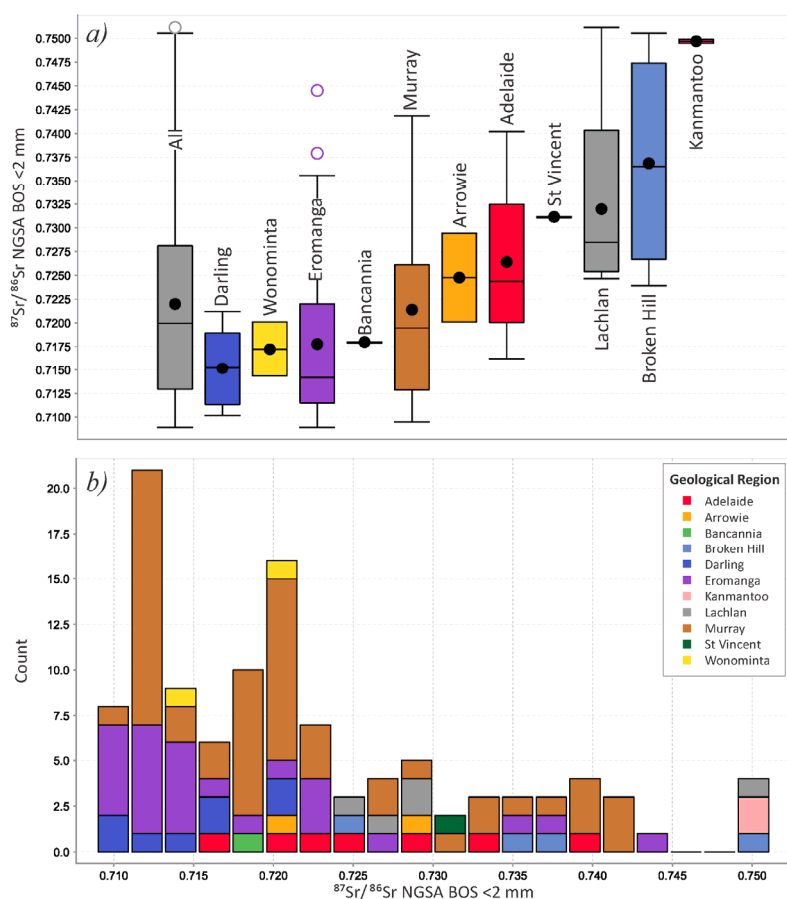


Figure 7: Univariate distribution representations of the $^{87}\text{Sr}/^{86}\text{Sr}$ data from the Darling-Curnamona-Delamerian (DCD) Sr isotope study area by geological region: (a) Tukey boxplots of, left to right, the whole dataset first (grey; $n = 112$), then sorted by increasing median (Darling, $n = 8$; Wonominta, $n = 2$; Eromanga, $n = 26$; Bancannia, $n = 1$; Murray, $n = 54$; Arrowie, $n = 2$; Adelaide, $n = 7$; St Vincent, $n = 1$; Lachlan, $n = 5$; Broken Hill, $n = 4$; and Kanmantoo, $n = 2$, geological regions); (b) histogram by the above subgroups.

The smaller Palaeoproterozoic-Devonian Wonominta region, drained by two of the catchments sampled here, yields $^{87}\text{Sr}/^{86}\text{Sr}$ values (0.7144 and 0.7201) uncharacteristic of the contemporaneous radiogenic endmember identified above, but intermediate between it and the Mt Wright metavolcanics of alkali basalt affinity (0.704-0.706; Plimer, 1985; Zhou and Whitford, 2007)

found in the Wonominta block. In the absence of published $^{87}\text{Sr}/^{86}\text{Sr}$ data for other lithologies, particularly felsic volcanic and (meta)sedimentary lithologies, from the Wonominta block, it is impossible to determine if the two catchment sediment values reported here are typical of a weighted average Wonominta block Sr isotope signature or, instead, represent a mixture of material originating from it and from either of the two endmembers discussed above.

4.6 Comparison to geochemistry and mineralogy

The $^{87}\text{Sr}/^{86}\text{Sr}$ values in the DCD area discussed here are loosely correlated with the concentrations of major elements/constituents potassium (Spearman correlation coefficient $r_s = 0.35$), calcium (-0.33), and loss on ignition (a proxy for organic matter; -0.32) in the same BOS coarse NGSA sediment samples (Caritat and Cooper, 2011). (Note that for $n = 112$, $|r_s|$ values > 0.24 have $p = 0.001$.) A number of trace elements similarly have ~~loose~~^{noteworthy} correlations with the $^{87}\text{Sr}/^{86}\text{Sr}$ values in the DCD area, most notably the total concentrations of thorium (0.48), tungsten (0.44), lanthanum (0.42) and light rare earth elements praseodymium, cerium and neodymium (0.38 to 0.35), rubidium (0.35), lead (0.35), and Sr itself (-0.52) (Caritat and Cooper, 2011). In terms of bulk mineralogy, the $^{87}\text{Sr}/^{86}\text{Sr}$ values of the DCD samples correlate best with the abundances of plagioclase (0.44), and illite-muscovite (0.43) in the TOS bulk NGSA sediments (Caritat and Troitzsch, 2021). Therefore, weak spatial distribution similarities exist between the $^{87}\text{Sr}/^{86}\text{Sr}$ maps and the geochemical/ mineralogical maps for the above parameters.

5 Data Availability

The new spatial Sr isotope dataset for the DCD region is publicly available through the Geoscience Australia portal (Caritat et al., 2022; <https://dx.doi.org/10.26186/146397>).

6 Conclusions

One hundred and twelve catchment outlet sediment samples from the National Geochemical Survey of Australia archive were analysed for strontium (Sr) isotopic composition ($^{87}\text{Sr}/^{86}\text{Sr}$). Geographically, this study covers 529,000 km² of the Darling-Curnamona-Delamerian (DCD) area in inland southeastern Australia, and is dominantly flat and low-lying with minor bedrock outcrop. The bottom outlet sediment (BOS) samples were retrieved mostly by augering overbank or floodplain landforms near the outlet of large catchments to, on average, 0.6 to 0.8 m depth. Total digestion of milled <2 mm grain-size fractions from these sediments yielded a wide range of $^{87}\text{Sr}/^{86}\text{Sr}$ values from a minimum of 0.7089 to a maximum of 0.7511 (~~range 0.0422~~), with a median (\pm robust standard deviation) of 0.7199 (± 0.0112), and a mean (\pm standard deviation) of 0.7220 (± 0.0106). A map of the $^{87}\text{Sr}/^{86}\text{Sr}$ distribution (isoscape) reveals spatial patterns reflecting the sources and transport pathways of the sediment carried principally down rivers, which drain mainly from the east and the north to the west/southwest, and, to a lesser degree, by wind, which blows dominantly from the west/northwest. Three main source regions of relatively radiogenic

($^{87}\text{Sr}/^{86}\text{Sr} \geq \sim 0.7270$; **top quartile**) elastic material are recognised. First, the Palaeozoic felsic igneous and sedimentary rocks of the Lachlan geological region to the east and southeast of the DCD area contribute fluvial sediment that is transported west by the Murray River and several tributaries. Second, in the central DCD area, alluvium shed **by**from the topographically proud outcrop of Palaeoproterozoic metamorphic rocks of the Broken Hill geological region disperses radially to the north, west, and southeast. Third, radiogenic material sourced from the Proterozoic to Palaeozoic rocks of the Kanmantoo, Adelaide, Gawler and Painter geological regions to the west of the area disperses mostly by aeolian processes toward the east and southeast. These radiogenic sources contrast with the relatively unradiogenic ($^{87}\text{Sr}/^{86}\text{Sr} \leq \sim 0.7130$; **bottom quartile**) sediments found in a few, mostly internally draining, catchments in the central Murray Basin, some Darling Basin catchments in the northeast, and a few Eromanga geological region-influenced catchments in the northwest of the study area.

This study constitutes the largest Sr isoscape in Australia to date and demonstrates the usefulness of $^{87}\text{Sr}/^{86}\text{Sr}$ analysis as a tool for understanding geological and geomorphological processes that may impact natural resources management of soil, water, and agriculture. **Although we have focused the discussion on sediment provenancing using $^{87}\text{Sr}/^{86}\text{Sr}$ data, potential applications could be extended to mineralisation, hydrology, food tracing, dust provenancing/sourcing, and historic migrations of people and animals.**

The new spatial dataset is publicly available through the Geoscience Australia portal (<https://url.place.holder.html.xxxx>).

Acknowledgments

The National Geochemical Survey of Australia (NGSA) project would not have been possible without Commonwealth funding through the Onshore Energy Security Program, and Geoscience Australia appropriation (<http://www.ga.gov.au/ngsa>). ~~The strontium isotopic analyses reported here were funded by the Exploring for the Future (EFTF 2020-2024) initiative of the Australian Government.~~ Collaboration with the geoscience agencies of all States and the Northern Territory was essential to the success of the NGSA project and is gratefully acknowledged. We ~~thank~~**acknowledge** all ~~the~~ land owners and custodians, **whether private, corporate and/or traditional**, for granting access to the field sites for the purposes of sampling, and Geoscience Australia laboratory staff for assistance with preparing and analysing the samples. **We thank Geoscience Australia reviewers Kathryn Waltenberg and David Huston, journal reviewers Patrick De Deckker, Jurian Hoogewerff and anonymous, and the journal editor, for their detailed and constructive critique of our work.** ~~The strontium isotopic analyses reported here were funded by the Exploring for the Future (EFTF 2020-2024) initiative of the Australian Government.~~ PdC publishes with the permission from the Chief Executive Officer, Geoscience Australia.

440 References

- Adams, S., Grün, R., McGahan, D., Zhao, J.-X., Feng, Y., Nguyen, A., Willmes, M., Quaresimin, M., Lobsey, B., Collard, M., and Westaway, M. C.: A strontium isoscape of north-east Australia for human provenance and repatriation, *Geoarchaeol.*, 34, 231-251, doi:10.1002/gea.21728, 2019.
- ASRIS (Australian Soil Resource Information System): Digital Atlas of Australian Soils, 2021a. Available at: <https://www.asris.csiro.au/themes/Atlas.html>
- ASRIS (Australian Soil Resource Information System): ASRIS Map Viewer Tool, Landcover Layer, Land Use 2001-2002, 2021b. Available at: <http://www.asris.csiro.au/mapping/viewer.htm>
- Bataille, C. P. and Bowen, G. J.: Mapping $^{87}\text{Sr}/^{86}\text{Sr}$ variations in bedrock and water for large scale provenance studies, *Chem. Geol.*, 304, 39-52, doi:10.1016/j.chemgeo.2012.01.028, 2012.
- Bataille, C. P., Crowley, B. E., Wooller, M. J., and Bowen, G. J.: *Advances in global bioavailable strontium isoscapes, Palaeogeog., Palaeoclim., Palaeoecol.*, 555, 109849, doi:10.1016/j.palaeo.2020.109849, 2020.
- Bestland, E. A. and Forbes, M. S.: Evidence for biocycling from Ba/Ca, Sr/Ca, and $^{87}\text{Sr}/^{86}\text{Sr}$ in soils (Red Brown Earths) from South Australia, *Austral. J. Soil Res.*, 47, 154-165, doi:10.1071/SR08026, 2009.
- Bestland, E. A., Green, G. P. and Rivett, K.: Sources of base cations in soil solids and soil water: examples from red brown earths of South Australia, in: Roach, I. C. (Ed), *Advances in Regolith* (Canberra, ACT, 19-21 November 2003), Coop. Res. Centre Landscape Evol. Min. Explo., Canberra, ACT, 16-18, 2003. Available at: <http://crlceme.org.au/Pubs/Advancesinregolith/AdvancesinRegolith.html>
- Blake, D. H. and Kilgour, B.: Geological Regions of Australia 1:5,000,000 scale (Data Set), *Geosci. Austral.*, Canberra, 1998. Available at: <http://pid.geoscience.gov.au/dataset/ga/32366>
- Blum, J. D., Erel, Y., and Brown, K.: $^{87}\text{Sr}/^{86}\text{Sr}$ ratios of Sierra Nevada stream waters: implications for relative mineral weathering rates, *Geochim. Cosmochim. Acta*, 57, 5019-5025, doi:10.1016/S0016-7037(05)80014-6, 1993.
- BOM (Bureau of Meteorology): Climate classification maps (Temperature/humidity zones), 2021a. Available at: http://www.bom.gov.au/jsp/ncc/climate_averages/climate-classifications/index.jsp
- BOM (Bureau of Meteorology): Climate classification maps (Köppen), 2021b. Available at: http://www.bom.gov.au/jsp/ncc/climate_averages/climate-classifications/index.jsp?maptype=kpn#maps
- BOM (Bureau of Meteorology): Decadal and multi-decadal temperature (Minimum), 2021c. Available at: http://www.bom.gov.au/jsp/ncc/climate_averages/decadal-temperature/index.jsp?maptype=6&period=7605&product=min#maps
- BOM (Bureau of Meteorology): Decadal and multi-decadal temperature (Maximum), 2021d. Available at: http://www.bom.gov.au/jsp/ncc/climate_averages/decadal-temperature/index.jsp?maptype=6&period=7605&product=max#maps

- BOM (Bureau of Meteorology): Decadal and multi-decadal rainfall (Rainfall totals), 2021e. Available at: http://www.bom.gov.au/jsp/ncc/climate_averages/decadal-rainfall/index.jsp?maptype=30&period=1986-2015&product=totals#maps
- 475 BOM (Bureau of Meteorology): Australian Climate Averages - Average wind velocity, 2021f. Available at: http://www.bom.gov.au/jsp/ncc/climate_averages/wind-velocity/index.jsp?period=aug#maps
- Bullen, T., White, A., Blum, A., Harden, J., and Schulz, M.: Chemical weathering of a soil chronosequence on granitoid alluvium: II. Mineralogic and isotopic constraints on the behavior of strontium, *Geochim. Cosmochim. Acta*, 61, 291-306, doi:10.1016/S0016-7037(96)00344-4, 1997.
- 480 Bølviken, B., Bogen, J., Jartun, M., Langedal, M., Ottesen, R. T., and Volden, T.: Overbank sediments: a natural bed blending sampling medium for large-scale geochemical mapping, *Chemomet Intel Lab Syst*, 74, 183-199, doi:10.1016/j.chemolab.2004.06.006, 2004.
- Caritat, P. de and Cooper, M.: A continental-scale geochemical atlas for resource exploration and environmental management: the National Geochemical Survey of Australia. *Geochem. Explo. Env. Anal.*, 16, 3-13. doi:10.1144/geochem2014-322, 2016.
- 485 Caritat, P. de and Cooper, M.: National Geochemical Survey of Australia: The Geochemical Atlas of Australia. Record, 2011/20, *Geosci. Austral.*, Canberra, 2011. Available at: <http://pid.geoscience.gov.au/dataset/ga/71973>
- Caritat, P. de and Troitzsch, U.: Towards a Regolith Mineralogy Map of the Australian Continent: A Feasibility Study in the Darling-Curnamona-Delamerian Region. Record 2021/35, *Geosci. Austral.*, Canberra, doi:10.11636/Record.2021.035, 2021.
- Caritat, P. de, Cooper, M., Lech, M., McPherson, A., and Thun, C.: National Geochemical Survey of Australia: Sample Preparation Manual. Record, 2009/08, *Geosci. Austral.*, Canberra, 2009. Available at: <http://pid.geoscience.gov.au/dataset/ga/68657>
- 490 Caritat, P. de, Cooper, M., Pappas, W., Thun, C., and Webber, E.: National Geochemical Survey of Australia: Analytical Methods Manual. Record, 2010/15, *Geosci. Austral.*, Canberra, 2010. Available at: <http://pid.geoscience.gov.au/dataset/ga/70369>
- 495 Caritat, P. de, Dosseto, A., and Dux, F.: A strontium isoscape of inland southeastern Australia. Dataset, *Geosci. Austral.*, Canberra, doi:10.26186/146397, 2022.
- Caritat, P. de, Kirste, D., Carr, G., and McCulloch, M.: Groundwater in the Broken Hill region, Australia: recognising interaction with bedrock and mineralisation using S, Sr and Pb isotopes, *Appl. Geochem.*, 20, 767-787, doi:10.1016/j.apgeochem.2004.11.003, 2005.
- 500 Chadwick, O. A., Derry, L. A., Bern, C. R., and Vitousek, P. M.: Changing sources of strontium to soils and ecosystems across the Hawaiian Islands, *Chem. Geol.*, 267, 64-76, doi:10.1016/j.chemgeo.2009.01.009, 2009.
- Chappell, B. W., White, A. J. R., Williams, I. S., Wyborn, D., and Wyborn, L. A. I.: Lachlan Fold Belt granites revisited: High- and low-temperature granites and their implications, *Austral. J. Earth Sci.*, 47, 123-138, doi:10.1046/j.1440-0952.2000.00766.x, 2000.

- Christensen, J. N., Dafflon, B., Shiel, A. E., Tokunaga, T. K., Wan, J., Faybishenko, B., Dong, W., Williams, K. H., Hobson, C., Brown, S. T., and Hubbard, S. S.: Using strontium isotopes to evaluate the spatial variation of groundwater recharge, *Sci. Total Env.*, 637-638, 672-685, doi:10.1016/j.scitotenv.2018.05.019, 2018.
- Cooper, M., Caritat, P. de, Burton, G., Fidler, R., Green, G., House, E., Strickland, C., Tang, J., and Wygralak, A.: National Geochemical Survey of Australia: Field Data. Record, 2010/18, Geosci. Austral., Canberra, 2010. Available at: <http://pid.geoscience.gov.au/dataset/ga/70478>
- De Deckker, P., Munday, C. I., Brocks, J., O'loingsigh, T., Allison, G. E., Hope, J., Norman, M., Stuut, J. - B. W., Tapper, N. J., and Kaars, S. van der: Characterisation of the major dust storm that traversed over eastern Australia in September 2009; a multidisciplinary approach, *Aeol. Res.*, 15, 133-149, doi:10.1016/j.aeolia.2014.07.003, 2014.
- De Deckker, P.: Airborne dust traffic from Australia in modern and Late Quaternary times, *Glo. Planet. Change*, 184, 103056, doi:10.1016/j.gloplacha.2019.103056, 2020.
- Douglas, G. B., Gray, C. M., Hart, B. T., and Beckett, R.: A strontium isotopic investigation of the origin of suspended particulate matter (SPM) in the Murray-Darling River system, Australia, *Geochim. Cosmochim. Acta*, 59, 3799-3815, 1995.
- Eggleton, R. A. (Ed). The Regolith Glossary-Surficial Geology, Soils and Landscapes. Coop. Res. Centre Landscape Evol. Min. Explo., Canberra, ACT, 144 pp, 2001. Available at: <http://crlcme.org.au/Pubs/Monographs/BookRegGloss.html>
- Elburg, M. A., Bons, P. D., Foden, J., and Brugger, J.: A newly defined Late Ordovician magmatic-thermal event in the Mt Painter Province, northern Flinders Ranges, South Australia, *Austral. J. Earth Sci.*, 50, 611-631, doi:10.1046/j.1440-0952.2003.01016.x, 2003.
- Foden, J., Barovich, K., Jane, M., and O'Halloran, G.: Sr-isotopic evidence for Late Neoproterozoic rifting in the Adelaide Geosyncline at 586 Ma: implications for a Cu ore forming fluid flux, *Precamb. Res.*, 106, 291-308, doi:10.1016/S0301-9268(00)00132-7, 2001.
- Foster, D. A., Gray, D. R., Spaggiari, C., Kamenov, G., and Bierlein, F. P.: Palaeozoic Lachlan orogen, Australia; accretion and construction of continental crust in a marginal ocean setting: isotopic evidence from Cambrian metavolcanic rocks, in: Cawood, P. A. and Kröner, A., (eds), *Earth Accretionary Systems in Space and Time*, Geol. Soc. Lond. Spec. Pub., 318, 329-349, doi:10.1144/SP318.12, 2009.
- GA (Geoscience Australia): Australia's River Basins 1997 – Product User Guide, Geosci. Austral., Canberra, 1997. Available at: <http://pid.geoscience.gov.au/dataset/ga/42343>
- GA (Geoscience Australia): 9 Second Digital Elevation Model of Australia Version 3, Geosci. Austral., Canberra, 2008. Available at: <http://pid.geoscience.gov.au/dataset/ga/89580>
- Gingele, F. X. and De Deckker, P.: Clay mineral, geochemical and Sr-Nd-isotopic fingerprinting of sediments in the Murray-Darling fluvial system, southeast Australia, *Austral. J. Earth Sci.*, 52, 965-974, doi:10.1080/08120090500302301, 2005.
- Gray, C. M.: A strontium isotopic traverse across the granitic rocks of southeastern Australia: petrogenetic and tectonic implications, *Austral. J. Earth Sci.*, 37, 331-349, doi:10.1080/08120099008727931, 1990.

- Green, G. P., Bestland, E. A., and Walker, G. S.: Distinguishing sources of base cations in irrigated and natural soils: evidence from strontium isotopes, *Biogeochem.*, 68, 199-225, doi:10.1023/B:BI0G.0000025743.34079.d3, 2004.
- 540 Haines, P. W., Turner, S. P., Foden, J. D., and Jago, J. B.: Isotopic and geochemical characterisation of the Cambrian Kanmantoo Group, South Australia: implications for stratigraphy and provenance, *Austral. J. Earth Sci.*, 56, 1095-1110, doi:10.1080/08120090903246212, 2009.
- Hergt, J., Woodhead, J., and Schofield, A.: A-type magmatism in the Western Lachlan Fold Belt? A study of granites and rhyolites from the Grampians region, Western Victoria, *Lithos*, 97, 122-139, doi:10.1016/j.lithos.2006.12.008, 2007.
- 545 [Hoogewerff, J. A., Reimann, C., Ueckermann, H., Frei, R., Frei, K. M., Aswegen, T. van, Stirling, C., Reid, M., Clayton, A., Ladenberger, A., and The GEMAS Project Team: Bioavailable \$^{87}\text{Sr}/^{86}\text{Sr}\$ in European soils: a baseline for provenancing studies, *Sci. Total Env.*, 672, 1033-1044, doi:10.1016/j.scitotenv.2019.03.387, 2019.](#)
- Isbell, R. F. and National Committee on Soil and Terrain, *The Australian Soil Classification*, Third Edition. CSIRO Publishing, Melbourne, Victoria, 181 pp, 2021. Available at: <https://ebooks.publish.csiro.au/content/australian-soil-classification-9781486314782>
- 550 [Jweda, J., Bolge, L., Class, C., and Goldstein, S. L.: High precision Sr-Nd-Hf-Pb isotopic compositions of USGS reference material BCR-2, *Geostand. Geoanal. Res.*, 40, 101-115, doi:10.1111/j.1751-908X.2015.00342.x, 2016.](#)
- Keay, S., Collins, W. J., and McCulloch, M. T.: A three-component Sr-Nd isotopic mixing model for granitoid genesis, Lachlan fold belt, eastern Australia, *Geology*, 25, 307-310, doi:10.1130/0091-7613(1997)025<0307:ATCSNI>2.3.CO;2, 1997.
- 555 [Lugli, F., Cipriani, A., Bruno, L., Ronchetti, F., Cavazzuti, C., and Benazzi, S.: A strontium isoscape of Italy for provenance studies, *Chem. Geol.*, 587, 120624, doi:10.1016/j.chemgeo.2021.120624, 2022.](#)
- Lech, M.E., Caritat, P. de, and Mcpherson, A. A.: *National Geochemical Survey of Australia: Field Manual. Record*, 2007/08, Geosci. Austral., Canberra, 2007. Available at: <http://pid.geoscience.gov.au/dataset/ga/65234>
- Madgwick, R., Lamb, A. L., Sloane, H., Nederbragt, A. J., Albarella, U., Pearson, M. P., and Evans, J. A.: Multi-isotope analysis reveals that feasts in the Stonehenge environs and across Wessex drew people and animals from throughout Britain, *Sci. Adv.*, 5, eaau6078, doi:10.1126/sciadv.aau6078, 2019.
- 560 [Madgwick, R., Lamb, A., Sloane, H., Nederbragt, A., Albarella, U., Parker Pearson, M., and Evans, J.: A veritable confusion: use and abuse of isotope analysis in archaeology, *Archaeol. J.*, 178, 361-385, doi:10.1080/00665983.2021.1911099, 2021.](#)
- [Martin, C. E., and McCulloch, M. T.: Nd-Sr isotopic and trace element geochemistry of river sediments and soils in a fertilized catchment, New South Wales, Australia, *Geochim. Cosmochim. Acta*, 63, 287-305, doi:10.1016/S0016-7037\(98\)00308-1, 1999.](#)
- 565 [McLaren, S., Sandiford, M., Powell, R., Neumann, N., and Woodhead, J.: Palaeozoic intraplate crustal anatexis in the Mount Painter Province, South Australia: timing, thermal budgets and the role of crustal heat production, *J. Pet.*, 47, 2281-2302, doi:10.1093/petrology/egl044, 2006.](#)
- 570 [MDBA \(Murray-Darling Basin Authority\): A plan for the Murray-Darling Basin, 2022. Available at: https://www.mdba.gov.au/basin-plan/plan-murray-darling-basin](#)

- Mee, A. C., Bestland, E. A., and Spooner, N. A.: Age and origin of Terra Rossa soils in the Coonawarra area of South Australia, *Geomorph.*, 58, 1-25, doi:10.1016/S0169-555X(03)00183-1, 2004.
- Page, R. W. and Laing, W. P.: Felsic metavolcanic rocks related to the Broken Hill Pb-Zn-Ag orebody, Australia: geology, depositional age, and timing of high-grade metamorphism, *Econ. Geol.*, 87, 2138-2168, doi:10.2113/gsecongeo.87.8.2138, 1992.
- Ottesen, R. T., Bogen, J., Bølviken, B., and Volden, T.: Overbank sediment: a representative sample medium for regional geochemical sampling, *J. Geoch. Explo.*, 32, 257-277, doi:10.1016/0375-6742%2889%2990061-7, 1989.
- Pain, C., Gregory, L., Wilson, P., and McKenzie, N.: The Physiographic Regions of Australia - Explanatory Notes. Australian Collaborative Land Evaluation Program (ACLEP) and National Committee on Soil and Terrain (NCST), Canberra, 30 pp, 2011. Available at: <https://publications.csiro.au/rpr/pub?pid=csiro%3AEP113843>
- Pain, C. F., Pillans, B. J., Roach, I. C., Worrall L., and Wilford, J. R.: Old, flat and red-Australia's distinctive landscape, Chap. 5 in: Blewett, R. (Ed), *Shaping a Nation-A Geology of Australia*. Geosci. Austral. and ANU E Press, Canberra, 227-275, doi:10.22459/SN.08.2012, 2012.
- Pidgeon, R. T.: A rubidium-strontium geochronological study of the Willyama Complex, Broken Hill, Australia, *J. Pet.*, 8, 283-324, doi:10.1093/petrology/8.2.283, 1967.
- Plimer, I. R.: Broken Hill Pb-Zn-Ag deposit - a product of mantle metasomatism, *Mineral. Dep.*, 20, 147-153, doi:10.1007/BF00204557, 1985.
- Plumlee, G.: Basalt, Columbia River, BCR-2, Prelim. U.S. Geol.Surv. Cert. Anal., 1998. Available at: <https://cpb-us-w2.wpmucdn.com/muse.union.edu/dist/c/690/files/2021/07/usgs-bcr2-1.pdf>
- Price, G. J., Ferguson, K. J., Webb, G. E., Feng, Y. X., Higgins, P., Nguyen, A. D., Zhao, J. X., Joannes-Boyau, R., and Louys, J.: Seasonal migration of marsupial megafauna in Pleistocene Sahul (Australia-New Guinea), *Proceed. R. Soc. B: Biol. Sci.*, 284, 20170785, doi:10.1098/rspb.2017.0785, 2017.
- Raymond, O. L. (Ed), Gallagher, R. (Ed), Shaw, R., Yeates, A. N., Douth, H. F., Palfreyman, W. D., Blake, D. H., and Highet, L.: *Surface Geology of Australia 1:2.5 million scale dataset 2012 edition*, Geosci. Austral., Canberra, doi:10.26186/5c636e559cbe1, 2012.
- Revel-Rolland, M., De Deckker, P., Delmonte, B., Hesse, P. P., Magee, J. W., Basile-Doelsch, I., Grousset, F., and Bosch, D.: Eastern Australia: a possible source of dust in East Antarctica interglacial ice, *Earth Planet. Sci. Lett.*, 249, 1-13, doi:10.1016/j.epsl.2006.06.028, 2006.
- Romaniello, S. J., Field, M. P., Smith, H. B., Gordon, G. W., Kim, M. H., and Anbar, A. D.: Fully automated chromatographic purification of Sr and Ca for isotopic analysis, *J. Anal. Atomic Spectro.*, 30, 1906-1912, doi:10.1039/C5JA00205B, 2015.
- Schellart, W. P. and Spakman, W.: Australian plate motion and topography linked to fossil New Guinea slab below Lake Eyre, *Earth Planet. Sci. Lett.*, 421, 107-116, doi:10.1016/j.epsl.2015.03.036, 2015.

- Snoeck, C., Ryan, S., Pouncett, J., Pellegrini, M., Claeys, P., Wainwright, A. N., Mattielli, N., Lee-Thorp, J. A., and Schulting, R. J.: Towards a biologically available strontium isotope baseline for Ireland, *Sci. Total Env.*, 712, 136248, doi:10.1016/j.scitotenv.2019.136248, 2020.
- Stewart, B. W., Capo, R. C., and Chadwick, O. A.: Quantitative strontium isotope models for weathering, pedogenesis and biogeochemical cycling, *Geoderma*, 82, 173-195, doi:10.1016/S0016-7061(97)00101-8, 1998.
- Tukey, J. W.: *Exploratory Data Analysis*, Addison-Wesley Publishing Company (Reading, MA), 506 pp, 1977. Available at: http://www.ru.ac.bd/wp-content/uploads/sites/25/2019/03/102_05_01_Tukey-Exploratory-Data-Analysis-1977.pdf
- Ullman, W. J., and Collerson, K. D.: The Sr-isotope record of late Quaternary hydrologic changes around Lake Frome, South Australia. *Austral. J. Earth Sci.*, 41, 37-45, doi:10.1080/08120099408728111, 1994.
- Vinciguerra, V., Stevenson, R., Pedneault, K., Poirer, A., H  lie, J. - F., and Widory, D.: Strontium isotope characterization of Wines from the Quebec (Canada) Terroir, *Proc. Earth Planet. Sci.*, 13, 252-255, doi:10.1016/j.proeps.2015.07.059, 2015.
- Wilford, J.: A weathering intensity index for the Australian continent using airborne gamma-ray spectrometry and digital terrain analysis, *Geoderma*, 183-184, 124-142, doi:10.1016/j.geoderma.2010.12.022, 2012.
- Zhao, Z., Leach, D. L., Wei, J., Liang, S., and Pfaff, K.: Origin of the Xitieshan Pb-Zn deposit, Qinghai, China: evidence from petrography and S-C-O-Sr isotope geochemistry, *Ore Geol. Rev.*, 139A, 104429, doi:10.1016/j.oregeorev.2021.104429, 2021.
- Zhou, B. and Whitford, D. J.: Geochemistry of the Mt Wright Volcanics from the Wonominta Block, northwestern New South Wales, *Austral. J. Earth Sci.*, 41, 331-340, doi:10.1080/08120099408728142, 1994.