

Holocene spatiotemporal millet agricultural patterns in northern China: A dataset of archaeobotanical macroremains

Keyang He¹, Houyuan Lu^{1,2,3}, Jianping Zhang^{1,2}, Can Wang⁴

¹Key Laboratory of Cenozoic Geology and Environment, Institute of Geology and Geophysics, Chinese Academy of Sciences, Beijing, 100029, China

²Innovation Academy for Earth Science, Chinese Academy of Sciences, Beijing, 100029, China

³College of Earth and Planetary Sciences, University of Chinese Academy of Sciences, Beijing, 100049, China

⁴School of History and Culture, Shandong University, Jinan, 250100, China

Correspondence to: Keyang He (hekeyang1991@163.com)

Abstract. Millet agriculture, i.e., broomcorn millet (*Panicum miliaceum*) and foxtail millet (*Setaria italica*), were initially originated in northern China and provided the basis for the emergence of the first state in the Central Plains. However, owing to the lack of a comprehensive archaeobotanical dataset, when, where, and how these two millet types evolved across different regions and periods remains unclear. Here, we presented a dataset of archaeobotanical macroremains (n = 538) spanning the Neolithic and Bronze Ages in northern China and suggested a significant spatiotemporal divergence of millet agriculture in the subhumid mid-lower Yellow River (MLY) and semiarid agro-pastoral ecotone (APE). The key timing of the diffusion and transition of millet agriculture occurred around 6000 cal. a BP, coinciding with the Holocene Optimum (8000–6000 cal. a BP) and Miaodigou Age (6200–5500 cal. a BP). It spread westward and northward from the mid-lower Yellow River MLY to the agro-pastoral ecotone APE and underwent a dramatic transition from low-yield broomcorn millet to high-yield foxtail millet. The combined influence of warm-wet climate, population pressure, and field management may have promoted the intensification, diffusion, and transition of millet agriculture around 6000 cal. a BP. Thereafter, the cropping patterns in the mid-lower Yellow River MLY were predominated by foxtail millet (~ 80%), while those in the agro-pastoral ecotone APE emphasized on both foxtail (~ 60%) and broomcorn millet under a persistent drying trend since the mid-Holocene. This study provided the first quantitative spatiotemporal cropping patterns during the Neolithic and Bronze Age in northern China, which can be used for evaluating prehistoric human subsistence, discussing past human-environment interaction, and providing a valuable perspective of agricultural sustainability for the future. The dataset is publicly available at <https://doi.org/10.5281/zenodo.6669730> (He et al., 2022)

1. Introduction

Broomcorn (*Panicum miliaceum*) and foxtail (*Setaria italica*) millets are among the world's oldest crops and were initially domesticated in northern China (Diao and Jia, 2017; Lu et al., 2009a; Yang et al., 2012; Zhao, 2011b), which played a significant role in the formation of the early Chinese civilization (Yuan et al., 2020; Zhao, 2011a) and prehistoric food

globalization (d'Alpoim Guedes and Bocinsky, 2018; Dong et al., 2017; Jones et al., 2011; Liu et al., 2019), and remaining as staple cereals in arid and semiarid regions. Although broomcorn and foxtail millet are generally similar in ecophysiology and are simultaneously excavated in archaeological sites in China (Dong et al., 2016; Zhao, 2011b), recent archaeobotanical studies suggested that the biogeography of the two millet types through time is distinctive (Hunt et al., 2008; Liu et al., 2009).

35 In particular, when, where, and how these two millet types evolved across different regions and stages spanning the Neolithic and Bronze Ages in northern China remains unclear.

Regarding the diachronic change in millets, the predominant crop during the Peiligang period (8000–7000 cal. a BP) was the broomcorn millet across the major centers of domestication, including Xinglonggou (Zhao, 2004), Dadiwan (Liu et al., 2004), Cishan (Lu et al., 2009a), Zhuzhai (Bestel et al., 2018; Wang et al., 2018a), and Yuezhuan sites (Crawford et al., 40 2016) (Figure 1), while the cropping patterns were dominated by the foxtail millet since the late Yangshao period (6000–5000 cal. a BP) (Zhou et al., 2011), as evidenced by a series of archaeobotanical surveys in the Yiluo (Lee et al., 2007; Zhang et al., 2014), Ying (Fuller and Zhang, 2007; Zhang et al., 2010a), and Sushui valleys (Song et al., 2019). In contrast, phytolith evidence from the Guanzhong basin (Zhang et al., 2010b) and Central Plains (Luo et al., 2018; Wang et al., 2017; Wang et al., 2019; Zhang et al., 2012) indicated that the broomcorn millet-dominated cropping pattern persisted from the 45 Peiligang to Erligang periods (3600–3300 cal. a BP). Whether and when there occurred a transition from broomcorn to foxtail in northern China is still in dispute (Qin, 2012).

Compared with the intensive attention paid to the temporal changes in the broomcorn and foxtail millets, their spatial divergence has rarely been discussed. Crawford noted that broomcorn millet was traditionally more important in the drier western areas, while foxtail millet was more common in the east (Crawford et al., 2005). A review of cropping patterns in 50 the mixed farming region suggested a selection of foxtail millet in the southward spread of millet agriculture to the mid-upper Yangtze River (He et al., 2017). In addition, recent studies have demonstrated the north–south cropping patterns on the Loess Plateau, with a dominance of broomcorn millet in the north steppe area and foxtail millet in the south shrub-grassland area during the Longshan period (5000–3800 cal. a BP) (Bao et al., 2018; Sheng et al., 2018). However, most of these studies were confined to intraregional comparisons, and integrated research across different regions in northern China was 55 unavailable.

To investigate the evolution of millet cropping patterns across different periods and regions, we compiled a comprehensive dataset of 538 flotation results from 381 sites spanning the Neolithic and Bronze Ages in northern China (Figure 1) and compared them with phytolith results obtained in our previous study. Based on the systematic analysis of crop data and demographic and climatic records, we revealed the spatiotemporal divergence between broomcorn and foxtail millet and the 60 dynamic driving mechanism behind these phenomena.

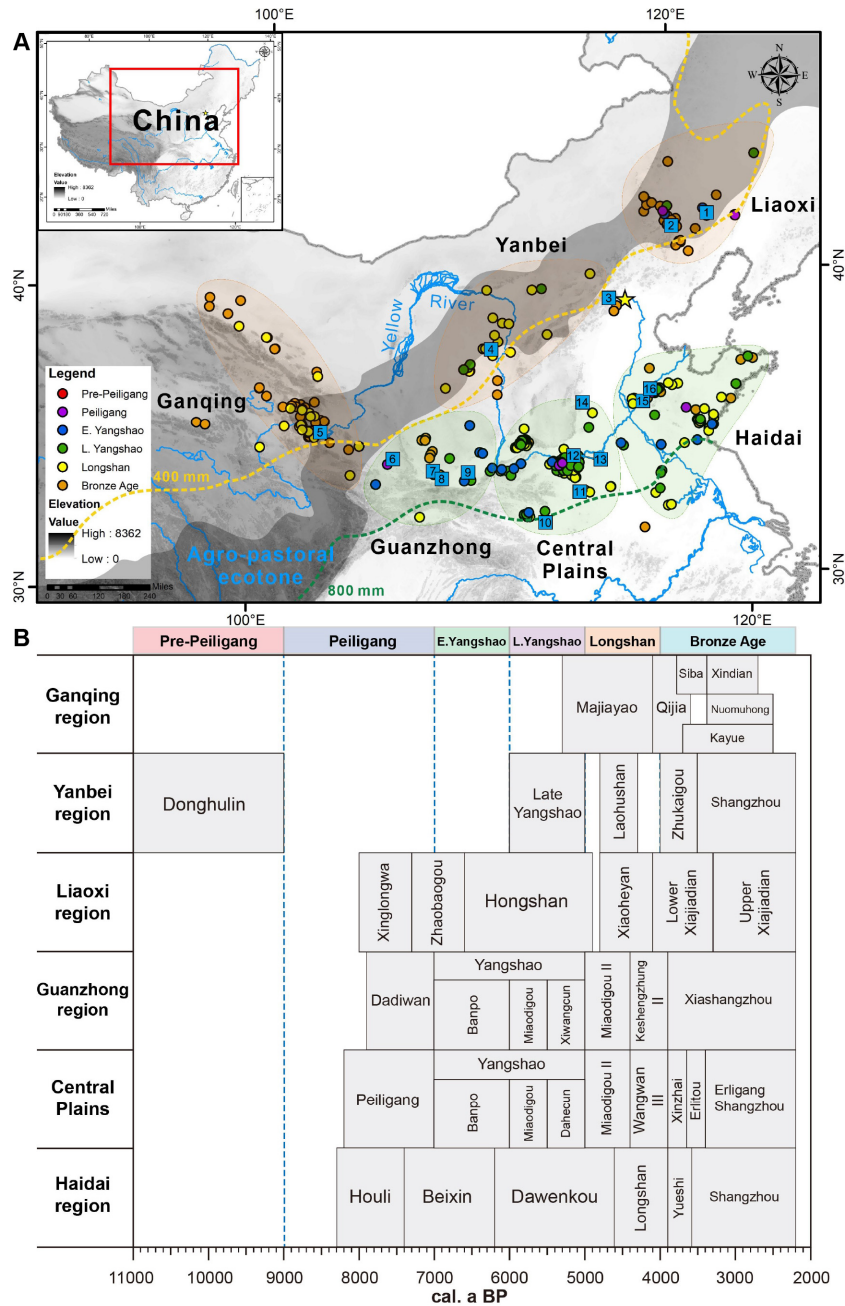


Figure 1: Distribution of archaeological sites of millet and related cultural sequence during the Neolithic and Bronze Ages in northern China. (A) The archaeological sites were classified into color-shaded subregions modified from Yan (2000). The gray shaded area and dashed lines indicate the agro-pastoral ecotone (APE) and annual average precipitation of 400 and 800 mm, respectively. The blue squares denote archaeological sites mentioned in this study: 1. Xinglonggou, 2. Weijiawopu, 3. Donghulin, 4. Shimao, 5. Lajia, 6. Dadiwan, 7. Wangjiazui, 8. Anban, 9. Yangguanzhai, 10. Baligang, 11. Jiahu, 12. Zhuzhai, 13. Dongzhao, 14. Cishan, 15. Yuezhuang, 16. Xihe. (B) Division of archaeological cultures and periods across the six subregions.

70 2. Archaeological background

Based on the spatial framework proposed by Yan (2000), the Neolithic cultures in northern China were subdivided into six subregions, i.e., Liaoxi, Yanbei, Ganqing, Guanzhong, Central Plains, and Haidai regions (Figure 1A). The first three regions are located in the semiarid agro-pastoral ecotone (APE) (Figure 1A) (Chen, 2018), while the last three regions are situated in the subhumid mid-lower Yellow River (MLY). The Liaoxi region is situated in the west of Liaoning Province and southeast of Inner Mongolia Autonomous Region; to the west, the Yanbei region is situated in the central-south of Inner Mongolia Autonomous Region and north of Shaanxi, Shanxi, and Hebei Provinces, northern parts of Chinese Loess Plateau; in the westmost, the Ganqing region is situated in the northeast of Qinghai Province and central-south of Gansu Province. The Guanzhong region is located in the southeast of Gansu Province and south of Shaanxi Province, which is merged into the Central Plains in some studies; to the east, the Central Plains is located in the south of Shanxi Province, and the bulk of Henan Province; the Haidai region is mainly located in the Shandong Province.

Regarding the temporal sequence in these regions, the Neolithic and Bronze cultures were summarized into six periods, including the Pre-Peiligang (11000–9000 cal. a BP), Peiligang (9000–7000 cal. a BP), early Yangshao (7000–6000 cal. a BP), late Yangshao (6000–5000 cal. a BP), and Longshan periods (5000–3800 cal. a BP) and the Bronze Age (3800–2221 cal. a BP) (Figure 1B) (The Institute of Archaeology and China Academy of Social Sciences, 2010). During the Pre-Peiligang period, only a few archaeological sites were scattered in the Yanbei region (i.e. Donghulin culture), Central Plains, and Haidai region. Subsequently, during the Peiligang period, four archaeological cultures, i.e. Xinglongwa, Dadiwan, Peiligang, and Houli, formed almost synchronously across Liaoxi, Guanzhong, Central Plains, and Haidai regions, which were widely regarded as early Neolithic cultures with sedentary settlements, origin of millet agriculture, pottery, and ground stone tool. During the early and late Yangshao period, settlements increased dramatically and spread wildly across all the six regions, especially Miaodigou culture, with remarkable signals of social hierarchy emergence. The Longshan period witnessed high population densities and the rise and fall of early complex society, and eventually the early states—Erlitou culture formed in the Central Plains in the Bronze Age (Liu and Chen, 2012).

3. Materials and methods

A total of 538 flotation results from 381 sites with millets excavated in northern China were assembled from a review of relevant literature, including published research papers, reports, and dissertations. Each site was assigned an age based on the direct dating *in situ* or the median age of archaeological culture. The following sites were eliminated: (1) sites belonging to historic periods beyond the study period and (2) sites with less than five grains of excavated staple crops, which may cause large randomness. After two screening steps, 487 flotation results from 349 sites were retained for further analysis.

Each flotation result addressed here indicated a compilation of original samples floated from the same cultural phase of an archaeological site. The original sample numbers investigated and compiled per cultural phase of each site ranged from 1 to 1082, with an average of approximate 30 samples. The 487 flotation results from 349 sites were classified into six

geographical regions and six cultural periods (Table 1), with 78 sites containing more than one single cultural phase. The number of flotation results across the six regions during each period was generally even, except for the common lack of flotation results in the agro-pastoral ecotone before Longshan period.

105

Table 1. Spatiotemporal composition of flotation results in northern China

Period	Mid-lower Yellow River (MLY)			Agro-pastoral ecotone (APE)			Sum
	Guanzhong region	Central Plains	Haidai region	Ganqing region	Yanbei region	Liaoxi region	
Pre-Peiligang	0	0	0	0	1	0	1
Peiligang	2	4	4	0	0	3	13
Early Yangshao	11	6	3	0	0	2	22
Late Yangshao	15	50	11	0	3	1	80
Longshan	11	72	29	22	26	0	160
Bronze Age	18	71	30	52	6	34	211
Sum	57	203	77	74	36	40	487

Five staple crops were summarized according to traditional Chinese agriculture (Liu et al., 2015): foxtail millet (*S. italica*), broomcorn millet (*P. miliaceum*), rice (*Oryza sativa*), wheat and barley (*Triticum aestivum* and *Hordeum vulgare*), and soybean (*Glycine max*). The flotation results were recounted with uniform standards referring to the concept of “number of identified specialness taxon (NISP)” in zooarchaeology (Grayson, 2014), defined as the number of identified specimens for a specific site or skeleton. According to this criterion, fragments of unidentified crop seeds were not counted, while each fragment of identifiable large crop seeds, such as wheat and rice, that retained more than half of intact seed were counted as an intact seed; different parts of the crop seeds, i.e. diagnostic grains and spikelet bases of wheat, barley, and rice, retrieved from the same context were added up to denote the total numbers of crop seeds.

Considering the significant differences between the weight of the grains of crop species, the counts may not reflect their real status in the subsistence. Thus, they were converted into weights for better comparison of their actual values (Zhou et al., 2016b). The staple crops were converted into weights using the average weight of 1000 grains (Table 2) based on the Chinese Crop Germplasm Resources Information System to estimate the actual yield proportions.

Percentages (ratio/proportion of total crop remains) were applied to the counts and weights of the staple crops for each site (Marston, 2014). Temporally, the sites were classified into six standardized periods and calculated for the mean values and standard deviations across the six regions (Figures 2 and 3). Besides, the percentage of the counts were summarized into the APE and MLY, which were plotted and smoothed using 5% “loess” regression method and 1000 bootstrap simulations in Acycle v2.4.1 (Figure 4) (Li et al., 2019). Spatially, the percentage of the counts of each site was plotted at intervals of 2000 or 1000 years and presented in graduated colors using ArcMap 10.6 (Figure 5).

125

Table 2. Statistics of weights of modern staple crops.

Crops	Number of samples	Weight (g/1000 grains)			
		Minimum	Maximum	Average	Standard deviation
<i>Setaria italica</i>	3584	1.0	5.90	2.823	0.597
<i>Panicum miliaceum</i>	2071	0.6	10.0	6.38	1.44
<i>Oryza sativa</i>	26818	2.37	86.9	24.661	3.1889
<i>Triticum aestivum</i>	15810	8.1	59.9	33.72	8.21
<i>Hordeum vulgare</i>	6437	5.5	66.8	40.76	7.11
<i>Glycine. max</i>	3995	38	350	151.1	41.1

Detailed information is available at <http://www.cgris.net/>

4. Results

130 4.1 Evolution of cropping patterns in the MLY

During the Peiligang period, the millet cropping patterns in the Guanzhong region, Central Plains, and Haidai region were dominated by the broomcorn millet, as indicated by the percentage of the counts (100, 32, and 55%) and weights (100, 32, and 55%) (Figure 2). The relative low percentages of millets in the Central Plains (Figures 2B and E) and Haidai region (Figures 2C and F) was mainly attributed to the quantities of rice excavated in a few sites, such as the Baligang (Deng et al., 135 2015), Jiahu (Zhao and Zhang, 2009), and Xihe sites (Jin et al., 2014). With a decrease in rice from the Peiligang to the early Yangshao period in the Central Plains and Haidai region, a steady rise occurred in the percentage of the counts (58 and 85%) and weights (62 and 88%) of broomcorn millet, which maintained an advantage over foxtail millet.

From the early Yangshao period to the Bronze age, the percentage of the counts and weights of broomcorn millet dramatically decreased from approximately 60 to 10%, while those of foxtail millet gradually increased from approximately 140 30 to 80% (Figure 2). Notably, during the late Yangshao period, foxtail millet surpassed broomcorn millet in most of the percentages of the counts and weights in the Guanzhong region (69 vs. 29%, 51 vs. 41%, respectively); Central Plains (72 vs. 20%, 57 vs. 25%); and Haidai region (53 vs. 36%, 33 vs. 42%).

The dominant role of foxtail millet improved during the Longshan period, as indicated by the percentages of the counts and weights in the Guanzhong region (77 and 54%, respectively), Central Plains (75 and 50%), and Haidai region (55 and 24%). 145 Accordingly, the percentage of the counts (10–17%) and weights (9–25%) of the broomcorn millet reduced in these regions. Subsequently, the gap between the foxtail and broomcorn millet widened in the Bronze Age.

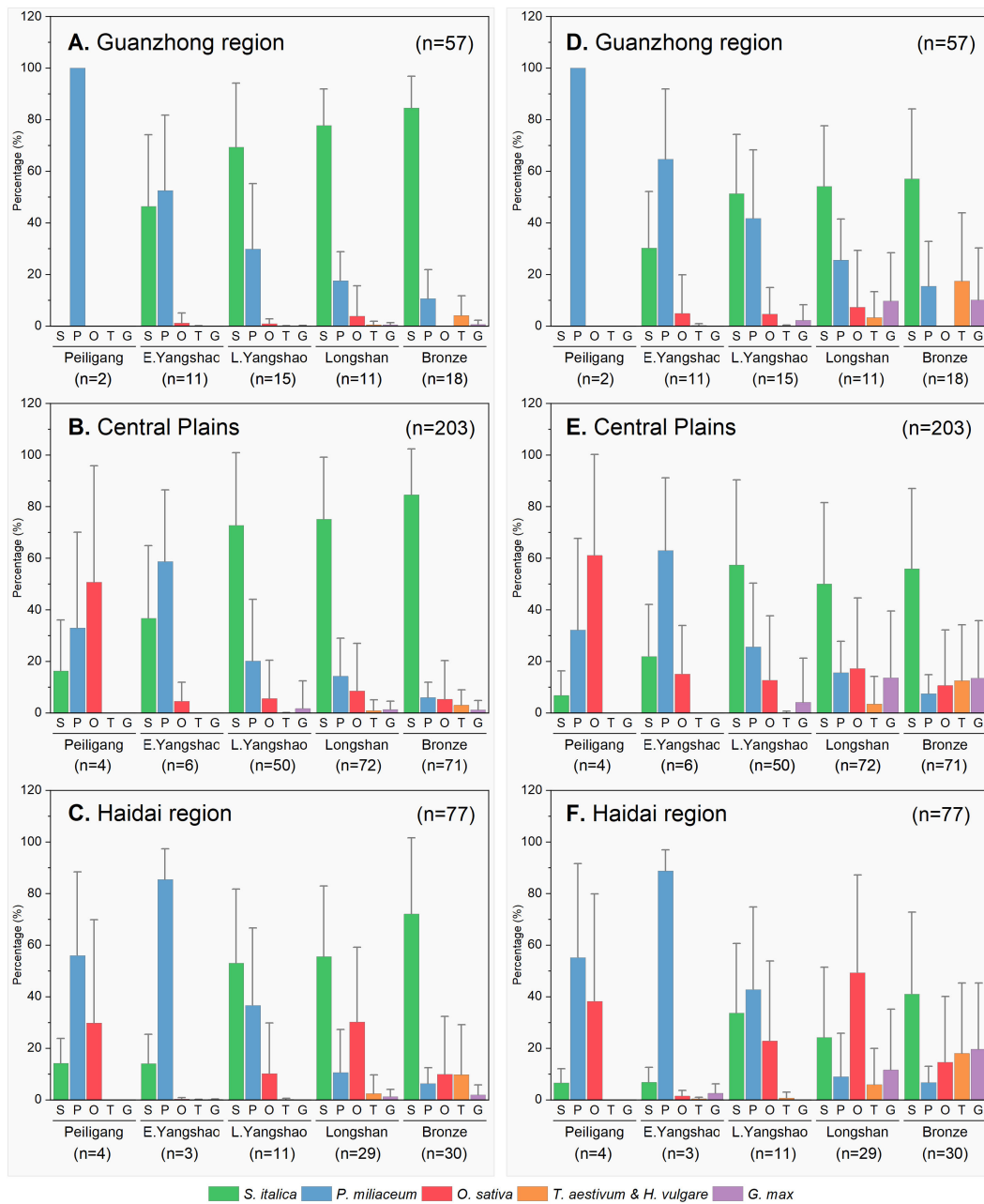


Figure 2: Evolution of cropping patterns in the subhumid mid-lower Yellow River (MLY). (A–C) The percentages of crop counts in the Guanzhong region, Central Plains, and Haidai region. (D–E) The percentages of crop weights in the Guanzhong region, Central Plains, and Haidai region.

4.2 Evolution of cropping patterns in the APE

The archaeobotanical studies in the APE were relatively rare and discontinuous, prior to the late Yangshao period. During the Pre-Peiligang period, the Donghulin site in the Yanbei region excavated the earliest charred millets in China, dominated by the foxtail millet (Zhao et al., 2020) (Figures 3B and E). Contrarily, the cropping pattern was dominated by the broomcorn millet during the Peiligang period in the Liaoxi region, accounting for 96 and 98% in the percentage of the counts and weights, respectively, particularly in the Xinglonggou site (Zhao, 2004) (Figures 3C and F). Subsequently, during the early Yangshao period, although the percentage of the counts and weights of the foxtail millet greatly increased to 40 and 26%, respectively, in the Liaoxi region (Figures 3C and F), particularly in the Weijiawopu site (Sun and Zhao, 2013), broomcorn millet still played a leading role in the cropping pattern.

From the late Yangshao period to the Bronze Age, the percentages of the counts and weights of broomcorn millet decreased in the Ganqing (45 to 30% and 55 to 27%, respectively); Yanbei (46 to 19% and 65 to 30%); and Liaoxi regions (96 to 35% and 98 to 48%) (Figure 3). The percentages of the counts and weights of foxtail millet gradually increased in the Yanbei (53 to 79% and 34 to 58%, respectively) and Liaoxi regions (3 to 64% and 1 to 50%), while the decrease in foxtail millet in the Ganqing region resulted from a rapid increase in wheat and barley (Figures 3A and D). Summarily, although the cropping patterns in the APE were dominated by foxtail millet during the Longshan period and Bronze Age, broomcorn millet was still significant.

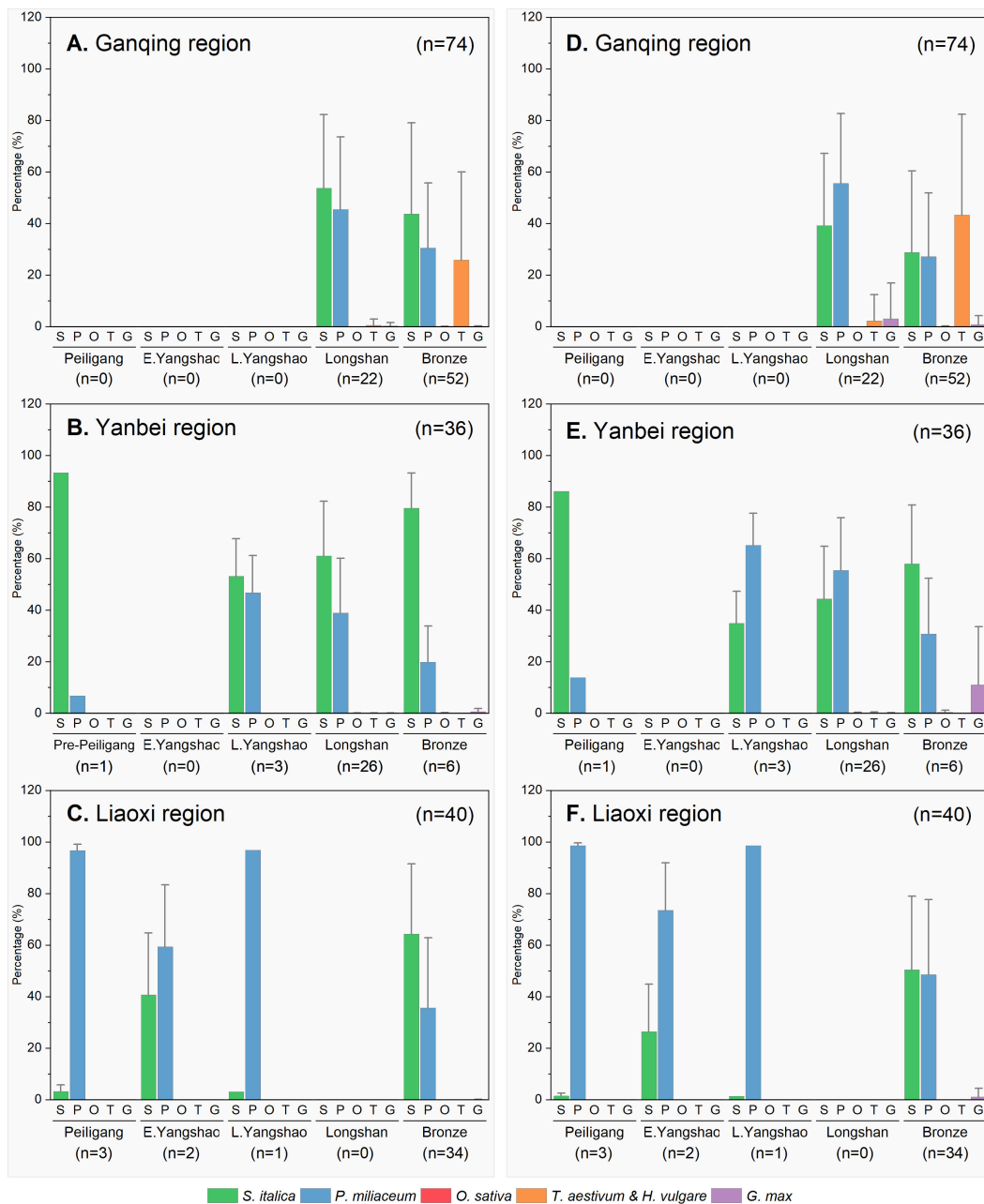


Figure 3: Evolution of cropping patterns in the semiarid agro-pastoral ecotone (APE). (A–C) The percentages of crop counts in the Ganqing, Yanbei, and Liaoxi regions. (D–E) The percentages of crop weights in the Ganqing, Yanbei, and Liaoxi regions.

4.3 Comparison of cropping patterns between the MLY and APE

- 175 The millet cropping patterns in northern China exhibited diverse patterns in the MLY and APE. In the MLY, the millet cropping patterns strikingly transitioned from broomcorn to foxtail millet around 6000 cal. a BP (Figure 4A), such as the Yangguanzhai site, the only settlement enclosed by a completed moat during the Miaodigou period (6000–5500 cal. a BP) (Zhong et al., 2020). The percentage of the counts of foxtail millet rapidly increased from approximately 20 to 80% around 6000 cal. a BP and predominated afterward, and that of the counts of broomcorn millet changed in reverse (Figure 4A).
- 180 By contrast, although it appeared that the transition also occurred in the APE around 6000 cal. a BP despite the inadequate data, the foxtail (~ 60%) and broomcorn millets (~ 40%) jointly made important contributions to the cropping patterns after 6000 cal. a BP (Figure 4B). For example, the staple crops in the Shimao site, a super-large central settlement dated 4300–3800 cal. a BP, mainly comprised foxtail (73%) and broomcorn millets (26%) (Yang et al., 2022).

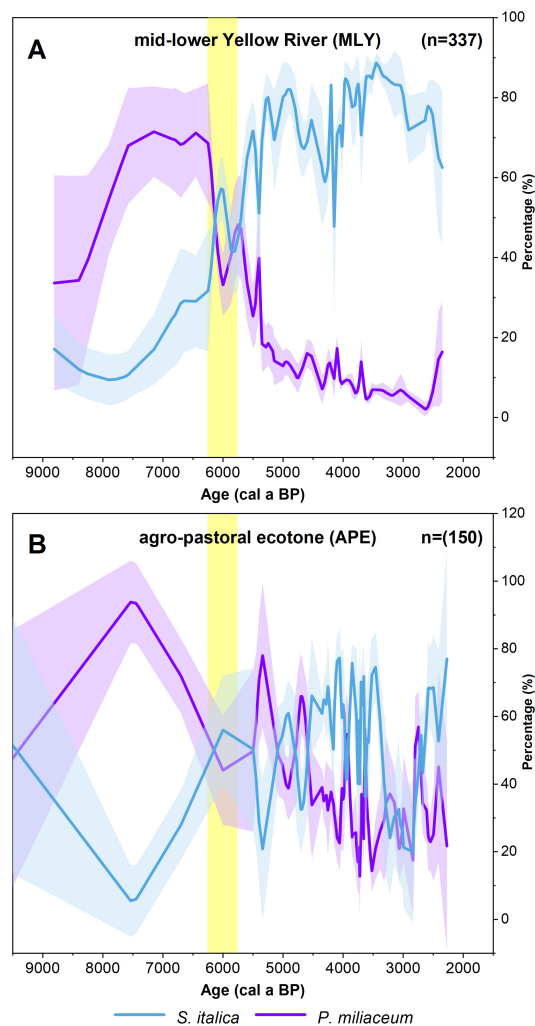


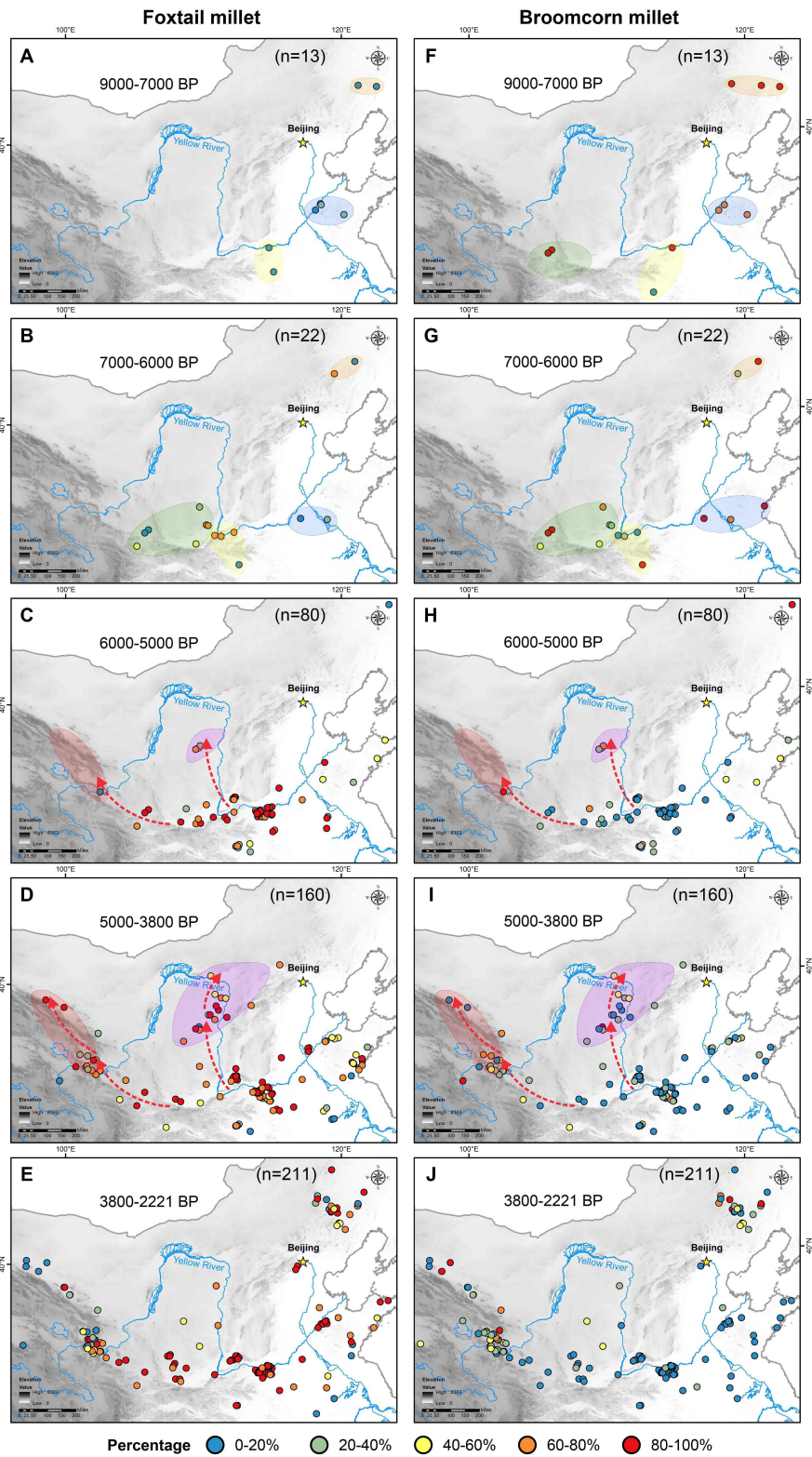
Figure 4: Transition of millet agriculture in the MLY (A) and APE (B). The percentages of foxtail and broomcorn millet counts are indicated in blue and purple, respectively. The shaded envelopes indicate the range of 1σ uncertainty of the percentage values. The yellow vertical bars denote the timing of transition around 6000 cal. a BP.

190 4.4 Distribution of millet agriculture in northern China

Based on the age, location, and percentage of crop counts of each site, the spatial distribution and temporal evolution of millet agriculture in northern China were divided into two stages.

195 Stage I (9000–6000 cal. a BP). Millet agriculture was confined to several possible centers of domestication along the marginal mountains of the loess plateau and Inner Mongolian plateau (Figures 5A–B and F–G), known as the Hilly flanks or China's Fertile Arc (Liu et al., 2009; Ren et al., 2016). The primary agricultural region in northern China had been framed at stage I despite several blank areas still existed within this region. The predominant crop was broomcorn millet in most sites in the Liaoxi region, Haidai region, Central Plains, and Guanzhong region, generally accounting for over 60% (Figures 5F and G).

200 Stage II (6000–2221 cal. a BP). The discontinuous agricultural region linked together at stage II and expanded to marginal areas without solid evidence of agriculture prior to 6000 cal BP. The spread of millet intensified from the late Yangshao to Longshan periods in two directions (Figures 5C–D and H–I): westward routine to the Ganqing region along the Wei River and Hexi corridor around 5400 cal BP (Leipe et al., 2019); and northward routine to the Yanbei region along the middle Yellow River around 5200 cal BP (Bao et al., 2018). The cropping patterns of most sites in northern China were now dominated by foxtail millet (mostly more than 60%), although a few sites in the APE were still dominated by broomcorn
205 millet.



210 **Figure 5:** Spatiotemporal distribution of millet sites along with cropping patterns in northern China. Graduated colors of the circles indicate the percentages of the counts of foxtail and broomcorn millets at each site. The light-colored shades denote the cultural subregions, and the red arrows indicate the spread routes of millet agriculture.

5. Discussion

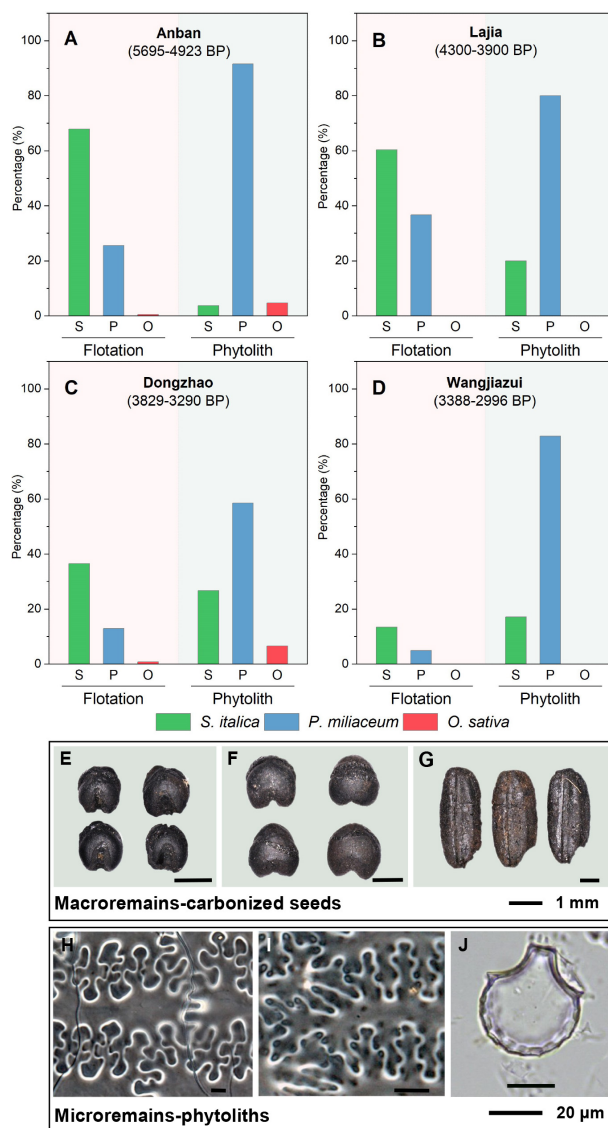
5.1 Possible biases of archaeobotanical macroremains

215 Although foxtail and broomcorn millet could be identified based on clear diagnostic features of their carbonized seed (Liu and Kong, 2004) and phytolith morphologies (Lu et al., 2009b; Zhang et al., 2011), the percentage of the carbonized millet appeared to exhibit a reverse proportion to those of the phytoliths in the archaeological context. The divergence between the macroremains and phytoliths may result from several factors, such as the different sources of crop grains and phytoliths or biases in the representativeness of quantity. Diagnostic phytoliths of millets were derived from the inflorescence bracts (Figures 6G and I), which may have been discarded during threshing and dehusking. Besides, based on the analysis of
220 modern crop husk phytoliths, a previous study suggested that the counts of the husk phytoliths of foxtail and broomcorn millet were proportional to the weights of their seed grains, which reflected the relative production rather than quantities of these two millet types (Zhang et al., 2010b). However, even after they were converted into weights, the percentage of carbonized millet still contradicted those of the phytoliths recovered from the same sites (Figures 6A–D), such as Anban (Liu, 2014; Zhang et al., 2010b), Lajia (Wang et al., 2015; Zhang, 2013; Zhao, 2003), Dongzhao (Luo et al., 2018; Yang et al., 2017), and Wangjiazui sites (Zhang et al., 2010b; Zhao and Xu, 2004). Thus, there may be other factors contributing to
225 this divergence, such as depositional and preservation biases.

Carbonized macroremains represented only a small and biased sample that had access to the fire, and the survival rates for the carbonization process varied among crops (Colledge and Conolly, 2014; Wright, 2003). Experiments on the effects of carbonization indicated that the carbonization temperature window of broomcorn millet (250–325 °C) was smaller than that
230 of foxtail millet (270–390 °C), implying that broomcorn millet was less likely to be carbonized than foxtail millet in archaeological contexts and thus may be underestimated in the cropping pattern (Märkle and Rösch, 2008; Wang and Lu, 2020). However, the preservation bias may be the reverse for phytoliths. Based on empirical evidence, the fragments of η -type phytoliths from broomcorn millet were generally larger than those of Ω -type phytoliths from foxtail millet (Lu et al., 2009b), implying that broomcorn millet was more likely to be preserved archaeologically and maintain diagnostic attributes
235 for identification. In sum, the amount of broomcorn millet may be underestimated in carbonized macroremains and overestimated in the phytolith assemblage. Thus, further taphonomic research on survival rates should be quantitatively conducted for the correction between foxtail and broomcorn millet.

Furthermore, the way of seed yield may also affect the biases between foxtail and broomcorn millet. Morphological data from the northern Chinese Loess Plateau showed that the size of broomcorn millet increased significantly during 5500–4000

240 cal BP, while that of foxtail millet didn't exhibit an obvious increasing trend (Bao et al., 2018). Given the contemporaneous
 increasing human population, the crop yield was supposed to increase to feed a large population. Nevertheless, the increasing
 yields of broomcorn millet may depend on the increase in the seed size, while that of foxtail millet may result from the
 increase in the number of seeds per plant. Thus, the different ways of seed yield may also be one cause of the increase in the
 proportion of foxtail millet within the total seed number of seeds. In brief, both biases in the carbonization process and the
 245 way of seed yield may have exaggerated the proportion of foxtail millet.



250 **Figure 6:** Divergence between flotation and phytolith results recovered from the same sites. (A) Anban (Liu, 2014; Zhang et al., 2010b),
 (B) Lajia (Wang et al., 2015; Zhang, 2013; Zhao, 2003), (C) Dongzhao (Luo et al., 2018; Yang et al., 2017), and (D) Wangjiazui (Zhang et
 al., 2010b; Zhao and Xu, 2004). The crop counts of the flotation results had been converted to weights before calculating the percentages.

(E–G) Images of charred seeds of foxtail (*S. italica*), broomcorn (*P. miliaceum*) millets, and rice (*O. sativa*), respectively. (H–J) Images of diagnostic phytoliths of foxtail (*S. italica*), broomcorn (*P. miliaceum*) millets, and rice (*O. sativa*), respectively.

5.2 Spatial divergence of cropping patterns in the MLY and APE

- 255 Though the transition from broomcorn to foxtail millet around 6000 cal. a BP occurred in both the MLY and APE (An et al., 2010; Li et al., 2021; Wang et al., 2016), the cropping patterns diversified afterwards to adapt to regional environments, which were predominated by foxtail millet in the MLY (Fuller and Zhang, 2007; Lee et al., 2007; Song et al., 2019; Yang et al., 2020; Zhang et al., 2014), and emphasized on foxtail and broomcorn millet in the APE (Bao et al., 2018; Sheng et al., 2018). The spatial divergence of the cropping patterns may be attributed to the crop traits and regional climate.
- 260 Compared to the foxtail millet, the broomcorn millet exhibited better resistance to saline-alkali soil and arid climates (mean annual precipitation: 400–700 mm vs. 300–500 mm) and required a shorter growing season and lower growing temperature constraints (mean annual temperature, 8–10 °C vs. 6–8 °C) (Shanxi Academy of Agricultural Sciences, 1987; Wang, 1996), and yet its yield was typically twice as low (1170 kg/hm² vs. 750 kg/hm²) (Dong and Zheng, 2006). In sum, foxtail millet was more productive while the broomcorn millet was more environment tolerant.
- 265 Furthermore, though the East Asian monsoon rain belt had migrated northwestward ~ 150–300 km during the mid-Holocene (Dong et al., 2021; Yang et al., 2015), the persistent drying trend since the mid-Holocene in northern China (Goldsmith et al., 2017; Yang et al., 2021) may have formed diverse ecosystems and millet selection. Thus, under a gradual aridification trend since approximate 6000 cal. a BP, drought-tolerant broomcorn millet had been replaced by high-yield foxtail millet in the subhumid MLY but was still significant in the semiarid APE.

270

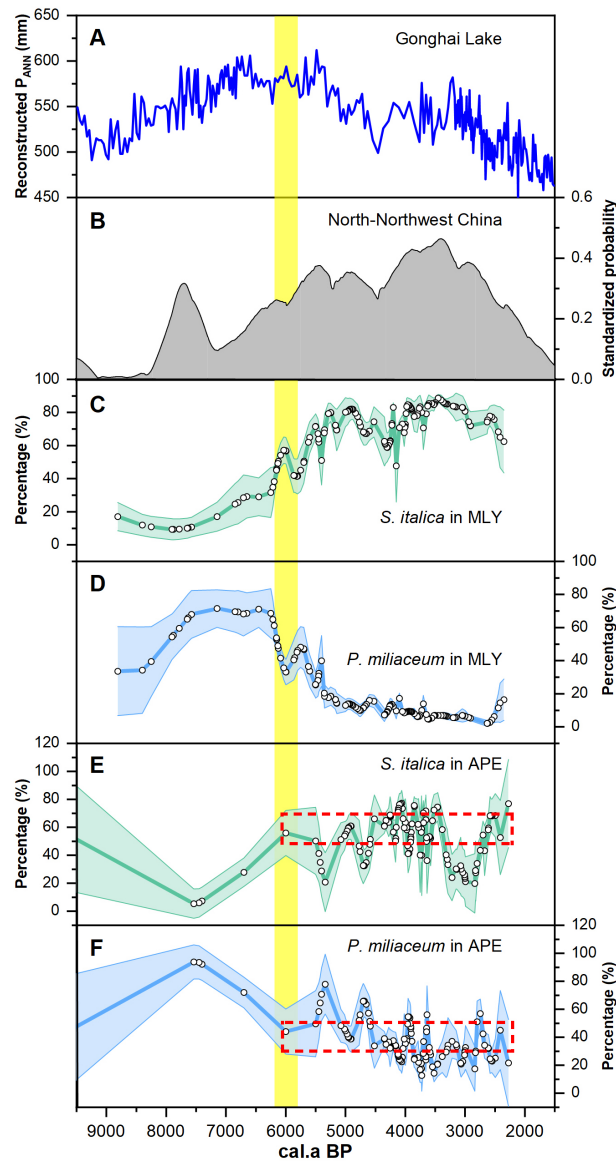


Figure 7: Comparison between cropping patterns and demographic and climatic records. (A) Pollen-based annual precipitation reconstructed from Gonghai Lake (Chen et al., 2015). (B) Demographic fluctuations inferred from the summed probability distribution of radiocarbon dates with 500-year smoothing in North and Northwest China (Wang et al., 2014). (C–F) Comparison of the percentages of foxtail (in green) and broomcorn (in blue) millet counts in the MLY and APE. The shaded envelopes indicate the range of 1σ uncertainty of the percentage values. The yellow vertical bars denote the high precipitation, population levels, and transition of millet in the MLY around 6000 cal. a BP. The red dashed rectangle indicates the roughly average values of millet in the APE after 6000 cal. a BP.

275

5.3 Transition and diffusion of millet agriculture in northern China

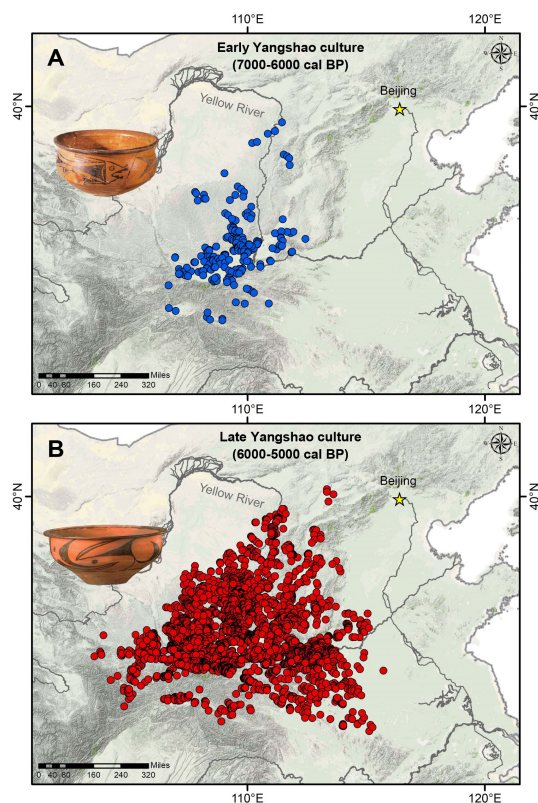
280 Based on the analysis of the archaeological and paleoclimatic records, it appeared that there occurred a diffusion, transition and divergence of millet agriculture in northern China around 6000 cal. a BP under the combined influence of climate change and cultural factors. The reasons are as follows.

First, although there was a dispute over whether a cooling or warming trend occurred in the late Holocene (Bova et al., 2021; Marsicek et al., 2018; Osman et al., 2021), global temperature anomalies reconstructed from a multi-proxy database of
285 paleotemperature records exhibited ~ 0.6 °C of warming from 10000 to 6000 cal. a BP (Kaufman et al., 2020; Marcott et al., 2013), known as the Holocene thermal maximum (Renssen et al., 2009). In addition, pollen-based East Asian monsoon precipitation exhibited a time-transgressive pattern of the maximum precipitation shift from southern to northern China (Zhou et al., 2016a; Zhou et al., 2022), and peak precipitation occurred between 8000 and 5000 cal. a BP in northern China (Figure 7A), as indicated by pollen records in the Dali, Daihai, and Gonghai Lakes (Chen et al., 2015; Wen et al., 2017; Xiao
290 et al., 2004). Thus, warm and wet climate during 8000–6000 cal. a BP with maximum combination of precipitation and temperature (Chen et al., 2015; Dong et al., 2022), defined as the Holocene optimum, may have greatly promoted the intensification of the millet agriculture shift from broomcorn millet to the productive foxtail millet in the MLY and the diffusion of millet agriculture from the subhumid MLY to the semiarid APE.

Second, the summed radiocarbon probability distribution suggested that the population in North and Northwest China
295 experienced a rapid increase and reached a high level during 6500–5000 cal. a BP (Figure 7B) (Wang et al., 2014). Additionally, an explosive growth of archaeological sites occurred from the early ($n = 217$) to the late Yangshao periods ($n = 3817$) (Hosner et al., 2016), extensively distributed along the middle Yellow River (Figure 8). Consequently, the interaction among different cultural subregions unprecedentedly intensified since 6000 cal. a BP and formed the Chinese Interaction Sphere (Chang, 1986) or Miaodigou Age (6200–5500 cal. a BP) (Han, 2012). Thus, the cultural expansion and population
300 explosion prompted the selection of the productive foxtail millet and the spread of millet agriculture around 6000 cal. a BP in northern China, coinciding with the origin and diffusion of the Sino-Tibetan evidenced by linguistics and genetics (Wang et al., 2021; Zhang et al., 2019).

Finally, as the main growing area of millet agriculture (He et al., 2017), Chinese loess was generally unsuitable for intensive arable production because of the small amounts of total nitrogen and phosphorus in the loess (Catt, 2001). Therefore, field
305 management practices, particularly manuring, played significant roles in the intensification of millet agriculture in northern China. Modern field experiments suggested that the manuring (animal waste) of cereal crops could significantly elevate their $\delta^{15}\text{N}$ values above those grown in natural or unmanured soils (Bogaard et al., 2013), with an offset range of 5–7‰ for millet (Christensen et al., 2022). Elevated nitrogen isotope values of the millet grains recovered from the Baishui valley indicated the use of animal manure as a growth-promoting factor since the late Yangshao period (Wang et al., 2018b). Besides, a
310 recent study in the Dadiwan site also suggested an intensive crop–livestock system was in practice around 5500 cal BP (Yang et al., 2022). Considering the yield of foxtail millet was typically twice that of broomcorn millet, the dramatic

increase in soil fertilization may promote the conscious choice of high-yield foxtail millets to maximize agricultural productivity.



315

Figure 8: Distribution of the archaeological sites of Yangshao culture. (A) Distribution of archaeological sites during the early Yangshao period (7000–6000 cal. a BP). (B) Distribution of archaeological sites during the middle and late Yangshao periods (6000–5000 cal. a BP). Representative painted pottery basin with the fish design of the Banpo phase (A) and the petal design of the Miaodigou phase (B).

320 6. Data availability

Dataset of archaeobotanical macroremains including absolute counts and weights of staple crops, and percentage of counts and weights for each sites together with their locations and ages are available at the open-access repository Zenodo (He et al., 2022; <https://doi.org/10.5281/zenodo.6669730>)

7. Conclusion

325 Based on the synthesis of archaeobotanical macroremains spanning the Neolithic and Bronze Ages in northern China, our study determined the distinctive spatiotemporal patterns of millet agriculture in the MLY and APE. On the one hand, millet agriculture spread westward and northward from the MLY to the APE around 6000 cal. a BP. On the other hand, the cropping patterns diversified in the MLY and APE after the transition from broomcorn to foxtail millet around 6000 cal. a BP to adapt to regional environments. The diffusion and transition of millet agriculture in northern China around 6000 cal. a BP may have been driven by the combined influence of warm-wet climate, population pressure, and field management. Afterward, the persistent drying trend since the mid-Holocene may have formed the millet agriculture emphasized on the foxtail millet and drought-tolerant broomcorn millet in the APE.

Author contributions

Conceptualization: HL, KH. Methodology: KH, CW, JZ. Investigation: KH, CW, JZ. Visualization: KH. Supervision: HL.
335 Writing - original draft: KH. Writing - review & editing: KH, HL.

Competing interests

The authors declare that they have no conflict of interest.

Acknowledgments

We sincerely thank Xiaoshan Yu, Xue Yan, Xiaoqu Zheng, Yuqian Wang and Yongchao Ma for their assistance with data
340 collection. We would like to thank Editage (www.editage.cn) for English language editing.

Financial support

This research was supported by the National Natural Science Foundation of China (Nos. T2192954, 41830322, and 41902187), the Strategic Priority Research Program of the Chinese Academy of Sciences (Nos. XDB26000000), and China Postdoctoral Science Foundation (Nos. 2020M670444).

345 References

An, C. B., Ji, D. X., Chen, F. H., Dong, G. H., Wang, H., Dong, W. M., and Zhao, X. Y.: Evolution of prehistoric agriculture in central Gansu Province, China: A case study in Qin'an and Li County, Chinese Sci. Bull., 55, 1925-1930, <https://doi.org/10.1007/s11434-010-3208-2>, 2010.

- Bao, Y. G., Zhou, X. Y., Liu, H. B., Hu, S. M., Zhao, K. L., Atahan, P., Dodson, J., and Li, X. Q.: Evolution of prehistoric
350 dryland agriculture in the arid and semi-arid transition zone in northern China, *PLoS One*, 13, e0198750,
<https://doi.org/10.1371/journal.pone.0198750>, 2018.
- Bestel, S., Bao, Y. J., Zhong, H., Chen, X. C., and Liu, L.: Wild plant use and multi-cropping at the early Neolithic Zhuzhai
site in the middle Yellow River region, China, *Holocene*, 28, 195-207, <https://doi.org/10.1177/0959683617721328>, 2018.
- Bogaard, A., Fraser, R., Heaton, T. H., Wallace, M., Vaiglova, P., Charles, M., Jones, G., Evershed, R. P., Styring, A. K.,
355 Andersen, N. H., Arbogast, R. M., Bartosiewicz, L., Gardeisen, A., Kanstrup, M., Maier, U., Marinova, E., Ninov, L.,
Schafer, M., and Stephan, E.: Crop manuring and intensive land management by Europe's first farmers, *Proc Natl Acad Sci
U S A*, 110, 12589-12594, <https://doi.org/10.1073/pnas.1305918110>, 2013.
- Bova, S., Rosenthal, Y., Liu, Z. Y., Godad, S. P., and Yan, M.: Seasonal origin of the thermal maxima at the Holocene and
the last interglacial, *Nature*, 589, 548-553, <https://doi.org/10.1038/s41586-020-03155-x>, 2021.
- 360 Catt, J. A.: The agricultural importance of loess, *Earth-Sci. Rev.*, 54, 213-229, [https://doi.org/10.1016/S0012-8252\(01\)00049-6](https://doi.org/10.1016/S0012-8252(01)00049-6), 2001.
- Chang, K.-c.: *The Archaeology of Ancient China*, Yale University Press, New Haven, 1986.
- Chen, F. H., Xu, Q. H., Chen, J. H., Birks, H. J. B., Liu, J. B., Zhang, S. R., Jin, L. Y., An, C. B., Telford, R. J., Cao, X. Y.,
Wang, Z. L., Zhang, X. J., Selvaraj, K., Lu, H. Y., Li, Y. C., Zheng, Z., Wang, H. P., Zhou, A. F., Dong, G. H., Zhang, J. W.,
365 Huang, X. Z., Bloemendal, J., and Rao, Z. G.: East Asian summer monsoon precipitation variability since the last
deglaciation, *Sci. Rep.*, 5, 11186, <https://doi.org/10.1038/srep11186>, 2015.
- Chen, Q. G.: "Hu Population Line" and the transitional border between agriculture and pasture: A discussion from a new
perspective, *Pratacultural Science*, 35, 669-676 (in Chinese with English abstract), 2018.
- Christensen, B. T., Jensen, J. L., Dong, Y., and Bogaard, A.: Manure for millet: Grain $\delta^{15}\text{N}$ values as indicators of
370 prehistoric cropping intensity of *Panicum miliaceum* and *Setaria italica*, *J. Archaeol. Sci.*, 139, 105554,
<https://doi.org/10.1016/j.jas.2022.105554>, 2022.
- Colledge, S. and Conolly, J.: Wild plant use in European Neolithic subsistence economies: a formal assessment of
preservation bias in archaeobotanical assemblages and the implications for understanding changes in plant diet breadth, *Quat.
Sci. Rev.*, 101, 193-206, <https://doi.org/10.1016/j.quascirev.2014.07.013>, 2014.
- 375 Crawford, G., Underhill, A., Zhao, Z., Lee, G., Feinman, G., Nicholas, L., Luan, F. S., Yu, H. G., Fang, H., and Cai, F. S.:
Late Neolithic Plant Remains from Northern China: Preliminary Results from Liangchengzhen, Shandong *CurrAnthr*, 46,
309-317, 2005.
- Crawford, G. W., Chen, X. X., Luan, F. S., and Wang, J. H.: People and plant interaction at the Houli Culture Yuezhuang
site in Shandong Province, China, *Holocene*, 26, 1594-1604, <https://doi.org/10.1177/0959683616650269>, 2016.
- 380 d'Alpoim Guedes, J. and Bocinsky, R. K.: Climate change stimulated agricultural innovation and exchange across Asia, *Sci.
Adv.*, 4, eaar4491, <https://doi.org/10.1126/sciadv.aar4491>, 2018.

- Deng, Z. H., Qin, L., Gao, Y., Weisskopf, A. R., Zhang, C., and Fuller, D. Q.: From early domesticated rice of the middle Yangtze Basin to millet, rice and wheat agriculture: Archaeobotanical macro-remains from Baligang, Nanyang Basin, Central China (6700-500 BC), *PLoS One*, 10, e0139885, <https://doi.org/10.1371/journal.pone.0139885>, 2015.
- 385 Diao, X. M. and Jia, G. Q.: Origin and Domestication of Foxtail Millet. In: *Genetics and Genomics of Setaria*, Doust, A. and Diao, X. M. (Eds.), Springer, Cham, 2017.
- Dong, G. H., Yang, Y. S., Han, J. Y., Wang, H., and Chen, F. H.: Exploring the history of cultural exchange in prehistoric Eurasia from the perspectives of crop diffusion and consumption, *Sci. China-Earth Sci.*, 60, 1110-1123, <https://doi.org/10.1007/s11430-016-9037-x>, 2017.
- 390 Dong, G. H., Zhang, S. J., Yang, Y. S., Chen, J. H., and Chen, F. H.: Agricultural intensification and its impact on environment during Neolithic Age in northern China, *Chinese Sci. Bull.*, 61, 2913-2925, <https://doi.org/10.1360/N972016-00547>, 2016.
- Dong, Y. C. and Zheng, D. S.: *Crops and their wild relatives in China (food crops)*, China Agriculture Press, Beijing, 2006.
- Dong, Y. J., Wu, N. Q., Li, F. J., and Lu, H. Y.: Rapid northwestward extension of the East Asian Summer Monsoon since the Last Deglaciation: Evidence from the mollusk record, *Front Earth Sci*, 9, <https://doi.org/10.3389/feart.2021.788738>, 2021.
- 395 Dong, Y. J., Wu, N. Q., Li, F. J., Zhang, D., Zhang, Y. T., Shen, C. M., and Lu, H. Y.: The Holocene temperature conundrum answered by mollusk records from East Asia, *Nat. Commun.*, 13, 5153, <https://doi.org/10.1038/s41467-022-32506-7>, 2022.
- Fuller, D. Q. and Zhang, H.: A preliminary report of the survey archaeobotany of the upper Ying valley (Henan province). In: *Archaeological Discovery and Research at the Wangchenggang Site in Dengfeng (2002-2005)*, School of Archaeology and Museology Peiking Universtiy and Henan Provincial Institute of Cultural Relics and Archaeology (Eds.), Great Elephant Publisher, Zhengzhou, 2007.
- 400 Goldsmith, Y., Broecker, W. S., Xu, H., Polissar, P. J., deMenocal, P. B., Porat, N., Lan, J. H., Cheng, P., Zhou, W. J., and An, Z. S.: Northward extent of East Asian monsoon covaries with intensity on orbital and millennial timescales, *Proc. Natl. Acad. Sci. U. S. A.*, 114, 1817-1821, <https://doi.org/10.1073/pnas.1616708114>, 2017.
- 405 Grayson, D. K.: *Quantitative Zooarchaeology: Topics in the Analysis of Archaeological Faunas*, Elsevier, Amsterdam, 2014.
- Han, J. Y.: Miaodigou Age and Eanly China, *Archaeology*, 2012. 59-69 (in Chinese with English ababstract), 2012.
- He, K. Y., Lu, H. Y., Zhang, J. P., Wang, C., and Huan, X. J.: Prehistoric evolution of the dualistic structure mixed rice and millet farming in China, *Holocene*, 27, 1885-1898, <https://doi.org/10.1177/0959683617708455>, 2017.
- 410 He, K. Y., Lu, H. Y., Zhang, J. P., and Wang, C.: A dataset of archaeobotanical macroremains (staple crops) during the Neolithic and Bronze Ages in northern China [Data set]. *Zenodo*. <https://doi.org/10.5281/zenodo.6410368>, 2022
- Hosner, D., Wagner, M., Tarasov, P. E., Chen, X. C., and Leipe, C.: Spatiotemporal distribution patterns of archaeological sites in China during the Neolithic and Bronze Age: An overview, *Holocene*, 26, 1576-1593, <https://doi.org/10.1177/0959683616641743>, 2016.

- 415 Hunt, H. V., Linden, M. V., Liu, X. Y., Motuzaite-Matuzeviciute, G., Colledge, S., and Jones, M. K.: Millets across Eurasia: chronology and context of early records of the genera *Panicum* and *Setaria* from archaeological sites in the Old World, *Veg. Hist. Archaeobot.*, 17, S5-S18, <https://doi.org/10.1007/s00334-008-0187-1>, 2008.
- Jin, G. Y., Wu, W. W., Zhang, K. S., Wang, Z. B., and Wu, X. H.: 8000-Year old rice remains from the north edge of the Shandong Highlands, East China, *J. Archaeol. Sci.*, 51, 34-42, <https://doi.org/10.1016/j.jas.2013.01.007>, 2014.
- 420 Jones, M., Hunt, H., Lightfoot, E., Lister, D., Liu, X. Y., and Motuzaite-Matuzeviciute, G.: Food globalization in prehistory, *World Archaeol.*, 43, 665-675, <https://doi.org/10.1080/00438243.2011.624764>, 2011.
- Kaufman, D., McKay, N., Routson, C., Erb, M., Davis, B., Heiri, O., Jaccard, S., Tierney, J., Datwyler, C., Axford, Y., Brussel, T., Cartapanis, O., Chase, B., Dawson, A., de Vernal, A., Engels, S., Jonkers, L., Marsicek, J., Moffa-Sanchez, P., Morrill, C., Orsi, A., Rehfeld, K., Saunders, K., Sommer, P. S., Thomas, E., Tonello, M., Toth, M., Vachula, R., Andreev, A.,
- 425 Bertrand, S., Biskaborn, B., Bringué, M., Brooks, S., Caniupan, M., Chevalier, M., Cwynar, L., Emile-Geay, J., Fegyveresi, J., Feurdean, A., Finsinger, W., Fortin, M. C., Foster, L., Fox, M., Gajewski, K., Grosjean, M., Hausmann, S., Heinrichs, M., Holmes, N., Ilyashuk, B., Ilyashuk, E., Juggins, S., Khider, D., Koinig, K., Langdon, P., Larocque-Tobler, I., Li, J., Lotter, A., Luoto, T., Mackay, A., Magyari, E., Malevich, S., Mark, B., Massaferrro, J., Montade, V., Nazarova, L., Novenko, E., Paril, P., Pearson, E., Peros, M., Pienitz, R., Plociennik, M., Porinchu, D., Potito, A., Rees, A., Reinemann, S., Roberts, S.,
- 430 Rolland, N., Salonen, S., Self, A., Seppa, H., Shala, S., St-Jacques, J. M., Stenni, B., Syrykh, L., Tarrats, P., Taylor, K., van den Bos, V., Velle, G., Wahl, E., Walker, I., Wilmshurst, J., Zhang, E., and Zhilich, S.: A global database of Holocene paleotemperature records, *Scientific Data*, 7, 115, <https://doi.org/10.1038/s41597-020-0445-3>, 2020.
- Lee, G.-A., Crawford, G. W., Liu, L., and Chen, X.: Plants and people from the early neolithic to Shang periods in North China, *Proc. Natl. Acad. Sci. U. S. A.*, 104, 1087-1092, <https://doi.org/10.1073/pnas.0609763104>, 2007.
- 435 Leipe, C., Long, T. W., Sergusheva, E. A., Wagner, M., and Tarasov, P. E.: Discontinuous spread of millet agriculture in eastern Asia and prehistoric population dynamics, *Sci. Adv.*, 5, eaax6225, <https://doi.org/10.1126/sciadv.aax6225>, 2019.
- Li, M. S., Hinnov, L., and Kump, L.: Acycle: Time-series analysis software for paleoclimate research and education, *Computers & Geosciences*, 127, 12-22, <https://doi.org/10.1016/j.cageo.2019.02.011>, 2019.
- Li, Y. P., Zhang, J. N., Zhang, X. H., and Zhao, H. T.: Agriculture, the Environment, and Social Complexity From the Early
- 440 to Late Yangshao Periods (5000–3000 BC): Insights From Macro-Botanical Remains in North-Central China, *Frontiers in Earth Science*, 9, <https://doi.org/10.3389/feart.2021.662391>, 2021.
- Liu, C. J. and Kong, Z. C.: Morphological Comparison of Foxtail Millet and Broomcorn Millet and Its Significance in Archaeological Identification, *Archaeology*, 2004. 76-83 (in Chinese with English abstract), 2004.
- Liu, C. J., Kong, Z. C., and Lang, S. D.: Plant remains at the Dadiwan site and a discussion of human adaptation to the
- 445 environment., *Cultural Relics of Central China*, 2004. 26-30 (in Chinese with English abstract), 2004.
- Liu, L. and Chen, X. C.: *The archaeology of China: from the late Paleolithic to the early Bronze Age*, Cambridge University Press, New York, 1-475 pp., 2012.

- Liu, X. Y.: Study on the plant remains excavated in the Anban site in 2012, Master, Northwest University, Xi'an, 1-55 pp., 2014.
- 450 Liu, X. Y., Fuller, D. Q., and Jones, M.: Early agriculture in China. In: The Cambridge World History: Volume 2: A World with Agriculture, 12,000 BCE–500 CE, Goucher, C. and Barker, G. (Eds.), The Cambridge World History, Cambridge University Press, Cambridge, 2015.
- Liu, X. Y., Hunt, H. V., and Jones, M. K.: River valleys and foothills: changing archaeological perceptions of North China's earliest farms, *Antiquity*, 83, 82-95, <https://doi.org/10.1017/S0003598X00098100>, 2009.
- 455 Liu, X. Y., Jones, P. J., Motuzaitė Matuzevičiūtė, G., Hunt, H. V., Lister, D. L., An, T., Przelomska, N., Kneale, C. J., Zhao, Z. J., and Jones, M. K.: From ecological opportunism to multi-cropping: Mapping food globalisation in prehistory, *Quat. Sci. Rev.*, 206, 21-28, <https://doi.org/10.1016/j.quascirev.2018.12.017>, 2019.
- Lu, H. Y., Zhang, J. P., Liu, K. b., Wu, N. Q., Li, Y. M., Zhou, K. S., Ye, M. L., Zhang, T. Y., Zhang, H. J., Yang, X. Y., Shen, L. C., Xu, D. K., and Li, Q.: Earliest domestication of common millet (*Panicum miliaceum*) in East Asia extended to
 460 10,000 years ago, *Proc. Natl. Acad. Sci. U. S. A.*, 106, 7367-7372, <https://doi.org/10.1073/pnas.0900158106>, 2009a.
- Lu, H. Y., Zhang, J. P., Wu, N. Q., Liu, K. B., Xu, D. K., and Li, Q.: Phytoliths analysis for the discrimination of Foxtail millet (*Setaria italica*) and Common millet (*Panicum miliaceum*), *PLoS One*, 4, e4448, <https://doi.org/10.1371/journal.pone.0004448>, 2009b.
- Luo, W. H., Li, J., Yang, Y. Z., Zhang, J. Q., Gu, C. G., Fang, F., Gu, W. F., and Zhang, J. Z.: Evidence for crop structure
 465 from phytoliths at the Dongzhao site on the Central Plains of China from Xinzhai to Erligang periods, *Journal of Archaeological Science: Reports*, 17, 852-859, <https://doi.org/10.1016/j.jasrep.2017.12.018>, 2018.
- Marcott, S. A., Shakun, J. D., Clark, P. U., and Mix, A. C.: A reconstruction of regional and global temperature for the past 11,300 years, *Science*, 339, 1198-1201, <https://doi.org/10.1126/science.1228026>, 2013.
- Märkle, T. and Rösch, M.: Experiments on the effects of carbonization on some cultivated plant seeds, *Veg. Hist. Archaeobot.*, 17, 257-263, <https://doi.org/10.1007/s00334-008-0165-7>, 2008.
- 470 Marsicek, J., Shuman, B. N., Bartlein, P. J., Shafer, S. L., and Brewer, S.: Reconciling divergent trends and millennial variations in Holocene temperatures, *Nature*, 554, 92-96, <https://doi.org/10.1038/nature25464>, 2018.
- Marston, J. M.: Ratios and simple statistics in Paleoethnobotanical analysis: Data exploration and hypothesis testing. In: Method and theory in paleoethnobotany, Marston, J. M., Guedes, J. d. A., and Warinner, C. (Eds.), University Press of
 475 Colorado, Louisville, 2014.
- Osman, M. B., Tierney, J. E., Zhu, J., Tardif, R., Hakim, G. J., King, J., and Poulsen, C. J.: Globally resolved surface temperatures since the Last Glacial Maximum, *Nature*, 599, 239-244, <https://doi.org/10.1038/s41586-021-03984-4>, 2021.
- Qin, L.: Archaeobotanical review and thin king on the origins of Chinese agriculture. In: A Collection of Studies on
 480 Archaeology (9), School of Archaeology and museology Peking University and Center for the Study of Chinese Archaeology Peking University (Eds.), Science Press, Beijing, 2012.

- Ren, X. L., Lemoine, X., Mo, D. W., Kidder, T. R., Guo, Y. Y., Qin, Z., and Liu, X. Y.: Foothills and intermountain basins: Does China's Fertile Arc have 'Hilly Flanks'?, *Quat. Int.*, 426, 86-96, <https://doi.org/10.1016/j.quaint.2016.04.001>, 2016.
- Renssen, H., Seppä, H., Heiri, O., Roche, D. M., Goosse, H., and Fichet, T.: The spatial and temporal complexity of the Holocene thermal maximum, *Nat. Geosci.*, 2, 411-414, <https://doi.org/10.1038/ngeo513>, 2009.
- 485 Shanxi Academy of Agricultural Sciences: *Cultivation of Millet in China*, China Agriculture Press, Beijing, 1987.
- Sheng, P. F., Shang, X., Sun, Z. Y., Yang, L. P., Guo, X. N., and Jones, M. K.: North-south patterning of millet agriculture on the Loess Plateau: Late Neolithic adaptations to water stress, NW China, *Holocene*, 28, 1554-1563, <https://doi.org/10.1177/0959683618782610>, 2018.
- Song, J. X., Wang, L. Z., and Fuller, D. Q.: A regional case in the development of agriculture and crop processing in
490 northern China from the Neolithic to Bronze Age: archaeobotanical evidence from the Sushui River survey, Shanxi province, *Archaeol Anthropol Sci*, doi: 10.1007/s12520-017-0551-0, 2019. 667-682, <https://doi.org/10.1007/s12520-017-0551-0>, 2019.
- Sun, Y. G. and Zhao, Z. J.: A comprehensive study on the unearthed plant remains in Weijiawopu site of Hongshan culture, *Agricultural Archaeology*, 2013. 1-5 (in Chinese), 2013.
- The Institute of Archaeology and China Academy of Social Sciences: *Chinese Archaeology: Neolithic*, China Social
495 Sciences Press, Beijing (in Chinese), 2010.
- Wang, C. and Lu, H. Y.: The carbonization temperature of common and foxtail millet and its implication in archaeobotany, *Southeast Culture*, 1, 65-74 (in Chinese with English abstract), <https://doi.org/10.3969/j.issn.1001-179X.2020.01.008>, 2020.
- Wang, C., Lu, H. Y., Gu, W. F., Wu, N. Q., Zhang, J. P., Zuo, X. X., Li, F. J., Wang, D. j., Dong, Y. J., and Wang, S. Z.: The spatial pattern of farming and factors influencing it during the Peiligang culture period in the middle Yellow River valley,
500 China, *Sci. Bull.*, 62, 1565-1568, <https://doi.org/10.1016/j.scib.2017.10.003>, 2017.
- Wang, C., Lu, H. Y., Gu, W. F., Wu, N. Q., Zhang, J. P., Zuo, X. X., Li, F. J., Wang, D. J., Dong, Y. J., Wang, S. Z., Liu, Y. F., Bao, Y. J., and Hu, Y. Y.: The development of Yangshao agriculture and its interaction with social dynamics in the middle Yellow River region, China, *Holocene*, 29, 173-180, <https://doi.org/10.1177/0959683618804640>, 2019.
- Wang, C., Lu, H. Y., Gu, W. F., Zuo, X. X., Zhang, J. P., Liu, Y. F., Bao, Y. J., and Hu, Y. Y.: Temporal changes of mixed
505 millet and rice agriculture in Neolithic-Bronze Age Central Plain, China: Archaeobotanical evidence from the Zhuzhai site, *Holocene*, 28, 738-754, <https://doi.org/10.1177/0959683617744269>, 2018a.
- Wang, C., Lu, H. Y., Zhang, J. P., Gu, Z. Y., and He, K. Y.: Prehistoric demographic fluctuations in China inferred from radiocarbon data and their linkage with climate change over the past 50,000 years, *Quat. Sci. Rev.*, 98, 45-59, <https://doi.org/10.1016/j.quascirev.2014.05.015>, 2014.
- 510 Wang, C., Lu, H. Y., Zhang, J. P., He, K. Y., and Huan, X. J.: Macro-process of past plant subsistence from the upper Paleolithic to middle Neolithic in China: A quantitative Analysis of multi-archaeobotanical data, *PLoS One*, 11, e0148136, <https://doi.org/10.1371/journal.pone.0148136>, 2016.
- Wang, C., Lu, H. Y., Zhang, J. P., Ye, M. L., and Cai, L. H.: Phytolith evidence of millet agriculture in the late Neolithic archaeological site of Lajia, northwestern China, *Quat Res*, 2015. 200-208 (in Chinese with English abstract), 2015.

- 515 Wang, C. C., Yeh, H. Y., Popov, A. N., Zhang, H. Q., Matsumura, H., Sirak, K., Cheronet, O., Kovalev, A., Rohland, N., Kim, A. M., Mallick, S., Bernardos, R., Tumen, D., Zhao, J., Liu, Y. C., Liu, J. Y., Mah, M., Wang, K., Zhang, Z., Adamski, N., Broomandkshobacht, N., Callan, K., Candilio, F., Carlson, K. S. D., Culleton, B. J., Eccles, L., Freilich, S., Keating, D., Lawson, A. M., Mandl, K., Michel, M., Oppenheimer, J., Özdoğan, K. T., Stewardson, K., Wen, S. Q., Yan, S., Zalzal, F., Chuang, R., Huang, C.-J., Loo, H., Shiung, C. C., Nikitin, Y. G., Tabarev, A. V., Tishkin, A. A., Lin, S., Sun, Z. Y., Wu, X.
- 520 M., Yang, T. L., Hu, X., Chen, L., Du, H., Bayarsaikhan, J., Mijiddorj, E., Erdenebaatar, D., Iderkhangai, T.-O., Myagmar, E., Kanzawa-Kiriyama, H., Nishino, M., Shinoda, K.-i., Shubina, O. A., Guo, J. X., Cai, W. W., Deng, Q. Y., Kang, L. L., Li, D. W., Li, D. N., Lin, R., Ni, N., Shrestha, R., Wang, L. X., Wei, L. H., Xie, G. M., Yao, H. B., Zhang, M. F., He, G. L., Yang, X. M., Hu, R., Robbeets, M., Schiffels, S., Kennett, D. J., Jin, L., Li, H., Krause, J., Pinhasi, R., and Reich, D.: Genomic insights into the formation of human populations in East Asia, *Nature*, 591, 413-419, <https://doi.org/10.1038/s41586-021-03336-2>, 2021.
- Wang, X., Fuller, B. T., Zhang, P. C., Hu, S. M., Hu, Y. W., and Shang, X.: Millet manuring as a driving force for the Late Neolithic agricultural expansion of north China, *Sci. Rep.*, 8, 5552, <https://doi.org/10.1038/s41598-018-23315-4>, 2018b.
- Wang, X. Y.: *Chinese Millets*, China Agriculture Press, Beijing, 1996.
- Wen, R. L., Xiao, J. L., Fan, J. W., Zhang, S. R., and Yamagata, H.: Pollen evidence for a mid-Holocene East Asian summer monsoon maximum in northern China, *Quat. Sci. Rev.*, 176, 29-35, <https://doi.org/10.1016/j.quascirev.2017.10.008>, 2017.
- 530 Wright, P.: Preservation or destruction of plant remains by carbonization?, *J. Archaeol. Sci.*, 30, 577-583, [https://doi.org/10.1016/s0305-4403\(02\)00203-0](https://doi.org/10.1016/s0305-4403(02)00203-0), 2003.
- Xiao, J. L., Xu, Q. H., Nakamura, T., Yang, X. L., Liang, W. D., and Inouchi, Y.: Holocene vegetation variation in the Daihai Lake region of north-central China: a direct indication of the Asian monsoon climatic history, *Quat. Sci. Rev.*, 23, 1669-1679, <https://doi.org/10.1016/j.quascirev.2004.01.005>, 2004.
- 535 Yang, B., Qin, C., Brauning, A., Osborn, T. J., Trouet, V., Ljungqvist, F. C., Esper, J., Schneider, L., Griessinger, J., Buntgen, U., Rossi, S., Dong, G. H., Yan, M., Ning, L., Wang, J. L., Wang, X. F., Wang, S. M., Luterbacher, J., Cook, E. R., and Stenseth, N. C.: Long-term decrease in Asian monsoon rainfall and abrupt climate change events over the past 6,700 years, *Proc. Natl. Acad. Sci. U. S. A.*, 118, e2102007118, <https://doi.org/10.1073/pnas.2102007118>, 2021.
- 540 Yan, W. M.: *Cradle of Oriental Civilization*. In: *The origins of agriculture and rise of civilization*, Yan, W. M. (Ed.), Science Press, Beijing, 2000.
- Yang, J. S., Zhang, D. J., Yang, X. Y., Wang, W. W., Perry, L., Fuller, D. Q., Li, H. M., Wang, J., Ren, L. L., Xia, H., Shen, X. K., Wang, H., Yang, Y. S., Yao, J. T., Gao, Y., and Chen, F. H.: Sustainable intensification of millet–pig agriculture in Neolithic North China, *Nat. Sustain.*, <https://doi.org/10.1038/s41893-022-00905-9>, 2022.
- 545 Yang, L., Ma, M. M., Chen, T. T., Cui, Y. F., Chen, P. P., Zheng, L. C., and Lu, P.: How did trans-Eurasian exchanges affect spatial-temporal variation in agricultural patterns during the late prehistoric period in the Yellow River valley (China)?, *Holocene*, 31, 247-257, <https://doi.org/10.1177/0959683620941140>, 2020.

- Yang, R. C., Di, N., Jia, X., Yin, D., Gao, S., Shao, J., Sun, Z. Y., Hu, S. M., and Zhao, Z. J.: Subsistence strategies of early Xia Period Analysis of flotation results from the Shimao site in Yulin area Shaanxi Province, *Quat. Res.*, 42, 101-118 (in Chinese with English abstract), 2022.
- 550 Yang, S. L., Ding, Z. L., Li, Y. Y., Wang, X., Jiang, W. Y., and Huang, X. F.: Warming-induced northwestward migration of the East Asian monsoon rain belt from the Last Glacial Maximum to the mid-Holocene, *Proc. Natl. Acad. Sci. U. S. A.*, 112, 13178-13183, <https://doi.org/10.1073/pnas.1504688112>, 2015.
- Yang, X. Y., Wan, Z. W., Perry, L., Lu, H. Y., Wang, Q., Zhao, C. H., Li, J., Xie, F., Yu, J. C., Cui, T. X., Wang, T., Li, M.
- 555 Q., and Ge, Q. S.: Early millet use in northern China, *Proc. Natl. Acad. Sci. U. S. A.*, 109, 3726-3730, <https://doi.org/10.1073/pnas.1115430109>, 2012.
- Yang, Y. Z., Yuan, Z. J., Zhang, J. Q., Cheng, Z. J., Xuan, H. L., Fang, F., Zhang, J. Z., and Gu, W. F.: Characteristics and development of agriculture during Xia and Shang dynasties based on carbonized plant analysis at the Dongzhao Site, central China, *Acta Anthropologica Sinica*, 36, 119-130 (in Chinese with English abstract), 2017.
- 560 Yuan, J., Roderick, C., Lorenzo, C., and Chen, X. L.: Subsistence and persistence: agriculture in the Central Plains of China through the Neolithic to Bronze Age transition, *Antiquity*, 94, 900-915, <https://doi.org/10.15184/aqy.2020.80>, 2020.
- Zhang, C.: Analysis on flotation plant remains of Lajia Site in Minhe, Qinghai province, Master, Northwest University, Xi'an, 1-43 pp., 2013.
- Zhang, H., Bevan, A., Fuller, D., and Fang, Y. M.: Archaeobotanical and GIS-based approaches to prehistoric agriculture in the upper Ying valley, Henan, China, *J. Archaeol. Sci.*, 37, 1480-1489, <https://doi.org/10.1016/j.jas.2010.01.008>, 2010a.
- 565 Zhang, J. N., Xia, Z. K., and Zhang, X. H.: Research on charred plant remains from the Neolithic to the Bronze Age in Luoyang Basin, *Chinese Sci. Bull.*, 59, 3388-3397 (in Chinese), <https://doi.org/10.1360/N972013-00022>, 2014.
- Zhang, J. P., Lu, H. Y., Gu, W. F., Wu, N. Q., Zhou, K. S., Hu, Y. Y., Xin, Y. J., and Wang, C.: Early Mixed Farming of Millet and Rice 7800 Years Ago in the Middle Yellow River Region, China, *PloS One*, 7, e52146, <https://doi.org/10.1371/journal.pone.0052146>, 2012.
- 570 Zhang, J. P., Lu, H. Y., Wu, N. Q., Li, F. J., Yang, X. Y., Wang, Y. L., Ma, M. Z., and Zhang, X. H.: Phytolith evidence of millet agriculture during about 6000~2100 aB.P. in the Guanzhong basin, China, *Quat. Res.*, 30, 287-297 (in Chinese with English abstract), 2010b.
- Zhang, J. P., Lu, H. Y., Wu, N. Q., Yang, X. Y., and Diao, X. M.: Phytolith analysis for differentiating between foxtail millet (*Setaria italica*) and green foxtail (*Setaria viridis*), *PLoS One*, 6, e19726, <https://doi.org/10.1371/journal.pone.0019726>, 2011.
- 575 Zhang, M. H., Yan, S., Pan, W. Y., and Jin, L.: Phylogenetic evidence for Sino-Tibetan origin in northern China in the Late Neolithic, *Nature*, 569, 112-115, <https://doi.org/10.1038/s41586-019-1153-z>, 2019.
- Zhao, Z. J.: Characteristics of agricultural economy during the formation of ancient Chinese civilization, *Journal of National Museum of China*, 2011a. 19-31 (in Chinese with English abstract), 2011a.
- 580 Zhao, Z. J.: Flotation results from the Lajia site, Minghe County of Qinghai. In: *China Cultural Relics News*, Beijing, 2003.

- Zhao, Z. J.: Flotation results from the Xinglonggou site and the origin of the dry-land agriculture in North China. In: *Antiquities of East Asian (A)*, University, D. o. C. R. a. M. o. N. N. (Ed.), Cultural Relics Publishing House, Beijing, 2004.
- Zhao, Z. J.: New Archaeobotanic Data for the Study of the Origins of Agriculture in China, *CurrAnthr*, 52, S295-S306, <https://doi.org/10.1086/659308>, 2011b.
- 585 Zhao, Z. J. and Xu, L. G.: Analysis on the flotation results of Zhouyuan (Wangjiazui locality), Shaanxi province., *Cultural Relics*, 2004. 89-96 (in Chinese), 2004.
- Zhao, Z. J. and Zhang, J. Z.: Report on the 2001 Flotation Results from the Site of Jiahu, *Archaeology*, 2009. 84-93 (in Chinese with English abstract), 2009.
- Zhao, Z. J., Zhao, C. H., Yu, J. C., Wang, T., Cui, T. X., and Guo, J. N.: Plant remains unearthed at the Donghulin site in
590 Beijing: discussion on results of flotation, *Archaeology*, 2020. 99-106 (in Chinese with English abstract), 2020.
- Zhong, H., Li, X. W., Wang, W. L., and Zhao, Z. J.: Preliminary research of the farming production pattern in the Central Plain area during the Miaodigou Period, *Quat Res*, 40, 472-485 (in Chinese with English abstract), 2020.
- Zhou, X., Sun, L., Zhan, T., Huang, W., Zhou, X., Hao, Q., Wang, Y., He, X., Zhao, C., Zhang, J., Qiao, Y., Ge, J., Yan, P., Yan, Q., Shao, D., Chu, Z., Yang, W., and Smol, J. P.: Time-transgressive onset of the Holocene Optimum in the East Asian
595 monsoon region, *Earth Planet. Sci. Lett.*, 456, 39-46, <https://doi.org/10.1016/j.epsl.2016.09.052>, 2016a.
- Zhou, X., Zhan, T., Tu, L., Smol, J. P., Jiang, S., Liu, X., Xu, C., and Guo, Z.: Monthly insolation linked to the time-transgressive nature of the Holocene East Asian monsoon precipitation maximum, *Geology*, 50, 331-335, <https://doi.org/10.1130/g49550.1>, 2022.
- Zhou, X. Y., Li, X. Q., Zhao, K. L., Dodson, J., Sun, N., and Yang, Q.: Early agricultural development and environmental
600 effects in the Neolithic Longdong basin (eastern Gansu), *Chinese Sci. Bull.*, 56, 762, <https://doi.org/10.1007/s11434-010-4286-x>, 2011.
- Zhou, X. Y., Li, X. Q., John, D., and Zhao, K. L.: Rapid agricultural transformation in the prehistoric Hexi corridor, China, *Quat. Int.*, 426, 33-41, <https://doi.org/10.1016/j.quaint.2016.04.021>, 2016b.