

## Carbon fluxes from land 2000-2020: bringing clarity on countries' reporting

Giacomo Grassi<sup>1\*</sup>, Giulia Conchedda<sup>2</sup>, Sandro Federici<sup>3</sup>, Raul Abad Viñas<sup>1</sup>, Anu Korosuo<sup>1</sup>, Joana Melo<sup>4</sup>, Simone Rossi<sup>5</sup>, Marieke Sandker<sup>6</sup>, Zoltan Somogyi<sup>7</sup>, [Matteo Vizzari](#)<sup>1</sup>, Francesco N. Tubiello<sup>2</sup>

5

1 Joint Research Centre (JRC), European Commission, Ispra, 21027, Italy.

2 Statistics Division, FAO, Rome, 00153, Italy

3 Institute for Global Environmental Strategies, IGES, Hayama, 240-0112, Japan

4 School of Geography, University of Leeds, Leeds, LS2 9JT, UK

10 5 Joint Research Centre (JRC) Consultant, ARCADIA SIT s.r.l., Vigevano (PV), 27029, Italy

6 Forestry Division, FAO, Rome, 00153, Italy

7 University of Sopron, Forest Research Institute, Sopron, H-9400, Hungary

*Correspondence to:* Giacomo Grassi ([giacomo.grassi@ec.europa.eu](mailto:giacomo.grassi@ec.europa.eu))

15

## Abstract

20 Despite an increasing attention on the role of land in meeting countries' climate pledges under the Paris Agreement, the range of estimates of carbon fluxes from Land Use, Land-Use Change and Forestry (LULUCF) in available databases is very large. A good understanding of the LULUCF data reported by countries under the United Nations Framework Convention on Climate Change (UNFCCC) - and of the differences with other datasets based on country reported data - is crucial to increase confidence in land-based climate change mitigation efforts.

25 Here we present a new data compilation of LULUCF fluxes of carbon dioxide (CO<sub>2</sub>) on managed land, aiming at providing a consolidated view on the subject. Our database builds on a detailed analysis of data from National Greenhouse Gas Inventories (NGHGs) communicated via a range of country reports to the UNFCCC, which report anthropogenic emissions and removals based on the IPCC (Intergovernmental Panel on Climate Change) methodology. Specifically, for Annex I countries, data are sourced from annual GHG  
30 inventories. For non-Annex I countries, we compiled the most recent and complete information from different sources, including National Communications, Biennial Update Reports, submissions to the REDD+ (Reducing Emissions from Deforestation and Forest Degradation) framework and Nationally Determined Contributions. The data are disaggregated into fluxes from forest land, deforestation, organic soils and other sources (including non-forest land uses). The CO<sub>2</sub> flux database is complemented by information on managed and  
35 unmanaged forest area as available in NGHGs. To ensure completeness of time series, we filled the gaps without altering the levels and trends of the country reported data. Expert judgement was applied in a few cases when data inconsistencies existed.

Results indicate a mean net global sink of -1.6 Gt CO<sub>2</sub>/yr over the period 2000-2020, largely determined by a sink on forest land (-6.4 Gt CO<sub>2</sub>/yr), followed by source from deforestation (+4.4 Gt CO<sub>2</sub>/yr), with smaller  
40 fluxes from organic soils (+0.9 Gt CO<sub>2</sub>/yr) and other land uses (-0.6 Gt CO<sub>2</sub>/yr).

Furthermore, we compare our NGHGI database with two other sets of country-based data: those included in the UNFCCC GHG data interface, and those based on forest resources data reported by countries to FAO and used as inputs into estimates of GHG emissions in FAOSTAT. The first dataset, once gap-filled as in our study, results in a net global LULUCF sink of -5.4 Gt CO<sub>2</sub>/yr. The difference with the NGHGI database is in this case  
45 mostly explained by more updated and comprehensive data in our compilation for non-Annex I countries. The FAOSTAT GHG dataset instead estimates a net global LULUCF source of +1.1 Gt CO<sub>2</sub>/yr. In this case, most

Deleted: and minor

of the difference to our results is due to a much greater forest sink for non-Annex I countries in the NGHGI database than in FAOSTAT. The difference between these datasets can be mostly explained by a more complete coverage in the NGHGI database, including for non-biomass carbon pools and non-forest land uses, and by different underlying data on forest land. The latter reflects the different scopes of the country reporting to FAO, which focuses on area and biomass, and to UNFCCC, which explicitly focuses on carbon fluxes. Bearing in mind the respective strengths and weaknesses, both our NGHGI database and FAO offer a fundamental, yet incomplete, source of information on carbon-related variables for the scientific and policy communities, including under the Global stocktake.

Overall, while the quality and quantity of the LULUCF data submitted by countries to the UNFCCC significantly improved in recent years, important gaps still remain. Most developing countries still do not explicitly separate managed vs. unmanaged forest land, a few report implausibly high forest sinks, and several report incomplete estimates. With these limits in mind, the NGHGI database presented here represents the most up-to-date and complete compilation of LULUCF data based on country submissions to UNFCCC.

Data from this study are openly available via the Zenodo portal (Grassi et al. 2022), at <https://doi.org/10.5281/zenodo.6390739>.

65

## 1. Introduction

Land-based mitigation is increasingly recognized as a key strategy to reach the Paris Agreement’s aim to “achieve a balance between anthropogenic emissions by sources and removals by sinks”. Global models indicate that changes in land-use and land management contribute to around 12% of the total global anthropogenic CO<sub>2</sub> emissions (Friedlingstein et al. 2021), mainly through deforestation. Simultaneously, land uses, particularly forests, may contribute to climate change mitigation through carbon absorption (sink) and storage (stock) in biomass, dead organic matter, soil, and wood products.

Despite an increasing attention to the Land Use, Land-Use Change and Forestry (LULUCF) sector under the United Nations Framework Convention on Climate Change (UNFCCC), including nature-based solutions to reduce CO<sub>2</sub> emissions and enhance CO<sub>2</sub> removals (e.g. Griscom et al. 2017, Roe et al. 2021), notable differences still exist among global land-related datasets, in both the magnitude of the net CO<sub>2</sub> flux and its trend (IPCC 2019, Harris et al. 2021, Grassi et al. 2021, Friedlingstein et al. 2021, Deng et al. 2022, Feng et al. 2022). These differences cause concern because, if not explained, they may jeopardize the confidence in LULUCF to achieve climate change mitigation.

Previous studies (Grassi et al. 2018, 2021) have analyzed the reasons for large differences in land use CO<sub>2</sub> fluxes - globally in the order of several billion tonnes (Gt) of CO<sub>2</sub> per year - between the country submissions to UNFCCC and global models (IPCC 2019, Friedlingstein et al. 2021). There, the differences were found to be mostly due to different approaches to assess the anthropogenic forest sink.

However, while of a similar order of magnitude, less attention has been paid to differences between various country submissions to UNFCCC, the different collections of UNFCCC country data (e.g. Grassi et al. 2021 vs. The Washington Post 2021) and other LULUCF datasets such as FAOSTAT (Tubiello et al. 2022). These differences are mostly due to three main factors.

First, it is arduous to collect LULUCF carbon flux information from some reports that countries submit to the UNFCCC, which here we broadly define as National Greenhouse Gas Inventories (NGHGIs). While data from Annex I (AI) countries are straightforward to retrieve because they are organized in annually submitted standardized tables within the GHG inventories (GHGIs), Non-Annex I (NAI) countries submit their NGHGI information less regularly, not in a standardized format, and in a number of reports of different scope and objectives: the National Communications (NCs), the Biennial Update Reports (BURs), submissions under the

95 REDD+ (Reducing Emissions from Deforestation and forest Degradation, and the conservation and enhancement of forest carbon stocks) framework and the Nationally Determined Contributions (NDCs). This highly heterogeneous and fragmented reporting, together with sometimes unclear description of methodologies, complicates the assessment of the LULUCF fluxes reported by several NAI countries.

**Deleted:** This highly heterogeneous and fragmented reporting makes it very difficult to identify and assess LULUCF data for NAI countries...

Second, different LULUCF datasets – and sometimes also different country submissions to the UNFCCC – report emissions and removals at different levels of aggregation of land uses, carbon pools and gases. This, together with differences in methodological approaches, makes the comparisons between the datasets difficult.

100 Third, carbon fluxes are associated with complex and highly dynamic biological systems, characterized by a marked spatial and temporal variability. Estimating these fluxes in a complete, accurate and consistent manner is very difficult, and different approaches may capture differently the various natural and anthropogenic drivers.

**Deleted:** which are further affected by various natural and anthropogenic drivers

**Deleted:** .

105 While dealing with and finding solutions to the third factor is crucial to further improve LULUCF estimates, minimising the ‘noise’ and the bias from first two factors is equally important. In other words, before comparing country reported LULUCF data with other LULUCF datasets, one should first ask: Am I using the most appropriate country data? Am I comparing apples to apples?

**Deleted:** that the

**Deleted:** often introduce

110 From the end of 2024, under the Enhanced Transparency Framework package finalised at COP26 (<https://unfccc.int/enhanced-transparency-framework>), all UNFCCC Parties will start reporting GHG fluxes and managed area with a harmonized format. This will happen through Biennial Transparency Reports (BTRs) that will include, among other things, (i) a national inventory report of anthropogenic emissions and removals, consisting of a national inventory document (with a description of the methods used) and common reporting

115 tables (noting that AI Parties will continue to provide flux estimates on a yearly basis), and (ii) information to track progress towards targets as defined in the NDC. This harmonized reporting is expected to alleviate many of the concerns discussed above.

120 However, we cannot wait until the end of 2024 to get the needed information. Notably, the first Global stocktake under the Paris Agreement will take place in 2022-2023, aimed at assessing the countries’ collective progress towards meeting the long-term goals of the Paris Agreement. The Global stocktake is a crucial step, because any identified gap between the globally aggregated country emissions (reported and pledged) and emission pathways consistent with the Paris Agreement is expected to motivate increased mitigation ambition

in subsequent NDCs. Since progress in the implementation of pledges will be monitored through NGHGs, confidence on NGHGs is crucial because “If you can’t measure it, you can’t improve it”.

Deleted: historical

In this context, a better understanding of the LULUCF data that countries report to the UNFCCC, and of the differences with other relevant country-based datasets, is important to the global assessment of climate efforts and, more broadly, to increase confidence on land-related climate change mitigation.

In this study, we collected LULUCF CO<sub>2</sub> flux data from AI countries’ GHG inventories and from the most recent and complete NAI countries’ reports to the UNFCCC (i.e., NCs, BURs, REDD+ and NDCs), complemented by any available information on managed and unmanaged forest area. To ensure a complete time series 2000-2020, we filled the gaps using standard statistical methods, with the aim to maintain the levels and trends of the underlying, reported raw data. Data are disaggregated into fluxes from forest land (including harvested wood products), deforestation, organic soils and other fluxes (including non-forest land uses).

The objectives of this study are therefore as follows: (i) to present a comprehensive and updated collection of carbon flux data from the most recent and complete country reports to the UNFCCC (i.e. the ‘NGHGI database’, NGHGI DB), which can be used by the scientific and policy communities; (ii) to assess the scale and understand the reasons for the discrepancies among different collections of UNFCCC country data, i.e. our NGHGI DB and the UNFCCC Greenhouse Gas Data Interface (GHGDI); (iii) to assess the scale and understand the reasons for the differences between our NGHGI DB and the FAOSTAT LULUCF emissions estimates, which represent an alternative, independent source of data based on country reporting to FAO FAO’s Global Forest Resources Assessment 2020 (FAO, 2020a; FAO 2020b).

## 2. Methods

### 2.1 The NGHGI LULUCF database (NGHGI DB)

In this study, we use the term National Greenhouse Gas Inventories (NGHGs) in a broad sense, including anthropogenic GHG data submitted to UNFCCC through any official country report. The data in such reporting processes are estimated using one of the relevant IPCC Guidelines (IPCC, 1996, 2006, 2019). Although the Paris Agreement removes the previous distinction between Annex I (AI) and non-Annex I (NAI) countries in

Deleted: GreenHouse

Deleted: , including uncertainty if any,

terms of targets and reporting (retaining some flexibility in GHG reporting for developing countries), we use this distinction here because it still reflects relevant differences in historical GHG data.

The NGHGI LULUCF database presented here (NGHGI DB) is a significant update to data in Grassi et al. 2021, including more recent data (until July 2022), greater coverage of countries, more disaggregated categories and additional methodological information.

Data were compiled from various submissions to UNFCCC (Table 1). For AI countries, all information is sourced from the GHGI 2022. For NAI countries, NC/BUR, REDD+ and NDC submissions have been used, prioritising the most recent one but also taking the completeness of information into account. For each country, only one type of submission is used in the NGHGI DB. In selecting the source of data for NAI countries, expert judgement is applied in a few cases, e.g. if a NC/BUR is clearly more complete than a slightly more recent NDC, the former is used (see Table 1 of the online dataset, Grassi et al. 2022). In most cases, these exceptions have little or no influence on the carbon fluxes, with the notable exception of the Central African Republic, (see later).

It is worth noting that, for NAI countries, NC/BUR, REDD+ and NDC submissions differ in scope and objectives (Table 1). Both NCs and BURs include a GHG inventory section, concern land-based reporting, aim to include all land uses, carbon pools and gases, and to systematically neither over- nor underestimate emissions/removals (which means accuracy of estimates is in principle achieved). While NCs are typically submitted every four years, BURs provide an update of the information presented in NCs, typically every two years. The methods used (i.e. 1996 or 2006 IPCC Guidelines), the amount of information and the disaggregation of the categories reported varies considerably among countries.

The REDD+ reporting is voluntary, with the objective of receiving results-based payments. Reporting tends to be activity-based, and is rarely complete: 87% of reporting countries cover the entire national territory, 42% include both emissions and removals from forest land and conversions to and from forest land (i.e., deforestation, forest degradation and enhancement of forest-carbon stock), 24% cover all GHGs and only 7% cover all carbon pools. The 2006 IPCC Guidelines are typically used. Generally, a larger amount of methodological information is provided in REDD+ compared to other submissions by NAI countries, and it is technically assessed by a team of independent UNFCCC experts.

The NDCs outline the post-2020 efforts by each country to reduce national emissions and adapt to the impacts of climate change, as requested by the Paris Agreement. While the focus is on the future actions, historical

**Deleted:** February

**Deleted:** .

**Deleted:** prioritising the most recent one but also taking the completeness of information into account.

**Deleted:** E

**Deleted:** see country-specific explanation in the Supplementary Table 1

**Deleted:** . In this case, we considered the forest sink reported in the most recent country submission (NDC 2021) to be biophysically impossible (-0.7 Gt CO<sub>2</sub>/yr over 20 Mha of forest, equivalent to an area-specific sink of some 35 tCO<sub>2</sub>/ha\*yr), and used the NDC 2016 instead (forest sink of -0.3 Gt CO<sub>2</sub>/yr).

**Moved (insertion) [1]**

**Deleted:** Reporting modalities are found in Annex III to, Decision 2/CP17 and in Decision 17/CP8 and respectively.

**Deleted:** gases

**Deleted:** which

emissions and removals from LULUCF are sometimes included, although typically with little or no methodological information and at a rather aggregated level.

### **Table 1.**

While AI countries report a complete time series for the period 1990-2020, most NAI do not. Since the lack of data occurs especially for the 1990s, our study focuses on the period 2000-2020, applying gap-filling for NAI countries when necessary.

Gap-filling was applied through linear interpolation between two points and/or through extrapolation backward (till 2000) and forward (till 2020) using the single closest available data (Supplementary Tables 4 and 5 show the original and gap-filled time series, respectively). The overall gap-filling rate is 48% (0% for AI and 62% for NAI countries), calculated by dividing the number of gap-filled data by the total number of yearly values in the database for all the 196 countries. When normalized by the contribution to the global carbon flux values, the gap-filling rate is 30% (0% for AI and 40% for NAI countries) of the absolute total flux (calculated by summing the absolute fluxes of the single land categories used here; forest land, deforestation, organic soils, other land uses). This indicates that most of the NAI countries where the biggest fluxes occur reported relatively complete time series.

Furthermore, we tested the potential impact of different gap-filling methods on the level and trends of carbon fluxes. Specifically, we compared the procedure described above with two alternative approaches: (i) i.e. the average 2000-2020 using the non-gap-filled data, and (ii) a gap filling where the interpolation between two data is done taking the most recent data to fill the missing years (while extrapolation backward and forward is done as described above).

Data from this study are openly available via the Zenodo portal (Grassi et al. 2022) at <https://doi.org/10.5281/zenodo.6390739>.

### **2.2 Area of Managed Land**

The NGHGI data submitted to UNFCCC are expected to use, as default, the 'managed land' proxy following the 2003 IPCC GPG for LULUCF and the subsequent IPCC Guidelines (IPCC 2006, 2019), according to which

**Moved down [2]:** Since UNFCCC data for years prior to 2000 are less frequent and less reliable for most NAI countries, our NGHGI DB includes only post-2000 data.

**Deleted:** for

**Deleted:** most

**Deleted:** countries some gap-filling was necessary to overcome a lack of data for all years.

**Moved (insertion) [2]**

**Deleted:** Since UNFCCC data for years prior to 2000 are less frequent and less reliable for most NAI countries,

**Deleted:** NGHGI DB includes

**Deleted:**

**Deleted:** by post-2000

**Deleted:** data.

**Deleted:** 1

**Deleted:** 47

**Deleted:** 5

**Deleted:** 60

**Deleted:** 195

**Deleted:** 32

**Deleted:** 5

**Deleted:** 42

**Deleted:**

**Moved up [1]:** It is worth noting that, for NAI countries, NC/BUR, REDD+ and NDC submissions differ in scope and objectives (Table 1). Both NCs and BURs include a GHG inventory section, concern land-based reporting, aim to include all land uses, carbon pools and gases, and to systematically neither over- nor underestimate emissions/removals (which means accuracy of estimates is in principle achieved). While NCs are typically submitted every four years, BURs provide an update of the information presented in NCs, typically every two years. Reporting modalities are found in Annex III to, Decision 2/CP.17 and in Decision 17/CP.8 and respectively. The methods used (i.e. 1996 or 2006 IPCC Guidelines), the amount of information and the disaggregation of the categories reported varies considerably among countries.

The REDD+ reporting is voluntary, with the objective of receiving results-based payments. Reporting tends to be activity-based, and is rarely complete: 87% of reporting countries cover the entire national territory, 42% include both emissions and removals from forest land and conversions to and from forest land (i.e., deforestation, forest degradation and enhancement of forest-carbon stock), 24% cover all gases and only 7% cover all carbon pools. The 2006 IPCC Guidelines

**Deleted:** 0

**Deleted:** Table 1.

**Deleted:** 1

**Deleted:** 1



all GHG fluxes from managed land areas are considered ‘anthropogenic’, while GHG fluxes on unmanaged  
310 land areas are not estimated. Only a minority of countries explicitly reported information on the  
implementation of this proxy (Ogle et al. 2018, Grassi et al. 2021). For the rest, we considered that the managed  
land proxy is implicitly used in all other country reports to the UNFCCC, which means that information  
reported is sourced from managed land only.

Most AI countries consider their whole land surface as managed, though some countries (for example, the  
315 United States, Canada and Russia) specifically report the area of unmanaged lands (for forest land, grassland  
and wetlands). By contrast, the vast majority of NAI countries do not distinguish between managed and  
unmanaged areas, with some not even reporting the forest area extent.

Given the importance of forest land in the LULUCF fluxes, here we focus mostly on the area of managed  
forest. When the information of forest area was available in the NGHGs, we considered this area as managed,  
320 whenever it can be assumed that it is the area over which the GHG emissions are estimated. In this case, most  
countries simply indicate the total area of managed land per each land use category, and only few countries  
(e.g. Canada, USA, Brazil) explicitly show maps of managed lands. Where this information is not available,  
we used the area of secondary forests and plantations from country reports to the FAO Forest Resources  
Assessment, (FRA; FAO, 2020) as a proxy managed forest (see Supplementary Table 2). In total, the amount  
325 of area from FRA that was used to gap-fill the missing information from NGHGs amounts to 46 Mha (1% of  
total forest area from NGHGs).

### 2.3 CO<sub>2</sub> Fluxes

The LULUCF CO<sub>2</sub> fluxes in the NGHGI DB are disaggregated into the following categories, following the  
330 2006 IPCC Guidelines (IPCC 2006): Forest land (FL, including harvested wood products, excluding organic  
soils), Deforestation (forest converted to other land uses), Organic soils (including organic soils from all land  
uses and peat fires) and Other land uses (including cropland, grassland, wetlands, settlements, other land),  
following the mapping of Table 2. When possible, data on FL were further split in the two subcomponents  
forest land remaining forest (FL-FL, i.e. forests existing from 20 years or more) and land converted to forest  
335 land (L-FL, i.e. forest established less than 20 years ago). While data on FL and Deforestation (typically the  
most important categories) are available for most countries, data for Organic soils and Other are available for  
most AI countries but only for some NAI countries (usually the largest in terms of area, see Table 2 of the

Deleted: few

Deleted: and

Deleted: only

[online dataset, Grassi et al. 2022](#)). For those NAI countries still using the categories of the Revised 1996 IPCC Guidelines, the mapping to the categories above [from the 2006 IPCC Guidelines](#) is described in Table 2. The categories used in our NGHGI DB represent a compromise between very disaggregated information from some countries (typically AI and a few NAI countries) and very aggregated one from others. In a few cases - generally for relatively small NAI countries - our categorization required some approximation: for example, where the country reported only "AFOLU net CO<sub>2</sub> flux" or "LULUCF net CO<sub>2</sub> flux", the flux was assigned to FL where it is a net removal, and to Deforestation where it is a net emission (Table 2). This is justified by the fact that, when a more disaggregated reporting is available, the vast majority of the CO<sub>2</sub> removals occur in FL and the vast majority of the CO<sub>2</sub> emissions are associated with deforestation.

Deleted: Supplementary Table 2

[In addition to the categories above, we provide information also on Harvested Wood Products \(HWP\) and natural disturbances such as fires, insects and wind throws \(i.e., whether they are excluded from the NGHGI\).](#)

Deleted: ,

In terms of carbon pools, FL and Deforestation data always include above- and below-ground biomass; data for the other carbon pools (dead organic matter, mineral soils, harvested wood products) are reported by the vast majority Annex I countries and by the largest NAI countries (including Brazil, China, India, Indonesia, Mexico). [For Annex I countries, we provide the main statistics on carbon pools retrieved from the individual tables of NGHGIs.](#)

Deleted: only

Although most NGHGIs include reporting for all GHGs, in this study we consider only CO<sub>2</sub>. Exceptions are some NAI countries for which it was not possible to separate CO<sub>2</sub> from non-CO<sub>2</sub> emissions (mainly CH<sub>4</sub> and N<sub>2</sub>O from forest fires). However, based on information available from AI countries and the largest NAI countries - for which non-CO<sub>2</sub> emissions are around 6% of the total CO<sub>2</sub>-equivalent LULUCF flux - the global contribution of non-CO<sub>2</sub> emissions in our NGHGI DB (i.e. from NAI countries that do not separate GHGs) is assumed be negligible.

For the purpose of our analysis, we [introduced two indicative thresholds to assess the plausibility of the net forest sink reported in the NGHGIs, selected on the basis of various considerations, including the distribution of the forest sink per unit of area among countries \(see Supplementary figure 1\), the typical range of IPCC default factors and expert judgement. In particular, we considered the net forest sink as "biophysically impossible" - and therefore not included in our NGHGI DB - when the average for the period 2000-2020 is greater than -30 tCO<sub>2</sub>/ha\\*yr at country level \(if occurring over >1Mha\). The only case that could be potentially included in our NGHGI DB and that fell in this category was the Central Africa Republic. In this case, the](#)

375 forest sink reported in the most recent country submission (i.e. -0.7 Gt CO<sub>2</sub>/yr. from the NDC 2021, corresponding to an area-specific sink of about 35 tCO<sub>2</sub>/ha\*yr) was excluded from the NGHGI DB, and the value from the NDC 2016 (forest sink of -0.3 Gt CO<sub>2</sub>/yr. or 15 tCO<sub>2</sub>/ha\*yr) was used instead.

380 Furthermore, we considered the net forest sink as “implausible” when the average for the period 2000-2020 is greater than -10 tCO<sub>2</sub>/ha\*yr at country level (if occurring over >1Mha). Five countries were included in this category (with a forest sink between -14 tCO<sub>2</sub>/ha\*yr and -18 tCO<sub>2</sub>/ha\*yr), collectively covering about 70 Mha of forest: Central African Republic (using the NDC 2016), Mali, Namibia, Malaysia and Philippines. For these countries, data are included in the NGHGI DB but are considered separately in the discussion (i.e. numbers are considered unlikely, but not impossible). It is to be noted that we did not apply an analogous method for screening countries which might overestimate gross emissions and/or underestimate gross removals. Also, if a country is not filtered out by the above threshold does not mean that its forest sink estimates are necessarily accurate.

**Deleted:** those reported forest sinks implying average sequestration rates greater than -10 tCO<sub>2</sub>/ha\*yr (if occurring over >1Mha). This threshold has been selected for indicative purposes, on the basis of the distribution of this parameter among countries (see Supplementary figure 1), the typical range of IPCC default factors and expert judgement

**Deleted:** very

**Deleted:** or

385 **Table 2.**

#### 2.4 Uncertainties

390 Assessing estimates of uncertainties in the LULUCF sector of NGHGIs is challenging, due to the frequent lack of data and insufficient methodological information (McGlynn et al. 2022).

395 As per IPCC Guidelines (2006), uncertainty is here defined as the lack of knowledge of the true value of a variable that can be described as a probability density function (PDF) characterizing the range and likelihood of possible values. It refers to random errors, although the central value of the PDF may be affected by unknown/unquantified biases. Systematic errors (biases, which refer to lack of accuracy), once identified/quantified, should be removed while uncertainties are to be reduced so far as practicable. Following the IPCC (2006), NGHGIs estimate uncertainty at 95% confidence interval.

400 Based on the values of uncertainty collected in Grassi et al. 2017, complemented by expert judgement, in this study the uncertainty on the net LULUCF CO<sub>2</sub> flux was estimated to be 35% for AI countries (where the dominating component flux is FL) and 50% for NAI countries (where the dominant flux component is deforestation). These values are similar to those collected by McGlynn et al. (2022) for the LULUCF estimates

**Deleted:** ¶

415 reported by six AI countries (average 33% uncertainty) and twelve NAI countries (average 47% uncertainty). It should be noted that the estimated % uncertainty has a broad range across countries (e.g., from 14% of Japan to 102% of Cambodia, McGlynn et al. 2022), and may be affected by the closeness to zero (i.e. when emissions and removals nearly balance out, the aggregated % uncertainty is likely to be higher). Given the incomplete information on the uncertainty of NGHGs (especially for NAI countries), the value used in this study should be considered as rough approximations. We then averaged this information at AI and NAI level and aggregated it at global level using equation 3.2 from IPCC (2006), Vol. 1, Chapter 3.

420 It is worth noting two problems concerning the application of the IPCC Guidelines for the estimation of the annual net C-stock changes and associated uncertainties in forest land, that may lead to a bias in the assessed uncertainty.

425 The first is about the so-called “informal harvesting”, i.e. harvest that is likely not captured by national statistical systems. It includes harvest that does not meet the criteria set by the country for data collection (e.g. often, wood harvested by small landowners for domestic uses is not captured in statistics), as well as harvest that is illegally harvested and therefore not reported to the national statistical system. Informal harvesting varies largely among countries and may add a bias when the IPCC “gain-loss” approach is used to the estimate the annual net CO<sub>2</sub> flux from forest. In some cases, this is corrected through proxy data or expert judgement (for instance, Italy reports an annual informal harvest equal to 50% of its total harvest, see Italian NIR 2021, annex 14), but in several other cases it may remain uncorrected. In principle, the IPCC “stock-difference” approach is not affected by this problem as it compares the forest biomass stocks between two different inventories.

430 The second problem is the ambiguity in the use of the standard error of the mean (SE) vs. the standard deviation of the population (SDp) to calculate the uncertainty of the carbon flux estimates. The SE is to be used to quantify the uncertainty of a variable that applies to the entire population from which the mean value of the variable has been unbiasedly inferred, e.g. the increment of the entire forest land when the increment value is derived from an unbiased forest inventory. In this case, the variability of the population does not determine uncertainty in the knowledge of the true value (only random errors in measurements matter). In contrast, SDp is to be used to quantify the uncertainty of a variable when the mean value of the variable (e.g. the average per hectare forest biomass carbon stock) is applied to only a portion of the population from which has been inferred (e.g. the deforested area). This means that the variability of the population contributes to the uncertainty in the

Commented [sf1]: As per IPCC Guidelines, Uncertainty is here defined as the lack of knowledge of the true value of a variable that can be described as a PDF characterising the range and likelik... [2]

Deleted: Grassi et al. 2017 collected values of uncertainty f... [1]

Deleted: n addition, i

Deleted: aspects

Deleted: of

Deleted: , which

Deleted: represent

Deleted:

Deleted: all

Deleted: all

Deleted: all

Deleted: estimated

Formatted: Subscript

Deleted: aspect

Deleted:

Deleted:

Deleted: appropriate

Deleted: when estimating the annual variation of

Deleted: across

Deleted: sampled

Deleted: -

Deleted: ,

Deleted: -

Deleted: sourced

Deleted: national data

Deleted: - so that

Deleted: do

Deleted: appropriate

Deleted: w

Deleted: an

Deleted: average

Deleted: the population,

Deleted: -

Deleted: -

Deleted: only

Deleted: -

Deleted: - which

knowledge of the true value: thus SDp always applies to every IPCC default value used in NGHGs. Although such guidance is provided by IPCC (IPCC, 2019, volume 1, chapter 3), countries do not always properly use the standard error vs. the standard deviation, which leads to underestimating uncertainties when the standard error is used instead of the standard deviation or overestimating uncertainties when the standard deviation is used instead of the standard error.

Deleted: , or when an

Deleted: is applied to

## 2.5 Comparison with other datasets

We compare our NGHGI DB with other datasets that are conceptually close and also based on country data.

First, the forest area is compared with data in the Forest Resources Assessment (FRA) database (FAO, 2020).

Second, the carbon fluxes are compared with two other sources:

(i) the LULUCF data directly derived from the UNFCCC GHG data interface (GHGDI, UNFCCC 2022a); the data for AI countries ([https://di.unfccc.int/flex\\_annex1](https://di.unfccc.int/flex_annex1)) are the same as the ones used in our study (even if the disaggregation is different), whereas those from NAI countries ([https://di.unfccc.int/flex\\_non\\_annex1](https://di.unfccc.int/flex_non_annex1) - which include only NC and BUR submissions) differ. To ensure comparability, for NAI countries we gap-filled the time series of the UNFCCC GHGDI with the same methodology applied in this study (see above). The original (not gap-filled) NC/BUR data from the UNFCCC GHGDI and those collected to build our NGHGI DB are shown in Supplementary Tables 7 and 8, respectively. We note that a compilation of UNFCCC country-reported data (from the UNFCCC GHGDI) is available also in the FAOSTAT website, for download and visualisation alongside the FAO emissions estimates (FAO, 2021).

Deleted: 2021

Deleted: while

Deleted: criteria

Deleted: -

(ii) the LULUCF estimates within the FAOSTAT GHG Database (Tubiello et al. 2022; FAO, 2021), which is used regularly in IPCC Assessment reports (i.e., IPCC, 2019; Tubiello, 2019; Tubiello et al., 2022) and by some countries as an input into data quality analysis in support of their NGHGs. Our analysis complements and updates the comparisons of carbon flux estimates between country data to UNFCCC and FAOSTAT for forest land done by Tubiello et al. (2021), which focused on AI and few large NAI countries.

Deleted: This paper

The FAOSTAT GHG Database (Tubiello et al., 2022) includes LULUCF CO<sub>2</sub> fluxes associated with 1) Net Forest Conversion (associated with positive net forest land area loss, tracked separately for FRA forest land sub-categories naturally regenerating forest and planted forest), which we compare to our Deforestation data; and 2) Forest land, arising from a combination of carbon stock changes per unit of area and net forest area gains between successive FRA periods; fluxes from 3) Drainage and fires in organic soils, which we compare

Formatted: Font: Not Italic

Formatted: Font: Not Italic

to our “organic soils” category. The first two categories are based on country reporting to FAO (via the FRA) of forest land area and above- and below-ground biomass data (FAO, 2020; Tubiello et al. 2021). The latter two categories are conversely estimated using geospatial information (Conchedda and Tubiello, 2020; Prosperi et al., 2020; Rossi et al., 2016).

Several aspects need to be considered when comparing our NGHGI DB and FAOSTAT. First, forest land in FAOSTAT is not disaggregated into a managed and unmanaged component, and the values of carbon stocks include all the forest area (Tubiello, et al. 2021), in contrast to the managed forest area included in the country NGHGIs data. This is the main reason why, as explained in Tubiello et al. 2021, FAOSTAT data cannot a priori be assumed to reflect anthropogenic fluxes. In practice, on carbon stocks/ha, the FRA 2020 reports from Canada and Russia explicitly aim to be consistent with UNFCCC reporting and the corresponding managed area, which for these countries is smaller by 0.3 Billion ha than their total forest area. For comparisons, the global managed forest area considered in our NGHGI DB (about 3.5 Billion ha, Figure 1) is within 15% of the total FAO forest land area (4.0 Billion ha).

Second, while the methods used by NGHGIs differ among countries (but all follow the IPCC methodological guidance), FAOSTAT applies the same carbon stock change estimation method to all countries, using the FRA data on biomass stocks and area as inputs. To this regard, our comparison with FAOSTAT data includes an assessment of the completeness/uncertainty of estimates for FL and Deforestation for NAI countries. The approach is illustrated in Supplementary figure 2. Specifically, the dataset (i.e. NGHGI DB or FAOSTAT) which includes an estimate for FL or Deforestation while the other does not, or the estimate is zero, is considered more complete or less uncertain. Whenever the two datasets appear equally complete or incomplete (for FL and Deforestation), then the completeness of the carbon pools is considered.

### 3. Results and discussion

#### 3.1 The NGHGI DB: general features

A total of 186 countries out of 196 UNFCCC Parties submitted data on LULUCF CO<sub>2</sub> emissions/removals to UNFCCC, covering 99.9% of the global forest area (Table 3). Contrary to Grassi et al. 2021, where LULUCF data was available only for 106 NAI countries, the NGHGI DB presented here includes data for 143 NAI

Deleted: 185

Deleted: 195

Deleted: 142

555 countries. These improvements reflect recent submissions (either NC/BUR, REDD+ or NDC) from countries that did not provide LULUCF data before.

**Table 3**

560 Most of the submissions used in the NGHGI DB are recent, i.e. in or after 2019 (80% of countries, corresponding to 86% of absolute CO<sub>2</sub> flux, i.e. the flux calculated by summing the absolute fluxes of the various land categories). Furthermore, approximately 70% of countries (80% of absolute CO<sub>2</sub> flux) used at least in part the 2006 IPCC guidelines to estimate the CO<sub>2</sub> fluxes.

In terms of land use categories, the reporting by AI countries is more complete than NAI countries (Table 4, Supplementary Table 2). The most reported land use is forest land (95% and 89% for AI and NAI countries, respectively). While reporting on Deforestation appears less complete in terms of the number of countries (91% and 55% of AI and NAI countries, respectively), those countries not reporting this category are typically small and with little forest area, i.e., they likely have insignificant or zero emissions from deforestation. Overall, it can be assumed that the vast majority of countries where significant fluxes from deforestation are likely to occur do report some data. This however, does not necessarily imply that the reported data is accurate.

570 Emissions from organic soils are assumed to be reported (even if sometimes not explicitly separated from mineral soil) by all AI countries where a relevant area of organic soil occurs on managed land. By contrast, only few NAI countries report emissions from the drainage in organic soils and Indonesia is the only one to report the emissions from peat fires. Nonetheless, significant improvements are expected in the coming years as a result of several international initiatives on peatlands.

575

**Table 4.**

580 In terms of carbon pools, Table 5 reports the key statistics for the main land use categories of AI countries. The majority of these countries report the most important pool in each category (i.e., living biomass in forest land, soils in cropland and grassland). Furthermore, the countries not reporting are generally the smaller ones. For example, for 'forest land remaining forest land', the 42 countries reporting on living biomass cover 100% of

Formatted: Justified

Formatted: Font: 11 pt

Formatted: Font: 11 pt

Formatted: Font: 11 pt

Formatted: Font: 11 pt

the total forest area of AI countries (only Monaco does not report); for the 31 countries reporting on dead organic matter this share reaches 95%, and for the 20 countries reporting on mineral soils it is 93%. While the most important NAI countries include living biomass, dead organic matter and mineral soils, the CO<sub>2</sub> fluxes are often not separated by pools.

Formatted: Font: 11 pt

## Table 5

### 3.2 Forest Land area

Here we compare the information on forest area compiled in the NGHGI DB with the data reported by countries to FAO via the FRA (FAO, 2020) as disseminated in FAOSTAT.

Overall, 150 countries reported information on forest land area under the UNFCCC. Conversely, 189 countries reported data to FAO on forest land area, including in most cases its disaggregation into FRA components of *naturally regenerating forest* (a category that includes both primary and naturally regrowing, or secondary, forest) and *planted forest* (Table 6 and Supplementary Table 3). The difference in the number of country reporting between UNFCCC and FAO is due to a group of NAI countries, corresponding in FRA to a total area of 46 Mha (about 1% of the global forest land area in 2015). The FAO data for these countries were used in the NGHGI DB to gap-fill the missing UNFCCC data (see Supplementary Table 3).

Deleted: 5

Deleted: .

Similarly, the area of unmanaged forest could be derived only from 9 NGHGIs (Tab. 5), compared to 91 countries that reported primary forest to FAO. While all AI countries explicitly report both managed and unmanaged forest area to UNFCCC (with unmanaged area being often zero), the vast majority of NAI countries do not explicitly make this separation in their NGHGIs. In the absence of additional information (e.g. see the information collected and the assumptions made for Colombia, Ecuador and Peru, Supplementary Table 1), and following the example of most AI countries, we assume that forest land area reported to UNFCCC is managed. The significance of this assumption is that, according to the IPCC Guidelines (IPCC 2006), all emissions and removals from managed lands are considered 'anthropogenic', while those from unmanaged lands are considered as non-anthropogenic and therefore do not need to be reported. The lack of specific information on managed land area from many NAI countries (particularly on managed forests) represents an important gap of information to assess the extent of anthropogenic CO<sub>2</sub> fluxes.

Deleted: while those from unmanaged lands do not need to be reported...



615 **Table 6.**

Deleted: 5

Figure 1 compares the distribution of managed and unmanaged forest in our NGHGI DB with that of secondary forest/plantation and primary forest from FAO, at global levels and for five macro regions (AI countries are in panels b and c; NAI countries are in panels d-f). While there is a general convergence between the two datasets on the total forest area, some differences emerge when comparing managed vs. secondary/plantation and unmanaged vs. primary. The main reason is that managed forest and secondary/plantations (or unmanaged and primary) are not necessarily synonyms. In fact, managed forest under UNFCCC includes areas that fulfil social, ecological and economic functions (IPCC 2006) and that may apply to both primary and secondary forest land, depending on country-specific definitions and situation. For example, based on the detailed information provided in FRA country reports that accompany that data submitted to FAO, many AI countries (including Canada, Russia and USA) consider relatively large areas of primary forest as managed. At the same time, we note nonetheless that “forest” area is generally reported by countries to both UNFCCC and FAO using the same underlying bio-physical characteristics, specifically, minimum area, minimum tree height at maturity and minimum crown closure.

Deleted:

630

### Figure 1

Deleted: therefore

### 3.3 CO<sub>2</sub> fluxes: the NGHGI DB

The NGHGI DB indicates a net mean global LULUCF sink of -1.6 Gt CO<sub>2</sub>/yr over the period 2000-2020 (Fig. 2a). The LULUCF sink is largely determined by a forest land sink (-6.4 Gt CO<sub>2</sub>/yr) and a deforestation source (+4.4 Gt CO<sub>2</sub>/yr), as well as by smaller land fluxes that nearly cancel each other out, i.e. including organic soils (+0.9 Gt CO<sub>2</sub>/yr) and ‘Other’ (-0.6 Gt CO<sub>2</sub>/yr). Country-level data are included in Supplementary Tables 4 (LULUCF net CO<sub>2</sub> flux, not gap-filled), 5 (LULUCF flux gap-filled), 6 (CO<sub>2</sub> flux by land use and land use-change category, gap-filled) and 7-10 (more detailed information from NAI country submissions). (Grassi et al. 2022).

640

Deleted: 1

A slight trend of decreasing CO<sub>2</sub> emissions from deforestation and increasing CO<sub>2</sub> removals from forests is present for the NAI country group (Fig. 2b). By contrast, the AI country group shows no clear trend.

**Figure 2.**

650

Figure 3 shows the LULUCF CO<sub>2</sub> fluxes in the period 2000-2020 for the largest Annex I and non-Annex I countries, suggesting that the level and trend of global carbon fluxes is largely determined by relatively few large countries.

655 **Figure 3.**

In addition to the categories illustrated in Fig. 2, the vast majority of AI countries and few NAI countries (e.g. Brazil, China Chile, Colombia, Mexico, South Africa, etc.) include information on the changes of carbon stock in the harvested wood products (HWP). At global level HWP represents a net increase in carbon stock, equivalent to -0.14 Gt CO<sub>2</sub>/yr, which in our NGHGI DB is included in the FL category. However, it should be noted that Canada reports HWP differently from other countries (<https://unfccc.int/sites/default/files/resource/docs/2017/arr/can.pdf>), which leads to estimating greater emissions in HWP and a correspondingly greater sink in the forest biomass pool compared to the other countries (with the total for Forest land + HWP being correct and comparable to other countries). If the net increase in HWP from Canada is added to the database in the same way as done by the other countries, the global increase in HWP carbon stock would higher, becoming equivalent to -0.3 Gt CO<sub>2</sub>/yr (-0.16 Gt CO<sub>2</sub>/yr and -0.14 Gt CO<sub>2</sub>/yr for AI and NAI countries, respectively).

670 With regard to natural disturbances, such as fires, insects and wind throws, these are included in most NGHGIs with the exception of Canada and Australia. Following the IPCC guidelines (IPCC 2019), these two countries implement a ‘second-order approximation’ for anthropogenic CO<sub>2</sub> fluxes (in principle, a refinement of the managed land proxy) and exclude the GHG emissions and subsequent CO<sub>2</sub> removals that are considered to result from natural disturbances from their NGHGIs. Overall, the average net emissions that were excluded

Deleted: ¶

Formatted: Not Highlight

Formatted: Not Highlight

Formatted: Not Highlight

Formatted: Not Highlight

675 from the NGHGI for the period 2000-2020 amounted to about 104 Mt CO<sub>2</sub>/yr in Canada (Canada, 2021) and 39 CO<sub>2</sub>/yr in Australia (Australia, 2021).

We tested the dependence of NGHGI DB on the choice of gap-filling procedure, noting that only 52% of the NGHGI DB data are directly derived from country reports. To this end, we compared our results with two equally reasonable alternatives for gap-filling on the resulting level and trends of carbon fluxes. The first alternative, i.e., a simple average of the original non-gap-filled data in each country for 2000-2020, results in a global LULUCF net sink (-1.58 Gt CO<sub>2</sub>/yr) very close to the one obtained with our gap-filling procedure (-1.64 Gt CO<sub>2</sub>/yr); qualitatively identical results are obtained when the analysis is done at the level of specific land categories (forest land, deforestation). The second alternative, i.e. no linear interpolation between two data points (see Methods), produced a global net sink of -1.69 Gt CO<sub>2</sub>/yr for 2000-2020 and a trend which is very similar to the one of our NGHGI DB (Supplementary figure 3). This indicates that the global levels and trends that are highlighted by the NGHGI DB data are robust across a range of credible gap-filling procedures. Furthermore, the analysis of UNFCCC country data with information on forest fluxes (all AI and 20 NAI countries) indicates that the majority of the reported sink in forest land (FL) is unevenly distributed across the two sub-categories forest land remaining forest land (FL-FL) and land converted to forest land (L-FL). Specifically, countries report that the vast majority of their forest sink is in FL-FL (87% globally, 88% in AI countries and 85% in NAI countries), while only 13% is in L-FL. This is consistent with the small carbon sequestration role expected in younger forests typical of the L-FL category which, though sequestering large amounts of carbon per unit area as they grow, occupy a small area compared to older forests in FL-FL. For example, for AI countries, the area of L-FL is only 8% of total forest area and 12% of the total forest sink.

695 Based on the values of uncertainty used in our study (i.e., 35% for AI countries and 50% for NAI countries, see Methods), we estimated an aggregated uncertainty at global level (Supplementary table 4) of about +/-0.8 GtCO<sub>2</sub>/yr (average 2000-2020). It is important to recognize that additional uncertainties may exist, including those arising from omissions or double counting, or other conceptual errors, or from incomplete understanding of the processes that may lead to inaccuracies in estimates developed from models (IPCC 2006). These uncertainties reflect biases and are not identified by the statistical means to estimate uncertainties provided by the 2006 IPCC Guidelines. Furthermore, it should be noted that - in the context of country GHG reporting to UNFCCC - the uncertainty analysis should be seen, first and foremost, as a means to help prioritise national

Deleted: further

Formatted: Not Highlight

Deleted: Fig.

Deleted:

Deleted: Here we use uncertainty values for the net LULUCF flux from Grassi et al (2021) - i.e. around 35% for AI countries and 50% for NAI countries.

Deleted: , not addressed by statistical means,

Formatted: Subscript

710 efforts to reduce the uncertainty of inventories in the future, and guide decisions on methodological choice  
(IPCC 2006). To this regard, in the context of review/technical assessment processes under the UNFCCC, a  
greater focus on the informal harvesting and the correct calculation of uncertainties (see Methods) would help  
countries in improving their national estimates and the assessment of the associated uncertainty.

715 Finally, Supplementary figure 5 includes data from 1990, aggregated for AI and NAI countries. Due to lack of  
LULUCF information from many NAI countries, data for the pre-2000 period should be considered more  
uncertain than for the post-2000 period.

### 3.4 CO<sub>2</sub> fluxes: comparing the NGHGI DB and the UNFCCC GHG Data Interface (UNFCCC GHGDI)

720 For 2000-2020, the UNFCCC GHGDI (gap-filled for NAI countries) includes a much greater net LULUCF  
sink globally (-5.4 Gt CO<sub>2</sub>/yr) than reported in our NGHGI DB (-1.6 Gt CO<sub>2</sub>/yr). This is entirely due to results  
in NAI countries, for which the UNFCCC GHGDI gives a global mean net sink of -3.4 Gt CO<sub>2</sub>/yr and the  
NGHGI DB conversely a source of 0.4 Gt CO<sub>2</sub>/yr. Note that, when the original (not gap-filled) data from NAI  
725 countries are compared instead the gap-filled ones - i.e. taking the average for 2000-2020 of the available data  
for each country - the results do not significantly change (i.e. -3.28 Gt CO<sub>2</sub>/yr in UNFCCC GHGDI and +0.43  
Gt CO<sub>2</sub>/yr in our NGHGI DB). The countries with the biggest difference in carbon flux between our NGHGI  
DB and the UNFCCC GHGDI are recalled in Table 7.

We identify two reasons for the large difference (3.8 Gt CO<sub>2</sub>/yr) between the two sources.

730 First, the UNFCCC GHGDI includes only NC/BUR in the format of, and sometimes methodologically  
consistent with, the Revised 1996 IPCC Guidelines (IPCC 1996), because the inclusion of GHG data reported  
in the format of the 2006 IPCC Guidelines has not yet been agreed by Parties. This explains a difference of 0.7  
Gt CO<sub>2</sub>/yr due to the inclusion, within our NGHGI DB, of data according to both the 1996 and 2006 IPCC  
formats.

735 Second, our NGHGI DB includes country submissions (i.e., REDD+ and NDCs, if clearly more recent than  
NCs/BURs, see Methods) which are not included in the UNFCCC GHGDI. This explains a further 3.1 Gt  
CO<sub>2</sub>/yr difference. For example, for the Central African Republic, the UNFCCC GHGDI includes an

Deleted:

Deleted:

Deleted: illustrated

Deleted: 6

exceptionally high net sink from the 2015 NC (-1.7 Gt CO<sub>2</sub>/yr), while our NGHGI DB includes a net LULUCF sink of -0.2 Gt CO<sub>2</sub>/yr reported in the more recent NDC (2016).

Overall, our NGHGI DB is more complete and updated for NAI countries, containing more than twice the number of yearly values of carbon fluxes than the UNFCCC GHGDI.

745 ~~For some countries, this second reason above may include difficulties in identifying what area and what anthropogenic LULUCF fluxes to include (especially for the forest sink), possibly resulting in different choices made for different types of submissions. These difficulties may reflect the different IPCC methodological guidance used. The 1996 Revised IPCC Guidelines (IPCC 1996) - still used by several NAI countries, especially small ones - do not include a definition on managed land, which is a concept introduced by the IPCC Good Practice Guidance on LULUCF (IPCC 2003) and retained by the 2006 IPCC Guidelines later. According to IPCC (2003), emissions and removals from managed land are recommended as a proxy for anthropogenic emissions and removal. Specifically, forest management is defined as “the process of planning and implementing practices for stewardship and use of the forest aimed at fulfilling relevant ecological, economic and social functions of the forest” but also suggests that “...natural, undisturbed forests should not be considered either an anthropogenic source or sink and are excluded from national inventory estimation.” The 2006 IPCC Guidelines (IPCC 2006) - further confirmed in the 2019 IPCC Refinement (IPCC 2019) - suggest that national definitions of managed forest should cover all forests subject to human intervention, including as management practices protecting forests and abandonment of managed land. This may raise challenges on the exact coverage of managed forests to be included: for example, forests inside a national park can fulfil a relevant ecological function, and be actively protected while being natural and undisturbed.~~

Related to the above, many REDD+ and NDC submissions tend to focus more on emissions than on removals, compared to NCs/BURs. In the first case, it is explainable by the aim of the REDD+ framework. For NDCs, the greater focus on emissions compared to NC/BUR could be potentially explained by the difference existing for the LULUCF sector between ‘reporting’ of GHG fluxes - which in principle should include all the fluxes in managed lands - and ‘accounting’, i.e. the use of reported information to meet specific mitigation targets. 765 For the purpose of accounting, the reported GHG fluxes may be potentially filtered through a more restrictive interpretation of ‘anthropogenic’ flux, with the aim to better reflect the impact of mitigation actions (see Supplementary Information in Grassi et al. 2021). In this study we focus on the reporting, i.e. on the carbon fluxes that the countries estimate for the historical period in their managed land and report to UNFCCC. Even

**Deleted:** Due to the two reasons above, our NGHGI DB is more complete for NAI countries, containing more than twice the number of yearly values of carbon fluxes than the UNFCCC GHGDI.

775 if we found no evidence suggesting that the NDCs included in our dataset report a smaller sink than in the NC/BUR because the former apply a more restrictive interpretation of ‘anthropogenic’ flux, this possibility cannot be ruled out.

Overall, the above suggests that a more explicit identification by NAI countries of what they consider to be ‘anthropogenic’ sink would be important to achieve more clarity on global LULUCF fluxes.

**Table 7.**

780 Understanding the difference between our NGHGI DB and the UNFCCC GHGDI may help assessing also other analyses, like the one by the Washington Post (2021) and the recent UNFCCC Synthesis report for the technical assessment component of the first global stocktake (UNFCCC, 2022b).

785 The Washington Post (2021) estimated a global net LULUCF sink of -3.6 Gt CO<sub>2</sub>/yr in 2019 (excluding data from Central Africa Republic), while for the same year our NGHGI DB estimates -1.9 Gt CO<sub>2</sub>/yr (Supplementary Table 5). Most of the difference is due to the different sources used, i.e. the Post used only NCs and BURs, while our study included also REDD+ and NDC submissions if they were more recent than NCs and BURs. By using the same criteria as the Washington Post, we would obtain a global net LULUCF sink of -3.3 Gt CO<sub>2</sub>/yr in 2019. The rest of the difference between our NGHGI DB and the Post is linked to the more updated data we used and the slightly different gap-filling procedures.

790 The UNFCCC Synthesis for the global stocktake reports a global LULUCF net sink corresponding to about -3.1 Gt CO<sub>2</sub>/yr for the year 2015. This reflects a sink of -1.9 Gt CO<sub>2</sub>/yr for all AI countries (for which no differences exist to our dataset), and a sink of -1.2 Gt CO<sub>2</sub>/yr for 50 NAI countries (i.e., most of NAI countries were not included). This sink is smaller than the one that we derived from UNFCCC GHGDI, because the UNFCCC Synthesis for the global stocktake includes more updated data, like in our database. The remaining difference with our study is mostly explainable by the greater number of NAI countries considered in our database (we found some LULUCF data for 142 NAI countries, see Table 4), and the fact that we included also data from recent REDD+ and NDC submissions.

800 Overall, while the global LULUCF values from other datasets (-5.4 Gt CO<sub>2</sub>/yr from the UNFCCC GHGDI for the period 2000-2020, -3.6 Gt CO<sub>2</sub>/yr from the Washington Post for the year 2019, -3.1 Gt CO<sub>2</sub>/yr from the

Deleted: 6

Deleted: is important to interpret

Deleted: For example,

Deleted: Th

Deleted: (1.7 Gt CO<sub>2</sub>/yr) is mostly

Deleted:

Deleted: fact that

Deleted: Washington

Deleted: , apart from excluding the value for the Central African Republic, is based on the UNFCCC GHGDI, which appears to be less comprehensive and updated than our NGHGI DB (see above).

UNFCCC Synthesis for the global stocktake for the year 2015) are not implausible when compared to the global carbon budget (around -6.0 CO<sub>2</sub>/yr of net sink from all terrestrial ecosystems, Friedlingstein et al. 2022). we believe that the NGHGI DB presented here is the most complete, updated and disaggregated collection of LULUCF information based on NGHGIs.

Formatted: English (US)

### 3.5 CO<sub>2</sub> fluxes: comparing the NGHGI DB to FAOSTAT emissions estimates

The trends of the LULUCF component categories are broadly consistent across the two datasets (Fig. 4), with the exception of forest land after 2010 (Fig. 4b) and deforestation in the 2000s (Fig. 4c). By contrast, there is a large difference in total net LULUCF fluxes, amounting to 2.7 Gt CO<sub>2</sub>/yr (-1.6 vs. +1.1 for NGHGI-DB and FAOSTAT, respectively, i.e., our data pointing to a sink, while FAOSTAT suggests a source) averaged over the 2000-2020 period (Fig. 4a, 5a). This difference is mainly driven by a much larger estimated net forest land sink in the NGHGI DB (-6.4 Gt CO<sub>2</sub>/yr) compared to FAOSTAT (-3.2 Gt CO<sub>2</sub>/yr) (Fig. 4b, 5b). Conversely, the two datasets are closer on deforestation, albeit the NGHGI DB has consistently higher emissions (on average, by almost 1 Gt CO<sub>2</sub>/yr) than FAOSTAT for NAI countries (Fig. 4c, 5c). For organic soils, there is notable agreement not only on estimated absolute values, but also in the inter-annual variations of emissions (Fig. 4d, 5d). This is remarkable, considering that the NGHGI DB is not very much gap-filled for this category (considering that the largest NAI emitters, and particularly Indonesia, report these emissions estimates to UNFCCC), and that the FAOSTAT estimates are based on FAO's own geospatial analysis (Conchedda and Tubiello, 2020).

Deleted: While

Deleted: t

Deleted: ,

Deleted: both

Deleted: as well as in

Deleted: for both AI and NAI countries

Figure 4.

Figure 5.

Overall, the differences may be explained by a combination of factors, which we discuss below separately for AI and NAI countries, for each category, and for the level of the net CO<sub>2</sub> fluxes and their trends.

Deleted:

Deleted: and

In AI countries, the NGHGIs are typically more complete in terms of land categories and carbon pools compared to FAOSTAT. In particular, for the level of net CO<sub>2</sub> fluxes in FL, a comparison of AI countries' data

from NGHGs and FAOSTAT has already been done by Tubiello et al. (2021). The differences that emerge here between the NGHGI DB and FAOSTAT, can be mostly explained by estimates for pools other than living biomass, including HWP, included in the NGHGI DB but not in FAOSTAT. This explains a difference of about 0.2 Gt CO<sub>2</sub>/yr just for the USA, and a similar amount for other developed countries together (Fig. 6a). For the category 'other' - i.e. non-forest land uses, excluding organic soils, which are not included in FAOSTAT - our NGHGI DB reports a net sink of -0.23 Gt CO<sub>2</sub>/yr. At the same time, for organic soils, NGHGI DB and FAOSTAT report similar numbers at global level (Fig. 5d), with a good agreement also for AI and NAI countries.

In NAI countries, for FL, we find a large difference in the level of the carbon flux between our NGHGI DB and FAOSTAT data, resulting in a -2.7 Gt CO<sub>2</sub>/yr greater sink in NGHGI DB for 2000-2020 (Fig. 5b). This difference, which alone explains most of the gap between the two datasets, is largely linked to two factors.

On the one hand, the NGHGI DB contains a forest sink from five NGHGs which we consider implausible (see Methods), possibly due to the inaccurate implementation of the IPCC methodology (the UNFCCC review of some of these reports already signalled this). Collectively, these countries report a net LULUCF flux of -0.9 Gt CO<sub>2</sub>/yr over the period 2000-2020, with no clear trend. These five countries are located in Africa (Central African Republic, Mali, Namibia) and South-East Asia (Malaysia, Philippines).

The second factor relates to the large underlying uncertainty in measurements of carbon stock changes over time. The capacity of many NAI countries is insufficient to ensure provision of consecutive and consistent forest inventories. For this reason, many NAI countries report to FAO via the FRA, likely for lack of better information, a constant value of forest carbon stock density (carbon stock/ha) over the period analysed here (2000-2020). In such cases, the estimated carbon stock changes in FAOSTAT necessarily represent net fluxes on either L-FL (positive net forest land area change) or FL-L (negative net forest land area change), while the estimated fluxes on FL-FL are zero. Conversely, when the same NAI countries report to UNFCCC, they may choose to apply the default IPCC gain-loss approach to compute and report non-zero carbon fluxes over FL-FL. This is relevant, because FL-FL is typically where most of the FL carbon flux occurs, considering the much larger underlying areas of FL-FL compared to L-FL in most countries. More specifically, the carbon stock change approach implemented in FAOSTAT results in a non-zero carbon flux for FL-FL in only 63 NAI countries, compared to 136 in countries NGHGs (Table 8). The remaining 89 NAI countries have a total forest land area of 905 Mha (i.e. 41% of forest area in NAI countries, mostly in Africa and South America, Figure

Deleted: .

Deleted: .

Deleted: 7



880 6a), where the underlying FRA data on carbon stock density is lacking or constant over the entire period 2000-  
2020. Conversely, only 16 NAI countries in our NGHGI DB report no carbon fluxes on FL-FL (Table 8),  
corresponding to 272 Mha of forest (mostly in Africa, Figure 6a). The underlying reasons for these differences  
are further explained in Box 1, and can be summarized by the different scopes of the two country datasets:  
while FAO reporting via the FRA focuses on measures of area and biomass (without a focus on climate change  
885 relevant fluxes), UNFCCC explicitly asks countries to report a value of *carbon flux*, providing default methods  
and factors that can be used despite the underlying paucity of national data.

Deleted: 7

#### **BOX 1. The challenge of estimating the biomass carbon fluxes in forest land remaining forest land (FL-FL)**

890 While carbon fluxes on forest land remaining forest land are a critical component of the land carbon budget,  
they are typically one of the most difficult to estimate, because they result from small area-specific net carbon  
stock changes, which are difficult to detect over short time intervals and over large areas.

To estimate this carbon flux in the biomass C pool, two approaches are available from the IPCC: the “gain-  
loss” approach and the “stock difference” approach.

895 The stock difference approach estimates the FL-FL carbon flux based on the difference between two carbon  
stocks over time (examples of countries using this approach include USA, many EU countries, India and  
China). This approach always requires country-specific values of stock, e.g. from at least two subsequent,  
methodologically-consistent, national forest inventories based on representative sampling. The challenge is  
availability of good data to use as inputs into these computations. Specifically, very few NAI countries have  
900 conducted two or more methodologically-consistent national forest inventories, which would be necessary to  
apply the stock difference approach. For example, of the 56 REDD+ reporting countries, only very few (e.g.  
Mexico, partly Nicaragua and Dominica Republic) use subsequent forest inventories to estimate the stock-  
difference in FL-FL.

The gain-loss approach is the IPCC default method, since it associates each C stock change to its driver and  
905 therefore provides needed policy-relevant information; while the stock-difference approach is more  
straightforward in terms of measurement requirements, it provides no information on the drivers that  
determined the net C stock change. The gain-loss approach estimates the flux through net forest growth (i.e.  
considering mortality), minus losses from harvest and natural disturbances using country-specific or IPCC

910 default values for net growth, and country statistics for losses from harvest and natural disturbances. This approach can however have large uncertainty in the estimated net C stock change, especially where the losses are under-estimated, which could easily happen where not all harvest is not recorded in country statistics. Furthermore, the default IPCC net biomass growth factors (IPCC 2019) come with very large uncertainties. For example, in most regions of the tropical domain, the standard deviations are >100% for primary forest and  
915 >70% for secondary forest. Gatti et al (2021) and Hubau (2020) indicate that net biomass growth factors likely declined in the last decades in some tropical forests (Amazonia); this would imply that, when applying constant increment rates across decades, as e.g. per IPCC default factors, net removals from FL-FL could be overestimated if these factors were estimated decades back. On the other hand, Cook Patton et al. 2020 suggests that default rates from IPCC underestimate aboveground carbon accumulation rates by 32 per cent on  
920 average, especially in tropical regions.

FAOSTAT calculates emissions/removals based on data from the country reports to FRA. Under FRA, countries are expected to provide a time series of values of forest area, biomass, carbon stock and carbon stocks/ha, but are not asked to provide a carbon flux or carbon stock change. The absence of country specific values of forest carbon stocks changes from successive national forest inventories indeed is the most likely  
925 reason explaining why so many NAI countries report constant time series of carbon stock/ha, whereas some changes, either positive or negative, are to be expected.

By contrast, the UNFCCC specifically requests countries to provide a net value of carbon flux in their NGHGs. In the absence of successive national forest inventories to apply the stock difference approach, the gain-loss approach may be applied. In this case, when the required country-specific values are not available  
930 (e.g., forest growth), the gain-loss approach may use values sourced from IPCC defaults complemented by country data on losses (harvest, and other disturbances' mortality).

In summary, the differences above reflect mainly the different scopes of the country reporting to FRA, which focuses on area and biomass variables, and to UNFCCC, which explicitly focuses on carbon fluxes. It also underscores the challenges to estimate the fluxes in FL-FL in absence of accurate country data, like in many  
935 NAI countries. In the frequent case where multiple national forest inventories are not available or not comparable, a single value of carbon stock might be considered sufficient to describe the state of the forest under FRA - but not under the UNFCCC, where the focus is in fact carbon fluxes. In the latter case, correspondents are guided, even in the absence of national data, to use the IPCC gain-loss approach.

Deleted:

940 - End of the box -

We note that, when countries do report a non-zero value of FL-FL, these values are most often a sink in both NGHGs and FAOSTAT, although with features that would merit a more nuanced analysis. Based on this, we estimate a hypothetical sink that could have occurred on those FL areas with no or zero value of carbon flux.

945 To this aim, we used the mean net annual area-specific sink for NAI countries from our NGHGI DB (of -1.9 tCO<sub>2</sub>/ha\*yr, excluding the countries with implausible FL sinks) and FAOSTAT (of -1.1 tCO<sub>2</sub>/ha\*yr, excluding those countries reporting a constant carbon stock/ha under FRA). Acknowledging the uncertainty of this exercise, this approach would yield a greater global forest sink, by about -1.0 Gt CO<sub>2</sub>/yr in FAOSTAT and of -0.5 Gt CO<sub>2</sub>/yr in our NGHGI DB.

950 Trends in carbon stock density (tC/ha) may help explain, in part the differences of the trends in FL between NGHGIDB and FAO. In particular, after 2015 the NGHGI DB indicates globally a constant sink, whereas FAOSTAT suggests a decrease of the sink (Fig. 4b). These differences originate at country level - including for the major AI and NAI countries (see Supplementary figure 6) - and can be linked to the fact that FRA 2020 carbon stock density data, upon which the FAOSTAT estimates are based, are often constant after 2016 or  
955 2017 (see Supplementary figure 7, e.g. Australia, Canada, Finland, USA, India, Indonesia and Mexico); this fact reflects a lack of data for the most recent years, rather than a real decrease in sink capacity during the period 2015-2020. Indeed, the global forest area with constant carbon stock density for the period 2015-2020 is doubled that reported for the period 2000-2015 (see Supplementary figure 8). At the same time, the FL fluxes in FAOSTAT are estimated based on differences in carbon stock densities in 2020 and 2015 only. As  
960 shown in Supplementary figure 6, the use of 2020 FRA values with constant carbon density after 2015 (Supplementary figure 7) may lead to underestimating the sink strength in FAOSTAT in some case (for instance USA, EU27+UK, India) and overestimating it in other cases (for instance, Canada).

▲  
965 **Table 8.**

**Figure 6.**

**Deleted:** The constant values of...trends in carbon stock density (tC/ha) may help explaining also...in part the differences of the trends in FL between NGHGIDB and FAO. I, i., particular, after 2010... the NGHGI DB indicates globally a constant sink, whereas FAOSTAT suggests indicates...a decrease of the sink ...by...the sink (Fig. 4b). These differences trends...originate atare (... [3])

**Deleted:** ,

**Deleted:** reflected also ...including for most of ...the major AI and NAI countries (see Supplementary figure 6) - and can be linked to the fact that due to the fact that the respective country reports to... FRA 2020 carbon stock density data, upon which the FAOSTAT estimates are based, include a constant value of carbon stock/ha (... [4])

**Deleted:** h

**Deleted:** ). While it is presumable that these constant values reflect simply the

**Deleted:** ...a fact that (... [5])

**Deleted:** , in FAOSTAT this is reflected as a

**Deleted:** then implying...the actual observation of (... [6])

**Deleted:** of the ...sink in the estimation of the change in carbon stock for ...capacity during the period 2015-2020. At global level, when the forest area for which a non-zero carbon stock change is included in the country reports to FRA 2020 is compared to the global forest area... indeed, the global forest area with constant carbon stock density for the period 2015-2020 is doubled that reported for the period 2000-2015 (see Supplementary figure 8) it emerges that between 2000 and 2015 a constant carbon stock/ha is reported for nearly one Billion ha of forest (i.e., difference between the orange and green lines in Supplementary figure 8), while this figure doubles for the period 2015-2020. Overall, this suggests caution when interpreting the (... [7])

**Deleted:** een...own in s...supplementary Fig...figure 6, the use of 2020 FRA values used may lead in some cases ...ith constant carbon density after 2015 (Supplementary figure 7) may lead to overe...nderestimate...ngs...of...he sink strength in FAOSTAT in some case (for instance USA, EU27+UK, India) (for instance for Australia, Brazil and Canada), in some cases...nd under...verestimate...ngs...it in other cases (for instance, Canada USA, India... with lesser errors in other cases... Compared to the country results in NGHGI DB, the FAOSTAT FL sink for 2015-2020 is an underestimate (... [8])

**Formatted:** Font: Not Bold

**Deleted:** 7

For NAI countries, the emissions from deforestation are estimated in 141 countries by FAOSTAT (*net forest conversion*) compared to 124 countries in our NGHGI DB. Since FAOSTAT computes the emissions for net forest land area loss, data would roughly correspond to those countries using the so-called “IPCC approach 1” to land representation (Tubiello et al., 2021). By contrast, NGHGI reporting is usually based on a more detailed tracking of the conversions between land uses and the associated gross fluxes. This difference may partly explain why our NGHGI DB estimates somewhat larger emissions from deforestation for NAI countries than in FAOSTAT (Fig. 6b). Furthermore, in FAOSTAT, the use of a single average forest carbon stock density may lead to underestimation of emissions (Tubiello et al. 2021). Other possible confounding factors in comparing deforestation estimates across datasets may be different reporting by NGHGIs of shifting agriculture and forest degradation processes: depending on the country and the report, the fluxes from these processes may be reported either under FL or as additional deforestation.

Although the rates of emissions from deforestation differ in the two databases, the trends look similar, both for the area and for the emissions. Comparing 2015-2020 against 2000-2005, FRA reports a 33% reduction in deforestation area, and our NGHGI DB and FAOSTAT estimate a 18% and 20% reduction of emissions from net forest loss, respectively. The trends for our NGHGI DB and FAOSTAT look rather similar also for the macro regions analysed here, with emissions increasing in Asia and Africa while decreasing in South America (Supplementary figure 9). It should be noted, however, that neither dataset is always very updated: FAOSTAT reflect data collected up to 2017 (or earlier), while for NGHGIs, it depends on the country: for Brazil data used here are up to 2016 (thus the increases in deforestation detected in the last years in Brazil, e.g. Silva Junior et al. 2020, are not included), for DRC data are up to 2018, for Indonesia up to 2019.

Donegan et al. (2022) found the trends regional forest loss statistic in FAO-FRA to be in overall agreement with the satellite-based assessment in the JRC’s tropical moist forest dataset (Vancutsem et al. 2020). A similar trend emerges also in the Global Carbon Budget 2021 (Friedlingstein et al. 2021), based on bookkeeping models. However, this in contrast with analyses based on the Global Forest Change product (GFC, Hansen et al. 2013), which indicates an increasing tree cover loss. Recent evidence indicates that the GFC’s trend seems partly or largely explained by an increased capacity of the product to detect changes after 2015 (Palahi et al. 2021, Ceccherini et al. 2021), but other studies (Feng et al. 2022) confirm the GFC’s trend also after an effort is made to address its temporal inconsistencies. While acknowledging that tree cover loss does not necessarily imply a land use change, these contradictory trends are striking. Given the renewed political interest in

Deleted: 5

Deleted: both

Deleted: are not

Deleted:

Deleted: may fail to capture any recent increase in deforestation, such as those detected in the last years in Brazil (e.g., Silva Junior et al. 2020).

Deleted: forthcoming

Deleted:

1100 reducing deforestation emerged at the UNFCCC's conference in Glasgow in 2021 (COP 26), reconciling the differences above is a priority for the scientific community.

In NAI countries, the fluxes in the category "other" in our NGHGI DB, which are not included in FAOSTAT, represent a net sink of -0.35 Gt CO<sub>2</sub>/yr, mostly from cropland and grasslands in China and India. For organic soils, FAOSTAT's estimates include several NAI countries that do not report such emissions in the NGHGIs; this may explain 0.06 Gt CO<sub>2</sub>/yr difference between our NGHGI DB and FAOSTAT.

1105 To gain more confidence in our analysis for NAI countries, we made an additional assessment of the completeness/uncertainty of reporting for FL and Deforestation in our NGHGI DB and FAOSTAT (including the country reports to FRA). We took into account the cases of implausible forest sink in few NGHGIs, whenever the carbon flux for FL-FL is zero in FAOSTAT, and the carbon pools considered in the two sources (see methods). This assessment should be considered as broadly indicative of the level of process coverage of the two datasets, with the aim to help potential users.

1115 Results show (Table 9, see also Supplementary figure 2) that for 73 NAI countries, the NGHGI DB appears more complete/less uncertain than FAOSTAT on carbon fluxes. This occurs, especially when the NGHGI reports non-biomass pools (not included in FAOSTAT), and when FAOSTAT estimates zero carbon fluxes on FL-FL (because of a single value of carbon stock reported over time in many country FRA reports). In the latter case, we assume that one or more estimated values of carbon flux in a NGHGI represents more information than a single value of carbon stock reported over a period of time in a FRA report. It should be noted that here we speak of "completeness/uncertainty" because, according to the IPCC 2006 guidelines, the lack of completeness is a source of uncertainty. In 27 cases, FAOSTAT includes a more plausible forest sink or a more complete/less uncertain reporting than in our NGHGI DB, especially for deforestation in small countries. For the remaining 53 countries, both databases appear incomplete or the outcome of the assessment is uncertain.

1125 **Table 9.**

Deleted:

Deleted: 8

Deleted: F

Deleted: in

Deleted: cases

Deleted: ,

Deleted: in those cases where

Deleted: ies

Deleted: (that is,

Deleted: in the

Deleted: assumption

Deleted: an

Deleted: default

Deleted: ), and more complete on the carbon pools included

Deleted: 52

Deleted: 8

Figure 7 summarizes the outcome of our analysis, for both AI and NAI countries, to help understanding the reasons for the large differences between our NGHGI DB and FAOSTAT (-2.7 Gt CO<sub>2</sub>/yr on average for 2000-2020), and the NGHGI DB and the UNFCCC GHGDI (+3.8 Gt CO<sub>2</sub>/yr).

1145 In the first case, for AI countries we assume the NGHGI DB to be more complete in terms of land categories and carbon pools than FAOSTAT. For NAI countries, we distinguish cases when: (i) the NGHGI DB is more complete on non-forest land uses, or more complete/less uncertain on Forest Land and Deforestation (reflecting the analysis in Table 9) than FAOSTAT; (ii) it is unclear which source is more complete; (iii) FAOSTAT is either more plausible or more complete than the NGHGI DB. Overall, 59% of the total difference between the  
1150 NGHGI DB and FAOSTAT (1.6 Gt CO<sub>2</sub>/yr, striped blue parts in the upper-right column in Figure 7) may be explained by a more complete/less uncertain reporting (in terms of land categories and carbon pools) by the underlying NGHGIs included in our dataset, in both AI and NAI countries (see also Table 9). For another 26% of the gap (0.7 Gt CO<sub>2</sub>/yr, dotted gray part in the upper-right column in Figure 7), it is difficult to identify a clear reason, and often both datasets appear not very robust. The remaining 15% (0.4 Gt CO<sub>2</sub>/yr, yellow parts  
1155 in the upper-right column in Figure 7) can be explained by more plausible sinks or more complete/less uncertain reporting in FAOSTAT than in the NGHGI DB for NAI countries, including on organic soils. Based on this assessment, the hypothetical combination of the best databases for each country (i.e. NGHGI DB or FAOSTAT) would yield a global net LULUCF sink in the range between -0.5 Gt CO<sub>2</sub>/yr and -1.3 Gt CO<sub>2</sub>/yr (i.e. the dotted gray area in the upper right column, Figure 7).

1160 In the comparison between the NGHGI DB and the large sink we derived from the UNFCCCC GHGDI (UNFCCC 2022a), we consider the NGHGI DB more complete and up-to-date because it uses sources not considered by the UNFCCC GHGDI (i.e., recent REDD+ and NDC submissions, and NC/BURs with the IPCC 2006 format, see Figure 7). This suggests attention when using the UNFCCC GHGDI as basis for global analyses. In this regard, the recent UNFCCC Synthesis report for the global stocktake (UNFCCC 2022b) uses  
1165 more recent data from NAI countries than the UNFCCC GHGDI, resulting in a global LULUCF net sink (-3.1 Gt CO<sub>2</sub>/yr for the year 2015) which is closer to the values in our NGHGI DB. Overall, the completeness of information in our NGHGI DB – including the possibility to see results by land use and submission type (see the online dataset) – makes it a unique collection of LULUCF data submitted by countries to the UNFCCC.

1170 **Figure 7.**

**Moved up [3]:** For the rest 26% of the gap (0.7 Gt CO<sub>2</sub>/yr), it is difficult to identify a clear reason, and often both datasets appear rather poor. ¶

For the comparison between the NGHGI DB and the UNFCCCC GHGDI, we consider the NGHGI DB more complete because it uses sources either not considered by the UNFCCC GHGDI (recent REDD+ and NDC submissions), or simply more updated (NC/BURs

**Moved (insertion) [3]**

**Deleted:** ¶

In the first case, about 59% of the total difference (1.6 Gt CO<sub>2</sub>/yr, Figure 7) may be explained by a more complete/less uncertain reporting by the underlying NGHGIs included in our dataset, in both AI and NAI countries. Another For the rest 26% of the gap (0.7 Gt CO<sub>2</sub>/yr), it is difficult to identify a clear reason, and often both datasets appear rather poor. 15% (0.4 Gt CO<sub>2</sub>/yr) can be explained by more plausible sinks or more complete/less uncertain reporting in FAOSTAT than in the NGHGI DB for NAI countries, including on organic soils. For the rest 26% of the gap (0.7 Gt CO<sub>2</sub>/yr), it is difficult to identify a clear reason, and often both datasets appear rather poor. ¶

For the comparison between the NGHGI DB and the UNFCCCC GHGDI, we consider the NGHGI DB more complete because it uses sources either not considered by the UNFCCC GHGDI (recent REDD+ and NDC submissions), or simply more updated (NC/BURs with the IPCC 2006 format).

#### 4. Conclusions

The NGHGI DB presented in this study provides access to an up-to-date, comprehensive and gap-filled source of information on LULUCF carbon fluxes at country level, based on official country data submitted to the UNFCCC (both Annex I and non-Annex I countries). The database is disaggregated into the following components: i) forest land (of which we track separately forest land remaining forest land, FL-FL); ii) deforestation; iii) organic soils; and iv) other land fluxes (including non-forest land uses). The NGHGI DB results in a net global sink of -1.6 Gt CO<sub>2</sub>/yr, averaged over the period 2000-2020. This is due to a balance between a large forest land sink (-6.4 Gt CO<sub>2</sub>/yr, mostly on FL-FL), and a large land source from deforestation (+4.4 Gt CO<sub>2</sub>/yr). Other relevant fluxes include those from drainage and burning of organic soils (+0.9 Gt CO<sub>2</sub>/yr), and from other land uses (-0.6 Gt CO<sub>2</sub>/yr). Furthermore, our analysis reinforces the urgency for the global models used in the Global Carbon Budget (Friedlingstein et al. 2022) to address research questions such as: Is managed land a net sink or a net source globally? Have rates of deforestation in the tropics been increasing or decreasing in the last two decades? How important are emissions from non-forest lands?

With reference to the range of UNFCCC data that are used as input into the NGHGI DB, Annex I countries explicitly identify area of managed land (for which anthropogenic GHG fluxes are to be reported) and unmanaged land. Conversely, only few non-Annex I make this distinction explicit in their reported data. In the absence of more specific information, and in line with the basic scope of UNFCCC reporting, we assume that all fluxes reported are anthropogenic, and that the corresponding land area is managed. For the future, a more explicit identification by non-Annex I countries of what is considered managed area and anthropogenic GHG flux would be important to achieve more clarity on the global LULUCF fluxes.

Our NGHGI database is then compared with two LULUCF datasets that are conceptually close and also based on country data: the UNFCCC GHG data interface, which reports a global net sink of -5.4 Gt CO<sub>2</sub>/yr, and the LULUCF component of the FAOSTAT emissions database, which results in a global net source of +1.1 Gt CO<sub>2</sub>/yr averaged over the same 2000-2020 period. In the first case, the difference is due to the fact that our NGHGI DB includes more recent data from NAI countries than the UNFCCC GHGDI, including from REDD+ and NDC submissions.

Deleted: ¶

Formatted: Font: 10 pt

Deleted: ¶

Formatted: English (US)

Deleted:

Deleted: submissions (which go through a detailed technical assessment) ...

1230 In the second case, the NGHGI DB reports larger deforestation fluxes than FAOSTAT (+25% difference, within the underlying uncertainty in both products), possibly due to the fact that FAOSTAT's estimates are typically based on net forest area change, rather than gross deforestation as usually done by NGHGIs, and use a single country value of forest carbon stock density for both primary/secondary and planted forest. On the other hand, some NGHGIs may include shifting agriculture in their deforestation emissions.

1235 Importantly, the NGHGI DB results in a sink on forest land (-6.4 Gt CO<sub>2</sub>/yr) which is much larger than FAOSTAT (-3.2 Gt CO<sub>2</sub>/yr on average over 2000-2020), especially in non-Annex I countries, and show a different trend for the most recent years. While it can be assumed that no or few countries with major deforestation rates are missing from both datasets, significant data gaps exist in non-Annex I countries with respect to fluxes on forest land. In particular, the carbon flux on FL-FL (where the majority of the forest carbon flux typically occurs) is not estimated or estimated as null over large areas, i.e. 272 Mha in the NGHGI DB and 1240 905 Mha in FAOSTAT. Whereas the use of IPCC gain-loss method allows most NAI NGHGIs to estimate a forest carbon flux, the underlying data are uncertain (e.g., on forest growth, especially for recent years) or may be biased (e.g., harvest may be underestimated). By contrast, when country-level data on carbon stock changes are lacking in the FRA reports (especially in Africa for the entire 2000-2020 time series, and in many countries across the globe for the years after 2015), FAOSTAT provides no or null estimates for the forest carbon flux.

1245 These gaps imply a large uncertainty in forest land, both for the level of net fluxes (with the uncertainty likely proportional to the areas above for the NGHGI DB and FAOSTAT, and the trends (especially in FAOSTAT for the most recent years), which undermines further progress in assessing the net LULUCF fluxes and mitigation efforts. In addition, the net LULUCF flux in five NGHGIs - collectively amounting to -0.9 Gt CO<sub>2</sub>/yr - appears implausibly high.

1250 Overall, most of the difference between our NGHGI DB and FAOSTAT can be explained by more complete/less uncertain reporting of carbon fluxes by the NGHGIs included in our database (Figure 7), especially on FL-FL of non-Annex I countries, on non-biomass carbon pools and non-forest land uses. This mainly reflects the different scopes of the country reporting to FRA, which focuses on forest area and biomass stocks (upon which FAOSTAT's estimates for FL are based), and to UNFCCC, which explicitly focuses on 1255 LULUCF carbon fluxes. Indeed, compared to the data included in our NGHGI DB, FAO provides more complete information on forest areas (including primary and secondary forests and plantations) and on carbon stocks, which are important parameters for modelling purposes. Both the NGHGI DB and FAO – bearing in

Deleted: in  
Deleted: FL  
Deleted: ,  
Deleted: ,



mind the respective strengths and weaknesses – offer a fundamental, yet incomplete, source of information on carbon-related variables, representing a key source of information for both scientific and policy communities, including under the Global Stocktake.

1265 For the future, the quality of NGHGs is expected to improve following the full implementation of Enhanced  
Transparency Framework under the Paris Agreement. Based on our findings, we suggest that priority areas of  
improvement for non-Annex I countries - where UNFCCC reviewers and capacity building support should  
also focus on - include the explicit identification of managed vs unmanaged forest areas (which is crucial to  
understand if the reported flux is considered anthropogenic), the plausibility of the forest sink and the  
1270 completeness of reporting. For FRA data, where relevant improvements have already occurred (Nesha et al.  
2021), future efforts may focus on increasing consistency with NGHGs. Meanwhile, in the absence of  
appropriate data sources per country, it should be evaluated whether carbon fluxes can be estimated from  
reported carbon stocks over time.

In summary, although the quality and quantity of LULUCF data in NGHGs improved considerably in recent  
1275 years, our database highlights that some important gaps still remain, especially in non-Annex I countries.  
Addressing these gaps should be seen as a priority to increase confidence in land-use mitigation under the Paris  
Agreement and facilitate comparison with independent scientific estimates. With these limits in mind, the  
NGHGI DB presented is the most up-to-date and complete source of LULUCF CO<sub>2</sub> fluxes based on country  
submissions to UNFCCC.

1280

#### **Data availability**

Data from this study are openly available via the Zenodo portal (Grassi et al. 2022),  
<https://doi.org/10.5281/zenodo.6390739>

#### **Author contribution**

1285 G.G. led the study design with the help of S.F. and F.N.T., performed the analysis and wrote the first draft.  
S.F., R.A.V., A.K., S.R. and J.M. contributed to the collection of the data from country reports. G.C., M.S.,  
and Z.S. contributed to the analysis. All authors contributed to the drafting.

### Competing interests

1290 The authors declare that they have no conflicts of interest.

### Disclaimer

The views expressed are purely those of the writers and may not under any circumstances be regarded as stating an official position of the European Commission, FAO or any other institution.

### Acknowledgements

1295 G.G. acknowledges funding from the EU's Horizon 2020 VERIFY project (no. 776810). The authors thank Anssi Pekkarinen for constructive comments to a draft version of the manuscript.

### References

- 1300 [Australia: National Inventory Report \(NIR\), https://unfccc.int/documents/273478, 2021.](https://unfccc.int/documents/273478)
- [Canada: National Inventory Report \(NIR\), https://unfccc.int/documents/271493, 2021.](https://unfccc.int/documents/271493)
- Ceccherini, G., Duveiller, G., Grassi, G., Lemoine, G., Avitabile, V., Pilli, R., and Cescatti, A.: Concerns about reported harvests in European forests - Reply to Wernick, I. K. et al. Palahi, M. et al., Nature, 592 E18-E23, 2021.
- Conchedda, G., and Tubiello, F.N.: Drainage of organic soils and GHG emissions: validation with country data, Earth Syst. Sci. Data, 12, 3113–3137, <https://doi.org/10.5194/essd-12-3113-2020>, 2020.
- 1305 COP26. Glasgow leaders' declaration on forests and land use. UN Climate Change Conference <https://ukcop26.org/glasgow-leaders-declaration-on-forests-and-land-use/>, Glasgow, 2 November 2021.
- Deng H, Su Y, Liao Z, and Wu J.: Proposal of Implementation Framework of Cooperative Approaches and Sustainable Development Mechanism, Sustainability,14(2): 655, 2022.
- 1310 Donegan, E. and Sandker, M. forthcoming. Outcomes and Influences of REDD+ Implementation on Carbon. In: Parrotta J, Mansourian S, Wildburger C and Grima N (eds.), 2022. Forests, Climate, Biodiversity and

Deleted: (2021)

- People: Assessing a decade of REDD+. IUFRO World Series Volume 40. Vienna. ISBN 978-3-903345-14-0. <https://www.iufro.org/fileadmin/material/publications/iufro-series/ws40/ws40.pdf>. 2022.
- 1315 FAO: Global Forest Resources Assessment 2020: Main Report, available at: <http://www.fao.org/documents/card/en/c/ca9825en> (last access: March 2022), FAO, Rome, 2020.
- FAO: Emissions from agriculture and forest land. Global, regional and country trends 1990–2019 [data set], FAO, Rome, 2021.
- Feng Y, Zeng Z, Searchinger TD, Ziegler AD, Wu J, Wang D, He X, Elsen PR, Ciais P, Xu R, and Guo Z:  
 1320 Doubling of annual forest carbon loss over the tropics during the early twenty-first century, *Nat. Sustain.* 2022 Feb 28:1-8, 2022.
- Friedlingstein, P., Jones, M. W., O'Sullivan, M., Andrew, R. M., Bakker, D. C. E., Hauck, J., Le Quéré, C.,  
 Peters, G. P., Peters, W., Pongratz, J., Sitch, S., Canadell, J. G., Ciais, P., Jackson, R. B., Alin, S. R.,  
 1325 Anthoni, P., Bates, N. R., Becker, M., Bellouin, N., Bopp, L., Chau, T. T. T., Chevallier, F., Chini, L. P.,  
 Cronin, M., Currie, K. I., Decharme, B., Djutchouang, L., Dou, X., Evans, W., Feely, R. A., Feng, L.,  
 Gasser, T., Gilfillan, D., Gkritzalis, T., Grassi, G., Gregor, L., Gruber, N., Gürses, Ö., Harris, I., Houghton,  
 R. A., Hurtt, G. C., Iida, Y., Ilyina, T., Luijckx, I. T., Jain, A. K., Jones, S. D., Kato, E., Kennedy, D., Klein  
 Goldewijk, K., Knauer, J., Korsbakken, J. I., Körtzinger, A., Landschützer, P., Lauvset, S. K., Lefèvre, N.,  
 Lienert, S., Liu, J., Marland, G., McGuire, P. C., Melton, J. R., Munro, D. R., Nabel, J. E. M. S., Nakaoka,  
 1330 S.-I., Niwa, Y., Ono, T., Pierrot, D., Poulter, B., Rehder, G., Resplandy, L., Robertson, E., Rödenbeck, C.,  
 Rosan, T. M., Schwinger, J., Schwingshackl, C., Séférian, R., Sutton, A. J., Sweeney, C., Tanhua, T., Tans,  
 P. P., Tian, H., Tilbrook, B., Tubiello, F., van der Werf, G., Vuichard, N., Wada, C., Wanninkhof, R.,  
 Watson, A., Willis, D., Wiltshire, A. J., Yuan, W., Yue, C., Yue, X., Zachle, S., and Zeng, J.: Global Carbon  
 Budget 2021, *Earth Syst. Sci. Data*, <https://essd.copernicus.org/articles/14/1917/2022/>, 2022.
- 1335 Gatti L.V., Basso L.S., Miller J.B., Gloor M., Gatti Domingues L., Cassol H.L.G., Tejada G., Aragão L.E.O.C.,  
 Nobre C., Peters W., et al. Amazonia as a carbon source linked to deforestation and climate change. *Nature*,  
 595, 7867, 388–393, 2021.
- Grassi, G., House, J., Dentener, F., Federici, S., den Elzen, M., and Penman, J.: The key role of forests in  
 meeting climate targets requires science for credible mitigation, *Nat. Clim. Change*, 7, 220–226, 2017.
- 1340 Grassi, G., House, J., Kurz, W. A., Cescatti, A., Houghton, R. A., Peters, G. P., Sanz, M. J., Viñas, R. A.,  
 Alkama, R., Armeth, A., Bondeau, A., Dentener, F., Fader, M., Federici, S., Friedlingstein, P., Jain, A. K.,  
 Kato, E., Koven, C. D., Lee, D., Nabel, J. E. M. S., Nassikas, A. A., Perugini, L., Rossi, S., Sitch, S., Viovy,

**Deleted:** FAO: Global Forest Resources Assessment 2020: Main Report, available at: [.fao.org/documents/card/en/c/ca8753en](http://www.fao.org/documents/card/en/c/ca8753en) (last access: March 2022), FAO, Rome, 2020a.

**Deleted:** b

**Deleted:** '

**Deleted:** Discuss. [preprint]

**Deleted:** <https://doi.org/10.5194/essd-2021-386>

**Deleted:** in review,

**Deleted:** 1

**Deleted:** 2021

**Deleted:** .

- 1355 N., Wiltshire, A., and Zaehle, S.: Reconciling global-model estimates and country reporting of anthropogenic forest CO2 sinks, *Nat. Clim. Change*, 8, 914–920, 2018.
- Grassi, G., Stehfest, E., Rogelj, J., van Vuuren, D., Cescatti, A., House, J., Nabuurs, G., Rossi, S., Alkama, R., Viñas, R. A., Calvin, K., Ceccherini, G., Federici, S., Fujimori, S., Gusti, M., Hasegawa, T., Havlik, P., Humpenöder, F., Korosuo, A., Perugini, L., Tubiello, F. N., and Popp, A.: Critical adjustment of land mitigation pathways for assessing countries' climate progress, *Nat. Clim. Change*, 11(5):425-34, 2021.
- 1360 Grassi G, Federici S, Abad Viñas R, Korosuo A, Rossi S (version ~~August~~ 2022). LULUCF data based on National GHG inventories (NGHGI DB) available at <https://doi.org/10.5281/zenodo.6390739>, 2022
- Griscom, B.W., Adams, J., Ellis, P.W., Houghton, R.A., Lomax, G., Miteva, D.A., Schlesinger, W.H., Shoch, D., Siikamäki, J.V., Smith, P. and Woodbury, P.: Natural Climate Solutions, *Proc. Natl. Acad. Sci. USA* 114, 11645–11650, doi:10.1073/pnas.1710465114, 2017.
- 1365 Hansen MC, Potapov PV, Moore R, Hancher M, Turubanova SA, Tyukavina A, Thau D, Stehman SV, Goetz SJ, Loveland TR, Kommareddy A.: High-resolution global maps of 21<sup>st</sup>-century forest cover change, *Science*, 342(6160):850-853, 2013.
- Hubau W., Lewis S.L., Phillips O.L., Affum-Baffoe K., Beeckman H., Cuní-Sanchez A., Daniels A.K., Ewango C.E.N., Fauset S., Mukinzi J.M., et al. *Asynchronous carbon sink saturation in African and*
- 1370 *Amazonian tropical forests*. *Nature*, 579, 7797, 80–87, 2020.
- IPCC Revised 1996 IPCC Guidelines for National Greenhouse Gas Inventories, available in full at <https://www.ipcc-nggip.iges.or.jp/public/gl/invs6.html> (last access: March 2022), 1996.
- IPCC: IPCC Guidelines for National Greenhouse Gas Inventories: available at: <https://www.ipccnggip.iges.or.jp/public/2006gl/> (last access: March 2022), 2006.
- 1375 IPCC: 2019 Refinement to the 2006 IPCC Guidelines for National Greenhouse Gas Inventories, available at: <https://www.ipcc-nggip.iges.or.jp/public/2019rf/index.html> (last access: March 2022), 2019.
- ~~McGlynn E., Li, S., Berger, M.F., Amend M., Harper, K.L., Addressing uncertainty and bias in land use, land use change, and forestry greenhouse gas inventories. *Climatic Change*, 170:5, <https://doi.org/10.1007/s10584-021-03254-2>, 2022.~~
- 1380 ~~Mooney, C., Eilperin, J., Butler, D., Muyskens, J., Narayanswamy, A., and Ahmed, N., The Washington Post: (2021) Countries' climate pledges built on flawed data., available at: <https://www.washingtonpost.com/climate-environment/interactive/2021/greenhouse-gas-emissions-pledges-data/> (last access: March 2022), The Washington Post, 2021~~

Deleted: March

Formatted: Superscript

Deleted: (2020)

Deleted: .

Deleted:

Deleted: IPCC: Good Practice Guidance for Land use, Land use Change and Forestry, available at: [https://www.ipcc-nggip.iges.or.jp/public/gpalulucf/gpalulucf\\_files/GPG\\_LULUCF\\_FULL.pdf](https://www.ipcc-nggip.iges.or.jp/public/gpalulucf/gpalulucf_files/GPG_LULUCF_FULL.pdf) (last access: January 2020), 2003.

Deleted: a

Formatted: English (US), Not Highlight

Formatted: Not Highlight

Formatted: Not Highlight

Formatted: Not Highlight

Formatted: Not Highlight

- Nesha MK, Herold M, De Sy V, Duchelle AE, Martius C, Branthomme A, Garzuglia M, Jonsson O, Pekkarinen A.: An assessment of data sources, data quality and changes in national forest monitoring capacities in the Global Forest Resources Assessment 2005–2020. *Environ. Res. Lett.* 16(5), 2021.
- 1395 Ogle, S. M., Domke, G., Kurz, W. A., Rocha, M. T., Huffman, T., Swan, A., Smith, J. E., Woodall, C., and Krug, T.: Delineating managed land for reporting national greenhouse gas emissions and removals to the United Nations framework convention on climate change, *Carbon Balance and Management*, 13, 9, <https://doi.org/10.1186/s13021-018-0095-3>, 2018.
- 1400 Palahi M., Valbuena R., Senf C., Acil N., Pugh T.A., Sadler J., Seidl R., Potapov P., Gardiner B., Hetemäki L., Chirici G.: Concerns about reported harvests in European forests, *Nature*, 592(7856):E15-17, 2021.
- Prosperi P., Bloise M., Tubiello F.N., Conchedda G., Rossi S., Boschetti L., Salvatore M., Bernoux M.: New estimates of greenhouse gas emissions from biomass burning and peat fires using MODIS Collection 6 burned areas, *Climatic Change*, 161(3):415-32, 2020.
- 1405 Roe S., Streck C., Beach R., Busch J., Chapman M., Daioglou V., Deppermann A., Doelman J., Emmet-Booth J., Engelmann J., Fricko O.: Land-based measures to mitigate climate change: Potential and feasibility by country, *Global Change Biol.*, 27(23):6025-58, 2021.
- Rossi S., Tubiello F.N., Prosperi P, Salvatore M, Jacobs H, Biancalani R, House JI, Boschetti L.: FAOSTAT estimates of greenhouse gas emissions from biomass and peat fires. *Climatic Change* 135(3):699-711, 2016.
- 1410 Tubiello, F. N.: FAOSTAT Forest land emissions [data set] (version July2020), available at <https://doi.org/10.5281/zenodo.3941973> (last access March 2022), 2020.
- [Tubiello, F. N., Conchedda, G., Wanner, N., Federici, S., Rossi, S., and Grassi, G.: Carbon emissions and removals from forests: new estimates, 1990–2020, \*Earth Syst. Sci. Data\*, 13, 1681–1691, 2021.](#)
- [Silva Junior CH, Pessoa A, Carvalho NS, Reis JB, Anderson LO, Aragao LE.: The Brazilian Amazon deforestation rate in 2020 is the greatest of the decade, \*Nat Ecol Evol.\*, \(2\):144-5, 2021.](#)
- 1415 UNFCCC. [UNFCCC, GHG data from UNFCCC \[data set\]](#) , available at <https://unfccc.int/process-and-meetings/transparency-and-reporting/greenhouse-gas-data/ghg-data-unfccc/ghg-data-from-unfccc> (last access: March 2022), 2022a.
- [UNFCCC. UNFCCC Synthesis report for the technical assessment component of the first global stocktake, available at https://unfccc.int/documents/461466, 2022b.](#)
- 1420

**Deleted:** Tubiello FN, Karl K, Flammini A, Gutschow J, Obli-Layrea G, Conchedda G, Pan X, Qi SY, Halldóruddóttir Heiðarsdóttir H, Wanner N, and Quadrelli R.: Pre-and post-production processes along supply chains increasingly dominate GHG emissions from agri-food systems globally and in most countries, *Earth Syst. Sci. Data Discuss*, 1-24, 2021.

Tubiello, F. N., Conchedda, G., Wanner, N., Federici, S., Rossi, S., and Grassi, G.: Carbon emissions and removals from forests: new estimates, 1990–2020, *Earth Syst. Sci. Data*, 13, 1681–1691, 2021.

**Deleted:**

**Deleted:** 2021

Vancutsem C, Achard F, Pekel JF, Vieilledent G, Carboni S, Simonetti D, Gallego J, Aragao LE, Nasi R.:  
Long-term (1990–2019) monitoring of forest cover changes in the humid tropics, *Science Advances*,7(10),  
2021.

1435

## TABLES

**Table 1.** Overview of the main characteristics of the sources of data used in this study.

	DATASET USED		CO <sub>2</sub> flux	Forest area	Latest update	Time series	Comment by the authors
<b>Annex I countries (AI)</b>	<b>GHGI</b>	GHG Inventories (GHGI) <a href="https://unfccc.int/ghg-inventories-annex-i-parties/2021">https://unfccc.int/ghg-inventories-annex-i-parties/2021</a>	All land uses	yes	2021	1990-2019	Rather complete and generally reliable source. Based on the 2006 IPCC Guidelines (IPCC 2006). Reviewed annually by UNFCCC experts. Standardised tables.
<b>Non-Annex I countries (NAI)</b>	<b>NC or BUR</b>	National Communications (NC) or Biennial Update Reports (BUR) <a href="https://unfccc.int/non-annex-I-NCs">https://unfccc.int/non-annex-I-NCs</a> , <a href="https://unfccc.int/BURs">https://unfccc.int/BURs</a>	In principle, all land uses. In practice, mostly forest land (FL) and Deforestation (DEF)	Yes. Here we used FRA 2020 data to gap fill where this information is missing	After 2018 for most countries	Varies from country to country	The quantity and quality of information varies considerably among countries, but is improving with time. Technically assessed by UNFCCC experts (not an in-depth review). Typically, not standardised tables. Numbers are taken from available tables or, in the absence of these, are approximately derived from the figures reported. The 1996 or 2006 IPCC Guidelines are used.
	<b>REDD+</b>	Submissions to 'Reducing Emissions from Deforestation and forest Degradation' (REDD+) <a href="https://redd.unfccc.int/submissions.html?mode=browse-by-country">https://redd.unfccc.int/submissions.html?mode=browse-by-country</a>	The following activities may be reported: DEF: reducing emissions from deforestation. DEG: reducing emissions from forest degradation. CCS: conservation of forest-carbon stocks. ECS: enhancement of forest-carbon stock. SFM: sustainable management of forests. DEF and DEG are the most reported activities	yes	After 2018 for most countries that submitted under REDD+	Varies from country to country	The quantity and quality of information on forest and deforestation is typically greater than that of NC/BUR, but often estimates do not cover the entire national forest land area and all associated CO <sub>2</sub> fluxes. Estimates tend to be activity-based and often do not cover the forest land sink. Technically assessed by UNFCCC experts (in-depth review). Non-standardized tables. Generally, this source is used in our NGHGI DB if estimates are spatially complete (full national coverage) and if more than one activity is included (e.g. Deforestation and forest Degradation). Typically, the 2006 IPCC Guidelines are used
	<b>NDC</b>	Nationally Determined Contributions (NDC) <a href="https://www4.unfccc.int/sites/NDCStaging/Pages/All.aspx">https://www4.unfccc.int/sites/NDCStaging/Pages/All.aspx</a>	Mostly FL and DEF.	yes. FRA 2020 used to gap fill	Mostly from 2021	Varies from country to country	The quantity and quality of information varies considerably among countries; typically, much less information is provided than NC/BUR or REDD+, and the methodological basis is not always clear. Not assessed by UNFCCC experts, but when nothing better was available it is used here because it is a highly relevant information under the Paris Agreement. Non-standardized tables. Numbers are taken from available tables or, in the absence of these, are approximately derived from the figures.

1440 **Table 2.** Mapping of original categories in the country report (typically those of the IPCC methodology) to the categories used in this study (Forest land, Deforestation, Organic soils, Other).

	Original categories in the country reports	Categories in this study
IPCC 2006 categories	A. Forest land	FOREST LAND
	1. Forest land remaining forest land	FOREST LAND
	2. Land converted to forest land	FOREST LAND
	B. Cropland	If this category has no further disaggregation (e.g. in many NAI countries), it is assigned to "OTHER" or to "DEFORESTATION" depending on the additional information available in the country report.
	1. Cropland remaining cropland	OTHER
	2. Land converted to cropland	If this category has no further disaggregation, it is assigned to "OTHER", or (more often) to "DEFORESTATION", depending on the additional information available in the country report. If further disaggregation is available (e.g. all AI countries), the mapping follows this more detailed information (e.g., "forest converted to cropland" becomes "DEFORESTATION", while "grassland converted to cropland" becomes "CROPLAND")
	C. Grassland	As above for cropland
	1. Grassland remaining grassland	OTHER
	2. Land converted to grassland	As above for land converted to cropland
	D. Wetlands	As above for cropland
	1. Wetlands remaining wetlands	OTHER
	2. Land converted to wetlands	As above for land converted to cropland
	E. Settlements	As above for cropland
	1. Settlements remaining settlements	OTHER
	2. Land converted to settlements	As above for land converted to cropland
	F. Other land	As above for cropland
	1. Other land remaining other land	Not applicable
	2. Land converted to other land	As above for land converted to cropland
	G. Harvested wood products	FOREST LAND
IPCC 1996 categories	Changes in forest and other woody biomass stocks	FOREST LAND
	Abandonment of managed lands	FOREST LAND
	Forest and grassland conversion	If this category has no further disaggregation, it is assigned to "OTHER", or more often to "DEFORESTATION" (e.g. if it is an emission), depending on the additional information available in the country report. If further disaggregation is available, the mapping follows this more detailed information (e.g., "forest converted to pasture" becomes "DEFORESTATION", while "pasture converted to cropland" becomes "OTHER")
	Managed soil	OTHER
	Biomass burning	FOREST LAND
Mixed categories	"AFOLU CO <sub>2</sub> removals" or "LULUCF CO <sub>2</sub> removals"	FOREST LAND (this is supported by the fact that, when a more disaggregated reporting is available, the vast majority of the CO <sub>2</sub> removals occur in forest land)



"AFOLU CO2 emissions" or "LULUCF CO2 emissions"	DEFORESTATION (this is supported by the fact that, when a more disaggregated reporting is available, the vast majority of the CO <sub>2</sub> emissions are associated to deforestation)
"AFOLU net CO <sub>2</sub> flux" or "LULUCF net CO <sub>2</sub> flux"	FOREST LAND where it is a net removal, DEFORESTATION where it is a net emission (this is supported by the fact that, when a more disaggregated reporting is available, the vast majority of the CO <sub>2</sub> removals occur in forest land and the vast majority of the CO <sub>2</sub> emissions are associated with deforestation)
Emissions from managed ORGANIC SOILS for AI countries are taken from the detailed reporting in CRF tables, and are subtracted from the respective categories (forest land, deforestation, other). For NAI countries, only Indonesia reports emissions from peat decomposition and peat fires, which we both assigned to ORGANIC SOILS.	

**Table 3.** Statistics on the sources used in this study for Annex I (AI) and Non-Annex I (NAI) countries.

Source used	N. of countries	Forest area*		Absolute** CO <sub>2</sub> flux (%)
		Mha	%	
<b>AI countries</b>				
GHGI	43	2023	47%	25%
<b>NAI countries</b>				
NC/BUR	110	1842	43%	59%
REDD+	19	172	4%	5%
NDC	14	292	7%	12%
No LULUCF data	10	4	0.1%	0%
<b>Total</b>	195	196	4333	

\* The forest area includes 71 Mha which are gap-filled from FRA 2020 (see Supplementary Tab. 3, and next section)

1445 \*\*The absolute flux is calculated by summing the absolute fluxes of the various categories (forest land, deforestation, organic soils, other).

**Table 4.** Statistics on land use categories reported in NGHGs and used in this study. The % refers to the share within the categories (World, AI or NAI countries)

	n. of countries	LULUCF		Forest land		Deforestation		Org. soils		Other	
		n	%	n	%	n	%	n	%	n	%
<b>World</b>	196	185	94%	178	91%	124	63%	35	18%	91	46%
<b>AI</b>	43	43	100%	42	98%	42	98%	32	74%	36	84%
<b>NAI</b>	153	143	93%	137	90%	82	54%	3	2%	55	36%

1450

**Table 5.** Statistics on carbon pools (number of countries reporting, average CO<sub>2</sub> fluxes) for the main land use categories and sub-categories in the NGHGs of AI countries.

Formatted: Subscript

Deleted: ¶

Land use category	Land use sub-category	N. of countries reporting				Average for AI countries 2000-2020 (MtCO <sub>2</sub> /yr)			
		Living biomass	Dead organic matter	Soil mineral	Soil organic	Living biomass	Dead organic matter	Soil mineral	Soil organic
Forest land	Forest land remaining forest land	42	31	20	19	-1833	-217	-163	26
	Land converted to forest land	40	35	36	15	-168	-50	-3	2
Cropland	Cropland remaining Cropland	38	4	35	28	-6	2	1	121
	Land converted to Cropland	38	19	38	17	43	7	34	10
Grassland	Grassland remaining Grassland	22	9	25	26	-2	1	-5	97
	Land converted to Grassland	37	31	37	19	62	-11	-163	25

1455

Deleted: ¶

Deleted: 5

**Table 6.** Number of countries reporting on managed and unmanaged forest to UNFCCC (NGHGs). For comparison and within the assumptions made in this paper, we also show country reporting to FAO (FAO, 2020) of secondary forest/plantation and primary forest area.

1460

		managed	secondary/ plantation	unmanaged	primary
NGHGs	AI	43		5*	
	NAI	107		4	
FRA	AI		43		26
	NAI		146		65

\* including Canada, France, Greece, Russia, USA. All the other AI countries report that unmanaged forests do not occur.

**Table 7.** Countries where the difference between the net LULUCF CO<sub>2</sub> flux in the NGHGI DB and in the UNFCCC GHGDI is greater than 50 Mt CO<sub>2</sub>/yr (absolute values, i.e. positive numbers indicate greater emissions or smaller sinks in the NGHGI DB than the UNFCCC GHGDI), and explanation of the different source used. Collectively, these countries explain most of the difference in global LULUCF values between the two datasets.

	Difference NGHGI DB vs. UNFCCC GHGDI (Mt CO <sub>2</sub> /yr)	Source NGHGI DB	Source UNFCCC GHGDI	Comment
Central African Republic	1538	NDC 2016	NC2 2015	<u>This Central African Republic reports very diverse and contradicting estimates. The NC2 2015 reports a sink of -1.7 GtCO<sub>2</sub>/yr, which we consider biophysically impossible (see Methods). The most recent NDC 2021 reports a sink of -0.7 Gt CO<sub>2</sub>/yr, which we also consider biophysically impossible given the relatively small forest area (20 Mha of secondary forest), which as noted in Line 159 would be equivalent to a mean area-specific sink of -35 tCO<sub>2</sub>/yr/ha. In our NGHGI DB, we used the value from the NDC 2016 (see Fig. 1 in that document, including both emissions and removals: -0.2 GtCO<sub>2</sub>/yr) despite considered “implausible” according to our criteria (see Methods).</u>
Democratic Republic of the Congo	761	NDC 2021	NC3 2015	NDC 2021 used (Fig. 1) because more recent than the NC3 (2015) and broadly consistent with REDD+ (2018). However, this source does not report any carbon sink from forest.
Guinea	478	NDC 2021	NC2 2018	NDC 2021 used (Tab. 7) because more recent than the NC2 (2018), even if no forest sink is reported. Note that the sink in the NC2 is biophysically impossible (-0.4 Gt CO <sub>2</sub> /yr over 5 Mha forest).
Nigeria	189	BUR2 2021	NC2 2014	BUR2 2021 used (Tab. 2.11) because more recent than the NC2 2014. Note that the NDC 2021 and BUR2 2021 report different numbers. Here the BUR is used because much more detailed.
Papua New Guinea	175	BUR1 2019	NC2 2015	BUR1 2019 used (Fig. 2.11) because more recent than the NC2 2015.
Madagascar	173	REDD+ 2018	NC3 2017	REDD+ used (2018) because more recent than the NC3 (2017), but it covers only deforestation. Note that the NC3 reports a biophysically impossible sink (-0.3 Gt CO <sub>2</sub> /yr over 9 Mha of forest).
Myanmar	147	REDD+ 2018	NC1 2012	REDD+ (covering DEF, ECS) used because NDC 2021 confirmed it as the correct source to look at.
Guyana	101	REDD+ 2015	NC2 2012	REDD+ (covering DEF, DEG), used because more recent than the NC2 (2012)
Zimbabwe	95	BUR1 2021	NC3 2017	BUR1 2021 used (based on Fig. 2.18) because more recent than the NC3 (2017) and more complete than NDC 2021 (where LULUCF values seem unclear)
Cambodia	88	REDD+ 2021	NC2 2016	REDD+ (including DEF, ECS) used because more recent than the NC2 (2016)

Deleted: 6

Deleted: NDC 2016 used (Fig. 1, including both emissions and removals) because more recent than NC2 (2015). Note that a more recent NDC (2021) was ignored because the reported sink (-0.7 Gt CO<sub>2</sub>/yr) is biophysically impossible.

Thailand	70	REDD+ 2021	NC3 2018	REDD+ 2021 (including DEF, DEG, ECS) used because more recent and complete than the NC3 (2018)
Congo	64	NDC 2021	NC2 2009	NDC 2021 used (Tabs. 7 and 8) because more recent than the NC2 (2009)
Angola	54	NC2 2021	NC1 2012	NC2 2021 used (Tab. 2) because more recent than NC1 (2012)
Brazil	53	NC4 2020	BUR4 2020	NC4 2020 used (Appendix I) because more disaggregated and rich in information than BUR4 2020, even if not fully consistent (BUR4 has lower emission values).
Indonesia	-286	BUR3 2021	NC3 2018	BUR3 2021 used (Tab. 2.17) because more recent than NC3 2018 and more complete than REDD+ (2022).
Mexico	-184	NIR 2019	NC5 2012	NIR 2019 used (Tabs. 5.23-5.32) because more recent than the NC5 (2012) and more complete than REDD+ (2020)
Namibia	-117	NIR 2021	NC3 2015	NIR 2019 used (Tab. 6.18) because more recent than the NC3 (2015) and than more complete than NDC 2021

1475

1480 **Table 8.** Statistics on the number of NAI countries (and corresponding forest area) for which NGHGI DB and FAOSTAT compute null or non-null carbon fluxes for forest land (FL) and ‘forest land remaining forest land’ (FL-FL). To note is that FAOSTAT does not explicitly distinguish the two subcomponents of FL, i.e. FL-FL and land converted to forest (L-FL). Here, we performed an additional analysis based on the original country reports to FRA: if the country report to FRA includes a constant value of carbon stock/ha over time, then we assume that the carbon flux FL-FL is zero and that any value computed by FAOSTAT for FL comes from L-FL only (see text for details).

Deleted: 7

		NGHGI-DB		FAOSTAT	
		n. Countries	Area (Mha)	n. Countries	Area (Mha)
FL	Non-zero flux	136	1647	113	1859
	No or zero flux	17	272	40	327
FL-FL	Non-zero flux	136	1674	63	1282
	No or zero flux	17	272	89	905
Total		153	1946	153	2186

**Table 2.** Assessment of the reasons for the difference between the NGHGI database and FAOSTAT for 153 NAI countries, based on the completeness/uncertainty in the estimates of Forest Land (FL) and Deforestation, and of carbon pools included. The method used is illustrated in Supplementary figure 2. The total flux (-1683 Mt CO<sub>2</sub>/yr) is the average difference, for the sum of FL and deforestation in NAI countries, between NGHGI DB (+26 Mt CO<sub>2</sub>/yr) and FAOSTAT (+1819 Mt CO<sub>2</sub>/yr) for the period 2000-2020.

Deleted: 8

	Countries		Difference explained	
	n	%	Mt CO <sub>2</sub> /yr	%
<b>NGHGI DB</b> Countries where NGHGIs in our database appear either more complete, or report non-zero sinks on forest land, than FAOSTAT, and/or for the reporting of non-biomass carbon pools	72	47%	-676	38%
<b>Uncertain</b> Countries where both databases are incomplete, or countries where the NGHGIs in our database are considered implausible*, but for which FAOSTAT estimates a zero carbon flux for FL-FL.	54	35%	-777	43%
<b>FAOSTAT</b> Countries where FAOSTAT appear more complete for FL or Deforestation, or where the NGHGIs in our database are considered implausible* and FAOSTAT estimates a non-zero carbon flux for FL-FL.	27	18%	-340	19%
<b>Total</b>	153		-1793	

\*Where the forest sink is greater than -10 tCO<sub>2</sub>/ha over >1Mha, see Methods.

1495 **FIGURE CAPTIONS**

**Figure 1.** Global forest area reported to UNFCCC (as consolidated and gap-filled in the NGHGI DB) (managed and unmanaged) and FRA (primary and secondary + plantations) for the year 2015 at global level (a) and for five macro regions (b-f). For the NGHGI DB, about 1% of total forest area in NAI countries is gap-filled with  
1500 FAO data (i.e., 2, 43 and 1 Mha in panels d, e and f, respectively).

**Figure 2.** Global trend 2000-2020 of CO<sub>2</sub> fluxes from the NGHGI DB for the various land uses and land-use change categories (a) and for Annex I vs. non-Annex I countries (b).

1505 **Figure 3.** Trends 2000-2020 of LULUCF CO<sub>2</sub> fluxes from the NGHGI DB for the largest Annex I (a) and non-Annex I (b) countries (or country aggregations). Dots indicate the years for which the data exists in the original submission (i.e. not gap-filled).

1510 **Figure 4.** Global trend 2000-2020 of CO<sub>2</sub> fluxes from our NGHGI DB and FAOSTAT for LULUCF (a), Forest land (b, including ‘forest land remaining forest land’, ‘land converted to forest land’ and harvest wood products), Deforestation (c, corresponding to net forest conversion in FAOSTAT) and Organic Soils (d, including peat drainage and peat fires).

**Deleted:** Global trend 2000-2020 of CO<sub>2</sub> fluxes from our NGHGI DB and FAOSTAT for LULUCF (a), Forest land (b), Deforestation (c, corresponding to net forest conversion in FAOSTAT) and Organic Soils (d, including peat drainage and peat fires).

**Figure 5.** CO<sub>2</sub> fluxes (average 2000-2020) in Annex I and non-Annex I countries from our NGHGI DB and  
1515 FAOSTAT, for LULUCF (a), Forest land (b), Deforestation (c, typically gross in NGHGIs and net in FAOSTAT) and Organic Soils (d, including peat drainage and peat fires).

**Figure 6.** CO<sub>2</sub> fluxes (average 2000-2020) in the five macro-regions from our NGHGI DB and FAOSTAT, for Forest land (a) and Deforestation (b, net deforestation in FAOSTAT). The numbers next to each column in  
1520 panel a indicate the areas (in Mha, and % relative to the respective regional forest area) where no or zero

1525 carbon flux is estimated for FL or for FL-FL. In panel a, the dashed blue areas indicate the carbon fluxes that  
we consider implausible in the NGHGI DB (see Methods).

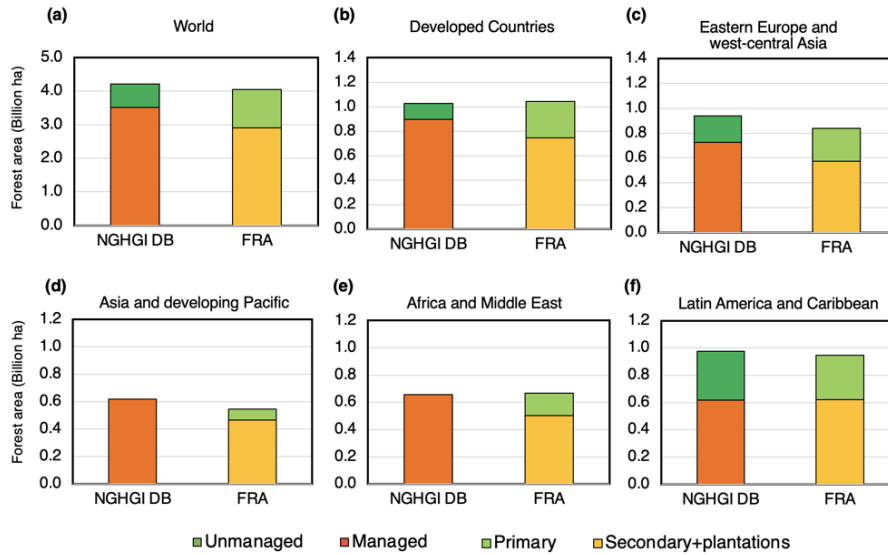
530 **Figure 7.** Disaggregation of the differences in net global LULUCF CO<sub>2</sub> fluxes (average 2000-2020) between  
the NGHGI DB presented in this study and FAOSTAT (upper right column), and between the NGHGI DB and  
the UNFCCC GHG Data Interface (UNFCCC GHGDI) (bottom right column). Whiskers indicate the estimated  
global uncertainty (95% confidence interval) on the net LULUCF flux for the NGHGI DB (see Methods) and  
FAOSTAT (Tubiello et al. 2021). See text for details.

**Formatted:** Not Highlight

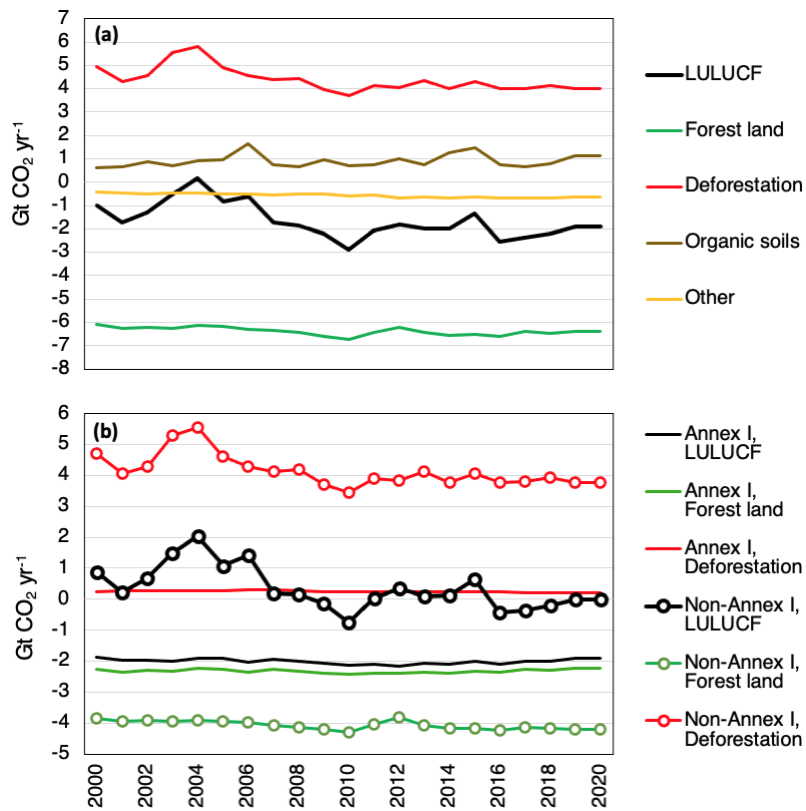
**Deleted:** Disaggregation of the differences in net global LULUCF CO<sub>2</sub> fluxes (average 2000-2020) between the NGHGI DB presented in this study and UNFCCC GHG Data Interface (UNFCCC GHGDI), and between the NGHGI DB and FAOSTAT, into different categories. For NAI countries, numbers for Forest Land (FL) and Deforestation (DEF) reflect the analysis shown in Table 8. Whiskers indicate the estimated global uncertainty (95% confidence interval) on the net LULUCF flux for the NGHGI DB (see Methods) and FAOSTAT (Tubiello et al. 2021). See text for details.



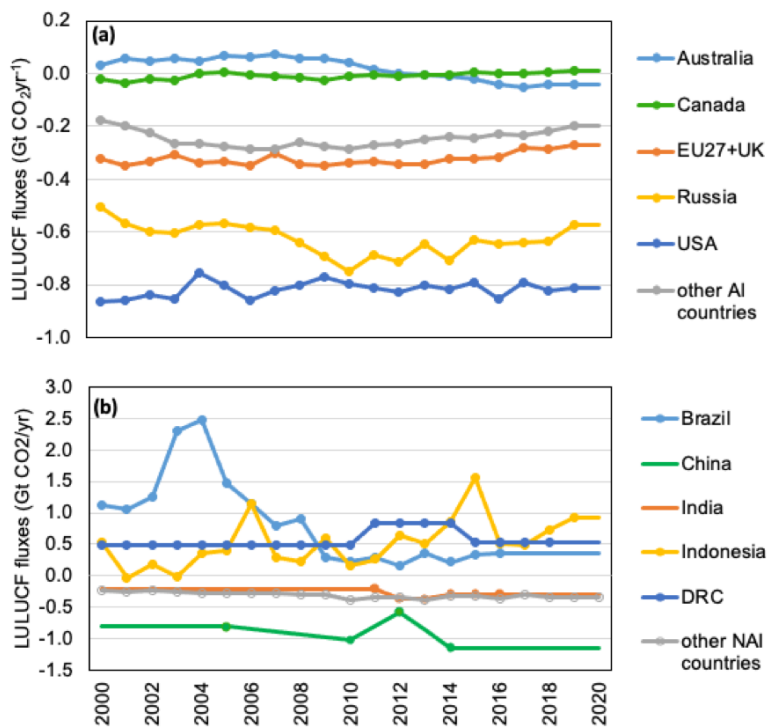
## FIGURES



**Figure 1.** Global forest area reported to UNFCCC (as consolidated and gap-filled in the NGHGI DB) (managed and unmanaged) and FRA (primary and secondary + plantations) for the year 2015 at global level (a) and for five macro regions (b-f). For the NGHGI DB, about 1% of total forest area in NAI countries is gap-filled with 1550 FAO data (i.e., 2, 43 and 1 Mha in panels d, e and f, respectively).

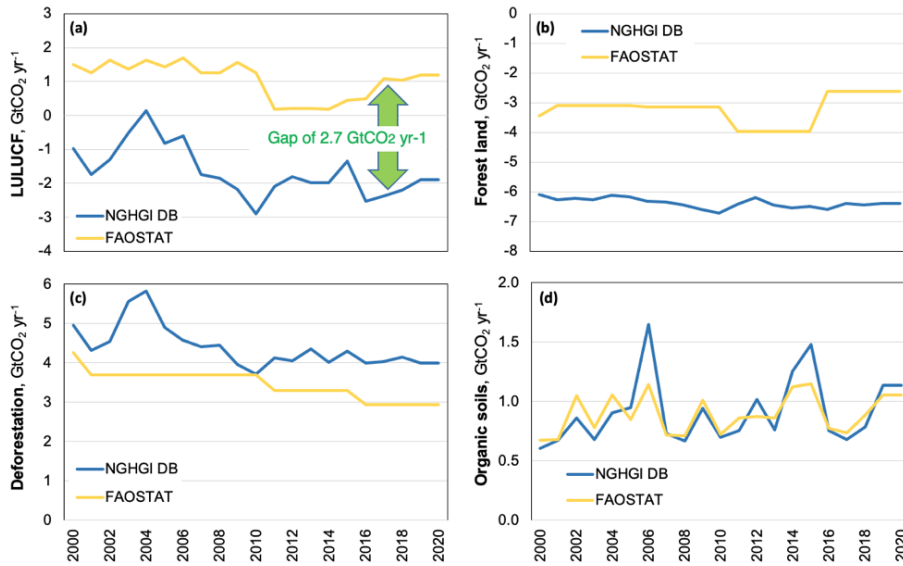


**Figure 2.** Global trend 2000-2020 of CO<sub>2</sub> fluxes from the NGHGI DB for the various land uses and land-use change categories (a) and for Annex I vs. non-Annex I countries (b).

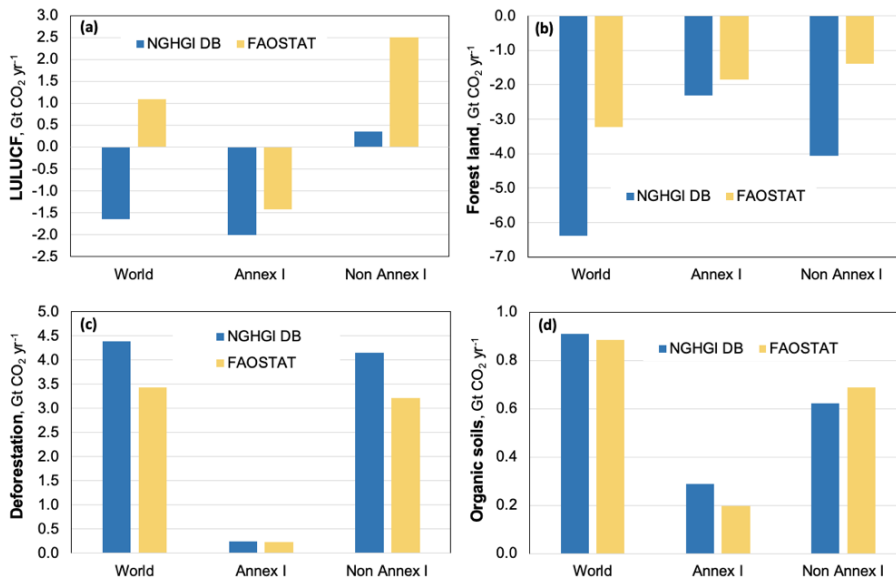


**Figure 3.**

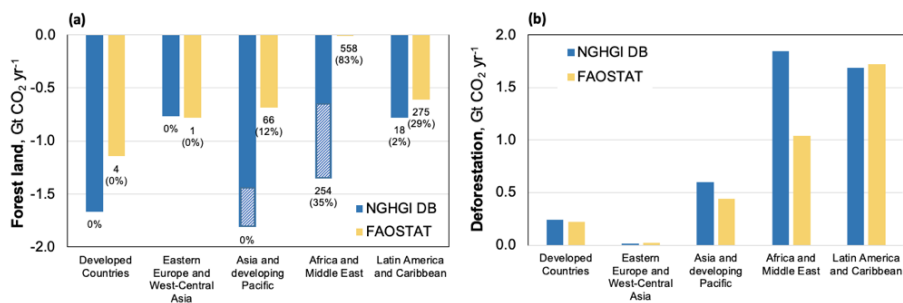
Trends 2000-2020 of LULUCF CO<sub>2</sub> fluxes from the NGHGI DB for the largest Annex I (a) and non-Annex I (b) countries (or country aggregations). Dots indicate the years for which the data exists in the original submission (i.e. not gap-filled).



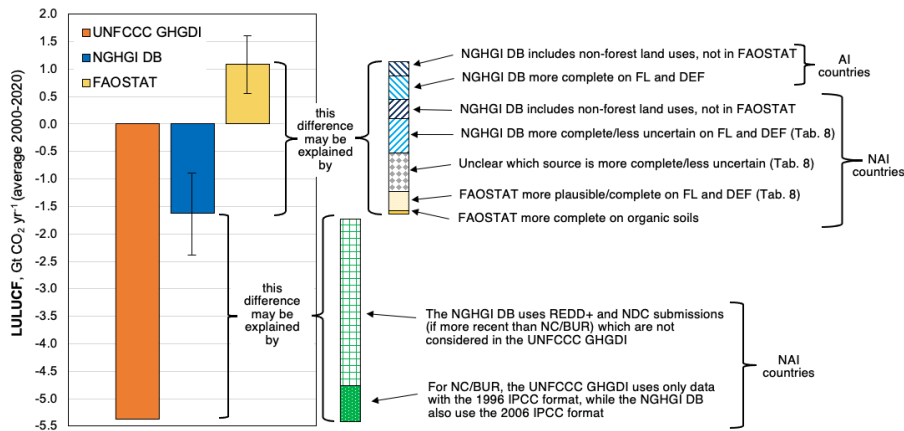
**Figure 4.** Global trend 2000-2020 of CO<sub>2</sub> fluxes from our NGHGI DB and FAOSTAT for LULUCF (a), Forest land (b, including “forest land remaining forest land”, “land converted to forest land” and harvest wood products), Deforestation (c, corresponding to net forest conversion in FAOSTAT) and Organic Soils (d, including peat drainage and peat fires).



**Figure 5.** CO<sub>2</sub> fluxes (average 2000-2020) in Annex I and non-Annex I countries from our NGHGI DB and FAOSTAT, for LULUCF (a), Forest land (b), Deforestation (c, typically gross in NGHGs and net in FAOSTAT) and Organic Soils (d, including peat drainage and peat fires).



**Figure 6.** CO<sub>2</sub> fluxes (average 2000-2020) in the five macro-regions from our NGHGI DB and FAOSTAT, for Forest land (a) and Deforestation (b, net deforestation in FAOSTAT). The numbers next to each column in panel a indicate the areas (in Mha, and % relative to the respective regional forest area) where no or zero carbon flux is estimated for FL or for FL-FL. In panel a, the dashed blue areas indicate the carbon fluxes that we consider implausible in the NGHGI DB (see Methods).



1580

**Figure 7.** Disaggregation of the differences in net global LULUCF CO<sub>2</sub> fluxes (average 2000-2020) between the NGHGI DB presented in this study and [FAOSTAT \(upper right column\)](#), and between the NGHGI DB and [the UNFCCC GHG Data Interface \(UNFCCC GHGDI\) \(bottom right column\)](#). Whiskers indicate the estimated global uncertainty (95% confidence interval) on the net LULUCF flux for the NGHGI DB (see Methods) and FAOSTAT (Tubiello et al. 2021). See text for details.

1585

**Deleted:** UNFCCC GHG Data Interface (UNFCCC GHGDI),

**Deleted:** FAOSTAT, into different categories

**Deleted:** For NAI countries, numbers for Forest Land (FL) and Deforestation (DEF) reflect the analysis shown in Table 8.

Page 12: [1] Deleted Giacomo Grassi 10/08/2022 10:28:00

Page 12: [2] Commented [sf1] sandro federici 05/08/2022 12:40:00

"as per IPCC Guidelines, Uncertainty is here defined as the lack of knowledge of the true value of a variable that can be described as a PDF characterising the range and likelihood of possible values. It does refer to random errors, although the central value of the pdf may be affected by unknown/unquantified biases. As per IPCC good practice systematic errors (biases), once identified/quantified, shall be removed while uncertainties are to be reduced so far as practicable"

Page 27: [3] Deleted Tubiello, Francesco (ESS) 09/08/2022 12:03:00

Page 27: [3] Deleted Tubiello, Francesco (ESS) 09/08/2022 12:03:00

Page 27: [3] Deleted Tubiello, Francesco (ESS) 09/08/2022 12:03:00

Page 27: [3] Deleted Tubiello, Francesco (ESS) 09/08/2022 12:03:00

Page 27: [3] Deleted Tubiello, Francesco (ESS) 09/08/2022 12:03:00

Page 27: [3] Deleted Tubiello, Francesco (ESS) 09/08/2022 12:03:00

Page 27: [3] Deleted Tubiello, Francesco (ESS) 09/08/2022 12:03:00

Page 27: [3] Deleted Tubiello, Francesco (ESS) 09/08/2022 12:03:00

Page 27: [3] Deleted Tubiello, Francesco (ESS) 09/08/2022 12:03:00

Page 27: [4] Deleted Tubiello, Francesco (ESS) 09/08/2022 12:06:00

Page 27: [4] Deleted Tubiello, Francesco (ESS) 09/08/2022 12:06:00

Page 27: [4] Deleted Tubiello, Francesco (ESS) 09/08/2022 12:06:00



▲  
**Page 27: [5] Deleted Giacomo Grassi 22/08/2022 12:56:00**

▼  
▲  
**Page 27: [5] Deleted Giacomo Grassi 22/08/2022 12:56:00**

▼  
▲  
**Page 27: [6] Deleted Giacomo Grassi 22/08/2022 12:57:00**

▼  
▲  
**Page 27: [6] Deleted Giacomo Grassi 22/08/2022 12:57:00**

▼  
▲  
**Page 27: [7] Deleted Tubiello, Francesco (ESS) 09/08/2022 12:11:00**

▼  
▲  
**Page 27: [7] Deleted Tubiello, Francesco (ESS) 09/08/2022 12:11:00**

▼  
▲  
**Page 27: [7] Deleted Tubiello, Francesco (ESS) 09/08/2022 12:11:00**

▼  
▲  
**Page 27: [7] Deleted Tubiello, Francesco (ESS) 09/08/2022 12:11:00**

▼  
▲  
**Page 27: [8] Deleted Giacomo Grassi 22/08/2022 13:00:00**

▼  
▲  
**Page 27: [8] Deleted Giacomo Grassi 22/08/2022 13:00:00**

▼  
▲  
**Page 27: [8] Deleted Giacomo Grassi 22/08/2022 13:00:00**

▼  
▲  
**Page 27: [8] Deleted Giacomo Grassi 22/08/2022 13:00:00**

▼  
▲  
**Page 27: [8] Deleted Giacomo Grassi 22/08/2022 13:00:00**

▼  
▲  
**Page 27: [8] Deleted Giacomo Grassi 22/08/2022 13:00:00**

▲  
**Page 27: [8] Deleted    Giacomo Grassi    22/08/2022 13:00:00**

▼  
▲  
**Page 27: [8] Deleted    Giacomo Grassi    22/08/2022 13:00:00**

▼  
▲  
**Page 27: [8] Deleted    Giacomo Grassi    22/08/2022 13:00:00**

▼  
▲  
**Page 27: [8] Deleted    Giacomo Grassi    22/08/2022 13:00:00**

▼  
▲  
**Page 27: [8] Deleted    Giacomo Grassi    22/08/2022 13:00:00**

▼  
▲  
**Page 27: [8] Deleted    Giacomo Grassi    22/08/2022 13:00:00**

▼  
▲  
**Page 27: [8] Deleted    Giacomo Grassi    22/08/2022 13:00:00**

▼  
▲  
**Page 27: [8] Deleted    Giacomo Grassi    22/08/2022 13:00:00**