

A New Global Gridded Sea Surface Temperature Data Product Based on Multisource Data

Mengmeng Cao^{1†}, Kebiao Mao^{1,2,†}, Yibo Yan¹, Jiancheng Shi³, Han Wang¹, Tongren Xu⁴, Shu Fang⁵, Zijin Yuan¹

¹Institute of Agricultural Resources and Regional Planning, Chinese Academy of Agricultural Sciences, Beijing, 100081, China

²School of Physics and Electronic-Engineering, Ningxia University, Yinchuan, 750021, China

³National Space Science Center, Chinese Academy of Sciences, Beijing, 100190, China.

⁴State Key Laboratory of Remote Sensing Science, Jointly Sponsored by the Aerospace Information Research Institute of Chinese Academy of Sciences and Beijing Normal University, Beijing, 100101, China.

⁵School of Earth Sciences and Resources, China University of Geosciences, Beijing, 100083, China

Correspondence to: Kebiao Mao (maokebiao@caas.cn)

†These authors contributed equally to this work and should be considered co-first authors.

Abstract: Sea surface temperature (SST) is an important geophysical parameter that is essential for studying global climate change. Although sea surface temperature can currently be obtained through a variety of sensors (MODIS, AVHRR, AMSR-E, AMSR2, Windsat, in situ sensors), the temperature values obtained by different sensors come from different ocean depths and different observation times, so different temperature products lack consistency. In addition, different thermal infrared temperature products have many invalid values due to the influence of clouds, and passive microwave temperature products have very low resolutions. These factors greatly limit the applications of ocean temperature products in practice. To overcome these shortcomings, this paper first took MODIS SST products as a reference benchmark and constructed a temperature depth and observation time correction model to correct the influences of the different sampling depths and observation times obtained by different sensors. Then, we built a reconstructed spatial model to overcome the effects of clouds, rainfall and land interference that makes full use of the complementarities and advantages of SST data from different sensors. We applied these two models to generate a unique global 0.041° gridded monthly SST product covering the years 2002–2019. In this dataset, approximately 25% of the invalid pixels in the original MODIS monthly images were effectively removed, and the accuracies of these reconstructed pixels were improved by more than 0.65°C compared to the accuracies of the original pixels. The accuracy assessments indicate that the reconstructed dataset exhibits significant improvements and can be used for mesoscale ocean phenomenon analyses. The product will be of great use in research related to global change, disaster prevention and mitigation and is available at <http://doi.org/10.5281/zenodo.4419804> (Cao et al., 2021).

1 Introduction

The temperature at the interface between the atmosphere and ocean, known as the sea surface temperature (SST), is an important indicator of Earth's ecosystem (Hosoda and Sakaida, 2016). SSTs are widely used in atmospheric and oceanographic

Formatted: Font color: Auto

Formatted: Font color: Auto

Formatted: Font color: Auto

studies, such as in atmospheric simulations, climate change monitoring, and in studies of marine dynamic environments (Kawai and Wada, 2007; Martin et al., 2007; Peres et al., 2017; Reynolds and Smith, 1995). In addition, the oceans cover 70% of Earth's surface. A small variation in the ocean temperature exerts strong impacts on regional and even global climate change, energy exchange and the environment due to the unique physical characteristics of the oceans, including their high heat capacity (Varela et al., 2018). The rise of ocean temperatures will release huge amounts of heat, affect atmospheric movement, and produce many chain reactions, causing reductions in the CO₂ content of seawater, the occurrence of extreme weather, the melting of sea ice in the polar region, and the rise of sea level, all of which will impact the survival of marine life, marine production and human life (Sakalli and Basusta, 2018). Thus, it is essential to accurately monitor changes in SST.

It is difficult for traditional SST measurements based on buoys, platforms and voluntary ships to obtain large-scale and synchronous SST data due to the large gaps present in the data over both space and time. Compared to the traditional in situ SST monitoring approach, remote sensing technology has advantages in terms of large-scale and dynamic monitoring and has been used to acquire global ocean SST observation data (Li and He, 2014). Satellite SST data include [thermal](#) infrared and microwave radiometer SST data. Retrievals from satellite thermal infrared sensors can provide global SSTs at high temporal frequencies and spatial resolutions of typically 1-4 kilometers with low uncertainty (Alerskans et al., 2020). For example, series sensors such as the Moderate Resolution Imaging Spectroradiometer (MODIS) and Advanced Very High Resolution Radiometer (AVHRR) can measure global SSTs with high resolutions and high accuracies. These observations are unfortunately greatly influenced by the atmospheric environment. In cases of aerosol contamination and cloud cover, it is impossible to obtain effective observations, resulting in spatial discontinuities and low quality in the collected data (Guan and Kawamura, 2003; Hosoda et al., 2015; Liu et al., 2017b). In contrast to [thermal](#) infrared measurements, microwave sensors are less affected by clouds and aerosol concentrations (Alerskans et al., 2020). Therefore, microwave sensors can observe SST information at all times and in all weather conditions except rain, and they also have high temporal resolutions and can quickly cover the whole surface of Earth (Wentz et al., 2000). As a result, microwave sensors play important roles in monitoring the temporal and spatial changes in SSTs on global and continental scales and have also been developed into mature remote sensing products, such as the TRMM Microwave Imager (TMI), the WindSat on-board Coriolis, and the Advanced Microwave Scanning Radiometer for Earth Observation System (AMSR-E), which have been widely used to retrieve SSTs (Gentemann, 2014; Ng et al., 2009; Purdy et al., 2006). However, the spatial resolutions of passive microwave sensors are very coarse and are greatly affected by land and sea surface wind and waves, which makes it impossible to obtain detailed information about SSTs (Gentemann et al., 2010; Liu et al., 2017a). In addition, due to the influence of imaging orbit gaps, microwave-based products produce spatial gaps. Therefore, the SST information obtained by a single satellite remote sensor is often incomplete and limited and cannot fully meet the user's demand for a dataset with a high resolution, high precision and full spatiotemporal coverage. ~~Luckily~~[Fortunately](#), the simultaneous availability of multiple satellite sensors provides highly complementary information, enabling the production of high-quality unified SST datasets with improved global coverage (Guan and Kawamura, 2004; Shi et al., 2015; Thiebaux et al., 2003).

Many SST fusion algorithms use multiple satellites and in situ data to take advantage of the strengths of each SST

observation and solve the above issues; these algorithms include objective analysis (OA), optimal interpolation (OI), three-dimensional variational (3-D Var), and Kalman filtering (KF) (Chao et al., 2009a; Li et al., 2013; Smith and Reynolds, 2003). Bretherton et al. (1976) first applied OA in a study of ocean data. OI was developed on the basis of OA, and in OI, background information is introduced in the analysis process. Although there is no physical constraint, the OI has a perfect mathematical form, which statistically takes into account the influence of the relative position changes of different observation points on the error covariance. The OI algorithm is simple and easy to use and has become one of the main methods currently used for SST fusion. For example, Reynolds and Smith (1994) used the OI method to fuse in situ data from ships, buoys and satellites to produce OISST products that are widely used. The other SST analysis data product, RTG-SST from the National Centers for Environment Prediction (NCEP), are also obtained by the OI method. In addition, based on the Modular Ocean Model (MOM), the National Science Foundation and the National Oceanic and Atmospheric Administration established the Simple Ocean Data Assimilation system (SODA) by the OI method (Carton et al., 2018; Carton and Giese, 2008). Based on the Modular Ocean Model version 4p1 (MPM4), the Australian Bureau of Meteorology established marine forecasting systems covering Australia, nearby regions and the globe through the EnOI method (Oke et al., 2008). However, in practice, to reduce the computational burden, the OI algorithm is usually only applied using data near the analysis point, and there is often a certain degree of subjectivity. Methods such as VAR and KF have been proposed to overcome these problems, and these methods have been widely used. For example, Zhu et al. (2006) developed a new 3DVAR-based Ocean Variational Analysis System (OVALS), which can effectively improve estimations of temperature and salinity by assimilating various observed data. Li et al. (2008) applied a new 3D VAR data assimilation scheme to a retroactive real-time forecast experiment, and favorable results were obtained. In terms of operational applications, some institutions in Canada, the United Kingdom, the United States and China have used this method to establish ocean environmental forecast and analysis systems based on different oceanic general circulation models (Burnett et al., 2014; Chassignet et al., 2009; Han et al., 2011; Storkey et al., 2010). Huang et al. (2008) filled in the missing parts of satellite SST data with the kriging interpolation method based on the slowly changing characteristics of SSTs and then used KF to coordinate the variation error and interpolation error of the obtained SSTs. Finally, the interpolation and filtered SST data were fitted to realize SST filling. Wang et al. (2010) used the KF method to fuse the AVHRR SST and AMSR-E SST products to produce daily, spatially continuous SST data with a spatial resolution of approximately 2 km. However, a daily variation correction was not carried out before the fusion, and the model processing error was not taken into account, which brought great uncertainty to the fusion results.

~~The above research has greatly improved. Although many studies have tried to improve the accuracy and spatial coverage integrity of SST products, and a variety of SSTs especially the sea temperature fusion products have been generated that have excellent accuracy in deep water regions ocean areas have high accuracy (Dash et al., 2011). However, there are also important deficiencies in, some SST fusion ocean surface (skin) temperature products. On the one hand, the SST observations obtained by different sensors are highly complementary, but there are certain differences in SST products from different sensors because different sensors can effectively respond to water column temperatures—still exist some deficiencies. Different methods can be used to obtain ocean surface temperature, but they actually represent temperature information at different times and ocean~~

depths, and the observation time is also inconsistent (Castro et al., 2004; Wick et al., 2004). Despite the sea temperature observed by traditional sites is deeper than the use of various technologies to blend multiple SST products after rigorous quality control at each datapoint, temperature observed by remote sensing. Even if they are all the differences still need to be resolved. On temperatures retrieved from remote sensing, the other hand, although these SST products have high accuracies for temperatures retrieved from thermal infrared and microwave are from different ocean depths. The sea temperature observed by thermal infrared is the global oceanskin temperature, and the sea temperature observed by microwave is a bit deeper than the depth observed by thermal infrared. The sea surface temperature obtained by the assimilation model should also be different. In addition, some products have problems with missing pixels and relatively low accuracies near coasts and the edges of sea ice due to the characteristics of the remote sensing products themselves and the insufficiencies of fusion methods (Xie et al., 2008). Last, the Some assimilation and fusion products (E.g. ERA5, ECMWF Re-Analysis) of multisource oceanic data can solve state estimations of oceanic large-scale ocean phenomena well; (Hersbach et al., 2020), but some of these products cannot meet the needs of near-shore or small- and medium-scale phenomena. To address the above issues

In order to obtain a long-term series of global major meteorological disaster remote sensing data sets with high spatio-temporal and consistency based on the current global multi-source remote sensing data and ground observation site data, we constructed a temperature depth and observation time correction model to eliminate the sampling depth and temporal differences among different data. Then, we proposed, and built a reconstructed spatial model that filters out missing pixels and low-quality pixels from the monthly MODIS SST dataset and reconstructs them based on daily in situ SST data and daily satellite SST retrieval data from two infrared (MODIS and AVHRR) and three passive microwave (AMSR-E, AMSR2, Windsat) radiometers to generate a high-quality unified global SST product with long-term (2002–2019) spatiotemporal continuity. The dataset that takes advantage of complementarities and advantages of SST data from different sensors has a 0.041° grid of monthly observations covering the years 2002–2019 and was validated validation and cross-compared comparisons with in situ observations and other SST products. The results indicate were made to prove that the new reconstructed SST dataset is reliable and is suitable for regional or global SST studies.

2 Data and method sources

2.1 Satellite data retrievals

Infrared Thermal infrared and microwave radiometers on sun-synchronous satellites are the primary technical tools used to obtain global SST, and collectively, these sensors provide highly complementary information with which a new SST product can be generated. The AVHRR and MODIS satellites sensors, which cover the global ocean, were selected as sources of thermal infrared radiometer data. To reduce the data gaps present in thermal infrared data resulting from cloud and water vapor contamination, the inclusion of microwave radiometer data from polar-orbiting satellites are essential; in this study, ASMR-E, WindSat and AMSR2 are the main sources of microwave data.

The MODIS sensor is onboard the Terra and Aqua spacecraft: the sensor has an ascending local equatorial crossing time of

Formatted: Font color: Auto

Formatted: Font color: Auto

Formatted: Font color: Auto

13:30 in the case of the Aqua spacecraft and a 10:30 descending equatorial crossing time for the Terra spacecraft. The daily and monthly L3m global SST products (Day and Night) of the MODIS sensor from Terra and Aqua are available starting from February 2000 and July 2002, respectively, with a 0.041° spatial resolution; these datasets were mainly used to reconstruct high-quality SST data and are available through the website <https://oceandata.sci.gsfc.nasa.gov/>. The standard deviation obtained in a data comparison was better than 0.43°C, as determined by comparison of the SST data with coincident ferry observations (Barton and Pearce, 2006). Each pixel of these SST data is associated with a numerical quality level stored in SST_flags whose value ranges, in order of descending quality, from 0 to 4. Clear data of the best quality are limited to the satellite zenith angles, < 55 degrees. Clear pixels at satellite angles > 55 degrees have good quality, with quality levels of 1. Pixels with a quality level > 1 may have very large differences between the retrieved SST and the reference SST due to significant cloud contamination or various other problems (<https://oceancolor.gsfc.nasa.gov/atbd/sst/>). Therefore, these pixels are not used for scientific research.

The AVHRR sensor is onboard NOAA polar-orbiting satellites, has 6 bands ranging in wavelength from visible to infrared (one visible, two near-infrared, and three thermal infrared) and can cover the globe twice a day. The twice-daily (Day and Night) AVHRR 4-km SST data product is produced by the NOAA National Centers for Environmental Information and is available through the website <https://data.node.noaa.gov/pathfinder/Version5.3/L3C/>. The standard deviation obtained in a data comparison is approximately 0.68°C, as determined by a comparison of the AVHRR products with coincident ferry observations (Barton and Pearce, 2006). The data also provided a quality index for each pixel based on the evaluation test results stored in the pathfinder_quality_level metric, which allows the identification of cloudy pixels and/or suspicious observations, with the quality level 0 representing the worst quality and the quality level 7 being the best (Pisano et al., 2016). In our data processing method, we only considered values with quality flags 4 ~ 7.

The AMSR-E sensor is onboard the Aqua satellite and is a dual-polarization microwave scanning radiometer with 6 frequency channels in the range of 6–89 GHz. The AMSR-E instrument was in orbit for nearly 10 years but was discontinued in October 2011, owing to an antenna rotation problem. The AMSR2 sensor, onboard the Global Change Observation Mission-Water 1 (GCOM-W1) satellite, was launched in May 2012 to continue the Aqua/AMSR-E observations and ensure the continuity of SST data (Zabolotskikh et al., 2015). AMSR2 has the same channels as did AMSR-E, with a 7.3-GHz channel added to help alleviate radio frequency interference. However, SST information collected from the AMSR2 sensor was not provided until mid-2012. To ensure that there is an uninterrupted consistent long-term microwave SST time series that can be used to reconstruct a high-quality SST product, a WindSat polarimetric radiometer was used to bridge the gap between the AMSR-E and AMSR2 products. The daily L3 SST products (ascending and descending passes) of AMSR-E and AMSR2, available from June 2002 and July 2012, respectively, with 0.1°-grid spatial resolutions, were used to reconstruct high-quality SST data and are available through the website <https://gportal.jaxa.jp/gpr/search/>. The accuracies of AMSR-E and AMSR2 are approximately 0.75°C and 0.56°C, respectively, as determined by comparisons with buoy data (Sun et al., 2018). Daily WindSat SST datasets on a global 25-km grid (ascending and descending passes) were downloaded online (<http://www.remss.com/missions/windsat>), and their accuracies are very close to that of AMSR-E, as determined by

Formatted: Font color: Auto

Formatted: Font color: Auto

Formatted: Font color: Auto

Formatted: Font color: Auto

Formatted: Font color: Auto

comparisons with buoy data (Banzon and Reynolds, 2013; Gentemann, 2011).

2.2 In situ observations

In situ observations of SST from 2002-2019 were used for the reconstruction of the new SST product and the validation of both the satellite-obtained SST data and the new product. The in situ observed SST data used in this study consist of SSTs from the Version 2.1 NOAA in situ Quality Monitor (iQuam), which includes updated observations every 12 hrs with a 2-hr latency. The SST data from iQuam include observations from drifters, ships, tropical (T-) and coastal (C-) moorings, agro floats, high resolution (HR) drifters, IMOS ships, and coral reef water (CRW) buoys, and the data can be obtained from <ftp://ftp.star.nesdis.noaa.gov/pub/sod/sst/iquam/v2.10/>. Quality control of the data, including basic screening, duplicate removal, plausibility, platform tracks, referencing, cross-platform and SST spike checks, was performed by the NOAA Center for Satellite Application and Research (Xu and Ignatov, 2014). Only SSTs assigned the best quality flag (i.e., level 5) were used in this study. To ensure the independence of the data reconstruction and the accuracy verification process, [the data obtained from all spatially coincident daily iQuam SSTs with temporal sampling less than or equal to in situ observations of SST were randomly divided into two completely independent subsets by the jackknife method \(Benali et al., 2012\). Subset 1](#) [accounts for 80 % of the total number of in situ observations, which](#) were used to reconstruct the MODIS SST data, [while spatially coincident monthly SSTs calculated from daily SSTs. Subset 2 accounts for 20 % of the total number of in situ observations, which](#) were used to verify the accuracy of the reconstruction results [\(Minnett, 1991\)](#). The spatially coincident criterion restricts the maximum distance between in situ measurements and the center of the satellite image grid cells to within 2.3 km, which is approximately half the spatial resolution of MODIS, so that the in situ observations always fall within the MODIS SST pixels [\(Minnett, 1991; Pisano et al., 2016\)](#).

2.3 Ancillary data

ERA-Interim, a climate reanalysis product produced by the European Centre for Medium-Range Weather Forecasts (ECMWF), was discontinued on 31 August 2019 and has been superseded by the ERA5 reanalysis product produced by the ECMWF. The ERA5 dataset is the latest climate reanalysis product, providing hourly data on atmospheric, land and oceanic climate parameters together with estimates of uncertainty. The 10-meter wind component U, 10-meter wind component V, 2-meter temperature, 2-meter dewpoint temperature, sea surface temperature, relative humidity, cloud cover and other data from the two datasets with 0.25° spatial resolutions were used to calculate the heat, momentum and [freshwater](#) fluxes between the ocean and the atmosphere as well as the incoming solar radiation. These data can be obtained from <https://apps.ecmwf.int/datasets/>.

2.4 SST data development

3 Methodology

Since MODIS SST data have a high accuracy and spatiotemporal resolution ~~and which~~ can be used to capture mesoscale phenomena in the oceans, ~~combining combination of~~ MODIS SSTs from Aqua and Terra is a good way to improve the spatial coverage of SST data. However, ~~infrared-SST data~~ are retrieved using the ~~thermal infrared band, bands~~ which ~~cannot penetrate~~ ~~are influenced much by~~ clouds, so SST data cannot be provided ~~when it has clouds~~ in the ~~presence of clouds~~. Furthermore, ~~infrared-sky~~, and SST retrievals are ~~greatly also~~ influenced by atmospheric aerosols ~~and water vapor~~. Some ~~other~~ factors related to radiometers can also contaminate SST observations, such as the viewing geometry, spectral response, and noise level of each sensor (Kilpatrick et al., 2015). Due to these ~~factor effects~~, MODIS SST data often have problems involving low-quality or missing pixels. Statistical analysis performed during the study period indicated that the ~~unusable missing~~ pixels present in the monthly SST records of Terra and Aqua during both daytime and nighttime generally cover 23.46% and 28.06% of the global ocean, respectively. ~~It is difficult to fill the data gaps in the MODIS SST retrievals caused by the above factors using infrared SST retrievals with data of the same quality as SST measurements collected under clear sky. Therefore~~ ~~In order to overcome these defects~~, we built a reconstructed spatial model that combines in situ station-based data and daily SST data from AVHRR, AMSR-E, AMSR-2 and WindSat to ~~reconstruct a high-quality monthly MODIS SST dataset that takes into account the actual SSTs under clear sky conditions instead of under clouds, generate high quality MODIS SST monthly data set~~. Although the temperatures retrieved by different sensors are all ocean surface temperatures, they actually represent temperature information at different ocean depths which are caused by different frequencies of different sensor settings and inconsistent algorithms. The sea temperature observed by thermal infrared is the skin temperature, and the sea temperature observed by microwave is a bit deeper than the depth observed by thermal infrared. In addition, the observation time of different observation methods may be inconsistent. ~~Therefore~~ ~~More details are given in the following sections~~. In addition, ~~there are certain biases present in SST products due to the use of different sensors resulting from the measurement methods, sensor band settings, and environmental influencing factors in both space and time. Thus, after identifying and accounting for these differences~~, we proposed a temperature depth and observation time correction model to address the influence of time phase and sampling depth of different sensors. ~~More details are given in the following sections~~. The overall methodology is illustrated in Figure 1. ~~The~~ This processing effectively retains the ~~high-precision pixels with high accuracy~~ in the original MODIS daily and monthly data, ~~and uses combines the calibrated ocean multisource multi-source data after calibration by using the temperature depth and observation time correction model and combines the~~ with spatio-temporal information to reconstruct the low-quality and missing daily pixels, and finally replaces ~~the~~ low-quality and missing pixels ~~with the composite average pixel value~~ in the monthly data.

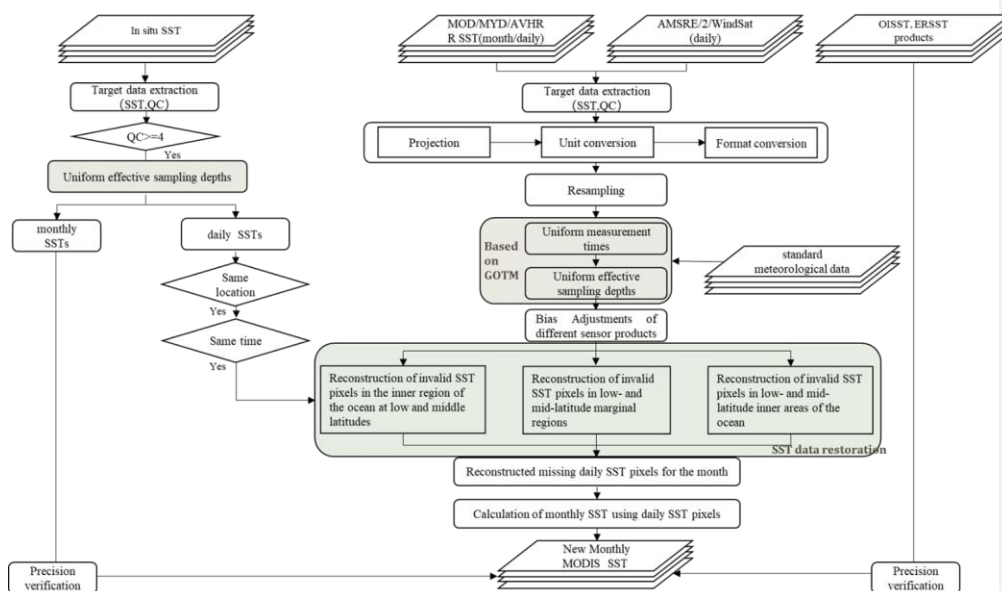


Figure 1. A summary flowchart for reconstructing MODIS monthly SST data

2.4.3.1 Bias adjustment schemes by constructing temperature depth and observation time correction model

2.4.3.1.1 Bias adjustment scheme for multisource remote sensing data

To combine oceanic multisource remote sensing data into the MODIS SST product, it is necessary to assume that the measured values represent the same quantities or to use some method to eliminate the differences among products. The ocean temperature data obtained by different sensors are different from those obtained by MODIS, and there are complex spatiotemporal differences among the sensors. Figures 2 and 3 represent the different difference distributions of the original MODIS and multisource daily SSTs in the daytime. Obviously, these multisource data cannot be directly used to reconstruct the valid pixels of MODIS SST data before the differences are corrected.

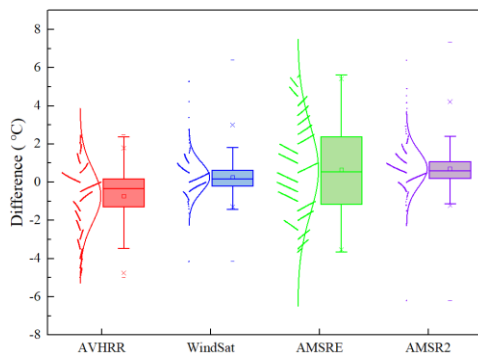


Figure 2. Box chart with scatters of the differences in the original MODIS and multisource daily SSTs (AVHRR, WindSat, AMSRE, AMSR2). The boxes are determined by the 25th and 75th percentiles. The whiskers are determined by the 5th and 95th percentiles. The data are plotted as scatters on the left of each box. A curve corresponding to a normal distribution is also displayed on top of each scatter plot.

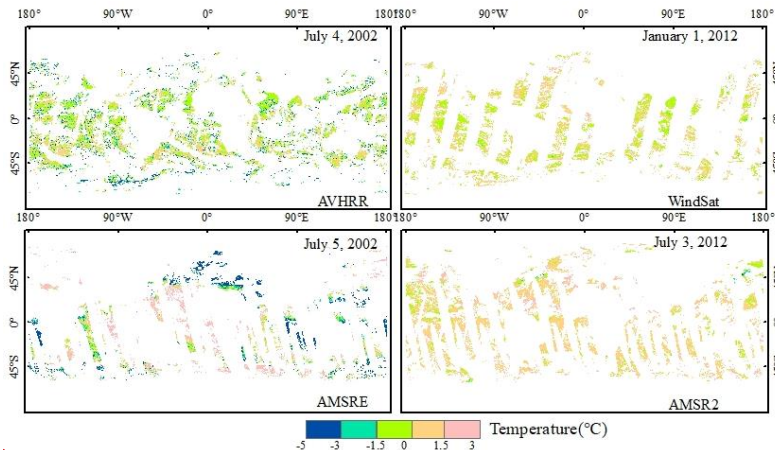


Figure 3. Difference maps of the original MODIS and multisource daily SST products. Areas of missing data are blank.

The main source of the difference is mainly due to the inconsistent wavelength or frequency ranges used by different sensors; these differences cause the sensors to obtain, which leads to the temperature information measured by the sensors from different ocean depths. The sea temperature inversion algorithms of different sensors cause the measured temperatures to be higher/lower due to inconsistencies among key parameter settings, which cause the inversion results to be

closer to the temperatures of the ocean surface or a given subsurface layer. Due to differences in the absorption of solar radiation, heat exchange with the atmosphere and levels of subsurface turbulent mixing (Minnett et al., 2011), near-surface temperatures are highly variable vertically, horizontally and temporally (Minnett, 2003). Infrared thermal infrared remote sensors retrieve sensor measures the sea surface skin temperature at depths a depth of 10-20 μm . Microwave, while the microwave remote sensors sensor can retrieve the sea surface subskin temperatures subcutaneous temperature at a depth of 1-1.5 mm depths (Minnett, 2003; Minnett et al., 2011). Therefore, the SSTs retrieved from various microwave radiometers (AMSRE, WindSat, and AMSR2) are different from the SSTs measured by the MODIS radiometer. Although In addition, due to the difference of the inversion algorithm parameters, the sea temperature retrieved from the same type of sensor may also be different. For example, although the AVHRR sensor is an infrared remote sensor and its brightness temperatures represent the sea surface skin temperature, AVHRR SSTs correspond to subsurface SSTs because they are statistically regressed to coincident in situ buoy SSTs (Chao et al., 2009b; Kilpatrick et al., 2001; Pisano et al., 2016). Starting with the AVHRR Pathfinder Version 5.3, an average skin/subsurface temperature difference of 0.17 K, determined from Marine Atmospheric Emitted Radiance Interferometer (MAERI) matchups, was used to eliminate the subsurface bias so that the SSTs were more closely tuned to the sea surface skin temperatures (Sea Surface Temperature-Pathfinder C-ATBD). MODIS SSTs are skin SSTs. MODIS retrievals are based on empirical coefficients derived by regressing MODIS brightness temperatures against in situ observations from drifting and moored buoys, but the regressed SSTs are converted to skin SSTs based on at-sea measurements. Thus, the SSTs retrieved from the AVHRR radiometer are different from the SSTs measured by the MODIS radiometer. In addition, MODIS and several other sensors used in this paper have different observation times and can obtain measurements at several different times throughout the diurnal cycle. The relationships among these observations are, however, not constant because there are significant diurnal variations in sea surface temperature resulting from constant changes in the atmosphere, solar heating, wind speeds, etc. (Kilpatrick et al., 2015; Luo et al., 2019; Minnett et al., 2019; Wick et al., 2004). This also results in differences between MODIS observations and those of other sensors. Therefore, compensating for measurement depths and times is conducive to reducing the uncertainty present in the reconstruction results before the multisource remote sensing data are combined into the MODIS SST product.

1) Compensating to ensure uniform effective sampling depths

To solve the differences among MODIS and multisource daily SST products caused by the sampling depths, it is necessary to consider the differences as results of the cool skin effect and diurnal heating (Luo et al., 2020). Therefore, the model proposed by Fairall et al. (1996) was used to estimate the skin effect of infrared remote sensing products when integrating microwave remote sensing SSTs into infrared data, as shown in Eqs. 1 and 2:

$$\Delta T = Q_8 / K \quad (1)$$
(2020). The General Ocean Turbulence Model (GOTM) can model the SST signal at different depths by simulating the hydrodynamic and thermodynamic processes of vertical mixing in one-dimensional water columns in natural waters, which has been successfully used to model the near-surface variability of ocean temperature (Karagali et al., 2017; Pimentel et al., 2018). →

$$\delta = \frac{\lambda V}{\mu_{*w}} \quad (2)$$

where ΔT is the temperature variation (positive, representing that the surface is cooler than the bulk), Q is the net heat flux, K is the thermal conductivity of water, δ is the thickness of the change in temperature, λ is the empirical coefficient, V is the kinematic viscosity, and μ_{*w} is the friction velocity in the water. It is difficult to obtaining λ in Eq. 2. Based on the observed data of the Tropical Ocean Global Atmosphere Coupled Ocean-Atmosphere Response Experiment (COARE) program, Fairall et al. (1996) determined λ to be dependent on wind speed. General ocean models typically simulate the surface layer of 5-10 m as a uniform layer, and simulating such thin sea surface skin layers and subskin layers takes a long time. The General Ocean Turbulence Model (GOTM) can use a nonuniform grid and specifically encrypt the surface layer to quickly simulate the temperature of the sea surface skin layer and the subskin layer. The formula is as follows: For example, the top 50m of the water column is resolved by using 50 vertical layers, which have higher resolution near the surface and gradually decrease with depth. The thickness of the first layer at the top of the water column is about 20um, and the thickness of each layer can be calculated according to equation 1.

$$h_k = D \frac{\tanh\left((d_l + d_u) \frac{k}{M} - d_l\right) + \tanh(d_l)}{\tanh(d_l) + \tanh(d_u)} - 1 \quad (31)$$

where h_k represents the thickness of layer K , D represents the depth, M is the number of layers, and d_l and d_u show the zooming factors of the surface and bottom, respectively.

From this formula, the following grids are constructed:

- $dl = du = 0$ results in equidistant discretization.
- $dl > 0, du = 0$ results in zooming near the bottom.
- $dl = 0, du > 0$ results in zooming near the surface.
- $dl > 0, du > 0$ results in double zooming near both the surface and the bottom.

In addition, Furthermore, Considering the GOTM can be used to simulate the hydrodynamic and thermodynamic processes, cool skin effect that usually occurs in a molecular sublayer of vertical mixing in one-dimensional water columns in natural waters and can be used the air-sea interface, a physical model for depth corrections taking into account atmosphere-ocean interactions and vertical turbulent mixing. Therefore, the Fairall model skin (as shown in Eqs. 2 and 3) widely used to estimate the cold skin effect was integrated into the air-sea interaction module of the GOTM, and the (Fairall et al., 1996; Saunders, 1967). The heat and momentum flux changes of each layer in the water column were integrated to more accurately simulate the skin effects of the SSTs.

$$\Delta T = Q\delta/K \quad (2)$$

$$\delta = \frac{\lambda V}{\mu_{*w}} \quad (3)$$

where ΔT is the temperature variation (positive, representing that the surface is cooler than the bulk), Q is the net heat flux, K is the thermal conductivity of water, δ is the thickness of the change in temperature, λ is the empirical coefficient, V is the

Formatted: Indent: First line: 1 ch

kinematic viscosity, and μ_w is the friction velocity in the water. It is difficult to obtaining λ in Eq. 2. Based on the observed data of the Tropical Ocean-Global Atmosphere Coupled Ocean-Atmosphere Response Experiment (COARE) program, Fairall et al. (1996) determined λ to be dependent on wind speed.

In this section, the conversion of SSTs between different depths can be conducted using the model by entering the SST measurement depth and the corresponding meteorological parameter values present during the measurement, including the wind speed at a 10-m height, the air temperature at a 2-m height above the sea surface, air humidity data, and cloud cover data from the ECMWF. Figure 4 (a) and (b) show the variations in ocean temperatures at different depths and the differences between the sea surface skin temperatures and sea surface subskin temperatures simulated by the GOTM every half hour for a pixel with a longitude of 32.65°N and a latitude of 43.25°E from July 1, 2002, to July 31, 2002. When the wind speed is low, the infrared-measured SST is 0.1~0.2°C lower than that obtained by microwave remote sensing. When the wind speed is high, the SSTs measured by the two sensor types are basically the same. By deducting this difference, the SSTs obtained by microwave remote sensing can be normalized to the SSTs obtained by infrared remote sensing.

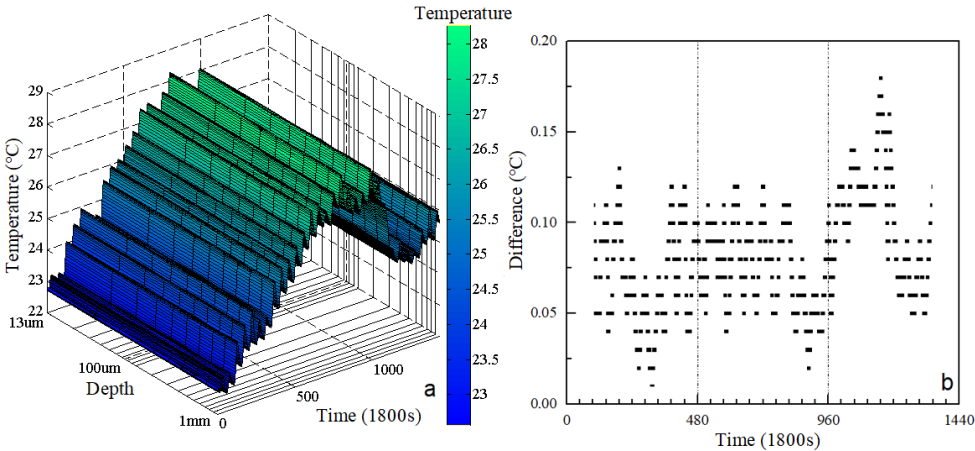


Figure 4. SST depth changes simulated by the GOTM every half hour for a pixel with a longitude of 32.65° and a latitude of 43.25° in July 2002 (a is the variation in ocean temperature at different depths; b is the difference between the sea surface skin temperature and sea surface subskin temperature).

2) Compensating to ensure uniform measurement times

To solve the differences among the MODIS and multisource daily SST products caused by the varying measurement times, it is necessary to consider the diurnal variations in SST. The GOTM is based on the hydrodynamic and thermodynamic processes of water and comprehensively considers the effects of solar shortwave radiation, longwave radiation, latent heat, sensible heat and cloudiness on diurnal variations in SST. The diurnal variations caused by differences in the absorption and

attenuation of solar radiation of different water types are also considered. Therefore, the GOTM can accurately simulate diurnal variations in SST. ~~We use the GOTM to simulate diurnal variations in SST.~~ The input data also come from the ECMWF reanalysis product and include the wind speed at a 10-m height, the air temperature at a 2-m height above the sea surface, air humidity data, and cloud cover data. Cloudiness is used to calculate oceanic radiant heating. Wind speed, air temperature and relative humidity are used as inputs in the turbulence model to estimate sensible heat, latent heat and wind stress. The exchange coefficient of the turbulence equation is obtained based on the Fairall parameter method. Figure 4 (a) shows the variations in ocean temperature at different half-hour increments for a pixel with a longitude of 32.65° and a latitude of 43.25° from July 1, 2002 to July 31, 2002. For the SSTs ~~occurring obtaining~~ at different times, after deducting the diurnal variations in temperature simulated by the GOTM, the observations can be referenced to common time. The formula is as follows:

$$SST_s = \frac{\sum_{i=1}^N (SST_s(i) + (SST_g(j) - SST_g(i)))}{N} \quad (4)$$

where SST_s is the SST observed by the satellite; j is the referenced common time; i is the effective observation of other moments by the sensor on the same day other than moment j , of which there are a total of N ; and SST_g is the SST simulated by the GOTM, which also corresponds to moments i and j .

3) Bias Adjustments of different sensor products

In order to ensure that the corrections of depth and time are effective for each pixel, we calculated the difference range of high quality pixels for different SST data. Then, we manually checked the correction results of each invalid pixel, and determined the outliers according to the statistical difference range and other satellite SST data. Finally, these outliers were adjusted based on mathematical statistics. For example, to determine the temperature difference (Δt) between the skin surface temperature and sub-skin surface temperature of the pixel i of the MODIS data, we first calculated the high quality value of pixel of MODIS data and the microwave data at the corresponding time during the study period. Then we extracted the data of wind speed, cloud cover, humidity and other environmental factor corresponding to these values. Further, based on these environmental factors, we determined the SSTs corresponding to the environmental conditions at the moment when the outlier of pixel i appeared. Lastly, the average value of the difference between these high quality SSTs was Δt . After completion of the above depth and diurnal change corrections, the different measurement times and effective sampling depths were ~~compensated~~ corrected. However, the performances of different sensors are different, and there may be systematic and regional deviations, which need to be eliminated before fusion (Alerskans et al., 2020; Huang et al., 2015). Therefore, to correct the large-scale deviations among different sensors, we used the daily MODIS SST data to correct the other remotely sensed data compensated for different measurement times and effective sample depths. Figure 5 shows that the correlation coefficient of the MODIS ~~SST~~ SST data and the other remotely sensed data reaches above 0.97, indicating that these data have a strong correlation with the MODIS data. Therefore, we adopt linear regression to modify the other remotely sensed SST data. The correction method uses linear regression of two corresponding images, and the regression coefficient is determined by matching the data of the MODIS sensor and the other remotely sensed data. To avoid the influence of individual outliers, points with standard deviations over 1°C or with a difference greater than 2°C from the corresponding MODIS datum in the

matching window did not participate in the regression.

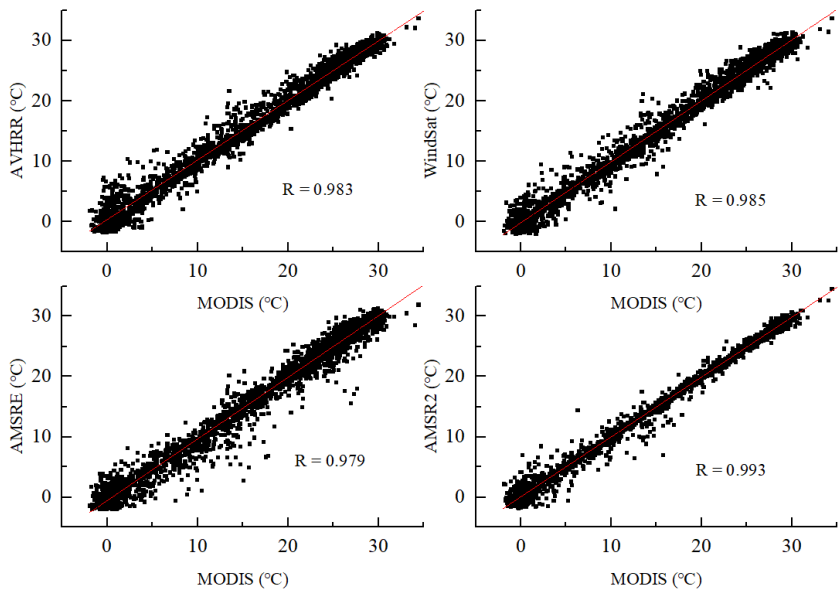
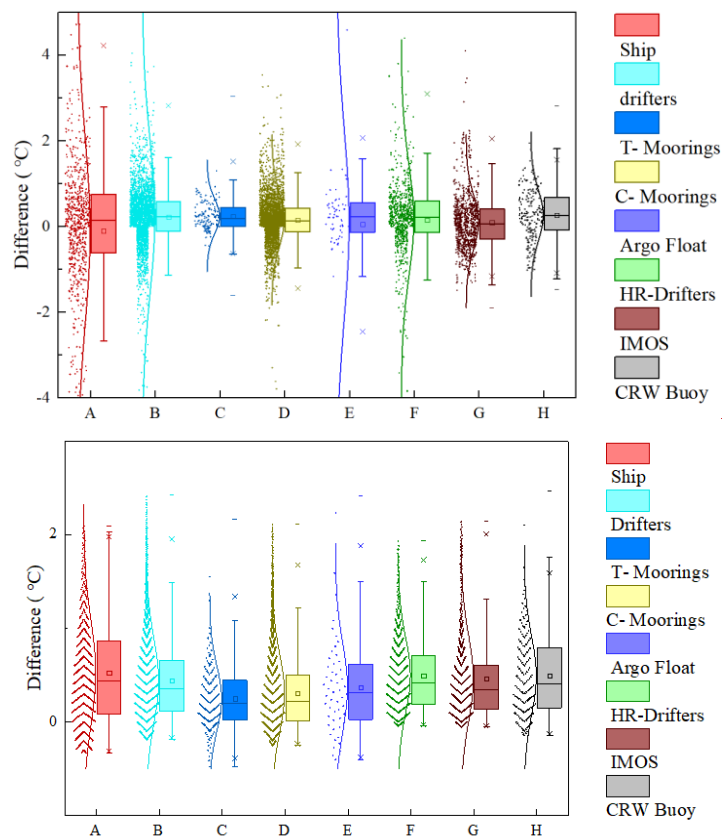


Figure 5. Scatter diagrams of the MODIS SST data and ocean multisource data compensated for different measurement times and effective sampling depths.

2.4.3.1.2 Bias adjustment scheme for in situ observations

SSTs retrieved from MODIS sensors are skin SSTs. However, the in situ SSTs from Version 2.1 NOAA iQuam are subsurface SSTs. For Argo floats, only the shallowest high-quality measurement is extracted and saved from each profile into the iQuam dataset (the same algorithms are used for other in situ platforms, such as those on ships, drifters, and moorings), along with its measurement depth. The closest measurement to the surface of the Argo float is at a depth of 3-8 dbar (0.15-0.2 m for drifters and ~1 m for moorings). The differences between skin and subsurface SSTs, as described by Donlon et al. (2002), can be as large as 1.0°–2.0°C when the solar insolation is strong and the wind speed is weak. Figure 6 shows that the differences between the MODIS data and the eight types of in situ SSTs from iQuam can be significant under different weather conditions. When combining in situ SSTs into the MODIS SST product, such differences need to be accounted for. Therefore, in situ SSTs were first collocated and made coincident with MODIS data (within ±1 hr and ±0.02° of latitude and longitude). Then, the coincident in situ SSTs were adjusted using the [GOTM temperature depth and observation time correction model](#) by entering the SST measurement depth and corresponding meteorological parameter values present during the measurement, including the wind

380 speed at a 10-m height, the air temperature at a 2-m height above the sea surface, air humidity data, and cloud cover data from the ECMWF.



385 Figure 6. Box chart with scatters representing the differences between the original MODIS data and eight types of in situ SST observations.

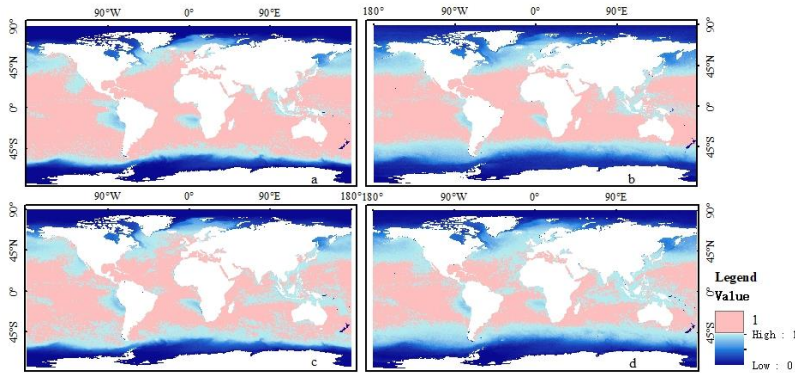
2.4.3.2 Filtering of MODIS SST

The monthly MODIS SST data cover the whole sea area of the world, but they contain many missing and low-quality pixels caused by factors such as clouds and aerosols. Figure 7 shows the frequency of ~~non-null~~non-null pixels, including valid pixels

Formatted: Heading 2, None, Space Before: 0 pt, After: 0 pt

and low-quality pixels, in the monthly MODIS SST data from July 2002 to December 2019. The missing pixels are mainly distributed in high latitude sea areas beyond ± 60 degrees of latitude. In the middle- and low-latitude sea areas within ± 60 degrees of latitude, the coverage rate of pixels is more than 95%, among which%, There are many missing pixels are mainly distributed off the Peru coast, exactly in ocean edges near land, the ENSO signal region, due to the widespread low clouds over the eastern South Pacific off the coasts of Chile and Peru (Satyamurty and Rosa, 2020). In addition, there is a lower frequency of non-null pixels in the Inter-Tropical convergence zone (ITCZ) region and other tropical oceanic areas west of the continents due to the cloud cover in these areas (Ackerman et al., 2008; McCoy et al., 2017). In most areas of low and middle latitudes, the non-null pixel coverage is as high as 100%, but it is difficult to detect the cold top surface of thin clouds or subpixel clouds, and the SSTs retrieved under such conditions are usually underestimated because the temperatures of clouds are almost always colder than the temperature of the sea surface (Reynolds et al., 2007). Moreover, other factors can also contaminate the observed signals and affect the data quality, such as factors related to the radiometer, including its viewing geometry, spectral response and noise level (Kilpatrick et al., 2015). Therefore, there are many low-quality pixels present among non-null pixels in the low and middle latitudes during the study period. In this study, the spatial process of the SST reconstruction includes the removal of low-quality pixels in low- and mid-latitude regions and the reconstruction of low-quality and missing pixels in the marginal low- and mid-latitude regions and the high-latitude regions.

The quality control information stored in the qual_sst layer is provided along with the MODIS L3m SST data, with the quality level 0 being the best quality and the quality level 4 being the worst. These values can be found in the original MODIS SST Netcdf files (see section 2.1 for a detailed description). The missing pixels present in these data are represented by the filling value -32767. Therefore, the quality control labels and the filling value were used to identify low-quality and missing pixels in the MODIS SST product. For monthly and daily SST data, to ensure the data quality and the number of effective pixels, pixels with a quality level ≤ 1 were considered to be high-quality data.



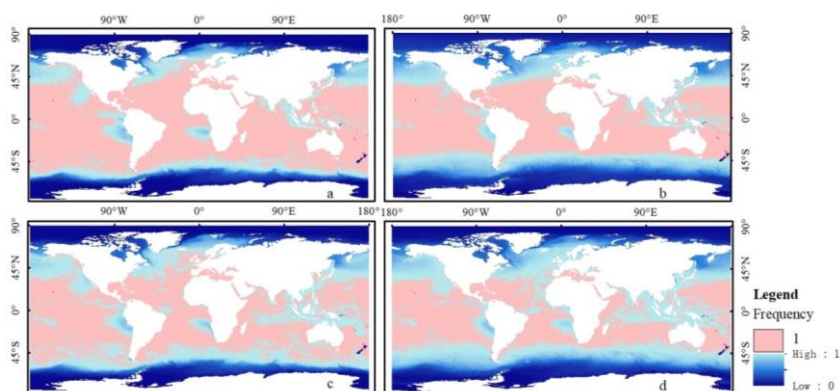


Figure 7. Frequency of ~~nonnull~~non-null pixels, including valid pixels and low-quality pixels, in the monthly MODIS SST data during the study period from (a) nighttime Aqua overpasses, (b) daytime Aqua overpasses, (c) nighttime Terra overpasses, and (d) daytime Terra overpasses.

2.4.3.3 SST data reconstruction

In the data processing, we first filtered all input monthly MODIS SST images and determined the locations of the low-quality and missing pixels. Then, for each invalid pixel (i.e., the low-quality and missing pixels) in the monthly images, we filtered the daily MODIS SST data of the respective month at the corresponding location. The high-quality pixels in the daily SST data were retained, and the invalid pixels in the daily data were reconstructed by combining multisource data. Finally, the invalid pixels present in the monthly data were replaced by the mean SST values derived from the gap-filled daily SST time series of the corresponding month. Combining the characteristics of multisource data and the availability of the data, we adopted different methods to reconstruct the invalid pixels present in the daily MODIS SST data for different regions.

2.4.3.3.1 Reconstruction of invalid SST pixels in low- and mid-latitude marginal regions of the ocean

Due to the influence of the mixed ~~sea and land~~ pixels in adjacent coastal areas, ~~microwave-based~~ sea surface temperature products ~~obtained from passive microwave remote sensing~~ have very large uncertainties in ~~these areas~~ (Xie et al., 2008), which ~~result in more invalid or low-quality pixel values in~~ adjacent coastal areas (Xie et al., 2008). Therefore, ~~we~~invalid pixels in ~~these regions were~~ first ~~used daily-filled with in situ or AVHRR SST data from MODIS, and AVHRR and corresponding these~~ pixels filled with in situ observations ~~to reconstruct the pixels in these regions. In~~were marked. Then, in cases where these observations were missing, we filled these invalid pixels based on the geographically weighted regression (GWR) and Kalman filtering (KF) methods, fitted the SSTs obtained by the two methods and finally reconstructed the invalid pixels. A summary

Formatted: Heading 2, None, Space Before: 0 pt, After: 0 pt

flowchart of the process is schematically illustrated in Figure 8.

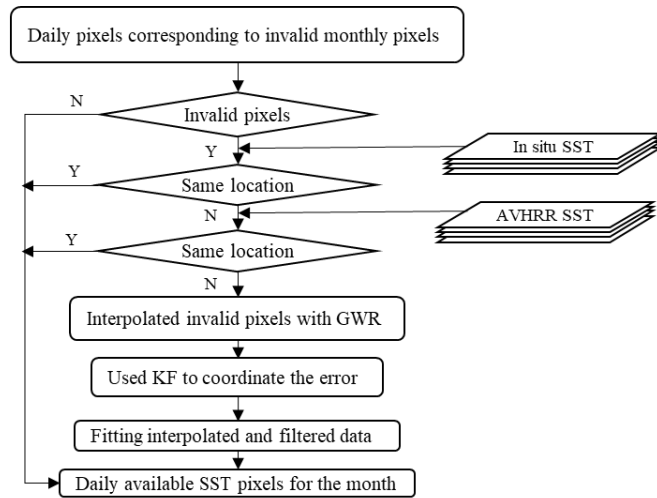


Figure 8. A summary flowchart for reconstructing invalid SST pixels in the marginal low- and mid-latitude marginal regions of the ocean

Invalid pixels were filled with in-situ or AVHRR SST data at the same location and time (priority was given to the use of in situ data), and these pixels filled with in-situ observations were marked. For the invalid pixels without AVHRR and in-situ SSTs, we filled in the missing part with GWR method based on the slowly changing characteristics of SST, and then used KF to coordinate the variation error and interpolation error of SST. Finally, the interpolation and filtered SST data were fitted to realize the SST filling.

2.1.1 Interpolating invalid pixels with GWR

GWR is an effective method for estimating missing pixels, and it which can quantitatively determine the contribution of adjacent pixels to contaminated pixels (Zhao et al., 2020). This method assumes that the spatially adjacent pixels with similar meteorological conditions have similar temperature values. Therefore, after determining the pixels, the GWR method was used in this study to reconstruct invalid pixels. To determine the sliding window with the minimum noise and the best complement value, we simulated the size of the experimental pixel window several many times and selected a sliding window of 15 by 15 pixels centered on the target pixel. This window size also avoids the reduction in execution efficiency caused by the redundancy of pixel data involved in the calculation and ensures the number of pixel values involved in the calculation. In theory, even in the case of thick cloud coverage, in-situ SSTs are the most reliable records. If there are in-situ SST observations, the missing or low-quality pixels are directly obtained from the in-situ measurements, which are more representative of the real SSTs under cloud cover than under clear sky conditions. During the reconstruction of invalid pixels, the regression weight coefficient of

each adjacent pixel was determined by the Euclidean distance between that pixel and the target pixel. Simultaneously, considering that the available pixels obtained from in situ observations are more representative of the real SST under the cloud cover, we assigned a relative multiple weight to the marked in situ data according to GWR. By selecting some marked pixels as experimental values, it was found that the target pixels can be estimated most accurately when M_c (M_c , M_g (M_g is the weighting coefficient of the in situ assigned pixels) was set to 3—in this paper. The weighting coefficients of adjacent pixels can be determined by the following formula. After the GWR model used the Euclidean distance to obtain the weights, Eqs. 5 and 6. Then a local linear regression calculation was performed for each point in the window according to the sample weights. This regression calculation can be expressed as Eq. 7:

$$D = \sqrt{(x - x_t)^2 + (y - y_t)^2} \quad (5)$$

$$W_i = \frac{\frac{M_c}{D_i^m}}{\sum_{i=1}^m \frac{M_c}{D_i^m} + \sum_{j=1}^n \frac{M_g}{D_j^n}}, W_j = \frac{\frac{M_g}{D_j^n}}{\sum_{i=1}^m \frac{M_c}{D_i^m} + \sum_{j=1}^n \frac{M_g}{D_j^n}} \quad (6)$$

$$T_t = \sum_{i=1}^m W_i \cdot T_i + \sum_{j=m+1}^n W_j \cdot T_j \quad (7)$$

where D is the distance from the adjacent pixel to the target pixel; (x, y) , (x_t, y_t) are the locations of the adjacent pixel and target pixel, respectively; i and j are the adjacent pixels used to estimate the SST of the invalid pixel; i is an adjacent pixel of high quality; j is a pixel assigned by the in situ measurement; W_i and W_j are weight multipliers; m is the number of i ; n is the number of j ; and M_c and M_g represent the weighting coefficients of the high-quality pixels and in situ assignment pixels, respectively. In this paper, M_c and M_g are set to 1 and 3, respectively. T_t is the filled SST value of the target pixel.

3.2) Using KF to coordinate the error

For this region, on the basis of interpolation, KF can be used to coordinate the error characteristics of the SST variation and the error characteristics of the interpolation. Since the SST variation is relatively flat, SST is treated as a stationary random process. Due to the slowly changing characteristics of SST and the lack of in situ data effective temperature values representing these pixels, we took into account the observed SST data representing the three days before and after adjacent time at the location of the invalid pixel. The MODIS products from the Terra and Aqua satellites produced 4 SST images per day, for a total of 28 images. Considering the operational requirements of SST real-time retrievals and the necessary computing speed and storage capacity of the computer, the correlation of the error changes with each observation time was not considered in the actual operation process, and only simple random error was used to simulate the changes in the process error and observation measurement error. By modeling the data, the equation of state of the system can be written as follows:

$$X_{t+1} = X_{(t+1)} + W_{(t+1)} X_t = \Phi X_{t-1} + W_{t-1} \quad (8)$$

where X_t is state to be estimated at time instant t . X_{t-1} is the daily MODIS SST without interpolation; state vector of the process at time t . Φ is the state transition matrix of the process from the state at $t-1$ to the state at t , which is assumed stationary over time, and t is time; and W represents the process noise, which is considered to be Gaussian, and its covariance is represented by Q . Taking Q . We take the KF of 124 MODIS SST images in July 2002 as an example, there were 124 MODIS data points. All data were arranged in chronological order, and the change of the SST in each pixel relative to the SST of the

Formatted: Subscript

previous time was counted. Based on the statistical results of these images, the mean square deviation of the change covariance was 1.7648. Therefore, Q_t is $1.7648^2 \times 3.115 \times I$ (I is the identity matrix).

Consider the following measurement equation:

$$Z_{(t)} = HX_{(t)} + V_{(t)} \quad Z_t = HX_t + V_t \quad (9)$$

where Z is the interpolated daily MODIS SST; H is an identity matrix; and VZ_t is the measurement of X at time instant t . H is the noiseless connection between the state vector and the measurement vector, which is assumed stationary over time. V_t represents the measurement noise, which is also considered to be Gaussian, and its covariance is represented by R_t . R_t is determined mainly by the accuracy of Z . In this paper, the covariance between the interpolated daily MODIS comparing the measurement data with the verification data and the in-situ data collected during the study period was calculated to be 0.945; then (Xu and Cheng, 2021). Then, the following KF formula was used to combine the input data to achieve the optimal output of the system:

The, which operates in a prediction-update. The prediction equations are responsible for projecting forward (in time) the current state and error covariance estimates to obtain the a priori estimates for the next state-time step. The update equations are responsible for the feedback, i.e. for incorporating a new measurement into the a priori estimate was calculated using the state extrapolation equations:

$$X_{(t)}^- = X_{(t-1)} \quad (10)$$

The extrapolated to obtain an improved a posteriori estimate uncertainty (variance), $P_{(X(t))}$, is the uncertainty of the extrapolated estimate.

$$P_{(X(t))} = P_{(X(t-1))} + Q_{(t-1)} \quad (\text{Prediction equations are as Eqs. 10 and 11}).$$

The KF gain, $K_{(t)}$, was then calculated:

$$K_{(t)} = P_{(X(t))} / (P_{(X(t))} - R_{(t)}) \quad (12)$$

The current estimate was calculated using the state update equation:

$$X_{(t)} = X_{(t)}^- + K_{(t)} [Z_{(t)} - HX_{(t)}^-] \quad (13)$$

The current estimate uncertainty was updated:

$$P_{X(t)} = [I - K_{(t)}] P_{(X(t-1))} \quad (10)$$

$$P_t^- = \phi P_{t-1} \phi^T + Q \quad (11)$$

Update Equations are as Eqs. 12, 13, and 14.

$$K_t = P_t^- H^T [H P_t^- H^T + R]^{-1} \quad (12)$$

$$X_t = X_t^- + K_t [Z_t - H X_t^-] \quad (13)$$

$$P_t = [I - K_{(t)}] P_{(X(t-1))} K_t H] P_t^- \quad (14)$$

where X , ϕ , H , Q and R can be obtained according to the explanation of equations 8 and 9. K is the Kalman gain, P is the error covariance matrix.

4) Fitting interpolated and filtered data

Formatted: Indent: First line: 0 ch

Formatted: Justified, Indent: First line: 0 ch

The least square method was used to fit To more accurately reconstruct the interpolated and filtered data, where in the interpolation based on the WGR method and the filtering based on KF were represented by T_g and T_k in the following equation, respectively.

$$T' = \alpha T_g + \beta T_k \quad (15)$$

To determine the coefficient of pixels that lack valid observations, a data fitting, we selected some pixels from the images replaced by the in situ and AVHRR SSTs and marked them as invalid pixels and then interpolated and filtered these pixels. The least square method was used to fit shown in Eq. 15 was performed for the interpolated and filtered data, and which are the fitting coefficient was SSTs obtained using the following formula. Then based on the GWR and the KF methods, respectively. Finally, the reconstruction of invalid pixels without in situ or AVHRR SST filling could be realized by using Eq. 16: the data fitting.

$$T' = \alpha T_g + \beta T_k \quad (15)$$

where T' is the reconstructed SST. T_g and T_k are the SSTs obtained based on the GWR and the KF methods, respectively.

To determine the best fitting parameters of α and β , we selected some valid pixels from each image and then interpolated and filtered these pixels. The Eq. 15 was used to fit the interpolated and filtered results, and the fitting coefficients of each SST image was obtained using the least squares method.

$$\Delta T(\alpha, \beta) = \sum_{i=1}^n [T_i - T'_i]^2 \quad (16)$$

where T_i is the valid pixel value in the image replaced by the in situ and AVHRR SSTs and n is the number of these pixels.

When ΔT reaches a minimum value, the fitting coefficient can be obtained by using Eqs. 17 and 18.

$$\frac{\partial \Delta T(\alpha, \beta)}{\partial \alpha} = -2 \sum_{i=1}^n (T_i - \alpha T_g - \beta T_k) T_g = 0 \quad (17)$$

$$\frac{\partial \Delta T(\alpha, \beta)}{\partial \beta} = -2 \sum_{i=1}^n (T_i - \alpha T_g - \beta T_k) T_k = 0 \quad (18)$$

2.4.3.3.2 Reconstruction of invalid SST pixels in low- and mid-latitude inner ocean areas

Similar to the method used to reconstruct invalid SST pixels in the marginal regions of the oceans at low and middle latitudes, pixels with invalid SST values were collocated reconstructed through collocating with in situ and AVHRR data to reconstruct invalid pixels in inner ocean areas. The invalid pixels were filled using values from valid in situ SST or AVHRR data collected at the same location at the same time. The difference is that the accuracy of microwave-based data is lower in marginal sea areas but higher in the ocean interior. Based on the consistency of MODIS daily data and microwave daily data temperature variation trends at corresponding dates, in cases of missing observations, we used microwave-based In cases of missing in situ SST or AVHRR data, the SST retrieved from passive microwave data to reconstruct the invalid SST data. A summary flowchart of the process is schematically illustrated in Figure 9.

Formatted: Don't allow text to wrap in the middle of a word

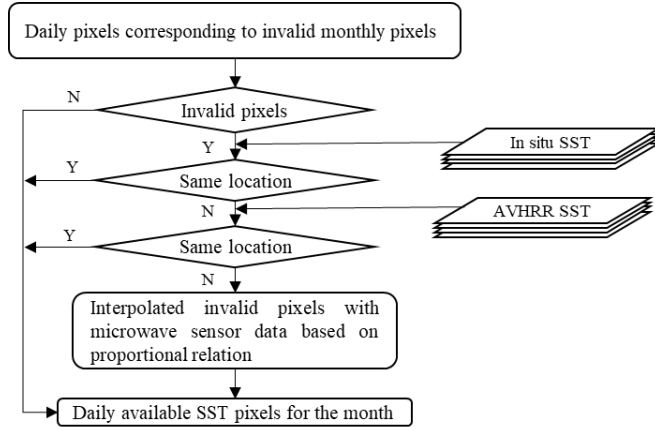


Figure 9. The summary flowchart for reconstructing invalid SST pixels in low- and mid-latitude inner ocean areas

The temperature variation trends present in the MODIS daily data and microwave daily data on corresponding date in the same region are the same, so the two groups of data have the same proportional relation. Taking a grid of n pixels by n pixels as an example, a and b are considered the same regions clipped from the MODIS and microwave-based data, respectively. The gray and white rasters represent the effective and invalid pixels, respectively. M_{kl} and R_{kl} represent the pixel values of the MODIS and microwave-based data, respectively. K and L represent the pixel positions. M_{ij} represents the value after the interpolation of invalid pixels.

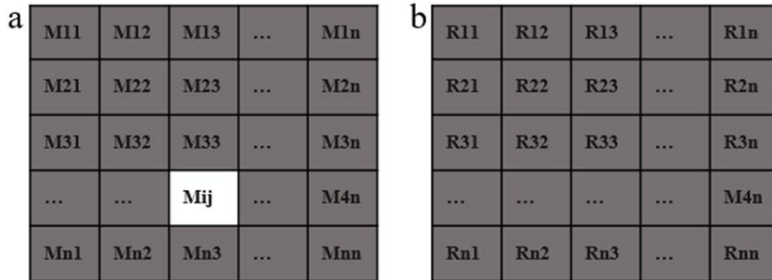


Figure 10. MODIS and microwave SST data corresponding to a $n \times n$ grid

$$\frac{M_{ij}}{\sum_{k=1, l=1}^{k=i-1, l=j-1} M_{k,l} + \sum_{k=i+1, l=j+1}^{k=n, l=n} M_{k,l}} = \frac{R_{ij}}{\sum_{k=1, l=1}^{k=i-1, l=j-1} R_{k,l} + \sum_{k=i+1, l=j+1}^{k=n, l=n} R_{k,l}} \quad (19)$$

The reconstruction of invalid pixels can be achieved by using the above formula. The reconstructed pixels meet the accuracy of the interpolated images to a certain extent and do not damage the original SST variation trend of the interpolated image.

After several simulations of different experimental pixel window sizes, the noise was found to be minimized when a sliding window of 6 by 6 pixels was used, and this window size was considered to have the best complement value.

2.4.3.3 Reconstruction of invalid SST pixels in high-latitude regions of the ocean

At high latitudes, sea ice covers a significant fraction of the global oceans (approximately 5-8%). The presence of large areas of mixed sea ice and open water makes it difficult to retrieve SSTs (Høyer et al., 2012; Vincent et al., 2008). In addition, there is persistent cloud cover in polar regions, with cloud cover occurring up to 90% of the time in summer and 50%-60% of the time in winter in the Arctic (Høyer et al., 2012). The continuous cloud cover and extended twilight period complicate the detection of cloud, which thus present problems for identifying clouds correctly of cloud detection algorithms. Therefore, it is challenging to use satellite sensors to accurately retrieve SST at high latitudes, including the Arctic Ocean. Moreover, because of the existence of sea ice and the difficulty of navigating in ice-filled water, the amount of field observations at the area is generally scarce compared to other regions (Reynolds et al., 2002). The Microwave and AVHRR SST data used in this study have limited available pixels in high latitude regions, so it is impossible to reconstruct MODIS SST data in high latitude regions only by relying on these data and in situ data.

High-latitude SSTs can be estimated based on satellite sea ice concentrations (SICs). In areas with sea ice, the SST is the temperature of the open water or of the water under the ice (Banzon et al., 2020). Multiple analysis (L4) products from GHRSSST enable SST estimation near the polar region by converting SIC into SST. Due to differences in satellite source data, integration methods and methods for converting SIC to SST, the accuracy of levels 4 SST products of GHRSSST-PP vary in many aspects. After understanding the differences among current GHRSSST level 4 products and their qualities and availabilities in different areas, the OISST V2.1 product was selected to restore invalid pixels in the MODIS SST data in the high-latitude area with sea ice coverage. In the product, SICs were revised to SSTs to remove warm biases in the Arctic region.

In areas of high latitudes, since the microwave-based SST data (used in this paper) exclude sea ice pixels, that is, SSTs are missing when the number of pixels with sea ice contamination exceeds a specified value, we used a combination of two strategies to reconstruct the missing SST data to improve the accuracy of the results. A summary flowchart of the process is schematically illustrated in Figure 11.

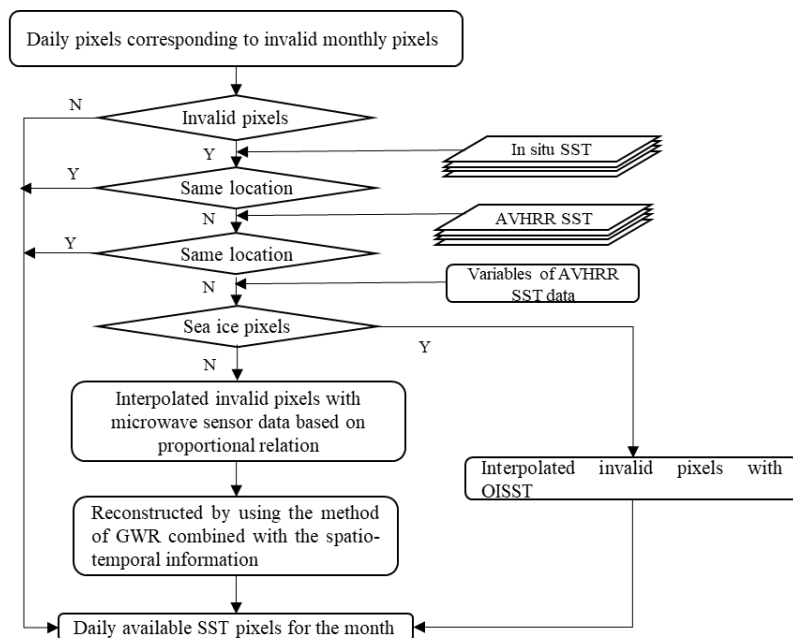


Figure 11. The summary flowchart for reconstructing invalid SST pixels in high latitude regions of the ocean

First, the variables `l2p_flags` and the sea ice fraction in the AVHRR SST data were used to identify the sea ice extent. The sea ice fraction variable quantified the fraction of sea ice contamination in a given pixel (ranging from 0 to 1), and bit 2 of the `l2p_flags` variable was recorded if an input pixel recorded ice contamination. These variables can be used to identify sea ice pixels. Then, we used the first strategy to reconstruct invalid pixels in high latitudes without sea ice coverage. Pixels with invalid SST values in the MODIS data were collocated with in situ and AVHRR observations. Invalid pixels were filled using the values from the valid in situ or AVHRR data at the same location and the same time (priority was given to the use of in situ data). Then, for the invalid pixels without available observations, we used the method described in section 2.4.3.2 above to fill the pixels using microwave data. Finally, considering the characteristics of the slow changes in SST and the fact that SST changes in the same area are interannual and its changes in the short term are usually small, the invalid pixels without any filling data were reconstructed by using the GWR method combined with spatiotemporal information. That is, we obtained the effective pixels of the same date in the previous year and the following year at the same position and the effective pixel values of the adjacent dates (within two days) in the same year. Then, we replace invalid pixels with the composite average pixel value of valid pixels from the adjacent dates. If the number of effective pixels was too small, then the GWR

method was used to reconstruct the invalid pixel.

In another strategy, ~~grid cells~~ pixels with invalid SST values due to sea ice-covered areas were collocated with in situ and AVHRR SSTs. ~~Invalid pixels, which~~ were filled using values from valid in situ SST or AVHRR data ~~collected~~ observed at the same location and at the same time. ~~Then~~ Finally, the adjusted OISST V2.1 products were used to reconstruct the invalid pixels ~~in sea ice-covered areas that did~~ when there are not have sufficient replacement pixels ~~in sea ice-covered areas~~. The adjustment algorithm is a linear regression algorithm that relies on coefficients derived from ~~collocated, cotermporal~~ co-temporal OISST and MODIS SST observations. ~~These data were then used to fill the missing value pixels by linear interpolation:~~

$$T_M = \alpha \times T_O + \beta \quad (20)$$

where T_M is the ~~adjusted SST after interpolation (units: °C)~~; T_O is the pixel value of the OISST product; α is the ~~correction factor of the OISST on the SST value from MODIS, which is the regression coefficient based on,~~ which is determined by ~~matching the clear sky pixels data of daily the MODIS SSTs in SST data and the corresponding two images; OISST data,~~ and β is the estimated intercept.

3.4 Result

MODIS has superior coverage and performance in sampling global SST and has been verified by various studies (Barton and Pearce, 2006). Moreover, to better assess the accuracy of the new SST product, we performed verification of the original MODIS data, oceanic multisource data compensated for different measurement times and effective sampling depths, and the new SST data in different regions. The accuracy of the data was assessed using five statistical indexes: ~~the correlation coefficient of determination~~ (R^2), root mean squared error (RMSE), bias, absolute bias (Abs_Bias), and scatter index (SI). The bias was calculated as the ~~SST obtained from the MODIS SST~~ product minus the in situ SST. The scatter index, usually denoted as SI, was used to measure the magnitude of the bias between the SST product and the in situ observations versus the in situ observations. A smaller SI means a more accurate measurement.

$$R^2 = \frac{(\sum_{i=1}^n (SST_i - \overline{SST})(SST'_i - \overline{SST'}))^2}{\sum_{i=1}^n (SST_i - \overline{SST})^2 \sum_{i=1}^n (SST'_i - \overline{SST'})^2} \quad (21)$$

$$RMSE = \sqrt{\frac{1}{n} \sum_{i=1}^n (SST_i - SST'_i)^2} \quad (22)$$

$$bias = \frac{1}{n} \sum_{i=1}^n (SST_i - SST'_i) \quad (23)$$

$$abs_bias = \frac{1}{n} \sum_{i=1}^n |SST_i - SST'_i| \quad (24)$$

$$SI = \frac{\sqrt{\frac{1}{n} \sum_{i=1}^n [(SST_i - \overline{SST}) - (SST'_i - \overline{SST'})]^2}}{\overline{SST'}} \quad (25)$$

where SST_i is the MODIS SST value of matching point i . SST'_i is in situ observation value of matching point i . n is the number of matching points. \overline{SST} and $\overline{SST'}$ are the average value of SST obtained from MODIS products and the average value of SST obtained from in situ observations, respectively.

In addition, to convey information more easily and concisely, Taylor diagrams (Taylor, 2001) were also used to compare the accuracies of different SST products, as they provide a way to graphically summarize the relative accuracies of several products. Taylor diagrams are two-dimensional scatter plots in which discrete points give an indication of how well patterns match each other in terms of their correlation coefficient (R), centered RMSE (E), and normalized standard deviation (SDV), all at once (Castro et al., 2016). These statistics are defined as follows, where M and O are the simulated and observed patterns, respectively.

$$R = \frac{1}{N-1} \sum_{i=1}^N \left(\frac{m_i - \bar{m}}{\sigma_m} \right) \left(\frac{o_i - \bar{o}}{\sigma_o} \right) \tag{2026}$$

$$SDV = \frac{\sigma_m}{\sigma_o} \tag{2127}$$

$$E^2 = \frac{(RMSE^2 - bias^2)}{\sigma_o^2} \tag{2228}$$

$$E^2 = SDV^2 + 1 - 2SDV \times R \tag{2229}$$

In the Taylor diagram, SDV is shown as the radial distance, and R is shown as the cosine of an azimuthal angle in the polar plot. The observed patterns are represented by points on the X-axis at R = 1 and SDV = 1. E is the distance from the simulated patterns to the observed patterns, and this distance can quantify how closely the simulated patterns resemble the observed patterns.

34.1 Evaluation of the original product

We conducted a comparative analysis based on the distribution of invalid pixels in different regions, as shown in Tables 1 and 2. The Arctic Ocean was not verified because the original data had many missing pixels at high latitudes. Tables 1 and 2 show the validation results of validations of the original monthly MODIS SST values against the in situ SST measurements and the (including the uncorrected in situ data and corrected in situ data) were shown in Table 1. Validation using in situ SST measurements compensated for the effective sampling depths, respectively. Without correction of the sampling depths of the in situ SST measurements, the MODIS-based daytime SST measurements showed positive biases, while the MODIS-based nighttime SST measurements showed negative biases except over the Atlantic shows that the RMSE ranges from 0.768 °C to 1.727 °C (SI: 0.034-0.066), and validation using corrected Ocean. With corrected sampling depths of the in situ SST measurements, MODIS-based nighttime SST measurements of the Atlantic Ocean also showed negative biases. In addition, MODIS-based daytime SST products are better than nighttime products, and the measurements over the Atlantic Ocean have the lowest accuracies.

Table 1. Analysis of SST matching points between original monthly MODIS TERRA/AQUA and in situ SST measurements from 2002 to 2019 indicates that the RMSE ranges from 0.719 °C to 1.167 °C (SI: 0.032 to 0.544).

Table 1. Statistics of the validation results of original monthly MODIS SSTs against in situ SST measurements (non-corrected/corrected)

Day/Night	R ²	Abs_bias	bias	RMSE	SI
-----------	----------------	----------	------	------	----

Formatted: Indent: First line: 1 ch, No widow/orphan control

Formatted: Justified
Formatted: Font: 10 pt
Formatted: Font: 10 pt
Formatted: Justified
Deleted Cells
Formatted Table
Formatted: Font: 10 pt

	<u>n situ data</u>					
Pacific Ocean	dNon-c	0.97739793	0.66936364	0.2240	1.15130753	0.05480507
	ncorrected	0.97869854	0.68075638	-0.18218958	1.1665	0.05320423
Atlantic Ocean	dNon-c	0.95619663	0.82798634	0.2543	1.45277271	0.07090657
	ncorrected	0.95849662	0.96347272	0.0921	1.62251670	0.09700544
Indian Ocean	dNon-c	0.97869915	0.69295271	0.02717677	1.1606	0.04980339
	ncorrected	0.98369925	0.60824875	-0.20097185	1.24120.0320	0.0613
Global Ocean	dNon-c	0.97219735	0.72627478	0.1900	1.25932461	0.05910581
	ncorrected	0.9789835	0.70796293	-0.14349671	1.26660.0454	0.0615

Table 2. Analysis of SST matching points between original monthly MODIS TERRA/AQUA and in-situ SST measurements adjusted by GOTM from 2002 to 2019

	Day/Night	R ²	Abs_bias	bias	RMSE	SI
Pacific Ocean	d	0.9850	0.5794	0.1528	0.9134	0.0437
	n	0.9880	0.5995	-0.2360	0.8925	0.0397
Atlantic Ocean	d	0.9776	0.6822	0.1015	0.8254	0.0503
	n	0.9821	0.7624	-0.1709	1.0686	0.0622
Indian Ocean	d	0.9892	0.5654	0.0150	0.8254	0.0406
	n	0.9954	0.5072	-0.2924	0.7162	0.0326
Global Ocean	d	0.9843	0.6097	0.1054	0.9314	0.0439
	n	0.9898	0.6031	-0.2393	0.8849	0.0414

3

4.2 Evaluation of the bias adjustment

34.2.1 Evaluation of satellite data bias adjustment

Different sensors and satellites can obtain measurements at several different times throughout the diurnal cycle. In addition, microwave and thermal infrared sensors have different effective measurement depths. Since both the AMSRE and MODIS instruments are aboard the AQUA satellite, they both pass through the equator at approximately 01:30 and 13:30. Therefore, in order to verify the depth compensation-conducted-by-the-GOTMcorrection model, we used the GOTMdepth correction model to perform depth correction on the daily AMSRE data. That is, the sampling depth of AMSRE daily data was corrected to the sampling depth of MODIS data, and then compared the corrected values with the corresponding MODIS daily data collected-at-the-same-time. Figure 12 (a) shows the validation results of the AMSRE data-sampling-depth-compensated-by-the-GOTM. It can be seenSST data, which shown that the overall result between the corrected data have-better-consistency-with

the and the MODIS data presents a good linear relationship. The RMSE value being is reduced from 1.137°C to 0.508°C and the absolute bias being is reduced from 0.718°C to 0.302, indicating°C, which indicates that the GOTM model can simulate the SST at different depths well and can be used for SST conversions between different depths. Furthermore, we compared and analyzed the nighttime products of the same sensor with the corresponding daytime products after a time correction to verify the time correction performed by the GOTM model. Taking AMSRE daytime SST products that pass through the equator at approximately 13:30 as an example, we corrected these SST values to AMSRE the corresponding nighttime products that pass through the equator at 01:30 SST values (Figure 12 (b)). With this method, the region that experiences a temperature increase shown from 01:30 to 13:30 is well corrected. Comparing the SST values before and after the correction with the actual SST at 01:30, figure 12 (b), there was an obvious daily temperature increase diurnal warming before the correction, and the data after the correction had lower absolute bias and RMSE values, indicating that. Thus, the GOTM model also can simulate the diurnal variation in the SST well and can be used to normalize the SSTs observed at different times.

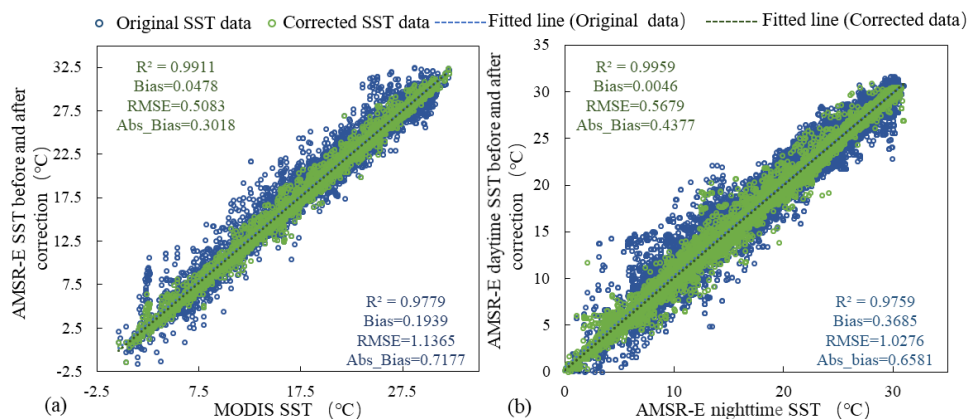


Figure 12. The scatter diagrams of the daily original SST data and corrected results versus their corresponding actual SST data from 2002 to 2019. The blue points indicate original SST pixel values. The green points represent the values in corrected SST data, and the statistical accuracy measures (R^2 , Bias, Abs_Bias, and RMSE) are also indicated.

3.4.2.2 Evaluation of in situ data bias adjustment

To validate the correction results of using the GOTM for the temperature depth compensation of and observation time correction model on in situ SSTs, we selected the matchups corresponding to the effective pixels of daily MODIS SSTs from the in situ SSTs and compared and analyzed the daily MODIS SSTs with these matchups corrected by the GOTM. Figures 13 and 14 both show the verification results of the MODIS SSTs against the in situ data before and after the calibration, respectively. Figure 13 reflects the change in the difference between all types of in situ data before and after the correction and the

690 corresponding MODIS SST data. ~~The SSTs~~It can be shown from figure 13 that the MODIS sensor and range of temperature difference between uncorrected in situ observations showed a large deviation without data and MODIS data is about -2°C - 2.5°C . while the depth compensation difference range between corrected in situ data and the deviation was significantly MODIS data is reduced after to the correction range of -0.5°C - 0.75°C . Figure 14 is based on the MODIS SST data as a reference and shows the distribution of SSTs before and after the correction from the 8 platforms described in the normalized Taylor diagram. In Figure 14, the degrees of agreement are compared among the in situ data from different platforms before and after the correction with the MODIS data. The points representing the in situ SSTs lying near the MODIS observations (the MODIS observations are represented by points on the X-axis at $R = 1$ and $\text{SDV} = 1$) have relatively high R and low E values. After the depth correction, the points representing the in situ SSTs are closer to the MODIS observations, which means that compared with the in situ data before correction, the agreement between the two is better. Therefore, the corrected result of the GOTM model is stable and reliable and can be used for the conversion of SSTs from in situ observations taken at different depths.

695

700

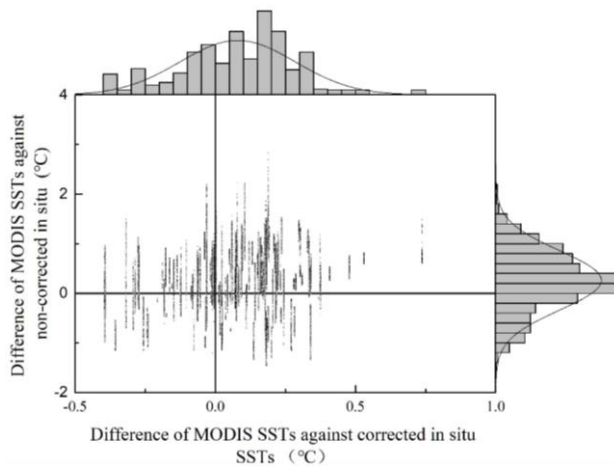


Figure 13. Marginal Histogram of the difference between in situ data before and after correction and the corresponding MODIS SST data. (The margins of the scatterplot ~~is~~are a histogram of the variables, indicating the distribution of data in either direction)

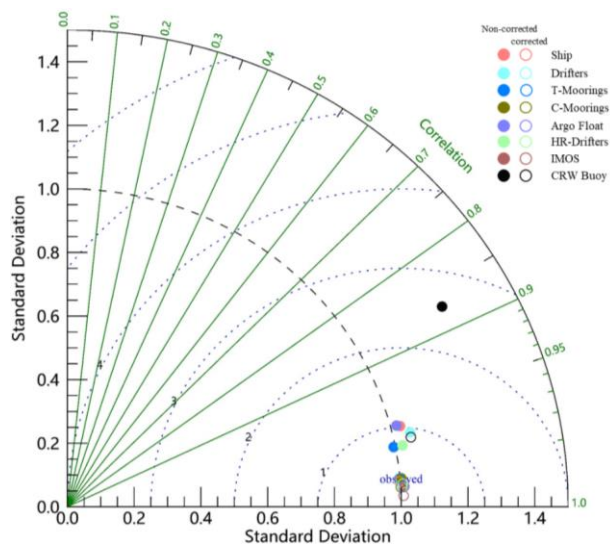


Figure 14. Normalized Taylor diagrams showing differences between matched SST from in situ data before and after correction and the corresponding MODIS SST data.

3.4.3 Evaluation of the new product

3.4.3.1 Accuracy verification of low-quality pixels

In this study, we only restored invalid pixels, including low-quality pixels and missing pixels, in the MODIS data and first evaluated the improvement effect of these pixels. Figure 15 shows the validation results of the low-quality MODIS SST data and the reconstruction results versus the corresponding in situ observations, including the corrected *in situ data* and uncorrected data, showing the comparison of the accuracies of the low-quality pixels before and after the reconstruction in situ data. The validation results show indicate that the reconstructed MODIS SST data are always more consistent with the in situ data, including the corrected data and uncorrected data, than the values before reconstruction, with RMSE values lower than 0.675°C and R^2 values higher than 0.991. Compared with the original values, the accuracies of the corrected values are improved by more than 0.65°C.

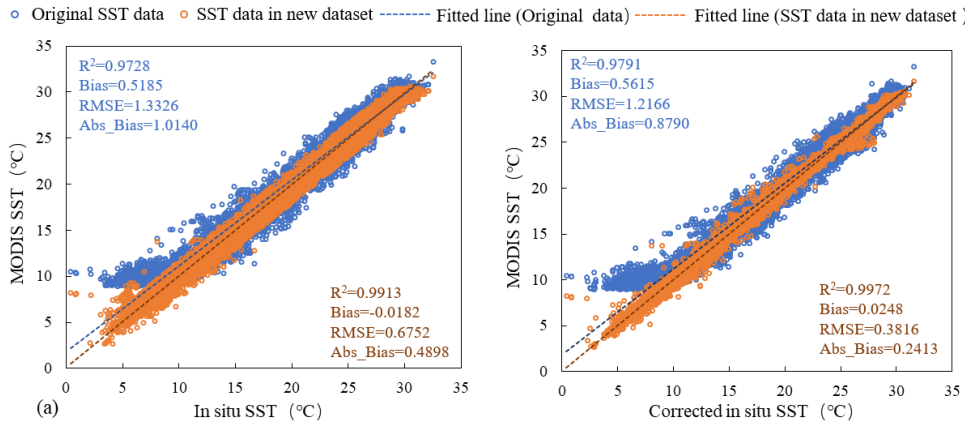


Figure 15. The scatter diagrams of the low-quality MODIS SST data and the reconstruction results versus their corresponding in situ SST data from 2002 to 2019. The blue points indicate low-quality MODIS SST pixel values. The orange points represent the values in reconstructed SST data, and the statistical accuracy measures (R^2 , Bias, Abs_Bias, and RMSE) are also indicated.

3.4.3.2 Overall accuracy verification

To fully verify the overall accuracy of the reconstructed SST products, we compared the performances of the original MODIS SST and the reconstructed SST products relative to the in situ dataset data via Taylor diagrams. The normalized Taylor diagrams showing the performances of the two products relative to the in situ data before and after the correction are presented in Figure 16. Compared with the original MODIS product, the reconstructed product can better represent the in situ observations, with the highest R value, lowest E value and SDV closest to one. Among them, the original MODIS product with the lowest consistency with both the uncorrected observations and the corrected observations by far consists of the Atlantic SSTs, with $E=0.090$ and 0.057 , $SDV=0.967$ and 0.982 , and $R=0.954$ and 0.9711 , respectively. After reconstruction, the Atlantic SSTs show very good correlation, with a lower E value and SDV closer to 1 with both the corrected and uncorrected observations, and its accuracy is significantly improved.

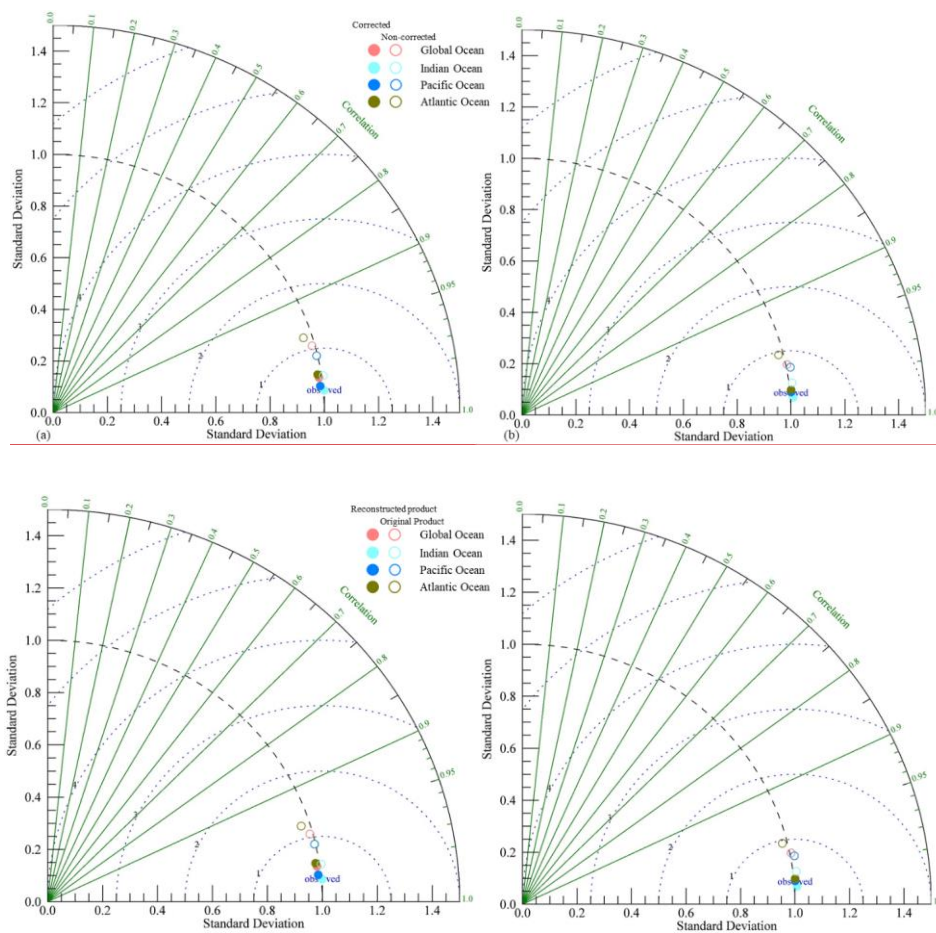


Figure 16. Normalized Taylor diagrams showing differences between matched SST from in situ data before (a) and after (b) correction and the corresponding SST products.

To further understand the credibility of the reconstructed product and clarify the limitations of this method, we further assessed the performance in terms of the output biases in different regions. The associated validation statistics of the new SST dataset against the corrected in situ observations and uncorrected in situ observations are summarized in Table 32. The new dataset is in agreement with the uncorrected in situ observations with $\text{abs_bias}=0.3358^{\circ}\text{C}$, $\text{RMSE}=0.5767^{\circ}\text{C}$, and $\text{SI}=0.0352$

on the global ocean. Among these statistics, the RMSE, SI and abs_bias of the Atlantic region are slightly larger than the values in the global ocean, but they are all better than those of the original MODIS SST data (see Table 1 for details), the correlation coefficients of this product in different regions are all greater than 0.984, and ~~these SI values are~~ less than 0.004. ~~The~~04. For the whole ocean, the abs_bias of the new SST product relative to the corrected in situ observations is 0.3349°C, and the RMSE and SI are 0.4742°C and 0.0242, respectively. The RMSE, SI and abs_bias of the values of the Atlantic Ocean region are also slightly larger than those of the global values. However, they are still better than those of the original MODIS SST data (see Table 21 for details), the correlation coefficients of the product in the different areas are greater than 0.995, and ~~these SI values~~ less than 0.0032032. In addition, the RMSE and SI values of the edge areas and high latitude areas are slightly lower than the global values, which indicates that the accuracy of the data in these areas is higher.

These results indicate that the reconstructed MODIS SST dataset is robust and accurate due to its high consistency with in situ observations, including corrected and uncorrected observations. Therefore, we believe that the accuracy of SST data can be improved by the method adopted in this paper.

Table 32 Statistics of the validation results of new SSTs against in situ SST measurements (non- corrected/corrected)

	In situ data	R ²	Abs_bias	RMSE	SI
Pacific Ocean	Non-c	0.9888	0.2977	0.5219	0.0306
	corrected	0.9960	0.3226	0.4618	0.0219
Atlantic Ocean	Non-c	0.9846	0.4343	0.7657	0.0391
	corrected	0.9952	0.3666	0.4864	0.0320
Indian Ocean	Non-c	0.9963	0.3095	0.5010	0.0238
	corrected	0.9977	0.2529	0.4080	0.0186
Global Ocean	Non-c	0.9906	0.3358	0.5767	0.0352
	corrected	0.9961	0.3349	0.4742	0.0242
Arctic Ocean	Non-c	0.9933	0.3660	0.5161	0.0298
	corrected	0.9971	0.3122	0.4738	0.0243
marginal regions	Non-c	0.9941	0.3360	0.5049	0.0269
	corrected	0.9983	0.3342	0.467	0.0219

To investigate the performance of the reconstructed product relative to the other products, a comparison between the OISST product and the reconstructed data ~~in this study~~ was conducted during 2002-2019. OISST Version 2.1 is an analysis product constructed by combining observations from different platforms on a regular global grid, such as AVHRR data from NOAA satellites, ships, Argo float and drift floats, with a spatial grid size of 0.25°. For the OISST images, we averaged the daily SST data corresponding to each month and obtained monthly SST images. Then, the dataset was validated against the corresponding in situ observations, including the uncorrected and corrected in situ SSTs, as shown in Figure 17 (a). The RMSE values of OISST against the uncorrected and corrected in situ observations in the global ocean were 0.602°C and 0.495°C, respectively.

Formatted Table

Those of the reconstructed SSTs against the uncorrected and corrected in situ observations in the global ocean were 0.577°C and 0.474°C, respectively. Compared to these, the overall accuracy of the reconstructed data is better. In addition, we also performed an intercomparison with the 2° Extended Reconstructed Sea Surface Temperature (ERSST) product, which is a global monthly SST dataset derived from the International Comprehensive Ocean–Atmosphere Dataset (ICOADS) that uses statistical methods to enhance spatial completeness. Figure 17 (b) reflects the monthly average SST changes in different oceans from the ERSST product and the reconstructed products over the 2002-2019 period, indicating a reasonable consistency between the two. Based on the accuracy assessment and data intercomparison results, it can be seen that the reconstructed MODIS products of 2002-2019 are reliable with high accuracies and that the reconstructed models we designed are effective.

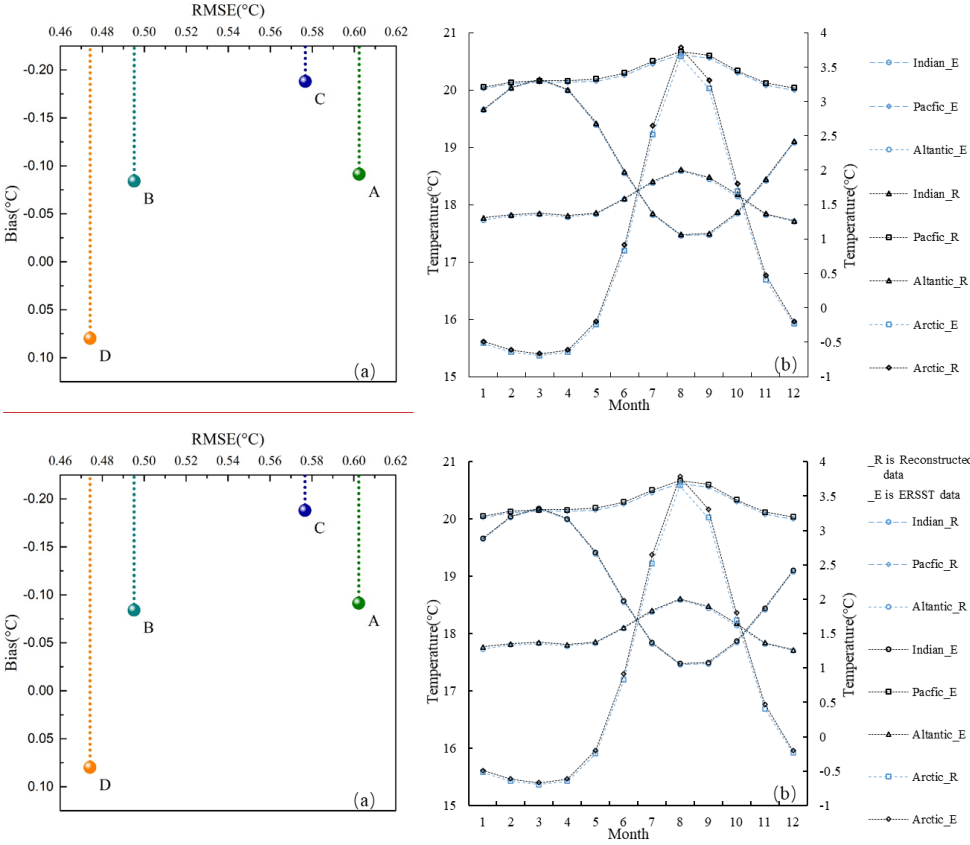


Figure 17. Validation statistics of the reconstructed product and other SST products during 2002–2019. (a): intercomparison with OISST, A and C represent the results of OISST and new SSTs against uncorrected in situ SST measurements, respectively. B and D represent the results of OISST and new SSTs against corrected in situ SST measurements, respectively. (b) intercomparison with ERSST, black and blue are monthly mean SST changes of ERSST and new SSTs in different ocean from 2002 to 2019.

Formatted: Font color: Auto

5 Data availability

The Reconstructed MODIS SST products at 0.041° resolution from 2002 to 2019 are freely available to the public in the img format at <http://doi.org/10.5281/zenodo.4419804> (Cao et al., 2021), which are distributed under a Creative Commons Attribution 4.0 License.

46 Discussion

SST dataset with high accuracy, spatial completeness, and fine resolution has important research and application value in the research of global change, disaster prevention and mitigation, and economics. The complementary information of the SST data derived from multiple satellite sensors in spatial completeness and accuracy makes it possible to generate the improved global coverage, high-quality unified SST data set by integrating the multiple SST products. **Conclusions**

There are many differences in terms of effective sampling depths and measurement times of SST products derived from various instruments, which will lead to complicated. The purpose of this study is to build a long-term series of global major meteorological disaster remote sensing data sets with high spatio-temporal and consistency based on the current global multi-source remote sensing data and ground observation site data, and to provide key ocean temperature parameters (such as sea surface temperature) for marine meteorological disaster forecasting models, especially rapid forecasts of marine disasters such as typhoons, and provide early warning services for global fishing vessels and merchant ships.

Formatted: Font: Bold

Formatted: Level 1, Don't adjust right indent when grid is defined, Space Before: 24 pt, After: 12 pt, Line spacing: single, No widow/orphan control, Don't adjust space between Latin and Asian text, Don't adjust space between Asian text and numbers

Formatted: Font: Bold

In order to ensure the temporal and spatial differences in SST consistency of different products (Castro et al., 2004; Minnett et al., 2011; Wiek et al., 2004). Therefore, data, we built a temperature depth and observation time correction model based GOTM for modeling of the diurnal variations of SST signal at different surface depths must also be considered in thus bridging the merging gap of multi-source data. The GOTM model simulates the hydrodynamic and thermodynamic processes of vertical mixing of one-dimensional water columns in natural waters, and comprehensively considers the effects of solar short-wave radiation, long-wave radiation, latent heat, sensible heat and cloudiness on the diurnal variations of SST, which can more accurately simulate the diurnal variations of SST than traditional empirical regression models that only consider the main factors of diurnal variations (such as wind speed, solar radiation, etc.). In addition, it has a high vertical resolution and can be encrypted on the surface layer to simulate the difference between the skin layer and the sub-skin layer, so as to achieve the uniformity of temperature at different observation depths. Therefore, the method based GOTM simulation method was used

Formatted: Font color: Auto

Formatted: Font color: Auto

Formatted: Font color: Auto

Formatted: Font color: Auto

to unify the temporal and spatial reference of SST at different depths and different times for each pixel of the image, and the accuracies of each sensor and in situ observations are improved ~~by about~~ 0.3-0.8°C. However, there are still certain errors, which are not only related to the characteristics of different sensors, retrieval algorithms, etc., but also to the accuracy of the GOTM model simulation. The simulation accuracy of GOTM largely depends on the input meteorological parameters. The wind speed, sea temperature, relative humidity, cloud cover and other data used in this paper come from ECMWF reanalysis and forecast data. The spatial resolutions of these data are relatively low, ~~and the temporal resolutions are 3-6 hours, which are obviously insufficient for the rapidly changing volume such as wind speed and cloud cover, which has some influence to accuracy.~~ If the meteorological parameters with higher accuracy and resolution are available, the simulation accuracy is expected to ~~can~~ be improved ~~further~~. In addition, when correcting ~~temperature obtained from in situ observations, not every~~ the in situ observations from ~~the iQuam, not every in situ observations from iQuam~~ record the depth at the ~~same time of measurement.~~ For example, the actual ~~depth temperature~~ measured by the ~~drift buoy drifting buoys~~ is not fixed at 0.2m ~~beneath the surface,~~ which will fluctuate due to the ~~action influence~~ of waves and so ~~on other factors.~~ Therefore, there will be a certain deviation in the correction ~~to of~~ the skin layer, and these factors will ultimately affect the accuracy of the reconstructed product.

In addition, the SST data in the grid form ~~represent represents~~ the average temperature in the grid area, while ~~the in situ~~ observations represent just the temperature near the locations of the ~~station stations.~~ Although ~~this the~~ study ~~uses used~~ the average value of the high-quality ~~observations observation data~~ that fall in the grid area with temporal sampling less than or equal to 1 h as the matched data of the grid, it ~~is was~~ still limited by the number of measured data within the grid. Especially in the high latitude areas where the measured points are sparse, the uncertainties associated with such matches could potentially bias the reconstruction and validation results. Therefore, more meteorological observation stations ~~will be need are needed~~ to help improve the accuracy of the product. The acquisition and integration of rasterized SST ~~is are~~ a complex problem, and the reconstruction models proposed in this research ~~is are~~ just the beginning, which needs to be improved and developed continuously. How to better solve the time phase and sampling depth problems of satellite remote sensing data, and to introduce multiple types of data sources into the model is a way to improve the product accuracy, ~~which needs further in-depth research in the future.~~

5 Data availability

The Reconstructed MODIS SST products at 0.041° resolution from 2002 to 2019 are freely available to the public in the img format at <http://doi.org/10.5281/zenodo.4419804> (Cao et al., 2021), which are distributed under a Creative Commons Attribution 4.0 License.

6 Conclusions

Formatted: Font color: Auto

Formatted: Font color: Auto

Formatted: Font color: Auto

Formatted: Font color: Auto

Formatted: Font color: Auto

Formatted: Font color: Auto

Formatted: Font color: Auto

Formatted: Font color: Auto

Formatted: Font color: Auto

Formatted: Font color: Auto

Formatted: Font color: Auto

Formatted: Font color: Auto

Formatted: Font color: Auto

Formatted: Font color: Auto

Formatted: Font color: Auto

Formatted: Font color: Auto

Formatted: Font color: Auto

Formatted: Font color: Auto

Formatted: Font color: Auto

Formatted: Font color: Auto

Formatted: Font color: Auto

Formatted: Font color: Auto

830 This study presentsFinally, a new SST product was obtained with fullhigh spatiotemporal coverage based on multisource
data after calibration by using a temperature depth and observation time correction model above model. The product, generated
by inputting infrared-based, microwave-based and in situ SST data into the reconstruction spatial model, has a monthly
temporal interval and a 0.041° spatial interval. This dataset effectively removed approximately 25% of the missing pixels or
low-quality SST pixels from, which has higher accuracy and better consistency with statistics than the original MODIS
835 monthly images.datasets, and it combines the advantages of multi-source data. Detailed comparisons and analyses with the in
situ observations (including uncorrected in situ data and corrected in situ data) and OISST and ERSST products also illustrate
the reliability and accuracy of the reconstructed product. This dataset effectively addresses the issues of inconsistent
observation times and sampling depths of multisource data and compensates for the insufficiency of reconstructing actual SST
pixels under clear sky conditions rather than under clouds in some studies with very limited information, achieving good
840 temporal and spatial coverages; thusThus, this product can be used for mesoscale ocean phenomenon analyses. It will be of
great useuseful in research related to global change, local area disaster prevention and mitigation, and economic research.
Moreover, In addition, the reconstruction strategy used in this study can be extended to the reconstruction of temporal and
spatial gap-free fields of other multisourcemulti-source and multitemporalmulti-temporal satellite data, providing technical
support for the generation of satellite reconstruction SST series products with a unified spatiotemporal reference for any
845 temporal and spatial intervals space-time gapless field reconstruction.

- Formatted: Font color: Auto
- Formatted: Indent: First line: 1 ch
- Formatted: Font color: Auto
- Formatted: Font color: Auto
- Formatted: Font color: Auto
- Formatted: Font color: Auto
- Formatted: Font color: Auto
- Formatted: Font color: Auto

- Formatted: Font color: Auto
- Formatted: Font color: Auto
- Formatted: Font color: Auto
- Formatted: Font color: Auto
- Formatted: Font color: Auto
- Formatted: Font color: Auto
- Formatted: Font color: Auto

Author contributions. MC and KM designed the research and developed the methodology; MC wrote the manuscript; and KM, YY and all other authors revised the manuscript.

Competing interests. The authors declare no conflicts of interest.

850 **Acknowledgments.** The authors would also like to thank the National Aeronautics and Space Administration (NASA), the
NOAA National Centers for Environmental Information, the Naval Research Laboratory (NRL) Remote Sensing Division and
the Naval Center for Space Technology, and other agencies for their support by providing the SST product. We also thank the
ECMWF for providing the climate reanalysis data. This work was supported by the National Key Project of China (Nos.
2018YFC1506502, 2018YFC1506602, 2018YFC1506502), Fundamental Research Funds for Central Non-profit Scientific
855 Institution (Grant No. 1610132020014), and Open Fund of State Key Laboratory of Remote Sensing Science (Grant No.
OFSLRSS201910).

References

- Formatted: Font color: Auto

Ackerman, S. A., Holz, R. E., Frey, R., Eloranta, E. W., Maddux, B. C., and McGill, M.: Cloud Detection with MODIS. Part
II: Validation, J. Atmos. Ocean. Technol., 25(7), 1073-1086. <https://doi.org/10.1175/2007JTECHA1053.1>, 2008.
Alerskans, E., Hoyer, J. L., Gentemann, C. L., Pedersen, L. T., Nielsen-Englyst, P., and Donlon, C.: Construction of a climate
860 data record of sea surface temperature from passive microwave measurements, Remote Sensing of Environment, Sens.

- Environ., 236, 11485, <https://doi.org/10.1016/j.rse.2019.111485>, 2020.
- Banzon, V., Smith, T. M., Steele, M., Huang, B., and Zhang, H.-M.: Improved Estimation of Proxy Sea Surface Temperature in the Arctic, J. Atmos. Ocean. Journal of Atmospheric and Oceanic Technology Technol., 37, 341-349, <https://doi.org/10.1175/jtech-d-19-0177.1>, 2020.
- 865 Banzon, V. F., and Reynolds, R. W.: Use of WindSat to Extend a Microwave-Based Daily Optimum Interpolation Sea Surface Temperature Time Series, Journal of Climate, J. Clim., 26, 2557-2562, <https://doi.org/10.1175/jcli-d-12-00628.1>, 2013.
- Barton, I., and Pearce, A.: Validation of GLI and other satellite-derived sea surface temperatures using data from the Rottnest Island ferry, Western Australia, Journal of Oceanography, J. Oceanogr., 62, 303-310, <https://doi.org/10.1007/s10872-006-0055-5>, 2006.
- 870 Benali, A., Carvalho, A. C., Nunes, J. P., Carvalhais, N., and Santos, A.: Estimating air surface temperature in Portugal using MODIS LST data, Remote Sens. Environ., 124, 108-121, <https://doi.org/10.1016/j.rse.2012.04.024>, 2012.
- Bretherton, F. P., Davis, R. E., and Fandry, C. B.: A technique for objective analysis and design of oceanographic experiments applied to MODE-73, Deep-Sea Research and Oceanographic Abstracts, Res. Oceanogr. Abstr., 23, 559-582, [https://doi.org/https://doi.org/10.1016/0011-7471\(76\)90001-2](https://doi.org/https://doi.org/10.1016/0011-7471(76)90001-2), 1976.
- 875 Burnett, W., Harper, S., Preller, R., Jacobs, G., and LaCroix, K.: Overview of Operational Ocean Forecasting in the US Navy Past, Present, and Future, Oceanography, 27, 24-31, <https://doi.org/10.5670/oceanog.2014.65>, 2014.
- Cao, M., Mao, K., Yan, Y., Shi, J., Wang, H., Xu, T., Fang, S., and Yuan, Z.: A New Global Gridded Sea Surface Temperature Data Product Based on Multisource Data (Version 1.0) [Dataset], Zenodo, <http://doi.org/10.5281/zenodo.4419804>, 2021.
- Carton, J. A., and Giese, B. S.: A Reanalysis of Ocean Climate Using Simple Ocean Data Assimilation (SODA), Monthly Mon. Weather Review, Rev., 136, 2999-3017, <https://doi.org/10.1175/2007mwr1978.1>, 2008.
- 880 Carton, J. A., Chepurin, G. A., and Chen, L.: SODA3: A New Ocean Climate Reanalysis, Journal of Climate, J. Clim., 31, 6967-6983, <https://doi.org/10.1175/JCLI-D-18-0149.1>, 2018.
- Castro, S. L., Emery, W. J., and Wick, G. A.: Skin and bulk sea surface temperature estimates from passive microwave and thermal infrared satellite imagery and their relationships to atmospheric forcing, Gayana (Concepción), 68, 96-101, <https://doi.org/10.4067/S0717-65382004000200018>, 2004.
- 885 Castro, S. L., Wick, G. A., and Steele, M.: Validation of satellite sea surface temperature analyses in the Beaufort Sea using UpTempO buoys, Remote Sensing of Environment, Sens. Environ., 187, 458-475, <https://doi.org/https://doi.org/10.1016/j.rse.2016.10.035>, 2016.
- Chao, Y., Li, Z., Farrara, J., McWilliams, J. C., Bellingham, J., Capet, X., Chavez, F., Choi, J.-K., Davis, R., Doyle, J., Frantoni, D. M., Li, P., Marchesiello, P., Moline, M. A., Paduan, J., and Ramp, S.: Development, implementation and evaluation of a data-assimilative ocean forecasting system off the central California coast, Deep-Sea Research Res. Part II: Topical Studies in Oceanography, Top. Stud. Oceanogr., 56, 100-126, <https://doi.org/https://doi.org/10.1016/j.dsr2.2008.08.011>, 2009a.
- 890 Chao, Y., Li, Z., Farrara, J. D., and Hung, P.: Blending Sea Surface Temperatures from Multiple Satellites and In Situ

895 Observations for Coastal Oceans, ~~Journal of Atmospheric and Oceanic Technology~~, *J. Atmos. Ocean. Technol.*, 26, 1415-1426, <https://doi.org/10.1175/2009jtech0592.1>, 2009b.

Chassignet, E. P., Hurlburt, H. E., Metzger, E. J., Smedstad, O. M., Cummings, J. A., Halliwell, G. R., Bleck, R., Baraille, R., Wallcraft, A. J., Lozano, C., Tolman, H. L., Srinivasan, A., Hankin, S., Cornillon, P., Weisberg, R., Barth, A., He, R., Werner, F., and Wilkin, J.: US GODAE Global Ocean Prediction with the HYbrid Coordinate Ocean Model (HYCOM), 900 *Oceanography*, 22, 64-75, <https://doi.org/10.5670/oceanog.2009.39>, 2009.

Dash, P., Ignatov, A., Martin, M., Donlon, C., Brasnett, B., Reynolds, R., Banzon, V., Helen, B., Cayula, J.-F., Chao, Y., Grumbine, R., Maturi, E., Harris, A., Mittaz, J., Sapper, J., Chin, T., Vazquez, J., Armstrong, E., Gentemann, C., and Poulter, D.: Group for High Resolution SST (GHRSSST) Analysis Fields Inter Comparisons: Part2. Near real-time web-based Level 4 SST Quality Monitor (L4-SQUAM), Deep-Sea ~~Research~~ *Res.* Part II ~~Topical Studies in Oceanography~~, *Top.* 905 *Stud. Oceanogr.*, 7, 31-43, 2011.

Donlon, C. J., Minnett, P. J., Gentemann, C., Nightingale, T. J., Barton, I. J., Ward, B., and Murray, M. J.: Toward Improved Validation of Satellite Sea Surface Skin Temperature Measurements for Climate Research, *Journal of Climate*, *J. Clim.*, 15, 353-369, [https://doi.org/10.1175/1520-0442\(2002\)015<0353:TIVOSS>2.0.CO;2](https://doi.org/10.1175/1520-0442(2002)015<0353:TIVOSS>2.0.CO;2), 2002.

Fairall, C. W., Bradley, E. F., Godfrey, J. S., Wick, G. A., Edson, J. B., and Young, G. S.: Cool-skin and warm-layer effects 910 on sea surface temperature, ~~Journal of Geophysical Research~~, *J. Geophys. Res.-Oceans*, 101, 1295-1308, <https://doi.org/10.1029/95jc03190>, 1996.

Gentemann, C. L., Meissner, T., and Wentz, F. J.: Accuracy of Satellite Sea Surface Temperatures at 7 and 11 GHz, ~~Ieee Transactions on Geoscience and~~ *IEEE Trans. Geosci. Remote Sensing*, 48, 1009-1018, <https://doi.org/10.1109/tgrs.2009.2030322>, 2010.

915 Gentemann, C. L.: Microwave sea surface temperatures for climate, https://doi.org/http://www.wcrp-climate.org/conference2011/posters/C14/C14_Gentemann_T45B.pdf, 2011.

Gentemann, C. L.: Three way validation of MODIS and AMSR-E sea surface temperatures, ~~Journal of Geophysical Research~~, *J. Geophys. Res.-Oceans*, 119, 2583-2598, <https://doi.org/10.1002/2013jc009716>, 2014.

Guan, L., and Kawamura, H.: SST Availabilities of Satellite Infrared and Microwave Measurements, ~~Journal of~~ 920 ~~Oceanography~~, *J. Oceanogr.*, 59, 201-209, <https://doi.org/10.1023/A:1025543305658>, 2003.

Guan, L., and Kawamura, H.: Merging satellite infrared and microwave SSTs: Methodology and evaluation of the new SST, *Journal of Oceanography*, *J. Oceanogr.*, 60, 905-912, <https://doi.org/10.1007/s10872-004-5782-x>, 2004.

Han, G., Li, W., Zhang, X., Li, D., He, Z., Wang, X., Wu, X., Yu, T., and Ma, J.: A regional ocean reanalysis system for coastal waters of China and adjacent seas, ~~Advances in Atmospheric Sciences~~, *Adv. Atmos. Sci.*, 28, 682, 925 <https://doi.org/10.1007/s00376-010-9184-2>, 2011.

~~Hersbach, H., Bell, B., Berrisford, P., Hirahara, S., Horányi, A., Muñoz-Sabater, J., Nicolas, J., Peubey, C., Radu, R., Schepers, D., Simmons, D., Soci, C., Abdalla, S., Abellan, X., Balsamo, G., Bechtold, P., Biavati, G., Bidlot, J., Bonavita, M., De Chiara, G., Dahlgren, P., Dee, D., Diamantakis, M., Dragani, R., Flemming, J., Forbes, R., Fuentes, M., Geer, A.,~~

- Haimberger, L., Healy, S., Hogan, R. J., Hólm, E., Janisková, M., Keeley, S., Laloyaux, P., Lopez, P., Lupu, C., Radnoti, G., de Rosnay, P., Rozum, I., Vamborg, F., Villaume, S., Thépaut, J.N.: The ERA5 global reanalysis. *Q. J. Roy. Meteor. Soc.*, 146, 1999–2049, <https://doi.org/10.1002/qj.3803.2020>.
- Hosoda, K., Kawamura, H., and Sakaida, F.: Improvement of New Generation Sea Surface Temperature for Open ocean (NGSST-O): a new sub-sampling method of blending microwave observations, *Journal of Oceanography, J. Oceanogr.*, 71, 205-220, <https://doi.org/10.1007/s10872-015-0272-x>, 2015.
- Hosoda, K., and Sakaida, F.: Global Daily High-Resolution Satellite-Based Foundation Sea Surface Temperature Dataset: Development and Validation against Two Definitions of Foundation SST, *Remote Sensing, Sens.*, 8, 962, <https://doi.org/10.3390/rs8110962>, 2016.
- Høyer, J. L., Karagali, I., Dybkjær, G., and Tonboe, R.: Multi sensor validation and error characteristics of Arctic satellite sea surface temperature observations, *Remote Sensing of Environment, Sens. Environ.*, 121, 335-346, <https://doi.org/10.1016/j.rse.2012.01.013>, 2012.
- Huang, B., Wang, W., Liu, C., Banzon, V., Zhang, H., and Lawrimore, J.: Bias Adjustment of AVHRR SST and Its Impacts on Two SST Analyses, *Journal of Atmospheric and Oceanic Technology, J. Atmos. Ocean. Technol.*, 32, 372-387, <https://doi.org/10.1175/jtech-d-14-00121.1>, 2015.
- Huang, S., Cheng, L., and Sheng, Z.: A method of making up the satellite retrieval data of sea surface temperature, *Scientia Meteorologica Sinica*, 28, 237-243, <https://doi.org/10.3969/j.issn.1009-0827.2008.03.001>, 2008. (in Chinese).
- Kawai, Y., and Wada, A.: Diurnal sea surface temperature variation and its impact on the atmosphere and ocean: A review, *Journal of Oceanography, J. Oceanogr.*, 63, 721-744, <https://doi.org/10.1007/s10872-007-0063-0>, 2007.
- Karagali, I., Høyer, J. L., and Donlon, C. J.: Using a 1-D model to reproduce the diurnal variability of SST, *J. Geophys. Res. Oceans*, 122, 2945-2959, <https://doi.org/10.1002/2016JC012542>, 2017.
- Kilpatrick, K. A., Podesta, G. P., and Evans, R.: Overview of the NOAA/NASA advanced very high resolution radiometer Pathfinder algorithm for sea surface temperature and associated matchup database, *Journal of Geophysical Research, J. Geophys. Res.-Oceans*, 106, 9179-9197, <https://doi.org/10.1029/1999jc000065>, 2001.
- Kilpatrick, K. A., Podestá, G., Walsh, S., Williams, E., Halliwell, V., Szczodrak, M., Brown, O. B., Minnett, P. J., and Evans, R.: A decade of sea surface temperature from MODIS, *Remote Sensing of Environment, Sens. Environ.*, 165, 27-41, <https://doi.org/10.1016/j.rse.2015.04.023>, 2015.
- Li, A., Bo, Y., Zhu, Y., Guo, P., Bi, J., and He, Y.: Blending multi-resolution satellite sea surface temperature (SST) products using Bayesian maximum entropy method, *Remote Sensing of Environment, Sens. Environ.*, 135, 52-63, <https://doi.org/10.1016/j.rse.2013.03.021>, 2013.
- Li, W., Xie, Y., He, Z., Han, G., Liu, K., Ma, J., and Li, D.: Application of the Multigrid Data Assimilation Scheme to the China Seas' Temperature Forecast, *Journal of Atmospheric and Oceanic Technology, J. Atmos. Ocean. Technol.*, 25, 2106-2116, <https://doi.org/10.1175/2008jtech0510.1>, 2008.
- Li, Y., and He, R.: Spatial and temporal variability of SST and ocean color in the Gulf of Maine based on cloud-free SST and

- chlorophyll reconstructions in 2003–2012, *Remote Sensing of Environment, Sens. Environ.*, 144, 98-108, <https://doi.org/https://doi.org/10.1016/j.rse.2014.01.019>, 2014.
- 965 Liu, M., Guan, L., Zhao, W., and Chen, G.: Evaluation of Sea Surface Temperature From the HY-2 Scanning Microwave Radiometer, *IEEE Transactions on Geoscience and Trans. Geosci. Remote Sensing*, 55, 1372-1380, <https://doi.org/10.1109/TGRS.2016.2623641>, 2017a.
- Liu, Y., Chin, T. M., and Minnett, P. J.: Sampling errors in satellite-derived infrared sea-surface temperatures. Part II: Sensitivity and parameterization, *Remote Sensing of Environment, Sens. Environ.*, 198, 297-309, 970 <https://doi.org/10.1016/j.rse.2017.06.011>, 2017b.
- Luo, B., Minnett, P. J., Gentemann, C., and Szczodrak, G.: Improving satellite retrieved night-time infrared sea surface temperatures in aerosol contaminated regions, *Remote Sensing of Environment, Sens. Environ.*, 223, 8-20, <https://doi.org/https://doi.org/10.1016/j.rse.2019.01.009>, 2019.
- Luo, B., Minnett, P. J., Szczodrak, M., Kilpatrick, K., and Izaguirre, M.: Validation of Sentinel-3A SLSTR derived Sea-Surface Skin Temperatures with those of the shipborne M-AERI, *Remote Sensing of Environment, Sens. Environ.*, 244, 111826, 975 <https://doi.org/https://doi.org/10.1016/j.rse.2020.111826>, 2020.
- Martin, A. J., Hines, A., and Bell, M. J.: Data assimilation in the FOAM operational short-range ocean forecasting system: A description of the scheme and its impact, *Quarterly Journal of the Royal Meteorological Society, Q. J. R. Meteorol. Soc.*, 133, 981-995, <https://doi.org/10.1002/qj.74>, 2007.
- 980 [McCoy, D. T., Eastman, R., Hartmann, D. L., and Wood, R.: The Change in Low Cloud Cover in a Warmed Climate Inferred from AIRS, MODIS, and ERA-Interim, J. Clim., 30\(10\), 3609-3620, https://doi.org/10.1175/JCLI-D-15-0734.1, 2017.](https://doi.org/https://doi.org/10.1175/JCLI-D-15-0734.1)
- Minnett, P. J.: Consequences of sea surface temperature variability on the validation and applications of satellite measurements, *Journal of Geophysical Research: J. Geophys. Res.-Oceans*, 96, 18475-18489, <https://doi.org/10.1029/91JC01816>, 1991.
- Minnett, P. J.: Radiometric measurements of the sea-surface skin temperature: the competing roles of the diurnal thermocline and the cool skin, *International Journal of Int. J. Remote Sensing, Sens.*, 24, 5033-5047, 985 <https://doi.org/10.1080/0143116031000095880>, 2003.
- Minnett, P. J., Smith, M., and Ward, B.: Measurements of the oceanic thermal skin effect, *Deep-Sea Research Res. Part II: Topical Studies in Oceanography, Top. Stud. Oceanogr.*, 58, 861-868, <https://doi.org/https://doi.org/10.1016/j.dsr2.2010.10.024>, 2011.
- 990 Minnett, P. J., Alvera-Azcárate, A., Chin, T. M., Corlett, G. K., Gentemann, C. L., Karagali, I., Li, X., Marsouin, A., Marullo, S., Maturi, E., Santoleri, R., Saux Picart, S., Steele, M., and Vazquez-Cuervo, J.: Half a century of satellite remote sensing of sea-surface temperature, *Remote Sensing of Environment, Sens. Environ.*, 233, 111366, <https://doi.org/https://doi.org/10.1016/j.rse.2019.111366>, 2019.
- Ng, H. G., MatJafri, M. Z., Abdullah, K., and Othman, N.: Merging Infrared and Microwave SST data at South China Sea, Proceedings of the 6th International Conference on Computer Graphics, Imaging and Visualization (CGIV 2009), Tianjin, China, 11-14 August 2009, 530-535, 2009.
- 995

- Oke, P. R., Brassington, G. B., Griffin, D. A., and Schiller, A.: The Bluelink ocean data assimilation system (BODAS), *Ocean Modelling*, **Model.**, 21, 46-70, <https://doi.org/10.1016/j.ocemod.2007.11.002>, 2008.
- Peres, L. F., Franca, G. B., Paes, R. C. O. V., Sousa, R. C., and Oliveira, A. N.: Analyses of the Positive Bias of Remotely Sensed SST Retrievals in the Coastal Waters of Rio de Janeiro, *IEEE Transactions on Geoscience and Trans. Geosci. Remote Sensing*, 55, 6344-6353, <https://doi.org/10.1109/tgrs.2017.2726344>, 2017.
- Pimentel, S., Tse, W. - H., Xu, H., Denaxa, D., Jansen, E., Korres, G., Mirouze, I., and Storto, A.: Modeling the near - surface diurnal cycle of sea surface temperature in the Mediterranean Sea, *J. Geophys. Res.-Oceans*, 124, 171-183, <https://doi.org/10.1029/2018JC014289>, 2018.
- Pisano, A., Buongiorno Nardelli, B., Tronconi, C., and Santoleri, R.: The new Mediterranean optimally interpolated pathfinder AVHRR SST Dataset (1982–2012), *Remote Sensing of Environment*, **Sens. Environ.**, 176, 107-116, <https://doi.org/10.1016/j.rse.2016.01.019>, 2016.
- Purdy, W. E., Gaiser, P. W., Poe, G. A., Uliana, E. A., Eissner, T., and Wentz, F. J.: Geolocation and pointing accuracy analysis for the WindSat sensor, *IEEE Transactions on Geoscience and Trans. Geosci. Remote Sensing*, 44, 496-505, <https://doi.org/10.1109/tgrs.2005.858415>, 2006.
- Reynolds, R. W., and Smith, T. M.: Improved Global Sea Surface Temperature Analyses Using Optimum Interpolation, *Journal of Climate*, **J. Clim.**, 7, 929-948, [https://doi.org/10.1175/1520-0442\(1994\)007<0929:IGSSTA>2.0.CO;2](https://doi.org/10.1175/1520-0442(1994)007<0929:IGSSTA>2.0.CO;2), 1994.
- Reynolds, R. W., and Smith, T. M.: A High-Resolution Global Sea Surface Temperature Climatology, *Journal of Climate*, **J. Clim.**, 8, 1571-1583, [https://doi.org/10.1175/1520-0442\(1995\)008<1571:Ahrqss>2.0.Co;2](https://doi.org/10.1175/1520-0442(1995)008<1571:Ahrqss>2.0.Co;2), 1995.
- Reynolds, R. W., Rayner, N. A., Smith, T. M., Stokes, D. C., and Wang, W. Q.: An improved in situ and satellite SST analysis for climate, *Journal of Climate*, **J. Clim.**, 15, 1609-1625, [https://doi.org/10.1175/1520-0442\(2002\)015<1609:Aiisas>2.0.Co;2](https://doi.org/10.1175/1520-0442(2002)015<1609:Aiisas>2.0.Co;2), 2002.
- Reynolds, R. W., Smith, T. M., Liu, C., Chelton, D. B., Casey, K. S., and Schlax, M. G.: Daily High-Resolution-Blended Analyses for Sea Surface Temperature, *Journal of Climate*, **J. Clim.**, 20, 5473-5496, <https://doi.org/10.1175/2007JCLI1824.1>, 2007.
- Sakalli, A., and Basusta, N.: Sea surface temperature change in the Black Sea under climate change: A simulation of the sea surface temperature up to 2100, *International Journal of Climatology*, **Int. J. Climatol.**, 38, 4687-4698, <https://doi.org/10.1002/joc.5688>, 2018.
- Satyamurty, P., and Rosa, M. B.: Synoptic climatology of tropical and subtropical South America and adjoining seas as inferred from Geostationary Operational Environmental Satellite imagery, *Int. J. Climatol.*, 40, 378-399, <https://doi.org/10.1002/joc.6217>, 2020.
- Saunders, P. M.: The Temperature at the Ocean-Air Interface, *Asia-Pac. J. Atmos. Sci.*, 24(3), 269-273, [https://doi.org/10.1175/1520-0469\(1967\)024<0269:TTATOA>2.0.CO;2](https://doi.org/10.1175/1520-0469(1967)024<0269:TTATOA>2.0.CO;2), 1967.
- Shi, Y., Zhou, X., Yang, X., Shi, L., and Ma, S.: Merging Satellite Ocean Color Data With Bayesian Maximum Entropy Method, *IEEE Journal of Selected Topics in Applied Earth Observations and Remote Sensing*, **J. Sel. Top. Appl. Earth**

- [Observ.](https://doi.org/10.1109/JSTARS.2015.2425691), 8, 3294-3304, <https://doi.org/10.1109/JSTARS.2015.2425691>, 2015.
- Smith, T. M., and Reynolds, R. W.: Extended reconstruction of global sea surface temperatures based on COADS data (1854-1997), [*Journal of Climate*, **J. Clim.**](#), 16, 1495-1510, <https://doi.org/10.1175/1520-0442-16.10.1495>, 2003.
- Storkey, D., Blockley, E. W., Furner, R., Guiavarc'h, C., Lea, D., Martin, M. J., Barciela, R. M., Hines, A., Hyder, P., and Siddorn, J. R.: Forecasting the ocean state using NEMO: The new FOAM system, [*Journal of Operational Oceanography*, **J. Oper. Oceanogr.**](#), 3, 3-15, <https://doi.org/10.1080/1755876X.2010.11020109>, 2010.
- Sun, W., Wang, J., Zhang, J., Ma, Y., Meng, J., Yang, L., and Miao, J.: A new global gridded sea surface temperature product constructed from infrared and microwave radiometer data using the optimum interpolation method, [*Acta Oceanologica Sinica*, **Oceanol. Sin.**](#), 37, 41-49, <https://doi.org/10.1007/s13131-018-1206-4>, 2018.
- Taylor, K. E.: Summarizing multiple aspects of model performance in a single diagram, [*Journal of Geophysical Research-Atmospheres*, **J. Geophys. Res.-Atmos.**](#), 106, 7183-7192, <https://doi.org/10.1029/2000jd900719>, 2001.
- Thiebaut, J., Rogers, E., Wang, W. Q., and Katz, B.: A new high-resolution blended real-time global sea surface temperature analysis, [*Bulletin of the American Meteorological Society*, **Bull. Amer. Meteorol. Soc.**](#), 84, 645-656, <https://doi.org/10.1175/bams-84-5-645>, 2003.
- Varela, R., Costoya, X., Enriquez, C., Santos, F., and Gomez-Gesteira, M.: Differences in coastal and oceanic SST trends north of Yucatan Peninsula, [*Journal of Marine Systems*, **J. Mar. Syst.**](#), 182, 46-55, <https://doi.org/10.1016/j.jmarsys.2018.03.006>, 2018.
- Vincent, R. F., Marsden, R. F., Minnett, P. J., Creber, K. A. M., and Buckley, J. R.: Arctic waters and marginal ice zones: A composite Arctic sea surface temperature algorithm using satellite thermal data, [*Journal of Geophysical Research-Oceans*, **J. Geophys. Res.-Atmos.**](#), 113, <https://doi.org/10.1029/2007jc004353>, 2008.
- Wang, Y., Guan, L., and Qu, L.: Merging Sea Surface Temperature Observed by Satellite Infrared and Microwave Radiometers Using Kalma, *Periodical of Ocean University of China*, 40, 126-130, <https://doi.org/10.16441/j.cnki.hdxh.2010.12.019>, 2010. [*\(in Chinese\)*](#).
- Wentz, F. J., Gentemann, C., Smith, D., and Chelton, D.: Satellite measurements of sea surface temperature through clouds, *Science*, 288, 847-850, <https://doi.org/10.1126/science.288.5467.847>, 2000.
- Wick, G. A., Jackson, D. L., and Castro, S. L.: Production of an enhanced blended infrared and microwave sea surface temperature product, IGARSS 2004. 2004 IEEE International Geoscience and Remote Sensing Symposium, Anchorage, AK, USA, 20-24 September 2004, 2004.
- Xie, J., Zhu, J., and Li, Y.: Assessment and inter-comparison of five high-resolution sea surface temperature products in the shelf and coastal seas around China, [*Continental Shelf Research*, **Res.**](#), 28, 1286-1293, <https://doi.org/10.1016/j.csr.2008.02.020>, 2008.
- Xu, S., and Cheng, J.: A new land surface temperature fusion strategy based on cumulative distribution function matching and multiresolution kalman filtering, [*Remote Sens. Environ.*](#), 254, <https://doi.org/10.1016/j.rse.2020.112256>, 2020.
- Xu, F., and Ignatov, A.: In situ SST Quality Monitor (iQuam), [*Journal of Atmospheric and Oceanic Technology*, **J. Atmos.**](#)

- 065 [Ocean. Technol.](https://doi.org/10.1175/JTECH-D-13-00121.1), 31, 164-180, <https://doi.org/10.1175/JTECH-D-13-00121.1>, 2014.
- Zabolotskikh, E. V., Mitnik, L. M., Reul, N., and Chapron, B.: New Possibilities for Geophysical Parameter Retrievals Opened by GCOM-W1 AMSR2, IEEE ~~Journal of Selected Topics in Applied Earth Observations and Remote Sensing~~[J. Sci. Top. Appl. Earth Observ.](https://doi.org/10.1109/JSTARS.2015.2416514), 8, 4248-4261, <https://doi.org/10.1109/JSTARS.2015.2416514>, 2015.
- 070 Zhao, B., Mao, K., Cai, Y., Shi, J., Li, Z., Qin, Z., Meng, X., Shen, X., and Guo, Z.: A combined Terra and Aqua MODIS land surface temperature and meteorological station data product for China from 2003 to 2017, Earth ~~System Science~~[Syst. Sci. Data](https://doi.org/10.5194/essd-12-2555-2020), 12, 2555-2577, <https://doi.org/10.5194/essd-12-2555-2020>, 2020.
- Zhu, J., Zhou, G., Yan, C., Fu, W., and You, X.: A three-dimensional variational ocean data assimilation system: Scheme and preliminary results, Science in China Series D: Earth Sciences, 49, 1212-1222, <https://doi.org/10.1007/s11430-006-1212-9>, 2006-~~(in Chinese)~~.