

GeoDAR: Georeferenced global dam and reservoir dataset for bridging attributes and geolocations

Jida Wang¹, Blake A. Walter¹, Fangfang Yao², Chunqiao Song³, Meng Ding¹, Abu S. Maroof¹, ~~Aote Xin¹~~, Jingying Zhu³, Chenyu Fan³, ~~Aote Xin¹~~, Jordan M. McAlister⁴, Safat Sikder¹, Yongwei Sheng⁵, George H. Allen⁶, Jean-François Crétau⁷, and Yoshihide Wada⁸

¹Department of Geography and Geospatial Sciences, Kansas State University, Manhattan, Kansas, USA
²Cooperative Institute for Research in Environmental Sciences (CIRES), University of Colorado Boulder, Boulder, Colorado
³Nanjing Institute of Geography and Limnology, Chinese Academy of Sciences, Nanjing, China
⁴Department of Geography, Oklahoma State University, Stillwater, Oklahoma, USA
⁵Department of Geography, University of California, Los Angeles (UCLA), Los Angeles, California, USA
⁶Department of Geography, Texas A&M University, College Station, Texas, USA
⁷Laboratoire d'Études en Géophysique et Océanographie Spatiales (LEGOS), Centre National d'Études Spatiales (CNES), Toulouse, France
⁸International Institute for Applied Systems Analysis (IIASA), Laxenburg, Austria

Correspondence to: Jida Wang (jidawang@ksu.edu)

Abstract. Dams and reservoirs are among the most widespread human-made infrastructure on Earth. Despite their societal and environmental significance, spatial inventories of dams and reservoirs, even for the large ones, are insufficient. A dilemma of the existing georeferenced dam datasets is the polarized focus on either dam quantity and spatial coverage (e.g., GOODD) or detailed attributes for a limited dam quantity or region (e.g., GRaND and national inventories). One of the most comprehensive datasets, the World Register of Dams (WRD) maintained by the International Commission on Large Dams (ICOLD), documents nearly 60,000 dams with an extensive suite of attributes. Unfortunately, ~~the~~ WRD records ~~are provide~~ ~~no geographic coordinates~~~~not georeferenced~~, limiting the benefits of their attributes for spatially explicit applications. To bridge the gap between attribute accessibility and spatial explicitness, we introduce the Georeferenced global Dam And Reservoir (GeoDAR) dataset, created by utilizing online geocoding API and multi-source inventories. We release GeoDAR in two successive versions (v1.0 and v1.1) at <https://doi.org/10.6084/m9.figshare.13670527>. GeoDAR v1.0 holds ~~21,051~~~~22,743~~ dam points georeferenced from WRD, whereas v1.1 consists of a) ~~23,680~~~~24,978~~ dam points after a ~~careful~~ harmonization between GeoDAR v1.0 and GRaND and b) ~~20,214~~~~21,576~~ reservoir polygons retrieved from high-resolution water masks. Due to geocoding challenges, GeoDAR spatially resolved ~~~~~40% of the records in WRD which, however, comprise over 90% of the total reservoir area, catchment area, and reservoir storage capacity. GeoDAR does not release the proprietary WRD attributes, but upon individual user requests we ~~can~~~~may provide assistance~~ ~~assist~~ in associating GeoDAR spatial features with the WRD attribute information that users have acquired from ICOLD. ~~Despite this limit, GeoDAR~~ ~~With~~ a dam quantity triple that of GRaND, ~~GeoDAR~~ significantly enhances the spatial details of smaller but more widespread dams and reservoirs, and complements other existing global dam inventories. Along with its extended attribute

accessibility, GeoDAR is expected to benefit a broad range of applications in hydrologic modelling, water resource management, ecosystem health, and energy planning.

1 Introduction

Since around the 1950s, the world has seen an unprecedented boom in large dam construction as a response to the ever-growing human demands for water and energy (Chao et al., 2008; Wada et al., 2017). Today, dams and their impounded reservoirs are ubiquitous across many global basins, providing multiple services that range from hydropower and flood control to water supply and navigation (Belletti et al., 2020; Biemans et al., 2011; Boulange et al., 2021; Deöll et al., 2009; Grill et al., 2019). These benefits were, however, often gained at the costs of fragmenting river systems, submerging arable lands, displacing population, and disturbing climate regimes (Carpenter et al., 2011; Cretaux et al., 2015; Degu et al., 2011; Grill et al., 2019; Latrubesse et al., 2017; Nilsson and Berggren, 2000; Tilt et al., 2009; Vööresmärtty et al., 2003; Wang et al., 2017).

Despite such environmental and societal significance, our spatial inventory of global dams and reservoirs, even for the large ones (such as those with a surface area $>1 \text{ km}^2$), has been insufficient. We still lack a thorough and authoritative dataset that documents both geographic coordinates (latitude and longitude) and standard attributes (e.g., purpose, reservoir storage capacity, and hydropower capacity) of the existing large dams. One of the most comprehensive datasets, the World Register of Dams (WRD), is regularly updated by the International Commission on Large Dams (ICOLD; <https://www.icold-cigb.org>), a non-governmental organization dedicated to the global sharing of professional dam/reservoir information. The recent version of ICOLD WRD documents nearly 60,000 “large” dams, defined as those with a wall higher than 15 m or between 5 to 15 m but with a reservoir storage greater than 3 million m^3 (mcm). These WRD records are considered to be “complete” to the extent of contributions from willing nations and water authorities (Wada et al., 2017).

While ICOLD WRD provides more than 40 attributes (e.g., reservoir storage capacity, dam height, and reservoir purpose, and political divisions), the dam locations are, unfortunately, either not georeferenced or publically available inaccessibly. Despite the availability of many essential attributes, missing geographic coordinates has severely limited the applications of WRD, including for hydrological modelling and hydropower planning (Yassin et al., 2019) which require the dam records to be spatially explicit. This dilemma may be partially resolved by using georeferenced regional registers such as the United States National Inventory of Dams (US NID; <https://nid.sec.usace.army.mil>) and from the Canadian Dam Association (<https://www.cda.ca>). Nevertheless, such regional registers are not always publicly available, especially in developing nations where dam construction is still booming (Zarfl et al., 2015).

Other global dam and reservoir datasets that are georeferenced, however, often lack essential attributes. An example is the recently published Global geOreferenced Database of Dams (GOODD V1) (Mulligan et al., 2020), which contains 38,667

65 dam points digitized from Google Earth imagery and their associated catchments delineated from digital elevation models
(DEMs). Despite this dam quantity, GOODD provides no other attribute information. Another inventory, the Global River
Obstruction Database (GROD) (Kornei, 2020; Whittemore et al., 2020), located more than 35,000 flow obstructions along
rivers wider than 30 m as mapped in the Global River Width from Landsat (GRWL) database (Allen and Pavelsky, 2018).
The current attributes are limited to obstruction types such as locks, weirs, and multiple types of dams. In addition, GROD is
tailored for the forthcoming Surface Water and Ocean Topography (SWOT) satellite mission which is designed to observe
70 river reaches wider than 50–100 m (Biancamaria et al., 2016). While these rivers are sufficiently captured by GRWL, the
obstruction infrastructure identified along the river mask in GRWL excludes many large dams on rivers narrower than 30 m.
In the US, for instance, there are at least 5170 NID-registered dams higher than 15 m (i.e., large dams according to ICOLD
criteria), but less than 8% of these dams intersect with GRWL (i.e., located on rivers wider than 30 m).

Among the few global dam/reservoir datasets that provide both georeferenced locations and essential attributes, are the
75 United Nations Food and Agricultural Organization (FAO) AQUASTAT (Li et al., 2011) and the Global Reservoir and Dam
database (GRanD) (Lehner et al., 2011). GRanD was constructed by harmonizing AQUASTAT and a wide range of regional
gazetteers and inventories. Its latest version, v1.3, contains 7320 dams as well as their reservoir boundaries and
approximately 50 attributes, with a cumulative storage capacity of 6881 km³. Since its publication, GRanD has been applied
extensively by a variety of studies, although its focus is on the world’s largest dams (e.g., >0.1 km³) and its quantity (7320
80 dams) is **only** a fraction of the 59,000 dams documented in WRD. A spatially resolved inclusion of additional large dams,
such as those in compliance with the ICOLD definition, has been increasingly desired by the hydrology community and
encouraged by growing collaborations from multiple disciplines such as biogeochemistry, ecology, energy planning, and
infrastructure managements (Belletti et al., 2020; Boulange et al., 2021; Grill et al., 2019; Lin et al., 2019; Wada et al.,
2017).

85 **Table 1.** GeoDAR product versions and components

Version	Sources	Components	Count	Total-reservoir storage-capacity-(km ³)	Total-reservoir Area-(km ²)
v1.0	ICOLD	Dam-points	21,051	6252.1	—
v1.1	Harmonized ICOLD-GRanD	Dam-points	23,680	7486.1	—
		Reservoir-polygons	20,214	7168.4	492,068.3

Note: Total-reservoir areas for dam-points are not reported because reservoir area values are often missing in ICOLD-WRD.

Here, we present the initial versions of the Georeferenced global Dam And Reservoir dataset, or GeoDAR. We built
GeoDAR by utilizing multi-source dam and reservoir inventories and the Google Maps geocoding API. Our goal is to tackle
the limitations of existing datasets by offering a dam inventory that is both spatially resolved and has an extended ability to

90 access important attributes. As summarized in Table 1, our GeoDAR product includes two successive versions. GeoDAR
v1.0 is essentially a georeferenced subset of ICOLD WRD. It contains ~~more than 20,000~~nearly 23,000 dam points, each
indexed by an ~~encrypted~~ identifier (ID) that is associated with a WRD record, allowing for the potential retrieval of all its
40+ proprietary attributes from ICOLD. GeoDAR v1.1 consists of a) nearly 25,000 dam points which harmonized as in v1.0
and GRanD ~~except that they were further harmonized with GRanD~~ for an ~~improved~~expanded inclusion of the largest dams,
95 and b) the reservoir boundaries for most (86%) of the dam points. ~~For proprietary reasons, neither version releases any WRD~~
~~attributes, but upon individual request we may decrypt the ICOLD “international code” of each GeoDAR feature, through~~
~~which the user can match attributes from the WRD website ([https://www.icold-](https://www.icold-cigb.org/GB/world_register/world_register_of_dams.asp)~~
~~[cigb.org/GB/world_register/world_register_of_dams.asp](https://www.icold-cigb.org/GB/world_register/world_register_of_dams.asp))~~ (see Section 3.3 and Section 4 for details). Due to geocoding
challenges, GeoDAR v1.0 spatially resolved about 40% of the individual dams in WRD. However, these georeferenced
100 locations were quality controlled, and after the harmonization with~~supplementation by~~ GRanD, v1.1 captures a total storage
capacity of 74867297 km³, a magnitude comparable to the full storage capacity of ~~ICOLD~~ WRD. While GeoDAR v1.1 can
be considered as a version that supersedes v1.0, the latter was georeferenced independently from GRanD, and we opted to
release both versions so that users have the flexibility to choose whichever works better for their cases and potentially
improve the harmonization.
105 ~~For proprietary reasons, neither GeoDAR version releases any WRD attributes. Instead~~However, we offer~~provide an option~~
~~for users if they need to acquire access the attributes: leave the attribute accessibility as an option for users:~~ upon individual
request we may assist the user who has purchased WRD ([https://www.icold-](https://www.icold-cigb.org/GB/world_register/world_register_of_dams.asp)
[cigb.org/GB/world_register/world_register_of_dams.asp](https://www.icold-cigb.org/GB/world_register/world_register_of_dams.asp)) to associate the GeoDAR ID with the ICOLD “international code”,
through which WRD attributes can be linked to each GeoDAR feature (see Sections 3.3 and 7 for more details). Even
110 without the proprietary WRD attributes, GeoDAR offers one of the most extensive and spatially-resolved global inventory of
~~some of the finest spatial details of global dams~~ and reservoirs ~~dataset~~, which may benefit a variety of applications in
hydrology, hydropower planning, and ecology.

Table 1. GeoDAR product versions and components

<u>Version</u>	<u>Description</u>	<u>Component</u>	<u>Acquisition sources/methods</u>	<u>Count</u>	<u>Storage capacity (km³)</u>	<u>Reservoir polygon area (km²)</u>
<u>v1.0</u>	<u>Georeferenced ICOLD</u>	<u>Dam points</u>	<u>Geo-matched via regional registers</u>	<u>13,260</u>	<u>1309.3</u>	<u>---</u>
			<u>Geocoded via Google Maps API</u>	<u>9350</u>	<u>1226.2</u>	<u>---</u>
			<u>Supplemented by Wada et al. (2017)</u>	<u>133</u>	<u>3900.0</u>	<u>---</u>
			<u>Total</u>	<u>22,743</u>	<u>6435.5</u>	<u>---</u>
<u>v1.1</u>	<u>Harmonized ICOLD and GRanD</u>	<u>Dam points</u>	<u>GeoDAR v1.0 alone</u>	<u>17,732</u>	<u>428.3</u>	<u>---</u>
			<u>GRanD v1.3 and GeoDAR 1.0</u>	<u>5011</u>	<u>5995.5</u>	<u>---</u>
			<u>GRanD v1.3 and other ICOLD</u>	<u>1425</u>	<u>604.7</u>	<u>---</u>
			<u>GRanD v1.3 alone</u>	<u>810</u>	<u>268.0</u>	<u>---</u>

Formatted Table

	Total	24,978	7296.6	---
	GRanD v1.3 reservoirs	7181	6801.3	472,379.6
Reservoir polygons	HydroLAKES v1.0	7673	223.9	16,677.6
	UCLA Circa-2015 Lakes	6722	92.1	4802.9
	Total	21,576	7117.4	493,860.2

115 **2 Methods**

2.1 Definitions and overview[Georeferencing rationale](#)

We aim to georeference (i.e., acquire the latitude and longitude of) each dam listed in ICOLD WRD, by using the nominal location (i.e., descriptive information) available in the WRD attributes. Examples of the attributes that are important for georeferencing include the names of the dam and reservoir, the administrative divisions the dam is affiliated with, and the name of the impounded river. Using such attribute information, spatial coordinates of a dam may be either a) queried from an existing register or inventory where dam records were already georeferenced and verified, or b) estimated through a geocoding service that can convert [nominal locations](#)~~descriptive addresses~~ to numeric spatial coordinates. Our preference was the former when possible ~~for the reason of to~~ [optimizing](#) the georeferencing accuracy.

2.2 Method overview

125 The schematic procedure of GeoDAR production is illustrated in Fig. 1. We started ~~with~~[by](#) removing duplicate records from the 59,071 dams listed in the original ICOLD WRD (accessed in March 2019). Here “duplicates” are defined as the dams that are either a) repeatedly recorded with identical (or highly similar) attribute information or b) different dam structures but associated with the same reservoir. Examples of the second scenario include a reservoir’s primary dam and secondary dyke such as the Boonton Dam and its associated Parsippany Dike (40.884° N, 74.408° W) in New Jersey and multiple controls
130 for one reservoir such as Veersedam and Zandkreekdam for Veerse Meer (51.549° N, 3.678° E) in the Netherlands. Although “duplicates” in this scenario refer to different dam bodies, including them could lead to double or multiple counting of the ~~same reservoir~~ storage capacity [of the same reservoir](#). After removing the identified duplicates, the cleaned WRD contains ~~56,783~~[56,850](#) unique dams/reservoirs with a total water storage capacity of ~~7388.37~~[334](#) km³ (based on WRD attribute values). [Unless otherwise described, the ICOLD WRD mentioned in the following text refers to the version after duplicate removal.](#) We acknowledge that ~~although we tried to be as careful as possible~~[owing to the challenges of lacking explicit spatial information and occasional attribute errors in WRD](#), our duplicate removal ~~is not perfect and may not be always accurate or thorough~~[have misidentified or missed some duplicate dams](#).

Formatted: Space After: Auto

We then compared the unique ICOLD WRD records against a collection of georeferenced dam registers we acquired from regional water authorities and agencies. When the attribute information of a WRD dam matched that in a regional register, the spatial coordinates from the latter were “borrowed” by the WRD record. We call this process “geo-matching”, which resulted in the georeferencing of 41,859 WRD dams. For the remaining dams in WRD, we applied the alternative approach “geocoding”, which transforms a nominal location (such as the dam or reservoir address formulated by inputting ICOLD attribute information) to a pair of spatial coordinates, the available ICOLD attribute information. The tool we used to implement geocoding was the Google Maps geocoding API (<http://developers.google.com/maps>). The geocoding process successfully retrieved the spatial coordinates of another 91,499 WRD dams. The combined output from both geo-matching and geocoding were next collated with the spatial coordinates and reservoir storage capacities of 124,133 WRD dams larger than 10 km³ as documented in Wada et al. (2017). These processes resulted in GeoDAR v1.0, a total of 21,051 georeferenced WRD dam points with an accumulative storage capacity of 625,264 km³ (accounting for more than 80% of that in ICOLD WRD). The Venn diagram in Fig. 2a provides an overview of the logical relations among the georeferencing sources and methods for GeoDAR v1.0.

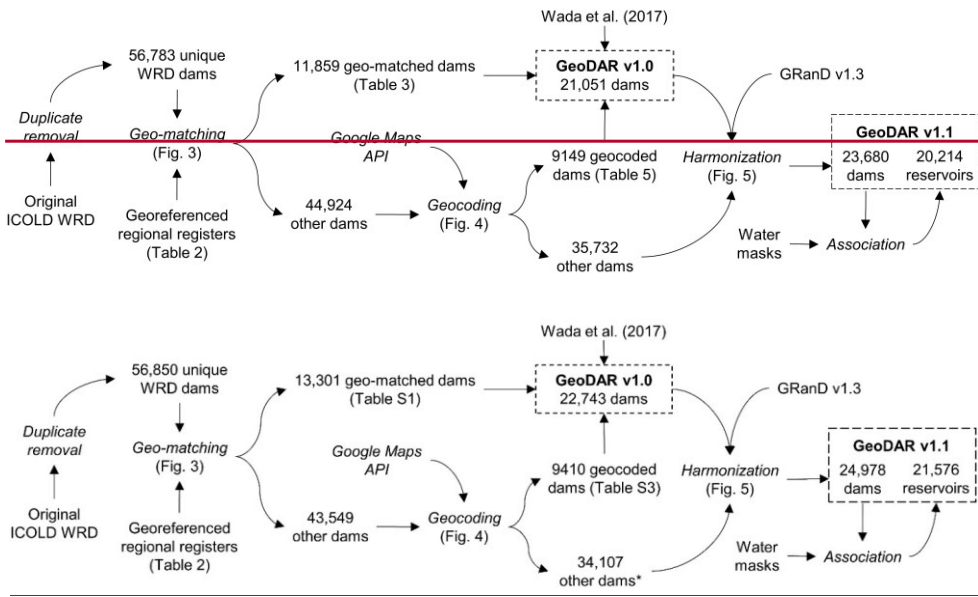
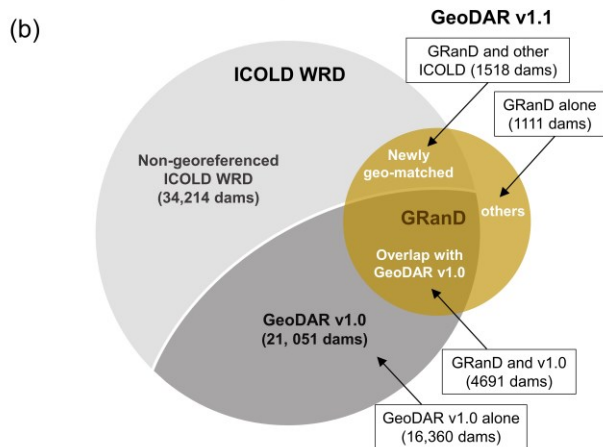
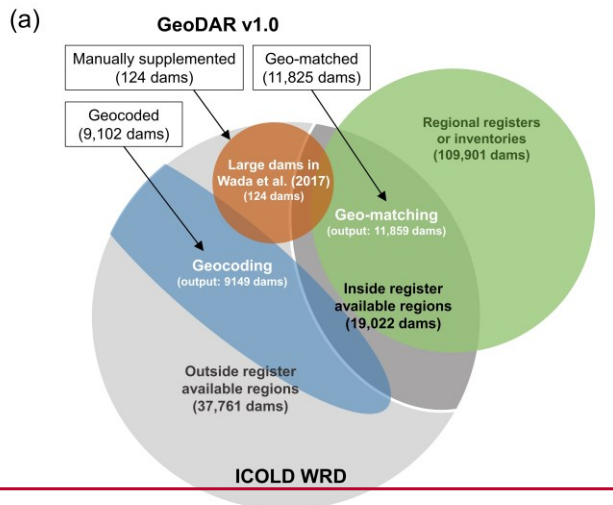


Figure 1. Schematic flowchart of GeoDAR production. Text in roman indicates applied or produced datasets, and text in italics indicates methods or procedures. The number noted by asterisk excludes 27 dams that are also in Wada et al. (2017).

155 To further improve our spatial inventory of the world's largest dams, we performed a harmonization between the dam points
in GeoDAR v1.0 and GRanD v1.3. ~~The~~Through harmonization, we aimed ~~at~~ mergeing both datasets, removeing any
duplicates ~~between them~~, and ~~when possible, associating~~build asoeiation between each new dams supplemented by GRanD
~~andwith~~ the corresponding WRD records. This process identified another ~~26292235~~ dam points, including ~~15181425~~
associated with ~~ICOLD~~-WRD ~~butwhich were~~ not georeferenced ~~suecessfully~~ in GeoDAR v1.0. With removal of duplicates,
160 this harmonization led to a total number of ~~23,68024,978~~ georeferenced dam points, with an accumulative storage capacity
of ~~74867297~~ km³ (comparable to that ~~73887334~~ km³ in the original WRD). An overview of this harmonization process is
illustrated by the Venn diagram in Fig. 2b. Finally, the reservoir polygons for each of the georeferenced dams were retrieved
as thoroughly as possible from three global water body datasets: GRanD v1.3 reservoirs (Lehner et al., 2011), HydroLAKES
v1.0 (Messenger et al., 2016), and the Landsat-based UCLA Circa-2015 Lake Inventory (Sheng et al., 2016). These ~~nearly~~
165 ~~245,000~~ ~~or so~~ dam points (~~georeferenced from WRD and supplemented by GRanD~~) and their associated reservoir polygons
constituted GeoDAR v1.1. Details of ~~all~~ ~~production~~ processes and their Quality Assurance and Quality Control (QA/QC) are
included in the following method sections.



175 2.23 Geo-matching regional registers

The ICOLD WRD was a joint contribution from more than 100 member nations, some of which also release detailed and publicly accessible dam registers that have been georeferenced. These regional/local registers, with reliable spatial coordinates already provided for each dam, were our preferred sources for georeferencing WRD. Since this type of register is not available for most countries, we searched multiple water authority and project websites, and collected seven georeferenced regional registers or inventories that are open access. Their names, sources, and numbers of documented dams are summarized in Table 2.

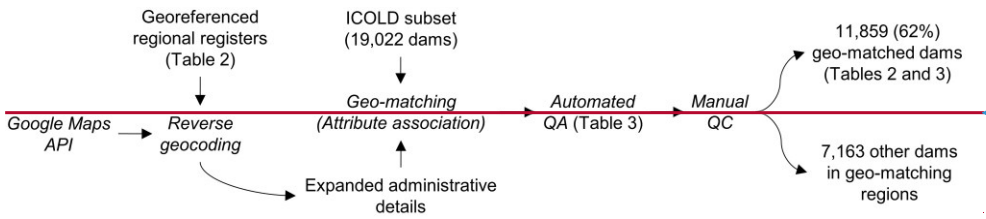
Table 2. Regional registers or inventories for geo-matching and the validation of geocoding.

Region	Register/Source	Dam count		
		Regional register	ICOLD WRD	Geo-matched
Geo-matching				
Brazil	RSB (SNISB, 2017)	24,09723,630	1364 1347	675686 (4951 %)
Cambodia	ODC (2015)	73	7	3 (43%)
Canada	CanVec (NRC, 2017)	843	669 651	427437 (6467 %)
Europe	MARS (2017)	5,043	6654 6675	32934033 (4960 %)
Myanmar	ODM (2018)	254	33	1314 (3942 %)
South Africa	LRD (DWS, 2019)	5,592	1112 1105	777848 (7077 %)
United States	NID (USACE, 2013 2018)	73,9999 1,213	91838886	66717280 (7382 %)
Total		109,904 126,648	19,022 18,704	11,859 13,301 (6271 %)
Geocoding validation				
China	NPCGIS (accessed 2021 0)	Not counted	23,839 23,783	---
India	NRLD (accessed 2020 202019)	5701 5723	5096 5074	---
Japan	JDF (accessed 2021 0)	2421 2349	3117 3089	---

Register/source acronyms: Relatório de Segurança de Barragens (RSB, Dams Safety Report of Brazil), Open Development Cambodia (ODC), Managing Aquatic ecosystems and water Resources under multiple Stress project (MARS), Open Development Myanmar (ODM), List of Registered Dams (LRD) of South Africa, National Inventory of Dams (NID) of US, National Platform for Common Geospatial Information Services (NPCGIS) of China, National Register of Large Dams (NRLD) of India, and Japan Dam Foundation (JDF). Regional inventories were collected with partial reference to the Global Dam Watch project (<http://globaldamwatch.org>). Dam numbers for regional registers are based on the records with valid geographic coordinates, and numbers for ICOLD WRD are based on the records after duplicate removal. NID records was accessed through the R-package compiled by Goteti and Stachelek (2016). See full registers, references, and download links in the reference list.

These seven registers/inventories cover Brazil, Canada, the United States, ~~31 most~~ European countries (including part of Russia), South Africa, and part of Southeast Asia (~~Cambodia and Myanmar~~), with a total dam count of ~~nearly more than 110,000~~126,000. Besides spatial coordinates, each of these registers also provides attributes for their documented dams, which were required by the geo-matching process. While other dam inventories could be available, our geo-matching effort for GeoDAR v1.0 was focused on these collected ones. However, we referred to additional registers from China, India, and Japan (Table 2) for the validation of our WRD geocoding (see Validation). For these additional regional registers, it was either ~~difficult~~inconvenient to bulk-download the dam records, or we were legally restricted from releasing their dam coordinates, ~~as was the case for China, and~~ therefore, we only used these registers for the purpose of validation.

The procedure of geo-matching is illustrated in Fig. 3. Given each regional register, our goal was to find its matching records from the subset of ICOLD WRD for the same region, by cross-checking value similarities for several key attributes between the two datasets. On one hand, the compared attributes must be mutually available in both datasets. On the other hand, the attributes should cover various themes so that in combination, they are able to disambiguate records that represent different dams but may coincide in certain attributes. Taking both requirements into account, the key attributes used include the dam and reservoir names, multiple levels of administrative/political divisions for the dam, and the dam’s completion year. The river on which the dam was constructed was also considered for all regions except Cambodia as the register does not contain such an attribute. For each of the key attributes, we considered values in WRD and the regional register agreeing with each other if the similarity score between the value sequences exceeded about 85% (meaning that there are more than 8 pairs of identical elements, with consideration of their orders, between two 10-element string sequences). This similarity threshold tolerated minor variations in spelling that often occur among different data sources. If an agreement was not reached between the two full sequences (e.g., “Maharashtra Pradesh” and “Maharashtra”), the similarity was then tested between the main subsets of the sequences in order to increase the matching success.



Formatted: Centered

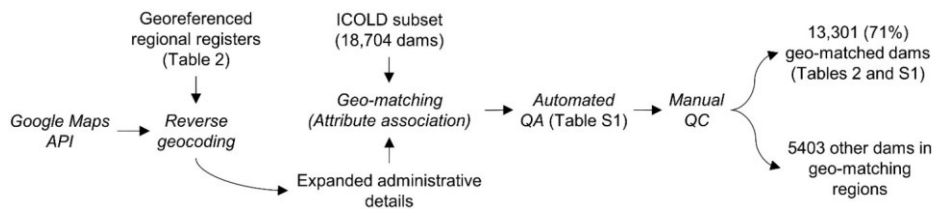


Figure 3. Schematic procedure of geo-matching regional registers. Text in roman indicates applied or produced datasets, and text in italics indicates methods or procedures.

One of the geo-matching challenges was that the levels of political/administrative divisions are not always comparable or consistent between WRD and the regional registers. In WRD, the divisions were provided at the levels of country, state/province, and the nearest town/city, which are inconsistent with some of the registers. For example, the register for Brazil (Dams Safety Report in 2017) provides the finest division at the county level, whereas the European inventory (from the MARS (Managing Aquatic ecosystems and water Resources under multiple Stress) project) documents no divisions below the national level. To improve the feasibility in division comparison, we performed a “reverse geocoding” for each georeferenced regional register using the Google Maps geocoding API. Opposite to a regular (or the so-called “forward”) geocoding which converts a nominal location text address to numeric spatial coordinates, process, this reverse geocoding converted the documented spatial coordinates of each dam documented in the register, to a parsed address that contains with an array of administrative divisions at consecutive administrative levels. These multi-level divisions and subdivisions were appended to the original regional registers (Fig. 3), thus enabling a more flexible and complete comparison with the WRD attributes and thus an increased success rate of geo-matching.

We considered a WRD record matched with a regional record if their agreements on the key attributes warranted a reasonable confidence that the two are the same dam. In principle, a high confidence would require a unanimous agreement on all key attributes. However, this ideal scenario was often unnecessary and sometimes impossible. One of the reasons is that the key attributes do not always have valid values. In WRD, for instance, the values of “nearest town” for nearly all (>99%) US dams are null. While this attribute is valid for most other dams, the nearest town/city in WRD is not necessarily the division that administrates or contains the dam as is the case in the township in some regional registers. Another reason is that our collected multi-source datasets were not collated by a universal standard. As a result, inherent discrepancies of the attribute definitions and/or values may exist among the datasets. One example is the dam’s “completion year”, which could be ambiguous between the year when the dam construction was concluded and the year when the dam operation was initiated or commissioned. These two definitions do not necessarily lead to the same year. To address such inconsistencies, we defined a baseline scenario that required any pair of matched WRD and regional records to agree on the following:

- 240
- Dam or reservoir name,
 - Country, state/province if values are valid, and
 - At a minimum, (a) either completion year or river if the town/city values disagree or are invalid, or (b) town/city when completion years and rivers do not both disagree.

Formatted: Space After: Auto, Bulleted + Level: 1 +
Aligned at: 0.25" + Indent at: 0.5"

245 In compliance with this baseline, [we implemented an automated QA to filter out any matching errors and optimize the matching accuracy for each WRD record](#). In brief, any match that did not meet the baseline scenario was removed, and the ~~remaining~~[we further ranked our](#) geo-matched ~~pairs~~[WRD records were ranked according to their specific scenarios of attribute agreements to three discrete](#) general QA levels (M1, M2, and M3 ~~as explained in Supplementary Table S1~~) [according to the quality of attribute agreements \(see definitions in Supplementary Table S1\)](#). As the QA ~~ranklevel~~ increases (from M3 to M1), agreements on the key attributes improved from the baseline to the ideal scenario (i.e., a unanimous agreement). [If a WRD record was matched to more than one records in the regional register, the QA selected the match with the best rank](#). This way, each georeferenced WRD record was only matched to the best-ranking regional record. Users may refer to the provided QA ~~levels~~[ranks](#) as an ~~measure~~[indicator](#) of the general reliability of each geo-matched location. [It is worth noting that our geo-matching purpose was to acquire the spatial coordinates of any matched WRD record from the regional register, rather than collating or correcting any existing attribute values](#). In other words, some of the WRD and ~~regional records may actually refer to the same dams but were matched unsuccessfully due to major discrepancies between their attribute values~~. This led to a conservative success rate in our automated geo-matching. [More technical details about QA are given in our Python scripts at https://github.com/jida-wang/georeferencing-ICOLD-dams-and-reservoirs](#).

260 Following the automated ~~QA~~[geo-matching process](#), we performed a manual QC to ~~reassure the accuracy of the geo-matching results~~. ~~verify whether the attribute values in the matched WRD records in fact agreed with those in the source regional registers~~. It is worth noting that our geo-matching purpose was to acquire the spatial coordinates of any matched WRD record from the regional register, rather than collating or correcting any existing attribute values. In other words, some of the WRD and regional records may actually refer to the same dams but were not matched ~~unsucccessfully~~ due to major discrepancies between their attribute values. This led to a conservative success rates in our automated geo-matching. ~~In addition,~~[We went through each geo-matched WRD record to examine whether its attributes \(e.g., dam/reservoir name, administrative locations, river name, construction year, and storage capacity\) indeed agreed with those of the regional source](#). If an evident discrepancy was identified, the match was removed from the final result. Although we made every endeavour to be as rigorous as possible, remnant matching errors are still possible due to the challenges of incompleteness and intrinsic errors in the attribute information (refer to Section 4 for accuracies). ~~Our manual QC identified that about ~34% error in of the geo-matched WRD records, most of which came from QA ranklevel M3, showed evident matching errors and were therefore removed~~. [After removing these errors a result, our](#) the geo-matching process concluded with a total of ~~11,859~~[113,301](#) WRD records georeferenced (Fig. 3), including ~~27923275, 65577039, and 25102987~~ for QA ~~ranklevels~~ M1,

M2, and M3, respectively (Supplementary Table 3S1). The reason why QA level M2 dominates the total quantity is the missing WRD value of “nearest town” for US dams, which explains about 80% out of the 6557 level-M2 records. The success rate, i.e., the number of geo-matched dams as a percentage of the number of WRD records, varies from about 40% in Southeast Asia to about 80.70% or more in South Africa and US (Table 2), with an overall success of 62.71% in all geo-matched regions (Fig. 3).

Table 3. Quality Assurance and Quality Control (QA/QC) for geo-matching (11,859 final dams in total):

Quality-level	Name	Country	State/Province	Town/City	Year	River
M1 2792 dams	Y	Y	Y/na	Y	Y	Y
	Y	Y	Y/na	Y	Y	N/na
	Y	Y	Y/na	Y	N/na	Y
M2 6557 dams	Y	Y	Y	Y	na	na
	Y	Y	Y	N/na	Y	Y
	Y	Y	na	Y	na	na
M3 2510 dams	Y	Y	na	N/na	Y	Y
	Y	Y	Y/na	N/na	Y	N/na
	Y	Y	Y/na	N/na	N/na	Y

Note: In column “Quality level”, the initial letter “M” symbolizes QA levels for geo-matching (as opposed to “C” for geocoding in Table 5). “Y” indicates that attribute values in WRD and the regional register agree with each other, “N” represents disagreement, and “na” indicates attribute values are not available in either or both datasets. Scenarios with “River” values as “Y” do not apply to Cambodia as river names are missing in the regional register/inventory.

2.3.4 Geocoding via Google Maps

The subset of ICOLD WRD that was not geo-matched includes the remaining 7,163,540 dams in the geo-matched regions and the entire 37,761,381,146 dams in the rest parts remaining other regions of the world (Fig. 2a). For these dams, we applied the Google Maps geocoding API, a sophisticated cloud-based geocoding service, to retrieve the spatial coordinates of each dam as thoroughly and accurately as possible. To do so, we designed a recursive geocoding procedure that implemented three primary steps on each dam: forward geocoding, reverse geocoding, and QA filtering. The purpose of each of the steps and their logical relations are illustrated in Fig. 4.

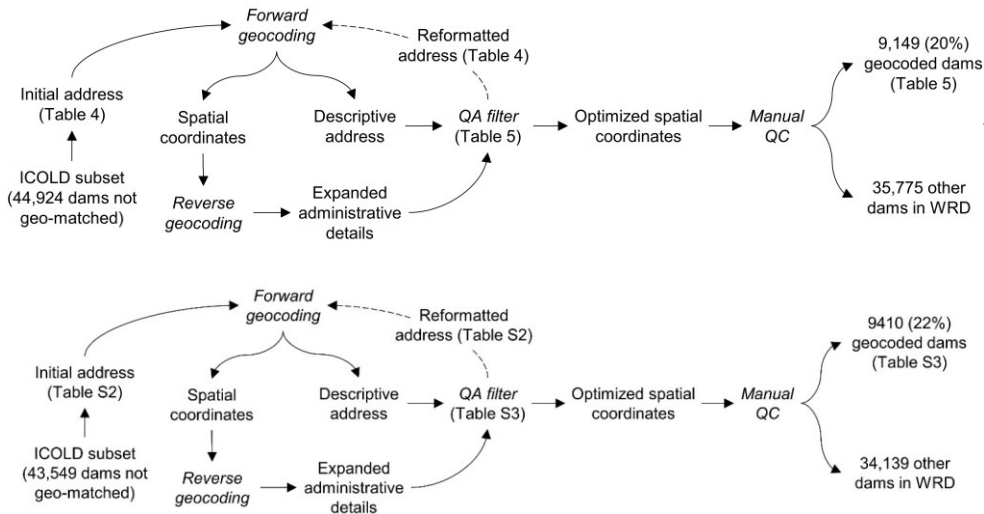


Figure 4. Schematic procedure of geocoding using Google Maps API. Text in roman indicates applied or produced datasets, and text in italics indicates methods or procedures. The dashed line arrow indicates that this step is not always necessary.

In brief, the forward geocoding (see Section 2.1 for definition) input used the text address of each dam as the input, which we formatted by concatenating the WRD attribute values, to output query the latitude and longitude of the dam from Google Maps. The WRS attributes used for address formatting include dam name, reservoir name, statement/province, and country. “Nearest town” was excluded because it is not always the township administrating the dam or reservoir. To approach the optimal geocoding result, these attributes were arranged into several single line address strings which could result in different geocoding results (see Supplementary Text and Supplementary Table S2). Together with the spatial coordinates, the forward geocoding also outputs a descriptive Google Maps address associated with the coordinates, which was parsed to individual components for the location of the coordinates. The output address components (e.g., including feature name, street name, and political divisions). These output address components, in return, provided valuable information for QA: if the geocoded coordinates are correct, the associated output address components should agree well with those of the WRD input. However, we noticed that address components from forwarding geocoding are often limited in terms of division levels. To complement this limitation, we utilized reverse geocoding (see Section 2.2 for definition) to convert the coordinates from forward geocoding to an updated address that had all with possible more complete division levels. The address components from both forward and reverse geocoding were combined and hereafter referred to as the “output address”.

310 Like geo-matching, we implemented a QA process to filter out erroneous coordinates. In principle, if the two sets of address components (from the WRD input and the geocoding output) agreed with each other, the geocoded coordinates were considered correct; otherwise, we started over from the forward geocoding by inputting a reformatted WRD address (see Table 4). This process repeated until the agreement between the input and output addresses reached the best possible QA level (see Table 5). More details are explained below.

315 Specifically, to approach the optimal geocoding result, we arranged the attribute values of each WRD record into different address formats as potential inputs to forward geocoding. The address formats and their preference order are listed in Table 4. The utilized key attributes included dam name, reservoir name, statement/province, and country. The attribute “nearest town” was excluded because it is not always the township that administrates the dam and including it might lead to misplaced or void coordinates. To comply with the address standard in Google Maps, the attributes were arranged from the most specific to general components, i.e., starting with the dam/reservoir name followed by increasing levels of political divisions. Variations among the formats were then introduced by a) iterating “dam”, “reservoir”, and “lake” as the title of the dam or reservoir name and b) including or excluding each of the division levels. Through experimentation, we observed that 320 these variations could indeed make a difference for the output coordinates. Although the most effective format often varied case by case, higher preferences were given to those where the dam or reservoir name was followed by the matching title (for instance, Hoover Dam, not Hoover Reservoir or Lake) and where the political divisions were more detailed (Table 4).

Table 4. Input address formats and their preference orders for forward geocoding.

Iteration-level 2	Iteration-level 3	Iteration-level 1
Dam name “Dam”		
Reservoir name		
“Reservoir”		
Dam name “Reservoir”	+/- state or province name	+/- country name
Reservoir name “Dam”		
Reservoir name “Lake”		
Dam name “Lake”		

325 Note: A full address is formatted by the components of dam/reservoir name, state/province, and country. “+/-” notates the iteration of including and then excluding this component. A higher iteration level indicates that options in this address component are first iterated before those in a lower level. Levels 1 to 3 are the highest to the lowest levels.

Formatted: Space After: Auto, Line spacing: 1.5 lines

Formatted: Left, Line spacing: 1.5 lines

Formatted: Left, Line spacing: 1.5 lines

Formatted: Left, Line spacing: 1.5 lines

Formatted: Left, Line spacing: 1.5 lines

Formatted: Left, Line spacing: 1.5 lines

Formatted: Left, Line spacing: 1.5 lines

Formatted: Space Before: 0 pt

Similar to geo-matching, we employed a QA filter to approach the optimal geocoding result. This process first arranged the attributes of each WRD record to several address formats as they could result in different geocoding outputs. The address arrangements are listed in Supplementary Table S2, and their preference order is rationalized in Supplementary Text. Each of these WRD addresses was used iteratively for both forward and reverse geocoding (as described above). If the two sets of address components (from the WRD input and the geocoding output) agreed with each other, the geocoded coordinates were considered correct; otherwise, we started over from forward geocoding by inputting the next address string (Supplementary Table S2). Similar to geo-matching, we ranked their geocoded spatial coordinates were then ranked to five discrete QA levels based on how well their input and output addresses agree on individual components (Table S1 to C5, Supplementary Table S3). The iteration was terminated if the highest QA rank was achieved; otherwise, the coordinates that render the best possible QA rank was used as the geocoding result, and these QA ranks levels were then used to rate the results of different input addresses (Table 4) and determine the best quality coordinates for each WRD record.

As shown explained in Supplementary Table S3Table 5, the compared address components include the name of the dam or reservoir and its affiliated political divisions from town/city to country levels. Consistent with geo-matching, we considered that a component was agreed on if the similarity of its values from both input and output addresses exceeds about 85%. Since the nearest town in WRD was not used for forward geocoding, we treated it as an “independent reference” for validating the township component in the output address. Although the town or city near the dam (from WRD) does not always coincide with that administrating the dam (from the geocoding output), their occasional agreement would strengthen our confidence of the geocoded coordinates if other components were also well matched between the WRD input and the geocoding output. For this reason, we opted to include the township comparison as a supplementary criterion in the geocoding QA process.

As explained in Supplementary Table S3Table 5, the highest QA rank level (C1) corresponds to a unanimous agreement on all address components. We assumed that for any WRD record, following the input address order in Table 4 was the most efficient way to reach Level C1. If Level C1 was never reached, we selected the pair of coordinates which first led to the highest possible QA level as the optimal result (see iteration in Fig. 4). However, the minimum rank (C5) only required the agreement on dam or reservoir name, which is a more flexible baseline in comparison with that for geo-matching. Compared to that of geo-matching, the QA of geocoding applied a more flexible baseline scenario (level C5), which only required the agreement on dam or reservoir name. This was because some of the large reservoirs, particularly those on or near political boundaries, have shared or ambiguous divisions (see Table 5), and this the ambiguity might be further amplified by the geocoded coordinates which could fall in anywhere from the dam to across the reservoir water surface. Since we aimed to maximize the quantity of georeferenced records, a flexible baseline level scenario was purposely adopted to keep as many geocoded dams as possible. As a result, the automated geocoding procedure yielded a total of 16,75716,088 WRD records (Table 5), each with a pair of optimal spatial coordinates and the corresponding QA rank level.

To complement the automated QA process, we then performed a rigorous QC to manually identify and remove geocoding errors. ~~For each QA level, In principle,~~ we reviewed each of the geocoded points against high-resolution Google Earth and Esri images, and deleted any identified error where (a) no dam or reservoir could be visibly verified or (b) the WRD attribute information is inconsistent with the feature or division labels on Google Maps. ~~It is important to note that t~~The geo-matched coordinates from regional registers are usually on or close to the dam bodies, but the geocoded coordinates could be located on the reservoir ~~of the dam rather than the dam body~~. The latter case was not considered as an error. ~~However, we observed that in mainland China, Due to China's GPS shift problem, the~~ geocoded points in mainland China tended to exhibit show a systematic offset of roughly 500 m from their actual dam or reservoir features, ~~probably due to misregistration issues between Google Maps imagery and labels~~. For such Chinese dams, we tried to reduce their geocoding offsets as much as possible, by manually relocating the coordinate points to their correct dams or reservoirs. Our rigorous QC process ended up removing about 4245% of the originally geocoded dams, most of which stemmed from relatively lower QA ranks levels (Table ~~5~~see statistics in Supplementary Table S3). The complete geocoding procedure resulted in 9,183,941 georeferenced and quality controlled WRD records, with an overall success rate of 2022%.

Table 5. QA/QC for geocoding (9149 final dams in total).

Quality level	Dam count	Dam/Reservoir name	Administrative divisions		
			Country	State/Province	Town/City
C1	6690 (7214)	Y	Y	Y	Y
C2	1653 (6636)	Y	Y	Y	N/na
C2: “Nearest town” in WRD null or likely not the township administrating the dam/reservoir					
C3	271 (328)	Y	Y	N/na	Y
C4	513 (2459)	Y	Y	N/na	N/na
C3 and C4: “State/province” in WRD null or dam/reservoir likely on state or provincial borders.					
C5	22 (120)	Y	N/na		
C5: dam/reservoir likely on international borders or in disputed regions (e.g., Kashmir).					

Note: In column “Quality level”, the initial letter “C” symbolizes QA levels for geocoding (as opposed to “M” for geo-matching in Table 3). In column “Dam count”, the first value reports the dam quantities after QA and QC whereas the second (parenthesized) value reports the quantity after QA but before manual QC. “Y” means that component values in WRD and the output address from geocoding agree with each other, “N” means that values disagree, and “na” means values not available/valid in either WRD or the output address.

2.45 Supplementation with other global inventories

The outputs from both geo-matching and geocoding, a total of 21,008,22,711 georeferenced ICOLD WRD records (Fig. 2a), was further supplemented or harmonized by two global dam/reservoir inventories to improve our inclusion of the world’s largest dams. We considered this process necessary for two reasons. First, our georeferencing process, particularly

geocoding via Google Maps API, did not warrant an exhaustive inclusion of the largest dams. This is particularly evident for regions where the address and label information in Google Maps is either lacking or difficult to pass the automated QA due to language ambiguity or naming discrepancies. Second, through cross-referencing we noted that the attribute values of reservoir storage capacity provided in ICOLD WRD are occasionally erroneous (also noted by Mulligan et al. (2020)), e.g., by a factor of 1000 probably caused by unit confusion in WRD compilation. As part of the supplementation/harmonization process, we therefore collated the ICOLD reservoir storage capacities with those in the two global inventories below and corrected any evident errors in ICOLD.

2.4.5.1 Supplementation with Wada et al (2017): forming GeoDAR v1.0

Wada et al. (2017) compiled a list of all 144 large dams with a reservoir storage capacity larger than 10 km³ in the world. Among them, 139 dams were provided with ~~quality-controlled~~ spatial coordinates. ~~We verified each of the dam locations and made minor adjustments and correction to further assure the quality. We manually compared these~~The attributes of these 139 dams ~~were then manually compared~~ with those in ICOLD WRD. We found that ~~124~~133 of them were documented in WRD but ~~43~~32 were georeferenced unsuccessfully in our geo-matching or geocoding procedure. Therefore, we borrowed the spatial coordinates of these ~~43~~32 large dams ~~from~~in Wada et al. (2017) to supplement what we had georeferenced. The coordinates of the other ~~84~~101 large dams, which we georeferenced successfully (~~34~~41 from geo-matching and ~~47~~60 from geocoding), were also overwritten by those in Wada et al. (2017) to double-assure and improve their spatial accuracies. This supplementation is illustrated by the Venn diagram in Fig. 2a.

We then compared the storage capacities of each of the ~~124~~133 dams in Wada et al. (2017) with those in WRD and identified ~~34~~22 of them exhibiting substantial discrepancies between the two datasets. ~~We then collated their storage capacities with other documents (e.g., regional inventories, GRanD, and Wikipedia) and concluded that Wada et al. (2017) supersedes WRD in the accuracy of storage capacity for 16 of the 22 dams. Considering that the storage capacity values in Wada et al. (2017) have been verified with other data sources, Therefore, the storage capacities of these 16 dams in Wada et al. (2017) were we-used them~~to replace the original WRD ~~capacities~~values of these ~~34~~22 dams. The entire supplementation process, including adding new dams, updating existing dam coordinates, and correcting reservoir storage capacities, increased the total storage capacity of our georeferenced dams by ~~49~~15%, and ~~90~~70% of the capacity increase comes from the ~~43~~32 added large dams. For improved clarity, it is worth reiterating that all dams supplemented by Wada et al. (2017) were ~~also~~ documented in ICOLD WRD.

The combined results of geo-matching and geocoding, after the supplementation from Wada et al. (2017), defines GeoDAR v1.0 which containings ~~21,051~~22,743 georeferenced records in ICOLD WRD, ~~with a total reservoir storage capacity of 6252.1 km³. In other words, GeoDAR v1.0 spatially resolved 37% of the WRD records by dam count and 82% by reservoir storage capacity (or 85% if using the original total WRD capacity value 7388.3 km³).~~

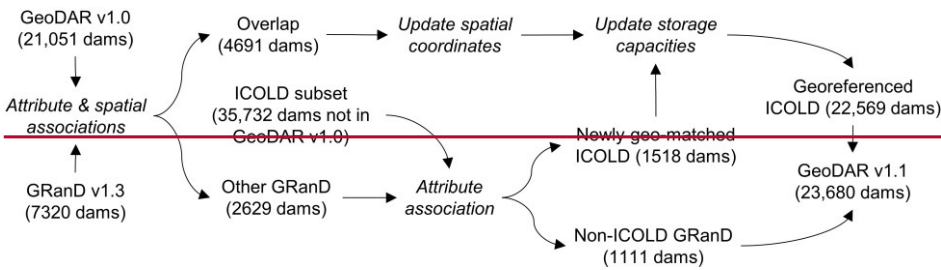
2.45.2 Harmonization with GRanD: forming GeoDAR v1.1

While GeoDAR v1.0 largely exceeds GRanD in dam count, a visual comparison of their spatial distributions revealed that the latter is often complementary to (instead of completely duplicated by) the former in many regions of the world. This motivated us to perform a systematic harmonization between the two datasets. The merged version, which we entitled GeoDAR v1.1, combines the merits of GRanD in accurately documenting the world's largest dams and GeoDAR v1.0 in providing extensiveunprecedented spatial details of smaller but more widespread dams (see Disclaimer section for citation courtesy). Compared with other global inventories such as GOODD which only emphasized spatial locations, GeoDAR v1.1 also enables the access to many critical attributes of each of the georeferenced dams through the ICOLD WRD website (see Section 3 for more comparisons).

We assumed that GRanD, by having collated multiple data sources, is superior to GeoDAR v1.0 in the accuracies of both spatial locations and attribute values (particularly reservoir storage capacity) of the world's largest dams. While this may be true for most cases, we identified 69 dams in GRanD that exhibit evident georeferencing or attribute errors. These dams were excluded from the harmonization process. Another 5 dams in GRanD that were documented as subsumed or replaced by new dams were also excluded. For user convenience, we released these 74 GRanD dams together with suggested new coordinates (if possible) in Supplementary Table S4 (full spreadsheet accessible at <https://doi.org/10.6084/m9.figshare.13670527>). Using the remaining 7246 GRanD dams Following this assumption, the harmonizing process (Fig. 5) aimed atto achieve four major objectives:

- Improving spatial coordinates of the dam points in GeoDAR v1.0,
- Adding WRD dams that are not georeferenced in GeoDAR v1.0 but are included by GRanD,
- Correcting storage capacity errors in the georeferenced WRD, and
- Absorbing the remaining GRanD dams that are not documented in WRD.

Detailed processing for each of the objectives is given below.



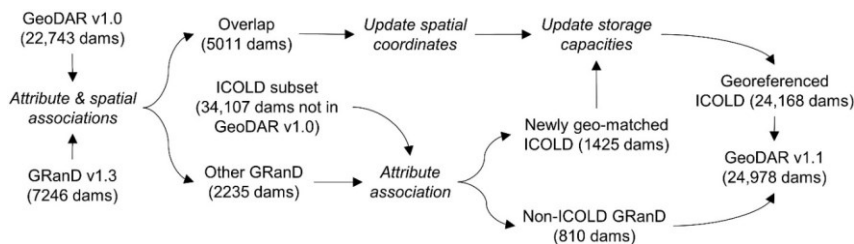


Figure 5. Schematic procedure of harmonizing GeoDAR v1.0 and GRanD v1.3 to form GeoDAR v1.1 Text in roman indicates applied or produced datasets, and text in *italics* indicates methods or procedures. [GRanD used for harmonization](#)
~~dams~~ excludes 74 problematic records (see [Supplementary Table S4](#)).

First, when a dam in GeoDAR v1.0 also exists in GRanD, the spatial coordinates of the former were replaced by those of the latter. We implemented a two-step procedure to identify the overlapping dams between GeoDAR v1.0 and GRanD. Step 1 was based on attribute association while Step 2 utilized spatial query. ~~More~~ Specifically, Step 1 detected matching records between ICOLD WRD and GRanD by assessing agreements on several attributes, including dam/reservoir names, administrative divisions, impounded rivers, and completion years. This step was essentially the same as ~~the~~ “geo-matching” process that was used to link WRD records to regional registers for GeoDAR v1.0 (Section 2.23). The association results, after a meticulous manual QC, identified ~~4258–4660~~ dams in GRanD that were georeferenced in GeoDAR v1.0. For the remaining ~~3062~~ GRanD dams ~~in GRanD~~, Step 2 utilized their reservoir polygons to spatially intersect with the dam points in GeoDAR v1.0. A distance tolerance of ~~500 m–5 km~~ was applied ~~into assist~~ the spatial ~~association~~ intersection ~~and to~~ account for ~~occasional possible~~ geographic offsets in GeoDAR v1.0 (~~such as in mainland China~~; see Section 2.4). As part of the QC, the attribute values of each ~~intersecting~~ pair (one from GRanD and the other from WRD) were manually compared to determine whether they are indeed the same dam. This step identified another ~~~433~~ 50 overlapping dams between the two datasets. In total, we found that GeoDAR v1.0 overlaps ~~4694~~ 5011 out of the ~~7320~~ 7246 dams in GRanD, and their spatial coordinates were updated to be consistent with those in GRanD.

Second, for the remaining ~~2629~~ 2235 dams in GRanD that do not overlap GeoDAR v1.0, we assumed that at least part of them could be matched to the WRD records ~~that were~~ not georeferenced in GeoDAR v1.0. Therefore, we performed another round of attribute association between the remaining subsets of GRanD and WRD, ~~with a purpose of including as many WRD records as possible by fully exploiting what is already available in GRanD~~. After QC, this process identified another ~~1518~~ 1425 WRD dams that are included ~~in by~~ GRanD. These additional WRD dams, with a total storage capacity of ~~674~~ 605 km³, were then added to our inventory using the spatial coordinates provided in GRanD. As a result of the first two

objectives, GeoDAR v1.1 georeferenced ~~22,569~~24,168 (4043%) out of the ~~56,783~~56,850 dams in ICOLD WRD, including ~~6209~~6436 that overlap GRanD.

Third, to reduce the impact of possible attribute errors in ICOLD WRD, we next merged the values of reservoir storage capacity from both WRD and GRanD to a single updated attribute, where the original values in WRD or Wada et al. (2017) were overwritten by those of the overlapping dams in GRanD. This correction led to a minor ~~decrease~~increase of ~~302.4~~ km³ (less than ~~+0.1~~%) in the total reservoir storage capacity. Eventually, the remaining ~~444~~810 dams in GRanD, which were not found in ~~ICOLD~~-WRD, were appended to ~~the 22,569~~our georeferenced WRD-dams so that ~~our~~the final inventory absorbed the entire dataset of GRanD. It is worth noting that similar to geo-matching (Section ~~2.22.3~~), our attribute association here could be conservative, meaning that some of the dams appended from GRanD might be documented in the remaining WRD (the subset not georeferenced successfully). The complete harmonization process, combining the above three steps, led to a total of 24,978 georeferenced dams in GeoDAR v1.1 (Fig. 2b).

~~The harmonized dataset, GeoDAR v1.1, contains a total of 23,680 georeferenced dam points, including 16,360 from WRD alone, 6209 shared between WRD and GRanD, and the other 1111 from GRanD alone (Fig. 2b). Although this number of dams is still about 42% of that of WRD, the total reservoir storage capacity in GeoDAR v1.1 reaches 7486 km³, which matches the scale of the original WRD (7388 km³). In comparison, the remaining 34,214 WRD dams not included by GeoDAR v1.1 own a total reservoir storage capacity of 716 km³ (or less than 10%), indicating that we have thus far georeferenced some of the most capacious and influential dams in ICOLD-WRD.~~

2.56 Retrieving reservoir boundaries

~~In addition to the Reservoir polygons of the 23,680 georeferenced dam points were retrieved, GeoDAR v1.1 also includes their associated reservoir boundaries which we retrieved~~ as thoroughly as possible from three global water body datasets: GRanD reservoirs (Lehner et al., 2011), HydroLAKES v1.0 (Messenger et al., 2016), and UCLA Circa-2015 Lake Inventory (Sheng et al., 2016). These three water body datasets exhibit an increasing spatial resolution: from 7000+ polygons in GRanD reservoirs provided exclusively for GRanD's dam points, to millions of water body polygons, including both natural lakes and reservoirs, in the other two datasets. While HydroLAKES documents 1.4 million water bodies larger than 0.1 km² (10 ha), the Landsat-based UCLA Circa-2015 Lake Inventory further reduced the minimum size to only 0.004 km² (0.4 ha), resulting in another 7.7 million water bodies on the global continental surface. Accordingly, we implemented a hierarchical procedure, where the three water body datasets were applied in ascending order of spatial resolution to retrieve the reservoir boundaries with an overall decreasing size.

Specifically, GRanD v1.3 provides ~~72507~~181 reservoir polygons for the ~~73207~~246 collected dam points. The remaining ~~7065~~ dams without reservoir polygons are either river barrages and thus have no proper reservoirs, or infrastructures that

were too recent to have filled impoundments. Other rarer cases also include dams that were abandoned or to be constructed (Lehner et al., 2011). These [72507181](#) reservoir polygons were assigned to their associated dam points in GeoDAR v1.1 through GRanD IDs. Reservoirs of the remaining [46,36017,732](#) dam points in GeoDAR v1.1, which were georeferenced from ICOLD alone, were next retrieved from HydroLAKES when possible. To avoid duplicates in the reservoirs retrieved from different data sources, we only used the subset of HydroLAKES that is spatially independent from (i.e., not intersecting with) GRanD reservoirs. Different from reservoir assignment using GRanD, there was no common attribute ID to pair HydroLAKES polygons with the remaining dam points, so their reservoir retrieval relied completely on spatial association. One major challenge in dam-reservoir spatial association was the ambiguity caused by the offsets between our georeferenced dam points and their actual reservoir polygons (see Section 2.34).

To tackle this ambiguity, we designed a procedure that consists of three rounds of iteration to progressively optimize reservoir-dam association. This procedure was based on two assumptions, both conditional on a reasonable spatial tolerance. We started with 500 m to be [roughly](#) consistent with the georeferencing offset ([e.g.,](#) observed in China). The first assumption was that larger reservoirs are more likely to be documented than smaller ones, in both ICOLD WRD and Google Maps. Therefore, the first round of iteration assigned each of the dams to the largest water body within the tolerance. This assignment might, however, lead to a situation where multiple dams were assigned to the same reservoir. To untangle this situation, the remaining iterations assumed Tobler's First Law of Geography (Tobler, 1970): "everything is related to everything else, but near things are more related than distant things" (p.236). Accordingly, for any water body mistakenly associated with multiple dams, the second round of iteration reassigned the water body to its closest dam, and the other dam(s) within the tolerance, as a result, was/were left unpaired. To reduce the number of such "orphan" dams, a final, third round of iteration assigned the remaining unpaired dams to the next closest water body that was within the spatial tolerance and had not been previously associated with any dams. If this led to multiple dams associated with one reservoir again, only the dam with the closest proximity to the reservoir was kept. Through experimentation, we opted to implement this three-iteration procedure twice, first using a conservative 500-m tolerance to maximize the accuracy for most associations, and then a 1-km tolerance to further minimize the number of orphan dams.

This multi-iteration procedure retrieved [~69027600](#) reservoir polygons from HydroLAKES. For the remaining [9458](#) dam points left unpaired, we applied the same association procedure to continue retrieving their reservoirs from the high-resolution UCLA Circa-2015 Lake Inventory. Similarly, only the subset that does not intersect with the [6902retrieved](#) HydroLAKES polygons was considered, in order to avoid duplicates in the retrieved reservoirs from different datasets. The use of UCLA Circa-2015 Lake Inventory retrieved another [~67006062](#) reservoirs. [A manual QC was performed on the combined result to confirm that each retrieved reservoir polygon was matched to the correct dam point, and if not, we tried to adjust the association as thoroughly as possible.](#) Combining the results from all three water body datasets, 20,214 (85%)

out of the 23,680 georeferenced dams were paired with their reservoir polygons. To this end, both of the dam points and their associated reservoir polygons were considered as the final product components in GeoDAR v1.1.

3 Product components and usage

3 Data structure and components Results and discussions

3.1 Product components

Following method descriptions, we here we provide a detailed documentation of present the product the components and structure of the two current versions for GeoDAR versions (v1.0 and v1.1). Although previously summarized in Table 4 To facilitate the description, the two GeoDAR versions and their component statistics are further explained in Table 61, and spatial distributions of the dam points and reservoir polygons are visualized in Figs. 6 and 7.

3.1.1 GeoDAR v1.0: dams

GeoDAR v1.0 is a collection of 21,051 22,743 dam points georeferenced exclusively for ICOLD WRD (Fig. 6a). In other words, each dam point corresponds to the location of a unique WRD record, and the dam latitude and longitude coordinates were acquired independently from GRanD. Among them the 21,051 dam points, 11,825 13,260 or 56 58% were retrieved from geo-matching regional dam registers, 9402 9350 or 4341% from Google Maps geocoding API, and the remaining 4241 33 largest dams from the spatial inventory in Wada et al. (2017) (Fig. 6b). For improved accuracies, the WRD storage capacities of most of these 4241 33 large reservoirs were replaced by the values in Wada et al. (2017) (see Section 2.54.1), and unless stated otherwise, our following statistics on storage capacities were calculated after this replacement.

The total reservoir storage capacity of all the 21,051 22,743 dams is 6252.4 6435.5 km³, meaning that GeoDAR v1.0 georeferenced 3740% of the 56,786 56,850 WRD records but included 82% more than 80% of their cumulative reservoir storage capacity (7639 km³). The total storage capacity of the 4241 33 largest dams from Wada et al. (2017), despite being limited in number, reaches 3807 3900 km³ or 61% of the cumulative storage capacity in GeoDAR v1.0, and the other ~40% capacity was split almost equally between the remaining 202,000+ geo-matched and geocoded dams. Although the regional registers used for geo-matching are regional only cover seven countries, the dams in GeoDAR v1.0, as shown in Fig. 6b, are distributed in 148 out of the 164 countries in WRD (including ICOLD member and non-member countries), largely owing to our geocoding efforts through Google Maps API. Since Again, GeoDAR v1.0 was produced independently from other comprehensive global dam datasets such as GRanD, it can also be used to cross-compare, supplement, and potentially improve other dam datasets. While its dam quantity can be further expanded, this version provides users a flexibility to

Formatted: Justified

Formatted: Heading 1

Formatted: Heading 2

choose the optimal dataset based on their specific purposes or study regions. Validation of our georeferencing accuracy for v1.0 is provided in Section 43.2.

Table 6. GeoDAR product versions and components

Version	Description	Component	Acquisition sources/methods	Count	Storage capacity (km ³)	Reservoir polygon area (km ²)
v1.0	Georeferenced ICOLD	Dam points	Geo-matched via regional registers	11,825	1274.1	—
			Geocoded via Google Maps API	9102	1170.7	—
			Supplemented by Wada et al. (2017)	124	3807.3	—
			Total	21,051	6252.1	—
v1.1	Harmonized ICOLD and GRanD	Dam points	GeoDAR v1.0 alone	16,360	605.1	—
			GRanD v1.3 and GeoDAR 1.0	4691	5585.1	—
			GRanD v1.3 and other ICOLD	1518	702.3	—
			GRanD v1.3 alone	1111	593.6	—
			Total	23,680	7486.1	—
		Reservoir polygons	GRanD v1.3 reservoirs	7250	6810.6	474,192.8
			HydroLAKES v1.0	6902	242.4	13,488.2
			UCLA Ciresa 2015 Lakes	6062	115.4	4387.3
			Total	20,214	7168.4	492,068.3

Note: Dam points from “GeoDAR v1.0 alone”, “GRanD v1.3 and GeoDAR 1.0”, and “GRanD v1.3 and other ICOLD” in GeoDAR v1.1 represent our most complete collection (22,569 dams) of georeferenced ICOLD WRD records. Refer to the Venn diagrams in Fig. 2 for more illustration of the logical relations among the georeferencing sources/methods.

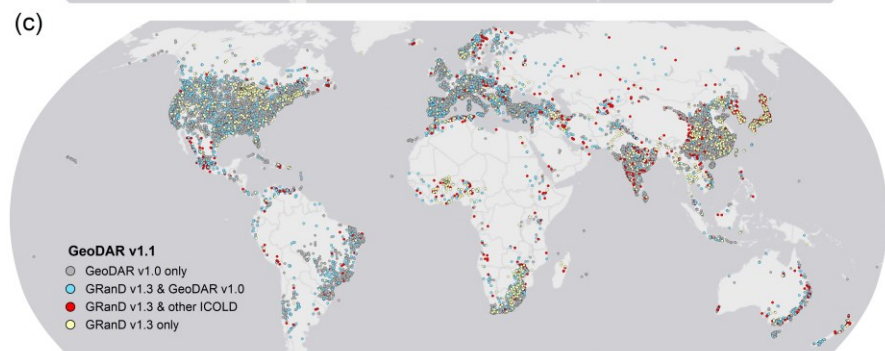
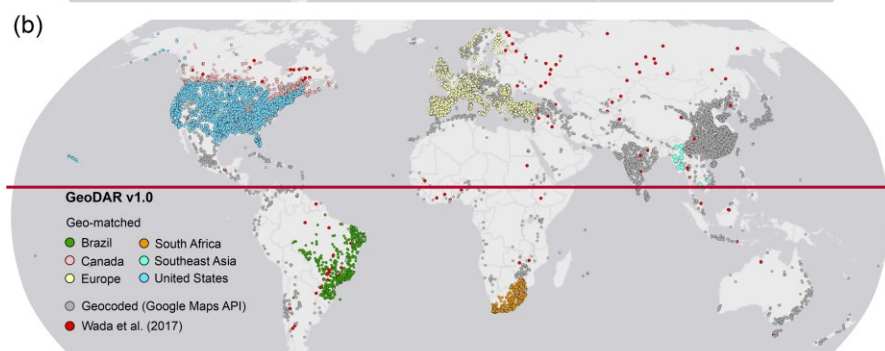
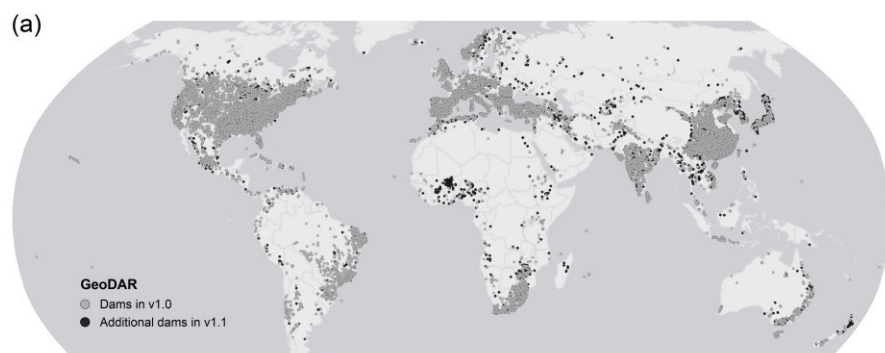
3.1.2 GeoDAR v1.1: dams and reservoirs

GeoDAR v1.1 consists of a) 23,68024,978 dam points (Fig. 6a) which were representing a full harmonization between harmonized from GeoDAR v1.0 and GRanD v1.3, and b) 20,21421,576 reservoir polygons (Fig. 7). In these 23,680nearly 25,000 dam points, 16,36017,732 or 6971% come from GeoDAR v1.0 alone, 62096436 or 26% shared by ICOLD WRD and GRanD, and the other 1111810 or 53% from GRanD alone (Table 61; Fig. 6c). Among the 62096436 shared dams, 46915011 were georeferenced in both GeoDAR v1.0 and GRanD, and the remaining 15181425 were introduced through newly “geo-matched” by GRanD. In other words, the harmonization with GRanD introduced another 1518 dams from WRD that were not georeferenced successfully in GeoDAR v1.0. This resulted in a total of 22,56924,168 georeferenced WRD records; (or 4043% of all all WRD records); in GeoDAR v1.1. In addition to the expanded number of georeferenced WRD dams, GRanD also supplemented another 1111810 dams which which are exclusive of we were unable to associate affirmatively with WRD records. The total 26292235 dams added by GRanD, shownnotated as “GRanD v1.3 & other ICOLD” and “GRanD v1.3 only” in Fig. 6c, are distributed worldwide and complement the results of v1.0, particularly in

Formatted: Heading 2

regions such as Africa and Central Asia, where geocoding using Google Maps was challenging. After this ICOLD-GRanD harmonization, the spatial coverage of the dam points in GeoDAR v1.1 increased to 154 out of the 164 countries in WRD.

As described in Section 2.5.4.2, we substituted the reservoir storage capacities in GRanD for the original capacity values of their overlapping WRD dams. As a result, the total reservoir storage capacity in GeoDAR v1.1 reaches ~~7486.1~~7296.6 km³, which ~~compares to matches~~95% of the cumulative capacity in the entire ICOLD WRD (see Section 3.4.5.1 for more comparisons with ICOLD). As reported in Table 6.1, ~~7582%~~5585 (5996 km³) of the total storage capacity in GeoDAR v1.1 is explained by the ~~4694~~5011 relatively large dams georeferenced in both GeoDAR v1.0 and GRanD. The ~~46,360~~17,732 smaller dams from GeoDAR v1.0 alone contribute only ~~86%~~60 (5428 km³) of the total storage capacity, which is roughly comparable to the subset from GRanD alone (~~5942~~68 km³) or ~~the subset from both~~ GRanD and other ~~ICOLD-ICOLD~~ WRD (~~7026~~05 km³). These capacity contributions suggest that compared to GRanD, the major improvement of GeoDAR lies on the increased number of relatively small dams, rather than the increase in total storage capacity of the dams (see Section 3.5.5.2 for more comparisons with GRanD).



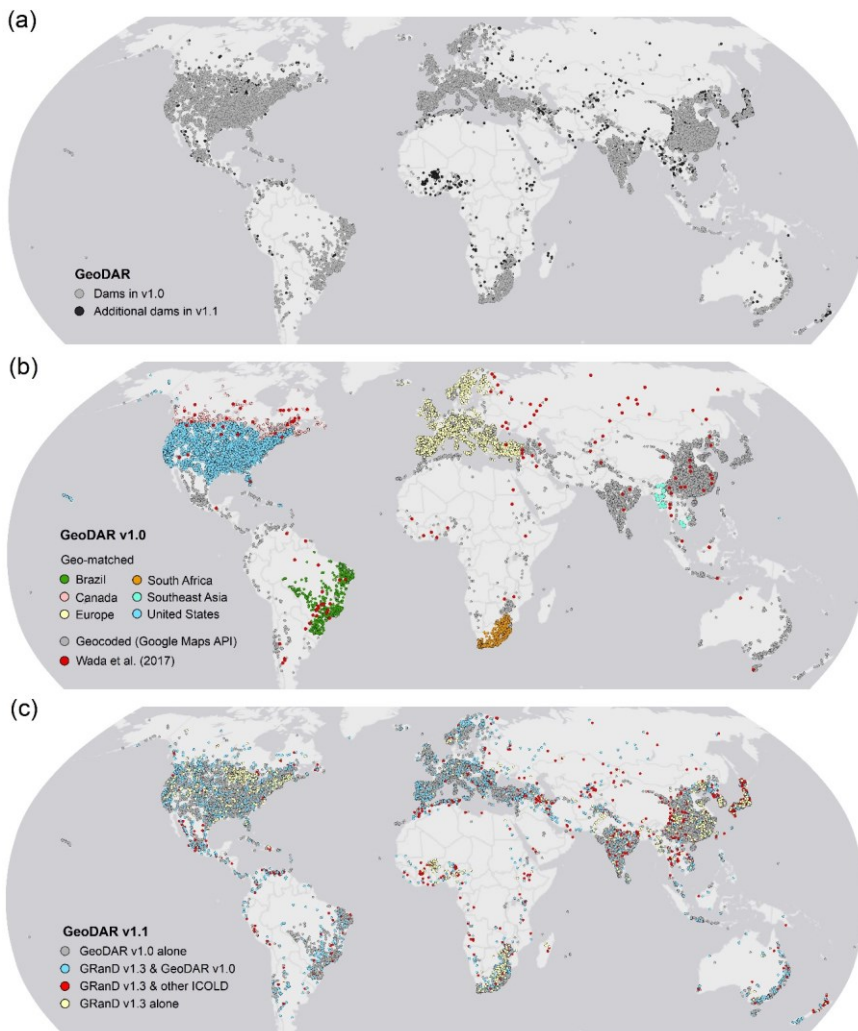


Figure 6. Georeferenced dam points in GeoDAR. (a) A total of [23,680,24,978](#) dam points in v1.1 superimposed by [21,051,22,743](#) dam points by in v1.0. (b) Georeferencing methods and data sources for v1.0. (c) Data sources for v1.1.

Different from GeoDAR v1.0, version 1.1 also ~~includes~~provides a component of reservoir polygons (~~Fig. 7~~) which represent water impoundment extents associated with ~~20,214~~21,576 or ~~85~~86% of the ~~23,680~~ georeferenced dam points (~~Fig. 7~~).

Reservoir polygons for the remaining ~~45~~14% of ~~the~~ dam points were retrieved unsuccessfully due to a combination of factors, ~~including such as~~ limited spatial resolutions of the applied water masks, offsets in our georeferenced dam points, and the fact that some of the dams (e.g., river barrages) have no evident water impoundments. Nevertheless, the retrieved ~~20,214~~ reservoir polygons have a cumulative area of ~~492,068~~493,860 km², accounting for ~~98~~96% of the total reservoir area of all georeferenced dams in GeoDAR v1.1 (reservoir areas without polygons are based on ~~ICOLD~~-WRD attributes). These reservoir polygons also correspond to a cumulative storage capacity of ~~7168~~7117 km³, accounting for nearly ~~96~~98% of the total storage capacity in v1.1. These statistics indicate that the reservoirs whose boundaries were retrieved unsuccessfully were mostly small in area and storage.

The numbers of reservoir polygons retrieved from each of the three water body datasets are fairly comparable (~~6000~~roughly 7000 to 7000 each), but the total reservoir storage capacity and area both decrease drastically with the increasing spatial resolution of the water body datasets (Table ~~61~~). As a result, the mean~~average~~ reservoir polygon size decreased from ~~6566~~ km² ~~infor~~ those identified from GRanD, to 2 km² from HydroLAKES and then less than 1 km² from the UCLA Circa-2015 Lake Inventory. This result is overall consistent with the design of our hierarchical procedure (Section 2.~~65~~), where smaller reservoirs were successively retrieved with the help of finer water masks. It is important to note that the retrieved polygons are do not always represent the largest~~maximum~~ water extents of the reservoirs because water boundaries in the retrieval sources were not necessarily mapped in the maximum inundation periods. For example, the UCLA Circa-2015 Lake Inventory contains approximately 9.5 million water bodies larger than 0.4 ha, which were mapped from Landsat images acquired during the “steady” climate periods (Lyons and Sheng, 2018) and thus represent the average seasonal extent of each water body (Sheng et al., 2016). Despite not always being the largest water extents, our retrieved reservoir polygons enhanced the spatial details of global reservoir locations, using which users can further expand or refine the water boundaries to their specific needs.

~~In addition, we foresee several other applications of our produced reservoir polygons in GeoDAR v1.1. These 20,000-plus reservoirs, which are mostly distributed in the populated middle-latitude regions (Fig. 7), reveal an unprecedented detail of human footprints on the natural surface hydrology. Together with other high-resolution surface water data such as the UCLA Circa-2015 Lake Inventory and the Joint Research Centre’s Global Water Database (Pekel et al., 2016), these reservoir polygons can help us better disambiguate artificial water impoundments from natural lakes and free-flowing river reaches. This water-body separation is overdue, as it provides a fundamental base map for assessing and modelling how human water regulations alter the natural surface water regimes. By flagging more reservoirs from natural lakes, this map also expanded the global training pool for machine learning algorithms that aim to thoroughly classify or detect reservoirs from remote sensing images.~~

Formatted: Font: (Default) Times New Roman, Not Highlight

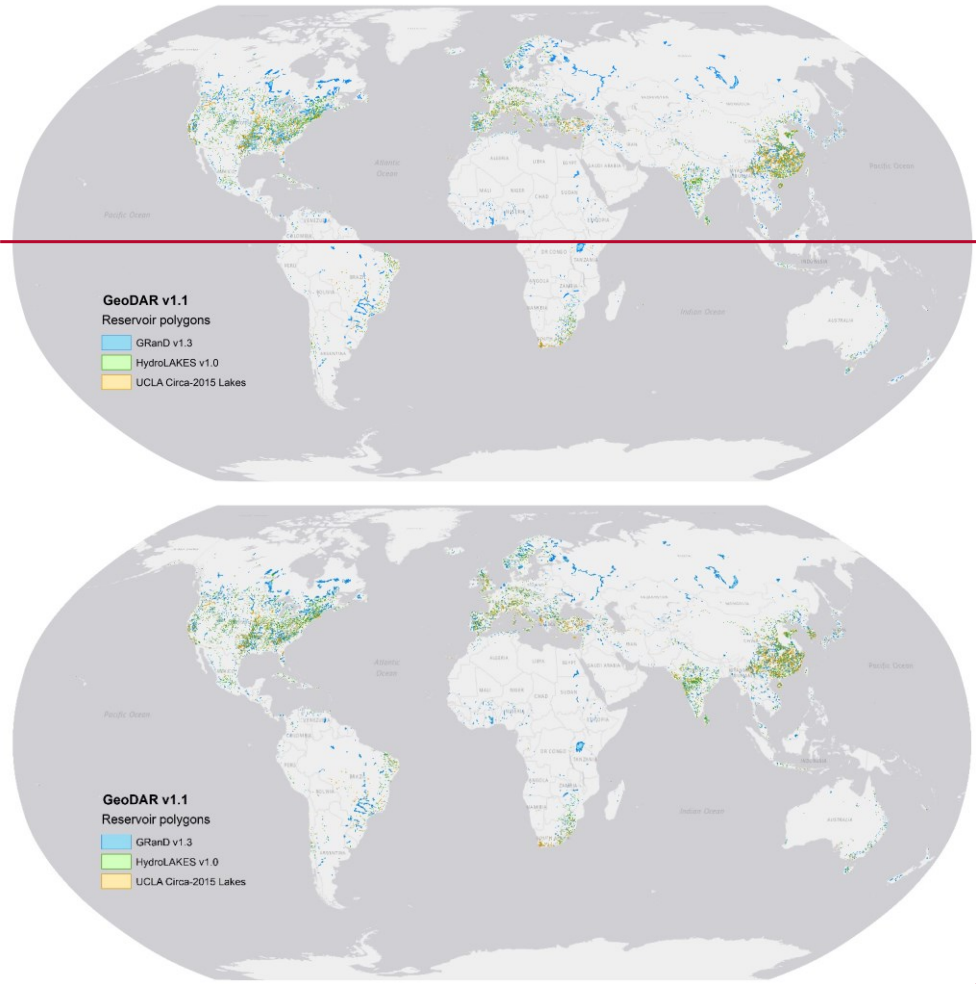


Figure 7. Reservoir polygons and their retrieval data sources in GeoDAR v1.1.

Formatted: English (United States)

3.2 Georeferencing accuracy

Separate from the QA/QC during data production, we also performed a posterior validation to further assess the accuracy of our georeferenced ICOLD WRD records. The validation sample consists of nearly 1000 dam points (Fig. 8), which were selected worldwide from GeoDAR v1.0 and represent the results of our geo-matching and geocoding prior to the supplementation by GRanD. The collection of the validation points followed a stratified sampling method (Table 7). From the subset of GeoDAR v1.0 produced by geo-matching, we randomly selected 30 dam points for each of the geo-matching regions (Brazil, Canada, Europe, South Africa, and United States), with the exception of Southeast Asia (Cambodia and Laos) where all 16 geo-matched WRD dams were included for validation. We allowed the sample to occasionally overlap with GRanD because all dams in GeoDAR v1.0 were georeferenced independently from GRanD and those shared with GRanD reflect our georeferencing accuracy for the world's largest dams. However, for each regional sample, we limited the number of GRanD-overlapping dams to no more than 30% of the entire regional sample size (Table 7). This was to comply with the size ratio between GRanD and GeoDAR v1.0 (about 1:3) so that our validation still emphasized smaller dams newly georeferenced in our dataset. We also randomly selected 30 out of the 124 large WRD dams supplemented by Wada et al. (2017), considering that they are part of GeoDAR v1.0 and the supplementation was based on attribute association that is similar to regional geo-matching. In total, 192 dams were selected for validating the geo-matching accuracy. For each dam, we manually checked whether its spatial coordinates in GeoDAR v1.0 are consistent with those documented in the geo-matching source (see source references in Table 2).

Table 7. Validation statistics for GeoDAR v1.0

Region	Main reference	Sample	Accuracy	Error source
Geo-matching		196; 58	192 (98.0%)	
Brazil	RSB	30; 5	29 (96.7%)	Register
Canada	CanVec	30; 9	30 (100%)	---
Europe	MARS	30; 3	29 (96.7%)	Register
South Africa	LRD	30; 10	30 (100%)	---
Southeast Asia	ODC; ODM	16 (all); 3	16 (100%)	---
United States	NID	30; 5	30 (100%)	---
Global	Wada et al (2017)	30; 23	28 (93.3%)	Register
Geocoding		782; 170	748 (95.7%)	
China	NPCGIS	200; 15	199 (99.5%)	Misplacement
India	NRLD	200; 21	198 (99.0%)	Misplacement
Japan	JDF	178 (all); 110	157 (88.2%)	Misplacement; Google Maps label
Others	Google Maps	204; 24	194 (95.1%)	Misplacement
ALL		978; 228	940 (96.1%)	

Formatted: Heading 1

640 Note: In “Sample”, the two numbers delimited by semicolon indicate the size of the validation sample from GeoDAR v1.0 (left) and the number of dams in this sample that overlap with GRanD v1.3 (right), respectively. “Cause(s) of error” lists error scenarios in decreasing order of frequency. “Register” indicates geo-matching errors due to inaccurate spatial coordinates in the reference register/inventory. “Misplacement” indicates geocoding errors where the information of ICOLD WRD and the validation reference disagrees with each other. “Google Maps label” indicates geocoding errors due to endogenous labelling mistakes in Google Maps. See Table 2 (column “Register/Source”) for reference details.

645 From the remaining subset of GeoDAR v1.0 produced by geocoding, we followed the same stratified sampling scheme and randomly selected 200 or so dam points for each of the validation regions: China, Indian, Japan, and the other part of the world as a whole (Table 7). Compared to geo-matching which was based on attribute association with georeferenced regional registers, the geocoding process was more complicated, and relied largely on the geographic information repository in Google Maps and its embedded geocoding algorithms. To increase our confidence in the geocoding results, we therefore purposefully enlarged the sample size for each validation region. As described in Section 2.3, three additional georeferenced datasets from authoritative registries in China, Indian, and Japan were used exclusively for the purpose of geocoding
650 validation (refer to Table 2 for register details). For the remaining regions of the world, the validation was based on a meticulous manual comparison between the WRD information of each sampled dam point and its associated Google Maps label, including the dam/reservoir name, administrative divisions, the nearest town/city, and the impounded river name if possible. When necessary, we also referred to other auxiliary information including open-source gazetteers and other literature. The auxiliary validation sources were provided in the attribute table of GeoDAR v1.0 (see data attributes in
655 Section 3.3). In total, we collected 782 dam points for validating the accuracy of geocoding, including all 178 Japanese dams in GeoDAR v1.0 (before GRanD supplementation). The distribution of all sampled validation dams is shown in Fig. 8.

As reported in Table 7, our geo-matching accuracy ranges from 93% to 100% among different regions, with an overall accuracy of 98%. Causes of the identified geo-matching errors (see the last column in Table 7) were not necessarily mistakes in our attribute association between ICOLD WRD and the georeferenced registers, but sometimes inaccurate spatial
660 coordinates provided by the georeferenced registers themselves. An example is Skutvik Dam/Reservoir (completion year 1991) in Norway (Fig. 8), where coordinates are documented to be 68.025° N and 15.345° E in MARS. However, inspected from high-resolution Google Maps imagery, no dam or reservoir, operational or abandoned, could be conclusively verified at or near this coordinate point, except for three surrounding lakes that are all over 2 km away and labelled with other names (Vanbassenget, Lanstøvatnet, and Stenslandsvatnet). We believed that the documented coordinates for this dam are probably
665 inaccurate.

The accuracy of our geocoded sample ranges from 88% in Japan to about 99% in China and India, with an overall accuracy of 96%. As shown in Table 7, most of the errors were related to the misplacement of the dam/reservoir to another feature,

typically a free-flowing river reach, which shares the name and administrative divisions with the dam/reservoir. One example is Nambiar Dam near the city of Tirunelveli in the state of Tamil Nadu, southern India (Fig. 8). The correct coordinates, according to INRLD, are 8.374° N and 77.738° E where the Google Maps labelled “Nambi Dam” instead of Nambiar Dam. Probably because of this spelling inconsistency, our geocoded coordinates were misplaced on a reach of the Nambi(y)ar River (8.435° N, 77.569° E, labelled as “Nambiyar”) about 20 km upstream from the dam. Although our recursive geocoding procedure (Section 2.4) embedded an automated filter that examines the type of the feature at each returned point (see released scripts through Code availability), this filter was designed to only eliminate the coordinates where feature types are clearly disparate from a dam or reservoir (such as commercial and residential buildings). Our experiments showed that dams/reservoirs and free-flowing river reaches could both be categorized as “establishment” of “natural feature” and a feature type that is more specific to dams/reservoirs was hardly seen. Thus, to avoid over-filtering, we allowed a certain ambiguity in the geocoded feature types, and then relied on manual QC to correct or remove mistaken coordinates as thoroughly as possible. The misplacement of dams to their upstream/downstream river reaches is a major cause of the relatively low geocoding accuracy in Japan. Through experimentations, we noticed that Google Maps labelling for some of the Japanese dams that are homonymous to their impounded rivers, is either lacking or highly adapted to the Japanese language. The latter further challenged our geocoding accuracy using English-based ICOLD information. For one of the errors in Japan, we verified from the JDF register that Google Maps mislabelled Myojin Dam in Horoshima Prefecture (34.587° N, 132.505° E) as “Nabara Dam” whose correct location is 3 km downstream (34.563° N, 132.517° E; Fig. 8). As a result, our georeferenced coordinates for Nabara Dam were wrong although our geocoding process was correct. However, given what we have observed, such endogenous labelling errors in Google Maps are probably rare.

Integrating the validations for both geo-matching and geocoding, our overall georeferencing accuracy is 96.1% in terms of dam count, or 97.5% in terms of total storage capacity based on the sampled 978 dams. While these statistics can be considered as the accuracies of our data product, the identified errors in the validation sample have been corrected wherever possible in our released GeoDAR v1.0 and v1.1.

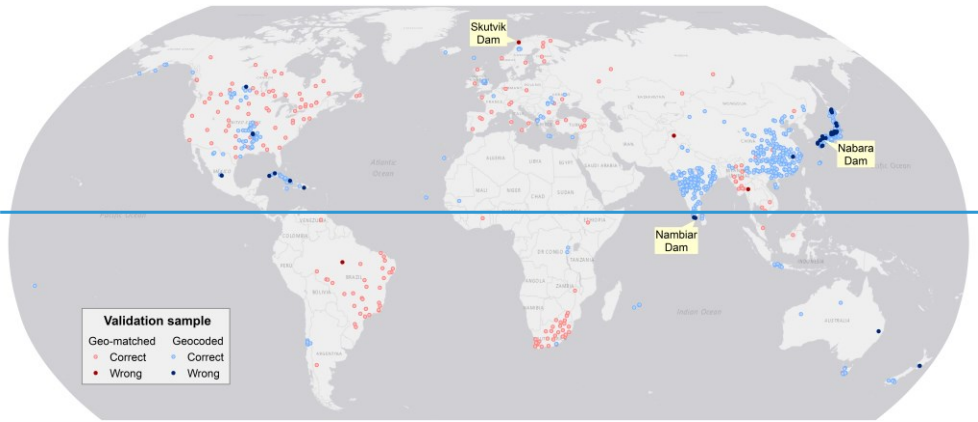


Figure 8. Validation sample and results for GeoDAR v1.0. The validation sample consists of 978 georeferenced ICOLD dams, including 196 dams from geo-matching and 782 dams from geocoding. See Table 7 for detailed validation statistics.

3.3 Data attributes and usage

The GeoDAR dataset, including dam points for v1.0 and both dam points and reservoir polygons for v1.1, is provided as three separate shapefiles. For user convenience, we also duplicated the two dam point shapefiles in the comma-separated values (csv) format. The file names and attributes are explained in Table 38. Although most of our dam points were georeferenced using WRD records, our published GeoDAR complies with the proprietary rights of ICOLD and does not directly release any attribute from WRD. The attributes we provide in GeoDAR, as listed in Table 38, are only limited to our georeferencing methods, QA/QC, validation, and other information (such as spatial coordinates and part of the reservoir storage capacities) that is already open source or has been permitted for use by the original producers.

Table 38. Attributes in the data products of GeoDAR

Attribute	Description and values
v1.0 dams (file name: GeoDAR_v10_dams; format: comma-separated values (csv) and point shapefile)	
<i>ID_v10</i>	Dam ID in this version (type: integer). Note this is not the “International Code” in ICOLD WRD but is associated with “International Code” through encryption.
<i>latitude</i>	Latitude of the dam point (type: float) on datum World Geodetic System (WGS) 1984.
<i>longitude</i>	Longitude of the dam point (type: float) on WGS 1984.
<i>geomtd</i>	Georeferencing methods (type: text). Unique values include: “geo-matching CanVec”, “geo-matching LRD”, “geo-matching MARS”, “geo-matching NID”, “geo-matching ODC”, “geo-matching ODM”, “geo-matching RSB”, “geocoding (Google Maps)”, and “Wada et al. (2017)”. Refer to Table 2 for acronyms.

<i>QA_level</i>	Quality assurance (QA) levels (type: text). Unique values include: “M1”, “M2”, “M3”, “C1”, “C2”, “C3”, “C4”, and “C5”. Refer to Supplementary Tables S31 and S53 for value explanation.
<i>rv_mcm</i>	Reservoir storage capacity or volume in million cubic meters (type: float). Values are only available for dams acquired from Wada et al. (2017). ICOLD WRD capacity values are not released for proprietary reasons.
<i>val_scn</i>	Validation result (type: text). Unique values include: “correct”, “register”, “ mismatch ”, “misplacement”, and “Google Maps label ”. Refer to Table 47 for value explanation.
<i>val_src</i>	Sources used for validation (type: text). Values include: “CanVec”, “Google Maps”, “JDF”, “LRD”, “MARS”, “NID”, “NPCGIS”, “NRLD”, “ODC”, “ODM”, “RSB”, “Wada et al. (2017)”, and other websites and literature. Refer to Table 2 for acronyms.
v1.1 dams (file name: GeoDAR_v11_dams; format: comma-separated values (csv) and point shapefile)	
<i>ID_v11</i>	Dam ID in this version (type: integer). Note this is not the “International Code” in ICOLD WRD but is associated with “International Code” through encryption.
<i>ID_v10</i>	v1.0 ID of this dam (as in <i>ID_v10</i>) if georeferenced in v1.0 (type: integer).
<i>ID_GRDv13</i>	GRanD ID of this dam if georeferenced in GRanD v1.3 (type: integer).
<i>latitude</i>	Latitude of the dam point (type: float) on WGS 1984. Value may be different from that in v1.0.
<i>longitude</i>	Longitude of the dam point (type: float) on WGS 1984. Value may be different from that in v1.0.
<i>pnt_src</i>	Source(s) of the georeferenced dam point. Unique values include: “GeoDAR v1.0 alone”, “GRanD v1.3 and GeoDAR 1.0”, “GRanD v1.3 and other ICOLD”, “GRanD v1.3 alone”. Refer to Table 16 for more details value explanation .
<i>geomtd_v10</i>	Same as <i>geomtd</i> in v1.0 if this dam was georeferenced in v1.0.
<i>QA_level</i>	Same as <i>QA_level</i> in v1.0 if this dam was georeferenced in v1.0.
<i>rv_mcm_v11</i>	Reservoir storage capacity in million cubic meters in this version (type: float). For proprietary reasons, values are only provided for dams acquired from Wada et al. (2017) and GRanD v1.3.
<i>rv_mcm_v10</i>	Same as <i>rv_mcm</i> in v1.0 if this dam was georeferenced in v1.0.
<i>val_scn</i>	Same as <i>val_scn</i> in v1.0 if this dam was georeferenced in v1.0.
<i>val_src</i>	Same as <i>val_src</i> in v1.0 if this dam was georeferenced in v1.0.
v1.1 reservoirs (file name: GeoDAR_v11_reservoirs; format: polygon shapefile)	
<i>plg_src</i>	Source of the retrieved reservoir polygon (type: text). Unique values include “GRanD v1.3 reservoirs”, “HydroLAKES v1.0”, and “UCLA Circa-2015 Lakes”. Refer to Table 16 for more details.
<i>plg_a_km2</i>	Area of the retrieved reservoir polygon in square kilometres (calculated using the cylindrical equal area projection on WGS 1984).
<i>All other attributes in v1.1 dams.</i>	

Note: Missing or inapplicable values are flagged by “Null” for text-type attributes and “-999” for numeric-type attributes.

705 Although WRD attributes are not directly available in GeoDAR, we suggest two possible ways for users to acquire at least
some of the essential attributes. Upon the user’s reasonable request [and on a case-by-case basis](#), we ~~can~~[may provide](#)
[assistance in decrypting the association between](#) GeoDAR IDs (Table [38](#)) ~~and to~~ ICOLD’s International Codes, and using the
International Codes, the user can link each of the dams/reservoirs in GeoDAR to the entire 40 or so proprietary attributes in
WRD. ~~However, t~~[his is also](#) based on the premise that the user needs to acquire the WRD attribute data from ICOLD, and
710 that the user agrees ~~not to not~~ release the ~~decryption key~~[GeoDAR-WRD association](#) or the WRD attributes to the public.
Alternatively, since we imposed no usage restrictions on our spatial features (geometric dam points and reservoir polygons),
users are free to integrate them with other datasets and tools, such as remote sensing observations and modelling, to acquire

the needed attributes, particularly those not yet documented in ICOLD WRD. Acquisition methods have been exemplified for at least the following attributes: reservoir hypsometry and bathymetry (Li et al., 2020; Yigzaw et al., 2018), surface evaporation loss (Mady et al., 2020; Zhan et al., 2019; Zhao and Gao, 2019a), operation rules (Shin et al., 2019; Yassin et al., 2019), completion years (Zhang et al., 2019), storage capacities (Liu et al., 2020), and the changes in water area (Pekel et al., 2016; Yao et al., 2019; Zhao and Gao, 2019b), level (Cretaux et al., 2011; Schwatke et al., 2015), and storage or volume (Busker et al., 2019; Cretaux et al., 2016; Gao et al., 2012; Zhang et al., 2014).

4 Validation

Separate from the QA/QC during data production, we also performed a posterior validation to further assess the accuracy of the georeferenced ICOLD WRD records. The validation sample consists of about 1400 dam points (Fig. 8), which were selected worldwide from GeoDAR v1.0 and represent the results of our geo-matching and geocoding prior to GRanD harmonization. The collection of the validation points followed a stratified sampling method (Table 74). From the subset of GeoDAR v1.0 produced by geo-matching, we randomly selected about 3040 dam points for each of the geo-matching regions (Brazil, Canada, Europe, South Africa, and United States), with the exception of Southeast Asia (Cambodia and Laos) where all 1716 geo-matched WRD dams were included for validation. We allowed the sample to occasionally overlap with GRanD because all dams in GeoDAR v1.0 were georeferenced independently from GRanD and those shared with GRanD reflect our georeferencing accuracy for the world’s largest dams. However, for each regional sample, we limited the number of GRanD-overlapping dams to no more than 30% of the entire regional sample size if possible (Table 47). This was to comply with the size ratio between GRanD and GeoDAR v1.0 (about 1:3) so that our validation still emphasized smaller, newly georeferenced dams. We also randomly selected 4030 out of the 133124 large WRD dams supplemented by Wada et al. (2017), considering that they are part of GeoDAR v1.0 and the supplementation was based on attribute association that is similar to regional geo-matching. In total, 260192 dams were selected for validating the geo-matching accuracy. For each dam, we manually checked whether its spatial coordinates in GeoDAR v1.0 are consistent with those documented in the geo-matching source (see source references in Table 2).

Table 47. Validation statistics for GeoDAR v1.0

Region	Main reference	Sample	Accuracy	Error source
Geo-matching		260196; 8458	252192 (96.998.0%)	---
Brazil	RSB	4030; 75	3829 (95.096.7%)	Register
Canada	CanVec	4130; 139	3830 (92.7400%)	Register; Mismatch---
Europe	MARS	4130; 3	4029 (97.696.7%)	Register
South Africa	LRD	4030; 1140	4030 (100%)	---
Southeast Asia	ODC; ODM	1716 (all); 43	1516 (88.2400%)	Register---
United States	NID	4130; 95	4030 (100%)	---

Formatted Table

Global	Wada et al (2017)	4030; 3723	4028 (10093.3%)	---Register
Geocoding		1,152782; 316170	1,095748 (95.195.7%)	---
China	NPCGIS	250200; 3045	247199 (98.899.5%)	Misplacement
India	NRLD	220200; 5721	215198 (97.799.0%)	Misplacement
Japan	JDF	232178 (all); 148110	209157 (90.188.2%)	Misplacement; Google Maps label
Others	Google Maps	450204; 8124	424194 (94.295.1%)	Misplacement
ALL		1,412978; 400228	1,347940 (95.496.1%)	---

Note: In “Sample”, the two numbers delimited by semicolon indicate the size of the validation sample from GeoDAR v1.0 (left) and the number of dams in this sample that overlap with GRanD v1.3 (right), respectively. “Cause(s) of error/Error source” lists error scenarios in decreasing order of frequency. “Mismatch” indicates geo-matching errors due to incorrect association between WRD and the source/reference register. “Register” indicates geo-matching errors due to inaccurate spatial coordinates in the source register (despite correct association). “Misplacement” indicates geocoding errors where the information of ICOLD-the WRD attribute information disagrees with the Google Maps label and the validation reference disagrees with each other. “Google Maps-label” indicates geocoding errors due to endogenous feature labelling mistakes in Google Maps (despite the WRD attribute information and the Google Maps label agreeing with each other). See Table 2 (column “Register/Source”) for reference details.

From the remaining subset of GeoDAR v1.0 produced by geocoding, we followed the same stratified sampling scheme and randomly selected 200 or so 220 to 250 dam points for each of the validation regions: for each of China, India, and Japan. Indian. Another 450 dam points were sampled Japan, and from the other partregions of the world as a whole (Table 47). Compared to geo-matching which was based on attribute association with georeferenced regional registers, the geocoding process was more complicated and relied largely on the geographic information repository in Google Maps and its embedded geocoding algorithms. To increase our confidence in the geocoding results, we therefore purposefully enlarged the sample size for each validation region. As described in Section 2.2, three additional georeferenced datasets from authoritative registries in China, Indian, and Japan were used exclusively for the purpose of geocoding validation (refer to Table 2 for register details). For the remaining regions of the world, the validation was based on a meticulous manual comparison between the WRD information of each sampled dam point and the associated Google Maps label, including the dam/reservoir name, administrative divisions, the nearest town/city, and the impounded river name if possible. When necessary, we also referred to other auxiliary information including open-source gazetteers and other literature. In total, we collected 1,152782 dam points for validating the accuracy of geocoding, including all 232178 Japanese dams in GeoDAR v1.0. The distribution of all sampled validation dams is shown in Fig. 8.

Formatted Table

As reported in Table 47, our geo-matching accuracy ranges from 93.88% to 100% among different regions, with an overall accuracy of 97.98%. Causes of the identified geo-matching errors (see the last column in Table 47) were not necessarily mistakes in our attribute association between WRD and the georeferenced registers, but sometimes inaccurate spatial coordinates provided by the georeferenced registers themselves. An example is Skutvik Dam (completion year 1991) in Norway (Fig. 8), where coordinates are documented to be 68.025° N and 15.345° E in MARS. However, inspected from high-resolution Google Maps imagery, no dam or reservoir could be conclusively verified at or near this coordinate point, except for three surrounding lakes that are all over 2 km away and labelled with other names (Vanbassenget, Lanstøvatnet, and Stenslandsvatnet). The documented coordinates for this dam are probably inaccurate.

The accuracies of our geocoded samples ranges from 88.90% in Japan to 98–99% for India and China, with an overall accuracy of 95.96%. As shown in Table 47, most of the errors were related to the misplacement of the dam/reservoir to another feature, typically a free-flowing river reach, which shares the name and administrative divisions with the dam/reservoir. One example is Nambiar Dam near the city of Tirunelveli in the state of Tamil Nadu, southern India (Fig. 8). The correct coordinates, according to NRLD, are 8.374° N and 77.738° E where the Google Maps labelled “Nambi Dam” instead of Nambiar Dam. Probably because of this spelling inconsistency, our geocoded coordinates were misplaced on a reach of the Nambi(y)ar River (8.435° N, 77.569° E, labelled as “Nambiyar”) about 20 km upstream from the dam. Although our recursive geocoding procedure (Section 2.3) embedded an automated filter that examines the type of the feature at each returned point (scripts accessible through Code availability), this filter was designed to only eliminate the coordinates where feature types are clearly disparate from a dam or reservoir (such as commercial and residential buildings). Our experiments showed that dams/reservoirs and free-flowing river reaches could both be categorized as “establishment” of “natural feature” and a feature type that is more specific to dams/reservoirs was hardly seen. Thus, to avoid over-filtering, we allowed a certain ambiguity in the geocoded feature types, and then relied on manual QC to correct or remove mistaken coordinates as thoroughly as possible. The misplacement of dams to their upstream/downstream river reaches is a major cause of the relatively low geocoding accuracy in Japan. Through experimentations, we noticed that Google Maps labelling for some of the Japanese dams that are homonymous to their impounded rivers, is either lacking or highly adapted to the Japanese language. The latter further challenged our geocoding accuracy using English-based ICOLD information. For one of the errors in Japan, we verified from the JDF register that Google Maps mislabelled Myojin Dam in Horoshima Prefecture (34.587° N, 132.505° E) as “Nabara Dam” whose correct location is 3 km downstream (34.563° N, 132.517° E; Fig. 8). As a result, our georeferenced coordinates for Nabara Dam were wrong although our geocoding process was correct. However, given what we have observed, such endogenous labelling errors in Google Maps are probably rare.

Integrating the validations for both geo-matching and geocoding, our overall georeferencing accuracy is 95.496.1% in terms of dam count or 97.599.1% in terms of total storage capacity based on the sampled 1,412,978 dams. While these statistics can be considered as the accuracies an accuracy measure of our data product, the identified errors in the validation sample have

been corrected wherever possible in our released GeoDAR v1.0 and v1.1. To reflect the accuracy of GRand harmonization, we also randomly sampled another ~100 dams in v1.0 that were associated with GRand in v1.1, and identified no association errors were identified among them.

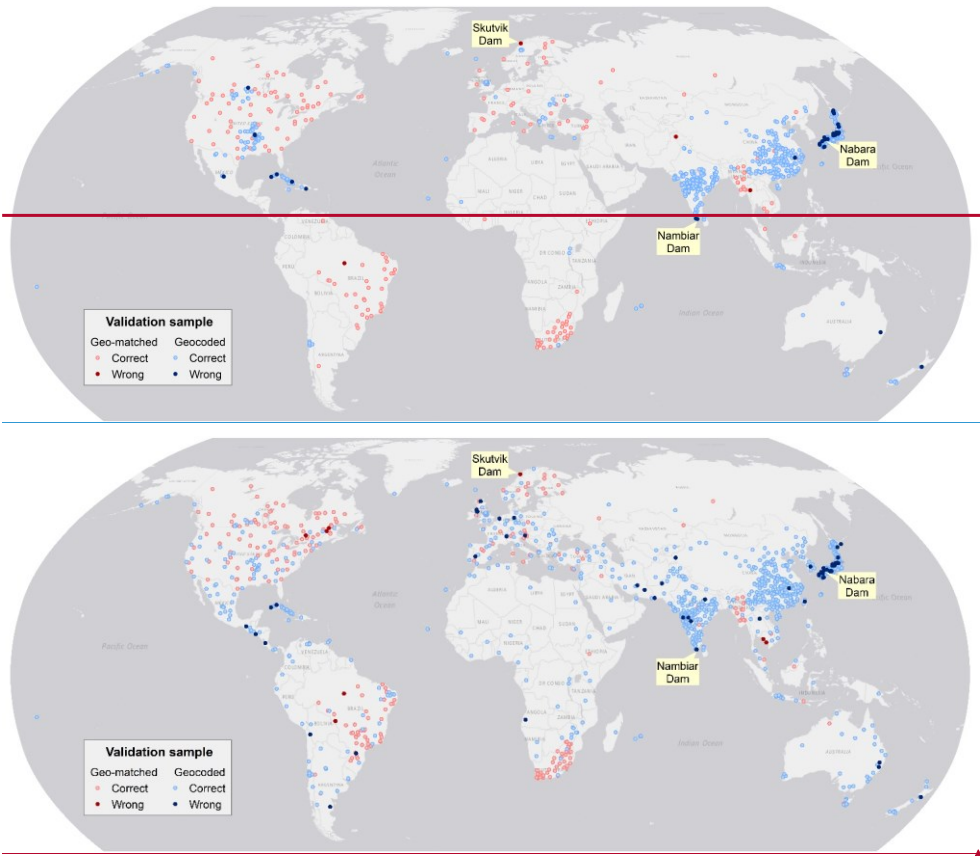


Figure 8. Validation sample and results for GeoDAR v1.0. The validation sample consists of 1,412 georeferenced ICOLD dams, including 260 dams from geo-matching and 1,152 dams from geocoding. See Table 47 for detailed validation statistics.

800 **5.3.4 Comparisons with ~~other existing~~ global dam and reservoir datasets**

Formatted: Heading 1

To better understand the improvements and potential applications of GeoDAR, we compare it with three major global dam and reservoir datasets: the complete ICOLD WRD, GRanD (v1.3), and GOODD (V1). To recap the pros and cons of each dataset, ICOLD WRD documents over 56,000 unique dam records with a broad suite of attributes, but the provided dam records are not georeferenced. GOODD depicts the spatial details of more than 38,000 dam points and their catchments but
805 does not include any other attribute. GRanD is georeferenced and provides multiple essential attributes, but the records are limited to 7320 large dams. Accordingly, our comparison first emphasized the aspects of dam quantity, reservoir area, and if applicable, the spatial pattern and distribution of the dams. These aspects are directly acquirable from the spatial features (i.e., dam points and reservoir polygons) in GeoDAR. Considering that each GeoDAR feature is explicitly linked to a WRD or GRanD record which contains detailed attributes, our comparison also includes two important attributes, i.e., reservoir
810 storage capacity and catchment area, to help inform the extended capability of GeoDAR once the attributes are acquired.

5.13.4.1 Comparisons with ICOLD WRD

Formatted: Heading 2

~~Since georeferencing ICOLD WRD was one of our primary motivations for this work, we view the most important improvement of GeoDAR is the fact that it is spatially resolved.~~ Despite our efforts to integrate multi-source registers and the Google Maps geocoding API, georeferencing ~~ICOLD~~ WRD, particularly smaller dams in poorly documented regions,
815 has proven to be challenging. This challenge was reflected by the proportion of WRD that was spatially resolved in GeoDAR. As compared in Table 59, GeoDAR v1.0 included ~~3740~~% of the ~~56,783~~~~56,850~~ records in the entire WRD. Although limited in number, these georeferenced records compromised a balance between geocoding thoroughness and quality (see Sections 2.32 and 2.43), and account for ~~8284~~% of the total reservoir storage capacity in WRD. The larger proportion in terms of storage capacity indicates that most of the sizable dams in ~~ICOLD~~-WRD have been spatially resolved.
820 This message is also corroborated by Fig. 9. ~~More than 60~~Nearly 70% of the ~~43,248~~~~12,425~~ WRD dams larger than 10 mcm, for example, have been georeferenced in GeoDAR v1.0 (Fig. 9a). While ~~5180~~% of the ~~20,222~~~~21,845~~ WRD dams smaller than 1 mcm were not georeferenced, these smaller dams account for less than ~~71~~% of the total WRD storage capacity (Fig. 9b). After harmonization with GRanD, the proportion of WRD georeferenced in GeoDAR v1.1 increased to ~~4043~~% by count or ~~9492~~% by storage capacity (Table 59), and these percentages represent our best result for georeferencing WRD. By
825 absorbing the remaining dams in GRanD as well, v1.1 has a total dam count equivalent to ~~4244~~% of ~~ICOLD~~-WRD, and a cumulative storage capacity ~~only 2~~less than 5% below that of the full WRD (Table 59; Fig. 9b). Compared to v1.0, the margin between the distribution curves of GeoDAR v1.1 and WRD, particularly for relatively large dams, was further reduced (Fig. 9a). As a result, the number of dams larger than 10 mcm in GeoDAR v1.1 ~~exceeds reaches~~ 80% of that in WRD, and the number of dams larger than 1 mcm ~~reaches 60%exceeds half~~ of that in WRD.

830 **Table 59.** Summative comparisons among GeoDAR, ICOLD, and GRanD

Statistics	GeoDAR			ICOLD	GRanD
	v1.0 (WRD)	v1.1 (WRD)	v1.1 (entire)	Entire WRD	v1.3
Dam count	21,051 37% (of entire WRD); 288% (of GRanD)	22,569 40%, 308%	23,680 42%, 323%	56,783	7320
Storage capacity (km ³)	6252.1 82%, 91%	6892.5 91%, 100%	7486.1 98%, 109%	7608.6	6881.0
Reservoir area (km ²)	---	466,178.7 90%, 98%	492,068.3 95%, 104%	516,566.5	474,192.8
Catchment area (10 ³ km ²)	---	134,236.5 92%, 115%	147,565.6 101%, 127%	145,837.3	116,455.9

Formatted: Left, Line spacing: 1.5 lines

Formatted: Left, Line spacing: 1.5 lines

Formatted: Left, Line spacing: 1.5 lines

Formatted: Left, Line spacing: 1.5 lines

Formatted: Left, Line spacing: 1.5 lines

Statistics	ICOLD	GRanD	GeoDAR		
	Full WRD	v1.3	v1.0 (WRD)	v1.1 (WRD)	v1.1 (WRD <u>&</u> GRanD)
Dam count	56,783 <u>56,850</u>	7320	21,051 <u>22,743</u>	22,569 <u>24,168</u>	23,680 <u>24,978</u>
Storage capacity (km ³)	7608.6 <u>7642.2</u>	6881.0	6252.1 <u>6435.5</u>	6892.5 <u>7028.5</u>	7486.1 <u>7296.6</u>
Reservoir area (km ²)	516,566.5 <u>513,897.3</u>	474,192.8	---	466,178.7 <u>474,129.9</u>	492,068.3 <u>493,860.2</u>
Catchment area (10 ³ km ²)	145,837.3 <u>150,279.5</u>	116,455.9	---	134,236.5 <u>140,597.6</u>	147,565.6 <u>148,166.6</u>

Note: When a dam is documented in both GRanD and WRD, we considered that attribute values in GRanD ([excluding those of the 74 dams in Supplementary Table S4](#)) had precedence over those in WRD for computing “Reservoir storage capacity” and “Catchment area” for GeoDAR v1.1 and “Entire WRD”. When a dam has [both](#) a reservoir polygon and an area attribute, the polygon area took precedence for computing “Reservoir area”. Reservoir area statistics for GeoDAR v1.1 only include the dams whose reservoir polygons were successfully retrieved. [Statistics for GRanD are based on the entire records in v1.3.](#)

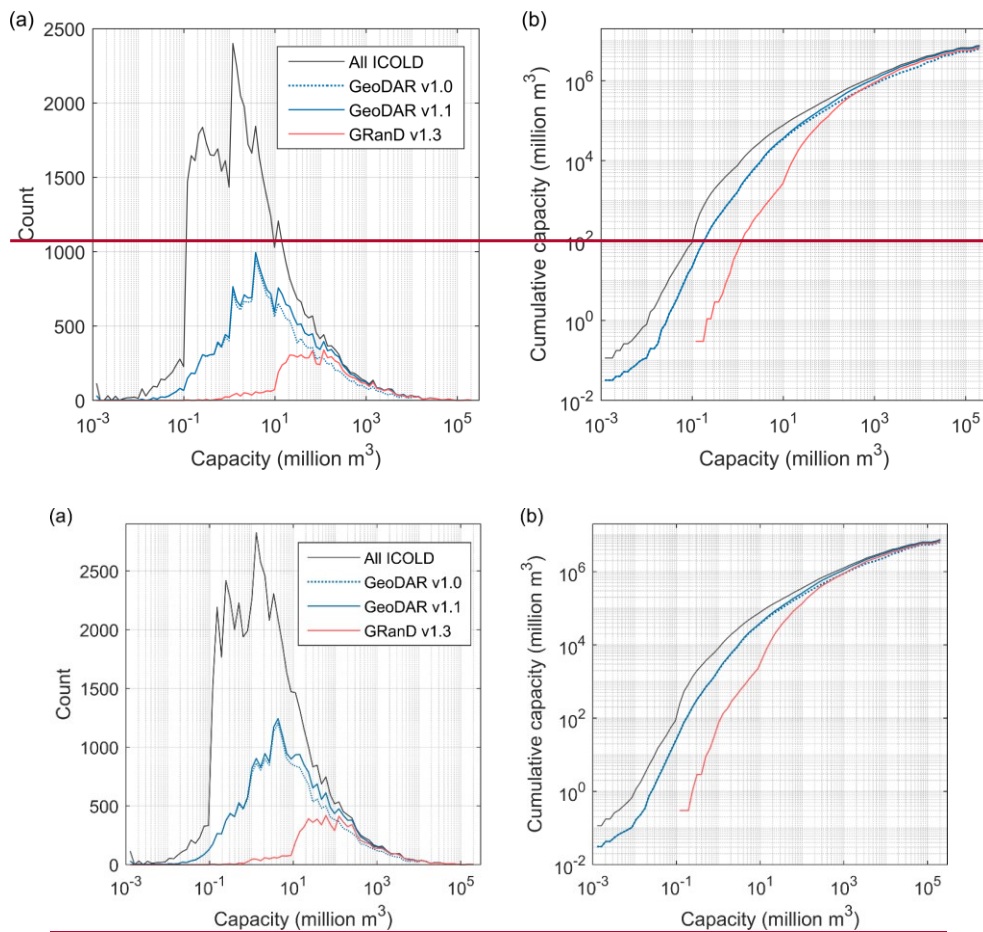
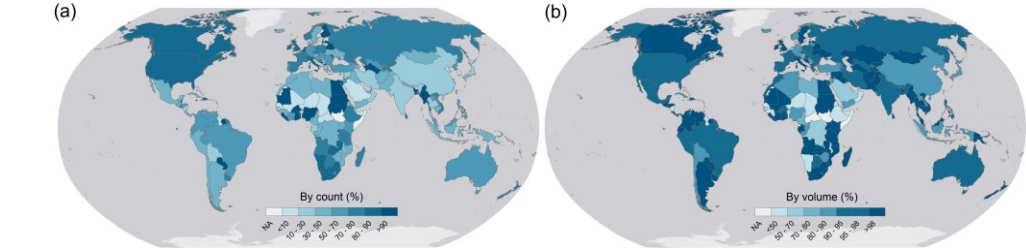


Figure 9. Comparison among GeoDAR, ICOLD WRD, and GRanD by reservoir storage capacity. (a) Frequency (count) distribution. (b) Cumulative (integral) storage capacities. Statistics were based on 80 equal-size bins on a logarithmic scale between the minimum and maximum storage capacities (i.e., 0.001 to 204,800 mcm).

We reported in Section 3.1 that the georeferenced dams in GeoDAR v1.0 are distributed in 148 out of the 164 countries registered in ICOLD WRD, and the spatial coverage was further improved to 154 countries in v1.1. Since GeoDAR v1.1

represents an improved version of our spatial dam inventory, we compare it with WRD in terms of dam count and reservoir storage capacity for each of the registered countries worldwide (Fig. 10). Among the 164 WRD countries, the median proportion of the dam count covered by GeoDAR is 57.62%, with the first and third quartiles being 33.35% and 82.89%, respectively. As shown in Fig. 10a, better coverages tend to occur in North America, Europe, Russia, Oceania, and part of South America and Africa, whereas poorer coverages are seen in East Asia, South Asia, and part of the Middle East. The coverages in China and India, for example, are only about 20.22–26% due to a large quantity of WRD records for these two countries (23,737,749 in China and 505,850,74 in India) but relatively limited information on Google Maps. Despite lower percentages, the dam counts for China and India in GeoDAR are nearly six and three times of those in GRanD, respectively (see Section 3.4.5.2 for details), suggesting that our improvements on the spatial details of dams for major emerging nations are substantial. Compared with dam counts, GeoDAR’s coverage for reservoir storage capacity is higher overall (Fig. 10b). Among the 156 countries with documented reservoir storage capacities, the median coverage in GeoDAR reaches 97%, with the first and third quartiles being 86% and nearly 100%, respectively.

To assess the coverage in GeoDAR for leading dam contributors, we further highlight the top five countries by either dam count or total reservoir storage capacity. According to ICOLD-WRD, the top five countries by dam count are China (23,737,749), US (891,888), India (505,850,74), Japan (308,730,89), and Brazil (134,613,47). GeoDAR v1.1 covers the dam counts of these countries by 23.22%, 88.90%, 19.26%, 20%, and 58.59%, respectively, and the coverages for their total reservoir storage capacities are substantially higher: ranging from 88% for China to 98% for India. Similarly, the top five countries by total reservoir storage capacity are Canada (976.2 Gigatons (Gt)), US (919.2 Gt), Russia (917.8 Gigatons (Gt)), Canada (892.3 Gt), US (867.1 Gt), China (815.4814.1 Gt), and Brazil (673.35 Gt). The coverage GeoDAR ranges from 88% for China, 92% for Brazil, 98% for Russia, to about 100% for the US and Canada, covers these capacities by about 100%, 97%, 98%, 88%, and 92%, respectively, in comparison to 88%, 88%, 78%, 23%, and 58% in terms of dam count. These comparisons again suggest that, although less than half of the WRD records were spatially resolved in GeoDAR, georeferencing the remaining over 50% of WRD, which could be more challenging, will only add a marginal increase of the total reservoir storage capacity.



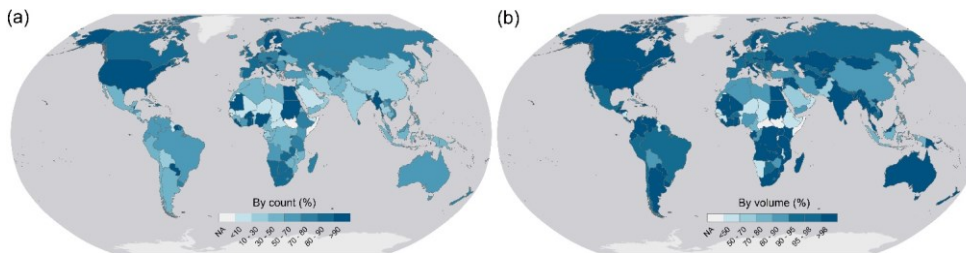


Figure 10. GeoDAR (v1.1) as proportion of ICOLD WRD for each country or territory. (a) By dam count and (b) by reservoir storage capacity. For consistency, storage capacities of dams shared by WRD and GeoDAR were based on the values in GeoDAR.

Catchment areas of the reservoirs often indicate the stream order of the impounded river, and thus the scales of flow and sediment alterations by the dam. Locating dams with an improved representation of catchment areas, particularly smaller ones, has been increasingly needed by hydrologic modelling and watershed managements (Grill et al., 2019; Lin et al., 2019). To evaluate how GeoDAR spatially resolved WRD in this aspect, we directly used the values of the attribute “catchment area” provided in WRD. As many records in WRD are missing catchment areas, we combined the available values in both WRD and GRanD, and when a dam has catchment areas in both datasets, we preferred the value in GRanD. As reported in Table 59, the subset of WRD georeferenced in GeoDAR v1.1 has a total catchment area of 134141 million km², which covers 9294% of the total catchment area in the entire-WRD. The remaining 86% gap catchment area was largely closed compensated for by the inclusion of the remaining non-WRD dams from GRanD. It is worth mentioning that these statistics do not take into account the dams without valid catchment areas. While it is possible to retrieve catchment boundaries for GeoDAR dams (e.g., using high-resolution DEM as per Mulligan et al. (2020)), acquiring accurate catchment areas of the other WRD dams (which have not been georeferenced) is prohibited due to unknown pour point locations. Therefore, our comparison was only based on the attribute values that are already available. This explains why GeoDAR ~~v1.1~~ georeferenced ~~less than ~40%-half~~ of ~~all the~~ WRD records by count but included ~~more than ~90%~~ of the total catchment area. Similar to the pattern of reservoir storage capacity, higher proportions of the WRD catchment area covered by GeoDAR are skewed towards the dams with larger catchment areas (Fig. 11a). For example, the number of dams with a catchment area larger than 10 km² in GeoDAR equals 8789% of that in WRD, and the coverage increases to 9395% for the dams with a catchment area larger than 100 km².

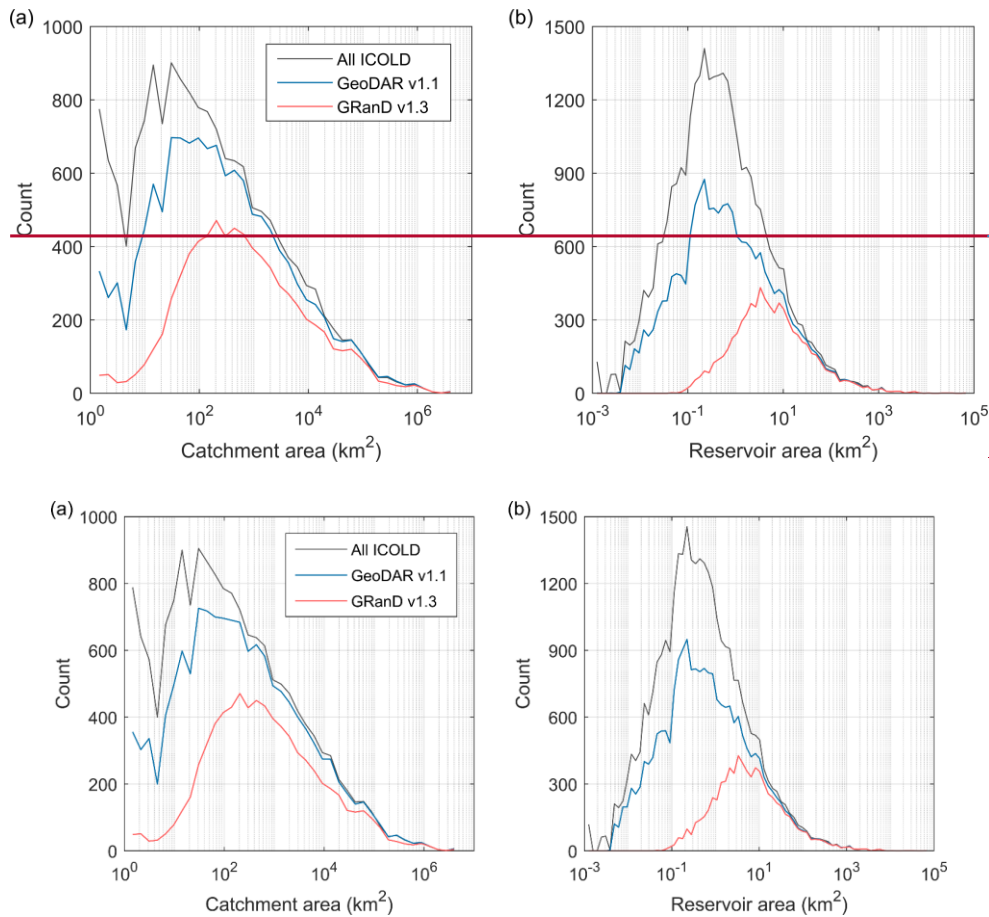


Figure 11. Comparison among GeoDAR, ICOLD WRD, and GRanD by reservoir catchment area and reservoir area. (a) Frequency (count) distributions by reservoir catchment area. Statistics were based on 40 bins between the minimum and maximum catchment areas (i.e., 1 to 4,040,000 km²). (b) Frequency distribution by reservoir area. Statistics are based on 80 bins between the minimum and maximum reservoir areas (i.e., 0.001 to 66,866.7 km²). All bins are of equal size on a logarithmic scale. Considering that catchment areas are often missing in WRD, a smaller bin size 40 was used to generate smoother distribution curves. Catchment areas were acquired from data attribute values. When a dam is in both GRanD and

WRD, the value in GRanD took precedence. Reservoir areas for GeoDAR and GRanD were based on their reservoir polygons, and the small proportions of dams missing reservoir polygons were not counted in distribution curves. Reservoirs areas for ICOLD WRD were based on reservoir polygons if available in GeoDAR or from the WRD attribute if not.

Although ~~the current version of~~ GeoDAR does not include reservoir catchment boundaries, it does provide reservoir polygons for ~~20,214 or 8586%~~ of the georeferenced dam points. As reported in Section 3.1.2, the remaining ~~1514%~~ of the dam points without reservoir polygons, if inferred from their available attribute values, yield a reservoir area that is only ~~24%~~ of the total reservoir area of all GeoDAR dams. For this reason, we focus on the retrieved reservoir polygons for comparing how GeoDAR v1.1 represents the reservoir areas in the entire ICOLD WRD. Among the ~~20,214~~~~21,576~~ polygons, ~~19,122~~~~20,778~~ (~~9596%~~) are associated with the georeferenced WRD dams. These retrieved WRD reservoirs have a total area of ~~474466~~ thousand km², accounting for ~~9092%~~ of the cumulative reservoir area in WRD (Table 59). After supplementation of the other ~~1092798~~ polygons from GRanD, the total reservoir area reached ~~492494~~ thousand km², equivalent to ~~9596%~~ of the cumulative reservoir area in WRD. Like other attributes, the values of reservoir area are not always available in all WRD records, so our reported coverage percentages are theoretically overestimated. However, if a WRD record is missing its area attribute value but has a retrieved reservoir polygon, we used the area of the reservoir polygon as the *de facto* reservoir area in calculating WRD statistics, and the other WRD records still missing reservoir areas probably contribute a miniscule fraction of the aggregated area. Therefore, we consider our comparison to be overall reasonable. Keeping this limitation in mind, we showed in the distribution curves (Fig. 11b) that the number of GeoDAR reservoir polygons accounts for ~~6468%~~ of all WRD records that have reservoir area values (either documented or *de facto*), and consistent with the distributions of other attributes, higher coverages for reservoir area tend to occur for larger reservoirs. For example, GeoDAR retrieved ~~78288111~~ reservoirs larger than 1 km², which account for ~~7680%~~ of those in WRD. The coverage increases to ~~8892%~~ for reservoirs larger than 10 km² although the reservoir polygon number decreases to ~~25222543~~.

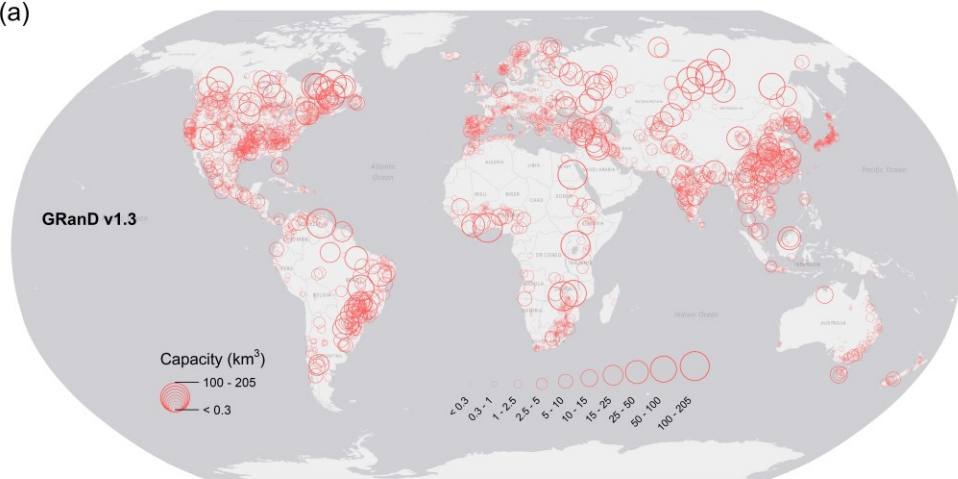
5.23.4.2 Improved spatial ~~details~~density over GRanD

~~Enhancing the spatial detail of existing global inventories of dams and reservoirs, such as GRanD, is another motivation of producing GeoDAR.~~ While GRanD emphasized ~~all dams and reservoirs~~ larger than 100 mcm (or 0.1 km³), GeoDAR aimed to georeference ~~all records in~~ WRD ~~records~~ which, by definitions, have a minimum storage capacity of 3 mcm or smaller if the dam is higher than 15 m (see Section 1). This reduced storage threshold entailed a substantial increase of the dam quantity in GeoDAR. As compared in Table 59, GeoDAR v1.0, which was generated independently from GRanD, ~~is already more than triple exceeds~~ the dam quantity ~~of in~~ GRanD (7320) ~~by 188%~~, and accounts for ~~more than 9094%~~ of the total reservoir storage capacity in GRanD (6881 Gt). ~~The harmonization with GRanD further expanded GeoDAR by another 2629 dam points including 1518 newly georeferenced from WRD. As a result, the WRD portion of GeoDAR v1.1 (with 22,569 dams) matches the full storage capacity of GRanD but is triple GRanD's dam count. This comparison suggests that the improvement of GeoDAR is mainly manifested as the increased dam locations or spatial details, rather than reservoir storage~~

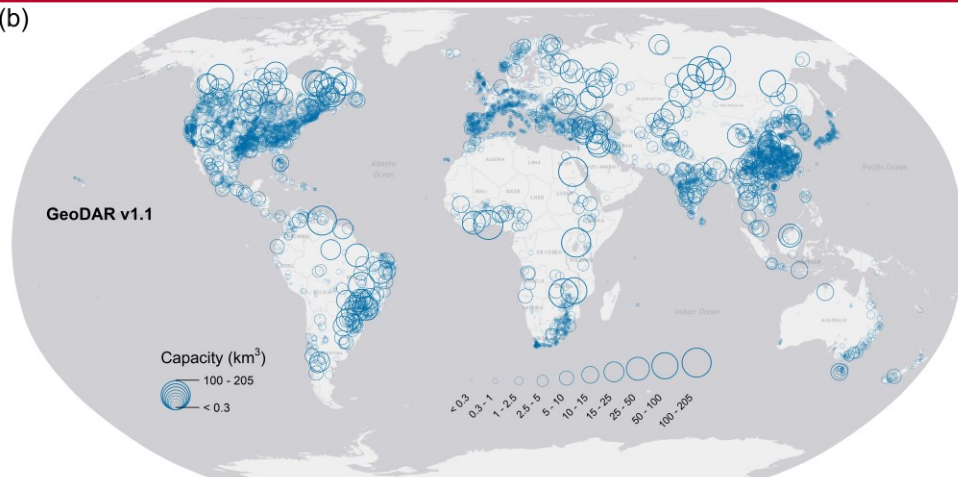
Formatted: Heading 2

~~capacity.~~ With the harmonization with GRanD, inclusion of the remaining 1111 large dams from GRanD, the number of dams in GeoDAR v1.1 ~~(23,680)~~ reaches 323341% of that in GRanD, with a total reservoir storage capacity ~~(7486 Gt)~~ also exceeding 96% of that in GRanD. This comparison suggests that the improvement of GeoDAR is mainly manifested as the increased dam quantity, rather than reservoir storage capacity.

(a)



(b)



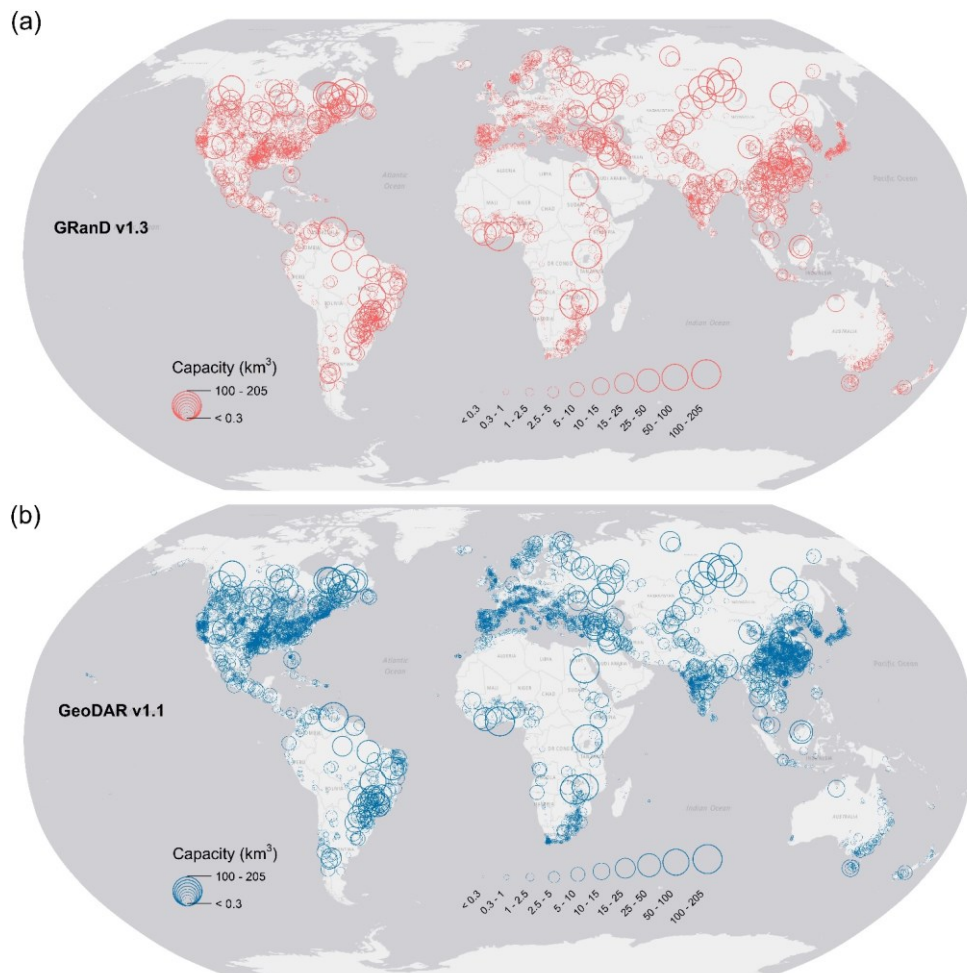
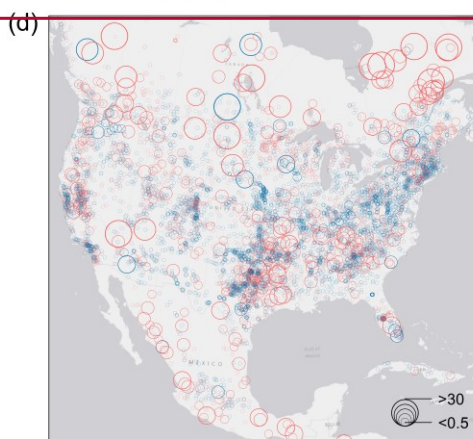
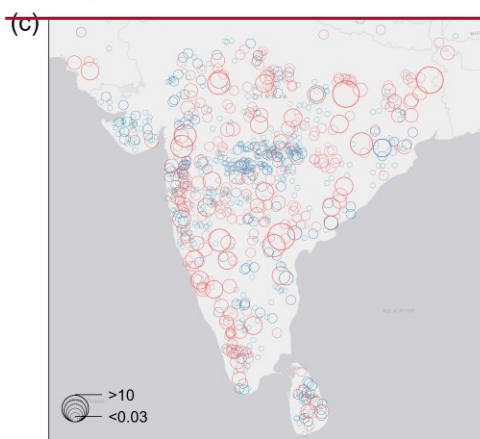
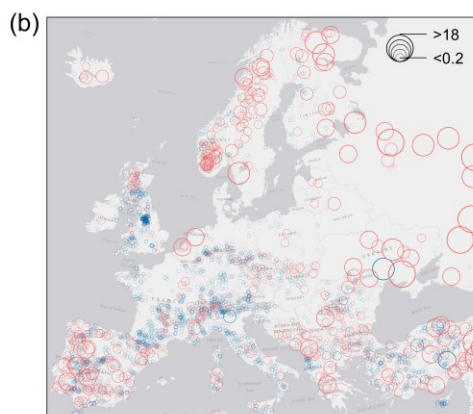
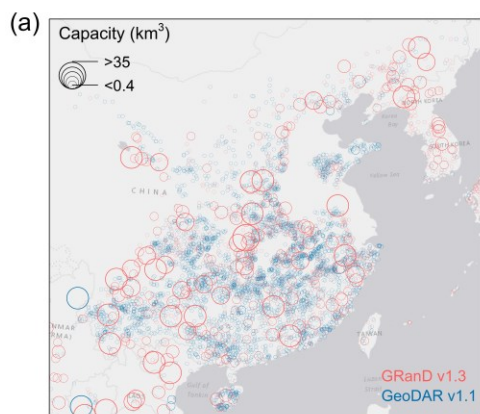


Figure 12. Global distribution of reservoir storage capacities of georeferenced dams. (a) GRanD v1.3 and (b) GeoDAR v1.1. Shown on the maps are 7312 out of the 7320 dams in GRanD v1.3 and [23,082,347](#) out of the [23,680,978](#) dams in GeoDAR v1.1 [with](#) [The fractional proportions of the dams not shown have no](#) documented or estimated reservoir storage capacities.

The ~~increased~~improved dam quantity ~~spatial detail~~ in GeoDAR is ~~manifested as also revealed by a ubiquitous improvement of the spatial density of smaller dams worldwide~~the distribution of individual reservoir storage capacities worldwide (Fig. 12). Since GeoDAR v1.1 has absorbed GRanD v1.3, the global patterns for capacious reservoirs are overall similar between the two datasets. What is noticeably different are the proliferated ~~spatial densities~~density of thousands of smaller reservoirs, particularly those beyond the main focus of GRanD (such as smaller than 100 mcm). The substantial increase of smaller dams and reservoirs is corroborated by the distribution curves in Fig. 9a, where the mode storage capacity (i.e., the capacity corresponding to the peak frequency) shifted from about 100 mcm in GRanD to about 3–5 mcm in GeoDAR (both v1.0 and v1.1). The area between the distribution curves is largely explained by the addition of ~~~15,300~~16,600 dams smaller than 100 mcm in GeoDAR v1.1 (Fig. 9a), which correspond to a total storage increase of ~~75~~126 Gt or ~~58~~96% of the total storage of ~~the dams smaller than 100 mcm in GRanD~~ (Fig. 9b). ~~These smaller dams (<100 mcm) comprise 84% of GeoDAR v1.1 in number, in comparison to only 54% of GRanD.~~

~~As visualized in Fig. 12, increases of reservoir population and density are seen across the continents such as North America, Europe, East and South Asia, the Middle East, southern Africa, and South America. Some of the hotspots, not surprisingly, also concur with the most economically active and energy-demanding regions, such as China, Europe, India, and the US where details are further enlarged in Fig. 13.~~ It is important to note that the added reservoirs in GeoDAR still comply with ICOLD's definition of "large dams". Although their aggregated storage is limited, these relatively small reservoirs are geographically widespread, meaning that they are locally significant for filling service gaps between more sporadic larger dams. Examples include hundreds of smaller dams ~~and~~/reservoirs that provide irrigation from southern Europe (Fig. 13b) to north-western and central India (Fig. 13c), hydropower and water usage in central and southern China (Fig. 13a), and flood controls across the Mississippi River Basin and southern Texas in the US (Fig. 13d). The sheer number of these added smaller dams and reservoirs accentuate the benefits of an improved knowledge of their spatial locations, such as what GeoDAR offers, for strategizing water and energy managements and assessing fragmentation of the river ecosystems (Belletti et al., 2020; Grill et al., 2019).



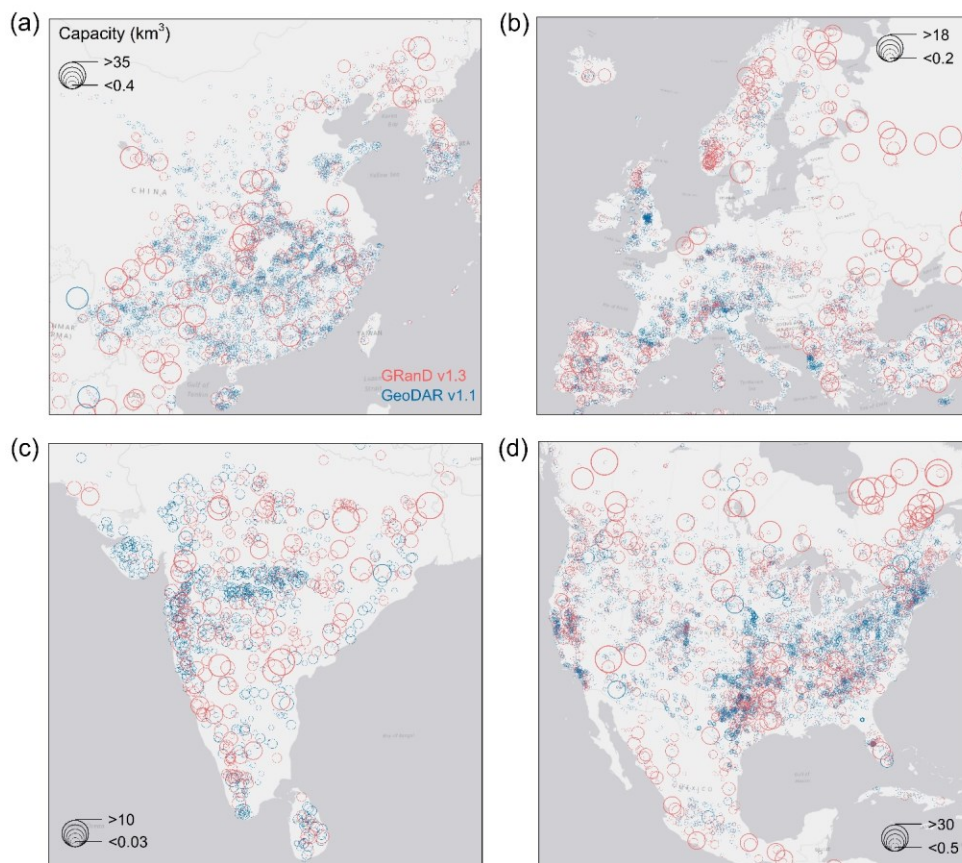


Figure 13. Regional distributions of reservoir storage capacities in GRanD v1.3 and GeoDAR v1.1. (a) China and its surrounding East and Southeast Asia. (b) Europe. (c) India and its surrounding South Asia. (d) US and its surrounding North America. Graduated symbols for GeoDAR (blue bubbles) are superimposed by symbols for GRanD (red bubbles).

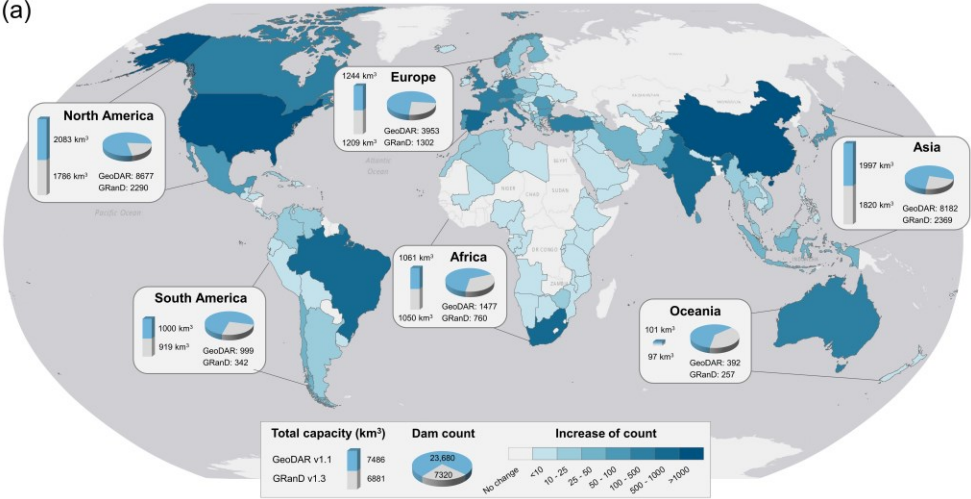
970 To assist regional applications, we further aggregated the improvements of GeoDAR over GRanD into national scales. As shown in Fig. 14, GeoDAR's improvements in either dam count or reservoir storage capacity pervade more than [100120](#) countries which occupy about [7086](#)% of the continental landmass (excluding Greenland and Antarctica). The increase of

dam count occurs in ~~422~~126 out of the 154 GeoDAR countries (Fig. 14a). These ~~422~~ countries include 17 countries without GRanD records at all (e.g., such as ~~Mauritius, Haiti~~, United Arab Emirates, Yemen, and Bhutan), and the other ~~405~~109 countries comprise ~~77~~80% of the 137 countries with GRanD records. There are slightly fewer countries with a confirmed increase of reservoir storage capacity (Fig. 14b) because some of the added WRD records are missing storage capacity values. The number of these countries is ~~441~~116, including ~~43~~14 without GRanD records at all.

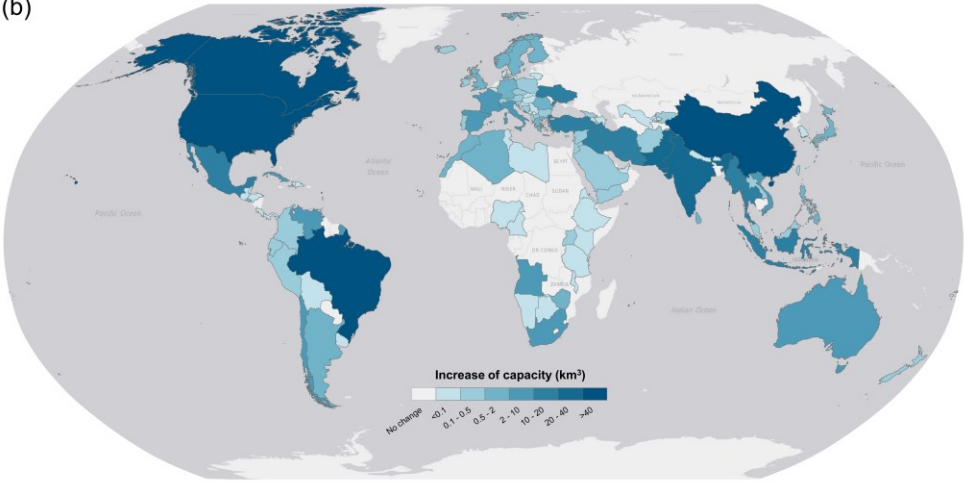
~~Although While~~ GeoDAR's improvements are widespread, the improvement levels are not geographically uniform (Fig. 14). Globally speaking, the spatial patterns of number and capacity increases are overall consistent, with ~~the the major~~ hotpotsmost prominent improvements ~~concurring within~~ large or industrialized nations (e.g., US, China, Brazil, India, and European countries) and less impressive increases in smaller, drier, and/or less developed nations (e.g., part of Africa and South America). This is reasonable as bigger and/or more developed nations usually possess a larger quantity of dam infrastructures and thus a greater potential for GeoDAR to improve. However, this pattern also reflects the disparities ~~due to~~ of several factors, such as ~~a possible bias in WRD information sharing among the ICOLD members (as it is a volunteered dataset and not all member nations contributed equally)~~, the accessibility of regional registers for geo-matching, and geocoding challenges for different countries. The top five countries in terms of dam count increase are the US (an increase of ~~5906~~6090 or ~~307~~317%), China (~~4413~~4376 or ~~480~~477%), ~~India (967 or 291%)~~, South Africa (~~627~~672 or ~~233~~250%), ~~India (602 or 181%)~~, and Brazil (~~575~~586 or ~~283~~289%). These five countries cover nearly three quarters of the global dam count increase (~~46,360~~17,658). Similarly, the top five countries in terms of storage capacity increase are the US (~~450~~129 km³ or ~~20~~17%), ~~Canada (131 km³ or 15%)~~, Brazil (~~666~~7 km³ or 12%), China (~~4544~~ km³ or 7%), ~~and India (2232 km³ or 812%)~~, ~~and Canada (15 km³ or 2%) or Iraq (17 km³ or 17%) if including the unfinished Bekhme Dam~~, which together comprise ~~about 80%~~nearly 70% of the global ~~storage capacity increaseimprovement~~ (~~605~~416 km³).

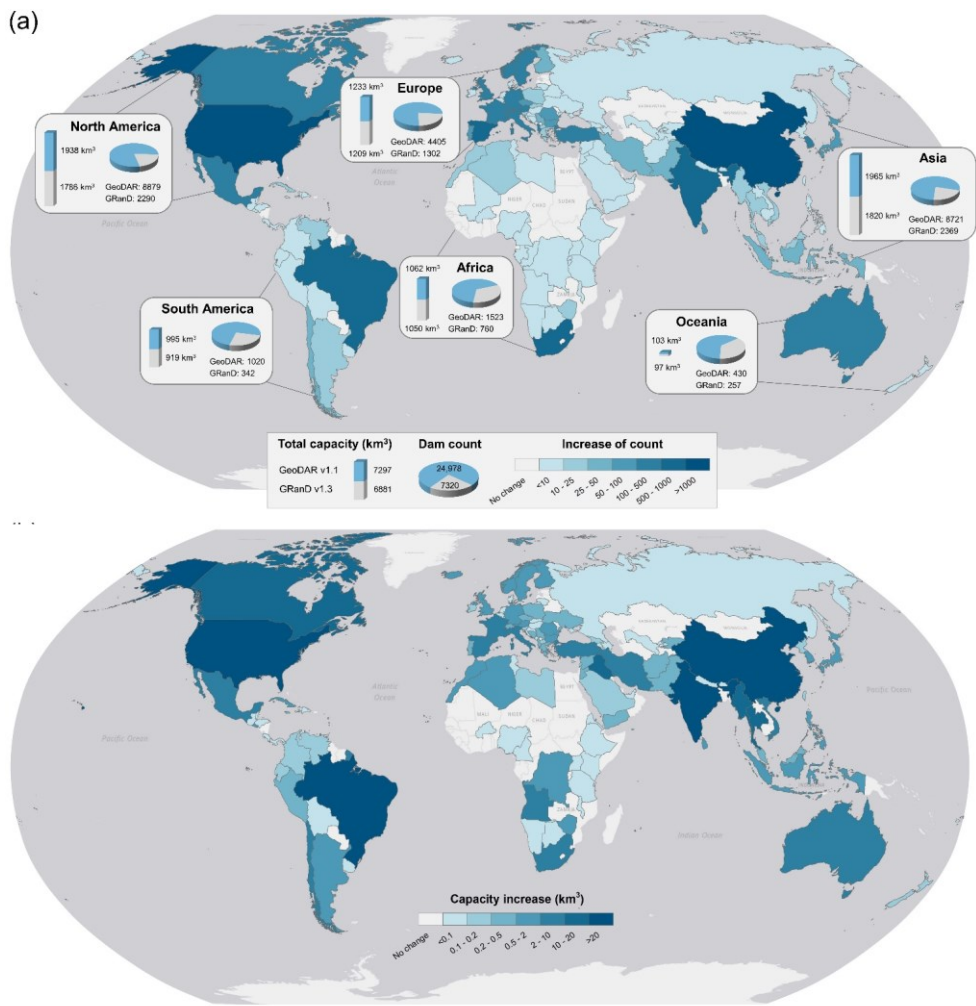
~~While the patterns of dam count and capacity improvements are similar, e~~Certain regions with limited increases in dam count, such as the Middle East, Southeast Asia, and southern Africa, show more pronounced improvements in storage capacity. This contrast indicates that, in addition to smaller dams and reservoirs (e.g., <100 mcm), GeoDAR also supplemented GRanD by including more capacious reservoirs. Examples are Dau Tieng Dam in Vietnam (storage capacity 1580 mcm; location 11.323° N, 106.341° E), San Roque Dam in the Philippines (990 mcm; 16.147° N, 120.685° E), Mrica Dam in Indonesia (193 mcm; 7.392° S, 109.605° E), Marib Dam in Yemen (398 mcm; 15.396° N, 45.244° E), and the recently completed Lauca Dam in Angola (5482 mcm; 9.739° S, 15.127° E). ~~Different from GRanD~~, GeoDAR also inventoried some large hydroelectric projects that are under construction or consideration. Examples are Diamer-Bhasha Dam in Pakistan (expected 10,000 mcm; 35.521° N, 73.739° E), Bakhtiari Dam in Iran (4845 mcm; 32.958° N, 48.761° E), and Myitsone Dam in Myanmar (13282 mcm; 25.691° N, 97.516° E).

(a)



(b)





1005 **Figure 14.** Country-level improvements in GeoDAR v1.1 over GRanD v1.3. (a) Increase of dam count and (b) increase of total reservoir storage capacity for each country or territory. Aggregated statistics for dam count and storage capacity were also compared for each continent. For convenience of comparison, both statistics were displayed on Panel a.

By further aggregating national statistics to each continent (Fig. 14a), the result echoes that GeoDAR's major improvement lies on the quantity or spatial ~~density~~ details of the dams, rather than their total reservoir storage capacity. However, this should not overshadow the fact that improvements of both dam count and storage capacity do exist in all continents. As summarized in Fig. 14a, the continental improvement ascends from ~~135~~173 more dams with a ~~46~~ km³ total capacity in Oceania, to a scale of ~~56000–67000~~ more dams with a ~~2100–3200~~ km³ capacity in North America or Asia. Unfortunately, because the total storage capacity is disproportionally dominated by the largest reservoirs and GRanD has already included most of them, the added storage capacity by GeoDAR relative to what has existed in GRanD appears limited and descends from ~~108–179%~~ in North America, ~~and Asia, and South America, 97%~~ in ~~OceaniaSouth-America~~, to only 1–24% in ~~Europe and Africa~~ the other continents. By contrast, GeoDAR's dam quantity ranges from being almost double that of GRanD in Oceania and ~~AfricaSouth-America~~, to being triple to quadruple in the other continents.

A derivative benefit of the increased dam quantity is a more complete representation of ~~the regulated watershedsthe reservoir~~ catchment areas, which is critical to improving discharge estimates. As revealed by the distribution curves in Fig. 11a, GeoDAR improved GRanD in the inclusion of reservoir catchment areas from two aspects. First, the exceedance of the number of reservoir catchments is almost unanimous on all area levels. This corresponds to a total increase of the regulated catchment area by ~~31,71134,110~~ km² or 27% (Table ~~59~~). Second, the increase of reservoir catchments is skewed towards smaller catchments, signifying a more realistic inventory of human water regulations in the basins of lower stream orders or closer to stream headwaters. As shown in the distribution curves (Fig. 11a), the average increasing rate is augmented from about ~~2830%~~ for catchments larger than 1000 km², ~~7580%~~ for catchments between 10 and 1000 km², to more than ~~500600%~~ for those smaller than 10 km². The mode of catchment areas decreases from about 200–400 km² in GRanD to 30–100 km² in GeoDAR, with the latter much closer to the mode of the entire ~~ICOLD~~-WRD (15–50 km²). As a result, the number of dams with a catchment size smaller than 25 km², for example, which is the channelization threshold for the high-resolution MERIT Basins hydrography dataset (Lin et al., 2019; Yamazaki et al., 2017)), is ~~29383556~~ or ~~2327%~~ in GeoDAR in comparison to only ~~571671~~ or ~~89%~~ in GRanD. These small-catchment dams, once integrated into river networks, may substantially improve the performance of routing models. Consistent with our comparison with ~~ICOLD~~-WRD (Section ~~3.4.15.1~~), these statistics are only based on the records with valid catchment areas. Considering that missing values more likely occur to dams with smaller catchments, our reported improvement could be theoretically conservative.

The increased dam count in GeoDAR also enabled the ~~retrievalretrieval of surface extents~~ of another ~~12,89414,000~~ or so ~~smaller~~ reservoirs ~~polygons from the high-resolution HydroLAKES dataset and the finer UCLA Circa-2015 Lake Inventory~~ (Fig. 7). These added reservoir polygons ~~are mostly small, with have~~ a median size of ~~0.20.5~~ km² in comparison to 4.3 km³ in GRanD. They aggregate to a total area of ~~17,87619,667~~ km², a scale comparable to 30 Lake Meads. Although this area increase may appear substantial, it only expanded the global reservoir area in GRanD by a marginal proportion of 4%. Similar to the pattern of storage capacities, reservoir areas follow a quasi-Pareto distribution, meaning that smaller reservoirs

1040 tend to dominate the population (or number) whereas larger reservoirs dominate the area and storage. This explains why the increase of relative area is small, but the increase of absolute quantity is double that of the entire reservoir polygons in GRanD. For example, ~~about 9695%~~ of the total reservoir area in GeoDAR comes from only 12% of the reservoir polygons larger than 10 km², and ~~about 9290%~~ of these large reservoirs are already included by GRanD (Fig. 11b). This pattern again suggests that the core value of GeoDAR is not to augment the global scale of reservoir area or storage, but to amplify the

1045 local details of smaller dams and reservoirs. Owing to the added details, the mode of reservoir area is on the order of 1–10 km² in GRanD but was refined by one order of magnitude to 0.1–1 km² in GeoDAR. ~~Similarly, the number of reservoir polygons smaller than 1 km² is 1170 or only 16% in GRanD and has increased to 11,957 or 59% in GeoDAR. As discussed in Section 3.1, these thousands of added reservoir polygons are concentrated on the populated middle and lower latitudes, and contribute to an enhanced base map of both locations and extents of human water impoundments. Together with remote~~

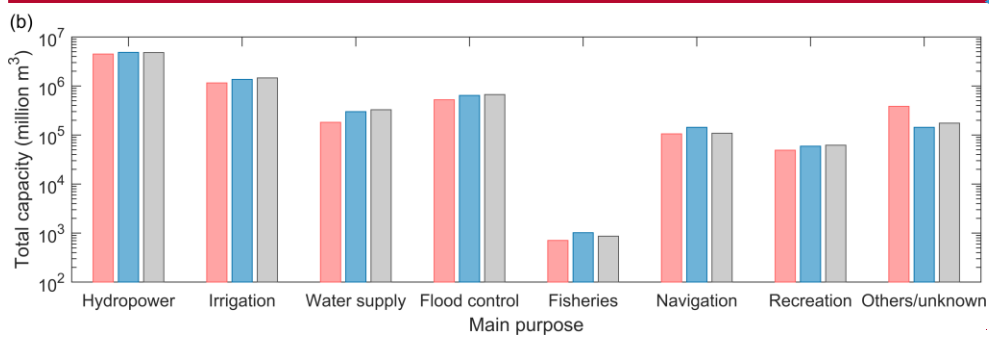
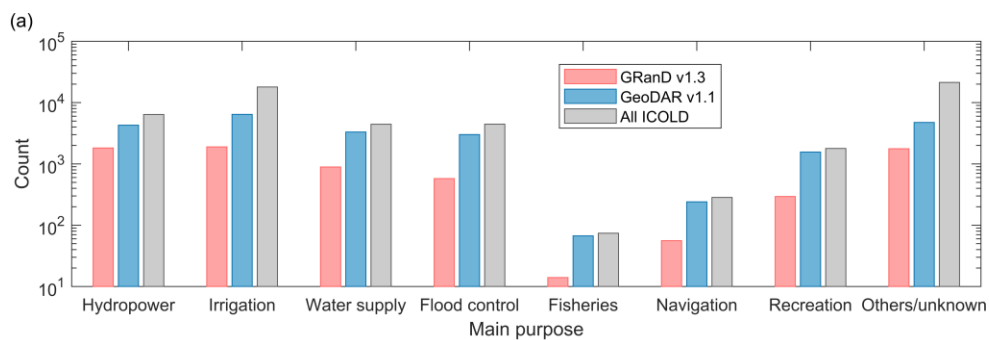
1050 ~~sensing observations such as satellite altimeters and spectrometers, this enhanced base map will facilitate a more comprehensive monitoring of reservoir water budget variations, and thus an improved understanding of how human footprints alter and fragment the global river systems.~~

~~The detailed reservoir base map of GeoDAR, with the *a priori* attribute of reservoir purpose, can also enhance our understanding of reservoir operation rules.~~ If we group the global dams by their documented main purpose, we observe in

1055 Fig. 15 that GeoDAR improved GRanD unanimously in both dam count and storage capacity for all main purposes (Fig. 15). For the same reason as explained above (i.e., the added reservoirs are small), the increases of dam count appear more prominent than those of storage capacity, and the increases of storage capacity from GRanD to GeoDAR are overall more evident than those from GeoDAR to ICOLD WRD. The exception is the dams with “others” or “unknown” purposes whose total storage capacity in GeoDAR is lower. This is because when GRanD and WRD records conflict with each other in the

1060 GeoDAR harmonization process, the attribute values in GRanD took precedence only if they are available or valid (“others” or “unknown” was considered as invalid reservoir purpose). ~~This harmonization scheme, as also used for the calculation of other attribute statistics, ensured the optimal integration of all available attribute data. The improved spatial inventories for all reservoir purposes have important implications for generalizing reservoir operation rules. Assuming that the reservoir operations rules vary by purpose, this unanimous improvement of the spatial inventory for all reservoir purposes, in~~

1065 ~~conjunction with satellite-observed water budget variations, can help us better generalize reservoir operation rules which are critical to improving water managements, the accuracy of our generalized operation rules, such as from satellite-observed water budget variations, will improve as the number of observed reservoirs increases. This is especially true if the observed reservoirs also cover wider variations of sizes, storage capacities, and catchment areas.~~



Formatted: Centered

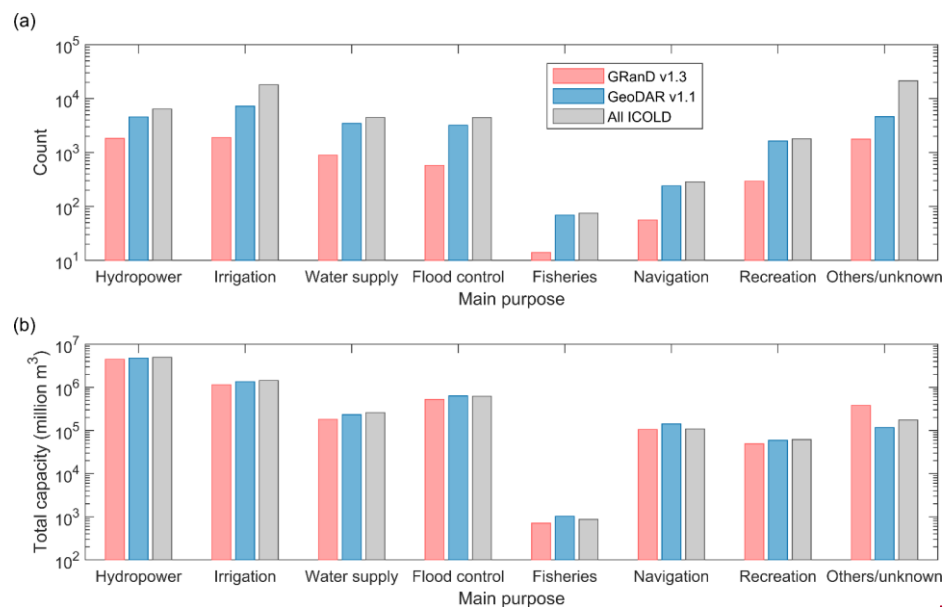


Figure 15. Comparison among GRanD v1.3, GeoDAR v1.1, and ICOLD WRD by dam/reservoir purpose. (a) Dam counts and (b) total reservoir storage capacities for each main purpose. Dam purposes are based on attribute values provided in WRD and GRanD. For a dam with multiple purposes, its “main purpose” was considered as the one with the highest order of priority. The main purpose in GRanD took precedence if it differs from that in WRD.

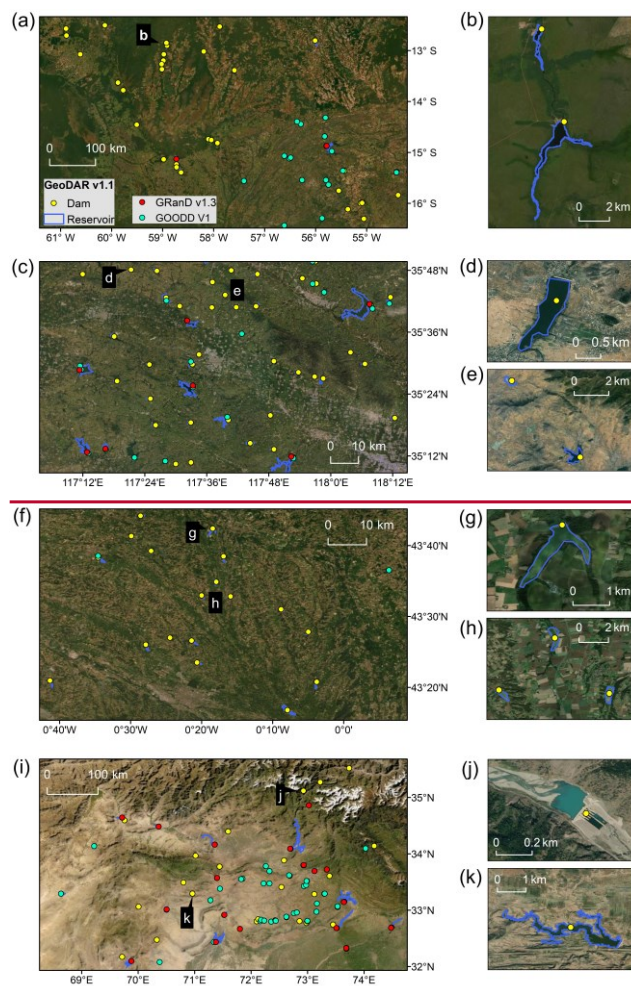
5.33.4.3 Spatially complementary towith GOODD

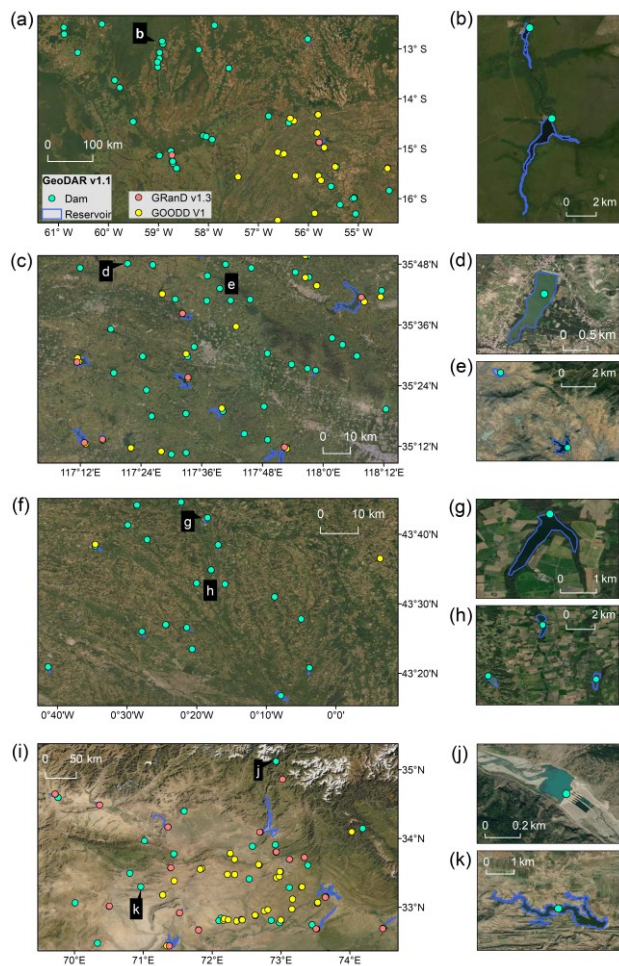
The recently published GOODD (V1) dataset (Mulligan et al., 2020) holdsincludes 38,667 dam points in the world, which were consistentlydigitized by scanning through Google Earth imagery with supports of regional inventories and the Shuttle Radar Topography Mission Water Body Dataset (SWBD, 2005). Despite lacking essential attributes, GOODD is thus far the most comprehensive global inventory of dam locations and catchments. The digitization was performed during 2007 to 2011 and was later updated in 2016. This means that reservoirs postdating 2016 were not yet included in the dataset. The completeness and accuracy of GOODD also depend on the sizes of the dams or reservoirs. According to Mulligan et al. (2020)As the authors described, the resolution and quality of available Google Earth imagery during the digitization period were low in some parts of the world (such as China), and an experiment in the US showed that detectable dams and reservoirs from low resolution imagery (e.g., Landsat Geocover 2000) may require the reservoir length greater than 500 m

and the dam width greater than 150 m. These minimum size criteria do not necessarily overlap with those of ICOLD WRD which instead emphasize the reservoir storage capacity and dam height (see Section 1).

Because of these digitizing limitations and criterion difference, the dam points in GeoDAR are spatially complementary to, rather than ~~always completely~~ duplicated by, those in GOODD across many regions. Figure 16 identified four examples in Cerrado Brazil, northern China, southwestern France, and northern Pakistan, where a large proportion of the GeoDAR dams were not digitized by GOODD. Some of the dams that only appear in GeoDAR also comply with the minimum size criteria of GOODD, and examples are those enlarged in the right panels except the Duber Khwar Dam in Pakistan (35.119° N, 72.927° E; Fig. 16j) which was completed more recently in 2014. Since the area of the Duber Khwar Reservoir (about 0.05 km²) is smaller than the resolution of HydroLAKES (0.1 km²) and the dam completion year overlaps with the image acquisition period of the UCLA Circa-2015 Lake Inventory (from May 2013 to August 2015 (Sheng et al., 2016)), GeoDAR georeferenced the dam point but did not successfully retrieve the reservoir polygon.

To approximate how GeoDAR and GOODD complement each other globally, we intersected both dam datasets with the 30-m-resolution UCLA Circa-2015 Lake Inventory. We noticed that some of the points in GOODD, particularly in regions like China, India, and Brazil, exhibit substantial geographic offsets from the dams or reservoirs observed in the Google Earth imagery. Through For a pilot experiment, we applied a 1-km tolerance when intersecting the UCLA lake inventory with GOODD, and kept a 500-m tolerance as used in Section 2.56 for intersecting the lake inventory with GeoDAR. The result shows that among the 57,00055,000 or so water bodies that intersect either datasets, 8280% intersect with GOODD and the other 4820% with GeoDAR alone. These statistics imply that GeoDAR may have an ability to expand the number of dams in GOODD by about 2425% (i.e., 4820% divided by 8280%). It is important to note that since we applied a larger tolerance for GOODD, this estimated expansion by GeoDAR is likely conservative (considering that the number of GOODD-intersecting reservoirs may be overestimated). If a 500-m tolerance is used for both intersections, the expansion by GeoDAR will increase to roughly 4245%. In addition to the expanded spatial coverage, GeoDAR indexed each georeferenced dam point to a WRD and/or GRanD record and thus enabled access to multiple attributes, whereas GOODD carries no attribute information except the delineated reservoir catchments. These regional and global comparisons suggest that, even just with the geometric dam points, GeoDAR is not a simple replication of GOODD, but instead complements GOODD for an improved spatial coverage and density of global dams.





Formatted: Centered

Figure 16. Comparisons between GRand v1.3, GOODD V1, and GeoDAR v1.1 in selected regions of the world. (a)-(b) Cerrado, Brazil (Mato Grasso State). (c)-(e) Northern China (Shandong Province). (f)-(h) Southwestern France (Aquitaine and Midi-Pyrenees). (i)-(k) Northern Pakistan (northern highlands and foothills). GRand points (red) are placed on top of GOODD (green) which is placed on top of GeoDAR (yellow). Background image source: Esri imagery base map.

64 Data ~~a~~Availability

GeoDAR v1.0 (dam points) and v1.1 (both dam points and reservoir polygons) are available for download from the figshare repository <https://doi.org/10.6084/m9.figshare.13670527>. The dam points are stored in both csv and shapefile formats, and the reservoir polygons are provided in shapefile. Their attributes and values are described in Table 38 as well as in the repository website. The data usage information is described in Section 3.3. Other citation courtesy and disclaimer information are given in the Disclaimer section and the repository website. All released datasets and information are available under the Creative Commons Attribution 4.0 International (CC-BY 4.0) license (<https://creativecommons.org/licenses/by/4.0>). Users who would like to link GeoDAR records to the proprietary WRD attributes they have purchased in advance from ICOLD should contact the corresponding author.

75 ~~Conclusions and Outlook~~Summary and applications

We have produced a comprehensive and spatially resolved dam and reservoir dataset, GeoDAR, which complementarily improved the existing global inventories of large dams. We demonstrated that the production of GeoDAR is not a direct compilation or collation of existing dam datasets. Instead, it involved a first-known effort to georeference ICOLD WRD. This was jointly enabled by geo-matching (or table-associating) multi-source regional registers and geocoding descriptive attributes through the Google Maps API. This georeferencing effort resulted in GeoDAR v1.0 which contains ~~21,051~~^{22,743} spatially resolved dam points, each associated with a WRD record, with an overall accuracy of ~~96~~⁹⁵%. Each of the georeferenced records was also labelled with a QA score, providing users a reference to the qualities of individual dam locations. Our georeferencing process and accuracy validation, as we have elaborated in substantive detail, have important methodological values for future expansions of spatial dam inventories using similar approaches, such as Geo-Wiki and OpenStreetMap.

To further ensure the optimal inclusion of the world’s largest dams, we harmonized the georeferenced WRD (or GeoDAR v1.0) carefully with GRand v1.3. Using the harmonized dam points as spatial identifiers, most of their reservoir boundaries were then retrieved from high-resolution water body datasets. This ICOLD-GRand harmonization and the subsequent reservoir retrieval resulted in GeoDAR v1.1, our end product, which holds ~~23,680~~^{24,978} dam points (including ~~22,569~~^{24,168} linked to WRD) and ~~20,214~~^{21,576} reservoir polygons. This product spatially resolved ~~40~~⁴²% of the entire

1145 ICOLD WRD by dam count and more than 90% by reservoir storage capacity. Since most of the world's largest reservoirs
(e.g., >0.1 km³) are already included in GRanD, GeoDAR adds limited improvements (by 4–27%) to the total reservoir area,
storage capacity, and catchment area. However, by including many smaller dams particularly in lower and middle latitudes,
GeoDAR is triple the size of GRanD in terms of dam and reservoir quantity. For this reason, one of the major improvements
of GeoDAR is its unparalleled ability to capture relatively small dams, or in other words, to enhance the spatial detail of
1150 global dam and reservoir distributions.

Besides an ~~improved quantity and enhanced~~ spatial detail, another unique value of GeoDAR is its capability of bridging the
locations of dams to a broad suite of attributes that are essential to scientific applications. A standing dilemma of existing
global dam datasets is the divergence between the focus on dam quantity or spatial detail and the provision of detailed
attributes for a limited dam quantity. This dilemma was partially ameliorated by GeoDAR because its georeferenced dams
1155 and reservoirs were explicitly indexed to WRD and/or GRanD records where many attributes are available. Since the
original ~~ICOLD~~-WRD is not georeferenced, our perception was that the task of georeferencing WRD to enable a spatially
explicit application of the attribute information, even at regional scales, ~~often may~~ fell on individual users. To avoid the
duplication of efforts and to facilitate scientific applications, we performed this comprehensive georeferencing on the
entirety of ICOLD WRD as thoroughly as possible, and hereby released the resultant dam coordinates and reservoir
1160 polygons to the public as part of GeoDAR. We would like to reiterate the disclaimer that GeoDAR does not directly contain,
and neither do we intend to release, the original WRD attribute data which are proprietary to ICOLD. In other words, the
association between GeoDAR IDs and WRD IDs exist but were purposefully encrypted. However, if individual users need
GeoDAR records to be linked to the WRD attributes that they already purchased from ICOLD, we can be contacted and [on a](#)
[case-by-case basis](#), we may provide this ~~assistance information on a case-by-case basis~~ given that the users agree not to
1165 release the decryption key or the proprietary WRD attributes.

We envision that GeoDAR, with its enhanced spatial ~~density detail~~ and extended accessibility to essential attributes, will
benefit a wide spectrum of disciplines and applications. It is worth noting that although most dams in GeoDAR are smaller
than those in GRanD or AQUASTAT, they are still compliant with ICOLD's size criteria which exclude countless tiny on-
farm reservoirs and water storage tanks. Nevertheless, we have suggested from regional examples that GeoDAR partially
1170 complements some of the most extensive global dam inventories such as GOODD, despite GOODD owning a larger number
of dams. In this sense, even just with the ~~24,000~~[25,000](#) or so geometric dam points, GeoDAR contributes yet another
fundamental extension to global water infrastructure databases. If these dam points are rectified to high-resolution
hydrographic networks (such as MERIT Hydro (Lin et al., 2021; Yamazaki et al., 2019)), GeoDAR, together with other
existing dam and barrier datasets, can help refine our understanding of how human water infrastructure fragmented global
1175 rivers and their ecosystems (Belletti et al., 2020; Grill et al., 2019; Kornei, 2020), especially with a more exhaustive
inclusion of smaller and/or headwater catchments.

Alongside the detailed dam points, GeoDAR's reservoir boundaries provide thus far the most comprehensive global base maps for assessing reservoir dynamics and the impacts of human water regulation. In combination with the expanding constellation of satellite sensors (e.g., ICESat-2, Sentinel-6, and the forthcoming SWOT), this high-resolution base map will, for instance, enable a more complete and accurate monitoring of water storage variation and surface evaporation in global reservoirs (Biancamaria et al., 2016; Chen et al., 2021; Cretaux et al., 2016; Zhao and Gao, 2019a). Tracking the spatiotemporal balance between reservoir water storage and evaporative loss will help strategize regional water managements under a warming climate (Cretaux et al., 2015). Since our knowledge and understanding improves as observations increase, the observed water storage dynamics for an increased quantity of reservoirs will inevitably entail a more realistic generalization of the reservoir operation rules. This is particularly true if the attribute information such as reservoir purpose and storage capacity are also utilized. Considering that small but widespread reservoirs have a strong cumulative impact on discharge (Habets et al., 2018; Lin et al., 2019), the improved operation rules and the fine details of reservoir storage changes will benefit discharge estimations from hydrological models. From another perspective, GeoDAR's reservoir polygons can also help refine surface water typology, either by directly using them to mask artificial impoundments from natural lakes, or by expanding the training pool to enhance machine learning algorithms so that additional reservoirs can be detected (Fang et al., 2019). A refined water typology map will, in turn, assist other analysis tools in improving our assessments of how human footprints alter surface hydrology and its related biodiversity and ecosystem health.

68 Code availability

Python scripts for geo-matching, geocoding, and reservoir assignment are publicly available at <https://github.com/jida-wang/georeferencing-ICOLD-dams-and-reservoirs>. We request users who adapt or use the scripts to cite Wang et al. (2021).

97 Author contribution

JW: Conceptualization, Data curation, [Data harmonization](#), Formal analysis, Funding acquisition, Investigation, Methodology, Programming, Project administration, Quality assurance, Quality control, Supervision, Validation, Visualization, Writing – original draft preparation, ~~and~~ Writing – ~~review and editing~~ [revision](#). BAW: Data curation, Formal Analysis, Investigation, Methodology, Programming, Visualization, Writing – original draft preparation, ~~and~~ Writing – review [and editing and revision](#). FY: Data curation, Methodology, Quality control, Writing – review [and editing and revision](#). CQ: Methodology, Quality control, Supervision, Validation, Writing – review [and editing and revision](#). MD: Quality control, Validation, Writing – review ~~and revision~~. MASM: Quality control, Validation, Writing – review ~~and revision~~. ~~AX: Data harmonization, Quality control, Data Harmonization, and Validation, Writing – review, JZ: Quality control, and Validation. CF: Quality control, and Validation. AX: Quality control and Validation. JMM: Validation, and~~

Writing – review ~~and editing and revision~~. MSS: Methodology, ~~Quality control, and~~ Writing – review ~~and editing and revision~~. YS: Data curation, Methodology, ~~Supervision, and~~ Writing – review and editing. GHA: Methodology, ~~and Supervision~~, Writing – review and editing. JFC: ~~Data curation~~Methodology, Supervision, ~~and~~ Writing – review and editing. YW: Methodology, Supervision, Writing – review and editing.

108 Competing interests

The authors declare no conflict of interest.

911 Disclaimer

GeoDAR v1.0 and v1.1 contain knowledge derived from ICOLD WRD (https://www.icold-cigb.org/GB/world_register/acknowledgements_wrd.asp) but release no original values of the proprietary WRD attributes. The production and dissemination of GeoDAR (spatial features) abide by ICOLD's legal policies (<https://www.icold-cigb.org/GB/legal.asp>) and were approved by the Central Office of ICOLD. GeoDAR v1.0 represents an initial effort of georeferencing WRD at a global scale, and the resultant dam distribution may be geographically skewed and thus may not reflect the distribution of all WRD records. The authors are not responsible for any consequence arising from this limitation. GeoDAR v1.1 absorbed the spatial features (i.e., dam point coordinates and reservoir polygons) in GRanD v1.3. To acknowledge the originality of GRanD, we request that ~~a user cites the reference of GRanD (Lehner et al., 2011) under the following two conditions: a) if a user uses the complete collection or a subset of GeoDAR v1.1 that contains spatial features from both GeoDAR v1.0 and GRanD, the user should cite this paper (Wang et al., 2021) and Lehner et al. (2011) concurrently; b) if a user uses a subset of GeoDAR v1.1 that only includes spatial features from GRanD and meanwhile the user does not use the WRD attribute data associated with the GRanD features, the user should only cite~~ ~~a user should cite~~ Lehner et al. (2011) ~~if he/she uses the subset of GeoDAR v1.1 from GRanD alone and meanwhile does not use the WRD attribute data associated with the GRanD features.~~. The source of each spatial feature in GeoDAR v1.1 has been specified in the attribute “pnt_src” for dam points and the attribute “plg_src” for reservoir polygons (see Table 38). For any questions about data citation, users are recommended to contact the corresponding author JW. Authors of this paper claim no responsibility or liability for any consequences related to the use, citation, or dissemination of GeoDAR.

1012 Acknowledgements

The work was in part supported by ~~Kansas State University faculty start-up fund to JW and~~ NASA Surface Water and Ocean Topography (SWOT) Grant (#80NSSC20K1143) to JW ~~and Kansas State University faculty start-up fund to JW~~. The authors would like to acknowledge ICOLD for providing WRD and the Central Office of ICOLD for informing data

1235 dissemination policies and for allowing us to release the position information of WRD we georeferenced. The authors are also grateful to Bernhard Lehner at McGill University for his constructive suggestions and comments on data curation, usage, and dissemination. We also acknowledge Google Maps Platform (<https://cloud.google.com/maps-platform>) for providing the geocoding API.

1413 References

- 1240 Allen, G. H. and Pavelsky, T. M.: Global extent of rivers and streams, *Science*, 361, 585-587, <https://doi.org/10.1126/science.aat0636>, 2018.
- Belletti, B., Leaniz, C. G. d., Jones, J., Bizzi, S., Börger, L., Segura, G., Castelletti, A., Bund, W. v. d., Aarestrup, K., Barry, J., Belka, K., Berkhuisen, A., Birnie-Gauvin, K., Bussetini, M., Carolli, M., Consuegra, S., Dopico, E., Feierfeil, T., Fernández, S., Garrido, P. F., Garcia-Vazquez, E., Garrido, S., Giannico, G., Gough, P., Jepsen, N., Jones, P. E., Kemp, P., Kerr, J., King, J., Łapińska, M., Lázaro, G., Lucas, M. C., Marcello, L., Martin, P., McGinnity, P., O’Hanley, J., Amo, R. O. d., Parasiewicz, P., Pusch, M., Rincon, G., Rodriguez, C., Royte, J., Schneider, C. T., Tummers, J. S., Vallesi, S., Vowles, A., Verspoor, E., Wanningen, H., Wantzen, K. M., Wildman, L., and Zalewski, M.: More than one million barriers fragment Europe's rivers, *Nature*, 588, 436-441, <https://doi.org/10.1038/s41586-020-3005-2>, 2020.
- Biancamaria, S., Lettenmaier, D. P., and Pavelsky, T. M.: The SWOT mission and its capabilities for land hydrology, *Surv. Geophys.*, 37, 307-337, <https://doi.org/10.1007/s10712-015-9346-y>, 2016.
- 1250 Biemans, H., Haddeland, I., Kabat, P., Ludwig, F., Hutjes, R. W. A., Heinke, J., von Bloh, W., and Gerten, D.: Impact of reservoirs on river discharge and irrigation water supply during the 20th century, *Water Resour. Res.*, 47, W03509, <https://doi.org/10.1029/2009WR008929>, 2011.
- Boulange, J., Hanasaki, N., Yamazaki, D., and Pokhrel, Y.: Role of dams in reducing global flood exposure under climate change, *Nat. Commun.*, 12, 417, <https://doi.org/10.1038/s41467-020-20704-0>, 2021.
- 1255 Busker, T., de Roo, A., Gelati, E., Schwatke, C., Adamovic, M., Bisselink, B., Pekel, J. F., and Cottam, A.: A global lake and reservoir volume analysis using a surface water dataset and satellite altimetry, *Hydrol. Earth Syst. Sci.*, 23, 669-690, <https://doi.org/10.5194/hess-23-669-2019>, 2019.
- Carpenter, S. R., Stanley, E. H., and Vander Zanden, M. J.: State of the world's freshwater ecosystems: physical, chemical, and biological changes, *Annu. Rev. Environ. Resour.*, 36, 75-99, <https://doi.org/10.1146/annurev-environ-021810-094524>, 2011.
- 1260 Chao, B. F., Wu, Y. H., and Li, Y. S.: Impact of artificial reservoir water impoundment on global sea level, *Science*, 320, 212-214, <https://doi.org/10.1126/science.1154580>, 2008.

- Chen, T., Song, C., Ke, L., Wang, J., Liu, K., and Wu, Q.: Estimating seasonal water budgets in global lakes by using multi-source remote sensing measurements, *Journal of Hydrology*, 593, 125781, <https://doi.org/10.1016/j.jhydrol.2020.125781>, 2021.
- Creétaux, J. F., Abarca-del-Rio, R., Berge-Nguyen, M., Arsen, A., Drolon, V., Clos, G., and Maisongrande, P.: Lake volume monitoring from space, *Surv. Geophys.*, 37, 269-305, <https://doi.org/10.1007/s10712-016-9362-6>, 2016.
- Creétaux, J. F., Biancamaria, S., Arsen, A., Berge-Nguyen, M., and Becker, M.: Global surveys of reservoirs and lakes from satellites and regional application to the Syrdarya river basin, *Environ. Res. Lett.*, 10, 015002, <http://dx.doi.org/10.1088/1748-9326/10/1/015002>, 2015.
- Creétaux, J. F., Jelinski, W., Calmant, S., Kouraev, A., Vuglinski, V., Berge-Nguyen, M., Gennero, M. C., Nino, F., Del Rio, R. A., Cazenave, A., and Maisongrande, P.: SOLS: A lake database to monitor in the near real time water level and storage variations from remote sensing data, *Adv. Space. Res.*, 47, 1497-1507, <https://doi.org/10.1016/j.asr.2011.01.004>, 2011.
- Dams in Japan, Japan Dam Foundation (JDF): http://damnet.or.jp/Dambinran/binran/TopIndex_en.html, last access: [May 2021](#) [September 2020](#).
- Degu, A. M., Hossain, F., Niyogi, D., Pielke, R., Shepherd, J. M., Voisin, N., and Chronis, T.: The influence of large dams on surrounding climate and precipitation patterns, *Geophys. Res. Lett.*, 38, L04405, <https://doi.org/10.1029/2010GL046482>, 2011.
- Department of Water and Sanitation (DWS) of South Africa: List of Registered Dams (LRD) [data set], <http://www.dwaf.gov.za/DSO/Publications.aspx>, 2019.
- Deöll, P., Fiedler, K., and Zhang, J.: Global-scale analysis of river flow alterations due to water withdrawals and reservoirs, *Hydrol. Earth Syst. Sci.*, 13, 2413-2432, <https://doi.org/10.5194/hess-13-2413-2009>, 2009.
- Fang, W., Wang, C., Chen, X., Wan, W., Li, H., Zhu, S., Fang, Y., Liu, B., and Hong, Y.: Recognizing global reservoirs from Landsat 8 images: a deep learning approach, *IEEE J. Sel. Top. Appl. Earth. Obs. Remote Sens.*, 12, 3701-3701, <https://doi.org/10.1109/JSTARS.2019.2929601>, 2019.
- Gao, H., Birkett, C., and Lettenmaier, D. P.: Global monitoring of large reservoir storage from satellite remote sensing, *Water Resour. Res.*, 48, W09504, <https://doi.org/10.1029/2012WR012063>, 2012.
- Grill, G., Lehner, B., Thieme, M., Geenen, B., Tickner, D., Antonelli, F., Babu, S., Borrelli, P., Cheng, L., Crochetiere, H., Macedo, H. E., Filgueiras, R., Goichot, M., Higgins, J., Hogan, Z., Lip, B., McClain, M. E., Meng, J., Mulligan, M., Nilsson, C., Olden, J. D., Opperman, J. J., Petry, P., Liermann, C. R., Saenz, L., Salinas-Rodriguez, S., Schelle, P., Schmitt, R. J. P., Snider, J., Tan, F., Tockner, K., Valdujo, P. H., van Soesbergen, A., and Zarfl, C.: Mapping the world's free-flowing rivers, *Nature*, 569, 215-221, <https://doi.org/10.1038/s41586-019-1111-9>, 2019.

- 1295 Goteti, G. and Stachelek J.: Dams in the United States from the National Inventory of Dams, R package version 0.2 [data set], <https://www.rdocumentation.org/packages/dams/versions/0.2>, 2016.
- Habets, F., Molenat, J., Carluet, N., Douez, O., and Leenhardt, D.: The cumulative impacts of small reservoirs on hydrology: a review, *Sci. Total Environ.*, 643, 850-867, <https://doi.org/10.1016/j.scitotenv.2018.06.188>, 2018.
- Kornei, K.: Europe's rivers are the most obstructed on Earth, *Eos*, 101, <https://doi.org/10.1029/2020EO139204>, 2020.
- 1300 Latrubesse, E. M., Arima, E. Y., Dunne, T., Park, E., Baker, V. R., d'Horta, F. M., Wight, C., Wittmann, F., Zuanon, J., Baker, P. A., Ribas, C. C., Norgaard, R. B., Filizola, N., Ansar, A., Flyvbjerg, B., and Stevaux, J. C.: Damming the rivers of the Amazon basin, *Nature*, 546, 363-369, <https://doi.org/10.1038/nature22333>, 2017.
- Lehner, B., Liermann, C. R., Revenga, C., Veith, C., Fekete, B., Crouzet, P., Doll, P., Endejan, M., Frenken, K., Magome, J., Nilsson, C., Robertson, J. C., Rodel, R., Sindorf, N., and Wissler, D.: High-resolution mapping of the world's reservoirs and dams for sustainable river-flow management, *Front. Ecol. Environ.*, 9, 494-502, <https://doi.org/10.1890/100125>, 2011.
- 1305 Li, B., Yan, Q., and Zhang, L.: Flood monitoring and analysis over the middle reaches of Yangtze River basin using MODIS time-series imagery, in: 2011 IEEE International Geoscience and Remote Sensing Symposium, Vancouver, British Columbia, Canada, 24-29 July 2011, 807-810, <https://doi.org/10.1109/IGARSS.2011.6049253>, 2011.
- Li, Y., Gao, H., Zhao, G., and Tseng, K. H.: A high-resolution bathymetry dataset for global reservoirs using multi-source satellite imagery and altimetry, *Remote Sens. Environ.*, 244, 111831, <https://doi.org/10.1016/j.rse.2020.111831>, 2020.
- 1310 Lin, P., Pan, M., Wood, E. F., Yamazaki, D., and Allen, G. H.: A new vector-based global river network dataset accounting for variable drainage density, *Sci. Data*, 8, 28, <https://doi.org/10.1038/s41597-021-00819-9>, 2021.
- Lin, P., Pan, M., Beck, H. E., Yang, Y., Yamazaki, D., Frasson, R., David, C. H., Durand, M., Pavelsky, T. M., Allen, G. H., Gleason, C. J., and Wood, E. F.: Global reconstruction of naturalized river flows at 2.94 million reaches, *Water Resour. Res.*, 55, 6499-6516, <https://doi.org/10.1029/2019WR025287>, 2019.
- 1315 Liu, K., Song, C., Wang, J., Ke, L., Zhu, Y., Zhu, J., Ma, R., and Luo, Z.: Remote sensing-based modeling of the bathymetry and water storage for channel-type reservoirs worldwide, *Water Resour. Res.*, 56, e2020WR027147, <https://doi.org/10.1029/2020WR027147>, 2020.
- Lyons, E. A. and Sheng, Y.: LakeTime: Automated seasonal scene selection for global lake mapping using Landsat ETM+ and OLI, *Remote Sensing*, 10, 54, <https://doi.org/10.3390/rs10010054>, 2018.
- 1320 Mady, B., Lehmann, P., Gorelick, S. M., and Or, D.: Distribution of small seasonal reservoirs in semi-arid regions and associated evaporative losses, *Environ. Res Commun.*, 2, 061002, <https://doi.org/10.1088/2515-7620/ab92af>, 2020.

- Managing Aquatic ecosystems and water Resources under multiple Stress project (MARS): MARS GeoDatabase (MARSgeoDB) version 2 [data set], <http://www.mars-project.eu/index.php/databases.html>, 2017.
- 1325 Map World (Tianditu), National Platform for Common Geospatial Information Services (NPCGIS): <https://map.tianditu.gov.cn>, last access: ~~July 2021~~ September 2020.
- Messenger, M. L., Lehner, B., Grill, G., Nedeva, I., and Schmitt, O.: Estimating the volume and age of water stored in global lakes using a geo-statistical approach, *Nat. Commun.*, 7, 13603, <https://doi.org/10.1038/ncomms13603>, 2016.
- Mulligan, M., van Soesbergen, A., and Saenz, L.: GOODD, a global dataset of more than 38,000 georeferenced dams, *Sci. Data*, 7, 31, <https://doi.org/10.1038/s41597-020-0362-5>, 2020.
- 1330 National Register of Large Dams (NRLD), [Central Water Commission \(CWC\), Government of India, New Delhi, 281 pp., 2019](http://ewc.gov.in/national-register-large-dams), ~~Central Water Commission (CWC) of India: <http://ewc.gov.in/national-register-large-dams>, last access: September, 2020~~.
- Natural Resources Canada (NRC): CanVec 1M Man-Made Features - Dam version 1.0 [data set], <http://geogratis.gc.ca/api/en/nrcan-mcan/ess-sst/0c78d7fe-100b-5937-b74e-7590a03a6244.html>, 2017.
- 1335 Nilsson, C. and Berggren, K.: Alterations of riparian ecosystems caused by river regulation, *Bioscience*, 50, 783-792, [https://doi.org/10.1641/0006-3568\(2000\)050\[0783:AORECB\]2.0.CO;2](https://doi.org/10.1641/0006-3568(2000)050[0783:AORECB]2.0.CO;2), 2000.
- Open Development Cambodia (ODC): Hydropower dams 1993-2014 [data set], <https://data.opendevopmentmekong.net/en/dataset/hydropower-2009-2014>, 2015.
- 1340 Open Development Myanmar (ODM): Myanmar Dams [data set], <https://data.opendevopmentmekong.net/en/dataset/myanmar-dams>, 2018.
- Pekel, J. F., Cottam, A., Gorelick, N., and Belward, A. S.: High-resolution mapping of global surface water and its long-term changes, *Nature*, 540, 418-422, <https://doi.org/10.1038/nature20584>, 2016.
- Schwatke, C., Dettmering, D., Bosch, W., and Seitz, F.: DAHITI - an innovative approach for estimating water level time series over inland waters using multi-mission satellite altimetry, *Hydrol. Earth Syst. Sci.*, 19, 4345-4364, <https://doi.org/10.5194/hess-19-4345-2015>, 2015.
- 1345 Sheng, Y., Song, C., Wang, J., Lyons, E. A., Knox, B. R., Cox, J. S., and Gao, F.: Representative lake water extent mapping at continental scales using multi-temporal Landsat-8 imagery, *Remote Sens. Environ.*, 185, 129-141, <https://doi.org/10.1016/j.rse.2015.12.041>, 2016.
- 1350 Shin, S., Pokhrel, Y., and Miguez-Macho, G.: High-resolution modeling of reservoir release and storage dynamics at the continental scale, *Water Resour. Res.*, 55, 787-810, <https://doi.org/10.1029/2018WR023025>, 2019.

- Shuttle Radar Topography Mission Water Body Data set (SWBD): <http://www2.jpl.nasa.gov/srtm>, last access 2014.
- Sistema Nacional de Informações sobre Segurança de Barragens (SNISB, Brazilian National Dam Safety Information System): Relatório de Segurança de Barragens 2017 (Dams Safety Report 2017) [data set],
1355 <http://www.snisb.gov.br/portal/snisb/relatorio-anual-de-seguranca-de-barragem/2017>, 2017.
- Tilt, B., Braun, Y., and He, D.: Social impacts of large dam projects: A comparison of international case studies and implications for best practice, *Journal of Environmental Management*, 90, S249-S257, 2009.
- Tobler, W. R.: Computer Movie Simulating Urban Growth in Detroit Region, *Econ. Geogr.*, 46, 234-240,
<https://doi.org/10.2307/143141>, 1970.
- 1360 United States Army Corps of Engineers (USACE): National Inventory of Dams (NID) [data set], <https://nid.usace.army.mil>,
2013~~8~~.
- Veore~~o~~smarty, C. J., Meybeck, M., Fekete, B., Sharma, K., Green, P., and Syvitski, J. P. M.: Anthropogenic sediment retention: major global impact from registered river impoundments, *Glob. Planet Change*, 39, 169-190,
[https://doi.org/10.1016/S0921-8181\(03\)00023-7](https://doi.org/10.1016/S0921-8181(03)00023-7), 2003.
- 1365 Wada, Y., Reager, J. T., Chao, B. F., Wang, J., Lo, M. H., Song, C., Li, Y. W., and Gardner, A. S.: Recent changes in land water storage and its contribution to sea level variations, *Surv. Geophys.*, 38, 131-152, <https://doi.org/10.1007/s10712-016-9399-6>, 2017.
- Wang, J., Sheng, Y., and Wada, Y.: Little impact of the Three Gorges Dam on recent decadal lake decline across China's Yangtze Plain, *Water Resour. Res.*, 53, 3854-3877, <https://doi.org/10.1002/2016WR019817>, 2017.
- 1370 Wang, J., Walter, B.A., Yao, F., Song, C., Ding, M., Maroof, M.A.S., Zhu, J., Fan, C., Xin, A., McAlister, J.M., Sikder, M.S., Sheng, Y., Allen, G.H., Crétaux, J.-F., and Wada, Y., 2021. GeoDAR: Georeferenced global dam and reservoir dataset for bridging attributes and geolocations. *Earth System Science Data*, in review.
- Whittemore, A., Ross, M. R. V., Dolan, W., Langhorst, T., Yang, X., Pawar, S., Jorissen, M., Lawton, E., Januchowski-Hartley, S., and Pavelsky, T.: A participatory science approach to expanding instream infrastructure inventories, *Earth's*
1375 *Future*, 8, e2020EF001558, <https://doi.org/10.1029/2020EF001558>, 2020.
- Yamazaki, D., Ikeshima, D., Sosa, J., Bates, P. D., Allen, G. H., and Pavelsky, T. M.: MERIT Hydro: A high-resolution global hydrography map based on latest topography dataset, *Water Resour. Res.*, 55, 5053-5073,
<https://doi.org/10.1029/2019WR024873>, 2019.
- Yamazaki, D., Ikeshima, D., Tawatari, R., Yamaguchi, T., O'Loughlin, F., Neal, J. C., Sampson, C. C., Kanae, S., and Bates,
1380 P. D.: A high-accuracy map of global terrain elevations, *Geophys. Res. Lett.*, 44, 5844-5853,
<https://doi.org/10.1002/2017GL072874>, 2017.

- Yao, F., Wang, J., Wang, C., and Cretaux, J. F.: Constructing long-term high-frequency time series of global lake and reservoir areas using Landsat imagery, *Remote Sens. Environ.*, 232, 111210, <https://doi.org/10.1016/j.rse.2019.111210>, 2019.
- 1385 Yassin, F., Razavi, S., Elshamy, M., Davison, B., Sapriza-Azuri, G., and Wheeler, H.: Representation and improved parameterization of reservoir operation in hydrological and land-surface models, *Hydrol. Earth Syst. Sci.*, 23, 3735-3764, <https://doi.org/10.5194/hess-23-3735-2019>, 2019.
- Yigzaw, W., Li, H. Y., Demissie, Y., Hejazi, M. I., Leung, L. R., Voisin, N., and Payn, R.: A new global storage-area-depth data set for modeling reservoirs in land surface and earth system models, *Water Resour. Res.*, 54, 10372-10386, <https://doi.org/10.1029/2017WR022040>, 2018.
- 1390 Zarfl, C., Lumsdon, A. E., Berlekamp, J., Tydecks, L., and Tockner, K.: A global boom in hydropower dam construction, *Aquat. Sci.*, 77, 161–170, <https://doi.org/10.1007/s00027-014-0377-0>, 2015.
- Zhan, S., Song, C., Wang, J., Sheng, Y., and Quan, J.: A global assessment of terrestrial evapotranspiration increase due to surface water area change, *Earth's Future*, 7, 266-282, <https://doi.org/10.1029/2018EF001066>, 2019.
- 1395 Zhang, S., Gao, H., and Naz, B. S.: Monitoring reservoir storage in South Asia from multisatellite remote sensing, *Water Resour. Res.*, 50, 8927-8943, <https://doi.org/10.1002/2014WR015829>, 2014.
- Zhang, W., Pan, H., Song, C., Ke, L., Wang, J., Ma, R., Deng, X., Liu, K., Zhu, J., and Wu, Q. H.: Identifying emerging reservoirs along regulated rivers using multi-source remote sensing observations, *Remote Sens.-Basel*, 11, 25, <https://doi.org/10.3390/rs11010025>, 2019.
- 1400 Zhao, G. and Gao, H.: Estimating reservoir evaporation losses for the United States: Fusing remote sensing and modeling approaches, *Remote Sens. Environ.*, 226, 109-124, <https://doi.org/10.1016/j.rse.2019.03.015>, 2019a.
- Zhao, G. and Gao, H.: Towards global hydrological drought monitoring using remotely sensed reservoir surface area, *Geophys. Res. Lett.*, 46, 13027-13035, <https://doi.org/10.1029/2019GL085345>, 2019b.