

UV-Indien Network: Ground-based measurements dedicated to the monitoring of UV radiation over the Western Indian Ocean.

Kevin Lamy¹, Thierry Portafaix¹, Colette Brogniez², Kaisa Lakkala^{3,4}, Mikko R.A. Pitkänen⁴, Antti Arola⁴, Jean-Baptiste Forestier¹, Vincent Amelie⁵, Mohamed Abdoulwahab Tohir⁶, and Solofoarisoa Rakotoniaina⁷

¹LACy, Laboratoire de l'Atmosphère et des Cyclones (UMR 8105 CNRS, Université de La Réunion, Météo-France), Saint-Denis de La Réunion, France

²LOA, Laboratoire d'Optique Atmosphérique (Univ. Lille, CNRS - UMR 8518) Lille, France

³Space and Earth Observation Centre, Finnish Meteorological Institute, Sodankylä, Finland

⁴Climate Research Programme, Finnish Meteorological Institute, Kuopio, Finland

⁵Seychelles Meteorological Authority, Mahé, Seychelles

⁶Agence Nationale de l'Aviation Civile et de la Météorologie, Moroni, Comores

⁷IOGA, Institute and Observatory of Geophysics of Antananarivo (IOGA) University of Antananarivo, Madagascar

Correspondence: K. Lamy (kevin.lamy@univ-reunion.fr)

Abstract. Within the framework of the [UV-India-UV-Indien](#) network, 9 ground stations have been equipped with ultraviolet broadband radiometers, 5 of them have also been equipped with an all-sky camera, and the main station in Saint-Denis de la Réunion is also equipped with a spectroradiometer. These stations are spatially distributed to cover a wide range of latitudes, longitudes, altitudes ~~or~~ [and](#) environmental conditions in 5 countries of the Western Indian Ocean region (Comoros, France, Madagascar, Mauritius and Seychelles), a part of the world where almost no measurements have been made so far. The distribution of the stations is based on the scientific interest ~~in~~ [of](#) studying ultraviolet radiation, [not only](#) in relation to atmospheric processes, but also in order to provide data relevant to fields such as biology, health (prevention of skin cancer, ~~or~~), [and](#), agriculture. The main scientific objectives of this network are to study the annual and inter-annual variability of the ultraviolet (UV) radiation in this area, to validate the output of numerical models and satellite estimates of ground-based UV measurements, and to monitor UV radiation in the context of climate change and projected ozone depletion in this region. ~~The first results are presented here for the oldest stations (Antananarivo, Anse-Quitor, Mahé and Saint-Denis). Ground-based measurements of UV index (UVI) are compared against satellite estimates (Ozone Monitoring Instrument (OMI), the Tropospheric Monitoring Instrument (TROPOMI), the Global Ozone Monitoring Experiment (GOME) and model forecasts of UVI (Tropospheric Emission Monitoring Internet Service (TEMIS) and Copernicus Atmospheric Monitoring Service (CAMS)). The median relative differences between satellite or model estimates and ground-based measurements of clear-sky UVI range between -34.5 % and -15.8 %. Under clear skies, the smallest UVI median difference between the satellites or model estimates and the measurements of ground-based instruments is found to be 0.02 (TROPOMI), 0.04 (OMI), -0.1 (CAMS) and -0.4 (CAMS) at St-Denis, Antananarivo, Anse-Quitor and Mahé respectively. The cloud fraction and UVI diurnal profile are calculated for these four stations. The mean UVI values at local solar noon range between 10 (Antananarivo, Anse-Quitor and Saint-Denis) and 14 at Mahé. The mean UVIs in clear-sky conditions are higher than mean UVI in all-sky~~

conditions, although it can still be noted that UVI maxima are higher for all-sky conditions than for clear sky conditions. This is the result of UVI enhancement induced by clouds, observed at these four stations. The greatest increase in UV radiation under cloudy conditions was observed at the ~~As part of~~ A calibration procedure including three types of calibrations responding to the UV-Indien Network, 9 ground-based stations have been equipped with one spectroradiometer, radiometers and all-sky cameras. These stations are homogeneously distributed in 5 countries of the Western Indian Ocean region (Comoros, France, Madagascar, Mauritius and Seychelles), a part of the world where almost no measurements have been made so far. The main scientific objectives of this network are to study the annual and inter-annual variability of the ultraviolet (UV) radiation in this area, to validate the output of numerical models and satellite estimates of ground-based UV measurements, and to monitor UV radiation in the context of climate change and projected ozone depletion in this region. The first results are presented here for ~~the oldest stations~~ various constraints of sustaining the network has been put in place and a data processing chain has been set up to control the quality and the format of the files sent to the various data centres. A method of clear-sky filtering of the data is also applied. Here, we present an intercomparison with other datasets as well as several daily or monthly representations of the UVI and cloud fraction data to discuss the quality of the data and their range of values for the older stations. (Antananarivo, Anse Quito, Mahé and Saint-Denis). Ground-based measurements of UV index (UVI) are ~~compared against~~ used to validate satellite estimates (Ozone Monitoring Instrument (OMI), the Tropospheric Monitoring Instrument (TROPOMI), the Global Ozone Monitoring Experiment (GOME) and model forecasts of UVI (Tropospheric Emission Monitoring Internet Service (~~FEMIS~~), TEMIS and Copernicus Atmospheric Monitoring Service (~~CAMS~~), CAMS). The median relative differences between satellite or model estimates and ground-based measurements of clear-sky UVI range between - 34.5 % and 15.8 %. Under clear skies, the smallest UVI median difference between the ~~satellites~~ satellite or model estimates and the measurements ~~of~~ made by ground-based instruments is found to be 0.02 (TROPOMI), 0.04 (OMI), -0.1 (CAMS) and -0.4 (CAMS) at St-Denis, Antananarivo, Anse Quito and Mahé, respectively. The ~~cloud fraction and UVI diurnal profile are calculated for these four stations. The mean UVI values at local solar noon range between 10 (Antananarivo, Anse Quito and Saint-Denis) and 14 at Mahé. The mean UVIs in clear-sky conditions are higher than mean UVI in all-sky conditions, although it can still be noted that UVI maxima are higher for all-sky conditions than for clear sky conditions. This is the result of UVI enhancement induced by clouds, observed at these four stations. The greatest increase in UV radiation under cloudy conditions was observed at the Mahé station, with increases of more than 4 absolute values of UVI~~ diurnal variability of UVI and cloud fraction, as well as the monthly variability of UVI is evaluated to ensure the quality of the dataset. The data used in this study is available at: <https://doi.org/10.5281/zenodo.4811488> (Lamy and Portafaix, 2021).

1 Introduction

50 ~~Solar radiation~~ The sun produces a broad spectrum of radiation, in which wavelengths between 100 and 400 nm correspond to ultraviolet radiation (UVR). The UVR that reaches the Earth's surface has a direct effect on human health, terrestrial and aquatic ecosystems, and ~~on~~ the degradation of ~~material~~ materials (Bernhard et al., 2020).

UV has important effects on human health. These effects can be beneficial or harmful. For example, human exposure to UV-B ensures the synthesis of vitamin D, which is essential for bone mineralization. UVR is also known to be a powerful virus
55 killer, which can explain some epidemiological pattern (Duan et al., 2003). On the other hand, UV-B can have a harmful effect by altering the DNA of cells. For humans, an increase in UV-B radiation increases the risk of skin cancer and the occurrence of cataracts and weakens the immune system.

The UV Index (UVI) was defined by the World Health Organization (WHO, 1995) to measure the amount of sunburn-producing UV radiation that reaches the surface. If the UVI is above 3, protection is necessary and, above 8, prolonged
60 exposure can become dangerous. Indices above 11 are considered extreme.

Naturally, the geographical area corresponding to the tropics of the southern hemisphere (tropical and ocean-dominated environment) exposes populations to high levels of UV radiation. This is because the zenith angles of the sun ~~are very small~~
close to noon are very small all year round and the amounts of stratospheric ozone or atmospheric aerosols are lower than at higher latitudes in continental regions. This is the case in most of the southern Indian Ocean (La Réunion, Madagascar,
65 Mauritius, Seychelles, Comoros). UV indices in these regions can exceed 10 almost all year round, which implies serious consequences for the health of the populations. For example, dermatologists in Reunion Island (21°S, 55.5 °E) have noted a rapid increase in sun-induced skin lesions (Observatoire Régional de la Santé de La Réunion, 2008). The number of these lesions ~~triples is currently tripling~~
every 10 years, with an accelerating progression ~~and affects~~, and more than 2% of the population is affected. Radiation doses received by particularly exposed populations (children and outdoor workers) exceed
70 dangerous thresholds in this region of the Indian Ocean almost all year round (Wright et al., 2013). Finally, it can be noted that all skin phototypes are concerned, including photo-types 5 and 6 (Sitek et al., 2016). An important part of this observed increase can be explained by lifestyle changes, ~~and expansion in~~ with an expansion of seaside activities and a constant increase in exposure to the sun. The development of tourism, especially local tourism, is a determining factor.

When UV radiation penetrates the atmosphere, its intensity along the atmospheric path and on the ground depends on various
75 parameters, including geometric or geographical factors such as the solar zenith angle (SZA), latitude and altitude. Cloud cover plays an important role, generally reducing the intensity of radiation, although under certain conditions cloud cover can also increase the intensity, as it is the case of fractional cloud cover (Sabburg and Wong, 2000). Aerosols, small particles of natural (marine aerosols, ~~volcanoes~~ volcanic) or anthropogenic (biomass fires, fossil fuel combustion) origin, scatter and absorb UV radiation. If present in large quantities, they can strongly affect surface UV radiation or radiative forcing. The reflectivity of
80 a surface, or albedo, is also involved in modulating the intensity of radiation and, finally, the concentrations of certain gases, such as ozone, in the atmosphere plays play an essential role. The amount of ozone (O₃) in the stratosphere largely drives UV levels on the ground because ~~of~~ ozone has a high absorption capacity in the UV wavelengths. O₃ is produced in the tropics under the influence of strong solar radiation and is transported towards the poles by the Brewer-Dobson circulation (BDC).

Ozone concentrations have been significantly depleted over the past 35 years due to emissions of halocarbons, which are both
85 powerful greenhouse gases (GHGs) and ozone-depleting substances (ODS). The Montreal Protocol (1987) and its amendments are an undisputed success of environmental policy making and have slowly brought ODS amounts down almost to historical levels (Chipperfield et al., 2015).

However, the evolution of stratospheric ozone beyond the middle of the 21st century, when ODS emissions will be minimal and their atmospheric concentrations will continue to decrease, will be largely determined by the concentrations of certain greenhouse gases (GHGs) such as CO₂, N₂O and CH₄ (Eyring et al., 2013). On the other hand, the increase in CO₂ is expected to accelerate the BDC (Butchart, 2014; WMO, 2018)(Butchart, 2014; WMO, 2018). Ozone will then be transported more rapidly from the tropics to the poles and thus the total ozone column (TOC) will increase in mid-latitudes and decrease in the tropics. Since UV radiation at the surface is directly dependent on the total ozone column, UV can be expected to decrease in mid-latitudes and increase in the tropics (Butler et al., 2016; Lamy et al., 2019)(Butler et al., 2016; Lamy et al., 2019). Therefore, climate change, linked to the accumulation of greenhouse gases in the atmosphere, is also one of the phenomena identified to explain the increasing levels of exposure to UV radiation in the tropics.

The western Indian Ocean is mainly located in the tropical region of the southern hemisphere. This part of the world is therefore potentially impacted by the changes in radiation described above. However, this geographical area suffers from a very large measurement deficit, both for ozone and UV radiation on the ground. Studies associated with these topics are sparse in the literature. The originality of Reunion Island is that it is located in the heart of this region and has benefited from high-quality measurements of ozone and aerosols for several decades thanks to OPAR (Reunion's Atmospheric Physics Observatory). Within the framework of various programmes funded by Europe, Reunion Council or CNES (French Space Agency), the University of Réunion Island has developed a specialized network for the measurement of UV radiation and cloud cover in the south-western part of the Indian Ocean, known as the UV-Indien network. The data-sets presented here are original and, as mentioned, concern an extremely poorly measured region of the globe, which highlights their importance. They include the UV index at 9 stations, the cloud fraction measured at 4 stations. These measurements are ideally suited for assessing the effect of UV radiation on the health of people or ecosystems in this region.

2 ~~Data~~UV-Indien Network

2.1 ~~UV-Indien Network~~Scientific Objectives

~~This network currently has 9 stations in 5 countries of the region (France, Madagascar, Seychelles, Comoros and Mauritius), with 8 scientific, institutional or meteorological partners:~~The UV-Indien measurement network proposes to answer the following scientific questions:

- ~~LACy, Université de la Réunion, Réunion~~What is the annual and inter-annual variability of UV radiation at the scale of the Western Indian Ocean area?
- ~~IOGA, Institut de Géophysique d'~~How is UV radiation impacted by regular episodes of ozone-rich or ozone-poor air mass filaments, over different places?
- Are chemistry-transport models or regional climate models, coupled with radiative transfer models, reliable for predicting the evolution of UV radiation in the southern tropics?

- How will UVR evolve by the end of this century in the Indian Ocean, in the context of climate change and the predicted 3-4% decrease in ozone ?

120

2.2 Selection and Characterisation of Sites

125

130

Although the selection of the instrumented sites of the UV-Indien network was conditioned by financial, technical and logistical feasibility constraints, the choice of the sites where the stations were implanted was also based on several scientific criteria: a spatial distribution of stations that is as homogeneous as possible over a region where the majority of the land area is located in the western part (an essential criterion for obtaining the highest geographical representativeness, in order to be able to validate the outputs of climate models for UV forecasting in the region); a diversity of environmental conditions (between urban and rural sites, different degrees of pollution, close to the coast or not, at low or high altitude); the presence of scientific partners on site; and the interest of UV measurements for other scientific disciplines. For example, the site of Anse Quitor, Rodrigues is situated on the roof of the François Legat turtle reserve. This reserve aims to preserve giant tortoises and monitor their behaviour and biology, so it is of interest to use environmental data such as UV radiation and cloudiness. The sites of the UV-Indien network are presented in Table 1 and are indicated on the map (Figure 1).

135

140

The site of Saint-Denis, Réunion, is the main site of the UV-Indien network. UV measurements have been carried out since January 2009 with the Bentham DTMc300 spectroradiometer (affiliated with the Network for the Detection of Atmospheric Composition Change (NDACC)) and since December 2016 for the Kipp & Zonen UVS-E-T radiometer. Cloudiness measurements have been carried out since October 2016. This site has the advantage of being co-located with several other instruments allowing detailed studies of physical processes. These include the UV-Visible spectrometer SAOZ (Système D'Analyse par Observations Zénithales) (Pastel et al., 2014; Tohir et al., 2018), which measures the total column of ozone and nitrogen dioxide and is part of the NDACC network, or the sun-photometer CIMEL (Kabanov et al., 2001), which carries out measurements of the optical and microphysical properties of aerosols and is part of the AERONET network (Aerosol RObotic NETwork, Holben et al. (1998)). The environment of Saint-Denis is urban and slightly polluted by heavy road traffic despite the regular advection of air by the trade winds. This site is located on the coast, at an altitude of 82 m asl and is surrounded by high reliefs of 500 to 1500 m altitude. The climate is tropical and marked by two distinct seasons: a rainy season in the southern summer and a dry season in the southern winter dominated by strong trade winds . The climate of all sites generally follows this pattern, with some exceptions mentioned in the following paragraphs.

145

150

The Maito site, Reunion Island, is the site of the Maito Atmospheric Observatory (Baray et al., 2013). This site has been instrumented to perform UV measurements since February 2020 with a Kipp&Zonen SUV-E radiometer. This site has the advantage of being highly multi-instrumented; in-situ measurements of the composition of the atmosphere are carried out (CO₂, CO, CH₄, ...), meteorological measurements, measurements of atmospheric profiles of temperature, water vapour or ozone (via LIDAR or radiosoundings). This site is located at 2200m asl, outside the boundary layer, the environment is mountainous and uninhabited, the climate is generally dry. The vegetation is sparse and consists of lichens and small shrubs, the soil is composed of lapillis (Strasberg et al., 2005). This area is classified as shrubland on lapillis. This area has often affected by fire episodes.

The site at Anse Quito, Rodrigues, has been operational since June 2017 for UV measurements using a Kipp&Zonen UVS-E-T radiometer, and since September 2019 for cloudiness measurements. This site is located at 32m asl near the coast, the climate is very dry, rainfall is low for most of the year, vegetation is sparse and the terrain is slightly mountainous. The Mahé, Seychelles site has been operational since November 2017 for UV measurements using a Kipp&Zonen UVS-E-T series radiometer. Cloudiness measurements are not yet possible, as the deployment of the network has been delayed by the COVID-19 health crisis. The instrumented site is located at 15m asl, near the coast. The instrument is positioned at Victoria International Airport, in an urban area. The island of Mahé has an equatorial climate all year round, as it is located very close to the equator. The vegetation of the instrumented area is sparse and consists of grasses and small shrubs and can be classified as savanna (Hume et al., 2013).

The site in Antananarivo, Madagascar ~~Institut Supérieur de Technologie de~~ has been operational since December 2016 for UV measurements using a Kipp&Zonen UVS-E-T series radiometer. Cloudiness measurements are available since April 2019. The instrumented site is located at 1370m asl in the highlands of Madagascar. Located in a densely populated urban area, the air quality of the site can be very degraded, frequent pollution peaks are observed as well as the presence of smog (Gorremans and Masquelier, 2018). The radiometer and camera are installed on the roof of the Geophysical Institute and Observatory of Antananarivo (IOGA).

The instrumental site of Diego Suarez, Madagascar ~~OPAR, Observatoire de l'Atmosphère de la Réunion Seychelles Meteorological Authority (SMA), Mahé, Seychelles~~ has been equipped with a Kipp&Zonen SUV-E radiometer since November 2019, the deployment of the camera there has been delayed due to technical incidents following the passage of tropical cyclone Belna and due to the recent health crisis. The site is located at an altitude of 35m asl, close to the coast, in a semi-urban area, where air pollution is generally low.

The site of Fort Dauphin, Madagascar is equipped with a Kipp&Zonen SUV-E radiometer and a SkyCamVision camera since January 2020. This site is very similar to the one in Diego-Suarez, it is located at an altitude of 10m asl, close to the coast, in a semi-urban area, where air pollution is generally low. However, there is a 10 degree latitude difference between this site and Diego-Suarez.

The site of Moroni, Comoros, is equipped with an SUV-E radiometer and a SkyCamVision camera since December 2019. The instruments are located on the roof of the Agence Nationale de l'Aviation Civile et de la Météorologie, ~~Moroni, Comores. L'université des Comores~~ des Comores and are therefore co-located with meteorological records of rainfall and temperature. The site should soon be equipped with a SAOZ that will allow the monitoring of the total ozone column. The site is located at an altitude of 12 m asl, in an urban area and close to the coast, where the air is generally not very polluted.

Juan de Nova Island is located in the centre of the Mozambique Channel is an integral environmental reserve and its access is strictly regulated. There are no inhabitants on this island. This site is equipped with a Kipp&Zonen radiometer since April, ~~Moroni, Comores Terre Australes et Antaretiques Françaises, St Pierre, France~~ 2019. The purchase of the equipment and its installation was supported by the French space agency (CNES), which is very interested in this type of data for the validation of satellite sounders. Access to this island is difficult, data are stored there but can only be retrieved locally, so they are brought

back at least once a year. However, this was not the case during the recent health crisis. This completely flat coral desert island has an area of 4.80 km² with very sparse vegetation. The instrumented site is at an altitude of 10 m asl.

190 ~~Since April 2020, all stations for UVR measurements (one station at Rodrigues, two stations at Réunion, one station at Mahé, three stations at Madagascar, one station at Juan de Nova and one station at Moroni) are operational, as are 4 stations for cloud cover measurements (see Table 1 and Figure 1)~~

3 Instrumentation and Data

3.1 UV-Indien Instrumentation

195 Each station in the UV-Indien network is equipped with at least one broadband UV radiometer. This is usually supplemented by a all-sky camera. The radiometers installed at the UV-Indian network sites are the Kipp&Zonen UVS-E-T or the Kipp&Zonen SUV-E. The camera installed is a SkyCam Vision developed by Réuniwatts. Some stations of the UV-Indian network are on the same site as other measurement networks (NDACC, ICOS, AERONET, etc.) and therefore benefit from more complementary measurements. The specificities of the instruments of the UV-Indien network, only, will be detailed here; namely the radiometers and the camera.

~~All stations are now equipped with either Kipp &~~

200 3.1.1 Instrument Details

The Kipp Zonen UVS-E-T ~~or a~~ radiometer is a radiometer designed to have a spectral response close to the erythemal action spectrum (ISO 17166:1999 / CIE S 007/E-1998). The detection system consists of an optical filter and a phosphor, which determines the spectral response. The phosphor, sensitive to UV light, emits light which is then detected by a photodiode. The resulting signal is amplified and the output voltage, multiplied by 40m²/W, gives an estimate of the UVI. The angular response
205 of the radiometer is a function of the cosine of the zenith angle. According to the manufacturer: the expected daily uncertainty is less than 5%, the measurement drift of the sensor is less than 5% per year, the directional response error is less than 2.5% and the non-linear error is less than 1%. The Kipp&Zonen SUV-E ~~broadband radiometer~~. Reunion Island is also equipped with a Bentham UV spectroradiometer. The raw UV measurements obtained by the radiometers are reprocessed considering the calibrations and TOC measured simultaneously
210 is the new version of the UVS-E-T from the same manufacturer. This new radiometer no longer has a desiccant that needs to be changed regularly and has a digital interface. It is also designed to have a spectral response close to the erythemal action spectrum (ISO 17166:1999 / CIE S 007/E-1998). Its detection system is similar to that of the Kipp&Zonen UVS-E-T. The expected daily uncertainty, according to the manufacturer, is less than 5%. The measurement drift of the sensor is less than 5 % per year, its directional response error is less than 5 W/m² and its non-linear error is less than 1%. The broadband radiometers ~~will be calibrated~~ are calibrated about every 2 years at (depending on logistical
215 and current health conditions) according to a procedure that is specified in the Section 3.1.2. The SkyCam Vision camera built by Réuniwatts is an all-sky camera that acquires hemispheric images of the sky in the visible spectrum every minute. The

220 CMOS acquisition sensor has a resolution of 2048 x 2048 pixels and the acquisition frequency is usually 30 seconds but can be modified. The cloud fraction calculated by the camera is obtained according to the ELIFAN algorithm, developed at CNRS, France (Lothon et al., 2019). The algorithm is based on the application of criteria and thresholds on the distribution of R/B ratios, and the R/B ratio of each pixel. Two treatments are performed: an "absolute" treatment, and a "differential" treatment with respect to a library of clear sky images built up initially. The steps of the process are as follows:

- Limitation of the processed image contour
- Application of masks: solar and object
- Detection of clear sky and fully cloudy images
- 225 - Discrimination between clear sky and fully cloudy images through absolute or differential threshold process

230 More information on this camera is available on the manufacturer's website: <http://www.reuniwatt.com/> and in Lothon et al. (2019) for the ELIFAN algorithm. The Bentham DTMc300 spectrometer consists of a dual monochromator giving irradiance measurements with a wavelength step of 0.5 nm and a full width at half maximum of 0.5 nm. The measurements are cosine corrected, temperature stabilised and calibrated every three months with standard 1000 W lamps that can be traced back to the National Institute of Standards and Technology. This instrument also underwent intercomparison during a QASUME (Quality Assurance of Ultraviolet Measurements in Europe) campaign in 2013. The Bentham used in the UV-Indien network, located in St-Denis de la Réunion, Moufia site, showed a bias of about 3% (Bentham measurements lower than measurements with the Moufia-super site (University of Reunion Island, St Denis) using the Bentham-UV spectrometer, itself calibrated every reference instrument). The uncertainty on irradiance is about 5% for a coverage factor of k=2 (Brogniez et al., 2016).

235 3.1.2 Maintenance and Calibration Protocols

The radiometers do not require any particular maintenance, except a regular cleaning of the dome. For older models of the Kipp and Zonen radiometer (Kipp & Zonen UVS-E-T), it is also necessary to change the desiccant approximately every 6 months or when necessary (colour change). This is done by our local partner. In general, it is usual to recalibrate this type of radiometer every 2 years to avoid drift. The calibration protocol is identical for the UVS-E and SUV-E radiometers. However this protocol depends on the type of radiometer and the type of calibration most recently performed for each radiometer. Table 3 months (Brogniez et al., 2016). The radiometer located at Saint-Denis was previously calibrated at Davos but is now calibrated using the Bentham measurements (Table 3). The TOC correction uses the total ozone measurements made with the UV-Visible spectrometer SAOZ (Pastel et al., 2014; Tohir et al., 2015) on a smaller mesh size (due to the high cost of the instrument and also shows the last calibration performed for each radiometer. There are three types of calibration: the manufacturer's calibration, the PMOD/WRC calibration named Davos calibration hereafter, and the Bentham calibration. The manufacturer's calibration is used from the start of the instrument operation and for a period of approximately 2 years. This period can be extended to 3 years when logistical constraints do not allow the recovery of the radiometer at its installation site. It should be noted that many of the stations in the network are costly to transport and are located in countries and regions that are difficult

to access, with little or no freight service. Even though this calibration step is essential for the quality of the measurements, we
250 have to adapt our constraints. The manufacturer's calibration is a function of the solar zenith angle and the total ozone column.
This calibration is performed with a Xenon lamp, a monochromator (Oriel Cornerstone MS257) and a sensor consisting of a
calibrated silicon photodiode. The calibration coefficient is obtained following several monochromatic measurements from 280
nm to 400 nm with an increment of 1 nm. In order to take both the actual response of the instrument and the ideal response into
account, a radiative transfer model is used to estimate the sensitivity as a function of several atmospheric spectra corresponding
255 to zenith solar angles ranging from 0 to 70° in 5 degree steps and from 260 to 400 DU in 10 Dobson Unit steps. When the
manufacturer's calibration expires, the instrument is re-calibrated in two different ways. If our budget can cover the lower
variability of ozone). For sites without local total ozone measurements, the TOC given by the OMI satellite is used. Currently,
only sites in Reunion and Mahé are equipped with a SAOZ and there are plans to install a new one in Moroni (Ngazidja Island)
in 2020 (UN Environment Programme under the Vienna Convention, funding acquired). The level 2 data (final data) obtained
260 are archived on an ftp server accessible to all partners. Finally, cloud cover measurements are carried out using the wide-angle
total sky imager, SkyCamVision (SCV), manufactured by Reuniwatts (<http://cost>, the instrument is sent to the World Radiation
Centre in Davos, Switzerland (PMOD). Otherwise, it is recalibrated directly on the Moufia station in Reunion Island by direct
comparison with the calibrated values of the Bentham spectro-radiometer. The calibration performed at the PMOD/WRC is
carried out in 3 steps, allowing the weighted irradiance to be calculated according to the following formula:

265
$$E_{CIE} = (U - U_{offset} \cdot C \cdot f_n(SZA, TOZ)) \cdot \text{coscor}$$

U is the value of the raw voltage signal of the radiometer. The calibration therefore allows the following 4 parameters to be
determined:

- C, the absolute calibration factor determined for a solar zenith angle, SZA, of 40° and total column ozone (TO3) of 300
DU.
- 270 - The conversion function (normalised), f_n , which converts from the detector weighted solar irradiance to erythemal
weighted irradiance.
- Coscor, a factor that corrects the detector cosine error.
- The dark offset, U offset, which is determined every night.

More details are available at: <https://www.reuniwatt.com/pmodwrc.ch/en/world-radiation-center-2/wcc-uv/uv-radiometer-calibration-ser>
275). The camera acquires hemispherical images between 380 and 440 nm every minute. Cloud fractions (CF) are calculated
following a cloud segmentation algorithm. (Liandrat et al., 2017; Breiman, 2001; Long et al., 2006). All the data can be easily
downloaded (open data).

The scientific objectives of this network are the following:-

280 The study of The Bentham calibration consists of co-locating the radiometers with the Bentham DTMc300 at the St-Denis
site for a period of 3 to 4 months. The relative differences between the radiometers and the Bentham measurements are

then calculated, and are also classified by SZA band (about $\pm 5^\circ$). The average of these relative difference bins allows us to obtain a calibration coefficient depending on the SZA. The average of all relative differences (without distinction of SZA) is also calculated to obtain an average calibration coefficient. This calibration could be refined by also classifying the biases according to the total ozone column observed during the measurement but this has not been done. In order to obtain sufficient measurement points covering all observed total ozone column values in the Indian Ocean region, the intercomparison period would need to last at least one year to capture the annual ozone cycle. A period of one year is too long for the capabilities and needs of the ~~annual~~ Indian UV network and therefore the Bentham calibration does not include the total ozone column discrimination.

A Bentham calibration was performed for the UVS-E-T 15-0124 and ~~inter-annual variability of UVR over the whole Western Indian Ocean basin. Validation of numerical model outputs for UVR forecasting. Long-term monitoring of UVR in the context of climate change and projected ozone depletion of 2 to~~ SUV-E-1800 (27/28/29/30) radiometers between June 2019 and Decembrt 2019 and average relative differences ranging from about -10% to +5% were obtained before recalibration. The SUV-E radiometers (previously calibrated by the manufacturer) tend to underestimate the UVI (by about 10%) with respect to the BENTHAM measurements. The UVS-E-T 15-0124 radiometer (recalibrated DAVOS-PMOD/WRC) tends to overestimate UVI by about 3% compared to the Bentham measurements. The relative differences depend on the SZA and tend to become more pronounced as the SZA increases. After recalibration of the UVS-E-T and SUV-E radiometers using the calibration coefficients described above, a second comparison with the BENTHAM showed average relative differences of $\pm 4\%$ (Lamy et al., 2019). The cameras do not require any particular maintenance except for regular cleaning of the window.

3.1.3 Data Processing

With the exception of the station on the island of Juan de Nova, raw data are transmitted daily. These data then undergo a first processing stage in which a first quality control eliminates acquisition errors or outliers. The data files are then homogenised in order to be recalibrated. Depending on the most recent calibration of the instrument, the data are recalibrated according to the manufacturer's calibration procedure, DAVOS or Bentham. They are then reformatted in the format requested by the various distribution platforms (WOUDC or Zenodo). The frequency of updating of the online databases is 3 to 6 months. For the Juan de Nova station, an annual rotation is planned in order to physically recover the data and carry out the maintenance of the instrument. The radiometer data are filtered to define the UVI measurements made in clear sky. This filtering is done manually for 1h intervals. The filtering process is as follows: each daily UVI and cloud fraction profile is plotted together with an estimate of the clear sky profile using the Madronich analytical formula (Madronich, 2007). To calculate the Madronich UVI estimate, we use the total ozone column from either the OMTO3d satellite product or a co-located ground-based instrument (the SAOZ for the St-Denis station). An observer then selects the one-hour windows considered as clear sky according to the following criteria:

- ~~Satellite validation. Instruments from Juan , Seychelles, la Réunion and Antananarivo participate in the validation of the Tropospheric Monitoring Instrument (TROPOMI) surface UV product (Lakkala et al., 2020). Difference between observed and estimated UVI (according to the Madronich Analytical formula) higher than 10%~~
- 315 – Presence of clouds, a cloud fraction threshold of 0.25 is set.
- Shape and regularity of the UVI curve during the day. A Gaussian (or semi-Gaussian) curve indicates a day (or half-day) not affected by the presence of clouds. As clouds generally have a high temporal variability, rapid development of clouds usually results in rapid variations of UVI over a few minutes.
- Cloud cover can also be quasi-homogeneous and quasi-constant over the day, which does not lead to sudden variations
320 in UVI. This case is also excluded from the filtering.

~~The exploitation of the data from the~~

~~Figure 2 represents the time period covered by all the instruments of the UV-Indien network will allow a fine characterization UV variability in this region of the globe, in both clear and cloudy skies. The importance of such measurements in a region where almost no data are available should be noted. Finally, UV measurements have recently integrated the international GAW~~
325 ~~UV WOUDC (World Ozone and Ultraviolet Radiation Data Centre) network.~~

4 Data Overview

4.1 ~~Satellite Observations and Global Forecasting of~~ Comparison Against Existing UVI Product

4.1.1 Other UVI estimates available in the Indian Ocean region

UVI ground-based observations ~~offers~~ offer high temporal and spectral resolution and precision. However, to study the impact
330 of climate change on the UVI, global estimates of UVI are also needed. Satellites and Global Forecast Models provide such estimates.

To compute the UVI at the surface, the Global Forecast Model uses a radiative transfer model (RTM) or a look-up table generated by an RTM. Multiple parameters are required, such as TOC, aerosols, CF and SZA. To determine the UVI at the surface, satellite UV estimates are calculated using a combination of RTM calculations and measurements. In order to compare
335 ground UVI measurements with the UVI product from satellites or forecast modelling, we have gathered together the multiple datasets presented in Table 2.

The Bentham spectrometer (called UVI-BENTHAM hereafter) and Kipp & Zonen Radiometer (called UVI-RADIO hereafter) ~~are~~ constitute the ground-based instruments part of the ~~UV-Indien~~ UV- network. These instruments will be compared with satellite surface UV products (TROPOMI, OMUVBG and GOME-2) and forecast model products (CAM5 and TEMIS).

340 The TROPOMI instrument is onboard the Sentinel-5 Precursor (S5P) polar-orbiting satellite launched on 13 October 2017 as part of the EU Copernicus programme. TROPOMI surface UV radiation products include irradiances with daily integrals at four

different wavelengths, and dose rates with daily doses for erythema (CIE Standard, 1998) and vitamin D synthesis (Bouillon et al., 2006) action spectra. All parameters are calculated for overpass time, solar noon time, and for clear-sky conditions (no clouds, no aerosols). The TROPOMI UV algorithm (Lindfors et al., 2018) is based on two pre-computed look-up tables (LUTs): The first is used to retrieve the cloud optical depth from the measured 354 nm reflectance. This cloud optical depth, the total ozone column from the TROPOMI level 2 total ozone column product (Garane et al., 2019), the surface pressure, the surface albedo and the SZA are then used as input to the second LUT from which the UV irradiances and dose rates are retrieved. A post-correction for the effect of absorbing aerosols (Arola et al., 2009) is applied to the irradiances. The ground resolution for the UV products is $7.2 \times 3.5 \times 3.5 \text{ km}^2$ ($5.6 \times 3.5 \times 3.5 \text{ km}^2$ since 6 August 2019) at nadir. Only the estimates corresponding to the time of the overpass are chosen here. The UVI estimated in clear-sky conditions and in all-sky conditions will be used in this study and will both be called UVI-TROPOMI for ease of reading. UVI-TROPOMI computed for clear-sky conditions will be compared against UVI-RADIO or UVI-BENTHAM measured in clear-sky conditions and UVI-TROPOMI computed for all-sky conditions will be compared against UVI-RADIO or UVI-BENTHAM measured in clear-sky conditions.

OMUVBG is a product derived from the Ozone Monitoring Instrument (Levelt et al. (2006), Tanskanen et al. (2007), Arola et al. (2009)). It is based on the Total Ozone Mapping Spectrometer (TOMS) algorithm to retrieve TOC. TOC, measured with OMI, along with climatological albedo, ozone and temperature profile, elevation, and SZA are used as input to an RTM to compute a first ~~estimation~~ estimate of the UVI under clear skies. The measured reflectance at ~~360nm~~ 360 nm made by the OMI is used to estimate a cloud modification factor (CMF). The CMF represents the attenuation of UV radiation by clouds and non-absorbing aerosols. The clear-sky UVI computed previously is multiplied by the CMF to obtain an estimation of UVI in all-sky conditions (called UVI-OMUVBG hereafter). This estimate corresponds to the satellite overpass time. Absorbing aerosols are only corrected if the aerosol index is higher than 0.5 and if the measured reflectance at 360 nm is lower than 0.15 (Tanskanen et al., 2006). This could lead to overestimation for regions affected by absorbing aerosols (Tanskanen et al., 2007). UVI-OMUVBG computed for clear-sky conditions will be compared against UVI-RADIO or UVI-BENTHAM measured in clear-sky conditions and UVI-OMUVBG computed for all-sky conditions will be compared against UVI-RADIO or UVI-BENTHAM measured in clear-sky conditions.

The offline surface UV is a product derived from the measurements of the GOME-2 instruments on-board the METOP-B and METOP-C satellites. The offline surface UV contains multiple variables related to UV radiation and human health: UVI, integrated UVB and UVA, and daily doses derived from different biological weighting functions (erythema, DNA damage, plant damage and vitamin-D synthesis). TOC and cloud measurements provided by the AC SAF Total Ozone product and the Advanced Very High Resolution Radiometer (AVHRR-3) reflectances are used with an RTM to compute the offline surface UV product (Kujanpää and Kalakoski, 2015). The product is given on a regular $0.5 \times 0.5^\circ$ grid and UVI is computed at local solar noon (called UVI-GOME hereafter).

The Integrated Forecasting System (IFS) of the Copernicus Atmosphere Monitoring Service (CAMS) has been providing UV forecasts since 2012 (Bozzo A., 2015). More precisely, it provides the spectral UV with a spectral resolution of 5 nm and the UVI by integrating the spectral UV according to the erythema action spectrum (CIE Standard, 1998). The UV irradiances and UVI are produced in clear-sky and in all-sky conditions (hereafter called UVI-CAMS). For UVI-CAMS, new

forecasts are available every 12 hours: ~~the~~. The model output has a time step of 3 hours. From the first forecast of the day, which starts and is ~~initialize~~ ~~initialized~~ at 00:00:00, we take the first, second, third and fourth ~~timesteps~~ ~~time steps~~ of the model (00:00:00, 03:00:00, 06:00:00 and 09:00:00 respectively) and, from the second forecast, which starts at 12:00:00, we take the first, second, third and fourth ~~timesteps~~ ~~time steps~~ (12:00:00, 15:00:00, 18:00:00 and 21:00:00 respectively). The horizontal resolution was approximately 80 km prior to 2016-06-21 and approximately 40 km afterwards. Following its continuous development, the CAMS model has been upgraded every year with components that significantly change the UVI forecasts. For instance, improved handling of cloudiness (implemented on 2017-01-24) and a new ~~extraterrestrial~~ ~~extraterrestrial~~ UV spectrum (implemented on 2017-09-26) have resulted in significant improvements (W. Wandji, 2018). As these changes only affect the data following the upgrade, the CAMS UV forecast is not a homogeneous time series, but should be considered as an evolving UV product with which measurements can be compared. More information on the IFS and CAMS-IFS models is available at <https://atmosphere.copernicus.eu/node/326>. UVI-CAMS computed for clear-sky conditions will be compared against UVI-RADIO or UVI-BENTHAM measured in clear-sky conditions and UVI-CAMS computed for all-sky conditions will be compared against UVI-RADIO or UVI-BENTHAM measured in clear-sky conditions.

The TEMIS UVI product is derived from the TOC at solar noon obtained by satellites (SCIAMACHY, GOME-2A or GOME-2B depending on the time period). Following the parameterization of Allaert et al. (2004), a first estimate of UVI is computed with the TOC. The final UVI under clear sky at local solar noon (called UVI-TEMIS hereafter) is obtained by correcting the first estimates for the effects of the Earth-Sun distances, surface albedo, elevation and aerosols (Zempila et al., 2017). The spatial resolution is $0.5 \times 0.5^\circ$.

~~Figure 2 represents the time period covered by all datasets at St-Denis. TEMIS shows the longest period covered as of 2002. TROPOMI is the most recent instrument and the UVI data starts at the end of 2017. For the ground-based instruments, UVI-BENTHAM has been acquiring data since 2009 and UVI-RADIO since the end of 2016.~~

5 Validation

4.1 Calibration

~~The UV-Indien project is deploying broadband radiometers at various sites in the Indian Ocean. In order to recalibrate these radiometers with a frequency of about 2 years, we plan to regularly reposition the radiometers on the Moufia super-measurement site (University of Reunion Island - 20.902°S , 55.485°E), and thus co-locate with the BENTHAM spectrometer, for a period of 3 or 4 months. For the recent recalibration of the UVS-E-T-15-0124, located in St-Denis, the absolute differences (AD) of the UVI, the relative differences (RD) between the UVI measured by the radiometer and the UVI measured by BENTHAM were calculated. These differences are calculated per SZA band ($\pm 5^\circ$) and for clear-sky conditions. We noted that the differences depend on the SZA. As the SZA increases, the absolute values of the UVI tend to decrease and, therefore the absolute difference also tends to decrease. Nonetheless, the RD increases as the SZA increases. This behaviour is observed for all radiometers currently compared to the Bentham (Table 3). While the UVS-E-T radiometer tends to overestimate UVI between 0° and 50° of SZA, the SUV-E radiometer underestimates the UVI. The underestimation is greatest at high SZA. The SUV-E radiometers~~

410 were installed collocated during the austral winter, when the SZA takes higher values. The differences with respect to the BENTHAM spectroradiometer were used as a reference to recalibrate the KZ Radiometers (UVI-RADIO). UVI-BENTHAM is cosine corrected, its temperature is stabilized and the instrument is regularly calibrated against standard 1000 W lamps, whose origin can be traced to the National Institute of Standards and Technology (Brogniez et al., 2016). We compared both measurements again for all-sky conditions. We noted that the ADs between each radiometer and the Bentham were less than
415 0.5. RDs were less than 5 to 10% except for the UVS-E-T-15-0124 around 25° of SZA, where the differences could reach about 11%. There was still a SZA dependency: as SZA increased, RD tended to increase, but the magnitude of this effect decreased after recalibration. Note that the radiometers installed in Mahé, Anse-Quitor, and Antananarivo are still under the constructor's calibration and have not yet been compared to BENTHAM. These radiometers should be recalibrated during the coming year. Table 3 presents the different radiometers and their current locations, along with the date of the next calibration.

420 4.1 Filtering

The radiometer data were filtered to define the UVI measurements made in clear sky. This filtering was done manually for 1h intervals. The filtering process is as follows: each daily UVI and cloud fraction profile is plotted together with an estimate of the clear sky profile using the Madronich analytical formula (Madronich, 2007). To calculate the Madronich UVI estimate, we use the total ozone column from either the OMT03d satellite product or a co-located ground-based instrument (the SAOZ for the
425 St-Denis station). An observer then selects the one-hour windows considered as clear sky according to the following criteria: – Difference between observed and estimated UVI (according to the Madronich Analytical formula) – Presence of clouds, a cloud fraction threshold of 0.25 is set. A UVI measurement performed – Shape and regularity of the UVI curve during the day. A Gaussian (or semi-Gaussian) curve indicates a day (or half-day) not affected by the presence of clouds. As clouds generally have a high temporal variability, rapid development of clouds usually results in rapid variations of UVI over a few minutes. –
430 Cloud cover can also be quasi-homogeneous and quasi-constant over the day, which does not lead to sudden variations in UVI, and this case is also excluded from the filtering.

4.1 Comparison of UV-OI Ground-Based Measurements, Satellite Estimates and Modelling Estimates of UVI.

4.0.1 Comparison results

Ground-based UVI measurements from the UV-Indien Network were compared with satellite estimates and model UVI estimates. ~~To do this, for each station we took~~ taking the nearest model grid point or satellite pixel for each station. Then, for each satellite or model ~~estimates~~ estimate computed at this point, we looked for the closest UVI-BENTHAM or UVI-RADIO measurement. Finally, for each ~~couple of measurements~~ pair of measurements, we checked the following requirements: the time difference between the estimate and the reference ~~must~~ had to be less than 5 minutes and the SZA difference ~~must~~ had to be less than 5 degrees. For these comparisons, the UVI-BENTHAM was also scaled up and linearly interpolated at a resolution of
440 5 min. For data from the OMUVBG and TROPOMI product, ~~we selected~~ UVI estimates located within 10 km ~~away~~ of the corresponding ground-based station we selected. For CAMS, ~~we took~~ the closest grid point available for each station was taken:

14.8, 9.6, 7.2 and 4.7 km from Antananarivo, Anse Quito, Mahé and St-Denis respectively. For TEMIS, ~~we took~~ the closest grid point available for each station ~~was used~~: 7.8, 13.0, 12.1 and 11.8 km from Antananarivo, Anse Quito, Mahe and St-Denis respectively. Here, it was chosen to compare the satellite product or model forecast ~~to~~ with results from the four stations of the UV Indien Network that have the longest time periods covered (Antananarivo, Anse Quito, Mahé and St-Denis) ~~that have the longest time periods covered~~. Figure 2 shows the period covered by each data set at these four stations. BENTHAM has been collecting data since 2009 but, in this study, only the period between 2016 and ~~now~~ the present was chosen because the radiometers were ~~only installed~~ installed only in 2016 or later (in 2017) depending on the stations. The Pearson correlation coefficient and absolute and relative differences were calculated for each ground-based instrument installed at each station. Then, the means and medians of the absolute and relative differences between ground-based measurements and the satellite or model estimates were computed (called ~~M-AD, MED-AD, M-RD and MED-RD~~ Mean-AD, Median-AD, Mean-RD and Median-RD hereafter).

The correlation between the BENTHAM at St-Denis and the other measurements is shown in Figure 3. All data sets are well correlated with the UVI-BENTHAM under clear sky conditions; Pearson correlation coefficients are greater than 0.9, except for OMUVBG (0.55) at Saint-Denis. Correlation results for the radiometers at St-Denis, Antananarivo, Mahé and Anse Quito stations are available in the appendix (Figure A1, A3, A5 and A7 respectively). Correlation coefficients are greater than 0.8 at all stations except Anse Quito (for TEMIS and OMUVBG), Mahé (for OMUVBG, GOME and TEMIS) and Saint-Denis (OMUVBG). On average, for all stations combined, OMUVBG is the product with the lowest correlation coefficients while CAMS shows the highest correlation coefficients. Mahé is the station that is least well represented ~~station~~ by most models, with correlation coefficients between 0.19 and 0.9.

The absolute and relative ~~Differences~~ differences between satellite product or forecast model and UVI-BENTHAM at St-Denis are shown in Figure 4 and Table 4. The clear-sky conditions are presented in blue on the boxplot (Figure 4) and the corresponding values are reported in Table 4. The all-sky conditions are presented in red on the boxplot (Figure 4) and the corresponding values are shown in brackets in Table 4. Looking at the median of the absolute differences (~~MED-AD~~ Median-AD) under all-sky conditions, it can be seen that all data sets, with the exception of OMUVBG, overestimate UVI relative to the UVI-BENTHAM measurements; median overestimation ranges between 0.21 (TROPOMI) and 0.96 (TEMIS). In clear-sky conditions, the median absolute differences decrease but a UVI overestimation can still be observed for CAMS (+0.21) and TEMIS (+0.27). The smallest median difference is obtained for GOME (-0.01). UVI-RADIO is expected to be aligned with UVI-BENTHAM since it has been recalibrated with the UVI-BENTHAM measurements, so it will not be discussed further here. The mean of the absolute differences under all-sky conditions ranges from 0.34 ~~+±~~ ± 2.54 (OMUVBG) to +2.31 ~~+3.26~~ ± 3.26 (TEMIS). Under clear-sky conditions, this absolute difference is smaller and ranges between -0.25 ~~+±~~ ± 0.73 (TROPOMI) and 0.47 ~~+±~~ ± 0.55 (CAMS).

~~The M-RD~~ The Mean-RD under all-sky conditions is between 23.93 ~~+±~~ ± 82 % (OMUVBG) and +59.73 ~~+±~~ ± 164% (TEMIS). These means and standard deviations are strongly reduced under clear sky conditions; they are between 0.76 ~~+±~~ ± 8.66 % (GOME) and 12.33 ~~+±~~ ± 12.27 (CAMS). Similarly, the ~~MED-RD~~ Median-RD under all-sky conditions are higher than those obtained under clear-sky conditions.

UVI estimates by satellite or models are closer to ~~instruments measurements in clear-sky conditions observed instrument~~ measurements made on the ground in clear-sky conditions. This is mainly due to the spatial resolution and ~~clouds representation~~ representation of clouds. The satellite pixel or model grid point is representative of a 5.6 x 3.7 km region for the ~~better best~~ defined satellite (TROPOMI) or a 0.5 deg x 0.5 deg region (~~-55 km~~ x 55 km) (GOME, OMI and TEMIS). Thus the cloud cover considered is representative of this entire region but it is not necessarily that directly observed above the ground-based instruments. In addition, the pixels and grid points selected are not perfectly centred on the ground instruments. Finally, the four study sites are located in the tropics, present non-uniform topographic conditions, and are very close to the sea (with the exception of Antananarivo). These conditions favour the rapid development of clouds and complicate the estimation of cloud cover over the site by the satellite (~~Lakkala et al., 2020~~). ~~Thus~~ (Lakkala et al., 2020). ~~Thus~~, the clear-sky conditions observed on the ground may not be the same as those observed by satellites or models. This will induce a discrepancy between UVI derived from satellite and modelling and UVI observed at the ground.

For the other stations (Appendix A1 to A8), all satellites and models underestimate the surface UVI (UVI-RADIO) except CAMS at Antananarivo, where UVI-CAMS is just above UVI-RADIO with a mean absolute difference of +0.1. In clear-sky conditions, the ~~MED-AD~~ Median-AD vary between -0.01 for CAMS in Antananarivo and -6.0 for GOME in Mahé. In all-sky conditions, the ~~MED-AD~~ Median-AD vary between 0.05 for CAMS in Antananarivo and -4.5 for GOME in Mahé. In clear-sky conditions, the ~~MED-RD~~ Median-RD vary between -0.5 % for CAMS in Antananarivo and -34.5 % for TROPOMI in Mahé. In all-sky conditions, the ~~MED-RD~~ Median-RD vary between 15.8 % for CAMS in St-Denis and -32.7 % for TROPOMI in Mahé. In clear-sky conditions, the ~~M-AD~~ Mean-AD vary between 0.1 for CAMS in Antananarivo and -5.8 for GOME in Mahé. In all-sky conditions, the ~~M-AD~~ Mean-AD vary between 0.2 for CAMS in Antananarivo and -3.5 for TROPOMI and GOME in Mahé. In clear-sky conditions, the ~~M-RD~~ Mean-RD vary between -10.9 % for CAMS in Antananarivo and 56.15% for TEMIS in Anse Quito. In all-sky conditions, the ~~M-RD vary between -25,0~~ Mean-RD vary between -25.0% for TROPOMI in Mahé and 26.4 % for TEMIS in Mahé.

Although TROPOMI has large relative differences, especially in Mahé, it is also the product with the most consistent differences. ~~The~~ Its relative and absolute standard deviation is the smallest at all stations. It should be noted that all satellite or model estimates give poor results at the Mahé station. An examination of the percentage of clear days ~~showed~~ shows that, in Mahé, Anse Quito and Antananarivo, there are only 16% clear days while, in St-Denis, there are 27% clear days. In addition, Anse Quito and Antananarivo radiometers have a 1 min resolution, while those in Mahé and St-Denis have a 5 min resolution. The small number of clear-sky days combined with the larger temporal resolution ~~reduce~~, reduces the number of points compared in clear-sky conditions at Mahé. For OMUVBG, TROPOMI, GOME and TEMIS, which produce only one UVI estimate per day, the number of points compared ranges from 72 to 253. Mahé station is also closer to the equator than the other stations (at about ~~-4~~ 4° South) and is strongly influenced by the convection in this region.

Outliers and large differences could be due to numerous issues. The satellite measurements and the modelled UVI do not have spatial resolutions that can accurately represent the sky conditions just above the ground-based instruments. The satellite or model grid points used in this study are either the closest grid point to the station or the average of four grid points encircling the station location. Nonetheless, for satellite estimates or model results, spatial resolution can be as ~~high as~~ large as

50km (TEMIS or GOME) or as low as 3.7 km (TROPOMI). Also, cloud conditions, albedo or altitude can vary strongly over distances smaller than ~~100km~~100 km. These differences can affect the quality of the model forecast or of the inversion algorithm used by the satellite. Differences between a satellite product or model forecast and radiometers measurements could also be explained by a drift in the radiometer calibration. Note that the radiometers installed in Mahé, Anse Quito, and Antananarivo are still under the manufacturer's calibration and this could explain some of the observed differences with satellite or model estimates The recalibration of radiometers in Antananarivo, Anse Quito and Mahé is planned for ~~early~~-2021. Nevertheless, UVI-BENTHAM, which provides high quality data and is recalibrated every 3 months, still shows a ~~MED-RD~~Median-RD between -2.5% (TROPOMI) and 11.3% (CAMS), and a ~~MED-AD~~Median-AD between -0.2 (TROPOMI) and 0.3 (TEMIS), in clear-sky conditions.

Correlation, boxplot and tables for UVI-RADIO at St-Denis, Antananarivo, Mahé and Anse Quito are available in supplements the supplementary information (Appendix Figures A1 to A8 and appendix Tables A1 to A4).

5 First Results of the UV-Indien-project

4.1 UVI Climatology Diurnal Variation of UVR and CF

525 For each station, the ~~UVI variability~~variability of the UV index, as measured by the radiometers, was ~~studied~~analysed to understand the variability of the dataset and ensure its quality. The diurnal cycle of UVI was calculated ~~for the whole measurement period~~from the start of measurements at each station until June 2020 for Anse Quito, November 2020 for Mahé and December 2020 for Antananarivo and St-Denis. The results are presented ~~on~~in Figure 5: the mean UVI (blue line), the UVI maximum (continuous red line) and the first and third quartiles (blue shading) of the UVI in all-sky conditions during the day are represented for Antananarivo, Mahé, Anse Quito and St-Denis. For ~~the same a given~~ station, in clear-sky conditions, the mean UVI is represented by a green line, the maximum UVI by a dashed red line and quartiles by shades of green.

In all-sky conditions, the mean UVI at local solar noon varies from about 10 (Antananarivo, Anse Quito, St-Denis) to about 14 (Mahé). The difference between Mahé and the other three stations can be explained by the ~~latitude~~latitudes of the stations: Antananarivo, Anse Quito and St-Denis are at about 20° South while Mahé is at 4.6° South. Therefore, in Mahé, SZA are lower throughout the year, which induces a higher UVI during the year. For clear-sky conditions, the mean UVI is higher than for all-sky conditions at all stations. In addition, the first and third quartiles are closer to the mean in clear-sky conditions. This is due to the impact of cloud attenuation on UVI variability.

It can be seen that the UVI maxima can be higher than ~~-20~~ for Anse Quito, Antananarivo and Mahé. For St-Denis, the UVI maxima can reach 16. The highest UVIs are observed at the Mahé station with maxima of up to 25. At all stations, the UVI maxima are higher for all-sky conditions than clear-sky conditions. These ~~maximas of UVI~~maxima of UVI in all-sky conditions, can be 1 to 4 units of UVI higher than maxima in clear-sky conditions. This is due to the enhancement of UVI by fractional cloud cover, which can produce multiple scattering, thus enhancing the UVI on the surface. This phenomenon was previously observed at St-Denis (~~Lamy et al., 2018~~)(Lamy et al., 2018) and has been described in past studies for ~~others~~other regions of the world (~~Badosa et al., 2014; Sabburg and Wong, 2000~~)(Badosa et al., 2014; Sabburg and Wong, 2000). The largest differ-

ences between the maxima in all-sky conditions and clear-sky conditions are observed at Mahé, the ~~lowest~~ smallest differences are observed at St-Denis and Anse Quito. Antananarivo also shows a significant ~~UVI enhancement~~ absolute increase of UVI, by about 2 to 3 ~~UVI~~ units. Antananarivo is at a higher altitude than the other three stations, at about 1.3 km asl. The city is also located inland and suffers from heavy pollution. Therefore, both aerosols and altitude can be expected to have a significant impact on the variability of surface UVIs.

In Antananarivo, the peaks of UVI mean and maxima are aligned for both clear-sky and all-sky conditions. In St-Denis the peak of mean UVI occurs later in the day for clear-sky conditions than for ~~te~~ all-sky conditions. In Anse Quito, the peak of UVI is early in the day. This is due to the time zone used at Anse Quito. Rodrigues Island, where Anse Quito is located, shares the same time zone as St-Denis (Reunion island) or Mahé (Seychelles) but is farther east by about 8 degrees of longitude. In Mahé, the peaks of mean UVI, in all-sky and clear-sky conditions, are aligned. This is not the case for the maxima, which occur 1 to 2 hours earlier in all-sky conditions than in clear-sky conditions. The position of the UVI peaks can be explained by the variability of the cloud cover as will be shown in the next section.

~~The average monthly climatology~~ The monthly averages of the daily UVI maximum and the daily UVI at solar noon ~~were~~ have also calculated. Although the datasets do not cover a sufficient period to be climatologically significant, the annual variability and the differences between UVI and UVI daily maxima at solar noon present interesting results. Figure 6 shows these monthly ~~climatologies~~ averages for the four stations of Antananarivo, St-Denis, Mahé and Anse Quito. The measurement periods used to obtain these monthly averages were the same as for Figure 5. The daily maxima of UVI are in red lines with filled circles, the corresponding sun zenith angles are in orange dashed lines with filled circles. The UVIs at local solar noon are marked with blue lines and crosses, and the corresponding sun zenith angles are shown as dashed orange lines with crosses.

For all stations and all months of the year, the maximum daily UVI ($UVI_{D_{MAX}}$) is higher than the average UVI at solar noon ($UVI_{S_{NOON}}$). These ~~climatologies~~ monthly averages are based on data sets for all types of cloud cover. Thus, the cloud cover will introduce a bias in the result. $UVI_{D_{MAX}}$ include maxima of UVI during cloud enhancements, which could occur earlier or later than the local solar noon, as discussed in the previous result (Figure 5). ~~$UVI_{D_{MAX}}$ also include~~ $UVI_{D_{MAX}}$ also includes maxima of UVI during clear-sky days, which will usually ~~occurs~~ occur at local solar noon. $UVI_{S_{NOON}}$ will include only UVI at local solar noon with or without cloud cover. This is why $UVI_{D_{MAX}}$ is always higher than $UVI_{S_{NOON}}$ in all-sky conditions. The differences range between 1 during austral winter at St-Denis and 6 in austral summer at Mahé. The corresponding SZA differences ~~ranges~~ range from 0 to 6 $^{\circ}$.

Looking at the few complete clear-sky days revealed a $UVI_{S_{NOON}}$ and a $UVI_{D_{MAX}}$ that were almost equivalent. However, as there were not enough clear sky measurements per month and per SZA bin, these results are not represented here.

4.2 ~~Cloud measurements~~ Seasonal Distribution and Variation of UVR and CF

Early results from the ~~camera are able to describe~~ cameras provide a brief description of the mean diurnal cloud cycles over each station. Figure 7a shows the mean diurnal cycle of the cloud fraction (CF) over Antananarivo for the entire year (black curve), along with the distribution of the first and third quartiles (blue shaded ~~area~~ areas). Seasonal means of CF are also presented for December, January and February (DJF, in green), March, April and May (MAM, in red), September, October

and November (SON, in orange) and June, July and August (JJA, in purple). The density of the corresponding data set for each month of the year is represented in Figure 7b. Figure 7c represents the difference of UVI maxima between clear-sky UVI and all-sky UVI for the same period. The UVI distribution is also available in Figure 6d. The same results are presented for St-Denis ~~on~~in Figure 8.

Over Antananarivo (Figure 7), the annual mean diurnal cycle shows intermediate values of CF, of about 0.6 at the beginning of the ~~the~~ day. CF tends to decrease during the day and to increase in the late afternoon. Antananarivo is located in a mountainous region in the ~~high lands~~highlands of Madagascar at ~~+370m~~1370 m asl. The difference in CF in the four seasons is not statistically significant, especially for the JJA and SON seasons. Since the camera at Antananarivo was installed in April, 2019, there are not yet significant numbers of data points for certain months of the year. Nonetheless, since the ~~radiometers at Antananarivo were~~radiometer at Antananarivo was installed in 2016, there is a significant number of UVI data over the whole year (Figure 7d). The largest difference between maxima of UVI in clear-sky conditions and maxima of UVI in all-sky conditions can be observed for the DJF and JJA seasons (Figure 7c). CF diurnal profiles are quite different between the DJF ~~season and the JJA season~~and JJA seasons, with DJF showing CF higher than the annual mean while JJA shows CF lower than the annual mean. The CF diurnal cycle alone is probably not the only factor involved in triggering UVI enhancement: cloud distributions and type of clouds probably play a role ~~in UVI enhancement (Sabburg and Wong, 2000; Calbó et al., 2005; Badosa et al., 2014)~~-(Sabburg and Wong, 2000; Calbó et al., 2005; Badosa et al., 2014). The measurements proposed here will be fully useful in
595 carrying out this type of study.

Over St-Denis the mean diurnal CF cycle shows a different profile from that of Antananarivo. CF values are lower in the morning, at around 0.4, and increase during the day to reach 0.6. St-Denis is located on the northern part of Reunion Island, a mountainous island under the influence of the south-east trade winds which induce cloud formation on the southern part of the island during the morning. During the day, the clouds tend to overflow over the rest of the island, thus inducing a rising
600 CF during the day. The lowest values of CF throughout the day are observed in SON. DJF, MAM and JJA follow the annual mean. For this station, well spread CF and UVI data are available throughout the year (Figure 8b and 8d). A glance at the difference between the maxima of UVI in clear-sky conditions and the maxima of UVI in all-sky conditions (Figure 7c), shows that almost all the highest differences are observed for the DJF season. These differences can reach -2.4. The JJA season also shows large differences during the morning but, after 10 am, the differences are ~~lower~~smalled than in DJF ~~season~~ most of
605 the time. CF also starts to increase faster from 10am ~~is also the hour when the CF starts to rise more rapidly in JJA~~:00 a.m. onwards for the JJA season. (Figure 7a). This result could indicate ~~than that~~ UVI enhancement occurs less frequently above a certain CF threshold.

The cameras of the UV-Indien network present promising results for studying cloud variability and its impact on UV radiation in the Indian Ocean region. CF alone is probably not sufficient to give an understanding UVI enhancement. Cloud types, types of cloud distribution and solar occultation by clouds also need to be considered. Moreover, the UV Indien Network is
610 ~~very young~~just starting up, so there is not yet enough data ~~to conduct~~for significant climatological studies to be conducted.

The statistics obtained on the diurnal cycles of the UVI show consistent results, the maxima measured by the radiometers do not seem to be outliers but rather the consequence of physical phenomena such as the increase of radiation by clouds.

615 The monthly averages of daily UVI maxima and UVI measured at solar noon on the 4 sites of Antananarivo, St-Denis, Mahé and Anse Quitar are consistent with the variation of the zenith solar angle on these different sites. For the Antananarivo and St-Denis sites, coherent behaviour is observed between the all-sky camera measurements and the radiometer measurements over the whole data set or over the four seasons represented here.

5 Data Availability

620 Data from the UV radiometers and the total sky imagers can be downloaded from Zenodo and are referenced under the following doi: <https://doi.org/10.5281/zenodo.4811488> (Lamy and Portafaix, 2021).

The data from the UV radiometers are also available on the WOUDC website at these addresses for the four stations studied here :

- Saint-Denis, La Réunion : <https://woudc.org/data/stations/?id=530>
- 625 – Mahé, Seychelles : <https://woudc.org/data/stations/?id=207>
- Anse Quitar, Mauritius : <https://woudc.org/data/stations/?id=532>
- Antananarivo, Madagascar : <https://woudc.org/data/stations/?id=531>

The TROPOMI surface UV radiation product used in this study is available at https://nsdc.fmi.fi/data/data_s5puv.php
The AC SAF (GOME/METOP) data can be downloaded through the website at <https://acsaf.org>
630 The TEMIS data can be downloaded through the website at <http://www.temis.nl/uvradiation/UVindex.html>
The OMUVBG data can be downloaded through the website at https://disc.gsfc.nasa.gov/datasets/OMUVBG_003
The CAMS data can be downloaded through the website at <https://apps.ecmwf.int>

6 Conclusions

635 ~~The ground-based spectroradiometer and radiometer of the UV-Indien network were compared with satellites estimates and the-~~

640 The UV-Indien network is an emerging network dedicated to UV radiation and cloud cover in the western Indian Ocean region. This network offers numerous perspectives for studies, both on the variability of these parameters at each site, and for example, for the validation of climate models. The diversity of the instrumented sites provides a good representation of the different environmental conditions in the region. Our region is essentially made up of poor countries, whose access is difficult. The challenge of maintaining such a network in this region is mainly related to the regular calibration of the radiometers and also to the repair of the instruments when failures occur. A protocol including three types of calibration was established

to guarantee the quality of the measurements while meeting logistical and financial constraints. A calibration plan has been established with frequencies of the order of 2 years, but logistical difficulties or health crises can modulate these forecasts.

645 Another difficulty lies in the regular transfer of data to a centralising organisation. Nonetheless, the calibration protocol and post-processing of the data ensures the quality of the data before distribution to the Zenodo and WOUDC databases. In order to assess the validity of the measurements so that future users can use them with confidence, we compared these measurements with satellite estimates and model estimates of the UVI~~model~~. In clear-sky conditions, the correlation coefficient between the satellite or model estimates and the ground-based measurements was greater than 0.9 at all stations except Mahé and

650 for all datasets except OMUVBG. In all-sky conditions, the largest UVI median absolute difference between the satellite or model estimates and the ground-based instruments was -0.4 (TROPOMI), -1.4(TROPOMI), -2.3(GOME) and -6.0(GOME) at St-Denis, Antananarivo~~(\ominus)~~, Anse Quito and Mahé respectively. In clear-sky conditions, the largest UVI median absolute difference between the satellites or model estimates and the ground-based instruments was 1.1(TEMIS), -1.3(TROPOMI), -1.7(GOME) and -4.6 (GOME) at St-Denis, Antananarivo, Anse Quito and Mahé respectively. In all-sky conditions, the

655 smallest UVI median difference between the satellites or model estimates and the measurements of ground-based instruments was 0.1 (CAMS and TEMIS), -0.1 (CAMS), -0.1 (CAMS) and 0.1 (CAMS) at St-Denis, Antananarivo, Anse Quito and Mahé respectively. In clear-sky conditions, the smallest UVI median difference between the satellites or model estimates and the measurements of ground-based instruments was 0.02 (TROPOMI), 0.04 (OMUVBG), -0.1 (CAMS) and -0.4 (CAMS) at St-Denis, Antananarivo, Anse Quito and Mahé respectively. Compared to ground measurements, UVI-CAMS showed the most

660 consistent results at all stations in both all-sky and clear-sky conditions. At St-Denis, satellite and model estimates were usually found to overestimate UVI compared to ground-based instruments, while at Antananarivo, Anse Quito and Mahé, satellite and model were found to underestimate ground-based measurements of UVI.

The largest discrepancies were observed at the Mahé station. Many reasons can be evoked to explain these differences. The satellite or model resolution may not be able to accurately determine the sky conditions above the station. As Mahé is under

665 the influence of the sea-breeze, the formation of clouds is frequent late in the morning. From the ground, these clouds could be seen to induce irradiance enhancements due to multiple scattering at their edges. From the satellite²'s point of view, only strong backscattering would be observed and an attenuation of the clouds would therefore be applied to the UV product. This is also consistent with the time of the satellite estimates (solar-noon or overpass), which is late in the morning when cloud formation is frequent which would induce backscattering. UVI enhancement ~~occurs also~~ also occurs frequently during this time (Figure 5).

670 ~~This two phenomenons~~ These two phenomena could explain both the observed high UVI and the discrepancy with satellite and model estimates. A drift in the radiometer calibration could also explain part of the difference. In addition, Mahé ~~also presents a low~~ presents a small number of clear-sky comparison points since the K&Z radiometer temporal resolution is 5 min and there are only 16% of clear-sky days. St-Denis and Anse Quito are mountainous islands also under the influence of trade winds, where there is ~~also~~ frequent cloud formation in the late morning. A fractional cloud sky cover could induce UVI enhancements

675 measured by the ground-based instruments while satellites and model could apply attenuation of the measured UVI instead. These two stations are located at about 20 degrees south, while Mahé is located at about 5 degrees south. Therefore, the maxima of UVI are higher at Mahé and the resulting enhancement of UVI should also be stronger. ~~To~~ As the phenomenon of cloud

enhancement of the UV index can be observed in the radiometer data of the four stations presented in detail here, these data are suitable for the study of this phenomenon. To enable users to investigate the impact of clouds on UVI, all-sky cameras have recently been deployed at each station of the UV Indien network. ~~When a significant number of data have been acquired, another study will address the subject of clouds and UV in the tropics.~~

~~We also analysed the UVI variability. In this article, we have also proposed a first estimate of the variability of UVI at these different sites. Mean UVI at local solar noon ranges between 10 (Antananarivo, Anse-Quitor, St-Denis) and about 14 (Mahé, Seychelles). While the mean UVI in clear-sky conditions are higher than mean UVI in all-sky conditions, the UVI maxima in all-sky conditions are higher than in clear-sky conditions. This phenomenon of UVI enhancement by clouds can be observed at the four stations studied here. Measurements of the diurnal cloud fraction cycle have also been studied, enabling different daily profiles to be distinguished depending on the station and the season. However, these data are still recent and there are not enough measurements available at present to give a significant statistical description. The highest UVI enhancement is observed at Mahé where there is a 4 to 5 UVI unit difference between maxima of UVI in all-sky conditions compared to clear-sky conditions. When the number of cloud fraction measurements is significant throughout the year and the time period covered by the camera is longer, it will be possible to combine Cloud Fraction and UVI data to better understand and quantify the UVI enhancement by clouds. The UVI data at the other 4 sites of UV Indien Network (Maido, Diego-Suarez, Moroni, Fort-Dauphin and Juan-de-Nova) will also be the subject of a future study when sufficient data have been collected, to give users a general idea of this variability. In a region where UVI values are very high all year round, these data are also useful for monitoring the intensity of ultraviolet radiation in the Indian Ocean for health preventive studies or health impact studies. The monitoring of long-term UVI trends in the region will allow us to evaluate their evolution in the context of climate change and the possible acceleration of the Brewer-Dobson circulation leading to a decrease in the total ozone column in the tropics and thus an increase in ultraviolet radiation levels.~~

Acknowledgements. We thank the AC SAF project of EUMETSAT for providing the GOME-2/Metop offline surface UV products used in this paper. We also thank the Finnish Meteorological Institute for providing the TROPOMI UV products, and especially Jukka Kujanpää for product development. ~~The authors thank Reuniwatt for the support provided during the installation of the total sky cameras at the different sites of the UV-Indien Network is funded jointly by European cooperation programme PO-INTERREG-V and the Regional Council of Reunion Island network. Finally, the authors would like to thank the PMOD/WRC for carrying out the calibration of the Radiometer UVS-E-T-150154 in St Denis/Moufia.~~

~~The UV-Indien programme is supported by the European Union through PO INTERREG V, by the Reunion Island Council and by the French Government. The BENTHAM spectrometer-spectroradiometer and UV radiometer at St Denis are managed by the OSU-R and OPAR (Observatoire de Physique de l'Atmosphère de la Réunion) and OPAR activities are funded by the INSU/CNRS network and the University of Reunion Island. The authors thank to Reuniwatt for the support provided during the installation of the total sky cameras at the different sites of the UV-Indien network Université de La Réunion and CNRS. Measurements of Bentham spectroradiometers are also supported by CNES (within the French programme TOSCA).~~

References

- Arola, A., Kazadzis, S., Lindfors, A., Krotkov, N., Kujanpää, J., Tamminen, J., Bais, A., di Sarra, A., Villaplana, J. M., Brogniez, C., Siani, A. M., Janouch, M., Weihs, P., Webb, A., Koskela, T., Kouremeti, N., Meloni, D., Buchard, V., Auriol, F., Ialongo, I., Staneck, M., Simic, S., Smedley, A., and Kinne, S.: A new approach to correct for absorbing aerosols in OMI UV, *Geophysical Research Letters*, 36, 715 <https://doi.org/10.1029/2009GL041137>, <https://agupubs.onlinelibrary.wiley.com/doi/abs/10.1029/2009GL041137>, 2009.
- Badosa, J., Calbó, J., McKenzie, R., Liley, B., González, J.-A., Forgan, B., and Long, C. N.: Two Methods for Retrieving UV Index for All Cloud Conditions from Sky Imager Products or Total SW Radiation Measurements, *Photochemistry and Photobiology*, 90, 941–951, <https://doi.org/https://doi.org/10.1111/php.12272>, <https://onlinelibrary.wiley.com/doi/abs/10.1111/php.12272>, 2014.
- Baray, J.-L., Courcoux, Y., Keckhut, P., Portafaix, T., Tulet, P., Cammas, J.-P., Hauchecorne, A., Godin Beekmann, S., De Mazière, M., Hermans, C., Desmet, F., Sellegri, K., Colomb, A., Ramonet, M., Sciare, J., Vuillemin, C., Hoareau, C., Dionisi, D., Dufлот, V., Vérémes, H., Porteneuve, J., Gabarrot, F., Gaudo, T., Metzger, J.-M., Payen, G., Leclair de Bellevue, J., Barthe, C., Posny, F., Ricaud, P., Abchiche, A., and Delmas, R.: Maïdo observatory: a new high-altitude station facility at Reunion Island (21° S, 55° E) for long-term atmospheric remote sensing and in situ measurements, *Atmospheric Measurement Techniques*, 6, 2865–2877, <https://doi.org/10.5194/amt-6-2865-2013>, <https://amt.copernicus.org/articles/6/2865/2013/>, 2013.
- 720 Bernhard, G. H., Neale, R. E., Barnes, P. W., Neale, P., Zepp, R. G., Wilson, S. R., Andrady, A. L., Bais, A. F., McKenzie, R., Aucamp, P., et al.: Environmental effects of stratospheric ozone depletion, UV radiation and interactions with climate change: UNEP Environmental Effects Assessment Panel, update 2019, *Photochemical & Photobiological Sciences*, 19, 542–584, 2020.
- Bouillon, R., Eisman, J., Garabedian, M., Holick, M., Kleinschmidt, J., Suda, T., Terenetskaya, I., and Webb, A.: Action Spectrum for the Production of Pre-vitamin D3 in Human Skin: CIE 174-2006, Wien, Austria: International Commission on Illumination, 2006.
- 730 Bozzo A., Arola A., C. V. P. M.: Report on implementation of spectral UV irradiance, MACC-III deliverable D57.2, work package 122, Tech. rep., 2015.
- Breiman, L.: Random forests, *Machine learning*, 45, 5–32, 2001.
- Brogniez, C., Auriol, F., Deroo, C., Arola, A., Kujanpää, J., Sauvage, B., Kalakoski, N., Pitkänen, M. R. A., Catalfamo, M., Metzger, J.-M., and et al.: Validation of satellite-based noontime UVI with NDACC ground-based instruments: influence of topography, environment and satellite overpass time, *Atmospheric Chemistry and Physics*, 16, 15 049–15 074, <https://doi.org/10.5194/acp-16-15049-2016>, <http://dx.doi.org/10.5194/acp-16-15049-2016>, 2016.
- 735 Butchart, N.: The Brewer-Dobson circulation, *Reviews of Geophysics*, 52, 157–184, <https://doi.org/10.1002/2013rg000448>, 2014.
- Butler, A. H., Daniel, J. S., Portmann, R. W., Ravishankara, A. R., Young, P. J., Fahey, D. W., and Rosenlof, K. H.: Diverse policy implications for future ozone and surface UV in a changing climate, *Environmental Research Letters*, 11, 064 017, <http://stacks.iop.org/1748-9326/11/i=6/a=064017>, 2016.
- 740 Cadet, J.-M., Portafaix, T., Bencherif, H., Lamy, K., Brogniez, C., Auriol, F., Metzger, J.-M., Boudreault, L.-E., and Wright, C. Y.: Inter-Comparison Campaign of Solar UVR Instruments under Clear Sky Conditions at Reunion Island (21°S, 55°E), *International Journal of Environmental Research and Public Health*, 17, 2867, <https://doi.org/10.3390/ijerph17082867>, 2020.
- Calbó, J., Pagès, D., and González, J.-A.: Empirical studies of cloud effects on UV radiation: A review, *Reviews of Geophysics*, 43, 745 <https://doi.org/10.1029/2004RG000155>, <https://agupubs.onlinelibrary.wiley.com/doi/abs/10.1029/2004RG000155>, 2005.
- Chipperfield, M. P., Dhomse, S. S., Feng, W., McKenzie, R., Velders, G. J., and Pyle, J. A.: Quantifying the ozone and ultraviolet benefits already achieved by the Montreal Protocol, *Nature communications*, 6, 1–8, 2015.

- CIE Standard, C.: Erythema reference action spectrum and standard erythema dose, CIE S, 7, E1998, 1998.
- Duan, S.-M., Zhao, X.-S., Wen, R.-F., Huang, J.-J., Pi, G.-H., Zhang, S.-X., Han, J., Bi, S.-L., Ruan, L., Dong, X.-P., and SARS Research
750 Team: Stability of SARS coronavirus in human specimens and environment and its sensitivity to heating and UV irradiation, *Biomedical and environmental sciences : BES*, 16, 246—255, <http://europepmc.org/abstract/MED/14631830>, 2003.
- Eyring, V., Lamarque, J.-F., Hess, P., Arfeuille, F., Bowman, K., Chipperfield, M. P., Duncan, B., Fiore, A., Gettelman, A., Giorgetta, M. A., et al.: Overview of IGAC/SPARC Chemistry-Climate Model Initiative (CCMI) community simulations in support of upcoming ozone and climate assessments, *SPARC newsletter*, 40, 48–66, 2013.
- 755 Garane, K., Koukouli, M.-E., Verhoelst, T., Lerot, C., Heue, K.-P., Fioletov, V., Balis, D., Bais, A., Bazureau, A., Dehn, A., Goutail, F., Granville, J., Griffin, D., Hubert, D., Keppens, A., Lambert, J.-C., Loyola, D., McLinden, C., Pazmino, A., Pommereau, J.-P., Redondas, A., Romahn, F., Valks, P., Roozendael, M. V., Xu, J., Zehner, C., Zerefos, C., and Zimmer, W.: TROPOMI/S5P total ozone column data: global ground-based validation and consistency with other satellite missions, *Atmospheric Measurement Techniques*, 12, 5263–5287, <https://doi.org/10.5194/amt-12-5263-2019>, 2019.
- 760 Gorremans, M. and Masquelier, B.: Risques environnementaux et développement: Le cas de la pollution de l'air à Antananarivo, Madagascar, 2018.
- Herman, J. R., Labow, G., Hsu, N. C., and Larko, D.: Changes in cloud and aerosol cover (1980-2006) from reflectivity time series using SeaWiFS, N7-TOMS, EP-TOMS, SBUV-2, and OMI radiance data, *Journal of Geophysical Research: Atmospheres*, 114, <https://doi.org/10.1029/2007JD009508>, 2009.
- 765 Holben, B., Eck, T., Slutsker, I., Tanré, D., Buis, J., Setzer, A., Vermote, E., Reagan, J., Kaufman, Y., Nakajima, T., Lavenu, F., Jankowiak, I., and Smirnov, A.: AERONET—A Federated Instrument Network and Data Archive for Aerosol Characterization, *Remote Sensing of Environment*, 66, 1–16, [https://doi.org/https://doi.org/10.1016/S0034-4257\(98\)00031-5](https://doi.org/https://doi.org/10.1016/S0034-4257(98)00031-5), <https://www.sciencedirect.com/science/article/pii/S0034425798000315>, 1998.
- Hume, J. P., Göhlich, U., and Kroh, A.: A synopsis of the pre-human avifauna of the Mascarene Islands, in: *Paleornithological Research*
770 2013: Proceedings of the 8th International Meeting of the Society of Avian Paleontology and Evolution, pp. 195–237, 2013.
- Kabanov, D., Sakerin, S., and Turchinovich, S.: Sun photometer for scientific monitoring (instrumentation, techniques, algorithms) Translated by SA Terpugova, edited by SB Ponomareva, *ATMOSPHERIC AND OCEANIC OPTICS C/C OF OPTIKA ATMOSFERY I OKEANA*, 14, 1067–1074, 2001.
- Kinne, S., O'Donnel, D., Stier, P., Kloster, S., Zhang, K., Schmidt, H., Rast, S., Giorgetta, M., Eck, T. F., and Stevens, B.:
775 MAC-v1: A new global aerosol climatology for climate studies, *Journal of Advances in Modeling Earth Systems*, 5, 704–740, <https://doi.org/10.1002/jame.20035>, 2013.
- Krotkov, N. A., Bhartia, P. K., Herman, J. R., Fioletov, V., and Kerr, J.: Satellite estimation of spectral surface UV irradiance in the presence of tropospheric aerosols: 1. Cloud-free case, *Journal of Geophysical Research: Atmospheres*, 103, 8779–8793, <https://doi.org/10.1029/98JD00233>, <http://dx.doi.org/10.1029/98JD00233>, 1998.
- 780 Kujanpää, J. and Kalakoski, N.: Operational surface UV radiation product from GOME-2 and AVHRR/3 data, *Atmospheric Measurement Techniques*, 8, 4399–4414, <https://doi.org/10.5194/amt-8-4399-2015>, 2015.
- Lakkala, K., Kujanpää, J., Brogniez, C., Henriot, N., Arola, A., Aun, M., Auriol, F., Bais, A. F., Bernhard, G., De Bock, V., Catalfamo, M., Deroo, C., Diémoz, H., Egli, L., Forestier, J.-B., Fountoulakis, I., Garcia, R. D., Gröbner, J., Hassinen, S., Heikkilä, A., Henderson, S., Hülsen, G., Johnsen, B., Kalakoski, N., Karanikolas, A., Karppinen, T., Lamy, K., León-Luis, S. F., Lindfors, A. V., Metzger, J.-M.,
785 Minvielle, F., Muskatel, H. B., Portafaix, T., Redondas, A., Sanchez, R., Siani, A. M., Svendby, T., and Tamminen, J.: Validation of

- TROPOMI Surface UV Radiation Product, *Atmospheric Measurement Techniques Discussions*, 2020, 1–37, <https://doi.org/10.5194/amt-2020-121>, <https://www.atmos-meas-tech-discuss.net/amt-2020-121/>, 2020.
- Lamy, K. and Portafaix, T.: Ultraviolet Index measurements in the Indian Ocean, <https://doi.org/10.5281/zenodo.4572026>, <https://doi.org/10.5281/zenodo.4572026>, 2021.
- 790 Lamy, K., Portafaix, T., Brogniez, C., Godin-Beekmann, S., Bencherif, H., Morel, B., Pazmino, A., Metzger, J. M., Auriol, F., Deroo, C., Dufлот, V., Goloub, P., and Long, C. N.: Ultraviolet radiation modelling from ground-based and satellite measurements on Reunion Island, southern tropics, *Atmospheric Chemistry and Physics*, 18, 227–246, <https://doi.org/10.5194/acp-18-227-2018>, <https://www.atmos-chem-phys.net/18/227/2018/>, 2018.
- Lamy, K., Portafaix, T., Josse, B., Brogniez, C., Godin-Beekmann, S., Bencherif, H., Revell, L., Akiyoshi, H., Bekki, S., Hegglin, M. I.,
795 Jöckel, P., Kirner, O., Liley, B., Marecal, V., Morgenstern, O., Stenke, A., Zeng, G., Abraham, N. L., Archibald, A. T., Butchart, N., Chipperfield, M. P., Di Genova, G., Deushi, M., Dhomse, S. S., Hu, R.-M., Kinnison, D., Kotkamp, M., McKenzie, R., Michou, M., O'Connor, F. M., Oman, L. D., Pitari, G., Plummer, D. A., Pyle, J. A., Rozanov, E., Saint-Martin, D., Sudo, K., Tanaka, T. Y., Visionsi, D., and Yoshida, K.: Clear-sky ultraviolet radiation modelling using output from the Chemistry Climate Model Initiative, *Atmospheric Chemistry and Physics*, 19, 10087–10 110, <https://doi.org/10.5194/acp-19-10087-2019>, <https://www.atmos-chem-phys.net/19/10087/2019/>, 2019.
- 800 Levelt, P. F., van den Oord, G. H. J., Dobber, M. R., Malkki, A., Huib Visser, Johan de Vries, Stammes, P., Lundell, J. O. V., and Saari, H.: The ozone monitoring instrument, *IEEE Transactions on Geoscience and Remote Sensing*, 44, 1093–1101, <https://doi.org/10.1109/TGRS.2006.872333>, 2006.
- Liandrat, O., Cros, S., Braun, A., Saint-Antonin, L., Decroix, J., and Schmutz, N.: Cloud cover forecast from a ground-based all sky infrared thermal camera, in: *Remote Sensing of Clouds and the Atmosphere XXII*, edited by Comerón, A., Kassianov, E. I., and Schäfer, K., vol. 805 10424, pp. 19 – 31, International Society for Optics and Photonics, SPIE, <https://doi.org/10.1117/12.2278636>, <https://doi.org/10.1117/12.2278636>, 2017.
- Lindfors, A. V., Kujanpää, J., Kalakoski, N., Heikkilä, A., Lakkala, K., Mielonen, T., Sneep, M., Krotkov, N. A., Arola, A., and Tamminen, J.: The TROPOMI surface UV algorithm, *Atmospheric Measurement Techniques*, 11, 997–1008, <https://doi.org/10.5194/amt-11-997-2018>, 2018.
- 810 Long, C. N., Sabburg, J. M., Calbó, J., and Pagès, D.: Retrieving Cloud Characteristics from Ground-Based Daytime Color All-Sky Images, *Journal of Atmospheric and Oceanic Technology*, 23, 633–652, <https://doi.org/10.1175/JTECH1875.1>, <https://doi.org/10.1175/JTECH1875.1>, 2006.
- Lothon, M., Barnéoud, P., Gabella, O., Lohou, F., Derrien, S., Rondi, S., Chiriaco, M., Bastin, S., Dupont, J.-C., Ha-effelin, M., Badosa, J., Pascal, N., and Montoux, N.: ELIFAN, an algorithm for the estimation of cloud cover
815 from sky imagers, *Atmospheric Measurement Techniques*, 12, 5519–5534, <https://doi.org/10.5194/amt-12-5519-2019>, <https://amt.copernicus.org/articles/12/5519/2019/>, 2019.
- Madronich, S.: Analytic Formula for the Clear-sky UV Index, *Photochemistry and Photobiology*, 83, 1537–1538, <https://doi.org/https://doi.org/10.1111/j.1751-1097.2007.00200.x>, <https://onlinelibrary.wiley.com/doi/abs/10.1111/j.1751-1097.2007.00200.x>, 2007.
- 820 Observatoire Régional de la Santé de La Réunion: Melanome Cutané à la Réunion, 2008.
- Pastel, M., Pommereau, J.-P., Goutail, F., Richter, A., Pazmiño, A., Ionov, D., and Portafaix, T.: Construction of merged satellite total O₃ and NO₂ time series in the tropics for trend studies and evaluation by comparison to NDACC SAOZ measurements, *Atmospheric Measurement Techniques*, 7, 3337–3354, <https://doi.org/10.5194/amt-7-3337-2014>, <https://amt.copernicus.org/articles/7/3337/2014/>, 2014.

- Sabburg, J. and Wong, J.: The effect of clouds on enhancing UVB irradiance at the Earth's surface: A one year study, *Geophysical Research Letters*, 27, 3337–3340, <https://doi.org/10.1029/2000GL011683>, <http://dx.doi.org/10.1029/2000GL011683>, 2000.
- 825 Sitek, A., Rosset, I., Żądzińska, E., Kasielska-Trojan, A., Neskromna-Jędrzejczak, A., and Antoszewski, B.: Skin color parameters and Fitzpatrick phototypes in estimating the risk of skin cancer: A case-control study in the Polish population, *Journal of the American Academy of Dermatology*, 74, 716 – 723, <https://doi.org/https://doi.org/10.1016/j.jaad.2015.10.022>, <http://www.sciencedirect.com/science/article/pii/S0190962215023786>, 2016.
- 830 Strasberg, D., Rouget, M., Richardson, D. M., Baret, S., Dupont, J., and Cowling, R. M.: An assessment of habitat diversity and transformation on La Réunion Island (Mascarene Islands, Indian Ocean) as a basis for identifying broad-scale conservation priorities, *Biodiversity & Conservation*, 14, 3015–3032, 2005.
- Tanskanen, A., Krotkov, N. A., Herman, J. R., and Arola, A.: Surface ultraviolet irradiance from OMI, *IEEE Transactions on Geoscience and Remote Sensing*, 44, 1267–1271, 2006.
- 835 Tanskanen, A., Lindfors, A., Määttä, A., Krotkov, N., Herman, J., Kaurola, J., Koskela, T., Lakkala, K., Fioletov, V., Bernhard, G., and et al.: Validation of daily erythemal doses from Ozone Monitoring Instrument with ground-based UV measurement data, *Journal of Geophysical Research*, 112, <https://doi.org/10.1029/2007jd008830>, <http://dx.doi.org/10.1029/2007JD008830>, 2007.
- Tohir, A. M., Bencherif, H., Sivakumar, V., El Amraoui, L., Portafaix, T., and Mbatha, N.: Comparison of total column ozone obtained by the IASI-MetOp satellite with ground-based and OMI satellite observations in the southern tropics and subtropics, *Annales Geophysicae*, 33, 1135–1146, <https://doi.org/10.5194/angeo-33-1135-2015>, <https://angeo.copernicus.org/articles/33/1135/2015/>, 2015.
- 840 Tohir, A. M., Portafaix, T., Sivakumar, V., Bencherif, H., Pazmiño, A., and Bègue, N.: Variability and trend in ozone over the southern tropics and subtropics, *Annales Geophysicae*, 36, 381–404, <https://doi.org/10.5194/angeo-36-381-2018>, 2018.
- W. Wandji, M. R. A. Pitkänen, A. A.: UV EQA report 9, September–November 2017, Validation Report of the CAMS UV processor, Tech. rep., ECMWF Copernicus Report, *cAMS72₂015SC_{2D}72.3.2.1 – 2017SON_{UV}AL₂01803_v*, 2018.
- WHO: Report of the WMO Meeting of Experts on UV-B Measurements, Data Quality and Standardization of UV Indices (Les Diablerets, 25–28 July, 1994), 1995.
- 845 WMO: Scientific assessment of ozone depletion: 2018, Global Ozone Research and Monitoring Project-Report No. 58, p. 588pp., 2018.
- Wright, C. Y., Brogniez, C., Ncongwane, K. P., Sivakumar, V., Coetzee, G., Metzger, J.-M., Auriol, F., Deroo, C., and Sauvage, B.: Sunburn Risk Among Children and Outdoor Workers in South Africa and Reunion Island Coastal Sites, *Photochemistry and Photobiology*, 89, 1226–1233, <https://doi.org/10.1111/php.12123>, <http://dx.doi.org/10.1111/php.12123>, 2013.
- Zempila, M.-M., van Geffen, J. H. G. M., Taylor, M., Fountoulakis, I., Koukouli, M.-E., van Weele, M., van der A, R. J., Bais, A., Meleti, C., 850 and Balis, D.: TEMIS UV product validation using NILU-UV ground-based measurements in Thessaloniki, Greece, *Atmospheric Chemistry and Physics*, 17, 7157–7174, <https://doi.org/10.5194/acp-17-7157-2017>, 2017.

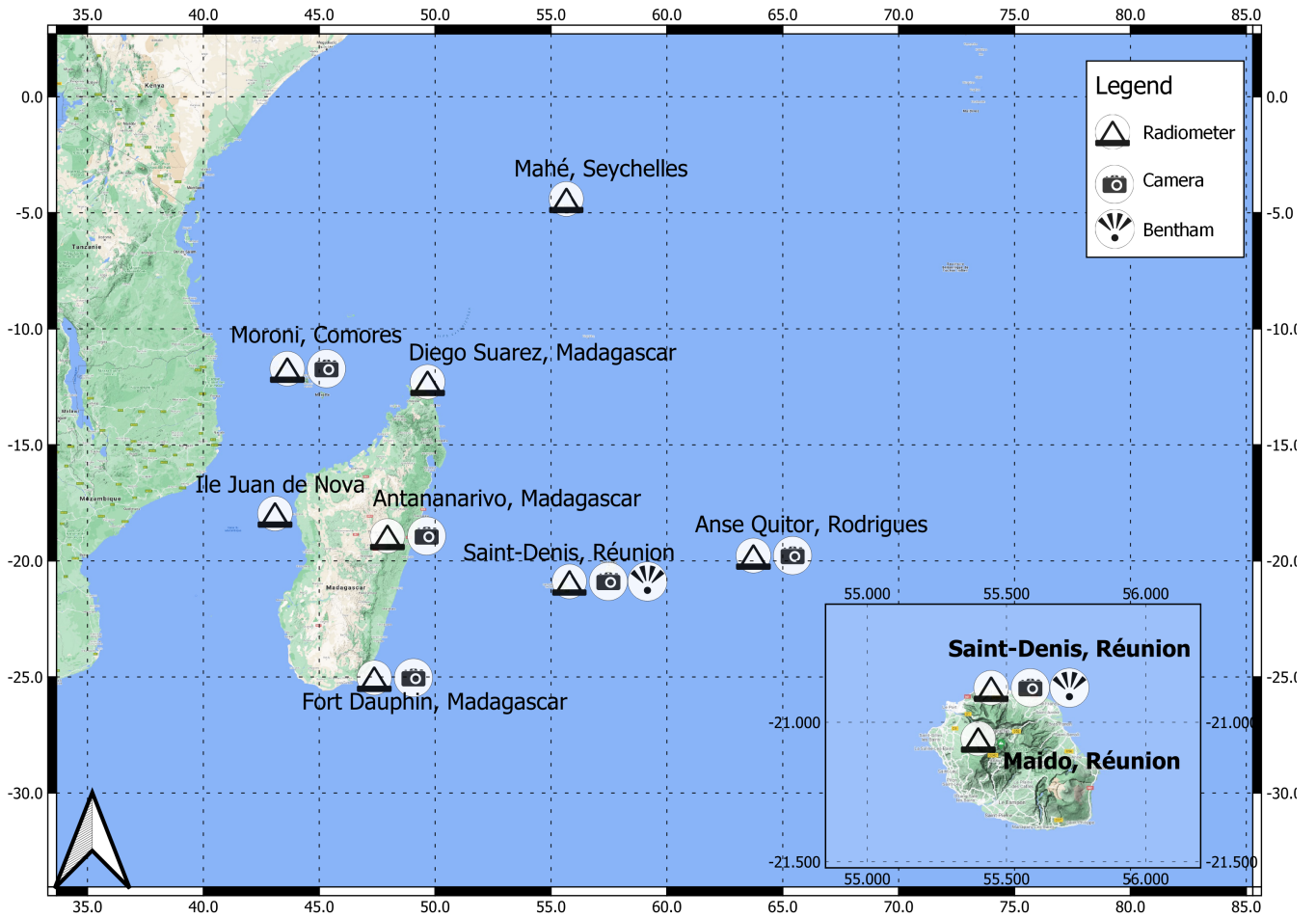


Figure 1. Location of the UV-Indien Stations

UV-Indien Network Datasets Coverage

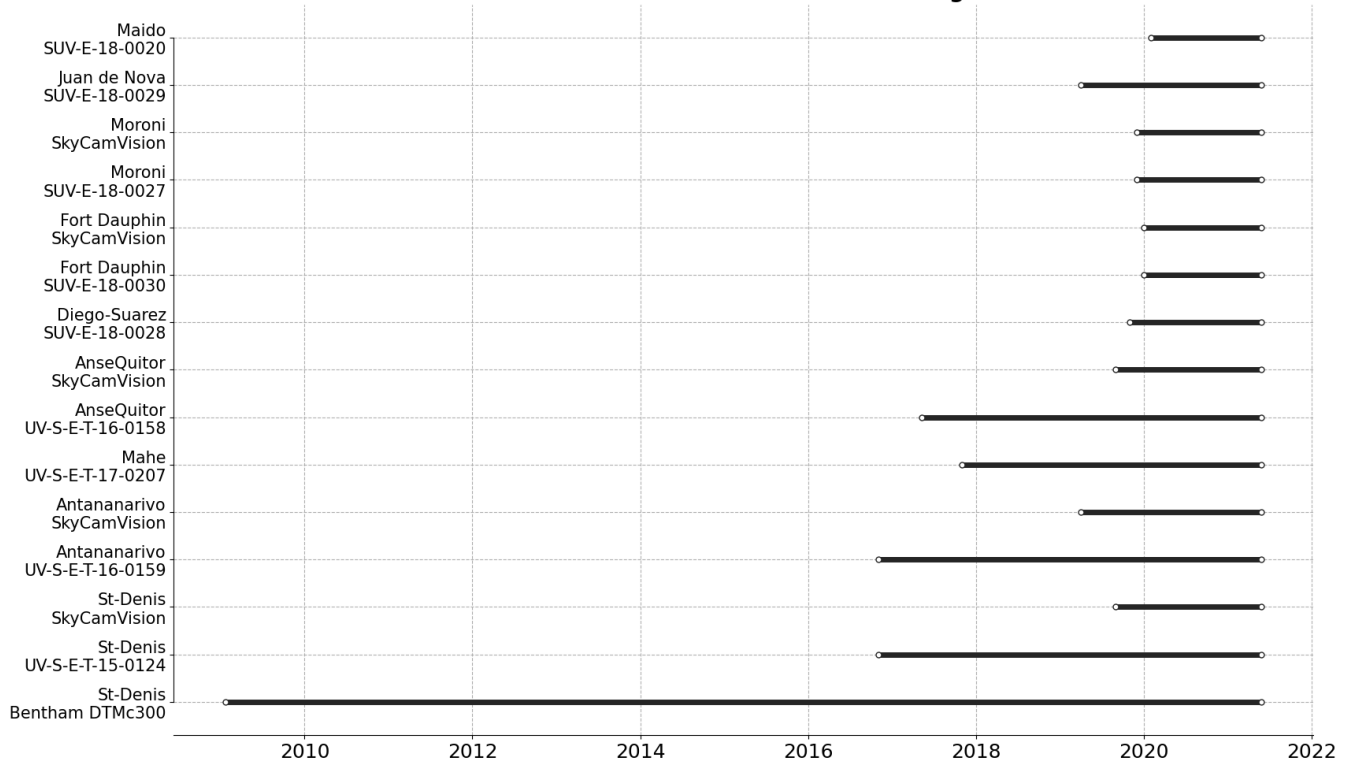


Figure 2. Timeline of the ~~UV-Indien network datasets used in this study~~ instruments of the UV-Indien network

Correlation between UVI-BENTHAM and SAT/MODEL UVI at ST-DENIS

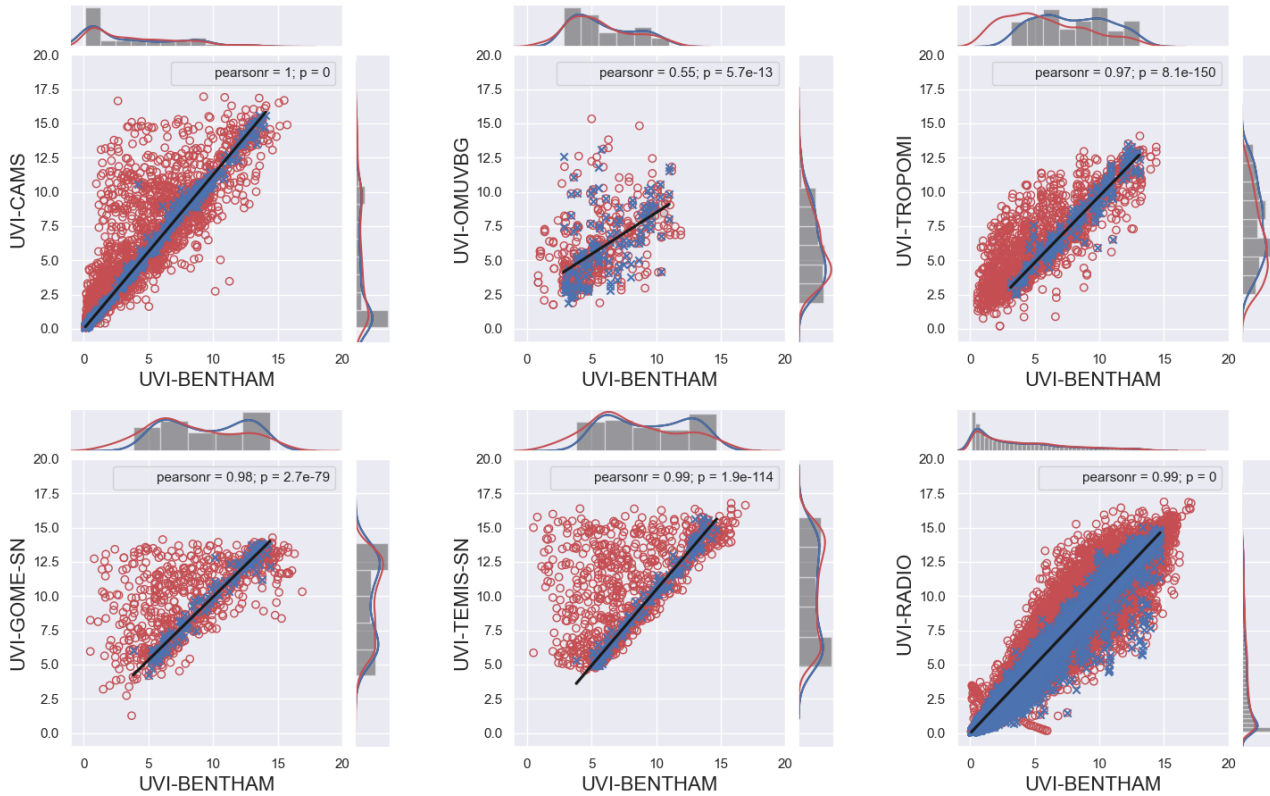


Figure 3. Correlation between UVI-BENTHAM and Sat/Model Estimates at ST-DENIS.

A histogram representing each dataset distribution is represented of the right and at the top side of each subfigure. The clear-sky measurements made by BENTHAM have been distinguished and are shown as blue crosses while the measurements for all-sky conditions are shown as red circles.

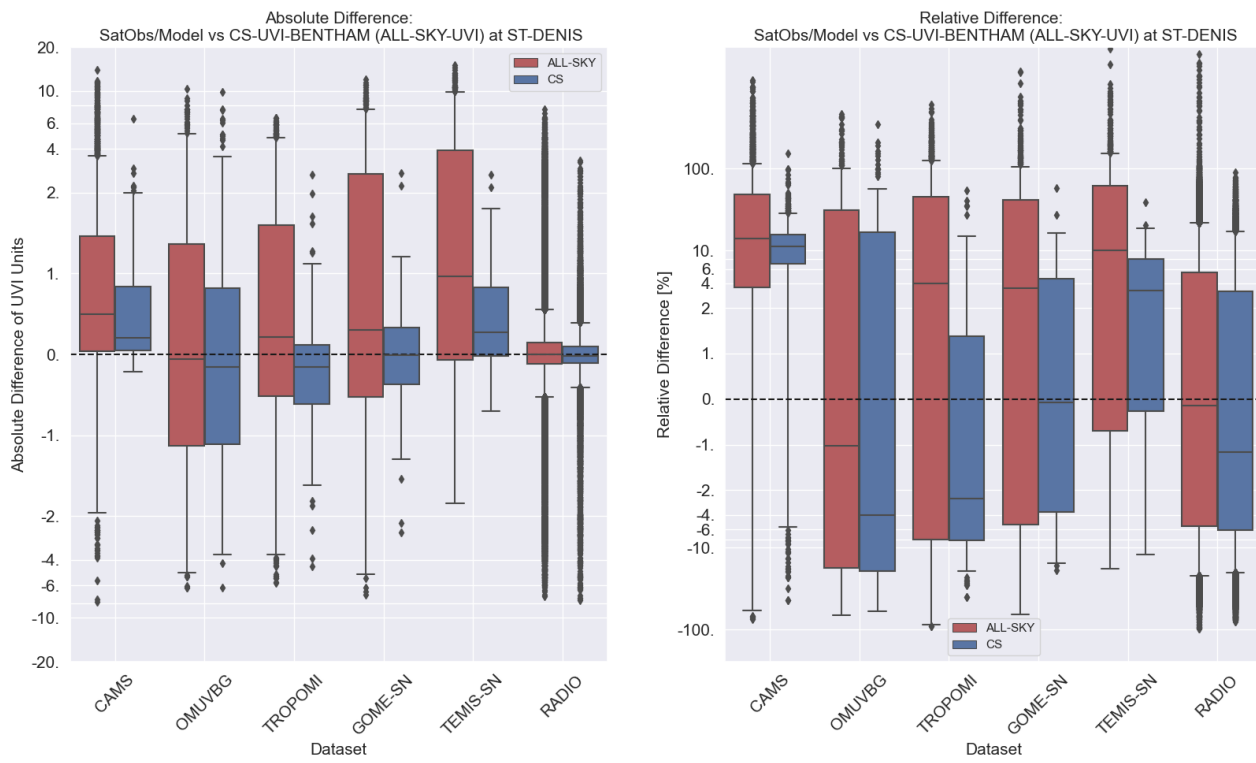


Figure 4. Boxplot of differences between UVI-BENTHAM and Sat/Model Estimates at ST-DENIS.

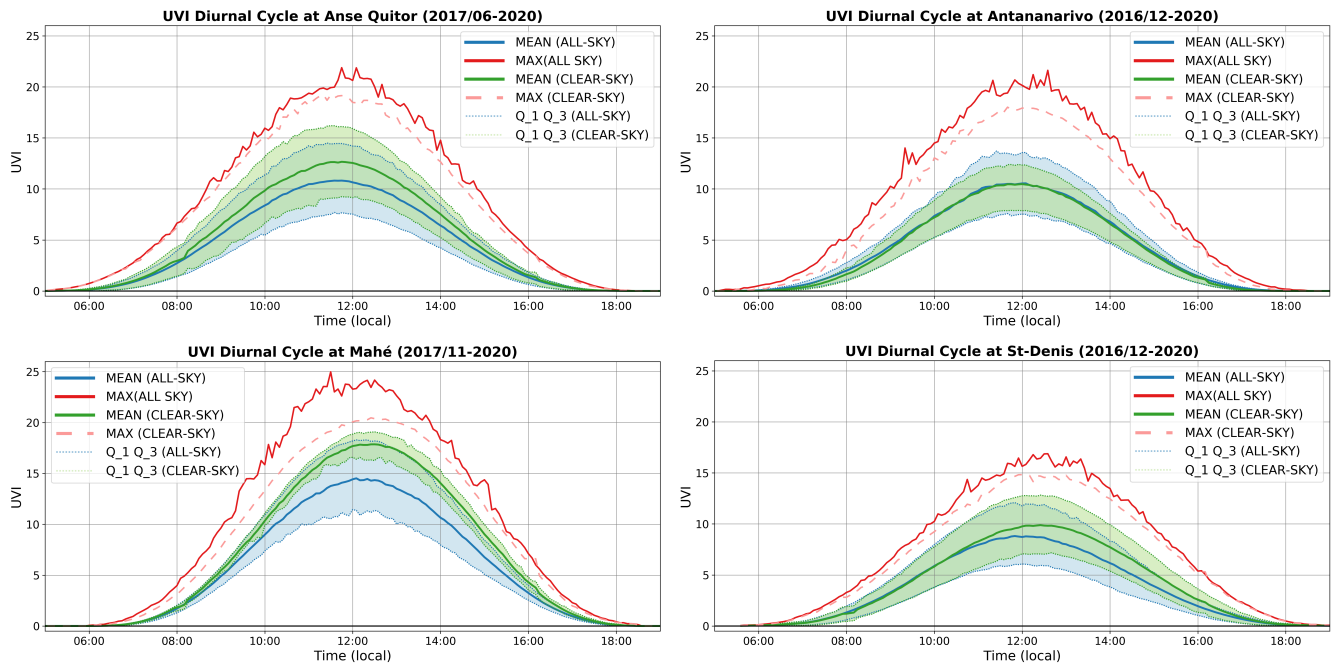


Figure 5. Diurnal Cycle of UVI at Anse Quito, Antananarivo, Mahé and St-Denis.

In all-sky conditions: Mean UVI in blue, Max UVI in red, First and Third Quartile delimit the blue shaded area. In clear-sky conditions: Mean UVI in green, Max UVI in dashed-red, First and Third Quartile delimit the green shaded area.

UVI Monthly Averages (All-Sky)

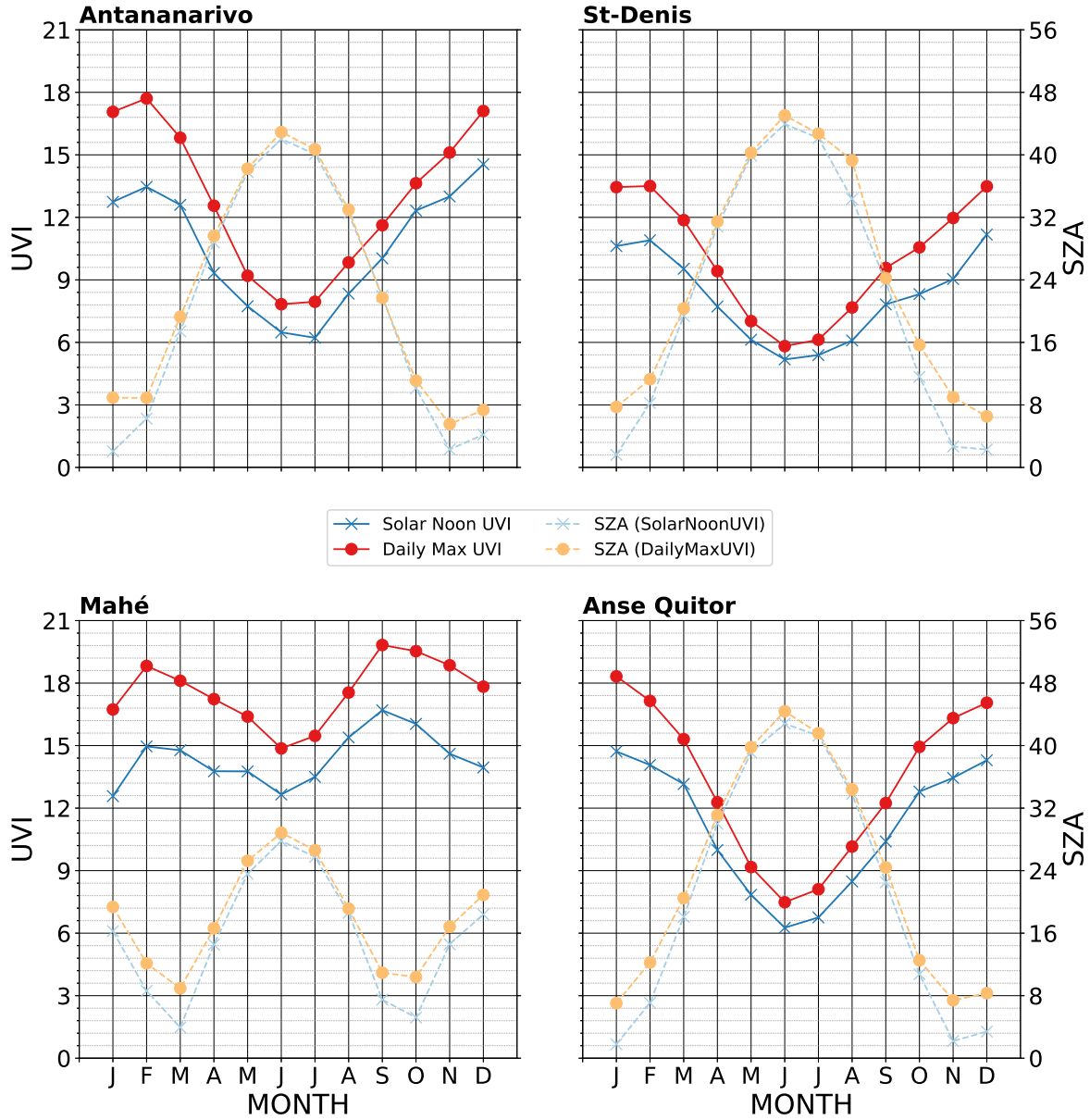


Figure 6. UVI Monthly Averages in all-sky conditions for the four stations of Antananarivo, St-Denis, Mahé and Anse Quito. The monthly averages of the daily max UVI is represented by the red line with filled circles marker. The corresponding SZA is represented by the dotted orange line.

The monthly averages of the UVI at solar noon is represented by the blue line with blue cross. The corresponding SZA is represented by the blue dashed line.

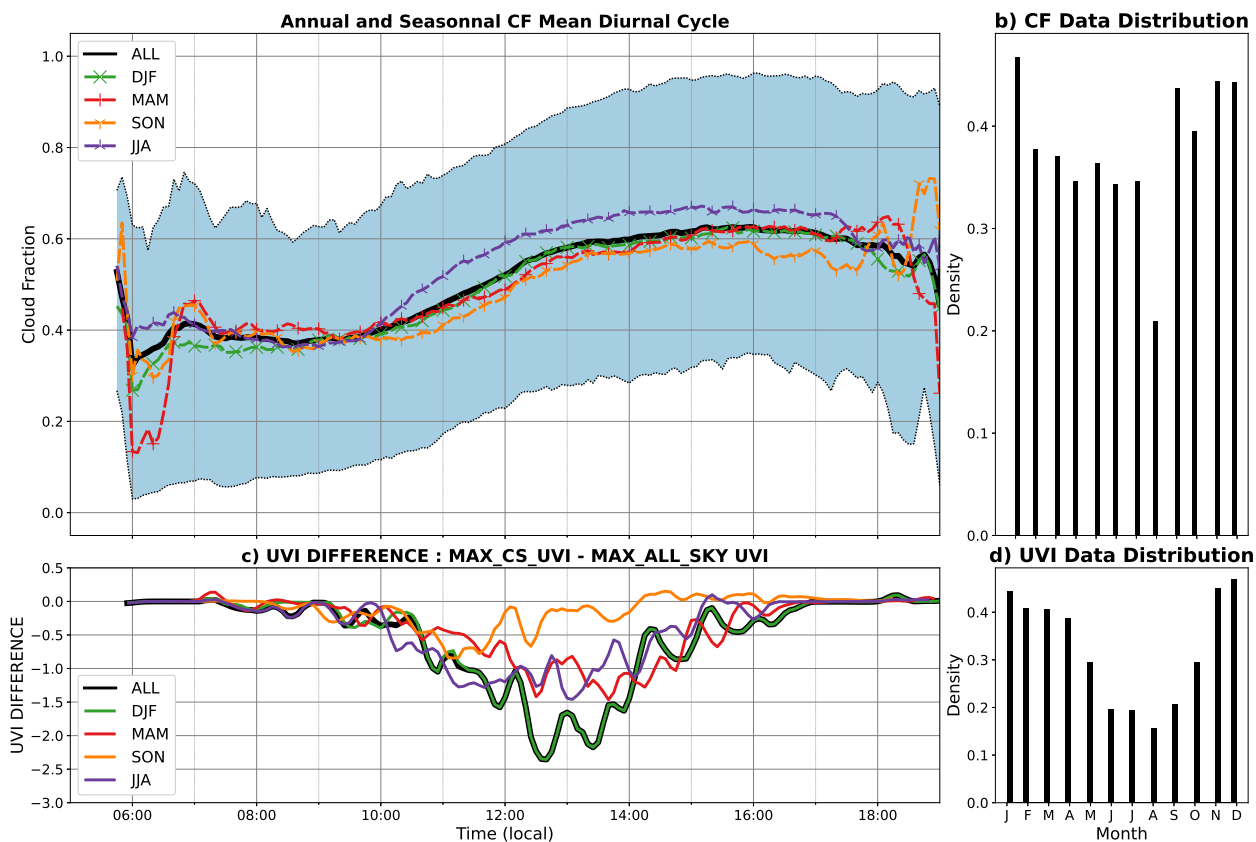


Figure 7. a) and b) Diurnal Cycle of CF at ANTANANARIVO. Annual Mean CF in black, first and third Quartiles delimit the blue shaded area. Seasonal Mean in green (DJF), red (MAM), orange (SON) and purple (JJA).

c) and d) Diurnal Cycle of the difference between maxima of UVI in clear-sky conditions and in all-sky conditions at ANTANANARIVO. Annual Max UVI differences in black. Seasonal Max UVI differences in green (DJF), red (MAM), orange (SON) and purple (JJA)

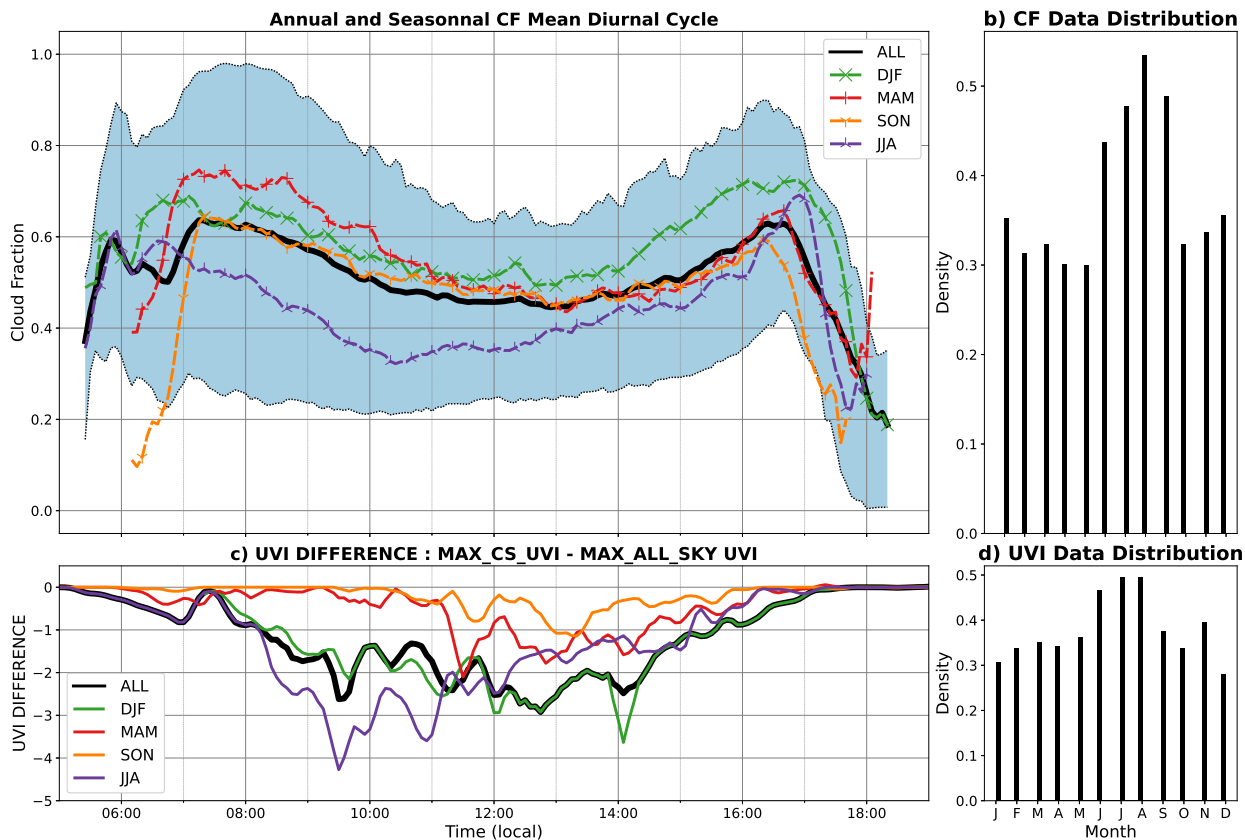


Figure 8. a) and b) Diurnal Cycle of CF at ST-DENIS. Annual Mean CF in black, first and third quartiles delimit the blue shaded area. Seasonal Mean in green (DJF), red (MAM), orange (SON) and purple (JJA).

c) and d) Diurnal Cycle of the difference between maxima of UVI in clear-sky conditions and in all-sky conditions at ST-DENIS. Annual Max UVI differences in black. Seasonal Max UVI differences in green (DJF), red (MAM), orange (SON) and purple (JJA)

Station	Location	Coordinates	Instrument	Data since	Frequency	UTC+	Altitude (asl)	Environmental conditions
Saint-Denis	Reunion	20.902°S 55.485°E	BENTHAM DTMc 300	2009/01	15 min	+4	82m	Urban
								Coastal
			Radiometer KippZonen UVS-E-T 15-0124	2016/12	5 min			Low-Mid Pollution
			All Sky Camera SkyCamVision	2019/09	1 min			Tropical Climate
Maido	Reunion	21.079°S 55.383°E	Radiometer KippZonen	2020/02	1 min	+4	2200m	Rural
			SUV-E 18-0020					Mountain
Anse Quito	Rodrigues	19.758°S 63.368°E	Radiometer KippZonen	2017/06	1 min	+4	32m	Rural
			UVS-E-T 16-0158					Coastal
			All Sky Camera SkyCamVision	2019/09	1min			No Pollution Dry Tropical Climate
Mahé	Seychelles	4.679 °S 55.531 °E	Radiometer KippZonen	2017/11	5 min	+4	15m	Semi-Urban
			UVS-E-T 17-0207					Coastal No Pollution Tropical Climate
Antananarivo	Madagascar	18.916°S 47.565°E	Radiometer KippZonen	2016/12	5 min	+3	1370m	Urban
			UVS-E-T 16-0159					Plateaux
			All Sky Camera SkyCamVision	2019/04	1 min			Mid/High Pollution Tropical Climate
Diego Suarez	Madagascar	12.279°S 48.287°E	Radiometer KippZonen	2019/11	1 min	+3	35m	Semi-Urban
			SUV-E 18-0028					Coastal No Pollution Tropical Climate
Fort Dauphin	Madagascar	25.028°S 46.995°E	Radiometer KippZonen	2020/01	1 min	+3	10m	Semi-Urban
			SUV-E 18-0030					Coastal
			All Sky Camera SkyCamVision	2020/01				No Pollution Tropical Climate
Moroni	Comores	11.708°S 43.247°E	Radiometer KippZonen	2019/12	1 min	+3	12m	Semi-Urban
			SUV-E 18-0027					Coastal
			All Sky Camera SkyCamVision					Low Pollution Tropical Climate
Ile Juan de Nova	France	17.054°S 42.711°E	Radiometer KippZonen	2019/04	1 min	+3	10m	Small Desert Island
			SUV-E 18-0029					Coastal No Pollution Tropical Climate

Table 1. Stations of the UV-Indien Project

Dataset	Platform	Type	Resolution	Field used for computation/calibration		References
				Ozone field used	Aerosol field used	
BENTHAM	Ground-Based	Spectrometer	dt = 15min	None	None	Brogniez et al. (2016)
Radiometer K&Z (UVI-RADIO)	Ground-Based	Radiometer	dt = 1 or 5 min	SAOZ or OMI	None	Cadet et al. (2020)
OMUVBG	Satellite	Spectrometer (Measurement at 360nm then Table Look-Up)	Daily (Overpass/Solar Noon) 0.25 x 0.25 deg.	OMI	OMI Krotkov et al. (1998) Herman et al. (2009)	Tanskanen et al. (2006) Arola et al. (2009) Levelt et al. (2006)
TROPOMI	Satellite	Spectrometer (Measurement at 354nm then Table Look-Up)	Daily (Overpass/Solar Noon) 5.6 x 3.7 km	TROPOMI L2 total ozone column product Garane et al. (2019).	Aerosol Climatology Kinne et al. (2013)	Lindfors et al. (2018) Lakkala et al. (2020)
GOME	Satellite	Spectrometer	Daily (local solar noon) 0.5 x 0.5 deg.	GOME-2A TOZ	MODIS Level 3	Kujanpää and Kalakoski (2015)
CAMS	Model	Modelling	dt = 6 hours 40km (after 2016-06-21) 80 km (before 2016-06-21)	Modelled	Modelled	Bozzo A. (2015)
TEMIS	Model	Modelling	Daily (local solar noon) 0.5 x 0.5 deg.	SCIAMACHY GOME-2A MSR	No direct correction	Zempila et al. (2017)

Table 2. Satellites, Model and ground-based data.

Radiometer	Current Calibration Type	Date of Current Calibration	Next Calibration Date	Current Location
UVS-E-T 15-0124	Bentham	07-10/2019	05/2021	Saint-Denis
UVS-E-T 16-0159	Manufacturer	12/2016	06/2021	Antananarivo
UVS-E-T 16-0158	Manufacturer	06/2017	06/2021	Anse Quitor
UVS-E-T 17-0207	Manufacturer	11/2017	06/2021	Mahé
SUV-E 18-0020	Bentham	11/2019	03/2022	Maido
SUV-E 18-0028	Bentham	07/2019	03/2022	Diego Suarez
SUV-E 18-0030	Bentham	06/2019	03/2022	Fort Dauphin
SUV-E 18-0027	Bentham	08/2019	03/2022	Moroni
SUV-E 18-0029	Bentham	06/2019	03/2022	Juan de Nova

Table 3. Radiometers of the UV-Indien Network.

	SAT/MODEL Comparison Against CS-UVI-BENTHAM (ALL-SKY-UVI BENTHAM) at ST-DENIS					
STATS	UVI-CAMS	UVI-OMUVBG	UVI-TROPOMI	UVI-GOME-SN	UVI-TEMIS-SN	UVI-RADIO
MEAN-AD	0.47 ± 0.55 (1.09 ± 1.97)	0.09 ± 2.36 (0.34 ± 2.54)	-0.25 ± 0.73 (0.60 ± 1.83)	-0.01 ± 0.68 (1.23 ± 2.86)	0.40 ± 0.62 (2.31 ± 3.26)	-0.03 ± 0.39 (0.02 ± 0.65)
MEAN-RD	12.33 ± 12.27 (48.36 ± 105.87)	8.54 ± 53.93 (23.95 ± 82.00)	-3.13 ± 10.09 (30.85 ± 70.85)	0.78 ± 8.66 (40.31 ± 123.55)	3.61 ± 7.12 (59.73 ± 164.38)	-2.95 ± 12.16 (0.32 ± 23.77)
MEDIAN-AD	0.21 (0.50)	-0.15 (-0.06)	-0.16 (0.21)	-0.01 (0.30)	0.27 (0.96)	-0.02 (-0.00)
MEDIAN-RD	11.32 (14.20)	-3.98 (-1.03)	-2.52 (3.98)	-0.07 (3.48)	3.27 (10.15)	-1.17 (-0.14)
NDA	1038 (3069)	145 (408)	254 (1555)	120 (750)	142 (919)	34665 (93300)

Table 4. Mean and Median Absolute and Relative Differences between CS-UVI Sat/Model Measurements and CS-UVI-BENTHAM ~~and~~ at ST-DENIS. Mean and Median Absolute and Relative Differences between ALL-SKY-UVI Sat/Model Measurements and ALL-SKY-UVI-BENTHAM ~~and~~ at ST-DENIS in parentheses

Appendix A

A1

Correlation between UVI-RADIO and SAT/MODEL UVI at ST-DENIS

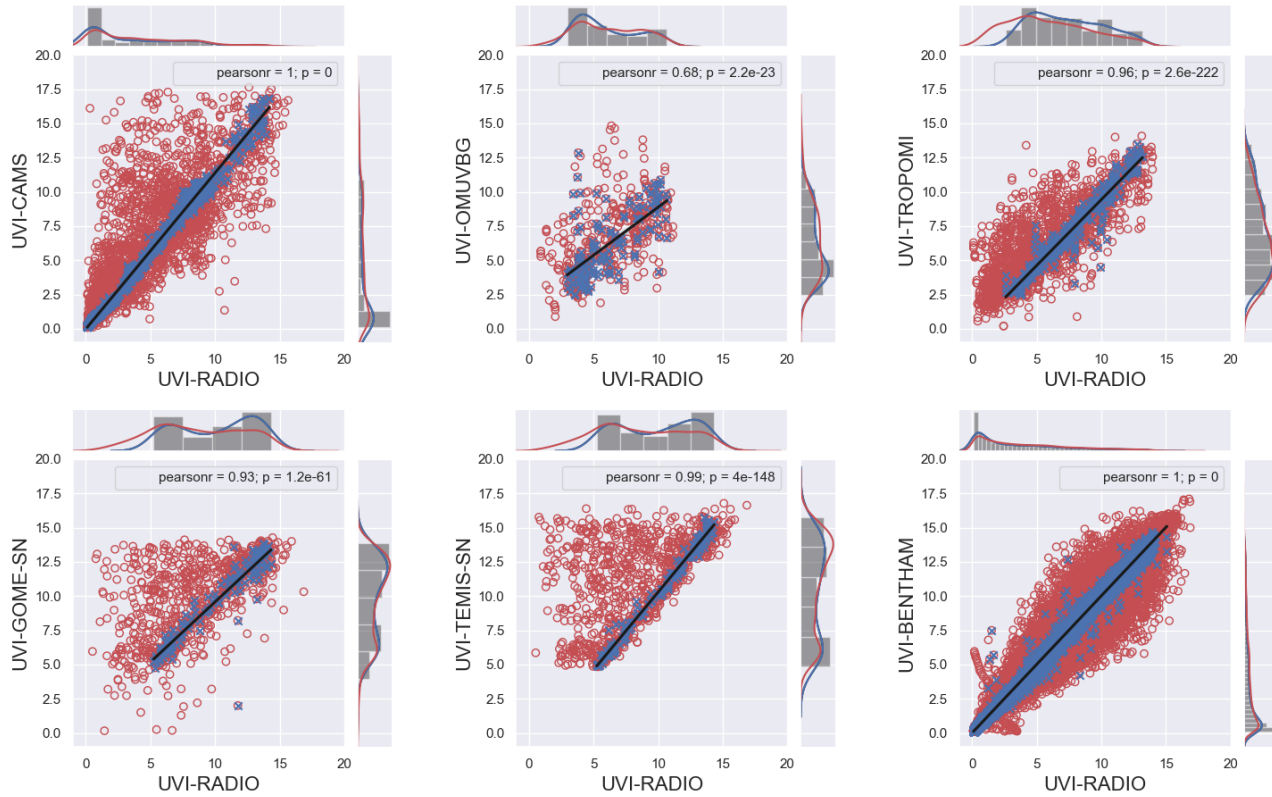


Figure A1. Correlation between UVI-RADIO and Sat/Model Estimates at ST-DENIS

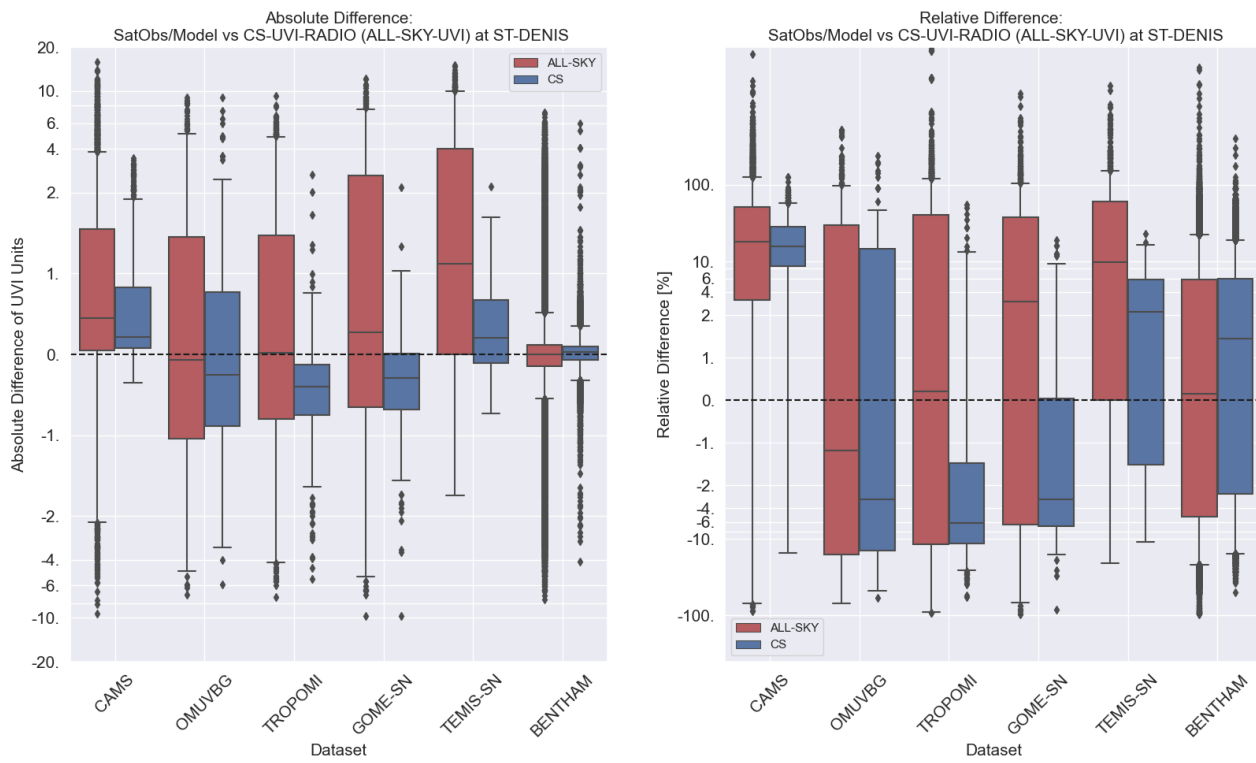


Figure A2. Boxplot of differences between UVI-RADIO and Sat/Model Estimates at ST-DENIS.

Correlation between UVI-RADIO and SAT/MODEL UVI at ANTANANARIVO

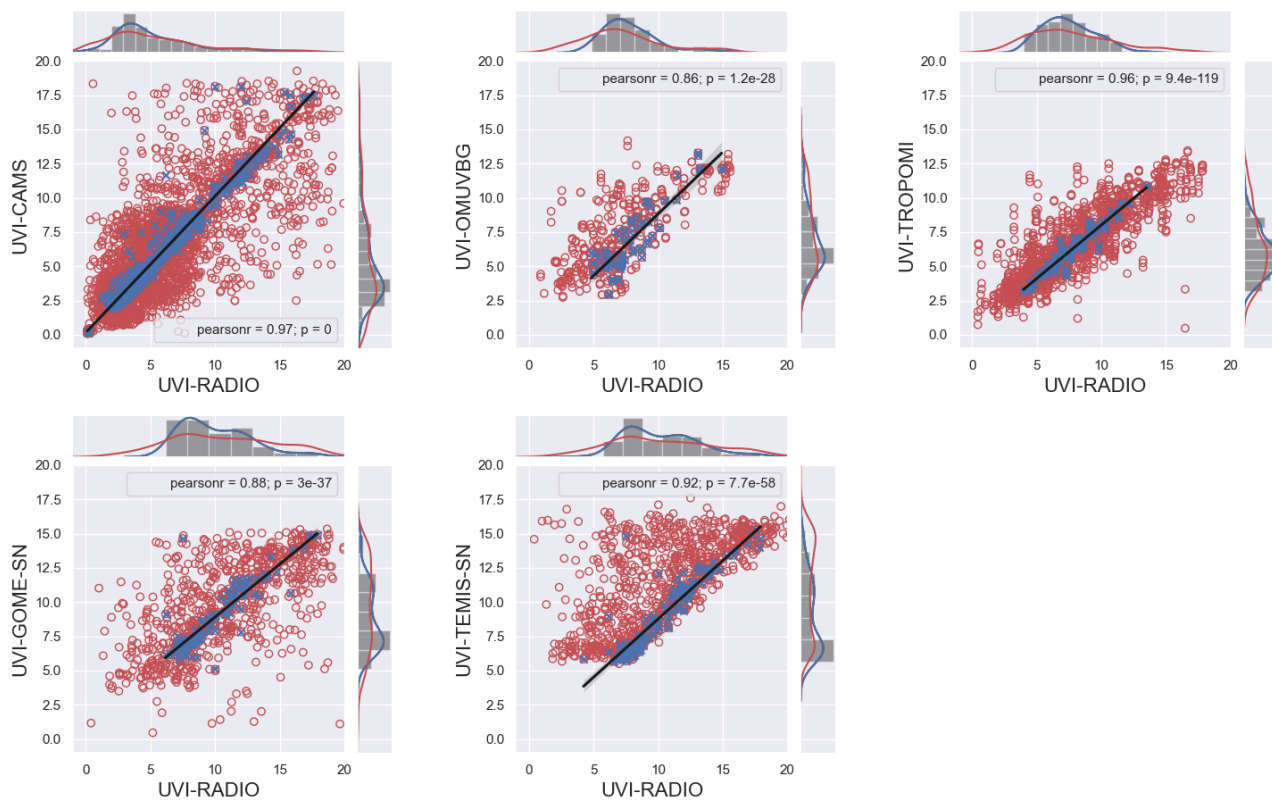


Figure A3. Correlation between UVI-RADIO and Sat/Model Estimates at ANTANANARIVO.

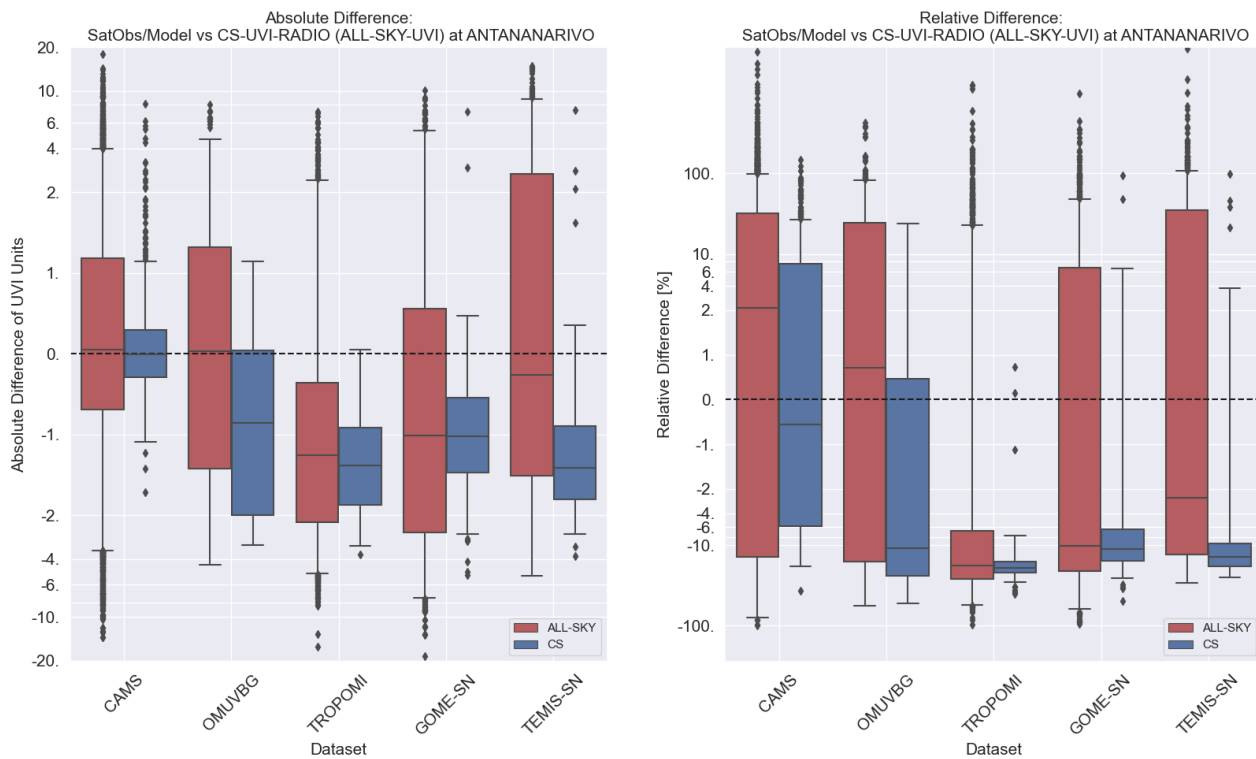


Figure A4. Boxplot of differences between UVI-RADIO and Sat/Model Estimates at ANTANANARIVO.

Correlation between UVI-RADIO and SAT/MODEL UVI at MAHE

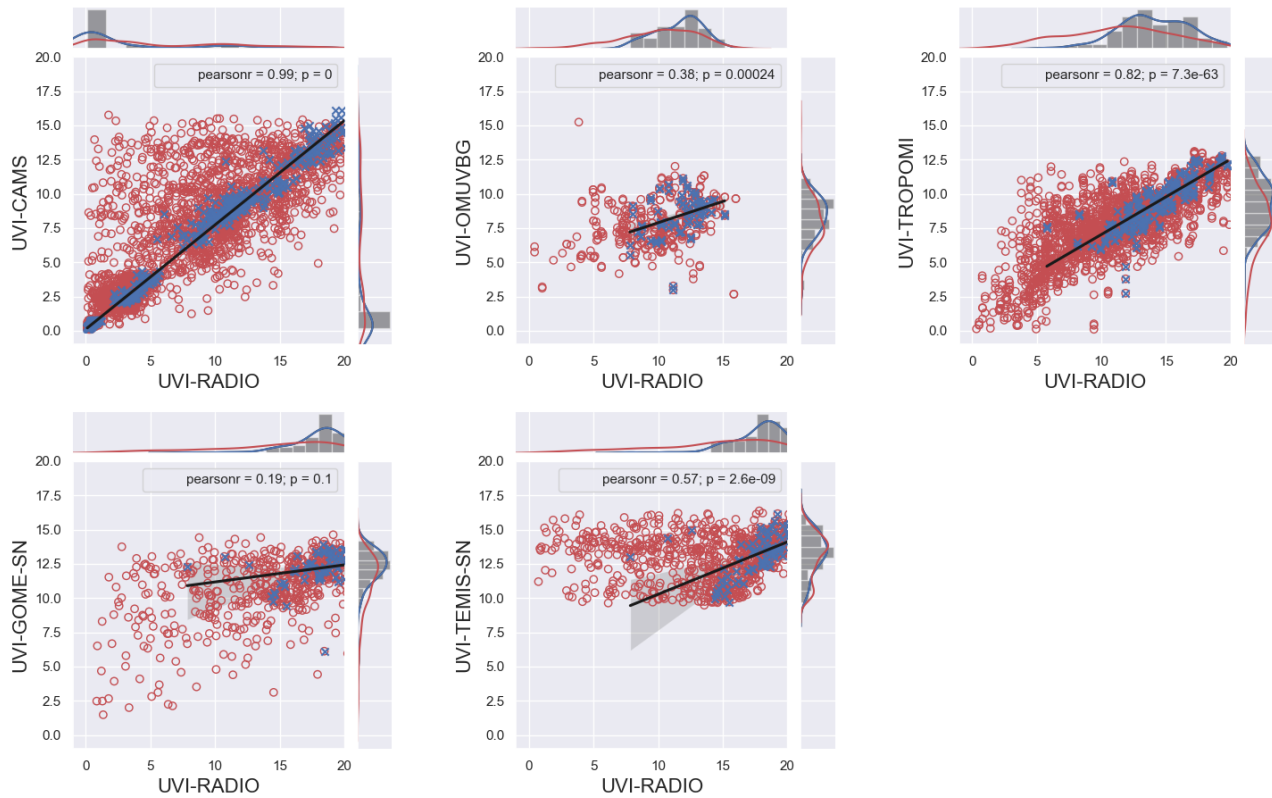


Figure A5. Correlation between UVI-RADIO and Sat/Model Estimates at MAHE.

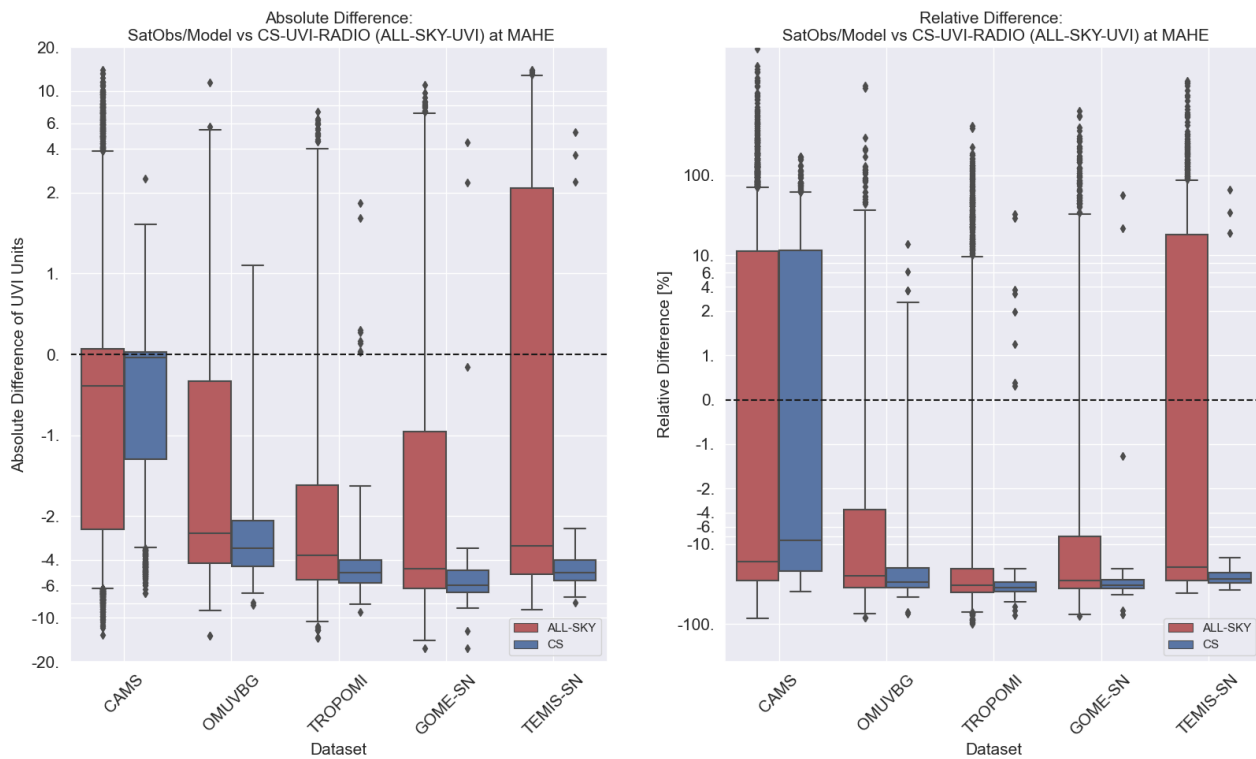


Figure A6. Boxplot of differences between UVI-RADIO and Sat/Model Estimates at MAHE.

Correlation between UVI-RADIO and SAT/MODEL UVI at ANSE QUITOR

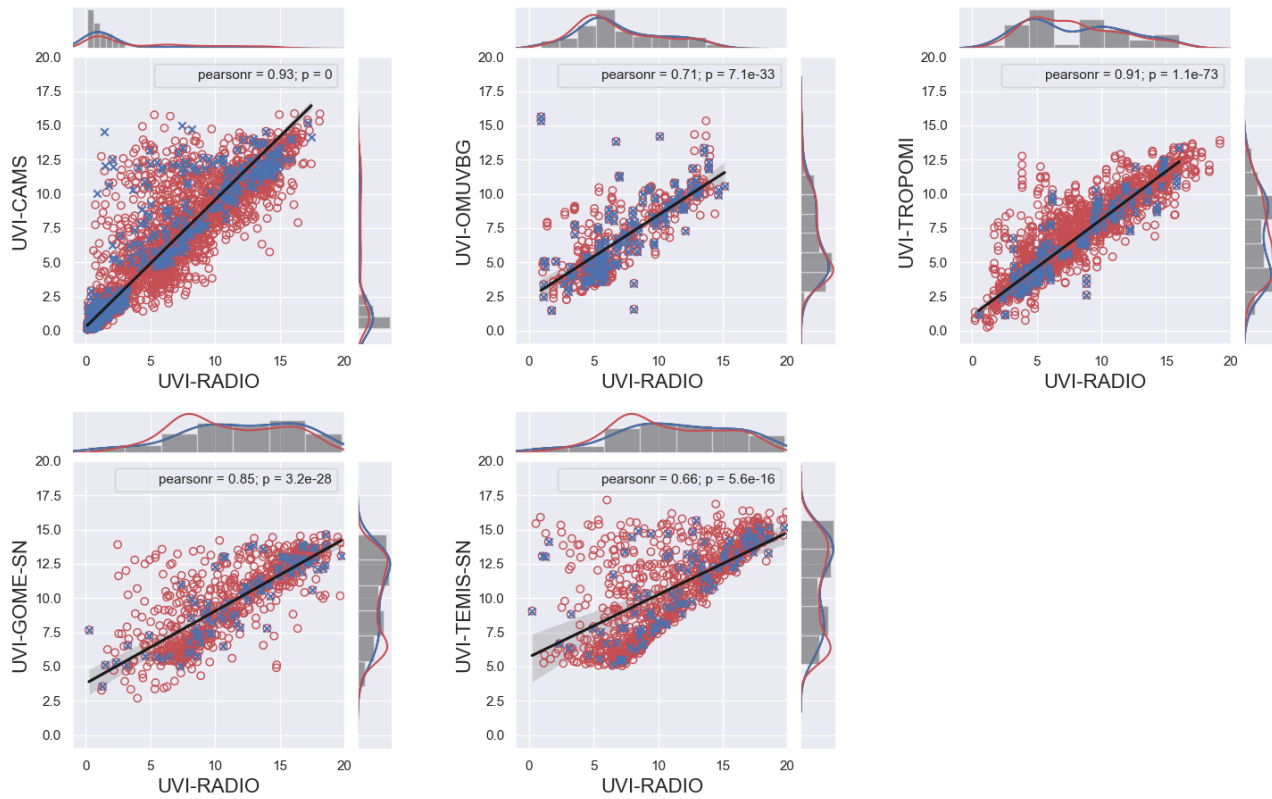


Figure A7. Correlation between UVI-RADIO and Sat/Model Estimates at ANSE QUITOR.

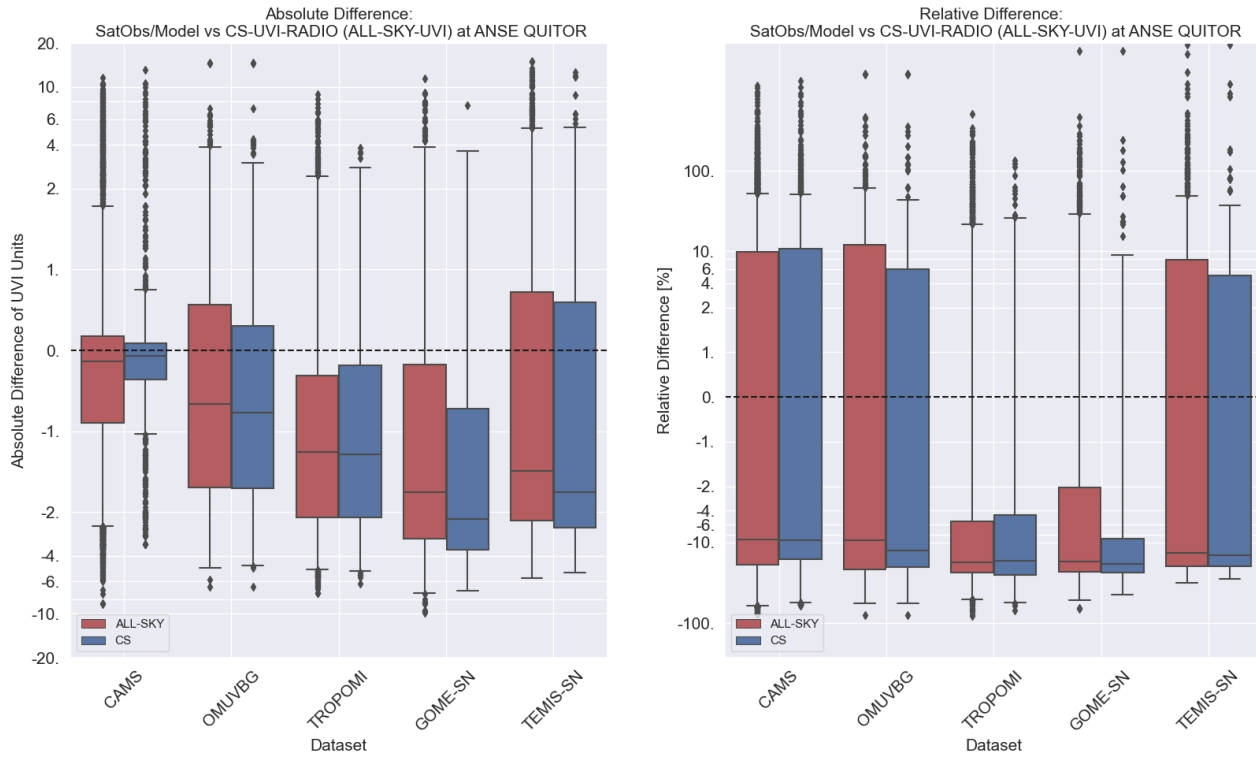


Figure A8. Boxplot of differences between UVI-RADIO and Sat/Model Estimates at ANSE QUITOR.

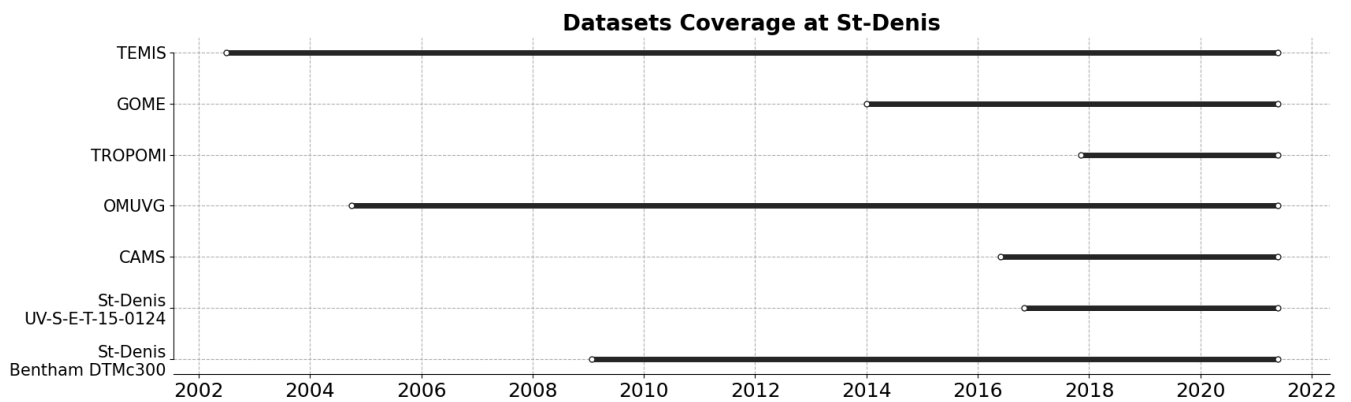


Figure A9. Timeline of the instruments of the UVI dataset used in the comparison at St-Denis.

Comparison of SAT/MODEL with CS-UVI-RADIO (ALL-SKY-UVI RADIO) at ST-DENIS						
STATS	UVI-CAMS	UVI-OMUVBG	UVI-TROPOMI	UVI-GOME-SN	UVI-TEMIS-SN	UVI-BENTHAM
MEAN-AD	0.51 ± 0.63 (1.08 ± 2.19)	0.07 ± 1.89 (0.38 ± 2.47)	-0.46 ± 0.75 (0.39 ± 1.95)	-0.43 ± 1.10 (1.09 ± 2.92)	0.29 ± 0.58 (2.39 ± 3.24)	0.02 ± 0.22 (-0.02 ± 0.64)
MEAN-RD	20.12 ± 18.11 (51.13 ± 140.84)	6.22 ± 41.58 (21.24 ± 77.44)	-6.45 ± 10.87 (46.13 ± 290.98)	-3.53 ± 9.84 (34.69 ± 112.84)	1.80 ± 6.12 (57.14 ± 141.93)	4.17 ± 13.00 (1.97 ± 24.99)
MEDIAN-AD	0.21 (0.45)	-0.25 (-0.07)	-0.40 (0.02)	-0.29 (0.27)	0.20 (1.12)	0.03 (0.00)
MEDIAN-RD	15.80 (18.01)	-3.03 (-1.19)	-6.24 (0.21)	-3.08 (3.01)	2.22 (9.86)	1.45 (0.14)
NDATA	1279 (4087)	160 (467)	387 (1988)	141 (893)	164 (1069)	29488 (92864)

Table A1. Mean and Median Absolute and Relative Differences between CS-UVI Sat/Model Measurements and CS-UVI-RADIO and at ST-DENIS. Mean and Median Absolute and Relative Differences between ALL-SKY-UVI Sat/Model Measurements and ALL-SKY-UVI-RADIO and at ST-DENIS in parentheses

Comparison of SAT/MODEL with CS-UVI-RADIO (ALL-SKY-UVI RADIO) at ANTANANARIVO					
STATS	UVI-CAMS	UVI-OMUVBG	UVI-TROPOMI	UVI-GOME-SN	UVI-TEMIS-SN
MEAN-AD	0.14 ± 0.84 (0.18 ± 2.64)	-0.96 ± 1.16 (0.10 ± 2.24)	-1.43 ± 0.61 (-1.35 ± 1.91)	-1.10 ± 1.27 (-1.00 ± 3.23)	-1.25 ± 1.11 (0.77 ± 3.20)
MEAN-RD	4.03 ± 18.53 (21.40 ± 113.35)	-12.16 ± 15.84 (13.53 ± 58.09)	-18.94 ± 5.65 (-8.93 ± 61.87)	-10.09 ± 13.80 (1.39 ± 58.78)	-11.96 ± 13.22 (26.44 ± 139.83)
MEDIAN-AD	-0.01 (0.05)	-0.86 (0.04)	-1.38 (-1.26)	-1.02 (-1.01)	-1.41 (-0.26)
MEDIAN-RD	-0.55 (2.13)	-10.98 (0.71)	-19.11 (-18.02)	-11.11 (-10.10)	-14.13 (-2.59)
NDATA	564 (3337)	92 (427)	203 (1796)	111 (816)	142 (992)

Table A2. Mean and Median Absolute and Relative Differences between CS-UVI Sat/Model Measurements and CS-UVI-RADIO and at ANTANANARIVO. Mean and Median Absolute and Relative Differences between ALL-SKY-UVI Sat/Model Measurements and ALL-SKY-UVI-RADIO and at ANTANANARIVO in parentheses

Comparison of SAT/MODEL with CS-UVI-RADIO (ALL-SKY-UVI RADIO) at MAHE					
STATS	UVI-CAMS	UVI-OMUVBG	UVI-TROPOMI	UVI-GOME-SN	UVI-TEMIS-SN
MEAN-AD	-0.82 ± 1.44 (-0.93 ± 2.94)	-3.22 ± 1.83 (-2.16 ± 2.95)	-4.80 ± 1.60 (-3.48 ± 2.88)	-5.75 ± 2.51 (-3.41 ± 4.29)	-4.52 ± 1.82 (-1.22 ± 4.99)
MEAN-RD	-1.23 ± 28.57 (11.52 ± 140.58)	-26.62 ± 14.30 (-6.28 ± 101.10)	-33.43 ± 10.43 (-24.98 ± 31.94)	-30.65 ± 14.98 (-6.92 ± 69.82)	-24.46 ± 13.08 (23.62 ± 144.59)
MEDIAN-AD	-0.04 (-0.39)	-3.31 (-2.63)	-4.88 (-3.73)	-5.99 (-4.59)	-4.91 (-3.19)
MEDIAN-RD	-8.91 (-16.41)	-29.49 (-24.85)	-34.58 (-32.70)	-32.25 (-28.55)	-27.11 (-19.15)
NDA	1133 (3525)	89 (392)	253 (2132)	72 (635)	94 (881)

Table A3. Mean and Median Absolute and Relative Differences between CS-UVI Sat/Model Measurements and CS-UVI-RADIO and at MAHE. Mean and Median Absolute and Relative Differences between ALL-SKY-UVI Sat/Model Measurements and ALL-SKY-UVI-RADIO and at MAHE in parentheses

Comparison of SAT/MODEL with CS-UVI-RADIO (ALL-SKY-UVI RADIO) at ANSE QUITOR					
STATS	UVI-CAMS	UVI-OMUVBG	UVI-TROPOMI	UVI-GOME-SN	UVI-TEMIS-SN
MEAN-AD	0.06 ± 1.49 (-0.20 ± 1.82)	-0.43 ± 2.36 (-0.36 ± 2.19)	-1.28 ± 1.69 (-1.19 ± 1.80)	-1.88 ± 2.58 (-1.42 ± 2.71)	-0.55 ± 3.34 (-0.39 ± 3.06)
MEAN-RD	12.02 ± 91.52 (6.85 ± 69.67)	17.36 ± 163.36 (12.16 ± 114.22)	-10.93 ± 26.62 (-8.71 ± 35.26)	26.16 ± 319.83 (0.12 ± 121.81)	56.15 ± 376.30 (18.21 ± 179.43)
MEDIAN-AD	-0.06 (-0.14)	-0.77 (-0.66)	-1.28 (-1.25)	-2.23 (-1.75)	-1.75 (-1.49)
MEDIAN-RD	-9.28 (-9.20)	-12.56 (-9.45)	-16.65 (-17.68)	-18.47 (-17.10)	-14.51 (-13.31)
NDA	996 (3956)	204 (516)	189 (2114)	95 (752)	115 (964)

Table A4. Mean and Median Absolute and Relative Differences between CS-UVI Sat/Model Measurements and CS-UVI-RADIO and at ANSE QUITOR. Mean and Median Absolute and Relative Differences between ALL-SKY-UVI Sat/Model Measurements and ALL-SKY-UVI-RADIO and at ANSE QUITOR in parentheses