

# The Surface Water Chemistry (SWatCh) database: A standardized global database of water chemistry to facilitate large-sample hydrological research

Lobke Rotteveel<sup>1</sup>, [Franz Heubach](#)<sup>2</sup>, Shannon M. Sterling<sup>1</sup>

5 <sup>1</sup> Sterling Hydrology Research Group, Dalhousie University, Halifax, B3H 4R2, Canada

<sup>2</sup> [Department of Mechanical Engineering, Dalhousie University, Halifax, B3H 4R2, Canada](#)

*Correspondence to:* Shannon M. Sterling (shannon.sterling@dal.ca)

**Abstract.** Openly accessible global scale surface water chemistry datasets are urgently needed to detect widespread trends and problems, to help identify their possible solutions, and ~~identify~~determine critical spatial data gaps where more monitoring is required. Existing datasets are limited in availability, sample size/sampling frequency, and geographic scope. These limitations inhibit the answering of emerging transboundary water chemistry questions, for example, the detection and understanding of delayed recovery from freshwater acidification. Here, we begin to address these limitations by compiling the global surface water chemistry (SWatCh) database, available on Zenodo (DOI: [10.5281/zenodo.6484939](https://doi.org/10.5281/zenodo.6484939)~~10.5281/zenodo.4559696~~). We collect, clean, standardize, and aggregate open access data provided by six national and international agencies to compile a database ~~consisting of three relational datasets containing information on~~ sites, methods, and samples, and ~~one a~~ GIS shapefile of site locations. We remove poor quality data (for example, values flagged as “suspect” ~~or “rejected”~~), standardize variable naming conventions and units, and perform other data cleaning steps required for statistical analysis. The database contains water chemistry data for streams, rivers, canals, ponds, lakes, and reservoirs across seven continents, ~~4724~~ variables, ~~38,59833.722~~ sites, and over ~~95~~ million samples collected between 1960 and 2019~~22~~. Similar to prior research, ~~We~~ identify critical spatial data gaps ~~in the equatorial and arid climate regions~~ African and Asian continents, highlighting the need for more data collection and sharing initiatives in these areas, especially considering freshwater ecosystems in these environs are predicted to be among the most heavily impacted by climate change. We identify the main challenges associated with compiling global databases – limited data availability, dissimilar sample collection and analysis methodology, and reporting ambiguity – and provide ~~recommendations to~~ address them~~solutions~~. By addressing these challenges and consolidating data from various sources into one standardized, openly available, high quality, and trans-boundary database, SWatCh allows users to conduct powerful and robust statistical analyses of global surface water chemistry.

## 30 1 Introduction

Globally, 159 million people are reliant on untreated surface water, with only one in three people having access to safely-managed drinking water services (World Health Organization and United Nations Children’s Fund (WHO and UNCF), 2017). With two-thirds of the global population (4.0 billion people) already experiencing water shortages at least one month per year (Mekonnen and Hoekstra, 2016), and a number projected to increase to 4.8-5.7 billion people projected to  
35 experience water shortages by 2050 (Burek et al., 2016), maintaining the quality of ~~these redrinking water~~ sources is paramount to human health and society. One of the main obstacles to achieving this goal is a lack of openly available, high quality, transboundary data (WHO and UNCF~~World Health Organization and United Nations Children’s Fund~~, 2017). Existing large-sample water quality datasets have: 1) limited availability, for example, raw data may not be published with journal articles (Alsheikh-Ali et al., 2011); 2) limited sample size, for example, datasets may only include one water body  
40 type (Hartmann et al., 2014); or 3) limited geographic scope, for example, national datasets only include data for one country.

Delayed acidification recovery is an example of a transboundary problem which would benefit from a large-sample dataset. Here, we define a “transboundary problem” to be a water quality issue, or cause of a water quality issue, which crosses international borders. For example, a main driver of freshwater acidification in Atlantic Canada is acid deposition originating  
45 from all the major production regions in North America, including those in the United States of America (Shaw, 1979). A similar definition of “transboundary problem” is often used when discussing water availability issues which cross international borders (for example, Thu & Wehn, 2016). Ecosystem acidification and associated elevated ~~aluminium~~aluminum (Al) concentrations are responsible for the loss of economically-significant fish species (Committee on the Status of Endangered Wildlife in Canada, 2011; Dennis and Clair, 2012), reductions in crop success (Collignon et al.,  
50 2012), reduced forest health (Collignon et al., 2012; DeHayes et al., 1999; de Wit et al., 2010) and therefore carbon sequestration, and increased cost of water treatment (Letterman and Driscoll, 1988); further, high Al, in drinking water resources and may contribute to human osteological and neurological diseases (~~World Health Organization~~WHO, 2010). Prior large-sample (Björnerås et al., 2017; Monteith et al., 2007), and global scale (Weyhenmeyer et al., 2019) studies on  
55 freshwater acidification indicate that recovery is delayed in some regions. But, so far, there is no openly available global scale database of acidification related water chemistry which includes Al, increased concentrations of which are one of the most biotically toxic effects of acidification (Gensemer and Playle, 1999).

There is a need for harmonized large-sample hydrological research (Blöschl et al., 2019), and g-lobal datasets are required to develop global water chemistry models (Harrison, Caraco, et al., 2005; Harrison, Seitzinger, et al., 2005). The majority of water quality research has ~~foeussed~~focused on catchment scale datasets, which ~~limits~~narrows our understanding of  
60 ~~transboundary hydrochemical~~ processes to catchments which have historically been studied. Catchment scale analyses make

valuable contributions to our understanding of hydrochemical processes; ~~but~~ ~~However,~~ ~~phenomena observed at the~~ ~~catchment scale may not generalize across regions~~ variability in catchment response to perturbation, which is potentially indicative of variability in hydrochemical processes, is difficult to evaluate in a robust manner without an approach which assesses multiple catchments/regions in a harmonized way. ~~For example,~~ ~~w~~ ~~In the case of~~ ~~th~~ freshwater acidification, ~~catchment~~ ~~water chemistry~~ response to acid deposition may be altered by ~~its~~ geology and land use/land cover; thus, observations made in one watershed/region may not generalize to others ~~—(for example,~~ Clair et al., 2011; Rotteveel & Sterling, 2020). ~~Specifically~~ ~~For example,~~ watershed response to acid deposition is influenced by weak acids in regions with slow-weathering, base cation ( $C_B$ ) poor, bedrock, ~~are more strongly effected by acid deposition but not in than those~~ ~~regions~~ with ~~with~~ higher  $C_B$  geology (Clair et al., 2011; Stoddard et al., 1999), and watersheds with high-intensity forest harvesting may be more strongly affected by acid deposition than those with less disturbance (Aherne et al., 2008; Feller, 2005).

Obtaining and consolidating water chemistry datasets for transboundary hydrological research is challenging due to limited data access, and disparate (that is, dissimilar) data collection programs and data reporting formats. Access may be limited because data ~~is~~ are not published and/or kept confidential, as is the case for some sites within the United Nations International Centre for Water Resources and Global Change’s Global Water Quality Database and Information System (GEMStat). Data collection programs are dissimilar largely due to a lack of international variable and analysis method definitions (~~WHO and UNCF~~ ~~World Health Organization and United Nations Children’s Fund~~, 2017). For example, Al measurements may not be comparable across different functional, operational, and classical species definitions (Namieśnik and Rabajczyk, 2010; Ščančar and Milačič, 2006). Lastly, disparate variable naming conventions, units, and censored data notation complicates consolidation of datasets from different sources, as these notations must first be standardized.

Here, we aim to address the above limitations by contributing an openly available, standardized, easy-to-use, global water chemistry database. We focus on providing data to address the problem of delayed freshwater acidification recovery by collecting, cleaning, standardizing, and compiling datasets of acidification related water chemistry variables. Specifically, our research goals are 1) to develop a global database of acidification related surface water chemistry, 2) to identify the main limitations associated with compiling this database, 3) to identify and characterize critical spatial data gaps within existing datasets, and 4) to provide recommendations for data reporting and storage to facilitate its easy access and use by other researchers.

## 2 Methods

### 2.1 Data Sources

We obtained input data for SWatCh from openly available datasets published by national and international agencies and from datasets available on open-access servers (Table 1). Our search terms were “water chemistry data” or “water quality data” and “global” or a country name, as listed in the United Nations member countries (United Nations, 2009). ~~We assume that water chemistry data available from these reputable sources have undergone standard laboratory quality assurance and~~

~~control; spot checks of available methodology information support this assumption.~~ Our data search did not have a geographic focus, although our sources were limited to datasets available in English. Datasets likely missed by this approach include those hosted on servers or websites without (or without English) Search Engine Optimization (SEO); that is, those which have not been optimized with keywords identifiable by search engines to provide results (Google, 2020). ~~For example, the search “water quality data AND Sweden” does not return a website with Swedish water quality data. This data does exist; it is hosted by the Swedish University of Agricultural Sciences at <https://miljodata.slu.se/MVM/>, but cannot be found using our English search terms. Please note that this data is included in SWatCh, as it is included in the European Environment Agency’s Waterbase, one of our data sources.~~ All datasets were originally downloaded in ~~September 2019~~ September 2019 and updated during the manuscript review process in April and March 2022 so newly published data could be included. The GloRiCh dataset was not re-downloaded because it not been updated since the prior download, and the National Water Quality Monitoring Council Water Quality Portal dataset was not re-downloaded due to unresolved internal server errors.

## 2.2 Data Inclusion

SWatCh includes 1724 water chemistry variables collected in untreated surface water bodies. We define “untreated” as water that is not wastewater or receiving treatment plant effluent near to the sample collection site (for example, sites described as “wastewater” or “effluent”). The included water body types are streams, rivers, canals, ponds, lakes, and reservoirs. The included water chemistry variables are metals: Al, and iron (Fe); C<sub>B</sub>’s: calcium (Ca), magnesium (Mg), potassium (K), and sodium (Na); other measures of buffering capacity: acid neutralization capacity (ANC), alkalinity, carbonate (CO<sub>3</sub>), and bicarbonate (HCO<sub>3</sub>); acid anions: sulf~~ph~~ate (SO<sub>4</sub>), nitrate (NO<sub>3</sub>), and nitrite (NO<sub>2</sub>); other anions: fluoride (F), and chloride (Cl); nutrients: phosphorus (P), phosphate (PO<sub>4</sub>), and ammonium (NH<sub>4</sub>); physical parameters: pH, and temperature; carbon: carbon dioxide (CO<sub>2</sub>), total inorganic carbon (TIC), dissolved inorganic carbon (DIC), total organic carbon (TOC), and dissolved organic carbon (DOC). ~~The included water body types are streams, rivers, canals, ponds, lakes, reservoirs, and impoundments.~~ The included sample fractions are unfiltered, filtered, and extracted (that is, acid digested). We screened out sites identified as confidential or with other publication restrictions (~~Error: Reference source not found~~). A visual representation of the data processing completed during the preparation of SWatCh is presented in Fig. 1.

### 2.2.1 ~~Removal~~ Flagging of ~~Low Quality~~ Low-Quality Data

We ~~removed~~ identified low quality data using the flag “Rejected”; for example, samples flagged as “unreliable”, “suspect”, or “poor quality” in the source databases. Additionally, we ~~removed~~ flagged values below zero for all variables except temperature, alkalinity, and ANC; these values are assumed to have been entered incorrectly. A total of 79,910 data points were considered to have low data quality, representing 1.48% of data in SWatCh.

## 2.2.2 Removal of Duplicates

We removed duplicate site and sample data. Three of our source databases, GEMStat, the Global River Chemistry Database (GloRiCh), and Waterbase are compilations of water chemistry data from several sources, and thus repeat some measurements. We removed duplicated sites based on the unique site identification code ~~and the country the site was located in~~. We removed duplicated samples based on the site identification code, ~~country~~, date, variable name, variable fraction, variable speciation, and sample value. We define “variable fraction” as the component part of a water sample, such as filtered or total (unfiltered sample) and dissolved (filtered sample). “Variable speciation” is defined as the speciation of a reported parameter; for example, NH<sub>4</sub> may be reported as nitrogen (N) or NH<sub>4</sub>. ~~Country is included as a parameter in the duplicate removal process, as some site codes are replicated across different countries; this primarily occurs for numeric or single-letter site codes.~~

## 2.2.3 Flagging of Potential Outliers

We identify potential outliers for each timeseries in SWatCh using a four-times median absolute deviation (MAD) cut-off value. The MAD is preferred to other methods of outlier removal when the data have a skewed distribution or large outliers are present (Leys et al., 2013; Rousseeuw & Hubert, 2011), as is common in water chemistry data (for example, Rotteveel & Sterling, 2020). Water chemistry data in SWatCh have a skewed distribution for most variables; thus, the MAD is suitable outlier screening approach. The equation for the MAD is presented in Eq. (1).

$$MAD = \frac{1}{n} \sum_{i=1}^n |x_i - \tilde{x}| \text{ where } i = 1, \dots, n \quad (1)$$

Here, MAD is median absolute deviation,  $x_i$  an observation, and  $\tilde{x}$  the median (Rousseeuw & Hubert, 2011). A total of 0.27% (13,309 values) were flagged as potential outliers.

## 2.3 Data Standardization

### 2.3.1 Database Format

~~We formatted the~~ The SWatCh database ~~to~~ conforms to the DataStream Water Quality (DS-WQX) schema, a standardized data format which specifies the allowable elements and dataset structure. The DS-WQX schema is a simplified adaptation of the United States Environmental Protection Agency (US EPA) WQX schema. The US EPA WQX schema is an implementation of the Environmental Sampling, Analysis, and Results data standard which conforms to the National Environmental Information Exchange Network (EN) standards (US EPA, 2021). The complexity of the US EPA WQX schema presents a barrier to entry (DataStream Initiative, 2022), which is addressed by the simplified DS-WQX schema. The US EPA WQX schema is simplified compared to the DS-WQX schema in the following ways: most optional columns are removed, data are stored as one database as opposed to multiple relational datasets, column names are simplified, and date and time information is conformed to the ISO 8601 format to simplify parsing and ensure universal readability (DataStream Initiative, 2022). For further details, please see <https://github.com/datastreamapp/schema>.

155 We made two changes to the DS-WQX format: the minimum value for the “MonitoringLocationLatitude” field (that is, minimum allowable latitude value) was updated from 0 to -90 so that sites located in the southern hemisphere could be included; and “OTHER” was added as an allowable value to the “ResultAnalyticalMethodContext” field (that is, the context associated with the analysis identifier code; for example, the agency which published the analysis method specifications), so method information which was undefined in the DS-WQX schema could be included. For samples where the “ResultAnalyticalMethodContext” was specified as “OTHER”, information on the analysis identifier code context is  
160 provided in the “ResultComment” column.

~~reduce storage requirements and simplify use. To reduce storage requirements, we provide SWatCh as a relational database containing three datasets: 1) sites, 2) methods, and 3) samples. These three datasets are linked via site and method identification codes. We formatted each dataset after the input dataset we found the most straightforward to analyse and manipulate; that is, the sites and methods datasets are modelled after the United Nations’ GEMStat, and the samples dataset is modelled after the European Environment Agency’s Waterbase.~~

165

### 2.3.2 Variable Naming and Measurement Units

We standardized variable naming conventions in accordance with DS-WQX. ~~to prevent confusion due to inconsistent spelling and abbreviation (Table 2). For example, aluminium (British spelling) and aluminum (American spelling) are both abbreviated to Al. We keep v~~Variable names are indicated separately from variable fractions and speciation to  
170 simplify/facilitate analysis ~~examiningof~~ different fractions simultaneously. In the input datasets, the fractions are not specified for all variables; for these, we denote the fraction as “uUnspecified”.

~~We simplified and standardized measurement units to prevent analysis and encoding errors (Table 2). Several input datasets did not include their encoding type, causing corrupted characters and measurement unit ambiguity. To prevent these errors, we omit non-ASCII (American Standard Code for Information Interchange) characters; for example, micrograms (µg), are denoted as ug.~~  
175 We harmonized the measurement units and variable speciation for each parameter to simplify data analysis.

Measurements were reported in different units in the input datasets; we standardized them to the most common International System of Unit (SI unit) we observed for each variable. For example, Ca was reported in µg L<sup>-1</sup>, mg L<sup>-1</sup>, eq L<sup>-1</sup>, and Mol, but was most commonly reported as mg L<sup>-1</sup>, thus, we standardized the measurement unit to mg L<sup>-1</sup>. Concentrations are provided  
180 in mg L<sup>-1</sup>, other than Al and Fe (µg L<sup>-1</sup>), ANC (mmol L<sup>-1</sup>), pH (no unit: “None”), and temperature (°C).

~~Several input datasets did not include their encoding type, causing corrupted characters and measurement unit ambiguity. To prevent these errors, we omit non-ASCII (American Standard Code for Information Interchange) characters; for example, micrograms (µg), are denoted as ug. Measurement units in SWatCh conform to the DS-WQX standard.~~

### 2.3.3 Censored Data Notation

185 We standardized censored data notation to facilitate easier handling of these values. Censored data notation varied across the input datasets and included abbreviations such as “bdl”, “<”, or the numeric value of the detection limit. The input datasets did not distinguish between samples measured at or below the detection limit. Detection limits differed across and within datasets; thus, we standardized below detection limit values by flagging them and providing the detection limit in separate columns, allowing for various approaches of handling these results.

### 190 2.4 Mapping

We ~~standardized~~harmonized the coordinate reference systems (CRSs) of the sample site locations to simplify geographic analysis. Site location coordinates are provided in various CRSs in the input datasets; thus, we ~~first mapped the sites in their original coordinate systems, then~~ re-projected them to the World Geodetic System 1984 (WGS 84) geographic CRS. We selected WGS 84, as this provides good mean solution across the globe and can easily be projected to local datums (Bajjali, 195 2018).

## 3 Results

The SWatCh database contains water chemistry data across ~~2417~~ variables, ~~six~~four fractions, ~~33,72238,598~~ sites, and ~~5,062,9809,608,026~~ samples collected between 1960 and 20~~22~~19 (Table ~~2~~Table 3). SWatCh is available on Zenodo (DOI: [10.5281/zenodo.6484939](https://doi.org/10.5281/zenodo.6484939); Rotteveel and Heubach, 2021). Sample collection frequency ranges from approximately twice a 200 daily to one-time samples, depending on the data source parameter and water body type. The parameters with the highest average annual sampling frequency are temperature (791) and pH (359). Average annual sampling frequency across all parameters is similar between water body types: four samples per year for lacustrine and riverine systems, and eight samples per year for reservoirs. Not all samples included collection and analysis methodologies; for the samples where this information was available, there are ~~over 600~~565 different methods.

205 Sites in SWatCh are located across the globe, but are concentrated in North America, South America, and Europe (Fig. 2), and encompass a variety of bedrock types (United States Geological Survey, n.d.) ~~and~~ land use types (Goldewijk et al., 2011), and climate zones (Kottek et al., 2006)(Figure 2). The spatial distribution of sampling locations varies by water body type; notably, only riverine sites are available in northern North America and several island nations, such as Guam and New Zealand, and reservoir sites are concentrated in the equatorial and arid climate zones, such as Central America (Fig. 2).

210 The number of sites available to study freshwater acidification, and their spatial extent, decreases with number of included parameters and timeseries length (Table 3; Fig. 3). We allocated the available parameters in SWatCh into five groupings, each of which allows freshwater acidification to be studied with increasing detail and certitude. The parameter groupings, in order of decreasing importance, are as follows:

1. Acidity (pH): pH is assigned the to the first grouping because it is the primary indicator of freshwater acidification.

- 215 2. Basicity (alkalinity, hardness, ANC, CO<sub>3</sub>, HCO<sub>3</sub>, Ca, and Mg): the primary measures of basicity are assigned to the second grouping because they are also used as primary indicators of freshwater acidification and can be used to determine the stage of freshwater acidification. For example, Stage 2 is characterized by an increase in freshwater C<sub>B</sub> concentrations as cation exchange from cation exchange sites in soils buffers acid anion deposition (Galloway et al., 1983). K and Na are not included in the basicity grouping because they are usually present in minor
- 220 concentrations compared to Ca and Mg (Maybeck, 2004).
3. Acid anions (SO<sub>4</sub>, NO<sub>3</sub>, and NO<sub>2</sub>): acid anions are assigned to the third grouping because acid deposition is usually the primary driver of freshwater acidification (Galloway et al., 1983), but may not be a good indicator of freshwater acidification in low C<sub>B</sub> waters, or waters with high DOC concentrations (Rotteveel & Sterling, 2020).
4. Metallic cations (Al and Fe): metallic cations are assigned to the fourth group because soils undergo Al or Fe buffering in response to acid deposition once soil C<sub>B</sub> are depleted (Björnerås et al., 2017; Galloway et al., 1983), and are thus a secondary indicator of freshwater acidification.
- 225 5. Weak acids (CO<sub>2</sub>, TOC/DOC, and NH<sub>4</sub>): although weak acids are not a primary driver of freshwater acidification in most catchments, they are an important driver of freshwater response to acid deposition in some catchments with low buffering capacity (Clair et al., 2011; Rotteveel & Sterling, 2020); thus, they are assigned to the fifth grouping.
- 230 6. Other (temperature, K, Na, Cl, F, P, PO<sub>4</sub>, and DIC): the remaining parameters are assigned to the last group because they characterize catchment-scale processes which may have secondary effects on freshwater response to acid deposition (for example, Berger et al., 2015; Harriman et al., 1995; Kopáček et al., 2001). DIC is included in this group because the speciation (that is, CO<sub>2</sub>, CO<sub>3</sub>, or HCO<sub>3</sub>) is unknown, although it can be calculated using pH.

7-6.

235

## 4 Discussion

Here, we discuss the main limitations we encounter when compiling and ~~analysing~~analyzing datasets and provide recommendations for data sharing to facilitate more large-sample and global scale water chemistry research.

### 4.1 Data Availability and Spatial Gaps

240 Some variables have smaller sample sizes. The number of reported measurements differs greatly per variable, with metals (Fe and Al) and F having the smallest sample sizes and lowest sampling frequencies and pH and temperature having the largest and highest. This discrepancy is possibly due to these parameters being relevant to a wider range of research topics or the cost of measurement, where pH and temperature can be measured with a variety of field or laboratory-based multiparameter probes, whereas metals and anions require laboratory analysis. What is currently unknown, is if analysis

245 results are under-reported for some variables: that is, if all laboratory analysis results are reported for each sample included



in the input databases. Prior research on one of the main variables with low sample size (Fe), includes an openly available research dataset of 340 water bodies in Europe and eastern North America (Björnerås et al., 2017). Despite the quality geographical coverage and size of this dataset, it is not included in SWatCh because the data do not adhere to the DS-WQX data schema due to missing site identification codes, variable fractionation information, and analysis methodology information. These types of published research datasets are uncommon (Alsheikh-Ali et al., 2011) and highlight the potential contribution of unpublished raw research data.

Critical data gaps exist across large areas on the African, Asian, Australian, and Antarctic continents, representing mainly the equatorial, arid, snowy, and polar climate zones (Kottek et al., 2006). The zones of missing data represent regions where freshwater acidification is an emerging issue, for example in China (Li et al., 2019), and regions where climate change induced alteration of freshwater discharge regimes is projected the greatest by 2050 (Döll and Zhang, 2010). The lower data coverage in some of these regions represents a limitation in the development of global water chemistry models (Harrison, Caraco, et al., 2005; Harrison, Seitzinger, et al., 2005), and may inhibit the detection – and therefore treatment – of emerging water quality problems related to climate change induced perturbation of freshwater discharge regimes Concentrations of many water chemistry variables are discharge dependant (Moatar et al., 2017)(M(Moatar et al., 2017)oatar et al., 2017); thus, these data gaps may inhibit the detection – and therefore treatment – of emerging climate change induced water quality problems. The observed lower data availability may be because of our reliance on English datasets, less data sharing in these regions due to concerns about “parachute research” (where researchers abscond with local data to their home countries) (Serwadda et al., 2018), a lack of funding for scientific research (Serwadda et al., 2018), a lack of national data sharing regulations (Serwadda et al., 2018; Thu and Wehn, 2016), or outdated information management systems (Thu and Wehn, 2016), or preferential research focus. For example, research on freshwater acidification predominantly focusses on Europe and North America (for example, Björnerås et al., 2017; Holland et al., 2005; Stoddard et al., 1999) where this is an established environmental issue, and focusses less on other regions such as China, where this is an emerging concern (for example, Li et al., 2019).

Despite the aforementioned data gaps, some of the most acidified regions of the world can be studied with a high degree of detail and certitude using SWatCh. Sites with sufficient available parameters (as defined in Results) and timeseries length (that is, ten to 15 years) to study drivers and trends are concentrated in the northern hemisphere, and encompass the some of the most acidified regions of North America and Europe (Björnerås et al., 2017; Clair, 2012; Clair et al., 2011; Driscoll et al., 2016) (Fig. 3). We chose a timeseries length of ten to 15 years because this (Howden et al., 2014)is the minimum duration required to distinguish between short-term hydrological variability and underlying system behavior (Howden et al., 2011), and is comparable to timeseries lengths commonly used to study freshwater acidification (for example, Burns et al., 2008; Clair et al., 2011; Driscoll et al., 2016). Based on the available parameters for locations with a 10- or 15-year timeseries, the following aspects of freshwater acidification can be studied using SWatCh: acidification stage(Galloway et al., 1983), extent of base cation depletion, catchment buffering processes, the importance of natural and/or weak acids, and other influential catchment-scale processes. The lack of water chemistry data relevant to freshwater acidification in some regions may be

280 ~~related to historical preferential research focus or preferential research focus. That is, freshwater acidification research has~~  
~~historically predominantly been focused on Europe and North America (for example, Björnerås et al., 2017; Holland et~~  
~~al., 2005; Stoddard et al., 1999) where this is an established environmental issue, and less focused on other regions such as~~  
~~China, where this is an emerging concern (for example, Li et al., 2019).~~

~~Alleviating the issue of data availability is complex (Serwadda et al., 2018), but can be facilitated through journals more~~  
285 ~~consistently implementing and enforcing data sharing policies (Alsheikh-Ali et al., 2011), ensuring coherence of and balance~~  
~~between data sharing policies and protecting national interests (Thu and Wehn, 2016), and engaging and crediting the people~~  
~~and organizations collecting the data (Serwadda et al., 2018).~~

~~Alleviating the issue of data availability is complex (Serwadda et al., 2018), but can be facilitated through journals more~~  
290 ~~consistently implementing and enforcing data sharing policies (Alsheikh-Ali et al., 2011), ensuring coherence of and~~  
~~balance between data sharing policies and protecting national interests (Thu and Wehn, 2016), and engaging and~~  
~~crediting the peoples and organizations who collected the data (Serwadda et al., 2018).~~

#### 4.2 Methodology Changes and Dissimilarity

The analysis of timeseries and intercomparison of data collected at different sites is challenging due to dissimilarity of  
295 sample collection programs and methodology changes. Methodology changes throughout a timeseries may result in spurious  
trend test results. For example, ~~at site AL05BE0013, located in the Bow River approximately 4.5 km upstream of Canmore,~~  
~~Alberta, Canada, dissolved Al was analyzed using Variable Method Variable (VMV) 100195 prior to 2003, and VMV~~  
~~methods 107941 and 97963 after 2003 (Fig. 4). VMV methods 107941 and 97963 both use inductively coupled plasma mass~~  
~~spectrometry (ICP-MS) and have comparable low-level detection limits, whereas VMV 100195 uses inductively coupled~~  
300 ~~argon plasma emission spectroscopy (ICAP) and has a higher detection limit. Because most values in this timeseries are~~  
~~lower than the detection limit for VMV 100195 (that is,  $20 \mu\text{g}\cdot\text{L}^{-1}$ ), analysis of the timeseries without removing samples~~  
~~analyzed via VMV 100195 would result in the detection of a spurious negative trend. spurious negative Al trends may result~~  
~~from changing from inductively coupled plasma optical emission spectroscopy (ICP-OES) to inductively coupled plasma~~  
~~mass spectrometry (ICP-MS) if the measured values are at or near the detection limit, as ICP-MS has a lower detection limit~~  
305 ~~than ICP-OES. Spurious positive Al trends may result from changing from extractable Al ( $\text{Al}_{\text{ext}}$ ; comprising the dissolved~~  
~~fraction and weakly bound or sorbed molecules) to  $\text{Al}_t$  (comprising dissolved, weakly bound or sorbed, and particulate~~  
~~molecules), as was done by Environment and Climate Change Canada in Atlantic Canada in 2011. Similarly, disparate~~  
analysis methods across geographic regions may hinder comparability and consolidation of data collected by different  
sources (~~WHO and UNCF~~World Health Organization and United Nations Children's Fund, 2017). For example, in the USA,  
310 Al samples may be ~~analysed~~analyzed by ~~United States Environmental Protection Agency (US EPA)~~ method 200.7, with an  
estimated detection limit of  $45 \mu\text{g L}^{-1}$  (US EPA, 2015), whereas in Europe, Al samples may be ~~analysed~~analyzed by  
~~International Organization for Standardization (ISO)~~ method 15586:2003, with an estimated detection limit of  $1 \mu\text{g L}^{-1}$

(ISO/TC 147 SC2, 2003); samples ~~analysed~~analyzed by these two methods cannot be compared if Al concentrations below are  $45 \mu\text{g L}^{-1}$ . Trend analysis can also not be robustly performed if different sample fractions are present throughout the timeseries. For example, Environment and Climate Change Canada (ECCC) analyzed the unfiltered Al fraction as extractable Al ( $\text{Al}_{\text{ext}}$ ; comprising the dissolved fraction and weakly bound or sorbed molecules) prior to 2011 in Atlantic Canada and as total Al ( $\text{Al}_t$ ; comprising dissolved, weakly bound or sorbed, and particulate molecules) after 2011 (Rotteveel & Sterling, 2020). To facilitate intercomparison of data and trend analysis, the creation of internationally standardized variable definitions and cross-boundary analysis methodology is needed (~~WHO and UNCF~~World Health Organization and United Nations Children's Fund, 2017).

### 4.3 Ambiguity and Inconsistency

We encounter ambiguity and inconsistency in variable and fraction naming conventions, reporting units, analysis methodology, and dataset encoding. Firstly, we find variable and fraction definitions and consistency to be lacking in most input datasets. For example, an  $\text{Al}_d$  sample may be filtered through a  $0.45$  or  $0.10 \mu\text{m}$  filter; both samples are considered  $\text{Al}_d$  but represent a different set of Al molecules. Since naming conventions are variable, and there are no internationally standardized variable definitions (~~WHO and UNCF~~World Health Organization and United Nations Children's Fund, 2017), defining variables and their fractions is required to prevent confusion regarding comparability. Similarly, reporting units and censored data notation should be defined and consistent throughout the dataset; this includes spelling, abbreviations, and capitalization. We also observe ambiguity regarding analysis methodology, where analysis methods are inadequately described or missing entirely. Ideally, analysis method reporting includes all-of-all the following which are applicable: filter size and type, analysis instrument, acid preservative type, location of acid preservation (in field or laboratory), and the analysis/speciation method, method code, its publishing agency, and link to a reference document. Lastly, we encounter corrupted characters due to unknown dataset encoding; to prevent this ambiguity, the encoding of the dataset should be known and published, this is especially important for datasets not encoded in 8-bit Unicode (UTF-8), which preferred for data exchange (ISO/IEC JTC 1/SC 2, 2017).

### 4.4 Limitations and Future Work

In addition to the challenges noted above, the main limitations of SWatCh are a lack of discharge data and information on watershed land use and land cover. We did not include discharge information, as there are numerous openly available global scale river discharge datasets which cover ~~manysome~~ of the sites available in the SWatCh database. For example, those available via the European Environmental Agency's Waterbase ~~contains a water quality dataset (used in the SWatCh database) and a water quantity dataset~~or the Global Runoff Data Centre. Further development is needed to integrate existing discharge datasets into SWatCh, allowing discharge-weighted water chemistry concentrations to be computed. ~~Most of the input datasets to SWatCh do not include~~The DS-WOX schema does not allow for the inclusion of watershed information such as land use and land cover ~~information~~; thus, we do not include these data in ~~the SWatCh database~~. Some of ~~these~~

345 ~~data~~this information ~~are~~is available in the input datasets, for example, the GloRiCh database (Hartmann et al., 2014).  
Catchment characteristics can be identified for sites by using existing global datasets such as HydroATLAS, which provides  
information on hydrologic, physiographic, climate, land use and land cover, soils and geology, and anthropogenic influences  
for catchments at a resolution of up to 15 arc-seconds (approximately 463 m at the equator) (Linke et al., 2019).

350 ~~Delineating the watersheds and computing land use and land cover information is beyond the scope of this research;~~  
~~but is a key area of improvement for future research and updates to the database.~~

## 5 Conclusion

Prior research demonstrates that despite variability in sample size, geographic coverage, and analysis methodology, large-  
sample datasets facilitate the understanding of global water chemistry processes and the identification of transboundary  
problems (for example, Björnerås et al., 2017; Monteith et al., 2007; Weyhenmeyer et al., 2019). Despite these clear  
355 benefits, there are few global scale water chemistry datasets. We created SWatCh to begin to fill this gap; it is a global  
database of surface water chemistry ~~foeussed~~focused on freshwater acidification-related variables. This database contains  
water chemistry data across ~~1724~~ variables, ~~six~~four variable fractions, ~~38,59833,722~~ sites, and ~~9,608,0265,062,980~~ unique  
samples collected between 1960 and 20~~22~~19. The numerous available variables and large sample sizes in SWatCh allows  
users to conduct powerful and robust statistical analyses to answer emerging global surface water chemistry questions. To  
360 facilitate data use in databases like SWatCh and by other researchers, we recommend making research data openly available,  
standardizing analysis methodology, and avoiding ambiguity/inconsistency in variable and fraction names, reporting units,  
censored data notation, analysis method descriptions, and dataset encoding. Future work should focus on filling the spatial  
data gaps identified in Asia, Africa, and Australia, and adding discharge data, ~~and adding catchment land use/land cover~~  
~~information~~. With more people experiencing decreased water quantity (Burek et al., 2016; Mekonnen and Hoekstra, 2016),  
365 maintaining water quality is paramount. By facilitating the global exchange of their data, researchers can contribute toward  
this goal.

## Data ~~and~~ Code Availability

The SWatCh database is available on Zenodo: ~~https://zenodo.org/record/4559696~~ (DOI:  
~~10.5281/zenodo.6484939~~10.5281/zenodo.4559696); it can be accessed by navigating to https://zenodo.org/ and searching for  
370 dataset number 6484939. No account or sign-up is required to download the data. ~~The code used to generate the SWatCh~~  
~~database is published on Github: https://github.com/LobkeRottveel/SWatCh.~~ SWatCh is composed of third-party data, as  
listed in Table 1 ~~Table 1~~. GEMStat data, 3,0347,401 sites (7.921.95 % of sites), are not available in SWatCh due to a  
publication ban (Supplement S1). Users may add these data by requesting the GEMStat dataset from the United Nations

375 Environment Programme and running the SWatCh data processing scripts available from the GitHub repository ~~listed~~  
~~indicated above~~below.

### **Code Availability**

The code used to generate the SWatCh database is published on ~~GitHub~~GitHub:  
<https://github.com/LobkeRotteveel/SWatCh>.

### **Author Contribution**

380 LR conceived the original idea, compiled, and prepared the data, ~~wrote~~co-developed the data processing scripts, conducted  
the geospatial information systems (GIS) procedures, conceptualized and prepared the figures and tables, and was the  
principal author. FH wrote the data validation scripts and co-developed the data processing scripts. SMS provided  
supervision and co-edited the manuscript.

### **Competing Interests**

385 The authors declare that they have no conflict of interest.

### **Disclaimer**

While substantial efforts are made to eliminate errors from the SWatCh database, complete accuracy of the data and  
metadata cannot be guaranteed. All data and metadata are made available "as is". Neither Lobke Rotteveel, Franz Heubach,  
and Dr. Shannon M. Sterling nor their current or future affiliated institutions, including the Sterling Hydrology Research  
390 Group and Dalhousie University, can be held responsible for harms, damages, or other consequences resulting from the use  
or interpretation of information contained within the SWatCh database.

The SWatCh database is licensed under the Creative Commons Attribution-NonCommercial-ShareAlike 4.0 International  
License. To view a copy of this license, visit <http://creativecommons.org/licenses/by-nc-sa/4.0/> or send a letter to Creative  
Commons, PO Box 1866, Mountain View, CA 94042, USA.

### 395 **Acknowledgements**

Thank you to the United Nations Environment Programme and International Centre for Water Resources and Global  
Change, Environment and Climate Change Canada, the McMurdo Dry Valleys Long Term Ecological Research Team,  
United States of America National Science Foundation and National Water Quality Monitoring Council, the European

Environment Agency, and Jens Hartmann, Ronny Lauerwald, and Nils Moosdorf for making the data collected by their  
400 contributing agencies, laboratories, researchers, and technicians openly available data for research. Thank you to Dr. Rob  
Jamieson for his feedback on the draft of this manuscript. Thank you to Abby Millard and Lilian Barraclough for assistance  
with compiling site data. This research was funded by the Nova Scotia Government through the Nova Scotia Graduate  
Scholarship program.

## References

- 405 [Aherne, J., Posch, M., Forsius, M., Vuorenmaa, J., Tamminen, P., Holmberg, M., and Johansson, M.: Modelling the hydro-geochemistry of acid-sensitive catchments in Finland under atmospheric deposition and biomass harvesting scenarios, \*Biogeochemistry\*, 88, 233–256, <https://doi.org/10.1007/s10533-008-9206-7>, 2008.](#)
- [Alsheikh-Ali, A. A., Qureshi, W., Al-Mallah, M. H., and Ioannidis, J. P. A.: Public Availability of Published Research Data in High-Impact Journals, \*PLOS One\*, 6, e24357, <https://doi.org/10.1371/journal.pone.0024357>, 2011.](#)
- 410 [Bajjali, W.: ArcGIS for environmental and water issues, Springer International Publishing, Cham, Switzerland, <https://doi.org/10.1007/978-3-319-61158-7>, 2018.](#)
- [Berger, T., Mathurin, F. A., Gustafsson, J. P., Peltola, P., and Åström, M. E.: The impact of fluoride on Al abundance and speciation in boreal streams, \*Chemical Geology\*, 409, 118–124, <https://doi.org/10.1016/j.chemgeo.2015.05.013>, 2015.](#)
- 415 [Björnerås, C., Weyhenmeyer, G. A., Evans, C. D., Gessner, M. O., Grossart, H.-P., Kangur, K., Kokorite, I., Kortelainen, P., Laudon, H., Lehtoranta, J., Lottig, N., Monteith, D. T., Nöges, P., Nöges, T., Oulehle, F., Riise, G., Rusak, J. A., Räike, A., Sire, J., Sterling, S. M., and Kritzberg, E. S.: Widespread increases in iron concentration in European and North American freshwaters, \*Global Biogeochem. Cycles\*, 31, 1488–1500, <https://doi.org/10.1002/2017GB005749>, 2017.](#)
- 420 [Blöschl, G., Bierkens, M. F. P., Chambel, A., Cudennec, C., Destouni, G., Fiori, A., Kirchner, J. W., McDonnell, J. J., Savenije, H. H. G., Sivapalan, M., Stumpp, C., Toth, E., Volpi, E., Carr, G., Lupton, C., Salinas, J., Széles, B., Viglione, A., Aksoy, H., Allen, S. T., Amin, A., Andréassian, V., Arheimer, B., Aryal, S. K., Baker, V., Bardsley, E., Barendrecht, M. H., Bartosova, A., Batelaan, O., Berghuijs, W. R., Beven, K., Blume, T., Bogaard, T., Amorim, P. B. de, Böttcher, M. E., Boulet, G., Breinl, K., Brilly, M., Brocca, L., Buytaert, W., Castellarin, A., Castelletti, A., Chen, X., Chen, Y., Chen, Y., Chiffard, P., Claps, P., Clark, M. P., Collins, A. L., Croke, B., Dathe, A., David, P. C., Barros, F. P. J. de, Rooij, G. de, Baldassarre, G. D., Driscoll, J. M., Duethmann, D., Dwivedi, R., Eris, E., Farmer, W. H., Feiccabrino, J., Ferguson, G., Ferrari, E., Ferraris, S., Fersch, B., Finger, D., Foglia, L., Fowler, K., Gartsman, B., Gascoin, S., Gaume, E., Gelfan, A., Geris, J., Gharari, S., Gleeson, T., Glendell, M., Bevacqua, A. G., González-Dugo, M. P., Grimaldi, S., Gupta, A. B., Guse, B., Han, D., Hannah, D., Harpold, A., Haun, S., Heal, K., Helfricht, K., Herrnegger, M., Hipsey, M., Hlaváčiková, H., Hohmann, C., Holko, L., Hopkinson, C., Hrachowitz, M., Illangasekare, T. H., Inam, A., Innocente, C., Istanbuloglu, E., Jarihani, B., et al.: Twenty-three unsolved problems in hydrology \(UPH\) – a community perspective, \*Hydrol. Sci. J.\*, 64, 1141–1158, <https://doi.org/10.1080/02626667.2019.1620507>, 2019.](#)
- 430

- Burek, P., Satoh, Y., Fischer, G., Kahil, M. T., Scherzer, A., Tramberend, S., Nava, L. F., Wada, Y., Eisner, S., Flörke, M., Hanasaki, N., Magnuszewski, P., Cosgrove, B., and Wiberg, D.: Water futures and solution - fast track initiative (final report), International Institute for Applied Systems Analysis, Laxenburg, Austria, 2016.
- 435 Burns, D. A., Riva-Murray, K., Bode, R. W., and Passy, S.: Changes in stream chemistry and biology in response to reduced levels of acid deposition during 1987–2003 in the Neversink River Basin, Catskill Mountains, Ecol.Ind., 8, 191–203, <https://doi.org/10.1016/j.ecolind.2007.01.003>, 2008.
- Clair, T. A.: Acid rain effects to Atlantic Canada: where we stand and the long road to recovery, Presentation to Mersey Tobiatic Research Institute, Kempt, Nova Scotia, Canada, 2012.
- 440 Clair, T. A., Dennis, I. F., and Vet, R.: Water chemistry and dissolved organic carbon trends in lakes from Canada’s Atlantic Provinces: no recovery from acidification measured after 25 years of lake monitoring, Can. J. Fish. Aquat. Sci., 68, 663–674, <https://doi.org/10.1139/f2011-013>, 2011.
- Collignon, C., Boudot, J.-P., and Turpault, M.-P.: Time change of aluminium toxicity in the acid bulk soil and the rhizosphere in Norway spruce (*Picea abies* (L.) Karst.) and beech (*Fagus sylvatica* L.) stands, Plant Soil, 357, 259–274, <https://doi.org/10.1007/s11104-012-1154-2>, 2012.
- 445 Committee on the Status of Endangered Wildlife in Canada: COSEWIC assessment and status report on the Atlantic salmon, *Salmo salar*, Committee on the Status of Endangered Wildlife in Canada, Ottawa, Canada, 2011.
- DataStream Initiative: WQX Comparison, 2022.
- DeHayes, D. H., Schaberg, P. G., Hawley, G. J., and Strimbeck, G. R.: Acid rain impacts on calcium nutrition and forest health: alteration of membrane-associated calcium leads to membrane destabilization and foliar injury in red spruce, 49, 789–800, 1999.
- 450 Dennis, I. F. and Clair, T. A.: The distribution of dissolved aluminum in Atlantic salmon (*Salmo salar*) rivers of Atlantic Canada and its potential effect on aquatic populations, Can. J. Fish. Aquat. Sci., 69, 1174–1183, <https://doi.org/10.1139/f2012-053>, 2012.
- Döll, P. and Zhang, J.: Impact of climate change on freshwater ecosystems: a global-scale analysis of ecologically relevant river flow alterations, Hydrol. Earth Syst. Sci., 14, 783–799, <https://doi.org/10.5194/hess-14-783-2010>, 2010.
- 455 Driscoll, C. T., Driscoll, K. M., Fakhraei, H., and Civerolo, K.: Long-term temporal trends and spatial patterns in the acid-base chemistry of lakes in the Adirondack region of New York in response to decreases in acidic deposition, Atmospheric Environment, 146, 5–14, <https://doi.org/10.1016/j.atmosenv.2016.08.034>, 2016.
- Feller, M. C.: Forest harvesting and streamwater inorganic chemistry in western North America: a review, J. Am. Water Resour. Assoc., 41, 786–811, <https://doi.org/10.1111/j.1752-1688.2005.tb03771.x>, 2005.
- 460 Galloway, J. N., Norton, S. A., and Church, M. R.: Freshwater acidification from atmospheric deposition of sulfuric acid: A conceptual model, 17, 541–545, 1983.
- Gensemer, R. W. and Playle, R. C.: The bioavailability and toxicity of aluminum in aquatic environments, Crit. Rev. Environ. Sci. Technol., 29, 315–450, <https://doi.org/10.1080/10643389991259245>, 1999.

- 465 [Goldewijk, K. K., Beusen, A., van Drecht, G., and de Vos, M.: The HYDE 3.1 spatially explicit database of human-induced global land-use change over the past 12,000 years, \*Global Ecol. Biogeogr.\*, 20, 73–86, <https://doi.org/10.1111/j.1466-8238.2010.00587.x>, 2011.](#)
- [Search Engine Optimization \(SEO\) starter guide - search console help: <https://support.google.com/webmasters/answer/7451184?hl=en>, last access: 7 July 2020.](#)
- 470 [Harriman, R., Anderson, H., and Miller, J. D.: The role of sea-salts in enhancing and mitigating surface water acidity, \*Water Air Soil Pollut.\*, 85, 553–558, <https://doi.org/10.1007/BF00476887>, 1995.](#)
- [Harrison, J. A., Seitzinger, S. P., Bouwman, A. F., Caraco, N. F., Beusen, A. H. W., and Vörösmarty, C. J.: Dissolved inorganic phosphorus export to the coastal zone: Results from a spatially explicit, global model, 19, <https://doi.org/10.1029/2004GB002357>, 2005a.](#)
- 475 [Harrison, J. A., Caraco, N., and Seitzinger, S. P.: Global patterns and sources of dissolved organic matter export to the coastal zone: Results from a spatially explicit, global model, 19, <https://doi.org/10.1029/2005GB002480>, 2005b.](#)
- [Hartmann, J., Lauerwald, R., and Moosdorf, N.: A brief overview of the GLObal River Chemistry Database, \*GLORICH, Proced. Earth Plan. Sci.\*, 10, 23–27, <https://doi.org/10.1016/j.proeps.2014.08.005>, 2014.](#)
- [Holland, E. A., Braswell, B. H., Sulzman, J., and Lamarque, J.-F.: Nitrogen deposition onto the United States and Western](#)
- 480 [Europe: synthesis of observations and models, \*Ecol. Appl.\*, 15, 38–57, <https://doi.org/10.1890/03-5162>, 2005.](#)
- [Howden, N. J. K., Burt, T. P., Worrall, F., and Whelan, M. J.: Monitoring fluvial water chemistry for trend detection: hydrological variability masks trends in datasets covering fewer than 12 years, \*J. Environ. Monit.\*, 13, 514, <https://doi.org/10.1039/c0em00722f>, 2011.](#)
- [ISO/IEC JTC 1/SC 2: ISO/IEC 10646:2017 Information technology — Universal Coded Character Set \(UCS\), International](#)
- 485 [Organization for Standardization, Geneva, Switzerland, 2017.](#)
- [ISO/TC 147 SC2: ISO 15586:2003 Water quality - determination of trace elements using atomic absorption spectrometry with graphite furnace, International Organization for Standardization, Geneva, Switzerland, 2003.](#)
- [Kopáček, J., Ulrich, K.-U., Hejzlar, J., Borovec, J., and Stuchlík, E.: Natural inactivation of phosphorus by aluminum in atmospherically acidified water bodies, \*Water Research\*, 35, 3783–3790, \[https://doi.org/10.1016/S0043-1354\\(01\\)00112-\]\(https://doi.org/10.1016/S0043-1354\(01\)00112-9\)](#)
- 490 [9, 2001.](#)
- [Kottek, M., Grieser, J., Beck, C., Rudolf, B., and Rubel, F.: World map of the Köppen-Geiger climate classification updated, \*Meteorol. Z.\*, 15, 259–263, <https://doi.org/10.1127/0941-2948/2006/0130>, 2006.](#)
- [Letterman, R. D. and Driscoll, C. T.: Survey of residual aluminum in filtered water, \*J. Am. Water Works Assoc.\*, 80, 154–158, 1988.](#)
- 495 [Leyes, C., Ley, C., Klein, O., Bernard, P., and Licata, L.: Detecting outliers: Do not use standard deviation around the mean, use absolute deviation around the median, \*Journal of Experimental Social Psychology\*, 49, 764–766, <https://doi.org/10.1016/j.jesp.2013.03.013>, 2013.](#)

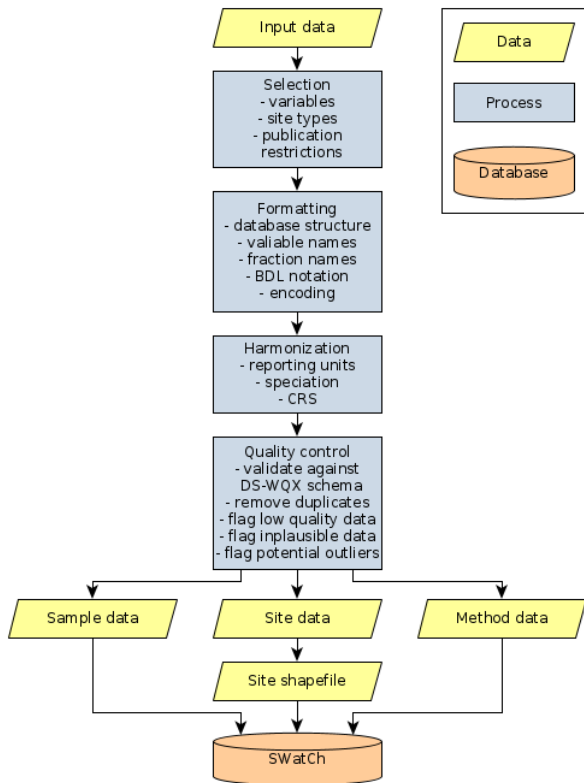


- 500 Li, R., Cui, L., Zhao, Y., Meng, Y., Kong, W., and Fu, H.: Estimating monthly wet sulfur (S) deposition flux over China using an ensemble model of improved machine learning and geostatistical approach, Atmos. Environ., 214, 116884, <https://doi.org/10.1016/j.atmosenv.2019.116884>, 2019.
- Linke, S., Lehner, B., Ouellet Dallaire, C., Ariwi, J., Grill, G., Anand, M., Beames, P., Burchard-Levine, V., Maxwell, S., Moidu, H., Tan, F., and Thieme, M.: Global hydro-environmental sub-basin and river reach characteristics at high spatial resolution, Sci Data, 6, 283, <https://doi.org/10.1038/s41597-019-0300-6>, 2019.
- 505 Maybeck, M.: Global occurrence of major elements in rivers, in: Surface and ground water, weathering, and soils, vol. 5, Elsevier-Pergamon, Oxford, 207–223, 2004.
- Mekonnen, M. M. and Hoekstra, A. Y.: Four billion people facing severe water scarcity, Sci. Adv., 2, e1500323, <https://doi.org/10.1126/sciadv.1500323>, 2016.
- 510 Monteith, D. T., Stoddard, J. L., Evans, C. D., de Wit, H. A., Forsius, M., Høgåsen, T., Wilander, A., Skjelkvåle, B. L., Jeffries, D. S., Vuorenmaa, J., Keller, B., Kopáček, J., and Vesely, J.: Dissolved organic carbon trends resulting from changes in atmospheric deposition chemistry, Nature, 450, 537–540, <https://doi.org/10.1038/nature06316>, 2007.
- Namieśnik, J. and Rabajczyk, A.: The speciation of aluminum in environmental samples, Crit. Rev. Anal. Chem., 40, 68–88, <https://doi.org/10.1080/10408340903153234>, 2010.
- 515 Rotteveel, L. and Sterling, S. M.: Five aluminum seasonality regimes identified in chronically acidified rivers of Nova Scotia, Environ. Sci. Technol., 54, 807–817, <https://doi.org/10.1021/acs.est.9b04872>, 2020.
- Rotteveel, L. and Heubach, F.: The Surface Water Chemistry (SWatCh) database [Data set]. In Earth System Science Data (ESSD): Vol. under review (2.0.0). Zenodo. <https://doi.org/10.5281/zenodo.6484939>, 2021.
- Rousseeuw, P. J. and Hubert, M.: Robust statistics for outlier detection: Robust statistics for outlier detection, WIREs Data Mining Knowl Discov, 1, 73–79, <https://doi.org/10.1002/widm.2>, 2011.
- 520 Ščančar, J. and Milačič, R.: Aluminium speciation in environmental samples: a review, Anal. Bioanal. Chem., 386, 999–1012, <https://doi.org/10.1007/s00216-006-0422-5>, 2006.
- Serwadda, D., Ndebele, P., Grabowski, M. K., Bajunirwe, F., and Wanyenze, R. K.: Open data sharing and the Global South - Who benefits?, Science, 359, 642–643, <https://doi.org/10.1126/science.aap8395>, 2018.
- 525 Shaw, R. W.: Acid precipitation in Atlantic Canada, Environ. Sci. Technol., 13, 406–411, <https://doi.org/10.1021/es60152a006>, 1979.
- Stoddard, J. L., Jeffries, D. S., Lükewille, A., Clair, T. A., Dillon, P. J., Driscoll, C. T., Forsius, M., Johannessen, M., Kahl, J. S., Kellogg, J. H., Kemp, A., Mannio, J., Monteith, D. T., Murdoch, P. S., Patrick, S., Rebsdorf, A., Skjelkvåle, B. L., Stainton, M. P., Traaen, T., van Dam, H., Webster, K. E., Wieting, J., and Wilander, A.: Regional trends in aquatic recovery from acidification in North America and Europe, Nature, 401, 575–578, <https://doi.org/10.1038/44114>, 1999.
- 530 Thu, H. N. and Wehn, U.: Data sharing in international transboundary contexts: the Vietnamese perspective on data sharing in the Lower Mekong Basin, J. Hydrol., 536, 351–364, <https://doi.org/10.1016/j.jhydrol.2016.02.035>, 2016.
- Member States of the United Nations: <http://www.un.org/en/members/index.shtml>, last access: 5 June 2020.

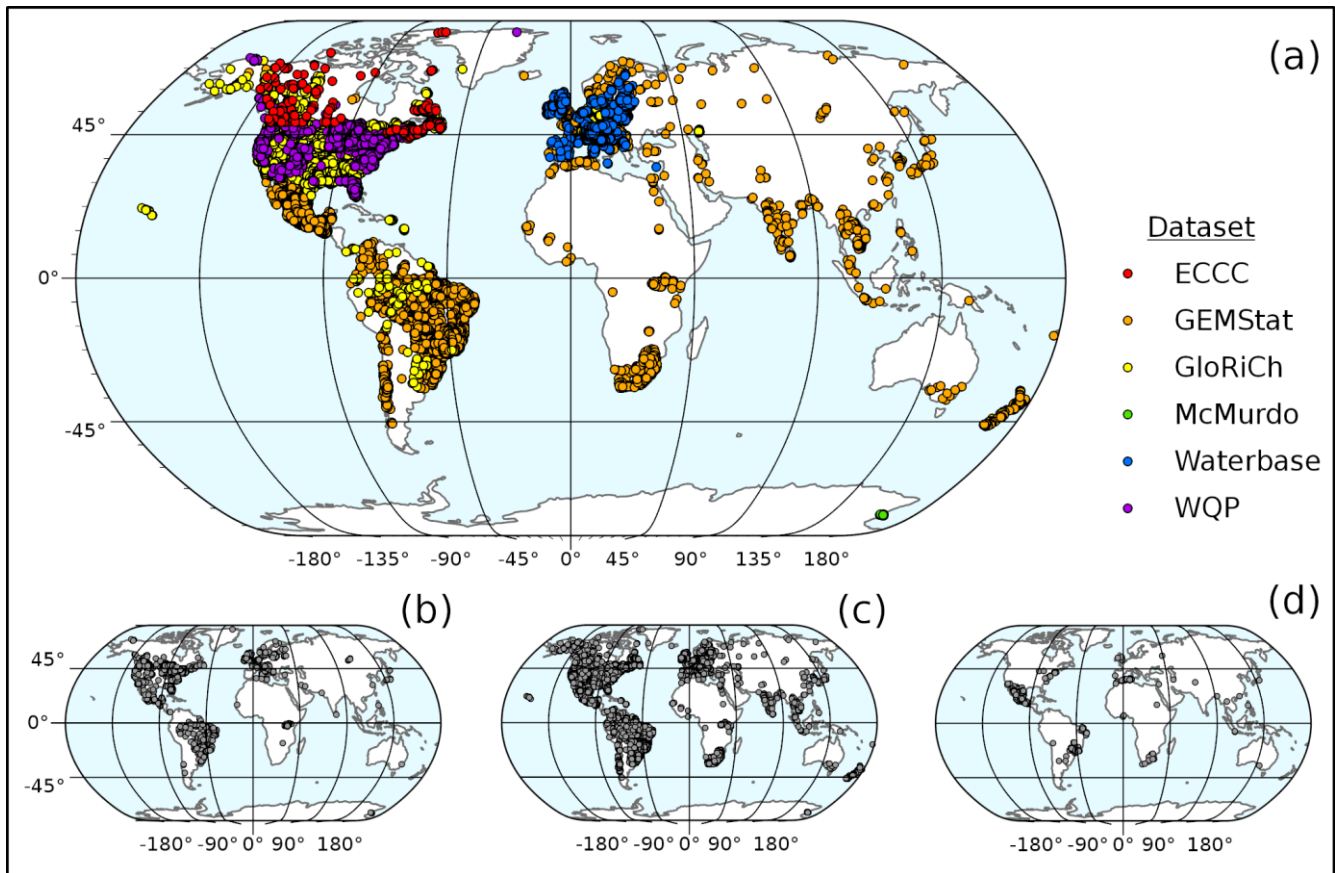
- World Geologic Maps: <https://certmapper.cr.usgs.gov/data/apps/world-maps/>, last access: 18 April 2022.
- 535 US EPA: EPA method 200.7 Determination of metals and trace elements in water and wastes by inductively coupled plasma-atomic emission spectrometry. Environmental Monitoring Systems Laboratory, Cincinnati, Ohio. <https://doi.org/10.1016/B978-0-8155-1398-8.50010-0>, 2015.
- US EPA: Water Quality Exchange, 2021.
- Weyhenmeyer, G. A., Hartmann, J., Hessen, D. O., Kopáček, J., Hejzlar, J., Jacquet, S., Hamilton, S. K., Verburg, P., Leach, T. H., Schmid, M., Flaim, G., Nöges, T., Nöges, P., Wentzky, V. C., Rogora, M., Rusak, J. A., Kosten, S., Paterson, A. M., Teubner, K., Higgins, S. N., Lawrence, G. B., Kangur, K., Kokorite, I., Cerasino, L., Funk, C., Harvey, R., Moatar, F., de Wit, H. A., and Zechmeister, T.: Widespread diminishing anthropogenic effects on calcium in freshwaters, *Sci. Rep.*, 9, 10450, <https://doi.org/10.1038/s41598-019-46838-w>, 2019.
- 540 de Wit, H. A., Eldhuset, T. D., and Mulder, J.: Dissolved Al reduces Mg uptake in Norway spruce forest: results from a long-term field manipulation experiment in Norway, *Forest Ecol. Manag.*, 259, 2072–2082, <https://doi.org/10.1016/j.foreco.2010.02.018>, 2010.
- 545 World Health Organization: Aluminium in drinking-water: Background document for development of WHO Guidelines for Drinking-water Quality, WHO Press, Geneva, Switzerland, 2010.
- World Health Organization and United Nations Children’s Fund: Progress on Drinking Water, Sanitation and Hygiene: 2017 Update and SDG Baselines, Geneva, Switzerland, 2017.
- Berger, T., Mathurin, F. A., Gustafsson, J. P., Peltola, P., & Åström, M. E. (2015). The impact of fluoride on Al abundance and speciation in boreal streams. *Chemical Geology*, 409, 118–124. <https://doi.org/10.1016/j.chemgeo.2015.05.013>
- 550 Björnerås, C., Weyhenmeyer, G. A., Evans, C. D., Gessner, M. O., Grossart, H. P., Kangur, K., Kokorite, I., Kortelainen, P., Laudon, H., Lehtoranta, J., Lottig, N., Monteith, D. T., Nöges, P., Nöges, T., Oulehle, F., Riise, G., Rusak, J. A., Rälke, A., Sire, J., ... Kritzberg, E. S. (2017). Widespread increases in iron concentration in European and North American freshwaters. *Global Biogeochemical Cycles*, 31(10), 1488–1500.
- 555 Burns, D. A., Riva Murray, K., Bode, R. W., & Passy, S. (2008). Changes in stream chemistry and biology in response to reduced levels of acid deposition during 1987–2003 in the Neversink River Basin, Catskill Mountains. *Ecological Indicators*, 8(3), 191–203. <https://doi.org/10.1016/j.ecolind.2007.01.003>
- Clair, T. A. (2012, November 14). *Acid rain effects to Atlantic Canada: Where we stand and the long road to recovery; Presentaton to Mersey Tobeatic Research Institute.*
- 560 Clair, T. A., Dennis, I. F., & Vet, R. (2011). Water chemistry and dissolved organic carbon trends in lakes from Canada’s Atlantic Provinces: No recovery from acidification measured after 25 years of lake monitoring. *Canadian Journal of Fisheries and Aquatic Sciences*, 68(4), 663–674.
- DataStream Initiative. (2022). *WQX Comparison.*

- 565 Driscoll, C. T., Driscoll, K. M., Fakhraei, H., & Civerolo, K. (2016). Long-term temporal trends and spatial patterns in the acid-base chemistry of lakes in the Adirondaek region of New York in response to decreases in acidic deposition. *Atmospheric Environment*, *146*, 5–14.
- Galloway, J. N., Norton, S. A., & Church, M. R. (1983). Freshwater acidification from atmospheric deposition of sulfuric acid: A conceptual model. *Environmental Science & Technology*, *17*(11), 541–545.
- 570 Goldewijk, K. K., Beusen, A., van Drecht, G., & de Vos, M. (2011). The HYDE 3.1 spatially explicit database of human-induced global land use change over the past 12,000 years. *Global Ecology and Biogeography*, *20*(1), 73–86.
- Harriman, R., Anderson, H., & Miller, J. D. (1995). The role of sea salts in enhancing and mitigating surface water acidity. *Water, Air, & Soil Pollution*, *85*(2), 553–558. <https://doi.org/10.1007/BF00476887>
- Harrison, J. A., Caraco, N., & Seitzinger, S. P. (2005). Global patterns and sources of dissolved organic matter export to the coastal zone: Results from a spatially explicit, global model. *Global Biogeochemical Cycles*, *19*(4). <https://doi.org/10.1029/2005GB002480>
- 575 Harrison, J. A., Seitzinger, S. P., Bouwman, A. F., Caraco, N. F., Beusen, A. H. W., & Vörösmarty, C. J. (2005). Dissolved inorganic phosphorus export to the coastal zone: Results from a spatially explicit, global model. *Global Biogeochemical Cycles*, *19*(4).
- Howden, N. J. K., Burt, T. P., Worrall, F., & Whelan, M. J. (2011). Monitoring fluvial water chemistry for trend detection: Hydrological variability masks trends in datasets covering fewer than 12 years. *Journal of Environmental Monitoring*, *13*(3), 514.
- 580 Kopáček, J., Ulrich, K. U., Hejzlar, J., Borovec, J., & Stuchlík, E. (2001). Natural inactivation of phosphorus by aluminum in atmospherically acidified water bodies. *Water Research*, *35*(16), 3783–3790. [https://doi.org/10.1016/S0043-1354\(01\)00112-9](https://doi.org/10.1016/S0043-1354(01)00112-9)
- 585 Kottkek, M., Grieser, J., Beck, C., Rudolf, B., & Rubel, F. (2006). World map of the Köppen-Geiger climate classification updated. *Meteorologische Zeitschrift*, *15*(3), 259–263.
- Lays, C., Ley, C., Klein, O., Bernard, P., & Licata, L. (2013). Detecting outliers: Do not use standard deviation around the mean, use absolute deviation around the median. *Journal of Experimental Social Psychology*, *49*(4), 764–766.
- 590 Linke, S., Lehner, B., Ouellet Dallaire, C., Ariwi, J., Grill, G., Anand, M., Beames, P., Burchard-Levine, V., Maxwell, S., Moideu, H., Tan, F., & Thieme, M. (2019). Global hydro-environmental sub-basin and river reach characteristics at high spatial resolution. *Scientific Data*, *6*(1), 283. <https://doi.org/10.1038/s41597-019-0300-6>
- Maybeck, M. (2004). Global occurrence of major elements in rivers. In *Surface and ground water, weathering, and soils* (Vol. 5, pp. 207–223). Elsevier Pergamon.
- 595 Moatar, F., Abbott, B. W., Minaudo, C., Curie, F., & Pinay, G. (2017). Elemental properties, hydrology, and biology interact to shape concentration-discharge curves for carbon, nutrients, sediment, and major ions. *Water Resources Research*, *53*(2), 1270–1287. <https://doi.org/10.1002/2016WR019635>

- Rotteveel, L., & Sterling, S. M. (2020). Five aluminum seasonality regimes identified in chronically acidified rivers of Nova Scotia. *Environmental Science & Technology*, *54*(2), 807–817. <https://doi.org/10.1021/acs.est.9b04872>
- 600 Rousseeuw, P. J., & Hubert, M. (2011). Robust statistics for outlier detection: Robust statistics for outlier detection. *Wiley Interdisciplinary Reviews: Data Mining and Knowledge Discovery*, *1*(1), 73–79.
- Shaw, R. W. (1979). Acid precipitation in Atlantic Canada. *Environmental Science & Technology*, *13*(4), 406–411. <https://doi.org/10.1021/es60152a006>
- 605 Stoddard, J. L., Jeffries, D. S., Lükewille, A., Clair, T. A., Dillon, P. J., Driscoll, C. T., Forsius, M., Johannessen, M., Kahl, J. S., Kellogg, J. H., Kemp, A., Mannio, J., Monteith, D. T., Murdoch, P. S., Patrick, S., Rebsdorf, A., Skjellkvåle, B. L., Stainton, M. P., Traaen, T., ... Wilander, A. (1999). Regional trends in aquatic recovery from acidification in North America and Europe. *Nature*, *401*(6753), 575–578. <https://doi.org/10.1038/44114>
- Thu, H. N., & Wehn, U. (2016). Data sharing in international transboundary contexts: The Vietnamese perspective on data sharing in the Lower Mekong Basin. *Journal of Hydrology*, *536*, 351–364.
- United States Geological Survey. (n.d.). *World Geologic Maps*. Retrieved April 18, 2022, from
- 610 US EPA. (2021). *Water Quality Exchange*.

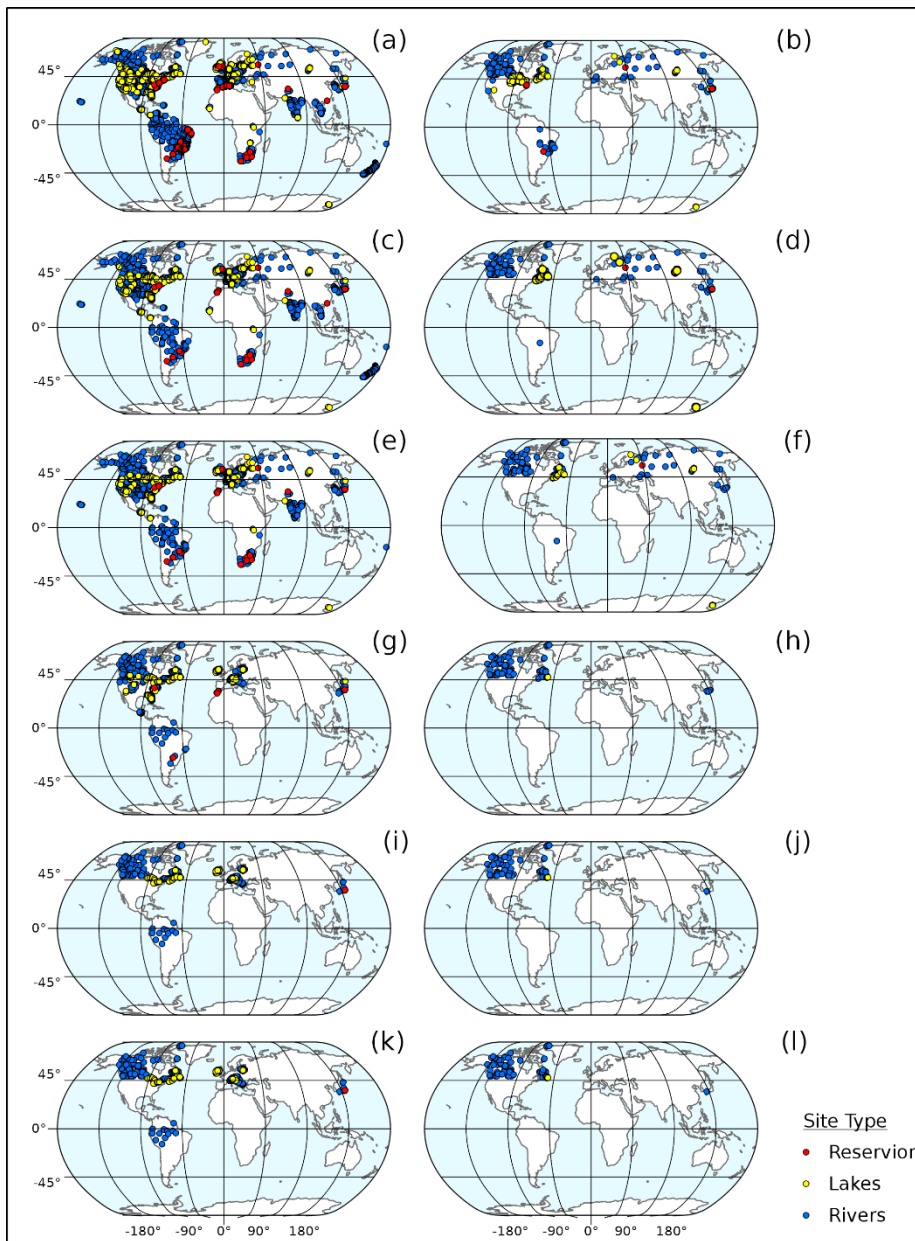


615 **Figure 1: Workflow for creating SWatCh.** Below detection limit is abbreviated as BDL and coordinate reference system is abbreviated as CRS.

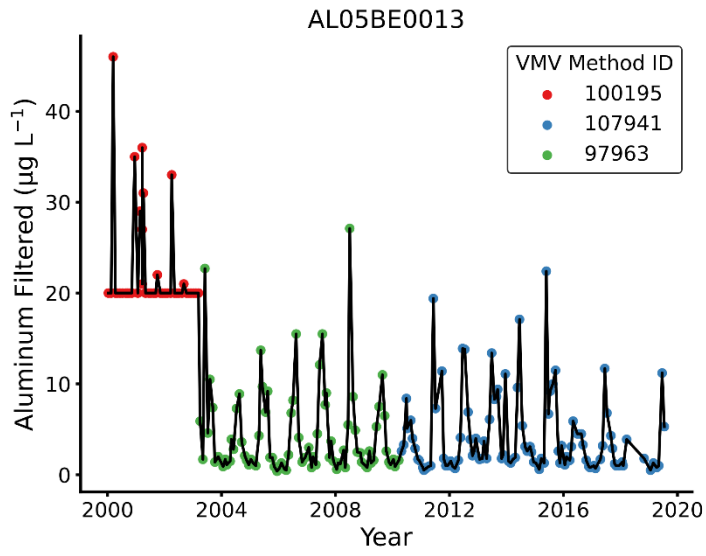


**Figure 2: Sample sites in the SWatCh database, colored by dataset source (a), and separated by site type: lakes/ponds (b), rivers/streams/canals (c), and reservoirs (d). Points overlap where sites are in close vicinity. Projection: Natural Earth, scales: 1:275,000,000 (a) and 1:725,000,000 (b, c, and d).**

~~Figure 2: The SWatCh database sample site locations, coloured by data source. Points overlap where sites are in close vicinity. Projection: Natural Earth, scales: 1:250,000,000.~~



**Figure 3: Sample size (sites) for waterbody types based on timeseries duration and data availability in the following parameter categories: acidity (a and b), basicity (c and d), acid anions (e and f), metallic cations (g and h), weak acids (i and j), and other parameters (k and l). Sites included in consecutive parameter categories also meet all the prior category requirements. Sites with at least one observation are shown in the left panes, and sites with a minimum timeseries length of 15 years are shown in the right panes. Points overlap where sites are in close vicinity. Projection: Natural Earth, scales: 1:550,000,000.**



630

Figure 4: Example of change in analysis methodology on detected concentrations. Colored points represent different analysis methodologies. For non-detect concentrations, the detection limit is shown.



|

Dataset/Database	Source
Global Water Quality database and information system (GEMStat)	United Nations Environment Programme (2017). GEMStat database of the Global Environment Monitoring System for freshwater (GEMS/Water) Programme. International Centre for Water Resources and Global Change, Koblenz. Accessed <del>10 August 2019</del> <u>24 March 2022</u> . Available upon request from GEMS/Water Data Centre: gemstat.org
Global River Chemistry Database (GloRiCh)	Hartmann, J., Lauerwald, R., Moosdorf, N. (2019). GLORICH - Global river chemistry database. PANGAEA. Accessed 18 August 2019. Available from: <a href="https://doi.org/10.1594/PANGAEA.902360">https://doi.org/10.1594/PANGAEA.902360</a> . Supplement to: Hartmann, J. et al. (2014). A Brief Overview of the GLObal River Chemistry Database, GLORICH. <i>Procedia Earth and Planetary Science</i> , 10, 23-27, <a href="https://doi.org/10.1016/j.proeps.2014.08.005">https://doi.org/10.1016/j.proeps.2014.08.005</a> .
National Long-Term Water Quality Monitoring Database	Environment and Climate Change Canada (2019). National Long-term Water Quality Monitoring Data. Accessed <del>8 September 2019</del> <u>19 March 2022</u> . Available from: <a href="http://data.ec.gc.ca/data/substances/monitor/national-long-term-water-quality-monitoring-data/">http://data.ec.gc.ca/data/substances/monitor/national-long-term-water-quality-monitoring-data/</a>
Water Quality Database	National Water Quality Monitoring Council (2019). Water Quality Portal. Accessed 7 September 2019. Available from: <a href="https://www.waterqualitydata.us">https://www.waterqualitydata.us</a> <del>https://www.waterqualitydata.us/apps_using_portal/</del> .
Waterbase	European Environment Agency - European Environment Information and Observation Network (Eionet) (2019). Waterbase - Water Quality <u>ICM</u> . Accessed <del>8 September 2019</del> <u>5 April 2022</u> . <a href="https://www.eea.europa.eu/data-and-maps/data/waterbase-water-quality-icm-1">https://www.eea.europa.eu/data-and-maps/data/waterbase-water-quality-icm-1</a> <del>https://www.eea.europa.eu/data-and-maps/data/waterbase-water-quality-2_</del> .
McMurdo Dry Valleys Long Term Ecological Research Network	<a href="https://doi.org/10.6073/pasta/878eccb6e5c8e492f933381b8c257d79">Gooseff, M.N., Lyons, W. (2022). Dissolved organic carbon (DOC) concentrations in glacial meltwater streams, McMurdo Dry Valleys, Antarctica (1990-2020, ongoing). Environmental Data Initiative. Accessed 4 April 2022. doi: 10.6073/pasta/878eccb6e5c8e492f933381b8c257d79.</a>
	<a href="https://doi.org/10.6073/pasta/275ee580f3c93f077dd7ddcce1f2ecdd">Gooseff, M.N., Lyons, W. (2022). Ion concentrations in glacial meltwater streams, McMurdo Dry Valleys, Antarctica (1993-2020, ongoing). Environmental Data Initiative. Accessed 4 April 2022. doi: 10.6073/pasta/275ee580f3c93f077dd7ddcce1f2ecdd.</a>
	<a href="https://doi.org/10.6073/pasta/f6131f5ef67901bc98027e9df55ec364">Gooseff, M.N., Lyons, W. (2022). Nitrogen and phosphorus concentrations in glacial meltwater streams, McMurdo Dry Valleys, Antarctica (1993-2020, ongoing). Environmental Data Initiative. Accessed 4 April 2022. doi: 10.6073/pasta/f6131f5ef67901bc98027e9df55ec364.</a>
	<a href="https://doi.org/10.6073/pasta/4d64208bd91fc6a336c9c388436b1634">Lyons, W. (2015). Dissolved Inorganic Carbon in Streams. Environmental Data Initiative. Accessed 4 April (2022). doi: 10.6073/pasta/4d64208bd91fc6a336c9c388436b1634.</a>
	<a href="https://doi.org/10.6073/pasta/b3d212996e5e4cb7f91b82090b4f550d">Lyons, W. (2015). Stream Nutrients for Reactivated Channel. Environmental Data Initiative. Accessed 4 April (2022). doi: 10.6073/pasta/b3d212996e5e4cb7f91b82090b4f550d.</a>
	<a href="https://doi.org/10.6073/pasta/ed143e49e82d0aaa1494447ebcee17c1">Lyons, W., Mcknight, D.M. (2015). Stream Chemistry for Reactivated Channel. Environmental Data Initiative. Accessed 4 April 2022. doi: 10.6073/pasta/ed143e49e82d0aaa1494447ebcee17c1.</a>
	<a href="https://doi.org/10.6073/pasta/e68682ea6614259b4f091be206a773b8">Priscu, J. (2018). Dissolved inorganic carbon (DIC) concentrations in discrete water column samples collected from lakes in the McMurdo Dry Valleys, Antarctica (1993-2017, ongoing). Environmental Data Initiative. Accessed 4 April 2022. doi: 10.6073/pasta/e68682ea6614259b4f091be206a773b8.</a>
	<a href="https://doi.org/10.6073/pasta/e68682ea6614259b4f091be206a773b8">Priscu, J. (2019). Hydrogen ion concentrations (pH) in discrete water column samples collected from lakes in the McMurdo Dry Valleys, Antarctica (1993-2018, ongoing). Environmental Data Initiative. Accessed 4 April 2022. doi: 10.6073/pasta/e68682ea6614259b4f091be206a773b8.</a>

<b>Dataset/Database</b>	<b>Source</b>
	<a href="https://doi.org/10.6073/pasta/a0c17e313c63f6b5e5e5e071e5ba6b4a">10.6073/pasta/a0c17e313c63f6b5e5e5e071e5ba6b4a</a> .
	<a href="https://doi.org/10.6073/pasta/a5d82d5d2167679c8ecff0d8ad06c0ee">Priscu, J. (2022). Dissolved organic carbon (DOC) concentrations in discrete water column samples collected from lakes in the McMurdo Dry Valleys, Antarctica (1993-2022, ongoing). Environmental Data Initiative. Accessed 4 April 2022. doi: 10.6073/pasta/a5d82d5d2167679c8ecff0d8ad06c0ee</a>
<a href="#"><u>McMurdo Dry Valleys Long Term Ecological Research Network</u></a>	<a href="https://doi.org/10.6073/pasta/5cba7e25aa687c1e989c72c3ee0a0f69">Priscu, J. (2022). Nitrogen and phosphorus concentrations in discrete water column samples collected from lakes in the McMurdo Dry Valleys, Antarctica (1993-2020, ongoing). Environmental Data Initiative. Accessed 4 April 2022. doi: 10.6073/pasta/5cba7e25aa687c1e989c72c3ee0a0f69. Dataset accessed 4 April 2022.</a>
	<a href="https://doi.org/10.6073/pasta/31f7354d1a05679eb3ce7c384c6e2b22">Priscu, J., Welch, K.A., Lyons, W. (2022). Ion concentrations in discrete water column samples collected from lakes in the McMurdo Dry Valleys, Antarctica (1991-2019, ongoing). Environmental Data Initiative. Accessed 4 April 2022. doi: 10.6073/pasta/31f7354d1a05679eb3ce7c384c6e2b22.</a>

640 Table 2 Variable naming and measurement unit conventions in the SWatCh database.

<b>SWatCh variable notation</b>	<b>SWatCh unit notation</b>	<b>Unit</b>
Al	ug/l	$\mu\text{g L}^{-1}$
Fe	ug/l	$\mu\text{g L}^{-1}$
Ca	mg/l	$\text{mg L}^{-1}$
Mg	mg/l	$\text{mg L}^{-1}$
K	mg/l	$\text{mg L}^{-1}$
Na	mg/l	$\text{mg L}^{-1}$
Cl	mg/l	$\text{mg L}^{-1}$
F	mg/l	$\text{mg L}^{-1}$
SO4	mg/l	$\text{mg L}^{-1}$
NO3	mg/l	$\text{mg L}^{-1}$
NO2	mg/l	$\text{mg L}^{-1}$
NH4	mg/l	$\text{mg L}^{-1}$
P	mg/l	$\text{mg L}^{-1}$
PO4	mg/l	$\text{mg L}^{-1}$
OC	mg/l	$\text{mg L}^{-1}$
pH	unit	unit
temperature	Deg_e	$^{\circ}\text{C}$

**Table 2: Summary of The SWaTCh database sample size, timeseries start and end dates, and average annual sampling frequency throughout timeseries separated by water body type and variable and fraction. Minimum and maximum are abbreviated as min. and max., respectively. Field measurements are only applicable to pH and temperature. Organic carbon is abbreviated as OC and temperature is abbreviated as temp.**

-	Dissolved		Extractable		Recoverable		Total		Unspecified		
	sites	samples	sites	samples	sites	samples	sites	samples	sites	samples	sites
Al	2,515	27,113	170	5,959	642	2,604	4,144	120,216	-	-	-
Fe	103	9,866	164	5,941	89	766	277	29,905	-	-	-
Ca	12,199	591,313	155	5,694	797	5,094	1,433	19,340	-	-	-
Mg	12,734	590,961	155	5,678	802	5,079	7,708	96,790	-	-	-
Na	11,639	560,572	161	5,686	589	2,910	6,599	86,296	-	-	-
K	11,980	549,954	161	5,689	490	2,657	6,205	99,386	189	257	-
Cl	12,414	668,247	-	-	-	-	9,357	144,919	368	6,340	-
F	5,567	424,997	-	-	-	-	901	6,771	25	3,335	-
SO <sub>4</sub>	13,347	637,383	-	-	-	-	8,840	117,968	108	3,805	-
NO <sub>3</sub>	8,434	228,049	-	-	-	-	4,022	74,668	2,566	65,234	-
NO <sub>2</sub>	9,148	205,258	-	-	-	-	2,606	36,721	2,139	51,176	-
NH <sub>4</sub>	11,241	506,116	-	-	-	-	5,677	146,000	-	-	-
P	2,967	103,980	-	-	-	-	10,306	361,460	35	270	-
PO <sub>4</sub>	10,351	494,427	-	-	-	-	968	21,929	13	96	-
OC	11,128	301,467	-	-	-	-	6,642	184,455	-	-	-
pH	-	-	-	-	-	-	-	-	27,183	1,144,310	135
temp	-	-	-	-	-	-	-	-	27,296	849,130	195

Site Type	Parameter	Sample Size		Earliest Data Point (yr)			Latest Data Point (yr)			Average Annual Sampling Frequency		
		Sites	Samples	Min.	Max.	Mean	Min.	Max.	Mean	Min.	Max.	Median
Lake/ Pond	ANC	285	5,151	2013	2019	2015	2013	2020	2016	1	74	4
	Al	472	5,553	2000	2018	2013	2000	2019	2016	1	29	2
	Alkalinity	210	12,317	1977	2019	2001	1982	2020	2010	1	34	6
	CO <sub>2</sub>	2	53	1979	1980	1980	1980	1985	1983	1	9	5
	Ca	2,592	24,385	1993	2019	2012	1995	2020	2013	1	73	2
	Cl	3,105	67,153	1993	2019	2010	1995	2020	2013	1	107	4
	F	491	3,976	1994	2019	2014	2002	2019	2015	1	21	2
	Fe	266	6,282	2000	2019	2012	2000	2019	2017	1	23	7
	HCO <sub>3</sub>	520	14,222	1969	2018	2014	1974	2020	2018	1	63	6
	Hardness	508	12,141	1990	2019	2012	1996	2019	2017	1	80	2
	TIC/DIC	65	1,384	1993	2010	2001	1995	2017	2009	1	4	2
	K	1,315	15,551	1993	2019	2010	1995	2020	2012	1	50	1
	Mg	1,923	20,467	1993	2019	2011	1995	2020	2012	1	70	1
	NH <sub>4</sub>	1,037	32,022	1993	2019	2014	2003	2020	2017	1	79	6
	NO <sub>2</sub>	1,176	25,152	1993	2020	2012	2000	2020	2015	1	75	4
	NO <sub>3</sub>	1,502	30,696	1993	2020	2012	2000	2020	2014	1	122	4
	Na	1,694	18,865	1993	2019	2010	1995	2020	2012	1	62	2
TOC/DOC	529	15,032	1993	2019	2012	2000	2022	2016	1	52	5	
P	8,384	227,921	2000	2020	2009	2000	2020	2013	1	105	4	

	Dissolved		Extractable		Recoverable		Total		Unspecified		
	sites	samples	sites	samples	sites	samples	sites	samples	sites	samples	sites
Al	2,515	27,113	170	5,959	642	2,604	4,144	120,216	-	-	-
Fe	403	9,866	164	5,941	89	766	277	29,905	-	-	-
Ca	12,199	591,313	155	5,694	797	5,094	1,433	19,340	-	-	-
Mg	12,734	590,961	155	5,678	802	5,079	7,708	96,790	-	-	-
Na	11,639	560,572	161	5,686	589	2,910	6,599	86,296	-	-	-
K	11,980	549,954	161	5,689	490	2,657	6,205	99,386	189	257	-
Cl	12,414	668,247	-	-	-	-	9,357	144,919	368	6,340	-
F	5,567	424,997	-	-	-	-	901	6,771	25	3,335	-
SO <sub>4</sub>	13,347	637,383	-	-	-	-	8,840	117,968	108	3,805	-
NO <sub>3</sub>	8,434	228,049	-	-	-	-	4,022	74,668	2,566	65,234	-
NO <sub>2</sub>	9,148	205,258	-	-	-	-	2,606	36,721	2,139	51,176	-
NH <sub>4</sub>	11,241	506,116	-	-	-	-	5,677	146,000	-	-	-
P	2,967	103,980	-	-	-	-	10,306	361,460	35	270	-
PO <sub>4</sub>	10,351	494,427	-	-	-	-	968	21,929	13	96	-
OC	11,128	301,467	-	-	-	-	6,642	184,455	-	-	-
pH	-	-	-	-	-	-	-	-	27,183	1,144,310	135
temp	-	-	-	-	-	-	-	-	27,296	849,130	195

Site Type	Parameter	Sample Size		Earliest Data Point (yr)			Latest Data Point (yr)			Average Annual Sampling Frequency		
		Sites	Samples	Min.	Max.	Mean	Min.	Max.	Mean	Min.	Max.	Median
Reservoir	PO <sub>4</sub>	1,272	23,537	2000	2019	2012	2000	2020	2014	1	33	4
	SO <sub>4</sub>	2,616	22,553	1993	2019	2011	1995	2020	2013	1	80	1
	Temperature	8,302	1,053,822	2000	2020	2009	2000	2020	2012	1	791	5
	pH	6,490	566,977	1993	2019	2009	1994	2020	2012	1	359	6
	Al	9	301	2000	2014	2005	2004	2015	2010	1	9	5
	Alkalinity	44	9,836	1976	2016	1986	1981	2020	2001	1	159	9
	CO <sub>2</sub>	1	79	1980	1980	1980	1995	1995	1995	7	7	7
	Ca	30	4,091	2000	2015	2006	2002	2018	2013	1	155	7
	Cl	49	4,013	2000	2014	2001	2000	2018	2011	1	15	5
	F	13	2,928	2000	2006	2000	2002	2012	2009	4	123	11
	HCO <sub>3</sub>	2	101	2016	2016	2016	2017	2017	2017	24	27	25
	Hardness	600	8,634	1976	2019	2013	1996	2019	2018	1	60	2
	K	27	3,771	2000	2015	2007	2000	2018	2013	1	148	8
	Mg	30	3,837	2000	2015	2006	2002	2018	2013	1	154	7
	NO <sub>2</sub>	107	6,789	2000	2015	2005	2004	2015	2012	1	24	6
NO <sub>3</sub>	130	7,456	2000	2015	2005	2005	2017	2012	1	29	6	
Na	29	3,851	2000	2015	2006	2001	2018	2012	1	151	8	
TOC/DOC	1	255	2001	2001	2001	2015	2015	2015	18	18	18	
P	6	250	2000	2014	2009	2011	2015	2013	1	11	2	
PO <sub>4</sub>	52	5,747	2000	2009	2004	2008	2010	2010	5	133	10	
SO <sub>4</sub>	29	4,074	2000	2015	2006	2002	2018	2013	1	155	8	
Reservoir	Temperature	161	9,753	2000	2015	2004	2000	2018	2012	1	35	6
	pH	210	15,688	2000	2014	2004	2000	2018	2012	1	155	7

	Dissolved		Extractable		Recoverable		Total		Unspecified		
	sites	samples	sites	samples	sites	samples	sites	samples	sites	samples	sites
Al	2,515	27,113	170	5,959	642	2,604	4,144	120,216	-	-	-
Fe	403	9,866	164	5,941	89	766	277	29,905	-	-	-
Ca	12,199	591,313	155	5,694	797	5,094	1,433	19,340	-	-	-
Mg	12,734	590,961	155	5,678	802	5,079	7,708	96,790	-	-	-
Na	11,639	560,572	161	5,686	589	2,910	6,599	86,296	-	-	-
K	11,980	549,954	161	5,689	490	2,657	6,205	99,386	189	257	-
Cl	12,414	668,247	-	-	-	-	9,357	144,919	368	6,340	-
F	5,567	424,997	-	-	-	-	901	6,771	25	3,335	-
SO <sub>4</sub>	13,347	637,383	-	-	-	-	8,840	117,968	108	3,805	-
NO <sub>3</sub>	8,434	228,049	-	-	-	-	4,022	74,668	2,566	65,234	-
NO <sub>2</sub>	9,148	205,258	-	-	-	-	2,606	36,721	2,139	51,176	-
NH <sub>4</sub>	11,241	506,116	-	-	-	-	5,677	146,000	-	-	-
P	2,967	103,980	-	-	-	-	10,306	361,460	35	270	-
PO <sub>4</sub>	10,351	494,427	-	-	-	-	968	21,929	13	96	-
OC	11,128	301,467	-	-	-	-	6,642	184,455	-	-	-
pH	-	-	-	-	-	-	-	-	27,183	1,144,310	135
temp	-	-	-	-	-	-	-	-	27,296	849,130	195

Site Type	Parameter	Sample Size		Earliest Data Point (yr)			Latest Data Point (yr)			Average Annual Sampling Frequency		
		Sites	Samples	Min.	Max.	Mean	Min.	Max.	Mean	Min.	Max.	Median
River/ Stream/ Canal	ANC	479	8,802	2013	2019	2015	2013	2019	2017	1	24	4
	Al	967	59,043	2000	2019	2010	2000	2019	2016	1	74	4
	Alkalinity	4,263	350,531	1960	2019	1994	1968	2020	2001	1	112	3
	CO <sub>2</sub>	65	6,966	1979	2007	2000	1981	2019	2017	1	33	4
	CO <sub>3</sub>	1,272	78,474	1960	2015	1979	1961	2020	1988	1	41	6
	Ca	2,495	72,758	1971	2020	2012	1971	2020	2015	1	52	4
	Cl	2,909	69,272	1972	2019	2012	1972	2020	2015	1	57	5
	F	2,925	62,930	1967	2019	1994	1967	2020	1999	1	44	2
	Fe	998	69,307	2000	2020	2012	2011	2020	2018	1	74	11
	HCO <sub>3</sub>	2,631	112,069	1960	2020	1989	1962	2020	1996	1	43	3
	Hardness	4,364	331,545	1960	2020	2010	1970	2020	2016	1	104	5
	TIC/DIC	353	18,266	1973	2016	1994	1974	2019	2002	1	41	3
	K	2,271	57,642	1972	2019	2009	1973	2020	2013	1	40	4
	Mg	2,414	72,945	1973	2020	2011	1973	2020	2014	1	52	4
	NH <sub>4</sub>	7,504	111,903	1971	2019	2003	1972	2020	2006	1	52	3
	NO <sub>2</sub>	8,477	145,325	1970	2020	2003	1973	2020	2006	1	52	3
	NO <sub>3</sub>	6,005	144,335	1986	2020	2009	1989	2020	2013	1	52	4
	Na	2,023	60,865	1975	2020	2011	1980	2020	2015	1	52	4
	TOC/DOC	2,943	91,423	1971	2019	2010	1971	2020	2013	1	81	5
	P	8,663	171,177	1970	2020	2007	1972	2020	2009	1	290	4
PO <sub>4</sub>	7,393	107,069	1969	2019	2002	1972	2019	2005	1	39	2	
SO <sub>4</sub>	2,923	75,552	1970	2019	2010	1971	2020	2013	1	57	4	
Temperature	9,610	230,617	1982	2020	2009	1984	2020	2012	1	52	4	

	Dissolved		Extractable		Recoverable		Total		Unspecified		
	sites	samples	sites	samples	sites	samples	sites	samples	sites	samples	sites
Al	2,515	27,113	170	5,959	642	2,604	4,144	120,216	-	-	-
Fe	103	9,866	164	5,941	89	766	277	29,905	-	-	-
Ca	12,199	591,313	155	5,694	797	5,094	1,433	19,340	-	-	-
Mg	12,734	590,961	155	5,678	802	5,079	7,708	96,790	-	-	-
Na	11,639	560,572	161	5,686	589	2,910	6,599	86,296	-	-	-
K	11,980	549,954	161	5,689	490	2,657	6,205	99,386	189	257	-
Cl	12,414	668,247	-	-	-	-	9,357	144,919	368	6,340	-
F	5,567	424,997	-	-	-	-	901	6,771	25	3,335	-
SO <sub>4</sub>	13,347	637,383	-	-	-	-	8,840	117,968	108	3,805	-
NO <sub>3</sub>	8,434	228,049	-	-	-	-	4,022	74,668	2,566	65,234	-
NO <sub>2</sub>	9,148	205,258	-	-	-	-	2,606	36,721	2,139	51,176	-
NH <sub>4</sub>	11,241	506,116	-	-	-	-	5,677	146,000	-	-	-
P	2,967	103,980	-	-	-	-	10,306	361,460	35	270	-
PO <sub>4</sub>	10,351	494,427	-	-	-	-	968	21,929	13	96	-
OC	11,128	301,467	-	-	-	-	6,642	184,455	-	-	-
pH	-	-	-	-	-	-	-	-	27,183	1,144,310	135
temp	-	-	-	-	-	-	-	-	27,296	849,130	195

Site Type	Parameter	Sample Size		Earliest Data Point (yr)			Latest Data Point (yr)			Average Annual Sampling Frequency		
		Sites	Samples	Min.	Max.	Mean	Min.	Max.	Mean	Min.	Max.	Median
	pH	10,363	257,499	1980	2020	2008	1980	2020	2011	1	114	4



**Table 3: Sample size (sites) for waterbody types based on available parameters and timeseries duration. Sites included in consecutive parameter categories also meet all the prior category requirements.**

Site Type	Category	Minimum Timeseries Length (yr)				
		1	5	10	15	20
River/ Stream/ Canal	1. Acidity	10,363	2,712	1,013	237	2
	2. Basicity	5,026	964	325	208	1
	3. Acid Anions	4,029	801	291	184	1
	4. Metallic Cations	1,049	390	193	125	0
	5. Weak Acids	717	380	184	120	0
	6. Other	717	380	184	120	0
Lake/ Pond	1. Acidity	6,490	1,635	735	420	5
	2. Basicity	2,474	408	71	55	5
	3. Acid Anions	1,989	371	66	55	5
	4. Metallic Cations	447	73	44	1	0
	5. Weak Acids	242	73	44	1	0
	6. Other	242	73	44	1	0
Reservoir	1. Acidity	210	137	75	26	0
	2. Basicity	33	27	14	4	0
	3. Acid Anions	31	19	11	3	0
	4. Metallic Cations	5	3	2	0	0
	5. Weak Acids	1	1	0	0	0
	6. Other	1	1	0	0	0

650