

~~Illuminating the structure of convective cold pools~~ Sub-mesoscale meteorological observations with a dense station network during FESST@HH 2020

Bastian Kirsch^{1,4}, Cathy Hohenegger^{2,4}, Daniel Klocke^{3,4,2}, Rainer Senke¹, Michael Offermann¹, and Felix Ament^{1,2,4}

¹Meteorological Institute, University of Hamburg, Germany

²Max Planck Institute for Meteorology, Hamburg, Germany

³Deutscher Wetterdienst, Offenbach am Main, Germany

⁴Hans Ertel Centre for Weather Research, Branch Model Development - Convection, Hamburg, Germany

Correspondence: Bastian Kirsch (bastian.kirsch@uni-hamburg.de)

Abstract. From June to August 2020 an observational network of 103 meteorological ground-based stations covered the greater area (50 km × 35 km) of Hamburg (Germany) as part of the Field Experiment on Sub-mesoscale Spatio-Temporal variability in-at Hanseatic city of Hamburg (FESST@HH). The purpose of the experiment was to shed light on the ~~sub-mesoeale~~ sub-mesoscale ($\mathcal{O}(100)$ m – $\mathcal{O}(10)$ km) structure of convective cold pools that typically remains under-resolved in operational networks. During the ~~experiment~~experiment, 82 custom-built, low-cost APOLLO (Autonomous cold POoL LOgger) stations sampled air temperature and pressure with fast-response sensors at 1 s resolution to adequately capture the strong and rapid perturbations associated with ~~propagating~~propagating cold pool fronts. A secondary network of 21 weather stations with commercial sensors provided additional information on relative humidity, wind speed and precipitation at 10 s resolution. The realization of the experiment during the COVID-19 pandemic was facilitated by a large number of volunteers who provided measurement sites on their premises and supported ~~the~~station maintenance. This article introduces the novel type of autonomously operating instruments, their measurement characteristics, and the FESST@HH data set (<https://doi.org/10.25592/UHHFDM.8973>; Kirsch et al., <https://doi.org/10.25592/UHHFDM.10172>; Kirsch et al., 2021b). A case study demonstrates that the network is capable of mapping the horizontal structure of the temperature signal inside a cold pool, as well as quantifying its a cold pool's size and propagation velocity throughout its life cycle. Beyond its primary purpose, the data set offers new insights into the spatial and temporal characteristics of the nocturnal urban heat island and variations of turbulent temperature fluctuations ~~as an expression of~~associated with different urban and natural environments.

1 Introduction

We present the instrumentation and data set of the Field Experiment on Sub-mesoscale Spatio-Temporal variability in-at Hanseatic city of Hamburg (FESST@HH) that illuminates the spatial and temporal structure of convective cold pools. Conventional mesoscale meteorological station networks have a typical resolution of ~ 25 km in space and 10 min in time and are essential in order to obtain a reliable picture of the atmospheric background state. Remote sensing techniques can help us

to retrieve more-finely resolved information for a few atmospheric variables like precipitation ~~or~~ and wind speed. However, the spatial variability of basic meteorological parameters like air temperature or pressure on the sub-mesoscale (i.e., length scales between $\mathcal{O}(100)$ m and $\mathcal{O}(10)$ km) remains under-resolved. ~~The information~~ Information on sub-mesoscale variability is especially important for the investigation and simulation of convective clouds and precipitation (Stevens et al., 2020). Convective cold pools are an important source of this variability and ~~, therefore,~~ represent a blind spot for conventional observation networks. ~~This fact qualifies them as~~ Therefore, cold pools are the main motivation for the FESST@HH experiment.

Cold pools play a prominent role for understanding the formation and life cycle of atmospheric convection. They are defined as areas of relatively cool and dense air that form through melting and evaporation of hydrometeors underneath precipitating clouds. Their horizontal size range from a few km to ~~several tens~~ hundreds of km (~~Terai and Wood, 2013; Feng et al., 2015)~~ ~~with temperature falling by more than~~ (Terai and Wood, 2013; Feng et al., 2015; Zuidema et al., 2017) and temperature decreases can exceed 10 K (Engerer et al., 2008; Kirsch et al., 2021a). As the body of cold air grows and propagates horizontally away from the precipitation, it often causes a rapid decrease in local air temperature and the formation of a gust front. Secondary updrafts are preferentially triggered in the region ahead of the cold pool air due to the combination of mechanical lifting and accumulation of moisture in the lower troposphere (~~Tompkins, 2001; Feng et al., 2015; Torri et al., 2015)~~ (Tompkins, 2001; Feng et al., 2015; Torri et al., 2015; Drager et al., 2020). Cold pools are also found to support the organization of convective clouds and the transition from shallow to deep convection (~~Khairoutdinov and Randall, 2006; Schlemmer and Hohenegger~~ (e. g., Rotunno et al., 1988; Khairoutdinov and Randall, 2006; Schlemmer and Hohenegger, 2014; Kurowski et al., 2018)). Since models with hectometer-scale resolution are required to realistically represent processes related to convection (Bryan et al., 2003; Grant and van den Heever, 2016; Hirt et al., 2020), large-eddy simulations (LES) have become an established tool to study cold pools. However, LES models critically depend on parametrizations of subgrid-scale phenomena, such as turbulence and microphysics (~~Dawson et al., 2010; Li et al., 2015)~~ (Smagorinsky, 1963; Dawson et al., 2010; Li et al., 2015). This fact supports the need for observational data with a similar resolution to LES models that facilitate validation of simulations and enhance our understanding of sub-mesoscale processes.

Observational studies on cold pools draw upon a wide range of data-collection methods. These include measurements from boundary layer towers (Goff, 1976; Kirsch et al., 2021a), ~~aircrafts~~ aircraft (Terai and Wood, 2013), ships (de Szoeke et al., 2017), precipitation radars (Borque et al., 2020), and combinations thereof (Mueller and Carbone, 1987; Feng et al., 2015). Nevertheless, capturing the horizontal structure of cold pools with the help of in situ observations is a challenging task given the small number of studies using, e. g., mesoscale station networks (Markowski et al., 2002; Engerer et al., 2008). In a recent study, van den Heever et al. (2021) described the use of uncrewed aerial systems, radiosondes and three closely-spaced surface stations during the C³LOUD-Ex campaign to characterize the structure of convective updrafts and ~~downdrafts on cold~~ pools. The observations revealed that cold pool temperatures can exhibit variability on spatial scales between $\mathcal{O}(100)$ m and $\mathcal{O}(1)$ km, ~~whereas their surface network consisted of only three points. However, given the small geographical extent of the in-situ network, the experiment was unable to characterize the complete surface temperature structure of any individual cold~~ pool. There are also examples of more extensive observation networks at km-scale resolution, like the ~~the~~ Oklahoma City Micronet (Basara et al., 2011) and the WegenerNet (Kirchengast et al., 2014). However, with respect to areal coverage and

instrument characteristics, these networks were mainly designed for climate monitoring rather than investigating short-lived convective-scale ~~processes~~ phenomena like cold pools.

The FESST@HH field experiment took place in Hamburg (Germany) from June to August 2020. The ~~idea~~ aim of the experiment was to perform meteorological observations that are suited to capturing the spatial structure of cold pools at the sub-mesoscale. This goal required the design of a ground-based station network that is large enough to cover the typical size of a cold pool ($\mathcal{O}(10)$ km) and dense enough to satisfy the desired resolution ($\mathcal{O}(100)$ m). Additionally, the measurement instruments had to be equipped with appropriate sensors for capturing cold pool fronts but still ~~cheap~~ inexpensive enough to be deployed in large numbers. The relatively long measurement period was chosen to catch a reasonable number of cold pools during the convective season in Hamburg, where around seven events per month are expected (Kirsch et al., 2021a). In this article, we introduce the novel instruments and data set of FESST@HH and demonstrate its potential for investigating the spatial structure and life cycle of cold pools based on a case study. Moreover, the experimental setup allows ~~to study the for~~ the assessment of the spatial dimension of the nocturnal urban heat island as well as the variability of turbulent temperature fluctuations in different environments. A special feature of FESST@HH was the participation of a large number of volunteers that became necessary ~~in response~~ due to the COVID-19 pandemic.

2 Design of instruments

The instrument design for the FESST@HH experiment was guided by the technical demands required to observe the sub-mesoscale structure of cold pools in space and time. Most importantly, the instruments had to be equipped with fast-response air temperature sensors that precisely capture relative changes in temperature. The sampling interval required was $\Delta t \leq 10$ s in order to track the propagation of cold pool fronts with a velocity of about 10 m s^{-1} (Borque et al., 2020) on scales of $\mathcal{O}(100)$ m. Moreover, the instruments had to ~~operate independent of an external power source~~ be able to operate independently of external power for about two weeks ~~to facilitate the search for appropriate site locations. According to given site location constraints.~~ Based on these requirements, we designed and manufactured the Autonomous cold POoL Logger (APOLLO) for operation during the FESST@HH experiment (section 2.1). We complemented the network with WXT weather stations (section 2.2) based on commercial sensors.

2.1 APOLLO stations

The APOLLO is a simple and low-cost data logger that records air temperature and pressure. Inspired by the pyranometer network stations used during the HOPE campaign (Madhavan et al., 2016), it operates autonomously without an external power source, and its sensor and control units are mounted on a short mast (Fig. 1). The APOLLO is equipped with a fast-response and moisture-resistant thermometer consisting of a small ($7 \text{ mm} \times 1.2 \text{ mm}$) NTC (negative temperature coefficient) thermistor probe (type: TE Connectivity GA10K3MRBD1; Fig. 2a) placed inside a passively ventilated radiation shield (see sensor specifications in Table 1). The ~~design and size of the sensor allow for very small response times according to a time constant $\tau = 14 \pm 10\%$ at 3 wind speed that we determined in wind tunnel laboratory tests.~~ The control unit is based on a micro

controller board (type: HIMALAYA Matrix-Core ESP32) located inside a small (26 cm×17 cm×10 cm) logger box (Fig. 2b).

90 A digital air pressure sensor (type: Bosch BME280 Environmental sensor) is installed on the logger main board, ~~whereas and~~ a counterbalance valve ensures rapid adjustment of barometric pressure inside the logger box.

The readings of the temperature and pressure sensors are sampled with a resolution of 1 s and ~~written-recorded~~ onto a micro-SD memory card. An on-board GPS receiver is used to initially synchronize the internal real-time clock on start of the logger. To minimize power consumption during operation, the GPS module is activated to log the current time only once per hour for
95 about 10 s, which allows ~~to correct~~ correction of the logger time stamp for ~~drifting-drift~~ in a post-processing step. The logger can establish a local WiFi hotspot for on-site control ~~and~~ data inspection and fast data access via download and is able to send status ~~telegrams-messages~~ via the LoRa (Long Range) wireless communication protocol for live monitoring.

The APOLLO is powered by a standard USB power bank battery (20 Ah capacity) that corresponds to an autonomous operation time of 10 to 14 days. For easy access during maintenance, the power bank is placed inside a separate plastic tube.
100 All logger units are mounted on a 3 m mast that is anchored in the soil with a ground screw. In the standard configuration, the temperature sensor at the top of the mast and the pressure sensor inside the logger box are situated about 2.9 m and 1.7 m above ground, respectively. The material costs for all required parts sum up to around 300 Euro per logger station.

The APOLLO station ~~proves suitable~~ prove to be especially suited for accurately recording sharp thermal boundaries associated with cold pool front passages ~~in field measurements~~. In wind tunnel laboratory tests the shielded NTC temperature sensor exhibits a response time (i.e., e -folding time constant) of $\tau = \{93, 14, 10\} \text{ s} \pm 10\%$ at $\{1, 3, 5\} \text{ m s}^{-1}$ wind speed when being artificially heated and released to room temperature. Since cold pools are usually associated with wind speed increases of 3 m s^{-1} and more (Kirsch et al., 2021a), the lack of active sensor ventilation is unlikely to impact the accuracy of temperature measurements of cold pool passages. The comparison with an ~~inertia-free~~ ultrasonic sensor confirms that the NTC thermometer ~~responds almost instantaneously to captures well~~ the rapid cooling signature of a cold pool event ~~and even captures~~
105 ~~high-frequency temperature fluctuations~~ (Fig. 3). ~~Test measurements also~~ Although the response time of the APOLLO sensor is too large to respond to sub-second temperature fluctuations in the same way as the inertia-free ultrasonic sensor, it does not show any apparent lag in the minute-scale shape of the signal and even captures second-scale fluctuations. Moreover, trial field measurements of two cold pool events show that external site conditions, such as surrounding obstacles or different surface properties, do not ~~have a considerable impact on the cold pool~~ systematically impact the strength and shape of a cold
115 pool temperature signal (not shown) and, therefore, do not restrict the choice of ~~the measurement site~~. measurement sites for APOLLO stations. Since this is not true for observations of wind speed and wind direction, these are only performed by the WXT weather stations at appropriate locations. Similarly, humidity measurements are limited to the WXT stations to avoid the technical and financial effort needed to equip the APOLLO stations with precise sensors.

2.2 WXT weather stationstations

120 WXT weather stations are employed to complement the APOLLO stations by providing information on other common meteorological parameters at selected locations. The main component of the station is a commercial compact multi-parameter sensor (type: Vaisala Weather Transmitter WXT536) that measures air pressure, temperature, relative humidity, wind speed, wind

direction and precipitation (see sensor specifications in Table 2). Pressure, temperature and relative humidity measurements are performed by a PTU module inside a radiation shield that combines a capacitive silicon BAROCAP sensor (pressure), a resistive thin-film Pt1000 sensor (temperature) and a capacitive thin-film polymer HUMICAP R2 sensor (relative humidity). Wind speed and wind direction are detected by an WINDCAP ultrasonic anemometer on top of the radiation shield that consists of three equally-spaced ultrasonic transducers on a horizontal plane. The wind measurements are determined from the transit times of the ultrasound along the three paths with a sampling rate of 4 Hz and are internally averaged. Wind gusts are defined as the highest average wind speed of a 3 s interval which is internally updated every second. The precipitation measurement principle of the WXT536 sensor is based on a RAINCAP piezoelectrical sensor underneath a steel cover that detects the impacts of individual rain drops within a collecting area of 60 cm². Since the individual signals are proportional to the size of the ~~rains~~ rain drops, the sensor is able to derive the accumulated rainfall amount within the measurement interval. The sensor also distinguishes between impacts of rain drops and hail stones (Vaisala, 2020). Additionally, the WXT station is equipped with an external Pt1000 thermometer (type: TMH cable sensor Pt1000 1/3 DIN Klasse B; size: 40 mm×3 mm) inside a separate radiation shield that allows for smaller response times of the measured temperature signal ($\tau = 55 \tau = \{173, 55, 39\}$ s ± 10 % at $3 \{1, 3, 5\}$ m s⁻¹ wind speed) than the internal PTU module ($\tau = 213 \tau = \{334, 213, 155\}$ s ± 10 % at $3 \{1, 3, 5\}$ m s⁻¹ wind speed).

The WXT data are sampled at 10 s resolution and written onto a SD memory card by a data logger (type: Avisaro M22766) that is synchronized with an integrated GPS module. ~~The units of the station are~~ Each station is powered by a 12 V lead battery. The battery is recharged by a solar panel (67 cm×41 cm) so that the station can operate autonomously for several months, depending on the available ~~sun-light~~ sunlight. Similar to the APOLLO design, the station components are mounted on a 3 m mast that is anchored in the soil with a ground screw (Fig. 4).

Similar to the APOLLO stations, site conditions like surrounding obstacles and surface properties are not expected to have a systematic impact on cold pool signals in temperature, pressure and humidity that is specific to the WXT sensors. However, wind speed and wind direction are heavily affected by nearby obstacles like buildings or vegetation due to the low installation height of 3 m above ground. Therefore, the individual site properties have to be taken into account when choosing a measurement location as well as interpreting the wind data of the WXT stations.

3 Description of experiment

The FESST@HH measurement campaign took place under extraordinary circumstances. Its name is a modification of the acronym FESSTVaL (Field Experiment on Sub-mesoscale Spatio-Temporal Variability in Lindenberg), a field campaign that was originally planned to take place at the Meteorological Observatory Lindenberg (eastern Germany) during summer 2020. Due to travel restrictions ~~in response to~~ associated with the COVID-19 pandemic, the decision was made to postpone the FESSTVaL campaign to 2021 and to replicate the cold pool part of FESSTVaL in Hamburg under the name FESST@HH to make it compatible with ~~home-office~~ pandemic-related regulations.

155 3.1 Experiment area

Hamburg is the second largest city in Germany (population: 1.9 million; 2019) and is located in northern Germany (53.5° N, 10.0° E) about 80 km from the North Sea and the Baltic Sea. The FESST@HH measurement sites cover an area of 50 km×35 km that includes the urban center of Hamburg and its rural surroundings (Fig. 5). The station network consists of 82 APOLLO sites (Table 3) and 21 WXT sites (Table 4) that are ~~randomly non-uniformly~~ scattered over the domain with ~~the tendency for~~ a generally higher station density closer to the city center. The ~~random arrangement~~ arrangement of stations results from the location of private gardens and of public facilities like schoolyards that could be used as measurement sites (see section 3.2). Moreover, the sites for WXT stations were chosen based on a small impact of surrounding obstacles on the local wind field and a roughly uniform distribution over the network. The average nearest-neighbor distance between all 103 measurement sites is $1.85 \pm$ km with a standard deviation of 1.42 km, whereas it is 1.93 ± 1.41 km and 5.49 ± 1.98 km for APOLLO and WXT, respectively. The measurement area is crossed by the Elbe river in southeast–northwest direction and is characterized by relatively flat terrain. While the Elbe valley is situated around sea level, the elevation north and south of it does not exceed about 80 m and 110 m, respectively. The ~~altitude~~ altitudes of all measurement site ~~lies lie~~ between 1 m and 82 m above sea level with an average of 17 m.

To characterize the environmental properties of the measurement sites, we apply the local climate zone (LCZ) framework introduced by Stewart and Oke (2012). This framework classifies the ~~impact~~ impacts of surface structure, surface cover and human activity on the local thermal climate with the help of 17 standardized LCZ classes. All 103 FESST@HH sites fall into 15 different LCZ classes, which also includes combinations of classes to describe the heterogeneity within about 500 m around the station (Bechtel et al., 2015). The majority of sites (61) are situated in an open arrangement of low-rise buildings and scattered trees (LCZ 6; *mixed* in Fig. 5), while 24 sites, mostly near the city center, are located in the proximity of mid-rise and high-rise buildings, either in a compact or open arrangement (LCZ 2, 4 and 5; *urban*). Each of the other occurring classes contain less than ten sites, which include natural environments (LCZ 9, A, B and D) and industrial areas with mostly paved surfaces (LCZ 8 and 10). ~~10-Ten~~ sites are situated ~~near large~~ less than 50 m away from water bodies like the Elbe river, the Alster lake, or channels (LCZ G).

3.2 Implementation

The ~~installation of instruments started in late May~~ measurement period started on 1 June 2020 and ~~took about 3 weeks.~~ The measurement period covered all three summer months and ended in early September 2020, ended on 31 August 2020, whereas the the installation of all stations was completed in mid-June. The realization of the experiment was enabled by the support of many institutions and private landowners who provided ~~permissions~~ permission at short notice ~~for using to use~~ their premises as measurement sites. The different groups of landowners are indicated by two-letter acronyms as part of a unique site identifier code that also contains the site number and the installed instrument type (a=APOLLO, w=WXT). The majority of measurement stations were installed in private gardens and backyards (PG; Fig. 6a) as well as on the grounds of various institutions and clubs (OG). Further groups of sites include existing weather stations and sites of the Meteorological Institute

(WS and MI), air quality observation sites of the Free and Hanseatic City of Hamburg (LM), grounds of the University of Hamburg (UH), and schoolyards (KB). A special characteristic of the latter group is that most of the respective APOLLO logger components are mounted at existing weather stations used for educational purposes and, therefore, exhibit lower temperature sensor heights (~ 1.8 m) than the standard stations (Fig. 6b). Further deviations from the standard APOLLO installation include four loggers mounted on balconies (040UHa, 092PGa, 111OGa, and 113PGa; Fig. 6e) and two WXT stations installed on top of a container (017LMw; Fig. 6g) and on a roof-deck of the building of the Meteorological Institute (114UHw; Fig. 6h). Due to technical issues, minor changes to the instrumental set up had to be implemented during the measurement period with the replacement of one APOLLO (068OGa) and two WXT stations (048OGw and 114UHw) as well as the replacement of one APOLLO by a WXT station (083PGa).

Ensuring the implementation of FESST@HH was compatible with ~~home-office-not-only-affected~~ pandemic-related restrictions affected not only the selection of measurement sites but also the maintenance strategy. Instead of a small team servicing the entire network, the maintenance work was shared between nearly 40 people. Private landowners, who provided measurement sites in their backyard, could also volunteer to regularly change the battery, check the data, and upload it to a FTP server. Other stations located on public groundgrounds, schoolyards or industrial premises were serviced by colleagues living nearby. The main benefit of this maintenance strategy was that the collective effort kept the individual workload very low and promoted the continuous operation of the instruments, which eventually eased the execution of the experiment under challenging circumstances.

205 4 Data processing

The processing of the APOLLO and WXT station measurement data is a two-stage procedure. This study describes the published level 2 data format that contains quality-controlled data in a standardized format. In contrast, level 0 data are the raw data as directly produced by the instruments and level 1 data are homogenized data for preliminary analyses, but have not passed any quality checks.

210 4.1 Level 0 data

The raw measurement data are stored in ASCII files. The APOLLO data logger creates a new file at the start time, which contains the internal logger time, the GPS-synchronized time, the resistance readings of the NTC thermometer, the pressure readings of the BME280 module and status information at 1 Hz frequency. ~~In-By~~ contrast, new level 0 WXT data files are created at midnight (UTC) on a daily basis. Each line in the files consists of a GPS-synchronized time stamp and the measurement telegram data of a specific sensor module, whereas each module sends data at 10 s intervals.

4.2 Level 1 data

Measurement data, which have passed the first processing step, are called level 1 data. At this stage, basic standardization procedures are performed to allow for easy access to the data for preliminary analyses, but not quality checks. Most importantly,

220 this includes the correction and homogenization of the data time stamps. For the APOLLO data, the internal logger time is corrected with its deviation from the most recent valid GPS time stamp that is logged once per hour. Data for missing time steps are filled with placeholder values (NaN). Furthermore, daily files are created by splitting multi-day files and merging sub-daily files. In case of the WXT data, all time stamps are moved to a regular 10 s time grid. The measurement data itself are not manipulated, except for the APOLLO thermometer readings that are converted from resistance to temperature. For both station types, level 1 data are stored in a standard ASCII format.

225 4.3 Level 2 data

The purpose of the second processing level is to generate a standardized and quality-controlled data product that is ready to use for scientific analyses. Since the raw APOLLO measurements contain different kinds of erroneous data, which originate from technical issues of the logger or characteristics of the measurement site, we apply several quality checks and corrections to clean up the data. This processing step is not required for WXT data due to internal quality checks implemented by the manufacturer of the sensor. In total, less than 1 % of the level 1 data fail the quality criteria and need to be removed. The correction procedure contains the following steps:

- removing erroneous temperature and pressure data outside plausible limits defined by $0 \leq T \leq 40^\circ\text{C}$ and $950 \leq p \leq 1050$ hPa, respectively;
- 235 – removing spikes in temperature (pressure) larger than $\Delta T = 0.5$ K ($\Delta p = 1$ hPa), where ΔT (Δp) denotes the absolute difference from the 30 s (60 s) running median value. For the temperature data, spikes are only removed for phases of active WiFi connection, which produces the spikes;
- removing temperature data showing implausibly large differences from the current network mean value defined as $|T - \bar{T}| > 15$ K. For three stations ~~with erroneous NTC temperature sensor~~ (037UHa, 040UHa, 068OGa) with erroneous NTC temperature sensors producing unphysical spikes, a criterion of $|T - \bar{T}| > 2$ K is applied, and all data within a time window of 15 min before and after erroneous data are also removed;
- 240 – manually removing single periods of erroneous temperature and pressure measurements that are not filtered by the previous criteria. In case of station 039UHa, temperature measurements on more than 40 days are affected by the warm air outlet of a ~~near-by~~ nearby air conditioning facility and are manually removed;
- applying a 10 s running mean smoothing procedure on the temperature measurements of station 113PGa to account for an anomalously high noise level of the NTC sensor; and
- 245 – correcting the individual biases of NTC temperature sensors. The biases are determined from ~~a~~ one week long calibration calibrations with respect to a reference WXT sensor (114UHw) ; between January and June 2020. The pressure readings of the BME280 sensors are not calibrated since in test measurements the absolute values showed an oscillating drift pattern with an amplitude and period of about 0.5 hPa and 10 days. The WXT536 and Pt1000 sensors are calibrated by the manufacturer.
- 250

Level-2 data (Kirsch et al., 2021b) are stored in the NetCDF4 data format (Eaton et al., 2017), while the naming of files, variables and attributes complies with the SAMD (Standardized Atmospheric Measurement Data) Product Standard (Lammert et al., 2018). Accordingly, all measurement data of the same variable and from the same type of instrument are merged and stored in daily files. Note that the time variable expressed as seconds since 1 January 1970, 00:00:00 UTC ignores leap seconds (i.e., occasional adjustments of UTC time to variations in Earth's rotation velocity). Also note that the time drift correction and quality control procedures cause irregular and isolated data gaps that may affect only single seconds which has to be taken into account when using the data set at its full time resolution. The file header contains all relevant ~~meta~~ ~~data~~ ~~metadata~~ describing the individual measurement sites, namely the station identifier, the station name, the geographic coordinates, the altitude above sea level, the sensor height above ground, and the LCZ. Attached to the data set are also images of all measurement stations and panoramic views of the surroundings of all WXT stations to support the interpretation of the corresponding observation data.

5 Description of data set

5.1 Data availability

The level 2 data set of FESST@HH covers the period from 1 June to 31 August 2020 (Fig. 7a). The average availability of valid temperature observations is 83.2 % and 87.6 % for all APOLLO and WXT stations, respectively. Since the 3 month period also includes the installation phase of the instruments during the first half of June, these numbers increase to 90.0 % and 94.3 % if only the period after 15 June is considered. During this period, the daily availability of APOLLO and WXT measurements is always larger than 82.6 % and 90.0 %, respectively. Apart from the removed measurements affected by erroneous sensors and local site conditions, most of the data gaps in the APOLLO data are due to missing power supply of the loggers, either caused by technical issues related to the power bank batteries or insufficient maintenance. In only one case was a battery stolen. The ~~higher~~ ~~greater~~ stability of the WXT power supply is also the reason for the generally ~~higher~~ ~~greater~~ availability of WXT data compared to APOLLO data.

5.2 Weather conditions

The weather conditions during the FESST@HH period covered the full range of a typical mid-latitude summer. The air temperature measured by the station network ranges between a minimum of 5.3 °C on 13 July and a maximum of 35.6 °C on 8 August (Fig. 7b; days defined in UTC). During the entire 92 day period, the maximum temperature exceeded 25 °C on 41 days and 30 °C on 16 days, including an exceptionally long period of 12 consecutive days with ~~more than~~ ~~maximum daily~~ ~~temperature exceeding~~ 30 °C between 6 August and 17 August. In contrast, July was characterized by ~~a phase of~~ relatively cold temperatures, with a maximum of above 25 °C on only 6 days. ~~Rainfall~~ Measurable rainfall, defined as a daily rainfall accumulation of more than 1 mm at at least one WXT station of the network, was observed on approximately half of the days from 1 June to 31 August (Fig. 7c). On 11 days, mostly between 27 June and 10 July, the median rainfall amount exceeded

5 mm. A maximum daily accumulation of 28.2 mm was observed on 27 June ~~when in association with~~ a strong convective event ~~occurred~~.

6 Observations of sub-mesoscale phenomena

285 The goal of the FESST@HH experiment was to design and operate an observation network that is dense enough to investigate the structure of convective cold pools. However, the data set also contains information and potential scientific implications for ~~further additional~~ sub-mesoscale phenomena that we present here.

6.1 Cold pools

During the 3 month measurement period, ~~the station network recorded~~ 37 cold pool events ~~occurred, defined by~~. We define ~~events as periods with~~ at least five stations ~~per hour~~ satisfying the cold pool detection criterion ~~introduced by~~ ~~described in~~ Kirsch et al. (2021a), i.e., a local temperature drop of at least 2 K within ~~30~~20 min ~~associated with rainfall~~. This rather ~~conservative threshold was chosen to robustly discriminate the cold pool signals from other potential sources of spatial temperature variability. The plausibility of cold pool detections is checked based on the visual inspection of corresponding rain radar imagery by a X-band radar of the University of Hamburg (Burgemeister et al., 2022) and the operational C-band~~ ~~radar network of the German Weather Service. The number of approximately 12 events per month is larger than the long-term average at the Hamburg weather mast site of about 7 events per month (Kirsch et al., 2021a) as expected from the larger areal coverage compared to a point measurement. Fig. 8 shows an overview of all 37 identified cold pool events and illustrates the spatial variability of maximum temperature perturbations detected within the station network. Most of the events (28) exhibit a median temperature signal of -4 K or weaker, however, the variability in signal strength and number of affected stations largely~~ ~~vary for different events~~. To demonstrate the ability of the station network to capture the characteristics of a ~~individual~~ cold pool and to shed light on its internal structure, we present one case study.

290
295
300

On 10 August 2020 around 12:45 UTC, a strong and nearly stationary convective precipitation cell developed southeast of the city center. About 10 min later, the formation of a cold pool became evident from a rapid cooling of the surface-layer air ~~masses~~. Fig. 9 illustrates the evolution of the cold pool with snapshots of the temperature perturbations relative to the pre-event state ~~observed by the station network. About 20 min after initiation of the convective cell, the cold pool exhibited a temperature perturbation of up to -8 K within an area of less than 10 km in diameter (Fig. 9a). After another 20 min, the cold pool deepened temperature perturbation strengthened~~ to about -11 K and ~~the cold pool~~ expanded to a size of roughly 10 km×20 km (Fig. 9b). This process continued until around 14:00 UTC when the cold pool reached its maximum temperature perturbation of about -12 K and a diameter of nearly 30 km ~~, whereas the northeastern parts when assuming a roughly elliptical shape~~ of the cold ~~pool, whereas its northeastern parts~~ were outside of the network (Fig. 9d). The associated near-surface wind field observed by the WXT weather stations indicated a strong divergent flow at the cold pool center, especially during the early stages of ~~its the cold pool's~~ life cycle (Fig. 9a and b). Consistent with expected characteristics of a cold pool, the radial expansion of the ~~cold~~

305
310

~~air masses cold-air region~~ during the later stages was also present in the wind observations, predominantly southwest of the cold pool center (Fig. 9c and d).

315 The time series of temperature measurements at selected stations of the network provide further insights into the spatial structure and life cycle of the cold pool (Fig. 10a). APOLLO station *Luxweg* (104PGa) near the cold pool ~~origin-center~~ experienced an initial temperature drop of approximately 8 K within 5 min that continued at a slower rate afterwards and reached ~~its-a~~ maximum perturbation of -12 K after one hour. This value is on the order of strongest temperature perturbations expected during cold pool passages in Hamburg (Kirsch et al., 2021a). The readings of the stations *Ochsenwerder Norderdeich* 320 (082PGa) and *Obsthof Lehmbeck* (054OGa), located 4 km and 12 km further south, respectively, reveal that the maximum ~~cooling decreases to about one-third~~ amount of cooling decreases by about two-thirds away from the center, which suggests a highly heterogeneous temperature structure inside the cold pool. Since the site *Luftmessnetz Habichtstraße* (018LMa), situated northwest of the cold pool center, experienced no cooling at all, the cold pool produced a ~~temperature-gradient~~ gradient in temperature perturbation of 12 K within a distance of 11 km. This result is in line with the findings of van den Heever 325 et al. (2021), who report a variation of near-surface cold pool ~~properties~~ temperature perturbations of order 1 to 2 K on scales between $\mathcal{O}(100)$ m and $\mathcal{O}(1)$ km. The time lags between the cooling signals observed on the southern side of the cold pool also allow us to estimate its propagation velocity. Based on time lags of about 15 min and 50 min for travel distances of 3.9 km (104PGa–082PGa) and 11.9 km (104PGa–054PGa), respectively, the velocity is ~~of~~ about 4 m s^{-1} . This value ~~lies in the expected range~~ (Borque et al., 2020), is lower than the propagation velocity of 6.7 m s^{-1} found for a cold pool event in 330 north-central Oklahoma (Borque et al., 2020), but plausible considering that the parent precipitation cell was almost stationary and, therefore, ~~did not superimpose the buoyancy-driven~~ the observed propagation of the cold ~~air~~ outflow air was not biased by the movement of the cell itself.

The accompanying air pressure measurements at the four selected sites confirm that the negative temperature perturbation of the cold pool is associated with a typical hydrostatic pressure rise (Fig. 10b). However, the positive pressure perturbation 335 was well-pronounced only at station 104PGa, while the amplitudes were not proportional to the strength of the corresponding cooling signals. The pressure signal at station 104PGa also experienced rapid fluctuations of about 1 hPa that were not apparent at the three other sites. Although an in-depth investigation of such effects lies beyond the scope of this study, this may indicate that the spatial structure of a cold pool differs between temperature and pressure and that mechanisms other than ~~the~~ hydrostatic cooling control the pressure signal near the center, like dynamic effects already described in early studies 340 (i.e., Wakimoto, 1982; Mueller and Carbone, 1987).

6.2 Urban heat island

The FESST@HH data set is well suited for studying urban climate effects, as the station network covers both the city center and its rural ~~surrounding~~ surroundings. Stations near the city center record weather conditions with urban modifications, whereas rural stations provide undisturbed references. Focusing on air temperature, we define the urban modification ΔT_{city} as the 345 difference between the locally observed air temperature and the undisturbed, natural temperature T_{nat} , determined exclusively by large-scale weather conditions. On scales of $\mathcal{O}(10)$ km without orography, it is reasonable to assume that T_{nat} varies only

linearly in space. We estimate the mean and the slope of this linear temperature field with a regression using all stations in weakly sealed ~~environments~~, (i.e., ~~all stations with~~ mostly natural) environments, defined by a maximum sealing up to *open low-rise* (LCZ 6). The mean diurnal cycle of ΔT_{city} features a step function at almost all stations (Fig. 11a). During daytime, the urban effects are small and ΔT_{city} is close to zero everywhere. In contrast, during nighttime, predominantly between 21 and 3 UTC, ΔT_{city} reaches a constant level at all stations, which largely reflects the well-known nocturnal urban heat island effect. For example, the most central station *Wetterstation HafenCity* (010WSa; orange in Fig. 11a) is almost 2.5 K warmer than estimated T_{nat} and the most rural site *Obsthof Schuback* (0550Gw) is even 1.5 K colder than the reference. The spatial pattern of the mean nocturnal urban heat excess is in agreement with the typical heat island structure featuring largest values close to the city center (Fig. 11b). Further analysis of individual days (not shown) provides indication that the advection of the heat island effect causes downwind heat plumes to form, which affect specific outskirts depending on the prevailing wind direction.

6.3 Turbulent temperature fluctuations

The NTC temperature sensor of the APOLLO station responds rapidly to air temperatures fluctuations. The recorded time series with a sampling rate of 1 Hz partly resolves temperature eddies related to turbulent sensible heat fluxes. The high frequency temperature fluctuation expressed by the standard deviation of temperature readings within 1 min intervals, σ_T , features a well-pronounced diurnal cycle (Fig. 12a). During nighttime, σ_T is close to 0.05 K at all stations, which most likely resembles the noise level of the instruments. However, at daytime, σ_T is well above that noise level and follows the common diurnal cycle of net radiation or sensible heat flux at the surface. Turbulent fluxes are strongly determined by ~~the local surface condition~~ local surface conditions like albedo, sealing or vegetation cover. Likewise, the differences in the diurnal cycle of σ_T can be explained by local surface conditions: the station *Stadtteilschule Blankenese* (033KBa) at a schoolyard next to a sportsground (low albedo, no evapotranspiration) with free insolation exhibits the highest temperature variability. High values also occur at the schoolyard of station *Schule Redder* (036KBa) but are shifted and limited to morning hours due to a building west of the station casting a shadow and reflecting sunlight. Even more extreme, buildings shade the station *Luftmessnetz Rothenburgsort* (020LMa) almost the whole day except during the late afternoon. The lowest temperature variance is observed at station *Uni Sternwarte* (043UHa), the only station below tall trees. The heat exchange within the tree canopy effectively ~~reduced~~ reduces the energy exchange at the ground.

The relation between surface heat exchange and temperature variability is also directly confirmed by correlating the net radiation observed at the Hamburg weather mast reference site (Bruemmer et al., 2012) with σ_T at the neighboring APOLLO station *Wetterstation Zollamt* (011WSa) located about 750 m away (Fig. 12b). Values of σ_T lower than 0.75 K are strongly correlated to situations where the net radiation is close to zero. Increasing variance beyond this threshold is mostly explained by increasing net radiation ($r^2=0.77$). Instead of the sensible heat flux, we use the net radiation for this analysis to minimize the influence of land surface differences between the two sites (pasture at *Wetterstation Zollamt* versus sealed area at Hamburg weather mast). Additional measurements on a test site show that ~~the heating of the sensor shield by solar radiation does not~~ impact σ_T does not change if the sensor shield is protected from direct solar radiation (not shown). This finding supports

our reasoning that the APOLLO stations capture turbulent temperature fluctuations ~~that are mainly~~ caused by the surface heat exchange in the near environment of the observation site ~~.rather than artificially generated by the heating of the sensor shield.~~ Direct measurements of turbulent heat fluxes and surface properties like temperature and moisture added in the FESSTVaL follow-up experiment will help to better understand the land-atmosphere interactions for different land classes.

385 7 Summary and conclusions

The FESST@HH field experiment took place in Hamburg (Germany) from June to August 2020 with the primary aim of illuminating the internal structure of convective cold pools that conventional observations miss. To this end, a dense network of 103 autonomously operating weather stations was installed over an area of 50 km×35 km with an average distance between the stations of 1.85km. The measurements were mainly conducted by 82 low-cost, custom-built APOLLO stations that were
390 designed to sample the strong and rapid changes in air temperature and pressure associated with cold pools at 1 s resolution. Additional measurements of relative humidity, wind speed and precipitation at 10s resolution were performed by 21 WXT weather stations based on commercial sensors.

The FESST@HH data set is unique not only with respect to its scientific potential for investigating sub-mesoscale atmospheric processes but also with respect to its implementation. The experiment was successfully conducted despite the excep-
395 tional circumstances caused by the COVID-19 pandemic, especially thanks to the short-notice support of local institutions and private landowners, who provided their ground-grounds as measurement sites and helped with the station maintenance. The low-cost and self-manufactured measurement instruments operated smoothly without any major technical problems, although they ~~were never~~ had never been used in such a large number before. The good performance is reflected by an availability of quality-controlled data of more than 90 % during the main observation period. Most importantly, a case study demonstrates
400 that the network is capable of mapping the sharp horizontal temperature gradients produced by a convective cold pool and capturing its spatial footprint. Throughout its life cycle, the cold pool diameter grows from less than 10 km to nearly 30 km, while its leading edge propagates at a velocity of about 4 m s⁻¹ away from the center of convection. There is also evidence that the spatial variance of the corresponding pressure signals differs from the cooling signature and may indicate the presence of non-hydrostatic effects acting within the cold pool center. Furthermore, the data set is relevant for studies in urban meteorology,
405 as the dense temperature observations include information on the spatial structure of the nocturnal urban heat island as well as on the local surface heat exchange mirrored by high-frequency temperature fluctuations.

The FESST@HH field experiment proves that it is possible to conduct observations that close the information gap left by conventional measurement networks. In addition, it highlights the real need for dense station networks that act like a magnifying glass for revealing sub-mesoscale atmospheric processes. The use of a large number of low-cost instruments designed for a
410 specific purpose ~~has shown to be is~~ a feasible strategy to tailor a measurement network that is dense enough to shed light on previously unobserved scales. These data are scientifically valuable not only for a deeper understanding of cold pools and the convective life cycle, but also for the validation of hectometer-scale numerical simulations. Moreover, the data set leaves space for unexpected results and applications not yet anticipated. FESST@HH also exemplifies how a major community effort can

ease the execution of a major scientific enterprise or ~~as in this case~~, make it possible at all. In this sense, FESST@HH
415 has the potential to be a prototype for future field campaigns. It already provides a ~~prove~~-proof of concept for an extended
investigation of cold pools and further sub-mesoscale boundary layer structures during the FESSTVaL 2021 experiment.

8 Data availability

The data set is available for download at <https://doi.org/10.25592/UHHFDM.10172> (Kirsch et al., 2021b). The data are stored
in netCDF files per station type, measurement variable and day. The file size is about 25 MB and 1.5 MB for APOLLO and
420 WXT data, respectively. For both station types all daily files are merged into monthly *.zip files. The data set also includes a
file containing images of all measurement stations and panoramic views of the surroundings of all WXT stations.

Author contributions. BK: methodology (design, assembling and testing of instruments), investigation (installation and operation of in-
struments), data curation (compilation of meta data and processing of data), formal analysis (except for sections 6.2 and 6.3), writing -
original draft (except for sections 6.2 and 6.3), writing - review and editing; CH and DK: conceptualization, supervision, project administra-
425 tion; RS: methodology (design, assembling and testing of APOLLO stations), software (software development for APOLLO stations); MO:
methodology (design, assembling and testing of instruments), investigation (installation and operation of measurement stations); FA: con-
ceptualization, supervision, methodology (design of instruments), investigation (installation and operation of measurement stations), formal
analysis (sections 6.2 and 6.3), writing - original draft (sections 6.2 and 6.3)

Competing interests. The authors declare that they have no conflicts of interests.

430 *Acknowledgements.* ~~We~~-The authors are grateful to Marco Clemens and Ingo Lange for heavily supporting the manufacturing, installa-
tion and maintenance of measurement stations and to Sarah Wiesner for planning and coordinating the field experiment. We thank Theresa
Szyszka and Jan Moritz Witt for assembling the APOLLO logger main boards, manufacturing the components of the APOLLO and WXT
stations and supporting their maintenance. For either helping with the installation and maintenance of stations or providing ground for
measurement sites we are thankful to Sigrid and Werner Bock, Agnes Bornholdt, Frank Böttcher, Burghardt Brümmer, Stefan Bühler, Finn
435 Burgemeister, Guido Cioni, Martin Claussen, Traute Crüger, Henning Dorff, Tobias Finn, Veronika Gayler, David Grawe, Akio Hansen, Anja
Hermans, Tatiana Ilyina, Olaf Jäke, Markus Kilian, Stefan Kinne, Marlene and Reinhard Kirsch, Brita Kliemt, Hartmut Kock, Heike Konow,
Sascha Krueck, Heiner Meier, Ulrike Niemeier and Luis Kornbluh, Peter Peitzner, Jon Petersen, Thomas Raddatz, Jule Radtke, Berinike
Rappat, Florian Römer, Nicole and Steffen Rüeß, Rita Schierholz, Imke Schirmacher, Hauke Schmidt, Amelie Schmitt, Hauke Schulz, Con-
stanze Seibert, Milica Stankovic, Claudia Timmreck and Hannes Thiemann, Karla Tomhawe, Bodo Voigt, Stefan Walter, Ralf Wedemann,
440 Tobias Weiß, Susanne and Heinz-Dieter Wenck, Benjamin Will, Holger Witt ~~and~~ Florian Ziemer. We ~~also~~ acknowledge the following insti-
tutions, schools, clubs and companies for allowing us to install measurement stations on their grounds: Hamburger Luftmessnetz, Universität
Hamburg, Bundesanstalt für Wasserbau Hamburg, Deutscher Wetterdienst Niederlassung Hamburg, Drachenfreunde Winsen, Greenpeace

Wilhelmsburg, Gut Karlshöhe, Gymnasium Rahlstedt, Halepaghen-Schule Buxtehude, Hamburger Aero-Club Boberg, Hamburger Bogenschützen Gilde, Hansa Sportverein Stöckte, Hochschule für Angewandte Wissenschaften Hamburg, Immanuel-Kant-Gymnasium Harburg, 445 Obsthof Axel Schuback, Obsthof Lehmebeck, Overmeyer Landbaukultur, Restaurant Bobby Reich, Restaurant Fährhaus Tatenberg, Schule Redder Sasel, Segelclub Rhe Hamburg, Segelvereinigung Sinstorf, Stadtteilschule Blankenese, Stadtteilschule Eidelstedt, Stadtteilschule Meiendorf, Suntrace, Tennisclub Eichtalpark and TSV Holm. We also thank all persons and institutions that supported the experiment in any way and were not explicitly mentioned here.

This research was carried out in the Hans Ertel Center for Weather Research (Hans-Ertel-Zentrum für Wetterforschung; HERZ). This 450 German research network of universities, research institutions, and the German Weather Service (Deutscher Wetterdienst; DWD) is funded by the ~~BMVI~~ (Federal Ministry of Transport and Digital Infrastructure) ~~;~~ (Bundesministerium für Verkehr und digitale Infrastruktur; BMVI).

BK is thankful to Jochem Marotzke and Dallas Murphy for providing valuable tips on the writing style and structure of the manuscript and to Arjun Kumar for proofreading.

455 The authors thank Aryeh Jacob Drager and one anonymous referee for carefully reviewing the manuscript and for their detailed and constructive comments.

References

- Basara, J. B., Illston, B. G., Fiebrich, C. A., Browder, P. D., Morgan, C. R., McCombs, A., Bostic, J. P., McPherson, R. A., Schroeder, A. J., and Crawford, K. C.: The Oklahoma City Micronet, *Meteorol. Appl.*, 18, 252–261, <https://doi.org/10.1002/MET.189>, 2011.
- 460 Bechtel, B., Alexander, P. J., Böhner, J., Ching, J., Conrad, O., Feddema, J., Mills, G., See, L., and Stewart, I.: Mapping local climate zones for a worldwide database of the form and function of cities, *ISPRS Int. J. Geo-Inf.*, 4, 199–219, <https://doi.org/10.3390/ijgi4010199>, 2015.
- Borque, P., Nesbitt, S. W., Trapp, R. J., Lasher-Trapp, S., and Oue, M.: Observational study of the thermodynamics and morphological characteristics of a midlatitude continental cold pool event, *Mon. Weather Rev.*, 148, 719–737, <https://doi.org/10.1175/MWR-D-19-0068.1>, 2020.
- 465 Bosch: BME280 data sheet, version 1.9, <https://www.bosch-sensortec.com/media/boschsensortec/downloads/datasheets/bst-bme280-ds002.pdf>, accessed on 14 January 2021, 2020.
- Bruemmer, B., Lange, I., and Konow, H.: Atmospheric boundary layer measurements at the 280 m high Hamburg weather mast 1995–2011: Mean annual and diurnal cycles, *Meteorol. Z.*, 21, 319–335, <https://doi.org/10.1127/0941-2948/2012/0338>, 2012.
- Bryan, G. H., Wyngaard, J. C., and Fritsch, J. M.: Resolution requirements for the simulation of deep moist convection, *Mon. Weather Rev.*, 131, 2394–2416, [https://doi.org/10.1175/1520-0493\(2003\)131<2394:RRFTSO>2.0.CO;2](https://doi.org/10.1175/1520-0493(2003)131<2394:RRFTSO>2.0.CO;2), 2003.
- 470 Burgemeister, F., Clemens, M., and Ament, F.: Multi-year X-band weather radar observations in Hamburg (LAWR HHG), https://cera-www.dkrz.de/WDCC/ui/Compact.jsp?acronym=LAWR_UHH_HHG, 2022.
- Cramer, F.: Scientific colour maps, version 7.0.1, <https://doi.org/10.5281/zenodo.1243862>, 2018.
- Cramer, F., Shephard, G. E., and Heron, P. J.: The misuse of colour in science communication, *Nat. Commun.*, 11, 5444, <https://doi.org/10.1038/s41467-020-19160-7>, 2020.
- 475 Dawson, D. T., Xue, M., Milbrandt, J. A., and Yau, M. K.: Comparison of evaporation and cold pool development between single-moment and multimoment bulk microphysics schemes in idealized simulations of tornadic thunderstorms, *Mon. Weather Rev.*, 138, 1152–1171, <https://doi.org/10.1175/2009MWR2956.1>, 2010.
- de Szoeke, S. P., Skillingstad, E. D., Zuidema, P., and Chandra, A. S.: Cold pools and their influence on the tropical marine boundary layer, *J. Atmos. Sci.*, 74, 1149–1168, <https://doi.org/10.1175/JAS-D-16-0264.1>, 2017.
- 480 Drager, A. J., Grant, L. D., and van den Heever, S. C.: Cold Pool Responses to Changes in Soil Moisture, *J. Adv. Model. Earth Sy.*, 12, <https://doi.org/10.1029/2019MS001922>, 2020.
- Eaton, B., Gregory, J., Drach, B., Taylor, K., Hankin, S., Blower, J., Caron, J., Signell, R., Bentley, P., Rappa, G., Höck, H., Pamment, A., Juckes, M., and Raspaud, M.: NetCDF Climate and Forecast (CF) Metadata Conventions version 1.7, <https://cfconventions.org/Data/cf-conventions/cf-conventions-1.7/cf-conventions.pdf>, accessed on 14 January 2021, 2017.
- 485 Engerer, N. A., Stensrud, D. J., and Coniglio, M. C.: Surface characteristics of observed cold pools, *Mon. Weather Rev.*, 136, 4839–4849, <https://doi.org/10.1175/2008MWR2528.1>, 2008.
- Feng, Z., Hagos, S., Rowe, A. K., Burleyson, C. D., Martini, M. N., and de Szoeke, S. P.: Mechanisms of convective cloud organization by cold pools over tropical warm ocean during the AMIE/DYNAMO field campaign, *J. Adv. Model. Earth Sy.*, 7, 357–381, <https://doi.org/10.1002/2014MS000384>, 2015.
- 490 Goff, R. C.: Vertical structure of thunderstorm outflows, *Mon. Weather Rev.*, 104, 1429–1440, [https://doi.org/10.1175/1520-0493\(1976\)104<1429:VSOTO>2.0.CO;2](https://doi.org/10.1175/1520-0493(1976)104<1429:VSOTO>2.0.CO;2), 1976.

- Grant, L. D. and van den Heever, S. C.: Cold pool dissipation, *J. Geophys. Res.-Atmos.*, 121, 1138–1155, <https://doi.org/10.1002/2015JD023813>, 2016.
- 495 Hirt, M., Craig, G. C., Schäfer, S. A. K., Savre, J., and Heinze, R.: Cold-pool-driven convective initiation: using causal graph analysis to determine what convection-permitting models are missing, *Q. J. Roy. Meteor. Soc.*, 146, 2205–2227, <https://doi.org/10.1002/QJ.3788>, 2020.
- Khairoutdinov, M. and Randall, D.: High-resolution simulation of shallow-to-deep convection transition over land, *J. Atmos. Sci.*, 63, 3421–3436, <https://doi.org/10.1175/JAS3810.1>, 2006.
- 500 Kirchengast, G., Kabas, T., Leuprecht, A., Bichler, C., and Truhetz, H.: WegenerNet: A pioneering high-resolution network for monitoring weather and climate, *Bull. Am. Meteorol. Soc.*, 95, 227–242, <https://doi.org/10.1175/BAMS-D-11-00161.1>, 2014.
- Kirsch, B., Ament, F., and Hohenegger, C.: Convective cold pools in long-term boundary layer mast observations, *Mon. Weather Rev.*, 149, 811–820, <https://doi.org/10.1175/MWR-D-20-0197.1>, 2021a.
- Kirsch, B., Hohenegger, C., Klocke, D., Senke, R., Offermann, M., and Ament, F.: FESST@HH meteorological network measurements, 505 version v00, <https://doi.org/10.25592/UHHFDM.10172>, 2021b.
- Kurowski, M. J., Suselj, K., Grabowski, W. W., and Teixeira, J.: Shallow-to-deep transition of continental moist convection: Cold pools, surface fluxes, and mesoscale organization, *J. Atmos. Sci.*, 75, 4071–4090, <https://doi.org/10.1175/JAS-D-18-0031.1>, 2018.
- Lammert, A., Grützun, V., and Stamnas, E.: The SAMD product standard (Standardized Atmospheric Measurement Data), <https://doi.org/10.5281/ZENODO.1741364>, available online at <https://zenodo.org/record/1741364#.X7U621AxIEY>, 2018.
- 510 Li, Z., Zuidema, P., Zhu, P., and Morrison, H.: The sensitivity of simulated shallow cumulus convection and cold pools to microphysics, *J. Atmos. Sci.*, 72, 3340–3355, <https://doi.org/10.1175/JAS-D-14-0099.1>, 2015.
- Madhavan, B. L., Kalisch, J., and Macke, A.: Shortwave surface radiation network for observing small-scale cloud inhomogeneity fields, *Atmos. Meas. Tech.*, 9, 1153–1166, <https://doi.org/10.5194/AMT-9-1153-2016>, 2016.
- Markowski, P. M., Straka, J. M., and Rasmussen, E. N.: Direct surface thermodynamic observations within the rear- 515 flank downdrafts of nontornadic and tornadic supercells, *Mon. Weather Rev.*, 130, 1692–1721, [https://doi.org/10.1175/1520-0493\(2002\)130<1692:DSTOWT>2.0.CO;2](https://doi.org/10.1175/1520-0493(2002)130<1692:DSTOWT>2.0.CO;2), 2002.
- Mueller, C. K. and Carbone, R. E.: Dynamics of a thunderstorm outflow, *J. Atmos. Sci.*, 44, 1879–1898, [https://doi.org/10.1175/1520-0469\(1987\)044<1879:DOATO>2.0.CO;2](https://doi.org/10.1175/1520-0469(1987)044<1879:DOATO>2.0.CO;2), 1987.
- Rotunno, R., Klemp, J. B., and Weisman, M. L.: A theory for strong, long-lived squall lines, *J. Atmos. Sci.*, 45, 463–485, 520 [https://doi.org/10.1175/1520-0469\(1988\)045<0463:ATFSL>2.0.CO;2](https://doi.org/10.1175/1520-0469(1988)045<0463:ATFSL>2.0.CO;2), 1988.
- Schlemmer, L. and Hohenegger, C.: The formation of wider and deeper clouds as a result of cold-pool dynamics, *J. Atmos. Sci.*, 71, 2842–2858, <https://doi.org/10.1175/JAS-D-13-0170.1>, 2014.
- Smagorinsky, J.: General circulation experiments with the primitive equations: I. The basic experiment, *Mon. Weather Rev.*, 91, 99–164, [https://doi.org/10.1175/1520-0493\(1963\)091<0099:GCEWTP>2.3.CO;2](https://doi.org/10.1175/1520-0493(1963)091<0099:GCEWTP>2.3.CO;2), 1963.
- 525 Stevens, B., Acquistapace, C., Hansen, A., Heinze, R., Klinger, C., Klocke, D., Rybka, H., Schubotz, W., Windmiller, J., Adamidis, P., Arka, I., Barlakas, V., Biercamp, J., Brueck, M., Brune, S., Buehler, S. A., Burkhardt, U., Cioni, G., Costa-Suros, M., Crewell, S., Crueger, T., Deneke, H., Friederichs, P., Henken, C. C., Hohenegger, C., Jacob, M., Jakub, F., Kalthoff, N., Koehler, M., van Laar, T. W., Li, P., Loehnert, U., Macke, A., Madenach, N., Mayer, B., Nam, C., Naumann, A. K., Peters, K., Poll, S., Quaas, J., Roeber, N., Rochetin, N., Scheck, L., Schemann, V., Schnitt, S., Seifert, A., Senf, F., Shapkalijevski, M., Simmer, C., Singh, S., Sourdeval, O., Spickermann, D.,

- 530 Strandgren, J., Tessiot, O., Vercauteren, N., Vial, J., Voigt, A., and Zaengl, G.: The Added Value of Large-eddy and Storm-resolving Models for Simulating Clouds and Precipitation, *J. Meteorol. Soc. Jpn.*, 98, 395–435, <https://doi.org/10.2151/JMSJ.2020-021>, 2020.
- Stewart, I. D. and Oke, T. R.: Local climate zones for urban temperature studies, *Bull. Am. Meteorol. Soc.*, 93, 1879–1900, <https://doi.org/10.1175/BAMS-D-11-00019.1>, 2012.
- TE Connectivity: High humidity environments mini probe (MRBD), https://www.te.com/commerce/DocumentDelivery/DDEController?Action=showdoc&DocId=Data+Sheet%7FMRBD_10K3MRBD1%7FA%7Fpdf%7FEnglish%7FENG_DS_MRBD_10K3MRBD1_A.pdf%7FGA10K3MRBD1, accessed on 7 October 2021, 2015.
- 535 Terai, C. R. and Wood, R.: Aircraft observations of cold pools under marine stratocumulus, *Atmos. Chem. Phys.*, 13, 9899–9914, <https://doi.org/10.5194/ACP-13-9899-2013>, 2013.
- Tompkins, A. M.: Organization of tropical convection in low vertical wind shears: The role of cold pools, *J. Atmos. Sci.*, 58, 1650–1672, [https://doi.org/10.1175/1520-0469\(2001\)058<1650:OOTCIL>2.0.CO;2](https://doi.org/10.1175/1520-0469(2001)058<1650:OOTCIL>2.0.CO;2), 2001.
- 540 Torri, G., Kuang, Z., and Tian, Y.: Mechanisms for convection triggering by cold pools, *Geophys. Res. Lett.*, 42, 1943–1950, <https://doi.org/10.1002/2015GL063227>, 2015.
- Vaisala: Weather Transmitter WXT530 Series user guide, <https://www.vaisala.com/sites/default/files/documents/WXT530-User-Guide-in-English-M211840EN-E.pdf>, accessed on 14 January 2021, 2020.
- 545 van den Heever, S. C., Grant, L. D., Freeman, S. W., Marinescu, P. J., Barnum, J., Bukowski, J., Casas, E., Drager, A. J., Fuchs, B., Herman, G. R., Hitchcock, S. M., Kennedy, P. C., Nielsen, E. R., Park, J. M., Rasmussen, K., Razin, M. N., Riesenber, R., Dellaripa, E. R., Slocum, C. J., Toms, B. A., and van den Heever, A.: The Colorado State University Convective CLOUD Outflows and UpDrafts Experiment (C3LOUD-Ex), *Bull. Am. Meteorol. Soc.*, 102, E1283–E1305, <https://doi.org/10.1175/BAMS-D-19-0013.1>, 2021.
- Wakimoto, R. M.: The life cycle of thunderstorm gust fronts as viewed with Doppler radar and rawinsonde data, *Mon. Weather Rev.*, 110, 1060–1082, [https://doi.org/10.1175/1520-0493\(1982\)110<1060:TLCOTG>2.0.CO;2](https://doi.org/10.1175/1520-0493(1982)110<1060:TLCOTG>2.0.CO;2), 1982.
- 550 Zuidema, P., Torri, G., Muller, C., and Chandra, A.: A survey of precipitation-induced atmospheric cold pools over oceans and their interactions with the larger-scale environment, *Surv. Geophys.*, 38, 1283–1305, <https://doi.org/10.1007/S10712-017-9447-X>, 2017.

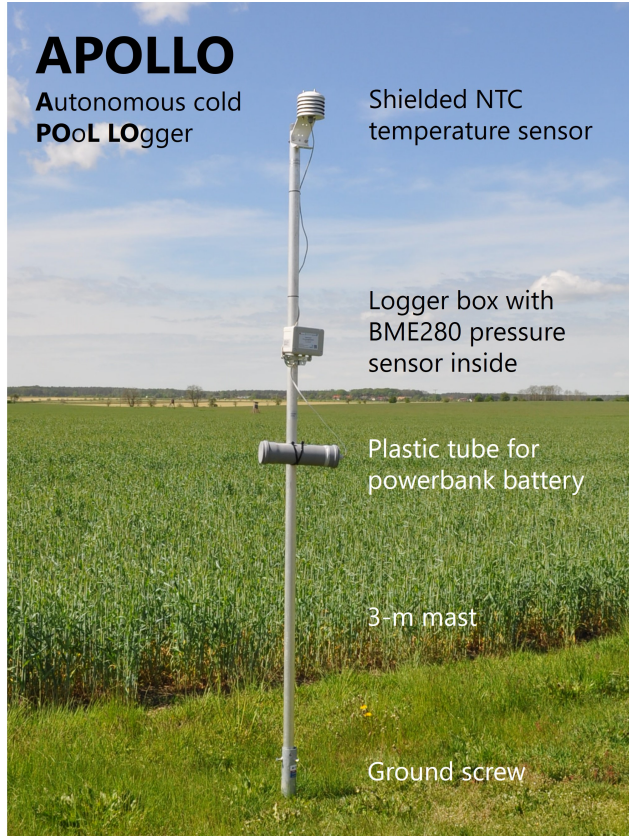


Figure 1. Components of APOLLO station.

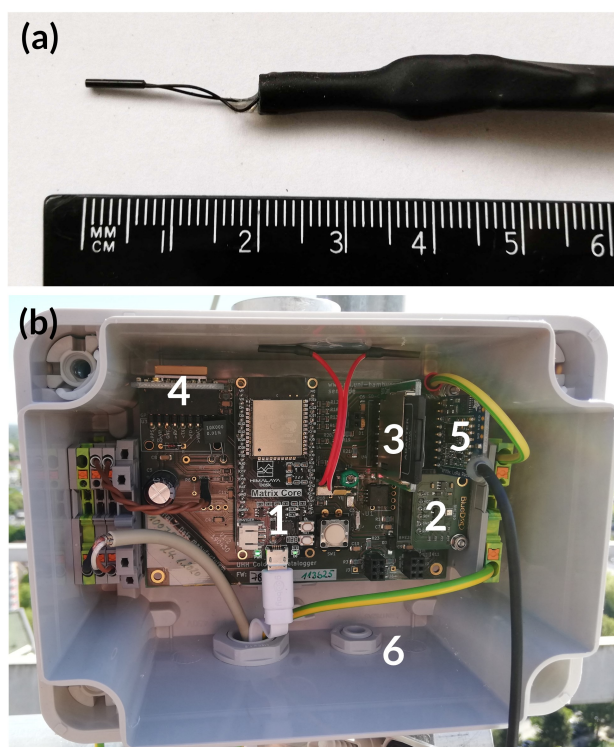


Figure 2. (a) NTC thermometer with scale for reference, (b) logger main board of APOLLO station. Marked are the micro controller board (1), digital air pressure sensor BME280 (2), micro-SD memory card (3), GPS receiver module (4), LoRa module (5) and pressure counterbalance valve (6).

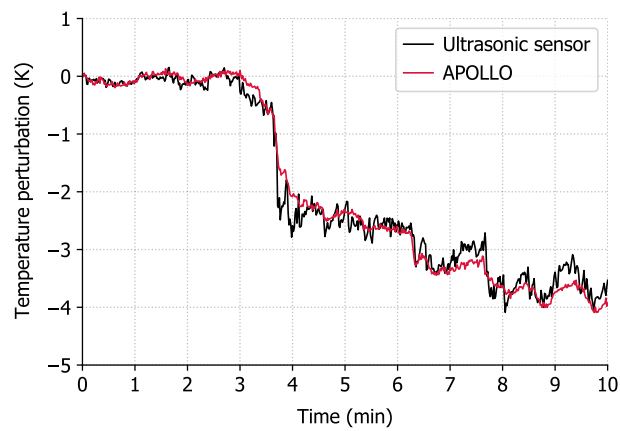


Figure 3. Air temperature perturbation observed by [a](#) co-located ultrasonic sensor and APOLLO station during a cold pool event at the Meteorological Observatory Lindenberg (eastern Germany) on 26 August 2019. The readings of the ultrasonic sensor are 1 s averages of 20 Hz acoustic temperature measurements by an ultrasonic anemometer ([type: METEK uSonic-3 Scientific](#)).

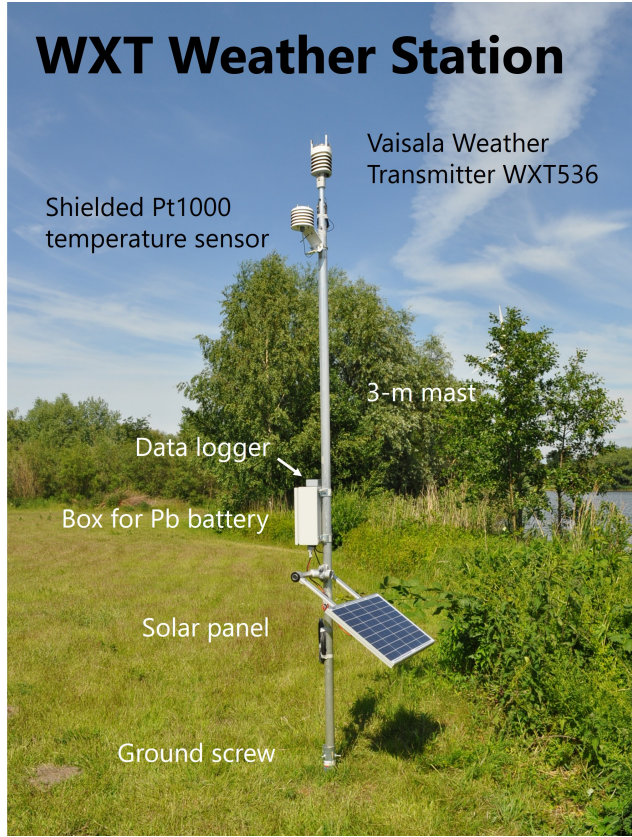


Figure 4. Components of WXT weather station.

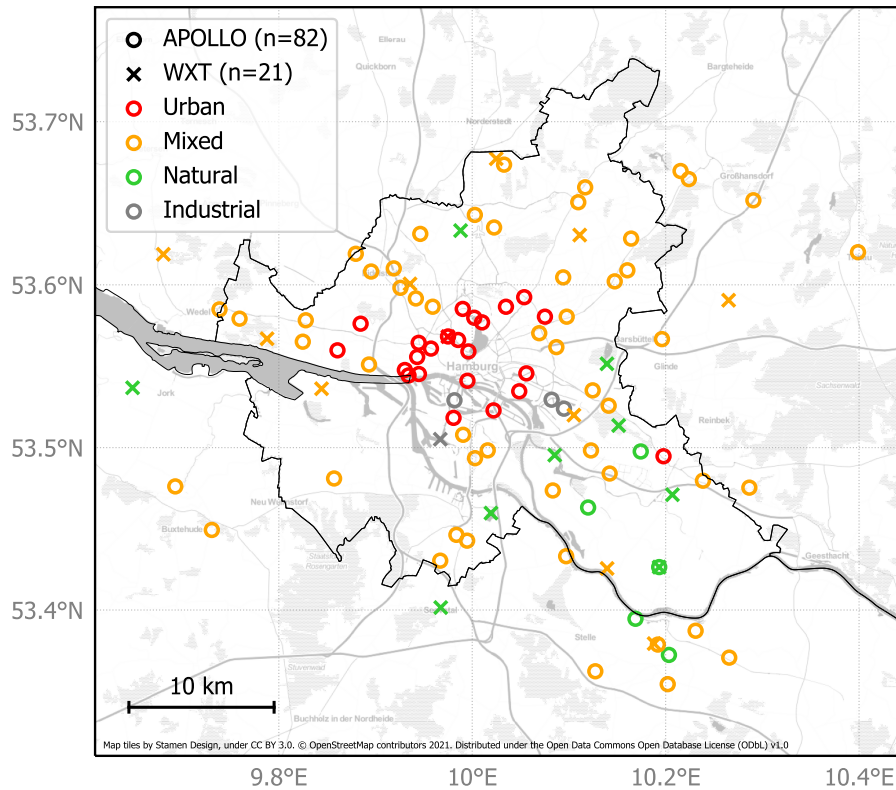


Figure 5. Map of [measurement locations of APOLLO and WXT weather stations forming during the FESST@HH network2020 experiment](#). Colors indicate environmental conditions of measurement sites grouped into urban (local climate Zone 2, 4 or 5), mixed (LCZ 6), natural (LCZ 9, B or D) and industrial (LCZ 8 or 10) following the framework of Stewart and Oke (2012). For stations falling into two LCZs, only the predominant sub-class is [considered depicted](#). Black lines mark the city limits of Hamburg.

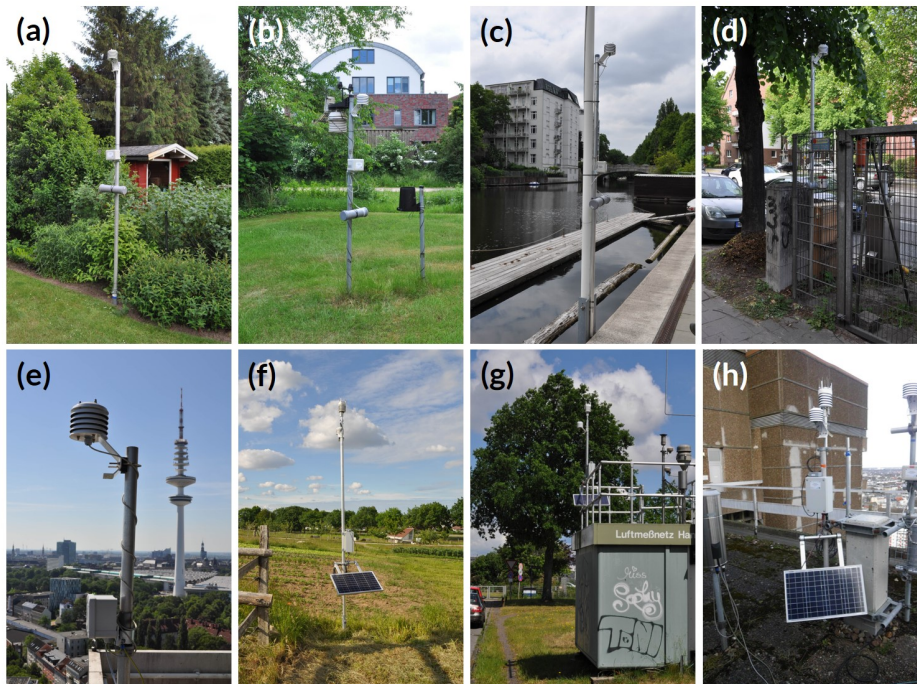


Figure 6. Examples of instrument installations during FESST@HH: APOLLO station (a) as the standard installation in a private garden, (b) attached to an existing weather station on a schoolyard, (c) on a boat landing stage at a channel, (d) on an air quality observation site at a public road, (e) on the balcony of the building of the Meteorological Institute, and WXT weather station (f) as the standard installation on an agricultural field, (g) on top of a container, and (h) on the roof-deck of the building of the Meteorological Institute.

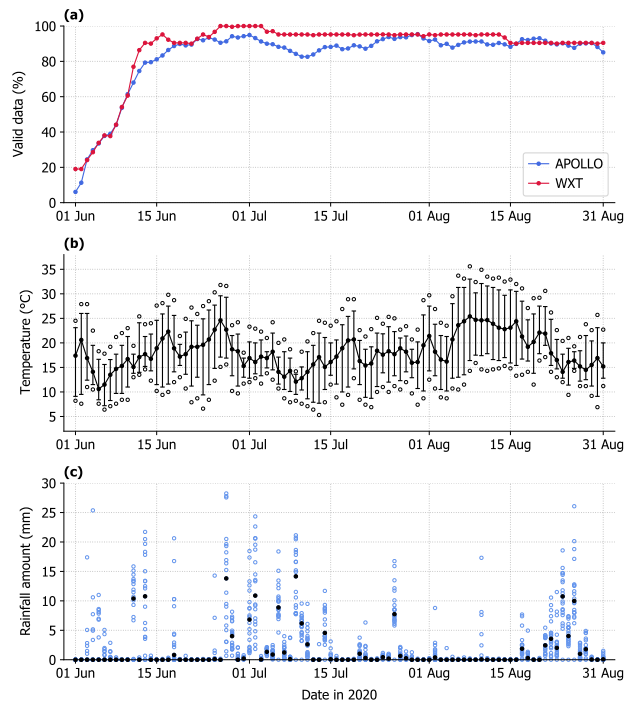


Figure 7. FESST@HH level 2 data from 1 June to 31 August 2020: (a) Daily mean fraction of valid temperature observations over all APOLLO and WXT stations, (b) daily median (filled dots), [5%-quantile-5th percentile](#) and [95%-quantile-95th percentile](#) (whiskers) and minimum and maximum (open circles) of all WXT air temperature observations, (c) individual accumulated rainfall amount at all WXT stations (open circles). Filled dots mark the daily median. [Days are defined in UTC.](#)

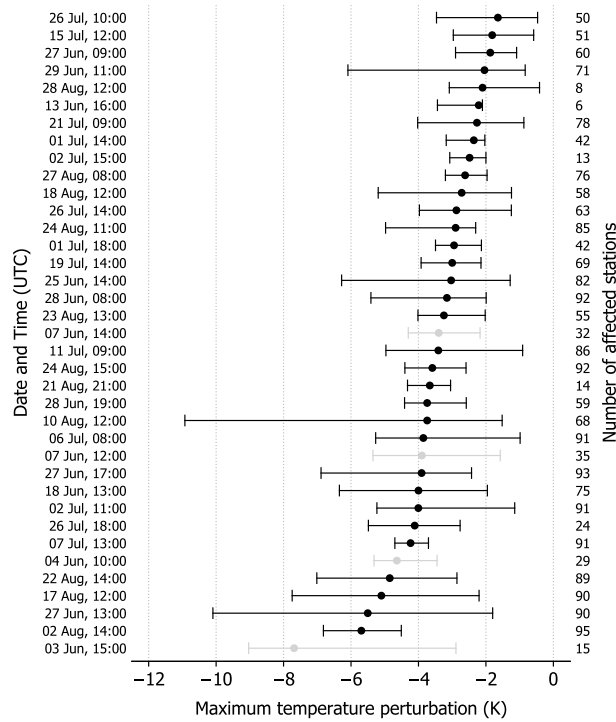


Figure 8. Perturbation in air-Distribution of the maximum temperature since 12:30 UTC from (a) 13:05 UTC to (d) 14:05 UTC observed by perturbation detected at individual APOLLO and WXT stations during a for the 37 identified cold pool event on 10 August 2020. Bluish colors events during FESST@HH. Black dots and whiskers mark stations inside the cold pool median value and 5th/95th percentiles, defined by a respectively. The events are sorted according to the median values in maximum temperature perturbations smaller than -2 (color map by Crameri (2018); Crameri et al. (2020)). Black arrows indicate instantaneous wind speed and direction observed by WXT Events with an average data availability over all stations -Length of reference arrow refers to 5 less than 75 wind speed% are marked in grey. The four highlighted stations refer to times specify the defined begin of the respective data illustrated in Fig. events about 30 to 60 min prior to the onset of rainfall, whereas the duration of an event is 4 10 hours. Indicated is also the number of stations that have experienced a cold pool passage.

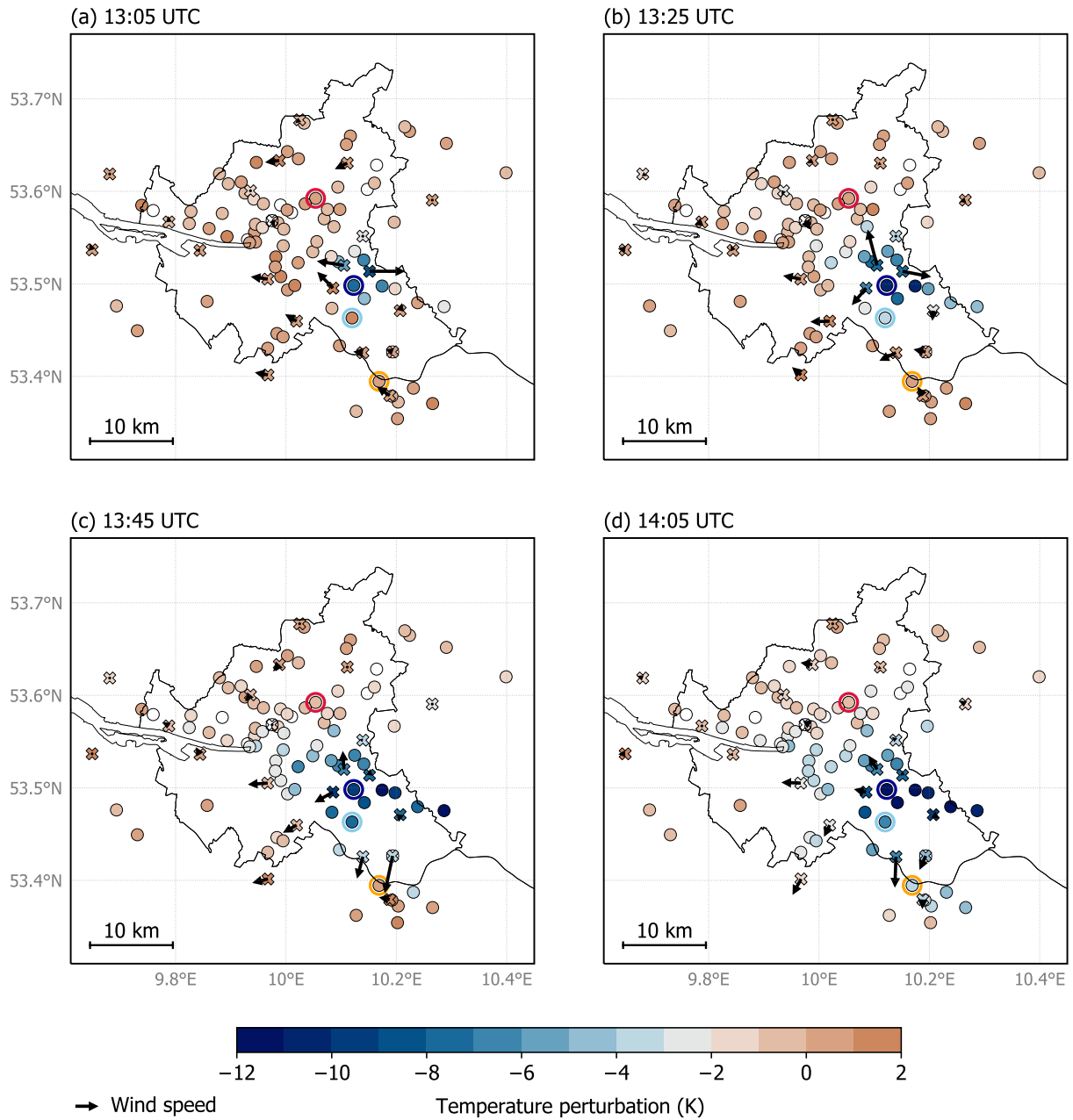


Figure 9. Perturbation in air temperature since 12:30 UTC from (a) 13:05 UTC to (d) 14:05 UTC observed by APOLLO (circles) and WXT stations (crosses) during a cold pool event on 10 August 2020. Bluish colors mark stations inside the cold pool, defined by a temperature perturbation stronger than -2 K (color map by Crameri (2018); Crameri et al. (2020)). Black arrows indicate instantaneous wind speed and direction observed by WXT stations. The length of the reference arrow corresponds to 5 m s^{-1} wind speed. The four highlighted stations refer to the respective data illustrated in Fig. 10.

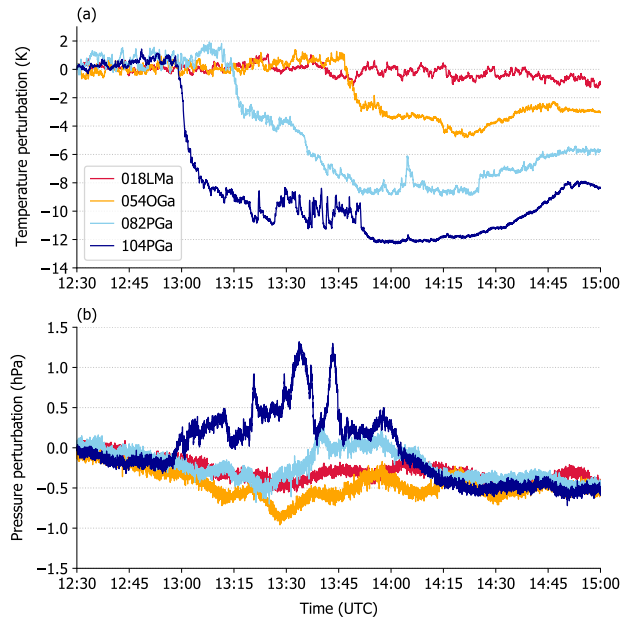


Figure 10. Perturbation in (a) air temperature and (b) pressure since 12:30 UTC observed by the four selected APOLLO stations *Luftmessnetz Habichtstraße* (018LMa), *Obsthof Lehmbek* (054OGa), *Ochsenwerder Norderdeich* (082PGa) and *Luxweg* (104PGa) during a cold pool event on 10 August 2020. Locations of the stations are also highlighted in Fig. 9.

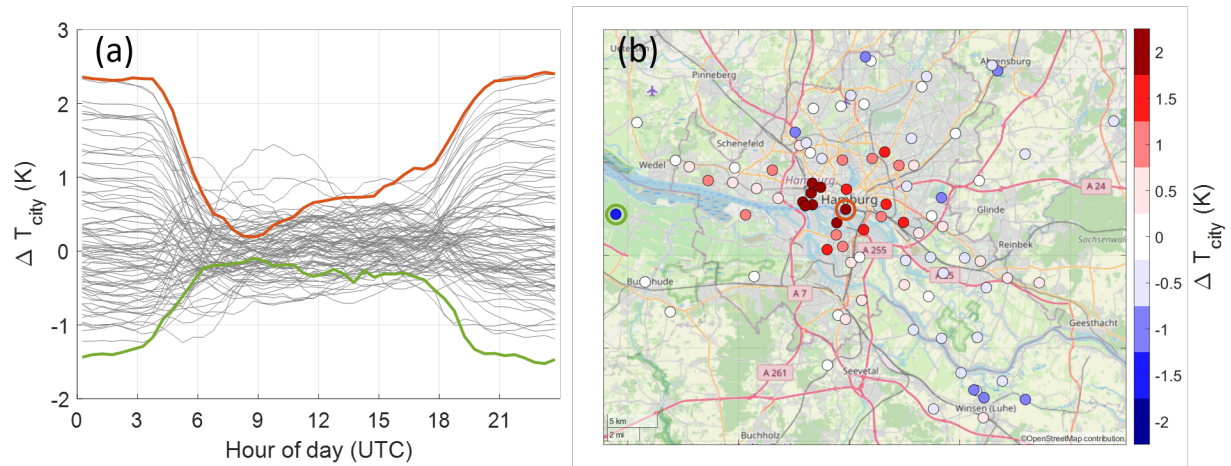


Figure 11. (a) Mean diurnal cycle of urban temperature modification ΔT_{city} and (b) nighttime (21:00 UTC to 03:00 UTC) mean of ΔT_{city} at all APOLLO and WXT stations from 15 June to 31 August 2020. Highlighted in orange and green are the [stations-urban station](#) *Wetterstation HafenCity* (010WSa) and [the rural station](#) *Obsthof Schuback* (055OGw), respectively. © OpenStreetMap contributors 2021. Distributed under the Open Data Commons Open Database License (ODbL) v1.0.

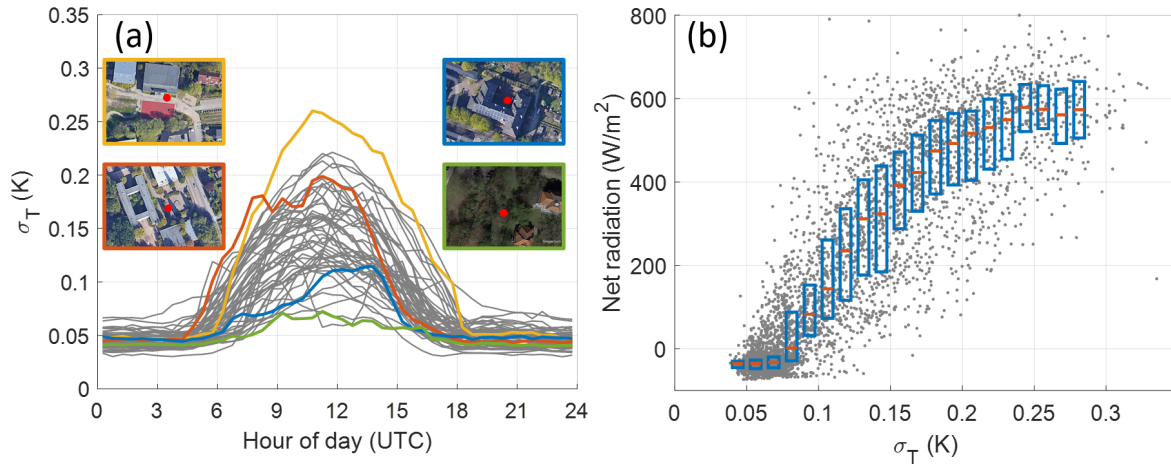


Figure 12. (a) Mean diurnal cycle of standard deviation of 1 min temperature fluctuations σ_T at all APOLLO stations (grey lines) and at the highlighted stations *Stadteilschule Blankenese* (yellow; 033KBa), *Schule Redder* (orange; 036KBa), *Luftmessnetz Rothenburgsort* (blue; 020LMa) and *Uni Sternwarte* (green; 043UHa). Map data © Google Earth 2021. (b) Net radiation at the Hamburg weather mast site dependent on σ_T at station *Wetterstation Zollamt*, both averaged over 10 min. Blue boxes and orange bars indicate the inter-quartile range and median for the respective σ_T bin. The analyses in both (a) and (b) are valid for sunny days from 1 June to 31 August 2020, whereas sunny days are defined as days on which the daily averaged global radiation at Hamburg weather mast is larger than at least one-third of the daily averaged theoretical maximum of clear sky insolation.

Table 1. Sensor specifications of APOLLO station (TE Connectivity, 2015; Bosch, 2020).

Parameter	Sensor	Measurement range	Accuracy
Temperature	NTC thermistor	-40 ... 100 °C	± 0.2 K at 0 ... 70 °C
Pressure	BME280 digital sensor	300 ... 1100 hPa	± 1 hPa at 0 ... 30 °C (absolute) ± 0.12 hPa at 25 ... 40 °C (relative)

Table 2. Sensor specifications of WXT weather station (Vaisala, 2020).

Parameter	Sensor	Measurement range	Accuracy
Temperature	PTU module	-52 ... 60 °C	±0.3 K at 20 °C
	Pt1000 thermometer	-50 ... 85 °C	±1.3 K at 20 °C
Pressure	PTU module	500 ... 1100 hPa	±0.5 hPa at 0 ... 30 °C
			±1.0 hPa at -52 ... 60 °C
Relative humidity	PTU module	0 ... 100 %RH	±3 %RH at 0 ... 90 %RH
			±5 %RH at 90 ... 100 %RH
Wind speed	Ultrasonic anemometer	0 ... 60 m s ⁻¹	±3 % at 10 m s ⁻¹
Wind direction	Ultrasonic anemometer	0 ... 360°	±3° at 10 m s ⁻¹
Rainfall	Piezoelectrical sensor	-	better than 5 %, weather dependent

Table 3. ~~Meta-data of~~ [Information about](#) APOLLO measurement sites. Altitude denotes the height of ground above sea level and sensor height is the height of temperature sensor above ground. See section 3.1 for explanation of local climate zones (LCZ) after Stewart and Oke (2012).

Identifier	Name	Latitude (°N)	Longitude (°E)	Altitude (m)	Sensor height (m)	LCZ
007WSa	Wetterstation Stellingen Wohngebiet	53.59817	9.92575	21	3	6
008WSa	Wetterstation Wilhelmsburg Grünfläche	53.49349	10.00290	3	3	6
010WSa	Wetterstation HafenCity	53.54109	9.99505	8	2	5
011WSa	Wetterstation Zollamt	53.52393	10.09486	6	3	8
015LMa	Luftmessnetz Max-Brauer-Allee	53.55571	9.94306	25	3	2
016LMa	Luftmessnetz Kieler Straße	53.56440	9.94464	17	3	2
018LMa	Luftmessnetz Habichtstraße	53.59240	10.05374	13	3	5
019LMa	Luftmessnetz Elbhang	53.54523	9.94488	23	3	5
020LMa	Luftmessnetz Rothenburgsort	53.53463	10.04861	4	3	5
021LMa	Luftmessnetz Stresemannstraße	53.56086	9.95733	21	3	2
022LMa	Luftmessnetz Neugraben	53.48101	9.85715	3	3	6
023LMa	Luftmessnetz Wilhelmsburg	53.50789	9.99059	3	3	6
024LMa	Luftmessnetz Hafen	53.52910	9.98163	6	3	8
025LMa	Luftmessnetz Veddel	53.52287	10.02204	5	3	5G
026LMa	Luftmessnetz Billbrook	53.52945	10.08207	5	3	8G
027KBa	Saselbekstraße, Sasel	53.65976	10.11679	30	3	6
028KBa	Halepaghen Schule, Buxtehude	53.47613	9.69293	3	2	6
029KBa	Stadtteilschule Eidelstedt	53.60816	9.89548	19	3	6
030KBa	Stadtteilschule Meiendorf	53.62835	10.16431	40	2	6
031KBa	Gymnasium Rahlstedt	53.60212	10.14735	31	2	6
033KBa	Stadtteilschule Blankenese	53.56509	9.82479	39	3	6
036KBa	Schule Redder, Sasel	53.65064	10.10965	38	2	6
037UHa	Uni Physik DESY, Bahrenfeld	53.57615	9.88457	38	3	5
039UHa	Uni Campus, Rotherbaum	53.56615	9.98540	12	3	5
040UHa	Geomatikum, Balkon 16. Stock	53.56831	9.97495	16	68	4
041UHa	Uni Botanischer Garten, Klein Flottbek	53.55979	9.86068	29	3	5
043UHa	Uni Sternwarte, Bergedorf	53.47964	10.23859	31	3	6A
046OGa	BAW Rissen	53.58492	9.73867	11	3	6A
049OGa	Horner Rennbahn	53.56176	10.08700	14	3	6
051OGa	Drachenwiese Winsen	53.37231	10.20341	4	3	B
052OGa	HAW Campus Bergedorf	53.49469	10.19780	19	3	5
053OGa	Hamburger Bogengilde, Fuhlsbüttel	53.64289	10.00270	21	3	6D
054OGa	Obsthof Lehmbeck, Hoopte	53.39460	10.16881	3	3	9

Table 3. (continued)

Identifier	Name	Latitude (°N)	Longitude (°E)	Altitude (m)	Sensor height (m)	LCZ
057OGa	Segelclub Rhe, Rotherbaum	53.55912	9.99605	4	3	5G
059OGa	Uni Segelclub, Uhlenhorst	53.57696	10.01017	5	3	5G
060OGa	Uni Rudersteg, Eppendorf	53.58521	9.99019	4	3	5G
061OGa	Bootssteg Bobby Reich, Winterhude	53.57979	10.00210	3	3	5G
063OGa	Immanuel-Kant Gymnasium, Marmstorf	53.43041	9.96692	41	3	6
066OGa	Tennisclub Eichtalpark, Wandsbek	53.58045	10.09769	13	3	6A
068OGa ¹	Billwerder Billdeich, Oberbillwerder	53.49763	10.17424	2	3	9
069OGa	Europaring, Winsen	53.35427	10.20215	6	3	6
070PGa	Ilmenaudeich, Tönnhäuser	53.37063	10.26575	4	3	6
071PGa	Laßbröner Dorfstraße, Laßbrönne	53.38721	10.23099	4	3	6
072PGa	Hoopster Straße, Stöckte	53.37869	10.19198	3	3	6
073PGa	Im Schönenfelde, Wilhelmsburg	53.49830	10.01601	2	3	6
074PGa	Am Eisenwerk, Jarrestadt	53.58654	10.03488	8	3	5
075PGa	Himmelshorst, Großhansdorf	53.65183	10.29073	49	3	6
076PGa	Gartenstraße, Trittau	53.62002	10.39891	42	2	6
077PGa	Hamburger Straße, Ahrensburg	53.66481	10.22399	47	3	6
078PGa	Waldweg, Immenbeck	53.44932	9.73072	22	2	6
079PGa	Sumpfveilchenweg, Langenhorn	53.67367	10.03292	32	3	6
080PGa	Lupinenkamp, Fuhlsbüttel	53.63517	10.02261	22	3	6
082PGa	Ochsenwerder Norderdeich, Ochsenwerder	53.46314	10.11983	2	3	9
083PGa ²	Norderquerweg, Kirchwerder	53.42645	10.19333	2	3	D
084PGa	Overdeich, Over	53.43314	10.09711	3	3	6
085PGa	Jahnstraße, Ashausen	53.36222	10.12728	21	3	6
086PGa	Kleingartenverein Wilstorf	53.44632	9.98363	28	3	6
087PGa	Brookwisch, Iserbrook	53.57825	9.82787	26	3	6
088PGa	Achter de Höf, Rissen	53.57922	9.75940	23	3	6
089PGa	Kleingartenverein Stellingen	53.59163	9.94172	18	3	6
090PGa	Kleingartenverein Lokstedt	53.58656	9.95912	14	3	6
091PGa	Fährstraße, Wilhelmsburg	53.51829	9.98068	4	3	5
092PGa	Holländische Reihe, Ottensen	53.54770	9.93032	31	15	2

¹ APOLLO station replaced on 25 June 2020² APOLLO station replaced by WXT station on 25 June 2020

Table 3. (continued)

Identifier	Name	Latitude (°N)	Longitude (°E)	Altitude (m)	Sensor height (m)	LCZ
093PGa	Kleingartenverein Niendorfer Gehege	53.61008	9.91888	12	3	6
094PGa	Harzburger Weg, Niendorf	53.63124	9.94628	21	3	6
095PGa	Rantzaustraße, Ahrensburg	53.66977	10.21542	47	3	6
096PGa	Godenwind, Mümmelmannsberg	53.52577	10.14109	30	3	6
097PGa	Parchimer Straße, Rahlstedt	53.60891	10.16041	30	3	6
098PGa	Musilweg, Wilstorf	53.44273	9.99474	27	3	6
099PGa	Schlossgarten, Wandsbek	53.57030	10.06929	13	3	6
100PGa	Hamfelderredder, Börnsen	53.47537	10.28655	55	3	6
102PGa	Abelke-Bleken-Ring, Ochsenwerder	53.47363	10.08330	1	3	6
103PGa	Burbekstraße, Eidelstedt	53.61903	9.87959	22	3	6
104PGa	Luxweg, Billwerder	53.49826	10.12280	1	3	6
105PGa	Barsbütteler Landstraße, Barsbüttel	53.56667	10.19619	37	3	6
106PGa	Kleingartenverein Allermöhe	53.48406	10.14210	2	3	6
107PGa	Ansorgestraße, Othmarschen	53.55108	9.89326	23	3	6
108PGa	Auf dem Königslande, Wandsbek	53.58045	10.07517	15	3	5
109PGa	Eenstock, Bramfeld	53.60457	10.09405	18	3	6
111OGa	Suntrace, Altona	53.54436	9.93413	5	10	5G
112PGa	Teubnerweg, Billstedt	53.53520	10.12454	17	3	6
113PGa	Steinbeker Straße, Hamm	53.54563	10.05597	6	7	5G

Table 4. As Table 3, but for WXT measurement sites.

Identifier	Name	Latitude (°N)	Longitude (°E)	Altitude (m)	Sensor height (m)	LCZ
002MIw	Wettermast, Billwerder	53.51996	10.10515	1	3	6D
004MIw	Wasserwerk Bausberg, Blankenese	53.56692	9.78784	82	2	6
005WSw	Wetterstation Langenhorn Grünfläche	53.67731	10.02480	24	3	6B
006WSw	Wetterstation Stellingen Grünfläche	53.60056	9.93568	14	3	6B
017LMw	Luftmessnetz Finkenwerder	53.53621	9.84419	6	5	6
035KBw	Gut Karlshöhe, Bramfeld	53.63052	10.11114	31	3	6
044OGw	Fährhaus Tatenberg	53.49537	10.08528	2	3	9
045OGw	Windpark Curslack	53.47102	10.20700	2	3	D
047OGw	Bogenwiese Holm	53.61872	9.68062	15	3	6
048OGw ¹	Segelflugplatz Boberg	53.51360	10.15142	2	3	9
050OGw	Bogenschießplatz Stöckte	53.37930	10.18809	1	3	6D
055OGw	Obsthof Schuback, Mittelnkirchen	53.53679	9.64878	1	3	B
062OGw	Segelverein Neuländer See	53.45972	10.01936	1	3	9G
064OGw	Biohof Obermeyer, Emmelndorf	53.40151	9.96742	49	3	9
065OGw	Greenpeace, Wilhelmsburg	53.50515	9.96698	8	3	10G
067OGw	DWD Flughafen, Fuhlsbüttel	53.63327	9.98796	9	3	9
081PGw	Süderquerweg, Kirchwerder	53.42561	10.13946	3	3	6
083PGw	Norderquerweg, Kirchwerder	53.42645	10.19333	2	3	D
101PGw	Reinbeker Weg, Brunsbek	53.59054	10.26513	58	3	6
110OGw	Öjendorfer See, Billstedt	53.55152	10.13930	13	3	B
114UHW ²	Geomatikum, Dachterasse 18. Stock	53.56819	9.97483	16	72	4

¹WXT536 sensor replaced on 31 July 2020²WXT536 sensor replaced on 10 June 2020