

# **Streamflow data (2013-2019) for seven small coastal watersheds, British Columbia in the Northeast Pacific coastal temperate rainforest, Canada, 2013-2019**

Formatted: Font: Bold, Font color: Black

5 Maartje C. Korver<sup>1,2</sup>, Emily Haughton<sup>1</sup>, William C. Floyd<sup>3,4</sup>, Ian J. W. Giesbrecht<sup>1,5</sup>

<sup>1</sup>Hakai Institute, Tula Foundation, Heriot Bay BC, V0P 1H0, Canada

<sup>2</sup>Current address: McGill University, Department of Geography, Montréal QC, H3A 0B9, Canada

<sup>3</sup>Ministry of Forests, Lands and Natural Resource Operations, Nanaimo BC, V9T 6E9, Canada

<sup>4</sup>Vancouver Island University, Nanaimo BC, V9R 5S5, Canada

10 <sup>5</sup>School of Resource and Environmental Management, Simon Fraser University, Burnaby BC, V5A 1S6, Canada.

Correspondence to: Maartje Korver (maartje.korver@mail.mcgill.ca)

**Abstract.** Hydrometeorological observations of small watersheds of the northeast Pacific coastal temperate rainforest (NPCTR) of North America are important to understand land to ocean ecological connections and to provide the scientific basis for regional environmental management decisions. The Hakai Institute operates a densely networked and long-term hydrometeorological monitoring observatory, that fills a spatial data gap in the remote and sparsely gauged outer coast of the NPCTR. Here we present the first five water years (October 2013–October 2019) of hourly high-resolution streamflow and weather data from seven small (< 13 km<sup>2</sup>), coastal watersheds. Measuring rainfall and streamflow in remote and topographically complex rainforest environments is challenging, hence advanced and novel automated measurement methods were used. These methods, specifically for stream flow measurement allowed us to quantify uncertainty and identify key sources of error, which varied by gauging location. Average yearly rainfall was 3267 mm, resulting in 2317 mm of runoff and 0.1087 km<sup>3</sup> of freshwater exports from all seven watersheds per year. However, rainfall and runoff were highly variable depending on location and elevation. The seven watersheds have rainfall-dominated (pluvial) streamflow regimes, streamflow responses are rapid and most water exports are driven by high-intensity fall and winter storm events. Measuring rainfall and streamflow in remote and topographically complex rainforest environments is challenging, hence advanced and novel automated measurement methods were used. These methods, specifically for stream flow measurement allowed us to quantify uncertainty and identify key sources of error, which varied by gauging location. Links to the complete dataset, watershed delineations with metrics, and calculation scripts can be found in Sect. 6 and 7.

15

20

25

Formatted: Font color: Auto

## **1 Introduction**

30

Climate and hydrology are major drivers of the physical and ecological connections between land and sea.

Understanding the timing and quantities of water, sediment, nutrient, and organic matter fluxes to the ocean can provide the scientific basis for conservation and restoration of coastal environments (Fang et al., 2018), which are vulnerable to anthropogenic pressures and a warming climate (Lotze et al., 2006; Lu et al., 2018). The outer coast of the northeast Pacific coastal temperate rainforest (NPCTR) of North America is characterized by thousands of small watersheds (Gonzalez Arriola et al., 2018) with a wet and mild maritime climate, low to moderately sloped rocky

35

terrain, and open, low productivity forests and wetland ecosystems (Banner et al., 2005). Even though total freshwater inflows to the NPCTR coast are dominated by large drainage basins that have the majority of area located inland (Morrison et al., 2012), small coastal watersheds are thought to play an important role in supporting productive marine food webs and abundant salmon runs (Bidlack et al., 2021). However, the current network of gauging stations in the NPCTR is especially sparse among these small watersheds, due to their remote location and access limitations (Fig. 1). Consequently, estimates of weather and streamflow from that area are generally derived from models (Moore et al., 2012; Morrison et al., 2012; Hill et al., 2009; Wang et al., 2019; PRISM Climate Group). The Kwakshua Watersheds Observatory (KWO), established in 2013, helps fill this observational data gap by providing continuous and high-resolution hydrometeorological data from seven small (< 13 km<sup>2</sup>) watersheds ~~on,~~ representing an area of > 16,000 km<sup>2</sup> in the outer coast of British Columbia (Fig. 1). NPCTR with broadly similar climate, topography, and streamflow regimes (Giesbrecht et al., 2022). Besides the hydrometeorology of these watersheds, the KWO also monitors ~~soil hydrology,~~ aquatic biogeochemistry, microbial ecology, and nearshore oceanographic conditions (Giesbrecht et al., 2021) and to date, the observatory has supported studies showing that this area of the NPCTR is a hot-spot of soil organic carbon storage (McNicol et al., 2019) and that high riverine fluxes of dissolved organic matter (Oliver et al., 2017) have a significant effect on the estuarine waters of the NPCTR (St. Pierre and Oliver et al., 2020; St. Pierre et al., 2021).

Projected changes in the NPCTR's climate - increased mean annual temperature, increased mean annual precipitation and less precipitation as snow - are anticipated to result in a cascade of ecosystem level effects (Shanley et al., 2015; Bidlack et al., 2021) and streamflow regime changes (Déry et al., 2009). The KWO ~~is monitoring program is set up to be long-term, so the hydrometeorological dataset here presented will be regularly updated to make future analyses of these anticipated system changes possible. The relatively undisturbed environment of the gauged watersheds makes the KWO particularly well-suited to monitor hydrometeorological responses to accommodate climate change research programs and to potentially serve within national reference hydrologic networks (Whitfield et al., 2012), as the monitoring program is set up to be long term and.~~ In addition, the data may be useful for regional forest management decisions (e.g., Kranabetter et al., 2013; Banner et al. 2005) and engineering applications. For example, landslides triggered by heavy rain pose risks to local communities and forestry workers, but warning systems suffer from the lack of long-term quality rain gauges (Jakob et al., 2006). Landslide as well as flooding events are expected to increase (Sobie, 2020) as the frequency of atmospheric rivers has increased in the past decades (Sharma and Déry, 2019) - a trend that is projected to continue (Radić et al., 2015).

This article provides a summary of streamflow and weather conditions ~~between 1 October 2013 and 30 September 2019 from the seven watersheds of the KWO that are representative of the outer coast of the NPCTR.~~ Continuous and a characterization of catchment responses between 1 October 2013 and 30 September 2019 from the seven watersheds of the KWO. In addition, this article highlights how automation and the use of novel technologies made it possible to measure weather and streamflow in a remote environment with access limitations, complex topography, intense storms, and rapid streamflow responses, and special attention is given to the uncertainties associated with these conditions and measurement methods. It should be noted that throughout this article,

'streamflow' refers to a flow rate ( $\text{m}^3 \text{s}^{-1}$ ), 'discharge' describes a volume of river water ( $\text{m}^3$ ), and 'runoff' is this volume divided by drainage area (mm). All data (continuous observations of stream discharge, rain, total precipitation, snow depth, air temperature, wind, relative humidity and solar radiation from seven hydrometric and fourteen meteorological stations are made available and are presented here to improve our understanding of the hydrology of the region. A novel method to automatically measure streamflow at high flows was developed and implemented, as rainfall events in the NPCTR can be heavy and the manual measurement of rapid streamflow responses are near impossible. A method to quantitatively analyze streamflow uncertainty was developed to accompany this method and special attention is given to the uncertainties associated with measuring streamflow and rainfall in a coastal rainforest environment with complex topography. All data are provided in, and solar radiation from seven hydrometric and fourteen meteorological stations) are provided in five-minute and hourly timesteps and catchment metadata (location, catchment delineations with metrics) are made available (Sect. 6). High data quality is assured through systematic and thorough quality control methods.

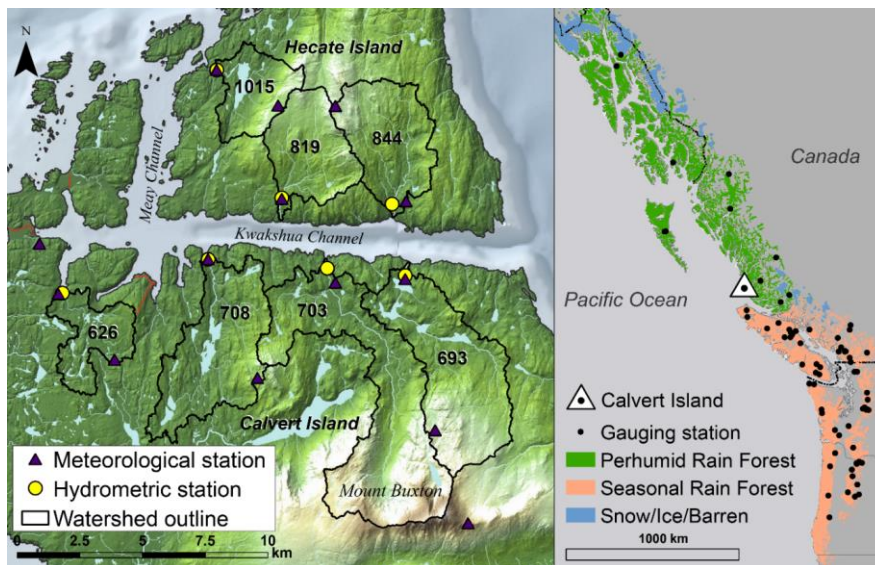


Figure 1: The seven gauged watersheds at Calvert and Hecate Islands on the outer coast of the ~~northeast~~Northeast Pacific coastal temperate rainforest (NPCTR) of North America. Active government operated gauging stations in small watersheds (Environment Canada stations with gross drainage area  $< 25 \text{ km}^2$  and USGS stations with 24 h average summer flow  $< 1.5 \text{ m}^3 \text{ s}^{-1}$ ) are shown to indicate the lack of gauging stations measuring outer coast, small watersheds. Terrain relief map was created by Arriola and Holmes (2017). Regional rainforest cover is derived from the original rainforest distribution mapping of Ecotrust (1995), which reflects the rainforest subzones of Alaback (1996).

Table 1: Main characteristics of the seven gauged watersheds.

Watershed	Area ( $\text{km}^2$ ) <sup>a</sup>	Average slope (%) <sup>a</sup>	Mean elevation (m-asl) <sup>a</sup>	Max elevation (m-asl) <sup>a</sup>	Lakes (count) <sup>b</sup>	Lakes (% area) <sup>a</sup>	Forested (% land area) <sup>c</sup>	Non-forested (% land area) <sup>c</sup>	Non-vegetated (% land area) <sup>c</sup>	Wetlands (% area) <sup>d</sup>
-----------	-------------------------------------	--------------------------------	-------------------------------------	------------------------------------	----------------------------	-----------------------------	-------------------------------------	---	--	--------------------------------

626	3.17	21.7	59	460	28	4.7	29.9	59.4	6.0	48.0
1015	3.33	34.2	132	432	6	9.1	79.8	8.7	2.3	23.8
819	4.81	30.1	248	465	7	0.3	75.3	21.3	3.1	50.2
844	5.71	32.5	218	495	6	0.3	81.6	12.5	2.7	35.2
708	7.79	28.5	93	385	40	7.5	66.4	21.4	4.7	46.3
693	9.28	30.2	230	680	19	4.4	65.9	26.3	3.5	42.8
703	12.79	40.3	325	1012	53	1.9	72.0	20.3	5.7	24.3
Average	6.7	27.7	186	578	22	4.0	67.7	24.2	4.0	27.1

<sup>a</sup>Reproduced from Gonzalez-Arriola et al. (2015).

<sup>b</sup>Lakes are defined as waterbodies > 0.02 ha. From Freshwater Atlas Lakes, British Columbia Ministry of Forests, Lands, Natural Resource Operations and Rural Development, <https://catalogue.data.gov.bc.ca/dataset/cb1e2aba-d3fe-4de1-a2d4-b8b6650b1f6>

<sup>c</sup>Forested, non-forested and non-vegetated landcovers were calculated as % of land in each watershed (total watershed area minus total lake area), using the ecosystem classification maps of Thompson et al. (2016).

<sup>d</sup>Reproduced from Oliver et al. (2017), who estimated wetland cover using the Province of British Columbia Terrestrial Ecosystem Mapping (TEM) (Green, 2014; Gonzalez-Arriola et al., 2015).

## 2 Site description

Calvert and Hecate Islands are located on the central coast of British Columbia, about 350 km northwest of Vancouver and 50 km south of Bella Bella. The islands, 325 and 46 km<sup>2</sup> respectively, are separated by two glacially eroded sea channels, Kwakshua and Meay Channel (Fig. 1), that are connected to Fitz Hugh sound in the east and Hakai Pass in the north. The area's relief ranges from 1012 m a.s.l. in the east of Calvert Island (Mount Buxton) and 495 m a.s.l. on central Hecate Island to relatively low gradient hummocky terrain in the west. The landscape is characterized by extensive wetlands, bog forests, and bog woodlands (Green, 2014; Thompson et al., 2016), with shallow (typically < 1 m) but organic rich soils (Oliver et al., 2017), on faulted and folded intrusive igneous bedrock (primarily quartz diorite) (Roddick, 1996). The soils are thin (< 70 cm on average), organic-rich, and have formed in sandy colluvium and patchy morainal deposits (Oliver et al., 2017), resulting in a soil landscape with limited water storage potential. Forest stands are generally short with open canopies and tree composition is dominated by western redcedar, yellow cedar, shore pine, and western hemlock (Thompson et al., 2016; Hoffman et al., 2021). Understory and wetland plants include bryophytes, salal, deer fern, sphagnum mosses and sedges.

Calvert and Hecate Islands are located within the Hakai Lúxvbálís Conservancy (protected area) and the unceded territories of the Haíłzaqv and Wuikinuxv Nations. The study watersheds have no dams or diversions, no active roads, and little evidence of historic logging except in some shoreline areas which are now well forested. Old-growth forests are extensive and tree ages commonly exceed 250 years (Hoffman et al., 2021). Fire is typically infrequent in the coastal temperate rainforest, yet recent work has revealed legacies of long-term cultural burning near village sites in this area (Hoffman et al., 2016). More broadly, Indigenous oral history and archaeological evidence describe at least 13,000 years of human activity in the area (McLaren et al., 2015; McLaren et al., 2018) and active stewardship is ongoing.

The KWO design captures the seven largest (3.0 to 12.8 km<sup>2</sup>) watersheds draining into Kwakshua and Meay Channel, signified as 626, 708, 703 and 693 (Calvert Island) and 1015, 819, and 844 (Hecate Island). The watersheds are on average 68 % forested, 24 % non-forested but vegetated (including open mainly wetlands with

Formatted: Font: Not Italic

125 short vegetation), 4 % non-vegetated (including mainly exposed bedrock), and 4 % covered by lakes (Thompson et  
al., 2016) (Table 1). A total of 159 lakes (> 0.02 ha) are unequally distributed across watersheds (range of 6–53  
130 lakes per). Contrasting watershed features are summarized by 1) the topography, where 626,  
708, and 1015 drain overall low gradient terrain, 819 and 844 reach medium elevations range from 160 to (465 and  
495 m a.s.l.), and 693 and 703, the largest watersheds, drain Mount Buxton (1012 m a.s.l. and slopes.), which is the  
135 only area experiencing permanent seasonal snow cover; 2) the presence of lakes, where 1015 and 708 encompass a  
large lake (28 - 30 ha), located centrally and near the outlet respectively, watershed 693 is characterized by a chain  
of four larger lakes (> 5 ha) near the outlet, numerous small lakes and ponds (< 1 ha) are scattered across 626, 708,  
and 703, and watersheds 819 and 844 have almost no lake cover; and 3) the landcover, where the Hecate Island  
watersheds are overall more forested than the watersheds on average 31 % Calvert Island (more wetlands with short  
vegetation), 626 stands out for its relatively sparse forest cover and high amount of wetlands/unvegetated areas, and  
watershed 703 is largely unvegetated at high elevations (exposed bedrock) (Table 1).

140 Catchment characteristics vary among the seven gauged watersheds (Table 1, Fig. 1). Watershed 703 (12.8 km<sup>2</sup>) and  
693 (9.3 km<sup>2</sup>) drain the northern aspect of Mount Buxton. Watershed 703 encompasses the mountain top (1012 m  
a.s.l.), has steep slopes (40 % average), is sparsely vegetated at high elevations (5.7 % of total area), and has many  
small lakes and ponds (53, most < 1 ha). Watershed 693 reaches an elevation of 680 m a.s.l., is more gently sloped  
145 (30 %) and is distinguished by a chain of four comparatively large lakes (> 5 ha) near the outlet. Watersheds 819  
and 844 drain the southern aspect of Hecate Island, are similar in size (4.81 and 5.71 km<sup>2</sup> respectively) and elevation  
(max of 465 and 495 m a.s.l. respectively) and exhibit similar landscape features like high vegetation cover (97% of  
watershed area) and very few, small lakes (6-7 lakes < 1.5 ha). The watersheds are only different with respect to  
landcover types, whereas 844 is more heavily forested (85 % vs. 75 %) and 819 has higher wetland cover (50.2 vs.  
35.2 %). Watersheds 626 (3.17 km<sup>2</sup>) and 708 (7.79 km<sup>2</sup>), located in the lower relief terrain of western Calvert Island  
150 (average elevation of 59 and 93 m a.s.l. respectively and < 30 % average slope), have higher lake cover (4.7 and  
7.5% respectively). Watershed 626 is typified by multiple small lakes and a relatively large area of exposed bedrock  
and non-forested vegetated land (e.g. bogs, 59%). Watershed 708 is typified by one centrally located large (30 ha)  
lake. Watershed 1015 (3.33 km<sup>2</sup>) has a subdued topography in the west, characterized by a large lake (28 ha.) near  
the outlet, which is flanked by a steeply sloped ridge in the east (max elevation 432 m a.s.l.). The watershed has a  
relatively high forest cover (80%).

Each watershed has a hydrometric station near the outlet and a meteorological station at low to mid elevation. In  
addition, three meteorological stations have been installed at higher elevations between watershed boundaries (Fig.  
1, Table 2A1). Photos of meteorological and hydrometric stations are given in Fig. A1 and A2.

Formatted: Font color: Black

155 **Table 1: Main characteristics of the seven gauged watersheds.**

<u>Watershed</u>	<u>Area (km<sup>2</sup>)<sup>a</sup></u>	<u>Average slope (%)<sup>a</sup></u>	<u>Mean elevation (m asl)<sup>a</sup></u>	<u>Max elevation (m asl)<sup>a</sup></u>	<u>Lakes (count)<sup>b</sup></u>	<u>Lakes (% area)<sup>a</sup></u>	<u>Forested (% area)<sup>c</sup></u>	<u>Non-forested (% area)<sup>c</sup></u>	<u>Non-vegetated (% area)<sup>c</sup></u>	<u>Wetlands (% area)<sup>d</sup></u>
<u>626</u>	<u>3.17</u>	<u>21.7</u>	<u>59</u>	<u>160</u>	<u>28</u>	<u>4.7</u>	<u>29.9</u>	<u>59.4</u>	<u>6.0</u>	<u>48.0</u>
<u>1015</u>	<u>3.33</u>	<u>34.2</u>	<u>132</u>	<u>432</u>	<u>6</u>	<u>9.1</u>	<u>79.8</u>	<u>8.7</u>	<u>2.3</u>	<u>23.8</u>
<u>819</u>	<u>4.81</u>	<u>30.1</u>	<u>248</u>	<u>465</u>	<u>7</u>	<u>0.3</u>	<u>75.3</u>	<u>21.3</u>	<u>3.1</u>	<u>50.2</u>
<u>844</u>	<u>5.71</u>	<u>32.5</u>	<u>218</u>	<u>495</u>	<u>6</u>	<u>0.3</u>	<u>84.6</u>	<u>12.5</u>	<u>2.7</u>	<u>35.2</u>
<u>708</u>	<u>7.79</u>	<u>28.5</u>	<u>93</u>	<u>385</u>	<u>40</u>	<u>7.5</u>	<u>66.4</u>	<u>21.4</u>	<u>4.7</u>	<u>46.3</u>
<u>693</u>	<u>9.28</u>	<u>30.2</u>	<u>230</u>	<u>680</u>	<u>19</u>	<u>4.4</u>	<u>65.9</u>	<u>26.3</u>	<u>3.5</u>	<u>42.8</u>
<u>703</u>	<u>12.79</u>	<u>40.3</u>	<u>325</u>	<u>1012</u>	<u>53</u>	<u>1.9</u>	<u>72.0</u>	<u>20.3</u>	<u>5.7</u>	<u>24.3</u>
<u>Average</u>	<u>6.7</u>	<u>31.1</u>	<u>186</u>	<u>518</u>	<u>23</u>	<u>4.0</u>	<u>67.7</u>	<u>24.3</u>	<u>4.0</u>	<u>37.1</u>

<sup>a</sup> Reproduced from Gonzalez Arriola et al. (2015).

<sup>b</sup> Lakes are defined as waterbodies > 0.02 ha. From Freshwater Atlas Lakes, British Columbia Ministry of Forests, Lands, Natural Resource Operations and Rural Development. <https://catalogue.data.gov.bc.ca/dataset/cb1e3aba-d3fe-4de1-a2d4-b8b6650fb1f6>

<sup>c</sup> Forested, non-forested (mainly wetlands with short vegetation) and non-vegetated landcovers (mainly exposed bedrock) were calculated as % of watershed area, using the ecosystem classification maps of Thompson et al. (2016).

<sup>d</sup> Reproduced from Oliver et al. (2017), who estimated wetland cover (including forested wetlands) using the Province of British Columbia Terrestrial Ecosystem Mapping (TEM) (Green, 2014; Gonzalez Arriola et al., 2015).

### 3 Methods

#### 3.1 Instrumentation and data collection

165 Seven hydrometric and fourteen meteorological stations were installed in a tight network spanning most of the elevation gradient (Giesbrecht et al., 2021; Fig. 1), as the study area's complex topography leads to rapid changes in climatic parameters over short distances (Beniston, 2006). Station details (installation date, location, and elevation) are provided in Table 2A1, and sensor inventory and specifications can be found in Table A+A2. Essential maintenance, replacement, calibration and field checks of the sensors and station infrastructure occurred twice per year in September and May. The stations were connected to a telemetry network facilitating two-way communication and online data storage to overcome accessibility issues. Data transfer and communication between weather and stream gauging stations is controlled with CR1000 data loggers (Campbell Scientific Ltd.) via 900Mhz UHF radios (RF401 Campbell Scientific Ltd) and custom designed, portable, self-powered repeaters. These repeaters transmit to one of two mountain top communication nodes with 2.4 Ghz and 5 Ghz radios (Ubiquiti airMAX devices), with direct links back to station headquarters. Power is supplied to stations primarily through solar panels, with two stations using a combination of solar panels and micro-hydro power systems. Data are made available in near real-time through satellite internet. The data are managed through a distributed spatial data infrastructure developed by the Hakai Institute to manage, visualize, and share environmental data.

##### 3.1.1 Meteorological stations

180 All meteorological stations were equipped with a tipping bucket rain gauge (TB4, Hydrological Services America, Lake Worth USA and TR-4 Texas Electronics at 'East Buxton' station) and an air temperature/relative humidity sensor (H2SC3, Campbell Scientific, Edmonton, Canada) with solar radiation shield. Snow Continuous measurements of snow depth was measured were taken at three high elevation stations (449 – 740 m a.s.l.) (SR50A:

185 Sonic Distance Sensor, Campbell Scientific, Edmonton, Canada) ~~and a~~. Due to access limitations (remote environment and adverse winter weather conditions), snow density observations could not be taken. A custom-made total precipitation gauge (400 mm diameter pvc pipe, 2000 mm tall, with KPSI 700 pressure transducer) was installed at the 'East Buxton' as well as the 'Reference Station' which has an Alter shield (Campbell Scientific 260-953) to correct for wind-induced undercatch ~~due to wind~~. Wind speed and wind direction were measured at stations with topographic exposure (eight of fourteen stations) (05106C-10: Marine Wind Monitor; Campbell Scientific, 190 Edmonton, Canada). Incoming solar radiation was measured at the 'East Buxton' station (SP110 Apogee Limited).

Formatted: Font: 9 pt

**Table 2: Station details (installation date, location, and elevation), station specific mean annual runoff and weather parameters (± standard deviation) calculated for 2015/2016–2018/2019 water years. Values that are not indicated (–) are not measured at that specific station. Shown are runoff (MAQ), precipitation (MAP), air temperature (MAT), wind speed (MAW), relative humidity (MARH), solar radiation (MAR), and snow depth (MASD). ClimateNA model projections (Vang et al., 2016) of mean annual precipitation with precipitation as snow (PAS) and air temperature (2016–2019) are indicated for reference.**

Station	Date installed (m-y)	Lat	Long	Elev. (m a.s.l.)	MAQ (mm)	MAP (mm) <sup>a</sup>	MAP (PAS)-Clim NA (mm)	MAT (°C)	MAT-Clim NA (°C)	MAW (m s <sup>-1</sup> )	MARH (%)	MASD (m)
ReISm	Nov-15	51.6520	-128.1287	42	-	2452 ± 335*	2423 (67)	8.9 ± 0.3*	9.4	§	82 ± 1*	-
SSN626	Aug-14	51.6408	-128.1219	13	1750 ± 219	2634 ± 322	2327 (62)	8.6 ± 0.4	9.4	-	83 ± 1	-
WNSN626	Sep-15	51.6262	-128.1018	78	-	2966 ± 305	2525 (76)	9.2 ± 0.5	9.3	2.6 ± 0.1	80 ± 1	-
SSN693	Aug-14	51.6442	-127.9978	51	3066 ± 415	3325 ± 414	2655 (80)	8.9 ± 0.4	9.4	1.1 ± 0.1	81 ± 5	-
WNSN693_703	Sep-14	51.6106	-127.9871	449	-	4392 ± 630	3464 (254)	7.4 ± 0.5	7.7	3.0 ± 0.2	83 ± 1	0.6 ± 0.2*
SSN703	Aug-14	51.6466	-128.0257	40	2804 ± 444	-	-	-	-	-	-	-
WNSN703	Sep-14	51.6433	-128.0228	42	-	2855 ± 406	2464 (70)	8.2 ± 0.6	9.5	-	86 ± 1	-
WNSN703_708	Sep-14	51.6222	-128.0507	289	-	3738 ± 287	3148 (156)	8.6 ± 0.5	8.4	3.1 ± 0.1	-	-
SSN708	Sep-13	51.6486	-128.0684	12	1932 ± 293	2440 ± 329	2355 (63)	8.7 ± 0.4	9.5	-	87 ± 1	-
SSN819	Aug-14	51.6619	-128.0419	79	1614 ± 242	2515 ± 309	2546 (75)	8.2 ± 0.4	9.4	-	86 ± 0	-
WNSN819_1015	Sep-14	51.6827	-128.0433	331	-	2685 ± 335	3374 (158)	7.8 ± 0.5	8.6	2.8 ± 0.2	81 ± 1	-
SSN844	Sep-14	51.6608	-128.0025	35	1919 ± 246	-	-	-	-	-	-	-
WNSN844	Jul-15	51.6614	-127.9975	90	-	2951 ± 362	2676 (81)	8.8 ± 0.4	9.4	-	-	-
SSN1015	Aug-14	51.6906	-128.0653	17	1502 ± 275	2244 ± 310	2458 (69)	8.6 ± 0.4	9.4	-	87 ± 1	-
East Buxton	Sep-13	51.5899	-127.9752	740	-	3603 ± 267	3865 (461)	6.0 ± 0.5	6.7	§	81 ± 2	1.5 ± 0.3*
Heckate	Jul-14	51.6826	-128.0228	477	-	2824 ± 282	3512 (194)	7.1 ± 0.5	8.6	4.2 ± 0.3	85 ± 2	0.3 ± 0.2*

<sup>a</sup> Precipitation includes rain + snow measurements at Reference Station (±5% precipitation as snow) and East Buxton (±30% precipitation as snow) and was measured as rain only at all other stations, where snowfall was assumed to be negligible; this was confirmed by the ±5% PAS at Reference Station and the ClimateNA model estimates of PAS never exceeding 5% except at East Buxton.  
<sup>b</sup> 2015–2016 ignored due to data gap  
<sup>c</sup> 2018–2019 ignored due to data gap  
<sup>d</sup> data available but too many data gaps



195 Air temperature, relative humidity and rain were measured at two meters above ground for all stations, except 'East  
Buxton' where seasonal snowpacks necessitate the precipitation gauge orifice and air temperature/relative humidity  
sensor to be installed at 4.5 and 4 meters above ground respectively. Wind speed and direction were measured at 10  
m above the ground at 'Reference Station', 8 m at 'East Buxton' and at 5 m at all other stations. Tipping bucket rain  
gauges (TBRG) were field calibrated semi-annually using a Field Calibration Device (FCD-653, Hydrological  
Services, Lake Worth, USA) with a 200 mm h<sup>-1</sup> nozzle rate. For the field test, the FCD was emptied into the TBRG  
200 twice and the total number of tips were recorded. The current field specification required the TBRG to be within +/-  
6 tips of 202; where 202 tips is the expected number of tips delivered by two applications of the FCD. If the results  
of the field test exceeded this threshold, a correction factor was applied to the TBRG to adjust the volume per tip  
ratio. The air temperature/relative humidity sensors were replaced every two years. The sensors were field checked  
twice per year in between replacements using a 'benchmark' sensor (H2SC3, Campbell Scientific, Edmonton,  
205 Canada). In addition, a second temperature sensor (CS 109, Campbell Scientific) was installed at each site as a  
check and back-up in case of main sensor malfunction. The measurements of the main sensors were corrected if the  
difference between the benchmark and the main sensor measurements exceeded the sum of their accuracies ( $\pm 0.2$   
 $^{\circ}\text{C}$  and  $\pm 1.6\%$ ).

Formatted: Space Before: 0 pt, After: 8 pt

### 3.1.2 Hydrometric stations

210 Stream water level (stage) was continuously measured at each hydrometric station (starting fall 2013 for watershed  
708 and fall 2014 for all other watersheds) and periodic discharge measurements were taken along the range of  
potential water levels to develop stage-discharge rating curves.

Station locations were selected based on channel stability and potential to measure discharge. Pressure transducers  
(OTT PLS-L, 2016), anchored to bedrock or boulders with cables armored with steel, were used to measure stage (0-  
215 4 m range SDI-12). The mean, maximum, minimum, and standard deviation of five second sampling intervals were  
recorded every five minutes. Stand-alone water level recorders (Odyssey Capacitance Water Level recorder - Data  
Flow Systems PTY Ltd 2016, replaced by HOBO Water Level Data Logger - U20L-04 in September 2018) were  
installed in proximity to each pressure transducer as a backup in case of sensor or data logger malfunction. Relative  
location of each pressure transducer was regularly surveyed to a benchmark to help identify potential sensor  
220 movements. Stream conditions and streambed morphology were monitored through time lapse cameras pointing at  
each station's stream cross-section and through photos taken during maintenance visits.

Low flows, generally below  $0.5\text{ m}^3\text{ s}^{-1}$ , were measured manually using the velocity-area method midsection  
discharge equation (ISO, 2007), at least once a year during the summer season. Flow velocities, averaged over a 30 s  
measurement interval, were measured with the Swoffer 2100 propeller type mechanical current meter (Swoffer  
225 Instruments Inc., Seattle, USA) or the Sontek Flowtracker acoustic doppler velocimeter (SonTek, San Diego, USA).  
Manually measuring flows at moderate to high flows was a challenge for multiple reasons: rapid streamflow  
responses to rain events (generally under 12 hours, Table 4); late fall and winter storm occurrences when field crews  
were only on site periodically; and safety issues with both accessing the hydrometric stations and taking manual  
stream flow measurements at high water levels. Therefore, a novel discharge measurement system was designed

Formatted: Font: 9 pt, Bold

230 based on the salt in solution method as described by Moore (2005): salt in solution (~~51.5 L~~ water to ~~4 kg~~ kg salt) is  
stored in a 1000L IPC tote on site, with a pump to pre-mix the salt solution before a measurement, and another pump  
to transfer the solution to a stainless-steel cylinder used to calculate the volume, before it is transferred to a dumping  
mechanism over the stream that holds up to ~~40L~~40 L (Fig. A2). At predefined stages - based on gaps in the stage-  
discharge rating curve - a signal is sent to release ~~a predetermined volume of the~~ salt solution. ~~This volume is~~  
235 ~~targeted~~The volume of solution was predetermined (higher volumes for higher stage levels) to induce a clear signal  
~~on top of potential natural river salinity fluctuations, but never exeeed~~exceeding the most sensitive toxicity threshold  
of 400 mg L<sup>-1</sup> (Moore 2004a, 2004b). Upon initiation of the salt solution pump sequence, a second command is sent  
to a downstream data logger to activate at a minimum two electrical conductivity sensors (Global Water  
instrumentation, Inc., College Station, USA; T-HRECS Fathom Scientific Ltd), installed at opposing sides of the  
240 stream to capture the passing salt wave. Upon completion of the dump sequence, the EC data are transmitted via the  
telemetry network for data storage and processing. Recharging of the salt solution reservoir was done manually and  
a calibration factor (CF), needed to convert EC sensor readings to the relative salinity of the salt solution, was  
determined prior to refill as well as after refill, with a goal of two CFs per salt fill. To increase accuracy, a triplicate  
reading was taken for each CF and each salt in solution measurement was matched with one set of triplicate CF  
245 values based on their sampling date. Finally, discharge was calculated using the salt volume data and relative  
salinity (Moore, 2005) for each EC sensor and for each CF. This yielded six discharge values per measurement,  
which were averaged to calculate final discharge.

### 3.2 Data analysis and quality control

Characterization of data quality was done by two descriptors, which were stored together with each observation:  
250 data processing levels and data quality flags. Data processing levels indicate the status of data handling:  
unpublished, raw data are termed 'level 1', data subjected to quality control are labelled 'level 2', and 'level 3'  
refers to derived data products (e.g., gap-filled data). The flagging scheme consists of two tiers: the first tier includes  
generic flags, e.g., 'Accepted Value' (AV), 'Estimated Value' (EV), 'Suspicious Value Caution' (SVC), and  
'Suspicious Value Discard' (SVD) (Henshaw & Martin, 2014). The second tier is a use-case-specific comment on  
255 data quality (e.g., background events affecting data values or failed individual quality tests). Any changes or  
corrections applied to the data are stated in the second tier allowing data users to customize data filling specific to  
their research objectives. In addition to general quality checks, a quantitative uncertainty analysis of the streamflow  
data was performed, focusing on discharge measurement and rating curve ~~effor~~errors. The following section  
provides details specific to each dataset for quality assurance and quality control.

#### 3.2.1 Weather data

260 Measured weather data ~~includes~~include air temperature (°C), relative humidity (%), rain (mm), total precipitation  
(mm), snow depth (m), wind speed (m s<sup>-1</sup>), wind direction (degree), and incoming solar radiation (W m<sup>-2</sup>). Quality  
assurance procedures involved a combination of visual and automated inspection of the data for inconsistencies,  
such as sudden large increases in measurements, as well as outliers. Table ~~A2A~~A3 details the thresholds used to  
265 identify outliers; and ~~the rate of change (ROC) used to identify~~ inconsistencies in the data. All data, except for the

Formatted: Default Paragraph Font

Formatted: Line spacing: 1.5 lines

Formatted: Space Before: 0 pt, After: 8 pt

snow depth data, were gap-filled using linear regression from nearby station data. For instances when air temperature readings were faulty, relative humidity (RH) was first converted to vapour pressure and was then converted back to RH based on the appropriate temperature from the nearest station showing the greatest coefficient of determination. ~~All observations were recorded on a 5-minute time step and aggregated to the hourly time step.~~

270 Precipitation data required additional quality assurance procedures due to errors introduced by wind. Tipping bucket rain gauge (TBRG) data from ‘WSN626’, ‘WSN693\_703’, ‘WSN703\_708’, ‘WSN819\_1015’, ‘Hecate’, ‘East Buxton’, ‘SSN693’, ‘Reference Station’, and total precipitation data from ‘East Buxton’ and ‘Reference Station’ were corrected for undercatch (Yang et al., 2008) using the wind speed adjustment from Legates et al. (2004). This correction was applied to the hourly timestep only, as wind data at the 5-min level introduced too much noise to the  
275 corrected dataset. In addition to these corrections, suspect spikes in rain intensity caused by wind-induced tips were identified, initially through visual inspection, but starting from February 2016 through an automated method: when three or more tips ~~occurred~~ occurred within a 5 s scan interval, the data were flagged assuming that 3 or more tips within 5 s would yield an extremely unlikely rainfall rate for the area ( $> 200 \text{ mm h}^{-1}$ ). All suspect tips were removed and gap-filled. Obvious spikes in the snow data ( $> 1 \text{ m}$ ) that did not correspond to increases in total precipitation  
280 were removed, but recurrent gaps in the snow depth data that were caused by sensor failures were too large to be gap-filled.

### 3.2.2 Streamflow data

~~Stage-discharge rating curves were calculated for each watershed (Fig. 2). Rating curves were updated generally once per year, with each site having between 5 to 50 new measurements.~~

285 Stage data were quality controlled and flagged by visual inspection; any spikes ~~of,~~ drops ~~and,~~ or changes in stage not associated with a rain event were further inspected and where necessary manually flagged ~~or~~ and corrected. Time As an example, time-lapse photos were also used to assess the turbulence of flows affecting sensor  
measurements. confirm debris blockages to explain and correct unexpected small fluctuations in stage. Data gaps  $< 30 \text{ min}$  were filled using linear interpolation (computer automated) while longer gaps were filled manually using  
290 linear regression of the data from the back-up stand-alone water level sensors that were installed in proximity of the main stage sensors. In the one exceptional case where both water level sensors were malfunctioning (Watershed 819, 1 Dec 2015–17 May 2016), the stage records of watershed 844, the neighboring watershed sharing many catchment characteristics, were used to estimate stage by linear regression.

Discharge measurement uncertainties were calculated using the Interpolated Variance Estimator (Cohn et al., 2013)  
295 for the Velocity-Area method, which estimates uncertainty from the fluctuations in the flow velocity and depth profile, as well as from calibration errors in the width, depth, and velocity measurements. Uncertainty estimations for the automated ‘salt solution’ discharge measurements were recorded in both a quantitative and a qualitative manner. First, a quantitative % error was calculated by error propagation of the uncertainty in the volume of salt solution, the EC sensor resolution, and the salt solution-electrical conductivity calibration factor (Korver et al.,  
300 2018). Measurements with uncertainties higher than 20 % were excluded from further analysis. Second, the EC data

Formatted: Heading 3, Space Before: 0 pt, After: 0 pt

Formatted: Font: Bold, Font color: Auto

were assessed for noise and spikes, caused by turbulence at high flows; where possible spikes were removed, and noisy data were smoothed. Measurements that contained EC readings so noisy that they could not be corrected, were removed. As an example, peak flows at watershed 703 were not successfully measured due to extremely turbulent flow conditions and hence extremely noisy EC data. Last, an assessment of salt mixing conditions at the downstream EC sensor site was performed by comparing calculated discharge from the two EC sensors placed within opposing sides of the river. If calculated discharge differed more than 1 %, mixing conditions were considered poor and, unless the measurement filled an essential gap on the stage-discharge rating curve, it was excluded from further analysis.

310 ~~Rating~~ Each discharge measurement was paired with a time-averaged measurement of stage (recorded every second for the duration of the measurement), and rating curves were plotted for each station ~~were plotted~~ using locally estimated scatterplot smoothing (LOESS) regression ~~of the stage-discharge measurements (Fig. (Fig. 2)).~~ The span widths of the LOESS fits were visually assessed and selected. ~~Discharge data~~ Between 5 to 50 new measurements were added to each station's rating curve every year. Measurements prior to and after high-flow events were analyzed for possible shifts in the rating curves; in case of a shift, time-lapse videos and photos taken during maintenance surveys were investigated to confirm a concurrent change in streambed morphology, and a new curve was applied to the discharge time-series from the onset of the high-flow event. The curves were extrapolated to minimum and maximum stage of the five-year stage time-series, estimating ~~minimum~~ zero stage to equal zero flow, and estimating maximum flow by extrapolating a power-law equation fitted on the upper section of the rating curves.

320 Following the methodology proposed by Coxon et al. (2015), ~~rating curve uncertainties were quantified by plotting 95 % confidence intervals (CI) were plotted around the rating curves. CIs were derived from 500 curve fitting results of LOESS regressions on 500 randomized sets of~~ in two steps: first, the absolute error of each stage-discharge measurements and their maximum and minimum absolute measurement errors. Measurement error of a single stage-discharge set was calculated by error propagation of the discharge measurement uncertainty (described above) and the stage measurement uncertainty. ~~The latter were~~ Stage measurement uncertainty was calculated ~~from~~ as two times the standard deviation of stage values recorded during the discharge measurement, so that measurements taken during rapidly falling or rising water levels ~~get~~ got assigned higher uncertainties. ~~For each~~ The accuracy of the stage-sensors used (+/- 0.2 cm) was found to be inconsequential to the final calculation of discharge uncertainty, compared to flow turbulence and rapidly changing water levels. Second, CIs were derived from 500 curve fitting results of LOESS regressions on 500 randomized sets of stage-discharge measurements and their maximum and minimum absolute measurement ~~set~~ errors. For each mm of stage on the rating curve, 500 discharge values and 500 standard deviations ~~are~~ were predicted and combined in a Gaussian mixed model, to derive minimum and maximum absolute discharge (95 % CI). Any minimum absolute flow extending below zero was set to zero. Calculations were done in R and the code has been made publicly available (Sect. 7). The output is a stage-discharge lookup table with values of discharge, minimum discharge (95 % CI), and maximum discharge (95% CI) for each mm of stage.

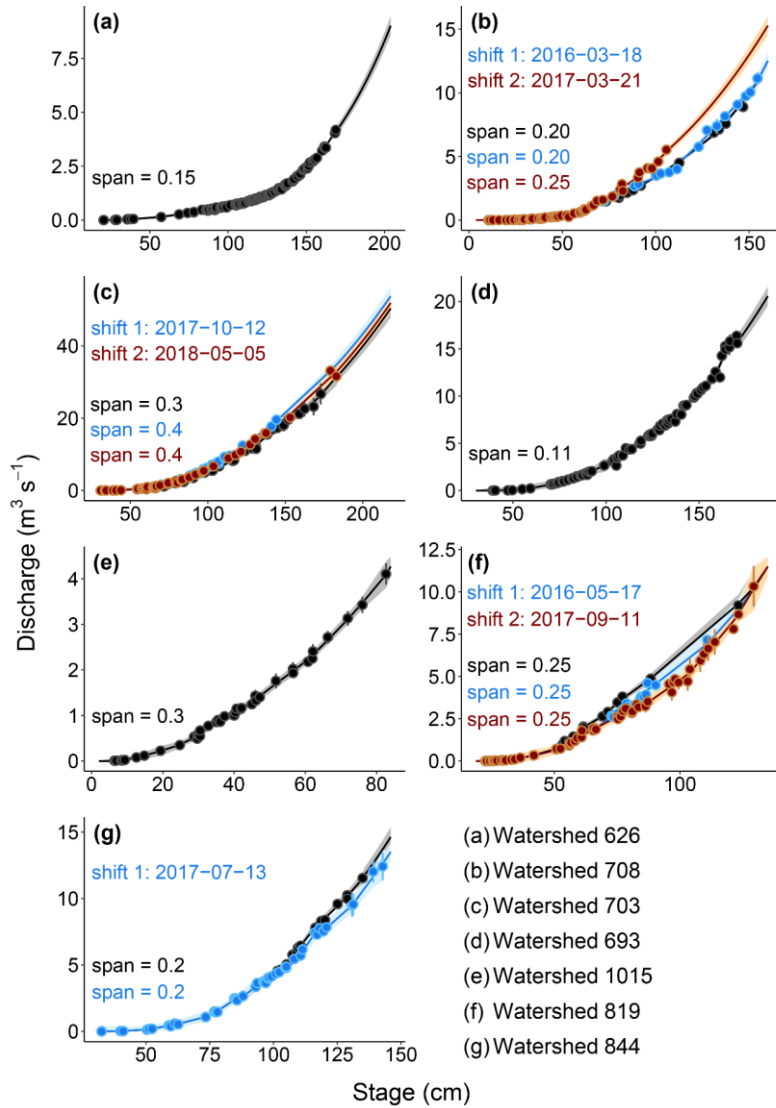


Figure 2: Stage-discharge rating curves with 95 % confidence bands for the seven gauged watersheds. Large storm events caused rating curves to shift at some of the watersheds; dates are indicated for each individual shift. Rating curves were plotted using LOESS regression and span widths ('span') were visually selected for each individual curve.

## 340 4 Data summary and overview

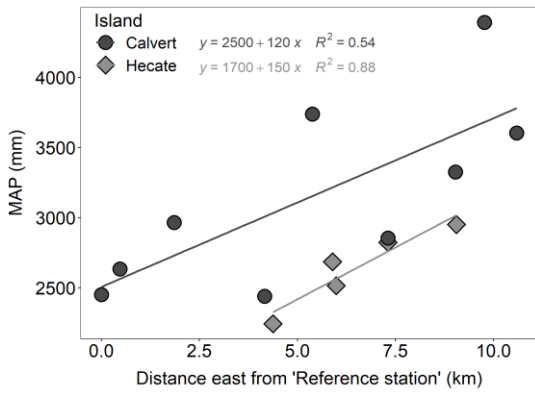
### 4.1 Weather and climate

Precipitation from 2015 to 2019 averaged Annual precipitation was 3246 mm over (average of all watersheds, stations within watershed boundaries), however this may have been slightly underestimated as precipitation was measured as rain only, disregarding snow, at all but two locations (Table 2). Temperatures were generally mild with mean annual temperatures of 8.2 °C ranging from 2.6 °C in December to 14.5 °C in August. Winter was characterized by high-intense windstorms ( $> 10 \text{ m s}^{-1}$ ) from the southeast shifting to calmer winds from the south- and northwest in summer. Snowpacks were recorded at high elevations between December and May all years: persistently above 700 m a.s.l. and intermittently between 400 and 500 m a.s.l. However, there was a high amount of variation in weather conditions by season, year, location, and elevation, which will be described in more detail below.

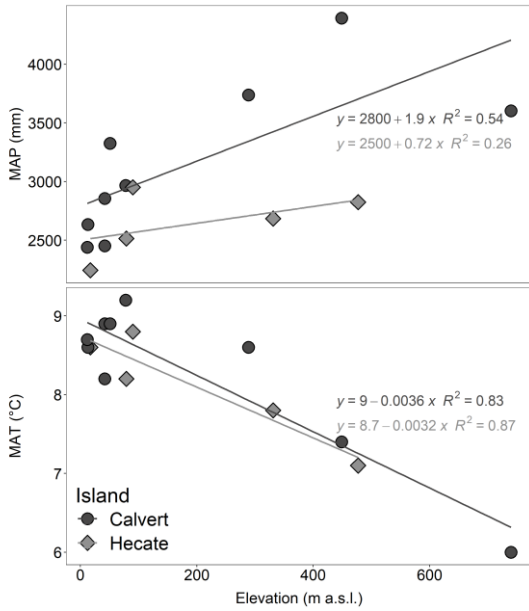
#### 350 4.1.1 Spatial variations

In general, mean annual precipitation increased in a west to east direction, and by elevation, however the rates of change varied due to local conditions. Calvert Island received more precipitation (3353 mm per year) than Hecate Island (2676 mm per year), and for low elevation stations ( $< 100 \text{ m a.s.l.}$ ), precipitation increased along a west to east gradient by about  $120 \text{ mm km}^{-1}$  on Calvert Island ( $R^2 = 0.54$ , for stations between 'Reference Station' and 'East Buxton') and  $150 \text{ mm km}^{-1}$  on Hecate Island (Fig. 3  $R^2 = 0.88$ , for stations between 'SSN1015' and 'WSN844'). Precipitation increased with elevation: only minimally on Hecate Island (about 70 mm per 100 meter,  $R^2 = 0.26$ ) and more pronounced on Calvert Island (about 190 mm per 100 meter) (Fig. 4,  $R^2 = 0.54$ ), likely because the topography of Hecate Island is subdued (max elevation of 495 m a.s.l.) compared to Calvert Island's Mount Buxton (max elevation of 1012 m a.s.l.). There was almost a 50 percent increase in mean total precipitation (3603 vs. 2452 mm) between 'Reference Station' on western Calvert Island (42 m a.s.l.) and 'East Buxton' in the east (740m a.s.l.), with 5 % versus 30 % falling as snow at the respective stations. The seasonal snowpack at 'East Buxton' station reached an average maximum depth of 1.4 meters, whereas intermittent snow cover records at lower elevation ('WSN693\_703', 449 m a.s.l.) and at the south facing slope of Hecate Island ('Hecate', 477 m a.s.l.) never exceeded 0.6 and 0.3 meters respectively.

365 Air temperature decreased with increasing elevation at a rate of approximately 0.35 °C per 100 meters (-0.36 and -0.32 °C per 100 m on Calvert ( $R^2 = 0.83$ ) and Hecate Islands ( $R^2 = 0.87$ ) respectively), from 8.7 °C at sea level to 6.0 °C at 740 m a.s.l. (Fig. 4). This lapse rate varied seasonally with small differences in temperature between low and high elevation stations during summer months (-0.1 °C per 100 m in August) and large differences in winter (-0.5 °C per 100 m in February). All stations recorded an average relative humidity (RH) between 80 and 370 87 %, with high elevation stations reaching lower RH's (e.g. minimum of 16 % daily RH at 'East Buxton') than low elevation stations (e.g. minimum of 37 % daily RH at 'SSN708'). General wind directions were uniform across Calvert and Hecate Islands, except for the areas around Mount Buxton which showed local variability. Highest wind speed was recorded at 'Hecate' station ( $27.3 \text{ m s}^{-1}$ ), which also recorded highest winds on average ( $4.4 \text{ m s}^{-1}$ ) and station 'SSN693' was, despite being adjacent to a lake, most sheltered (average of  $1.1 \text{ m s}^{-1}$ ). Station specific annual weather parameters are summarized in Table 2.



380 **Figure 3: Mean annual precipitation (MAP) for meteorological stations on Calvert and Hecate Islands, along a longitudinal gradient (expressed as distance east from the westernmost 'Reference Station'). Regression slopes indicate a ~120 mm and a ~150 mm increase in precipitation per km east for Calvert and Hecate Islands respectively. Note that precipitation includes measurements of snow for 'Reference Station' (0 km, 2452 mm) and 'East Buxton' (10.6 km, 3603 mm) stations only, thus values of all other stations might be underestimated.**



385 **Figure 4: Mean annual air temperature (MAT) and mean annual precipitation (MAP) by elevation above sea level (a.s.l.), for meteorological stations on Calvert and Hecate Islands. Precipitation increases by approximately 190 and 72 mm and air temperature decreases by 0.36 and 0.32 °C per 100 meters on Calvert and Hecate Islands respectively.**

**Table 2: Spatial variability of weather variables by meteorological station. Station names refer to 'Stream Sensor Node' (SSN) or 'Weather Sensor Node' (WSN), followed by the watershed ID, and are ordered by location (west to east on Calvert, then Hecate Islands). Annual means ( $\pm$  standard deviation) were calculated for 2015/2016 – 2018/2019 water**

years. Values that are not indicated (-) are not measured at that specific station. Shown are precipitation (MAP)<sup>a</sup>, air temperature (MAT), wind speed (MAW), relative humidity (MARH), and snow depth (MASD). As MAP was measured as rain only at most stations, ClimateNA model projections (Wang et al., 2016) of precipitation with precipitation as snow (PAS) are indicated for reference.

Station	MAP (mm) <sup>a</sup>	MAP (PAS) Clim NA (mm)	MAT (°C)	MAW (m s <sup>-1</sup> )	MARH (%)	MASD (m)
<u>RefStn</u>	2452 ± 335*	2423 (67)	8.9 ± 0.3*	§	82 ± 1*	-
<u>SSN626</u>	2634 ± 322	2327 (62)	8.6 ± 0.4	-	83 ± 1	-
<u>WSN626</u>	2966 ± 305	2525 (76)	9.2 ± 0.5	2.6 ± 0.1	80 ± 1	-
<u>SSN708</u>	2440 ± 329	2355 (63)	8.7 ± 0.4	-	87 ± 1	-
<u>WSN703 708</u>	3738 ± 287	3148 (156)	8.6 ± 0.5	3.1 ± 0.1	-	-
<u>WSN703</u>	2855 ± 406	2464 (70)	8.2 ± 0.6	-	86 ± 1	-
<u>SSN693</u>	3325 ± 414	2635 (80)	8.9 ± 0.4	1.1 ± 0.1	81 ± 5	-
<u>WSN693 703</u>	4392 ± 630	3464 (254)	7.4 ± 0.5	3.0 ± 0.2	83 ± 1	0.6 ± 0.2*
<u>East Buxton</u>	3603 ± 267	3865 (461)	6.0 ± 0.5	§	81 ± 2	1.5 ± 0.3*
<u>SSN1015</u>	2244 ± 310	2438 (69)	8.6 ± 0.4	-	87 ± 1	-
<u>WSN819 1015</u>	2685 ± 335	3374 (158)	7.8 ± 0.5	2.8 ± 0.2	81 ± 1	-
<u>SSN819</u>	2515 ± 309	2546 (75)	8.2 ± 0.4	-	86 ± 0	-
<u>Hecate</u>	2824 ± 282	3512 (194)	7.1 ± 0.5	4.2 ± 0.3	85 ± 2	0.3 ± 0.2*
<u>WSN844</u>	2951 ± 362	2676 (81)	8.8 ± 0.4	-	-	-

<sup>a</sup> Precipitation includes rain- + snow measurements at 'Reference Station' (~5 % precipitation as snow) and 'East Buxton' (~30 % precipitation as snow) and was measured as rain only at all other stations, where snowfall was assumed to be negligible; this was confirmed by the ~5 % PAS at 'Reference Station' and the ClimateNA model estimates of PAS never exceeding 5 % except at 'East Buxton'.

\* 2015-2016 ignored due to data gap

§ data available but too many data gaps

#### 4.1.2 Temporal variations

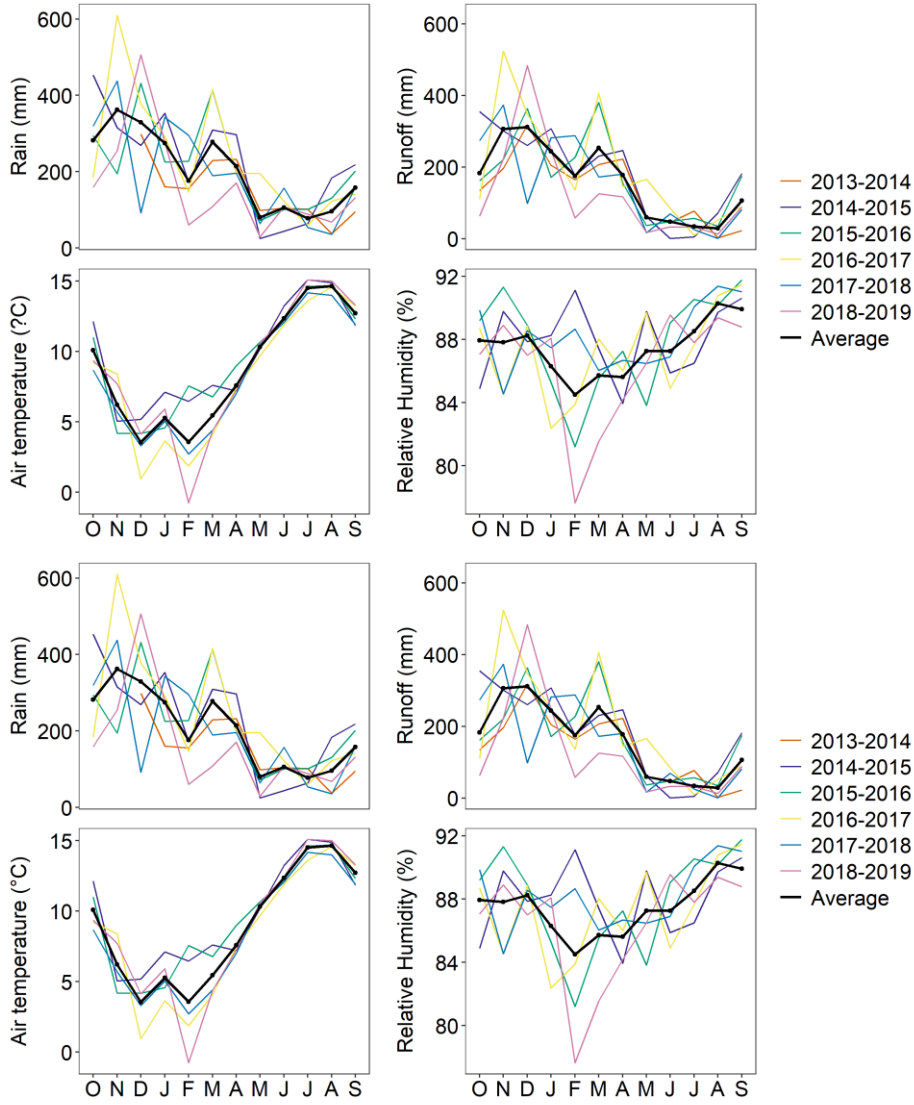
Seasonal variations in weather variables were analyzed for station 'SSN708', the station with the longest record (installed September 2013, 12 m a.s.l.): Calvert and Hecate Islands had wet (Oct – Apr) and comparatively dry (May – Sep) seasons, with the dry season starting abruptly in May but transitioning gradually into the wet season in September (Fig. 53). Although average monthly rainfall was distinctly lower in the dry season (128 versus 320 mm in the wet season), rain events still regularly occurred: the longest dry periods never exceeded between 9 and 11 consecutive days, usually in July or August. The wet seasons were marked by large inter-monthly as well as inter-annual variations (58 - 524 mm per month), whereas variations were comparatively small during the dry seasons (22 - 218 mm per month). November was the wettest, and July the driest month of the year (average of 362 and 78 mm respectively). Frequently recurring high-wind storms (> 10 m s<sup>-1</sup>) from a predominantly southeastern direction characterized the wet season and low northwest as well as southwest winds (< 10 m s<sup>-1</sup>) prevailed during the dry season (Fig. 6)-4, averaging each year to 2.7 m s<sup>-1</sup>. Monthly average air temperature followed an annual cycle ranging between 2.2 °C in February to 14.5 °C in August, with January peaking to 4.3 °C in mid-winter. This seasonal trend was consistent between years, except for the month of February which varied markedly from year to year (between -0.8 and 7.6 °C). Similar to Like air temperature, relative humidity followed an annual cycle peaking



415 in August-September (90 %) and reaching a low in February (85 %), with relatively more year-to-year variability in winter.-

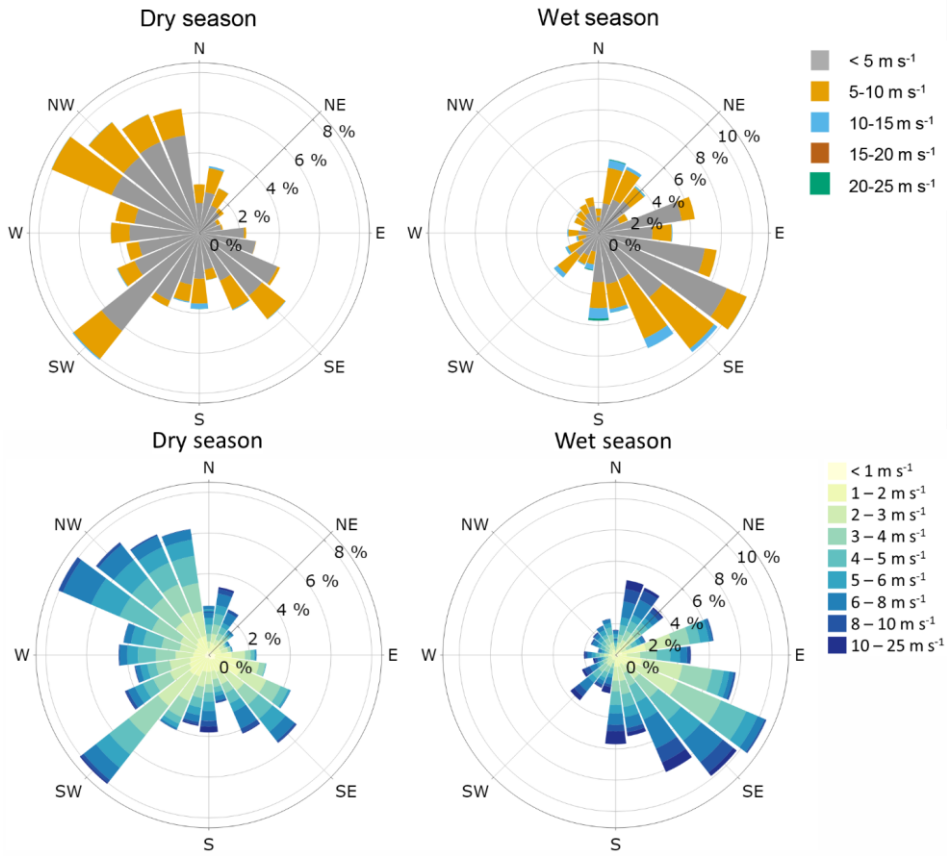
Between water years, average precipitation and air temperature varied, whereas wind speed and relative humidity were consistent (2.7 m s<sup>-1</sup> and 82 – 84 %). Water year 2016-2017 was within the short record period relatively wet and cool (7.6 °C, 3681 mm), whereas 2018-2019 was drier than average (2770 mm, Table 3). Maximum and minimum air temperatures of 30 °C and -16.3 °C were recorded in September 2016 ('SSN693' station) and February 420 2019 ('East Buxton' station). Snowfall was highest in the winter of water year 2017-2018 and lowest in 2015-2016, with maximum snow depths measuring 1.8 and 0.2 meters respectively at 'East Buxton' station. Maximum snow accumulation was usually reached in March (Table 3).

425 Compared to the 1981-2010 climate normal (8.5 °C, 3602 mm, Table 4), which was calculated for the area of the observatory from a locally downscaled climate model (ClimateNA, Wang et al. 2016), the time period between October 2014 and October 2019 was slightly cooler and drier (8.1 °C, 3246 mm), except for water year 2016-2017, which was within the short record period anomalously wet and cool (7.6 °C, 3681 mm, Table 3). However, interpreting these deviations from the climate normal warrants caution, as they are more likely explained by discrepancies in the estimation of climate parameters by ClimateNA. When comparing the observatory's data with projected ClimateNA data for the period between 2016 and 2019 (averaged station specific precipitation and air 430 temperature), they overestimated precipitation at Hecate Island weather stations by 30-700 mm, but underestimated precipitation at Calvert Island by 80-900 mm (Table 2). The precipitation overestimation on Hecate Island is also apparent when comparing watershed averaged modelled climate normals with measured data, which exceed 1000 mm per year (Table 4).



435

Figure 53: Seasonal rain, runoff, air temperature and relative humidity by water year. Monthly totals (rain, runoff) and monthly averages (air temperature, relative humidity) from station 'SSN708' are shown, the station with the longest record (installed September 2013, 12 m a.s.l.).



**Figure 64:** Average hourly wind speeds and wind directions during the dry (May-Sep) and the wet (Oct-Apr) meteorological seasons. Frequency of occurrence is indicated in % of time for the entire measurement record of ‘Hecate’ station (Oct 2015 – Oct 2019).

Table 3: Total Annual variability of precipitation, discharge/runoff, mean discharge, maximum snow depth, and mean air temperature, relative humidity (RH), and wind speed (by water year Oct 1st – Sep 30th). Runoff was averaged over all seven watersheds, scaled by watershed area. Discharge (m<sup>3</sup>) is a total of all seven watersheds. Precipitation and streamflow (m<sup>3</sup>s<sup>-1</sup>) was averaged over all seven watersheds. Rain, air temperature and relative humidity data were averaged over all meteorological stations, except 'Reference Station' (no data 2015-2016), and 2014-2015 was not calculated because stations 'WSN6226' and 'WSN844' had not been installed yet. Maximum snow depth was determined from daily aggregated values of 3 h rolling moving averages.

Water year	Total precipitation (m)	Total runoff (m)	Total discharge (x10 <sup>6</sup> m <sup>3</sup> )	Mean streamflow (m <sup>3</sup> s <sup>-1</sup> )	Max. snow depth (m) <sup>b</sup>	Mean air temp (°C)	Mean RH (%)	Mean wind speed (m s <sup>-1</sup> )
2014	NA	2789	130.8	0.593	0.2 (26 Feb)	NA	NA	NA
2015	3253	2423	113.7	0.513	1.1 (15 Mar)	8.8 (-10.1)	84 (-23)	2.7 (0)
2016	3681	2724	127.8	0.579	1.8 (17 Mar)	7.6 (-13.5)	84 (-23)	2.8 (0)
2017	3279	2329	109.2	0.495	1.6 (4 Mar)	8.0 (-11.0)	83 (-17)	2.7 (0)
2018	2770	1791	84.0	0.380	1.0 (12 Mar)	8.3 (-16.3)	82 (-17)	2.7 (0)
2019	3246	2317	108.7	0.492	1.4 (26.1 Mar)	8.2 (-12.2)	83 (-20)	2.7 (0)
Average <sup>d</sup>	3246	2317	108.7	0.492	1.4	8.2 (-27.5)	83 (99)	2.7 (21.0)

<sup>a</sup> Underestimate because all stations, except for 'East Buxton', only measure rain and not rain + snow.

<sup>b</sup> Measured at 'East Buxton' station (740 m a.s.l.).

<sup>c</sup> Measured at 'Hecate' station.

<sup>d</sup> Averaged over water years 2015-2016 to 2018-2019.

#### 4.2 Streamflow and catchment processes

Average yearly runoff from all watersheds, scaled by watershed area, was 2317 mm, suggesting that ~30 % of precipitation (3246 mm) ~~is was~~ not accounted for in surface runoff. The average flux of freshwater from the seven watersheds was 0.1087 km<sup>3</sup> per year. Seasonal runoff patterns followed the wet (Oct – Apr) and dry (May – Sep) patterns of rainfall, with runoff dropping abruptly in May but increasing gradually into the wet season in September reaching highest flows in November and December (Fig. 53). Runoff generated in the wet season accounted for 84 % of total average yearly runoff.

Freshwater fluxes were dominated by large storm events: 34 % of all freshwater delivered to the ocean occurred during very high flows that were only exceeded for 5 % of the record (≥ P5 flows), and although none of the rivers fully ceased to flow during the record period, baseflows were low with P95 flows approaching zero (Table 4). The majority (92 %) of the ≥ P5 flows occurred during the wet season, with 48 % occurring in November and December. In accordance, 98 % of all days with very low flows (≤ P95) occurred during the dry season of which 52 % occurred

Deleted Cells

Deleted Cells

Deleted Cells

Deleted Cells

Formatted Table

Formatted Table

470 during the month of August. Storm events resulted in rapid streamflow responses: average lagtimes (the time from  
peak rain to the start of rise in streamflow) were less than 8 h for most watersheds; average peaktimes (the start of  
rise in streamflow to peak discharge) were generally under 12 h (Table 4). However, runoff responses varied across  
the study area: this is illustrated by Figure 75 which shows the hydro-hyetograph of a large rainstorm which  
produced 114 mm over 3 days and reached highest rain intensity (74 mm in 24 h) on 16 October 2017. Discharge  
475 peaked at 50 and 20 m<sup>3</sup> s<sup>-1</sup> at watersheds 703 and 693, but never exceeded 12 m<sup>3</sup> s<sup>-1</sup> in the other rivers. This can only  
be partially explained by differences in watershed size; those watersheds draining large lakes (1015 and 708) or a  
chain of lakes (693), had relatively subdued peak flows and longer lasting receding limbs. In addition, whereas peak  
flows generally showed a positive relation to watershed size, high flow values (P5) of watersheds 708 and 1015  
were subdued compared to similar, or smaller sized watersheds (Table 4). Further, lagtimes and peaktimes of  
480 watersheds 1015 and 693 (~20 and ~25 hours) were much higher than those of the other watersheds, including  
watershed 708; this can be explained by the relatively small contributing watershed area upstream of 708's large  
lake, whereas the lakes at 1015 and 693 are located close to the watershed outlets.

Variations in discharge volume and streamflow responses among the seven watersheds can be explained by  
watershed characteristics but also by the spatial variation in precipitation (Sect. 4.1.1). For example, although  
485 freshwater fluxes (total volume) were directly related to watershed size, runoff (area scaled yields) varied greatly  
between 1502 and 3066 mm per year for watersheds 1015 and 693 respectively, showing a clear spatial pattern of  
increasing runoff from west to east, with lower overall runoffs on Hecate Island. ~~Discharge~~These patterns mirror  
those of rain and total precipitation where inputs vary between 2465 and 3774 mm per year at watersheds 1015 and  
693 respectively. There are potentially three factors that contributed to these differences; first the presence of Mount  
490 Buxton ~~with peak elevations of 1012, 680, and 385 m a.s.l. in watershed 703, 693 and 708 respectively,~~ which  
resulted in elevated precipitation lapse rates on eastern Calvert Island. Second, the ~~majority high occurrence~~ of large  
storm events ~~occurred during the wet season when dominant with wind direction was directions~~ from the southeast,  
~~and thus there was potential that Hecate Island and western Calvert Island were being affected by potentially causing~~  
a rain shadow from Mount Buxton. Last, the steep relief, exposed bedrock, and sparsely vegetated and shallow soils  
495 at high-elevation areas of Mount Buxton ~~contributed contributing~~ to rapid runoff generation and elevated runoff  
coefficients of 77 and 81 % (versus 60 to 66 % for the other watersheds, Table 4). ~~However, presented watershed~~  
~~averaged precipitation estimates do not include any stations above 740 m a.s.l., and thus are potentially~~  
~~underestimating total precipitation, resulting in overestimated runoff coefficients in watershed 703 and to a lesser~~  
~~extent in 693.~~

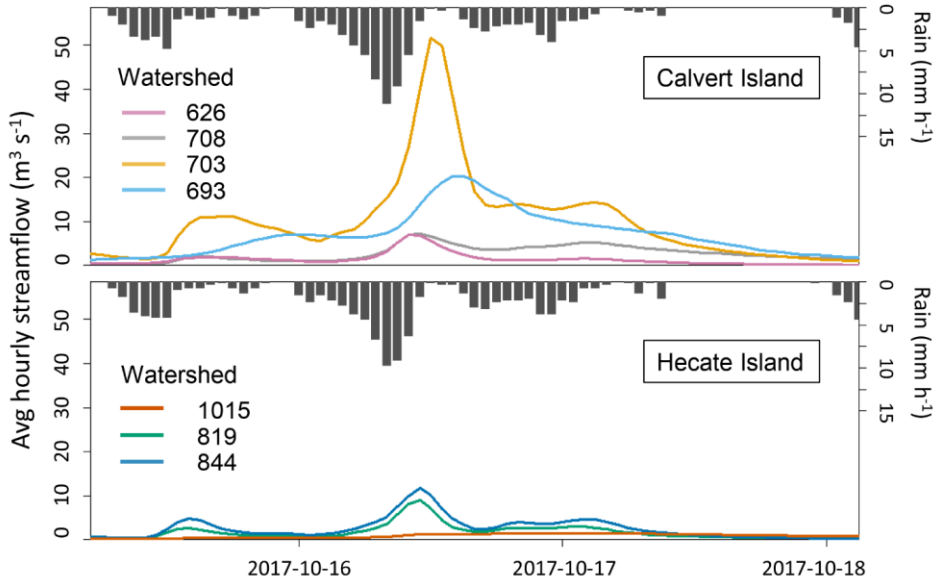
500 A muted freshet from seasonal snowpacks contributed to stream flow in watersheds 703 and 693. Visual inspection  
of the hydrograph of watershed 703 showed daily fluctuations of streamflow during dry conditions from April to  
June, with peak flows occurring ~12 hours after maximum daily air temperature (Fig. 8A3). These streamflow  
fluctuations were, compared to peak flows after rainfall events, small (increases of a maximum of 0.2 m<sup>3</sup> s<sup>-1</sup>, versus  
up to 1 to 40 m<sup>3</sup> s<sup>-1</sup> during rain events) and could not be distinguished during rainy periods, suggesting snowmelt  
505 ~~makes made~~ up a small component of annual runoff generation. However, the Mount Buxton snowpack has the

potential to contribute to peak flows during rain-on-snow events, especially in watersheds 703, 693 and to a lesser extent in 708.

510 Based on the general climatic conditions and hydrographs, these watersheds have rainfall-dominated (pluvial) streamflow regimes with peak flows occurring from the early fall through to mid-winter and low flows in the summer dry months (Moore et al., 2012). This contrasts to the freshwater fluxes from one of the major drainage basins within the larger study area, the Wannock river catchment (3900 km<sup>2</sup>, ~50 km east of Calvert Island), which has a snow (nival) and glacial melt dominated regime, with the highest sustained flows in the summer months. Total Wannock river freshwater fluxes reached on average 9.5742 km<sup>3</sup> per year which is around a factor 100 higher than the fluxes from the seven Calvert and Hecate Island watersheds combined (0.1087 km<sup>3</sup> per year). However, yields (scaled by watershed size) were comparable (2317 vs. 2455 mm) (Wannock River daily discharge data, 2021).

515 Despite these major differences in flow regimes ~~across the region as described above~~, Wannock river peak flows generally occurred in the late fall and early winter when atmospheric rivers make landfall (Wannock River annual instantaneous extreme discharge data, 2021), ~~contributing up to 44 % of annual runoff in coastal watersheds~~ (Sharma and Déry, 2019). These atmospheric rivers, combined with warm temperatures and strong winds can melt 520 early season snow and glaciers at higher elevations. It is during such storms that freshwater discharge was likely synchronized across the region, with corresponding high material flux to the marine ecosystems. It is expected that current yields and streamflow regime will change due to accelerated glacial loss in the Wannock basin (Menounos et al., 2019), a projected increase in the region's mean annual precipitation with less falling as snow (Shanley et al., 2015), and more frequent and intense atmospheric river events (Déry et al., 2009).

Formatted: Font: 9 pt, Bold



525

Figure 7

Table 4: Hydrometeorological characteristics of the seven gauged watersheds. Shown are total precipitation (MAP)<sup>a</sup>, runoff (MAR), and streamflow (MASF), averaged over water years with complete precipitation station records (Oct 2015 – Oct 2019). Additional metrics include the flow-duration exceedance probabilities for low (P95) and high (P5) flows; the % of annual runoff originating from >P5 events; the % uncertainty in annual runoff; the mean lag- and peaktimes (time from peak rain - start of rise in hydrograph and start of rise in hydrograph - peak discharge respectively)<sup>b</sup>; and the runoff coefficient (MAR/MAP). Total precipitation was averaged over the records of the stations located inside and at the border of each watershed; averages for watersheds 693 and 703 also include measurements from ‘East Buxton’, located outside watershed boundaries but close enough to be representative of the watersheds’ high elevation areas. Watershed precipitation with precipitation as snow (PAS) climate normals (1981-2010) were calculated by averaging station specific, modelled ClimateNA data (Wang et al., 2016).

Watershed	MAP (mm) <sup>a</sup>	MAP - (PAS) 1981-2010 (mm)	MAR (mm)	MASF (m <sup>3</sup> s <sup>-1</sup> )	P5 (m <sup>3</sup> s <sup>-1</sup> )	P95 (m <sup>3</sup> s <sup>-1</sup> )	MAR from >P5 (%)	MAR unc. (%)	Mean lag (h)	Mean peak (h)	Runoff coef. (-)
626	2800	2745 (80)	1750	0.1760	0.8161	0.0029	37	-18/+23	7.0	12.8	0.62
708	3089	3229 (115)	1932	0.4772	1.6451	0.0021	27	-19/+23	7.2	10.8	0.63
703	3647	3829 (218)	2805	1.1371	5.1097	0.0215	34	-23/+39	6.3	11.8	0.77
693	3774	3886 (243)	3066	0.9017	3.9584	0.0059	34	-21/+41	21.3	27.3	0.81
1015	2465	3324 (117)	1502	0.1583	0.6786	0.0007	33	-32/+41	17.4	21.4	0.61
819	2675	3724 (168)	1614	0.2461	1.1433	0.0012	37	-33/+74	5.8	11.5	0.60
844	2888	3683 (177)	1919	0.3470	1.6829	0.0069	37	-32/+77	5.4	11.2	0.66
Average	3246	3602 (179)	2317	0.4919	2.1477	0.0059	34	-24/+43	10.1	15.3	0.67

<sup>a</sup> Annual precipitation is calculated from rain- as well as snowfall measurements at watersheds 693 and 703 (including total precipitation from ‘East Buxton’) but from rainfall measurements only at the other lower elevation watersheds where snowfall was assumed to be negligible; this was confirmed by the ~5 % PAS at ‘Reference Station (42 m a.s.l., outside watershed boundaries) and the ClimateNA model estimates of PAS never exceeding 5 % (see Table 2 for station specific PAS model estimates).

<sup>b</sup> Calculated from 50 rain events of varying sizes occurring throughout the record period during both wet and dry seasons, that started from baseflow conditions and had single peakflows in all rivers

Formatted: Space Before: 0 pt, After: 8 pt

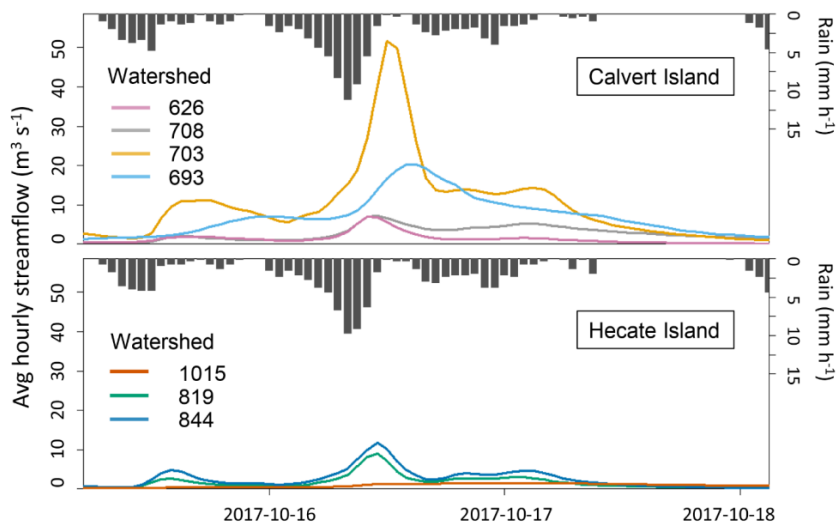
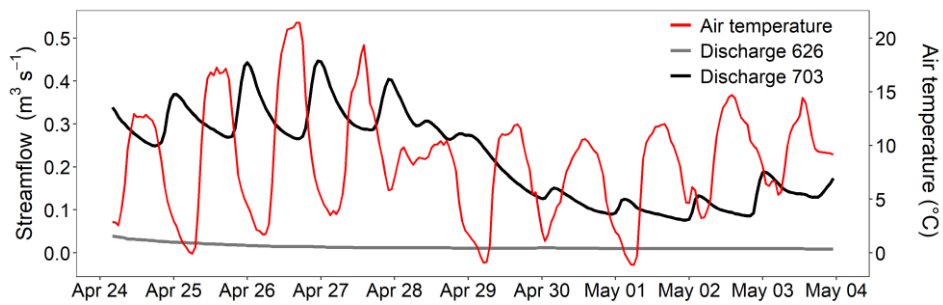


Figure 5:

Hydro-hyetographs for the seven gauged watersheds during a large storm event (114 mm of rain in 3 days). Rain measured at ‘SSN708’ and ‘SSN819’.





Formatted: Space Before: 0 pt, After: 8 pt, Line spacing: Multiple 1.08 li

**Figure 8** Discharge and air temperature at watershed 703 during 10 days without rainfall in the snowmelt season (measured at 'SSN703' and 'WSN703' respectively). Daily fluctuations in 703 streamflow indicate snowmelt contributions; peak flows occur ~12 h after daily maximum air temperatures. Discharge at watershed 626 (low elevation watershed with no snowpack), shown for reference; stable recession indicates no rainfall inputs during this period.

550

**Table 4: Mean annual precipitation (MAP), air temperature (MAT), and streamflow (MAQ) by watershed, averaged over water years with complete precipitation station records (Oct 2015 – Oct 2019). MAQ is indicated by total discharge ( $m^3$ ), total runoff (mm), and average streamflow ( $m^3 s^{-1}$ ) with uncertainty estimations for total discharge and runoff. The runoff coefficient is calculated by MAQ/MAP, flow duration exceedance probabilities are indicated for low (P5) and high (P5) flows with % of annual discharge originating from >P5 events. Mean lag and peaktimes (time from peak rain – start of rise in hydrograph and start of rise in hydrograph – peak discharge respectively) were calculated from 50 rain events of varying sizes occurring throughout the record period during both wet and dry seasons, that started from baseflow conditions and had single peakflows in all rivers. Precipitation and air temperature were averaged over the mean annual records of the stations located inside and at the border of each watershed/averages for watersheds 693 and 703 also include measurements from ‘East Baxton’, which is located just outside watershed boundaries but close enough to be representative of the watersheds. High elevation areas, Watershed precipitation with precipitation as snow (PAS) and air temperature climate normals (1981–2010) were calculated by averaging station specific modelled ClimateVA data (Wang et al., 2016).**

Watershed	MAP	MAP -	MAT	MAT	MAQ	MAQ	MAQ	MAQ	Runoff	P5	P95	Annual Q vol. from >P5 events (%)	Mean lagtime (h)	Mean peaktime (h)
	(mm) <sup>a</sup>	(PAS) 1981-2010 (mm)	(°C)	1981- 2010 (°C)	( $\times 10^6 m^3$ )	(mm)	uncertainty (%)	( $m^3 s^{-1}$ )	coef. (-)	( $m^3 s^{-1}$ )	( $m^3 s^{-1}$ )			
626	2800	2745 (80)	8.9	8.9	5.6	1750	-18/+23	0.176	0.62	0.820	0.003	37	7.0	12.8
708	3089	3229 (115)	8.2	8.6	15.1	1932	-19/+23	0.477	0.63	1.641	0.002	27	7.2	10.8
703	3647	3829 (218)	7.7	8.2	35.9	2804	-23/+39	1.137	0.77	5.110	0.020	34	6.3	11.8
693	3774	3886 (243)	8.0	8.1	28.5	3066	-21/+41	0.902	0.81	3.961	0.005	34	21.3	27.3
1015	2465	3324 (117)	8.7	8.7	5.0	1502	-32/+41	0.158	0.61	0.678	0.001	33	17.4	21.4
819	2675	3724 (168)	8.2	8.5	7.8	1614	-33/+74	0.246	0.60	1.156	0.001	37	5.8	11.5
844	2888	3683 (177)	7.5	8.5	11.0	1919	-32/+77	0.347	0.66	1.684	0.007	37	5.4	11.2
<i>Average or Total*</i>	3246	3602 (179)	8.1	8.5	108.9*	2317	-24/+43	0.492	0.67	2.150	0.005	34	10.1	15.3

\*Annual precipitation is calculated from rain as well as snowfall measurements at watersheds 693 and 703 (including total precipitation from ‘East Baxton’), but from rainfall measurements only at the other lower elevation watersheds where snowfall was assumed to be negligible; this was confirmed by the 5% PAS at ‘Reference Station’ (42 m a.s.l., outside watershed boundaries) and the ClimateVA model estimates of PAS never exceeding 5% (see Table 2 for station specific PAS model estimates).

## 5 Data uncertainties

### 5.1 Uncertainties in the weather data

555 Rainfall data that were corrected for wind-induced undercatch were on average 12 % greater than the raw data. The  
largest corrections were applied at ‘WSN693\_703’ (13 %), which was exposed to some of the highest recorded  
windspeeds (Table 2). In contrast, station ‘SSN693’ was at a much lower elevation with lower exposure, resulting  
in overall corrections of 7 %. Some stations exposed to wind required additional anchoring and thus had increased  
560 uncertainty due to wind induced tips between 2014 and 2018 (‘WSN693\_703’, ‘WSN703\_708’, ‘Hecate’). This was  
corrected using a tip threshold (> 3 tips per 5 s) to remove faulty tips. However, it was difficult to discern whether  
some of these tips represented real events even when using adjacent stations as comparison. Following proper  
anchoring in 2018, 1 to 2 % of the annual rainfall record was flagged as suspect and cleaned. Tipping bucket  
calibrations indicated there were no shifted values over the course of the study period, but site-specific issues with  
tipping buckets included blown off lids (‘WSN703\_708’), blockages from debris (‘WSN703’ and ‘WSN844’) and  
565 wiring damage by wolves causing false tips (‘819\_1015’). Snow depth data were corrected by removing obvious  
spikes, induced through false returns during heavy snowfall and wind, but large data gaps due to sensor failures  
were not filled with this dataset. It should be noted that the SR50 snow depth sensors had a high rate of failure (1 to  
2 years), and thus sensors were replaced annually. The anemometers occasionally froze in winter causing wind  
direction records to get ‘stuck’. However, these issues were usually short-lived as sensors would melt during  
570 daytime. Resulting issues were addressed and data gaps were filled using linear regression of nearby station records.

The majority of weather station data presented here stations only measured rainfall and not snow (twelve out of  
fourteen stations, Table 2A1), and thus there was likely an underestimation of precipitation across the study area. All  
stations above 400 m a.s.l. measured snow depth to assess the relative contribution of snow, but these data were not  
used to correct rainfall at these locations. However, according to ClimateNA modelled data, snow made up less than  
575 5 % of annual precipitation at all stations (except ‘East Buxton’ at 740 m a.s.l.) including those between 400 and 500  
m a.s.l. It is therefore likely that any errors associated with not measuring total precipitation at all sites is less than  
the variation in precipitation across the study area.

~~Snow depth data were corrected by removing obvious spikes, induced through false returns during heavy snowfall  
and wind, but large data gaps due to sensor failures were not filled with this dataset. It should be noted that the SR50  
580 snow depth sensors had a high rate of failure (1 to 2 years), and thus sensors were replaced annually. In contrast, the  
air temperature, relative humidity and solar radiation data were without issues. The anemometers occasionally froze  
in winter causing wind direction records to get ‘stuck’. However, these issues were usually short-lived as sensors  
would melt during daytime.~~

### 5.2 Uncertainties in the streamflow data

585 Stream flow measurements are affected by many sources of uncertainty, and thus it is important to both identify and  
quantify these errors. One potentially major source of error which can be difficult to quantify, is the lack of high-  
flow discharge measurements necessitating the extrapolation of a rating curve from the highest measured flow up to  
the highest measured stream stage (Coxon et al., 2015; Domeneghetti, 2012). However, the automated salt dilution

measurement system ~~used here~~ enabled the collection of hundreds of measurements taken along the near-full range of stage values in the rating curve for most of the watersheds, therefore allowing us to quantify discharge uncertainty generally not reported.

Channels were stable in watersheds 626, 693 and 1015 for the duration of the data presented, but large storm events resulted in rating curve shifts in watersheds 708, 703, 819 and 844. These watersheds all experienced one to two rating curve shifts within the five-year data record (Fig. 2). However, the automated salt dilution measurement method allowed regular and ample discharge measurements before and after big storms, and thus shifts could be tracked with minimal rating curve data gaps. In addition, peak flows were measured at the upper end of the rating curve in most watersheds. For all watersheds, less than 0.12 % of discharge data points were calculated from the extrapolated part of the rating curve; in other words, less than 2.5 days of the five-year discharge time series are estimated and not measured. On a volumetric basis, between 1 and 3 % of total water discharge from watersheds 626, 693, and 819 was calculated from the extrapolated parts of rating curves, and below 1 % for all other watersheds.

Despite having discharge measurements ~~overfor~~ the majority of stage measurements in the rating curves, there was significant error in the discharge dataset presented, with mean annual runoff from the seven watersheds potentially being overestimated by 24% and underestimated by 43%. Uncertainty varied by watershed (Table 4), with amounts depending on the spread and measurement uncertainties of individual discharge data points at different positions along the rating curves (affecting the widths of confidence bands). Underlying causes were related to channel stability, turbulence, downstream mixing of salt solution, and general uncertainties introduced by equipment accuracies, which are described in more detail below.

Discharge measurement error was always below 20 % at low flows, and generally under 5 %, but occasionally no more than 15 % at high flows using the automated salt-dilution method. The largest factor contributing to the uncertainty of low flow measurements using the velocity-area method, was uncertainty in the velocity readings: despite careful selection of river cross-section sites, ideal sites with minimal flow velocity variation were sparse due to the rivers' steep gradients and complex streambeds. The largest factor contributing to salt-dilution measurement uncertainty was error associated with the salt solution-electrical conductivity calibration factor, which was sensitive to the salt solution's mixing prior to transfer, temperature, and the precision of the calibration equipment (~70 % of total measurement error). The next largest factor was error associated with determining the salt solution dump volume, which due to the system being automated, had to be determined indirectly from pressure measurements (using a pressure transducer inside a stainless-steel collector) and could therefore vary with salinity and within the limits of sensor accuracy. This uncertainty increased with decreasing volume (~30 % of total measurement error). Further on, discharge measurement error was increased by incomplete mixing of salt solution, or excessive noise in the EC data at downstream sensors. However, most measurements affected were removed from further analysis, except for measurements at the upper end of the rating curves where no other data were available (e.g., high flows at watersheds 703 and 1015 reaching up to 15 % measurement uncertainty).

625 Selecting a stage value to match a discharge measurement for rating curve plotting was difficult when flows were  
either turbulent and/or the stream level was rapidly rising or falling during the discharge measurement. This error  
was quantified by propagating the standard deviation of stage values recorded during a discharge measurement to  
total discharge uncertainty. Fluctuating stage values were mostly a concern for high-flow measurements at  
watershed 819, where stage values could be noisy and rapidly increase or decrease within a 5 to 15 minutes  
measurement interval, increasing discharge measurement uncertainties by on average 2 % (range of 0 to 9 %). This  
630 was also a concern at watershed 844, but to a lesser magnitude (uncertainty increases of 0 to 3 %). All other  
watersheds were only minorly affected (typically < 1 %).

Rating curve confidence intervals are narrow, resulting in low overall discharge uncertainty, if 1) discharge  
measurement uncertainties are low, and 2) there is little spread in the rating curve data points. These conditions were  
met for watersheds 626 and 708, resulting in an overall uncertainty in yearly runoff of -18/-19 % (lower CI) and +23  
635 % (higher CI) (Table 4, Fig. 2). The rating curves of watersheds 703 and 1015 were of high quality at low to mid  
flows, but confidence intervals widened above 15 and 1 m<sup>3</sup> s<sup>-1</sup> respectively, because of increased measurement  
uncertainties related to incomplete salt solution mixing at the downstream sites. Measurements taken at watershed  
693 all had low uncertainties (< 5 % except at very low flows), but nonetheless a spread in the data (> 3 m<sup>3</sup> s<sup>-1</sup>)  
increased confidence intervals suggesting there were sources of error unaccounted for in the quantitative uncertainty  
640 estimations. Measurements taken at mid to high flows at watersheds 819 and 844 (> 4 and 5.5 m<sup>3</sup> s<sup>-1</sup> respectively)  
had the highest uncertainty due to incomplete salt mixing at the downstream EC sensors and rapidly fluctuating  
stage during high flows. In addition, unstable channel conditions at watershed 819 caused a rating curve shift once  
per year, and in some instances the complete rating curve could not be rebuilt before the next shift. All above issues  
resulted in an overall uncertainty in yearly runoff of -32/-33 % (lower CI) and +74/77 % (higher CI) for watershed  
645 844 and 819 respectively.

#### 6 Data availability

All discharge and weather data presented in this paper are available at <https://doi.org/10.21966/J99C-9C14> (Korver  
et al., 2021) and watershed delineations with watershed metrics can be found at <http://dx.doi.org/10.21966/1.15311>  
650 ([Gonzales and Giesbrecht, Gonzalez et al., 2015](#)). Both data packages include a readme file detailing data file content  
and contact information for further details.

#### 7 Code availability

Calculations were done in R: the rating curve script is available at <https://github.com/HakaiInstitute/RatingCurve>  
and the scripts used for weather data QC can be found at <https://github.com/HakaiInstitute/wx-tools>.

#### 8 Conclusions

655 The hydrometeorological data of the Kwakshua Watersheds Observatory fills a critical data gap on the outer coast of  
the ~~northeast~~Northeast Pacific coastal temperate rainforest (NPCTR) of North America and over time will help to  
better understand the hydrology of the region. The hydrometeorological dataset presented is part of a greater  
interdisciplinary effort to better understand this region, including oceanography, biodiversity, ecology, climate, and

660

watershed processes. High quality data are assured using state-of-the-art technology and thorough data quality procedures. Discharge data presented here are unique because the novel method of measuring streamflow accounts for measurement error from various sources, which is often not quantified in publicly available datasets. The dataset also highlights the difficulty of measuring streamflow in small, turbulent streams and identifies key sources of uncertainty which should be included when using these data for analysis and modelling.

**Table A1:** Station location and installation details. Station names refer to ‘Stream Sensor Node’ (SSN) or ‘Weather Sensor Node’ (WSN), followed by the watershed ID, and are ordered by location (west to east on Calvert, then Hecate Islands). ‘RefStn’ and ‘East Buxton’ are located outside watershed boundaries and ‘Hecate’ is located at the 819/844 watershed boundary (Fig. 1).

<u>Station</u>	<u>Date installed (m-y)</u>	<u>Lat</u>	<u>Long</u>	<u>Elev. (m a.s.l.)</u>
<u>RefStn</u>	<u>Nov-15</u>	<u>51.6520</u>	<u>-128.1287</u>	<u>42</u>
<u>SSN626</u>	<u>Aug-14</u>	<u>51.6408</u>	<u>-128.1219</u>	<u>13</u>
<u>WSN626</u>	<u>Sep-15</u>	<u>51.6262</u>	<u>-128.1018</u>	<u>78</u>
<u>SSN693</u>	<u>Aug-14</u>	<u>51.6442</u>	<u>-127.9978</u>	<u>51</u>
<u>WSN693_703</u>	<u>Sep-14</u>	<u>51.6106</u>	<u>-127.9871</u>	<u>449</u>
<u>SSN703</u>	<u>Aug-14</u>	<u>51.6466</u>	<u>-128.0257</u>	<u>40</u>
<u>WSN703</u>	<u>Sep-14</u>	<u>51.6433</u>	<u>-128.0228</u>	<u>42</u>
<u>WSN703_708</u>	<u>Sep-14</u>	<u>51.6222</u>	<u>-128.0507</u>	<u>289</u>
<u>SSN708</u>	<u>Sep-13</u>	<u>51.6486</u>	<u>-128.0684</u>	<u>12</u>
<u>SSN819</u>	<u>Aug-14</u>	<u>51.6619</u>	<u>-128.0419</u>	<u>79</u>
<u>WSN819_1015</u>	<u>Sep-14</u>	<u>51.6827</u>	<u>-128.0433</u>	<u>331</u>
<u>SSN844</u>	<u>Sep-14</u>	<u>51.6608</u>	<u>-128.0025</u>	<u>35</u>
<u>WSN844</u>	<u>Jul-15</u>	<u>51.6614</u>	<u>-127.9975</u>	<u>90</u>
<u>SSN1015</u>	<u>Aug-14</u>	<u>51.6906</u>	<u>-128.0653</u>	<u>17</u>
<u>East Buxton</u>	<u>Sep-13</u>	<u>51.5899</u>	<u>-127.9752</u>	<u>740</u>
<u>Hecate</u>	<u>Jul-14</u>	<u>51.6826</u>	<u>-128.0228</u>	<u>477</u>

670

**Table A2:** Sensor specifications and sensor inventory by station.

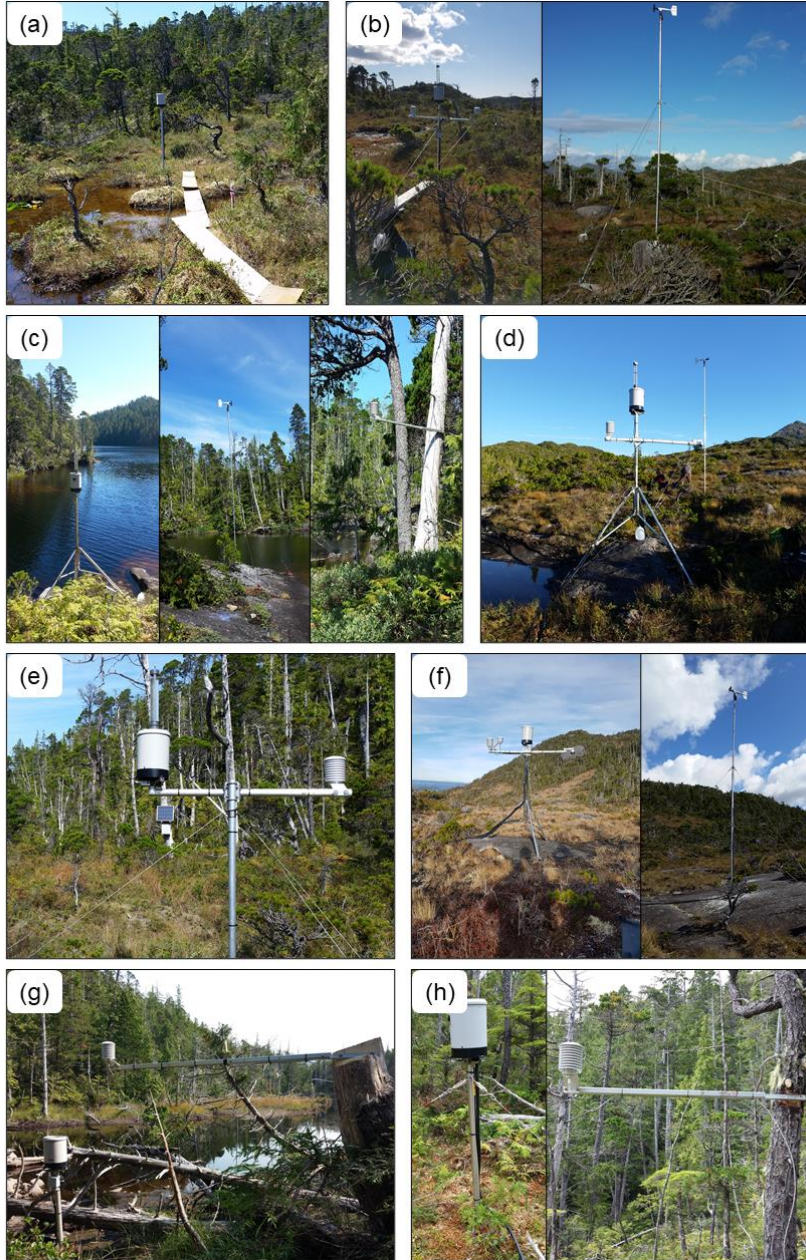
<b>Measurement</b>	<b>Station</b>	<b>Sensor specification</b>
Air temperature and relative humidity	RefStn, SSN626, WSN626, SSN693, WSN693_703, WSN703, WSN703_708, SSN708, SSN819, WSN819_1015, WSN844, SSN1015, East Buxton, Hecate	H2SC3, Campbell Scientific, Edmonton, Canada
Wind speed and direction	RefStn, WSN626, SSN693, WSN693_703, WSN703_708, SSN1015, East Buxton, Hecate	05106C-10: Marine Wind Monitor, Campbell Scientific, Edmonton, Canada
Solar radiation	East Buxton	SP110 Apogee Limited
Rain	RefStn, SSN626, WSN626, SSN693, WSN693_703, WSN703, WSN703_708, SSN708, SSN819, WSN819_1015, WSN844, SSN1015, East Buxton, Hecate	TB4, Hydrological Services America, Lake Worth USA and TR-4 Texas Electronics (East Buxton station)
Total precipitation	RefStn, East Buxton	Custom made: 400 mm diameter pvc pipe, 2000 mm tall, with KPSI 700 pressure transducer and Alter shield, Campbell Scientific 260-953
Snow depth	East Buxton, WSN793_703, Hecate	SR50A: Sonic Distance Sensor, Campbell Scientific, Edmonton, Canada
Water level	SSN626, SSN693, SSN703, SSN708, SSN819, SSN844, SSN1015	OTT PLS: Pressure Transducer, OTT Hydromet

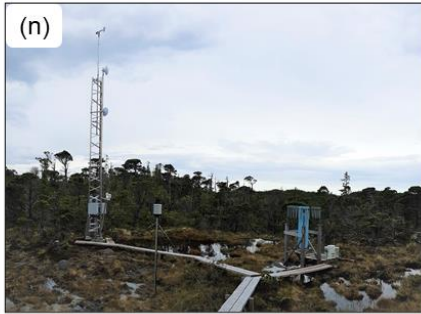
Table A2A3: Thresholds used ~~for~~ to investigate quality control procedures of the weather data: maximum, and minimum, values, a maximum rate of change (ROC) $\delta$ , and the maximum timestepnumber of timesteps with a constant value. Outlier data were flagged or where necessary, corrected and gap filled.

Variable	Unit	<u>Maximum</u> <u>Max.</u> <u>(unit)</u>	<u>Minimum</u> <u>Min.</u> <u>(unit)</u>	<u>ROC</u> <u>limit</u> $\delta$ <u>(unit h<sup>-1</sup>)</u>	<u>Time-steps to</u> <u>flag</u> <u>No. of</u> <u>timesteps with</u> <u>constant value (h)</u>
Air temperature	°C	40	-30	10	<u>964</u>
Relative humidity	%	100	0	30	<u>964</u>
Wind speed	m s <sup>-1</sup>	35	0	n.a	<u>964</u>
Wind direction	degrees	360	0	n.a	<u>12n.a.</u>
Snow depth	m	n.a	0	1	<u>964</u>
Solar radiation	W m <sup>-2</sup>	1368	0	<u>1450n.a.</u>	<u>96n.a.</u>
Precipitation	mm	30	0	n.a	n.a



Figure A1: Images of meteorological stations (continued next page). Photos by Shawn Hateley and Bill Floyd.





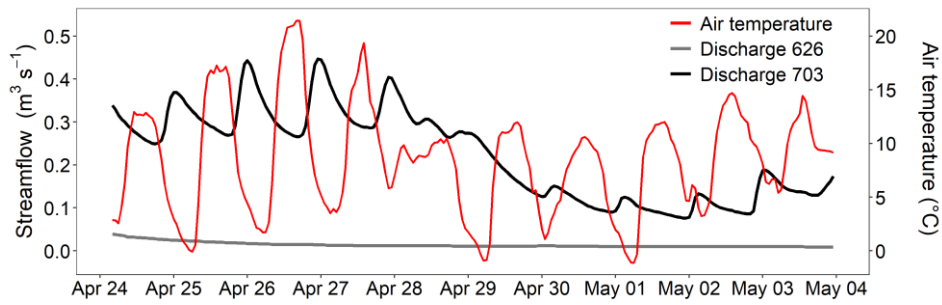
**Meteorological station**

- a) SSN626
- b) WSN626
- c) SSN693
- d) WSN693\_703
- e) WSN703
- f) WSN703\_708
- g) SSN708
- h) SSN819
- i) SSN1015
- j) WSN844
- k) WSN819\_1015
- l) East Buxton
- m) Hecate
- n) Reference Station



680 **Figure A2: Images of the seven streams near the watershed outlets. Shown are the water level gauging site (watershed 693); the downstream sites of the automated salt in solution discharge measurement method (watersheds 703 and 1015); the upstream sites of the automated salt in solution discharge measurement method with dumping mechanism (all other watersheds). Photos by Shawn Hateley, Bill Floyd, and Maartje Korver.**





**Figure A3:** Discharge and air temperature at watershed 703 during 10 days without rainfall in the snowmelt season (measured at 'SSN703' and 'WSN703' respectively). Daily fluctuations in 703 streamflow indicate snowmelt contributions: peak flows occur ~12 h after daily maximum air temperatures. Discharge at watershed 626 (low elevation watershed with no snowpack), shown for reference: stable recession indicates no rainfall inputs during this period.

690



## 10 Author contributions

695 M.K. wrote the manuscript, with contributions from E.H. for the meteorology sections and overall contributions  
from W.F. and I.G.. W.F. designed the hydrometeorological station network and is responsible for installation and  
maintenance. M.K. and E.H. managed, quality controlled and conducted analysis on the streamflow and weather  
700 data respectively, with oversight from W.F.. Data collection, station installation and maintenance was performed by  
W.F., M.K. and E.H. among many others specified in the acknowledgments. I.G. led the watershed characterization  
in addition to co-conceptualizing and co-designing the broader Kwakshua Watersheds Observatory along with W.F.  
and others (see acknowledgments).

## 11 Competing interests

The authors declare no competing interests.

## 12 Acknowledgements

705 We gratefully acknowledge that this work was conducted on the traditional, ancestral and unceded territories of the  
Haílzaqv and Wuikinuxv Nations. Funding for the Hakai Institute is provided by the Tula Foundation. In-kind and  
financial support was also provided by the BC Provincial Governments Ministry of Forests, Lands and Natural  
Resource Operations and Rural Development and Environment and Climate Change Canada for the 'East Buxton'  
station, which is part of a regional high elevation weather station network. We would like to sincerely thank the  
710 Hakai Institute support staff involved in operating the Kwakshua Watersheds Observatory. The installation and  
development of this observatory arose from research ideas first conceived by Prof. Ken Lertzman, who still acts as a  
primary scientific advisor. [In addition, prof. Ilja van Meerveld supervised the early stages of the development of the  
discharge measurement and uncertainty calculation methods.](#) Ray Brunsting was as head of IT a key person in the  
early days of observatory design and he continues to aid in the management and quality assurance of the data. Hakai  
715 Energy Solutions, specifically Colby Owen and James McPhail, have been indispensable in designing, data logger  
programming and installing the extensive telemetry network enabling real-time data access. Shawn Hateley has led  
many field maintenance operations and Stewart Butler has been responsible for the maintenance of the salt dilution  
systems. GIS calculations of watershed characteristics were done by Santiago Gonzalez Arriola. Many people  
assisted installation and maintenance operations including Will McInnes, Jason Jackson, Rob White, Isabelle  
720 Desmarais, David Norwell, Christopher Coxson, Christian Stranding, Libby Harmsworth, Ben Millard-Martin,  
Carolyn Knapper, Midoli Bresch, Parker Christensen, Andrew Sharrock, Darren Cashato, Michel Stitger, Mike  
Mearns, Dave Snow, Nelson Roberts, Lawren McNab, Ondine Pontier, Eric Courtin and Hannah McSorely.

Formatted: Font color: Auto

Formatted: Font: Times New Roman, 10 pt, Bold, Font color: Auto

Formatted: Heading 1, Line spacing: 1.5 lines

### 13 References

- 725 Alaback, P.B.: Biodiversity patterns in relation to climate in the temperate rainforests of North America. In: Lawford R, Alaback PB, Fuentes ER (eds). High latitude rain forests of the west coast of the Americas: climate, hydrology, ecology and conservation. *Ecological studies* 113. Springer, Berlin, pp 105–133, 1996.
- Arriola, S.G., and Holmes, K.: Hakai Terrain Relief [Data set], [hakai.maps.arcgis.com/home/item.html?id=711527c3469a4012bd0b25983de4b3d9](http://hakai.maps.arcgis.com/home/item.html?id=711527c3469a4012bd0b25983de4b3d9), 2017.
- 730 Banner, A., LePage, P., Moran, J. and de Groot, A. (eds): The HyP3 Project: pattern, process, and productivity in hypermaritime forests of coastal British Columbia – a synthesis of 7-year results. B.C. Min. For., Res. Br., Victoria, B.C. Spec. Rep. 10, 2005.
- Beniston, M.: Mountain Weather and Climate: A General Overview and a Focus on Climatic Change in the Alps. *Hydrobiologia* 562, 3–16, doi:10.1007/s10750-005-1802-0, 2006.
- 735 Bidlack, A.L., Bisbing, S.M., Buma, B.J., Diefenderfer, H.L., Fellman, J.B., Floyd, W.C., Giesbrecht, I., Lally, A., Lertzman, K.P., Perakis, S.S., Butman, D.E., D'Amore, D.V., Fleming, S.W., Hood, E.W., Hunt, B.P.V., Kiffney, P.M., McNicol, G., Menounos, B., Tank, S.E.: Climate-Mediated Changes to Linked Terrestrial and Marine Ecosystems across the Northeast Pacific Coastal Temperate Rainforest Margin, *BioScience*, 71, 6, 581–595, doi:10.1093/biosci/biaa171, 2021.
- 740 Cohn, T.A., Kiang J.E., Mason Jr., R.R., P.E., M.ASCE: Estimating Discharge Measurement Uncertainty Using the Interpolated Variance Estimator. American Society of Civil Engineers. doi: 10.1061/(ASCE)HY.1943-7900.0000695, 2013.
- Coxon, G., Freer, J., Westerberg, I. K., Wagener, T., Woods, R., and Smith, P. J.: A novel framework for discharge uncertainty quantification applied to 500 UK gauging stations, *Water Resour. Res.*, 51, 5531– 5546, doi:10.1002/2014WR016532, 2015.
- 745 Déry, S. J., Stahl, K., Moore, R. D., Whitfield, P. H., Menounos, B., and Burford, J. E.: Detection of runoff timing changes in pluvial, nival, and glacial rivers of western Canada, *Water Resour. Res.*, 45, W04426, doi:10.1029/2008WR006975, 2009.
- Domeneghetti, A., Castellarin, A., and Brath, A.: Assessing rating-curve uncertainty and its effects on hydraulic model calibration. *Hydrology and Earth System Sciences*, 16(4), 1191, doi:10.5194/hess-16-1191-2012, 2012.
- 750 Eaton, B.C. and Moore, R.D.: Regional Hydrology. Compendium of Forest Hydrology and Geomorphology in British Columbia. In: Compendium of Forest Hydrology and Geomorphology in British Columbia Land Management Handbook 66, R.G. Pike, T.E. Redding, R.D. Moore, R.D. Winkler, and K.D. Bladon (Eds). B.C. Ministry of Forests and Range Research Branch, Victoria, British Columbia, pp. 85-110 and FORREX Forest Research Extension Partnership, Kamloops, 2010.

Ecotrust, Pacific GIS, & Conservation International: Original distribution of the Coastal Temperate Rain Forest. In: The rainforests of home: An atlas of people and place. Interrain, Portland, Oregon, 1995.

Fang, X., Hou, X., Li, X., Hou W., Nakaoka, M., and Yu X.: Ecological connectivity between land and sea: a review. *Ecol Res* 33, 51–61, doi:10.1007/s11284-017-1549-x, 2018.

760 Fiedler, F. R.: Simple, practical method for determining station weights using Thiessen polygons and isohyetal maps. *Journal of Hydrologic engineering*, 8(4), 219-221, doi:10.1061/(ASCE)1084-0699(2003)8:4(219), 2003.

Fleming, S.W., Whitfield, P.H., Moore, R.D. and Quilty, E.J.: Regime-dependent streamflow sensitivities to Pacific climate modes cross the Georgia–Puget transboundary ecoregion. *Hydrol. Process.*, 21: 3264-3287. doi:10.1002/hyp.6544, 2007.

765 Giesbrecht, I. J. W., Floyd, W. C., Tank, S. E., Lertzman, K. P., Hunt, B. P. V., Korver, M. C.... Del Bel Belluz, J.: The Kwakshua Watersheds Observatory, central coast of British Columbia, Canada. *Hydrological Processes*, 35( 6), e14198, doi:10.1002/hyp.14198, 2021.

[Giesbrecht, I. J. W., Tank, S. E., Frazer, G. W., Hood, E., Gonzalez Arriola, S. G., Butman, D. E., D'Amore, D.V., Hutchinson, D., Bidlack, A., Lertzman, K.P.: Watershed classification predicts streamflow regime and organic carbon dynamics in the Northeast Pacific Coastal Temperate Rainforest. \*Global Biogeochemical Cycles\*, 36, e2021GB007047, doi:10.1029/2021GB007047, 2022.](#)

770 Gonzalez Arriola, S., Frazer, G.W., and Giesbrecht, I.: LiDAR-derived watersheds and their metrics for Calvert Island. [data set]. doi:10.21966/1.15311, 2015.

775 Gonzalez Arriola, S., Giesbrecht, I. J. W., Biles, F. E., & D'Amore, D. V.: Watersheds of the northern Pacific coastal temperate rainforest margin. [data set]. doi:10.21966/1.715755, 2018.

Green, R. N.: Reconnaissance level terrestrial ecosystem mapping of priority landscape units of the coast EBM planning area: Phase 3, Prepared for British Columbia Ministry Forests, Lands and Natural Resource Ops., Blackwell and Associates, Vancouver, Canada, 2014.

780 Henshaw, D., and Martin, M.: Sensor Data Quality. Retrieved April 1, 2020, from [https://wiki.esipfed.org/Sensor\\_Data\\_Quality](https://wiki.esipfed.org/Sensor_Data_Quality), 2014.

Hill, D.F., Ciavola, S.J., Etherington, L., Klaar, M.J.: Estimation of freshwater runoff into Glacier Bay, Alaska and incorporation into a tidal circulation model. *Estuarine, Coastal and Shelf Science* 82: 95–107, doi:10.1016/j.ecss.2008.12.019, 2009.

785 Hoffman, K.M., Gavin, D.G. and Starzomski, B.M.: Seven hundred years of human-driven and climate-influenced fire activity in a British Columbia coastal temperate rainforest. *Royal Society Open Science*. doi:10.1098/rsos.160608, 2016.

Formatted: Pattern: Clear (White)



- Hoffman, K. M., Starzomski, B. M., Lertzman, K. P., Giesbrecht, I. J. W., & Trant, A. J.: Old-growth forest structure in a low-productivity hypermaritime rainforest in coastal British Columbia, Canada. *Ecosphere*, 12(5), 1–15, doi:10.1002/ecs2.3513, 2021.
- 790 ISO 748:2007. Hydrometry – Measurement of liquid flow in open channels using current-meters or floats. International Organization for Standardization, Geneva Switzerland. <https://www.iso.org/standard/37573.html> <https://www.iso.org/standard/37573.html>, 2007.
- Jakob, M., Holm, K., Lange, O., and Schwab, J.W.: Hydrometeorological thresholds for landslide initiation and forest operation shutdowns on the north coast of British Columbia. *Landslides* 3, 228–238, doi:10.1007/s10346-006-0044-1, 2006.
- 795 Korver, M.C., van Meerveld, H.J., Floyd, W.C., Waterloo, M.J.: Uncertainty analysis of stage-discharge rating curves for seven rivers at Calvert Island, British Columbia, Canada. VU University Amsterdam and Hakai Institute. MSc thesis. doi:10.21966/1.715699, 2018.
- Korver, M., Houghton, E., Floyd, B., and Giesbrecht, I. High-resolution hydrometeorological data from seven small coastal watersheds, British Columbia, Canada, 2013-2019 [Data set]. doi:10.21966/J99C-9C14, 2021.
- 800 Kranabetter, J.M., LePage, P., Banner, A.: Management and productivity of cedar-hemlock-salal scrub forests on the north coast of British Columbia, *Forest Ecology and Management*, 308, 161–168. doi:10.1016/j.foreco.2013.07.058, 2013.
- Lotze, H.K., Lenihan, H.S., Bourque, B.J., Bradbury, R.H., Cooke, R.G., Kay, M.C., Kidwell, S.M., Kirby, M.X., Peterson, C.H., and Jackson, J.B.: Depletion, degradation, and recovery potential of estuaries and coastal seas. *Science*, 312:1806–1809, doi:10.1126/science.1128035, 2006.
- 805 Lu, Y., Yuan, J., Lu, X., Su, C., Zhang, Y., Wang, C., Cao, X., Li, Q., Su, J., Ittekkot, V., Garbutt, R.A., Bush, S., Fletcher, S., Wagey, T., Kachur, A., and Sweijid, N.: Major threats of pollution and climate change to global coastal ecosystems and enhanced management for sustainability *Environ. Pollut.*, 239, pp. 670-680, doi:10.1016/j.envpol.2018.04.016, 2018.
- 810 McLaren, D., Fedje, D., Dyck, A., Mackie, Q., Gauvreau, A., and Cohen, J.: Terminal Pleistocene epoch human footprints from the Pacific coast of Canada. *PLOS ONE* 13(3): e0193522. doi:10.1371/journal.pone.0193522, 2018.
- McNicol, G., Bulmer, C., D'Amore, D., Sanborn, P., Saunders, S., Giesbrecht, I., Gonzales Arriola, S., Bidlack, A., Butman, D., and Buma, B.: Large, climate-sensitive soil carbon stocks mapped with pedology-informed machine learning in the North Pacific coastal temperate rainforest. *Environ. Res. Lett.* 14 014004. doi:10.1088/1748-9326/aaed52, 2019.
- 815 Menounos, B., Hugonnet, R., Shean, D., Gardner, A., Howat, I., Berthier, E., Pelto, B., Tennant, C., Shea, J., Noh, M.J., Brun, F., and Dehecq, A.: Heterogeneous changes in western North American glaciers linked to decadal variability in zonal wind strength. *Geophysical Research Letters*, 46, 200–209. doi:10.1029/2018GL080942, 2019.

- 820 Moore, R.D.: Introduction to salt dilution gauging for streamflow measurement Part I. Streamline Watershed Management Bulletin 7(4): 20-23, 2004a.
- Moore, R.D.: Introduction to salt dilution gauging for streamflow measurement Part II: Constant-rate injection. Streamline Watershed Management Bulletin 8(1): 11-15, 2004b.
- Moore, R.D.: Introduction to salt dilution gauging for streamflow measurement part III: Slug injection using salt in  
825 solution. Streamline Watershed Management Bulletin 8(2), 2005.
- Moore, R.D., Trubilowicz, J. and Buttle, J.: Prediction of Streamflow Regime and Annual Runoff for Ungauged Basins Using a Distributed Monthly Water Balance Model. JAWRA Journal of the American Water Resources Association, 48: 32-42. doi:10.1111/j.1752-1688.2011.00595.x, 2012.
- Morrison, J., Foreman, M.G.G., and Masson, D.: A Method for Estimating Monthly Freshwater Discharge Affecting  
830 British Columbia Coastal Waters, Atmosphere-Ocean, 50:1, 1-8, doi: 10.1080/07055900.2011.637667, 2012.
- Oliver, A.A., Tank, S.E., Giesbrecht, I., Korver, M.C., Floyd, W.C., Sanborn, P., Bulmer, C., and Lertzman, K.P.: A global hotspot for dissolved organic carbon in hypermaritime watersheds of coastal British Columbia, Biogeosciences, 14, 3743–3762, doi:10.5194/bg-14-3743-2017, 2017.
- PRISM Climate Group, Oregon State University, <http://prism.oregonstate.edu>.
- 835 Radić, V., Cannon, A.J., Menounos, B., and Gi, N.: Future changes in autumn atmospheric river events in British Columbia, Canada, as projected by CMIP5 global climate models, J. Geophys. Res. Atmos., 120, 9279–9302, doi:10.1002/2015JD023279, 2015.
- Shanley, C.S., Pyare, S., Goldstein, M.I., Alaback, P.B., Albert, D.M., Beier, C.M., Brinkman, T.J., Edwards, R.T., Hood, E., MacKinnon, A., McPhee, M.V., Patterson, T.M., Suring, L.H., Tallmon, D.A., and Wipfli, M.S.: Climate  
840 change implications in the northern coastal temperate rainforest of North America. Climatic Change 130, 155–170. doi:10.1007/s10584-015-1355-9, 2015.
- Sharma, A.R., and Déry, S.J.: Variability and trends of landfalling atmospheric rivers along the Pacific Coast of northwestern North America. Int J Climatol. 40, 544–558. doi:10.1002/joc.6227, 2019.
- 845 [Sobie, S.R.: Future changes in precipitation-caused landslide frequency in British Columbia. Climatic Change 162, 465–484, doi:10.1007/s10584-020-02788-1, 2020.](#)
- St. Pierre, K.A., Oliver, A.A., Tank, S.E., Hunt, B.P.V., Giesbrecht, I., Kellogg, C.T.E., Jackson, J.M., Lertzman, K.P., Floyd, W.C. and Korver, M.C.: Terrestrial exports of dissolved and particulate organic carbon affect nearshore ecosystems of the Pacific coastal temperate rainforest. Limnol Oceanogr. doi:10.1002/lno.11538, 2020.
- 850 St. Pierre, K.A., Hunt, B.P.V., Tank, S.E., Giesbrecht, I., Korver, M.C., Floyd, W.C., Oliver, A.A., and Lertzman, K.P.: Rain-fed streams dilute inorganic nutrients but subsidise organic-matter-associated nutrients in coastal waters of the northeast Pacific Ocean, Biogeosciences, 18, 3029–3052, doi:10.5194/bg-18-3029-2021, 2021.

Thompson, S.D., Nelson, T.A., Giesbrecht, I., Frazer, G., and Saunders, S C.: Data-driven regionalization of forested and non-forested ecosystems in coastal British Columbia with LiDAR and RapidEye imagery, *Appl. Geogr.*, 69, 35–50, doi:10.1016/j.apgeog.2016.02.002, 2016.

855 Trant, A. J., Nijland, W., Hoffman, K. M., McLaren, D., Matthews, D. L., Nelson, T. A. and Starzomski, B. M. Intertidal resource-use over millennia enhances forest productivity. *Nature Communications* 7(12491). doi:10.1038/ncomms12491, 2016.

Upton, G.J.G., and Rahimi, A.R.: On-line detection of errors in tipping-bucket raingauges. *Journal of Hydrology*, 278(1-4), 197-212, doi:10.1016/S0022-1694(03)00142-2, 2003.

860 Wang, T., Hamann, A., Spittlehouse, D.L., and Carroll, C.: Locally downscaled and spatially customizable climate data for historical and future periods for North America. *PLoS One* 11: e0156720, doi:10.1371/journal.pone.0156720, 2016.

Wannock River daily discharge data, Oct 2015 - Oct 2018, Wannock River at outlet of Owikeno Lake, extracted from the Environment and Climate Change Canada Historical Hydrometric Data web site

865 ([https://wateroffice.ec.gc.ca/mainmenu/historical\\_data\\_index\\_e.html](https://wateroffice.ec.gc.ca/mainmenu/historical_data_index_e.html)) on 2021-02-05, 2021.

Wannock River annual instantaneous extreme discharge data, 1961 - 2017, Wannock River at outlet of Owikeno Lake, extracted from the Environment and Climate Change Canada Historical Hydrometric Data web site

([https://wateroffice.ec.gc.ca/report/historical\\_e.html](https://wateroffice.ec.gc.ca/report/historical_e.html)) on 2021-11-01, 2021.

870 Whitfield, P.H., Burn, D.H., Hannaford, J., Higgins, H. Hodgkins, G.A., Marsh, T., and Looser, U. Reference hydrologic networks I. The status and potential future directions of national reference hydrologic networks for detecting trends, *Hydrological Sciences Journal*, 57:8, 1562-1579, DOI: 10.1080/02626667.2012.728706, 2012.

Yang D, Goodison B.E., Metcalfe, J.R.: Accuracy of NWS 8" Standard non recording precipitation gauge: results and application of WMO intercomparison. *Journal of Atmospheric & Oceanic Technology*, 15: 54–68, doi:10.1175/1520-0426(1998)015<0054:AONSNP>2.0.CO;2, 1998.