

Supplementary Information for

**Improved maps of surface water bodies, large dams,
reservoirs, and lakes in China**

Xinxin Wang, Xiangming Xiao, et al.,

Corresponding author: Xiangming Xiao, xiangming.xiao@ou.edu; Bo Li,
bool@fudan.edu.cn

This file includes:

Supplementary Figures 1-7

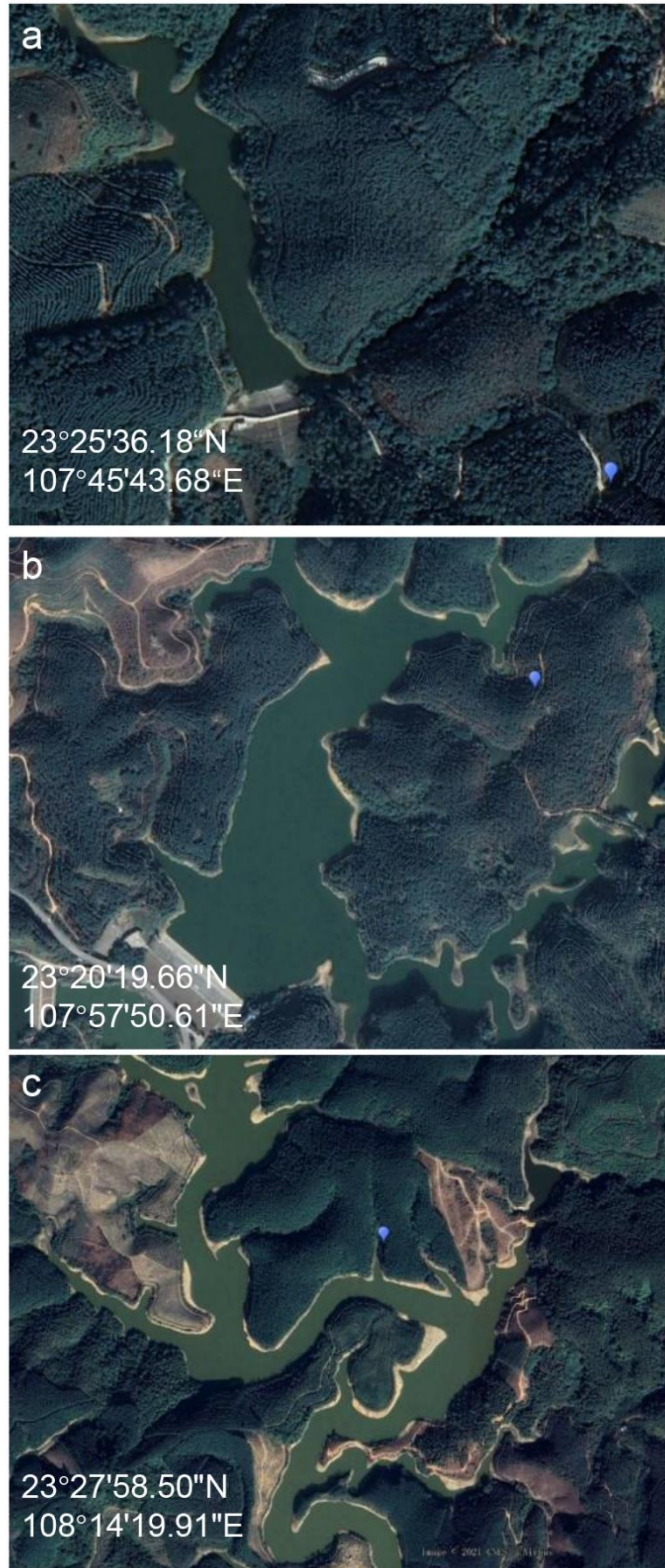


Fig. S1. Georeferenced coordinate errors of dams from the GeoDAR database within high-resolution images (© Google Earth Pro 2019).

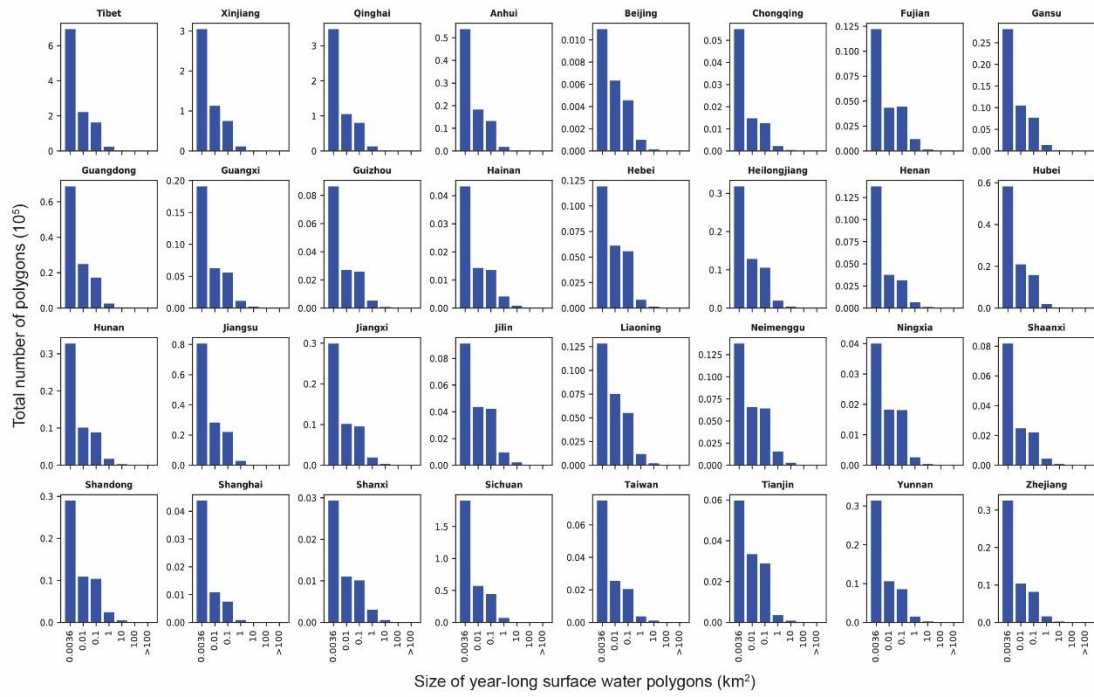


Fig. S2. Distribution of total number of different sizes of polygons at the provincial scale.

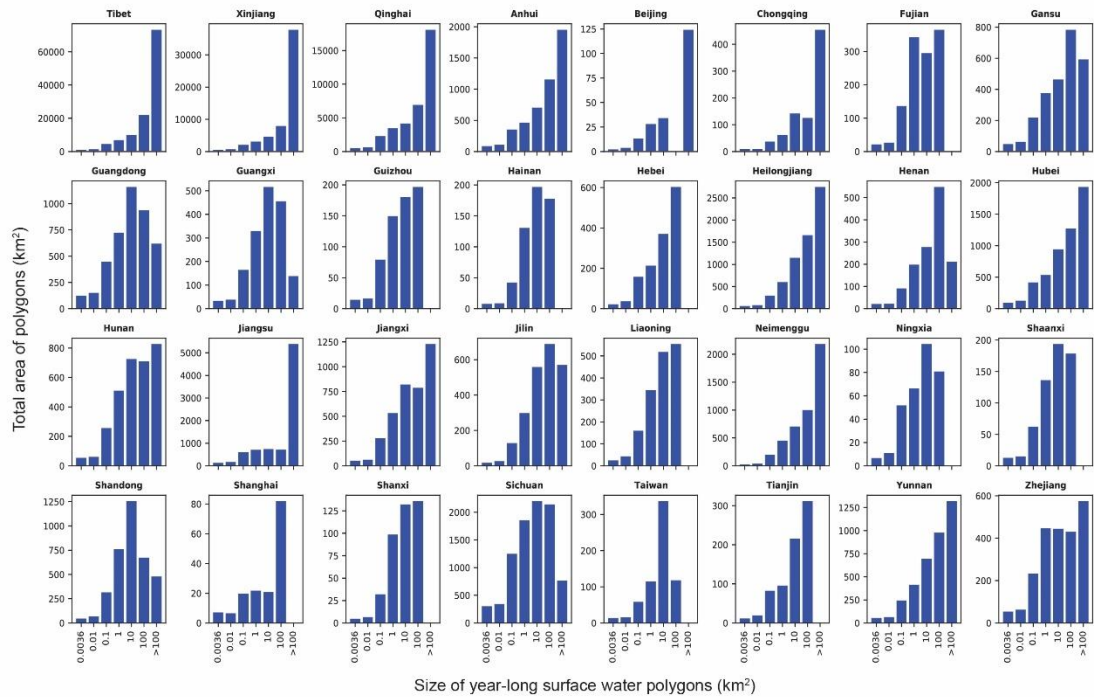


Fig. S3. Distribution of total area of different sizes of polygons at the provincial scale.

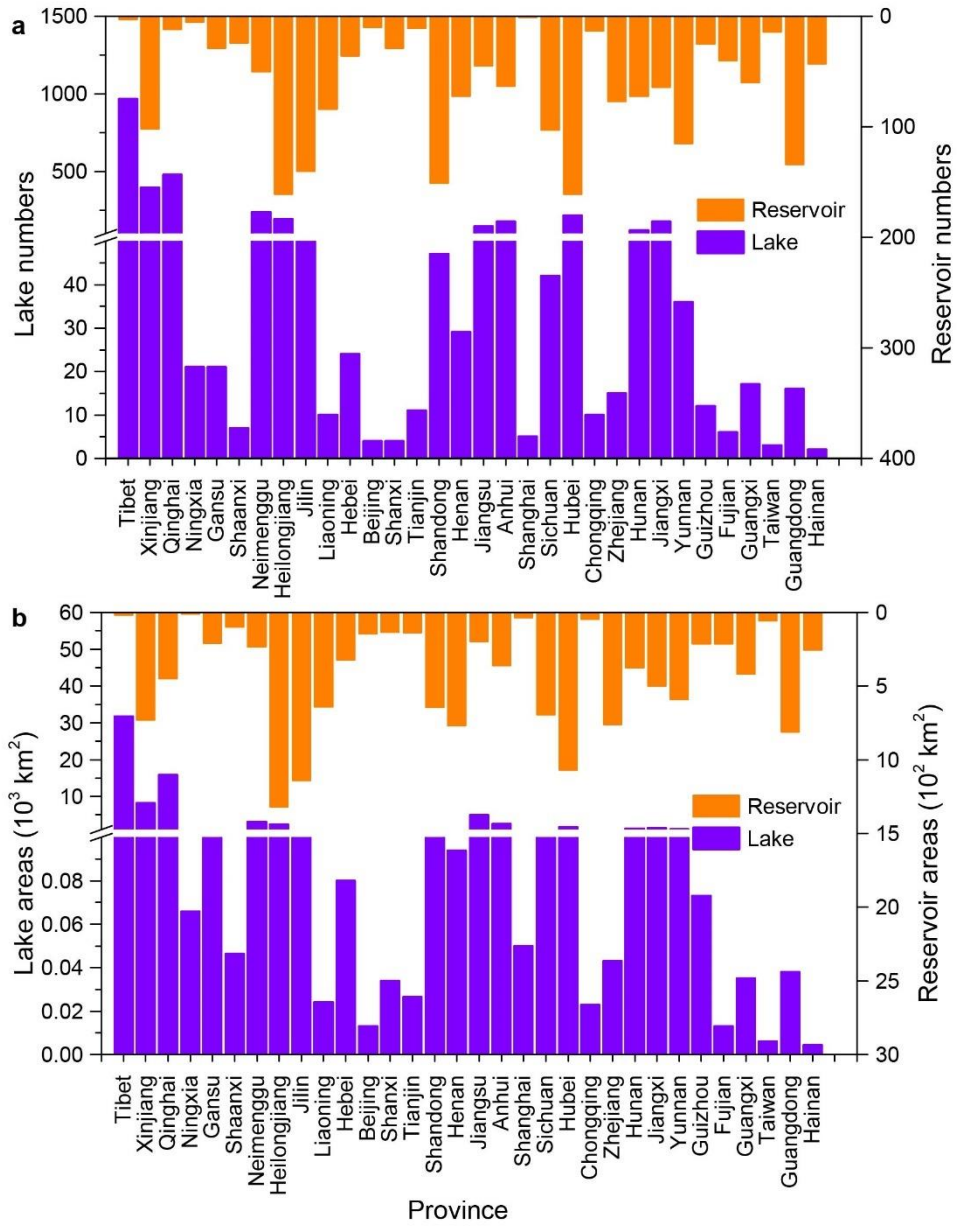


Fig. S4. Numbers and areas of lakes and reservoirs in China-LDRL dataset by province. **a**, Numbers of lakes and reservoirs in each province; **b**, Areas of lakes and reservoirs in each province.

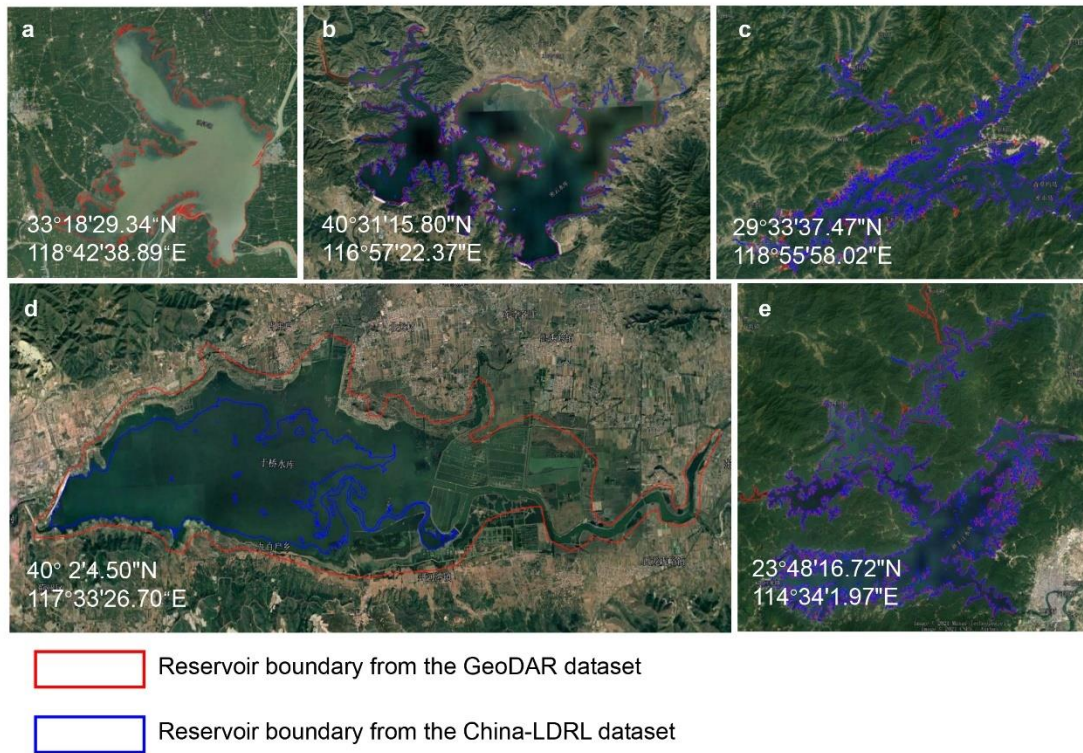


Fig. S5. Lakes and reservoirs from the GeoDAR and China-LDRL datasets within high-resolution images (© Google Earth Pro 2019). (a) The Hongze Lake (洪泽湖) in Jiangsu Province which was identified as reservoir in the GeoDAR dataset. (b) Miyun Reservoir (密云水库) in Beijing. (c) Xinanjiang Reservoir (新安江水库) in Zhejiang Province. (d) Yuqiao Reservoir (于桥水库) in Tianjin. (e) Xinfengjiang Reservoir (新丰江水库) in Guangdong Province.

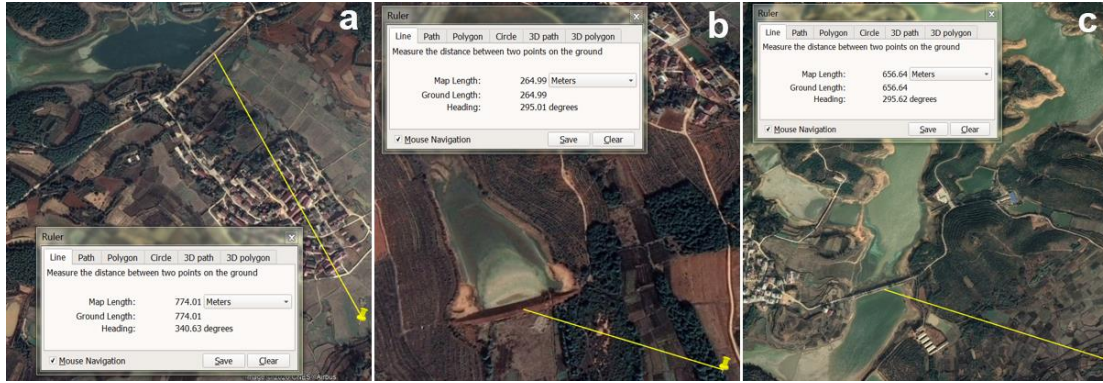


Fig. S6. Location errors of the GOODD dataset within high-resolution images (© Google Earth Pro 2019).

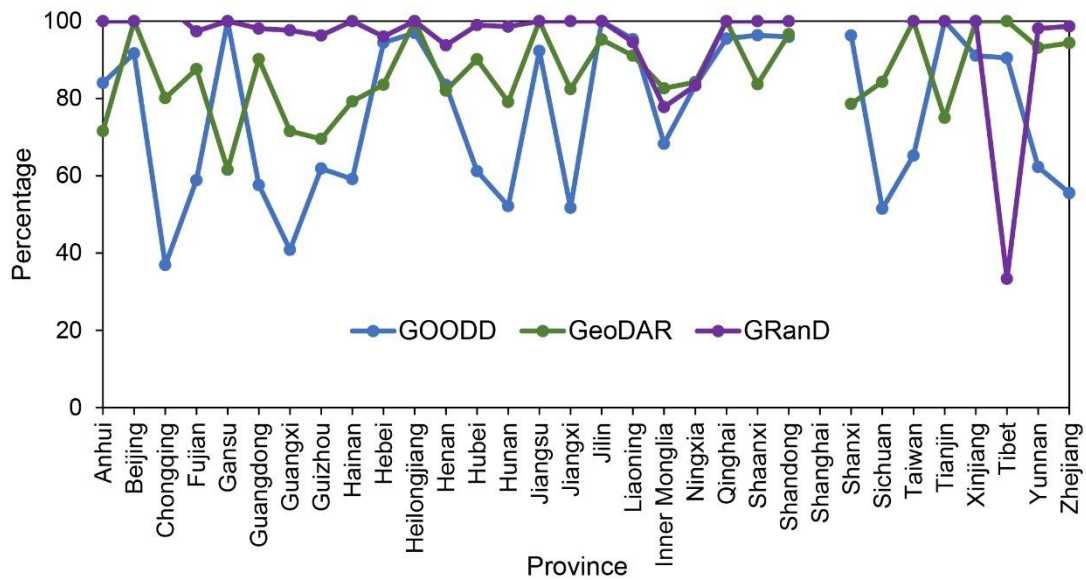


Fig. S7. Percentage of numbers of dams intersected with the surface water body map in China for 2019 when applying a 500-m tolerance.