

A ~~comprehensive~~ global dataset of atmospheric ^7Be and ^{210}Pb measurements: annual air concentration and depositional flux

Fule Zhang¹, Jinlong Wang¹, Mark Baskaran², Qiangqiang Zhong³, Yali Wang¹, Jussi Paatero⁴, Jinzhou Du¹.

¹State Key Laboratory of Estuarine and Coastal Research, East China Normal University, Shanghai, 200241, China

²Department of Environmental Science and Geology, Wayne State University, Detroit, Michigan 48202, USA

³Laboratory of Marine Isotopic Technology and Environmental Risk Assessment, Third Institute of Oceanography, Ministry of Natural Resource, Xiamen, 361005, China

⁴Observation Services, Finnish Meteorological Institute, Helsinki, FI-00560, Finland

Correspondence to: Jinlong Wang (jlwang@sklec.ecnu.edu.cn)

Abstract. ^7Be and ^{210}Pb air concentration and depositional flux data provide key information on the origins and movements of air masses, as well as atmospheric deposition processes and residence time of aerosols. After their deposition onto the Earth's surface, they are utilized for tracing soil redistribution processes on land, ~~and~~ particle dynamics in aquatic systems and mixing processes in the open ocean. Here we present a global dataset of air concentration and depositional flux measurements of atmospheric ^7Be and ^{210}Pb made by a large number of global research ers and laboratoriescommunity. Data were collected from published papers between 1955 and early 2020. It includes the annual surface air concentrations data of ^7Be from 367 sites and of ^{210}Pb from 270 sites, the annual depositional flux data of ^7Be from 279 sites, and of ^{210}Pb from 602 sites. When available, appropriate metadata have also been summarized, including geographic location, sampling date, methodology, annual precipitation, and references. The dataset is ~~available~~ archived at <https://doi.org/10.5281/zenodo.4785136> (Zhang et al., 2021) and is freely available for the scientific community. The purpose of this paper is to ~~have the published data available in one place for future researchers' public consumption in their research and~~ provide an overview of the scope and nature of this dataset holdings and its potential utility as baseline data for future research.

1 Introduction

带格式的: 字体: (默认) Times New Roman

Naturally occurring beryllium-7 (^7Be , $T_{1/2}$: 53.3 days) and lead-210 (^{210}Pb , $T_{1/2}$: 22.3 y) have been widely utilized as tracers to investigate Earth's surface and atmospheric processes (Huh et al., 2006; Du et al., 2012). ^7Be , a cosmogenic radionuclide, is produced by the spallation of oxygen and nitrogen nuclei by cosmic rays in the stratosphere and upper troposphere (Lal et al., 1958). The production rate of ^7Be has negligible dependence on longitude or season, but depends on the altitude, latitude and the ~ 11 years solar cycle (Koch et al., 1996; Liu et al., 2001; Su and Huh, 2003). Although a major fraction of ^7Be (67%) production takes place in the stratosphere, but they do not readily reach the troposphere except during spring when seasonal thinning of the tropopause folds near the jet stream seasonal thinning occurs at mid-latitudes and changing the seasonal structure of the stratosphere facilitating the exchange of air masses (Lal and Peters, 1967; Danielsen, 1968). Depositional flux of ^7Be is independent of longitude but depends on the altitude and the ~ 11 years solar cycle. Besides, owing to the tropospheric/stratospheric exchange occurring in the mid-latitudes during spring, ^7Be flux to the Earth's surface varies with latitude and season (Lal and Peters, 1967; Koch and Mann, 1996). ^{210}Pb , a progeny of ^{222}Rn in the ^{238}U -series, is derived mostly (>99%) from the radioactive decay of ^{222}Rn . Most of the atmospheric ^{210}Pb is derived from atmospheric radon. The global ^{222}Rn flux from continent ranges from 1300 to 1800 $\text{Bq m}^{-2} \text{ d}^{-1}$, while $\sim 172\text{--}21$ $\text{Bq m}^{-2} \text{ d}^{-1}$ is reported for the oceanic areas (Samuelsson et al., 1986; Wilkening and Clements, 1975; Nazaroff, 1992). Radon is not removed by precipitation scavenging while its decay products are. Vertical profiles of ^{222}Rn in the atmosphere indicate the highest concentrations occur in the continental boundary layer (CBL, 3–8 Bq m^{-3}) and while an order of magnitude lower activity (~ 40 mBq m^{-3}) occurs near the tropopause, with decreasing activity with increasing altitude from CBL (Moore et al., 1977; Liu et al., 1984; Kritiz et al., 1993). Consequently, the atmospheric concentration of ^{210}Pb decreases with increasing altitude and is strongly controlled by the land-sea distribution pattern. After formation, both ^7Be and ^{210}Pb or its predecessors, and short-lived ^{222}Rn progeny, are rapidly and irreversibly attached to aerosol particles (Winkler et al., 1998; Elsässer et al., 2011). Subsequently, the fate of ^7Be and ^{210}Pb is closely linked to that of aerosols. Most of ^7Be and ^{210}Pb are in accumulation mode aerosol particles with an aerodynamic diameter of a few hundred nanometers (Ioannidou and Paatero, 2014; Paatero et al., 2017). Therefore, they are deposited onto the Earth's surface primarily by precipitation because accumulation mode aerosol particles are too small for gravitational settling and removal and too large to be deposited by Brownian motion.

Owing to their distinctly different source terms but well-known source distributions, and similar

tropospheric physicochemical behavior, ^7Be and ^{210}Pb have been widely utilized as powerful atmospheric tracers for studying the origin of the air masses (e.g., Graustein and Turekian, 1996; Zheng et al., 2005; Likuku et al., 2006; Dueñas et al., 2011; Lozano et al., 2012), vertical exchange and horizontal transport processes (e.g., Arimoto et al., 1999; Lee et al., 2007; Rastogi and Sarin, 2008; Tositti et al., 2014), deposition velocities and washout ratios of aerosols (e.g., Todd et al., 1989; McNeary and Baskaran, 2003, Dueñas et al., 2005; Lozano et al., 2011; Mohan et al., 2019) and behavior and fate of analog species (e.g., Crecelius, 1981; Mattson, 1988; Prospero et al., 1995; Lamborg et al., 2013). Following their deposition on the Earth's surface, both ^7Be and ^{210}Pb are strongly attached to soils, which make them useful for assessing soil erosion rates from episodic to multi-decadal timescales (e.g., Wallbrink and Murry, 1993; Walling and He, 1999; Blake et al., 1999; Walling et al., 1999; Wilson et al., 2003; Mabit et al., 2008, 2014). In aquatic environments, ^{210}Pb is most widely used for dating recent sediments (e.g., Appleby, 2008). Meanwhile, ^7Be and ^{210}Pb are also widely used as tracers of sediment source identification and particle dynamics in rivers (e.g., Bonniwell et al., 1999; Matisoff et al., 2005; Jweda et al., 2008; Mudbidre et al., 2014; Baskaran et al., 2020), lakes (e.g., Dominik et al., 1987; Schuler et al., 1991; Vogler et al., 1996), estuaries and coasts (e.g., Baskaran et al., 1997; Huang et al., 2013; Wang et al., 2016) for indicating particle transport, deposition, and resuspension in estuarine and coastal regions (e.g., Du et al., 2010; Huang et al., 2013; Wang et al., 2016). ^7Be deposited on the open ocean are further used as a tracer for diagnosing ocean ventilation and subduction (Kadko, 2000; Kadko and Olson, 1996), inferring upwelling rates (Kadko and Johns, 2011) and estimating the deposition of trace metals (Kadko et al., 2015; Shelley et al., 2017; Buck et al., 2019).

There have been numerous published datasets with concentrations and depositional fluxes of ^{210}Pb and ^7Be (directly and indirectly) over the past few decades, particularly under the national or international monitoring programs such as Environmental Measurements Laboratory (EML) Surface Air Sampling Program (Feely et al., 1989), Sea-Air Exchange (SEAREX) program (Uematsu et al., 1994), Finnish Meteorological Institute monitoring program (Paatero et al., 2015), Radioactivity Environmental Monitoring (REM) network (Hernandez-Ceballos et al., 2015), and International Monitoring System (IMS) operated by Comprehensive Nuclear-Test-Ban Treaty Organization (CTBTO) (Terzi and Kalinowski, 2017). It is valuable to compile all these existing data, including those measured in case studies, along with appropriate metadata, in one place for facilitating further data analysis and geological, geochemical and geophysical applications.

Although several datasets of air concentrations and depositional fluxes of ^7Be (Bleichrodt, 1978; Brost et al., 1991) and ^{210}Pb (Rangarajan et al., 1986; Preiss et al., 1996) have been published, unfortunately, many of the published data are not readily available in hard data format (e.g., data table) and often it is challenging and retrieval of data from published figures often is not precise. To date, only one dataset was published that compiled ^7Be and ^{210}Pb together (Persson, 2015), but it contained limited data. Therefore, the focus of the present work is to build a new and comprehensive dataset. This dataset is the result of many scientists' efforts in generating the data.

2 Methods

2.1 ^7Be and ^{210}Pb air concentrations measurement methodology

Aerosol samples are usually collected by pumping-filtering a high volume of air, typically 1.4-1.5 m³/min, collected typically for a day, through paper filters, at a relatively constant flow rate. Common aerosol collecting equipment includes ASS 500 (CLRP Warsaw, Germany), Anderson PM10 (Anderson Ltd., USA), Snow White (Senya Ltd., Finland), and HV-1000F (Shibata Co. Ltd., Japan). The preferred filter membrane material includes glass fiber, cellulose nitrate or acetate, polypropylene fiber, and quartz fiber. The collection efficiency, the percentage of the particles in the air stream that are collected by the air filter, depends on the aerodynamic diameter of aerosol particles and the filter face velocity (average flow velocity of air into the filter) of the airflow. Although the collection efficiency depends on the distribution of particle sizes, generally the collection efficiency varies between 80% and 100% for different filter materials. This was shown by overlapping two filters in tandem and comparing the concentrations separately in the top and bottom filters. The sampling frequency is usually set from daily to monthly, with a typical collection time of ~ 24 h, corresponding to ~ 2,000 m³ air. The ^7Be and ^{210}Pb trapped on filters can both be analyzed simultaneously by gamma spectrometry spectroscopy (e.g., McNeary and Baskaran, 2003; Bourcier et al., 2011; Lozano et al., 2012; Mohan et al., 2018), while ^{210}Pb also can also be analyzed by beta counting of its daughter ^{210}Bi (e.g., Joshi et al., 1969; Poet et al., 1972; Daish et al., 2005) or via alpha counting of in-grown ^{210}Po from the decay of ^{210}Pb (e.g., Turekian and Cochran, 1981; Mattsson et al., 1996; Marx et al., 2005).

2.2 ^7Be and ^{210}Pb depositional fluxes measurement methodology

The atmospheric depositional fluxes of ^7Be and ^{210}Pb are commonly measured directly by using rain collectors such as polyethylene drum/buckets, stainless steel container, and indirectly by natural archives (e.g., soils, lichens, mosses, snow/ice cores, salt marsh sediments). The direct collecting method is the most reliable technique for the measurement of annual ^7Be and ^{210}Pb depositional fluxes, and this technique is useful in collecting short-time scale (daily, weekly and monthly) depositional fluxes. In contrast, using natural archives avoids the labor and time-intensive measurement of the ^7Be and ^{210}Pb concentration in precipitation the tedious procedures and can serve as a complementary to fill regional gaps especially in deserted-remote areas. However, these archives are susceptible to be affected by natural processes and anthropogenic activities, thus, the sampling location of these archives should be restricted to an-undisturbed areas.

2.2.1 Direct ^7Be and ^{210}Pb flux measurements

Rain collectors are usually placed on the roof of a building so as to prevent contamination from resuspended dust from the ground. Care should be taken to ensure direct overhead atmospheric deposition is collected and there is no shadowing effect from adjacent structure/building or funneling effect in sample collection. Atmospheric aerosols can be removed not only by precipitation-scavenging but also by settling under the influence of gravitational or electrostatic forces. In most cases, the collectors are continuously exposed over a long enough period and the bulk (wet + dry) depositional samples are collected periodically (e.g., Baskaran et al., 1993; Hirose et al., 2004; Baskaran and Swarzenski, 2007; Lozano et al., 2011; Du et al., 2015). Fluxes obtained by this method yields the best estimate of the depositional flux. Sometimes, fallout ^7Be and ^{210}Pb samples are collected only during rainfall, and concentration is measured in the individual rainwater sample (e.g., Cho et al., 2011; Chae and Kim, 2019; Du et al., 2020). In this case, only the bulk depositional flux is obtained for the duration of collection. In rare cases, only a mean concentration of ^{210}Pb and/or ^7Be in rainwater is available, the wet flux can be estimated by multiplying by the annual precipitation (Peirson et al., 1966).

Most of the time, the volume of rainwater sample is large enough which cannot be directly counted in a gamma-ray spectrometer for the simultaneous measurements of ^7Be and ^{210}Pb , and in which case a preconcentration of the sample is required. Since both ^7Be and ^{210}Pb have a strong affinity for solid surfaces, it is strongly recommended to add stable Be (commonly 1-5 mg) and stable Pb (typically 5-20 mg) in about 1 L of 1 M HCl to the rain collector prior to deployment. Alternately, the

带格式的: 上标

带格式的: 上标

spikes can also be immediately added after sample collection, followed by rinsing of rain collector with 1 L of 1 M HCl rinsing twice and combining the rinses with the collected rainwater. An earlier critical review of earlier atmospheric depositional flux studies by Lal et al. (1979) showed that loss of ^7Be and ^{210}Pb by sorption onto rain collector walls was observed when pre-acidification of the collector was not done resulting in the underestimation of depositional flux. In the case of preconcentration by ferric chloride precipitation method, due to variable scavenging efficiency of ^7Be and ^{210}Pb during the preconcentration method, it is required to add stable Pb and Be as yield tracer (e.g., Baskaran et al., 1993). The best chemical procedure to obtain high-quality data is to add acid and stable Be and Pb carriers with 1 L of 1 M HCl to the rain collector prior to the start of the sample collection. The final calculation for depositional fluxes would involve chemical yield for ^7Be and ^{210}Pb , and appropriate decay corrections, as outlined in Baskaran et al. (1993) and Du et al. (2015).

2.2.2 Indirect ^7Be flux measurements

Measurements of ^7Be inventory in the upper oceanic water column, from air-sea interface until the layer where ^7Be activity is below the detection limit (in >400 L water sample), can indirectly yield the bulk depositional flux of ^7Be (Brost et al., 1991). This requires precise determination of the penetration depth of ^7Be in the water column. The only uncertainty is the loss of ^7Be -laden sinking particles from the upper water column where ^7Be is present. After being deposited on the ocean surface, ^7Be is generally mixed uniformly within the surface mixed layer (Young and Silker, 1980; Kadko and Olson, 1996). In the open ocean, the particle concentration is generally low, and a major fraction of ^7Be is expected to be in the dissolved phase, thus allowing particle scavenging losses to be ignored (Silker, 1972; Andrews et al., 2008). Therefore, in the absence of physical removal processes other than radioactive decay, the input flux of ^7Be should be balanced by the ^7Be inventory integrated over the water column. In other words, ^7Be flux of atmospheric fallout ($\text{Bq m}^{-2} \text{ d}^{-1}$) can be obtained from the ^7Be water column inventory (Bq m^{-2}) multiplied by the decay constant (0.013 d^{-1}) of ^7Be . This method has been proven to be reliable in open ocean due to the relatively short half-life of ^7Be and the constancy of ^7Be deposition over broad latitudinal bands (Young and Silker, 1980; Aaboe et al., 1981). Although in areas where there are large variations in seasonal variations of precipitation, the inventory is expected to be season-dependent. It is expected that the ^7Be inventory is season-dependent in areas with large seasonal variations in precipitation (e.g., monsoon-dominated continental and oceanic areas). Time-series study in Bermuda

带格式的: 字体: 10 磅, 字体颜色: 文字 1

has shown that the inventory of ^7Be was relatively constant throughout the year, such that ^7Be inventory measured at any one time is likely representative (to within 20%) of the instantaneous ^7Be flux; the time-series study in Bermuda showed that, the inventory of ^7Be inventory was relatively constant throughout the year, such that ^7Be inventory measured at any one time is representative (to within 20%) of the instantaneous ^7Be flux (Kadko and Prospeo, 2011; Kodko et al., 2015). This method is not suitable for coastal and estuarine areas where ^7Be is scavenged substantially by particulate matters (Olsen et al., 1986; Baskaran and Santschi, 1993), and upwelling-dominated areas where ^7Be inventory is diluted by ^7Be “dead” water (Kadko and Johns, 2011; Haskell et al., 2015).

Another potential candidate is undisturbed soil profiles. However, ^7Be inventories in undisturbed soils were reported to vary by more than an order of magnitude within one year (Walling et al., 2009; Kaste et al., 2011; Zhang et al., 2013). Such large variations in depositional fluxes of ^7Be are attributed to the seasonal fluxes of ^7Be . Earlier studies have shown that the atmospheric fluxes are highly dependent upon the amount of precipitation (Baskaran, 1995; Du et al., 2015). Since seasonal variations will significantly affect the ^7Be inventory in soils, the data of ^7Be soil inventory are not included in our dataset, and hence those are data are not included.

2.2.3 Indirect ^{210}Pb flux measurements

Several archives (soils, snow/ice cores, sediment cores, etc) have been used to assay the ^{210}Pb fluxes. Here we only present ^{210}Pb fluxes estimated from soil profiles and snow/ice cores. The former is the most frequently used, and the latter perfectly fills the regional gap in polar regions and montane permanent snowfields. There are many ^{210}Pb measurements in sediment cores, however, due to the sediment focusing and erosion, most sediment cores do not provide a reliable estimate of the atmospheric ^{210}Pb flux (Turekian et al., 1977; Preiss et al., 1996), thus this type of ^{210}Pb depositional flux data are not included in our dataset.

^{210}Pb in surface (upper ~30 cm) soil has two sources: one is generated from the decay of ^{222}Rn in the soil minerals, known as supported ^{210}Pb which is produced from the decay of ^{238}U and the other comes from atmospheric deposition as unsupported ^{210}Pb . The fallout of ^{210}Pb is retained generally in the organic-rich surface soils presumably because of the sequestering properties of the— organo-mineral complexes (Covelo et al., 2008) organic matter as well as in lithogenic mineral grain. When soil CO_2 combines with percolating water, carbonic acid is produced which can leach some of the sorbed ^{210}Pb ultimately

带格式的: 上标

resulting in slow migration down to a ~~maximum~~ depth of ~~up to~~ 20-30 cm (Matisoff and Whiting, 2012). As a result, the surface soil layer contains an excess ^{210}Pb ~~concentration than compared to that expected~~ from its equilibrium with ^{226}Ra (Mabit et al., 2014). The part of the ^{210}Pb excessing is termed “unsupported” or “excess” ^{210}Pb ($^{210}\text{Pb}_{\text{ex}}$). ~~$^{210}\text{Pb}_{\text{ex}}$ is the difference between total (measured) ^{210}Pb and the supported ^{210}Pb in the soils. Supported ^{210}Pb is assumed to be the same as ^{226}Ra activity, under the~~ assumption of secular equilibrium between ^{226}Ra and supported ^{210}Pb . It can also be obtained by assuming ~~that the supported ^{210}Pb activity is equal to the total ^{210}Pb at depth greater than 30 cm in the soil profile where atmospherically-delivered ^{210}Pb has not reached (Matisoff et al., 2014).~~ The mean residence time of ^{210}Pb over a large drainage basin is on the order of 2000-3000 years in surface soils (Benninger et al., 1975; Dominik et al., 1987), so the inventory of $^{210}\text{Pb}_{\text{ex}}$ in a soil profile that has not been disturbed by erosion, accumulation or human activities for about a century can be used to calculate the depositional flux (Graustein and Turekian, 1986). At ~~a~~ steady state, the ^{210}Pb depositional flux can be deduced using the $^{210}\text{Pb}_{\text{ex}}$ inventory multiplied by the decay constant (0.0311 y^{-1}) of ^{210}Pb . This method has been widely used worldwide (e.g., Nozaki et al., 1978; Graustein and Turekian, 1986, 1989; Dörr and Munich, 1991; García-Orellana et al., 2006). At undisturbed soil sites, flux values derived from soil profile measurements were consistent with direct atmospheric flux observations (Olsen et al., 1985; Appleby et al., 2002, 2003), and $^{210}\text{Pb}_{\text{ex}}$ soil inventory showed little discrepancy at different sampling times (Porto et al., 2006, 2016).

Goldberg (1963) was the first to show that the total ^{210}Pb activity in a glacier from Greenland decreased with depth, with a possibility of ~~the~~ dating ice cores. Subsequently, snow chronology in the Antarctic was determined (Crozaz et al. 1964; Picciotto et al., 1964). Since then, this technique has been used in both the large ice caps of Antarctica (e.g., Picciotto et al., 1968; Koide et al., 1979; Nijampurkar et al., 2002) and ~~the~~ Arctic (e.g., Crozaz and Langway, 1966; Koide et al., 1977; Dibb et al., 1990a, 1992; Peters et al., 1997) and the small montane permanent snow ~~field~~ ~~filed~~ (e.g., Windom, 1969; ~~Gäggeler~~ ~~Gaggeler~~ et al., 1983; Monaghan and Holdsworth, 1990). The ^{210}Pb flux in snow/ice core is calculated in the same way as ~~for~~ the soil, except ~~the difference is~~ that supported ^{210}Pb in snow/ice core is very low due to low concentration of ^{226}Ra in snow/ice core and may be negligible, as the lithogenic dust is the primary source of ^{226}Ra and its concentration in polar regions ~~are~~ ~~is~~ very low (Preiss et al., 1996). When the snow accumulation rate is known, the depositional flux can ~~also~~ ~~be also~~ obtained by using ^{210}Pb concentration in surface snow multiplied by the accumulation rate (Pourchet et al., 1997; Suzuki et al., 2004). The

带格式的: 上标

带格式的: 下标

带格式的: 上标

带格式的: 上标

带格式的: 上标

带格式的: 上标

带格式的: 上标

带格式的: 上标

带格式的: 上标

uncertainty in the depositional flux of ^{210}Pb from snow/ice core record is the potential post-depositional movement of the snow/ice due to heavy wind and the possibility of snow melting and percolation.

2.3 Data collection

~~Regarding compiling~~In order to compile the global dataset for annual ^7Be and ^{210}Pb air concentrations and depositional fluxes ~~comprehensively~~, we attempted to collect published papers between 1955 and early 2020 in which hard data for their concentrations and depositional fluxes are available or their calculated values reported. Using a series of keywords or with a combination of words search (e.g., ^7Be , ^{210}Pb , air concentration, depositional flux, fallout radionuclide, atmospheric tracer, or soil erosion), data were retrieved from online literature databases (Web of Science, Science Direct, and China Knowledge Resource Integrated Database). During the literature survey, no a priori criteria (e.g., study area, sampling period, and measurement method) were applied. However, a critical review of the collected literature was conducted to obtain long-term data, using the following criteria. For concentrations in air and directly measured fluxes of ^7Be and ^{210}Pb , only those sites ~~where-with~~ more than one year of data were included. When averaged over a longer period, data are more representative because of the inherent seasonal variations (at least one full year data) and inter-annual fluctuations (multi-year data). For indirectly measured fluxes of ^7Be and ^{210}Pb , only those undisturbed sites clearly stated in the original literature ~~was~~ ~~were~~ included.

Here we did not include unpublished data, as data quality control could be a potential issue. In the peer-reviewed published data, it is assumed that the ~~originating~~ authors, ~~reviewers and/or~~ ~~and~~ editors ~~of the original articles~~ have undertaken the necessary steps to verify data quality. All concentrations in air were converted ~~into~~ mBq m^{-3} and all depositional fluxes ~~were converted into~~ $\text{Bq m}^{-2} \text{ y}^{-1}$, if not already reported in these units. When available, the metadata of latitude, longitude, altitude, sampling date, annual precipitation, methodology, and references are also given. A brief description of different variables that could affect the data is summarized in Table 1. In ~~the event that~~ ~~cases where~~ the air concentration and depositional flux data were only available graphically, a computer program ([GetData Graph Digitizer](#)) was used to digitize the data from graphics, the same was done for geographical location and annual precipitation. In rare cases, only the locality name of the study site was available, the geographical ~~location-coordinates were extracted from~~ ~~was digitized by~~ Google Earth.

Table 1. Fields in the main data table.

Field name	Field description	Field type	Unit
Site	Locality name (city, country) or station name of study site	Short text	Unitless
Sampling time	Sampling-Monitoring period or sampling /date in month/year format	Short text	Unitless
Latitude	North latitude in decimal degrees (from -90 to +90) either directly from original studies or extracted from Google Earth	Number	°
Longitude	East longitude in decimal degrees (from -180 to +180) either directly from original studies or extracted from Google Earth	Number	°
Altitude	Altitudes of study sites either directly from original studies	Number	m
Annual precipitation	Mean annual precipitation of study sites directly from original studies	Number	mm
Sampling device ^a	Model of aerosol sampling device and air flow rate during sampling	Short text	Unitless
Filter ^a	Model, material and dimension of filter membranes	Short text	Unitless
Frequency ^a	Sampling frequency set during observation	Short text	Unitless
Data number ^a	Total number of measurements performed	Integer	Unitless
Concentration ^a	⁷ Be or ²¹⁰ Pb annual concentration in surface air	Number	mBq m ⁻³
Con-error ^a	Uncertainty in ⁷ Be or ²¹⁰ Pb annual concentration in surface air	Number	mBq m ⁻³
Con-range ^a	Minimum to maximum values of ⁷ Be or ²¹⁰ Pb concentration	Number	mBq m ⁻³
Method ^b	Short descriptor-description of ⁷ Be or ²¹⁰ Pb depositional flux obtained from different methods	Short text	Unitless
Rain collector ^b	Material, shape and collection area of rain collectors	Short text	Unitless
Clean procedure ^b	Rainwater collector cleaning process and reagents used	Short text	Unitless
Preconcentration ^b	Preconcentration method for rainwater samples	Short text	Unitless
Recovery ^b	Recovery of ⁷ Be or ²¹⁰ Pb and the determination method	Short text	Unitless
Decay-correction ^b	Calculation of decay-correction for ⁷ Be or ²¹⁰ Pb	Short text	Unitless
Flux ^b	⁷ Be or ²¹⁰ Pb annual depositional flux derived from different methods	Number	Bq m ⁻² y ⁻¹
Flux-error ^b	Uncertainty in ⁷ Be or ²¹⁰ Pb annual depositional flux	Number	Bq m ⁻² y ⁻¹
Contribution of dry deposition ^b	Fraction of dry depositional flux to total depositional flux of ⁷ Be or ²¹⁰ Pb	Number	Unitless
Reference	Investigator and published year of references	Short text	Unitless
Reference's DOI	Digital Object Identifier of references	Short text	Unitless

^aThe field only appears in ⁷Be or ²¹⁰Pb annual concentration worksheet;

^bThe field only appears in ⁷Be or ²¹⁰Pb annual [depositional](#) flux worksheet.

3 Results and discussions

3.1 Scope of the dataset

From 456 references (Appendix A), we have compiled a comprehensive dataset of atmospheric ⁷Be and

^{210}Pb measurements made by numerous laboratories. The dataset includes 494 annual surface air concentration data of ^7Be covering 367 different sites, 366 annual surface air concentration data of ^{210}Pb from 270 different sites, 304 annual depositional flux data of ^7Be from 279 different sites, and 645 annual depositional flux data of ^{210}Pb from 602 different sites. In some cases, data collected from different periods were published in different literature articles. In these cases, all data from the same site are listed as separately in the dataset, but in the data analysis and plotting of this article, the data from the same site are merged. The sampling locations of this global dataset show broad geographical coverage (Fig. 1). The sampling maps are mainly composed of continental sites, while the oceanic monitoring sites are relatively few limited.

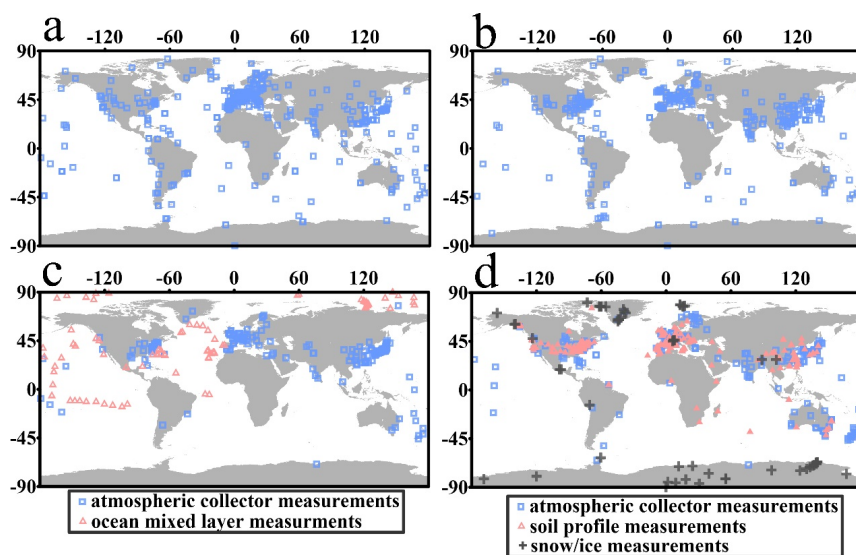


Figure 1: Maps showing the distribution of sampling locations of (a) ^7Be concentration in surface air, (b) ^{210}Pb concentration in surface air, (c) ^7Be atmospheric depositional flux, and (d) ^{210}Pb atmospheric depositional flux.

The number of peer-reviewed journal articles published annually, containing ^7Be and ^{210}Pb data from 1955 to 2020 which are included in this article is plotted in Fig. 2. The ^7Be measurements of ^7Be began in the mid-1950s (Arnold and Al-Salih, 1955; Cruikshank et al., 1956; Rama and Zutshi, 1958), earlier than those of ^{210}Pb , which began in the early 1960s (Burton and Stewart, 1960; Crozaz et al., 1964; Peirson et al., 1966). The long-term monitoring work was started in the 1980s with the ^7Be and ^{210}Pb concentration data generated by the EML Surface Air Sampling Program (Feely et al., 1989; Larsen et

带格式的: 上标

al., 1995). This was followed by more ambitious international programs such as the REM network (Hernandez-Ceballos et al., 2015) and IMS-CTBTO (Terzi and Kalinowski, 2017). However, in these two programs, ²¹⁰Pb concentration measurements were conducted only in a few stations measured ²¹⁰Pb concentration (Heinrich et al., 2007; Sangiorgi et al., 2019). In contrast, direct ⁷Be and ²¹⁰Pb flux measurements were rarely supported by the international program, but there were several national monitoring programs initiated by developed countries like Australia (Bonnyman and Molina-Ramos, 1976), Japan (Narazaki et al., 2003; Yamamoto et al., 2006), United States (Lamborg et al., 2013) and Finland (Paatero et al., 2015; Leppanen, 2019). The measurement of ⁷Be inventory in ocean mixed layer began in the 1970s (Silker, 1972; Young and Silker, 1974, 1980), and the idea proposed by Young and Silker was subsequently developed in the upper 100-200 m to assess surface water subduction, oxygen utilization and rate of upwelling (Kadko, 2009; Kadko and Olson, 1996; Kadko and Johns, 2011). The measurement of ²¹⁰Pb_{ex} in the an undisturbed soil profile was first conducted by Fisenne (1968). Subsequently, Benninger et al. (1975) and Moore and Poet (1976) showed that excess ²¹⁰Pb activities in undisturbed soil profiles can be utilized to estimate the atmospheric ²¹⁰Pb depositional flux, which motivated resulted in an increase in the measurements of ²¹⁰Pb_{ex} in soil profiles in the late 1980s (Graustein and Turekian, 1986, 1989; Monaghan et al., 1989; Dörr and Munnich, 1991). Subsequently, ²¹⁰Pb_{ex} was shown to be useful for soil erosion studies on agricultural land. A second boost to soil ²¹⁰Pb measurements occurred after the development of ²¹⁰Pb_{ex} tracing soil erosion studies on agricultural land (Walling and He, 1999; Walling et al, 2003).

带格式的: 上标

带格式的: 上标

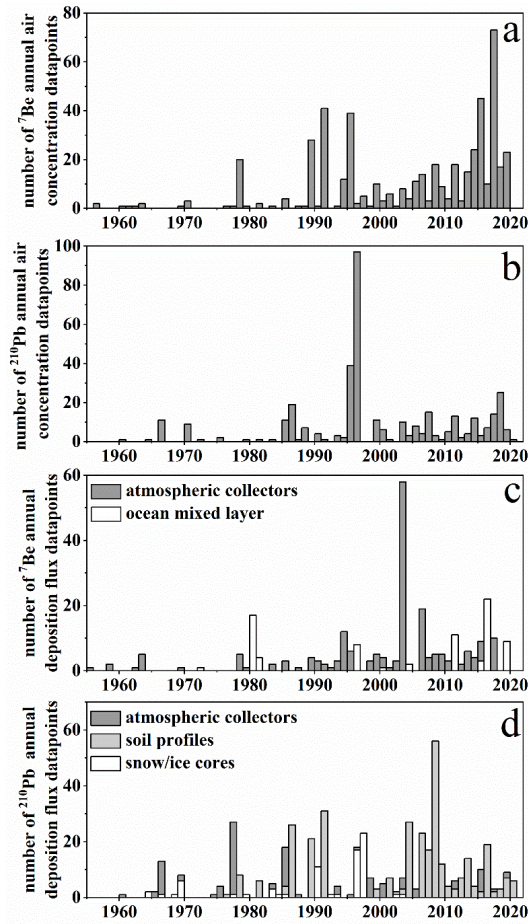


Figure 2: Time-distributions of data published between 1955 and early 2020: (a) ^7Be concentration, (b) ^{210}Pb concentration, (c) ^7Be depositional flux, and (d) ^{210}Pb depositional flux.

The histogram of sampling durations of ^7Be and ^{210}Pb measurements is given in Fig. 3. In general, the duration of sampling for ^7Be measurements, especially for air concentration, is longer than that of ^{210}Pb . Globally, there are 140 sites that monitored ^7Be air concentration for more than 10 years. The long-term (decades) measurements of ^7Be were mainly dedicated to investigate the negative effect of changes in sunspot number on ^7Be (Megumi et al., 2000; Cannizzaro et al., 2004; Kulan et al., 2006; Pham et al., 2013; Steinmann et al., 2013). Due to the simpler measurement procedure for air concentration, the duration of air concentration measurements, whether for ^7Be or ^{210}Pb , is generally longer than that of ^{210}Pb and/or ^7Be depositional flux measurements.

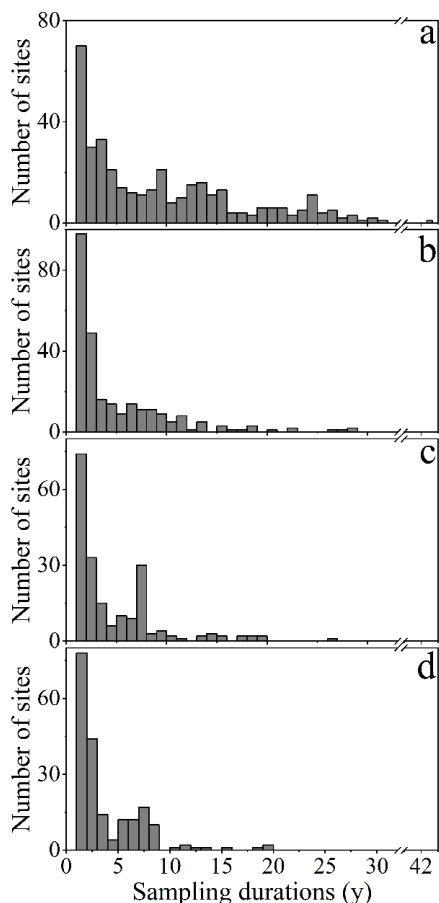


Figure 3: Histogram of sampling durations of (a) ^7Be concentration, (b) ^{210}Pb concentration, (c) ^7Be depositional flux, and (d) ^{210}Pb depositional flux. For those sites with multiple data set, we added the sampling duration together, after deducting the overlapping period, if any. Note that the data of ^7Be and ^{210}Pb depositional flux data plotted here only refer to that those obtained by using rain collectors.

3.2 Global variability

The global data of ^7Be and ^{210}Pb air concentrations and depositional fluxes are presented in Fig. 4. The range of concentrations of ^7Be and ^{210}Pb are $0.33\text{--}17.77\text{ mBq m}^{-3}$ and $0.003\text{--}4.65\text{ mBq m}^{-3}$, respectively. The range of depositional fluxes of ^7Be and ^{210}Pb are $59\text{--}6350\text{ Bq m}^{-2}\text{ y}^{-1}$ and $1\text{--}2539\text{ Bq m}^{-2}\text{ y}^{-1}$, respectively. The concentration and depositional flux ranges of ^7Be and ^{210}Pb are $0.33\text{--}17.77\text{ mBq m}^{-3}$ and $0.003\text{--}4.65\text{ mBq m}^{-3}$, $59\text{--}6350\text{ Bq m}^{-2}\text{ y}^{-1}$ and $1\text{--}2539\text{ Bq m}^{-2}\text{ y}^{-1}$, respectively. The concentrations and depositional fluxes of ^7Be show clear-discernable latitudinal variability (Fig. 5a and 5c). In general, ^7Be

带格式的: 上标

带格式的: 上标

带格式的: 上标

带格式的: 上标

带格式的: 上标

带格式的: 上标

带格式的: 上标

带格式的: 上标

带格式的: 上标

带格式的: 上标

concentration and flux peak at the mid-latitudes and decrease toward the equator and poles, as was theoretically predicted by Lal and Peters (1967). A symmetric pattern is observed between the Northern and Southern hemispheres; however, a sharp increment-increase in ^7Be air concentration (lack of flux data) occurred on the Antarctic continent which reflects the subsidence of stratospheric air masses over the Antarctica continent (Wagenbach et al., 1988; Elsässer et al., 2011). Although the ^{210}Pb concentration and depositional flux are expected to heavily depend on the source(s) of air mass(es), and not to depend on the latitude, the 10° latitudinal variability of ^{210}Pb concentration and depositional flux in the Northern and Southern hemisphere is observed (Fig. 5b and 5d). The latitudinal variability of ^{210}Pb flux is similar to the global fallout curve based on 167 global sites (Baskaran, 2011). Since most of the ^{210}Pb data are derived from continental sites, the latitudinal variation is mostly due to differences in the radon emanation rates with latitude. As the area of the landmass in the Southern hemisphere is smaller compared to the Northern hemisphere, the ^{210}Pb concentration and depositional flux are much lower there. An asymmetry is observed in the ^{210}Pb concentration and depositional flux between the Northern and Southern hemispheres, with the highest values appearing in the mid-latitudes of the Northern hemisphere.

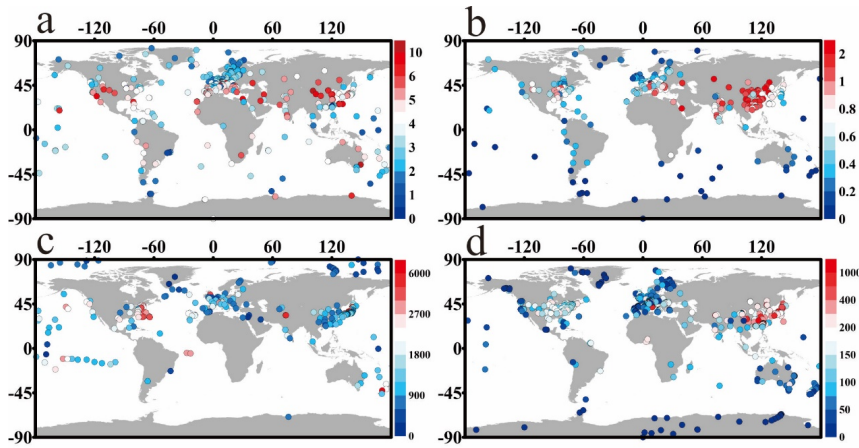


Figure 4: Global distribution of (a) ^7Be annual air concentration (mBq m^{-3}), (b) ^{210}Pb annual air concentration (mBq m^{-3}), (c) ^7Be annual depositional flux ($\text{Bq m}^{-2} \text{y}^{-1}$) and (d) ^{210}Pb annual depositional flux ($\text{Bq m}^{-2} \text{y}^{-1}$). For those sites with multiple data set published, a weighted average was performed calculated based on the sampling durations.

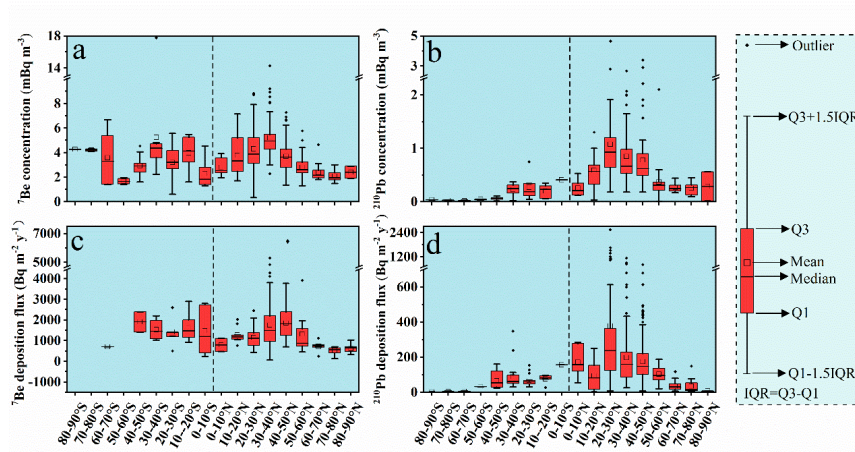


Figure 5: Latitudinal variability (box whisker plots) of (a) ^7Be concentration, (b) ^{210}Pb concentration, (c) ^7Be depositional flux, and (d) ^{210}Pb depositional flux sorted-plotted by the 10° latitudinal bands.

3.3 Contribution-Fraction of dry deposition and effect of precipitation on ^7Be and ^{210}Pb depositional flux

It was reported that dry deposition of ^7Be and ^{210}Pb generally accounts for less than 10% of the total deposition (Talbot and Andren, 1983; Brown et al., 1989; Todd et al., 1989), however, the fraction of dry deposition of ^7Be and ^{210}Pb is highly variable (McNeary and Baskaran, 2003; Pham et al., 2013). It is likely that the contribution of dry fallout could increase when annual precipitation decreases (McNeary and Baskaran, 2003). The fraction of dry to total depositional flux of ^7Be and ^{210}Pb are presented in Fig. 6a and 6b. Globally, the fraction of dry to total depositional flux of ^7Be and ^{210}Pb ranged from 1% to 44% (mean: $12 \pm 9\%$, $n=29$, excluding one extreme site without precipitation) and from 5% to 51% (mean: $21 \pm 12\%$, $n=26$), respectively (Fig. 6c). The low fraction of dry to total depositional fluxes of ^7Be and ^{210}Pb suggest that these nuclides are removed from the atmosphere primarily by precipitation (both rain and snowfall). Our results also support previous studies (Baskaran et al., 1993; Benitez-Nelson and Buesseler, 1999) that the fraction of dry deposition is higher for ^{210}Pb than for ^7Be . The fraction of dry fallout of ^7Be and ^{210}Pb is plotted against annual precipitation in Fig. 6d and 6e, however, a weak negative correlation is observed especially for ^{210}Pb .

带格式的: 上标

带格式的: 上标

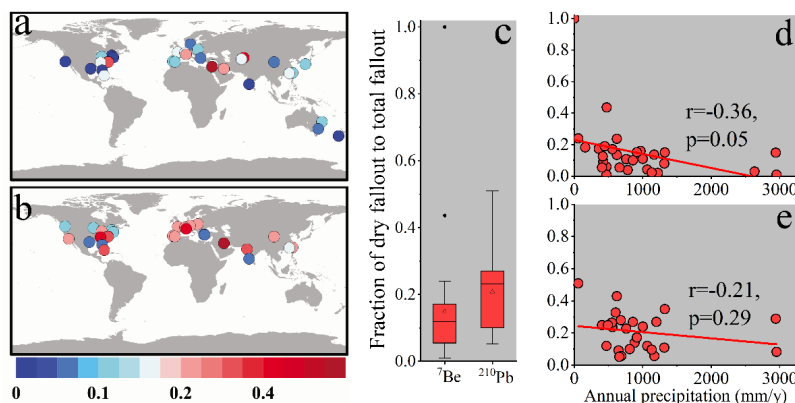


Figure 6: Global distribution of the fraction of dry to total depositional fluxes of (a) ^7Be and (b) ^{210}Pb . (c) Box whisker plots showing the comparison between the fraction of dry to total depositional fluxes of ^7Be and the fraction of dry to total depositional fluxes of ^{210}Pb . (d) The fraction of dry to total depositional fluxes of ^7Be versus annual precipitation. (e) The fraction of dry to total depositional fluxes of ^{210}Pb against annual precipitation.

As precipitation is the primary mechanism of removal of these nuclides from the atmosphere, the annual depositional fluxes of these nuclides generally depend on the amount and frequency of precipitation. In our dataset, the world's lowest ^7Be depositional flux (only $59 \text{ Bq m}^{-2} \text{ y}^{-1}$, less than 5% of the global average ^7Be flux) occurred in Judean Desert, a precipitation free area in the horse latitude that in the same latitude was observed in a precipitation area, the Judean Desert (Belmaker et al., 2011). The highest ^7Be ($6350 \text{ Bq m}^{-2} \text{ y}^{-1}$) and ^{210}Pb ($2539 \text{ Bq m}^{-2} \text{ y}^{-1}$) depositional flux were observed in heavy rainfall areas, Hokitika, New Zealand (Harvey and Matthews, 1989) and Taiwan (Huh and Su, 2004), respectively. Positive correlations between annual depositional flux and precipitation have been observed on a local scale (e.g., Narazaki et al., 2003; Garcia-Orellana et al., 2006; Sanchez-Cabeza et al, 2007; Leppanen et al., 2019). Here we illustrate the effect of precipitation on annual depositional flux on a global scale (Figs. 7 and 8). As both ^7Be and ^{210}Pb depositional flux show clear latitudinal variability, the fitting-linear best-fit curve of annual depositional flux to annual precipitation is plotted within the 10° latitudinal bands (if data are available). The empirical equations and fitting parameters describing the relationships between annual precipitation and ^7Be and ^{210}Pb depositional fluxes are summarized in Table 2. ^7Be and ^{210}Pb annual depositional fluxes generally show a good positive correlation with annual precipitation, although the data are limited in some latitudinal bands. Note that the frequency of precipitation is also an important factor which is not considered in earlier studies.

带格式的: 上标

带格式的: 上标

带格式的: 上标

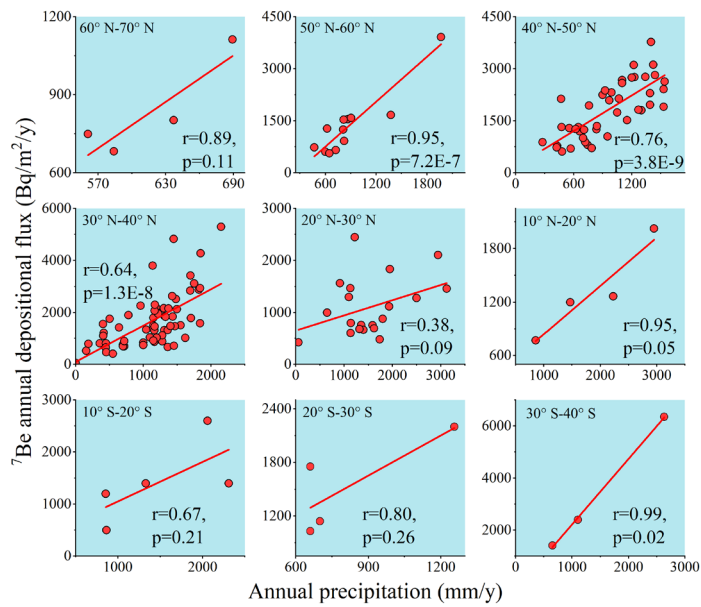


Figure 7: Annual depositional fluxes of ^7Be are plotted against annual precipitation ~~within the~~for 10° latitudinal bands.

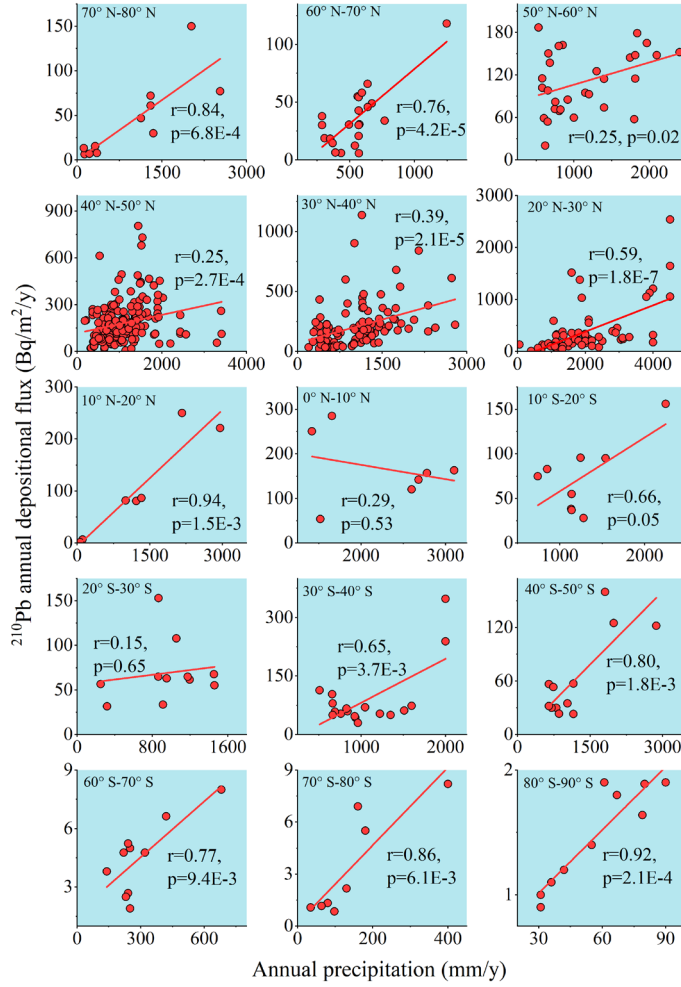


Figure 8: Annual depositional fluxes of ^{210}Pb are plotted against annual precipitation within thefor 10° latitudinal bands.

3.4 $^7\text{Be}/^{210}\text{Pb}$ ratios and deposition velocities

Considering that some data come from the same station, we further calculated the ratios of ^7Be to ^{210}Pb and deposition velocities of aerosols using ^7Be and ^{210}Pb data, as shown in Figs. 9 and 10.

The variations in the $^7\text{Be}/^{210}\text{Pb}$ ratios reflect both vertical and horizontal transport in the atmosphere (Baskaran, 1995; Koch et al., 1996; Arimoto et al., 1999; Lee et al., 2007; Tositti et al., 2014). Our dataset exhibits similar global patterns of $^7\text{Be}/^{210}\text{Pb}$ ratio as simulated with a three-dimensional chemical tracer

model (Koch et al., 1996), with a positive south poleward gradient and a little variation in the Northern hemisphere. Globally, the $^7\text{Be}/^{210}\text{Pb}$ air concentration ratio ranged from 2 to 222, and the $^7\text{Be}/^{210}\text{Pb}$ depositional flux ratio ranged from 2 to 229. In 19 sites for which, $^7\text{Be}/^{210}\text{Pb}$ air concentration ratio and depositional flux ratio are were available simultaneously, the a paired t-test indicates that at 0.05 level the $^7\text{Be}/^{210}\text{Pb}$ air concentration ratio and depositional flux ratio are not significantly different.

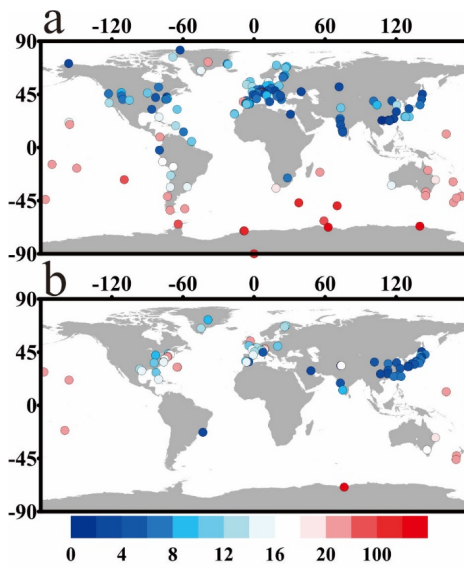


Figure 9: Global distribution of (a) $^7\text{Be}/^{210}\text{Pb}$ activity ratio and (b) $^7\text{Be}/^{210}\text{Pb}$ depositional flux ratio. Note that the color bar below applies to both figures.

^7Be and ^{210}Pb are excellent tracers for the determination of the deposition velocities of aerosols for several two reasons: (1) their measurements are easy; (2) their production rates depositional fluxes and air concentrations at any given site remain fairly constant over a long period; and (3) their size distributions in aerosols are similar to that of many particulate contaminants of interest (McNeary and Baskaran, 2003; Dueñas et al., 2005). When both air concentration (C) and depositional flux (F) at the same site are available, the average total deposition velocities of aerosols that carry these nuclides (V_d) can be calculated by the following Eq. (1):

$$V_d = F/C, \quad (1)$$

Thus, the V_d obtained from ^7Be and ^{210}Pb can be used to determine the depositional flux of analog species (Turekian et al., 1983) with a knowledge of their air concentration (Turekian et al., 1983) of these analog species, assuming that the scavenging behavior of analog species is similar to ^7Be and ^{210}Pb . The V_d for

^7Be ranged from 0.182-8.394 (mean: 1.253 ± 1.462 , $n=70$) cm s^{-1} , and for ^{210}Pb ranged from 0.13-12.79 (mean: 1.462 ± 1.687 , $n=72$) cm s^{-1} . The deposition velocity of aerosols collected over a period of 17 months in Detroit, MI, USA varied over two orders of magnitude, from 0.2 to 3.6 (mean: 1.6, $n=30$) cm s^{-1} for ^7Be and 0.04 to 3.6 cm s^{-1} (mean: 1.1, $n=30$) cm s^{-1} (McNeary and Baskaran, 2003). A summary of depositional velocity from 10 different stations are also given in McNeary and Baskaran (2003). Earlier studies suggested that, at continental sites, V_d of ^7Be will be higher than V_d of ^{210}Pb using the ground level as the reference, which is an artifact of-in the manner in which the calculation is made (Turekian et al., 1983; Todd et al., 1989; McNeary and Baskaran, 2003). However, later works observed opposite results (Dueñas et al., 2005, 2017; Lozano et al., 2011; Mohan et al., 2019). The independent t-test analysis indicates that at 0.05 level the V_d calculated by ^7Be and ^{210}Pb are not significantly different in the global dataset, which suggests that ^7Be and ^{210}Pb attach onto the aerosols by similar mechanisms (Winkler et al., 1998; Papastefanou, 2006), and are affected by similar deposition processes (Lozano et al., 2013).

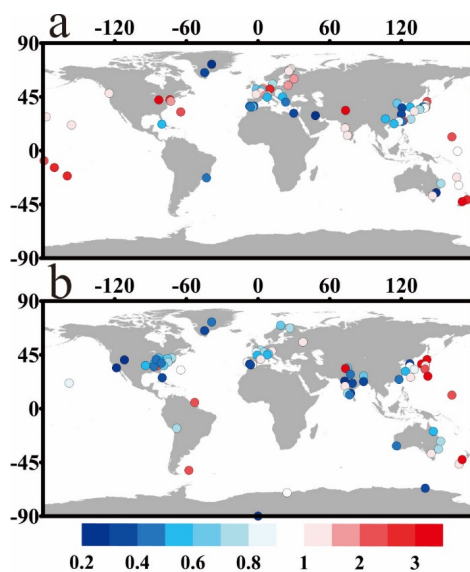


Figure 10: Global distribution of deposition velocities (V_d) of aerosols (in cm s^{-1}) obtained from (a) ^7Be and (b) ^{210}Pb . Note that the color bar below applies to both figures.

3.5 Investigations on global atmospheric dynamics and climate changes

Developing numerical models in which aerosols, chemistry, radiation, and clouds interact with one another and with atmospheric dynamics is important for understanding and predicting global climate

changes (Brost et al., 1991). In such atmospheric dynamic models, the major uncertainty is from the parameterization of subgrid-scale processes such as precipitation scavenging, vertical transport, and radiative effect. The cosmogenic ^7Be and terrigenous ^{210}Pb , taken together, offer an excellent tool in investigating wet scavenging and vertical transport in global models (Liu et al., 2001).

A set of data obtained prior to the 1990s ~~were-was~~ used to compare simulated results in global models such as ECHAM2 (Brost et al., 1991; Feichter et al., 1991), ECMWF (Rehfeld and Heimann, 1995), CTM ~~based on GISS GCM~~ (Balkanski et al., 1993; Koch et al., 1996), GEOS-CHEM (Liu et al., 2001), ~~-and~~ LMDz (Preiss and Genthon, 1997; Heinrich and Pilon, 2013) ~~and GMI CTM (Liu et al., 2016)~~. By simulating the ratio ~~of~~ $^7\text{Be}/^{210}\text{Pb}$, Koch et al. (1996) eliminated the error associated with the effect of precipitation and provided a better measure of vertical transport. After correcting the cross-tropopause transport, simulation of observed ^7Be and ^{210}Pb surface concentrations and depositional fluxes with no significant global bias was obtained (Liu et al., 2001). Note that the spatial coverage of the dataset used in the previous modeling work was only partial, thus, ~~reducing-limiting~~ the statistical significance of comparisons of simulated and observed results (Feichter et al., 1991). Additional work with more data is needed for detailed comparison and successful validation of models (Brost et al., 1991). The size of the ^7Be and ^{210}Pb datasets has greatly increased in the last three decades and our new dataset is expected to lay a foundation ~~to-developin~~ ~~developing~~ better parameterization and contribute to modeling efforts.

3.6 Soil erosion, ~~Paquatic~~ particle dynamics and ocean surface process studies

The atmospheric depositional flux data of ^7Be and ^{210}Pb are useful in utilizing these nuclides as tracers for soil erosion and redistribution studies in terrestrial environments (Mabit et al., 2008) as well as particle dynamics study in ~~aqueous-aquatic~~ environments (e.g., Du et al., 2012; Matisoff et al., 2014). The basic principles involved in using of ^7Be or $^{210}\text{Pb}_{\text{ex}}$ as soil tracers are the same, which is to compare the measured inventory of ^7Be or $^{210}\text{Pb}_{\text{ex}}$ (Bq m^{-2}) at a sampling point with the inventory ~~of~~ ~~at~~ an undisturbed (or reference) site (Blake et al., 1999; Walling and He, 1999). Depletion of the inventory means that soil erosion has occurred, whereas ~~exceeding-enrichment~~ provides evidence of accumulation ~~and/or-redistribution~~ of surficial soil. The first step in these studies is to select a suitable undisturbed site and obtain the reference inventory (Mabit et al., 2009). However, as human activity intensifies, such undisturbed sites are not always readily available. In ~~aquatic systems (including river, lake, estuary and coast), the estuarine and coastal areas,~~ the mass balance ~~-calculation~~ ~~models~~ of ^7Be and $^{210}\text{Pb}_{\text{ex}}$ have

become powerful tools to understand the sediment source, transportation, and resuspension processes scavenging processes (e.g., Wieland et al., 1991; Feng et al., 1999; Su and Huh, 2002; Jweda et al., 2008; Du et al., 2010; Saari et al., 2010; Huang et al., 2013; Mudbidre et al., 2014). In such models, the atmospheric depositional input of ^7Be and ^{210}Pb is a required source term. The measured enhanced sediment inventory of $^{210}\text{Pb}_{\text{ex}}$ compared to atmospheric deposition-based inventory (=annual deposition, $\text{Bq m}^{-2}\text{y}^{-1}$ /mean-life of the isotope, y) indicates notable sediment focusing or additional particle input other than atmospheric fallout (Swarzenski et al., 2006; Lepore et al., 2009; Wang et al., 2020). Furthermore, $^7\text{Be}/^{210}\text{Pb}_{\text{ex}}$ activity ratio can be used to identify the source area of sediments (Whiting et al., 2005; Jweda et al., 2008; Wang et al., 2021), to quantify the age of sediments (Matisoff et al., 2005; Saari et al., 2010), and to determine the transport distance of suspended particles (Bonniwell et al., 1999; Matisoff et al., 2002). Thus, the atmospheric depositional flux data of ^7Be and ^{210}Pb are also important for tracing particle dynamics in aquatic systems using ^7Be and $^{210}\text{Pb}_{\text{ex}}$. We believe that the atmospheric depositional flux data presented in our dataset will benefit and facilitate soil or coastal sediment erosion/focusing and particle dynamics studies.

The atmospheric depositional flux (or ocean inventory) data of ^7Be serve as an indispensable parameter for tracing surface ocean process (e.g., subduction, upwelling, and depositional flux of trace metals) (Kadko, 2017; Kadko and Olsen, 1996; Kadko et al., 2015). Due to the low activity of ^7Be in open ocean waters, usually, 400-700 L seawater is needed, which imposes some limitations for sampling, especially for deep layers. This constraint has hampered/limited its application. If the ^7Be ocean inventory can be accurately estimated, the collection of a large volume of seawater can be avoided and the application of ^7Be in open ocean will be expanded.

Scientific data are not simply the outputs of research but they also provide inputs to new hypotheses, extending research and enabling new scientific insights (Tenopir et al., 2011). Our dataset provides a forum in which a large amount of ^7Be and ^{210}Pb atmospheric depositional flux data for the above-mentioned research communities. This database will help in identifying data gaps and evaluating the empirical relations between ^7Be and ^{210}Pb depositional fluxes and annual precipitation (Table 2). Researchers can rely on previously collected data in planning their research, without additional monitoring of ^7Be and/or ^{210}Pb depositional fluxes. Even for those areas with data gaps, the empirical equations between ^7Be and ^{210}Pb depositional fluxes and annual precipitation provide an empirical method for estimating fluxes, especially for ^7Be , as ^7Be depositional flux is independent of longitude and

带格式的: 上标

带格式的: 上标

带格式的: 上标

带格式的: 上标

带格式的: 定义网格后不调整右缩进, 孤行控制, 不调整西文与中文之间的空格, 不调整中文和数字之间的空格

带格式的: 上标

带格式的: 上标

带格式的: 上标

带格式的: 上标

带格式的: 上标

带格式的: 上标

带格式的: 上标

带格式的: 上标

is constant over broad latitudinal bands. In summary, the atmospheric depositional flux data presented in this our dataset along with the meta-analysis of the data will be useful in the investigations of soil erosion studies in terrestrial environments, particle dynamics studies in aquatic systems, and surface mixing process studies in open ocean.

3.7 Gaps and recommendations

Our dataset is a compilation of most of the published results in international peer-reviewed journal articles represents an ambitious expansion in comparison to the ^7Be or ^{210}Pb datasets currently available (Brost et al., 1991; Preiss et al., 1996; Persson et al., 2016). Although the spatial coverage of this dataset is more significant, the data available sites it is still are unevenly distributed. Compared to spatial and temporal coverage of depositional flux data, the coverage of air concentration data is much larger. The air concentration measurement at from deep ocean site is limited, but the data from coastal oceanic sites is adequate; however, but the depositional flux measurement at oceanic sites is rare. Concerning air concentrations, in areas such as Europe, East Asia, eastern Oceania, and the eastern United States are well covered, whereas other areas such as the African continent and Northern Asia are underrepresented limited. A similar spatial coverage pattern exists for the depositional flux of these nuclides, but the regional gaps are more notable, especially for ^7Be flux data which are almost non-existent in Antarctica and African continents. In addition, it needs to be emphasized that the number of sampling sites, in which both concentration and flux of ^7Be and ^{210}Pb were measured simultaneously, are limited. Finally, we acknowledge that the seasonal information is indeed not much discussed for this dataset.

We recommend that future studies should pay more attention to those areas that are currently undersampled or unsampled to better characterize the expected global variability in the ^7Be and ^{210}Pb air concentrations and depositional fluxes, by measuring both nuclides simultaneously to obtain more data as well as $^7\text{Be}/^{210}\text{Pb}$ ratio and estimate deposition velocity of aerosols. In areas with very limited precipitation such as deserts, it is expected that the dry fallout will dominate the bulk depositional flux, and quantification of the role of dry fallout in the removal of these nuclides will provide insights on the removal of other analog species. As mentioned earlier, combining cosmogenic ^7Be with ^{210}Pb that has a predominantly Earth-surface origin will be useful to trace species that originate both from Earth's surface, such as Hg , SO_4^{2-} , NO_3^- , and those that originate in the upper atmosphere, such as O_3 . Besides, the size

带格式的: 字体: (默认) + 西文正文 (等线), 10.5 磅, 字体颜色: 自动设置

distribution of aerosols particles carrying ^7Be and ^{210}Pb is crucial for understanding atmospheric behavior and tracing analogues, and such studies also need to be strengthened-conducted. Further compilation of monthly data is also warranted to assess seasonal variability of ^7Be and ^{210}Pb and understand the relationship between these changes and influencing factors such as atmospheric dynamics, meteorological condition, and geographic location on a global scale. As mentioned earlier, combining cosmogenic ^7Be with ^{210}Pb that has a predominantly Earth surface origin will be useful to trace species that originate both from Earth's surface, such as Hg , SO_4^- , NO_3^- , and those that originate in the upper atmosphere, such as O_3 . Besides, tThe troposphere contains ~99% of global water vapor with < 1% in the stratosphere. The depositional velocity of aerosol in the stratosphere is very low ($\sim 4 \times 10^{-3} \text{ cm s}^{-1}$; Junge, 1963) with no precipitation. Thus, the ^7Be concentration is governed by local production, meridional, zonal and vertical downward transport, and its decay. In the middle and upper troposphere where precipitation is much less frequent, the removal rate of aerosols is also slow. Collection of air samples in that part of the atmosphere will provide useful information on the total deposition velocity of aerosols. Between the upper tropopause and cloud condensation height, the removal rate of aerosols is also slow. Collection of air samples about cloud condensation height to tropopause will provide useful information on the settling velocity of aerosols (Lal and Baskaran, 2012).

Finally, we acknowledge that the seasonal data of ^7Be and ^{210}Pb has not been included in the current version of dataset, because compiling the seasonal data is more challenging than compiling the annual data. Unlike the annual data, most of the published seasonal data are presented in graphs, without giving in tables, and in some cases, the graph quality was poor and precision in data extraction is expected to be poor. Besides, in some papers, although seasonal data were measured, only the annual data were provided. Thus, the comprehensive compilation of seasonal data of ^7Be and ^{210}Pb may need collaboration with and data sharing from the scientific community. The compilation of seasonal data is expected to be useful to assess seasonal variability of ^7Be and ^{210}Pb and understand the relationship between these changes and influencing factors such as atmospheric dynamics, meteorological conditions, and geographic location on a global scale. And the seasonal data can also be useful in evaluating seasonality of transport in global atmospheric models.

4 Data formats and availability

For clarity and convenience, four separate worksheets, each named as ^7Be or ^{210}Pb annual air concentration and ^7Be or ^{210}Pb annual atmospheric flux, are available in one Microsoft Excel® file, although sometimes these data come from the same [literature article](#). In addition, the data of $^7\text{Be}/^{210}\text{Pb}$ air concentration ratio, $^7\text{Be}/^{210}\text{Pb}$ depositional flux ratio and deposition velocities for ^7Be and ^{210}Pb are also presented. The dataset can be downloaded from Zenodo (<https://doi.org/10.5281/zenodo.4785136>, Zhang et al., 2021). It is free for scientific applications, but the free availability does not constitute a license to reproduce or publish it. The compilation of seasonal data is ongoing, and the dataset will be updated in a future effort.

5 Conclusions

This paper summarizes the global dataset of ^7Be and ^{210}Pb for their concentration in atmospheric air and their depositional fluxes from 456 publications spanning the [time-period](#) from 1955 to early 2020. The calculated activity ratios of $^7\text{Be}/^{210}\text{Pb}$ and deposition velocity of aerosols are also reported. Some noteworthy spatial gaps in the dataset are the African continent, Northern Asia, and Antarctica (only for ^7Be flux). Despite these gaps, our dataset is the largest compilation of ^7Be and ^{210}Pb air concentration and depositional flux up to date and could be used to better understand the transport processes of air masses and depositional processes of aerosols. This dataset not only lays a solid foundation to develop better parameterization contributing to future modeling efforts but also supply a basic parameter for tracing soil erosion [on land](#), particle dynamics [in aquatic systems](#), and ocean surface processes using ^7Be and/or ^{210}Pb .

Appendix A: List of references in the dataset

Aaboe et al. (1981), Aba et al. (2016), Ahmed et al. (2004), Akata et al. (2008, 2015, 2018a, 2018b), Akram et al. (1999), Al-Azmi et al. (2001), Alegría et al. (2010), Ali et al. (2011a, 2011b), Alonso-Hernández et al. (2004, 2014), Amano and Kasai (1981), Anand and Rangarajan (1990), Anderson et al. (1960), Andres (2018), Appleby et al. (2002, 2003, 2019), Arimoto et al. (1999), Arkian et al. (2010), Arnold and Al-Salih (1955), Azahra et al. (2003, 2004), Azimov et al. (2011, 2017), Bachhuber and Bunzl (1992), Baeza et al. (1996, 2016), Bas et al. (2017), Baskaran and Swarzenski (2007), Baskaran et al. (1993), Batraov et al. (2016), Bazarbaev et al. (2012), Begy et al. (2016), Beks et al. (1998), Belmaker

带格式的: 上标

带格式的: 上标

带格式的: 上标

带格式的: 上标

带格式的: 上标

带格式的: 上标

et al. (2011), Belyaev et al. (2004), Benitez-Nelson and Buesseler (1999), Benmansour et al. (2013), Bettoli et al. (1995), Bikkina et al. (2015), Blake et al. (2009), Blazej and Mietelski (2014), Bleichrodt
585 (1978), Bleichrodt and van Abkoude (1963), Bourcier et al. (2011), Brandt et al. (2018), Branford et al. (2004), Brost et al. (1991), Brown et al. (1989), Buck et al. (2019), Buraeva et al. (2013a, 2013b), Burton and Stewart (1960), Caillet et al. (2001), Cámara-Mor et al. (2011), Cannizzaro et al. (1999, 2004), Canuel et al. (1990), Cao et al. (2018), Carpenter et al. (1981), Carvalho et al. (1995, 2013), Chae and Kim (2019), Chae et al. (2011), Chang et al. (2008), Chao et al. (2012, 2014), Chen (2014), Chen et al.
590 (2016, 2020), Chham et al. (2017, 2018, 2019), Cho et al. (2011), Clifton et al. (1995), Conaway et al. (2013), Courtier et al. (2017), Crecelius (1981), Crozaz and Langway (1966). Crozaz et al. (1964), Cruikshank et al. (1956), Cruz et al. (2019), Cui et al. (2012), Daish et al. (2005), Damatto et al. (2005), Damnati et al. (2013), D'Amours et al. (2013), de Tombeur et al. (2020), Deng et al. (2020), Dibb (1989, 1990a, 1990b, 1992, 2007), Dibb and Jaffrezo (1993), Dibb et al. (1994), Ding et al. (2017), Dlugosz-
595 Lisiecka (2019), Doering and Akber (2008a, 2008b), Doering and Saey (2014), Doering et al. (2006), Doi et al. (2007), Dominik et al. (1987, 1989), Dörr and Münnich (1991), Dovhyi et al. (2017), Du et al. (2008, 2015), Du and Walling (2012), Dueñas et al. (1999, 2004, 2005, 2009, 2011, 2017), Āurana et al. (1996), Dutkiewicz and Husain (1985), El-Hussein et al. (2001), Elsässer et al. (2011), Eriksson et al. (2004), Fan et al. (2013), Fang et al. (2013), Feely et al. (1989), Filizok and Ugur Gorgun (2019), Filizok
600 et al. (2013), Fogh et al. (1999), Fukuyama et al. (2008), Fuller and Hammond (1983), Gäggeler et al. (1983, 1995), Gai et al. (2015), Garcia-Orellana et al. (2006), Garimella et al. (2003), Garspar et al. (2013), Gavini et al. (1974), Gerasopoulos et al. (2001), Gonzalez-Gomez et al. (2006), Gordo et al. (2015), Grabowska et al. (2003), Graham et al. (2003), Graustein and Turekian (1986, 1989), Grossi et al. (2016), Gustafson et al. (1961), Halstead et al. (2000), Harvey and Matthews (1989), Hasebe et al.
605 (1981), Hasegawa et al. (2007), Haskell et al. (2015), He and Walling (1997), He et al. (2018), Heikkilä et al. (2008), Heinrich et al. (2007), Hernández et al. (2005, 2007, 2008), Hernandez-Ceballos et al. (2015), Hicks and Goodman (1977), Hirose et al. (2004), Hötzl et al. (1987), Houali et al. (2019), Hu (2016), Hu and Zhang (2019), Hu et al. (2020), Huang et al. (2019), Huh and Su (2004), Huh et al. (2006), Igarashi et al. (1998), Ioannidou and Paatero (2014), Ioannidou and Papastefanou (2006), Ioannidou et
610 al. (2005, 2019), Irlweck et al. (1997), Isakar et al. (2016), Ishikawa et al. (1995), Itoh and Narazaki (2017), Itthipoonthanakorn et al. (2019), Iurian et al. (2013), Jankovic et al. (2014), Jasiulionis and Wershofen (2005), Jia and Jia (2014), Jia et al. (2003), Jiang (1999), Joshi (1985), Joshi et al. (1969),

Juri Ayub et al. (2009), Kadko (2000), Kadko and Johns (2011), Kadko and Olson (1996), Kadko and Prospero (2011), Kadko and Swart (2004), Kadko et al. (2015, 2016), Kapala et al. (2018), Karwan et al. (2016), Kato et al. (2010), Khan et al. (2008, 2009), Khodadadi et al. (2018), Kikuchi et al. (2009), Kim et al. (1998, 1999, 2000, 2005), Kitto et al. (2005, 2006), Klaminder et al. (2006), Koide et al. (1977, 1979), Kolb (1970), Kownacka et al. (1990), Krmar et al. (2015), Kulan et al. (2006), Kurata et al. (1986), Laguionie et al. (2014), Lal et al. (1979), Lambert et al. (1990), Lamborg et al. (2000, 2003), Landis et al. (2014), Larsen et al. (1995), Lee et al. (1985, 2002, 2015), Leppanen (2019), Li et al. (2009, 2013, 2017a, 2017b), Likuku (2006a, 2006b), Lin et al. (2014), Lindblom (1969), Liu et al. (2014), Lockhart Jr et al. (1966), Lozano et al. (2011, 2012, 2013), Lujanienė (2003), Luyanas et al. (1970), Mabit et al. (2009), Maenhaut et al. (1979), Magno et al. (1970), Marx et al. (2005), Mattsson (1970), McNeary and Baskaran (2003), Megumi et al. (2000), Mélières et al. (2003), Men et al. (2016), Meusburger et al. (2016, 2018), Mietelski et al. (2017), Milton et al. (2001), Miralles et al. (2004), Mohan et al. (2018, 2019), Mohery et al. (2014, 2016), Momoshima et al. (2006), Monaghan (1989), Monaghan and Holdsworth (1990), Monaghan et al. (1986), Moore and Poet (1976), Muramatsu et al. (2008), Narazaki and Fujitaka (2009), Narazaki et al. (2003), Neroda et al. (2016), Nijampurkar and Clausen (1990), Nijampurkar and Rao (1993), Nijampurkar et al. (2002), Noithong et al. (2019), Nozaki et al. (1978), O'Farrell et al. (2007), Olsen et al. (1985), Othman et al. (1998), Paatero and Hatakka (2000), Paatero et al. (2003, 2010, 2015, 2017), Pacini et al. (2011, 2015), Padilla et al. (2019), Pan et al. (2011, 2017), Papastefanou and Bondietti (1991), Papastefanou and Ioannidou (1991), Papastefanou et al. (1995), Parker (1962), Peirson (1963), Peirson et al. (1966), Peng et al. (2019), Perreault et al. (2017), Persson (2016), Peters et al. (1997), Pfahler et al. (2004), Pham et al. (2011, 2013), Picciotto et al. (1964, 1968), Piñero-García and Ferro-García (2013), Piñero-García et al. (2012, 2015), Poet, et al. (1972), Poreba et al. (2019), Porto and Walling (2012), Porto et al. (2006, 2009, 2013, 2014, 2016), Pourchet et al. (1997), Preiss et al. (1996), Prospero et al. (1995), Qian et al. (1985), Rabesiranana et al. (2016), Rajačić et al. (2015, 2016), Raksawong et al. (2017), Ram and Sarin (2012), Rangarajan et al. (1966, 1975, 1986), Rastogi and Sarin (2008), Realo et al. (2004, 2007), Reiter et al. (1983), Renfro et al. (2013), Rodas Ceballos et al. (2016), Ródenas et al. (1997), Rodríguez-Perulero et al. (2019), Saari et al. (2010), Sabuti and Mohamed (2016), Sakurai et al. (2005, 2011), Saleh and Abdel-Halim (2017), Sambayev et al. (2019), Samolov et al. (2014), San Miguel et al. (2019), Sanchez-Cabeza et al. (2007), Sanders et al. (2011), Sato et al. (1994, 2003), Savva et al. (2018), Schuler et al. (1991), Schumann and Stoeppler (1963), Shapiro and Forbes-Resha

(1976), Sheets et al. (1999), Shelley et al. (2016), Shi et al. (2011, 2017), Shleien and Friend (1966), Short et al. (2007), Silker (1972), Simon et al. (2009), Smith et al. (1997), Song et al. (2003, 2015),
645 Stamoulis et al. (2018), Steinmann et al. (1999, 2013), Stromsoe et al. (2016), Su et al. (2003), Sugihara et al. (2000), Suzuki and Shiono (1995), Suzuki et al. (1999, 2004, 2017), Sykora et al. (2017), Talbot and Andren (1983), Tan et al. (2013, 2016), Tanahara et al. (2014), Tanaka and Turekian (1995), Tateda and Iwao (2008), Taylor et al. (2016), Terzi and Kalinowski (2017), Thang et al. (2018), Thompson et al. (1984), Thor and Zutshi (1958), Todd et al. (1989), Todorovic et al. (1999, 2000, 2005, 2010), Tokieda
650 et al. (1996), Tositti et al. (2014), Tsunogai, et al. (1985, 1988), Tuo et al. (2018), Turekian and Cochran (1981), Turekian et al. (1977, 1983), Uchida et al. (2009), Uematsu et al. (1994), Ueno et al. (2003), Uğur et al. (2011), Uhlář et al. (2014), Valles et al. (2009), Van Metre and Fuller (2009), Vecchi and Valli (1997), Vecchi et al. (2005), Vogler et al. (1996), Von Gunten et al. (1993), Wagenbach et al. (1988), Wakiyama et al. (2010), Wallbrink and Murray (1994, 1996), Walling and He (1999), Walling et al.
655 (2003), Walton and Fried (1962), Wan et al. (2010), Wang (2010, 2011), Wang et al. (2014a, 2014b), Weiss and Naidu (1986), Wells et al. (2012), Windom (1969), Winkler and Rosner (2000), Winkler et al. (1998), Wu et al. (2011), Yamagata et al. (2019), Yamamoto et al. (2006), Yang et al. (1999, 2011, 2013), Yi et al. (2005, 2007), Yoshimori et al. (2005), Young and Silker (1980), Yu et al. (2017, 2018), Zanis et al. (1999, 2003), Zhang et al. (2003, 2006, 2014, 2016, 2018a, 2018b, 2019), Zheng et al. (2005, 2007),
660 Zhu and Olsen (2009).

Author contributions

FZ is responsible for most of the writing of this article, along with the assembly of the data and preparation of the figures. QZ and YW assisted FZ in compiling the data. JW, MB, QZ, PJ and JD contributed to the review of the manuscript.

Competing interests

The authors declare that they have no conflict of interest.

Acknowledgements

We thank all scientists conducting research on ^7Be and/or ^{210}Pb , whose previous work and published data

made our compilation possible. Fule Zhang would like to thank Yufeng Chen for his assistance in
670 preparing graphics.

Financial support

This research has been supported by the Science and Technology Plan Projects of Guangxi Province
(2017AB30024), [111 Program \(BP0820020\)](#), and the [ECNU Academic Innovation Promotion Program
for Excellent Doctoral Students](#).

References

Aaboe, E., Dion, E. P., and Turekian, K. K.: ^7Be in Sargasso Sea and Long Island Sound waters, J.
Geophys. Res., 86, 3255-3257, 1981.

Aba, A., Al-Dousari, A. M., and Ismaeel, A.: Depositional characteristics of ^7Be and ^{210}Pb in Kuwaiti
dust, J. Radioanal. Nucl. Ch., 307, 15-23, 2016.

680 Ahmed, A. A., Mohamed, A., Ali, A. E., Barakat, A., Abd El-Hady, M., and El-Hussein, A.: Seasonal
variations of aerosol residence time in the lower atmospheric boundary layer, J. Environ. Radioactiv.,
77, 275-283, 2004.

Akata, N., Kawabata, H., Hasegawa, H., Sato, T., Chikuchi, Y., Kondo, K., Hisamatsu, S., and Inaba, J.:
Total deposition velocities and scavenging ratios of ^7Be and ^{210}Pb at Rokkasho, Japan, J. Radioanal.
685 Nucl. Ch., 277, 347-355, 2008.

Akata, N., Hasegawa, H., Kawabata, H., Kakiuchi, H., Chikuchi, Y., Shima, N., Suzuki, T., and
Hisamatsu, S.: Atmospheric deposition of radionuclides (^7Be , ^{210}Pb , ^{134}Cs , ^{137}Cs and ^{40}K) during
2000–2012 at Rokkasho, Japan, and impact of the Fukushima Dai-ichi Nuclear Power Plant accident,
J. Radioanal. Nucl. Ch., 303, 1217-1222, 2015.

690 Akata, N., Shiroma, Y., Furukawa, M., Kato, A., Kakiuchi, H., Hosoda, M., Kanai, Y., and Yanagisawa,
F.: Concentrations of chemical components, including ^{210}Pb , present in aerosols collected at Naha,
Okinawa prefecture, a sub-tropical region of Japan, Jpn. J. Health. Phys., 53, 17-22, 2018a.

Akata, N., Shiroma, Y., Ikemoto, N., Kato, A., Hegedus, M., Tanaka, M., Kakiuchi, H., and Kovacs, A.:

Atmospheric concentration and deposition flux of cosmogenic beryllium-7 at Toki, central part of
695 Japan, *Radiat. Environ. Med.*, 7, 47-52, 2018b.

Akram, M., Aslam, M., Shafique, M., Jabbar, A., and Orfi, S. D.: Monitoring of radioactive air pollutants
in the atmosphere of Karachi, Sindh, using gamma spectrometry technique, *Nucleus*, 36, 143-145,
1999.

Al-Azmi, D., Sayed, A. M., and Yatim, H. A.: Variations in ^7Be concentrations in the atmosphere of
700 Kuwait during the period 1994 to 1998, *Appl. Radiat. Isot.*, 55, 413-417, 2001.

Alegria, N., Herranz, M., Idoeta, R., and Legarda, F.: Study of ^7Be activity concentration in the air of
northern Spain, *J. Radioanal. Nucl. Ch.*, 286, 347-351, 2010.

Ali, N., Khan, E. U., Akhter, P., Khattak, N. U., Khan, F., and Rana, M. A.: The effect of air mass origin
on the ambient concentrations of ^7Be and ^{210}Pb in Islamabad, Pakistan, *J. Environ. Radioactiv.*, 102,
705 35-42, 2011a.

Ali, N., Khan, E. U., Akhter, P., Rana, M. A., Rajput, M. U., Khattak, N. U., Malik, F., and Hussain, S.:
Wet depositional fluxes of ^{210}Pb - and ^7Be -bearing aerosols at two different altitude cities of North
Pakistan, *Atmos. Environ.*, 45, 5699-5709, 2011b.

Alonso-Hernández, C. M., Aguila, H. C., Asencio, M. D., and Caravaca, A. M.: Reconstruction of ^{137}Cs
710 signal in Cuba using ^7Be as tracer of vertical transport processes in the atmosphere, *J. Environ.*
Radioactiv., 75, 133-142, 2004.

Alonso-Hernández, C. M., Morera-Gómez, Y., Cartas-Águila, H., and Guillén-Arruebarrena, A.:
Atmospheric deposition patterns of ^{210}Pb and ^7Be in Cienfuegos, Cuba, *J. Environ. Radioactiv.*, 138,
149-155, 2014.

715 Amano, H., and Kasai, A.: Concentration of ^7Be in the lower atmosphere and fallout rate in Tokai, *Jpn.*
J. Health. Phys., 16, 99-103, 1981 (in Japanese).

Anand, S. J. S. and Rangarajan, C.: Studies on the activity ratios of polonium-210 to lead-210 and their
dry-deposition velocities at Bombay in India, *J. Environ. Radioactiv.*, 11, 235-250, 1990.

Anderson, W., Bentley, R. E., Parker, R. P., Crookall, J. O., and Burton, L. K.: Comparison of fission

- 720 product and beryllium-7 concentrations in the atmosphere, *Nature*, 187, 550-553, 1960.
- Andres, P.: Determination of atmospheric concentration of beryllium-7 at ground level, *Radiat. Prot. Environ.*, 41, 148-151, 2018.
- Andrews, J. E., Hartin, C., and Buesseler, K. O.: ^7Be analyses in seawater by low background gamma-spectroscopy, *J. Radioanal. Nucl. Ch.*, 277, 253-259, 2008.
- 725 Appleby, P. G.: Three decades of dating recent sediments by fallout radionuclides: a review, *Holocene*, 18, 83-93, 2008.
- Appleby, P. G., Koulikov, A. O., Camarero, L., and Ventura, M.: The input and transmission of fallout radionuclides through Redó, a high mountain lake in the Spanish Pyrenees, *Water Air Soil Poll.*, 2, 19-31, 2002.
- 730 Appleby, P. G., Haworth, E. Y., Michel, H., Short, D. B., Laptev, G., and Piliposian, G. T.: The transport and mass balance of fallout radionuclides in Blelham Tarn, Cumbria (UK), *J. Paleolimnol.*, 29, 459-473, 2003.
- Appleby, P. G., Semertzidou, P., Piliposian, G. T., Chiverrell, R. C., Schillereff, D. N., and Warburton, J.: The transport and mass balance of fallout radionuclides in Brotherswater, Cumbria (UK), *J. Paleolimnol.*, 62, 389-407, 2019.
- 735 Arimoto, R., Snow, J. A., Graustein, W. C., Moody, J. L., Ray, B. J., Duce, R. A., Turekian, K. K., and Maring, H. B.: Influences of atmospheric transport pathways on radionuclide activities in aerosol particles from over the North Atlantic, *J. Geophys. Res.*, 104, 21301-21316, 1999.
- Arkian, F., Meshkatee, A. H., and Bidokhti, A. A.: The effects of large-scale atmospheric flows on beryllium-7 activity concentration in surface air, *Environ. Monit. Assess.*, 168, 429-439, 2010.
- 740 Arnold, J. R. and Al-Salih, H. A.: Beryllium-7 produced by cosmic rays, *Science*, 121, 451-453, 1955.
- Azahra, M., Camacho-García, A., González-Gómez, C., López-Peñalver, J. J., and El Bardouni, T.: Seasonal ^7Be concentrations in near-surface air of Granada (Spain) in the period 1993–2001, *Appl. Radiat. Isot.*, 59, 159-164, 2003.
- 745 Azahra, M., González-Gómez, C., López-Peñalver, J. J., El Bardouni, T., Camacho García, A., Boukhal, H., El Moussaoui, F., Chakir, E., Erradi, L., Kamili, A., and Sekaki, A.: The seasonal variations of

^7Be and ^{210}Pb concentrations in air, *Radiat. Phys. Chem.*, 71, 789-790, 2004.

Azimov, A. N., Safarov, A. N., Kungurov, F. R., and Muminov, A. T.: ^7Be variation in monthly atmospheric precipitation in 2002–2005 in Samarkand, *Atom. Energy*, 111, 151-154, 2011.

750 Azimov, A. N., Mukhamedov, A. K., Safarov, A. A., Bazarbaev, N. N., Inoyatov, A. K., Muminov, I. T., Omonov, K. S., Rashidova, D. S., Kholbaev, I. K., and Eshkobilov, S. K.: Atmospheric Fallout of ^7Be in 2009–2014 in Tashkent and Samarkand, *Atom. Energy*, 123, 63-67, 2017.

Bachhuber, H. and Bunzl, K.: Background levels of atmospheric deposition to ground and temporal variation of ^{129}I , ^{127}I , ^{137}Cs and ^7Be in a rural area of Germany, *J. Environ. Radioactiv.*, 16, 77-89,
755 1992.

Baeza, A., Delrío, L. M., Jiménez, A., Miró, C., Paniagua, J. M., and Rufo, M.: Analysis of the temporal evolution of atmospheric ^7Be as a vector of the behavior of other radionuclides in the atmosphere, *J. Radioanal. Nucl. Ch.*, 207, 331-344, 1996.

Baeza, A., Rodriguez-Perulero, A., and Guillen, J.: Anthropogenic and naturally occurring radionuclide content in near surface air in Cáceres (Spain), *J. Environ. Radioactiv.*, 165, 24-31, 2016.
760

Balkanski, Y. J., Jacob, D. J., Gardner, G. M., Graustein, W. C., and Turekian, K. K.: Transport and residence times of tropospheric aerosols inferred from a global three-dimension simulation of ^{210}Pb , *J. Geophys. Res.*, 98, 20573-20586, 1993.

Bas, M. D., Ortiz, J., Ballesteros, L., and Martorell, S.: Evaluation of a multiple linear regression model and SARIMA model in forecasting ^7Be air concentrations, *Chemosphere*, 177, 326-333, 2017.
765

Baskaran, M.: A search for the seasonal variability on the depositional fluxes of ^7Be and ^{210}Pb . *J. Geophys. Res.*, 100: 2833-2840, 1995.

Baskaran, M.: Po-210 and Pb-210 as atmospheric tracers and global atmospheric Pb-210 fallout: a Review. *J. Environ. Radioactiv.*, 102, 500-513, 2011.

770 Baskaran, M. and Santschi, P. H.: The role of particles and colloids in the transport of radionuclides in coastal environments of Texas, *Mar. Chem.*, 43, 95-114, 1993.

Baskaran, M. and Swarzenski, P. W.: Seasonal variations on the residence times and partitioning of short-lived radionuclides (^{234}Th , ^7Be and ^{210}Pb) and depositional fluxes of ^7Be and ^{210}Pb in Tampa Bay,

Florida, Mar. Chem., 104, 27-42, 2007.

775 Baskaran, M., Coleman, C. H., and Santschi, P. H.: Atmospheric depositional fluxes of ^7Be and ^{210}Pb at Galveston and College Station, Texas, J. Geophys. Res., 98, 20555-20571, 1993.

Baskaran, M., Ravichandran, M., and Bianchi, T. S.: Cycling of ^7Be and ^{210}Pb in a high DOC, shallow, turbid estuary of south-east Texas, Estuar. Coast. Shelf S., 45, 165-176, 1997.

带格式的: 上标

带格式的: 上标

780 Baskaran, M., Mudbidre, R., and Schweitzer, L.: Quantification of Po-210 and Pb-210 as tracer of sediment resuspension rate in a shallow riverine system: case study from Southeast Michigan, USA, J. Environ. Radioact., 222, <http://doi.org/10.1016/j.jenvrad.2020.106339>, 2020.

Batraov, G. F., Kremenchutskii, D. A., Nazarov, A. B. and Kholoptsev, A. V.: Factors influence on atmospheric concentrations of beryllium-7 (^7Be) in the Chernobyl zone, <http://doi.org/10.20861/2304-2338-2016-45-002>, 2016.

785 Bazarbaev, N. N., Inoyatov, A. K., Muminov, I. T., Rashidova, D. S., Mukhamedov, A. K., and Safarov, A. N.: Cosmogenic ^7Be fallout near Samarkand in 2002–2009, Atom. Energy, 111, 295-300, 2012.

Begy, R. C., Kovacs, T., Veres, D., and Simon, H.: Atmospheric flux, transport and mass balance of ^{210}Pb and ^{137}Cs radiotracers in different regions of Romania, Appl. Radiat. Isot., 111, 31-39, 2016.

790 Beks, J. P., Eisma, D., and van der Plicht, J.: A record of atmospheric ^{210}Pb deposition in The Netherlands, Sci. Total. Environ., 222, 35-44, 1998.

Belmaker, R., Lazar, B., Stein, M., and Beer, J.: Short residence time and fast transport of fine detritus in the Judean Desert: Clues from ^7Be in settled dust, Geophys. Res. Lett., 38, L16714, <https://doi.org/10.1029/2011GL048672>, 2011.

795 Benninger, L. K., Lewis, D. M., and Turekian, K. K.: The use of natural Pb-210 as a heavy metal tracer in the river-estuarine system, in: Marine Chemistry in the Coastal Environment/ACS Symposium Series 18, Washington, D. C., USA, 202-210, 1975.

Belyaev, V. R., Wallbrink, P. J., Golosov, V. N., Murray, A. S., and Sidorchuk, A. Y.: Reconstructing the development of a gully in the upper Kalaus basin, Stavropol region (southern Russia), Earth Surf. Proc. Land., 29, 323-341, 2004.

- 800 Benitez-Nelson, C. R. and Buesseler, K. O.: Phosphorus 32, phosphorus 37, beryllium 7, and lead 210:
Atmospheric fluxes and utility in tracing stratosphere/troposphere exchange, *J. Geophys. Res.*, 104,
11745-11754, 1999.
- Benmansour, M., Mabit, L., Noura, A., Moussadek, R., Bouksirate, H., Duchemin, M., and Benkdad,
A.: Assessment of soil erosion and deposition rates in a Moroccan agricultural field using fallout
805 ^{137}Cs and $^{210}\text{Pb}_{\text{ex}}$, *J. Environ. Radioactiv.*, 115, 97-106, 2013.
- Bettoli, M. G., Cantelli, L., Degetto, S., Tositti, L., Tubertini, O., and Valcher, S.: Preliminary
investigations on ^7Be as a tracer in the study of environmental processes, *J. Radioanal. Nucl. Ch.*,
190, 137-147, 1995.
- Bikkina, S., Sarin, M. M., and Chinni, V.: Atmospheric ^{210}Pb and anthropogenic trace metals in the
810 continental outflow to the Bay of Bengal, *Atmos. Environ.*, 122, 737-747, 2015.
- Blake, W., Walling, D. E., and He, Q.: Fallout beryllium-7 as a tracer in soil erosion investigations, *Appl.*
Radiat. Isotopes, 51, 599-605, 1999.
- Blake, W. H., Wallbrink, P. J., Wilkinson, S. N., Humphreys, G. S., Doerr, S. H., Shakesby, R. A., and
Tomkins, K. M.: Deriving hillslope sediment budgets in wildfire-affected forests using fallout
815 radionuclide tracers, *Geomorphology*, 104, 105-116, 2009.
- Blazej, S. and Mielinski, J. W.: Cosmogenic ^{22}Na , ^7Be and terrestrial ^{137}Cs , ^{40}K radionuclides in ground
level air samples collected weekly in Krakow (Poland) over years 2003-2006, *J. Radioanal. Nucl.*
Chem., 300, 747-756, 2014.
- Bleichrodt, J. F.: Mean tropospheric residence time of cosmic-ray-produced beryllium 7 at north
820 temperate latitudes, *J. Geophys. Res.*, 83, 3058-3062, 1978.
- Bleichrodt, J. F. and van Abkoude, E. R.: On the deposition of cosmic-ray-produced beryllium 7, *J.*
Geophys. Res., 68, 5283-5288, 1963.
- [Bonniwell, E. C., Matisoff, G., and Whiting, P. J.: Determining the times and distances of particle transit
in a mountain stream using fallout radionuclides, *Geomorphology*, 27, 75-92, 1999.](#)
- 825 Bonnyman, J., and Molina-Ramos, J.: Concentrations of lead-210 in rainwater in Australia during the
years 1964-1970, Tech. Rep. CXRL/7, Commonw. X-Ray Radium Lab., Melbourne, 1971.

- Bourcier, L., Masson, O., Laj, P., Pichon, J. M., Paulat, P., Freney, E., and Sellegri, K.: Comparative trends and seasonal variation of ^7Be , ^{210}Pb and ^{137}Cs at two altitude sites in the central part of France, *J. Environ. Radioactiv.*, 102, 294-301, 2011.
- 830 Brandt, C., Benmansour, M., Walz, L., Nguyen, L. T., Cadisch, G., and Rasche, F.: Integrating compound-specific $\delta^{13}\text{C}$ isotopes and fallout radionuclides to retrace land use type-specific net erosion rates in a small tropical catchment exposed to intense land use change, *Geoderma*, 310, 53-64, 2018.
- 835 Branford, D., Fowler, D., and Moghaddam, M. V.: Study of Aerosol Deposition at a Wind Exposed Forest Edge Using ^{210}Pb and ^{137}Cs Soil Inventories, *Water Air Soil Poll.*, 157, 107-116, 2004. Brost, R. A., Feichter, J., and Heimann, M.: Three-dimensional simulation of ^7Be in a global climate model, *J. Geophys. Res.*, 96, 22423-22445, 1991.
- Brown, L., Stensland, G. J., Klein, J., and Middleton, R.: Atmospheric deposition of ^7Be and ^{10}Be , *Geochim. Cosmochim. Ac.*, 53, 135-142, 1989.
- 840 Buck, C. S., Aguilar-Islas, A., Marsay, C., Kadko, D., and Landing, W. M.: Trace element concentrations, elemental ratios, and enrichment factors observed in aerosol samples collected during the US GEOTRACES eastern Pacific Ocean transect (GP16), *Chem. Geol.*, 511, 212-224, 2019.
- Buraeva, E. A., Malyshevsky, V. S., Nephedov, V. C., Shramenko, B. I., Stasov, V. V., and Zorina, L. V.: Cosmogenic ^7Be in ground level air in Rostov-on-Don (Russia) (2001-2011), *Physics*, 845 <http://arxiv.org/abs/1310.5271v1>, 2013a.
- Buraeva, E. A., Malyshevsky, V. S., Shramenko, B. I., Zorina, L. V., and Shramenko, B. I.: A record of atmospheric ^{210}Pb accumulation in the industrial city, *Physics*, <https://arxiv.org/abs/1310.5305>, 2013b.
- Burton, W. M. and Stewart, N. G.: Use of long-lived natural radioactivity as an atmospheric tracer, *Nature*, 850 186, 584-589, 1960.
- Caillet, S., Arpagaus, P., Monna, F., and Dominik, J.: Factors controlling ^7Be and ^{210}Pb atmospheric deposition as revealed by sampling individual rain events in the region of Geneva, Switzerland, *J. Environ. Radioactiv.*, 53, 241-256, 2001.

- Cámara-Mor, P., Masque, P., Garcia-Orellana, J., Kern, S., Cochran, J. K., and Hanfland, C.: Interception
855 of atmospheric fluxes by Arctic sea ice: Evidence from cosmogenic ^7Be , *J. Geophys. Res.*, 116,
C12041, <https://doi.org/10.1029/2010JC006847>, 2011.
- Cannizzaro, F., Greco, G., Raneli, M., Spitale, M. C., and Tomarchio, E.: Determination of ^{210}Pb
concentration in the air at ground-level by gamma-ray spectrometry, *Appl. Radiat. Isot.*, 51, 239-
245, 1999.
- 860 Cannizzaro, F., Greco, G., Raneli, M., Spitale, M. C., and Tomarchio, E.: Concentration measurements
of ^7Be at ground level air at Palermo, Italy—comparison with solar activity over a period of 21 years,
J. Environ. Radioactiv., 72, 259-271, 2004.
- Canuel, E. A., Martens, C. S., and Benninger, L. K.: Seasonal variations in ^7Be activity in the sediments
of Cape Lookout Bight, North Carolina, *Geochim. Cosmochim. Ac.*, 54, 237-245, 1990.
- 865 Cao, Z., Yang, Y., Wang, L., and Wang, K.: The activity concentration of ^{210}Pb and ^{210}Po in Hangzhou
atmosphere and induced public dose assessment, *Radiat. Prot.*, 38, 8-14, 2018 (in Chinese).
- Carpenter, R., Bennett, J. T., and Peterson, M. L.: ^{210}Pb activities in and fluxes to sediments of the
Washington continental slope and shelf, *Geochim. Cosmochim. Ac.*, 45, 1155-1172, 1981.
- Carvalho, F. P.: Origins and concentrations of ^{222}Rn , ^{210}Pb , ^{210}Bi and ^{210}Po in the surface air at Lisbon,
870 Portugal, at the Atlantic edge of the European continental landmass, *Atmos. Environ.*, 29, 1809-
1819, 1995.
- Carvalho, A. C., Reis, M., Silva, L., and Madruga, M. J.: A decade of ^7Be and ^{210}Pb activity in surface
aerosols measured over the Western Iberian Peninsula, *Atmos. Environ.*, 67, 193-202, 2013.
- Chae, J. S. and Kim, G.: Large seasonal variations in fine aerosol precipitation rates revealed using
875 cosmogenic ^7Be as a tracer, *Sci. Total. Environ.*, 673, 1-6, 2019.
- Chae, J. S., Byun, J. I., Yim, S. A., Choi, H. Y., and Yun, J. Y.: ^7Be in ground level air in Daejeon, Korea,
Radiat. Prot. Dosim., 146, 334-337, 2011.
- Chang, Y., Wang, X., Wang, S., and Wang, J.: Radionuclides monitoring in atmospheric aerosol samples
in Xi'an, *Nucl. Tech.*, 31, 796-800, 2008 (in Chinese).

- 880 Chao, J. H., Chiu, Y. J., Lee, H. P., and Lee, M. C.: Deposition of beryllium-7 in Hsinchu, Taiwan, *Appl. Radiat. Isot.*, 70, 415-422, 2012.
- Chao, J. H., Liu, C. C., Cho, I. C., and Niu, H.: Monitoring of ^7Be in surface air of varying PM_{10} concentrations, *Appl. Radiat. Isot.*, 89, 95-101, 2014.
- Chen, R.: Study on soil erosion tracer and nutrient element distribution in Honghu watershed, Jiangxi, 885 M.S. thesis, Nanjing Normal University, China, 2014 (in Chinese).
- Chen, J., Luo, S., and Huang, Y.: Scavenging and fractionation of particle-reactive radioisotopes ^7Be , ^{210}Pb and ^{210}Po in the atmosphere, *Geochim. Cosmochim. Ac.*, 188, 208-223, 2016.
- Chen, J., Zhang, X., Navas, A., Wen, A., Wang, X., and Zhang, R.: A study on a $^{210}\text{Pb}_{\text{ex}}$ accumulation-decay model for dating moraine soils to trace glacier retreat time, *J. Environ. Radioactiv.*, 212, 890 <https://doi.org/10.1016/j.jenvrad.2019.106124>, 2020.
- Chham, E., Pinero-Garcia, F., Gonzalez-Rodelas, P., and Ferro-Garcia, M. A.: Impact of air masses on the distribution of ^{210}Pb in the southeast of Iberian Peninsula air, *J. Environ. Radioactiv.*, 177, 169-183, 2017.
- Chham, E., Pinero-Garcia, F., Brattich, E., El Bardouni, T., and Ferro-Garcia, M. A.: ^7Be spatial and 895 temporal pattern in southwest of Europe (Spain): Evaluation of a predictive model, *Chemosphere*, 205, 194-202, 2018.
- Chham, E., Milena-Pérez, A., Piñero-García, F., Hernández-Ceballos, M. A., Orza, J. A. G., Brattich, E., El Bardouni, T., and Ferro-García, M. A.: Sources of the seasonal-trend behaviour and periodicity modulation of ^7Be air concentration in the atmospheric surface layer observed in southeastern Spain, 900 *Atmos. Environ.*, 213, 148-158, 2019.
- Cho, H. M., Hong, Y. L., and Kim, G.: Atmospheric depositional fluxes of cosmogenic ^{35}S and ^7Be : Implications for the turnover rate of sulfur through the biosphere, *Atmos. Environ.*, 45, 4230-4234, 2011.
- Clifton, R. J., Watson, P. G., Davey, J. T., and Frickers, P. E.: A study of processes affecting the uptake 905 of contaminants by intertidal sediments, using the radioactive tracers: ^7Be , ^{137}Cs and unsupported ^{210}Pb , *Estuar. Coast. Shelf S.*, 41, 459-474, 1995.

- Conaway, C. H., Storlazzi, C. D., Draut, A. E., and Swarzenski, P. W.: Short-term variability of ^7Be atmospheric deposition and watershed response in a Pacific coastal stream, Monterey Bay, California, USA, *J. Environ. Radioactiv.*, 120, 94-103, 2013.
- 910 Courtier, J., Sdraulig, S., and Hirth, G.: ^7Be and ^{210}Pb wet/dry deposition in Melbourne, Australia and the development of deployable units for radiological emergency monitoring, *J. Environ. Radioactiv.*, 178-179, 419-425, 2017.
- Covelo, E. F., Vega, F. A., and Andrade, M. L.: Sorption and desorption of Cd, Cr, Cu, Ni, Pb and Zn by a Fibric Histosol and its organo-mineral fraction, *J. Hazard. Mater.*, 159, 342-347, 2008.
- 915 Crecelius, E. A.: Prediction of marine atmospheric deposition rates using total ^7Be deposition velocities, *Atmospheric Environment* (1967), 15, 579-582, 1981.
- Crozaz, G. and Langway, C. C.: Dating Greenland firn-ice cores with Pb-210, *Earth Planet. Sc. Lett.*, 1, 194-196, 1966.
- Crozaz, G., Picciotto, E., and De Breuck, W.: Antarctic snow chronology with Pb^{210} , *J. Geophys. Res.*, 920 69, 2597-2604, 1964.
- Cruikshank, A. J., Cowper, G., and Grummitt, W. E.: Production of Be^7 in the atmosphere, *Cann. J. Chem.*, 34, 214-219, 1956.
- Cruz, P. T. F., Bonga III, A. C., Dela Sada, C. L., Olivares, J. U., Dela Cruz, F. M., Palad, L. J. H., Jesuitas, A. J., Cabatbat, E. C., Omandam, V. J., Garcia, T. Y., and Feliciano, C. P.: Assessment of 925 temporal variations of natural radionuclides Beryllium-7 and Lead-212 in surface air in Tanay, Philippines, *J. Environ. Radioactiv.*, 208-209, <https://doi.org/10.1016/j.jenvrad.2019.105989>, 2019.
- Cui, W., Zhang, M., Yang, H., Yang, B., and Lu, J.: Estimating soil erosion rates of cultivated fields using ^{137}Cs and $^{210}\text{Pb}_{\text{ex}}$ in Jiangxi red soils region, *J. Anhui Agri. Sci.*, 40, 8515-8517, 2012 (in Chinese).
- Daish, S. R., Dale, A. A., Dale, C. J., May, R., and Rowe, J. E.: The temporal variations of ^7Be , ^{210}Pb 930 and ^{210}Po in air in England, *J. Environ. Radioactiv.*, 84, 457-467, 2005.
- Damatto, S. R., Máduar, M. F., Nisti, M. B., Nogueira, P. R., and Pecequilo, B. R. S.: Preliminary results of ^7Be concentrations in ground level air at So Paulo, Brazil, in: The 2nd International Conference

on Radioactivity in the Environment, Nice, France, 2-6 October 2005, 140-146, 2005.

935 Damnati, B., Ibrahimi, S., and Radakovitch, O.: Quantifying erosion using ^{137}Cs and ^{210}Pb in cultivated
soils in three Mediterranean watershed: Synthesis study from El Hachef, Raouz and Nakhla (North
West Morocco), *J. Afr. Earth Sci.*, 79, 50-57, 2013.

Danielsen, E. F.: Stratospheric-tropospheric exchange based on radioactivity, ozone, and potential
vorticity. *J. Atmos. Sci.*, 25, 502-518, 1968.

940 D'Amours, R., Mintz, R., Mooney, C., and Wiens, B. J.: A modeling assessment of the origin of
Beryllium-7 and Ozone in the Canadian Rocky Mountains, *J. Geophys. Res-Atmos.*, 118, 10125-
10138, 2013.

de Tombeur, F., Cornu, S., Bourlès, D., Duvivier, A., Pupier, J., Aster, T., Brossard, M., and Evrard, O.:
Retention of ^{10}Be , ^{137}Cs and $^{210}\text{Pb}_{\text{xs}}$ in soils: Impact of physico-chemical characteristics, *Geoderma*,
367, 114242, 2020.

945 Deng, B., Zhong, Q., Wang, Q., Du, J., and Zhang, X.: Temporal variation of ^{210}Pb concentration in the
urban aerosols of Shanghai, China, *J. Radioanal. Nucl. Ch.*, 323, 1135-1143, 2020.

Dibb, J. E.: Atmospheric deposition of beryllium 7 in the Chesapeake Bay region, *J. Geophys. Res.*, 94,
2261-2265, 1989.

950 Dibb, J. E.: Recent deposition of ^{210}Pb on the Greenland Ice Sheet: variations in space and time, *Ann.*
Glaciol., 14, 51-54, 1990a.

Dibb, J. E.: Beryllium-7 and lead-210 in the atmosphere and surface snow over the Greenland Ice Sheet
in the summer of 1989, *J. Geophys. Res.*, 95, 22407-22415, 1990b.

Dibb, J. E.: The accumulation of ^{210}Pb at Summit, Greenland since 1855, *Tellus*, 44B, 72-79, 1992.

955 Dibb, J. E.: Vertical mixing above Summit, Greenland: Insights into seasonal and high frequency
variability from the radionuclide tracers ^7Be and ^{210}Pb , *Atmos. Environ.*, 41, 5020-5030, 2007.

Dibb, J. E. and Jaffrezo, J. L.: Beryllium-7 and lead-210 in aerosol and snow in the dye 3 gas, aerosol
and snow sampling program, *Atmos. Environ.*, 27A, 2751-2760, 1993.

Dibb, J. E., Meeker, L. D., Finkel, R. C., Southon, J. R., Caffee, M. W., and Barrie, L. A.: Estimation of

- stratospheric input to the Arctic troposphere: ^7Be and ^{10}Be in aerosols at Alert, Canada, *J. Geophys. Res.*, 99, 12855-12864, 1994.
- 960 Ding, M., Su, L., Liu, G., Zhu, J., Feng, J., and Zhang, H.: Atmospheric depositional fluxes of ^7Be and depositional velocities of aerosols in Shenzhen, *Geochimica*, 46, 81-86, 2017 (in Chinese).
- Dlugosz-Lisiecka, M.: Chemometric methods for source apportionment of ^{210}Pb , ^{210}Bi and ^{210}Po for 10 years of urban air radioactivity monitoring in Lodz city, Poland, *Chemosphere*, 220, 163-168, 2019.
- 965 Doering, C. and Akber, R.: Beryllium-7 in near-surface air and deposition at Brisbane, Australia, *J. Environ. Radioactiv.*, 99, 461-467, 2008a.
- Doering, C. and Akber, R.: Describing the annual cyclic behaviour of ^7Be concentrations in surface air in Oceania, *J. Environ. Radioactiv.*, 99, 1703-1707, 2008b.
- Doering, C. and Saey, P.: Hadley cell influence on ^7Be activity concentrations at Australian mainland
970 IMS radionuclide particulate stations, *J. Environ. Radioactiv.*, 127, 88-94, 2014.
- Doering, C., Akber, R., and Heijnis, H.: Vertical distributions of ^{210}Pb excess, ^7Be and ^{137}Cs in selected grass covered soils in Southeast Queensland, Australia, *J. Environ. Radioactiv.*, 87, 135-147, 2006.
- Doi, T., Sato, S., and Sato, J.: Atmospheric concentration of ^{210}Pb in East Asia and its contribution to Japanese islands by long-range transport, *Radioisotopes*, 56, 115-130, 2007.
- 975 Dominik, J., Burrus, D., and Vernet, J. P.: Transport of the environmental radionuclides in an alpine watershed, *Earth Planet. Sc. Lett.*, 84, 165-180, 1987.
- Dominik, J., Schuler, C., and Santschi, P. H.: Residence times of ^{234}Th and ^7Be in Lake Geneva, *Earth Planet. Sc. Lett.*, 93, 345-358, 1989.
- Dörr, H. and Münnich, K. O.: Lead and cesium transport in European forest soils, *Water Air Soil Poll.*,
980 57, 809-818, 1991.
- Dovhyi, I. I., Kremenchutskii, D. A., Proskurnin, V. Y., and Kozlovskaya, O. N.: Atmospheric depositional fluxes of cosmogenic ^{32}P , ^{33}P and ^7Be in the Sevastopol region, *J. Radioanal. Nucl. Ch.*, 314, 1643-1652, 2017.
- Du, J., Zhang, J., Zhang, J., and Wu, Y.: Deposition patterns of atmospheric ^7Be and ^{210}Pb in coast of

- 985 East China Sea, Shanghai, China, *Atmos. Environ.*, 42, 5101-5109, 2008.
- Du, J., Wu, Y., Huang, D., and Zhang, J.: Use of ^7Be , ^{210}Pb and ^{137}Cs tracers to the transport of surface sediments of the Changjiang Estuary, China, *J. Marine Syst.*, 82, 286-294, 2010.
- Du, J., Zhang, J., and Baskaran, M.: Applications of short-lived radionuclides (^7Be , ^{210}Pb , ^{210}Po , ^{137}Cs and ^{234}Th) to trace the sources, transport pathways and deposition of particles/sediments in rivers, estuaries and coasts, in: *Handbook of environmental isotope geochemistry*, edited by: Baskaran, M., Springer, Berlin, Heidelberg, Germany, 305-329, https://doi.org/10.1007/978-3-642-10637-8_16, 2012.
- 990 Du, J., Du, J., Baskaran, M., Bi, Q., Huang, D., and Jiang, Y.: Temporal variations of atmospheric depositional fluxes of ^7Be and ^{210}Pb over 8 years (2006-2013) at Shanghai, China, and synthesis of global fallout data, *J. Geophys. Res-Atmos.*, 120, 4323-4339, 2015.
- 995 Du, J., Baskaran, M., and Du, J.: Atmospheric deposition of ^7Be , ^{210}Pb and ^{210}Po during typhoons and thunderstorm in Shanghai, China and global data synthesis, *Sci. China-Earth Sci.*, 63, 602-614, 2020.
- Du, P. and Walling, D. E.: Using ^{210}Pb measurements to estimate sedimentation rates on river floodplains, *J. Environ. Radioactiv.*, 103, 59-75, 2012.
- 1000 Dueñas, C., Fernández, M. C., Liger, E., and Carretero, J.: Gross alpha, gross beta activities and ^7Be concentrations in surface air: analysis of their variations and prediction model, *Atmos. Environ.*, 33, 3705-3715, 1999.
- Dueñas, C., Fernández, M. C., Carretero, J., Liger, E., and Cañete, S.: Long-term variation of the concentrations of long-lived Rn descendants and cosmogenic ^7Be and determination of the MRT of aerosols, *Atmos. Environ.*, 38, 1291-1301, 2004.
- 1005 Dueñas, C., Fernández, M. C., Carretero, J., Liger, E., and Cañete, S.: Deposition velocities and washout ratios on a coastal site (southeastern Spain) calculated from ^7Be and ^{210}Pb measurements, *Atmos. Environ.*, 39, 6897-6908, 2005.
- Dueñas, C., Fernández, M. C., Cañete, S., and Pérez, M.: ^7Be to ^{210}Pb concentration ratio in ground level air in Málaga (36.7°N, 4.5°W), *Atmos. Res.*, 92, 49-57, 2009.
- 1010 Dueñas, C., Orza, J. A. G., Cabello, M., Fernández, M. C., Cañete, S., Pérez, M., and Gordo, E.: Air mass

- origin and its influence on radionuclide activities (^7Be and ^{210}Pb) in aerosol particles at a coastal site in the western Mediterranean, *Atmos. Res.*, 101, 205-214, 2011.
- Dueñas, C., Gordo, E., Liger, E., Cabello, M., Canete, S., Perez, M., and Torre-Luque, P.: ^7Be , ^{210}Pb and ^{40}K depositions over 11 years in Malaga, *J. Environ. Radioactiv.*, 178-179, 325-334, 2017.
- 1015 Ďurana, L., Chudý, M., and Masarik, J.: Investigation of ^7Be in the Bratislava atmosphere, *J. Radioanal. Nucl. Ch.*, 207, 345-356, 1996.
- Dutkiewicz, V. A. and Husain, L.: Stratospheric and tropospheric components of ^7Be in surface air, *J. Geophys. Res.*, 90, 5783-5788, 1985.
- 1020 El-Hussein, A., Mohamemed, A., Abd El-Hady, M., Ahmed, A. A., Ali, A. E., and Barakat, A.: Diurnal and seasonal variation of short-lived radon progeny concentration and atmospheric temporal variations of ^{210}Pb and ^7Be in Egypt, *Atmos. Environ.*, 35, 4305-4313, 2001.
- Elsässer, C., Wagenbach, D., Weller, R., Auer, M., Wallner, A., and Christl, M.: Continuous 25-yr aerosol records at coastal Antarctica, *Tellus B*, 63, 920-934, 2011.
- 1025 Eriksson, M., Holm, E., Roos, P., and Dahlgaard, H.: Distribution and flux of ^{238}Pu , $^{239,240}\text{Pu}$, ^{241}Am , ^{137}Cs and ^{210}Pb to high arctic lakes in the Thule district (Greenland), *J. Environ. Radioactiv.*, 75, 285-299, 2004.
- Fan, Y., Wang, S., Li, H., Zhang, X., Li, Q., Jia, H., Zhao, Y., Chen, Z., Chang, Y., and Liu, S.: Preliminary study of ^7Be , ^{137}Cs and ^{131}I activity concentration distribution rule in Beijing aerosol, *At. Energy Sci. Technol.*, 47, 189-192, 2013 (in Chinese).
- 1030 Fang, H. Y., Sheng, M. L., Tang, Z. H., and Cai, Q. G.: Assessment of soil redistribution and spatial pattern for a small catchment in the black soil region, Northeastern China: Using fallout $^{210}\text{Pb}_{\text{ex}}$, *Soil. Till. Res.*, 133, 85-92, 2013.
- Feely, H. W., Larsen, R. J., and Sanderson, C. G.: Factors that cause seasonal variations in beryllium-7 concentrations in surface air, *J. Environ. Radioactiv.*, 9, 223-249, 1989.
- 1035 Feng, H., Cochran, J. K., and Hirschberg, D. J.: ^{234}Th and ^7Be as tracers for the transport and dynamics of suspended particles in a partially mixed estuary, *Geochim. Cosmochim. Ac.*, 63, 2487-2505, 1999.

- Feichter, J., Brost, R. A., and Heimann, M.: Three-dimensional modeling of the concentration and deposition of ^{210}Pb aerosols, *J. Geophys. Res.*, 96, 22447-22460, 1991.
- 1040 Filizok, I. and Ugur Gorgun, A.: Atmospheric depositional characteristics of ^{210}Po , ^{210}Pb and some trace elements in Izmir, Turkey, *Chemosphere*, 220, 468-475, 2019.
- Filizok, I., Uğur, A., and Özden, B.: Local Enhancement of ^{210}Po Atmospheric Flux at a Site in İzmir, Turkey, *Water Air Soil Poll.*, 225, 2013.
- Fisenne, I. M.: Distribution of lead-210 and radium-226 in soil, U.S. Dep. of Energy, Rep. UCRL-18140, 1045 Washington, D. C., 1968.
- Fogh, C. L., Roed, J., and Andersson, K. G.: Radionuclide resuspension and mixed deposition at different heights, *J. Environ. Radioactiv.*, 46, 67-75, 1999.
- Fukuyama, T., Onda, Y., Takenaka, C., and Walling, D. E.: Investigating erosion rates within a Japanese cypress plantation using Cs-137 and Pb-210 exmeasurements, *J. Geophys. Res.*, 113, F02007, 1050 <https://doi.org/10.1029/2006JF000657>, 2008.
- Fuller, C. and Hammond, D. E.: The fallout rate of Pb-210 on the western coast of the United States, *Geophys. Res. Lett.*, 10, 1164-1167, 1983.
- Gäggeler, H., von Gunten, H. R., Rössler, E., Oeschger, H., and Schotterer, U.: ^{210}Pb -dating of cold alpine firn/ice cores from Colle Gnifetti, Switzerland, *J. Glaciol.*, 29, 165-177, 1983.
- 1055 Gäggeler, H. W., Jost, D. T., Baltensperger, U., Schwikowski, M., and Seibert, P.: Radon and thoron decay product and ^{210}Pb measurements at Jungfraujoch, Switzerland, *Atmos. Environ.*, 29, 607-616, 1995.
- Gai, N., Pan, J., Yin, X. C., Zhu, X. H., Yu, H. Q., Li, Y., Tan, K. Y., Jiao, X. C., and Yang, Y. L.: 1060 Latitudinal distributions of activities in atmospheric aerosols, deposition fluxes, and soil inventories of ^7Be in the East Asian monsoon zone, *J. Environ. Radioactiv.*, 148, 59-66, 2015.
- García-Orellana, J., Sánchez-Cabeza, J. A., Masqué, P., Ávila, A., Costa, E., Loýe-Pilot, M. D., and Bruach-Menchén J. M.: Atmospheric fluxes of ^{210}Pb to the western Mediterranean Sea and the Saharan dust influence, *J. Geophys. Res.*, 111, D15305, <https://doi.org/10.1029/2005JD006660>, 2006.

- 1065 Garimella, S., Koshy, K., and Singh, S.: Concentration of ^7Be in surface air at Suva, Fiji, S. Pac. J. Nat. Appl. Sci., 21, 15-19, 2003.
- Gaspar, L., Navas, A., Machín, J., and Walling, D. E.: Using $^{210}\text{Pb}_{\text{ex}}$ measurements to quantify soil redistribution along two complex toposequences in Mediterranean agroecosystems, northern Spain, Soil. Till. Res., 130, 81-90, 2013.
- 1070 Gavini, M. B., Beck, J. N., and Kuroda, P. K.: Mean residence times of the long-lived radon daughters in the atmosphere, J. Geophys. Res., 79, 4447-4452, 1974.
- Gerasopoulos, E., Zanis, P., Stohl, A., Zerefos, C. S., Papastefanou, C., Ringer, W., Tobler, L., Hübener, S., Gäggeler, H. W., Kanter, H. J., Tositti, L., and Sandrini, S.: A climatology of ^7Be at four high-altitude stations at the Alps and the Northern Apennines, Atmos. Environ., 35, 6347-6360, 2001.
- 1075 Goldberg, E. D.: Geochronology with lead-210, in: Radioactive Dating, Int. At. Energy Agency, Vienna, 1963.
- Gonzalez-Gomez, C., Azahra, M., Lopez-Penalver, J. J., Camacho-Garcia, A., El Bardouni, T., and Boukhal, H.: Seasonal variability in ^7Be depositional fluxes at Granada, Spain, Appl. Radiat. Isot., 64, 228-234, 2006.
- 1080 Gordo, E., Liger, E., Dueñas, C., Fernandez, M. C., Canete, S., and Perez, M.: Study of ^7Be and ^{210}Pb as radiotracers of African intrusions in Malaga (Spain), J. Environ. Radioactiv., 148, 141-153, 2015.
- Grabowska, S., Mieltski, J. W., Kozak, K., and Gaca, P.: Gamma emitters on micro-becquerel activity level in air at Kraków (Poland), J. Atmos. Chem., 46, 103-116, 2003.
- Graham, I., Ditchburn, R., and Barry, B.: Atmospheric deposition of ^7Be and ^{10}Be in New Zealand rain (1996-98), Geochim. Cosmochim. Ac., 67, 361-373, 2003.
- 1085 Graustein, W. C. and Turekian, K. K.: ^{210}Pb and ^{137}Cs in air and soils measure the rate and vertical profile of aerosol scavenging, J. Geophys. Res., 91, 14355-14366, 1986.
- Graustein, W. C. and Turekian, K. K.: The effects of forests and topography on the deposition of sub-micrometer aerosols measured by lead-210 and cesium-137 in soils, Agr. Forest Meteorol., 47, 199-220, 1989.
- 1090

- Graustein, W. C. and Turekian, K. K.: ^7Be and ^{210}Pb indicate an upper troposphere source for elevated ozone in the summertime subtropical free troposphere of the eastern North Atlantic, *Geophys. Res. Lett.*, 23, 539-542, 1996.
- 1095 Grossi, C., Ballester, J., Serrano, I., Galmarini, S., Camacho, A., Curcoll, R., Morgui, J. A., Rodo, X., and Duch, M. A.: Influence of long-range atmospheric transport pathways and climate teleconnection patterns on the variability of surface ^{210}Pb and ^7Be concentrations in southwestern Europe, *J. Environ. Radioactiv.*, 165, 103-114, 2016.
- Gustafson, P. F., Kerrigan, M. A., and Brar, S. S.: Comparison of beryllium-7 and caesium-137 radioactivity in ground-level air, *Nature*, 191, 454-456, 1961.
- 1100 Halstead, M. J. R., Cunninghame, R. G., and Hunter, K. A.: Wet deposition of trace metals to a remote site in Fiordland, New Zealand, *Atmos. Environ.*, 34, 665-676, 2000.
- Harvey, M. J. and Matthews, K. M.: ^7Be deposition in a high-rainfall area of New Zealand, *J. Atmos. Chem.*, 8, 299-306, 1989.
- 1105 Hasebe, N., Doke, T., Kikuchi, J., Takeuchi, Y., and Sugiyama, T.: Observation of fallout rates of atmospheric ^7Be and ^{22}Na produced by cosmic rays—concerning estimation of the fallout rate of atmospheric ^{26}Al , *J. Geophys. Res.*, 86, 520-524, 1981.
- Hasegawa, H., Akata, N., Kawabata, H., Chikuchi, Y., Sato, T., Kondo, K., and Inaba, J.: Mechanism of ^7Be scavenging from the atmosphere through precipitation in relation to seasonal variations in Rokkasho Village, Aomori Prefecture, Japan, *J. Radioanal. Nucl. Ch.*, 273, 171-175, 2007.
- 1110 Haskell, W. Z., Kadko, D., Hammond, D. E., Knapp, A. N., Prokopenko, M. G., Berelson, W. M., and Capone, D. G.: Upwelling velocity and eddy diffusivity from ^7Be measurements used to compare vertical nutrient flux to export POC flux in the Eastern Tropical South Pacific, *Mar. Chem.*, 168, 140-150, 2015.
- 1115 He, Q. and Walling, D. E.: The distribution of fallout ^{137}Cs and ^{210}Pb in undisturbed and cultivated soils, *Appl. Radiat. Isot.*, 48, 677-690, 1997.
- He, X., Liao, Y., Lu, D., Peng, C., Chen, B., Zhou, H., Lin, M., Wang, L., & Yang, Y.: A preliminary analysis of the distribution of ^7Be in the ground-level air in Nanning, *Sci-Tech. Dev. Enterp.*, 3, 98-

99, 2018 (in Chinese).

1120 Heikkilä, U., Beer, J., and Alfimov, V.: Beryllium-10 and beryllium-7 in precipitation in Dübendorf (440 m) and at Jungfrauoch (3580 m), Switzerland (1998–2005), *J. Geophys. Res.*, 113, D11104, <https://doi.org/10.1029/2007JD009160>, 2008.

Heinrich, P. and Pilon, R.: Simulation of ^{210}Pb and ^7Be scavenging in the tropics by the LMDz general circulation model, *Atmos. Res.*, 132-133, 490-505, 2013.

1125 Heinrich, P., Coindreau, O., Grillon, Y., Blanchard, X., and Gross, P.: Simulation of the atmospheric concentrations of ^{210}Pb and ^7Be and comparison with daily observations at three surface sites, *Atmos. Environ.*, 41, 6610-6621, 2007.

Hernández, F., Hernández-Armas, J., Catalán, A., Fernández-Aldecoa, J. C., and Karlsson, L.: Gross alpha, gross beta activities and gamma emitting radionuclides composition of airborne particulate samples in an oceanic island, *Atmos. Environ.*, 39, 4057-4066, 2005.

1130 Hernández, F., Karlsson, L., and Hernandez-Armas, J.: Impact of the tropical storm Delta on the gross alpha, gross beta, ^{90}Sr , ^{210}Pb , ^7Be , ^{40}K and ^{137}Cs activities measured in atmospheric aerosol and water samples collected in Tenerife (Canary Islands), *Atmos. Environ.*, 41, 4940-4948, 2007.

1135 Hernández F., Rodríguez, S., Karlsson, L., Alonso-Pérez, S., López-Pérez, M., Hernandez-Armas, J., and Cuevas, E.: Origin of observed high ^7Be and mineral dust concentrations in ambient air on the Island of Tenerife, *Atmos. Environ.*, 42, 4247-4256, 2008.

Hernandez-Ceballos, M. A., Cinelli, G., Ferrer, M. M., Tollefsen, T., De Felice, L., Nweke, E., Tognoli, P. V., Vanzo, S., and De Cort, M.: A climatology of ^7Be in surface air in European Union, *J. Environ. Radioactiv.*, 141, 62-70, 2015.

1140 Hicks, B. B. and Goodman, H. S.: Seasonal and latitudinal variations of atmospheric radioactivity along Australia's east coast (150°E longitude), *Tellus*, 29, 182-188, 1977.

Hirose, K., Honda, T., Yagishita, S., Igarashi, Y., and Aoyama, M.: Deposition behaviors of ^{210}Pb , ^7Be and thorium isotopes observed in Tsukuba and Nagasaki, Japan, *Atmos. Environ.*, 38, 6601-6608, 2004.

Hötzl, H. and Winkler, R.: Activity concentrations of ^{226}Ra , ^{228}Ra , ^{210}Pb , ^{40}K and ^7Be and their temporal

- 1145 variations in surface air, *J. Environ. Radioactiv.*, 5, 445-458, 1987.
- Houali, A., Azahra, M., El Bardouni, T., Ferro García, M. A., Piñero García, F., and Chham, E.: Impact of the meteorological parameters on the behaviour of ^7Be at ground level in Tetouan city, Morocco from June 2015 to February 2017, *J. Radioanal. Nucl. Ch.*, 322, 271-280, 2019.
- 1150 Hu, J.: Distribution characteristics and tracing techniques using $^{210}\text{Pb}_{\text{ex}}$ applied to soil erosion in alpine grassland region-illustrated by a case of Ziketan of Xinghai basin, M.S. thesis, University of Chinese Academy of Sciences, 2016 (in Chinese).
- Hu, Y., and Zhang, Y.: Using ^{137}Cs and $^{210}\text{Pb}_{\text{ex}}$ to investigate the soil erosion and accumulation moduli on the southern margin of the Hunshandake Sandy Land in Inner Mongolia, *Acta Geol. Sin.*, 74, 1890-1903, 2019 (in Chinese).
- 1155 Hu, J., Sha, Z., Wang, J., Du, J., and Ma, Y.: Atmospheric deposition of ^7Be , ^{210}Pb in Xining, a typical city on the Qinghai-Tibet Plateau, China, *J. Radioanal. Nucl. Ch.*, 324, 1141-1150, 2020.
- Huang, D., Du, J., Moore, W. S., and Zhang, J.: Particle dynamics of the Changjiang Estuary and adjacent coastal region determined by natural particle-reactive radionuclides (^7Be , ^{210}Pb , and ^{234}Th), *J. Geophys. Res-Oceans*, 118, 1736-1748, 2013.
- 1160 Huang, D., Bao, H., and Yu, T.: Temporal Variations in Radionuclide Activity (^7Be and ^{210}Pb) in Surface Aerosols at a Coastal Site in Southeastern China, *Aerosol Air Qual. Res.*, 19, 1969-1979, 2019.
- Huh, C. A. and Su, C. C.: Distribution of fallout radionuclides (^7Be , ^{137}Cs , ^{210}Pb and $^{239,240}\text{Pu}$) in soils of Taiwan, *J. Environ. Radioactiv.*, 77, 87-100, 2004.
- 1165 Huh, C. A., Su, C. C., and Shiau, L. J.: Factors controlling temporal and spatial variations of atmospheric deposition of ^7Be and ^{210}Pb in northern Taiwan, *J. Geophys. Res.*, 111, D16304, <https://doi.org/10.1029/2006JD007180>, 2006.
- Igarashi, Y., Hirose, K., and Otsuji-Hatori, M.: Beryllium-7 deposition and its relation to sulfate deposition, *J. Atmos. Chem.*, 29, 217-231, 1998.
- 1170 Ioannidou, A. and Paatero, J.: Activity size distribution and residence time of ^7Be aerosols in the Arctic atmosphere, *Atmos. Environ.*, 88, 99-106, 2014.

- Ioannidou, A. and Papastefanou, C.: Precipitation scavenging of ^7Be and ^{137}Cs radionuclides in air, J. Environ. Radioactiv., 85, 121-136, 2006.
- Ioannidou, A., Manolopoulou, M., and Papastefanou, C.: Temporal changes of ^7Be and ^{210}Pb concentrations in surface air at temperate latitudes (40 °N), Appl. Radiat. Isot., 63, 277-284, 2005.
- 1175 Ioannidou, A., Eleftheriadis, K., Gini, M., Gini, L., Manenti, S., and Groppi, F.: Activity size distribution of radioactive nuclide ^7Be at different locations and under different meteorological conditions, Atmos. Environ., 212, 272-280, 2019.
- Irlweck, K., Hinterdorfer, K., and Karg, V.: Beryllium-7 and ozone correlations in surface atmosphere, Naturwissenschaften, 84, 353-356, 1997.
- 1180 Isakar, K., Kiisk, M., Realo, E., and Suursoo, S.: Lead-210 in the atmospheric air of North and South Estonia: long-term monitoring and back-trajectory calculations, P. Est. Acad. Sci., 65, 442-451, 2016.
- Ishikawa, Y., Murakami, H., Sekine, T., and Yoshihara, K.: Precipitation scavenging studies of radionuclides in air using cosmogenic ^7Be , J. Environ. Radioactiv., 26, 19-36, 1995.
- 1185 Itoh, H. and Narazaki, Y.: Meteorological Notes for Understanding the Transport of Beryllium-7 in the Troposphere, Jpn. J. Health. Phys., 52, 122-133, 2017.
- Itthipoonthanakorn, T., Dann, S. E., Crout, N. M. J., and Shaw, G.: Nuclear weapons fallout ^{137}Cs in temperate and tropical pine forest soils, 50 years post-deposition, Sci. Total. Environ., 660, 807-816, 2019.
- 1190 Iurian, A. R., Mabit, L., Begy, R., and Cosma, C.: Comparative assessment of erosion and deposition rates on cultivated land in the Transylvanian Plain of Romania using ^{137}Cs and $^{210}\text{Pb}_{\text{ex}}$, J. Environ. Radioactiv., 125, 40-49, 2013.
- Jankovic, M., Todorovic, D., Nikolic, J., Rajacic, M., Pantelic, G., and Sarap, N.: Temporal changes of beryllium-7 and lead-210 in ground level air in Serbia, Hem. Ind., 68, 83-88, 2014.
- 1195 Jasiulionis, R. and Wershofen, H.: A study of the vertical diffusion of the cosmogenic radionuclides, ^7Be and ^{22}Na in the atmosphere, J. Environ. Radioactiv., 79, 157-169, 2005.

- Jia, G. and Jia, J.: Atmospheric Residence Times of the fine-aerosol in the region of south Italy estimated from the activity concentration ratios of $^{210}\text{Po}/^{210}\text{Pb}$ in air particulates, *J. Anal. Bioanal. Tech.*, 5, <https://doi.org/10.4172/2155-9872.1000216>, 2014.
- 1200 Jia, C., Liu, G., Yang, W., Zhang, L., and Huang, Y.: Atmospheric depositional fluxes of ^7Be and ^{210}Pb at Xiamen, *J. Xiamen Univ.*, 42, 352-357, 2003 (in Chinese).
- Jiang, R.: ^7Be content and its seasonal variation in the ground air around Hangzhou area, *Nucl. Sci. Tech.*, 10, 230-234, 1999.
- Joshi, S. R.: Recent sedimentation rates and ^{210}Pb fluxes in Georgian Bay and Lake Huron, *Sci. Total Environ.*, 41, 219-233, 1985.
- 1205 Joshi, L. U., Rangarajan, C., and Gopalakrishnan, S.: Measurement of lead-210 in surface air and precipitation, *Tellus*, 21, 107-112, 1969.
- Junge, C. E., *Air chemistry and radioactivity*, Academic Press, San Diego, USA, 1963.
- Juri Ayub, J., Di Gregorio, D. E., Velasco, H., Huck, H., Rizzotto, M., and Lohaiza, F.: Short-term seasonal variability in ^7Be wet deposition in a semiarid ecosystem of central Argentina, *J. Environ. Radioactiv.*, 100, 977-981, 2009.
- 1210 [Jweda, J., Baskaran, M., van Hees, E., and Schweitzer, L.: Short-lived radionuclides \(\$^7\text{Be}\$ and \$^{210}\text{Pb}\$ \) as tracers of particle dynamics in a river system in southeast Michigan, *Limnol. Oceanogr.*, 53, 1934-1944, 2008.](#)
- 1215 Kadko, D.: Modeling the evolution of the Arctic mixed layer during the fall 1997 Surface Heat Budget of the Arctic Ocean (SHEBA) Project using measurements of ^7Be , *J. Geophys. Res.*, 105, 3369-3378, 2000.
- Kadko, D.: Rapid oxygen utilization in the ocean twilight zone assessed with the cosmogenic isotope ^7Be , *Global Biogeochem. Cy.*, 23, <https://doi.org/10.1029/2009GB003510>, 2009.
- 1220 Kadko, D.: Upwelling and primary production during the U.S. GEOTRACES East Pacific Zonal Transect, *Global Biogeochem. Cy.*, 31, 218-232, 2017.
- Kadko, D. and Johns, W.: Inferring upwelling rates in the equatorial Atlantic using ^7Be measurements in

带格式的: 上标

带格式的: 上标

the upper ocean, *Deep-Sea Res. Part. I*, 58, 647-657, 2011.

Kadko, D. and Olson, D.: Beryllium-7 as a tracer of surface water subduction and mixed-layer history, *Deep-Sea Res. Part. I*, 43, 89-116, 1996.

Kadko, D. and Prospero, J.: Deposition of ^7Be to Bermuda and the regional ocean: Environmental factors affecting estimates of atmospheric flux to the ocean, *J. Geophys. Res.*, 116, C02013, <http://doi.org/10.1029/2010JC006629>, 2011.

Kadko, D. and Swart, P.: The source of the high heat and freshwater content of the upper ocean at the SHEBA site in the Beaufort Sea in 1997, *J. Geophys. Res.*, 109, C01022, <http://doi.org/10.1029/2004GL021262>, 2004.

Kadko, D., Landing, W. M., and Shelley, R. U.: A novel tracer technique to quantify the atmospheric flux of trace elements to remote ocean regions, *J. Geophys. Res-Oceans*, 120, 848-858, 2015.

Kadko, D., Galfond, B., Landing, W. M., and Shelley, R. U.: Determining the pathways, fate, and flux of atmospherically derived trace elements in the Arctic ocean/ice system, *Mar. Chem.*, 182, 38-50, 2016.

Kapala, J., Karpinska, M., Mnich, S., Gromotowicz-Poplawska, A., and Kulesza, G.: ^7Be concentration in the near-surface layer of the air in Bialystok (north-eastern Poland) in the years 1992-2010, *J. Environ. Radioactiv.*, 187, 40-44, 2018.

Karwan, D. L., Siegert, C. M., Levia, D. F., Pizzuto, J., Marquard, J., Aalto, R., and Aufdenkampe, A. K.: Beryllium-7 wet deposition variation with storm height, synoptic classification, and tree canopy state in the mid-Atlantic USA, *Hydrol. Process.*, 30, 75-89, 2016.

Kaste, J. M., Elmore, A. J., Vest, K. R., and Okin, G. S.: Beryllium-7 in soils and vegetation along an arid precipitation gradient in Owens Valley, California, *Geophys. Res. Lett.*, 38, L09401, <http://dx.doi.org/10.1029/2011GL047242>, 2011.

Kato, H., Onda, Y., and Tanaka, Y.: Using ^{137}Cs and $^{210}\text{Pb}_{\text{ex}}$ measurements to estimate soil redistribution rates on semi-arid grassland in Mongolia, *Geomorphology*, 114, 508-519, 2010.

Khan, S., Alaamer, A. S., and Tahir, S. N.: Assessment of ^7Be concentration in outdoor ambient air, *Health Phys.*, 95, 433-435, 2008.

- 1250 Khan, K., Jabbar, A., and Akhter, P.: Climatic variations of beryllium-7 activity in the atmosphere of Peshawar basin, Pakistan, during 2001-2006, *Nucl. Technol. Radiat. Prot.*, 2, 104-108, 2009.
- Khodadadi, M., Mabit, L., Zaman, M., Porto, P., and Gorji, M.: Using ^{137}Cs and $^{210}\text{Pb}_{\text{ex}}$ measurements to explore the effectiveness of soil conservation measures in semi-arid lands: a case study in the Kouhin region of Iran, *J. Soil. Sediment.*, 19, 2103-2113, 2018.
- 1255 Kikuchi, S., Sakurai, H., Gunji, S., and Tokanai, F.: Temporal variation of ^7Be concentrations in atmosphere for 8y from 2000 at Yamagata, Japan: solar influence on the ^7Be time series, *J. Environ. Radioactiv.*, 100, 515-521, 2009.
- Kim, S. H., Hong, G. H., Baskaran, M., Park, K. M., Chung, C. S., and Kim, K. H.: Wet removal of atmospheric ^7Be and ^{210}Pb at the Korean Yellow Sea coast, *Yellow Sea*, 4, 58-68, 1998.
- 1260 Kim, G., Alleman, L. Y., and Church, T. M.: Atmospheric depositional fluxes of trace elements, ^{210}Pb , and ^7Be to the Sargasso Sea, *Global Biogeochem. Cy.*, 13, 1183-1192, 1999.
- Kim, G., Hussain, N., Scudlark, J. R., and Church, T. M.: Factors influencing the atmospheric depositional fluxes of stable Pb, ^{210}Pb , and ^7Be into Chesapeake Bay, *J. Atmos. Chem.*, 36, 65-79, 2000.
- 1265 Kim, G., Hong, Y. L., Jang, J., Lee, I., Hwang, D. W., and Yang, H. S.: Evidence for anthropogenic ^{210}Po in the urban atmosphere of Seoul, Korea, *Environ. Sci. Technol.*, 39, 1519-1522, 2005.
- Kitto, M. E., Hartt, G. M., Gillen, E. A.: Airborne activities of gross beta, ^7Be , and ^{131}I in New York, *J. Radioanal. Nucl. Ch.*, 264, 387-392, 2005.
- Kitto, M. E., Fielman, E. M., Hartt, G. M., Gillen, E. A., Semkow, T. M., Parekh, P. P., and Bari, A.: Long-term monitoring of radioactivity in surface air and deposition in New York State, *Health Phys.*, 90, 31-37, 2006.
- 1270 Klaminder, J., Bindler, R., Emteryd, O., Appleby, P., and Grip, H.: Estimating the mean residence time of lead in the organic horizon of boreal forest soils using ^{210}Pb -lead, stable lead and a soil chronosequence, *Biogeochemistry*, 78, 31-49, 2006.
- 1275 Koch, D. M. and Mann, M. E.: Spatial and temporal variability of ^7Be surface concentration, *Tellus B*,

48, 387-396, 1996.

Koch, D. M., Jacob, D. J., and Graustein, W. C.: Vertical transport of tropospheric aerosols as indicated by and in a chemical tracer model, *J. Geophys. Res.*, 101, 18651-18618, 1996.

1280 Koide, M., Goldberg, E. D., Herron, M. M., and Langway, C. C.: Transuranic depositional history in South Greenland firn layers, *Nature*, 269, 137-139, 1977.

Koide, M., Michel, R., Goldberg, E. D., Herron, M. M., and Langway, C. C.: Depositional history of artificial radionuclides in the Ross Ice Shelf, Antarctica, *Earth Planet. Sc. Lett.*, 44, 205-223, 1979.

Kolb, W.: Jahreszeitliche Schwankungen der ^7Be -, ^{54}Mn - und Spaltprodukt-Konzentrationen der bodennahen Luft, *Tellus*, 22, 443-450, 1970 (in German).

1285 Kownacka, L., Jaworowski, Z., and Suplinska, M.: Vertical distribution and flows of lead and natural radionuclides in the atmosphere, *Sci. Total. Environ.*, 91, 199-221, 1990.

Kritz, M. A., Rosner, S. W., Kelly, K. K., Loewenstein, M., and Chan, K. R.: Radon measurements in the lower tropical stratosphere: evidence for rapid vertical transport and dehydration of tropospheric air, *J. Geophys. Res.*, 98, 8725-8736.

1290 Krmar, M., Velojić, M., Hansman, J., Ponjarac, R., Mihailović, A., Todorović, N., Vučinić-Vasić, M., and Savić, R.: Wind erosion on Deliblato (the largest European continental sandy terrain) studied using $^{210}\text{Pb}_{\text{ex}}$ and ^{137}Cs measurements, *J. Radioanal. Nucl. Ch.*, 303, 2511-2515, 2015.

Kulan, A., Aldahan, A., Possnert, G., and Vintersved, I.: Distribution of ^7Be in surface air of Europe, *Atmos. Environ.*, 40, 3855-3868, 2006.

1295 Kurata, T. and Tsunogai, S.: Exhalation rates of ^{222}Rn and deposition surface estimated from ^{226}Ra and rates of ^{210}Pb at the earth's ^{210}Pb profiles in soils, *Geochem. J.*, 20, 81-90, 1986.

Laguionie, P., Rounsard, P., Maro, D., Solier, L., Rozet, M., Hébert, D., and Connan, O.: Simultaneous quantification of the contributions of dry, washout and rainout deposition to the total deposition of particle-bound ^7Be and ^{210}Pb on an urban catchment area on a monthly scale, *J. Aerosol Sci.*, 77, 67-84, 2014.

Lal, D. and Baskaran, M.: Applications of cosmogenic isotopes as atmospheric tracers, in: *Handbook of environmental isotope geochemistry*, edited by: Baskaran, M., Springer, Berlin, Heidelberg,

Germany, 575-589, https://doi.org/10.1007/978-3-642-10637-8_28, 2012.

Lal, D. and Peters, B.: Cosmic ray produced radioactivity on the Earth, in: *Handbuch der Physik / Encyclopedia of Physics*, edited by: Sittle, K., Springer, Berlin, Heidelberg, Germany, 551-612, https://doi.org/10.1007/978-3-642-46079-1_7, 1967.

Lal, D., Malhotra, P. K., and Peters, B.: On the production of radioisotopes in the atmosphere by cosmic radiation and their application to meteorology, *J. Atmos. Sol-Terr. Phys.*, 12, 306-328, 1958.

Lal, D., Nijampurkar, V. N., Rajagopalan, G., and Somayajulu, B. L. K.: Annual fallout of ^{32}Si , ^{210}Pb , ^{22}Na , ^{35}S and ^7Be in rains in India, *P. Indian Acad. Sci.*, 88, 29-40, 1979.

Lambert, G., Ardouin, B., and Sanak, J.: Atmospheric transport of trace elements toward Antarctica, *Tellus*, 42B, 76-82, 1990.

Lamborg, C. H., Fitzgerald, W. F., Graustein, W. C., and Turekian, K. K.: An examination of the atmospheric chemistry of mercury using ^{210}Pb and ^7Be , *J. Atmos. Chem.*, 36, 325-338, 2000.

Lamborg, C. H., Engstrom, D. R., Fitzgerald, W. F., and Balcom, P. H.: Apportioning global and non-global components of mercury deposition through ^{210}Pb indexing, *Sci. Total. Environ.*, 448, 132-140, 2013.

Landis, J. D., Renshaw, C. E., and Kaste, J. M.: Quantitative retention of atmospherically deposited elements by native vegetation is traced by the fallout radionuclides ^7Be and ^{210}Pb , *Environ. Sci. Technol.*, 48, 12022-12030, 2014.

Larsen, R. J., Sanderson, C. G., and Kada, J.: EML Surface Air Sampling Program, 1990-1993 Data, U.S. Dep. of Energy, New York, *Environ. Rep. EML-572*, 1995.

Le Roux, G., Pourcelot, L., Masson, O., Duffa, C., Vray, F., and Renaud, P.: Aerosol deposition and origin in French mountains estimated with soil inventories of ^{210}Pb and artificial radionuclides, *Atmos. Environ.*, 42, 1517-1524, 2008.

Lee, S. C., Saleh, A. I., Banavali, A. D., Jonooby, L., and Kuroda, P. K.: Beryllium-7 deposition at Fayetteville, Arkansas, and excess polonium-210 from the 1980 eruption of Mount St. Helens, *Geochem. J.*, 19, 317-322, 1985.

Lee, S. H., Pham, M. K., and Povinec, P. P.: Radionuclide variations in the air over Monaco, *J. Radioanal.*

- 1330 Nucl. Ch., 254, 445-453, 2002.
- Lee, H. N., Tositti, L., Zheng, X., and Bonasoni, P.: Analyses and comparisons of variations of ^7Be , ^{210}Pb and $^7\text{Be}/^{210}\text{Pb}$ with ozone observations at two Global Atmosphere Watch stations from high mountains, *J. Geophys. Res.*, 112, D05303. <http://dx.doi.org/10.1029/2006JD007421>, 2007.
- 1335 Lee, H. I., Huh, C. A., Lee, T., and Huang, N. E.: Time series study of a 17-year record of ^7Be and ^{210}Pb fluxes in northern Taiwan using ensemble empirical mode decomposition, *J. Environ. Radioactiv.*, 147, 14-21, 2015.
- Lepore, K., Moran, S. B., and Smith, J. N.: ^{210}Pb as a tracer of shelf-basin transport and sediment focusing in the Chukchi Sea, *Deep-Sea Res. Pt. II*, 56, 1305-1315, 2009.
- 1340 Leppanen, A. P.: Deposition of naturally occurring ^7Be and ^{210}Pb in Northern Finland, *J. Environ. Radioactiv.*, 208-209, <https://doi.org/10.1016/j.jenvrad.2019.105995>, 2019.
- Li, J., Li, Y., Wang, Y., and Wu, J.: Study of soil erosion on the east-west transects in the Three-Rivers headwaters region using ^{137}Cs and $^{210}\text{Pb}_{\text{ex}}$ tracing, *Res. Environ. Sci.*, 22, 1452-1459, 2009 (in Chinese).
- 1345 Li, J., Wang, Y., Li, D., Zhuo, M., and Wu, J.: Characterization and evaluation of agricultural soil erosion in Shenzhen City using environmental radionuclides, *Res. Environ. Sci.*, 26, 780-786, 2013 (in Chinese).
- Li, C., Le Roux, G., Sonke, J., van Beek, P., Souhaut, M., Van der Putten, N., and De Vleeschouwer, F.: Recent ^{210}Pb , ^{137}Cs and ^{241}Am accumulation in an ombrotrophic peatland from Amsterdam Island (Southern Indian Ocean), *J. Environ. Radioactiv.*, 175-176, 164-169, 2017a.
- 1350 Li, X., Zhao, Q., Wang, Q., and Luo, M.: Application of ^{210}Pb analysis method in aerosol determination of Chengdu, *Sichuan Environ.*, 36, 142-146, 2017b (in Chinese).
- Likuku, A. S.: Factors influencing ambient concentrations of ^{210}Pb and ^7Be over the city of Edinburgh (55.9 °N, 03.2 °W), *J. Environ. Radioactiv.*, 87, 289-304, 2006a.
- 1355 Likuku, A. S., Branford, D., Fowler, D., and Weston, K. J.: Inventories of fallout ^{210}Pb and ^{137}Cs radionuclides in moorland and woodland soils around Edinburgh urban area (UK), *J. Environ. Radioactiv.*, 90, 37-47, 2006b.

- Lin, Y. C., Huh, C. A., Hsu, S. C., Lin, C. Y., Liang, M. C., and Lin, P. H.: Stratospheric influence on the concentration and seasonal cycle of lower tropospheric ozone: Observation at Mount Hehuan, Taiwan, *J. Geophys. Res-Atmos.*, 119, 3527-3536, 2014.
- 1360 Lindblom, G.: Fallout gamma-emitting radionuclides in air, precipitation, and the human body up to spring 1967, *Tellus*, 22, 443-450, 1969.
- Liu, S. C., McAfee, J. R., and Cicerone, R. J.: Radon 222 and tropospheric vertical transport, *J. Geophys. Res.*, 89, 7291-7297, 1984.
- Liu, H., Jacob, D. J., Hey, I., and Yantosca, R. M.: Constraints from ^{210}Pb and ^7Be on wet deposition and transport in a global three-dimensional chemical tracer model driven by assimilated meteorological fields, *J. Geophys. Res.*, 106, 12109-12128, 2001.
- 1365 Liu, H., Considine, D. B., Horowitz, L. W., Crawford, J. H., Rodriguez, J. M., Strahan, S. E., Damon, M. R., Steenrod, S. D., Xu, X., Kouatchou, J., Carouge, C., and Yantosca, R. M.: Using beryllium-7 to assess cross-tropopause transport in global models, *Atmos. Chem. Phys.*, 16, 4641-4659, 2016.
- 1370 Liu, G., Luo, Q., Pan, Y., Liu, D., Li, Z., Zhang, H., and Sun, H.: Variations of airborne ^7Be in Shenzhen and its implication for atmospheric transport, *Geochimica*, 43, 32-38, 2014 (in Chinese).
- Lockhart Jr., L. B., Patterson Jr., R. L., and Saunders Jr., A. W.: Airborne radioactivity in Antarctica, *J. Geophys. Res.*, 71, 1985-1991, 1966.
- Lozano, R. L., San Miguel, E. G., Bolívar, J. P., and Baskaran, M.: Depositional fluxes and concentrations of ^7Be and ^{210}Pb in bulk precipitation and aerosols at the interface of Atlantic and Mediterranean coasts in Spain, *J. Geophys. Res.*, 116, D18213, <https://doi.org/10.1029/2011JD015675>, 2011.
- 1375 Lozano, R. L., Hernández-Ceballos, M. A., San Miguel, E. G., Adame, J. A., and Bolívar, J. P.: Meteorological factors influencing the ^7Be and ^{210}Pb concentrations in surface air from the southwestern Iberian Peninsula, *Atmos. Environ.*, 63, 168-178, 2012.
- 1380 Lozano, R. L., Hernández-Ceballos, M. A., Rodrigo, J. F., San Miguel, E. G., Casas-Ruiz, M., García-Tenorio, R., and Bolívar, J. P.: Mesoscale behavior of ^7Be and ^{210}Pb in superficial air along the Gulf of Cadiz (south of Iberian Peninsula), *Atmos. Environ.*, 80, 75-84, 2013.

Lujanienė, G.: Study of removal processes of ^7Be and ^{137}Cs from the atmosphere, Czech. J. Phys., 53, A57-A65, 2003.

Luyanas, V. Y., Yasyulyonis, R. Y., Shopauskiene, D. A., and Styra, B. I.: Cosmogenic ^{22}Na , ^7Be , ^{32}P , and ^{33}P in atmospheric dynamics research, J. Geophys. Res., 75, 3665-3667, 1970.

Mabit, L., Benmansour, M., and Walling, D. E.: Comparative advantages and limitations of the fallout radionuclides ^{137}Cs , $^{210}\text{Pb}_{\text{ex}}$ and ^7Be for assessing soil erosion and sedimentation, J. Environ. Radioactiv., 99, 1799-1807, 2008.

Mabit, L., Klik, A., Benmansour, M., Toloza, A., Geisler, A., and Gerstmann, U. C.: Assessment of erosion and deposition rates within an Austrian agricultural watershed by combining ^{137}Cs , $^{210}\text{Pb}_{\text{ex}}$ and conventional measurements, Geoderma, 150, 231-239, 2009.

Mabit, L., Benmansour, M., Abril, J. M., Walling, D. E., Meusburger, K., Iurian, A. R., Bernard, C., Tarjan, S., Owens, P. N., Blake, W. H., and Alewell, C.: Fallout ^{210}Pb as a soil and sediment tracer in catchment sediment budget investigations: a review. Earth-Sci. Rev., 138, 335-351, 2014.

Maenhaut, W., Zoller, W. H., and Coles, D. G.: Radionuclides in the south pole atmosphere, J. Geophys. Res., 84, 3131-3138, 1979.

Magno, P. J., Groulx, P. R., and Apidianakis, J. C.: Lead-210 in air and total diets in the United States during 1966, Health Phys., 18, 383-388, 1970.

Marx, S. K., Kamber, B. S., and McGowan, H. A.: Estimates of Australian dust flux into New Zealand: Quantifying the eastern Australian dust plume pathway using trace element calibrated ^{210}Pb as a monitor, Earth Planet. Sc. Lett., 239, 336-351, 2005.

Matisoff, G.: ^{210}Pb as a tracer of soil erosion, sediment source area identification and particle transport in the terrestrial environment, J. Environ. Radioactiv., 138, 343-354, 2014.

Matisoff, G., and Whiting, P. J.: Measuring soil erosion rates using natural (^7Be , ^{210}Pb) and anthropogenic (^{137}Cs , $^{239,240}\text{Pu}$) radionuclides, in: Handbook of environmental isotope geochemistry, edited by: Baskaran, M., Springer, Berlin, Heidelberg, Germany, 487-519, https://doi.org/10.1007/978-3-642-10637-8_25, 2012.

Matisoff, G., Bonniwell, E. C., and Whiting, P. J.: Radionuclides as indicators of sediment transport in

带格式的: 上标

agricultural watersheds that drain to Lake Erie, J. Environ. Qual., 31, 62-72, 2002.

Matisoff, G., Wilson, C. G., and Whiting, P. J.: The $^7\text{Be}/^{210}\text{Pb}_{\text{ss}}$ ratio as an indicator of suspended sediment age or fraction new sediment in suspension, Earth Surf. Proc. Land., 30, 1191-1201, 2005.

带格式的: 定义网格后不调整右缩进, 段落间距段后: 0.5 行, 不调整西文与中文之间的空格, 不调整中文和数字之间的空格

带格式的

Mattsson, R.: Seasonal variation of short-lived radon progeny, Pb^{210} and Po^{210} , in ground level air in Finland, J. Geophys. Res., 75, 1741-1744, 1970.

Mattsson, R.: ^{210}Pb and ^{222}Rn as guides in adjudicating SO_4^{2-} and SO_2 air concentrations sulphate in the air in Finland 1962...1985, Sci. Total Environ., 69, 211-224, 1988.

Mattsson, R., Paatero, J., and Hatakka, J.: Automatic alpha/beta analyser for air filter samples-absolute determination of radon progeny by pseudo-coincidence techniques, Radiat. Prot. Dosim., 63, 133-139, 1996.

Megumi, K., Matsunami, T., Ito, N., Kiyoda, S., Mizohata, A., and Asano, T.: Factors, especially sunspot number, causing variations in surface air concentrations and depositions of ^7Be in Osaka, Japan, Geophys. Res. Lett., 27, 361-364, 2000.

Mélières, M. A., Pourchet, M., and Richard, S.: Surface air concentration and deposition of lead-210 in French Guiana: two years of continuous monitoring, J. Environ. Radioactiv., 66, 261-269, 2003.

Men, W., Lin, J., Wang, F., and Yin, M.: Atmospheric processes studies and radiation dose assessment based on ^7Be , ^{210}Pb and ^{210}Po around Xiamen Island, J. Appl. Oceanogr., 35, 266-274, 2016 (in Chinese).

Meusburger, K., Mabit, L., Ketterer, M., Park, J. H., Sandor, T., Porto, P., and Alewell, C.: A multi-radionuclide approach to evaluate the suitability of $^{239+240}\text{Pu}$ as soil erosion tracer, Sci. Total Environ., 566-567, 1489-1499, 2016.

Meusburger, K., Porto, P., Mabit, L., La Spada, C., Arata, L., and Alewell, C.: Excess Lead-210 and Plutonium-239+240: Two suitable radiogenic soil erosion tracers for mountain grassland sites, Environ. Res., 160, 195-202, 2018.

Mietelski, J. W., Nalichowska, E., Tomankiewicz, E., Brudecki, K., Janowski, P., and Kierepko, R.: Gamma emitters in atmospheric precipitation in Krakow (Southern Poland) during the years 2005-2015, J. Environ. Radioactiv., 166, 10-16, 2017.

- Milton, G. M., Kramer, S. J., Watson, W. L., and Kotzer, T. G.: Qualitative estimates of soil disturbance in the vicinity of CANDUS stations, utilizing measurements of ^{137}Cs and ^{210}Pb in soil cores, J. Environ. Radioactiv., 55, 195-205, 2001.
- 1440
- Miralles, J., Radakovitch, O., Cochran, J. K., Véron, A., and Masqué, P.: Multitracer study of anthropogenic contamination records in the Camargue, Southern France, Sci. Total. Environ., 320, 63-72, 2004.
- Mohan, M. P., D'Souza, R. S., Rashmi Nayak, S., Kamath, S. S., Shetty, T., Sudeep Kumara, K., Yashodhara, I., Mayya, Y. S., and Karunakara, N.: A study of temporal variations of ^7Be and ^{210}Pb concentrations and their correlations with rainfall and other parameters in the South West Coast of India, J. Environ. Radioactiv., 192, 194-207, 2018.
- 1445
- Mohan, M. P., D'Souza, R. S., Nayak, S. R., Kamath, S. S., Shetty, T., Kumara, K. S., Mayya, Y. S., and Karunakara, N.: Influence of rainfall on atmospheric deposition fluxes of ^7Be and ^{210}Pb in Mangaluru (Mangalore) at the Southwest Coast of India, Atmos. Environ., 202, 281-295, 2019.
- 1450
- Mohery, M., Abdallah, A. M., Al-Amoudi, Z. M., and Baz, S. S.: Activity size distribution of some natural radionuclides, Radiat. Prot. Dosim., 158, 435-441, 2014.
- Mohery, M., Abdallah, A. M., Ali, A., and Baz, S. S.: Daily variation of radon gas and its short-lived progeny concentration near ground level and estimation of aerosol residence time, Chinese Phys. B, 25, 2016.
- 1455
- Momoshima, N., Nishio, S., Kusano, Y., Fukuda, A., and Ishimoto, A.: Seasonal variations of atmospheric ^{210}Pb and ^7Be concentrations at Kumamoto, Japan and their removal from the atmosphere as wet and dry depositions, J. Radioanal. Nucl. Ch., 268, 297-304, 2006.
- Monaghan, M. C.: Lead 210 in surface air and soils from California: Implications for the behavior of trace constituents in the planetary boundary layer, J. Geophys. Res., 94, 6449-6456, 1989.
- 1460
- Monaghan, M. C. and Holdsworth, G.: The origin of non-sea-salt sulphate in the Mount Logan ice core, Nature, 343, 245-248, 1990.
- Monaghan, M. C., Krishnaswami, S., and Turekian, K. K.: The global-average production rate of ^{10}Be , Earth Planet. Sc. Lett., 76, 279-287, 1986.

- 1465 Moore, H. E. and Poet, S. E.: ^{210}Pb fluxes determined from ^{210}Pb and ^{226}Ra soil profiles, J. Geophys. Res., 81, 1056-1058, 1976.
- Moore, H. E., Poet, S. E., Martell, E. A.: Vertical profiles of ^{222}Rn and its long-lived daughters over the eastern Pacific, Environ. Sci. Technol., 11, 1207-1210, 1977.
- 1470 [Mudbidre, R., Baskaran, M., and Schweitzer, L.: Investigations of the partitioning and residence times of Po-210 and Pb-210 in a riverine system in Southeast Michigan USA. J. Environ. Radioact., 138, 375-383, 2014.](#)
- Muramatsu, H., Yoshizawa, S., Abe, T., Ishii, T., Wada, M., Horiuchi, Y., and Kanekatsu, R.: Variation of ^7Be concentration in surface air at Nagano, Japan, J. Radioanal. Nucl. Ch., 275, 299-307, 2008.
- 1475 Narazaki, Y., and Fujitaka, K.: Cosmogenic ^7Be : atmospheric concentration and deposition in Japan, Jpn. J. Health Phys., 44, 95-105, 2009.
- Narazaki, Y., Fujitaka, K., Igarashi, S., Ishikawa, Y., and Fujinami, N.: Seasonal variation of ^7Be deposition in Japan, J. Radioanal. Nucl. Ch., 256, 489-496, 2003.
- Nazaroff, W. W.: Radon transport from soil to air, Rev. Geophys., 30, 137-160, 1992.
- 1480 Neroda, A. S., Goncharova, A. A., Goryachev, V. A., Mishukov, V. F., and Shlyk, N. V.: Long-range atmospheric transport Beryllium-7 to region the Sea of Japan, J. Environ. Radioactiv., 160, 102-111, 2016.
- Nijampurkar, V. N. and Clausen, H. B.: A century old record of lead-210 fallout on the Greenland ice sheet, Tellus B, 42, 29-38, 1990.
- 1485 Nijampurkar, V. N. and Rao, D. K.: Polar fallout of radionuclides ^{32}Si , ^7Be and ^{210}Pb and past accumulation rate of ice at Indian station, Dakshin Gangotri, East Antarctica, J. Environ. Radioactiv., 21, 107-117, 1993.
- Nijampurkar, V. N., Rao, D. K., Clausen, H. B., Kaul, M. K., and Chaturvedi, A.: Records of climatic changes and volcanic events in an ice core from Central Dronning Maud Land (East Antarctica) during the past century, Proc. Indian Acad. Sci. (Earth Planet. Sci.), 111, 39-49, 2002.
- 1490 Noithong, P., Rittirong, A., and Hazama, R.: Study of the factors influence on variation of Be-7 concentration in surface air at Osaka, Japan, J. Phys.: Conf. Ser., 1285, 012016,

<http://dx.doi.org/10.1088/1742-6596/1285/1/012016>, 2019.

Nozaki, Y., DeMaster, D. J., Lewis, D. M., and Turekian, K. K.: Atmospheric ^{210}Pb fluxes determined from soil profiles, *J. Geophys. Res.*, 83, 4047-4051, 1978.

1495 O'Farrell, C. R., Heimsath, A. M., and Kaste, J. M.: Quantifying hillslope erosion rates and processes for a coastal California landscape over varying timescales, *Earth Surf. Proc. Land.*, 32, 544-560, 2007.

Olsen, C. R., Larsen, I. L., Lowry, P. D., Cutshall, N. H., Todd, J. F., Wong, G. T. F., and Casey, W. H.: Atmospheric fluxes and marsh-soil inventories of ^7Be and ^{210}Pb , *J. Geophys. Res.*, 90, 10487-10495, 1985.

1500 Olsen, C. R., Larsen, I. L., Lowry, P. D., Cutshall, N. H., and Nichols, M. M.: Geochemistry and deposition of ^7Be in river, estuarine and coastal waters, *J. Geophys. Res.*, 91, 896-908, 1986.

Othman, I., Al-Masri, M. S., and Hassan, M.: Fallout of ^7Be in Damascus City, *J. Radioanal. Nucl. Ch.*, 238, 187-192, 1998.

1505 Paatero, J. and Hatakka, J.: Source areas of airborne ^7Be and ^{210}Pb measured in Northern Finland, *Health Phys.*, 79, 691-696, 2000.

Paatero, J., Hatakka, J., Holmén, K., Eneroth, K., and Viisanen, Y.: Lead-210 concentration in the air at Mt. Zeppelin, Ny-Ålesund, Svalbard, *Phys. Chem. Earth.*, 28, 1175-1180, 2003.

Paatero, J., Buyukay, M., Holmén, K., Hatakka, J., and Viisanen, Y.: Seasonal variation and source areas of airborne lead-210 at Ny-Ålesund in the High Arctic, *Polar Res.*, 29, 345-352, 2010.

1510 Paatero, J., Vaaramaa, K., Buyukay, M., Hatakka, J., and Lehto, J.: Deposition of atmospheric ^{210}Pb and total beta activity in Finland, *J. Radioanal. Nucl. Ch.*, 303, 2413-2420, 2015.

Paatero, J., Ioannidou, A., Ikonen, J., and Lehto, J.: Aerosol particle size distribution of atmospheric lead-210 in northern Finland, *J. Environ. Radioactiv.*, 172, 10-14, 2017.

1515 Pacini, A. A., Usoskin, I. G., Evangelista, H., Echer, E., and de Paula, R.: Cosmogenic isotope ^7Be : A case study of depositional processes in Rio de Janeiro in 2008–2009, *Adv. Space Res.*, 48, 811-818, 2011.

Pacini, A. A., Usoskin, I. G., Mursula, K., Echer, E., and Evangelista, H.: Signature of a sudden

stratospheric warming in the near-ground ^7Be flux, *Atmos. Environ.*, 113, 27-31, 2015.

Padilla, S., Lopez-Gutierrez, J. M., Manjon, G., Garcia-Tenorio, R., Galvan, J. A., and Garcia-Leon, M.:

1520 Meteoric ^{10}Be in aerosol filters in the city of Seville, *J. Environ. Radioactiv.*, 196, 15-21, 2019.

Pan, J., Yang, Y. L., Zhang, G., Shi, J. L., Zhu, X. H., Li, Y., and Yu, H. Q.: Simultaneous observation of seasonal variations of beryllium-7 and typical POPs in near-surface atmospheric aerosols in Guangzhou, China, *Atmos. Environ.*, 45, 3371-3380, 2011.

Pan, J., Wen, F., Chen, L., Ren, X., Zhang, J., Zhao, S., Cao, Z., and Pan, Z.: Preliminary analysis of activity concentration distributions of airborne ^{210}Po and ^{210}Pb in major cities in China, *Radiat. Prot.*, 37, 433-437, 2017 (in Chinese).

1525

Papastefanou, C.: Residence time of tropospheric aerosols in association with radioactive nuclides, *Appl. Radiat. Isotopes*, 64, 93-100, 2006.

Papastefanou, C. and Bondietti, E. A.: Mean residence times of atmospheric aerosols in the boundary layer as determined from $^{210}\text{Bi}/^{210}\text{Pb}$ activity ratios, *J. Aerosol Sci.*, 22, 927-931, 1991.

1530

Papastefanou, C. and Ioannidou, A.: Depositional fluxes and other physical characteristics of atmospheric beryllium-7 in the temperate zones (40°N) with a dry (precipitation-free) climate, *Atmos. Environ.*, 25A, 2335-2343, 1991.

Papastefanou, C., Ioannidou, A., Stoulos, S., and Manolopoulou, M.: Atmospheric deposition of cosmogenic ^7Be and ^{137}Cs from fallout of the Chernobyl accident, *Sci. Total. Environ.*, 170, 151-156, 1995.

1535

Parker, R. P.: Beryllium-7 and fission products in surface air, *Nature*, 193, 967-968, 1962.

Peirson, D. H.: Beryllium 7 in air and rain, *J. Geophys. Res.*, 68, 3831-3832, 1963.

Peirson, D. H., Cambray, R. S., and Spicer, G. S.: Lead-210 and polonium-210 in the atmosphere, *Tellus*, 18, 427-433, 1966.

1540

Peng, A., Liu, G., Jiang, Z., Liu, G., and Liu, M.: Wet depositional fluxes of ^7Be and ^{210}Pb and their influencing factors at two characteristic cities of China, *Appl. Radiat. Isot.*, 147, 21-30, 2019.

Perreault, L. M., Yager, E. M., and Aalto, R.: Effects of gradient, distance, curvature and aspect on steep

- burned and unburned hillslope soil erosion and deposition, *Earth Surf. Proc. Land.*, 42, 1033-1048, 2017.
- 1545 Persson, B. R. R.: Global distribution of ^7Be , ^{210}Pb and, ^{210}Po in the surface air, ~~(with Appendix A-E)~~, *Acta Sci. Lundsensia*, 008, 1-241, <https://doi.org/10.13140/RG.2.1.4196.2960>, ~~2016~~2015.
- Peters, A. J., Gregor, D. J., Wilkinson, P., and Spencer, C.: Deposition of ^{210}Pb to the Agassiz Ice Cap, Canada, *J. Geophys. Res.*, 102, 5971-5978, 1997.
- 1550 Pfahler, V., Glaser, B., McKey, D., and Klemm, E.: Soil redistribution in abandoned raised fields in French Guiana assessed by radionuclides, *J. Plant. Nutr. Soil Sci.*, 178, 468-476, 2015.
- Pfützner, J., Brunskill, G., and Zagorskis, I.: ^{137}Cs and excess ^{210}Pb deposition patterns in estuarine and marine sediment in the central region of the Great Barrier Reef Lagoon, north-eastern Australia, *J. Environ. Radioactiv.*, 76, 81-102, 2004.
- 1555 Pham, M. K., Betti, M., Nies, H., and Povinec, P. P.: Temporal changes of ^7Be , ^{137}Cs and ^{210}Pb activity concentrations in surface air at Monaco and their correlation with meteorological parameters, *J. Environ. Radioactiv.*, 102, 1045-1054, 2011.
- Pham, M. K., Povinec, P. P., Nies, H., and Betti, M.: Dry and wet deposition of ^7Be , ^{210}Pb and ^{137}Cs in Monaco air during 1998-2010: seasonal variations of deposition fluxes, *J. Environ. Radioactiv.*, 120, 45-57, 2013.
- 1560 Picciotto, E., Crozaz, G., and De Breuck, W.: Rate of accumulation of snow at the south pole as determined by radioactive measurements, *Nature*, 203, 393-394, 1964.
- Picciotto, E., Cameron, R., Crozaz, G., Deutsch, S., and Wiloain, S.: Determination of the rate of snow accumulation at the pole of relative inaccessibility, Eastern Antarctica: a comparison of glaciological and isotopic methods, *J. Glaciol.*, 7, 273-287, 1968.
- 1565 Piñero-García, F. and Ferro-García, M. A.: Evolution and solar modulation of ^7Be during the solar cycle 23, *J. Radioanal. Nucl. Ch.*, 296, 1193-1204, 2013.
- Piñero-García, F., Ferro-García, M. A., and Azahra, M.: ^7Be behaviour in the atmosphere of the city of Granada January 2005 to December 2009, *Atmos. Environ.*, 47, 84-91, 2012.

- 1570 Piñero-García, F., Ferro-García, M. A., Chham, E., Cobos-Díaz, M., and González-Rodelas, P.: A cluster analysis of back trajectories to study the behaviour of radioactive aerosols in the south-east of Spain, *J. Environ. Radioactiv.*, 147, 142-152, 2015.
- Poet, S. E., Moore, H. E., and Martell, E. A.: Lead 210, bismuth 210, and polonium 210 in the atmosphere: Accurate ratio measurement and application to aerosol residence time determination, *J. Geophys. Res.*, 77, 6515-6527, 1972.
- 1575 Poreba, G., Snieszko, Z., Moska, P., Mroczek, P., and Malik, I.: Interpretation of soil erosion in a Polish loess area using OSL, ^{137}Cs , $^{210}\text{Pb}_{\text{ex}}$, dendrochronology and micromorphology-case study: Biedrzykowice site (S Poland), *Geochronometria*, 46, 57-78, 2019.
- Porto, P. and Walling, D. E.: Validating the use of ^{137}Cs and $^{210}\text{Pb}_{\text{ex}}$ measurements to estimate rates of soil loss from cultivated land in southern Italy, *J. Environ. Radioactiv.*, 106, 47-57, 2012.
- 1580 Porto, P., Walling, D. E., Callegari, G., and Catona, F.: Using fallout lead-210 measurements to estimate soil erosion in three small catchments in southern Italy, *Water Air Soil Poll.*, 6, 657-667, 2006.
- Porto, P., Walling, D. E., Callegari, G., and Capra, A.: Using caesium-137 and unsupported lead-210 measurements to explore the relationship between sediment mobilisation, sediment delivery and sediment yield for a Calabrian catchment, *Mar. Freshwater Res.*, 60, 680-689, 2009.
- 1585 Porto, P., Walling, D. E., and Callegari, G.: Using ^{137}Cs and $^{210}\text{Pb}_{\text{ex}}$ measurements to investigate the sediment budget of a small forested catchment in southern Italy, *Hydrol. Process.*, 27, 795-806, 2013.
- Porto, P., Walling, D. E., and Capra, A.: Using ^{137}Cs and $^{210}\text{Pb}_{\text{ex}}$ measurements and conventional surveys to investigate the relative contributions of interrill/rill and gully erosion to soil loss from a small cultivated catchment in Sicily, *Soil. Till. Res.*, 135, 18-27, 2014.
- 1590 Porto, P., Walling, D. E., Cogliandro, V., and Callegari, G.: Exploring the potential for using $^{210}\text{Pb}_{\text{ex}}$ measurements within a re-sampling approach to document recent changes in soil redistribution rates within a small catchment in southern Italy, *J. Environ. Radioactiv.*, 164, 158-168, 2016.
- 1595 Pourchet, M., Bartarya, S. K., Maignan, M., Jouzel, J., Pinglot, J. F., Aristarain, A. J., Furdada, G., Kotlyakov, V. M., Mosley-Thompson, E., Preiss, N., and Young, N. W.: Distribution and fall-out of

¹³⁷Cs and other radionuclides over Antarctica, *J. Glaciol.*, 43, 435-445, 1997.

Preiss, N. and Genthon, C.: Use of a new database of lead 210 for global aerosol model validation, 102, 25347-25357, 1997.

1600 Preiss, N., Mélières, M. A., and Pourchet, M.: A compilation of data on lead 210 concentration in surface air and fluxes at the air-surface and water-sediment interfaces, *J. Geophys. Res.*, 101, 28847-28862, 1996.

Prospero, J. M., Schmitt, R., Cuevas, E., Savoie, D. L., Graustein, W. C., Turekian, K. K., Volz-Thomas, A., Díaz, A., Oltmans, S. J., and Levy II, H.: Temporal variability of summer-time ozone and
1605 aerosols in the free troposphere over the eastern North Atlantic, *Geophys. Res. Lett.*, 22, 2925-2928, 1995.

Qian, J., Wang, X., and Xu, Z.: The Pb-210 atmospheric precipitation flux near the East China Sea, *Donghai Mar. Sci.*, 4, 27-33, 1985 (in Chinese).

Rabesiranana, N., Rasolonirina, M., Solonjara, A. F., Ravoson, H. N., Raelina, A., and Mabit, L.:
1610 Assessment of soil redistribution rates by ¹³⁷Cs and ²¹⁰Pb_{ex} in a typical Malagasy agricultural field, *J. Environ. Radioactiv.*, 152, 112-118, 2016.

Rajačić, M. M., Todorović, D. J., Janković, M. M., Nikolić, J. D., Sarap, N. B., and Pantelić, G. K.: ⁷Be in atmospheric deposition: determination of seasonal indices, *J. Radioanal. Nucl. Ch.*, 303, 2535-2538, 2015.

1615 Rajačić, M. M., Todorovic, D. J., Krneta Nikolic, J. D., Jankovic, M. M., and Djurdjevic, V. S.: The Fourier analysis applied to the relationship between ⁷Be activity in the Serbian atmosphere and meteorological parameters, *Environ. Pollut.*, 216, 919-923, 2016.

Raksawong, S., Krmar, M., and Bhongsuwan, T.: The ⁷Be profiles in the undisturbed soil used for reference site to estimate the soil erosion, *J. Phys.: Conf. Ser.*, 860, 012009,
1620 <http://dx.doi.org/10.1088/1742-6596/860/1/012009>, 2017.

Ram, K. and Sarin, M. M.: Atmospheric ²¹⁰Pb, ²¹⁰Po and ²¹⁰Po/²¹⁰Pb activity ratio in urban aerosols: temporal variability and impact of biomass burning emission, *Tellus B*, 64, <https://doi.org/10.3402/tellusb.v64i0.17513>, 2012.

1625 Rama, and Zutshi, P. K.: Annual deposition of cosmic ray produced Be^7 at equatorial latitudes, *Tellus*,
10, 99-103, 1958.

Rangarajan, C., Gopalakrishnan, S. S., Sadasivan, S., and Chitale, P. V.: Atmospheric and precipitation
radioactivity in India, *Tellus*, 20, 269-283, 1966.

1630 Rangarajan, C., Gopalakrishnan, S., Chandrasekaran, V. R., and Eapen, C. D.: The relative
concentrations of radon daughter products in surface air and the significance of their ratios, *J.*
Geophys. Res., 80, 845-848, 1975.

Rangarajan, C., Madhavan, R., and Gopalakrishnan, S. S.: Spatial and temporal distribution of lead-210
in the surface layers of the atmosphere, *J. Environ. Radioactiv.*, 3, 23-33, 1986.

Rastogi, N. and Sarin, M. M.: Atmospheric ^{210}Pb and ^7Be in ambient aerosols over low- and high-altitude
sites in semiarid region: Temporal variability and transport processes, *J. Geophys. Res.*, 113,
1635 D11103, <https://doi.org/10.1029/2007JD009298>, 2008.

Realo, E., Realo, K., Lust, M., Koch, R., and Uljas, A.: Lead-210 in air and in surface soil in NE Estonia,
in: 11th International Congress of International Radiation Protection Association, Madrid, Spanish,
23-28 May 2004, 1-8, 2004.

1640 Realo, K., Isakar, K., Lust, M., and Realo, E.: Weekly variation of the ^{210}Pb air concentration in North
Estonia, *Boreal Environ. Res.*, 12, 37-41, 2007.

Rehfeld, S. and Helmann, M.: Three dimensional atmospheric transport simulation of the radioactive
tracers ^{210}Pb , ^7Be , ^{10}Be and ^{90}Sr , *J. Geophys. Res.*, 100, 26141-26161, 1995.

Reiter, R., Munzert, K., Kanter, H. J., and Pötzl, K.: Cosmogenic radionuclides and ozone at a mountain
station at 3.0 km a.s.l, *Arch. Met. Geoph. Biocl. Ser. B*, 32, 131-160, 1983.

1645 Renfro, A. A., Cochran, J. K., and Colle, B. A.: Atmospheric fluxes of ^7Be and ^{210}Pb on monthly time-
scales and during rainfall events at Stony Brook, New York (USA), *J. Environ. Radioactiv.*, 116,
114-123, 2013.

Rodas Ceballos, M., Borrás, A., Gomila, E., Estela, J. M., Cerda, V., and Ferrer, L.: Monitoring of ^7Be
and gross beta in particulate matter of surface air from Mallorca Island, Spain, *Chemosphere*, 152,
1650 481-489, 2016.

- Ródenas, C., Gómez, J., Quindós, L. S., Fernández, P. L., and Soto, J.: ^7Be concentrations in air, rain water and soil in Cantabria (Spain), *Appl. Radiat. Isot.*, 48, 545-548, 1997.
- Rodriguez-Perulero, A., Baeza, A., and Guillen, J.: Seasonal evolution of $^7,^{10}\text{Be}$ and ^{22}Na in the near surface atmosphere of Caceres (Spain), *J. Environ. Radioactiv.*, 197, 55-61, 2019.
- 1655 Saari, H. K., Schmidt, S., Castaing, P., Blanc, G., Sautour, B., Masson, O., and Cochran, J. K.: The particulate $^7\text{Be}/^{210}\text{Pb}_{\text{xs}}$ and $^{234}\text{Th}/^{210}\text{Pb}_{\text{xs}}$ activity ratios as tracers for tidal-to-seasonal particle dynamics in the Gironde estuary (France): implications for the budget of particle-associated contaminants, *Sci. Total. Environ.*, 408, 4784-4794, 2010.
- Sabuti, A. A. and Mohamed, C. A.: Impact of northern and southern air mass transport on the temporal
1660 distribution of atmospheric ^{210}Po and ^{210}Pb in the east coast of Johor, Malaysia, *Environ. Sci. Pollut. Res.*, 23, 18451-18465, 2016.
- Sakurai, H., Shouji, Y., Osaki, M., Aoki, T., Gandou, T., Kato, W., Takahashi, Y., Gunji, S., and Tokanai, F.: Relationship between daily variation of cosmogenic nuclide Be-7 concentration in atmosphere and solar activities, *Adv. Space Res.*, 36, 2492-2496, 2005.
- 1665 Sakurai, H., Sato, T., Oe, T., Takahashi, Y., Matsubara, Y., Miyahara, H., Ohashi, H., Tavera, W., and Salinas, J.: Daily variation of cosmogenic nuclide Be-7 concentrations in high altitude atmosphere at Mt. Chacaltaya at the solar minimum from 2009, in: 32nd International Cosmic Ray Conference, Beijing, China, 11-18 August 2011, 420-423, 2011.
- Saleh, I. H. and Abdel-Halim, A. A.: ^7Be in soil, deposited dust and atmospheric air and its using to infer
1670 soil erosion along Alexandria region, Egypt, *J. Environ. Radioactiv.*, 172, 24-29, 2017.
- Sambayev, Y. K., Zhumalina, A. G., Zhumadilov, K. S., Sakaguchi, A., Kajimoto, T., Tanaka, K., Endo, S., Kawano, N., Hoshi, M., and Yamamoto, M.: Temporal variation of atmospheric ^7Be and ^{210}Pb concentrations and their activity size distributions at Astana, Kazakhstan in Central Asia, *J. Radioanal. Nucl. Ch.*, 323, 663-674, 2019.
- 1675 Samolov, A., Dragovic, S., Dakovic, M., and Bacic, G.: Analysis of ^7Be behaviour in the air by using a multilayer perceptron neural network, *J. Environ. Radioactiv.*, 137, 198-203, 2014.

summer air, *J. Environ. Radioact.*, **3**, 35-54, 1986.

San Miguel, E. G., Hernández-Ceballos, M. A., García-Mozo, H., and Bolívar, J. P.: Evidences of different meteorological patterns governing ^7Be and ^{210}Pb surface levels in the southern Iberian Peninsula, *J. Environ. Radioactiv.*, **198**, 1-10, 2019.

Sanchez-Cabeza, J. A., Garcia-Talavera, M., Costa, E., Peña, V., Garcia-Orellana, J., Masqué, P., and Nalda, C.: Regional calibration of erosion radiotracers (^{210}Pb and ^{137}Cs): atmospheric fluxes to soils (northern Spain), *Environ. Sci. Technol.*, **41**, 1324-1330, 2007.

Sanders, C. J., Smoak, J. M., Cable, P. H., Patchineelam, S. R., and Sanders, L. M.: Lead-210 and Beryllium-7 fallout rates on the southeastern coast of Brazil, *J. Environ. Radioactiv.*, **102**, 1122-1125, 2011.

Sangiorgi, M., Hernández Ceballos, M. A., Iurlaro, G., Cinelli, G., and de Cort, M.: 30 years of European Commission Radioactivity Environmental Monitoring data bank (REMdb) - an open door to boost environmental radioactivity research, *Earth Syst. Sci. Data*, **11**, 589-601, 2019.

Sato, J., Doi, T., Segawa, T., and Sugawara, S.: Seasonal variation at Tsukuba, Japan, from the 1991 of atmospheric concentrations of ^{210}Pb and ^7Be with a possible observation of ^{210}Pb originating from the 1991 eruption of Pinatubo volcano, Philippines, *Geochem. J.*, **28**, 123-129, 1994.

Sato, S., Koike, Y., Saito, T., and Sato, J.: Atmospheric concentration of ^{210}Pb and ^7Be at Sarufutsu, Hokkaido, Japan, *J. Radioanal. Nucl. Ch.*, **255**, 351-353, 2003.

Savva, M. I., Karangelos, D. J., and Anagnostakis, M. J.: Determination of ^7Be and ^{22}Na activity in air and rainwater samples by gamma-ray spectrometry, *Appl. Radiat. Isot.*, **134**, 466-469, 2018.

Schuler, C., Wieland, E., Santschi, P. H., Sturm, M., Lueck, A., Bollhalder, S., Beer, J., Bonani, G., Hofmann, H. J., Suter, M., and Wolfli, W.: A multitracer study of radionuclides in Lake Zurich, Switzerland: 1. Comparison of atmospheric and sedimentary fluxes of ^7Be , ^{10}Be , ^{210}Pb , ^{210}Po , and ^{137}Cs , *J. Geophys. Res.*, **96**, 17051-17065, 1991.

Schumann, G. and Stoeppler, M.: Beryllium 7 in the atmosphere, *J. Geophys. Res.*, **68**, 3827-3830, 1963.

Shapiro, M. H. and Forbes-Resha, J. L.: Mean residence time of ^7Be -bearing aerosols in the troposphere, *J. Geophys. Res.*, **81**, 2647-2649, 1976.

- 1705 Sheets, R. W. and Lawrence, A. E.: Temporal dynamics of airborne lead-210 in Missouri (USA): implications for geochronological methods, *Environ. Geol.*, 38, 343-348, 1999.
- Shelley, R. U., Roca-Martí, M., Castrillejo, M., Sanial, V., Masqué, P., Landing, W. M., van Beek, P., Planquette, H., and Sarthou, G.: Quantification of trace element atmospheric deposition fluxes to the Atlantic Ocean (>40°N; GEOVIDE, GEOTRACES GA01) during spring 2014, *Deep-Sea Res. Part. I*, 119, 34-49, 2016.
- 1710 Shi, Z., Wen, A., Yan, D., Zhang, X., and Ju, L.: Temporal variation of ⁷Be fallout and its inventory in purple soil in the Three Gorges Reservoir region, China, *J. Radioanal. Nucl. Ch.*, 288, 671-676, 2011.
- Shi, H., Zhang, Y., Deng, A., and Dong, Z.: Variation in activity concentration of ²¹⁰Pb in atmospheric aerosol and its radiation dose assessment in Qingdao, *Chin. J. Radiol. Med. Prot.*, 37, 372-375, 2017 (in Chinese).
- 1715 Shleien, B. and Friend, A. G.: Local ground-level air concentrations of lead-210 at Winchester, Massachusetts, *Nature*, 210, 579-580, 1966.
- Short, D. B., Appleby, P. G., and Hilton, J.: Measurement of atmospheric fluxes of radionuclides at a UK site using both direct (rain) and indirect (soils) methods, *Int. J. Environ. Pollut.*, 29, 392-404, 2007.
- 1720 Silker, W. B.: Beryllium-7 and fission products in the Geosecs II water column and applications of their oceanic distributions, *Earth Planet. Sc. Lett.*, 16, 131-137, 1972.
- Simon, J., Meresova, J., Sykora, I., Jeskovsky, M., and Holy, K.: Modeling of temporal variations of vertical concentration profile of ⁷Be in the atmosphere, *Atmos. Environ.*, 43, 2000-2004, 2009.
- 1725 Smith, J. T., Appleby, P. G., Hilton, J., and Richardson, N.: Inventories and fluxes of ²¹⁰Pb, ¹³⁷Cs and ²⁴¹Am determined from the soils of three small catchments in Cumbria, UK, *J. Environ. Radioactiv.*, 37, 127-142, 1997.
- Song, H., Li, L., Li, Q., Mo, G., and Huang, N.: Levels of ²¹⁰Pb in aerosols of Daya Bay, Guangdong, in: *National Seminar on Radioactive Effluent and Environmental Monitoring and Evaluation*, Hangzhou, China, 25-27 November 2003, 484-486, 2003 (in Chinese).
- 1730

Song, H., Mo, G., Li, L., Chen, W., Wang, J, Li, Q., and Huang, N.: Variations of ^7Be concentrations in the atmosphere of Guangdong Daya Bay district, China during the period 1994 to 2003, Prog. Rep. China Nucl. Sci. Technol., 4, 46-50, 2015 (in Chinese).

Stamoulis, K. C., Tsigliou, Z., Aslanoglou, X., and Ioannides, K. G.: Variation of both tritium (^3H) and beryllium (^7Be) concentrations in air, rain and humidity samples collected at Ioannina, North-western Greece, HNPS Proc., 0, 220-223, 2018.

Steinmann, P., Billen, T., Loizeau, J. L., and Dominik, J.: Beryllium-7 as a tracer to study mechanisms and rates of metal scavenging from lake surface waters, Geochim. Cosmochim. Ac., 63, 1621-1633, 1999.

Steinmann, P., Zeller, M., Beuret, P., Ferreri, G., and Estier, S.: Cosmogenic ^7Be and ^{22}Na in ground level air in Switzerland (1994-2011), J. Environ. Radioactiv., 124, 68-73, 2013.

Stromsoe, N., Marx, S. K., Callow, N., McGowan, H. A., and Hejnis, H.: Estimates of late Holocene soil production and erosion in the Snowy Mountains, Australia, Catena, 145, 68-82, 2016.

Su, C. C. and Huh, C. A.: ^{210}Pb , ^{137}Cs and $^{239,240}\text{Pu}$ in East China Sea sediments: sources, pathways and budgets of sediments and radionuclides, Mar. Geol., 183, 163-178, 2002

Su, C. C., Huh, C. A., and Lin, F. J.: Factors controlling atmospheric fluxes of ^7Be and ^{210}Pb in northern Taiwan, Geophys. Res. Lett., 30, <https://doi.org/10.1029/2003GL018221>, 2003.

Sugihara, S., Momoshima, N., Maeda, Y., Osaki, S.: Variation of atmospheric ^7Be and ^{210}Pb depositions at Fukuoka, Japan, in: 10th International Congress of the International Radiation Protection Association, Hiroshima, Japan, 10-16 May 2000, P-1a-11, 2000.

Suzuki, T., and Shiono, H.: Comparison of $^{210}\text{Po}/^{210}\text{Pb}$ activity ratio between aerosol and deposition in the atmospheric boundary layer over the west coast of Japan, Geochem. J., 29, 287-291, 1995.

Suzuki, T., Maruyama, Y., Nakayama, N., Yamada, K., and Ohta, K.: Measurement of the $^{210}\text{Po}/^{210}\text{Pb}$ activity ratio in size fractionated aerosols from the coast of the Japan sea, Atmos. Environ., 33, 2285-2288, 1999.

Suzuki, T., Kamiyama, K., Furukawa, T., and Fujii, Y.: Lead-210 profile in firn layer over Antarctic ice sheet and its relation to the snow accumulation environment, Tellus B, 56, 85-92, 2004.

- Suzuki, T., Sakurai, H., Tokanal, F., Inul, E., Shimizu, H., Masuda, K., Mitthumslrl, W., Ruffolo, D., Macatangay, R., Kikuchi, S., and Kurebayashi, Y.: Observation of cosmogenic nuclide Be-7 concentrations in the air at Bangkok and trajectory analysis of global air-mass motion, in: 35th International Cosmic Ray Conference, Busan, Korea, 10-20 Jul 2017, <https://doi.org/10.22323/1.301.0070>, 2017.
- 1760 Swarzenski, P. W., Baskaran, M., Rosenbauer, R. J., and Orem, W. H.: Historical trace element distribution in sediments from the Mississippi River delta, *Estuar. Coast.*, 29, 1094-1107, 2006.
- 1765 Sykora, I., Holy, K., Jeskovsky, M., Mullerova, M., Bulko, M., and Povinec, P. P.: Long-term variations of radionuclides in the Bratislava air, *J. Environ. Radioactiv.*, 166, 27-35, 2017.
- Talbot, R. W. and Andren, A. W.: Relationships between Pb and ^{210}Pb in aerosol and precipitation at a Semiremote Site in northern Wisconsin, *J. Geophys. Res-Oceans*, 88, 6752-6760, 1983.
- 1770 Tan, K., Yang, Y., Zhu, X., Li, Y., Chen, S., Yu, H., Jiao, X., Gai, N., and Huang, Y.: Beryllium-7 in near-surface atmospheric aerosols in mid-latitude (40°N) city Beijing, China, *J. Radioanal. Nucl. Ch.*, 298, 883-891, 2013.
- Tan, J., Li, M., Jiang, L., and Song, H.: Radioactivity characteristics of atmospheric aerosol samples in Guangzhou, *Nucl. Tech.*, 39, 1-7, 2016 (in Chinese).
- 1775 Tanahara, A., Nakaema, F., Zamami, Y., and Arakaki, T.: Atmospheric concentrations of ^{210}Pb and ^7Be observed in Okinawa Islands, *Radioisotopes*, 63, 175-181, 2014.
- Tanaka, N. and Turekian, K. K.: Determination of the dry deposition flux of SO_2 using cosmogenic ^{35}S and ^7Be measurements, *J. Geophys. Res.*, 100, 2841-2848, 1995.
- Tateda, Y. and Iwao, K.: High ^{210}Po atmospheric deposition flux in the subtropical coastal area of Japan, *J. Environ. Radioactiv.*, 99, 98-108, 2008.
- 1780 Taylor, A., Keith-Roach, M. J., Iurian, A. R., Mabit, L., and Blake, W. H.: Temporal variability of beryllium-7 fallout in southwest UK, *J. Environ. Radioactiv.*, 160, 80-86, 2016.
- [Tenopir, C., Allard, S., Douglass, K., Aydinoglu, A.U., Wu, L., Read, E., Manoff, M., and Frame, M.: Data sharing by scientists: practices and perceptions, PLoS ONE, 6, e21101, http://doi.org/10.1371/journal.pone.0021101, 2011.](https://doi.org/10.1371/journal.pone.0021101)

- 1785 Terzi, L. and Kalinowski, M.: World-wide seasonal variation of ^7Be related to large-scale atmospheric circulation dynamics, *J. Environ. Radioactiv.*, 178-179, 1-15, 2017.
- Thang, D., Bac, V., Long, N., Thu Ha, N., Quynh, N., Khanh, N., Oanh, N., and Viet, C.: Activity concentrations of ^{210}Pb in the aerosol at Hanoi, *Nucl. Sci. Technol.*, 8, 17-22, 2018.
- 1790 Thompson, L. G., Mosley-Thompson, E., Grootes, P. M., Pourchet, M., and Hastenrath, S.: Tropical glaciers: Potential for ice core paleoclimatic reconstructions, *J. Geophys. Res.*, 89, 4638-4646, 1984.
- Thor, R. and Zutshi, P. K.: Annual deposition of cosmic ray produced Be^7 at equatorial latitudes, *Tellus*, 10, 99-103, 1958.
- Todd, J. F., Wong, G. T. F., Olsen, C. R., and Larsen, I. L.: Atmospheric depositional characteristics of beryllium 7 and lead 210 along the southeastern Virginia coast, *J. Geophys. Res.*, 94, 11106-11116, 1795 1989.
- Todorovic, D., Popovic, D., and Djuric, G.: Concentration measurements of ^7Be and ^{137}Cs in ground level air in the Belgrade City area, *Environ. Int.*, 25, 59-66, 1999.
- Todorovic, D., Popovic, D., Djuric, G., and Radenkovic, M.: ^{210}Pb in ground-level air in Belgrade city area, *Atmos. Environ.*, 34, 3245-3248, 2000.
- 1800 Todorovic, D., Popovic, D., Djuric, G., and Radenkovic, M.: ^7Be to ^{210}Pb concentration ratio in ground level air in Belgrade area, *J. Environ. Radioactiv.*, 79, 297-307, 2005.
- Todorovic, D., Popovic, D., Nikolic, J., and Ajtic, J.: Radioactivity monitoring in ground level air in Belgrade urban area, *Radiat. Prot. Dosim.*, 142, 308-313, 2010.
- 1805 Tokieda, T., Yamanaka, K., Harada, K., and Tsunogai, S.: Seasonal variations of residence time and upper atmospheric contribution of aerosols studied with Pb-210, Bi-210, Po-210 and Be-7, *Tellus*, 48B, 690-702, 1996.
- Tositti, L., Brattich, E., Cinelli, G., and Baldacci, D.: 12 years of ^7Be and ^{210}Pb in Mt. Cimone, and their correlation with meteorological parameters, *Atmos. Environ.*, 87, 108-122, 2014.
- 1810 Tsunogai, S., Suzuki, T., Kurata, T., and Uematsu, M.: Seasonal and areal variation of continental aerosol in the surface air over the western North Pacific region, *J. Oceanogra. Soc. Jpn.*, 41, 427-434, 1985.

- Tsunogai, S., Kurata, T., Suzuki, T., and Yokota, K.: Seasonal variation of atmospheric ^{210}Pb and Al in the western North Pacific region, *J. Atmos. Chem.*, 7, 389-407, 1988.
- Tuo, F., Pang, C., Wang, W., Zhang, J., Zhou, Q., Yao, S., Li, W., and Li, Z.: Level, distribution, variation and sources of Pb-210 in atmosphere in North China, *J. Radioanal. Nucl. Ch.*, 318, 1855-1862, 2018.
- 1815 Turekian, K. K. and Cochran, J. K.: ^{210}Pb in surface air at Enewetak and the Asian dust flux to the Pacific, *Nature*, 292, 522-524, 1981.
- Turekian, K. K., Nozaki, Y., and Benninger, L. K.: Geochemistry of atmospheric radon and radon products, *Ann. Rev. Earth Planet. Sc.*, 5, 227-255, 1977.
- 1820 Turekian, K. K., Benninger, L. K., and Dion, E. P.: ^7Be and ^{210}Pb total deposition fluxes at New Haven, Connecticut and at Bermuda, *J. Geophys. Res.*, 88, 5411-5415, 1983.
- Uchida, T., Takahashi, F., Onda, Y., Sisingghi, D., Kato, H., Noro, T., and Osanai, N.: Estimating soil erosion rate and sediment sources using radionuclide Pb-210_{ex} in upper Brantas River basin in Indonesia, *J. Japan Soc. Hydrol. Water Resour.*, 22, 188-197, 2009 (in Japanese).
- Uematsu, M., Duce, R. A., and Prospero, J. M.: Atmosphere beryllium-7 concentrations over the Pacific Ocean, *Geophys. Res. Lett.*, 21, 561-564, 1994.
- 1825 Ueno, T., Nagao, S., and Yamazawa, H.: Atmospheric deposition of ^7Be , ^{40}K , ^{137}Cs and ^{210}Pb during 1993-2001 at Tokai-mura, Japan, *J. Radioanal. Nucl. Ch.*, 255, 335-339, 2003.
- Uğur, A., Özden, B., and Filizok, I.: Determination of ^{210}Po and ^{210}Pb concentrations in atmospheric deposition in İzmir (Aegean sea-Turkey), *Atmos. Environ.*, 45, 4809-4813, 2011.
- 1830 Uhlář, R., Količová, P., and Alexa, P.: Short-term variations in ^7Be wet deposition in the eastern part of the Czech Republic, *J. Radioanal. Nucl. Ch.*, 304, 89-93, 2014.
- Valles, I., Camacho, A., Ortega, X., Serrano, I., Blazquez, S., and Perez, S.: Natural and anthropogenic radionuclides in airborne particulate samples collected in Barcelona (Spain), *J. Environ. Radioactiv.*, 100, 102-107, 2009.
- 1835 Van Metre, P. C. and Fuller, C. C.: Dual-core mass-balance approach for evaluating mercury and ^{210}Pb atmospheric fallout and focusing to lakes, *Environ. Sci. Technol.*, 43, 26-32, 2009.

- Vecchi, R. and Valli, G.: ^7Be in surface air: A natural atmospheric tracer, *J. Aerosol Sci.*, 28, 895-900, 1997.
- 1840 Vecchi, R., Marcazzan, G., and Valli, G.: Seasonal variation of ^{210}Pb activity concentration in outdoor air of Milan (Italy), *J. Environ. Radioactiv.*, 82, 251-266, 2005.
- Vogler, S., Jung, M., and Mangini, A.: Scavenging of ^{234}Th and ^7Be in Lake Constance, *Limnol. Oceanogr.*, 41, 1384-1393, 1996.
- Von Gunten, H. R., and Moser, R. N.: How reliable is the ^{210}Pb dating method? Old and new results from Switzerland, *J. Paleolimnol.*, 9, 161-178, 1993.
- 1845 Wagenbach, D., Görlach, U., Moser, K., and Münnich, K. O.: Coastal Antarctic aerosol: the seasonal pattern of its chemical composition and radionuclide content, *Tellus*, 40B, 426-436, 1988.
- Wakiyama, Y., Onda, Y., Mizugaki, S., Asai, H., and Hiramatsu, S.: Soil erosion rates on forested mountain hillslopes estimated using ^{137}Cs and $^{210}\text{Pb}_{\text{ex}}$, *Geoderma*, 159, 39-52, 2010.
- 1850 Wallbrink, P. J. and Murray, A. S.: Use of fallout radionuclides as indicators of erosion processes, *Hydrol. Process.*, 7, 297-304, 1993.
- Wallbrink, P. J. and Murray, A. S.: Fallout of ^7Be in south eastern Australia, *J. Environ. Radioactiv.*, 25, 213-228, 1994.
- Wallbrink, P. J. and Murray, A. S.: Determining soil loss using the inventory ratio of excess lead-210 to cesium-137, *Soil Sci. Soc. Am. J.*, 60, 1201-1208, 1996.
- 1855 Walling, D. E. and He, Q.: Using fallout lead-210 measurements to estimate soil erosion on cultivated land, *Soil Sci. Soc. Am. J.*, 63, 1404-1412, 1999.
- Walling, D. E., He, Q., and Blake, W.: Use of ^7Be and ^{137}Cs measurements to document short-and medium-term rates of water-induced soil erosion on agricultural land, *Water Resour. Res.*, 35, 3865-3874, 1999.
- 1860 Walling, D. E., Collins, A. L., and Sickingabula, H. M.: Using unsupported lead-210 measurements to investigate soil erosion and sediment delivery in a small Zambian catchment, *Geomorphology*, 52, 193-213, 2003.

Walling, D. E., Schuller, P., Zhang, Y., and Iroume, A.: Extending the timescale for using beryllium 7 measurements to document soil redistribution by erosion, *Water Resour. Res.*, 45, W02418, <https://doi.org/10.1029/2008WR007143>, 2009.

Walton, A. and Fried, R. E.: The deposition of beryllium 7 and phosphorus 32 in precipitation at north temperate latitudes, *J. Geophys. Res.*, 67, 5335-5340, 1962.

Wan, G., Zheng, X., Lee, H. N., Bai, Z. G., Wan, E., Wang, S., Yang, W., Su, F., Yang, J., Wang, C., Huang, R., and Liu, P.: ^{210}Pb and ^7Be as tracers for aerosol transfers at center Guizhou, China: II. the interpretation by monthly and yearly intervals, *Adv. Earth Sci.*, 25, 505-514, 2010 (in Chinese).

Wang, Y.: Investigating the soil erosion rates on the cultivated slopes in the northeast black soil region of China using ^{137}Cs and $^{210}\text{Pb}_{\text{ex}}$ measurements, M.S. thesis, University of Chinese Academy of Sciences, China, 2010 (in Chinese).

Wang, L.: Study on soil erosion rates in Zhenjiang district using ^{137}Cs and $^{210}\text{Pb}_{\text{ex}}$ tracers, M.S. thesis, Nanjing Normal University, China, 2011 (in Chinese).

Wang, B., Wu, J., Sun, W., Luo, W., Zhang, F., and Wang, Y.: Monitoring the variation of ^{210}Pb concentration in aerosol of Lanzhou from 2009-2012, *Nucl. Electron. Detect. Technol.*, 34, 114-116, 2014a (in Chinese).

Wang, Z., Yang, W., Chen, M., Lin, P., and Qiu, Y.: Intra-Annual Deposition of Atmospheric ^{210}Pb , ^{210}Po and the Residence Times of Aerosol in Xiamen, China, *Aerosol Air Qual. Res.*, 14, 1402-1410, 2014b.

Wang, J., Du, J., Baskaran, M., and Zhang, J.: Mobile mud dynamics in the East China Sea elucidated using ^{210}Pb , ^{137}Cs , ^7Be , and ^{234}Th as tracers, *J. Geophys. Res-Oceans*, 121, 224-239, 2016.

Wang, J., Huang, D., Xie, W., He, Q., and Du, J.: Particle dynamics in a managed navigation channel under different tidal conditions as determined using multiple radionuclide tracers, *J. Geophys. Res-Oceans*, 126, e2020JC016683, <https://doi.org/10.1029/2020JC016683>, 2021.

Wang, J., Baskaran, M., Kumar, A. et al. Reconstruction of temporal variations of metal concentrations using radiochronology ($^{239+240}\text{Pu}$ and ^{137}Cs) in sediments from Kizilirmak River, Turkey. *J. Paleolimnol.*, 65, 137-149, 2020.

Weiss, H. V., and Naidu, H. V.: ^{210}Pb flux in an Arctic coastal region, *Arctic*, 39, 59-64, 1986.

- Wells, T., Hancock, G. R., Dever, C., and Murphy, D.: Prediction of vertical soil organic carbon profiles using soil properties and environmental tracer data at an untilled site, *Geoderma*, 170, 337-346, 2012.
- 1895 Whiting, P. J., Matisoff, G., Fornes, W., and Soster, F. M.: Suspended sediment sources and transport distances in the Yellowstone River basin, *Geol. Soc. Am. Bull.*, 117, 515-529, 2005.
- Wieland, E., Santschi, P. H., and Beer, J.: A multitracer study of radionuclides in Lake Zurich, Switzerland: 2. Residence times, removal processes, and sediment focusing, *J. Geophys. Res.-Oceans*, 96, 17067-17080, 1991.
- 1900 Wilkening, M. H., and Clements, W. E.: Radon 222 from the ocean surface, *J. Geophys. Res.*, 80, 3828-3830, 1975.
- Wilson, C., Matisoff, G., and Whiting, P.: Short-term erosion rates from a ^7Be inventory balance, *Earth Surf. Proc. Land.*, 28, 967-977, 2003.
- Windom, H. L.: Atmospheric dust records in permanent snowfields: Implications to marine sedimentation, *Geol. Soc. Am. Bull.*, 80, 761-782, 1969.
- 1905 Winkler, R. and Rosner, G.: Seasonal and long-term variation of ^{210}Pb concentration in air, atmospheric deposition rate and total deposition velocity in south Germany, *Sci. Total. Environ.*, 263, 57-68, 2000.
- Winkler, R., Dietl, F., Frank, G., and Tschiersch, J.: Temporal variation of ^7Be and ^{210}Pb size distributions in ambient aerosol, *Atmos. Environ.*, 32, 983-991, 1998.
- 1910 Wu, J., Sun, W., Wang, B., Luo, W., Kang, F., Zhang, B., and Wang, Y.: The concentrations of ^7Be in air aerosols of Lanzhou City, *Chin. J. Radiol. Health.*, 20, 333-334, 2011 (in Chinese).
- Yamagata, T., Nagai, H., Matsuzaki, H., and Narasaki, Y.: Decadal variations of atmospheric ^7Be and ^{10}Be concentrations between 1998 and 2014 in Japan, *Nucl. Instrum. Meth. B*, 455, 265-270, 2019.
- 1915 Yamamoto, M., Sakaguchi, A., Sasaki, K., Hirose, K., Igarashi, Y., and Kim, C. K.: Seasonal and spatial variation of atmospheric ^{210}Pb and ^7Be deposition: features of the Japan Sea side of Japan, *J. Environ. Radioactiv.*, 86, 110-131, 2006.
- Yang, H., Jun, E., Kim, Y., and Ok, G.: Residence times and chemical composition of atmospheric

带格式的: 定义网格后自动调整右缩进, 段落间距段后: 0磅, 调整中文与西文文字的间距, 调整中文与数字的间距

带格式的

- aerosols: II. Residence times of aerosols in Pusan, J. Korean Environ. Sci. Soc., 8, 171-176, 1999 (in Korean).
- 1920 Yang, Y. H., Yan, B. X., and Zhu, H.: Estimating soil erosion in northeast China using ^{137}Cs and $^{210}\text{Pb}_{\text{ex}}$, Pedosphere, 21, 706-711, 2011.
- Yang, Y. L., Gai, N., Geng, C. Z., Zhu, X. H., Li, Y., Xue, Y., Yu, H. Q., and Tan, K. Y.: East Asia monsoon's influence on seasonal changes of beryllium-7 and typical POPs in near-surface atmospheric aerosols in mid-latitude city Qingdao, China, Atmos. Environ., 79, 802-810, 2013.
- 1925 Yi, Y., Bai, J., Liu, G., Yang, W., Yi, Q., Huang, Y., and Chen, H.: Measurements of atmospheric deposition fluxes of ^7Be , ^{210}Pb and ^{210}Po , Mar. Sci., 29, 20-24, 2005 (in Chinese).
- Yi, Y., Zhou, P., and Liu, G.: Atmospheric deposition fluxes of ^7Be , ^{210}Pb and ^{210}Po at Xiamen, China, J. Radioanal. Nucl. Ch., 273, 157-162, 2007.
- Yoshimori, M.: Beryllium 7 radionuclide as a tracer of vertical air mass transport in the troposphere, Adv. Space Res., 36, 828-832, 2005.
- 1930 Young, J. A. and Silker, W. B.: The determination of air-sea exchange and oceanic mixing rates using ^7Be during the BOMEX experiment, J. Geophys. Res., 79, 4481-4489, 1974.
- Young, J. A. and Silker, W. B.: Aerosol deposition velocities on the Pacific and Atlantic oceans calculated from ^7Be measurements, Earth Planet. Sc. Lett., 50, 92-104, 1980.
- 1935 Yu, Z., Tang, L., Qiu, X., Xiao, P., and Wu, Y.: Research about the change trend of ^{210}Pb and ^{210}Po of a year in aerosol, Prog. Rep. China Nucl. Sci. Technol., 5, 61-65, 2017 (in Chinese).
- Yu, D., Sha, Z., Wang, Q., Hu, J., and Wang, Z.: Distribution characteristics of ^{137}Cs and $^{210}\text{Pb}_{\text{ex}}$ in soil of grassland region in the northeastern of Qinghai-Tibet Plateau, J. Arid. Land Resour. Environ., 32, 160-166, 2018 (in Chinese).
- 1940 Zanis, P., Schuepbach, E., Gaggeler, H. W., Hubener, S., and Tobler, L.: Factors controlling beryllium-7 at Jungfraujoch in Switzerland, Tellus, 51B, 789-805, 1999.
- Zanis, P., Gerasopoulos, E., Priller, A., Schnabel, C., Stohl, A., Zerefos, C., Gaggeler, H. W., Tobler, L., Kubik, P. W., Kanter, H. J., Scheel, H. E., Luterbacher, J., and Berger, M.: An estimate of the impact

- of stratosphere-to-troposphere transport (STT) on the lower free tropospheric ozone over the Alps
 1945 using ^{10}Be and ^7Be measurements, *J. Geophys. Res.*, 108, D12,
<https://doi.org/10.1029/2002JD002604>, 2003.
- Zhang, X., Walling, D. E., Feng, M., and Wen, A.: $^{210}\text{Pb}_{\text{ex}}$ depth distribution in soil and calibration models
 for assessment of soil erosion rates from $^{210}\text{Pb}_{\text{ex}}$ measurements, *Chinese Sci. Bull.*, 48, 813-818,
 2003 (in Chinese).
- 1950 Zhang, X., Qi, Y., Walling, D. E., He, X., Wen, A., and Fu, J.: A preliminary assessment of the potential
 for using $^{210}\text{Pb}_{\text{ex}}$ measurement to estimate soil redistribution rates on cultivated slopes in the Sichuan
 Hilly Basin of China, *Catena*, 68, 1-9, 2006.
- Zhang, F., Zhang, B., and Yang, M.: Beryllium-7 atmospheric deposition and soil inventory on the
 northern Loess Plateau of China, *Atmos. Environ.*, 77, 178-184, 2013.
- 1955 Zhang, Y., Long, Y., Yu, X., and An, J.: A comparison of measured ^{137}Cs and excess ^{210}Pb levels in the
 cultivated brown and cinnamon soils of the Yimeng Mountain area, *Chin. J. Geochem.*, 33, 155-
 162, 2014.
- Zhang, L., Yang, W., Chen, M., Wang, Z., Lin, P., Fang, Z., Qiu, Y., and Zheng, M.: Atmospheric
 Deposition of ^7Be in the southeast of China: A case study in Xiamen, *Aerosol Air Qual. Res.*, 16,
 1960 105-113, 2016.
- Zhang, Y., and Jiang, Z.: Estimation of Po-210 and Pb-210 emissions from coal energy use in China, *Adv.*
Eng. Res., 163, 1576-1581, 2018a (in Chinese).
- Zhang, W., Lam, K., and Ungar, K.: The development of a digital gamma-gamma
 coincidence/anticoincidence spectrometer and its applications to monitor low-level atmospheric
 1965 $^{22}\text{Na}/^7\text{Be}$ activity ratios in Resolute Bay, Canada, *J. Environ. Radioactiv.*, 192, 434-439, 2018b.
- Zhang, L., Yang, W., Chen, M., Zhu, Y., and Wang, Z.: Atmospheric deposition of ^{210}Po and ^{210}Pb near
 the coast of Xiamen, *Acta Oceanol. Sin.*, 41, 114-122, 2019 (in Chinese).
- Zheng, X., Wan, G., Yang, J., Zhang, X., Yang, W., Lee, H. N., and Wang, C.: ^7Be and ^{210}Pb radioactivity
 and implications on sources of surface ozone at Mt. Waliguan, *Chinese Sci. Bull.*, 50, 167-171, 2005
 1970 (in Chinese).

Zheng, J. J., He, X. B., Walling, D., Zhang, X. B., Flanagan, D., and Qi, Y. Q.: Assessing soil erosion rates on manually-tilled hillslopes in the Sichuan hilly basin using ^{137}Cs and $^{210}\text{Pb}_{\text{ex}}$ measurements, *Pedosphere*, 17, 273-283, 2007.

1975 Zhu, J. and Olsen, C. R.: Beryllium-7 atmospheric deposition and sediment inventories in the Neponset River estuary, Massachusetts, USA, *J. Environ. Radioactiv.*, 100, 192-197, 2009.