



# Comprehensive bathymetry and intertidal topography of the Amazon estuary

Alice César Fassoni-Andrade<sup>1</sup>, Fabien Durand<sup>1,2</sup>, Daniel Moreira<sup>3</sup>, Alberto Azevedo<sup>4</sup>, Valdenira Ferreira dos Santos<sup>5</sup>, Claudia Funi<sup>5</sup>, Alain Laraque<sup>6</sup>

<sup>1</sup>Institut de Recherche pour le Développement (IRD), Universidade de Brasília (UnB), Brasília, 70910-900, Brazil.

<sup>2</sup>LEGOS UMR5566, CNRS/CNES/IRD/UPS, 31400 Toulouse, France

<sup>3</sup>CPRM, Serviço Geológico do Brasil, Avenida Pasteur, 404, Urca, Rio de Janeiro, Brazil.

<sup>4</sup>Laboratório Nacional de Engenharia Civil (LNEC), Avenida do Brasil 101, Lisboa, Portugal.

<sup>5</sup>Instituto de Pesquisas Científicas e Tecnológicas do Estado do Amapá (IEPA), Campus IEPA Fazendinha, Macapá, Brasil

<sup>6</sup>IRD, GET-UMR CNRS/IRD/UPS – UMR 5562 du CNRS, UMR 234 de l'IRD, Toulouse, France

*Correspondence to:* Alice Fassoni-Andrade (alice.fassoni@gmail.com)

**Abstract.** The characterization of estuarine hydrodynamics primarily depends on the knowledge of bathymetry and topography. Here we present the first comprehensive, high-resolution dataset of the topography and bathymetry of the Amazon River estuary, the world's largest estuary. Our product is based on an innovative approach combining space-borne remote sensing data, an extensive and processed river depth dataset, and auxiliary data. Our goal with this characterization is to promote the database usage in studies that require this information, such as hydrodynamic modeling or geomorphological assessments. Our twofold approach considered 500'000 sounding points digitized from 19 nautical charts for bathymetry estimation, in conjunction with a state-of-the-art topography dataset based on remote sensing, encompassing intertidal flats, riverbanks, and adjacent floodplains. Finally, our estimate can be accessed in a unified 30 m resolution regular grid referenced to EGM08, complemented both landward and seaward with land (MERIT DEM) and ocean (GEBCO2020) topography data. Extensive validation against independent and spatially-distributed data, from an airborne LIDAR survey, from ICESat-2 altimetric satellite data, and from various in situ surveys, shows a typical accuracy of 8.4 m (river bed) and 1.2 m (non-vegetated inter-tidal floodplains). The dataset is available at <http://dx.doi.org/10.17632/3g6b5ynrdb.1> (Fassoni-Andrade et al., 2021).

## 1 Introduction

The Amazon River exports the largest discharge of freshwater (205'000 m<sup>3</sup>s<sup>-1</sup>; Callède et al., 2010) and the largest sedimentary supply (5-13 10<sup>8</sup> tons per year; Filizola et al., 2011) to the global ocean. However, there does not exist, up to now, any consistent, comprehensive, publicly available topographic dataset in the estuary that can support hydrodynamic, sedimentary, or ecological studies. The largest estuary in the world is home to energetic exchanges of momentum between the upstream river and the ocean, with a marked variability of the water level over a broad range of timescales, from the



semi-diurnal tide propagating upstream from the Atlantic Ocean to the interannual hydro-meteorological climatic events frequently occurring over the upstream catchment. These exchanges between the river and the ocean result in sporadic flooding events, which profoundly impact the riparian communities' socio-economic conditions (Andrade and Szlafsztein, 2018; Mansur et al., 2016). The morphology of the river bed is known to primarily condition the estuary's hydrodynamics, particularly the propagation of the tidal wave (Gallo and Vinzon, 2015), which is expected to affect the dynamics of the riverine floods and the extent of the associated flooding (Kosuth et al., 2009). This dynamic environment with high ecological diversity is essential for nutrient cycling and carbon fluxes (Sawakuchi et al., 2017; Ward et al., 2015), for navigation (Fernandes et al., 2007), and the transport and accumulation of sediment (Nittrouer et al., 2021).

The Amazon estuary extends from the continental shelf up to Óbidos city, corresponding to the longest tidally-influenced reach in the world with 800-910 km (Kosuth et al., 2009; Nittrouer et al., 2021; Fig. 1). This river flow is drained downstream towards the ocean through the main channel until the confluence with the Xingu River, around 300 km upstream of the mouth, where it is divided into two long channels, hereafter called South Channel (locally named Gurupá Channel) and North Channel (Fig. 1). Downstream of this branching, the estuary appears as a complex network of dendritic tidal channels and islands (Fricke et al., 2019). The estuary is classified as macrotidal (Dyer, 1997; Gallo and Vinzon, 2005) and semi-diurnal (Kosuth et al., 2009) with a tidal range between 4 and 6 m at the mouth. The  $M_2$  (lunar semi-diurnal) and  $S_2$  (solar semi-diurnal) tidal constituents are the dominant components at the ocean boundary, with amplitudes of 1.5 and 0.4 m there (Gallo and Vinzon, 2005). At the upstream limit of the estuary in Óbidos, the range of the drought-flood annual cycle of the river height typically amounts to 6 m, and the tidal effects remain sensible only during the drought season (Kosuth et al., 2009). So far, the quantitative investigation of the estuary's hydrodynamics and the interaction mechanisms between the tide and the river flow has been limited by the lack of sufficiently-resolved bathymetric databases (e.g., Gabioux et al., 2005). Past hydrodynamical studies of the Amazon estuary thus relied on approaches based on box models (Prestes et al., 2020) and/or on coarse hydrodynamical models (e.g. Gallo and Vinzon, 2015). Still, these past studies revealed rich hydrodynamics of the estuary, comprising contrasted patterns of bottom friction (Gabioux et al., 2005), active non-linear deformation of the tidal waves (Gallo and Vinzon, 2005), a distinct structure of the salinity front (Molinas et al., 2014, 2020) and a prominent role of the intertidal flats in the flow variability (Gallo and Vinzon, 2005). The interplay between the fluvial variability of the water level and its tidal variability is particularly known to exert a central control on the estuary's sedimentation pattern (Fricke et al., 2019). While the geometry of the Amazon estuary is known to have been little influenced by anthropic effects up to now, it appears essential to document it in its current state, at a time when the human influence is rising and is expected to induce profound, long-lasting impacts on the continental sediment supply to this estuary (Latrubesse et al., 2017).

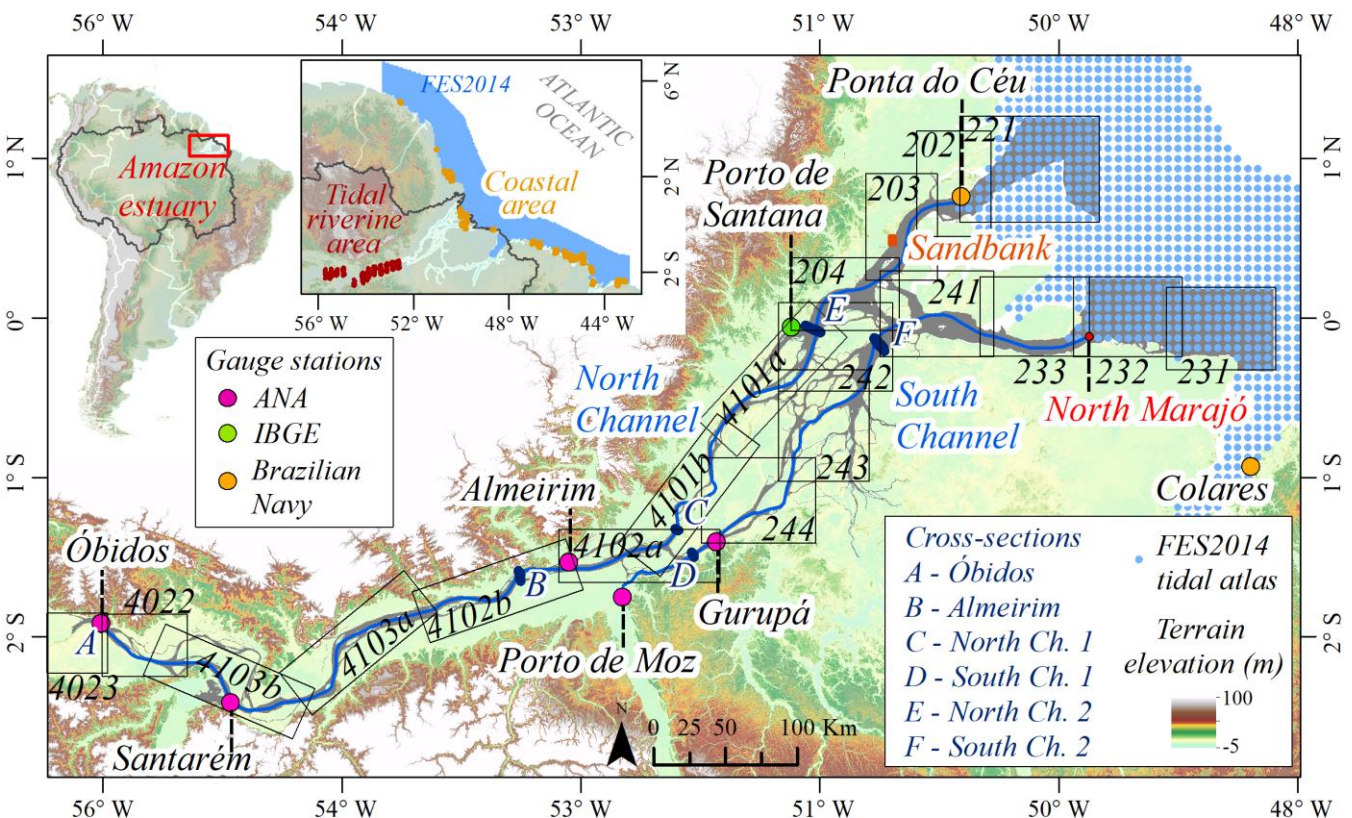
The present paper aims to present a novel topography and bathymetry dataset of the whole Amazon River estuary, from its upstream limit 1000 km inland, to its terminal estuary at its oceanic outlet, covering the riverbed as well as the intermittently-flooded river banks and adjoining floodplains. These various domains being inherently different in nature, our



methodological approach is twofold.

Over the always-wet part of the riverbed, we rely on a traditional methodology to construct the bathymetry based on comprehensive, systematic digitization of existing nautical charts. In contrast over the intermittently-dry intertidal zones and floodplains, our mapping is achieved through an original, state-of-the-art approach based on space-borne remote sensing. Our dataset is regularly gridded at 30 m resolution and elevations are referenced to EGM08 (Pavlis et al., 2012). It covers the river streams, riverbanks, and floodplains and extends downstream of the estuary mouths over the near-shore ocean shelf and open-ocean coastline, covering the domain shown in Fig. 1.

Section 2 presents the data sources and the methods used to build the dataset. Section 3 presents the validation against independent databases. Section 4 shows the topographic mapping and cross-section along the river and floodplain. Section 5 discusses the significance and caveats of the dataset, and Section 6 explains the access to the various forms of our dataset.



**Figure 1.** Location of Amazon River estuary with identification and limits of nautical charts (Brazilian Navy) and gauge stations from Agência Nacional de Águas (ANA), Brazilian Navy, and Instituto Brasileiro de Geografia e Estatística (IBGE).



## 2 Data and methods

### 2.1 Bathymetry of the river bed

Over the always-wet part of the various streams of the Amazon estuary, the approach relies on systematic digitization of sounding points of bed elevation harvested from a comprehensive ensemble of nautical charts published by the Brazilian Navy (available at [www.marinha.mil.br/chm/dados-do-segnav/cartas-raster](http://www.marinha.mil.br/chm/dados-do-segnav/cartas-raster)). Although technically straightforward, this task was by far the most tedious part of the procedure, on account of the large geographical extent of the domain (21'500 km<sup>2</sup>, a grey polygon in Fig. 1). We digitized more than 500'000 individual points in a total of 19 charts, which identification and limits are shown in Fig. 1. The primary bathymetric surveys utilized in these charts were carried out by the Brazilian Navy on different dates varying between 1953 and 2019, with a reasonably large fraction of them done after 2000 (see Table A1 for further details). Figure 2a displays an example of a digitized nautical chart. One issue with the maps we could access was the vertical referencing of the digitized elevations. Depending on the map considered, the bed elevation values were provided with respect to two different reference water surface elevations (WSE): either the level of the 90<sup>th</sup> percentile of water surface elevation (hereafter noted WS90) or the average level of the low tide during the spring tide (termed as syzygy, noted SYZ).

We inferred the vertical elevation of each of these two references from the available records of the tide gauge stations scattered along the river down to the river mouth. The tidal and limnigraphic records from the seven stations we could access, listed in Table A2 and Table A3 (locations in Fig. 1), were provided by the Agência Nacional de Águas (ANA), by the Brazilian Navy, and by Instituto Brasileiro de Geografia e Estatística (IBGE). The vertical water level of both references (WS90 and SYZ) was deducted explicitly from the temporal records by computing the level of the 90<sup>th</sup> percentile to infer WS90 and by computing the average level of the low tide during spring tides for SYZ. These references were computed with respect to the geoid considering the absolute leveling published in Calmant et al. (2012) and Callède et al. (2013), complemented by a dedicated geodetic survey field that we conducted in January-February 2020 (Text A1). At the river mouth, downstream of the downstream-most tidal stations (blue points in Fig. 1), the SYZ level was calculated using the combination of the mean sea surface height provided by the ocean general circulation model of Ruault et al. (2020) and of a proxy of the syzygy level estimated by FES2014 tidal atlas (Carrère et al., 2016; available at [www.aviso.altimetry.fr/en/data/products/auxiliary-products/global-tide-fes.html](http://www.aviso.altimetry.fr/en/data/products/auxiliary-products/global-tide-fes.html)). This proxy of SYZ was defined classically according to equation 1, from the sum of amplitudes of *M2* and *S2* tidal constituents (Pugh and Woodworth, 2014).

$$SYZ = \text{mean sea surface height} - (M2 + S2), \quad (1)$$

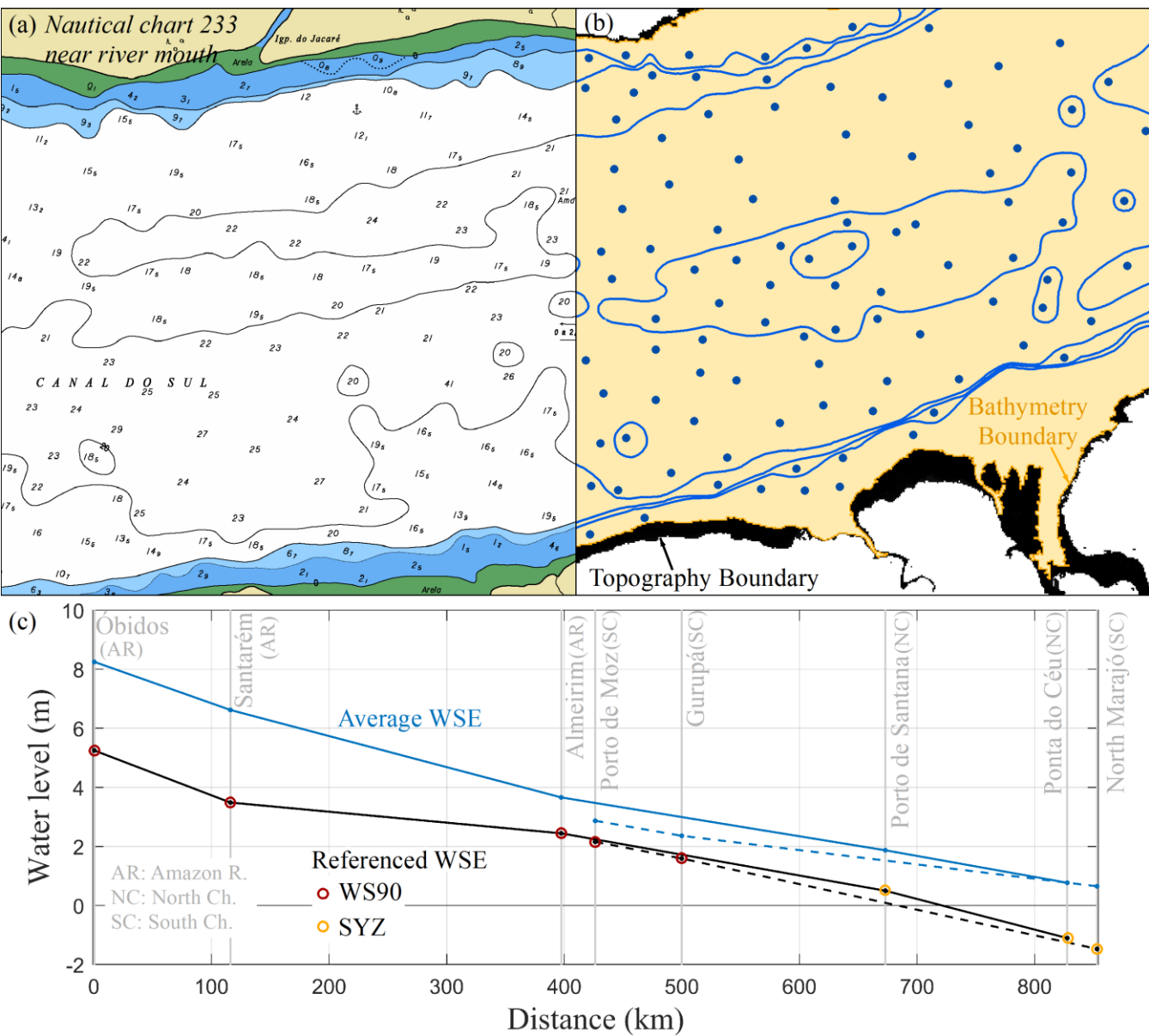
We inferred WSE (i.e., WS90 or SYZ, depending on the reference of the chart under consideration) separately along the Amazon River (Óbidos, Santarém, and Almeirim), North Channel (Porto de Santana, and Ponta do Céu) and the South



Channel (Almeirim, Porto de Moz, Gurupá, and a point of the FES2014 tidal model marked as "North Marajó" in Fig. 1) via  
110 curvilinear interpolation between the successive stations, resulting in the profile shown in Fig. 2c. The WSE for each of the  
500'000 digitized points was then inferred from the values along the two blue lines and blues points in Fig. 1 via a nearest-  
neighbor interpolation method. After, the WSE was subtracted from the water depths resulting in bed elevation values  
referenced to EGM08. The bed elevation points were then interpolated using the topo-to-raster method (Hutchinson, 1989),  
which is essentially an interpolation method suited to hydrological objects to create a regular elevation grid with 30 m spatial  
115 resolution.

In the interpolation, a river boundary was considered, as shown in Fig. 1 (grey polygon) and exemplified in Fig. 2b  
(bathymetry boundary). This boundary is a polygon defined considering a flood frequency comprised between 96% and  
100%. The flood frequency map was calculated from the Global Surface Water (GSW) Monthly Water History v1.1 data  
(Pekel et al., 2016; available at <https://global-surface-water.appspot.com>), which represents the space-borne Landsat-based  
120 monthly record of water presence on a global scale with a spatial resolution of 30 m. A Google-Earth engine code (Gorelick  
et al., 2017), described in Fassoni-Andrade et al. (2020b), was used to create it considering all GSW monthly images from  
the period from January 2015 to December 2018, hereby totalizing 48 months.





125 **Figure 2.** (a) Example of a nautical chart nearby river mouth (code 233); (b) Digitized pointwise soundings and isobaths, along with bathymetry boundaries (defined as the isoline 96% of flood frequency) and topography boundaries (defined as the isoline 0% of flood frequency); (c) Referenced WSE and Average WSE along the Amazon estuary (EGM08 geoid).



## 2.2 Topography of periodically flooded areas

130 Intertidal banks and floodplains are areas periodically flooded by tides and riverine floods, respectively. We define them as the areas comprised between 0% and 96% of the above-described flood frequency map (Fig. 3a). In the past studies devoted to coastal mapping, intertidal topography has been mapped through remote sensing data, the waterline method being one of the most widely adopted techniques (see Salameh et al., 2019 for a review). This method requires the detection and extraction of the water contours in imagery time series. Next, water levels are assigned to the individual water contours, creating isobaths. A Digital Elevation Model (DEM) raster can be generated from a large enough amount of such isobaths. Some recent applications of this method are found in Bell et al. (2016), Bergmann et al. (2018), Bishop-Taylor et al. (2019), Khan et al. (2019), and Salameh et al. (2020). This method has proven tractable with moderate-resolution space-borne imagery; however, it requires simultaneous water level knowledge at the exact time of each acquisition, along the remotely-sensed water lines. It also relies on spatial interpolation of the isobaths between successive waterlines, which can be problematic if the waterlines are sparse. Recently, alternative methods have been developed using a flood frequency map to estimate the coastal topography pixel-by-pixel (Dai et al., 2019; Tseng et al., 2017). In these approaches, reference water levels (for instance, minimum, average, and maximum) were assigned to reference flood frequencies (respectively 100%, 50%, and 0%). Contrasting these approaches that do not explicitly require the knowledge of the water level's temporal variation, Fassoni-Andrade et al. (2020b) related the function of water level exceedance probability and a flood frequency map to estimate the topography of the water bodies. The authors showed that the terrain elevation at a given pixel is defined as the water level, which probability of exceedance is equal to the flood frequency there.

This straightforward approach requires a flood-frequency map and the water level exceedance probability functions to generate the terrain elevation map. It has been applied in situations where the temporal dynamics of water filling and draining is slow. Here, the same method is applied to estimate the floodplain topography and coastal topography of the Amazon estuary, where the water level variability is spread over a broader spectrum, from intra-daily timescales to seasonal or interannual timescales (Kosuth et al., 2009). As we did not have access to vertically-leveled tide gauge archives in the Amazon estuary coastal area, two domains were considered for topographic estimation. The first domain considered the riverbanks, intertidal zone, and floodplains along the channels (described in Section 2.2.1), where the approach described in Fassoni-Andrade et al. (2020a) was directly applied. Downstream of the estuary mouths, over the open near-shore Atlantic Ocean, the method was adapted to estimate tidal variation considering the water level exceedance function from a tidal station (Section 2.2.2).

### 2.2.1 Riverbanks, intertidal zone, and floodplains

In the intertidal zone and floodplains along the Amazon River, WSE records from limnigraphic and tidal stations were considered over the period 2015-2018 (Table A2 and Table A3) for consistency with the imagery period covered by the flood frequency map. These records yielded exceedance probability functions, such as the one illustrated in Fig. 3b (Óbidos



station). Like WSE estimation along the river (Section 2.1), the water level duration curve was inferred separately along the North Channel and the South Channel by interpolating curvilinearly the curves obtained at each station. Then, the water level duration curves were extrapolated through a nearest-neighbor interpolation over the whole of the estuary inter-tidal areas and floodplains, i.e., everywhere upstream estuary mouths. Therefore, the terrain elevation at any pixel was estimated considering the water level, in which the probability of exceedance is equal to the flood frequency at the same pixel (Fassoni-Andrade et al., 2020b). In permanently flooded areas, i.e., where the flood frequency is 100%, the method considers the topography equal to the lowest WSE observed, as in the river.

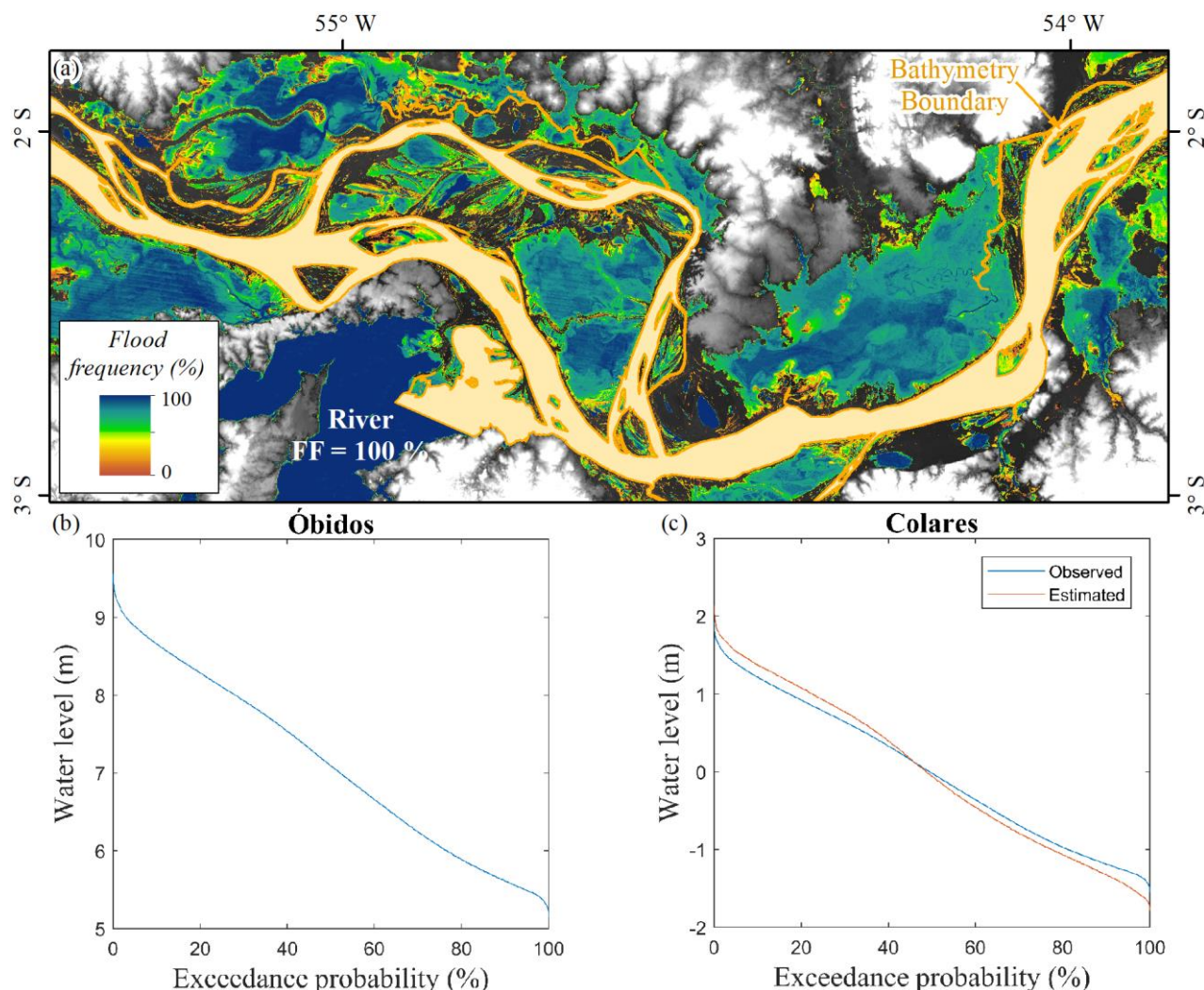


Figure 3. (a) Close-up view of the flood frequency map over the Amazon estuary's upstream part, (b) Water level duration function at Óbidos station, (c) Water level duration function observed and estimated at Colares station (see Fig. 1 for the location of these two stations).





### 2.2.2 Coastal ocean

The challenge to estimate the topography in the coastal area using the methodology of Fassoni-Andrade et al. (2020b), where vertically-leveled tide gauges are lacking, is to infer spatially-distributed water level exceedance functions. We considered the downstream-most Amazon estuary station of Ponta do Céu (Table A2; location in Fig. 1) and computed the water level exceedance function there. This curve's shape was then assumed to be the same throughout the coastal region, but with variable amplitude, proportional to the local tidal amplitude. In this semi-diurnal macro-tidal region, a reasonable proxy of the tidal amplitude over the region can be thought of as the sum of the amplitudes of  $S2$  and  $M2$  tidal constituents, as these two constituents are the dominant ones downstream of the river mouth (Gallo and Vinzon, 2005). The water level duration function ( $WLDF$ ) at any point along the oceanic coastline was obtained by scaling the corresponding function observed at Ponta do Céu ( $WLDF_{PC}$ ) considering the tidal amplitude given by  $S2$  and  $M2$  components from the FES2014 model (Carrère et al., 2016), according to the equation 2:

$$WLDF = WLDF_{PC} \times \frac{\text{Tidal amplitude}}{\text{Tidal amplitude}_{PC}} \quad (2)$$

in which the tidal amplitude at a point is given by  $2 \times (S2 + M2)$ , and the PC subscript refers to Ponta do Céu values.

As a verification, Fig. 3c shows the observed and estimated exceedance probability functions at Colares station, located about 150 km to the east of the Amazon estuary (Fig. 1). Both curves represent the anomaly with respect to the average. The two curves look very similar, with a root-mean-square deviation (RMSD) of 12.7 cm.

After estimating the water level exceedance probability at each point, the vertical reference was adjusted by matching the mean level with the height of the mean sea surface estimated by the ocean circulation model of Ruault et al. (2020). Similar to the water level exceedance probability functions estimated along the river, the coastal area's water level duration functions were inferred for all pixels of the flood frequency map considering the nearest neighbor interpolation method. Therefore, the terrain elevation at a pixel was estimated considering the water level, in which the probability of exceedance is equal to the flood frequency at the same pixel (Fassoni-Andrade et al., 2020b).

## 2.3 In situ and space-borne data for validation

### 2.3.1 GEA/EB Digital Terrain Model

A Digital Terrain Model (DTM) with 2.5 m of spatial resolution and accuracy of 1.62 m (BRADAR, 2017), provided by the Instituto de Pesquisas Científicas e Tecnológicas do Estado do Amapá (IEPA; <http://www.iepa.ap.gov.br/>), was used to validate the estimated topography on a sandbank covering  $\sim 0.9 \text{ km}^2$  in the North Channel (location in Fig. 1). This area was chosen because it is an almost non-vegetated area and it has sufficient corresponding topographic mapping points. For consistency, the DTM vertical reference was transformed from MAPGEO2010 (Matos et al., 2012) to EGM08. The DTM



was developed using P-band interferometry from an aerial survey conducted in late 2014 and early 2015 (De Castro-Filho and Antonio Da Silva Rosa, 2017) in the context of the Base Cartográfica Continua do Amapá project (Vieira, 2015) in cooperation with Governo do Estado do Amapá and Exército Brasileiro (GEA/EB).

### 2.3.2 ICESat-2 space-borne data

The topography was further validated against Ice, Cloud, and land Elevation Satellite-2 (ICESat-2) data. Launched in September 2018, the satellite provides measurements of the surface level from the transmission of laser pulses in the green wavelength (532 nm) by the Advanced Topographic Laser Altimeter System (ATLAS) instrument. ATLAS beams provide six tracks, divided into three pairs, on the Earth surface along the ICESat-2 orbit. The beam pairs are separated by ~3.3 km in the across-track direction, and each spot on the surface is ~13 m in diameter of footprint (Neuenschwander et al., 2020). The accuracy expected from ATLAS is approximately 25 cm for flat surfaces and 119 cm in the case of a 10-degree surface slope (Neuenschwander et al., 2020).

ATL08 v.3 dataset, derived from ATLAS measurements, provides every 100 m along-track heights above the WGS84 ellipsoid for the land and vegetation (available at <https://nsidc.org/data/ATL08>). ATL08 data can also represent water surface elevation, and therefore a criterion has been used to separate these from the measurements over the land surface. Some studies have also shown that the ATLAS instrument can penetrate water and provide information on the bottom (Ma et al., 2020; Parrish et al., 2019). Since the Amazon River has a high concentration of sediments (Martinez et al., 2009), we assume that target information from the water represents only the water surface elevation.

Two regions were selected for the topography validation: upstream of the Xingu River, where the tidal amplitude is small (~40 cm; Kosuth et al., 2009), and along the oceanic coastal area (see Fig. 1 inset map for the locations of both these regions: "Tidal Riverine area" and "Coastal Area", respectively). In both regions, cloudy conditions and measurements with uncertainty above 50 cm (as indicated by the dataset flags) were discarded. Criteria to remove the points derived from the water elevation were considered in each case. In the tidal riverine region, only ATL08 points from the October-December seasons of 2018 and 2019 were considered as this period represents the low-water season of the Amazon River. Besides, since the flooded areas should show a very low variability of the space-borne measurements along-track, it is easy to detect them in the individual along-track data. Thus, each track's water level was evaluated, and points below 50 cm above the water elevation were discarded. For the coastal area, tracks with a visually markedly different elevation between ocean and continent were selected. Each selected track was evaluated, and points below 1 m above the water elevation were discarded.

### 2.3.3 In situ surveys of the river bed bathymetry

The river bed was evaluated in six different bathymetry cross-sections acquired from past in situ surveys done over 2007-2019 by SO HYBAM (see [www.so-hybam.org](http://www.so-hybam.org)) and Companhia de Pesquisa de Recursos Minerais (CPRM; Location of



cross-sections in Fig. 1). The water depth was obtained by acoustic Doppler current profiler (ADCP) instrument and a WSE was considered here for estimating the bed elevation concerning EGM08. In section A, we considered the WSE at Óbidos station on the survey day (28 November 2019). In sections, B, C, and D, the WSE at Porto de Moz station on the day of the survey (6 February 2007) was used considering the water surface declivity obtained by the WSE estimated along the river (Fig. 2c). Finally, the WSE measured every 15 minutes at Porto de Santana station on 5 June of 2008 was considered in sections E and F and is described in Callède et al. (2010). Besides, metrics were evaluated considering all points (excluding outliers) in the round-trip survey and repetitions. In section A, four cross-sections were acquired. In sections B, C, and D, only one cross-section was obtained. In section E, six cross-sections, and in section F, nine cross-sections were obtained.

## 2.4 Ancillary databases

The estimated topography does not cover the terrain elevation in the non-open water area. Similarly, our set of bathymetric charts does not cover the Atlantic Ocean's continental shelf downstream of the river mouth. Thus, our dataset was complemented by two global databases: Multi-Error-Removed Improved-Terrain (MERIT) DEM over the continental area and General Bathymetric Chart of the Oceans (GEBCO) v. 2020 over the ocean. MERIT DEM is a widely-used global model with a spatial resolution of 90 m in which several errors of the Shuttle Radar Topography Mission (SRTM) DEM and the height of vegetation have been corrected (available at [http://hydro.iis.u-tokyo.ac.jp/~yamada/MERIT\\_DEM/](http://hydro.iis.u-tokyo.ac.jp/~yamada/MERIT_DEM/); Yamazaki et al., 2019). For consistency, the MERIT DEM reference was changed from EGM96 to EGM08 (Pavlis et al., 2012). GEBCO is a global terrain model referred to mean sea level with a spatial resolution of 15 arc seconds (approximately 460 m in the Amazon estuary; available at [https://www.gebco.net/data\\_and\\_products/gridded\\_bathymetry\\_data/gebco\\_2020/](https://www.gebco.net/data_and_products/gridded_bathymetry_data/gebco_2020/)). Since GEBCO data has integer values at intervals of 1 meter, the top-to-raster interpolation was used considering the 1 m isolines to generate data consistent with float values wiping out staircases artefacts. Besides, a low-pass filter with a  $9 \times 9$  ( $19 \times 19$ ) window moving average, i.e.,  $4.5 \text{ km} \times 4.5 \text{ km}$  ( $9.5 \times 9.5 \text{ km}$ , respectively), was used in the region above (below) the -200 m isobath to reduce the noise caused by in situ multibeam sounding swaths edges. These combined databases allowed a unified mapping of the topography and bathymetry of the Amazon estuary. However, since MERIT DEM represents the topography of 2010 and some areas in the coastal region may have been eroded or accreted between 2010 and the 2015-2017 period considered in the flood frequency mapping, a procedure was implemented to correct this issue considering three types of regions: 1) erosion areas; 2) accretion areas, i.e., regions where MERIT product does not have topographic information; and 3) GEBCO regions that represent the continent due to sparse spatial resolution, whereas it should represent transition areas or the ocean. The procedure was performed as follows: 1) MERIT DEM areas with topographic information in eroded areas were selected and replaced by GEBCO data, which covers both the continent and the ocean. In the case of substitution to continent GEBCO data, the region is corrected again in step three. 2) Deposition areas where MERIT does not have topographic information were estimated from the topo-to-raster interpolation method considering the values in the mapped regions' contours. Similarly, 3) GEBCO's high topographic regions in the

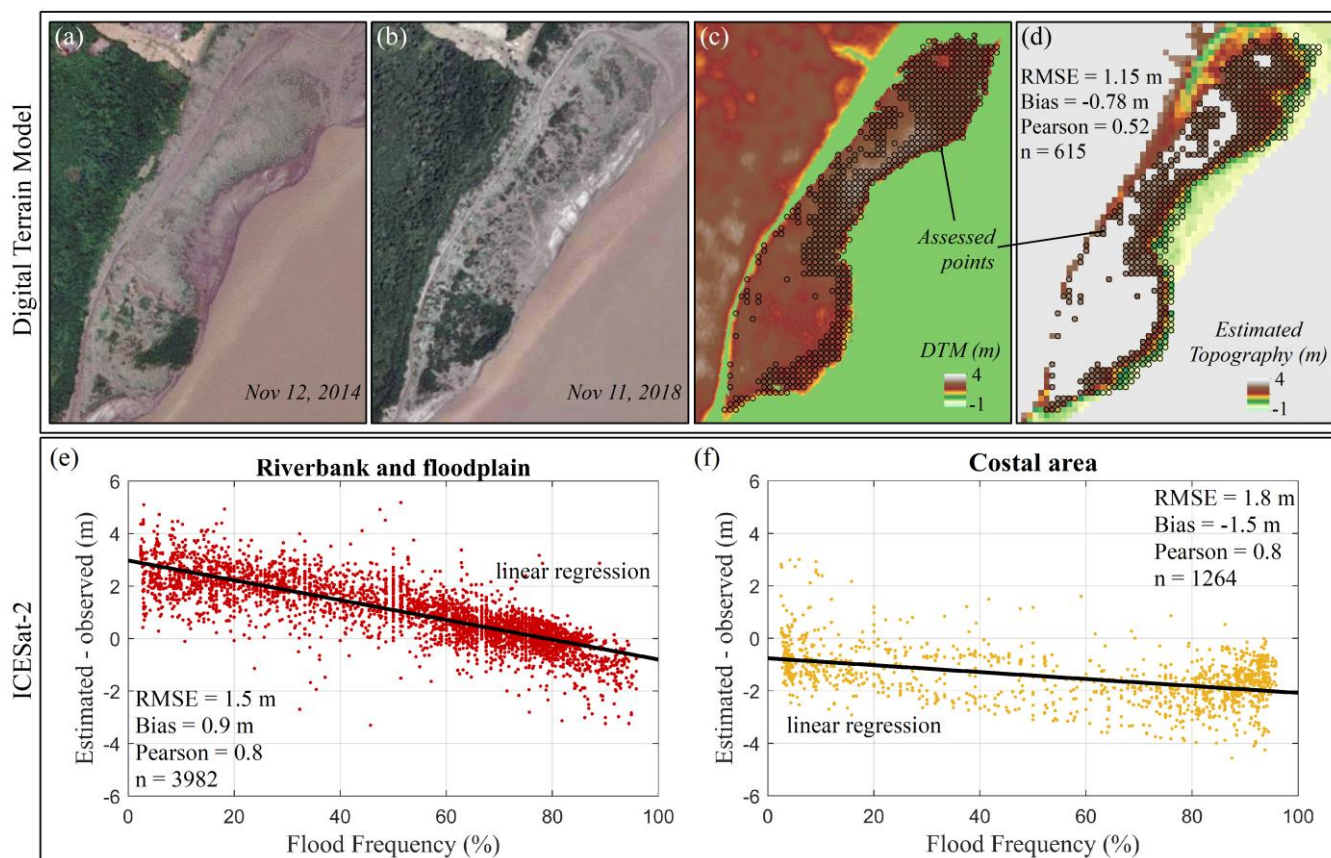


ocean, including regions not previously corrected in step one, were removed, and new values were estimated by topo-to-raster interpolation considering the neighboring pixels. These areas were manually selected considering the polygons generated from the elevation reclassification into three classes: less than -8 m, between -8 m and 1 m, and greater than 1 m – visually-defined criteria. Figure A1 shows an example of these steps and a corrected area. Finally, to ensure a smooth transition between the nautical charts and GEBCO, an area was selected and replaced considering topo-to-raster interpolation from the neighboring pixels. This area was defined by a buffer of ~2 km around the transition limit, i.e., considering 4 km width.

### 3 Validation

#### 3.1 Topography

Figure 4 shows the validation of the estimated topography considering the GEA/EB DTM ("Sandbank" label in Fig. 1) and the ICESat-2 data. The estimated topography yields an RMSE of 1.15 m, a bias of -0.78 m, and a Pearson correlation coefficient ( $r$ ) of 0.52 (number of data,  $n = 612$ ) compared to GEA/EB DTM. This error may be partly related to the spatial resolution of the Landsat images (30 m) and geomorphological changes in the island during 2014 and 2015, as shown in Figure 4ab. Still, this error is lower than the DTM intrinsic accuracy (RMSE of 1.62 m). Considering the ICESat-2 data, the estimated topography was also well represented in the riverbanks/floodplain and coastal area with  $r$  of 0.8 and 0.8, RMSE of 1.5 m and 1.8, and a bias of 0.9 m and -1.5, respectively. However, Fig. 4f shows a bias related to the flood frequency in which overestimations are observed at low flood frequencies (e.g., ~3 m for flood-frequency of 0%). As shown in Fassoni-Andrade et al. (2020a), this bias may be related to the Landsat images used in the flood frequency map that do not represent the flood extent in flood-prone vegetated areas. Thus, the flood frequency in these areas is considered only from situations when the water level exceeds the vegetation height, and, therefore, the flood frequency is underestimated, mechanically overestimating the terrain elevation.



290 **Figure 4.** Sandbank represented by GEA/EB DTM and topography mapping (location in Fig. 1). (a) and (b) represent true-color images of the area from Landsat. (c) shows GEA/EB DTM, and (d) shows the estimated topography. **Flood frequency versus error in topographic estimation in riverbank/floodplain ("Tidal Riverine Area" in Fig. 1) (e), and coastal area ("Coastal Area" in Fig. 1) (f) considering the ICESat-2 data.**

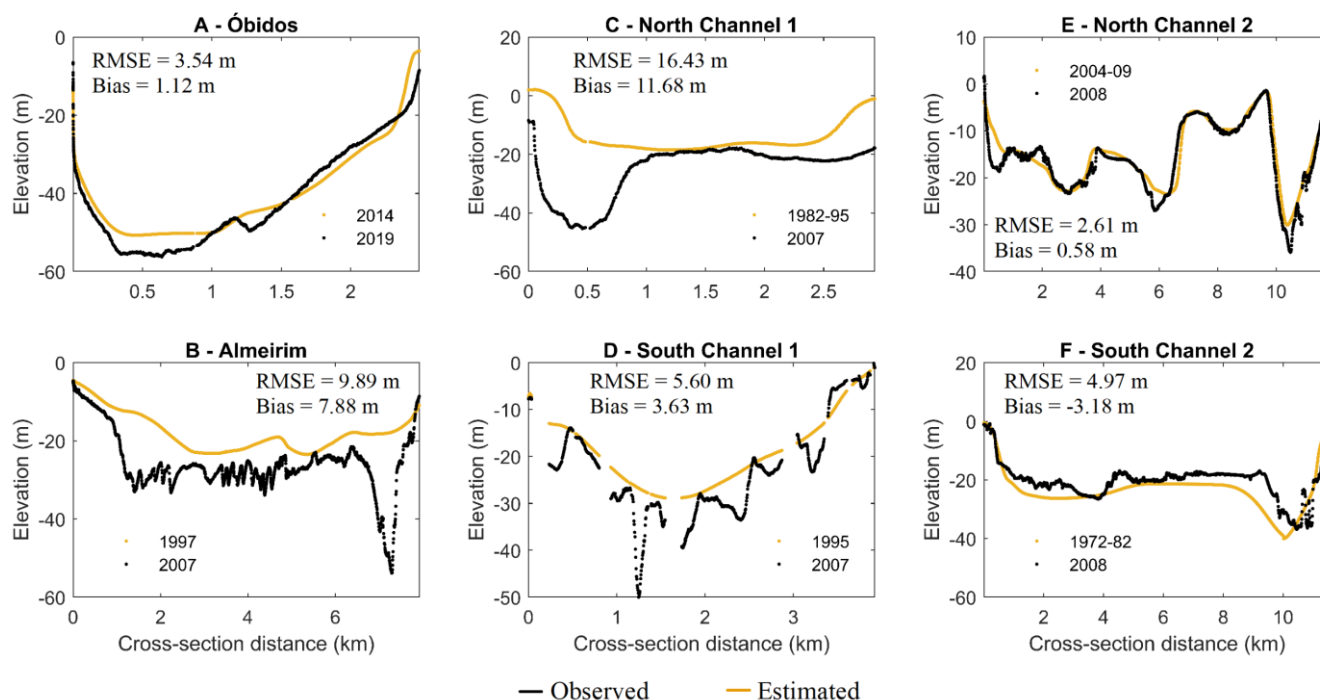
### 3.2 Bathymetry

295 Figure 5 shows the comparison between the in situ cross-sections of the Amazon River and our product. The Amazon river's bed elevation was well represented, with an average **RMSE of 8.4 m** and an average bias of 4.3 m for the six sections considered together. Keeping aside the small-scale (typically: sub-kilometric) features not resolved by the coarser bathymetric digitized charts, the shape of the cross-sections appear appropriately captured by our product, along the steep banks as well as in the median part. The smallest errors are observed in Óbidos (Section A; RMSE 3.5 m) and North Channel 2 (Section E; RMSE 2.6 m), possibly due to the shorter time lag between the dates of the surveys (< 5 years), keeping in  
 300 mind the possible variability of the bed bathymetry (Vital et al., 1998). Furthermore, the WSE considered in these sections are from nearby stations, reducing the vertical reference uncertainties.





On the other hand, although the in situ survey for South Channel 2 is about 40 years old (1972-82; Section F), a good agreement appears with the SO HYBAM survey in 2008 (RMSE of 5 m), which shows that the bed surface has possibly not changed much in these 26-36 years. The region near the Almeirim station, i.e., Sections B, C, and D, seems to have undergone the most significant bed change. In general, the errors are larger (e.g., RMSE of 16 m in Section C), and the topographic variation was not represented in the nautical charts. The respective impact of the limited spatial resolution of the digitized nautical charts and of the morphological variability of the bed on the mismatch we observe is not clear to establish in the absence of additional information.



**Figure 5.** Cross-section transects of the Amazon River (locations are shown in Fig. 1) from the cross-section estimated (yellow) and observed from the in situ surveys (black). Elevations are relative to EGM08. The dates of the corresponding in situ surveys are indicated in each panel.

#### 4 Topographic variation along the estuary

Figure 6 shows the resulting topography and bathymetry, as well as the complementary data MERIT DEM and GEBCO. The extensive floodplain, riverbanks, and intertidal zone have been seamlessly mapped, as exemplified in Box A, B, and C. It can be noted that the floodplain extent reduces from upstream to downstream, and the channels become dendritic in the eastern half of the estuary (East of 52°W). This is related to the accumulation of sediment and the fluvial and tidal influences, as described in Fricke et al. (2019) and Nittrouer et al. (2021). These authors showed that the upper estuary, characterized by



low tidal influence (~40 cm or less), has high levees that limit the overbank flow and sediment accumulation in the floodplain. In the central reach, the stronger tidal range (~1-2 m) and the associated tidal flow suppress the levees' heights, inducing strong overbank transport with high sedimentation rates in the floodplain. In the lower reach with an even stronger tidal range (~4 m), the river canalized transport predominates, and there is little space for sediment accumulation in the floodplain.

325

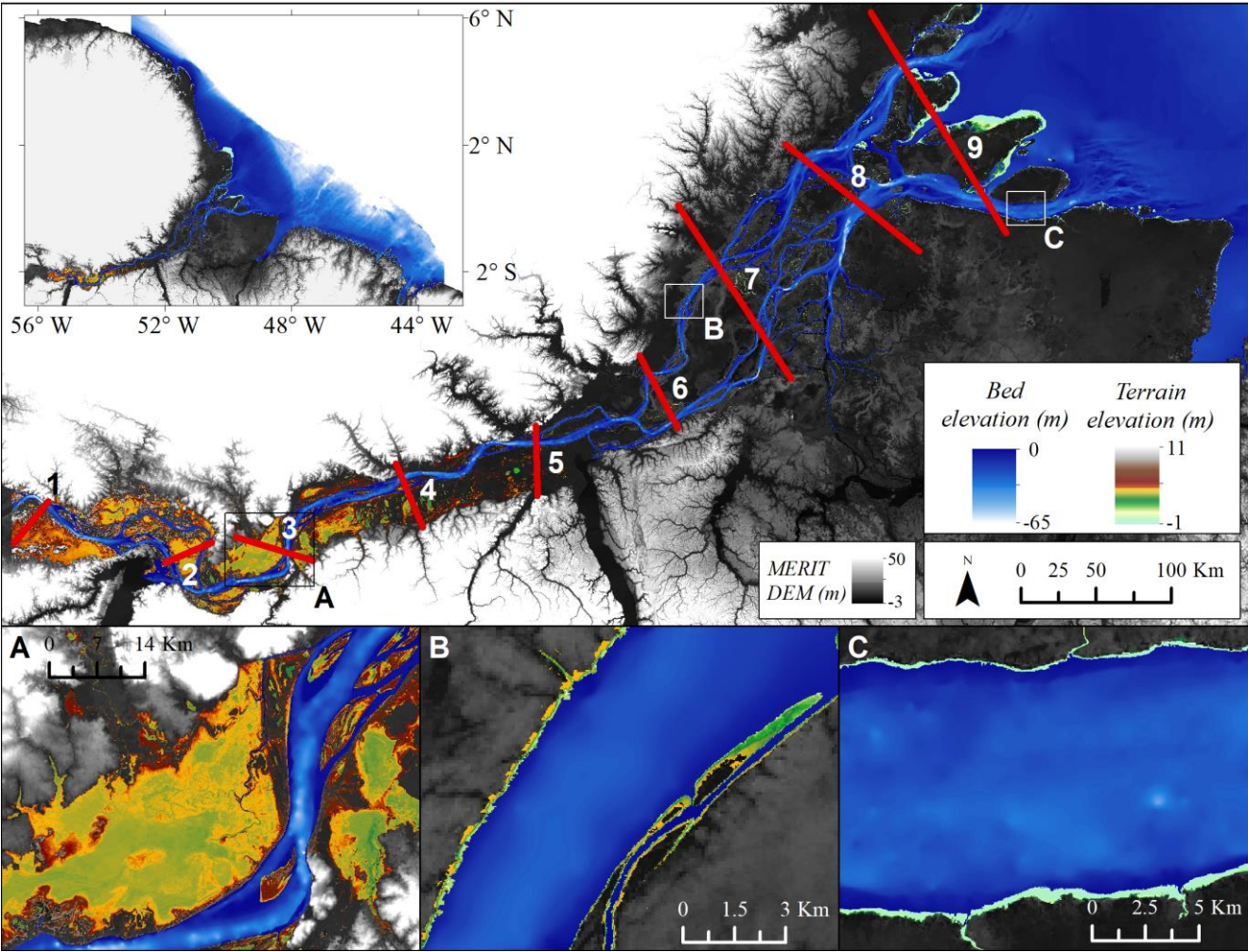


Figure 6. Estimated topography and bathymetry of the Amazon estuary with MERIT DEM and GECOCO 2020 data.

In general, our product stands under this known geomorphological characterization, which is shown in the nine representative topographic profiles of Figure 7 (extracted in the across-river direction every 100 km). The color bar represents the flood frequency from the GSW data, i.e., regions where topography and bathymetry were estimated. Black

330



dots represent the MERIT DEM, and the horizontal lines represent the average (blue) and the maximum (red) river WSE (2015-2018). Note the difference between the average WSE and the floodplain elevation tends to reduce from section 1 to section 5 (h values in grey); that is, the space for sediment accommodation in the floodplain reduces due to sediment accumulation. It can also be observed that the height of the levees is similar to the maximum WSE in sections 1 to 5 (upper and central reach), but from section 6 and further downstream, the topography, represented by the black points, is higher than the maximum elevation and the river has no flooded banks. This observation in the estuary's lower reach has more uncertainty because it considers the MERIT DEM data (Yamazaki et al., 2019), which were not validated here. Fricke et al. (2019) did not observe levees in this reach and described the topography as a flat surface, but the evaluation of the authors considered topography surveys of the banks with a distance from the river of 30 to 250 m (average of 80 m), which is equivalent to ~3 points of our analysis (30 m of spatial resolution).

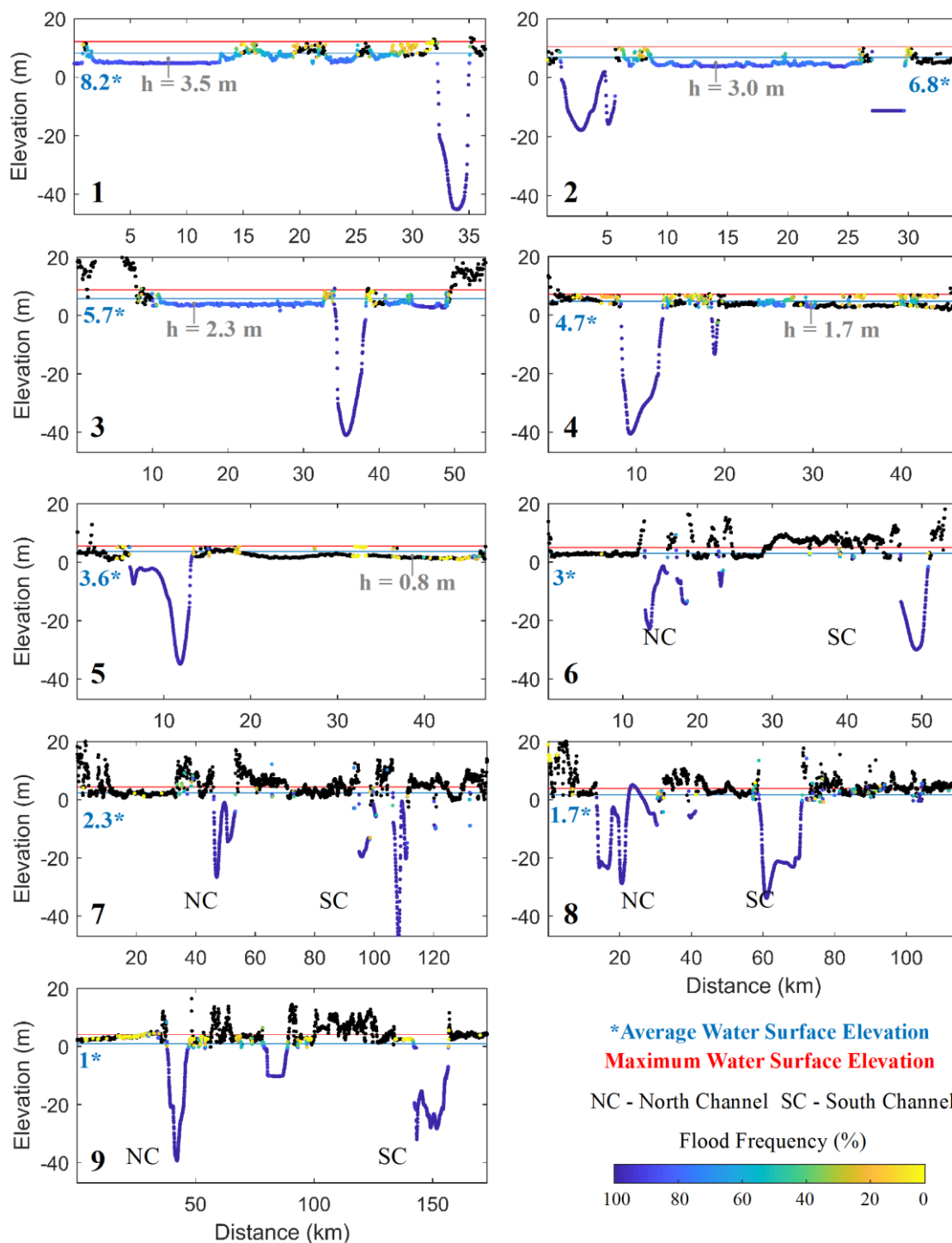


Figure 7. Topographic profiles distributed every 100 km along the river, with the flood frequency, average and maximum WSE, and height between the average level and the minimum elevation of the floodplain.



## 5 Conclusion

### 5.1 Summary and significance of the dataset

Our dataset provides the first-ever consistent, high-resolution, and vertically-referenced topography of the Amazon estuary. Our product's **accuracy** typically amounts to 8.4 m over the river bed and 1.2 m over non-vegetated inter-tidal floodplains (2015-2018 period). These values appear in line with similar remote, poorly-surveyed tropical or deltaic shorelines (Khan et al., 2019; Salameh et al., 2019). Our mapping is based on an innovative approach using remote sensing data, an extensive and novel dataset of river depth, and auxiliary data over the adjoining areas. We believe that this new approach opens unprecedented opportunities for a straightforward estimation of coastal topography worldwide. The validation approach uses an independent and spatially-distributed dataset of various origins (in situ and remotely-sensed), which provides vital support to our findings' quality.

Our overarching goal in assembling this dataset is to characterize the topography and bathymetry of the world's largest estuary. This dataset has many potential applications, such as hydrodynamic modeling, flooding hazard assessment, sedimentology, ecology, physical or human geography, among others. For hydrodynamic modeling, for instance, where the knowledge of topography is instrumental for the accuracy of the results, as well as for geomorphological assessments, which are usually performed with satellite images extracting horizontal information (e.g., width, length) but most often lacking the vertical information, we believe this dataset offers a substantial potential of scientific progress. The dataset can also support ecological studies such as vegetation distribution and carbon balance.

The availability of high-resolution space-borne imagery promised by ongoing operational initiatives (such as the European program Sentinel or the upcoming Constellation Optique 3D - CO3D - mission) opens excellent prospects for frequent revisit updates and improvement of the intertidal part of our product. Keeping in mind the Amazon estuary's energetic morphodynamics, such updates will ensure a perennial quality of our dataset.

### 5.2 Caveats

**Our product's main limitation lies in the long timespan of our raw bathymetry data collection** (encompassing five decades, Table A1). This limitation is probably sensible regarding the supposed characteristic timescale of the variability of river bed through erosion and accretion processes, as revealed from our validation. Repeated shipborne bathymetric surveys are needed, although the geographical extent of the domain makes it hardly tractable at this mega-delta scale. In particular, it will be opportune to consider the future releases of bathymetric charts by the Brazilian Navy along the Amazon estuary, as they become available in the future years, in case they are based on updated primary bathymetric surveys. The issue is less severe for the intertidal topography, as the timespan of our primary data period is inferior by one order of magnitude (4 years only). Another limitation of our dataset over the intertidal flats and floodplains results from the approach based on remotely-sensed imagery of GSW product to estimate the flood frequency. Indeed, it is not expected to work well over the Amazon





estuary areas that are densely vegetated. In addition, topographic mapping bias due to flooded vegetation could be avoided using satellite radar data to map the water extent even in flooded vegetation, such as ALOS/PALSAR (Arnesen et al., 2013). Another issue of using Landsat images for coastal topography estimation is the flood extent representation only every 16 days (Landsat has a sun-synchronous orbit). The tide's temporal variability occurs on an hourly scale, and the amplitude of S<sub>2</sub> tidal constituent would be observed in the same phase, introducing a bias in the mapping. More investigations are needed using images with more significant temporal variability. The upcoming SWOT satellite mission that will provide for the first time a frequent mapping of the water surface elevation and water extent over continental and riverine areas offers a bright prospect to curb these limitations.

## 6 Data availability

The dataset generated from this work (listed below) is available at <http://dx.doi.org/10.17632/3g6b5ynrdb.1> (Fassoni-Andrade et al., 2021). All other datasets used in our work are open-source data cited within.

1) Bathymetry of the Amazon estuary (Bathymetry.tif and Bathymetry.nc); Elevation in meters relative to the EGM2008 geoid.

2) Topography of the non-forested portion of the lower Amazon floodplain (Topography.tif and Topography.nc); Elevation in meters relative to the EGM2008 geoid.

3) Flood frequency for the period 2015 to 2018 (FloodFrequency\_15to18.tif and FloodFrequency\_15to18.nc); Values ranging from 0 to 100%.

4) Unified mapping of the Amazon estuary: merge of bathymetry, topography, MERIT, and GEBCO products (DEM\_AMestuary.tif and DEM\_AMestuary.nc); Elevation in meters relative to the EGM2008 geoid.

## Appendix A

**Table A1. Identification of nautical charts and dates of surveys (Brazilian Navy)**

Nautical chart	Dates
4023	2013-2016
4022	1986/2013-2014
4103b	1990/1998/2003-2007/2011-2014
4103a	1998/2007/2009
4102b	1978/1997/2012
4102a	1978/1995/1997
4101b	1969-1975/1982-1995/2005
4101a	1969-1978/1991-1993/2004-2009/2011-2012



244	no information
243	no information
242	1972-1982/1983-1986/1991-1993/2004-2012
241	no information
233	no information
232	1973/2004
231	no information
204	1972/1983-1993/2004-2009/2011
203	1977/1980
202	1953-1956/1980/1989-1991/2017/2019
221	1970/1994-1989/2005-2008/2017-2019

**Table A2. Gauge station in the North Channel of the Amazon estuary**

	<b>Óbidos</b> (-55.51, -1.92)	<b>Santarém</b> (-54.70, -2.42)	<b>Almeirim</b> (-52.58, -1.53)	<b>Porto de Santana</b> (-51.18, -0.06)	<b>Ponta do Céu</b> (-50.11, 0.76)
<b>Source ID</b>	ANA/CPRM 17050001	ANA/CPRM 17900000	ANA/CPRM 18390000	IBGE	Marinha 10653
<b>Frequency</b>	Daily	Daily	15 minutes	5 minutes	10 minutes
<b>Absolute vertical correction (cm; EGM08)</b>	358***	190.6***	-39 (FS)	--	--
<b>Relative vertical correction (Eq) (cm; EGM08)</b>	--	--	--	AL -187*	AL - 77**
<b>Period (Topography)</b>	2015-2018	2015-2018	2017 a 2018	2015-2017	11 Feb 2008 3 Nov 2008
<b>Period (Bathymetry)</b>	22 Feb 1968 30 Nov 2019	01 Sep 1930 31 Oct 2019	12 Mar 2015 30 Sep 2019	14 Apr 2016 30 Apr 2018	11 Feb 2008 3 Nov 2008
<b>Reference WSE (cm; EGM08)</b>	WS90 525	WS90 348.6	WS90 244.4	SYZ (n =57) 50.04	SYZ (n =17) -110.38

400 FS – Field Survey (Text A1).

Eq = Average level (AL) - level above the geoid (EGM08).

\*(Callède et al., 2013); \*\*(Ruault et al., 2020); \*\*\* (Calmant et al., 2013).

**Table A3. Gauge station in the South Channel of the Amazon estuary**

	<b>Porto de Moz</b> (-52.24, -1.75)	<b>Gurupá</b> (-51.65, -1.41)	<b>North Marajó</b> (-49.37, -0.18)
--	--	----------------------------------	--



Source ID	ANA/CPRM 18950003	Kosuth et al. 2009	FES2014
Frequency	15 minutes	30 minutes	--
Absolute vertical correction (cm; EGM08)	39.7 (FS)	--	--
Relative vertical correction (Eq) (cm; EGM08)	--	AL - 236*	AL - 65**
Period (Topography)	2015-2017	24 Jan 2000 21 Oct 2000 (***)	--
Period (Bathymetry)	27 Oct 2014 28 Jan 2020	24 Jan 2000 21 Oct 2000 (***)	--
Reference WSE (cm; EGM08)	WS90 215.7	WS90 159.16	SYZ (M2 + S2) -147

405 FS – Field Survey (Text A1).

Eq = Average level (AL) - level above the geoid (EGM08).

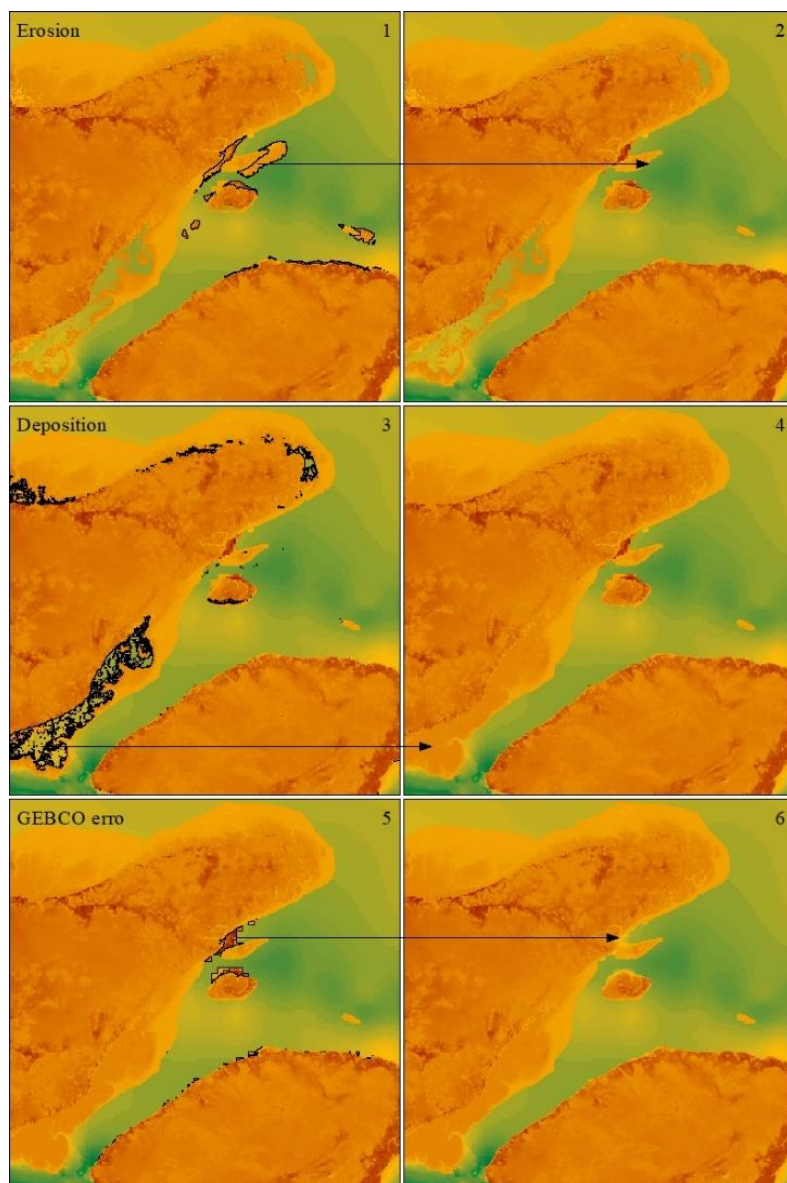
\*(Callède et al., 2013); \*(Ruault et al., 2020).

\*\*\* data from October 2000 are repeated twice to complete one year of data.

#### 410 Text A1.

Series of stage values are relative to a so-called “gauge zero”, which simply corresponds to the lowest mark on the graduated staff and is referred to an arbitrary datum that is different in each gauge station. Therefore, stages from one gauge cannot be compared in an absolute way to stages at other gauges. It is not possible to obtain the corresponding water surface elevation to derive, for example, the slope of the water surface or relate the water level to a Digital Elevation Models-DEM of the surrounding watershed. Yet, the slope information is a key-parameter for the hydrodynamic modeling of the flow in the basin. The “zero values” of the Almeirim and Porto de Moz gauge stations were surveyed using GNSS (Global Navigation Satellite System) geodetic receivers installed over gauges benchmarks. The data surveyed was computed in Precise Point Positioning (PPP) technique (Héroux and Kouba, 1995), using the GINS software (Marty et al., 2011) developed by the French Space Agency (CNES). Coordinates were produced in the WGS84 ellipsoid related with ITRF2014 frame and following all the recommended corrections from the IERS 2010 conventions (McCarthy and Petit, 2011). The efficiency and accuracy of GINS to process GPS data in PPP mode expected from our processing chain is better than 2 cm. This expected accuracy is possible thanks to the GNSS observation time, and the model corrections accuracy (see Moreira et al., 2016 for further details).

425



**Figure A1.** Example of data correction in ocean after merging the database (GEBCO, MERIT DEM, bathymetry and topography).

#### Author contributions.

AF, FD: Conceptualization, Data acquisition, Formal analysis, Methodology, Validation, Writing - review & editing; DM:  
 430 Data acquisition, Methodology, Validation, Writing - review & editing; AA: Methodology, Validation, Writing - review &  
 editing, Project administration; VF, CF, AL: Data acquisition, Writing - review & editing.



## Competing interests

The authors declare that they have no conflict of interest.

## Acknowledgements

- 435 EOSC-SYNERGY (grant number 857647), IRD, CPRM, LAGEQ/IG/UnB for financial support. Leandro Guedes Santos  
 (CPRM-Belém), Rodrigo Da Silva (UFOPA - Santarém), Fabrice Papa (IRD-LEGOS), Victor Hugo da Motta Paca (CPRM-  
 Belém), Arthur Abreu (CPRM-Rio de Janeiro) and the whole crew of R/V Isabella for logistical support during the  
 "Dinâmica Fluvial 2020" bathymetric cruise. Gérard Cochonneau (from SO HYBAM-IRD) for sharing the in situ tidal  
 records published by Kosuth et al. (2009). Julien Jouanno (IRD-LEGOS) for sharing the mean sea surface of the ocean  
 440 circulation model of Ruault et al. (2020).

## References

- Andrade, M. M. N. de and Szlafsztein, C. F.: Vulnerability assessment including tangible and intangible components in the  
 index composition: An Amazon case study of flooding and flash flooding, *Sci. Total Environ.*, 630, 903–912,  
 doi:10.1016/j.scitotenv.2018.02.271, 2018.
- 445 Arnesen, A. S., Silva, T. S. F. F., Hess, L. L., Novo, E. M. L. M. L. M., Rudorff, C. M., Chapman, B. D. and McDonald, K.  
 C.: Monitoring flood extent in the lower Amazon River floodplain using ALOS/PALSAR ScanSAR images, *Remote Sens.*  
*Environ.*, 130, 51–61, doi:10.1016/j.rse.2012.10.035, 2013.
- Bell, P. S., Bird, C. O. and Plater, A. J.: A temporal waterline approach to mapping intertidal areas using X-band marine  
 radar, *Coast. Eng.*, 107, 84–101, doi:10.1016/j.coastaleng.2015.09.009, 2016.
- 450 Bergmann, M., Durand, F., Krien, Y., Khan, M. J. U., Ishaque, M., Testut, L., Calmant, S., Maisongrande, P., Islam, A. K.  
 M. S., Papa, F. and Ouillon, S.: Topography of the intertidal zone along the shoreline of Chittagong (Bangladesh) using  
 PROBA-V imagery, *Int. J. Remote Sens.*, 39(23), 9004–9024, doi:10.1080/01431161.2018.1504341, 2018.
- Bishop-Taylor, R., Sagar, S., Lymburner, L. and Beaman, R. J.: Between the tides: Modelling the elevation of Australia's  
 exposed intertidal zone at continental scale, *Estuar. Coast. Shelf Sci.*, 223(October 2018), 115–128,  
 455 doi:10.1016/j.ecss.2019.03.006, 2019.
- BRADAR: Projeto DSG AMAPÁ relatório técnico processamento SAR v.1., 2017.
- Callède, J., Cochonneau, G., Alves, F. V., Guyot, J.-L., Guimarães, V. S. and De Oliveira, E.: The River Amazon water  
 contribution to the Atlantic Ocean, *Rev. des Sci. l'eau*, 23(3), 247–273 [online] Available from:  
 https://www.erudit.org/en/journals/rseau/2010-v23-n3-rseau3946/044688ar/abstract/, 2010.
- 460 Callède, J., Moreira, D. M. and Calmant, S.: Détermination de l'altitude du zéro des stations hydrométriques en amazonie





- brésilienne. Application aux lignes d'eau des Rios Negro, Solimões et Amazone, *Rev. des Sci. l'Eau*, 26(2), 153–171, doi:10.7202/1016065ar, 2013.
- Calmant, S., Da Silva, J. S., Moreira, D. M., Seyler, F., Shum, C. K., Crétaux, J. F. and Gabalda, G.: Detection of Envisat RA2/ICE-1 retracked radar altimetry bias over the Amazon basin rivers using GPS, *Adv. Sp. Res.*, 51(8), 1551–1564, doi:10.1016/j.asr.2012.07.033, 2013.
- 465 Carrère, L., Lyard, F. H., Cancet, M., Guillot, A. and Picot, N.: Finite Element Solution FES2014, a new tidal model – Validation results and perspectives for improvements, in *ESA Living Planet Conference*, Prague., 2016.
- De Castro-Filho, C. A. P. and Antonio Da Silva Rosa, R.: Brazilian Amazon land mapping project: Status and perspectives, in *International Geoscience and Remote Sensing Symposium (IGARSS)*, pp. 2895–2898, Fort Worth, TX., 2017.
- 470 Dai, C., Howat, I. M., Larour, E. and Husby, E.: Coastline extraction from repeat high resolution satellite imagery, *Remote Sens. Environ.*, 229(November 2018), 260–270, doi:10.1016/j.rse.2019.04.010, 2019.
- Dyer, K. R.: *Estuaries: a physical introduction*, London., 1997.
- Fassoni-Andrade, A., Durand, F., Moreira, D., Azevedo, A., Santos, V., Funi, C. and Laraque, A.: Comprehensive bathymetry and intertidal topography of the Amazon estuary, , *Mendeley Data*, V1, doi:10.17632/3g6b5ynrdb.1, 2021.
- 475 Fassoni-Andrade, A. C., Paiva, R. C. D., Rudorff, C. M., Barbosa, C. C. F. and Novo, E. M. L. de M.: High-resolution mapping of floodplain topography from space: A case study in the Amazon, *Remote Sens. Environ.*, 251, 112065, doi:10.1016/j.rse.2020.112065, 2020a.
- Fassoni-Andrade, A. C., Paiva, R. C. D. and Fleischmann, A. S.: Lake topography and active storage from satellite observations of flood frequency, *Water Resour. Res.*, 56(7), doi:10.1029/2019wr026362, 2020b.
- 480 Fernandes, R. D., Vinzon, S. B. and De Oliveira, F. A. M.: Navigation at the Amazon River mouth: Sand bank migration and depth surveying, *Ports 2007 30 Years Shar. Ideas 1977-2007; Proc. Elev. Trienn. Int. Conf.*, 52, doi:10.1061/40834(238)52, 2007.
- Filizola, N., Guyot, J.-L., Wittmann, H., Martinez, J.-M. and de, E.: The Significance of Suspended Sediment Transport Determination on the Amazonian Hydrological Scenario, *Sediment Transp. Aquat. Environ.*, doi:10.5772/19948, 2011.
- 485 Fricke, A. T., Nittrouer, C. A., Ogston, A. S., Nowacki, D. J., Asp, N. E. and Souza Filho, P. W. M.: Morphology and dynamics of the intertidal floodplain along the Amazon tidal river, *Earth Surf. Process. Landforms*, 44(1), 204–218, doi:10.1002/esp.4545, 2019.
- Gabioux, M., Vinzon, S. B. and Paiva, A. M.: Tidal propagation over fluid mud layers on the Amazon shelf, *Cont. Shelf Res.*, 25(1), 113–125, doi:10.1016/j.csr.2004.09.001, 2005.
- 490 Gallo, M. N. and Vinzon, S. B.: Generation of overtides and compound tides in Amazon estuary, *Ocean Dyn.*, 55(5–6), 441–448, doi:10.1007/s10236-005-0003-8, 2005.
- Gallo, M. N. and Vinzon, S. B.: Estudo numérico do escoamento em planícies de marés do canal Norte (estuário do rio Amazonas), *Ribagua*, 2(1), 38–50, doi:10.1016/j.riba.2015.04.002, 2015.



- Gorelick, N., Hancher, M., Dixon, M., Ilyushchenko, S., Thau, D. and Moore, R.: Google Earth Engine: Planetary-scale  
 495 geospatial analysis for everyone, *Remote Sens. Environ.*, 202, 18–27, doi:10.1016/j.rse.2017.06.031, 2017.
- Héroux, P. and Kouba, J.: GPS precise point positioning with a difference, *Geomatics*, 1995.
- Hutchinson, M. F.: A new procedure for gridding elevation and stream line data with automatic removal of spurious pits, *J. Hydrol.*, 106(3–4), 211–232, doi:10.1016/0022-1694(89)90073-5, 1989.
- Khan, J. U., Ansary, N. and Durand, F.: High-Resolution Intertidal Topography from Sentinel-2 Multi-Spectral Imagery :  
 500 Synergy between Remote Sensing and Numerical Modeling, , 1–20, doi:10.3390/rs11242888, 2019.
- Kosuth, P., Callede, J., Laraque, A., Filizola, N., Guyot, J. L., Seyler, P., Fritsch, J. M. and Guimarães, V.: Sea-tide effects on flows in the lower reaches of the Amazon River, *Hydrol. Process.*, 23(November 2008), 3141–3150, doi:10.1002/hyp.7387, 2009.
- Latrubesse, E. M., Arima, E. Y., Dunne, T., Park, E., Baker, V. R., D’Horta, F. M., Wight, C., Wittmann, F., Zuanon, J.,  
 505 Baker, P. A., Ribas, C. C., Norgaard, R. B., Filizola, N., Ansar, A., Flyvbjerg, B. and Stevaux, J. C.: Damming the rivers of the Amazon basin, *Nature*, 546(7658), 363–369, doi:10.1038/nature22333, 2017.
- Ma, Y., Xu, N., Liu, Z., Yang, B., Yang, F., Wang, X. H. and Li, S.: Satellite-derived bathymetry using the ICESat-2 lidar and Sentinel-2 imagery datasets, *Remote Sens. Environ.*, 250(July), 112047, doi:10.1016/j.rse.2020.112047, 2020.
- Mansur, A. V., Brondízio, E. S., Roy, S., Hetrick, S., Vogt, N. D. and Newton, A.: An assessment of urban vulnerability in  
 510 the Amazon Delta and Estuary: a multi-criterion index of flood exposure, socio-economic conditions and infrastructure, *Sustain. Sci.*, 11(4), 625–643, doi:10.1007/s11625-016-0355-7, 2016.
- Martinez, J. M., Guyot, J. L., Filizola, N. and Sondag, F.: Increase in suspended sediment discharge of the Amazon River assessed by monitoring network and satellite data, *Catena*, 79(3), 257–264, doi:10.1016/j.catena.2009.05.011, 2009.
- Marty, J. C., Loyer, S., Perosanz, F., Mercier, F., Bracher, G., Legresy, B., Portier, L., Capdeville, H., Fund, F., Lemoine, J.  
 515 M. and others: GINS the CNESGRGS GNSS scientific software, in 3rd international colloquium scientific and fundamental aspects of the Galileo programme, ESA proceedings WPP326, vol. 31, pp. 8–10, Denmark., 2011.
- Matos, A. C. O. C. de, Blitzkow, D., Guimarães, G. do N., Lobianco, M. C. B. and Costa, S. M. A.: Validação do MAPGEO2010 e comparação com modelos do geopotencial recentes, *Bol. Ciências Geodésicas*, 18, 101–122, doi:10.1590/s1982-21702012000100006, 2012.
- McCarthy, D. D. and Petit, G.: IERS Technical Note# 32—IERS Conventions (2010), Frankfurt., 2011.
- Molinas, E., Vinzon, S. B., de Paula Xavier Vilela, C. and Gallo, M. N.: Structure and position of the bottom salinity front in the Amazon Estuary, *Ocean Dyn.*, 64(11), 1583–1599, doi:10.1007/s10236-014-0763-0, 2014.
- Molinas, E., Carneiro, J. C. and Vinzon, S.: Internal tides as a major process in Amazon continental shelf fine sediment transport, *Mar. Geol.*, 430(June), doi:10.1016/j.margeo.2020.106360, 2020.
- 525 Moreira, D. M., Calmant, S., Perosanz, F., Xavier, L., Rotunno Filho, O. C., Seyler, F. and Monteiro, A. C.: Comparisons of observed and modeled elastic responses to hydrological loading in the Amazon basin, *Geophys. Res. Lett.*, 1, 1,



- doi:10.1002/2016GL070265, 2016.
- Neuenschwander, A. L., Pitts, K. L., Jelley, B. P., Robbins, J., Klotz, B., Popescu, S. C., Nelson, R. F., Harding, D., Pederson, D. and Sheridan, R.: ATLAS/ICESat-2 L3A Land and Vegetation Height, Version 3. ATL08, NASA National  
 530 Snow and Ice, Boulder, Colorado USA., 2020.
- Nitttrouer, C., DeMaster, D., Kuehl, S., Figueiredo, A., Sternberg, R., Faria, L. E. C., Silveira, O., Allison, M., Kineke, G., Ogston, A., Souza Filho, P., Asp, N., Nowacki, D. and Fricke, A.: Amazon Sediment Transport and Accumulation Along the Continuum of Mixed Fluvial and Marine Processes, *Ann. Rev. Mar. Sci.*, 13(1), 1–36, doi:10.1146/annurev-marine-010816-060457, 2021.
- 535 Parrish, C. E., Magruder, L. A., Neuenschwander, A. L., Forfinski-Sarkozi, N., Alonzo, M. and Jasinski, M.: Validation of ICESat-2 ATLAS bathymetry and analysis of ATLAS's bathymetric mapping performance, *Remote Sens.*, 11(14), doi:10.3390/rs11141634, 2019.
- Pavlis, N. K., Holmes, S. A., Kenyon, S. C. and Factor, J. K.: The development and evaluation of the Earth Gravitational Model 2008 (EGM2008), *J. Geophys. Res. Solid Earth*, 117(B4), doi:10.1029/2011JB008916, 2012.
- 540 Pekel, J.-F., Cottam, A., Gorelick, N. and Belward, A. S.: High-resolution mapping of global surface water and its long-term changes, *Nature*, 540(7633), 418–422, doi:10.1038/nature20584, 2016.
- Prestes, Y. O., Borba, T. A. da C., Silva, A. C. da and Rollnic, M.: A discharge stationary model for the Pará-Amazon estuarine system, *J. Hydrol. Reg. Stud.*, 28(February), 100668, doi:10.1016/j.ejrh.2020.100668, 2020.
- Pugh, D. and Woodworth, P.: *Sea-Level Science: Understanding Tides, Surges, Tsunamis and Mean Sea-Level Changes.*,  
 545 2014.
- Ruault, V., Jouanno, J., Durand, F., Chanut, J. and Benshila, R.: Role of the Tide on the Structure of the Amazon Plume: A Numerical Modeling Approach, *J. Geophys. Res. Ocean.*, 125(2), 1–17, doi:10.1029/2019jc015495, 2020.
- Salameh, E., Frappart, F., Almar, R., Baptista, P., Heygster, G., Lubac, B., Raucoles, D., Almeida, L. P., Bergsma, E. W. J., Capo, S., De Michele, M. D., Idier, D., Li, Z., Marieu, V., Poupardin, A., Silva, P. A., Turki, I. and Laignel, B.: Monitoring  
 550 Beach Topography and Nearshore Bathymetry Using Spaceborne Remote Sensing: A Review, *Remote Sens.*, 11(19), doi:10.3390/rs11192212, 2019.
- Salameh, E., Frappart, F., Turki, I. and Laignel, B.: Intertidal topography mapping using the waterline method from Sentinel-1 & -2 images: The examples of Arcachon and Veys Bays in France, *ISPRS J. Photogramm. Remote Sens.*, 163(November 2019), 98–120, doi:10.1016/j.isprsjprs.2020.03.003, 2020.
- 555 Sawakuchi, H. O., Neu, V., Ward, N. D., Barros, M. de L. C., Valerio, A. M., Gagne-Maynard, W., Cunha, A. C., Less, D. F. S., Diniz, J. E. M., Brito, D. C., Krusche, A. V and Richey, J. E.: Carbon Dioxide Emissions along the Lower Amazon River, *Front. Mar. Sci.*, 4(March), 76, doi:10.3389/fmars.2017.00076, 2017.
- Tseng, K. H., Kuo, C. Y., Lin, T. H., Huang, Z. C., Lin, Y. C., Liao, W. H. and Chen, C. F.: Reconstruction of time-varying tidal flat topography using optical remote sensing imageries, *ISPRS J. Photogramm. Remote Sens.*, 131, 92–103,



560 doi:10.1016/j.isprsjprs.2017.07.008, 2017.

Vieira, M. S.: Base cartográfica contínua do estado do Amapá, *Rev. Digit. Simonsen*, 3, 47–60, 2015.

Vital, H., Stattegger, K., Posewang, J. and Theilen, F.: Lowermost Amazon River: Morphology and shallow seismic characteristics, *Mar. Geol.*, 152(4), 277–294, doi:10.1016/S0025-3227(98)00099-1, 1998.

565 Ward, N. D., Krusche, A. V., Sawakuchi, H. O., Brito, D. C., Cunha, A. C., Moura, J. M. S., da Silva, R., Yager, P. L., Keil, R. G. and Richey, J. E.: The compositional evolution of dissolved and particulate organic matter along the lower Amazon River-Óbidos to the ocean, *Mar. Chem.*, 177, 244–256, doi:10.1016/j.marchem.2015.06.013, 2015.

Yamazaki, D., Ikeshima, D., Sosa, J., Bates, P. D., Allen, G. H. and Pavelsky, T. M.: MERIT Hydro: A High-Resolution Global Hydrography Map Based on Latest Topography Dataset, *Water Resour. Res.*, 55(6), 5053–5073, doi:10.1029/2019WR024873, 2019.

570