

The Active Faults of Eurasia Database (AFEAD): Ontology and Design behind the Continental-Scale Dataset

Egor Zelenin¹, Dmitry Bachmanov¹, Sofya Garipova¹, Vladimir Trifonov¹, Andrey Kozhurin^{2, 1}

¹Geological Institute, Moscow, 119017, Russia

5 ²Institute of Volcanology and Seismology, Petropavlovsk-Kamchatsky, 683006, Russia

Correspondence to: Egor Zelenin (egor.zelenin@ginras.ru)

Abstract.

Active faults are those faults on which movement is possible in the future. It draws particular attention to active faults in geodynamic studies and seismic hazard assessment. Here we present a high-detail continental-scale geodatabase: The Active Faults of Eurasia Database (AFEAD). It comprises ~~46,775~~48,205 objects stored in the shapefile format with spatial detail sufficient for a map of scale 1:1M. Fault sense, a rank of confidence in activity, a rank of slip rate, and a reference to source publications are provided for each database entry. Where possible, it is supplemented with a fault name, fault zone name, abbreviated fault parameters (e.g., slip rate, age of the last motion, total offset), and text information from the sources. The database was collected from 612 published sources, including regional maps, databases, and research papers.

15 AFEAD facilitates a spatial search for local studies. It provides sufficient detail for planning a study of a particular fault system and guides deeper bibliographical investigations, if needed. This scenario is particularly significant for vast Central and North Asia areas, where most studies are available only in Russian and hardcopy. Moreover, the database model provides the basis for GIS-based regional and continental-scale integrative studies.

The database is available at <https://doi.org/10.13140/RG.2.2.40333.7472632655.05280> (Bachmanov et al., 2022) and via web map at http://neotec.ginras.ru/index/mapbox/database_map.html (last access: ~~July 30, 2021~~. ~~Some~~ May 05, 2022). Database representations ~~with~~and supplementary data are hosted at http://neotec.ginras.ru/index/english/database_eng.html.

1 Introduction

The concept of an active fault emerged to distinguish a specific group of faults with present tectonic movements and hence with anticipated activity in the nearest future. The term “active fault” and its synonym “living fault” were introduced in the late 1940s to 1950s by both American and European authors (Wallace, 1949; topic issue of *Geologische Rundschau*, 1955). This group of faults has a particular significance in two aspects of geological studies. The slip at the fault produces an earthquake; ~~thus~~therefore, active faults are a crucial component of seismic hazard assessment (e.g., Ulomov et al., 1993; Basili et al., 2013; Walker et al., 2021). Moreover, active faulting occurs simultaneously across the Earth and thus provides a basis for studies of recent geodynamics (e.g., Rukieh et al., 2005; Schellart and Lister, 2005; Kozhurin and Zelenin, 2017).

30 The first global-scale inventory of active faults was the Project II-2 World Map of Major Active Faults of the International Lithosphere Program (ILP) initiated in 1989 and included in the ILP Global Seismic Hazard Assessment Program in 1993. The Project II-2 joined more than 70 scientists from 50 countries lead by two co-chairmen representatives for the Eastern (V.G. Trifonov) and Western (M.S. Machette) Hemispheres. The Geological Institute of the Russian Academy of Sciences, Moscow, hosted the data on active faults of Eurasia provided by project members. These source data were ~~represented~~obtained in
35 different scales and formats (maps, tables, descriptions, and papers), so the first database (DB96) of active faults of Eurasia (Ioffe et al., 1993; Ioffe and Kozhurin, 1996; Trifonov, 1997) was intended to store digitized fault geometry in uniform scale of 1:5M and with a unified set of attributes. Recent advances in tectonics and IT highlighted the limitations of DB96: that outdated database scheme became incompatible with modern GIS, the fault locations lacked accuracy, and many recently studied faults were to be incorporated.

40 All these issues required creating a conceptually new database, and this work was initiated based on DB96 some 15 years ago (Bachmanov et al., 2017). The authors have designed ~~the~~a new database and GIS for data processing that inherited all the strengths of DB96 but provided far more opportunities for parameterization and analysis. The result of this work is the Active Faults of Eurasia Database (AFEAD) ~~presented in this paper (Fig. 1).~~, presented in this paper (Fig. 1) and distributed as a shapefile (Bachmanov et al., 2022). In the last decade, active fault databases have been published for some countries (e.g.,
45 Atanackov et al., 2021; Ganas, 2021; Jomard et al., 2017) and subcontinental regions (e.g., Middle East: Danciu et al., 2018; Central Asia: Mohadjer et al., 2016). A global collection of active faults was compiled within the Global Earthquake Model project (Christophersen et al., 2015; Styron and Pagani, 2020). However, none of the published datasets covers the entire Eurasia with uniform detail, and a great lack of data exists for areas of the former USSR. AFEAD addresses this lack as it includes a number of sources published in Russian or hardcopy only or both; ca. 350 publications in total.

50 ~~The aim of the AFEAD is to provide a uniform overview of the active faults pattern across Eurasia with a standardized set of attributes. Intentionally uniform detail, equal to 1:1M hardcopy map, exceeds any other active faults dataset in either extent or spatial detail and faults parameterization but requires a classification of database objects by likelihood of activity. Spatial detail of AFEAD keeps~~AFEAD provides an active fault pattern for the continent of Eurasia and its adjacent water bodies north of 20°S and within 30°W – 180°E. Spatial detail of AFEAD is uniform and equal to 1:1M hardcopy map across the entire dataset
55 to keep a balance between a large amount of data for well-studied regions (such as the Mediterranean) and few pieces of data for least studied areas (~~e.g. NE Siberia~~);such as NE Siberia). There may be a significant time lag between the release of recent publications and their inclusion into AFEAD, and the reader is advised to support AFEAD data with a query to academic databases.

2 The Concept of an Active Fault

60 Each object of the database represents an active fault. The meaning of this term varies significantly among studies; therefore, we consider it crucial to discuss what kind of data comprise the AFEAD.

From the most general approach, active faults are those faults on which movement is possible in the future (see discussion in Slemmons and DePolo, 1986). Movements at the fault typically are intermittent, with strong earthquakes and long quiescence between them. The repose period generally is much longer than human's life, so that sole present-day observations cannot
65 resolve uncertainty in fault activity, making it necessary to study the geological history of the fault.

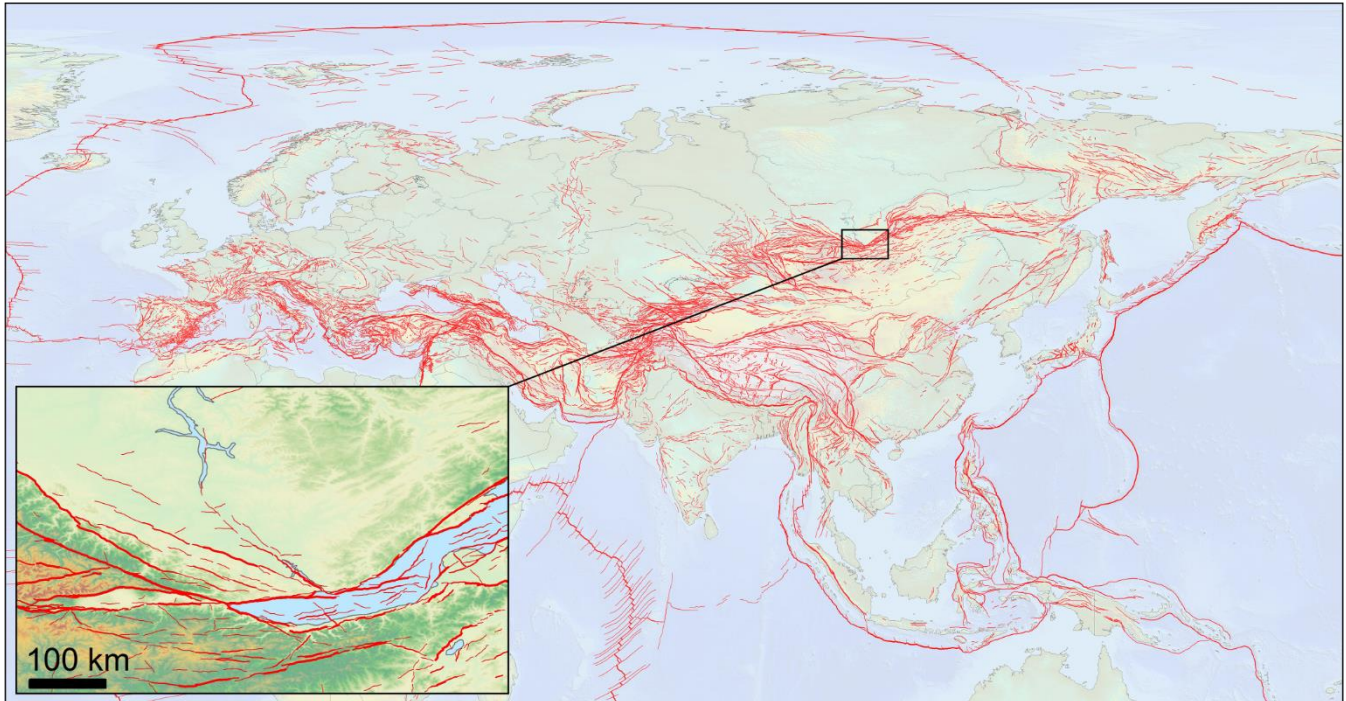


Figure 1: Overview and detail of the Active Faults of Eurasia Database (AFEAD).

The expectancy of future movement is what makes a fault active. All other fault parameters (such as kinematics, an average rate of movement, or any other) are intrinsic to faults in general, disregarding their age, and cannot affect the problem of
70 activity. The crucial question is what evidence could provide the basis for expecting future movements, and this question traditionally has been solved via the determination of a “critical” timespan back from the present during which at least one fault movement could have occurred. It is assumed that if such a movement has occurred, then the fault should be considered active. Estimations of the “critical” period were summarized by Galadini et al. (2012), and all the cited intervals fall within the range of 10,000 to 1,000,000 years. However, even longer intervals were discussed (e.g., 2.6 Ma by Atanackov et al., 2021).
75 The concept of the critical interval implies that a slip may occur at an active fault after long quiescence. Paleoseismological studies, however, provide recurrence periods of hundreds to the first thousand years with maximum values of order tens ka. For example, Umehara Fault in Japan has a recurrence interval of 14-15 ka (Kumamoto, 1998). Indeed, further studies could reveal longer intervals, but even doubling or tripling this value limits the quiescence period within the Holocene and the Late Pleistocene. Even in slow deforming continental regions, substantiated recurrence intervals fall within 20–30 ka (Bollinger et al., 2021). This estimate is close to Trifonov and Machette (1993) estimate for the World Map of Major Active Faults. Late
80

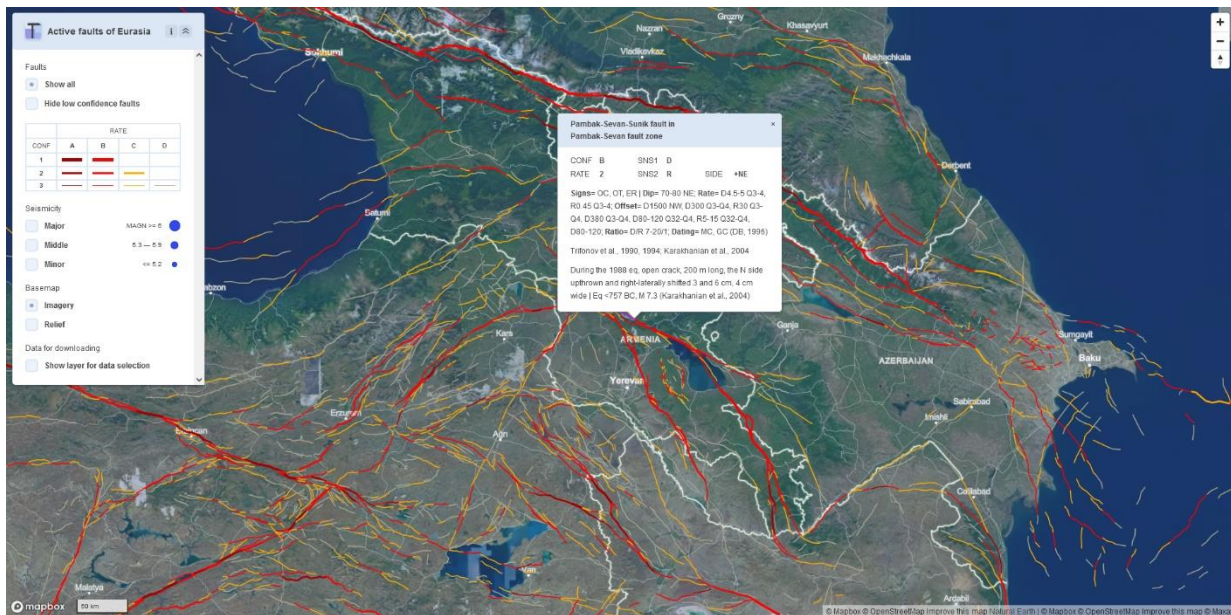
Quaternary deformations remain on the Earth's surface and could be unambiguously distinguished when found at late Quaternary landforms. Therefore, remote sensing interpretation of recent landforms is sufficient for regional-scale mapping or paleoseismological fieldwork planning.

85 Identifying and mapping active faults must precede any detailed research, and many studies report results of sole remote sensing interpretation. We account for such kind of information after the verification following guidelines discussed by Trifonov and Kozhurin (2010): a studied object is unlikely to be created by sole non-tectonic surface processes; it offsets landforms in the same direction, which is consistent with the fault pattern of the region, and the offset is larger on older landforms.

90 In the database, authors make efforts to keep a balance between a unified representation of data and the intention to store all available data. Therefore, we propose a database model capable of indicating cases of a significantly different approach in studies.

3 Database Model

The Active Faults of Eurasia Database is a geodatabase in the shapefile format, an open standard for geospatial vector data. It stores the spatial location of fault lines on the Earth's surface and their attributes (Fig. 2). Within the attribute table, field order streamlines the workflow of the database population, so the fields organically form two groups. The first group contains fault parameters transferred from sources "as is" and is accompanied by a complete bibliographic reference. ~~However, some~~ Unification was applied to these data to ensure the uniform glossary, spelling of fault names, and spatial detail. The attributes of this group have a broad domain of values that may hamper querying but allow textual analysis. The second group of attributes, generated by the database owners, provide consistent nomenclature to simplify GIS processing and querying.



100

Figure 2. Spatial pattern of AFEAD faults in Transcaucasia with an attribute table for an object within the Pambak-Sevan fault. Snapshot of the AFEAD web-interface at http://neotec.ginras.ru/index/mapbox/database_map.html (last access: [July 30, 2024](#) [May 05, 2022](#)).

3.1 Geometry

105

Every AFEAD record has a two-dimensional linear shape stored as a polyline. In most cases, it represents a fault line crossing the Earth's surface and traced by scarp or a linear deformation of landforms, whereas some objects represent presumed intersection of a fault plane with the Earth's surface when an active fault was revealed by geophysical or seismological studies below a fold at the surface. The spatial data populated from sources is processed to comply with the topography, the database model, and target map of scale 1:1M. Usually, active fault deforms Earth's surface and may be traced on satellite imagery and digital elevation models. We utilized the STRM global digital elevation model and Landsat 7 ETM+ imagery for georeferencing and spatial adjustment of published maps. In Soviet publications, the geographic location of studied objects was classified, so that processing of such data required deeper investigations and even reinterpretation of remote sensing data. To provide an accurate presentation at target scale of 1:1M, all the objects in the database were redrawn at a scale of 1:500 000 with uniform spacing between vertices whenever possible, disregarding geometry accuracy in source data. Most of the fault lines bear attributes varying along it. In such cases, fault lines were split at the point where any attribute changes its value.

115

3.2 Attributes Transferred from Source Data

Collected data are stored in five fields: AUTH, FAULT_NAME, ZONE_NAME, PARM, and TEXT. Their order provides a workflow for data population, starting from identifying references and ending with auxiliary text data. This group of fields is supposed to store as much relevant data as possible and retain authors' interpretation. Still, some unification is applied to

120 ensure the consistency of definitions and naming. If studies provide contradictory data, all the provided parameters are recorded
with a relevant citation. The low formalized string fields of this group are designed to store different estimates of the same
parameter and relevant references; any normalized representation of these parameters would either eliminate the context or
increase the complexity of the database dramatically. As a shapefile may store up to 254 symbols in a field, exceeding the field
length is resolved by omitting the least relevant data. As the present-day active fault studies provide rare cases of abundant yet
125 different estimates of fault parameters, the length limit does not hamper the use of the shapefile standard.

AUTH is a non-nullable field that stores brief English references to the studies considered that object. The field format complies with the reference list (see Sect. 3.4) for further bibliographic retrieval.

FAULT_NAME and **ZONE_NAME** store proper names of a fault and a fault zone, if available. In most cases, a fault zone includes a group of faults, either named or nameless. Name of a zone may originate from the name of its main fault, and an
130 object with equal values of **FAULT_NAME** and **ZONE_NAME** should be interpreted as a main fault within a zone. If a fault has an ambiguous attribution to several fault zones, all of them are listed in **ZONE_NAME**, comma-separated. Uniform name spelling and designation of objects to a zone or a single fault are maintained in the database, even if varying among studies.

PARM is a formal description of fault parameters. It has a dictionary-like structure (Fig. 2, Appendix) with mnemonic keys ending with “=” and a comma-separated list of values after it. A sequence of keys from a single source is separated by
135 semicolon, whereas different authorship is indicated with a vertical bar “|” and provided with the reference. For brevity, units of measurement are omitted with length reported in meters, depth in km, rates in mm/yr, age in years BP or units of the geological time scale (e.g., N1 for the Miocene, Q4 for the Holocene), location in decimal degrees, unless otherwise stated explicitly. Acronyms are applied for directions and sense of slip (Table 1, Appendix). “Signs=”, and “Dating=” have coded values, the complete form provided in Appendix. These keys originate from DB96 attributes (Trifonov and Machette, 1993),
140 although they are concatenated into a single synthetic field. This denormalization was applied as separate attributes proved ineffective due to the excessive number of null values and an occurrence of valuable yet different estimates of the same parameter.

TEXT contains free-form comments on the fault characteristics supplementing other fields of this group.

145 **Table 1. Acronyms for fault sense used in the database.**

N	Normal fault
R	Reverse fault
T	Thrust fault (reverse fault dipping <45°)
D	Dextral (right-lateral) strike-slip fault
S	Sinistral (left-lateral) strike-slip fault
E	Extensional fracture
V	Dip-slip , Sense unknown, <u>vertical offset</u>

U Slip unknown, no vertical offset

~~TEXT contains free form comments on the fault characteristics supplementing other fields of this group.~~

3.3 Derivative Attributes

The derivative attributes are those produced by the database owners based on collected data. Data domain is defined for the fields of this group (Table 2), thus providing a basis for classification and spatial analysis. All of them, except for SENS2 and
150 SIDE, are non-nullable.

Table 2. Values of derivative attributes.

Attribute	Domain	Comments
FAULT_ID	integer	Unique ID number of the object
RATE	{1, 2, 3}	1 – Measured <u>high, estimated</u> rate exceeding <u>exceeds</u> 5 mm/yr, 2 – <u>medium, estimated rate</u> 1 to 5 mm/yr, 3 – <u>low, no measured estimates or estimated</u> rate above <u>below</u> 1 mm/yr
SENS1	{N, R, T, D, S, E, V, U}	Described in table 1
SENS2	{N, R, T, D, S, E, V, null}	Described in table 1
SIDE <u>UPSIDE</u>	{+N, +NE, +E, +SE, +S, +SW, +W, +NW, null}	Direction of the uplifted side
CONF	{A, B, C, D}	A – <u>proved active</u> by a series of published either historical and instrumental evidence or paleoseismological studies; B – unambiguous <u>surface deformations, but no recent slips</u> have been described yet; C – few pieces of evidence of activity are known; D – fault once stated active, but the <u>evidence is insufficient</u> or even absent.

CONF indicates a level of confidence that a particular object once identified as an active fault meets the conventional definition
155 of the active fault. Its variations represent the fact that the definition of the active fault varies between studies depending on their objectives and reasoning behind active fault mapping. In AFEAD, by “confidence” our team means a qualitative measure of expectation that an independent researcher would support the hypothesis of fault activity considering ~~published~~published ~~evidence~~from sources provided in the AUTH field. We are aware that it is a highly ambiguous criterion, still being a crucial ~~for~~representing a concept attribute of an active fault, ~~varying~~as this concept varies in meaning significantly, among studies.

160 Confidence in activity is unrelated to age or level of source publication and cannot be technically derived from it. Following guidelines have been proposed for ~~each class of~~ CONF values assignment:

A – proved active by a series of published either historical and instrumental evidence or paleoseismological studies, multiple crustal earthquakes occurred at the fault line consistent with fault sense;

B – unambiguous surface deformations, but no recent slips have been described yet, attribution of earthquakes is questionable;

165 C – few pieces of evidence of activity are known, lack of seismicity, surface deformations, or both;

D – once declared active, but the evidence provided for such opinion is insufficient or even absent.

CONF is reconsidered if new data are obtained for the studied object as well as if new data for neighboring faults support or doubt the activity of the studied object.

RATE is a rank of deformation rate with estimated boundary values of one and five mm per year, which may not be considered as actual measured slip rates. ~~Rate values was transferred from measured sites to adjacent fault segments with similar morphology.~~ Slip rate is unlikely to be justified well at low confidence faults so that RATE is meaningless for such faults.

170 Therefore, boundary values of RATE have been chosen to affect primarily high-confidence faults with minimal rate estimation error. However, measurement techniques and their accuracy may vary greatly even in well-studied regions, thus making RATE a qualitative indicator acceptable for regional-scale visualization and ~~analysis. RATE could serve just as rough estimate of~~
175 ~~deformation rates, intentionally recorded as a rank value.~~ spatial analysis. RATE source data are point measurements stored in the PARM field of the relevant fault segment; thus, RATE is propagated along the fault line considering topography. Even though this approach implies ambiguous rank assignment, it is the most effective way of representing rather scarce rate data.

SENS1 and **SENS2** represent sense slip motion by its primary and secondary components (Table 1); **SENS2** has values only for faults with identified oblique slip. ~~SIDE is a direction of an upthrown side of the fault recorded as cardinal direction with leading “+”.~~ Objects with poorly constrained slip are identified as **SENS1** = “U” (for “unknown”) or **SENS1** = “V” (for “vertical”) where vertical offset is evident along the scarp.

180 **UPSIDE** is a direction of an upthrown side of the fault recorded as cardinal direction.

3.4 Reference List

Most of the entries in the database have been collected from published studies, ~~612621~~ references and ~~5563~~ unpublished pieces of data. The reference list represents the database sources as a ~~separate~~ tab-separated text file with ~~the text of brief reference~~ (citations equal to the domain of the “AUTH” field) and a complete bibliographic reference to the source publication in English and in the language of publication. ~~For data compiled for the World Map of Major Active Faults~~ The reference list is supplemented with a relational table many-to-many that connects FAULT_ID with primary keys of the bibliographic reference table, a “citations” field. AFEAD references to the initial studies, even though they may be considered outdated, and to the
190 studies that provided significant contributions to each object. For data compiled for the World Map of Major Active Faults (Trifonov and Machette, 1993; Trifonov, 2004) and never published before it, the reference is supplemented with the name of

a researcher responsible for a region containing the fault (e.g., Kozhurin, data 1996). Recent unpublished contributions have reference to the responsible researcher (or “working material” for contributions of the database owners) and the year of update.

4 Source Data

195 The actual structure and contents of AFEAD is defined by a style of data presentation in recent active fault studies. AFEAD generally inherits the approach of the World Map of Major Active Faults (scale 1:5M, Trifonov and Machette, 1993), although being radically improved in spatial detail and fault parameterization. Those improvements required the compilation of heterogeneous sources, mostly regional maps of active faults and research papers. Due to the amount of processed data, we update any fault zone just to the target detail and resume the processing in rare cases of contradiction between the database
200 and newly published data. We exploited several sources of fault characteristics with methods of data processing vary between them and present them following the workflow of data population in AFEAD. ~~There is an inevitable time lag between the publication of new data and its implication in AFEAD that may reach some years due to an increasing number of relevant studies. It should be taken into consideration when up-to-date regional or local data is required.~~

The first attempt to collect a global-scale inventory of active faults was the World Map of Major Active Faults that was initiated
205 in 1989 and approved by the International Lithosphere Commission in 1990 as the Project II-2 of the International Lithosphere Program (ILP). The Project was supported by UNESCO as a contribution of the ILP to the UN International Decade of Natural Disaster Reduction and was included in the ILP Global Seismic Hazard Assessment Program in 1993. During that project, the AFEAD authors proposed data representation methods (Trifonov and Machette, 1993) and the model of database DB96 for parametrization of active faults (Ioffe and Kozhurin, 1996) based on the software design of Ioffe et al. (1993). This first
210 database of active faults of Eurasia contained about 10,000 objects. These data were published as the active fault maps of Eurasia and Northern and Eastern Africa, 1:10,000,000 (Fig. 3, Trifonov, 2004), Eurasia, 1:5,000,000 (Trifonov, 1997), and in the table format (Trifonov et al., 2002).

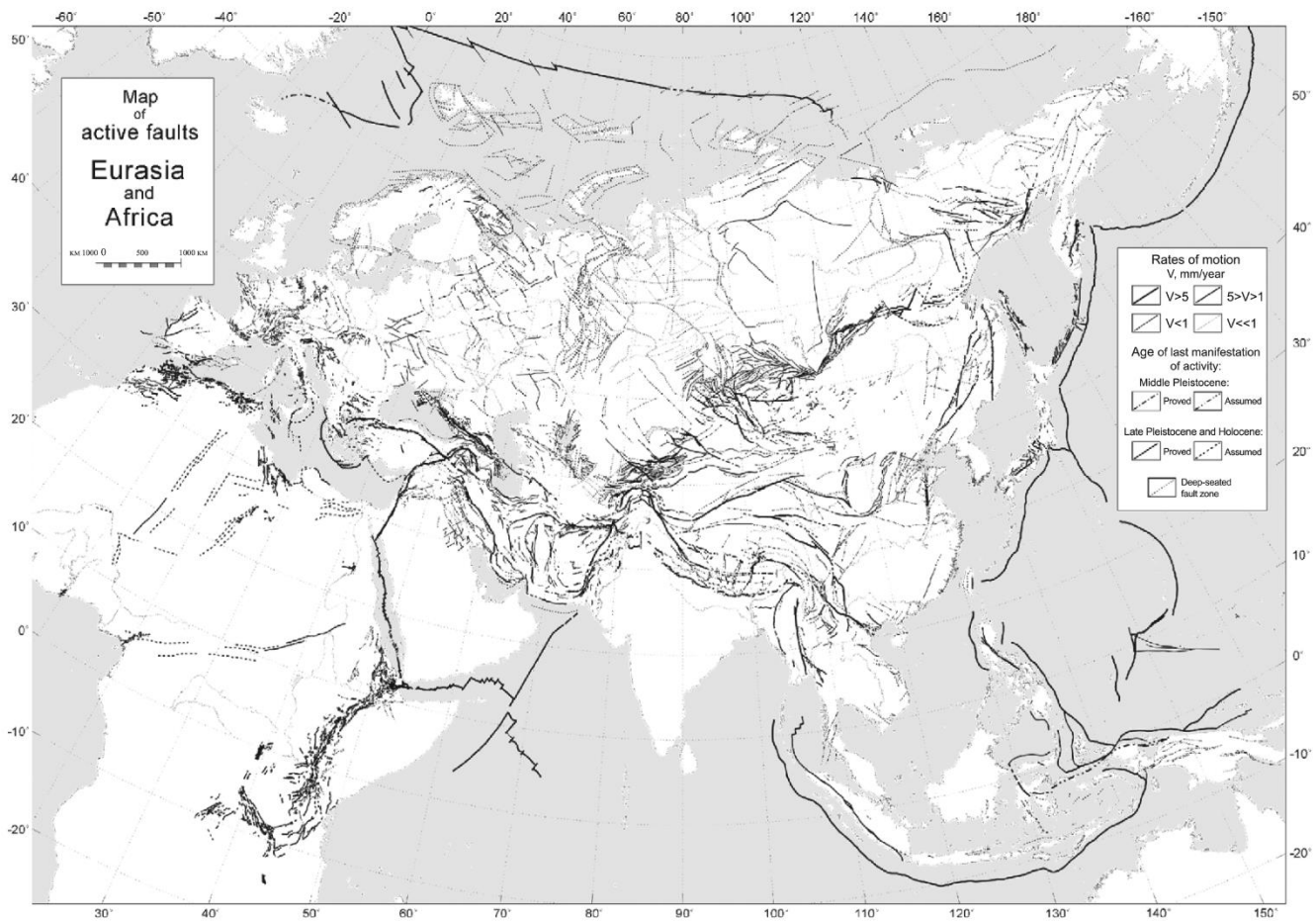
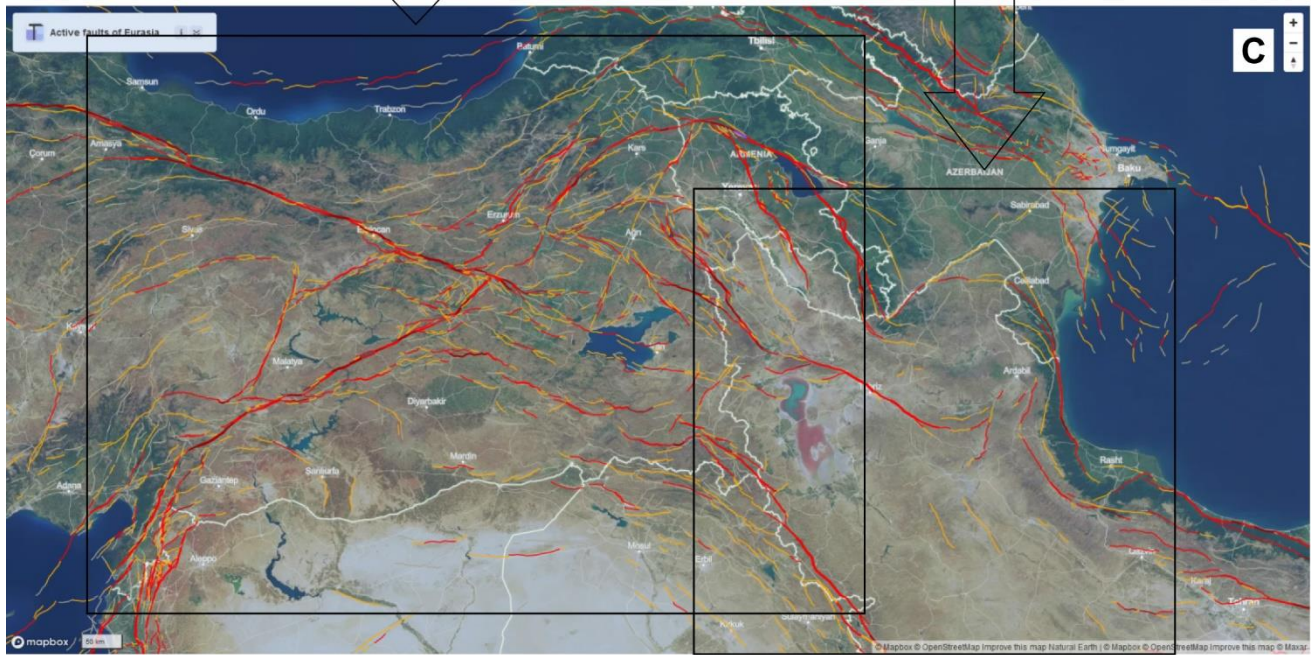
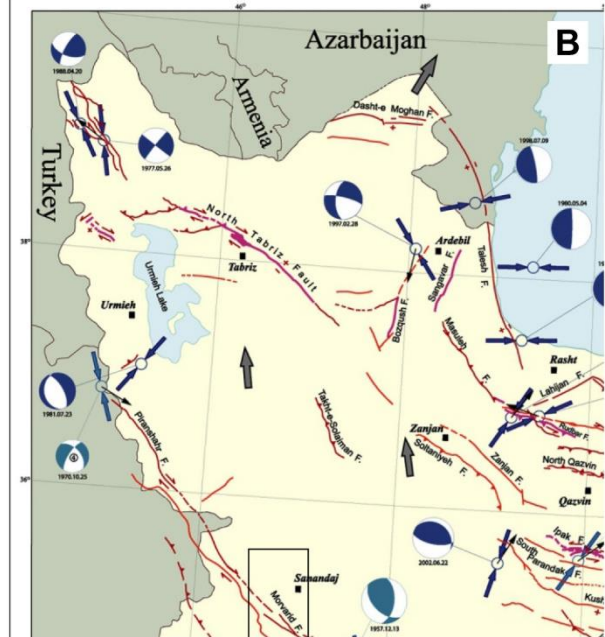
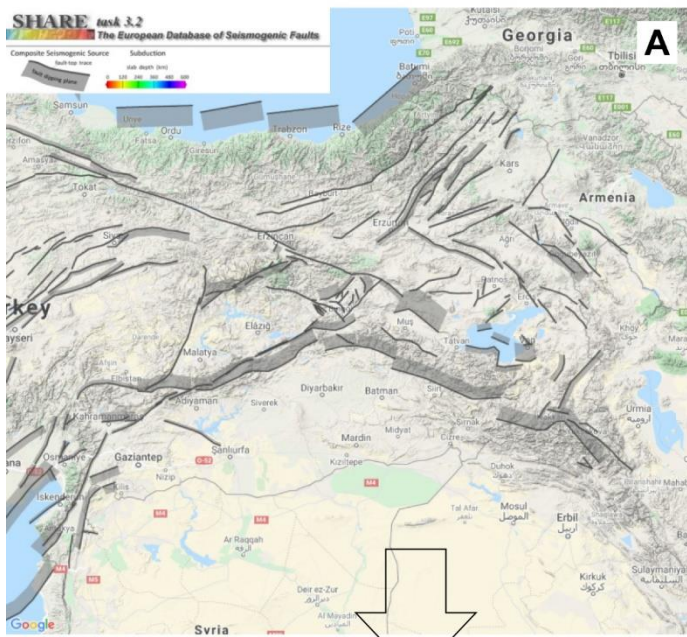


Figure 3. A selection from the World Map of Major Active Faults for Eurasia and Africa (Trifonov, 2004).

- 215 In AFEAD, we use the spatial database of the World Map of Major Active Faults as a base layer, referred to as DB96. Its entries were redrawn to comply with the target scale, the attributes were updated according to the actual database scheme and the references were revised, thus providing a framework for further data collection. During AFEAD development, much of DB96 data have been replaced by more relevant information. However, there are some regions that cannot be updated due to the absence of studies after the publishing of DB96.
- 220 Among the rest of the sources, a large amount of data was collected from region-scale maps and databases of active faults (e.g., Hessami et al., 2003, Basili et al., 2013), both digital and published in hardcopy. Such maps usually bear sufficient information on slip direction and rate as well as generalization level but lack reasoning. Therefore, their processing includes georeferencing, verification of their spatial location against topography, and population of attributes (Fig. 4). CONF is to be set uniform and low, and its elevation requires additional studies at individual faults.



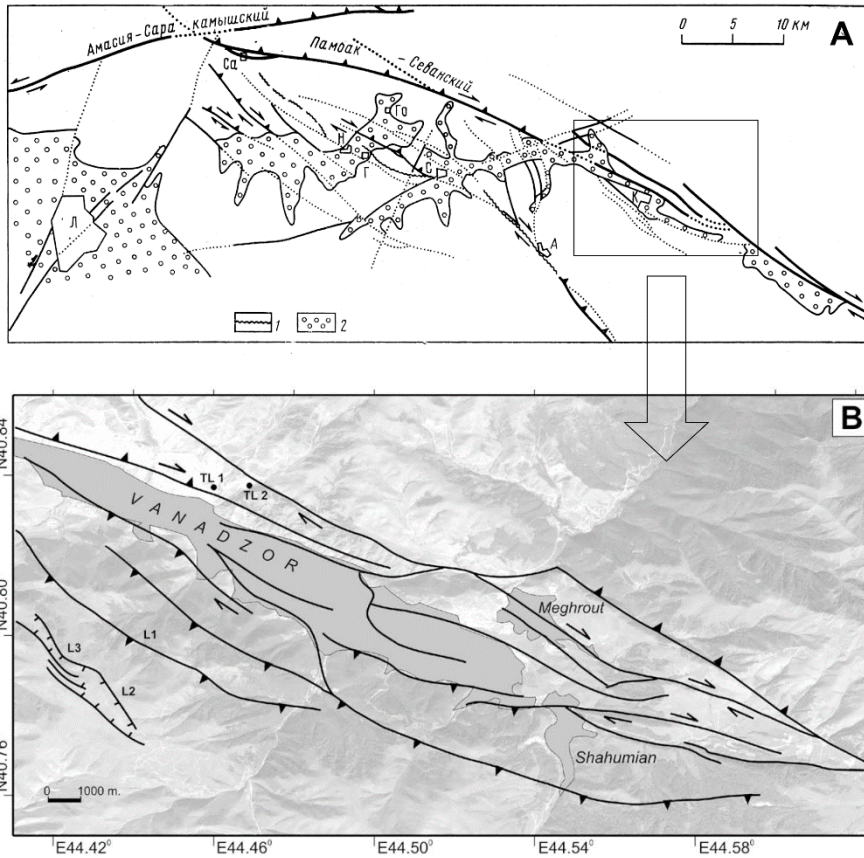
225

Figure 4. Active faults in Transcaucasia: A, web-interface of the European database of Seismogenic Faults (Basili et al., 2013); B, a fragment of the Major Active Faults of Iran Map (Hessami et al., 2003); C, AFEAD web-interface (http://neotec.ginras.ru/index/mapbox/database_map.html, last access ~~July 17, 2021~~ May 05, 2022) for this area.

230

Research papers are the most comprehensive sources considering a particular fault or a fault zone. A standard structure of a research paper provides both parameters of active faults and rationale for it, thus allowing us to assess the reasoning and choose

the most relevant and accurate data among published. However, the methods and definitions significantly vary in sources. Therefore, they require a thorough analysis and normalization before **populationpopulating** (Fig. 5).



235 **Figure 5. Sources for mapping Pambak-Sevan fault near Vanadzor city, Armenia. A, an initial study of Trifonov et al. (1990), geographical objects and coordinates had been omitted due to Soviet legal requirements; the location of Vanadzor is labeled with K (for its former name Kirovakan) within the box. B, a more recent georeferenced map (Karakhanian et al., 2004). Both papers affected the location and attributes of the Pambak-Sevan fault in AFEAD, including the object highlighted in Fig 2.**

240 Spatial adjustment and verification of populated fault parameters require complementary sources. The global digital elevation model SRTM V3 and Landsat 7 ETM+ imagery serve as base maps for any spatial processing. Earthquakes are strong evidence of fault activity, so we utilized catalogs of the National Earthquake Information Center (NEIC), U.S. Geological Survey (<https://earthquake.usgs.gov/>, last access **July 30, 2021**May 05, 2022) and the International Seismological Centre (ISC, <http://www.isc.ac.uk/>, last access **July 30, 2021**May 05, 2022) to refine the confidence in fault activity (a value of “CONF” field) and, where needed, to specify fault plane geometry and slip sense.

245 After the initial population of the database, new data may contradict with AFEAD. There is no direct relation between the recency of the information and its accuracy, so **that** any join of recent data requires **a**-comparison of **the** reasoning behind older and recent objects. The result of the comparison affects CONF in either its elevation or decrease up to deletion from the

database. Published data have to be supplemented by additional interpretation of remote sensing data to facilitate the uniform detail of the database by adding unpublished objects. In most cases, additional research was required at the spatial boundaries of cited studies (e.g., national borders, limits of a tectonic structure). Unfortunately, a significant amount of fault zones still lacks published data. The absence of relevant published information could be confused with the absence of active faults, so the AFEAD authors collect unpublished data, after thorough consideration and assigning a level of confidence. This contribution significantly improves the spatial pattern of active faults in remote areas, mainly in North Asia. Such unpublished entries will be updated as soon as new studies are published, although it is unlikely to occur in the near future for all the entries.

5 Overview of the Dataset

5.1 General characteristics

The database comprises 46,775,48,205 objects – active faults and their segments. Most of them (ca. 42,100,44,000) belong to mainland Eurasia, whereas the rest are located on islands or underwater. Active faults tend to group in broad belts (Fig. 1) incorporating minor plates and crustal blocks at margins of tectonic plates. However, active faults were mapped elsewhere across tectonic plates as well. Individual faults are indistinguishable on the continent-scale map, but a fault density map (Fig. 6) shows an even greater contrast between active belts and cratons.

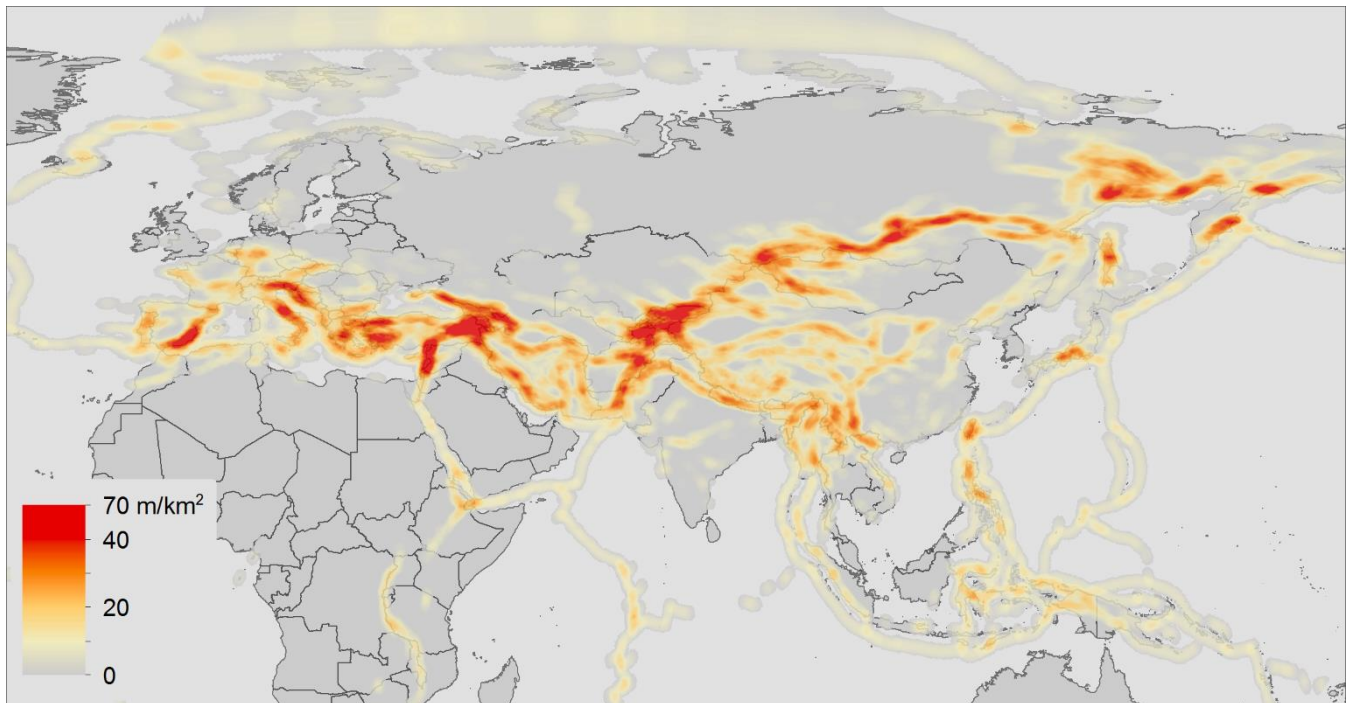
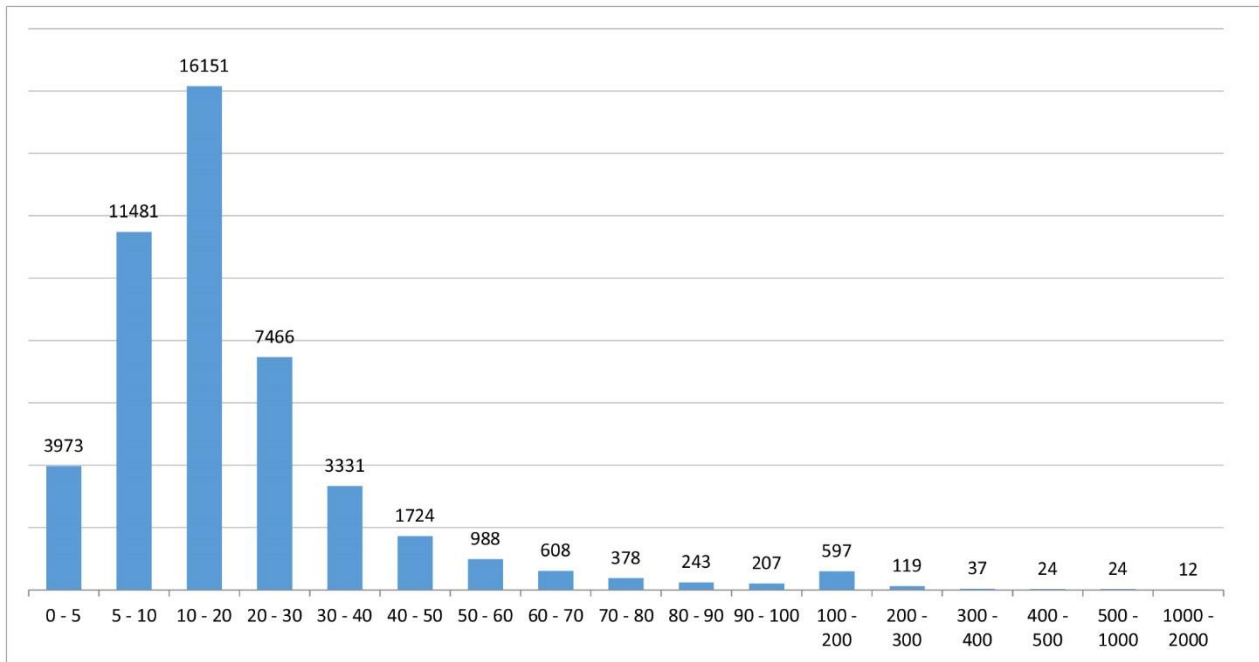


Figure 6. The density of active faults in AFEAD, meters per km². Low-confidence faults (CONF="D") are omitted.

The mean length of database objects is 22 km, and 90 % of them belong to the range 5-60 km (Fig. 7). Most of the faults longer than 100 km are underwater, where no detailed data are available.



265

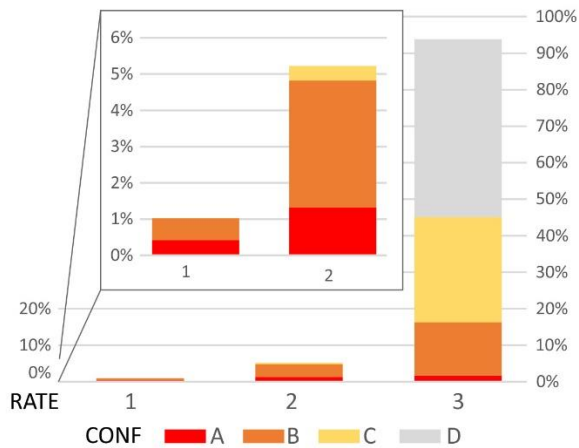
Figure 7. Distribution of AFEAD objects by length.

Within the dataset, 81% of objects have been published before, including 36% with two and more sources. The PARM field represents the amount of data yielded by studies. Aside from unpublished, 31% of entries have empty PARM, most of them originated from maps with no parametrization. Complete descriptions are common in the Western Pacific, Baikal Rift, and Alpine-Himalayan Belt. in the latter, prominent clusters are located in Eastern Mediterranean and Anatolia, Transcaucasia, Iranian mountains, and Tibet region. On the contrary, active faults within cratons typically are poorly studied and low-confidence, thus representing different approaches of active fault studies.

270

The intensity of motions along a fault affects two parameters: RATE and CONF (Fig. 8). The former is a natural characteristic, whereas the latter represents the quality and quantity of studies considered the fault (Table 2). Therefore, subsequent researches may elevate CONF, even at slow-moving faults. Most of AFEAD entries (94%) are slow-moving faults (RATE=3); all low-confidence (CONF="D") and most CONF="C" faults fall within this class. Deformation rates exceeding 1 mm/yr were identified for 6.2% of entries; faults exceeding 5 mm/yr comprise 1% of entries. The amount of both CONF="A" and CONF="B" faults in RATE classes gradually decreased from slow-moving to fast-moving.

275



280 **Figure 8. Distribution of AFEAD objects by classes of RATE (horizontal axis) and CONF (color). Inset, zoomed RATE classes 1 and 2.**

The most frequent fault sense in AFEAD is reverse (21%) even considered separately from thrusts (7%), the normal sense was identified in 17% of objects, amount of right-lateral and left-lateral faults are almost equally common (13% and 12%). Dip-slip was identified in 18% of entries, whereas the sense of slip remains unknown for the rest 11% of entries. A

285 secondary component is provided for 22% of entries (Fig. 9).

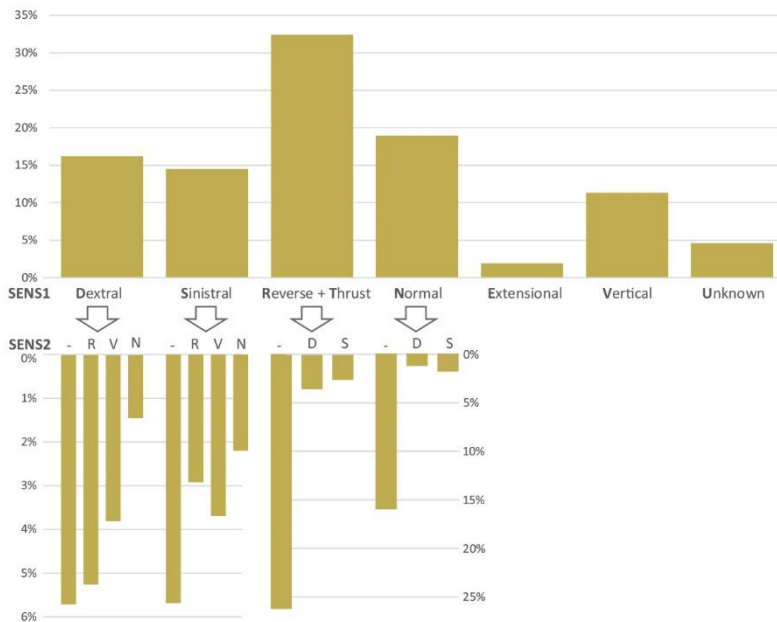


Figure 9. Distribution of AFEAD objects by fault sense: top, SENS1, bottom, SENS2 for each SENS1 value. For sense indices see Table 1.

5.2 Regional examples

290 To provide a deeper insight into the AFEAD structure and usability, we present two contrast examples from the compressional setting of the Caucasus and the transtensional setting of the Baikal region corresponding to $4^{\circ} \times 6^{\circ}$ map tiles K-38 Tbilisi (http://neotec.ginras.ru/index/datamap/AFEAD_K38_Map.html, last access: ~~July 30, 2021~~ May 05, 2022) and N-49 Chita (http://neotec.ginras.ru/index/datamap/AFEAD_N49_Map.html, last access: ~~July 30, 2021~~ May 05, 2022).

The Caucasus is located at the northern flank of the Alpine-Himalayan collision belt. It has been experiencing compression since the Oligocene (e.g., Nikishin et al., 1998) that, together with mantle geodynamics, built up a high mountain range of the Greater Caucasus and highlands of Transcaucasia south of it. Recent deformation in the area is concentrated at the Main Thrust of the Greater Caucasus and an arcuate system of Zheltorechensky-Sarykamysh, Pambak-Sevan, Garni, and Hanarasar strike-slip fault zones in Transcaucasia (Fig. 10). Minor faults generally follow their pattern, although they are scattered across large areas up to the northern foothills of the Caucasus. In the Greater Caucasus, most of the faults had been identified by the 1980s and published in monographs on broad geological topics (e.g., Milanovsky, 1968, Kogoshvili, 1970) incorporated into DB96. Few works were carried out after the compilation of DB96; thus, the Greater Caucasus area appears to lack state-of-art paleoseismological studies. Transcaucasia had been much less studied until the infamous 1988 Spitak earthquake ($M_s = 6.7$, Bommer and Ambraseys, 1989). The subsequent extensive studies (e.g., Trifonov et al., 1990; Karakhanian et al., 2004) revealed spatial patterns and geodynamic settings of active faulting. Hence, AFEAD entries in Transcaucasia bear much more attributes than those at the Greater Caucasus.

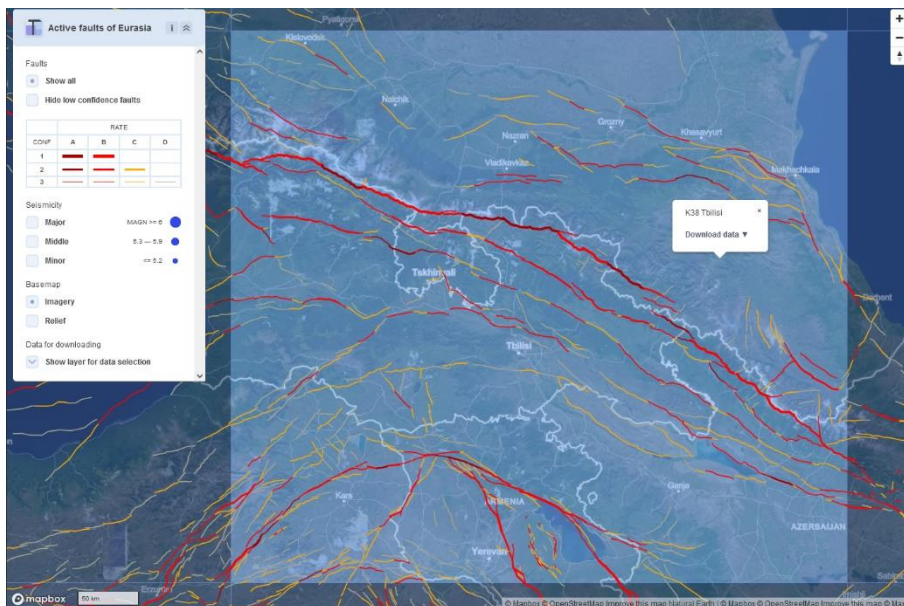


Figure 10. Representation of active faults in the Caucasus by AFEAD web-interface (http://neotec.ginras.ru/index/mapbox/database_map.html, last access ~~July 17, 2021~~ May 05, 2022).

Another case of different tectonic settings and research history is the Baikal Rift zone (Fig. 11). It is a linear system of grabens bounded by normal or transtensional faults developing since the Oligocene (e.g., Logatchev and Zorin, 1992). General features of this zone had been identified by the 1980s (Sherman and Levi, 1978; Solonenko, 1977 Logachev, 1984), but intermittent seismicity keeps drawing constant attention to the active faults of the region. In addition to research papers, recent studies have been published as regional data collections: an inventory of paleoseismic sites by Smekalin et al. (2010), the database of Pliocene-Quaternary faults of Southern East Siberia (Lunina et al., 2014), and the Map of Seismotectonics of Eastern Siberia (Imaeva et al., 2015). A compilation of these sources provides uniform input for the AFEAD.

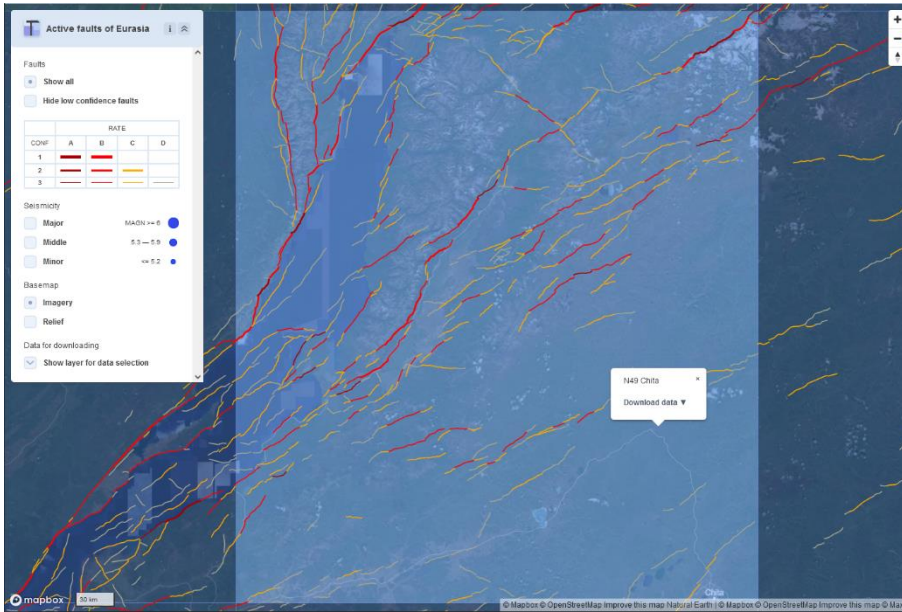


Figure 11. Representation of active faults at the Baikal rift zone by AFEAD web-interface (http://neotec.ginras.ru/index/mapbox/database_map.html, last access ~~July 17, 2021~~ May 05, 2022).

6 Update Strategy

Since the initial populating of the database, the database owners have been monitoring scholarly literature for relevant data. After the acquisition of new data, its reference is appended to the reference list and a graphical representation of faults is georeferenced and traced, if needed. Their location is checked against AFEAD fault patterns, so that the location of the new fault line may either differ from AFEAD objects or match some of them. In the first case, the fault line is redrawn to comply with the topography and target map scale of 1:1M, and primary attributes are populated: AUTH, FAULT_NAME, ZONE_NAME, PARM, and TEXT. Derivative attributes of kinematics (SENS1, SENS1 and UPSIDE) are set according to them and topography. Confidence of activity relies both on reported evidence of activity (Table 2) and on coherence of fault parameters with parameters of adjacent AFEAD objects. If data for neighboring faults support the activity of the studied object, it may elevate CONF for the entire zone. Otherwise, if faults contradict each other, CONF is reduced for the new fault or pre-existing objects, or both, depending on the reasoning behind each object. Finally, RATE is set according to the actual slip

330 measurement at the fault and its confidence, if possible, or propagated from other objects in the fault zone. The second case of
matching locations causes an update to the existing AFEAD object. Its location is then adjusted according to the reasoning in
the new source and AFEAD. The new citation is then appended to AUTH, and newly acquired parameters are appended to
PARM as well as comments to TEXT. If these affect attributes of kinematics SENS1, SENS1 and UPSIDE, their values are
reconsidered. New reported evidence of activity may elevate CONF value as well.

335 The presented database AFEAD v.2022 has reached target detail, and no major revisions in the database model are planned
after the completion of this study. However, new versions will be released after the acquisition of recently published data. To
ensure data consistency, no direct external contribution to the database is possible. The authors encourage researchers to inform
us about missing or recently obtained data via the e-mail of the corresponding author.

7 Data Access and Further Development

340 The main access point to the most recent version of AFEAD is a web map available at
http://neotec.ginras.ru/index/mapbox/database_map.html (last access: ~~July 30, 2021~~ May 05, 2022). The current data set
v.~~2021~~2022 is available at https://doi.org/10.13140/RG.2.2.~~40333.7472632655.05280~~ (Bachmanov et al., ~~2021~~2022). A
variety of up-to-date database representations, supplemented by the reference list and explanatory notes, are hosted at
http://neotec.ginras.ru/index/english/database_eng.html (last access: ~~July 30, 2021~~ May 05, 2022); it includes a raster overview
345 map, raster map tiles designed for print, .kmz, and .shp vector tiles.

Studies considering the AFEAD scheme or its reasoning may refer to this study, DOI of the database, or the initial publication
on this topic of Bachmanov et al. (2017). None of them would be an acceptable reference for studies considering fault locations
or their parameters; instead, the researcher is advised to cite source studies provided in the AUTH field.

~~The presented database AFEAD v.2021 has reached target detail, and no major revisions in the database model and its contents~~
350 ~~are planned after the completion of this study. However, new versions will be released after the acquisition of recently~~
~~published data. To ensure data consistency, no direct external contribution to the database is possible. The authors encourage~~
~~researchers to inform us about missing or recently obtained data via the e-mail of the corresponding author.~~

7 Conclusion

AFEAD is the largest and the most comprehensive collection of active faults comprising ~~~474~~8,000 entries spanning entire
355 Eurasia and adjacent seas. For each entry in the database, its spatial location and characteristics of motions are provided. All
spatial data ~~has~~have uniform detail equal to hardcopy maps of scale 1:1M. Attributes of faults store relevant information
transferred from sources and derivative parameters generated by the database owners.

The database makes possible a spatial search for local studies. It provides sufficient detail for planning a study of a particular
fault system and guides deeper bibliographical investigations, if needed. This scenario is particularly significant for vast
360 Central and North Asia areas, where most studies are available only in Russian and hardcopy. Moreover, the database model

provides the basis for GIS-based regional and continental-scale integrative studies. The authors suggest that the use of this database will support geodynamic and paleoseismological studies in Eurasia.

Author contributions

365 EZ and DB conceived and set up the paper. DB, VT, and AK designed the database and compiled the data. SG contributed to database normalization and provided an overview of the dataset. All the authors discussed the study and contributed to the writing of the manuscript.

Competing interests

The authors declare that they have no conflict of interest.

Acknowledgements

370 The authors thank all the colleagues supported the database population. The contributions of N.N. Govorova and G.I. Volchkova made it possible to sustain and develop the database. We are deeply grateful to Dr. A.I. Ioffe, Dr. G.A. Vostrikov, and R.V. Trifonov for their contributions to the ILP II-2 database design strongly affected this study.

Financial support

375 This research was supported by the Russian Science Foundation, grant no. 17-17-01073-p. State scientific programs have supported data gathering since 1990s, ongoing project no. 0135-2019-0051.

References

- Active Faults of Eurasia Database (AFEAD) Map View http://neotec.ginras.ru/index/mapbox/database_map.html, last access ~~July 30, 2021~~ May 05, 2022.
- 380 Active Faults of Eurasia Database http://neotec.ginras.ru/index/english/database_eng.html, last access: ~~July 30, 2021~~ May 05, 2022.
- [Atanackov J., Jamšek Rupnik P., Jež J., Celarc B., Novak M., Milanič B., Markelj A., Bavec M., Kastelic V. Database of active faults in Slovenia: Compiling a New Active Fault Database at the Junction Between the Alps, the Dinarides and the Pannonian Basin Tectonic Domains. Front Earth Sci, 9, 604388, 2021, <https://doi.org/10.3389/feart.2021.604388>.](#)
- 385 Bachmanov, D.M., Trifonov, V.G., Kozhurin, A.I. and Zelenin E.A.: AFEAD v.~~2021~~2022, ResearchGate [data set], <https://doi.org/10.13140/RG.2.2.40333.74726>, ~~2021~~32655.05280, 2022.
- Bachmanov, D.M., Kozhurin, A.I., and Trifonov, V.G.: The Active Faults in Eurasia Database, *Geodynamics and Tectonophysics*, 8 (4), 711–736, 2017; doi:10.5800/GT-2017-8-4-0314.

- Basili R., Kastelic V., Demircioglu M. B., Garcia Moreno D., Nemser E. S., Petricca P., Sboras S. P., Besana-Ostman G. M., Cabral J., Camelbeeck T., Caputo R., Danciu L., Domac H., Fonseca J., García-Mayordomo J., Giardini D., Glavotovic B., Gulen L., Ince Y., Pavlides S., Sesetyan K., Tarabusi G., Tiberti M. M., Utkucu M., Valensise G., Vanneste K., Vilanova S., Wössner J. The European Database of Seismogenic Faults (EDSF) compiled in the framework of the Project SHARE, 2013, <http://diss.rm.ingv.it/share-edsf/>, doi: 10.6092/INGV.IT-SHARE-EDSF.
- Bollinger, L., Klinger, Y., Forman, S., Chimed, O., Bayasgalan, A., Munkhuu, U., Davaasuren, G., Dolgorsuren, T., Enkhee, B. and Sodnomsambuu, D.: 25,000 Years Long Seismic Cycle in a Slow Deforming Continental Region of Mongolia, *Scientific Reports* 17855(11), 2021; <https://doi.org/10.1038/s41598-021-97167-w>.
- Bommer, J.J. and Ambraseys, N.N.: The Spitak (Armenia, USSR) earthquake of 7 December 1988: a summary engineering seismology report, *Earthq. Eng. Struct. D.*, 18(6), 921-925. 1989.
- [Christophersen A., Litchfield N., Berryman K., Thomas R., Pagani M., Henshaw P., Wyss B., Wallace L., Ries W., Hayes G., Haller K., Toshikazu Y., Koehler R.D., Clark D., Wolfson-Schwehr M., Boettcher M., Villamor P., Horspool N., Ornthammarath T., Zuniga R., Langridge R., Stirlig M., Goded T., Basili R., Stein R., Costa C., Yeats R. Development of the Global Earthquake Model's neotectonic fault database, *Nat Hazards*, 79, 111-135, 2015, <https://doi.org/10.1007/s11069-015-1831-6>.](#)
- [Danciu L., Sesetyan K., Demircioglu M., Gulen L., Zare M., Basili R., Elias A., Adamia Sh., Tsereteli N., Yalçin H., Utkucu M., Khan A., Sayab M., Hessami Kh., Rovida A., Stucchi M., Burg J.-P., Karakhanian A., Babayan H., Giardini D. The 2014 Earthquake Model of the Middle East: seismogenic sources. *Bull Earthq Eng*, 16, 3465-3496, 2018.](#)
- Galadini, F., Falcucci, E., Galli, P., Giaccio, B., Gori, S., Messina, P., Moro, M., Saroli, M., Scardia, G. and Sposato, A.: Time intervals to assess active and capable faults for engineering practices in Italy, *Eng. Geol.*, 139,50-65, 2012.
- [Ganas A., Oikonomou I.A., Tsimi C. NOAfaults: a digital database for active faults in Greece. *Bull Geol Society Greece* 47\(2\), 518-530, 2021.](#)
- Geologische Rundschau, 43, 1, 1955
- Hessami, K., Jamali, F. and Tabassi, H.: Major active faults of Iran. IIEES, Tehran, 2003.
- Imaeva, L.P., Imaev, V.S., Grib, N.N., Smekalin, O.P., Kozmin, B.M., Chipizubov, A.V. and Trifomenko, S.V.: Map of seismotectonics of Eastern Siberia, TI SEFU, Neryungri, 2015.
- International Seismological Centre <http://www.isc.ac.uk/>, last access ~~July 30, 2021~~ May 05, 2022.
- Ioffe, A.I. and Kozhurin, A.I.: Database of active faults of Eurasia, *Earthq. Pred. Res.*, 5, 431-435, 1996.
- Ioffe, A., Govorova, N., Volchkova, G. and Irifonov, R.: Data base of active faults for the USSR area, *Geoinformatics*, 4(3), 289-290, 1993.
- [Jomard H., Cushing E., Palumbo L., Baize S., David C., Chartier T., 2017. Transposing an active fault database into a seismic hazard fault model for nuclear facilities – Part 1: Building a database of potentially active faults \(BDFA\) for metropolitan France. *Nat Hazards Earth Syst Sci*, 17, 1573-1584, 2017, <https://doi.org/10.5194/nhess-17-1573-2017>.](#)

- Karakhanian, A.S., Trifonov, V.G., Philip, H., Avagyan, A., Hessami, K., Jamali, F., Bayraktutan, M.S., Bagdassarian, H., Arakelian, S., Davtian, V. and Adilkhanyan, A.: Active faulting and natural hazards in Armenia, eastern Turkey and northwestern Iran, *Tectonophys.*, 380(3-4), 189-219, 2004.
- Kogoshvili L.V.: Active tectonics of Georgia and its influence to relief, Metsienerba, Tbilisi, 220 pp., 1970 (in Russian).
- 425 Kozhurin, A. and Zelenin, E.: An extending island arc: The case of Kamchatka, *Tectonophys.*, 706, 91-102, 2017.
- Kumamoto T.: Long term conditional seismic hazard of Quaternary active faults in Japan, *J. Seismol. Soc. Japan*, 50, 53–71, 1998 (in Japanese).
- Logachev N.I. (ed.): Geology and seismicity of the Baikal-Amur railway zone. Neotectonics, Nauka, Novosibirsk, 1984, 208 pp., 1984 (in Russian).
- 430 Logatchev, N.A. and Zorin, Y.A.: Baikal rift zone: structure and geodynamics, *Tectonophys*, 208 (1-3), 273-286, 1992.
- Lunina, O.V., Caputo, R., and Gladkov, A.S.: Southern East Siberia Pliocene-Quaternary faults: database, analysis and inference, *Geoscience Frontiers*, 5, 605–619, 2014.
- Map of active faults. Sheet K-38 Tbilisi http://neotec.ginras.ru/index/datamap/AFEAD_K38_Map.html, last access: ~~July 30, 2021~~ May 05, 2022.
- 435 Map of active faults. Sheet N-49 Chita http://neotec.ginras.ru/index/datamap/AFEAD_N49_Map.html, last access: ~~July 30, 2021~~ May 05, 2022.
- Milanovsky E.E.: Neotectonics of the Caucasus, Nedra, Moscow, 1968. 484 pp., 1968 (in Russian).
- [Mohadjer, S., Ehlers, T. A., Bendick, R., Stübner, K., Strube, T. A Quaternary fault database for central Asia. Nat Hazards Earth Syst Sci, 16\(2\), 529–542, 2016. https://doi.org/10.5194/nhess-16-529-2016.](https://doi.org/10.5194/nhess-16-529-2016)
- 440 Nikishin, A.M., Cloetingh, S., Brunet, M.F., Stephenson, R.A., Bolotov, S.N. and Ershov, A.V.: Scythian Platform, Caucasus and Black Sea region: Mesozoic-Cenozoic tectonic history and dynamics, in: Peri-Tethys Memoir 3: stratigraphy and evolution of Peri-Tethyan platforms, edited by: Crasquin-Soleau, S. and Barrier, E. (eds), *Mem. Mus. Natn. Hist. Nat.*, 177, Paris, 163-176, 1998.
- Rukieh, M., Trifonov, V.G., Dodonov, A.E., Minini, H., Ammar, O., Ivanova, T.P., Zaza, T., Yusef, A., Al-Shara, M. and
- 445 Jobaili, Y.: Neotectonic map of Syria and some aspects of Late Cenozoic evolution of the northwestern boundary zone of the Arabian plate. *J. Geod.*, 40(2-3), 235-256, 2005.
- Schellart, W.P. and Lister, G.S.: The role of the East Asian active margin in widespread extensional and strike-slip deformation in East Asia. *J. Geol. Soc.*, 162(6), 959-972, 2005.
- Sherman S.I. and Levi K.G.: Transform faults in the Baikal rift zone and seismicity on its flanks, in: *Tectonics and seismicity of the continental rift zones*, Nauka, Moscow, 7-185, 1978 (in Russian).
- 450 Slemmons, D.B., and dePolo, C.M.: Evaluation of active faulting and associated hazards, in *Active tectonics*, edited by Wallace, R.E., National Academy Press, Washington, D.C., 45-62, 1968.
- Smekalin O.P., Chipizubov A.V., Imayev V.S.: Paleoearthquakes in the Pribaikalie: methods and results of dating, *Geod Tectonophys*, 2010, 1(1), 55-74, 2010 (in Russian).

455 [Styron R.H., Pagani M. The GEM Global Active Faults Database. Earthq Spectra, 36, 160-180, 2020, https://doi.org/10.1177/8755293020944182.](https://doi.org/10.1177/8755293020944182)

Solonenko V.P. (ed.): Seismic zonation of the Eastern Siberia and its geologic-geophysical basis, Nauka, Novosibirsk, 1977, 304 pp., 1977 (in Russian).

Trifonov, V.G.: World map of active faults, their seismic and environmental effects, in Historical and Prehistorical Earthquakes
460 in the Caucasus, Kluwer Acad. Publ., Dordrecht, 169-180, 1997.

Trifonov, V.G.: Active faults in Eurasia: general remarks, Tectonophys., 380(3-4), pp.123-130, 2004.

Trifonov, V.G. and Kozhurin, A.I.: Study of active faults: Theoretical and applied implications, Geotectonics, 44(6), 510-528, 2010.

Trifonov, V.G. and Machette, M.N.: The world map of major active faults project, Ann. Geophys., 36(3-4), 225-236, 1993.

465 Trifonov, V.G., Karakhanian, A.S., Kozhurin, A.I.: The Spitak earthquake as a manifestation of active tectonics, Geotectonika, 6, 46–60 1990, (in Russian).

Trifonov, V.G., Soboleva, O.V., Trifonov, R.V. and Vostrikov, G.A.: Recent Geodynamics of the Alpine-Himalayan Collision Belt, GEOS, Moscow, 225 pp., 2002 (in Russian).

Ulomov V., Strakhov V. and Giardini D.: Seismic hazard assessment in Northern Eurasia, Ann. Geophys., 36, 3-4, 83-92,
470 1993.

USGS Earthquake Hazard Program <https://earthquake.usgs.gov/>, last access ~~July 30, 2021~~[May 05, 2022](#).

Walker, J.F., Boncio, P., Pace, B., Roberts, G., Benedetti, L., Scotti, O., Visini, F. and Peruzza, L.: Fault2SHA Central Apennines database and structuring active fault data for seismic hazard assessment, Scientific data, 8(1), 1-20, 2021.

Wallace, R.E.: Structure of a portion of the San Andreas rift in southern California, Geol. Soc. Am. Bull., 60(4), 781-806,
475 1949.

Appendix. Data domain of the PARM field

Age= Age of the latest dated slip in years BP or units of the geological time scale (e.g., N1 for the Miocene, Q4 for the Holocene).

Signs= Signs of recent fault motion:

480 DF Drape fold,
DT Sharp change of recent deposits thickness,
EC En echelon array of compressional structures,
EQ Earthquake hypocenter,
ER Surface seismic ruptures,
485 ET En echelon array of extensional structures,
FD Surface folding,

- FM Earthquake focal mechanism,
- FR Linear group of fractures,
- GA Gas and hydrochemical anomalies,
- 490 GD Geodetic surveys,
- GP Geophysical data,
- HS Historical or archaeological data,
- HT Hydrothermal springs,
- LS Linear group of landslides or rockfalls,
- 495 MV Mud volcanism,
- OC Offset river channels,
- OD Offset recent deposits,
- OT Offset river terraces or alluvial fans,
- PS Paleoseismic sites,
- 500 TS Sharp change of tectonic structure
- VC Volcanic chain.

Dating= Dating techniques:

- AR Archaeological,
- CR Radiocarbon,
- 505 GC Geological correlation,
- HI Historical,
- IN Instrumental,
- LH Lichenometry,
- MC Geomorphological correlation.

510 **Layers=** Faulted layers of the lithosphere:

- S Sedimentary cover,
- UC Upper crust,
- LC Lower crust,
- M Upper mantle.

515 **Dip=** Dip angle (in degrees), dip direction (cardinal directions), occasionally supplemented with site coordinates or fault part (cardinal directions, C for central) for which data are relevant.

Depth= Fault depth in km.

Offset= Measured offset at the surface, occasionally supplemented with site coordinates or fault part (cardinal directions, C for central) for which data are relevant.

520 **Rake=** Rake, the angle between the slip direction and the strike line.

Rate= Average slip rate, mm/yr, supplemented with time span and occasionally site coordinates or fault part (cardinal directions, C for central) for which data are relevant. An asterisk (*) indicate geodetic measurements, a double asterisk (**) - seismological measurements.

Ratio= Ratio of strike slip and dip slip.

525 **Seism**= Parameters of an earthquake occurred at the fault: magnitude, (name,) date, depth.

SeismDepth= Depth range of earthquakes at the fault.

SeismRecur= Mean recurrence interval of earthquakes at the fault.

Sense= Fault slip sense, abbreviated (as in Table 1).

Side= A direction of an upthrown side of the fault.