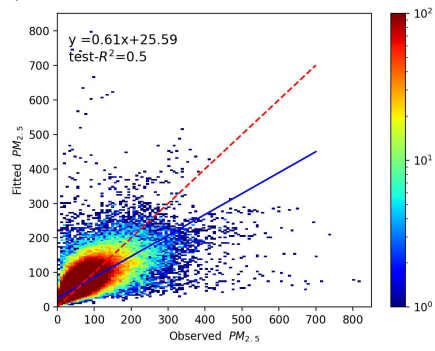


Fig. 1 The density plots of modeling and observed $PM_{2.5}$ concentration in US embassies in Beijing, Shenyang, Chengdu, Guangzhou and Shanghai during 2005-2012

From left to right respectively show the comparison between measured and simulated values of the site from 2005 to 2017 ($N = 10204$), measured and simulated values of the site from 2005 to 2012 ($N = 2489$), and measured and simulated values of the site from 2013 to 2017 ($N = 7715$).

A)



B)

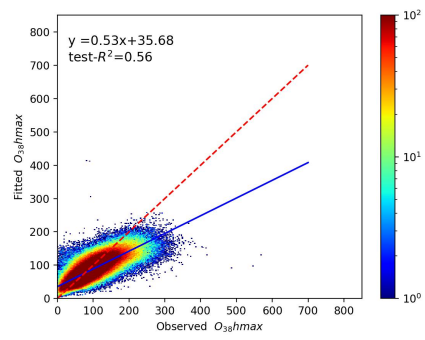


Fig. 2 The density plots of $PM_{2.5}$ (A) and $O_3-8hmax$ in 2017(B)

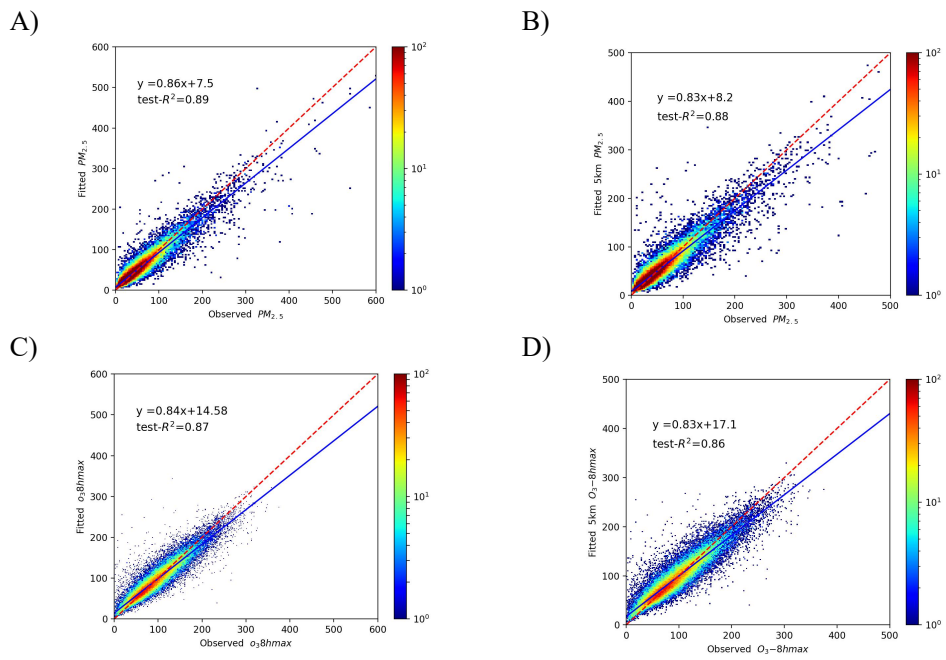


Fig. 3 The density plots of PM_{2.5} and O₃-8hmax in 2017 with 1km and 5km resolution
 A and B show the density plots of PM_{2.5} in 2017 with 1km and 5km resolution; C and D show the density plots of O₃-8hmax in 2017 with 1km and 5km resolution.