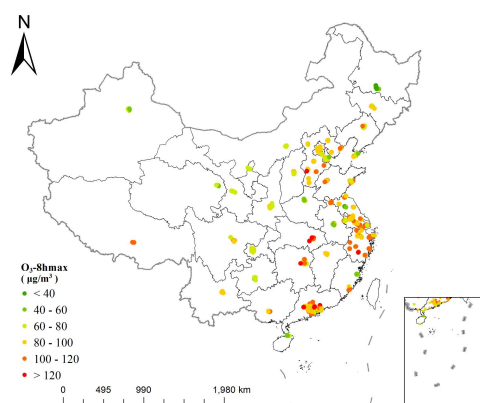
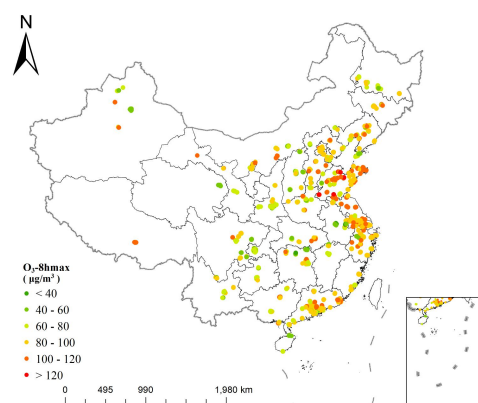


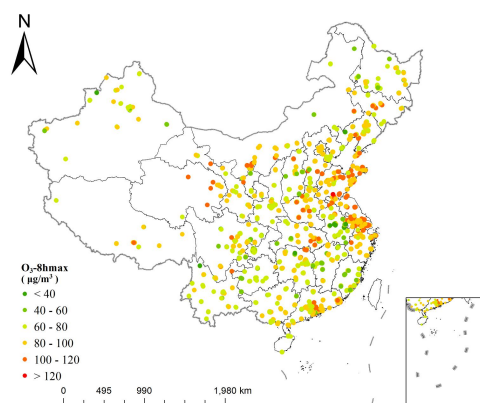
Fig. 1 Station distribution in China and average ground monitoring concentration of PM_{2.5} during 2013-2017



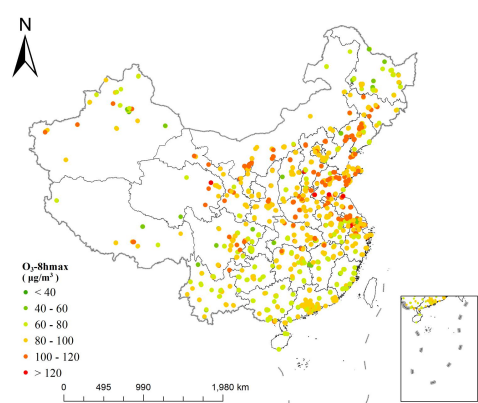
2013 annual



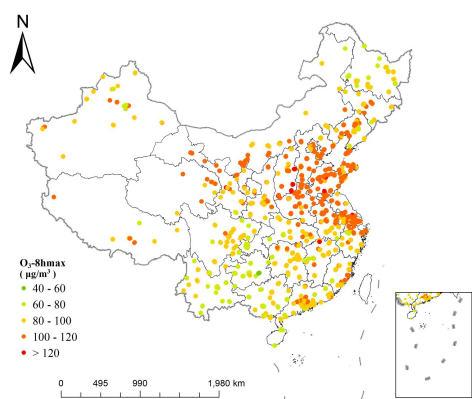
2014 annual



2015 annual



2016 annual



2017 annual

Fig. 2 Station distribution in China and average ground monitoring concentration of O_3 -8hmax during 2013-2017

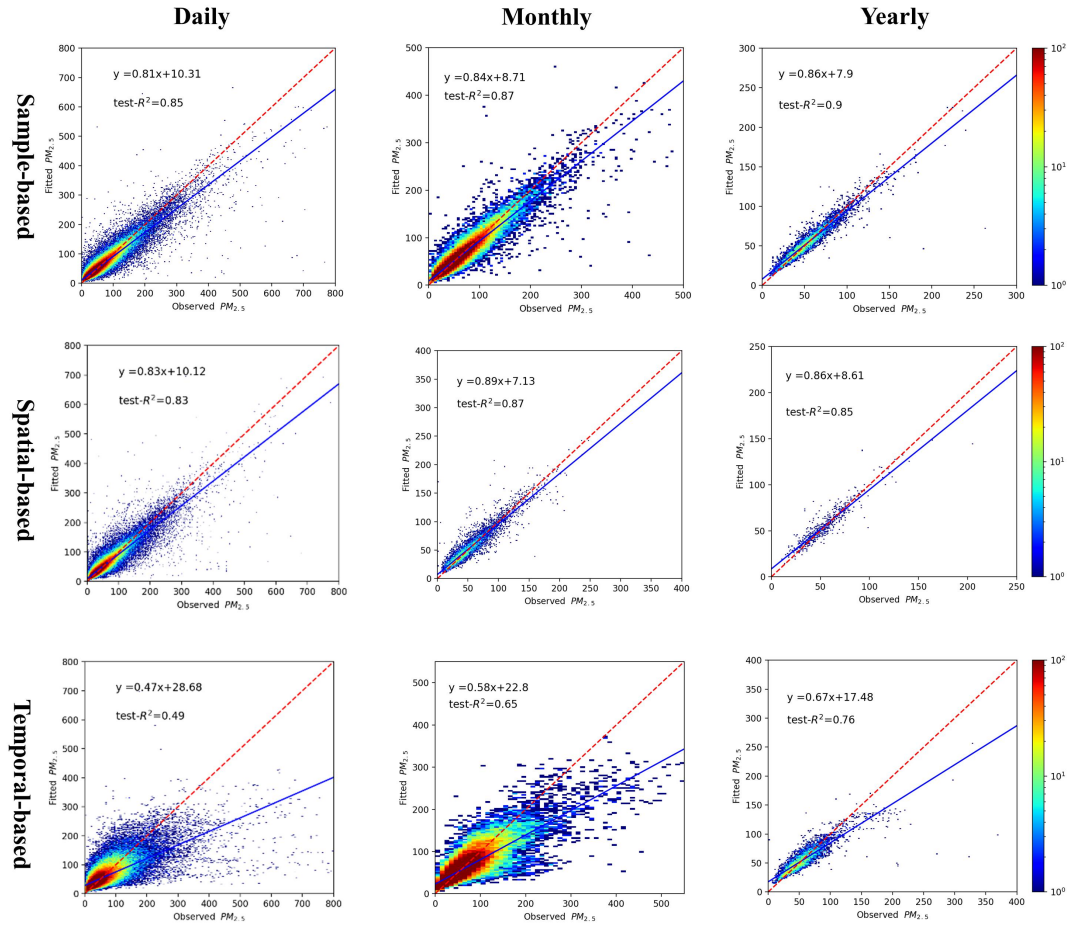


Fig. 3 The density plot of $PM_{2.5}$ model

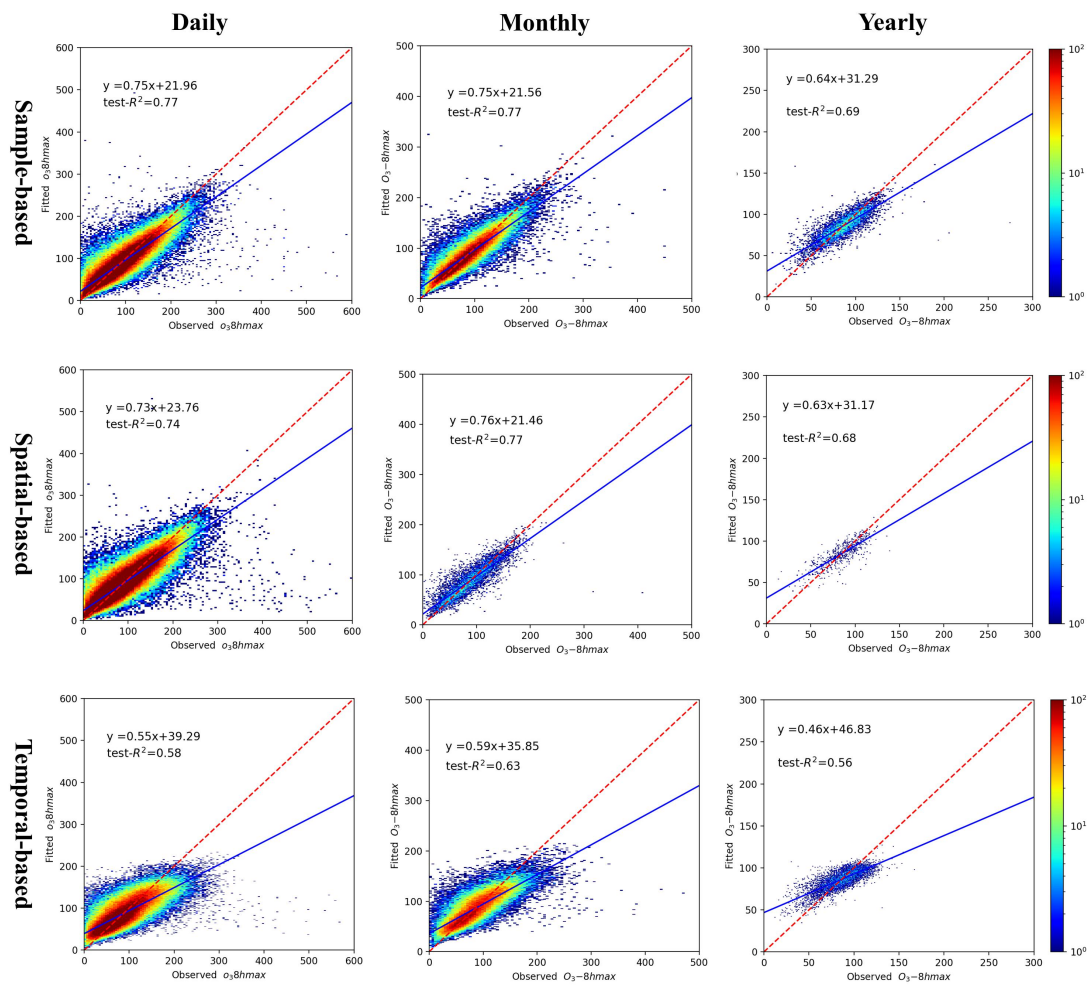


Fig. 4 The density plot of $O_3-8hmax$ model

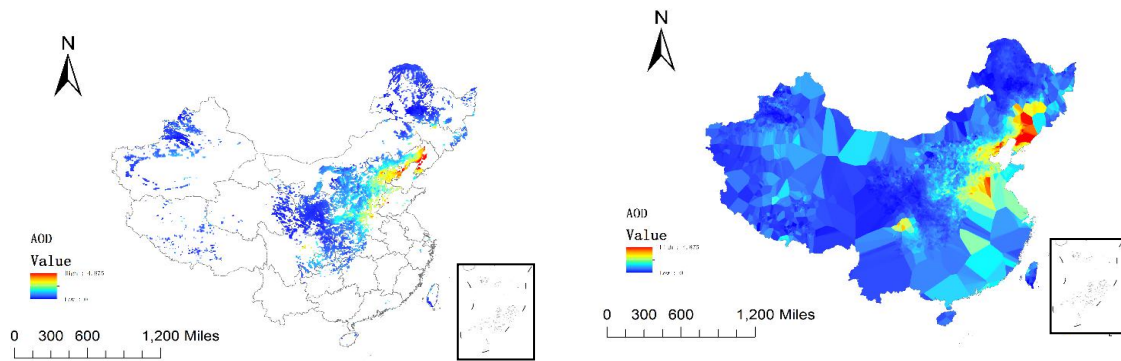
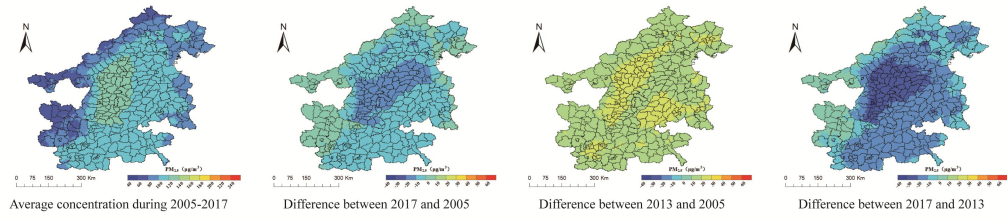
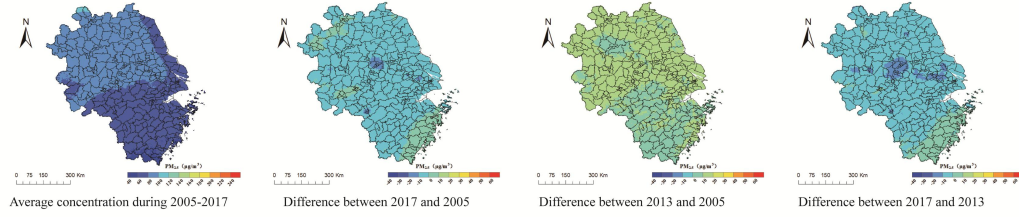


Fig. 5 MYD04_3K coverage in China and results after interpolation on January 1, 2017

A) Beijing-Tianjing-Hebei region



B) Yangtze River Delta



C) Pearl River Delta

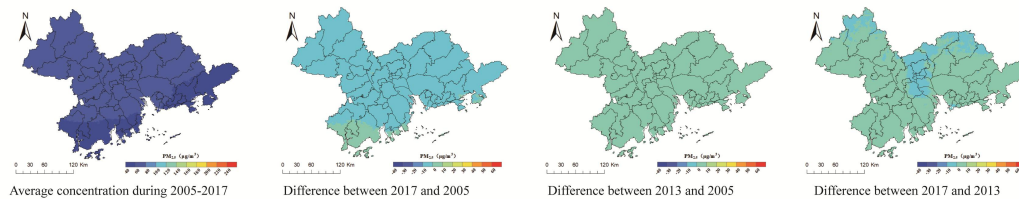
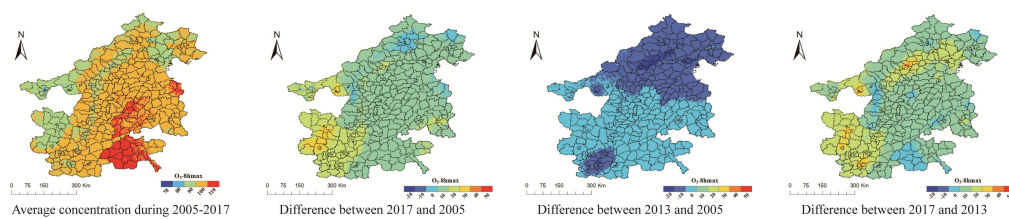
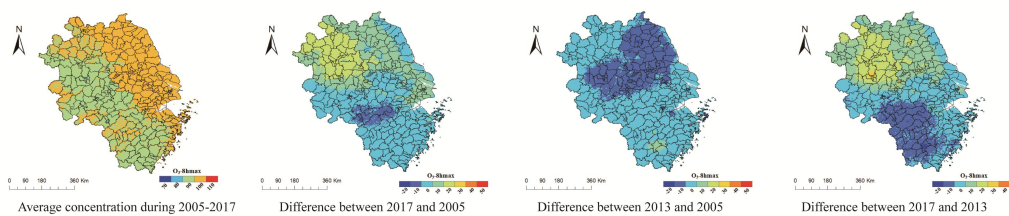


Fig. 6 The Simulated annual mean and difference of PM_{2.5} concentration in A) Beijing-Tianjin-Hebei region, B) Yangtze River Delta, and C) Pearl River Delta during 2005 to 2017

A) Beijing-Tianjing-Hebei region



B) Yangtze River Delta



C) Pearl River Delta

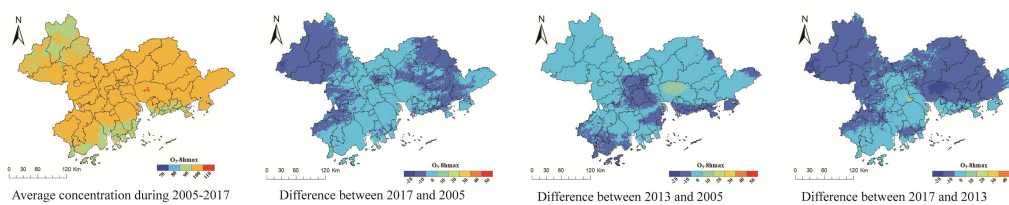


Fig. 7 The Simulated annual mean and difference of O_3 -8hmax concentration in A) Beijing-Tianjin-Hebei region, B) Yangtze River Delta, and C) Pearl River Delta during 2005 to 2017

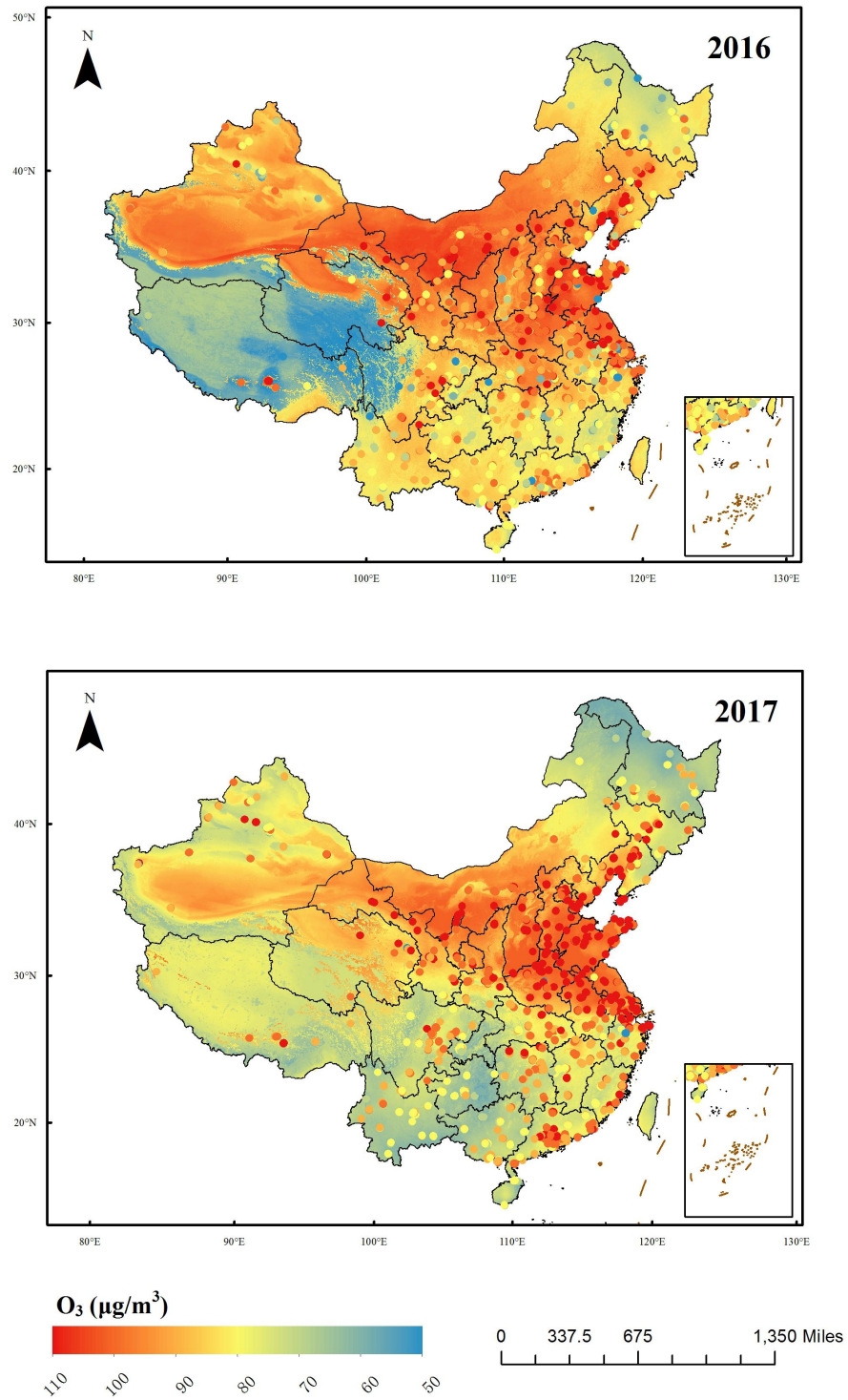


Fig. 8 The modeling and monitoring O_3 -8hmax concentrations in China in 2016 and 2017