

Greenland Geothermal Heat Flow Database and Map (Version 1)

William Colgan¹, Agnes Wansing², Kenneth Mankoff¹, Mareen Lösing², John Hopper¹, Keith Loudon³, Jörg Ebbing², Flemming G. Christiansen¹, Thomas Ingeman-Nielsen⁴, Lillemor Claesson Liljedahl⁵, Joseph A. MacGregor⁶, Árni Hjartarson⁷, Stefan Bernstein¹, Nanna B. Karlsson¹, Sven Fuchs⁸, Juha Hartikainen⁹, Johan Liakka⁹, Robert Fausto¹, Dorthe Dahl-Jensen¹⁰, Anders Bjørk¹¹, Jens-Ove Naslund⁹, Finn Mørk¹, Yasmina Martos¹², Niels Balling¹³, Thomas Funck¹, Kristian K. Kjeldsen¹, Dorthe Petersen¹⁴, Ulrik Gregersen¹, Gregers Dam¹, Tove Nielsen¹, Abbas Khan¹⁵, and Anja Løkkegaard¹

¹Geological Survey of Denmark and Greenland, Copenhagen, DENMARK

²Institute of Geosciences, Kiel University, Kiel, GERMANY

³Dalhousie University, Halifax, CANADA

⁴Department of Civil Engineering, Technical University of Denmark, Lyngby, DENMARK

⁵DHI Sverige, Stockholm, SWEDEN

⁶Cryospheric Sciences Lab, NASA Goddard Space Flight Center, Greenbelt, USA

⁷Icelandic Geosurvey, Reykjavik, ICELAND

⁸Helmholtz Centre Potsdam, German Research Centre for Geosciences, Potsdam, GERMANY

⁹Swedish Nuclear Fuel and Waste Management Company, Stockholm, SWEDEN

¹⁰Center for Earth Observation Science, University of Manitoba, Winnipeg, CANADA

¹¹Department of Geography, University of Copenhagen, Copenhagen, DENMARK

¹²Planetary and Magnetospheres Laboratory, NASA Goddard Space Flight Center, Greenbelt, USA

¹³Department of Geoscience, Aarhus University, Aarhus, DENMARK

¹⁴Asiaq – Greenland Survey, Nuuk, GREENLAND

¹⁵National Space Institute, Technical University of Denmark, Lyngby, DENMARK

Correspondence to: William Colgan (wic@geus.dk)

Abstract. We compile, [and analyse](#) ~~and map~~ all available geothermal heat flow measurements collected in and around Greenland into a new database of 419 sites and generate an accompanying spatial map. This database includes 290 sites previously reported by the International Heat Flow Commission (IHFC), for which we now standardize measurement and metadata quality. This database also includes 129 new sites, which have not been previously reported by the IHFC. These new sites consist of 88 offshore measurements and 41 onshore measurements, of which 24 are subglacial. We employ machine learning to synthesize these *in situ* measurements into a gridded geothermal heat flow model that is consistent across both continental and marine areas in and around Greenland. This model has a native horizontal resolution of 55 km. In comparison to five existing Greenland geothermal heat flow models, our model has the lowest mean geothermal heat flow for Greenland onshore areas (44 mW m^{-2}). [Our modelled heat flow in Central North Greenland is highly sensitive to whether the NGRIP elevated heat flow anomaly is included in the training dataset.](#) Our model's most distinctive spatial feature is pronounced low geothermal heat flow ($< 40 \text{ mW m}^{-2}$) across the North Atlantic Craton of southern Greenland. Crucially, our model does not show an area of elevated heat flow that might be interpreted as remnant from the Icelandic Plume track. Finally, we discuss the substantial influence of paleoclimatic and other corrections on geothermal heat flow measurements in Greenland. The *in-*

situ measurement database and gridded heat flow model, as well as other supporting materials, are freely available from the GEUS ~~DataVerse~~Dataaverse (<https://doi.org/10.22008/FK2/F9P03L>; Colgan and Wansing, 2021).

1 Introduction

Assessing the magnitude and spatial distribution of geothermal heat flow across Greenland is important for many reasons, such as mapping geothermal springs and energy resources, constraining a key basal boundary condition for the permafrost, glaciers, and the ice sheet, [constraining the thermal structure and material properties of the lithosphere](#), and understanding the generation and preservation of hydrocarbon accumulations. However, the current generation of Greenland regional heat flow models still show substantial disagreement (Rezvanbehbahani et al., 2017; Martos et al., 2018; Greve, 2019). A fundamental challenge in reliably interpolating the magnitude and spatial distribution of geothermal heat flow across Greenland is the paucity of local heat flow measurements ~~or estimates~~ with which to constrain regional heat flow models.

Of the 40,870 onshore heat flow measurements presently catalogued in the International Heat Flow Commission (IHFC) database, just ten (~0.02%) are onshore in Greenland (Fuchs et al., [2024-2021a](#)). As Greenland represents ~1.5% of global land area, this makes the country disproportionately underrepresented in the IHFC database. While several studies have assembled additional non-IHFC heat flow measurements from published sources (Martos et al., 2018; Rysgaard et al., 2018), it is highly desirable to have a comprehensive, and continuously updated, open-access repository of all Greenland heat flow measurements. It is similarly desirable to have an open-access Greenland heat-flow map that is ~~both~~ self-consistent with that updating repository.

The goal of this study is to develop and describe this first version of the Greenland Geothermal Heat Flow Database and Map. First, we collect existing and new heat flow measurements in and around Greenland into a database with uniform metadata. Second, we apply machine learning to this database, along with other geophysical datasets, to produce a regional model of the magnitude and spatial distribution of Greenland heat flow that is consistent with these measurements. These data products and their supporting information are publicly available. We anticipate updating the heat flow database and map as new measurements become available. Here, we describe the development of these data products and discuss their implications for advancing our understanding of Greenland's geothermal heat flow.

2 Methods

2.1 Heat Flow Measurement Database

We use the 2018 IHFC database as the foundation upon which to build a region-specific update of Greenland heat flow measurements. This 2018 version of the IHFC database, which contains 58,536 measurements (both onshore and offshore) with no quality documentation, is an updated version of the 2013 IHFC database (Global Heat Flow Compilation Group, 2013; <https://doi.org/10.1594/PANGAEA.810104>). Within our Greenland domain, the IHFC 2018 database contains 290 heat flow

measurements, the majority of which are offshore- (Figure 1). In 2021, the fundamental structure of the IHFC database was revised for the first time since 1976 (Jessop et al., 1976; Fuchs and Ben, 2021 et al., 2021b). While the previous 1976 IHFC database structure contained 17 data fields for each heat flow measurement, the new 2021 IHFC database structure now contains 59 data fields for each heat flow measurement, 18 of which are “mandatory”, 32 of which are “recommended”, and 9 of which are “optional”. The novel heat flow database we present here has 26 data fields for each heat flow measurement. Eighteen of these fields have 100% data coverage, but these do not align with all 18 “mandatory” IHFC2018 fields (Table 4A1). Four fields, associated with the temperature gradient, depth range and thermal conductivity, have better than 81% data coverage. The last four fields, associated with topographic correction of heat flow, have 34% data coverage.

Table 1—Comparison of the data fields in the IHFC 1976 and 2021 database structures (Jessop et al., 1976; Fuchs et al., 2021) and this study. “X” denotes an included field. Red outlines and bold text denote the eighteen mandatory data fields of the IHFC 2021 structure and red shading denotes the eight mandatory data fields that are not available in our new database. Here, “TC” denotes thermal conductivity.

	IHFC 1976	IHFC 2021	This Study
Heat-flow (parent-level)	X	X	X
Heat-flow (parent-level) uncertainty		X	X
Site name	X	X	X
Geographical latitude	X	X	X
Geographical longitude	X	X	X
Geographical position uncertainty			X
Geographical elevation	X	X	X
Geographical elevation uncertainty			X
EPSG:3413 Easting			X
EPSG:3413 Northing			X
EPSG:3413 Uncertainty			X
Geographical environment		X	
Measurement type			X
Type of exploration method		X	
Original exploration purpose		X	
Flag heat production		X	
Bottom-water temperature		X	
General comments	X	X	X
Heat-flow (child level)	X	X	X
Heat-flow (child level) uncertainty		X	
Heat-flow method		X	
Heat-flow interval top	X	X	X
Heat-flow interval bottom	X	X	X
Penetration depth		X	
Probe type		X	
Probe length		X	
Heat-flow transfer mechanism		X	
Additional references		X	
Date of acquisition		X	
Relevant child		X	
Flag in-situ properties		X	
Flag temp correction		X	
Flag sedimentation effect		X	
Flag erosion effect		X	
Flag topographic effect		X	X
Topographic correction			X
Topographic correction uncertainty			X
Topographic corrected heat flow			X
Topographic corr. heat flow uncertainty			X

	IHFC 1976	IHFC 2021	This Study
Flag transient climate effect		X	
Flag convection effect		X	
Flag bottom-water effect		X	
Flag heat refraction effect		X	
Lithology		X	
Stratigraphic age		X	
Temperature gradient	X	X	X
Gradient uncertainty		X	
Average gradient corrected		X	
Gradient cor. uncertainty		X	
T method (top)		X	
T method (bottom)		X	
Shut-in time (top)		X	
Shut-in time (bottom)		X	
T correction method (top)		X	
T correction method (bottom)		X	
Number T recordings	X	X	
Probe tilt		X	
TC mean	X	X	X
TC uncertainty		X	
TC source		X	
TC method		X	
TC saturation		X	
TC pT conditions		X	
TC pT assumed function		X	
TC number		X	
TC averaging method		X	
Heat Production	X		
Number of heat production measurements	X		
Number of sites	X		
Primary reference	X	X	X
Measurement date		X	X
Publication year	X	X	
Source individual			X
International Geo Sample Number (IGSN)		X	
Identification number	X	X	X
IHFC status		X	X

We briefly introduce and describe the fields of our database in Table 21. While our database generally exceeds the information required by the IHFC 1976 database structure, it does not contain 8 of the 18 mandatory fields information required by the IHFC 2021 database structure (Table 4A1). Conforming and assimilating our database into the IHFC 2021 database and structure remains a near-term but non-trivial goal. While translating the “Measurement Type” of this study into “Geographical Environment” of IHFC 2021 is relatively straightforward, assessing IHFC 2021 fields like “TC Saturation” or “TC pT Conditions” requires reviewing historical measurements on a site-by-site basis. Similar to the IHFC databases, however, our present database has a “one borehole, one estimate” philosophy. This merges multiple estimates for a single borehole into a single best or consensus estimate for that borehole. Generally, for the predominantly subglacial sites where multiple estimates have been published, the consensus estimate is reached by expert elicitation within our author team. [Further, our database only includes direct heat flow estimates; those derived from temperature gradient measurements. Following the IHFC, we exclude heat flow estimates derived from remotely sensed approaches \(i.e. Cox et al., 2021\).](#)

Generally, our present database has a greater focus on three-dimensional positional accuracy than the IHFC databases. We report positions, elevations, and uncertainties in both latitude/longitude and the popular EPSG:3413 coordinate system adopted by many Greenland-focused and Arctic-wide data products. [The EPSG:3413 system, also known as the NSIDC Sea Ice Polar Stereographic North projection, has its latitude of origin at 70°N and its central meridian at 45°W, and provides a polar projection for data products \(see: <http://epsg.io/3413>; last access 8 February 2022\).](#) This focus on three-dimensional positional uncertainty is intended to facilitate future investigations of local heat flow corrections, such as those associated with paleoclimate or topography. As Greenland is a high-relief land mass with a complex climate history, these corrections are likely more important in modifying contemporary heat-flow measurements in Greenland than lower relief and more temperate regions of Earth.

Table 21 - Database fields in this study.

Field (units)	Description
Site Name (text)	Unique text string identification for each entry in the database. For existing IHFC 2018 sites, names are retained. Ambiguous IHFC 2018 names are made unique by adding alphanumeric suffixes based on measurement year. For new sites, names are derived from primary literature and/or personal communications.
ID (unitless)	Unique numeric identification for each entry in the database. 1000-level denotes submarine sites, 2000-level denotes subaerial sites, 3000-level denotes subglacial sites. Generally equivalent to the discontinued “Data Number” field in IHFC2018.
IHFC Status (unitless)	Code to identify each entry in the database as either: “0” (existing entry in IHFC 2018), “1” (new entry, not contained in IHFC 2018), “2” (uncertain data

	availability at this site) and “3” (no heat flow can be calculated at this site).
Type {text-}	Code to identify each entry in the database into one of three classes: “subaerial”, “subglacial” or “submarine”.
Latitude {°N}	The decimal degree latitude for each entry in the database. For existing IHFC 2018 sites, existing latitude is retained. For new sites, latitude is derived from published literature and/or personal communications.
Longitude {°E}	The decimal degree longitude for each entry in the database. For existing IHFC 2018 sites, existing longitude is retained. For new sites, longitude is derived from published literature and/or personal communications.
Latitude and Longitude Uncertainty {°}	Order-of-magnitude estimate of the positional uncertainty of each entry in decimal degrees: 0.01, 0.001, or 0.0001 °. For existing IHFC 2018 sites, this uncertainty is estimated from a combination of reported decimal places and measurement year. For new sites, this is based on reported decimal places and/or personal communications.
Easting {m}	The local easting position of each entry in the database in the EPSG:3413 projection, derived from longitude using the MATLAB “polarstereo_fwd” conversion tool (Bliss, 2021).
Northing {m}	The local northing position of each entry in the database in the EPSG:3413 projection, derived from latitude using the MATLAB “polarstereo_fwd” conversion tool (Bliss, 2021).
Easting and Northing Uncertainty {m}	Order-of-magnitude estimate of the positional uncertainty in each entry in meters: 1100, 110, or 11 m. Converted from L&L-latitude and longitude uncertainty in decimal degrees.
Elevation {m}	Elevation above sea level of each entry. For existing IHFC 2018 sites, elevations are retained where available. For new sites, elevations are derived from primary literature and/or personal communications. Where elevation is not available, it is interpolated from either BedMachine v3 or ETOPO1 digital elevation models (Amante, and Eakins, 2009; Morlighem et al., 2017) and noted in the comments section. For subglacial sites, this is the elevation of the ice–bed interface.
Elevation Uncertainty {m}	Uncertainty in elevation above sea level of each entry. Unless otherwise noted, this is assumed to be 5 m where elevation is reported, and 20 m where elevation is interpolated from a digital elevation model.
Year {CE}	Common Era (CE) measurement year of each entry. For existing IHFC 2018 sites, this is retained as the “Year of Publication”, or the latest “Year of Publication”, when a range is provided. For new sites, this is derived from published literature and/or personal communications.
Minimum Depth {m}	The minimum depth, relative to site elevation, of the temperature profile used to compute heat flow for each entry in the database. For existing IHFC 2018

	sites, this is retained as “Minimum Depth” where available. Where unavailable in IHFC 2018, it remains unavailable in this database. For new sites, this is derived from published literature or personal communications. For subglacial sites, temperature profiles are collected above the bedrock, so depths are negative.
Maximum Depth {[m]}	The maximum depth, relative to site elevation, of the temperature profile used to compute heat flow for each entry in the database. For existing IHFC 2018 sites, this is retained as “Maximum Depth” where available. Where unavailable in IHFC 2018, it remains unavailable in this database. For new sites, this is derived from published literature or personal communications. For subglacial sites, temperature profiles are collected above the bedrock, so depths are negative.
Gradient {[K km ⁻¹]}	The temperature gradient used to compute heat flow for each entry. For existing IHFC 2018 sites, this is retained as “Gradient” where available. Where unavailable in IHFC 2018, it remains unavailable in this database. For new sites, this is derived from published literature or personal communications.
Conductivity {[W m ⁻¹ K ⁻¹]}	Thermal conductivity used to compute heat flow for each entry. For existing IHFC 2018 sites, this is retained as “Conductivity” where available. Where unavailable in IHFC 2018, it remains unavailable in this database. For new sites, this is derived from published literature or personal communications. Where conductivity has been assumed, rather than measured, is noted in the comments section.
Heat Flow {[mW m ⁻²]}	Heat flow computed for each entry. For existing IHFC 2018 sites, this is retained as “Heat Flow”. For new sites, this is derived from the site gradient and site conductivity reported in the database.
Heat Flow Uncertainty {[mW m ⁻²]}	Uncertainty in heat flow for each entry. For both existing IHFC 2018 sites and new sites, unless otherwise stated, this is estimated as 5% where both gradient and conductivity are reported, 10% where only gradient or conductivity is reported <u>and conductivity is assumed</u> , and 15% when neither only heat flow is reported without any information about gradient nor conductivity are reported .
Topographic Correction {[unitless]}	Topographic correction for geothermal heat flow for each entry. This value represents the fraction by which local topography enhances measured heat flow. For both existing IHFC 2018 sites and new sites, where available, this is derived from an existing data product (Colgan et al., 2021). Where unavailable in this product, topographic correction remains unavailable in the database. Mean topographic correction is interpolated within the positional uncertainty of each entry.
Uncertainty in Topographic Correction {[unitless]}	Uncertainty in topographic correction for geothermal heat flow for each entry in the database. For both existing IHFC 2018 sites and new sites, this is derived from the Colgan et al. (2021) product where available.
Topographically Corrected	Topographically corrected geothermal heat flow for each entry, where

Heat Flow (mW m^{-2})	topographic correction is available.
Uncertainty in Topographically Corrected Heat Flow (mW m^{-2})	Uncertainty in topographically corrected geothermal heat flow for each entry, where topographic correction is available.
Source (text)	This is the source of the heat flow value for each. For existing IHFC 2018 sites, this is listed as “IHFC2018”. For new sites, this is either listed as the individual who is most familiar with site-specific calculation, or “As Published” for previously published values.
Comment (text)	This field contains relevant additional notes for each entry. This includes ice thickness for subglacial sites, heat flow corrections where available, assumptions about conductivity, source of elevation data, or edits made to IHFC 2018 data. This field also aggregates information in less frequently used fields of the IHFC 1975 structure, such as “Heat Production” and “Number of Sites”.
Reference (text)	This is the most relevant article or report discussing the temperature profile, or other metadata, for each entry. These references have been updated since IHFC2018 where possible. The most relevant reference will not necessarily contain a heat flow estimate for the site, but it serves as the best starting point to learn more about a site.

2.2 Heat Flow Measurements

Heat flow measurements typically rely on knowledge of local temperature gradient and local thermal conductivity, with the product of these two terms yielding heat flow. There can be substantial diversity in the depth interval over which temperature gradient is measured, from kilometer-scale deep boreholes to meter-scale heat probes. Similarly, there can be substantial diversity in how thermal conductivity is estimated, ranging from relatively precise continuous-core laboratory analysis to less precise estimations based on tabulated data from analogous rock types. For this reason, it is desirable to present a heat flow measurement with sufficient metadata for users to assess the relative differences in data quality between sites (Table 21). In this database, we assess uncertainty in heat flow based on the quality of the local temperature gradient and thermal conductivity data comprising the heat flow. In the following, all mentions of “conductivity” relate to “thermal conductivity”. We divide the heat flow measurements into four types: Type 0 are measurements already included in IHFC 2018, Type 1 are “new” measurements that are not included in IHFC 2018, Type 2 are sites for which we are uncertain if sufficient data exists to estimate heat flow, and finally, Type 3 are sites where we felt there is insufficient data to estimate heat flow with available methods.

2.2.1 Type 0 - Included in IHFC 2018

The IHFC 2018 database contains 290 heat flow measurements within our Greenland domain (Figure 1). Here, we provide the first systematic quality control of these existing IHFC data, as part of a broader community effort to bring all historical IHFC into compliance with the most recent IHFC data standards (Fuchs et al., 2021a). During this quality control, we reassess 10 of these historical IHFC heat flow values in our present database (Table 32). The remaining 280 historical IHFC heat flow measurements are unchanged.

The largest reassessment is site V28-11. The heat flow at this site – 871 mW m⁻² – is a clear outlier within the IHFC 2018 database, exceeding the next highest value within the Greenland region by a factor of two. It is also more than an order of magnitude greater than the contemporaneous measurement at V30-96, located 72 km away. While all temperature gradients measured during the V28/V30 cruises range between 35 and 181 K km⁻¹, the V28-11 temperature gradient is listed as 1000 K km⁻¹ in IHFC 2018. Such an extreme heat gradient seems implausible (Bons et al., 2021). We attribute this to a transposed decimal place and revise the gradient to a more reasonable 100 K km⁻¹. This accordingly reassesses the V28-11 heat flow to 87 mW m⁻². In comparison, the nearby V30-96 heat flow measurement is 52 mW m⁻².

There are nine other heat flow measurements where the product of reported gradient and conductivity is more than ±2 mW m⁻² different from the reported heat flow. In these instances, heat flow has been revised to reflect the product of reported gradient and conductivity. [This approach assumes that gradient and conductivity are the primary measurements from which heat flow is secondary derived product.](#) The discrepancy of this reassessment of reported gradient and conductivity product is greatest at Ymer 80-133 – where heat flow is reassessed from 442 to 120 mW m⁻². Table 32 summarizes all instances of reassessed IHFC 2018 heat flows. Generally, these reassessments can be described as [diminishing down revising extreme heat flow values from oceanographic surveys conducted in the vicinity of the Mid Atlantic Ridge](#) in the late 1970s and early 1990s. These reassessments are also noted in the Comment section of each entry in the database.

This study adds significant metadata to many of the existing IHFC 2018 entries. First, all 290 existing IHFC 2018 entries are coded as either “subaerial”, “submarine” or “subglacial”. Heat flow uncertainties are also estimated for all 290 sites, [based on the approach described in Section 2.1. For 50 of these, Where site-specific measurements of both temperature gradient and thermal conductivity are available, an uncertainty of ±5% is assumed. Where only site-specific temperature gradient is measured and thermal conductivity is assumed, an uncertainty of ±10% is assumed. Where only heat flow is reported, without a specific temperature gradient or thermal conductivity, an uncertainty of ±15% is assumed. This approach is applied to all Type 0 \(and Type 1\) sites for which formal uncertainties are not previously reported. For 50 of the Type 0 existing IHFC 2018 sites, a previously unavailable elevation of measurement is interpolated from a digital elevation model. Within the immediate proximity of Greenland, the \[relatively high higher resolution BedMachine v3 elevation model\]\(#\) is used, \[\\(150 m horizontal resolution\\)\]\(#\), while for areas more distal to Greenland, the \[relatively low lower resolution ETOPO1 elevation model\]\(#\) is used \[\\(1 arc-minute or ~1.8 km horizontal resolution\\)\]\(#\); Amante, and Eakins, 2009; Howat et al., 2014; Morlighem et al., 2017\). For a further ten sites, corresponding to the “OU” cruise, measurement elevations were revised from a positive water depth to a](#)

negative ocean bottom elevation. Finally, for 51 of these existing sites, a previously unavailable measurement year is now estimated from the IHFC 2018 “year of publication” field.

In addition to these batch additions of metadata, we also revised existing site-specific metadata in several instances. This includes renaming two non-unique “Akureyri” sites as “Akureyri73” and “Akureyri91”, and non-unique “Grundarfjordur” sites as “Grundarfjordur91A” and “Grundarfjordur91B”, and finally two non-unique “Hvammstangi” sites as “Hvammstangi73” and “Hvammstangi91”. The numeric suffixes are based on measurement year. We remove an apparent IHFC 2018 double-entry of “V29-155”. For the GRIP ice core site, the measured elevation is revised from sea-level (0 m elevation) to the observed ice–bed interface at 203 m elevation. For GRIP, the heat flow was also re-assessed with the approach described in Section 2.2.2. to be consistent with the heat flow assessed for other subglacial sites.

Table 32 - Reassessed heat flows between IHFC 2018 and this study.

Site	Latitude (°N)	Longitude (°E)	IHFC 2018 (mW m ⁻²)	This Study (mW m ⁻²)	Change (mW m ⁻²)	Change (%)
V28-11	63.750	-28.970	871	87±4	-784	-90
787	63.367	-27.333	280	278±14	-2	-1
807	67.750	-18.500	197	241±12	+44	+22
AS-151	77.000	-3.667	78	86±4	+8	+10
AS-210	72.967	-7.433	193	196±10	+3	+2
Svalbard84-42	78.828	4.499	117	122±6	+5	+4
Ymer 80-131	81.108	3.272	343	125±6	-218	-64
Ymer 80-132	80.786	5.107	212	113±6	-99	-47
Ymer 80-133	79.997	-2.363	442	120±6	-322	-73
Ymer 80-134	79.853	-1.175	147	111±6	-36	-24
GRIP	72.600	-37.600	51	61±2	+10	+20

2.2.2 Type 1 - Not included in IHFC 2018

Our database includes 129 heat flow values that were not included in IHFC 2018 (Figure 1). Of these, 54 heat flow values are collected from previously published grey-literature reports or peer-reviewed articles (Classon, 1977; Colebeck and Gow, 1979; Van Tatenhove and Olesen, 1994; Müller et al., 2006; Taylor et al., 2006; Damm, 2010; Harper et al., 2011; Rysgaard et al.,

2018; Hartikainen et al., 2021). In the database, the “Source” field of these heat flow values is listed as “As Published.” The remaining 75 heat flow values are previously unreported. While heat flow values have been previously published at a handful of these sites, we reassess these heat flows using a consistent methodology. In the database, the “Source” field of these heat flow values is listed as the author of this study who is most familiar with this calculation. Below, we provide a brief overview of these 75 heat flow values.

The first type of new heat flow measurements in the database is submarine measurements (44 of 75 new values). Of these, 30 measurements were collected during cruise 2005-040 of the Canadian Coast Guard Ship Hudson. These measurements comprise east–west and north–south transects in water depths of between 1015 and 2550 m within the Davis Strait. These heat flow values were calculated from site-specific measurements of temperature gradient and thermal conductivity measured by a 4 m heat probe deployed in the uppermost layers of submarine sediments. For these heat-probe measurements, site-specific heat flow uncertainty is propagated from gradient and conductivity uncertainties.

The remaining fourteen new submarine measurements are derived from deep marine exploration wells and cored boreholes drilled offshore West Greenland between 1976 and 2011. These wells are between 1148 and 4385 m deep, and in water depths between 104 and 1508 m. For these sites, the temperature gradient is calculated from Horning-corrected bottom-hole temperature and an assumed top-hole temperature of 4°C, reflecting assumed bottom water temperature. We assume that any seasonal cycle in bottom water temperatures at these sites is small in comparison to the temperature difference between the top- and bottom-hole temperatures, which averages 86°C. For the fourteen deep exploration wells presented here, the average top-to-bottom temperature difference is 86°C. In the absence of a method to systematically convert borehole stratigraphy into depth-integrated conductivity, we assume a bulk thermal conductivity of 2.00 W m⁻¹ K⁻¹ for all these deep boreholes. This approximates the back-calculated bulk thermal conductivity inferred by Rolle (1985) at five of these wells. We accordingly assume a 10% uncertainty in heat flow at these sites.

Table 43 - Reassessed heat flows between previous studies and this study.

Site	Latitude (°N)	Longitude (°E)	Previous Study (mW/m^2)	This Study (mW/m^2)	Change (mW/m^2)	Change (%)	Reference
Hellefisk-1	67.8781	-56.7392	50	49 ± 5	-1	-2	Issler & Beaumont (1987)
Ikermiut-1	66.9367	-56.5906	51	58 ± 6	+7	+13	Issler & Beaumont (1987)
Kangâmiut-1	66.1503	-56.1900	55	54 ± 5	-1	-2	Issler & Beaumont (1987)
Nukik-1	65.6317	-54.7669	56	42 ± 4	-14	-25	Issler & Beaumont (1987)
Nukik-2	65.5267	-54.7606	54	39 ± 4	-15	-28	Issler & Beaumont (1987)

Indsatte celler

formaterede: Skrifttype: Fed

Formateret: Linjeafstand: enkelt

Formateret: Linjeafstand: enkelt

Formateret: Linjeafstand: enkelt

Formateret: Linjeafstand: enkelt

Formateret: Linjeafstand: enkelt

CampCentury	77.1797	-61.1097	42 40	40 ± 2	-2 0	<u>-5</u> <u>0</u>	Hansen & Langway (1966) Weertman (1968)
GRIP	72.600	-37.600	51 59	61 ± 2	+10 +2	<u>+20</u> <u>+3</u>	Dahl-Jensen et al. (1998) Martos et al. (2018)
NEEM	77.45	-51.07	58	65 ± 5	+7	<u>+12</u>	Martos et al. (2018)
DYE-3	65.18	-43.82	25	26 ± 3	+1	<u>+4</u>	Greve (2005)

Formateret: Linjeafstand: enkelt

Formateret: Linjeafstand: enkelt

Formateret: Linjeafstand: enkelt

Formateret: Linjeafstand: enkelt

Formateret: Linjeafstand: enkelt

Formateret: Linjeafstand: enkelt

Formateret: Linjeafstand: enkelt

Formateret: Linjeafstand: enkelt

Issler and Beaumont (1987) previously estimated heat flows at five of these deep wells (Hellefisk-1, Ikermiut-1, Kangâmiut-1 and Nukik-1/2) that are generally higher than our heat flows (Table 43). While Issler and Beaumont (1987) do not provide the gradients or conductivities used in their calculations, the gradients we calculate are nearly identical to those published contemporaneously by Rolle (1985). We therefore speculate that the disparity between our heat flows and those of Issler and Beaumont (1987) results from differences in assumed conductivity.

The second type of new measurements in the database is subaerial measurements. This category specifically denotes ice-free onshore sites (11 of 75 new values). They are generally derived by applying an assumed thermal conductivity to a measured borehole temperature gradient. At three sites (DH-GAP01, Skaergaard_89-09B and Skaergaard_90-11), thermal conductivity has also been measured (Balling and Brooks, 1991; Harper et al., 2011). At these sites, we estimate the uncertainty in heat flow from site-specific uncertainties in gradient and conductivity.

At the remaining eight sites, thermal conductivity has not been measured so we must therefore assume a value (Roethlisberger, 1961; Dam and Christiansen, 1994; Van Tatenhove and Olesen, 1994; Bjerager et al. 2018). At sites located within the Precambrian Shield of South Greenland (Alcoa_Site7e-I, Alcoa_Site7e-P, Alcoa_Site6g-P, SIS2019-02) we assume a thermal conductivity of 2.50 W m⁻¹ K⁻¹, based on the thermal conductivity measured near Kangerlussuaq (Harper et al., 2011). At sites located within the basaltic intrusions stretching across Central Greenland from Disko Island to Geikie Plateau (G02_Paakitsoq, Marraat-1, Blokely-1), we assume a thermal conductivity of 2.25 W m⁻¹ K⁻¹, based on thermal conductivity measured in the Skaergaard Formation (Balling and Brooks, 1991). At Thule (Thule_1002feet) we similarly assume a thermal conductivity of 2.25 W m⁻¹ K⁻¹, although with no guidance from measurements in analogous geological formations (Roethlisberger, 1961; Davies et al., 1963; Dawes, 2009). At all eight sites, we assume an uncertainty in heat flow of 10%.

For all subaerial sites, where possible, we calculate temperature gradients below 75 m depth. As recent near-surface warming can decrease the near-surface temperature gradient and thus decrease near-surface heat flow in comparison to deeper values, we prefer not to use ground temperature data from depths shallower than 75 m. This approach minimizes the influence of recent, meaning post-1990, pronounced atmospheric warming on the near-surface temperature gradient (Balling and Brooks, 1991). This can be considered a basic paleoclimatic correction to remove the influence of recent climate change over the past century (Beltrami and Mareschal, 1991; Mareschal and Beltrami, 1992).

The third type of new measurements in the database is subglacial measurements (20 of 75 new heat flow values). This category specifically denotes onshore sites located beneath glaciers. Heat flow has been previously assessed at four of these sites (Table 43). For all subglacial sites, heat flow is calculated using a slightly modified version of the temperature gradient approach. We use ice temperature profiles from the Greenland Ice Borehole Temperature Profile Database (Mankoff, 2021; https://github.com/GEUS-PROMICE/greenland_ice_borehole_temperature_profiles; last access 8 February 2022). At sites where the ice temperature profile is complete, meaning it spans the full ice thickness from surface to bed (Devon73, PrinceWales05, Meighen67, Agassiz77/79A/79B/84, Penny96, CampCentury, DYE-3, GISP2, NEEM, HansTausen_Dome, HansTausen_Hare), we fit a second-order temperature–depth function in the bottom 10% of the borehole (Paterson, 1968; Weertman, 1968; Paterson et al., 1977; Fisher and Koerner, 1984; Gundestrup and Hansen, 1984; Clarke et al., 1987; Fisher et al., 1988; Clausen et al., 2001; Kinnard et al., 2008; Rasmussen et al., 2013; MacGregor et al., 2015). We then adopt the temperature gradient at the deepest 1% of this second-order polynomial fit. This approach standardizes the approximation of temperature gradient across sites by accounting for differences in the depth interval of temperature measurements. It also acknowledges the characteristic non-linearity of basal ice temperature profiles (Hooke, 2019).

At some subglacial sites, however, the ice temperature profile is incomplete, meaning it does not reach the ice–bed interface (Devon72/98, Renland88, FladeIsblink06) (Paterson et al., 1977; Hansson, 1994; Kinnard et al., 2006; Lemark and Dahl-Jensen, 2010). At these sites, we must extrapolate the temperature profile to the ice–bed interface to approximate the temperature gradient in the deepest 1% of the borehole. For this extrapolation, we generate a second-order polynomial fit to the deepest portion of the measured temperature–depth profile that is the same thickness as the depth range that is missing measurements, i.e., the depth range that must be extrapolated. For example, if ice temperatures are not available in the bottom 10% of the borehole, then we fit the temperature–depth profile to the deepest available 10% of the borehole where ice temperatures are available; the bottom 20 down to the bottom 10 % of the borehole. This ensures a 1:1 ratio between the observation and extrapolation depth increments. To quantify the uncertainty associated with this extrapolation, we then repeat the extrapolation of the deepest 1% gradient ten times but adjust the shallowest depth of the data range up the ice column 1% each time. We make available a sample of this code for the Devon72 extrapolation (Figure 2) in the provided database associated with this article.

For all subglacial boreholes, thermal conductivity (κ ; in $\text{W m}^{-1} \text{K}^{-1}$) is estimated as a function of ice temperature (T_i ; in K) based on the following relation (Yen, 1981):

$$\kappa = -0.013 T_i + 2.1 \quad (1)$$

We prescribe the thermal conductivity of ice based on the ice temperature in the bottom 1% of the borehole.

Four subglacial sites have unique glaciological settings requiring further explanation. Basal melting presently occurs at both NGRIP and NEEM. This loss of basal ice is evident in local radiostratigraphy and depth–age relations at both sites. NGRIP has substantial basal melting, which prevents application of the basal temperature gradient approach described above.

For this site, we estimate basal heat flow as $130 \pm 30 \text{ mW m}^{-2}$, based on the published range of values based on thermomechanical ice modelling (Dahl-Jensen et al., 2003; Greve, 2005; Buchardt and Dahl-Jensen, 2007). At NEEM, where there is evidence of trace basal melting, the basal temperature gradient approach is still valid, but we add a $+5 \pm 5 \text{ mW/m}^2$ correction to account for an estimated 0.5 mm yr^{-1} of basal melt there (Rasmussen et al., 2013). At Tuto_D-11, the ice thickness is only 48 m. We therefore use a simple linear relation to constrain the temperature gradient in the lowermost 33 m of the ice, within a generous uncertainty from a digitized version of the published temperature profile (Davis, 1967).

Finally, at HansTausen_Hare, the borehole is drilled in a relatively high deformation setting, where the ice surface speed is $\sim 20 \text{ m yr}^{-1}$ with an ice thickness of 289 m (Clausen et al., 2001; Reeh et al., 2001). This situation implies that deformational heating is a significant heat source in the deepest part of the ice column there. Assuming $n = 3$ deformational and isothermal ice flow, the bottom 1% (3 m) of the HansTausen_Hare borehole has an along-flow strain rate of 0.27 yr^{-1} (Hooke, 2019). Assuming an overburden confining stress of 2.6 MPa ($286 \text{ m} \times 917 \text{ kg m}^{-3} \times 9.8 \text{ m s}^{-2}$), this calculation yields 66 mW m^{-2} of deformational heating ($3 \text{ m} \times 0.27 \text{ yr}^{-1} \times 2.6 \text{ MPa}$) in the bottom 3 m of the HansTausen_Hare borehole (Marshall et al., 2005). We therefore apply a $-66 \pm 33 \text{ mW m}^{-2}$ correction to account for significant basal deformational heating at HansTausen_Hare, but we note that the geothermal gradient is likely also influenced by deformational heating higher in the ice-temperature profile. Comparison with the upstream HansTausen_Dome borehole, which is unaffected by deformational heating, suggests a deformation heating correction of closer to -100 mW m^{-2} may be appropriate at HansTausen_Hare.

2.2.3 Type 2 – No Heat Flow (Uncertain Temperature Data)

Our database includes 66 entries where at least one borehole has been drilled to $>100 \text{ m}$ depth, but for which we are presently uncertain of the availability of borehole temperature data (Figure 1). While no heat flow values are presently available for these sites, the possibility exists that sufficient data may become available to assess heat flow values in future studies. Where multiple deep boreholes are known to exist at a single site, the number of boreholes is noted in the “Comment” field of the database. For all these Type 2 entries, the database includes metadata showing the site or borehole name, type of site, characteristic drill year, and decimal degree and EPGSEPSG:3413 positional and elevation data.

These sites were identified from the Greenland National Petroleum Data Repository (GNPDR) (<http://greenpetrodata.gl>; last access 8 February 2022 - formerly the “GEUS Oil & Gas” database), the Greenland Mineral (GreenMin) database (<http://www.greenmin.gl>; last access 8 February 2022 - formerly the “GEUS SAMBA” database), and also the International Ocean Discovery Program (IODP) drilling database (<https://iodp.tamu.edu/scienceops/maps.html>); last access 8 February 2022). For several GNPDR and GreenMin sites, a comprehensive evaluation of non-digitized hardcopy reports would likely yield temperature gradients omitted from our preliminary evaluation of digitized reports. We appeal to persons with site-specific knowledge of the availability of temperature profiles at these Type 2 sites to contact our ~~author~~ team to help us parse these sites as either Type 1 or Type 3 in future versions of this database.

2.2.4 Type 3 - No Heat Flow (~~No Temperature~~Insufficient Data)

Finally, our database also includes entries where a borehole has been drilled and a heat flow cannot be calculated with presently available data and methods. Our database contains 74 of these Type 3 sites (Figure 1). Thirty-three of these sites appear in IHFC 2018, but have no associated heat flow value, or primary gradient and conductivity values from which to calculate heat flow. All but one of these sites is submarine. At a combination of 27 subaerial and submarine sites, we ascertain through end-of-well reports or personal communications that no temperature profile was collected in the borehole. Finally, at 14 subglacial sites, an ice temperature profile has been collected, but it is not possible to use this profile to calculate heat flow for one or two reasons. First, if the temperature profile is not deep enough to make a reasonable extrapolation of the temperature gradient at the ice-bed interface (i.e. SiteII). Second, if the basal ice is at the pressure-melting-point ~~but there is insufficient~~ additional glaciological data is ~~available~~needed to characterize ~~the melt-rate~~basal frictional heating, which ~~prohibits estimating~~warms ice temperatures, and/or basal melting, which cools ice temperatures (Karlsson et al., 2021). At temperate sites, where friction heating or basal melting are not constrained, heat flow cannot be estimated using the standard basal temperature gradient approach due to complex thermodynamics associated with ice-water phase changes (i.e. Jakobshavn_A).

Despite these limitations, we consider it important to inventory Type 3 subaerial and subglacial boreholes, as they may be useful for resolving future heat flow values. Where subaerial boreholes have been capped with metal sealers, as opposed to filled with concrete, it may be possible to re-open them and insert thermistor strings (Balling and Brooks, 1991). Instrumenting abandoned boreholes drilled into consolidated bedrock is unconventional but could be an inexpensive opportunity to rapidly expand the number of reliable Greenlandic heat flow measurements. Any frozen drilling fluid in these boreholes, while extremely dirty in comparison to glacier ice, should be significantly easier to penetrate in comparison to surrounding bedrock. Perhaps similarly, while it is not presently possible to resolve a geothermal heat flow estimate from subglacial temperature profiles near the pressure-melting-point using the basal temperature gradient approach, future methodological improvements may allow heat flow to be inferred where complex water-ice phase changes are present (Colebeck and Gow, 1979; Iken et al., 1993; Lüthi et al., 2015; Doyle et al., 2018).

~~2.3~~

2.3. Topographic Correction

The database includes an explicit correction for the influence of topography on geothermal heat flow for all heat flow measurement sites (Types 0 and 1). This topographic correction accounts for elevated heat flow in valleys and correspondingly diminished heat flow along ridge lines (Lees, 1910). We interpolate this site-specific correction from the geostatistical product of Colgan et al. (2020), which is based on the BedMachine v3 digital elevation model (Morlighem et al., 2017). As the BedMachine domain covers only part of the larger Greenland domain of this study, this topographic correction is only available for c. 34% of heat flow measurement sites. However, this subregion does include all subaerial and subglacial sites in Greenland, and most submarine sites on the Greenlandic continental shelf. Most of the sites for which this systematic topographic correction is not available may be considered abyssal submarine sites, meaning beyond the continental shelf, where

topographic variation is generally more subdued compared to subaerial or subglacial sites. Within our Greenland domain, this topographic correction ranges from a minimum of $-21 \pm 5\%$ at Hole 38 in Ilimaussaq, South Greenland (Sass et al., 1972), to $+55 \pm 10\%$ at the Dybet site in Young Sound, East Greenland (Rysgaard et al., 2018). These end-member sites highlight the potential importance of acknowledging topographic influence on local heat flow when interpreting heat flow measurements.

Critically, however, the database only provides these topographically corrected heat flow values as a supplement to measured heat flow values. The machine learning analysis that we perform to interpolate a regularly spaced heat flow map across our Greenland domain (Section 2.4) uses uncorrected heat flow measurements. We discuss other heat flow corrections of concern in the Greenland context in Sections 4.1 and 4.2.

2.4 Greenland Heat Flow Map

We derive a spatial heat flow map across our Greenland domain using a machine learning approach that combines the heat flow measurements described above with other geophysical datasets. We employ the machine learning approach to estimate geothermal heat flow at the lithospheric surface, meaning the subaerial, subglacial or submarine plane. This approach was initially presented for Greenland by Rezvanbehbahani et al. (2017) and subsequently revised for Antarctica by Lösing and Ebbing (2021) (<https://github.com/MareenLoesing/GHF-Antarctica-MachineLearning->; last access 8 February 2022). Lösing and Ebbing (2021) enhanced the machine learning algorithm by using an advanced, and more regularized, gradient boosting regression and provided more detailed evaluation of the influence of regional and global geophysical datasets. This evaluation showed the added value of applying well-constrained regional data, as global datasets often have a high uncertainty in polar regions. In total, twelve features are used for the machine learning algorithm (Table A2), three of them are boundary layers: the topography, the crust-mantle boundary (Moho depth) and the lithosphere-asthenosphere boundary (LAB). A magnetic susceptibility model includes crustal constraints. Seismological information is added to the model as a tectonic regionalisation, calculated from a tomography model. In addition, the vertical magnetic field and the gravity field, the latter represented by its mean curvature, are included. Finally, the predicted geothermal heat flow also depends on the distance to five major tectonic elements (trenches, ridges, transform faults, young rifts, and volcanoes). More technical descriptions on the method can be found in Rezvanbehbahani et al. (2017) and Lösing and Ebbing (2021) and a graphical overview of these datasets is provided in the Appendix of this study.

Following Lösing and Ebbing (2021), we optimize a global supervised machine learning regression approach by incorporating regional datasets best suited for Greenland (Table 5–Figure A1). We combine the heat flow measurements described above with the global point dataset used by Lösing and Ebbing (2021). All the global or regional predictive geophysical datasets are similarly interpolated from their native resolution to a common 55 km grid, which defines the fundamental resolution of the final heat flow solution. For some datasets, this means increasing the spatial resolution from coarser native resolutions using bilinear interpolation, while for other datasets this means decreasing the spatial resolution from finer native resolutions using area averaging. The heat flow measurements are similarly binned into 55 km cells. Where multiple heat flow measurements exist within a 55 km single cell, they are averaged. We exclude heat flow measurements

350 >200 mW/m², as these high values are representing local anomalies, rather than regional heat flow at the 55 km scale. We also
 351 exclude four on-shore measurements where heat flow is strongly influenced by various local processes (DH-GAP01, Marraat-
 352 1, Alert_203-1, HansTausen_Hare; Section 4.2).

Table 5 Geophysical datasets and features provided to the machine learning algorithm to spatially interpret point measurements of heat flow. Data extent is global, unless otherwise stated. A graphical overview of these input datasets is shown in the Appendix.

Feature	Dataset/Method	Reference
Topography *Global *Regional	*Earth 2014 *BedMachine v3	Hirt and Rexer (2015) Morlighem et al. (2017)
Mohe depth *Global *Regional	*kriging interpolation *satellite gravity gradient inversion	Szwilius et al. (2019) following the method of Haas et al. (2020)
Lithosphere-Asthenosphere boundary *Global *Regional	*LithoRef2018 *AMISvAre	Afonso et al. (2019) Steinberger et al. (2019)
Tectonic regionalisation *Global *Regional	*SL2013sv *NAT2021	Schaeffer and Lebedev (2015) Celli et al. (2021) following the method of Schaeffer and Lebedev (2015)
Magnetic susceptibility	VIS model	Hemant and Maus (2005)
Vertical magnetic field	LCS-1	Ebbing et al. (2021)
Mean curvature	GOCE gravity gradient	Ebbing et al. (2018)
Distance to: *trench *ridge *transform faults *young rifts *volcanoes	*UTIG (Plates project) *UTIG (Plates project) *UTIG (Plates project) *n/a *n/a	Goutorbe et al. (2011) Goutorbe et al. (2011) Goutorbe et al. (2011) Şengör and Natal'in (2001) Siebert et al. (2010)

355 To ensure globally consistent results, the machine learning algorithm is trained with global data and the prediction is also global. The training data set for this algorithm contains 80% of all available global heat flow measurements, but we include 100% of all available heat flow measurements within the Greenland domain. As this study focuses on heat flow in and around

Greenland, we present only the Greenland domain of this simulation. The Greenland domain contains both continental and oceanic crust, which are known to have markedly different thermal characteristics and geological histories (Dawes, 2009). We therefore run the algorithm separately for each crust type to optimize heat-flow prediction.

For the continental [modelsimulations](#), we assign the measurements associated with the present-day Iceland plume to the remaining 20% of the testing dataset. This removes regions of active volcanism from the training data but maintains regions of paleo plume activity within the training data. We also employ a jackknife resampling method with the 60 available continental measurements, ~~to provide~~. This means we calculate sixty individual simulations, and in each simulation one of the Greenland onshore heat flow points is left out from the machine learning training dataset. From this simulation ensemble, minimum, mean and maximum heat flow estimates are calculated (Figure 3). This jackknifing indicates that the magnitude and spatial distribution of continental heat flow is disproportionately sensitive to the inclusion or exclusion of the relatively high and uncertain heat flow measurement at NGRIP. ~~As this suggests that the NGRIP measurement may not be statistically representative of the broader region, we exclude it from the training data for the machine learning approach. No other point influences the predicted heat flow results to such a degree.~~

~~The jackknifing ensembles suggest that the NGRIP measurement is not representative of the regional background lithospheric heat flow being simulated by the machine learning approach. Simply put, there is no plausible source for high heat flow at NGRIP in the twelve input geophysical datasets provided to the machine learning algorithm (Figure A1). However, NGRIP and the presence of the Northeast Greenland Ice Stream strongly suggest elevated heat flow in North Greenland. Given appreciable community interest in the NGRIP anomaly, we follow Rezvanbehbahani et al. (2017) and run the machine learning algorithm with training datasets that both include and exclude NGRIP. We make both these “with” and “without” NGRIP heat flow maps available in the database and describe the influence of the NGRIP anomaly on the machine learning approach in Section 3.2. Generally, while the location of the NGRIP measurement is unique within Greenland for spatial interpolations, from a machine learning perspective, the relations between observations and geophysical fields are more important than spatial relations. In this sense, our machine learning algorithm does not consider NGRIP a spatial outlier, but rather a geophysical outlier; the heat flow at NGRIP is not consistent with other observations of heat flow in similar settings. This suggests that the NGRIP heat flow anomaly is due to local processes that are not captured in the twelve input geophysical datasets.~~

For the regional overview considered here, precise placement of the continent–ocean transition and type of transitional crust is not critical, so we use the 1000-m bathymetry contour as a simple proxy to delineate oceanic and continental domains. This is a reasonable first-order approximation everywhere except along the Greenland–Iceland Ridge where the boundary is complex. For the oceanic portion of the domain, where spatial variations in submarine topography and ocean-bottom temperatures influencing heat flow are generally more subtle than on land, we do not employ a jackknife resampling method, and instead provide a single heat flow estimate. Although the continental and oceanic [modelsimulations](#) were run separately, no edge effects are apparent along the continent–ocean transition.

Figure 4 shows the importance of the individual input variables to the machine learning algorithm for the continental and the oceanic domains of our model. The importance parameter evaluates the relative importance of each input dataset for

predicting the results. More details about the calculation and theory of the importance parameter can be found in Lösing and Ebbing (2021). For the continental [modelsimulation](#) domain, the distance to volcanoes is the most important feature, followed by the Moho depth and the tectonic regionalization. The mean curvature of the gravity data, the susceptibility model, and the vertical magnetic field component (Bz) are the least important features. For the oceanic [modelsimulation](#) domain, the distance to the nearest ridge, the [LABlithosphere-asthenosphere boundary](#) depth and the tectonic regionalization are the most important features. Differences in feature importance between the continental and oceanic domains supports the idea that machine learning can be more precise when each domain is modelled individually. [The inclusion or exclusion of NGRIP from the training data does not fundamentally shift this importance ranking of the input geophysical datasets.](#)

3 Data Products

3.1 Heat Flow Measurement Database

The heat flow measurement database presented here contains 290 measurements that are carried forward from IHFC 2018. Eleven of these measurements have been [re-assessedreassessed](#) with new heat flow values (Table [32](#)). The database contains a further 129 measurements that did not appear in IHFC 2018. The majority of these measurements have not been previously published elsewhere. They consist of 88 offshore measurements and 41 onshore measurements, of which 24 are subglacial. Perhaps most notably, these new measurements provide the first comprehensive sampling of heat flow in Davis Strait and Baffin Bay. The mean distance between a new measurement (Type 1) and an existing IHFC 2018 measurement (Type 0) is 251 km, with distance ranging from <1 km (HF4-9 in Davis Strait) to 645 km (DANA06-HF93_01 in Baffin Bay). The Greenland domain that we employ has an area of $6.4 \times 10^6 \text{ km}^2$, [which yields a characteristic measurement density of one measurement per ~15,000 km².](#)

Within the Greenland domain, the median of all heat flow measurements ($n = 419$) is 79 mW m^{-2} with a standard deviation of 53 mW m^{-2} (Figure 5). The highest heat flow measurement is 377 mW m^{-2} at the RK2105 site on the Mid-Atlantic Ridge just north of Iceland. The lowest heat flow measurement is 3 mW m^{-2} at the DH-GAP01 site in a permafrost talik in southwestern Greenland. While there is a large range of both onshore and offshore heat flow values, a two-tailed t -test, assuming two samples with unequal variance, suggests that the population of [off-shoreoffshore](#) heat flows (median 85 mW m^{-2} and standard deviation 52 mW m^{-2}) is significantly ($p < 0.05$) warmer than the population of [on-shoreonshore](#) heat flows (mean 58 mW m^{-2} and standard deviation 55 mW m^{-2}). This difference can be attributed to the more intensively sampled elevated heat flow in the vicinity of the Mid-Atlantic Ridge, in the eastern portion of our Greenland domain. Of the $n = 419$ heat flow measurements, 53% have a measurement uncertainty of $<5 \text{ mW m}^{-2}$, 40% have a measurement uncertainty of between 5 and 20 mW m^{-2} , and 7% have a measurement uncertainty of $>20 \text{ mW m}^{-2}$ (Figure 6).

formaterede: Hævet skrift

formaterede: Hævet skrift

formaterede: Hævet skrift

3.2 Greenland Heat Flow Map

Combining multiple simulations from the machine learning algorithm provides a seamless heat flow map across both continental and oceanic areas around Greenland (Figure 7). This seamless heat flow map represents the mean, or “best estimate”, of geothermal heat flow across the domain. Our “without NGRIP” heat flow ~~modelsimulation~~ suggests a mean onshore heat flow across Greenland of 44 mW m⁻², ranging from 28 to 76 mW m⁻² across the country. Aside from a heat flow anomaly of up to 100 mW m⁻² in Central North Greenland, our “with NGRIP” heat flow simulation is broadly similar to the “without NGRIP” simulation. The presence of the NGRIP anomaly, however, increases the mean onshore heat flow across Greenland to 48 mW m⁻². Generally, the range between maximum and minimum heat flow simulations is <20 mW m⁻² for most continental areas. ~~Perhaps~~The heat flow anomaly around NGRIP is caused by the machine learning algorithm classifying the anomaly region as broadly similar to NGRIP, based on the twelve input geophysical datasets.

Aside from the NGRIP anomaly, the most distinctive onshore heat flow feature is the relatively low heat flow within the North Atlantic Craton of South Greenland. As the North Atlantic Craton is an old Archaean block, it is expected to have an average surface heat flow significantly less than younger continental terrains (Goes et al., 2020). ~~The~~Apart from the NGRIP anomaly, the highest onshore heat flow is in central eastern Greenland. This positive anomaly, or warm bias, in heat flow is attributable to proximity to the Mid-Atlantic Ridge. Offshore, there is a clear asymmetry to the east and west of Greenland. West of Greenland, in Davis Strait and Baffin Bay, heat flow is generally similar to continental values with some indications of near-shore warm anomalies. However, these warm anomalies may be due to our approximate delineation between continental and oceanic crust types. East of Greenland, in the North Atlantic and Greenland Sea, there is a pronounced high heat flow along the Mid-Atlantic Ridge. Offshore heat flow is enhanced throughout the Irminger Basin off Southeast Greenland.

We compare our modelled heat flow map with the measured heat flow values: (Figure 8). Generally, the residuals between measured and modelled heat flow are <20 mW m⁻² in the continental portion of the domain. NGRIP, however, is a clear outlier in this n = 419 site comparison. In the oceanic portion of the domain, the ~~measured-versus-modelled~~ residuals are significantly higher (Figure 8)-typically larger. This asymmetry ~~in residuals~~ may be attributable to both our coarse resolution of the continent–ocean crustal boundary or differences in the accuracy and resolution of geophysical datasets in the onshore and offshore portions of the domain. Our relatively poor delineation of the continent—ocean crustal boundary inevitably results in some oceanic measurements lumped into the continental simulations, and vice versa. ~~In offshore areas, especially along the Mid-Atlantic Ridge, the large~~These larger residuals suggest that available geophysical datasets do not capture local processes offshore, especially along the Mid Atlantic Ridge, as well as in some onshore areas. In other words, the global or regional datasets upon which the machine learning algorithm depends have insufficient resolution to capture the variety of local processes reflected in heat flow measurements (Section 4.2.3). This is a fundamental limitation of the 55 km spatial resolution ~~that~~ we adopted to ensure a globally consistent heat flow simulation. We expect these residuals to decrease with finer spatial resolution and the inclusion of more geophysical datasets.

Formateret: Indrykning: Første linje: 1,27 cm

The magnitude and spatial distribution of heat flow is ~~highly~~clearly very sensitive to the inclusion of the relatively high and uncertain NGRIP heat flow measurement ($129 \pm 30 \text{ mW m}^{-2}$). ~~Similar~~This machine learning outcome is similar to that highlighted by Rezvanbehbahani et al. (2017), when-. ~~The inclusion of NGRIP is included in the jackknifing simulations, the algorithm predicts a large area of training data introduces substantial ensemble uncertainty in Central North Greenland, as the machine learning algorithm cannot reconcile the NGRIP anomaly with heat flows up available input geophysical datasets. The magnitude and spatial distributions of the ensemble uncertainty ranges of the “with” and “without” NGRIP simulations clearly show that, of all on-shore measurements, the machine learning algorithm is most sensitive to 60 mW m^{-2} greater, compared to simulations when NGRIP is excluded the inclusion or exclusion of NGRIP (Figure 9). Our decision recommendation to exclude NGRIP from the training data, is on the basis that it is not statistically representative of the broader region, is not entirely subjective regional background lithospheric heat flow.~~ The heat flow measured at NGRIP is $\sim 86 \text{ mW m}^{-2}$ greater than the heat flow we simulate at NGRIP: 43 mW m^{-2} with a range of 35 to 45 mW m^{-2} . ~~Strictly~~However, strictly speaking, ~~however~~, the NGRIP ice borehole measurement reflects elevated heat flow in the basal layers of the ice sheet, and is not necessarily representative of thermal conditions in the uppermost layers of the underlying bedrock. A substantial portion of this ~~e-~~ $\sim 86 \text{ mW m}^{-2}$ discrepancy between observed basal and simulated geothermal heat flows may be attributable to local subglacial hydrological processes at the ice-bed interface (Gooch et al., 2016; Bons et al., 2021; Smith-Johnsen et al., 2021). For example, subglacial water flow or hot springs are much finer-scale processes in comparison to the 55 km resolution of our machine learning algorithm. We note, ~~however~~, that future additional measurements of elevated heat flows in Central North Greenland may yet render NGRIP statistically representative of the broader region. We therefore make both the “with” and “without” NGRIP heat flow maps available in the database.

4 Discussion

4.1 Paleoclimate Correction

Ground surface temperature is an important boundary condition for geothermal flow. Increases in surface temperature generally decrease the temperature gradient and heat flow, while decreases in surface temperature generally increase the temperature gradient and heat flow. The depth of these heat flow perturbations depends on the magnitude and duration of the paleoclimatic shift. In Arctic settings, the most striking paleoclimatic heat flow perturbations are those associated with submarine to subaerial transition. In areas where crustal uplift causes land to emerge from the ocean, geothermal flow is greatly enhanced by the transition from a relatively warm ocean-bottom boundary temperature to a relatively cold atmospheric boundary temperature. While this heat flow anomaly is limited to low-elevation coastal fringes, it can be surprisingly pronounced. For example, a heat flow of 148 mW m^{-2} was measured in the Alert_203-1 borehole at 5 m elevation, whereas a heat flow of 72 mW m^{-2} was measured in the Alert_202-2 at 77 m elevation $< 2 \text{ km}$ away (Taylor et al., 2006). Similarly, the Marraat-1 borehole at 13 m elevation yielded a geothermal flow of 132 mW m^{-2} (Damm and Christensen, 1994), which is $\sim 160\%$ greater than the 50 mW m^{-2} measured at G02_Paakitsoq at higher elevations $\sim 110 \text{ km}$ away (Tatenhove and Olesen, 1994).

While the basalt and gneiss rock types are different between the Marraat-1 and G02_Paakitsoq sites, their thermal properties are not sufficiently different to readily explain this discrepancy in local heat flows.

We ~~characterize~~demonstrate the magnitude and duration of a submarine to subaerial paleoclimate perturbation using a simple 1-D heat flow model. In this model, we prescribe a constant basal heat flow of 50 mW m^{-2} applied at 500 m depth and uniform thermal diffusivity of $0.5 \text{ mm}^2 \text{ s}^{-1}$. We then assume that the surface boundary condition shifts from a $+4^\circ\text{C}$ submarine setting to a -6°C subaerial setting at model initialization. For this submarine to subaerial transition, which is characteristic of the Ilulissat area, it is plausible that geothermal flows of $>150 \text{ mW m}^{-2}$ can persist to depths of 100 m for >400 years as freshly emerged coastal land cools in the atmosphere (Figure 10). While it is clear that the Alert_203-1 and Marraat-1 boreholes represent encounters with the elevated coastal heat flow anomaly associated with recent land emergence, this effect may influence other heat flow measurements in the database to a lesser degree. Caution should be exercised when interpreting heat flow measurements from land that has emerged in geologically recent times (i.e. since the Little Ice Age). While it may be difficult to interpret anomalous coastal heat flow measurements, it is conceivable that this coastal heat flow anomaly could be harnessed as an indirect, or low-temperature, geothermal heat source for coastal settlements around Greenland.

A second paleoclimatic heat flow perturbation is that associated with subglacial to subaerial transitions (and vice versa), as well as transitions between cold-based (or frozen) and warm-based (or thawed) subglacial conditions. The effect of such transitions is highlighted by 2D simulations of bedrock temperature and heat flow at the DH-GAP04 borehole in West Greenland (Claesson Liljedahl et al., 2016; Hartikainen et al., 2021). For this site, an uncorrected heat flow of 28 mW m^{-2} was calculated over the 280-480 m depth range. The uppermost 280 m of borehole temperatures were discarded to avoid the effect of topography and recent variations in surface climate. Calculating a longer-term paleoclimatic correction, one that accounts for both ice-sheet history and climatic events influencing ground surface temperature, has been performed using a 2D cross-sectional simulation and site-specific data for the past 100 ka (Hartikainen et al., 2021). This period includes a full glacial cycle, during which DH-GAP04 transitioned between ice-covered and ice-free periods, as well as between cold- and warm-based ice-sheet conditions. This approach suggests a paleoclimatically corrected heat flow of $38 \pm 2 \text{ mW m}^{-2}$, which is $\sim 36\%$ greater than the present-day measurement. This paleoclimatically corrected heat flow represents the equilibrium heat flow through Earth's crust, unaffected by long-term variations in ground surface temperature over millennial time scales. When interpreting near-surface heat flow in previously glaciated terrain, it is important to use a paleoclimatically corrected heat flow as the deep, or lower boundary condition, in heat flow simulations.

Figure 11 shows a 2D cross-sectional heat flow simulation at DH-GAP04 that exemplifies both types of glacial transitions described above. First, at around 10 ka (3 kyr before deglaciation), the local basal thermal state of the ice sheet changes from being cold-based (basal ice temperature $\sim -8^\circ\text{C}$) to warm-based (basal ice temperature at the pressure melting point, $\sim -1^\circ\text{C}$; Hartikainen et al., 2021). This results in a very strong decrease in heat flow. At the DH-GAP04 borehole, the heat flow is reduced from 35 ± 3 to $12 \pm 1 \text{ mW m}^{-2}$ ($\sim 65\%$ decrease). Subsequently, at the time of deglaciation (around 7 ka), the ground surface cools by $2-6^\circ\text{C}$, compared to the ice-covered warm-based period, as the area becomes subject to Holocene air temperatures. This cooling lithospheric surface boundary condition increases heat flow to $25 \pm 5 \text{ mW m}^{-2}$. At this site, the

glacial transitions therefore result in complex changes in heat flow, with values ranging from 11 to 38 mW m⁻² over the past 100 ka (Hartikainen et al., 2021). Across its 25-km transect distance, this simulation also highlights considerable spatial variability in the heat flow response to glacial transitions. Thus, similar to submarine to subaerial transitions, glacial transitions may result in considerable temporal variations in geothermal heat flow with a complex kilometer-scale spatial pattern. Paleoclimatic corrections for previously glaciated terrain will always have some degree of uncertainty associated with assumed basal ice temperature, near-surface ground temperature, and ice-cover histories.

A third paleoclimatic heat flow consideration is the propagation of surface temperature changes through persistent ice-sheet cover to the subglacial interface where heat flow is measured. (Calov and Hutter, 1997). The propagation of surface temperatures through the ice sheet is controlled by heat conduction and advection, where the latter is caused by a combination of snowfall leading to vertical transport of relatively cold surface snow downwards, and ice-flow dynamics giving rise to horizontal ice transport from colder interior sites to warmer marginal sites (Hooke, 2019). In the interior of the ice sheet, advection generally dominates in the upper ice column because. There, vertical velocity at the ice-sheet surface is effectively equivalent to the snowfall rates-are-comparatively-high, meaning that rate, which means that downward advection outpaces upward conduction. In from the lower bed. Lower in the ice column, where vertical velocities are small become smaller, conduction becomes increasingly important. This means that – even in the absence of heat sources or sinks – a deep ice temperature profile measured today, is typically not representative of present-day climate but is instead a convolution of complementary competing advection and conduction processes through the ice sheet. (Calov and Hutter, 1997). Measurements of ice temperatures on the ice divide thus display a cold anomaly in the glacial Last Glacial Period ice temperatures (115–11 ka) and a warm anomaly in the part of the ice column that corresponds in age to the Holocene Climatic Optimum (8–5 ka) (Gundestrup et al., 1994; Dahl-Jensen et al., 2003). Due to conduction, the magnitude magnitudes of these anomalies are moderated moderate over time. Simply put, however, there can be a multi-centurial to multi-millennial time lag, depending on ice thickness, for surface temperature changes to reach the ice-bed interface at the ice divide. In the ice-sheet interior, present-day basal ice temperatures still reflect a past cooler climate, and measured temperature gradient and heat flow will be greater than they would otherwise if Greenland's climate had not changed significantly in the past c. 100 ka. Indeed, the 61±2 mW m⁻² present-day heat flow that we estimate at GRIP is ~20% greater than the 51 mW m⁻² estimated for that site with differing paleoclimatic correction-by-corrections (Dahl-Jensen et al., 1998; Greve, 2019).

4.2 Other Corrections

In addition to correcting local heat flow measurements to account for the effect of non-steady local past climate, there are several other heat flow corrections relevant within the Greenland domain. First, there is local topographic correction, to account for elevated heat flow in valleys and correspondingly diminished heat flow along ridge lines (Lees, 1910). This Study provides an explicit topographic is the only systematic correction for most heat flow measurement currently provided in the database, based on the geostatistical model of Colgan et al. (2020). Within our Greenland domain, this topographic correction ranges from a minimum of –21±5% at Hole 38 in Ilímaussaq, South Greenland (Sass et al., 1972), to +55±10% at the Dybet site in

Young Sound, East Greenland (Rysgaard et al., 2018). These end-member sites highlight the potential importance of
555 acknowledging topographic influence on local heat flow. However, there are several measurement sites where topographic
correction is not resolved by the Colgan et al. (2020) product, primarily due to geographic limitations. At Agassiz Ice Cap, for
example, four borehole ice temperature profiles have been measured within ± 1100 m of the same position (Agassiz77, 79A,
79B and 84; Clarke et al., 1987; Fisher and Koerner, 1994). The ice thicknesses vary between 128 and 341 m across these sites
and assessed heat flows vary between 51 ± 6 and 58 ± 5 mW m⁻². Topography likely explains part of the apparent discrepancy
560 among those four closely spaced measurements.

Second, groundwater flow can substantially modify the apparent geothermal heat gradient. The heat advection
associated with even relatively small ~~liter-per-second scale~~ ~ 1 L s⁻¹ groundwater flows can be comparable to the heat diffusion
associated with the geothermal gradient (Mansure and Reiter, 1979). In Greenland, there are clearly some areas where
groundwater flow is substantially suppressing or enhancing the apparent geothermal heat gradient. For example, at the DH-
565 GAP01 site near Kangerlussuaq, in Southwest Greenland, the apparent geothermal gradient in a talik beneath a small lake is
almost entirely moderated by groundwater flow. There, measured heat flow is reduced 90% in comparison to the nearby DH-
GAP03 and DH-GAP04 sites (Johansson et al., 2015). In contrast, there are also areas of Greenland with active hot springs
where groundwater flow can similarly overwhelm the regional geothermal heat flow value (Persoz et al., 1972). At
Unartukavsaq, West Greenland, for example, a subaerial 15°C hot spring discharge of 1 L s⁻¹ represents a 63 kW sensible heat
570 source relative to a mean annual air temperature of 0°C (Hjartarson and Armannsson, 2010). This is equivalent to a heat flow
of 6300 mW m⁻² over a characteristic area of 100 m². These end-member sites highlight the need to account for the differing
influences of “cold” and “hot” groundwater flow on-shore, including in subglacial settings.

Third, ~~while approximately half of Earth’s contemporary heat flow is ultimately derived from radioactive decay,~~
~~primarily within the mantle,~~ heat production from ~~near-surface~~ radioactive sources can ~~also~~ influence the apparent ~~magnitude~~
575 ~~and spatial distribution of the deeper~~ geothermal gradient (Lees, 1910). The temperature profiles of the Ilimaussaq boreholes,
drilled for the Kvanefjeld uranium prospect in South Greenland, are substantially influenced by ~~near-surface~~ radioactive heat
production. ~~Their~~ measured ~~Ilimaussaq~~ heat flows ~~of~~ (34 to 39 mW m⁻² ~~(converted from 0.80 to 0.92 HFU)~~ ~~included~~
~~associated radioactive decay. That outcrop is~~ ~~have been~~ estimated to ~~have reflect~~ a ~~near-surface radioactive~~ heat production of
 ~ 8 μ W m⁻³ over limited horizontal (<10 km) and vertical (<1 km) extents. Based on heat flow measurements in analogous
580 Precambrian Shield settings in Canada, Australia and the United States, Sass et al. (1972) suggested that the measured
Ilimaussaq heat flows are 26 to 44 % higher than the ~ 27 mW m⁻² ~~(converted from 0.65 HFU)~~ heat flow that ~~they would~~
~~otherwise be~~ expected for Precambrian Shield. The Ilimaussaq ~~case boreholes highlight~~ ~~study highlights~~ the potentially non-
trivial influence of ~~near-surface~~ radioactive heat production for altering local geothermal gradients in Greenland. Given the
diverse subaerial geology of Greenland, and the vast area of poorly resolved subglacial geology beneath the ice sheet (Dawes,
585 2009), it is likely that there are areas in the Greenland domain beyond Ilimaussaq/Kvanefjeld where heat flow may be similarly
influenced by non-trivial heat production associated with ~~radioactive decay~~ ~~near-surface geology~~.

Finally, lateral contrasts in the thermal conductivity of rock types can result in local heat flow refraction (Jaeger, 1965; Lachenbruch, 1968). In these settings, geotherms close to the geological boundary are influenced by the contrast between relatively high and low conductivity rock types, with heat flow diverted from the low conductivity rock type into the high conductivity rock type. Sharp spatial contrasts in thermal conductivity associated with rock type may modify local heat flow by $\pm 15\%$ in subglacial settings (Willcocks et al., 2021). Within our Greenland domain, the effect of lateral conductivity contrasts on heat flow has been qualitatively described at the Isua site. There, Colbeck and Gow (1979) suggest that the heat flow measured in ice-sheet boreholes may be biased low, as subglacial heat flow is potentially being diverted into the adjacent, and highly conductive, subaerial iron ore formation. With the recent availability of digital maps of subaerial Greenland geology available on open platforms, such as the Escher and Pulvertaft (1995) geological map that now appears in QGreenland (<https://qgreenland.org/>); last access 8 February 2022), and growing knowledge of variations in thermal conductivity with rock type, it appears feasible to begin systematically quantifying the effect of lateral conductivity contrasts on heat flow across ice-free areas of Greenland.

Table 6 – Minimum, mean and maximum Number of heat flow over Greenland land area from observations and geophysical datasets used by this study and five previous studies within the Greenland domain that we consider. These values may be regarded as best estimates. The interpolation method of each study is also listed.

Model	Number of Greenland heat flow measurements			Number of geophysical datasets	Interpolation method
	Onshore		Offshore		
	Subglacial	Subaerial			
This study	25	77	317	12	Machine learning
Rezvanbehbahani et al. (2017)	5	4	0	20	Machine learning
Artemieva (2019)	1	60	229	8	Thermal isostasy model
Martos et al. (2018)	6	2	0	5	Forward model
Greve (2019)	5	3	0	3	Paleoclimate and Ice flow model
Lucazeau (2019)	4	62	248	14	Geostatistical model

Formateret tabel

Formateret: Linjeafstand: enkelt

Formateret tabel

Formateret: Linjeafstand: enkelt

Formateret: Linjeafstand: enkelt

Formateret: Linjeafstand: enkelt

Formateret: Linjeafstand: enkelt

4.3 Comparison of Heat Flow Models

We statistically compare our heat flow model to five previously published Greenland heat flow models. Root-mean-squared-error (RMSE) and simulated minus measured bias relative to heat flow measurements within the common land area domain also shown (Figure 12). Here, the number of onshore heat flow measurements (n) reflects binned 55-km grid cells.

Model	Min {mW·m ⁻² }	Mean {mW·m ⁻² }	Max {mW·m ⁻² }	RMSE {mW·m ⁻² }	Onshore bias {mW·m ⁻² }	Sample Size
This Study (without NGRIP)	28	44	76	11	0	20
				22	-4	21
This Study (with NGRIP)	29	48	102	13	0	21
Rezvanbehbahani et al. (2017)	20	54	124	15	+1	21
Artemieva (2019)	40	58	108	23	+6	21
Martos et al. (2018)	50	60	75	24	+8	21
Greve (2019)	32	62	130	14	+6	21
Lucazeau (2019)	46	64	83	25	+11	21

4.3 Comparison of Heat Flow Models

We statistically compare our heat flow model to five previously published Greenland heat flow models. Their, whose inputs and methods are summarized and compared with ours in Table 74. With a mean Greenland heat flow of 44 mW m⁻², our model “without NGRIP” simulation infers the lowest mean Greenland heat flow across all models to date (Table 65). Even when including NGRIP in the continental jackknifing simulations, our mean “with NGRIP” heat flow only increases to 48 mW m⁻². When comparing all sixseven heat flow simulations with the n = 21 grid cells of binned heat flow measurements (including NGRIP) within the Greenland land area common to all sixseven models, we find that our model which includes NGRIP in the training dataset has the smallest bias and root-mean-squared-error (RMSE). Our model is followed by the model of Rezvanbehbahani et al. (2017) which has the second smallest bias, and the model of Greve (2019) which has the second lowest root-mean-squared-error (RMSE; (Figure 12). Our model only If we exclude the NGRIP measurement from the comparison our simulation trained without NGRIP yields the smallest bias (0 mW m⁻²) and RMSE (11 mW m⁻²) if the NGRIP measurement is excluded from this comparison. As we exclude the relatively high and uncertain NGRIP heat flow

~~value measurement~~ from our training dataset, our model clearly does not reproduce this heat flow anomaly ~~as well as, unlike~~ models that ~~do~~ include the NGRIP measurement. ~~However, even our model that is trained with NGRIP predicts a heat flow value of only 90 mW m⁻² at NGRIP, which is 39 mW m⁻² less than the measured value (129 mW m⁻²). This difference of 39 mW m⁻² between measured and predicted values remains the highest residual among all onshore sites (Figure 12).~~

625 We also qualitatively compare the magnitude and spatial distribution of ~~our geothermal heat flow map without NGRIP~~ with these five previous studies (Figure 13). In comparison to the ~~most methodologically similar model, the machine-learning model of Rezvanbehbahani et al. (2017), we infer a significantly cooler Central North Greenland. methodologically similar model, the machine-learning model of Rezvanbehbahani et al. (2017), we infer a significantly cooler Central North Greenland.~~ This pronounced difference can be explained ~~partly~~ by our choice of excluding the NGRIP measurement. ~~We but also~~ 630 ~~employ the model which is trained with NGRIP is colder in Central North Greenland than Rezvanbehbahani et al. (2017). We also employed~~ more Greenland regional datasets, which are generally finer resolution, and better suited to our study area than global datasets. ~~We also train, and trained~~ our model with a significantly larger number of *in situ* measurements.

The Lucazeau (2019) heat flow model is also geostatistical, as it relies on empirical correlations between global geophysical datasets and heat flow measurements. While the Lucazeau (2019) model shares similar length scales of spatial 635 variability (~50 km), its patterns are quite different from our model. For example, they infer a relatively warm North Atlantic Craton. These differences can be attributed to our explicit preference for more detailed regional datasets, instead of global datasets, where possible. An additional source of deviation from the Lucazeau (2019) model may be their manually weighting of included geophysical datasets, whereas our machine-learning algorithm includes geophysical datasets without *a priori* weights.

640 Martos et al. (2018) based their heat flow model on identifying deep magnetic sources, assuming that the deepest sources coincide with the Curie isotherm and constructing a regional thermal model of heat flow. Their regional thermal model infers a band of enhanced heat flow anomaly from Central East to Northwest Greenland. Our model does not infer this enhanced heat flow anomaly and also finds substantially lower heat flows in the North Atlantic Craton. We attribute these differences to the choice of input data, including availability of heat flow measurements, and differing geostatistical and 645 thermal modelling approaches.

Artemieva (2019) proposed a thermal isostasy method to calculate upper mantle temperatures, lithosphere thickness and geothermal heat flow using bedrock topography, ice thickness and Moho depth from seismic data. This approach is sensitive to the choice of surface wave tomography models and reference values. Our model has the largest discrepancy with the Artemieva (2019) model along the coast of Central East Greenland, where our model infers a substantially lower heat flow 650 over a broad region. All four other models, however, also predict lower heat flows than Artemieva (2019) in this region, which suggests this anomaly is unique to the data or methodology of Artemieva (2019).

Finally, the Greve (2019) heat flow model uses a numerical ice sheet model to infer the heat flow required to match observed basal ice temperatures at ice core locations, treating the Pollack et al. (1993) heat flow model as an *a priori* guess. Similar to the difference field with Rezvanbehbahani et al. (2017), our difference field with Greve (2019) highlights the NGRIP

655 measurement site, where we predict a much lower regional heat flow. The spatial patterns in the Greve (2019) model suggest
it is sensitive to a relatively small number of input heat flow measurements ($n = 8$). Part of the difference from our model may
therefore be attributable to differing availability of heat flow measurements between studies.

660 **Table 7 – Number of heat flow observations and geophysical datasets used by This Study and five previous studies within the Greenland domain that we consider. Table 5 - Minimum, mean and maximum heat flow over Greenland onshore area from this study and five previous studies. Root-mean-squared-error (RMSE) and simulated-minus-measured bias relative to heat flow measurements within the common land area domain also shown (Figure 12). Here, the number of onshore heat flow measurements (sample) reflects binned 55-km grid cells. See Table 4 for a comparison of the heat flow measurements used in each of these studies.**

<u>Model</u>	<u>Min</u> <u>[mW m⁻²]</u>	<u>Mean</u> <u>[mW m⁻²]</u>	<u>Max</u> <u>[mW m⁻²]</u>	<u>RMSE</u> <u>[mW m⁻²]</u>	<u>Onshore</u> <u>bias</u> <u>[mW m⁻²]</u>	<u>Sample</u> <u>Size</u>
This study (without NGRIP)	28	44	76	11	0	20
				22	-4	21
This study (with NGRIP)	29	48	102	13	0	21
Rezvanbehbahani et al. (2017)	20	54	124	15	+1	21
Artemieva (2019)	40	58	108	23	+6	21
Martos et al. (2018)	50	60	75	24	+8	21
Greve (2019)	32	62	130	14	+6	21
Lucazeau (2019)	46	64	83	25	+11	21

665 ~~These values may be regarded as best estimates. The interpolation method of each study is also listed.~~

Model	Number of Greenland heat flow measurements			Number of geophysical datasets	Interpolation method
	Onshore		Offshore		
	Subglacial	Subaerial			
This Study	25	77	347	12	Machine learning
Rezvanbehbahani et al. (2017)	5	4	0	20	Machine learning
Artemieva (2019)	4	60	229	8	Thermal isostasy model

Martos et al. (2018)	6	2	0	5	Forward model
Greve (2019)	5	3	0	3	Paleoclimate and Ice flow model
Lucazeau (2019)	4	62	248	14	Geostatistical model

Formateret: Linjeafstand: enkelt

Formateret: Linjeafstand: enkelt

Formateret: Linjeafstand: enkelt

4.4 Icelandic Plume Track

There is substantial interest in understanding the paleo Icelandic plume track beneath Greenland and its ice sheet. Generally, there is consensus among plume track models that the Icelandic plume was located in the vicinity of present-day Kangerdlugssuaq Fjord in Central East Greenland at ~50 Ma (Morgen, 1983; Forsyth et al., 1986; Muller et al., 1993; Doubrovine et al., 2012; Martos et al., 2018). In addition to reconstructing past tectonic motion, this paleo plume fix is supported by the presence of basalts up to 7 km thick from the North Atlantic Igneous Province dated to ~56 Ma along the Blosseville Coast (Storey et al., 2007) and the presence of a relatively low upper mantle viscosity there today (Khan et al., 2016). However, there is less consensus as to the plume position prior to this time, with analogous West Coast plume positions previously hypothesized from Disko Island (70°N) to Petermann Glacier (81°N). It has also been recently suggested that Greenland bears the imprint of not just one – but two – plume tracks with differing histories of activity (Toyokuni et al., 2020).

Our model does not show an area of elevated heat flow that might be interpreted as a remnant of the Icelandic plume track. This pattern is consistent with Rezvanbehbahani et al. (2017), Greve (2019) and Lucazeau (2019), but differs from Martos et al. (2018) and Artemieva (2019), which both infer plume tracks. An earlier model from Rogozhina et al. (2016), can also be interpreted in terms of west-to-east passage of a plume. There is debate over the potential influence of paleo plume activity on present-day heat flow beneath the Greenland Ice Sheet (Smith-Johnsen et al., 2020; Bons et al., 2021). It is plausible that enhanced heat flow of ~10 mW/m² may exist along the most recent 50 Ma of the plume track, but heat flow anomalies likely become difficult to observe after this time, as heat flow returns to balance (Martos et al. 2018). The main observable impacts of paleo plume activity are now likely limited to the base of the lithosphere, meaning that plume tracks derived from geophysical modelling may not reflect near-surface heat flow, but rather an imprint of underlying lithospheric architecture.

Interpretations of paleo plume tracks are further complicated by the presence of very young volcanic and geothermal processes. Young igneous formations in East Greenland, dated to 14 Ma, suggest very recent widespread volcanism well after Greenland moved off the Icelandic plume (Storey et al., 2004). Similarly, the presence of coastal geothermal hot springs in both Central West and Central East Greenland suggests appreciable contemporary heat sources far from the contemporary location of the Icelandic plume (Hjartarson and Armannsson, 2010; Figure 6). Storey et al. (2004) suggested that metasomatic processes and emplacement of volatiles from the plume into the shallow mantle may have had long-lived influence on the

region. It is conceivable that small pressure perturbations resulting from loading and unloading of ice sheets, and/or tectonic stresses, could result in local volcanism in such a mantle (Jull and McKenzie, 1996). A north-south transect of on-shore heat flow measurements in Central East Greenland, either subaerial, subglacial, or a combination of both, could improve understanding of the residual heat flow anomaly associated with the paleo plume, as well as offer insight on elevated heat flow potential associated with young secondary processes.

5 Summary Remarks

Here, we have documented the first version of the Greenland Geothermal Heat Flow Database and Map. While we have increased the available heat flow measurements by 44% (290 to 419) within the Greenland domain, onshore measurements remain disproportionately scarce. Greenland represents ~1.5% of global land area, but — once our regional database is merged into the IHFC database — Greenland will only represent 0.08% of IHFC onshore measurements. We anticipate updating this measurement database as new measurements and corrections become available. We will continue efforts to parse the Type 2 sites (uncertain temperature data) into either Type 1 (new measurement) or Type 3 (no temperature data) classes. ~~Given Topographic correction is presently the pronounced recent and paleoclimate shifts in Greenland, only systematic correction available within the measurement database would also benefit from, but there is clearly a need for more systematic corrections. Most notably, the application of a standardized, yet site-specific, paleoclimatic correction that is systematically applied to all measurement sites would ensure that heat flow measurements are interpreted in the correct climatic context.~~

We have used machine learning to create a heat flow map that is self-consistent with this measurement database. While there has been a proliferation of Greenland heat flow maps in the past decade, compilations of *in situ* heat flow measurements have generally lagged these models. The heat flow map we present may be the first of a new generation of heat flow maps that are self-consistent with a larger and better documented inventory of *in situ* heat flow measurements. Clearly, a fundamental question in mapping Greenland heat flow is whether or not to include NGRIP as a regionally representative heat flow measurement. This touches on a larger issue of how to not only understand the effect of local processes in measurements, but also how to represent the influence of these local processes in large-scale models. For the NGRIP measurement, this may mean resolving potential differences between “basal” and “geothermal” heat flows. In regional models, this may mean representing the cumulative effect of local processes like widespread hot spring activity.

There is a present possibility to use unconventional sources to increase the inventory of available *in situ* Greenland heat flow measurements. Abandoned prospecting wells can be repurposed for heat flow measurements by inserting temperature strings to measure local geothermal gradients. While this requires knowledge of well closure and present conditions, it has been successful in the past. Local temperature gradients can also be resolved by combining knowledge of seismic- or radar-derived permafrost depth with mean annual ground temperature. This is most feasible in valley bottoms, where the permafrost is contained within a thick sediment package and there is free water below the permafrost limit. Finally, while hot spring temperatures do not serve as reliable indicators of regional geothermal heat flow, chemical analyses of their water can resolve

deep temperatures that are characteristic of regional phenomena and heat flow. It is likely that many uncharted hot springs — both subaerial and subglacial — exist in Greenland.

There are presently at least four grand challenges that ~~each provide distinct motivations to increase~~ motivate further improvement of our level of scientific understanding of Greenland's geothermal heat flow. First, geothermal heat flow is a critical basal boundary condition for the ~~thermo-mechanical~~ thermomechanical ice flow models being used to project Greenland's future sea-level rise contribution. Second, geothermal heat flow is similarly a critical basal boundary condition influencing the stability of periglacial processes and landforms, including both onshore permafrost and shallow offshore gas hydrates, that can deteriorate under future climate change. Third, resolving how the present-day magnitude and spatial distribution of geothermal heat flow may reflect the pre-50 Ma influence of the Icelandic plume track ~~is a pressing topic in understanding~~ may be key to resolving Greenland's ~~geological~~ geologic history. Finally, from a social perspective, there appears to be potential for low-temperature geothermal heating to play a role in Greenland's green energy transition.

Acknowledgements

This publication is made possible by the award "HOTROD: Prototype for Rapid Sampling of Ice-Sheet Basal Temperatures" supported by the Experiment Programme of the Villum Foundation (00022885). This work has also been supported by the Programme for Monitoring of the Greenland Ice Sheet (www.promice.dk); last access 8 February 2022) funded by the Danish Ministry of Climate, Energy and Utilities. Additional support was given by the European Space Agency through the STSE 3D Earth and the ~~Deutsche Forschungsgemeinschaft (DFG)~~ German Research Council (DFG) to the projects "GreenCrust" and "Antarctic Heat", the latter in the framework of the priority programme Antarctic Research with comparative investigations studies in Arctic ice areas. Observational and modelled data for the DH-GAP04 drillhole was financed by Swedish Nuclear Fuel and Waste Management Company (SKB).

Data Availability

Digital assets for the Greenland Geothermal Heat Flow Database and Map (Version 1) are now available open access on the GEUS ~~DataVerse~~ Dataverse at <https://doi.org/10.22008/FK2/F9P03L> (Colgan and Wansing, 2021). These include: (1) heat flow measurement database as .xlsx and .shp, (3) heat flow ~~map~~ maps at 10 and 55 km resolutions as .xyz and .nc ~~for the model with and without NGRIP~~, (3) hot spring database as .xlsx, (4) regional coast+500 km domain boundary as .shp, and (5) extrapolation code for subglacial temperature gradients as .m. The primary temperature and stratigraphy profiles of the Hellefisk-1, Ikermiut-1, Kangâmiut-1, Nukik-1/2, Alpha-1, Atammik2-1 (AT2-1), Atammik7-1 (AT7-1), Delta-1, Gamma-1, LadyFranklin7-1 (LF7-1), Qulleq-1, T4-1 and T8-1 submarine boreholes are owned by the Geological Survey of Denmark and Greenland. The derived temperature gradients and heat flows included here are published by special permission. The primary temperature and stratigraphy profiles of the Alcoa_Site7e-I, Alcoa_Site7e-P, and Alcoa_Site6g-P subaerial boreholes are

jointly owned by the Greenland Government and Alcoa. The derived temperature gradients and heat flows included here are
755 published by special permission.

References

- Afonso, J., F. Salajegheh, W. Szwilius, J. Ebbing and C. Carmen. 2019. A global reference model of the lithosphere and upper mantle from joint inversion and analysis of multiple data sets. *Geophysical Journal International*. 217: 1602–1628. <https://doi.org/10.1093/gji/ggz094>
- 760 Amante, C. and B. Eakins. 2009. ETOPO1 1 Arc-Minute Global Relief Model: Procedures, Data Sources and Analysis. Technical Memorandum NESDIS NGDC-24. *National Geophysical Data Center*. NOAA. <https://doi.org/10.7289/V5C8276M>
- Artemieva, I. 2019. Lithosphere structure in Europe from thermal isostasy. *Earth-Science Reviews*. 188: 454–468. <https://doi.org/10.1016/j.earscirev.2018.11.004>
- 765 Balling, N. and C. Brooks. 1991. Heat Flow Measurements in the Skaregaard Intrusion: A Progress Report. Kangerdlugssuaq Studies. Proceedings of a meeting held on January 1991 in the Geological Institute. *University of Copenhagen*.
- Beltrami, H. and J.-C. Mareschal. 1991. Recent warming in eastern Canada inferred from geothermal measurements. *Geophysical Research Letters*. 18: 605–608. <https://doi.org/10.1029/91GL00815>
- 770 Bjerager, M., S. Piasecki and J. Bojesen-Koefoed. 2018. The Upper Jurassic Blokely-1 cored borehole in Jameson Land, East Greenland - an introduction. *GEUS Bulletin*. 42: 7–14. <https://doi.org/10.34194/geusb.v42.4307>
- Bliss, A. 2021. Polar stereographic coordinate transformation (lat/lon to map). *MATLAB Central File Exchange*. <https://www.mathworks.com/matlabcentral/fileexchange/32950-polar-stereographic-coordinate-transformation-lat-lon-to-map>
- 775 [Bons, P., T. Riese, S. Franke, M.-G. Llorens, T. Sachau, N. Stoll, I. Weikusat, J. Westhoff and Y. Zhang. 2021. Comment on “Exceptionally high heat flux needed to sustain the Northeast Greenland Ice Stream” by Smith-Johnsen et al. \(2020\). *The Cryosphere*. 15: 2251–2254. <https://doi.org/10.5194/tc-15-2251-2021>](#)
- Buchardt, S. and D. Dahl-Jensen. 2007. Estimating the basal melt rate at NorthGRIP using a Monte Carlo technique. *Annals of Glaciology*. 45: 137–142. <https://doi.org/10.3189/172756407782282435>
- 780 [Calov, R. and K. Hutter. 1997. Large scale motion and temperature distributions in land-based ice shields; the Greenland Ice Sheet in response to various climatic scenarios. *Archives of Mechanics*. 49: 919–962.](#)
- Celli, N., S. Lebedev, A. Schaeffer and C. Gaina. 2021. The tilted Iceland Plume and its effect on the North Atlantic evolution and magmatism. *Earth and Planetary Science Letters*. 569: 117048. <https://doi.org/10.1016/j.epsl.2021.117048>

formaterede: Tysk (Tyskland)

- Claesson Liljedahl, L., A. Lehtinen, J. Harper, J.-O. Näslund, J.-O. Selroos, P. Pitkänen, I. Puigdomenech, M. Hobbs, S. Follin, S. Hirschorn, P. Jansson, H. Järvinen, L. Kennell, N. Marcos, T. Ruskeenieni, E.-L. Tullborg and P. Vidstrand. 2016. Greenland Analogue Project: Final Report. SKB Report TR-14-13. Svensk Kärnbränslehantering AB.
- Clarke, G., D. Fisher and W. Waddington. 1987. Wind pumping: A potentially significant heat source in ice sheets. The Physical Basis of Ice Sheet Modelling. *IAHS Publication Number 170*. 169-180.
- Classen, D. 1977. Temperature Profiles for the Barnes Ice Cap Surge Zone. *Journal of Glaciology*. 18: 391-405. <https://doi.org/10.3189/S0022143000021079>
- Clausen, H., M. Stampe, C. Hammer, C. Hvidberg, D. Dahl-Jensen and J.P. Steffensen. 2001. Glaciological and chemical studies on ice cores from Hans Tausen ice cap, Greenland. *Meddelelser om Grønland*. 39: 123-149.
- Colebeck, S. and A. Gow. 1979. The margin of the Greenland Ice Sheet at Isua. *Journal of Glaciology*. 24: 155-165. <https://doi.org/10.3189/S0022143000014714>
- Colgan, W., J. MacGregor, K. Mankoff, R. Haagenson, H. Rajaram, Y. Martos, M. Morlighem, M. Fahnestock, K. Kjeldsen. 2021. Topographic Correction of Geothermal Heat Flux in Greenland and Antarctica. *Journal of Geophysical Research*. 126: e2020JF005598. <https://doi.org/10.1029/2020JF005598>
- Colgan, W. and A. Wansing. 2021. Greenland Geothermal Heat Flow Database and Map. GEUS DataVerse. <https://doi.org/10.22008/FK2/F9P03L>.
- Cox, D., M. Huuse, A. Newton, A. Sarkar and P. Knutz. 2021. Shallow gas and gas hydrate occurrences on the northwest Greenland shelf margin. *Marine Geology*. 432: 106382. <https://doi.org/10.1016/j.margeo.2020.106382>.
- Dahl-Jensen, D., K. Mosegaard, N. Gundestrup, G. Clow, S. Johnsen, A. Hansen and N. Balling. 1998. Past Temperatures Directly from the Greenland Ice Sheet. *Science*. 282: 268-271. <https://doi.org/10.1126/science.282.5387.268>
- Dahl-Jensen, D., N. Gundestrup, S. Gogineni and H. Miller. 2003. Basal melt at NorthGRIP modeled from borehole, ice-core and radio-echo sounder observations. *Annals of Glaciology*. 37: 207-212. <https://doi.org/10.3189/172756403781815492>
- Dam, G. and F. Christiansen. 1994. Well summary Marraat-1, Nuussuaq, West Greenland. Open File Series. *GGU Report*. 94/11.
- Damm, V. 2010. The expedition of the Research Vessel "Polarstern" to the Arctic in 2010 (ARK-XXV/3). *Alfred Wegener Institute*. http://doi.org/10.2312/BzPM_0621_2010
- Davies, W., D. Krinsley and A. Nicol. 1963. Geology of the North Star Bugt area, Northwest Greenland. *Meddelelser om Grønland*. 162: 68.
- Davis, R. 1967. Approach Roads, Greenland, 1960-1964. *Cold Regions and Research and Engineering Laboratory*. Technical Report 133.
- Dawes, P. 2009. The bedrock geology under the Inland Ice: the next major challenge for Greenland mapping. *GEUS Bulletin*. 17: 57-60. <https://doi.org/10.34194/geusb.v17.5014>

- Doubrovine, P., B. Steinberger and T. Torsvik. 2012. Absolute plate motions in a reference frame defined by moving hotspots in the Pacific, Atlantic and Indian oceans. *Journal of Geophysical Research*. 117: B09101. <https://doi.org/10.1029/2011JB009072>
- 820 Doyle, S., B. Hubbard, P. Christoffersen, T. Young, C. Hofstede, M. Bougamont, J. Box and A. Hubbard. 2018. Physical Conditions of Fast Glacier Flow: 1. Measurements From Boreholes Drilled to the Bed of Store Glacier, West Greenland. *Journal of Geophysical Research*. 123: 324-348. <https://doi.org/10.1002/2017JF004529>
- Ebbing, J., P. Haas, F. Ferraccioli, F. Pappa, W. Szwilius and J. Bouman. 2018. Earth tectonics as seen by GOCE - Enhanced satellite gravity gradient imaging. *Scientific Reports*. 8: 16356. <https://doi.org/10.1038/s41598-018-34733-9>
- 825 Ebbing, J., Y. Dilixiati, P. Haas, F. Ferraccioli and S. Scheiber-Enslin. 2021. East Antarctica magnetically linked to its ancient neighbours in Gondwana. *Scientific Reports*. 11: 5513. <https://doi.org/10.1038/s41598-021-84834-1>
- Escher, J. and T. Pulvertaft. 1995. Geological map of Greenland. 1:2,500,000. Copenhagen, Geological Survey of Denmark and Greenland.
- Fisher, D. and R. Koerner. 1994. Signal and noise in four ice-core records from the Agassiz Ice Cap, Ellesmere Island, Canada: Details of the last millennium for stable isotopes, melt and solid conductivity. *The Holocene*. 4: 113-120. <https://doi.org/10.1177/095968369400400201>
- 830 Fisher, D., R. Koerner, J. Bourgeois, G. Zielinski, C. Wake, C. Hammer, H. Clausen, N. Gundestrup, S. Johnsen, K. Goto-Azuma, T. Hondoh, E. Blake and M. Gerasimoff. 1998. Penny Ice Cap Cores, Baffin Island, Canada, and the Wisconsin Foxe Dome Connection: Two States of Hudson Bay Ice Cover. *Science*. 279: 692-695. <https://doi.org/10.1126/science.279.5351.692>
- 835 Forsyth, D., P. Morel-a-l'Huissier, I. Asudeh and A. Green. 1986. Alpha ridge and Iceland-products of the same plume? *Journal of Geodynamics*. 6: 197- 214. [https://doi.org/10.1016/0264-3707\(86\)90039-6](https://doi.org/10.1016/0264-3707(86)90039-6)
- Fuchs, S., G. Beardsmore, P. Chiozzi, G. Gola, W. Gosnold, R. Harris, S. Jennings, S. Liu, R. Negrete-Aranda, F. Neumann, B. Norden, J. Poort, D. Rajver, L. Ray, M. Richards, J. Smith, A. Tanaka and M. Verdoya. 2021a. A new database structure for the IHFC Global Heat Flow Database. *International Journal of Terrestrial Heat Flow and Applied Geothermics*. 22: 1-4. <https://doi.org/10.31214/ijthfa.v4i1.62>
- 840 Fuchs, S., B. Ben-Norden and International Heat Flow Commission. 2021b. The Global Heat Flow Database: Release 2021. *GFZ Data Services*. <https://doi.org/10.5880/fidgeo.2021.014>
- Global Heat Flow Compilation Group. 2013. Component parts of the World Heat Flow Data Collection. *PANGAEA*. <https://doi.org/10.1594/PANGAEA.810104>
- 845 Goes, S., D. Hasterok, D. Schutt and M. Klöcking. 2020. Continental lithospheric temperatures: A review. *Physics of the Earth and Planetary Interiors*. 306: 106509. <https://doi.org/10.1016/j.pepi.2020.106509>
- Gooch, B., D. Young and D. Blankenship. 2016. Potential groundwater and heterogeneous heat source contributions to ice sheet dynamics in critical submarine basins of East Antarctica. *Geochemistry, Geophysics, Geosystems*. 17: 395-409. <https://doi.org/10.1002/2015GC006117>
- 850

- Goutorbe, B., J. Poort, F. Lucazeau and S. Raillard. 2011. Global heat flow trends resolved from multiple geological and geophysical proxies. *Geophysical Journal International*. 187: 1405–1419. <https://doi.org/10.1111/j.1365-246X.2011.05228.x>
- Greve, R. 2005. Relation of measured basal temperatures and the spatial distribution of the geothermal heat flux for the Greenland ice sheet. *Annals of Glaciology*. 42: 424–432. <https://doi.org/10.3189/172756405781812510>
- Greve, R. 2019. Geothermal heat flux distribution for the Greenland ice sheet, derived by combining a global representation and information from deep ice cores. *Polar Data Journal*. 3: 22–36. <https://doi.org/10.20575/00000006>
- Gundestrup, N. and B. Hansen. 1984. Bore-Hole Survey at Dye 3, South Greenland. *Journal of Glaciology*. 30: 282–288. <https://doi.org/10.3189/S0022143000006109>
- Gundestrup, N., H. Clausen and B. Hansen. 1994. The UCPH bore-hole logger. National Institute for Polar Research. Special Issue. 49: 224–233.
- Haas, P., J. Ebbing, and W. Szwilius. 2020. Sensitivity analysis of gravity gradient inversion of the Moho depth—a case example for the Amazonian Craton. *Geophysical Journal International*. 221: 1896–1912. <https://doi.org/10.1093/gji/ggaa122>
- Hansen, B. and C. Langway. 1966. Deep core drilling in ice and core analysis at Camp Century, Greenland, 1961–1966. *Antarctic Journal of the United States*. 1: 207–208.
- Hansson, M. 1994. The Renland ice core. A Northern Hemisphere record of aerosol composition over 120,000 years. *Tellus B*. 46: 390–418. <https://doi.org/10.3402/tellusb.v46i5.15813>
- Harper, J., A. Hubbard, T. Ruskeeniemi, L. Claesson Liljedahl, A. Lehtinen, A. Booth, D. Brinkerhoff, H. Drake, C. Dow, S. Doyle, J. Engström, A. Fitzpatrick, S. Frape E. Henkemans, N.
- Humphrey, J. Johnson, G. Jones, I. Joughin, K. Klint, I. Kukkonen, B. Kulesa, C. Landowski, K. Lindbäck, M. Makahnouk, T. Meierbachtol, T. Pere, K. Pedersen, R. Pettersson, S. Pimentel, D. Quincey, E.-L. Tullborg and D. van As. 2011. The Greenland Analogue Project: Yearly Report 2010. SKB R-11-23. *Svensk Kärnbränslehantering AB*.
- Hartikainen, J., et al. 2021. Evaluation of SR-Site and SR-PSU permafrost models against the GAP site bedrock temperatures. SKB TR-21-08. *Svensk Kärnbränslehantering AB*.
- Hemant, K., and S. Maus. 2005. Geological modeling of the new CHAMP magnetic anomaly maps using a geographical information system technique. *Journal of Geophysical Research*. 110: B12103. <https://doi.org/10.1029/2005JB003837>
- Hirt, C., and M. Rexer. 2015. Earth2014: 1 arc-min shape, topography, bedrock and ice-sheet models – Available as gridded data and degree-10,800 spherical harmonics. *International Journal of Applied Earth Observation and Geoinformation*. 39: 103–112. <https://doi.org/10.1016/j.jag.2015.03.001>
- Hjartarson, A. and H. Armannsson. 2010. Geothermal research in Greenland. *Proceedings World Geothermal Congress*. Bali, Indonesia. 25–29 April 2010.
- Hooke, Roger LeB. 2019. *Principles of Glacier Mechanics*. Cambridge University Press.

formaterede: Engelsk (USA)

- 885 Howat, I., A. Negrete and B. Smith. 2014. The Greenland ice mapping project (gimp) land classification and surface elevation data sets. *The Cryosphere*. 8: 1509–1518. <https://doi.org/10.5194/tc-8-1509-2014>
- Iken, A., K. Echelmeyer, W. Harrison and M. Funk. 1993. Mechanisms of fast flow in Jakobshavn Isbrae, West Greenland: Part 1. Measurements of temperature and water level in deep boreholes. *Journal of Glaciology*. 39: 15-25. <https://doi.org/10.3189/S0022143000015689>
- 890 Issler, D. and C. Beaumont. 1987. Thermal and subsidence history of the Labrador and West Greenland continental margins. Sedimentary Basins and Basin-Forming Mechanisms — Memoir 12. *Canadian Society of Petroleum Geologists*. 45-69.
- Jaeger, J. 1965. Application of the theory of heat conduction to geothermal measurements. *Geophysical Monograph Series: Terrestrial Heat Flow*. 8: 7-23. <https://doi.org/10.1029/GM008p0007>
- 895 Jessop, A., M. Hobart and J. Selater. 1976. The World Heat Flow Data Collection-1975. Geothermal Series Number 5. *Geological Survey of Canada*. Ottawa, Canada. <https://doi.org/10013/epic.40176.d002>
- Johansson, E., L. Gustafsson, S. Berglund, T. Lindborg, J.-O. Selroos, L. Claesson Liljedahl and G. Destouni. 2015. Data evaluation and numerical modeling of hydrological interactions between active layer, lake and talik in a permafrost catchment, Western Greenland. *Journal of Hydrology*. 527: 688–703. <https://doi.org/10.1016/j.jhydrol.2015.05.026>
- 900 Jull, M., and D. McKenzie. 1996. The effect of deglaciation on mantle melting beneath Iceland. *Journal of Geophysical Research*. 101: 21815–21828. <https://doi.org/10.1029/96jb01308>
- [Karlsson, N. A. Solgaard, K. Mankoff, F. Gillet-Chaulet, J. MacGregor, J. Box, M. Citterio, W. Colgan, S. Larsen, K. Kjeldsen, N. Korsgaard, D. Benn, I. Hewitt and R. Fausto. 20221. A first constraint on basal melt-water production of the Greenland ice sheet. *Nature Communications*. 12: 3461. <https://doi.org/10.1038/s41467-021-23739-z>.](#)
- 905 Khan, S., I. Sasgen, M. Bevis, T. van Dam, J. Bamber, J. Wahr, M. Willis, K. Kjær, B. Wouters, V. Helm, B. Csatho, K. Fleming, A. Björk, A. Aschwanden, P. Knudsen and P. Munneke. 2016. Geodetic measurements reveal similarities between post–Last Glacial Maximum and present-day mass loss from the Greenland ice sheet. *Science Advances*. 2: e1600931. <https://doi.org/10.1126/sciadv.1600931>
- Kinnard, C., C. Zdanowicz, D. Fisher and C. Wake. 2006. Calibration of an ice-core glaciochemical (sea-salt) record with Sea-ice variability in the Canadian Arctic. *Annals of Glaciology*. 44: 383-390. <http://doi.org/10.3189/172756406781811349>
- 910 Kinnard, C., R. Koerner, C. Zdanowicz, D. Fisher, J. Zheng, M. Sharp, L. Nicholson and B. Lauriol. 2008. Stratigraphic analysis of an ice core from the Prince of Wales Icefield, Ellesmere Island, Arctic Canada, using digital image analysis: High-resolution density, past summer warmth reconstruction, and melt effect on ice core solid conductivity. *Journal of Geophysical Research*. 113: D24120. <https://doi.org/10.1029/2008JD011083>
- 915 Lachenbruch, A. 1968. Preliminary geothermal model of the Sierra Nevada. *Journal of Geophysical Research*. 73: 6977-6989. <https://doi.org/10.1029/JB073i022p06977>.

- Lees, C. 1910. On the shapes of the iso geotherms under mountain ranges in radio-active districts. *Proceedings of the Royal Society of London Series A*. 83: 339-346. <https://doi.org/10.1098/rspa.1910.0022>
- 920 Lemark, A. and D. Dahl-Jensen. 2010. A study of the Flade Isblink ice cap using a simple ice flow model. Master's thesis. Niels Bohr Institute. *Copenhagen University*.
- Lesur, V., M. Hamoudi, Y. Choi, J. Dymant and E. Thébaud. 2016. Building the second version of the World Digital Magnetic Anomaly Map (WDMAM). *Earth, Planets and Space*. 68. <https://doi.org/10.1186/s40623-016-0404-6>
- Lösing, M. and J. Ebbing. 2021. Predicting Geothermal Heat Flow in Antarctica with a Machine Learning Approach. *Journal of Geophysical Research*. 126: e2020JB021499. <https://doi.org/10.1029/2020JB021499>
- 925 Lucazeau, F. 2019. Analysis and Mapping of an Updated Terrestrial Heat Flow Data Set. *Geochemistry, Geophysics, and Geosystems*. 20: 4001–4024. <https://doi.org/10.1029/2019GC008389>
- Lüthi, M., C. Ryser, L. Andrews, G. Catania, M. Funk, R. Hawley, M. Hoffman and T. Neumann. 2015. Heat sources within the Greenland Ice Sheet: dissipation, temperate paleo-ice and cryo-hydrologic warming. *The Cryosphere*. 9: 245-253. <https://doi.org/10.5194/tc-9-245-2015>
- 930 Mansure, A. and M. Reiter. 1979. A vertical groundwater movement correction for heat flow. *Journal of Geophysical Research*. 84: 3490-3496. <https://doi.org/10.1029/JB084iB07p03490>.
- Martos, Y., T. Jordan, M. Catalán, T. Jordan, J. Bamber and D. Vaughan. 2018. Geothermal heat flux reveals the Iceland hotspot track underneath Greenland. *Geophysical Research Letters*. 45: 8214-8222. <https://doi.org/10.1029/2018GL078289>
- 935 MacGregor, J., J. Li, J. Paden, G. Catania, G. Clow, M. Fahnestock, S. Gogineni, R. Grimm, M. Morlighem, S. Nandi, H. Seroussi and D. Stillman. 2015. Radar attenuation and temperature within the Greenland Ice Sheet. *Journal of Geophysical Research*. 120: 983-1008. <https://doi.org/10.1002/2014JF003418>
- Mankoff, K. 2021. Greenland Ice Borehole Temperature Profile Database. *GitHub*. https://github.com/GEUS-PROMICE/greenland_ice_borehole_temperature_profiles
- 940 Mareschal, J.-C., and H. Beltrami. 1992. Evidence for recent warming from perturbed geothermal gradients: examples from eastern Canada. *Climate Dynamics*. 6: 135-143. <https://doi.org/10.1007/BF00193525>
- Marshall, S., H. Björnsson, G. Flowers and G. Clarke. 2005. Simulation of Vatnajökull ice cap dynamics. *Journal of Geophysical Research*. 110: F03009. <https://doi.org/10.1029/2004JF000262>
- 945 Morgan, W. 1983. Hotspot tracks and the early rifting of the Atlantic. *Tectonophysics*. 94: 123–139. [https://doi.org/10.1016/0040-1951\(83\)90013-6](https://doi.org/10.1016/0040-1951(83)90013-6)
- Morlighem, M., C. Williams, E. Rignot, L. An, J. Arndt, J. Bamber, G. Catania, N. Chauché, J. Dowdeswell, B. Dorschel, I. Fenty, K. Hogan, I. Howat, A. Hubbard, M. Jakobsson, T. Jordan, K. Kjeldsen, R. Millan, L. Mayer, J. Mouginot, B. Noël, C. O'Cofaigh, S. Palmer, S. Rysgaard, H. Seroussi, M. Siegert, P. Slabon, F. Straneo, M. van den Broeke, W. Weinrebe, M. Wood and K. Zinglarsen. 2017. BedMachine v3: Complete bed topography and ocean bathymetry
- 950

formaterede: Tysk (Tyskland)

mapping of Greenland from multi-beam echo sounding combined with mass conservation. *Geophysical Research Letters*. 44: 11,051–11,061. <https://doi.org/10.1002/2017GL074954>

Müller, R., J. Royer and L. Lawver. 1993. Revised plate motions relative to the hotspots from combined Atlantic and Indian Ocean hotspot tracks. *Geology*. 21: 275–278. [https://doi.org/10.1130/0091-7613\(1993\)021](https://doi.org/10.1130/0091-7613(1993)021)

955 Müller, C., H. Villinger, N. Kaul and B. Heesemann. 2006. Final Report: Heat Flow Measurements Cruise DANA06. Fielax GmbH.

Paterson, W. 1968. A temperature profile through the Meighen ice cap, Arctic Canada. *International Association of Scientific Hydrology*. 79: 440–449.

960 Paterson, W., R. Koerner, D. Fisher, S. Johnsen, H. Clausen, W. Dansgaard, P. Bucher and H. Oeschger. 1977. An oxygen-isotope climatic record from the Devon Island ice cap, Arctic Canada. *Nature*. 266: 508–511. <https://doi.org/10.1038/266508a0>

Persoz, F., E. Larsen and K. Singer. 1972. Helium in the thermal springs of Ûnartoq. *Geological Survey of Denmark and Greenland*. Report 44.

965 Pollack, H., S. Hurter, and J. Johnson. 1993. Heat flow from the Earth's interior: Analysis of the global data set. *Reviews of Geophysics*. 31: 267–280. <https://doi.org/10.1029/93RG01249>

Rasmussen, S., P. Abbott, T. Blunier, A. Bourne, E. Brook, S. Buchardt, C. Buizert, J. Chappellaz, H. Clausen, E. Cook, D. Dahl-Jensen, S. Davies, M. Guillemin, S. Kipfstuhl, T. Laepple, I. Seierstad, J. Severinghaus, J. Steffensen, C. Stowasser, A. Svensson, P. Vallengaard, B. Vinther, F. Wilhelms and M. Winstrop. 2013. A first chronology for the North Greenland Eemian Ice Drilling (NEEM) ice core. *Climate of the Past*. 9: 2713–2730. <https://doi.org/10.5194/cp-9-2713-2013>

970 Reeh, N., O. Olesen, H. Thomsen, W. Starzer and C. Boggild. 2001. Mass balance parameterisation for Hans Tausen Iskappe, Peary Land, North Greenland. *Meddelelser om Grønland*. 39: 57–69.

Rezvanehbehani, S., L. Stearns, A. Kadivar, J. Walker and C. van der Veen. 2017. Predicting the Geothermal Heat Flux in Greenland: A Machine Learning Approach. *Geophysical Research Letters*. 44: 12,271–12,279. <https://doi.org/10.1002/2017GL075661>

975 Roethlisberger, H. 1961. The Applicability of Seismic Refraction Soundings in Permafrost Near Thule, Greenland. *Cold Regions Research and Engineering Laboratory*. Technical Report 81.

Rogozhina, I., A. Petrunin, A. Vaughan, B. Steinberger, J. Johnson, M. Kaban, R. Calov, F. Rickers, M. Thomas and I. Koulakov. 2016. Melting at the base of the Greenland ice sheet explained by Iceland hotspot history. *Nature Geoscience*. 9: 366–369. <https://doi.org/10.1038/ngeo2689>

980 Rolle, F. 1985. Late Cretaceous-Tertiary sediments offshore central West Greenland: lithostratigraphy, sedimentary evolution, and petroleum potential. *Canadian Journal of Earth Sciences*. 22: 1001–1019. <https://doi.org/10.1139/e85-105>

Rysgaard, S., J. Bendtsen, J. Mortensen and M. Sej. 2018. High geothermal heat flux in close proximity to the Northeast Greenland Ice Stream. *Scientific Reports*. 8: 1344. <https://doi.org/10.1038/s41598-018-19244-x>

formaterede: Tysk (Tyskland)

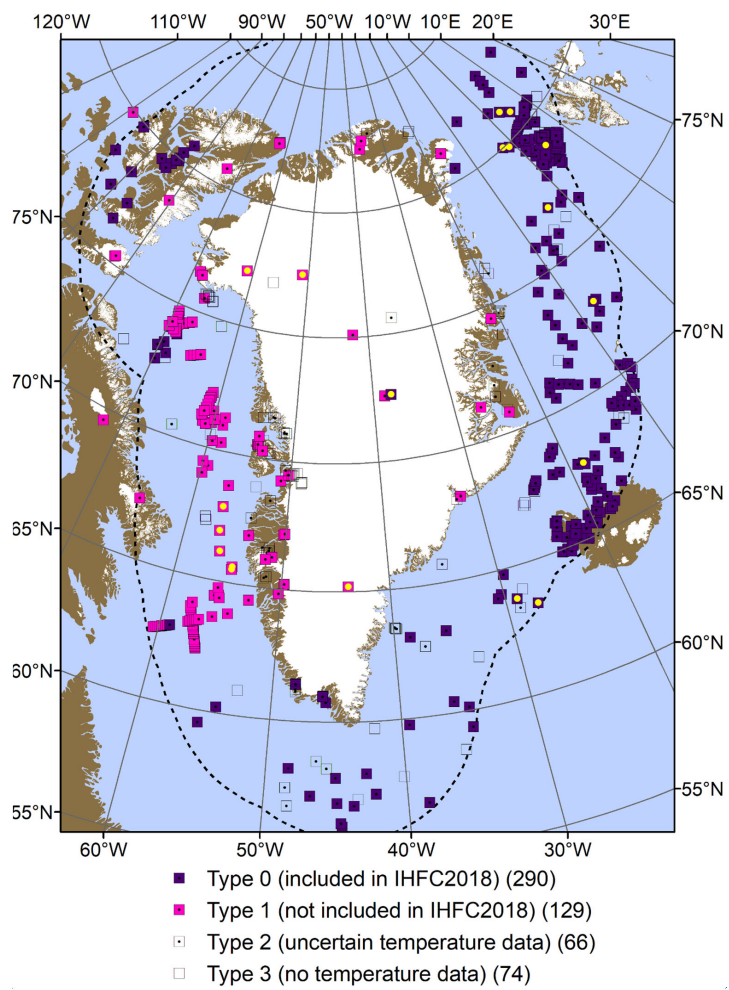
formaterede: Tysk (Tyskland)

formaterede: Dansk

- 985 Sass, J., B. Nielsen, H. Wollenberg and R. Munroe. 1972. Heat flow and surface radioactivity at two sites in south Greenland.
Journal of Geophysical Research. 77: 6435-6444. <https://doi.org/10.1029/JB077i032p06435>
- Schaeffer, A. and S. Lebedev. 2015. Global Heterogeneity of the Lithosphere and Underlying Mantle: A Seismological
 Appraisal Based on Multimode Surface-Wave Dispersion Analysis, Shear-Velocity Tomography, and Tectonic
 Regionalization. A. Khan and F. Deschamps. *The Earth's Heterogeneous Mantle*. Cham: Springer International
 990 Publishing. 3–46.
- Şengör, A. and B. Natal'in. 2001. Rifts of the world. R. Ernst and K. Buchan. *Mantle plumes: Their identification through
 time*. Boulder, Colorado. Geological Society of America. Special paper. 352.
- Siebert, L., P. Kimberly and T. Simkin. 2010. Volcanoes of the world. 3rd Ed. Berkeley, University of California Press.
 Smithsonian Institution.
- 995 Smith-Johnsen, S., B. Fleurian, N. Schlegel, H. Seroussi and K. Nisancioglu. 2020. Exceptionally high heat flux needed to
 sustain the Northeast Greenland Ice Stream. *The Cryosphere*. 14: 841–854. <https://doi.org/10.5194/tc-14-841-2020>
- Steinberger, B., E. Bredow, S. Lebedev, A. Schaeffer and T. Torsvik. 2019. Widespread volcanism in the Greenland–North
 Atlantic region explained by the Iceland plume. *Nature Geoscience*. 12: 61–68. <https://doi.org/10.1038/s41561-018-0251-0>
- 1000 Storey, M., A. Pedersen, O. Stecher, H. Larsen, L. Larsen, J. Baker and R. Duncan. 2004. Long-lived post breakup magmatism
 along the East Greenland margin: Evidence for shallow-mantle metasomatism by the Iceland plume. 2004. *Geology*.
 32: 173–176. <http://doi.org/10.1130/G19889.1>
- Storey, M., R. Duncan and C. Tegner. 2007. Timing and duration of volcanism in the North Atlantic Igneous Province:
 Implications for geodynamics and links to the Iceland hotspot. *Chemical Geology*. 241: 264–281.
 1005 <http://doi.org/10.1016/j.chemgeo.2007.01.016>
- Szwilius, W., J.-C. Afonso, J. Ebbing and W. Mooney. 2019. Global Crustal Thickness and Velocity Structure from
 Geostatistical Analysis of Seismic Data. *Journal of Geophysical Research*. 124: 1626–1652.
<https://doi.org/10.1029/2018JB016593>
- Taylor, A., K. Wang, S. Smith, M. Burgess and A. Judge. 2006. Canadian Arctic Permafrost Observatories: Detecting
 1010 contemporary climate change through inversion of subsurface temperature time series. *Journal of Geophysical
 Research*. 111: B02411. <https://doi.org/10.1029/2004JB003208>
- Toyokuni, G., T. Matsuno and D. Zhao. 2020. P Wave Tomography Beneath Greenland and Surrounding Regions: 1. Crust
 and Upper Mantle. *Journal of Geophysical Research*. 125: e2020JB019837. <https://doi.org/10.1029/2020JB019837>
- Van Tatenhove, F. and O. Olesen. 1994. Ground temperature and related permafrost characteristics in West Greenland.
 1015 *Permafrost and Periglacial Processes*. 5: 199–215. <https://doi.org/10.1002/ppp.3430050402>
- Weertman, J. 1968. Comparison between Measured and Theoretical Temperature Profiles of the Camp Century, Greenland,
 Borehole. *Journal of Geophysical Research*. 73: 2691–2700. <https://doi.org/10.1029/JB073i008p02691>

Willcocks, S., D. Hasterok and S. Jennings. 2021. Thermal refraction: implications for subglacial heat flux. *Journal of Glaciology*. 67: 1-10. <https://doi.org/10.1017/jog.2021.38>

1020 Yen, Y.-C. 1981. Review of thermal properties of snow, ice and sea ice. *Cold Regions Research and Engineering Laboratory*. Report 81-10.



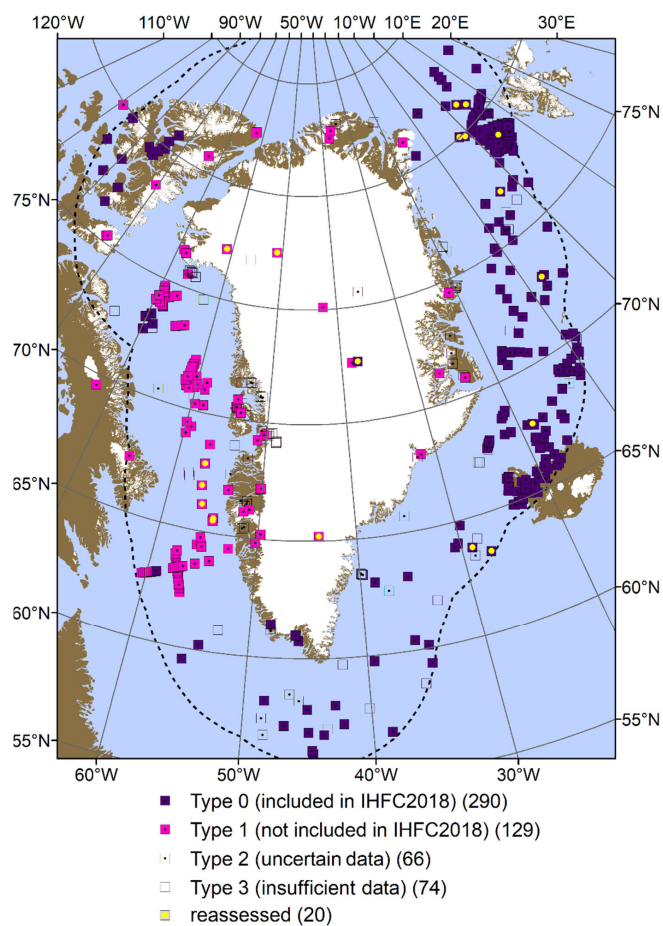


Figure 1 - Overview of site locations and types in the heat flow measurement database. Yellow dots denote sites where we reassessed heat flow values presented described in IHFC 2018 (Table 3) or other studies (Table and 4). Dashed line denotes our study boundary, 500 km from Greenland's coasts. The Meighen and Barnes Ice Caps lie outside this boundary, but we still report these subglacial measurements here. Projection is EPSG:3413. See Figure 6 for the sites overlaid on a bathymetric map.

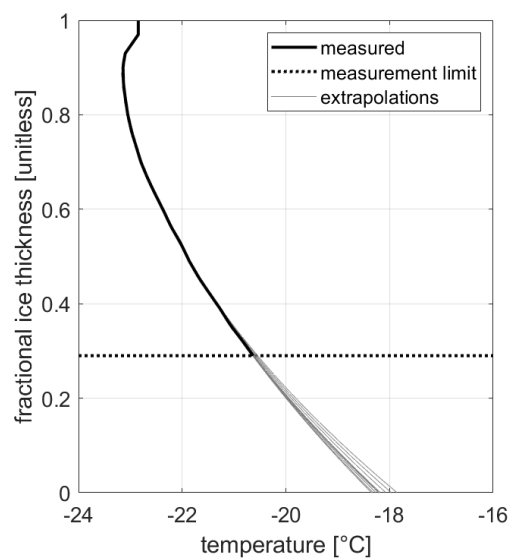
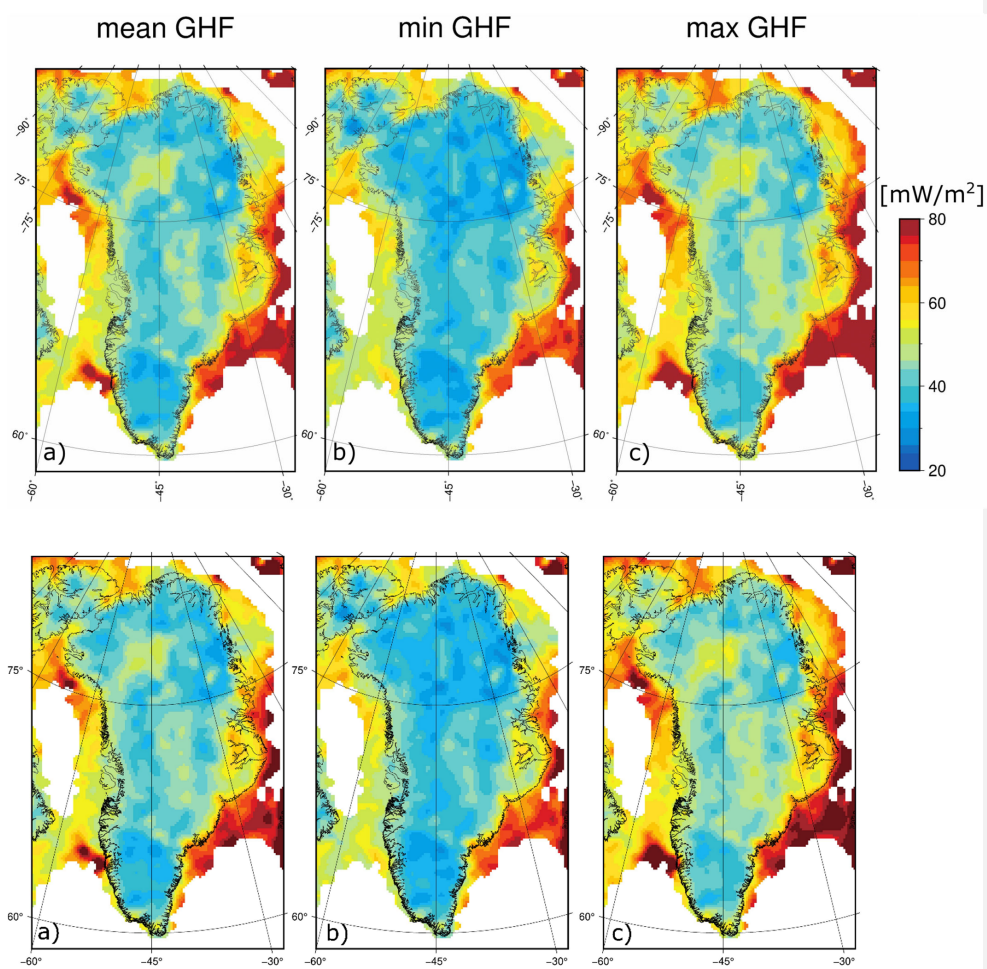


Figure 2 - Extrapolating temperature gradient at the ice-bed interface in the Devon72 borehole, where ice temperature measurements are not available in the deepest 29% of the ice column.

1035



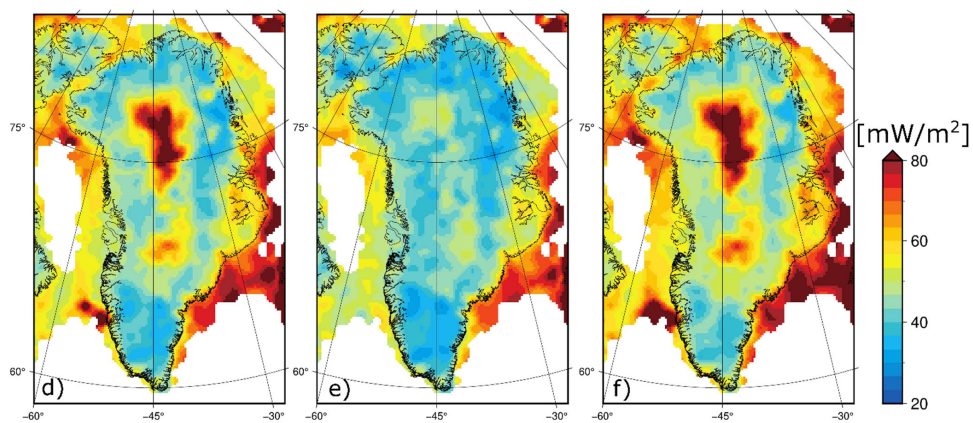


Figure 3 - Machine learning results highlighting spatial variability due to the jackknifing approach within the continental portion of the domain. The mean (a,d), minimum (b,e) and maximum (c,f) geothermal heat flow calculated from $n = 59$ jackknifing simulations without NGRIP (a,b,c) and $n = 60$ jackknifing simulations with NGRIP (d,e,f).

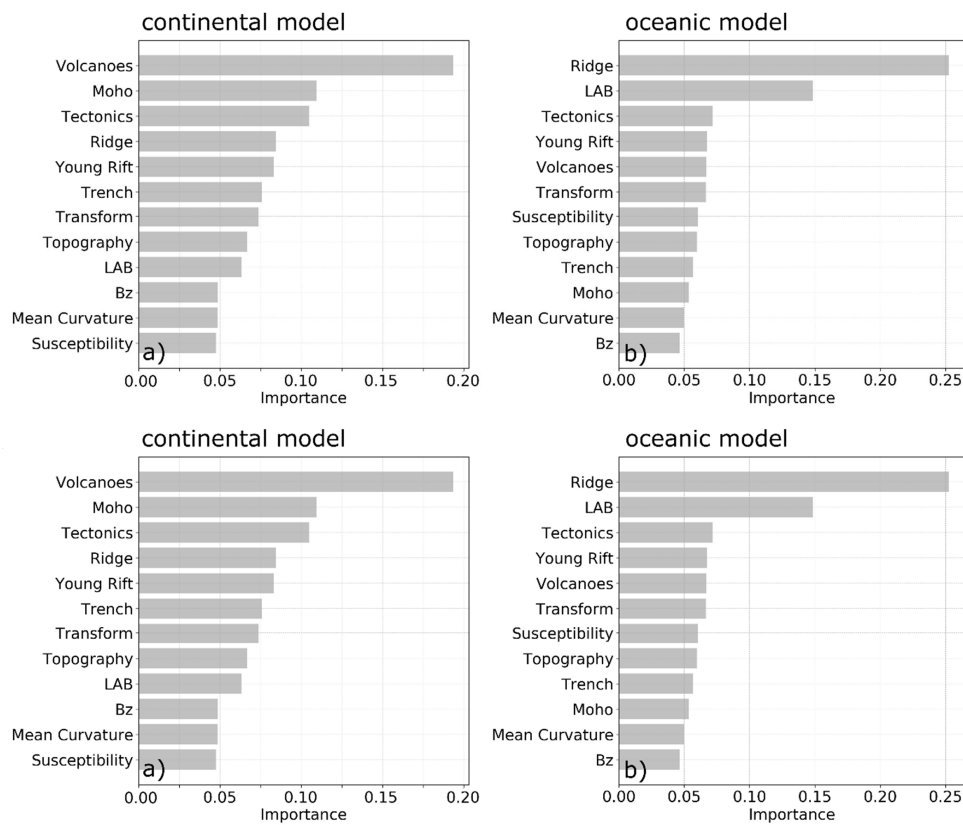


Figure 4 - The importance of the 12 input variables used in the machine learning. (a) for the continental model domain and (b) for the oceanic model domain. "Bz" denotes the vertical magnetic field component.

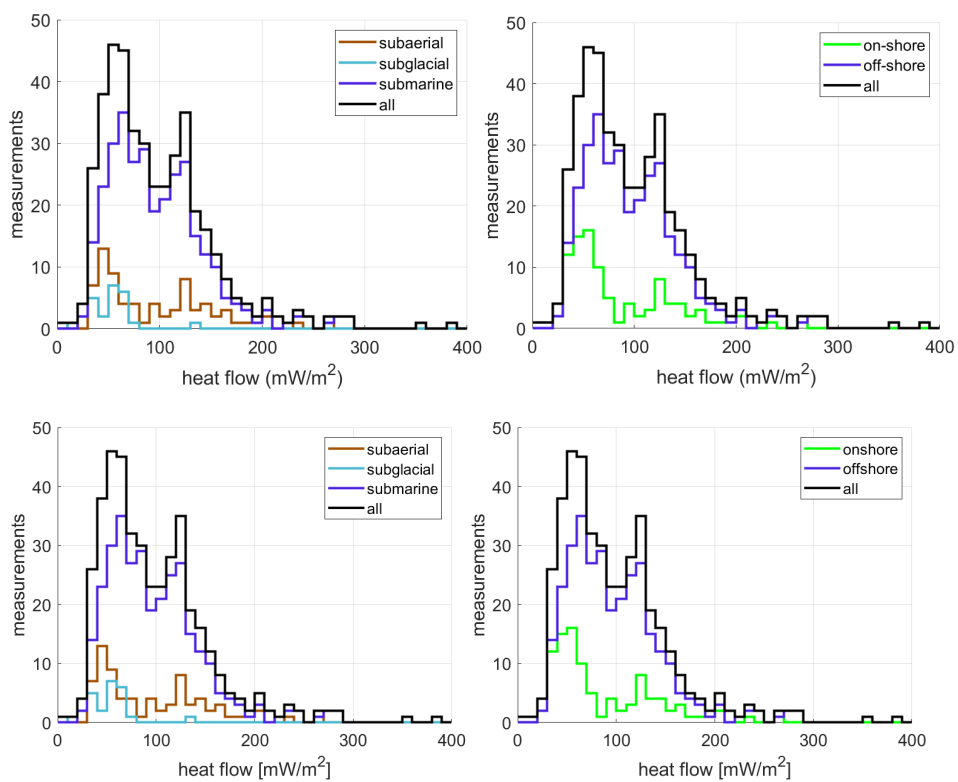
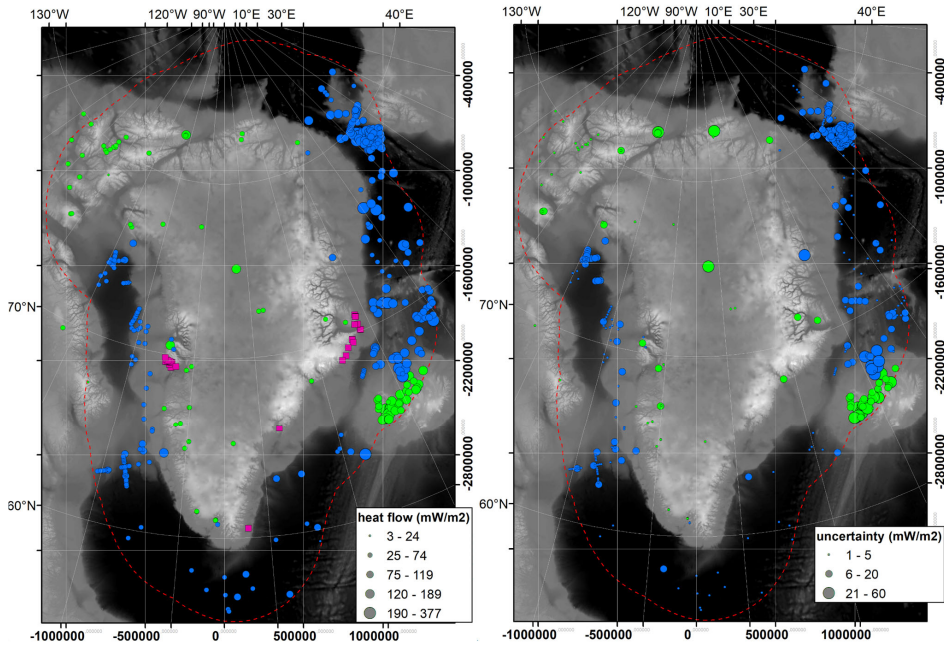


Figure 5 - Histograms of heat flow measurements in the subaerial (n = 77), subglacial (n = 25) and submarine (n = 317) populations (Left) and the onshore (n = 102) and offshore (n = 317) populations (Right).



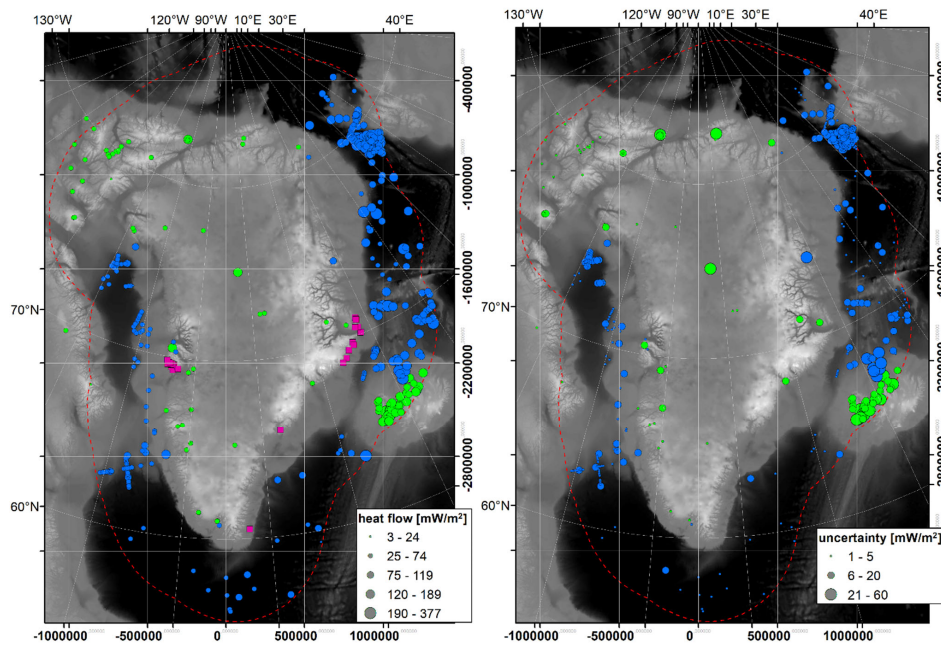
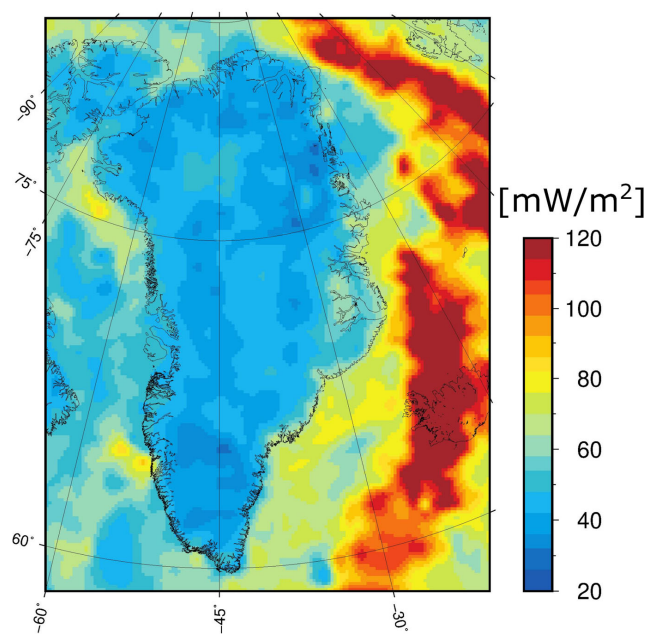


Figure 6 - Left: Heat flow measurements, scaled by magnitude, overlaid on the ETOPO1 digital elevation model (Amante, and Eakins, 2009). Green dots denote onshore measurements ($n = 102$) and blue dots denote offshore measurements ($n = 317$). Magenta squares denote hot springs inventoried by Hjartarson and Armannsson (2010). Right: The same for uncertainty in heat flow measurement. Projection is EPSG:3413 (bottom x-axis and right y-axis).



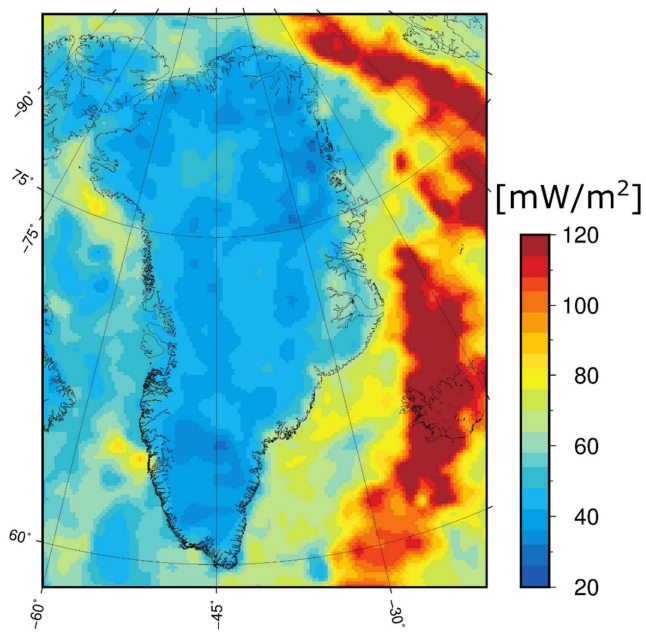


Figure 7 - Machine learning results for the combined continental and oceanic portions of the domain. [For the onshore part, the model trained without NGRIP is used.](#) Note the different color scale in comparison to Figure 3.

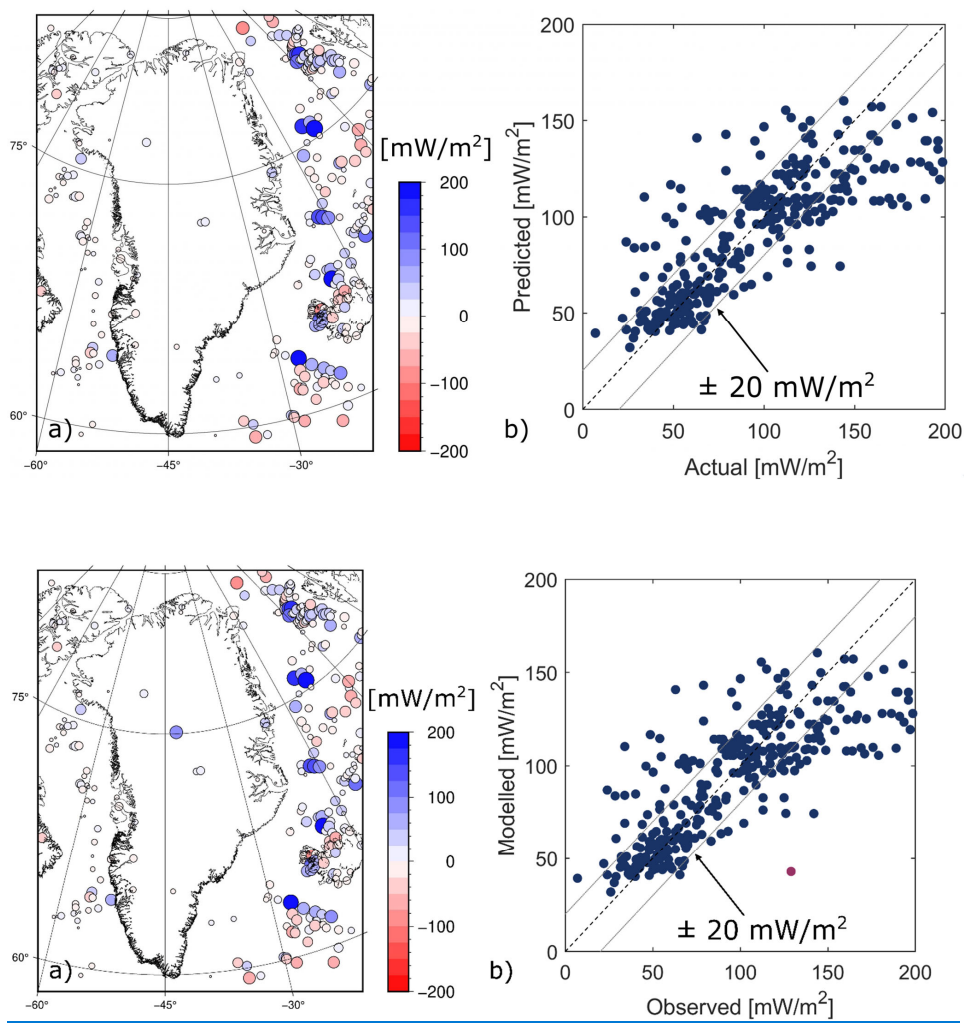


Figure 8 –Left: a) Difference (measured-minus-modelled heat flow) at measurement sites, in comparison to our “without NGRIP” simulation. Blues denotes that the model is “colder” than the measurement. Right: b) Comparison of modelled and observed heat flow values at 419 sites. The NGRIP measurement is included in this comparison as a purple dot.

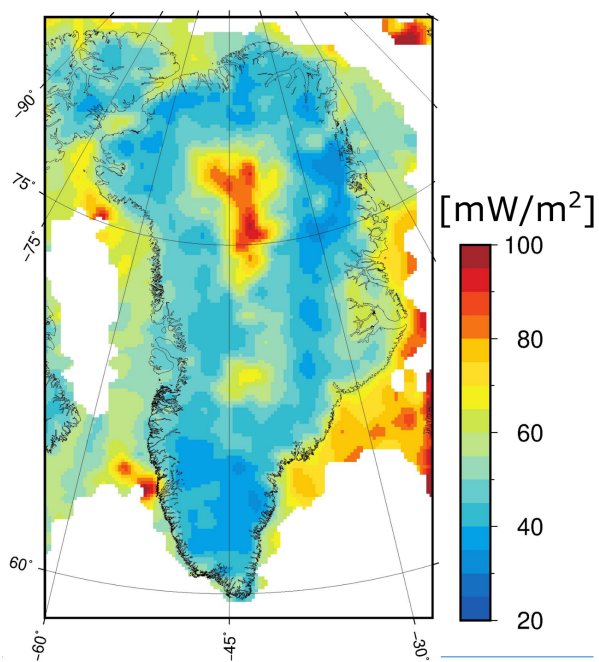
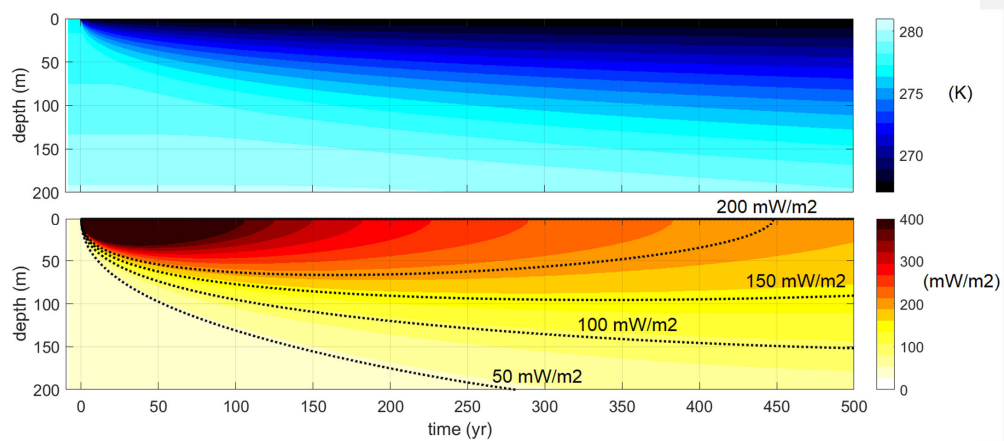


Figure 9—Predicted heat flow in one of the $n = 60$ continental jackknifing simulations that includes NGRIP.



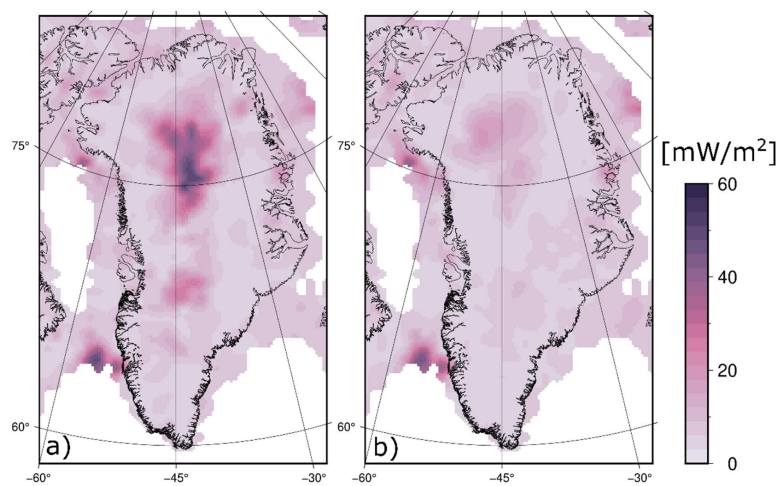


Figure 9 – The jackknifing ensemble uncertainty range, calculated as the difference between maximum and minimum heat flow, for the a) “with” and b) “without” NGRIP simulations. The inclusion of NGRIP introduces substantial ensemble uncertainty in Central North Greenland, as the machine learning algorithm cannot reconcile the NGRIP anomaly with available input geophysical datasets (Figure A1).

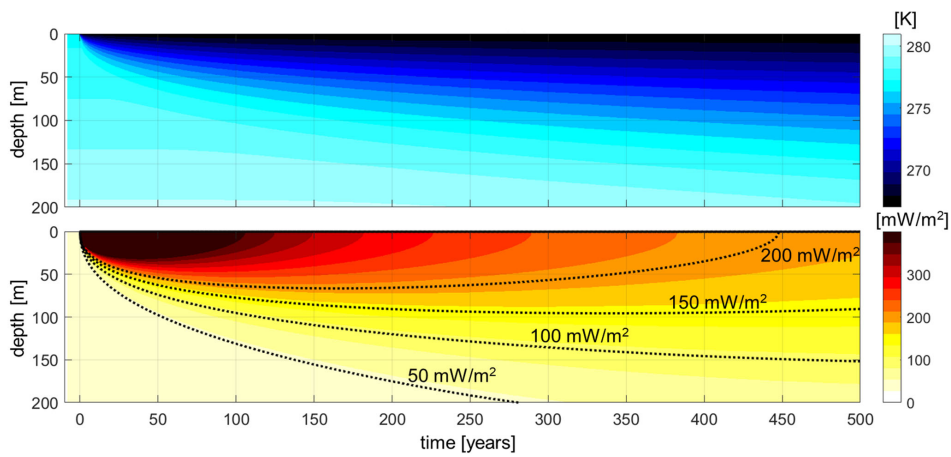
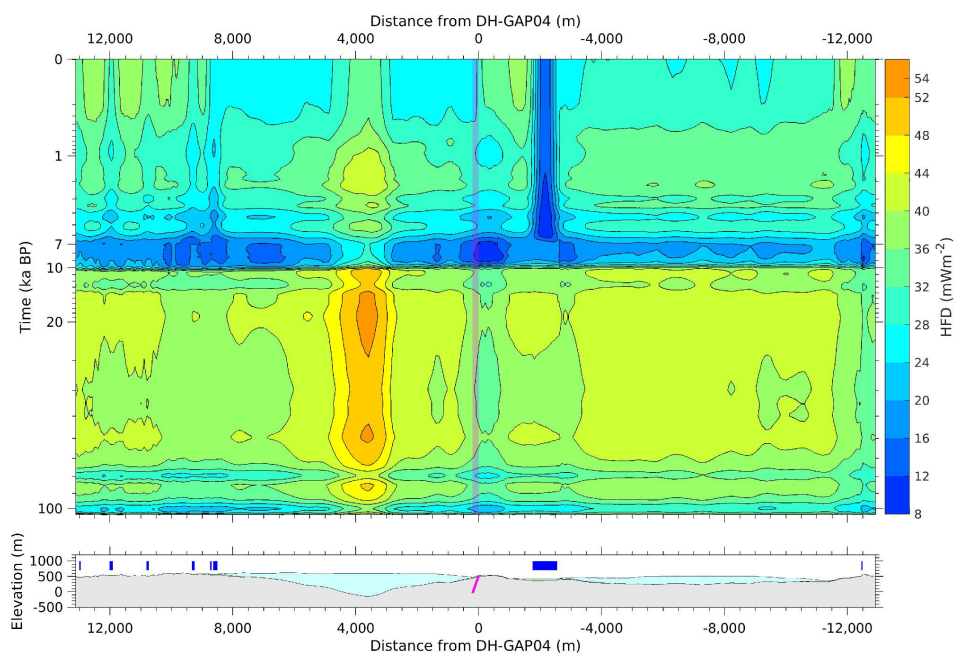


Figure 10 - Simulation of ground temperature (top) and geothermal flow (bottom) in response to a change in boundary temperature from submarine to subaerial settings at year 0. This simulation is parameterized to approximate conditions characteristic of Ilulissat, western Greenland.



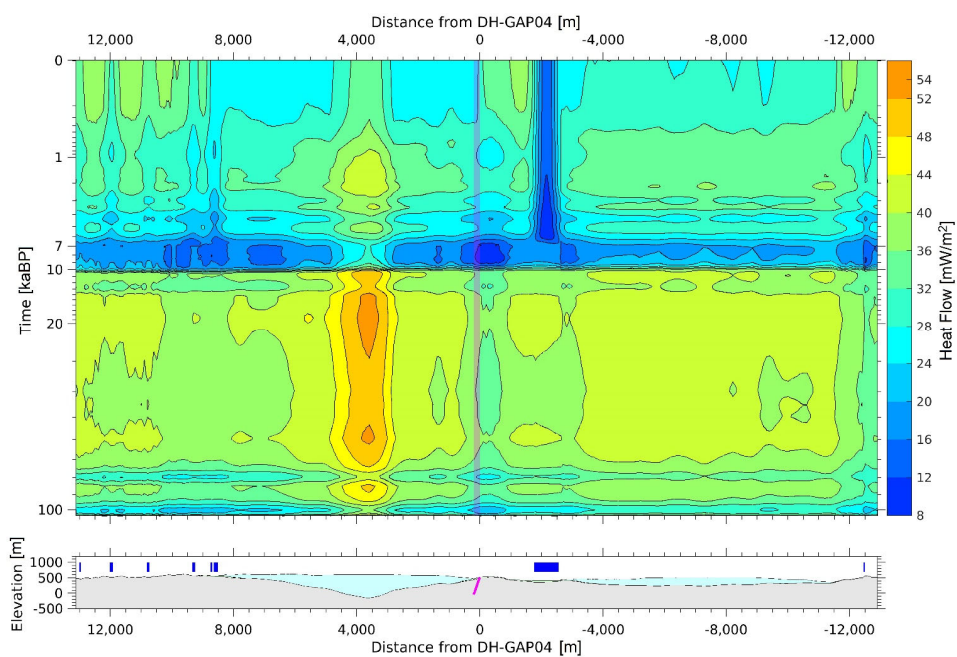
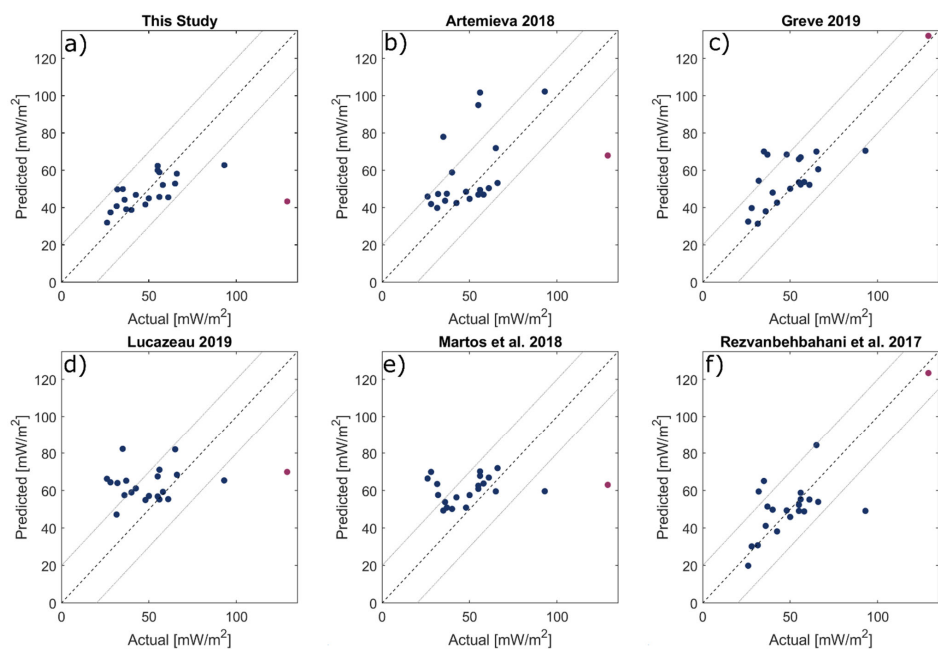


Figure 11 – Top: Simulated temporal changes in ground surface heat flow along a 25 km profile crossing the DH-GAP04 borehole (at distance 0 m) during the last glacial cycle (104–0 ka). In this simulation, the ice sheet changed from cold-based to warm-based conditions around 10 ka, and the borehole location was deglaciated around 7 ka. Note the logarithmic scale on the y-axis. Bottom: Surface topography along the 2D cross-sectional model domain. The DH-GAP04 borehole is shown in pink. Present-day outlet glaciers are shown in light blue and lake locations are shown by dark blue bars (Hartikainen et al., 2021).



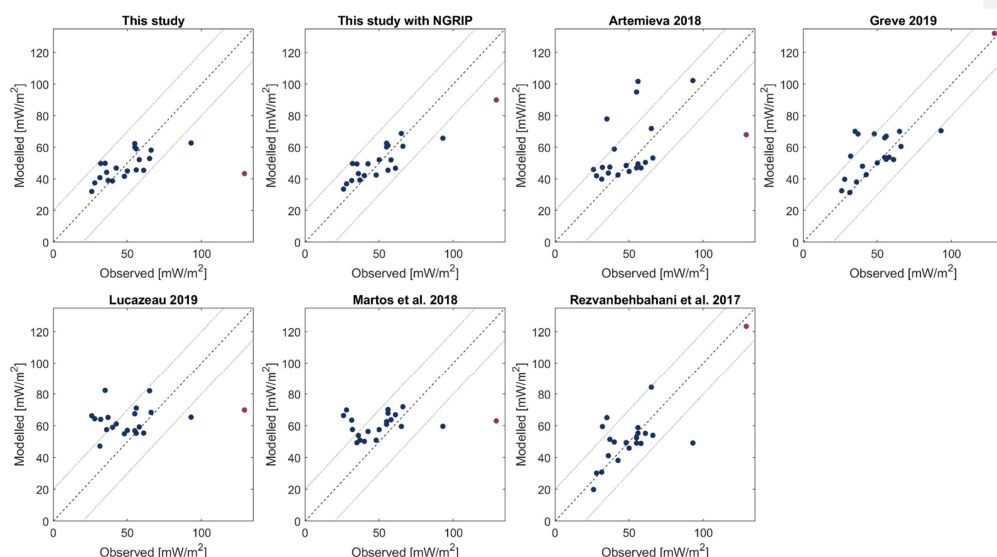
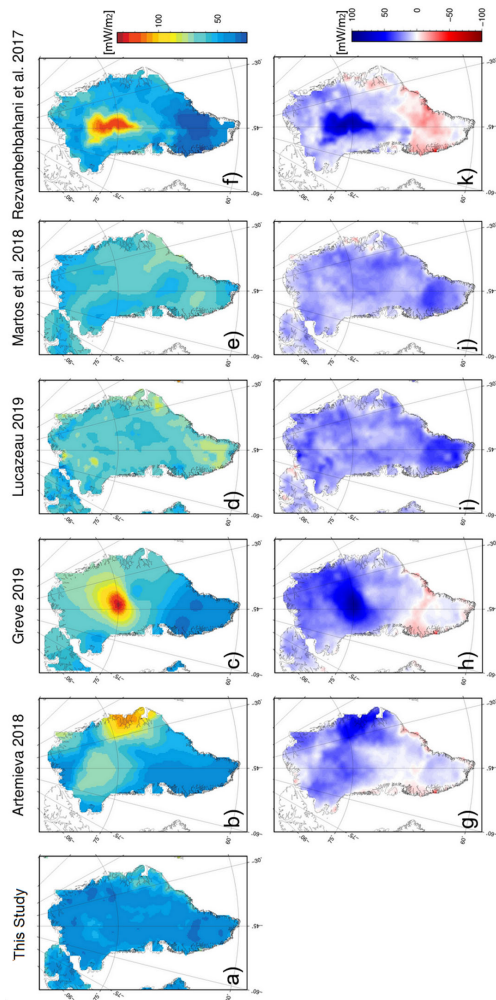


Figure 12 - Comparison of simulated and measured geothermal heat flow in binned 55 km grid cells within the Greenland land area common to all ~~six~~seven models (n = 21; Table 4). RMSE and bias for each model listed in Table 6.5. The NGRIP measurement is included in this comparison as a purple dot.

formaterede: Skrifttype: 10 pkt, Ikke Fed

Formateret: Lige margener, Linjeafstand: 1,5 linjer



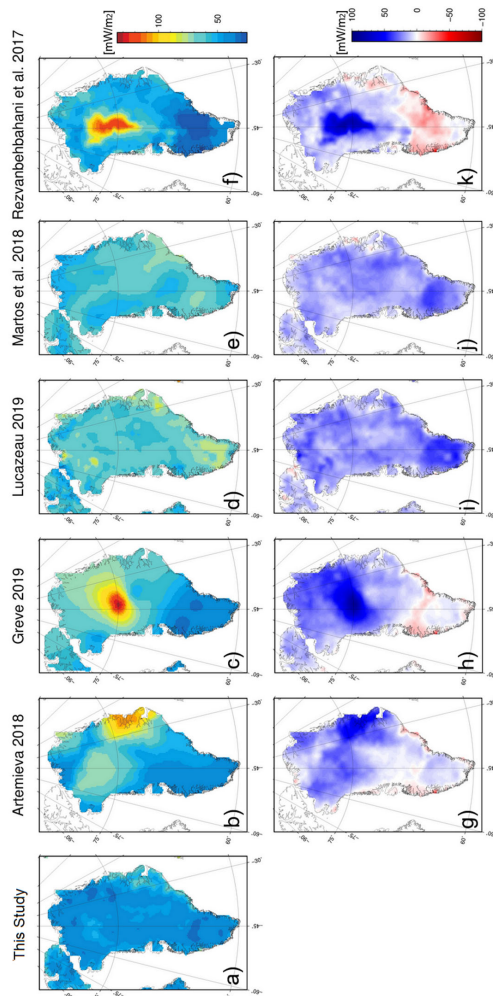
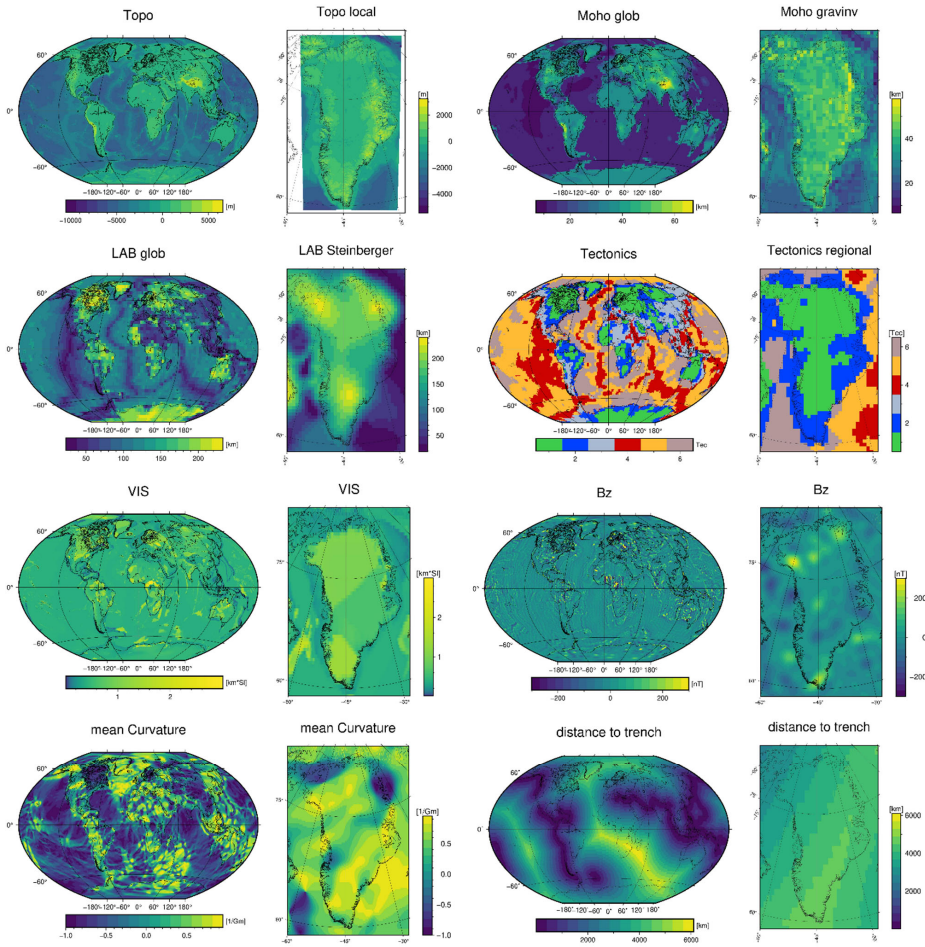


Figure 13 - Comparison of the heat flow model of [This Study](#) [this study without NGRIP](#) (a) to previously published models: (b) thermal isostasy from Artemieva (2019) model 1, (c) fitting to available heat flow data from Greve (2019), (d) global similarity study from Lucazeau (2019), (e) magnetic data from Martos et al. (2018) and (f) machine learning by Rezvanbehbahani et al. (2017) with NGRIP = 135 mW/m². Anomaly plots are shown in (g) to (k), where blue denotes this study as “colder”. Mean geothermal heat flow of each model summarized in Table 6.

Appendix.

120 [Table A1](#) - Comparison of the data fields in the IHFC 1976 and 2021 database structures (Jessop et al., 1976; Fuchs et al.,



2021a) and this study. 'X' denotes an included field. Red outlines and bold text denote the eighteen mandatory data fields of the IHFC 2021 structure and red shading denotes the eight mandatory data fields that are not available in our new database. Here, "T" denotes temperature and "TC" denotes thermal conductivity. Full IHFC naming convention described in Fuchs et al. (2021a).

	IHFC 1976	IHFC 2021	This Study
Heat-flow	X	X	X
Heat-flow uncertainty		X	X
Site name	X	X	X
Geographical latitude	X	X	X
Geographical longitude	X	X	X
Geographical position uncertainty			X
Geographical elevation	X	X	X
Geographical elevation uncertainty			X
EPSG:3413 Easting			X
EPSG:3413 Northing			X
EPSG:3413 Uncertainty			X
Geographical environment		X	
Measurement type			X
Type of exploration method		X	
Original exploration purpose		X	
Flag heat production		X	
Bottom-water temperature		X	
General comments	X	X	X
Heat-flow method		X	
Heat-flow interval top	X	X	X
Heat-flow interval bottom	X	X	X
Penetration depth		X	
Probe type		X	
Probe length		X	
Heat-flow transfer mechanism		X	
Additional references		X	
Date of acquisition		X	
Relevant child		X	
Flag in-situ properties		X	
Flag temp correction		X	
Flag sedimentation effect		X	
Flag erosion effect		X	
Flag topographic effect		X	X
Topographic correction			X
Topographic correction uncertainty			X
Topographic corrected heat flow			X
Topographic corr. heat flow uncertainty			X

	IHFC 1976	IHFC 2021	This Study
Flag transient climate effect		X	
Flag convection effect		X	
Flag bottom-water effect		X	
Flag heat refraction effect		X	
Lithology		X	
Stratigraphic age		X	
Temperature gradient	X	X	X
Gradient uncertainty		X	
Average gradient corrected		X	
Gradient cor. uncertainty		X	
T method (top)		X	
T method (bottom)		X	
Shut-in time (top)		X	
Shut-in time (bottom)		X	
T correction method (top)		X	
T correction method (bottom)		X	
Number T recordings	X	X	
Probe tilt		X	
TC mean	X	X	X
TC uncertainty		X	
TC source		X	
TC method		X	
TC saturation		X	
TC pT conditions		X	
TC pT assumed function		X	
TC number		X	
TC averaging method		X	
Heat Production	X		
Number of heat production measurements	X		
Number of sites	X		
Primary reference	X	X	X
Measurement date		X	X
Publication year	X	X	
Source individual			X
International Geo Sample Number (IGSN)		X	
Identification number	X	X	X
IHFC status		X	X

Table A2 - Geophysical datasets and features provided to the machine learning algorithm to spatially interpret point measurements of heat flow. Data extent is global, unless otherwise stated. A graphical overview of these input datasets is shown in [Figure A1](#).

<u>Feature</u>	<u>Dataset/Method</u>	<u>Reference</u>
<u>Topography</u> • <u>Global</u> • <u>Regional</u>	• <u>Earth 2014</u> • <u>BedMachine v3</u>	<u>Hirt and Rexer (2015)</u> <u>Morlighem et al. (2017)</u>
<u>Moho depth</u> • <u>Global</u> • <u>Regional</u>	• <u>kriging interpolation</u> • <u>satellite gravity gradient inversion</u>	<u>Szwilius et al. (2019)</u> <u>following the method of Haas et al. (2020)</u>
<u>Lithosphere–Asthenosphere boundary</u> • <u>Global</u> • <u>Regional</u>	• <u>LithoRef2018</u> • <u>AMISvArc</u>	<u>Afonso et al. (2019)</u> <u>Steinberger et al. (2019)</u>
<u>Tectonic regionalisation</u> • <u>Global</u> • <u>Regional</u>	• <u>SL2013sv</u> • <u>NAT2021</u>	<u>Schaeffer and Lebedev (2015)</u> <u>Celli et al. (2021) following the method of Schaeffer and Lebedev (2015)</u>
<u>Magnetic susceptibility</u>	<u>VIS model</u>	<u>Hemant and Maus (2005)</u>
<u>Vertical magnetic field</u>	<u>LCS-1</u>	<u>Ebbing et al. (2021)</u>
<u>Mean curvature</u>	<u>GOCE gravity gradient</u>	<u>Ebbing et al. (2018)</u>
<u>Distance to:</u> • <u>trench</u> • <u>ridge</u> • <u>transform faults</u> • <u>young rifts</u> • <u>volcanoes</u>	• <u>UTIG (Plates project)</u> • <u>UTIG (Plates project)</u> • <u>UTIG (Plates project)</u> • <u>n/a</u> • <u>n/a</u>	<u>Goutorbe et al. (2011)</u> <u>Goutorbe et al. (2011)</u> <u>Goutorbe et al. (2011)</u> <u>Şengör and Natal'in (2001)</u> <u>Siebert et al. (2010)</u>

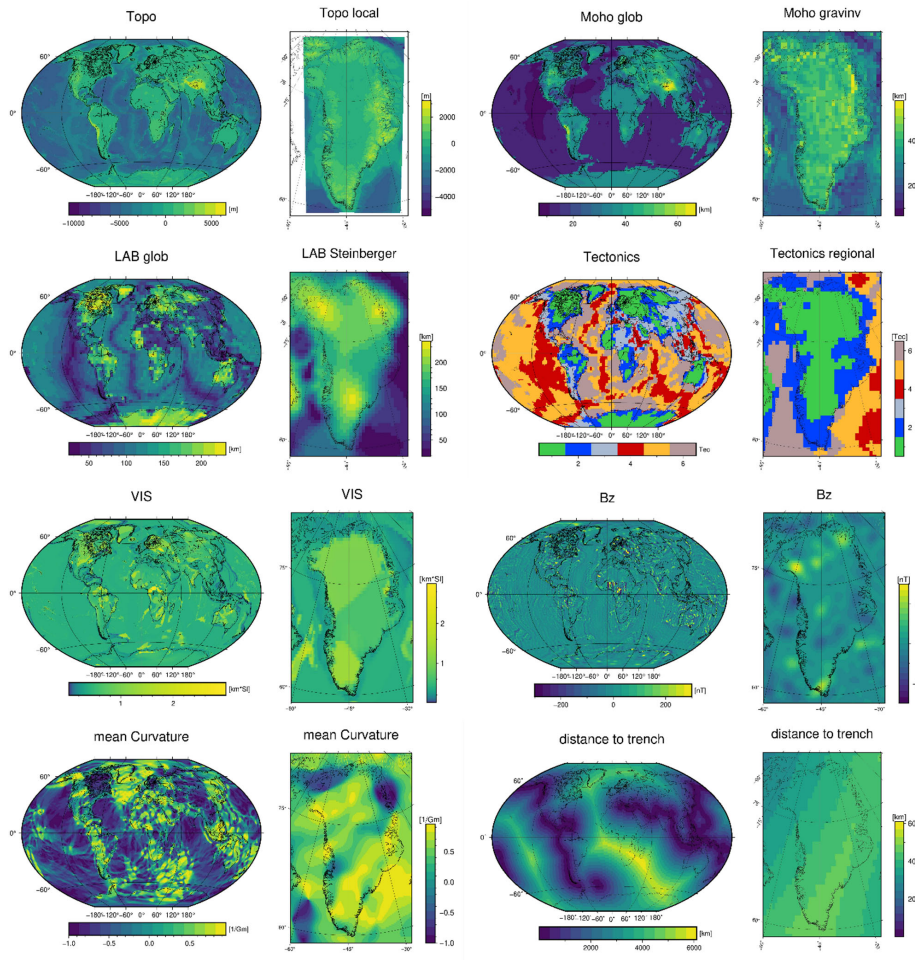


Figure A1 - Graphical overview of the twelve geophysical datasets and features provided to the machine learning algorithm (Table [5A2](#)). Each variable is shown in both global and local (Greenland) extents.

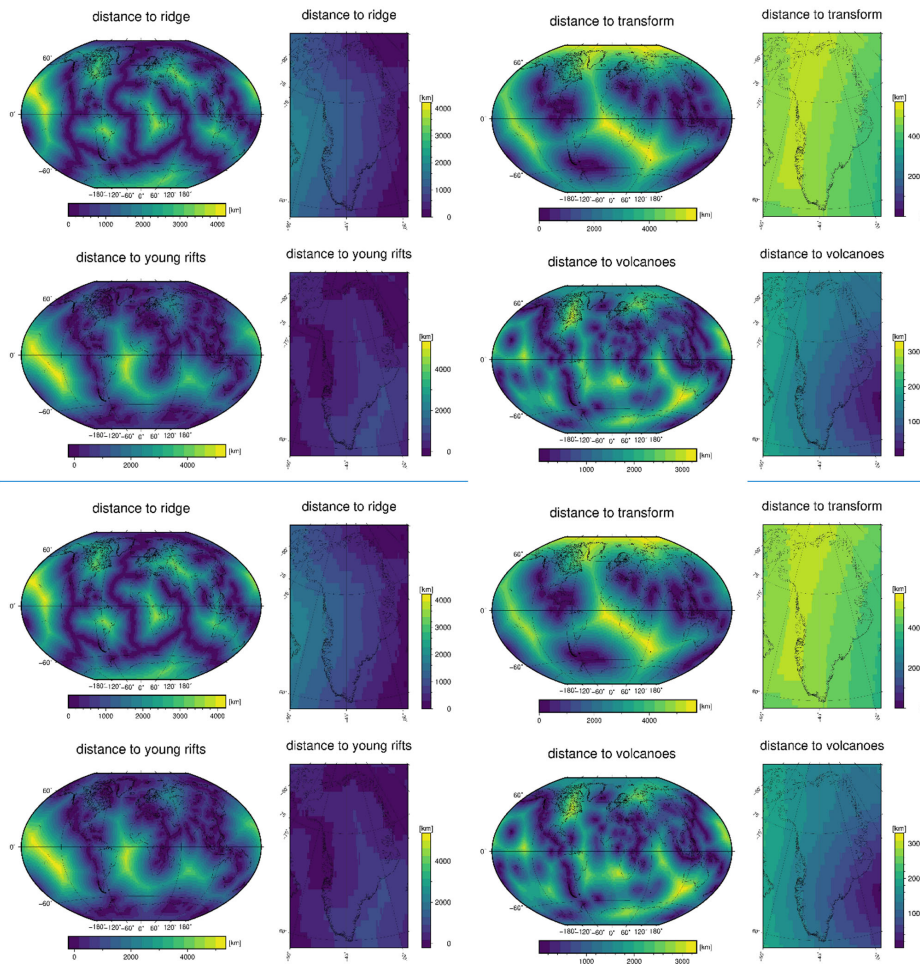


Figure A1 - continued.