

Emissions of greenhouse gases from energy use in agriculture, forestry and fisheries: 1970-2019

Alessandro Flammini¹, Xueyao Pan², Francesco N. Tubiello^{2*}, Sally Yue Qiu³, Leonardo Rocha Souza⁴, Roberta Quadrelli⁵, Stefania Bracco⁶, Philippe Benoit³ and Ralph Sims⁷

¹ United Nations Industrial Development Organization, Vienna, Austria

² Food and Agriculture Organization, Statistics Division, Rome, Italy

³ Columbia University, Centre on Global Energy Policy, New York, USA

⁴ United Nations Statistics Division, New York, USA

⁵ International Energy Agency, Paris, France

⁶ University of Gastronomic Sciences, Bra, Italy

⁷ Massey University, Palmerston North, New Zealand

*Corresponding author: Francesco N. Tubiello, francesco.tubiello@fao.org

Abstract. Fossil-fuel based energy use in agriculture leads to CO₂ and non-CO₂ emissions. We focus on emissions generated within the farm gate and from fisheries, providing information relative to the period 1970-2019, for both energy use, as input activity data and the associated greenhouse gas (GHG) emissions. Country-level information is generated from UNSD and IEA data on energy in agriculture (including forestry and fisheries), relative to use of: gas/diesel oil, motor gasoline, liquefied petroleum gas (LPG), natural gas, fuel oil and coal. Electricity used within the farm gate is also quantified, while recognizing that the associated emissions are generated elsewhere. We find that in 2019, annual emissions from energy use in agriculture were about 523 million tonnes (Mt-CO_{2eq}-yr⁻¹), while including electricity they were 1,029 Mt CO_{2eq} yr⁻¹, having increased 7% from 1990. The largest emission ~~increases~~^{increase} from on-farm fuel combustion ~~were~~^{was} from LPG (32%), whereas significant decreases were observed for coal (-55%), natural gas (-50%), motor gasoline (-42%) and fuel oil (-37%). Conversely, use of electricity and the associated indirect emissions increased three-fold over the 1990-2019 period, thus becoming the largest emission source from energy use in agriculture since 2005. Overall, the global trends were a result of counterbalancing effects: marked decreases in developed countries in 2019 compared to 1990 (-273 Mt CO_{2eq}-yr⁻¹) were masked by slightly larger increases in developing and emerging economies (+ 339 Mt CO_{2eq} yr⁻¹). The information used in this work is available as open data at: <https://zenodo.org/record/5153241> (Tubiello and Pan, 2021). The relevant FAOSTAT (FAO, 2021b) emissions database is maintained and updated annually by FAO.

1. Introduction

Agricultural production more than doubled over the period 1990-2019, with additional increases of more than 50% expected ~~teby~~ 2050, to meet projected increases in food demand (FAO, 2018; Calicioglu et al., 2019). Historically, productivity increases were achieved through transitions from traditional, extensive agri-food systems to modern, intensive production systems, characterized by greater energy use within the farm (Sims et al., 2014; Smil, 2008). Direct on-farm energy inputs include fuel to power tractors and other agricultural field machinery, irrigation pumps, heat to warm greenhouses and animal shelters. Other uses beyond the farm may include power for forestry

1 machinery and fishing vessels (Dubois et al., 2017). On-farm energy use is a significant component of agricultural
2 production and growth (Sims et al., 2014; Utz, 2011), however, it often attracts less attention in food-related
3 emissions analysis relevant to National Determined Contributions (Tubiello et al., 2021) as the on-farm energy use
4 emissions are reported instead under the ‘Energy’ sector of the national GHG inventories ~~(NGHGI)~~. In fact,
5 countries regularly submit to the UN Framework Convention on Climate Change (UNFCCC), containing only
6 non-CO₂ emissions from crop and livestock bio-physical processes. For instance, enteric fermentation in ruminants
7 or nitrous oxide from fertilizers on cropland (IPCC, 2006; Tubiello et al., 2019). Within the UNFCCC context,
8 emissions from agriculture are currently about 5 Gt CO₂eq yr⁻¹, having increased by roughly 50% since 1961
9 (Tubiello, 2019). They are dominated by livestock processes and are fairly equally split between CH₄ and N₂O
10 components, ~~respectively~~ in single gases units corresponding to annual emissions in 2019 of 140 Mt CH₄ yr⁻¹ and
11 7.7 Mt N₂O yr⁻¹ ~~respectively~~ (FAO, 2021b; Tubiello et al., 2021).

12 Energy use in agriculture, forestry and fisheries deserves more attention than paid in current reporting and
13 associated studies, because it is an important food production component deserving analysis in its own right
14 alongside the biophysical crop and livestock processes mentioned above. Additionally, it offers significant
15 opportunities for on-farm mitigation actions directly focussed on CO₂ (Dyer et al., 2014).

16 Information on energy consumption in different agricultural operations is available from the literature, albeit there
17 is a lack of consistent global data with country detail provided over relevant time series. Available information
18 indicates that in-farm energy demand in OECD countries is mainly for crop cultivation, harvesting, heating
19 protected crops in greenhouses, crop drying and storage, water pumping and livestock housing (OECD, 2008).
20 ~~Furthermore, on~~ On-farm use in high-GDP countries (20 GJ/ha) is almost double the use in low-GDP countries (11
21 GJ/ha) (FAO, 2011). Fossil fuel energy inputs have reduced labor inputs, or around 152 MJ for every man-hour of
22 labor inputs in high-GDP countries, and 4 MJ in low-GDP countries (Sims, 2014).

23 Smil (2008) and FAO (2011) estimated global direct and indirect energy use in agriculture in the early 2000s using
24 available literature and global estimates at 17 EJ, of which 5 EJ to power machinery; 4 EJ for animal husbandry,
25 aquaculture, and fisheries; 2 EJ to manufacture and maintain agricultural machinery; 5 EJ to extract, synthesize
26 and distribute fertilizers; 0.5 EJ to manufacture pesticides and herbicides; and 0.3 to manufacture irrigation
27 systems. Direct energy use in agriculture was a bit more than half this total, about 9 EJ. In addition to these
28 amounts, energy use in agriculture includes electricity from the grid, decentralized renewable sources including
29 bioenergy, conventional technologies, mechanical and thermal energy and biodiesel/biofuels. ~~In many traditional~~
30 ~~systems, human labour and draught animal power add significant energy inputs.~~

31 As opposed to GHG emission estimates from global analysis (top-down analysis), this paper focuses on quantifying
32 the GHG emissions that arise from the combustion of fossil fuels for energy use in agriculture, forestry and fisheries
33 (i.e. capture fishing and aquaculture) with a “bottom-up” approach, i.e. using official statistical data reported by
34 countries to the UN Statistics Division. It also provides an overview of total emissions and key trends at the global,
35 regional and country level.

36 The dataset and the related analysis ~~in this paper~~ refers to one single ‘agriculture’ sector, which covers the three
37 agricultural sub-sectors: agriculture, forestry and fisheries. Some additional disaggregated information is provided
38 for fishing alone.

39 As detailed in the methods section, our quantification focuses mostly on farm and ~~on~~-fishing activities, assuming
40 that emissions associated to energy used in forestry is negligible—i.e., it ~~focuses on~~ is limited to energy use for

farm operations, for aquaculture and for powering fishing vessels. We include additional estimates of the emissions associated to the off-site generation of electricity used on the farm, tracking results both separately for electricity and on-site fossil fuel use, as well as in the aggregate. The analysis does not include all other indirect energy uses that are typically addressed in life-cycle analyses, such as embedded energy for manufacturing of agriculture machinery (FAO, 2011; Sims et al. 2015; FAO, 2018).

2. Materials and methods

Data on energy use in agriculture (including forestry and fisheries,) by fuel type, over the annual time series 1970-2019, were available from UNSD and IEA. These Agencies regularly collect energy data from member countries, including for use in agriculture, forestry and fishing. Biofuels, renewables, and other energy carriers derived from biomass, were analyzed but not considered for calculating GHG emissions, since they were assumed to be carbon neutral (IPCC, 2006). In particular, UNSD energy consumption data were used to estimate GHG emission from agriculture as a whole, while IEA data were used to provide a breakdown for GHG from fisheries for information purposes. UNSD data are publicly available through the UNDATA portal, while access to IEA data is restricted, and the latter was kindly made available by IEA for this analysis. Energy use data from the UNSD Energy Statistics Database (UNSD, 2020) included the following fuels, over the period 1970-2019: Diesel oil; Motor gasoline; Liquefied petroleum gas (LPG); Natural gas, including Liquefied Natural Gas (LNG); Fuel oil; Hard coal. Energy use data from the IEA Energy Statistics included Diesel oil and Fuel oil used in fisheries.

2.1 Gap filling

The energy use data sourced from UNSD were gap filled for both improving the quality of available time series by country and generating data for missing countries. The original set had several missing data points especially for Africa (FAO, 2021b). First, a simple linear gap-filling method was applied to estimate data points missing within intervals with data points, over the time period 1970-2019. Conversely, gap-filling of values for carrying backward and forward values without an available interval was performed by applying sub-regional trends. Finally, time series for countries with no data were generated with a multivariate approach, i.e., by computing the sub-regional energy use in agriculture divided by the sub-regional total energy use, and applying the coefficient to the time series of national total energy use, which was available in the UNSD database without major gaps. We validated our gap-filling method by performing random substitutions of existing values and computing the associated error, which was on average below 5%.

2.2 Emissions Estimates

The activity data on energy use described in previous sections served as input for estimates of GHG emissions, made following the Tier 1 method of the Guidelines of the Intergovernmental Panel on Climate Change (IPCC, 2006). In particular, we used default fuel-specific CO₂ emission factors for off-road mobile combustion sources (e.g., tractors, harvesters and other mobile machinery) and stationary combustion sources (i.e., irrigation pumps, space heating), within the following formula:

$$E_i = AD_i * EF_i \quad (1)$$

Where E_i are the emissions (in t CO₂ yr⁻¹) for energy carrier i , computed by multiplying the amount of fossil fuel type AD _{i} (GJ yr⁻¹) by the relevant emission factor EF _{i} (t CO₂ GJ⁻¹). The default emission factors applied to relevant fuel categories were those for stationary combustion in the residential and agriculture/forestry/fishing farms categories, assumed by IPCC to be used for power generation (heat and/or electricity) (Tab. 2). Fuels reported in metric tons were converted to GJ by assuming a net calorific value of 43.0 GJ/t for diesel, 44.3 GJ/t for gasoline, 47.3 GJ/t for LPG, 44.2 Gg/t for natural gas liquids, 40.4 GJ/t for fuel oil, 25.8 for coal¹ (IPCC, 2016).

Finally, country-specific grid emission factors needed to estimate CO₂ emissions from electricity used were taken from IEA (2014) and imputed from 2013 to 2019. They were complemented with CH₄ and N₂O country-specific grid emission factors estimated by the authors on the basis of the default emission factors for stationary combustion in the energy industries, according to IPCC (2006). As our calculations (not shown) indicated, CH₄ and N₂O emissions, calculated as a proportion of CO₂ emissions, are only a minor share (< 5%) of total GHG emissions from electricity.

Emissions from fisheries were estimated as a separate item (until 2018), using dedicated IEA data, and for information purposes only, i.e., they were assumed to represent additional information, since energy used in agriculture-~~(including forestry and fisheries)~~ are already included in the UNSD energy statistics. Fisheries statistics from IEA were limited to OECD countries. Only diesel and fuel oil for powering fishing vessels and aquaculture were reported under fisheries, since these two fuels represent the bulk of energy used in the sector (followed by heat).

Uncertainties were derived by applying ranges for GHG emission factors provided by IPCC 2006 to fuels considered and an error of 5% for emissions associated with electricity consumption (calculated based on the global energy mix for electricity generation in the IEA database).

2.3 Limitations and uncertainty

There are limitations and uncertainties associated with the estimates presented herein. First, we note that the input data on energy refers to use in agriculture-~~(including forestry and fisheries)~~ without further breakdown. While we refer often to the associated emissions as generated within the farm gate, they include components of unknown relative magnitude that are in fact generated through forestry and fisheries activities. For the latter, we have provided a partial and incomplete breakdown in the database, using IEA fisheries data. Second, the underlying data on energy use have significant geographical gaps, especially in Africa, as well as temporal gaps, particularly before 1990. Out of 233 countries and territories, 51 were imputed in the energy emissions FAOSTAT database. However, these are all small countries and their total share of global GHG emissions from energy use in agriculture is less than 1%. As mentioned above, the error associated with activity data gap-filling was on average below 5%.

The uncertainty ~~is in~~ the original energy consumption data is much smaller for some countries than for others, depending on whether the activity data are collected using specific surveys, where a sense of the uncertainty can be measured, or whether national statistical offices use proxies and/or assumptions. The uncertainty also varies by product, depending on what administrative data may be available for them (sales, taxes, etc.), or even on whether they are traded in the formal or informal sector (or not traded at all). According to the default uncertainty for

¹ We assumed that coal used in agriculture is mostly 'bituminous coal.'

activity data set by IPCC energy guidelines, the uncertainty is measured mainly from two aspects: 1) the adequacy of the statistical coverage of all source categories and 2) the adequacy of the scope of all fuels (both traded and non-traded). In our case, using the level of uncertainty for stationary non-energy intensive industries and ‘well developed statistical systems’ (such as energy statistics), an uncertainty associated with the activity data of $\pm 5\%$ can be assumed for activity data (IPCC, 2006, Volume 2, Chapter 2, Table 2.6). For estimates of GHG emissions, we applied default IPCC methods and uncertainty values for EFs to compute the error propagation in equation (1) above, finding an uncertainty range in emissions of -7 to 16%. The overall resulting uncertainty range, which compute the uncertainty resulting from energy statistics ($\pm 5\%$) and the Uncertainty in activity data was then combined with uncertainty resulting from the default fuel emission factors by fuel (-7 to 16%), computed by taking the IPCC lower and upper values of emissions factors by fuel, weighted by their average world use). The resulting overall uncertainty was obtained by applying the IPCC (2006) default error propagation method, resulting in the range are between -9 to +17% (IPCC, 2006, Volume 1 2001, Chapter 6, Equation 6.4) and they are presented in Fig. 33. The large upper bound is mainly due to the uncertainty of fuel emission factors in off-road and stationary combustion, according to the IPCC guidelines.

2.4 Data availability

The GHG emission data presented herein cover the period 1970-2019, at the country level, with regional and global aggregates. Significant gaps in some countries and regions, especially Africa, imply that specific regional estimates may be systematically underestimated. Additionally, statistics on energy consumption and emissions from fisheries are highly uncertain and likely underestimates, considering that significant amounts of fuel consumed by small vessels, constituting a majority of the global fishing fleet, are not typically reported in official statistics.

Data on energy use in agriculture and associated emissions used in this work are available as open data at: <https://zenodo.org/record/5153241> (Tubello and Pan, 2021). A thorough description of the dataset and metadata information are available through FAOSTAT at <https://www.fao.org/faostat/en/#data/GN>. The relevant FAOSTAT (FAO, 2021) database is maintained and updated annually by FAO.

3. Results

Our estimates indicated that world-total GHG emissions from energy use in agriculture including electricity were above 1 billion tonnes in 2019 (1,029 Mt CO₂eq yr⁻¹; 7% greater than in 1990). The average annual increase was 0.2% over the period 1990-2019 and was consistent with the overall growth in agricultural emissions within the farm gate. Almost half of the estimated emissions (496 Mt CO₂eq yr⁻¹) arose from combustion of fossil fuels for power generation of electricity used on the farm. The most important energy sources after electricity were gas/diesel oil and coal, while motor gasoline, typically associated to field machinery and irrigation in developing countries, contributed a mere 5% of the total (Fig. 1). Emissions from electricity grew rapidly over the study period (mean annual growth rates of more than 6%), overtaking gas diesel oil and motor gasoline as the main emission source by roughly the year 2012. This, together with an increase of LPG use, suggests a global transition towards cleaner on-farm energy use, considering grid electricity is typically associated to lower emissions per energy compared to single fossil fuel sources.

At the same time, use and hence emissions from natural gas, fuel oil and coal were rather constant over the period 1990-2019, about 38, 123, and 25 Mt CO₂eq yr⁻¹ on average. While data for on farm energy use were rich in

coverage, trends in emissions from use of diesel oil and fuel oil in fishing vessels were limited by data paucity. Within such limitations, we find a small, decreasing share of emissions from fishing vessels compared to world-total energy use in agriculture, with a total contribution in 2018 (the breakdown of energy used in fisheries is available only until 2018) of about 27 Mt CO₂eq (3%).

In terms of total emissions, the top 15 countries (out of 199 countries covered by the dataset) are responsible for 54% of global GHG emissions in 2019. No country from Africa or Oceania were among the top 10 GHG emitters. As these are typically densely populated countries, an analysis of GHG emission per person (done on the basis of population data also available in FAOSTAT) led to the same result. Of the 10 top emitters, three are from Asia, two from North America, two from Europe, and three from Latin America. However, in terms of GHG emission from energy use in agriculture per person, no Asian country appears in the top 10.

China and India were the largest emitters in 2019-[in absolute terms](#). Although gas/diesel oil was responsible for the most GHG emissions in Asia, in China and India, most of the on-farm emissions from on-farm energy use originate from coal (50% and 88% respectively).

3.2 Regional Distributions and Trends

Our results indicate that on-farm energy use is an important and increasing component of GHG emissions in agriculture, corresponding to 892 Mt CO₂eq yr⁻¹ out of 6,604 Mt CO₂eq yr⁻¹ on-farm emissions in 1990, and 962 out of 7,214 Mt CO₂eq yr⁻¹ in 2019. Emissions declined in Annex I countries over the period 1990-2019, especially energy from coal (-88%) and fuel oil (-77%). Such decline was more than counterbalanced by increases in energy use in non-Annex I parties (NAI), with significant increases in emissions from electricity (three-fold increases since 1990) (Fig. 2).

Asia and Europe were the largest emitters among FAO regions, although with starkly different trends over 1990-2019. Indeed, while emissions in Europe decreased over the whole period, from 730 Mt CO₂eq yr⁻¹ in 1970 to 410 Mt CO₂eq yr⁻¹ in 1990, and further decreased to 145 Mt CO₂eq yr⁻¹ in 2019, emissions in Asia nearly doubled over 1990 to 2019, from 380 Mt CO₂eq yr⁻¹ to 629 Mt CO₂eq yr⁻¹, while they were 453 Mt CO₂eq yr⁻¹ in 1970. Africa was a significant emission source in 2019, having more than doubled since 1990, from 18 MtCO₂-eq to 48 Mt CO₂eq yr⁻¹. Emissions increased more than 55% in Latin America, but only 18% in North America. The smallest contributor to global emissions was Oceania, despite increases by nearly 55% from 1990 (Fig. 4). Top emitting countries in 2019 in terms of energy use in agriculture were China (233 Mt CO₂eq yr⁻¹), followed by India (212 Mt CO₂eq yr⁻¹) and the USA (79 Mt CO₂eq yr⁻¹). The top 10 emitting countries were responsible for nearly two-thirds of the world total (Fig. 54).

Emissions from mobile combustion in agriculture (typically tractors or other field machinery) represent a large share in most continents. In 2019, gas/diesel oil burning was the largest CO₂ on-farm emission source in all the continents: 55% in Asia, 48% in Africa, Northern America (57%), Oceania (88%), and Latin America (76%). The second-largest emitter is motor gas in Africa (21%), Ocean (7%) and North America (23%), coal in Asia (31%), natural gas (13%) in Europe, and fuel oil (9%) in Latin America.

In countries dominated by fisheries as the main agricultural sub-sector, the result are significantly different, with diesel oil and fuel oil as the main sources of GHG emissions. For example, in Faroe Island, gas diesel oil generated 75% of CO₂ emissions, followed by fuel oil (18%) and electricity (7%). Greenland had 63% CO₂ emissions from gas/diesel oil, followed by fuel oil (20%) and motor gasoline (17%).

3.3 Indicators

We developed indicators by cropland area and by agricultural production value to help ~~us~~ disentangle effects of country agricultural size, both in terms of area and economy. We defined GHG emission intensity per unit of cropland as the total GHG emissions from energy use in agriculture divided by total cropland area of a country. Likewise, energy GHG intensity per production value was computed by dividing total GHG from national energy use in agriculture by total agricultural value added. (Fig. 65). Data for the denominators of both indicators were taken from FAOSTAT (FAO, 2021a, b).

Our results indicate that energy GHG emissions per unit cropland have been fluctuating but have been substantially stable over the last two decades. Nonetheless, significant differences can be noted among regions (Fig. 76). While Europe has decreased significantly its energy-related GHG emission intensity in agriculture (-57%) in the period 1990-2018, Africa, Central America and Asia have increased it substantially (+88%, +51% and +44% respectively). This means that more GHG emissions are associated with the cultivation of one unit of cropland in these regions. In absolute terms, the lowest energy intensity per unit of cropland in 2018 was achieved in Africa (0.16 t CO₂eq ha⁻¹), followed by Oceania (0.38 t CO₂eq ha⁻¹), South America (0.42 t CO₂eq ha⁻¹) and Europe (0.48 t CO₂eq ha⁻¹). A clear diverging trend can be noticed between Annex I and non-Annex I countries, with the former significantly decreasing the energy-related agricultural emissions intensity, and the latter significantly increasing them (Fig. 86).

In terms of energy-related GHG emissions to agricultural value added, the picture is substantially different, with Europe having significantly improved its energy intensity since 1990 (-68%), followed by Asia (-61%), Latin America and the Caribbean (-54%), Northern America (-53%) and Oceania (-45%), while Africa's intensity remained substantially stable over the last two decades.

This picture is significantly different when analyzing energy-related emission per capita (Fig. 97). Per capita, the emission intensity is lowest in most African countries and India, while it is high in Canada, Australia and Argentina, among others.

In 2019, high levels of GHG emissions per capita (from energy used in agriculture) were estimated for Faro Islands, Greenland and Iceland. In those territories, emissions from gas/diesel oil take more than two-thirds of the total. Fishing is one of the most responsible factors contributing to the high per capita emission from energy use in agriculture in Faroe Island, as fishing vessels take almost one-third of energy use at national level. Fishing is also the primary industry in Iceland. For Greenland, fishing is the second-largest industry by employment. Though Greenland has the highest ratio of using renewable energy (70%), fishing remains a sector depending on traditional fossil fuels.

4. Discussion

Emissions from energy use in agriculture are only about one-fifth of the total in CO₂eq generated from crop and livestock production (Tubiello et al. 2019), however they represent an important contribution in terms of CO₂ gas, the other process emitting CO₂ on the farm being the drainage of organic soils. They are therefore of great importance to GHG mitigation in agriculture. In terms of comparing these results with the existing literature, we note that our approach covers only 7.2 of the 8-10 EJ usually estimated for total fuel consumption within the farm gate (Arizpe et al., 2011; FAO, 2011; Smil, 2008). Additionally, our estimates of energy use in fisheries is

admittedly incomplete (0.3 EJ) compared to amounts reported in other studies (Buhaug et al., 2009; FAO, 2011). The reason is that we focused only on electricity and on the most relevant fuels consumed in agriculture, but not all. Specifically for fisheries, the relatively low coverage is also due to the fact that still few countries report disaggregated energy consumption statistics for fisheries alone.

Electricity generation and gas/diesel oil used in agriculture were the two most important emissions sources, responsible for roughly 40% of the total on average during the period 1990 -2019. Electricity is used for different agriculture purposes: irrigation, processes that require heat or mechanical power, such as drying or milling. LPG, natural gas, and heavy fuel oil are typically used for heat generation and, in some rare cases, for motive power. Apart from some sharp variation of their total consumption in agriculture between consecutive years, mainly at the beginning of the '90s, probably due to reporting issues of important consumer countries such as India and the dissolution of the USSR, their emissions remained relatively stable. Compared to other emissions, coal and fuel oil emissions decreased over the last few years, while agricultural production still increased. This can be explained by updated energy use structure - the increased uptake of cleaner energy carriers such as electricity and LPG over fuel oil and coal for heating. China, for example, one of the major emitting countries, decreased emissions from fuel oil use by 48%, while increased emissions due to diesel use by around 59 % and emissions due to electricity use by over 170% over the same period 1990-2019. There is anyway still a long way to go to decrease emissions in the agricultural sector in China, due to its still very high reliance on coal as a heat source.

Unlike other regions, Europe's emissions went significantly down, partly because less energy was consumed by primary production in absolute terms. Also, Europe has gradually moved from high GHG emitting energy carriers such as coal and fuel oil towards cleaner ones, such as natural gas and electricity. This is confirmed by the additional analysis done using the energy-related GHG intensity indicators. This analysis shows how Europe has been steadily ~~improving~~~~decreasing~~ its agricultural GHG intensity (both in terms of unit of cropland and of unit of agricultural production value), thus providing a good example for other regions.

5. Conclusions

This paper provides details of a new dataset added to the existing section of FAOSTAT, which contains information about emissions due to agricultural activities, and which was just opened publicly online (July 2021). It also provides an analysis of energy-related GHG intensity in agriculture, per unit of cropland and per unit of agricultural production value, which has not been published yet. It complements the analysis with selected GHG emission intensity indicators, which are derived directly from FAOSTAT. The calculation makes use of official statistics as reported by countries to the UN, applying IPCC Tier 1 default emission factors for fuels and IEA country-specific emission factors for electricity generation (considering the national energy mix) and relies on official energy consumption in agriculture data reported by countries to the UNSD and the IEA. Further to the above, the share of emissions on fisheries' energy use is estimated and reported separately as a subset. These estimated emission shares provide references to their relevance compared with total emissions but should be used with relevant uncertainties taken into consideration.

6. References

- Ahokas, J., Rajaniemi, M., Mikkola, H., Frorip, J., Kokin, E., Praks, J., Poikalainen, V., Veermäe, I. and Schäfer, W.: Energy use and sustainability of intensive livestock production, in Sustainable Energy Solutions in Agriculture, p. 50, CRC Press, 2014.
- Angelou, N., Elizondo Azuela, G., Banerjee, S. G., Bhatia, M., Bushueva, I., Inon, J. G., Jaques Goldenberg, I., Portale and Sarkar, A.: Global tracking framework (Vol. 2): Overview (English), Sustain. Energy Wash. DC World Bank Group, 2013.
- Arizpe, N., Giampietro, M. and Ramos-Martin, J.: Food Security and Fossil Energy Dependence: An International Comparison of the Use of Fossil Energy in Agriculture (1991-2003), Crit. Rev. Plant Sci., 30(1-2), 45-63, <https://doi.org/10.1080/07352689.2011.554352>, 2011.
- Boissy, J., Aubin, J., Drissi, A., Bell, J. G. B. and Kaushik, S.: Environmental impacts of plant-based salmonid diets at feed and farm scales, Aquaculture, 321, 61-70, <https://doi.org/10.1016/j.aquaculture.2011.08.033>, 2011.
- Bosma, R., Anh, P. T. and Potting, J.: Life cycle assessment of intensive striped catfish farming in the Mekong Delta for screening hotspots as input to environmental policy and research agenda, Int. J. Life Cycle Assess., 16(9), 903, <https://doi.org/10.1007/s11367-011-0324-4>, 2011.
- Buhaug, Ø., Corbett, J., Endresen, Ø., Eyring, V., Faber, J., Hanayama, S., Lee, D., Lee, D., Lindstad, E., Mjelde, A., Pålsson, C., Wanquing, W., Winebrake, J. and Yoshida, K.: Second IMO Greenhouse Gas Study 2009, International Maritime Organization., 2009.
- Bundschuh, J. and Chen, G.: Sustainable Energy Solutions in Agriculture, CRC Press, London., 2014.
- Calicioglu, O.; Flammini, A.; Bracco, S.; Bellù, L.; Sims, R. The Future Challenges of Food and Agriculture: An Integrated Analysis of Trends and Solutions. Sustainability 2019, 11, 222. <https://doi.org/10.3390/su11010222>
- Cao, L., Diana, J., Keoleian, G. and Lai, Q.: Life Cycle Assessment of Chinese Shrimp Farming Systems Targeted for Export and Domestic Sales, Environ. Sci. Technol., 45, 6531-8, <https://doi.org/10.1021/es104058z>, 2011.
- Dalgaard, T., Olesen, J. E., Petersen, S. O., Petersen, B. M., Jørgensen, U., Kristensen, T., Hutchings, N. J., Gyldenkerne, S. and Hermansen, J. E.: Developments in greenhouse gas emissions and net energy use in Danish agriculture – How to achieve substantial CO2 reductions?, Environ. Pollut., 159(11), 3193-3203, <https://doi.org/10.1016/j.envpol.2011.02.024>, 2011.
- Desjardins, R. L., Vergé, X. P. C., Hutchinson, J. J., Smith, W. N., Grant, B. B., McConkey, B. G. and Worth, D. E.: Final Report to the Agri-Environmental Indicator Project, AAFC East. Cereal Oilseed Res. Cent., 2005.
- Dubois, O., Flammini A., Kojakovic A., Maltoglou I., Puri M., Rincon L.: Energy access : food and agriculture. State of Electricity Access Report. Washington, D.C. : World Bank Group., 2017.
- Dyer, J. and Desjardins, R.: A Review and Evaluation of Fossil Energy and Carbon Dioxide Emissions in Canadian Agriculture, J. Sustain. Agric. - J Sustain. AGR, 33, 210-228, <https://doi.org/10.1080/10440040802660137>, 2009.
- Dyer, J. A., Desjardins, R. L. and McConkey, B. G.: The fossil energy use and CO2 emissions budget for Canadian agriculture, in Sustainable Energy Solutions in Agriculture, Taylor & Francis /CRC press, , 2014.
- Ellingsen, H. and Aanonsen, S.: Environmental Impacts of Wild Caught Cod and Farmed Salmon - A Comparison with Chicken, Int. J. Life Cycle Assess., 11, 60-65, <https://doi.org/10.1065/lca2006.01.236>, 2006.
- energypedia: Literature Analysis: Energy in Agriculture, https://energypedia.info/wiki/Literature_Analysis:_Energy_in_Agriculture, 2020a.

1 FAO: Energy-smart food for people and climate, Food and Agriculture Organization of United Nations (FAO),
2 <http://www.fao.org/3/i2454e/i2454e00.pdf>, 2011.

3 FAO: Energy Smart Agriculture, E-Agric. <http://www.fao.org/e-agriculture/blog/energy-smart-agriculture>, 2018.

4 FAO, IFAD, UNICEF, WFP, and WHO: The state of food security and nutrition in the world 2017: Building
5 resilience for peace and food security., Food and Agriculture Organization of the United Nations, Rome., 2017.

6 FAOa: FAOSTAT Production Indices, <http://www.fao.org/faostat/en/#data/QI>, 2021.

7 FAOb: FAOSTAT Emissions – Agriculture, Energy Use, <http://www.fao.org/faostat/en/#data/GN>, 2021.

8 GoS: Foresight project on global food and farming futures Challenge D: Meeting the challenges of a low emissions
9 world, The Government Office for Science, London, UK.
10 [https://assets.publishing.service.gov.uk/government/uploads/system/uploads/attachment_data/file/288329/11-](https://assets.publishing.service.gov.uk/government/uploads/system/uploads/attachment_data/file/288329/11-546-future-of-food-and-farming-report.pdf)
11 546-future-of-food-and-farming-report.pdf, 2011.

12 IEA: CO2 Emissions from Fuel Combustion 2014, International Energy Agency, 2014.

13 IPCC: 2006 Guidelines for National Greenhouse Gas Inventories (NGHGI), the Institute for Global Environmental
14 Strategies (IGES), Hayama, Japan on behalf of the IPCC. : <https://www.ipcc-nggip.iges.or.jp/public/2006gl/>.

15 IPCC: 2001. Good Practice Guidance and Uncertainty Management in National Greenhouse Gas Inventories.
16 <https://ipcc-nggip.iges.or.jp/public/gp/english/>

17 Jackson, T. and Hanjra, M. A.: Energy, water and food: exploring links in irrigated cropping systems, in
18 Sustainable Energy Solutions in Agriculture, p. 24, CRC Press, 2014.

19 Jaques, A. P.: Trends in Canada's greenhouse gas emissions (1990-1995), Air Pollution Prevention Directorate,
20 Pollution Data Branch, Environment Canada, Ottawa, 1997.

21 d'Orbcastel, E. R., Blancheton, J.-P. and Aubin, J.: Towards environmentally sustainable aquaculture: Comparison
22 between two trout farming systems using Life Cycle Assessment, Aquac. Eng., 40(3), 113–119,
23 <https://doi.org/10.1016/j.aquaeng.2008.12.002>, 2009.

24 Pelletier, N. and Tyedmers, P.: Feeding farmed salmon: Is organic better? Aquaculture, 272, 399–416,
25 <https://doi.org/10.1016/j.aquaculture.2007.06.024>, 2007.

26 Pimentel, D.: Energy Inputs in Food Crop Production in Developing and Developed Nations, Energies, 2,
27 <https://doi.org/10.3390/en20100001>, 2009.

28 Sims, R. E. H., Flammini A., Puri, M., Bracco, S.: Opportunities for agri-food chains to become energy-smart, p.
29 212, FAO and USAID, 2015.

30 Sims, R. E. H. and Flammini, A.: Energy-smart food - technologies, practices and policies, in Sustainable Energy
31 Solutions in Agriculture, p. 48, CRC Press, , 2014.

32 Smil, V.: Energy in Nature and Society, MIT Press, 2008.

33 Tubiello F N et al.: Greenhouse gas emissions from food systems: Building the evidence base, Environ. Res. Lett.
34 16 065007, 2021

35 Tubiello, F. and Pan, X.: Emissions from energy used in agriculture (on-farm) ZENODO,
36 <https://zenodo.org/record/5153241>, 2021.

37 Tubiello, F.N.: Greenhouse Gas Emissions Due to Agriculture. In: [Ferranti, P., Berry, E.M., Anderson, J.R.
38 (Eds.)], Encyclopedia of Food Security and Sustainability, vol. 1, pp. 196–205, Elsevier. ISBN:
39 9780128126875, 2019.

Formatted: Font: 10 pt

Formatted: Indent: Left: 0", Hanging: 0.15"

Formatted: Font: (Default) Times New Roman, 12 pt, Font color: Auto

Formatted: Normal, Left, Indent: Left: 0", First line: 0", Space After: 0 pt, Line spacing: single, Pattern: Clear

1 Tullberg, J. N.: Energy in crop production systems, in Sustainable Energy Solutions in Agriculture, vol. 3, p. 15,
2 CRC Press, Florida, United States, , 2014.
3 Utz, V.: Modern Energy Services for Modern Agriculture: A Review of Smallholder Farming in Developing
4 Countries, GIZ-HERA – Poverty-oriented Basic Energy Services.
5 https://energypedia.info/images/f/fd/Energy_Services_for_Modern_Agriculture.pdf, 2011.
6 Wang, L.: Energy efficiency technologies for sustainable food processing, Energy Effic., 7(5), 791–810,
7 <https://doi.org/10.1007/s12053-014-9256-8>, 2014.

| | CO ₂ | | | CH ₄ | | | N ₂ O | | |
|-----------------------------|-----------------|-------|-------|-----------------|-------|-------|------------------|-------|-------|
| | Default | Lower | Upper | Default | Lower | Upper | Default | Lower | Upper |
| | (kg/TJ) | | | (kg/TJ) | | | (kg/TJ) | | |
| Gas/Diesel oil | 74100 | 72600 | 74800 | 4.15 | 1.67 | 10.4 | 28.6 | 14.3 | 85.8 |
| Motor gasoline ² | 69300 | 67500 | 73000 | 80 | 32 | 200 | 2 | 1 | 6 |

Table 1. Fuel-specific emission factors for agriculture off-road mobile combustion sources and machinery applied (IPCC 2006)

| | CO ₂ | | | CH ₄ | | | N ₂ O | | |
|---------------------------|----------------------|-------|-------|-----------------|-------|-------|------------------|-------|-------|
| | Default | Lower | Upper | Default | Lower | Upper | Default | Lower | Upper |
| | (kg/TJ) ³ | | | (kg/TJ) | | | (kg/TJ) | | |
| Liquefied Petroleum Gases | 63100 | 61600 | 65600 | 5 | 1.5 | 15 | 0.1 | 0.03 | 0.3 |
| Natural gas | 56100 | 54300 | 58300 | 5 | 1.5 | 1.5 | 0.1 | 0.03 | 0.3 |
| Residual fuel oil | 77400 | 75500 | 78800 | 10 | 3 | 30 | 0.6 | 0.2 | 2 |
| Other bituminous coal | 94600 | 89500 | 99700 | 300 | 100 | 900 | 1.5 | 0.5 | 5 |

Table 2. Fuel-specific emission factors for stationary combustion in the residential and agriculture/forestry/fishing/fishing farms categories applied (IPCC 2006)

² The default emission factors regard 4-stroke motor gasoline engines.

³ kg of greenhouse gas per TJ on a Net Calorific Basis

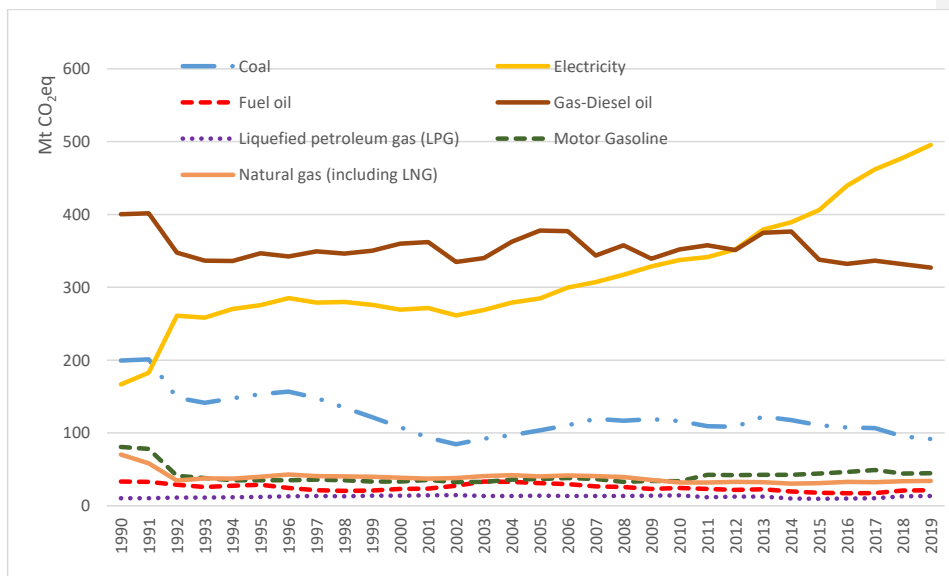


Figure 1. Global GHG emissions from energy use in agriculture from 1990 to 2019, by energy carrier (Mt CO₂eq).
Source: FAOSTAT, based on data from IEA and UNSD, 2021

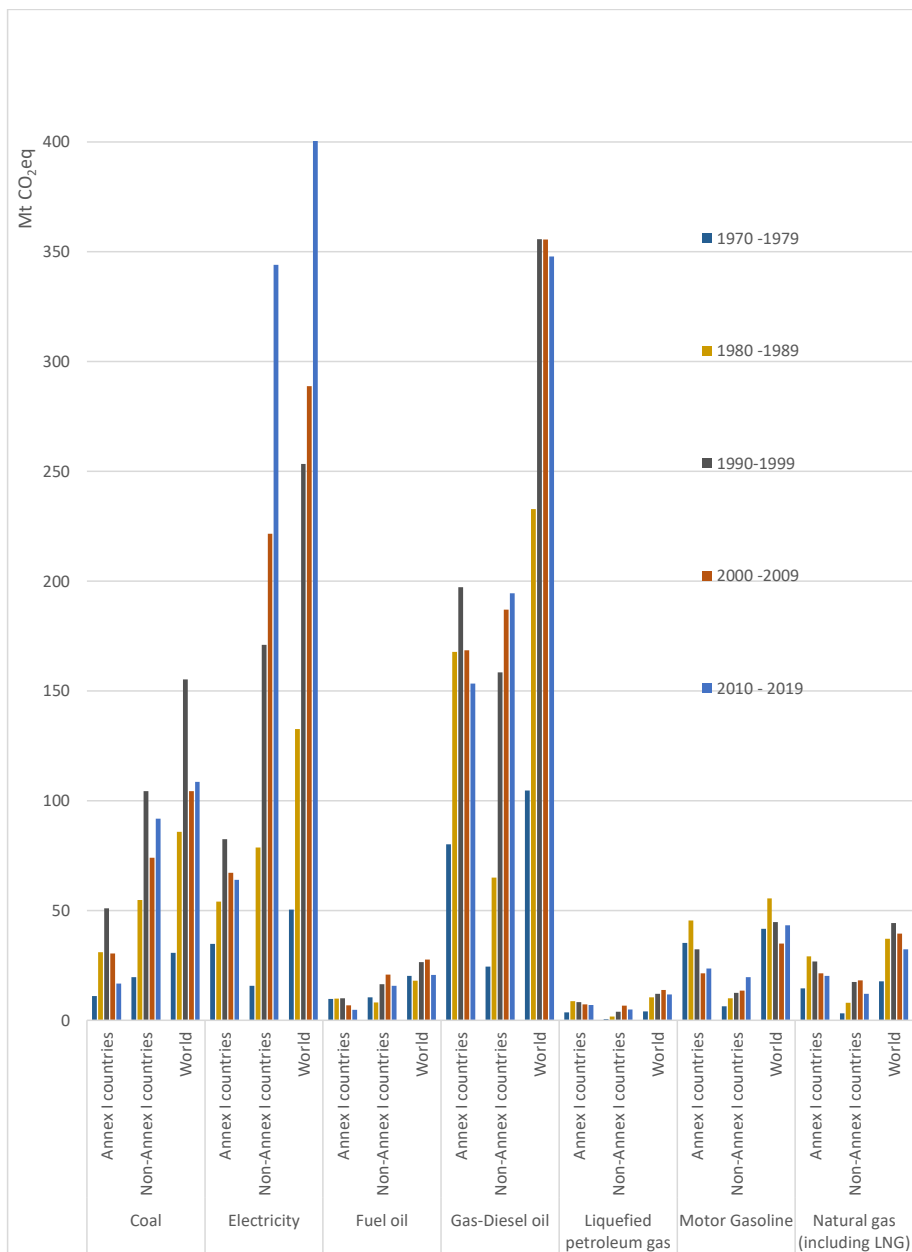


Figure 2. GHG emission trends from 1990 to 2019 for Annex I and Non-Annex I by energy carrier (Mt CO₂eq). Source: FAOSTAT, 2021

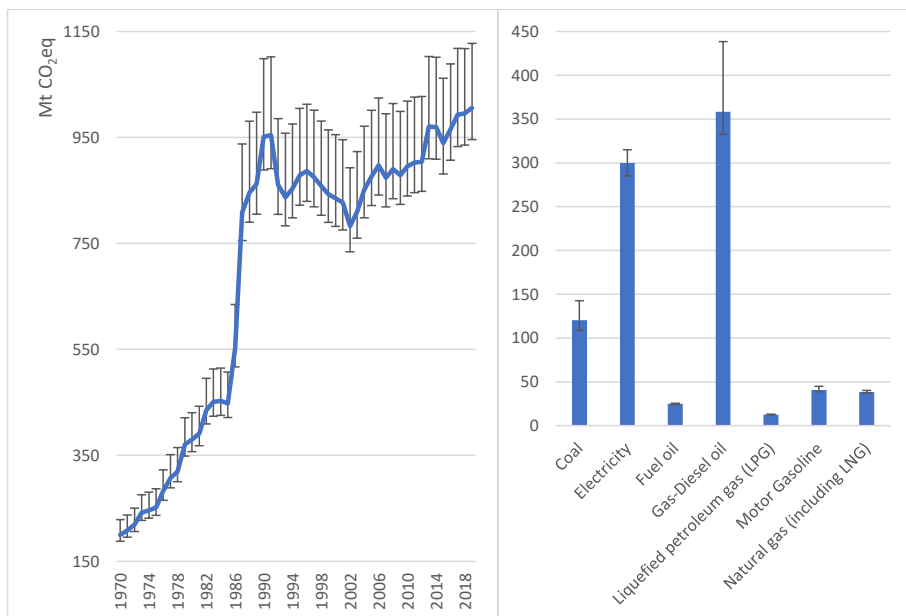


Figure 3. Trend in global GHG emissions (from 1990 to 2019) and global GHG emissions from energy use in agriculture by energy source (average 1990 – 2019) with uncertainty ranges (Mt CO₂eq). Source: FAOSTAT, based on data from IEA and UNSD, 2021

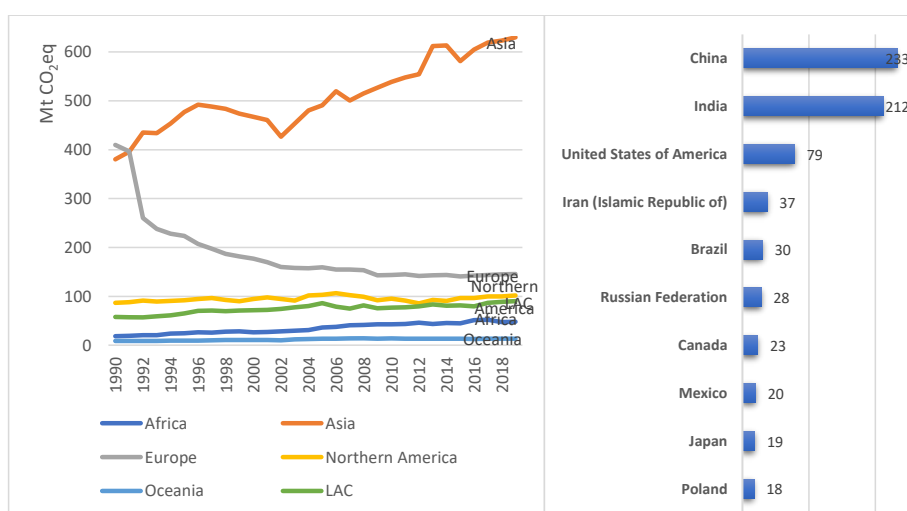
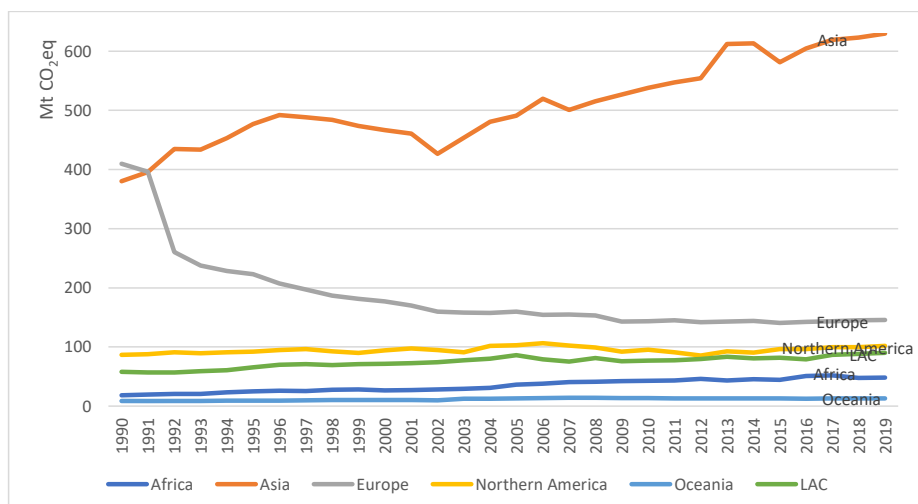


Figure 4. GHG emissions from energy use in agriculture from 1990 to 2019, by region (Mt CO₂eq). Source: FAOSTAT, based on data from IEA (left) and UNSD, 2021

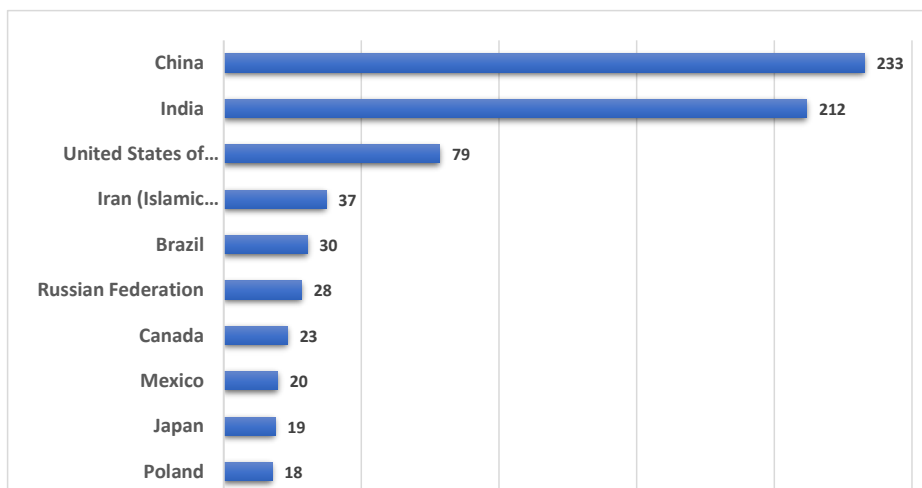


Figure 5. Top 10 emitting countries emitting GHG from energy used in agriculture in 2019 (right) (Mt CO₂eq).
Source: FAOSTAT, based on data from IEA and UNSD, 2021

Formatted: Justified, Space After: 0.6 pt, Line spacing: 1.5 lines

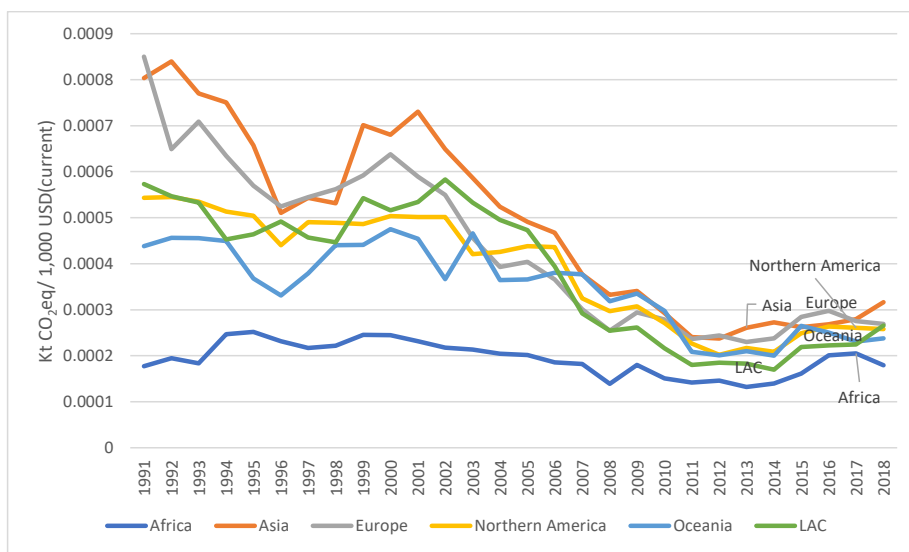
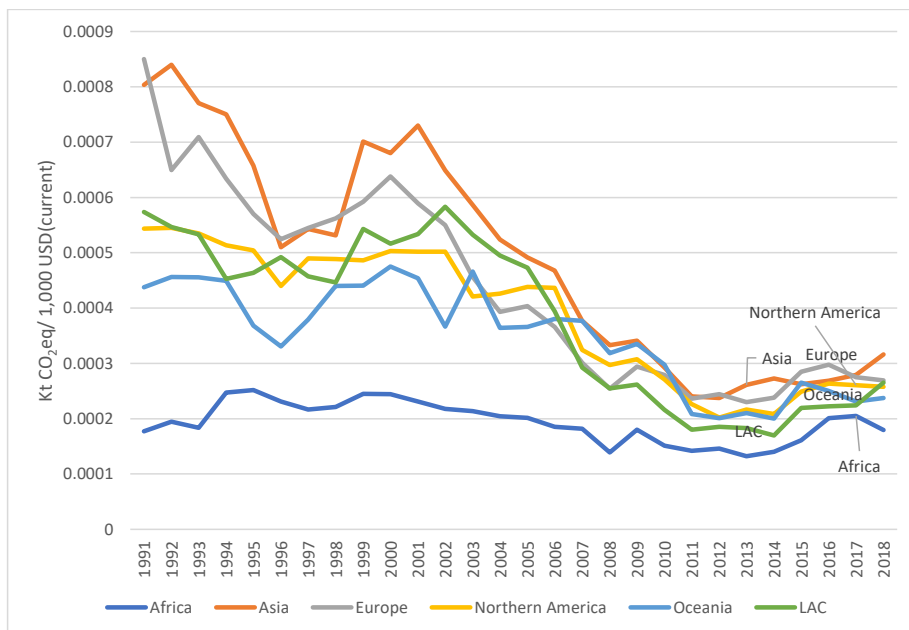


Figure 65. GHG emission from energy use in agriculture per gross agriculture production value 1991-2018 (Kt CO₂eq/1,000 current USD). Source: FAOSTAT, based on data from IEA and UNSD, 2021

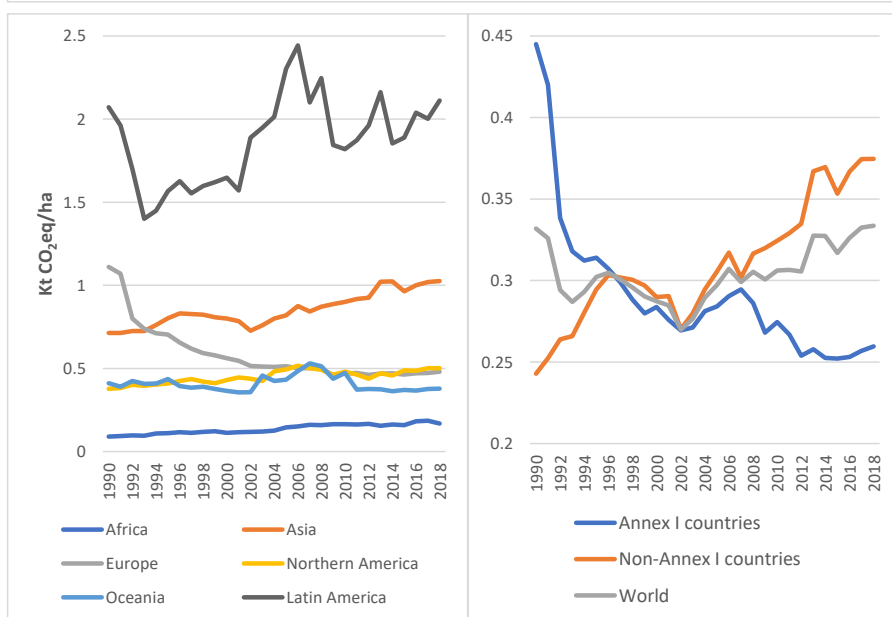
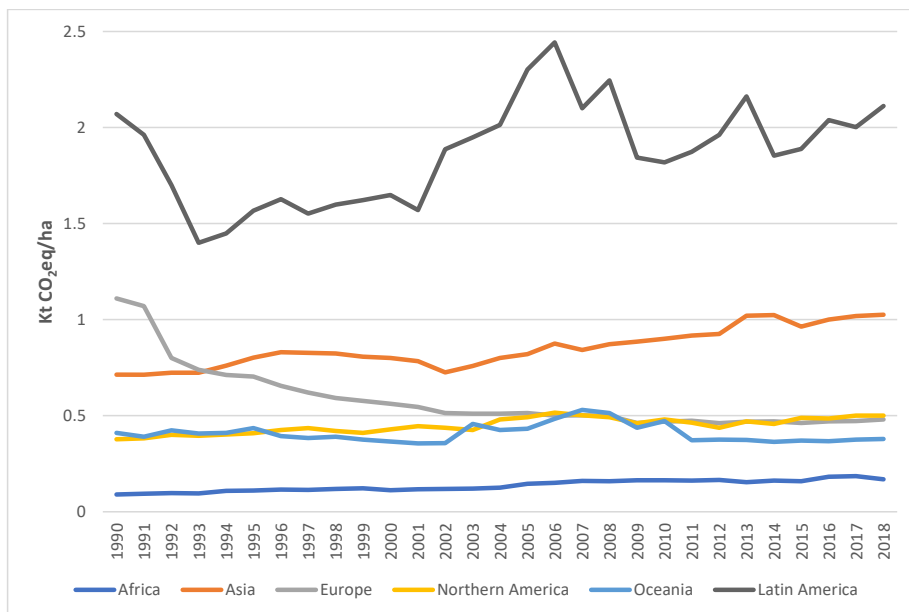


Figure 76. GHG emission from energy use in agriculture per unit of cropland by continent (left) and by Annex I and Non-Annex I countries (right) 1990-2018 (Kt CO₂eq/ha).

Source: FAOSTAT, based on data from IEA and UNSD, 2021

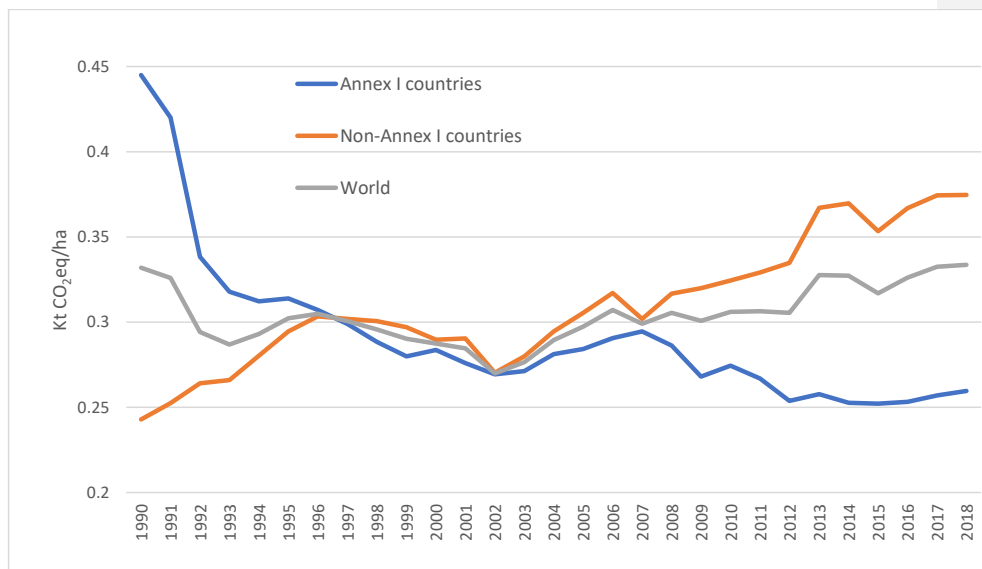


Figure 8. GHG emission from energy use in agriculture per unit of cropland by Annex I and Non-Annex I countries, 1990-2018 (Kt CO₂eq/ha). Source: FAOSTAT, based on data from IEA and UNSD, 2021

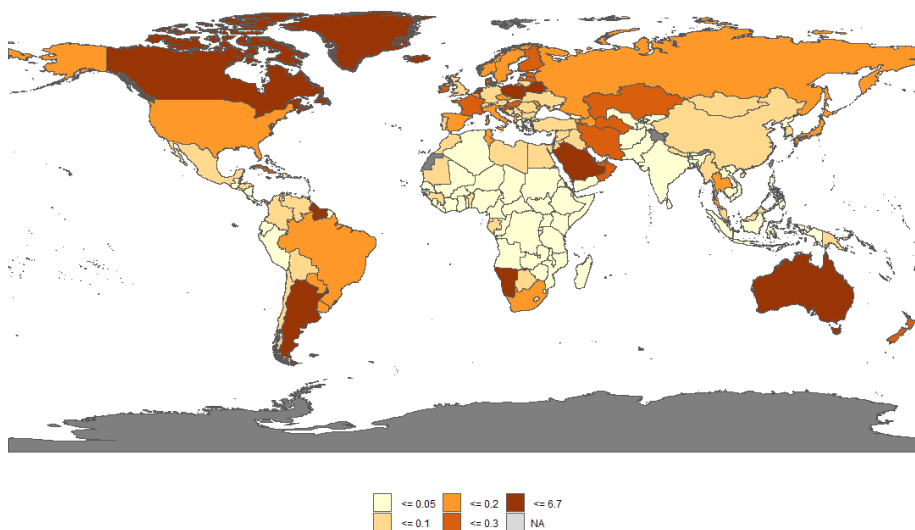


Figure 97. GHG emission from energy used in agriculture per capita in 2019 (t CO₂eq/person). Source: Emissions data from FAOSTAT, 2021. Population data from the World Bank (<https://data.worldbank.org/indicator/SP.POP.TOTL>), complemented with UNDESA population data for Falkland Islands (Malvinas), Guadeloupe, French Guyana, Martinique, Niue, Réunion, Romania, Palestine, Democratic Republic of the Congo.