

## **Third Revision of the Global Surface Seawater Dimethyl Sulfide Climatology (DMS-Rev3)**

Shrivardhan Hulswar<sup>1</sup>, Rafel Simo<sup>2</sup>, Martí Galí<sup>2,3</sup>, Thomas G. Bell<sup>4</sup>, Arancha Lana<sup>5</sup>, Swaleha Inamdar<sup>1,6</sup>, Paul R. Halloran<sup>7</sup>, George Manville<sup>7</sup> and Anoop S. Mahajan<sup>1\*</sup>

5 <sup>1</sup>Indian Institute of Tropical Meteorology, Ministry of Earth Sciences, Pune, India

<sup>2</sup>Institut de Ciències del Mar (CSIC), Barcelona, Catalonia, Spain

<sup>3</sup>Barcelona Supercomputing Center (BSC)

<sup>4</sup>Plymouth Marine Laboratory (PML), Plymouth, UK

10 <sup>5</sup>Institut Mediterrani d'Estudis Avançats (IMEDEA, UIB-CSIC), Esporles, Balearic Islands, Spain

<sup>6</sup>Institute of Environment and Sustainable Development, Banaras Hindu University, Varanasi, India

<sup>7</sup>College of Life and Environmental Sciences, University of Exeter, Exeter, UK

\*corresponding author: Anoop Sharad Mahajan (anoop@tropmet.res.in)

15

**Key points:**

- The sea-surface DMS concentration climatology was updated using an upgraded processing algorithm and the inclusion of new data.
- Usage of monthly dynamic biogeochemical province boundaries and DMS variability length scales reduces the patchiness observed in surface mean concentrations seen in the older climatologies.
- DMS-Rev3 estimates the global annual mean at 2.26 nM (2.39 nM without a sea-ice mask), approximately ~7% lower than the last DMS climatology (~2% lower without considering sea-ice), with much larger regional differences.

## 25 **Abstract**

This paper presents an updated estimation of the bottom-up global surface seawater dimethyl sulfide (DMS) climatology. This update, called DMS-Rev3, is the third of its kind and includes five significant changes from the last climatology, ‘L11’ (Lana et al., 2011) that was released about a decade ago. The first change is the inclusion of new observations that have become  
30 available over the last decade, creating a database of 873,539 observations leading to a ~18-fold increase in raw data as compared to the last estimation. The second is significant improvements in data handling, processing, and filtering, to avoid biases due to different observation frequencies which results from different measurement techniques. Thirdly, we incorporate the dynamic seasonal changes observed in the geographic boundaries of the ocean  
35 biogeochemical provinces. The fourth change involves the refinement of the interpolation algorithm used to fill in the missing data. And finally, an upgraded smoothing algorithm based on observed DMS variability length scales (VLS) help to reproduce a more realistic distribution of the DMS concentration data. The results show that DMS-Rev3 estimates the global annual mean DMS concentration to be ~2.26 nM (2.39 nM without a sea-ice mask), i.e., about 4%  
40 lower than the previous bottom-up ‘L11’ climatology. However, significant regional differences of more than 100% as compared to L11 are observed. The global sea to air flux of DMS is estimated at ~27.1 TgS yr<sup>-1</sup> which is about 4% lower than L11, although, like the DMS distribution, large regional differences were observed. The largest changes are observed in high concentration regions such as the polar oceans, although oceanic regions that were under-  
45 sampled in the past also show large differences between revisions of the climatology. Finally, DMS-Rev3 reduces the previously observed patchiness in high productivity regions.

## **Plain Language Summary**

The third climatological estimation of sea-surface DMS concentrations based on in-situ measurements was created. The update includes a much larger input dataset and includes  
50 improvements in the data unification, filtering, and smoothing algorithm. The DMS-Rev3 climatology provides more realistic monthly estimates of DMS and shows significant regional differences compared to the past climatologies.

**Keywords:** Dimethyl Sulfide (DMS); Climatology; Sea-air Emissions;

## 55 1. Introduction

Dimethyl sulfide (DMS) is a volatile compound found in the global oceans and its biogeochemical cycle plays an important role in the Earth's climate system (Andreae and Crutzen, 1997; Charlson et al., 1987). It is primarily a by-product of phytoplankton growth and marine microbial food web interactions (Simó, 2001). DMS is produced by the breakdown of the phytoplankton intracellular metabolite dimethylsulfoniopropionate (DMSP) either in the algal cell or through microbial catabolism of the DMSP released due to physiological stress or mortality (Kiene et al., 2000; Stefels et al., 2007). This produced DMS is either oxidized by photochemical reactions or metabolized by bacteria (Toole et al., 2003), leaving a small portion that is released into the atmosphere as gaseous DMS (Galí and Simó, 2015; Simó, 2001). The DMS emitted from the surface ocean is responsible for up to 70% of the natural sulfur emissions into the global atmosphere (Andreae, 1982; Carpenter et al., 2012). Oxidation of DMS takes place in the atmosphere and yields sulfuric and methanesulfonic acids, which eventually lead to the formation of sulfate aerosols that can grow to act as cloud condensation nuclei (CCN) (Andreae, 2018; Pazmiño et al., 2005). New CCN can make clouds brighter, thus establishing a feedback loop between phytoplankton and cloud albedo popularly known as the CLAW hypothesis (Charlson et al., 1987). While some studies based on large-scale observations of ocean surface DMS provided partial support for the CLAW hypothesis (Vallina and Simó, 2007), other studies based on model sensitivity analysis of the hypothesis have challenged it (Quinn and Bates, 2011; Woodhouse et al., 2010, 2013). However, even if the feedback loop is not as strong as previously envisaged, DMS emissions contribute towards a large fraction of aerosols in the remote oceanic environment (Quinn et al., 2017) and its emission needs to be quantified accurately to improve our understanding of climate sensitivity, the current climate (Carslaw et al., 2013) and improve the accuracy of future projections (Wang et al., 2021).

80 Acknowledging the significance of oceanic DMS, the scientific community has striven to reproduce an accurate representation of the global atmospheric and seawater DMS concentrations, and more importantly the ocean-atmosphere flux on a global scale. To compute the ocean-atmosphere flux, two basic methods have been adopted. The first method, described here as the top-down approach method, relies on the dependency of DMS on various physical, 85 chemical, and biological parameters that correlate with the variability of DMS, e.g., chlorophyll-*a*, photosynthetically active radiation (PAR), nutrients, etc. This method creates a parameterization-based seawater DMS inventory, which when fed with input fields and used in combination with an air-sea exchange parameterization results in the ocean-atmosphere DMS flux (Belviso et al., 2004; Bopp et al., 2004; Galí et al., 2018; Simó and Dachs, 2002; 90 Vallina and Simó, 2007). These approaches provided statistical relationships needed to understand the mechanisms of the biogeochemical cycle of DMS, its formation and removal from the surface ocean. These seawater DMS parameterizations produced in the past, help reproduce preliminary or localized DMS concentration fields but have shortcomings when applied on a global scale. For example the SD02 algorithm (Simó and Dachs, 2002) was able 95 to estimate values accurately only in the tropical and temperate latitudes but underestimated DMS in low chlorophyll areas and along the Antarctic coast. VS07 (Vallina and Simó, 2007) was unable to reproduce the DMS-irradiance relationship that depended on phytoplankton biomass, leading to overestimations or underestimations outside the subtropical region. Another method applies a two-step approach, first computing the DMSP concentrations (Galí 100 et al., 2015) and using them to calculate the DMS concentrations utilizing satellite measured proxies (Galí et al., 2018). However, this satellite-based seawater DMS computation ( $DMS_{SAT}$ ) suffers from a negative bias in the Antarctic coastal region during the productive season.  $DMS_{SAT}$  tends to underestimate observations by around 50% in some regions of the Southern Ocean (Galí et al., 2018). A recent parameterization-based approach used an artificial neural

105 network (ANN) to extrapolate seawater DMS observations into a global climatology (Wang et al., 2020). This approach using linear regressions showed that on a global scale, mixed layer depth (MLD - explaining ~9% of variance) and solar radiation (explaining ~7% of variance) are the strongest predictors of DMS. The ANN climatology captured 66% of the raw data variance for the test DMS database (Wang et al., 2020). This approach however does not give  
110 much scientific insight into the relationships between biological and physical parameters and processes controlling the DMS concentrations. The concentrations are also under-estimated in the higher latitudes and the episodic occurrence of higher DMS concentrations is also poorly predicted (Bell et al., 2021). These parameterizations (diagnostic models) can however be useful to provide predictions using satellite/model proxies, allowing ‘real time’ predictions and  
115 interannual variability studies, although there is a clear need to improve them.

The second, a more widely-used method is the bottom-up approach, which relies on the Global Surface Seawater DMS Database (GSSDD) (NOAA-PMEL, 2020), which consists of data contributed by research groups from all over the world. This database was established to consolidate all the surface seawater DMS measurements in a single comprehensive dataset.  
120 This data is then modelled using a combination of smoothing and interpolation techniques to create a gridded seawater DMS concentration climatology, which is then converted into a flux as mentioned above (Kettle et al., 1999; Lana et al., 2011). The first attempt in creating the bottom-up climatology was made by Kettle et al. (Kettle et al., 1999). They used the then available dataset (15,617 observations across the global ocean) to create a global DMS  
125 climatology (hereafter called the K99). A decade later, this climatology was updated by Lana et al. (Lana et al., 2011), using an updated DMS database (47,313 observations) and included some minor changes in the computation algorithm (hereafter called the L11 climatology). Significant differences were observed between the two climatologies: globally, the L11 estimated emission of DMS was 28 (17.6 – 34.4) Tg S year<sup>-1</sup>, about 17% higher than the

130 estimate calculated using K99. Regionally, large differences were observed, for example in the  
Indian Ocean, where the L11 predicted higher values, and in the Southern Ocean, where large  
longitudinal differences were reported. At present, the L11 (Lana et al., 2011) bottom-up  
climatology is considered as the primary reference product for global DMS seawater  
concentrations and is used as an input in numerous atmospheric chemistry models (Mahajan et  
135 al., 2015) and climate and Earth system models.

However, over time, significant shortcomings in L11 have been identified. First, it uses a single  
threshold for data selection using the 99.9 percentile of the data to remove any extreme values.  
This causes the relatively higher values in the open ocean to remain if they are under the  
threshold. These might represent a highly productive bloom in the region and show  
140 anomalously high concentrations or be due to instrument related issues. Such abnormal values  
cause regional patches of higher concentrations which are seen in the L11 climatology. The  
L11 climatology also uses static biogeochemical province boundaries for global data  
segregation, which does not capture variability in the biogeochemical properties affecting DMS  
production, especially on seasonal scales. Since the number of available observations of sea-  
145 surface DMS concentrations has increased, the data distribution over the oceans, especially in  
under-sampled regions like the remote oligotrophic oceans and the Southern Ocean has  
improved (Figure 1). These regions had little data in the L11 climatology and were hence  
heavily reliant on interpolations (Tesdal et al., 2016). The newer data from these remote regions  
will help to make realistic estimates of concentrations, hence reducing dependence on the  
150 interpolated estimates.

Here we present ‘DMS-Rev3’, the third revision of the bottom-up DMS climatology, wherein  
we have amended the algorithm keeping in mind the shortcomings of K99 and L11. We updated  
the DMS database using the latest additions in the GSSDD along with other published data that  
are not currently in the database to reconstruct the monthly, seasonal, and annual DMS



155 climatologies. Comparison with the L11 climatology demonstrates that the DMS-Rev3 addresses some of the concerns with previous climatologies. Furthermore, shortcomings of the latest revision are discussed, along with the identification of gaps that need to be addressed in subsequent versions.

## 2. Methodology

### 160 2.1. Data consolidation and clean-up

Since the last bottom-up DMS climatology (L11) was published about a decade ago by Lana et al. (Lana et al., 2011), the GSSDD database (NOAA-PMEL, 2020) has been continuously updated with new observations and now consists of a total of 87,801 data points. This is a significant increase in the number of data points (an increase of ~85.6%) compared to the 165 number of data points used in the L11 climatology (47,313 – blue circles in Figure 1). All the raw data used for the new climatology is also shown in Figure S1. Most of these observations were made using the gas chromatography (GC) technique and have a temporal resolution ranging from 10 minutes to a data point every week for individual campaigns. Over the last decade, newer techniques that use high-resolution mass spectrometry have become more 170 common and led to a drastic increase in the number of available data points. We added the raw high temporal resolution data (frequency as high as ~1 s) from published campaigns, which make use of these new techniques (Behrenfeld et al., 2019; Jarníková et al., 2016; Royer et al., 2015; Wohl et al., 2020, 2021; Zavarisky et al., 2018b). On the addition of these high-resolution data, the consolidated raw dataset included 873,539 data points (~1746% increase over the 175 number of data points in the L11 climatology).

The first step after consolidating all the available data was to ensure data quality. To do this, the values with incorrect location data were removed (in all about 83 data points had location on land and hence were removed). Unfortunately, as explained by Lana et al. (Lana et al.,

2011), there is no robust criteria or accepted method for the selection or elimination of historical  
180 data. However, intercomparison studies show that the historical methods and new high  
resolution methods reproduce data within a range of  $\pm 25\%$  (Bell et al., 2012; Swan et al., 2014).  
Hence, to avoid the undesirable effects that potentially erroneous and extreme values might  
produce during the objective analysis, a two-step filtering was conducted. The lower limit for  
the observations was set to 0.001 nM (typical detection limits are higher than the set lower  
185 limit). While we delete the data below this value to avoid erroneous data, inclusion of the  
deleted data with a fixed lower limit affected the final DMS climatology by  $<0.001\%$ . The K99  
and L11 climatologies also applied a 99.9 percentile upper threshold filter to remove the  
extremely high values which could be due to erroneous observations or a result of preferential  
sampling in phytoplankton blooms that could bias the climatology, as suggested by Galí et al.  
190 (Galí et al., 2018). However, the range for DMS values is expected to be different in different  
biogeochemical regions. For example, peak values in the open ocean oligotrophic regions can  
be up to two orders of magnitude lower than in highly productive coastal environments. Hence,  
a single threshold is not applicable for the global dataset. Instead, several thresholds need to be  
calculated for data segregated according to the biogeochemical properties that can affect DMS  
195 production. This was done by first sorting the data according to the updated dynamic Longhurst  
provinces (detailed in section 2.3). Then the 99.9 percentile threshold was calculated for every  
province. This helped identify and remove extreme values in each province, thereby reducing  
the number of data points to 872,523 ( $\sim 0.1\%$  datapoints were rejected). While this method  
might result in a negative bias during blooms, the extreme values could add bias in the monthly  
200 first guess means of the related provinces due to the low number of data in each pixel. Details  
of the DMS concentration percentile thresholds for each province, along with the amount of  
data before and after applying the filters is given in Table 1. The range of thresholds for  
provinces that had sufficient data (section 2.4) was between  $\sim 2$  nM in the Red Sea to 344.1 nM

close to Antarctica (Table 1). By comparison, L11 used a single threshold of 148 nM for the  
205 global oceans, which filtered out the higher values only in coastal and highly productive  
environments.

## **2.2. Data unification (spatial and temporal)**

The consolidated data contains observations made using vastly different measurement  
techniques. Until 2000, the GC based instruments were widely used for the measurement of  
210 DMS, but later, high-frequency instruments based on high-resolution mass spectrometry (such  
as the Chemical Ionization Mass Spectrometer (CIMS) and the Membrane Inlet Mass  
Spectrometer (MIMS)) started to become more common. This resulted in data with different  
spatial and temporal resolutions. We analyzed the sampling frequency of the observations  
(Figure 2a) to identify the most common sampling frequency. It was found to be greater than  
215 or equal to 24 hours when all the campaigns were considered. However, this is mostly because  
older campaigns reported data once a day or less frequently. All more recent campaigns have  
a much higher sampling frequency, at times as frequent as a data point every second. The high-  
resolution data collected using the mass spectrometry techniques contributed up to ~59% of  
the raw global database. However, the high-resolution data represents only 15% of the  
220 campaigns (Figure 2b and 2c). The climatology, which works on averages, can thus become  
biased towards the data procured using high-resolution instruments. Hence, to avoid this bias  
and standardize the interpolation field to facilitate further analysis, we binned all the data to  
frequencies of 1 minute, 1 hour, and 1 day. After binning the data per minute, around 516,506  
data points remain of which about 326,664 points belong only to higher resolution datasets.  
225 This would result in a highly biased input dataset. Daily binning results in 7874 datapoints  
significantly reducing the number of points available for further analysis. Hence, we binned  
the input data into hourly, as it helped to degrade the high temporal resolution data to the same  
resolution as the rest of the historical data. This resulted in a unified dataset of 48,898 data

points for DMS-Rev3, reducing bias towards a particular measurement technique or campaign  
230 while ensuring that enough data points are available in all the provinces for further analysis.  
Although keeping a higher temporal resolution would result in more data points, this  
calculation also helps reduce the disparity in the spatial resolution of the dataset, with the  
average distance between two consecutive data points for a single campaign coming to about  
0.2° (assuming a constant ship speed of 10 knots). In certain regions of the oceans, where the  
235 data availability is higher, a high-resolution climatology of up to 0.2° spatial resolution could  
be attempted, but the majority of the world's oceans are under-sampled or moderately sampled  
and hence a coarser resolution results in a more realistic climatology. Additionally, since most  
of the climate models also work on 1° spatial resolution or lower, this dataset was used to create  
a 1° climatology like that produced earlier in K99 and L11. We tested the sensitivity of the  
240 climatology to the temporal resolution. While the global mean did not change significantly  
depending on whether we used the minute, hour or daily binned data, the minute binned data  
resulted in regional means biased towards single campaigns in regions where high-resolution  
data is available.

### **2.3. A first guess monthly climatology according to dynamic Longhurst provinces**

245 Since the data was not uniformly distributed across the oceans, the strategy adopted by the  
earlier K99 and L11 climatologies was to segregate the data in different provinces based on  
their biogeochemical properties (chlorophyll-a concentrations, nitrate concentration, salinity,  
etc.) as defined by Longhurst et al. (2007) (Figure S2a). Computing mean values representing  
these provinces helped in creating a 'first guess' global distribution, which is the first step  
250 towards a climatology at a coarse resolution. However, satellite images for the biogeochemical  
parameters reveal that these features are highly dynamic in terms of geographical extents  
(Devred et al., 2007; Oliver and Irwin, 2008; Reygondeau et al., 2013). Hence, using a static  
province approach for the whole year (as in K99 and L11), though practical, has an inherent

drawback of not accounting for the spatial/temporal changes in the biogeochemistry. This  
255 affects the estimations of DMS, especially along the borders of the provinces where static  
boundaries were used in K99 and L11. To address this, we make use of the dynamic Longhurst  
provinces based on the work of Reygondeau et al. (Reygondeau et al., 2013) who defined the  
dynamic boundaries based on satellite data between 1997–2007 (Figure S2b). The monthly  
data were segregated according to the changing geographical extents for all the provinces and  
260 the means of these separated data were used for creating the ‘first guess’ fields (Figure S3).  
The advantage of using dynamic biogeochemical provinces is that they helped resolve the  
environmental, biogeochemical dynamics better on a regional scale, especially in different  
seasons. The difference due to the inclusion of the seasonal variation in the province boundaries  
is discussed further in Section 3.2.

265 DMS-Rev3 also provides an option to create ‘first guess’ fields using medians instead of means  
across the provinces. Median is not affected by dataset skew due to a few larger values. The  
median will also minimize the effect of the blooms that drive high DMS emissions. This  
approach thus helps re-create background values better than using means but can lead to an  
overall underestimation in regions where blooms are more common, but observations have not  
270 been made frequently enough to capture them. Keeping this in mind, we used the province  
means for the calculation of the climatology, although the values using medians are also  
reported.

#### **2.4. Data substitution, merging and interpolation.**

The number of data points available per province differs greatly depending on the sampling  
275 carried out in that region during a particular month. Since these are in situ observations, some  
regions are adequately sampled, some are moderately sampled, while some are rarely or never  
sampled due to physical constraints like accessibility, remoteness etc. This results in an uneven

distribution of data in the different provinces with respect to space and time. After segregation, some provinces had data for all 12 months of the year, while others had as few as 1-2 months  
280 of data (Figure 3; Table 1). Hence, there was a need to fill the monthly gaps in some of the provinces with data from an appropriate ‘donor’ province to provide sufficient data for a valid interpolation for the annual variation in each province. Across all the provinces, it was seen that for provinces with only 1-2 months with data, substitution from (or merging with, in case the receiving province had no data at all) a single province would result in 5 months with data,  
285 providing enough data for interpolation. Hence, if a province had data for less than 5 months, it was selected for substitution/merging, thus all the ‘receiver’ provinces had at least 5 months with data after substitution/merging. The data from the donor province were normalized by scaling up or down based on the ratio of concentrations of the donor and receiver provinces for the common months. In case the receiving province had no data at all, the data was substituted  
290 from the donor province. Details of the biogeochemical provinces that were substituted or merged are given in Table 1.

In all, 14 provinces that needed substitution or merging, i.e., provinces with less than 5 months that contained data, were identified. The provinces off the eastern coast of Australia (TASM and the ARCH) were inter-substituted between each other. The coastal province AUSE was  
295 used to fill the northern coastal province SUND. NEWZ, although south of New Zealand, was also updated with the data from AUSE due to biogeochemical similarities with AUSE. The data from AUSW, AUSE and SUND were merged to complete AUSW. NPSW and KURO in the northern Pacific were merged with NPSE. In equatorial regions, the coastal province on the east American coast, CAMR was substituted by CCAL following K99 and L11. The province  
300 FKLD received data from the adjacent coastal province BRAZ. The coastal Atlantic provinces GUIN and GUIA were substituted by the adjacent provinces ETRA and WTRA, respectively, following L11. Due to the usage of dynamic provinces, the province GUIN is present only in

November, December, January, and June. The Canary coastal current seems to highly influence the region occupied by GUIN province converting it to CNRY for the rest of the months. The Indian Ocean coastal provinces INDE, REDS, and EAFR are under-sampled despite the importance for the highly populated South Asian region's respective countries. Data from the ARAB province is merged in the INDE and REDS provinces, while EAFR is merged with data from ISSG.

The substitution or merging was done to ensure that the dependence on interpolation to estimate the values for the remaining months was as low as possible. However, even after this step, it was obvious that the data required some amount of interpolation as only two provinces had data for all 12 months (NATR and NASTE), while other provinces had data between 11 to 5 months (Figure 3). Hence, to obtain monthly data for each province to estimate the month-to-month variability, it was interpolated to estimate the missing monthly data following the recommendations of Lana et al., (2011). The above ensured that month-to-month variability were created for every province (Figure 4).

### **2.5. Incorporation of observed VLS for smoothing.**

The 'first guess' database has a uniform distribution within a province as it is the mean value in the province. It also has a sharp and unrealistic transition at the boundaries. Hence, to create a realistic distribution of DMS values at the boundaries, a Shuman filter, which is an unweighted 11-point smoothing filter (Shuman, 1957) was employed. On top of these smoothed first guess fields, a  $1^\circ \times 1^\circ$  spatially binned DMS concentration field was superimposed by replacing the pixels where spatially binned data is available. This replicates the differences in the DMS concentrations within the individual biogeochemical provinces. The average DMS values in a particular pixel ( $1^\circ \times 1^\circ$ ) contribute to the value of the pixel. However, there will be an influence of surrounding pixels on each of the pixels. This was

accounted for using Barnes filter (Barnes, 1964), which is a convergent weighted-average interpolation scheme where the radius of influence (ROI, which is the average distance between a grid point and the data points that influence) is used as a ‘weight’. The ROI used by K99 and L11 was 555 km ( $\sim 5^\circ$ , close to the Rossby radius in the tropics). The main aim of using such a filter is to ensure that the DMS variability is captured in the climatology, but this also causes patchiness in the resultant climatology. We tested the sensitivity of the algorithm to the ROI value, different fixed values of ROI: 555 km, 100 km, 75 km, 50 km, 25 km, 10 km, and 7.5 km. On a global scale, each ROI resulted in a different global mean, but once the ROI dropped below 25 km, the mean value stabilized at  $\sim 2.44$  nM (Figure S4). Although the global mean did not change by much, large regional differences were observed, with smaller ROI values showing less patchiness in the resultant climatology, indicating that choosing an appropriate ROI is crucial for an accurate estimation of the DMS distribution.

The L11 climatology used the 555 km value since little information was available on DMS variability length scales (VLS) in the oceans, which is the distance over which one would expect the DMS concentration to significantly change as we move over the ocean surface. However, more recent studies based on high-frequency measurements (Asher et al., 2011; Royer et al., 2015) have been able to quantify the variability in DMS and show that it occurs at a much smaller scale in the order of 15 to 50 km. These findings are consistent with initial findings from a new global VLS analysis of seawater DMS (using data from 2004-2019), which follows the method of Hales and Takahashi (2004) to give a global mean DMS VLS of  $\sim 17$  km (Figure S5). The DMS Rev3 climatology uses VLS results from 11 biogeochemical provinces to estimate the DMS VLS in other provinces and to create a simple DMS VLS distribution map. Monthly geographical variability in VLS was estimated within the dynamic province boundaries, after applying a Shuman filter as detailed above (Figure 5). Monthly VLS distribution was then used for computing the convergent weighted-average interpolation for



DMS using the Barnes filter. The difference in the resultant DMS climatology due to the inclusion of the VLS information is discussed further in Section 3.3.

## 2.6. Using sea-ice cover masks

355 In addition to the oceanic sources of DMS, the presence of sea-ice affects the emissions of DMS. The contribution of sea-ice to the total DMS production during the melt period was simulated by Hayashida et al (Hayashida et al., 2017) and showed episodic spikes of up to 8  $\mu\text{mol m}^{-2} \text{d}^{-1}$ . However, the exact extent of this contribution is not known due to the scarcity of field measurements. Further model simulations highlighted the importance of addressing the  
360 sea-ice ecosystem separately for better DMS flux estimates. The K99 and L11 DMS climatologies applied a sea-ice filter to mask out any emissions from areas covered with sea-ice, which most likely underestimates the total DMS flux.

Considering that large portions of the polar waters can be under sea-ice at different times during the year, it is necessary to apply a sea-ice filter to modulate emissions in these regions. This  
365 can be done in two ways: i) before creating the DMS climatology to filter out data that are ‘under’ sea-ice regions; or ii) after the climatology is created as a mask. A sea-ice monthly climatology (Figure S6) was created using data obtained from the Defense Meteorological Satellite Program (DMSP) F13 Special Sensor Microwave/Imager (SSM/I) and Scanning Multichannel Microwave Radiometer (SMMR). The DMS-Rev3 code replaces the data with  
370 zeros when considered to be under sea-ice, where sea-ice is less than or equal to the set threshold. For example, the Antarctic coastal region is a DMS hotspot during the southern hemisphere summer and is a sea-ice covered region during the winter with no DMS emissions. An annual average ignoring these regions during winter would result in a hotspot with the annual average biased towards the summer values.

375 A sea-ice threshold cutoff value of 50% was used (which can be changed in the code). If the  
filter was applied after data unification, but before the creation of the climatology, the mask  
removed only 17 data points (88 data points for 30% sea-ice cover threshold) from the 48,898  
datapoints that are deemed to be under the sea-ice. This does not lead to a significant change  
in the overall calculations. However, if the mask is applied after the creation of the climatology,  
380 large portions from the polar provinces come under the mask and lead to changes in the monthly  
and the annual global mean values (detailed in Section 3.4).

### **2.7. Sea-air DMS flux estimations**

The sea-air DMS flux was estimated using the output of DMS-Rev3 to understand the impact  
of the new climatology. The estimations were carried out following the same procedure as Lana  
385 et al (Lana et al., 2011) which used the Nightingale et al (2000) parameterization. This  
parameterization is based on the DMS gas transfer velocity utilizing the wind speed at 10 m  
and the climatological sea surface temperature. The inputs for calculating the flux were for the  
same period as that used for L11 (1978-2008) and were obtained from the NCEP/NCAR  
reanalysis project (<http://www.esrl.noaa.gov/>). This was necessary for a one-to-one  
390 comparison of DMS-Rev3 and L11 flux estimations.

### **2.8. Uncertainties in the climatology**

Estimating the uncertainty in the climatology is difficult due to the variety of methodologies  
and the lack of reported observational uncertainties for most of the campaigns. The  
uncertainties in the DMS climatology were hence estimated from the point of data unification  
395 (Section 2.2) and will therefore be an underestimate of the total uncertainty in the final  
climatology. First, the standard deviations were computed for the hourly binned observations.  
This standard deviation was further propagated while spatially averaging the data when  
creating the 1°x 1° bins. An additional standard deviation was computed for the first guess

fields, which use the means across the biogeochemical provinces (Section 2.3). These standard  
400 deviations from the hourly binned data, pixel binned data and province binned data were then  
propagated through the calculation of pooled standard deviations. The uncertainty introduced  
due to the smoothing using the Shuman and Barnes filters (Section 2.5) is difficult to estimate  
and hence the same smoothing filters were also applied to the standard deviations to create a  
monthly and annual uncertainty database corresponding to the DMS concentrations. While  
405 these uncertainties are not a complete estimation of the errors, they provide an estimate of the  
range of DMS concentrations in the climatology. The calculated global monthly and annual  
standard deviations are shown in Figure S7.

### 3. Results and discussion

#### 3.1. Features in DMS-Rev3

##### 410 3.1.1. Global

Figure 6 shows the monthly and annual climatological distribution of surface seawater DMS  
concentrations as estimated by the DMS-Rev3 algorithm after the application of a 50% sea-ice  
cover mask (the distribution without the application of the sea-ice mask is shown in Figure S8).  
For the annual mean climatology, the DMS concentrations range between 0.1 to 7 nM, of which  
415 ~85% of the grid points contain DMS concentrations below 3 nM (Figure S9). When globally  
averaged across all the oceans, DMS-Rev3 estimates the annual mean at 2.26 nM (2.39 nM  
with no sea-ice mask – henceforth nM\* indicates values without a sea-ice mask). If province  
medians are considered instead of the province means, the global annual average concentration  
reduces to 1.79 nM (1.73nM\*), about ~26% lower than the L11 climatology (~21% lower than  
420 DMS-Rev3 calculated using means). The highest global averages are observed in November,  
December, January, and February with average values of 2.51 nM (2.85 nM\*), 3.17 nM (3.46  
nM\*), 3.32 nM (3.57 nM\*) and 2.48 nM (2.67 nM\*), respectively (Figure S10). The higher  
values in these months are mainly due to large concentrations in the southern hemisphere with

coastal Antarctica dominating the peak values. The global mean annual cycle shows a clear  
425 peak in December and January, followed by the first minimum in April (~2.19 nM (~2.07 nM\*)).  
The values then show a modest increase through the months of May-August (with values  
around ~2.15 nM) due to the northern hemispheric summer. This can be attributed to the higher  
DMS values in the northern high latitudes. September shows the second minimum lowest mean  
DMS values of 1.72 nM (1.56 nM\*). The region below 60°S has the highest average  
430 concentrations, with large peaks seen in the high productivity regions such as the Weddell Sea  
and the Ross Sea. Outside this polar environment, higher values are seen on the southwest coast  
of Africa and the west coast of South America. Elevated concentrations are also observed in  
the Mediterranean Sea and the Arctic Ocean close to Norway and Greenland. The waters close  
to Alaska and California also show higher than the global mean concentrations.

435 A clear regional annual cycle is observed in most locations, with the Southern and Northern  
hemispheres peaking during their respective summers. The range of values also differ  
according to the months, but higher values of as much as ~8.8 to 14.7 nM (10-15.1 nM\*) are  
seen in the Antarctic coastal province (APLR), especially in November, December, and  
January. However, even during these months, more than ~60% (83% in November) of the grid  
440 points contain concentrations below 3 nM (Figure S9). The final output for individual  
provinces is shown in Figure S11.

### **3.1.2. Polar**

Regionally, the highest values were found in the polar biomes during their respective summers  
(60° to 90° both in the northern and southern hemispheres). APLR showed the highest levels  
445 of DMS with peak monthly averaged concentrations of 12.83 nM (13.34 nM\*) and 14.72 nM  
(15.16 nM\*) in December and January (Figure S11). The DMS concentration was 0.58 nM in  
September. However, since this region is under the ice during this season, this value

corresponds to the concentration limited to a smaller region to the north of the Weddell Sea, which stays exposed and out of ice cover (Figure 6). The concentrations increase through spring and summer until January, after which the values decrease to April which has an average of 1.22 nM (1.23 nM\*). Over these months, since most of the APLR province is under sea-ice, it does not make a large contribution to the global monthly mean DMS. Similarly, most of the polar province of BPLR also gets masked by sea-ice during the northern winter. The peak DMS concentration was 4.31 nM (2.92 nM\*) during May (Figure S11). In the North Atlantic region, phytoplankton blooms dominate the Labrador and the Grand Banks coastal regions (ARCT province) in spring and summer (Friedland et al., 2016), driving high DMS concentrations. A similar peak is observed in the SARC province with elevated DMS values during the same seasons (Figure S11).

### 3.1.3. Extra-tropics

The southern extra-tropical region gets split into three sectors: the Indian Ocean sector, the Atlantic Ocean sector, and the Pacific Ocean sector. The northern extra-tropical region has two sectors: the Pacific Ocean and the Atlantic Ocean.

In the southern hemisphere, in the Indian Ocean extra-tropical region, the monthly variation observed in the polar province APLR is also noticed in the adjacent province ANTA, which shows peak monthly mean concentrations of 7.76 nM (8.32 nM\*) in December and 7.56 nM (7.69 nM\*) in January (Figure S11). The adjacent provinces SANT and SSTC form a part of all the sectors mentioned above, although divided by the South American and the African continents. These provinces follow a similar annual variability as the APLR and ANTA provinces, although the peak values are lower (Figure S11). These concentrations reflect the summer-time productivity of the Southern Ocean during the summer. The province ISSG in the Indian Ocean sector, spread over the tropics and extra-tropics, follows a similar seasonal

trend, although being further away from the polar region has much lower month-to-month variations. The highest concentrations are observed in the months of November-December-January. During the rest of the year, the values are lower and stay close to ~2.2 nM, with a slight increase in June to 2.59 nM (Figure S11). The province to the west of ISSG (EAFR) also has a similar annual trend with similar concentrations to those observed in the ISSG province. The slightly higher concentration in June in these two provinces is attributed to winter blooms occurring off the Madagascar coast (Dilmahamod et al., 2019). This trend is different in the AUSW province (east of ISSG), where the values are also higher during November (2.46 nM), December (3.19 nM) and January (3.24 nM) but a clear low is observed during August (1.05 nM) (Figure S11).

In the southern hemispheric Atlantic Ocean sector, the provinces SATL, FKLD, BRAZ and BENG are a part of the South Atlantic Gyre. The mean values in these provinces decrease from approximately 2 nM in January to less than 1 nM in May (Figure S11). The African coastal province, BENG shows higher values in January (4.09 nM) and March (3.59 nM) with lower concentrations in February (2.54 nM). This province does not show significant variation throughout the year owing to the continual supply of nutrient-rich water due to an upwelling that supports primary production and hence DMS production (Jury and Brundrit, 1992) (Figure S11).

In the southern hemispheric Pacific Ocean sector, the provinces AUSE, TASM and NEWZ cover the eastern and southern coastal region of Australia and coastal New Zealand. The primary production in TASM and NEWZ shows an annual cycle controlled by the availability of solar radiation, wind stress and MLD similar to most provinces but the variation is large for these variables (Chiswell et al., 2013). Variability in the DMS concentrations follows variability in chlorophyll and sunlight with the highest concentrations observed in the summer, reducing in autumn with a decreasing trend until the summer of the following year. SSTC DMS

concentrations are constant throughout the year, although from July to October DMS levels are consistently lower. This is most likely due to the autumn, winter and spring phytoplankton blooms observed in the TASM and NEWZ regions (Chiswell et al., 2013) (Figure S11).

500 Provinces in the northern extra-tropical (BERS, PSAW, PSAE, NECS) typically show higher values in the northern hemispheric summer. The provinces in the North Atlantic extra-tropical gyre (NAST(W), NAST(E), GFST, NWCS, NECS and MEDI) typically show peaks during the northern summer. This pattern results from a combination of plankton seasonal species succession and short-term sunlight effects on DMS budgets, stimulating DMS production, 505 inhibiting bacterial consumption, enhancing photolysis, etc. (Galí and Simão, 2015). The provinces NECS and MEDI show a similar trend to the polar province SARC. In addition to the summer peaks, an additional peak is also observed during the northern spring that has higher values than the peak in summer. The trends in the NECS province appear to be dominated by the spring blooms of the Baltic and the North Sea (April=6.71 nM; May=8.55 510 nM). A second bloom driven by dinoflagellates has been reported to occur in July (Hjerne et al., 2019) and coincides with a second peak in the DMS concentrations at 5.98 nM. The GFST and NWCS provinces show similar values and trends with twin maxima in spring and summer. NWCS, being a coastal province, shows consistently higher values than the GFST province. These higher values in the North Atlantic provinces are mostly associated with the *Phaeocystis* 515 *pouchetii* and coccolithophores blooms occurring in the months of May-July (Iida et al., 2002; Matrai et al., 2007; Matrai and Keller, 1993) (Figures S11 and 6).

In the Pacific region, the BERS, PSAW, and PSAE provinces show higher values during May followed by lower concentrations in June and the concentrations rise again in July. A gradual decrease follows the summer peak, and the lowest values are observed during winter in 520 December-January. In the Bering Sea and adjacent regions, blooms tend to form due to the dynamics of sea-ice retreat in the spring (Jin et al., 2007; Sigler et al., 2014). This most likely

contributes to the maxima observed in the respective provinces. Although significant blooms were also reported in the fall, (Ardyna et al., 2014) the magnitude of increase in the DMS concentrations is smaller after more data has been added.

#### 525           **3.1.4. Tropics**

In the Indian Ocean sector of the tropics, the province MONS is in the central Indian Ocean with coastal provinces of REDS, INDW and INDE to the north, ARAB to the west, AUSW to the east and ISSG to the south. The annual variation in the MONS province is like the ISSG province, although with the peak value observed in February instead of December (3.66 nM).

530   The INDE and REDS provinces show a similar monthly variation as the ARAB province. This region experiences the southwest and northeast monsoons during the periods between June to September and October to December. The Somali current flowing through the ARAB and the INDE provinces is characterized by seasonal changes influenced by the southwest and northeast monsoons. During June to September, the warm southwest monsoon moves the  
535   coastal waters north-eastward, creating a coastal upwelling (McCreary et al., 1996). This could be a reason for the higher mean DMS concentrations observed in these provinces during June and July (~2.8 nM). However, these variations in DMS are not observed in the INDW province which is on the eastern coast of the Indian peninsula and not directly affected by the upwelling. In November, the coastal Indian province INDW shows higher values than the ARAB province,  
540   most likely due to the northeast monsoon winds increasing continental aerosol deposition over the ocean surface, thereby increasing productivity due to increased nutrient availability (Figures S11 and 6).

In the northern tropical Pacific Ocean, the province NPTG shows higher values in August (2.34 nM), while the lowest levels are observed in January (~1 nM). DMS concentrations increase  
545   from a low in January to 1.61 nM in April, decreasing slightly to 1.29 nM in May and increasing



thereafter until August. In PNEC, there is no significant annual trend as the mean DMS concentrations stay in the 2-2.6 nM range with one lower value in May (1.59 nM). From May to August, PNEC and NTPG show an increase in DMS (Figures S11 and 6).

In the southern tropical Pacific region, the provinces SPSG, CHIL, PEQD and PNEC are seen to have little variability unlike those seen in the Indian Ocean. The mean DMS values in the SPSG province are higher in January and March (~3.3 nM), with a drop in February to 2.63 nM. The mean then drops to 1.39 nM in April followed by an increase to 2.74 nM in July. June onwards, the mean DMS concentrations are ~2.6 nM (2.34 nM to 2.9 nM) up until December (2.9 nM). During the southern summer months, CHIL is influenced by increased DMS production with higher mean concentrations in December (4.93 nM) and January (7.53 nM). This is also observed in the PEQD province as the mean DMS is slightly higher in December (3.38 nM) and January (3.14 nM) compared to the other months. The Chile coastal 'Humboldt' current is one of the most productive currents (Penven et al., 2005) and this may be driving the higher DMS concentrations during May-June (May =4.27 nM, June=5.61 nM) in CHIL. Since the current flows northward from CHIL to the province PEQD, the effect is seen as a slight increase during June (3.35 nM) in PEQD (Figures S11 and 6).

The Atlantic Ocean tropical sector is comprised of the provinces CARB, NATR, CNRY, ETRA, WTRA, GUIN, GUIA, and SATL. NATR and SATL are the major gyres in the northern and the southern tropics. The gyres show elevated DMS concentrations during August (NATR) and March (SATL). However, in the SATL province, the peak concentration is observed during the transition from summer to autumn (March=2.64 nM). In the SATL province, the open ocean sees the confluence of the Brazilian-Malvinas current which significantly affects the productivity of the region. During most months, DMS concentrations are in the range of 1 – 2.5 nM in this province, with the lowest observed in May (0.83 nM). The NATR province has higher values throughout the year compared to SATL, except in March. In the ETRA and

WTRA provinces, a clear annual peak is seen in August, which coincides with the maximum extent and magnitude of phytoplankton blooms (July-September) in the eastern equatorial Atlantic Ocean (Pérez et al., 2005). The inputs from the Amazon and Congo rivers are a major source of nutrients in this area throughout the year, with peak input between May and 575 September. Similarly, in the GUIA and the CARB provinces, the Amazon and the Orinoco river inputs influence the seasonal variability of primary production (Forget et al., 2011). This is seen in the peak concentrations of DMS in CARB (September=2.74 nM) and GUIA (August=2.75 nM). In the eastern Atlantic, the GUIN province shows a seasonal presence, with the CNRY province occupying its location as seen in the dynamic biogeochemical province 580 map (Figure S1, S11). Three characteristic peaks are seen in the CNRY province in March (3.86 nM), August (3.34 nM) and November (2.45 nM) (Figures S11 and 6).

### **3.2. Differences due to usage of dynamic biogeochemical province boundaries**

Dynamic biogeochemical province boundaries as defined by Reygondeau et al. (Reygondeau et al., 2013) were used in the DMS-Rev3 climatology instead of static boundaries to incorporate 585 the monthly variability of surface properties in the world's oceans. In this section, we describe the differences caused by using the dynamic province boundaries as compared to the static boundaries (Figure 7 and S12a). As expected, most of the differences are seen at the province boundaries when compared to the output using static provinces. Major differences are seen in the polar regions and smaller differences in the extra-tropical and tropical oceans. When 590 globally averaged, the annual difference caused in the climatology by using the dynamic province boundaries is only about 0.02 nM (~5.1%) (Table S1), however, regional differences are up to  $\pm 5$  nM ( $\pm 100\%$ ) (Figure 7 and S12a).

The sea-ice mask excludes data from the Arctic region when sea-ice cover exceeds 50%. If the sea-ice mask is ignored, the use of dynamic provinces generates significant differences in the

595 Arctic Ocean region, with increases of 1-3 nM (+100%) during February-March and decreases  
of 1 to 3 nM (-40% to -60%) during April (Figure S12b). The winter months and spring months  
show a positive change in the DMS concentrations as compared to the summer months where  
a reduction in the DMS concentrations is observed (Figure 7). The Arctic region, especially the  
Nordic Seas where ice-free regions exist even during the winter season, showed positive a  
600 difference with a maximum of 100% change during February. The difference stayed positive  
during the northern winter (~40% to 60%) while it ranged from 0 to ~-40% for the northern  
summer.

The Southern Ocean region showed the greatest regional differences in November where  
concentrations differed by >4 nM (+100%), while the largest reduction is observed in January  
605 (-4 nM; -50%). Both large positive and negative differences are seen in this region during the  
summer months with a negligible difference during the rest of the year.

For the rest of the regions in the extra-tropics and tropics, regional differences of between  $\pm 2$   
nM (up to 100%) can be seen, changing throughout the year. Most of the world's oceans show  
differences of  $\pm 20\%$ . Clear patches with larger differences can be observed such as in the  
610 Atlantic Ocean where the differences are around -2 nM (-60% to -80%). A few patches are also  
observed in the northern and equatorial Pacific Ocean, where large differences are seen in  
different locations depending on the month (Figure 7). Globally, the largest difference is seen  
during November, where the use of dynamical province boundaries leads to an increase of 0.36  
nM in the globally averaged concentration, while the smallest difference is seen during May (-  
615 0.003 nM).

### **3.3. Differences due to usage of Variability Length Scale (VLS)**

The other major change in DMS-Rev3 was the use of DMS VLS, which led to significant  
changes, reducing the patchiness that was a feature of past climatologies. In this section, we

present the effect of using VLS compared to the fixed value of 555 km when applying the  
620 Barnes filter (see Section 2.5). The differences ( $DMS_{VLS}-DMS_{555}$ ) are shown in Figure 8 and  
the percentage differences ( $(DMS_{VLS}-DMS_{555}) \times 100/DMS_{555}$ ) are shown in Figure S13. When  
globally averaged, the annual DMS concentration increased by 0.025 nM (+7.4%) when using  
the VLS while applying the Barnes filter (Table S1). Annually, the largest differences of up to  
 $\pm 4$  nM ( $\pm 90\%$ ) were observed in the coastal Antarctic region and smaller increases were  
625 observed in certain regions of the Atlantic and Pacific Oceans. However, over most of the  
world's oceans, the difference was within  $\pm 0.3$  nM ( $\pm 5\%$ ).

When the monthly differences are considered, large regional differences show up between the  
VLS and 555 km filters. For instance, during the southern hemispheric summer (DJF), large  
differences of above  $\pm 5$  nM ( $\pm 100\%$ ) are seen in the Southern Ocean. This suggests that the  
630 use of a fixed value of 555 km led to severe over and underestimations in this region. During  
February, the entire Indian Ocean region shows patches of both positive and negative  
differences. The central Atlantic region also shows positive differences during the months from  
March to May, with the largest differences observed in March  $\sim 2$  nM ( $>100\%$ ). The Pacific  
Ocean shows the least differences amongst all the world's oceans. The Arctic region also shows  
635 differences of above 100%, especially during the summer season. Overall, the largest  
differences are observed in the high concentration polar regions, with smaller differences seen  
close to the tropics.

### **3.4. Differences due to sea-ice cover**

Applying the sea-ice cover filter after the data unification before creating the DMS-Rev3  
640 climatology, there is a marginal change in the global annual mean DMS ( $<1\%$ ) at the 50%  
threshold. The most noticeable changes are when the filter is applied after the creation of  
climatology. The global annual DMS reduces from 2.39 nM to 2.37 nM (0.8% reduction when

using a 95% sea-ice mask) and further down to 2.21 nM (~8% reduction when using a 20% sea-ice mask). The relationship with the sea-ice mask and the averaged annual global DMS concentrations is now shown in Figure S17. The relationship between the % sea-ice and the DMS concentration is linear, showing that the polar regions contribute heavily to the annual global average.

For this study, a threshold of 50% was considered for the sea-ice cover. The sea-ice cover removes a major part of the province of BPLR and parts of the BERS, SARC and ARCT were also masked reducing the monthly means of the respective provinces. Similarly, in the southern region, the province APLR was also masked by the sea-ice. The southern hemisphere winter shows the presence of sea-ice to a much larger extent covering areas of APLR and ANTA provinces.

### 3.5. Differences between DMS-Rev3 and L11

Figure 9 shows the differences between the DMS-Rev3 and L11 climatologies ( $DMS_{REV3} - DMS_{L11}$ ) and Figure S14 shows the percentage difference ( $(DMS_{REV3} - DMS_{L11}) \times 100 / DMS_{L11}$ ) between the two. The most noticeable difference is the reduced patchiness in the data distribution. This is mainly due to the improvements made in the interpolation routine and the use of observed DMS VLS in the Barnes filter (Section 2.5). For the global annual climatology mean, 73% of the grid points show a positive difference, (Figure 9, S15) ~51% data shows differences up to  $\pm 1$  nM ( $\pm 10\%$ ), and ~81% of data has differences within  $\pm 2$  nM ( $\pm 30\%$ ) (Figure S15). Only 0.24% of data shows differences equal to or above 100% ( $> 5$  nM). Overall, the DMS-Rev3 climatology estimates a global annual average DMS concentration that is 0.05 nM less than the L11 climatology. The largest mean difference is seen in November (+0.31 nM) and the lowest difference is seen in September (-0.03 nM) (Table S1).

Most of the large differences are found in the polar regions, especially in the Southern Ocean. The equatorial oceans show differences less than  $\pm 0.5$  nM, except in parts of the Indian and Pacific Oceans, where differences of up to  $-1$  nM are observed (Figure 9). The two climatologies agree well in the oligotrophic regions of the oceans where lower DMS concentrations are observed. Monthly, the largest differences are seen in the Southern Ocean during the months of November-February, with the DMS-Rev3 climatology displaying higher values in November throughout the Southern Ocean. For the rest of the southern hemisphere summer, positive and negative differences of up to  $5$  nM are seen in the Southern Ocean, where the negative differences coincide with the patches that were a feature in the L11 climatology.

#### 675 **4. DMS Flux**

The global sea-air DMS flux (Figure 10) reveals that  $\sim 93\%$  of the world oceans emit DMS in the range of  $0-10 \mu\text{mol S m}^{-2} \text{ d}^{-1}$ , with few hotspots in the world's coastal regions like BENG, ARAB, etc. provinces along with oceanic provinces like the confluence of PEQD and SPSG in the Pacific, ISSG province in central Indian Ocean region, which covers  $\sim 7\%$  of oceans with emissions in the range from  $10 - 20 \mu\text{mol S m}^{-2} \text{ d}^{-1}$ . The Southern Pacific Ocean shows higher values as compared to the Northern Pacific, although the Eastern Pacific shows more flux as compared to the western Pacific mainly due to the coastal provinces of CHIL, CAMR, CCAL and ALSK which show particularly large fluxes. The North Atlantic region, mainly in the GFST and NADR, shows a higher flux compared to the South Atlantic. The equatorial Indian Ocean region shows lower values than the rest of the Indian Ocean. The Arabian Sea shows a higher flux of DMS compared to the Bay of Bengal. The total global annual DMS flux is estimated at  $27.1 \text{ TgS yr}^{-1}$ , about  $3.5\%$  lower than the L11 climatology. DMS flux variability follows the variability in DMS concentration, which is significant at the regional scale.

The entire oceanic region to the south of  $\sim 30^\circ$  S seems to be a major source of DMS during the southern hemisphere summer. The northern hemisphere summer shows elevated DMS emissions in only a few regions. Additional regions are visible as hotspots in the open ocean (e.g. in the North Atlantic and the Central Indian Ocean) as well as in coastal regions like those observed off Chile coast, South of Alaskan coast in the Pacific Ocean and the North-western Arabian Sea. The hotspot observed in the Central Indian Ocean region is present almost through all seasons although it seems to be weakening during the northern spring. With an annual average of  $\sim 2.76$  nM, this region is above the global average, increasing the annual DMS flux ( $\sim 14 \mu\text{mol S m}^{-2} \text{ d}^{-1}$ ).

Since the Nightingale et al parameterization (Nightingale et al., 2000) uses the wind speed and the SST for estimation of the gas transfer from sea to air, the DMS flux hence calculated shows a direct relationship with the wind speed and SST. However, wind speed is a major driving force of the gas transfer velocity, which is a major determinant of the flux. As observed by Bell et al and Zavarisky et al. (Bell et al., 2013; Zavarisky et al., 2018a), the wind-speed of about  $\sim >10 \text{ m s}^{-1}$  seems to be one of the main factors to suppress the DMS fluxes. The optimum response was observed in the range of  $5\text{-}8 \text{ m s}^{-1}$  approximately comparing the wind speed climatology and DMS fluxes in the region where the DMS fluxes were found to be higher over the global oceans. This explains most of the regional flux variability as observed in the DMS-Rev3 output. The evidence of this is seen in the Antarctic coastal region, which seems to be a major source of DMS during the southern summer. But due to the higher wind speed over the region, the contribution to the DMS flux is lower than one would expect. This region also has lower SST which further reduces the gas transfer.

The differences in the fluxes with respect to L11 show a similar pattern to that seen in the distribution of oceanic DMS on monthly and annual scales (Figure S16). This means that although the change in the global annual average of DMS flux is not substantial, the DMS-

Rev3 climatology has large regional changes due to a reduction in the patchiness of the oceanic  
715 DMS concentrations. Most of the high latitudes show a reduced flux, while the tropical regions  
show an enhanced flux.



## 5. Conclusion

An updated global sea-surface DMS concentration climatology was created by upgrading the  
720 processing algorithm initiated by Kettle et al., (1999) and Lana et al., (2011), along with the  
inclusion of new data compiled from various sources. The global annual average concentration  
reduced to 2.26 nM, although large differences of up to 5 nM were observed on regional scales  
during certain months. This is an important difference considering the effect of regional  
emissions on the total impact of DMS on the Earth's radiative budget (Fiddes et al., 2018;  
725 Mahajan et al., 2015; Thornhill et al., 2020; Woodhouse et al., 2013). The global sea-air flux  
of DMS is estimated at 27.1 TgS yr<sup>-1</sup> which is similar to L11 (a 3.5% decrease). The use of  
dynamic province boundaries allowed the estimation of more realistic annual trends in different  
regions. The patchiness in the climatology identified in previous estimates was reduced by  
region-specific data exclusion (Section 2.2) and the usage of the observation-based VLS  
730 (Section 2.5). The use of dynamic province boundaries and VLS was not important at the  
annual and global scales but resulted in large differences at regional scales. Although this  
climatology shows significant improvements in the estimation of seawater DMS  
concentrations, it still suffers from a lack of continuous observations, especially in certain parts  
of the world's oceans. Focus can be given specifically to the provinces NEWS, AUSE, AUSW,  
735 SUND and ARCH which are present around Australia including the Great Barrier Reef, and  
the Indonesian archipelago. Along with these regions, the northern and eastern regions of the  
Arabian sea (EAFR, INDE and REDS provinces) also need extensive sampling for reducing  
the dependence on substitution and interpolation. Another major uncertainty is the contribution  
in regions affected by sea-ice. DMS-Rev3 essentially removes data from sea-ice regions  
740 according to a fixed percentage, neglecting the contribution of these regions. Thus although  
this new climatology is a major upgrade from the past estimates, and matches the estimates

using top-down methods, further improvements are needed in the future, with the main limiting factor being data availability.

#### 745 **Acknowledgements and Data**

IITM is funded by the Ministry of Earth Sciences (MOES), Government of India. T.G.B. contribution to this study was supported by the NASA North Atlantic Aerosols and Marine Ecosystems Study (grant no. NNX15AF31G). G.M. (with input from T.G.B. and P.H.) contributed the VLS analysis, which is part of his PhD (NERC industrial CASE studentship  
750 NE/R007586/1).

The data used for creating the climatology, along with the algorithm can be found in the online repository: (Mahajan, 2021), “Third Revision of the Global Surface Seawater Dimethyl Sulfide Climatology (DMS-Rev3)”, Mendeley Data, V1, doi: 10.17632/hyn62spny2.1

755 **References**

Andreae, M. O.: Dimethyl Sulfide in the Surface Ocean and the Marine Atmosphere: , , (August), 6–9, 1982.

Andreae, M. O.: The marine chemistry of dimethylsulfide, , 4203(October), doi:10.1016/0304-4203(84)90047-1, 2018.

760 Andreae, M. O. and Crutzen, P. J.: Atmospheric aerosols: Biogeochemical sources and role in atmospheric chemistry, *Science* (80-. ), 276, 1052–1058, 1997.

Ardyna, M., Babin, M., Gosselin, M., Devred, E., Rainville, L. and Tremblay, E. J.: Recent Arctic Ocean sea ice loss triggers novel fall phytoplankton blooms, *Geophys. Res. Lett.*, 41, 6207–6212, doi:10.1002/2014GL061047.Received, 2014.

765 Asher, E. C., Merzouk, A. and Tortell, P. D.: Fine-scale spatial and temporal variability of surface water dimethylsulfide ( DMS ) concentrations and sea – air fluxes in the NE Subarctic Paci fic, , 126, 63–75, doi:10.1016/j.marchem.2011.03.009, 2011.

Barnes, S. L.: A Technique for Maximizing Details in Numerical Weather Map Analysis, *J. Appl. Meteorol.*, 3(4), 396–409, doi:10.1175/1520-0450(1964)003<0396:atfmdi>2.0.co;2,

770 1964.

Behrenfeld, M. J., Moore, R. H., Hostetler, C. A., Graff, J., Gaube, P., Russell, L. M., Chen, G., Doney, S. C., Giovannoni, S., Liu, H., Proctor, C., Bolaños, L. M., Baetge, N., Davie-  
Martin, C., Westberry, T. K., Bates, T. S., Bell, T. G., Bidle, K. D., Boss, E. S., Brooks, S.  
D., Cairns, B., Carlson, C., Halsey, K., Harvey, E. L., Hu, C., Karp-Boss, L., Kleb, M.,

775 Menden-Deuer, S., Morison, F., Quinn, P. K., Scarino, A. J., Anderson, B., Chowdhary, J., Crosbie, E., Ferrare, R., Hair, J. W., Hu, Y., Janz, S., Redemann, J., Saltzman, E., Shook, M., Siegel, D. A., Wisthaler, A., Martin, M. Y. and Ziemba, L.: The North Atlantic Aerosol and

- Marine Ecosystem Study (NAAMES): Science motive and mission overview, *Front. Mar. Sci.*, 6(MAR), doi:10.3389/fmars.2019.00122, 2019.
- 780 Bell, T. G., Malin, G., Lee, G. A., Stefels, J., Archer, S., Steinke, M. and Matrai, P.: Global oceanic DMS data inter-comparability, *Biogeochemistry*, 110(1–3), 147–161, doi:10.1007/s10533-011-9662-3, 2012.
- Bell, T. G., De Bruyn, W., Miller, S. D., Ward, B., Christensen, K. H. and Saltzman, E. S.: Air–sea dimethylsulfide (DMS) gas transfer in the North Atlantic: evidence for limited  
785 interfacial gas exchange at high wind speed, *Atmos. Chem. Phys.*, 13(21), 11073–11087, doi:10.5194/acp-13-11073-2013, 2013.
- Bell, T. G., Porter, J. G., Wang, W.-L., Lawler, M. J., Boss, E., Behrenfeld, M. J. and Saltzman, E. S.: Predictability of Seawater DMS During the North Atlantic Aerosol and Marine Ecosystem Study (NAAMES), *Front. Mar. Sci.*, 7(January),  
790 doi:10.3389/fmars.2020.596763, 2021.
- Belviso, S., Moulin, C., Bopp, L. and Stefels, J.: Assessment of a global climatology of oceanic dimethylsulfide ( DMS ) concentrations based on SeaWiFS imagery ( 1998 – 2001 )  
1, , 816(September 2002), 804–816, doi:10.1139/F04-001, 2004.
- Bopp, L., Boucher, O., Aumont, O., Belviso, S., Monfray, P. and Pham, M.: Will marine  
795 dimethylsulfide emissions amplify or alleviate global warming ? – A model study ., *Can. J. Fish Aquat. Sci.*, 61, 826–835, 2004.
- Carpenter, L. J., Archer, S. D. and Beale, R.: Ocean-atmosphere trace gas exchange, *Chem. Soc. Rev.*, 41(19), 6473–6506, doi:10.1039/c2cs35121h, 2012.
- Carslaw, K. S., Lee, L. A., Reddington, C. L., Pringle, K. J., Rap, A., Forster, P. M., Mann,  
800 G. W., Spracklen, D. V., Woodhouse, M. T., Regayre, L. A. and Pierce, J. R.: Large

contribution of natural aerosols to uncertainty in indirect forcing, *Nature*, 503(7474), 67–71, doi:10.1038/nature12674, 2013.

Charlson, R. J. R. J., Lovelock, J. E., Andreae, M. O. M. O. M. O., Warren, S. G., Lovecook, J. E., Andreae, M. O. M. O. M. O. and Warren, S. G.: Oceanic phytoplankton, atmospheric sulphur, cloud albedo and climate, *Nature*, 326(16), 655–661, doi:10.1029/2003GB002183, 1987.

Chiswell, S. M., Bradford-Grieve, J., Hadfield, M. G. and Kennan, S. C.: Climatology of surface chlorophyll a, autumn-winter and spring blooms in the southwest Pacific Ocean, *J. Geophys. Res. Ocean.*, 118(2), 1003–1018, doi:10.1002/jgrc.20088, 2013.

Devred, E., Sathyendranath, S. and Platt, T.: Delineation of ecological provinces using ocean colour radiometry, *Mar. Ecol. Prog. Ser.*, 346, 1–13, doi:10.3354/meps07149, 2007.

Dilmahamod, A. F., Penven, P., Aguiar-González, B., Reason, C. J. C. and Hermes, J. C.: A New Definition of the South-East Madagascar Bloom and Analysis of Its Variability, *J. Geophys. Res. Ocean.*, 124(3), 1717–1735, doi:10.1029/2018JC014582, 2019.

Fiddes, S. L., Woodhouse, M. T., Nicholls, Z., Lane, T. P. and Schofield, R.: Cloud, precipitation and radiation responses to large perturbations in global dimethyl sulfide, *Atmos. Chem. Phys.*, 18(14), doi:10.5194/acp-18-10177-2018, 2018.

Forget, M. H., Platt, T., Sathyendranath, S. and Fanning, P.: Phytoplankton size structure, distribution, and primary production as the basis for trophic analysis of Caribbean ecosystems, *ICES J. Mar. Sci.*, 68(4), 751–765, doi:10.1093/icesjms/fsq182, 2011.

Friedland, K. D., Record, N. R., Asch, R. G., Kristiansen, T., Saba, V. S., Drinkwater, K. F., Henson, S., Leaf, R. T., Morse, R. E., Johns, D. G., Large, S. I., Hjøllø, S. S., Nye, J. A., Alexander, M. A. and Ji, R.: Seasonal phytoplankton blooms in the North Atlantic linked to

- the overwintering strategies of copepods, *Elementa*, 2016, 1–19,  
825 doi:10.12952/journal.elementa.000099, 2016.
- Galí, M. and Simó, R.: A meta-analysis of oceanic DMS and DMSP cycling processes: Disentangling the summer paradox, *Global Biogeochem. Cycles*, 29(4), 496–515, doi:10.1002/2014GB004940, 2015.
- Galí, M. and Simó, R.: A meta-analysis of oceanic DMS and DMSP cycling processes:  
830 Disentangling the summer paradox, *Global Biogeochem. Cycles*, 29(4), 496–515, doi:10.1002/2014GB004940, 2015.
- Galí, M., Devred, E., Levasseur, M., Royer, S. J. and Babin, M.: A remote sensing algorithm for planktonic dimethylsulfoniopropionate (DMSP) and an analysis of global patterns, *Remote Sens. Environ.*, 171, 171–184, doi:10.1016/j.rse.2015.10.012, 2015.
- 835 Galí, M., Levasseur, M., Devred, E., Simó, R. and Babin, M.: Sea-surface dimethylsulfide (DMS) concentration from satellite data at global and regional scales, *Biogeosciences*, 15(11), 3497–3519, doi:10.5194/bg-15-3497-2018, 2018.
- Hayashida, H., Steiner, N., Monahan, A., Galindo, V., Lizotte, M. and Levasseur, M.:  
Implications of sea-ice biogeochemistry for oceanic production and emissions of dimethyl  
840 sulfide in the Arctic, , 3129–3155, 2017.
- Hales, B., & Takahashi, T.: High-resolution biogeochemical investigation of the Ross Sea, Antarctica, during the AESOPS (U. S. JGOFS) Program. *Global Biogeochemical Cycles*, 18(3). <https://doi.org/10.1029/2003GB002165>, 2004.
- Hjerne, O., Hajdu, S., Larsson, U., Downing, A. and Winder, M.: Climate driven changes in  
845 timing, composition and size of the Baltic Sea phytoplankton spring bloom, *Front. Mar. Sci.*, 6(JUL), 1–15, doi:10.3389/fmars.2019.00482, 2019.

- Iida, T., Saitoh, S. I., Miyamura, T., Toratani, M., Fukushima, H. and Shiga, N.: Temporal and spatial variability of coccolithophore blooms in the eastern Bering Sea, 1998-2001, *Prog. Oceanogr.*, 55(1-2 SPEC ISS.), 165–175, doi:10.1016/S0079-6611(02)00076-9, 2002.
- 850 Jarníková, T., Tortell, P. D., Jarnikova, T. and Tortell, P. D.: Towards a revised climatology of summertime dimethylsulfide concentrations and sea – air fluxes in the Southern Ocean, *Environ. Chem.*, 13(2), 364–378, doi:10.1071/EN14272, 2016.
- Jin, M., Deal, C., Wang, J., Alexander, V., Gradinger, R., Saitoh, S. I., Iida, T., Wan, Z. and Staben, P.: Ice-associated phytoplankton blooms in the southeastern Bering Sea, *Geophys. Res. Lett.*, 34(6), 1–6, doi:10.1029/2006GL028849, 2007.
- 855 Jury, M. R. and Brundrit, G. B.: Temporal organization of upwelling in the southern Benguela ecosystem by resonant coastal trapped waves in the ocean and atmosphere, *South African J. Mar. Sci.*, 12(1), 219–224, doi:10.2989/02577619209504704, 1992.
- Kettle, A. J., Andreae, M. O., Amouroux, D., Bates, T. S., Berresheim, H., B, H., Boniforti, 860 R., Curran, M. A. J., Ditullio, G. R., Helas, G., Jones, G. B., Keller, M. D., Leck, C., Lévassieur, M., Malin, G., Maspero, M., Matrai, P., Mctaggart, A. R., Mihalopoulos, N., Nguyen, B. C., Novo, A., Putaud, J. P., Rapsomanikis, S., Roberts, G., Schebeske, G., Sharma, S., Sim, R., Staubes, R., Turner, S., Uher, G., Boothbay, W. and Planck, M.: A global database of sea surface dimethylsulfide ( DMS ) measurements and a procedure to 865 predict sea surface DMS as a function of latitude , longitude , and month TM grazing, , 13(2), 399–444, 1999.
- Kiene, R. P., Linn, L. J. and Bruton, J. A.: New and important roles for DMSP in marine microbial communities, *J. Sea Res.*, 43(3–4), 209–224, doi:10.1016/S1385-1101(00)00023-X, 2000.
- 870 Lana, A., Bell, T. G., Simó, R., Vallina, S. M., Ballabrera-Poy, J., Kettle, A. J., Dachs, J.,

- Bopp, L., Saltzman, E. S., Stefels, J., Johnson, J. E. and Liss, P. S.: An updated climatology of surface dimethylsulfide concentrations and emission fluxes in the global ocean, *Global Biogeochem. Cycles*, 25(1), 1–17, doi:10.1029/2010GB003850, 2011.
- Longhurst, A. R.: *ECOLOGICAL GEOGRAPHY OF THE SEA*, Academic Press., 2007.
- 875 Mahajan, A. S.: Third Revision of the Global Surface Seawater Dimethyl Sulfide Climatology (DMS-Rev3), Mendeley Data, V1, doi:10.17632/hyn62spny2.1, 2021.
- Mahajan, A. S., Fadnavis, S., Thomas, M. A., Pozzoli, L., Gupta, S., Royer, S. J., Saiz-Lopez, A. and Simó, R.: Quantifying the impacts of an updated global dimethyl sulfide climatology on cloud microphysics and aerosol radiative forcing, *J. Geophys. Res.*, 120(6), 2524–2536, 880 doi:10.1002/2014JD022687, 2015.
- Matrai, P., Vernet, M. and Wassmann, P.: Relating temporal and spatial patterns of DMSP in the Barents Sea to phytoplankton biomass and productivity, *J. Mar. Syst.*, 67(1–2), 83–101, doi:10.1016/j.jmarsys.2006.10.001, 2007.
- Matrai, P. A. and Keller, M. D.: Dimethylsulfide in a large-scale coccolithophore bloom in 885 the Gulf of Maine, *Cont. Shelf Res.*, 13(8–9), 831–843, doi:10.1016/0278-4343(93)90012-M, 1993.
- McCreary, J. P., Kohler, K. E., Hood, R. R. and Olson, D. B.: A four-component ecosystem model of biological activity in the Arabian Sea, *Prog. Oceanogr.*, 37(3–4), 193–240, doi:10.1016/S0079-6611(96)00005-5, 1996.
- 890 Nightingale, D., Malin, G., Law, C. S., Watson, J., Liss, S. and Liddicoat, I.: In situ evaluation of air-sea gas exchange parameterizations using novel conservative and volatile tracers., *Global Biogeochem. Cycles*, 14(1), 373–387, doi:10.1029/1999GB900091, 2000.
- NOAA-PMEL: Global Surface Seawater Dimethylsulfide (DMS) Database, [online]



Available from: <https://saga.pmel.noaa.gov/dms/> (Accessed 18 February 2020), 2020.

- 895 Oliver, M. J. and Irwin, A. J.: Objective global ocean biogeographic provinces, *Geophys. Res. Lett.*, 35(15), 1–6, doi:10.1029/2008GL034238, 2008.
- Pazmiño, A. F., Godin-Beekmann, S., Ginzburg, M., Bekki, S., Hauchecorne, A., Piacentini, R. D. and Quel, E. J.: Impact of Antarctic polar vortex occurrences on total ozone and UVB radiation at southern Argentinean and Antarctic stations during 1997-2003 period, *J. Geophys. Res. D Atmos.*, 110(3), 1–13, doi:10.1029/2004JD005304, 2005.
- 900 Penven, P., Echevin, V., Pasapera, J., Colas, F. and Tam, J.: Average circulation, seasonal cycle, and mesoscale dynamics of the Peru Current System: A modeling approach, *J. Geophys. Res. C Ocean.*, 110(10), 1–21, doi:10.1029/2005JC002945, 2005.
- Pérez, V., Fernández, E., Marañón, E., Serret, P. and García-Soto, C.: Seasonal and 905 interannual variability of chlorophyll a and primary production in the Equatorial Atlantic: In situ and remote sensing observations, *J. Plankton Res.*, 27(2), 189–197, doi:10.1093/plankt/fbh159, 2005.
- Quinn, P. K. and Bates, T. S.: The case against climate regulation via oceanic phytoplankton sulphur emissions, *Nature*, 480(7375), 51–56, doi:10.1038/nature10580, 2011.
- 910 Quinn, P. K., Coffman, D. J., Johnson, J. E., Upchurch, L. M. and Bates, T. S.: Small fraction of marine cloud condensation nuclei made up of sea spray aerosol, *Nat. Geosci.*, 10(9), 674–679, doi:10.1038/ngeo3003, 2017.
- Reygondeau, G., Longhurst, A., Martinez, E., Beaugrand, G., Antoine, D. and Maury, O.: Dynamic biogeochemical provinces in the global ocean, *Global Biogeochem. Cycles*, 27(4), 915 1046–1058, doi:10.1002/gbc.20089, 2013.
- Royer, S.-J., Mahajan, A. S., Galí, M., Saltzman, E. and Simó, R.: Small-scale variability

patterns of DMS and phytoplankton in surface waters of the tropical and subtropical Atlantic, Indian, and Pacific Oceans, *Geophys. Res. Lett.*, 42(2), 475–483, doi:10.1002/2014GL062543, 2015.

920 Shuman, F. G.: Numerical Methods in Weather Prediction: II. Smoothing and Filtering, *Mon. Weather Rev.*, 85(11), 357–361, doi:10.1175/1520-0493(1957)085<0357:nmiwpi>2.0.co;2, 1957.

Sigler, M. F., Stabeno, P. J., Eisner, L. B., Napp, J. M. and Mueter, F. J.: Spring and fall phytoplankton blooms in a productive subarctic ecosystem, the eastern Bering Sea, during  
925 1995-2011, *Deep. Res. Part II Top. Stud. Oceanogr.*, 109, 71–83, doi:10.1016/j.dsr2.2013.12.007, 2014.

Simo, R.: Production of atmospheric sulfur by oceanic plankton : biogeochemical , ecological and evolutionary links, *Trends Ecol. Evol.*, 16(6), 287–294, 2001.

Simó, R. and Dachs, J.: Global ocean emission of dimethylsulfide predicted from  
930 biogeophysical data, *Global Biogeochem. Cycles*, 16(4), 26-1-26–10, doi:10.1029/2001gb001829, 2002.

Stefels, J., Steinke, M., Turner, S., Malin, G. and Belviso, S.: Review: Environmental constraints on the production and removal of the climatically active gas dimethylsulphide (DMS) and implications for ecosystem modelling., *Biogeochemistry*, 83(1–3), 245–275,  
935 doi:10.1007/s10533-007-9091-5, 2007.

Swan, H. B., Armishaw, P., Iavetz, R., Alamgir, M., Davies, S. R., Bell, T. G. and Jones, G. B.: An interlaboratory comparison for the quantification of aqueous dimethylsulfide, *Limnol. Oceanogr. Methods*, 12(NOV), 784–794, doi:10.4319/lom.2014.12.784, 2014.

Tesdal, J. E., Christian, J. R., Monahan, A. H. and Von Salzen, K.: Sensitivity of modelled

- 940 sulfate aerosol and its radiative effect on climate to ocean DMS concentration and air-sea flux, *Atmos. Chem. Phys.*, 16(17), 10847–10864, doi:10.5194/acp-16-10847-2016, 2016.
- Thornhill, G., Collins, W., Olivié, D., Archibald, A., Bauer, S., Checa-Garcia, R., Fiedler, S., Folberth, G., Gjermundsen, A., Horowitz, L., Lamarque, J.-F., Michou, M., Mulcahy, J., Nabat, P., Naik, V., O'Connor, F., Paulot, F., Schulz, M., Scott, C., Seferian, R., Smith, C.,
- 945 Takemura, T., Tilmes, S. and Weber, J.: Climate-driven chemistry and aerosol feedbacks in CMIP6 Earth system models, *Atmos. Chem. Phys.*, 1–36, doi:10.5194/acp-2019-1207, 2020.
- Toole, D. A., Kieber, D. J., Kiene, R. P., Siegel, D. A. and Nelson, N. B.: Photolysis and the dimethylsulfide ( DMS ) summer paradox in the Sargasso Sea, , 48(3), 1088–1100, 2003.
- Vallina, S. M. and Simó, R.: Strong Relationship Between DMS and the Solar Radiation
- 950 Dose over the Global Surface Ocean, *Science* (80-. ), 506(2007), doi:10.1126/science.1133680, 2007.
- Wang, C., Soden, B., Yang, W. and Vecchi, G. A.: Compensation between cloud feedback and aerosol-cloud interaction in CMIP6 models, *Geophys. Res. Lett.*, 1–10, doi:10.1029/2020gl091024, 2021.
- 955 Wang, W.-L., Song, G., Primeau, F., Saltzman, E. S., Bell, T. G. and Moore, J. K.: Global ocean dimethyl sulfide climatology estimated from observations and an artificial neural network, *Biogeosciences*, 17(21), 5335–5354, doi:10.5194/bg-17-5335-2020, 2020.
- Wohl, C., Brown, I., Kitidis, V., Jones, A. E., Sturges, W. T., Nightingale, P. D. and Yang, M.: Underway seawater and atmospheric measurements of volatile organic compounds in the
- 960 Southern Ocean, *Biogeosciences*, 17(9), 2593–2619, doi:10.5194/bg-17-2593-2020, 2020.
- Wohl, C., Jones, A., Sturges, W., Nightingale, P., Else, B., Butterworth, B. and Yang, M.: Sea ice concentration impacts dissolved organic gases in the Canadian Arctic, *Biogeosciences*

Discuss., (October), 1–36, doi:10.5194/bg-2021-252, 2021.

Woodhouse, M. T., Carslaw, K. S., Mann, G. W., Vallina, S. M., Vogt, M., Halloran, P. R.  
965 and Boucher, O.: Low sensitivity of cloud condensation nuclei to changes in the sea-air flux  
of dimethyl-sulphide, *Atmos. Chem. Phys.*, 10(16), 7545–7559, 2010.

Woodhouse, M. T., Mann, G. W., Carslaw, K. S. and Boucher, O.: Sensitivity of cloud  
condensation nuclei to regional changes in dimethyl-sulphide emissions, *Atmos. Chem.  
Phys.*, 13, 2723–2733, doi:10.5194/acp-13-2723-2013, 2013.

970 Zavarisky, A., Goddijn-Murphy, L., Steinhoff, T. and Marandino, C. A.: Bubble-Mediated  
Gas Transfer and Gas Transfer Suppression of DMS and CO<sub>2</sub>, *J. Geophys. Res. Atmos.*,  
123(12), 6624–6647, doi:10.1029/2017JD028071, 2018a.

Zavarisky, A., Booge, D., Fiehn, A., Krüger, K., Atlas, E. and Marandino, C.: The Influence  
of Air-Sea Fluxes on Atmospheric Aerosols During the Summer Monsoon Over the Tropical  
975 Indian Ocean, *Geophys. Res. Lett.*, 45(1), 418–426, doi:10.1002/2017GL076410, 2018b.

## Tables and figures

**Table 1:** Details of the number of raw data points, the threshold used for filtering extreme values, number of data points after binning, number of months with data in each biogeochemical province, before and after substitution are given. The provinces used as a donor where substitution was made are also listed. Provinces that were substituted (with data in less than five months) are highlighted in bold.

Province number	Code	Province name	Biome	Ocean	Threshold according to 99.9 Percentile (nM)	No. of raw data points		No. of data lost due to filtering	Binned data before substitution		Substituted by which province	Binned data after substitution	
						Before filtering	After filtering		No. of data	No. of months		No. of data	No. of months
1	ETRA	Eastern tropical Atlantic	Trades	Atlantic	8.8	126	125	1	234	6		234	6
2	APLR	Austral polar	Polar	Antarctic	344.1	327720	327462	328	9790	8		9790	8
3	ANTA	Antarctic	Polar	Antarctic	80.3	326020	325693	327	7816	9		7816	9
4	SANT	Subantarctic water ring	Westerly	Antarctic	8.0	45225	45180	45	3762	9		3762	9
5	SSTC	South subtropical convergence	Westerly	Antarctic	19.9	17543	17525	18	2420	11		2420	11
6	WTRA	Western tropical Atlantic	Trades	Atlantic	7.0	382	381	1	654	8		654	8
7	NEWZ	New Zealand coast	Coastal	Pacific	28.5	1465	1464	1	930	5		930	5
<b>8</b>	<b>AUSE</b>	<b>East Australian coast</b>	<b>Coastal</b>	<b>Pacific</b>	<b>8.6</b>	<b>36</b>	<b>35</b>	<b>1</b>	<b>44</b>	<b>3</b>	<b>AUSE + NEWZ</b>	<b>758</b>	<b>7</b>
<b>9</b>	<b>SUND</b>	<b>Indo-Arafuru shelves</b>	<b>Coastal</b>	<b>Pacific</b>	<b>6.9</b>	<b>777</b>	<b>775</b>	<b>2</b>	<b>416</b>	<b>4</b>	<b>SUND + AUSE</b>	<b>426</b>	<b>5</b>
10	NATR	North Atlantic tropical gyre	Trades	Atlantic	14.6	1749	1747	2	2526	12		2526	12
11	CHIN	China Sea	Coastal	Pacific	16.4	830	829	1	700	8		700	8
12	CHIL	Humboldt current Chile coast	Coastal	Pacific	80.3	796	795	1	958	6		958	6
<b>13</b>	<b>CAMR</b>	<b>Central American coast</b>	<b>Coastal</b>	<b>Pacific</b>	<b>5.4</b>	<b>130</b>	<b>129</b>	<b>1</b>	<b>112</b>	<b>1</b>	<b>CAMR + CCAL</b>	<b>4966</b>	<b>8</b>
14	CCAL	Coastal Californian current	Coastal	Pacific	42.1	10981	10970	11	4854	7		4854	7
15	ALSK	Alaska coastal downwelling	Coastal	Pacific	154.9	4659	4654	5	4824	9		4824	9
<b>16</b>	<b>ARCH</b>	<b>Archipelagic deep basins</b>	<b>Trades</b>	<b>Pacific</b>	<b>7.3</b>	<b>166</b>	<b>165</b>	<b>1</b>	<b>50</b>	<b>3</b>	<b>ARCH + TASM</b>	<b>326</b>	<b>6</b>
17	WAR M	Western Pacific warm pool	Trades	Pacific	8.5	10429	10419	10	2174	6		2174	6
18	PEQD	Pacific equatorial divergence	Trades	Pacific	44.9	1395	1394	1	1682	10		1682	10
19	PNEC	North Pacific equatorial	Trades	Pacific	6.9	11325	11314	11	1766	10		1766	10

		counter current											
20	NPTG	North Pacific Tropical gyre	Trades	Pacific	6.6	8129	8121	8	1270	11		1270	11
21	NASTW	Northwest Atlantic subtropical gyre	Westerly	Atlantic	8.6	1281	1280	1	1616	10		1616	10
22	SPSG	South Pacific gyre	Trades	Pacific	11.4	10539	10528	11	4768	8		4768	8
23	TASM	Tasman Sea	Westerly	Pacific	6.8	3996	3992	4	422	4	TASM + ARCH	448	6
24	C(O)CAL	California current	Trades	Pacific	48.4	4811	4806	5	2850	8		2850	8
25	NPSW	Northwest Pacific subtropical	Westerly	Pacific	5.0	146	145	1	196	4	NPSW + NPSE	264	7
26	NPSE	Northeast Pacific subtropical	Westerly	Pacific	8.3	130	129	1	192	6		192	6
27	NPPF	North Pacific polar front	Westerly	Pacific	16.9	251	250	1	378	7		378	7
28	KURO	Kuroshio current	Westerly	Pacific	10.8	697	696	1	728	4	KURO + NPSE	788	6
29	PSAW	Western Pacific subarctic gyre	Westerly	Pacific	11.0	252	251	1	290	5		290	5
30	PSAE	Eastern Pacific subarctic gyre	Westerly	Pacific	27.9	3043	3040	3	1288	5		1288	5
31	BERS	North Pacific epicontinental sea	Polar	Pacific	151.0	3856	3852	4	3928	9		3928	9
32	GFST	Gulf Stream	Westerly	Atlantic	16.1	2073	2071	2	1460	11		1460	11
33	NADR	North Atlantic Drift	Westerly	Atlantic	27.1	4706	4701	5	3224	10		3224	10
34	AUSW	Western Australian and Indonesian coast	Coastal	Indian	3.1	5997	5991	6	314	3	AUSW + AUSE + SUND	488	6
35	INDE	Western India coast	Coastal	Indian	220.5	98	97	1	176	8		176	8
36	INDW	Eastern India coast	Coastal	Indian	6.8	98	97	1	186	3	INDW + ARAB	322	8
37	ARAB	Northwest Arabian Sea upwelling	Westerly	Indian	16.9	150	149	1	268	8		268	8
38	REDS	Red Sea, Arabian Gulf	Coastal	Indian	2.0	14	13	1	26	1	REDS + ARAB	266	8
39	EAFR	Eastern India coast	Coastal	Indian	20.1	303	302	1	76	2	EAFR + ISSG	1112	7
40	ISSG	Indian South subtropical gyre	Trades	Indian	12.5	13574	13560	14	1738	7		1738	7
41	MONS	Indian monsoon gyre	Trades	Indian	12.1	352	351	1	586	7		586	7
42	SARC	Atlantic sub-Arctic	Polar	Atlantic	66.7	1296	1295	1	1702	6		1702	6
43	BENG	Benguela current coast	Coastal	Atlantic	13.4	6399	6393	6	652	5		652	5
44	FKLD	Southwest Atlantic shelves	Coastal	Atlantic	18.9	168	167	1	276	4	FKLD + BRAZ	364	7
45	BRAZ	Brazilian current coast	Coastal	Atlantic	23.7	1060	1059	1	296	7		296	7
46	ARCT	Atlantic Arctic	Polar	Atlantic	19.0	6311	6305	6	3572	9		3572	9

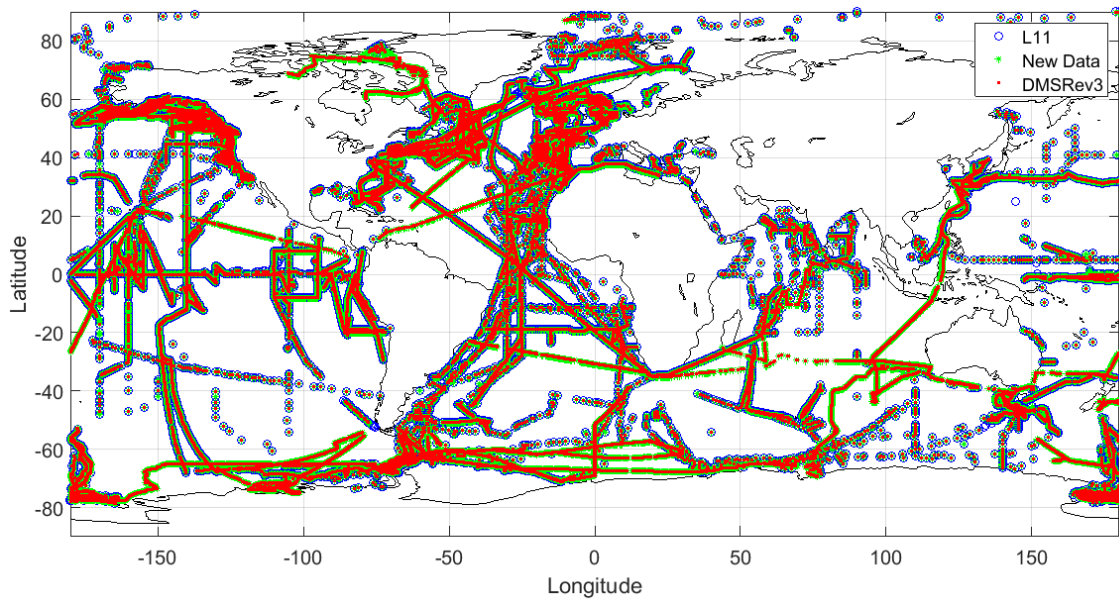
47	NASTE	Northeast Atlantic subtropical gyre	Westerly	Atlantic	19.7	5889	5883	6	4126	12		4126	12
48	CARB	Caribbean	Trades	Atlantic	23.0	992	991	1	1318	9		1318	9
49	MEDI	Mediterranean Sea	Westerly	Atlantic	60.5	625	624	1	864	11		864	11
50	NWCS	Northwest Atlantic shelves	Coastal	Atlantic	28.6	3329	3326	3	3102	11		3102	11
<b>51</b>	<b>GUIA</b>	<b>Guianas coast</b>	<b>Coastal</b>	<b>Atlantic</b>	<b>2.3</b>	<b>8</b>	<b>7</b>	<b>1</b>	<b>12</b>	<b>1</b>	<b>GUIA + WTRA</b>	<b>432</b>	<b>8</b>
<b>52</b>	<b>GUIN</b>	<b>Guinea current coast</b>	<b>Coastal</b>	<b>Atlantic</b>	<b>NaN</b>	<b>0</b>	<b>0</b>		<b>0</b>	<b>0</b>	<b>ETRA</b>	<b>234</b>	<b>6</b>
53	CNRY	Canary current coast	Coastal	Atlantic	32.0	73	72	1	138	6		138	6
54	NECS	Northeast Atlantic shelves	Coastal	Atlantic	198.5	2661	2658	3	4376	11		4376	11
55	SATL	South Atlantic gyre	Trades	Atlantic	6.7	14072	14058	14	1866	9		1866	9
56	BPRL	Boreal polar	Polar	Arctic	19.3	4006	4002	4	2970	8		2970	8

Table 2: Annual DMS Flux ( $\text{TgS yr}^{-1}$ ) per  $10^\circ$  latitudinal band obtained from DMS-Rev3 is

985 given in the table along with the annual DMS flux obtained from L11 for comparison.

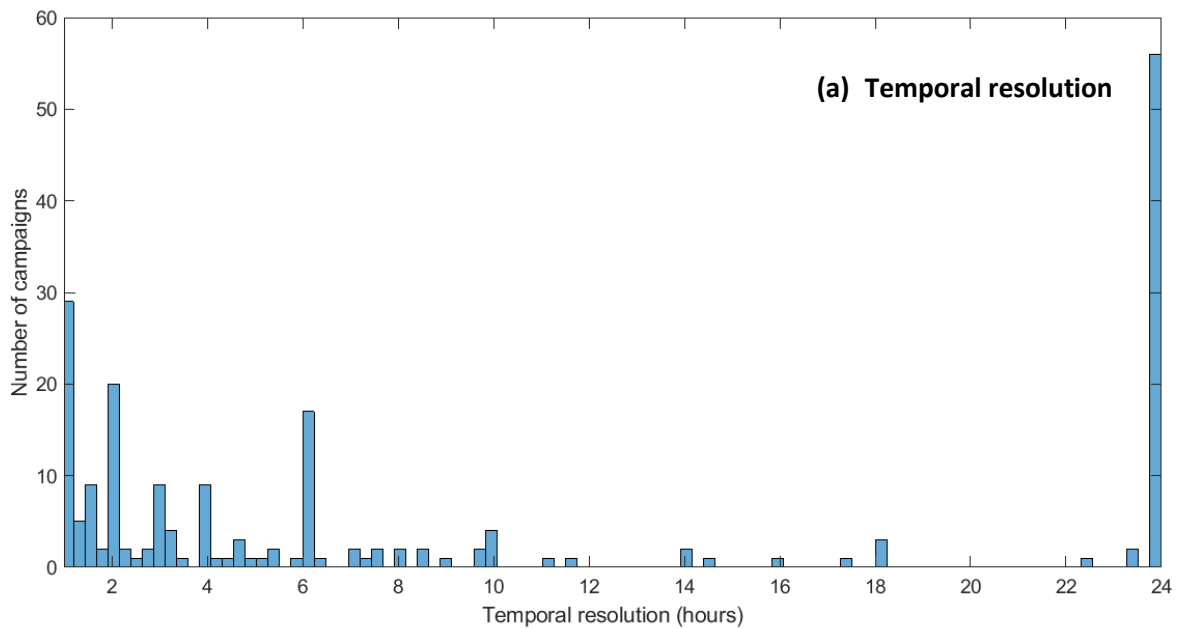
Latitude Bands	REV3	L11
90 N to 80 N	0.0	0.0
80 N to 70 N	0.1	0.1
70 N to 60 N	0.2	0.2
60 N to 50 N	0.8	0.9
50 N to 40 N	1.3	1.5
40 N to 30 N	1.5	1.5
30 N to 20 N	1.5	1.4
20 N to 10 N	2.4	2.6
10 N to 0 EQ	2.2	2.6
0 EQ to -10 S	2.0	2.2
-10 S to -20 S	3.4	3.5
-20 S to -30 S	3.0	3.0
-30 S to -40 S	2.5	2.7
-40 S to -50 S	2.6	2.8
-50 S to -60 S	2.4	2.1
-60 S to -70 S	1.0	0.9
-70 S to -80 S	0.1	0.1
-80 S to -90 S	0.0	0.0
<b>Total</b>	<b>27.1</b>	<b>28.1</b>



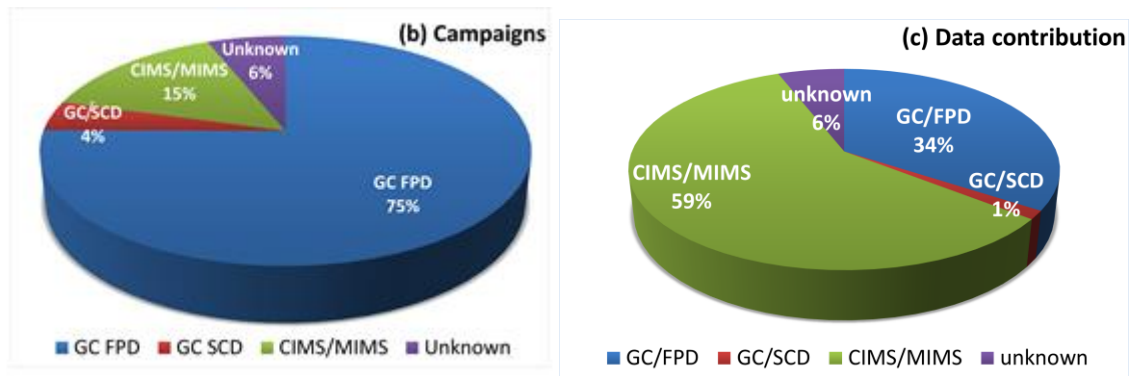


987

988 **Figure 1:** Data from different sources was put together for creating the raw input dataset, which  
 989 consisted of 873,539 points. The data in blue circles represent data that was used in the L11  
 990 DMS climatology, and the green represent the new data. Post quality control, and data  
 991 unification for addressing temporal and spatial sampling biases, 48,898 data points were used  
 992 as an input for the DMS-Rev3 climatology calculation algorithm (red dots).

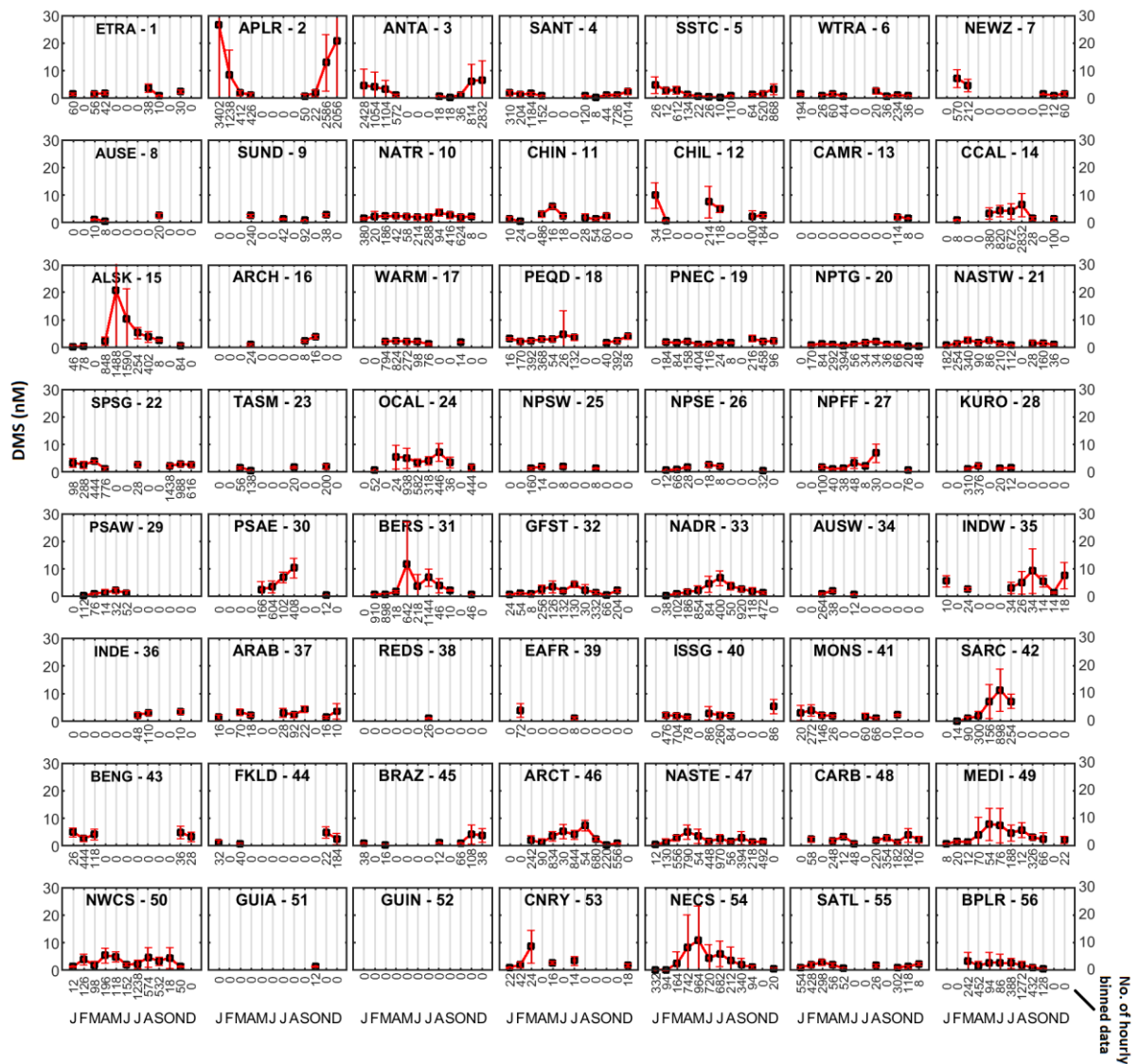


993



994

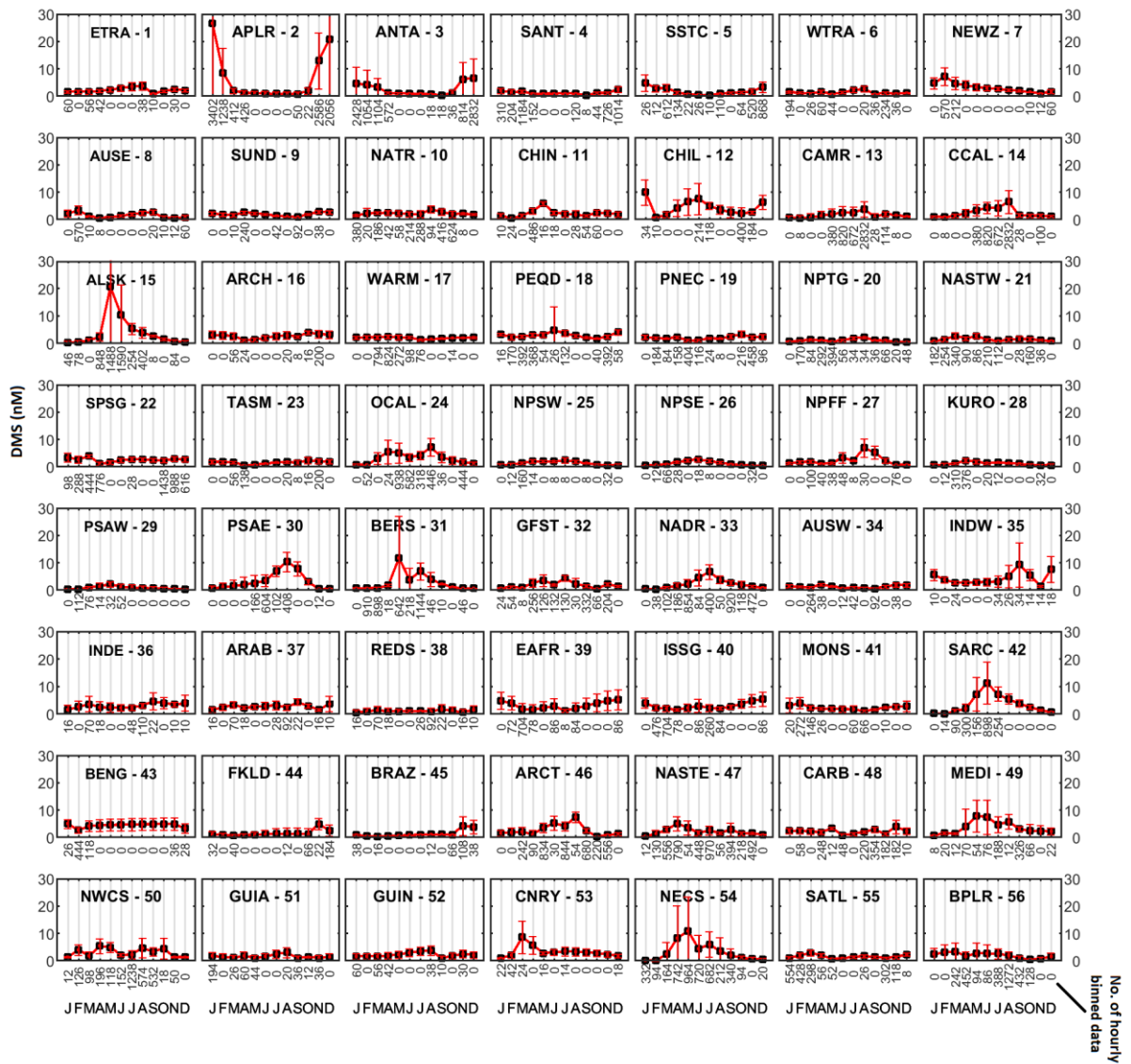
995 **Figure 2:** (a) Frequency distribution of the sampling interval for the campaigns included in  
 996 this study are shown. Note that the ‘24-hour’ bin represents Temporal resolution lower than or  
 997 equal to 24 hours. (b) The type of measurement technique used to measure DMS during the  
 998 individual campaigns. The ‘unknown’ dataset/campaigns resemble the frequency of a GC  
 999 instrument. (c) The number of raw data points according to the measurement technique is  
 1000 shown. The number of data is dominated by CIMS/MIMS based measurements, but the number  
 1001 of campaigns is dominated by the GC measurements.



1002

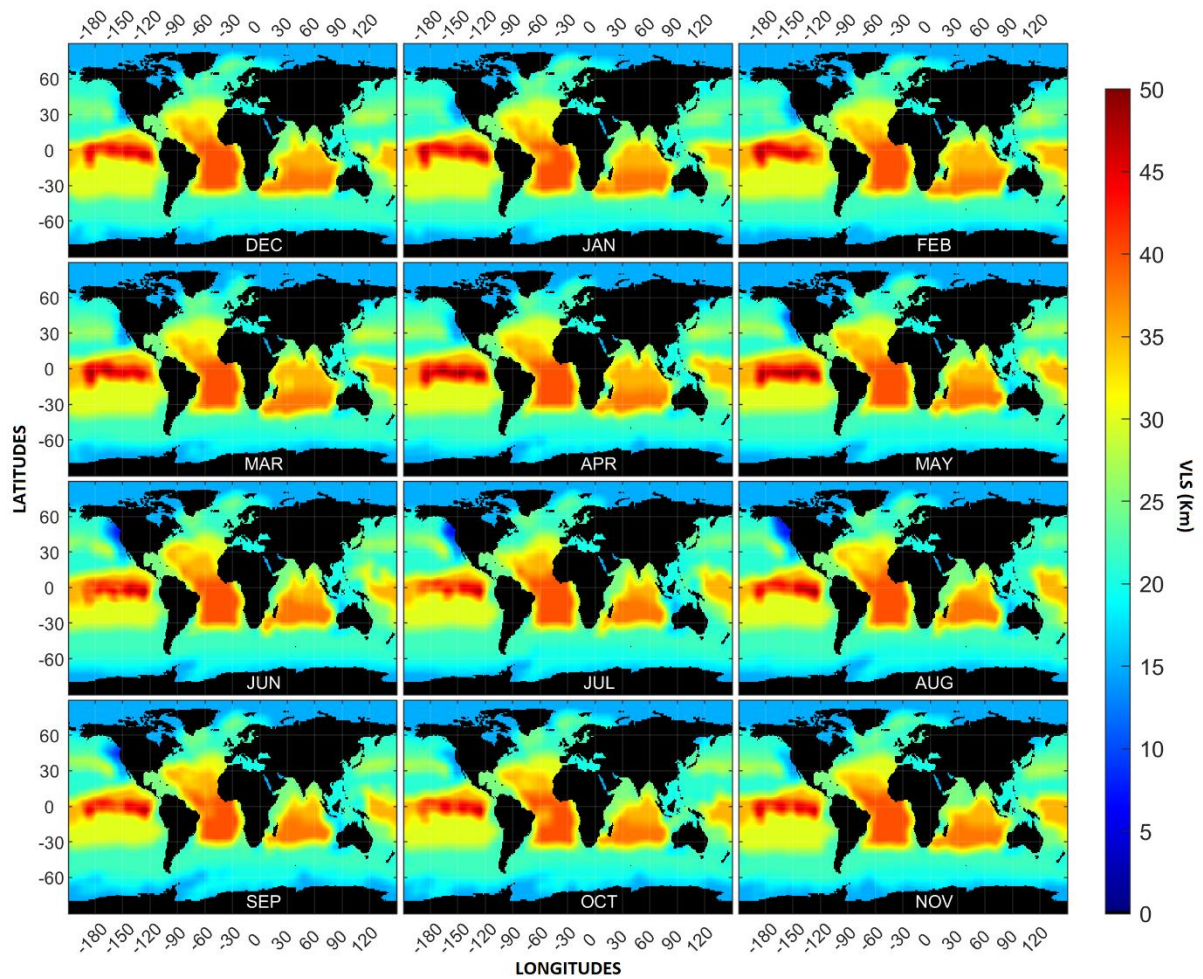
1003 **Figure 3:** The data distribution in different biogeochemical provinces is different owing to the  
 1004 time, location, and frequency of observation. The black squares represent the monthly mean of  
 1005 data with standard deviations shown as error bars. The number of hourly binned observations  
 1006 in a month is shown below the *x*-axis.

1007



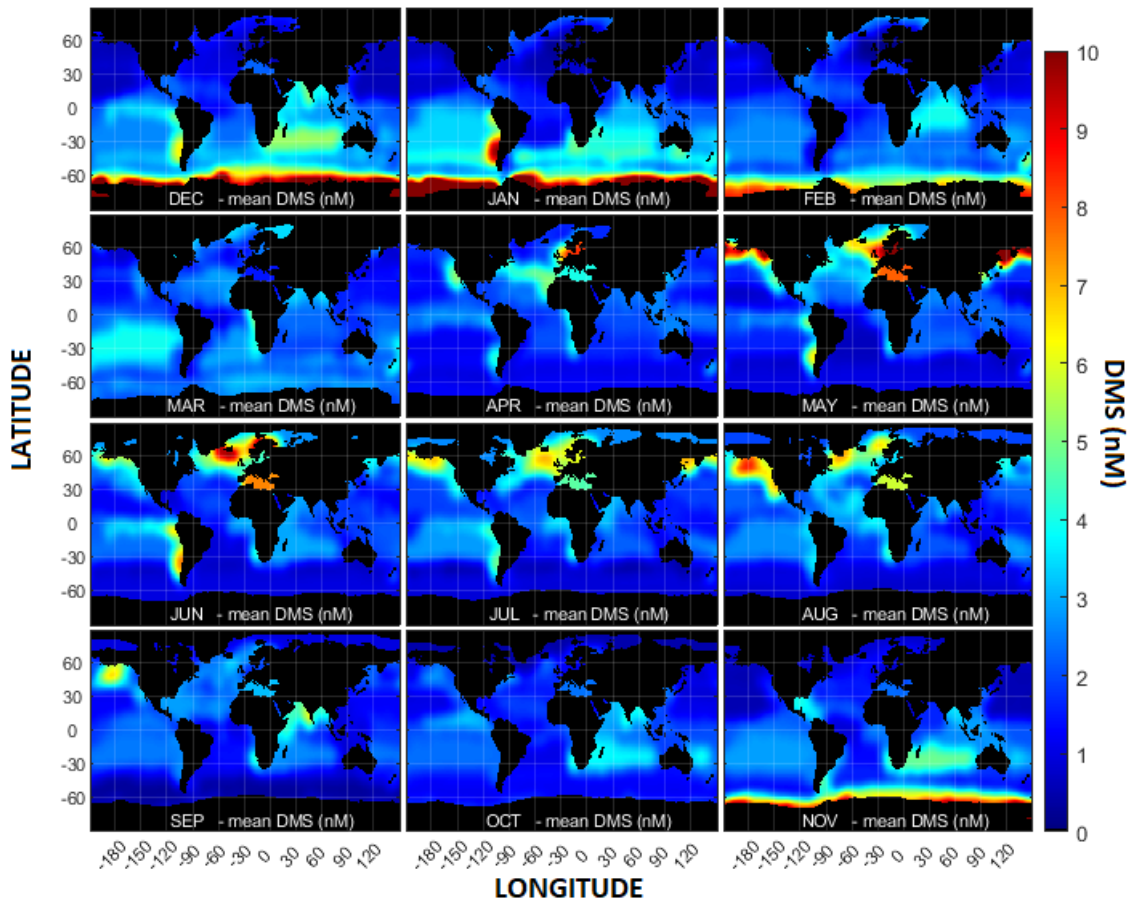
1008

1009 **Figure 4:** The substituted and interpolated monthly mean data (black squares) with respective  
 1010 standard deviations for each province are shown. The number of hourly binned observations in  
 1011 a month is shown below the  $x$ -axis; where 0 indicates that the data was interpolated.

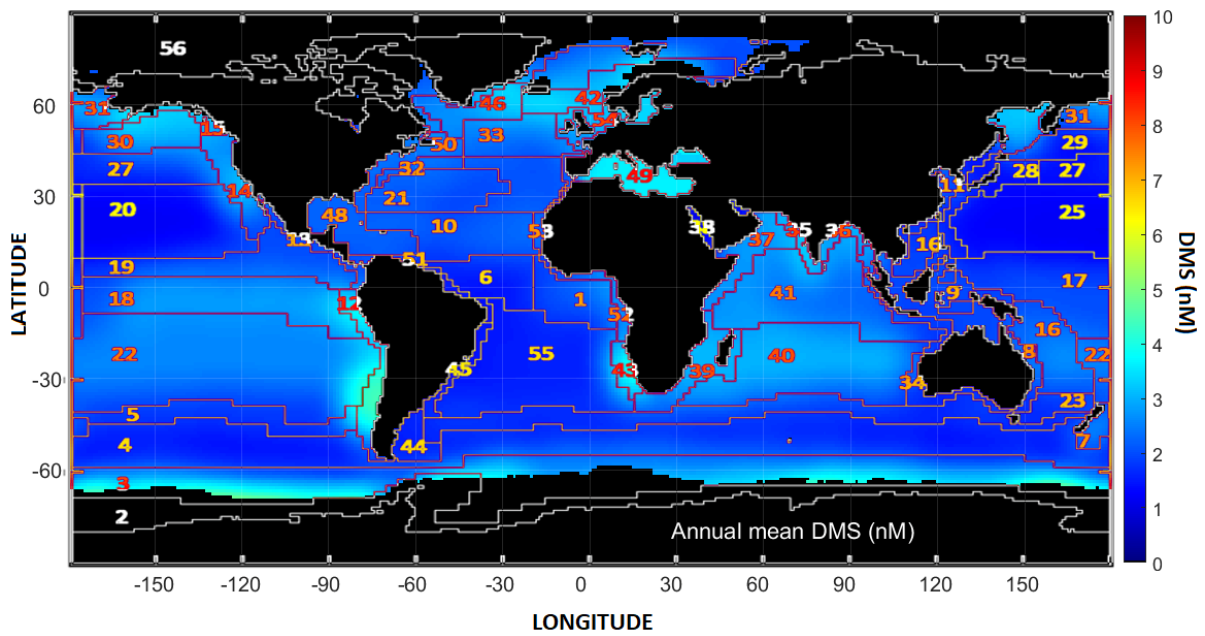


1012

1013 **Figure 5:** The DMS Variability Length Scale (VLS) used for the weighted-average  
 1014 interpolation computation is shown. The VLS in 11 provinces were based on past observations,  
 1015 and the VLS in the other provinces was estimated by looking for biogeochemical similarities.

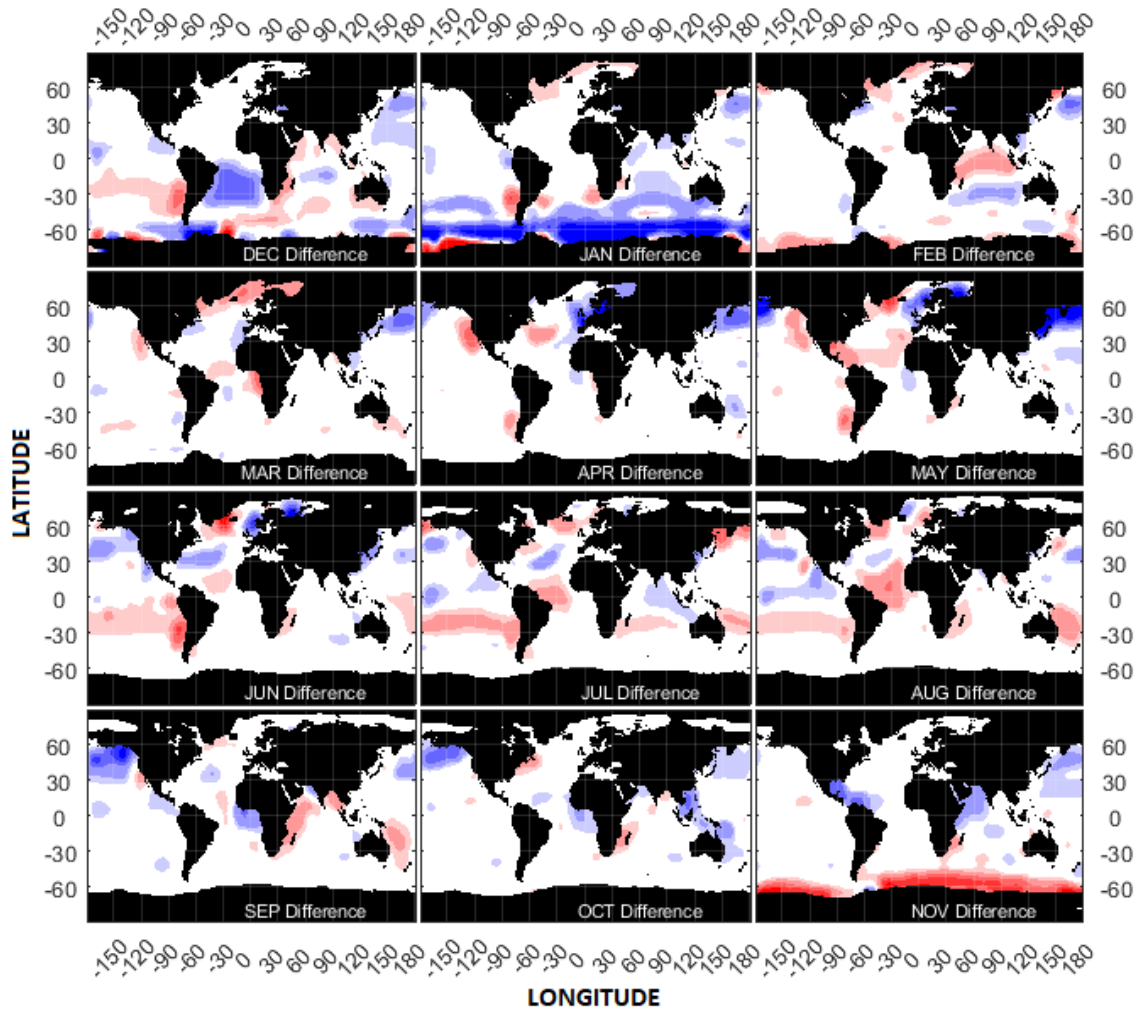


1016

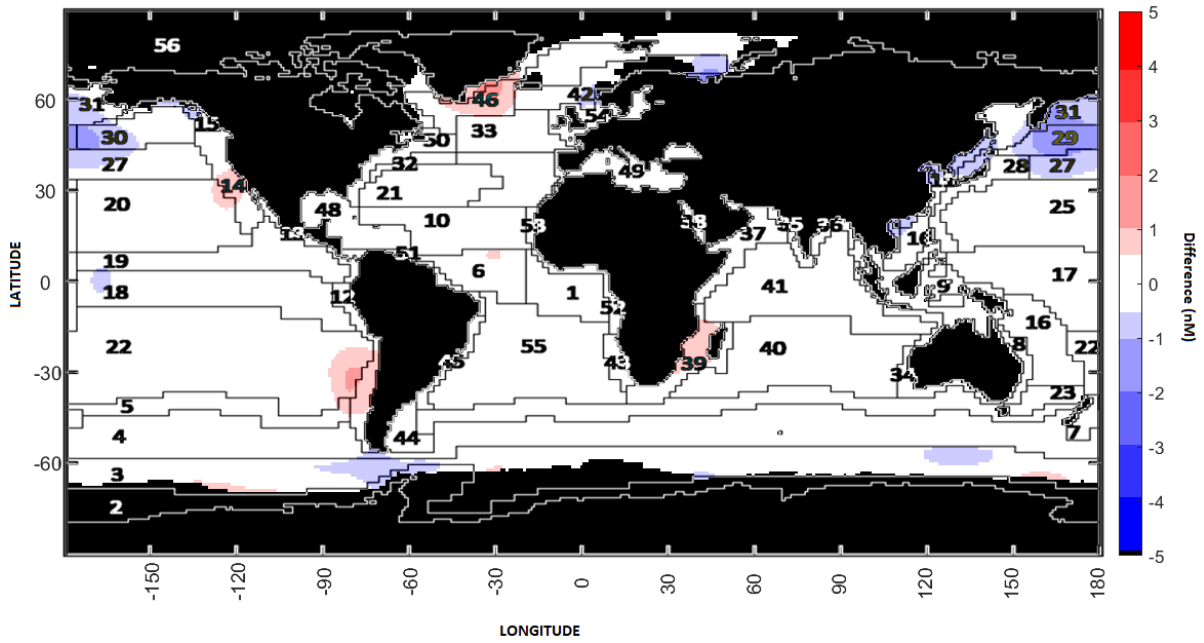


1017

1018 **Figure 6:** Distribution of the monthly and annual DMS concentrations as estimated by DMS-  
 1019 Rev3 climatology with a 50% sea-ice mask.

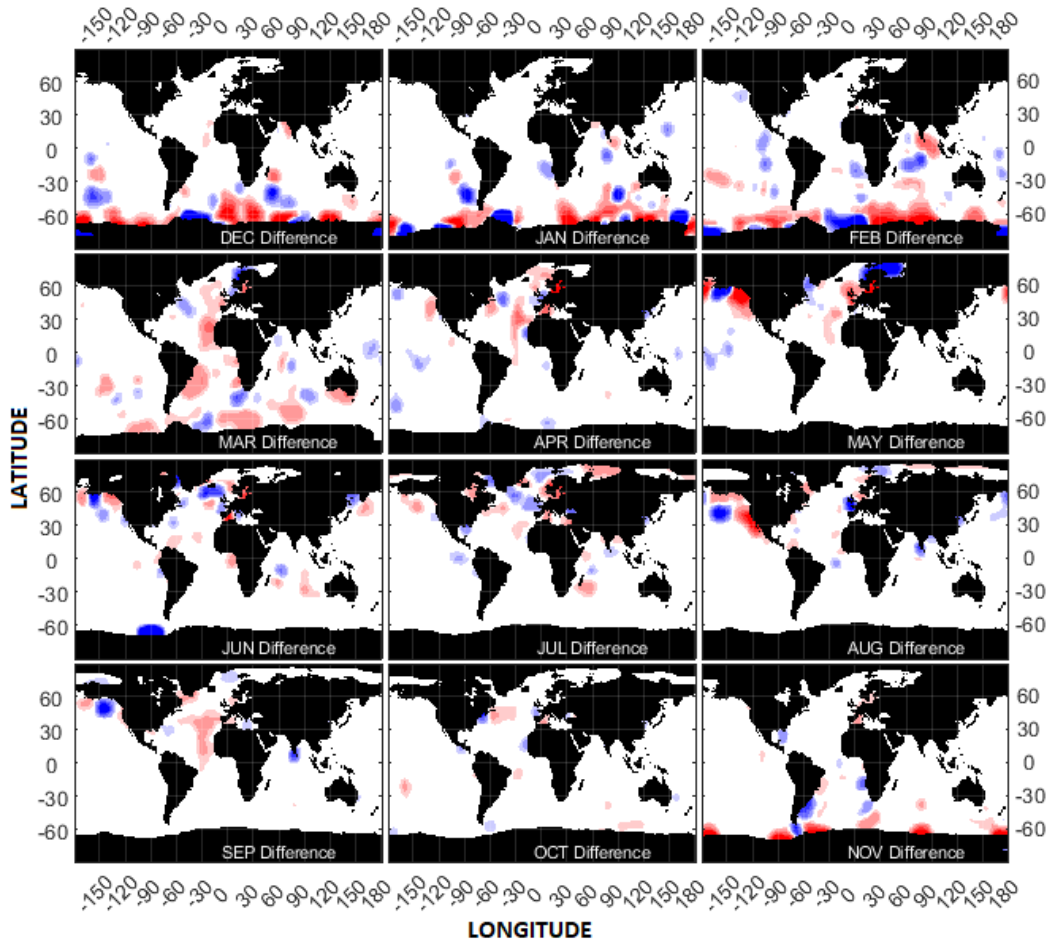


1020

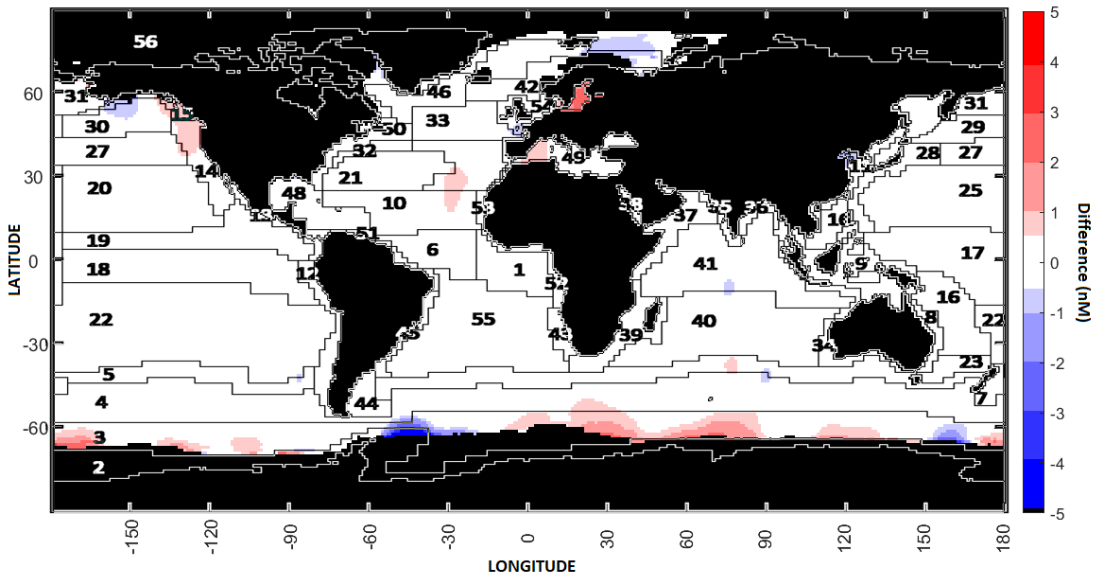


1021

1022 **Figure 7:** Differences between the monthly and annual mean DMS concentrations estimated  
 1023 using dynamic and static biogeochemical province boundaries (Dynamic - Static).



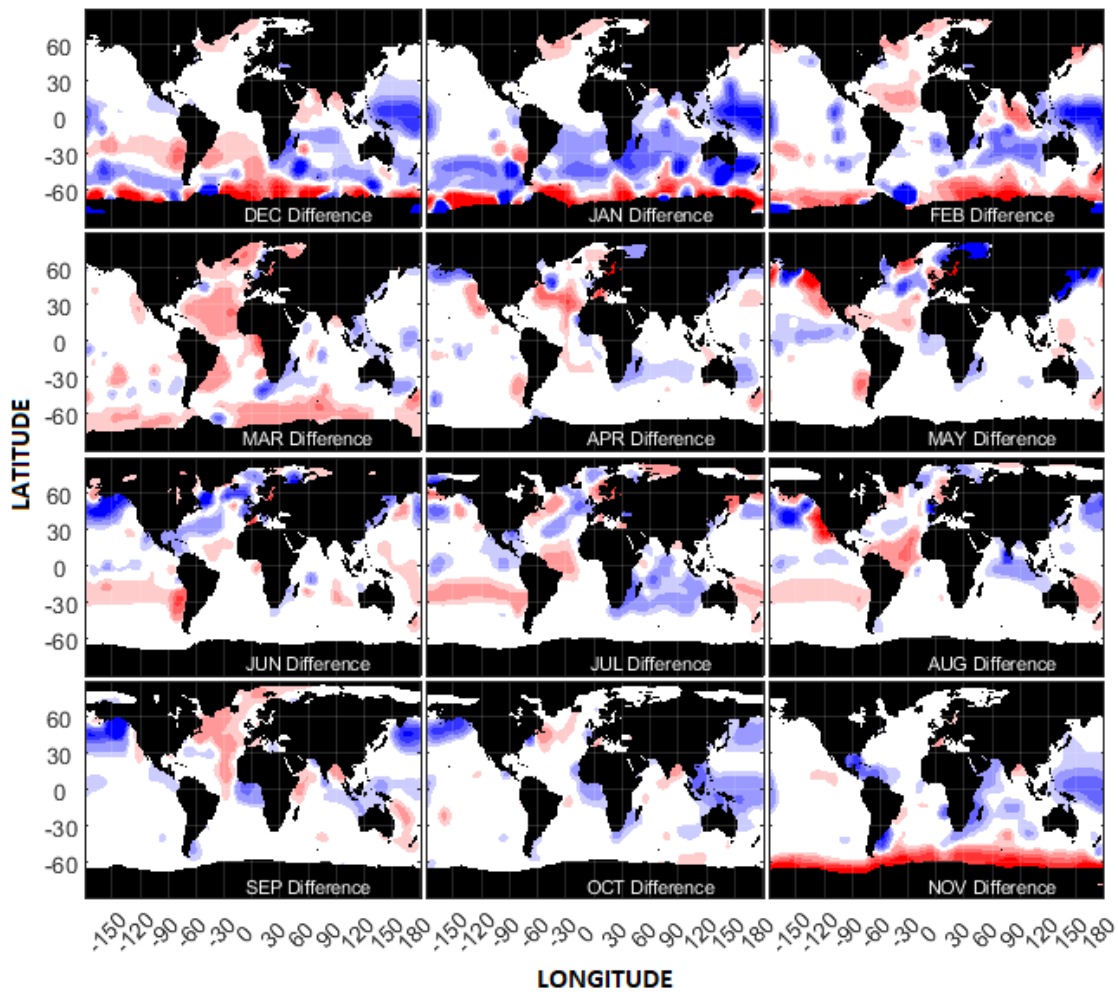
1024



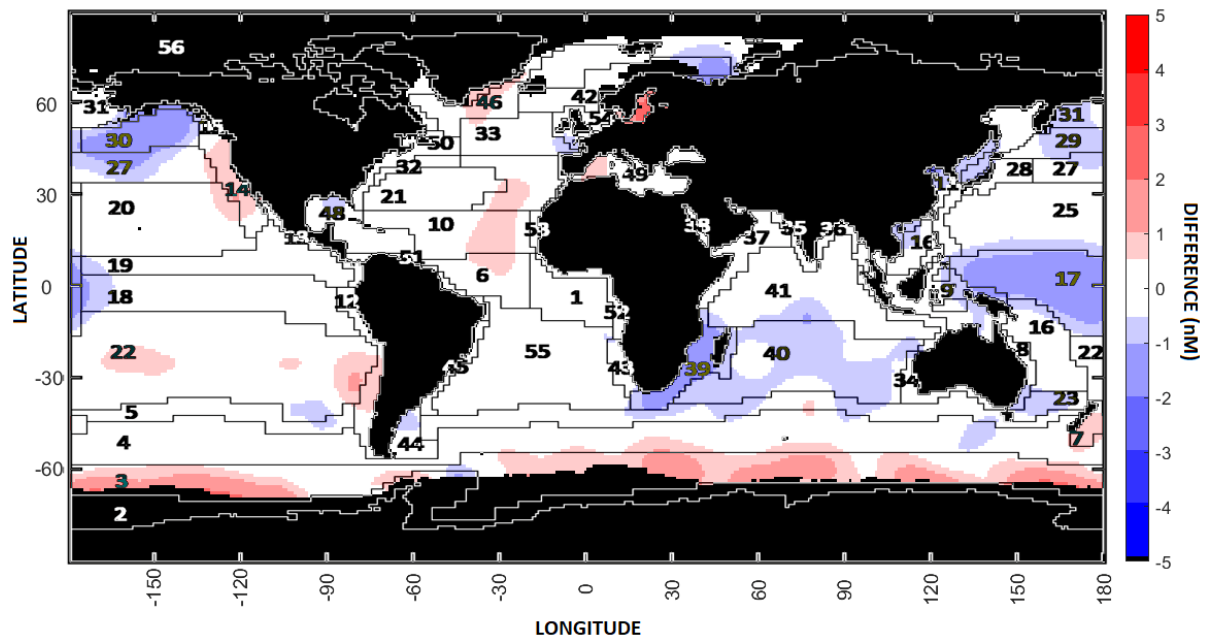
1025

1026 **Figure 8:** Differences in the DMS concentrations caused using Variability Length Scale (VLS)  
 1027 instead of a fixed value for the Radius of Influence as used by L11 (555 km) for the weighted  
 1028 average interpolation computation. (VLS- 555 km).



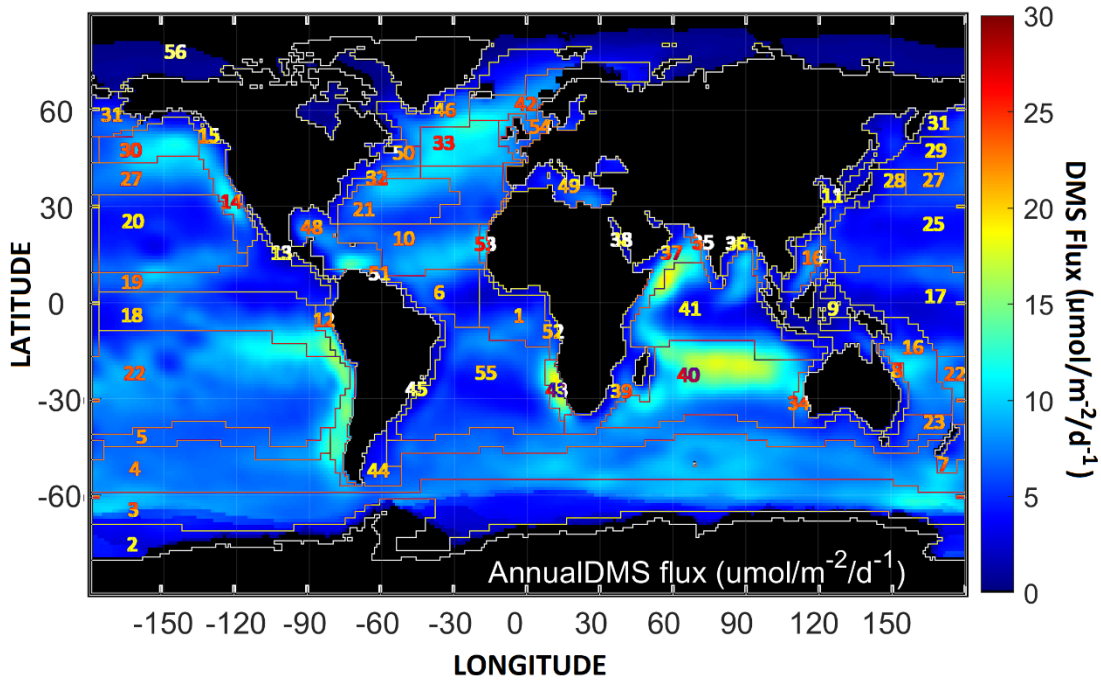
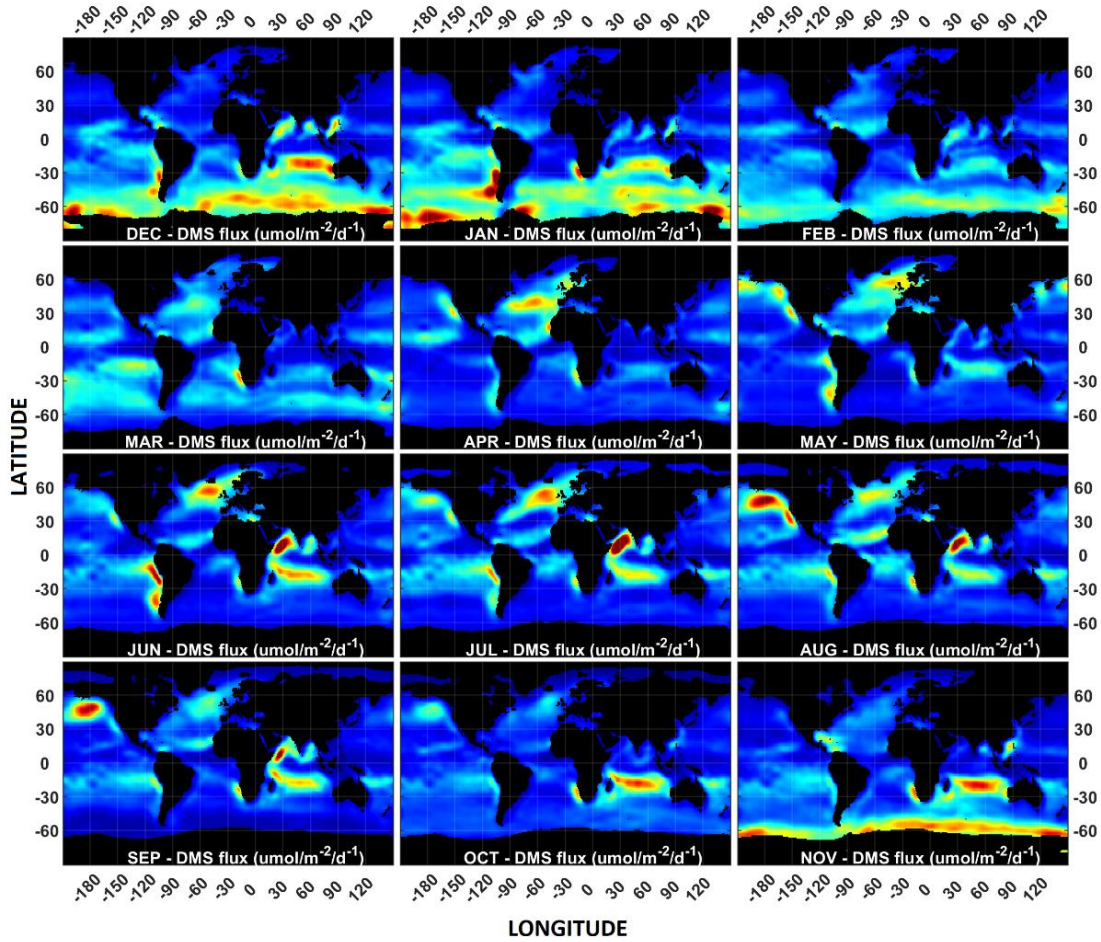


1029



1030

1031 **Figure 9:** Differences between the monthly and annual mean DMS concentrations of the Rev3  
 1032 and L11 climatologies (Rev3-L11).



1035 **Figure 10:** Distribution of the monthly and annual DMS flux as estimated by DMS-Rev3  
 1036 climatology with 50% sea-ice mask.