

A remote sensing-based dataset to characterize the ecosystem functioning and functional diversity in the Biosphere Reserve of Sierra Nevada (SE Spain)

5 Beatriz P. Cazorla^{1,2}, Javier Cabello^{1,2}, Andrés Reyes¹, Emilio Guirado^{1,3}, Julio Peñas^{1,4},
Antonio J. Pérez-Luque^{5,6}, Domingo Alcaraz-Segura^{1,4,5}

¹Andalusian Center for the Assessment and Monitoring of Global Change, University of Almería, 04120, Almería, Spain

²Department of Biology and Geology, University of Almería, 04120, Almería, Spain

³Multidisciplinary Institute for Environment Studies “Ramon Margalef” University of Alicante, 03690, Alicante, Spain

⁴Department of Botany, University of Granada, Av. de Fuentenueva, s/n 18071, Granada, Spain

10 ⁵icolab. Andalusian Institute for Earth System Research (IISTA-CEAMA) – University of Granada, Avda. Mediterráneo s/n, E-18006, Granada, Spain.

⁶Terrestrial Ecology Research Group, Department of Ecology, Faculty of Science, University of Granada, Av. Fuentenueva s/n, Granada, E-18071 Spain

Correspondence to: Beatriz P. Cazorla (b.cazorla@ual.es)

15

Abstract

Conservation Biology faces the challenge of safeguarding the ecosystem functions and ecological processes (the water cycle, nutrients, energy flow, and community dynamics) that sustain the multiple facets of biodiversity. Characterization and evaluation of these processes and functions can be carried out through
20 functional attributes or traits related to the exchanges of matter and energy between vegetation and the atmosphere. Based on this principle, satellite imagery can provide integrative spatiotemporal characterizations of ecosystem functions at local to global scales. Here, we provide a multi-temporal dataset at protected area level, that characterizes the spatial patterns and temporal dynamics of ecosystem
25 functioning in the Biosphere Reserve of Sierra Nevada (Spain), captured through the spectral Enhanced Vegetation Index (EVI, using product MOD13Q1.006 from MODIS sensor) from 2001 to 2018. The database contains, at the annual scale, a synthetic map of Ecosystem Functional Types (EFTs) classes from three Ecosystem Functional Attributes (EFAs): i) descriptors of annual primary production, ii) seasonality, and iii) phenology of carbon gains. It also includes two ecosystem functional diversity indices derived from the above datasets: i) EFT richness, and ii) EFT rarity. Finally, it provides inter-annual summaries for all
30 previously mentioned variables, i.e., their long term means and inter-annual variability. The datasets are available in two open-source sites (PANGAEA: <https://doi.pangaea.de/10.1594/PANGAEA.924792> (Cazorla et al., 2020a) and interannual-summaries at http://obsnev.es/apps/efts_SN.html). This dataset provides scientists, environmental managers, and the public in general with valuable information on the first characterization of ecosystem functional diversity based on primary production developed in Sierra
35 Nevada, a biodiversity hotspot in the Mediterranean basin, and an exceptional natural laboratory for ecological research within the Long-Term Social-Ecological Research (LTSER) network.

1 Introduction

40 A better characterization of the functional dimension of biodiversity is required to develop management approaches that ensure nature contributions to human well-being (Jax, 2010; Cabello et al., 2012; Bennet et al., 2015). A set of essential variables for characterizing and monitoring ecosystem functioning is necessary to achieve this goal (Pereira et al., 2013). Such variables are critical to understanding the dynamics of ecological systems (Petchey and Gaston, 2006), the links between biological diversity and ecosystem services (Balvanera et al., 2006; Haines-Young and Potschin, 2010), and the mechanisms of ecological resilience (Mouchet et al., 2010). In addition, there have been calls for the use of ecosystem functioning variables to assess functional diversity at large scales to measure biosphere integrity (Mace et al., 2014; Steffen et al., 2015), one of the most challenging planetary boundaries to assess (Steffen et al., 2015). Despite the importance of ecosystem functioning variables and the conceptual frameworks developed to promote their use (Pettorelli et al., 2018), they have seldom been incorporated into ecosystem monitoring (see Alcaraz-Segura et al., 2009; Fernández et al., 2010; Cabello et al., 2016; Skidmore et al., 2021).

Characterization and evaluation of ecosystem functioning can be carried out through monitoring functional traits or attributes related to the matter and energy exchanges between biota and the atmosphere (Box et al., 1989; Running et al., 2000). Nowadays, the use of satellite imagery provides useful methods to derive such attributes, allowing for the spatially explicit characterization of ecosystem functioning and its heterogeneity (i.e., functional diversity) from local (Fernández et al., 2010) to regional (Alcaraz-Segura et al., 2006, 2013), and global scales (Ivits et al., 2013; Skidmore et al., 2021). Theoretical and empirical models enable essential functional variables of ecosystems, such as primary production, evapotranspiration, surface temperature, or albedo to be estimated based on spectral indices derived from satellite images (e.g., Enhanced Vegetation Index; EVI) (Pettorelli et al., 2005; Fernández et al., 2010; Lee et al., 2013). Among them, primary production is one of the most integrative and essential descriptor of ecosystem functioning (Virginia and Wall, 2001; Pereira et al., 2013) since it has a significant role in the carbon cycle (i.e., the energy input to the trophic web and the driving force behind many ecological processes) (Xiao et al., 2019). Moreover, primary production provides a holistic response to environmental changes and constitutes a synthetic indicator of ecosystem health (Costanza et al., 1992; Skidmore et al., 2015).

To characterize ecosystem functioning focusing on primary production, we can use the satellite-derived approach based on Ecosystem Functional Types (EFTs), defined as patches of the land surface that share similar dynamics in the matter and energy exchanges between the biota and the physical environment (Paruelo et al., 2001; Alcaraz-Segura et al., 2006). EFTs are derived from three Ecosystem Functional Attributes (EFAs) that describe the seasonal dynamics of carbon gains through time-series of spectral vegetation indices: 1) EVI annual mean (a surrogate of annual primary production), 2) EVI annual standard deviation (a descriptor of seasonality or the differences between the growing and non-growing seasons), and 3) the annual date of maximum EVI (a phenological indicator of the date within a year on which the growing period is centered). Biologically, these three metrics can be interpreted as surrogates of the total amount and timing of primary production (Paruelo et al., 2001; Pettorelli et al., 2005; Alcaraz-Segura et al., 2006), one of the most integrative indicators of ecosystem functioning (Virginia and Wall, 2001). Since the EFT concept appeared in 2001 (Paruelo et al., 2001), its applicability has grown to characterize functional heterogeneity from local to global scales (Alcaraz-Segura et al., 2006; Karlsen et al., 2006; Duro et al., 2007; Fernández et al., 2010; Geerken 2009; Alcaraz-Segura et al., 2013; Ivits et al., 2013; Cabello et al., 2013; Pérez-Hoyos et al., 2014; Müller et al., 2014; Wang and Huang, 2015; Villarreal et al., 2018; Coops et al., 2018; Mucina, 2019; Cazorla et al. 2020b).

Here, we present a dataset that describes the spatial heterogeneity and temporal variability of a key measure of ecosystem functioning and ecosystem functional diversity patterns in the Sierra Nevada Biosphere Reserve, a protected area in south-east Spain (Fig. 1). We derived the dataset from the analysis of the intra- and inter-annual variation of vegetation greenness captured through the EVI spectral vegetation index, as a surrogate of primary production, during the 2001-2018 period. First, for each year, we provide maps of three EFAs: i) annual primary production, and ii) seasonality and iii) phenology of carbon gains, as well as their integration into a synthetic mapping of EFTs as discrete landscape functional units. Second, based on these units, we present two functional diversity metrics: EFT richness and EFT rarity. Finally, by considering the yearly maps, we calculated inter-annual summaries, i.e., inter-annual means and inter-annual variability, to show the average conditions and the stability of ecosystem functioning of the period (the workflow is provided in Fig. 2). The abundance of long-term datasets from multiple disciplines in Sierra Nevada constitutes an opportunity to explore the role of ecosystem functioning and functional diversity on ecohydrological and species distribution modeling, climate change mitigation and adaptation, ecological resilience, adaptive management, and mountain ecosystem services supply since humankind depends on freshwater of mountain regions, are hotspots of biodiversity and a key destination for recreation activities (Grêt-Regamey et al., 2012).

2 Data description

2.1 Data acquisition and processing

We based ecosystem functioning characterization on analyzing the temporal dynamics of the EVI from 2001 to 2018. We chose EVI instead of any other vegetation index (such as SAVI, ARVI, or NDVI) as an indicator of carbon gains since it is more reliable in both low and high vegetation cover situations (Huete et al., 1997). Furthermore, EVI reduces the influence of atmospheric conditions on vegetation index values and corrects for canopy background signals.

EVI is computed following this equation (Equation 1):

$$EVI = G \times \frac{(NIR - RED)}{(NIR + C1 \times RED - C2 \times Blue + L)}$$

Equation 1, where NIR/RED/Blue are atmospherically corrected (Rayleigh and ozone absorption) surface reflectance for near infrared, red and blue wavelengths, respectively; L is the canopy background adjustment that addresses the non-linear and differential transfer through a canopy of the NIR and red radiations; and C1, C2 are the coefficients of the aerosol resistance term, which uses the blue band to correct for aerosol influences in the red band. The coefficients adopted in the MODIS-EVI algorithm are; L=1, C1 = 6, C2 = 7.5, and G (gain factor) = 2.5. The EVI values range from -1 to +1, where negative values correspond to snow, ice, or water, and values closer to +1 represent a high density of green leaves (Huete et al., 2002).

We obtained EVI from the MOD13Q1.006 product of the Moderate Resolution Imaging Spectroradiometer (MODIS sensor) onboard NASA's Terra satellite (Didan, 2015). MOD13Q1.006 EVI product is computed from atmospherically corrected bi-directional surface reflectance by choosing automatically the best available pixel value from all the acquisitions (4 per day) in a 16-day period based on quality, cloud presence, and viewing geometry (Huete et al., 1999; Didan et al., 2015). To further remove the potential remaining effect of snow, ice, and water in our dataset, we transformed negative EVI values into zeros. Thus, we obtained a maximum-value composite image every 16 days (23 images per year). Despite its

125 moderate spatial resolution (232 meters spatial resolution at the equator), we chose the MOD13Q1.006
product as the basis for our data since it offers a long time series (almost 20 years) every 16 days, which
allows for the characterization of the temporal dynamics of ecosystem functioning (Anderson et al., 2018).

130 MOD13Q1.006 images were available in Google into the Earth Engine (GEE)
servers https://developers.google.com/earth-engine/datasets/catalog/MODIS_006_MOD13Q1), where we
processed them. GEE combines a multi-petabyte catalog of satellite imagery and geospatial datasets with
planetary-scale analysis capabilities (Gorelick et al., 2017). We used the main Javascript programming
interface to build the algorithms and requests to GEE servers. EVI values are multiplied by 10,000 to store
them as real numbers to occupy less disk space (both in the original MOD13Q1.006 product and in our
dataset).

135 **2.2 Calculating Ecosystem Functional Attributes (EFAs)**

We calculated three EFAs maps known to capture most of the variance of the seasonal curve or annual
dynamics of vegetation indices (Paruelo et al., 2001; Alcaraz-Segura et al., 2006, 2009): the EVI annual
mean (EVI_mean; an estimator of primary production), the EVI seasonal Standard Deviation (EVI_sSD; a
descriptor of seasonality, i.e., the differences between the growing and non-growing seasons), and the date
140 of maximum EVI (EVI_DMAX; a phenological indicator of the month with maximum EVI) (Fig. 3). To
summarize the EFAs of the 2001-2018 period, we calculated the interannual mean for each attribute (using
linear statistics for EVI_mean and EVI_sSD and circular statistics for EVI_DMAX).

To explore the robustness of these metrics in our study area, we examined their correlation with the first
axes of a Principal Component Analysis run on the EVI annual curve of the average year (i.e., 12 EVI
145 values corresponding to the inter-annual means of the 18 (one per year) maximum EVI values of each
month. These three metrics were highly correlated with the first two PCA axes (which accumulated 96.5%
of variance), as previously reported for many regions (Townshend et al., 1985; Paruelo and Lauenroth,
1998, Paruelo et al., 2001; Alcaraz-Segura et al., 2006, 2009; Ivits et al., 2013). This component of the
analysis is presented in full in Supplement A.

150

2.3 Identifying Ecosystem Functional Types (EFTs)

EFTs were identified by dividing the EFAs into four intervals and combining them into a potential number
of 64 EFT classes ($4 \times 4 \times 4$), following a similar approach to Alcaraz-Segura et al., (2013) (Figure 2). For
EVI_DMAX, the four intervals agreed with the four seasons of the year: January to March = Winter, April
155 to June = Spring, July to September = Summer, October to December = Autumn. For EVI_mean and
EVI_sSD, we extracted the first, second, and third quartiles for each year. We verified that an 18-year
period was long enough to stabilize the quartiles by running a sensitivity analysis (see Supplement B).
Then, for each quartile, we calculated the inter-annual mean of the 18- year period and used them as breaks
between classes (Supplement B, Table S4). These breaks were applied back to each year as the thresholds
160 for EVI_Mean and EVI_sSD to set EFT classes (Table 1). Finally, to summarize the EFTs, we calculated
the most frequent EFT (i.e., the EFT mode for each pixel) of the 2001–2018 period. To name EFTs, we
used two letters and a number: the first capital letter indicates primary production (EVI_mean), increasing
from A to D; the second lower case letter represents seasonality (EVI_sSD), decreasing from a to d; finally,
the numbers are a phenological indicator of the growing season (EVI_DMAX), with values 1-spring, 2-

165 summer, 3-autumn, 4-winter (Table 1). The EFT alphanumeric code (Aa1 to Dd4) corresponds to the
numeric code (1 to 64) in the .TIF files, which is shown in the legend of Figure 4d.

2.4 Deriving Ecosystem Functional Diversity metrics

170 We derived two diversity metrics of ecosystem functional diversity from the EFT map: EFT richness and
EFT rarity. EFT richness was calculated for each year by counting the number of different EFTs in a 4x4-
pixel moving window around each pixel (top-left center pixel of a 4x4 kernel) (modified from Alcaraz-
Segura et al., 2013). Each pixel received a richness value calculated by counting how many different EFTs
175 there were in the 4x4 pixels search window. We chose a 4x4-pixel window because it offered the most
acceptable spatial resolution without saturating the number of EFT classes per kernel (i.e., smaller kernel
sizes resulted in a high proportion of moving windows saturated) (see sensitivity analysis on kernel size in
Section 3.2 and Supplement C).

We calculated EFT rarity as the extension of each EFT compared to the most abundant EFT in the study
area (Equation 1) (Cabello et al., 2013). Then, the average rarity map of all years was obtained.

$$Rarity\ EFT_i = \frac{Area\ EFT_{max} - Area\ EFT_i}{Area\ EFT_{max}} \text{ (Equation 2)}$$

180 where Area_EFTmax is the area occupied by the most abundant EFT, and Area_EFTi is the i EFT area
being evaluated, with i ranging from 1 to 64.

Once we had obtained the rarity value of each EFT (using Equation 2), we assigned to each pixel in the
EFT map its rarity value. Hence, the EFT rarity map spatial resolution was the same as the resolution as the
EFT map (232 m).

185

2.5 Characterizing inter-annual stability in ecosystem functioning

We followed two approaches to characterize inter-annual stability of ecosystem functioning (either due to
inter-annual fluctuations or directional trends). First, as an estimate of inter-annual variability of EFT
occurrence at pixel level, we recorded the number of different EFTs that were observed at each pixel
190 throughout the 2001-2018 period. Second, as an estimate of inter-annual dissimilarity of EFT composition
at 4x4-pixel level, we started by calculating the dissimilarity (Equation 2) in the EFT composition of each
4x4-pixel window (924 x 924 m) between all combinations of two years.

Then, we obtained the mean of the indices obtained from all combinations of years. We calculated
dissimilarity as follows (Equation 3): Dissimilarity = 1 - Jaccard Index (Equation 3)

195 where Jaccard similarity index is calculated as (Equations 4 and 5; Jaccard, 1901):

*Jaccard Index = (the number of shared classes between two sets) / (the total number of classes in either
set) * 100 (Equation 4).*

The same formula in notation form is (Equation 5):

200

$$J(X, Y) = |X \cap Y| / |X \cup Y| \text{ (Equation 5)}$$

where the Jaccard index for two data sets ($X = \text{set 1}$; $Y = \text{set 2}$) is equal to the size of the intersection divided by the size of the union of the data sets.

This way, to calculate the Jaccard Index, we proceeded as follows: for each 4x4-pixel window, we first counted the number of EFTs shared between the two sets, i.e., the two years; second we counted the total number of EFTs that occurred in either set (shared and unshared between the two years); then, we divided the number of shared EFTs by the total number of EFTs; and finally, we multiplied the result by 100. Dissimilarity values ranged from 0 to 1, being 1 the highest degree of dissimilarity in EFT composition throughout years, and 0 full similarity in EFT composition throughout years. We processed inter-annual variability and inter-annual dissimilarity with IDL® software (Interactive Data Language). IDL is commonly used for interactive processing of large amounts of data, including image processing.

3 Sensitivity and uncertainty analyses

3.1 Effect of the EVI inter-annual variability on the boundaries set among EFT classes

To assess how inter-annual variability of EVI dynamics could affect the quartiles of EVI_Mean and EVI_sSD (which set the boundaries among EFT classes), we determined the minimum number of years needed in a study period to get stability in all quartiles (see Supplement B). For each quartile, we plotted (Figure B1) the maximum inter-annual coefficient of variation observed across all combinations of consecutive years from 2001 to 2018 (i.e., from the 17 separate combinations of two consecutive years to a single combination of all 18 years together) against the number of years considered. Starting with two consecutive years, we plotted the maximum of 17 coefficients of variation (i.e., 2001-2002, 2002-2003, ... 2017-2018); for three consecutive years, the maximum of 16 coefficients of variation (i.e., 2001-2002-2003, ... 2016-2017-2018), and so on.

The inter-annual Coefficient of Variation (CV) of the 2001-2018 period was around 5% for the EVI_mean quartiles and around 10% for the EVI_sSD quartiles (Table B1, Supplement B). The quartiles of EVI_Mean (our surrogate for productivity) required at least 14 years to stabilize around 5% of CV. The quartiles of EVI_sSD (our surrogate for seasonality) required at least 17 years to stabilize around 10% of CV (Figure B1, Supplement B).

Despite the variation observed in the quartile values across years, we did not change the limits among EFT classes from one year to the next but instead applied the same limits to all years so we could compare the classification output across years. That is, we followed a fixed-classification approach with fixed limits among EFT classes for the entire period to make the classification able to detect such inter-annual changes. For example, if a mega wild fire burns the entire protected area in the future (e.g., in 2022), our use of fixed limits among classes for the 2001-2018 period will allow the detection of such disturbance (most pixels would be classified as low productivity "A EFT class"). On the contrary, if the limits among EFT classes were adapted to the data distribution of each year, the classification would not detect the effect of wildfire on EVI dynamics and would impede the 2022 classification to be compared to previous years.

3.2 Kernel size and borderline effect on EFT richness

To assess the effect of the size of the sliding window kernel on EFT richness and rarity, we calculated EFT richness for different kernel sizes (2x2, 3x3, 4x4, 5x5 pixels) and compared the outputs (see analysis in

Supplement C). The 4x4-pixel kernel offered the most satisfactory spatial resolution of the EFT richness map without saturation of this variable (Figure C1, Supplement C). When the size of the sliding window kernels was 2x2 or 3x3 pixels, there was a high proportion of kernels that reached the highest possible richness value for that kernel size (i.e., 4 and 9 EFT classes per kernel, respectively), so the EFT richness variable was highly saturated. The 5x5-pixels kernel never reached the maximum number of pixels in a kernel but resulted in too coarse outputs (grain size of 5x5 MO13Q1 pixels, i.e., 1150x1150). Hence, the 4x4-pixel kernel offered a balance between output resolution and variable saturation, since we observed a maximum EFT richness of 13, while the maximum potential richness in a 4x4-pixel kernel was 16.

250 Pixels with NoData values were not considered a distinct class to compute EFT richness along the study area borderline. For this reason, it is important to note that the sliding windows along the borderline of the study area could systematically show lower EFT richness in our dataset than reality.

4 Data structure and availability

Overall, the collection of datasets that we present here provides a characterization of ecosystem functioning, ecosystem functional diversity and inter-annual dynamics in Sierra Nevada Biosphere Reserve (SE Spain) through a key measure based on primary productivity derived from remote sensing. To broaden the use of data, we provided the datasets in two institutional scientific repositories. Datasets are available for downloading in PANGAEA: <https://doi.pangaea.de/10.1594/PANGAEA.924792?format=html#download> (Cazorla et al., 2020a), and we have also developed an ad-hoc visualization for the inter-annual summaries at Sierra Nevada Global Change Observatory-LTER site (http://obsnev.es/apps/efts_SN.html). To increase the transferability of the work, we also provide open source to calculate the EFTs in GEE: <https://code.earthengine.google.com/246dee63522ae557603ab7e44bdbbad5>.

265 The dataset is structured in three main subsets of variables: Ecosystem Functional Attributes (EFAs), Ecosystem Functional Types (EFTs), and Ecosystem Functional Diversity (see Table 2). For each subset of variables, there are two groups of data (two subfolders): one containing the yearly variables, and another one containing the summaries for the 18-year period. A Data Management Plan with our dataset formal metadata is also available in PANGAEA data repository.

270 We provided the data in .TIF format and accompanied each .TIF file with a .TFW file containing its corresponding metadata. Additionally, we have also incorporated rendered versions of all layers as required by Google Earth Pro (called “filename..._forGoogleEarthVisualization.tif”) for easing their visualization in this commonly used software. All data are available yearly (2001-2018) and summarized for the period. The spatial reference system of all data is EPSG:4326 Datum WGS84.

4.1 Data attribution

275 The MODIS database used in this work is maintained by NASA (satellite Terra, sensor MODIS, product MOD13Q1.006) and copied by Google into the Earth Engine servers (https://developers.google.com/earth-engine/datasets/catalog/MODIS_006_MOD13Q1). The Sierra Nevada Biosphere Reserve boundaries shapefile is included in the public official geodatabase of the Andalusian regional government (REDIAM:[https://descargasrediam.cica.es/7_PATRIMONIO_NATURAL/01_ESPACIOS_PROTEGIDO](https://descargasrediam.cica.es/7_PATRIMONIO_NATURAL/01_ESPACIOS_PROTEGIDO_S)
280 [S](#)).

5 Data usage in Ecology and Conservation

Ecological research based on time series of spectral vegetation indices plays an essential role in biodiversity conservation (Cabello et al., 2012; Pettorelli, 2016, 2018) and management (Pelkey et al., 2003; Cabello et al., 2016), and for the study of biodiversity and ecosystems responses to environmental changes (Alcaraz-Segura et al., 2017; Pérez-Luque et al., 2015a, Skidmore et al., 2021). Recently, the use of EFAs derived from spectral vegetation indices in species distribution models has made possible to evaluate with high spatial and temporal precision habitat suitability for plant (Arenas-Castro et al., 2018) and animal species (Requena-Mullor et al., 2017; Regos et al., 2019) and may even anticipate expected changes in the distribution of threatened species because of climate change (Alcaraz-Segura et al., 2017). EFAs are also the basis of the monitoring program of the Spanish National Parks Network to identify changes and anomalies in ecosystem functioning, and to inform managers of ecosystem health and conservation status (Cabello et al., 2016).

Datasets based on an EFT approach can be useful for different purposes: to characterize spatial and temporal heterogeneity of ecosystem functioning from local to global scales (Alcaraz-Segura et al., 2006, Fernández et al., 2010, Cabello et al., 2013; Ivits et al., 2013); to evaluate the environmental and human controls of ecosystem functional diversity (Alcaraz-Segura et al., 2013); to identify priorities for Biodiversity Conservation (Cazorla et al., 2020b); to assess the representativeness of environmental observatory networks (Villarreal et al., 2018); to assess the effects of land-use changes on ecosystem functioning (Oki et al., 2013); and to improve weather forecast models (Lee et al., 2013; Müller et al., 2014).

5.1 Case study

Sierra Nevada is a mountain range between 860 and 3482 m a.s.l covering more than 2000 km² in SE Spain (Fig. 1). It is one of the most critical biodiversity hotspots in the Mediterranean region (Blanca et al., 1998; Cañadas et al., 2014), hosting 105 endemic plant species and a total of 2353 taxa of vascular plants (33% and 20% of Spanish and European flora, respectively; Lorite 2016). Forest cover in Sierra Nevada is dominated by pine plantations covering approximately 40000 ha. The primary native forests are dominated by the evergreen holm oak *Quercus ilex* subsp. *ballota* (Desf.) Samp. occupying low and medium mountain areas (8800 ha) and by the deciduous Pyrenean oak *Quercus pyrenaica* Willd. ranging from 1100 to 2000 m a.s.l. (about 2000 ha). Above the tree line, plant communities of the Oromediterranean and Crioromediterranean belts (above 1800-2000 m a.s.l.), dominated by chamaephytes and hemicryptophytes (scrublands, grasslands, and cliff and scree communities), are the habitat to many endemisms.

Sierra Nevada receives legal protection and international recognition in multiple ways: UNESCO Biosphere Reserve (1986), Natural Park (1989), National Park (1999), Important Bird Area (2003), Special Area of Conservation in Natura 2000 network (2012), and it is in the IUCN Green List of Protected Areas (2014), a global standard of best practice for area-based conservation. Sierra Nevada is also a site within the European Long Term Ecological Research (LTER) network, with many available ecological data records from multiple disciplines (Zamora et al., 2017, LTER_EU_ES_010), DEIMS link <https://deims.org/e51cee43-dc12-4545-8e5b-dad35431e3f7>.

The dataset presented here provides the first characterization of functional diversity at ecosystem level for the Sierra Nevada Biosphere Reserve. Our dataset provides a baseline of ecosystem functioning for Sierra Nevada ecosystems, which opens the possibility to assess responses of ecosystem functioning to global change and management actions, to understand the drivers of ecosystem functioning and functional

325 diversity, and to assess the supply of ecosystem services. This dataset provides valuable information for the
Global Change Observatory of Sierra Nevada, a long-term ecological research site (name: ES- SNE, code:
LTER_EU_ES_010) established more than a decade ago (Zamora et al., 2017), which is also now a
mountain node of the LifeWatch ERIC (European Research Infrastructure Consortium). Thus, our dataset
330 provides information at the level of ecosystem functioning that can be combined with other available
datasets on this LTER site concerning on species distributions and dynamics, climate, ecosystem services,
hydrology, land-use changes, and management practices (Pérez-Luque et al., 2014, 2015b, 2015c, 2016;
Ros-Candeira et al., 2019, 2020; Lorite et al., 2020).

6 Conclusion

335 We introduce a new dataset based on the processing and analysis of the temporal dynamics of the Enhanced
Vegetation Index (EVI) data from the MODIS sensor (MOD13Q1.006). The dataset contains EFAs, EFTs,
EFT richness, and EFT rarity across the Sierra Nevada Biosphere Reserve (SE Spain). EFAs represent
functional attributes at the ecosystem level related to primary production, seasonality, and phenology of
carbon gains. EFTs are groups of pixels of the land surface that share similar dynamics in the exchanges of
340 matter and energy between the biota and the physical environment, derived from the combination of the
EFAs. EFT richness and EFT rarity are two metrics that provide information about the spatial heterogeneity
of primary production as a focal ecosystem function. We also provide an estimation of the inter-annual
stability of the former functional variables both at the pixel and at landscape levels throughout the 2001-
2018 period. For this, we estimated the EFT inter-annual variability at each pixel and the inter-annual
345 dissimilarity in the composition of EFTs at 4x4 sliding-window resolution. Overall, these data characterize
the spatial and temporal patterns of a key measure of ecosystem functioning and ecosystem functional
diversity. The EFT approach adopted here improves our understanding of ecosystem processes and
ecosystem response through environmental gradients. It provides scientists and managers valuable
information to identify conservation priorities, assess ecosystem response to environmental changes,
350 estimate ecosystem services provision, and to model species distributions and ecological and hydrological
processes.

Author contributions

DAS, JC, JP and BPC designed the study, and DAS coordinated it. BPC and AR processed the images and
355 produced the associated data sets presented in this paper. BPC prepared the manuscript with contributions
from all authors. BPC and JC wrote the definitive version of the manuscript. BPC, EG, and AJPL prepared
the final figures. AJPL designed and made the application to visualize the data. AJPL and BPC prepared
the Data Management Plan. All authors reviewed the database and provided valuable feedback.

Competing interests. The authors declare that they have no conflict of interest.

360 **Acknowledgements.** BC was supported by the Plan Propio Ph.D. program of the University of Almería.
E.G. is supported by the European Research Council grant agreement 647038 (BIODESERT). This research
was developed as part of the projects: “Smart-EcoMountains” and “INDALO” (LifeWatch2019-10-UGR-
01 Ministerio de Ciencia e Innovación/Universidad de Granada/FEDER), partially funded by European
Funds for Regional Development, “ECOPOTENTIAL: Improving future ecosystem benefits through earth
365 observations” (<http://www.ecopotential-project.eu/>), which received funding from the European Union’s
Horizon 2020 research and innovation program under grant agreement No 641762; Project “Ecosystem and

Socio-Ecosystem Functional Types: Integrating biophysical and social functions to characterize and map the ecosystems of the Anthropocene” (CGL2014-61610-EXP), which received funding from the Spanish Ministry of Economy and Business; Project LIFE-ADAPTAMED (LIFE14 CCA/ES/000612): “Protection of key ecosystem services by adaptive management of Climate Change endangered Mediterranean socio-ecosystems”. E.G. was supported by the European Research Council grant agreement n° 647038 (BIODESERT). This research was done under the collaboration of the LTSER Platforms of the arid Iberian southeast, Spain, (LTER_EU_ES_027) and Sierra Nevada/Granada (ES- SNE), Spain (LTER_EU_ES_010) and contributes to the work done within the GEO BON working group on ecosystem function essential biodiversity variables.

References

- Alcaraz-Segura, D., Paruelo, J. and Cabello, J.: Identification of current ecosystem functional types in the Iberian Peninsula, *Global Ecol and Biogeogr*, 15(2), 200–212, doi:10.1111/j.1466- 822X.2006.00215.x, 395 2006.
- Alcaraz-Segura, D., Cabello, J., Paruelo, J. M. and Delibes, M.: Use of Descriptors of Ecosystem Functioning for Monitoring a National Park Network: A Remote Sensing Approach, *Environ Manage.*, 43(1), 38–48, doi:10.1007/s00267-008-9154-y, 2009.
- Alcaraz-Segura, D., Chuvieco, E., Epstein, H. E., Kasischke, E. S. and Trishchenko, A.: Debating the greening vs. browning of the North American boreal forest: differences between satellite datasets, *Global Change Biol*, 16(2), 760–770, 2010.
- Alcaraz-Segura, D., Paruelo, J. M., Epstein, H. E. and Cabello, J.: Environmental and Human Controls of Ecosystem Functional Diversity in Temperate South America, *Remote Sens*, 5(1), 127–154, doi:10.3390/rs5010127, 2013.
- Alcaraz-Segura, D., Lomba, A., Sousa-Silva, R., Nieto-Lugilde, D., Alves, P., Georges, D., Vicente, J. R. and Honrado, J. P.: Potential of satellite-derived Ecosystem Functional Attributes to anticipate species range shifts, *Int J of Appl Earth Obs*, 57, 86–92, doi:10.1016/j.jag.2016.12.009, 2017.
- Anderson, C. B.: Biodiversity monitoring, earth observations and the ecology of scale. *Ecol Lett*, 21(10), 1572-1585, <https://doi.org/10.1111/ele.13106>, 2018.
- Arenas-Castro, S., Gonçalves, J., Alves, P., Alcaraz-Segura, D. and Honrado, J. P.: Assessing the multiscale predictive ability of Ecosystem Functional Attributes for species distribution modelling, *PLOS ONE*, 13(6), e0199292, doi:10.1371/journal.pone.0199292, 2018.
- Balvanera, P., Pfisterer, A. B., Buchmann, N., He, J.-S., Nakashizuka, T., Raffaelli, D. and Schmid, B.: Quantifying the evidence for biodiversity effects on ecosystem functioning and services, *Ecol Lett*, 9(10), 1146–1156, doi:10.1111/j.1461-0248.2006.00963.x, 2006.
- Blanca, G., Cueto, M., Martínez-Lirola, M. J. and Molero-Mesa, J.: Threatened vascular flora of Sierra Nevada (Southern Spain), *Biol Conserv*, 85(3), 269–285, doi:10.1016/S0006-3207(97)00169-9, 1998.
- Bennett, E.M., Cramer, W., Begossi, A., Cundill, G., Díaz, S., Egoh, B. N., ... and Lebel, L.: Linking biodiversity, ecosystem services, and human well-being: three challenges for designing research for sustainability. *Curr Opin Environ Sustain*, 14, 76-85, <https://doi.org/10.1016/j.cosust.2015.03.007>, 2015.

- Box, E. O., Holben, B. N., and Kalb, V. Accuracy of the AVHRR vegetation index as a predictor of biomass, primary productivity and net CO₂ flux. *Vegetatio*, 80(2), 71-89, <https://doi.org/10.1007/BF00048034>, 1989.
- 410 Cabello, J., Fernández, N., Alcaraz-Segura, D., Oyonarte, C., Piñeiro, G., Altesor, A., Delibes, M. and Paruelo, J. M.: The ecosystem functioning dimension in conservation: insights from remote sensing, *Biodivers Conserv.*, 21(13), 3287–3305, doi:10.1007/s10531-012-0370-7, 2012.
- Cabello, J., Lourenço, P., Reyes-Díez, A. and Alcaraz-Segura, D.: Ecosystem services assessment of national parks networks for functional diversity and carbon conservation strategies using remote sensing, *Earth Observation of Ecosystem Services*, 179, 2013.
- 415 Cabello, J., Alcaraz-Segura, D., Reyes-Díez, A., Lourenço, P., Requena-Mullor, J., Bonache, J., Castillo, P., Valencia, S., Naya, J., Ramírez, L. and Serrada, J.: Sistema para el Seguimiento del funcionamiento de ecosistemas en la Red de Parques Nacionales de España mediante Teledetección, *Revista de Teledetección*, 46, 119–131, doi:10.4995/raet.2016.5731, 2016.
- 420 Cabello, J., López-Rodríguez, M., Pacheco-Romero, M., Torres-García, M.T., Reyes-Díez, A.: Valores y argumentos para la conservación de la diversidad vegetal de Sierra Nevada, in *Biología de la conservación de plantas en Sierra Nevada: Principios y retos para su preservación*, pp. 345–361, Editorial Universidad de Granada., 2019.
- 425 Cañadas, E. M., Fenu, G., Peñas, J., Lorite, J., Mattana, E. and Bacchetta, G.: Hotspots within hotspots: Endemic plant richness, environmental drivers, and implications for conservation, *Biol Conserv*, 170, 282–291, doi:10.1016/j.biocon.2013.12.007, 2014.
- Cazorla, B. P., Cabello, J., Peñas, J., Guirado, E., Reyes-Díez, A. and Alcaraz-Segura, D.: Funcionamiento de la vegetación y diversidad funcional de los ecosistemas de Sierra Nevada, in *Biología de la conservación de plantas en Sierra Nevada: Principios y retos para su preservación*, pp. 325–343, Editorial Universidad de Granada., 2019.
- 430 Cazorla, B. P., Cabello, J., Reyes-Díez, A., Guirado, E., Peñas, J., Pérez-Luque, A J. and Alcaraz-Segura, D.: Ecosystem functioning and functional diversity of Sierra Nevada (SE Spain). University of Almería and Granada, PANGAEA, <https://doi.pangaea.de/10.1594/PANGAEA.924792>, 2020a.
- 435 Cazorla, B. P., Cabello, J., Penas, J., Garcillan, P. P., Reyes, A. and Alcaraz-Segura, D.: Incorporating Ecosystem Functional Diversity into Geographic Conservation Priorities Using Remotely Sensed Ecosystem Functional Types. *Ecosystems*, 1-17. doi: <https://doi.org/10.1007/s10021-020-00533-4>, 2020b.
- Coops, N. C., Kearney, S. P., Bolton, D. K. and Radeloff, V. C.: Remotely-sensed productivity clusters capture global biodiversity patterns, *Sci Rep*, 8(1), 16261, doi:10.1038/s41598-018-34162-8, 2018.
- Costanza, R., Norton, B. G. and Haskell, B. D.: *Ecosystem Health: New Goals for Environmental Management*, Island Press., 1992.
- 440 Didan, K., Munoz, A. B., Solano, R., and Huete, A.: MODIS vegetation index user's guide (MOD13 series). University of Arizona: Vegetation Index and Phenology Lab, 2015.
- Duro, D. C., Coops, N. C., Wulder, M. A. and Han, T.: Development of a large area biodiversity monitoring system driven by remote sensing, *Progress in Physical Geography: Earth Environ.*, 31(3), 235–260, doi:10.1177/0309133307079054, 2007.

- 445 Fernández, N., Paruelo, J. M. and Delibes, M.: Ecosystem functioning of protected and altered Mediterranean environments: A remote sensing classification in Doñana, Spain, *Remote Sens Environ*, 114(1), 211–220, doi:10.1016/j.rse.2009.09.001, 2010.
- Geerken, R. A.: An algorithm to classify and monitor seasonal variations in vegetation phenologies and their inter-annual change, *ISPRS J Photogramm*, 64(4), 422–431, doi:10.1016/j.isprsjprs.2009.03.001, 2009.
- 450 Gorelick, N., Hancher, M., Dixon, M., Ilyushchenko, S., Thau, D., and Moore, R.: Google Earth Engine: Planetary-scale geospatial analysis for everyone. *Remote Sens Environ*, 202, 18–27, <https://doi.org/10.1016/j.rse.2017.06.031>, 2017.
- Grêt-Regamey, A., Brunner, S. H., & Kienast, F. Mountain ecosystem services: who cares?. *Mountain Research and Development*, 32(S1), <https://doi.org/10.1659/MRD-JOURNAL-D-10-00115.S1>, 2012.
- 455 Habitat Directive: Council Directive 92/43/EEC of 21 May 1992 on the conservation of natural habitats and of wild fauna and flora, *Official Journal of the European Union*, 206, 7–50, 1992.
- Haines-Young, R. and Potschin, M.: The links between biodiversity, ecosystem services and human well-being, *Ecosyst Ecol: A New Synthesis*, doi:10.1017/CBO9780511750458.007, 2010.
- 460 Huete, A. R., Liu, H. Q., Batchily, K. V., and Van Leeuwen, W. J. D. A.: A comparison of vegetation indices over a global set of TM images for EOS-MODIS. *Remote Sens Environ*, 59(3), 440–451, [https://doi.org/10.1016/S0034-4257\(96\)00112-5](https://doi.org/10.1016/S0034-4257(96)00112-5), 1997.
- Huete, A., Justice, C., and Van Leeuwen, W.: MODIS vegetation index (MOD13). Algorithm theoretical basis document, 3(213), 1999. Huete, A., Didan, K., Miura, T., Rodriguez, E. P., Gao, X., and Ferreira, L. G.: Overview of the radiometric and biophysical performance of the MODIS vegetation indices. *Remote Sens Environ*, 83(1-2), 195–213, [https://doi.org/10.1016/S0034-4257\(02\)00096-2](https://doi.org/10.1016/S0034-4257(02)00096-2), 2002.
- 465 Ivits, E., Cherlet, M., Mehl, W. and Sommer, S.: Ecosystem functional units characterized by satellite observed phenology and productivity gradients: A case study for Europe, *Ecol Indic.*, 27, 17–28, doi:10.1016/j.ecolind.2012.11.010, 2013.
- 470 Jaccard, P.: Étude comparative de la distribution florale dans une portion des Alpes et des Jura, *Bull Soc Vaudoise Sci Nat*, 37, 547–579, 1901.
- Jax, K.: *Ecosystem Functioning*, Cambridge University Press, Cambridge., 2010.
- Karlsen, S. R., Elvebakk, A., Høgda, K. A. and Johansen, B.: Satellite-based mapping of the growing season and bioclimatic zones in Fennoscandia, *Global Ecol Biogeogr*, 15(4), 416–430, doi:10.1111/j.1466-822X.2006.00234.x, 2006.
- 475 Lee, S.-J., Berbery, E. H. and Alcaraz-Segura, D.: The impact of ecosystem functional type changes on the La Plata Basin climate, *Adv. Atmos. Sci.*, 30(5), 1387–1405, doi:10.1007/s00376-012-2149-x, 2013.
- Lorite, J.: An updated checklist of the vascular flora of Sierra Nevada (SE Spain), *Phytotaxa*, 261(1), 1–57, 2016.
- 480 Lorite, J., Ros-Candeira, A., Alcaraz-Segura, D., Salazar-Mendías, C.: FloraSNevada: a trait database of the vascular flora of Sierra Nevada, southeast Spain. *Ecology*. <https://doi.org/10.1002/ecy.3091>, *Ecology*, 2020.

- 485 Mace, G. M., Reyers, B., Alkemade, R., Biggs, R., Chapin, F. S., Cornell, S. E., Díaz, S., Jennings, S., Leadley, P., Mumby, P. J., Purvis, A., Scholes, R. J., Seddon, A. W. R., Solan, M., Steffen, W. and Woodward, G.: Approaches to defining a planetary boundary for biodiversity, *Global Env Chang*, 28, 289–297, doi:10.1016/j.gloenvcha.2014.07.009, 2014.
- Mouchet, M. A., Villéger, S., Mason, N. W. H. and Mouillot, D.: Functional diversity measures: an overview of their redundancy and their ability to discriminate community assembly rules, *Funct Ecol*, 24(4), 867–876, doi:10.1111/j.1365-2435.2010.01695.x, 2010.
- 490 Mucina, L.: Biome: evolution of a crucial ecological and biogeographical concept, *New Phytol*, 222(1), 97–114, doi:10.1111/nph.15609, 2019.
- Müller, O. V., Berbery, E. H., Alcaraz-Segura, D. and Ek, M. B.: Regional Model Simulations of the 2008 Drought in Southern South America Using a Consistent Set of Land Surface Properties, *J. Climate*, 27(17), 6754–6778, doi:10.1175/JCLI-D-13-00463.1, 2014.
- 495 Oki, T., Blyth, E. M., Berbery, E. H. and Alcaraz-Segura, D.: Land Use and Land Cover Changes and Their Impacts on Hydroclimate, Ecosystems and Society, in *Climate Science for Serving Society: Research, Modeling and Prediction Priorities*, edited by G. R. Asrar and J. W. Hurrell, pp. 185–203, Springer Netherlands, Dordrecht., 2013.
- 500 Paruelo, J. M., and Lauenroth, W. K.: Regional patterns of normalized difference vegetation index in North American shrublands and grasslands. *Ecology*, 76(6), 1888–1898, <https://doi.org/10.2307/1940721>, 1995.
- Paruelo, J. M., Jobbágy, E. G. and Sala, O. E.: Current Distribution of Ecosystem Functional Types in Temperate South America, *Ecosystems*, 4(7), 683–698, doi:10.1007/s10021-001-0037-9, 2001.
- 505 Pelkey, N. W., Stoner, C. J. and Caro, T. M.: Assessing habitat protection regimes in Tanzania using AVHRR NDVI composites: Comparisons at different spatial and temporal scales, *Int J Remote Sens*, 24(12), 2533–2558, doi:10.1080/01431160210155929, 2003.
- 510 Pereira, H. M., Ferrier, S., Walters, M., Geller, G. N., Jongman, R. H. G., Scholes, R. J., Bruford, M. W., Brummitt, N., Butchart, S. H. M., Cardoso, A. C., Coops, N. C., Dulloo, E., Faith, D. P., Freyhof, J., Gregory, 540 R. D., Heip, C., Höft, R., Hurtt, G., Jetz, W., Karp, D. S., McGeoch, M. A., Obura, D., Onoda, Y., Pettorelli, N., Reyers, B., Sayre, R., Scharlemann, J. P. W., Stuart, S. N., Turak, E., Walpole, M. and Wegmann, M.: Essential Biodiversity Variables, *Science*, 339(6117), 277–278, doi:10.1126/science.1229931, 2013.
- Pérez-Hoyos, A., Martínez, B., García-Haro, F. J., Moreno, Á. and Gilabert, M. A.: Identification of Ecosystem Functional Types from Coarse Resolution Imagery Using a Self-Organizing Map Approach: A Case Study for Spain, *Remote Sens*, 6(11), 11391–11419, doi:10.3390/rs61111391, 2014.
- 515 Pérez-Luque, A. J., Bonet, F. J., Pérez-Pérez, R., Aspizua, R., Lorite, J. and Zamora, R.: Sinfonevada: Dataset of floristic diversity in Sierra Nevada forests (SE Spain), *PhytoKeys*, 35, 1–15, doi:10.3897/phytokeys.35.6363, 2014.
- 520 Pérez-Luque, A. J., Pérez-Pérez, R., Bonet-García, F. J. and Magaña, P. J.: An ontological system based on MODIS images to assess ecosystem functioning of Natura 2000 habitats: A case study for Quercus pyrenaica forests, *Int J Appl Earth Obs*, 37, 142–151, doi:10.1016/j.jag.2014.09.003, 2015a.

- Pérez-Luque, A. J., Zamora, R., Bonet, F.J. and Pérez-Pérez, R.: Dataset of MIGRAME Project (Global Change, Altitudinal Range Shift and Colonization of Degraded Habitats in Mediterranean Mountains), *PhytoKeys*, 56, 61–81, doi:10.3897/phytokeys.56.5482, 2015b.
- 525 Pérez-Luque, A. J., Sánchez-Rojas, C. P., Zamora, R., Pérez-Pérez, R. and Bonet, F. J.: Dataset of Phenology of Mediterranean high-mountain meadows flora (Sierra Nevada, Spain), *PhytoKeys*, 46, 89–107, doi:10.3897/phytokeys.46.9116, 2015c.
- Pérez-Luque, A. J., Barea-Azcón, J. M., Álvarez-Ruiz, L., Bonet-García, F. J. and Zamora, R.: Dataset of Passerine bird communities in a Mediterranean high mountain (Sierra Nevada, Spain), *ZooKeys*, 552, 137–154, doi:10.3897/zookeys.552.6934, 2016.
- 530 Pérez-Luque, A. J., Bonet-García, F. J. and Zamora Rodríguez, R.: Map of ecosystems types in Sierra Nevada mountain (southern Spain). <https://doi.pangaea.de/10.1594/PANGAEA.910176>, 2019.
- Petchey, O. L. and Gaston, K. J.: Functional diversity: back to basics and looking forward, *Ecology Letters*, 9(6), 741–758, doi:10.1111/j.1461-0248.2006.00924.x, 2006.
- 535 Pettorelli, N., Vik, J. O., Mysterud, A., Gaillard, J.-M., Tucker, C. J. and Stenseth, N. Chr.: Using the satellite-derived NDVI to assess ecological responses to environmental change, *Trends in Ecology & Evolution*, 20(9), 503–510, doi:10.1016/j.tree.2005.05.011, 2005.
- Pettorelli, N., Wegmann, M., Skidmore, A., Múcher, S., Dawson, T. P., Fernandez, M., Lucas, R., Schaeppman, M. E., Wang, T., O'Connor, B., Jongman, R. H. G., Kempeneers, P., Sonnenschein, R., Leidner, A. K., Böhm, M., He, K. S., Nagendra, H., Dubois, G., Fatoyinbo, T., Hansen, M. C., Paganini, M., Klerk, H. M. de, Asner, G. P., Kerr, J. T., Estes, A. B., Schmeller, D. S., Heiden, U., Rocchini, D., Pereira, H. M., Turak, E., Fernandez, N., Lausch, A., Cho, M. A., Alcaraz-Segura, D., McGeoch, M. A., Turner, W., Mueller, A., St-Louis, V., Penner, J., 560 Vihervaara, P., Belward, A., Reyers, B. and Geller, G. N.: Framing the concept of satellite remote sensing essential biodiversity variables: challenges and future directions, *Remote Sens Ecol Conserv*, 2(3), 122–131, doi:10.1002/rse2.15, 2016.
- 545 Pettorelli, N., Schulte to Bühne, H., Tulloch, A., Dubois, G., Macinnis-Ng, C., Queirós, A. M., Keith, D. A., Wegmann, M., Schrod, F., Stellmes, M., Sonnenschein, R., Geller, G. N., Roy, S., Somers, B., Murray, N., Bland, L., Geijzendorffer, I., Kerr, J. T., Broszeit, S., Leitão, P. J., Duncan, C., Serafy, G. E., He, K. S., Blanchard, J. L., Lucas, R., Mairota, P., Webb, T. J. and Nicholson, E.: Satellite remote sensing of ecosystem functions: opportunities, challenges and way forward, *Remote Sens Ecol Conserv*, 4(2), 71–93, 550 doi:10.1002/rse2.59, 2018.
- Requena-Mullor, J. M., López, E., Castro, A. J., Alcaraz-Segura, D., Castro, H., Reyes, A. and Cabello, J.: Remote-sensing based approach to forecast habitat quality under climate change scenarios, *PLOS ONE*, 12(3), e0172107, doi:10.1371/journal.pone.0172107, 2017.
- Ros-Candeira, A., Pérez-Luque, A. J., Suárez-Muñoz, M., Bonet-García, F. J., Hódar, J. A., Giménez de Azcárate, F. and Ortega-Díaz, E.: Dataset of occurrence and incidence of pine processionary moth in Andalusia, south Spain, *ZooKeys*, 852, 125–136, doi:10.3897/zookeys.852.28567, 2019.
- 555 Ros-Candeira, A., Moreno-Llorca, R., Alcaraz-Segura, D., Bonet-García, F.J., Vaz, A.S.: Social media photo content for Sierra Nevada: a dataset to support the assessment of cultural ecosystem services in protected areas. *Nat Conserv*, 38:1-12, 2020.

- 560 Running, S. W., Thornton, P. E., Nemani, R. and Glassy, J. M.: Global Terrestrial Gross and Net Primary Productivity from the Earth Observing System, in *Methods in Ecosystem Science*, edited by O. E. Sala, R. B. Jackson, H. A. Mooney, and R. W. Howarth, pp. 44–57, Springer New York, New York, NY., 2000.
- Skidmore, A. K., Pettorelli, N., Coops, N. C., Geller, G. N., Hansen, M., Lucas, R., Múcher, C. A., O’Connor, B., Paganini, M., Pereira, H. M., Schaepman, M. E., Turner, W., Wang, T. and Wegmann, M.:
565 Environmental science: Agree on biodiversity metrics to track from space, *Nature*, 523(7561), 403– 405, doi:10.1038/523403a, 2015.
- Skidmore, A. K., Coops, N. C., Neinavaz, E., Ali, A., Schaepman, M. E., Paganini, M., ... & Wingate, V. Priority list of biodiversity metrics to observe from space. *Nature ecology & evolution*, 1-11, doi: 10.1038/s41559-021-01451-x, 2021.
- 570 Steffen, W., Richardson, K., Rockström, J., Cornell, S. E., Fetzer, I., Bennett, E. M., Biggs, R., Carpenter, S. R., Vries, W. de, Wit, C. A. de, Folke, C., Gerten, D., Heinke, J., Mace, G. M., Persson, L. M., Ramanathan, V., Reyers, B. and Sörlin, S.: Planetary boundaries: Guiding human development on a changing planet, *Science*, 347(6223), 1259855, doi:10.1126/science.1259855, 2015.
- Townshend, J. R., Goff, T. E., and Tucker, C. J.: Multitemporal dimensionality of images of normalized
575 difference vegetation index at continental scales. *IEEE Trans Geosci Remote Sens*, (6), 888-895, 10.1109/TGRS.1985.289474, 1985.
- Villarreal, S., Guevara, M., Alcaraz-Segura, D., Brunzell, N. A., Hayes, D., Loescher, H. W. and Vargas, R.: Ecosystem functional diversity and the representativeness of environmental networks across the
580 conterminous United States, *Agr Forest Meteorol*, 262, 423–433, doi:10.1016/j.agrformet.2018.07.016, 2018.
- Virginia, R. A., Wall, D. H. and Levin, S. A.: Principles of ecosystem function, *Encyclopedia of biodiversity*, 2, 345–352, 2001.
- Wang, Y. and Huang, F.: Identification and analysis of ecosystem functional types in the west of Songnen
585 Plain, China, based on moderate resolution imaging spectroradiometer data, *JARS*, 9(1), 096096, doi:10.1117/1.JRS.9.096096, 2015.
- Wilson, M. V. and Shmida, A.: Measuring beta diversity with presence-absence data, *J Ecol*, 1055– 1064, DOI: 10.2307/2259551, 1984. Xiao, J., Chevallier, F., Gomez, C., Guanter, L., Hicke, J. A., Huete, A. R., ... and Sun, G. Remote sensing of the terrestrial carbon cycle: A review of advances over 50 years. *Remote Sensing of Environment*, 233, 111383, 2019.
- 590 Zamora Rodríguez, R. J., Pérez-Luque, A. J., Bonet, F. J., Barea-Azcón, J. M. and Aspizua, R.: Global Change Impacts in Sierra Nevada: Challenges for Conservation. *Consejería de Medio Ambiente y Ordenación del Territorio. Junta de Andalucía*. 208 pp, 2016. Zamora, R., Pérez-Luque, A. J., Bonet, F. J., Barea-Azcón, J. M., Aspizua, R., Sánchez-Gutiérrez, F. J., Cano-Manuel, F. J., Ramos-Losada, B. and Henares-Civantos, I.: Global Change Impact in the Sierra Nevada Long-Term Ecological Research Site
595 (Southern Spain), *The Bulletin of the Ecological Society of America*, 98(2), 157–164, doi:10.1002/bes.2.1308, 2017.

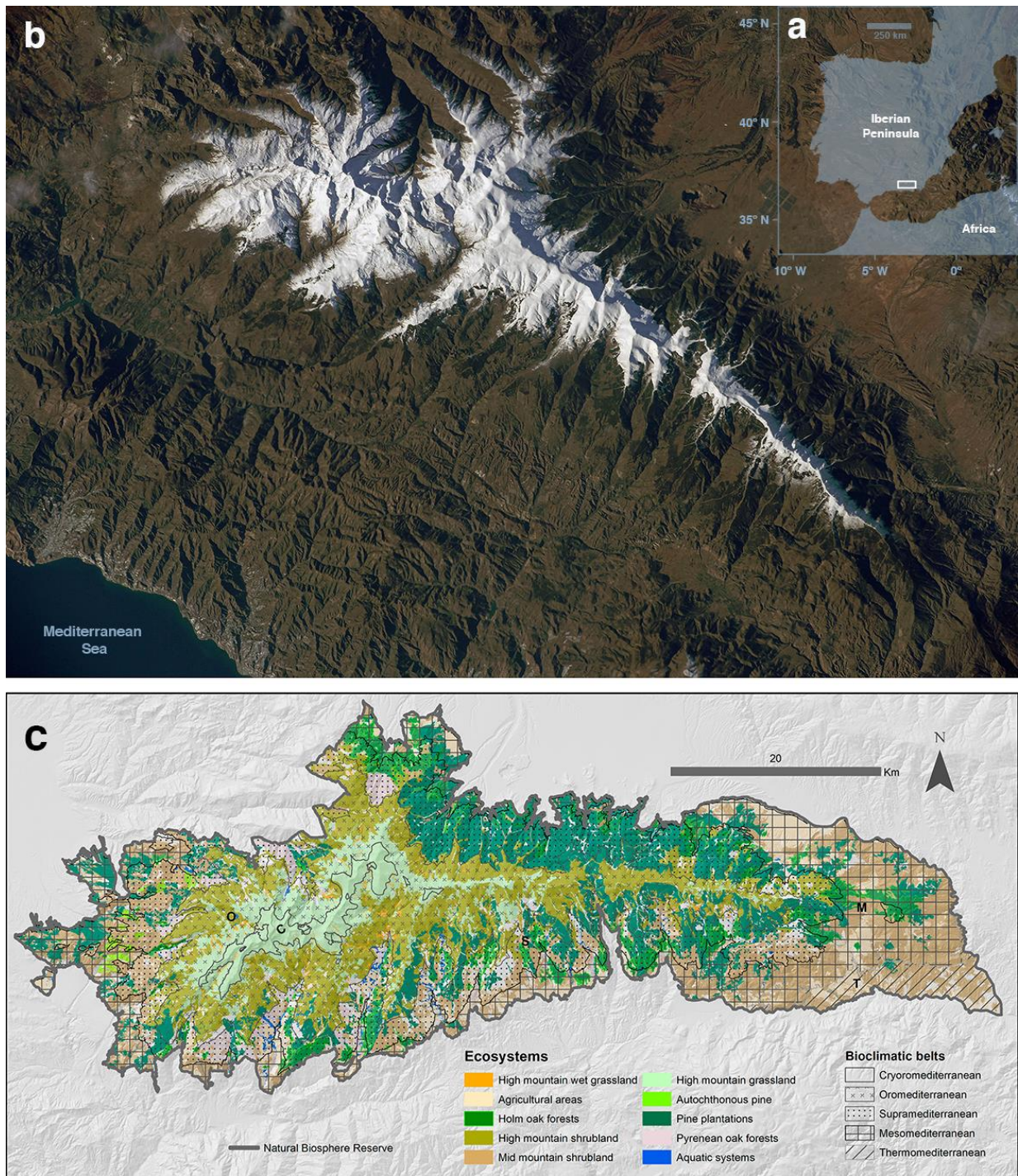
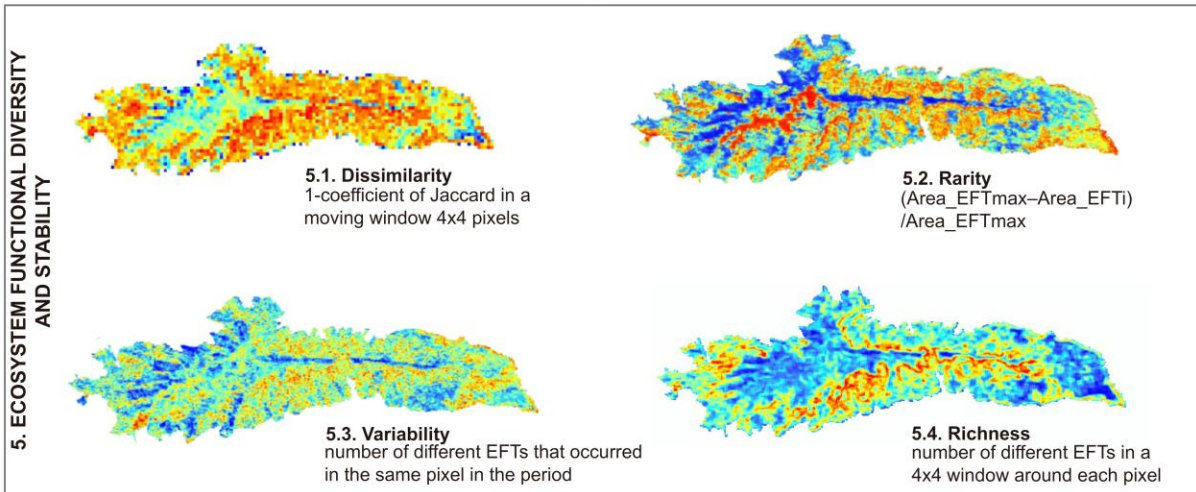
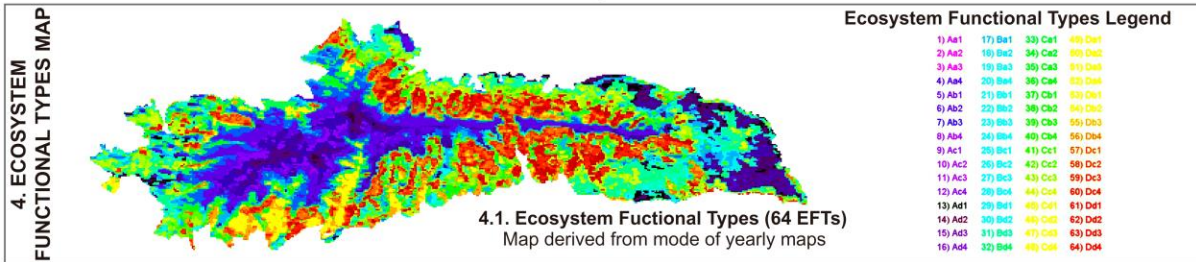
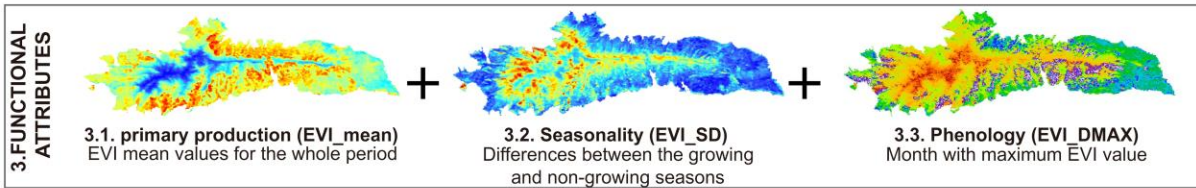
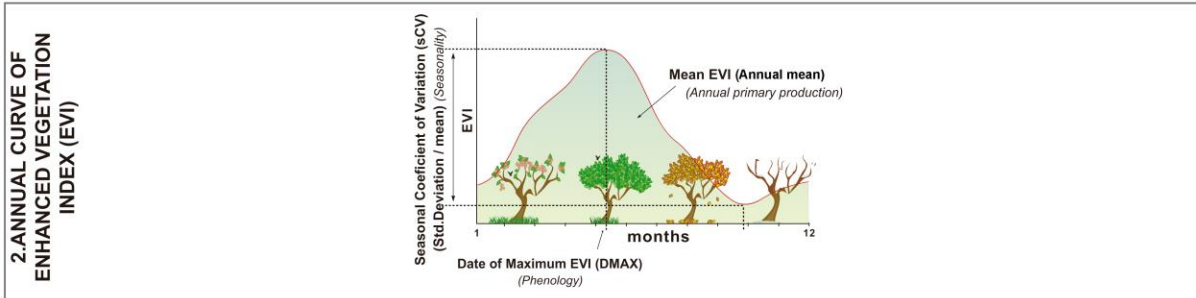
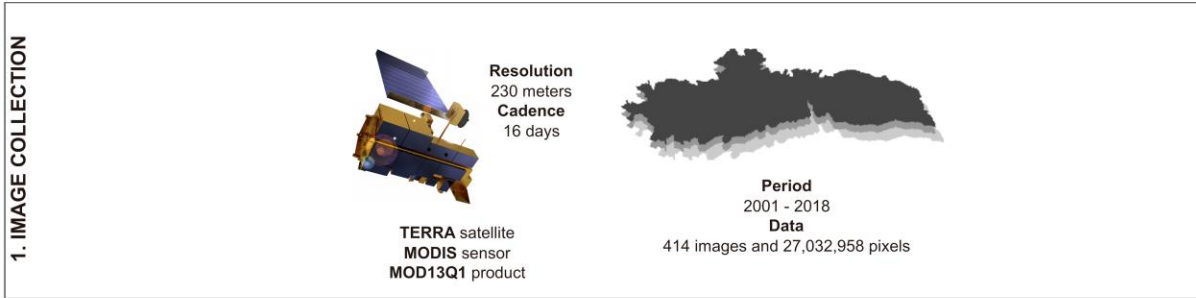
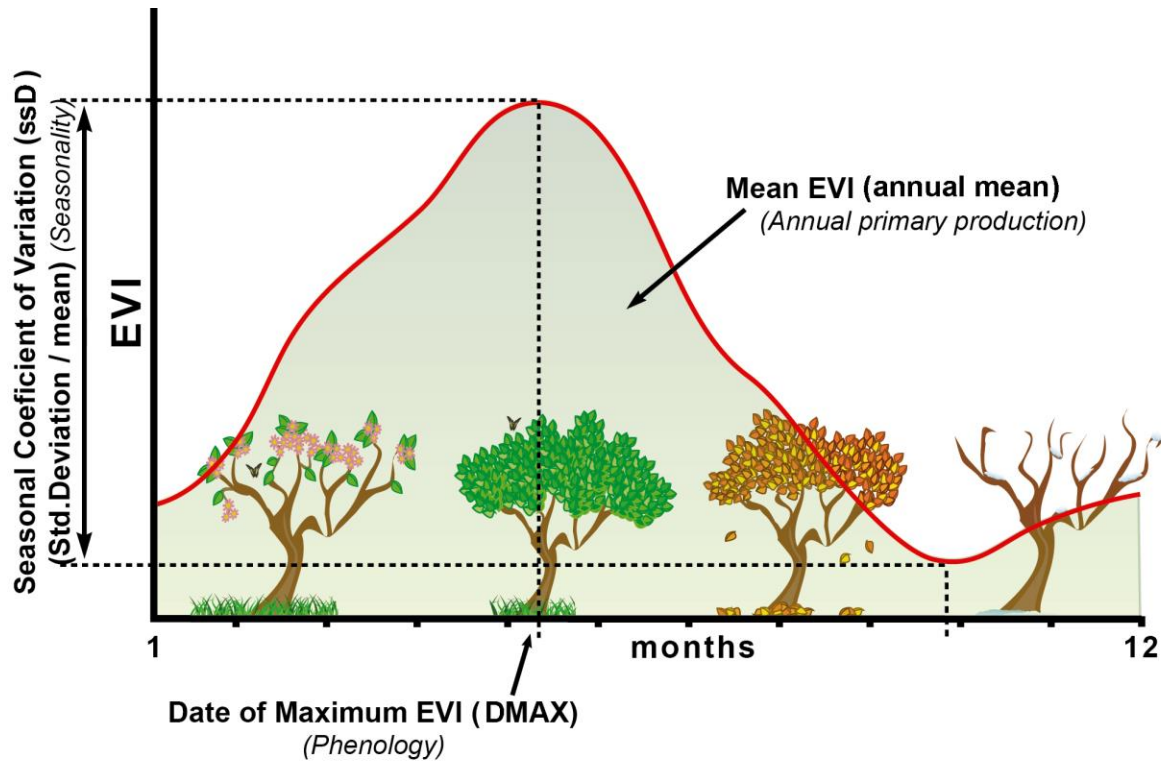


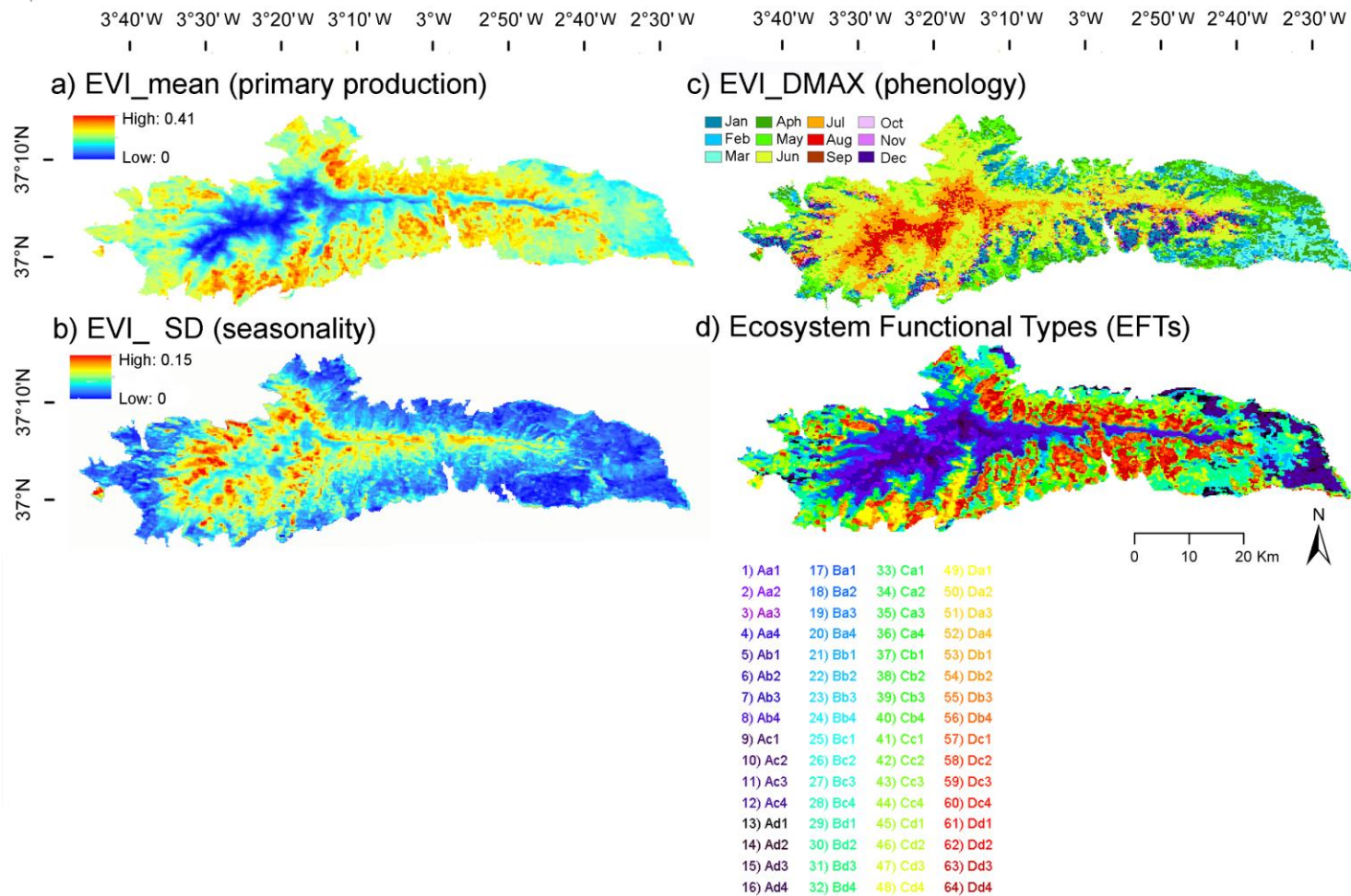
Figure 1. Study area: Sierra Nevada Biosphere Reserve. a) Location in the context of the Iberian Peninsula; b) remote view of Sierra Nevada mountain region (image from the International Space Station took in December 2014; courtesy of “Earth Science and Remote Sensing Unit, 615 NASA Johnson Space Center”); c) delimitation of the Biosphere Reserve and the distribution of the main ecosystems (Pérez-Luque et al., 2019) and thermotype bioclimatic belts (Molero-Mesa and Marfil, 2015).



610 Figure 2. Workflow to characterize the ecosystem functioning and functional diversity of Sierra Nevada. MODIS (Moderate Resolution Imaging Spectroradiometer) sensor product MOD13Q1 onboard NASA's Terra satellite was used. This product contains maximum value composite images with 16-day temporal resolution (23 images per year) and 232 m spatial resolution for the Enhanced Vegetation Index (EVI) (1). The study period was from 2001 to 2018. Three ecosystem functional attributes (EFAs) describing ecosystem functioning were calculated from the EVI seasonal curve for each year (2 and 3). The range of values for each attribute was divided into four intervals, resulting in a potential number of 64 ecosystem functional types (EFTs; $4 \times 4 \times 4 = 64$) (4). From EFTs, we derived four metrics related to ecosystem functional diversity (i.e., EFT richness and rarity) and ecosystem functional stability (i.e., inter-annual variability and dissimilarity) (5).



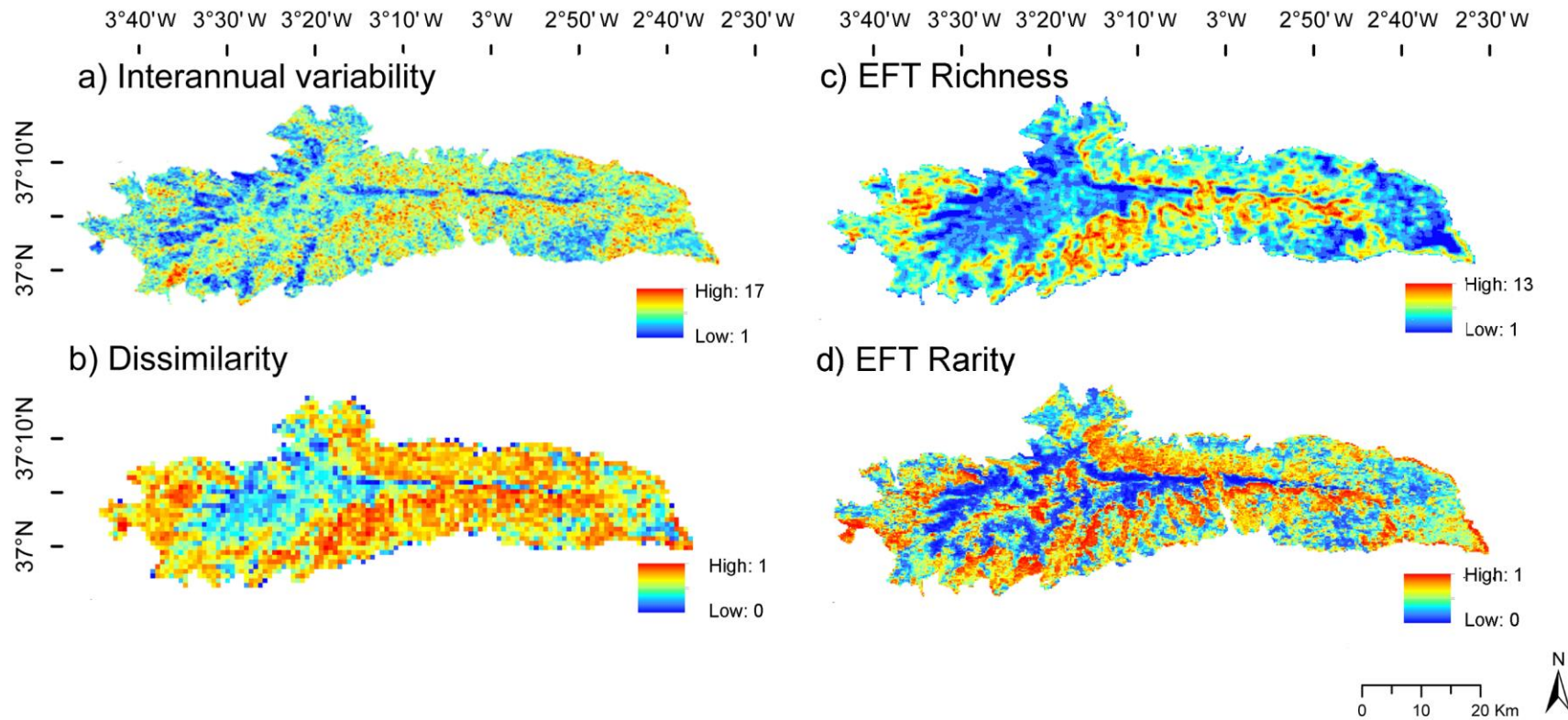
620 Figure 3: Seasonal dynamics of Enhanced Vegetation Index (EVI) and EVI derived metrics or Ecosystem Functional Attributes (EFAs). The “X” axis corresponds to the months of the year and the “Y” axis to the EVI values. EFAs were: the annual mean of EVI, an estimator of annual primary production (EVI_mean); the EVI seasonal coefficient of variation, i.e. a descriptor of seasonality or the differences between the growing and non growing seasons (EVI_ssd), and the date of maximum EVI, a phenological indicator of the growing season (EVI_DMAX). We chose these three EVI metrics or EFAs since they capture most of the variance (96.5%) of the EVI seasonal dynamics in a Principal Component Analysis.



630

Figure 4. Ecosystem Functional Attributes (EFAs; a-c) and Ecosystem Functional Types (d) describing the functioning of vegetation canopy based on the Enhanced Vegetation Index (EVI), derived from MOD13Q1- TERRA (pixel 232 m) for the period 2001-2018. EFAs were (a-c): the annual mean of EVI, an estimator of annual primary production (EVI_mean); the EVI seasonal coefficient of variation, i.e. a descriptor of seasonality or the differences between the growing and non growing seasons (EVI_sSD), and the date of maximum EVI, a phenological indicator of the growing season (EVI_DMAX). To name EFTs (d), we used two letters and a number: the first capital letter

635 indicates primary production (EVI_mean), increasing from A to D; the second lower case letter represents seasonality (EVI_sSD), decreasing from a to d; finally, the numbers are a phenological indicator of the growing season (EVI_DMAX), with values 1-spring, 2-summer, 3-autumn, 4-winter (Table 1). The EFT alphanumeric code (Aa1 to Dd4) corresponds to the numeric code (1 to 64) in the .TIF files, as shown in the panel legend (d).



640 **Figure 5. Functional diversity and stability patterns based on the identification of ecosystem functional types (EFTs) derived from Enhanced Vegetation Index (EVI) images captured by MOD13Q1-TERRA sensor along the 2001-2018 period. a) EFT inter-annual variability for the period, i.e., number of EFTs that occurred at each pixel throughout the period; b) EFT inter-annual dissimilarity (1 - Jaccard index), i.e., mean inter-annual dissimilarity of EFT composition in 4x4 MODIS-pixel windows between all possible combinations of pairs of years throughout the period; c) Spatial EFT richness patterns, i.e., number of different EFTs observed in a 4x4 MODIS-pixel sliding window (~232m x 4=~1 km²); and d) Spatial EFT rarity patterns, i.e., a measure of the relative scarcity or abundance of each EFT in the study area.**

645 **Tables**

650 **Table 1. Ecosystem functional attribute (EFA) ranges used for the identification of ecosystem functional types (EFTs) in the Sierra Nevada Biosphere Reserve. For EVI_DMAX, the four intervals agree with the four seasons of the year. For EVI_mean and EVI_sSD, we extracted the first, second, and third quartiles for each year and then calculated the inter-annual mean of each quartile (their average over the 18-year period). The values of both EVI_mean and EVI_sSD are multiplied by 10,000 in the .TIF files to save disk space.**

Ecosystem Functional Attribute	EFT Character code	Digit code	Range
<hr/>			
EVI Mean (Productivity)	A	100	0 - 0.137
	B	200	0.137 - 0.187
	C	300	0.187 – 0.241
	D	400	> 0.241
<hr/>			
EVI SD (Seasonality)	a	10	> 0.062
	b	20	0.043 – 0.062
	c	30	0.030 – 0.043
	d	40	0 – 0.030
<hr/>			
EVI MMAX (Phenology)	1	1	Spring
	2	2	Summer
	3	3	Autumn
	4	4	Winter
<hr/>			

655 **Table 2. Dataset description: Ecosystem Functional Attributes (EVI_Mean, EVI_sSD and**
EVI_MMAX provided yearly and summarized for the 2001-2018 period as inter-annual mean);
Ecosystem Functional Types (EFTs provided yearly and summarized for the period as inter-annual
mode, variability and dissimilarity); Ecosystem Functional Diversity (EFT richness and EFT rarity,
660 **provided yearly and summarized for the period as inter-annual mean). Spatial resolution is ~231 in**
all cases except in the EFT dissimilarity, where it is ~232m x 4 = ~1km². YYYY refers to year and
varies from 2001 to 2018.

Filename	Variable	Definition	Biological significance	Temporal resolution
EVI_Mean_YYYY_ C006_MOD13Q1 _Pixel232	EVI_ mean	Mean of the positive EVI values in a year	Primary production in a year	Yearly, one image per year YYYY
EVI_Mean_InterAn nualMean_2001- 2018_C006_MOD13 Q1_Pixel232	EVI_ mean	Inter-annual mean of the annual EVI_mean values of the period	Average annual primary production of the period	One image for the 2001- 2018 period
EVI_sSD_YYYY_C 006_MOD13Q1_ Pixel232	EVI_ sSD	Intra-annual standard deviation of the positive EVI values within a year	Seasonality in vegetation greenness. Differences in carbon gains between the growing and non-growing seasons in a year	Yearly, one image per year YYYY
EVI_sSD_Interannu alMean_2001- 2018_C006_MOD13 Q1_Pixel232	EVI_ sSD	Inter-annual mean of the annual EVI_sSD values of a period	Seasonality. Average annual of the differences in carbon gains between the growing and non-growing seasons throughout the period	Average of the 2001- 2018 period
EVI_MMAX_YYY Y_C006_MOD13Q1 _Pixel232	EVI_ MMA X	Month with maximum EVI in a year	Phenology. Date of maximum greenness in a year	Yearly, one image per year YYYY
EVI_MMAX_Intera nnualMean_2001- 2018_C006_MOD13 Q1_Pixel232	EVI_ MMA X	Inter-annual mean of the month with maximum EVI of the period	Phenology. Average annual of the month with maximum greenness throughout the period	Average of the 2001- 2018 period

EFTs_YYYY_C006_MOD13Q1_Pixel232	EFTs	Range of EFA's values divided into four intervals $4 \times 4 \times 4 = 64$ potential EFTs in a year	Patches of land surface that share similar dynamics in matter and energy exchanges in a year	Yearly, one image per year YYYY
EFTs_InterannualMode_2001-2018_C006_MOD13Q1_Pixel232	EFTs	Mode of the range of EFA's values divided into four intervals $4 \times 4 \times 4 = 64$ potential EFTs of the period	Patches of land surface that share similar dynamics in matter and energy exchanges throughout the period	Mode of the 2001-2018 period
EFT_InterannualVariability_2001-2018_C006_MOD13Q1_Pixel232	EFT interannual variability	N° of different EFTs that occurred in the same pixel in the period	Changes in an ecosystem functioning in a period	2001-2018 period
EFT_InterannualDissimilarity_2001-2018_C006_MOD13Q1_Pixel232	EFT interannual dissimilarity	1 - <i>Jaccard Index</i>	Changes in ecosystem functioning a landscape level in a period	2001-2018 period
EFT_Richness_YY_C006_MOD13Q1_Pixel232	EFT richness	N° of different EFTs in a 4x4-pixel moving window around each pixel in a year	Different EFTs represented in the land-surface in a year	Yearly, one image per year YYYY
EFT_Richness_InterannualMean_2001-2018_C006_MOD13Q1_Pixel232	EFT richness	N° of different EFTs in a 4x4-pixel moving window (924 x 924 m) around each pixel in a period	Different EFTs represented in the land surface throughout the period	Average of the 2001-2018 period
EFT_Rarity_YYYY_C006_MOD13Q1_Pixel232	EFT rarity	$Rarity\ of\ EFT_i = (Area_EFT_{max} - Area_EFT_i) / Area_EFT_{max}$ (in a year)	EFT geographical extension	Yearly, one image per year YYYY
EFT_Rarity_InterannualMean_2001-2018_C006_MOD13Q1_Pixel232	EFT rarity	$Rarity\ of\ EFT_i = (Area_EFT_{max} - Area_EFT_i) / Area_EFT_{max}$ (in a period)	EFT geographical extension	Average of the 2001-2018 period