

High resolution inventory of atmospheric emissions from transport, industrial, energy, mining and residential activities of Chile

Nicolás Álamos^{1,2}, Nicolás Huneeus^{1,2}, Mariel Opazo^{1,2}, Mauricio Osses^{3,2}, Sebastián Puja¹, Nicolás Pantoja^{3,2}, Hugo Denier van der Gon⁴, Alejandra Schueftan^{5,6}, René Reyes⁵, Rubén Calvo^{1,2}.

¹ Universidad de Chile, Santiago, Chile

² Center for Climate and Resilience Research, Santiago Chile

³ Universidad Técnica Federico Santa María, Valparaíso, Chile

⁴ TNO, dept. Climate, Air and Sustainability, Utrecht, The Netherlands

⁵ Instituto Forestal, Valdivia, Chile

⁶ Universidad Austral de Chile, Valdivia, Chile

Correspondence to: Nicolas Huneeus (nhunneus@dgf.uchile.cl)

Abstract. This study presents the first high-resolution national inventory of anthropogenic emissions for Chile (INEMA). Emissions for vehicular, industrial, energy, mining and residential sectors are estimated for the period 2015-2017 and spatially distributed onto a high-resolution grid (1 x 1 km approximately). The pollutants included are CO₂, NO_x, SO₂, CO, VOCs, NH₃, and particulate matter (PM₁₀ and PM_{2.5}) for all sectors. CH₄ and Black Carbon are included for transport and residential sources, while Arsenic, Benzene, Mercury, Lead, Toluene, and Polychlorinated dibenzo-p-dioxins and Furan (PCDD / F) are estimated for energy, mining and industrial sources. New activity data and emissions factors are compiled to estimate emissions, which are subsequently spatially distributed using census data and Chile's road network information.

The estimated annual average total national emissions of PM₁₀ and PM_{2.5} during the study period are 191 and 173 kilotonnes (kt/annum), respectively. The residential sector is responsible for over 90% of these emissions. This sector also emits 81% and 87% of total CO and VOC, respectively. On the other hand, the energy and industry sectors contribute significantly to NH₃, SO₂, CO₂ emissions while the transport sector dominates NO_x and CO₂ emissions, and the mining sector dominates SO₂ emissions. In general, emissions of anthropogenic air pollutants and CO₂ in northern Chile are dominated by mining activities as well as thermoelectric power plants while in central Chile the dominant sources are transport and residential emissions. The latter also mostly dominates emissions in southern Chile which has a much colder climate. Preliminary analysis revealed the dominant role of the emission factors in the final emission uncertainty. Nevertheless, uncertainty in activity data also contributes as suggested by the difference in CO₂ emissions between INEMA and EDGAR. A comparison between these two inventories also revealed considerable differences for all pollutants in terms of magnitude and sectoral contribution, especially for the residential sector. EDGAR presents larger emissions for most of the pollutants except for CH₄ and PM_{2.5}. The differences between both inventories can partly be explained by the use of different emission factors, in particular for the residential sector

35 where emission factors incorporate information on firewood and local operation conditions. Although both inventories use similar emission factors, differences in CO₂ emissions between both inventories indicates biases in the quantification of the activity.

This inventory (available at <https://doi.org/10.5281/zenodo.4784286>) (Alamos et al., 2021)) will support the design of policies that seek to mitigate climate change and improve air quality by providing policy makers, stakeholders and scientists with qualified scientific spatial explicit emission information.

40 1. Introduction

Air pollution is one of the main environmental challenges in Chile; in 2018 more than 9 million of its population (out of 17 million) were exposed to concentrations of fine particulate matter (PM_{2.5}) above the national air quality standard (50 and 20 µg/m³ for annual and 24-h standard, respectively), and around 3,640 cases of premature mortality were estimated due to cardiopulmonary diseases (MMA, 2019a). Urban areas of central and southern Chile are among the most polluted in Latin
45 America with serious consequences for human health (Romero-Lankao et al., 2013) including an increase in hospital admissions and mortality associated with cardiovascular and respiratory diseases (WHO, 2016).

The current air pollution and climate change problems are directly related to atmospheric emissions of criteria pollutants - which affect air quality - and greenhouse gases (GHG). Identifying the origin and estimating the emissions of these pollutants
50 by source type is a prerequisite for quantifying the impact of anthropogenic activity on air quality and climate, and thus developing effective mitigation strategies. Additionally, having GHG emissions and criteria pollutants consistent with each other is key in the design of policies that allow addressing climate change and air quality in an integrated manner (Melamed et al., 2016).

55 Currently, emission inventories of GHG in Chile are produced within the framework of their national determined contributions (NDCs) as part of the commitments with the Parties to the United Nations Framework Convention on Climate Change (UNFCCC). Emission inventories of criteria pollutants are developed for the most polluted cities within the framework of the decontamination plans to develop mitigation strategies to improve urban air quality. The national GHG emissions are prepared by a team of professionals from the Ministry of Environment (MMA from Spanish Ministerio del Medio Ambiente) responsible
60 for the development and updating of the GHG emission inventories, whereas the decontamination plans are prepared by consultants hired on a case-by-case basis. Furthermore, while GHG inventories are performed consistently over the years, urban emission inventories of criteria pollutants are not necessarily consistent with previous versions and/or emission inventories of other cities. Additionally, the Pollutant Release and Transfer Register (RETC from Spanish Registro de Emisiones y Transferencia de Contaminantes) from the MMA gathers the emission declaration from the industrial sector and

65 combines it with emission estimates from the residential and transport sectors from different state agencies to build a national
emission inventory. This information is available to the population through a dedicated web platform (www.retc.cl).

While the national GHG inventory provides annual emissions at a national and regional scale, inventories of criteria pollutants
provide annual emissions at a communal¹ level for the case of RETC, or for an entire city for the case of Decontamination
70 Plans. Thus, none of these inventories have the spatial (gridded) resolution necessary for air quality modelling. Regional air
quality (AQ) assessments in South America have relied on global emission inventories to understand the interactions between
emissions, air quality and public health (e.g. Longo et al., 2013; Rosario et al., 2013; Klimont et al., 2017; UNEP/CCAC,
2018). Furthermore, a comparison of global emission inventories against city-scale emission inventories for five South
American cities (namely, Buenos Aires, Bogota, Lima, Rio de Janeiro and Santiago) revealed that although total emissions are
75 in general comparable for these cities between the inventories, large differences exist for sectoral estimates (Huneus et al.,
2020a). Given that mitigation of air quality depends on identifying the dominating emission sectors, using global emission
inventories is not recommended to define mitigation policies due to the risk of identifying the wrong target (Huneus et al.,
2020a). Therefore, national inventories built on local data are needed to understand the contribution of human activity to air
quality and climate change and to design effective mitigation policies.

80 This paper presents the first gridded national inventory of anthropogenic emission for Chile of criteria pollutants as well as
GHG (hereafter INEMA from Spanish **I**nventario **N**acional de **E**Misiones **A**ntropogénicas). The paper is structured as follows;
the data and methodology used to estimate the emissions of each pollutant and sector are presented in section 2 while in section
3 the main results are shown, differentiating between the main pollutants and sectors that acquire relevance in the different
85 regions of Chile. Discussion of the main results and uncertainty analysis of the estimated emissions are presented in section 4.
Finally, in section 5 the main conclusions of this work are presented.

2. Methodology and data

The INEMA inventory includes yearly emissions of carbon dioxide (CO₂), nitrogen oxides (NO_x), sulfur dioxide (SO₂), carbon
monoxide (CO), volatile organic compounds (VOCs), ammonia (NH₃) and particulate matter (PM₁₀ and PM_{2.5}) from the
90 residential (section 2.2), industry (section 2.3), energy (section 2.3), mining (section 2.3) and transport sectors (section 2.4)
for the years 2015 to 2017. Additionally, the residential and transport sector include emission estimates of methane (CH₄) and
black carbon (BC), while for the industry, mining and energy sector emissions of arsenic, benzene, mercury, lead, toluene, and
polychlorinated dibenzo-p-dioxins and furan (PCDD / F) are also reported. Emissions are grouped into sectors following the

¹The commune is the smallest administrative and territorial unit in Chile, and is equivalent to what is known in other countries
as a municipality.

IPCC (2006) classification (Table 1). It's important to clarify that in this inventory residential emission estimations only consider firewood combustion, while the IPCC subcategory 1A4b considers all emissions from fuel combustion in households. Throughout this paper we will follow the EDGAR nomenclature and use the term “sectors” to refer to emission activities (Crippa et al., 2018). Furthermore, emissions of NO_x correspond to emission of NO₂+NO and thus the units are ktNO_x/annum while for VOC and NMVOC the corresponding unit are ktVOC/annum and ktNMVOC/annum.

100

Sector considered on this paper	IPCC Code	IPCC Categories	Pollutants considered in our inventory
Energy	1A1	Energy Industries	CO, CO ₂ , VOC, NO _x , NH ₃ , PM _{2.5} , PM ₁₀ , SO ₂ , Benzene, Arsenic, Toluene, PCDD/F, Mercury, and Lead
Industry	1A2 and 2, excluding 2C	Manufacturing Industries and Construction; Industrial Processes and Product Use	
Mining	2C1, 2C2, 2C3 and 2C4	Metal Industry	
Residential firewood combustion	1A4b	Residential	CO, CO ₂ , NMVOC, NO _x , NH ₃ , PM _{2.5} , PM ₁₀ , SO ₂ , CH ₄ and BC
Transport	1A3b	On road transport.	CO, CO ₂ , NMVOC, NO _x , PM _{2.5} , PM ₁₀ CH ₄ and BC

Table 1 Pollutants and sectors considered in the Chilean inventory(INEMA) according to IPCC (2006) classification

The atmospheric emissions for each sector and pollutant are obtained by weighting the total activity level by an emission factor (EMEP / EEA, 2016), as shown in eq. (1).

105

$$E_{iyz} = \sum_{iyz} [AL_{iyz} * EF_{iz}] \quad (1)$$

where E_{izj} is the total emission for species or pollutant i on year y and sector z , AL_{ijz} is the activity level of pollutant i , in sector z on year y , and EF is the emission factor for pollutant species i , type of source z . No interannual variability is assumed

110 for the EFs. The following subsections present detailed methodology and considerations for the estimations of each 2015-2017
emission sectors

115 **2.1 Study area.**

Chile spans from 17 ° 29'57 "S to 56 ° 32'12" S and has a population of over 19 million inhabitants. The administrative political
division is made up of 16 regions containing 56 provinces and 346 communes, presenting considerable differences in size and
115 population density. Furthermore, each commune contains urban and/or rural areas, with the exception of some purely urban
communes in larger cities. The territory can be broken down into 3 large macrozones with distinctive climatic, geographical
and demographic characteristics (Fig 1). The northern zone, with the regions of Arica and Parinacota, Tarapacá, Antofagasta,
Atacama and Coquimbo, has an arid climate and includes the presence of the Atacama Desert, the driest desert outside polar
regions (Rondanelli et al., 2015). Between 32- and 38-degrees south is the central zone with the regions of Valparaíso,
120 Metropolitana, O'Higgins, Maule, Ñuble and Biobío. A Mediterranean climate with rainy winter and dry summer seasons
prevails in this area. The regions of Araucanía, Los Ríos, Los Lagos, Aysén and Magallanes are located in the southern zone
characterized by a temperate rainy climate, where low temperatures and abundant rainfall stand out. These conditions are
accentuated further south, although the rainfall drastically decreases in the highest mountainous areas and south of the Strait
of Magellan where a tundra-type climate predominates (Sarricolea et al., 2017).

125

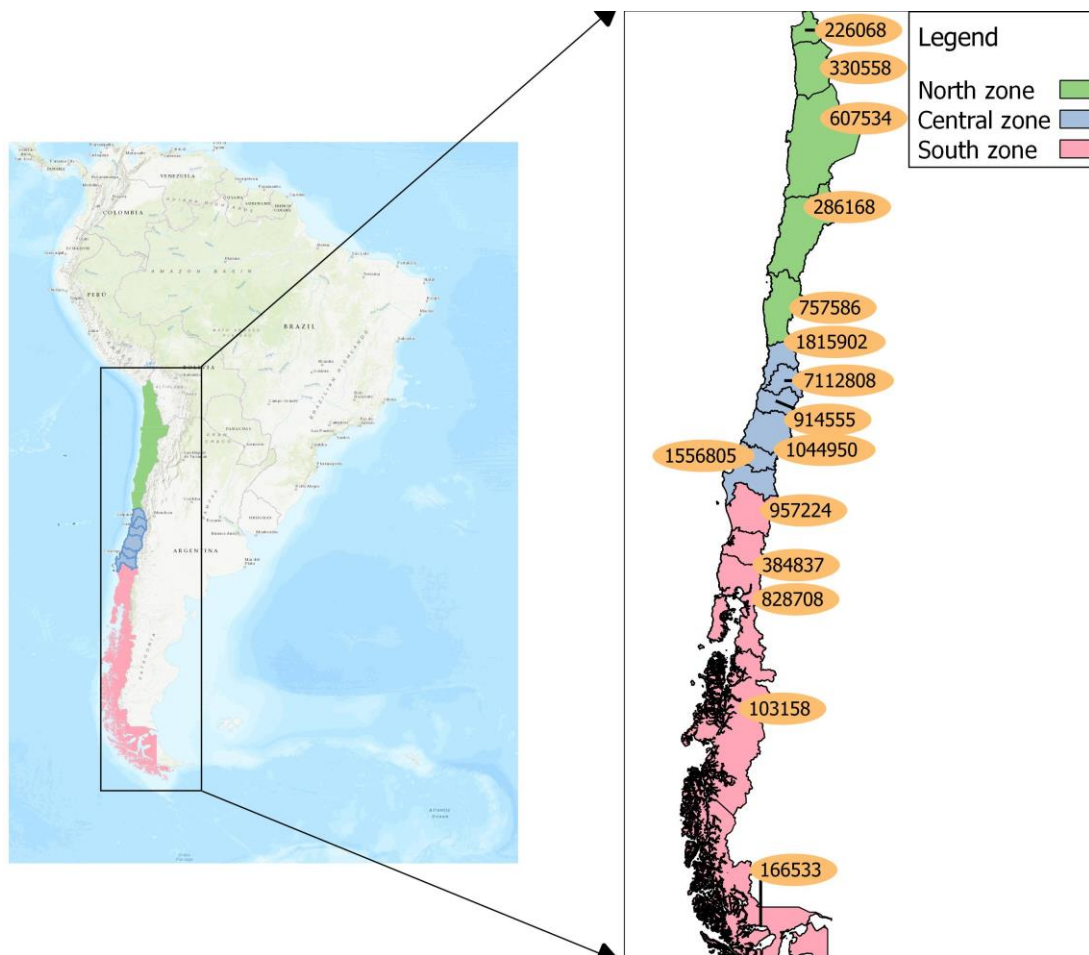


Figure 1 Continental Chile highlighting three macrozones defined for the paper, namely the northern (green), central (blue) and southern zone (red). Divisions within each macrozone indicate limits of the 16 administrative regions. Population in each one of these 16 regions is indicated in the orange ellipses.

2.2 Residential sector

Emissions from residential sources come from the combustion of all fuels used inside of homes, such as gasoline, kerosene and biomass, among others. However, in this first version of INEMA, the residential sector will focus on emissions from firewood combustion only given its dominant role in air quality in central and southern Chile (Saide et al., 2016; Huneus et al., 2020b) The inclusion of additional fuels is left for future versions of this inventory.

Estimates for the residential sector include emissions from biomass combustion for heating, cooking and heating water. Firewood is acquired mostly through informal wood markets and the few regular and consistent information that exist to

characterize its consumption is collected through household surveys (REDPE, 2020). In this article, three studies with regional representation (conducted in the last ten years) are used to estimate the total firewood consumption in central and southern Chile.

The first one of the three aforementioned studies was conducted by the Universidad Austral de Chile (UACH). Firewood consumption in the residential sector was estimated based on existing studies for the years between 2005 and 2012 for each region in southern and central Chile (UACH, 2013; hereafter UACH13). Another study was mandated by the Ministry of Energy to the Corporation of Technological Development (CDT from Spanish Corporación de Desarrollo Tecnológico; <https://www.cdt.cl>), a private non-profit organization created in 1989 by the Chilean Chamber of construction. This study collected information on firewood consumption from the residential, commercial, public services, and industrial sectors for the entire Chilean territory for the year 2014. In each of the 16 Chilean regions, a total of 300 households in urban areas and 65 in rural ones were surveyed (CDT, 2015; hereafter CDT15). Finally, the most recent survey was done by the Forestry Institute (INFOR from Spanish Instituto Forestal) collecting samples of between 300 and 500 households for a single year between 2015 and 2018 in the 6 Central-Chilean regions considered in the study (INFOR, 2019; hereafter INFOR19) (Fig 2). Despite their differences, these studies agree that the consumption increases towards the south - consistent with lower temperatures and the corresponding higher energy requirement of dwellings (Fig 2). However, significant differences in wood consumption are found between these datasets within several individual regions.

Activity levels in INFOR19 are higher than the ones estimated in CDT15 and methodological shortcomings that potentially explain this underestimation have been identified (Reyes et al., 2018; Reyes 2017). For this reason, firewood consumption from CDT15 is only used for regions lacking alternative data (all regions north of Santiago). For the regions of O'Higgins, Maule, Bio-Bio, Ñuble, Araucanía and Los Ríos, the data reported in INFOR19 are used, whereas for the regions Los Lagos, Aysén, and Magallanes, the information from UACH13 is selected over CDT15. Consumption estimates from UACH13 are consistent with the results from INFOR19 for regions with data from both sources (Fig 2). It's worth noting that only INFOR19 provides firewood consumption at the communal level, the remaining studies estimate the firewood consumption at the regional scale. Regardless of the spatial disaggregation, in each study an average household firewood consumption (AHFC) is computed at a communal level. For regions where the data are available at a regional level (see figure 2, those with information from CDT15 and UACH13), the same average consumption is assumed for all communes contained within the same administrative region.

A bottom-up approach is used to standardize the different information sources for the study period. The activity level of residential emissions is obtained at communal level (c), differentiating between urban and rural areas (a) as follows:

$$AL_{y,c,a} = HN_{y,c,a} * PF_{y,c,a} * AHFC_{c,a} \quad (2)$$

Where $AL_{y,c,a}$ is the activity level corresponding to the residential fuelwood consumption for the year y in commune c for urban/rural area a ; $HN_{y,c,a}$ is the number of total dwellings in year y in commune c in area a registered in INE (2019); $PF_{y,c,a}$ is the “penetration factor” representing the percentage of houses that use biomass in the year y in commune c and area a obtained from the Chilean Ministry of Social Development (MDS from Spanish Ministerio de Desarrollo Social; 2015; 2017) and $AHFC_{c,a}$ is the average household firewood consumption in commune c and area a .

The MDS conducts every two years the National Socio-Economic Characterization Survey (CASEN) for the entire country. This survey contains information on the type of fuel used by households for heating, cooking food, and domestic hot water production, allowing to derive the penetration factor (PF) of biomass. For the isolated communes where this survey is not applied, the PF is taken for each region at urban or rural level considering the regional PF value from CDT (2015).

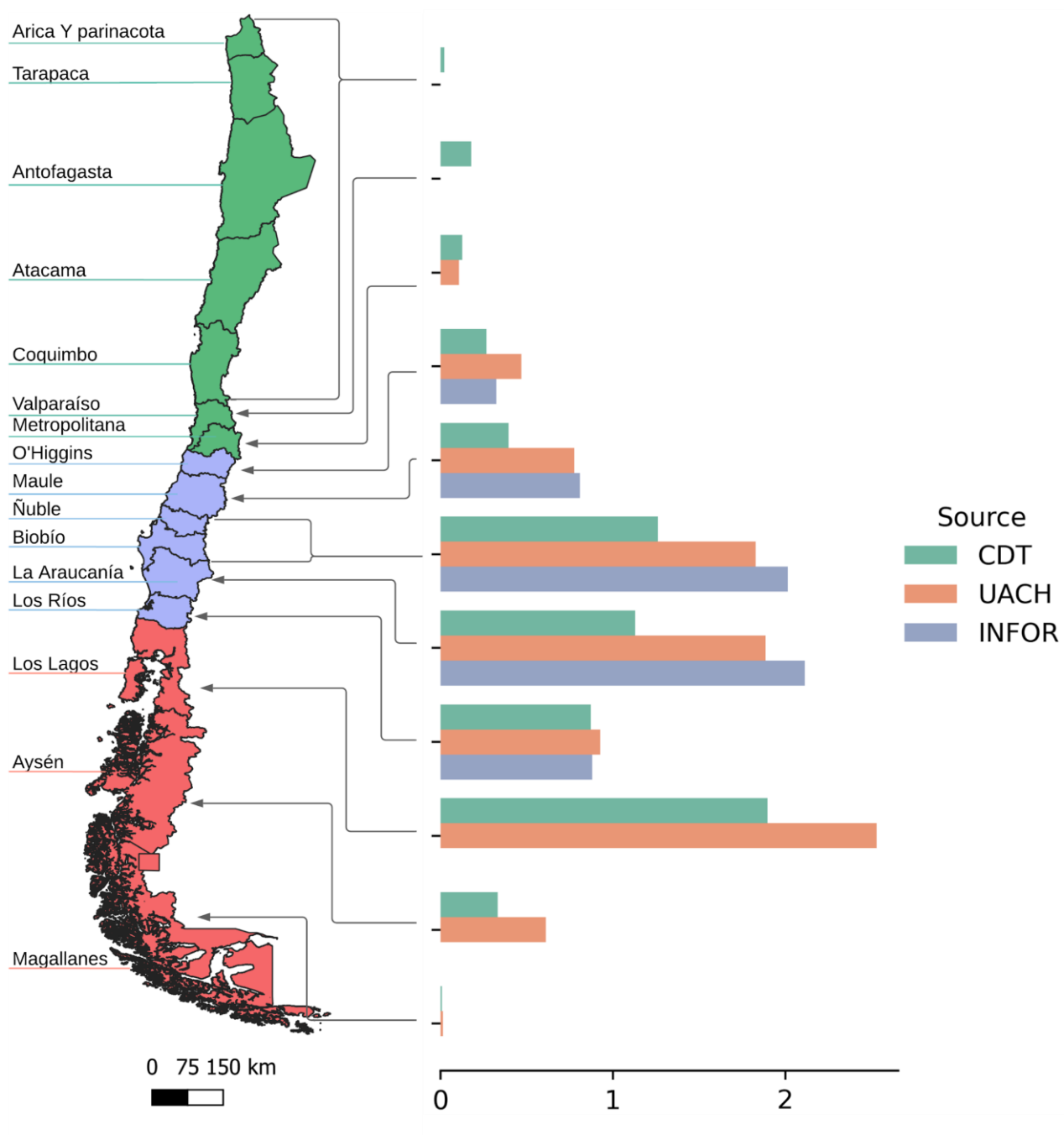


Figure 2 2017 Annual fuelwood consumption on kilotonnes by region according to UACH (2013, red), CDT (2015, green) and INFOR (2019, blue). Regions are colored according to the data source used in each region.

Emission factors for residential combustion of firewood vary, among other factors, according to the efficiency of the technology used (e.g., fireplace, wood stove, simple heater, heater with temper, etc.), the humidity present in the wood, and the device's operating conditions² (Jimenez et al., 2017; Guerrero et al., 2019; Schuefftan et al., 2016). Given that EMEP/EEA and IPCC's EFs do not include these aspects and which can lead to a negative bias in the estimated emissions, we use the local EFs from SICAM (2014) and also used in MMA (2019b) to estimate emissions of NO_x, PM_{2.5}, PM₁₀, and SO₂ (Table A1 in Appendix A) and those estimated from MMA (2019b) for CO₂ and NH₃. However, for species absent in the aforementioned studies, EFs are taken from EMEP/EEA (2019) and IPCC (2006); namely for CO and NMVOC's (Non-Methane VOCs) EFs for dry firewood from EMEP/EEA (2019) is used while for CH₄ the EFs estimated on the tier 1 approach from IPCC (2006) is used. Finally, we follow EMEP/EEA (2016) and consider BC to represent 10% of PM_{2.5} emissions.

2.3 Transport sector:

Estimated emissions from the transport sector consider exhaust emissions from vehicles traveling on public routes nationwide, in urban and interurban areas, for the years 2015 to 2017. Rail, air and sea modes are not included, nor are off-road machinery. Also, resuspended dust from paved and non-paved roads are not considered in this analysis. Approximately 60 % of the national roads in Chile are non-paved. Emissions were calculated per region based on estimates of number of vehicles and their activity level. A more detailed description of the method applied to estimate transport emissions can be found in Osses et al. (2021, this issue)

The different types of vehicles and their activity levels per region come from information obtained from official reports of government agencies. This information includes statistics on fleet composition as the number of registered vehicles by region (INE 2017b), average annual mileage by vehicle type (SCSS, 2014; MAPS, 2013) and fuel sales for road transport by region (SEC, 2017). Vehicle categories considered are: light passenger, commercial and taxi vehicles; 12- and 18-meter buses; light, medium and heavy duty trucks; and two-wheeled vehicles. Each of these categories is subdivided according to the type of fuel used (gasoline or diesel) and the emission standard in its European equivalent (EURO standard). Estimates of total fuel consumption from registered vehicles were compared to real fuel use for each region, using information on sales of diesel and gasoline for the transportation sector, by political region, provided by the Electricity and Fuel Superintendence (SEC, www.sec.cl). A correction factor to the total number of registered vehicles in each region is applied, to make these two fuel consumptions equal, correcting for those vehicles that are registered but do not contribute to actual driving activity. Thus, the number of active vehicles in a region was inferred and adjusted accordingly. The distribution of vehicles into urban and interurban activity per region was based on a proportional regional distribution provided by SCSS (2010). The combination of

² A bad operation condition occurs when combustion is carried out with the stove draft closed.

categories, fuels and emission standards generates a total of 70 types of vehicles for the emission analysis, distributed regionally and distinguishing between urban and interurban activity.

Activity level was expressed in VKT (vehicle kilometre travelled) calculated as the sum of the number of vehicles per mileage per type of vehicle (eq. 3) expressed as follows

$$VKT = \sum_{v,r,k}^N N_{v,r,k} * KM_{v,r,k} \quad (3)$$

where $N_{v,r,k}$ is the number of vehicles of type v in region r and road class k (urban or interurban) and $KM_{v,r,k}$ are the kilometers travelled per year by vehicles type v , in region r and road class k .

The estimate considers that all vehicles that enter Chile are required to comply with the European EURO regulations or their US equivalent. Consequently, the assignment of emission factors for each of the vehicle types was carried out by applying COPERT V values (EMEP/EEA, 2019), adapted to the Chilean fleet (Gomez, 2020). Total emissions are calculated by multiplying VKT by an emission factor in grams per kilometer. The result is a regional emission database distinguishing by urban and interurban emissions, for CO, CO₂, VOC, NO_x, PM_{2.5}, PM₁₀, CH₄ and BC.

2.4 Point sources: energy, mining and industry sectors

Emissions from point sources and for species listed in table 1 are not estimated by our work but downloaded from the Register of Emissions and Pollutant Transport (RETC from spanish Registro de Emisiones y Transporte de Contaminantes, <https://datosretc.mma.gob.cl/group/emisiones-al-aire>) from the Ministry of Environment. Every year, this register receives self-reported emissions from industrial facilities in accordance with current environmental regulations (MMA, 2019b). No verification nor quality control of the declared emission estimates are conducted by the Ministry, nor is it done in this work. Although self-reported emissions estimates could have strong biases, they are currently the sole estimates of industrial emissions and are therefore used in this work. This limitation will be considered when analysing and discussing the results. Industries are not obligated to declare CH₄ and NMVOC but only total VOCs. Therefore, when analysing VOC emissions from the energy, mining and/or industry sector we will be referring to total VOCs.

Establishments with economic activities (given by their International Standard Industrial Classification or ISIC) that meet any of the following criteria are subject to declare their atmospheric emissions to RETC:

- Pulp and Paper Production; Primary and Secondary Smelters; Thermoelectric Power Plants; Cement; Lime and Gypsum Production; Glass Production; Ceramic Production; Iron and Steel Industry; Petrochemical Industry; Asphalt Production.

- Industries with generator sets greater than 20kW, and industrial and heating boilers with fuel energy consumption greater than 1 Mega Joule per hour.
- Establishments with electricity generation units, made up of boilers or turbines, with a thermal power greater than or equal to 50 MWt
- Establishments whose fixed sources, made up of boilers or turbines, individually or as a whole, add a thermal power greater than or equal to 50 MWt
- Establishments corresponding to copper smelters and arsenic emitting sources

250

255

Agricultural emissions, thermoelectric plants that are a part of cogeneration processes, and other activity sectors not mentioned explicitly above or that don't meet one of the above criteria, are not obligated to declare unless they are in a geographical zone with an existing atmospheric decontamination plan.

260

Emissions from point sources are differentiated between energy, mining and industry sectors. The energy sector includes production and distribution of fuels and the generation of electric energy while mining includes the production and smelting of metals. The remaining point sources will be aggregated into a single sector to which we will refer as Industry henceforth.

265

This database includes more than 8324 point sources along the territory, most of which have associated coordinates, however, a large number of sources exist in the database where only the commune of emission is known (along with additional information such as the company name, activity type, and description) but not their coordinates. Approximate coordinates of these sources without a specified location, and whose contribution to their respective commune was larger than 20%, were obtained by pinpointing them on google earth using the information provided in their declaration. The remainder of the point sources without a geographic location were not explicitly included in the inventory, however, their emissions were distributed among the located sources (including those manually geo-referenced) within the same commune. For a given species, sector and commune, the spatial distribution of the emissions of located sources was scaled to fit the total (located + non-located) emissions.

270

2.5 Spatial distribution of emissions:

While point source emissions from industry, mining and energy sector are spatially distributed using their coordinates (section 2.4), those from the transport and residential sectors are estimated at the regional or communal level and thus need to be distributed to the final grid of 0.01°x0.01° (approximately 1x1 km) (Fig 3).

275

Residential emissions were initially estimated at the communal level and distributed onto a regular 0.01°x0.01° grid (approximately 1x1 km) based on population density from the last census conducted in 2017 (INE 2017a). The information is available at the census block scale, which is the smallest territorial scale for which relevant information from the census exists, it consists of a group of adjoining or separate dwellings, buildings, establishments and/or properties, delimited by geographical,

280 cultural and natural features. The population distribution was obtained by projecting the 0.01°x0.01° lat-lon grid (epsg:4326, WGS 84) onto the information contained in the census blocks and retrieving the aggregated information. We used the population density to distribute the emissions with the assumption that firewood is consumed similarly among the population despite the limitations it presents. This, due to not having information available at the census block scale that would allow to make a finer spatial disaggregation according to population characteristics such as income. Furthermore, the CDT15 database
285 reveals that households with higher incomes have higher firewood consumption levels per capita, but less dwellings use firewood for heating and cooking, being difficult to establish a clear relationship between income and firewood consumption.

The spatial distribution of transport emissions within each region was performed by projecting the road network of each region onto the grid of 0.01x0.01 degrees of latitude and longitude (approximately 1x1 km). QGIS open source software, the official
290 database for Chile's road network and regional limits (BCN, 2020) was used to characterize the Chilean road network and was complemented with information from Open Street Map (OSM, 2020) to organize it into a hierarchy comprising freeways, arterials, collectors, and local roads of 77800 km of both rural lands and main cities. Road vehicle flow per type of road was estimated applying a road weight factor, based on toll barrier vehicle counts at interurban roads and origin-destiny surveys in urban roads. Average weight factors are 54% for freeways, 23% on arterials, 16% for collectors and 7% on local roads. In each
295 region, urban emissions were distributed among cities based on population (INE, 2017a) first and then within each city emissions were distributed applying the aforementioned weight factors. Thus, urban emissions in each cell depend on the population and the roads in the cell.

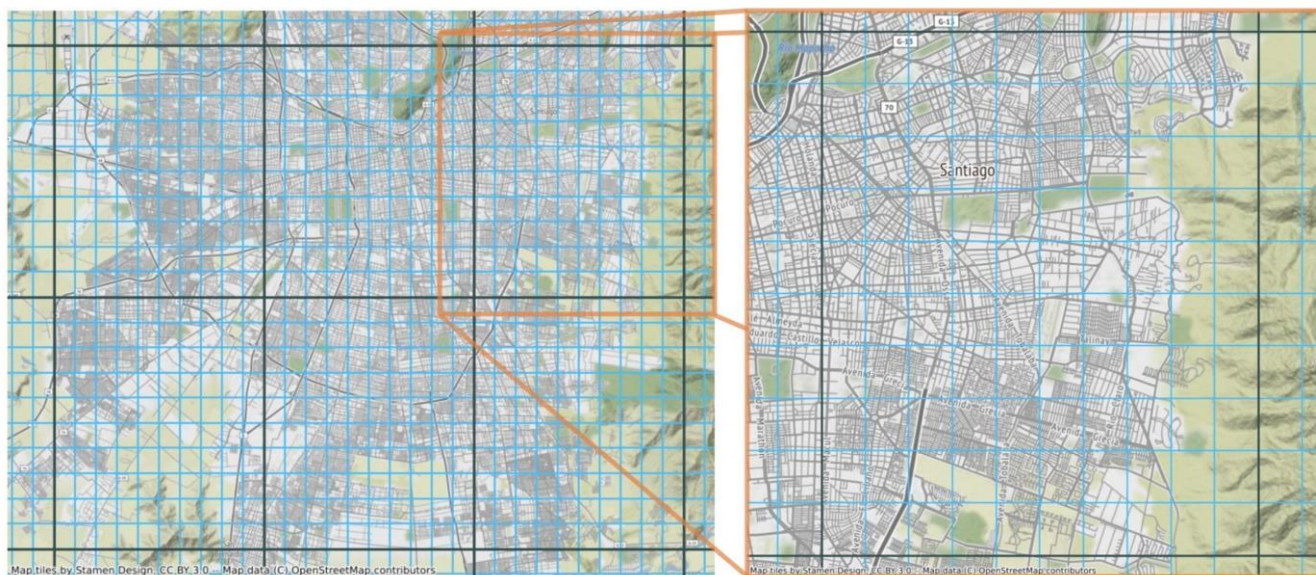


Figure 3 Map of Santiago at different scales: in blue the utilized $0.01^\circ \times 0.01^\circ$ grid (approximately 1×1 km), and in black the $0.1^\circ \times 0.1^\circ$ EDGAR V5.0 grid for comparison. © OpenStreetMap contributors 2021. Distributed under the Open Data Commons Open Database License (ODbL) v1.0

2.6 uncertainty on residential emissions:

Emissions represent a large source of uncertainty in air quality modelling (Thunis et al., 2016), of which uncertainty in emission factors dominate over the better-known activity data (Scarpelli et al. 2019). To assess the uncertainty of the residential sector we construct a range of possible estimates using different sources of information for the level of activity and emission factors. Two possible activity levels were considered, the lower limit is given by the CDT15 information for the whole country (CDT, 2015), while the upper limit considers the activity levels used in this inventory (section 2.1). For emission factors we consider four possible datasets. The upper estimates are based on the EF's used in the RETC database until 2014 while the lower limit considers the EF's estimated on IPCC (2006), and EMEP/EEA (2019) for different species. Also, EF's used in the current inventory and those proposed by US EPA (1996a; b) are considered. Eight possible residential emission levels were estimated by considering all possible combinations between the two activity levels estimation and the four EF's datasets. These eight emissions estimates are then normalized by INEMA's emissions and therefore, for a given specie, a resulting value of four represents an estimate four times larger than INEMA while a value of 0.2 corresponds to an estimate five time smaller than INEMA and the corresponding range of uncertainty of the estimated emission of the given specie would be a factor of 20. The analysis (section 4) focuses on the largest (considering INEMA's activity level and RETC EFs) and lowest (considering CTD15 activity level and EMEP/EEA EFs) emission estimate.

3. Results:

320 Total national emissions remain mainly stable for most species between 2015 and 2017 with a slight increase for PM_{2.5}, NH₃,
SO₂, and CO₂ between the beginning and end of the period, whereas CO, VOC, PM₁₀ and NO_x show a slight decrease (Fig 4,
the values of emission per sector and year are available on appendix B). While PM₁₀ decreases due to decreasing trend in
industrial emissions (driven mostly by changes in the manufacturing industry) and stable residential ones, NO_x remains mostly
constant due to a decrease in energy emissions and the slight increase in the rest of the sectors. Almost half of the NO_x
325 emissions are from the transport sector while the industry and energy sector combined contribute to almost an equivalent
amount of the total NO_x emissions. Although the largest contributor to CO₂ emissions in Chile is the energy sector due to
thermoelectric power plants (MMA, 2017), the increase is associated with the increase of CO₂ emissions in the industrial sector
(mainly driven by the forestry along with manufacturing industry). Mining activity, more specifically emissions from copper
smelters, dominate SO₂ emissions in Chile. Starting in 2016, 7 additional copper smelters started declaring their emission to
RETC due to changes in the regulatory framework driving an increase in SO₂ emissions from 2015 to 2016 that is sustained
330 in 2017. However, the decrease from 2016 to 2017 is the result of reductions in the energy and industry sector combined with
mostly stable emissions from the mining activity. Finally, for NH₃ the emissions are dominated by the energy sector followed
by emissions from the residential sector and the increase in emissions is explained by increases from the energy and industry
sectors. We highlight that the agriculture sector is not included in this inventory due to the lack of high resolution data allowing
to spatially distribute this sector's emission onto INEMA's grid and therefore is not reflected in emissions of CH₄ nor NH₃. In
335 general, the agriculture sector dominates NH₃ (Muñoz et al., 2016) and CH₄ (according to MMA, in 2017 more than half of
CH₄ emissions in Chile come from agriculture) emissions and for any future study on these species, these sectors would need
to be estimated.

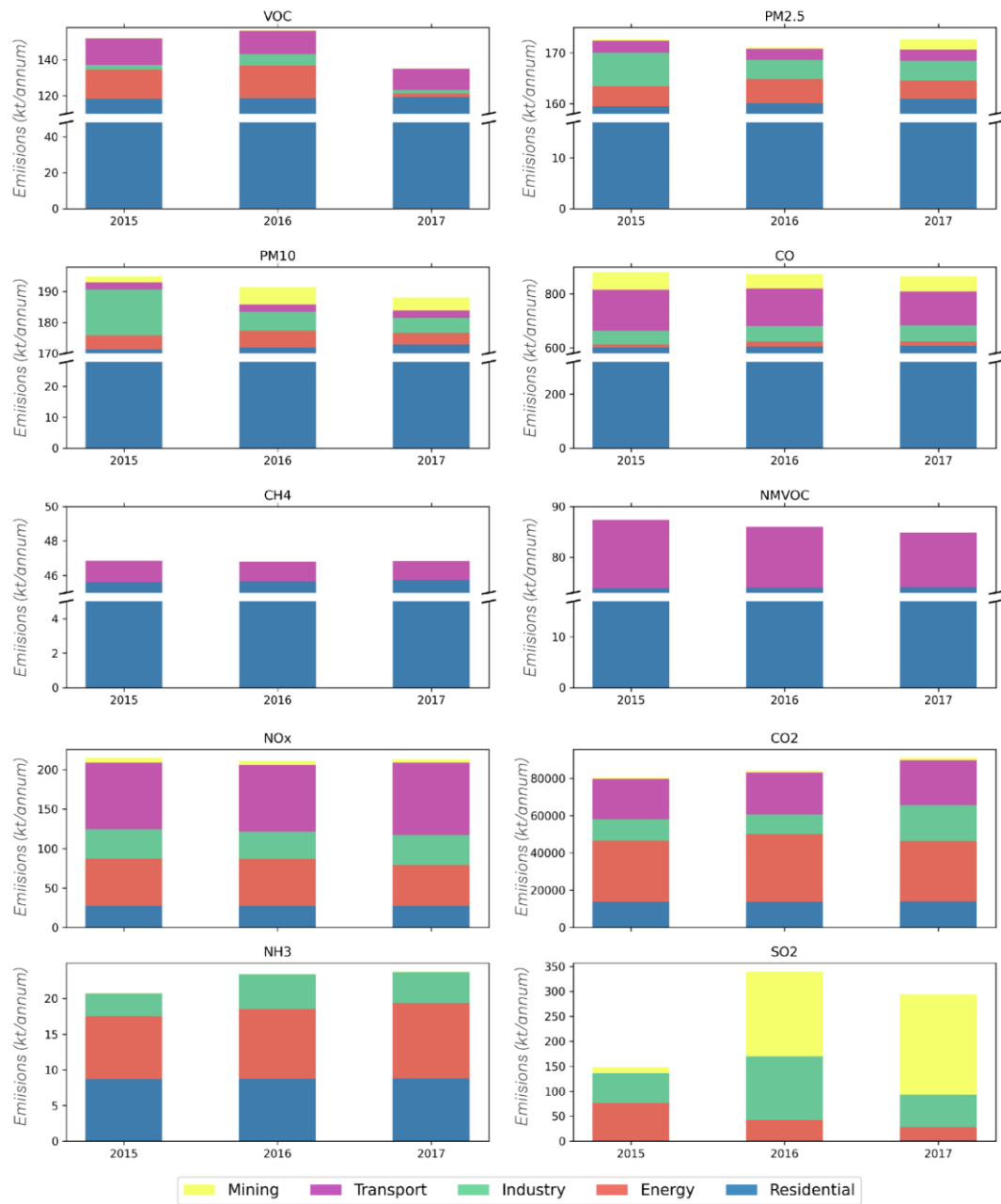


Figure 4 Total national annual emissions distributed by sector for pollutants VOC, PM_{2.5}, PM₁₀, NO_x, NH₃, CO₂, CO, and SO₂ in kilotonnes for 2015-2017.

Emissions of NO_x dominate in Central Chile due to a larger population (see figure 1), urban centers and vehicular traffic in this area. CO₂ emissions are distributed mainly in northern and central Chile, where thermoelectric power plants are abundant (Table 2). Furthermore, PM_{2.5} and PM₁₀ are mostly emitted in southern Chile with large contributions also in central Chile, mainly from the residential sector in both cases. This sector also makes the largest contribution in CO and VOC. SO₂ has a greater presence in the northern part of the country, consistent with a larger mining activity.

Pollutant	Total	North	Centre	South
BC	16	3.2%	35.3%	61.5%
CO	876	3.9%	48.1%	48.9%
CO ₂	85402	29.6%	52.6%	17.9%
NH ₃	23	26.4%	45.7%	27.9%
NO _x	213	26.4%	49.9%	23.7%
PM ₁₀	191	4.6%	35.2%	60.2%
PM _{2.5}	173	3.1%	35.3%	61.6%
SO ₂	261	62.3%	35.4%	2.2%
VOC	149	3.7%	43.1%	53.2%

Table 2 Average annual total emissions [kt/annum] for the period 2015-2017 from energy, industry, residential, and transportation sectors by pollutant and macrozone.

Given the large health impact associated with PM_{2.5} and its role in poor air quality in central and southern Chile, we focus now on this particular pollutant and its spatial emission distribution along the territory (Fig 5). More than 90% of the 158 (170) kt/annum of PM_{2.5} (PM₁₀) total national emissions for 2017 originated from the residential sector (Fig 5). Emissions in the northern macrozone are mostly from the energy and industry sectors, which are generally located in urban areas. The Mejillones commune concentrates more than 20% of all PM_{2.5} 2017 emissions in the northern macrozone (Fig 6a). More than 1300 tonnes/annum are emitted in this commune, of which 99% come from the energy sector (thermal power plants) concentrated in a few locations.

In Central and Southern Chile emissions are largely dominated by the residential sector and are consequently distributed along the territory according to population, with a larger magnitude in locations with a greater number of dwellings and concentrated in the country's central valley. However, contrary to cities of Southern Chile (Fig 6c), significant contributions from other

365

sources are observed in some areas of Central Chile. For instance, Santiago, the capital of Chile (Fig 6b), where more than 40% of the country's population resides, stands out in Central Chile. Although firewood burning for heating and cooking is prohibited in the metropolitan area, it is still the largest contributor to PM_{2.5} in the region due to its use in the outskirts and surroundings; from the 2030 tonnes/annum of PM_{2.5} emitted in 2017, 1480 tonnes/annum are emitted in the outskirts and surroundings of the city. Within the Santiago metropolitan area, the largest polluter is the transport sector, representing 22% of the total PM_{2.5} 2017 emissions and almost 90% of the 25 kt/annum of NO_x.

370

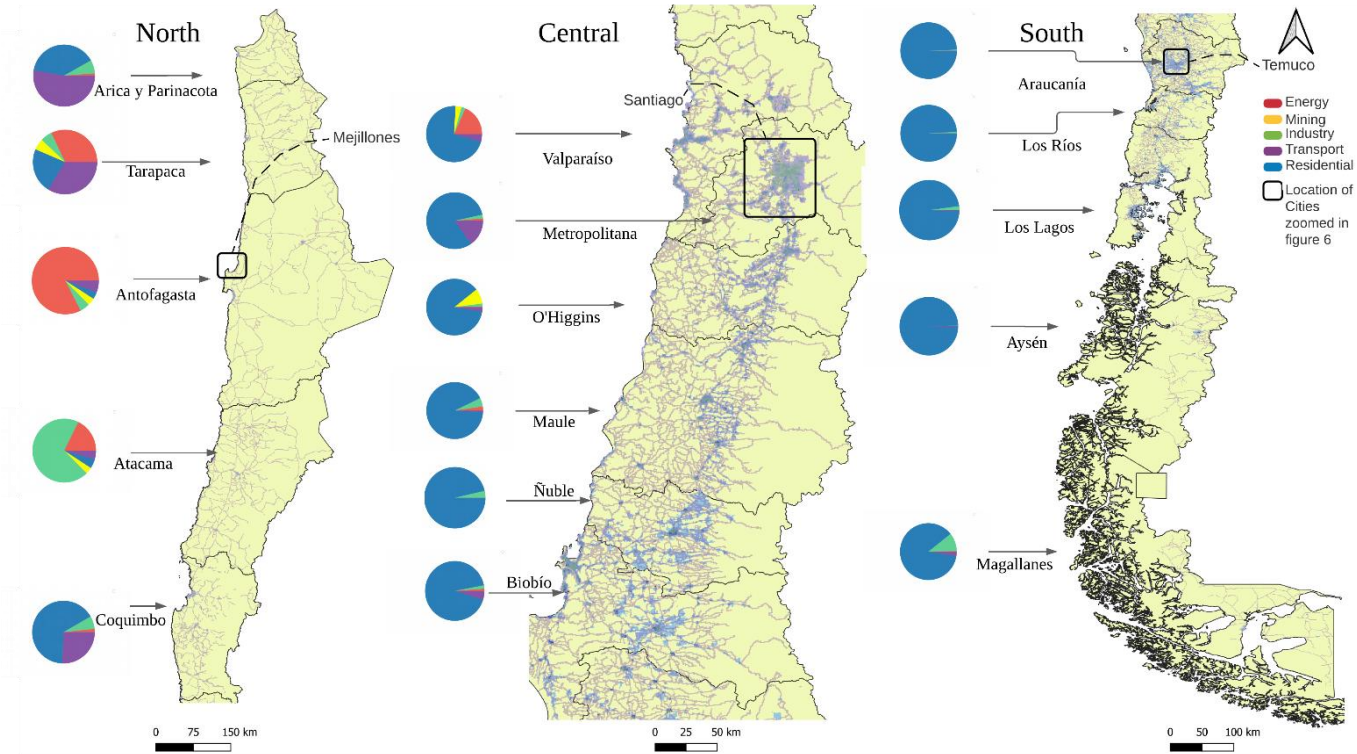


Figure 5 Spatial distribution of the 2017 emissions of PM_{2.5} of the energy (red), industry (green), residential (blue) and transport (purple) sectors in a grid of 0.01 ° x 0.01 ° on a map of Chile according to the macrozones defined for the country (Figure 1). Note that the Metropolitan region includes the capital Santiago and ~ 40% of the population. The pie charts indicate the relative contribution that each source makes to total PM_{2.5} emissions in each region.

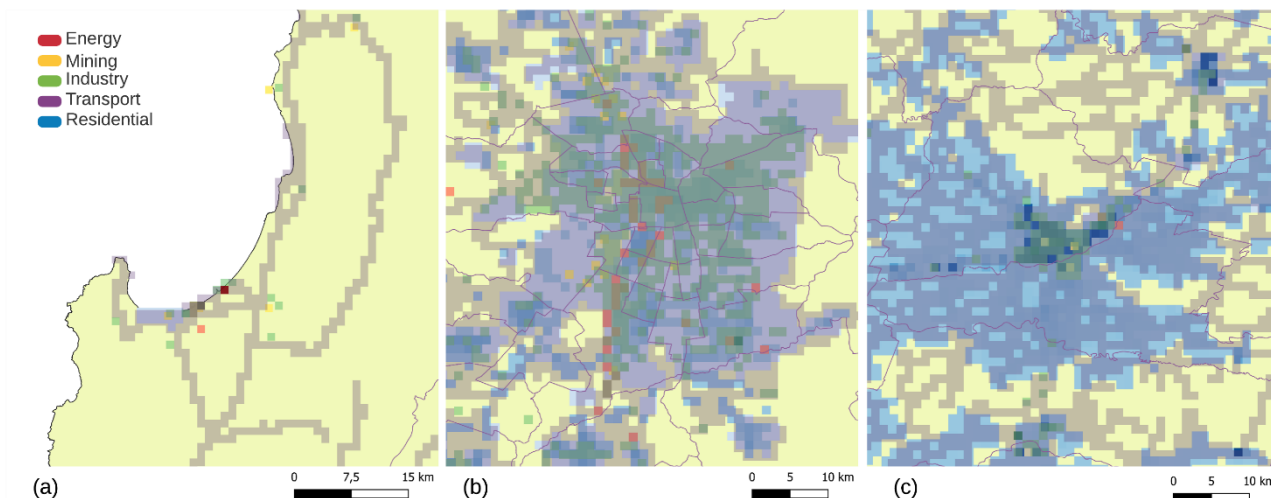


Figure 6 Spatial distribution of the 2017 emissions of PM_{2.5} of the Energy (red), industry (green), residential (blue) and transportation (purple) sectors in a grid of 0.01 x 0.01 degrees (approximately 1x1 km) for Mejillones (a), Santiago (b) and Temuco and Padre Las Casas Cities (c). These cities are located in the Northern, Central and Southern zones, respectively.

3.1 Comparison of total emissions by sector and pollutant with EDGAR inventory

Puliafito et al. (2017) and Huneus et al. (2020a) show that despite consistencies in the magnitude of total emissions of pollutants, global inventories have large discrepancies in sectoral contribution when compared to local or national inventories. We compare estimated emission for 2015 from the present inventory against the EDGAR v5.0 inventory 2015 emissions (Crippa et al., 2019; 2020). Global inventories, such as EDGAR, have been used in South America in the absence of a local inventory for AQ assessments (Huneus et al., 2020). Both inventories, EDGAR and this work, follow the same sectoral classification proposed in IPCC (2006) with the exception of the residential sector. While for INEMA the residential sector corresponds to IPCC code 1A4b with only firewood combustion, the residential sector in EDGAR corresponds to the IPCC code 1A4, including residential emissions as well as emissions from commercial, agriculture, forestry, fishing and fish farms. In spite of these differences in activities represented in the residential sector between both inventories, INEMA presents larger total PM_{2.5} and sectoral residential emissions for all species (Figure 7 and 8).

The differences for 2015 between both inventories for all pollutants are considerable in terms of magnitude and sectoral contribution, especially for the residential sector (Fig 7 and 8). Except for PM_{2.5} and CH₄, EDGAR presents larger emissions than INEMA. For CO, NMVOC and VOC, EDGAR emissions are more than double that of INEMA's, for NO_x differences are around 90%, and for CO₂ around 40%. While for PM_{2.5} INEMA emissions are 45% larger than those estimated in EDGAR. These differences can partly be explained due to the use of different emission factors in both inventories. Emission factors

used in EDGAR do not consider wet firewood and combustion with poor operating conditions which considerably increases these pollutants' emissions (Schueftan et al., 2016; Guerrero et al., 2019). In contrast, the current inventory (INEMA) considers emission factors for PM₁₀, PM_{2.5}, NO_x, and SO₂ that take these conditions into account. For NO_x the larger emissions in EDGAR are from the transport, energy and industry sector. While EDGAR and INEMA have comparable CO₂ emissions for the transport, mining and residential sector, they differ significantly for the energy and industry sector. We note that the estimated emissions in this work for the energy and industry sectors are in line with what Chile reports to the UNFCCC (34000 kt for energy and 18000 for industry, see INGEI on CO₂ graph of figure 8) suggesting a potential source of bias in the activity data used in EDGAR for the energy sector.

EDGAR NMVOC and CO transport emissions are larger, due to evaporation emissions, which are not considered in INEMA inventory. Furthermore, smaller EDGAR emissions of PM_{2.5} are mostly due to differences in emissions from the residential sector. Although the use of distinct EF by both inventories might explain this discrepancy, differences in estimating activity as highlighted by different CO₂ emissions might also explain part of the difference.

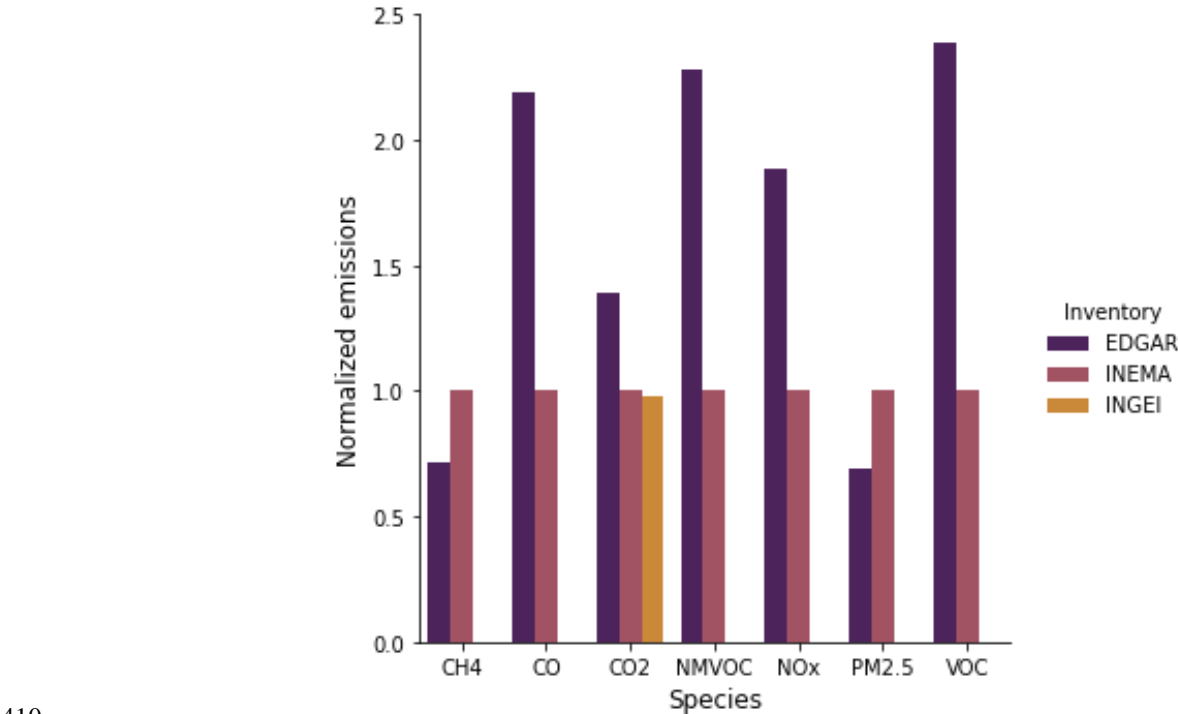


Figure 7 Emissions of CH₄, CO, CO₂, NMVOC, VOC, NO_x, PM_{2.5} for 2015 reported by EDGAR v5.0 (purple) relative to the present work (INEMA; pink). EDGAR emissions were normalized by the magnitude of the current INEMA inventory. We note that the residential sector from EDGAR corresponds to category 1A4 from IPCC, while for INEMA the residential sector

corresponds to IPCC code 1A4b with only firewood combustion. The category 1A4, in addition to residential emissions, also include emissions from commercial, agriculture, forestry, fishing and fish farms.

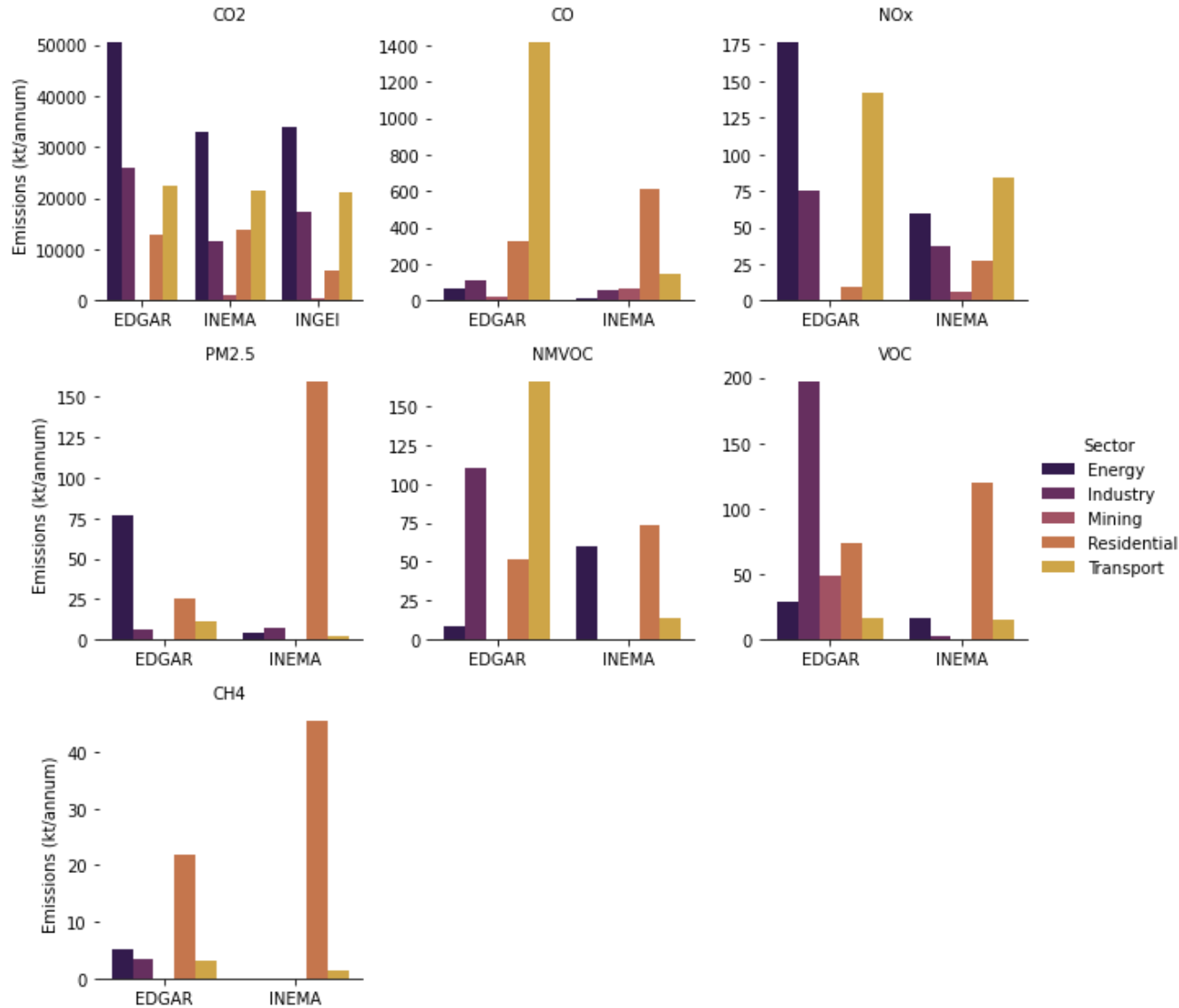


Figure 8 Total 2015 emissions in kilotonnes by pollutant and sectors according to this work and EDGAR v5.0. Sectors considered in both inventories correspond to the classification proposed in IPCC (2006) presented in section 2.

4. Uncertainty and quality of estimations on the residential sector

To examine and estimate emission uncertainties associated with the residential sector, multiple emissions considering different levels of activity and EFs are estimated (Section 2.6). For VOC, CO, BC and particulate matter emissions, the range of possible

residential emissions estimations can reach differences of a factor 84, 24, 13 and 13 respectively (Fig 9a) between the upper and the lower estimation limits. For VOC and PM not all differences can be attributed to uncertainty, it is partly related to the choice of what is included in the definition of VOC or PM. For the residential sector in this study, the largest uncertainty in the estimated magnitude is associated with the emission factor. In the case of $PM_{2.5}$ emissions, differences in the estimated magnitude following the different emissions factors can reach up to factor 8 whereas differences in the activity data are less than a factor two (Fig 9b). However, the final uncertainty is even larger when considering the combined uncertainties from each parameter (Fig 9b). CO_2 , NH_3 , and SO_2 , have lower uncertainty ranges (Fig 9a) due to the greater consensus on their EFs in the literature (MMA,2019b; IPCC, 2006; US EPA (1996a; b); SICAM, 2014) and the fact that these are single well-defined species whereas VOC and PM are container definitions; they include a variety of species and/or sizes. For CO_2 , NH_3 , and SO_2 the possible estimations of the lower and upper limits differ by a factor 2, while for NO_x this value can reach up to a factor 5.

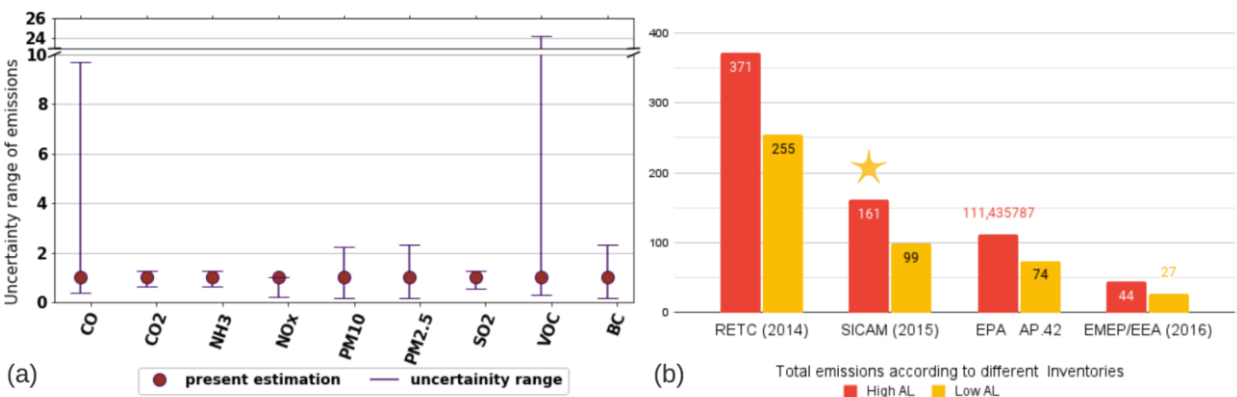


Figure 9 a) uncertainty range of residential emissions considering the possible estimation that can be made with the different sources of information evaluated in this work. The units on the y axis are the ratio of total 2017 emissions from one set of assumptions to the INEMA estimate. The y axis is broken for better visualization b) 2017 $PM_{2.5}$ emissions uncertainty range disaggregated according to different emission factors (groups of columns) and activity levels (colors). In yellow are the inventories constructed using CDT information, which provides the lowest possible activity level (AL) while in red are the activity levels used in this inventory (section 2.1). The first group of columns represent estimated $PM_{2.5}$ emissions based on EF from RETC while the second group correspond to the estimate based on EF used in the current inventory (the bar used on INEMA's inventory is marked with a star). The third and fourth group of columns correspond to the estimate based on EF proposed by US EPA (1996a; b) and EMEP/EEA 2019 respectively.

The final EF's used in this study (see table A2, in Appendix A) are obtained by aggregating several EFs, each one corresponding to a specific emission condition and/or fuel component. They determine the magnitude of the emitted flux (see table A1), by weighting each EF according to distribution parameters estimated in household surveys. The most relevant

445 parameters that were considered when weighing the EFs are: the quality and efficiency of the technology used (appliance
type), the humidity of firewood fuel, and the operating conditions of the devices (Jimenez et al., 2017; Guerrero et al., 2019;
Schuefftan et al., 2016). Each of these EFs has its uncertainty, which depends on the quality and the number of laboratory tests
carried out to determine its robustness (RTI International, 2007). Despite the studies carried out, the uncertainty associated
with EF estimation is considerable. EMEP/EEA 2019 indicates that for a standard heater the associated uncertainty to the
450 estimated CO and PM_{2.5} EF can be larger than ten and four times respectively. Additionally, estimating activity data has sources
of uncertainties associated. For example, to estimate the amount and type of firewood consumed as well as the technology
used and operating conditions, household surveys are usually conducted. These studies have big uncertainties, due to high
informality surrounding the firewood transactions and markets (Zhao et al., 2011), and depend on the size of the surveyed
sample as well as its representativity. The combination of the aforementioned uncertainties (Fig 10) impacts the expected final
455 confidence of aggregated EFs and thus the magnitude of the estimated emissions (EMEP / EEA, 2016)

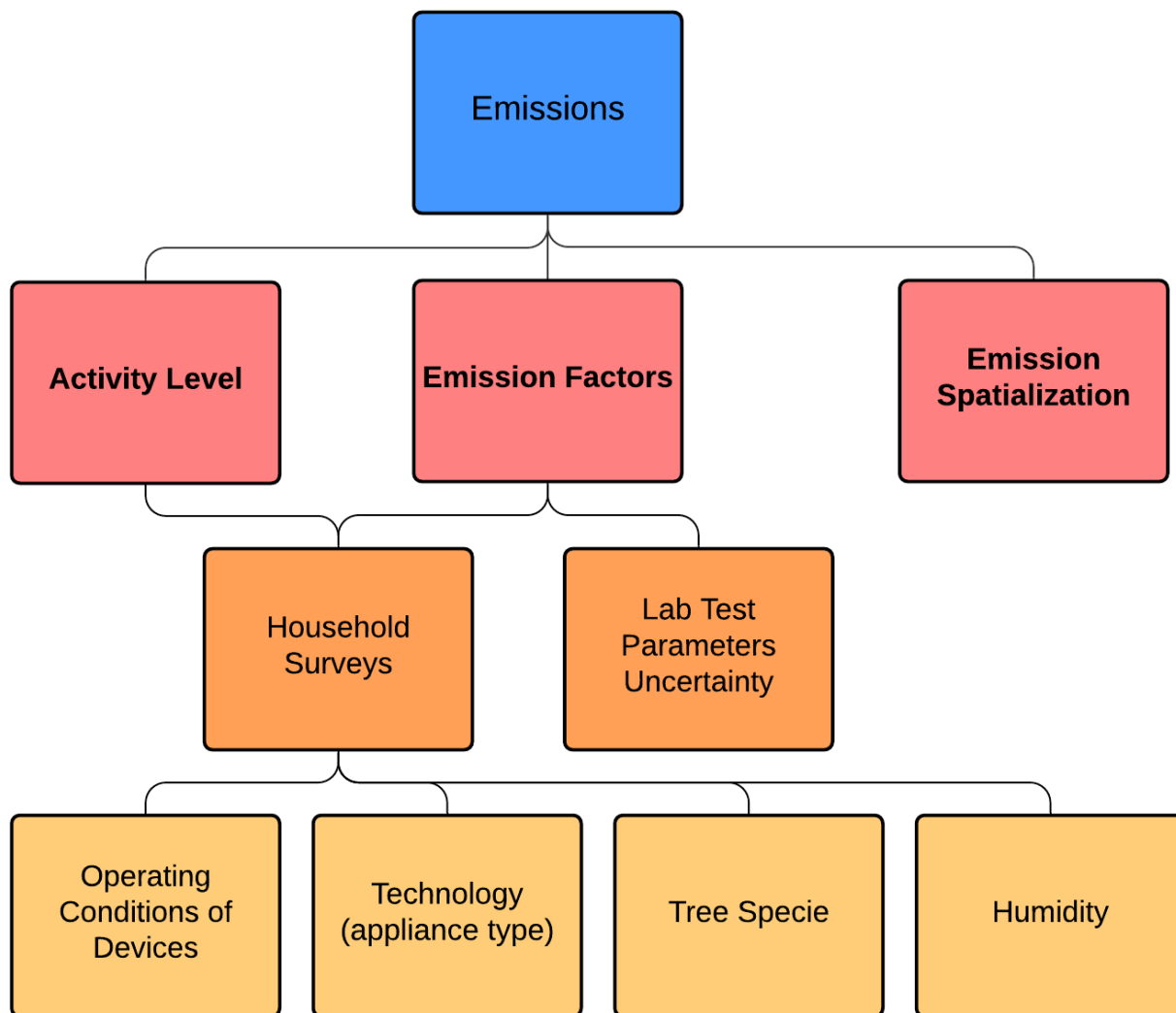


Figure 10 Components that determine the final uncertainty of residential emission estimations

5. Data availability

The emission database described is available at Zenodo (<https://doi.org/10.5281/zenodo.4784286>) (Alamos et al., 2021). The database consists of one .tar file for each year and sector, containing NetCDF (.nc) files for each pollutant. Each NetCDF contains annual total emissions for the pollutant and year indicated per grid cell

6. Conclusions

A high-resolution emission inventory (0.01°x 0.01° degrees, approximately 1 x 1 km) of criteria pollutants, CH₄ and CO₂ from transport, industry, mining, energy, and residential sectors in Chile for the period 2015 to 2017 was developed. This is the first time a national gridded emission inventory with consistent CH₄, CO₂ and criteria pollutants was created for the entire country. Urban and rural emissions from the residential sector are estimated based on firewood consumption data derived from different surveys conducted at the regional and communal level. The transport sector includes vehicles travelling on public urban and interurban routes nationwide. For mining, industry and energy sources, the self-reported emission estimates compiled by the environmental agency RETC are used.

Total national emissions remained mostly stable between 2015 and 2017 with slight increases for PM_{2.5}, CO₂, NH₃ and SO₂, and small decreases for CO, VOC, PM₁₀ and NO_x. Estimated total annual average emissions for the period 2015-2017 for PM₁₀ and PM_{2.5} were 192 and 173 kt/annum respectively, of which more than 90% is emitted by the residential sector. This sector is also responsible for 69% of the 872 kt/annum CO emissions and 78% of the 149 kt/annum VOC emissions. Regarding NO_x, total average annual emissions were estimated at 213 kt/annum and dominated by the transport sector (87 kt/annum) while the industry and energy sector combined contribute an almost equivalent amount with 57 and 36 kt/annum respectively. Additionally, CO₂ emissions (85402 kt/annum) are dominated by the energy sector mostly due to emissions from thermoelectric power plants (33911 kt/annum) followed by the transport and industrial sectors (22770 and 13804 kt/annum, respectively). Mining activity (due to copper smelters) dominates SO₂ emissions in Chile, contributing an average of 201 kt/annum of a total of 294 kt/annum in 2017.

A comparison of the estimated emissions against the EDGARv5 database (Crippa et al., 2019; 2020) shows significant differences for several species. For CO and VOC, EDGAR emissions double those of INEMA's, while NO_x and CO₂ have differences around 90% and 40% respectively. On the other hand, PM_{2.5} emissions estimated in this work are 45% larger than those estimated on EDGAR. These differences are even larger when considering emissions per sector, in particular for the residential and energy sector. Furthermore, a preliminary uncertainty analysis on the residential sector suggests that the main uncertainty source in this work is the diversity in emission factors available, calling for the need to compile emission factors that include local conditions. Uncertainties also exist in activity data as suggested by the difference in CO₂ emissions between INEMA and EDGAR.

We note that what we call "residential sector" in EDGAR corresponds to the IPCC code 1A4 and therefore, in addition to including residential emissions, also includes emissions from commercial, agriculture, forestry, fishing and fish farms. Given that the residential sector in INEMA only considers residential emissions (IPCC code 1A4b) the difference between both inventories (INEMA and EDGAR) are actually larger than illustrated in this study. Nevertheless, future versions of INEMA

495 need to estimate the emissions from all activities in category 1A4 and not only residential emissions. This means including not
only emissions from commercial, agriculture, forestry, fishing and fish farms activity but also residential emissions from fuels
other than biomass.

500 The dominant contribution of the residential sector to various pollutants, especially particulate matter, highlights the
importance of increasing efforts to mitigate this source. Increasing the thermal efficiency of dwellings, improving the firewood
combustion quality by reducing the humidity of burned woods, increasing the efficiency of combustion technologies, and
implementing educational campaigns that ensure the correct use of the devices, are among the potential policies to achieve this
goal. Nevertheless, a consistent and robust estimation of firewood consumption is prerequisite to estimate emissions from the
residential sector. This requires the creation of an official database that characterizes firewood consumption throughout the
territory. Given the timeliness of the consumption data used in the present work, the absence of such an official database would
prevent updating the present inventory in the near future considering there is no activity level data of the residential sector
collected regularly for the whole country. Furthermore, additional studies need to be conducted to develop EFs for residential
emissions of VOC, CO, NMVOC and CH₄ that consider local operating conditions, appliances type, humidity of firewood
and tree species.

510 This is the first version of a national gridded inventory and will need to be further developed and continuously updated. It can
be an important reference and benchmark for comparison in the future to track the impact of mitigation or other policy
measures. Further, future development of this inventory should consider, for instance including speciation of VOCs, the
agriculture sector, off-road vehicle emissions as well as emissions from non-paved roads given that approximately 60% of the
national roads in Chile fall into this category and completing the industry sector by locating in the territory the non-documented
sources. Nevertheless, this inventory provides policy makers, stakeholders and scientists with qualified scientific spatial
explicit emission information to support air quality modelling and the development and further evaluation of policies to
minimize (health and climate relevant) atmospheric pollutant emissions.

520 **Author Contributions**

NA and NH lead and write the original draft with contributions of all authors. NA, NH, MOpazo, SP prepare and curate the
data, MOsses and NP generate and describe the emissions from the transport sector. RR and AS participate in the processing
of the residential activity level data. NA generates the residential emission data while NA and MOpazo prepared the industry,
mining and energy emission estimates. HDvdG and NH designed the algorithm to distribute the residential emissions and
together with RC provide feedback on the methodology used and the global consistency of the inventory. All the authors
review and edit the manuscript.

Competing interests

The authors declare that they have no conflict of interest.

530 Acknowledgements

The authors would like to thank Center for Climate and Resilience Research (FONDAP #1511009) for institutional support and funding. Also to the data providers of EDGARv5 database: EDGAR air pollutant website (https://edgar.jrc.ec.europa.eu/overview.php?v=50_AP) and Crippa et al. (2019) (DOI https://data.europa.eu/doi/10.2904/JRC_DATASET_EDGAR).

535 NH was also partially funded by the Ministry of Science and Technology of Chile through FONDECYT N1181139 and Research and Innovation programs under grant agreement N870301 (AQ-WATCH). NH acknowledges the support of project ANID-PIA-Anillo INACH ACT192057. This study was supported by the MAP-AQ which is an IGAC and WMO sponsored activity. Powered@NLHPC: This research was partially supported by the supercomputing infrastructure of the NLHPC (ECM-02). Mosses acknowledges the support of ANID PIA/APOYO AFB180002

540 References

BCN (Biblioteca del Congreso Nacional). Mapoteca, Mapas vectoriales: https://www.bcn.cl/siit/mapas_vectoriales, last access: 30 June 2020

CDT (Corporación de Desarrollo Tecnológico): Medición del consumo nacional de leña y otros combustibles sólidos derivados de la madera. Ministerio de Energía, Santiago, Chile, available at <http://www.biblioteca.digital.gob.cl/handle/123456789/586>, 2015

Chavarria, C.: Metodología de inspección de caminos no pavimentados a través de un sistema de cámaras de bajo costo, Undergraduate Thesis, Universidad Técnica Federico Santa Maria, Santiago, Chile. Available at <https://repositorio.usm.cl/>, 2019

Crippa, M., Guizzardi, D., Muntean, M., Schaaf, E., Dentener, F., van Aardenne, J. A., Monni, S., Doering, U., Olivier, J. G. J., Pagliari, V., and Janssens-Maenhout, G.: Gridded emissions of air pollutants for the period 1970–2012 within EDGAR v4.3.2, Earth Syst. Sci. Data, 10, 1987–2013, doi:10.5194/essd-10-1987-2018, 2018.

555

- Crippa, M., Solazzo, E., Huang, G., Guizzardi, D., Koffi, E., Muntean, M., Schieberle, C., Friedrich, R. and Janssens-Maenhout, G.: High resolution temporal profiles in the Emissions Database for Global Atmospheric Research. *Sci Data* 7, 121, <https://doi.org/10.1038/s41597-020-0462-2>, 2020
- 560 Crippa, M., Oreggioni, G., Guizzardi, D., Muntean, M., Schaaf, E., Lo Vullo, E., Solazzo, E., Monforti-Ferrario, F., Olivier, J.G.J., Vignati, E.: Fossil CO₂ and GHG emissions of all world countries - 2019 Report, EUR 29849 EN, Publications Office of the European Union, Luxembourg, doi:10.2760/687800, 2019
- Denier van der Gon, H. A. C., Bergström, R., Fountoukis, C., Johansson, C., Pandis, S. N., Simpson, D., and Visschedijk, A. J. H.: Particulate emissions from residential wood combustion in Europe – revised estimates and an evaluation, *Atmos. Chem. Phys.*, 15, 6503-6519, doi:10.5194/acp-15-6503-2015, 2015.
- 565 J. H.: Particulate emissions from residential wood combustion in Europe – revised estimates and an evaluation, *Atmos. Chem. Phys.*, 15, 6503-6519, doi:10.5194/acp-15-6503-2015, 2015.
- Dominutti, P., Keita, S., Bahino, J., Colomb, A., Liousse, C., Yoboué, V., Galy-Lacaux, C., Morris, E., Bouvier, L., Sauvage, S., & Borbon, A.: Anthropogenic VOCs in Abidjan, southern West Africa: From source quantification to atmospheric impacts. *Atmos. Chem. Phys.*, 19(18), 11721–11741. <https://doi.org/10.5194/acp-19-11721-2019>, 2019
- 570 Atmos. Chem. Phys., 19(18), 11721–11741. <https://doi.org/10.5194/acp-19-11721-2019>, 2019
- EMEP/EEA.: EMEP/EEA Air Pollutant Emission Inventory Guidebook 2016 - Technical Guidance to Prepare National Emission Inventories. EEA Report No 21/2016, 2016
- 575 EMEP/EEA.: EMEP/EEA Air Pollutant Emission Inventory Guidebook - 1.A.4 Small Combustion. 189 pp, EMEP/EEA, doi:10.2800/29365, 2019
- EMEP/EEA.: Spreadsheet Appendix 4 to chapter '1.A.3.b.i-iv Road transport', of the EMEP/EEA air pollutant emission inventory guidebook 2019. Updated on 25 September 2020 and linked to COPERT v. 5.4. EMEP/EEA[data set], Available at: [1.A.3.b.i-iv Road Transport Appendix 4 Emission Factors 2019](#), 2020
- 580 Gómez, B.: Modelación y proyección de las emisiones generadas por vehículos terrestres en el periodo 2020-2050 en Chile”, Undergraduate Thesis, Universidad Técnica Federico Santa María, Santiago, Chile. Available at <https://repositorio.usm.cl/>, 2020
- Guerrero, F., Yáñez, K., Vidal, V., & Cereceda-Balic, F.: Effects of wood moisture on emission factors for PM_{2.5}, particle numbers and particulate-phase PAHs from Eucalyptus globulus combustion using a controlled combustion chamber for emissions. *Sci Total Environ*, 648, 737-744, DOI: 10.1016/j.scitotenv.2018.08.057, 2019
- 585 emissions. *Sci Total Environ*, 648, 737-744, DOI: 10.1016/j.scitotenv.2018.08.057, 2019

Huneus N, van der Gon HD, Castesana P, Menares C, Granier C, Granier L, Alonso M, de Fatima Andrade M, Dawidowski L, Gallardo L, Gomez D.: Evaluation of anthropogenic air pollutant emission inventories for South America at national and city scale. Atmos Environ., 117606, <https://doi.org/10.1016/j.atmosenv.2020.117606>, 2020a

590 Huneus, N., Urquiza A., Gayó, E., Osses, M., Arriagada, R., Valdés, M., Álamos, N., Amigo, C., Arrieta, D., Basoa, K., Billi, M., Blanco, G., Boisier, J.P., Calvo, R., Casielles, I., Castro, M., Chahuán, J., Christie, D., Cordero, L., Correa, V., Cortés, J., Fleming, Z., Gajardo, N., Gallardo, L., Gómez, L., Insunza, X., Iriarte, P., Labraña, J., Lambert, F., Muñoz, A., Opazo, M., O’Ryan, R., Osses, A., Plass, M., Rivas, M., Salinas, S., Santander, S., Seguel, R., Smith, P., Tolvet, S.: El aire que respiramos: pasado, presente y futuro – Contaminación atmosférica por MP2,5 en el centro y sur de Chile. Centro de Ciencia del Clima y
595 la Resiliencia (CR)2, (ANID/FONDAP/15110009), 102 pp. Available on www.cr2.cl/contaminacion/, 2020b

INFOR (Instituto Forestal): Base de datos no publicada. Sistema nacional de monitoreo del consumo de leña y otros biocombustibles sólidos, Instituto Forestal [data set], Valdivia, Chile, 2019

INE (Instituto Nacional de Estadísticas): Censo 2017, INE [data set], Chile, available at <http://www.censo2017.cl/microdatos/>, last access: 20 October 2020, 2017a

600

INE (Instituto Nacional de Estadísticas): Official Statistics for transport webpage, INE [data set], Available at: <https://www.ine.cl/estadisticas/economia/transporte-y-comunicaciones/permiso-de-circulacion>, last access: 20 October 2020, 2017b

605

INE (Instituto Nacional de Estadísticas): Estimaciones y proyecciones de la población en Chile 2002-2035: totales regionales, población urbana y rural, INE [data set], Available at: <https://www.ine.cl/estadisticas/sociales/demografia-y-vitales/proyecciones-de-poblacion#:~:text=Las%20proyecciones%20de%20poblaci%C3%B3n%20proporcionan,demogr%C3%A1ficos%20fecundidad%2C%20mortalidad%20y%20migraci%C3%B3n>, last access: 20 October 2020, 2019

610

IPCC: Chapter 4: Methodological Choice and identification of key categories, in: 2006 IPCC Guidelines for National Greenhouse Gas Inventories, edited by: Eggleston, H. S., Buendia, L., Miwa, K., Ngara, T., Tanabe, K., Volume 1: General Guidance and Reporting, The National Greenhouse Gas Inventories Program, Hayama, Kanagawa, Japan, 2006

615

IPCC: Chapter 2: Stationary combustion, in: 2006 IPCC Guidelines for National Greenhouse Gas Inventories, edited by: Gómez, D.R., Watterson, J.D., Americano, B.B., HA, C., Marland, G., Matsika, E., Namayanga, L.N., Osman-Elasha, B.,

Kalenga, J.D., Tranton, K. (IEA., Volume 2: Energy, The National Greenhouse Gas Inventories Program, Hayama, Kanagawa, Japan, 2006

620 Jimenez, J., Farias, O., Quiroz, R., & Yañez, J.: Emission factors of particulate matter, polycyclic aromatic hydrocarbons, and levoglucosan from wood combustion in south-central Chile. *Japca J Air Waste Ma*, 67(7), 806–813. <https://doi.org/10.1080/10962247.2017.1295114>, 2017

Klimont, Z., Kupiainen, K., Heyes, C., Purohit, P., Cofala, J., Rafaj, P., Borken-Kleefeld, J., Schöpp, W. Global anthropogenic emissions of particulate matter including black carbon. *Atmos. Chem. Phys.* 17, 8681–8723. <https://doi.org/10.5194/acp-17-8681-2017>, 2017

625 Longo, K.M., Freitas, S.R., Pirre, M., Marécal, V., Rodrigues, L.F., Panetta, J., et al. The Chemistry CATT-BRAMS model (CCATT-BRAMS 4.5): a regional atmospheric model system for integrated air quality and weather forecasting and research. *Geosci. Model Dev. (GMD)* 6 (5), 1389–1405. <https://doi.org/10.5194/gmd-6-1389-2013>, 2013

630 MAPS Chile: Escenarios referenciales para la mitigación del cambio climático en Chile. Resultados de la Fase 1. Ministerio del Medio Ambiente, Santiago, Chile, available at: <https://mma.gob.cl/cambio-climatico/proyecto-maps-chile/>, 2013.

Melamed, M.L., Schmale, J., von Schneidmesser, E.: Sustainable policy—key considerations for air quality and climate change. *Curr. Opin. Environ. Sustain.* 23, 85–91. <https://doi.org/10.1016/j.cosust.2016.12.003>, 2016

635 MDS (Ministerio de Desarrollo Social): Encuesta CASEN 2015, Observatorio Social [data set] available at <http://observatorio.ministeriodesarrollosocial.gob.cl/encuesta-casen-2015>, 2015

MDS (Ministerio de Desarrollo Social): Encuesta CASEN 2017, Observatorio Social [data set] available at <http://observatorio.ministeriodesarrollosocial.gob.cl/encuesta-casen-2017>, 2017

MMA (Ministerio del Medio Ambiente): Segundo Informe del Inventario Nacional de Gases de Efecto Invernadero de Chile serie 1990-2013, Ministerio del Medio Ambiente, Santiago, Chile, 517 pp, 2017

640 MMA (Ministerio del Medio Ambiente): Quinto Reporte del Estado del Medio Ambiente, Santiago, Chile, available at <https://sinia.mma.gob.cl/wp-content/uploads/2019/12/REMA-2019-comprimido.pdf>, 2019a

MMA (Ministerio del Medio Ambiente): *Informe Consolidado de Emisiones y Transferencias de Contaminantes 2005-2017*, Santiago, Chile, available at: <https://retc.mma.gob.cl/publicaciones/>, 2019b

645 MMA (Ministerio del Medio Ambiente): Inventario Nacional de GEI 1990-2018. Sistema Nacional de Inventarios de Gases de Efecto Invernadero [data set] available at <https://snichile.mma.gob.cl/documentos/>, 2020

- Muñoz, E., Navia, R., Zaror, C., & Alfaro, M. . Ammonia emissions from livestock production in Chile: an inventory and uncertainty analysis. *J Soil Sci Plant Nut* 16(1), 60-75.<http://dx.doi.org/10.4067/S0718-95162016005000005>, 2015
- Osses, M., Rojas, N., Ibarra, C., Valdevenito, V., Laengle, I., Pantoja, N., Osses, D., Basoa, K., Tolvet, S., Hunneus, N., Gallardo, L.: High-definition spatial distribution maps of on-road transport exhaust emissions in Chile, 1990 - 2020. *Earth Syst Sci Data* ESSD2021-208, Special Issue Surface emissions for atmospheric chemistry and air quality modelling.,2022
- OSM, Open Street Maps, 2020. Webpage for Chile. Available at: <https://wiki.openstreetmap.org/wiki/ES:Chile>, last access: 30 June 2020.
- Puliafito, S. E., Allende, D. G., Castesana, P. S., & Ruggeri, M. F.: High-resolution atmospheric emission inventory of the argentine energy sector. Comparison with EDGAR global emission database. *Heliyon*, 3(12), e00489. <https://doi.org/10.1016/j.heliyon.2017.e00489>, 2017
- Puliafito, S. E., Bolaño-Ortiz, T., Berná, L., & Pascual Flores, R.: High resolution inventory of atmospheric emissions from livestock production, agriculture, and biomass burning sectors of Argentina. *Atmos Environ*, 223, 117248. <https://doi.org/10.1016/j.atmosenv.2019.117248>, 2020
- RedPE: Caracterización del mercado de la leña y sus barreras para la transición energética. Santiago, Chile: Red de Pobreza Energética. available at: www.pobrezaenergetica.cl, 2020
- Reyes, R: Consumo de combustibles derivados de la madera y transición energética en la Región de Los Ríos, periodo 1991-2014. En: Informes Técnicos BES, Bosques - Energía - Sociedad, Año 3. N° 6. Enero 2017. Observatorio de los Combustibles Derivados de la Madera OCDM. Instituto Forestal, Chile. p. 20, available at: <https://observatoriobes.infor.cl/>, 2017
- Reyes, R., Sagardía, R., Schueftan A.: Consumo de combustibles derivados de la madera y transición energética en la Región del Maule. En: Informes técnicos BES, Bosques - Energía - Sociedad, Año 4. N° 8. Enero 2018. Observatorio de los Combustibles Derivados de la Madera OCDM. Instituto Forestal, Chile. p. 24, available at: <https://observatoriobes.infor.cl/>, 2018
- Reyes, R., Sanhueza, R., Schueftan, A.: Consumo de combustibles derivados de la madera en la región de O'Higgins: El desconocido rol de frutales y viñas en el abastecimiento regional de energía. En: Informes técnicos BES, Bosques - Energía - Sociedad, Año 6. N° 11. Enero 2020. Observatorio de los Combustibles Derivados de la Madera OCDM. Instituto Forestal, Chile. 17 pp, available at: <https://observatoriobes.infor.cl/>, 2020

- Romero-Lankao, P., Qin, H., & Borbor-Cordova, M.: Exploration of health risks related to air pollution and temperature in three Latin American cities. *Soc Sci Med*, 83, 110–118. <https://doi.org/10.1016/j.socscimed.2013.01.009>, 2013
- Rondanelli, R., Molina, A., Falvey, M. The atacama surface solar maximum. *Bull. Am. Meteorol. Soc.* 96 (3), 405–418. <https://doi.org/10.1175/BAMS-D-13-00175.1>, 2015
- Rosário, N.E., Longo, K.M., Freitas, S.R., Yamasoe, M.A., Fonseca, R.M., Modeling the South American regional smoke plume: aerosol optical depth variability and surface shortwave flux perturbation. *Atmos. Chem. Phys.* 13 (6), 2923–2938. <https://doi.org/10.5194/acp-13-2923-2013>, 2013
- RTI International.: Emissions Factor Uncertainty Assessment, prepared for Office of Air Quality Planning and Standards, US Environmental Protection Agency, US, 108pp. available at http://www.epa.gov/ttn/chief/efpac/documents/ef_uncertainty_assess_draft0207s.pdf, 2007
- Saide, P.E., Mena-Carrasco, M., Tolvett, S., Hernandez, P., Carmichael, G.R.: Air quality forecasting for winter-time PM_{2.5} episodes occurring in multiple cities in central and southern Chile. *J. Geophys. Res.: Atmosphere* 121 (1), 558–575. <https://doi.org/10.1002/2015JD023949>, 2016
- Sarricolea, P., Herrera-Ossandon, M., & Meseguer-Ruiz, Ó.: Climatic regionalisation of continental Chile. *Journal of Maps*, 13(2), 66–73. <https://doi.org/10.1080/17445647.2016.1259592>, 2017
- Scarpelli, T., Jacob, D., Maasakkers, J., Sulprizio, M., Sheng, J.-X., Rose, K., ... Janssens-Maenhout, G.: A global gridded (0.1° × 0.1°) inventory of methane emissions from oil, gas, and coal exploitation based on national reports to the United Nations Framework Convention on Climate Change. *Earth Syst Sci Data, Discussions*, 1–21. <https://doi.org/10.5194/essd-2019-127>, 2019
- Schueftan, A., Sommerhoff, J., & González, A. D.: Firewood demand and energy policy in south-central Chile. *Energy for Sustainable Development*, 33, 26 - 35. <https://doi.org/10.1016/j.esd.2016.04.004>, 2016
- SCSS (Sociedad Consultora Sistemas Sustentables): *Análisis y Desarrollo de una Metodología de Estimación de Consumos Energéticos y Emisiones para el Transporte*. Report commissioned by Secretaria de Transporte, SECTRA. Available at: <http://www.sectra.gob.cl/biblioteca/detalle1.asp?mfn=2800>, 2010
- SCSS (Sociedad Consultora Sistemas Sustentables):. *Actualización metodológica del Modelo de Consumo Energético y Emisiones para el Sector Transporte (STEP)*. Report commissioned by Secretaria de Transporte, SECTRA. Available at: <http://www.sectra.gob.cl/biblioteca/detalle1.asp?mfn=3236>, 2014

- 710 SEC (Superintendencia de Electricidad y Combustibles): *Anuario 2017*, Santiago, Chile, available at: <https://www.sec.cl/area-sec/anuario-sec/>, 2017
- SICAM: Actualización del inventario de emisiones atmosféricas de las comunas de Temuco y Padre Las Casas, Año Base 2013. Seremi del Medio Ambiente región de la Araucanía, Temuco, Chile, available at: <https://catalogador.mma.gob.cl/sinia/>,
715 2014
- Thunis, P., Degraeuwe, B., Cuvelier, K., Guevara, M., Tarrason, L., & Clappier, A.: A novel approach to screen and compare emission inventories. *Air Qual Atmos Hlth*, 9(4), 325–333. <https://doi.org/10.1007/s11869-016-0402-7>, 2016
- UACH (Universidad Austral de Chile): Evaluación del mercado de biomasa y su potencial: Estimación de superficie disponible para el establecimiento de plantaciones dendroenergéticas, Ministerio de Energía y Corporación Nacional Forestal, Santiago, Chile. doi:[10.13140/RG.2.1.2247.0561](https://doi.org/10.13140/RG.2.1.2247.0561), 2013
- 720 UNEP/CCAC. Integrated Assessment of Short-Lived Climate Pollutants in Latin America and the Caribbean: Improving Air Quality while Contributing to Climate Change Mitigation. United Nations Environment Programme (UNEP) and Climate and Clean Air Coalition (CCAC), Paris, France. available at <http://ccacoalition.org/en/resources/integrated-assessment-short-lived-climate-pollutants-latin-america-and-caribbean>, 2018.
- 725 USACH: Informe final: Actualización y sistematización del inventario de emisiones de contaminantes atmosféricos en la región metropolitana, Universidad de Santiago de Chile, Santiago, Chile, available at: <http://ambiente.usach.cl/estudios/Inf-Inventarios-final1.pdf>, 2014
- US EPA: US EPA AP-42, chapter 1.9, Residential Fireplaces, , US Environmental Protection Agency, US, available at:
730 <https://www.epa.gov/air-emissions-factors-and-quantification/ap-42-fifth-edition-volume-i-chapter-1-external-0>, 1996a
- US EPA: US EPA AP-42, chapter 1.10, Residential Wood Stoves,, US Environmental Protection Agency, US, available at: <https://www.epa.gov/air-emissions-factors-and-quantification/ap-42-fifth-edition-volume-i-chapter-1-external-0>, 1996b.
- WHO. Health risk assessment of air pollution – general principles, Copenhagen: WHO Regional Office for Europe, available at: [https://www.euro.who.int/en/publications/abstracts/health-risk-assessment-of-air-pollution.-general-principles-2016#:~:text=General%20principles%20\(2016\),-AddThis%20Sharing%20Buttons&text=An%20air%20pollution%20health%20risk,for%20informing%20public%20policy%20decisions](https://www.euro.who.int/en/publications/abstracts/health-risk-assessment-of-air-pollution.-general-principles-2016#:~:text=General%20principles%20(2016),-AddThis%20Sharing%20Buttons&text=An%20air%20pollution%20health%20risk,for%20informing%20public%20policy%20decisions), 2016
- 735

Zhao, Y., Nielsen, C. P., Lei, Y., McElroy, M. B., and Hao, J.: Quantifying the uncertainties of a bottom-up emission inventory of anthropogenic atmospheric pollutants in China, *Atmos. Chem. Phys.*, 11, 2295–2308, <https://doi.org/10.5194/acp-11-2295-2011>, 2011.

Appendix A

Table A1 shows emission factors (g/kg) for the residential sector by technology (appliance type), humidity and operation device conditions for PM₁₀, PM_{2.5}, NO_x, and SO₂. For CO and NMVOC's (Non-Methane VOCs) we use EFs for dry firewood from EMEP/EEA(2019;) while for CH₄ the EFs estimated on the tier 1 approach from IPCC(2006) are used.

Table A2 shows the aggregated emission factors (g/kg) at a regional level for each pollutant used in the residential sector (eq A1), considering the distribution of technologies and humidity conditions of fuelwood estimated in CDT (2015) for each region, and 30% of devices bad operation, according to RETC (MMA, 2019). For CO₂ and NH₃ are used EFs estimated from MMA (2019b)

$$EF_{ij} = \sum_z \sum_{x,j} \sum_{y,j} \left[\left[\left[EF_{i,x,y,z} * T_{y,j} \right] * H_{x,j} \right] * OD_z \right] \tag{A1}$$

Where:

EF_{ijz} is the emission factor for pollutant i on region j

$EF_{i,x,y,z}$: Is lab emission factor estimated for pollutant i , humidity conditions of fuelwood x , technology for combustion y and quality operation device z

$H_{x,j}$: is the proportion of humidity conditions x of fuelwood on region j

$T_{y,j}$: is the proportion of technology conditions for fuelwood combustion y on region j

OD_z : is the proportion of bad operation device condition z considered at a national level

Technology	Pollutant	Dry	Wet	Bad operation
Cook stoves	CH ₄	4.5	4.5	4.5
	NMVOC	9	9	9
	PM ₁₀	7.5	13.9	33.8
	PM _{2.5}	7	12.9	31.5
	CO	60	60	60
	NO _x	2.1	2.7	2.7
	SO ₂	0.2	0.2	0.2
Conventional stove	CH ₄	4.5	4.5	4.5
	NMVOC	9	9	9
	PM ₁₀	6.2	11.8	45.8

Catalytic stove	PM _{2.5}	5.8	11.0	42.6
	CO	60	60	60
	NO _x	2	3	3
	SO ₂	0.1	0.2	0.2
	CH ₄	4.5	4.5	4.5
	NMVOC	5.7	5.7	5.7
	PM ₁₀	5.2	11	29.5
Open fireplace / Others	PM _{2.5}	4.8	10.2	27.5
	CO	60	60	60
	NO _x	1.9	2	2
	SO ₂	0.1	0.1	0.1
	CH ₄	4.5	4.5	—
	NMVOC	9.0	9.0	—
	PM ₁₀	12.7	28.5	—
	PM _{2.5}	11.8	26.5	—
	CO	60	60	—
	NO _x	7.7	3.1	—
	SO ₂	0.2	0.2	—

Table A1. Emission factors (g/kg) for the residential sector by technology (appliance type), humidity and operation device conditions

Region	PM _{2.5}	PM ₁₀	SO ₂	CO	NO _x	NMVOC	CH ₄	CO ₂	NH ₃
North Zone	14.45	15.54	0.15	60	3.78	7,54	4.5	1366.83	0.87
Valparaíso	14.05	15.03	0.13	60	3.21	6,96	4.5	1366.83	0.87
O'higgins	15.60	16.76	0.16	60	3.74	7,77	4.5	1366.83	0.87
Maule	13.80	14.82	0.14	60	3.13	7,11	4.5	1366.83	0.87
Bio-Bio	15.07	16.19	0.15	60	3.10	7,28	4.5	1366.83	0.87
Araucania	17.80	19.12	0.14	60	2.44	7,08	4.5	1366.83	0.87
Los Ríos	15.86	17.04	0.15	60	2.50	7,44	4.5	1366.83	0.87
Los Lagos	15.68	16.84	0.14	60	2.39	7,31	4.5	1366.83	0.87
Aysén	15.74	16.91	0.15	60	2.38	7,77	4.5	1366.83	0.87
Magallanes	17.32	18.60	0.15	60	2.77	7,38	4.5	1366.83	0.87
Metropolitana	16.79	18.04	0.14	60	2.76	6,96	4.5	1366.83	0.87
Mean	15.65	16.81	0.15	60	2.93	7,33	4.5	1366.83	0.87

Table A2 aggregated emission factors (g/kg) at a regional level for each pollutant used in the residential sector.

Appendix B

765 Table B1 displays the total emissions (kt/annum) by year and sector for each pollutant of INEMA with information for more than one sector (represented in figure 4).

Specie	Year	Energy	Industry	Minining	Residential	Transport	Total
CH ₄	2015	0.0	0.0	0.0	45.6	1.3	46,8
	2016	0,0	0,0	0,0	45.7	1.1	46.8
	2017	0.0	0.0	0.0	45.7	1.1	46.8
CO	2015	10.3	52.7	64.6	601.7	150.7	880.0
	2016	18.4	59.9	52.9	604.2	137.6	873.1
	2017	16.9	59.0	56.0	607.2	126.1	865.2
CO ₂	2015	32922.5	11586.6	919.2	13728.0	21524.2	80680.6
	2016	36390.1	10550.9	863.4	13787.4	22514.5	84106.4
	2017	32660.0	19275.8	1185.4	13855.6	24100.9	91077.6
NH ₃	2015	8.8	3.2	0.0	8.7	0.0	20.8
	2016	9.8	4.9	0.0	8.7	0.0	23.4
	2017	10.6	4.3	0.1	8.8	0.0	23.8
NMVOC	2015	0.0	0.0	0.0	73.9	13.4	87.3
	2016	0.0	0.0	0.0	74.0	12.0	86.0
	2017	0.0	0.0	0.0	74.1	10.8	84.9
NO _x	2015	60.0	37.6	5.7	27.1	84.5	214.8
	2016	59.5	34.2	5.2	27.2	85.1	211.2
	2017	51.8	37.8	3.9	27.4	92.0	213.0
PM ₁₀	2015	4.5	14.9	1.9	171.3	2.4	195.0
	2016	5.4	6.0	5.8	172.0	2.4	191.5
	2017	3.8	4.8	4.1	172.8	2.4	188.0
PM _{2.5}	2015	4.0	6.7	0.3	159.4	2.2	172.6
	2016	4.7	3.8	0.3	160.1	2.1	171.1
	2017	3.7	3.9	2.0	160.9	2.2	172.7
SO ₂	2015	75.1	60.0	12.1	1.5	0.0	148.6
	2016	40.8	127.7	169.7	1.5	0.0	339.7
	2017	27.1	64.9	200.9	1.5	0.0	294.3
VOC	2015	16.3	2.7	0.4	118.3	14.6	152.2
	2016	18.1	6.3	0.3	118.8	13.1	156.6
	2017	1.8	2.0	0.2	119.3	11.8	135.3

Table B1 total emission (kt/annum) by year and sector for each pollutant represented in figure 4