

# Ground-based vertical profile observations of atmospheric composition on the Tibetan Plateau (2017-2019)

Chengzhi Xing<sup>1</sup>, Cheng Liu<sup>2,1,3,5,6,\*</sup>, Hongyu Wu<sup>1</sup>, Jinan Lin<sup>1</sup>, Fan Wang<sup>4</sup>, Shuntian Wang<sup>1</sup>, Meng Gao<sup>4,7,\*</sup>

5 <sup>1</sup>Key Lab of Environmental Optics & Technology, Anhui Institute of Optics and Fine Mechanics, Hefei Institutes of Physical Science, Chinese Academy of Sciences, Hefei, 230031, China

<sup>2</sup>Department of Precision Machinery and Precision Instrumentation, University of Science and Technology of China, Hefei, 230026, China

10 <sup>3</sup>Center for Excellence in Regional Atmospheric Environment, Institute of Urban Environment, Chinese Academy of Sciences, Xiamen, 361021, China

<sup>4</sup>Department of Geography, State Key Laboratory of Environmental and Biological Analysis, Hong Kong Baptist University, Hong Kong SAR, China

<sup>5</sup>Key Laboratory of Precision Scientific Instrumentation of Anhui Higher Education Institutes, University of Science and Technology of China, Hefei, 230026, China

15 <sup>6</sup>Anhui Province Key Laboratory of Polar Environment and Global Change, University of Science and Technology of China, Hefei, 230026, China

<sup>7</sup>Hong Kong Branch of Southern Marine Science and Engineering Guangdong Laboratory (Guangzhou), Hong Kong, China

*Correspondence to:* Cheng Liu (chliu81@ustc.edu.cn) and Meng Gao (mmgao2@hkbu.edu.hk)

20

## **Abstract.**

The Tibet Plateau (TP) plays an essential role in modulating regional and global climate, and its influence on climate is affected also by human-related processes, including changes in atmospheric composition. However, observations of atmospheric composition, especially vertical profile observations, remain sparse and rare on the TP, due to extremely high altitude, topographical heterogeneity and grinding environment. Accordingly, the forcing and feedback of atmospheric composition from rapidly changing surrounding regions to regional environmental and climate change in the TP remains poorly understood. This paper introduces a high time-resolution (~15 min) vertical profile observational dataset of atmospheric composition (aerosol, NO<sub>2</sub>, HCHO and HONO) on the TP for more than one year (2017-2019) using a passive remote sensing technique. The diurnal pattern, vertical distribution and seasonal variations of these pollutants are documented here in detail. The sharing of this dataset would benefit scientific community in exploring source-receptor relationships, forcing and feedback of atmospheric composition on the TP to regional and global climate. It also provides potentials to improve satellite retrievals, and to facilitate the development and improvement of models in cold regions. The dataset is freely available at Zenodo (<https://doi.org/10.5281/zenodo.5336460>; [Xing et al., 2021](#)).

25  
30

## 1 Introduction

35 The Tibetan Plateau (TP) and the surrounding Hindu Kush Himalayan mountains are referred to as the world's "Third Pole" due to their vast wealth of areas and glaciers. It is the highest and largest plateau in the world with a ~4000 m averaged elevation. Headwaters of six major rivers in Asia start on the TP, (Kang et al., 2010; Cheng and Jin, 2013), and it thus acts the role of "Water Tower of Asia", determining the survival and development of more than 2 billion people (Xu et al., 2008; Immerzeel et al., 2010; Gao et al., 2019; Kang et al., 2019). A number of studies have suggested that the TP is an important

40 driving force to thermally and dynamically affect global and regional climate (Yanai et al., 1992; Liu et al., 2007; Boos et al., 2010). In contrast to the surrounding cold middle troposphere, the TP receives strong solar radiation at the surface owing to its topographic characteristics, leading to its critical role in the evolution and variability of South and East Asian monsoons (Wu et al., 2007, 2012). It also acts as a natural barrier that inhibits northward moisture transport (Dong et al., 2017) and splits subtropical westerlies (Bolin et al., 1950). The TP is usually regarded as one of the most sensitive areas responding to

45 global environmental and climate change (Peng et al., 2012), and can amplify the changes to global scale (Kang et al., 2010). Recent decades have witnessed increased warming, together with retreat of glaciers and early melting of snow, in the TP (He et al., 2003; Lau et al., 2010; Xu et al., 2016), leading to serious side issues, including soil erosion, floods, etc. (Shrestha et al., 1999). As the warming rate of the TP is much faster than the greenhouse warming rate, it was argued that other factors besides greenhouse warming might have resulted in accelerated warming over the TP (Kang et al., 2000; Ramanathan et al.,

50 2007). The TP was usually considered as a background region of atmospheric composition due to low population density and less intense human activities. However, studies in the past decade suggested that transport of pollutants from south Asia, east Asia and southeast Asia cannot be ignored (Cong et al., 2009; Yao et al., 2012; Zhang et al., 2015; Kang et al., 2019). Ample evidence has demonstrated the significance of atmospheric composition in influencing the retreat of glaciers on the TP (Xu et al., 2009), while large uncertainties remain in understanding the sources, mainly owing to lack of long-term observations

55 that obstructed by complex topography and harsh environment (Cong et al., 2015; Barnett et al., 2005; Pu et al., 2007; Bolch et al., 2012; Kang et al., 2016).

To fill these gaps, a series of field campaigns were carried out in recent years to unveil the features of weather and atmospheric composition over the TP, especially after the "second comprehensive scientific expedition to the Qinghai-Tibet Plateau" plan (Wang et al., 2021; Che et al., 2021; Liu et al., 2021). The Institute of Tibetan Plateau Research, Chinese

60 Academy of Sciences (ITP, CAS) established six long-term stations to measure both meteorological and micrometeorological variables over the TP (Ma et al., 2020). China National Environmental Monitoring Center (CNEMC) has also established an atmospheric composition monitoring network (Gao et al., 2020b; Liang et al., 2017) on the TP to continuously monitor the ground-level concentrations of PM<sub>2.5</sub>, PM<sub>10</sub>, NO<sub>2</sub>, SO<sub>2</sub>, O<sub>3</sub> and CO since 2013, covering Lhasa, Shigatse, Qamdo, Nyingchi, Shannan, Nagqu and Ngari. Satellite retrievals (i.e. OMI, MODIS and CALIPSO) have also

65 been widely applied to elucidate the spatial and temporal variation of atmospheric processes over the TP (Zhu et al., 2019; Li et al., 2020). Although the vertical profiles of aerosols were revealed with CALIPSO (Huang et al., 2007), the relatively long

revisiting (~ 16 days) hinders understanding of processes at smaller scales. Accordingly, the current atmospheric composition monitoring platforms and freely available datasets are inadequate to fully understand the sources and impacts of atmospheric composition on the TP, as the formation, aging and transport processes also occurs above the ground (Hindman et al., 2002; Duo et al., 2018; Huang et al., 2007). If we only use satellite column or ground-level observations to infer transport fluxes of atmospheric trace gases, the relative significance of local and transport contributions could be overvalued/downplayed (Hu et al., 2020; Liu et al., 2021a). In addition, the low air density, land surface heterogeneity, relatively cold temperature and strong solar radiation on the TP cause relatively higher planetary boundary layer (PBL) compared to its surrounding lowlands (Yang et al., 2003; Seidel et al., 2010). It promotes the exchange of atmosphere between PBL and stratosphere, which has important impacts on atmospheric chemistry (Skerlak et al., 2014). The lack of sufficient vertical profile observation data limits the understanding of atmospheric composition on the TP and its impact on the global climate.

Limited field experiments were conducted using balloon and lidar on the TP in recent years (Wu et al., 2016; Dai et al., 2018; Fang et al., 2019; Zhang et al., 2020). The instruments used are costly and very limited atmospheric composition species (mostly O<sub>3</sub>) can be measured. On the other hand, these observations are not open for sharing or very limited available upon request (i.e. only data during specified periods are provided). The coarse temporal resolution of these data is not sufficient for evaluations of chemical transport modeling and climate modeling (Gao et al., 2020a). Multi-axis differential optical absorption spectroscopy (MAX-DOAS) uses scattered sunlight as the signal source, enabling it to achieve low-cost and continuous measurement of vertical profiles of atmospheric composition.

Here we describe and provide access to a high time-resolution dataset of vertical profiles of atmospheric composition over the TP for more than one year. This database will play a critical role in improving satellite retrievals and numerical modeling of atmospheric composition over the TP. The uncertainties of air mass factor (AMF) caused by the high surface albedo and the absence of a priori profile on the TP could lead to large uncertainties in satellite retrievals of trace gases. Previously, we have demonstrated that using AMF calculated with MAX-DOAS measured NO<sub>2</sub> vertical profiles could remarkably improve the accuracy of retrievals of NO<sub>2</sub> column densities (VCD) (Liu et al., 2016; Xing et al., 2017). On top of that, due to complex terrain and weather conditions, uncertainties in emission inventories, and imperfect model parameterization, chemical transport models are difficult to capture the vertical structures of atmospheric composition on the TP (Yang et al., 2018b), the uncertainties of which could be constrained through assimilation of observations from this dataset. Sect. 2 describes the observation site, MAX-DOAS instrument and retrieval algorithms. The vertical profiles of aerosol, NO<sub>2</sub>, HCHO and HONO, and their diurnal and monthly variations are introduced in Sect. 3. Sect. 4 and Sect. 5 present the availability of this dataset (Xing et al., 2021) and a summary, respectively.

## 2 Experimental setup

### 100 2.1 Description of the monitoring site

The MAX-DOAS instrument was setup at the Qomolangma Atmospheric and Environmental Observation and Research Station, CAS (QOMS) (4276 m, 28.21°N, 86.56°E), which is located at the bottom of the lower Rongbuk valley (Fig. 1). The geomorphic of this station is mainly alpine covered by sandy soil, and sparse vegetation exists. During the summer monsoon season, abundant moisture is prevailed to the CAS (QOMS) station from the Indian Ocean, increasing humidity and precipitation there. The maximum humidity was observed from July to August, and lower values usually appeared from December to February (Zhang et al., 2018; Chen et al., 2018). To the south of the measurement site is the South Asian subcontinent, covering Nepal, India and Bangladesh. The South Asian subcontinent is currently one of the most polluted regions in the world. Averaged spatial distributions of satellite monitored aerosol optical depth (AOD), NO<sub>2</sub> and HCHO from December 2017 to March 2019 are displayed in Fig. S1. Elevated AOD, NO<sub>2</sub> and HCHO values are found in the southern foothills of the Himalayas compared to those in the Tibetan plateau. Local circulations, such as valley winds, closely connect the near-surface atmosphere with free atmosphere on the north side of Mt. Everest, and South Asia summer monsoon could drive pollutants from the South Asian subcontinent to influence atmospheric composition over the TP. Accordingly, the CAS(QOMS) site acts as a terrific location to monitor the vertical distribution of atmospheric composition, and to explore the sources and impacts of these pollutants.

### 115 2.2 Description of the MAX-DOAS instrument

The MAX-DOAS instrument at the CAS (QOMS) station was operated from December 2017 to March 2019. It consisted of two key parts, namely the telescope scanner unit and the spectrometer unit (Fig. 2). Temperature stabilization of both spectrometers, USB communication and control-electronics for additional sensors to record temperature, pressure, inclination, and the telescope elevation stepper-motor were also incorporated.

120 The telescope unit contained motor, electronics, MEMS inclination sensor and optical components. A quartz-glass tube was used to protect the rotating prism, which reflected the light through a lens onto the fibre at the end of an adjustable tube. This unit was controlled by a stepping motor to collect the scattered sunlight at different elevation angles, which was then transmitted via a glass fiber bundle to the spectrometer unit. The stepping motor had a precision of 0.01°, and the field of view (FOV) of telescope was less than 0.3°. Telescope scanner unit covered elevation angles from -10° to 180°, with angle accuracy < 0.1°. Moreover, an azimuth motor covering 0°-180° was installed in the telescope scanner unit to observe atmospheric composition at different azimuth angles. In this study, we set the elevation angle sequence to 1, 2, 3, 4, 5, 6, 8, 10, 15, 30 and 90°, and exposure time of each individual spectrum to 1 min. The telescope unit was pointed to an azimuth angle of 53°.

The spectrometer unit included two AvaSpec-ULS2048L spectrometers (UV: 300-460 nm, visible: 460-630 nm) with a 0.6  
 130 nm spectral resolution. A cooling unit was used to control the spectrometer temperature. Typical instrumental stray light was  
 < 0.05%, root mean square (RMS) of  $1 \times 10^{-4}$  (visible) and  $2 \times 10^{-4}$  (UV) for  $\approx 1000$  scans around noon. A Peltier element  
 was mounted on the spectrometer housing to cool and heat the spectrometer, and the temperature was stabilized at  $20^\circ\text{C}$   
 with low fluctuations of  $< 0.05^\circ\text{C}$ . We also equipped a charge-coupled device camera (Sony ILX511 with 2048 pixels) to  
 the spectrometer to convert analog signal to digital signal. Moreover, the dark current and electric offset were recorded at  
 135 night to correct the observed spectra. To avoid the strong absorption of stratosphere, this study analyzed only spectra  
 collected when solar zenith angle (SZA) was less than  $75^\circ$ .

### 2.3 Spectral retrieval

This study used the QDOAS software developed by Belgian Institute for Space Aeronomy (BIRA-IASB) ([http://uv-  
 vis.aeronomie.be/software/QDOAS/](http://uv-vis.aeronomie.be/software/QDOAS/), last access: 26 April 2021) to retrieve differential slant column densities (DSCDs) of  
 140 the oxygen dimer ( $\text{O}_4$ ),  $\text{NO}_2$ , HCHO and HONO. A sequential zenith spectrum, estimated from interpolation of two zenith  
 spectra recorded before and after an elevation sequence, was selected as Fraunhofer reference spectrum. The retrieval  
 configuring settings followed Xing et al. (2020, 2021), and the configurations used in CINDI intercomparison campaign as  
 well (Roscoe et al., 2010; Kreher et al., 2019; Wang et al., 2020) (details are listed in Table 1). Fig. 3 illustrates the DOAS  
 fits of above four species, and reasonably good fitting with tiny values of RMS can be found. Retrieved data with root mean  
 145 square (RMS) values larger than  $5 \times 10^{-4}$ ,  $5 \times 10^{-4}$ ,  $6 \times 10^{-4}$  and  $5 \times 10^{-3}$  for  $\text{O}_4$ ,  $\text{NO}_2$ , HCHO and HONO, respectively, were  
 filtered out. We calculated also the color index (CI), defined as the ratio of spectral intensities at 330 nm to that at 390 nm, to  
 remove the cloud effects (Wagner et al., 2016). We filtered out data when the CI was less than 10% of the threshold that  
 obtained through fitting a fifth-order polynomial to CI data (Ryan et al., 2018). After these processes, 90.17%, 86.41%,  
 83.22% and 80.19%, respectively, of the original DSCDs data were marked as qualified.

### 150 2.4 Vertical profile retrieval algorithm

The vertical profiles of aerosol extinction and volume mixing ratios (VMR) of trace gases (i. e.,  $\text{NO}_2$ , HCHO and HONO)  
 were retrieved using the optimal estimation method (OEM) based algorithm. The radiative transfer model VLIDORT (Spurr  
 et al., 2006) was used as the forward model. The maximum posteriori state vector  $x$  was determined through optimizing the  
 following cost function  $\chi^2$ .

$$155 \quad \chi^2 = (y - F(x, b))^T S_e^{-1} (y - F(x, b)) + (x - x_a)^T S_a^{-1} (x - x_a) \quad (1)$$

where  $F(x, b)$  denotes the measurement vector  $y$  (DSCDs measured at different elevation angles) as a function of the state  
 vector  $x$  (pollutants profiles) and the true atmospheric meteorological parameters (profiles of temperature and pressure,

albedo and aerosol phase function).  $x_a$  stands for a priori state vector.  $S_\varepsilon$  and  $S_a$  represent the covariance matrices of  $y$  and  $x_a$ , respectively. During the retrieval process, exponential decreasing shape was assumed as the initial a priori vertical profile shape of aerosol and trace gases, and the corresponding WRF-Chem simulated AOD and VCDs were also used as input a priori information. The inversion strategy used a Gauss-Newton (GN) scheme (Wedderburn et al., 1974). The iterative weighting function  $K$  was calculated using the Jacobians of DSCDs. The inversion consisted of two steps. Aerosol vertical profile was retrieved first, and then fed into the forward model to retrieve trace gases profile.

In this study, we derived the vertical profiles of aerosol and trace gases at 30 vertical layers, covering from 0.0 to 3.0 km, and a 1.0 km correlation length was chosen. For forward simulations, surface albedo and surface altitude were set as 0.08 and 4.2 km, respectively. In addition, a fixed single scattering albedo (SSA) of 0.85 and an aerosol phase function with an asymmetry parameter of 0.65 were selected, due to the low uncertainties in retrieved aerosols with fixed SSA and asymmetry parameter (Irie et al., 2008). The profiles of aerosol and trace gases were filtered out when the degree of freedom (DFS) was less than 1.0 and retrieved relative error were larger than 100%.

### 170 **3 Vertical profile observations of atmospheric composition**

Fig. 4 illustrates the monthly data integrity of vertical profiles of aerosol,  $\text{NO}_2$ , HCHO and HONO at the CAS (QOMS). The value of 100 indicates completely continuous observations. Better data integrity occurred mostly in autumn, and serious missing happened mainly in summer. Missing data were largely associated with power outages of the instrument or the measurement station, technical problems of the instrument, poor data quality under unfavorable weather conditions (i.e. rain or high cloud coverage), and retrieval failure (i.e. high retrieval error or low DFS). Considering the heterogeneity of atmospheric composition in the vertical direction, the resolution of vertical profiles within 0-1.0 km and 1.0-3.0 km were set to 0.1 km and 0.2 km, respectively. During the day, PBL over the TP could reach as high as 1-3km (Chen et al., 2016; Xu et al., 2019). We thus used three representative layers, namely 0-100 m, 500-600 m and 900-1000 m, were used to represent the bottom, middle and upper boundary layers.

#### 180 **3.1 Aerosol**

As indicated in Fig. 5, maximum AOD over the TP occurred in August (1.19), almost doubled the minimum that happened in April (0.57). However, the high levels of AOD in summer might have been overestimated due to poor integrity of AOD data in summer (Fig. 4: 12.91% in July and 22.58% in August). Relatively enhanced levels of AOD started from September and persisted till February. Such an enrichment was likely to be associated with both the increased anthropogenic emissions due to tourism and transported pollution plume from South Asia. The ground surface of CAS (QOMS) station is exposed continually throughout the year, rarely covered by ice, snow or vegetation. Valley and mountain winds in this region began

to strengthen from October, and strong winds persisted throughout the whole winter to blow soil and dust particles into the atmosphere (Xu et al., 2015; Liu et al., 2017; Chen et al., 2018).

190 Fig. 6 (a) shows the time series of hourly averaged aerosol extinction coefficient at layers of 0-100 m, 500-600 m and 900-1000 m December 2017 to February 2019. It suggests that elevated abundance of aerosol was mainly concentrated in the lower layer, and aerosol loadings decreased with height. Consistent with the seasonality shown in Fig. 5, high aerosol extinction coefficients appeared frequently in autumn and winter. Fig. 6(a) also indicates that strong aerosol extinction coefficients occurred occasionally in the middle layer, associated with long-range transport of particles (Zhang et al., 2018; Chen et al., 2018). The total and seasonal averaged vertical profiles of aerosol extinction are displayed in Fig. 7. All  
195 averaged profiles exhibit exponential decreasing shape with maximum values occurred near the surface. Aerosol extinction coefficient in the lower layer varied with seasons, with maximum in autumn ( $1.55 \text{ km}^{-1}$ ) and minimum in spring ( $1.00 \text{ km}^{-1}$ ). The ratios of aerosol extinction coefficients in the middle layer to those in the lower boundary layer were 44.96%, 41.11%, 44.35%, 40.01% and 52.31% for the total-averaged, spring-averaged, summer-averaged, autumn-averaged and winter-averaged aerosol profiles, respectively. These numbers decreased to 24.81%, 22.72%, 25.87%, 21.29% and 30.02% for the  
200 upper layer. Relatively higher levels of aerosol above ground during winter is associated with strong mountain-valley breeze, which can blow dust on the ground surface into high layers (Liu et al., 2017). Aerosol pollution is also more severe in winter in South Asia (Gao et al., 2019), which can be transported as an important source of aerosols over the TP (Cong et al., 2015; Chen et al., 2018; Zhang et al., 2018).

Fig. 8 (a-e) illustrates the diurnal variations of aerosol vertical profiles for different seasons. Lower aerosol extinction mainly  
205 occurred before 10:00, and it gradually increased and spread to higher altitudes with the rise of planetary boundary layer (PBL) height after 10:00. Moreover, aerosol extinction showed bi-peak patterns in all four seasons. One peak appeared between 10:30-12:30, and the other one occurred after 14:00. This bi-peak pattern was in line with previous investigation by Liu et al. (2017), dominated by the effects of local aerosol emissions, local dust geomorphology and mountain valley breeze (Liu et al., 2017). We observed also that the diffusion height of aerosol exhibited maximum in summer and minimum in  
210 winter, mainly due to differences in PBL height driven by temperature in four seasons.

### 3.2 Nitrogen dioxide ( $\text{NO}_2$ )

Fig. 6 (b) presents the time series of hourly  $\text{NO}_2$  concentration at 0-100 m, 500-600 m and 900-1000 m layers from December 2017 to February 2019. Abundance of  $\text{NO}_2$  in the lower, middle and upper boundary layers exhibited clearly different levels, and elevated levels were concentrated in the lower levels. Higher  $\text{NO}_2$  concentrations were observed in May  
215 and September-December (Chen et al., 2019), which was likely to be associated with the enhanced vehicle emissions due to arrival of the tourist season in Tibet from May. Additionally, the transmission of  $\text{NO}_2$  emitted from the Indo-Gangetic Plain (Chen et al., 2017; Yang et al., 2018a) and the enhanced local anthropogenic emissions (i. e. heating using cow dung as fuel) in cold periods also caused the relatively high  $\text{NO}_2$  levels.

The vertical structure of NO<sub>2</sub> presented also an exponential decreasing shape, with the highest concentration located in the lower layer (Fig. 9). NO<sub>2</sub> concentrations in the lower layer peaked in autumn (1.28 ppb), and minimum happened in spring (0.82 ppb). The ratios of NO<sub>2</sub> concentrations in the middle layer to those in the lower boundary layer were 39.50%, 38.14%, 40.19%, 40.16% and 39.39% for the total-averaged, spring-averaged, summer-averaged, autumn-averaged and winter-averaged aerosol profiles, respectively. These numbers declined to 18.10%, 17.36%, 18.50%, 18.44% and 18.07% for the upper layer. Different from aerosol extinction, higher levels of NO<sub>2</sub> above ground occurred mainly in summer, instead of winter, which might be associated with stronger mixing within PBL in summer.

The diurnal variation of NO<sub>2</sub> in spring, summer and winter also exhibited a bi-peak pattern (Fig. 8 (f-j)), with one peak within 11:00-13:00 and the other after 16:00. These two periods are usually accompanied with low PBL height. Lower NO<sub>2</sub> concentration in the morning (before 10:00) can be attributed to less vehicle emissions (Wang et al., 2011). The elevated PBL height was conducive to the diffusion and dilution of NO<sub>2</sub> and lead to lower NO<sub>2</sub> concentrations from 13:00 to 16:00. In autumn, another two NO<sub>2</sub> peaks values were observed between 14:00-16:00, which was likely to be related to tourist traffic.

### 3.3 Formaldehyde (HCHO)

Formaldehyde (HCHO) is one of the most abundant volatile organic compounds (VOCs) in the atmosphere, and it strongly correlates with peroxy radicals (Kleinman et al., 2001; Ling et al., 2017). HCHO plays a critical role in atmospheric photochemistry to strongly drive ozone (O<sub>3</sub>) formation (Luecken et al., 2012; Hassan et al., 2018). It comes from both primary sources (i.e. fossil fuel combustion, biomass burning, traffic and industrial activities) and secondary production (i.e. the oxidation of biogenic VOCs). Fig. 6 (c) displays the time series of hourly averaged HCHO concentration at 0-100 m, 500-600 m and 900-1000 m layers from December 2017 to February 2019. We found HCHO at the CAS (QOMS) station was mainly distributed in the lower boundary layer, its concentrations decreased with height, similarly to NO<sub>2</sub>. The highest HCHO concentrations mainly appeared in September-November, and the lowest HCHO concentrations occurred in December-February. The highest amount of vegetation appeared in autumn at the CAS (QOMS) station, and isoprene along with other active VOCs emitted from vegetation can accumulate near the surface and be oxidized to form high levels of HCHO (Mu et al., 2007). On the other hand, local outdoor biomass burning is active in this season (Chen et al., 2018). The incomplete combustion could emit methane and non-methane volatile organic compounds (NMVOCs) to enhance HCHO concentrations (Gonzi et al., 2011). Fewer primary and secondary sources of HCHO was observed in winter.

Fig. 10 provides the total and seasonal averaged vertical profiles of HCHO. Similarly to NO<sub>2</sub>, vertical profiles of HCHO in all seasons displayed exponential decreasing shape, with the highest concentration in the lower boundary layer (total averaged value being 3.15 ppb). The HCHO concentrations in the lower layer peaked in autumn (5.20 ppb) and dropped in winter (2.01 ppb). However, the vertical gradient of HCHO was smaller than that of NO<sub>2</sub>. The ratios of HCHO concentrations in the middle layer to those in the lower boundary layer were 62.86%, 69.74%, 68.06%, 60.00% and 60.20% for the total-averaged, spring-averaged, summer-averaged, autumn-averaged and winter-averaged aerosol profiles,



respectively. These numbers dropped to 42.86%, 47.60%, 46.27%, 40.77% and 41.14% for the upper layer. The vertical gradient of HCHO in autumn was relatively larger than that in other three seasons, which was partially associated with stronger surface HCHO sources in autumn.

255 On the diurnal variations of vertical profiles of HCHO, lower concentrations were observed before 10:00, but the abundance gradually increased with sunrise and elevation of temperature (Fig. 8 (k-o)). HCHO peaked within 10:00-16:00 in spring and winter, while peak values of HCHO also appeared after 16:00 due to prolonged daytime in summer and autumn. The maximum and minimum diffusion heights of HCHO appeared in summer and winter, respectively, associated with PBL height.

### 3.4 Nitrous acid (HONO)

260 The photolysis of nitrous acid (HONO) is a significant source of hydroxyl (OH) radical. HONO mainly originates from primary emissions from vehicles, ships, biomass burning and soil, the photolysis of nitrate particles ( $NO_3^-$ ), homogeneous reaction of NO with OH radical, and heterogeneous reaction of  $NO_2$  on several types of surfaces (Wang et al., 2015; Fu et al., 2019). As shown in Fig. 6 (d), elevated HONO was mostly distributed in the lower boundary layer, and higher HONO concentrations appeared from July 2018 to February 2019. Enhanced levels after summer was likely to be connected with  
265 elevated direct emissions from vehicle, biomass burning and soil (Wang et al., 2015; Fu et al., 2019). We found high aerosol extinction,  $NO_2$  and HONO concentrations simultaneously in Fig. 8 (d), (i) and (s), suggesting that heterogeneous reaction of  $NO_2$  on aerosol surfaces might be another important source of HONO over the TP.

Fig. 11 shows that the vertical profiles of HONO in all seasons exhibited exponential shape, with the highest concentration (0.93 ppb) in the lower boundary layer. HONO concentrations in the lower layer peaked in summer (1.11 ppb) and dropped  
270 in spring (0.56 ppb) (Fig. 11). Different from aerosol,  $NO_2$  and HCHO, HONO concentrations in the middle and upper layers were extremely low. The proportions of HONO concentrations in the middle layer to those in the lower boundary layer were 8.86%, 13.68%, 7.82%, 9.05% and 10.44% for the total-averaged, spring-averaged, summer-averaged, autumn-averaged and winter-averaged aerosol profiles, respectively. These numbers decreased to 3.14%, 5.30%, 3.52%, 2.72% and 3.06% for the upper layer. On the diurnal variations of vertical profiles of HONO, we found that HONO concentrations were, consistently  
275 in four seasons, lower before 10:00 and peaked around 10:00-14:00. This pattern in the monitoring site was different from that in other low altitude cities (Wang et al., 2013; Lee et al., 2016; Wang et al., 2017; Xing et al., 2021).

### 3.5 Validations against satellite retrievals

In this study, OMI  $NO_2$  and HCHO products were used to validate the described dataset. For better comparison, MAX-DOAS data were averaged over the OMI overpass time (from 06:30 to 08:30 UTC) in the region that covers the CAS  
280 (QOMS) station. OMI data were spatially averaged over the 15 km grid cells around the MAX-DOAS site, as the spatial resolution of OMI is  $15 \times 15$  km<sup>2</sup>. The VCDs of  $NO_2$  and HCHO were derived by vertical integrations of their vertical

profiles. The linear association between MAX-DOAS and OMI measurements are shown in Fig. 12. We found reasonably good correlations between MAX-DOAS and OMI observations, with Pearson correlation coefficients (R) of 0.68 and 0.60 (slope of 1.21 and 1.12, offset of  $1.29 \times 10^{15}$  and  $2.06 \times 10^{15}$  molec.  $\text{cm}^{-2}$ ) for  $\text{NO}_2$  and HCHO, respectively. OMI  $\text{NO}_2$  and HCHO VCDs were systematically lower than MAX-DOAS  $\text{NO}_2$  and HCHO VCDs, which is different from previous comparisons applied in lower-altitude areas (Liu et al., 2016; Xing et al., 2017). This might be caused by large-area averaging effect of OMI and introduced uncertainties in OMI products by cloud cover and high surface albedo.

We observed also that the correlations between MAX-DOAS and OMI observations exhibited significant differences across seasons. The highest correlation appeared in autumn, followed by winter (Table S1). High correlation in these two seasons was associated with increased tourism vehicle emissions, regional transport of  $\text{NO}_2$ , and enhanced photochemical formation of HCHO. Failed linear regression analysis mainly appeared in spring and summer, due to high cloud coverage from March to September in the TP (Chen et al., 2006).

#### 4 Data availability

Ground-based vertical profile observations of atmospheric composition on the Tibetan Plateau introduced here are available in .txt format at Zenodo (<https://doi.org/10.5281/zenodo.5336460>; Xing et al., 2021).

#### 5 Summary

In situ observations, especially profile observations, are scarce but essential in polar regions, including the TP, the so-called “Third Pole”. The sources of atmospheric composition over the TP, and how the species interact with regional and global climate remain unclear, mainly owing to lack of observations. Large uncertainties also remain in chemical transport and climate modeling of cold-region processes, without observational constraints. The presented dataset offers high time-resolution vertical profile observations of aerosol,  $\text{NO}_2$ , HCHO and HONO for more than one year on the TP. Distinct features were found on the diurnal variations, vertical distributions, and seasonality of these atmospheric composition species. Data products were also validated with satellite retrievals.

The limitations of this data are described as follows. (1) MAX-DOAS in ultraviolet and visible spectral ranges are typically affected by photon-shot noise, and the retrieval errors usually increase under heavy haze or cloudy conditions. The data with relative retrieval errors larger than 50% were filtered in this study; (2) only the daytime vertical profiles of aerosol,  $\text{NO}_2$ , HCHO and HONO were retrieved since MAX-DOAS relies on scattered sunlight. The spectral collected when solar zenith angle (SZA) are larger than  $75^\circ$  were filtered to avoid the strong absorption of stratosphere (Xing et al., 2017); (3) the vertical resolution of 100 m is the highest resolution at present, which still needs to be improved with the development of hardware and algorithms in the future. This dataset provides better temporal coverage and fills the gaps in the vertical direction. It has potentials to improve both satellite retrievals and reduce uncertainties in chemical transport modeling over

the TP, particularly in the vertical direction. We expect this dataset can be used to understand the sources and dynamic evolution of air pollutants over the TP, to assess the impacts of chemical forcings on climate system at multiple scales, and to facilitate the development and improvement of models in cold regions. The potential applications of this dataset include: (1) Performances of chemical transport models are commonly poor when applied over the Tibet plateau due to complex topography and meteorology, etc. This dataset can be used to reduce the uncertainties of these models, especially in the vertical direction (Liu et al., 2021a); (2) this dataset can assist in the source apportionments of atmospheric composition at different altitudes over the Tibet Plateau; (3) observed atmospheric composition over the TP is valuable inputs for box models to understand atmospheric oxidation capacity at different altitudes on the Tibet Plateau.

320

*Author contributions.* All the authors were involved in the generation of the introduced dataset. Chengzhi Xing, Cheng Liu and Meng Gao wrote the manuscript with contributions from all the other authors.

325 *Competing interests.* The authors declare that they have no conflict of interest

*Acknowledgements.* We would like to thank the Institute of Tibetan Plateau Research, Chinese Academy of Sciences (Professor Zhiyuan Cong's group) for help on experimental setup at the CAS monitoring station.

330 *Financial support.* This research is supported by grants from the National Key Research and Development Program of China (No. 2018YFC0213104), National Natural Science Foundation of China (No.41722501, 91544212, 51778596, 41575021, 41977184 and 41875043), National Key Research and Development Program of China (No.2017YFC0210002, 2016YFC0203302 and 2017YFC0212800), Anhui Science and Technology Major Project (No.18030801111), the Strategic Priority Research Program of the Chinese Academy of Sciences (No. XDA23020301), the National Key Project for Causes and Control of Heavy Air Pollution (No.DQGG0102 and DQGG0205), the National High-Resolution Earth Observation Project of China (No.05-Y30B01-9001-19/20-3) and Civil Aerospace Technology Advance Research Project (No. Y7K00100KJ).

## References

- 340 Aliwell, S.R., Van Roozendaal, M., Johnston, P.V., Richter, A., Wagner, T., Arlander, D.W., Burrows, J. P., Fish, D.J., Jones, R.L., Tørnkvist, K. K., Lambert, J. C., Pfeilsticker, K., and Pundt, I.: Analysis for BrO in zenith-sky spectra: an intercomparison exercise for analysis improvement, *J. Geophys. Res.* 107, 2002.
- Barnett, T. P., Adam, J. C., and Lettenmaier, D. P.: Potential impacts of a warming climate on water availability in snow-dominated regions, *Nature*, 438, 303-309, 2005.
- 345 Beirle, S., Dörner, S., Donner, S., Remmers, J., Wang, Y., and Wagner, T.: The Mainz profile algorithm (MAPA). *Atmos. Meas. Tech.*, 12, 1785–1806, 2019.
- Bolch, T., Kulkarni, A., Kaab, A., Huggel, C., Paul, F., Cogley, J. G., Frey, H., Kargel, J. S., Fujita, K., Scheel, M., Bajracharya, S., and Stoffel, M.: The State and Fate of Himalayan Glaciers, *Science*, 336, 310-314, 2012.
- Bolin, B.: On the influence of the earth's orography on the general character of the westerlies, *Tellus*, 2:184–195, <https://doi.org/10.1111/j.2153-3490.1950.tb00330.x>, 1950.
- 350 Boos, W. R., and Kuang, Z.: Dominant control of the South Asian monsoon by orographic insulation versus plateau heating, *Nature*, 463(7278): 218-222, 2010.
- Bösch, T., Rozanov, V., Richter, A., Peters, E., Rozanov, A., Wittrock, F., Merlaud, A., Lampel, J., Schmitt, S., Haij, M. de, Berkhout, S., Henzing, B., Apituley, A., Hoed, M. den, Vonk, J., Tiefengraber, M., Müller, M., and Burrows J. P.: BOREAS
- 355 – a new MAX-DOAS profile retrieval algorithm for aerosols and trace gases, *Atmos. Meas. Tech.*, 11, 6833–6859, 2018.
- Che, J., and Zhao, P.: Characteristics of the summer atmospheric boundary layer height over the Tibetan Plateau and influential factors, *Atmos. Chem. Phys.*, 21, 5253–5268, 2021.
- Chen, X., Škerlak, B., Rotach, M.W., Añel, J.A., Su, Z., Ma, Y. and Li, M.: Reasons for the extremely high-ranging planetary boundary layer over the western Tibetan Plateau in winter. *Journal of the atmospheric sciences*, 73(5), 2021-2038,
- 360 2016.
- Chen, P. F., Li, C. L., Kang, S. C., Rupakheti, M., Panday, A. K., Yan, F. P., Li, Q. L., Zhang, Q.G., Guo, J.M., Ji, Z.M., Rupakheti, D. and Luo, W.: Characteristics of particulate-phase polycyclic aromatic hydrocarbons (PAHs) in the atmosphere over the central Himalayas, *Aerosol Air Qual. Res.*, 17: 2942–2954, 2017.
- Chen, S., and Dong, A.: Climatic change and stability of total cloud amount over the Qinghai-Tibetan plateau. *Arid Zone*
- 365 *Research*, 23, 2, 2006.
- Chen, X., Kang, S., Cong, Z., Yang, J., and Ma, Y.: Concentration, temporal variation, and sources of black carbon in the Mt. Everest region retrieved by real-time observation and simulation, *Atmos. Chem. Phys.*, 18, 12859–12875, 2018.
- Cheng, G. and Jin, H.: Permafrost and groundwater on the Qinghai Tibet Plateau and in northeast China, *Hydrogeol. J.*, 21, 5–23, 2013.
- 370 Cheng, P., Kang, S., Yang, J., Pu, T., Li, C., Guo, J., and Tripathee, L.: Spatial and Temporal Variations of Gaseous and Particulate Pollutants in Six Sites in Tibet, China, during 2016–2017, *Aerosol Air Qual. Res.*, 19: 516–527, 2019.

- Cong, Z. Y., Kang, S. C., Smirnov, A., and Holben, B.: Aerosol optical properties at Nam Co, a remote site in central Tibetan Plateau, *Atmos. Res.*, 92, 42-48, 2009.
- Cong, Z., Kang, S., Kawamura, K., Liu, B., Wan, X., Wang, Z., Gao, S. and Fu, P.: Carbonaceous aerosols on the south edge of the Tibetan Plateau: concentrations, seasonality and sources, *Atmos. Chem. Phys.*, 15(3), 1573-1584, 2015.
- Cong, Z., Kawamura, K., Kang, S., and Fu, P.: Penetration of biomass-burning emissions from South Asia through the Himalayas: new insights from atmospheric organic acids, *Sci. Rep.*, 5:9580, 2015.
- Dai, G., Wu, S., and Song, X.: Depolarization Ratio Profiles Calibration and Observations of Aerosol and Cloud in the Tibetan Plateau Based on Polarization Raman Lidar, *Remote Sens.*, 10, 378, 2018.
- 375 Duo, B., Cui, L., Wang, Z., Li, R., Zhang, L., Fu, H., Chen, J., Zhang, H., and Qiong, A.: Observations of atmospheric pollutants at Lahsa during 2014-2015: Pollution status and the influence of meteorological factors, *J. Environ. Sci.*, 63, 28-42, 2018.
- Dong, W., Lin, Y., Wright, J.S., Xie, Y., Xu, F., Xu, W. and Wang, Y.: Indian monsoon low-pressure systems feed up-and-over moisture transport to the southwestern Tibetan Plateau, *J. Geophys. Res- Atmos.*, 122(22), pp.12-140, 2017.
- 385 Fang, X., Li, T., Ban, C., Wu, Z., Li, J., Li, F., Cen, Y., and Tian, B.: A mobile differential absorption lidar for simultaneous observations of tropospheric and stratospheric ozone over Tibet, *Opt. Express*, 27(4), 4126-4139, 2019.
- Fleischmann, O. C., Hartmann, M., Burrows, J. P., and Orphal, J.: New ultraviolet absorption cross-sections of BrO at atmospheric temperatures measured by time-windowing Fourier transform spectroscopy, *J. Photoch. Photobio. A* 168, 117–132, 2004.
- 390 Frieß, U., Monks, P. S., Remedios, J. J., Rozanov, A., Sinreich, R., Wagner, T., and Platt, U.: MAX-DOAS O<sub>4</sub> measurements: A new technique to derive information on atmospheric aerosols: 2. Modeling studies, *J. Geophys. Res.*, 111, D14203, 2006.
- Fu, X., Wang, T., Zhang, L., Li, Q., Wang, Z., Xia, M., Yun, H., Wang, W., Yu, C., Yue, D., Zhou, Y., Zheng, J., and Han, R.: The significant contribution of HONO to secondary pollutants during a severe winter pollution event in southern China, *Atmos. Chem. Phys.*, 19, 1–14, 2019.
- 395 Gao, J., Yao, T., Masson-Delmotte, V., Steen-Larsen, H. C., and Wang, W.: Collapsing glaciers threaten Asia's water supplies, *Nature*, 565, 19-21, 2019.
- Gao, M., Sherman, P., Song, S., Yu, Y., Wu, Z. and McElroy, M.B.: Seasonal prediction of Indian wintertime aerosol pollution using the ocean memory effect. *Science advances*, 5(7), p.eaav4157, 2019.
- 400 Gao, M., Liu, Z., Zheng, B., Ji, D., Sherman, P., Song, S., Xin, J., Liu, C., Wang, Y., Zhang, Q., Xing, J., Jiang, J., Wang, Z., Carmichael, G. R., and McElroy, M. B.: China's emission control strategies have suppressed unfavorable influences of climate on wintertime PM<sub>2.5</sub> concentrations in Beijing since 2002, *Atmos. Chem. Phys.*, 20, 1497–1505, <https://doi.org/10.5194/acp-20-1497-2020>, 2020a.

- Gao, M., Gao, J., Zhu, B., Kumar, R., Lu, X., Song, S., Zhang, Y., Jia, B., Wang, P., Beig, G., Hu, J., Ying, Q., Zhang, H., Sherman, P., and McElroy, M. B.: Ozone pollution over China and India: seasonality and sources, *Atmos. Chem. Phys.*, 20, 4399–4414, <https://doi.org/10.5194/acp-20-4399-2020>, 2020b.
- Gonzi, S., Palmer, P. I., Barkley, M. P., De Smedt, I., and Van Roozendaal, M.: Biomass burning emission estimates inferred from satellite column measurements of HCHO: Sensitivity to co-emitted aerosol and injection height, *Geophys. Res. Lett.*, 38(14), 2011.
- Hassan, Salwa K., Ahmeh, A. El-Abssawy, and Mamdouh I. Khoder: Effect of Seasonal Variation on the Levels and Behaviours of Formaldehyde in the Atmosphere of a Suburban Area in Cairo, Egypt, *Asian J. Atmos. Environ.*, 12: 356-68, 2018.
- He, Y., Zhang, Z., Theakstone, W. H., Chen, T., Yao, T., and Pang, H.: Changing features of the climate and glaciers in China's monsoonal temperate glacier region, *J. Geophys. Res.* 108 4530, 2003.
- Hindman, E. E., and Upadhyay, B. P.: Air pollution transport in the Himalayas of Nepal and Tibet during the 1995-1996 dry season, *Atmos. Environ.*, 36(4), 727-739, 2002.
- Hu, Q., Liu, C., Ji, X., Liu, T., and Zhu, Y.: Vertical structure of the transport fluxes of aerosol and its precursors on the southwest transport pathway in the Beijing-Tianjin-Hebei region. EGU General Assembly 2020, online, EGU, EGU2020-4967, <https://doi.org/10.5194/egusphere-egu2020-4967>.
- Huang, J., Minnis, P., Yi, Y., Tang, Q., Wang, X., Hu, Y., Liu, Z., Ayers, K., Treppe, C., and Winker, D.: Summer dust aerosols detected from CALIPSO over the Tibetan Plateau, *Geophys. Res. Lett.*, 34(18), 2007.
- Immerzeel, W. W., van Beek, L. P. H., and Bierkens, M. F. P.: Climate Change Will Affect the Asian Water Towers, *Science*, 328, 1382-1385, 2010.
- Irie, H., Kanaya, Y., Akimoto, H., Iwabuchi, H., Shimizu, A., and Aoki, K.: First retrieval of tropospheric aerosol profiles using MAX-DOAS and comparison with lidar and sky radiometer measurements, *Atmos. Chem. Phys.*, 8: 341–350, 2008.
- Kang, S., Cameron, P. W., Qin, D., Paul, A. M., and Yao, T.: Monsoon and dust signals recorded in Dasuopu glacier, Tibetan Plateau, *J. Glaciol.*, 46(153), 222-226, 2000.
- Kang, S. C., Huang, J., Wang, F. Y., Zhang, Q. G., Zhang, Y. L., Li, C. L., Wang, L., Chen, P. F., Sharma, C. M., Li, Q., Sillanpaa, M., Hou, J. Z., Xu, B. Q., and Guo, J. M.: Atmospheric Mercury Depositional Chronology Reconstructed from Lake Sediments and Ice Core in the Himalayas and Tibetan Plateau, *Environ. Sci. Technol.*, 50, 2859-2869, 2016.
- Kang, S., Xu, Y., You, Q., Flügel, W. A., Pepin, N. and Yao, T.: Review of climate and cryospheric change in the Tibetan Plateau, *Environ. Res. Lett.*, 5(1), p.015101, 2010.
- Kang, S. C., Zhang, Q. G., Qian, Y., Ji, Z. M., Li, C. L., Cong, Z. Y., Zhang, Y. L., Guo, J. M., Du, W. T., Huang, J., You, Q. L., Panday, A. K., Rupakheti, M., Chen, D. L., Gustafsson, O., Thiemens, M. H., and Qin, D. H.: Linking atmospheric pollution to cryospheric change in the Third Pole region: current progress and future prospects, *Natl. Sci. Rev.*, 6, 796-809, 2019.

- Kleinman, L. I., Daum, P. H., Lee, Y.-N., Nunnermacker, L. J., Springston, S. R., Weinstein-Lloyd, J., and Rudolph, J.: Sensitivity of ozone production rate to ozone precursors, *Geophys. Res. Lett.*, 15, 2903–2906, 2001.
- Kreher, Karin, Roozendaal, Michel Van, Hendrick, Francois, Apituley, Arnoud, Dimitropoulou, Ermioni, Frieß, Udo, Richter, Andreas, Wagner, Thomas, Abuhassan, Nader, Ang, Li, Anguas, Monica, Bais, Alkis, Benavent, Nuria, Bösch, Tim, Bognar, Kristof, Borovski, Alexander, Bruchkouski, Ilya, Cede, Alexander, Ka, L. Chan, Donner, Sebastian, Drosoglou, Theano, Fayt, Caroline, Finkenzeller, Henning, Garcia-Nieto, David, Gielen, Clio, Gómez-Martín, Laura, Hao, Nan, Herman, Jay R., Hermans, Christian, Hoque, Syedul, Irie, Hitoshi, Jin, Junli, Johnston, Paul, Butt, Junaid Khayyam, Khokhar, Fahim, Koenig, Theodore K., Kuhn, Jonas, Kumar, Vinod, Lampel, Johannes, Liu, Cheng, Ma, Jianzhong, Merlaud, Alexis, Mishra, Abhishek K., Müller, Moritz, Navarro-Comas, Monica, Ostendorf, Mareike, Pazmino, Andrea, Peters, Enno, Pinardi, Gaia, Pinharanda, Manuel, PETERS, Ankie, Platt, Ulrich, Postlyakov, Oleg, Prados-Roman, Cristina, Puentedura, Olga, Querel, Richard, Saiz-Lopez, Alfonso, Schönhardt, Anja, Schreier, Stefan F., Seyler, Andre, Sinha, Vinayak, Spinei, Elena, Strong, Kimberly, Tack, Frederik, Tian, Xin, Tiefengraber, Martin, Tirpitz, Jan-Lukas, van Gent, Jeron, Volkamer, Rainer, Vrekoussis, Mihalis, Wang, Shanshan, Wang, Zhuoru, Wenig, Mark, Wittrock, Folkard, Xie, Pinhua H., Jin, Xu, Yela, Margarita, Zhang, Chengxin, and Zhao, Xiaoyi: Intercomparison of NO<sub>2</sub>, O<sub>4</sub>, O<sub>3</sub> and HCHO slant column measurements by MAX-DOAS and zenith-sky UV-Visible spectrometers during the CINDI-2 campaign, *Atmos. Meas. Tech. Disc.*, 2019.
- Lau, W. K., Kim, M. K., Kim, K. M., and Lee, W. S.: Enhanced surface warming and accelerated snow melt in the Himalayas and Tibetan Plateau induced by absorbing aerosols, *Environ. Res. Lett.*, 5(2), p.025204, 2010.
- Lee, J. D., Whalley, L. K., Heard, D. E., Stone, D., Dunmore, R. E., Hamilton, J. F., Young, D. E., Allan, J. D., Laufs, S., and Kleffmann, J.: Detailed budget analysis of HONO in central London reveals a missing daytime source, *Atmos. Chem. Phys.* 16, 2747–2764, 2016.
- Li, C., Bosch, C., Kang, S., Andersson, A., Chen, P., Zhang, Q., Cong, Z., Chen, B., Qin, D., and Gustafsson, O.: Sources of black carbon to the Himalayan-Tibetan Plateau glaciers, *Nat. Commun.*, 7, 12574, 2016.
- Li, R., Zhao, Y., Zhou, W., Meng, Y., Zhang, Z., and Fu, H.: Developing a novel hybrid model for the estimation of surface 8 h ozone (O<sub>3</sub>) across the remote Tibetan Plateau during 2005–2018, *Atmos. Chem. Phys.*, 20, 6159–6175, 2020.
- Liang, F., Gao, M., Xiao, Q., Carmichael, G.R., Pan, X. and Liu, Y.: Evaluation of a data fusion approach to estimate daily PM<sub>2.5</sub> levels in North China, *Env. Res.*, 158, 54-60, <https://doi.org/10.1016/j.envres.2017.06.001>, 2017.
- Ling, Z. H., Zhao, J., Fan, S. J., and Wang, X. M.: Sources of formaldehyde and their contributions to photochemical O<sub>3</sub> formation at an urban site in the Pearl River Delta, southern China, *Chemosphere*, 168: 1293-301, 2017.
- Liu, B., Cong, Z., Wang, Y., Xin, J., Wan, X., Pan, Y., Liu, Z., Wang, Y., Zhang, G., Wang, Z., Wang, Y., and Kang, S.: Background aerosol over the Himalayas and Tibetan Plateau: observed characteristics of aerosol mass loading, *Atmos. Chem. Phys.*, 17, 449–463, 2017.
- Liu, C., Gao, M., Hu, Q., Brasseur, G. P., and Carmichael, G. R.: Stereoscopic Monitoring: A Promising Strategy to Advance Diagnostic and Prediction of Air Pollution, *Bull. Am. Meteorol. Soc.*, E730-E737, 2021a.

- Liu, C., Xing, C., Hu, Q., Li, Q., Liu, H., Hong, Q., Tan, W., Ji, X., Lin, H., Lu, C., Lin, J., Liu, H., Wei, S., Chen, J., Yang, K., Wang, S., Liu, T., and Chen, Y.: Ground-based hyperspectral stereoscopic remote sensing network: A promising strategy to learn coordinated control of O<sub>3</sub> and PM<sub>2.5</sub> over China, *Engineering*, 2021b.
- 475 Liu, H., Liu, C., Xie, Z., Li, Y., Huang, X., Wang, S., Xu, J., and Xie, P.: A paradox for air pollution controlling in China revealed by “APEC Blue” and “Parade Blue”, *Sci. Rep.*, 6, 34408, 2016.
- Liu, H., Wang, Q., Xing, L., Zhang, Y., Zhang, T., Ran, W., and Cao, J.: Measurement report: quantifying source contribution of fossil fuels and biomass-burning black carbon aerosol in the southeastern margin of the Tibetan Plateau, *Atmos. Chem. Phys.*, 21, 973–987, 2021.
- Liu, Y., Hoskins, B., and Blackburn, M.: Impact of Tibetan Orography and Heating on the Summer Flow over Asia, *J. Meteorol. Soc. Jpn. Ser. II*, 85B, 1–19, 2007.
- 480 Luecken, D. J., W. T. Hutzell, M. L. Strum, and G. A. Pouliot: Regional sources of atmospheric formaldehyde and acetaldehyde, and implications for atmospheric modeling, *Atmos. Environ.*, 47: 477-90, 2012.
- Lu, Z., Streets, D. G., Zhang, Q., and Wang, S.: A novel back trajectory analysis of the origin of black carbon transported to the Himalayas and Tibetan Plateau during 1996–2010, *Geophys. Res. Lett.*, 39, L01809, 2012.
- 485 Ma, Y., Hu, Z., Xie, Z., Ma, W., Wang, B., Chen, X., Li, M., Zhong, L., Sun, F., Gu, L., Han, C., Zhang, L., Liu, X., Ding, Z., Sun, G., Wang, S., Wang, Y., and Wang, Z.: A long-term (2005–2016) dataset of integrated land-atmosphere interaction observations on the Tibetan Plateau, V1, Science Data Bank, 2020.
- Ma, Y., Hu, Z., Xie, Z., Ma, W., Wang, B., Chen, X., Li, M., Zhong, L., Sun, F., Gu, L., Han, C., Zhang, L., Liu, X., Ding, Z., Sun, G., Wang, S., Wang, Y., and Wang, Z.: A long-term (2005–2016) dataset of hourly integrated land–atmosphere  
490 interaction observations on the Tibetan Plateau, *Earth Syst. Sci. Data*, 12, 2937–2957, 2020.
- Meller, R., and Moortgat, G.K.: Temperature dependence of the absorption cross sections of formaldehyde between 223 and 323K in the wavelength range 225–375 nm, *J. Geophys. Res.* 105, 7089–7101, 2000.
- Mu, Y., Pang, X., Quan, J., and Zhang, X.: Atmospheric carbonyl compounds in Chinese background area: A remote mountain of the Qinghai-Tibetan Plateau, *J. Geophys. Res.-Atmos.*, 112, D22302, 2007.
- 495 Peng, J., Liu, Z., Liu, Y., Wu, J. and Han, Y.: Trend analysis of vegetation dynamics in Qinghai–Tibet Plateau using Hurst Exponent, *Ecol. Indic.*, 14(1), 28-39, 2012.
- Pu, Z. X., Xu, L., and Salomonson, V. V.: MODIS/Terra observed seasonal variations of snow cover over the Tibetan Plateau, *Geophys. Res. Lett.*, 34, 2007.
- Qiu, J.: China: the third pole, *Nature*, 454, 393–396, 2008.
- 500 Ran, L., Lin, W. L., Deji, Y. Z., La, B., Tsering, P. M., Xu, X. B., and Wang, W.: Surface gas pollutants in Lhasa, a highland city of Tibet – current levels and pollution implications, *Atmos. Chem. Phys.*, 14, 10721-10730, 2014.
- Robert J. D. Spurr.: VLIDORT: A linearized pseudo-spherical vector discrete ordinate radiative transfer code for forward model and retrieval studies in multilayer multiple scattering media, *J. Quant. Spectrosc. RA.*, 102, 316-342, 2006.



- Roscoe, H. K., Van Roozendaal, M., Fayt, C., du Piesanie, A., Abuhassan, N., Adams, C., Akrami, M., Cede, A., Chong, J.,  
505 Clémer, K., Friess, U., Gil Ojeda, M., Goutail, F., Graves, R., Griesfeller, A., Grossmann, K., Hemerijckx, G., Hendrick, F.,  
Herman, J., Hermans, C., Irie, H., Johnston, P.V., Kanaya, Y., Kreher, K., Leigh, R., Merlaud, A., Mount, G.H., Navarro,  
M., Oetjen, H., Pazmino, A., Perez-Camacho, M., Peters, E., Pinardi, G., Puentedura, O., Richter, A., Schönhardt, A.,  
Shaiganfar, R., Spinei, E., Strong, K., Takashima, H., Vlemmix, T., Vrekoussis, M., Wagner, T., Wittrock, F., Yela, M.,  
Yilmaz, S., Boersma, F., Hains, J., Kroon, M., Piters, A., and Kim, Y. J.: Intercomparison of slant column measurements of  
510 NO<sub>2</sub> and O<sub>4</sub> by MAX-DOAS and zenith-sky UV and visible spectrometers, *Atmos. Meas. Tech.*, 3, 1629–1646, 2010.
- Ramanathan, V., Ramana, M. V., Roberts, G., Kim, D., Corrigan, C. E., Chung, C. E., and Winker, D.: Warming trends in  
Asia amplified by brown cloud solar absorption, *Nature*, 448, 575–8, 2007.
- Rothman, L. S., Gordon, I. E., Barbe, A., Benner, D. C., Bernath, P. F., Birk, M., Boudon, V., Brown, L. R., Campargue, A.,  
Champion, J. P., Chance, K., Coudert, L. H., Dana, V., Devi, V. M., Fally, S., Flaud, J. M., Gamache, R. R., Goldman, A.,  
515 Jacquemart, D., Kleiner, I., Lacome, N., Lafferty, W. J., Mandin, J. Y., Massie, S. T., Mikhailenko, S. N., Miller, C. E.,  
Moazzen-Ahmadi, N., Naumenko, O. V., Nikitin, A. V., Orphal, J., Perevalov, V. I., Perrin, A., Predoi-Cross, A., Rinsland,  
C. P., Rotger, M., Šimečková, M., Smith, M. A. H., Sung, K., Tashkun, S. A., Tennyson, J., Toth, R. A., Vandaele, A. C.,  
and Vander Auwera, J.: The HITRAN 2008 molecular spectroscopic database, *J. Quant. Spectrosc. Radiat. Transf.*, 110 (9–  
10), 533–572, 2010.
- 520 Ryan, R. G., Rhodes, S., Tully, M., Wilson, S., Jones, N., and Frieß, U.: Daytime HONO, NO<sub>sub</sub>N<sub>2b</sub>/subN and aerosol  
distributions from MAX-DOAS observations in Melbourne, *Atmos. Chem. Phys. Discuss.*, 1–27, 2018.
- Seidel, D. J., Ao, C. O., and Li, K.: Estimating climatological planetary boundary layer heights from radiosonde  
observations: Comparison of methods and uncertainty analysis, *J. Geophys. Res.*, 115, D16113, 2010.
- Serdyuchenko, A., Gorshelev, V., Weber, M., Chehade, W., and Burrows, J. P.: High spectral resolution ozone absorption  
525 cross-sections – part 2: temperature dependence, *Atmos. Meas. Tech.*, 7, 625–636, 2014.
- Shrestha, A. B., Wake, C. P., Mayewski, P. A., and Dibb, J. E.: Maximum temperature trends in the Himalaya and its  
vicinity: an analysis based on temperature records from Nepal for the period 1971–94, *J. Climate*, 12(9), 2775–2786, 1999.
- Skerlak, B., Sprenger, M., and Wernli, H.: A global climatology of stratosphere–troposphere exchange using the ERA  
Interim data set from 1979 to 2011, *Atmos. Chem. Phys.*, 14, 913–917, 2014.
- 530 Stout, J. E.: Diurnal patterns of blowing sand, *Earth Surf. Proc. Land.*, 35, 314–318, 2010.
- Stutz, J., Kim, E. S., Platt, U., Bruno, P., Perrino, C., and Febo, A.: UV–visible absorption cross sections of nitrous acid, *J.  
Geophys. Res.-Atmos.* 105, 14585–14592, 2000.
- Thalman, R.M., and Volkamer, R.: Temperature dependent absorption cross-sections of O<sub>2</sub>-O<sub>2</sub> collision pairs between 340  
and 630 nm and at atmospherically relevant pressure, *Phys. Chem. Chem. Phys.* 15, 15371–15381, 2013.
- 535 Tian, L., Yao, T., MacClune, K., White, J. W. C., Schilla, A., Vaughn, B., Vachon, R., and Ichiyanagi, K.: Stable isotopic  
variations in west China: A consideration of moisture sources, *J. Geophys. Res.*, 112, D10112, 2007.

- Vandaele, A. C., Hermans, C., Simon, P. C., Carleer, M., Colin, R., Fally, S., Mérienne, M.-F., Jenouvrier, A., and Coquart, B.: Measurements of the NO<sub>2</sub> absorption cross section from 42 000 cm<sup>-1</sup> to 10000 cm<sup>-1</sup> (238–1000 nm) at 220 K and 294 K, *J. Quant. Spectrosc. Ra.*, *59*, 171–184, 1998.
- 540 Vlemmix, T., Piters, A. J. M., Berkhout, A. J. C., Gast, L. F. L., Wang, P., and Levelt, P. F.: Ability of the MAX-DOAS method to derive profile information for NO<sub>2</sub>: can the boundary layer and free troposphere be separated? *Atmos. Meas. Tech.*, *4*: 2659–2684, 2011.
- Wang, K., Hattori, S., Lin, M., Ishino, S., Alexander, B., Kamezaki, K., Yoshida, N., and Kang, S.: Isotopic constraints on atmospheric sulfate formation pathways in the Mt. Everest region, southern Tibetan Plateau, *Atmos. Chem. Phys.*, *21*, 8357–
- 545 8376, 2021.
- Wang, S., Zhou, R., Zhao, H., Wang, Z., Chen, L., and Zhou, B.: Long-term observation of atmospheric nitrous acid (HONO) and its implication to local NO<sub>2</sub> levels in Shanghai, China, *Atmos. Environ.*, *77*, 718–724, 2013.
- Wagner, T., Beirle, S., Remmers, J., Shaiganfar, R., and Wang, Y.: Absolute calibration of the colour index and O<sub>4</sub> absorption derived from multi AXis (MAX-)DOAS measurements and their application to a standardised cloud classification
- 550 algorithm, *Atmos. Meas. Tech.*, *9*, 4803–4823, 2016.
- Wang, F., Lin, W., Wang, J., and Zhu, T.: NO<sub>x</sub> release from snow and ice covered surface in polar regions and the Tibetan Plateau, *Advances in Climate Change Research*, *2*(3), 141-148, 2011.
- Wang, Y., Arnoud, A., Alkiviadis, B., Steffen, B., Nuria, B., Alexander, B., Ilya, B., Chan, K. L., Sebastian, D., Theano, D., Henning, F., Martina, M. F., Udo F., David, G. N., Laura, G. M., François, H., Andreas, H., Jin, J., Paul, J., Theodore, K. K.,
- 555 Karin, K., Vinod, K., Aleksandra, K., Johannes, L., Liu, C., Liu, H., Ma, J., Oleg, L. P., Oleg, P., Richard, Q., Alfonso, S. L., Stefan, S., Tian, X., Tirpitz, J., Roozendaal, M. V., Volkamer, R., Wang, Z., Xie, P., Xing, C., Xu, J., Margarita, Y., Zhang, C., and Wagner, T.: Inter-comparison of MAX-DOAS measurements of tropospheric HONO slant column densities and vertical profiles during the CINDI-2 Campaign, *Atmos. Meas. Tech.*, *13*, 5087–5116, 2020.
- Wang, Y., Beirle, S., Hendrick, F., Hilboll, A., Jin, J., Kyuberis, A. A., Lampel, J., Li, A., Luo, Y., Lodi, L., Ma, J., Navarro,
- 560 M., Ortega, I., Peters, E., Polyansky, O. L., Remmers, J., Richter, A., Puentedura, O., Roozendaal, M. V., Seyler, A., Tennyson, J., Volkamer, R., Xie, P., Zobov, N. F., and Wagner, T.: MAX-DOAS measurements of HONO slant column densities during the MAD-CAT campaign: inter-comparison, sensitivity studies on spectral analysis settings, and error budget, *Atmos. Meas. Tech.*, *10*, 3719–3742, 2017.
- Wang, Z., Chan., K. L., Heue, K. P., Doicu, A., Wagner, T., Holla, R., and Wiegner, M.: A multi-axis differential optical
- 565 absorption spectroscopy aerosol profile retrieval algorithm for high-altitude measurements: application to measurements at Schneefernerhaus (UFS), Germany, *Atmos. Meas. Tech.*, *13*, 1835–1866, 2020.
- Wedderburn, R. W. M.: Quasi-likelihood functions, generalized linear models, and the Gauss—Newton method, *Biometrika*, *61*, *3*, 439, 1974.
- Wu, G., Liu, Y., He, B., Bao, Q., Duan, A., and Jin, F.-F.: Thermal Controls on the Asian Summer Monsoon, *Sci. Rep.*, *2*,
- 570 404, 2012.

- Wu, G., Liu, Y., Zhang, Q., Duan, A., Wang, T., Wan, R., Liu, X., Li, W., Wang, Z., and Liang, X.: The Influence of Mechanical and Thermal Forcing by the Tibetan Plateau on Asian Climate, *J. Hydrometeorol.*, 8, 770–789, 2007.
- Wu, S., Dai, G., Song, X., Liu, B., and Liu, L.: Observations of water vapor mixing ratio profile and flux in the Tibetan Plateau based on the lidar technique, *Atmos. Meas. Tech.*, 9, 1399–1413, 2016.
- 575 Xia, X. G., Zong, X. M., Cong, Z. Y., Chen, H. B., Kang, S. C., and Wang, P. C.: Baseline continental aerosol over the central Tibetan plateau and a case study of aerosol transport from South Asia, *Atmos. Environ.*, 45, 7370–7378, 2011.
- Xing, C., Liu, C., Hu, Q., Fu, Q., Wang, S., Lin, Hua, Zhu, Y., Wang, S., Wang, W., Javed, Z., Ji, X., and Liu, J.: Vertical distributions of wintertime atmospheric nitrogenous compounds and the corresponding OH radicals production in Leshan, southwest China, *J. Environ. Sci.*, 105, 44–55, 2021.
- 580 Xing, C., Liu, C., Hu, Q., Fu, Q., Lin, H., Wang, S., Su, W., Wang, W., Javed, Z., and Liu, J.: Identifying the wintertime sources of volatile organic compounds (VOCs) from MAX-DOAS measured formaldehyde and glyoxal in Chongqing, southwest China, *Sci. Total Environ.*, 715, 136258, 2020.
- Xing, C., Liu, C., Wang, S., Chan, K. L., Gao, Y., Huang, X., Su, W., Zhang, C., Dong, Y., Fan, G., Zhang, T., Chen, Z., Hu, Q., Su, H., Xie, Z., and Liu, J.: Observations of the vertical distributions of summertime atmospheric pollutants and the
- 585 corresponding ozone production in Shanghai, China, *Atmos. Chem. Phys.*, 17, 14275–14289, 2017.
- Xing, C.: Ground-based vertical observations of atmospheric composition from field campaign on the Tibetan Plateau, Zenodo, <https://doi.org/10.5281/zenodo.5336460>, 2021.
- Xu, B., Cao, J., Hansen, J., Yao, T., Joswita, D. R., Wang, N., Wu, G., Wang, M., Zhao, H., Yang, W., Liu, X., and He, J.: Black soot and the survival of Tibetan glaciers, *Proc. Natl. Acad. Sci. U.S.A.*, 106(52), 22,114–22,118,
- 590 doi:10.1073/pnas.0910444106, 2009.
- Xu, C., Ma, Y., You, C., and Zhu, Z.: The regional distribution characteristics of aerosol optical depth over the Tibetan Plateau, *Atmos. Chem. Phys.*, 15, 12065–12078, 2015.
- Xu, X. D., Lu, C. G., Shi, X. H., and Gao, S. T.: World water tower: An atmospheric perspective, *Geophys. Res. Lett.*, 35, 2008.
- 595 Xu, L., Liu, H., Du, Q. and Xu, X.: The assessment of the planetary boundary layer schemes in WRF over the central Tibetan Plateau. *Atmospheric Research*, 230, 104644, 2019.
- Xu, Y., Ramanathan, V., and Washington, W. M.: Observed high-altitude warming and snow cover retreat over Tibet and the Himalayas enhanced by black carbon aerosols, *Atmos. Chem. Phys.*, 16(3), 1303-1315, 2016.
- Yanai, M., Li, C., and Song, Z.: Seasonal Heating of the Tibetan Plateau and Its Effects on the Evolution of the Asian
- 600 Summer Monsoon, *J. Meteorol. Soc. Jpn. Ser. II*, 70, 319–351, 1992.
- Yang, J. H., Kang, S.C., Ji, Z. M. and Chen, D. L.: Modeling the origin of anthropogenic black carbon and its climatic effect over the Tibetan Plateau and surrounding regions, *J. Geophys. Res.* 123: 671–692, 2018a.

- Yang, J., Kang, S., and Ji, Z.: Sensitivity analysis of chemical mechanisms in the WRF-chem model in reconstructing aerosol concentrations and optical properties in the Tibetan plateau, *Aerosol Air Qual. Res.*, 18, 505–521, 605 <https://doi.org/10.4209/aaqr.2017.05.0156>, 2018b.
- Yang, K., Koike, T., and Yang, D.: Surface flux parameterization in the Tibetan Plateau, *Bound. Layer Meteor.*, 106, 245–262, 2003
- Yao, T. D., Thompson, L., Yang, W., Yu, W. S., Gao, Y., Guo, X. J., Yang, X. X., Duan, K. Q., Zhao, H. B., Xu, B. Q., Pu, J. C., Lu, A. X., Xiang, Y., Kattel, D. B., and Joswiak, D.: Different glacier status with atmospheric circulations in Tibetan 610 Plateau and surroundings, *Nat. Clim. Change*, 2, 663–667, 2012.
- Zhang, J., Xia, X., and Wu, X.: First in situ UV profile across the UTLS accompanied by ozone measurement over the Tibetan Plateau, *J. Environ., Sci.*, 98, 71–76, 2020.
- Zhang, R., Wang, H., Qian, Y., Rasch, P. J., Easter, R. C., Ma, P. L., Singh, B., Huang, J., and Fu, Q.: Quantifying sources, transport, deposition, and radiative forcing of black carbon over the Himalayas and Tibetan Plateau, *Atmos. Chem. Phys.*, 615 15, 6205–6223, 2015.
- Zhang, X., Xu, J., Kang, S., Liu, Y., and Zhang, Q.: Chemical characterization of long-range transport biomass burning emissions to the Himalayas: insights from high-resolution aerosol mass spectrometry, *Atmos. Chem. Phys.*, 18, 4617–4638, 2018.
- Zhu, J., Xia, X., Che, H., Wang, J., Cong, Z., Zhao, T., Kang, S., Zhang, X., Yu, X., and Zhang, Y.: Spatiotemporal variation 620 of aerosol and potential long-range transport impact over the Tibetan Plateau, China, *Atmos. Chem. Phys.*, 19, 14637–14656, 2019.
- Zou, H., and Gao, Y.: Vertical ozone profile over Tibet using sage I and II data, *Adv. Atmos. Sci.*, 14, 505–512, 1997.

625

630

635

640

645

650

**Table 1. Detailed retrieval settings of O<sub>4</sub>, NO<sub>2</sub>, HCHO and HONO.**

Parameter	Data source	Fitting intervals (nm)			
		O <sub>4</sub>	NO <sub>2</sub>	HCHO	HONO
Wavelength range		338-370	338-370	322.5-358	335-373
NO <sub>2</sub>	298K, I <sub>0</sub> -corrected, Vandaele et al. (1998)	✓	✓	✓	✓
NO <sub>2</sub>	220K, I <sub>0</sub> -corrected, Vandaele et al. (1998)	✓	✓	✗	✓
O <sub>3</sub>	223K, I <sub>0</sub> -corrected, Serdyuchenko et al. (2014)	✓	✓	✓	✓
O <sub>3</sub>	243K, I <sub>0</sub> -corrected, Serdyuchenko et al. (2014)	✓	✓	✓	✓
O <sub>4</sub>	293K, Thalman and Volkamer (2013)	✓	✓	✓	✓
HCHO	298K, Meller and Moortgat (2000)	✓	✓	✓	✓
H <sub>2</sub> O	HITEMP (Rothman et al. 2010)	✓	✓	✗	✓
BrO	223K, Fleischmann et al. (2004)	✓	✓	✓	✓

HONO	296K, Stutz et al. (2000)	×	×	×	✓
Ring	Calculated with QDOAS	✓	✓	✓	✓
Polynomial degree		Order 3	Order 3	Order 5	Order 5
Intensity offset		Constant	Constant	Constant	Constant

655 \* Solar  $I_0$  correction; Aliwell et al. (2002)

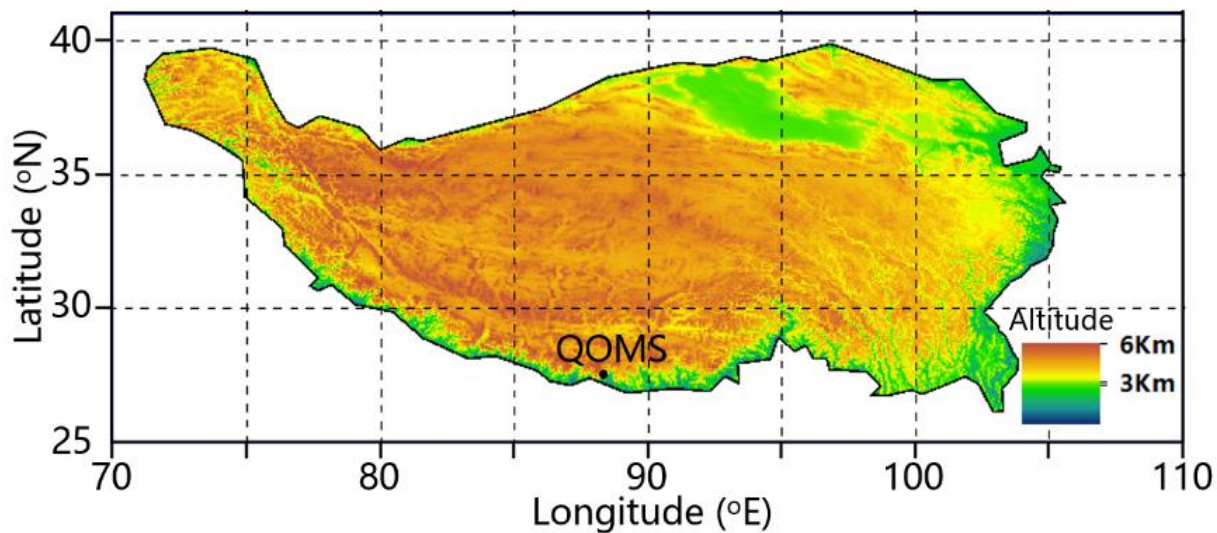
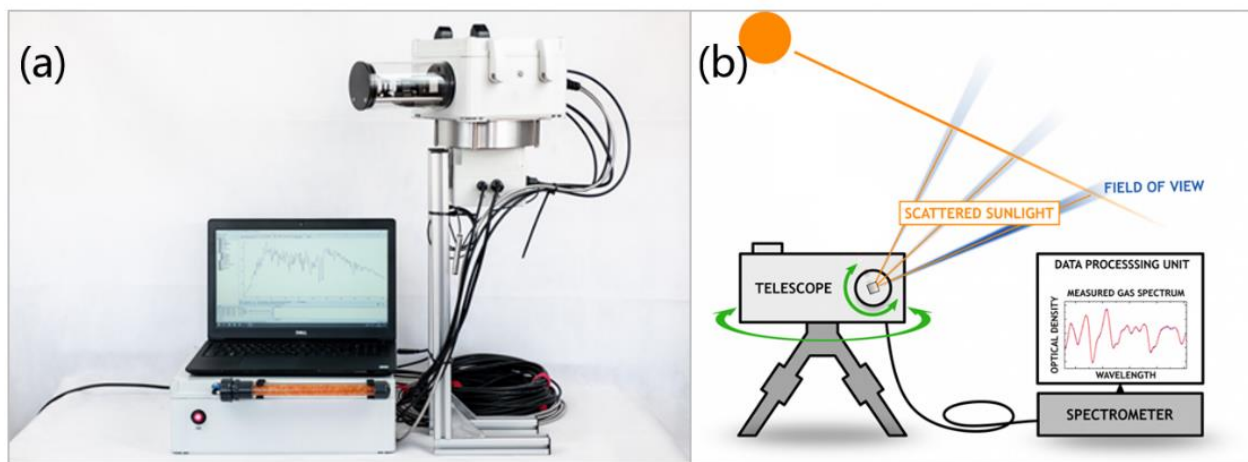


Figure 1. Elevation map of the TP and location of the CAS (QOMS) monitoring site.



660

Figure 2. (a) Physical view and (b) schematic view of the MAX-DOAS instrument.

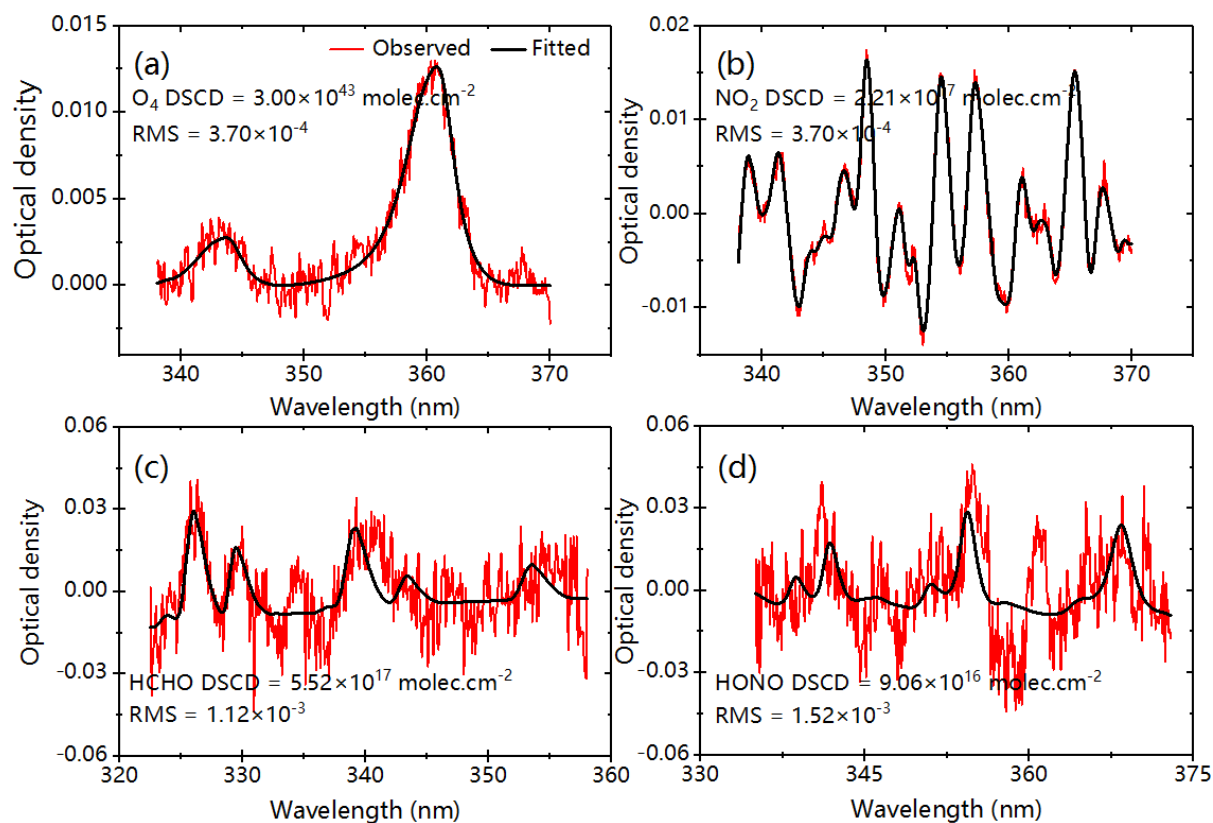
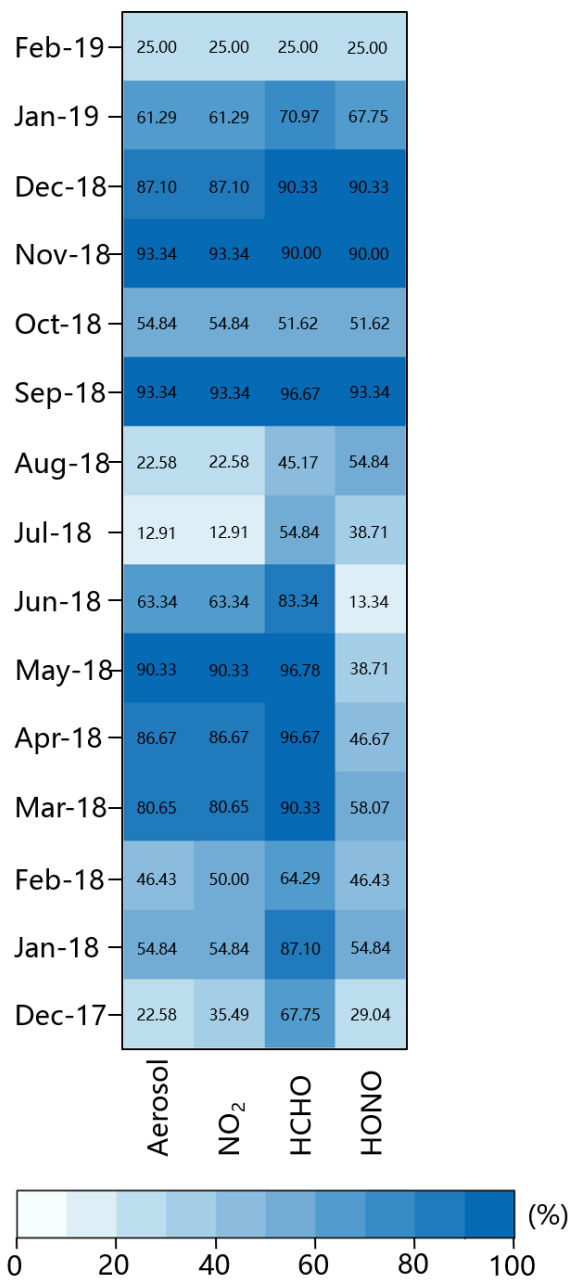


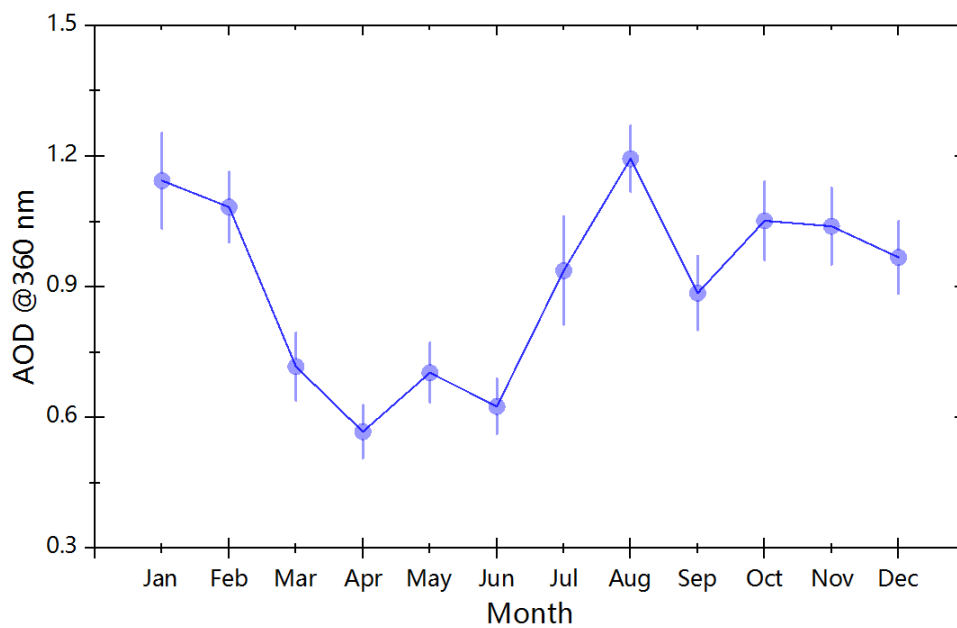
Figure 3. Examples of DOAS fits for  $O_4$ ,  $NO_2$ ,  $HCHO$  and  $HONO$  (~13:30 LST on May 22, 2018, SZA and EVA values were 52.53o and 15o, respectively).



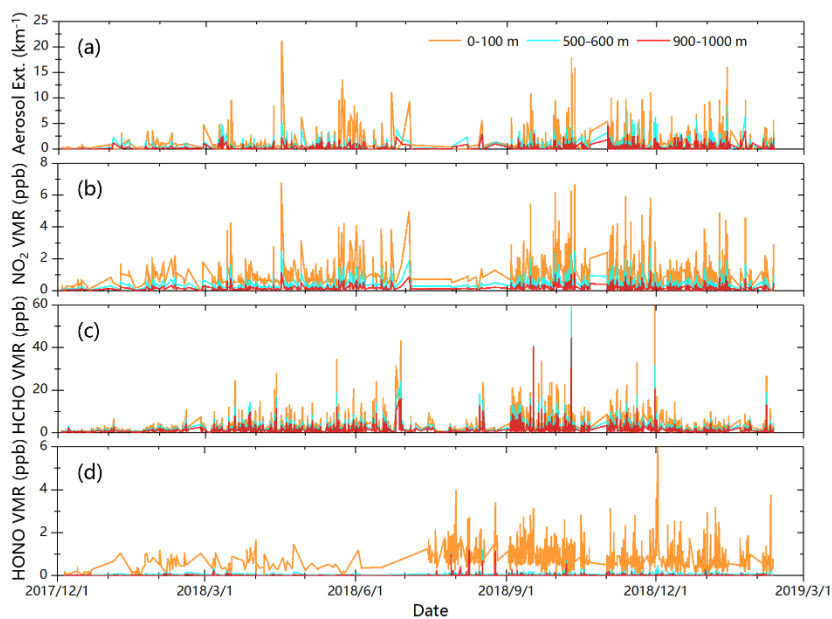
665

Figure 4. Monthly data integrity of the vertical profiles of aerosol, NO<sub>2</sub>, HCHO and HONO.



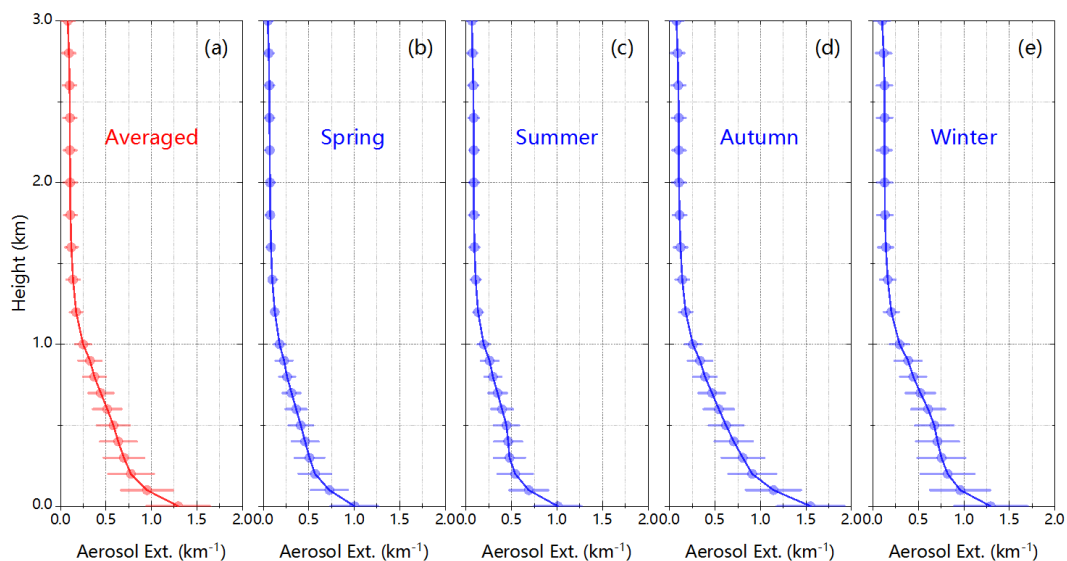


670 **Figure 5. Time series of monthly AOD from December 2017 to February 2019 at the CAS (QOMS) station.**

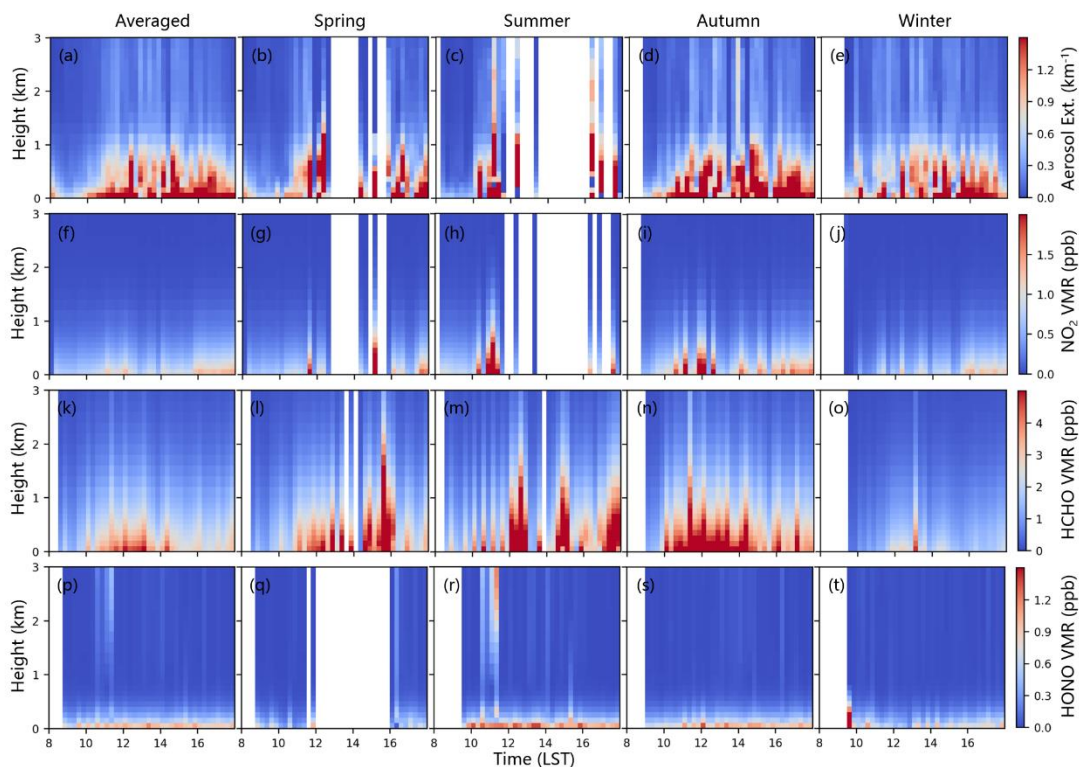


**Figure 6. Time series of hourly averaged (a) aerosol extinction, (b) NO<sub>2</sub>, (c) HCHO, and (d) HONO from December 2017 to February 2019 at the CAS (QOMS) station.**

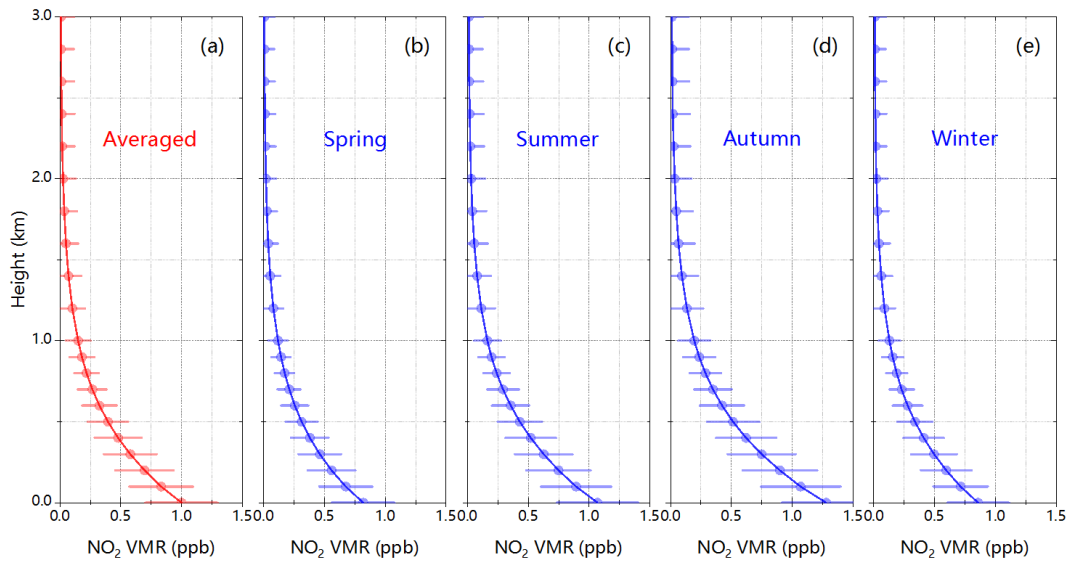
675



**Figure 7. (a) total averaged, (b) spring averaged, (c) summer averaged, (d) autumn averaged, and (e) winter averaged aerosol extinction vertical profiles from December 2017 to February 2019 at the CAS (QOMS) station.**

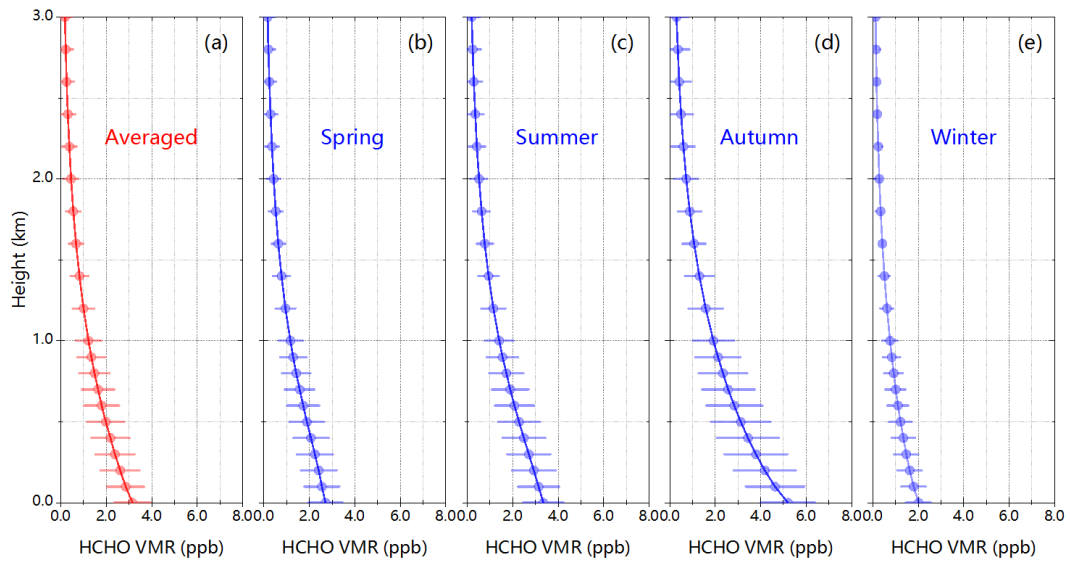


680 **Figure 8. Diurnal variations of the total averaged and seasonal averaged aerosol extinction profiles (a-e), NO<sub>2</sub> profiles (f-j), HCHO profiles (k-o), and HONO profiles (p-t) from December 2017 to February 2019 at the CAS (QOMS) station.**

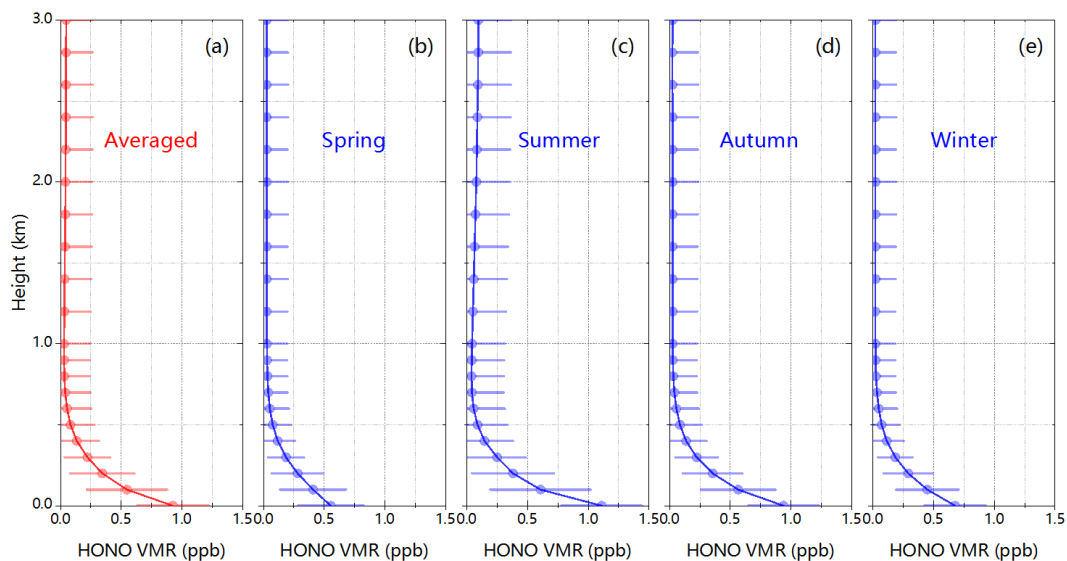


**Figure 9. (a) total averaged, (b) spring averaged, (c) summer averaged, (d) autumn averaged, and (e) winter averaged NO<sub>2</sub> vertical profiles from December 2017 to February 2019 at the CAS (QOMS) station.**

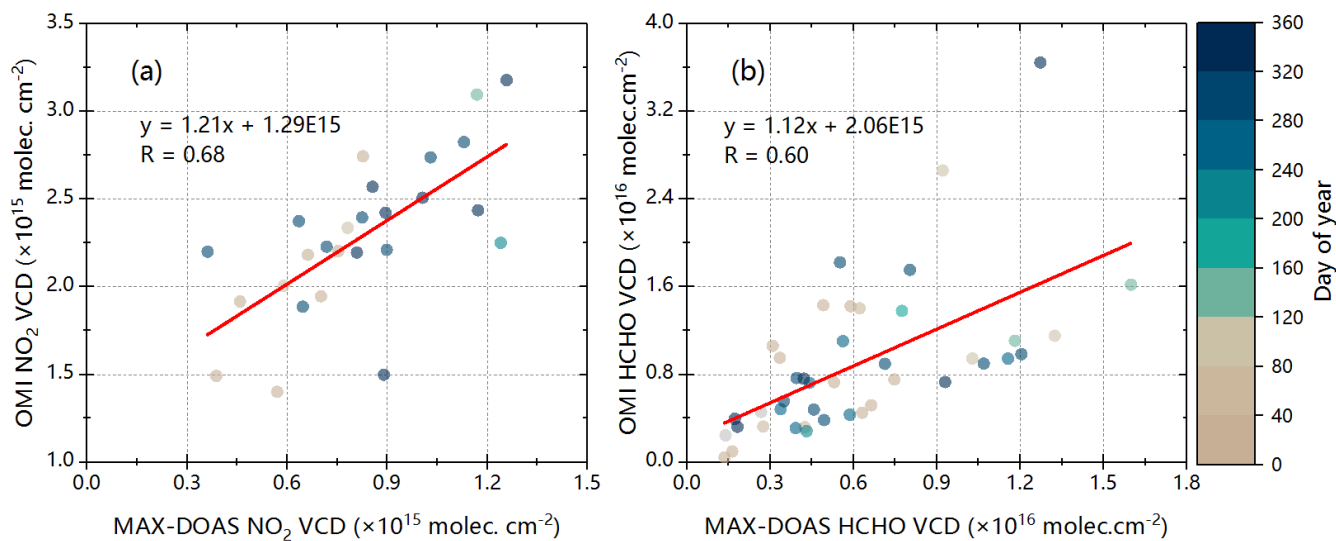
685



**Figure 10. (a) total averaged, (b) spring averaged, (c) summer averaged, (d) autumn averaged, and (e) winter averaged HCHO vertical profiles from December 2017 to February 2019 at the CAS (QOMS) station.**



690 **Figure 11. (a) total averaged, (b) spring averaged, (c) summer averaged, (d) autumn averaged, and (e) winter averaged HONO vertical profiles from December 2017 to February 2019 at the CAS (QOMS) station.**



695 **Figure 12. Linear regression plots (a) of the tropospheric NO<sub>2</sub> VCDs measured by OMI and MAX-DOAS, (b) of the tropospheric HCHO VCDs measured by OMI and MAX-DOAS.**