



MISELA: 1-minute sea-level analysis global dataset

Petra Zemunik¹, Jadranka Šepić², Havu Pellikka³, Leon Čatipović², Ivica Vilibić¹

¹Institute of Oceanography and Fisheries, Šetalište I. Meštrovića 63, 21000 Split, Croatia

²Faculty of Science, University of Split, R. Boškovića 33, 21000 Split, Croatia

5 ³Finnish Meteorological Institute, P.O. Box 503, FI-00101 Helsinki, Finland

Correspondence to: Petra Zemunik (zemunik@izor.hr)

Abstract. Sea-level observations provide information on a variety of processes occurring over different temporal and spatial scales that may contribute to coastal flooding and hazards. However, global research of sea-level extremes is restricted to hourly datasets, which prevent quantification and analyses of processes occurring at timescales between a few minutes and a few hours. These shorter period processes, like seiches, meteotsunamis, infragravity and coastal waves, may even dominate in low-tidal basins. Therefore, a new global 1-minute sea-level dataset - MISELA (Minute Sea-Level Analysis) - has been developed, encompassing quality-checked records of nonseismic sea-level oscillations at tsunami timescales ($T < 2\text{h}$) obtained from 331 tide-gauge sites (<https://doi.org/10.14284/456>, Zemunik et al., 2021b). This paper describes data quality-control procedures applied to the MISELA dataset, world and regional coverage of tide-gauge sites and lengths of time-series. The dataset is appropriate for global, regional or local research of atmospherically-induced high-frequency sea-level oscillations, which should be included in the overall sea-level extremes assessments.

1 Introduction

Extreme sea-level events represent a major hazard in coastal zones and have an immediate impact on the coasts, unlike processes acting on longer timescales such as the rise of the mean sea-level, which leaves much more time to adapt (Menéndez and Woodworth, 2010). The sensitivity of the coastal zone infrastructure and population to extreme sea levels emphasizes the need for investigation of their sources and characteristics, estimation of their incidence and strengths, cataloguing of historical events, assessments of their behaviour under the future climate, development of warning systems and ultimately arranging possible adaptation measures to these phenomena. However, these attempts are significantly limited by the availability of sea-level data in terms of resolution, coverage and quality.

25 Tide gauge observations provide information on a wide range of oceanographic processes, including extreme events associated with tsunamis, storm surges and other causes of sudden coastal inundations. It has been recognized long ago that well-organised and accessible sea-level databases are a prerequisite for gaining knowledge on sea-level extremes (e.g. Vafeidis et al., 2008; Hunter et al., 2017) and, consequently, for the management of coastal hazards. However, no quality-checked global sea-level datasets exist with temporal resolutions higher than an hour, i.e. covering periods at which – in addition to extraordinary events like tsunamis – a variety of processes may contribute substantially to, or even dominate the



overall sea-level extremes (Vilibić and Šepić, 2017). Many research activities have been based on 1-minute sea-level records, mainly being focused on specific regions known for frequent occurrence of meteotsunamis or high-frequency sea-level oscillations, such as the Mediterranean Sea (e.g. Šepić et al., 2015), Sicily (e.g. Šepić et al., 2018; Zemunik et al., 2021a), the Adriatic Sea (e.g. Šepić et al., 2016), the Balearic Islands (e.g. Marcos et al., 2009), the Finnish coast (e.g. Pellikka et al., 2014), the Great Lakes (e.g. Šepić and Rabinovich, 2014; Bechle et al., 2016), the U.S. East Coast (e.g. Pasquet et al., 2013), the Chilean coast (e.g. Carvajal et al., 2017), Japan (e.g. Heidarzadeh and Rabinovich, 2021), Australia (e.g. Pattiaratchi and Wijeratne, 2014), and many other.

Accessible global sea-level datasets differ in both sampling and latency, following the needs of the scientific and user communities, from quantification of climate changes and sea-level rise (e.g. Jevrejeva et al., 2006) through studying of sea-level extremes (e.g. Menéndez and Woodworth, 2010). Global sea-level datasets coming from tide gauge observations are dominantly assembled and archived in the following data centres and datasets:

1. Permanent Service for Mean Sea Level (PSMSL, <https://www.psmsl.org>), providing monthly and annual mean values of sea-level for ca. 1550 stations, mainly being used in climate sea-level studies (Woodworth and Player, 2003);
2. British Oceanographic Data Centre (BODC, <https://www.bodc.ac.uk>), handling hourly sea-level data for ca. 215 stations in delayed-mode (up to a year), during which the centre performs inspection and quality-control;
3. Global Extreme Sea Level Analysis dataset (GESLA, <http://www.gesla.org>, Woodworth et al., 2016, 2017), containing global sea-level data with an hourly resolution at the majority of 1355 tide gauges, however the quality-check has not been undertaken centrally but relies on procedures undertaken by data providers;
4. University of Hawaii Sea Level Centre (UHSLC, <https://uhslc.soest.hawaii.edu>), distributing both preliminary quality-checked data in fast-mode (1-2 months) for ca. 290 stations and fully quality-checked hourly sea-level dataset through Joint Archive for Sea Level (JASL) (Caldwell et al., 2015) for ca. 515 stations, in cooperation with NOAA National Centers for Environmental Information (<https://www.ncei.noaa.gov/access/metadata/landing-page/bin/iso?id=gov.noaa.nodc:JIMAR-JASL>);
5. Intergovernmental Oceanographic Commission Sea Level Station Monitoring Facility (IOC SLSMF, <http://www.ioc-sealevelmonitoring.org>) hosted by the Flanders Marine Institute (VLIZ), providing raw global sea-level data for ca. 1100 stations with a minute resolution in real- or near-real time and designed for operational purposes.

Convincingly, only the last dataset contains global sea-level records coming from tide gauges measuring at a minute resolution, however the disadvantage is that there is no possibility of undertaking quality-control in real-time, therefore these raw records may contain many different problems (UNESCO, 2020). It should be noted here that some services freely share their 1-min data through specific databases, but covering national coastlines or limited areas, like NOAA Tides and Currents dataset (<https://tidesandcurrents.noaa.gov>). In order to override these issues and provide a consistent global-scale dataset of research quality, the Minute Sea-Level Analysis (MISELA) dataset was developed and will be presented in this paper.



- 65 MISELA contains delayed mode 1-minute quality-checked and filtered sea-level records from a large number of tide gauges worldwide for a period from 2004 to 2019. Having access to a global dataset of 1-minute sea-level data may accelerate the research on various high-frequency sea-level phenomena such as seiches, meteotsunamis, infragravity and coastal waves (e.g. Monserrat et al., 2006; Yankovsky, 2009; Pellikka et al., 2014; Dodet et al., 2019), which is definitely not possible to achieve using hourly measurements.
- 70 The paper is organized as follows. In Section 2 the sources of the data used for the MISELA dataset and the quality-check procedure are thoroughly described. Section 3 presents the MISELA dataset, the global and regional coverage of the quality-checked time-series and the basic statistics of the dataset. The paper finishes with the data availability statement and discussion on applications, perspectives and possible improvements of the MISELA dataset.

2 Data and methods

75 2.1 Sources of data

The main source for constructing the MISELA dataset is Intergovernmental Oceanographic Commission (IOC) Sea Level Station Monitoring Facility (SLSMF, <http://www.ioc-sealevelmonitoring.org>), which provides raw sea-level data received in real-time from more than 160 providers that presently operate with approximately 935 tide gauge stations. However, the network of tide gauges is not completely operational as many stations do not report data regularly to the facility, but the
80 coverage is still appropriate for global studies.

The IOC database has been established following the disastrous 2004 Indian Ocean tsunami (Chlieh et al., 2007), after which UNESCO through IOC coordinated efforts in developing regional tsunami warning systems (Amato, 2020). Besides giving access to the data, the main objective of the facility is to inform users about the status of station availability and performance. This includes controlling the tide gauge stations metadata and regularly checking the operational status of all
85 stations, as well as contacting operators regarding non-operating stations. Another important objective is a display service through which one can undertake quick visual inspection of the raw data in a selected half-daily, daily, weekly or monthly period during which the chosen station was operational (IOC, 2012). It is also possible to download the data.

As real-time data are mostly used for operational purposes, the IOC data have not undergone any quality-check procedure and are shared as received from providers. Expectedly, many time-series are of bad quality with spikes, shifts, drifts and
90 other errors which are due to malfunctions of instruments (Fig. 1), being dependent on the real-time quality procedures set up by the operators and on the quality of sensors and instrumentation on the sites. The majority of the tide gauges are providing data with a 1-minute frequency of sampling, yet some of them are still recording on a multi-minute timescale and are thus not included in the MISELA dataset. Further, some stations have multiple sensors (e.g. pressure, radar and bubbler sensors) to provide cross-calibration between measurements. Each of the station comes with an information on a reference
95 code, location and country of the tide gauge, contacts of the local agency operating the station, geographic position, type of sensor for measurement and sampling rate, and other.

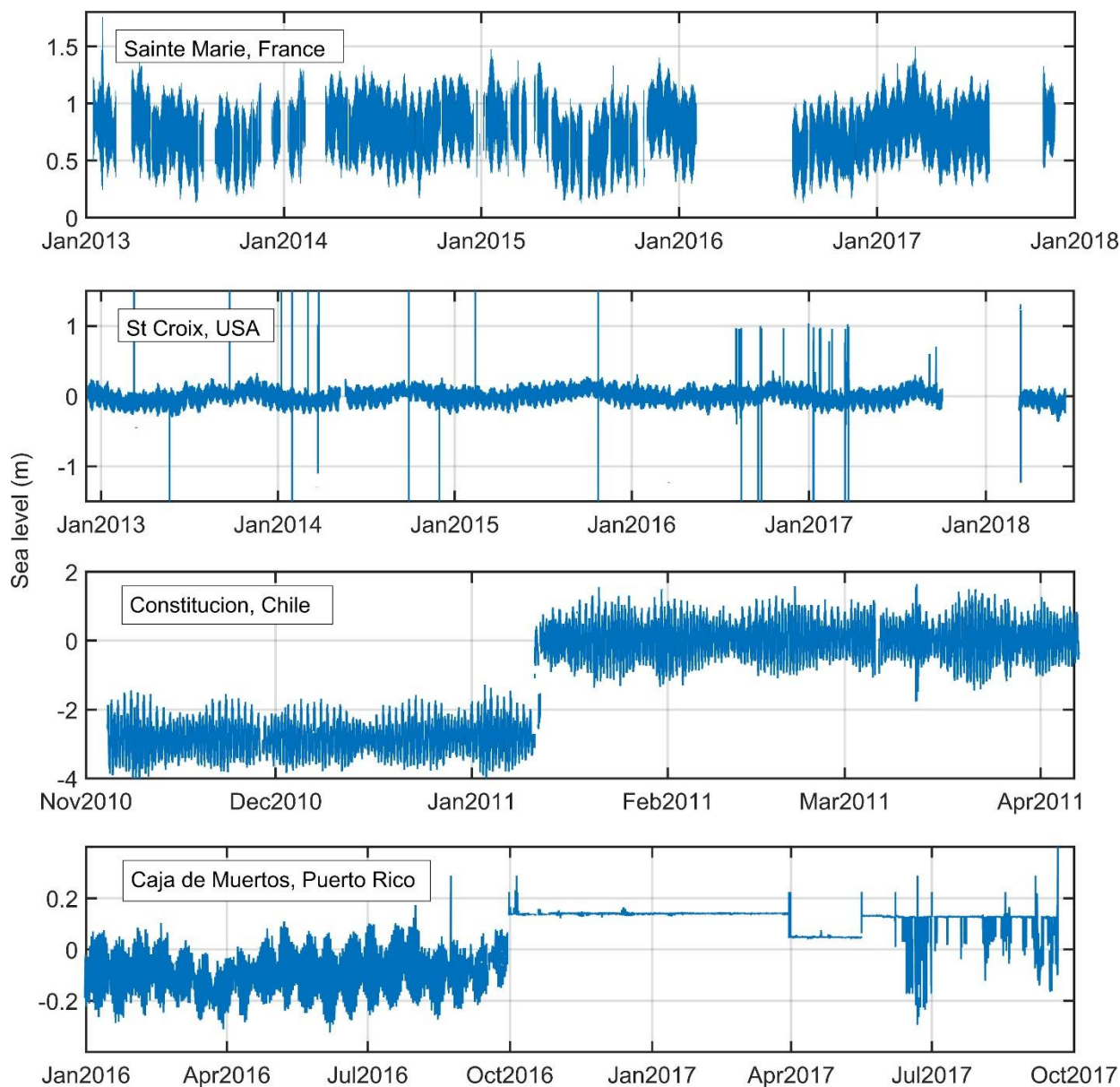


Figure 1: Examples of measured 1-min sea-level series containing different problems with the data.

100 Furthermore, 13 stations operated by the Finnish Meteorological Institute (FMI, <https://en.ilmatieteenlaitos.fi/>) and situated on the east coast of the Baltic Sea are included in the MISELA dataset. The 1-minute sea-level records are available from 2004 and have been already used in several regional studies on meteorological tsunamis along the Finnish coast (e.g. Pellikka et al., 2014; Jylhä et al., 2018). The FMI data are not included in the IOC SLSMF database. Finally, sea-level data from four stations in the Adriatic Sea were provided by the Institute of Oceanography and Fisheries (IOF, www.izor.hr), to



105 be included in the MISELA dataset. These stations, except Split, can also be found in the IOC SLSMF dataset, but only after October 2018, whereas the IOF provided the data from May 2017 onwards.

2.2 Quality-control (QC) procedures

The first step in the development of the MISELA dataset was implementing a procedure that reads and stores data from the IOC SLSMF portal for the period from the beginning of the station activity until June 2018. After obtaining the sea-level time-series from the IOC, FMI and IOF stations, for further processing, we selected stations having at least a 2-year-long series and containing no more than 30% of data gaps. For stations having multiple sensors we selected the series being the longest or with the lowest percentage of data gaps. The stations having data records of very low quality (too many spikes, incorrect records), spotted by visual checking, were also not taken into the processing. Along with 13 FMI and 4 IOF stations, 314 stations were selected from the IOC satisfying the above conditions, constituting 331 time-series in total.

115 The dataset required further processing as it contained numerous data quality problems (Fig. 1). First, the series were detided by removing all significant tidal components using the Matlab software package T_Tide (Pawlowicz et al., 2002) in order to allow for simpler visual inspection of the residual signal. The automatic quality-control procedures included removing of out-of-range values, i.e. values 50 cm differing from one neighbouring value or 30 cm differing from both neighbouring values (20 and 15 cm, respectively, in case of the FMI stations). The automatic spike detection procedure was continued by applying the methodology described by Williams et al. (2019), removing the values that deviate from a spline fitted using a least-square method. After the automatic control, remaining spikes were detected and removed by visual scanning of all records. In this time-consuming process, each series was inspected over 15-day-long windows, and spurious spikes and isolated data that have passed through the automatic procedures were manually removed. During these quality-control steps, a considerable amount of data has been removed, in particular at the beginning or end of the time series. Therefore, the MISELA's time-series might be shorter (down to 1.5 years) or gap-denser, when compared to the raw series. Unlike the existing automatic quality-check systems SELENE (EuroGOOS DATA-MEQ working group, 2010) and Automatic Tide Gauge Processing System from the NOC (Williams et al., 2019), our approach introduced manual procedure as well, given the great variety of data problems coming from a wide range of operators, operating procedures and sea-level sensors. Not all problems were removed properly and thus a more robust approach, than provided by the fully automated system, was required.

130 The next step in creating the MISELA dataset was to exclude sea-level records observed during seismic tsunamis, since the applications are directed towards research on atmospherically-induced sea-level oscillations. Using the NGDC/WDS Global Historical Tsunami Database (https://www.ngdc.noaa.gov/hazard/tsu_db.shtml), we listed all tsunamis from 2006 to 2018 and deleted several days of data (depending on the tsunami intensity) during each recorded tsunami at all stations in the area. To restrict to the high-frequency sea-level signal only, the final step included digital filtering of the data by the high-pass Kaiser-Bessel filter with a cut-off period of 2 hours. Therefore, the applications of the MISELA dataset are designed exclusively for researching atmospherically-induced sea-level oscillations at the tsunami timescales, however, it might be



140

combined with other existing datasets (at hourly resolutions) that are available by the known databanks (like these listed in Section 1). Prior to the filtering, linear interpolation of gaps shorter than one week was carried out, as the digital filtering requires a continuous time-series. While a great majority of data outliers have been removed from the records, some have undoubtedly remained in the data as the visual control is subject to errors and omissions. The complete process of the QC procedure is illustrated in Fig. 2, while Fig. 3 demonstrates three examples of sea-level series before and after applied procedures.

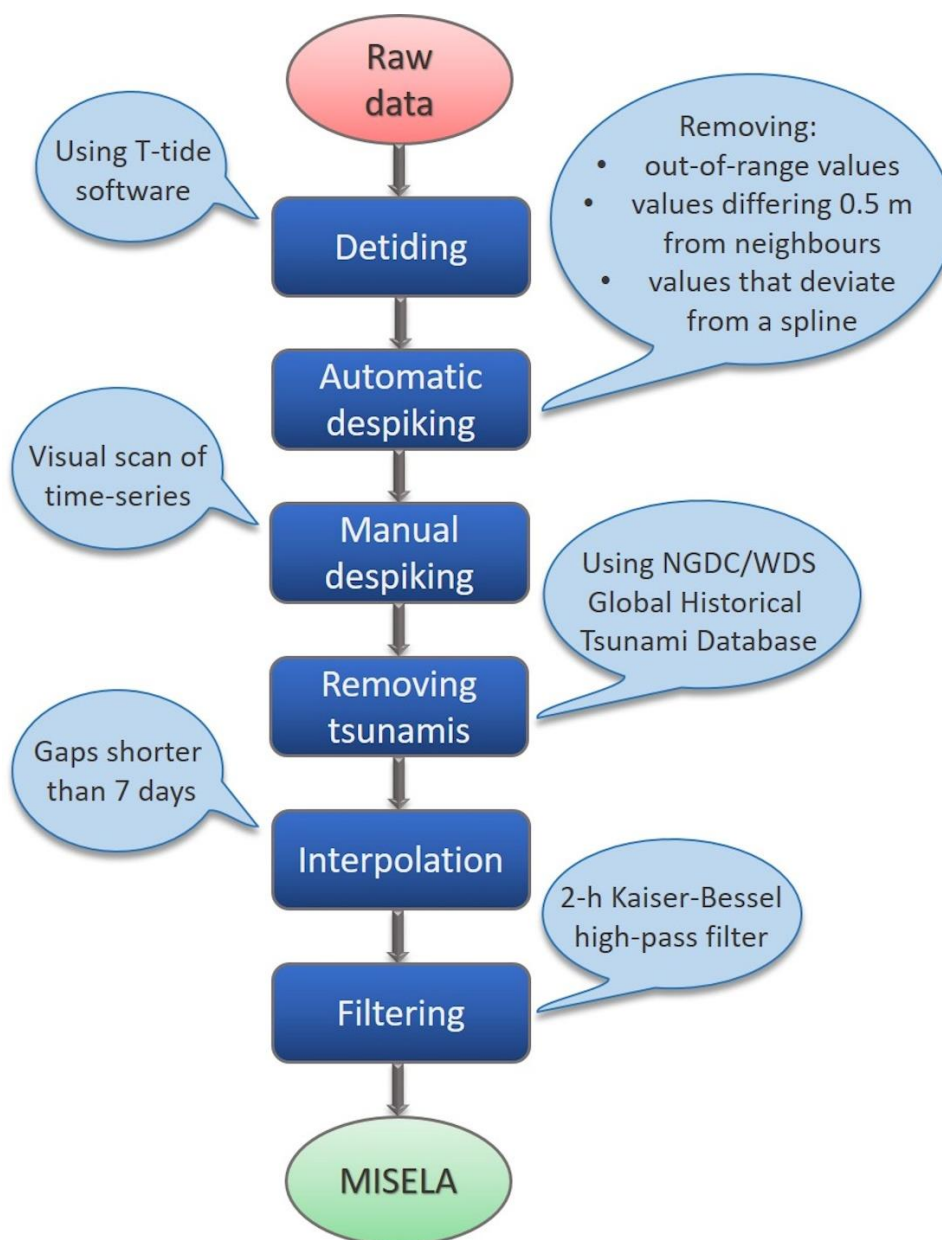
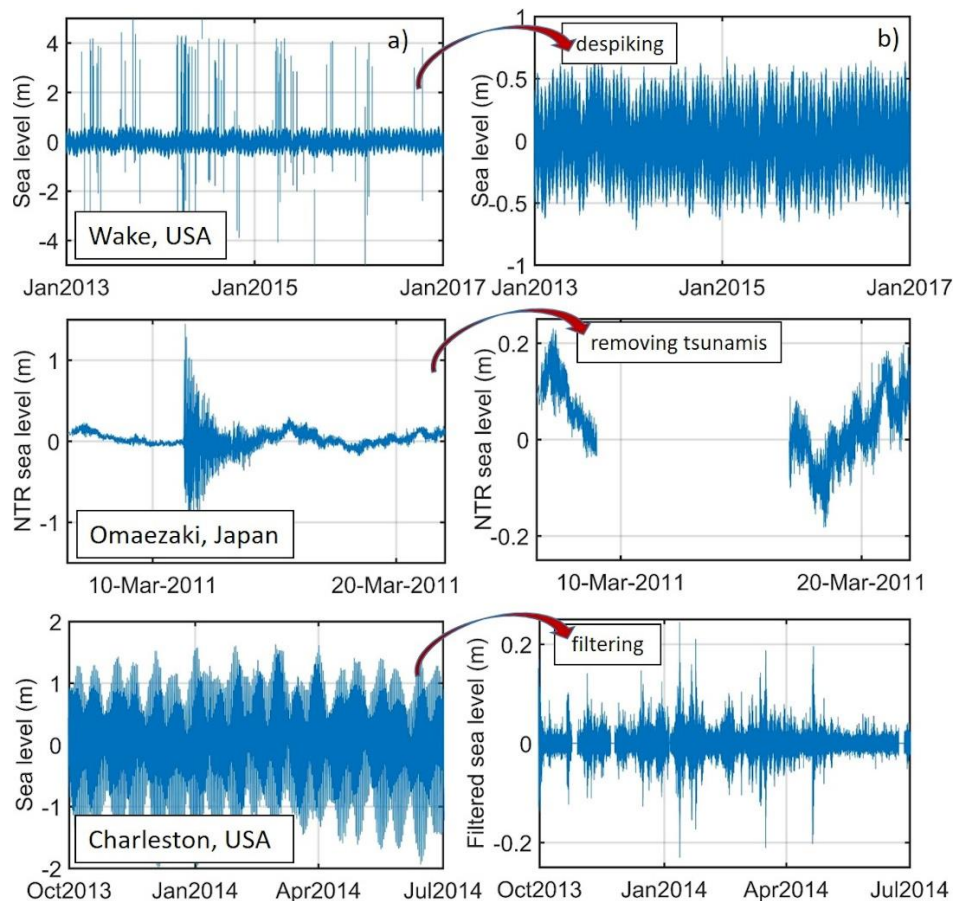


Figure 2: The diagram of the data processing.



145

Figure 3: Examples of three time-series a) before and b) after processing.

3 Description of the MISELA dataset

The MISELA dataset contains 331 data files in the NetCDF format, each corresponding to high-frequency sea-level time-series from one tide gauge. The file contains three variables: time, nslott (nonseismic sea-level oscillations at tsunami timescales, Vilibić and Šepić, 2017) and QC, along with global attributes on the station code, geographic position of the station, origin of data and contact person for the dataset. Table 1 shows an example of a MISELA file with the station name abas. This is a 4-letter station code taken from the IOC Sea Level Station Monitoring Facility website, therefore one can easily find additional metadata about each IOC station if needed (e.g. location, country, local contact, type of sensor, etc.). The variable time is represented in the unit of minutes since the 2000-01-01 00:00:00 UTC with the sea-level value noted in the same row of the variable nslott and the corresponding quality-check flag of the data in the variable QC. The FMI and IOF stations differ from the IOC stations in having a full name of the station location in the title of the files (e.g. helsinki, degerby, velaluka, starigrad) instead of a shorter code name. The dimension of the variables provides quick information on record length, considering that approximately half a million data points represent a one-year-long record. The variable nslott

155



160 is the final product obtained after the whole process of quality-check and contains the sea-level time-series filtered with a high-pass filter (cut-off period of 2 hours).

Table 1. Example of a data file in the MISELA dataset.

File name:	abas	
Format:	NetCDF	
Global attributes:		
<i>Station code</i>	abas	
<i>Latitude</i>	44.02 degree N	
<i>Longitude</i>	144.29 degree E	
<i>Original data</i>	http://www.ioc-sealevelmonitoring.org/station.php?code=abas	
<i>Abstract</i>	This file is a part of the MISELA (Minute Sea-Level Analysis) dataset containing 1-minute quality-checked sea-level records from 331 tide gauges worldwide. The dataset is appropriate for global, regional or local research of atmospherically-induced high-frequency sea-level oscillations.	
<i>Contact</i>	Petra Zemunik Institute of Oceanography and Fisheries, Split, Croatia zemunik@izor.hr	
Variables:		
<i>time</i>	Size: 3276018 x 1 Datatype: double Long name: time Units: minutes since 2000-01-01 00:00:00 UTC Resolution: 1 min Start/end time: 21-Mar-2012 23:43:00 14-Jun-2018	
<i>nslott</i>	Size: 3276018 x 1 Datatype: single Long name: nonseismic sea level oscillations at tsunami timescales Units: m	
<i>QC</i>	Size: 3276018 x 1 Datatype: int8 Long name: quality-control (QC) flags Flags: 0 removed or non-existing data 1 good data 2 interpolated data 3 interpolated or removed data due to seismic tsunami	
<i>time</i>	<i>nslott</i>	<i>QC</i>
6428143	2.0816682e-17	1
6428144	0.0030234202	1
6428145	0.012026043	1
6428146	0.0089078695	1
6428147	-0.00043109810	1
6428148	0.0025091446	1
6428149	0.0023286000	1
6428150	0.0021272700	1
6428151	-0.0072948458	1



Figure 4 shows that the MISELA dataset has an acceptable geographical distribution, covering many of the World's coasts. The tide gauge network is denser in the areas having a long history of sea-level monitoring, in particular at the tsunami timescale, like the Mediterranean Sea, both the East and West Coasts of the US and the coasts of Chile and Australia. Additionally, many island countries and archipelagos have well-developed network of tide gauges such as Japan, New Zealand, the Aleutian Islands, the Hawaii and the Caribbean. However, some areas still have lower spatial station coverage, including the east coast of South America and the entire African coast, the Middle East, the Indonesian and Russian coasts, presumably due to under-investment in sea-level monitoring or due to data-sharing restriction policies. In general, the Northern Hemisphere dominates over the Southern Hemisphere in terms of spatial coverage (70% of stations are in the Northern Hemisphere), particularly the zone between 30 and 60°N that contains 137 densely deployed stations spreading over the coasts of North America, Europe and Japan.

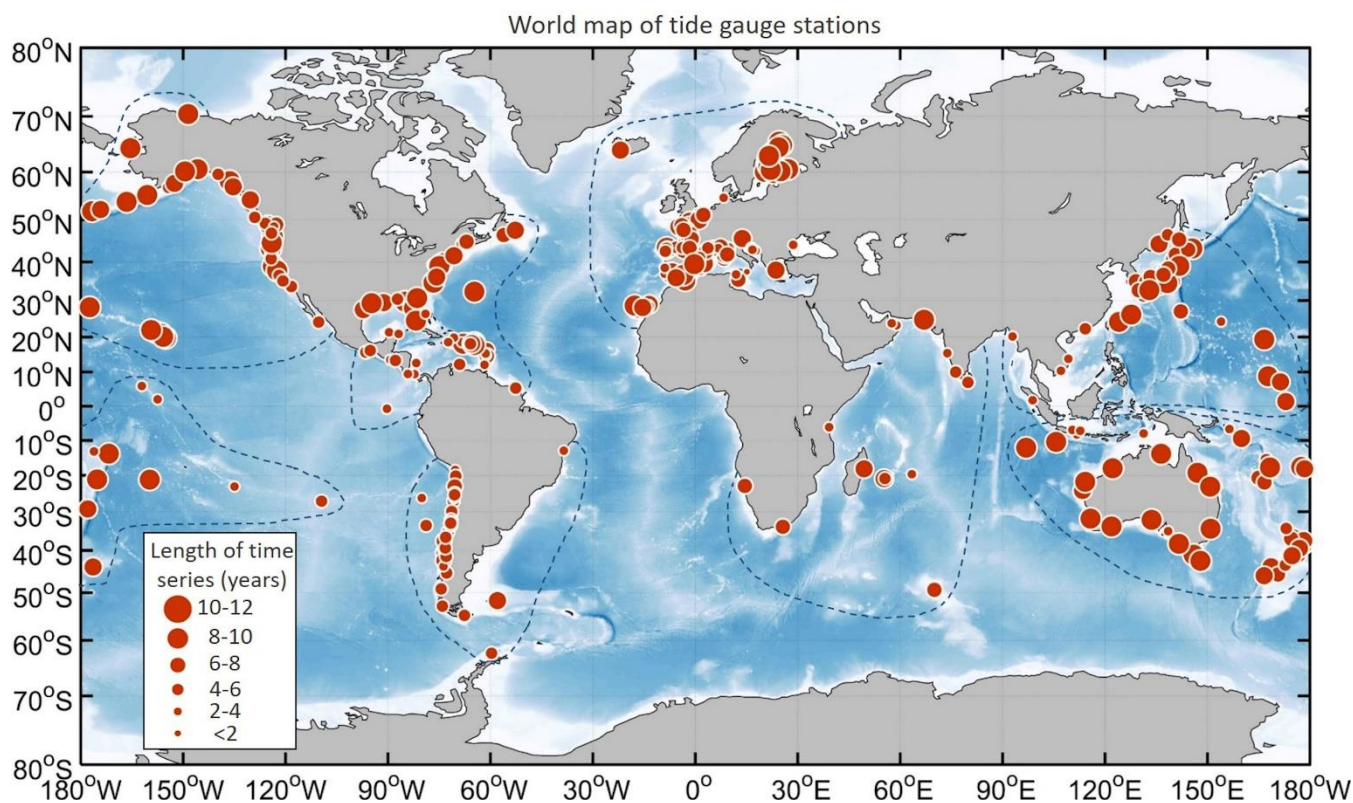


Figure 4. The world map of the MISELA station locations. The size of the circle is proportional to the length of the time-series. The borderlines between different macro-regions is indicated (EU – Europe, CNEA – The Central and North-East Americas, NWH – North-West America and Hawaii, EA – East Asia, ASWA - Africa and South-West Asia, ANSA - Australia, New Zealand and South Asia, SSA – Southern South America, CSP - Central and Southern Pacific).

Figure 5 shows a close-up of station-populated areas, revealing densely distributed tide gauges on the coasts of the Western Mediterranean and Europe, the Finnish coast, the Gulf of Mexico, the Caribbean Islands, the US East and West Coast and the Japanese and Chilean coasts, indicating that there exists an excellent coverage for regional investigations.

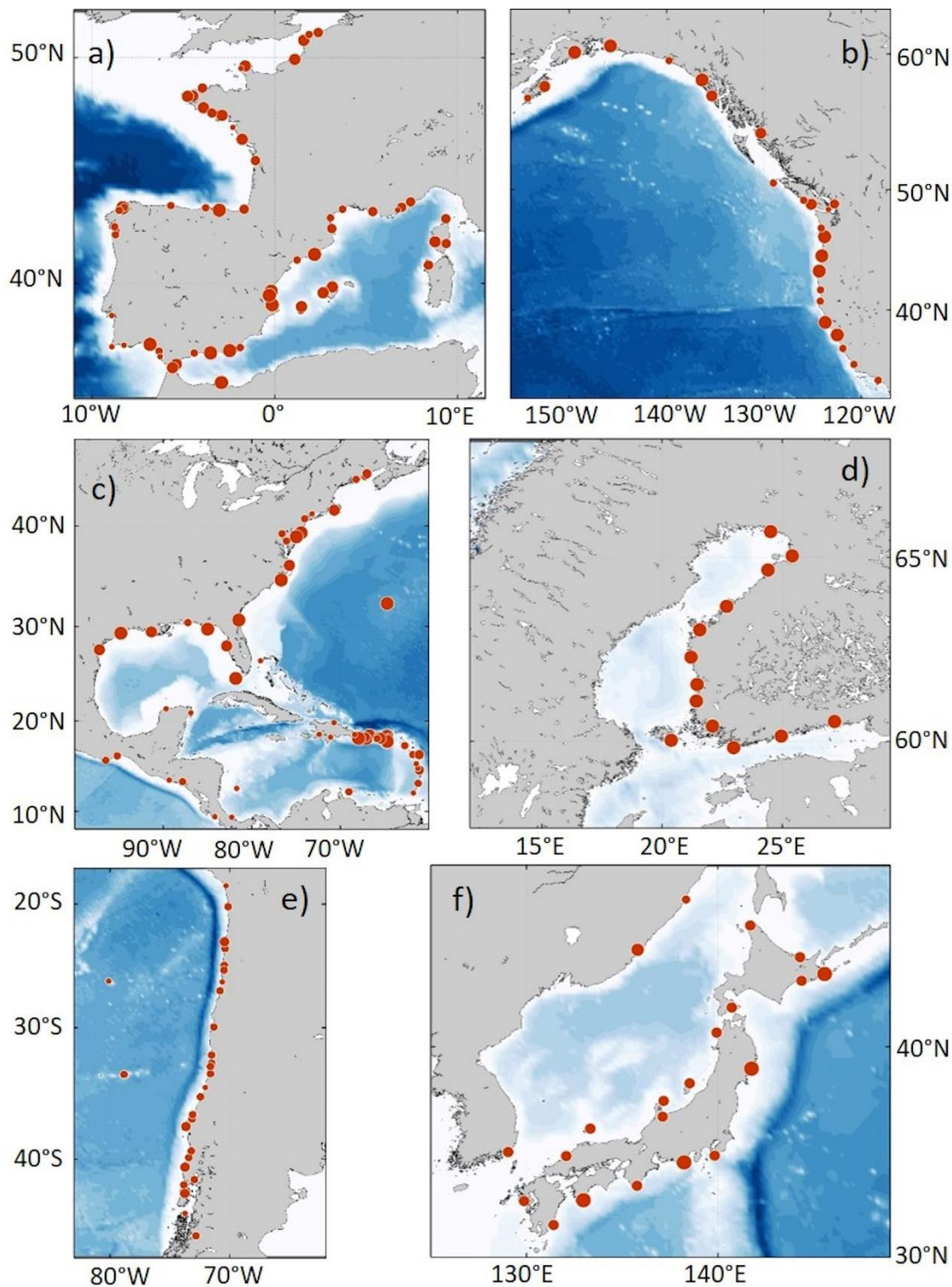


Figure 5. Zoom to station-populated areas: (a) The Western Mediterranean and the Western Europe, (b) the US West Coast, (c) the Caribbean, the Gulf of Mexico and the US East Coast, (d) the Finnish coast, (e) the Chilean coast, and (f) the Japanese coast.



In total, the MISELA dataset contains 2303 station-years of data spanning between 2004 and 2019, with an overall average record length of nearly 7 years, but varying from only 1.5 years at some stations to 12 years at others. Longer records (>10 years) are primarily located in the Baltic and Australia, while shorter ones (<4 years) are grouped in Chile, Central America and Indonesia. An important contribution to the overall dataset comes from densified sub-systems such as the Mediterranean, Japan, Gulf of Mexico and New Zealand in which records of various lengths can be found.

For regional statistics, we classified stations into 8 macro-regions: Europe (EU), Central and North-East Americas (CNEA), North-West America and Hawaii (NWH), East Asia (EA), Africa and South-West Asia (ASWA), Australia, New Zealand and South Asia (ANSA), Southern South America (SSA) and Central and Southern Pacific (CSP). Table 2 shows that in average the longest time-series (8.3 years) are available for the stations of NWH, followed by the ANSA and EU regions (7.8 and 7.4 years), while shortest-averaged records are found in the SSA and ASWA regions (5.1 and 5.8 years). Interestingly, some of the longest records are found in the ASWA and CSP regions that mostly have shorter time-series (Fig. 6b).

Table 2. Number of stations and the mean length of time-series (in years) in each macro-region and globally.

	<i>Number of stations</i>	<i>Mean length of time-series (years)</i>
<i>World</i>	331	6.96
<i>Europe (EU)</i>	90	7.39
<i>Central and North-East Americas (CNEA)</i>	63	6.27
<i>North-West America and Hawaii (NWH)</i>	39	8.27
<i>East Asia (EA)</i>	34	6.89
<i>Africa and South-West Asia (ASWA)</i>	14	5.78
<i>Australia, New Zealand and South Asia (ANSA)</i>	44	7.88
<i>Southern South America (SSA)</i>	35	5.12
<i>Central and Southern Pacific (CSP)</i>	12	6.53

Most of the sea-level observations in the MISELA dataset were made after 2011, when many tide gauges were installed or added to the IOC Sea Level Station Monitoring Facility as a reaction to the disastrous 2011 Japan Tohoku earthquake and tsunami (Simons et al., 2011; Fig. 6a). The expansion of the sea-level network in 2012 is particularly evident for the regions of EA, CNEA and NWH, while numerous stations were added to SSA in 2013. The region of EU continuously has the highest number of stations among all macro-regions. All macro-regions show a positive trend in the number of active stations over the period 2006-2018. It should be highlighted here that records from the IOC stations are obtained for the period from as early as 1 January 2006 to 14 June 2018 at the latest, while only records from the 4 IOF stations end in December 2019 and records from the 13 FMI stations start in January 2004 (the EU region), which results in a lower number of stations at the beginning and at the end of the whole MISELA period (2004-2019, Fig 6a).

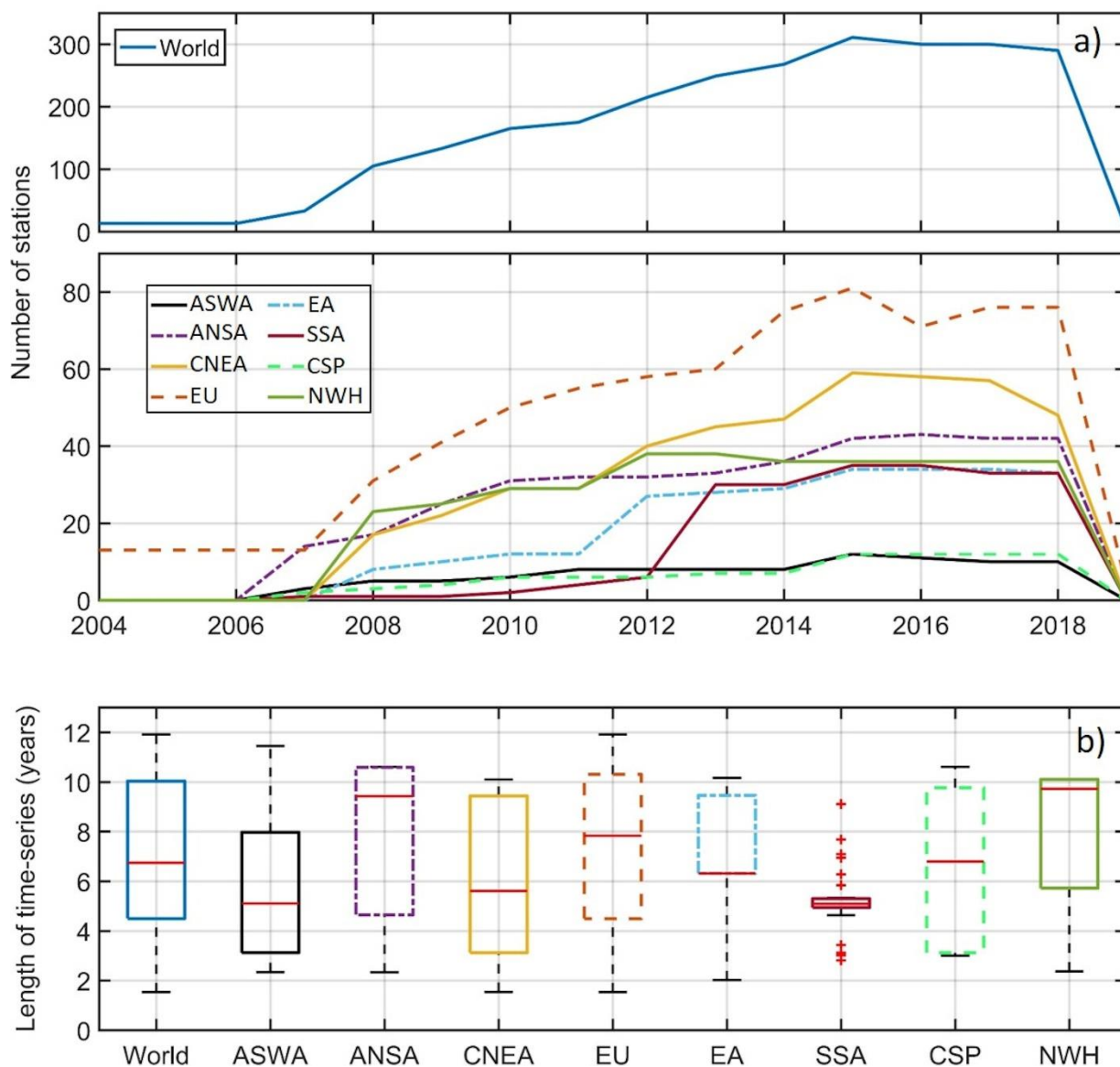


Figure 6. (a) Number of stations in a year between 2004 and 2019, and (b) Box-Whiskers plots of the length of the time-series in each macro-region and globally.

4 Data availability

210 The data described in this manuscript can be accessed through the Marine Data Archive of the Flanders Research Institute (VLIZ) at <https://doi.org/10.14284/456> (Zemunik et al., 2021b).



5 Conclusions and perspectives

A new global dataset of high-frequency sea-level oscillations, the MISELA dataset, was specifically designed and created to serve as a tool for coastal hazard assessment, in particular coming from atmospherically-induced high-frequency sea-level oscillations. This hazard has so far been underrated (Pattiaratchi and Wijeratne, 2015), primarily due to a lack of sea-level measurements at a minute timescale. Fortunately, the “rate” of the research on high-frequency sea-level oscillations, in particular on meteotsunamis, strongly increased in recent years (Vilibić et al., 2021). It is not certain how will high-frequency sea-level oscillations change under the future climate scenarios, although there is at least one research stating that these oscillations might become more frequent and of higher magnitude (Vilibić et al., 2018). Therefore, the importance of having a dataset that may provide the quality-checked global data for coastal studies is inevitable.

The MISELA dataset merges data from different sources to create a consistent dataset, which may serve for researching the magnitude and incidence of moderate and extreme high-frequency sea-level phenomena, like meteotsunamis, on the global scale. The primary motivation stems from the need to gather measurements, standardize them and bring to research-quality level. To this day, none of the existing sea-level databanks has provided global quality-checked dataset with the sampling interval of 1 minute.

Obtaining a global dataset of 1-minute sea-level data has several objectives. One of the main aims is to encourage an increase of the sampling resolution on numerous tide gauges that retained a lower frequency of sampling. Another objective, adopted from the Global Sea Level Observing System (GLOSS), is to stimulate the installation of tide gauges according to all international standards on coasts where none of them exist at present (IOC, 2012). New tools and technologies for observing and processing sea-level data (e.g. Pérez et al., 2014; García-Valdecasas et al., 2021) allowed for instrumentation to reach a standard in sea-level measurements at a minute timescale, therefore contributing to the improvement of existing high-frequency sea-level networks and development of new ones. This also includes the development of quality-check procedures in real-time; however, for scientific purposes, such an automatic quality-check may not be enough to reach a fully controlled data product. Recent manual on the quality-check of sea-level data (UNESCO/IOC, 2020) has gathered all relevant aspects and recommendations on this topic. In summary, the quality-check must maintain common standards, acquire consistency and ensure reliability and in that way may contribute to processing the data according to ‘FAIR’ Guiding Principles for scientific data management and stewardship (Wilkinson et al., 2016). Following these principles, all time-series stored in the MISELA dataset have undergone such a standardized quality-check procedures (described in Sect. 2.2). However, the vast of efforts during the quality-check were spent on visual (manual) inspection, as the series suffer from data problems undetectable by automatic procedures. Together with the development of new techniques for quality-check and a great effort for standardisation, more procedures can hopefully be automatized in the future, hence the amount of time dedicated to visual inspection may be reduced.

In spite of all arguments, there are tide gauges and tide gauge networks having a lower sampling resolution, thus providing data from which high-frequency sea-level oscillations cannot be extracted nor studied properly. For example, the tide gauge



245 network of the United Kingdom is still operating with the resolution of 15 minutes, although such a coarse sampling
resolution may strongly affect the estimate of coastal sea-level extremes (Tsimplis et al., 2009). For that reason, Vilibić and
Šepić (2017) concluded that the global tide-gauge network should be standardized to sample at the minute resolution and to
report in real-time, with as much as possible quality-check procedures implemented before releasing data to the public.
Hopefully, that will be the way of global development of future sea-level networks.

250 There are number of future improvements that can contribute to the evolving of the MISELA dataset. Specifically, some
areas have a low station coverage due to meagre sea-level station networks or restrictive data policies, while some regions
stand out as having significant development over the past years. For example, a major gap in the provision of data is related
to the African coasts (an exception is part of the east African coast and nearby islands where tide-gauge stations were
installed following the Sumatra tsunami). This is not a new issue, as attempts have been made to construct a sea-level
255 network in Africa since the last century (IOC, 1997). However, the problem remains in the long-term maintenance.
Moreover, the MISELA dataset contains very few stations in the areas of the Middle East, India, Russia and the east coast of
South America. The Global Sea-Level Observing System (GLOSS) core network of active tide gauge stations today contains
slightly higher number of stations in these regions, being excluded from the MISELA dataset as they do not meet specific
conditions on the length and continuity of the time-series and the resolution of the measurements. In addition, in some of
260 these regions data ownership restricts data exchange (Woodworth et al., 2016), yet we hope that their operators may consider
providing 1-minute sea level data to the MISELA dataset. Last but not least, polar regions have always represented a great
issue for tide-gauge operations, and their records are highly desirable in all aspects of sea-level research.
In the future, the MISELA dataset can be updated with new data as these become available. Extending the time-series can
bring more reliable results of the studies. Also, as new tide gauges are being installed, the total number of stations in the
265 MISELA dataset can increase, and a better global coverage can thus be achieved.

Author contributions

All authors participated in performing quality-check procedures. I.V. and P.Z. developed the concept of the manuscript, P.Z.
wrote the initial version of the text, while all authors commented on and revised the text and approved the manuscript.

Competing interests

270 The authors declare that they have no conflict of interest.



Acknowledgements

We are grateful to a hundred of data providers and thousands of researchers, engineers and technicians engaged in the maintenance of tide gauge stations whose data is included in the MISELA dataset. Comments and issues raised by Clea Denamiel are particularly appreciated. The work has been conducted through “Young Researchers’ Career Development
275 Project – Training New Doctoral Students” of the Croatian Science Foundation, with the support of the Croatian Science Foundation projects ADIOS (Grant IP-2016-06-1955), BivACME (Grant IP-2019-04-8542) and StVar-Adri (Grant IP-2019-04-5875), the Horizon 2020 projects SHExtreme (ERC-StG Grant 853045) and BLUEMED (Grant 727453), the Unity Through Knowledge Fund project MESSI (Grant 25/15), the Interreg Italy-Croatia Programme projects CHANGE WE CARE and ECOSS, and the European Structural and Investment Funds 2014–2020 projects CAAT (Grant
280 KK.01.1.1.04.0064) and HIDROLAB (Grant KK.01.1.1.04.0053).

References

- Amato, A.: Some reflections on tsunami Early Warning Systems and their impact, with a look at the NEAMTWS, *Boll. Geof. Teor. Appl.*, 61, 403-420, <https://doi.org/10.4430/bgta0329>, 2020.
- Bechle, A.J., Wu, C.H., Kristovich, D.A.R., Anderson, E.J., Schwab, D.J., and Rabinovich, A.B.: Meteotsunamis in the
285 Laurentian Great Lakes, *Sci. Rep.*, 6, 37832, <https://doi.org/10.1038/srep37832>, 2016.
- Caldwell, P. C., Merrifield, M.A., and Thompson, P.R.: Sea level measured by tide gauges from global oceans — the Joint Archive for Sea Level holdings (NCEI Accession 0019568), Version 5.5, NOAA National Centers for Environmental Information, Dataset, <https://doi.org/10.7289/V5V40S7W>, 2015.
- Carvajal, M., Contreras-Lopez, M., Winckler, P., and Sepulveda, I.: Meteotsunamis occurring along the southwest coast of
290 South America during an intense storm, *Pure Appl. Geophys.*, 174, 3313-3323, <https://doi.org/10.1007/s00024-017-1584-0>, 2017.
- Chlieh, M., Avouac, J.P., Hjorleifsdottir, V., Song, T.R.A., Ji, C., Sieh, K., Sladen, A., Hebert, H., Prawirodirdjo, L., Bock, Y., and Galetzka, J.: Coseismic slip and afterslip of the great M-w 9.15 Sumatra-Andaman earthquake of 2004, *Bull. Seismol. Soc. Am.*, 97, S152-S173, <https://doi.org/10.1785/0120050631>, 2007.
- 295 Dodet, G., Melet, A., Arduin, F., Bertin, X., Idier, D., and Almar, R.: The contribution of wind-generated waves to coastal sea-level changes. *Survey Geophys.*, 40, 1563-1601, <https://doi.org/10.1007/s10712-019-09557-5>, 2019.
- EuroGOOS DATA-MEQ working group: Recommendations for in-situ data Near Real Time Quality Control, Coriolis Data Centre, 23 pp., <https://doi.org/10.13155/36230>, 2010.
- García-Valdecasas, J., Pérez Gómez, B., Molina, R., Rodríguez, A., Rodríguez, D., Pérez, S., Campos, A., Rodríguez Rubio,
300 P., Gracia, S., Ripollés, L., Terrés Nicoli, J. M., Javier de los Santos, F., and Álvarez Fanjul, E.: Operational tool for characterizing high-frequency sea level oscillations, *Nat. Hazards*, 106, 1149–1167, <https://doi.org/10.1007/s11069-020-04316-x>, 2021.



- Heidarzadeh, M., and Rabinovich, A.B.: Combined hazard of typhoon-generated meteorological tsunamis and storm surges along the coast of Japan, *Nat. Hazards*, 106, 1639–1672, <https://doi.org/10.1007/s11069-020-04448-0>, 2021.
- 305 Hunter, J. R., Woodworth, P. L., Wahl, T., and Nicholls, R. J.: Using global tide gauge data to validate and improve the representation of extreme sea levels in flood impact studies, *Global. Planet. Change*, 156, 34–45, <https://doi.org/10.1016/j.gloplacha.2017.06.007>, 2017.
- IOC: Global Sea Level Observing System (GLOSS) implementation plan -1997. UNESCO/Intergovernmental Oceanographic Commission, Technical Series, No. 50, 91 pp. & Annexes, 1997.
- 310 IOC: Global Sea Level Observing System (GLOSS) Implementation Plan – 2012. UNESCO/Intergovernmental Oceanographic Commission, 41 pp. 2012. IOC Technical Series No.100. GOOS Report No.194, JCOMM Technical Report No. 66. (English), 2012.
- Jevrejeva, S., Grinsted, A., Moore, J.C., and Holgate, S.: Nonlinear trends and multiyear cycles in sea level records, *J. Geophys. Res. Oceans*, 111, C09012, <https://doi.org/10.1029/2005JC003229>, 2006.
- 315 Jylhä, K., Kämäräinen, M., Fortelius, C., Gregow, H., Helander, J., Hyvärinen, O., Johansson, M., Karppinen, A., Korpinen, A., Kouznetsov, R., Kurzeneva, E., Leijala, U., Mäkelä, A., Pellikka, H., Saku, S., Sandberg, J., Sofiev, M., Vajda, A., Venäläinen, A., and Vira, J.: Recent meteorological and marine studies to support nuclear power plant safety in Finland, *Energy*, 165(A), 1102–1118, <https://doi.org/10.1016/j.energy.2018.09.033>, 2018.
- Marcos, M., Monserrat, S., Medina, R., Orfila, A., and Olabarrieta, M.: External forcing of meteorological tsunamis at the coast of the Balearic Islands. *Phys. Chem. Earth*, 34(17–18), 938–947, <https://doi.org/10.1016/j.pce.2009.10.001>, 2009.
- 320 Menéndez, M. and Woodworth, P. L.: Changes in extreme high water levels based on a quasi-global tide-gauge data set, *J. Geophys. Res. Oceans*, 115, C10011, <https://doi.org/10.1029/2009JC005997>, 2010.
- Monserrat, S., Vilibić, I., and Rabinovich, A. B.: Meteotsunamis: atmospherically induced destructive ocean waves in the tsunami frequency band, *Nat. Hazards Earth Syst. Sci.*, 6, 1035–1051, <https://doi.org/10.5194/nhess-6-1035-2006>, 2006.
- 325 Pasquet, S., Vilibić, I., and Šepić, J.: A survey of strong high-frequency sea level oscillations along the US East Coast between 2006 and 2011, *Nat. Hazards Earth Syst. Sci.*, 13(2), 473–482, <https://doi.org/10.5194/nhess-13-473-2013>, 2013.
- Pattiaratchi, C., and Wijeratne, E. M. S.: Observations of meteorological tsunamis along the south-west Australian coast, *Nat. Hazards*, 74(1), 281–303, <https://doi.org/10.1007/s11069-014-1263-8>, 2014.
- Pattiaratchi, C.B., and Wijeratne, E.M.S.: Are meteotsunamis an underrated hazard?, *Philos. Trans. R. Soc. A*, 373, 20140377, <https://doi.org/10.1098/rsta.2014.0377>, 2015.
- 330 Pawłowicz, R., Beardsley, B., and Lentz, S.: Classical tidal harmonic analysis including error estimates in MATLAB using T_TIDE, *Comput. Geosci.*, 28(8), 929–937, [https://doi.org/10.1016/s0098-3004\(02\)00013-4](https://doi.org/10.1016/s0098-3004(02)00013-4), 2002.
- Pellikka, H., Rauhala, J., Kahma, K. K., Stipa, T., Boman, H., and Kangas, A.: Recent observations of meteotsunamis on the Finnish coast, *Nat. Hazards*, 74(1), 197–215, <https://doi.org/10.1007/s11069-014-1150-3>, 2014.
- 335 Pérez, B., Álvarez Fanjul, E., Pérez, S., de Alfonso, M., and Vela, J.: Use of tide gauge data in operational oceanography and sea level hazard warning systems, *J. Oper. Oceanogr.*, 6(2), 1–18, <https://doi.org/10.1080/1755876x.2013.11020147>, 2013.



- Šepić, J., and Rabinovich, A. B.: Meteotsunamis in the Great Lakes and on the Atlantic coast of the United States generated by the “derecho” of June 29–30, 2012, *Nat. Hazards*, 74(1), 75–107, <https://doi.org/10.1007/s11069-014-1310-5>, 2014.
- 340 Šepić, J., Vilibić, I., Lafon, A., Macheboeuf, L., and Ivanović, Z.: High-frequency sea level oscillations in the Mediterranean and their connection to synoptic patterns, *Prog. Oceanogr.*, 137, 284–298, <https://doi.org/10.1016/j.pocean.2015.07.005>, 2015.
- Šepić, J., Međugorac, I., Janeković, I., Dunić, N., and Vilibić, I.: Multi-meteotsunami event in the Adriatic Sea generated by atmospheric disturbances of 25–26 June 2014, *Pure Appl. Geophys.*, 173, 4117–4138, <https://doi.org/10.1007/s00024-016-1249-4>, 2016.
- 345 Šepić, J., Vilibić, I., Rabinovich, A. B., and Tinti, S.: Meteotsunamis (“Marrobbio”) of 25–26 June 2014 on the Southwestern Coast of Sicily, Italy, *Pure Appl. Geophys.*, 175, 1573–1593, <https://doi.org/10.1007/s00024-018-1827-8>, 2018.
- Simons, M., Minson, S.E., Sladen, A., Ortega, F., Jiang, J.L., Owen, S.E., Meng, L.S., Ampuero, J.P., Wei, S.J., and Chu, R.S.: The 2011 magnitude 9.0 Tohoku-Oki Earthquake: mosaicking the megathrust from seconds to centuries, *Science*, 332, 350 1421–1425, <https://doi.org/10.1126/science.1206731>, 2011.
- Tsimplis, M.N., Marcos, M., Pérez, B., Challenor, P., Garcia-Fernandez, M.J., and Raicich, F.: On the effect of the sampling frequency of sea level measurements on return period estimate of extremes—Southern European examples, *Cont. Shelf Res.*, 29, 2214–2221, <https://doi.org/10.1016/j.csr.2009.08.015>, 2009.
- UNESCO/IOC: Quality Control of in situ Sea Level Observations: A Review and Progress towards Automated Quality Control, Vol. 1. Paris, France, UNESCO, 70 pp., <http://dx.doi.org/10.25607/OBP-854>, 2020.
- Vafeidis, A. T., Nicholls, R. J., Mcfadden, L., Tol, R. S. J., Hinkel, J., Spencer, T., Grashoff, P. S., Boot, G., and Klein, R. J. T.: A new global coastal database for impact and vulnerability analysis to sea-level rise, *J. Coastal. Res.*, 24(4), 917–924, <https://doi.org/10.2112/06-0725.1>, 2008.
- Vilibić, I. and Šepić, J.: Global mapping of nonseismic sea level oscillations at tsunami timescales, *Sci. Rep.*, 7, 40818, 360 <https://doi.org/10.1038/srep40818>, 2017.
- Vilibić, I., Šepić, J., Dunić, N., Sevault, F., Monserrat, S., and Jordà, G.: Proxy-based assessment of strength and frequency of meteotsunamis in future climate, *Geophys. Res. Lett.*, 45, 10501–10508, <https://doi.org/10.1029/2018GL079566>, 2018.
- Vilibić, I., Rabinovich, A.B., and Anderson, E.J.: The global perspective on meteotsunami science: Editorial, *Nat. Hazards*, 106, 1087–1104, <https://doi.org/10.1007/s11069-021-04679-9>, 2021.
- 365 Yankovsky, A.E.: Large-scale edge waves generated by hurricane landfall, *J. Geophys. Res. Oceans*, 114, C04014, <https://doi.org/10.1029/2008JC005113>, 2009.
- Wilkinson, M. D., Dumontier, M., Aalbersberg, I., et al.: The FAIR Guiding Principles for scientific data management and stewardship, *Scientific Data*, 3, 160018, <https://doi.org/10.1038/sdata.2016.18>, 2016.
- Williams, J., Matthews, A., and Jevrejeva, S.: Development of an automatic tide gauge processing system, National 370 Oceanography Centre Research and Consultancy Report, 64, Southampton, National Oceanography Centre, 26 pp., 2019.



- Woodworth, P.L., and Player, R.: The Permanent Service for Mean Sea Level: An update to the 21st century, *J. Coastal Res.*, 19, 287-295, 2003.
- Woodworth, P. L. and Blackman, D. L.: Evidence for Systematic Changes in Extreme High Waters since the Mid-1970s, *J. Climate*, 17(6), 1190-1197, [https://doi.org/10.1175/1520-0442\(2004\)017<1190:EFSCIE>2.0.CO;2](https://doi.org/10.1175/1520-0442(2004)017<1190:EFSCIE>2.0.CO;2), 2004.
- 375 Woodworth, P.L., Hunter, J.R., Marcos Moreno, M., Caldwell, P.C., Menendez, M., and Haigh, I.D.: GESLA (Global Extreme Sea Level Analysis) high frequency sea level dataset - Version 2. British Oceanographic Data Centre - Natural Environment Research Council, UK. <https://doi.org/10/bp74>, 2016.
- Woodworth, P. L., Hunter, J. R., Marcos, M., Caldwell, P., Menéndez, M., and Haigh, I.: Towards a global higher-frequency sea level dataset, *Geosci. Data J.*, 3(2), 50–59, <https://doi.org/10.1002/gdj3.42>, 2017.
- 380 Zemunik, P., Bonanno, A., Mazzola, S., Giacalone, G., Fontana, I., Genovese, S., Basilone, G., Candela, J., Šepić, J., Vilibić, I., and Aronica, S.: Observing meteotsunamis (“Marrobbio”) on the southwestern coast of Sicily, *Nat. Hazards*, 196, 1337–1363, <https://doi.org/10.1007/s11069-020-04303-2>, 2021a.
- Zemunik, P., Vilibić, I., Šepić, J., Pellikka, H., and Čatipović, L.: MISELA: Minute Sea-Level Analysis, *Marine Data Archive*, <https://doi.org/10.14284/456>, 2021b.