

Greenland ice sheet mass balance from 1840 through next week

Kenneth D. Mankoff¹, Xavier Fettweis², Peter L. Langen³, Martin Stendel⁴, Kristian K. Kjeldsen¹, Nanna B. Karlsson¹, Brice Noël⁵, Michiel R. van den Broeke⁵, Anne Solgaard¹, William Colgan¹, Jason E. Box¹, Sebastian B. Simonsen⁶, Michalea D. King⁷, Andreas P. Ahlstrøm¹, Signe Bech Andersen¹, and Robert S. Fausto¹

¹Department of Glaciology and Climate, Geological Survey of Denmark and Greenland (GEUS), Copenhagen, Denmark

²SPHERES research unit, Department of Geography, University of Liège, Liège, Belgium

³Department of Environmental Science, iClimate, Aarhus University, Roskilde, Denmark

⁴Danish Meteorological Institute (DMI), Copenhagen, Denmark

⁵Institute for Marine and Atmospheric Research, Utrecht University, The Netherlands

⁶Geodesy and Earth Observation, DTU Space, Technical University of Denmark, Lyngby, Denmark

⁷Polar Science Center, University of Washington, Seattle, WA, United States

Correspondence: Ken Mankoff (kdm@geus.dk)

Abstract. The mass of the Greenland ice sheet is declining as mass gain from ~~snowfall~~ snow accumulation is exceeded by mass loss from surface meltwater runoff, marine-terminating glacier calving and submarine melting, and basal melting. Here we use the input/output (IO) method to estimate mass change from 1840 through next week. ~~Mass gains come from~~ Surface mass balance (SMB) gains and losses come from a semi-empirical SMB model from 1840 through 1985, and three regional climate models (RCMs; HIRHAM/HARMONIE, MAR, and RACMO) ~~and a semi-empirical surface mass balance (SMB) model. Mass from 1986 through next week. Additional non-SMB~~ losses come from ~~the RCMs, a statistical SMB model, ice discharge at marine terminating glaciers, and ice melted at the base of the ice sheet~~ a marine terminating glacier ice discharge product and a basal mass balance model. From these products we provide an annual estimate of GIS Greenland ice sheet mass balance from 1840 through 1985 and a daily estimate at sector and region scale from 1986 through next week. ~~Compared with other mass balance estimates, this~~ This product updates daily ~~, has higher temporal resolution,~~ and is the first IO product to include the basal mass balance which is a source of an additional ~~~8%–24 Gt yr⁻¹ of~~ mass loss. Our results demonstrate an accelerating GIS-scale ice-sheet-scale mass loss and general agreement (coefficient of determination, r^2 , ranges from 0.62 to 0.94) among six other products, including gravitational, volume, and other IO mass balance estimates. Results from this study are available at <https://doi.org/10.22008/FK2/OHI23Z> (Mankoff et al., 2021).

15 1 Introduction

Over the past several decades, mass loss from the Greenland ice sheet has increased ~~. However, exactly where, when, and how that mass has been lost is not precisely known.~~ (Khan et al., 2015; The IMBIE Team, 2019). Different processes dominate the regional mass loss of the ice sheet, and their relative contribution has fluctuated in time (Mouginot and Rignot, 2019). For example, in the 1970s nearly all sectors gained mass due to positive SMB, except the northwest sector where discharge losses

20 dominated. More recently in the 2010s, all sectors lost mass, with some sectors losing mass almost entirely via negative SMB, and others primarily due to discharge (Fig. 1).

There are three common methods for estimating mass balance – changes in gravity (Barletta et al., 2013; Groh et al., 2019; The IMBIE Team, 2019; Velicogna et al., 2020), changes in volume (Simonsen et al., 2021a; Sørensen et al., 2011; Zwally and Giovinetto, 2011; Sasgen et al., 2012; Smith et al., 2020), ~~or and~~ the input/output (IO) method (Colgan et al., 2019; Mouginit et al., 2019; Rignot et al., 2019; King et al., 2020). Each provides some estimate of where, when, and how the mass is lost or gained, and each method has some limitations. The gravity mass balance (GMB) estimate has ~~very low~~ low ~100 km spatial resolution (where), monthly temporal resolution (when), and ~~no little~~ information on the ~~process~~ processes contributing to changes in mass balance components (how). The volume change (VC) mass balance estimate has ~~higher spatial resolution than GMB~~ ~1 km spatial resolution (where), ~~lower temporal resolution than GMB often provided on annual or multi-year temporal~~ resolution (when), and ~~again no with little~~ information on the ~~process~~ driving processes (how).

The IO method has a complex ~~definition of~~ spatial resolution (where). The inputs typically come from regional climate models (RCMs) ~~and therefore have km-scale spatial resolution much higher than GMB and on the order of VC~~ which can reach a spatial resolution of up to 1 km. However, that spatial resolution is generally reduced in the final output to sector or region scale – ~~still typically~~ higher than GMB but now lower resolution than VC. The IO temporal resolution (when) is limited by ice velocity data updates, which for the past several years occur ~~more frequently than GMB and VC updates. Finally, every~~ 12 days year-round after the launch of the Sentinel missions (Solgaard et al., 2021). The primary issue with the IO method is the only one that unknown ice thickness in some locations (e.g. Mankoff et al. (2020b)). Finally, the IO method can provide insight into the processes (how) by distinguishing between changes in mass gain (e.g., snowfall), and changes in caused by SMB (which may be due to changes in positive and/or negative SMB components) vs. changes in other mass loss terms (e.g., surface melting vs. calving). Our IO method is also the first IO product to include the basal mass balance (Karlsson et al., 2021) – a term implicitly included in the GMB and VC methods but neglected by all previous IO estimates.

In this work we introduce the new PROMICE Greenland ice sheet mass balance dataset based on the IO method, updating the previous product from Colgan et al. (2019). ~~IO inputs are the positive SMB fields from one RCM (We use the SMB field from one empirical model from 1840 through 1985) to three RCMs (, and three RCMs from 1986 onward), IO outputs are the negative SMB fields from the same RCM(s),. The combined SMB field used here is comprised of positive SMB terms (precipitation in the form of snowfall, rainfall, and condensation/riming) and negative SMB terms (surface melt, evaporation, sublimation, and snow drift erosion/deposition). We also use~~ the basal mass balance, and an estimate of dynamic ice discharge. Spatial resolution is effectively per sector (Zwally et al., 2012) or region (Mouginit and Rignot, 2019). Temporal resolution is annual from 1840 through 1985, and ~~daily since 1986. The effectively daily since 1986 - the~~ RCM fields are updated daily and ~~forecasted through next week, and~~ the marine mass balance (i.e., discharge at marine terminating glaciers) is updated every 12 days ~~and forecasted with ~12 day resolution, interpolated to daily, and forecasted using historical and seasonal trends through next week.~~ Thus, this study provides ~~an a~~ a daily-updating estimate of Greenland mass changes from 1840 through next week.

2 Terminology

We use the following terminology throughout the document:

- 55
- ~~'This Study'~~ This Study refers to the new results presented in this study.
 - ~~'Recent'~~ Recent refers to the new 1986 through next week daily temporal resolution data at region and sector scale
 - ~~'Reconstructed'~~ Reconstructed refers to the adjusted Kjeldsen et al. (2015) annual temporal resolution data at ~~GIS-scale~~ data-ice sheet scale used to extend this product from 1986 back through 1840. The 1986 through 2012 portion of the Kjeldsen et al. (2015) data set is used only to adjust the reconstructed data, then discarded.
- 60
- ROI (region of interest) refers to one or more of the ice sheet sectors or regions (Fig. 1).
 - Sector refers to one of the Zwally et al. (2012) sectors (Fig. 1), expanded here to cover the RCM ice domains which exist slightly outside these sectors in some locations.
 - Region refers to the Mouginot and Rignot (2019) regions (Fig. 1), expanded here to cover the RCM ice domains.
 - SMB is the surface mass balance from an RCM.
- 65
- MMB is the marine mass balance, which in other works is often referred to as solid ice discharge or D. It includes both calving and submarine melting.
 - BMB is the basal mass balance. It comes from geothermal flux (BMB_{GF}), frictional heating from ice velocity ($BMB_{friction}$), and viscous heat dissipation (BMB_{VHD}).
 - MB is the total mass balance including the BMB term (Eq. 3).
- 70
- MB* is the mass balance not including the BMB term (Eq. 4).
 - HIRHAM/HARMONIE, MAR, and RACMO refer to the RCMs, which only provide SMB, and runoff in the case of MAR. However, when referencing the different MB products, we use, for example, "MAR MB" rather than repeatedly explicitly stating "MB derived from MAR SMB minus BMB and MMB". The use should be clear from context.

3 Product ~~Description~~description

- 75
- The output of this work is two NetCDF files and one CSV file containing a time series of mass balance and the components used to calculate mass balance. The only difference between the two NetCDF files is the ROI – one for Zwally et al. (2012) sectors and one for Mouginot and Rignot (2019) regions. Each ~~also includes properties summed across the entire ice sheet. This Greenland sum data are also the contents of the CSV file.~~ Each NetCDF file includes the ice sheet mass balance (MB), MB per region of interest (ROI; sector or region), MB per ROI per RCM, ice sheet surface mass balance (SMB), SMB per ROI,

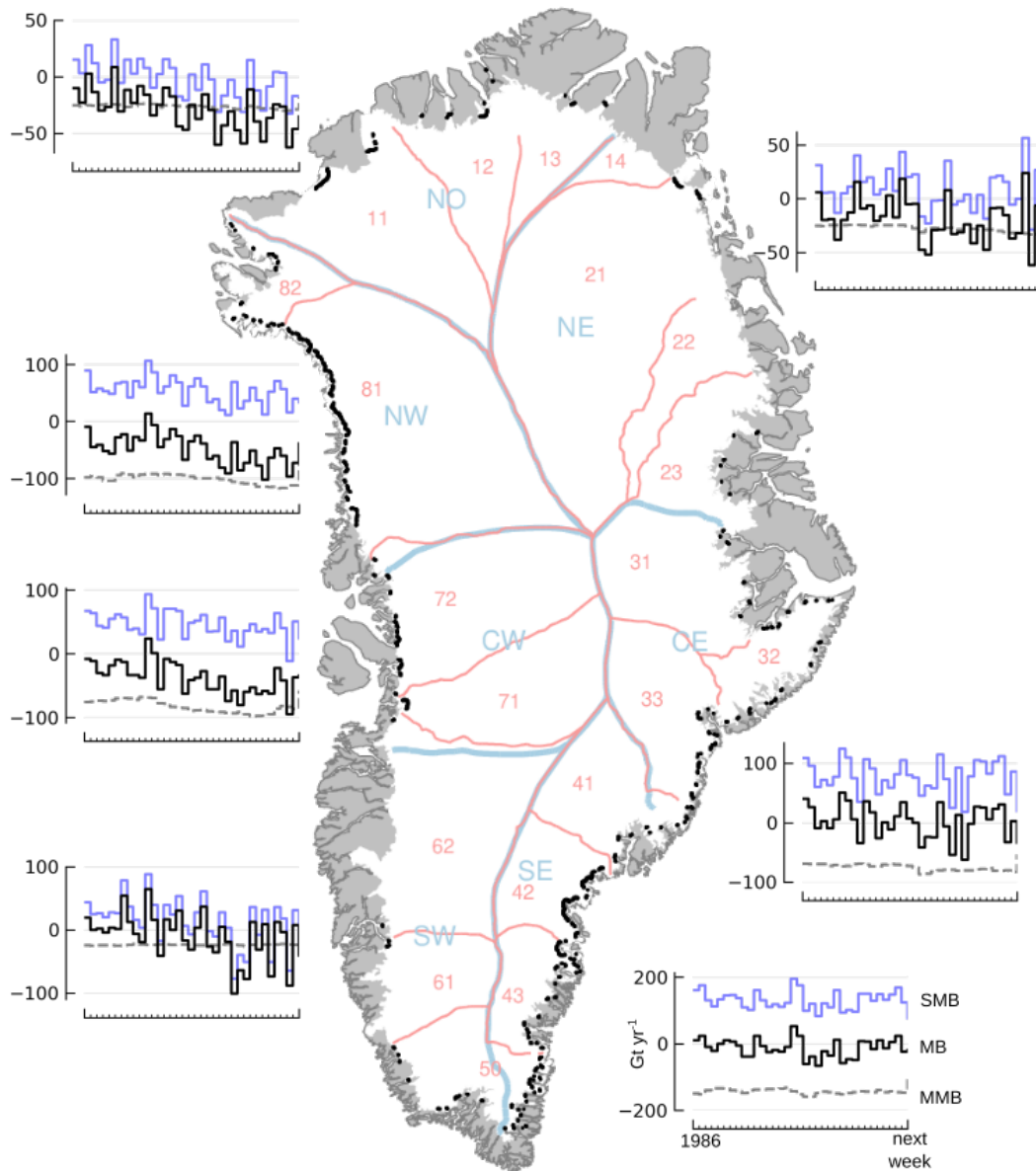


Figure 1. Annual mass balance (black lines), surface mass balance (blue lines) and marine plus basal mass balance (dashed grey) in Gt yr^{-1} for each of the seven Mouginot and Rignot (2019) regions. The map shows both the named regions (Mouginot and Rignot, 2019) and the numbered sectors (Zwally et al., 2012). Marine mass balance gates are [the marked in black blobs near glacier termini](#). Only recent (post-1986) data are shown because reconstructed data are not separated into regions or sectors. Next week is defined as [2021-05-01](#) [2021-08-20](#) based on the date this document was compiled.

80 ice sheet marine mass balance (MMB), MMB per ROI, ice sheet basal mass balance (BMB), and BMB per ROI. [The CSV file contains a copy of the ice-sheet summed data.](#)

An example of the output is shown in Fig. 2, where the top panel shows mass balance for the entire Greenland ice sheet, in addition to SMB, and MMB, at annual resolution. The lower panel shows an example two years at daily temporal resolution. ~~Because this is The~~ ice-sheet-wide ~~, the product includes the reconstructed data to 1840. At sector or region scale, only recent data are provided~~ product includes data from 1840 through next week, but the sector and region-scale products only includes data from 1986 through next week, because the 1840 through 1985 reconstructed only exists at ice-sheet scale (Fig. 1).

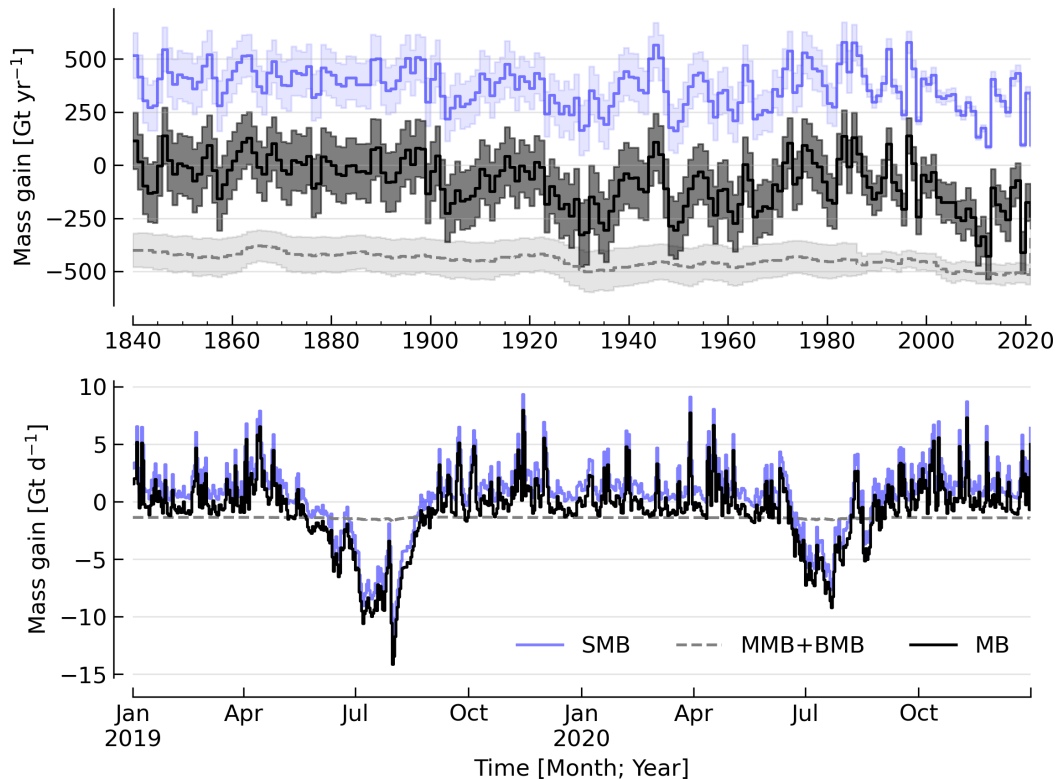


Figure 2. Mass balance and its major components. Top panel: Annual average surface mass balance (blue line), marine mass balance (gray dashed), and their mass balance sum (black line). Here the marine and basal mass balance (MMB + BMB) are shown with sign inverted (e.g. $-1 \times (\text{MMB} + \text{BMB})$) Lower panel: Same data at daily resolution and limited to 2019 and 2020.

4 Data Sources

This section introduces data products that exist prior to and are external to this work (Table 1). In the following Methods section we introduce both the intermediate products we generate using these data sources, and the final product that is the output of This Study.

The inputs to this work are the recent SMB fields from the three RCMs, the recent marine mass balance data from Mankoff et al. (2020b) (data: Mankoff and Solgaard (2020)), and the recent basal mass balance fields, of which BMB_{GF} and $BMB_{friction}$ are direct outputs from Karlsson et al. (2021) (data: Karlsson (2021)), but the BMB_{VHD} calculations are redone here (see Methods Sect. 5.3) using the MAR runoff field. The reconstructed data (pre 1986) are surface and marine mass balance from Kjeldsen et al. (2015) (data: Box et al. (2021)), but adjusted here using the overlapping period (see Methods Sect. 5.4), and runoff from Kjeldsen et al. (2015) (data: Box et al. (2021)) as a proxy and scaled for BMB_{VHD} (see Methods Sect. 5.3).

Table 1. Summary of data products used as inputs to This Study.

<u>Product</u>	<u>Period</u>	<u>Reference</u>	<u>Data / Notes</u>
<u>Reconstructed SMB</u>	<u>1840 through 1985</u>	<u>Kjeldsen et al. (2015)</u>	<u>Box et al. (2021)</u>
<u>Reconstructed MMB</u>	<u>1840 through 1985</u>	<u>Kjeldsen et al. (2015)</u>	<u>Box et al. (2021)</u>
<u>HIRHAM/HARMONIE SMB</u>	<u>1986 through yesterday</u>	<u>Langen et al. (2017)</u>	
<u>MAR SMB</u>	<u>1986 through next week</u>	<u>Fettweis et al. (2020)</u>	
<u>RACMO SMB</u>	<u>1986 through last month</u>	<u>Noël et al. (2019)</u>	
<u>MMB</u>	<u>1986 through last month</u>	<u>Mankoff et al. (2020b)</u>	<u>Mankoff and Solgaard (2020)</u>
<u>BMB_{GF}; $BMB_{friction}$</u>	<u>1840 through next week</u>	<u>Karlsson et al. (2021)</u>	<u>Karlsson (2021)</u>
<u>BMB_{VHD}</u>	<u>1840 through 1985</u>	<u>Kjeldsen et al. (2015)</u>	<u>Box et al. (2021) reconstructed runoff</u>
<u>BMB_{VHD}</u>	<u>1986 through next week</u>	<u>Fettweis et al. (2020)</u>	<u>MAR runoff</u>

4.1 Surface mass balance

We use one reconstructed SMB from 1840 through 1985, and three recent SMB from 1986 through last month (HIRHAM/HARMONIE, MAR, and RACMO), two through yesterday (HIRHAM/HARMONIE and MAR) and one through next week (MAR).

100 4.1.1 HIRHAM/HARMONIE

The HIRHAM/HARMONIE product from the Danmarks Meteorologiske Institut (Danish Meteorological Institute; DMI) is based on an offline subsurface firn/SMB model (Langen et al., 2017), which is forced with surface fluxes of energy (turbulent and downward radiative) and mass (snow, rain, evaporation, and sublimation). These surface fluxes are derived from the HIRHAM5 regional climate model for the reconstructed part of the simulation and from DMI's operational numerical weather forecast model HARMONIE (Iceland-Greenland domain "B", which covers Iceland, Greenland, and the adjacent seas) for the real-time part. HIRHAM5 is used until 2017-08-31 after which HARMONIE is used.

The HIRHAM5 regional climate model (Christensen et al., 2007) combines the dynamical core of the HIRLAM7 numerical weather forecasting model (Eerola, 2006) with physics schemes from the ECHAM5 general circulation model (Roeckner et al., 2003). In the Greenland setup employed here (Lucas-Picher et al., 2012), it has a horizontal resolution of $0.05^\circ \times 0.05^\circ$ on a rotated pole grid (corresponding to 5.5 km resolution), and 31 atmospheric levels in the vertical. It is forced at 6 hr intervals on the lateral boundaries with horizontal wind vectors, temperature, and specific humidity from the ERA-Interim reanalysis

(Dee et al., 2011). ERA-Interim sea surface temperatures and sea ice concentration are prescribed in ocean grid points. Surface fluxes from HIRHAM5 are passed to the offline subsurface model.

The offline subsurface model was developed to improve firn details for the HIRHAM5 experiments (Langen et al., 2017).
115 The subsurface consists of 32 layers with time-varying fractions of snow, ice and liquid water. Layer thicknesses increase with depth ~~and give from 6.5 cm water equivalent (w.e.) at the top to 9.2 m w.e. at the bottom giving~~ a full model depth of 60 m ~~water equivalent w.e.~~. The processes governing the firn evolution include snow densification, varying hydraulic conductivity, irreducible water saturation and other effects on snow liquid water percolation, and retention. Runoff is calculated from liquid water in excess of the irreducible saturation with a characteristic local timescale that depends on surface slope (Zuo and
120 Oerlemans, 1996; Lefebvre, 2003). The offline subsurface model is run on the HIRHAM5 5.5 km grid.

For the real-time data we use DMI's operational numerical weather forecast model HARMONIE (Bengtsson et al., 2017), a nonhydrostatic model in terrain-following sigma coordinates based on the fully compressible Euler equations (Simmons and Burridge, 1981; Laprise, 1992). HARMONIE is run at 2.5 km horizontal resolution and with 65 vertical levels. Compared to previous model versions, upper air 3D variational data assimilation of satellite wind and radiance data, radio occultation data,
125 radiosonde, aircraft, and surface observations are incorporated. This ~~is important, as there are only few~~ greatly improves the number of observations in the model, as in situ observations ~~in Greenland from ground stations and radiosondes only make up approximately 20 % of observations in Greenland~~ (Wang and Randriamampianina, 2021; Yang et al., 2018). The model is driven at the boundaries with European Centre for Medium-Range Weather Forecasts (ECMWF) high-resolution data at 9 km resolution. The 2.5 km HARMONIE output is regridded to the 5.5 km HIRHAM grid before input to the offline subsurface
130 model. The HIRHAM5 and the offline model both employ the Citterio and Ahlström (2013) ice mask interpolated to the 5.5 km grid.

4.1.2 MAR

The Modèle Atmosphérique Régional (MAR) RCM has been developed by the University of Liège (Belgium) with a focus on the polar regions (Fettweis et al., 2020). The MAR atmosphere ~~model module~~ (Gallée and Schayes, 1994) is fully coupled with
135 ~~a snow energy balance model the soil-ice-snow energy balance vegetation model SISVAT~~ (Gallée et al., 2001) simulating the evolution of the ~~25-30~~ first meters of snow/ice ~~See Fettweis et al. (2020) for a full description and validation of MAR over Greenland over the ice sheet with the help of 30 snow layers (with time varying thickness) or the 10 first meter of soil over the tundra area.~~ At its lateral boundary, MAR is 6 hourly forced by the reanalysis ~~NCEP-NCARv1 and run ERA5 and runs~~ at a resolution of 20 km ~~using the same setup as presented by Tedesco and Fettweis (2020), but using~~. The snow pack has been
140 initialised in 1950 from a former MARv3.11 .5 for This Study, while Fettweis et al. (2020) and Tedesco and Fettweis (2020) used based simulation. Its snow model is based on a former version of the CROCUS snow model (Vionnet et al., 2012) dealing with all the snowpack processes including the meltwater retention, transformation of melting snow and grain size, compaction of snow, formation of ice lenses impacting meltwater penetration, warming of the snowpack from rainfall, and complex snow/bare ice albedo. MAR uses the Greenland Ice Mapping Project (GIMP) ice sheet mask and ice sheet topography
145 (Howat et al., 2014).

The new version, MAR 3.12, is used here. With respect to version 3.9 intensively validated over Greenland (Fettweis et al., 2020) or the 20 km based MARv3.9 and GridMARv3.10, respectively. The main improvements of set-up used in Tedesco and Fettweis (2020), MARv3.12 now uses the common polar stereographic projection EPSG 3413. With respect to MARv3.11 are the inclusion of a blowing snow module (however, not used over Greenland) in addition to fully described in Amory et al. (2021), MARv3.12 assures now the full conservation of water mass into both soil and snowpack at each time step, takes into account of the geographical projection deformations in its advection scheme, better deals with the snow/rain temperature limit with a continuous temperature threshold between 0 and -2°C, increases the evaporation above snow thanks to a saturated humidity computation in SISVAT adapted to freezing temperatures, disallows melt below the 30 m of the resolved snowpack, includes small improvements and bug corrections/fixes with the aim of improving the evaluation of MAR (with both in situ and satellite products) as presented in Fettweis et al. (2020) in addition to small computer time improvements in the parallelisation of its code.

In addition to providing SMB, MAR also provides daily runoff —over both permanent ice and tundra area— this is used for the daily BMB_{VHD} estimate (Section 5.3).

As the recent SMB decrease (successfully evaluated with GRACE based estimates in Fettweis et al. (2020)) has been fully driven by the increase of runoff, we can in runoff (Sasgen et al., 2020), we assume the same degree of accuracy between SMB simulated by MAR (evaluated with the PROMICE SMB database (Fettweis et al., 2020)) and the runoff simulated by MAR.

Weather-forecasted SMB: To provide a real-time state of the Greenland ice sheet, MAR is forced automatically everyday by the run of 00h-00 h UTC from the Global Forecast System (GFS) model providing weather forecasting initialised by the snowpack behaviors/behaviours of the MAR run from the previous day. This continuous GFS forced time series (without any reinitialisation of MAR) provides SMB and runoff estimates between the period covered by NCEP-NCAR-ERA5 and the next 7 days. At the end of each day, NCEP-NCARv1-ERA5 is used to update the GFS forced MAR time series until about 5 days before the current date and to provide an homogeneous NCEP-NCARv1-ERA5 forced MAR times series from 1948-1950 to a few days before the current date. We use both the forecasted SMB and runoff fields: forecasted runoff (for BMB_{VHD}) fields.

4.1.3 RACMO

The Regional Atmospheric Climate MOdel (RACMO) v2.3p2 has been developed at the Koninklijk Nederlands Meteorologisch Instituut (Royal Netherlands Meteorological Institute; KNMI). It incorporates the dynamical core of the High-Resolution Limited Area Model (HIRLAM) and the physics parameterizations of the ECMWF Integrated Forecast System cycle CY33r1. A polar version (p) of RACMO has been developed at the Institute for Marine and Atmospheric research of Utrecht University (UU-IMAU), to assess the surface mass balance of glaciated surfaces. The current version RACMO2.3p2 has been described in detail in Noël et al. (2018), and here we repeat the main characteristics.

The ice sheet has an extensive dry interior snow zone, a relatively narrow runoff zone along the low-lying margins, and a percolation zone of varying width in between. To capture these processes in first order, the original single-layer snow model in RACMO has been replaced by a 40-layer snow scheme that includes expressions for dry snow densification and a simple tipping bucket scheme to simulate meltwater percolation, retention, refreezing, and runoff (Ettema et al., 2010). The snow layers are

180 initialized in September 1957 using temperature and density from a previous run with the offline IMAU Firn Densification Model (Ligtenberg et al., 2018). To simulate drifting snow transport and sublimation, Lenaerts et al. (2012) implemented a drifting snow scheme. Snow albedo depends on snow grain size, cloud optical thickness, solar zenith angle, and impurity content (van Angelen et al., 2012). Bare ice albedo is assumed constant and estimated as the fifth percentile value of albedo time series (2000-2015) from the 500 m resolution MODIS 16-day albedo product (MCD43A3). Minimum/maximum values
185 of 0.30/0.55 are applied to the bare ice albedo, representing ice with high/low impurity content (cryoconite, algae).

To simulate as accurately as possible the contemporary climate and surface mass balance of the ice sheet, the following boundary conditions have been applied. The glacier ice mask and surface topography have been down-sampled from the 90 m resolution Greenland Ice Mapping Project (GIMP) digital elevation model (~~DEM; Howat et al. (2014)~~)(Howat et al., 2014). At the lateral boundaries, model temperature, specific humidity, pressure, and horizontal wind components at the 40 vertical
190 model levels are relaxed towards 6-hourly ECMWF reanalysis (ERA) data. For this we use ERA-40 between 1958 and 1978 (Uppala et al., 2005), ERA-Interim between 1979 and 1989 (Dee et al., 2011), and ERA-5 between 1990 and 2020 (Hersbach et al., 2020). The relaxation zone is 24 grid cells (~130 km) wide to ensure a smooth transition to the domain interior. This run has active upper atmosphere relaxation (van de Berg and Medley, 2016). Over glaciated grid points, surface aerodynamic roughness is assumed constant for snow (1 mm) and ice (5 mm). In this run, RACMO2.3p2 has 5.5 km horizontal resolution
195 over Greenland and the adjacent oceans and land masses, but it was found previously that this is insufficient to resolve the many narrow outlet glaciers. The 5.5 km product is therefore statistically downscaled onto a 1 km grid sampled from the GIMP DEM (Noël et al., 2019), employing corrections for biases in elevation and bare ice albedo using a MODIS albedo product at 1 km resolution (Noël et al., 2016).

4.1.4 Reconstructed

200 The Kjeldsen et al. (2015) 173-year (1840 through 2012) mass balance reconstruction is based on the Box (2013) 171-year (1840 through 2010) statistical reconstruction. Kjeldsen et al. (2015) add a more sophisticated meltwater retention scheme (Pfeffer et al., 1991); weighting of in situ records in their contribution to the estimated value; dispersal of annual accumulation to monthly; and ~~a later end date, i.e.,~~ extend the reconstruction in time through 2012.

The Box (2013) 171-year (1840-2010) reconstruction is developed from linear regression parameters that describe the least
205 squares regression between a-) spatially discontinuous in situ monthly air temperature records (Cappelen et al., 2011; Cappelen, 2001; Cappelen et al., 2006; Vinther et al., 2006)) or firm/ice cores (Box et al., 2013) and b-) spatially continuous outputs from regional climate model RACMO version 2.1 (Ettema et al., 2010). A 43-year overlap period (1960 through 2012) with the RACMO data are used to determine regression parameters (slope, intercept) on a 5 km grid cell basis. Temperature data define melting degree days, which have a different coefficient for bare ice than snow cover, determined from hydrological-
210 year cumulative SMB. A fundamental assumption is that the calibration factors, regression slope, and offset for the calibration period 1960 through 2012 are stationary over time for which there is some evidence of in Fettweis et al. (2017). Box et al. (2013) describes the methods in more detail.

The reconstructed surface mass balance is adjusted as described in the Methods Sect. 5.4 (Fig. 3).

4.2 Marine mass balance

215 The recent marine mass balance data are the discharge (D) product from Mankoff et al. (2020b) (data: Mankoff and Solgaard (2020)). This product covers all fast-flowing ($> 100 \text{ m yr}^{-1}$) marine-terminating glaciers. The marine mass balance in Mankoff et al. (2020b) is computed at flux gates $\sim 5 \text{ km}$ upstream from glacier termini (Mankoff, 2020), using a wide range of velocity products, and ice thickness from BedMachine v3 (~~supplemented in the SE Greenland with ice thickness from Millan et al. (2018))~~v4. Discharge across flux gates is derived with a 200 m spatial resolution grid, but then summed and provided at glacier resolution. Temporal coverage begins in 1986 with a few velocity estimates, and is ~~now updating~~ updated each time a new velocity product is released, which is every ~ 12 days with a ~ 30 day lag (Solgaard et al., 2021) (data: Solgaard and Kusk (2021)).

Some changes have been implemented since the last publication describing the marine mass balance product ~~in detail~~ (i.e., Mankoff et al. (2020b)). These are minor and include updating the [Khan et al. \(2016\) \(data: Khan \(2017\)\)](#) surface elevation change product from 2015 through 2019, updating various MEaSURES velocity products to their latest version, ~~and~~ updating the PROMICE Sentinel ice velocity product from Edition 1 (doi:10.22008/promice/data/sentinel1icevelocity/greenlandicesheet/v1.0.0) to Edition 2 (Solgaard et al. (2021); Solgaard and Kusk (2021)), ~~and updating from BedMachine v3 (supplemented in the SE with Millan et al. (2018)) to use only BedMachine v4~~ (Morlighem et al., 2021).

The reconstructed marine mass balance data (Kjeldsen et al., 2015) are estimated via a linear fit between unsmoothed annual marine mass balance spanning 2000 to 2012 (Enderlin et al., 2014) and runoff data from ~~Kjeldsen et al. (2015)~~ (Kjeldsen et al., 2015) using a 6-year trailing average. The ~~physical basis for the marine mass balance parameterization using runoff is described in Box and Colgan (2013)~~ [method for scaling discharge from runoff was introduced by \(Rignot et al., 2008\), who scaled the SMB anomaly with discharge. Sensitivity analyses conducted by Box and Colgan \(2013\) showed runoff to be the more effective discharge predictor, and include a discussion of the physical basis. Although the fitting period of the present dataset includes an anomalous period of discharge \(2000 through 2005; e.g., Boers and Rypdal \(2021\)\), the discharge data used by Rignot et al. \(2008\) and Box and Colgan \(2013\) also includes years 1958 and 1964 that lie near the regression line \(See Box and Colgan \(2013\) Fig. 4 and related section 4. Physical basis\). Further, while 2000 through 2005 cover a changing period in Greenlandic discharge \(Mankoff et al., 2020b; King et al., 2020\), there were likely other anomalous periods in the past, when glaciers in Greenland experienced considerable increases in discharge as inferred by geological and geodetic investigations](#) (Andresen et al., 2012; Björk et al., 2012; Khan et al., 2015, 2020).

The reconstructed marine mass balance is adjusted as described in the Methods Sect. 5.4.

4.3 Basal mass balance

The basal mass balance (BMB; Karlsson et al. (2021)) comes from mass lost at the bed from geothermal flux (BMB_{GF}), frictional heating ($\text{BMB}_{\text{friction}}$) from the basal shear velocity, and viscous heat dissipation (BMB_{VHD}) from surface runoff routed to the bed (i.e. the volume of the subglacial conduits formed from surface runoff; Mankoff and Tulaczyk (2017)).

These fields (data: Karlsson (2021)) are provided as steady state annual estimates. We use the BMB_{GF} and $BMB_{friction}$ products and apply 1/365th to each day, each year. Because BMB_{VHD} is proportional to runoff, an annual estimate is not appropriate for this work with daily resolution. We therefore re-calculate the BMB_{VHD} -induced basal melt as described in Methods Sect. 5.3.

250 4.3.1 Geothermal Flux

Due to a lack of direct observations, the geothermal flux is poorly constrained under most of the Greenland ice sheet. Different approaches have been employed to infer the value of the BMB_{GF} often with diverging results (see e.g., Rogozhina et al. (2012); Rezvanbehbahani et al. (2019)). Lacking substantial validation that favours one BMB_{GF} map over the others, Karlsson et al. (2021) instead use the average of three widely used BMB_{GF} estimates: Fox Maule et al. (2009); Shapiro and Ritzwoller (2004),
255 and Martos et al. (2018). The BMB_{GF} melt rate is calculated as

$$\dot{b}_m = E_{GF} \rho_i^{-1} L^{-1}, \quad (1)$$

where E_{GF} is available energy at the bed, here the geothermal flux in units $W m^{-2}$, ρ_i is the density of ice ($917 kg m^{-3}$), and L is the latent heat of fusion ($335 kJ kg^{-1}$; Cuffey and Paterson (2010)). BMB_{GF} melting is only calculated where the bed is not frozen. We use ~~MacGregor et al. (2016)~~ [the MacGregor et al. \(2016\) estimate of temperate bed extent](#) and scale Eq. 1 by 0,
260 0.5, or 1 where the bed is frozen ~~, uncertain (~25 % of the ice sheet area), uncertain (~33 %),~~ or thawed (~~respectively~~ [~42 %](#)),
[respectively](#).

4.3.2 Friction

This heat term stems from the friction produced as ice slides over the bedrock. The term has only been measured in a handful of places (e.g., Ryser et al. (2014); Maier et al. (2019)) and it is unclear how representative those measurements are ~~on~~ [at](#) ice-sheet
265 scales. Karlsson et al. (2021) therefore estimate the frictional heating using the Full Stokes Elmer/Ice model that resolves all stresses while relating basal sliding and shear stress using a linear friction law (Gillet-Chaulet et al., 2012; Maier et al., 2021). The model is tuned to match a multi-decadal surface velocity map (Joughin et al., 2018) covering 1995-2015 and it returns an estimated basal friction heat that is used to calculate the basal melt due to friction, similar to Eq. 1:

$$\dot{b}_m = E_f \rho_i^{-1} L^{-1}, \quad (2)$$

270 where E_f is energy due to friction. We also apply the 0, 0.5, and 1 scale as used for the BMB_{GF} term (MacGregor et al., 2016) in order to mask out areas that are likely frozen.

4.4 Other

ROI regions come from Mouginot and Rignot (2019) and ROI sectors come from Zwally et al. (2012).

4.5 Products used for validation

275 We validate This Study against five other data products ([See Table 2 and Sect. 6](#)). These products are the most ~~similar and~~
recent IO product (Mouginot et al., 2019), the previous PROMICE mass balance product (Colgan et al. (2019); data: Colgan
(2021)), the two mostly-independent methods of estimating ice sheet mass change: GMB (Barletta et al. (2013); data: Barletta
et al. (2020)) and VC (Simonsen et al. (2021a); data: Simonsen et al. (2021b)), and the IMBIE2 data (The IMBIE Team, 2019).
280 In addition to this we evaluate the reconstructed Kjeldsen et al. (2015) (data: Box et al. (2021)) and This Study data during the
overlapping period 1986 through 2012. ~~Results of the validation are in Sect. 6.~~

5 Methods

The total mass balance for all of Greenland and all the different ROIs involves summing each field (SMB, MMB, BMB) by
each ROI, then subtracting the MMB and BMB from the SMB fields, or,

$$MB = SMB - MMB - BMB. \quad (3)$$

285 Products that do not include the BMB term (i.e., Mouginot et al. (2019); Colgan et al. (2019), and Kjeldsen et al. (2015))
have total mass balance defined as

$$MB^* = SMB - MMB, \quad (4)$$

~~And and~~ when comparing This Study to those products, we compare like terms, never comparing our MB to a different
product MB*, except [in](#) Fig. 4 where all ~~data products are graphed~~ [products are shown](#) together.

290 Prior to calculating the mass balance, we perform the following steps.

5.1 Surface mass balance

In This Study we generate an output based on each of the three RCMs (HIRHAM/HARMONIE, MAR, and RACMO), however,
in addition to these we generate a final and 4th SMB field defined as a combination of 1) the adjusted reconstructed SMB from
1840 through 1985 (Sect. 5.4), and 2) the average of HIRHAM/HARMONIE, MAR, and RACMO from 1986 through a few
295 months ago when RACMO drops ~~out~~ [are available](#), the average of HIRHAM/HARMONIE and MAR from a few months ago
through yesterday, and MAR from yesterday through next week. See the Appendix A for differences among This Study MB
and MB derived using each of the RCM SMBs. There is no obvious change or step function at the 1985 to 1986 reconstructed-
to-recent change, nor as the RACMO and then HIRHAM/HARMONIE RCMs ~~drop out of the time series,~~ [become unavailable](#)
a few months ago and yesterday, respectively.

300 5.2 ~~Forecasted~~ Projected marine mass balance

We ~~estimate future~~ project the marine mass balance ~~as steady from the most recent estimate~~ from the last observed point from Mankoff et al. (2020b) (generally between 2 weeks and 1 month old) ~~Ice discharge changes annually to seven days into the future at each glacier.~~ We define the long-term trend as the linear least squares fit to the last three years of observed data. We define the seasonal signal as the mean of the last three years of observed data during the temporal window of interest that spans
305 from the most recently available observation through to present plus one week. We then assign the long term trend plus the seasonal signal value to next week's MMB (i.e., now + 7 days), and finally linearly interpolate between the last observed value and the forecasted next week's value, to provide the recent past projected and future forecasted MMB.

Marine mass balance does not change sign and changes magnitude by approximately 6 % annually over the entire ice sheet (King et al., 2018), ~~suggesting a maximum of one-month change of less than 6 %~~ but surface mass balance changes sign and
310 has much larger and short-term variability. From this, the statistical forecast for marine mass balance described above does not impact results as much as the physically-based model forecast for surface mass balance.

5.3 Basal mass balance

Because Karlsson et al. (2021) provide a steady-state annual-average estimate of the BMB_{GF} and ~~friction velocity (BMB_{friction})~~ BMB_{friction} fields by 365 to estimate daily average. This is a reasonable treatment of the BMB_{GF}
315 field, which does not have an annual cycle. The BMB_{friction} field does have a small annual cycle that matches the annual velocity cycle. However, when averaged over all of Greenland, this is only a ~6 % variation (King et al., 2018), and Karlsson et al. (2021) found that basal melt rates are 5 % higher for summer maps. Thus, the intra-annual changes are less than the uncertainty. The BMB_{VHD} field varies significantly throughout the year, because it is proportional to surface runoff. We therefore generate our own BMB_{VHD} for this study.

320 To estimate recent BMB_{VHD} we use daily MAR runoff (see Mankoff et al. (2020a)) and BedMachine ~~v3~~ v4 (Morlighem et al., 2017, 2021) to derive subglacial routing pathways, similar to Mankoff and Tulaczyk (2017). We assume that all runoff travels to the bed within the grid cell where it is generated, the bed is pressurized by the load of the overhead ice, and the runoff discharges on the day it is generated. We calculate subglacial routing from the gradient of the subglacial pressure head surface, h , defined as

$$325 \quad h = z_b + k \frac{\rho_i}{\rho_w} (z_s - z_b), \quad (5)$$

with z_b the basal topography, k the flotation fraction (1), ρ_i the density of ice (917 kg m⁻³), ρ_w the density of water (1000 kg m⁻³), and z_s the ice surface. Eq. 5 comes from Shreve (1972), where the hydropotential has units of pascals (Pa), but here it is divided by gravitational acceleration g times the density of water ρ_w to convert the units from pascals to meters (Pa to m).

We compute h and from ~~that~~ h streams and outlets, and both the pressure and elevation difference between the source
330 and outlet. The energy available for basal melting is the elevation difference (gravitational potential energy) and two-thirds

of the pressure difference, with the remaining one third consumed to warm the water to match the changing phase transition temperature (Liestøl, 1956; Mankoff and Tulaczyk, 2017). We assume all energy, E_{VHD} (in Joules), is used to melt ice with

$$b_m = E_{\text{VHD}} \rho_i^{-1} L^{-1}. \quad (6)$$

335 Because results are presented per ROI and to reduce the computational load of this daily estimate, we only calculate the integrated energy released between the RCM runoff source cell and the outlet cell, and then assign that to the ROI containing the runoff source cell.

To estimate reconstructed basal mass balance, we treat BMB_{GF} and $\text{BMB}_{\text{friction}}$ as steady state as described at the ~~top~~ start of this section. For BMB_{VHD} we use the fact that VHD comes from runoff by definition, and from this, reconstructed BMB_{VHD} is calculated using scaled runoff as a proxy. VHD theory suggests that a unit volume of runoff that experiences a 1000 m
340 elevation drop will release enough heat to melt an additional 3 % (Liestøl, 1956). To estimate the scale factor we use the 1986 through 2012 overlap between Kjeldsen et al. (2015) runoff and This Study recent BMB_{VHD} from MAR runoff described above. The correlation between the two has an r^2 value of ~~0.78~~0.75, slope of ~~0.043~~0.03, and an intercept of ~~-5~~-3 Gt yr⁻¹ (Appendix D). From this, we scale the Kjeldsen et al. (2015) reconstructed runoff by ~~4.3~~3 % (from the 0.03 slope, unrelated to the theoretical 1000 m drop described earlier) to estimate reconstructed BMB_{VHD} .

345 5.4 Reconstructed adjustment

We use the reconstructed and recent surface (SMB) and marine (MMB) mass balance overlap from 1986 through 2012 to adjust the reconstructed data. This Study vs reconstructed SMB has a slope of 0.6 and an intercept of 165 Gt yr⁻¹ (Fig. 3 SMB), and This Study vs reconstructed MMB has a slope of 1.1 and an intercept of -6 Gt yr⁻¹ (Fig. 3 MMB). The unadjusted reconstructed data slightly underestimates years with high SMB and overestimates years with low SMB (see 1986, 2010, 2011, and 2012 in
350 Fig. 3 SMB). The unadjusted reconstructed data slightly overestimates years with low MMB and overestimates years with high MMB.

We adjust the reconstructed data until the reconstructed vs. recent slope is 1 and ~~the~~ intercept is 0 Gt yr⁻¹ for each of the surface and marine mass balance comparisons (Fig. 3). We then derive the BMB_{VHD} term for reconstructed basal mass balance (Sect. 5.3 and Appendix D), bring in the other BMB terms (Sect. 5.3), and use Eq. 3 to ~~find the~~ compute the adjusted
355 reconstructed mass balance.

For reconstructed SMB and MMB, the mean of the recent uncertainty is added to the reconstructed uncertainty during the adjustment. Reconstructed MB uncertainty is then re-calculated as the square root of the sum of the squares of the reconstructed SMB and MMB uncertainty.

For surface mass balance, the adjustment is effectively a rotation around the mean values, with years with low SMB decreasing and years with high SMB increasing after the adjustment. For marine mass balance, years with low MMB are slightly
360 reduced, and years with high MMB have a higher reduction to better match the overlapping estimates.

The adjustment described above treats all biases in the reconstructed data. The primary assumption of our adjustment is that the bias contributions do not change in proportion to each other over time.

365 ~~Given high correlations, we find it reasonable to~~ We attribute the disagreement and need for the adjustment to the demonstrated too-high biases in accumulation and ablation estimates in the 1840-2012 ~~statistical reconstruction SMB reconstructed~~ SMB field (Fettweis et al., 2020), an offset resulting from differences in ice masks (Kjeldsen et al., 2015), the inclusion of peripheral glaciers (Kjeldsen et al., 2015), other accumulation rate inaccuracies (Lewis et al., 2017, 2019), and other unknowns.

5.5 Domains, ~~Boundaries~~boundaries, and regions of interest

370 Few of the ~~data products ice masks~~ used here are spatially aligned. The Zwally et al. (2012) sectors and the Mouginot and Rignot (2019) regions are often smaller than the RCM ice domains. For example, the RACMO ice domain is 1,718,959 km², of which 1,696,419 km² (99 %) are covered by the Mouginot and Rignot (2019) regions, and 22,540 km² (1 %) are not, or 1,678,864 km² (98 %) are covered by the Zwally et al. (2012) and 40,095 km² (2 %) are not.

375 Cropping the RCM domain edges would remove the edge cells where the largest SMB losses occur. This effect is minor when SMB is high (years with low runoff, assuming SMB magnitude is dominated by the runoff term). This effect is large when SMB is low (years with high runoff). As an example for the 2010 decade, RACMO SMB has a mean of 251 Gt yr⁻¹ for the decade, with a low of 45 Gt in 2019, a high of 420 Gt in 2018. For these same extreme years RACMO cropped to Mouginot and Rignot (2019) has a low of 76 Gt (68 % high) and a high of 429 Gt (2 % high). RACMO cropped to Zwally et al. (2012) has a low of 84 Gt (85 % high) and a high of 429 Gt (2 % high).

380 We therefore grow the ROIs to cover the RCM domains. ROIs are grown by expanding them outward, assigning the new cells the value (ROI classification, that is sector number or region name, see Fig. 1) of the nearest non-null cell, and then clipping to the RCM ice domain. This is done for each ROI and RCM. Appendix E provides a graphical display of the HIRHAM RCM domain, the Mouginot and Rignot (2019) domain, and our expanded Mouginot and Rignot (2019) domain.

385 BMB_{VHD} comes from the MAR ice domain runoff, but is generated on the BedMachine ice thickness grid, which is smaller than the ice domain in some places. Therefore, the largest runoff volumes per unit area (from the low-elevation edge of the ice sheet) are discarded in these locations.

6 Product evaluation and assessment

We compare to six related data sets (see ~~See~~Table 2 and Sect. 4.5): The most similar and recent IO product (Mouginot et al., 2019), the previous PROMICE assessment (Colgan et al., 2019), the two mostly independent methods (GMB (Barletta et al., 2013) and VC (Simonsen et al., 2021a)), IMBIE2 (The IMBIE Team, 2019), and the unadjusted reconstructed/recent overlap 390 (Kjeldsen et al., 2015).

Our initial comparison (Fig. 4) shows all seven products overlaid in a time series accumulating at the product resolution (daily to annual) from the beginning of the first overlap (1972, Mouginot et al. (2019)) until seven days from now (now defined as ~~2021-04-24~~2021-08-13). Each data set is manually aligned vertically so that the last timestamps appear to overlap,

allowing disagreements to grow back in time. We also assume errors are smallest at present and allow errors to grow back in
 395 time. The errors for this product are described in the Uncertainty section.

In the sections below, we compare This Study to each of the validation data in more detail. The Mougnot et al. (2019) and
 Colgan et al. (2019) products allow term-level (SMB, MMB, and MB*) comparison, and the GMB, VC, and IMBIE2 only
 MB-level comparison. The MB or MB* comparison for each product is summarized in Table ???. All have different masks.
 Bias [Gt yr⁻¹] is defined as $\frac{1}{n} \sum_{i=1}^n (x_i - y_i)$. RMSE [Gt yr⁻¹] is defined as $\sqrt{\frac{1}{n} \sum_{i=1}^n (x_i - y_i)^2}$. Sums are computed using
 400 ice-sheet wide annual values, where x is This Study, y is the other product, and a positive bias means that This Study has a
 larger value.

Table 2. Summary of correlation, bias, and RMSE between different products during their overlap periods with This Study. Basal mass balance not included in This Study when comparing against Mougnot and Rignot (2019), Colgan et al. (2019), or Kjeldsen et al. (2015). Peripheral ice masses never included in This Study.

Other product	r ²	bias	RMSE	Fig.	Overlap	Notes
Mougnot et al. (2019)	<u>0.96-0.94</u>	<u>-4-9</u>	<u>29-36</u>	5	<u>1986 – 2018</u>	No basal mass balance
Colgan et al. (2019)	<u>0.88-0.87</u>	<u>-50-35</u>	<u>69-61</u>	6	<u>1995 – 2015</u>	No basal mass balance
GMB	<u>0.87-0.86</u>	<u>13-30</u>	<u>54-62</u>	7	<u>Includes peripherals 2002 – 2020</u>	<u>Includes peripheral masses</u>
VC	<u>0.64-0.62</u>	<u>-29-14</u>	<u>89-85</u>	7	<u>1992 – 2019</u>	Multi-year smooth
IMBIE2	0.89	<u>-25-10</u>	<u>50-44</u>	7	<u>1992 – 2018</u>	No BMB when using IO; BMB when using G
Kjeldsen et al. (2015)	<u>0.82-0.80</u>	<u>-5-3</u>	<u>60-59</u>	3	<u>1986 – 2012</u>	No basal mass balance; Includes peripheralspe

6.1 Mougnot (2019)

The Mougnot et al. (2019) product spans the 1972 through 2018 period. The SMB ~~originates from the~~ comes from RACMO
 v2.3p2 downscaled at 1 km, and agrees very well with SMB from This Study (r² 0.97, bias -1, RMSE 18, slope 1.00, 0.94, bias
 405 9, RMSE 36, slope 1.1). The minor SMB differences are likely due to mask differences, or our use of a three-RCM average
 SMB estimate, ~~or perhaps updates to the RACMO model since the Mougnot et al. (2019) study.~~

Mougnot et al. (2019) discharge and our MMB from Mankoff et al. (2020b) have a -23-33 Gt yr⁻¹ bias. This difference can
 mainly be attributed to different discharge estimates in the Southeast and Central east sector (Appendix: Mougnot regions).
 When we include BMB in This Study (diamonds in middle panel shifting values to the right), it adds ~25 Gt yr⁻¹ to This Study.

410 Because MB* is a linear combination of SMB and MMB terms (Eq 4), the MB* difference differences between this product
 and Mougnot et al. (2019) is are dominated by the SMB term. ~~The MMB disagreement adds only a small amount of noise to~~
~~the overall agreement~~ MMB term, although it is not apparent because interannual variability is dominated by SMB.

6.2 Colgan (2019)

The Colgan et al. (2019) product spans 1995 through 2015. The SMB term is broadly similar to the RCM-averaged SMB term
 415 in This Study, although Colgan et al. (2019) use only an older version of MAR (Fig. 6 top panel). The Colgan et al. (2019)

SMB is spatially interpolated over the PROMICE ice-sheet ice mask (Citterio and Ahlström, 2013), which contains more detail on the ice sheet periphery, ~~but also and therefore~~ a larger ablation area than the native coarser MAR ice mask. This Study does not interpolate the SMB field and instead works on the SMB ice domain ~~and~~.

420 The most critical difference between This Study and Colgan et al. (2019) is that the latter estimate grounding line ice discharge based on corrections to ice volume flow rate measured across the approximately 1700 m elevation contour. This ice volume flow rate measurement is far inland relative to the grounding line flux gates used in This Study (from Mankoff (2020)). This introduces ~~large~~ uncertainty in the Colgan et al. (2019) MMB term induced by the SMB corrections between the 1700 m elevation contour and the terminus (see large disagreement in Fig. 6 mid panel). This disagreement increases when BMB is included in the results of This Study (shown by dots shifting the annual values to the right).

425 The MMB disagreement is represented differently across sectors (Appendix: Colgan 2019), where sectors 1, 2, 5, and 6 all have correlation coefficients less than ~ 0.1 , while the remaining sectors 3, 4, 7, and 8 all have correlation coefficients greater than 0.5.

This Study assesses greater MMB bias (~~54~~43 Gt yr⁻¹) than Colgan et al. (2019). While Colgan et al. (2019) did not assess BMB, the majority (~~>85%~~) of this discrepancy likely results from Colgan et al. (2019) aliasing the aforementioned downstream correction terms. For example, while This Study shows very little ~~inter-annual~~interannual variability in ice discharge in the predominantly land-terminating SW region, Colgan et al. (2019) infer large ~~inter-annual~~interannual variability in ice ~~discharge~~ based on large ~~inter-annual~~interannual variability in SMB and changes in ablation area ice volume in their Sector 6. The discrepancy between This Study and Colgan et al. (2019) MMB [+BMB] is largest during the earliest part of the record (i.e. 1995-2000), decreasing towards present-day, which may suggest that Colgan et al. (2019) particularly overestimated the response in ice discharge to 1990s climate variability.

435 Similar to the comparison with Mouginot et al. (2019), the ~~variation in Colgan et al. (2019) MB* is also ultimately dominated by variation in the SMB term. This leads to strong agreement between this study and the Colgan et al. (2019) estimated annual MB* disagreement between This Study and Colgan et al. (2019) is dominated by MMB disagreement, although it is again not apparent because interannual variability is dominated by SMB.~~

440 6.3 Gravimetric Mass Balance (GMB)

~~The primary difference between GMB and This Study is that~~ Unlike this Study, the GMB method includes mass losses and gains on peripheral ~~glaciers~~ice masses which should introduce a bias of ~ 10 to 15% ~~, while This Study does not include peripheral glaciers~~ (Colgan et al., 2015; Bolch et al., 2013). The inclusion of peripheral ~~glaciers~~ice in the GMB product is because the spatial resolution is so low that it cannot distinguish between them and the main ice sheet. There is also signal leakage from other glaciated areas, ~~eg e.g.~~ the Canadian Arctic. This can have ~~a major an~~ effect on the estimated signal, especially in sectors 1 and 8 or regions NW and NO. There is also leakage between basins, which becomes a larger issue for smaller basins or where major outlet glaciers are near basin boundaries. GMB may also have an amplified seasonal signal due to changing snow loading in the surrounding land areas that may be mapped as ice sheet mass change variability. This would enhance the seasonal amplitude but not have an impact on the ~~inter-annual~~interannual mass change rates. Additionally, different glacial isostatic

450 adjustment (GIA) corrections applied to the gravimetric signal may also lead to differences in GMB estimates on ice sheet scale, but also on sector scale (e.g. Sutterley et al. (2014); Khan et al. (2016)).

GMB and the IO method (This Study) both report changes in ice sheet mass, but they are measuring two fundamentally different things. The IO method tracks volume flow rate across the ice sheet ~~boundary~~boundaries. Typically this is meltwater across the ice sheet surface and solid ice across flux gates near the calving edge of the ice sheet, and in This Study also meltwater across the ice sheet basal boundary. That volume is then converted to mass. We consider that mass is 'lost' as soon as it crosses the boundary (i.e. the ice melts or ice crosses the flux gate). The GMB method tracks the regional mass changes. Melting ice has no impact on this, until the meltwater enters the ocean and a similar mass leaves the far-field GMB footprint. From these differences, the GMB method may be a better estimate of sea level rise, while the ~~IO~~IO method may be a better representation of the state of the Greenland ice sheet.

460 6.4 Volume ~~change~~Change (VC)

When deriving surface elevation change from satellite altimetry, data from multiple years are needed to give a stable ice sheet-wide prediction. Hence, the altimetric mass balance estimates are often reported as averages of single satellite missions.

Although This Study has a small (~~-29~~-14 Gt yr⁻¹) bias in comparison to Simonsen et al. (2021a) VC, there is a relatively high RMSE of ~~89~~85 Gt yr⁻¹ and a mid-range correlation ($r^2 = \del{0.64}0.62). This suggests that while both This Study and VC agree on the total mass loss of the ice sheet, they disagree on the precise temporal distribution of this mass loss. ~~The~~It is possible the outlying 1992 and 2019 years are influenced by the edge of the time series record if not fully sampled, but other outliers exist - the 1992 extreme low melt year and the 2019 extreme melt year, as well as the ~~1996-1998~~1995 through 1998 period, stand out as years ~~of especially~~with poor agreement.$

We suggest that this is due to climate influences on the effective radar horizon across the ice sheet during these years. Weather-driven changes in the effective scatter horizon, mapped by Ku-band in the upper snow layer of ice sheets hampers the conversion of radar-derived elevation change into mass change (Nilsson et al., 2015). Simonsen et al. (2021a) used a machine learning approach to derive a temporal calibration field for converting the radar elevation change estimates into mass change. This approach relied on precise mass balance estimates from ICESat to train the model and thereby was able to remove the effects of the changing scattering horizon in the radar data. This VC mass balance is given for monthly time steps (Simonsen et al., 2021a), however the running-mean applied to derive radar elevation change will dampen the interannual variability of the mass balance estimate from VC. This is especially true prior to 2010, after which the novel radar altimeter onboard CryoSat-2 allowed for a shortening of the data windowing from 5 to 3 years. This smoothing of the interannual variability is also seen in the intercomparison between This Study and the VC MB, where in addition to the two end members of the time series (1992 and 2019) the years 1995, 1996, and 1998 seem to be outliers (Fig. 7). These years are notable for high MB which seems to be captured less precisely by the older radar altimeters due to the longer temporal averaging.

6.5 IMBIE

The most widely cited estimate of Greenland mass balance today is the Ice-Sheet Mass Balance Inter-Comparison Exercise 2 (IMBIE2, The IMBIE Team (2019)). IMBIE2 seeks to provide a consensus estimate of monthly Greenland mass balance between 1992 and 2018 that is derived from altimetry, gravimetry, and input-output ensemble members. There are two critical
485 methodological differences between This Study and IMBIE2. Firstly, the gravimetry members of IMBIE2 ~~assesses~~ assess mass balance of all ~~Greenland~~ Greenlandic land ice, including peripheral ice masses, while This Study only assesses mass balance of the ice sheet proper. Secondly, the input-output members of IMBIE2 do not assess BMB, while This Study does.

~~Of the 26 independent estimates in the~~ The IMBIE2 ~~assessment~~ 9 are from satellite altimetry composite record of ice-sheet mass balance equally weights three methods of assessing ice-sheet mass balance: input-output, altimetry and gravimetry. Prior
490 to c. 2003, ~~however~~, IMBIE2 is derived ~~using only the IO method solely from IO studies that explicitly exclude BMB~~ (MB is actually MB*), ~~while after~~. After c. 2003, it is mostly driven by the variability of GRACE dampened by the longer averaging in the altimetry ~~by comparison~~, IMBIE2 includes both satellite altimetry and gravimetry records ~~implicitly sample BMB~~. The representation of BMB in the composite IMBIE2 mass balance record therefore shifts before and after c. 2003.

In comparison to mass balance assessed by IMBIE2, This Study has a small bias of ~~~ -24~~ -10 Gt yr⁻¹ over the ~~common~~ 26
495 calendar year comparison period. This apparent agreement may be attributed to the compensating effects of IMBIE2 effectively sampling peripheral ice ~~eaps~~ masses and ignoring BMB, while This Study does the opposite and ignores peripheral ice ~~eaps~~ masses but samples BMB, equal to ~ 25 Gt yr⁻¹. Over the entire 26-year comparison period, the RMSE with IMBIE2 is ~~~ 50~~ 44 Gt yr⁻¹ and the correlation is ~~0.89~~ 0.89. This relatively high correlation highlights good agreement in interannual variability between studies, and the RMSE suggests that formal stated uncertainties of each study (c. ± 30 to ± 63 Gt yr⁻¹ for
500 IMBIE2 and mean of ~~88~~ 86 Gt yr⁻¹ for This Study) are indeed good estimates of the true uncertainty, as assessed by inter-study discrepancies.

7 Uncertainty

We treat the three inputs to the total mass balance (surface, marine, and basal mass balance, or SMB, MMB, and BMB) as independent when calculating the total error. This is a simplification – the RCM SMB and the BMB_{VHD} from RCM runoff are
505 related, and MMB ice thickness and BMB_{VHD} pressure gradients are related, and other terms may have dependencies. However, the two dominant IO terms, SMB inputs and MMB outputs, are independent on annual time scales, and for simplification we treat all terms as independent. We use Eq 3 and standard error propagation for SMB, MMB, and BMB terms (i.e., the square root of the sum of the squares of the SMB plus MMB plus BMB error terms). For the MMB, extra work is done to calculate uncertainty between the last Mankoff 2020 MMB data (up to 30 days old, with error of ~~~10~~ 9 % or ~~~50~~ 45 Gt yr⁻¹) and the
510 forecasted now-plus-7-day MMB (see Sect. 7.1). Table 3 provides a summary of the uncertainty for each input.

The final This Study MB uncertainty value shown in Table 3 comes from ~~the average value~~ mean of the annual sum of the MB error term ~~after summing by year and computing the mean of the uncertainty~~.

Term	Uncertainty [\pm]	Notes
HIRHAM / HARMONIE SMB	15 %	Langen et al. (2017). The mean accumulation bias (-5%) and ablation bias (-7%) tend to cancel out, but this cannot be expected to be the case on single-basin, short-term scales where uncertainty is estimated to be larger.
MAR SMB	15 %	Fettweis et al. (2020). The mean bias between the model and the measurements was 15 % with a maximum of 1000 mmWE yr ⁻¹ . GrSMBMIP uses integrated values over several months of SMB, suggesting larger uncertainty of modeled runoff at the daily timescale.
RACMO SMB	15 %	Noël et al. (2019). Average 5% runoff bias compared to annual cumulative discharge from the Watson River. Increases to a maximum of 20 % for extreme runoff years.
This Study SMB	9 %	Average of 15 % SMB uncertainties above, assuming uncorrelated.
Reconstructed SMB	~ 20 %	From Kjeldsen et al. (2015) Table 1.
Recent MMB	~ 50 ~ 45 Gt yr ⁻¹	~ 10 ~ 9 %. Mankoff et al. (2020b) <u>updated (Mankoff, 2021)</u> .
Reconstructed MMB	~ 10 %	From Kjeldsen et al. (2015) Table 1.
BMB _{GF}	50 %	5.3 +4/-1.4 Gt yr ⁻¹ from Karlsson et al. (2021) Table 1, using the average of the three available methods.
BMB _{friction}	20 %	11.8 \pm 3.4 Gt yr ⁻¹ from Karlsson et al. (2021) Table 1.
BMB _{VHD}	15 %	MAR runoff uncertainty.
This Study MB	~ 88 ~ 86 Gt yr ⁻¹	Eq 3, assuming all uncertainty is uncorrelated.

Table 3. Summary of uncertainty estimates for products used in This Study. This is an approximate and simplified representation – RCM uncertainties are calculated separately for gain and loss terms, because SMB near 0 does not mean uncertainty is near 0. This is also why the final This Study uncertainty is presented with units [Gt yr⁻¹].

7.1 Marine mass balance

The MMB uncertainty is ~~adjusted from the forecasted MMB based on reconstructed the MMB variability~~. ~~For the forecast period we estimate the uncertainty based on data from all previous years~~. ~~On~~ discussed in detail in Mankoff et al. (2020b), but the main uncertainties come from unknown ice thickness, the assumption of no vertical shear at fast-flowing marine-terminating outlet glaciers, and ice density of 917 kg m⁻³. Regional ice density can be significantly reduced by crevasses. For example, Mankoff et al. (2020c) identified a snow-covered crevasse field with 20 % crevasse density, meaning at that location regional firn density should be reduced by 20 %.

520 Temporally, MMB at daily resolution comes from ~12 day observations up-sampled to daily, and those ~12 day resolution observations come from longer time period observations (Solgaard et al., 2021). Because the velocity method using feature tracking, it is correct on average but misses variability within each sample period (e.g., Greene et al. (2020)).

525 Spatially, MMB discharge is estimated ~5 km upstream from the grounding lines for ice velocities as low as 100 m yr⁻¹. That ice accelerates toward the margin, but even ice flowing steady at 1 km yr⁻¹ would take 5 years before that mass is lost. However, at any given point in time, ice that had previously crossed the flux gate is calving or melting into the fjord. The discrepancy here between the flux gate estimated mass loss and the actual mass lost at the downstream terminus is only significant for glaciers that have had large velocity changes at some point in the recent past, large changes in ice thickness, or large changes in the location (retreat or advance) of the terminus. We do not consider SMB changes downstream of the flux gate, because the gates are temporally near the terminus for most of the ice that is fast-flowing, and the largest SMB uncertainty is at the ice sheet margin where there are both mask issues and high topographic variability.

530 The forecasted MMB uncertainty is estimated from the same forecasted calendar days of the last three years of observed MMB at each glacier. MMB uncertainty for the first forecasted day ~~the uncertainty is increased from the baseline approximate 10 % by adding 2 standard deviations of the daily variability in MMB on that calendar date throughout our record. On is the~~ baseline MMB uncertainty plus the largest daily change observed during the forecast period from the last three years. The MMB uncertainty for the second forecasted day ~~we do the same, and then use the larger of that value or the previous days value (i.e., uncertainty cannot decrease as the forecast moves forward in time)~~ is the baseline uncertainty plus the uncertainty from the first forecasted day plus the second largest daily change observed during the forecast period from the last three years. We repeat this for the approximately 30 days of forecasted MMB. This implementation takes into account the larger variability (uncertainty) during the seasonal transition between the lower winter and higher summer discharge, or the smaller variability during the winter period.

7.2 Regions of interest (ROI)

~~Domain and ice mask alignment issues are non-trivial. In general, we~~ We work on the three different domains of the three RCMs, and expand the ROIs to match the RCMs (see Appendix E). However, some alignment issues cannot be solved. For example, we use BedMachine ice thickness to estimate BMB_{VHD} . Often, the largest BMB_{VHD} occurs near the ice margin under ice with the steepest surface slopes. This is also where the largest runoff often occurs, because the ice margin, at the lowest elevations, is exposed to the warmest air. If these RCM ice grid cells with high runoff are anywhere inside the BedMachine ice domain, that runoff is still included in our BMB_{VHD} estimates because it flows outward and passes through the BedMachine near-ice-edge grid cells with the large pressure gradients. However, if these RCM ice grid cells with high runoff are outside the BedMachine ice domain (ice thickness is 0), there is no reasonable way to include that runoff in our BMB_{VHD} budget. ~~It is ignored-, and these grid cells are ignored.~~

550 The MAR ice domain is 1,828,800 km² of which 1,711,200 km² (94 %) are covered by the BedMachine ice mask, and 26,000 km² (6 %) are not. This 6 % area contributes ~15 % of the runoff (excluded from the VHD calculations) and likely

a higher percent of the VHD, because the border region of the ice sheet has the steepest gradients and the largest volume of subglacial flow.

555 We encourage RCM developers, BedMachine, and others to use a common and up-to-date mask (see Kjeldsen et al. (2020)).

7.3 Accumulating uncertainties

When accumulating errors as in Fig. 4, we use only the MMB ~~uncertainty. This is because the~~ and BMB_{GF} uncertainty. The MMB uncertainty is primarily due to unknown ice thickness and is invariant in time, and ~~for temporal accumulation, we treat the BMB and SMB uncertainties as random~~ the geothermal heat flux is steady state. SMB uncertainty is assumed to have errors
560 randomly distributed in time (for the purposes of Fig. 4). There may be time-invariant biases in the BMB_{friction} and SMB fields, but treating all uncertainties as biases is incorrect - evidence for that comes from the six other MB estimates. This distinction between bias and random uncertainty is only done for Fig. 4 where errors accumulate in time. The provided data product contains one uncertainty field and does not distinguish between systematic and random uncertainty.

The shaded region in Fig. 4 representing the uncertainty for This Study is computed as a 365 day rolling smooth from 1840
565 through 1999 of the above-described uncertainty, 1/365th of the annual error at now + 7 days, and a linear blend, from 2000 to now + 7 days, between the smoothed reconstructed uncertainty and the present and future more variable uncertainty.

The Mouginot et al. (2019), Colgan et al. (2019), and Kjeldsen et al. (2015) ~~all products~~ products all provide an error estimate, but do not distinguish between temporally fixed errors (biases; should accumulate in time) vs. temporally random errors.

570 We treat the Mouginot et al. (2019) data the same as This Study. Marine mass balance uncertainty is treated as a bias and accumulates, and surface mass balance uncertainty is treated as random and does not accumulate.

The Colgan et al. (2019) vs. this study bias and RMSE are ~~-50 and 69~~ -35 and 61 Gt yr⁻¹ respectively. This suggests that in any given year, there could be up to ~~-50-35 ± 69-61~~ or ~~+1926/-119-96~~ Gt yr⁻¹ departure from This Study. From this, we assign a ~~50-35~~ 35 Gt yr⁻¹ bias (~~42-36~~ 36 %; accumulates in time) and a ~~69-61~~ 61 Gt yr⁻¹ RMSE (~~58-64~~ 64 %; random in time).

575 The adjusted Kjeldsen et al. (2015) data have 0 surface and marine mass balance bias by definition (Sect. 5.4), but Fig. 4 displays the unadjusted data, and we ~~use the same method as for the Colgan et al. (2019) data. The unadjusted Kjeldsen et al. (2015) vs. this study bias and RMSE are -5 and 60 Gt yr⁻¹ respectively, meaning there could be up to a -5 ± 60~~ apply a 36 Gt yr⁻¹ ~~departure from This Study. We assign a 5 Gt yr⁻¹ error to the accumulating data~~ accumulating uncertainty from the unadjusted MMB bias (Fig. 3).

580 7.4 Peripheral ~~Glaciers~~ ice masses

Greenland's peripheral glaciers and ice caps are not included in this product. Nonetheless, we briefly summarize recent mass balance estimates of these areas. ~~Greenland peripheral glaciers contribute~~ Greenlandic peripheral ice contributes more runoff per unit area than the main ice sheet – they are < 5 % of the total ice area but contribute ~15 to 20 % of the whole island mass loss (Bolch et al., 2013). From 2003 to 2009 and using the VC method (altimetry), Gardner et al. (2013) estimate -38 ± 7 Gt

585 yr⁻¹ peripheral mass balance. From 2006 to 2016 and using the VC method (DEM differencing), Zemp et al. (2020) estimate -51 ±17 Gt yr⁻¹ peripheral mass balance, using Rastner et al. (2012) delineations.

~~When the IO estimate can be applied to these peripheral glaciers (i.e., thickness data becomes available) this product can then include them.~~

8 Results

590 From the 181 years of data, the mean mass balance is ~~-90-80~~ ±120 Gt yr⁻¹ 125 Gt yr⁻¹, with a minimum of ~~-434-429~~ ±109 Gt in 2012 (SMB of ~~96-86~~ ±9-8 Gt, MMB of ~~496-485~~ ±51-46 Gt, BMB of ~~34-29~~ ±7-6 Gt) and a maximum of ~~152 Gt in 1985~~ 137 ±83 Gt yr⁻¹ Gt in 1996 (SMB of ~~609-578~~ ±74-52 Gt, MMB of ~~433-420~~ ±34-39 Gt, BMB of ~~24-21~~ ±12-5 Gt).

At the decadal average, the following trends are apparent. Surface mass balance has decreased from a high of ~450 Gt yr⁻¹ in the 1860s to low of ~260 Gt yr⁻¹ in the 2010s. SMB variability has also increased during this time. Marine mass balance
595 has increased slightly from a low of ~~~330-375~~ Gt yr⁻¹ in the 1860s to a high of ~~~500-490~~ Gt yr⁻¹ in the 2010s. Basal mass balance ~~has increased by ~15% from a low of 24, from runoff as a proxy, had a high of 26 ±16 Gt yr⁻¹ in the 1860s to a high of ~28-1930s and a low of 22 ±5 Gt yr⁻¹ in the 2010s~~ 1990s, but as with runoff, is increasing in recent decades.

The total mass balance decadal trend from ~~1840 through 2020~~ the 1840s through the 2010s is one of general mass decrease and increased ~~inter-decadal~~ intra-decadal variability. The record begins in the 1840s with ~~~-20-10~~ Gt yr⁻¹, has only one (of 19)
600 decades with a mass gain of ~~~-40~~ (~50 Gt yr⁻¹ in the 1860s), and a record low of ~~~-270-250~~ Gt yr⁻¹ in the 2010s.

9 Data availability

The RCM surface mass balance, ~~the marine mass balance~~, and the VHD basal mass balance components are updated daily, ~~and the marine mass balance approximately every 12 days, and all are~~ used to produce the final daily-updating product. The data area available at ~~while the paper is in review, and will be available at~~ <https://doi.org/10.22008/FK2/YG3IWC> (Mankoff et al.,
605 2021), with all historical ~~versions archived, after review~~ (daily updated) versions archived.

As part of our commitment to make continual and improving updates to the data product, we introduce a GitHub database (https://github.com/GEUS-Glaciology-and-Climatology/mass_balance/; last visited ~~2020-04-01~~ August 13, 2021) where users can track progress, make suggestions, discuss, ~~and~~ report and respond to issues that arise during use of this product.

10 Conclusions

610 This study is the first to provide a dataset containing more than a century and real time estimates detailing the state of Greenland ice sheet mass balance, with regional or sector spatial and daily temporal resolution products of surface mass balance, marine mass balance, basal mass balance, and the total mass balance.

IMBIE2 highlights that during the GRACE satellite gravimetry era (2003 through 2017), there are usually more than twenty independent estimates of annual Greenland ice sheet mass balance. Just two independent estimates, however, are available

615 prior to 2003. This study will therefore provide additional insight on ice sheet mass balance during the late 1980s and 1990s. IMBIE2 also highlights how the availability of mass balance estimates declines in the year prior to IMBIE2 publication. This reflects a lag period during which mass balance assessments from non-operational products are undergoing peer-review. The operational nature of this product supports the timely inclusion of annual MB estimates in community consensus reports such as those from IMBIE and the IPCC.

620 As such, the data products provided in this study present the first operational monitoring of the Greenland ice sheet total mass balance and its components. One property of the input-output approach used in This Study is the explanatory capabilities of the data products, allowing scrutiny of the physical origins of recorded mass changes. By excluding peripheral ice masses, this study allows and invites anyone to keep an eye on the current evolution of the Greenland ice sheet proper. However, as the spatial resolution of ~~RCM increases~~ RCMs increase and estimates of ~~ice thickness of the peripheral glacier~~ peripheral
625 ice thickness become available, our setup allows inclusion of these ice masses to generate a full Greenland-wide product. Moreover, as the determination of each of the individual components of the ice sheet mass balance is expected to improve over time through international research efforts, the total mass balance product presented will also be able to improve, as it is sustained by the Danish-Greenlandic governmental long-term monitoring effort – the Programme for Monitoring of the Greenland ice sheet (PROMICE).

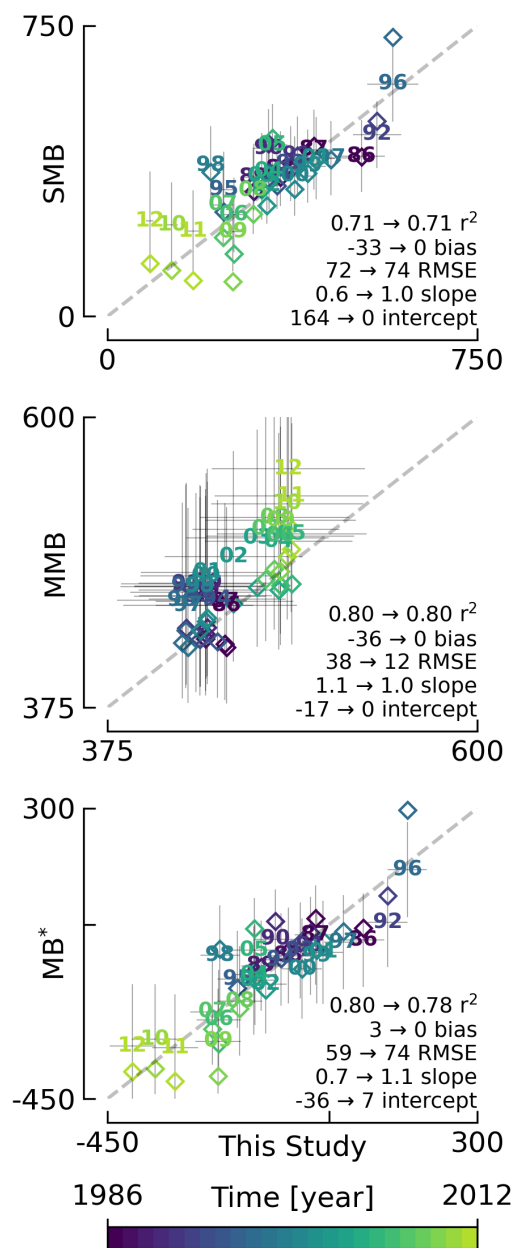


Figure 3. Comparison between This Study and the reconstructed (Kjeldsen et al., 2015) 27-year-overlap period. Numbers—All axes units are $Gt\ yr^{-1}$. Plotted numbers represent the last two digits of the years for the unadjusted data sets. The matching colored diamonds show the adjusted data. MB^* shown here does not include BMB for either the reconstructed or This Study data. Arrows show statistical properties before and after the adjustment. No adjustment is made to MB^* , but it is computed from Eq. 4 both before (numbered) and after (diamonds) the surface and marine mass balance adjustments.

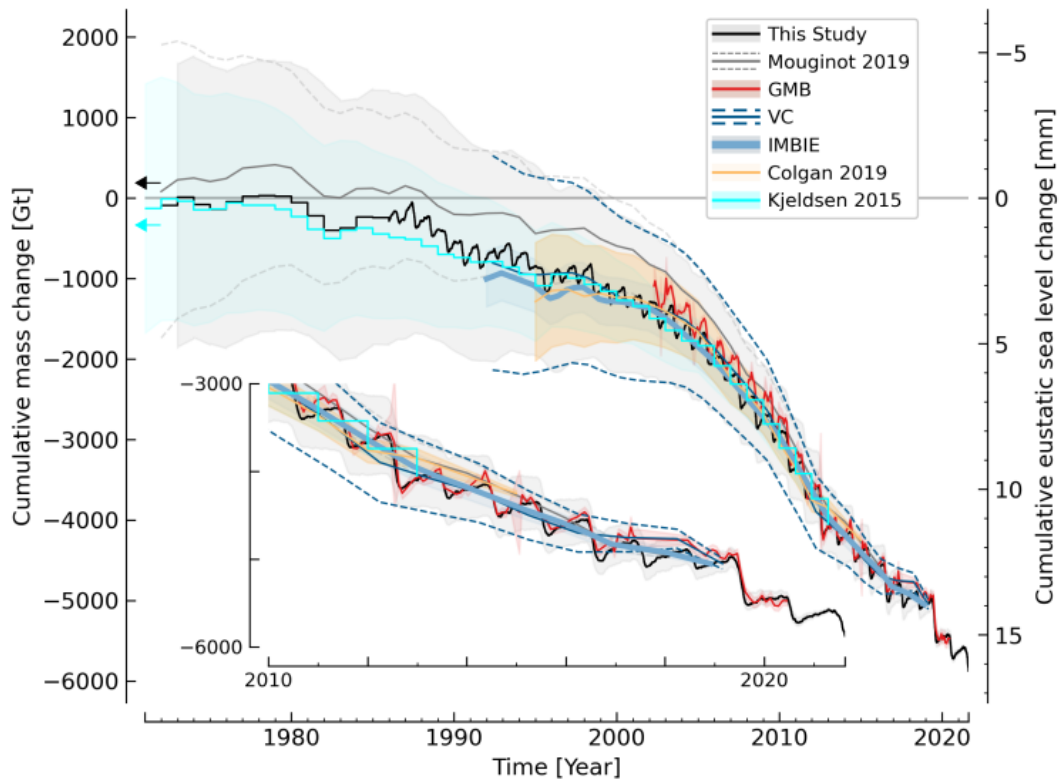


Figure 4. Comparison between This Study and other mass balance time series. Note that various products do or do not include basal mass balance or peripheral [glaciers-ice masses](#) (see Table [???](#)). This Study annual-resolution data prior to 1986 is the Kjeldsen et al. (2015) data adjusted as described in Sect. 5.4. Sea level rise calculated as $-Gt/361.8$. Inset highlights changes since 2010.

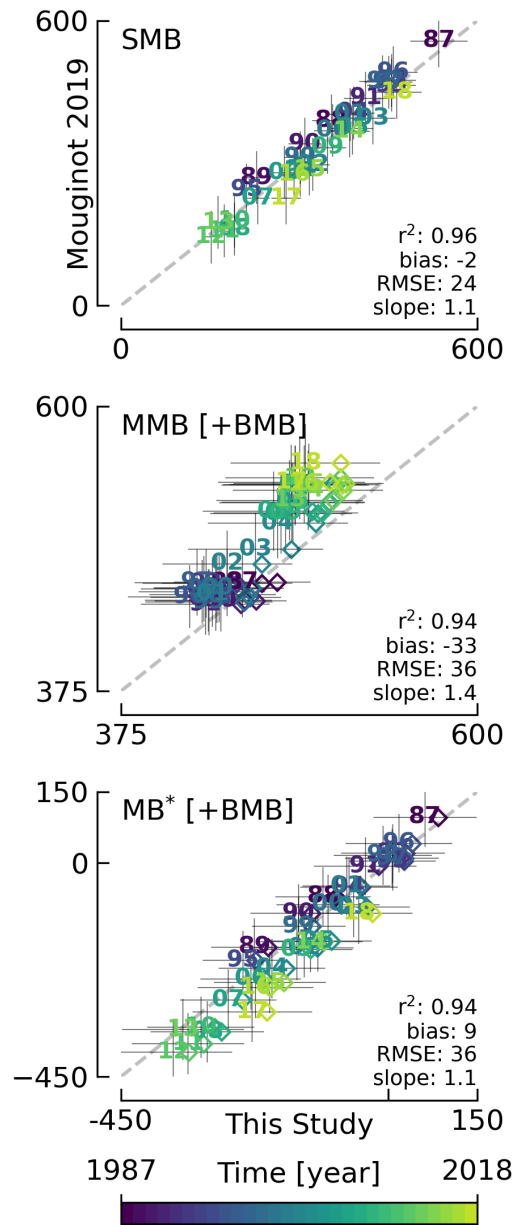


Figure 5. Comparison of This Study vs Mouginot et al. (2019). Numbers-All axes units are Gt yr^{-1} . Plotted numbers represent the last two digits of the year. Matching colored diamonds show the data when BMB is added to This Study. Printed numbers (r^2 , bias, RMSE, slope) compare values without BMB.

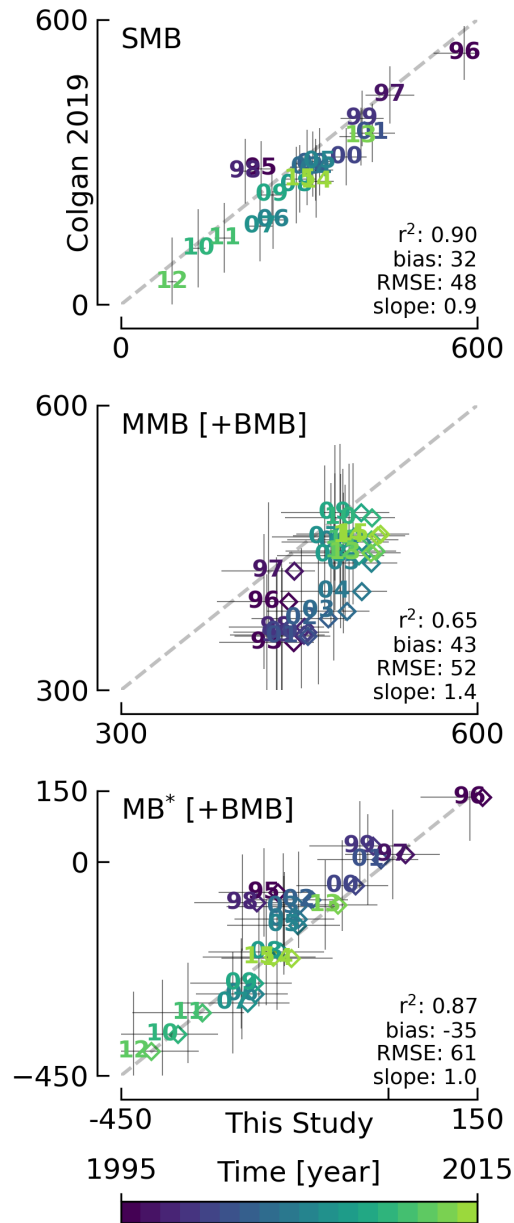


Figure 6. Comparison of This Study vs Colgan et al. (2019). Numbers-All axes units are Gt yr^{-1} . Plotted numbers represent the last two digits of the year. Matching colored diamonds show the data when BMB is added to This Study. Printed numbers (r^2 , bias, RMSE, slope) compare values without BMB.

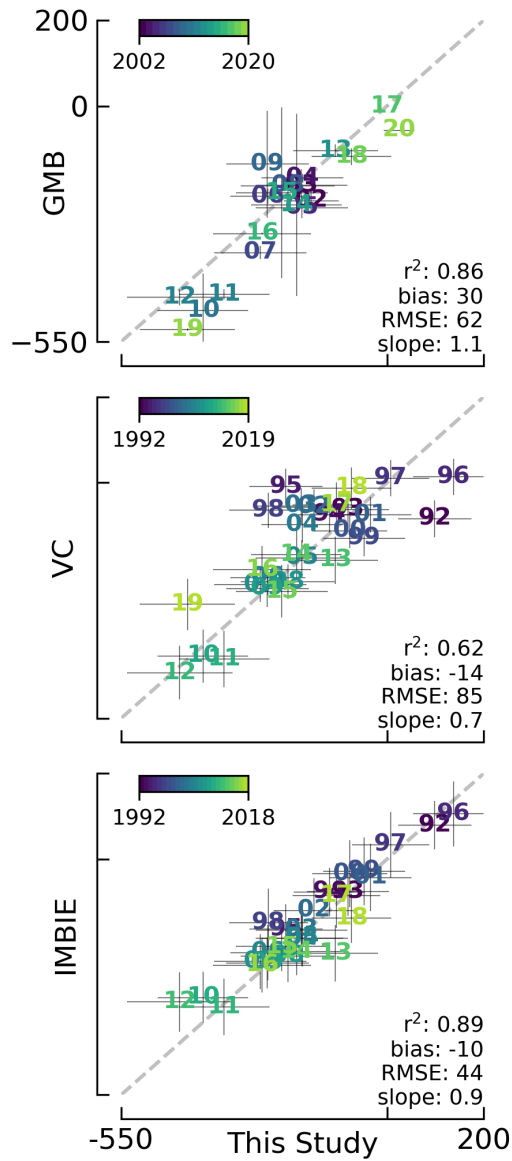


Figure 7. This Study total mass balance (MB) vs. the gravimetric method (GMB), volume change method (VC) and IMBIE2 estimates of MB. All three include BMB. All axes units are $Gt\ yr^{-1}$. Plotted numbers represent the last two digits of the year. GRACE and IMBIE2 include peripheral glaciers ice masses.

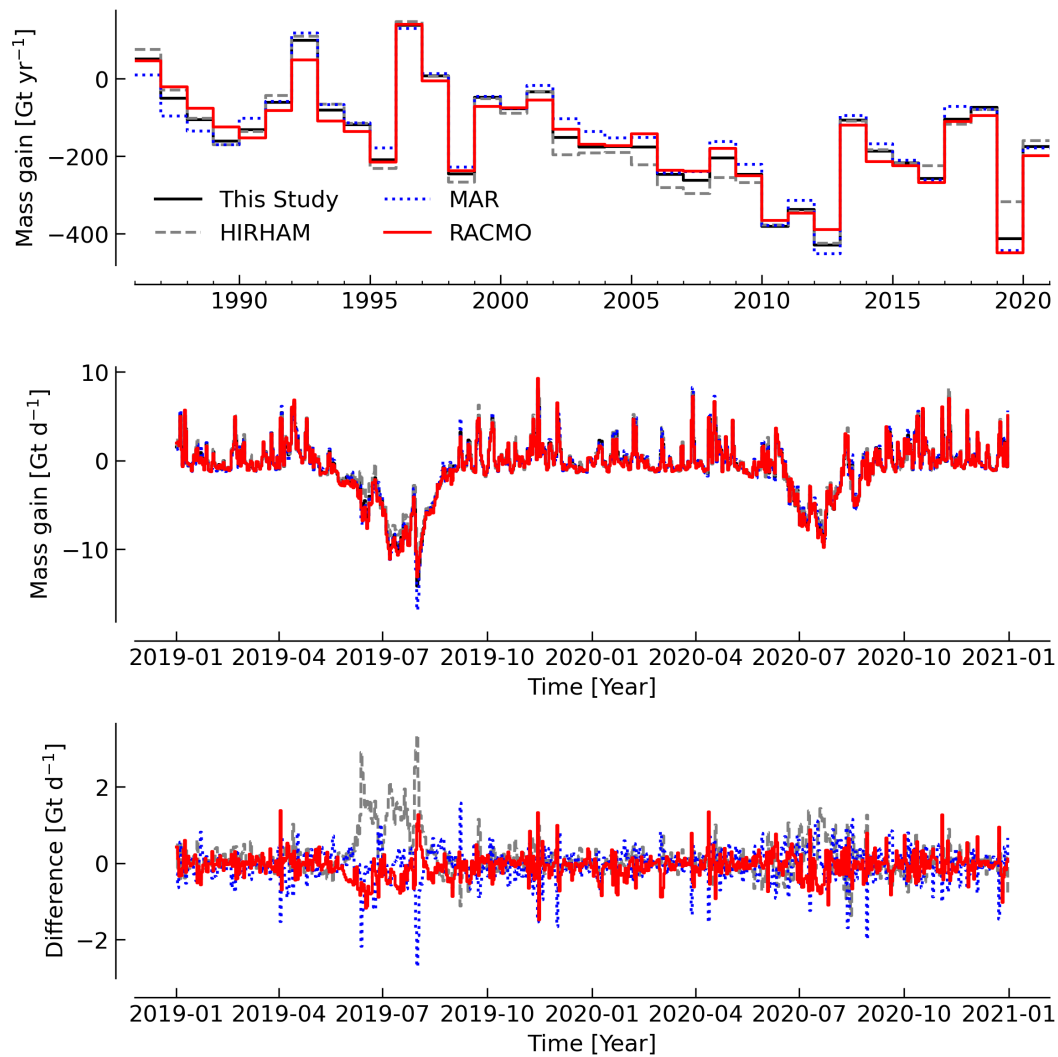


Figure A1. Comparison of This Study combined RCM product and the HIRHAM/HARMONIE, MAR, and RACMO RCMs. Results shown here are MB, not SMB, but the same MMB and BMB have been subtracted from each SMB product. Top panel: annual MB for entire time series. Middle panel: Example two years (2019 and 2020) at daily resolution. Bottom panel: Difference between the three RCM MB products and This Study RCM-averaged product, for the same data shown in the middle panel.

Appendix B: Mougnot 2019 by region

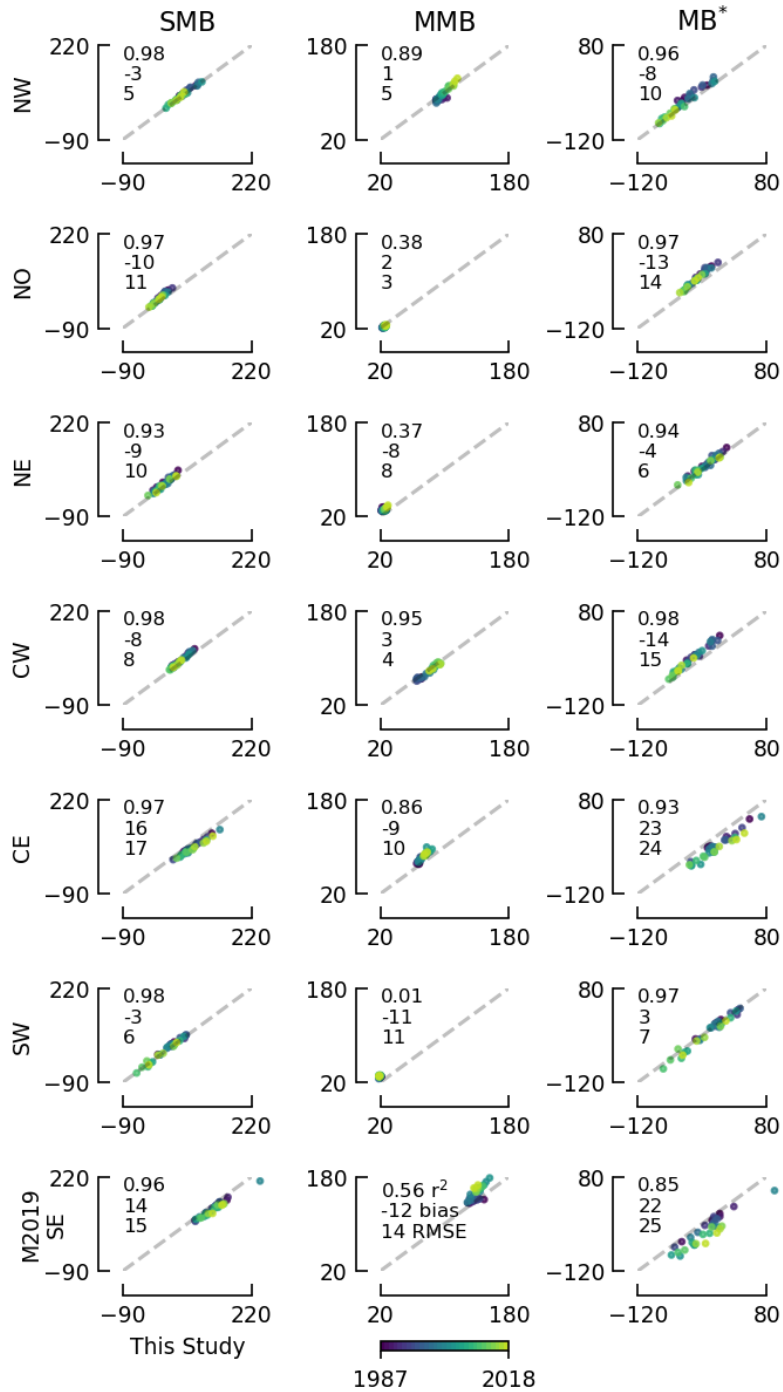


Figure B1. Comparison between This Study ([excluding BMB](#)) and Mouginit et al. (2019). Same data and display as Fig. 5 except here displayed by Mouginit and Rignot (2019) region. Numbers in each graph show r^2 , bias, and RMSE, from top to bottom, respectively. [All axes units are \$\text{Gt yr}^{-1}\$.](#) [Plotted numbers represent the last two digits of the year.](#)

Appendix C: Colgan 2019 by sector

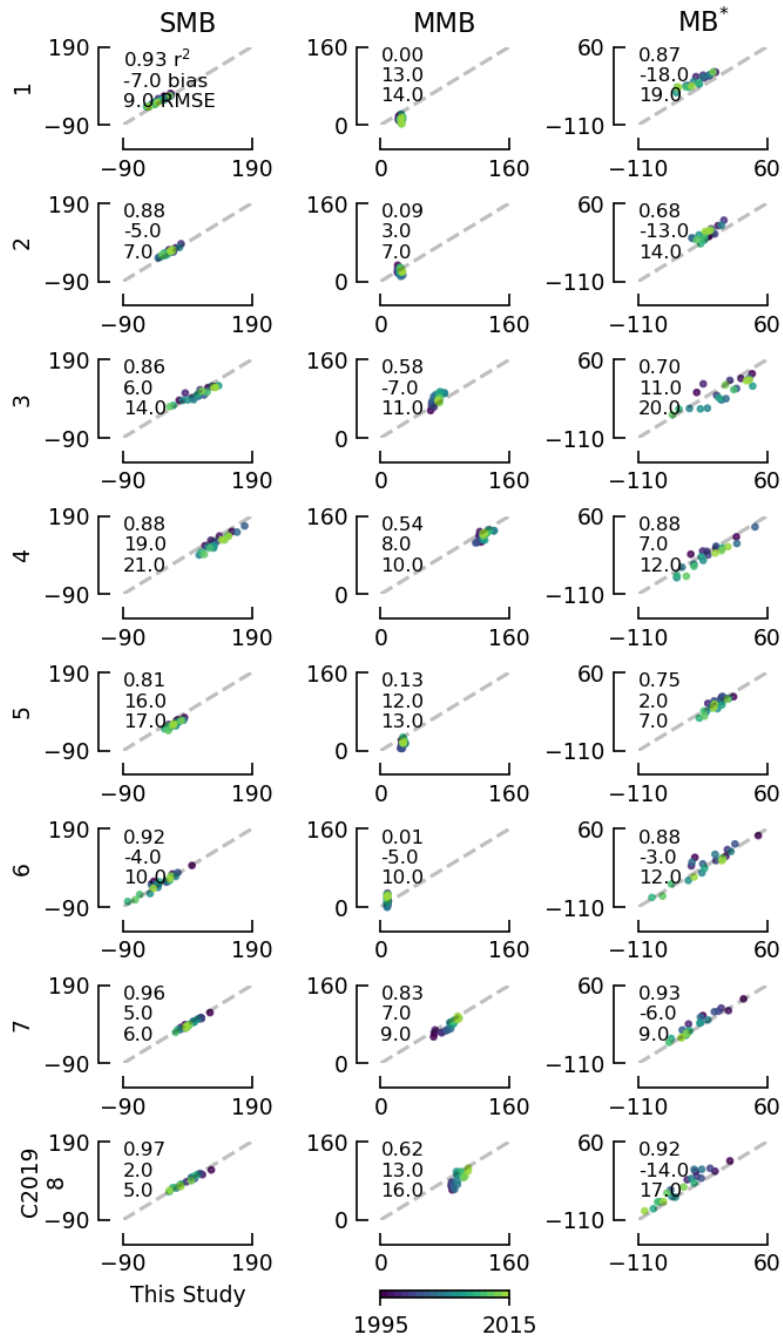


Figure C1. Comparison between This Study (excluding BMB) and Colgan et al. (2019). Same data and display as Fig. 6 except here displayed by Zwally et al. (2012) sector. Numbers in each graph show r^2 , bias, and RMSE, from top to bottom, respectively. All axes units are Gt yr⁻¹. Plotted numbers represent the last two digits of the year.

Appendix D: Reconstructed runoff

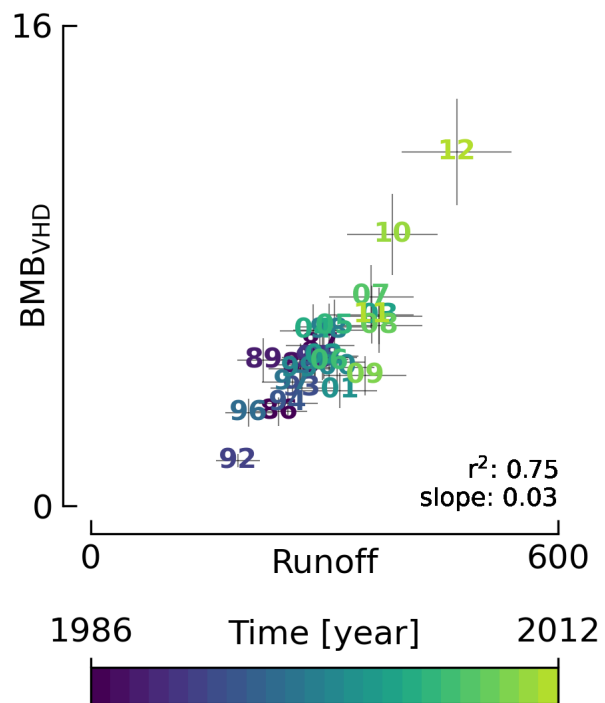


Figure D1. Comparison between MAR runoff and basal viscous heat dissipation derived from that runoff. The slope is used to estimate the reconstructed BMB_{VHD} from reconstructed runoff (see Sect. 5.3). Axis units are Gt yr⁻¹. Plotted numbers represent the last two digits of the year.

Appendix E: RCM coverage

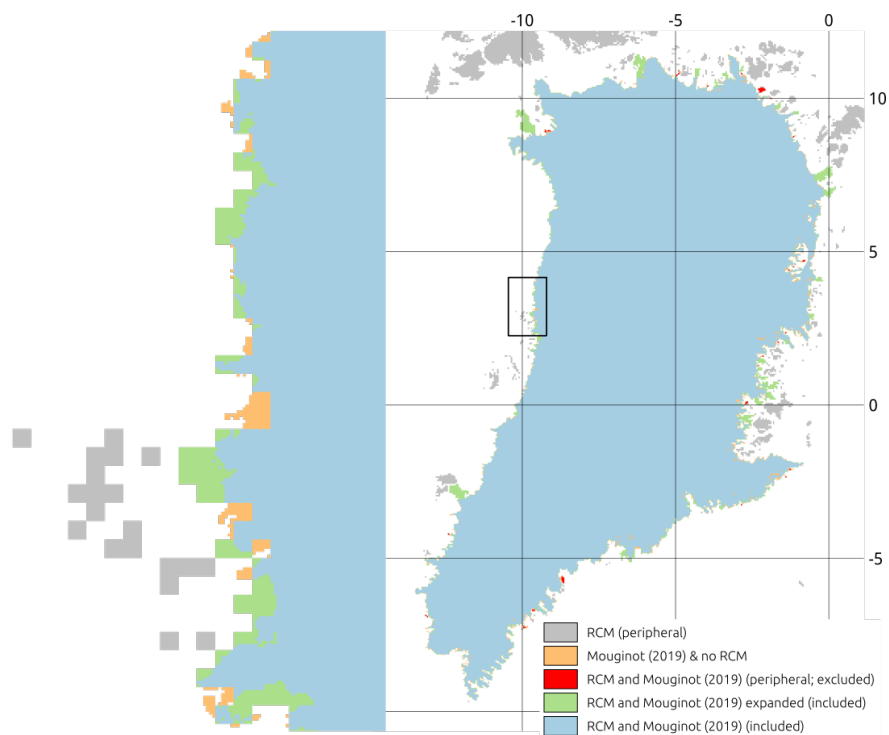


Figure E1. HIRHAM RCM coverage by Mouginit and Rignot (2019). Coverage of HIRHAM by Zwally et al. (2012), and MAR and RACMO by Mouginit and Rignot (2019) and Zwally et al. (2012) is similar to graphic shown here (See section 5.5 for discussion of RACMO coverage issues). HIRHAM latitude and longitude covers the equator because we work on the native HIRHAM rotated pole coordinate system.

635 Appendix F: Software

This work was performed using only open-source software, primarily GRASS GIS (Neteler et al., 2012), CDO (Schulzweida, 2019), NCO (Zender, 2008), GDAL (GDAL/OGR contributors, 2020), and Python (Van Rossum and Drake Jr, 1995), in particular the Jupyter (Kluyver et al., 2016), dask (Dask Development Team, 2016; Rocklin, 2015), pandas (McKinney, 2010), geopandas (Jordahl et al., 2020), numpy (Oliphant, 2006), x-array (Hoyer and Hamman, 2017), and
640 Matplotlib (Hunter, 2007) packages. The entire work was performed in Emacs (Stallman, 1981) using Org Mode (Schulte et al., 2012) on GNU/Linux and using many GNU utilities. The parallel (Tange, 2011) tool was used to speed up processing.

Appendix G: [CRediT](#)

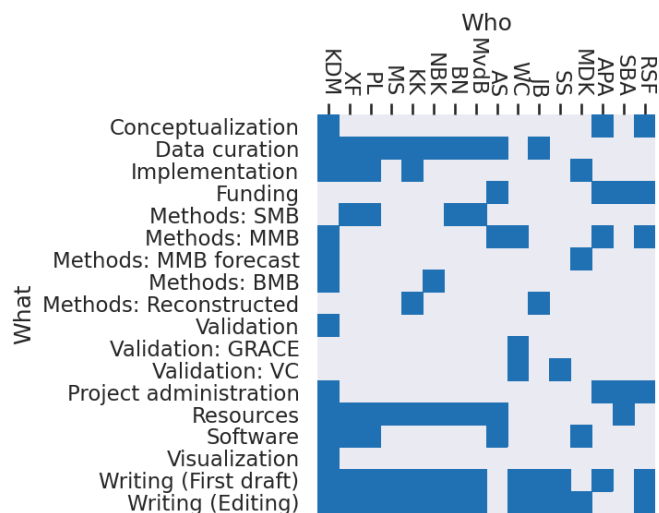


Figure G1. [Author contributions following the CRediT system \(Allen et al., 2014; Brand et al., 2015; Allen et al., 2019\)](#)

Author contributions. {Author contribution is captured following the CRediT system (Allen et al., 2014; Brand et al., 2015; Allen et al., 2019) and shown graphically in Figure G1. The following authors contributed in the following ways. Conceptualization: KDM, APA, and RSF. Curation: KDM, XF, PL, MS, KK, NBK, BN, MvdB, AS, and JB. Implementation: KDM, XF, PL, KK, and MKD. Funding: AS, APA, SBA, and RSF. SMB methods: XF, PL, BN, and MvdB. MMB methods: KDM, WC, AS, MKD, APA, and RSF. BMB methods: NBK and KDM. Validation (general): KDM. Validation GRACE: WC. Validation VC: WC and SS. Reconstruction methods: KK, JB, and KDM. Project admin: KDM, APA, SBA, and RSF. Resources: KDM, XF, PL, MS, KK, NBK, BN, MvdB, AS, and SBA. Software: KDM, XF, PL, AS, and MKD. Visualization: KDM. Writing: KDM, XF, PL, MS, KK, NBK, BN, MvdB, WC, JB, SS, APA, and RSF. }

Competing interests. The authors declare that they have no conflict of interest.

Acknowledgements. [The editor, one anonymous reviewer \(Anonymous, 2021\), and Andrew Shepherd \(Shepherd, 2021\) provided feedback and helped improve this paper.](#)

Financial Support: Funding was provided by the Programme for Monitoring of the Greenland ice sheet (PROMICE). Parts of this work were funded by the INTAROS project under the European Union's Horizon 2020 research and innovation program under grant agreement no.

727890. B. Noël was funded by the NWO VENI grant VI.Veni.192.019. [MvdB acknowledges support from the Netherlands Earth System Science Centre \(NESSC\).](#)

References

- 660 Allen, L., Scott, J., Brand, A., Hlava, M., and Altman, M.: Publishing: Credit where credit is due, *Nature*, 508, 312–313, <https://doi.org/10.1038/508312a>, 2014.
- Allen, L., O’Connell, A., and Kiermer, V.: How can we ensure visibility and diversity in research contributions? How the Contributor Role Taxonomy (CRediT) is helping the shift from authorship to contributorship, *Learned Publishing*, 32, 71–74, <https://doi.org/10.1002/leap.1210>, 2019.
- 665 Amory, C., Kittel, C., Le Toumelin, L., Agosta, C., Delhasse, A., Favier, V., and Fettweis, X.: Performance of MAR (v3.11) in simulating the drifting-snow climate and surface mass balance of Adélie Land, East Antarctica, *Geoscientific Model Development*, 14, 3487–3510, <https://doi.org/10.5194/gmd-14-3487-2021>, 2021.
- Andresen, C. S., Straneo, F., Ribergaard, M. H., Bjørk, A. A., Andersen, T. J., Kuijpers, A., Nørgaard-Pedersen, N., Kjær, K. H., Schjøth, F., Weckström, K., and Ahlstrøm, A. P.: Rapid response of Helheim Glacier in Greenland to climate variability over the past century, *Nature Geoscience*, 5, 37 – 41, <https://doi.org/10.1038/NGEO1349>, 2012.
- 670 Anonymous: RC1: Comment on *essd-2021-131*, <https://doi.org/10.5194/essd-2021-131-rc1>, 2021.
- Barletta, V. R., Sørensen, L. S., and Forsberg, R.: Scatter of mass changes estimates at basin scale for Greenland and Antarctica, *The Cryosphere*, 7, 1411–1432, <https://doi.org/10.5194/tc-7-1411-2013>, 2013.
- Barletta, V. R., Sørensen, L. S., Simonsen, S. B., and Forsberg, R.: Gravitational mass balance of Greenland 2003 to present v2.1, <https://doi.org/10.11583/DTU.12866579.v1>, 2020.
- 675 Bengtsson, L., Andrae, U., Aspelien, T., Batrak, Y., Calvo, J., de Rooy, W., Gleeson, E., Hansen-Sass, B., Homleid, M., Hortal, M., Ivarsson, K.-I., Lenderink, G., Niemelä, S., Nielsen, K. P., Onvlee, J., Rontu, L., Samuelsson, P., Muñoz, D. S., Subias, A., Tijm, S., Toll, V., Yang, X., and Kjøltzow, M. : The HARMONIE–AROME Model Configuration in the ALADIN–HIRLAM NWP System, *Monthly Weather Review*, 145, 1919–1935, <https://doi.org/10.1175/mwr-d-16-0417.1>, 2017.
- 680 Bjørk, A. A., Kjær, K. H., Korsgaard, N. J., Khan, S. A., Kjeldsen, K. K., Andresen, C. S., Box, J. E., Larsen, N. K., and Funder, S.: An aerial view of 80 years of climate-related glacier fluctuations in southeast Greenland, *Nature Geoscience*, 5, 427 – 432, <https://doi.org/10.1038/NGEO1481>, 2012.
- Boers, N. and Rypdal, M.: Critical slowing down suggests that the western Greenland Ice Sheet is close to a tipping point, *Proceedings of the National Academy of Sciences*, 118, e2024192 118, <https://doi.org/10.1073/pnas.2024192118>, 2021.
- 685 Bolch, T., Sørensen, L. S., Simonsen, S. B., Mölg, N., Machguth, H., Rastner, P., and Paul, F.: Mass loss of Greenland’s glaciers and ice caps 2003-2008 revealed from ICESat data, *Geophysical Research Letters*, 40, 875–881, <https://doi.org/10.1002/grl.50270>, 2013.
- Box, J., Colgan, W. T., and Kjeldsen, K.: Greenland SMB, D and TMB annual time series 1840-2012, <https://doi.org/10.22008/FK2/L1QOZ5>, 2021.
- Box, J. E.: Greenland ice sheet mass balance reconstruction. Part II: surface mass balance (1840-2010), *Journal of Climate*, 26, 6974 – 6989, <https://doi.org/10.1175/JCLI-D-12-00518.1>, 2013.
- 690 Box, J. E. and Colgan, W.: Greenland ice sheet mass balance reconstruction. Part III: marine ice loss and total mass balance (1840-2010), *Journal of Climate*, 26, 6990 – 7002, <https://doi.org/10.1175/JCLI-D-12-00546.1>, 2013.
- Box, J. E., Cressie, N., Bromwich, D. H., Jung, J.-H., van den Broeke, M. R., van Angelen, J. H., Forster, R. R., Miège, C., Mosley-Thompson, E., Vinther, B., and McConnell, J. R.: Greenland ice sheet mass balance reconstruction. Part I: Net snow accumulation (1600–2009), *Journal of Climate*, 26, 3919–3934, <https://doi.org/10.1175/JCLI-D-12-00373.1>, 2013.
- 695

- Brand, A., Allen, L., Altman, M., Hlava, M., and Scott, J.: Beyond authorship: attribution, contribution, collaboration, and credit, *Learned Publishing*, 28, 151–155, <https://doi.org/10.1087/20150211>, 2015.
- Cappelen, J.: The observed climate of Greenland, 1958-99-with climatological standard normals, 1961-90, Danish Meteorological Institute, 2001.
- 700 Cappelen, J., Laursen, E. V., Jørgensen, P. V., and Kern-Hansen, C.: DMI Monthly Climate Data Collection 1768-2005: Denmark, The Faroe Islands and Greenland, DMI, 2006.
- Cappelen, J., Laursen, E., Jørgensen, P., and Kern-Hansen, C.: DMI monthly climate data collection 1768-2010, Denmark, the Faroe Islands and Greenland, Tech. rep., DMI Technical Report 11-05. Copenhagen, 2011.
- Christensen, O. B., Drews, M., Hesselbjerg Christensen, J., Dethloff, K., Ketelsen, K., Hebestadt, I., and Rinke, A.: The HIRHAM Regional
705 Climate Model. Version 5 (beta), no. 06-17 in Denmark. Danish Meteorological Institute. Technical Report, Danish Climate Centre, Danish Meteorological Institute, 2007.
- Citterio, M. and Ahlstrøm, A. P.: Brief communication “The aerophotogrammetric map of Greenland ice masses”, *The Cryosphere*, 7, 445–449, <https://doi.org/10.5194/tc-7-445-2013>, 2013.
- Colgan, W.: Greenland ice sheet mass balance assessment (1995-2019), <https://doi.org/10.22008/FK2/XOTO3K>, 2021.
- 710 Colgan, W., Abdalati, W., Citterio, M., Csatho, B., Fettweis, X., Luthcke, S., Moholdt, G., Simonsen, S. B., and Stober, M.: Hybrid glacier Inventory, Gravimetry and Altimetry (HIGA) mass balance product for Greenland and the Canadian Arctic, *Remote Sensing of Environment*, 168, 24–39, <https://doi.org/10.1016/j.rse.2015.06.016>, 2015.
- Colgan, W., Mankoff, K. D., Kjeldsen, K. K., Bjørk, A. A., Box, J. E., Simonsen, S. B., Sørensen, L. S., Khan, S. A., Solgaard, A. M., Forsberg, R., Skourup, H., Stenseng, L., Kristensen, S. S., Hvidegaard, S. M., Citterio, M., Karlsson, N., Fettweis, X., Ahlstrøm, A. P.,
715 Andersen, S. B., van As, D., and Fausto, R. S.: Greenland ice sheet mass balance assessed by PROMICE (1995 – 2015), *Geological Survey of Denmark and Greenland Bulletin*, 43, e2019430 201, <https://doi.org/10.34194/GEUSB-201943-02-01>, 2019.
- Cuffey, K. M. and Paterson, W. S. B.: *The physics of glaciers*, Academic Press, fourth edn., 2010.
- Dask Development Team: Dask: Library for dynamic task scheduling, <https://dask.org>, 2016.
- Dee, D. P., Uppala, S. M., Simmons, A. J., Berrisford, P., Poli, P., Kobayashi, S., Andrae, U., Balmaseda, M. A., Balsamo, G., Bauer,
720 P., Bechtold, P., Beljaars, A. C. M., van de Berg, I., Biblot, J., Bormann, N., Delsol, C., Dragani, R., Fuentes, M., Greer, A. J., Haimberger, L., Healy, S. B., Hersbach, H., Holm, E. V., Isaksen, L., Kallberg, P., Kohler, M., Matricardi, M., McNally, A. P., Mong-Sanz, B. M., Morcette, J.-J., Park, B.-K., Peubey, C., de Rosnay, P., Tavolato, C., Thepaut, J. N., , and Vitart, F.: The ERA-Interim reanalysis: configuration and performance of the data assimilation system, *Quarterly Journal of the Royal Meteorological Society*, 137, 553–597, <https://doi.org/10.1002/qj.828>, 2011.
- 725 Eerola, K.: About the performance of HIRLAM version 7.0, *Hirlam Newsletter*, 51, 93–102, 2006.
- Enderlin, E. M., Howat, I. M., Jeong, S., Noh, M.-J., van Angelen, J. H., and van den Broeke, M. R.: An improved mass budget for the Greenland Ice Sheet, *Geophysical Research Letters*, 41, 866–872, <https://doi.org/10.1002/2013GL059010>, 2014.
- Ettema, J., van den Broeke, M. R., van Meijgaard, E., van de Berg, W. J., Box, J. E., and Steffen, K.: Climate of the Greenland ice sheet using a high-resolution climate model – Part 1: Evaluation, *The Cryosphere*, 4, 511–527, <https://doi.org/10.5194/tc-4-511-2010>, 2010.
- 730 Fettweis, X., Box, J. E., Agosta, C., Amory, C., Kittel, C., Lang, C., Van As, D., Machguth, H., and Gallée, H.: Reconstructions of the 1900–2015 Greenland ice sheet surface mass balance using the regional climate MAR model, *The Cryosphere*, 11, 1015–1033, <https://doi.org/10.5194/tc-11-1015-2017>, 2017.

- Fettweis, X., Hofer, S., Krebs-Kanzow, U., Amory, C., Aoki, T., Berends, C. J., Born, A., Box, J. E., Delhasse, A., Fujita, K., Gierz, P., Goelzer, H., Hanna, E., Hashimoto, A., Huybrechts, P., Kapsch, M.-L., King, M. D., Kittel, C., Lang, C., Langen, P. L., Lenaerts, J. T. M., Liston, G. E., Lohmann, G., Mernild, S. H., Mikolajewicz, U., Modali, K., Mottram, R. H., Niwano, M., Noël, B., Ryan, J. C., Smith, A., Streffing, J., Tedesco, M., van de Berg, W. J., van den Broeke, M., van de Wal, R. S. W., van Kampenhout, L., Wilton, D., Wouters, B., Ziemen, F., and Zolles, T.: GrSMBMIP: intercomparison of the modelled 1980–2012 surface mass balance over the Greenland Ice Sheet, *The Cryosphere*, 14, 3935–3958, <https://doi.org/10.5194/tc-14-3935-2020>, 2020.
- Fox Maule, C., Purucker, M. E., and Olsen, N.: Inferring magnetic crustal thickness and geothermal heat flux from crustal magnetic field models, 2009.
- Gallée, H. and Schayes, G.: Development of a Three-Dimensional Meso- γ Primitive Equation Model: Katabatic Winds Simulation in the Area of Terra Nova Bay, Antarctica, *Monthly Weather Review*, 122, 671–685, [https://doi.org/10.1175/1520-0493\(1994\)122<0671:doatdm>2.0.co;2](https://doi.org/10.1175/1520-0493(1994)122<0671:doatdm>2.0.co;2), 1994.
- Gallée, H., Guyomarc’h, G., and Brun, E.: Impact Of Snow Drift On The Antarctic Ice Sheet Surface Mass Balance: Possible Sensitivity To Snow-Surface Properties, *Boundary-Layer Meteorology*, 99, 1–19, <https://doi.org/10.1023/a:1018776422809>, 2001.
- Gardner, A. S., Moholdt, G., Cogley, J. G., Wouters, B., Arendt, A. A., Wahr, J., Berthier, E., Hock, R., Pfeffer, W. T., Kaser, G., Ligtenberg, S. R. M., Bolch, T., Sharp, M. J., Hagen, J. O., Van Den Broeke, M. R., and Paul, F.: A Reconciled Estimate of Glacier Contributions to Sea Level Rise: 2003 to 2009, *Science*, 340, 852–857, <https://doi.org/10.1126/science.1234532>, 2013.
- GDAL/OGR contributors: GDAL/OGR Geospatial Data Abstraction software Library, Open Source Geospatial Foundation, <https://gdal.org>, 2020.
- Gillet-Chaulet, F., Gagliardini, O., Seddik, H., Nodet, M., Durand, G., Ritz, C., Zwinger, T., Greve, R., and Vaughan, D. G.: Greenland ice sheet contribution to sea-level rise from a new-generation ice-sheet model, *The Cryosphere*, 6, 1561–1576, <https://doi.org/10.5194/tc-6-1561-2012>, 2012.
- Greene, C. A., Gardner, A. S., and Andrews, L. C.: Detecting seasonal ice dynamics in satellite images, *The Cryosphere*, 14, 4365–4378, <https://doi.org/10.5194/tc-14-4365-2020>, 2020.
- Groh, A., Horwath, M., Horvath, A., Meister, R., Sørensen, L. S., Barletta, V. R., Forsberg, R., Wouters, B., Ditmar, P., Ran, J., Klees, R., Su, X., Shang, K., Guo, J., Shum, C. K., Schrama, E., and Shepherd, A.: Evaluating GRACE Mass Change Time Series for the Antarctic and Greenland Ice Sheet – Methods and Results, *Geosciences*, 9, 415, <https://doi.org/10.3390/geosciences9100415>, 2019.
- Hersbach, H., Bell, B., Berrisford, P., Hirahara, S., Horányi, A., Muñoz-Sabater, J., Nicolas, J., Peubey, C., Radu, R., Schepers, D., Simmons, A., Soci, C., Abdalla, S., Abellan, X., Balsamo, G., Bechtold, P., Biavati, G., Bidlot, J., Bonavita, M., Chiara, G. D., Dahlgren, P., Dee, D., Diamantakis, M., Dragani, R., Flemming, J., Forbes, R., Fuentes, M., Geer, A., Haimberger, L., Healy, S., Hogan, R. J., Hólm, E., Janisková, M., Keeley, S., Laloyaux, P., Lopez, P., Lupu, C., Radnoti, G., de Rosnay, P., Rozum, I., Vamborg, F., Villaume, S., and Thépaut, J.: The ERA5 global reanalysis, *Quarterly Journal of the Royal Meteorological Society*, 146, 1999–2049, <https://doi.org/10.1002/qj.3803>, 2020.
- Howat, I. M., Negrete, A., and Smith, B. E.: The Greenland Ice Mapping Project (GIMP) land classification and surface elevation data sets, *The Cryosphere*, 8, 1509–1518, <https://doi.org/10.5194/tc-8-1509-2014>, 2014.
- Hoyer, S. and Hamman, J. J.: xarray: N-D labeled Arrays and Datasets in Python, *Journal of Open Research Software*, 5, <https://doi.org/10.5334/jors.148>, 2017.
- Hunter, J. D.: Matplotlib: A 2D graphics environment, *Computing In Science Engineering*, 9, 90–95, 2007.

- Jordahl, K., den Bossche, J. V., Wasserman, J., McBride, J., Fleischmann, M., Gerard, J., Tratner, J., Perry, M., Farmer, C., Hjelle, G. A., Gillies, S., Cochran, M., Bartos, M., Culbertson, L., Eubank, N., Bilogur, A., and maxalbert: *geopandas/geopandas: v0.7.0*, <https://doi.org/10.5281/zenodo.3669853>, 2020.
- Joughin, I., Smith, B. E., and Howat, I.: Greenland Ice Mapping Project: ice flow velocity variation at sub-monthly to decadal timescales, *The Cryosphere*, 12, 2211–2227, <https://doi.org/10.5194/tc-12-2211-2018>, 2018.
- 775 Karlsson, N. B.: Greenland Ice Sheet Basal Melt, <https://doi.org/10.22008/FK2/PLNUEO>, 2021.
- Karlsson, N. B., Solgaard, A. M., Mankoff, K. D., Gillet-Chaulet, F., MacGregor, J. A., Box, J. E., Citterio, M., Colgan, W. T., Larsen, S. H., Kjeldsen, K. K., Korsgaard, N. J., Benn, D. I., Hewitt, I., and Fausto, R. S.: A first constraint on basal melt-water production of the Greenland ice sheet, *Nature Communications*, 12, <https://doi.org/10.1038/s41467-021-23739-z>, 2021.
- 780 Khan, S. A.: Greenland Ice Sheet Surface Elevation Change, https://doi.org/10.22008/promice/data/DTU/surface_elevation_change/v1.0.0, GEUS Data Center, 2017.
- Khan, S. A., Aschwanden, A., Bjørk, A. A., Wahr, J., Kjeldsen, K. K., and Kjær, K. H.: Greenland ice sheet mass balance: a review, *Reports on Progress in Physics*, 78, 046 801, <https://doi.org/10.1088/0034-4885/78/4/046801>, 2015.
- Khan, S. A., Sasgen, I., Bevis, M., van Dam, T., Bamber, J. L., Wahr, J., Willis, M., Kjær, K. H., Wouters, B., Helm, V., Csatho, B., Fleming, K., Bjørk, A. A., Aschwanden, A., Knudsen, P., and Munneke, P. K.: Geodetic measurements reveal similarities between post-Last Glacial Maximum and present-day mass loss from the Greenland ice sheet, *Science Advances*, 2, e1600 931–e1600 931, <https://doi.org/10.1126/sciadv.1600931>, 2016.
- 785 Khan, S. A., Bjørk, A. A., Bamber, J. L., Morlighem, M., Bevis, M., Kjær, K. H., Mouginot, J., Løkkegaard, A., Holland, D. M., Aschwanden, A., Zhang, B., Helm, V., Korsgaard, N. J., Colgan, W., Larsen, N. K., Lui, L., Hansen, K., Barletta, V., Dahl-Jensen, T. S., Søndergaard, A. S., Csatho, B. M., Sasgen, I., Box, J., and Schenk, T.: Centennial response of Greenland’s three largest outlet glaciers, *Nature Communications*, 11, <https://doi.org/10.1038/s41467-020-19580-5>, 2020.
- 790 King, M. D., Howat, I. M., Jeong, S., Noh, M. J., Wouters, B., Noël, B., and van den Broeke, M. R.: Seasonal to decadal variability in ice discharge from the Greenland Ice Sheet, *The Cryosphere*, 12, 3813–3825, <https://doi.org/10.5194/tc-12-3813-2018>, 2018.
- King, M. D., Howat, I. M., Candela, S. G., Noh, M. J., Jeong, S., Noël, B. P. Y., van den Broeke, M. R., Wouters, B., and Negrete, A.: Dynamic ice loss from the Greenland Ice Sheet driven by sustained glacier retreat, *Communications Earth Environment*, 1, <https://doi.org/10.1038/s43247-020-0001-2>, 2020.
- 795 Kjeldsen, K. K., Korsgaard, N. J., Bjørk, A. A., Khan, S. A., Box, J. E., Funder, S., Larsen, N. K., Bamber, J. L., Colgan, W., Broeke, M. v. d., Siggaard-Andersen, M.-L., Nuth, C., Schomacker, A., Andresen, C. S., Willerslev, E., and Kjær, K. H.: Spatial and temporal distribution of mass loss from the Greenland Ice Sheet since AD 1900, *Nature*, 528, 396–400, <https://doi.org/10.1038/nature16183>, 2015.
- 800 Kjeldsen, K. K., Khan, S. A., Colgan, W. T., MacGregor, J. A., and Fausto, R. S.: Time-Varying Ice Sheet Mask: Implications on Ice-Sheet Mass Balance and Crustal Uplift, *Journal of Geophysical Research: Earth Surface*, 125, <https://doi.org/10.1029/2020jf005775>, 2020.
- Kluyver, T., Ragan-Kelley, B., Pérez, F., Granger, B., Bussonnier, M., Frederic, J., Kelley, K., Hamrick, J., Grout, J., Corlay, S., Ivanov, P., Avila, D., Abdalla, S., and Willing, C.: Jupyter Notebooks – a publishing format for reproducible computational workflows, <https://doi.org/10.3233/978-1-61499-649-1-87>, 2016.
- 805 Langen, P. L., Fausto, R. S., Vandecrux, B., Mottram, R. H., and Box, J. E.: Liquid Water Flow and Retention on the Greenland Ice Sheet in the Regional Climate Model HIRHAM5: Local and Large-Scale Impacts, *Frontiers in Earth Science*, 4, <https://doi.org/10.3389/feart.2016.00110>, 2017.

- Laprise, R.: The Euler Equations of Motion with Hydrostatic Pressure as an Independent Variable, *Monthly Weather Review*, 120, 197–207, [https://doi.org/10.1175/1520-0493\(1992\)120<0197:tecomw>2.0.co;2](https://doi.org/10.1175/1520-0493(1992)120<0197:tecomw>2.0.co;2), 1992.
- 810 Lefebre, F.: Modeling of snow and ice melt at ETH Camp (West Greenland): A study of surface albedo, *Journal of Geophysical Research*, 108, <https://doi.org/10.1029/2001jd001160>, 2003.
- Lenaerts, J. T. M., van den Broeke, M. R., van Angelen, J. H., van Meijgaard, E., and Déry, S. J.: Drifting snow climate of the Greenland ice sheet: a study with a regional climate model, *The Cryosphere*, 6, 891–899, <https://doi.org/10.5194/tc-6-891-2012>, 2012.
- Lewis, G., Osterberg, E., Hawley, R., Whitmore, B., Marshall, H. P., and Box, J.: Regional Greenland accumulation variability from Operation
815 IceBridge airborne accumulation radar, *The Cryosphere*, 11, 773–788, <https://doi.org/10.5194/tc-11-773-2017>, 2017.
- Lewis, G., Osterberg, E., Hawley, R., Marshall, H. P., Meehan, T., Graeter, K., McCarthy, F., Overly, T., Thundercloud, Z., and Ferris, D.: Recent precipitation decrease across the western Greenland ice sheet percolation zone, *The Cryosphere*, 13, 2797–2815, <https://doi.org/10.5194/tc-13-2797-2019>, 2019.
- Liestøl, O.: *Glacier Dammed Lakes in Norway*, vol. 81, Fabritius
820 Sønners Forlag, Oslo, 1956.
- Ligtenberg, S. R. M., Kuipers Munneke, P., Noël, B. P. Y., and van den Broeke, M. R.: Brief communication: Improved simulation of the present-day Greenland firn layer (1960–2016), *The Cryosphere*, 12, 1643–1649, <https://doi.org/10.5194/tc-12-1643-2018>, 2018.
- Lucas-Picher, P., Wulff-Nielsen, M., Christensen, J. H., Aðalgeirsdóttir, G., Mottram, R., and Simonsen, S. B.: Very high resolution regional climate model simulations over Greenland: Identifying added value, *Journal of Geophysical Research: Atmospheres*, 117,
825 <https://doi.org/10.1029/2011jd016267>, 2012.
- MacGregor, J. A., Fahnestock, M. A., Catania, G. A., Aschwanden, A., Clow, G. D., Colgan, W. T., Gogineni, P. S., Morlighem, M., Nowicki, S. M. J., Paden, J. D., Price, S. F., and Seroussi, H.: A synthesis of the basal thermal state of the Greenland Ice Sheet, *Journal of Geophysical Research: Earth Surface*, 121, 1328–1350, <https://doi.org/10.1002/2015JF003803>, 2016.
- Maier, N., Humphrey, N., Harper, J., and Meierbachtol, T.: Sliding dominates slow-flowing margin regions, *Greenland Ice Sheet, Science
830 Advances*, 5, eaaw5406, <https://doi.org/10.1126/sciadv.aaw5406>, 2019.
- Maier, N., Gimbert, F., Gillet-Chaulet, F., and Gilbert, A.: Basal traction mainly dictated by hard-bed physics over grounded regions of Greenland, *The Cryosphere*, 15, 1435–1451, <https://doi.org/10.5194/tc-15-1435-2021>, 2021.
- Mankoff, K.: Greenland Ice Sheet solid ice discharge from 1986 through last month: Gates,
https://doi.org/10.22008/promice/data/ice_discharge/gates/v02, 2020.
- 835 Mankoff, K. and Solgaard, A.: Ice Discharge, https://dataverse01.geus.dk/dataverse/ice_discharge, 2020.
- Mankoff, K., Fettweis, X., Solgaard, A., Langen, P., Stendel, M., Noël, B., van den Broeke, M. R., Karlsson, N., Box, J. E., and Kjeldsen, K.: Greenland ice sheet mass balance from from 1840 through next week, <https://doi.org/10.22008/FK2/YG3IWC>, 2021.
- Mankoff, K. D.: Total Mass Balance, GitHub https://github.com/GEUS-Glaciology-and-Climatology/ice_discharge/issues, last access: August 13, 2021, 2021.
- 840 Mankoff, K. D. and Tulaczyk, S. M.: The past, present, and future viscous heat dissipation available for Greenland subglacial conduit formation, *The Cryosphere*, 11, 303–317, <https://doi.org/10.5194/tc-11-303-2017>, 2017.
- Mankoff, K. D., Noël, B., Fettweis, X., Ahlstrøm, A. P., Colgan, W., Kondo, K., Langley, K., Sugiyama, S., van As, D., and Fausto, R. S.: Greenland liquid water discharge from 1958 through 2019, *Earth System Science Data*, 12, 2811–2841, <https://doi.org/10.5194/essd-12-2811-2020>, 2020a.

- 845 Mankoff, K. D., Solgaard, A., Colgan, W., Ahlstrøm, A. P., Khan, S. A., and Fausto, R. S.: Greenland Ice Sheet solid ice discharge from 1986 through March 2020, *Earth System Science Data*, 12, 1367–1383, <https://doi.org/10.5194/essd-12-1367-2020>, 2020b.
- Mankoff, K. D., van As, D., Lines, A., Bording, T., Elliott, J., Kraghede, R., Cantalloube, H., Oriot, H., Dubois-Fernandez, P., Ruault du Plessis, O., Vest Christiansen, A., Auken, E., Hansen, K., Colgan, W., and Karlsson, N. B.: Search and recovery of aircraft parts in ice-sheet crevasse fields using airborne and in situ geophysical sensors, *Journal of Glaciology*, 66, 496–508, <https://doi.org/10.1017/jog.2020.26>,
850 2020c.
- Martos, Y. M., Jordan, T. A., Catalán, M., Jordan, T. M., Bamber, J. L., and Vaughan, D. G.: Geothermal Heat Flux Reveals the Iceland Hotspot Track Underneath Greenland, *Geophysical Research Letters*, <https://doi.org/10.1029/2018gl078289>, 2018.
- McKinney, W.: Data Structures for Statistical Computing in Python, in: *Proceedings of the 9th Python in Science Conference*, edited by van der Walt, S. and Millman, J., pp. 51 – 56, <https://doi.org/10.25080/Majora-92bf1922-00a>, 2010.
- 855 Millan, R., Rignot, E., Mouginot, J., Wood, M., Bjørk, A. A., and Morlighem, M.: Vulnerability of Southeast Greenland glaciers to warm Atlantic Water from Operation IceBridge and Ocean Melting Greenland data., *Geophysical Research Letters*, 45, 2688–2696, <https://doi.org/10.1002/2017gl076561>, 2018.
- Morlighem, M., Williams, C. N., Rignot, E., An, L., Arndt, J. E., Bamber, J. L., Catania, G., Chauché, N., Dowdeswell, J. A., Dorschel, B., Fenty, I., Hogan, K., Howat, I. M., Hubbard, A., Jakobsson, M., Jordan, T. M., Kjeldsen, K. K., Millan, R., Mayer, L., Mouginot, J., Noël,
860 B. P. Y., Cofaigh, C. Ó., Palmer, S., Rysgaard, S., Seroussi, H., Siegert, M. J., Slabon, P., Straneo, F., van den Broeke, M. R., Weinrebe, W., Wood, M., and Zinglensen, K. B.: BedMachine v3: Complete bed topography and ocean bathymetry mapping of Greenland from multi-beam echo sounding combined with mass conservation, *Geophysical Research Letters*, 44, <https://doi.org/10.1002/2017gl074954>, 2017.
- Morlighem, M., Williams, C., Rignot, E., An, L., Arndt, J. E., Bamber, J., Catania, G., Chauché, N., Dowdeswell, J. A., Dorschel, B., Fenty, I., Hogan, K., Howat, I., Hubbard, A., Jakobsson, M., Jordan, T. M., Kjeldsen, K. K., Millan, R., Mayer, L., Mouginot, J., Noël,
865 B., O’Cofaigh, C., Palmer, S. J., Rysgaard, S., Seroussi, H., Siegert, M. J., Slabon, P., Straneo, F., van den Broeke, M. R., Weinrebe, W., Wood, M., and Zinglensen, K.: IceBridge BedMachine Greenland, Version 4, <https://doi.org/10.5067/VLJ5YXKCNXGO>, used all subsets; Accessed 2021-06-30, 2021.
- Mouginot, J. and Rignot, E.: Glacier catchments/basins for the Greenland Ice Sheet, <https://doi.org/10.7280/d1wt11>, 2019.
- 870 Mouginot, J., Rignot, E., Bjørk, A. A., van den Broeke, M., Millan, R., Morlighem, M., Noël, B., Scheuchl, B., and Wood, M.: Forty-six years of Greenland Ice Sheet mass balance from 1972 to 2018, *Proceedings of the National Academy of Sciences*, p. 201904242, <https://doi.org/10.1073/pnas.1904242116>, 2019.
- Neteler, M., Bowman, M. H., Landa, M., and Metz, M.: GRASS GIS: a multi-purpose Open Source GIS, *Environmental Modelling Software*, 31, 124–130, <https://doi.org/10.1016/j.envsoft.2011.11.014>, 2012.
- 875 Nilsson, J., Vallelonga, P., Simonsen, S. B., Sørensen, L. S., Forsberg, R., Dahl-Jensen, D., Hirabayashi, M., Goto-Azuma, K., Hvidberg, C. S., Kjær, H. A., et al.: Greenland 2012 melt event effects on CryoSat-2 radar altimetry, *Geophysical Research Letters*, 42, 3919–3926, 2015.
- Noël, B., van de Berg, W. J., Machguth, H., Lhermitte, S., Howat, I., Fettweis, X., and van den Broeke, M. R.: A daily, 1 km resolution data set of downscaled Greenland ice sheet surface mass balance (1958–2015), *The Cryosphere*, 10, 2361–2377, <https://doi.org/10.5194/tc-10-2361-2016>, 2016.
880
- Noël, B., van de Berg, W. J., van Wessem, J. M., van Meijgaard, E., van As, D., Lenaerts, J. T. M., Lhermitte, S., Kuipers Munneke, P., Smeets, C. J. P. P., van Ulf, L. H., van de Wal, R. S. W., and van den Broeke, M. R.: Modelling the climate and surface mass balance of

- polar ice sheets using RACMO2 – Part 1: Greenland (1958–2016), *The Cryosphere*, 12, 811–831, <https://doi.org/10.5194/tc-12-811-2018>, 2018.
- 885 Noël, B., van de Berg, W. J., Lhermitte, S., and van den Broeke, M. R.: Rapid ablation zone expansion amplifies north Greenland mass loss, *Science Advances*, 5, eaaw0123, <https://doi.org/10.1126/sciadv.aaw0123>, 2019.
- Oliphant, T. E.: *A guide to NumPy*, vol. 1, Trelgol Publishing USA, 2006.
- Pfeffer, W. T., Meier, M. F., and Illangasekare, T. H.: Retention of Greenland runoff by refreezing: Implications for projected future sea level change, *Journal of Geophysical Research*, 96, 22 117, <https://doi.org/10.1029/91jc02502>, 1991.
- 890 Rastner, P., Bolch, T., Mölg, N., Machguth, H., Le Bris, R., and Paul, F.: The first complete inventory of the local glaciers and ice caps on Greenland, *The Cryosphere*, 6, 1483–1495, <https://doi.org/10.5194/tc-6-1483-2012>, 2012.
- Rezvanbehbahani, S., Stearns, L. A., van der Veen, C. J., Oswald, G. K. A., and Greve, R.: Constraining the geothermal heat flux in Greenland at regions of radar-detected basal water, *Journal of Glaciology*, 65, 1023–1034, <https://doi.org/10.1017/jog.2019.79>, 2019.
- Rignot, E., Mouginot, J., Scheuchl, B., van den Broeke, M., van Wessem, M. J., and Morlighem, M.: Four decades of Antarctic Ice Sheet mass
895 balance from 1979–2017, *Proceedings of the National Academy of Sciences*, 116, 1095–1103, <https://doi.org/10.1073/pnas.1812883116>, 2019.
- Rignot, E. J., Box, J. E., Burgess, E. W., and Hanna, E.: Mass balance of the Greenland ice sheet from 1958 to 2007, *Geophysical Research Letters*, 35, <https://doi.org/10.1029/2008GL035417>, 2008.
- Rocklin, M.: Dask: Parallel Computation with Blocked algorithms and Task Scheduling, in: *Proceedings of the 14th Python in Science Conference*, edited by Huff, K. and Bergstra, J., pp. 130 – 136, 2015.
- 900 Roeckner, E., Bäuml, G., Bonaventura, L., Brokopf, R., Esch, M., Giorgetta, M., Hagemann, S., Kirchner, I., Kornbluh, L., Manzini, E., et al.: The atmospheric general circulation model ECHAM 5. Part I: Model description, 2003.
- Rogozhina, I., Hagedoorn, J. M., Martinec, Z., Fleming, K., Soucek, O., Greve, R., and Thomas, M.: Effects of uncertainties in the geothermal heat flux distribution on the Greenland Ice Sheet: An assessment of existing heat flow models, *Journal of Geophysical Research: Earth Surface*, 117, <https://doi.org/10.1029/2011JF002098>, 2012.
- 905 Ryser, C., Lüthi, M. P., Andrews, L. C., Hoffman, M. J., Catania, G. A., Hawley, R. L., Neumann, T. A., and Kristensen, S. S.: Sustained high basal motion of the Greenland ice sheet revealed by borehole deformation, *Journal of Glaciology*, 60, 647 – 660, <https://doi.org/10.3189/2014JoG13J196>, 2014.
- Sasgen, I., Van Den Broeke, M., Bamber, J. L., Rignot, E., Sørensen, L. S., Wouters, B., Martinec, Z., Velicogna, I., and Simonsen, S. B.: Timing and origin of recent regional ice-mass loss in Greenland, *Earth and Planetary Science Letters*, 333-334, 293–303, <https://doi.org/10.1016/j.epsl.2012.03.033>, 2012.
- 910 Sasgen, I., Wouters, B., Gardner, A. S., King, M. D., Tedesco, M., Landerer, F. W., Dahle, C., Save, H., and Fettweis, X.: Return to rapid ice loss in Greenland and record loss in 2019 detected by the GRACE-FO satellites, *Communications Earth Environment*, 1, <https://doi.org/10.1038/s43247-020-0010-1>, 2020.
- 915 Schulte, E., Davison, D., Dye, T., and Dominik, C.: A multi-language computing environment for literate programming and reproducible research, *Journal of Statistical Software*, 46, 1–24, 2012.
- Schulzweida, U.: CDO User Guide, <https://doi.org/10.5281/zenodo.3539275>, 2019.
- Shapiro, N. M. and Ritzwoller, M. H.: Inferring Surface Heat Flux Distributions Guided by a Global Seismic Model: Particular Application to Antarctica, *Earth and Planetary Science Letters*, 223, 213–224, <https://doi.org/10.1016/j.epsl.2004.04.011>, 2004.
- 920 Shepherd, A.: RC2: Comment on *essd-2021-131*, <https://doi.org/10.5194/essd-2021-131-rc2>, 2021.

- Shreve, R. L.: Movement of water in glaciers, *Journal of Glaciology*, 11, 205–214, 1972.
- Simmons, A. J. and Burridge, D. M.: An Energy and Angular-Momentum Conserving Vertical Finite-Difference Scheme and Hybrid Vertical Coordinates, *Monthly Weather Review*, 109, 758–766, [https://doi.org/10.1175/1520-0493\(1981\)109<0758:aeaamc>2.0.co;2](https://doi.org/10.1175/1520-0493(1981)109<0758:aeaamc>2.0.co;2), 1981.
- Simonsen, S. B., Barletta, V. R., Colgan, W., and Sørensen, L. S.: Greenland Ice Sheet mass balance (1992–2020) from calibrated radar altimetry, *Geophysical Research Letters*, <https://doi.org/10.1029/2020gl091216>, see <http://doi.org/10.11583/DTU.13353062>. See citet:simonsen2021a, 2021a.
- Simonsen, S. B., Barletta, V. R., Colgan, W., and Sørensen, L. S.: Greenland Ice Sheet mass balance (1992–2020) from calibrated radar altimetry, <https://doi.org/10.11583/DTU.13353062.v1>, https://data.dtu.dk/articles/dataset/Greenland_Ice_Sheet_mass_balance_1992-2020_from_calibrated_radar_altimetry/13353062, see <http://doi.org/10.1029/2020GL091216>. See citet:simonsen2021, 2021b.
- Smith, B., Fricker, H. A., Gardner, A. S., Medley, B., Nilsson, J., Paolo, F. S., Holschuh, N., Adusumilli, S., Brunt, K., Csatho, B., and et al.: Per-
925 vasive ice sheet mass loss reflects competing ocean and atmosphere processes, *Science*, p. eaaz5845, <https://doi.org/10.1126/science.aaz5845>, 2020.
- Solgaard, A. and Kusk, A.: Greenland Ice Velocity from Sentinel-1 Edition 2, <https://doi.org/10.22008/promice/data/sentinel1icevelocity/greenlandicesheet>, 2021.
- Solgaard, A., Kusk, A., Boncori, J. P. M., Dall, J., Mankoff, K. D., Ahlstrøm, A. P., Andersen, S. B., Citterio, M., Karlsson, N. B., Kjeldsen,
930 K. K., Korsgaard, N. J., Larsen, S. H., and Fausto, R. S.: Greenland ice velocity maps from the PROMICE project, *Earth System Science Data*, 13, 3491–3512, <https://doi.org/10.5194/essd-13-3491-2021>, 2021.
- Stallman, R. M.: EMACS the Extensible, Customizable Self-Documenting Display Editor, in: *Proceedings of the ACM SIGPLAN SIGOA Symposium on Text Manipulation*, p. 147–156, Association for Computing Machinery, New York, NY, USA, <https://doi.org/10.1145/800209.806466>, 1981.
- 935 Sutterley, T. C., Velicogna, I., Rignot, E. J., Mouginot, J., Flament, T., van den Broeke, M. R., van Wessem, J. M., and Reijmer, C. H.: Mass loss of the Amundsen Sea Embayment of West Antarctica from four independent techniques, *Geophysical Research Letters*, 41, 8421–8428, <https://doi.org/10.1002/2014GL061940>, 2014.
- Sørensen, L. S., Simonsen, S. B., Nielsen, K., Lucas-Picher, P., Spada, G., Adalgeirsdottir, G., Forsberg, R., and Hvidberg, C. S.: Mass balance of the Greenland ice sheet (2003–2008) from ICESat data – the impact of interpolation, sampling and firn density, *The Cryosphere*, 5,
940 173–186, <https://doi.org/10.5194/tc-5-173-2011>, 2011.
- Tange, O.: GNU Parallel - The Command-Line Power Tool, ;login: *The USENIX Magazine*, 36, 42–47, <https://doi.org/10.5281/zenodo.16303>, <http://www.gnu.org/s/parallel>, 2011.
- Tedesco, M. and Fettweis, X.: Unprecedented atmospheric conditions (1948–2019) drive the 2019 exceptional melting season over the Greenland ice sheet, *The Cryosphere*, 14, 1209–1223, <https://doi.org/10.5194/tc-14-1209-2020>, 2020.
- 945 The IMBIE Team: Mass balance of the Greenland Ice Sheet from 1992 to 2018, *Nature*, 579, 233–239, <https://doi.org/10.1038/s41586-019-1855-2>, 2019.
- Uppala, S. M., Källberg, P. W., Simmons, A. J., Andrae, U., Da Costa Bechtold, V., Fiorino, M., Gibson, J., Haseler, J., Hernandez, A., Kelly, G. A., Li, X., Onogi, K., Saarinen, S., Sokka, N., Allan, R. P., Anderson, E., Arpe, K., Balmaseda, M. A., Beljaars, A. C. M., Van De Berg, L., Bidlot, J., Bormann, N., Caires, S., Chevallier, F., Dethof, A., Dragosavac, M., Fisher, M., Fuentes, M., Hagemann, S., Hólm, E., Hoskins, B. J., Isaksen, L., Janssen, P. A. E. M., Jenne, R., McNally, A. P., Mahfouf, J.-F., Morcrette, J.-J., Rayner, N. A., Saunders, R. W., Simon, P., Sterl, A., Trenbreth, K. E., Untch, A., Vasiljevic, D., Viterbo, P., , and Woollen, J.: The ERA-40 re-analysis, *Quarterly Journal of the Royal Meteorological Society*, 131, 2961–3012, <https://doi.org/10.1256/qj.04.176>, 2005.

- van Angelen, J. H., Lenaerts, J. T. M., Lhermitte, S., Fettweis, X., Kuipers Munneke, P., van den Broeke, M. R., van Meijgaard, E., and Smeets, C. J. P. P.: Sensitivity of Greenland Ice Sheet surface mass balance to surface albedo parameterization: a study with a regional climate model, *The Cryosphere*, 6, 1175–1186, <https://doi.org/10.5194/tc-6-1175-2012>, 2012.
- van de Berg, W. J. and Medley, B.: Brief Communication: Upper-air relaxation in RACMO2 significantly improves modelled interannual surface mass balance variability in Antarctica, *The Cryosphere*, 10, 459–463, <https://doi.org/10.5194/tc-10-459-2016>, 2016.
- Van Rossum, G. and Drake Jr, F. L.: Python reference manual, Centrum voor Wiskunde en Informatica Amsterdam, 1995.
- Velicogna, I., Mohajerani, Y., A. G., Landerer, F., Mouginot, J., Noel, B., Rignot, E., Sutterley, T., Broeke, M., Wessem, M., and et al.: Continuity of Ice Sheet Mass Loss in Greenland and Antarctica From the GRACE and GRACE Follow-On Missions, *Geophysical Research Letters*, 47, <https://doi.org/10.1029/2020gl087291>, 2020.
- Vinther, B. M., Andersen, K. K., Jones, P. D., Briffa, K. R., and Cappelen, J.: Extending Greenland temperature records into the late eighteenth century, *Journal of Geophysical Research*, 111, <https://doi.org/10.1029/2005jd006810>, 2006.
- Vionnet, V., Brun, E., Morin, S., Boone, A., Faroux, S., Le Moigne, P., Martin, E., and Willemet, J.-M.: The detailed snowpack scheme Crocus and its implementation in SURFEX v7.2, *Geoscientific Model Development*, 5, 773–791, <https://doi.org/10.5194/gmd-5-773-2012>, 2012.
- Wang, Z. Q. and Randriamampianina, R.: The Impact of Assimilating Satellite Radiance Observations in the Copernicus European Regional Reanalysis (CERRA), *Remote Sensing*, 13, 426, <https://doi.org/10.3390/rs13030426>, 2021.
- Yang, X., Palmason, B., Sattler, K., Thorsteinsson, S., Amstrup, B., Dahlbom, M., Hansen Sass, B., Pagh Nielsen, K., and Petersen, G. N.: IGB, the Upgrade to the Joint Operational HARMONIE by DMI and IMO in 2018, *ALADIN-HIRLAM Newsletter*, pp. 93–96, 2018.
- Zemp, M., Huss, M., Eckert, N., Thibert, E., Paul, F., Nussbaumer, S. U., and Gärtner-Roer, I.: Brief communication: Ad hoc estimation of glacier contributions to sea-level rise from the latest glaciological observations, *The Cryosphere*, 14, 1043–1050, <https://doi.org/10.5194/tc-14-1043-2020>, 2020.
- Zender, C. S.: Analysis of self-describing gridded geoscience data with netCDF Operators (NCO), *Environmental Modelling & Software*, 23, 1338–1342, <https://doi.org/10.1016/j.envsoft.2008.03.004>, 2008.
- Zuo, Z. and Oerlemans, J.: Modelling albedo and specific balance of the Greenland ice sheet: calculations for the Søndre Strømfjord transect, *Journal of Glaciology*, 42, 305–317, <https://doi.org/10.3189/s0022143000004160>, 1996.
- Zwally, H. J. and Giovinetto, M. B.: Overview and Assessment of Antarctic Ice-Sheet Mass Balance Estimates: 1992–2009, *Surveys in Geophysics*, 32, 1–26, <https://doi.org/10.1007/s10712-011-9123-5>, 2011.
- Zwally, H. J., Giovinetto, M. B., Beckley, M. A., and Saba, J. L.: Antarctic and Greenland Drainage Systems, http://icesat4.gsfc.nasa.gov/cryo_data/ant_grn_drainage_systems.php, GSFC Cryospheric Sciences Laboratory, 2012.