

Land-Use Harmonization Datasets for Annual Global Carbon Budgets

Louise Chini¹, George Hurtt¹, Ritvik Sahajpal¹, Steve Frohking², Kees Klein Goldewijk^{3,7}, Stephen Sitch⁴, Raphael Ganzenmüller⁶, Lei Ma¹, Lesley Ott⁵, Julia Pongratz⁶, Benjamin Poulter⁵

5 ¹Department of Geographical Sciences, University of Maryland, College Park, MD, 20742, U.S.A

²Earth Systems Research Center, University of New Hampshire, Durham, NH 03824, U.S.A

³PBL Netherlands Environmental Assessment Agency, 2500 GH The Hague, The Netherlands

⁴Department of Geography, University of Exeter, Exeter, EX4 4QE, United Kingdom

⁵NASA Goddard Space Flight Center, Greenbelt, MD, 20771, U.S.A

10 ⁶Department of Geography, Ludwig-Maximilians University, Munich, D-80333, Germany

⁷Copernicus Institute for Sustainable Development, Utrecht University, Utrecht, The Netherlands

Correspondence to: Louise Chini (lchini@umd.edu)

Abstract. Land-use change has been the dominant source of anthropogenic carbon emissions for most of the historical period, and is currently one of the largest and most uncertain components of the global carbon cycle. Advancing the scientific understanding on this topic requires that the best data be used as input to state-of-the-art models in well-organized scientific assessments. The Land-Use Harmonization 2 dataset (LUH2), previously developed and used as input for CMIP6 simulations, has been updated annually to provide required input to land models in the annual Global Carbon Budget (GCB) assessments. Here we discuss the methodology for producing these annual LUH2-GCB updates and extensions which incorporate annual wood harvest data updates from the Food and Agriculture Organization (FAO) of the United Nations for dataset years after 2015 and the History Database of the Global Environment (HYDE) gridded cropland and grazing area data updates (based on annual FAO cropland and grazing area data updates) for dataset years after 2012, along with extrapolations to the current year due to a lag of one or more years in the FAO data releases. The resulting updated LUH2-GCB datasets have provided global, annual gridded land-use and land-use change data relating to agricultural expansion, deforestation, wood harvesting, shifting cultivation, regrowth and afforestation, crop rotations, and pasture management and are used by both bookkeeping models and Dynamic Global Vegetation Models (DGVMs) for the GCB. For GCB 2019, a more significant update to LUH2 was produced, LUH2-GCB2019 (<https://doi.org/10.3334/ORNLDAAAC/1851>, Chini et al., 2020b), to take advantage of new data inputs that corrected cropland and grazing areas in the globally important region of Brazil, as far back as 1950. From 1951-2012 the LUH2-GCB2019 dataset begins to diverge from the version of LUH2 used for the World Climate Research Programme's 6th Coupled Model Intercomparison Project (CMIP6), with peak differences in Brazil in the year 2000 for grazing land (difference of 100,000 km²) and in the year 2009 for cropland (difference of 77,000 km²), along with significant sub-national reorganization of agricultural land-use patterns within Brazil. The LUH2-GCB2019 dataset provides the base for future LUH2-GCB updates including the recent LUH2-GCB2020 dataset, and presents a starting point for operationalizing the creation of these datasets to reduce time-lags due to the multiple input dataset and model latencies.

Deleted: FAO

1 Introduction

Human-induced changes to the Earth's carbon cycle are now known to have driven changes in the Earth's climate system, with far-reaching consequences for all components of the Earth system including the atmosphere, oceans, land, and human society.

To gain improved understanding of the anthropogenic disturbances of the global carbon cycle and provide decision-support for climate policies, the Global Carbon Project has coordinated the publication of an annual carbon budget since 2005 (Le Quéré et al. 2013, Friedlingstein et al. 2019). These Global Carbon Budgets (GCBs) use models and observations to quantify and partition annual anthropogenic emissions and associated natural sinks in the carbon cycle and provide the underlying data for use by the wider community.

For most of the historical period, land-use change activities such as deforestation for agriculture and wood harvesting were the primary sources of anthropogenic carbon emissions (Ciais et al., 2013). From 1750-2018, land use change emissions total 235±75 Pg C and fossil fuel emissions total 440±20 Pg C, with annual fossil fuel emissions surpassing land use change emissions in the mid 20th century (Friedlingstein et al. 2019). Although they are no longer the dominant source of human-generated carbon emissions, contemporary land-use emissions remain a large, and highly uncertain term in the global carbon budget and a driver of the interannual variability in the land carbon balance (Yue et al. 2020). Over the last decade (2009–2018) the Global Carbon Budget 2019 (Friedlingstein et al. 2019) estimated the net annual CO₂ flux from land-use, E_{LUC} , to be 1.5±0.7 Gt C yr⁻¹ (compared with fossil fuel emissions over that same time period of 9.5±0.5 Gt C yr⁻¹). In addition, land-use related carbon emissions and removal are likely to become increasingly important in the future with both increasing demand for food and fiber by a growing and more affluent population and the potential adoption of climate mitigation strategies that heavily involve the terrestrial biosphere (such as biofuel crop production, afforestation and forest restoration, and more sustainable agricultural management practices, some of which specifically target the C budget) (Popp et al., 2017).

For the annual Global Carbon Budget (GCB) publications, the net land-use carbon flux, E_{LUC} , (which is described in additional detail and context by Houghton 2020) is the sum of CO₂ fluxes from anthropogenic clearing of forests and other natural vegetation, afforestation, wood harvesting, forest degradation, shifting cultivation, regrowth of natural vegetation following wood harvest or abandonment of agriculture, and some land management activities, as well as decomposition from product pools. The book-keeping models H&N2017 (Houghton and Nassikas, 2017) and BLUE ([Bookkeeping of Land Use Emissions](#), Hansis et al., 2015), and an ensemble of Dynamic Global Vegetation Models (DGVMs) as part of TRENDY ([the land model synthesis project for the Global Carbon Project](#), Sitch et al., 2015), are used to compute E_{LUC} and its uncertainty. E_{LUC} is computed by the DGVMs as the difference between two simulations, one with land use and one without, and as a result it includes the loss of additional sink capacity from reduced forest cover, that is not included in the estimates of E_{LUC} from book-keeping models. One of the ways in which BLUE differs from H&N2017 is that it utilizes gridded historical land-use and land-use change maps from the Land-Use Harmonization 2 (LUH2) dataset (Hurtt et al., 2019a, 2019b, 2020), whereas H&N2017

Deleted: the

Deleted: (

75 makes use of national-level land-use data, primarily from [the Food and Agriculture Organization \(FAO\) of the United Nations](#). Many of the DGVMs also utilize the LUH2 dataset to prescribe the gridded historical land-use and land-use changes used by those models. The availability of LUH2 has facilitated the development of more comprehensive representations of [land-use change](#) in DGVMs. Originally DGVMs represented only net [land-use change](#) change at coarse gridcell resolution (typically greater than 0.5° / ~50km), whereas LUH datasets have enabled models to account for sub-gridcell heterogeneity, i.e. shifting cultivation practices, and comprehensive [land-use change](#) transitions. Arneth et al. (2017) suggests [land-use change](#) emissions are likely greater than previously assumed as more [land use](#) detail is included in DGVMs.

Deleted: LUC

Deleted: LUC

Deleted: LUC

Deleted: LUC

Deleted: LU

80 The LUH2 dataset was developed as a required forcing dataset for the [World Climate Research Programme's 6th Coupled Model Intercomparison Project \(CMIP6\) Diagnostic, Evaluation and Characterization of Klima \(DECK\)](#) and historical climate simulations (Meehl et al., 2014; Eyring et al., 2016), with its predecessor, Land-Use Harmonization 1 (Hurt et al., 2006, 2011), having already been used extensively for the CMIP5 simulations (e.g., Brovkin et al., 2013, Boysen et al., 2014). A major goal and feature of the LUH2 dataset is that it harmonizes an historical land-use reconstruction with multiple future scenarios supplied by Integrated Assessment Models (IAMs). [LUH2 differs from other datasets of historical land-use such as HYDE3.2 \(Klein Goldewijk et al. 2017\), which LUH2 is based upon, and HILDA+ \(Winkler et al. 2021\), which incorporates additional satellite data for the period 1960-2019. It defines a consistent format intended for use in Earth System Models, connects continuously with future scenarios, provides spatial patterns of wood harvest and shifting cultivation, and estimates the age, area and biomass of recovering secondary lands.](#) The historical reconstruction of LUH2 has been used and extended for Global Carbon Budget annual assessments (Le Quéré et al., 2016; Le Quéré et al., 2017; Le Quéré et al., 2018; Friedlingstein et al., 2019, Friedlingstein et al., 2020) but LUH2 and its related datasets have now also been used for CMIP6 future scenarios (ScenarioMIP, O'Neill et al., 2016), the Land-Use Model Intercomparison Project (LUMIP, Lawrence et al., 2016), the Inter-Sectoral Impact Model Intercomparison Project 2b (ISIMIP2b, Frieler et al. 2017), Paleoclimate Modeling Intercomparison Project (PMIP, JungCLAUS et al. 2017), the Global and North American Driver Data for Multi-Model Intercomparison (MsTMIP, Wei et al. 2014), and the Intergovernmental Platform on Biodiversity and Ecosystem Services (IPBES, Kim et al. 2018, Rosa et al 2020). This wide usage of the LUH2 dataset provides a consistent treatment of land-use across multiple scientific studies.

100 LUH2 brings together multiple datasets at multiple different spatial and temporal scales and harmonizes them to produce a single dataset of global, gridded land-use and all associated land-use transitions, annually for the years 850-2100, in a consistent format for use in Earth System Models (ESMs). All data layers are provided as fractional values within 0.25° spatial grids and include the area of 12 different land-use states, the age and biomass density of secondary land, wood harvest area and biomass, and agricultural management practices such as irrigated area and synthetic nitrogen fertilizer application. For the historical period the LUH2 dataset uses inputs from [the History Database of the Global Environment \(HYDE 3.2, Klein Goldewijk et](#)

Deleted: (

110 al., 2017) for gridded cropland, grazing land (sub-divided into managed pasture and rangelands), and urban area, as well as
population data, and uses national wood harvest production data from FAO (2020a).

Early versions of LUH datasets have been used in annual GCBs from 2013 onwards (Le Quéré et al. 2014, 2015a, 2015b,
2016, 2018a, 2018b, Friedlingstein et al. 2019). For use in CMIP6 simulations, the LUH2 historical-period dataset (LUH2
115 v2h) was developed for the years 850-2015 and this LUH2 v2h dataset (where 'h' is historical) was extended for use as an
input into the Global Carbon Budget 2017 by incorporating updated data from FAO and HYDE for the years 2013-2014, as
well as a linear extrapolation to the year 2016, as described in Methods (note: the GCB includes a projection for the current
year, but is based on model simulations and thus forcing until the previous year, i.e. GCB 2017 incorporates LUH2 data until
2016). The intended strategy for subsequent annual LUH2-GCB updates was to use the significant updates to LUH that are
120 typically made on the same cycle as CMIP analyses, and then provide annual extensions to those each year, while also ingesting
any new/modified data from FAO and HYDE for recent years. Although this strategy involves multiple dataset and model
update latencies, it was successfully used to extend the LUH2 v2h dataset for GCB 2017 and GCB 2018 with updated FAO
and HYDE inputs, along with extrapolations for years without underlying data. However, the LUH2-GCB2019 dataset (Chini
et al., 2020b) provided a more significant update that took advantage of new input datasets and corrections of previous inputs
125 for Brazil (Rosan et al. 2021), which is a region of significance for the global carbon budget. This was the first major update
to the LUH-GCB datasets since the development of the LUH2 v2h dataset, and it resulted in small changes from 1951 onwards
and more significant modifications to the cropland area trajectories during the 2000-2010 period and grazing land trajectories
during the 1990-2010 period.

130 With multiple versions of LUH2 datasets now being used for different synthesis studies, and multiple versions of key inputs
to LUH2 also in existence, it is important to have a documented record of these datasets and their intended uses, along with
the methodology underlying each of them. In this paper we will describe and document the general approach for generating
the LUH-GCB datasets, as well as specific details of the recent changes made to the LUH2-GCB2019 dataset, and comparisons
with previous LUH datasets.

135 **2 Methods**

2.1 Land-Use Harmonization 2 Dataset

The Land-Use Harmonization 2 dataset (Hurtt et al. 2019a, 2019b) provides global, annual, gridded land-use states and all
associated land-use transitions between those states, fractionally, at 0.25° spatial resolution for the years 850-2100 (Hurtt et
al. 2020). The twelve LUH2 land-use states include gridded fractions of cropland (which is further sub-divided into fractions
140 of C3 annuals, C4 annuals, C3 perennials, C4 perennials, and C3 N-fixers), grazing land (sub-divided into fractions of managed
pasture and rangeland), urban land, primary land (both forested and non-forested) and secondary land (both potentially forested

and potentially non-forested). In addition, the LUH2 dataset provides estimates of the age and biomass density of secondary lands (estimated from the empirical Miami model of net primary production, Leith 1972), gridded areas and biomass associated with wood harvest, and gridded cropland management data including irrigated areas and synthetic nitrogen fertilizer application rates (all provided at the same spatial and temporal scales as the land-use states and transitions). As described in Hurtt et al. 2020, the LUH2 dataset was computed with the Global Land-Use Model 2 (GLM2) which harmonizes multiple input datasets at multiple different temporal and spatial scales to produce a single land-use dataset in the format required for use in climate, carbon, and vegetation models. LUH2 includes major updates to several features, including a new historical national wood harvest reconstruction (Kaplan et al. 2017), a new representation of shifting cultivation (Heinimann et al. 2017), use of Landsat remote sensing data (Hansen et al., 2013) to constrain patterns of wood harvesting, crop rotations, and connects to 8 different future scenarios provided by Integrated Assessment Models (O'Neill et al., 2016, Popp et al., 2017). The version of GLM2 that was used for generating the LUH2-GCB2019 dataset is identical to that used for generating the LUH2 dataset, with the exception of some minor corrections to the method for determining the spatial patterns of wood harvesting.

For the historical period (years 850-2015), the LUH2 dataset was based on two key inputs: the HYDE 3.2 dataset and FAO wood harvest data. The HYDE 3.2 dataset (Klein Goldewijk et al. 2017) provides gridded cropland, managed pastureland, rangeland, and urban land data, and is itself based on national FAO agricultural data for the years 1961-2012, along with extrapolations based on a 5-year trend for the years 2013-2015. The FAO wood harvest data provides national forestry statistics for the years 1961-2015 (FAO 2020a) that were used by LUH2 to determine the spatial patterns of wood harvesting.

2.2 General approach for annual LUH extensions for GCB

Each year, for the annual Global Carbon Budget (for publication years 2013-2020), the LUH dataset was extended in time for use in the participating DGVM and book-keeping model simulations. In general, these LUH extensions were built off the most recent LUH release (i.e. either LUH1 or LUH2) and incorporated updated and extended agricultural area data from HYDE (based on newly released data from FAO) along with newly released national wood harvest production data from FAO. This not only extended the LUH datasets beyond their final year (2005 for LUH1 and 2015 for LUH2) but also updated the LUH data for years that were not previously based on FAO inputs (i.e. years for which data was previously extrapolated but for which FAO data was now available).

The annual updates for GCB from the HYDE dataset were updates to the most recent HYDE release, either HYDE 3.1 (Klein Goldewijk et al., 2010, 2011) or HYDE 3.2 (Klein Goldewijk et al., 2017). Both HYDE 3.1 and HYDE 3.2 used data from FAO to inform the spatial patterns and areas of cropland, grazing land, and urban land for years in which FAO data was available, and used extrapolations and additional datasets to inform the years after the last "FAO-data-based" year. When producing annual updates to HYDE using the most recent FAO data releases, the new FAO data could often not be simply appended to the previously used FAO data due to the retrospective changes to the FAO datasets that sometimes occur. To

175 resolve this challenge, the annual updates to HYDE 3.1 or HYDE 3.2 used an anomaly approach to update the cropland, grazing land, and urban land grids by applying the annual differences in new FAO data to the last “FAO-data-based” year of the current HYDE dataset. The updated HYDE data was also extrapolated using a 5-year trend for years without underlying FAO data. HYDE 3.2 was provided to LUH2 each decade from 1700 to 2000 and then annually for the years 2000 onwards.

180 The national wood harvest reconstruction used by LUH was updated with new data from FAO by replacing any extrapolated wood harvest data from the current LUH dataset with the new wood harvest data from FAO, and then extrapolating national wood harvest rates for any remaining years without underlying FAO data.

The schematic diagram in Figure 1a shows the interactions and dependencies between the LUH datasets prepared for use in
185 CMIP, the LUH-GCB datasets prepared for use in GCB simulations, as well as the inputs used by LUH that are typically updated on both CMIP as well as annual cycles. The FAO data that informs the HYDE dataset and the LUH national wood harvest reconstruction typically lag behind the current year by one or more years. As a result, the LUH-GCB datasets contain several data latencies and data extensions. A typical timeline for this process is shown in Figure 1b, illustrating the sequence of dataset updates, and associated latencies, that occur during the creation of a generalized ‘LUHx-GCBi’ dataset.

190 For GCB publication years 2013-2015, the LUH-GCB dataset was built off the LUH1 dataset and was identical to that dataset for years 1500-2005. The data for the years 2006 to the end of the LUH-GCB timeseries was based on new data from FAO and HYDE, using the aforementioned anomaly approach (for years that FAO data existed at the time of dataset creation), and extrapolations for years without FAO data. Table 1 provides the specific years that are based on updated FAO and HYDE data
195 in each of these LUH-GCB datasets. For LUH data years without specified FAO data, extrapolations were used to fill data gaps.

For GCB 2016, an updated LUH dataset was not provided due to ongoing work on the creation of the LUH2 dataset. Instead, GCB used only those DGVMs that were based directly on HYDE, not LUH (Le Quéré et al., 2016).

200 For GCB publication years 2017-2018, the LUH-GCB dataset was built off the LUH2 dataset and was identical to that dataset for years 1500-2012 (i.e. to the end of the time period for which FAO data was used in the creation of HYDE 3.2). The data for the years 2013 to the end of the LUH-GCB timeseries was based on new data from FAO wood harvest and HYDE, again using the aforementioned anomaly approach, along with extrapolations for years without underlying FAO data, as outlined in
205 Table 1.

For GCB publication years 2019-2020, a more significant update was performed to correct an error in the previously used input datasets, especially for the country of Brazil, as described in Section 2.3. These LUH-GCB datasets were built off the

210 LUH2 dataset and were identical to that dataset for all years up to and including the year 1950. The data for the years 1951 to
the end of the LUH-GCB timeseries was based on new data from FAO (FAO 2020b) and corrections from HYDE, along with
extrapolations for years without underlying FAO data, as outlined in Table 1.

2.3 HYDE land-use data update for GCB 2019

215 The HYDE-GCB2019 dataset used for LUH2-GCB2019 employed new input datasets, as outlined in this paragraph, to correct
some inadvertent errors present in the previously-used input files. These corrections specifically addressed the sudden leveling-
220 off of cropland area expansion around the year 2000 and a compensating sudden increase in cropland-related clearing of natural
vegetation in Brazil around the year 2010. Similarly, an overestimate of grazing land area in Brazil between 1990 and 2010
was eliminated. HYDE-GCB2019 was based upon the HYDE3.2 (as were HYDE-GCB2017-18), although using a slightly
different variant of HYDE 3.2 from that used in LUH2 v2h. In addition, HYDE-GCB2019 incorporated updated cropland and
grazing land data from FAO as far back as 1961, through to 2015, as well as sub-national data for Brazil from Instituto
225 Brasileiro de Geografia e Estatística (IBGE) for the years 1920-1995, and European Space Agency (ESA)-derived data for the
year 2010. In addition, the HYDE-GCB2019 dataset was extrapolated to 2019 using a 5-year trend in gridded land-use areas
(2014-2018).

225 Despite the differences between the HYDE3.2-Aug2016 used for LUH2 v2h and the HYDE-GCB2019, for each year up to
and including 2012, the HYDE-GCB2019 was closely matched to the HYDE3.2-Aug2016 dataset, with the exception of grid-
cells in the corrected regions of Brazil. The global areas provided by the HYDE-GCB2019 dataset differ from the HYDE3.2-
Aug2016 dataset by up to 0.5% for cropland and up to 0.3% for grazing land. However, within Brazil the areas in HYDE-
GCB2019 differ from those in HYDE3.2-Aug2016 by up to 11% for total cropland (in 2009) and up to 5% for total grazing
land (in the year 2000). In the year 1960 (the first year of corrected data in HYDE-GCB2019 and the year in which we would
230 expect the closest match between the two datasets) 0.4% of grid-cells (at 5 minute spatial resolution) outside Brazil had
cropland area differences of greater than 10% from the HYDE3.2-Aug2016 data, and 0.01% had grazing land area differences
of greater than 10% from the HYDE3.2-Aug2016 data.

2.4 National wood harvest data update for GCB 2019

235 The version of wood harvest data used for LUH2 v2h was based on a previous FAO release (FAO 2020a) that included data
up to and including the year 2014 – those inputs remained the same in this new GCB dataset. For LUH2-GCB2019, the most
recent FAO data (FAO 2020b) was used to provide wood harvest data for the years 2015-2017. The annual changes in FAO
wood harvest data for the years 2015-2017 were applied to the year 2014 data from the previous release to get the new 2015-
2017 data used for GCB 2018. After the year 2017 wood harvest data was extrapolated to the year 2018, the last year in which
GLM2 simulates wood harvest for LUH2-GCB2019.

Deleted: ed

Deleted: its underlying

Deleted: datasets

Deleted: ,

2.5 Computing the LUH2-GCB2019 dataset

245 To enable long-term historical simulations, the LUH datasets must provide a consistent and continuous data time-series over the entire simulation time domain (i.e. from 850 onwards). This implies that annual dataset updates must be harmonized with the core version of LUH being used (either LUH1 or LUH2) at the point in time in which the dataset extension begins to diverge from the core LUH version. HYDE provides decadal data for years from 1700 up to 2000, and the data in HYDE-GCB2019 was different to that in HYDE3.2-August2016 (the version used for LUH2 v2h) from 1960 onwards, making 1950
250 the most recent year of identical data between these two datasets and the “harmonization” year between the LUH2 core dataset and the LUH2-GCB2019 update.

The HYDE-GCB2019 dataset for the years 1960-2019, along with the HYDE3.2-August2016 data for the year 1950, were aggregated to 0.25° spatial resolution and interpolated to annual time-steps, to create the cropland, grazing land, and urban
255 land input datasets for LUH2 for the period 1950-2019. The GLM2 code (Chini et al., 2020a), used to generate the LUH2 datasets, was then run with the processed HYDE data, and the FAO-based national wood harvest data, as inputs for the years 1950 to 2019, using the LUH2-v2h data for the year 1950 as an initial condition. Using this approach, the LUH2-GCB2019 data for the years 1950-2019 connected continuously to the LUH2-v2h dataset for the years 850-1950.

3 Results

260 The LUH2-GCB2019 dataset shares many of the same properties as its predecessors LUH2 v2h, LUH2-GCB2017, and LUH2-GCB2018, and is identical to those datasets for all years up to 1950. Figure 2a shows the global area of the five aggregated land-use states represented by LUH2-GCB2019 for the years 1950-2019. Global cropland area increased from 12.2×10^6 km² in 1950 to 15.9×10^6 km² in 2015 (for LUH2 v2h) or 16.1×10^6 km² in 2015 (for LUH2-GCB2019) and 16.8×10^6 km² in 2019 (for LUH2-GCB2019). Global grazing land area increased from 26.1×10^6 km² in 1950, peaked in the year 2000 at 33.2×10^6
265 km² (for LUH2 v2h) or peaked in 2001 at 33.1×10^6 km² (for LUH2-GCB2019), then decreased to 32.8×10^6 km² in 2015 (for LUH2 v2h) or 32.7×10^6 km² in 2015 (for LUH2-GCB2019) and 32.6×10^6 km² in 2019 (for LUH2-GCB2019). Cropland, grazing land, and urban land areas in LUH2-GCB2019 were identical to those areas provided by the HYDE dataset at global, regional, and 0.25 degree spatial scales (by design).

270 Looking at Brazil specifically, Figure 2b shows that the new input data underlying LUH2-GCB2019 has modified the previously observed feature of LUH2 v2h in which cropland area anomalously leveled-off, and then quickly increased, during the 2000-2010 time-period. The cropland area over the same time period in LUH2-GCB2019 now increases monotonically. Similarly, LUH2-GCB2019 has also reduced the area of grazing land in Brazil between the years 1990 and 2010, when compared with the LUH2 v2h grazing land area.

275

Land-use states began to differ between LUH2-GCB2019 and LUH2 v2h from 1951 onwards. Figure 2c shows the differences in global areas of the five LUH2 land-use states between these two datasets from 1950-2015 (solid lines). Although differences in cropland and grazing land areas didn't become significant until 1990 onwards, differences in primary and secondary land areas appeared in the time series from around 1960 onwards, due to slightly different methodology for determining the spatial patterns of primary vs. secondary wood harvesting in some locations of the world, compared with the methodology used in preparation of the LUH2 dataset. Figure 2c also shows the same variables but focused only on the country of Brazil (dashed lines). Prior to 2010, the differences between the LUH2 v2h and LUH2-GCB2019 datasets in Brazil were of similar magnitude to the global differences in the five land-use variables, indicating that the changes made to the LUH2-GCB2019 dataset within Brazil account for the majority of the global differences in this dataset. Cropland and grazing land differences between the LUH2 v2h and LUH2-GCB2019 datasets became largest during the 2000-2019 timeframe when input datasets (based on FAO) began to diverge more significantly, especially in the country of Brazil. The difference in global cropland area between the two datasets has a low point in 2009 of -77,500 km² of which 99% comes from cropland differences within Brazil. The maximum difference in global cropland area of -203,900 km² occurred in 2015. The difference in global grazing land area between the two datasets was highest in year 2000 with a difference of +102,600 km², of which 98% comes from grazing land differences within Brazil.

Figure 3 shows that global wood harvest, one of the dominant land-use transitions in the LUH2 dataset, remained largely unchanged between LUH2 v2h and LUH2-GCB2019, with global wood harvest differences being less than 2×10^{-3} PgC (or <0.2%) each year. Total gross transitions (the sum of the absolute value of all land-use transitions) are a measure of all land-use change activity. Gross transitions in the LUH2 dataset tend to have higher interannual variability after year 2000 when the input data to LUH2 (from HYDE) becomes annual, rather than decadal. Figure 4a shows that global gross transitions between 1950 and 2012 (years that are based on the same FAO data) were very similar between the LUH2 v2h and LUH2-GCB2019 datasets, with maximum global annual differences of less than 3%. After 2012, differences between the two datasets increased slightly due to the use of different FAO data in the HYDE dataset, but global differences still remained less than 10%. Gross transitions within Brazil (Figure 4b) showed more significant differences between these two datasets, with the largest absolute differences occurring in 2008 (-52,000 km²/yr difference) and 2009 (47,000 km²/yr difference), which was consistent with the timeframe of the maximum cropland area differences within Brazil.

The spatial patterns of differences (of the fractional content of each quarter degree grid-cell) between the LUH2 v2h and LUH2-GCB2019 datasets for 4 key variables at 3 different time points are shown in Figure 5. The cropland patterns illustrate that in the year 2000 and 2009 almost all grid-cell differences were located within Brazil, with grid-cells elsewhere having only very minor differences, if any (fraction of grid-cell of $\sim 10^{-3}$). Although the total difference in Brazil cropland area between the two datasets in 2000 was very small (504 km²), Figure 5 shows that sub-national differences existed that both increased

Deleted: 3

310 cropland in some sub-regions of Brazil, and reduced it in others (and aggregated to a small national total difference). In the
year 2009, when the Brazil total cropland difference between LUH2 v2h and LUH2-GCB2019 was greatest, the gridded
differences in Brazil were almost all in the same direction, which in aggregate led to a 77,000 km² correction from the LUH2
v2h values. In 2015 gridded cropland differences in Brazil were small (and the aggregate national difference for Brazil was
also small) but significant gridded differences in other locations in the world appeared, especially within China, Southeast
315 Asia, and Australia. These differences were due to new FAO data for the years 2013-2015 being used by the HYDE dataset
within LUH2-GCB2019 (compared with the extrapolated data used for LUH2 v2h) and represent the error in previous
projections/extrapolations before data was available.

The patterns for grazing land in Figure 5 show that in the year 2000, although the country of Brazil had a total grazing land
320 decrease of 10,000 km² in LUH2-GCB2019 (compared with LUH2 v2h), there were sub-regions within Brazil that were
exhibiting increases in grazing land that offset some of these decreases. In the year 2009, grazing land differences between
LUH2 v2h and LUH2-GCB2019 were small (fractions of grid-cell $\sim 10^{-3}$), both within Brazil and elsewhere in the world. In
2015, grazing land differences between the datasets showed larger differences throughout the world, due to the use of new
FAO data for the years 2013-2015, as was also observed with cropland, and again represent errors in previous
325 projections/extrapolations.

Secondary forest patterns in Figure 5 showed that LUH2-GCB2019 had greater secondary forest area in high latitude locations,
as well as in China and Southeast Asia, and lower areas of secondary forest in the Amazon and Congo regions, across all time
periods after 1950. These changes in secondary forest patterns reflected the related changes to the updated GLM2 methodology
330 for the spatial patterns of wood harvesting, which resulted in more primary wood harvest in the high latitudes, generating more
secondary land, with the converse occurring in the Amazon and Congo regions.

[The patterns of primary forest land in Figure 5 show lower primary forest area in high latitude locations, Southeast Asia, and
China, as well as the Congo across all time periods after 1950. Higher primary forest area is shown around the year 2000 in
335 some parts of Brazil.](#)

4 Discussion

The LUH2-GCB2019 dataset (Chini et al., 2020b) is the annual update to the LUH2 dataset for use as input to the ensemble
of international DGVMs (TRENDY DGVM model synthesis, Sitch et al., 2015) that delivers to (and supports) the 2019 Global
Carbon Budget. It was based on existing LUH2 methodology (Hurtt et al. 2020) with updated inputs from HYDE (for gridded
340 cropland, grazing land, and urban land areas at decadal and/or annual timesteps) and from FAO (for annual national wood
harvest amounts). In contrast with previous LUH2 annual updates for GCB that incorporated new data from HYDE and FAO

for the years 2013 onwards and extrapolated the time-series to the current year, the LUH2-GCB2019 dataset provided a more significant update to correct the anomalous decrease in cropland area and overestimate of grazing land within Brazil over the years 2000-2009 due to errors in the previously used FAO and HYDE data for Brazil. This correction was successful and
345 resulted in a national cropland area difference for Brazil of up to 77,000 km² in the year 2009, and also modified the national grazing land area within Brazil over the years 1990-2009 with a difference of up to 100,000 km² in the year 2000. Differences between LUH2-GCB2019 and LUH2 v2h in other regions of the world were more minor, as shown in Figures 2 and 5, with the exception of small differences in the spatial patterns of wood harvesting that resulted in an increase of secondary forest area in the northern latitudes, and a reduction of secondary forest area in the Amazon and Congo regions.

350 Global gross transitions (a measure of all land-use change activity) were very similar between LUH2 v2h and LUH2-GCB2019, although slightly higher for LUH2-GCB2019 after the year 2000. In contrast, the gross transitions for Brazil tended to be lower for LUH2-GCB2019 compared with those for LUH2 v2h, with the exception of the 2000-2009 period when gross transitions within Brazil for LUH2-GCB2019 became much larger than those in LUH2 v2h. Those land-use transitions in the
355 early-2000s, when the main correction to the Brazil land-use data was applied, are likely to provide the biggest changes to the global carbon budget. The high annual variability in land use transitions after year 2000 was an artifact of the input data from HYDE, which was provided to LUH2 each decade from 1700 to 2000 and then annually for the years 2000-2019, and does not necessarily indicate that land-use transitions were fluctuating more quickly in the years 2000-2009 when compared with the earlier part of the historical period.

360 The differences between the LUH2-GCB2019 dataset and previous versions have implications for the global and regional carbon budgets, and many models that were part of GCB2019 have now used the LUH2-GCB2019 dataset to compute the carbon fluxes associated with land-use activities. For example, the bookkeeping model BLUE (Hansis et al., 2015) has computed the land-use emissions from both the LUH2-GCB2019 and LUH2-GCB2018 datasets, and compared them globally
365 and regionally. The results from BLUE indicate that global carbon emissions from land-use from over the years 2000 to 2009 are similar, although slightly higher, in LUH2-GCB2019 than in LUH2-GCB2018, with a peak difference in 2008 of 340 Tg C yr⁻¹, and with the majority of these differences attributed to emissions from expansion of cropland. LUH2-GCB2019 gives higher land-use emissions from BLUE in Brazil over that time period, with large differences for emissions from cropland expansion, but only small differences from expansion of grazing land, from wood harvesting, or from vegetation regrowth.
370 The higher emissions from 2000-2009 in LUH2-GCB2019 were expected, due to the additional cropland expansion in LUH2-GCB2019. However, global emissions from BLUE over the period 1960-1980, as well as those in Brazil over the same time period, are slightly lower in LUH2-GCB2019 when compared with LUH2-GCB2018, despite very small net differences in cropland area between LUH2-GCB2019 and LUH2-GCB2018 over the time period, both globally and within Brazil. Gross transitions within Brazil from 1960-1980 are also lower in LUH2-GCB2019 when compared with LUH2-GCB2018. Inspection
375 of the spatial patterns of cropland area differences between 1960 and 1980 for both LUH2-GCB2019 and LUH2-GCB2018

shows significant sub-national reorganization of cropland areas between the two different datasets within Brazil, resulting in a very small net difference in cropland area, but potentially driving lower gross transitions and lower cropland-related emissions in LUH2-GCB2019 over that time period.

380 In addition to its usage in the 2019 Global Carbon budget and associated TRENDY DGVM model synthesis, the LUH2-GCB2019 has also been used as part of a seasonal carbon forecasting project (Ott et al., 2018) in which the LUH-GCB methodology is used, in the absence of existing forecasting datasets, to give land-use projections. As part of this project, the LUH2-GCB2019 land-use data was compared with previous projections and estimates as well as the Shared Socioeconomic Pathways (Popp et al. 2017). Due to the inclusion of new FAO data, the global LUH2-GCB2019 cropland and grazing land
385 areas have a constant offset from previous land-use projections, which provides a measure of the skill of those previous projections. The global LUH2-GCB2019 cropland and grazing land trajectories are comparable with many of the SSP future scenarios, although they contain significant regional and sub-national differences, which will be explored in more detail.

390 The LUH2 datasets provide estimates of human land-use and do not explicitly provide estimates of land cover. As a result they are not guaranteed to capture regional trends of afforestation and/or cropland greening, as observed in remote-sensing-based land cover studies (e.g. Chen et al. 2019). However, to the extent that changes in cropland and forested land areas are already well-represented within the national FAO data and/or the gridded HYDE data used by the LUH2 datasets, the LUH2 land-use changes will be consistent with observed land cover changes. To that end, the LUH2-GCB2019 dataset does indeed show increased areas of cropland areas in India and China, as well as scattered areas of secondary land increases, when compared
395 with the LUH2 v2h dataset for recent years, as indicated in Chen et al. 2019. The land-use changes/transitions from LUH2 are typically converted into land-cover changes by DGVMs for use in those models. DGVM groups have often asked for guidance on which land-cover change(s) to associate with each LUH2 land-use change, and in particular have asked for a recommendation on whether natural vegetation should be lost when converting to managed pasture and/or rangeland. Based on recommendations from HYDE, as well as the study by Ma et al. 2020, the LUH2 recommendation is that all natural
400 vegetation should be cleared for managed pasture, and only cleared for rangeland if it is forested (Hurt et al. 2020). Using this rule/guideline gives maps of forest area, carbon density, and carbon emissions that are consistent with other published maps.

A challenge when producing the annual LUH2 updates for the Global Carbon Budget is handling the inherent latencies associated with input data updates and model developments that exist in this process, as illustrated in Figure 1. FAO wood
405 harvest data is updated annually, but typically lags behind the current year by 2 years, requiring extrapolation to complete the time-series. FAO cropland and grazing land data (used by HYDE) is updated less frequently and sometimes lags behind the current year by several years. Previously published values for existing years in the FAO datasets can also be modified retrospectively as part of the FAO dataset updates, resulting in dataset inconsistencies. In addition to data input updates, the models themselves are also constantly evolving. The model underlying the HYDE dataset is updated frequently to incorporate

Deleted: ¶

Deleted: LUH2

new data, to use new methodology for computing gridded land-use states, and to provide additional data layers, while the LUH2 model itself is typically updated for every CMIP cycle with minor updates and bug fixes in between those updates. These widely varying timescales for updates to data and models present some challenges for providing a consistent, yet
415 annually updated dataset for large model synthesis projects such as the Global Carbon Budget, while also making use of the latest data and model improvements, and our ongoing goal is to continue reducing these latencies wherever possible. Our approach thus far has involved a desire to provide consistency with climate simulations and with previous GCBs and to enable comparison across scientific studies that are utilizing the same underlying land-use data. As a result we have avoided incorporating major updates to the LUH methodology and input datasets between CMIP updates. However, the downside of
420 this approach is that important input-data updates do not always appear in the LUH-GCB datasets in a timely manner. This tension between consistency and incorporating new data requires a balanced approach, which we have attempted to achieve in the LUH2-GCB2019 update in which we incorporated more significant dataset corrections beyond the regular extensions. An aspirational goal for these LUH-GCB products, would be to update the datasets in a more operational mode, in which model and input-data updates would be automated annually. This would require a centralized activity, including operational support
425 and coordination, between the FAO, HYDE, and LUH teams. Although this goal would undoubtedly present its own challenges and competing constraints, it would enable an important input dataset for the Global Carbon Budget to be updated consistently and collaboratively over the long term.

Subsequent to generating the LUH2-GCB2019 dataset, we also recently generated the LUH2-GCB2020 dataset for use in
430 GCB2020 simulations (Friedlingstein et al. 2020). This dataset used LUH2-GCB2019 cropland, grazing land, and urban land grid-cell fractions for years up to and including 2019, and extrapolated those land-use states to 2020 using a 5-year trend from HYDE. The national wood harvest inputs used for LUH2-GCB2019 were used for all years up to and including 2014, after which new wood harvest data from FAO was used, including extrapolations for the years 2019 and 2020. The differences in wood harvest inputs for the years 2015-2019 between LUH2-GCB2019 and LUH2-GCB2020 resulted in some small
435 differences for primary and secondary land fractions for those years.

Looking ahead, we anticipate providing an LUH2 update for use in the Global Carbon Budget 2021 simulations which will likely incorporate new HYDE and FAO data for very recent years (Rosan et al. 2021) and extend the time-series to 2021. In addition, with plans already beginning for CMIP7, we can anticipate the need for LUH3. While it is too early to define the
440 priorities for this dataset, we can anticipate some of the potential features. The development could include a new version of the HYDE dataset, new future scenarios, the use of additional satellite remote sensing data, as well as the introduction of additional land-use/land management processes such as forest degradation and plantation forestry.

Code Availability

445 The source code used to produce the core LUH2 datasets as well as the LUH2-GCB datasets, along with the sources and citations of necessary inputs, are archived at <http://doi.org/10.5281/zenodo.3954113> (Chini et al., 2020a).

Data Availability

The data produced in this study are archived and publicly available at the NASA Oak Ridge National Laboratory Distributed Active Archive Center: <https://doi.org/10.3334/ORNLDAAC/1851> (Chini et al, 2020b).

Author Contributions

450 LC is the lead author and co-developed the method and conducted analyses with GH, RS, SF, SS, and KKG. KKG provided historical input data. RG provided data from the BLUE book-keeping model. LM, LO, JP, and BP provided modeling input. All authors contributed to writing the manuscript.

Competing Interests

The authors declare that they have no conflict of interest.

455 Acknowledgements

We gratefully acknowledge the support of NASA grants 80NSSC17K0348 (NASA-IDS) and 80NSSC17K0710 (NASA-CMS). This research was also supported as part of the Energy Exascale Earth System Model (E3SM) project, funded by the U.S. Department of Energy, Office of Science, Office of Biological and Environmental Research.

References

- 460 Arneeth, A., Sitch, S., Pongratz, J., Stocker, B. D., Ciais, P., Poulter, B., Bayer, A. D., Bondeau, A., Calle, L., Chini, L. P., Gasser, T., Fader, M., Friedlingstein, P., Kato, E., Li, W., Lindeskog, M., Nabel, J. E. M. S., Pugh, T. A. M., Robertson, E., Viovy, N., Yue, C., Zaehle, S., Historical carbon dioxide emissions caused by land-use changes are possibly larger than assumed, *Nature Geoscience*, 10(2), DOI: 10.1038/NGEO2882, 2017.
- 465 Brovkin, V., Boysen, L., Arora, V. K., Boisier, J. P., Cadule, P., Chini, L., Claussen, M., Friedlingstein, P., Gayler, V., van den Hurk, B. J. J. M., Hurr, G. C., Jones, C. D., Kato, E., de Noblet-Ducoudré, N., Pacifico, F., Pongratz, J., and Weiss, M.

- Effect of anthropogenic land-use and land cover changes on climate and land carbon storage in CMIP5 projections for the 21st century. *Journal of Climate*, 130325101629005. <http://doi.org/10.1175/JCLI-D-12-00623.1>, 2013.
- 470 Boysen, L. R., Brovkin, V., Arora, V. K., Cadule, P., de Noblet-Ducoudré, N., Kato, E., Pongratz, J., and Gayler, V.: Global and regional effects of land-use change on climate in 21st century simulations with interactive carbon cycle, *Earth Syst. Dynam.*, 5, 309–319, <https://doi.org/10.5194/esd-5-309-2014>, 2014.
- 475 [Chen, C., Park, T., Wang, X., Piao, S., Xu, B., Chaturvedi, R.K., Fuchs, R., Brovkin, V., Ciais, P., Fensholt, R., Tømmervik, H., Bala, G., Zhu, Z., Nemani, R.R., and Myneni, R.B.: China and India lead in greening of the world through land-use management, *Nature Sustainability*, 2, 122-129, 2019.](#)
- Chini, L., Hurtt, G., Sahajpal, R., Frohling, S., Klein Goldewijk, K., Sitch, S., Ganzenmüller, R., Ma, L., Ott, L., Pongratz, J., Poulter, B. Land-Use Harmonization 2 update for use in Global Carbon Budget 2019. ORNL DAAC, Oak Ridge, Tennessee, USA. <https://doi.org/10.3334/ORNLDAAC/1851>. 2020b.
- 480
- Chini, L., Hurtt, G., Sahajpal, R., Frohling, S. GLM2 Code (Global Land-use Model 2) for generating LUH2 datasets (Land-Use Harmonization 2). Zenodo (last access July 21, 2020). <http://doi.org/10.5281/zenodo.3954113>. 2020a.
- 485 Ciais, P., Sabine, C., Govindasamy, B., Bopp, L., Brovkin, V., Canadell, J., Chhabra, A., DeFries, R., Galloway, J., Heimann, M., Jones, C., Le Quéré, C., Myneni, R., Piao, S., and Thornton, P.: Chapter 6: Carbon and Other Biogeochemical Cycles, in: *Climate Change 2013 The Physical Science Basis*, edited by: Stocker, T., Qin, D., and Plattner, G.-K., Cambridge University Press, Cambridge, 2013.
- 490 Eyring, V., Bony, S., Meehl, G. A., Senior, C. A., Stevens, B., Stouffer, R. J., & Taylor, K. E. Overview of the Coupled Model Intercomparison Project Phase 6 (CMIP6) experimental design and organization. *Geoscientific Model Development*, 9(5), 1937–1958. <http://doi.org/10.5194/gmd-9-1937-2016>, 2016.
- FAO. FAOSTAT Database. Food and Agriculture Organization of the United Nations, Rome, Italy. Last access on July 28, 2016 from <http://www.fao.org/faostat/en/#data/FO>, 2020a.
- 495
- FAO. FAOSTAT Database. Food and Agriculture Organization of the United Nations, Rome, Italy. Last access on May 9, 2019 from <http://www.fao.org/faostat/en/#data/FO>, 2020b.

- 500 Frieler, K., Lange, S., Piontek, F., Reyer, C.P., Schewe, J., Warszawski, L., Zhao, F., Chini, L., Denvil, S., Emanuel, K. and Geiger, T., 2017. Assessing the impacts of 1.5 C global warming—simulation protocol of the Inter-Sectoral Impact Model Intercomparison Project (ISIMIP2b). *Geoscientific Model Development*. 10: 4321–4345. <https://doi.org/10.5194/gmd-10-4321-2017>
- 505 Friedlingstein, P., Jones, M. W., O'Sullivan, M., Andrew, R. M., Hauck, J., Peters, G. P., Peters, W., Pongratz, J., Sitch, S., Le Quéré, C., Bakker, D. C. E., Canadell, J. G., Ciais, P., Jackson, R. B., Anthoni, P., Barbero, L., Bastos, A., Bastrikov, V., Becker, M., Bopp, L., Buitenhuis, E., Chandra, N., Chevallier, F., Chini, L. P., Currie, K. I., Feely, R. A., Gehlen, M., Gilfillan, D., Gkritzalis, T., Goll, D. S., Gruber, N., Gutekunst, S., Harris, I., Haverd, V., Houghton, R. A., Hurtt, G., Ilyina, T., Jain, A. K., Joetzjer, E., Kaplan, J. O., Kato, E., Klein Goldewijk, K., Korsbakken, J. I., Landschützer, P., Lauvset, S. K., Lefèvre, N.,
- 510 Lenton, A., Lienert, S., Lombardozi, D., Marland, G., McGuire, P. C., Melton, J. R., Metzl, N., Munro, D. R., Nabel, J. E. M. S., Nakaoka, S.-I., Neill, C., Omar, A. M., Ono, T., Peregon, A., Pierrot, D., Poulter, B., Rehder, G., Resplandy, L., Robertson, E., Rödenbeck, C., Séférian, R., Schwinger, J., Smith, N., Tans, P. P., Tian, H., Tilbrook, B., Tubiello, F. N., van der Werf, G. R., Wiltshire, A. J., and Zaehle, S. Global Carbon Budget 2019. *Earth Syst. Sci. Data*, 11, 1783–1838, <https://doi.org/10.5194/essd-11-1783-2019>, 2019.
- 515 Friedlingstein, P., O'Sullivan, M., Jones, M. W., Andrew, R. M., Hauck, J., Olsen, A., Peters, G. P., Peters, W., Pongratz, J., Sitch, S., Le Quéré, C., Canadell, J. G., Ciais, P., Jackson, R. B., Alin, S., Aragão, L. E. O. C., Arneeth, A., Arora, V., Bates, N. R., Becker, M., Benoit-Cattin, A., Bittig, H. C., Bopp, L., Bultan, S., Chandra, N., Chevallier, F., Chini, L. P., Evans, W., Florentie, L., Forster, P. M., Gasser, T., Gehlen, M., Gilfillan, D., Gkritzalis, T., Gregor, L., Gruber, N., Harris, I., Hartung,
- 520 K., Haverd, V., Houghton, R. A., Ilyina, T., Jain, A. K., Joetzjer, E., Kadono, K., Kato, E., Kitidis, V., Korsbakken, J. I., Landschützer, P., Lefèvre, N., Lenton, A., Lienert, S., Liu, Z., Lombardozi, D., Marland, G., Metzl, N., Munro, D. R., Nabel, J. E. M. S., Nakaoka, S.-I., Niwa, Y., O'Brien, K., Ono, T., Palmer, P. I., Pierrot, D., Poulter, B., Resplandy, L., Robertson, E., Rödenbeck, C., Schwinger, J., Séférian, R., Skjelvan, I., Smith, A. J. P., Sutton, A. J., Tanhua, T., Tans, P. P., Tian, H., Tilbrook, B., van der Werf, G., Vuichard, N., Walker, A. P., Wanninkhof, R., Watson, A. J., Willis, D., Wiltshire, A. J., Yuan,
- 525 W., Yue, X., and Zaehle, S.: Global Carbon Budget 2020, *Earth Syst. Sci. Data Discuss.*, <https://doi.org/10.5194/essd-2020-286>, in review, 2020.
- Hansen, M. C., Potapov, P. V., Moore, R., Hancher, M., Turubanova, S. A., Tyukavina, A., Thau, D., Stehman, S. V., Goetz, S. J., Loveland, T. R., Kommareddy, A., Egorov, A., Chini, L., Justice, C. O., Townshend, J. R. G. High-Resolution Global
- 530 Maps of 21st-Century Forest Cover Change. *Science*. 342: 850–853. doi.org/10.1126/science, 2013.
- Hansis, E., Davis, S. J., and Pongratz, J.: Relevance of methodological choices for accounting of land use change carbon fluxes, *Global Biogeochem. Cy.*, 29, 1230-1246, <https://doi.org/10.1002/2014GB004997>, 2015.

- 535 Heinimann, A., Mertz, O., Frolking, S., Egelund Christensen, A., Hurni, K., Sedano, F., Chini, L. P., Sahajpal, R., Hansen, M., Hurtt, G. A global view of shifting cultivation: Recent, current, and future extent. *PLoS ONE*, 12(9), e0184479–21. <http://doi.org/10.1371/journal.pone.0184479>, 2017.
- Houghton, R.A. Terrestrial fluxes of carbon in GCP carbon budgets. *Glob Change Biol*; 26: 3006–3014.
540 <https://doi.org/10.1111/gcb.15050>, 2020.
- Houghton, R. A. and Nassikas, A. A.: Global and regional fluxes of carbon from land use and land cover change 1850–2015, *Global Biogeochem. Cy.*, 31, 456–472, <https://doi.org/10.1002/2016gb005546>, 2017.
- 545 Hurtt, G. C., Frolking, S., Fearon, M. G., Moore, B., Shevliakova, E., Malyshev, S., Pacala, S.W., Houghton, R.A. The underpinnings of land-use history: three centuries of global gridded land-use transitions, wood-harvest, and resulting secondary lands. *Global Change Biology*, 12(1208-1229), 22, 2006.
- Hurtt, G. C., Chini, L. P., Frolking, S., Betts, R. A., Feddema, J., Fischer, G., et al. Harmonization of land-use scenarios for
550 the period 1500–2100: 600 years of global gridded annual land-use transitions, wood harvest, and resulting secondary lands. *Climatic Change*. <http://doi.org/10.1007/s10584-011-0153-2>, 2011.
- Hurtt, G., Chini, L., Sahajpal, R., Frolking, S., Bodirsky, B. L., Calvin, K., Doelman, J., Fisk, J., Fujimori, S., Goldewijk, K., K., Hasegawa, T., Havlik, P., Heinimann, A., Humpenöder, F., Jungclaus, J., Kaplan, J., Krisztin, T., Lawrence, D., Lawrence,
555 P., Mertz, O., Pongratz, J., Popp, A., Riahi, K., Shevliakova, E., Stehfest, E., Thornton, P., van Vuuren, D., and Zhang, X. Harmonization of Global Land Use Change and Management for the Period 850-2015. Version 20201015. Earth System Grid Federation. <https://doi.org/10.22033/ESGF/input4MIPs.10454>, 2019a.
- Hurtt, G., Chini, L., Sahajpal, R., Frolking, S., Bodirsky, B. L., Calvin, K., Doelman, J., Fisk, J., Fujimori, S., Goldewijk, K.,
560 K., Hasegawa, T., Havlik, P., Heinimann, A., Humpenöder, F., Jungclaus, J., Kaplan, J., Krisztin, T., Lawrence, D., Lawrence, P., Mertz, O., Pongratz, J., Popp, A., Riahi, K., Shevliakova, E., Stehfest, E., Thornton, P., van Vuuren, D., and Zhang, X. Harmonization of Global Land Use Change and Management for the Period 2015-2300. Version 20201015. Earth System Grid Federation. <https://doi.org/10.22033/ESGF/input4MIPs.10468>, 2019b.
- 565 Hurtt, G.C., Chini, L., Sahajpal, R., Frolking, S., Bodirsky, B.L., Calvin, K., Doelman, J.C., Fisk, J., Fujimori, S., Klein Goldewijk, K., Hasegawa, T., Havlik, P., Heinimann, A., Humpenöder, F., Jungclaus, J., Kaplan, J., Kennedy, J., Krisztin, T., Lawrence, D., Lawrence, P., Ma, L., Mertz, O., Pongratz, J., Popp, A., Poulter, B., Riahi, K., Shevliakova, E., Stehfest, E.,

- Thornton, P., Tubiello, F.N., van Vuuren, D.P., Zhang, X. Harmonization of Global Land-Use Change and Management for the Period 850-2100 (LUH2) for CMIP6. *Geoscientific Model Development*. 2020.
- 570 Jungelaus, J. H., Bard, E., Baroni, M., Braconnot, P., Cao, J., Chini, L. P., et al. The PMIP4 contribution to CMIP6 – Part 3: The last millennium, scientific objective, and experimental design for the PMIP4 *past1000* simulations. *Geoscientific Model Development*, 10(11), 4005–4033. <http://doi.org/10.5194/gmd-10-4005-2017>, 2017.
- 575 Kaplan, J.O.; Krumhardt, K.M.; Gaillard, M.-J.; Sugita, S.; Trondman, A.-K.; Fyfe, R.; Marquer, L.; Mazier, F.; Nielsen, A.B. Constraining the Deforestation History of Europe: Evaluation of Historical Land Use Scenarios with Pollen-Based Land Cover Reconstructions. *Land*, 6, 91, 2017.
- Kim, H., Rosa, I., Alkemade, R., Leadley, P., Hurtt, G., Popp, A., Vuuren, D., Anthoni, P., Armeth, A., Baisero, D., Caton, E.,
580 Chaplin-Kramer, R., Chini, L., Palma, A., Fulvio, F., Marco, M., Espinoza, F., Ferrier, S., Fujimori, S., Gonzalez, R., Gueguen, M., Guerra, C., Harfoot, M., Harwood, T., Hasegawa, T., Haverd, V., Havlik, P., Hellweg, S., Hill, S., Hirata, A., Hoskins, A., Janse, J., Jetz, W., Johnson, J., Krause, A., Leclere, D., Martins, I., Matsui, T., Merow, C., Obersteiner, M., Ohashi, H., Poulter, B., Purvis, A., Quesada, B., Rondinini, C., Schipper, A., Sharp, R., Takahashi, K., Thuiller, W., Titeux, N., Visconti, P., Ware, C., Wolf, F., Pereira, H. A protocol for an intercomparison of biodiversity and ecosystem services models using harmonized
585 land-use and climate scenarios *Geoscientific Model Development* 11(11), 4537 - 4562. <https://dx.doi.org/10.5194/gmd-11-4537-2018>, 2018.
- Klein Goldewijk, K., Beusen, A., Doelman, J., and Stehfest, E. Anthropogenic land-use estimates for the Holocene - HYDE 3.2, *Earth Syst. Sci. Data*, 9, 927 - 953, 2017.
- 590 Klein Goldewijk, K., Beusen, A., Janssen, P. Long term dynamic modeling of global population and built-up area in a spatially explicit way: HYDE 3.1. *The Holocene* 20:565–573, 2010.
- Klein Goldewijk, K., Beusen, A., van Drecht, G., de Vos, M. The HYDE 3.1 spatially explicit database of human induced land
595 use change over the past 12,000 years. *Global Ecol Biogeogr* 20:73–86, 2011.
- Lawrence, D. M., Hurtt, G. C., Armeth, A., Brovkin, V., Calvin, K. V., Jones, A. D., Jones, C. D., Lawrence, P. J., de Noblet-Ducoudré, N., Pongratz, J., Seneviratne, S. I., Shevliakova, E., The Land Use Model Intercomparison Project (LUMIP) contribution to CMIP6: rationale and experimental design. *Geoscientific Model Development*, 9(9), 2973–2998.
600 <http://doi.org/10.5194/gmd-9-2973-2016>, 2016.

- Le Quéré, C., Peters, G. P., Andres, R. J., Andrew, R. M., Boden, T. A., Ciais, P., Friedlingstein, P., Houghton, R. A., Marland, G., Moriarty, R., Sitch, S., Tans, P., Arneeth, A., Arvanitis, A., Bakker, D. C. E., Bopp, L., Canadell, J. G., Chini, L. P., Doney, S. C., Harper, A., Harris, I., House, J. I., Jain, A. K., Jones, S. D., Kato, E., Keeling, R. F., Klein Goldewijk, K., Körtzinger, A., Koven, C., Lefèvre, N., Maignan, F., Omar, A., Ono, T., Park, G.-H., Pfeil, B., Poulter, B., Raupach, M. R., Regnier, P., Rödenbeck, C., Saito, S., Schwinger, J., Segsneider, J., Stocker, B. D., Takahashi, T., Tilbrook, B., van Heuven, S., Viovy, N., Wanninkhof, R., Wiltshire, A., and Zaehle, S.: Global carbon budget 2013, *Earth Syst. Sci. Data*, 6, 235–263, <https://doi.org/10.5194/essd-6-235-2014>, 2014.
- 610 Le Quéré, C., Moriarty, R., Andrew, R. M., Peters, G. P., Ciais, P., Friedlingstein, P., Jones, S. D., Sitch, S., Tans, P., Arneeth, A., Boden, T. A., Bopp, L., Bozec, Y., Canadell, J. G., Chini, L. P., Chevallier, F., Cosca, C. E., Harris, I., Hoppema, M., Houghton, R. A., House, J. I., Jain, A. K., Johannessen, T., Kato, E., Keeling, R. F., Kitidis, V., Klein Goldewijk, K., Koven, C., Landa, C. S., Landschützer, P., Lenton, A., Lima, I. D., Marland, G., Mathis, J. T., Metzl, N., Nojiri, Y., Olsen, A., Ono, T., Peng, S., Peters, W., Pfeil, B., Poulter, B., Raupach, M. R., Regnier, P., Rödenbeck, C., Saito, S., Salisbury, J. E., Schuster, U., Schwinger, J., Séférian, R., Segsneider, J., Steinhoff, T., Stocker, B. D., Sutton, A. J., Takahashi, T., Tilbrook, B., van der Werf, G. R., Viovy, N., Wang, Y.-P., Wanninkhof, R., Wiltshire, A., and Zeng, N.: Global carbon budget 2014, *Earth Syst. Sci. Data*, 7, 47–85, <https://doi.org/10.5194/essd-7-47-2015>, 2015a.
- 620 Le Quéré, C., Moriarty, R., Andrew, R. M., Canadell, J. G., Sitch, S., Korsbakken, J. I., Friedlingstein, P., Peters, G. P., Andres, R. J., Boden, T. A., Houghton, R. A., House, J. I., Keeling, R. F., Tans, P., Arneeth, A., Bakker, D. C. E., Barbero, L., Bopp, L., Chang, J., Chevallier, F., Chini, L. P., Ciais, P., Fader, M., Feely, R. A., Gkritzalis, T., Harris, I., Hauck, J., Ilyina, T., Jain, A. K., Kato, E., Kitidis, V., Klein Goldewijk, K., Koven, C., Landschützer, P., Lauvset, S. K., Lefèvre, N., Lenton, A., Lima, I. D., Metzl, N., Millero, F., Munro, D. R., Murata, A., Nabel, J. E. M. S., Nakaoka, S., Nojiri, Y., O'Brien, K., Olsen, A., Ono, T., Pérez, F. F., Pfeil, B., Pierrot, D., Poulter, B., Rehder, G., Rödenbeck, C., Saito, S., Schuster, U., Schwinger, J., Séférian, R., Steinhoff, T., Stocker, B. D., Sutton, A. J., Takahashi, T., Tilbrook, B., van der Laan-Luijkx, I. T., van der Werf, G. R., van Heuven, S., Van-demark, D., Viovy, N., Wiltshire, A., Zaehle, S., and Zeng, N.: Global Carbon Budget 2015, *Earth Syst. Sci. Data*, 7, 349–396, <https://doi.org/10.5194/essd-7-349-2015>, 2015b.
- 630 Le Quéré, C., Andrew, R. M., Canadell, J. G., Sitch, S., Korsbakken, J. I., Peters, G. P., Manning, A. C., Boden, T. A., Tans, P. P., Houghton, R. A., Keeling, R. F., Alin, S., Andrews, O. D., Anthoni, P., Barbero, L., Bopp, L., Chevallier, F., Chini, L. P., Ciais, P., Currie, K., Delire, C., Doney, S. C., Friedlingstein, P., Gkritzalis, T., Harris, I., Hauck, J., Haverd, V., Hoppema, M., Klein Goldewijk, K., Jain, A. K., Kato, E., Körtzinger, A., Landschützer, P., Lefèvre, N., Lenton, A., Lienert, S., Lombardozi, D., Melton, J. R., Metzl, N., Millero, F., Monteiro, P. M. S., Munro, D. R., Nabel, J. E. M. S., Nakaoka, S., O'Brien, K., Olsen, A., Omar, A. M., Ono, T., Pierrot, D., Poulter, B., Rödenbeck, C., Salisbury, J., Schuster, U., Schwinger, J., Séférian, R., Skjelvan, I., Stocker, B. D., Sutton, A. J., Takahashi, T., Tian, H., Tilbrook, B., van der Laan-Luijkx, I. T., van

- der Werf, G. R., Viovy, N., Walker, A. P., Wiltshire, A. J., and Zaehle, S.: Global Carbon Budget 2016, *Earth Syst. Sci. Data*, 8, 605–649, <https://doi.org/10.5194/essd-8-605-2016>, 2016.
- 640 Le Quéré, C., Andrew, R. M., Friedlingstein, P., Sitch, S., Pongratz, J., Manning, A. C., Korsbakken, J. I., Peters, G. P., Canadell, J. G., Jackson, R. B., Boden, T. A., Tans, P. P., Andrews, O. D., Arora, V. K., Bakker, D. C. E., Barbero, L., Becker, M., Betts, R. A., Bopp, L., Chevallier, F., Chini, L. P., Ciais, P., Cosca, C. E., Cross, J., Currie, K., Gasser, T., Harris, I., Hauck, J., Haverd, V., Houghton, R. A., Hunt, C. W., Hurtt, G., Ilyina, T., Jain, A. K., Kato, E., Kautz, M., Keeling, R. F., Klein Goldewijk, K., Körtzinger, A., Landschützer, P., Lefèvre, N., Lenton, A., Lienert, S., Lima, I., Lombardozi, D., Metzl, N., Millero, F., Monteiro, P. M. S., Munro, D. R., Nabel, J. E. M. S., Nakaoka, S., Nojiri, Y., Padin, X. A., Peregón, A., Pfeil, B., Pierrot, D., Poulter, B., Rehder, G., Reimer, J., Rödenbeck, C., Schwinger, J., Séférian, R., Skjelvan, I., Stocker, B. D., Tian, H., Tilbrook, B., Tubiello, F. N., van der Laan-Luijkx, I. T., van der Werf, G. R., van Heuven, S., Viovy, N., Vuichard, N., Walker, A. P., Watson, A. J., Wiltshire, A. J., Zaehle, S., and Zhu, D.: Global Carbon Budget 2017, *Earth Syst. Sci. Data*, 10, 405–448, <https://doi.org/10.5194/essd-10-405-2018>, 2018a.
- 650 Le Quéré, C., Andrew, R. M., Friedlingstein, P., Sitch, S., Hauck, J., Pongratz, J., Pickers, P. A., Korsbakken, J. I., Peters, G. P., Canadell, J. G., Arneeth, A., Arora, V. K., Barbero, L., Bastos, A., Bopp, L., Chevallier, F., Chini, L. P., Ciais, P., Doney, S. C., Gkritzalis, T., Goll, D. S., Harris, I., Haverd, V., Hoffman, F. M., Hoppema, M., Houghton, R. A., Hurtt, G., Ilyina, T., Jain, A. K., Johannessen, T., Jones, C. D., Kato, E., Keeling, R. F., Goldewijk, K. K., Landschützer, P., Lefèvre, N., Lienert, S., Liu, Z., Lombardozi, D., Metzl, N., Munro, D. R., Nabel, J. E. M. S., Nakaoka, S., Neill, C., Olsen, A., Ono, T., Patra, P., Peregón, A., Peters, W., Peylin, P., Pfeil, B., Pierrot, D., Poulter, B., Resplandy, L., Robertson, E., Rocher, M., Rödenbeck, C., Schuster, U., Schwinger, J., Séférian, R., Skjelvan, I., Steinhoff, T., Sutton, A., Tans, P. P., Tian, H., Tilbrook, B., Tubiello, F. N., van der Laan-Luijkx, I. T., van der Werf, G. R., Viovy, N., Walker, A. P., Wiltshire, A. J., Wright, R., Zaehle, S., and Zheng, B.: Global Carbon Budget 2018, *Earth Syst. Sci. Data*, 10, 2141–2194, <https://doi.org/10.5194/essd-10-2141-2018>, 2018b.
- 660 Leith, H., Modelling the primary productivity of the world, *Nature and Resources*, UNESCO, VIII, 2, 5–10, 1972.
- Ma, L., Hurtt, G.C., Chini, L.P., Sahajpal, R., Pongratz, J., Frolking, S., Stehfest, E., Klein Goldewijk, K., O’ Leary, D., Doelman, J.C. Global Rules for Translating Land-use Change (LUH2) To Land-cover Change for CMIP6 using GLM2. Geoscientific Model Development. 2020.
- Meehl, G. A., Moss, R., Taylor, K. E., Eyring, V., Stouffer, R. J., Bony, S., and Stevens, B.. Climate model intercomparisons: Preparing for the next phase. *Eos, Trans. Amer. Geophys. Union*, 95, 77, <https://doi.org/10.1002/2014EO090001>, 2014.

670

O'Neill, B. C., Tebaldi, C., van Vuuren, D. P., Eyring, V., Friedlingstein, P., Hurtt, G., Knutti, R., Kriegler, E., Lamarque, J.-F., Lowe, J., Meehl, G. A., Moss, R., Riahi, K., Sanderson, B. M., The Scenario Model Intercomparison Project (ScenarioMIP) for CMIP6. *Geoscientific Model Development*, 9(9), 3461–3482. <http://doi.org/10.5194/gmd-9-3461-2016>, 2016.

675 Ott, L., Hurtt, G. C., Randerson, J. T., Chatterjee, A., Chen, Y., Chini, L. P., Davis, S. J., Hubacek, K., Lee, E., Ma, L., Poulter, B., Rousseaux, C. S., Sun, L., Woodard, D., Zeng, F., Toward integrated seasonal predictions of land and ocean carbon flux: lessons from the 2015-16 El Nino, Abstract B51E-1990 presented at 2018 Fall Meeting, AGU, Washington, D.C., 10-14 Dec., 2018.

680 Popp, A., Calvin, K., Fujimori, S., Havlik, P., Humpenöder, F., Stehfest, E., Bodirsky, B. L., Dietrich, J. P., Doelmann, J. C., Gusti, M., Hasegawa, T., Kyle, P., Obersteiner, M., Tabeau, A., Takahashi, K., Valin, H., Waldhoff, S., Weindl, I., Wise, M., Kriegler, E., Lotze-Campen, H., Fricko, O., Riahi, K., van Vuuren, D. P., Land-use futures in the shared socio-economic pathways. *Global Environmental Change*, 42, 331–345. <http://doi.org/10.1016/j.gloenvcha.2016.10.002>, 2017.

685 Rosa, I., Purvis, A., Alkemade, R., Chaplin-Kramer, R., Ferrier, S., Guerra, C.A., Hurtt, G., Kim, H., Leadley, P., Martins, I.S., Popp, A., Schipper, A.M., van Vuuren, D., Pereira, H.M. Challenges in producing policy-relevant global scenarios of biodiversity and ecosystem services. *Global Ecol Conservation* 22, <https://doi.org/10.1016/j.gecco.2019.e00886>, 2020.

690 [Rosan, T.M., Klein Goldewijk, K., Ganzenmüller, R., O'Sullivan, M., Pongratz, J., Mercado, L.M., Aragao, L.E.O.C., Heinrich, V., von Randow, C., Wiltshire, A.J., Tubiello, F.N., Bastos, A., Friedlingstein, P., and Sitch, S.: A multi-data assessment of land use and land cover emissions from Brazil during 2000-2019. *Environmental Research Letters*, <http://iopscience.iop.org/article/10.1088/1748-9326/ac08c3>, 2021.](https://doi.org/10.1016/j.gloenvcha.2016.10.002)

Sitch, S., Friedlingstein, P., Gruber, N., Jones, S. D., Murray-Tortarolo, G., Ahlström, A., Doney, S. C., Graven, H., Heinze, C., Huntingford, C., Levis, S., Levy, P. E., Lomas, M., Poulter, B., Viovy, N., Zaehle, S., Zeng, N., Arneeth, A., Bonan, G., Bopp, L., Canadell, J. G., Chevallier, F., Ciais, P., Ellis, R., Gloor, M., Peylin, P., Piao, S. L., Le Quéré, C., Smith, B., Zhu, Z., and Myneni, R.: Recent trends and drivers of regional sources and sinks of carbon dioxide, *Biogeosciences*, 12, 653–679, <https://doi.org/10.5194/bg-12-653-2015>, 2015.

700 Wei, Y., S. Liu, D.N. Huntzinger, A.M. Michalak, N. Viovy, W.M. Post, C.R. Schwalm, K. Schaefer, A.R. Jacobson, C. Lu, H. Tian, D.M. Ricciuto, R.B. Cook, J. Mao, and X. Shi. NACP MsTMIP: Global and North American Driver Data for Multi-Model Intercomparison. Data set. Available on-line [<http://daac.ornl.gov>] from Oak Ridge National Laboratory Distributed Active Archive Center, Oak Ridge, Tennessee, USA. <http://dx.doi.org/10.3334/ORNLDAAC/1220>, 2014.

705 [Winkler, K., Fuchs, R., Rounsevell, M., and Herold, M.: Global land use changes are four times greater than previously estimated. *Nature Communications*, 12, 2501. <https://doi.org/10.1038/s41467-021-22702-2>, 2021.](https://doi.org/10.1038/s41467-021-22702-2)

Yue, C., Ciais, P., Houghton, R.A., Nassikas, A.A., Contribution of land use to the interannual variability of the land carbon cycle. *Nat Commun* 11, 3170. <https://doi.org/10.1038/s41467-020-16953-8>, 2020.

710

Formatted: Font: Not Italic

Formatted: Font: Not Italic

Formatted: Font: Not Bold

Publication / Dataset	LUH base version	LUH-GCB simulation years	HYDE base version	HYDE simulation years	FAO agricultural data	FAO wood harvest data
LUH1	LUH1	1500-2005	3.1	10,000 BCE – 2005 CE	1961-2005	1961-2005
GCB 2013	LUH1	1750-2012	3.1	10,000 BCE – 2012 CE	1961-2010	1961-2011
GCB 2014	LUH1	1750-2013	3.1	10,000 BCE – 2013 CE	1961-2010	1961-2012
GCB 2015	LUH1	1750-2014	3.1	10,000 BCE – 2014 CE	1961-2012	1961-2013
GCB 2016*	None					
LUH2	LUH2	850-2015	3.2***	10,000 BCE - 2015 CE	1961-2012	1961-2015
GCB 2017**	LUH2	1750-2016	3.2	10,000 BCE - 2016 CE	1961-2014	1961-2015
GCB 2018	LUH2	1750-2018	3.2	10,000 BCE - 2018 CE	1961-2015	1961-2016
GCB 2019	LUH2	1750-2019	3.2	10,000 BCE - 2019 CE	1961-2015	1961-2017
GCB 2020	LUH2	1750-2020	3.2	10,000 BCE - 2020 CE	1961-2015	1961-2018

Formatted: Font: Not Bold

Formatted: Font: Not Bold

Formatted Table

Formatted: Font: Not Bold

Formatted: Right: -0.06"

Formatted: Font: 10 pt, Not Bold

Formatted: Font: 10 pt

715

720

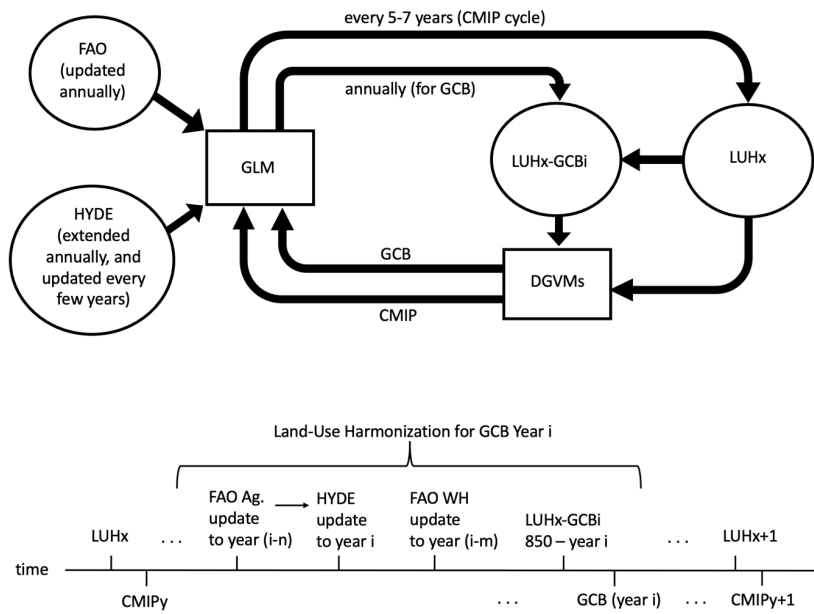
725

Table 1. Input datasets and simulation years for annual LUH-GCB datasets and core LUH products

* LUH data not used while new LUH2 dataset was under development

** First year LUH used for BLUE as well as for DGVMs/uncertainty

*** The specific version of HYDE 3.2 that was used for LUH2 is the August 2016 beta release



735 **Figure 1:** a) Schematic diagram of LUH-GCB annual updates showing interactions and dependencies between core LUH products, LUH-GCB datasets, and annually-updated inputs, b) timeline of LUH-GCB annual updates illustrating the sequence of dataset updates and associated latencies that occur during the creation of a generalized LUHx-GCBi dataset.

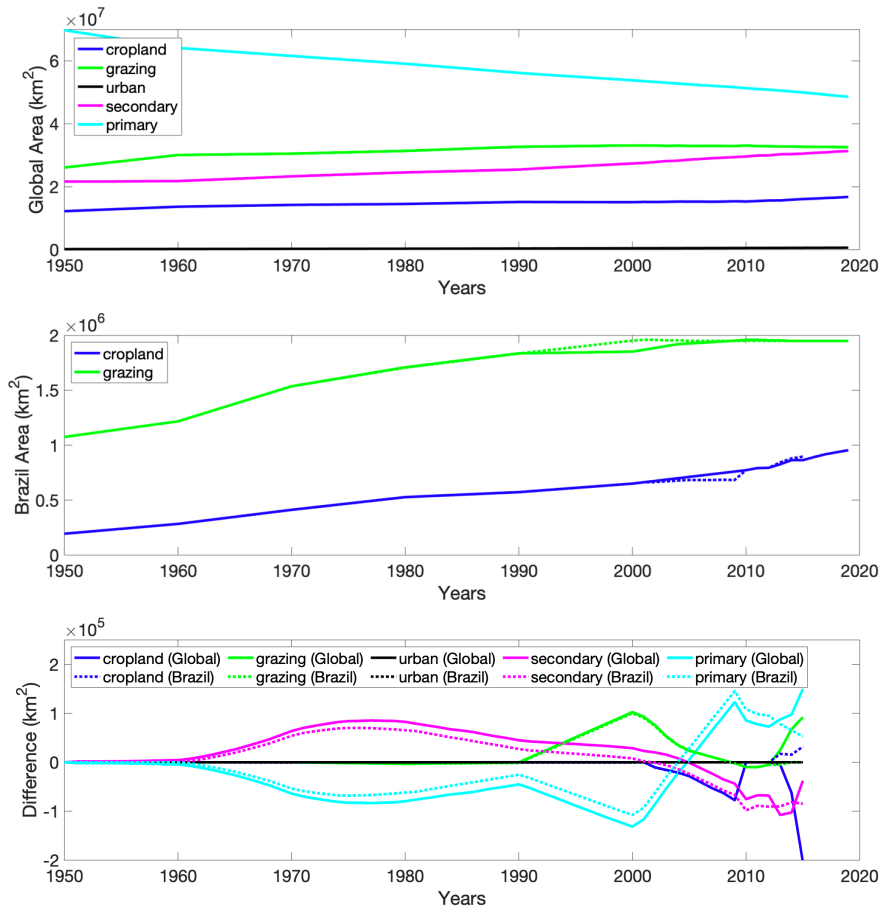


Figure 2. a) Global area of key land-use states in LUH2-GCB2019, b) Area of cropland and grazing land in Brazil in both LUH2-GCB2019 (solid line) and LUH2 v2h (dashed line), c) Differences between global areas (solid lines) and Brazil areas (dashed lines) of key land-use states (LUH2 v2h – LUH2-GCB2019).

740

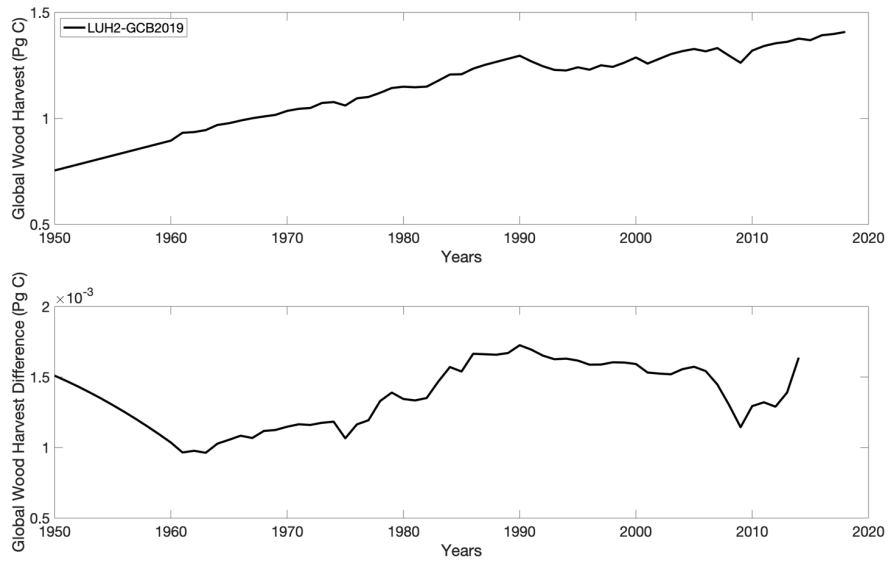
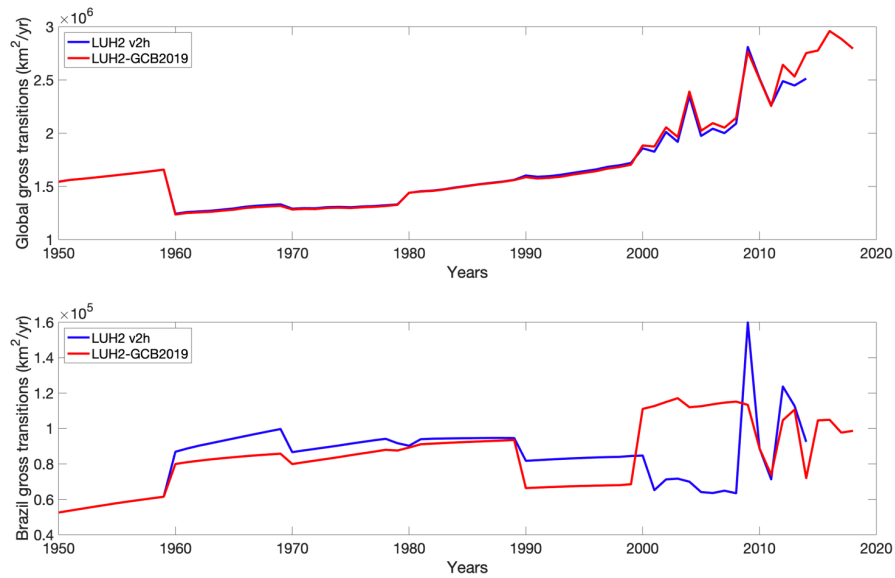
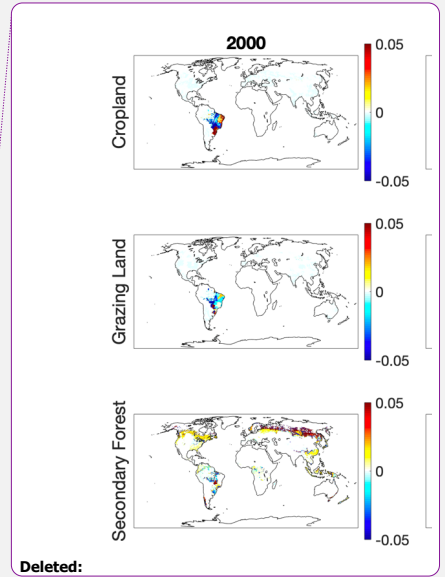
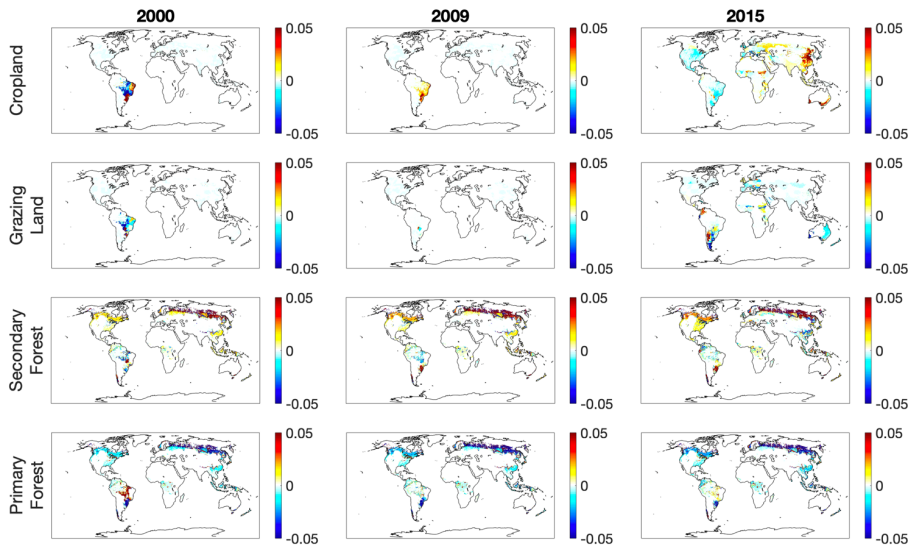


Figure 3. a) Global wood harvest for LUH2-GCB2019, b) difference between global wood harvest of LUH2 v2h and LUH2-GCB2019 (LUH2 v2h – LUH2-GCB2019)



745 **Figure 4.** a) Global and b) Brazil annual gross transitions, for LUH2 v2h and LUH2-GCB2019 for the years 1950-2014/2018



Deleted:

Deleted: of 0.25° grid-cell fractions of

Deleted: and

750 Figure 5. Mapped differences (LUH2-GCB2019 – LUH2 v2h) in fractions of each 0.25° gridcell, for cropland, grazing land, secondary forest, and primary forest in 2000, 2009, and 2015.