



The ADRIREEF database: a comprehensive collection of natural/artificial reefs and wrecks in the Adriatic Sea

Annalisa Minelli¹, Carmen Ferrà^{1*}, Alessandra Spagnolo¹, Martina Scanu¹, Anna Nora Tasseti¹, Carla Rita Ferrari², Cristina Mazziotti², Silvia Pigozzi², Zrinka Jakl³, Tena Šarčević³, Miranda Šimac³, Claudia Kruschel⁴, Dubravko Pejdo⁴, Enrico Barbone⁵, Michele De Gioia⁵, Diego Borme⁶, Emiliano Gordini⁶, Rocco Auriemma⁶, Ivo Benzon⁷, Đeni Vuković-Stanišić⁷, Sandi Orlić⁸, Vlado Frančić⁹, Damir Zec⁹, Ivana Orlić Kapović⁹, Michela Soldati¹⁰, Silvia Ulazzi¹⁰, Gianna Fabi¹

¹CNR-IRBIM, Largo Fiera della Pesca 1, 60125 Ancona (Italy)

²ARPAE (Regional Agency for Prevention, Environment And Energy In Emilia Romagna), Via Po 5, 40139 Bologna (Italy)

³SUNCE (Association for Nature, Environment and Sustainable Development), Obala Hrvatskog Narodnog Preporoda 7/III, 21000, Split (Croatia)

⁴University of Zadar, Mihovila Pavlinovica 1, 23000 Zadar (Croatia)

⁵ARPA Puglia (Regional Agency for Environmental Prevention and Protection of the Puglia Region), Corso Trieste 27, 70126 Bari (Italy)

⁶National Institute of Oceanography and Applied Geophysics - OGS, Borgo Grotta Gigante 42/C, 34010 Sgonico (Italy)

⁷RERA (Public Institution RERA SD for Coordination and Development of Split Dalmatia County), Domovinskog Rata 2, 21000 Split (Croatia)

⁸Ruder Bošković Institute, Bijenicka 54, 10000 Zagreb (Croatia)

⁹University of Rijeka, Faculty of Maritime Studies, Studentska 2, 51000 Rijeka (Croatia)

¹⁰Municipality of Ravenna, Piazza del Popolo 1, 48121, Ravenna (Italy)

Correspondence to: Carmen Ferrà (carmen.ferravega@cnr.it)

Abstract. The paper presents a database of information on wrecks, natural and artificial reefs located in the Adriatic Sea, collected within the framework of the Interreg Italy-Croatia project ADRIREEF - Innovative exploitation of Adriatic Reefs in order to strengthen Blue Economy. The data collection lasted more than one year and comprehended three surveys and a wide literature review. After being collected, data were harmonized and, where possible, made machine-readable. Moreover, data were widely metadated, published in a webGIS (<https://adrireef.github.io/sandbox3/>) and shared as Open Data in EMODnet (European Marine Observation Data network) through the SEANOE repository (Ferrà et al., 2020; <http://doi.org/10.17882/74880>). The database is composed of 285 three-dimensional records, each one described by 51 attributes. Parameters are clustered in four main groups: identification, reef and site description, management/exploitation information. Available literature (scientific and/or grey) was also included in the database and linked to the corresponding site.



1 Introduction

In the Blue Innovation concept, the attractiveness and possible use of existing marine resources which are not yet fully exploited is relevant to promote sustainable economic development (Vogt, 1998; Orams, 2002; Cater and Cater, 2007; Kiper, 2013; Sakellariadou and Kostopoulou, 2015; Nurhayati et al., 2019) and redefine marine fisheries (Pauly, 2018; Stead, 2018). In this context, the recognition of less known and appreciated natural reefs (NRs), existing artificial structures (e.g. artificial reefs, rig-to-reefs; ARs) and wrecks could also be a successful way to pursue Blue Growth as all these sites might be suitable places for developing or improving sustainable activities such as fishing (both recreational and professional), nautical tourism, diving and aquaculture (Wilhelmsson et al., 1998; Stolk et al., 2007; Uyarra et al., 2009; Needham, 2010; Edney, 2011; Spalding et al., 2017; Alempijević and Kovačić, 2019). Therefore, qualitative and quantitative information about the heritage presence and already existing human activities ~~are~~^{is} fundamental to pursue an ecosystem-based sea use management according to the Marine Spatial Planning Directive (EU Directive 2014/89/UE; Douvere, 2008; Gilliland and Laffoley, 2008). As MSP is based on the three pillars for sustainable development – social, economic and environmental – its implementation will facilitate in turn the enforcement of the Marine Strategy Framework Directive (MSFD, European Commission, 2008) and the achievement of Good Environmental Status (GES).


~~Based~~^{Based} on the above considerations, this paper presents a comprehensive collection of 285 natural reefs, artificial reefs and wrecks located in the Adriatic Sea, resulting from the joint effort of Italian and Croatian partners participating in the Interreg Italy-Croatia project ADRIREEF (Innovative exploitation of Adriatic Reefs in order to strengthen blue economy, <https://www.italy-croatia.eu/web/adrireef>) aimed at assessing the potentiality of reefs in the Adriatic Sea in order to strengthen the Blue Economy.

An analogous attempt of inventory was made on intentionally sunk shipwrecks to serve as ARs over six continents (Ilieva et al., 2019). Anyway, no wreck was signalled in the Adriatic Sea, whereas available literature (Pivetta et al., 2012) and our search highlighted the occurrence of several accidentally sunken ships which, anyway, act as artificial habitats. Similar attempts to geolocalize ARs and wrecks were made along the national coasts and offshore waters of Florida and Alabama (U.S.A.), by querying municipalities about the deployment of the reefs (U.S. Fish and Wildlife Service, Wildlife & Sport Fish Restoration Program, <https://www.fws.gov/wsfrprograms/>) as well as in the Gulf of Mexico (Alabama Marine Resources Division, <https://www.outdooralabama.com/saltwater-fishing/artificial-reefs>). The latter dataset reports all the submerged structures (including ARs, rig-to-reefs and wrecks) ~~relying on~~ⁱⁿ the Gulf of Mexico area, but only name, type of reef and coordinates are publicly available. Lastly, some efforts were done concerning NRs within the Reefbase project, which helped to localize and concisely qualify ~10000 reefs on a global scale (Oliver et al., 2002).


Another attempt made to identify aquaculture zones in the Adriatic Sea, also through a webGis application (<http://www.caps2.eu/caps2/>), enhances zones of production, harvesting and farms (Tara et al., 2017), but does not include some Italian reefs dedicated to this practice which are present in our database.



the

The collection work presented here is thus an ambitious attempt to gather in a single dataset location, geometries, history and detailed characteristics of natural reefs, artificial reefs and wrecks existing in the Adriatic Sea. It required a deep knowledge on the overall status of the sites, their history, past and ongoing research and monitoring programs carried out to characterize their ecological features as well as on their current exploitation level. In this perspective, the key exercise in Activity 1 of Work Package 3 of the ADRIREEF project was to obtain a classification of NRs, ARs and wrecks occurring in the cooperation area and provide a map of these sites from different perspectives.  The result is an interactive map and an Open Access detailed dataset (Ferrà et al, 2020) published on EMODnet whose contents are available for any user and purpose.

2 Data mining

Starting from an existing own  database of the Adriatic artificial reefs, CNR-IRBIM coordinated the data collection activity to improve it by developing and sharing among the ADRIREEF partners three online questionnaires on NRs, ARs and wrecks (Appendix A, B and C, respectively). An initial review of available literature and data was carried out to identify the necessary information on NRs/ARs and wrecks to be required. ^{The} Questionnaires were structured in such a way ^{as} to obtain a unique database for the two reef typologies and wrecks, including physical, ecological and economic aspects and allowing to classify elements according to their characteristics. Given the importance of collecting answers quickly and having a structured and homogeneous database, it became essential to use easy online tools and limit the possibility of free answers by proposing multiple-response questions (^{e.g.} ~~i. e.~~ Google Forms application; <https://www.google.com/forms/about/>).

Wrecks were included as a specific category and deserved a dedicated set of questions since they were defined within the project as accidentally-sunken artificial structures which are attractive for some economic activities (i.e., diving and recreational fishing).


The collected information was used to create the final ADRIREEF database which fed, in turn, a webGis application allowing the visualization of reefs and wrecks on an interactive map and their selection basing on running queries.

~~—~~ Projects' partners (PPs) were surveyed and answers were harmonized to obtain a consistent database. New features were defined and used as categories for the elements' classification and/or for the webGis application. Finally, all data properly checked and harmonized were assembled and used to populate the database.

2.1 Literature and ~~available~~ data review

The review of existing literature took into account European environmental databases (<https://www.eea.europa.eu/data-and-maps>, https://ec.europa.eu/environment/nature/natura2000/data/index_en.htm), research projects carried out by CNR-IRBIM and other entities, scientific publications and grey literature. Based on the results of the review and expert knowledge, existing gaps in the information of already known reef sites ^{and} ~~ad~~ wrecks were identified.




With regard to ARs, a large part of inputs came from the existing CNR-IRBIM database of artificial habitats in Italy, established in 2009 within the Italian Artificial Habitat Group of the Italian Society of Marine Biology (Fabi et al., 2011; Fabi et al., 2015; <http://www.habitatartificiali.irbim.cnr.it>) and containing more than 500 bibliographic references and information on 80 Italian artificial habitats. Bibliographic references included scientific publications and grey literature on artificial habitats such as harbours, breakwaters, fish aggregating devices (FADs), offshore platforms and ARs since 1967. By checking this database, it was possible to obtain a list of  studies regarding the Adriatic ARs published between 1977 and 2017. Conversely, a similar literature heritage was not present for NRs and wrecks.

2.2 Questionnaire design

The analysis of the collected information ~~arose~~ ^{indicated} the need of improving existing data especially on NRs and wrecks. As ARs and NRs have completely different features, it was decided to develop two distinct questionnaires. A third questionnaire was developed for wrecks as they have peculiar characteristics. All questionnaires were built in a systematic way with the aims of (i) investigating the reefs' and wrecks' suitability for Blue Economy purposes and identifying those answers that would help to achieve this target; (ii) facilitating experts' participation in the poll by ordering questions into a logical structure. The identification of the person/s filling in the questionnaires was considered relevant to collect consistent information and have a contact person in case of missing data. Moreover, numerical information (distances, measures, coordinates) were asked in specific measurement units to add collected data directly to the database avoiding transformations.

2.2.1 Identification of required information

Natural and artificial reefs

~~Some questions were asked~~  ~~Interrogations about reefs' characteristics that could influence their suitability for sustainable exploitation were posed.~~

- Which is the reef and where is it located?
 As a baseline, data regarding the identification of a reef are needed, therefore name and location (in WGS84 Coordinate Reference System and Decimal Degrees) of the reef were required.
- Which are the main characteristics of the area where the reef is located?
 The environmental characteristics of the area where a reef is located may influence its possible exploitation as well as its attractiveness to perform some activities, hence the following features were considered: minimum distance to the coast (km); typology of the surrounding seabed; ~~the~~ presence of meadows; important biocoenoses, alien and protected species (in case of NRs); possible protection level applied to the area (in case of NRs).
- Which are the physical features of the reef?
 The reefs' physical features themselves may also influence its potential use, especially for ARs, which are handmade constructed and designed for specific scopes. To answer this fundamental question, multiple information are needed: the typology of the reef; reef bottom depth (m); reef edge (in meters, for NRs); spatial extension of the reef (m²); the



original of the reef (for NRs); the material used for the reef construction (for ARs); structural design of the reef (for ARs, where it is necessary to know type and number of modules/structures put in place and their layout).

- Is the reef already managed and/or exploited and/or could it be ^{the} site for new activities?

The actual use of a reef and/or the scope for which it was built, in the case of ARs, can limit the development of further activities, thus such information is crucial to identify possible synergies and conflicts with additional potential users. At the same time, the original purpose of an artificial reef turns out to be a key information for better understanding monitoring and surveillance programs, management plans and possible grants taking place in the area, as those could also limit or benefit future uses. Therefore, the following information were requested: scope/s for which an AR was built; if the reef is managed (for both NRs and ARs) and, if yes, who is the management entity; if a monitoring program is already in place (for both NRs and ARs) and, if yes, its duration and the investigations carried out; if the reef area is subjected to grant or surveillance service (only for ARs). Furthermore, questions regarding available data (scientific publications, grey literature, monitoring data) were added to the questionnaires, as they could help for future research purposes.

Wrecks

Either accidentally or purposely sunken shipwrecks are full-fledged artificial structures even though they cannot be considered as actual artificial reefs. Therefore, they were included into a specific category sharing some information with the reefs and integrating some extra information about the physical features of wrecks.

Shared information concern (i) wreck identification (location and name), (ii) characterization of the surrounding area (distance from the coast, type of surrounding seabed, presence of meadows), (iii) physical features of the wreck (material, bottom depth and wreck edge), (iv) exploitation and protection of the wreck (exploitation, protection and management of the site, if existing). Extra information asked to the partners were: weight of the wreck (tons), total area of the footprint (m^2), total volume of the shipwreck (m^3) and known dimensions (length, width, height in meters).

2.3 Harmonisation and construction of the database

Firstly, all data collected from questionnaires were screened to delete duplicates and identify incomplete entries and missing information, ~~thus making an evaluation of~~ ^{thus making it impossible to evaluate} a reef for Blue Economy purposes ~~impossible~~. For these missing records, a data integration was asked to the contact person.

Data collected from questionnaires were then assembled together with those already contained in the CNR-IRBIM database and harmonized, as some answers were not in line with the requirements. Moreover, geolocations of reefs were inspected in a GIS environment and, when those were inconsistent, clarifications were asked.

Once data control and harmonization were completed, a preliminary analysis and classification of the Adriatic reefs was performed and query filters of the webGis application were identified. Once criteria for reef classification and filters to be applied in the webGis application were definitely agreed with PPs, the ADRIREEF database was finalized.



The final database counted ~~for~~ 51 columns, 48 of them derived by the questionnaires and 3 created by the database manager (Type of reef, Country, Region). Of these fields, 10 were used as filters in the webGis application and/or for the reefs' classification while the remaining 41 as part of technical information sheets.

3 Database structure and geographical coverage

The database counts 285 three-dimensional elements (Latitude/Longitude coordinate and bottom depth), described by 51 parameters and divided into 129 natural reefs, 47 artificial reefs and 109 wrecks located in the Adriatic Sea falling into Italian, Croatian and International waters (Table 1).

All artificial reefs and most of wrecks fell within the Italian territorial waters, while the majority (79%) of natural reefs was located within the Croatian ones. The presence of almost all the natural reefs on the eastern side of the studied area is mainly due to the geological morphology of the Adriatic basin (Stefanon, 1972), while the complete absence of artificial reefs on the same side is currently due to Croatian legal constraints. It is worth noting that the number of wrecks reported in the Croatian waters is somewhat underestimated. This fact is due to the lack of basic information about several wrecks (e.g. lack of exact position of the shipwreck, which did not allow to place it in the map), so it was decided to keep into the database only those with adequately detailed information. It is also worthy to note that, given the great occurrence of rocky substrates along the Croatian coast, it was agreed within the ADRIREEF Consortium to identify homogeneous areas and map each of them as a single natural reef (Zec et al., 2019).

	Croatian waters	Italian waters	International waters	Total
Artificial Reefs	-	47	-	47
Natural Reefs	102	27	-	129
Wrecks	9	87	13	109
Total	111	161	13	285

Table 1: Adriatic reefs and wrecks by typology and country.


The geographical bounding box delimiting  studied area is individuated by the coordinates: (N, S, E, W) = (46.0546, 39.4115, 20.0239, 11.7390), expressed in decimal degrees and Coordinates Reference System WGS84. The database is available ^{as} ~~in~~ a unique Comma Separated Values (CSV) file.

Table 2 summarizes the structure of the ADRIREEF database specifying the parameters required for each new element: current name, relative column name, unit of measure, origin of the data (if they come directly from questionnaires or have been created by the database manager) and possible applicability restrictions. Table 2 also reports, for each parameter, the group it belongs to. As mentioned in paragraph 2.2.1, Group no. 1 corresponds to reef identification and geolocation information, Group no. 2





contains parameters summarizing the characteristics of the area hosting the reef or wreck, Group no. 3 concerns aspects of the reefs/wrecks that may also have an effect on its usage, Group no. 4 includes parameters about the present and/or possible future reef or wreck exploitation.

Column name	Description	Group	Unit of measure	Origin of the data	Applicability restriction
type	type of reef/wreck	1		DB manager	
country		1		DB manager	
region		1		DB manager	
location	reference city or zone for the reef/wreck	1		DB manager	
name	common name of the reef/wreck	1		Questionnaires	
latitude		1	[decimal degrees]	Questionnaires	
longitude		1	[decimal degrees]	Questionnaires	
year_deployment	year of reef deployment/wreck sink	1		Questionnaires	for artificial reefs and wrecks only
year_modification	year of eventual modification	1		Questionnaires	for artificial reefs only
min_depth_m	bottom depth altitude	2	[m]	DB manager	
depth_m	depth range covered by the structure	2	[m]	Questionnaires	
reef_edge_m	height of the structure	2	[m]	Questionnaires	for natural reefs only
min_dist_km	minimum distance from the coastline	2	[km]	Questionnaires	
surrounding_seabed	surrounding seabed sedimentary composition	2		Questionnaires	
meadows	presence of meadows	2		Questionnaires	
reef_typology	reef typology	3		Questionnaires	for natural reefs only
structure_wreck	type of wreck	3		Questionnaires	for wrecks only
material	material composing the reef	3		Questionnaires	for artificial reefs only
arrangement_modules	global arrangement of modules composing the reef	3		Questionnaires	for artificial reefs only



origin_reef	origin of the reef	3		Questionnaires	for natural reefs only
total_area_sqm	total footprint area of the reef	3	[sqm]	Questionnaires	for natural and artificial reefs only
total_volume_cubm	total volume of the reef	3	[cubm]	Questionnaires	for artificial reefs only
n_oases	number of oases, composed by structures	3		Questionnaires	for artificial reefs only
dist_between_oases_m	linear distance between oases	3	[m]	Questionnaires	for artificial reefs only
dimens_oases_sqm	footprint area of the oases	3	[sqm]	Questionnaires	for artificial reefs only
type_structures	type of structures present in the reef, composed of modules	3		Questionnaires	for artificial reefs only
n_structures	number of structures present in the reef	3		Questionnaires	for artificial reefs only
dim_structures_m	relevant dimensions of the structures of the reef	3	[m]	Questionnaires	for artificial reefs only
dist_between_structures_m	linear distance between structures of the reef	3	[m]	Questionnaires	for artificial reefs only
modules_shape	shape of the modules composing the structures of the reef	3		Questionnaires	for artificial reefs only
n_modules	number of modules composing the structures of the reef	3		Questionnaires	for artificial reefs only
dist_between_modules_m	linear distance between modules composing the structures of the reef	3	[m]	Questionnaires	for artificial reefs only
dimension_leng_width_heigh_m	dimensions L H W of the reef/wreck	3	[m, m, m]	Questionnaires	for artificial reefs and wrecks only
weight_or_displacement_tons	weight or displacement of the wreck	3	[tons]	Questionnaires	for wrecks only
experimental_professional	describes the type of exploitation, if professional or experimental, of the reef	4		Questionnaires	for artificial reefs only
scope	describes original conception scopes of the reef	4		Questionnaires	for artificial reefs only
exploitation	current exploitation of the reef/wreck	4		Questionnaires	
possible_exploitation	potential exploitation of the reef/wreck	4		Questionnaires	
observations	additional observations	3		Questionnaires	for wrecks only
biocoenosis	presence (and types, if available) of	2		Questionnaires	for natural reefs



	biocoenosis				only
alien_species	presence (and names, if available) of alien species	2		Questionnaires	for natural reefs only
protected_species	presence (and names, if available) of protected species	2		Questionnaires	for natural reefs only
protected_area	presence of a protected area where the reef is placed	2		Questionnaires	for natural reefs only
management_prog_Y_N	existing of a management program insisting on the reef/wreck	2		Questionnaires	
management_body	name of the management body of the reef/wreck (if applicable)	2		DB manager	
concession_area_Y_N	presence of a concession area insisting on the reef/wreck	2		Questionnaires	for artificial reefs and wrecks only
surveillance_service	presence (and name, if available) of a surveillance service on reef/wreck	2		Questionnaires	
current_monitoring_program_Y_N	presence of a current monitoring program on reef/wreck	2		Questionnaires	
monitoring_programs	present or past monitoring program insisting on the reef/wreck	2		Questionnaires	
available_data	eventually available data related to the reef/wreck	-		Questionnaires	
available_literature	available literature, scientific or grey	-		Questionnaires	

Table 2: Column name, the current name of the parameter, type of parameter, unit of measure, origin of the information and eventual applicability restrictions.

4 Data interrogation and visualization

With the purpose of better exploiting, representing and filtering data, a ~~webGis~~^{webGIS} was created enabling the contemporary filtering (where applicable) of more than one of the following selected attributes:

- Type of element;
- Country;
- Minimum depth of the reef/wreck;
- Distance from the coastline;
- Usage of the reef/wreck;
- Reef typology (for natural reefs);
- Reef material (for artificial reefs).



URL

The webGis main page is reachable at the address: <https://adriareef.github.io/sandbox3/> and it is composed of two user-friendly windows (Fig. 1), one reporting all available data filters (left side) and the other one (right side) showing the map where points, identifying elements, are divided by colour in NRs (green), ARs (blue) and Wrecks (red). Hovering on an element with the mouse, its Name and Location appear in the left bottom corner of the map.

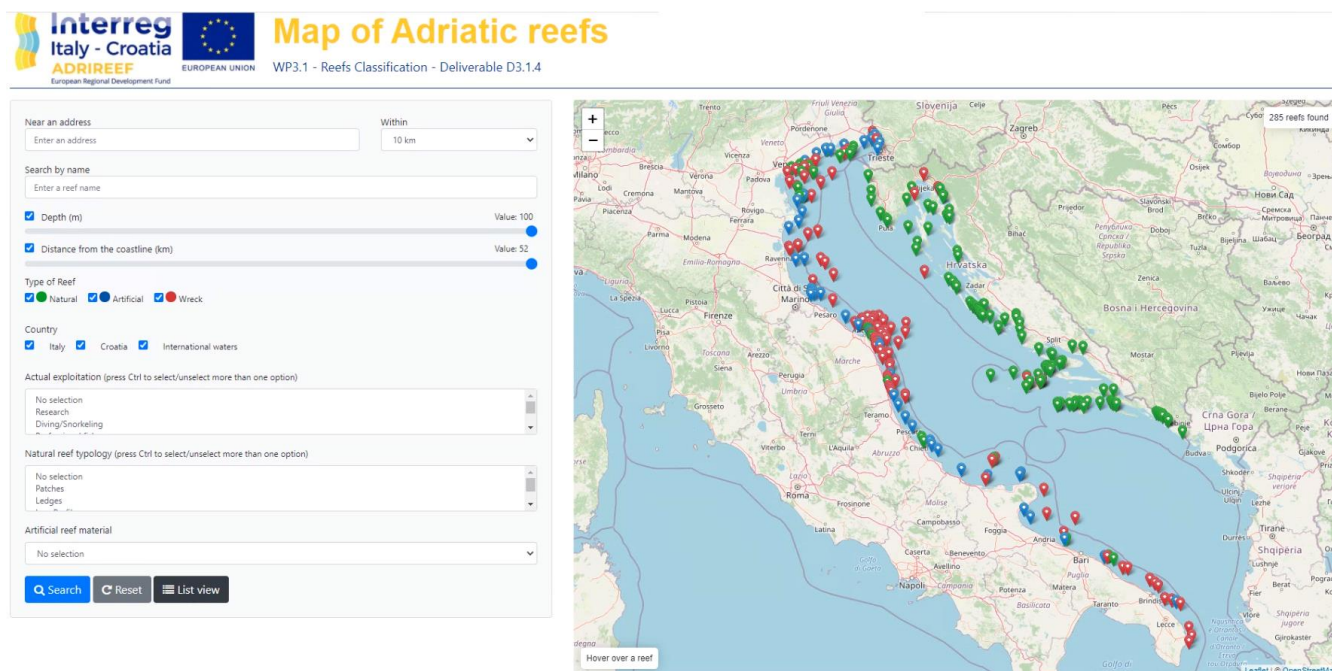


Figure 1: The webGis interface. On the left side: the filters window. On the right side: the map window with hover function (bottom left) and the total number of identified elements (top right). Basemap credits: © OpenStreetMap contributors 2020. Distributed under a Creative Commons BY-SA License

The total number of currently visualized elements is reported at the top right of the map. Moreover, when an element is clicked, a pop-up window appears showing the associated relevant information (Fig. 2). From this pop-up, it is possible to print out information regarding the selected element in PDF format. From the main page, it is also possible to access to the “List view” that shows, for the visualized elements, some common information ~~through~~ ^{throughout} natural, artificial reefs and wrecks (Fig. 3). The number of visualized elements, in the top right corner of the map view, is updated accordingly to the output of data filtering operations.

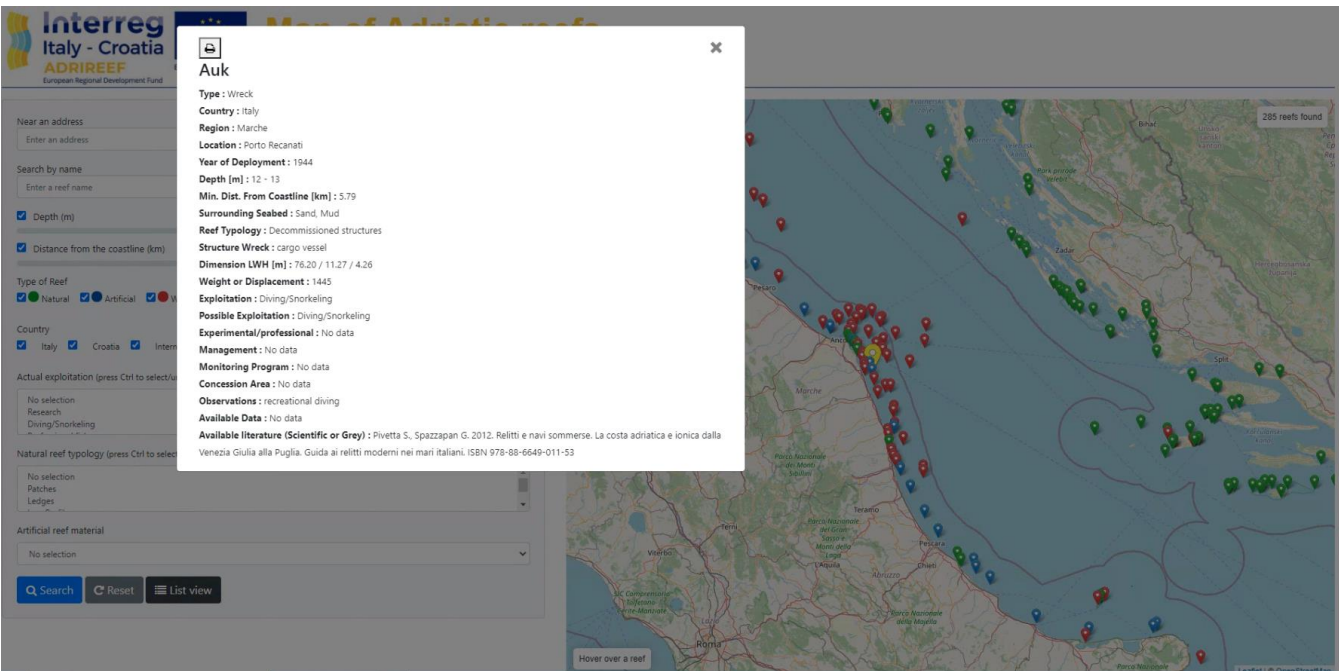


Figure 2: Example of a pop up that appears once an element is clicked. Basemap credits: © OpenStreetMap contributors 2020. Distributed under a Creative Commons BY-SA License



Figure 3: List view. Once elements are selected, it is possible to obtain some common information by clicking the appropriate button.



From a technical point of view, data were entered in .csv format, then transformed in JSON objects as “Collection of Features” class, with prototype (generic) and object (specific) capabilities. For each element, an integer and consecutive identification number was assigned by default. The interactive map has been published using the GitHub Pages extension (<https://pages.github.com/>), which represents an easy and rapid way to make information ^{quickly} ~~soon~~ available online. The base map coming from the open-source cooperative geographical project ^{OpenStreetMap} ~~Open Street Map~~ (<https://www.openstreetmap.org/>) and the Nominatim package for geocoding operations (<https://nominatim.openstreetmap.org/>) were used. The whole infrastructure is based on Searchable Map Template – CSV project (<https://github.com/datamade/searchable-map-template-csv>).

5 Data analysis

Data contained in the database can be analysed in many different ways and for different purposes. For example, Figure 4, representing the wrecks’ sink and the artificial reefs’ deployment on time (excluding missing information elements), shows that until the 2000s the majority of artificial structures existing in the Adriatic Sea were represented by wrecks, most of which accidentally sunken. Afterwards, almost all the manmade structures deployed on the seabed were purposely constructed artificial reefs.

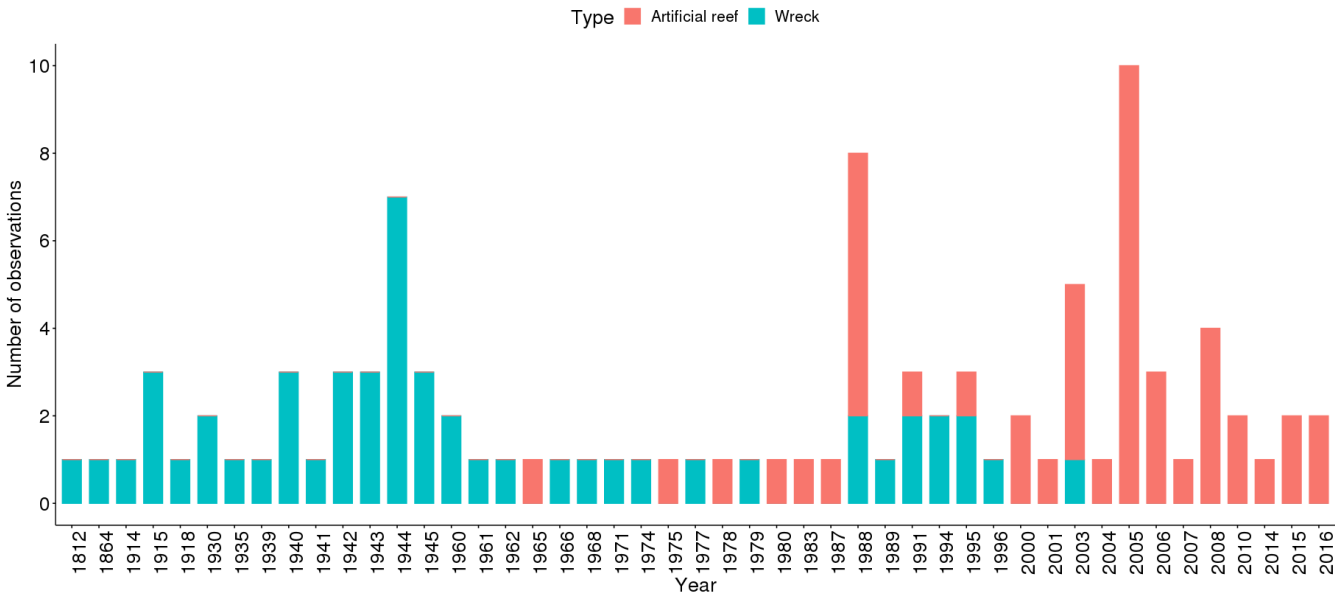


Figure 4. Artificial reefs and wrecks by year of deployment.



Another interesting example of analysis that can be performed on ^{the} data is the evaluation of the number of natural reefs subjected to any form of protection. Again, after deduction of “No data”, it is possible to identify 31 Natura 2000 sites, 12 Protected areas, 4 Natural reserves and 11 National parks (Fig. 5) with an overlapping at some sites. Figure 5 also shows how NRs are distributed in these categories through Italian and Croatian waters. Coupling this graph with the information contained in Table 1, it results that almost the totality of the Italian natural reefs is subjected to some form of protection, while only half of the Croatian ones are under preservation constraints.

Also, the 3D representation of the sites can be useful for ^{dissemination} ~~divulgate~~ purposes. For example, in Figure 6 (A) all reefs and wrecks are reported over a bathymetric map of the Adriatic Sea. A section of the Tremiti Islands (Apulia, Italy), connecting three observations of the database is reported in the zoom (B).

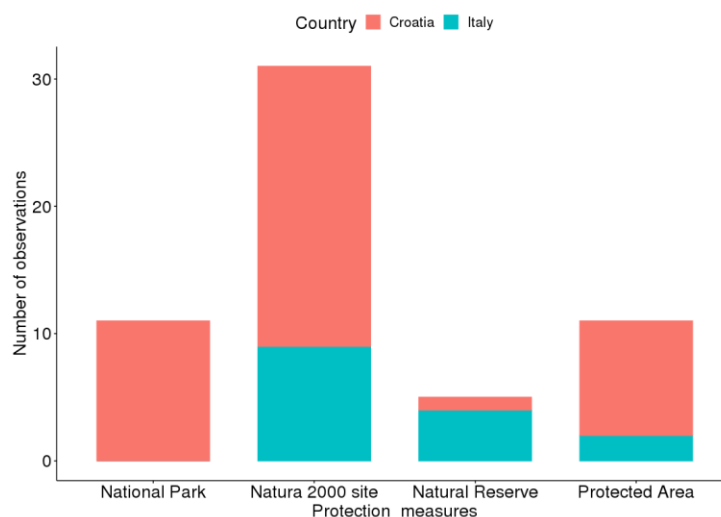


Figure 5. Protection measures insisting on Natural Reefs both in Croatia and in Italy.

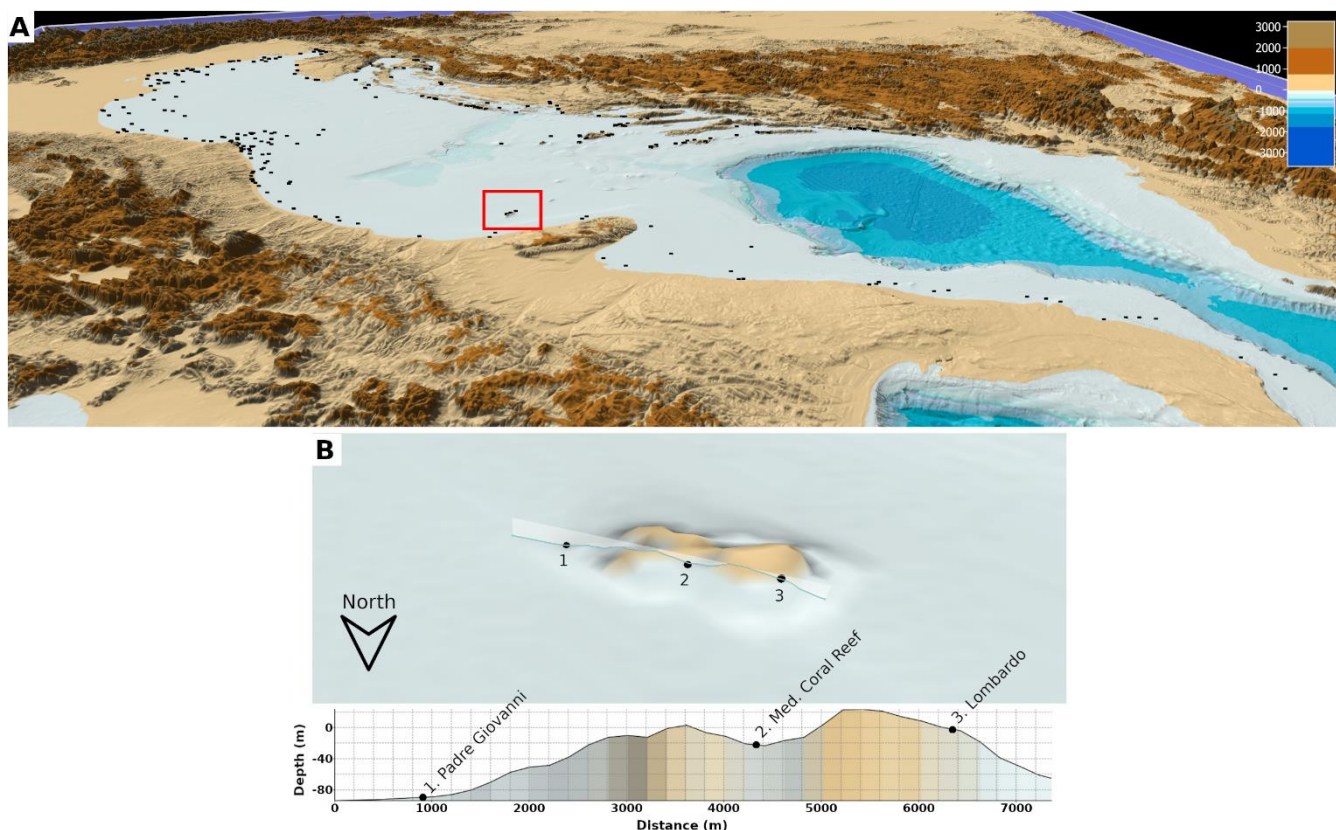


Figure 6. A 3D visualization of the spatial distribution of natural reefs, artificial reefs and wrecks in the Adriatic Sea (A). In the red square, the area concerning the zoom reported below. A view of Tremiti Islands and the vertical terrain section from left to right side crossing three elements (B): Padre Giovanni and Lombardo wrecks (points no. 1 and 3) and Mediterranean Mesophotic Coral Reef (point no. 2).

6 Data availability

The database (Ferrà et al., 2020) is currently available for download from EMODnet (European Marine Observation Data network, Novellino et al., 2015) through the SEANOE (<https://www.seanoe.org/>) repository and it is reachable at the following URL address: <https://doi.org/10.17882/74880>. EMODnet was chosen for two main reasons: it ensures long-term data availability and has increasingly become a reference point for all available European marine data (Martín Míguez et al., 2019). In fact, the platform was financed in the framework of EU's Integrated Maritime Policy definition (Commission of the European Community, 2007) to unlock existing but fragmented and hidden marine data and make them freely accessible for a wide range of users (Calewaert et al., 2016), while respecting FAIR data management principles (Findable, Accessible, Interoperable, Reusable; Wilkinson et al., 2016). In this way, an invaluable heritage of marine data was collected and all data uploaded in EMODnet are indexed in Web Of Science. The database was released under Creative Commons Attribution license (CC-BY, v. 4.0, <https://creativecommons.org/licenses/by/4.0/deed.it>)



7 Conclusions

The data collection work and publication represent an unprecedented, consistent and robust recognition of the reefs and wrecks in the Adriatic Sea. The database fully accomplished the purposes for which it was developed as it represents a comprehensive collection providing a well-detailed state of the art and some hints on possible/future exploitation of reefs and wrecks in this geographical zone.

Indeed, the collected information can be useful for different purposes, from spatial management, to the strengthening of some economic activities and/or development of new ones taking into account the local environmental features.

Knowing the environmental status and current exploitation level of reefs located in a specific geographical area is in fact fundamental to identify potential additional ecosystem services that those reefs can provide and, consequently, develop sustainable economic activities with subsequent positive impacts on the local communities (Costanza et al., 2014). In addition, from the research point of view, a comprehensive database like the one presented here could be a starting point for the implementation of ecological studies where the information is still scarce or lacking as well as of monitoring programmes aimed at evaluating the impact of some economic activities (e.g., tourism) on sensitive habitats.

Lastly, the interactive map represents a tool that allows, through the simultaneous usage of different filters, to highlight and quantify particularly interesting situations in a user-friendly and quick manner, so to be also easily handled by the wide public. It could be, for example, used by tourists to identify suitable and less known sites for recreational activities such as snorkelling, diving and sailing.

~~In the~~ overall, the provided collection can be helpful to increase visibility and attractiveness of reefs and wrecks existing in the Adriatic Sea while increasing awareness of both policy makers and citizens towards the need of managing and exploiting these sites in a sustainable way in order to assure their preservation over time.

The general perception derived from an overall evaluation of the collected data is that, in the Adriatic context, reefs and wrecks still represent an underestimated environmental heritage that, if adequately preserved and promoted, could provide in the near future new opportunities for developing activities in line with the Blue Economy.



Appendices

Appendix A: Natural Reefs Questionnaire

1. Name and Surname:
2. Occupational qualification and workplace:
3. Name of the reef:
4. Location of the reef:
5. Geographical coordinates Latitude (WGS84 DD.DD. e.g. 43.023N):
6. Geographical coordinates Longitude (WGS84 DD.DD. e.g. 13.123N):
7. Reef bottom depth (m) (If it is in a range, please specify the max and min):
8. Reef edge (m):
9. Minimum distance from the coast (km):
10. Total area occupied by the Natural Reef (m²):
11. Typology of the reef:
 - ☐ High profile reef (the reef protrudes more than 20 meters from the base substratum)
 - ☐ Low profile reef (the reef protrudes less than 20 meters from the base substratum)
 - ☐ Ledges (vertical reef face characterized by visible crevices)
 - ☐ Boulder reef (structure elevating from the flat seabed)
 - ☐ Patch reef (sand bottom with small reef structures protruding from the sediment)
 - ☐ I don't know
12. Origin of the reef:
 - ☐ Biogenic
 - ☐ Geogenic
13. Type of surrounding seabed:
 - ☐ Rocks
 - ☐ Sand
 - ☐ Mud
 - ☐ Detritic
 - ☐ Gravel
 - ☐ Other
14. Occurrence of meadows?
 - ☐ Yes, phanerogams
 - ☐ Yes, algae
 - ☐ no
15. Which are the most important biocenoses?
16. Any alien species?
 - ☐ Yes
 - ☐ No
 - ☐ Maybe
17. If "Yes", which alien species?
18. Any protected species? (e.g. IUCN Red List of Threatened Species, ASPIM Protocol, Berna Convention, etc.)
 - ☐ Yes
 - ☐ No
 - ☐ Maybe
 - ☐ If "Yes", which species?



19. Is the natural reef within a protected area?

- ☐ Yes, MPA
- ☐ Yes, Natura 2000 site
- ☐ Yes, National park
- ☐ Yes, Natural park
- ☐ Yes, Marine reserve
- ☐ No

20. Is the reef managed?

- ☐ Yes
- ☐ No
- ☐ I don't know

21. If yes, which is the Managing Subject? (Please give a short summary of the management measures adopted)

22. Does exist a monitoring program?

- ☐ Yes
- ☐ No

23. If "Yes" please give a short summary of the program

24. Surveillance service?

- ☐ Yes
- ☐ No

25. Current use of the Reef:

- ☐ Diving
- ☐ Mariculture
- ☐ Research
- ☐ Professional fishery
- ☐ Recreation fishery
- ☐ Fishing tourism
- ☐ Nothing
- ☐ Other (please, specify)

26. Development perspectives of the Natural Reef:

- ☐ Diving
- ☐ Mariculture
- ☐ Research
- ☐ Professional fishery
- ☐ Recreation fishery
- ☐ Fishing tourism
- ☐ Nothing
- ☐ Other (please, specify)

27. Please list the available data (If "Other" please specify):

- ☐ Geophysical map
- ☐ Water column
- ☐ Sediments
- ☐ Benthic community
- ☐ Fish community
- ☐ Other (please, specify)

28. Available literature (Scientific or Grey):

(Please add as many papers/works you know about the reef using the scheme:

1 Title/ 2 Authors / 3 Year of publication / 4 Journal or project / 5 Pages / 6 Abstract / 7 Keywords)



Appendix B: Artificial Reefs Questionnaire

1. Name and Surname:
2. Occupational qualification and workplace:
3. Name of the reef:
4. Location of the reef:
5. Geographical coordinates Latitude (WGS84 DD.DD. e.g. 43.023N):
6. Geographical coordinates Longitude (WGS84 DD.DD. e.g. 13.123N):
7. Year of deployment of the AR:
8. Year of modification of the AR:
9. Bottom depth (m) (If it is in a range, please specify the max and min):
10. Minimum distance from the coast (km):
11. Type of surrounding seabed:
 - ☐ Rocks
 - ☐ Sand
 - ☐ Mud
 - ☐ Detritic
 - ☐ Gravel
 - ☐ Other (please, specify)
12. Occurrence of meadows?
 - ☐ Yes, phanerogams
 - ☐ Yes, algae
 - ☐ No

ARTIFICIAL REEF STRUCTURE

1. Reef typology:
 - ☐ Specifically designed modules (basic module)
 - ☐ Decommissioned structures
 - ☐ Other (please, specify)

Specifically designed modules (basic module)

1. Material:
 - ☐ Concrete
 - ☐ Sea-friendly concrete (e.g., Tecnoreef)
 - ☐ Coal Ash
 - ☐ Rocks
 - ☐ Fiberglass
 - ☐ Other (please specify)
2. Shape of the single module:
 - ☐ Cube
 - ☐ Pole
 - ☐ Plinth
 - ☐ Other (please, specify)
3. Dimension of the single module (m):
4. Total volume of deployed material (m³):
5. Arrangement of the modules:
 - ☐ Geometrically assembled to form structures
 - ☐ Scattered



☐ Other (please, specify)

Artificial Reef geometrically assembled to form structures

1. Typology (e.g., pyramid):
2. Number of deployed structures:
3. Height of the structures (m):
4. Distance among structures (m):

Scattered Artificial Reef

1. Number of deployed structures:
2. Distance between structures (m):

If the Artificial Reef is composed by areas or oases, please indicate:

1. Number of the oases:
2. Distance among oases:
3. Dimension of each oasis (m²):
4. Total area occupied by the Artificial Reef (including the area covered by the bodies, the distance between the bodies and the area of respect) (m²):

Decommissioned structures

Please specify the nature of the structure:

- ☐ Offshore extraction platform
- ☐ Purposely sunk vessel/ship
- ☐ Other (please, specify)

Offshore extraction platform:

1. Type of the platform (e.g., one-leg platform):
2. Part of the platform used to realize the AR (e.g., jacket, deck):
3. Total area occupied by the Artificial Reef (m²):

Purposely sunk vessel/ship:

1. Number of sunk vessels:
2. Vessel material:
 - ☐ Wood
 - ☐ Iron
 - ☐ Fiberglass
 - ☐ Other (please, specify)
3. Dimension of the sunk vessel/ship - LFT (m) and Weight (ton):

Other Artificial Reefs:

1. Number of bodies:
2. Material of bodies:
 - ☐ Wood
 - ☐ Iron
 - ☐ Fiberglass
 - ☐ Concrete
 - ☐ Other (please, specify)
3. Dimension of each body - length (m) and Weight (ton):

ARTIFICIAL REEF UTILIZATION

1. Scope:
 - ☐ Habitat protection
 - ☐ Habitat restoration
 - ☐ Finfish enhancement



- ☐ Diving
- ☐ Mariculture
- ☐ Research
- ☐ Professional fishery
- ☐ Recreational fishery
- ☐ Fishing tourism
- ☐ Other (please, specify)

2. Type of Artificial Reef:

- ☐ Experimental
- ☐ Professional

3. Is the Reef exploited at present?

- ☐ Yes
- ☐ No
- ☐ Maybe

If “Yes”, by whom?

4. Does exist a management program?

- ☐ Yes
- ☐ No
- ☐ Maybe

If “Yes”, please specify the Managing Subject and give a short summary of the adopted management measures

.....

5. Concession area?

- ☐ Yes
- ☐ No

6. Surveillance service?

- ☐ Yes
- ☐ No

7. Does exist a monitoring program?

- ☐ Yes
- ☐ No
- ☐ Maybe

If “Yes”, please give a short summary (Duration / Monitored aspects / Involved Institute or Agency /address, e-mail address)

8. Possible exploitation of the Artificial Reef:

- ☐ Diving
- ☐ Mariculture
- ☐ Research
- ☐ Professional fishery
- ☐ Recreational fishery
- ☐ Fishing tourism
- ☐ Nothing
- ☐ Other (please, specify)

9. Please list the available data:

- ☐ Geophysical map
- ☐ Water column
- ☐ Sediments
- ☐ Benthic community
- ☐ Fish community
- ☐ Other (please, specify)



10. Available literature (Scientific or Grey):

(Please add as many papers/works you know about the reef using the scheme: 1 Title/ 2 Authors / 3 Year of publication / 4 Journal or project / 5 Pages / 6 Abstract / 7 Keywords)



Appendix C: Wreck Questionnaire

1. Name and Surname:
2. Occupational qualification and workplace:
3. Name of the Wreck:
4. Location of the Wreck:
5. Geographical coordinates Latitude (WGS84 DD.DD. e.g. 43.023N):
6. Geographical coordinates Longitude (WGS84 DD.DD. e.g. 13.123N):
7. Year of accidental sinking of the Wreck:
8. Bottom depth (m) (If it is in a range, please specify the max and min):
9. Minimum distance from the coast (km):
10. Type of surrounding seabed:
 - ☐ Rocks
 - ☐ Sand
 - ☐ Mud
 - ☐ Detritic
 - ☐ Gravel
 - ☐ Other (please, specify)
11. Occurrence of meadows?
 - ☐ Yes, phanerogams
 - ☐ Yes, algae
 - ☐ No
12. Vessel material:
 - ☐ Wood
 - ☐ Iron
 - ☐ Fiberglass
 - ☐ Other (please, specify)
13. Total area occupied by the Wreck (m²):
14. Total volume of the Wreck (m³):
15. Eventual fragments of the Wreck and their spatial configuration:.....
16. Dimension of the sunk vessel/ship - LFT (m) and Weight (ton):
17. Is the Wreck exploited at present?
 - ☐ Yes
 - ☐ No
 - ☐ Maybe
 If "Yes", by whom?
18. Does exist a management program?
 - ☐ Yes
 - ☐ No
 - ☐ Maybe
 If "Yes", please specify the Managing Subject and give a short summary of the adopted management measures

19. Concession area?
 - ☐ Yes
 - ☐ No
20. Surveillance service?



☐ Yes

☐ No

21. Does exist a monitoring program?

☐ Yes

☐ No

☐ Maybe

If “Yes”, please give a short summary (Duration / Monitored aspects / Involved Institute or Agency /address, e-mail address)

22. Possible exploitation of the Wreck:

☐ Diving

☐ Mariculture

☐ Research

☐ Professional fishery

☐ Recreational fishery

☐ Fishing tourism

☐ Nothing

☐ Other (please, specify)

23. Please list the available data:

☐ Geophysical map

☐ Water column

☐ Sediments

☐ Benthic community

☐ Fish community

☐ Other (please, specify)

24. Available literature (Scientific or Grey):

(Please add as many papers/works you know about the reef using the scheme: 1 Title/ 2 Authors / 3 Year of publication / 4 Journal or project / 5 Pages / 6 Abstract / 7 Keywords)



Author contribution

AM, CF, GF and ANT worked to the conceptualization of the paper; AM and CF analysed the data and wrote the original draft; AM, ANT, GF, AS, MSc, MSo, DB reviewed and edited the manuscript; CF, AS, MSc, ANT, GF, CRF, CM, SP, ZJ, TŠ, MŠ, CK, DP, EB, MDG, DB, EG, RA, IB, ĐVS, SO, VF, DZ, IOK, MSo, SU contributed to the collection and curation of data described in this paper; AM worked at data visualization; GF supervised the whole work.

Competing interests

Authors declare that they have no conflict of interest.

Funding

The present work was funded by the European Regional Development Fund in the frame of the project ADRIREEF (Innovative exploitation of Adriatic Reefs in order to strengthen blue economy), project ID: 10045901. Interreg VA Italy Croatia Cross-border Cooperation Programme 2014-2020.

References

- Alempijević, A. and Kovačić, M.: Nautical Tourism and Small Shipbuilding as Significant part of Blue Economy Development, *Pomorski zbornik*, 57(1), 97-110, <https://doi.org/10.18048/2019.57.07>, 2019.
- Calewaert, J.B., Weaver, P., Gunn, V., Gorringer, P. and Novellino, A.: The European Marine Data and Observation Network (EMODnet): Your Gateway to European Marine and Coastal Data. In: Zerr B. et al. (eds) *Quantitative Monitoring of the Underwater Environment. Ocean Engineering & Oceanography*, vol 6. Springer, Cham. https://doi.org/10.1007/978-3-319-32107-3_4, 2016.
- Cater, C. and Cater, E.: *Marine ecotourism: Between the devil and the deep blue sea* (Vol. 6), Cab Intl, ISBN: 9781845932596, 2007.
- Commission of the European Communities. Commission staff working document. Accompanying document to the communication from the commission to the European parliament, the council, the European economic and social committee and the committee of the regions: *An Integrated Maritime Policy for the European Union*, SEC(2007) 1278, 2007.



Costanza, R., De Groot, R., Sutton, P., Van der Ploeg, S., Anderson, S. J., Kubiszewski, I., Farber, S. and Turner, R. K.: Changes in the global value of ecosystem services. *Global environmental change*, 26, 152-158, doi: [10.1016/j.gloenvcha.2014.04.002](https://doi.org/10.1016/j.gloenvcha.2014.04.002), 2014.

Douvere, F.: The importance of marine spatial planning in advancing ecosystem-based sea use management. *Marine Policy* 32(5):762–71, <https://doi.org/10.1016/j.marpol.2008.03.021>, 2008.

Edney, J.: Understanding wreck divers: Case studies from Australia and Chuuk Lagoon, In *Proceedings of the Asia-Pacific Regional Conference on Underwater Cultural Heritage: 8–12 November* (pp. 575-587), 2011.

European Commission: Directive 2008/56/EC of the European Parliament and of the Council of 17 June 2008 establishing a framework for community action in the field of marine environmental policy (Marine Strategy Framework Directive), 164, 2008.

Fabi, G., Spagnolo, A., Bellan-Santini, D., Charbonnel, E., Çiçek, B. A., García, J. J. G., Jensen, A. C., Kallianiotis, A. and Santos, M. N. D.: Overview on artificial reefs in Europe, *Brazilian journal of oceanography*, 59(SPE1), 155-166, doi: [10.1590/S1679-87592011000500017](https://doi.org/10.1590/S1679-87592011000500017), 2011.

Fabi, G., Sarcella, G., Spagnolo, A., Bortone, S. A., Charbonnel, E., Goutayer, J. J., Naoufel, H., Lök, A. and Trommelen, M.: Practical guidelines for the use of artificial reefs in the Mediterranean and the Black Sea. *General Fisheries Commission for the Mediterranean. Studies and Reviews*, (96), I., ISSN: 1020-9549, 2015.

Ferrà, C., Minelli, A., Spagnolo, A., Scanu, M., Tasseti, A. N., Ferrari, C. R., Mazziotti, C., Pigozzi, S., Jakl, Z., Šarčević, T., Šimac, M., Kruschel, C., Pejdo, D., Barbone, E., De Gioia, M., Borme, D., Gordini, E., Auriemma, R., Benzon, I., Vuković-Stanišić, Đ., Orlić, S., Frančić, V., Zec, D., Orlić Kapović, I., Soldati, M., Uliazzi, S. and Fabi, G.: The ADRIREEF database: natural/artificial reefs and wrecks in the Adriatic Sea. *SEANOE*. <https://doi.org/10.17882/74880>, 2020.

Gilliland, P. M. and Laffoley, D.: Key elements and steps in the process of developing ecosystem-based marine spatial planning. *Marine Policy*, 32(5), 787-796, doi: [10.1016/j.marpol.2008.03.022](https://doi.org/10.1016/j.marpol.2008.03.022), 2008.

Ilieva, I., Jouvett, L., Seidelin, L., Best, B. D., Aldabet, S., da Silva, R. and Conde, D. A.: A global database of intentionally deployed wrecks to serve as artificial reefs. *Data in brief*, 23, 103584, <https://doi.org/10.1016/j.marpol.2008.03.021>, 2019.

Kiper, T.: Role of ecotourism in sustainable development, *InTech*, 773-802, <http://dx.doi.org/10.5772/55749>, 2013.



- 661
- 662 Llewellyn, L. E., English, S. and Barnwell, S.: A roadmap to a sustainable Indian Ocean blue economy. *Journal of the Indian*
- 663 *Ocean Region*, 12(1), 52-66, doi: 10.1080/19480881.2016.1138713, 2016.
- 664
- 665 Martín Míguez, B., Novellino, A., Vinci, M., Claus, S., Calewaert, J.B., Vallius, H., Schmitt, T., Pititto, A., Giorgetti, A.,
- 666 Askew, N., Iona, S., Schaap, D., Pinardi, N., Harpham, Q., Kater, B.J., Populus, J., She, J., Palazov, A.V., McMeel, O., Oset,
- 667 P., Lear, D., Manzella, G.M.R., Gorringe, P., Simoncelli, S., Larkin, K., Holdsworth, N., Arvanitidis, C.D., Molina Jack, M.E.,
- 668 Chaves Montero, M.M., Herman, P.M.J. and Hernandez, F.: The European Marine Observation and Data Network
- 669 (EMODnet): Visions and Roles of the Gateway to Marine Data in Europe. *Front. Mar. Sci.* 6:313.
- 670 <http://doi.org/10.3389/fmars.2019.00313>, 2019.
- 671
- 672 Needham, M. D.: Value orientations toward coral reefs in recreation and tourism settings: a conceptual and measurement
- 673 approach, *Journal of Sustainable Tourism*, 18:6, 757-772, <http://doi.org/10.1080/09669581003690486>, 2010.
- 674
- 675 Novellino, A., D'Angelo, P., Benedetti, G., Manzella, G., Gorringe, P., Schaap, D., Pouliquen, S. and Rickards, L.: European
- 676 marine observation data network - EMODnet physics. In *OCEANS 2015 - Genova* (pp. 1-6). IEEE.
- 677 <http://doi.org/10.1109/OCEANS-Genova.2015.7271548>, 2015.
- 678
- 679 Nurhayati, A., Aisah, I. and Supriatna, A. K.: Model Development of A Synergistic Sustainable Marine Ecotourism - A Case
- 680 Study in Pangandaran Region, West Java Province, Indonesia, *Sustainability*, 11(12), 3418,
- 681 <http://doi.org/10.3390/su11123418>, 2019.
- 682
- 683 Oliver, J., Noordeloos, M., Yusuf, Y., Tan, M., Nayan, N., Foo, C. and Shahriyah, F.: ReefBase: a global information system
- 684 on coral reefs. WorldFish Center, ReefBase Project., 2002.
- 685
- 686 Orams, M. B.: Marine ecotourism as a potential agent for sustainable development in Kaikoura, New Zealand, *International*
- 687 *Journal of Sustainable Development* 5(3):338-352, <http://doi.org/10.1504/IJSD.2002.003757>, 2002.
- 688
- 689 Pauly, D.: A vision for marine fisheries in a global blue economy, *Marine Policy*, 87, 371-374.,
- 690 <https://doi.org/10.1016/j.marpol.2017.11.010>, 2018.
- 691
- 692 Sakellariadou, F. and Kostopoulou, E.: Marine ecotourism from the perspective of the blue growth, Conference 7th iConEc
- 693 Conference Competitiveness and Stability in the Knowledge-based Economy, Craiova, Romania,



- 694 https://www.researchgate.net/publication/317142241_Marine_ecotourism_from_the_perspective_of_blue_growth (accessed
 695 on 17/02/2020), 2015.
- 696
- 697 Spalding, M., Burke, L., Wood, S. A., Ashpole, J., Hutchison, J. and Zu Ermgassen, P.: Mapping the global value and
 698 distribution of coral reef tourism. *Marine Policy*, 82, 104–113, <https://doi.org/10.1016/j.marpol.2017.05.014>, 2017.
- 699
- 700 Stead, S. M.: Rethinking marine resource governance for the United Nations sustainable development goals, *Current opinion*
 701 *in environmental sustainability*, 34, 54–61, <https://doi.org/10.1016/j.cosust.2018.12.001>, 2018.
- 702
- 703 Stefanon A.: Beachrock and paleogeography in the North Adriatic Sea. *Rapport et Procès Verbaux des Reunion Commission*
 704 *Internationale pour l'Exploration Scientifique de la Mer Méditerranée*, 20(4), 605–608, 1972.
- 705
- 706 Stolk, P., Markwell, K. and Jenkins, J. M.: Artificial Reefs as Recreational Scuba Diving Resources: A Critical Review of
 707 Research, *Journal of Sustainable Tourism*, 15:4, 331–350, DOI: 10.2167/jost651.0, 2007.
- 708
- 709 Tora, S., Sacchini, S., Listeš, E., Bogdanović, T., Di Lorenzo, A., Smajlović, M., Filipović, J. V., Tahirović, V., Šuković, D.,
 710 Beljkas, B., Xinxo, A., Maçi, R., Colangeli, P., Di Giacinto, F. and Conte, A.: A geographical information system for the
 711 management of the aquaculture data in the Adriatic Sea—the Strengthening of Centres for Aquaculture Production and Safety
 712 surveillance in the Adriatic countries experience: Present capabilities, tools and functions. *Geospatial Health*, doi:
 713 10.4081/gh.2017.593, 2017.
- 714
- 715 Uyarra, M.C., Watkinson, A.R. and Côté, I.M.: Managing Dive Tourism for the Sustainable Use of Coral Reefs: Validating
 716 Diver Perceptions of Attractive Site Features, *Environmental Management* 43, 1–16, doi: 10.1007/s00267-008-9198-z, 2009.
- 717
- 718 Vogt, H. P.: Economic benefits of tourism in the marine reserve of Apo Island, Philippines: Intercoast Network [Intercoast
 719 Network], no. 31, pp. 13–14, 1998.
- 720
- 721 Wilhelmsson, D., Öhman, M. C., Ståhl, H. and Shlesinger, Y.: Artificial Reefs and Dive Tourism in Eilat, Israel, *Ambio*, Vol.
 722 27, No. 8, *Building Capacity for Coastal Management*, pp. 764–766, <https://www.jstor.org/stable/4314831> (accessed on
 723 17/02/2020), 1998.
- 724
- 725 Wilkinson, M. D., Dumontier, M., Aalbersberg, I. J., Appleton, G., Axton, M., Baak, A., Blomberg, N., Boiten, J., Bonino da
 726 Silva Santos, L., Bourne, P.E., Bouwman, J., Brookes, A.J., Clark, T., Crosas, M., Dillo, I., Dumon, O., Edmunds, S., Evelo,
 727 C.T., Finkers, R., Gonzalez-Beltran, A., Gray, A.J.G., Groth, P., Goble, C., Grethe, J.S., Heringa, J., 't Hoen, P.A.C., Hooft,



728 R., Kuhn, T., Kok, R., Kok, J., Lusher, S.J., Martone, M.E., Mons, A., Packer, A.L., Persson, B., Rocca-Serra, P., Roos, M.,
 729 van Schaik, R., Sansone, S., Schultes, E., Sengstag, T., Slater, T., Strawn, G., Swertz, M.A., Thompson, M., van der Lei, J.,
 730 van Mulligen, E., Velterop, J., Waagmeester, A., Wittenburg, P., Wolstencroft, K., Zhao, J. and Mons, B.: The FAIR Guiding
 731 Principles for scientific data management and stewardship, Scientific data, 3, <http://dx.doi.org/10.1038/sdata.2016.18>, 2016.
 732
 733 Zec, D., Fabi, G. and Soldati, M.: Deliverable 3.1.1. Definition of reefs' category. Work Package 3 – Mapping of Adriatic
 734 Reefs from different perspectives. Activity 1 – Reefs' classification in the cooperation area. ADRIREEF project, 2019.
 735
 736 Map of Adriatic reefs: <https://adrireef.github.io/sandbox3>, last access: 03 November 2020.
 737
 738 ADRIREEF project page: <https://www.italy-croatia.eu/web/adrireef>, last access: 03 November 2020.
 739
 740 Wildlife & Sport Fish Restoration Program: <https://www.fws.gov/wsfrprograms/>, last access: 03 November 2020.
 741
 742 Outdoor Alabama Artificial Reefs: <https://www.outdooralabama.com/saltwater-fishing/artificial-reefs>, last access: 03
 743 November 2020.
 744
 745 CAPS2 project: <http://www.caps2.eu/caps2/>, last access: 03 November 2020.
 746
 747 Google Forms project: <https://www.google.com/forms/about/>, last access: 03 November 2020.
 748
 749 European Environment Agency data and maps: <https://www.eea.europa.eu/data-and-maps>, last access: 03 November 2020.
 750
 751 Natura 2000 data and maps: https://ec.europa.eu/environment/nature/natura2000/data/index_en.htm, last access: 03 November
 752 2020.
 753
 754 Habitat Artificiali group page: <http://www.habitatartificiali.irbim.cnr.it>, last access: 03 November 2020.
 755
 756 GitHub Pages project: <https://pages.github.com/>, last access: 03 November 2020.
 757
 758 ~~Open Street Map~~ project: <https://www.openstreetmap.org/>, last access: 03 November 2020.
 759
 760 Searchable Map Template CSV: <https://github.com/datamade/searchable-map-template-csv>, last access: 03 November 2020.
 761
 762 SEANOE repository: <https://www.seanoe.org/>, last access: 03 November 2020.



763
764 Creative Commons Attribution license (v. 4.0): <https://creativecommons.org/licenses/by/4.0/deed.it>, last access: 03 November
765 2020.