

The consolidated European synthesis of CO₂ emissions and removals for EU27 and UK: 1990-2018

Ana Maria Roxana Petrescu¹, Matthew J. McGrath², Robbie M. Andrew³, Philippe Peylin², Glen P. Peters³, Philippe Ciais², Gregoire Broquet², Francesco N. Tubiello⁴, Christoph Gerbig⁵, Julia Pongratz^{6,7}, Greet Janssens-Maenhout⁸, Giacomo Grassi⁸, Gert-Jan Nabuurs⁹, Pierre Regnier¹⁰, Ronny Lauerwald^{10,11}, Matthias Kuhnert¹², Juraj Balkovič^{13,14}, Mart-Jan Schelhaas⁹, Hugo A. C. Denier van der Gon¹⁵, Efisio Solazzo⁸, Chunjing Qiu², Roberto Pilli⁸, Igor B. Konovalov¹⁶, Richard A. Houghton¹⁷, Dirk Günther¹⁸, Lucia Perugini¹⁹, Monica Crippa⁹, Raphael Ganzenmüller⁶, Ingrid T. Luijkx⁹, Pete Smith¹², Saqr Munassar⁵, Rona L. Thompson²⁰, Giulia Conchedda⁴, Guillaume Monteil²¹, Marko Scholze²¹, Ute Karstens²², Patrick Brokmann² and Han Dolman¹

¹Department of Earth Sciences, Vrije Universiteit Amsterdam, 1081HV, Amsterdam, the Netherlands

²Laboratoire des Sciences du Climat et de l'Environnement, CEA CNRS UVSQ UPSACLAY Orme des Merisiers, Gif-sur-Yvette, France

³CICERO Center for International Climate Research, Oslo, Norway

⁴FAO, Statistics Division, Via Terme di Caracalla, Rome 00153, Italy

⁵Max Planck Institute for Biogeochemistry, Hans-Knöll-Strasse 10, 07745 Jena, Germany

⁶Department of Geography, Ludwig Maximilian University of Munich, 80333 Munich, Germany

⁷Max Planck Institute for Meteorology, Bundesstrasse 53, 20146 Hamburg, Germany

⁸European Commission, Joint Research Centre, Via Fermi 2749, 21027 Ispra, Italy

⁹Wageningen Environmental Research, Wageningen University and Research (WUR), Wageningen, 6708PB, the Netherlands

¹⁰Biogeochemistry and Modeling of the Earth System, Université Libre de Bruxelles, 1050 Brussels, Belgium

¹¹Université Paris-Saclay, INRAE, AgroParisTech, UMR ECOSYS, Thiverval-Grignon, France

¹²Institute of Biological and Environmental Sciences, University of Aberdeen, 23 St Machar Drive, Aberdeen, AB24 3UU, UK

¹³International Institute for Applied Systems Analysis, Ecosystems Services and Management Program, Schlossplatz 1, A-2361, Laxenburg, Austria

¹⁴Faculty of Natural Sciences, Comenius University in Bratislava, Ilkovičova 6, 842 15, Bratislava, Slovak Republic

¹⁵TNO, Department of Climate, Air and Sustainability, Princetonlaan 6, 3584 CB Utrecht, the Netherlands

¹⁶Institute of Applied Physics, Russian Academy of Sciences, Nizhniy Novgorod, Russia

¹⁷Woodwell Climate Research Center, Falmouth, Massachusetts, U.S.A.

¹⁸Umweltbundesamt (UBA), 14193 Berlin, Germany

¹⁹Centro Euro-Mediterraneo sui Cambiamenti Climatici (CMCC), Viterbo, Italy

²⁰Norwegian Institute for Air Research (NILU), Kjeller, Norway

²¹Dept. of Physical Geography and Ecosystem Science, Lund University, Lund, Sweden

²²ICOS Carbon Portal at Lund University, Lund, Sweden

Correspondence to: A.M. Roxana Petrescu (a.m.r.petrescu@vu.nl)

Abstract

Reliable quantification of the sources and sinks of atmospheric carbon dioxide (CO₂), including that of their trends and uncertainties, is essential to monitoring the progress in mitigating anthropogenic emissions under the Kyoto Protocol and the Paris Agreement. This study provides a consolidated synthesis of estimates for all anthropogenic and natural sources and sinks of CO₂ for the European Union and UK (EU27 + UK), derived from a combination of state-of-the-art bottom-up (BU) and top-down (TD) data sources and models. Given the wide scope of the work and the variety of datasets involved, this study focuses on identifying essential questions which need to be answered to properly understand the differences between various datasets, in particular with regards to the less-well characterized

fluxes from managed ecosystems. The work integrates recent emission inventory data, process-based ecosystem model results, data-driven sector model results, and inverse modelling estimates, over the period 1990-2018. BU and TD products are compared with European national GHG inventories (NGHGI) reported under the UNFCCC in 2019, aiming to assess and understand the differences between approaches. For the uncertainties in NGHGI, we used the standard deviation obtained by varying parameters of inventory calculations, reported by the Member States following the IPCC guidelines. Variation in estimates produced with other methods, like atmospheric inversion models (TD) or spatially disaggregated inventory datasets (BU), arise from diverse sources including within-model uncertainty related to parameterization as well as structural differences between models. In comparing NGHGI with other approaches, a key source of uncertainty is that related to different system boundaries and emission categories (CO₂ fossil) and the use of different land use definitions for reporting emissions from Land Use, Land Use Change and Forestry (LULUCF) activities (CO₂ land). At the EU27+UK level, the NGHGI (2019) fossil CO₂ emissions (including cement production) account for 2624 Tg CO₂ in 2014 while all the other seven bottom-up sources are consistent with the NGHGI and report a mean of 2588 (\pm 463 Tg CO₂). The inversion reports 2700 Tg CO₂ (\pm 480 Tg CO₂), well in line with the national inventories. Over 2011-2015, the CO₂ land sources/sinks from NGHGI estimates report -90 Tg C yr⁻¹ \pm 30 Tg C while all other BU approaches report a mean sink of -98 Tg C yr⁻¹ (\pm 362 Tg C from DGVMs only). For the TD model ensemble results, we observe a much larger spread for regional inversions (i.e., mean of 253 Tg C yr⁻¹ \pm 400 Tg C yr⁻¹). This concludes that a) current independent approaches are consistent with NGHGI b) their uncertainty is too large to allow a “verification” because of model differences and probably also because of the definition of “CO₂ flux” obtained from different approaches. The referenced datasets related to figures are visualized at <https://doi.org/10.5281/zenodo.4626578> (Petrescu et al., 2020a).

1. Introduction

Global atmospheric concentrations of CO₂ have increased 46% since pre-industrial times (pre-1750) (WMO, 2019). The rise of CO₂ concentrations in recent decades is caused primarily by CO₂ emissions from fossil sources. Globally, fossil emissions grew at a rate of 1.3% yr⁻¹ for the decade 2009–2018 and accounted for 87% of the anthropogenic sources in the total carbon budget (Friedlingstein et al., 2019). In contrast, global CO₂ emissions from land use and land use change estimated from bookkeeping models and dynamic global vegetation models (DGVMs) were approximately stable during the same period, albeit with large uncertainties (Friedlingstein et al., 2019).

National GHG inventories (NGHGI) are prepared and reported under the UNFCCC on an annual basis by Annex I countries¹, based on IPCC Guidelines using national activity data and different levels of sophistication (tiers) for well-defined sectors. These inventories contain time series of annual GHG emissions from the 1990 base year²

¹ Annex I Parties include the industrialized countries that were members of the OECD (Organization for Economic Co-operation and Development) in 1992 plus countries with economies in transition (the EIT Parties), including the Russian Federation, the Baltic States, and several central and eastern European states (UNFCCC, <https://unfccc.int/parties-observers>, last access: February 2020).

² For most Annex I Parties, the historical base year is 1990. However, parties included in Annex I with an economy in transition during the early 1990s (EIT Parties) were allowed to choose one year up to a few years before 1990 as reference because of a non-representative collapse during the breakup of the Soviet Union (e.g., Bulgaria, 1988, Hungary, 1985–1987, Poland, 1988, Romania, 1989, and Slovenia, 1986).

80 until two years before the current year and were required by the UNFCCC and used to track progress towards
countries' reduction targets under the Kyoto Protocol (UNFCCC, 1997). The IPCC tiers represent the level of
sophistication used to estimate emissions, with Tier 1 based on global or regional default values, Tier 2 based on
country and technology-specific parameters, and Tier 3 based on more detailed process-level modelling. Uncertainties
in NGHGI are calculated based on ranges in observed (or estimated) emission factors and variation of activity data,
85 using the error propagation method (95% confidence interval) or Monte-Carlo methods, based on clear guidelines
(IPCC 2006).

NGHGI follow principles of transparency, accuracy, consistency, completeness and comparability
(TACCC) under the guidance of the UNFCCC (UNFCCC, 2014). Methodological procedures follow the 2006 IPCC
guidelines (IPCC, 2006) and can be upgraded and completed with the IPCC 2019 Refinement (IPCC, 2019a)
90 containing updated sectors and additional sources. Atmospheric GHG concentration data can be used to derive
estimates of the GHG fluxes based on atmospheric transport inverse modeling techniques (Rayner et al., 2019). Such
estimates are often called top-down (TD) estimates since these are based on the analysis of concentrations, which
represent the sum of the effects of sources and sinks, in contrast to bottom-up (BU) estimates, which rely on models
analyzing the processes causing the fluxes. Current UNFCCC procedures do not require observation-based evidence
95 in the NGHGI and do not incorporate independent, large-scale observation-based GHG budgets but the latest
guidelines allow the use of atmospheric data for external checks within the data quality control, quality assurance and
verification process (IPCC 2006 Guidelines, Chapter 6 QA/QC procedures). Only a few countries (e.g. Switzerland,
UK, New Zealand and Australia) use atmospheric observations on a voluntary basis to complement their national
inventory data with top down estimates annexed to their NGHGI (Bergamaschi et al., 2018).

100 For the post-2020 reporting (which will start in 2023 for the inventory of year 2021), the Paris Agreement
follows on the Kyoto Protocol and, at the EU level, the GHG Monitoring Mechanism Regulation 525 (2013) is
replaced by Regulation 1999 (2018) while Regulation 824 (2018) embeds the LULUCF sector with estimates based
on spatial information in the EU Climate Targets of 2030. A key element in the current policy process is to facilitate
the global stocktake exercise of the UNFCCC foreseen in 2023, which will assess collective progress towards
105 achieving the near- and long-term objectives of the Paris Agreement, also considering mitigation, adaptation and
means of implementation. The global stocktake is expected to create political momentum for enhancing commitments
in Nationally Determined Contributions (NDCs) under the Paris Agreement.

Key components of the global stocktake are the NGHGI submitted by countries under the enhanced
transparency framework of the Paris Agreement. Under the new framework, for the first time, developing countries
110 will be required to submit their inventories on a biennial basis, alongside developed countries that will continue to
submit their inventories and full time-series on an annual basis. This calls for robust and transparent approaches that
can build-up long-term emission compilation capabilities and be applied to different situations. A priority is to refine
estimates of CH₄ and N₂O emissions, which are more uncertain than the CO₂ fossil emissions. Fossil CO₂ emissions
are closely anchored to well established fuel use statistics with narrow uncertainty ranges on emissions factors, while
115 CO₂ from LULUCF and CH₄ and N₂O have highly uncertain activity data and/or emission factors (see companion

paper, Petrescu et al., 2021,in press). However, CO₂ emissions dominate the GHG fluxes and there is need for Monitoring and Verification Support capacity (Janssen-Meanhout et al., 2020) as the reduction of anthropogenic CO₂ fluxes become increasingly important for the climate negotiations of the Paris Agreement, and where observation-based data can provide information on the actual situation. In addition, while fossil CO₂ emissions are known to relatively high precision, LULUCF activities are generally much more uncertain (RECCAP, CarboEurope) and as described below in sections 2.2. and 3.2.

The current study presents consistently derived estimates of CO₂ fluxes from BU and TD approaches for the EU27 and UK, building partly on Petrescu et al. (2020b) for the LULUCF sector and on Andrew (2020) for fossil sectors, while laying the foundation for future annual updates. Every year (time “t”) the Global Carbon Project (GCP) in its Global Carbon Budget (GCB) quantifies large-scale CO₂ budgets up to year “t-1”, bringing in information from global to large latitude bands, including various observation-based flux estimates from BU and TD approaches (Friedlingstein et al., 2020 in review). Except for two sector-specific BU models based on national statistics (EFISCEN and CBM), we note that the BU observation-based approaches used in the GCB and in this paper are based on the NGHG estimates provided by national inventory agencies to the UNFCCC with differences coming from allocation. They rely heavily on statistical data combined with Tier1 and Tier2 approaches. In our case, focusing on a region that is well covered with data and models (Europe), BU also refers to Tier 3 process-based models or complex bookkeeping models (see section 2). At regional and country scales, no systematic and regular comparison of these observation-based CO₂ flux estimates with reported fluxes at UNFCCC is yet feasible. As a first step in this direction, within the European project VERIFY (<http://verify.lsce.ipsl.fr/>), the current study compares observation-based flux estimates of BU versus TD approaches and compares them with NGHGs for the EU27+UK and five sub-regions (Figure 4). The methodological and scientific challenges to compare these different estimates have been partly investigated before (Grassi et al., 2018 for LULUCF; Peters et al., 2009 for fossil sectors) but not in a systematic and comprehensive way including both fossil and land-based CO₂ fluxes.

The work presented here represents many distinct datasets and use of models in addition to the individual country submissions to the UNFCCC for all European countries, which while following the general guidance laid out in IPCC (2006) still differ in specific approaches, models, and parameters, in addition to differences in underlying activity datasets. A comprehensive investigation of detailed differences between all datasets is beyond the scope of this paper, though attempts have been previously made for specific subsectors (Petrescu et al., 2020b for AFOLU³; Federici et al., 2015 for FAOSTAT versus NGHGs). As this is the most comprehensive comparison of NGHGs and research datasets (including both bottom-up (BU) and top-down (TD) approaches) for Europe to date, we focus here on a set of questions that such a comparison raises: How can one fairly compare the detailed sectoral NGHGI to observation-based estimates? What new information do the observation-based estimates provide, for instance on the mean fluxes, spatial disaggregation, trends and inter-annual variation? What can one expect from such complex studies, where are the key knowledge gaps, what is the added value to policy makers and what are the next steps to take?

³ In the IPCC AR5 AFOLU stands for Agriculture, Forestry and Other Land Use and represent a new sector replacing the two AR4 sectors Agriculture and LULUCF

We compare official anthropogenic NGHGI emissions with research datasets correcting wherever needed research data on total emissions/sinks to separate out anthropogenic emissions. We analyze differences and inconsistencies between emissions and sinks, and make recommendations towards future actions to evaluate NGHGI data. While NGHGI include uncertainty estimates, special disaggregated research datasets of emissions often lack quantification of uncertainty. While this is also a call to those developers to associate more detailed uncertainty estimates with their products, here we use the median and minimum/maximum (min/max) range of different research products of the same type to get a first estimate of overall uncertainty. Table AA in Appendix A presents the methodological differences of current study with respect to Petrescu et al., 2020b.

2. CO₂ data sources and estimation approaches

We use data of total CO₂ emissions and removals from EU27 + UK from TD inversions and BU estimates, in addition to BU estimates from sector-specific models. We collected data of CO₂ fossil and CO₂ land⁴ emissions and removals between 1990 and 2018 (or the last available year, if the datasets do not extend to 2018) from peer-reviewed literature and other data delivered under the VERIFY project (see description in Appendix A). The detailed data source descriptions are found in Appendices A1 and A2. For the BU anthropogenic CO₂ fossil estimates we used global inventory datasets (Emissions Database for Global Atmospheric Research (EDGAR v5.0.), Food and Agriculture Organization Corporate Statistical Database (FAOSTAT), British Petroleum (BP), Carbon Dioxide Information Analysis Center (CDIAC), GCP, Energy Information Administration (EIA), International Energy Agency (IEA), see Table 1) described in detail by Andrew (2020), while for CO₂ land estimates we used BU research-level biogeochemical models (e.g. DGVMs TRENDY-GCP, bookkeeping models, see Table 2). For TD we used global inversions (GCP 2019, Friedlingstein et al., 2019) as well as regional inversions at higher spatial resolution (CarboScopeReg, EUROCOM (Monteil et al., 2019 and Konovalov et al. 2016).

The values are defined from an atmospheric perspective: positive values represent a source to the atmosphere and negative ones a removal from the atmosphere. As an overview of potential uncertainty sources, Appendix B presents the use of emission factor data (EF), activity data (AD), and, whenever available, uncertainty methods used for all CO₂ land data sources used in this study. The referenced data used for the figures' replicability purposes are available for download at <https://10.5281/zenodo.4626578> (Petrescu et al., 2020a). We focus herein on EU27 and the UK. Within the VERIFY project, we have in addition constructed a web tool which allows for the selection and display of all plots shown in this paper (as well as the companion paper on CH₄ and N₂O), not only for the regions shown here but for a total of 79 countries and groups of countries in Europe. The website, located on the VERIFY project website: <http://webportals.ipsl.jussieu.fr/VERIFY/FactSheets/>, is accessible with a username and password distributed by the

⁴ The IPCC Good Practice Guidance (GPG) for Land Use, Land Use Change and Forestry (IPCC 2003) describes a uniform structure for reporting emissions and removals of greenhouse gases. This format for reporting can be seen as “land based”; all land in the country must be identified as having remained in one of six classes since a previous survey, or as having changed to a different (identified) class in that period. According to IPCC SRCCL: Land covers the terrestrial portion of the biosphere that comprises the natural resources (soil, near surface air, vegetation and other biota, and water) the ecological processes, topography, and human settlements and infrastructure that operate within that system”. Some communities prefer “biogenic” to describe these fluxes, while others found this confusing as fluxes from unmanaged forests, for example, are “biogenic” but not included in inventories reported to the UNFCCC. As this comparison is central to our work, we decided that “land” as defined by the IPCC was a good compromise.

project. Figure 4 includes also data from countries outside the EU but located within geographical Europe (Switzerland, Norway, Belarus, Ukraine and Rep. of Moldova).

2.1. CO₂ anthropogenic emissions from NGHGI

UNFCCC NGHGI (2019) emissions are country estimates covering the period 1990-2017. The Annex-I parties to the UNFCCC are required to report emissions inventories annually using the Common Reporting Format (CRF). This annual published dataset includes all CO₂ emissions sources for those countries, and for most countries for the period 1990 to t-2. Some eastern European countries' submissions begin in the 1980s. Revisions are made on an irregular basis outside of the standard annual schedule.

2.2. CO₂ fossil emissions

CO₂ fossil emissions occur when fossil carbon compounds are broken down via combustion or other forms of oxidation or via non-metal processes such as for cement production. Most of these fossil compounds are in the form of fossil fuels, such as coal, oil, and natural gas. Another category are fossil carbonates, such as calcium carbonate and magnesium carbonate, which are used as feed stocks in industrial processes, and whose decomposition also leads to emissions of CO₂. Because CO₂ fossil emissions are largely connected with energy, which is a closely tracked commodity group, there is a wealth of underlying data that can be used for estimating emissions. However, differences in collection, treatment, interpretation and inclusion of various factors such as carbon contents and fractions of oxidized carbon, lead to methodological differences (Appendix A, Table A1) resulting in differences of emissions between datasets (Andrew 2020). In contrast to BU estimates, atmospheric inversions for emissions of fossil CO₂ are not fully established (Brophy et al., 2019), though estimates exist. The main reason is that the types of atmospheric networks suitable for fossil CO₂ atmospheric inversions have not been widely deployed yet (Ciais et al. 2015).

In this analysis, the BU CO₂ fossil estimates are presented and split per fuel type and reported for the last year when all data products are available (Andrew 2020). In addition to the BU CO₂ fossil estimates, we report a fossil fuel CO₂ emission estimate for the year 2014 from a 4-year inversion assimilating satellite observations. In order to overcome the lack of CO₂ observation networks suitable for the monitoring of fossil fuel CO₂ emissions at national scale, this inversion is based on atmospheric concentrations of co-emitted species. It assimilates satellite CO and NO₂ data. While the spatial and temporal coverage of these CO and NO₂ observations is large, the conversion of the information on these co-emitted species into fossil fuel CO₂ emission estimates is complex and carries large uncertainties. Therefore, we focus here on the comparison between the uncertainties in the inversion versus the magnitude and variations of BU estimates without discussing system boundaries and constraints of each of these products (which are instead discussed in Andrew 2020). The detailed descriptions of each of the data products described in Table 1 are found in Appendix A1.

Table 1: Data sources for the anthropogenic CO₂ fossil emissions included in this study:

CO ₂ anthropogenic				
	Data/model name	Contact / lab	Species / Period	Reference/Metadata
	UNFCCC NGHGI (2019)	UNFCCC	Anthropogenic fossil CO ₂ 1990-2017	IPCC, 2006 IPCC Guidelines for National Greenhouse Gas Inventories https://www.ipcc-nggip.iges.or.jp/public/2006gl/ , 2006. UNFCCC CRFs https://unfccc.int/process-and-meetings/transparency-and-reporting/reporting-and-review-under-the-convention/greenhouse-gas-inventories-annex-i-parties/national-inventory-submissions-2019
BU	Compilation of multiple CO ₂ fossil emission data sources (Andrew 2020) EDGAR v5.0, BP, EIA, CDIAC, IEA, GCP, CEDS, PRIMAP	CICERO	CO ₂ fossil country totals and split by fuel type 1990-2018 (or last available year)	EDGAR v5.0 https://edgar.jrc.ec.europa.eu/overview.php?v=50_GHG BP 2011, 2017 and 2018 reports EIA https://www.eia.gov/beta/international/data/browse/r/views/partial/sources.html CDIAC https://energy.appstate.edu/CDIAC https://www.eia.gov/beta/international/data/browse/r/views/partial/sources.html IEA https://www.transparency-partnership.net/sites/default/files/u2620/the_iea_energy_data_collection_and_co2_estimates_an_overview_iea_coent.pdf . IEA, 2018d, p. I.17 CEDS http://www.globalchange.umd.edu/data-products/ GCP Le Quéré et al., 2018, Friedlingstein et al., 2019 https://www.icos-cp.eu/GCP/2018 PRIMAP https://dataservices.gfz-potsdam.de/pik/showshort.php?id=escidoc:2959897
TD	Fossil fuel CO ₂ inversions	IAPRAS	Inverse fossil fuel CO ₂ emissions 2012-2015	Konovalov et al., 2016 VERIFY report https://projectworkspace.eu/sites/VERIFY/WP%20documents/Estimate-FFCO2-Europe-2012-2015-Konovalov-et-al.pdf

220 2.3. CO₂ land fluxes

CO₂ land fluxes include CO₂ emissions and removals from LULUCF activities, based on either BU or TD CO₂ estimates from inversion ensembles, represented by the data sources and products described in Table 2. We compare CO₂ net emissions from the LULUCF sector primarily from three land use classes⁵ (Forest Land, Cropland,

⁵ According to 2006 IPCC guidelines the LULUCF sector includes six management classes (forest land, cropland, grassland, wetlands, settlements and other land)

225 and Grassland) from both land class remaining⁶ (land class remains unchanged) and land class converted⁷ (land class changed in the last 20 years). The Wetlands, Settlements, Other Land categories are included in the discussion on total LULUCF activities (incl. Harvested Wood Products (HWP)) presented in sections 3.3.1, 3.3.3 and 3.3.4. Not all the classes reported to the UNFCCC are present in FAOSTAT or other models; in addition some models are sector-specific. We use the notation of “FL-FL”, “CL-CL”, and “GL-GL” to indicate forest, cropland, and grassland which
 230 remain the same class from year to year. We present separate results from sector-specific models reporting carbon fluxes for FL-FL, CL-CL and GL-GL (the models EPIC-IIASA, ECOSSE, EFISCEN, CBM), those including multiple land use sectors and simulating land use changes (e.g. Dynamic Global Vegetation Models (DGVMs) ensemble TRENDY v7 (Sitch et al., 2008, Le Quéré et al., 2009)), and those employing bookkeeping approaches (H&N (Houghton & Nassikas, 2017) and BLUE (Hansis et al., 2015)). The detailed description of each of the products
 235 described in Table 3 is found in Appendix A2.

The two inverse model ensembles presented here are the GCB 2018 for 1990-2018 (Le Quéré et al., 2018) and EUROCOM for 2006-2015 (Monteil et al., 2019). The GCB inversions are global and include CarbonTracker Europe (CTE; van der Laan-Luijckx et al., 2017), CAMS (Chevallier et al., 2005) and the Jena CarboScope (Rödenbeck, 2005). The EUROCOM inversions are regional, with a domain limited to Europe and higher spatial
 240 resolution atmospheric transport modes, with five inversions covering the entire period 2006-2015 as analyzed in Monteil et al. (2019). They report Net Ecosystem Exchange (NEE) fluxes. These inversions make use of more than 30 atmospheric observing stations within Europe, including flask data and continuous observations and work at typically higher spatial resolution than the global inversion models. The other regional inversion presented here is generated with the CarboScope-Regional (CSR) inversion system (2006-2018), with different ensemble members.
 245 This system is part of the EUROCOM ensemble, but new runs were carried out for the VERIFY project. The results are plotted separately to illustrate two points: 1) that the CSR runs for VERIFY are not identical to those submitted to EUROCOM (VERIFY runs from CSR included several sites that started shortly before the end of the EURCOM inversion period), and 2) the CSR model was used in four distinct runs in VERIFY, that differ in the spatial correlation of prior uncertainties and in the number of atmospheric stations whose observations are assimilated. By presenting
 250 CSR separate from the EUROCOM results, one can get an idea of the uncertainty due to various model parameters in one inversion system, with one single transport model.

Table 2: Data sources for the land CO₂ emissions included in this study:

Bottom-up NGHGI CO ₂ land				
Met hod	Product Type / file or directory name	Contact / lab	Variables / Period	References

⁶According to 2006 IPCC guidelines, land should be reported in a “conversion” category for 20 years and then moved to a “remaining” category, unless a further change occurs. Converted land refers to CO₂ emissions from conversions to and from all six classes that occurred in the previous 20 years.

⁷Converted land refers to CO₂ emissions from conversions to and from all six classes that occurred in the previous 20 years.

	UNFCCC NGHGI (2019)	UNFCCC	LULUCF Net CO ₂ emissions/removals 1990-2017	<p>IPCC, 2006 Guidelines for National Greenhouse Gas Inventories, Prepared by the National Greenhouse Gas Inventories Programme. IGES, Japan, https://www.ipcc-nggip.iges.or.jp/public/2006gl/, 2006.</p> <p>UNFCCC CRFs</p> <p>https://unfccc.int/process-and-meetings/transparency-and-reporting/reporting-and-review-under-the-convention/greenhouse-gas-inventories-annex-i-parties/national-inventory-submissions-2019</p>
Observation-based bottom-up CO₂ land				
BU	ORCHIDEE	LSCE	CO ₂ fluxes and C stocks from forest, cropland, and grassland ecosystems reported as Net Biome Productivity (NBP) 1990-2018	Ducoudré et al., 1993 Viovy et al., 1996 Polcher et al., 1998 Krinner et al., 2005
BU	CO₂ emissions from inland waters	ULB	One average value for C fluxes from rivers, lakes and reservoirs, with lateral C transfer from soils 1990-2018	Lauerwald et al. (2015) Hastie et al. (2019) Raymond et al. (2013)
BU	CBM	EC-JRC	Net primary production (NPP) and carbon stocks and fluxes 2000-2015	Kurz et al., 2009 Pilli et al., 2016b
BU	ECOSSE grasslands, croplands	UNIABDN	CO ₂ fluxes from croplands and grassland ecosystems, with a particular focus on soils / Rh, NEE and NBP 1990-2018	Bradbury et al., 1993 Coleman., 1996 Jenkinson., 1977, 1987 Smith et al., 1996, 2010a,b
BU	EFISCEN	WUR	Forest biomass and soils C stocks and NBP (a single average value for 5 year periods , replicated on a yearly time axis)	Verkerk et al., 2016 Schelhaas et al. 2017 Nabuurs et al., 2018
BU	EPIC-IIASA croplands	IIASA	CO ₂ emissions from cropland 1981-2018	Balkovič et al., 2013, 2018 Izaurrealde et al., 2006 Williams et al., 1990
BU	BLUE bookkeeping model for land use change	MPI/LMU Munich	Net C flux from land use change, split into the contributions of different types of land use (cropland vs pasture expansion, afforestation, wood harvest) 1970-2017	Hansis et al., 2015 Le Quéré et al., 2018

BU	H&N bookkeeping model	Woodwell Climate Research Center	C flux from land use and land cover 1990-2015	Houghton & Nassikas, 2017
BU	FAO	FAOSTAT	CO ₂ emissions/removal from LULUCF sectors 1990-2017	FAO, 2014 Federici et al., 2015 Tubiello, 2019
BU	TRENDY v7 (2018) models: : CABLE, CLASS, CLM5, DLEM, ISAM, JSBACH, JULES, LPJ, LPX, OCN, ORCHIDEE-CNP, ORCHIDEE, SDGVM, SURFEX	MetOffice UK	Land related C emissions (NBP) from 14 bottom up models 1900-2017	References for all models in Le Quéré et al., 2018 https://www.icos-cp.eu/GCP/2018
Top-down CO₂ estimates				
TD	CarboScope regional inversions	MPI -Jena	Total CO ₂ inverse flux 2006-2018	Kountouris et al 2018 a,b
TD	GCB 2019 Global inversions (CTE, CAMS, CarboScope)	GCP	Total CO ₂ inverse flux (NBP) 4 inversions 1985-2018	Friedlingstein et al., 2019 Van der Laan-Luijk et al., 2017 Chevallier et al., 2005 Rödenbeck et al., 2005
TD	EUROCOM regional inversions 2019, 7 inversions (incl. CarboScope-Reg)	LSCE	Total CO ₂ inverse flux (NBP) 2006-2015 2006-2018 (CarboScopeReg)	Monteil et al., 2019

3. Results and discussion

3.1. Overall NGHGI reported fluxes

According to UNFCCC NGHGI (2019) estimates, in 2017 the European Union (EU27 + UK) emitted 3.96 Gt CO₂eq from all sectors (incl. LULUCF) and 4.21 Gt CO₂eq (excl. LULUCF) (Appendix B1, Figure B1a). LULUCF only contributed 0.28 Gt CO₂ in 2017. This number is consistent with a variety of independent emission inventories (Andrew 2020 and Petrescu et al., 2020b). A few large economies account for the largest share of EU27 + UK emissions, with Germany, UK and France representing 43 % of the total CO₂ emissions (excl. LULUCF) in 2017. For LULUCF the countries reporting the largest CO₂ sinks were Sweden, Poland and Spain accounting for 45% of the overall EU27 + UK sink strength. Only a few countries (The Netherlands, Ireland, Portugal and Denmark) reported a net LULUCF source in 2017; in the case of Portugal, this was mainly due to emissions from biomass burning. The UNFCCC show minimal inter-annual variability, so the 2017 values are indicative of longer-term trends.

CO₂ fossil emissions are dominated by the energy sector, combustion and fugitives, representing 91.4 % of the total EU27 + UK CO₂ emissions (excl. LULUCF) or 3.25 Gt CO₂ yr⁻¹ in 2017. The Industrial Process and Product Use sector (IPPU) sector contributes 8.2 % or 0.2 Gt CO₂ yr⁻¹ while the CO₂ emissions reported as part of the agriculture sector cover only liming and urea application, UNFCCC sectors 3G and 3H⁸ respectively. Together with waste, in 2017, the emissions from agriculture represent 0.4 % of the total UNFCCC CO₂ emissions. Often, the NGHGI reported values for CO₂ emissions do not include LULUCF as these reported-emissions are inherently uncertain showing almost no inter-annual variability, contrary to observation-based BU approaches (e.g. process-based models) which do show large inter-annual variations as a result of inter-annual variability in climatic conditions, and (in part as a consequence of this variability) in the occurrence of natural disturbances (Kurz et al., 2010, Olivier et al., 2017).

3.2. CO₂ fossil emissions

Bottom-up estimates by sector

At the EU27+UK level our results show that CO₂ fossil emissions are consistent between UNFCCC NGHGI (2019) and BU inventories from EDGAR v5.0, CEDS, and PRIMAP. EDGAR v5.0 reports the same sources as the UNFCCC, but CEDS reports emissions from Energy (1A+1B), IPPU and Waste up to 2014, and PRIMAP only for Energy and IPPU. All BU datasets show a good match for overlapping sectors, Energy and IPPU (Fig. 1, sum of sub-sectors 1A, 1B).

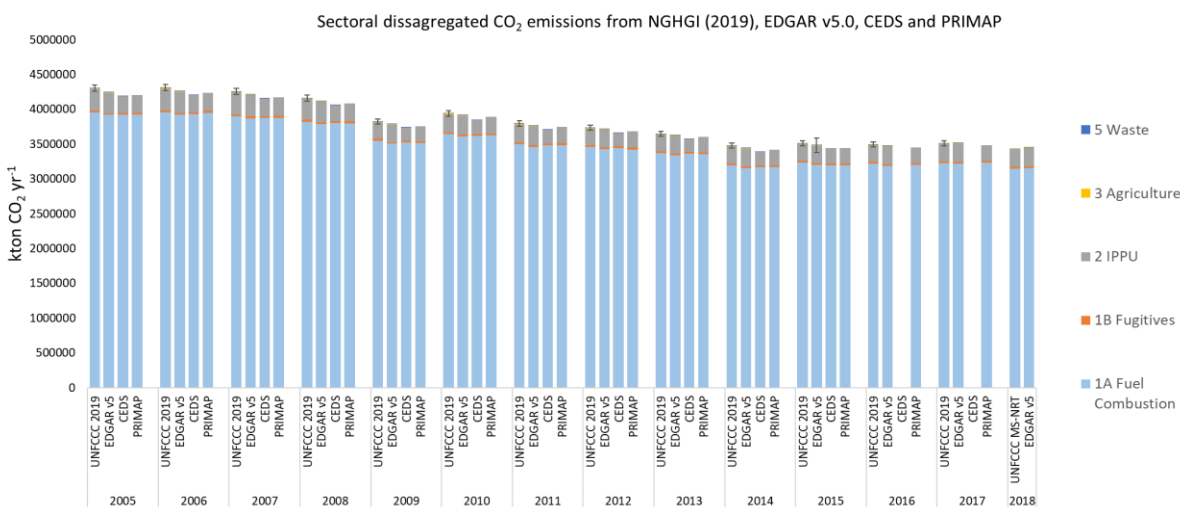


Figure 1: Total sectoral breakdown of CO₂ fossil emissions from UNFCCC NGHGI (2019), EDGAR v5.0, CEDS and PRIMAP. Sub sectors 1A and 1B belong to the Energy sector. The total UNFCCC uncertainty is 1.4 % and was calculated based on the UNFCCC NGHGI (2018) submissions. EDGAR v5.0 uncertainties were calculated only for the year 2015 using a lognormal distribution function and is min 3 % and max 4 %.

⁸ 3G and 3H refer to UNFCCC sector activities, as reported by the standardized common reporting format (CRF) tables, which contain CO₂ emissions from agricultural activities: liming and urea applications.

290 CO₂ fossil emissions are dominated by the energy sector, which includes emissions from energy use in energy industries (heat and electricity, industry, transport, and buildings). Out of the remaining three sectors (IPPU, agriculture and waste), IPPU contributes the most to the CO₂ emissions, in the EU27+UK these emissions contributed 7.1 %, 7.5 %, 5.6 % and 6.4 % from the total NGHGI, EDGAR v5.0 (2017), CEDS (2014) and PRIMAP (2015) respectively. For agriculture and waste, overall, emissions are very small, accounting in the EU27+UK in 2017 for 295 0.3% (NGHGI) and 0.4 % (EDGAR v5.0) respectively, therefore this difference is negligible for the total C budget.

Bottom-up estimates by source category

While Figure 1 was made to assist explanation of differences between datasets disaggregated by sector (e.g., energy industry, transport etc.), in Figure 2 we present CO₂ fossil emissions results from EU27+UK split by major 300 source categories (solid, liquid, gas). As in Andrew (2020), we observe good agreement between all data sources and UNFCCC NGHGI (2019) data at this level of regional aggregation. The figure presents estimates for the year 2014, as that was the most recent year when all sources reported estimates. BP⁹ (2019), CEDS (v_2019_12_23), and EDGAR¹⁰ v5.0 (2020) do not publish emissions split by fuel type at the country level and the latter two are shown as dark grey while the former is shown separating gas from liquid/solid.

305 While the datasets agree well, there are some differences. The EIA (2020) estimate is higher than others, largely because it includes international bunker fuels in liquid-fuel emissions. The IEA (2019) excludes a number of sources from non-energy use of fuels as well as all carbonates. GCP's total matches the NGHGIs exactly by design but remaps some of the fossil fuels used in non-energy processes from 'Others' to the fuel types used. BP, CEDS, and EDGAR v5.0 all report total emissions very similar to the UNFCCC NGHGI (2019).

⁹For BP, the method description allows for emissions from natural gas to be calculated from BP's energy data, but the data for solid and liquid fuels are insufficiently disaggregated to allow replication of BP's emissions calculation method for those fuels.

¹⁰EDGAR v5.0 provides significant sectoral disaggregation of emissions, but not by fuel type due to license restrictions with the underlying energy data from the IEA.

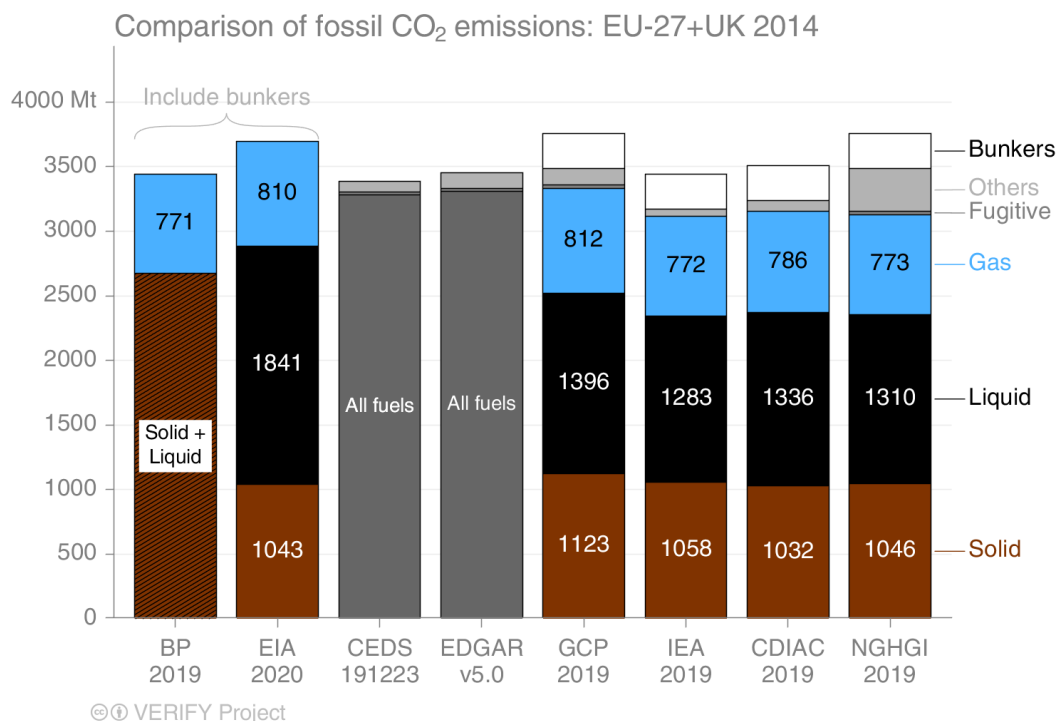


Figure 2: EU27+UK total CO₂ fossil emissions, as reported by eight data sources: BP, EIA, CEDS, EDGAR v5.0, GCP, IEA, CDIAC and UNFCCC NGHGI (2019). This figure presents the split per fuel type for year 2014. ‘Others’ is other emissions in the UNFCCC’s IPPU, and international bunker fuels are not usually included in total emissions at sub-global level. Neither EDGAR (v5.0 FT2017) nor CEDS publish a break-down by fuel type, so only the total is shown.

Top-down estimates

Figure 3 represents the first attempt to evaluate our single inversion of CO₂ fossil emissions, based on satellite CO and NO₂ measurements, against BU estimates. The particular inversion reported here provides emission totals for EU11¹¹ + Switzerland and these exclude non-fossil fuel emissions (Konovalov et al. 2016, Konovalov & Lvova, 2018). This inversion estimate partly relies on information available from the BU emission inventories (EDGAR v4.3.2 for 2012 ((http://edgar.jrc.ec.europa.eu/overview.php?v=432_GHG, http://edgar.jrc.ec.europa.eu/overview.php?v=432_AP) and CDIAC for 2012-2014 (http://cdiac.ess-dive.lbl.gov/trends/emis/overview_2014.html)) and is therefore not fully independent from BU CO₂ fossil emission estimates. The estimate from the inversion, despite its uncertainty (2700 Tg CO₂ (± 480 Tg CO₂)) is comparable with the mean of the CO₂ emissions from the NGHGI in 2014 (2624 Tg CO₂) and to mean of the other seven BU sources 2588 (±463 Tg CO₂). The TD estimate does not include CO₂ emissions from cement production while some bottom-up inventories include them. Cement emissions are known to constitute only a minor fraction (~5 %) of the total fossil

¹¹The EU11 members are Portugal, Spain, France, Belgium, Luxembourg, Netherlands, United Kingdom, Germany, Denmark, Italy, and Austria

CO₂ emissions in Europe (UNFCCC 2019, Andrew et al., 2019, Friedlingstein et al., 2020 in review) and can be disregarded in the given comparison.

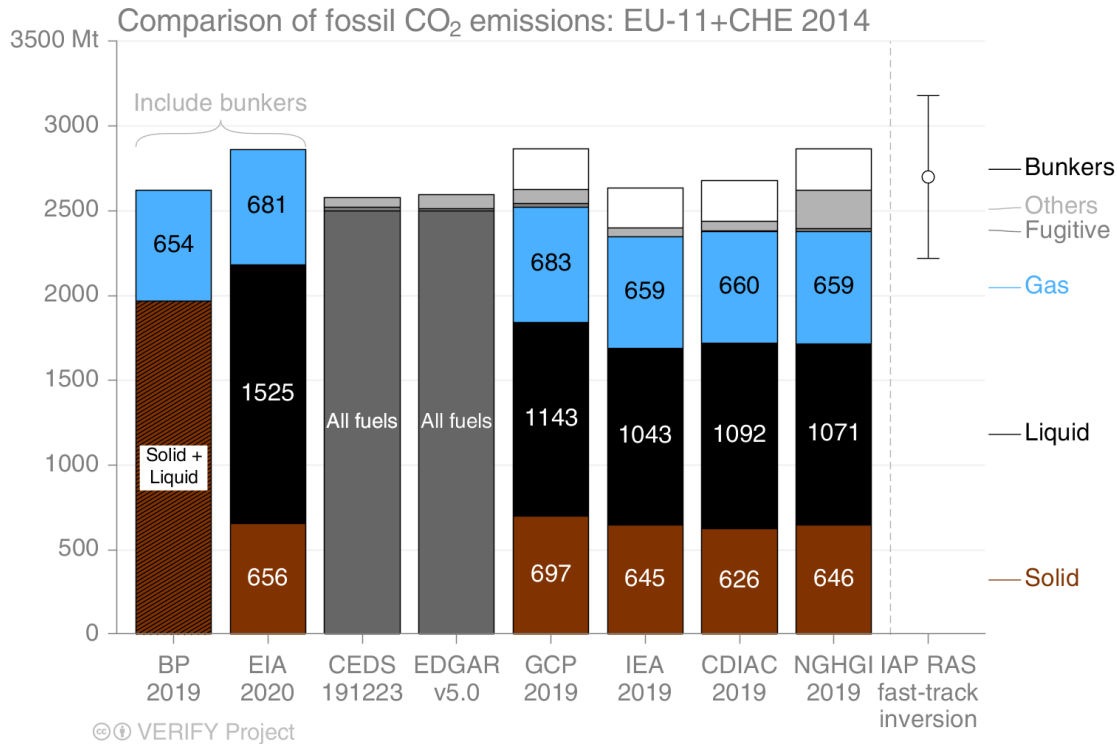


Figure 3: A first attempt in comparing BU CO₂ fossil estimates from eight data sets with a TD fast-track inversion (Konovalov and Lvova, 2018). The data represents EU11 + Switzerland for the year 2014. The uncertainty bar on the inversions represents the 2σ confidence interval.

3.3. CO₂ land fluxes

This section presents an update to the benchmark data collection by Petrescu et al., 2020b on CO₂ emissions and removals from the LULUCF sector (excluding energy-related emissions, but including emissions from land use change, emissions from disturbances on managed land, and the natural sink on managed land), expanding the scope of that work by adding TD estimates from inverse model ensembles and additional BU models run with higher-resolution meteorological forcing data over the EU27+UK.

Land CO₂ fluxes result from CO₂ emissions/removals from one land type converted to another (e.g., forests cleared for croplands), as well as emissions/removals from land occupied by terrestrial ecosystems (depending on the dataset, this may be from managed or unmanaged land, which complicates comparisons with NGHGs). Such fluxes typically include emissions and sinks in soils and carbon shifts due to harvests, including emissions from the decay of harvested wood products (HWP). Some estimates are specific to a given vegetation/sector type (i.e., only cropland or grassland). As discussed by Petrescu et al., 2020b, the analyzed fluxes therefore relate to emissions and removals from direct LULUCF activities (clearing of vegetation for agricultural purposes, regrowth after agricultural abandonment, wood harvesting and recovery after harvest and management) but also indirect LULUCF for CO₂ fluxes due to

processes such as responses to environmental drivers (i.e., climate change and CO₂ fertilization) on managed land¹². Additional CO₂ fluxes may occur on unmanaged land, but these fluxes are very small. According NIRs, all land in the EU27+UK is considered managed, except for 5% of France territory.

The indirect CO₂ fluxes on managed and unmanaged land, are part of the land sink in the definition used in IPCC Assessment Reports or the Global Carbon Project's annual global carbon budget (Friedlingstein et al., 2019), while the direct LULUCF fluxes are termed "net land-use change flux". Grassi et al. (2018) have shown that the inclusion or exclusion of the indirect sink on managed land in LULUCF is a key reason for discrepancy between reporting and scientific definitions.

Several studies have already analyzed the European land carbon budget from different perspectives and over several time periods using GHG budgets from fluxes, inventories and inversions (Lyusaaert et al., 2012), flux towers (Valentini et al., 2000), forest inventories (Liski et al., 2000, Pilli et al., 2017, Nabuurs et al., 2018) and IPCC Guidelines (Federici et al., 2015, Tubiello et al., 2020), in addition to the first benchmark data collection of BU estimates (Petrescu et al., 2020b).

Achieving the well-below 2°C temperature goal of the PA requires, among other things, low-carbon energy technologies, forest-based mitigation approaches, and engineered carbon dioxide removal (Grassi et al., 2018, Nabuurs et al. 2017). Currently, the EU27 + UK reports a sink for LULUCF and forest management will continue to be the main driver affecting the productivity of European forests for the next decades (Koehl et al., 2010). For the EU to meet its ambitious climate targets, it is necessary to maintain and even strengthen the LULUCF sink (COM(2020) 562). Forest management, however, can enhance (Schlamadinger et al., 1996) or weaken (Searchinger et al., 2018) this sink. Furthermore, forest management not only influences the sink strength, it also changes forest composition and structure, which affects the exchange of energy with the atmosphere (Naudts et al., 2016), and therefore the potential of mitigating climate change (Luyssaert et al., 2018; Grassi et al., 2019). Meteorological extremes (made more likely through climate change) can also affect the efficiency of the sink (Thompson et al., 2020). Therefore, understanding the evolution of the CO₂ land fluxes is critical to meet the goals set out in the Paris Agreement.

3.3.1. Estimates of European and regional total CO₂ land fluxes

We present results of total CO₂ land fluxes from EU27 + UK and five main regions in Europe: North, West, Central, East (non-EU) and South. The countries included in these regions are listed in Appendix A, table A.

Figure 4 shows the total CO₂ fluxes from NGHGI for both 1990 base year and mean of 2011-2015 period. We aim with this period to bring together all information over a five year period for which values are known in 2018. In fact this can be seen as a reference for what we can achieve in 2023, the year of the first global stocktake, where for most UN Parties the reported inventories will be compiled only up to the year 2021. Given that the GST is only repeated every 5 years, a five-year average is clearly of interest.

The CO₂ fluxes in Figure 4 include direct and indirect LULUCF on managed land. The total UNFCCC estimates include the total LULUCF emissions and sinks (by the UNFCCC definition) belonging to all six IPCC land classes and HWP (see section 2.3, Appendix B1, Figure B1b). We plot these and compare them with fluxes simulated

¹² In NGHGI reporting, land in EU is considered to be managed.

with statistical global datasets, bookkeeping and biosphere models, sector-specific models and inversion model ensembles. The error bar represents the variability in models estimates as the min and max values in the ensemble.

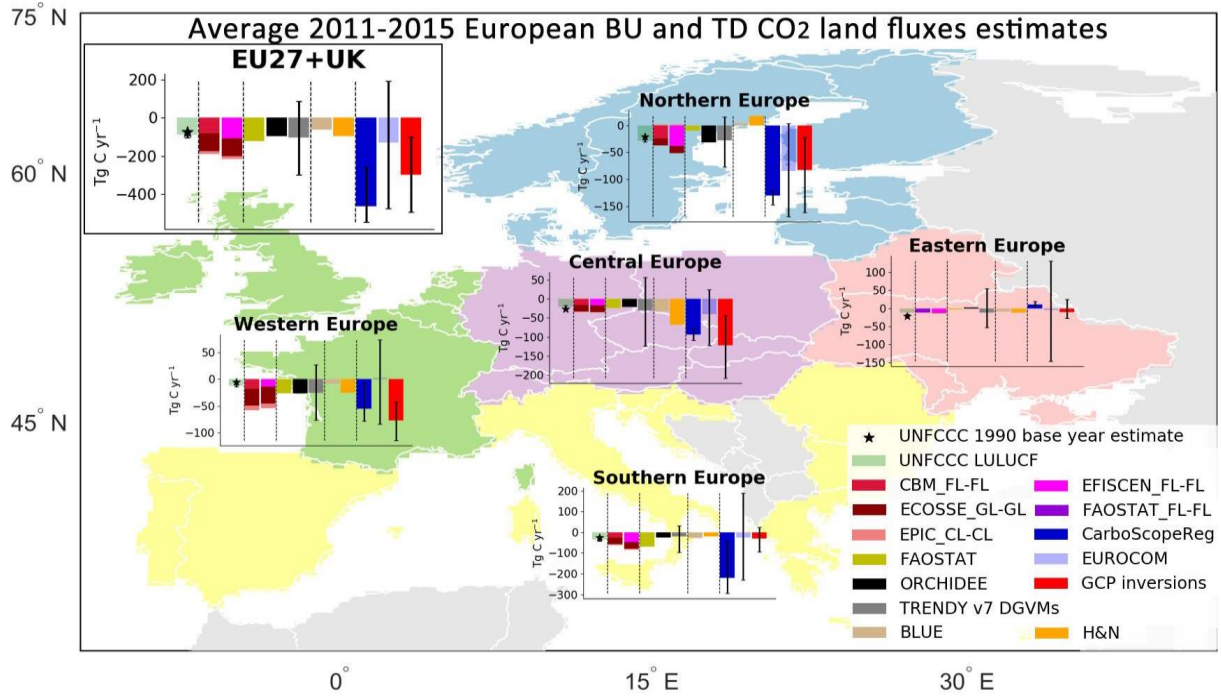


Figure 4: Five-year average (2011-2015) CO₂ land flux estimates (in Tg C) for EU27 + UK and five European regions (Northern, Western, Central, Southern and Eastern non-EU). Eastern Europe does not include European Russia and the UNFCCC uncertainty for the Republic of Moldova was not available. Northern Europe includes Norway. Central Europe includes Switzerland. The data are UNFCCC NGHGI (2019) submissions (grey) and base year 1990 (black star), four sector-specific BU models for FL-FL (CBM, EFISCEN), CL-CL (EPIC-IIASA), and GL-GL (ECOSSE), ecosystem models (ORCHIDEE and TRENDY v7 DGVMs), FAOSTAT, two bookkeeping models (BLUE and H&N), TD inversion ensembles (GCP2018, EUROCOM) and one regional European inversion represented by CarboScopeReg.

For all regions and the EU27+UK, we note considerable disagreement between the BU and TD results. We mostly see that BU (observation-based and process-based models) agree well with the NGHGIs, while inversions, in particular EUROCOM, report very strong sinks and high variability of the results compared to the BU estimates. We believe that, in general, the differences we see between regions' TD and BU results are linked to model-specific set-ups and definition issues explained in detail in sections 3.3.2 (process-based models and NGHGIs), 3.3.3 (DGVMs, bookkeeping models and NGHGIs) and 3.3.4 (all BU, TD and NGHGIs). As the current analysis is a first attempt to quantify EU27+UK estimates as a whole, we aim in the future to deepen the analysis for regional/country results.

3.3.2. LULUCF CO₂ fluxes from NGHGI and decadal changes

In Figure 5 we show the CO₂ LULUCF flux decadal change from UNFCCC NGHGI (2019). The contribution of each category ("remaining" and "converted") to the overall reduction of CO₂ emissions in percentages between the

three mean periods (grey columns are the mean values over 1990-1999, 2000-2009 and 2010-2017). The “+” and the “-” signs represent a source and a sink to the atmosphere. LUC(-) are the land use conversion changes that increase the strength of the LULUCF sink between two averages; LUC(+) are the land use conversion changes that decrease the strength of the overall LULUCF sink. Note that the sectors inside LUC(-) may be sources or may be sinks, but between the two average periods, they become more negative. For the period between 1990-1999 mean and 2000-2009 mean the overall reduction is -9.5 % (i.e., increased land sink) with positive contribution from FL-FL and LUC(+) (wetlands, settlements and other land conversions) contributing to weakening the overall sink (+3.5 %)¹³, and with all others conversions contributing to the strengthening of the sink (-13 %)¹⁴. For the period between the 2000-2009 mean and the 2010-2017 mean we notice that the main contributors to the overall +3.5 % increase are FL-FL, HWP and LUC (+) (forest, wetlands and settlement conversions) which contribute (+7.2 %) to weakening the sink, while GL-GL, CL-CL and LUC (-) (cropland, grassland and other conversions) contribute to strengthening the sink (-3.7 %).

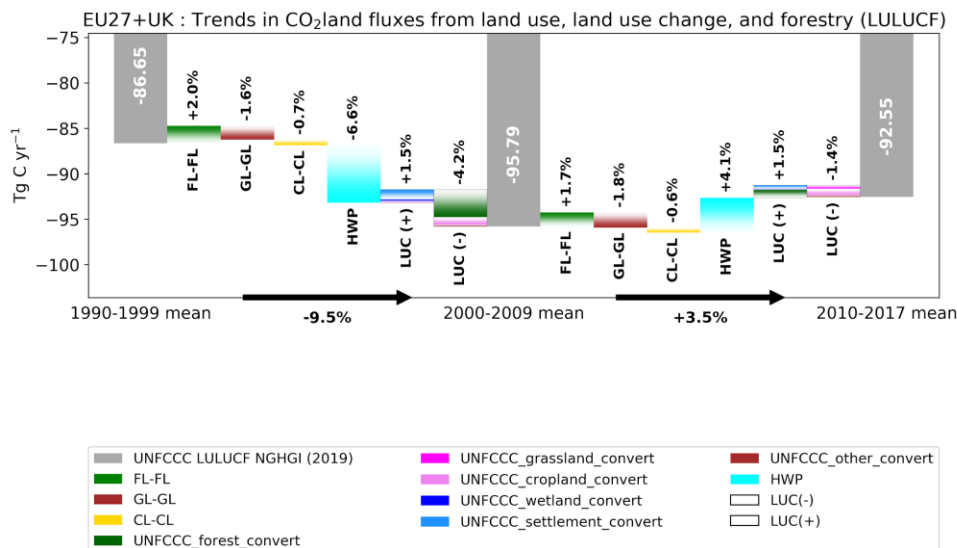


Figure 5: The contribution of changes (%) in various LULUCF categories to the overall change in LULUCF multi-year mean emissions as reported by Member States to the NGHGI UNFCCC (2019). Changes in land categories converted to other land are grouped to show net gains and net losses in the same column, with the bar color dictating which category each emission belongs to; note that the composition of the "LUC(+)" and "LUC(-)" bars can change between time periods. Not shown are emissions from "Wetlands remaining wetlands", "Settlements remaining settlements", and "Other land remaining other land" as none of the BU models used distinguish these categories. The

¹³ positive %s - source

¹⁴ negative %s – sink

fluxes follow the atmospheric convention, where negative values represent a sink while positive values represent a source.

We see that HWP emissions are by far the major contributor but in different directions across the two periods, from strengthening the sink between 1990-1999 and 2000-2009 to reducing the sink in the second period. This is mostly due to the specific accounting approach where a reduction on the amount of harvest, such as the one occurred after the economic crisis in 2008, progressively reduced the inflow of raw material and, taking into account the decay rate applied to each commodity, this further reduced the C stock within the same pool. Therefore, Figure 5 suggests that carbon emissions from HWP decay became greater than the amount of carbon entering HWP in recent decades.

3.3.2. Estimates of CO₂ fluxes from bottom-up approaches

In this section we present annual total net CO₂ land emissions between 1990-2018 i.e., induced by both LULUCF and other (environmental changes) processes from class specific models as well as from models that simulate some or all classes. The definitions of the classes might differ from the definition of the LULUCF (FL, CL, GL etc.) (Figures 6, 7 and 8) where, according to IPCC 2006 guidelines, to become accountable in the NGHGI under remaining categories, a land-use type must be in that class for at least 20 years. Over FL (both FL-FL and conversions) we compare modelled net biome production (NBP) estimates (including soil plus living and dead biomass C stock change) simulated with class-specific ecosystem models to UNFCCC and FAOSTAT data consisting of net carbon stock change in the living biomass pool (aboveground and belowground biomass) associated with forests and net forest conversion including deforestation.

The **Forest Land** estimates, which remain in this class (FL-FL) in Figure 6, were simulated with ecosystem models (CBM, ORCHIDEE, EFISCEN) (described in Appendix A2 and Appendix Table B1), global datasets (FAOSTAT) and countries' official inventory statistics reported to UNFCCC. The results show that the differences between models are systematic, with CBM having slightly weaker sinks than EFISCEN and FAOSTAT. Starting with year 2000 and towards 2017, the FAOSTAT reports sinks that strengthen over time. Differences between estimates might be due to the use of different input data e.g. CBM and EFISCEN use national forest inventory (NFI) data as the main source of input to describe the current structure and composition of European forest, while FAOSTAT uses input data directly from country submission done under FAO Global Forest Resource Assessments (FRA¹⁵) (e.g. carbon stock change calculated by FAO directly from carbon stocks and area data submitted by countries directly). Furthermore, FAOSTAT numbers include afforestation, i.e., the sum of all other land converted to FL, resulting in a smaller sink if afforestation would be removed, therefore matching better the UNFCCC estimates (Petrescu et al., 2020b).

For ORCHIDEE, the model shows a high inter-annual variability in carbon fluxes because ORCHIDEE operates on a sub-daily time step for most biogeochemical and biophysical processes except for a daily time step for "slow" processes like carbon allocation in the vegetation reservoirs, while all other models involved in this comparison use forest inventory data which is reported every few years (i.e., five years for FRA). ORCHIDEE results indicate that

¹⁵The Global Forest Resource Assessment (FRA) is the supplementary source of Forest land data disseminated in FAOSTAT, <http://www.FAO.org/forestry/fra/en/>

climatic perturbations and extreme events (multi-month droughts, in particular) can have significant impacts on the net carbon fluxes depending on when they occur. This is to some extent supported by dendrometer data although highly varying per site and tree species obscuring a significant net effect (Scharnweber et al., 2020). It should also be noted that dendrometer data measures carbon stored in individual trees, while the NBP reported in figures in this paper include fluxes from litter and soil respiration. The variability of the weather data affects all components of the carbon dynamics in the ecosystems (hence NBP), with for instance impacts on C assimilation rates, length of the growing season, dynamics of respiration rates and allocation of the carbon in the plant (cf. Figure 1 and 2 in Reichstein et al. (2013)).

The UNFCCC NGHGI uncertainty of CO₂ estimates for FL-FL across the EU27+UK, computed with the error propagation method (95% confidence interval) (IPCC, 2006), ranges between 23 % - 30 % when analyzed at the country level as it varies as a function of the component fluxes (EU NIR, 2017). Given the different methodologies and input data for emission calculation and uncertainties in each method (10 Tg C yr⁻¹ for the mean), we consider the match between the model EFISCEN and the UNFCCC NGHGI (2019) estimates to be good, in particular with respect to the similarity in temporal trends. The means of ORCHIDEE and CBM fall within the reported UNFCCC uncertainty (around 20 Tg C yr⁻¹), while FAOSTAT lies outside of it. Note that FAOSTAT and EFISCEN have a different trend compared to other models and the NGHGI.

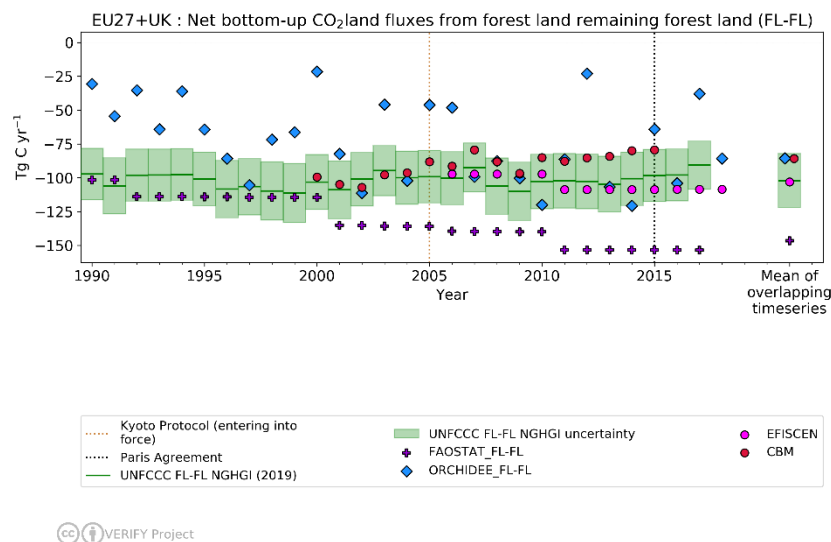


Figure 6: Net CO₂ land flux from forest land remaining forest land (FL-FL) estimates for EU27+UK CO₂ from UNFCCC NGHGI 2019 submissions and bottom-up emission models with their 2006-2015 mean (on the right side). CBM FL-FL estimates include 25 EU and UK countries (excl. Cyprus and Malta); The relative error on the UNFCCC value represents the UNFCCC NGHGI (2018) MS-reported uncertainty computed with the error propagation method (95% confidence interval) and is 19.6 % (with no values for Hungary and Cyprus). The negative values represent a sink.

485 Some of the reasons for differences between estimates we see in Figure 6 are linked to different activity data
(e.g. forest area) the models use, for example the stronger sink reported by FAOSTAT compared to UNFCCC NGHGI.
By analyzing three of the forest area products (ESA-CCI LUH2v2 (Hurtt et al., 2020) used in ORCHIDEE, FAOSTAT
and UNFCCC) we found the following:

- 490 • For this study, the ORCHIDEE model used a so-called ESA-CCI LUH2v2 PFT distribution (a combination
of the ESA-CCI land cover map for 2015 with the historical land cover reconstruction from LUH2 (Lurton
et al., 2020)), and assumes that the shrub land cover classes are equivalent to forest. In terms of area,
the original ESA-CCI product corresponding to our domain of the EU-27+UK shows shrub land equal to
about 50 % of the tree area in 2015. A similar analysis using the FAOSTAT domain Land Cover, which
maps and disseminates the areas of MODIS and ESA-CCI land cover classes to the SEEA land cover
495 categories (<http://www.fao.org/faostat/en/#data/LC>), shows that shrub-covered areas are around
20 % of that of forested areas for the EU-27+UK. The impact of classifying shrubs as "forests" on the
total carbon fluxes could therefore account for a significant percentage of the differences between
ORCHIDEE and other results in Figure 6. ESACCI LUH2v2 does not include the 20-year transition
period, as included in the IPCC reporting guidelines. This could be 1% of the forests in Europe, but there
500 is a considerable uncertainty in that based on the transition data seen between the maps.
- FAOSTAT forest land area is based on country statistics from the FAO/FRA process and includes not
only forest remaining forest area but all forested land, including afforestation.”

Cropland and Grassland (CL and GL) (in UNFCCC NGHGI 2019, UNFCCC sectors 4B and 4C,
505 respectively) include net CO₂ emissions/removals from soil organic carbon (SOC) under ‘remaining’ and
‘conversion’ categories. Similar to Forest Land, we present in Figure 7 the fluxes belonging to the
‘remaining’ category CL-CL. The cropland definition in the IPCC includes cropping systems and agro-
forestry systems where vegetation falls below the threshold used for the forest land category, consistent with
the selection of national definitions (IPCC glossary).

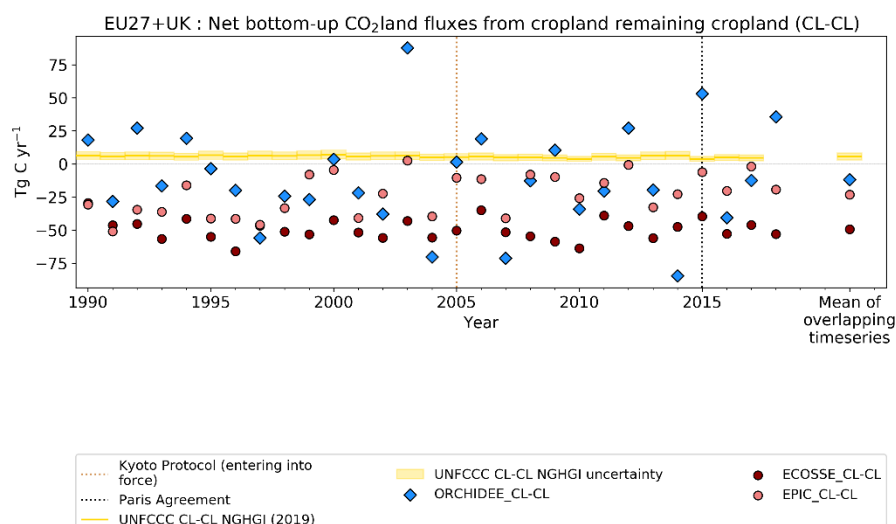


Figure 7: Net CO₂ flux from cropland remaining cropland estimates for EU27+UK from UNFCCC NGHGI 2019 submissions and bottom-up emission models with their 1990-2017 mean (on the right side). CL-CL emissions estimated with three ecosystem models, ORCHIDEE, ECOSSE and EPIC-IIASA. The relative error on the UNFCCC value represents the UNFCCC NGHGI (2018) MS-reported uncertainty computed with the error propagation method (95% confidence interval) and is 47.5 % (with no data from Hungary, Cyprus and Portugal). The negative values represent a sink, while the positive values represent a source.

From Figure 7 we see that modelled CL-CL inter-annual variabilities simulated by ECOSSE and EPIC-IIASA estimates are consistent, while ORCHIDEE shows a much larger year-to-year variation. The NGHGIs are mostly insensitive to inter-annual variability as the estimations are mainly based on statistical data for surfaces/activities and EFs that do not vary with changing environmental conditions.

The three process-based models report sinks in most years (means of -12, -49 and -23 Tg C respectively), contrary to the NGHGIs, which report a small but constant source over the whole period (mean of 5.6 ± 3.5 Tg C) with almost no inter-annual variability by construction. The source reported by NGHGIs, at EU level, is mostly attributed to emissions from cropland on organic soils¹⁶ in the northern part of Europe which emit CO₂ due to C oxidation from tillage activities. As an example, Finland and Sweden report together more than half of the total area of organic soil in Europe. Organic soils are an important source of emissions when they are under management practices that disturb the organic matter stored in the soil. In general, emissions from these soils are reported using country-specific values when they represent an important source within the total budget of GHG emissions. In the

¹⁶The 2006 IPCC Guidelines largely follow the definition of Histosols by the Food and Agriculture Organization (FAO), but have omitted the thickness criterion from the FAO definition to allow for often historically determined, country-specific definitions of organic soils (see Annex 3A.5, Chapter 3, Volume 4 of the 2006 IPCC Guidelines for National Greenhouse Gas Inventories (2006 IPCC Guidelines) and Chapter 1, Section 1.2 (Note 3) of 2013 Supplement to the 2006 IPCC Guidelines for National Greenhouse Gas Inventories: Wetlands (Wetlands Supplement, IPCC 2014): https://www.ipcc-nggip.iges.or.jp/public/wetlands/pdf/Wetlands_separate_files/WS_Chpl_Introduction.pdf).

southern part of Europe, the two categories (CL-CL and GL-GL) are a sink, due to a lack of organic soils in those regions and due to an abandonment trend of land converting arable land to grassland (EU NIR, 2019). In addition, NGHGs assume that all aboveground biomass of non-woody crops re-enters the atmosphere at harvest. In models like ORCHIDEE and EPIC-IIASA, only part of the aboveground biomass is harvested and enters the atmosphere, and the rest (approximately 50% of the aboveground carbon) enters the soil and decays. Given more favorable growing conditions due to climatic changes and CO₂ fertilization, this can lead to more carbon entering the soil in ORCHIDEE in recent decades, which is driving the CL-CL sink observed in the model.

The strongest sink reported by ECOSSE model is linked to the soil C model (RothC) used, which simulates a large ‘inert pool’ which thus leads to a slower C turnover time in the soil (compared to ORCHIDEE or EPIC-IIASA) and thus to significantly larger sink. This ‘respiration’ aspect of RothC will be addressed in the next synthesis. According to Ciais et al., 2010, a small carbon source would be a realistic assumption for croplands and in line with the NGHGI report. Thus, while the NGHGI and the three process-based models show a different sign of the CO₂ flux, the difference is a result of the processes included/definitions used in each approach, as explained above.

For the inter-annual variability all three models follow the same dynamic, but the impacts of climate extremes are different with significantly larger impacts in ORCHIDEE. While ORCHIDEE shows a strong reaction to drought impacts changing from a sink to a source (e.g. for 2003, which is reported as a very dry year (Ciais et al., 2005)), the other two models follow ORCHIDEE’s variation, but show less extremes. As ECOSSE directly simulates the annual net primary production (NPP) (i.e., internal component model (MIAMI) implemented in ECOSSE) and not the intra-annual gross primary production (as in ORCHIDEE), the impact of season specific climate anomalies is smaller than in ORCHIDEE.

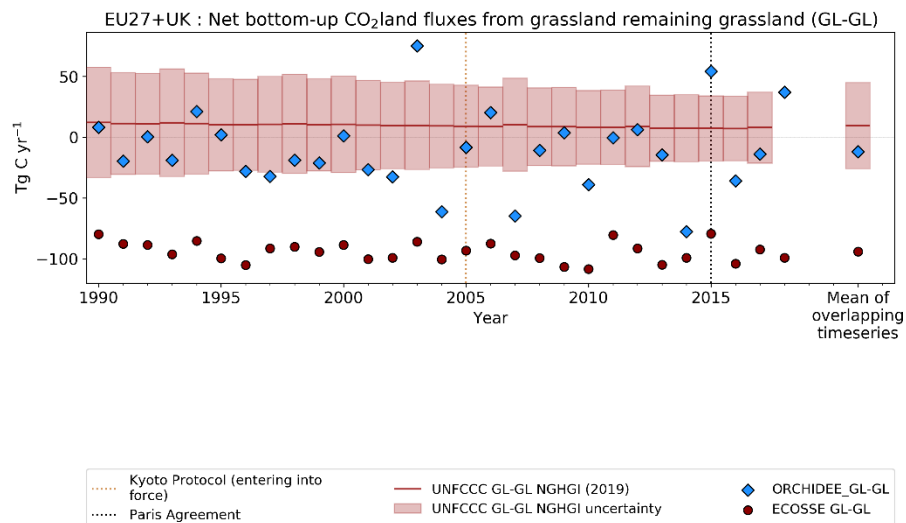


Figure 8: Net CO₂ flux estimates from grassland remaining grassland for EU27+UK CO₂ from UNFCCC NGHGI 2019 submissions and bottom-up emission models with their 1990-2017 mean (on the right side). GL-GL emissions are estimated with the ORCHIDEE and ECOSSE models. The relative error on the UNFCCC value represents the

UNFCCC NGHGI (2018) MS-reported uncertainty computed with the error propagation method (95% confidence interval), and is equal to 373.6 % (no data for Hungary, Cyprus, Slovakia, Spain and Czech Republic. The negative values represent a sink, while the positive represent a source.

Figure 8 shows the CO₂ flux of the grassland remaining grassland category, GL-GL. Grassland definition in the IPCC includes rangelands and pasture land that is not considered as cropland, as well as systems with vegetation that fall below the threshold used in the forest land category. This category also includes all grassland from wild lands to recreational areas as well as agricultural and silvo-pastoral systems, subdivided into managed and unmanaged, consistent with national definitions (Petrescu et al., 2020b). The NGHGIs of countries in the EU-27+UK report emissions from managed pastures only, which, in 2010, represented a minimum of 58 % (Chang et al., 2016) of the total managed grassland area in the EU. Since almost all European grasslands are somehow modified by human activity and have to a major extent been created and maintained by agricultural activities, they could be defined as “semi-natural grasslands”, even if their plant communities are natural (EU LIFE, 2008). Therefore, NGHGIs report a small mean source over 1990-2017 (9 Tg C) primarily due to the use of EFs from national statistics which are linked to intensive management practices applied to grasslands in the EU.

Out of all the models used in this study, only ORCHIDEE and ECOSSE report fluxes from this category. Grasslands in ORCHIDEE do not undergo any specific management and are not separated from pasturelands. Therefore, discrepancies between ORCHIDEE and the NGHGI data result in the first reporting a mean sink over 1990-2017 of -12 Tg C while official inventories report a small source, as explained above. The sink in ORCHIDEE is due to the fact that the CO₂ fertilization effect increases the NPP over time and also increases input of C to the soil, which then leads to increased soil C stocks. The strong sink simulated by ECOSSE (-94 Tg C in mean) is the result of using a limiting scenario where intensively managed grasslands, i.e., high grazing intensity and high yield removal, are not included, thus favoring high soil carbon storage. These effects are similar to that seen in croplands (see above), resulting from the CO₂ fertilization effect.

3.3.3. Bottom-up CO₂ estimates from all LULUCF sectors

In this section we attempt to present a comprehensive analysis of CO₂ emissions and sinks for the LULUCF sectors. Here we try to compare the sum of all categories and sectors of the NGHGIs discussed in Figure 5 (including the remaining and transition sub-sectors; details are found in the Figure 5 caption), with various observation-based BU model estimates. The comparison with atmospheric inversions (TD) is discussed in the next section. Such comparison is challenging due to differences in terms of activities covered in the different estimates, as well as differences in terminology, which have already been highlighted in several papers (see more specifically Petrescu et al., 2020b, Figure 12). Let's first briefly recall the main differences between the selected products:

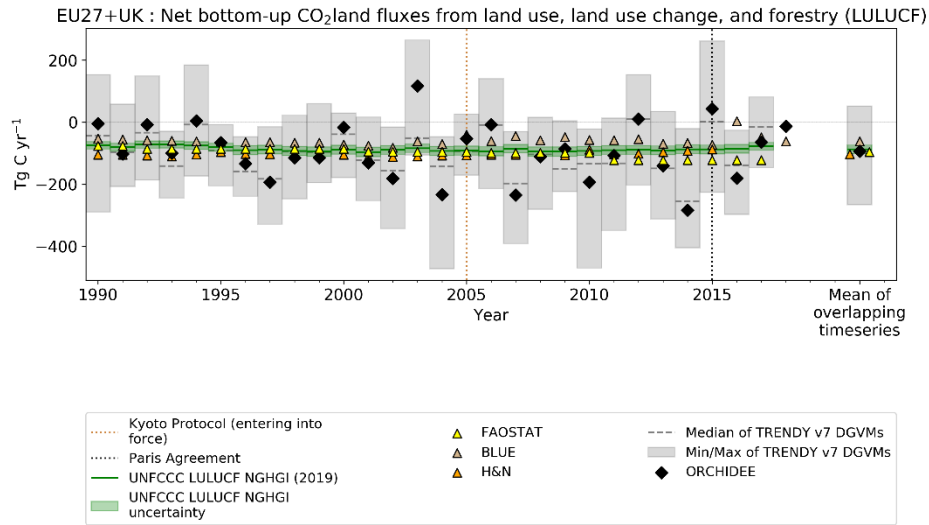
- FAOSTAT differs from NGHGIs for reasons summarized by Federici et al 2015 and Petrescu et al 2020b, including numerically different data provided by Member States to FAOSTAT and UNFCCC, different methods (FAOSTAT applies a Tier 1 approach globally, while Member States reports to the UNFCCC vary

from Tier 1 to Tier 3), differences between net and gross land use (FAOSTAT is based on net transitions), and FAOSTAT results only considering living biomass pools instead of the five IPCC pools¹⁷ reported to the UNFCCC.

- The process-based high resolution ORCHIDEE simulation and the TRENDY v7 ensemble, with the so-called “S3 simulation” (see the TRENDY simulation protocol, Le Quéré et al. 2018), include the impact of CO₂ fertilization, climate change and land use change for forest, grassland and cropland sectors; they do not explicitly treat the wetland, settlement and other land sectors as in the NGHGs. They account for the evolution of living and dead biomass as well as SOC for all categories while for NGHGs it is not mandatory for all subcategories (i.e., dead biomass). Finally, there is significant uncertainty associated to the DGVMs’ fluxes both from i) the forcing data, including datasets of land-use changes and the coverage of different land use change practices, ii) model parameters, and iii) structural uncertainty in models (i.e., which processes are included and which are not) (Arneth et al 2017). Similar to FAOSTAT, DGVMs typically deal with net land use change emissions, instead of gross land use change as reported in NGHGs, which may induce significant differences with coarse resolution model simulations (i.e., 0.5° or 1° for the TRENDY ensemble). DGVMs often do not distinguish between managed and unmanaged land, while NGHGs are for emissions from managed land.
- The bookkeeping models, BLUE and H&N, calculate net emissions from land use change including immediate emissions during land conversion, legacy emissions from slash and soil carbon after land-use change, regrowth of secondary forest after abandonment, and emissions from harvested wood products when they decay. They thus do not account for the net fluxes occurring in the “remaining” land categories due for instance the CO₂ fertilization effects or climate changes. One exception to this are fluxes from wood harvested, which is a primary source of emission on managed forest land and also included in bookkeeping models. As seen before in Figure 5, this component can present a significant flux.

Given all these differences in terms of activities, the comparison in this section should be considered as a first step that raises both important aspects of the C cycle and questions that need to be addressed in the future. Going toward a more specific comparison of only net land-use change fluxes would require additional considerations. In GCP’s annual global carbon budget, this term is estimated by global DGVMs as the difference between a run with and a run without land-use change and by bookkeeping models. Such an estimate is given in Figure 13 in Petrescu et al., 2020b for forest land. While attractive, such a plot does not fully resolve the differences mentioned above. In particular, questions remain about net vs. gross land use change, managed vs. unmanaged land, and emissions from wood harvest. In addition, UNFCCC “convert” emissions (i.e., emissions resulting from land that has been converted from one type to another) are calculated for 20 years following conversion. FAOSTAT, DGVMs, and bookkeeping models typically only include “convert” fluxes from the year following conversion, although bookkeeping models can more easily include this transition period.

¹⁷ According IPCC 2006 guidelines the reporting is done for the five LULUCF carbon pools: above-ground biomass, belowground biomass, dead wood, litter, and soil organic matter



CC BY VERIFY Project

Figure 9: A comparison of different estimates of the CO_2 fluxes from land use, land use change and forestry activities in the EU27+UK from seven data sources: UNFCCC NGHGI (2019), BLUE, H&N, DGVMs (TRENDY v7), FAOSTAT and ORCHIDEE (stand-alone with high spatial resolution forcing and from TRENDY). The grey bars represent the individual model data for eight DGVMs. The UNFCCC estimate includes the following categories: Forest Land, Cropland, Grassland, Wetlands, Settlements, and Other Land from conversions, in addition to harvested wood products (HWP). The relative error on the UNFCCC value represents the UNFCCC NGHGI (2018) MS-reported uncertainty computed with the error propagation method (95% confidence interval) and is 16 %. The FAOSTAT estimate includes the following categories: Forest Land, incl. afforestation and deforestation as conversion of forest land to other land types). The means are calculated for the 1990-2015 overlapping period. The negative values represent a sink, while the positive represent a source.

Figure 9 thus represents CO_2 fluxes from LULUCF activities, including estimates from ORCHIDEE high resolution and TRENDY (mean across the ensemble) DGVMs models (“S3” type simulations), bookkeeping models, NGHGI and FAOSTAT. For the overlapping period 1990-2015, we observe from the means (see right part of the plot) that both bookkeeping models (BLUE (-61 Tg C) and H&N (-103 Tg C)) and FAOSTAT (-96 Tg C) estimates match the UNFCCC NGHGI (-87 Tg C) reporting, because their managed areas for EU27+UK are similar (H&N: 118 Mha; BLUE: 117 Mha; UNFCCC: 167 Mha, from in Grassi et al., 2018a, Petrescu et al., 2020b). Unmanaged area in the EU27+UK is negligible and sums up only 4 Mha. The similarities between bookkeeping models and UNFCCC can be explained by the fact that, despite a smaller forest sink in H&N, they both report a small sink in non-forest land uses while for these land uses UNFCCC reports a source (Figures 7 and 8).

The UNFCCC LULUCF estimates contain CO_2 emissions from all six land use classes and HWP, including remaining classes and conversion to and from a class to another. ORCHIDEE (-93.9 Tg C) shows large variabilities (black diamonds), mostly following the temporal patterns of the mean from TRENDY v7 DGVMs (-103 Tg C) (grey

bars) as detailed above. Note again that ORCHIDEE is also part of the TRENDY ensemble, but with a different meteorological forcing (coarser resolution, 0.5°) than the one used within the VERIFY project (around 0.1° resolution).

The differences between bookkeeping models and UNFCCC and FAOSTAT are discussed in detail in Petrescu et al., 2020b cf. Fig. 12, who concludes that the key difference between bookkeeping models, on the one hand, and FAOSTAT and UNFCCC methodologies, on the other, is that the latter are based on the managed land proxy (Grassi et al., 2018a). ORCHIDEE model and the TRENDY v7 ensemble means show much higher inter-annual variability due to the sensitivity of the model fluxes to highly variable meteorological forcing and the models' sub-daily time steps which allow for much more rapid responses to changing conditions (i.e. 2003 extreme drought year), as already discussed in the previous sections. The incorporation of variable climate data and the fact that DGVM models simulate explicitly climate impacts on CO_2 fluxes, which inventories and bookkeeping do not, explain these differences.

DGVMs estimate net land-use emissions as the difference between a run with and a run without land-use change, and their estimate includes the loss/gain of additional sink capacity, that is, the sink that favors the environmental changes (e.g. CO_2 fertilization). This sink created over forest land in the simulation without land use change is "lost" in the simulation with land use change (i.e., deforestation) because agricultural land lacks the woody material and thus has a higher carbon turnover (Gasser et al., 2013, Pongratz et al., 2014 and cf. Figure 12 in Petrescu et al., 2020b). This different definition from bookkeeping models historically implies on average higher carbon 'land use' emissions from DGVMs when an ecosystem is converted to another with a lower carbon density, even if all post-conversion carbon stocks changes were the same in DGVMs and bookkeeping models.

3.3.4. Comparison of top-down and bottom-up CO_2 estimates

Figure 10 highlights the variability of estimates from atmospheric inversions of GCP (1990-2017), CarboScopeRegional (2006-2017) and EUROCOM (2006-2015) plotted against total annual EU27+UK CO_2 land emissions/removals from observation-based BU approaches and UNFCCC NGHGI (2019). In these inversions, all components of the carbon cycle (NEE) that contribute to the observed atmospheric CO_2 gradients between stations (e.g., lateral fluxes, oxidation of C compounds into CO_2) are included. To facilitate the comparisons with NGHGIS we first account for some of these differences by subtracting from the inversion estimates the emissions from rivers (Lauerwald et al., 2015), lakes and reservoirs (Raymond et al., 2013; Hastie et al., 2019) as NGHGIS do not include them. Also, not included in NGHGI estimates are the outgassing from crop and wood products traded and consumed this year.

Looking at TD estimates, the annual mean (overlapping period 2006-2015) of the EUROCOM inversions (-138 Tg C) is the closest inversions ensemble (among the three) to the time series mean of the NGHGI estimates (-90 Tg C), with a difference of 48 Tg C yr^{-1} that is well within the mean uncertainty of the regional inversion ensemble (about 250 Tg C yr^{-1}). It also matches well with the TRENDY v7 DGVMs trend which is smaller ($+7.3 \text{ Tg C yr}^{-2}$) than that of the global GCP inversions (-16 Tg C yr^{-1}). On the other hand, the large range of variability in the EUROCOM ensemble estimates ($+335 \text{ Tg C}$ in 2015 to -615 Tg C in 2013) demonstrates that there is still a very significant

Also, noteworthy is that the global inversions provide reliable results at a global scale (following the atmospheric global CO₂ growth rate) but the ranges of estimates when considering continental to regional scales increase significantly due to the difficulties of the inversion systems to separate regional fluxes (e.g. Friedlingstein et al 2020). Note also that these systems are still primarily designed for large scale flux estimates (for instance the CarboScope global system uses a transport model at coarse spatial resolution (4° x 5°) and an error correlation length of 1000 km over land). The regional inversions (EUROCOM and CarboScopeReg) are still systems in development with additional complexity due to the treatment of the boundary fluxes (compared to the global systems).

For the models, differences result from choices in the simulation setup and depend on the type of model used – bookkeeping models, DGVMs, or inventory-based – and whether fluxes are attributed to LULUCF emissions due to the cause or place of occurrence (indirect fluxes on managed land included in NGHGs and FAOSTAT e.g., changes due to human-induced climate change, including CO₂ fertilization and nitrogen deposition changes) (Petrescu et al., 2020b). Table 3 below highlights these differences by presenting an overview of processes included in the models, seen for the moment as the main cause of discrepancies between estimates shown in Figure 10.

Table 3: Comparison of the processes included in the inventories, bottom-up models and inversions.

Description	NGHGI		Process-based models				DGVMs		Bookkeeping Models		Inversions		
	UNFCCC ^a	FAOSTAT ^a	ECOSSE	EPIC-IIASA	CBM	EFISCEN	TRENDY v7	ORCHIDEE	BLUE	H&N	CarboScope Regional	Eurocom*	Global Inversions (GCP)**
Ecosystem split / LC transitions													
Forest total	E	E	N	N	E	E	Acc. table A1 in GCB 2019 (Friedlingstein et al 2019)	E	E ^h	E ^h	E	E	Acc. Table A3 in GCB 2019 (Friedlingstein et al 2019)
Split FL-FL / FL-X / X-FL	E	E	N	N	E	E/T/I		E	E ^h /E/E	E ^h /E/E	N	N	
Cropland total	E	N	E	E	N	N		E	E ^h	E ^h	E	E	
Split CL-CL / CL-X / X-CL	E	N	E	E/N/N	N	N		E	N/E/E	N/E/E	N	N	
Grassland total	E	N	E	N	N	N		E	E	E	E	E	

Split GL-GL / GL-X / X-GL	E	N	E	N	N	N		E	N/E/E	N/E/E	N	N	
Peatland accounting	E	E	N	N	N	N		N	N	N	N	N	
“Natural” Processes													
CO ₂ fertilization	N		N	E	N	N	Acc. table A1 in GCB 2019 (Friedlingstein et al 2019)	E	N ⁱ	N ⁱ	N	E	Acc. Table A3 in GCB 2019 (Friedlingstein et al 2019)
Climate induced impacts	N		N	E ^f	I ^b	I		E	N ⁱ	N ⁱ	E	E	
Natural disturbances (fires, insect, wind)	N		N	N	E	N		N	N ⁱ	N ⁱ	N	N	
Soil Organic C dynamic	I		E	E	E	E		E	N	N	E	E	
Lateral C transport (river)	N		N	N	N	N		N	N	N	N	N	
Direct human-induced processes													
Flux from Harvested Wood Products	E		N	N	I	N ^d	Acc. table A1 in GCB 2019 (Friedlingstein et al 2019)	E	E	E	N	N	Acc. Table A3 in GCB 2019 (Friedlingstein et al 2019)
Flux from Crop/Grass harvest	?		E	E ^c	N	N		E	I ⁱ	I ⁱ	N	N	
Biomass burning	E	E	E	N ^g	E	N		N	E ^j	E ^j	N	E	
N fertilization (with N dep)	I	N	E	N	N	N		N	N	N	N	N	
Flux from drained organic soils	I	E	E	N	I	N		I	E ^j	E ^j	N	N	
Resolution													
Spatial	Country totals	Country	0.125 x 0.125	0.125 x 0.125 degree	Country totals	Country totals	Acc. table A1 in GCB 2019 (Friedlingstein et al 2019)	0.125 x 0.125 degree	0.25 x 0.25 degree	Country totals	0.5° x 0.5°	0.5° x 0.5°	

Temporal	Yearly, t-2	Yearly	Yearly	Monthly	Yearly	Every 5 years		Monthly	Yearly	Yearly	3-hourly	from 3-hourly to monthly	
----------	-------------	--------	--------	---------	--------	---------------	--	---------	--------	--------	----------	--------------------------	--

Not included : **N**, Explicitly modeled : **E**, Implicitly modeled: **I**, Partly modeled : **P**

^aUNFCCC and FAOSTAT are ensemble of country estimates calculated with specific methodology for each country, following some guidelines.

^bThe climate effects can be estimated indirectly by CBM, using external additional input provided by other models

^cEFISCEN can add this as a scenario variable, there is no internal module that allocates how much forest area there should be.

^dEFISCEN has only production in m3 but doesn't have a direct HWP module.

^eCrop yield and residue harvest from cropland (20% of residues harvested in case of cereals, no residue harvest for other crops).

^fEPIC-IIASA partly accounts for soil drought, i.e., plant growth limitation due to a lack of water in the soils. Heat stress and floods are not accounted for, though.

^gIn principle, burning of crop residues on cropland can be explicitly simulated by EPIC-IIASA. However, not done for VERIFY as it is not a relevant scenario for the business as usual cropland management in Europe.⁷

^hforest/cropland/grassland exist and have carbon stocks, but have carbon fluxes only through change to management. FL-FL includes all land-use induced effects (harvest slash and product decay, regrowth after agric abandonment and harvesting)

ⁱimplicit by using observation-based carbon densities that reflect harvest/climate/natural disturbances

^jpeat burning and peat drainage are not bookkeeping model output, but are added from various data sources during post processing

^kAccording Table 2 in Monteil et al., 2020 and Table A3 in Friedlingstein et al., 2019

4. Summary and concluding remarks

The overview and variety of data products described in this study is the first of a series of European CO₂ synthesis papers presenting and investigating differences between UNFCCC NGHGI, bottom-up data-based inventories, high resolution observation-based BU models, and TD approaches represented by both global and regional inversions.

The CO₂ fossil emissions dominate the anthropogenic CO₂ flux in the EU27+UK. Fossil CO₂ emissions are more straightforward to estimate than ecosystem fluxes. Different BU methods have only minor differences with respect to the NGHGI. These differences can often be attributed to different definitions or assumptions about activity data or emission factors or by the allocation of fuel types to different sectors (see Fig. 2, section 3.2). Currently, TD methods, albeit only a single inversion using CO/NO_x proxies to determine CO₂ fossil emissions, show broad agreement with the BU estimates. The TD inversion is not yet capable of verifying the minor differences between the BU estimates. However, a substantial decrease in the level of uncertainty is expected in the near-term with the large-scale deployment of observation networks dedicated to detecting fossil fuel emissions (e.g., with launch of the CO₂M¹⁸ constellation in 2025, Maenhout al., 2020). In the short-term, methodological improvements and the potential co-assimilation of existing CO₂ satellite data are also expected to lead to significant decreases in the uncertainty.

The CO₂ land fluxes belong to the LULUCF sector, which is one of the most uncertain sectors in UNFCCC reporting due in part to the fact that these fluxes can be either sinks or sources. The IPCC guidelines prescribe methodologies that are used to estimate the CO₂ fluxes in the NGHGI, but differences between countries continue to exist due to the use of specific national circumstances (as permitted under the 2006 IPCC guidelines). When we analyzed the estimates from multiple BU sources (inventories and models) we observe similar sources of uncertainties: (a) differences due to input data and structural/parametric uncertainty of models (Houghton et al., 2012) and (b)

¹⁸ CO₂M: Copernicus Anthropogenic Carbon Dioxide Monitoring,
https://esamultimedia.esa.int/docs/EarthObservation/CO2M_MRD_v3.0_20201001_Issued.pdf

differences in definitions (Pongratz et al., 2014; Grassi et al., 2018b, Petrescu et al., 2020b). More accurate estimates for LULUCF data will be needed in the post-2020 reporting for the EU27 and UK since the LULUCF sector will now contribute to the EU's 2030 targets. To better assess natural variability and trends we believe a reconciliation of BU and TD estimates should focus on clearly defined activities over a given period (e.g. 5 years) and regions as presented in Figure 4. The considerable differences in the agreement between BU and TD estimates from regional split are related to areas and for some regions (e.g., Eastern Europe) sparseness of observation data. Regarding the detailed sector-specific and inversion results (Figures 6,7,8,9 and 10) often differences come from choices in the simulation setup and depend on the type of model used – bookkeeping models, DGVMs, inventory-based or inversion ensembles. Results also differ based on whether fluxes are attributed to LULUCF emissions due to the cause (e.g., direct or indirect) or place of occurrence. For example, indirect fluxes on managed land are included in NGHGs and FAOSTAT, while additional sink capacity (e.g. Petrescu et al, 2020b) is included in estimates from process-based models (e.g., ORCHIDEE or TRENDY DGVMs). A more in depth analysis of regional/country level is foreseen as part of the overall long-term VERIFY's objectives.

All observation-based BU estimates for LULUCF presented in this study show similar magnitudes and trends compared to the NGHGs but generally differ in the specific values. We notice stronger similarities between NGHGs and models using national forest inventory data (e.g. CBM, EFISCEN). For cropland and grassland sector-specific models (ECOSSE, EPIC-IIASA) the differences between their results and the NGHGs are due to differences in input data, process representation (in particular those linked to soil organic matter decomposition) and management representation. In general, management is one of the main drivers for the carbon balance of croplands and grasslands. However, spatial data on management is scarce and can have high uncertainty. For EPIC-IIASA specifically, the regional carbon simulation results for managed cropland are almost evenly impacted by model parameterization, soil input accuracy, and crop management regionalization (Balkovič et al. 2020). For the overall estimation of emissions from LULUCF activities on all land types (Figure 9), the comparison is made more challenging as results from both land use and land use changes are presented. Comparing only the “effect of land use change” (conversion) is non-trivial and presents an area for improvement to be handled in next synthesis.

Observation-based BU estimates of LULUCF provide large year-to-year flux variability (Figures 6,7,8,9), contrary to the NGHGs, primarily due to the effect of varying meteorology especially through the duration and intensity of the summer growing season, which can vary significantly between years (Bastos et al., 2020; Thompson et al., 2020). In the framework of periodic NGHGI assessments, the choice of a reference period (usually five years, or a biannual reporting) may be critical in the context of large flux inter-annual variability. One direction could be to include in the NGHGs EFs derived from the observation-based approaches (both BU and TD) in the form of year-to-year flux anomalies. The TD inversion estimates show as well pronounced inter-annual variability results (Fig. 10 and Appendix Figure B1c for mean values). Uncertainties in the inversion results are primarily due to uncertainties in atmospheric transport modeling, boundary conditions and uncertainty inherent to the limitation of the observation network. Currently, regional inversions (CarboscopeReg and EUROCOM) are still systems under development which face different challenges from the much coarser resolution global systems used here to represent regional results (GCP ensemble incl. CarboScope global).

The next steps needed to improve and facilitate the reconciliation between BU and TD estimates will include 1) as already discussed in Petrescu et al., 2020b, BU process-based models incorporating unified protocols and guidelines for uniform definitions should be able to disaggregate their estimates to facilitate comparison to NGHGI and 2006 IPCC practices (i.e., managed vs. unmanaged land, 20-year legacy for classes remaining in the same class, distinction of fluxes arising solely from land use change); 2) for sector-specific models, especially for cropland and grassland, improving treatment of the contribution of soil organic carbon dynamic to the budget; 3) for TD estimates, using the Community Inversion Framework currently under development (Berchet et al., 2020) to better assess the different sources of uncertainties from the inversion set-ups (model transport, prior fluxes, observation networks); 4) for the overall comparison of BU and TD fluxes, incorporating the contribution of lateral fluxes of carbon by human activities and rivers that connect CO₂ uptake in one area with its release in another (Ciais et al., 2020).

From this analysis we demonstrate that a complete, ready-for-purpose monitoring system providing annual carbon fluxes across Europe does not yet exist. Therefore, for consistent future estimates to be used in the global stock take exercise to reach the Paris Agreement targets, significant effort must still be undertaken to reduce the uncertainty across all potential methods used in such a system (e.g. Maenhout et al., 2020).

5. Appendices

Appendix A: Data sources, methodology and uncertainty descriptions

The country specific plots are found at: <http://webportals.ipsl.jussieu.fr/VERIFY/FactSheets/> v1.24

VERIFY project

VERIFY's primary aim is to develop scientifically robust methods to assess the accuracy and potential biases in national inventories reported by the parties through an independent pre-operational framework. The main concept is to provide observation-based estimates of anthropogenic and natural GHG emissions and sinks as well as associated uncertainties. The proposed approach is based on the integration of atmospheric measurements, improved emission inventories, ecosystem data, and satellite observations, and on an understanding of processes controlling GHG fluxes (ecosystem models, GHG emission models).

Two complementary approaches relying on observational data-streams will be combined in VERIFY to quantify GHG fluxes:

1) atmospheric GHG concentrations from satellites and ground-based networks (top-down atmospheric inversion models) and

2) bottom-up activity data (e.g. fuel use and emission factors) and ecosystem measurements (bottom-up models).

For CO₂, a specific effort will be made to separate fossil fuel emissions from ecosystems fluxes. For CH₄ and N₂O, we will separate agricultural from fossil fuel and industrial emissions. Finally, trends in the budget of the three GHGs will be analysed in the context of NDC targets.

The objectives of VERIFY are:

Objective 1. Integrate the efforts between the research community, national inventory compilers, operational centres in Europe, and international organisations towards the definition of future international standards for the verification of GHG emissions and sinks based on independent observation.

845 **Objective 2.** Enhance the current observation and modelling ability to accurately and transparently quantify the sinks and sources of GHGs in the land-use sector for the tracking of land-based mitigation activities.

Objective 3. Develop new research approaches to monitor anthropogenic GHG emissions in support of the EU commitment to reduce its GHG emissions by 40% by 2030 compared to the year 1990.

850 **Objective 4.** Produce periodic scientific syntheses of observation-based GHG balance of EU countries and practical policy-oriented assessments of GHG emission trends, and apply these methodologies to other countries.

For more information on project team and products/results check <https://verify.lsce.ipsl.fr/>.

Table A: *Country grouping used for comparison purposes between BU and TD emissions.*

Country name – geographical Europe	BU-ISO3	Aggregation from TD-ISO3
Luxembourg	LUX	
Belgium	BEL	BENELUX
Netherlands	NLD	BNL
Bulgaria	BGR	BGR
Switzerland	CHE	
<i>Lichtenstein</i>	<i>LIE</i>	<i>CHL</i>
Czech Republic	CZE	Former Czechoslovakia
Slovakia	SVK	CSK
Austria	AUT	AUT
Slovenia	SVN	North Adriatic countries
Croatia	HRV	NAC
Romania	ROU	ROU
Hungary	HUN	HUN
Estonia	EST	
Lithuania	LTU	Baltic countries
Latvia	LVA	BLT
Norway	NOR	NOR
Denmark	DNK	
Sweden	SWE	

Finland	FIN	DSF
Iceland	ISL	ISL
Malta	MLT	MLT
Cyprus	CYP	CYP
France (Corsica incl.)	FRA	FRA
<i>Monaco</i>	<i>MCO</i>	
<i>Andorra</i>	<i>AND</i>	
Italy (Sardinia, Vatican incl.)	ITA	ITA
<i>San Marino</i>	<i>SMR</i>	
United Kingdom (Great Britain + N Ireland)	GBR	UK
<i>Isle of Man</i>	<i>IMN</i>	
Iceland		
Ireland	IRL	IRL
Germany	DEU	DEU
Spain	ESP	IBERIA
Portugal	PRT	IBE
Greece	GRC	GRC
<i>Russia (European part)</i>	<i>RUS European</i>	
<i>Georgia</i>	<i>GEO</i>	<i>RUS European+GEO</i>
<i>Russian Federation</i>	<i>RUS</i>	<i>RUS</i>
Poland	POL	POL
<i>Turkey</i>	<i>TUR</i>	<i>TUR</i>
EU27+UK (Austria, Belgium, Bulgaria, Cyprus, Czech Republic, Germany, Denmark, Spain, Estonia, Finland, France, Greece, Croatia, Hungary, Ireland, Italy, Lithuania, Latvia, Luxembourg, Malta, Netherlands, Poland, Portugal, Romania, Slovakia, Slovenia, Sweden, United Kingdom)	AUT, BEL, BGR, CYP, CZE, DEU, DNK, ESP, EST, FIN, FRA, GRC, HRV, HUN, IRL, ITA, LTU, LVA, LUX, MLT, NDL, POL, PRT, ROU, SVN, SVK, SWE, GBR	E28
Western Europe (Belgium, France, United Kingdom, Ireland, Luxembourg, Netherlands)	BEL, FRA, UK, IRL, LUX, NDL	WEE

Central Europe (Austria, Switzerland, Czech Republic, Germany, Hungary, Poland, Slovakia)	AUT, CHE, CZE, DEU, HUN, POL, SVK	CEE
Northern Europe (Denmark, Estonia, Finland, Lithuania, Latvia, Norway, Sweden)	DNK, EST, FIN, LTU, LVA, NOR, SWE	NOE
South-Western Europe (Spain, Italy, Malta, Portugal)	ESP, ITA, MLT, PRT	SWN
South-Eastern Europe (all) (Albania, Bulgaria, Bosnia and Herzegovina, Cyprus, Georgia, Greece, Croatia, Macedonia, the former Yugoslav, Montenegro, Romania, Serbia, Slovenia, Turkey)	ALB, BGR, BIH, CYP, GEO, GRC, HRV, MKD, MNE, ROU, SRB, SVN, TUR	SEE
South-Eastern Europe (non-EU) (Albania, Bosnia and Herzegovina, Macedonia, the former Yugoslav, Georgia, Turkey, Montenegro, Serbia)	ALB, BIH, MKD, MNE, SRB, GEO, TUR	SEA
South-Eastern Europe (EU) (Bulgaria, Cyprus, Greece, Croatia, Romania, Slovenia)	BGR, CYP, GRC, HRV, ROU, SVN	SEZ
Southern Europe (all) (SOE) (Albania, Bulgaria, Bosnia and Herzegovina, Cyprus, Georgia, Greece, Croatia, Macedonia, the former Yugoslav, Montenegro, Romania, Serbia, Slovenia, Turkey, Italy, Malta, Portugal, Spain)	ALB, BGR, BIH, CYP, GEO, GRC, HRV, MKD, MNE, ROU, SRB, SVN, TUR, ITA, MLT, PRT, ESP	SOE
Southern Europe (non-EU) (SOY) Albania, Bosnia and Herzegovina, Georgia, Macedonia, the former Yugoslav, Montenegro, Serbia, Turkey)	ALB, BIH, GEO, MKD, MNE, SRB, TUR,	SOY
Southern Europe (EU) (SOZ) (Bulgaria, Cyprus, Greece, Croatia, Romania, Slovenia, Italy, Malta, Portugal, Spain)	BGR, CYP, GRC, HRV, ROU, SVN, ITA, MLT, PRT, ESP	SOZ
Eastern Europe (non-EU) (Belarus, Moldova, Republic of, Russian Federation, Ukraine)	BLR, MDA, RUS, UKR	EAE
EU-15 (Austria, Belgium, Germany, Denmark, Spain, Finland, France, United Kingdom, Greece, Ireland, Italy, Luxembourg, Netherlands, Portugal, Sweden)	AUT, BEL, DEU, DNK, ESP, FIN, FRA, GBR, GRC, IRL, ITA, LUX, NDL, PRT, SWE	E15
EU-27 (Austria, Belgium, Bulgaria, Cyprus, Czech Republic, Germany, Denmark, Spain, Estonia, Finland, France, Greece, Croatia, Hungary, Ireland, Italy, Lithuania, Latvia, Luxembourg, Malta, Netherlands, Poland, Portugal, Romania, Slovakia, Slovenia, Sweden)	AUT, BEL, BGR, CYP, CZE, DEU, DNK, ESP, EST, FIN, FRA, GRC, HRV, HUN, IRL, ITA, LTU, LVA, LUX, MLT, NDL, POL, PRT, ROU, SVN, SVK, SWE	E27
All Europe (Aaland Islands, Albania, Andorra, Austria, Belgium, Bulgaria, Bosnia and Herzegovina, Belarus, Switzerland, Cyprus, Czech	ALA, ALB, AND, AUT, BEL, BGR, BIH, BLR, CHE,	EUR

<i>Republic, Germany, Denmark, Spain, Estonia, Finland, France, Faroe Islands, United Kingdom, Guernsey, Greece, Croatia, Hungary, Isle of Man, Ireland, Iceland, Italy, Jersey, Liechtenstein, Lithuania, Luxembourg, Latvia, Moldova, Republic of, Macedonia, the former Yugoslav, Malta, Montenegro, Netherlands, Norway, Poland, Portugal, Romania, Russian Federation, Svalbard and Jan Mayen, San Marino, Serbia, Slovakia, Slovenia, Sweden, Turkey, Ukraine)</i>	<i>CYP, CZE, DEU, DNK, ESP, EST, FIN, FRA, FRO, GBR, GGY, GRC, HRV, HUN, IMN, IRL, ISL, ITA, JEY, LIE, LTU, LUX, LVA, MDA, MKD, MLT, MNE, NDL, NOR, POL, PRT, ROU, RUS, SJM, SMR, SRB, SVK, SVN, SWE, TUR, UKR</i>	
--	--	--

*countries highlighted in *italic* are not discussed in the current 2019 synthesis mostly because unavailability of UNFCCC NGHGI reports (non-Annex I countries¹⁹) but are present on the web-portal: <http://webportals.ipsl.jussieu.fr/VERIFY/FactSheets/>. Results of Annex I countries (NOR, CHE, ISL) and non-EU Eastern European countries (EAE) are represented in Figure 4.

¹⁹Non-Annex I countries are mostly developing countries. The reporting to UNFCCC is implemented through national communications (NCs) and biennial update reports (BURs): <https://unfccc.int/national-reports-from-non-annex-i-parties>

Table AA: Methodological changes (**in bold**) of current study with respect to Petrescu et al., 2020b; n/a cells mean that there is no data available.

Publication year	Bottom-up anthropogenic CO ₂ estimates (fossil CO ₂)			Top-down fossil CO ₂ estimates	Bottom-up natural CO ₂ (NBP) emissions/removals (land CO ₂)			Top-down land CO ₂ emissions		Uncertainty and other changes
	Inventories	Global databases	Emission models		Inventories	Emission models	Global Databases	Regional models	Global models	
2020 Petrescu et al. (2020b) AFOLU bottom-up synthesis	n/a	n/a	n/a	n/a	National emissions from UNFCCC (2018) 1990-2016 <i>LULUCF Forest land, - EU28 data for five years (1995, 2000, 2005, 2010 and 2015) Cropland and Grassland (1990, 2005, 2010 and 2016) All land uses EU28 time series 1990-2016</i>	CBM Forest land (2000, 2005, 2010 and 2015) EFISCEN Forest Land (1995, 2000, 2005, 2010 and 2015) BLUE All land uses 1990-2017 H&N All land uses 1990-2015 DGVMs (TRENDY v6) All land uses 1990-2017	FAOSTAT Time series Remaining and conversions 1990-2016	n/a	n/a	UNFCCC (2018) uncertainty estimates for 2016 (error propagation 95% interval method)
2021 this study synthesis bottom-up and top-down	National emissions from UNFCCC (2019) CRFs 2014 All anthropogenic (excl. LULUCF) sectors, time series 1990-2015	EDGAR v5.0 BP EIA CDIAC IEA GCP CEDS 2014 estimates split by fuel type EDGAR v5.0 All anthropogenic sectors, time series	n/a	IAP RAS fast-track inversion 2014 (EU11+CHE)	National emissions from UNFCCC (2019) 1990-2017 EU27 + UK Time series of Forest Land, Cropland and Grassland Regional EU27 + UK totals (incl. NOR, CHE, UKR, MLD and BLR)	CBM Forest land time series 1990-2015 EFISCEN Forest Land Time series 2005-2018 CO ₂ emissions from inland waters ORCHIDEE Forest, cropland and grassland and all land uses 1990-2018	FAOSTAT Time series Remaining and conversions 1990-2017	CarboSco peReg 2006-2018 EUROCOM 2006-2015	GCP 2019 inversions 2000-2018	UNFCCC (2019) uncertainty estimates for 2016 (error propagation 95% interval method) For model ensembles reported as variability in extremes (min/max)

		1990-2015				<p>ECOSSE Cropland and grassland 1990-2018</p> <p>EPIC-IIASA Cropland 1990-2018</p> <p>BLUE All land uses 1990-2018</p> <p>H&N All land uses 1990-2015</p> <p>DGVMs (TRENDY v7) All land uses 1990-2018</p>				
--	--	-----------	--	--	--	---	--	--	--	--

A1: Fossil CO₂ emissions

Bottom-up emission estimates

For further details, see Andrew (2020)

865

UNFCCC NGHGI (2019)

The Annex-I parties to the UNFCCC are required to report emissions inventories annually using the Common Reporting Format (CRF). This annual published dataset includes all CO₂ emissions sources for those countries, and for most countries for the period 1990 to t-2. Some eastern European countries' submissions begin in the 1980s. Revisions are made on an irregular basis outside of the standard annual schedule. For complete description see Andrew, 2020.

870

Uncertainties: Annex I parties quantitatively estimate their uncertainties of data used for all source and sink categories using the methodologies provided in the 2006 IPCC Guidelines. The 2006 IPCC Guidelines stipulate that the determination of uncertainties is a key element of any complete inventory. Uncertainties are quantified for emission factors, activity data and, in some cases, for emissions. In general, two methods for determining uncertainties are differentiated. The Tier 1 method combines, in a simple way, the uncertainties in activity data and emission factors, for each category and greenhouse gas, and then aggregates these uncertainties, for all categories and greenhouse gas components, to obtain the total uncertainty for the inventory. The Tier 2 method for uncertainties determination is the same, in principle, but it also considers the distribution function for uncertainties and carries out aggregation using Monte Carlo simulation. In the Tier 2 method, the process also necessarily includes the determination of the probability density function for both parameters.

875

880

EDGAR v5.0

The first edition of the Emissions Database for Global Atmospheric Research was published in 1995. The dataset now includes almost all sources of fossil CO₂ emissions, is updated annually, and reports data for 1970 to n-1. Estimates are provided by sector. Emissions are estimated fully based on statistical data from 1970 till 2015, while for the years beyond 2015 a Fast Track (FT) approach is applied based on BP data and other proxies to extrapolate CO₂ emissions till most recent years (Crippa et al., 2019b, <https://edgar.jrc.ec.europa.eu/overview.php?v=booklet2019>). For complete description see Andrew, 2020.

Uncertainties: EDGAR uses emission factors (EFs) and activity data (AD) to estimate emissions. Both EFs and AD are uncertain to some degree, and when combined, their uncertainties need to be combined too. To estimate EDGAR's uncertainties (stemming from lack of knowledge of the true value of the EF and AD), the methodology devised by IPCC (2006, Chapter 3) is adopted, that is the sum of squares of the uncertainty of the EF and AD (uncertainty of the product of two variables). A log-normal probability distribution function is assumed to avoid negative values, and uncertainties are reported as 95 % confidence interval according to IPCC (2006, chapter 3, equation 3.7). For emission uncertainty in the range 50 % to 230% a correction factor is adopted as suggested by Frey et al (2003) and IPCC (2006, chapter 3, equation 3.4).

BP

BP releases its Statistical Review of World Energy annually in June, the first report being published in 1952. Primarily an energy dataset, BP also includes estimates of fossil-fuel CO₂ emissions derived from its energy data. The emissions estimates are totals for each country starting in 1965 to year n-1. For complete description see Andrew, 2020.

CDIAC

The original Carbon Dioxide Information Analysis Center included a fossil CO₂ emissions dataset that was long known as CDIAC. This dataset is now produced at Appalachian State University, and includes emissions from fossil fuels and cement production from 1751 to n-3. Fossil-fuel emissions are derived from UN energy statistics, and cement emissions from USGS production data. For complete description see Andrew, 2020.

EIA

The US Energy Information Administration publishes international energy statistics and from these derives estimates of energy combustion CO₂ emissions. Data are currently available for the period 1980-2016. For complete description see Andrew, 2020.

IEA

The International Energy Agency publishes international energy statistics and from these derives estimates of energy combustion CO₂ emissions including from the use of coal in the iron and steel industry. Emissions estimates start in 1960 for OECD members and 1971 for non-members, and run through n-1 for OECD members' totals, and n-2 for members' details and non-members. Estimates are available by sector for a fee. For complete description see Andrew, 2020.

GCP

The Global Carbon Project includes estimates of fossil CO₂ emissions in its annual Global Carbon Budget publication. These includes emissions from fossil fuels and cement production for the period 1750 to n-1. For complete description see Andrew, 2020.

CEDS

The Community Emissions Data System has included estimates of fossil CO₂ emissions since 2018, with an irregular update cycle. Energy data are directly from IEA, but emissions are scaled to higher-priority sources, including national inventories. Almost all emissions sources are included and estimates are published for the period 1750-2014. Estimates are provided by sector. For complete description see Andrew R. M., ESSD, 2020.

Top-down CO₂ emission estimates

Fast-track fossil CO₂ emission inversion

The so called KL18 inversion product (Konovalov and Lvova 2018) consists in a rescaling of the 0.1° x 0.1° resolution maps of annual averages of fossil CO₂ anthropogenic emissions in Western Europe (over 11 countries of the European Union -Portugal, Spain, France, Belgium, Luxembourg, Netherlands, UK, Germany, Denmark, Italy, Austria- and Switzerland) from the EDGARv4.3.2 inventory (Janssens et al., 2019). It has been produced by IAP-RAS to provide first inversions of the emissions in Europe during the first years of VERIFY, while the development of the main inversion system for this task should last more than 2 years. It covers the years 2012 to 2015, updating the method and extending the inversions documented in Konovalov et al. (2016). The factors scaling the EDGARv4.3.2 maps are derived from the regional inversions of CO and NO_x emissions using EMEP/CEIP as prior knowledge of the emissions and CO₂/CO and CO₂/NO_x emission ratios associated with the combustion of fossil from EDGARv4.3.2. These regional inversions are based on the assimilation of satellite atmospheric concentration data: total column CO from IASI, and tropospheric column NO₂ from OMI in a 50-km resolution European configuration of the CHIMERE mesoscale atmospheric chemistry transport model (Menut et al., 2013). The resulting fCO₂ inverse emissions are calculated by converting the inverted CO and NO_x emission (sectoral or total) budgets into fCO₂ emissions budgets using ratios of CO (all emissions) / fCO₂ (fossil fuel missions only) and NO_x (all emissions) / fCO₂ (fossil fuel emissions only) from EDGAR (excluding biofuel from the CO₂ emissions in EDGAR but not from the CO and NO_x emissions in EDGAR).

Uncertainty: An estimate of the uncertainty in the annual budgets of the emissions over the 12 countries is derived from the analyzes of uncertainties within the CO and NO_x emission inversions (associated with model and data errors) and from an assessment of the uncertainties in the CO₂/CO and CO₂/NO_x emission ratios (based on their spatial variability). The preliminary results indicate that the uncertainty in the information from the CO inversion is too high to provide reliable estimates of the CO₂ fossil emissions when using CO satellite data only, or to provide weight to this information when using CO₂ fossil estimates from both the CO and NO_x inversions. The estimates based on NO₂ data are close to EDGAR v4.3.2 in 2012. These estimates are quite constant over the 4-year period while we

assume that the CO₂ fossil emissions followed a significant negative trend during this period. The analysis shows that the uncertainties in these estimates can explain the difficulty to detect such a trend.

955

A2: Land CO₂ emissions/removals

Bottom-up CO₂ estimates

UNFCCC NGHGI 2019 - LULUCF

960 Under the convention and its Kyoto Protocol national greenhouse gas (GHG) inventories are the most important source of information to track progress and assess climate protection measures by countries. In order to build mutual trust in the reliability of GHG emission information provided, national GHG inventories are subject to standardized reporting requirements, which have been continuously developed by the Conference of the Parties (COP)²⁰. The calculation methods for the estimation of greenhouse gases in the respective sectors is determined by the methods provided by the 2006 IPCC Guidelines for National Greenhouse Gas Inventories (IPCC, 2006). They provide detailed methodological descriptions to estimate emissions and removals, as well as provide recommendations to collect the activity data needed. As a general overall requirement, the UNFCCC reporting guidelines stipulate that reporting under the Convention and the Kyoto Protocol must follow the five key principles of transparency, accuracy, completeness, consistency and comparability (TACCC). The reporting under UNFCCC shall meet the TACCC principles. The three main GHGs are reported in time series from 1990 up to two years before the due date of the reporting. The reporting is strictly source category based and is done under the Common Reporting Format tables (CRF), downloadable from the UNFCCC official submission portal:

965

970

<https://unfccc.int/process-and-meetings/transparency-and-reporting/reporting-and-review-under-the-convention/greenhouse-gas-inventories-annex-i-parties/national-inventory-submissions-2019>

975

980

For the biogenic CO₂ emissions from sector 4 LULUCF, methods for the estimation of CO₂ removals and differ enormously among countries and land use categories. Each country uses its own country specific method which takes into account specific national circumstances (as long as they are in accordance with the 2006 IPCC guidelines), as well as IPCC default values, which are usually more conservative and result in higher uncertainties. The EU GHG inventory underlies the assumption that the individual use of national country specific methods leads to more accurate GHG estimates than the implementation of a single EU wide approach (UNFCCC, 2018b). Key categories for the EU28 are 4.A.1 Forest Land: Land Use CO₂, 4.A.2. Forest Land: Land Use CO₂, 4.B.1 Cropland Land Use CO₂, 4.B.2 Cropland Land Use CO₂, 4.C.1 Grassland Land Use CO₂, 4.C.2 Grassland Land Use CO₂, 4.D.1 Wetlands Land Use CO₂, 4.E.2 Settlements Land Use CO₂, and 4.G Harvested Wood Production Wood product CO₂. The tier method a country applies depends on the national circumstances and the individual conditions of the land, which explains the variability of uncertainties among the sector itself as well as among EU countries.

²⁰The last revision has been made by COP 19 in 2013 (UNFCCC, 2013)

985 **Uncertainty** methodology for the NGHGI UNFCCC submissions are based on the Chapter 3 of 2006 IPCC Guidelines for National Greenhouse Gas Inventories and is the same as in paragraph 2.1 and ESSD Petrescu et al., 2020b, Appendix B.

ORCHIDEE

990 ORCHIDEE is a general ecosystem model designed to be coupled to an atmospheric model in the context of modeling the entire Earth system. As such, ORCHIDEE calculates its prognostic variables (i.e., a multitude of C, H₂O and energy fluxes) from the following environmental drivers: air temperature, wind speed, solar radiation, air humidity, precipitation and atmospheric CO₂ concentration. As the run progresses, vegetation grows on each pixel, divided into thirteen generic types (e.g., broadleaf temperate forests, C3 crops), which cycle carbon between the soil,
995 land surface, and atmosphere, through such processes such as photosynthesis, litter fall, and decay. Limited human activities are included through the form of generic wood and crop harvests, which remove aboveground biomass on an annual basis.

Among other environmental indicators, ORCHIDEE simulates positive and negative CO₂ emissions from plant uptake, soil decomposition, and harvests across forests, grasslands, and croplands. Activity data is based on land use and land cover maps. For VERIFY, pixel land cover/land use fractions were based on the land use map LUH2v2h
1000 and the land cover project of the Climate Change Initiative (CCI) program of the European Space Agency (ESA). The latter is based on purely remotely-sensed methods, while the former makes use of national harvest data from the U.N. Food and Agricultural Organization.

LUH2v2-ESACCI: “We describe here the input data and algorithms used to create the land cover maps specific for
1005 our CMIP6 simulations using the historical/future reconstruction of land use states provided as reference datasets for CMIP6 within the land use harmonization database LUH2v2h (Hurtt et al., 2020). More details are provided on the devoted web page <https://orchidas.lsce.ipsl.fr/dev/lccci> which shows further tabular, graphical and statistical data. The overall approach relies on the combination of the LUH2v2 data with present-day land cover distribution derived from satellite observations for the past decades. The main task consists in allocating the land-use types from LUH2v2 in
1010 the different PFTs for the historical period and the future scenarios. The natural vegetation in each grid cell is defined as the PFT distribution derived from the ESA-CCI land cover product for the year 2010 to which pasture fraction and crop fraction from LUH2v2 (for the year 2010) have been subtracted from grass and crop PFTs. This characterization of the natural vegetation in terms of PFT distribution is assumed invariant in time and is used for both the historical period and the different future scenarios.” (Lurton et al., 2020).

Uncertainty in the ORCHIDEE model arises from three primary sources: parameters, forcing data (including spatial and temporal resolution), and model structure. Some researchers argue that the initial state of the model (i.e., the values of the various carbon and water pools at the beginning of the production run, following model spinup) represents a fourth area. However, the initial state of the model is defined by its equilibrium state, and therefore a strong function of the parameters, forcing data, and model structure, with the only independent choice being the target
1020 year of the initial state. Out of the three primary areas of uncertainty, the climate forcing data is dictated by the VERIFY project itself, thus removing that source from explaining observed differences among the models, although

it can still contribute to uncertainty between the ORCHIDEE results and the national inventories. The land use/land cover maps, another major source of uncertainty for ORCHIDEE carbon fluxes, have also been harmonized to a large extent between the bottom-up carbon budget models in the project. Parameter uncertainty and model structure thus represent the two largest sources of potential disagreement between ORCHIDEE and the other bottom-up carbon budget models. Computational cost prevents a full characterization of uncertainty due to parameter selection in ORCHIDEE (and dynamic global vegetation models in general), and uncertainties in model structure require the use of multiple models of the same type but including different physical processes. Such a comparison has not been done in the context of VERIFY, although the results from the TRENDY suite of models shown in Figures (plots Matt BU-TD) give a good indication of this."

CO₂ Emissions from inland waters

These estimates represent a climatology of average annual CO₂ emissions from rivers, lakes and reservoirs at the spatial resolution of 0.1°. The approach combines CO₂ evasion fluxes from the global river network, as estimated by the empirical model of Lauerwald et al. (2015) with the lakes and reservoirs estimates by Hastie et al. (2019) for the boreal biome and by Raymond et al. (2013) for the lower latitudes. The Lauerwald et al. and Hastie et al. studies follow the same approach and rely on the development of a statistical prediction model for inland water pCO₂ at 0.5° using global, high-resolution geodata. The pCO₂ climatology was then combined with different estimates of the gas transfer velocity *k* to produce the resulting map of CO₂ evasion. The Raymond et al. study only provides mean flux densities at the much coarser spatial resolution of the so-called COSCAT regions. All estimates were then downscaled to 0.1° using the spatial distribution of European inland water bodies. Note that in contrast to Hastie et al. (2019), the areal distribution of lakes was extracted from the HYDROLAKES database (Messenger et al., 2016), to be consistent with the estimates of inland water N₂O and CH₄ presented by Petrescu et al., 2021 in press at ESSD.

Uncertainty: Monte Carlo simulations were performed to constrain uncertainties resulting from both the pCO₂ prediction equation and the choice of the *k* formulation.

CBM

The Carbon Budget Model developed by the Canadian Forest Service (CBM-CFS3), can simulate the historical and future stand- and landscape-level C dynamics under different scenarios of harvest and natural disturbances (fires, storms), according to the standards described by the IPCC (Kurz et al., 2009). Since 2009, the CBM has been tested and validated by the Joint Research Centre of the European Commission (JRC), and adapted to the European forests. It is currently applied to 26 EU Member States, both at country and NUTS2 level (Pilli et al., 2016b).

Based on the model framework, each stand is described by area, age and land use classes and up to 10 classifiers based on administrative and ecological information and on silvicultural parameters (such as forest composition and management strategy). A set of yield tables define the merchantable volume production for each species while species-specific allometric equations convert merchantable volume production into aboveground

biomass at stand-level. At the end of each year the model provides data on the net primary production (NPP), carbon stocks and fluxes, as the annual C transfers between pools and to the forest product sector.

1060 The model can support policy anticipation, formulation and evaluation under the LULUCF sector, and it is
used to estimate the current and future forest C dynamics, both as a verification tool (i.e., to compare the results with
the estimates provided by other models) and to support the EU legislation on the LULUCF sector (Grassi et al., 2018a).
In the biomass sector, the CBM can be used in combination with other models, to estimate the maximum wood
potential and the forest C dynamic under different assumptions of harvest and land use change (Jonsson et al., 2018).
1065 Uncertainty: Quantifying the overall uncertainty of CBM estimates is challenging because of the complexity of each
parameter. The uncertainty in CBM arises from three primary sources: parameters, forcing data (including spatial and
temporal resolution) and model structure. It is linked to both activity data and emission factors (area, biomass volume
implied by species specific equation to convert the merchantable volume to total aboveground biomass (used as a
biomass expansion factor)) as well to the capacity of each model to represent the original values, in this case estimated
1070 through the mean percentage difference between the predicted and observed values. A detailed description of the
uncertainty methodology is found in Pilli et al., 2017.

EFISCEN

The European Forest Information SCENario Model (EFISCEN) is a large-scale forest model that projects
1075 forest resource development on regional to European scale. The model uses national forest inventory data as a main
source of input to describe the current structure and composition of European forest resources. The model projects the
development of forest resources, based on scenarios for policy, management strategies and climate change impacts.
With the help of biomass expansion factors, stem wood volume is converted into whole-tree biomass and subsequently
to whole tree carbon stocks. Information on litter fall rates, felling residues and natural mortality is used as input into
1080 the soil module YASSO (Liski et al. 2005), which is dynamically linked to EFISCEN and delivers information on
forest soil carbon stocks. The core of the EFISCEN model was developed by Prof. Ola Sallnäs at the Swedish
Agricultural University (Sallnäs 1990). It has been applied to European countries in many studies since then, dealing
with a diversity of forest resource and policy aspects. A detailed model description is given by Verkerk et al. (2016),
with online information on availability and documentation of EFISCEN at <http://efiscen.efi.int>. The model and its
1085 source code are freely available, distributed under the GNU General Public License conditions
(www.gnu.org/licenses/gpl-3.0.html).

Uncertainties: Sensitivity analysis on EFISCEN v3 is described in detail by Schelhaas et al. 2007 (the manual). Total
sensitivity is caused by especially young forest growth, width of volume classes, age of felling and few more. Scenario
uncertainty comes on top of this when projecting in future.

1090

EPIC-IIASA (croplands)

The Environmental Policy Integrated Climate (EPIC) model is a field-scale process-based model
(Izaurrealde et al., 2006; Williams, 1990) which calculates, with a daily time step, crop growth and yield, hydrological,

nutrient and carbon cycling, soil temperature and moisture, soil erosion, tillage, and plant environment control.

1095 Potential crop biomass is calculated from photosynthetically active radiation using the radiation-use efficiency concept modified for vapor pressure deficit and atmospheric CO₂ concentration effect. Potential biomass is adjusted to actual biomass through daily stress caused by extreme temperatures, water and nutrient deficiency or inadequate aeration. The coupled organic C and N module in EPIC (Izaurre et al., 2006) distributes organic C and N between three pools of soil organic matter (active, slow, and passive) and two litter compartments (metabolic and structural). EPIC
1100 calculates potential transformations of the five compartments as regulated by soil moisture, temperature, oxygen, tillage and lignin content. Daily potential transformations are adjusted to actual transformations when the combined N demand in all receiving compartments exceeds the N supply from the soil. The transformed components are partitioned into CO₂ (heterotrophic respiration), dissolved C in leaching (DOC), and the receiving SOC pools. EPIC also calculates SOC loss with erosion.

1105 The EPIC-IIASA (version EU) modelling platform was built by coupling the field-scale EPIC v. 0810 with large-scale data on land cover (cropland), soils, topography, field size, and crop management practices aggregated at a 1×1 km grid covering European countries (Balkovič et al., 2018, 2013). In VERIFY, a total of ten major European crops including winter wheat, winter rye, spring barley, grain maize, winter rapeseed, sunflower, sugar beet, potatoes, soybean, and rice were used to represent agricultural production systems in Europe. Crop fertilization and irrigation
1110 were estimated for NUTS2 statistical regions between 1995 and 2010 (Balkovič et al., 2013). For VERIFY, the simulations were carried out assuming conventional tillage, consisting of two cultivation operations and mouldboard ploughing prior to sowing and an offset disking after harvesting of cereals. Two row cultivations during the growing season were simulated for maize and one ridging operation for potatoes. It was assumed that 20% of crop residues are removed in case of cereals (excluding maize), while no residues are harvested for other crops.

1115 **Uncertainties** in EPIC arise from three primary sources which were in detail described by ORCHIDEE. A detailed sensitivity and uncertainty analysis of EPIC-IIASA regional carbon modelling is presented in Balkovič et al. (2020).

ECOSSE (grasslands)

ECOSSE is a biogeochemical model that is based on the carbon model ROTH-C (Jenkinson and Rayner, 1977; Jenkinson et al. 1987; Coleman and Jenkinson, 1996) and the nitrogen-model SUNDIAL (Bradbury et al. 1993; Smith et al. 1996). All processes of the carbon and nitrogen dynamics are considered (Smith et al., 2010a,b). Additionally, in ECOSSE processes of minor relevance for mineral arable soils are implemented as well (e.g. methane emissions) to have a better representation of processes that are relevant for other soils (e.g. organic soils). ECOSSE can run in different modes and for different time steps. The two main modes are site specific and limited data. In the
1125 later version, basis assumptions/estimates for parameters can be provided by the model. This increases the uncertainty but makes ECOSSE a universal tool that can be applied for largescale simulations even if the data availability is limited. To increase the accuracy in the site-specific version of the model, detailed information about soil properties, plant input, nutrient application and management can be added as available.

During the decomposition process, material is exchanged between the SOM pools according to first order
1130 rate equations, characterised by a specific rate constant for each pool, and modified according to rate modifiers

dependent on the temperature, moisture, crop cover and pH of the soil. The model includes five pools with one of them are inert. The N content of the soil follows the decomposition of the SOM, with a stable C:N ratio defined for each pool at a given pH, and N being either mineralised or immobilised to maintain that ratio. Nitrogen released from decomposing SOM as ammonium (NH_4^+) or added to the soil may be nitrified to nitrate (NO_3^-).

1135 For spatial simulations the model is implemented in a spatial model platform. This allows to aggregate the input parameter for the needed resolution. ECOSSE is a one-dimensional model and the model platform provides the input data in a spatial distribution and aggregates the model outputs for further analysis. While climate data are interpolated, soil data are represented by the dominant soil type or by the proportional representation of the different soil types in the spatial simulation unit (this is in VERIFY a grid cell).

1140 **Uncertainties** in ECOSSE arise from three primary sources: parameters, forcing data (including spatial and temporal resolution), and model structure. These uncertainties are not yet quantified.

Bookkeeping models

We make use of data from two bookkeeping models: **BLUE** (Hansis et al., 2015) and **H&N** (Houghton & Nassikas, 2017).

1145 The **BLUE** model provides a data-driven estimate of the net land use change fluxes. BLUE stands for ‘bookkeeping of land use emissions’. Bookkeeping models (Hansis 2015, Houghton 1983) calculate land-use change CO_2 emissions (sources and sinks) for transitions between various natural vegetation types and agricultural lands. The bookkeeping approaches keep track of the carbon stored in vegetation, soils, and products before and after the land-use change.

1150 In BLUE, land-use forcing is taken from the Land Use Harmonization, LUH2, for estimates within the annual global carbon budget. The model provides data at annual time steps and 0.25 degree resolution. Temporal evolution of carbon gain or loss, i.e., how fast carbon pools decay or regrow following a land-use change, is based on response curves derived from literature. The response curves describe decay of vegetation and soil carbon, including transfer to product pools of different lifetimes, as well as carbon uptake due to regrowth of vegetation and subsequent refilling of soil carbon pools.

1155 **Uncertainties** are not explicitly quantified in BLUE so far. A large contribution of uncertainty can be expected from various input datasets. Apparent uncertainties arise from the land-use forcing data, the equilibrium carbon densities of soil and vegetation and the response curves build to reflect carbon pools decay and regrow after land-use transitions. Furthermore, Hansis et al 2015 have shown that different accounting schemes and initialization settings lead to different emission estimates even decades after the model start.

1160 The **H&N** model (Houghton, 1983) calculates land-use change CO_2 emissions and uptake fluxes for transitions between various natural vegetation types and agricultural lands (croplands and pastures). The original bookkeeping approach of Houghton (2003) keeps track of the carbon stored in vegetation and soils before and after the land-use change. Carbon gain or loss is based on response curves derived from literature. The response curves describe decay of vegetation and soil carbon, including transfer to product pools of different life-times, as well as carbon uptake due to regrowth of vegetation and consequent re-filling of soil carbon pools. Natural vegetation can

generally be distinguished into primary and secondary land. For forests, a primary forest that is cleared cannot recover back to its original carbon density. Instead, long-term degradation of primary forest is assumed and represented by lowered standing vegetation and soil carbon stocks in the secondary forests. Apart from land use transitions between different types of vegetation cover, forest management practices in the form of wood harvest volumes are included. Different from dynamic global vegetation models, bookkeeping models ignore changes in environmental conditions (climate, atmospheric CO₂, nitrogen deposition and other environmental factors). Carbon densities at a given point in time are only influenced by the land use history, but not by the preceding changes in the environmental state. Carbon densities are taken from observations in the literature and thus reflect environmental conditions of the last decades.

FAOSTAT

FAOSTAT: Statistics Division of the Food and Agricultural Organization of the United Nations provides LULUCF CO₂ emissions for the period 1990-2017, available at: <http://www.fao.org/faostat/en/#data/GL> and its sub-domains. The FAOSTAT emissions land use database (metadata: http://fenixservices.fao.org/faostat/static/documents/GL/GL_e_2019.pdf) is computed following Tier 1 IPCC 2006 Guidelines for National GHG Inventories (<http://www.ipcc-nggip.iges.or.jp/public/2006gl/index.html>). Geospatial data are the source of AD for the estimates of emissions from cultivation of organic soils, biomass and peat fires. GHG emissions are provided by country, regions and special groups, with global coverage, relative to the period 1990-present (with annual updates). Land Use Total contains all GHG emissions and removals produced in the different Land Use sub-domains, representing four IPCC Land Use categories, of which three land use categories: forest land, cropland, grassland; plus and biomass burning. LULUCF emissions consist of CO₂ associated with land use and change, including management activities. CO₂ emissions/removals are computed at Tier 3 using carbon stock change. To this end, FAOSTAT uses Forest area and carbon stock data from FRA, gap-filled and interpolated to generate annual time-series. As a result CO₂ emissions/removals are computed for forest land and net forest conversion, representing respectively IPCC categories “forest land” and “forest land converted to other land uses”. CO₂ emissions are provided as by country, regions and special groups, with global coverage, relative to the period 1990-most recent available year (with annual updates), expressed as net emissions/removals as Gg CO₂, by underlying land use emission sub-domain and by aggregate (land use total).

Uncertainties are not available for the FAOSTAT estimates.

TRENDY v7

The TRENDY (Trends in net land-atmosphere carbon exchange over the period 1980-2010) project represents a consortium of dynamic global vegetation models (DGVMs) following identical simulation protocols to investigate spatial trends in carbon fluxes across the globe over the past century. As DGVMs, the models require climate, carbon dioxide, and land use change input data to produce results. In TRENDY, all three of these are harmonized to make the results across the whole suite of models more comparable. In the case of VERIFY, we used the following 14 models from version 7 of TRENDY, released in 2018 and therefore covering the period up to and

including 2017: CABLE, CLASS, CLM5, DLEM, ISAM, JSBACH, JULES, LPJ, LPX, OCN, ORCHIDEE-CNP, ORCHIDEE, SDGVM, SURFEX.

While describing the details of all the models used here is clearly not possible, DGVMs calculate prognostic variables (i.e., a multitude of C, H₂O and energy fluxes) from the following environmental drivers: air temperature, wind speed, solar radiation, air humidity, precipitation and atmospheric CO₂ concentration. As the run progresses, vegetation grows on each pixel, divided into generic types which depend on the model (e.g., broadleaf temperate forests, C3 crops), which cycle carbon between the soil, land surface, and atmosphere, through such processes such as photosynthesis, litter fall, and decay. Limited human activities are included depending on the model, typically removing aboveground biomass on an annual basis.

Among other environmental indicators, DGVMs simulate positive and negative CO₂ emissions from plant uptake, soil decomposition, and harvests across forests, grasslands, and croplands. Activity data is based on land use and land cover maps. For TRENDY, pixel land cover/land use fractions were based on the land use map LUH2 (Hurt et al 2020) and the HYDE land_use change data set (Klein Goldewijk et al., 2017a, b). Both of these maps rely on FAO statistics on agricultural land area and national harvest data.

Uncertainties in TRENDY v7 are model specific and described by Le Quéré et al., 2018. The spread of the 14 TRENDY models used by this study (Fig. 9) gives an idea of the uncertainty due to model structure in dynamic global vegetation models, as the forcing data was harmonized for all models.

Top-down CO₂ emissions estimates

CarboScope-Regional, GCP 2019 (CTE, CAMS, CarboScope) and EUROCOM

Top-down estimates of land biosphere fluxes are provided by a number of different inverse modeling systems that use atmospheric concentration data as input, as well as prior information on fossil emissions, ocean fluxes, and land biosphere fluxes. The land biosphere fluxes, and in some systems the ocean fluxes, are estimated using a statistical optimization involving atmospheric transport models. The inversion systems differ in the transport models used, optimization methods, spatiotemporal resolution, boundary conditions, and prior error structure (spatial and temporal correlation scales), thus using ensembles of such systems is expected to result in more robust top-down estimates.

For this study, the global inversion results are taken from the GCP 2019 (Global Carbon Project) models CTE (CarbonTracker Europe), CAMS (Copernicus Atmosphere Monitoring Service), and CarboScope, with spatial resolutions ranging from 1°x1° for certain regions to 4°x5°. For details see Friedlingstein et al., 2019.

Top-down estimates at regional scales (up to 0.25°x0.25° resolution) for the period 2006 – 2015 are taken from the six models used within EUROCOM (Monteil et al., 2019). These inversions make use of more than 30 atmospheric observing stations within Europe, including flask data and continuous observations. The CarboScope-Regional (CSR) inversion system (also included within the EUROCOM ensemble) was also run for the extended period 2006- 2018 using four different settings: three network configurations using 15, 40, or 46 sites, and one using all 46 sites but a factor two larger prior error correlation length scale (200 instead of 100 km).

B1: Overview figures

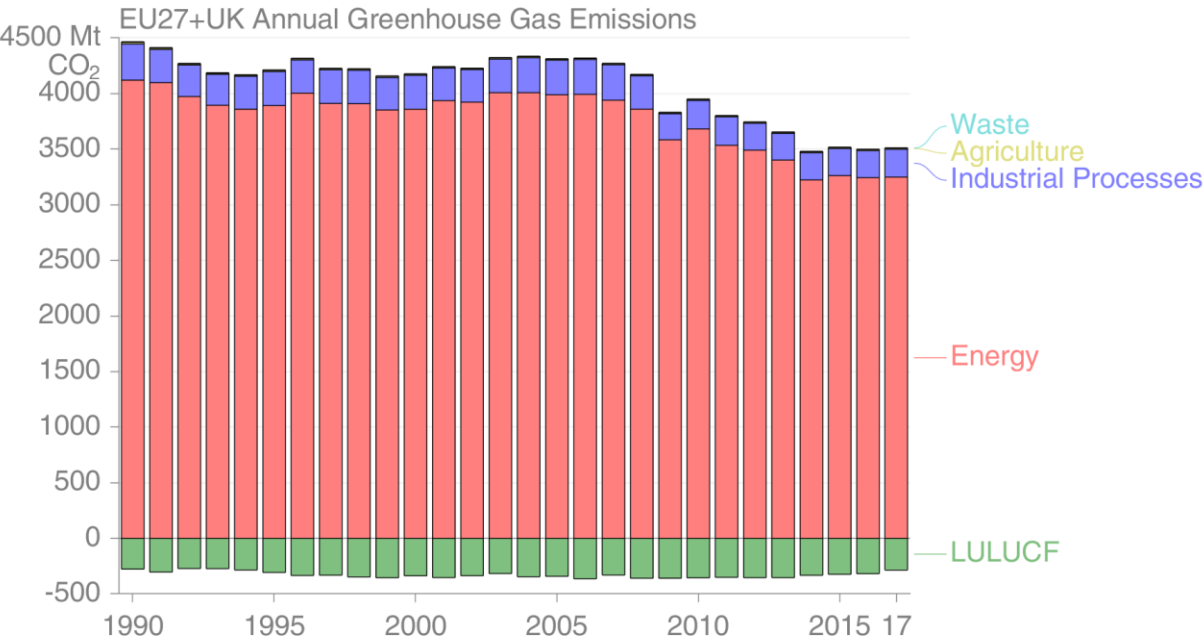


Figure B1a: EU27+UK total annual GHG emissions from UNFCCC NGHGI (2019) submissions split per sector.

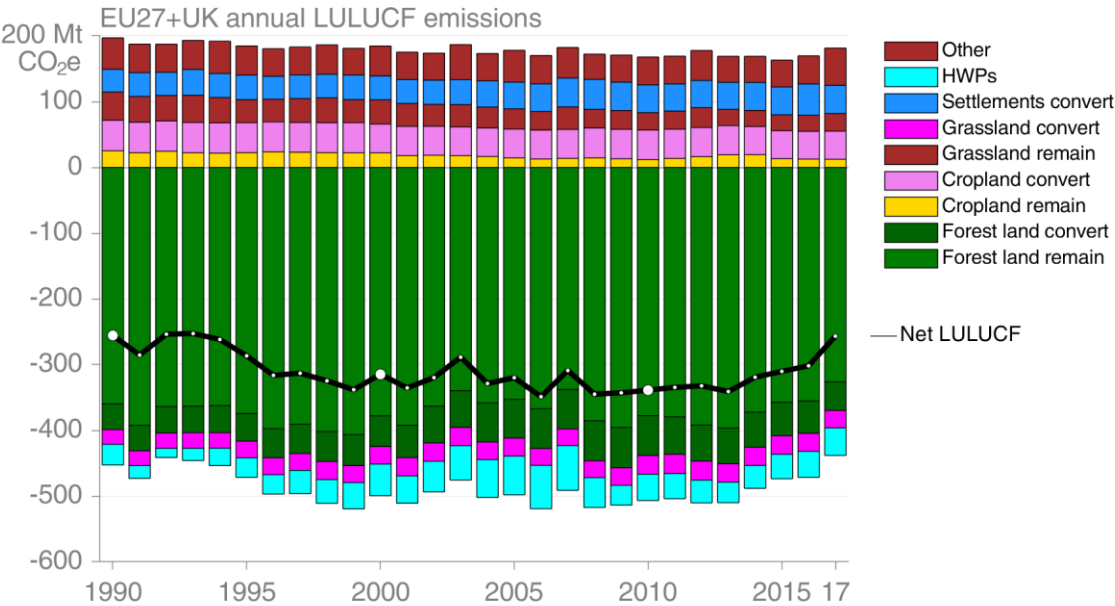


Figure B1b: EU27+UK total annual GHG emissions from the LULUCF sector split in classes and sub-classes.

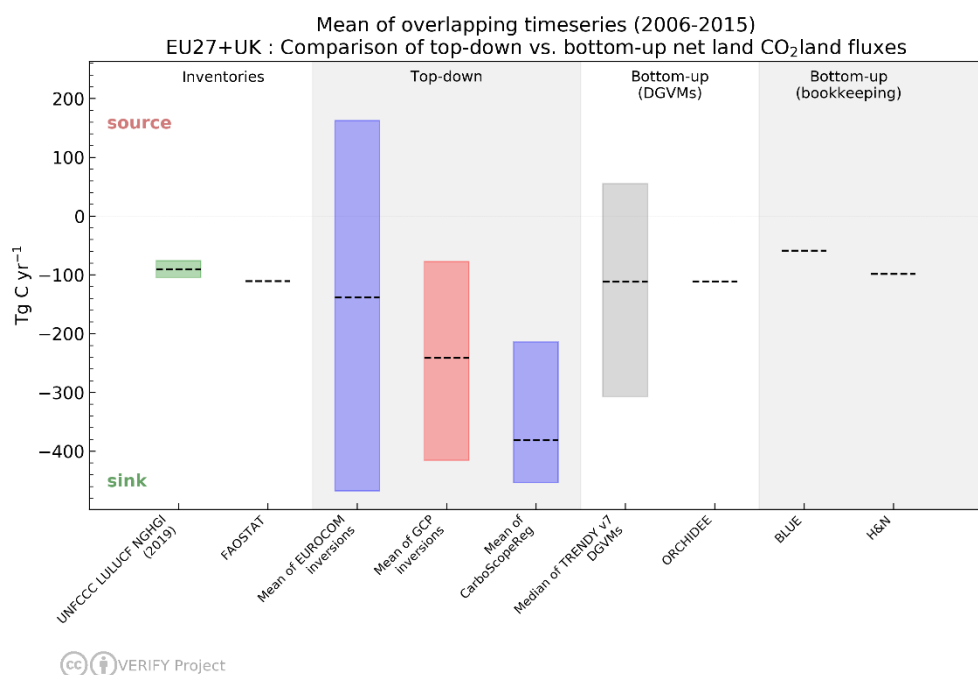


Figure B1c: Unfolded overlapping (2006-2015) mean column from Figure 10, section 3.3.4. The dotted lines represent the mean of the time series. The NGHGI UNFCCC uncertainty is calculated for 2018 as the relative error on the NGHGI value, computed with the 95 % confidence interval method 16 %. The uncertainty of the three inversions (EUROCOM, CarboScopeReg and GCP) represents the averaged min/max values of the model ensemble estimates.

B2: Source specific methodologies: AD, EFs and uncertainties

Table B2: Source specific activity data (AD), emission factors (EF) and uncertainty methodology for all current VERIFY and non-VERIFY 2019 data product collection.

Data sources CO ₂ emission calculation	AD/Tier	EFs/Tier	Uncertainty assessment method	Emission data availability
UNFCCC NGHGI (2019)	Country-specific information consistent with the IPCC Guidelines	IPCC guidelines / Country specific information for higher Tiers	IPCC guidelines (https://www.ipcc-nggip.iges.or.jp/public/2006gl/) for calculating the uncertainty of emissions based on the uncertainty of AD and EF, two different approaches: 1. Error propagation, 2. Monte Carlo Simulation	NGHGI official data (CRFs) are found at https://unfccc.int/process-and-meetings/transparency-and-reporting/reporting-and-review-under-the-convention/greenhouse-gas-inventories-annex-i-parties/submissions/national-inventory-submissions-2019 (last access: September 2020).

<i>Fossil CO₂</i>				
BP CDIAC EIA IEA GCP CEDS	<i>For further details, see Andrew (2020)</i>			
EDGAR v5.0	<p>International Energy Agency (IEA) for fuel combustion</p> <p>Food and Agricultural Organisation (FAO) for agriculture</p> <p>US Geological Survey (USGS) for industrial processes (e.g. cement, lime, ammonia and ferroalloys)</p> <p>GGFR/NOAA for gas flaring</p> <p>World Steel Association for iron and steel production</p> <p>International Fertilisers Association (IFA) for urea consumption and production</p> <p>Complete description of the data sources can be found in Janssens-Maenhout et al. and in Crippa et al. (2019b)</p>	IPCC 2006, Tier 1 or Tier 2 depending on the sector	Tier 1 with error propagation by fuel type for CO ₂ and accounting for covariances.	https://edgar.jrc.ec.europa.eu/overview.php?v=50_GHG

IAP RAS fast-track fCO₂ inversion	<p>Tier3 top-down</p> <p>0.1° x 0.1° resolution maps of annual averages of fossil CO₂ anthropogenic emissions from EDGAR v4.3.2</p> <p>Assimilation of satellite atmospheric concentration data: total column CO from IASI, and tropospheric column NO₂ from OMI</p>	<p>Tier3 top-down regional inversions of CO and NOx emissions using EMEP/CEIP as prior knowledge of the emissions and CO₂/CO and CO₂/NOx emission ratios associated with the combustion of fossil from EDGARv4.3.2.</p>	<p>Bayesian analysis in the CO and NOx inversions along with propagation of uncertainties in fCO₂/CO and fCO₂/NOx emission ratios</p>	<p>Detailed gridded data can be obtained by contacting the data providers:</p> <p>Gregoire Broquet gregoire.broquet@lsce.ipsl.fr</p> <p>Igor Kononov konov@ipfran.ru</p>
CO₂ land: bottom-up				
BLUE	<p>From LUH2: data on harvest, land cover types (primary, secondary, pasture, crop), and gross land use transitions (e.g. from primary to pasture);Based on Pongratz et al. 2008 and Ramankutty & Foley 1999: Plant functional types (PFTs) of natural vegetation types</p>	<p>Tier 3 (IPCC 2006 guidelines);PFT and land-cover type specific response curves describing the decay and regrowth of vegetation and soil carbon</p>	N/A	<p>Detailed gridded data can be obtained by contacting the data provider:</p> <p>Julia Pongratz: julia.pongratz@geographie.uni-muenchen.de</p>
H&N	<p>Simple assumptions about C-stock densities (per biome or per biome/country) based on literature</p>	<p>Transient change in C-stocks following a given transition (time dependent EF after an land use transition)</p>	N/A	<p>Detailed gridded data can be obtained by contacting the data provider:</p> <p>Richard Houghton rhoughton@woodwellclimate.org</p>
ECOSSE	<p>The model is a point model, which provides spatial results by using spatial distributed input data (lateral fluxes are not considered). The model is a TIER 3 approach that is applied on grid map data, polygon organized input data or study sites.</p>	<p>IPCC 2006: Tier 3</p> <p>The simulation results will be allocated due to the available information (size of spatial unit, representation of considered land use, etc.).</p>	N/A	<p>Detailed gridded data can be obtained by contacting the data providers:</p> <p>Kuhnert, Matthias matthias.kuhnert@abdn.ac.uk</p> <p>Pete Smith: pete.smith@abdn.ac.uk</p>

EPIC-IIASA	<p>Cropland: static 1×1 km cropland mask from CORINE-PELCOM.</p> <p>Initial SOC stock from the Map of organic carbon content in the topsoil (Lugato et al., 2014). “Static” crop management and input intensity by NUTS2 calibrated for 1995-2010 (Balkovič et al., 2013). Crop harvested areas by NUTS2 from EUROSTAT. The model is Tier 3 approach.</p>	<p>IPCC 2006: Tier 3</p> <p>Land management and input factors for the cropland remaining cropland category as simulated by the EPIC-IIASA modelling platform, assuming the business-as-usual crop management calibrated for the 1995-2010 period. A 50-ha field is considered in each grid cell.</p>	<p>Sensitivity and uncertainty analysis of EPIC-IIASA regional soil carbon modelling (Balkovič et al. 2020).</p>	<p>Detailed gridded data can be obtained by contacting the data provider: Balkovič Juraj balkovic@iiasa.ac.at</p>
ORCHIDEE	<p>For the land cover/land use input maps: data on wood harvest from the FAO</p>	<p>Tier 3 model, process based. Any emission factors enter in the form of generic parameters for a given ecosystem type fit against observational data (both site-level and remotely sensed).</p>	<p>None, though some information on uncertainty due to model structure is given by looking at the spread from the TRENDY suite of models, of which ORCHIDEE is a member.</p>	<p>Detailed gridded data can be obtained by contacting the data providers: Matthew Mcgrath matthew.mcgrath@lsce.ipsl.fr Philippe Peylin peylin@lsce.ipsl.fr</p>
TRENDY v7	<p>For the land cover/land use input maps: data on wood harvest and agricultural land from the FAO</p>	<p>Tier 3 models, process based. Any emission factors enter in the form of generic parameters for a given ecosystem type fit against observational data (both site-level and remotely sensed).</p>	<p>The spread of the 14 TRENDY models used gives an idea of the uncertainty due to model structure in dynamic global vegetation models, as the forcing data was harmonized for all models.</p>	<p>Detailed gridded data can be obtained by contacting the data provider: Sitch, Stephen S.A.Sitch@exeter.ac.uk</p>
Statistical prediction model for CO₂ in inland waters	<p>Hydrosheds 15s (Lehner et al., 2008) and Hydro1K (USGS, 2000) for river network, HYDROLAKES for lakes and reservoirs network and surface area (Messenger et al., 2016);</p>	<p>N/A</p>	<p>Monte Carlo runs (uncertainty on pCO₂ and gas transfer velocity)</p>	<p>Detailed gridded data can be obtained by contacting the data providers: Ronny Lauerwald Ronny.Lauerwald@ulb.ac.be</p>

	<p>river pCO₂ data from GloRiCh (Hartmann et al., 2014), lake pCO₂ database from Sobek et al. (2005); river channel slope and width calculated from GLOBE-DEM (GLOBE-Task-Team et al., 1999) and runoff data from Fekete et al. 2002.</p> <p>Geodata for predictors of pCO₂ and gas transfer coefficient include air temperature, precipitation and wind speed (Hijmans et al., 2005), population density (CIESIN and CIAT), catchment slope gradient (Hydrosheds 15s), and terrestrial NPP (Zhao et al., 2005)</p>			<p>Pierre Regnier Pierre.Regnier@ulb.ac.be</p>
CBM	national forest inventory data, Tier 2	EFs directly calculated by model, based on specific parameters (i.e., turnover and decay rates) defined by the user	N/A used from IPCC	<p>Detailed gridded data can be obtained by contacting the data providers:</p> <p>Roberto Pilli roberto.pilli713@gmail.com</p> <p>Giacomo Grassi Giacomo.GRASSI@ec.europa.eu</p>
EFISCEN	national forest inventory data, Tier 3	emission factor is calculated from net balance of growth minus harvest	<p>Sensitivity analysis on EFISCEN V3 in Schelhaas et al. 2007. (the manual) . Total sensitivity is caused by esp. young forest growth, width of volume classes, age of felling and few more. Scenario uncertainty comes on top of this when projecting in future.</p>	<p>Detailed gridded data can be obtained by contacting the data providers:</p> <p>Gert-Jan Nabuurs gert-jan.nabuurs@wur.nl</p> <p>Mart-Jan Schelhaas martjan.schelhaas@wur.nl</p>
FAOSTAT	FAOSTAT Land Use Domain; Harmonized world soil; ESA CCI; MODIS 6 Burned area products	IPCC guidelines	<p>IPCC (2006, Vol.4, p.10.33) - confidential</p> <p>Uncertainties in estimates of GHG emissions are due to uncertainties in emission factors and activity data. They may be related to, inter alia, natural variability, partitioning fractions, lack of spatial or temporal</p>	<p>Agriculture total and subdomain specific</p> <p>GHG emissions are found for download at</p> <p>http://www.fao.org/fao-stat/en/#data/GT</p> <p>(last access: June 2020).</p>

			coverage, or spatial aggregation.	
CO₂ land: Top-down				
CarboScopeReg GCP ensemble (CTE, CAMS, CarboScope) EUROCOM (PYVAR-CHIMERE, LUMIA, FLEXINVERT, CarboScopeReg, CTE-Europe)	Tier 3 top-down approach, prior information from fossil emissions, ocean fluxes, and biosphere-atmosphere exchange Spatial resolutions ranging from 1°x1° for certain regions to 4°x5°. EUROCOM uses more than 30 atmospheric stations. CarboScopeReg uses four different settings (as described in Appendix A2)	Tier3 top-down Inversion systems based on atmospheric transport models	CarboScopeReg - Gaussian probability distribution function, where the error covariance matrix includes errors in prior fluxes, observations and transport model representations. GCP: the different methodologies, the land-use and land-cover data set, and the different processes represented trigger the uncertainties between models. a semi-quantitative measure of uncertainty for annual and decadal emissions as best value judgment = at least a 68 % chance ($\pm 1\sigma$) EUROCOM: account for source of uncertainties via prior and model and observation error covariance matrices; assessment of the resulting uncertainties in fluxes based on spread	Detailed gridded data can be obtained by contacting the data providers: CarboScopeReg: Christoph Gerbig cgerbig@bgc-jena.mpg.de Saqr Munassar smunas@bgc-jena.mpg.de GCP ensembles: Pierre Friedlingstein P.Friedlingstein@exeter.ac.uk EUROCOM: Marko Scholze marko.scholze@nateko.lu.se Gregoire Broquet gregoire.broquet@lsce.ipsl.fr

Data availability

1260 All raw data files reported in this work which were used for calculations and figures are available for public download at <https://10.5281/zenodo.4626578> (Petrescu et al., 2020a). The data we submitted are reachable with one click (without the need for entering login and password), with a second click to download the data, consistent with the two click access principle for data published in ESSD (Carlson and Oda, 2018). The data and the DOI number are subject to future updates and only refers to this version of the paper.

1265

Author contributions

A. M. R. P., M. J. M., and A. J. D. designed research and led the discussions; A.M.R.P. wrote the initial draft of the paper and edited all the following versions together with M. J. M., P. P. and A. J. D.; M. J. M. and R. M. A. made the CO₂ fossil figures and CO₂ land figures respectively; M. J. M and P. P. processed the original data submitted to the VERIFY portal; M. J. M., P. P. and P. B. designed and are managing the web portal; G. P. provided the figures B1a, B1b and B1c and made a very detailed review on a previous version; A. M. R. P. processed the UNFCCC data and uncertainties; C.Q. helped with making of Figure 4; H. H. A. van der G. was leading the initial discussions within the fossil CO₂ working group and gave valuable suggestions to the manuscript structure; P.C., G. B., F. N. T. C. G., J. P.,

1270

J.-M. G., G. G., G. J. N., P. R., R. L., M. K., J. B., R. P., I. B. K., L. P., P. S., R. L. T., G. C. and A. J. D. read, gave comments and advice on previous versions of the manuscript; all co-authors commented on specific parts related to their data sets; M. J. M., P. P., P. B., F. N. T., P. R., R. L., M. K., J. B., R. P., I. B. K., R. H., M. C., R. G., I. L., C. G., S. M., G. C., G. M., M. S. are data providers.

Competing interests.

The authors declare that they have no conflict of interest.

Acknowledgements

FAOSTAT statistics are produced and disseminated with the support of its member countries to the FAO regular budget. The views expressed in this publication are those of the author(s) and do not necessarily reflect the views or policies of FAO. Philippe Ciais acknowledges the support of European Research Council Synergy project SyG-2013-610028 IMBALANCE-P and from the ANR CLand Convergence Institute. We acknowledge the work of the entire EDGAR group (Marilena Muntean, Diego Guizzardi, Edwin Schaaf, Jos Olivier). We acknowledge Stephen Sitch and the authors of the DGVMs TRENDY v7 ensemble models for providing us with the data.

Financial support

This research has been supported by the European Commission, Horizon 2020 Framework Programme (VERIFY, grant no. 776810).

References

Andrew, R. M.: A comparison of estimates of global carbon dioxide emissions from fossil carbon sources, *Earth Syst. Sci. Data*, 12, 1437–1465, <https://doi.org/10.5194/essd-12-1437-2020>, 2020.

Andrew, R. M.: Global CO₂ emissions from cement production, 1928–2018, *Earth Syst. Sci. Data*, 11, 1675–1710, <https://doi.org/10.5194/essd-11-1675-2019>, 2019.

Arneth, A., Sitch, S., Pongratz, J. et al. Historical carbon dioxide emissions caused by land-use changes are possibly larger than assumed. *Nature Geosci* 10, 79–84, <https://doi.org/10.1038/ngeo2882>, 2017.

Balkovič, J., Skalský, R., Folberth, C., Khabarov, N., Schmid, E., Madaras, M., Obersteiner, M., van der Velde, M.: Impacts and Uncertainties of +2°C of Climate Change and Soil Degradation on European Crop Calorie Supply, *Earth's Future* 6, 373–395, <https://doi.org/10.1002/2017EF000629>, 2018.

Balkovič, J., van der Velde, M., Schmid, E., Skalský, R., Khabarov, N., Obersteiner, M., Stürmer, B., Xiong, W.: Pan-European crop modelling with EPIC: Implementation, up-scaling and regional crop yield validation, *Agric. Syst.* 120, 61–75, <https://doi.org/10.1016/j.agry.2013.05.008>, 2013.

Bastos, A., Ciais, P., Friedlingstein, P., Sitch, S., Pongratz, J., Fan, L., Wigneron, J. P., Weber, U., Reichstein, M., Fu, Z., Anthoni, P., Arneth, A., Haverd, V., Jain, A. K., Joetzjer, E., Knauer, J., Lienert, S., Loughran, T., McGuire, P. C., Tian, H., Viovy, N., and Zaehle, S.: Direct 360 and seasonal legacy effects of the 2018 heat wave and drought on European ecosystem productivity, *Science Advances*, 6, eaba2724, <https://advances.sciencemag.org/content/advances/6/24/eaba2724.full.pdf>, type: 10.1126/sciadv.aba2724, 2020.

Berchet, A., Solum, E., Thompson, R. L., Pison, I., Thanwerdas, J., Broquet, G., Chevallier, F., Aalto, T., Bergamaschi, P., Brunner, D., Engelen, R., Fortems-Cheiney, A., Gerbig, C., Groot Zwaafink, C., Haussaire, J.-M., Henne, S., Houweling, S., Karstens, U., Kutsch, W. L., Lujckx, I. T., Monteil, G., Palmer, P. I., van Peet, J. C. A., Peters, W., Peylin, P., Potier, E., Rödenbeck, C., Saunio, M., Scholze, M., Tsuruta, A., and Zhao, Y.: The Community Inversion Framework v1.0: a unified system for atmospheric inversion studies, *gmd-2020-407*, Initial Submission, 2020.

BP: 60 Years BP Statistical Review of World Energy: 1951– 2011, available at: <https://www.bp.com/en/global/corporate/energy-economics/statistical-review-of-world-energy/downloads.html> (last access: 8 February 2019), 2011.

BP: BP Statistical Review of World Energy June 2018, available at: <https://www.bp.com/en/global/corporate/energy-economics/statistical-review-of-world-energy.html>, last access: 14 June 2018.

BP: Methodology for calculating CO₂ emissions from energy use, available at: <https://www.bp.com/en/global/corporate/energy-economics/statistical-review-of-world-energy/co2-emissions.html> (last access: 8 February 2019), 2017.

Bradbury, N. J., Whitmore, A. P., Hart, P. B. S., Jenkinson, D. S.: Modelling the fate of nitrogen in crop and soil in the years following application of 15N-labelled fertilizer to winter wheat, *J. Agr. Sci.* 121: 363-379, 1993.

- Brophy, K., Graven, H., Manning, A. J., White, E., Arnold, T., Fischer, M. L., Jeong, S., Cui, X., and Rigby, M.:
1340 Characterizing uncertainties in atmospheric inversions of fossil fuel CO₂ emissions in California, *Atmos. Chem. Phys.*,
19, 2991–3006, <https://doi.org/10.5194/acp-19-2991-2019>, 2019.
- CarboEurope <http://www.carboeurope.org/>.
- 1345 CDIAC <https://energy.appstate.edu/CDIAC>, <https://www.eia.gov/beta/international/data/browser/views/partials/sources.html>.
- CEDS v_2019_12_23 <http://www.globalchange.umd.edu/data-products/>.
- 1350 Chang, J., Ciais, P., Herrero, M., Havlik, P., Campioli, M., Zhang, X., Bai, Y., Viovy, N., Joiner, J., Wang, X., Peng,
S., Yue, C., Piao, S., Wang, T., Hauglustaine, D. A., Soussana, J.-F., Peregon, A., Kosykh, N., and Mironycheva-
Tokareva, N.: Combining livestock production information in a process-based vegetation model to reconstruct the
history of grassland management, *Biogeosciences*, 13, 3757–3776, <https://doi.org/10.5194/bg-13-3757-2016>, 2016.
- 1355 Chevallier, F., Fisher, M., Peylin, P., Serrar, S., Bousquet, P., Bréon, F.-M., Chédin, A., and Ciais, P.: Inferring CO₂
sources and sinks from satellite observations: Method and application to TOVS data, *J. Geophys. Res.*, 110,
D24309, doi:10.1029/2005JD006390, 2005.
- Chevallier, F., Fisher, M., Peylin, P., Serrar, S., Bousquet, P., Bréon, F.-M., Chédin, A., and Ciais, P.: Inferring CO₂
sources and sinks from satellite observations: Method and application to TOVS data, *J. Geophys. Res.*, 110, D24309,
1360 doi:10.1029/2005JD006390, 2005.
- Ciais, P., Reichstein, M., Viovy, N., Granier, A., Ogée, J., Allard, V., Aubinet, M., Buchmann, N., Bernhofer
Chr., Carrara, A., Chevallier, F., De Noblet, N., Friend, A. D., Friedlingstein, P., Grünwald, T., Heinesch,
B., Keronen, P., Knohl, A., Krinner, G., Loustau, D., Manca, G., Matteucci, G., Miglietta, F., Ourcival, J. M., Papale,
1365 D., Pilegaard, K., Rambal, S., Seufert, G., Soussana, J. F., Sanz, M. J., Schulze, E. D., Vesala, T. & Valentini, R.:
Europe-wide reduction in primary productivity caused by the heat and drought in 2003. *Nature* 437, 529–533,
<https://doi.org/10.1038/nature03972>, 2005.

- Ciais, P., Wattenbach, M., Vuichard, N., Smith, P., Piao, S.L., Don, A., Luyssaert, S., Janssens, A., Bondeau A.,
1370 Dechow, R., Leip, A., Smith, P.C., Beer, C., van der Werf, G.R., Gervois S., van Oost, K., Tomelleri, E., Freibauer,
A., Schulze, E.D., CARBONEUROPE SYNTHESIS TEAM, The European carbon balance, Part 2: croplands, *Glob.*
Chang. Biol., 16, pp. 1409-1428, 10.1111/j.1365-2486.2009.02055.x, 2010.
- Ciais et al., 2015, https://www.copernicus.eu/sites/default/files/2019-09/CO2_Blue_report_2015.pdf.
- 1375 Ciais, P., Bastos, A., Chevallier, F., Lauerwald, R., Poulter, B., Canadell, P., Hugelius, G., Jackson, R. B., Jain, A.,
Jones, M., Kondo, M., Luijkx, I., Patra, P. K., Peters, W., Pongratz, J., Petrescu, A. M. R., Piao, S., Qiu, C., Von
Randow, C., Regnier, P., Saunois, M., Scholes, R., Shvidenko, A., Tian, H., Yang, H., Wang, X., and Zheng, B.:
Definitions and methods to estimate regional land carbon fluxes for the second phase of the REgional Carbon Cycle
1380 Assessment and Processes Project (RECCAP-2), *Geosci. Model Dev. Discuss.*, [https://doi.org/10.5194/gmd-2020-](https://doi.org/10.5194/gmd-2020-259)
259, in review, 2020.
- Coleman, K., Jenkinson, D. S.: RothC-26.3 - A model the turnover of carbon in soil. In: Powlson DS, Smith P, Smith
JU (ed) *Evaluation of soil organic matter models using existing long-term datasets*, NATO ASI Series I, vol. 38.
1385 Springer, Berlin, pp 237–246, 1996.
- Crippa, M., Oreggioni, G., Guizzardi, D., Muntean, M., Schaaf, E., Lo Vullo, E., Solazzo, E., Monforti-Ferrario, F.,
Olivier, J. G. J., and Vignati, E.: Fossil CO₂ and GHG emissions of all world countries: 2019 report, Publications
Office of the European Union, Luxembourg, EUR 29849 EN, JRC117610, ISBN 978-92-76-11100-9, available at:
1390 <https://edgar.jrc.ec.europa.eu/overview.php?v=booklet2019> (last access: 14 April 2020), 2019.
- Crippa, M., Oreggioni, G., Guizzardi, D., Muntean, M., Schaaf, E., Lo Vullo, E., Solazzo, E., Monforti-Ferrario, F.,
Olivier, J.G.J., Vignati, E.: Fossil CO₂ and GHG emissions of all world countries - 2019 Report, EUR 29849 EN,
Publications Office of the European Union, Luxembourg, 2019, ISBN 978-92-76-11100-9, doi:10.2760/687800,
1395 JRC117610, 2019b.
- Ducoudré, N. I., Laval, K., and Perrier, A.: SECHIBA, a new set of parameterizations of the hydrologic exchanges at
the land-atmosphere interface within the LMD atmospheric general circulation model, *Journal of Climate*, 6, 248–
273, 1993.

1400

EDGAR v5.0 FT2017 https://edgar.jrc.ec.europa.eu/overview.php?v=50_GHG.

EFISCEN model: <http://efiscen.efi.int>

1405 EIA: International Energy Statistics, Energy Information Administration, available at: <https://www.eia.gov/international/data/world>, last access: 4 February 2020.

EU <https://eur-lex.europa.eu/legal-content/EN/TXT/?uri=CELEX%3A52020SC0176>.

1410 EU Report LIFE and Europe's grasslands Restoring a forgotten habitat, accessed from <https://ec.europa.eu/environment/archives/life/publications/lifepublications/lifefocus/documents/grassland.pdf>, 2008.
FAOSTAT <http://www.fao.org/faostat/en/#data/GL> and its sub-domains. The FAOSTAT emissions land use database (metadata: http://fenixservices.fao.org/faostat/static/documents/GL/GL_e_2019.pdf).

1415 Federici, S., Tubiello, F. N., Salvatore, M., Jacobs, H., and Schmidhuber, J.: New estimates of CO₂ forest emissions and removals: 1990–2015, *Forest Ecol. Manage.*, 352, 89–98, 2015.

FRA: Global Forest Resources Assessment 2015: How are the world's forest changing?, 2015, Rome, Italy, available at: <http://www.fao.org/3/a-i4793e.pdf> (last access: December 2019), 2015.

1420

Frey, C.: Evaluation of an approximate analytical procedure for calculating uncertainty in the Greenhouse gas version of the multi scale motor vehicle and equipment emission system (order 3A-0419-NATX), 2003.

Friedlingstein, P., Jones, M. W., O'Sullivan, M., Andrew, R. M., Hauck, J., Peters, G. P., Peters, W., Pongratz, J.,
1425 Sitch, S., Le Quéré, C., Bakker, D. C. E., Canadell, J. G., Ciais, P., Jackson, R. B., Anthoni, P., Barbero, L., Bastos, A., Bastrikov, V., Becker, M., Bopp, L., Buitenhuis, E., Chandra, N., Chevallier, F., Chini, L. P., Currie, K. I., Feely, R. A., Gehlen, M., Gilfillan, D., Gkritzalis, T., Goll, D. S., Gruber, N., Gutekunst, S., Harris, I., Haverd, V., Houghton, R. A., Hurtt, G., Ilyina, T., Jain, A. K., Joetzjer, E., Kaplan, J. O., Kato, E., Klein Goldewijk, K., Korsbakken, J. I., Landschützer, P., Lauvset, S. K., Lefèvre, N., Lenton, A., Lienert, S., Lombardozzi, D., Marland, G., McGuire, P. C.,
1430 Melton, J. R., Metzl, N., Munro, D. R., Nabel, J. E. M. S., Nakaoka, S.-I., Neill, C., Omar, A. M., Ono, T., Pregon,

- A., Pierrot, D., Poulter, B., Rehder, G., Resplandy, L., Robertson, E., Rödenbeck, C., Séférian, R., Schwinger, J., Smith, N., Tans, P. P., Tian, H., Tilbrook, B., Tubiello, F. N., van der Werf, G. R., Wiltshire, A. J., and Zaehle, S.: Global Carbon Budget 2019, *Earth Syst. Sci. Data*, 11, 1783–1838, <https://doi.org/10.5194/essd-11-1783-2019>, 2019.
- 1435 Friedlingstein, P., O'Sullivan, M., Jones, M. W., Andrew, R. M., Hauck, J., Olsen, A., Peters, G. P., Peters, W., Pongratz, J., Sitch, S., Le Quéré, C., Canadell, J. G., Ciais, P., Jackson, R. B., Alin, S., Aragão, L. E. O. C., Arneeth, A., Arora, V., Bates, N. R., Becker, M., Benoit-Cattin, A., Bittig, H. C., Bopp, L., Bultan, S., Chandra, N., Chevallier, F., Chini, L. P., Evans, W., Florentie, L., Forster, P. M., Gasser, T., Gehlen, M., Gilfillan, D., Gkritzalis, T., Gregor, L., Gruber, N., Harris, I., Hartung, K., Haverd, V., Houghton, R. A., Ilyina, T., Jain, A. K., Joetzjer, E., Kadono, K., Kato, E., Kitidis, V., Korsbakken, J. I., Landschützer, P., Lefèvre, N., Lenton, A., Lienert, S., Liu, Z., Lombardozi,
- 1440 D., Marland, G., Metzl, N., Munro, D. R., Nabel, J. E. M. S., Nakaoka, S.-I., Niwa, Y., O'Brien, K., Ono, T., Palmer, P. I., Pierrot, D., Poulter, B., Resplandy, L., Robertson, E., Rödenbeck, C., Schwinger, J., Séférian, R., Skjelvan, I., Smith, A. J. P., Sutton, A. J., Tanhua, T., Tans, P. P., Tian, H., Tilbrook, B., van der Werf, G., Vuichard, N., Walker, A. P., Wanninkhof, R., Watson, A. J., Willis, D., Wiltshire, A. J., Yuan, W., Yue, X., and Zaehle, S.: Global Carbon Budget 2020, *Earth Syst. Sci. Data Discuss.*, <https://doi.org/10.5194/essd-2020-286>, in review, 2020.
- 1445 Gasser, T. and Ciais, P.: A theoretical framework for the net land to-atmosphere CO₂ flux and its implications in the definition of “emissions from land-use change”, *Earth Syst. Dynam.*, 4, 171–186, <https://doi.org/10.5194/esd-4-171-2013>, 2013.
- 1450 Ghattas, J., and McGrath, M. J.: Trade-offs in using European forests to meet climate objectives, *Nature*, 562, 259–262, <https://doi.org/10.1038/s41586-018-0577-1>, 2018.
- Grassi, G., Cescatti, A., Matthews, R., Duveiller, G., Amia, A., Federici, S., House, J., de Noblet-Ducoudré, N., Pilli, R., and Vizzarri, M.: On the realistic contribution of European forests to reach climate objectives, *Carbon balance*
- 1455 *Manag.*, 14, 8, <https://doi.org/10.1186/s13021-019-0123-y>, 2019.
- Grassi, G., House, J., Kurz, W. A., Cescatti, A., Houghton, R. A., Peters, G. P., Sanz, M. J., Vi nas, R. A., Alkama, .., Arneeth, A., Bondeau, A., Dentener, F., Fader, M., Federici, S., Friedlingstein, P., Jain, A. K., Kato, E., Koven, C. D., Lee, D., Nabel, J. E. M. S., Nassikas, A. A., Perugini, L., Rossi, S., Sitch, S., Viovy, N., Wiltshire, A., and Zaehle, S.:
- 1460 Reconciling global-model estimates and country reporting of anthropogenic forest CO₂ sinks, *Nat. Clim. Chang.*, 8, 914–920, <https://doi.org/10.1038/s41558-018-0283-x>, 2018a.

Grassi, G., Pilli, R., House, J., Federici, S., and Kurz, W. A.: Science-based approach for credible accounting of mitigation in managed forests, *Carbon balance Manag.*, 13, 8, 2018b.

1465

Hansis, E., Davis, S. J., and Pongratz, J.: Relevance of methodological choices for accounting of land use change carbon fluxes, *Glob. Biogeochem. Cy.*, 29, 1230–1246, <https://doi.org/10.1002/2014GB004997>, 2015.

Hastie, A., Lauerwald, R., Ciais, P., Regnier, P. : Aquatic carbon fluxes dampen the overall variation of net ecosystem productivity in the Amazon basin: An analysis of the interannual variability in the boundless carbon cycle. *Global Change Biology*, 25 (6), pp. 2094-2111, DOI: 10.1111/gcb.14620, 2019.

1470

Houghton, R. A. and Nassikas, A. A.: Global and regional fluxes of carbon from land use and land cover change 1850–2015, *Glob. Biogeochem. Cy.*, 31, 456–472, <https://doi.org/10.1002/2016GB005546>, 2017.

1475

Houghton, R. A., House, J. I., Pongratz, J., van der Werf, G. R., DeFries, R. S., Hansen, M. C., Le Quéré, C., and Ramankutty, N.: Carbon emissions from land use and land-cover change, *Biogeosciences*, 9, 5125–5142, <https://doi.org/10.5194/bg-9-5125-2012>, 2012.

1480

Houghton, R. A.: Revised estimates of the annual net flux of carbon to the atmosphere from changes in land use and land management 1850–2000, *Tellus B*, 55, 378–390, 2003.

Houghton, R., Hobbie, J., Melillo, J., Moore, B., Peterson, B., Shaver, G., and Woodwell, G.: Changes in the carbon content of terrestrial biota and soils between 1860 and 1980: A net release of CO₂ to the atmosphere, *Ecol. Monogr.*,

1485

53(3):235–262, 1983.

Hurt, G. C., Chini, L., Sahajpal, R., Frohling, S., Bodirsky, B. L., Calvin, K., Doelman, J. C., Fisk, J., Fujimori, S., Klein Goldewijk, K., Hasegawa, T., Havlik, P., Heinemann, A., Hummel, F., Jungclaus, J., Kaplan, J. O., Kennedy, J., Krisztin, T., Lawrence, D., Lawrence, P., Ma, L., Mertz, O., Pongratz, J., Popp, A., Poulter, B., Riahi, K., Shevliakova, E., Stehfest, E., Thornton, P., Tubiello, F. N., van Vuuren, D. P., and Zhang, X.: Harmonization of global

1490

land use change and management for the period 850–2100 (LUH2) for CMIP6, *Geosci. Model Dev.*, 13, 5425–5464, <https://doi.org/10.5194/gmd-13-5425-2020>, 2020.

1495 IEA: CO₂ Emissions From Fuel Combustion: Database Documentation, International Energy Agency, Paris, France, available at: http://wds.iea.org/wds/pdf/Worldco2_Documentation.pdf (last access: 8 February 2019), 2018d, last access February 2019.

IEA <https://www.transparency->

1500 [partnership.net/sites/default/files/u2620/the_iea_energy_data_collection_and_co2_estimates_an_overview__iea__content.pdf](https://www.transparency-partnership.net/sites/default/files/u2620/the_iea_energy_data_collection_and_co2_estimates_an_overview__iea__content.pdf).

IPCC: 2019 Refinement to the 2006 IPCC Guidelines for National Greenhouse Gas Inventories, available at: <https://www.ipcc.ch/report/2019-refinement-to-the-2006-ipcc-guidelines-for-national-greenhouse-gas-inventories>,

1505 last access: January 2020), 2019a.

IPCC: Supplement to the 2006 IPCC Guidelines for National Greenhouse Gas Inventories: Wetlands, edited by: Hiraishi, T., Krug, T., Tanabe, K., Srivastava, N., Baasansuren, J., Fukuda, M., and Troxler, T. G., IPCC, Switzerland, 2014.

1510

IPCC, 2006 Guidelines for National Greenhouse Gas Inventories, Prepared by the National Greenhouse Gas Inventories Programme. IGES, Japan, <https://www.ipcc-nggip.iges.or.jp/public/2006gl/>, 2006.

IPCC: Good Practice Guidance for Land use, Land use Change and Forestry, Chapter 3, 3.3, available at: https://www.ipcc-nggip.iges.or.jp/public/gpglulucf/gpglulucf_files/GPG_LULUCF_FULL.pdf, last access: January 2020, 2003.

1515

Izaurrealde, R. C., Williams, J. R., McGill, W. B., Rosenberg, N.J., Jakas, M. C. Q.: Simulating soil C dynamics with EPIC: Model description and testing against long-term data, *Ecol. Model.* 192, 362–384, <https://doi.org/10.1016/j.ecolmodel.2005.07.010>, 2006.

1520

- Janssens-Maenhout, G., Crippa, M., Guizzardi, D., Muntean, M., Schaaf, E., Dentener, F., Bergamaschi, P., Pagliari, V., Olivier, J. G. J., Peters, J. A. H. W., van Aardenne, J. A., Monni, S., Doering, U., Petrescu, A. M. R., Solazzo, E., and Oreggioni, G. D.: EDGAR v4.3.2 Global Atlas of the three major greenhouse gas emissions for the period 1970–
1525 2012, *Earth Syst. Sci. Data*, 11, 959–1002, <https://doi.org/10.5194/essd-11-959-2019>, 2019.
- Janssens-Maenhout, G., Pinty, B., Dowell, M., Zunker, H., Andersson, E., Balsamo, G., Bézy, J.-L., Brunhes, T., Bösch, H., Bojkov, B., Brunner, D., Buchwitz, M., Crisp, D., Ciais, P., Counet, P., Dee, D., Denier van der Gon, H., Dolman, H., Drinkwater, M. R., Dubovik, O., Engelen, R., Fehr, T., Fernandez, V., Heimann, M., Holmlund, K.,
1530 Houweling, S., Husband, R., Juvyns, O., Kentarchos, A., Landgraf, J., Lang, R., Löschner, A., Marshall, J., Meijer, Y., Nakajima, M., Palmer, P. I., Peylin, P., Rayner, P., Scholze, M., Sierk, B., Tamminen, J., and Veefkind, P.: Toward an Operational Anthropogenic CO₂ Emissions Monitoring and Verification Support Capacity, *Bull. Amer. Meteor. Soc.*, 101, E1439–E1451, <https://doi.org/10.1175/BAMS-D-19-0017.1>, 2020.
- 1535 Jenkinson, D. S., Hart, P. B. S., Rayner, J. H., Parry, L. C.: Modelling the turnover of organic matter in long-term experiments at Rothamsted, *INTECOL Bulletin* 15:1–8, 1987.
- Jenkinson, D. S., Rayner, J. H.: The turnover of organic matter in some of the Rothamsted classical experiments. *Soil. Sci.* 123: 298–305, 1977.
- 1540 Jonsson, R., Blujdea, V. N., Fiorese, G., Pilli, R., Rinaldi, F., Baranzelli, C., and Camia, A.: Outlook of the European forestbased sector: forest growth, harvest demand, wood-product markets, and forest carbon dynamics implications, *iForest*, 11, 315–328, <https://doi.org/10.3832/ifer2636-011>, 2018.
- 1545 Juraj Balkovič, J., Madaras, M., Skalský, R., Folberth, C., Smatanová, M., Schmid, E., van der Velde, M., Kraxner, F., Obersteiner, M.: Verifiable soil organic carbon modelling to facilitate regional reporting of cropland carbon change: A test case in the Czech Republic, *Journal of Environmental Management*, Vol. 274, 111206, ISSN 0301-4797, <https://doi.org/10.1016/j.jenvman.2020.111206>, 2020.
- 1550 Klein Goldewijk, K., Beusen, A., Doelman, J., and Stehfest, E.: Anthropogenic land-use estimates for the Holocene; HYDE 3.2, *Earth Syst. Sci. Data*, 9, 927–953, <https://doi.org/10.5194/essd9-927-2017>, 2017a.

- 1555 Klein Goldewijk, K., Dekker, S. C., and van Zanden, J. L.: Per capita estimations of long-term historical land use and the consequences for global change research, *J. Land Use Sci.*, 12, 313– 337, <https://doi.org/10.1080/1747423X.2017.1354938>, 2017b.
- 1560 Koehl, M., Hildebrandt, R., Olschofsky, K., Koehler, R., Roetzer, T., Mette, T., Pretzsch, H., Koethke, M., Dieter, M., Abiy, M., Makeschin, F., and Kenter, B.: Combating the effects of climatic change on forests by mitigation strategies, *Carbon Balance and Management*, 5, 8, <https://doi.org/10.1186/1750-0680-5-8>, 2010.
- Konovalov, I. B., Berezin, E. V., Ciais, P., Broquet, G., Zhuravlev, R. V., and Janssens-Maenhout, G.: Estimation of fossil-fuel CO₂ emissions using satellite measurements of "proxy" species, *Atmos. Chem. Phys.*, 16, 13509–13540, <https://doi.org/10.5194/acp-16-13509-2016>, 2016.
- 1565 Konovalov, I. B., Lvova, D. A. : First, fast-track, Re-analysis of the national scale CO₂ anthropogenic emissions over 2005-2015, internal VERIFY report: https://projectworkspace.eu/sites/VERIFY/Deliverables/WP2/VERIFY_D2.10_First,%20fast-track,%20Re-analysis%20of%20the%20national%20scale%20CO2%20anthropogenic%20emissions%20over%202005-2015.pdf, last access September 2020, 2018.
- 1570 Kountouris, P., Gerbig, C., Rödenbeck, C., Karstens, U., Koch, T. F., and Heimann, M.: Technical Note: Atmospheric CO₂ inversions on the mesoscale using data-driven prior uncertainties: methodology and system evaluation, *Atmos. Chem. Phys.*, 18, 3027–3045, <https://doi.org/10.5194/acp-18-3027-2018>, 2018a.
- 1575 Kountouris, P., Gerbig, C., Rödenbeck, C., Karstens, U., Koch, T. F., and Heimann, M.: Atmospheric CO₂ inversions on the mesoscale using data-driven prior uncertainties: quantification of the European terrestrial CO₂ fluxes, *Atmos. Chem. Phys.*, 18, 3047–3064, <https://doi.org/10.5194/acp-18-3047-2018>, 2018b.
- 1580 Krinner, G., Viovy, N., de Noblet-Ducoudré N., Ogée, J., Polcher, J., Friedlingstein, P., Ciais, P., Sitch, S., and Prentice, I. C.: A dynamic global vegetation model for studies of the coupled atmosphere-biosphere system, *Global Biogeochemical Cycles*, 19, GB1015, doi:10.1029/2003GB002199, 2005.

Kurz, W. A., Dymond, C. C., White, T. M., Stinson, G., Shaw, C. H., Rampley, G. J., Smyth, C., Simpson, B. N., Neilson, E. T., Trofymow, J. A., Metsaranta, J., and Apps, M. J.: CBMCF3: a model of carbon dynamics in forestry and land use change implementing IPCC standards, *Ecol. Model.*, 220, 480–504, <https://doi.org/10.1016/j.ecolmodel.2008.10.018>, 2009.

Kurz, W. A.: Large inter-annual variations in carbon emissions and removals, Invited Background Paper, in: IPCC 2010, Revisiting the Use of Managed Land as a Proxy for Estimating National Anthropogenic Emissions and Removals, edited by: Eggleston, H. S., Srivastava, N., Tanabe, K., and Baasansuren, J., INPE, Sao José dos Campos, Brazil, 5–7 May 2009, IGES, Hayama, Japan, 41–48, 2010.

Lauerwald, R., Laruelle, G. G., Hartmann, J., Ciais, P., & Regnier, P. A. G.: Spatial patterns in CO₂ evasion from the global river network, *Global Biogeochemical Cycles*, 29(5), 534–554. <https://doi.org/10.1002/2014GB004941015>, 2015.

Le Quéré, C., Andrew, R. M., Friedlingstein, P., Sitch, S., Pongratz, J., Manning, A. C., Korsbakken, J. I., Peters, G. P., Canadell, J. G., Jackson, R. B., Boden, T. A., Tans, P. P., Andrews, O. D., Arora, V. K., Bakker, D. C. E., Barbero, L., Becker, M., Betts, R. A., Bopp, L., Chevallier, F., Chini, L. P., Ciais, P., Cosca, C. E., Cross, J., Currie, K., Gasser, T., Harris, I., Hauck, J., Haverd, V., Houghton, R. A., Hunt, C. W., Hurtt, G., Ilyina, T., Jain, A. K., Kato, E., Kautz, M., Keeling, R. F., Klein Goldewijk, K., Körtzinger, A., Landschützer, P., Lefèvre, N., Lenton, A., Lienert, S., Lima, I., Lombardozzi, D., Metzl, N., Millero, F., Monteiro, P. M. S., Munro, D. R., Nabel, J. E. M. S., Nakaoka, S., Nojiri, Y., Padin, X. A., Peregon, A., Pfeil, B., Pierrot, D., Poulter, B., Rehder, G., Reimer, J., Rödenbeck, C., Schwinger, J., Séférian, R., Skjelvan, I., Stocker, B. D., Tian, H., Tilbrook, B., Tubiello, F. N., van der Laan-Luijkx, I. T., van der Werf, G. R., van Heuven, S., Viovy, N., Vuichard, N., Walker, A. P., Watson, A. J., Wiltshire, A. J., Zaehle, S., and Zhu, D.: Global Carbon Budget 2017, *Earth Syst. Sci. Data*, 10, 405–448, <https://doi.org/10.5194/essd-10-405-2018>, 2018a.

Le Quéré, C., Raupach, M. R., Canadell, J. G., Marland, G., Bopp, L., Ciais, P., Conway, T. J., Doney, S. C., Feely, R. A., Foster, P., Friedlingstein, P., Gurney, K., Houghton, R. A., House, J. I., Huntingford, C., Levy, P. E., Lomas, M. R., Majkut, J., Metzl, N., Ometto, J. P., Peters, G. P., Prentice, I. C., Randerson, J. T., Running, S. W., Sarmiento, J. L., Schuster, U., Sitch, S., Takahashi, T., Viovy, N., van der Werf, G. R., and Woodward, F. I.: Trends in the sources and sinks of carbon dioxide, *Nat. Geosci.*, 2, 831–836, 2009.

1615 Liski, J., Karjalainen, T., Pussinen, A., Nabuurs, G.-J., and Kauppi, P.: Trees as carbon sinks and sources in the European Union, *Environ. Sci. Policy*, 3, 91–97, [https://doi.org/10.1016/S1462-9011\(00\)00020-4](https://doi.org/10.1016/S1462-9011(00)00020-4), 2000.

Liski, J., Palosuo, T., Peltoniemi, M., and Sievänen, R.: Carbon and decomposition model Yasso for forest soils, *Ecol. Model.*, 189, 168–182, <https://doi.org/10.1016/J.ECOLMODEL.2005.03.005>, 2005.

1620 Lugato, E., Panagos, P., Bampa, F., Jones, A., Montanarella, L.: A new baseline of organic carbon stock in European agricultural soils using a modelling approach, *Glob. Change Biol.* 20, 313–326, <https://doi.org/10.1111/gcb.12292>, 2014.

1625 Lurton, T., Balkanski, Y., Bastrikov, V., Bekki, S., Bopp, L., Braconnot, P., & Cugnet, D. : Implementation of the CMIP6 Forcing Data in the IPSL-CM6A-LR Model. *Journal of Advances in Modeling Earth Systems*, 12(4), e2019MS001940, 2020.

Luyssaert, S., Abril, G., Andres, R., Bastviken, D., Bellassen, V., Bergamaschi, P., Bousquet, P., Chevallier, F., Ciais, P., Corazza, M., Dechow, R., Erb, K.-H., Etiope, G., Fortems-Cheiney, A., Grassi, G., Hartmann, J., Jung, M., Lathière, J., Lohila, A., Mayorga, E., Moosdorf, N., Njakou, D. S., Otto, J., Papale, D., Peters, W., Peylin, P., Raymond, P., Rödenbeck, C., Saarnio, S., Schulze, E.-D., Szopa, S., Thompson, R., Verkerk, P. J., Vuichard, N., Wang, R., Wattenbach, M., and Zaehle, S.: The European land and inland water CO₂, CO, CH₄ and N₂O balance between 2001 and 2005, *Biogeosciences*, 9, 3357–3380, <https://doi.org/10.5194/bg-9-3357-2012>, 2012. Valentini et al., 2000.

Luyssaert, S., Marie, G., Valade, A., Chen, Y. Y., Njakou Djomo, S., Ryder, J., Otto, J., Naudts, K., Lansø, A. S., Menut, L., Bessagnet, B., Khvorostyanov, D., Beekmann, M., Blond, N., Colette, A., Coll, I., Curci, G., Foret, G., Hodzic, A., Mailler, S., Meleux, F., Monge, J.-L., Pison, I., Siour, G., Turquety, S., Valari, M., Vautard, R., and Vivanco, M. G.: CHIMERE 2013: a model for regional atmospheric composition modelling, *Geosci. Model Dev.*, 6, 981–1028, <https://doi.org/10.5194/gmd-6-981-2013>, 2013.

Messenger, M. L., Lehner, B., Grill, G., Nedeva, I. and Schmitt, O.: Estimating the volume and age of water stored in global lakes using a geo-statistical approach, *Nat. Commun.*, 7, 13603, [doi:10.1038/ncomms13603](https://doi.org/10.1038/ncomms13603), 2016.

- 1645 Monteil, G., Broquet, G., Scholze, M., Lang, M., Karstens, U., Gerbig, C., Koch, F.-T., Smith, N. E., Thompson, R. L., Luijkx, I. T., White, E., Meesters, A., Ciais, P., Ganesan, A. L., Manning, A., Mischurow, M., Peters, W., Peylin, P., Tarniewicz, J., Rigby, M., Rödenbeck, C., Vermeulen, A., and Walton, E. M.: The regional European atmospheric transport inversion comparison, EUROCOM: first results on European-wide terrestrial carbon fluxes for the period 2006–2015, *Atmos. Chem. Phys.*, 20, 12063–12091, <https://doi.org/10.5194/acp-20-12063-2020>, 2020.
- 1650 Nabuurs, G. J., Arets, E. J. M. M., and Schelhaas, M. J.: Understandin the implications of the EU-LULUCF regulation for the wood supply from EU forests to the EU, *Carbon Balance Manag.*, 13, 18, <https://doi.org/10.1186/s13021-018-0107-3>, 2018.
- 1655 Nabuurs, G. J., Delacote, P., Ellison, D., Hanewinkel, M., Hetemäki, L., Lindner, M., and Ollikainen, M.: By 2050 the mitigation effects of EU forests could nearly double through climate smart forestry, *Forests*, 8, 484, <https://doi.org/10.3390/f8120484>, 2017.
1. Naudts, K., Chen, Y., McGrath, M., Ryder, J., Valade, A., Otto, J., Luyssaert, S.: Europe’s forest
1660 management did not mitigate climate warming, *Science*, 351, 597–600, <https://doi.org/10.1126/science.aad7270>, 2016.
- Olivier, J. G. J., Schure, K. M., and Peters, J. A. H. W.: Trends in global CO₂ and total greenhouse gas emissions: 2017 report, PBL Netherlands Environmental Assessment Agency, The Hague, available at:
1665 https://www.pbl.nl/sites/default/files/downloads/pbl-2017-trends-in-global-co2-and-total-greenhouse-gas-emissions-2017-report_2674_0.pdf (last access: September 2019), 2017.
- Peters, G.P., Andrew, R.M., Canadell, J.G. et al. Carbon dioxide emissions continue to grow amidst slowly emerging climate policies. *Nat. Clim. Chang.* 10, 3–6, <https://doi.org/10.1038/s41558-019-0659-6>, 2020.
- 1670 Petrescu, A. M. R., McGrath, M. J., Andrew, R. M., Peylin, P., Peters, G. P., Ciais, P., Broquet, G.², Tubiello, F. N., Gerbig, C., Pongratz, J., Janssens-Maenhout, G., Grassi, G., Nabuurs, G. J., Regnier, P., Lauerwald, R., Kuhnert, M., Balkovič, J., Schelhaas, M. J., Denier van der Gon, H. A. C., Solazzo, E., Qiu, C., Pilli, R., Konovalov, I. B., Houghton, R., Günther, D., Perugini, L., Crippa, M., Ganzenmüller, R., Luijkx, I. T., Smith, P., Munassar, S., Thompson, R.L.,
1675 Conchedda, G., Monteil, G., Scholze, M., Karstens, U., Brokmann, P. and Dolman, A. J.: The consolidated European

synthesis of CO₂ emissions and removals for EU27 and UK: 1990-2018, version 1, Zenodo, <https://doi.org/10.5281/zenodo.4626578>, 2020a.

1680 Petrescu, A. M. R., Peters, G. P., Janssens-Maenhout, G., Ciais, P., Tubiello, F. N., Grassi, G., Nabuurs, G.-J., Leip, A., Carmona-Garcia, G., Winiwarter, W., Höglund-Isaksson, L., Günther, D., Solazzo, E., Kiesow, A., Bastos, A., Pongratz, J., Nabel, J. E. M. S., Conchedda, G., Pilli, R., Andrew, R. M., Schelhaas, M.-J., and Dolman, A. J.: European anthropogenic AFOLU greenhouse gas emissions: a review and benchmark data, *Earth Syst. Sci. Data*, 12, 961–1001, <https://doi.org/10.5194/essd-12-961-2020>, 2020b.

1685 Petrescu, A. M. R., Qiu, C., Ciais, P., Thompson, R.L., Peylin, P., McGrath, M. J., Solazzo, E., Janssens-Maenhout, G., Tubiello, F. N., Bergamaschi, P., Brunner, D., Peters, G. P., Höglund-Isaksson, L., Regnier, P., Lauerwald, R., Bastviken, D., Tsuruta, A., Winiwarter, W., Patra, P. K., Kuhnert, M., Orregioni, G. D., Crippa, M., Saunio, M., Perugini, L., Markkanen, T., Aalto, T., Groot Zwaafink, C. D., Yao, Y., Wilson, C., Conchedda, G., Günther, D., Leip, A., Smith, P., Haussaire, J.-M., Leppänen, A., Manning, A. J., McNorton, J., Brockmann, P., and Dolman, A. J.: The
1690 consolidated European synthesis of CH₄ and N₂O emissions for EU27 and UK: 1990-2018, *Earth Syst. Sci. Data Discuss.*, *essd-2020-367*, in press, 2021.

Pilli, R., Grassi, G., Kurz, W. A., Fiorese, G., and Cescatti, A.: The European forest sector: past and future carbon budget and fluxes under different management scenarios, *Biogeosciences*, 14, 2387–2405, [https://doi.org/10.5194/bg-](https://doi.org/10.5194/bg-14-2387-2017)
1695 14-2387-2017, 2017.

Pilli, R., Grassi, G., Kurz, W. A., Moris, J. V., and Viñas, R. A.: Modelling forest carbon stock changes as affected by harvest and natural disturbances – II. EU-level analysis including land use changes, *Carbon Balance and Management*, 11, 20, <https://doi.org/10.1186/s13021-016-0059-4>, 2016b.

1700

Pinty et al. 2017, https://www.copernicus.eu/sites/default/files/2019-09/CO2_Red_Report_2017.pdf.

Pinty et al. 2019 https://www.copernicus.eu/sites/default/files/2019-09/CO2_Green_Report_2019.pdf.

- 1705 Polcher, J., McAvaney, B., Viterbo, P., Gaertner, M.-A., Hahmann, A., Mahfouf, J.-F., Noilhan, J., Phillips, T.,
Pitman, A.J., Schlosser, C.A., Schulz, J.-P., Timbal, B., Verseghy D., and Xue, Y.: A proposal for a general interface
between land-surface schemes and general circulation models. *Global and Planetary Change*, 19:263-278, 1998.
- Pongratz, J., Reick, C. H., Houghton, R. A., and House, J. I.: Terminology as a key uncertainty in net land use and
land cover change carbon flux estimates, *Earth Syst. Dynam.*, 5, 177–195, <https://doi.org/10.5194/esd-5-177-2014>,
1710 2014.
- PRIMAP <https://dataservices.gfz-potsdam.de/pik/showshort.php?id=escidoc:2959897>.
- Raymond, P. A., Hartmann, J., Lauerwald, R., Sobek, S., McDonald, C., Hoover, M., Guth, P. : Global carbon dioxide
1715 emissions from inland waters, *Nature*, 503(7476), 355–359, retrieved from <https://doi.org/10.1038/nature12760>,
2013.
- Rayner, P. J., Michalak, A. M., and Chevallier, F.: Fundamentals of data assimilation applied to biogeochemistry,
Atmos. Chem. Phys., 19, 13911–13932, <https://doi.org/10.5194/acp-19-13911-2019>, 2019.
- 1720 RECCAP <https://www.globalcarbonproject.org/Reccap/index.htm> , last access November 2020.
- Regulation (EU) 2018/1999 (European Climate Law) amended proposal for a regulation of the European parliament
and of the council on establishing the framework for achieving climate neutrality
1725 https://ec.europa.eu/clima/sites/clima/files/eu-climate-action/docs/prop_reg_ecl_en.pdf.
- Regulation (EU) 525/2013 of the European Parliament and of the Council, <https://eur-lex.europa.eu/legal-content/EN/TXT/PDF/?uri=CELEX:32013R0525&from=EN>, last access November 2020.
- 1730 Reichstein, M., Bahn, M., Ciais, P., Frank, D., Mahecha, M. D., Seneviratne, S.I., Zscheischler, J., Beer, C.,
Buchmann, N., Frank, D. C., Papale, D., Rammig, A., Smith, P., Thonicke, K., van der Velde, M., Vicca, S., Walz,
A., Wattenbach, M.: Climate extremes and the carbon cycle, *Nature*, Aug 15;500(7462):287-95. doi:
10.1038/nature12350. PMID: 23955228, 2013.

- 1735 Rödenbeck, C.: Estimating CO₂ sources and sinks from atmospheric mixing ratio measurements using a global inversion of atmospheric transport, Tech. Rep. 6, Max Planck Institute for Biogeochemistry, Jena, Germany, 2005.
- Sallnäs, O.: A matrix model of the Swedish forest, *Studia Forestalia Suecica*, 183, 23 pp., 1990.
- Scharnweber, T., Smiljanic, M., Cruz-García, R., Manthey, M., and Wilmking, M.: Tree growth at the end of the 21st century - the extreme years 2018/19 as template for future growth conditions, *Environ. Res. Lett.* 15 074022, <https://doi.org/10.1088/1748-9326/ab865d>, 2020.
- Schelhaas, M.-J., Nabuurs, G.-J., Verkerk, P.J., Hengeveld, G., Packalen, T., Sallnäs, O., Pilli, R., Grassi, G., Forsell, N., Frank, S., Gusti, M., Havlik, P.: Forest Resource Projection Tools at the European Level. In: Barreiro, S., Schelhaas, M.-J., McRoberts, R.E., Kändler, G. (Eds.), *Forest Inventory-based Projection Systems for Wood and Biomass Availability*, Springer International Publishing, Cham, pp. 49-68, 2017.
- Schlamadinger, B. and Marland, G.: The role of forest and bioenergy strategies in the global carbon cycle, *Biomass and Bioenergy*, 10, 275–300, 1996.
- 1750 Searchinger, T. D., Wirsén, S., Beringer, T., and Dumas, P.: Assessing the efficiency of land use changes for mitigating climate change, *Nature*, 564, 249–253, <https://doi.org/10.1038/s41586-018-0757-z>, 2018.
- Sitch, S., Huntingford, C., Gedney, N., Levy, P. E., Lomas, M., Piao, S. L., Betts, R., Ciais, P., Cox, P., Friedlingstein, P., Jones, C. D., Prentice, J. C., and Woodward, F. I.: Evaluation of the terrestrial carbon cycle, future plant geography and climate-carbon cycle feedbacks using five Dynamic Global Vegetation Models (DGVMs), *Glob. Change Biol.*, 14, 2015–2039, 2008.
- 1755 Smith, J. U., Gottschalk, P., Bellarby, J., Chapman, S., Lilly, A., Towers, W., Bell, J., Coleman, K., Nayak, D. R., Richards, M. I., Hillier, J., Flynn, H. C., Wattenbach, M., Aitkenhead, M., Yeluri, J. B., Farmer, J., Milne, R., Thomson, A., Evans, C., Whitmore, A.P., Falloon, P. & Smith, P.: Estimating changes in national soil carbon stocks using ECOSSE – a new model that includes upland organic soils. Part II Application in Scotland, *Climate Research* 45, 193-205. doi: 10.3354/cr00902, 2010b.
- 1760

- 1765 Smith, J. U., Bradbury, N. J., Addiscott, T.M.: SUNDIAL: A PC-based system for simulating nitrogen dynamics in arable land, *Agron J* 88:38-43, 1996.
- Smith, J. U., Gottschalk, P., Bellarby, J., Chapman, S., Lilly, A., Towers, W., Bell, J., Coleman, K., Nayak, D. R., Richards, M. I., Hillier, J., Flynn, H. C., Wattenbach, M., Aitkenhead, M., Yeluripurti, J. B., Farmer, J., Milne, R.,
- 1770 Thomson, A., Evans, C., Whitmore, A. P., Falloon, P. & Smith, P.: Estimating changes in national soil carbon stocks using ECOSSE – a new model that includes upland organic soils. Part I. Model description and uncertainty in national scale simulations of Scotland, *Climate Research* 45, 179-192. doi: 10.3354/cr00899, 2010a.
- Solazzo, E., Crippa, M., Guizzardi, D., Muntean, M., Choulga, M., and Janssens-Maenhout, G.: Uncertainties in the
- 1775 EDGAR emission inventory of greenhouse gases, *Atmos. Chem. Phys. Discuss.*, <https://doi.org/10.5194/acp-2020-1102>, in review, 2020.
- Thompson, R. L., Broquet, G., Gerbig, C., Koch, T., Lang, M., Monteil, G., Munassar, S., Nickless, A., Scholze, M., Ramonet, M., Karstens, U., van Schaik, E., Wu, Z. and Rödenbeck, C.: Changes in net ecosystem exchange over
- 1780 Europe during the 2018 drought based on atmospheric observations. *Phil. Trans. R. Soc. B* 375: 20190512, <http://dx.doi.org/10.1098/rstb.2019.0512>, 2020.
- Tubiello, F. N.: Greenhouse Gas Emissions Due to Agriculture, *Enc. Food Security and Sustain.*, 1, 196–205, <https://doi.org/10.1016/B978-0-08-100596-5.21996-3>, 2019.
- 1785 UNFCCC 2014. Decision 24/CP.19 Revision of the UNFCCC reporting guidelines on annual inventories for Parties included in Annex I to the Convention. FCCC/CP/2013/10/Add.3.
- UNFCCC NGHGI 2018 NIR reports: UNFCCC: National Inventory Submissions 2018, available at:
- 1790 <https://unfccc.int/process-and-meetings/transparency-and-reporting/reporting-and-review-under-theconvention/greenhouse-gas-inventories-annex-i-parties/nationalinventory-submissions-2018>, last access: January 2020, 2018.

1795 UNFCCC NGHGI 2019 CRFs: <https://unfccc.int/process-and-meetings/transparency-and-reporting/reporting-and-review-under-the-convention/greenhouse-gas-inventories-annex-i-parties/national-inventory-submissions-2019>, last access September 2020.

1800 UNFCCC: Kyoto Climate Change Decision, available at: <https://unfccc.int/process-and-meetings/conferences/past-conferences/kyoto-climate-change-conference-december-1997/decisions-kyoto-climate-change-conference-december-1997> (last access: October 2020), 1997.

1805 UNFCCC: National Inventory Submissions 2018, available at: <https://unfccc.int/process-and-meetings/transparency-and-reporting/reporting-and-review-under-the-convention/greenhouse-gas-inventories-annex-i-parties/national-inventory-submissions-2018> (last access: January 2020), 2018.

van der Laan-Luijkx, I. T., van der Velde, I. R., van der Veen, E., Tsuruta, A., Stanislawski, K., Babenhauserheide, A., Zhang, H. F., Liu, Y., He, W., Chen, H., Masarie, K. A., Krol, M. C., and Peters, W.: The CarbonTracker Data Assimilation Shell (CTDAS) v1.0: implementation and global carbon balance 2001–2015, *Geosci. Model Dev.*, 10, 2785–2800, <https://doi.org/10.5194/gmd-10-2785-2017>, 2017.

1810 VERIFY H2020: <https://verify.lsce.ipsl.fr/>, last access: November 2020.

Verkerk, P. J., Schelhaas, M.-J., Immonen, V., Hengeveld, G., Kiljunen, J., Lindner, M., Nabuurs, G.-J., Suominen, T., and Zudin, S.: Manual for the European Forest Information Scenario model (EFISCEN 4.1), EFI Technical Report 99, European Forest Institute, 49 pp., 2016.

Viovy, N.: Interannuality and CO₂ sensitivity of the SECHIBA-BGC coupled SVAT-BGC model, *Physics and Chemistry of The Earth*, 21, 489–497, 1996.

1820 Williams, J. R.: The Erosion-Productivity Impact Calculator (EPIC) Model: A Case History, *Philos. Trans. R. Soc. B Biol. Sci.* 329, 421–428, <https://doi.org/10.1098/rstb.1990.0184>, 1990.

WMO: United in Science Report, available at: https://public.wmo.int/en/resources/united_in_science (last access: January 2020), 2019.