

General comments on the revised manuscript:

The text of the manuscript and the Supplement were edited accordingly to the comments of two Reviewers (detailed replies to both Reviewers are below).

The main text was shortened with details about the instruments, when essential for future users of the homogenized data sets, moved to the updated Tables. Some English corrections are introduced. The Tables are updated: now all the metadata for the H, I and Z components are summarized in Tables 1-3 of the main manuscript. The old Figure 1 is transformed into two: new Fig. 1 and new Fig. 9 (as proposed by Dr. M. Manda).

All changes are marked using the MS Words Markups except for the Tables which are shown in the updated form only. Please see the manuscript version with the mark-ups below.

The Supplement is changed accordingly to the changes of the main text: old Table 1 of the main text is moved to the Supplement, the old Tables S1-S3 are combined with the old Table 2 of the main text resulting in the new Tables 1-3.

The datasets are updated accordingly to the Dr. V. Soldatov comments: the files in the ASCII formats are added.

Reply to Dr. Mioara Mandea (essd-2020-317-RC1)

First of all we would like to thank Dr. Mioara Mandea for her useful comments.

Unfortunately we can't follow some of the suggestions (“*A physical interpretation of the results will bring more interest to this data driven manuscript*” and “*The long series of D and/or Y component can be used to investigate the SV behavior and geomagnetic jerks. A comparison with long series of D measurements could be used to show how COI are data in investigating these events.*”). The main reason is that it is outside the ESSD journal policy which says “*Any interpretation of data is outside the scope of regular articles*”. Thus in this manuscript we focus on presenting new (homogenized) data sets that, we hope, will be used later on by other researchers to study geomagnetic field variations in the European region. Besides, we must note that the geomagnetic jerks were already studied in our 1st paper (Morozova, A.L., Ribeiro, P., Pais, M. A.: *Correction of artificial jumps in the historical geomagnetic measurements of Coimbra Observatory, Portugal, Ann. Geophys., 32, 19-40, doi:10.5194/angeo-32-19-2014, 2014.*) dedicated to the homogenization of the series of the D element. Since the Y element, as is shown as well in our present manuscript, is very similar to D and was always calculated from other measured elements, it has no additional value for a study of the jerks.

Below we present replies to other comments:

Lots of information are given in the manuscript and they might be better deliver and summarized in forms of Tables.

We combined the information from the main text Table 2 and Tables S1-S3 from the supplement to make four new tables (Tables 1-4 in the revised manuscript) with the metadata and the correction values for the H (Tab. 1-2), I (Tab. 3) and Z (Tab. 4) elements updating them also with the information from the main text. Also all details about the instruments (specific names and numbers and installation options) are moved from the main text to the Supplement (Table S3). Furthermore, the Table 1 from the original manuscript is also moved to the Supplement (Tab. TS2 in the updated Supplement). Other Tables in the supplement are not changed but renumbered accordingly to the main text changes.

The authors propose to homogenize the available magnetic data until 2015. Why not until present day, supposing data are available for mid-2020?

The set of the instruments installed in 2006-2007 is still in use at the COI Observatory. This means that, as we mention in our manuscript (sec. 1): “*the addition to the corrected series of measurements done after December 2015 will not affect their homogeneity*”. Thus, anyone can download COI data for 2016-2017 from, e.g., WDC open data base and add them to the homogenized series presented in our work without any correction or treatment (corresponding link is added to the revised text – sec. 5). The data for 2018 and 2019 will be soon uploaded to WDC.

It is not clear how different noise contributions are assessed. For example, the “urban electromagnetic noise level” is noted, but no information about its value and evolution is provided.

In the presented manuscript we paid our attention only to changes of the baseline of the geomagnetic field elements. No treatment for the noise was done. The level of the urban electromagnetic noise could be devised from the variability of the data, e.g., using the month-to-month time derivative, as we mention in sec. 3.1 of the manuscript, or the standard deviation, comparing a more perturbed period vs a less perturbed period. Although, one must keep in mind that a larger part of hourly and daily noise is averaged out by the calculation of the monthly means. Corresponding sentence is added to the revised manuscript – sec. 5.

Somehow Figure 1, has to be the last figure of the paper (with all corrections applied). This figure needs after to be discussed in details.

Figure 1 from the original manuscript is split into Fig. 1 and 9 of the revised manuscript. Fig. 1 of the revised manuscript shows the COI original (observed) series and the COV-OBS model prediction. Figure 9 of the revised manuscript (now it is the last figure of the main text) shows COI observed and corrected series (final correction to the level of 2015). Since all the differences between the observed and corrected COI series result from the corrections described in detail in the main text (Sec. 3-4) we see no need to discuss once again the differences between the original and corrected series of the geomagnetic elements.

Also, according to the comments of another reviewer, the COI data are now available in the plain ASCII format in addition to the originally uploaded XLSX files.

Reply to Dr. Vadim Soldatov (essd-2020-317-RC2)

We would like to thank Dr. Vadim Soldatov for appreciation of our work and for providing us with a few practical suggestions

As was suggested by the reviewer, (“***The complete data sets are accessible as Excel files, both original and corrected. The format is clear, comprehensible and undoubtedly usable. Although my personal preference is to use more specific formats, such as netCDF or HDF. Plain ASCII text would do as well, as it allows for the direct comparison of two corresponding files line by line.***”), we uploaded the data in the plain ASCII format to <https://doi.org/10.5281/zenodo.4308022> (original data) and to <https://doi.org/10.5281/zenodo.4308036> (homogenized data).

The reviewer also mentioned that the manuscript is “***somewhat lengthy***”. In the revised manuscript we summarized the COI history in Tables 1-3 of the revised manuscript leaving as well many details for those potential users that will need to resolve ambiguities they might encounter using the COI historical data (e.g., if they will need to take care of the urban noise).

Thus, we combined the information from the main text Table 2 and Tables S1-S3 from the supplement to make four new tables (Tables 1-4 in the revised manuscript) with the metadata and the correction values for the H (Tab. 1), I (Tab. 2) and Z (Tab. 3) elements updating them also with the information from the main text. Also all details about the instruments (specific names and numbers and installation options) are moved from the main text to the Supplement (Table S3). Also, the Table 1 from the original manuscript is also moved to the Supplement (Tab. TS2 in the updated Supplement). Other Tables in the supplement are not changed but renumbered accordingly to the main text changes.

Accordingly to the comments of another reviewer, Figure 1 from the original manuscript is transformed into Fig. 1 and 9 of the revised manuscript. Fig. 1 of the revised manuscript shows the COI original (observed) series and the COV-OBS model prediction. Figure 9 of the revised manuscript (now it is the last figure of the main text) shows COI observed and corrected series (final correction to the level of 2015).

Homogenization of the historical series from the Coimbra Magnetic Observatory, Portugal

Anna L. Morozova^{1,2}, Paulo Ribeiro², and M. Alexandra Pais^{1,2}

¹ University of Coimbra, CITEUC, Department of Physics, Coimbra, Portugal

5 ² University of Coimbra, CITEUC, OGAUC, Coimbra, Portugal

Correspondence to: A.L. Morozova (annamorozovauc@gmail.com)

Abstract. The Coimbra Magnetic Observatory (COI), Portugal, established in 1866, provides almost continuous records of the geomagnetic field elements for more than 150 years. However, during its long lifetime inevitable changes of the instruments, measurement procedures and even re-location of the Observatory took place. In our previous work (Morozova et al., 2014) we performed homogenization – elimination of the artificial changes – of the measured declination series (D) for the period from 1866 to 2006. In this paper we continue work applying homogenization procedures to the measured series of the absolute monthly values of the horizontal (H, 1866-2006) vertical (Z, 1951-2006) and inclination components (I, 1866-1941). After homogenization of all measured series for the 1866-2006 time interval we performed the homogenization of the series of all geomagnetic field elements (X, Y, Z, H, D, I and F) to the level of epoch 2015. Since all series except D have a gap of about 10 years long in the middle of the 20th century, splitting each of them into two, the homogenization to the level of 2015 was done only for the series available after 1951 (with D series homogenized for the whole time interval 1866-2015). The COI geomagnetic field elements are available via the following addresses: COI original data —(ASCII and XLSX formats): <https://doi.org/10.5281/zenodo.41220664308022> (Ribeiro et al., 2020); COI homogenized data —(ASCII and XLSX formats): <https://doi.org/10.5281/zenodo.41222894308036> (Morozova et al., 2020).

20 1 COI metadata

In previous work by Morozova et al. (2014), the series of monthly values of the declination of the geomagnetic field (D) measured at the Coimbra Magnetic Observatory (COI) between 1866 and 2006 were analyzed for the presence of artificial homogeneity breaks (HB). A number of HBs related to the changes of the observatory location and changes or repairs of the instruments were found and, when possible, corrected. Here we present the continuation of the previous work, extending the homogeneity analysis to the monthly series of the horizontal (H) and vertical (Z) components, and the inclination (I) measured at COI between 1866 and 2006. ~~Finally, in~~ In 2006 the set of old instruments ~~were~~ was replaced with modern ~~ones~~ ones, which are still in use. Accordingly, we applied the same methods to the series of all elements for the 2006-2015 time interval to make them in line with current measurements done with instruments installed after 2006. To the time of the analysis, the most recent values in the series were available for December 2015. Since from that time on no changes in the instruments and procedures took place, the addition to the corrected series of measurements done after December 2015 will not affect their homogeneity.

The analysis is supported by metadata ~~relative to~~ about the instruments used to measure H, Z and I components between 1866 and 2015. More details about the Coimbra Observatory history and metadata can be also found in Pais and Miranda (1995) and Morozova et al. (2014).

35 The first geomagnetic measurements at the COI Observatory were started in ~~July~~ June 1866 at the *Cumeada* site (40° 12.4' N, 8° 25.4' W, 140 m a.s.l.). In January 1932 the observatory was relocated to a new site, *Alto da Baleia* (40° 13' N, 8° 25.3' W, 99 m a.s.l.), where it is still operating. The records have gaps that start between 1939 and 1942 (depending on the element) and end in October 1951. A number of instrument replacements and repairs, as well as changes of the measurements and calculation procedures took place between 1866 and 2015. Those related to the measurements of H, Z and I are described

40 below and summarized in Tables ~~S1-S3 in the Supplement~~, 1 (H), 2 (I) and 3 (Z). The information on the D component can be found in Morozova et al. (2014) and is also summarized in Table ~~S4S1~~ in the Supplement.

Different combinations of three magnetic elements can be used to fully specify the geomagnetic field vector. The particular combination is determined by the kind of instruments being used. The combinations of HDZ (cylindrical components) and XYZ (Cartesian) are commonly recorded by the relative instruments (i.e. variographs or variometers), while the combinations HDZ, HDI and DIF (spherical) are the most easily measured by absolute instruments (Parkinson, 1983). Table ~~4.S1 in the Supplement~~ shows the combinations of geomagnetic elements measured by the absolute and relative instruments in the Coimbra observatory from 1866 to 2015.

Concerning the absolute measurements, three different combinations of magnetic elements were registered in different periods of the observatory history. In the first period, between 1864 and 1951, the absolute observations were made for H, D and I. The Gibson unifilar magnetometer used in the first absolute observations of H and D, was replaced in January 1878 by the Elliott & Bros. unifilar magnetometer, which was kept running until 1948 ~~and from 1951 to 1955~~. The magnetic inclination (I) started to be measured with an inclinometer of Barrow in June 1866, which ~~later~~ was replaced by a John Dover inclinometer in September 1876. ~~This was kept which, in use until October 1935 when it turn,~~ was replaced by a Sartorius Earth inductor ~~in October 1935~~. The absolute measurements of I were discontinued in 1939. Despite the observatory relocation in 1932 to *Alto da Baleia*, relatively far from the city centre and the tram lines, the quality of data ~~not only has not improved but worsened~~ ~~did not improve and even deteriorated~~ significantly during the first 20 years in *Alto da Baleia* (1932-1951). The oversimplification of observation routines and the non-negligible perturbations mainly related to the aging and drift of old absolute instruments that were kept in use, as well as the incorrect installation of the newly acquired Askania variographs, can be regarded as the main reasons for the low quality of the data. In the following period, between 1951/52 and 2006, the absolute measurement of I was replaced by the measurement of Z, so that the calculation of the baselines for the magnetic variations (H, D and Z) was now obtained directly from the absolute measurements of these elements (~~please see Tab. 1 for information about the measured combination of elements at different time intervals~~ ~~see Tab. S2~~).

After 1952~~1~~ the absolute measurements of H and Z were obtained respectively with ~~a~~ quartz horizontal magnetometers (QHM) and ~~a~~ zero balance magnetometers (BMZ). The QHM and BMZ magnetometers are known to be semi-absolute instruments (i.e. instruments subject to drift) being then necessary to periodically assess the measurement quality by comparing them with standard instruments. ~~During period~~ ~~Such comparisons were done in~~ October 1951 – October 1952 ~~two QHMs (nos. 190, 191, loaned to COI by the National Meteorological Service of Portugal) were used interchangeably. In 1952 the Coimbra observatory acquired two new QHM instruments (nos. 220, 221 with measurement certificates obtained in Rude Skov, Denmark). They were compared (during and in~~ November and December of 1952) ~~with the QHM no. 190 and no. 191, and the results were considered consistent (according to the published yearbook data for 1952). Then, in~~. In January 1953, ~~QHM no. 220~~ ~~one of the QHMs~~ was adopted as the main observation instrument. ~~Shortly after, in~~ ~~until~~ 1955, ~~when it was replaced by~~ a new magnetometer QHM (no. 307) was acquired. ~~This instrument was compared to QHM no. 220 (with QHM. The comparison of the new and the old instruments showed~~ consistent measurements) and ~~the new QHM~~ was used as the main instrument for absolute measurements of the horizontal component from beginning of July 1955 until May 2006, ~~while installed on pillar no 7~~.

The absolute measurement of the Z component at the *Alto da Baleia* site started in December 1951/January 1952 ~~with a BMZ no. 69, which was replaced~~ ~~and the instruments were upgraded~~ in January 1953 ~~by the BMZ no. 80. This was replaced~~ ~~and~~ in January 1977 ~~by the BMZ no. 130 that assured exclusively the absolute~~. Absolute determination of the vertical component ~~was done~~ until May 2006.

The installation of the current set of modern instruments at the COI observatory ~~took place during 2006-2007. It began in 2006, with the DI-flux for the absolute observations (January 2006)~~. This ~~instrument is a combination of the fluxgate Mag-~~

01H magnetometer (Bartington) with a universal theodolite YOM MG2kP. It replaced the classic declinometer Askania that had been in use since 1955 in the absolute determination of D. This new instrument was installed on a different pillar (no. 4, henceforward, the observatory's reference pillar) in the absolute house, after the azimuth sighting has been determined for a new mark (cross of Missionary Sacred Heart located approximately at 750 m). All these changes change resulted in a D baseline jump (Morozova et al., 2014).

On the other hand, until the end of May 2006, the baselines of components H and Z continued to be determined using the absolute values obtained by the QHM (no. 307, used since 1955) and BMZ (no. 130, used since 1969) magnetometers. until the end of May 2006. These two instruments were replaced in the absolute observations in June 2006, and the baselines of H and Z started being computed through the absolute observations of D, I and F, obtained with the DI-flux (D and I) and the proton magnetometer Geometries G-856 (F). These equipment changes introduced discontinuities in the baselines of the H and Z series. In the case of H, there was a jump of -34 nT (considering the difference between values of June and May). In the case of component Z, there were two discontinuities: the first, also related to the change in the equipment of absolute measurements, resulted in a jump of -24 nT (considering the difference between the values of June and May), while the second, characterized by a jump of -25 nT (considering the difference between the August and September values), was related to the replacement of the analogue variometers (Eschenhagen model) by thea reliable and very stable FGE instrument, with a digital (FGE model) recording system. In May 2007, the proton sensor, initially installed at a height of about 2 m near the entrance of the pavilion of absolute measurements, was moved to the top of pillar no. 5. Later, in July 2007, the old proton magnetometer G-856 was replaced by the new Overhauser GSM-90F1 magnetometer (GEM systems), installed in the variometer house one. This last modification apparently did not introduce significant discontinuities in the evolution of baselines. In addition, during most of the year 2014 it was not possible to carry out the absolute observations due to the failure of both the DI-flux (between February and September) and the proton magnetometer (between May and September). Both instruments were repaired by the respective companies (Bartington and GEM systems). During the period of interruption of the absolute observations the baselines calculated for January 2014 were used.

The full list of the instruments used at COI for the absolute measurements can be found in Table S3 in the Supplement.

2 Homogenization procedure

The homogenization procedure used in this study is similar to the one described in detail in Morozova et al. (2014). The homogeneity study was done using It resorts to both the visual analysis and a statistical homogeneity test, namely the standard normal homogeneity test (SNHT, see Alexandersson and Moberg (1997)), which allows the estimation of the statistical significance of homogeneity breaks (HB). SNHT is known to be oversensitive to HBs near the beginning and/or the end of the analyzed series (Costa and Soares, 2009). In general, the relative amplitude of a maximum of the SNHT statistics does not directly depend on the strength of corresponding HB. The ratio of amplitudes of different maxima depends on the length of the studied period, relative distance between the breaks and/or to the proximity to the beginning/end of the series. Also, the correction of a break can result in changes of the relative amplitudes of other SNHT statistics' maxima. The natural cyclic variations and long term trends of the measured parameters are also detected by the statistical homogeneity tests and have to be accounted for.

Contrary to Morozova et al. (2014), we found that to take care of all significant artificial homogeneity breaks we have to analyse not only the time derivatives of the geomagnetic series but the series themselves. In some cases abrupt changes in a series mean level are clearly seen in the visual analysis of a geomagnetic element but not in the homogeneity test of its time derivative (e.g., the change of the mean level of the H component in March of 1922 discussed in Sec. 3.1), most probably shadowed by more significant inhomogeneities in the series.

The data series of geomagnetic elements and their time derivatives were analyzed using relative homogeneity tests applied to differences between COI series and similar data obtained from other geomagnetic observatories or simulated by a model which we refer to as “reference series”. The series of these differences are denoted by adding the prefix “ Δ ”. The series of time derivatives were calculated as differences between the same months of two consecutive years. Since this time derivative is close to the standard geomagnetic secular variation, we will denote it “SV”. The original series of the analyzed components are shown in Fig. 1 as red lines. The SV series are shown in the Supplement (Fig. S1, red lines).

Three types of series were used as references. The first type are observations from other European geomagnetic observatories (EO). The full list of these observatories is in the Supplement, Table S5S4. The values of geomagnetic elements can be significantly different for different stations; however their SV series tend to be more similar. Therefore, the data from the reference observatories were used to calculate the average of first time derivative of the components (SV_{EO}) and the resulting series were then compared with SV_{COI} . The ΔSV_{EO} and SV_{EO} series are shown in Figs. 2c-5c and Sup. Figs. S1, respectively, as green/yellow and green lines, respectively. The raw and SV individual ~~EosEOs~~ series were not used for the relative homogeneity tests because the data from individual observatories have many gaps and probably contain yet not corrected artificial homogeneity breaks which can, in turn, affect the homogeneity analysis of the COI series. However, they can be used to segregate homogeneity breaks of natural origin from artificial ones since the mean SV_{EO} and ΔSV_{EO} series have no gaps due to the overlapping of the series from individual observatories.

The second type of reference series used to compare with COI data was built from simulated variations of the components calculated for the COI location using the COV-OBS model for the internal geomagnetic field (Gillet et al., 2013). As in the previous study (Morozova et al., 2014), two versions of the model were ~~calculated~~ used: (1) ~~using~~ including the COI geomagnetic data among the set of all magnetic observatory (“all”) and (2) excluding the COI data from the internal field model calculation to mitigate its possible influence on the modelled series (“w/o COI”). The “w/o COI” model was computed by N. Gillet for the Morozova et al. (2014) study and used again in the present study for consistency. The comparison of the “all” and “w/o COI” predictions (see Sup. Fig. S2) shows that for the H component the differences (in the absolute values) between the two models do not exceed 2-2.5 nT during the 20th century but for more ancient epochs, in the 19th century, they grow up to 12 nT. Similar differences are seen for the I component: they do not exceed (in the absolute values) 0.3' during the 20th century but increase to 1.2' in the 19th century. Since the Z component was directly measured only during the 2nd half of the 20th century, when we can find a significantly large number of geomagnetic observatories over Europe, the input data from the individual observatory (COI) does not significantly affect the model prediction, and the difference (in the absolute values) between the two models does not exceed 0.6 nT. We verify that even for the 19th century the results of the statistical homogeneity tests obtained using both “all” and “w/o COI” models are essentially the same, thus only the results for the “w/o COI” model are shown here denoted for simplicity as “COV-OBS”. In our analysis in search for possible HBs we tested (1) the differences between the measured and simulated COI geomagnetic elements (“ Δ ” series, see Figs. 2a-5a, red lines) and (2) the differences between the SV series of the measured and modelled components (“ $\Delta SV_{COV-OBS}$ ” series, see Figs. 2c-5c, red/blue lines; see also Sup. Fig. S1 for SV of the COV-OBS series, black lines).

Differences between measurements and simulations arise not only from artificial inhomogeneities in the measured series but also from natural sources, e.g., solar and geomagnetic activity and crustal and induced fields that are not accounted for by the COV-OBS model. The H, I and Z series were found to be more strongly influenced by the solar activity than the D series analyzed in Morozova et al. (2014). In order to take this natural variability into account we used, as a third type of reference series, the following indices to describe the geomagnetic activity level (see Figs. 2b-5b): the index of inter-diurnal variability (IDV) from 1872 onward (Svalgaard et al., 2004; Svalgaard and Cliver, 2005), the aa index from 1868 onward, the global Kp index from 1951 onward (Menvielle et al., 2011) and the local K_{COI} index from 1951 onward, already homogenized in Morozova et al. (2014). The IDV and aa indices are global geomagnetic indices with the longest available series. They were used to estimate geomagnetic activity variation for the epoch before 1951 when K index was introduced. The IDV, aa and K

indices are calculated using different methodology and, consequently, their variations may represent different features of geomagnetic activity; moreover, the difference between the K_p and K_{COI} indices reflect differences in the geomagnetic activity on the global and regional scales. Thus all these indices can be useful in detection of homogeneity breaks in the series of geomagnetic field components related to the natural sources. The geomagnetic indices were used only for visualization of the geomagnetic cycles of external origin and for estimations of the approximate dates of the geomagnetic activity's minima and maxima.

The corrections for the artificial HBs (δ values) were calculated using the information from the COI Observatory's yearbooks and logbooks as well as by comparing the values of the measured components during some time intervals before and after a break in question (see details in Section 3).

Although the COV-OBS simulations cannot give the base level for COI, a more or less constant difference is expected between data series and COV-OBS simulations due to (1) uncertainty of the simulation although the uncertainty of COV-OBS model changes a lot in time, being larger for ancient epochs and (2) the crustal field. Assuming that the difference between the observations and COV-OBS is constant in time (slightly varying due to the geomagnetic activity cycles, see Sec. 3) and for a lack of better choice of the baselines, we choose to use the COV-OBS model level as an approximation for the actual base level of COI geomagnetic field components. We also paid attention to the cycles of the solar and geomagnetic activity to not overcorrect the observational data. Thus, in some cases, when COI data varies smoothly around COV-OBS level and these variations were in agreement with variations of geomagnetic indices, no corrections were applied. Please see detailed descriptions of specific cases in Section 3.

The HB corrections were applied backward in time, starting from the most recent break resulting in a corrected series being in line with the most recent measurements. This is a procedure usually applied for homogenization of the meteorological data (Morozova and Valente, 2012); however it may not always work for the COI series due to the long data gap between 1940s and 1951. Nevertheless, all HBs are described here in the direct chronological order to keep the usual narrative timeline.

The quality of the applied correction was estimated by calculation of (1) the homogeneity tests statistics for the homogenized series and (2) the centred root mean square error parameter (CRMSE, see e.g. Taylor, 2001 and Venema et al., 2012). CRMSE was calculated using Eq. 1:

$$CRMSE^2 = \sigma_D^2 + \sigma_R^2 - 2 \cdot \sigma_D \cdot \sigma_R \cdot r \quad (1)$$

where σ_D and σ_R are the standard deviations of the analyzed and reference series, respectively, and r is the Pearson correlation coefficient between the analyzed and reference series. In case the corrected series is more homogeneous than the original one, the CRMSE values for the corrected series will be lower than for the original (Venema et al., 2012). To compare CRMSE obtained for different geomagnetic elements and their derivatives, the CRMSE values shown here are normalized: they are divided by the standard deviations of corresponding original series.

To summarize, the homogenization procedure consists of the following steps (see also Fig. 6):

Step 1. Preliminary analysis of the series, corrections of the typos and OCR errors; detection of outliers, calculation of the Δ , SV and Δ SV series

Step 2. Visual analysis of the data and statistical homogeneity tests;

Step 3. Detection and analysis of HBs:

1. Selection of HBs with statistical significance of at least 95%;
2. Checking of the available metadata and logbooks;
3. In case the homogeneity test detects HB with a significance <95% but a change is registered in the yearbooks for that time, this break can also be accepted for correction;

4. In case HBs with statistical significance of at least 95% do not coincide with changes registered in the yearbooks but coincide with HBs in the series of geomagnetic indices, these HBs are excluded from the correction as caused by the solar and geomagnetic activity variations;

210 Step 4. Correction of the selected breaks using the most appropriate method discussed in corresponding sections 3.1-3.3;
Step 5. Examination of the corrected series through the visual analysis, the statistical homogeneity tests and the CRMSE analysis.

The original and corrected series of the H, I and Z components, corresponding Δ , ΔSV and SV series are shown in Figs. [4-52-9](#), and Fig. S1. The results of homogeneity tests for the original and corrected series are shown in Sup. Figs. S3-S9.

215 **3 Homogenization of the COI series (1866-2006)**

3.1 H component

The measured COI H monthly means series (H) can be split into two parts separated by a gap of about 10 years long. The first time interval, from June 1866 to December 1941, contains measurements at the *Cumeada* and *Alto da Baleia* sites (*C-AdB* period); the second time interval, from October 1951 to May 2006, is related solely to the *Alto da Baleia* site (*AdB* period) – see Figs. 1a, 2-3, Sup. Figs. S1a-S1b, S3-S5, Tabs. [1-2](#) and Sup. Tab. [S1S3](#). The series were checked with yearbooks and logbooks for typos and OCR errors. Only absolute measurements are taken into account. Unfortunately, logbooks and yearbooks do not provide enough information about all changes in the measurement procedures and instruments repairs. Some records are too laconic, e.g., “*some problems*” are mentioned in logbooks without any description of their nature. Also, the analysis of the logbooks showed that from time to time observers (on different reasons) did not follow the recommended routine (e.g., monthly means can be calculated using only one or two weeks of measurements). As a result, there are inhomogeneities that cannot be confirmed by metadata. On the other side, some events that could in principle generate inhomogeneities (e.g., installation of a new instrument) did not produce a visible and statistically significant HB. This is the case of the installation of a new instrument in January 1878 (Unifilar of Elliott) for measuring H and D components. It is possible that during the installation process the new instrument was calibrated in line with the old one without the corresponding note added to the logbook. The aging of the instruments, an increase of the urban electromagnetic noise (the beginning of the electrical tram services in the nearby area) and other technical problems started to significantly affect the quality of the H data after 1929 (seen in Sup. Fig. S10a, pink area, as increased month-to-month variations). This situation did not improve during the first years after the relocation in January 1932. This is clearly seen in the dispersion of the monthly H data (see Figs. 2a and 2c, and Sup. Fig. S10a). Only after the installation of the new instruments in 1951/1952 did the data quality improve (see Fig. 3a and 3c, and Sup. Fig. S10a). This irregular behaviour is also detected by the homogeneity tests statistics (Sup. Fig. S3). To reduce the influence of this odd time period, homogeneity tests were calculated for two time intervals: from 1866 to 1941 (whole *C-AdB* period) and from 1866 to 1933 (a period excluding the epoch of major irregularities) – see Sup. Figs. S4.

The analysis of the first part of the H series showed that there were two statistically significant HBs (see Table [21](#)): around March-April 1922 and from July to October 1931. In our opinion, the main reason for the break in March-April 1922 is the construction of a building within about 50 m from the house of absolute instruments. Despite the fact that there is no clear confirmation of this date in the Observatory logbooks and yearbooks, it was chosen for the corrections both because it is clearly seen in the visual analysis and due to its high statistical significance (> 99%, Sup. Figs. S3-S4). The latter HB or, more precisely, a four months long jump of the mean level in July – October 1931 (Fig. 2) was likely caused by a lack of regular measurements during this time interval which resulted in an artificially high level of the average monthly values. This conclusion is based on the analysis of the records and notes in the Observatory’s logbooks. Also, this break nearly

corresponds to the relocation period, and it is likely that the routines had changed with consequences in the data quality. Therefore, this HB was also chosen for correction.

250 These two HBs are not the only features that can be detected in the analysis of the H series during the *C-AdB* period. First of all, we have to mention a long-term wave-like variation with minima around 1892 and 1932 and maxima around 1873-1878 and 1912 clearly seen in ΔH and SV (Fig. 2a and Sup. Fig. S1a, red lines). This variation is detected by the homogeneity tests applied to ΔH with a maximum of the SNHT statistics in 1880s (Sup. Fig. S3-S4). This variation is not seen in the ΔSV series (see Fig. 2c and corresponding homogeneity test results in Sup. S3b-S4b). We compared ΔH COI series with similar Δ series (differences between the observations and the COV-OBS model predictions) from other observatories available for
255 this time interval (see Table S5). For the period 1866-1940 there are data from eight observatories: Parc Saint-Maur (PSM), Perpignan (PER), San Fernando (SFS), Oslo (OSL), Prague (PRA), Greenwich (GRW), Munich (MNH) and Lisbon (LIS); however the data sets of the MNH and LIS observatories have many gaps and contain clear shifts of the baseline (probably caused by changes in the observatory location, instruments or measurements procedure). The Δ series for the H component measured at the remaining six stations are shown in Sup. Fig. S11. The data observed at the observatories closest to COI
260 observatories, SFS and PER, also show similar wave-like variations; similar variations are probably seen in the data of PRA but since PRA data have significant gap and were, probably, not homogenized, we cannot draw a final conclusion. On the other hand, the Δ series obtained from the PSM and OSL data show not a wave-like variation but rather a steadily increase. Finally, the trend of the Δ series obtained from the GRW data is ambiguous.

Therefore, taking into account the absence of the recorded changes in the station environment and the similarity between the
265 time variations of the series measured by COI and closest observatories, we conclude that the observed long-term variations are due to the natural evolution of the geomagnetic field unaccounted for by the COV-OBS model.

The ΔH series also shows quasi-periodic decadal variations. These variations can also be found in the SV series, but there they are blurred by the high variability of the data. The origin of these quasi-decadal variations is clearly in the changes of the solar (and, consequently, geomagnetic) activity level. Figure 2 shows variations of the ΔH and $\Delta SV_{\text{COV-OBS}}$ series (panels
270 a and c, respectively, red lines) alongside with the variations of the aa and IDV indices (panel b). As one can see, the highest geomagnetic activity corresponds to lower values of ΔH . On [the](#) contrary, the periods of low geomagnetic activity correlate with epochs of higher ΔH values. Although this variability has natural origin, from the statistical point of view it results in inhomogeneities detected by homogeneity tests (see Sup. Figs. S3-S4). Nevertheless, the geomagnetic indices variations confirm the natural origin of these quasi-decadal variations of H and that they must be kept in the data.

275 Thus, only two HB found during the *C-AdB* period were selected for correction (in 1922 and 1931, see Tab. [21](#)). The correction values (δH , Tab. [21](#)) were calculated as the difference between the means of the original ΔH series calculated for a certain time interval before and after the date of HB. For the first HB this time interval was chosen to be 12 months. For the second HB the length of this time interval was only 4 months – the time between the break (July 1931) and the end of the series (October 1931). The corrections were rounded to the nearest whole number (since the precision of the 19th century
280 instruments was not higher than 1 nT). The corrected H, ΔH , SV and $\Delta SV_{\text{COV-OBS}}$ series are shown in [Figs. 1a, Fig. 2a](#) and Sup. [Figs. S1a](#) as blue lines and the homogeneity test results for the corrected series are also shown in Sup. Figs. S3-S4.

According to the COI annual books and logbooks (Tab. [21](#), Sup. Tab. [S1-S3](#)), the old instrument ([Unifilar of Elliot](#)) was kept in use for the first three months of the *AdB* period. Then, in January 1952, a set of new instruments ([QHM nos. 190, 191](#))
285 ~~thesethe old~~ magnetometers were compared to [the](#) newly purchased ~~magnetometers QHM nos. 220, 221 ones.~~ According to the logbooks, the difference between the new and old instruments was about 20 nT. ~~The QHM no. 220 magnetometer started being used as the main instrument.~~ This information is supported by the visual analysis of the ΔH series (Fig. 3a): there is a visible shift of the main level of the ΔH series not related to the geomagnetic activity variations (represented by the geomagnetic aa, IDV, Kp and K_{COI} indices in Fig. 3b).

290 | Later, in September 1953, the comparison between the measurements by the new ~~QHM no. 220~~ and ~~the old QHM no. 190~~ instruments showed that the new H values were higher by about 5.4 nT. This change of the mean level is also seen in the visual analysis. The other comparison of the COI and reference instruments took place in August 1959. Both the visual analysis and homogeneity tests show no significant changes in the data main level at this date. We assume that for this time period the difference was too low to be seen comparing to the level of the monthly data variability.

295 | One more comparison between the COI and reference instruments took place in April 1968. The differences were found to be about 18 nT. However, the analysis of the ΔH series shows that this correction ~~must behave been~~ applied up to April 1969. The last recorded comparison of the COI and reference instruments in August 1976 seems to cause no shifts of the H series that can be detected by the visual analysis or homogeneity tests.

There are also two outliers, February 1982 and October-December 2001, respectively, that have no direct documental support; however, as mentioned in the logbooks, in October of 2001 the absolute measurements were taken only during the third decade of the month, and we consider this as a possible source for the latter outlier.

The analysis of the homogeneity tests statistics (see Sup. Fig. S5) shows that the ΔH and $\Delta SV_{\text{COV-OBS}}$ series contain both the artificial inhomogeneities (above mentioned shifts and outliers) and the natural periodicities related (mostly) to the solar and geomagnetic cycles. Taking into account the results of the visual analysis, homogeneity tests and logbook records, we
305 | selected only five HBs for the corrections, listed in Tab. 21. The corrections for HBs associated with comparison to the reference instruments mentioned above were taken from the logbooks and the corrections for the outliers were calculated as differences between the means of the original ΔH series 4 months before and after each of the outlier in 1982 and before beginning and after end of the outlier interval in 2001 (see values in Tab. 21). Such short time interval was chosen to avoid contamination from the cyclic variations of the geomagnetic activity – compare Fig. 2a and 2b. The corrections were
310 | rounded to the nearest whole number (the precision of the instruments was 1 nT). The corrected series are shown in Figs. 3 and Sup. S1a as blue lines and the homogeneity test results for the corrected series are also shown in Sup. Figs. S5.

In some cases the corrections of the artificial HBs resulted in an increase of the statistical significance of the "natural HB" related to the geomagnetic cycles (Sup. Figs. S5a). The fact that this behaviour is seen mostly during the *AdB* period can be due to the higher ~~precision and~~ precision of the new instruments; another possible reason is the increase of the geomagnetic
315 | activity in the 2nd half of the 20th century reported by, e.g. Love (2011). Based on the variations of the geomagnetic indices, we conclude that the maxima observed on the SNHT statistics around 1980s, 1990s and 2000s (seen in Sup. Fig. S5a) are due to the natural variability of the data and do not need correction.

The CRMSE values for the original and corrected H and SV series relative to the corresponding reference series are shown in Fig. 7a. The results of this analysis support the conclusion that the corrected series are more homogeneous than the
320 | original ones; however, they contain "natural" inhomogeneities related, in particular, to the variations of the solar/geomagnetic activity.

3.2 I component

The digital series of the I monthly absolute measurements available from different sources (including the World Data Centre for Geomagnetism, Edinburgh, UK, website) starts in June 1866 and ends in May 1940. The series contains a number of
325 | gaps (from 1 to 6 months long, with longer gaps clustered between 1936 and 1940). This series was checked for the OCR errors, typos and calculation errors. The homogeneity of the series was affected by the relocation of the Observatory (in 1932), repairs and replacement of instruments or its parts, and environmental changes (urban electromagnetic noise level). The I series and its derivatives are shown in Figs. 1b, 4 and Sup. Fig. S1b. As one can see, between 1866 and 1932 the Δ and ΔSV series (Figs. 4a and 4c) show fluctuations related both to the already known changes in the instruments/procedures and
330 | to the variations of the solar activity (as is clearly seen in Fig. 4b where the IDV and aa geomagnetic indices are plotted): the Δ series varies in phase with IDV and aa. However, starting from about 1931 the I series shows a strong and unexpected

decrease that cannot be explained neither by natural variations of the field nor by events mentioned in the metadata. The most likely explanation is the degradation or incorrect installation of the instruments/needles or other (human) factors (e.g., disregard of the measurement procedures). Besides, the records in the logbooks clearly state that the I component was measured at COI only until the end of 1938. The origin of the (highly fragmented) monthly values of I between January 1939 and May 1940 is unknown. Therefore, we strongly recommend to not use the COI I series for this period and, accordingly, the I values for this time interval are removed from the final homogenized version described in this work.

The COI I series containing the measurements between 1866 and 1938 was submitted to the homogenization procedure. The homogeneity tests statistics were calculated both for the whole interval (1866-1938) and for a shorter time interval (1866-1930), shown in Sup. Fig. S6-S7, respectively, to exclude the period of the fast decrease. Both the visual analysis (Fig. 4) and the statistical homogeneity tests (Sup. Fig. S6-S7) show a number of HBs that are related to the known changes of the instruments or station location (see Tab. 2 and Sup. Tab. S2S3). These dates are: September 1876 (~~installation of the inclinometer of Dover~~), November 1922 ~~and~~, September 1928 (~~problems with inclinometer's needles, construction of a house near the geomagnetic absolute house and the installation of a spectroheliograph there~~), January 1931 (~~when measurements were simultaneously taken at two locations (Cumeada and AdB site)~~), January 1932 (~~official re-location of the Observatory~~), and January 1939 (~~beginning of unexplained decrease of the I values~~). These events are listed in Table 2 (and Sup. Table S2). There is also a HB in May 1883 that is seen in the homogeneity tests of the $\Delta SV_{\text{COV-OBS}}$ series (Sup. Fig. S7b); however the yearbooks and logbooks of the Observatory contain no information that can be related to this HB. The comparison of the Δ and the geomagnetic indices series (Fig. 4) shows that this HB is of natural origin and is related to a sharp decrease in the geomagnetic activity. Thus, this HB was not corrected. It has to be mentioned that the analysis of the data for the time interval 1931-1932 lead us to assume that although the logbook records mention that during 1931 the measurements were taken at the *Cumeada* and the *AdB* sites simultaneously, the published measurements, most likely, were obtained at the new site. Furthermore, the change of the instrument in October 1935 (the old inclinometer was replaced by an earth inductor) during the period of the fast decrease of I though seen both in the visual analysis and homogeneity tests, cannot be corrected due to the overall bad quality of the data.

As shown in Fig. 4a, during the time interval from November 1922 to August 1928 the Δ series slowly fluctuates (due to geomagnetic activity cycles) around zero, meaning that the differences between the measured and simulated I values do not have any systematic shift or trend. Assuming that there is no reason for a sudden (on the time scale of 1 month) change of the base level of the order of 5-10', we decided to use COV-OBS model as an approximation for the actual COI I base level. Therefore, the time interval from November 1922 to August 1928 was chosen as a reference interval: the corrections for the I series were calculated in a way that the mean values of Δ for any interval between HBs were equal to zero (the average value of Δ for the homogeneous interval from November 1922 to August 1928). Three time intervals between HBs were corrected (Tab. 2): June 1866 – August 1876, September 1876 – October 1922 and September 1928 – December 1930. The corrections were rounded to 1' (according to the precision of the instrument). The time interval between January 1931 and December 1938 was not corrected due to the bad data quality and strong decreasing trend. The corrected I series and its derivatives are shown in Figs. 4 and Sup. Fig. S1b (blue lines) and corresponding homogeneity tests statistics are in Sup. Fig. S6-S7. The homogeneity tests statistics for the corrected I series still show statistically significant HBs related to geomagnetic activity cycles. The CRMSE calculated for the original and the corrected series are shown in Fig. 7b. The CRMSEs for the corrected series are lower than for the original. Thus, the corrected I series is more homogeneous than the original one and contains, mostly, variations related to the natural sources, except the period from 1931 to 1938 which we do not recommend to use for any scientific analysis or simulation.

3.3 Z component

The installation of a new BMZ instrument in January 1953 is seen in the Z records (Figs. 1c and 5, and Sup. Fig. S1c) as a sudden step-like change of the baseline by about 30 nT. The visual analysis of the Z and ΔZ series (Figs. 1c and 5) show that after about 1.5 year from that date some problems with the instrument or measurement procedures started to appear: the level of the Z series jumped up by about 20 nT in the middle of 1954 and again by about 10nT in the end of 1955. Yet another increase of the base level for Z series took place in the end of 1960. The reasons for these changes are unknown since the currently available logbooks do not contain any notes on the Z measurements until 1963. However, these jumps cannot be neglected since they are seen not only in the visual analysis but also in the relative homogeneity tests of both the Δ and $\Delta SV_{\text{COV-OBS}}$ series (see Sup. Fig. S8-S9). These HBs do not coincide with the cycles of the geomagnetic activity (see geomagnetic indices aa, IDV, Kp and K_{COI} in Fig. 5b) and they are too sudden (sharp for the monthly mean data (see also Sup. Fig. S10c) to be attributed to the solar activity effect. They are also not seen in the variations of the SV_{EO} series (Sup. Fig. S1d). ~~The BMZ no. 80 was replaced by~~ A replacement of the ~~BMZ no. 130 instrument took place~~ in January 1977. ~~Plus, two but no HB is found near this date.~~ Two HBs were detected around September 1971 and December 1973. It seems that some measures were taken to improve the quality of the Z measurements at COI: from December 1973 the base line of the recorded measurements is in a good agreement with simulation done by the COV-OBS models. This homogeneous period started to deteriorate around 1982 when an annual cycle appeared in the data. This cycle became more prominent around 1989. Besides, the decrease of the mean Δ in 1990-1991 was too steep comparing to the variations of the geomagnetic indices (Fig. 5b). Similarly to the I component, we decided to use COV-OBS model as an approximation for the actual COI Z base level assuming that there ~~is~~ are no natural sources for a sudden (on the time scale of 1 month) changes of the base level of the order of 5-20 nT.

The origin of the annual cycle (and, probably, a part of the overall decrease of the Z base level between 1990 and 2006) seems to be related to the degradation of the instruments (the precision of the instruments to the temperature variations strongly increased), or, perhaps, errors in the calculation due to non-application of the temperature correction factor (or application of a wrong factor). This assumption is supported by the comparison of the monthly mean ΔZ values with the monthly mean temperature parameters measured by the COI meteorological observatory (see Morozova and Valente, 2012) – daily minimum (Tmin) and maximum (Tmax) temperatures, see Sup. Fig. S12. For the time interval 1990-2006 the correlation coefficients between the ΔZ and meteorological series are about 0.7 ($p \leq 0.01$, calculated using a Monte-Carlo approach with artificial series constructed using a bootstrapping with moving blocks procedure, block length equals to 12 months).

After the visual and statistical analysis of the Z, Δ and ΔSV series, several HB classified as “artificial” were identified and selected for correction (please see also Fig.S8-S9). They are listed in Table 23 (see also Sup. Table S3).

The time interval June 1954 – October 1960 was divided into two: before and after October 1955. This additional HB seen only in the visual analysis was needed to avoid step-like variations in the corrected Z series. This HB seems to be too small to be seen in the homogeneity tests on the background of the signal from other breaks. However, it becomes visible and statistically significant if the corrections are applied to all other HBs. Similarly to the I component case, taking the value $\Delta Z = 0$ nT (the mean ΔZ value for the time period 1973 December – 1989 October) as the reference level we calculated the correction value for this HB (see also Fig. 5).

The annual cycle (from 1990 to 2006) was not corrected because linear regression coefficients of Z series on the temperature series change from year to year. It is possible that such corrections for the meteorological effect are nonlinear, should take the average humidity level into account, and, also, depend on the mean annual level of the geomagnetic activity.

The corrected Z series and its derivatives are shown in Fig. 5 and Sup. Fig. S1c as blue lines. The homogeneity tests (Sup. Fig. S8-9) show that the corrected series contain HBs coinciding with the geomagnetic activity cycles (e.g., the maximum in 1980s) and the annual temperature cycle in 1990-2006. The CRMSE values for the original and corrected Z and SV series

415 relative to the corresponding reference series are shown in Fig. 7c. The CRMSE of the corrected Z series are lower than those of the original ones both when the whole series (1951-2006) and a shorter time interval (1951-1988) are considered. The results of this analysis show that the corrected series are more homogeneous than the original ones; however, they still contains "natural" inhomogeneities related to the variations of the solar/geomagnetic activity and the meteorological effect for the 1990-2006 time interval.

420 **4 Homogenization of the historical COI series in line with the current digital measurements (2006-2015)**

To complete the procedure of the homogenization of the historical COI geomagnetic series, the series for all geomagnetic elements (X, Y, Z, H, D, I, and F) were obtained for the period 1866-2006 using the direct measurements for some elements and calculating the other elements from the measurements as described below. The series of the geomagnetic elements were homogenized in line with most recent values in the series used for this study, i.e., December 2015, and corrections are shown in Table 2. The non-corrected and corrected series for the time interval 2006-2015 are shown in Fig. 8 together with the COV-OBS predictions.

First of all, we compared measured series before and after 2006 to make necessary corrections. To keep D series in line with current measurements we introduced additional correction to the series previously homogenized in Morozova et al., 2014. The correction for the D series of -7.3' (considering the difference between the monthly values of December 2005 and January 2006) was applied to the series between June 1866 and December 2005 (Table 2). The correction for the I component before June 2006 is not necessary since there is no visible jump. The corrections for the F series were calculated backward in time, first for the data before May 2007 (the change of the instrument implied a jump in the baseline between the months of April and May 2007) and later for the data before June 2006 (Table 2). The corrections were calculated assuming that the average change of the F values on the monthly scale is about +10 nT/yr or +0.83 nT/month, which is the average rate of change of F between June 2007 and December 2015. The correction of 22 nT for F were applied only for the 1951-2005 June 2006 – May 2007 time period. From the corrected D and F and from the uncorrected I series the new series of the H and Z for the 2006-2015 time interval were re-calculated. As a result, no visible breaks were seen in the H series, whereas there seems to be a significant jump (estimated as about 59 nT) in the Z series. This correction (Table 2) was applied to the whole period from October 1951- to December 2005. Please note that this correction also solved the problem of the voluntary chosen baseline level when the Z series for the 1951-2006 time interval was corrected (see Sec. 3.3).

Afterwards, all the elements (except D) were calculated for those periods where they were not measured:

- Z: May 1864 – December 1938 (from the H and I data);
- F: May 1864 – December 1938 (from H and I) and October 1951 – May 2006 (from H and Z);
- 445 – I: October 1951 – May 2006 (from H and Z).

Also, the X and Y components were calculated from July 1867 (beginning of the D observations) to December 2015. All the series except the D series have a gap in the data (from 1938/1941 to 1951). The series before the gap were not homogenized in line with the current observations both because of the gap and due to the bad quality of the data at the end of the C-AdB period. As was mentioned above, in most cases, the COV-OBS predictions were used as a reference level for the 1866-1951 time interval. All the series of the COI geomagnetic field elements (original and corrected) are shown in Fig. 49 (red and blue lines, respectively).

5 Conclusions

As a continuation of the previous work (Morozova et al., 2014) on the homogenization of the historical series of the Coimbra Geomagnetic Observatory (COI), Portugal, we applied here similar analysis to the long time series of H (horizontal

455 component), Z (vertical component) and I (inclination) absolute monthly means. The H component was measured from 1866
to 2006 with a break of about 10 years in the middle of 20th century, the I component was measured from 1866 to 1938 and
the Z records are from 1951 to 2006. Monthly mean values of the analyzed parameters and their time derivatives were
studied relative to the data series from both other European observatories and prediction made for the Coimbra location by
the COV-OBS model of the geomagnetic field. The analysis was done using available metadata (logbooks and annual books
460 of the Observatory), the visual analysis of the series and the SNHT statistical homogeneity test. Changes of the geomagnetic
activity were accounted for by the comparison to the geomagnetic activity indices (aa, IDV, Kp and the local K_{COI} index).
Statistically significant homogeneity breaks of artificial (non-natural) origin were detected and whenever possible corrected.
The corrected series were tested for homogeneity.

Overall, the corrected series show more consistency with the data from other geomagnetic observatories. The series recorded
465 after 1951 (the Z and the 2nd part of the H series) have better data quality compared to the series recorded during the 19th and
the 1st half of the 20th centuries, allowing a much easier detection and correction of the homogeneity breaks. This, mostly,
results from a better quality of the instruments (~~lower measurements errors~~higher precision) and improved observation
procedures. Unfortunately, the corrected series still contain artificial inhomogeneities related, in particular, to the
degradation of the instruments and an increase of the urban electromagnetic noise.

470 No treatment to remove the urban noise was applied in this work. The level of the urban electromagnetic noise could be
devised, e.g., from the variability of the data, e.g., using the month-to-month time derivative or the standard deviation
comparing a more perturbed period vs a less perturbed period. Also, one must keep in mind that a larger part of hourly and
daily noise is averaged out by the calculation of the monthly means. The final step of the homogenization of the COI series
consisted in the homogenization of all the series to the level of the current measurements. The series of the F, D and I
475 components available before 2006 were homogenized in line with the current observations. Then, the series of other
elements were re-calculated for the period 1866-2006 and, when needed, corrected for jumps. Please note that ~~all series,~~
~~withonly~~ the ~~exception of~~ D series, ~~that is~~ available for all COI lifetime duration (from 1866 to 1951 are not the present) is
homogenized in line with the current COI measurements ~~due to the about 10 year long break in the~~. For other elements, only
those parts of the series that are available from 1951 are homogenized in line with the current COI measurements.

480 Currently, the original and homogenized series at ~~at~~ doi.org/10.5281/zenodo.4122066 (ASCII and
doi.org/10.5281/zenodo.4122289; XLSX formats) are available at <https://doi.org/10.5281/zenodo.4308022> and
<https://doi.org/10.5281/zenodo.4308036>, respectively, and can be used in studies of secular variation. The COI data series
for 2016-2017 can be downloaded from the data base of the World Data Centre for Geomagnetism, Edinburgh
(<http://www.wdc.bgs.ac.uk/dataportal/>) and added to the homogenized series without any further correction. The data for
485 2018 and 2019 will be uploaded to the WDC data base soon. Besides, the metadata for the COI historical geomagnetic series
are also summarized in Sup. Tab. S1-S4. During the second half of the 19th and first half of the 20th centuries, historical
observatories represent the main source of highly dynamic and relatively precise geomagnetic data. We believe that applying
this kind of study to other historical series can contribute to better constrain geomagnetic field models as COV-OBS, and
also to better characterize cycles of external geomagnetic activity during the pre-satellite era.

490

Author contribution

PR provided digital series of the COI geomagnetic field elements, worked with the logbooks and annual books. AP provided
COV-OBS simulations. AM performed visual and statistical analyses of the series and estimated corrections. AM prepared
the manuscript; PR and AP performed revision of the manuscript.

495 Acknowledgement

[Authors are grateful to Dr. M. Manda and Dr. V. Soldatov for useful comments which resulted in the improvement of the manuscript.](#)

CITEUC is funded by [the National Funds through FCT](#) (Foundation for Science and Technology) (project: UID/MULTI/00611/2019) and [FEDER](#) (European Regional Development Fund through COMPETE 2020 – Operational Programme Competitiveness and Internationalization (project: POCI-01-0145-FEDER-006922)-UIDP/00611/2020).

A. Morozova thanks Geophysical and Astronomical Observatory of the University of Coimbra and Dr. J. Fernandes for financial support of this work.

This study is also a contribution of the project HISTIGUC (PTDC.FER-HFC.30666) and ~~the project~~ MAG-GIC (PTDC/CTA-GEO/31744/2017).

A. Pais wishes to thank Nicolas Gillet for kindly computing the “COV-OBS w/o COI” model that was used in this study.

Data availability

The COI geomagnetic field elements are available via the following addresses: COI original data – [XLSX: doi.org/10.5281/zenodo.4122066](#) (Ribeiro et al., 2020., 2020a) and [ASCII: https://doi.org/10.5281/zenodo.4308022](#) (Ribeiro et al., 2020b); COI homogenized data – [XLSX: doi.org/10.5281/zenodo.4122289](#) (Morozova et al., 2020., 2020a) and [ASCII: https://doi.org/10.5281/zenodo.4308036](#) (Morozova et al., 2020b).

The historical temperature series of the Coimbra Observatory are available at Morozova, AL; Valente, MA (2012): Homogenization of Portuguese long-term temperature data series: Lisbon, Coimbra and Porto. doi:10.1594/PANGAEA.785377.

[The COI data series for 2016-2017 can be downloaded from the data base of the World Data Centre for Geomagnetism, Edinburgh \(http://www.wdc.bgs.ac.uk/dataportal/\).](#)

The IDV index can be downloaded from the Leif Svalgaard website, [http://www.leif.org/research/](#).

The aa index is available from the NGDC website [http://www.ngdc.noaa.gov/stp/spaceweather.html](#).

The global Kp index can be downloaded from [http://www-app3.gfz-potsdam.de/kp_index/index.html](#) or [http://isgi.cetp.ipsl.fr/des_kp_ind.html](#).

Competing interests

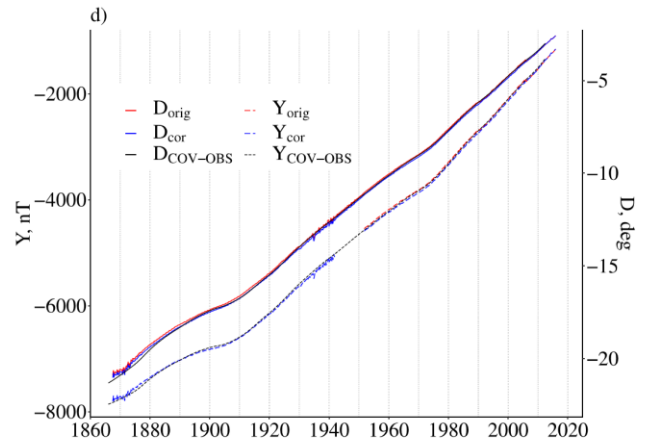
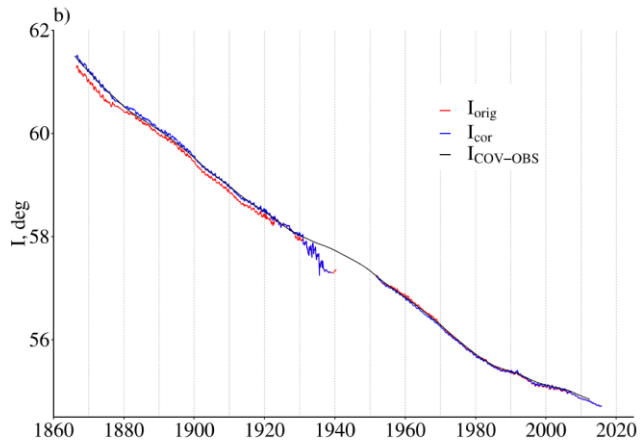
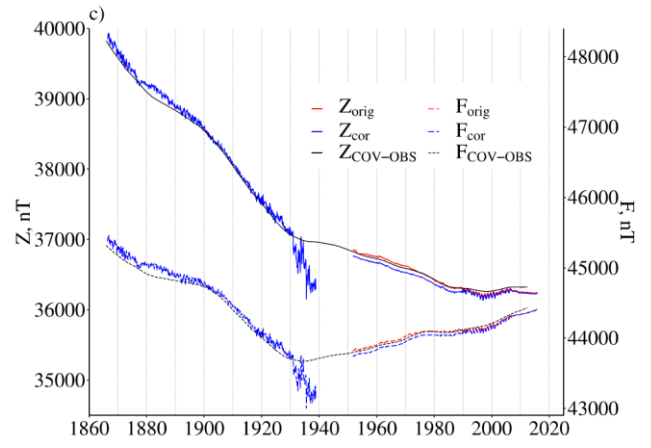
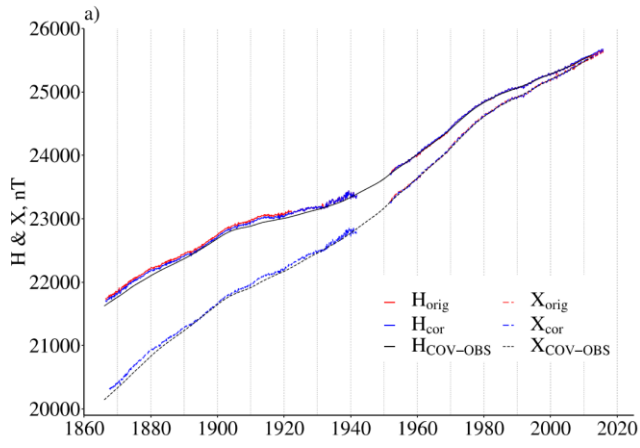
525 The authors declare that they have no conflict of interest.

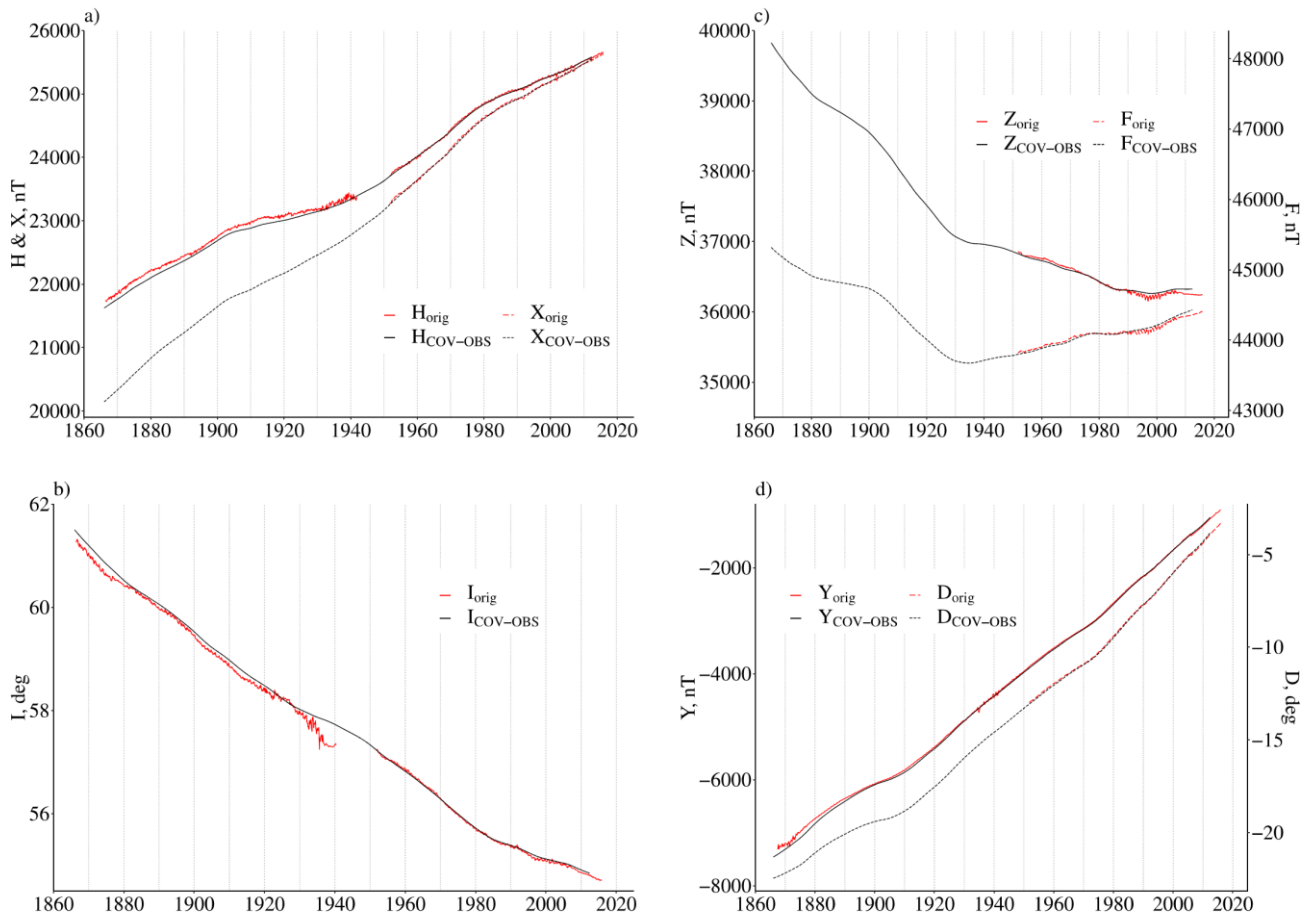
References

Alexandersson, H. and Moberg, A.: Homogenization of Swedish temperature data. Part I: Homogeneity test for linear trends, Int. J. Climatol., 17, 1, 25-34, 1997.

530 Costa, A.C. and Soares, A.: Homogenization of climate data: review and new perspectives using geostatistics, Math. Geosci., 41, 3, 291-305, 2009.

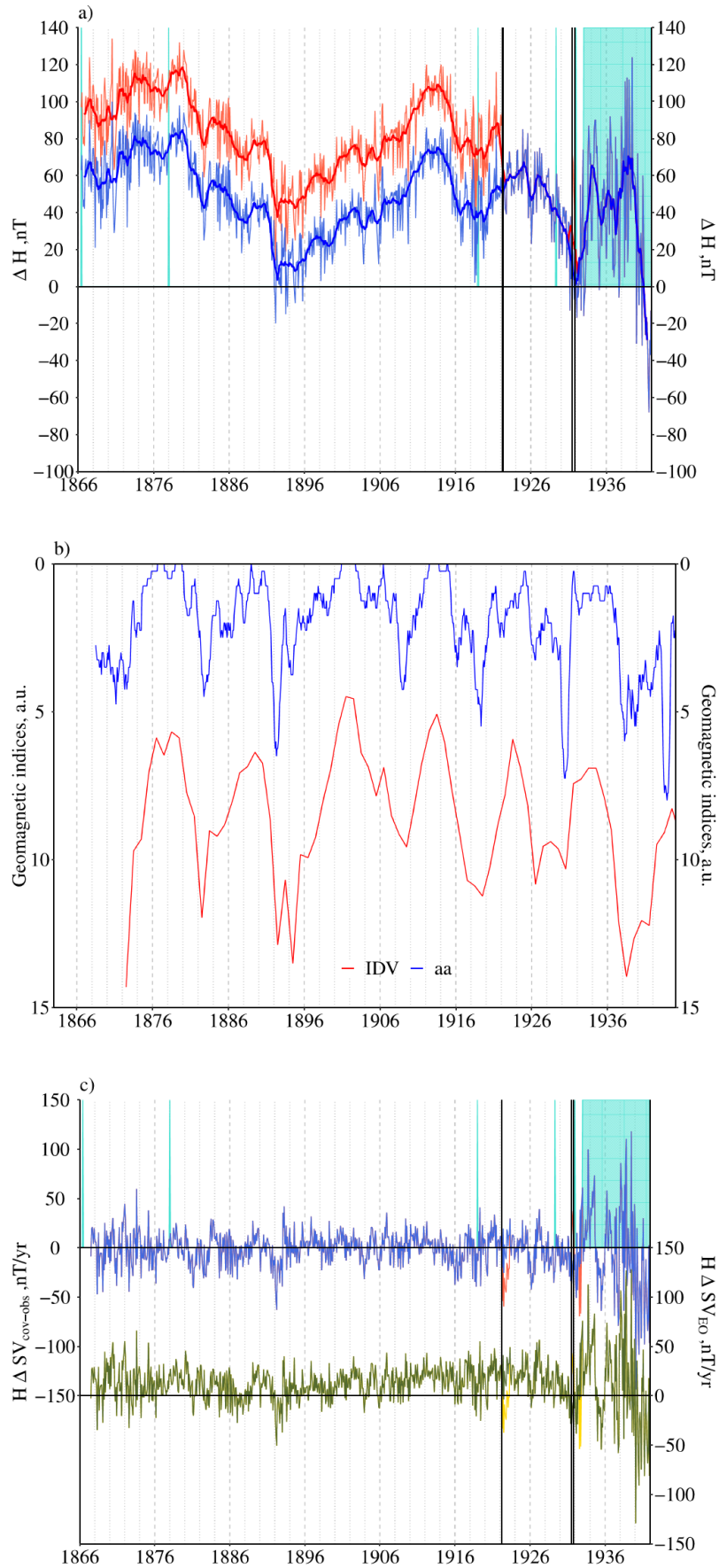
- Gillet, N., Jault D., Finlay C.C., Olsen N.: Stochastic modeling of the Earth's magnetic field: Inversion for covariances over the observatory era. *Geochem., Geophys., Geosys.*, 14, 4, 766-786, 2013.
- Love, J. J.: Secular trends in storm-level geomagnetic activity, *Ann. Geophys.*, 29, 51-262, 2011.
- Menvielle, M., Iyemori, T., Marchaudon, A. and Nosé, M.: Geomagnetic Indices, in: *Geomagnetic Observations and Models* (Vol. 5). Eds.: Manda, M., Korte, M.. Springer Science+ Business Media, 183-228, 2011.
- 535 Morozova, A. L. and Valente, M. A.: Homogenization of Portuguese long-term temperature data series: Lisbon, Coimbra and Porto, *Earth Syst. Sci. Data*, 4, 187-213, doi:10.5194/essd-4-187-2012, 2012.
- Morozova, A.L., Ribeiro, P., Pais, M. A.: Correction of artificial jumps in the historical geomagnetic measurements of Coimbra Observatory, Portugal, *Ann. Geophys.*, 32, 19-40, doi:10.5194/angeo-32-19-2014, 2014.
- 540 Morozova, A., Ribeiro, P. and Pais, M. A.: Homogenized monthly datasets of all geomagnetic components of Coimbra observatory for the time period 1866-2015, <https://doi.org/10.5281/ZENODO.4122289>, ~~2020~~[zenodo.4308036](https://doi.org/10.5281/ZENODO.4308036).
- Pais, M.A. and Miranda, J.M.A.: Secular variation in Coimbra (Portugal) since 1866. *Journal of geomagnetism and geoelectricity*, 47(3), pp.267-282, 1995.
- Parkinson, W. D.: *Introduction to geomagnetism*, Scottish Academic Press, United States, 433 p., 1983.
- 545 Ribeiro, P., Pais, M. A. and Morozova, A. L.: Monthly values of absolutely measured geomagnetic components (D, I, H, Z, F) of Coimbra observatory in the ~~period1866~~[period_1866-2015](https://doi.org/10.5281/ZENODO.4122066), ~~—~~<https://doi.org/10.5281/ZENODO.4122066>, ~~2020~~[zenodo.4308022](https://doi.org/10.5281/ZENODO.4308022).
- Svalgaard, L., Cliver, E.W.: The IDV index: Its derivation and use in inferring long-term variations of the interplanetary magnetic field strength. *J. Geophys. Res.* 110 (A12103), 1-9, 2005.
- 550 Svalgaard, L., Cliver, E. W., Le Sager, P.: IHV: A new long-term geomagnetic index. *Adv. Space Res.* 34(2), 436-439, 2004.
- Taylor, K.E. Summarizing multiple aspects of model performance in a single diagram, *J. Geophys. Res.*, 106, 7183– 7192, 2001.
- Venema, V. K. C., Mestre, O., Aguilar, E., Auer, I., Guijarro, J. A., Domonkos, P., Vertacnik, G., Szentimrey, T., Stepanek, P., Zahradnicek, P., Viarre, J., Müller-Westermeier, G., Lakatos, M., Williams, C. N., Menne, M., Lindau, R., Rasol, D.,
- 555 Rustemeier, E., Kolokythas, K., Marinova, T., Andresen, L., Acquafredda, F., Fratianni, S., Cheval, S., Klancar, M., Brunetti, M., Gruber, C., Prohom Duran, M., Likso, T., Esteban, P., Brandsma, T.: Benchmarking monthly homogenization algorithms, *Clim. Past Discussions*, 7, 4, 2655-2718, 2011.



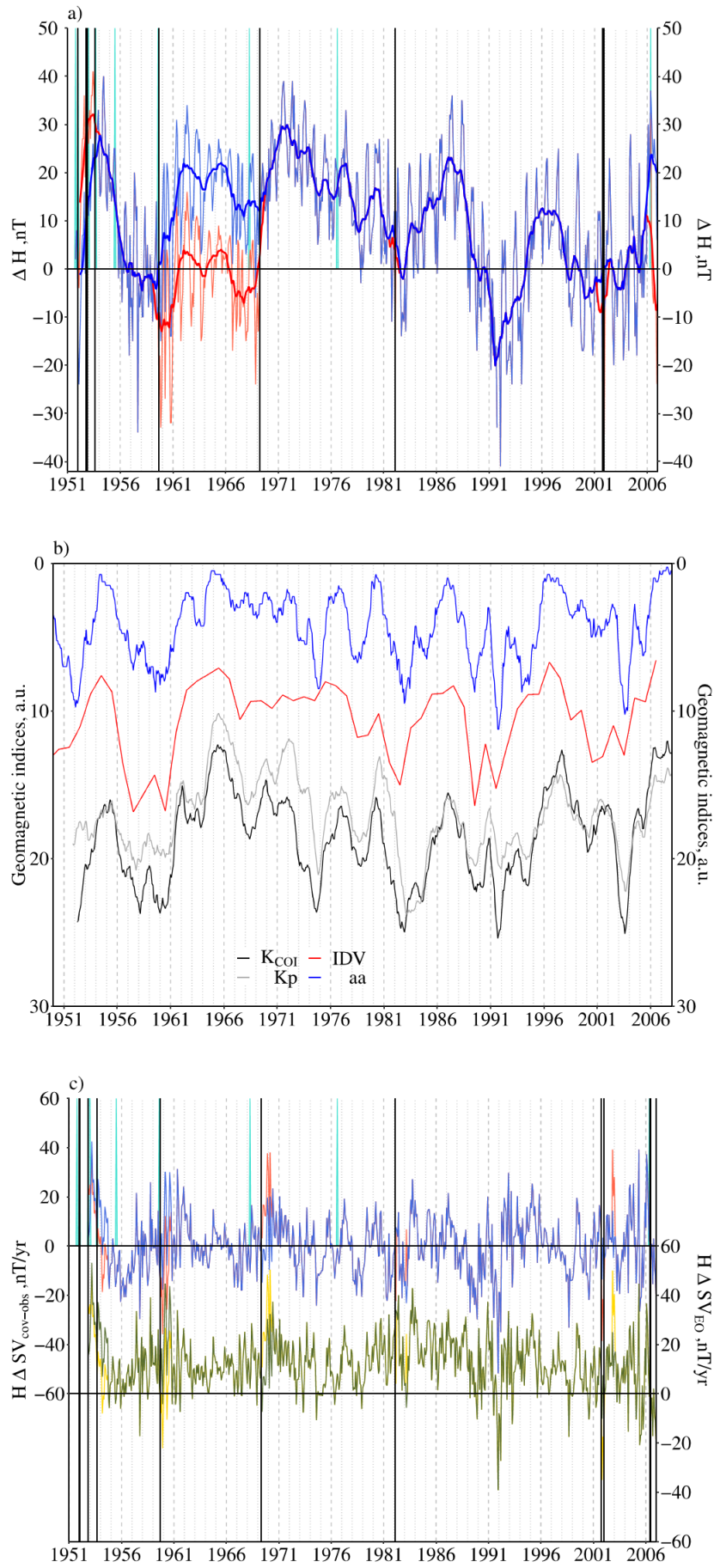


565

Figure 1: For the 1866 to 2015 time period, measured (red) and corrected (blue) series (red) of the COI geomagnetic field elements and COV-OBS model predictions (black) of (a) H and X; (b) I; (c) F and Z; (d) D and Y. The COV-OBS model predictions are in black.



570 **Figure 2:** (a) Original (red) and corrected (blue) COI ΔH series for the C-AdB period of measurements: 1866-1941. Thin lines are data and thick lines are moving average with 12-month span window. (b) Variations of the geomagnetic indices aa (monthly data, blue) and IDV (annual data, red). Please note reversed Y axis. (c) Original (red) and corrected (blue) $\Delta SV_{COV-OBS}$ series for H; original (yellow) and corrected (green) ΔSV_{EO} series for H. Cyan vertical lines/rectangles mark possible HBs which are not corrected (see details in the text), black vertical lines mark dates of the corrected HBs.



575

Figure 3: Same as Figure 2 but for the *AdB* period of measurements: 1951-2006. On (b) the monthly sums of the local K_{COI} (grey) and the global K_p (black) indices are also shown.

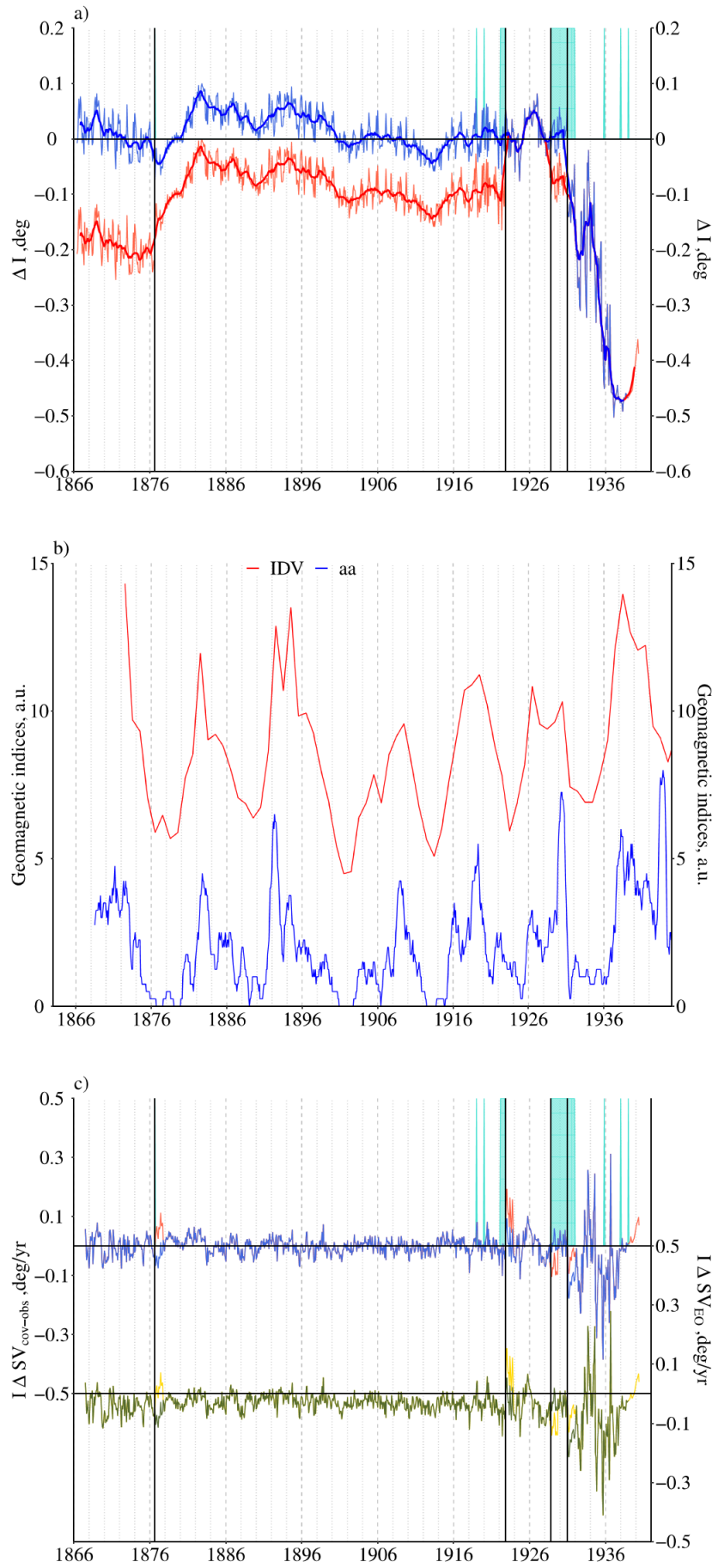
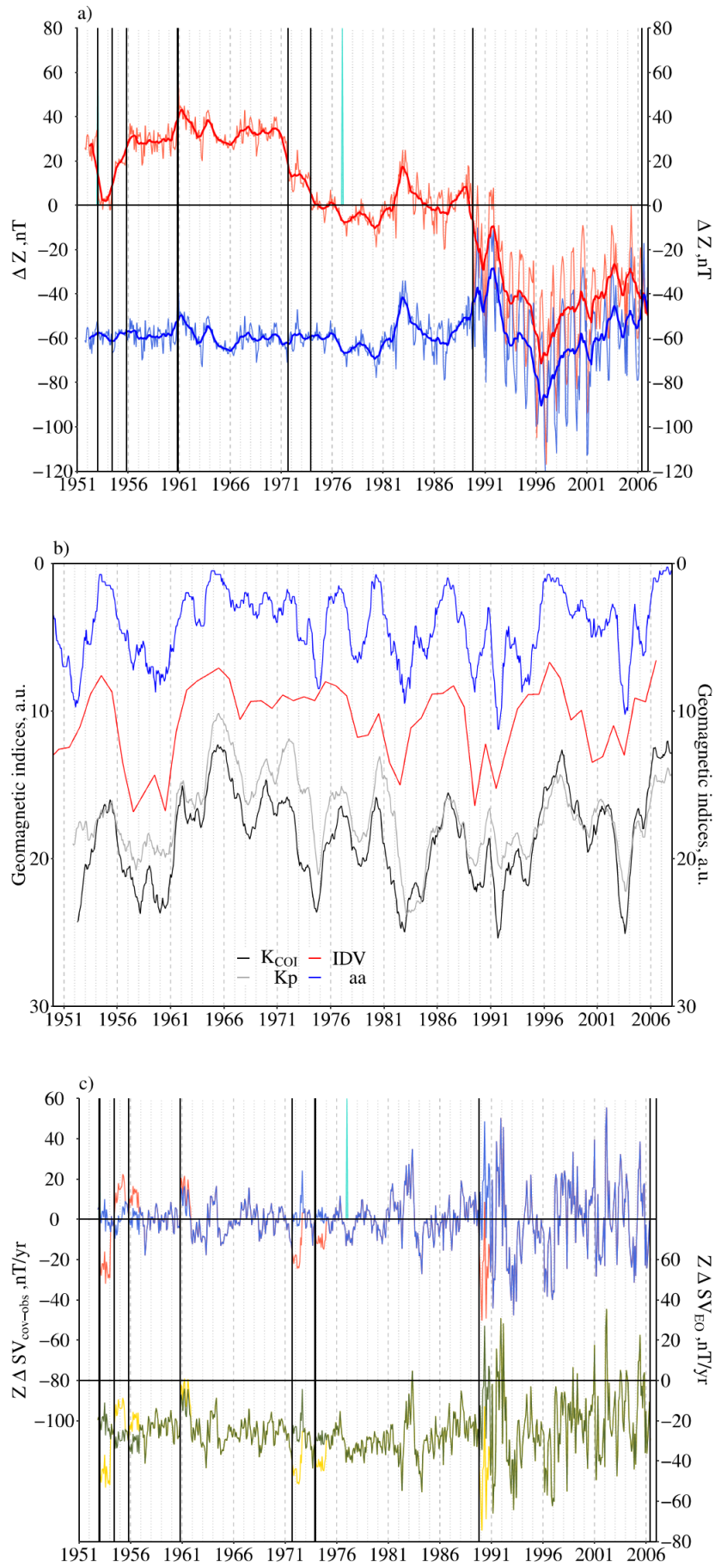


Figure 4: Same as Figure 2 but for the COI I series.



580

Figure 5: Same as Figure 3 but for the COI Z series.

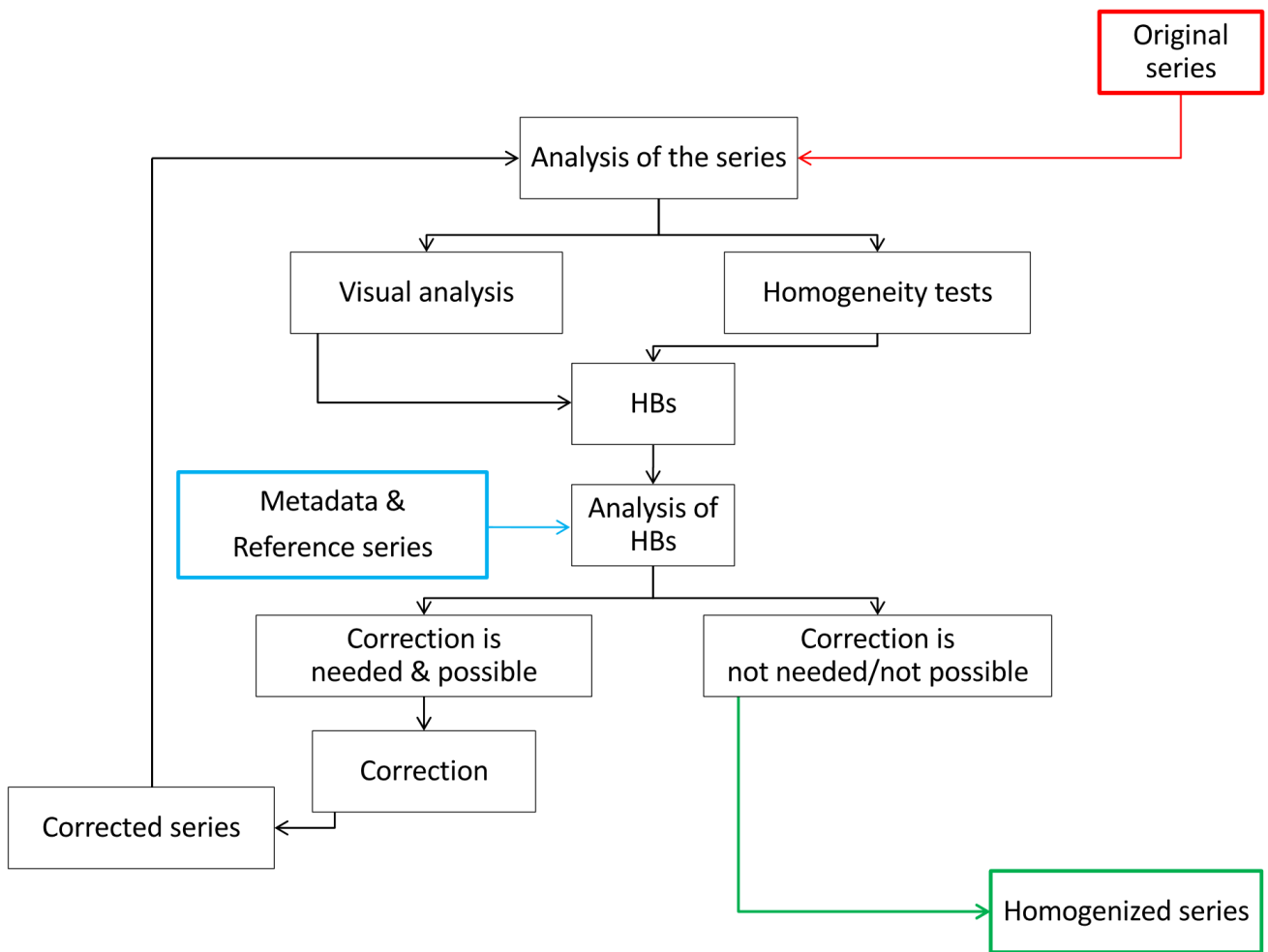


Figure 6: Homogenization scheme

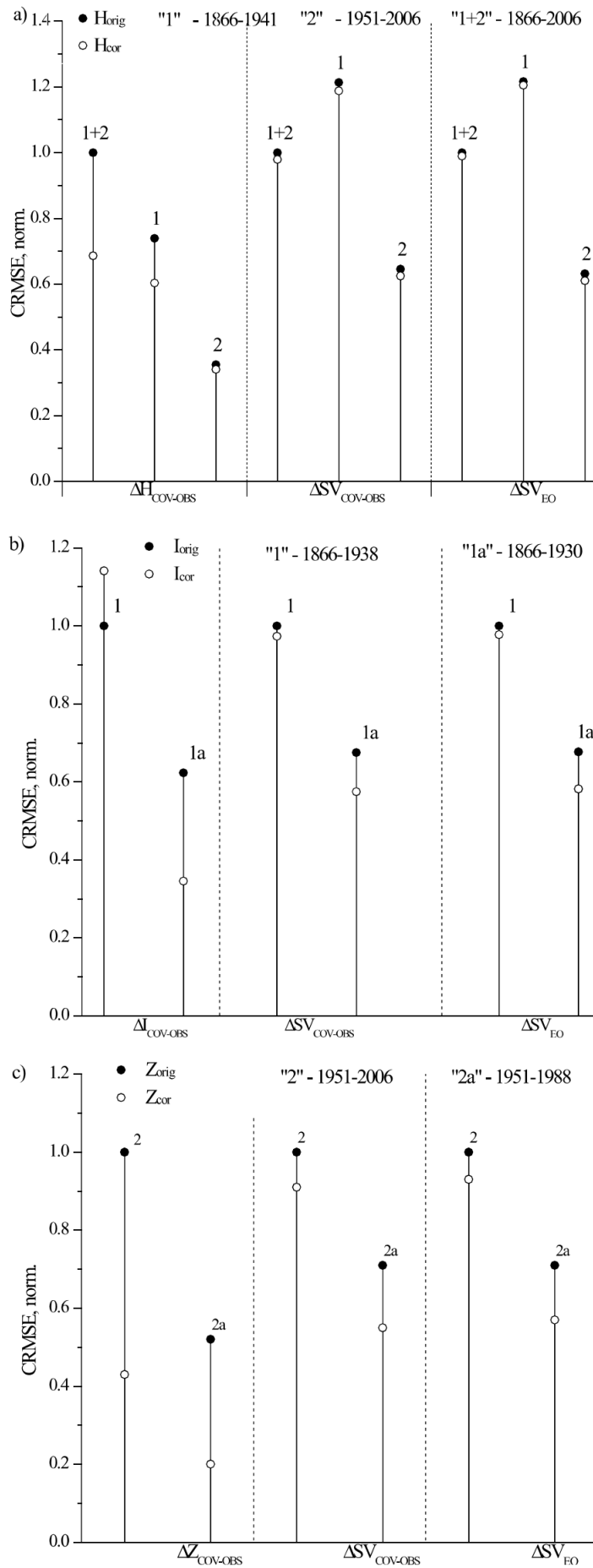
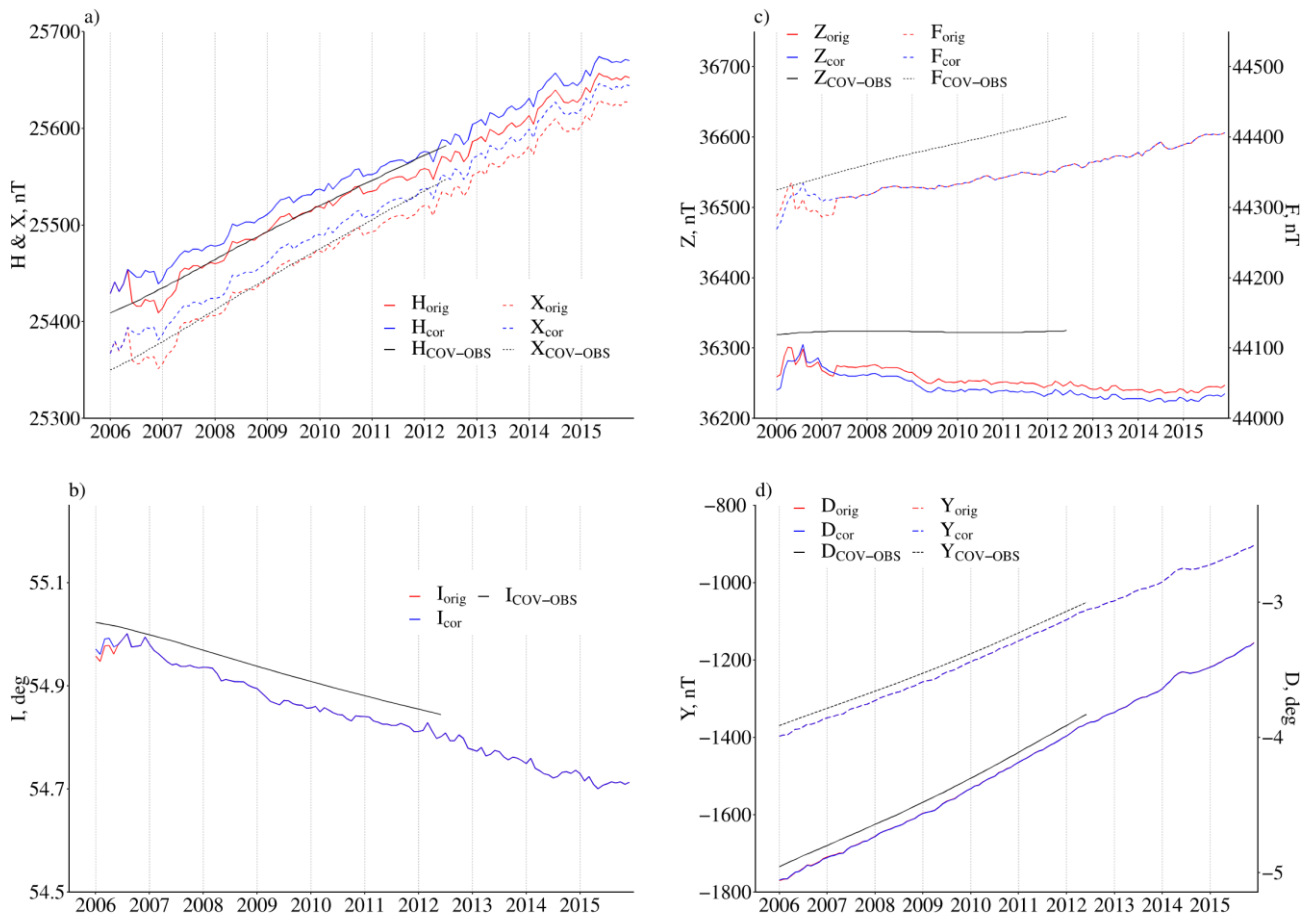


Figure 7. CRMSE of the original (black dots) and corrected (white filled circles) COI series estimated for different time intervals: a - COI H, b - COI I, c - COI Z. CRMSE values are normalized by the standard deviations of the original series.



590

Figure 8. Same as Figure 1 but from 2006 to 2015. For the 2006 to 2015 time period, measured (red) and corrected (blue) series of the COI geomagnetic field elements (a) H and X; (b) I; (c) F and Z; (d) D and Y. The COV-OBS model predictions are in black.

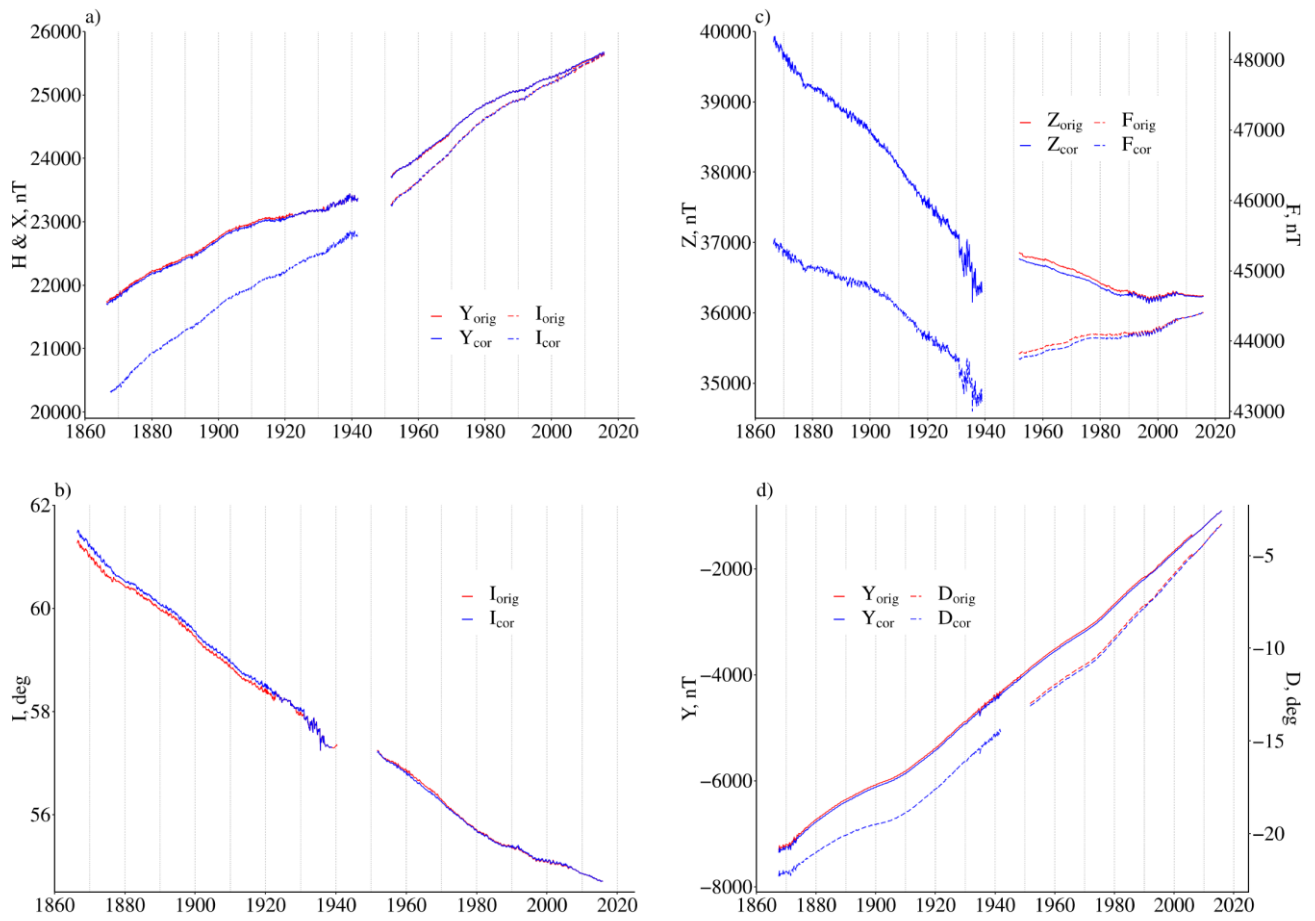


Figure 9: For the absolute measurements 1866 to 2015 time period, measured (red) and corrected (blue) series of the COI geomagnetic field elements (between 1866 and 2015) a) H and X; (b) I; (c) F and Z; (d) D and Y.

595 **Table 1. Metadata for the H data set at the *Cumeada* and the *Alto da Baleia* sites: dates of the instrument replacements, relocations, changes in the measurement/calculation procedures etc. Estimated corrections (δ) for COI series for different time intervals are in 3rd column.**

time interval	metadata	δ
1866 JUN – 1922 MAR	beginning of measurements at <i>Cumeada</i> in June 1866 installation of the Unifilar of Elliott, precision 1 nT in January 1878	-34 nT
1922 APR – 1931 JUN	the electrical tram services start in May 1929	0 nT
1931 JUL – 1931 OCT	low number of daily measurements	-50 nT
1931 NOV – 1931 DEC	end of measurements at <i>Cumeada</i> in December 1931	0 nT
1932 JAN – 1951 DEC	relocation to <i>Alto da Baleia</i> in January 1932 interruption of measurements in December 1941 Measurements are restated with the Unifilar of Elliott in October 1951	0 nT
1952 JAN – 1952 OCT	installation of the QHM (nn. 190-191), precision 1 nT in January 1951	-20 nT
1952 NOV – 1953 JAN	installation of the QHM (nn. 220-221), precision 1 nT $\Delta = -5.4$ nT, (correction of the H series to the reference level in September 1953)	-20 nT + 5.4 nT = -15 nT
1953 FEB – 1959 AUG	QHM n. 220 is replaced by QHM n. 307 in July 1955 comparison with instruments from the Committee on International Comparisons of Magnetic Standards, $\Delta = -9.3$ nT, in average in August 1959	0 nT
1959 SEP – 1968 APR	comparison with instruments from the Committee on International Comparisons of Magnetic Standards, $\Delta = -18$ nT, in average (correction of the H series to the reference level in April 1968)	18 nT
1968 MAY – 1982 JAN	comparison with instruments from the Committee on International Comparisons of Magnetic Standards, $\Delta = +24$ nT, in average (correction of the H series to the reference level in August 1976)	0 nT
1982 FEB	an outlier, source is unknown (low number of daily measurements?)	30 nT
1982 MAR – 2001 SEP	no changes in the instruments	0 nT
2001 OCT – 2001 DEC	an outlier, low number of daily measurements	25 nT
2002 JAN – 2006 MAY	end of the measurements in May 2006	0 nT

600 **Table 2. Metadata for the I data set at the *Cumeada* and the *Alto da Baleia* sites: dates of the instrument replacements, relocations, changes in the measurement/calculation procedures etc. Estimated corrections (δ) for COI series for different time intervals are in 3rd column. “d.n.u.” – it is not recommended to use the data for this time interval.**

time interval	metadata	δ
1866 JUN	beginning of measurements at <i>Cumeada</i> in June 1866	
–		+12'
1876 AUG	installation of the John Dover inclinometer in September 1876	
1876 SEP		
–	change of the needles in November 1922	+6'
1922 OCT		
1922 NOV	no changes in the instruments	0'
–	this time interval is used as a reference level (see Sec. 3.2)	
1928 AUG		
1928 SEP	new needles in September 1928	
–	construction of a house near the geomagnetic absolute house and the installation of a spectroheliograph there	+5'
1930 DEC		
1931 JAN	relocation to <i>Alto da Baleia</i> (officially in January 1932 but <i>de facto</i> in January 1931)	d.n.u.
–	degradation of the instruments has started around January 1939	
1938 DEC		
1939 JAN		
–	data for COI I element found in different data bases are from unknown source	d.n.u.
1940 MAY		

Table 3. Metadata for the Z data set at the *Alto da Baleia* site: dates of the instrument replacements, relocations, changes in the measurement/calculation procedures etc. Estimated corrections (δ) for COI series for different time intervals are in 3rd column.

time interval	metadata	δ
1951 OCT – 1952 DEC	Beginning of the measurements at <i>Alto da Baleia</i> in October 1951 new instrument in January 1953	-28 nT
1953 JAN – 1954 May	unknown source for HB (no logbooks) in June 1954	-2 nT
1954 JUN – 1955 OCT	unknown source for HB (no logbooks) in November 1955	-18 nT
1955 NOV – 1960 OCT	unknown source for HB (no logbooks) in November 1960	-29 nT
1960 NOV – 1971 AUG	unknown source for HB in September 1971	-34 nT
1971 SEP – 1973 NOV	unknown source for HB in December 1973	-13 nT
1973 DEC – 1989 OCT	this time interval is used as a reference level (see Sec. 3.3) no HB in January 1977 due to the change of the instrument	0 nT
1989 NOV – 2006 MAY	fast decrease of the baseline, probably due to the degradation of the instrument; an annual cycle appears, probably due to the temperature effect	+40nT