



# WegenerNet high-resolution weather and climate data 2007 to 2019

Jürgen Fuchsberger<sup>1</sup>, Gottfried Kirchengast<sup>1,2</sup>, and Thomas Kabas<sup>1</sup>

<sup>1</sup>Wegener Center for Climate and Global Change (WEGC), University of Graz, Graz, Austria

<sup>2</sup>Institute for Geophysics, Astrophysics, and Meteorology/Institute of Physics, University of Graz, Graz, Austria

**Correspondence:** Jürgen Fuchsberger ([juergen.fuchsberger@uni-graz.at](mailto:juergen.fuchsberger@uni-graz.at))

**Abstract.** This paper describes the latest reprocessed data record (version 7.1) over 2007 to 2019 from the WegenerNet climate station networks, which since 2007 provide measurements with very high spatial and temporal resolution of hydrometeorological variables for two regions in the state of Styria, southeastern Austria: 1) the WegenerNet Feldbach Region, in the Alpine forelands of southeastern Styria, which extends over an area of about 22 km × 16 km and comprises 155 meteorological stations placed on a tightly spaced grid, with an average spatial density of one station per ~2 km<sup>2</sup> and a temporal sampling of 5 min; and 2) the WegenerNet Johnsbachtal, which is a smaller "sister network" of the WegenerNet Feldbach Region in the mountainous Alpine region of upper Styria that extends over an area of about 16 km × 17 km and comprises 13 meteorological stations and one hydrographic station, at altitudes ranging from below 600 m to over 2100 m and with a temporal sampling of 10 min. These networks operate on a long-term basis and continuously provide quality-controlled station time series for a multitude of hydrometeorological near-surface and surface variables, including air temperature, relative humidity, precipitation, wind speed and direction, wind gust speed and direction, soil moisture, soil temperature, and others like pressure and radiation variables at a few reference stations. In addition, gridded data are available at a resolution of 200 m × 200 m for air temperature, relative humidity, precipitation and heat index, for the Feldbach Region, and at a resolution of 100 m × 100 m for the wind parameters for both regions. Here we describe this dataset (the most recent reprocessing version 7.1), in terms of the measurement site and station characteristics as well as the data processing from raw data (level 0) via quality-controlled basic station data (level 1) to weather and climate data products (level 2). In order to showcase the practical utility of the data we also include two illustrative example applications and briefly summarize and refer to scientific uses in a range of previous studies. The dataset is published as part of the University of Graz Wegener Center's WegenerNet data repository under the DOI <https://doi.org/10.25364/WEGC/WPS7.1:2020.1> (Fuchsberger et al., 2020) and is continuously extended.

## 20 1 Introduction

While climate model simulations can achieve kilometer-scale resolution for both general circulation models (e.g., Miyamoto et al., 2013; Klocke et al., 2017) and regional climate models (eg., Prein et al., 2015; Kendon et al., 2017; Leutwyler et al., 2017; Fuhrer et al., 2018), there is a lack of ground observation data for verifying model outputs and studying weather and climate at this resolution. Common meteorological networks cover scales of 10 km or larger [e.g. interstation distance in Switzerland (of MeteoSwiss-operated rain gauges) is 10–15 km (Wüest et al., 2009), and in Germany the Deutsche Wetterdienst (DWD) operates about 1100 rain gauges (Bartels et al., 2004), resulting in an average interstation distance of about 18 km]. At scales



below 10 km, most observation networks operate in a campaign-type setting with short observation periods and/or focus on the sub-km scale only (eg. Moore et al., 2000; Jensen and Pedersen, 2005; Ciach and Krajewski, 2006; Fiener and Auerswald, 2009; Pedersen et al., 2010; Jaffrain and Berne, 2012; Peleg et al., 2013). In the 1950s and 1960s some larger networks existed at this scale, for example in Illinois, USA (Huff and Shipp, 1969), and Oklahoma, USA (Hershfield, 1969), but data from these networks are not in a digital format and are therefore of limited use for current analyses, if they are even accessible at all. To the authors' knowledge, only two operational long-term observation facilities at the 1 to 10 km scale exist worldwide: the Walnut Gulch Experimental Watershed (hereafter just called "Walnut Gulch"), that focuses on rainfall measurements, located in a semi-arid climate in southeastern Arizona, USA (Goodrich et al., 2008; Keefer et al., 2008), and the WegenerNet Feldbach Region (FBR) climate station network (which is presented in this paper), that provides a broad array of hydrometeorological variables, located in the southeastern Alpine forelands of Austria (Kirchengast et al., 2014). Walnut Gulch covers an area of about 149 km<sup>2</sup> and consists of about 90 rain gauges, located at altitudes between 1100 m and 2300 m (Tan et al., 2018), resulting in an average density of about 0.6 gauges per km<sup>2</sup>. In the WegenerNet FBR, 155 hydrometeorological stations are distributed over an area of about 300 km<sup>2</sup> at altitudes ranging from 257 m to 520 m. The average density is about 0.5 stations per km<sup>2</sup>.

The WegenerNet FBR was specifically built as a long-term weather and climate monitoring facility that would provide open-ended measurements at very high spatiotemporal resolution. It has been in operation since January 2007 and helps fill the gap between short-term, high-resolution observations, and long-term observations at larger scales. In 2010, the WegenerNet FBR was expanded with an Alpine sister network. The WegenerNet Johnsbachtal (JBT) covers 13 meteorological stations and one hydrographic station in an area of about 16 km × 17 km with altitudes ranging from about 600 m to 2200 m above mean sea level (msl). A detailed description of both networks can be found in Sect. 3.

This paper focuses on an up-to-date characterization of the two WegenerNet networks. It describes the latest reprocessed data record (version 7.1) over 2007 to 2019, and their processing from raw data (level 0) via quality-controlled basic station data (level 1) to weather and climate data products (level 2). In order to showcase the practical utility of the data we also include two illustrative example applications and briefly summarize and refer to scientific uses in a range of previous studies.

## 2 Existing literature and previous studies

The WegenerNet FBR was initially described briefly by Kabas et al. (2011b), and a first broader introductory description to the international community was published by Kirchengast et al. (2014). Additional information about the network has been given in several reports. The most comprehensive description of the WegenerNet FBR, including its setup, processing system, and data, is given in the German PhD thesis by Kabas (2012). Subsequent reports focus on specific topics and improvements of the WegenerNet Processing System (WPS): Fuchsberger and Kirchengast (2013) describe the generation of soil moisture data, Szeberényi (2014) focuses on precipitation data analyses, Scheidl (2014) and Scheidl et al. (2017) describe the implementation of new quality control algorithms for precipitation and humidity data, respectively, Ebner (2017) addresses homogenization of



temperature and humidity data, and finally Fuchsberger et al. (2018) give an overview of the implemented changes in version 7  
60 of the WPS.

The WegenerNet JBT has been in development for many years and has not yet been described in its entirety in a single  
paper, although information can be taken from various papers and reports: Strasser et al. (2013) describe 10 of the 14 currently  
operating stations and a project related to the region, the "cooperation platform Johnsbachtal". Schlager et al. (2018) give a  
general description and information about 11 of the 13 meteorological stations, their location, and measured parameters. An  
65 MSc thesis by Grünwald (2014) (written in German) contains a detailed description of the Johnsbachtal region, covering its  
location, geology, and climate, as well as detailed information about 10 of the 13 meteorological stations. It also includes an  
overview and analysis of the temperature and wind data collected between 2011 and 2014.

Related scientific output has grown over time, as illustrated by the fact that 11 of 22 scientific journal papers collected as  
"WegenerNet-related publications" were published in 2018 and 2019. They cover a wide range of topics, including works  
70 with a focus on high-resolution rainfall variability and heavy precipitation (Hiebl and Frei, 2018; O et al., 2018; Schroerer  
and Kirchengast, 2018; Schroerer et al., 2018; Frei and Isotta, 2019; O and Foelsche, 2019), works with focus on temperature  
variability and change (Kabas et al., 2011a; Kann et al., 2011; Krähenmann et al., 2011), works with focus on wind field  
data and dynamic modeling (Schlager et al., 2017, 2018, 2019), works evaluating precipitation data from radar or satellite  
measurements (Kann et al., 2015; O et al., 2017; Tan et al., 2018; Lasser et al., 2019; Hu et al., 2020), works with a focus on  
75 hydrological modeling of high- and low-flow extremes (Hohmann et al., 2018, 2020), and works with a focus on ecosystem  
research (Denk and Berg, 2014).

Some of them are directly linked to aspects of the WegenerNet data processing: Schlager et al. (2017, 2018, 2019) focus on  
the development and evaluation of high-resolution wind fields for both WegenerNet regions, and O et al. (2018) addresses the  
validation and correction of rainfall data from the WegenerNet FBR.

80 A complete up-to-date list of WegenerNet-related literature can be found at [https://wegcenter.uni-graz.at/en/wegenernet/  
publications/](https://wegcenter.uni-graz.at/en/wegenernet/publications/) (last access: 14 September 2020).

### 3 Site description

#### 3.1 WegenerNet Feldbach Region (FBR)

The WegenerNet FBR (Fig. 1a) was established between 2005 and 2006 as a long-term weather and climate monitoring facility,  
85 providing measurements at very high resolution (Kirchengast et al., 2014). Its 155 meteorological stations are located in hilly  
terrain with altitudes ranging from about 250 m to 600 m, in the southeastern Alpine forelands of Austria, centered near the  
town of Feldbach (46.938°N, 15.908°E). The stations are spread over a core region (see the heavy black polygon in Fig. 1)  
with an extent of about 22 km × 16 km and an effective area of about 300 km<sup>2</sup>. The resulting average interstation distance  
and average station density are about 1.4 km and 0.5 stations per km<sup>2</sup>, respectively. Station msl altitudes range from 257 m to  
90 520 m (median: 327 m), with 95 % of the stations located below 400 m and only 2 stations above 450 m. Regular operation  
started on 1 January 2007 and data from the network are continuously available from this date on.



The region is traversed by the Raab river, which crosses from north-west to east, forming the Raab valley. The main types of land use are agriculture and forestry, with higher fractions of urban fabric along the Raab valley and in the areas of a couple of smaller towns (Schlager et al., 2017, Fig. 2a therein). Information about the region's climate is summarized in Kirchengast et al. (2014) and Schlager et al. (2017).  
95

The stations are grouped into five station types (base, special base, primary, reference, and external stations), each with different instrumentation (Table 1). Besides air temperature, relative humidity, and precipitation, which are measured at most stations, wind parameters, soil parameters, radiation and air pressure are measured at selected sites. The temporal sampling rate for all parameters is 5 minutes, except for pF value and soil temperature measured by GeoPrecision sensors, which measure at  
100 30 min intervals. Additionally, since 2018, all parameters measured at special base stations, primary stations and the reference station sample raw data at 1 minute intervals but are later resampled to 5 minutes in the L2 data processing (see Sect. 4).

A detailed list of all installed sensors, their record period, height/depth, and measurement interval can be found in Table A1. For simplicity, we do not give the exact day of installation in this table, but only the year. For a detailed overview of the exact installation dates and times, please refer to the WegenerNet data portal ([www.wegenernet.org](http://www.wegenernet.org)): navigate to *Station Data*  
105 → *Stations* → *Sensor Details*, or download the information in *comma-separated values* (CSV) format at *Station Data* → *Download* → *Sensor list CSV file*. In the *Station Data* → *Download* section of the portal, you can also find a list containing the station coordinates (*Station list CSV file*) and the sensor specifications of all available instruments (*Sensor specs CSV file*).

### 3.2 WegenerNet Johnsbachtal (JBT)

The WegenerNet JBT (Fig. 1b) is an alpine extension to the WegenerNet FBR and has grown out of the interdisciplinary  
110 cooperation platform Johnsbachtal (Strasser et al., 2013). It is situated in the mountainous area of the Ennstal Alps, which are part of the Northern Limestone Alps in the north of Styria, Austria. Within a core region of about 16 km × 17 km, 13 irregularly distributed meteorological stations and one hydrographic station are located at altitudes ranging from 580 m to 2191 m.

The landscape of this region is dominated by limestone mountains (highest peak: Hochtorn, 2369 m), steep slopes, and deep  
115 valleys, with the Enns river traversing it from west to east through the 16 km long "Gesäuse gorge". The Johnsbach valley (German: Johnsbachtal) is located as a sub-catchment south of the Enns, and lies in the center of the study region (location of Johnsbach village: 47.54°N, 14.58°E). The region also overlaps with the *National Park Gesäuse* (NPG), one of the six Austrian national parks. The main land use types are forestry and rangeland, with barren land around the limestone peaks, and without significant urban settlements in the core region (Schlager et al., 2018, Fig. 2a therein). Information about the region's  
120 climate is summarized in Schlager et al. (2018, Sect. 2 therein).

The WegenerNet JBT contains 14 stations, which are operated by different organizations: six stations are operated by the University of Graz (five by the WEGC and one by the IGR<sup>1</sup>), four stations are operated by the ZAMG<sup>2</sup> avalanche warning

<sup>1</sup>Institute of Geography and Regional Science

<sup>2</sup>Zentralanstalt für Meteorologie und Geodynamik (Central Institute for Meteorology and Geodynamics; Austrian national weather service)



service (ZAWS) in cooperation with the federal railways company ÖBB<sup>3</sup>, two stations by the NPG, and two stations by the Austrian Hydrographic Service (AHYD).

125 In 2014, all WEGC-operated stations were added to the WegenerNet facilities infrastructure and data from these stations were incorporated into the WPS data processing. Over several years, stations from the other providers in the region were gradually added to the network as well, once both the data exchange contracts and the long-term access to the actual data had been finalised. A complete list of the station characteristics can be found in Table 2.

The instrumentation differs from station to station and includes sensors for air temperature, relative humidity, precipitation, 130 wind parameters, snow parameters, radiation parameters, air pressure, and hydrographic parameters. A list of all measured parameters at each station, together with the sensor heights, can be found in Table 3. Some of the data are available from 2007, and others only from subsequent years (depending on the individual station's construction dates). The sampling interval is 10 min at all stations, except 5 min at all WEGC stations (as of Oct. 2019, when the interval was changed in connection with an upgrade of the data logger hardware) and AHYD stations. At the NPG stations, the sampling interval was 30 min between 135 2007 and 2014. See Table A2 for a complete list of all installed sensors including their record period, height, and sampling interval. Just as for the WegenerNet FBR, we do not give the exact day of installation in this table, but only the year. For a detailed overview, which is timed down to the hour, please refer to the *Station Data* → *Stations* → *Sensor Details* and *Station Data* → *Download* → *Sensor list CSV file* sections at the WegenerNet data portal ([www.wegenernet.org](http://www.wegenernet.org)).

## 4 Data processing and monitoring

140 The acquisition, processing, and visualization of the stations' data are conducted automatically by the WegenerNet Processing System (WPS), that was originally introduced by Kabas (2012) and Kirchengast et al. (2014). Each release of the WPS is assigned a new version number in order that the data produced with different releases can be archived and reproduced if needed. The data described in this paper were generated using version 7.1 of the WPS. Table 4 shows an overview of the steps involved in the processing and defines their output products. The WPS consists of four main parts, which are described in the 145 following sections. Except for the proprietary software provided by the data logger manufacturers, the WPS was developed entirely by the WEGC, using Python as the primary programming language and PHP and JavaScript for some parts where using Python was not feasible.

### 4.1 Level 0 processor: Command Receive Archiving System (CRAS)

In the first processing step, raw data generated by the stations' data loggers are received and stored into a database by the 150 CRAS.

In order to achieve this, the following tasks are executed:

1. The data loggers in the field collect measurements at the sampling interval specified in Tables A1 and A2.

---

<sup>3</sup>Österreichische Bundesbahnen (Austrian Federal Railways Company)



2. Once per hour, the data are sent to the WegenerNet server at the University of Graz.
3. A script reads and writes the data into the WegenerNet PostgreSQL database, producing the so-called level 0 (L0) data.

155 Additionally, logger and sensor parameters can be changed remotely using the software packages provided by the data logger manufacturers. All relevant metadata like station locations, logger configuration and sensor details are also stored in the database and can be changed by the WegenerNet team using a comprehensive user interface.

#### 4.1.1 WegenerNet Monitoring and Issue Tracking System (WMITS)

160 Running as an independent process, the WegenerNet Monitoring and Issue Tracking System (WMITS) screens the incoming data and processing log files at hourly intervals for anomalous values, calculates daily statistics about the data quality, and informs the WegenerNet team by a series of emails containing all the relevant information.

165 Another part of this task is the automatic surveillance of all heated precipitation gauges. These gauges have additional hardware such as temperature and heating-fan rotation sensors to monitor the proper functioning of the heating system. In case of a detected malfunction, the corresponding sensor is automatically marked as not-heated in the database, and the WegenerNet team is informed per email and can thus initiate immediate actions to remedy the problem.

170 The last part, humidity-sensor problem detection, focuses on the issue that humidity sensors are known to be the most error-prone in the network. If the sensor surface is contaminated by dust and dirt, a specific faulty behavior shows a negative offset at high humidity levels, which gets worse as contamination increases, and finally results in an inverse measurement of the values. This behavior and its detection are described in detail in Scheidl et al. (2017). The algorithms presented therein have been implemented in the WPS, which enables the early detection of problematic humidity sensors and the reliable posterior flagging of bad sensors.

#### 4.2 Level 1 processor: Quality Control System (QCS)

175 The QCS checks the data for their technical and physical plausibility, and flags all values that did not pass a certain check. It is run hourly, and processes all data that are new since the last run. The process analyzes single measurement values and up to three-hourly periods thereof.

Each release of the QCS is assigned a new version number in order that the data produced with different releases can be archived and reproduced if needed. The data described in this paper were generated using version 5 of the QCS, generating level 1 (L1) data version 5. The QCS consists of seven main processing steps (called *QCS layers*), which are described in detail in the following paragraphs.

180 Each layer contains one or several QCS algorithms, called *rules*, and each rule can set a *Quality Flag (QF)* if a check has not been passed. The QFs are unique for each layer in order that flags issued in different layers can be combined. The code used for encoding the QFs is a simple binary 8-bit integer, following the equation

$$QF(n) = 2^n \tag{1}$$



with  $n$  being the number of the respective QCS layer. Thus a  $QF$  in layer 0 gets an integer value of  $2^0 = 1 =$  binary 0000 0001, layer 1 gets  $2^1 = 2 =$  binary 0000 0010, layer 2 gets  $2^2 = 4 =$  binary 0000 0100, etc. An example for a combination of QFs would be 0111 0000 (integer  $2^4 + 2^5 + 2^6 = 112$ ), which would result from failed QCS checks in layers 4, 5, and 6.

If there are insufficient data for executing a certain rule, the respective data values are marked by a so-called *no-ref flag* instead of a QF. Finally, after a layer has been processed, a *checked flag* is set. All flags follow the same encoding as described above. The output of the QCS, the *L1 data*, consists of the L0 data values plus quality flags, no-ref flags, and checked flags.

190 All checks are executed for each station of the network and for each sensor that is mounted on the station.

- Layer 0 (*operations check*) checks if a certain station or sensor is in operation (status set manually by the maintenance crew) and sets  $QF(0)$  if not.
- Layer 1 (*availability check*) checks if data from a certain sensor are available and sets  $QF(1)$  if not.
- Layer 2 (*sensor check*) checks if data values lie within the sensor's technical specification and sets  $QF(2)$  if not.
- 195 – Layer 3 (*climatological check*) checks if the data values lie within specified climatological bounds, and sets  $QF(3)$  if not. The bounds are defined for each month of the year, and were initially derived from ZAMG climate-data maximum and minimum values. Since their initial setup, they have been and still are frequently evaluated using WegenerNet and ZAMG data, and adapted when necessary.
- Layer 4 (*time variability check*) checks for too high or too low variation of the data. It consists of three rules: the first one (*gradient check*) checks for too large gradients, the second one (*constancy check*) checks for too low variation, 200 and the third one (*pulse check*) checks for unnatural spikes. Currently the *pulse check* is implemented for wind and temperature data only (specifically the *wind spike check*, described in Fuchsberger et al. (2018, Sect. 3.1.1 therein), and the *temperature spike check*, described in Sect. 4.2.1 below). If any of the checks fail,  $QF(4)$  is set.
- Layer 5 (*intrastational check*) checks for meteorological and physical consistency of the sensor values measured at the same station. It consists of six rules: The first one (*temperature-precip check*) checks unheated rain gauges for precipitation measurements at an hourly mean temperature below 2 °C. Flagging all potential snowfall at unheated stations, it has major implications for the precipitation data in winter, since it reduces the effective number of precipitation gauges from 155 to 14 at temperatures below 2 °C. 205  
The second rule (*reference-precip check*) checks for consistency between the measurements of the three precipitation gauges installed at the reference station. In the third to sixth rules (*windsensor-*, *wind-mean-boe-*, *windvalues-*, and *windboe-dir check*), wind data are screened for inconsistencies. For example, the data must satisfy (gust value > speed value) and (gust value and direction  $\neq$  speed value and direction). If any of the checks fail,  $QF(5)$  is set. 210
- Layer 6 (*interstational check*) deals with the consistency of measurements between a station and its neighbors.



215 Neighbor stations for comparison are selected according to the parameter's requirements, e.g. precipitation is compared to the neighbors within a 3 km radius, and temperature and humidity data neighbors are selected according to the altitude difference, location of the stations and their distance.

220 The interstational check comprises seven rules: The first one (*maxdiff check*) checks for large deviations between the data values of a station and those of its neighbors, the second one (*flush check*) checks the precipitation data for flushes (sudden opening of blocked funnels or manual flushing by maintenance crew), the third and fourth rules (*total blockage check* and *partial blockage check*) check explicitly for (partially) blocked precipitation gauge funnels. The fifth rule (*fade away check*) checks for the slow, drop-wise emptying of partially blocked precipitation gauge funnels, the sixth one (*combined parameter check*) checks the combination of temperature and humidity at a single station compared to its neighbors in order to find suspicious values in the humidity data, and the seventh rule (*problem flanks check*) checks for inverse measurement of humidity sensors. For further details regarding the *combined parameter check* and the *problem flanks check* see Scheidl et al. (2017). Further details on the other rules can be found in Scheidl (2014).

225 If any of the checks fail,  $QF(6)$  is set.

This layer is applied to WegenerNet FBR data only, because the WegenerNet JBT station density is too low for the interstational checks to run reliably.

230 – Layer 7 (*external reference check*) compares net radiation and humidity data between ZAMG and WegenerNet FBR stations. If the data deviate too much,  $QF(7)$  is set.

This layer is applied to WegenerNet FBR data only, because ZAMG stations near the WegenerNet JBT region are too distant from the other stations.

#### 4.2.1 Temperature spike check

235 Since some of the EE08-05 temperature sensors that were installed in the WegenerNet FBR in 2018 have been found to produce unnatural spikes in the measurement data, a new check was implemented to detect these spikes. This *temperature spike check* compares the spike magnitude  $T_s$  to the derivative of the (non-flagged) temperature values of the last 120 minutes before the spike occurred. Fig. 2 shows an example of such spikes and those detected by the spike check.

The check flags any temperature value  $T_{s,i}$  if

$$T_{s,i} > 5 \times \text{stddev} \left( \frac{dT_j}{dt} \right), \quad (2)$$

240 where  $T_s$  is the spike magnitude, and  $T_j$  the (non-flagged) temperature values of the last 120 minutes (nominally 24 data values).

Note that this check is only executed for sensors that are manually marked as *problem sensors* by the WegenerNet team.





### 4.3 Level 2 processor: Data Product Generator (DPG)

The DPG processes all unflagged L1 data (i.e. the best-quality data) and interpolates the gaps resulting from flagged time steps  
245 using three different interpolation schemes. It also generates gridded fields of temperature, humidity, and precipitation data for  
the WegenerNet FBR. The DPG is run hourly, after the QCS has finished writing the L1 data.

Each release of the DPG is assigned a new version number in order that the data produced with different releases can be  
archived and reproduced if needed. The data described in this paper were generated using DPG version 7, generating L2 *basis*  
*data* version 7. The term *basis data* refers to the temporal resolution (*base period*) of the L2 data, which is 5 min for the  
250 WegenerNet FBR and 10 min for the WegenerNet JBT. Level 2 basis data are generated in near-real time with a data latency  
of less than 2 hours between measurement and storage into the database.

The DPG consists of six main processing steps described in detail below.

1. On reading the L1 data, the DPG applies homogenization factors for temperature and humidity data according to Ebner  
(2017).  
255 Furthermore, precipitation measured by Friedrichs 7041 and Young 52202 sensors is corrected by general correction  
factors of 1.10 and 1.13, respectively, according to O et al. (2018), and precipitation measured by Meteoservis MR3 and  
MR3H sensors is corrected dynamically by applying the correction curve published in METEOSERVIS (2008).
2. In the second processing step, data with a higher temporal resolution than the region's base period is resampled, generally  
by averaging (except summation for precipitation, vector mean for wind speed and maximum for peak gust).
- 260 3. The next step is the interpolation of the data gaps. The type of interpolation depends on the length of the interpolation pe-  
riod and the measured parameter; if a gap is shorter than the value defined in Table 5, the missing values are interpolated  
linearly between the two adjacent valid data values and a *Data Product Flag (DP-Flag)* of 1 is set for the interpolated  
time steps (see Table 6 for definition of DP-Flags).  
265 Due to the high station density of the WegenerNet FBR, interpolation can also be carried out spatially for the main  
parameters air temperature, humidity, and precipitation, which are measured at all stations. If a gap is longer than defined  
in Table 5, the values for temperature and humidity are interpolated from the values of the surrounding stations, using a  
linear inverse distance weighting (IDW) algorithm. The temperature values are projected to a reference altitude of 300 m  
before interpolation, using a lapse rate calculated from all stations' temperature data and their altitudes for every 1 h  
time window. Precipitation data are interpolated using an inverse distance squared weighting (IDSW) algorithm. Further,  
270 a DP-Flag of 2 is set for all neighbor-station-interpolated data.
4. In the fourth step, 200 m × 200 m, 5 minute-resolution gridded fields of air temperature, humidity and precipitation are  
generated for the WegenerNet FBR. The fields are calculated by interpolating the station measurement values onto the  
grid using the same algorithms as described in step 3 (IDW for air temperature and humidity, IDSW for precipitation).  
Additionally, the spatial maximum, minimum, average, and standard deviation are calculated for all gridded fields.



275 Temperature grids are stored in three separate fields, one calculated at a constant reference altitude of 300 m, and two terrain-following fields. For these two fields, one is calculated at the average terrain altitude of each grid point, and one at the altitude of the center of each grid point. In this context a digital elevation model (DEM) with 10 m resolution is used for calculating the altitudes. The altitude dependence of the temperature is accounted for by using the calculated lapse rate as described in step 3.

280 The DP-Flags of the fields are also stored as 2D-grids, serving as spatially resolved quality indicators. The DP-Flag values of each station are interpolated onto the grid using the same interpolation algorithm as for the corresponding measurement values. Additionally, the spatial average of each DP-Flag grid is calculated. Two examples of gridded DP-Flag data can be found in (Fuchsberger et al., 2018, Fig. 2.1 therein).

5. WegenerNet FBR air temperature, humidity, and precipitation data that could not be interpolated from the surrounding stations in step 3 are then interpolated from the gridded data calculated in step 4. Temperature data are interpolated from the reference altitude (300 m) grid and then projected back to the stations' altitudes using the lapse rate calculated in step 3. Furthermore, a DP-Flag of 3 is set for the interpolated time steps.

285 6. If a gap could not be interpolated, the missing time steps are filled with an empty value (*not a number, NaN*) and are marked by a DP-Flag of 4.

#### 290 4.4 Level 2+ processor: Wind products and value-added products

The L2+ processor generates data derived from several input variables, including one or several L2 data variables and other sources like soil texture data, land use data, etc. It is run hourly, after the DPG processing has finished.

##### 4.4.1 Wind Product Generator (WPG)

The WPG generates high-resolution 100 m × 100 m wind fields and peak gust fields for the WegenerNet FBR and WegenerNet JBT, using the *California Meteorological Model (CALMET)* as a core tool. It is run hourly, after the DPG processing has finished, and was derived in recent years by Schlager et al. (2017, 2018). Input variables of the model are meteorological observations, terrain elevations taken from a 100 m resolution DEM, and land use information. Meteorological variables include temperature, air pressure, wind speed and wind direction, all taken from WegenerNet station observations. The wind fields are generated for two height levels (10 m and 50 m above ground) with a temporal resolution of 30 minutes.

300 Gust fields are generated for a height of 10 m above ground in a separate process described in Schlager et al. (2018, Sect. 3.3 therein). Since the publication of this study, the gust field generation was further refined by changing the therein mentioned IDW algorithm to an IDSW algorithm, and by limiting the maximum gust values of a timestep to the maximum gust speed of all stations, multiplied by a factor of 1.2 to allow moderate overshooting. This helped to reduce unnaturally high gust speed values that can occur if the ratio between gust speed and average wind speed varies strongly between stations.

305 Detailed information about the WPG can be found in Schlager et al. (2017) and Schlager et al. (2018), and a comparison with other models for both regions was made by Schlager et al. (2019).



Similarly to the QCS and DPG, the releases of the WPG are versioned for each new release. The version used for generating the described data is WPG v7.1.

#### 4.4.2 Value-Added Product Generator (VAPG)

310 The VAPG generates data derived from L2 data and complementary data sources. It currently contains two main processing steps:

##### Soil moisture data generation

Soil moisture time series data are derived from L2 pF value data and soil-related metadata like soil texture, humus content, and dry bulk density, using the Mualem-Van Genuchten equation (Mualem, 1976; Van Genuchten, 1980). A detailed description of  
315 this process can be found in Fuchsberger and Kirchengast (2013).

The pF values were the only source of information about soil moisture in the WegenerNet FBR until 2013, when replacement of pF-meters by Stevens HydraProbe II sensors (capable of measuring soil moisture directly) began. Since then, pF-meters at all soil stations have been replaced or supplemented by HydraProbe II sensors (see Table A1 for details on the sensor mount dates). For keeping a cross-comparison capacity, stations 27 and 77 have both types of sensors installed.

##### 320 Heat index data generation

Gridded heat index (apparent temperature) fields are generated from L2 temperature and humidity fields using an equation developed by Schoen (2005),

$$HI = T - 1.0799 e^{0.03755 T} \left[ 1 - e^{0.0801(D-14)} \right], \quad (3)$$

where  $HI$  is the heat index ( $^{\circ}\text{C}$ ),  $T$  the air temperature ( $^{\circ}\text{C}$ ), and  $D$  the dewpoint ( $^{\circ}\text{C}$ ).

325 The dewpoint therein is calculated using an equation based on the Magnus–Tetens formula (Barenbrug, 1974; Schoen, 2005),

$$D = \frac{b \times \alpha}{a - \alpha}, \quad \text{where} \quad (4)$$

$$\alpha = \frac{a \times T[^{\circ}\text{C}]}{b + T[^{\circ}\text{C}]} + \ln(RH),$$

330  $a = 17.27$ ,  $b = 237.3$ , and  $RH$  is the relative humidity expressed as a (dimensionless) fraction between 0 and 1.

As an auxiliary classification, for user convenience, the heat index is also categorized into a scheme of five danger classes (based on NOAA, 2020), consisting of *comfortable* ( $20^{\circ}\text{C} < HI < 27^{\circ}\text{C}$ ), *caution* ( $27^{\circ}\text{C} < HI < 32^{\circ}\text{C}$ ), *extreme caution* ( $32^{\circ}\text{C} < HI < 41^{\circ}\text{C}$ ), *danger* ( $41^{\circ}\text{C} < HI < 54^{\circ}\text{C}$ ), and *extreme danger* ( $HI > 54^{\circ}\text{C}$ ).



## 4.5 Level 2 products processing: Weather and Climate Products Generator (WCPG)

### 335 4.5.1 Data aggregation

All L2 data, including value-added data products, are aggregated to half-hourly, hourly, and daily (weather data), and monthly, seasonal, and annual (climate data) products. The aggregation is generally done by averaging the data, with the exception of wind speed and direction (the vector mean is used for consistent averaging), peak gust data (the maximum value is used), and precipitation data (the sum is taken). For temperature data, the maximum and minimum values are also calculated. Weather  
340 data are generated by aggregating the basis data, and climate data are generated by aggregating the daily data.

### 4.5.2 Weather and climate data quality indicators

A special algorithm is used for calculating quality indicators for weather and climate data, the so-called *flagged percentage of data (FP)*. The *FP* indicates how much of the data has been interpolated or flagged missing in the DPG, but it does not indicate how the data have been interpolated (i.e. which DP-Flag they have received). It is calculated for station time series  
345 data using the following equations (taken from Fuchsberger et al., 2018).

a) for continuous data, like temperature and humidity:

$$FP_c = \frac{N[DP-Flag > 0]}{N_{total}} \cdot 100 [\%], \quad (5)$$

where  $N[DP-Flag > 0]$  is the number of flagged basis data values, and  $N_{total}$  is the total number of basis data values within the given timespan of a weather or climate data product.

350 b) for precipitation data:

$$FP_P = \frac{P_{flagged} [\text{mm}]}{P_{total} [\text{mm}]} \cdot 100 [\%], \quad (6)$$

where  $P_{flagged}$  is the precipitation sum over all flagged basis data values, i.e.

$$P_{flagged} = \sum_{i=1}^{N_T} \{P_i | DP-Flag(P_i) > 0\}, \quad (7)$$

and  $P_{total}$  is the total precipitation sum for a given timespan ( $T$ ) of a weather or climate data product, i.e.

$$355 \quad P_{total} = \sum_{i=1}^{N_T} P_i, \quad (8)$$

where index  $i$  runs over the timespan  $T$  up to the final value  $N_T$ .

In order to ensure that only “wet data” (data with a reasonable minimum precipitation) are flagged,  $FP_P$  is set to zero if the flagged precipitation sum is 0, or the maximum precipitation is below a certain low limit, i.e.,

$$\text{if } P_{flagged} \equiv 0 \text{ or } \max(P_i) < 0.21 \text{ mm, then} \quad (9)$$

$$360 \quad FP_P = 0;$$



Weather and climate data quality grids likewise use the flagged percentage of data  $FP$ , as described above. However, instead of a calculation per station,  $FP$  is now calculated per grid point. The same equations (Eq. 5 to 8) are used for this purpose, only now with the threshold  $DP-Flag > 0.5$  instead of  $DP-Flag > 0$  in Eqs. 5 and 7, in order to allow moderate deviations from zero for these interpolated grid point  $DP-Flag$  values.

365 Since flagging on the grid also applies to “wet data” only,  $FP_P$  is set to zero if the areal mean precipitation is below a certain low limit, i.e.,

$$\text{if } \overline{P_{total}(x,y)} < 0.21 \text{ mm then } FP_P = 0, \quad (10)$$

where  $\overline{P_{total}(x,y)}$  denotes the average precipitation over all grid points  $(x,y)$ .

Examples showing gridded  $FP$ -fields and the associated data for precipitation can be found in Fuchsberger et al. (2018, 370 Figs. 2.2 and 2.3 therein).

## 5 Data products and auxiliary data

This section gives an overview of the data products generated by the WPS and shows details of their format. As explained in Sect. 4, all data are available in four processing levels: Raw data (L0 data), quality controlled raw data (L1 data), quality controlled and interpolated data (L2 data), and data derived from several input variables (L2+ data). The latter two (L2 and 375 L2+ data) include time-aggregated (from half-hourly to annual) weather and climate data products.

The parameters available in L0, L1, and L2 are shown in Table 1 (for the WegenerNet FBR) and Table 3 (for the WegenerNet JBT). Additionally, in L2+ the following derived parameters are available: wind fields (derived from wind, temperature, and auxiliary data; see Sect. 4.4.1), soil moisture data (derived from pF values; see Sect. 4.4.2), and heat index fields (derived from temperature and humidity data; see Sect. 4.4.2).

380 Data are available both as time series in CSV format (see Table 7 for a description of the CSV format) and, for L2 and L2+ only, as gridded data in NetCDF format (see Tables A3 and A4 for a list of variables available in the NetCDF files).

### 5.1 Level 0 data and level 1 data

L0 data are raw data values written into the database by the CRAS as described in Sect. 4.1. They are available for expert users only. A download option is offered as CSV files via the data portal.

385 L1 data are quality controlled L0 values, containing the data and associated flags (see Sect. 4.2).

### 5.2 Level 2 and 2+ data

L2 data are available both as time series data in CSV format (all variables) and as gridded data in NetCDF format (main parameters air temperature, relative humidity, and precipitation only). See Sect. 4.3 and 4.5 for information on the L2 data generation.



390 L2+ data are either time series (in case of soil moisture data) or gridded data (in case of heat index and wind data), derived from basic level 2 data and auxiliary data or models, by using functional dependencies or modeling (see also Sect. 4.4).

The L2 and L2+ time series data can be plotted in the data portal and downloaded as CSV files. The data are available in basis data resolution (5 minutes for WegenerNet FBR and 10 minutes for WegenerNet JBT), and time-aggregated as half-hourly, hourly, daily, monthly, seasonal, and annual data.

395 Level 2 and 2+ gridded data products are available in NetCDF format. See Table A3 for a list of all parameters stored in the NetCDF files. The data are available in a base temporal resolution of 5 minutes for WegenerNet FBR and 10 minutes for WegenerNet JBT, and time-aggregated as half-hourly, hourly, daily, monthly, seasonal, and annual data. The spatial resolution of the grids is  $200\text{ m} \times 200\text{ m}$ .

400 Gridded wind field data products are available in NetCDF format and can be downloaded via the data portal. See Table A4 for a list of all parameters stored in the wind NetCDF files. The data are available in a base temporal resolution of 30 minutes, and time-aggregated as hourly, daily, monthly, seasonal, and annual data. The spatial resolution of the grids is  $100\text{ m} \times 100\text{ m}$ .

### 5.3 Auxiliary data

In addition to the meteorological data described above, a growing number of auxiliary data are available for the WegenerNet and can be downloaded via the data portal. These data currently include a Digital Elevation Model (DEM), landuse/landcover 405 data, and hydro-pedological soil characteristics, all provided by state offices of the regional government of Styria, Austria.

The DEM is available at a horizontal resolution of 10 m and 100 m for both the WegenerNet FBR and WegenerNet JBT, and also at 200 m resolution for the WegenerNet FBR. The data originate from the geographic information system (GIS) server of the government of Styria (<http://gis.steiermark.at>, last access: 14 May 2019).

410 Landuse/landcover data are available at a horizontal resolution of 100 m and cover the WegenerNet FBR and its surroundings. They originate from a project to classify the hydro-pedological characteristics of the Raab valley and southeastern Styria (Klebinder et al., 2017). Additional data from this project are available, but due to copyright reasons they must be requested from the WEGC. They include: soil type (content of silt, clay, and sand), saturated hydraulic conductivity  $k_{sat}$ , total pore volume, air capacity, permanent wilting point, available water capacity, the Mualem-Van Genuchten parameters ( $\theta_r$ ,  $\theta_s$ ,  $\alpha$ , and  $n$ ), runoff coefficients, and soil moisture distribution.

## 415 6 Example applications

We decided to show just two "arbitrary" examples for illustration, out of the many possible uses of the WegenerNet dataset. Section 6.1 presents a multi-variable view of meteorological data for a storm event caused by a midlatitude cyclone in 2017, and Sect. 6.2 presents high-resolution gridded precipitation and temperature data for a strong convective event. We note that the WegenerNet data, including predecessors of the version 7.1 dataset, have been applied in a wide variety of scientific uses 420 so far, such as the studies summarized in Sect. 2 above.



## 6.1 Storm event due to midlatitude cyclone Xaver

### 6.1.1 Multi-variable time series

Figure 3 shows meteorological data before and during the passage of midlatitude cyclone Xaver (3 March 2017 00:00:00 UTC – 5 March 2017 06:00:00 UTC) at four different WegenerNet stations: two in the WegenerNet FBR (No. 44, located atop a silo in the Raab valley at 55 m above ground, and No. 77, located in the center of the region at 10 m above ground), and two in the WegenerNet JBT (No. 501, Oberkainz, in the Johnsbach valley floor, at 930 m msl (located 10 m above ground), and No. 505 at the peak of mount Zinödl, at 2197 m msl (located 6 m above ground)). The cyclone formed over the Bay of Biscay on 3 March 2017, moving northwards and then crossing Ireland on 4 March 2017. On the same day, a trough was formed, reaching down to the eastern end of the Pyrenees. The Alps were lying between this trough and a strong anticyclone (named Hertha) with its center over the Black Sea. As a consequence, a strong föhn storm occurred over the Alps. On 5 March 2017, Xaver crossed Scotland in northeasterly direction, and then moved further north, losing its influence on the Central-European weather (Janke, 2017; Deutscher Wetterdienst and FU-Berlin/BWK, 2017a, b, c).

As shown in Fig. 3, peak wind gust velocities at station 505 reached a maximum of  $46.0 \text{ m s}^{-1}$  on 4 March 2017, at 18:40:00 UTC, blowing from a southerly direction. The maximum 10-min average wind velocity was reached a bit earlier, at 17:50:00 UTC, with  $28.6 \text{ m s}^{-1}$ , coinciding with a sharp rise in temperature of  $7 \text{ }^\circ\text{C}$  between 17:30:00 UTC and 18:10:00 UTC. In the Johnsbach valley floor (station 501), maximum wind speed and peak gust velocities were reached much earlier, at 08:30:00 UTC of the same day, with velocities of  $8.5 \text{ m s}^{-1}$ , and  $18.9 \text{ m s}^{-1}$ , respectively.

In the WegenerNet FBR, average wind and peak gust velocities reached their maximum values around 12:00:00 UTC, with  $12.4 \text{ m s}^{-1}$  and  $18.3 \text{ m s}^{-1}$ , respectively.

### 6.1.2 Gridded wind gust speed data

Figure 4 shows gridded wind gust speed data for the above mentioned föhn storm, as generated by the WPG, with Fig. 4a showing the situation pre-onset, with gusts up to about  $15 \text{ m s}^{-1}$ , and Fig. 4b showing the maximum of the storm, with gusts up to about  $49 \text{ m s}^{-1}$ . In both plots, the structure of the mountainous terrain is clearly visible, with increasing wind speeds at higher altitudes.

## 6.2 Precipitation and temperature data of a heavy local-scale thunderstorm

Figure 5 shows gridded 5-min precipitation sums (left) and temperature data (right) of a heavy local thunderstorm moving from north to south through the western part of the Feldbach region on 7 July 2017. Three snapshots are shown:

At 13:25–13:30:00 UTC, the cell was located slightly south of the Raab valley. While temperatures in the southeastern part of the region still reached about  $30 \text{ }^\circ\text{C}$ , they were already much cooler (about  $18 \text{ }^\circ\text{C}$ ) in the vicinity of the storm. At 13:35:00–13:40:00 UTC, the cell moved further south, and at 13:40:00–13:45:00 UTC precipitation intensity peaked, with a



5-min precipitation sum of 19.5 mm at station 142. The associated temperature data in Figs. 5d–f show a drop of about 10 °C as the storm moved through the region.

## 7 Outlook

In 2020, the WegenerNet FBR network will be upgraded with three major new observing components, expanding it from a 2D  
455 ground station hydrometeorological network into a 3D open-air laboratory for climate change research at very high resolution.

The following new atmospheric 3D observation components, as shown in a most recent WegenerNet FBR instrumentation map in Fig. 6, have started or will soon start operations during 2020:

- a) A polarimetric X-band Doppler weather radar for studying precipitation parameters in the troposphere above the ground network, such as rain rate, hydrometeor classification, Doppler velocity, and approximate drop size distribution and  
460 number. It can provide 3D volume data (at about 1 km × 1 km horizontal and 500 m vertical resolution, and 2.5-min time sampling) for moderate to strong precipitation. Together with the dense ground network this allows detailed studies of heavy precipitation events at high resolution and accuracy.
- b) A radiometer pair consisting of two azimuth- and elevation-steerable radiometers, 1.) a microwave atmospheric profiling radiometer with built-in auxiliary zenith-looking infrared radiometer, for vertical profiling of temperature, humidity, and  
465 cloud liquid water in the troposphere above the WegenerNet area (with 200 m to 1 km vertical resolution, and 5-min time sampling), also capable of measuring cloud-base heights, vertically integrated water vapor (IWV), and slant IWV along line-of-sight paths towards Global Navigation Satellite System (GNSS) satellites, and 2.) a complementary infrared cloud structure radiometer at similar spatiotemporal sampling, for further refining gridded cloud-base height calculations, and enabling multi-layer cloud-field reconstruction over the WegenerNet area, providing 3D cloud-field (multi-layered cloud  
470 fraction) estimates.
- c) A water-vapor-mapping high-resolution GNSS station network, named GNSS-StarNet, comprising six ground stations, spatially forming two star-shaped subnets across the WegenerNet area (one with ~10 km interstation distance, and one embedded with ~5 km interstation distance), for providing slant IWV, vertical IWV, and precipitable water, among other parameters, at 5-min to 10-min time sampling.

475 The WegenerNet JBT network will be expanded with a new station in the Enns valley, measuring air temperature, humidity, precipitation, radiation, and wind. This will allow more accurate wind modeling in the WegenerNet JBT area in particular, following a recommendation by Schlager et al. (2018, 2019) based on their JBT wind field quality evaluations.

Data from these new components will be made available via the WegenerNet data portal, and a description of the components is planned for a future paper.

480 Regarding improvements to the processing system, a version of the QCS which is capable of processing daily time periods (in contrast to three-hourly time periods in the current version) is presently being developed in the course of a master's thesis.





This will lead to improvements of the quality of precipitation data for cases like blocked gauges or melting snow, where the QCS algorithms gain additional information from the larger sample size.

Another future improvement will be the implementation of a new algorithm for the calculation of temperature lapse-rates in the DPG (see also step 3 of Sect. 4.3) which was developed in the course of a master's thesis (Hocking, 2020).

## 8 Data availability

The data described in this article are published at <https://doi.org/10.25364/WEGC/WPS7.1:2020.1> (Fuchsberger et al., 2020). This DOI contains data from version 7.1 of the WegenerNet processing system for the period 1 January 2007 to 31 December 2019. New data under this version beyond 2019 are continuously added to the database and are available via the WegenerNet data portal at [www.wegenernet.org](http://www.wegenernet.org). For reasons of consistency, new data-DOIs are generated on a regular basis (at least once per year), expanding the time range documented in this paper. The DOIs will be made available at the data portal's entry page upon release, and can be used together with this paper to properly cite the WegenerNet dataset.

## 9 Conclusions

This paper provided an overview of the current state of the WegenerNet climate station networks Feldbach Region (FBR) and Johnsbachtal (JBT), their processing system, and their data products. It is the first major update to a WegenerNet introduction and overview paper published in the Bulletin of the American Meteorological Society (BAMS) about six years ago (Kirchengast et al., 2014), and it is hence foreseen to be the new and up-to-date reference for all WegenerNet data users of the currently implemented data version 7.1.

*Author contributions.* J.F. and G.K. designed the paper. J.F. wrote the first draft, is maintaining and continuously improving the WegenerNet processing system, which is used to generate the data, and prepared the dataset publication. G.K. advised the publication in all aspects, provides advancement ideas and guides the overall concept and design of the WegenerNet, and has substantially contributed to the manuscript text. T.K. supported the data and information collection for the manuscript, advised on application aspects, and provided feedback and comments to the paper.

*Competing interests.* The authors declare that they have no conflict of interest.

*Acknowledgements.* The authors gratefully acknowledge all team members of the WegenerNet project, in particular Christoph Bichler for his indispensable work on maintaining the WegenerNet field infrastructure, Ulrich Foelsche for co-leading the science applications of the WegenerNet, especially related to precipitation studies, and Armin Leuprecht for his work on building the code base of the WegenerNet



processing system and advising on the data portal. Sincere thanks also go to Robert Galovic, Albert and Alois Neuwirth, Andreas Pilz, Daniel Scheidl, Heimo Truhetz, and all previous team members for their various valuable contributions to the project since its inception by 510 2005. Special thanks to Thomas Hocking, who also provided some proofreading and valuable comments on the paper.

WegenerNet funding is provided by the Austrian Ministry for Science and Research, the University of Graz, the state of Styria (which also included European regional development funds), and the city of Graz; detailed information can be found online ([www.wegcenter.at/wegenernet](http://www.wegcenter.at/wegenernet), last access: 4 September 2020).



## References

- 515 Barenbrug, A. W. T.: Psychrometry and Psychrometric Charts, Chamber of Mines of South Africa, 1974.
- Bartels, H., Weigl, E., Reich, T., Lang, P., Wagner, A., Kohler, O., Gerlach, N., and others: Projekt RADOLAN–Routineverfahren zur Online-Aneicherung der Radarniederschlagsdaten mit Hilfe von automatischen Bodenniederschlagsstationen (Ombrometer), Zusammenfassender Abschlussbericht, Deutscher Wetterdienst, Abt. Hydrometeorologie, Germany, [https://www.dwd.de/DE/leistungen/radolan/radolan\\_info/abschlussbericht\\_pdf.pdf?\\_\\_blob=publicationFile&v=2](https://www.dwd.de/DE/leistungen/radolan/radolan_info/abschlussbericht_pdf.pdf?__blob=publicationFile&v=2), 2004.
- 520 Ciach, G. J. and Krajewski, W. F.: Analysis and modeling of spatial correlation structure in small-scale rainfall in Central Oklahoma, *Adv. Water Resour.*, 29, 1450–1463, <https://doi.org/10.1016/j.advwatres.2005.11.003>, 2006.
- Denk, V. and Berg, C.: Do short-lived ruderal and arable weed communities reflect regional climate differences? A case study from SE Styria, *Tuexenia*, 34, 305–328, <https://doi.org/10.14471/2014.34.014>, 2014.
- Deutscher Wetterdienst and FU-Berlin/BWK: Bodendruck, Fr 03 März 2017 00 UTC, [http://www.met.fu-berlin.de/de/wetter/maps/Analyse\\_20170303.gif](http://www.met.fu-berlin.de/de/wetter/maps/Analyse_20170303.gif), accessed: 2020-02-10, 2017a.
- 525 Deutscher Wetterdienst and FU-Berlin/BWK: Bodendruck, Sa 04 März 2017 00 UTC, [http://www.met.fu-berlin.de/de/wetter/maps/Analyse\\_20170304.gif](http://www.met.fu-berlin.de/de/wetter/maps/Analyse_20170304.gif), accessed: 2020-02-10, 2017b.
- Deutscher Wetterdienst and FU-Berlin/BWK: Bodendruck, So 05 März 2017 00 UTC, [http://www.met.fu-berlin.de/de/wetter/maps/Analyse\\_20170305.gif](http://www.met.fu-berlin.de/de/wetter/maps/Analyse_20170305.gif), accessed: 2020-02-10, 2017c.
- 530 Ebner, S.: Analysis and Homogenization of WegenerNet Temperature and Humidity Data and Quality Evaluation for Climate Trend Studies, *Sci. Rep. No.70-2017*, ISBN 978-3-9503918-9-3, Wegener Center Verlag, Graz, Austria, <https://static.uni-graz.at/fileadmin/urbi-zentren/Wegcenter/9.WegCenterVerlag/2017/WCV-SciRep-No70-SEbner-Aug2017.pdf>, 2017.
- Fiener, P. and Auerswald, K.: Spatial variability of rainfall on a sub-kilometre scale, *Earth Surf. Processes Landforms*, 34, 848–859, <https://doi.org/10.1002/esp.1779>, 2009.
- 535 Frei, C. and Isotta, F. A.: Ensemble Spatial Precipitation Analysis From Rain Gauge Data: Methodology and Application in the European Alps, *J. Geophys. Res.-Atmos.*, <https://doi.org/10.1029/2018JD030004>, 2019.
- Fuchsberger, J. and Kirchengast, G.: Deriving Soil Moisture from Matric Potential in the WegenerNet Climate Station Network, *WegenerNet Tech. Note No.1/2013*, Wegener Center for Climate and Global Change, Graz, Austria, <https://doi.org/10.13140/RG.2.2.33461.68320>, 2013.
- 540 Fuchsberger, J., Kirchengast, G., and Kabas, T.: Release Notes for Version 7 of the WegenerNet Processing System (WPS Level-2 data v7), *WegenerNet Tech. Note No.1/2018*, Version 1.1, Wegener Center, University of Graz, Graz, Austria, <https://doi.org/10.13140/RG.2.2.20824.55046>, 2018.
- Fuchsberger, J., Kirchengast, G., Bichler, C., Leuprecht, A., and Kabas, T.: WegenerNet climate station network Level 2 data version 7.1 2007–2019, <https://doi.org/10.25364/WEGC/WPS7.1:2020.1>, 2020.
- 545 Fuhrer, O., Chadha, T., Hoefler, T., Kwasiński, G., Lapillonne, X., Leutwyler, D., Lüthi, D., Osuna, C., Schär, C., Schulthess, T. C., and Vogt, H.: Near-global climate simulation at 1 km resolution: establishing a performance baseline on 4888 GPUs with COSMO 5.0, *Geosci. Model Dev.*, 11, 1665–1681, <https://doi.org/10.5194/gmd-11-1665-2018>, 2018.
- Goodrich, D. C., Keefer, T. O., Unkrich, C. L., Nichols, M. H., Osborn, H. B., Stone, J. J., and Smith, J. R.: Long-term precipitation database, Walnut Gulch Experimental Watershed, Arizona, United States, *Water Resour. Res.*, 44, <https://doi.org/10.1029/2006WR005782>, 2008.



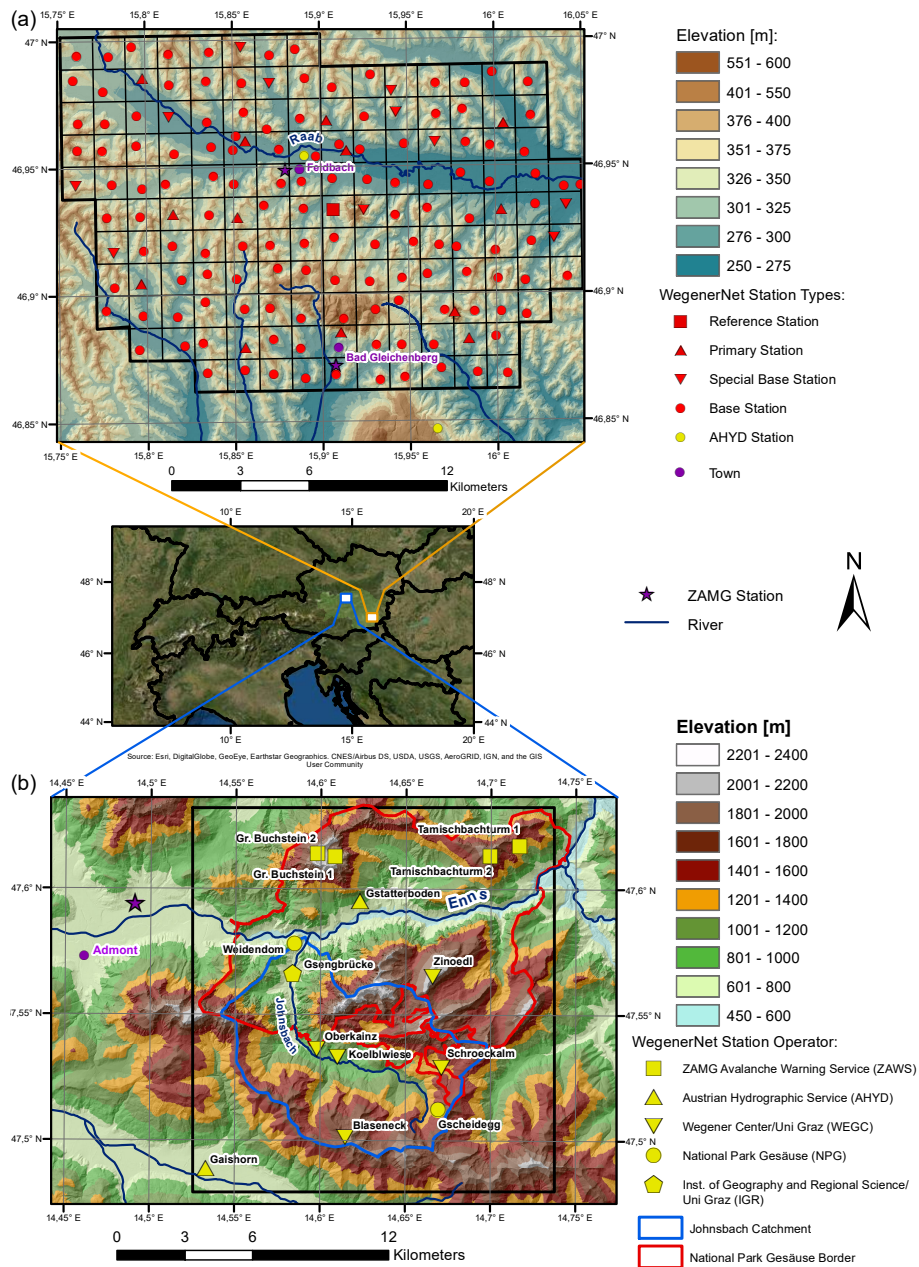
- 550 Grünwald, T.: Das Klimastationsmessnetz im Johnsbachtal und eine erste Auswertung der Daten, Master's thesis, Univ. Graz, Graz, Austria, [http://www.wegenernet.org/misc/Gruenwald-MA-2014-Johnsbachtal\\_small.pdf](http://www.wegenernet.org/misc/Gruenwald-MA-2014-Johnsbachtal_small.pdf), 2014.
- Hershfield, D. M.: A note on areal rainfall definition, *J. Am. Water Resour. Assoc.*, 5, 49–55, <https://doi.org/10.1111/j.1752-1688.1969.tb04923.x>, 1969.
- Hiebl, J. and Frei, C.: Daily precipitation grids for Austria since 1961—development and evaluation of a spatial dataset for hydroclimatic  
555 monitoring and modelling, *Theor. Appl. Climatol.*, 132, 327–345, <https://doi.org/10.1007/s00704-017-2093-x>, 2018.
- Hocking, T.: Improving WegenerNet temperature data products by advancing lapse rate and grid construction algorithms, Master's thesis, Univ. Graz, Graz, Austria, [https://wegenernet.org/downloads/Hocking-2020-WegNet\\_lapserates.pdf](https://wegenernet.org/downloads/Hocking-2020-WegNet_lapserates.pdf), 2020.
- Hohmann, C., Kirchengast, G., and Birk, S.: Alpine foreland running drier? Sensitivity of a drought vulnerable catchment to changes in climate, land use, and water management, *Climatic Change*, 147, 179–193, <https://doi.org/10.1007/s10584-017-2121-y>, 2018.
- 560 Hohmann, C., Kirchengast, G., O, S., Rieger, W., and Foelsche, U.: Runoff sensitivity to spatial rainfall variability: A hydrological modeling study with dense rain gauge observations, *Hydrol. Earth Syst. Sci.*, submitted manuscript, 2020.
- Hu, L., Nikolopoulos, E. I., Marra, F., Morin, E., Marani, M., and Anagnostou, E. N.: Evaluation of MEVD-Based Precipitation Frequency Analyses from Quasi-Global Precipitation Datasets against Dense Rain Gauge Networks, *J. Hydrol.*, p. 125564, <https://doi.org/10.1016/j.jhydrol.2020.125564>, 2020.
- 565 Huff, F. A. and Shipp, W. L.: Spatial Correlations of Storm, Monthly and Seasonal Precipitation, *J. Appl. Meteorol.*, 8, 542–550, [https://doi.org/10.1175/1520-0450\(1969\)008<0542:SCOSMA>2.0.CO;2](https://doi.org/10.1175/1520-0450(1969)008<0542:SCOSMA>2.0.CO;2), 1969.
- Jaffrain, J. and Berne, A.: Quantification of the Small-Scale Spatial Structure of the Raindrop Size Distribution from a Network of Disdrometers, *J. Appl. Meteorol. Climatol.*, 51, 941–953, <https://doi.org/10.1175/JAMC-D-11-0136.1>, 2012.
- Janke, M.: Tiefdruckgebiet XAVER, [http://www.met.fu-berlin.de/wetterpate/Lebensgeschichten/Tief\\_XAVER\\_02\\_03\\_17.htm](http://www.met.fu-berlin.de/wetterpate/Lebensgeschichten/Tief_XAVER_02_03_17.htm), accessed:  
570 2020-02-10, 2017.
- Jensen, N. and Pedersen, L.: Spatial variability of rainfall: Variations within a single radar pixel, *Atmos. Res.*, 77, 269–277, <https://doi.org/10.1016/j.atmosres.2004.10.029>, 2005.
- Kabas, T.: WegenerNet Klimastationsnetz Region Feldbach: Experimenteller Aufbau und hochauflösende Daten für die Klima- und Umweltforschung, *Sci. Rep. No.47-2012*, ISBN 978-3-9503112-4-2, Wegener Center Verlag, Graz, Austria, <http://wegcwww.uni-graz.at/publ/wegcreports/2012/WCV-WissBer-No47-TKabas-Jan2012.pdf>, 2012.
- 575 Kabas, T., Foelsche, U., and Kirchengast, G.: Seasonal and Annual Trends of Temperature and Precipitation within 1951/1971–2007 in South-Eastern Styria, Austria, *Meteorol. Z.*, 20, 277–289, <https://doi.org/10.1127/0941-2948/2011/0233>, 2011a.
- Kabas, T., Leuprecht, A., Bichler, C., and Kirchengast, G.: WegenerNet climate station network region Feldbach, Austria: network structure, processing system, and example results, *Adv. Sci. Res.*, 6, 49–54, <https://doi.org/10.5194/asr-6-49-2011>, 2011b.
- 580 Kann, A., Haiden, T., von der Emde, K., Gruber, C., Kabas, T., Leuprecht, A., and Kirchengast, G.: Verification of Operational Analyses Using an Extremely High-Density Surface Station Network, *Wea. Forecast.*, 26, 572–578, <https://doi.org/10.1175/WAF-D-11-00031.1>, 2011.
- Kann, A., Meirold-Mautner, I., Schmid, F., Kirchengast, G., Fuchsberger, J., Meyer, V., Tüchler, L., and Bica, B.: Evaluation of high-resolution precipitation analyses using a dense station network, *Hydrol. Earth Syst. Sci.*, 19, 1547–1559, <https://doi.org/10.5194/hess-19-1547-2015>, 2015.
- 585 Keefer, T. O., Moran, M. S., and Paige, G. B.: Long-term meteorological and soil hydrology database, Walnut Gulch Experimental Watershed, Arizona, United States, *Water Resour. Res.*, 44, <https://doi.org/10.1029/2006WR005702>, 2008.



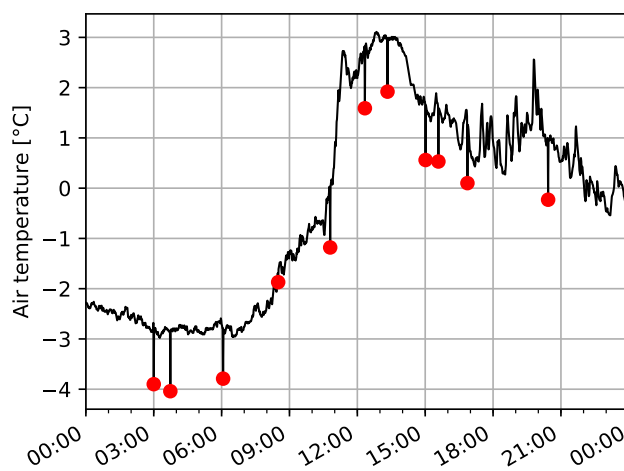
- Kendon, E. J., Ban, N., Roberts, N. M., Fowler, H. J., Roberts, M. J., Chan, S. C., Evans, J. P., Fosser, G., and Wilkinson, J. M.: Do Convection-Permitting Regional Climate Models Improve Projections of Future Precipitation Change?, *Bulletin of the American Meteorological Society*, 98, 79–93, <https://doi.org/10.1175/BAMS-D-15-0004.1>, 2017.
- 590 Kirchengast, G., Kabas, T., Leuprecht, A., Bichler, C., and Truhetz, H.: WegenerNet: A Pioneering High-Resolution Network for Monitoring Weather and Climate, *Bull. Am. Meteorol. Soc.*, 95, 227–242, <https://doi.org/10.1175/BAMS-D-11-00161.1>, 2014.
- Klebinder, K., Sotier, B., Lechner, V., and Strauss, P.: Hydrologische und hydropedologische Kenndaten Raabgebiet und Region Südoststeiermark, Tech. rep., Department of Natural Hazards, Austrian Research Center for Forests (BFW), Innsbruck, Austria, [https://wegenernet.org/downloads/Klebinder-et-al\\_HydroBod-SOStmk-Projbericht\\_Jul2017.pdf](https://wegenernet.org/downloads/Klebinder-et-al_HydroBod-SOStmk-Projbericht_Jul2017.pdf), 2017.
- 595 Klocke, D., Brueck, M., Hohenegger, C., and Stevens, B.: Rediscovery of the doldrums in storm-resolving simulations over the tropical Atlantic, *Nat. Geosci.*, 10, 891–896, <https://doi.org/10.1038/s41561-017-0005-4>, 2017.
- Krähenmann, S., Bissolli, P., Rapp, J., and Ahrens, B.: Spatial gridding of daily maximum and minimum temperatures in Europe, *Meteorol. Atmos. Phys.*, 114, 151–161, <https://doi.org/10.1007/s00703-011-0160-x>, 2011.
- 600 Lasser, M., O, S., and Foelsche, U.: Evaluation of GPM-DPR precipitation estimates with WegenerNet gauge data, *Atmos. Meas. Tech.*, 12, 5055–5070, <https://doi.org/10.5194/amt-12-5055-2019>, 2019.
- Leutwyler, D., Lüthi, D., Ban, N., Fuhrer, O., and Schär, C.: Evaluation of the convection-resolving climate modeling approach on continental scales, *J. Geophys. Res.-Atmos.*, 122, 5237–5258, <https://doi.org/10.1002/2016JD026013>, 2017.
- METEOSERVIS: Correction Curve for MR3, MR3H, [https://wegenernet.org/downloads/Meteoservis\\_Correction\\_curve\\_MR3\\_engl.pdf](https://wegenernet.org/downloads/Meteoservis_Correction_curve_MR3_engl.pdf), 2008.
- 605 Miyamoto, Y., Kajikawa, Y., Yoshida, R., Yamaura, T., Yashiro, H., and Tomita, H.: Deep moist atmospheric convection in a subkilometer global simulation, *Geophys. Res. Lett.*, 40, 4922–4926, <https://doi.org/10.1002/grl.50944>, 2013.
- Moore, R. J., Jones, D. A., Cox, D. R., and Isham, V. S.: Design of the HYREX raingauge network, *Hydrol. Earth Syst. Sci.*, 4, 521–530, <https://doi.org/10.5194/hess-4-521-2000>, <http://www.hydrol-earth-syst-sci.net/4/521/2000/>, 2000.
- 610 Mualem, Y.: A new model for predicting the hydraulic conductivity of unsaturated porous media, *Water Resour. Res.*, 12, 513–522, <https://doi.org/10.1029/WR012i003p00513>, 1976.
- NOAA: Heat index, <https://www.weather.gov/safety/heat-index>, accessed: 2020-09-10, 2020.
- O, S. and Foelsche, U.: Assessment of spatial uncertainty of heavy rainfall at catchment scale using a dense gauge network, *Hydrol. Earth Syst. Sci.*, 23, 2863–2875, <https://doi.org/10.5194/hess-23-2863-2019>, 2019.
- 615 O, S., Foelsche, U., Kirchengast, G., Fuchsberger, J., Tan, J., and Petersen, W. A.: Evaluation of GPM IMERG Early, Late, and Final rainfall estimates using WegenerNet gauge data in southeastern Austria, *Hydrol. Earth Syst. Sci.*, 21, 6559–6572, <https://doi.org/10.5194/hess-21-6559-2017>, 2017.
- O, S., Foelsche, U., Kirchengast, G., and Fuchsberger, J.: Validation and correction of rainfall data from the WegenerNet high density network in southeast Austria, *J. Hydrol.*, <https://doi.org/10.1016/j.jhydrol.2016.11.049>, 2018.
- 620 Pedersen, L., Jensen, N. E., Christensen, L. E., and Madsen, H.: Quantification of the spatial variability of rainfall based on a dense network of rain gauges, *Atmos. Res.*, 95, 441–454, <https://doi.org/10.1016/j.atmosres.2009.11.007>, 2010.
- Peleg, N., Ben-Asher, M., and Morin, E.: Radar subpixel-scale rainfall variability and uncertainty: lessons learned from observations of a dense rain-gauge network, *Hydrol. Earth Syst. Sci.*, 17, 2195–2208, <https://doi.org/10.5194/hess-17-2195-2013>, 2013.



- Prein, A. F., Langhans, W., Fosser, G., Ferrone, A., Ban, N., Goergen, K., Keller, M., Tölle, M., Gutjahr, O., Feser, F., Brisson, E., Kollet, S., Schmidli, J., van Lipzig, N. P. M., and Leung, R.: A review on regional convection-permitting climate modeling: Demonstrations, prospects, and challenges, *Rev. Geophys.*, 53, 323–361, <https://doi.org/10.1002/2014RG000475>, 2015.
- 625 Scheidl, D.: Improved Quality Control for the WegenerNet and Demonstration for Selected Weather Events and Climate, *Sci. Rep. No.61-2014*, ISBN 978-3-9503608-8-2, Wegener Center Verlag, Graz, Austria, <http://wegcwww.uni-graz.at/publ/wegcreports/2014/WCV-SciRep-No61-DScheidl-Oct2014.pdf>, 2014.
- 630 Scheidl, D., Fuchsberger, J., and Kirchengast, G.: Analysis of the Quality of WegenerNet Humidity Data and Improvements, *Sci. Rep. No.74-2017*, ISBN 978-3-9504501-2-5, Wegener Center Verlag, Graz, Austria, <https://wegcwww.uni-graz.at/publ/wegcreports/2017/WCV-SciRep-No74-DScheidletal-Dec2017.pdf>, 2017.
- Schlager, C., Kirchengast, G., and Fuchsberger, J.: Generation of high-resolution wind fields from the WegenerNet dense meteorological station network in southeastern Austria, *Wea. Forecast.*, 32, 1301–1319, <https://doi.org/10.1175/WAF-D-16-0169.1>, 2017.
- 635 Schlager, C., Kirchengast, G., and Fuchsberger, J.: Empirical high-resolution wind field and gust model in mountainous and hilly terrain based on the dense WegenerNet station networks, *Atmos. Meas. Tech.*, 11, 5607–5627, <https://doi.org/10.5194/amt-11-5607-2018>, 2018.
- Schlager, C., Kirchengast, G., Fuchsberger, J., Kann, A., and Truhetz, H.: A spatial evaluation of high-resolution wind fields from empirical and dynamical modeling in hilly and mountainous terrain, *Geosci. Model Dev.*, 12, 2855–2873, <https://doi.org/10.5194/gmd-12-2855-2019>, 2019.
- 640 Schoen, C.: A New Empirical Model of the Temperature–Humidity Index, *J. Appl. Meteorol.*, 44, 1413–1420, <https://doi.org/10.1175/JAM2285.1>, 2005.
- Schroer, K. and Kirchengast, G.: Sensitivity of extreme precipitation to temperature: the variability of scaling factors from a regional to local perspective, *Clim. Dyn.*, 50, 3981–3994, <https://doi.org/10.1007/s00382-017-3857-9>, 2018.
- Schroer, K., Kirchengast, G., and O, S.: Strong dependence of extreme convective precipitation intensities on gauge network density, *Geophys. Res. Lett.*, 45, 8253–8263, <https://doi.org/10.1029/2018GL077994>, 2018.
- 645 Strasser, U., Marke, T., Sass, O., Birk, S., and Winkler, G.: John’s creek valley: a mountainous catchment for long-term interdisciplinary human-environment system research in Upper Styria (Austria), *Environ. Earth Sci.*, 69, 695–705, <https://doi.org/10.1007/s12665-013-2318-y>, 2013.
- Szeberényi, K.: Analysis of WegenerNet Precipitation Data and Quality Evaluation for Case Studies and Climatologies, *Sci. Rep. No.58-2014*, ISBN 978-3-9503608-5-1, Wegener Center Verlag, Graz, Austria, <http://wegcwww.uni-graz.at/publ/wegcreports/2014/WCV-SciRep-No58-KSzeberenyi-Mar2014.pdf>, 2014.
- 650 Tan, J., Petersen, W. A., Kirchengast, G., Goodrich, D. C., and Wolff, D. B.: Evaluation of Global Precipitation Measurement Rainfall Estimates against Three Dense Gauge Networks, *J. Hydrometeorol.*, 19, 517–532, <https://doi.org/10.1175/JHM-D-17-0174.1>, 2018.
- Van Genuchten, M. T.: A Closed-form Equation for Predicting the Hydraulic Conductivity of Unsaturated Soils, *Soil Sci. Soc. Am. J.*, 44, 892, <https://doi.org/10.2136/sssaj1980.03615995004400050002x>, 1980.
- 655 Wüest, M., Frei, C., Altenhoff, A., Hagen, M., Litschi, M., and Schär, C.: A gridded hourly precipitation dataset for Switzerland using rain-gauge analysis and radar-based disaggregation, *Int. J. Climatol.*, <https://doi.org/10.1002/joc.2025>, 2009.

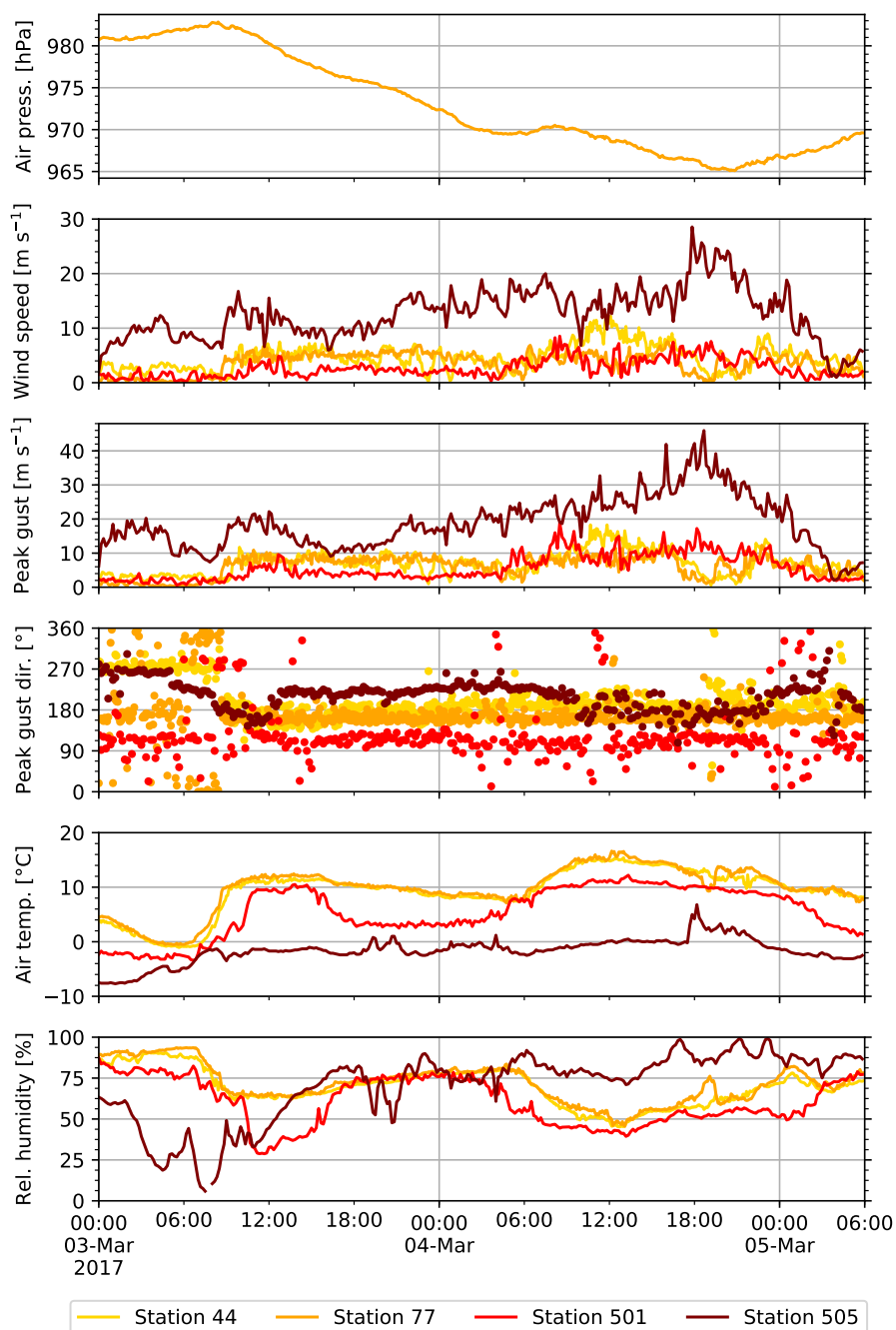


**Figure 1.** Overview of the study areas, (a) the WegenerNet Feldbach Region (FBR) in the southeast of Styria, Austria, with a core region (thick black polygon) of about 22 km × 16 km and 155 meteorological stations, and (b) the WegenerNet Johnsbachtal (JBT) in the north of Styria, Austria, with a core area (black rectangle) of about 16 km × 17 km and 14 stations. The middle panel shows their location in the greater Alpine region (WegenerNet FBR: orange rectangle, WegenerNet JBT: blue rectangle). The legend on the right explains map characteristics, WegenerNet FBR station types (as defined in Table 1), and WegenerNet JBT station operators.

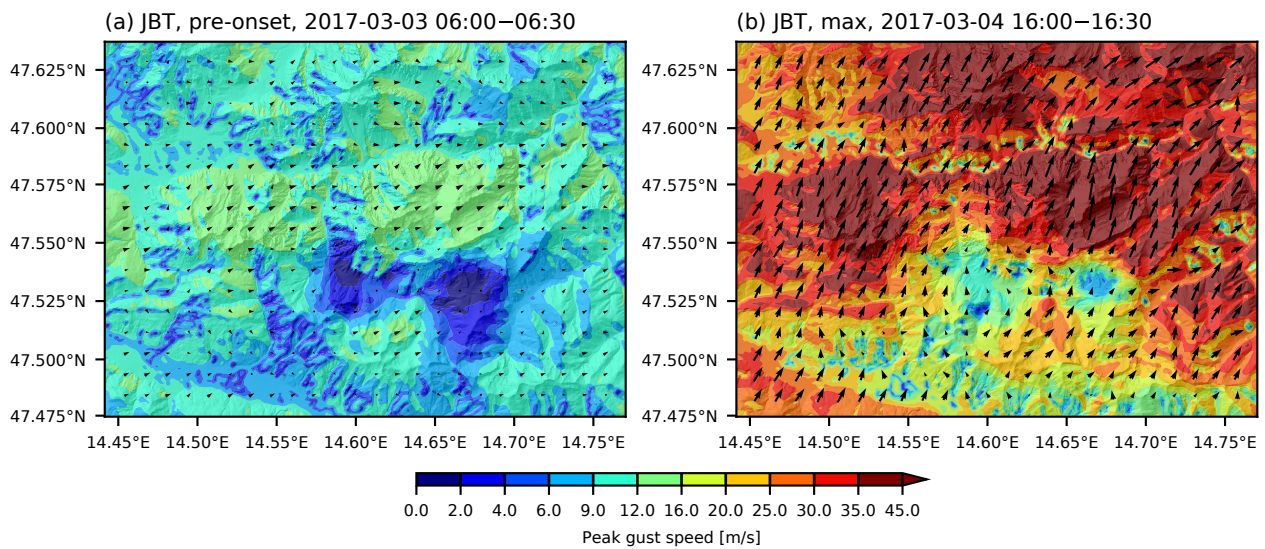


**Figure 2.** Air temperature data at station 6 on 7 December 2019, showing unnatural spikes. Data points that are flagged by the *Temperature spike check* are marked by red circles.

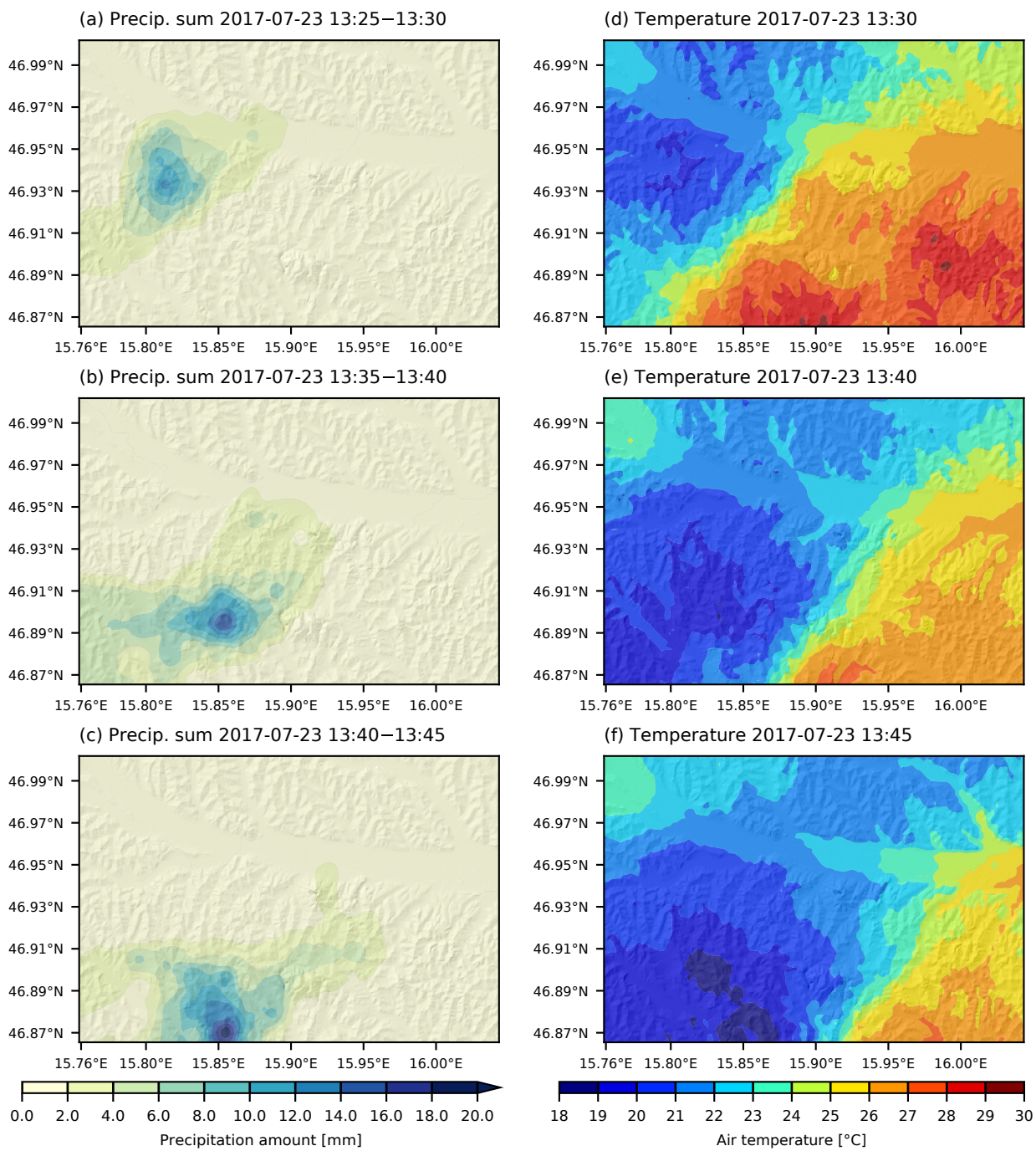




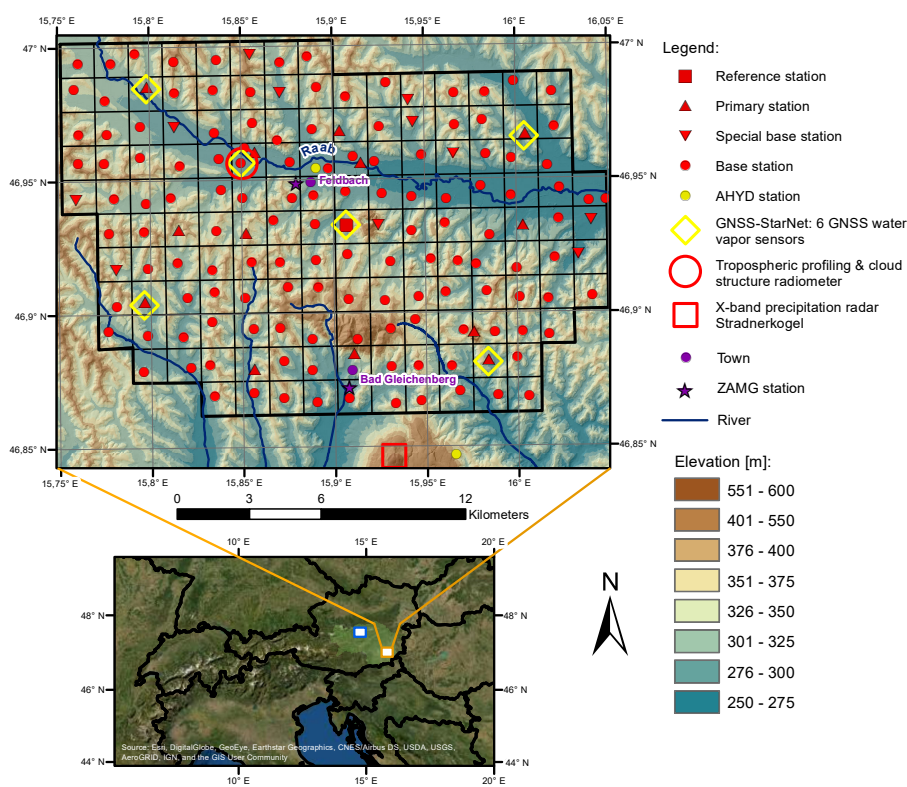
**Figure 3.** Level 2 time series data of meteorological conditions before and during the passage of midlatitude cyclone Xaver on 3–5 March 2017 at four different WegenerNet stations – two in the Feldbach region (44 and 77), and two in the Johnsbachtal region (501 and 505).



**Figure 4.** Modeled wind gust fields for the WegenerNet Johnsbachtal area before and during the passage of midlatitude cyclone Xaver. (a) Pre-onset, 3 March 2017 06:00:00–06:30:00 UTC, and (b) at its maximum on 4 March 2017 16:00:00–16:30:00 UTC.



**Figure 5.** Gridded fields of 5-minute precipitation sums (left column) of a strong local-scale thunderstorm cell moving through the western part of the WegenerNet Feldbach Region and associated temperature field data (right column).



**Figure 6.** The WegenerNet Feldbach Region (FBR) 3D Open-Air Laboratory for Climate Change Research, consisting of the ground station network as described in this paper, and additional 3D observing system components including an X-band precipitation radar, a tropospheric profiling and cloud structure radiometer pair, and a GNSS station network called GNSS-StarNet, comprising 6 GNSS receivers for water vapor sensing. The legend on the right explains all map characteristics.



**Table 1.** Summary of WegenerNet Feldbach Region (FBR) station types, measured parameters, and sensor heights.

| Station type   | Station No. (1–155)  | Station count | Measurement parameters  | Sensor height [m]  |
|--|--|---------------|---|--|
| Base stations (B)  | All, except numbers of SB, P, R,<br>and AHYD type stations           | 128           | Air temperature   | 2  |
|  |  |               | Air relative humidity   | 2  |
|  |  |               | Precipitation   | 1.5  |
| Special base stations (SB) <sup>a</sup><br>(also called soil stations) | 6, 15, 19, 27, 34, 50, 54, 78, 84,<br>85, 99                         | 11            | +Soil parameters <sup>b</sup>   | -0.2 or -0.3 <sup>c</sup>  |
| Primary stations (P) <sup>a</sup>                                      | 11, 32, 37, 44 <sup>d</sup> , 72, 74, 82, 101,<br>132, 135, 139, 155 | 12            | +Solid <sup>e</sup> precipitation and<br>Wind parameters <sup>f</sup> | 1.5<br>10 <sup>g</sup>   |
|  |  |               | 154   | 1  |
|  | Reference station (R) <sup>a</sup>                                   | 77            | 1   | +Solid <sup>e</sup> precipitation<br>+Wind parameters <sup>f</sup><br>+Soil parameters <sup>b</sup><br>+Air pressure<br>+Net radiation |
| External stations (AHYD <sup>h</sup> )                                 | 152  | 1             | Precipitation   | 2  |
|  | 153  | 1             | Precipitation + solid <sup>e</sup> precipitation                      | 1.2  |
|  | (155 total)  |               | Air temperature   | 2  |

<sup>a</sup> Measurement parameters listed for station types SB, P, and R are those that are measured in addition to the B parameters.

<sup>b</sup> Soil parameters include soil temperature, soil moisture, pF value, and electric conductivity; see Table A1 for details on installed sensors and Sect. 4 for details on the conversion from pF value to soil moisture.

<sup>c</sup> Depth of soil sensors has changed from -0.3 m to -0.2 m over the years; see Table A1 for details.

<sup>d</sup> Station 44 is a silo rooftop station in the Raab valley measuring temperature and relative humidity at a height of 53 m, precipitation at 51 m and wind parameters at 55 m.

<sup>e</sup> "Solid precipitation" indicates that the corresponding stations are equipped with heated rain gauges, and can therefore measure snow and other forms of frozen precipitation in addition to liquid precipitation. Note that for reasons of simplicity liquid precipitation is referred to as just "precipitation" in this table.

<sup>f</sup> Wind parameters comprise speed, direction, gust speed, and gust direction.

<sup>g</sup> Wind sensor heights for stations 44, 72, and 101 are 55 m, 18 m, and 14 m, respectively.

<sup>h</sup> Stations operated by the Austrian Hydrographic Service (AHYD).



**Table 2.** Characteristics of the WegenerNet Johnsbachtal (JBT) stations.

| Station No. | Station Name       | Start year <sup>a</sup> | Operator <sup>b</sup> | Lat (E)       | Lon (N)       | Alt [m] |
|-------------|--------------------|-------------------------|-----------------------|---------------|---------------|---------|
| 501         | Oberkainz          | 2010                    | WEGC                  | 47° 32' 11.0" | 14° 35' 52.8" | 920     |
| 502         | Koelblwiese        | 2013                    | WEGC                  | 47° 31' 52.3" | 14° 36' 40.7" | 860     |
| 503         | Schroeckalm        | 2010                    | WEGC                  | 47° 31' 45.2" | 14° 40' 16.8" | 1344    |
| 504         | Blaseneck          | 2010                    | WEGC                  | 47° 29' 57.7" | 14° 37' 07.9" | 1969    |
| 505         | Zinoedl            | 2009                    | WEGC                  | 47° 33' 55.4" | 14° 39' 57.8" | 2191    |
| 506         | Weidendom          | 2006                    | NPG                   | 47° 34' 51.0" | 14° 35' 29.3" | 590     |
| 507         | Gscheidegg         | 2008                    | NPG                   | 47° 30' 52.0" | 14° 40' 28.2" | 1690    |
| 508         | Tamischbachturm 1  | 2008                    | ZAWS                  | 47° 37' 02.4" | 14° 43' 01.2" | 1431    |
| 509         | Tamischbachturm 2  | 2008                    | ZAWS                  | 47° 36' 48.4" | 14° 41' 58.2" | 1952    |
| 510         | Gstatterboden      | 2007                    | AHYD                  | 47° 35' 29.0" | 14° 37' 44.0" | 580     |
| 511         | Gaishorn           | 2007                    | AHYD                  | 47° 29' 04.9" | 14° 31' 46.9" | 720     |
| 512         | Gsengbrücke        | 2012                    | IGR                   | 47° 34' 01.9" | 14° 34' 53.8" | 635     |
| 513         | Großer Buchstein 1 | 2019                    | ZAWS                  | 47° 36' 43.1" | 14° 36' 19.2" | 2100    |
| 514         | Großer Buchstein 2 | 2019                    | ZAWS                  | 47° 36' 44.7" | 14° 36' 15.2" | 2089    |

<sup>a</sup> Start year of time series (concerning station 506, the first year in the WegenerNet archive is 2007).

<sup>b</sup> WEGC: Wegener Center for Climate and Global Change; NPG: National Park Gesäuse; ZAWS: ZAMG Avalanche Warning Service (operated by the Central Institute for Meteorology and Geodynamics (ZAMG) in cooperation with the federal railways company ÖBB); AHYD: Austrian Hydrographic Service; IGR: Institute of Geography and Regional Science, University of Graz.



**Table 3.** Measured variables<sup>a</sup> (top row) of the WegenerNet Johnsbachtal (JBT) stations and corresponding sensor heights (numbers in the table).

| Stat. | Sensor heights [m] for measured variables <sup>a</sup> |           |          |          |        |                      |          |                      |                      |                      |          |           |            |                       |                      |           |                      |                      |
|-------|--|-----------|----------|----------|--------|----------------------|----------|----------------------|----------------------|----------------------|----------|-----------|------------|-----------------------|----------------------|-----------|----------------------|----------------------|
|       | <i>T</i>   | <i>rh</i> | <i>P</i> | <i>v</i> | $\phi$ | <i>v<sub>g</sub></i> | $\phi_g$ | <i>Q<sub>g</sub></i> | <i>Q<sub>r</sub></i> | <i>Q<sub>n</sub></i> | <i>p</i> | <i>sd</i> | <i>swe</i> | <i>T<sub>sn</sub></i> | <i>T<sub>s</sub></i> | <i>wl</i> | <i>Q<sub>w</sub></i> | <i>v<sub>w</sub></i> |
| 501   | 2  | 2         | 2.5      | 10       | 10     | 10                   | 10       | 2                    | 2                    | 2                    | –        | 4         | 0          | –                     | –                    | –         | –                    | –                    |
| 502   | 2, 3   | 2, 3      | 2, 3     | 3        | 3      | 3                    | 3        | 2                    | 2                    | 2                    | 3        | –         | –          | –                     | –                    | –         | –                    | –                    |
| 503   | 4  | 4         | 2        | 10       | 10     | 10                   | 10       | 2                    | 2                    | 2                    | –        | 4         | –          | –                     | –                    | –         | –                    |                      |
| 504   | 3  | 3         | –        | 6        | 6      | 6                    | 6        | 3                    | –                    | 3                    | –        | –         | –          | –                     | –                    | –         | –                    |                      |
| 505   | 3  | 3         | –        | 6        | 6      | 6                    | 6        | 3                    | –                    | 3                    | –        | –         | –          | –                     | –                    | –         | –                    |                      |
| 506   | 2  | 2         | 1.5      | 2        | –      | –                    | –        | 2.5                  | –                    | –                    | –        | –         | –          | –                     | –                    | 4         | –                    |                      |
| 507   | 4  | 4         | 1.5      | 6        | 6      | 6                    | 6        | 4                    | –                    | –                    | –        | 4         | 0          | –                     | –                    | –         | –                    |                      |
| 508   | 4  | 4         | –        | 7        | 7      | 7                    | 7        | 5.5                  | –                    | –                    | –        | 5.5       | –          | 0, 0.2, 0.4, 0.6      | 5.5                  | –         | –                    |                      |
| 509   | 3.5  | 3.5       | –        | 5        | 5      | 5                    | 5        | –                    | –                    | –                    | –        | –         | –          | –                     | –                    | –         | –                    |                      |
| 510   | –  | –         | 1.2      | –        | –      | –                    | –        | –                    | –                    | –                    | –        | –         | –          | –                     | –                    | –         | –                    |                      |
| 511   | –  | –         | 1.2      | –        | –      | –                    | –        | –                    | –                    | –                    | –        | –         | –          | –                     | –                    | –         | –                    |                      |
| 512   | –  | –         | –        | –        | –      | –                    | –        | –                    | –                    | –                    | –        | –         | –          | –                     | –                    | 4         | 4                    | 4                    |
| 513   | 3  | 3         | –        | 5.5      | 5.5    | 5.5                  | 5.5      | –                    | –                    | –                    | –        | –         | –          | –                     | –                    | –         | –                    |                      |
| 514   | 3  | 3         | 3        | –        | –      | –                    | –        | –                    | –                    | 5.5                  | –        | 5.5       | –          | –                     | 5.5                  | –         | –                    |                      |

<sup>a</sup> *T* air temperature, *rh* relative humidity, *P* precipitation, *v* wind speed,  $\phi$  wind direction, *v<sub>g</sub>* peak gust,  $\phi_g$  peak gust direction, *Q<sub>g</sub>* global radiation, *Q<sub>r</sub>* reflected radiation, *Q<sub>n</sub>* net radiation, *p* air pressure, *sd* snow depth, *swe* snow water equivalent, *T<sub>sn</sub>* snow temperature, *T<sub>s</sub>* surface temperature, *wl* water level, *Q<sub>w</sub>* water discharge, and *v<sub>w</sub>* water flow velocity; dash (–): variable not measured.



**Table 4.** Overview of the WegenerNet Processing System (WPS) tasks and its different levels of output data. (Task descriptions are written in non-italic text whereas output data descriptions are italicized).

| WPS step          | Description of WPS step                                 | Main processing tasks                             | Description of processing task  |
|-------------------|---|---|---|
| <i>Data level</i> | <i>Short description of data level</i>                  |   | <i>Full description of data level</i>   |
| <b>Raw data</b>   | <i>Sensor measurements</i>                              |   | <i>Measured parameters for each station according to Tables 1 and 3</i>   |
| LOP: CRAS         | Level 0 processor: Command Receive Archiving System     | Application of logger and sensor control commands | Execution of logger control and user interface software   |
|                   |   | Logger data receipt                               | Receipt of raw data files by web- or FTP-server   |
|                   |   | Database ingestion of level 0 sensor data         | Feeding of raw data files into the WegenerNet PostgreSQL database by Python script  |
| <b>L0 data</b>    | <i>Database-archived data</i>                           |   | <i>Sensor data at native time resolution, complemented by all necessary meta-information</i>                                  |
| 660               | WegenerNet Monitoring and Issue Tracking System (WMITS) | Check of data and log files for anomalies         | Monitoring of incoming data and, if anomalous readings are encountered, email transmission to the WegenerNet maintenance team |
|                   |   | Precip. heating surveillance                      | Check of heating temperature, fan speed, and system voltage for heated precipitation gauges                                   |
|                   |   | Humidity sensor problem detection                 | Check for problematic humidity sensors  |
| L1P: QCS          | Level 1 processor: Quality Control System               | QC layers 0 to 7: qcl-0 to qcl-7                  | qcl-0: check regarding station operation  |
|                   |   | qcl-1: check of data availability                 | Check if station and sensor are currently in operation (if not, set the QC flag to 1 and skip qcl-1 to qcl-7 for the station) |
|                   |   | qcl-2: check of sensor functioning                | Check if expected sensor data values are available (if not, add 2 to the QC flag and skip qcl-2 to qcl-7)                     |
|                   |   |   | Check if measurement value exceeds permitted range of technical sensor specifications (if yes, flag +4)                       |

*continued on next page*





*continued from previous page*

| WPS step                    | Description of WPS step                           | Main processing tasks  | Description of processing task   |
|-----------------------------|---|--|--|
| <i>Data level</i>           | <i>Short description of data level</i>            |  | <i>Full description of data level</i>  |
|                             |   | qcl-3: check of climatological plausibility                  | Check if measurement value exceeds plausibly set maximum climatological bounds (if yes, flag +8)   |
|                             |   | qcl-4: check of temporal variability                         | Check if measurement value shows too high or too low variation, i.e. check for jumps or constancy (if yes, flag +16)   |
|                             |   | qcl-5: check of intra-station consistency                    | Check if measurement value is inconsistent with related parameters (if yes, flag +32)  |
|                             |   | qcl-6: check of inter-station consistency                    | Check if measurement value deviates too much from values at neighbor stations (if yes, flag +64)   |
|                             |   | qcl-7: check against external reference                      | Check (for $p$ and $rh$ ) if measurement value deviates too much from ZAMG reference (if yes, flag +128)   |
| <b><i>L1 data</i></b>       | <i>Quality-controlled data</i>                    |  | <i>Quality-flagged time series data of all parameters; flag-0 data used by the DPG for product generation</i>  |
| L2P: DPG                    | Level 2 processor: Data Product Generator         | Station time series generation (basis data)                  | Application of calibration and homogenization factors, time interpolation, “missing value” assignment, neighbor- and grid-based interpolation, as needed               |
|                             |   | Generation of gridded fields for WegenerNet FBR (basis data) | Inverse-distance weighted interpolation of temp., humi., and precip. to grids; temp. also terrain-following  |
| <b><i>L2 basis data</i></b> | <i>5-min or 10-min basis data</i>                 |  | <i>Interpolated time series of all parameters</i><br><br><i>WegenerNet FBR only: gridded 200 m × 200 m fields of air temperature, rel. humidity, and precipitation</i> |
| L2+P: WPG                   | Level 2+ processor: Wind Product Generator        | Generation of wind fields                                    | Generation of high-resolution, half-hourly wind fields using CALMET model  |
| <b><i>L2+ wind data</i></b> | <i>Half-hourly wind field data</i>                |  | <i>Half-hourly gridded wind fields, 100 m × 100 m resolution</i>   |
| L2+P: VAPG                  | Level 2+ processor: Value-Added Product Generator | Soil moisture time series generation (WegenerNet FBR only)   | Derivation of soil moisture data products from level 2 pF value data and auxiliary soil related metadata   |

*continued on next page*



*continued from previous page*

| WPS step                  | Description of WPS step  | Main processing tasks                             | Description of processing task   |
|---------------------------|--|---|--|
| <i>Data level</i>         | <i>Short description of data level</i>                             |   | <i>Full description of data level</i>  |
|                           |  | Heat index field generation (WegenerNet FBR only) | Derivation of heat index data from level 2 temperature and humidity grids  |
| <b>L2+</b>                | <b>value-added data</b>  | <i>Value-added data (WegenerNet FBR only)</i>     | <i>Time series data of soil moisture; gridded fields of heat index</i>   |
| L2PP: WCPG                | Level 2 products processor: Weather and Climate Products Generator | Weather data product generation                   | Averaging of basis data (summation for precip.) to half-hourly, hourly, and daily data products; averaging of half-hourly wind field data (maximum for peak gust) to hourly, and daily data products |
|                           |  | Climate data product generation                   | Averaging of weather data (summation for precip., maximum for peak gust) to monthly, seasonal and annual climate data  |
| <b>L2 aggregated data</b> | <i>Weather and climate data products</i>                           |   | <i>Half-hourly, hourly, daily, monthly, seasonal, and annual time series data of all parameters</i>  |
|                           |  |   | <i>Hourly, daily, monthly, seasonal, and annual gridded wind and peak gust fields; 100 m × 100 m resolution</i>  |
|                           |  |   | <i>WegenerNet FBR only: Half-hourly, hourly, daily, monthly, seasonal, and annual gridded fields of temp., humi., and precip.; 200 m × 200 m resolution</i>  |
| VIS                       | Visualization and Information System                               |   | Provision of WPS data to users via the WegenerNet data portal  |



**Table 5.** Maximum bridged interpolation period of linearly interpolated data in the WPS data product generator (DPG).

| Parameters                                       | Max. period [min.] |
|--|--------------------|
| Air temperature, relative humidity               | 30                 |
| Air pressure, snow height, snow water equivalent | 60                 |
| Soil parameters                                  | 180                |
| All other parameters                             | 15                 |



**Table 6.** Data Product Flags for level 2 basis data and corresponding properties.

| DP-Flag | Property of parameter value flagged this way                      |
|---------|---|
| 0       | Measured value at station that has passed level 1 Quality Control |
| 1       | Temporally interpolated value                                     |
| 2       | Spatially interpolated value (from surrounding stations)          |
| 3       | Spatially interpolated value (from gridded data)                  |
| 4       | NaN value (no interpolation possible due to lack of data)         |



**Table 7.** WegenerNet CSV data format general definition.

| Data level                  | CSV parameters  |
|-----------------------------|---|
| L0                          | station No., meas. time, data value   |
| L1                          | station No., meas. time, data value, quality flag, checked flag, no-ref flag  |
| L2, L2+ (basis data)        | station No., meas. time, data value, data product flag  |
| L2 (weather + climate data) | station No., meas. time, data value, min. data value <sup>a</sup> , max. data value <sup>a</sup> , flagged percentage |

<sup>a</sup>Temporal minimum and maximum values, only available for temperature, soil moisture (derived from pF value), and wind peak gust data.

<https://doi.org/10.5194/essd-2020-302>  
Preprint. Discussion started: 3 November 2020  
© Author(s) 2020. CC BY 4.0 License.



665 **Appendix A**



**Table A1.** Sensors installed in the WegenerNet FBR (alphabetical order by parameter); installed data loggers are stated in the Table's bottom row.

| Parameter                                | Sensor  | Stations <sup>a</sup>         | Record period | Height <sup>b</sup> /<br>depth [m] | Sampling<br>intv. [min.] |
|--|---|-------------------------------|---------------|------------------------------------|--------------------------|
| Air pressure [hPa]                       | Kroneis Type 315 K                              | P                             | 2007–2018     | 2                                  | 5                        |
|  |   | P                             | since 2018    | 2                                  | 1                        |
| Air temperature [°C]                     | EE08-05   | B                             | since 2018    | 2                                  | 5                        |
|  |   | SB, P except 154, R           | since 2018    | 2                                  | 1                        |
|  | GeoPrecision Pt1000                             | B, SB, P except 154&155,<br>R | 2007–2018     | 2                                  | 5                        |
|  |   | Ott Compact Pt100             | 153           | since 2007                         | 2                        |
| Rotronic HC2A-S3                         | 154   | since 2017                    | 2             | 1                                  |                          |
| Air rel. humidity [%RH]                  | EE08-05   | B                             | since 2018    | 2                                  | 5                        |
|  |   | SB, P except 154, R           | since 2018    | 2                                  | 1                        |
|  | Rotronic HC2A-S3                                | 154                           | since 2017    | 2                                  | 1                        |
|  | Sensirion SHT75                                 | B, SB, P except 154&155,<br>R | 2007–2018     | 2                                  | 5                        |
| Precipitation [mm]                       |   | Friedrichs 7041.0000          | B, SB         | 2007–2016                          | 1.5                      |
|  | R   |                               | 2007–2018     | 1.5                                | 5                        |
|  | R   |                               | since 2018    | 1.5                                | 1                        |
|  | Meteoservis MR3                                 | B                             | since 2016    | 1.5                                | 5                        |
|  |   | SB                            | 2016–2018     | 1.5                                | 5                        |
|  |   | SB                            | since 2018    | 1.5                                | 1                        |
|  | Meteoservis/Kroneis MR3H                        | 154                           | since 2017    | 1.5                                | 1                        |
|  |   | P except 154                  | 2013–2018     | 1.5                                | 5                        |
|  |   | R                             | 2007–2018     | 1.5                                | 5                        |
|  | Ott Pluvio2 400 cm <sup>2</sup> (un-<br>heated) | P except 154, R               | since 2018    | 1.5                                | 1                        |
| 152                                      |   |                               | since 2013    | 2                                  | 5                        |
| 153                                      |   |                               | since 2007    | 1.2                                | 5                        |
| Ott Pluvio2 200 cm <sup>2</sup> (heated) |   | 153                           | since 2007    | 1.2                                | 5                        |
| Young Model 52202 H                      |   | P except 154&155              | 2007–2013     | 1.5                                | 5                        |
|  | R   | 2007–2018                     | 1.5           | 5                                  |                          |
|  | R   | since 2018                    | 1.5           | 1                                  |                          |

*continued on next page*



*continued from previous page*

| Parameter                                       | Sensor                                     | Stations <sup>a</sup>                             | Record period | Height <sup>b/</sup> depth [m] | Sampling intv. [min.] |
|---|--|---|---------------|--------------------------------|-----------------------|
| <i>Soil parameters:</i>                         |  |   |               |                                |                       |
| pF value [1]                                    | GeoPrecision pF-meter                      | SB except 6&15&54, P                              | 2007–2013     | -0.3                           | 30                    |
|   |  | some SB (6, 15, 54)                               | 2007–2017     | -0.3                           | 30                    |
|   |  | one SB (27), P                                    | since 2013    | -0.2                           | 30                    |
|   |  | some SB (78, 99)                                  | 2013–2017     | -0.2                           | 30                    |
| soil electric conductivity [S m <sup>-1</sup> ] | Stevens HydraProbe II                      | SB except 6&15&54, P                              | 2013–2018     | -0.2                           | 5                     |
|   |  | some SB (6, 15, 54)                               | 2017–2018     | -0.2                           | 5                     |
|   |  | SB, P   | since 2018    | -0.2                           | 1                     |
| soil moisture [m <sup>3</sup> m <sup>-3</sup> ] | Stevens HydraProbe II                      | SB except 6&15&54, P                              | 2013–2018     | -0.2                           | 5                     |
|   |  | some SB (6, 15, 54)                               | 2017–2018     | -0.2                           | 5                     |
|   |  | SB, P   | since 2018    | -0.2                           | 1                     |
| soil temperature [°C]                           | GeoPrecision pF-meter                      | SB except 6&15&54, P                              | 2007–2013     | -0.3                           | 30                    |
|   |  | some SB (6, 15, 54)                               | 2007–2017     | -0.3                           | 30                    |
|   |  | one SB (27), P                                    | since 2013    | -0.2                           | 30                    |
|   |  | some SB (78, 99)                                  | 2013–2017     | -0.2                           | 30                    |
|   | Stevens HydraProbe II                      | SB except 6&15&54, P                              | 2013–2018     | -0.2                           | 5                     |
|   |  | some SB (6, 15, 54)                               | 2017–2018     | -0.2                           | 5                     |
|   |  | SB, P   | since 2018    | -0.2                           | 1                     |
|   |  |   |               |                                |                       |
| Net radiation [W m <sup>-2</sup> ]              | Kipp&Zonen NR Lite                         | P   | 2007–2018     | 2                              | 5                     |
|   | Kipp&Zonen NR Lite2                        | P   | since 2018    | 2                              | 1                     |
| Wind parameters <sup>c</sup>                    | Gill Windsonic                             | P, R  | 2007–2018     | 10 <sup>d</sup>                | 5                     |
|   |  | P, R  | since 2018    | 10 <sup>d</sup>                | 1                     |
| Data loggers                                    | GeoPrecision i-Log3-3V <sup>e</sup>        | B   | 2007–2018     | –                              | –                     |
|   | GeoPrecision i-Log3-RS485 <sup>f</sup>     | SB  | 2007–2018     | –                              | –                     |
|   | GeoPrecision i-Log3-RS485-SDI <sup>g</sup> | P, R  | 2007–2018     | –                              | –                     |
|   | GeoPrecision i-Log-7V-FG2 <sup>e</sup>     | B   | since 2018    | –                              | –                     |
|   | GeoPrecision i-Log-12V-FG2                 | SB <sup>f</sup> , P <sup>g</sup> , R <sup>g</sup> | since 2018    | –                              | –                     |
|   | Ott <sup>g</sup>                           | AHYD  | since 2007    | –                              | –                     |





670

<sup>a</sup> Station types comprise B: Base stations, SB: Special Base stations, P: Primary stations, R: Reference station, and AHYD: stations operated by the Austrian Hydrographic Service; see also Table 1.

<sup>b</sup> For denoted stations, except station 44 (a silo rooftop station in the Raab valley), which measures temperature and rel. humidity at a height of 53 m, precipitation at 51 m and wind parameters at 55 m.

<sup>c</sup> Wind parameters comprise speed [ $\text{m s}^{-1}$ ], direction [ $^{\circ}$ ] gust speed [ $\text{m s}^{-1}$ ], and gust direction [ $^{\circ}$ ].

<sup>d</sup> Height for stations 44, 72, and 101 is 55 m, 18 m, and 14 m, respectively.

<sup>e</sup> Battery-powered.

<sup>f</sup> Powered by solar panel + battery.

<sup>g</sup> Grid-powered with backup battery.



**Table A2.** Sensors installed in the WegenerNet JBT (alphabetical order by parameter); installed data loggers are stated in the Table's bottom row.

| Parameter                   | Sensor            | Stations        | Record period | Height [m] | Sampling intv. [min.] |
|-----------------------------|-------------------|-----------------|---------------|------------|-----------------------|
| Air pressure [hPa]          | Vaisala WXT520    | 502             | 2013–2019     | 3          | 10                    |
| Air temperature [°C]        | EE06              | 501             | 2010–2012     | 2          | 10                    |
|                             |                   | 506             | 2007–2014     | 2          | 30                    |
|                             | 507               |                 | since 2014    | 2          | 10                    |
|                             |                   | 507             | 2007–2014     | 4          | 30                    |
|                             | 507               |                 | since 2014    | 4          | 10                    |
|                             |                   | EE08            | 501           | 2014–2019  | 2                     |
|                             | 502               |                 | since 2019    | 2          | 5                     |
|                             |                   |                 | 504           | 2014–2019  | 3                     |
|                             | 504               |                 |               | since 2019 | 3                     |
|                             |                   | EE08-05         | 503           | 2018–2019  | 4                     |
|                             | 503               |                 | since 2019    | 4          | 5                     |
|                             |                   |                 | 505           | 2018–2019  | 3                     |
|                             | 505               |                 |               | since 2019 | 3                     |
|                             |                   | Rotronic MP103A | 508           | since 2007 | 4                     |
|                             | 509               |                 | since 2007    | 3.5        | 10                    |
|                             | Rotronic HC2-S3-R | 501             | 2011–2014     | 2          | 10                    |
|                             |                   | 503             | 2010–2018     | 4          | 10                    |
| 504                         |                   | 2010–2014       | 3             | 10         |                       |
| 505                         |                   | 2010–2018       | 3             | 10         |                       |
| 513, 514                    |                   | since 2018      | 3             | 10         |                       |
| Sensirion                   | 502               | 2013–2019       | 2             | 10         |                       |
|                             | Vaisala WXT520    | 502             | 2013–2019     | 3          | 10                    |
| Air relative humidity [%RH] | EE06              | 501             | 2010–2012     | 2          | 10                    |
|                             |                   | 506             | 2007–2014     | 2          | 30                    |
|                             | 507               |                 | since 2014    | 2          | 10                    |
|                             |                   | 507             | 2007–2014     | 4          | 30                    |
|                             | 507               | since 2014      | 4             | 10         |                       |

*continued on next page*



*continued from previous page*

| Parameter                        | Sensor  | Stations | Record period | Height [m] | Sampling<br>intv. [min.] |
|----------------------------------|---|----------|---------------|------------|--------------------------|
|                                  | EE08  | 501      | 2014–2019     | 2          | 10                       |
|                                  |   |          | since 2019    | 2          | 5                        |
|                                  |   | 502      | since 2019    | 2          | 5                        |
|                                  |   | 504      | 2014–2019     | 3          | 10                       |
|                                  |   |          | since 2019    | 3          | 5                        |
|                                  | EE08-05                                       | 503      | 2018–2019     | 4          | 10                       |
|                                  |   |          | since 2019    | 4          | 5                        |
|                                  |   | 505      | 2018–2019     | 3          | 10                       |
|                                  |   |          | since 2019    | 3          | 5                        |
|                                  | Rotronic MP103A                               | 508      | since 2007    | 4          | 10                       |
|                                  |   | 509      | since 2007    | 3.5        | 10                       |
|                                  | Rotronic HC2-S3-R                             | 501      | 2011–2014     | 2          | 10                       |
|                                  |   | 503      | 2010–2018     | 4          | 10                       |
|                                  |   | 504      | 2010–2014     | 3          | 10                       |
|                                  |   | 505      | 2010–2018     | 3          | 10                       |
|                                  |   | 513, 514 | since 2018    | 3          | 10                       |
|                                  | Sensirion                                     | 502      | since 2013    | 2          | 10                       |
|                                  | Vaisala WXT520                                | 502      | 2013–2019     | 3          | 10                       |
| <i>Precipitation parameters:</i> |   |          |               |            |                          |
| Precipitation [mm]               | Anton Paar tipping bucket                     | 510      | since 2007    | 1.2        | 5                        |
|                                  | Campbell WRG205 (heated)                      | 514      | since 2019    | 3          | 10                       |
|                                  | Ott Pluvio2 200 [cm <sup>2</sup> ] (heated)   | 511      | since 2007    | 1.2        | 5                        |
|                                  | Ott Pluvio2 400 [cm <sup>2</sup> ] (heated)   | 501      | 2010–2019     | 2.5        | 10                       |
|                                  |   |          | since 2019    | 2.5        | 5                        |
|                                  | Ott Pluvio2 400 [cm <sup>2</sup> ] (unheated) | 502, 503 | 2013–2019     | 2          | 10                       |
|                                  |   |          | since 2019    | 2          | 5                        |
|                                  | Vaisala Raincap WXT520                        | 502      | 2013–2019     | 3          | 10                       |
|                                  | Young Model 52202 H (heated)                  | 506      | 2007–2014     | 1.5        | 30                       |
|                                  |   |          | since 2014    | 1.5        | 10                       |
|                                  | Young Model 52202 (unheated)                  | 507      | 2007–2014     | 1.5        | 30                       |
|                                  |   |          | since 2014    | 1.5        | 10                       |

*continued on next page*



*continued from previous page*

| Parameter                                   | Sensor   | Stations        | Record period       | Height [m] | Sampling<br>intv. [min.] |    |
|---|--|-----------------|---------------------|------------|--------------------------|----|
| Rainfall duration [min]                     | Vaisala WXT520                                 | 502             | 2013–2019           | 3          | 10                       |    |
| Rainfall intensity [mm h <sup>-1</sup> ]    | Vaisala WXT520                                 | 502             | 2013–2019           | 3          | 10                       |    |
| <i>Radiation parameters:</i>                |  |                 |                     |            |                          |    |
| Global solar radiation [W m <sup>-2</sup> ] | Kipp&Zonen CMA6                                | 501, 503        | 2010–2019           | 2          | 10                       |    |
|   |  |                 | since 2019          | 2          | 5                        |    |
|   |  | 502             | 2014–2019           | 2          | 10                       |    |
|   |  |                 | since 2019          | 2          | 5                        |    |
|   | Kipp&Zonen CMP3                                | 504, 505        | 2010–2019           | 3          | 10                       |    |
|   |  |                 | since 2019          | 3          | 5                        |    |
|   |  | 507             | 2008–2014           | 4          | 30                       |    |
|   |  |                 |                     | since 2014 | 4                        | 10 |
|   | Kipp&Zonen CNR4                                | 514             | since 2018          | 3          | 10                       |    |
|   | Schenk 8101                                    | 508             | since 2007          | 5.5        | 10                       |    |
| Thies GSM 3.3                               | 506  | 2007–2014       | 2.5                 | 30         |                          |    |
|   |  | since 2014      | 2.5                 | 10         |                          |    |
| Net radiation [W m <sup>-2</sup> ]          | Kipp&Zonen CNR4                                | 514             | since 2018          | 3          | 10                       |    |
|   |  |                 | Kipp&Zonen NR Lite2 | 501, 503   | 2010–2019                | 2  |
|   |  |                 | since 2019          |            | 2                        | 5  |
|   |  | 502             | 2014–2019           | 2          | 10                       |    |
|   |  |                 | since 2019          | 2          | 5                        |    |
|   |  | 504, 505        | 2010–2019           | 3          | 10                       |    |
|   | since 2019                                     |                 | 3                   | 5          |                          |    |
|   | Kipp&Zonen CNR4                                | 514             | since 2018          | 3          | 10                       |    |
|   | Reflected solar radiation [W m <sup>-2</sup> ] | Kipp&Zonen CMA6 | 501, 503            | 2010–2019  | 2                        | 10 |
|   |  |                 |                     | since 2019 | 2                        | 5  |
|   |  | 502             | 2014–2019           | 2          | 10                       |    |
|   |  |                 | since 2019          | 2          | 5                        |    |
| Kipp&Zonen CNR4                             |  | 514             | since 2018          | 3          | 10                       |    |

*Snow parameters:*

*continued on next page*

675



*continued from previous page*

| Parameter   | Sensor                           | Stations | Record period | Height [m]    | Sampling<br>intv. [min.] |    |
|---|----------------------------------|----------|---------------|---------------|--------------------------|----|
| Snow height [cm]                                  | Sommer USH-8                     | 501, 503 | 2010–2019     | 4             | 10                       |    |
|   |                                  |          | since 2019    | 4             | 5                        |    |
|   |                                  | 507      | 2008–2014     | 4             | 30                       |    |
|   |                                  |          | since 2014    | 4             | 10                       |    |
|   |                                  |          | 508           | since 2007    | 5.5                      | 10 |
| Snow temperature [°C]                             | Sommer USH-9                     | 514      | since 2018    | 5.5           | 10                       |    |
|   | Sommer STPG-592C                 | 508      | 2007–2019     | 0, .2, .4, .6 | 10                       |    |
| Snow water equivalent [mm]                        | Sommer SSG                       | 501      | 2010–2019     | 0             | 10                       |    |
|   |                                  | 507      | 2008–2014     | 0             | 30                       |    |
|   |                                  |          | since 2014    | 0             | 10                       |    |
| Surface temperature [°C]                          | Sommer IR-T/C.5                  | 508      | since 2007    | 5.5           | 10                       |    |
|   |                                  | 514      | since 2018    | 5.5           | 10                       |    |
| Wind parameters <sup>a</sup>                      | Gill Windsonic PK-100            | 501, 502 | since 2019    | 10            | 5                        |    |
|   | Kroneis 262                      | 504, 505 | 2010–2019     | 6             | 10                       |    |
|   |                                  |          | since 2019    | 6             | 5                        |    |
|   | Kroneis 263                      | 503      | 2010–2019     | 10            | 10                       |    |
|   |                                  |          | since 2019    | 10            | 5                        |    |
|   | Thies Ultrasonic 2D              | 501      | 2010–2019     | 10            | 10                       |    |
|   | Vaisala WXT520                   | 502      | 2013–2019     | 3             | 10                       |    |
|   | Young 05103                      | 508      | since 2007    | 7             | 10                       |    |
|   |                                  |          | 509           | since 2007    | 5                        | 10 |
|   |                                  |          | 513           | since 2018    | 5.5                      | 10 |
|   | Young 09101                      | 507      | 2008–2014     | 6             | 30                       |    |
| since 2014  |                                  |          | 6             | 10            |                          |    |
| Wind speed [ms <sup>-1</sup> ]                    | Thies Compact type 4.3519.00.000 | 506      | 2007–2014     | 2             | 30                       |    |
|   |                                  | 506      | since 2014    | 2             | 10                       |    |
| Water discharge [m <sup>3</sup> s <sup>-1</sup> ] | Sommer RQ-24                     | 512      | since 2007    | 4             | 10                       |    |
| Water flow velocity [m s <sup>-1</sup> ]          | Sommer RQ-24                     | 512      | since 2007    | 4             | 10                       |    |
| Water level [m]                                   | Mobrey MSP422                    | 506      | 2007–2014     | 4             | 30                       |    |

*continued on next page*



*continued from previous page*

| Parameter    | Sensor  | Stations           | Record period | Height [m] | Sampling<br>intv. [min.] |
|--------------|---|--------------------|---------------|------------|--------------------------|
|              |   | 506                | since 2014    | 4          | 10                       |
|              | Sommer RQ-24                                    | 512                | since 2007    | 4          | 10                       |
| Data loggers | Bogner & Lehner CLC <sup>b</sup>                | 506                | since 2007    | –          | –                        |
|              |   | 507                | since 2008    | –          | –                        |
|              | GeoPrecision i-Log3-12V <sup>b</sup>            | 502                | 2013–2019     | –          | –                        |
|              | GeoPrecision<br>i-Log-12V-GPRS-FG2 <sup>c</sup> | 501                | since 2019    | –          | –                        |
|              | GeoPrecision<br>i-Log-12V-GPRS-FG2 <sup>b</sup> | 502, 503, 504, 505 | since 2019    | –          | –                        |
|              | MRSX <sup>b</sup>                               | 508, 509           | since 2007    | –          | –                        |
|              |   | 513, 514           | since 2018    | –          | –                        |
|              | Ott <sup>c</sup>                                | 510, 511           | since 2007    | –          | –                        |
|              | Sommer MDL4 <sup>b</sup>                        | 512                | since 2010    | –          | –                        |
|              | Sommer MDL8 <sup>b</sup>                        | 503, 504, 505      | 2010–2019     | –          | –                        |
|              | Sommer MDL8-AE8 <sup>c</sup>                    | 501                | 2010–2019     | –          | –                        |

<sup>a</sup> Wind parameters comprise speed [ $\text{m s}^{-1}$ ], direction [ $^{\circ}$ ], gust speed [ $\text{m s}^{-1}$ ], and gust direction [ $^{\circ}$ ].

<sup>b</sup> Powered by solar panel + battery.

<sup>c</sup> Grid-powered with backup battery.



**Table A3.** List of variables of WegenerNet level 2 and 2+ NetCDF data.

| Gridded basis data fields  |   |      |
|--|---|------|
| Variable   | Long name   | Unit |
| T_z300m  | Air Temperature at 300 m Altitude   | K    |
| T_zTerrain   | Air Temperature (2 m) at Terrain Altitude of Grid Points                          | K    |
| T_zAvgTerr   | Air Temperature (2 m) at Average Terrain Altitude of Grid Points                  | K    |
| T_HeatIndex  | Heat Index  | °C   |
| RH   | Relative Humidity   | %    |
| Precip   | Precipitation Amount  | mm   |
| QGrid_T <sup>a</sup>   | Air Temperature Quality Grid  | -    |
| QGrid_RH <sup>a</sup>  | Relative Humidity Quality Grid  | -    |
| QGrid_Precip <sup>a</sup>  | Precipitation Amount Quality Grid   | -    |
| Temporal statistics of gridded fields (weather and climate data) |   |      |
| Variable   | Long name   | Unit |
| T_z300m_M <sup>b</sup>   | Air Temperature at 300 m Altitude (temporal mean)                                 | K    |
| T_zTerrain_M <sup>b</sup>  | Air Temperature (2 m) at Terrain Altitude of Grid Points (temporal mean)          | K    |
| T_zAvgTerr_M <sup>b</sup>  | Air Temperature (2 m) at Average Terrain Altitude of Grid Points (temporal mean)  | K    |
| T_HeatIndex_M <sup>b</sup>                                       | Heat Index (temporal mean)  | °C   |
| RH_M   | Relative Humidity (temporal mean)   | %    |
| Precip_S   | Precipitation Amount (temporal sum)   | mm   |
| Precip_S_Max <sup>c</sup>  | Precipitation Amount (maximum of related sums)                                    | mm   |
| Flagged_T <sup>d</sup>   | Percentage of Flagged Air Temperature Data  | %    |
| Flagged_RH <sup>d</sup>  | Percentage of Flagged Relative Humidity Data                                      | %    |
| Flagged_Precip <sup>d</sup>                                      | Percentage of Flagged Precipitation Amount Data                                   | %    |
| Areal statistics of gridded variables                            |   |      |
| Variable   | Long name   | Unit |
| T_zTerrain_avg <sup>e</sup>                                      | Air Temperature (2 m) at Terrain Altitude of Grid Points (Area-wide Mean)         | K    |
| T_zAvgTerr_avg <sup>e</sup>                                      | Air Temperature (2 m) at Average Terrain Altitude of Grid Points (Area-wide Mean) | K    |
| T_z300m_avg <sup>e</sup>   | Air Temperature at 300 m Altitude (Area-wide Mean)                                | K    |
| T_HeatIndex_avg <sup>e</sup>                                     | Heat Index (Area-wide Mean)   | °C   |
| RH_avg <sup>e</sup>  | Relative Humidity (Area-wide Mean)  | %    |
| Precip_avg <sup>e</sup>  | Precipitation Amount (Area-wide Mean)   | mm   |

*continued on next page*

680



*continued from previous page*

| Variable                          | Long name  | Unit |
|-----------------------------------|--|------|
| QGrid_T_avg <sup>a,e</sup>        | Air Temperature Quality Grid (Area-wide Mean)                    | -    |
| QGrid_RH_avg <sup>a,e</sup>       | Relative Humidity Quality Grid (Area-wide Mean)                  | -    |
| QGrid_Precip_avg <sup>a,e</sup>   | Precipitation Amount Quality Grid (Area-wide Mean)               | -    |
| Flagged_T_avg <sup>d,e</sup>      | Percentage of Flagged Air Temperature Data (Area-wide Mean)      | %    |
| Flagged_RH_avg <sup>d,e</sup>     | Percentage of Flagged Relative Humidity Data (Area-wide Mean)    | %    |
| Flagged_Precip_avg <sup>d,e</sup> | Percentage of Flagged Precipitation Amount Data (Area-wide Mean) | %    |

Other variables

| Variable                       | Long name   | Unit              |
|--------------------------------|---|-------------------|
| Vspeed_z400m_SelStation        | Wind Speed (10 m) at Selected z394 m–Station 74 scaled to 400 m Altitude        | ms <sup>-1</sup>  |
| VMspeed_z400m_SelStation       | Maximum Peak Gust (10 m) at Selected z394 m–Station 74 scaled to 400 m Altitude | ms <sup>-1</sup>  |
| P_z300m_RefStation             | Air Pressure at z302 m–Reference Station scaled to 300 m Altitude               | Pa                |
| Rnet_RefStation                | Net Radiation at Reference Station  | Wm <sup>-2</sup>  |
| Tsoil_AvgStations              | Soil Measurement Stations–Mean Soil Temperature                                 | K                 |
| Z_top                          | Height of Air Temperature Lapse Rate Change                                     | m                 |
| T_top                          | Air Temperature at Z_top  | K                 |
| lr_up                          | Lapse rate of Air Temperature above Z_top                                       | K m <sup>-1</sup> |
| lr_down                        | Lapse rate of Air Temperature below Z_top                                       | K m <sup>-1</sup> |
| QFlag_T <sup>f</sup>           | Air Temperature Quality Flag  | -                 |
| QFlag_RH <sup>f</sup>          | Relative Humidity Quality Flag  | -                 |
| QFlag_Precip <sup>f</sup>      | Precipitation Amount Quality Flag   | -                 |
| QFlag_T_HeatIndex <sup>g</sup> | Heat Index Quality Flag   | -                 |
| N_OK_T                         | Air Temperature - number of OK stations   | 1                 |
| N_OK_RH                        | Relative Humidity - number of OK stations                                       | 1                 |
| N_OK_Precip                    | Precipitation Amount - number of OK stations                                    | 1                 |
| N_OK_T_HeatIndex               | Heat Index - number of OK stations  | 1                 |

<sup>a</sup>Refers to the interpolated DP-Flag grids as described in Sect. 4.3, point 4.

<sup>b</sup>Given variables are also available as temporal maximum and minimum, indicated by variable name extension *\_Max*, and *\_Min*.

<sup>c</sup>Available for climate data only.

<sup>d</sup>Refers to the flagged percentage of data grids as described in Sect. 4.5.2.

<sup>e</sup>Given variables are available as area-wide mean, maximum, minimum, and standard deviation, indicated by variable name extensions *\_avg*, *\_max*, *\_min*, and *\_sdev*.

<sup>f</sup>Same as QGrid\_[T,RH,Precip]\_avg, available for compatibility reasons only.

<sup>g</sup>Average of QFlag\_T and QFlag\_RH.





**Table A4.** List of variables of WegenerNet wind field NetCDF data.

| Gridded data fields |  |                  |
|---------------------|--|------------------|
| Variable            | Long name  | Unit             |
| wind_speed          | Half-Hourly Wind Speed at defined Vertical Levels                              | ms <sup>-1</sup> |
| wind_dir            | Half-Hourly Wind Direction at defined Vertical Levels                          | °                |
| wind_avg_speed      | Half-Hourly Average Wind Speed at defined Vertical Levels (Arithmetic Mean)    | ms <sup>-1</sup> |
| gust_speed          | Half-Hourly Gust Speed at 10 m Height  | ms <sup>-1</sup> |
| gust_dir            | Half-Hourly Gust Direction at 10 m Height                                      | °                |
| FP_Wind             | Half-Hourly interpolated Flagged Percentage of Wind Data                       | %                |
| FP_Gust             | Half-Hourly interpolated Flagged Percentage of Gust Data                       | %                |
| Other variables     |  |                  |
| Variable            | Long name  | Unit             |
| max_gust_speed      | Half-Hourly Maximum Gust Speed at Stations with Wind Sensors                   | ms <sup>-1</sup> |
| max_gust_dir        | Half-Hourly Wind Direction of maximum Gust Speed at Stations with Wind Sensors | °                |