

Letter to the editor

Dear David Carlson,

Thank you for your efforts with our manuscript! We changed the manuscript according to the points the reviewers raised and adapted the data on the zenodo repository now including also areal precipitation and temperature as well as the shape files for each catchment (<https://zenodo.org/record/4057967>). Please, find the point-by-point reply (blue) to the reviewer comments (black) below.

On behalf of all co-authors,

Maria Staudinger

Reviewer #1

We thank the reviewer for their useful comments and include our response to each of their points here.

Major comments: The isotopic compositions of stream water in 23 catchments are indeed interesting to the hydrologists. I also understand the hard work for such collection.

Thank you!

However, the main concern for me about this work is that it lacks measured isotopes data of precipitation. Although the authors gave the interpolation values for each catchment, I would love to see measurements of these values.

We also wished we had been able to collect precipitation isotope samples but unfortunately this was not feasible given the available funding. However, we provide the modelled precipitation isotope composition to support other applications.

Moreover, the data set did not provide precipitation amount data. As the author mentioned, the data set is useful to estimate mean transit time (MTT) or run catchment hydrological models. However, the precipitation isotopic ratios and amount are the most important inputs for the models. MTT was calculated by modeling the relationship between precipitation as an input and hydrological components as outputs. Consequently, it can not calculate MTT accurately if there is no accurate input information. From my point, the data set did not support the usefulness which mentioned in the introduction.

Motivated by the request of the reviewer(s), we contacted the Swiss federal agency, MeteoSwiss, again and inquired whether we would be allowed to publish the data together with our data set. For the basin weighted average precipitation and we got the OK to do so and now added the areal precipitation to the dataset in the data repository.

Minor comments:

L40 od should be of

We changed that.

L159 Average elevation gradients for each month were calculated. Why the average elevation gradients for each month were calculated? I did not understand this sentence.

We rephrased this part in the manuscript. The gradients are lapse rates that change through the year. The elevation gradients remain the same of course.

Reviewer #2

The presented data collection is a unique and valuable contribution for the hydrology community. The accompanying text is comprehensible.

Thank you for this positive comment.

However, there are essential information missing (rainfall and streamflow data, basin boundaries) to make it a complete data collection that is usable for the community. It should be in the interest of the authors to provide a complete collection, as it will increase the impact of the published data and reduce misinterpretation.

Yes, we agree that precipitation and streamflow data as well as catchment boundaries might be needed to make our data easy to use for other studies, as we also wrote in the manuscript. Where these other data are available from the respective agencies, we added these data to the revised version of our data paper (see our response to the comment below).

Rainfall data – to make the dataset comprehensive you need to supply the rainfall amounts (e.g. as basin weighted averages), the link provided to Referee 1 is not sufficient at all, it only leads to a german webpage (not available in english). Even if anyone would be able to go through the registration process it is not at all clear which weather stations are required to obtain data for the specific basins. I guess not each of your basins has a weather station? And the names of corresponding weather stations might not be the names of the basins. I understand that certain institutions will not allow the publication of raw data, but I am convinced that Meteoswiss will allow publication of the data (especially when providing processed basin weighted averages) as part of a scientific publication (see section “how data may be used”

<https://gate.meteoswiss.ch/idaweb/more.do?language=en>)

Motivated by the request of the reviewer(s), we contacted the respective agencies again and inquired whether we would be allowed to publish the data together with our data set. For the basin weighted average precipitation and we got the OK from MeteoSwiss to do so. We added these data and the source (“Rhires” gridded data product) to the data set and describe the basin weighted average precipitation in the manuscript.

Streamflow data – Streamflow timeseries are essential for multiple applications, and I would highly recommend to add them to the data collection. In any case, the information that is currently provided is not sufficient. It is not clear where one can obtain the streamflow timeseries. In line 207 you mention Swiss FOEN as a data source (for streamflow and basin boundaries), however the stations ROE, ERL, VOG, LUE, AAM are not existing in the public dataset (<https://www.hydrodaten.admin.ch/en/stationsand-data.html>). GUE has a different FOEN ID and coordinates. You need to at least provide detailed information where one can get the data for all basins, but as outlined above I think providing streamflow timeseries would be a valuable addition to the present data collection.

Thank you for carefully checking the stations. We did indeed miss to provide the reference to the Alptal stations (ERL, VOG, LUE) that are maintained by the WSL (Swiss Federal Institute for Forest, Snow and Landscape Research) as well as for the Cantonal stations of ROE and AAM and we will add this information. In Table1, column FOENID there are simply blanks indicating that the stations are not maintained by the Federal Office. We will change that to make clear from where the respective data come. We asked again at the Cantons as well as at the FOEN and the WSL whether we could provide the streamflow time series. Since not all gave us the allowance, we decided for consistency and completeness within the data set to not add the streamflow data to our data set. However, we indicated now more clearly from where the streamflow data of each station can be obtained.

Basin boundaries – It would be great if you could provide basin boundaries for all basins, as for most applications these are needed to clip other data sources. E.g. without providing rainfall data, missing basin boundaries are another obstacle for interested users. It's clear that you have them available and I do not see a reason why you should not provide them.

We agree. We added these shapefiles to our data set (referring to the FOEN as data source).

Minor Comments:

Line 80 - replace "stemming from" with sth like "collected in"

We replaced that.

Line 141 – In my understanding, the flow percentile that you describe is 0.05, terms are mixed up, I guess you mean the exceedance probability of 0.95 or the percentile of 0.05

Yes, we intended to refer to the exceedance probability. We changed the text accordingly.

Figure 1: increase size of scale and basin IDs

We increased the size as recommended.

Figure 8: there is a 1 on top of January

We removed that, thanks for spotting the mistake.

The CH-IRP data set: a decade of fortnightly data of $\delta^2\text{H}$ and $\delta^{18}\text{O}$ in streamflow and precipitation in Switzerland

Maria Staudinger¹, Stefan Seeger², Barbara Herbstritt², Michael Stoelzle³, Jan Seibert¹, Kerstin Stahl³, Markus Weiler²

5 ¹Hydrology and Climate Unit, Department of Geography, University of Zurich, 8057, Zurich, Switzerland

²Chair of Hydrology, University of Freiburg, 79098, Freiburg, Germany

³Chair of Environmental Hydrological Systems, University of Freiburg, 79098, Freiburg, Germany

Correspondence to: Maria Staudinger (maria.staudinger@geo.uzh.ch)

10 **Abstract.**

The stable isotopes of oxygen and hydrogen, ^2H and ^{18}O , provide information on water flow pathways and hydrologic catchment functioning. Here a data set of time series data on precipitation and streamflow isotope composition in Swiss medium-sized catchments, CH-IRP, is presented that is unique in terms of its long-term multi-catchment coverage along an alpine to pre-alpine gradient. The data set comprises
15 fortnightly time series of both $\delta^2\text{H}$ and $\delta^{18}\text{O}$ as well as Deuterium excess from streamflow for 23 sites in Switzerland, together with summary statistics of the sampling at each station. Furthermore, time series of $\delta^{18}\text{O}$ and $\delta^2\text{H}$ in precipitation are provided for each catchment derived from interpolated datasets from the NISOT, GNIP and ANIP networks. For each station we compiled relevant metadata describing both
the sampling conditions as well as catchment characteristics and climate information. Lab standards and
20 errors are provided, and potentially problematic measurements are indicated to help the user decide on the applicability for individual study purposes. For the future, it is planned that the measurements will be continued at 14 stations as a long-term isotopic measurement network and the CH-IRP data set will, thus, be continuously be extended. The data set can be downloaded from data repository zenodo

25 2020).

1 Introduction

There are significant differences in the isotopic contents of seawater, freshwater (Gilfillan, 1934), rain and snow. The isotopic composition in precipitation further depends on meteorological influences such as air temperature, rainfall amount and intensity, and location parameters such as altitude, latitude and
30 distance from the coast (Dansgaard, 1953, 1964; Epstein, 1956; Friedman, 1953).

When tracing the path of water through a hydrological system such as a catchment, the composition of the stable water isotopes $\delta^{18}\text{O}$ and $\delta^2\text{H}$ of precipitation changes by the time it reaches the stream. The isotopic signal in the precipitation is changed along the water flow pathways through a catchment resulting in a temporal delay and a dampened amplitude of the signal in the streamflow. This signal
35 change can be modelled using water transit time distributions or other approaches to consider water ages, and can, hence, help improve the understanding of hydrological functioning of catchments. Event-based isotope sampling has long been the basis for hydrograph separation in hydrological research and allows quantifying pre-event and event water contributions to soil water, streamflow, or groundwater (Christophersen et al., 1990; Klaus and McDonnell, 2013; Sprenger et al., 2019). More extended time
40 series of the isotopic composition of catchment discharge, i.e., streamflow, allow the estimation of water transit times and storage ~~and~~of catchments (McGuire and McDonnell, 2006). Besides their value to develop, calibrate and validate a wide variety of catchment hydrological models, these data sets also have a demonstrated value for catchment intercomparisons in, for instance, Sweden (Lyon et al., 2010), Oregon

(McGuire et al., 2005) and different Northern regions (Tetzlaff et al., 2009). McGuire et al. (2005) used
45 isotopic data for a three-year period to quantify mean transit times for seven, partly nested, catchments in
the Cascades, Oregon, US, and found good relations to topographic indices such as the catchment average
of L/G , where L is the distance from the stream and G is the gradient to the stream. In a similar study in
Northern Sweden based on 15 snow-dominated subcatchments of the Krycklan catchment, Lyon et al.
(2010) found wetlands to be a controlling factor for catchment transit times. Tetzlaff et al. (2009)
50 compiled a data set of 55 catchments in different regions in the northern temperate zone. Their analysis
showed that topography is an essential control in catchments with a pronounced topography, whereas the
topographic influences are smaller in regions with a flatter topography. In the latter, hydrological soil
characteristics become relatively more important.

Here, we present a long-term data set consisting of $\delta^2\text{H}$ and $\delta^{18}\text{O}$ values for streamflow and precipitation
55 for 23 catchments in Switzerland and discuss the applicability of the data. The collection of this data set
started in 2010 as part of the DROUGHT-CH project (Seneviratne et al., 2013) and is still continuing.

2 CH-IRP data set

2.1 $\delta^2\text{H}$ and $\delta^{18}\text{O}$ for streamflow

2.1.1 Data sampling

60 The data were collected in 23 catchments with near-natural streamflow in Switzerland. The catchments
were selected based on two different criteria and two different temporal sampling resolutions were chosen.
The majority of catchments were selected with the focus on studying and comparing low-flow behaviour.
Therefore, we selected catchments without major water abstractions or transfers, where the gauging
stations provided precise streamflow measurements also during low flows (see

65 <https://opendata.swiss/de/dataset/niedrigwasserstatistik-nqstat> and Marti and Kan (2003)). These catchments vary in size, mean elevation, topographic characteristics as well as underlying geology (Table 1, [Figure 1](#)~~Figure-1~~). For these catchments the sampling was done fortnightly.

Five catchments belong to the Alptal long-term hydrological research catchments (Alp, Biber, Erlenbach, Lümpenbach, and Vogelbach). Here, grab samples were collected fortnightly until December 2014 and 70 have been collected weekly starting from January 2015.

Additional isotope data were collected within other research projects in the Alptal catchments ([Figure 1](#)~~Figure-1~~, inset zoom) during events with higher temporal resolution over a short period or in snapshot campaigns with higher spatial coverage. Fischer et al. (2016) performed isotopic hydrograph separations for several events in five small headwater catchments in the Alptal and found that the event-water fraction 75 depended much more on the event size than on catchment characteristics. These findings contributed to the emerging conceptual understanding of runoff generation in the Alptal (van Meerveld et al., 2018). A general observation for isotopes in the Alptal is the large spatial variation which was found for both, rainfall (Fischer et al., 2017) and groundwater (Kiewiet et al., in press). Rücker et al. (2019) measured the isotopic composition of snowpack outflow to study runoff generation during rain-on-snow events. 80 Furthermore, in the Alptal a field lab was installed that provides isotope data at high temporal resolution at the outlet of the Erlenbach catchment (von Freyberg et al., 2018). The data ~~stemming from~~[collected in](#) these studies ~~is~~[are](#) not part of the CH-IRP data set but could be useful for specific research questions.

All samples were taken as grab samples using 100 mL High Density PolyEthylene (HD-PE) bottles. The sampling personnel was instructed to flush the bottle with stream water before taking the sample and to

85 ensure to tightly close the bottle to minimize exchange with the atmosphere and thus to avoid fractionation of the samples.

2.1.2 Lab analysis

All liquid water samples were analyzed at the Chair of Hydrology at the University of Freiburg, Germany. The laboratory regularly participates successfully in IAEA Water Isotope Inter-Comparisons (WICO)
90 (Wassenaar et al., 2018). The samples were analyzed using CRDS laser spectrometers (either Picarro L2120-*i* or L2130-*i*, Picarro Inc., Santa Clara, CA, USA) in ‘high precision mode’. Samples were filtered via syringe filters (0.45 µm) prior to analysis if they were muddy. Of each sample, 1 mL was filled into autosampler vials. According to the manufacturer handbook, six injections per vial were analyzed with the isotope analyzer and raw data of the first three injections were discarded to keep memory effects from
95 one sample to the next at a minimum. Mean and standard deviation (SD) of the last three injections were calculated. In case there was still a memory effect and the SD was larger than 0.08‰ (in the case of $\delta^{18}\text{O}$) or larger than 0.30‰ (in the case of $\delta^2\text{H}$), the fourth injection was also discarded and only the last two injections were averaged.

Calibration of the raw data was then conducted using three in-house standards with distinct isotopic
100 compositions, -14,86‰, -9.47‰, and 0.30‰ for $\delta^{18}\text{O}$, -107.96‰, -66.07‰, and 1.53‰ for $\delta^2\text{H}$, referenced to the international VSMOW-SLAP scale (Craig, 1961). The standards were analyzed in triplicates each and averaged. The light and the heavy standards – embracing the samples – were used for a 2-point calibration, the third standard was used for validation. Long-term post-calibration accuracy of the validation standard was $\pm 0.05\text{‰}$ for $\delta^{18}\text{O}$ and $\pm 0.35\text{‰}$ for $\delta^2\text{H}$. Typically, the nine standards were
105 evenly distributed between 40 samples and thereby additionally used to check for instrument drift. Besides

the calibration of the measurements to an international system, a comparison to the standard is useful because it allows an implicit consideration of all corrections for instrumental effects and interferences. Furthermore, most of the influences are cancelled out since they affect both the sample and the reference standard equally (Gourcy et al., 2005).

110 All isotope data are expressed in δ -notation calculated following Eq. (1) (after Gonfiantini (1981)):

$$\delta = \left(\frac{R_{sample}}{R_{VSMOW}} - 1 \right) \cdot 1000\text{‰} \quad (1)$$

where *VSMOW* is the Vienna Standard Mean Ocean Water and *R* is the isotope ratio ($^{18}\text{O}/^{16}\text{O}$ or $^2\text{H}/^1\text{H}$).

During times when there was enough lab capacity, double measurements were performed and the arithmetic average was calculated (for ~50% of the samples).

115 2.1.3 Summary statistics

The sampling periods for streamflow was about eight years for 14 catchments, about three years for seven catchments and for the remaining two catchments five years and 1.5 years, respectively. There is an overlap of three years with data for almost all catchments (~90%), and for the 14 stations that are still being sampled more than eight years of overlapping data are available. Since the stations were sampled
120 fortnightly the number of samples was between 26 and 224 per station, while for the Alptal catchments the samples were taken weekly from 2015 on and these catchments have a total number of 318 samples each.

We performed a statistical outlier analysis based on z-scores (from a visual inspection of the data sets using qq-plots we assume the data are normally distributed). There were in total 47 outliers according to

125 the z-score in either $\delta^2\text{H}$ and $\delta^{18}\text{O}$ or both with an absolute value larger than three, indicating that the value deviates more than three standard deviations from the mean.

Isotopic compositions can strongly deviate during high flow conditions compared to mean or baseflow conditions because of larger proportion of event and more recent precipitation, as was found for instance in the high-resolution dataset of the Plynlimon catchment, Wales (Knapp et al., 2019). The time series of $\delta^2\text{H}$ in [Figure 2](#) and of $\delta^{18}\text{O}$ [Figure 3](#) give an overview of the seasonal changes for each catchment in the isotope composition. The relationship of $\delta^2\text{H}$ and $\delta^{18}\text{O}$ does not deviate for any of the catchments from the global meteoric water line (GMWL, $\delta^2\text{H} = 8.0 \delta^{18}\text{O} + 10\%$) ([Figure 4](#)).

2.1.4 Streamflow conditions during sampling

In addition to the values of $\delta^2\text{H}$ and $\delta^{18}\text{O}$ and deuterium excess we provide an index of sampling conditions regarding streamflow (sampling Q index). This index was calculated from the sum the streamflow volume on the day of sampling and the previous two days divided by the sum of the long-term mean streamflow over the same days of the year. An index larger than one indicates wetter conditions from the long-term mean, an index smaller than one indicates drier conditions than the long-term mean. This information can also be assembled to analyze the frequency of samples taken under certain streamflow conditions as given by the index ([Figure 7](#)).

Furthermore, we calculated the flow ~~percentile~~ [exceedance probabilities](#) on the flow duration curve during the sampling to get an idea if the samples were taken during baseflow, average or high flow conditions. An [exceedance probability](#) ~~percentile with the value of~~ 0.95, for instance, would be exceeded 95 % of the time during the year and indicates very low streamflow conditions. The [exceedance probabilities](#) ~~percentiles~~ were calculated empirically based on the last 20 years of the available record of streamflow

(1999 - 2018), note that this period contained some pronounced low flow periods (2003, 2011, 2015 and 2018). These computations demonstrated that the percentiles for the sampling times in each catchment span the full range of percentiles, which indicates that samples were taken during baseflow, mean flow and high flow conditions. Most samples were taken during mean flow conditions.

150 Comparing the mean catchment elevation shows that the isotope values follow the elevation gradient ([Figure 5](#)~~Figure 5~~ and [Figure 6](#)~~Figure 6~~) as expected (Dansgaard, 1964). The Riale di Calneggia catchment shows an exception to this general gradient. This catchment in the Canton Ticino in the Southern Alps receives precipitation from the Mediterranean Sea and thus shows a less depleted isotopic signal. The elevational gradient that is visible in the long-term mean values of the time series is also visible in specific
155 seasons (JFM, AMJ, JAS, OND) and is very similar for $\delta^2\text{H}$ and $\delta^{18}\text{O}$.

2.2 $\delta^2\text{H}$ and $\delta^{18}\text{O}$ for precipitation

For isotopes in precipitation, data from the National Network for the Observation of Isotopes in the Water Cycle (ISOT, see Schotterer, 2010) was used to predict precipitation isotopes for the selected catchments. For the catchments close to the Swiss border also data from the Austrian network (ANIP) as well as the
160 global network (GNIP) were used to allow for a better interpolation. Average ~~elevation~~ gradients for each month were calculated from a representative gradient based on three ~~NI~~ISOT stations ([Figure 1](#)~~Figure 1~~). Monthly $\delta^{18}\text{O}$ [and \$\delta^2\text{H}\$](#) values corrected to sea level elevation were computed for every measurement site of the original network by multiplying the [respective](#) average ~~elevation~~ gradient for the month with the elevation of the respective ~~NI~~ISOT station and adding it to the isotopic signal measured at this site. The
165 corrected average monthly $\delta^{18}\text{O}$ [and \$\delta^2\text{H}\$](#) values were interpolated in space by Kriging (Delhomme, 1978, implemented for R in the gstat-package by Pebesma, 2004) resulting in continuous monthly maps

(example for $\delta^{18}\text{O}$ in [Figure 8](#)~~Figure 8~~). In order to obtain an estimate of precipitation isotopic signature for any desired location, the deviation of the closest available measurement site from its long term average value of the respective month was combined with the interpolated map of corrected average values for the respective month. A more detailed description of the interpolation method can be found in Seeger and Weiler (2014).

Due to limited availability of precipitation isotope data time series with an appropriate length, the data were only validated qualitatively (Seeger and Weiler, 2014), by comparing the predicted isotope values to limited time series of sites situated in North-Eastern and Central Switzerland. The comparison between the interpolated data and validation data suggested good agreement. However, explorative simulations by Seeger and Weiler (2014) also showed a bias of up to 2‰ for $\delta^{18}\text{O}$ between the interpolated precipitation values and the measured discharge values. This suggests that the interpolated values are well suited to predict the amplitudes of the temporal variations of the precipitation isotopes, while the steep topography of the Swiss Alps might lead to regional inhomogeneities that are not fully captured by the data underlying the interpolation procedure.

2.3 Data file format

$\delta^2\text{H}$ and $\delta^{18}\text{O}$ in streamflow are provided as one ASCII.txt file for each station. Additionally to these time series each of the files contains the Deuterium excess, the streamflow conditions preceding the sampling (Q sampling index and streamflow percentiles) as well as the z-scores indicating if a sample might be a statistical outlier, assuming the data are normally distributed. All files contain further information for each sample whether double measurement was performed in the lab comments indicating for instance

special sampling conditions (ice etc.) or storage-related issues that could alter the isotopic composition due to fractionation (e.g., sample bottle not closed tightly).

For each data file for streamflow data there is a corresponding ASCII.txt file for catchment precipitation.

190 These contain the interpolated $\delta^2\text{H}$ and $\delta^{18}\text{O}$ in precipitation for the catchment as well as the source data that were used to derive the interpolated values.

2.4 Associated data

195 The data set is complemented by daily precipitation and air temperature for each catchment as well as the shape-files for the topographical catchment boundaries. The underlying data for the areal precipitation sums and the areal air temperature averages were extracted from the gridded data products ‘Rhires’ and ‘Tabs’ from MeteoSwiss, respectively. The gridded data were masked with the shape-file of the catchment and the arithmetic mean of each grid cell value for each day was calculated to obtain mean areal air temperature and precipitation for grid cells that were only partially within the catchment boundaries their value was included in the mean assigning a weight according to the percentage intersecting the mask.

200 These data are provided together with the isotopic data as separate ASCII.txt files. The shapefiles of the catchment boundaries are also provided. These were extracted from a data set comprising the topographic catchment boundaries of gauged Federal stations (FOEN, https://data.geo.admin.ch/ch.bafu.hydrologie-hydromessstationen/ch.bafu.hydrologie-hydromessstationen_einzugsgebiete.zip).

3 Data application and outlook

205 This data set with isotope data from precipitation and streamflow allows the estimation of mean transit times. With these, catchment water storage (mobile storage) can be estimated and may be related to the

sensitivity to droughts (Staudinger et al. 2017). From this data set also young water fractions can be calculated and for instance, using the data presented here, Von Freyberg et al. (2018) assessed how sensitive the young water fraction is to both hydro-climatic forcing and catchment properties. Using the $\delta^{18}\text{O}$ values in precipitation and streamflow for 12 catchments of the presented data set Allen et al. (2019) assessed whether summer or winter precipitation is overrepresented in streamflow, relative to its proportion of total precipitation. Also parts of this data set (composition of isotopes in precipitation) were used to re-investigate the relationship between transit times and catchment topography (Seeger and Weiler, 2014).

In 2019 we were still collecting data for 14 sites and it is planned to continue these observations. A long-term sampling will allow for more robust estimations of storages and young water, and hence for a more robust reassessment of the mentioned studies. The growing dataset will also provide opportunities for a closer look at catchment transit times and storages. The data set will, for instance, allow us to compare different conditions such as dry or wet years or the effects of extreme events.

Additional data that may be useful for potential applications are time series of streamflow time series and shapefiles of the catchments, which are both provided by the Swiss FOEN, meteorological time series, which are provided by MeteoSwiss, and a digital elevation model of Switzerland, which is provided by Swisstopo.

4 Data availability

The data set can be downloaded from the data repository zenodo <https://doi.org/10.5281/zenodo.3659679> <https://doi.org/10.5281/zenodo.4057967> (Staudinger et al., 2020). [Associated streamflow data can be](#)

obtained for most of the stations from the Swiss Federal office of the Environment (FOEN), for the small
Alptal catchments (ERL, LUE, VOG) from the Swiss Federal Research Institute WSL
<https://www.envidat.ch/#/metadata/longterm-hydrological-observatory-alptal-central-switzerland> for
Roethenbach (ROE) from the Canton of Bern (AWA) and for the Aabach (AAM) from the Canton of
Zurich (AWEL).

Author contribution

MS, JS, KS, MW designed the sampling net, BH and MS did the lab analysis and maintained the data
bank. SS interpolated the isotopes in precipitation. MS wrote the first draft of the manuscript. All authors
contributed to the discussion and revised the submitted manuscript.

Competing interests

The authors declare that they have no conflict of interest.

Acknowledgements

We thank all the persons that went out to take samples, many of them starting in 2010 continuing until
today. We want to explicitly mention Mr. M. Altermatt, Tiefbauamt Basel-Land, H. Aschwanden and R.
Gamma, Tiefbauamt Kanton Uri and Kari Steiner, WSL. Financial support for this long-term sampling
campaign came from the Swiss National Foundation, NFP61 "Drought-CH" (2010 - 2016), the Swiss
Federal Office for the Environment (FOEN) (Project "Auswirkungen der Klimaveränderung auf das
Grundwasser und Niedrigwasser, November 2013-December 2016, contract 13.0055.PJ/M372-1682) and

the University of Zurich. The basic data for the interpolation of isotopic compositions in precipitation came from ~~NI~~ISOT provided by FOEN, the National Groundwater Monitoring, NAQUA, from GNIP provided by IAEA as well as ANIP from the Environment Agency Austria. The streamflow data were provided by FOEN and Office of Waste, Water, Energy and Air, WWEA, Kanton Zurich.

[We further thank the two anonymous reviewers for their valuable comments on the manuscript and the data set.](#)

5 References

- Allen, S. T., Freyberg, J. Von and Kirchner, J. W.: The Seasonal Origins of Streamwater in Switzerland Geophysical Research Letters, , 425–434, doi:10.1029/2019GL084552, 2019.
- Bitterli, T., George M., Matousek F., Christe R., Aviolat P., Fracheboud S., Brändli R. and Frey D. Grundwasservorkommen. Hydrologischer Atlas der Schweiz, Tafel 8.4, Bern, 2004.
- Christophersen, N., Neal, C., Hooper, R. P., Vogt, R. D. and Andersen, S.: Modelling streamwater chemistry as a mixture of soilwater end-members — A step towards second-generation acidification models, J. Hydrol., 116(1–4), 307–320, doi:10.1016/0022-1694(90)90130-P, 1990.
- Craig, H.: Isotopic Variations in Meteoric Waters, Science (80-.), 133(3465), 1702–1703, doi:10.1126/science.133.3465.1702, 1961.
- Dansgaard, W.: The Abundance of O18 in Atmospheric Water and Water Vapour, Tellus, 5, 461–469 [online] Available from: <http://www.growsheffield.com/pages/groShefAbund.html>, 1953.
- Dansgaard, W.: Stable isotopes in precipitation, Tellus, 16(4), 436–468, doi:10.3402/tellusa.v16i4.8993, 1964.

- Delhomme, J. P.: Kriging in the hydrosociences, *Adv. Water Resour.*, 1(5), 251–266, doi:10.1016/0309-1708(78)90039-8, 1978.
- 270 Epstein, S.: Variations of the 18 O/ 16 O Ratios of Freshwater and Ice. Report No.19., 1956.
- Fischer, B. M. C., Stahli, M. and Seibert, J.: Pre-event water contributions to runoff events of different magnitude in pre-alpine headwaters, *Hydrol. Res.*, nh2016176, doi:10.2166/nh.2016.176, 2016.
- Fischer, B. M. C., van Meerveld, H. J. (Ilja.) and Seibert, J.: Spatial variability in the isotopic composition of rainfall in a small headwater catchment and its effect on hydrograph separation, *J. Hydrol.*, 547, 755–
- 275 769, doi:10.1016/j.jhydrol.2017.01.045, 2017.
- von Freyberg, J., Studer, B., Rinderer, M. and Kirchner, J. W.: Studying catchment storm response using event- and pre-event-water volumes as fractions of precipitation rather than discharge, *Hydrol. Earth Syst. Sci.*, 22(11), 5847–5865, doi:10.5194/hess-22-5847-2018, 2018.
- Von Freyberg, J., Allen, S. T., Seeger, S., Weiler, M. and Kirchner, J. W.: Sensitivity of young water
- 280 fractions to hydro-climatic forcing and landscape properties across 22 Swiss catchments, *Hydrol. Earth Syst. Sci.*, 22(7), 3841–3861, doi:10.5194/hess-22-3841-2018, 2018.
- Friedman, I.: Deuterium content of natural waters and other substances, *Geochim. Cosmochim.* [online] Available from: <https://www.sciencedirect.com/science/article/pii/0016703753900660> (Accessed 18 November 2019), 1953.
- 285 Gilfillan, E. S.: The Isotopic Composition of Sea Water, *J. Am. Chem. Soc.*, 56(2), 406–408, doi:10.1021/ja01317a037, 1934.
- Gonfiantini, R.: The d-notation and the mass-spectrometric measurement techniques, in *Stable Isotope Hydrology, Deuterium and Oxygen-18 in the Water Cycle*, Technical Reports Series No. 210, IAEA,

edited by J. R. Gat and R. Gonfiantini, pp. 35–84, Vienna., 1981.

- 290 Gourcy, L. L., Groening, M. and Aggarwal, P. K.: Stable Oxygen and Hydrogen Isotopes in Precipitation, in *Isotopes in the Water Cycle*, pp. 39–51, Springer-Verlag, Berlin/Heidelberg., 2005.
- Ilja Van Meerveld, H. J., Fischer, B. M. C., Rinderer, M., Stähli, M. and Seibert, J.: Runoff generation in a pre-alpine catchment: A discussion between a tracer and a shallow groundwater hydrologist, *Geogr. Res. Lett.*, 44(2), 429–452, doi:10.18172/cig.3349, 2018.
- 295 Klaus, J. and McDonnell, J. J.: Hydrograph separation using stable isotopes: Review and evaluation, *J. Hydrol.*, 505, 47–64, doi:10.1016/j.jhydrol.2013.09.006, 2013.
- Knapp, J. L. A., Neal, C., Schlumpf, A., Neal, M. and Kirchner, J. W.: New water fractions and transit time distributions at Plynlimon, Wales, estimated from stable water isotopes in precipitation and streamflow, *Hydrol. Earth Syst. Sci.*, 23(10), 4367–4388, doi:10.5194/hess-23-4367-2019, 2019.
- 300 Lyon, S. W., Laudon, H., Seibert, J., Mörth, M., Tetzlaff, D. and Bishop, K. H.: Controls on snowmelt water mean transit times in northern boreal catchments, *Hydrol. Process.*, 24(12), 1672–1684, doi:10.1002/hyp.7577, 2010.
- Marti, P. and Kan, C.: NQSta: Vergleich der Trockenjahre 1947 und 2003 - ein Anwendungsbeispiel der Niedrigwasser-Datenbank NQStat, *Wasser Energ. Luft* 95, 95, 333–336, 2003.
- 305 McGuire, K. J. and McDonnell, J. J.: A review and evaluation of catchment transit time modeling, *J. Hydrol.*, 330(3–4), 543–563, doi:10.1016/j.jhydrol.2006.04.020, 2006.
- McGuire, K. J., McDonnell, J. J., Weiler, M., Kendall, C., McGlynn, B. L., Welker, J. M. and Seibert, J.: The role of topography on catchment-scale water residence time, *Water Resour. Res.*, 41(5), doi:10.1029/2004WR003657, 2005.

- 310 Pebesma, E. J.: Multivariable geostatistics in S: the gstat package, *Comput. Geosci.*, 30(7), 683–691, doi:10.1016/J.CAGEO.2004.03.012, 2004.
- Rücker, A., Boss, S., Kirchner, J. W. and Von Freyberg, J.: Monitoring snowpack outflow volumes and their isotopic composition to better understand streamflow generation during rain-on-snow events, *Hydrol. Earth Syst. Sci.*, 23(7), 2983–3005, doi:10.5194/hess-23-2983-2019, 2019.
- 315 Schotterer, U.: Wasserisotope in der Schweiz - Neue Ergebnisse und Erfahrungen aus dem nationalen Messnetz ISOT, *Wasser | EAUX*, 12, 1073–1081, 2010.
- Seeger, S. and Weiler, M.: Reevaluation of transit time distributions, mean transit times and their relation to catchment topography, *Hydrol. Earth Syst. Sci.*, 18(12), 4751–4771, doi:10.5194/hess-18-4751-2014, 2014.
- 320 Seneviratne, S. I., Orth, R., Jörg-hess, S., Kruse, S., Seidl, I., Stähli, M., Zappa, M., Jan Seibert, Staudinger, M., Stahl, K. and Weiler, M.: Trockenheit in der Schweiz, *Aqua Gas*, 9, 38–47, 2013.
- Staudinger, M., Seeger, S., Herbstritt, B., Stoelzle, M., Seibert, J., Stahl, K. and Weiler, M.: The CH-IRP data set: fortnightly data of $\delta^2\text{H}$ and $\delta^{18}\text{O}$ in streamflow and precipitation in Switzerland (Version Version 1) [Data set]. Zenodo. <https://doi.org/10.5281/zenodo.4057967>, 2020
- 325 <https://doi.org/10.5281/zenodo.4057967> <http://doi.org/10.5281/zenodo.3659679>, 2020
- Sprenger, M., Stumpp, C., Weiler, M., Aeschbach, W., Allen, S. T., Benettin, P., Dubbert, M., Hartmann, A., Hrachowitz, M., Kirchner, J. W., McDonnell, J. J., Orlowski, N., Penna, D., Pfahl, S., Rinderer, M., Rodriguez, N., Schmidt, M. and Werner, C.: The Demographics of Water: A Review of Water Ages in the Critical Zone, *Rev. Geophys.*, 57(3), 800–834, doi:10.1029/2018RG000633, 2019.
- 330 Tetzlaff, D., Seibert, J., McGuire, K. J., Laudon, H., Burns, D. A., Dunn, S. M. and Soulsby, C.: How

does landscape structure influence catchment transit time across different geomorphic provinces, *Hydrol. Process.*, 23, 945–953, 2009.

Wassenaar, L. I., Terzer-Wassmuth, S., Douence, C., Araguas-Araguas, L., Aggarwal, P. K. and Coplen, T. B.: Seeking excellence: An evaluation of 235 international laboratories conducting water isotope
335 analyses by isotope-ratio and laser-absorption spectrometry, *Rapid Commun. Mass Spectrom.*, 32(5), 393–406, doi:10.1002/rcm.8052, 2018.

Table 1 Catchment characteristics: ID is the identification number that is used throughout the paper. FOEN ID is the identification number that is used by the Swiss Federal Office of the Environment (FOEN), if there is no FOEN ID the station is maintained on a Cantonal level or by the WSL and indicated with the acronym of the respective organization, gauge coordinates are given using the official Swiss reference system CH1903+, aquifer productivity is given as relative catchment area with low, varying and high productivity (Bitterli, 2004).

ID	Catchment	FOEN ID	Gauge Coord.		Size km ²	Elevation			Slope			Glacier [%]	Aquifer productivity			Streamflow regime	
			x	y		mean	max	min	mean [°]	< 3° [%]	> 15° [%]		low [%]	varying [%]	high [%]	detailed	simple
MEN	Mentue	2369	545440	180875	105.00	683	946	436	5	35	3	0	100	0	0	pluvial jurassien	pluvial
ROE	Roethenbach	AWA¹	627081	191605	53.00	1000	1539	727	12	8	26	0	99	0	1	nivo-pluvial préalpin	nivo-pluvial
SEN	Sense	2179	593350	193020	352.00	780	1044	524	9	12	14	0	85	2	13	nivo-pluvial préalpin	nivo-pluvial
GUE	Guerbe	2472	605890	181880	53.70	1038	2152	566	17	10	50	0	76	1	23	pluvial supérieur	pluvial
ALL	Allenbach	2232	608710	148300	28.80	1855	2833	1093	24	1	77	0	88	3	9	nival alpin	snow
ILF	Ilfis	2603	627320	198600	188.00	1047	2045	681	17	4	56	0	92	0	8	nivo-pluvial préalpin	nivo-pluvial
LAN	Langeten	2343	629560	219135	59.90	765	1123	566	8	11	8	0	77	13	10	pluvial inférieur	pluvial
ERL	Erlenbach	WSL²	680200	155350	0.60	1359	1650	1117	15	0	43	0	82	18	0	nivo-pluvial préalpin	nivo-pluvial
RIA	Riale di Calneggia	2356	684970	135960	24.00	1982	2866	645	32	1	93	0	96	4	0	nival méridional	snow
VOG	Vogelbach	WSL	697020	214700	1.55	1335	1540	1038	20	0	81	0	100	0	0	nivo-pluvial préalpin	nivo-pluvial
LUE	Luempenen	WSL	695060	212520	0.93	1336	1508	1092	12	0	24	0	99	1	0	nivo-pluvial préalpin	nivo-pluvial
BIB	Biber	2604	697240	223280	31.90	1008	1515	602	11	18	32	0	94	0	6	pluvial supérieur	pluvial
ALP	Alp	2609	698640	223020	46.40	1008	1515	602	11	18	32	0	73	17	10	nivo-pluvial préalpin	nivo-pluvial
AAM	Aabach	AWEL³	702145	242884	55.60	523	859	402	5	44	2	0	85	0	15	pluvial inférieur	pluvial
MUR	Murg	2126	714105	261720	78.90	654	1113	456	9	23	19	0	86	1	13	pluvial inférieur	pluvial
RIE	Rietholzbach	2414	718840	248440	3.30	794	938	671	14	1	42	0	100	0	0	pluvial inférieur	pluvial
AAC	Aach am Bodensee	2312	744410	268400	48.50	476	609	391	3	67	0	0	87	0	13	pluvial inférieur	pluvial
DIS	Dischmabach	2327	786220	183370	43.30	2294	3180	1545	26	1	84	1	91	9	0	b-glacio-nival	snow
OVA	Ova da Cluozza	2319	804930	174830	26.90	2361	3115	1468	31	0	92	0	8	15	77	nivo-glaciaire	snow
EMM	Emme	2409	627910	191180	124.00	1283	2161	562	18	2	55	0	90	0	10	nivo-pluvial préalpin	nivo-pluvial
ERG	Ergolz	2202	622270	259750	261.00	591	1181	296	12	10	34	0	42	28	30	pluvial jurassien	pluvial
SCH	Schaechen	2491	692480	191810	109.00	1722	3221	436	28	1	85	2	74	1	25	nivo-glaciaire	snow
SIT	Sitter	2112	749040	244220	74.20	1219	2431	445	20	6	54	0	56	3	41	nival de transition	nivo-pluvial

¹ Amt für Wasser und Abfall, Canton of Berne

² <https://www.envidat.ch/#/metadata/longterm-hydrological-observatory-alptal-central-switzerland>

³ Amt für Abfall, Wasser, Energie und Luft, Canton of Zurich

Table 2 Inventory of the data availability per catchment.

ID	Catchment	Period		Total sample number	Length (years)	Average sampling (1/days)	Number of comments
		from	to				
MEN	Mentue	05/07/2010	27/02/2013	63	2.7	15	0
ROE	Roethenbach	23/06/2010	13/11/2013	70	3.4	18	0
SEN	Sense	11/11/2011	ongoing	198	8.2	15	6
GUE	Guerbe	08/07/2010	18/12/2012	64	2.4	14	0
ALL	Allenbach	20/07/2010	ongoing	173	8.3	18	5
ILF	Ilfis	04/07/2010	ongoing	224	8.5	14	18
LAN	Langeten	02/07/2010	ongoing	197	8.5	16	1
ERL	Erlenbach	31/05/2010	ongoing	318	8.5	10	2
RIA	Riale di Calneggia	18/07/2010	20/12/2012	55	2.4	16	0
VOG	Vogelbach	21/06/2010	ongoing	318	8.5	10	1
LUE	Luempenen	31/05/2010	ongoing	330	8.2	9	1
BIB	Biber	31/05/2010	ongoing	318	8.6	10	1
ALP	Alp	31/05/2010	ongoing	319	8.6	10	7
AAM	Aa bach	06/09/2010	22/02/2016	95	5.5	21	0
MUR	Murg	07/07/2010	ongoing	128	8.5	24	0
RIE	Rietholzbach	23/07/2010	28/02/2013	68	2.6	14	0
AAC	Aach am Bodensee	23/06/2010	07/09/2012	26	1.4	20	0
DIS	Dischmabach	16/08/2010	16/09/2013	128	8.2	23	0
OVA	Ova da Cluozza	16/08/2010	16/09/2013	65	3.1	17	0
EMM	Emme	23/06/2010	13/11/2013	84	3.4	15	0
ERG	Ergolz	22/07/2010	ongoing	223	8.4	14	0
SCH	Schaechen	05/04/2011	ongoing	181	7.7	16	14
SIT	Sitter	02/11/2010	ongoing	185	8.2	16	0

Figure captions:

350 Figure 1 Map of the sampling locations and related catchments in Switzerland. The zoom shows the 5 Alptal catchments. Black dots indicate the source stations for the interpolation of the isotopic compositions in precipitation. The source of the underlying relief map is the Swiss Federal Office of Topography.

Figure 2 Fortnightly time series of $\delta^2\text{H}$. The colors indicate the regime type to which the catchments can be assigned. Samples that have a comment in the data are plotted as symbols without border.

355 Figure 3 Fortnightly time series of $\delta^{18}\text{O}$. The colors indicate the regime type to which the catchments can be assigned. Note the different y-axis scaling for the nival catchments. Samples that are flagged in the data are are plotted as symbols without border.

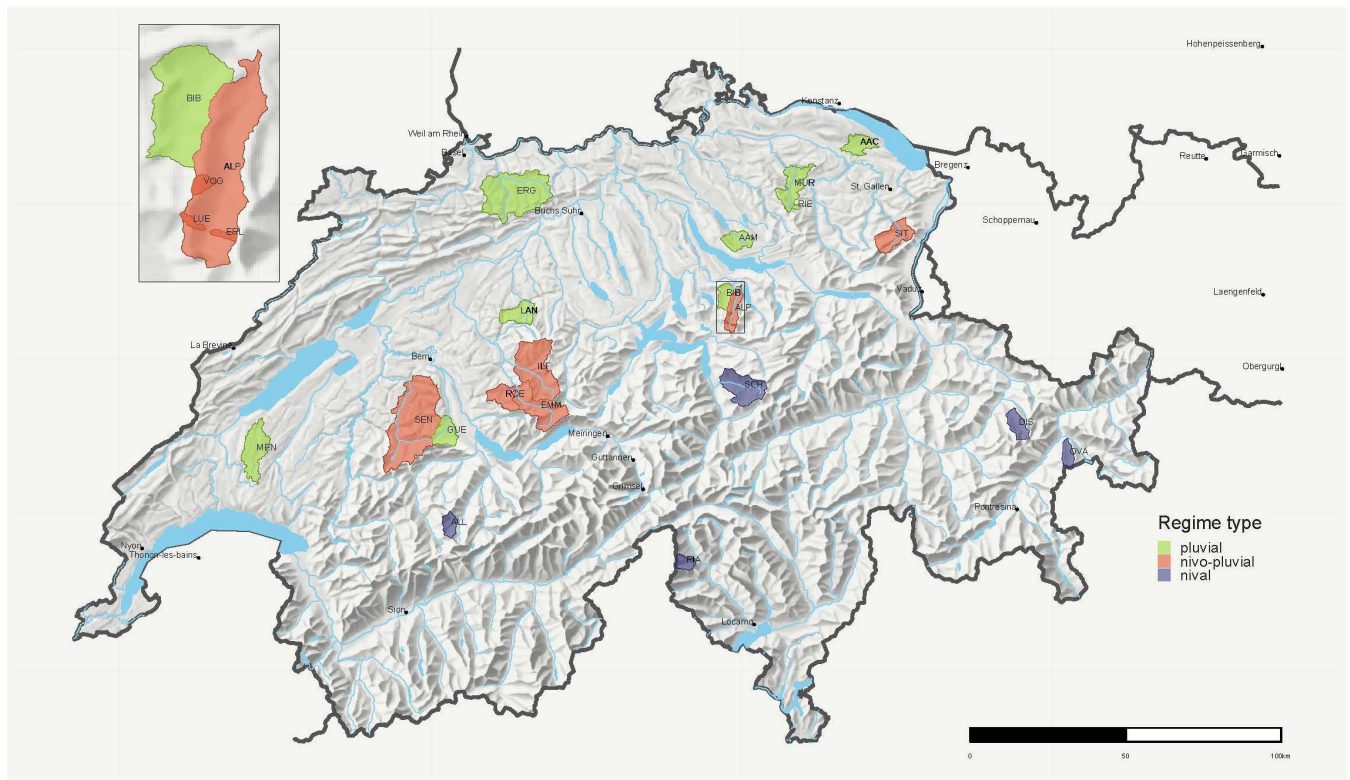
Figure 4 Comparison of the relation between $\delta^{18}\text{O}$ and $\delta^2\text{H}$ to the global meteoric water line (GWML). The colors indicate the regime type to which the catchments were assigned. Note the different x-axis scaling for the nival catchments.

360 Figure 5 Median and ranges (10th and 90th percentile) of $\delta^2\text{H}$ for the full sampling period (left) and separately for the seasons (right) of the samples for each catchment against the mean catchment elevation. The colors indicate the regime type to which the catchments were assigned.

365 Figure 6 Median and ranges (10th and 90th percentile) of $\delta^{18}\text{O}$ for the full sampling period (left) and separately for the seasons (right) of the samples for each catchment against the mean catchment elevation. The colors indicate the regime type to which the catchments were assigned.

370 Figure 7 Sampling conditions distribution expressed as sampling Q index. The dashed line shows the longterm streamflow conditions of the day of sampling. Values of the index larger than one indicate wetter than the observed long-term conditions, whereas values smaller one indicate conditions drier than the long-term at this day of the year (sum of three consecutive days). For the Roethenbach catchment (ROE) simulated streamflow was used. Note that the x-axis is log-scaled to visualize the percentual difference more intuitively.

Figure 8 Monthly maps of sea level corrected $\delta^{18}\text{O}$ in precipitation.



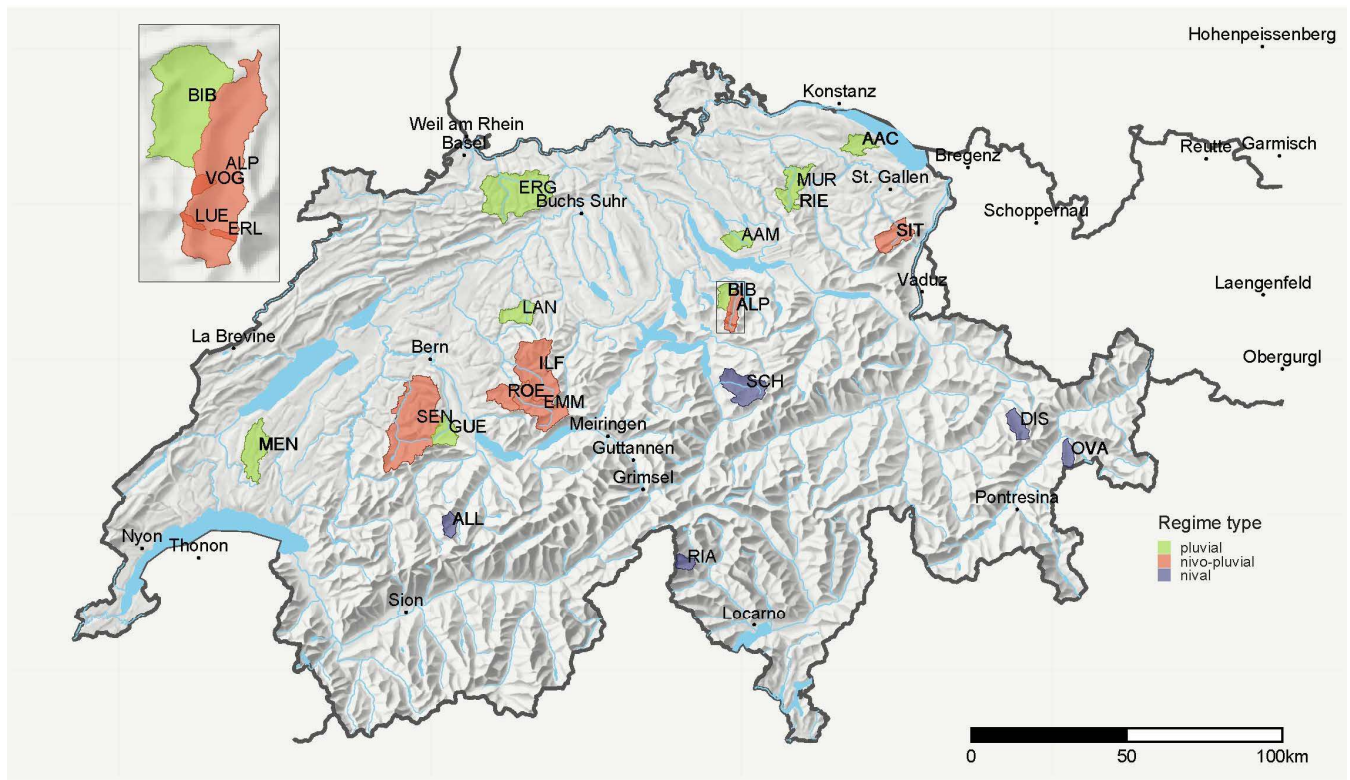
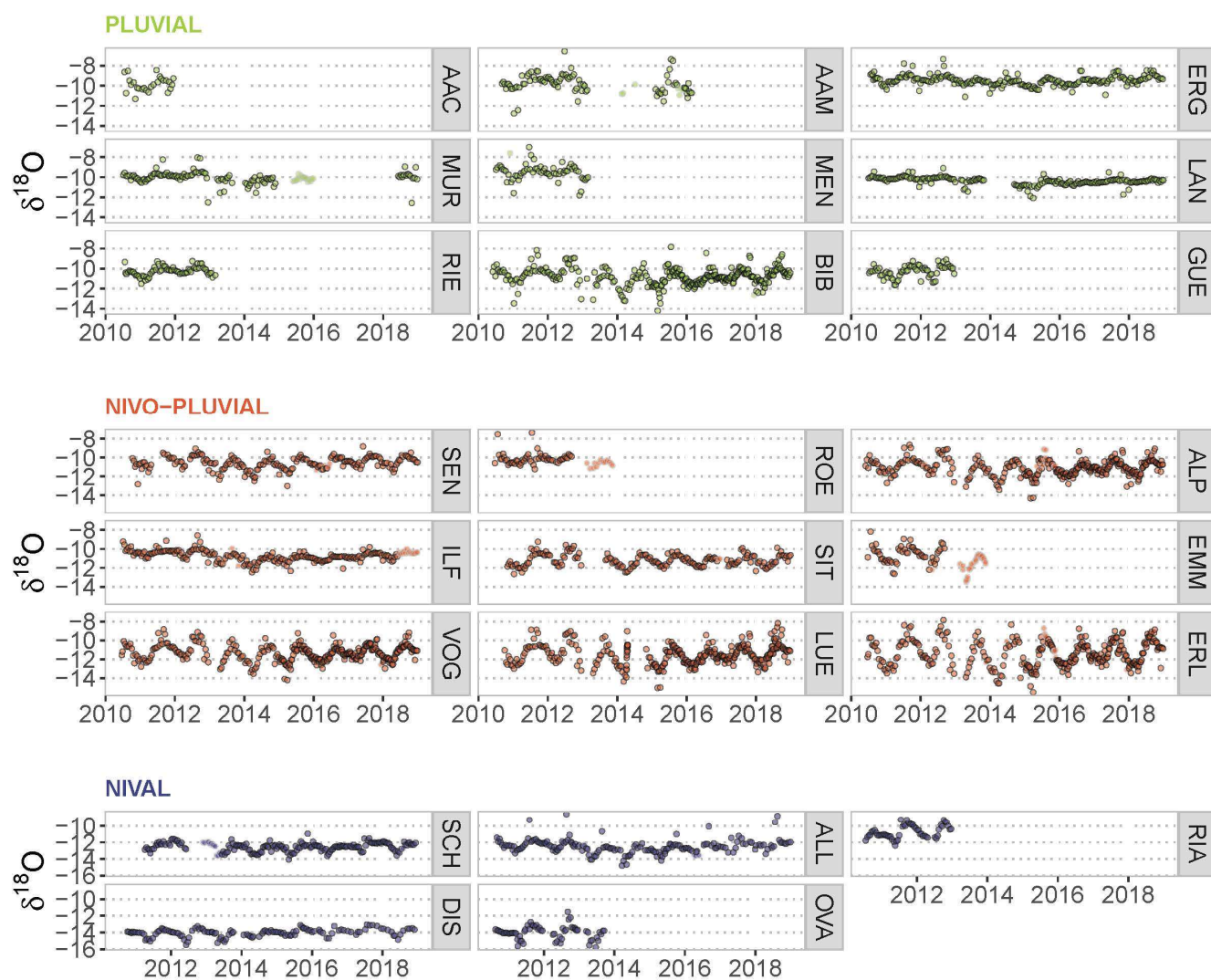


Figure 2



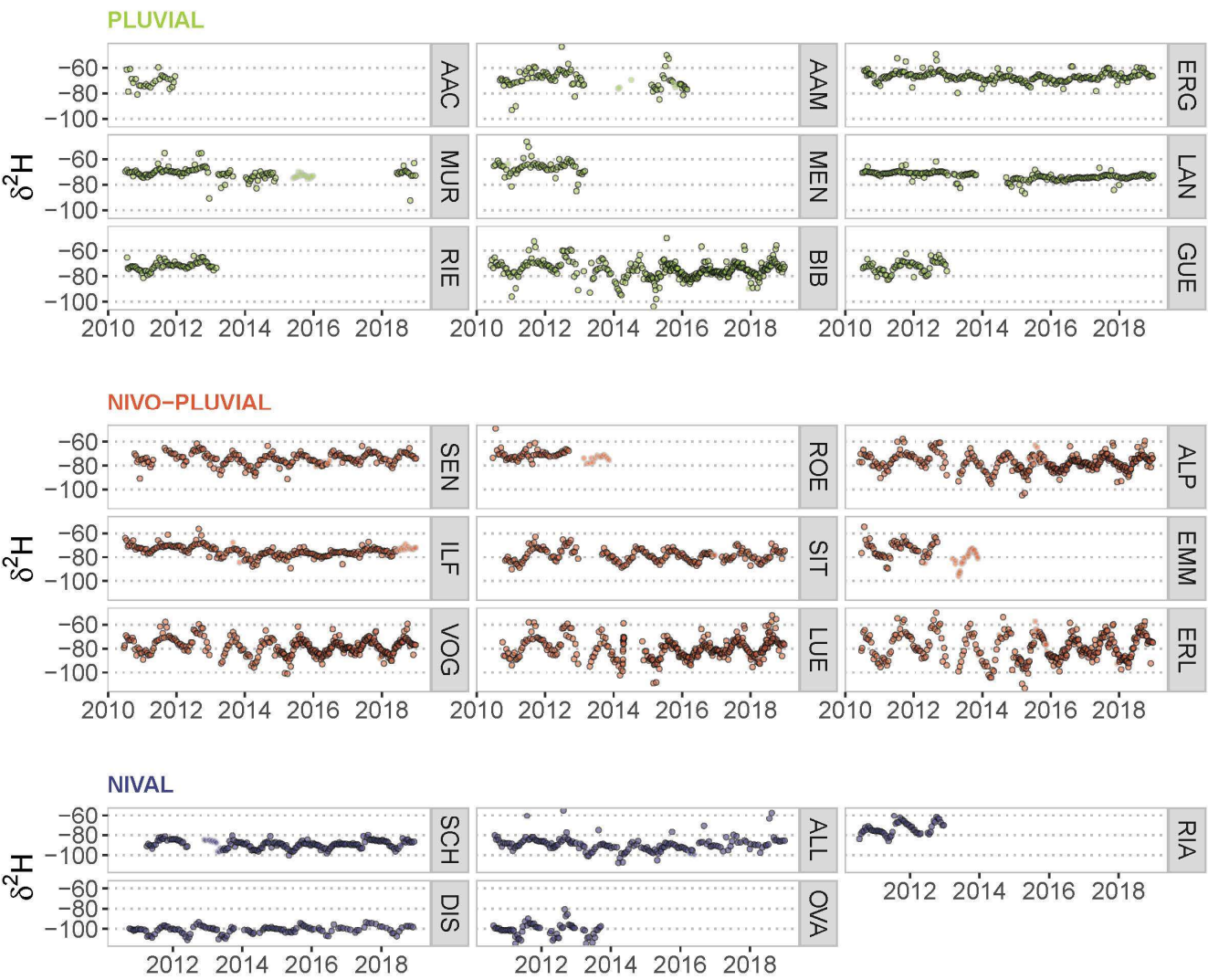
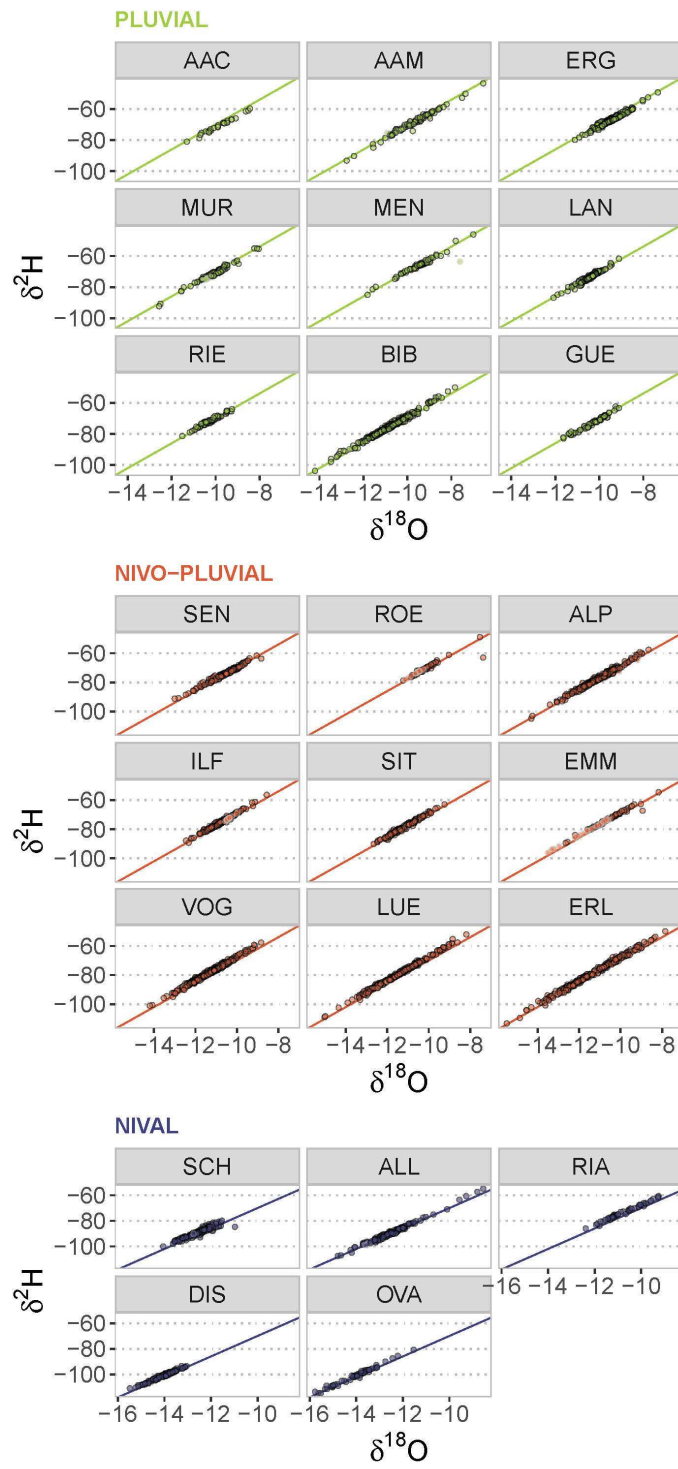


Figure 4



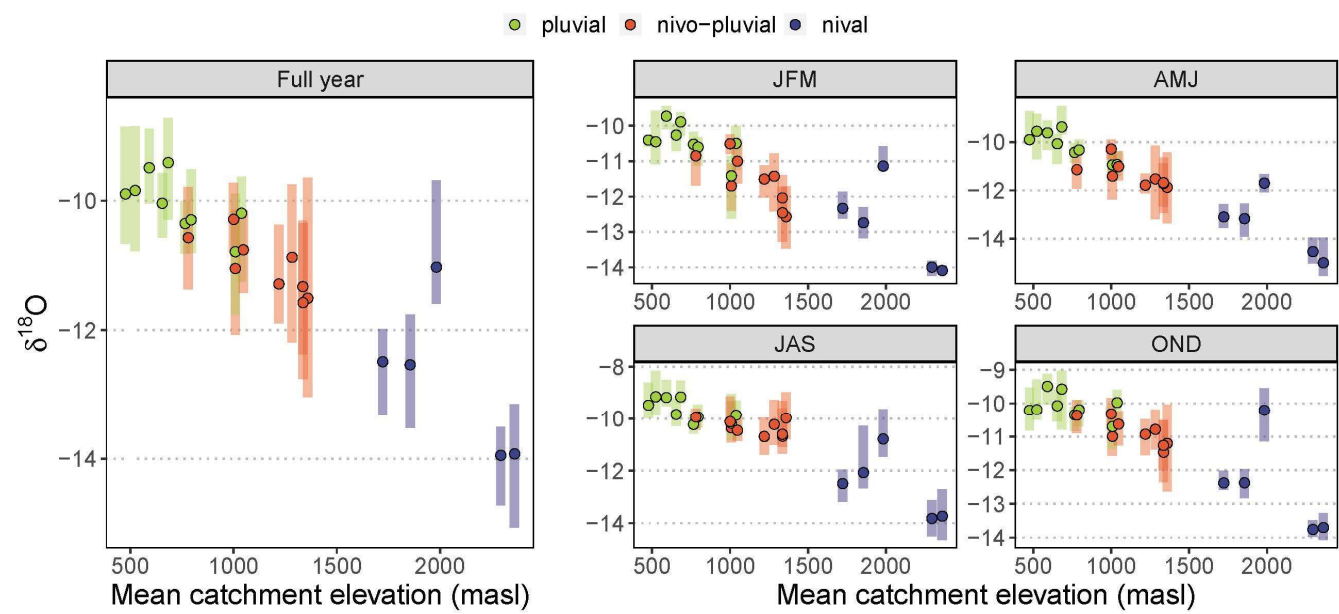
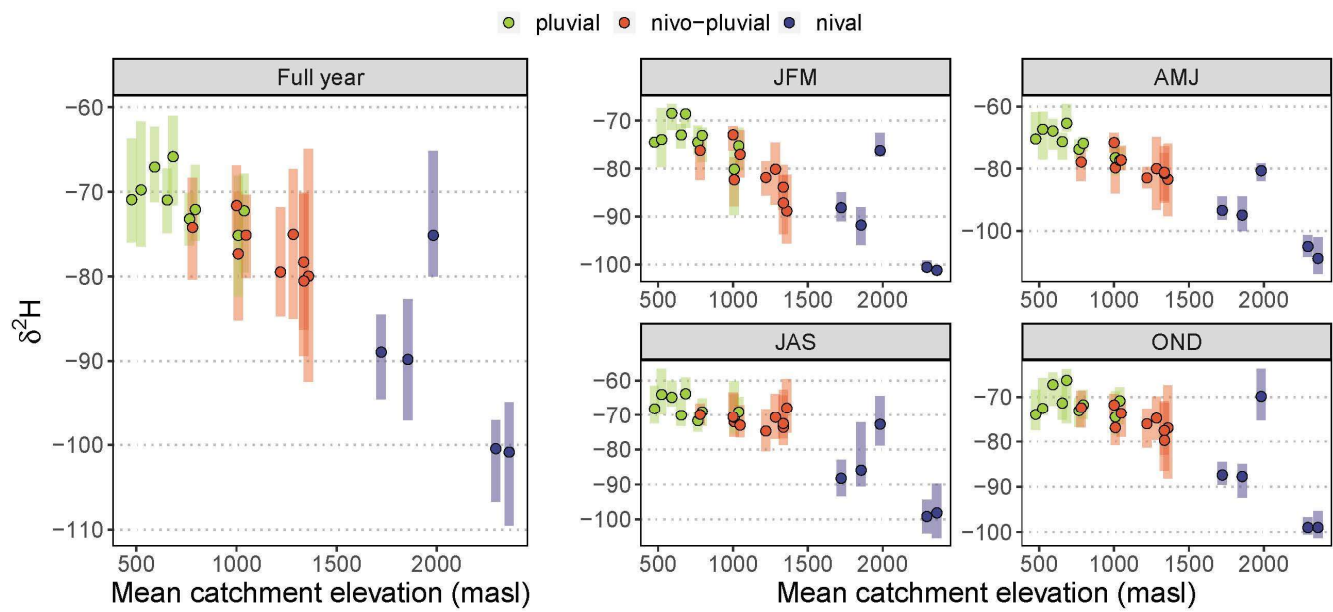


Figure 6



390

Figure 7

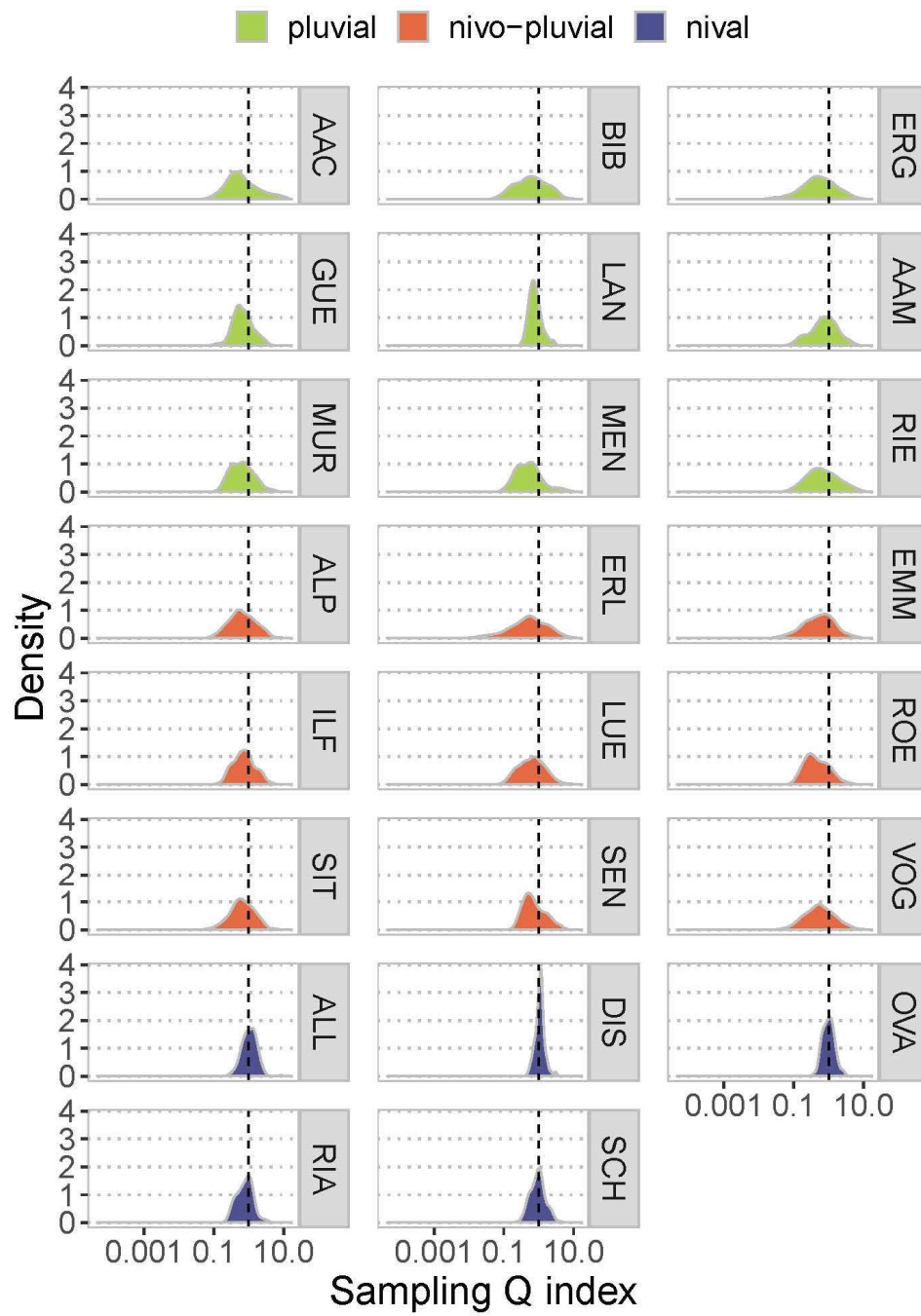
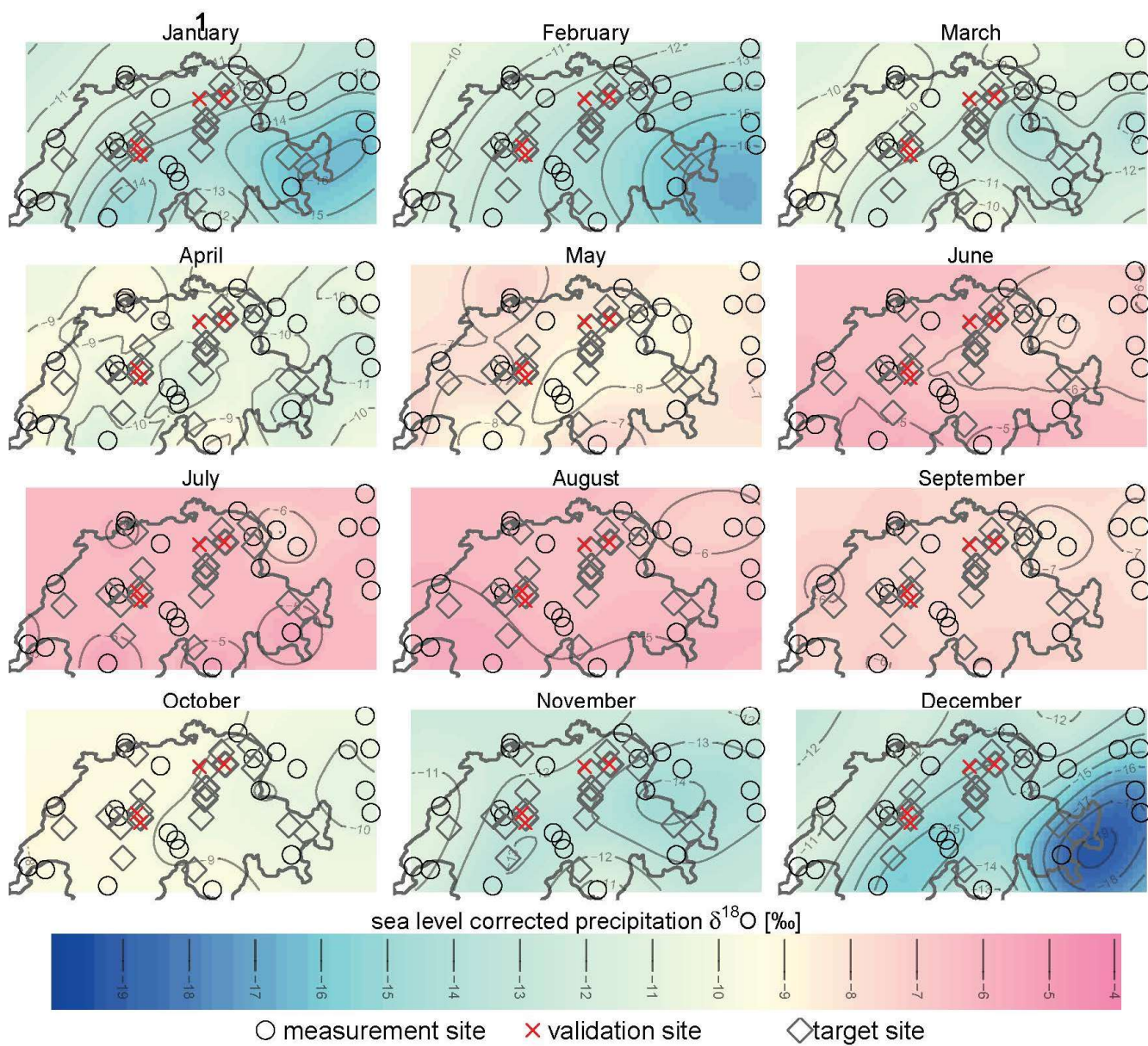
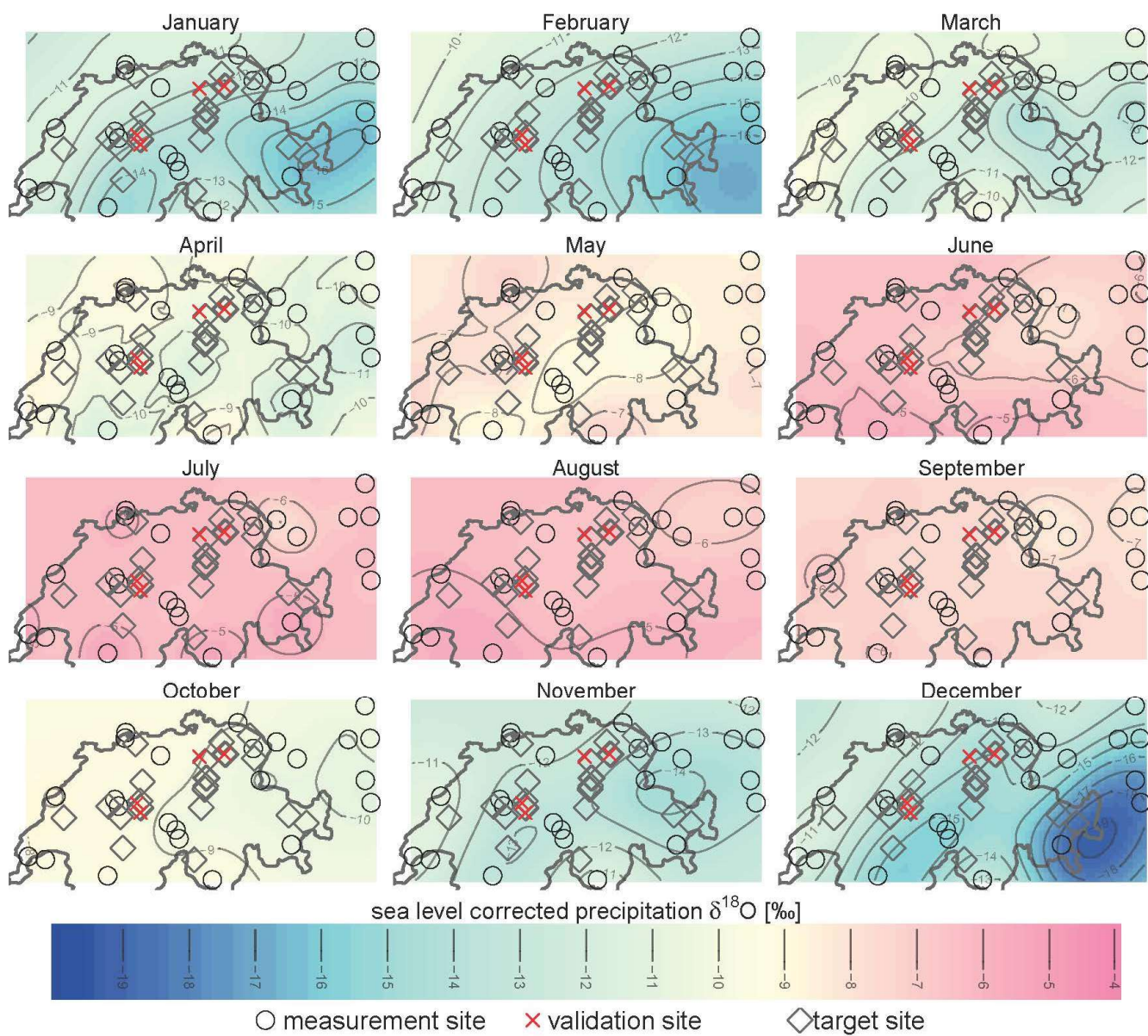


Figure 8





395