

Meteo and hydrodynamic data in the Mar Grande and Mar Piccolo by the LIC Survey, winter and summer 2015

Michele Mossa^{1,2}, Elvira Armenio³, Mouldi Ben Meftah^{1,2}, Maria Francesca Bruno^{1,2}, Diana De Padova^{1,2}, Francesca De Serio^{1,2}

¹Department of Civil, Environmental, Land, Building Engineering and Chemistry (DICATECh), Polytechnic University of Bari, Via Orabona 4 – 70125 Bari – Italy

²CoNISMa, Inter University Consortium for Marine Sciences, Piazzale Flaminio 9 – 00196 Rome, Italy

³Regional Agency for Environmental Protection ARPA Puglia, Corso Trieste 27 - 70126 Bari - Italy

Correspondence to: Diana De Padova (diana.depadova@poliba.it)

Abstract. The Coastal Engineering Laboratory (LIC) of the DICATECh of the Polytechnic University of Bari (Italy) maintains a place-based research program in the Mar Grande and Mar Piccolo of Taranto (a coastal system in southern Italy), providing records of hydrodynamic and water-quality measurements. This site is one of the most complex marine ecosystem models in terms of ecological, social, and economic activities. It is considered highly vulnerable for the presence of the naval base, of the biggest refinery of Europe and of the oil refinery. Two fixed stations have been installed, one in the Mar Grande (MG station) and another in Mar Piccolo (MP station). In the MG station constituents include wind speed and direction, air temperature and humidity, barometric pressure, net solar radiation, water salinity, water temperature, water pressure, dissolved oxygen, fluorescence, turbidity, CDOM, crude oil and refined fuels, sea currents and waves. In the MP station constituents include water temperature, sea currents and waves. We provide a summary of how these data have been collected by the research group and how they can be used to deepen understanding of the hydrodynamic structures and characteristics of the basin.

These data are available at <http://doi.org/10.5281/zenodo.4313075> (Mossa et al., 2020)

Design type(s)	time series design
Measurement Type(s)	MG station: wind speed and direction, air temperature and humidity, barometric pressure, net solar radiation, water salinity, water temperature, water pressure, dissolved oxygen, fluorescence, turbidity, CDOM, crude oil and refined fuels, sea currents and wave. MP station: water temperature, sea currents and waves
Technology Type(s)	data acquisition system
Factor Type(s)	spatiotemporal_interval

Sample Characteristic(s)	Mar Grande and Mar Piccolo of Taranto, coastal waters

1 Background & Summary

Coastal sites with typical lagoon features are extremely vulnerable, often suffering scarce circulation (de Swart and Zimmerman, 2009; De Pascalis et al., 2016; De Serio and Mossa, 2016a; De Serio and Mossa, 2016b; Armenio et al., 2017). The two bays of the Mar Piccolo have been considered as two different ecosystems influencing each other. The Mar Piccolo with its typical lagoon features is extremely vulnerable and is characterized by continue diffusion of contaminants with a strong ecological risk towards the marine ecosystem and human health.

Especially in this case of shallow basins subjected to strong anthropization and urban discharges, it is fundamental to monitor their hydrodynamics and water quality (De Carolis et al., 2013; De Serio and Mossa, 2014; De Serio and Mossa, 2015; De Serio and Mossa, 2016a; De Padova et al., 2017a; De Padova et al., 2017b; Armenio et al., 2018a-b; De Serio and Mossa, 2018; Armenio et al., 2019; De Serio et al., 2020; Chimienti et al., 2020).

This monitoring action has proved to be a necessary tool for local authorities and stakeholders, allowing to deepen the knowledge of the physical processes recurring in the target basin and to check its real-time status. Moreover, it allows to control sediment transport and effluent discharges, which are all phenomena strictly linked to current magnitudes and directions (De Serio and Mossa, 2013; Green and Coco, 2014; Ben Meftah et al., 2014; Ben Meftah et al., 2015; Mossa et al., 2017, Ben Meftah et al., 2018; De Serio and Mossa, 2016c).

Therefore, coastal management plans and in situ decision-making should include such monitoring actions to guarantee a thorough knowledge of hydrodynamic and tracers diffusion processes. Generally numerical models are preferred to this scope, because they allow to reproduce and predict marine physical phenomena in relatively short time, with accuracy and with moderate costs (De Serio et al., 2007; Monti and Leuzzi, 2010; Samaras et al., 2016; Di Bernardino et al., 2016; De Serio et al., 2020). Predictive operational oceanography commonly uses models covering regional, sub-regional and shelf-coastal scales. To study local scales, with resolution of few hundred meters, multiscale modelling systems based on a multiple-nesting approach have been implemented lately (Lane et al., 2009; Federico et al., 2017). Therefore, a large dataset is essential to calibrate and validate modelling systems providing forecasts (Lesser et al., 2004; Korotenko et al., 2010; Sánchez-Arcilla et al., 2014).

At the same time, a large dataset allows to deduce information on the evolutionary state of the analyzed basin. The present note aims to show how long-term and continuous recordings of meteorological, hydrodynamic and water quality data collected in a semi-enclosed sea can be managed to rapidly provide fundamental insights on its hydrodynamic structure and environmental health. The acquired signals have been analyzed in both time and frequency domain, filtered and grouped in classes with homogeneous features, then correlated. This simple and repeatable procedure has been applied with good results (De Serio and Mossa, 2015; De Serio and Mossa, 2016a; Armenio et al., 2017a-b), interesting in a predictive perspective and

for numerical modelling (Kjerfve and Magill, 1989; Babu et al. 2005; Ferrarin et al., 2008; De Serio and Mossa, 2016c; Benetazzo et al., 2012). Although the typical trends in the water circulation and exchanges have been studied by numerous models developed for the seas of Taranto, more observations, monitoring actions and numerical modelling are still necessary to better understand the most significant hydrodynamic–biological variability of this coastal basin. The results of these study can be applied for similar zones.

2 Method and sampling

The hydrodynamics and water-quality studies in the Mar Grande and Mar Piccolo of Taranto (Fig. 1) of the LIC (Coastal Engineering Laboratory of the DICATECh of the Polytechnic University of Bari) include two fixed stations briefly described below.

In December 2013, the first meteo-oceanographic station MG was mounted in the Mar Grande basin, at the geographical coordinates 40°27.6' N and 17°12.9' E (Figs. 1 and 2). It was funded by the Italian National Project PON R&C 2007-2013 “Magna Grecia” and the RITMARE flagship project (Italian Research for the Sea, where we operated as the research unit Co.N.I.S.Ma.-Polytechnic University of Bari) provided by the Italian Ministry of Education, University and Research (De Serio and Mossa, 2016a; De Serio and Mossa, 2016b; Armenio et al., 2017). The local depth in this station is on average equal to 23.25m. In this station a bottom mounted Acoustic Doppler Current Profiler (ADCP), a multidirectional wave array, a weather station and a CTD (SeaBird SBE-37SIP-ODO with sensors of conductivity, temperature, pressure and dissolved oxygen) were installed (Fig. 2).

Furtherly, sensors by Wet Labs and Turner Design to detect water physical and biochemical parameters completed the station. The water parameters were measured a depth on average equal to 5.6m below the sea surface.

In detail, the weather system by Met Pack was installed on the seamount where the monitoring MG station is present. It records speed and wind direction by means of an ultrasonic sensor. Hourly-averaged values of wind speed and direction are provided with an accuracy of $\pm 2\%$ of the velocity value and $\pm 3^\circ$ of the direction.

The ADCP (by Teledyne RDI) measured the 3D velocity of currents along the vertical. It uses a Janus configuration consisting of four acoustic beams, paired in orthogonal planes, where each beam is inclined at a fixed angle of 20° to the vertical. The ADCP is bottom mounted, upward facing and has a pressure sensor for measuring mean water depth. The transducer head is at 0.50m above the seafloor. Velocities are sampled along the water column with 0.50m vertical bin resolution and a 1.60m blanking distance. Therefore, the water column is investigated from a distance from the sea bottom $z=2.1$ m up to the most superficial bin not biased by waves. The surface layer, with a thickness on average equal to 2.0m, is excluded from the analysis, to filter out the possible noise in the measurements as well as the wave contribution to currents. Mean current velocity profiles are collected continuously at 1-hour intervals, using an average of 60 measurements acquired every 10s. In this way, hourly-averaged velocity components along the water column are available (De Serio and Mossa, 2016a; De Serio and Mossa, 2016b; Armenio et al., 2017). Figure 3 shows an example of polar plots of the measured bottom and surface currents in January 2015.

90

In May 2014, funded by the Flagship Project RITMARE, also the station MP was placed in the target area. Namely it was installed in the Navigable Channel, at the geographical coordinates 40.473° N and 17.235° E, because it is the main exchange between the Mar Piccolo and Mar Grande (Fig. 1). As shown by previous studies and field data analysis from MP station (Armenio et al., 2017a; De Serio and Mossa, 2018; De Serio et al., 2020), the net flow is inflowing at deeper layers, from the bottom up to 4m depth, while in the most superficial layer it is directed outward of the basin. Therefore, monitoring actions, as that of MP station, is necessary to better understand the most significant hydrodynamic–biological variability of this extremely vulnerable coastal site.

It is equipped with a bottom mounted ADCP and a wave array (by Teledyne RDI). The local depth in this station is on average equal to 13.7m. Also in this case, considering the ADCP size and its blanking distance, the current velocities are assessed along the vertical starting from $z=2.1$ m from the sea bed, at constant intervals of 0.5m, up to the most detectable unbiased bin, at $z=12.6$ m. The acoustic frequency of both the installed ADCPs is 600KHz and their velocity accuracy is 0.3% of the water velocity ± 0.003 m/s.

In both MG and MP stations, the ADCP measures the component of velocity projected along the beam axis, averaged over a range cell. The cross-spectra between velocities measured at various range cells (either beam to beam or along each beam) contain information about wave direction [2-4]. In other words, each depth cell of the ADCP can be considered an independent sensor that makes a measurement of one component of the wave field velocity. The ensemble of depth cells along the four beams constitutes an array of sensors from which magnitude and directional information about the wave field can be determined.



110 **Figure 1: Map of Mar Grande and Mar Piccolo coastal system, with location of the two monitoring stations MG and MP. Source Google Earth.**



Figure 2: Seamark where the monitoring station in Mar Grande was installed.

115

3 Data Record

The dataset (tab-delimited text format (ASCII)) contains timeseries of relevant metocean variables divided as follows:

120 For MG station, 4 files are available for the month of January 2015 (from 01.01.2015 to 31.01.2015) and other 4 files for the month of July 2015 (from 01.07.2015 to 31.07.2015):

- wave parameters (wave);
- current parameters (current);
- 125 - wind speed and direction file (meteo);
- water quality parameters (water quality).

For MP station, 3 files are available for the month of January 2015 (from 01.01.2015 to 31.01.2015) and other 3 files for the month of July 2015 (from 01.07.2015 to 31.07.2015):

- 130
- wave parameters (wave);
 - current parameters (current);
 - sea temperature (temperature).

135

File Name:

- rigID - MM-YYYY- Prefix.txt

- rigID: ID code (2 letters):

- 140
- MG - the Mar Grande (MG station)
 - MP - the Mar Piccolo (MP station)

- MM: Month

- YYYY: Year

145

- Prefix:

1) 'wave'

2) 'current'

3) 'meteo'

150

4) 'water quality'

5) 'temperature'

List of parameters:

155 - **Wave datafile:**

Progressive data number;

Date (year/month/day/hour/minute);

Significant wave height H_s (m);

Significant wave period T_s (s);

160 Significant wave incoming direction (in degree, referenced to North);

Local depth (mm);

Average of the 1/10 highest waves $H_{1/10}$ (m);

Average wave period T_{mean} (s).

165 - **Current datafile format:**

Progressive data number;

Date (year/month/day/hour/minute);

Cell of measurement with indication of its depth from surface ($z=0$); for each cell the column with current intensity (in m/s) and current direction of propagation (in degree, referenced to North) is shown.

170

Namely, the most superficial assessed cell is located at -2m from surface in MG station, while it is located at 1.5m from surface in MP station, thus to avoid the effects of wave disturbances in the signal.

- **Meteo datafile:**

175

Progressive data number;

Date (year/month/day/hour/minute);

Average wind velocity (m/s);

Max wind velocity (m/s);

Wind incoming direction NE (deg);

180

Air temperature ($^{\circ}\text{C}$);

Dew point ($^{\circ}\text{C}$);

Atmospheric pressure (mbar);

Relative humidity (%).

185 - **Water quality parameters datafile**

Progressive data number;

Date (year/month/day/hour/minute);

Water Potential Temperature measured in ITS-90 degrees Celsius ($^{\circ}\text{C}$);

Conductivity (S/m);

190 Pressure (dbar);
 Practical Salinity (PSU) using PSS-78 algorithm;
 Density (kg/m³);
 Dissolved oxygen (ml/l);
 Chlorophyll (µg/l);
195 Turbidity (NTU)
 CDOM (RFU)
 Crude oil (RFU)
 Refined oil (RFU)

200
- **Temperature datafile:**
 Progressive data number;
 Date (year/month/day/hour/minute);
 Sensor depth (m);
205 Water Potential Temperature measured in ITS-90 degrees Celsius (°C);

4 Technical and Data Validation

Results from each sampling data were examined carefully by the research team of the LIC to ensure that all values fell within expected ranges, to verify that calibration regressions were an acceptable basis for computing quantities from sensor
210 measurements and to ensure completeness of each monthly acquisition.

When data were bad acquisitions or were lacking, they were eliminated from the file record.

Each data set was validated with: (1) tests to ensure that the measured values fell within ranges that are plausible and consistent with knowledge of the Mar Piccolo and Mar Grande systems; (2) pattern tests of time series of all measurements to ensure they followed plausible and understandable patterns of variability over time (Babu et al., 2005; Ferrarin et al., 2008).
215

As also shown in previous works (De Serio and Mossa, 2016a; De Serio and Mossa, 2016b; Armenio et al., 2017), examples of plots deduced by the dataset are displayed below, for MG Station and MP Station.

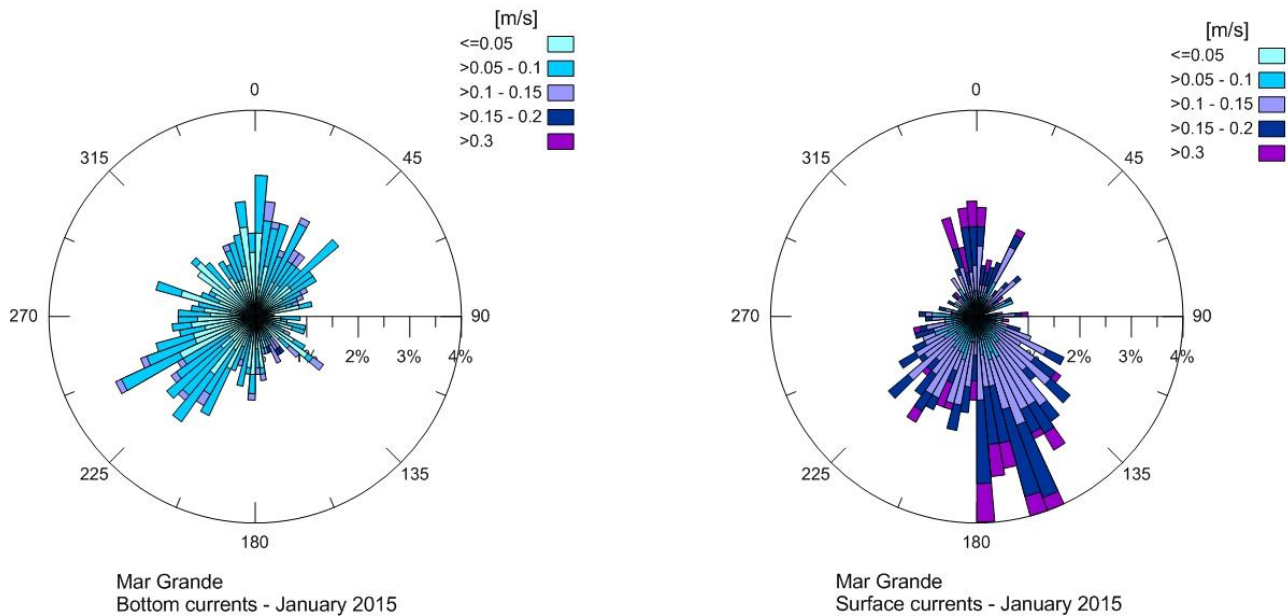
Figure 3 shows the pattern of the bottom and surface currents typical of the January month. The prevalence of currents directed towards SW confirms the deductions of other experimental works, proving that the site topography controls bed circulation
220 and induces a bottom current outflowing from the SW opening in the Mar Grande border (De Serio and Mossa, 2016a; De Serio and Mossa, 2016b; Armenio et al., 2017) also in accordance with results of numerical models (De Pascalis et al., 2016).

On the contrary, the significant waves enter from the same opening and spread throughout, thus not influenced by prevailing winds (Figure 4). Therefore, this SW opening represents a dominant key factor in the hydrodynamic of the basin.

225 Figure 5 displays the water temperature trend in July month, which increases as expected, and the salinity trend, which seems consistent with increasing evaporation rates and reduced riverine inputs. In Figure 6 the timeseries of dissolved oxygen and chlorophyll are plotted, with peaks due to the algal bloom of the period.

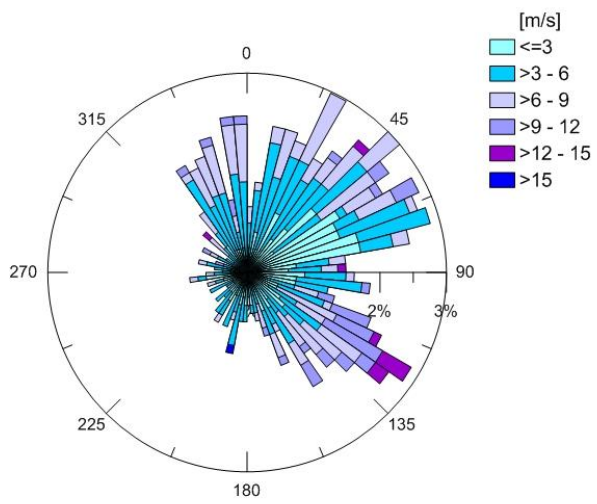
Figures 7a -7b show the time series of the significant wave heights recorded in January 2015 and July 2015, respectively. In January month, the greatest value of observed H_s is equal to 1.2 m, while the average value of H_s is around 0.2 m. In July month, the greatest value of observed H_s is equal to 0.5 m, while the average value of H_s is around 0.15 m.

230

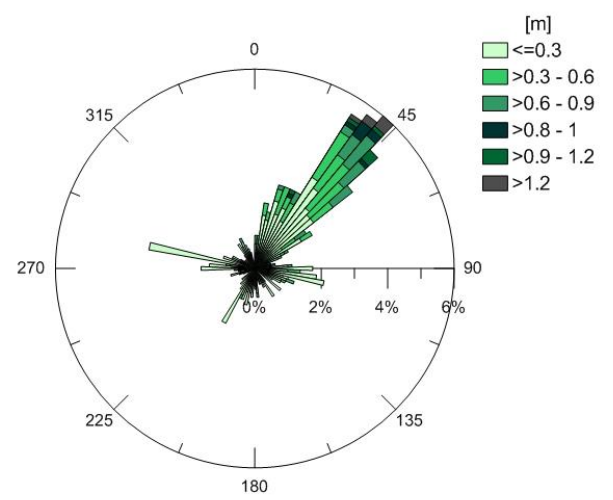


235 **Figure 3: Polar plot of measured bottom and surface currents in January 2015 (direction of propagation shown).**

240



Mar Grande
wind - January 2015
incoming direction



Mar Grande
waves - January 2015
direction of propagation

Figure 4: Polar plot of measured wind and waves in January 2015.

245

250

255

260

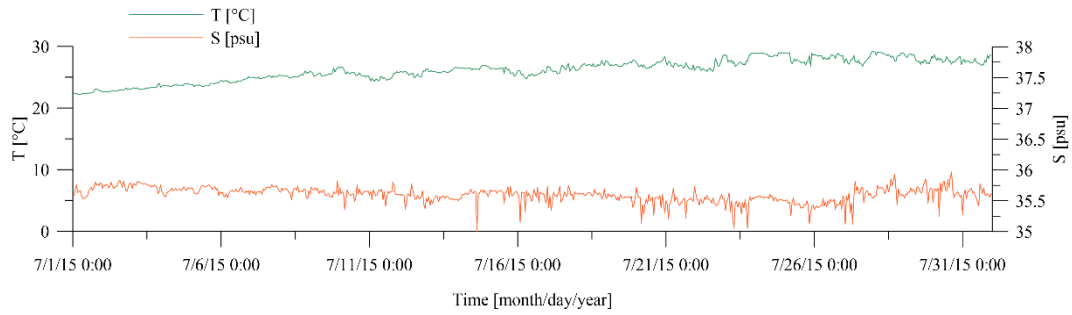


Figure 5: Time series of measured water temperature [°C] and salinity [psu] in July 2015.

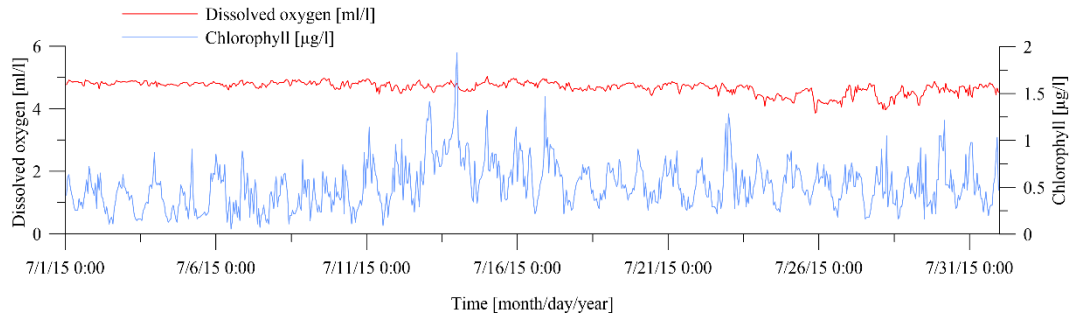
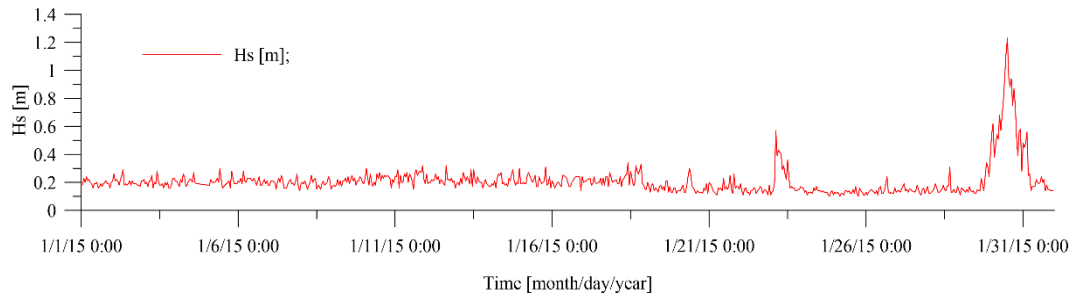
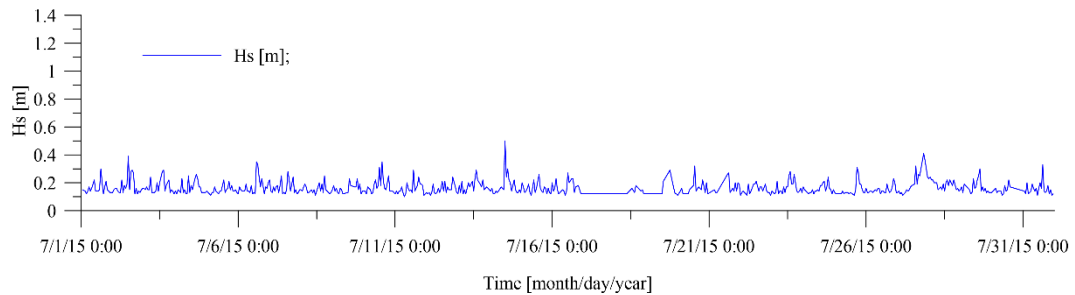


Figure 6: Time series of measured dissolved oxygen [ml/l] and chlorophyll [µg/l] in July 2015.



(a)



(b)

Figure 7: Time series of measured significant wave heights H_s recorded in (a) January 2015 and (b) July 2015.

5 Data availability

275 All data used in this paper are available at: <http://doi.org/10.5281/zenodo.4313075> (Mossa et al., 2020)

Author Contributions

M.M., E.A., M.B.M., D.D.P., M.F.B. and F.D.S. managed the survey program. **M.M.** and F.D.S. processed and organized the data sets and wrote the paper. MM conceived and coordinated the activities.

280 **Competing interests:** The authors declare no competing financial interests.

Acknowledgements

The monitoring stations were settled in the frame of the Italian Flagship Project RITMARE (Italian Research for the Sea, where we operated as the research unit Co.N.I.S.Ma.-Polytechnic University of Bari; LIC- Coastal Engineering Laboratory) and with funds from PON R&C 2007-13 Project (chief scientist of both Michele Mossa). The present work was partially funded by an agreement between the Polytechnic University of Bari and the Special Commissioner for urgent measures of reclamation, environmental improvements, and redevelopment of Taranto, gratefully acknowledged.

290 References

- Armenio, E., De Serio, F., Mossa, M. Analysis of data characterizing tide and current fluxes in coastal basins. *Hydrology and Earth System Sciences*, 21 (7), 3441-3454, 2017a.
- Armenio, E., De Padova, D., De Serio, F., Mossa, M., 2017b. Monitoring system for the sea: Analysis of meteo, wave and current data. *IMEKO TC19 Workshop on Metrology for the Sea, MetroSea 2017: Learning to Measure Sea Health Parameters* 2017-October, 143-148.
- 295 Armenio, E., De Serio, F., Mossa, M. Environmental technologies to safeguard coastal heritage. *SCIRES-IT*, vol. 8, p. 61-78, ISSN: 2239-4303, doi: 10.2423/i22394303v8n1p61, 2018a.
- Armenio, E., De Padova, D., De Serio, F., Mossa, M., 2018b. Monitoring System in Mar Grande Basin (Ionian Sea). *IEEE International Workshop on Metrology for the Sea; Learning to Measure Sea Health Parameters*. DOI: 10.1109/MetroSea.2018.8657891
- 300 Armenio, E., Ben Meftah, M., De Padova, D., De Serio, F., Mossa, M. Monitoring systems and numerical models to study coastal sites. *Sensors* 19 (7), 1552, 2019.

- Babu, M. T., Vethamony, P., Desa, E.: Modelling tidedriven currents and residual eddies in the Gulf of Kachchh and their seasonal variability: A marine environmental planning perspective. *Ecol. Model.*, 184, 299–312, 2005.
- 305 Ben Meftah, M., De Serio, F., Mossa, M. Hydrodynamic behavior in the outer shear layer of partly obstructed open channels. *Physics of Fluids*, 26 (6), 65102, 2014.
- Ben Meftah, M., De Serio, F., Malcangio, D., Mossa, M., Petrillo, A.F. Experimental study of a vertical jet in a vegetated crossflow. *Journal of Environmental Management*, 164, 19-31, 2015.
- Ben Meftah, M., Malcangio, D., De Serio, F. et al. Vertical dense jet in flowing current. *Environ Fluid Mech* 18, 75–96,
310 <https://doi.org/10.1007/s10652-017-9515-2>, 2018.
- Benetazzo, A., Carniel, S., Sclavo, M., Bergamasco, A. Wave-current interaction: Effect on the wave field in a semienclosed basin. *Ocean Modelling*, 70, 152-165, 2012.
- Chimienti, G., De Padova, D., Mossa, M. et al. A mesophotic black coral forest in the Adriatic Sea. *Sci Rep* 10, 8504 (2020).
<https://doi.org/10.1038/s41598-020-65266-9>
- 315 De Carolis, G., Adamo, M., Pasquariello, G., De Padova, D., Mossa, M. Quantitative characterization of marine oil slick by satellite near-infrared imagery and oil drift modelling: the Fun Shai Hai case study. *Int. J. Rem. Sens.* 34, 1838–1854, 2013.
- De Padova, D., Mossa, M., Adamo, M., De Carolis, G., Pasquariello, G. Synergistic use of an oil drift model and remote sensing observations for oil spill monitoring. *Environ. Sci. Pollut. Res. Int.* 24, 5530–5543, 2017a.
- De Padova, D., De Serio, F., Mossa, M., Armenio, E. Investigation of the current circulation offshore Taranto by using field
320 measurements and numerical model. In: *Proceedings of the 2017 IEEE International Instrumentation and Measurement Technology Conference (I2MTC)*, Turin, Italy, 22–25 May 2017, 2017b.
- De Pascalis, F., Petrizzo, A., Ghezzi, M., Lorenzetti, G., Manfè, G., Alabiso, G., Zaggia, L. Estuarine circulation in the Taranto Seas. *J. Env. Sci. and Poll. Res.*, 23(13), 12515–12534, 2016.
- De Serio, F., Malcangio, D., Mossa, M., Circulation in a Southern Italy coastal basin: Modelling and field measurements.
325 *Continental Shelf Research*, 27, 779-797, 2007.
- De Serio, F., Mossa, M. A laboratory study of irregular shoaling waves. *Experiments in Fluids*, 54(6), 1536, 2013.
- De Serio, F., Mossa, M. Streamwise velocity profiles in coastal currents. *Environmental Fluid Mechanics*, 14 895-918, 2014.
- De Serio, F., Mossa, M. Analysis of mean velocity and turbulence measurements with ADCPs. *J. Adv. Water Res.*, 81, 172–185, 2015.
- 330 De Serio, F., Mossa, M. Assessment of hydrodynamics, biochemical parameters and eddy diffusivity in a semi-enclosed Ionian basin. *J. Deep-Sea Res. II*, 133, 176-185, 2016a.
- De Serio, F., Mossa, M. Environmental monitoring in the Mar Grande basin (Ionian Sea, Southern Italy). *J. Environ. Sci. Poll. Res.*, 23, 12662–12674, 2016b.
- De Serio, F., Mossa, M. Assessment of classical and approximated models estimating regular waves kinematics. *Ocean*
335 *Engineering*, 126, 176-186, 2016c.

- De Serio, F., Mossa, M. Meteo and hydrodynamic measurements to detect physical processes in confined shallow seas. *Sensors* 18 (1), 280, 2018.
- De Serio, F., Armenio, E., Ben Meftah, M., Capasso, G., Corbelli, V., De Padova, D., De Pascalis, F., Di Bernardino, A., Leuzzi, G., Monti, P., Pini, A., Velardo, R., Mossa, M. Detecting sensitive areas in confined shallow basins. ENVIRONMENTAL MODELLING & SOFTWARE, vol. 126, ISSN: 1364-8152, doi: 10.1016/j.envsoft.2020.104659, 2020.
- de Swart, H.E., Zimmerman, J.T.F. Morphodynamics of tidal inlet systems. *Annu. Rev. Fluid Mech.* 41, 203–229, 2009.
- Di Bernardino, A., De Serio, F., Mossa, M., Pini, A., Leuzzi, G., Monti, P. Micrometeorological simulations over coastal area using CALMET data. *Proc. IEEE, EESMS* 180–185, 2016, 978-1-5090-2369-1, 2016.
- Federico, I., Pinardi N., Coppini, G., Oddo, P., Lecci, R., Mossa, M. Coastal ocean forecasting with an unstructured grid model in the southern Adriatic and northern Ionian Sea. *Nat. Hazards Earth Syst. Sci.*, 17(1), 45-59, 2017.
- Ferrarin, C., Umgiesser, G., Cucco, A., Hsu, T.W., Roland, A., Amos, C.L. Development and validation of a finite element morphological model for shallow water basins. *Coast. Eng.* 55, 716–731, 2008.
- Green, M.O., Coco, G. Review of wave-driven sediment resuspension and transport in estuaries. *Rev. Geophys.* 52, 77–117, 2014.
- Jia, L., Wen, Y., Pan, S., Liu, J.T., He, J. Wave–current interaction in a river and wave dominant estuary: A seasonal contrast. *Appl. Ocean Res.*, 52, 151–166, 2015.
- Kjerfve, B., Magill, K.E. Geographic and hydrodynamic characteristics of shallow coastal lagoons. *Mar. Geol.* 88, 187–199, 1989.
- Korotenko, K.A., Bowman, M.J., Dietrich, D.E. High resolution numerical model for predicting the transport and dispersal of oil spilled in the Black Sea. *Terr Atmos Ocean Sci*, 21(1), 123–136, 2010.
- Lane, E., Walters, R., Gillibrand, P., Uddstrom, M. Operational forecasting of sea level height using an unstructured grid ocean model. *Ocean Modell.*, 28 (1-3), 88-96, 2009.
- Lesser, G.R., Roelvink, J.A., van Kester, J.A.T.M., Stelling, G.S. Development and validation of a three-dimensional morphological model. *Coast. Eng.* 51, 883–915, 2004.
- Monti, P., Leuzzi, G. Lagrangian models of dispersion in marine environment. *Env. Fluid Mech.*, 10, 637-656, 2010.
- Mossa, M., Ben Meftah, M., De Serio, F., Nepf, H.M. How vegetation in flows modifies the turbulent mixing and spreading of jets. *Scientific Reports*, 7 (1), art. no. 6587, 2017.
- Mossa Michele, Armenio Elvira, Ben Meftah Mouldi, Bruno Maria Francesca, Diana De Padova Diana, & De Serio Francesca. (2020). Meteo and hydrodynamic data in the Mar Grande and Mar Piccolo by the LIC Survey, winter and summer 2015 [Data set]. Zenodo. <http://doi.org/10.5281/zenodo.4313075>
- Samaras, AG., Gaeta, MG., Miquel, AM., Archetti, R. High-resolution wave and hydrodynamics modelling in coastal areas: operational applications for coastal planning, decision support and assessment. *Nat. Hazards Earth Syst. Sci.*, 16, 1499–1518, 2016.

Sánchez-Arcilla, A., Wolf, J., Monbaliu, J. Oceanography at coastal scales: Introduction to the special issue on results from the EU FP7 FIELD_AC project. *Continental Shelf Research*, 87, 1-6, 2014.