

1 Status of the Tibetan Plateau observatory (Tibet-Obs) and a 2 10-year (2009-2019) surface soil moisture dataset

3 Pei Zhang^{1,2}, Donghai Zheng², Rogier van der Velde¹, Jun Wen³, Yijian Zeng¹, Xin Wang⁴,
4 Zuoliang Wang⁴, Jiali Chen^{2,5}, Zhongbo Su¹

5 ¹Faculty of Geo-Information Science and Earth Observation (ITC), University of Twente, Enschede,
6 7514AE, the Netherlands

7 ²National Tibetan Plateau Data Center, Key Laboratory of Tibetan Environmental Changes and Land Surface
8 Processes, Institute of Tibetan Plateau Research, Chinese Academy of Sciences, Beijing, 100101, China

9 ³College of Atmospheric Sciences, Chengdu University of Information Technology, Chengdu, 610225,
10 China

11 ⁴Northwest Institute of Eco-Environment and Resources, Chinese Academy of Sciences, Lanzhou, 730000,
12 China

13 ⁵College of Earth and Environmental Sciences, Lanzhou University, Lanzhou, 730000, China
14

15 *Correspondence to:* Donghai Zheng (zhengd@itpcas.ac.cn), Z. (Bob) Su (z.su@utwente.nl)

16 **Abstract.** The Tibetan Plateau observatory of plateau scale soil moisture and soil temperature (Tibet-Obs)
17 was established ten years ago, which has been widely used to calibrate/validate satellite- and model-based
18 soil moisture (SM) products for their applications to the Tibetan Plateau (TP). This paper reports on the status
19 of the Tibet-Obs and presents a 10-year (2009-2019) surface SM dataset produced based on *in situ*
20 measurements taken at a depth of 5 cm collected from the Tibet-Obs that consists of three regional-scale SM
21 monitoring networks, i.e. the Maqu, Naqu, and Ngari (including Ali and Shiquanhe) networks. This surface
22 SM dataset includes the original 15-min *in situ* measurements collected by multiple SM monitoring sites of
23 the three networks, and the spatially upscaled SM records produced for the Maqu and Shiquanhe networks.
24 Comparisons between four spatial upscaling methods, i.e. arithmetic averaging, Voronoi diagram, time
25 stability, and apparent thermal inertia, show that the arithmetic average of the monitoring sites with long-
26 term (i.e. \geq six years) continuous measurements are found to be most suitable to produce the upscaled SM
27 records. Trend analysis of the 10-year upscaled SM records indicates that the Shiquanhe network area in the
28 western part of the TP is getting wet while there is not significant trend found for the Maqu network area in
29 the east. To further demonstrate the uniqueness of the upscaled SM records in validating existing SM products
30 for long term period (~10 years), comparisons are conducted to evaluate the reliability of three reanalysis
31 datasets for the Maqu and Shiquanhe network areas. It is found that current model-based SM products still
32 show deficiencies in representing the trend and variation of measured SM dynamics in the Tibetan grassland
33 (i.e. Maqu) and desert ecosystems (i.e. Shiquanhe) that dominate the landscape of the TP. The dataset would
34 be also valuable for calibrating/validating long-term satellite-based SM products, evaluation of SM upscaling
35 methods, development of data fusion methods, and quantifying the coupling strength between precipitation
36 and SM at 10-year scale. The dataset is available in the 4TU.ResearchData repository at
37 <https://doi.org/10.4121/uuid:21220b23-ff36-4ca9-a08f-ccd53782e834> (Zhang et al., 2020).

38 **1 Introduction**

39 The Tibetan Plateau observatory (Tibet-Obs) of plateau scale soil moisture and soil temperature (SMST) was
40 setup in 2006 and became fully operational in 2010 to calibrate/validate satellite- and model-based soil
41 moisture (SM) products at regional scale (Su et al., 2011). The Tibet-Obs mainly consists of three regional-
42 scale SMST monitoring networks, i.e. Maqu, Naqu, and Ngari, which cover different climate and land surface
43 conditions across the Tibetan Plateau (TP) and include multiple *in situ* SMST monitoring sites in each
44 network. The SM data collected from the Tibet-Obs have been widely used in past decade to calibrate/validate
45 satellite- and model-based SM products (e.g. Su et al., 2013; Zheng et al., 2015a; Colliander et al., 2017),
46 and to evaluate and develop SM upscaling methods (e.g. Qin et al., 2013; 2015), SM retrieval algorithms for
47 microwave remote sensing (e.g. van der Velde et al., 2012; 2014a; Zheng et al., 2018a; 2018b; 2019), and
48 fusion methods to merge *in situ* SM and satellite- or model-based products (e.g. Yang et al., 2020; Zeng et
49 al., 2016).

50 Key information and outcomes of the main scientific applications using the Tibet-Obs SM data are
51 summarized in Table 1. As shown in Table 1, the state-of-the-art satellite- and model-based products are
52 useful but still show deficiencies of different degrees in different hydrometeorological conditions on the TP,
53 and further evaluation and improvement of the latest versions of these products remain imperative. In general,
54 previous studies mainly focused on the evaluation of SM products using the Tibet-Obs data for short term
55 period (i.e. less than five years), while up to now the Tibet-Obs have collected *in situ* measurements more
56 than 10 years. Development of an approximate 10-year *in situ* SM dataset collected from the Tibet-Obs would
57 further enhance the calibration/validation of long-term satellite- and model-based products, and should be
58 valuable for better understanding the hydrometeorological response to climate changes. However, the SM is
59 highly variable in both space and time, and data gaps in the availability of measurements taken from
60 individual monitoring site hinder scientific studies of longer periods, e.g. more than five years. Therefore, it
61 is still challenging to obtain accurate long-term regional-scale SM due to the sparse nature of monitoring
62 networks and highly variable soil conditions.

63 Spatial upscaling is usually necessary to obtain the regional-scale SM of an *in situ* network from multiple
64 monitoring sites to match the footprint-scale of satellite- or model-based products. A frequently used
65 approach for upscaling point-scale SM measurements to a spatial domain is the arithmetic average, mostly
66 because of its simplicity (Su et al. 2011; 2013). Many other studies also adopted the weighted averaging
67 methods, whereby the weights are assigned to account for spatial heterogeneity within the network areas
68 covered by *in situ* monitoring sites. For instance, Colliander et al. (2017) employed Voronoi diagrams for the
69 worldwide validation of the Soil Moisture Active/Passive (SMAP) SM products to determine the weights of
70 individual monitoring sites within core regional-scale networks based on the geographic location; Dente et
71 al. (2012a) determined the weights based on the topography and soil texture for the Maqu SM monitoring
72 network of the Tibet-Obs; Qin et al. (2013, 2015) derived the weights by minimizing a cost function between
73 *in situ* SM of individual monitoring site and a representative SM of the network that is estimated using the
74 apparent-thermal-inertia-based (ATI) method (Gao et al., 2017). Alternative methods, such as time stability

75 and ridge regression, have been adopted in other investigations (i.e. Zhao et al., 2013, Kang et al., 2017).
76 While a large number of studies have assessed the performance of different upscaling methods in other areas
77 such as the Tonzi Ranch network in California and the Heihe watershed (Moghaddam et al., 2014, Wang et
78 al., 2014), only few investigations have been done for the TP (Gao et al., 2017, Qin et al., 2015). Since the
79 number of monitoring sites changes over time due to damage of SM sensors in the Tibet-Obs, it is essential
80 to evaluate and select an appropriate upscaling method for a limited number of monitoring sites.

81 This paper reports on the status of the Tibet-Obs and presents a long-term *in situ* SM and spatially upscaled
82 SM dataset for the period between 2009 and 2019. The 10-year SM dataset includes the original 15-min *in*
83 *situ* measurements taken at a depth of 5 cm collected from the three regional-scale networks (i.e. Maqu, Naqu,
84 and Ngari as shown in Fig. 1) of the Tibet-Obs, and the consistent regional-scale SM produced by an
85 appropriately selected spatial upscaling method. To achieve this aim, four methods are used in this study
86 including the arithmetic averaging (AA), Voronoi diagram (VD), time stability (TS), and apparent thermal
87 inertia (ATI) methods. Moreover, the variation and trend of the regional-scale SM time series are analyzed,
88 and this 10-year SM dataset is used to validate the performance of three model-based SM products, e.g.
89 ERA5-land (Muñoz-Sabater et al., 2018), MERRA2 (Modern-Era Retrospective Analysis for Research and
90 Applications, version 2) (GMAO, 2015), and GLDAS Noah (Global Land Data Assimilation System with
91 Noah Land Surface Model) (Rodell et al., 2004), to demonstrate the uniqueness of this dataset for validating
92 existing reanalysis datasets for a long term period (~10 years).

93 This paper is organized as follows. Section 2 describes the status of the Tibet-Obs and *in situ* SM
94 measurements, as well as the precipitation data and the three model-based SM products. Section 3 introduces
95 the four SM spatial upscaling methods, Mann Kendall trend test and Sen's slope estimate, and statistical
96 metrics. Section 4 presents the inter-comparison of the four SM spatial upscaling methods, the production
97 and analysis of regional-scale SM dataset for a 10-year period, and its application to validate the three model-
98 based SM products. Section 5 provides the discussion and suggestion on maintaining the Tibet-Obs. Section
99 6 documents the information of data availability. Finally, conclusions are drawn in Section 7.

100 **2 Data**

101 **2.1 Status of the Tibet-Obs**

102 The Tibet-Obs consists of the Maqu, Naqu, and Ngari (including Shiquanhe and Ali) regional-scale SMST
103 monitoring networks (Fig. 1) that cover the cold humid climate, cold semiarid climate, and cold arid climate,
104 respectively. Each network includes different number of monitoring sites that measure the SMST at different
105 soil depths. Brief descriptions of each network and corresponding surface SM measurements taken at a depth
106 of 5 cm are given in following subsections. The readers are referred to existing literatures (Su et al., 2011;
107 Dente et al. 2012a; Zhao et al., 2018) for additional information of networks.

108 **2.1.1 Maqu network**

109 The Maqu network is located in the north-eastern edge of the TP (33°30'-34°15'N, 101°38'-102°45'E) at the
110 first major bend of the Yellow River. The landscape is dominated by the short grass at elevations varying
111 from 3400 to 3800 m. The climate type is characterized as cold-humid with cold dry winters and rainy
112 summers. The mean annual air temperature is about 1.2 °C, with -10 °C for the coldest month (January) and
113 11.7 °C for the warmest month (July) (Zheng et al., 2015a).

114 The Maqu network covers an area of approximately 40 by 80 km² and consists originally of 20 SMST
115 monitoring sites installed in 2008 (Dente et al. 2012a). During the period between 2014 and 2016, eight new
116 sites were installed due to the damage of several old monitoring sites by local people or animals. The basic
117 information of each monitoring site is summarized in Table A1 (Su et al., 2011), and the typical
118 characteristics of topography and land cover within the network are shown in Fig. 2 as well. The Decagon
119 5TM ECH₂O probes were used to measure the SMST at depths of 5, 10, 20, 40, and 80 cm (Fig. 3). The 5TM
120 probe is a capacitance sensor measuring the dielectric permittivity of soil, and the Topp equation (Topp et
121 al., 1980) is used to convert the dielectric permittivity to the volumetric SM. The accuracy of the 5TM output
122 was further improved via a soil-specific calibration performed for each soil type found in the Maqu network
123 area (Dente et al. 2012a), leading to a decrease in the root mean square error (RMSE) from 0.06 to 0.02 m³
124 m⁻³ (Dente et al. 2012a). Table 2 provides the specific periods of data missing during each year and the total
125 data lengths of surface SM for each monitoring site. Among these sites, the CST05, NST01, and NST03 have
126 collected more than nine years of SM measurements, while the data records for the NST21, NST22, and
127 NST31 are less than one year. In May 2019, there are still 12 monitoring sites that provided SM data.

128 **2.1.2 Ngari network**

129 The Ngari network is located in the western part of the TP at the headwater of the Indus River. It consists of
130 two SMST networks established around the cities of Ali and Shiquanhe, respectively. The landscape is
131 dominated by a desert ecosystem at elevations varying from 4200 to 4700 m. The climate type is
132 characterized as cold-arid with a mean annual air temperature of 7.0 °C. The annual precipitation is less than
133 100 mm that falls mainly in the monsoon season (July-August) (van der Velde et al., 2014).

134 The Shiquanhe network consists originally of 16 SMST monitoring sites installed in 2010 (Su et al. 2011),
135 and five new sites were installed in 2016. The basic information of each monitoring site is summarized in
136 Table A3 (Su et al., 2011), and the typical characteristics of topography and land cover within the network
137 are also shown in Fig. 4. The Decagon 5TM ECH₂O probes were installed at depths of 5, 10, 20, 40, and
138 60/80 cm to measure the SMST (Fig. 3). Table 3 provides the specific periods of data missing during each
139 year and the total data lengths of surface SM for each site. Among these sites, the SQ02, SQ03, SQ06, and
140 SQ14 have collected more than eight years of SM measurements, while the data records for the SQ13, SQ15,
141 and SQ18 are less than two years. In August 2019, there are still 12 sites that provided SM data. The Ali
142 network comprise four SM monitoring sites (Table A3), which will thus not be used for the further analysis
143 in this study due to limited number of monitoring sites and data records (Table 3).

144 **2.1.3 Naqu network**

145 The Naqu network is located in the Naqu river basin with an average elevation of 4500 m. The climate type
146 is characterized as cold-semiarid with cold dry winters and rainy summers. Over three-quarters of total annual
147 precipitation (400 mm) falls between June and August (Su et al., 2011). The landscape is dominated by the
148 short grass.

149 The network consists originally of five SMST monitoring sites installed in 2006 (Su et al. 2011), and six new
150 sites were installed between 2010 and 2016. The basic information of each monitoring site is summarized in
151 Table A5, and the typical characteristics of topography and land cover within the network are shown in Fig.
152 5 as well. The Decagon 5TM ECH₂O probes were installed at depths of 5/2.5, 10/7.5, 15, 30, and 60 cm to
153 measure the SMST, and the soil-specific calibration was also performed by van der Velde (2010) that yields
154 a RMSE of about 0.029 m³ m⁻³. Table 4 provides the specific periods of data missing during each year and
155 the total data lengths of surface SM for each site. Among these sites, only two sites (Naqu and MS sites in
156 Table A5) have collected more than six years of SM measurements, while the data records for the others are
157 less than four years. Similar to the Ali network, the Naqu network will also not be used for the further analysis
158 in this study due to limited number of monitoring sites and data records.

159 **2.2 Precipitation data**

160 The precipitation data is from two weather stations, i.e. Maqu (34°00'N, 102°05'E) and Shiquanhe (32°30'N,
161 80°05'E), operated by the China Meteorological Administration (CMA) which provides the near-surface
162 meteorological data of about 700 weather stations in China. [The daily precipitation data can be downloaded
163 from https://data.cma.cn/dataService/cdcindex/datacode/SURF_CLI_CHN_MUL_DAY.html](https://data.cma.cn/dataService/cdcindex/datacode/SURF_CLI_CHN_MUL_DAY.html) that is in
164 Chinese. The data is only available to agreement users, which is not allowed to be shared without permission
165 from the CMA.

166 **2.3 Model-based soil moisture products**

167 **2.3.1 ERA5-land soil moisture product**

168 ERA5-land is a reanalysis dataset produced by running land component of the ECMWF (European Centre
169 for Medium-Range Weather Forecasts) ERA5 climate reanalysis (Albergel et al., 2018). ERA5-land provides
170 SM data currently available from 1981 to present at hourly time interval with a spatial resolution of 0.1°, and
171 the data is available from <https://cds.climate.copernicus.eu/cdsapp#!/dataset/reanalysis-era5-land?tab> (last
172 verified on 11 March 2021). More information about the ERA5-land product can be referred to Muñoz-
173 Sabater et al., (2018). In this study, the data of volumetric total soil water content for the top soil layer (0-7
174 cm) is used for the analysis.

175 **2.3.2 MERRA2 soil moisture product**

176 MERRA2 is an atmospheric reanalysis dataset produced by NASA using the Goddard Earth Observing
177 System Model version 5 (GEOS-5) and atmospheric data assimilation system (ADAS), version 5.12.4.

178 MERRA2 provides SM data currently available from 1980 to present at hourly time interval with a spatial
179 resolution of 0.5° (latitude) by 0.625° (longitude), and the data is available from
180 https://disc.gsfc.nasa.gov/datasets/M2T1NXLND_5.12.4/summary (last verified on 11 March 2021). More
181 information about the MERRA2 product can be referred to GMAO (2015). In this study, the data of
182 volumetric liquid soil water content for the surface layer (0-5 cm) is used for the analysis.

183 2.3.3 GLDAS Noah soil moisture product

184 GLDAS-2.1 Noah is forced by a combination of model-based and observation data including Global
185 Precipitation Climatology Project (GPCP) version 1.3, and simulated with the Noah Model 3.6 in Land
186 Information System (LIS) version 7. GLDAS-2.1 Noah provides SM data currently available from 2000 to
187 present at 3-hourly time interval with a spatial resolution of 0.25° , and the data is available from
188 https://disc.gsfc.nasa.gov/datasets/GLDAS_NOAH025_3H_2.1/summary (last verified on 11 March 2021).
189 More information about the GLDAS Noah product can be referred to Rodell et al. (2004). In this study, the
190 data of soil water content for the top soil layer (0-10 cm) is used for the analysis.

191 3 Methods

192 3.1 Spatial upscaling of soil moisture measurements

193 The principle of spatial upscaling method is to determine the weight for each SM monitoring site with the
194 aid of extra information. The method generally follows the linear functional form, which can be
195 mathematically defined as:

$$196 \bar{\theta}_t^{ups} = \theta_t^{obs} \beta \quad (1a)$$

$$197 \theta_t^{obs} = [\theta_{t,1}^{obs}, \theta_{t,2}^{obs}, \dots, \theta_{t,N}^{obs}]^T \quad (1b)$$

198 where $\bar{\theta}_t^{ups}$ [$\text{m}^3 \text{m}^{-3}$] represents the upscaled SM, θ_t^{obs} [$\text{m}^3 \text{m}^{-3}$] represents the vector of SM measurements, N
199 represents the total number of SM monitoring sites, t represents the time (e.g. the t^{th} day), and β [-] represents
200 the weight vector.

201 In this study, only the surface SM measurements taken from the Maqu and Shiquanhe networks are upscaled
202 to obtain the regional-scale SM for a long-term period due to the availability of much longer data records in
203 comparison to the Naqu and Ali networks (see Section 2.1). Four upscaling methods are investigated and
204 inter-compared with each other to find the most suitable method for the application to the Tibet-Obs. Brief
205 descriptions of the selected upscaling methods are given in Appendix B. The arithmetic averaging method
206 (hereafter “AA”) assigns an equal weight coefficient to each SM monitoring site (see Appendix B.1), while
207 the Voronoi diagram method (hereafter “VD”) determines the weight based on the geographic distribution
208 of all the SM monitoring sites (see Appendix B.2). On the other hand, the time stability method (hereafter
209 “TS”) regards the most stable site as the representative site of the SM monitoring network (see Appendix
210 B.3), while the apparent thermal inertia (ATI) method is based on the close relationship between apparent
211 thermal inertia (τ) and SM (see Appendix B.4).

212 **3.2 Trend analysis**

213 The Mann-Kendall test and Sen's slope estimate (Gilbert, 1987; Mann, 1945; Smith et al., 2012) are adopted
 214 in this study to analyze the trend of 10-year upscaled SM time series and model-based products (i.e. ERA5-
 215 land, GLDAS Noah, and MERRA2). Specifically, the trend analysis is based on the monthly average SM,
 216 and all the missing data is regarded as an equal value smaller than other valid data. The test consists of
 217 calculating the seasonal statistics S and its variance $VAR(S)$ separately for each month during the 10-year
 218 period, and the seasonal statistics are then summed to obtain the Z statistics.

219 For the month i (e.g. January), the statistics S_i can be computed as:

$$220 S_i = \sum_{k=1}^9 \sum_{l=k+1}^{10} sgn(SM_{i,l} - SM_{i,k}) \quad (2a)$$

$$221 sgn(SM_{i,l} - SM_{i,k}) = \begin{cases} 1 & SM_{i,l} > SM_{i,k} \\ 0 & SM_{i,l} = SM_{i,k} \\ -1 & SM_{i,l} < SM_{i,k} \end{cases}$$

222 where k and l represent the different year and $l > k$, $SM_{i,l}$ and $SM_{i,k}$ represent the monthly average SM for the
 223 month i of the year k and l , respectively.

224 The $VAR(S_i)$ is computed as:

$$225 VAR(S_i) = \frac{1}{18} [N_i(N_i - 1)(2N_i + 5) - \sum_{p=1}^{g_i} t_{i,p}(t_{i,p} - 1)(2t_{i,p} + 5)] \quad (2b)$$

226 where N_i is the length of the record for the month i (e.g. the 10 year data record in this study with $N_i=10$),
 227 g_i is the number of equal-value data in month i , $t_{i,p}$ is the number of equal-value data in the p^{th} group for
 228 month i .

229 After obtaining the S_i and $VAR(S_i)$, the statistic S' and $VAR(S')$ for the selected season (e.g. warm season
 230 between May and October and cold season between November and April in this study) can be summed as:

$$231 S' = \sum_{i=1}^M S_i \quad (2c)$$

$$232 VAR(S') = \sum_{i=1}^M VAR(S_i) \quad (2d)$$

233 where M represents the number of months in the selected season, e.g. $M = 12$ for the full year, while $M = 6$
 234 for the warm and cold season, respectively.

235 Then the statistics Z can be computed as:

$$236 Z = \begin{cases} \frac{S'-1}{\sqrt{Var(S')}} & \text{if } S' > 0 \\ 0 & \text{if } S' = 0 \\ \frac{S'+1}{\sqrt{Var(S')}} & \text{if } S' < 0 \end{cases} \quad (2e)$$

237 If the statistics Z is positive (negative) and its absolute value is greater than $Z_{1-\alpha/2}$ (here $\alpha = 0.05$, $Z_{1-\alpha/2} =$
 238 1.96), the trend of the SM time series is regarded as upward (downward) at the significance level of α .
 239 Otherwise, we accept the hypothesis that there is not significant trend found for the SM time series.

240 If the trend is monotonous, we will further estimate the slope (change per unit time) with Sen's method (Sen,
 241 1968). The slopes of each month can be calculated as:

$$242 Q_i = \frac{SM_{i,l} - SM_{i,k}}{l - k} \quad (2f)$$

243 Then rank all the individual slopes (Q_i) for all months and find the median which is considered as the
 244 seasonal Kendall slope estimate.

245 **3.3 Metrics used for statistical comparison**

246 The metrics used to evaluate the accuracy of the upscaled SM are the bias [$\text{m}^3 \text{m}^{-3}$], RMSE [$\text{m}^3 \text{m}^{-3}$], and
 247 unbiased RMSE (ubRMSE [$\text{m}^3 \text{m}^{-3}$]) as:

$$248 \text{ Bias} = \frac{\sum_{t=1}^M (\theta_t^{tru} - \bar{\theta}_t^{ups})}{M} \quad (3a)$$

$$249 \text{ RMSE} = \sqrt{\frac{\sum_{t=1}^M (\theta_t^{tru} - \bar{\theta}_t^{ups})^2}{M}} \quad (3b)$$

$$250 \text{ ubRMSE} = \sqrt{\text{RMSE}^2 - \text{BIAS}^2} \quad (3c)$$

251 where θ_t^{tru} represents the SM that is considered as the ground truth, and $\bar{\theta}_t^{ups}$ represents the upscaled SM.

252 The closer the metric is to zero, the more accurate the estimation is.

253 The metrics used for the correlation analysis are the Nash-Sutcliffe efficiency coefficient (NSE [-]) as:

$$254 \text{ NSE} = 1 - \frac{\sum_{t=1}^n (\theta_t^{tru} - \bar{\theta}_t^{ups})^2}{\sum_{t=1}^n (\theta_t^{tru} - \bar{\theta}_t^{tru})^2} \quad (4)$$

255 The value of the NSE ranges from $-\infty$ to 1, and the closer the metric is to 1, the better the match of the
 256 estimated SM with the reference (θ_t^{tru}).

257 The metrics used to define the most representative SM time series (i.e. the best upscaled SM) is the
 258 comprehensive evaluation criterion (*CEC* [-]) combined by two statistical metrics including relative
 259 difference (*MRD* [-]) and standard deviation of the relative difference ($\sigma(RD)$ [-]) (Jacobs et al., 2004).

260 Detailed description of above mentioned three metrics are given in Appendix B.3. It should be noted that the
 261 $\theta_{t,i}^{obs}$ and $\bar{\theta}_t^{obs}$ in Eqs. (B4) and (B5) represent the upscaled SM using four different methods and their average
 262 here when using the *CEC* to determine the best upscaled SM. The most representative time series is identified
 263 by the lowest *CEC* value.

264 **3.4 Preprocessing of model-based soil moisture products**

265 The performance of the ERA5-land, MERRA2, and GLDAS Noah SM products are assessed using the
 266 upscaled SM data of the Maqu and Shiquanhe networks for a 10-year period. The corresponding regional-
 267 scale SM for each product can be obtained by averaging the grid data falling in the network areas. The
 268 numbers of grids covering the Maqu and Shiquanhe networks are 77 and 20 for the ERA5-land product, 12
 269 and 4 for the GLDAS Noah product, and only one for the MERRA2 product. Moreover, the ERA5-land and
 270 MERRA2 products with the temporal resolution of hourly and 3-hourly are averaged to daily-scale, and the
 271 unit of GLDAS Noah SM is converted from kg m^{-2} to $\text{m}^3 \text{m}^{-3}$. The uppermost layer of the ERA5-land (0-7
 272 cm), MERRA2 (0-5 cm), and GLDAS Noah (0–10 cm) SM products are considered to match the *in situ*
 273 observations at depth of 5 cm.

274 4 Results

275 4.1 Inter-comparison of soil moisture upscaling methods

276 In this section, four upscaling methods (see Section 3.1) are inter-compared first with the input of the
277 maximum number of available SM monitoring sites for a single year in the Maqu and Shiquanhe networks
278 to find the most suitable upscaled SM that can best represent the areal conditions (i.e. ground truth, SM_{truth}).
279 Later on, the performance of the four upscaling methods is further investigated with the input of reducing
280 number of SM monitoring sites to find the most suitable method for producing long-term (~10 year) upscaled
281 SM for the Maqu and Shiquanhe networks.

282 Fig. 6 shows the time series of daily average SM for the Maqu and Shiquanhe networks produced by the four
283 upscaling methods based on the maximum number of available SM monitoring sites (hereafter “ $SM_{\text{AA-max}}$ ”,
284 “ $SM_{\text{VD-max}}$ ”, “ $SM_{\text{TS-max}}$ ”, and “ $SM_{\text{ATI-max}}$ ”). Two different periods are selected for the two networks due to the
285 fact that the number of available monitoring sites reaches the maximum in different periods for the two
286 networks, e.g. 17 sites for Maqu between November 2009 and October 2010 and 12 sites for Shiquanhe
287 between August 2018 and July 2019, respectively (see Tables A2 and A4 in the Appendix A). For the Maqu
288 network, the $SM_{\text{AA-max}}$, $SM_{\text{VD-max}}$, and $SM_{\text{TS-max}}$ are comparable to each other, while the $SM_{\text{ATI-max}}$ shows
289 distinct deviations during the winter (between December and February) and summer periods (between June
290 and August). On the other hand, the $SM_{\text{ATI-max}}$ for the Shiquanhe network is comparable to $SM_{\text{AA-max}}$ and
291 $SM_{\text{VD-max}}$, while deviation is observed for the $SM_{\text{TS-max}}$. It seems that the ATI method performs better in the
292 Shiquanhe network due to the existence of a stronger relationship between τ and θ in the desert ecosystem.

293 Table B1 lists the values of MRD (see Eq. (B4) in Appendix B), $\sigma(RD)$ (Eq. (B3)), and CEC (Eq. (B6))
294 calculated for the upscaled SM produced by the four upscaling methods. The CEC is used here to determine
295 the most suitable upscaled SM that can best represent the areal conditions for the two networks. It can be
296 found that the $SM_{\text{AA-max}}$ yields the lowest CEC values for both networks, indicating that the $SM_{\text{AA-max}}$ can be
297 used to represent actual areal conditions, which will thus be regarded as the ground truth for following
298 analysis (i.e. SM_{truth}). The arithmetic average of the dense *in situ* measurements was also used as the ground
299 truth in other studies (Qin et al., 2013; Su et al., 2013).

300 As shown in Tables A2 and A4 (see Appendix A), the number of available SM monitoring sites decreases
301 with increasing time span of *in situ* measurements. There are only three (i.e. CST05, NST01, and NST03)
302 and four (i.e. SQ02, SQ03, SQ06, and SQ14) monitoring sites that provided more than nine years of *in situ*
303 SM measurement data for the Maqu and Shiquanhe networks, respectively (see Tables 2 and 3). This
304 indicates that the minimum number of available monitoring sites can be used to produce the long-term (~10
305 year) consistent upscaled SM are three and four for the Maqu and Shiquanhe networks, respectively. Fig. 7
306 shows the daily average SM time series produced by the four upscaling methods based on the minimum
307 available monitoring sites (hereafter “ $AA\text{-min}$ ”, “ $TS\text{-min}$ ”, “ $VD\text{-min}$ ”, and “ $ATI\text{-min}$ ”). The SM_{truth} obtained
308 by the $AA\text{-max}$ is also shown for comparison purpose. For the Maqu network, the upscaled SM produced by
309 the $AA\text{-min}$, $VD\text{-min}$, and $TS\text{-min}$ generally capture well the SM_{truth} variations, while the upscaled SM of
310 the $ATI\text{-min}$ shows dramatic deviations. Similarly, the upscaled SM produced by the $AA\text{-min}$ and $VD\text{-min}$

311 are consistent with the SM_{truth} for the Shiquanhe network with slight overestimations, while significant
312 deviations are noted for the upscaled SM of the TS-min and ATI-min. Table B2 lists the error statistics (e.g.
313 Bias, RMSE, ubRMSE, and NSE) computed between the upscaled SM produced by these four upscaling
314 methods with the input of the minimum available sites and the SM_{truth} . The upscaled SM produced by the
315 AA-min shows better performance for both networks as indicated by the lower RMSE and higher NSE values
316 in comparison to the other three upscaling methods.

317 Apart from the maximum and minimum numbers of available SM monitoring sites mentioned above, there
318 are about 14, 10, 8, and 6 available monitoring sites during different time spans for the Maqu network, and
319 for the Shiquanhe network are about 11, 10, 6, and 5 available monitoring sites (see Tables A2 and A4 in the
320 Appendix A). Fig. B2 shows the radar graph of error statistics (i.e. RMSE and NSE) computed between the
321 SM_{truth} and the upscaled SM produced by the four upscaling methods based on the input of different numbers
322 of available monitoring sites. For the Maqu network, the performances of the AA and VD methods are better
323 than the TS and ATI methods as indicated by smaller RMSEs and higher NSEs for all the estimations. A
324 similar conclusion can be obtained for the Shiquanhe network, while the performance of the ATI method is
325 largely improved when the number of available monitoring sites is not less than 10. It is interesting to note
326 that the upscaled SM produced by the AA-min are comparable to those produced with more available sites
327 (e.g. 10 sites) as indicated by comparable RMSE and NSE values for both networks. It indicates that the AA-
328 min is suitable to produce long-term (~10 years) upscaled SM for both networks, which yield RMSEs of
329 0.022 and 0.011 $m^3 m^{-3}$ for the Maqu and Shiquanhe networks in comparison to the SM_{truth} produced by the
330 AA-max based on the maximum available monitoring sites.

331 **4.2 Long-term analysis of upscaled soil moisture measurements**

332 In this section, the AA-min is first adopted to produce the consecutive upscaled SM time series (hereafter
333 “ SM_{AA-min} ”) for an approximately 10-year period for the Maqu and Shiquanhe networks, respectively. In
334 addition, the other time series of upscaled SM are produced by the AA method with input of all available SM
335 monitoring sites regardless of the continuity (hereafter “ $SM_{AA-valid}$ ”), which is widely used to validate the
336 various SM products (Dente et al. 2012a; Chen et al. 2013; Zheng et al. 2018b) for a short term period (e.g.
337 ≤ 2 years). This method may, however, leads to inconsistent SM time series for a long-term period due to the
338 fact that the number of available sites is different in distinct periods (see Tables A2 and A4 in the Appendix
339 A). Trend analysis (see Section 3.2) are applied to both SM_{AA-min} and $SM_{AA-valid}$ to investigate the impact of
340 change of available SM monitoring sites over time on the long-term (i.e. 10-year) trend.

341 Fig. 8a shows the time series of SM_{AA-min} and $SM_{AA-valid}$ along with the daily precipitation data for the Maqu
342 network during the period between May 2009 and May 2019. Both two time series of the SM show similar
343 seasonality with low values in winter due to frozen of soil and high values in summer due to rainfall (see
344 subplot of Fig. 8a). Deviations can be found between the SM_{AA-min} and $SM_{AA-valid}$ especially for the period
345 between 2014 and 2019, whereby the $SM_{AA-valid}$ tends to produce smaller SM values in the warm season. Fig.
346 9a shows further the Mann Kendall trend test and Sen’s slope estimate for the SM_{AA-min} , $SM_{AA-valid}$, and

347 precipitation of the Maqu network area for the full year, warm seasons, and cold seasons in a 10-year period.
348 As described in Section 3.2, the time series would present a monotonous trend if the absolute value of
349 statistics Z is greater than a critical value, i.e. $Z_{0.05} = 1.96$ in this study. The results show that there is not
350 significant trend found for both precipitation and SM_{AA-min} time series, while the $SM_{AA-valid}$ shows a drying
351 trend with a Sen's slope of -0.008 for warm seasons. The drying trend of the $SM_{AA-valid}$ is caused by the
352 change of available SM monitoring sites (see Table A2). Specifically, several monitoring sites (e.g. NST11-
353 NST15) located in the wetter area were damaged since 2013, and four new monitoring sites (i.e. NST21-
354 NST25) were installed in the drier area in 2015 (see Table 2) that affect the trend of the $SM_{AA-valid}$.
355 Fig. 8b shows the time series of the SM_{AA-min} and $SM_{AA-valid}$ along with the daily precipitation data for the
356 Shiquanhe network during the period between August 2010 and August 2019. Both time series of the SM
357 show similar seasonal variations as the Maqu network (see subplot of Fig. 8b). However, obvious deviation
358 can be noted for the inter-annual variations, and the $SM_{AA-valid}$ tends to produce larger values before 2014 but
359 smaller values since then. The Mann Kendall trend test and Sen's slope estimate for the SM_{AA-min} , $SM_{AA-valid}$,
360 and precipitation time series of the Shiquanhe network area are shown in Fig. 9b. The SM_{AA-min} demonstrates
361 a wetting trend with a Sen's slope of 0.003, while an opposite drying tendency is found for the $SM_{AA-valid}$ due
362 to the change of available SM monitoring sites (see Table A4) as the Maqu network. Specifically, several
363 monitoring sites (e.g. SQ11 and SQ12) located in the wetter area were damaged around 2014, and five new
364 monitoring sites (i.e. SQ17-21) were installed in the drier area in 2016 (see Table 3).
365 In summary, the $SM_{AA-valid}$ are likely affected by the change of available SM monitoring sites over time that
366 leads to inconsistent trend with the SM_{AA-min} . This indicates that the SM_{AA-min} is superior to the $SM_{AA-valid}$ for
367 the production of the long-term consistent upscaled SM time series.

368 **4.3 Application of the long-term upscaled soil moisture to validate the model-based products**

369 In this section, the long-term upscaled SM time series (i.e. SM_{AA-min}) produced for the two networks are
370 applied to validate the reliability of three model-based SM products, i.e. ERA5-land, MERRA2, and GLDAS
371 Noah, to demonstrate the uniqueness of this dataset for validating existing reanalysis datasets for a long term
372 period (~10 years). Since the ERA5-land product only provides the data of volumetric total soil water content,
373 the period when the soil is subject to freezing and thawing transition (i.e. November-April) is excluded for
374 this evaluation.

375 Fig. 10a shows the time series of SM_{AA-min} and daily average SM data derived from the three products for the
376 Maqu network area during the period between May 2009 and May 2019. The error statistics, i.e. bias and
377 RMSE, computed between the three products and the SM_{AA-min} for both warm (May-October) and cold
378 seasons (November-April) are given in Table 5. Although the three products generally capture the seasonal
379 variations of the SM_{AA-min} , the magnitude of the temporal SM variability is underestimated. Both GLDAS
380 Noah and MERRA2 products underestimate the SM measurements during the warm season leading to bias
381 of about -0.112 and -0.113 $m^3 m^{-3}$, respectively. This may be due to the fact that the LSMs adopted for
382 producing these products do not consider the impact of vertical soil heterogeneity caused by organic matter

383 contents widely existed in the surface layer of the Tibetan soil (Chen et al., 2013; Zheng et al., 2015a). In
384 addition, the MERRA2 product overestimates the SM measurements during the cold season with bias of
385 about $0.006 \text{ m}^3 \text{ m}^{-3}$. The ERA5-land product is able to capture the magnitude of $SM_{AA-\text{min}}$ dynamics in the
386 warm season but with more fluctuation that yields a RMSE of about $0.067 \text{ m}^3 \text{ m}^{-3}$. The trend analysis for the
387 three model-based SM products are shown in Fig. 9a as well. All three products do not show significant trend
388 in warm seasons as the $SM_{AA-\text{min}}$, while the GLDAS Noah and MERRA2 products show a wetting trend in
389 cold seasons that disagree with the $SM_{AA-\text{min}}$.

390 Fig. 10b shows the time series of $SM_{AA-\text{min}}$ and daily SM data derived from the three products for the
391 Shiquanhe network area during the period between August 2010 and August 2018, and the corresponding
392 error statistics are given in Table 5 as well. Although the three products generally capture the seasonal
393 variations of the $SM_{AA-\text{min}}$, both GLDAS Noah and MERRA2 products overestimate the $SM_{AA-\text{min}}$ for the
394 entire study period leading to positive bias values, and overestimation is also noted for the ERA5-land product
395 in the warm season with bias of about $0.002 \text{ m}^3 \text{ m}^{-3}$. The trend analysis for the three SM products are also
396 shown in Fig. 9b. Both the ERA5-land and MERRA2 products are able to reproduce the wetting trend found
397 for the $SM_{AA-\text{min}}$, while the GLDAS Noah product cannot capture well the trend.

398 In summary, the currently model-based SM products still show deficiencies in representing the trend and
399 variation of measured SM dynamics for a long-term period (~ 10 years) in the Tibetan grassland and desert
400 ecosystems that dominate the landscape of the TP.

401 **5 Discussion**

402 As shown in previous sections, the number of available SM monitoring sites in the Tibet-Obs generally
403 changes with time. For instance, several monitoring sites of the Maqu network located in the wetter area were
404 damaged since 2013, and four new monitoring sites were installed in the drier area in 2015 that would affect
405 the trend of SM time series (i.e. $SM_{AA-\text{valid}}$ shown in Section 4.2). On the other hand, the 10-year upscaled
406 SM data (i.e. $SM_{AA-\text{min}}$) produced in this study utilizing three and four monitoring sites with long-term
407 continuous measurements would yield RMSEs of about 0.022 and $0.011 \text{ m}^3 \text{ m}^{-3}$ for the Maqu and Shiquanhe
408 networks, respectively (see Section 4.1). Therefore, to provide a higher-quality continuous SM time series
409 for the future, it is necessary to find an appropriate strategy to maintain the monitoring sites of Tibet-Obs.
410 This section discusses the possible strategies for the Maqu and Shiquanhe networks as examples.

411 At first, a sensitivity analysis is conducted to quantify the impact of the number of monitoring sites on the
412 regional SM estimate. The SM time series described in Section 4.1 (i.e. 11/2009-10/2010 for the Maqu
413 network and 8/2018-7/2019 for the Shiquanhe network) are used to test the sensitivity, and there are totally
414 17 and 12 available monitoring sites for the Maqu and Shiquanhe networks, respectively. Taking the Maqu
415 network as an example, we randomly pick different numbers of sites from 1 to 16 among the 17 sites to make
416 up different combinations, and then compute the RMSEs of the averaged SM obtained by these combinations
417 (Famiglietti et al., 2008; Zhao et al., 2013). These RMSEs are further grouped into nine levels ranging from
418 0.004 to $0.02 \text{ m}^3 \text{ m}^{-3}$, and the percentage of the combinations falling into each level is summarized in Table

419 6. In general, the percentage increases with increasing number of monitoring sites at any RMSE levels. It can
420 be noted that more than 50% of combinations are able to comply with the RMSE requirement of 0.004 m^3
421 m^{-3} if the number of available monitoring sites are 16 and 11 in the Maqu and Shiquanhe networks,
422 respectively. If the number of available monitoring sites are not less than 13 and 6 in the Maqu and Shiquanhe
423 networks, there would be about 60% of combinations with 13 sites (6 sites) are able to comply with the
424 RMSE requirement of $0.01 \text{ m}^3 \text{ m}^{-3}$. For the RMSE requirement of $0.02 \text{ m}^3 \text{ m}^{-3}$, more than 50% of
425 combinations would achieve the requirement if the number of available monitoring sites are not less 7 and 3
426 in the two networks, respectively. In summary, the number of monitoring sites required to maintain current
427 networks depends on the defined RMSE requirement.

428 As shown in Section 4.1, the usage of a minimum number of sites (i.e. three for Maqu and four for Shiquanhe)
429 with about 10-year continuous measurements yields RMSEs of 0.022 and $0.011 \text{ m}^3 \text{ m}^{-3}$ for the Maqu and
430 Shiquanhe networks, respectively. Since there are still 12 monitoring sites providing SM measurements for
431 both networks until 2019 (see Tables 2 and 3), it is possible to decrease the RMSEs if the monitoring sites
432 selected for maintaining are appropriately determined. For the Shiquanhe network, the optimal strategy is to
433 keep the current 12 monitoring sites, which is exactly the combination used in Section 4.1. For the Maqu
434 network, it can be found that there is about 3.52% of combinations with 12 sites could yield the lowest RMSE
435 of $0.006 \text{ m}^3 \text{ m}^{-3}$ (see Table 6). In order to find the optimal combination with 12 sites for the Maqu network,
436 all the possible combinations (i.e. the number of 6188) are ranked by RMSE values from the smallest to
437 largest, and Table 7 lists the examples of ranking 1-5th and 95-100th. It can be noted that the 100th combination
438 contains the largest number of currently available monitoring sites (i.e. 7 sites including CST03, CST05,
439 NST01, NST03, NST05, NST06, and NST10) with a RMSE of less than $0.006 \text{ m}^3 \text{ m}^{-3}$. Therefore, the 100th
440 combination of 12 monitoring sites (as shown in Table 7) is suggested for the Maqu network.

441 In summary, it is suggested to maintain well current 12 monitoring sites for the Shiquanhe network, while
442 for the Maqu network it is suggested to restore five old monitoring sites, i.e. CST02, NST11, NST13, NST14,
443 and NST15.

444 **6 Data availability**

445 The 10-year (2009-2019) surface SM dataset is freely available from the 4TU.ResearchData repository at
446 <https://doi.org/10.4121/uuid:21220b23-ff36-4ca9-a08f-ccd53782e834> (Zhang et al., 2020). The original *in*
447 *situ* SM data, the upscaled SM data, and the supplementary data are stored in .xlsx files. A user guide
448 document is given to introduce the content of the dataset, the status of the Tibet-Obs, and the online dataset
449 utilized in the study.

450 **7 Conclusions**

451 In this paper, we report on the status of the Tibet-Obs and present the long-term *in situ* SM and spatially
452 upscaled SM dataset for the period 2009-2019. In general, the number of available SM monitoring sites

453 decreased over time due to damage of sensors. Until 2019, there are only three and four sites that provide an
454 approximately 10-year consistent SM time series for the Maqu and Shiquanhe networks, respectively.
455 Comparisons between four upscaling methods, i.e. arithmetic averaging (AA), Voronoi diagram (VD), time
456 stability (TS), and apparent thermal inertia (ATI), show that the AA method with input of the maximum
457 number of available SM monitoring sites (AA-max) can be used to represent the actual areal SM conditions
458 (SM_{truth}). The arithmetic average of the three and four monitoring sites with long-term continuous
459 measurements (AA-min) are found to be the most suitable to produce the upscaled SM dataset for the period
460 2009-2019, which may yield RMSEs of 0.022 and $0.011 \text{ m}^3 \text{ m}^{-3}$ for the Maqu and Shiquanhe networks in
461 comparison to the SM_{truth} .
462 Trend analysis of the approximately 10-year upscaled SM time series produced by the AA-min ($SM_{\text{AA-min}}$)
463 shows that the Shiquanhe network area in the western part of the TP is getting wet while there is not
464 significant trend found for the Maqu network area in the east. The usage of all the available monitoring sites
465 in each year leads to inconsistent time series of SM that cannot capture well the trend of $SM_{\text{AA-min}}$.
466 Comparisons between the $SM_{\text{AA-min}}$ and the model-based SM products from the ERA5-land, GLDAS Noah,
467 and MERRA2 further demonstrate that current model-based SM products still show deficiencies in
468 representing the trend and variation of measured SM dynamics on the TP. Moreover, strategies for
469 maintaining the Tibet-Obs are provided, and it is suggested to maintain well current 12 monitoring sites for
470 the Shiquanhe network, while for the Maqu network it is suggested to restore five old monitoring sites.
471 The 10-year (2009-2019) surface SM dataset presented in this paper includes the 15-min *in situ* measurements
472 taken at a depth of 5 cm collected from three regional-scale networks (i.e. Maqu, Naqu, and Ngari including
473 Ali and Shiquanhe) of the Tibet-Obs, and the spatially upscaled SM datasets produced by the AA-min for
474 the Maqu and Shiquanhe networks. This dataset is valuable for calibrating/validating long-term satellite-
475 and model-based SM products, evaluation of SM upscaling methods, development of data fusion methods, and
476 quantifying the coupling strength between precipitation and SM at 10-year scale.

477 **Author contribution**

478 Pei Zhang, Donghai Zheng, Rogier van der Velde and Zhongbo Su designed the framework of this work. Pei
479 Zhang performed the computations and data analysis, and written the manuscript. Donghai Zheng, Rogier
480 van der Velde and Zhongbo Su supervised the progress of this work and provided critical suggestions, and
481 revised the manuscript. Zhongbo Su and Jun Wen designed the setup of Tibet-Obs, Yijian Zeng, XinWang
482 and Zuoliang Wang involved in maintaining the Tibet-Obs and downloading the original measurements. Pei
483 Zhang, Zuoliang Wang, and Jiali Chen organized the data.

484 **Competing interests**

485 The authors declare that they have no conflict of interest.

486 **Acknowledgments**

487 This study was supported by the Strategic Priority Research Program of Chinese Academy of Sciences (Grant
488 No. XDA20100103) and National Natural Science Foundation of China (Grant No. 41971308, 41871273).

489 **Reference**

- 490
491 Albergel, C., Dutra, E., Munier, S., Calvet, J. C., Muñoz Sabater, J., Rosnay, P. and Balsamo, G.: ERA-5 and
492 ERA-Interim driven ISBA land surface model simulations: Which one performs better?, *Hydrology*
493 *and Earth System Sciences*, 22, doi:10.5194/hess-22-3515-2018, 2018.
- 494 Bi, H. and Ma, J.: Evaluation of simulated soil moisture in GLDAS using in-situ measurements over the
495 Tibetan Plateau, *International Geoscience and Remote Sensing Symposium (IGARSS)*, 2015-
496 Novem, 4825–4828, doi:10.1109/IGARSS.2015.7326910, 2015.
- 497 Chen, Y., Yang, K., Qin, J., Zhao, L., Tang, W. and Han, M.: Evaluation of AMSR-E retrievals and GLDAS
498 simulations against observations of a soil moisture network on the central Tibetan Plateau, *Journal*
499 *of Geophysical Research Atmospheres*, 118(10), 4466–4475, doi:10.1002/jgrd.50301, 2013.
- 500 Cheng, M., Zhong, L., Ma, Y., Zou, M., Ge, N., Wang, X. and Hu, Y.: A study on the assessment of multi-
501 source satellite soil moisture products and reanalysis data for the Tibetan Plateau, *Remote Sensing*,
502 11(10), doi:10.3390/rs11101196, 2019.
- 503 Colliander, A., Jackson, T. J., Bindlish, R., Chan, S., Das, N., Kim, S. B., Cosh, M. H., Dunbar, R. S., Dang,
504 L., Pashaian, L., Asanuma, J., Aida, K., Berg, A., Rowlandson, T., Bosch, D., Caldwell, T., Caylor,
505 K., Goodrich, D., al Jassar, H., Lopez-Baeza, E., Martínez-Fernández, J., González-Zamora, A.,
506 Livingston, S., McNairn, H., Pacheco, A., Moghaddam, M., Montzka, C., Notarnicola, C., Niedrist,
507 G., Pellarin, T., Prueger, J., Pulliainen, J., Rautiainen, K., Ramos, J., Seyfried, M., Starks, P., Su,
508 Z., Zeng, Y., van der Velde, R., Thibeault, M., Dorigo, W., Vreugdenhil, M., Walker, J. P., Wu, X.,
509 Monerris, A., O'Neill, P. E., Entekhabi, D., Njoku, E. G. and Yueh, S.: Validation of SMAP surface
510 soil moisture products with core validation sites, *Remote Sensing of Environment*, 191, 215–231,
511 doi:10.1016/j.rse.2017.01.021, 2017a.
- 512 Colliander, A., Jackson, T. J., Bindlish, R., Chan, S., Das, N., Kim, S. B., Cosh, M. H., Dunbar, R. S., Dang,
513 L., Pashaian, L., Asanuma, J., Aida, K., Berg, A., Rowlandson, T., Bosch, D., Caldwell, T., Caylor,
514 K., Goodrich, D., al Jassar, H., Lopez-Baeza, E., Martínez-Fernández, J., González-Zamora, A.,
515 Livingston, S., McNairn, H., Pacheco, A., Moghaddam, M., Montzka, C., Notarnicola, C., Niedrist,
516 G., Pellarin, T., Prueger, J., Pulliainen, J., Rautiainen, K., Ramos, J., Seyfried, M., Starks, P., Su,
517 Z., Zeng, Y., van der Velde, R., Thibeault, M., Dorigo, W., Vreugdenhil, M., Walker, J. P., Wu, X.,
518 Monerris, A., O'Neill, P. E., Entekhabi, D., Njoku, E. G. and Yueh, S.: Validation of SMAP surface
519 soil moisture products with core validation sites, *Remote Sensing of Environment*, 191, 215–231,
520 doi:https://doi.org/10.1016/j.rse.2017.01.021, 2017b.
- 521 Dente, L., Vekerdy, Z., Wen, J. and Su, Z.: Maqu network for validation of satellite-derived soil moisture
522 products, *International Journal of Applied Earth Observation and Geoinformation*, 17, 55–65,
523 doi:https://doi.org/10.1016/j.jag.2011.11.004, 2012a.
- 524 Dente, L., Su, Z. and Wen, J.: Validation of SMOS soil moisture products over the Maqu and Twente
525 Regions, *Sensors (Switzerland)*, 12(8), 9965–9986, doi:10.3390/s120809965, 2012b.
- 526 Van doninck, J., Peters, J., De Baets, B., De Clercq, E. M., Ducheyne, E. and Verhoest, N. E. C.: The potential
527 of multitemporal Aqua and Terra MODIS apparent thermal inertia as a soil moisture indicator,
528 *International Journal of Applied Earth Observation and Geoinformation*, 13(6), 934–941,
529 doi:https://doi.org/10.1016/j.jag.2011.07.003, 2011.
- 530 Famiglietti, J. S., Ryu, D., Berg, A. A., Rodell, M. and Jackson, T. J.: Field observations of soil moisture
531 variability across scales, *Water Resources Research*, 44(1), 1–16, doi:10.1029/2006WR005804,
532 2008.
- 533 Gao, S., Zhu, Z., Weng, H. and Zhang, J.: Upscaling of sparse in situ soil moisture observations by integrating
534 auxiliary information from remote sensing, *International Journal of Remote Sensing*, 38(17), 4782–
535 4803, doi:10.1080/01431161.2017.1320444, 2017.
- 536 Gilbert, Richland O, *Statistical Methods for Environmental Pollution Monitoring*, United States.

537 <https://www.osti.gov/biblio/7037501>, 1987.

538 GMAO, Global Modeling and Assimilation Office: MERRA-2 tavg1_2d_Ind_Nx: 2d,1-Hourly,Time-
539 Averaged,Single-Level,Assimilation,Land Surface Diagnostics V5.12.4, Accessed: [Data Access
540 Date], Greenbelt, MD, USA, Goddard Earth Sciences Data and Information Services Center (GES
541 DISC),, 2015.

542 Muñoz-Sabater, J., Dutra, E., Balsamo, G., Schepers, D., Albergel, C., Boussetta, S., Agusti-Panareda, A.,
543 Zsoter, E., and Hersbach, H.: ERA5-Land: an improved version of the ERA5 reanalysis land
544 component, Joint ISWG and LSA-SAF Workshop IPMA, Lisbon, 26–28, 2018.

545 Jacobs, J. M., Mohanty, B. P., Hsu, E.-C. and Miller, D.: SMEX02: Field scale variability, time stability and
546 similarity of soil moisture, *Remote Sensing of Environment*, 92(4), 436–446,
547 doi:<https://doi.org/10.1016/j.rse.2004.02.017>, 2004.

548 Ju, F., An, R. and Sun, Y.: Immune evolution particle filter for soil moisture data assimilation, *Water*
549 (Switzerland), 11(2), doi:10.3390/w11020211, 2019.

550 Kang, J., Jin, R., Li, X. and Zhang, Y.: Block Kriging With Measurement Errors: A Case Study of the Spatial
551 Prediction of Soil Moisture in the Middle Reaches of Heihe River Basin, *IEEE Geoscience and*
552 *Remote Sensing Letters*, 14(1), 87–91, doi:10.1109/LGRS.2016.2628767, 2017.

553 Li, C., Lu, H., Yang, K., Han, M., Wright, J. S., Chen, Y., Yu, L., Xu, S., Huang, X. and Gong, W.: The
554 evaluation of SMAP enhanced soil moisture products using high-resolution model simulations and
555 in-situ observations on the Tibetan Plateau, *Remote Sensing*, 10(4), 1–16, doi:10.3390/rs10040535,
556 2018.

557 Liu, J., Chai, L., Lu, Z., Liu, S., Qu, Y., Geng, D., Song, Y., Guan, Y., Guo, Z., Wang, J. and Zhu, Z.:
558 Evaluation of SMAP, SMOS-IC, FY3B, JAXA, and LPRM Soil moisture products over the
559 Qinghai-Tibet Plateau and Its surrounding areas, *Remote Sensing*, 11(7), doi:10.3390/rs11070792,
560 2019.

561 Mann, H. B.: Nonparametric Tests Against Trend, *Econometrica*, 13(3), 245–259, doi:10.2307/1907187,
562 1945.

563 Moghaddam, M., Clewley, D., Silva, A. and Akbar, R.: The SoilSCAPE Network Multiscale In-situ Soil
564 Moisture Measurements: Innovations in Network Design and Approaches to Upscaling in Support
565 of SMAP, in AGU Fall Meeting Abstracts, vol. 2014, pp. IN11A-3599, AA(The Ming Hsieh Dept.
566 of Electr. Eng., University of Southern California, Los Angeles, CA, United States), AB(The Ming
567 Hsieh Dept. of Electr. Eng., University of Southern California, Los Angeles, CA, United States),
568 AC(The Ming Hsieh Dept. of Electr. En. [online] Available from:
569 <https://ui.adsabs.harvard.edu/abs/2014AGUFMIN11A3599M>, 2014.

570 Qin, J., Yang, K., Lu, N., Chen, Y., Zhao, L. and Han, M.: Spatial upscaling of in-situ soil moisture
571 measurements based on MODIS-derived apparent thermal inertia, *Remote Sensing of Environment*,
572 138, 1–9, doi:10.1016/j.rse.2013.07.003, 2013.

573 Qin, J., Zhao, L., Chen, Y., Yang, K., Yang, Y., Chen, Z. and Lu, H.: Inter-comparison of spatial upscaling
574 methods for evaluation of satellite-based soil moisture, *Journal of Hydrology*, 523, 170–178,
575 doi:10.1016/j.jhydrol.2015.01.061, 2015.

576 Rodell, M., Houser, P. R., Jambor, U., Gottschalck, J., Mitchell, K., Meng, C. J., Arsenault, K., Cosgrove,
577 B., Radakovich, J., Bosilovich, M., Entin, J. K., Walker, J. P., Lohmann, D. and Toll, D.: The Global
578 Land Data Assimilation System, *Bulletin of the American Meteorological Society*, 85(3), 381–394,
579 doi:10.1175/BAMS-85-3-381, 2004.

580 Sen, P. K.: Estimates of the Regression Coefficient Based on Kendall’s Tau, *Journal of the American*
581 *Statistical Association*, 63(324), 1379–1389, doi:10.1080/01621459.1968.10480934, 1968.

582 Su, Z., Wen, J., Dente, L., Van Der Velde, R., Wang, L., Ma, Y., Yang, K. and Hu, Z.: The tibetan plateau
583 observatory of plateau scale soil moisture and soil temperature (Tibet-Obs) for quantifying
584 uncertainties in coarse resolution satellite and model products, *Hydrology and Earth System*
585 *Sciences*, 15(7), 2303–2316, doi:10.5194/hess-15-2303-2011, 2011.

586 Su, Z., De Rosnay, P., Wen, J., Wang, L. and Zeng, Y.: Evaluation of ECMWF’s soil moisture analyses using
587 observations on the Tibetan Plateau, *Journal of Geophysical Research Atmospheres*, 118(11), 5304–
588 5318, doi:10.1002/jgrd.50468, 2013.

589 Tarantola, A.: *Inverse Problem Theory and Methods for Model Parameter Estimation*, Society for Industrial
590 and Applied Mathematics., 2005.

591 Topp, G. C., Davis, J. L. and Annan, A. P.: Electromagnetic determination of soil water content:
592 Measurements in coaxial transmission lines, *Water Resources Research*, 16(3), 574–582,

593 doi:<https://doi.org/10.1029/WR016i003p00574>, 1980.

594 Vachaud, G., Passerat De Silans, A., Balabanis, P. and Vauclin, M.: Temporal Stability of Spatially Measured
595 Soil Water Probability Density Function1, *Soil Science Society of America Journal*, 49, 822–828,
596 doi:10.2136/sssaj1985.03615995004900040006x, 1985.

597 van der Velde, R.: Soil moisture remote sensing using active microwaves and land surface modelling, 1
598 January., 2010.

599 van der Velde, R., Su, Z. and Wen, J.: Roughness determination from multi-angular ASAR Wide Swath
600 mode observations for soil moisture retrieval over the Tibetan Plateau, *Proceedings of the European
601 Conference on Synthetic Aperture Radar, EUSAR, Proceeding(August 2011)*, 163–165, 2014.

602 Veroustraete, F., Li, Q., Verstraeten, W. W., Chen, X., Bao, A., Dong, Q., Liu, T. and Willems, P.: Soil
603 moisture content retrieval based on apparent thermal inertia for Xinjiang province in China,
604 *International Journal of Remote Sensing*, 33(12), 3870–3885, doi:10.1080/01431161.2011.636080,
605 2012.

606 Wang, J., Ge, Y., Song, Y. and Li, X.: A Geostatistical Approach to Upscale Soil Moisture With Unequal
607 Precision Observations, *IEEE Geoscience and Remote Sensing Letters*, 11(12), 2125–2129,
608 doi:10.1109/LGRS.2014.2321429, 2014.

609 Wei, Z., Meng, Y., Zhang, W., Peng, J. and Meng, L.: Downscaling SMAP soil moisture estimation with
610 gradient boosting decision tree regression over the Tibetan Plateau, *Remote Sensing of
611 Environment*, 225(February), 30–44, doi:10.1016/j.rse.2019.02.022, 2019.

612 Yang, K., Chen, Y., He, J., Zhao, L., Lu, H. and Qin, J.: Development of a daily soil moisture product for the
613 period of 2002-2011 in Mainland China., *Science China Earth Sciences*, doi:10.1007/s11430-019-
614 9588-5, 2020.

615 Zeng, J., Li, Z., Chen, Q., Bi, H., Qiu, J. and Zou, P.: Evaluation of remotely sensed and reanalysis soil
616 moisture products over the Tibetan Plateau using in-situ observations, *Remote Sensing of
617 Environment*, 163, 91–110, doi:<https://doi.org/10.1016/j.rse.2015.03.008>, 2015.

618 Zeng, Y., Su, Z., Van Der Velde, R., Wang, L., Xu, K., Wang, X. and Wen, J.: Blending satellite observed,
619 model simulated, and in situ measured soil moisture over Tibetan Plateau, *Remote Sensing*, 8(3),
620 1–22, doi:10.3390/rs8030268, 2016.

621 Zhang, Q., Fan, K., Singh, V. P., Sun, P. and Shi, P.: Evaluation of Remotely Sensed and Reanalysis Soil
622 Moisture Against In Situ Observations on the Himalayan-Tibetan Plateau, *Journal of Geophysical
623 Research: Atmospheres*, 123(14), 7132–7148, doi:10.1029/2017JD027763, 2018.

624 Zhao, H., Zeng, Y., Lv, S. and Su, Z.: Analysis of soil hydraulic and thermal properties for land surface
625 modeling over the Tibetan Plateau, *Earth System Science Data*, 10(2), 1031–1061,
626 doi:10.5194/essd-10-1031-2018, 2018.

627 Zhao, L., Yang, K., Qin, J., Chen, Y., Tang, W., Montzka, C., Wu, H., Lin, C., Han, M. and Vereecken, H.:
628 Spatiotemporal analysis of soil moisture observations within a Tibetan mesoscale area and its
629 implication to regional soil moisture measurements, *Journal of Hydrology*, 482, 92–104,
630 doi:10.1016/j.jhydrol.2012.12.033, 2013.

631 Zhao, W., Li, A., Jin, H., Zhang, Z., Bian, J. and Yin, G.: Performance evaluation of the triangle-based
632 empirical soil moisture relationship models based on Landsat-5 TM data and in situ measurements,
633 *IEEE Transactions on Geoscience and Remote Sensing*, 55(5), 2632–2645,
634 doi:10.1109/TGRS.2017.2649522, 2017.

635 Zheng, D., van der Velde, R., Su, Z., Wang, X., Wen, J., Booij, M. J., Hoekstra, A. Y. and Chen, Y.:
636 Augmentations to the Noah Model Physics for Application to the Yellow River Source Area. Part
637 I: Soil Water Flow, *Journal of Hydrometeorology*, 16(6), 2659–2676, doi:10.1175/JHM-D-14-
638 0198.1, 2015a.

639 Zheng, D., van der Velde, R., Su, Z., Wang, X., Wen, J., Booij, M. J., Hoekstra, A. Y. and Chen, Y.:
640 Augmentations to the Noah Model Physics for Application to the Yellow River Source Area. Part
641 II: Turbulent Heat Fluxes and Soil Heat Transport, *Journal of Hydrometeorology*, 16(6), 2677–2694,
642 doi:10.1175/JHM-D-14-0199.1, 2015b.

643 Zheng, D., van der Velde, R., Wen, J., Wang, X., Ferrazzoli, P., Schwank, M., Colliander, A., Bindlish, R.
644 and Su, Z.: Assessment of the SMAP Soil Emission Model and Soil Moisture Retrieval Algorithms
645 for a Tibetan Desert Ecosystem, *IEEE Transactions on Geoscience and Remote Sensing*, 56(7),
646 3786–3799, doi:10.1109/TGRS.2018.2811318, 2018a.

647 Zheng, D., Wang, X., van der Velde, R., Ferrazzoli, P., Wen, J., Wang, Z., Schwank, M., Colliander, A.,
648 Bindlish, R. and Su, Z.: Impact of surface roughness, vegetation opacity and soil permittivity on L-

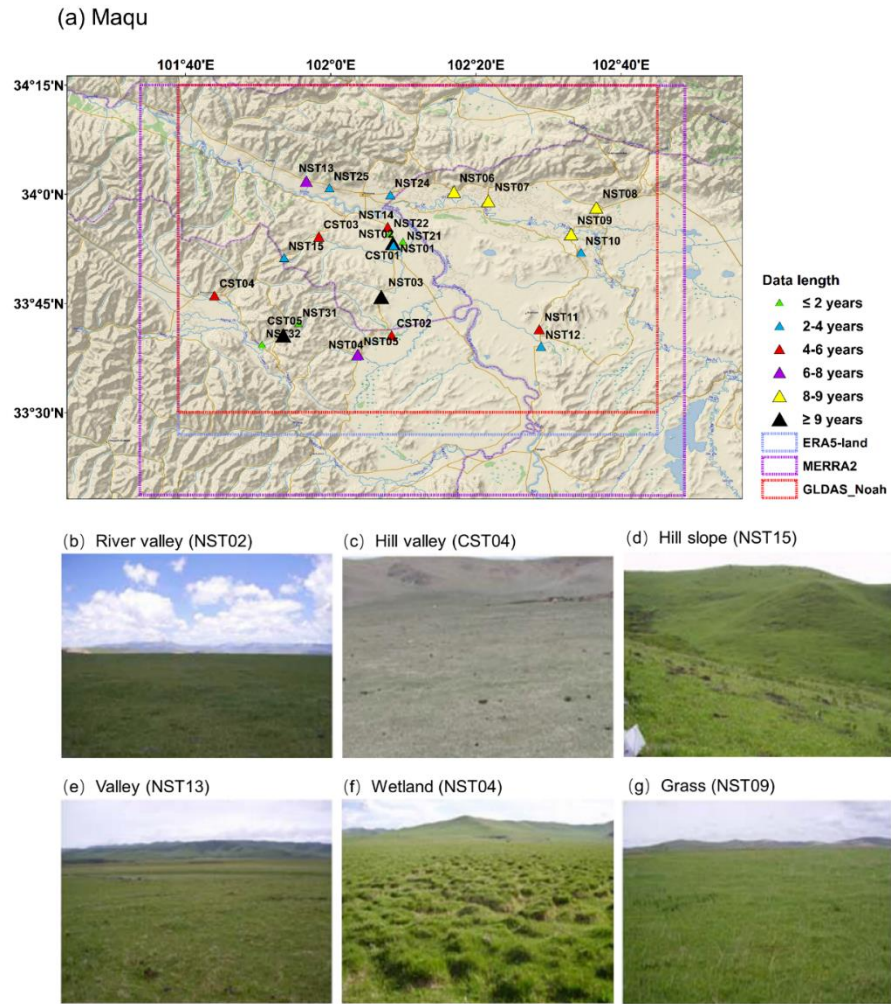
649 band microwave emission and soil moisture retrieval in the third pole environment, *Remote Sensing*
650 *of Environment*, 209(November 2017), 633–647, doi:10.1016/j.rse.2018.03.011, 2018b.
651 Zheng, D., Wang, X., van der Velde, R., Schwank, M., Ferrazzoli, P., Wen, J., Wang, Z., Colliander, A.,
652 Bindlish, R. and Su, Z.: Assessment of Soil Moisture SMAP Retrievals and ELBARA-III
653 Measurements in a Tibetan Meadow Ecosystem, *IEEE Geoscience and Remote Sensing Letters*,
654 16(9), 1407–1411, doi:10.1109/lgrs.2019.2897786, 2019.
655



* CMA weather station
 ■ Tibet-Obs network

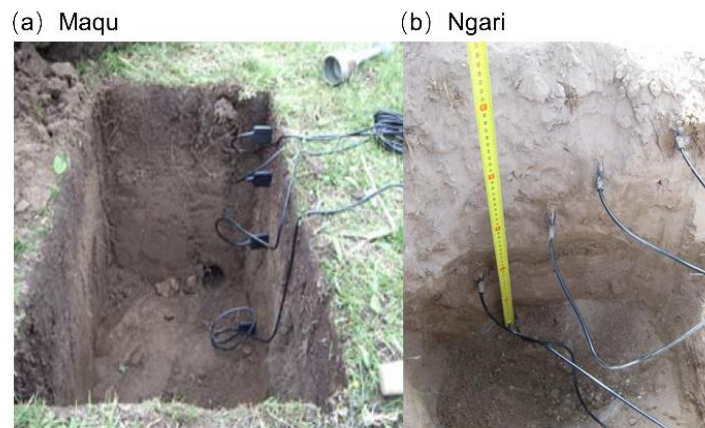
656

657 Fig. 1. Locations of the Tibet-Obs including Maqu, Naqu, and Ngari (including Ali and Shiquanhe) soil moisture
 658 monitoring networks. The weather stations of Maqu and Shiquanhe operated by the China Meteorological
 659 Administration (CMA) are also shown. (Base map is from Esri, Copyright: © Esri)



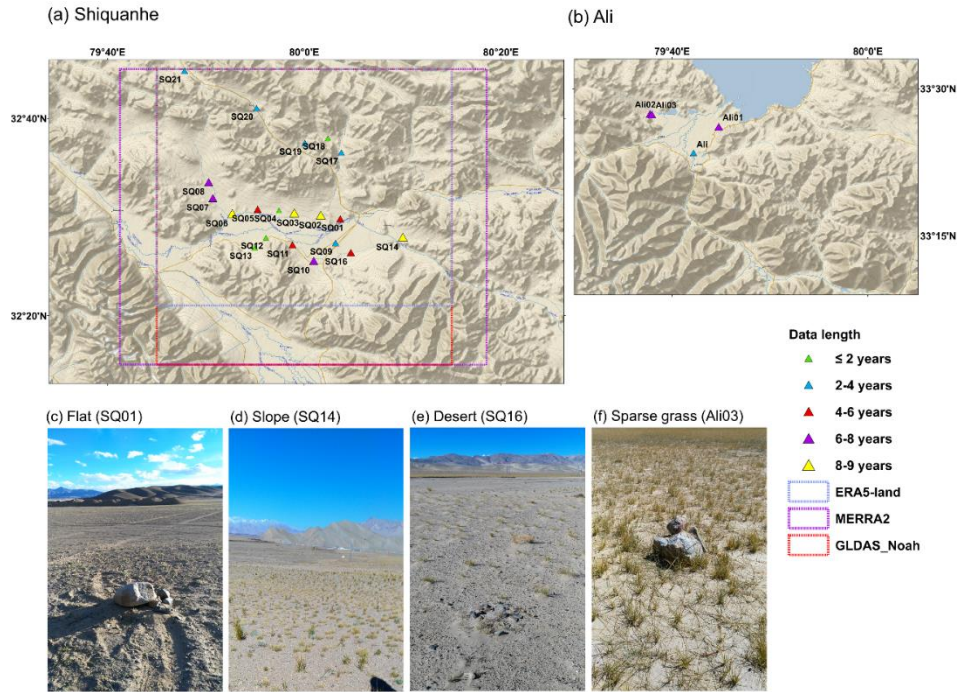
660

661 Fig. 2. (a) Overview of the Maqu monitoring network, and typical characteristics of topography and land cover
 662 within the network: (b) river valley, (c) hill valley, (d) hill slope, (e) valley, (f) wetland and (g) grass. The colored
 663 triangles in (a) represent different data lengths of surface SM measurements for each site, and the colored boxes
 664 represent the coverage of selected model-based products. The site name in the bracket in (b)-(g) indicates the site
 665 location for which the photograph is selected. (Base map copyright: ©2018 Garmin)



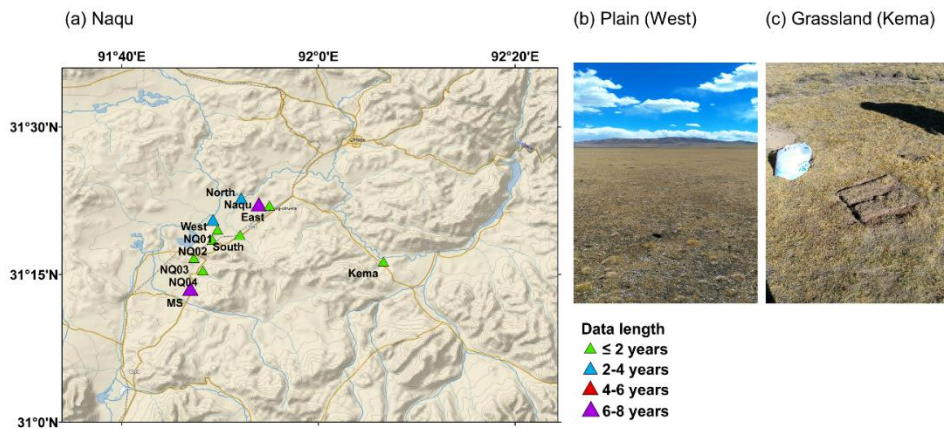
666

667 Fig. 3. Examples of typical installation of sensors in monitoring sites of (a) Maqu and (b) Ngari networks.



668

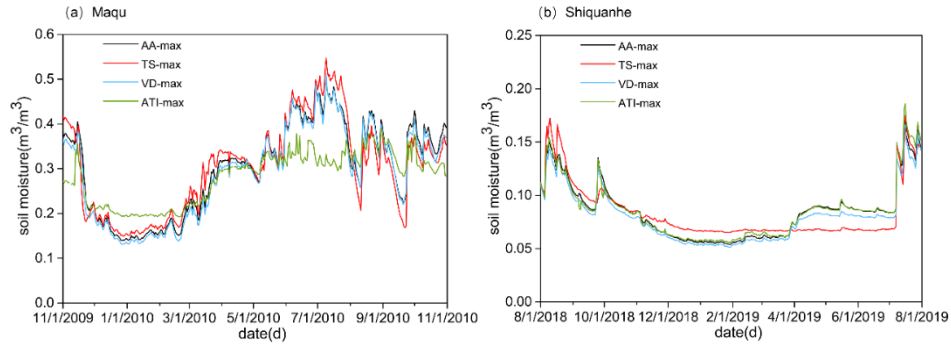
669 **Fig. 4. Overview of the Ngari monitoring network including (a) Shiquanhe and (b) Ali networks, and typical**
 670 **characteristics of topography and land cover within the network: (c) flat, (d) slope, (e) desert, and (f) sparse grass.**
 671 **The colored triangles in (a) and (b) represent different data lengths of surface SM measurements for each site,**
 672 **and the colored boxes represent the coverage of selected model-based products. The site name in the bracket in**
 673 **(c)-(f) indicates the site location for which the photograph is selected. (Base map copyright: ©2018 Garmin)**



674

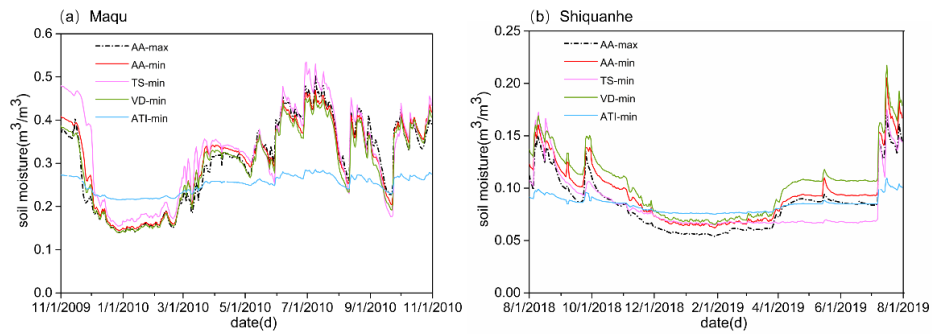
675 **Fig. 5. (a) Overview of the Naqu monitoring network, and typical characteristics of topography and land cover**
 676 **within the network: (b) plain and (c) grassland. The colored triangles in (a) represent different data lengths of**
 677 **surface SM measurements for each site. The site name in the bracket in (b) and (c) indicates the site location for**
 678 **which the photograph is selected. (Base map copyright: ©2018 Garmin)**

679



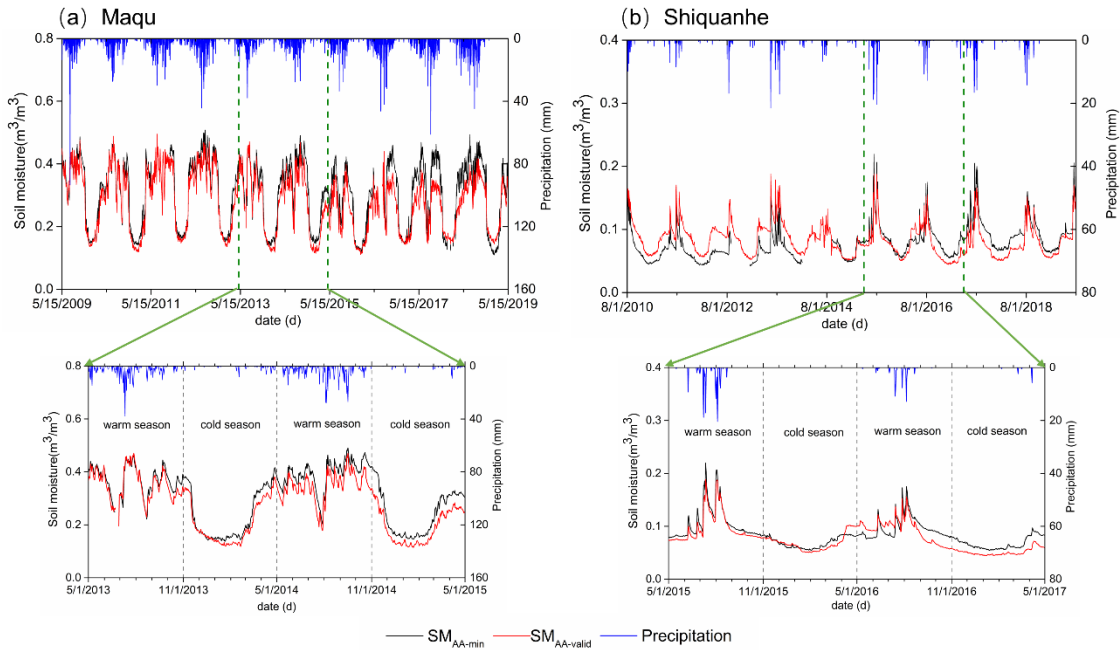
680

681 **Fig. 6. Comparisons of daily average SM for the (a) Maqu and (b) Shiquanhe networks produced by the four**
 682 **upscaling methods with input of the maximum number of available SM monitoring sites.**



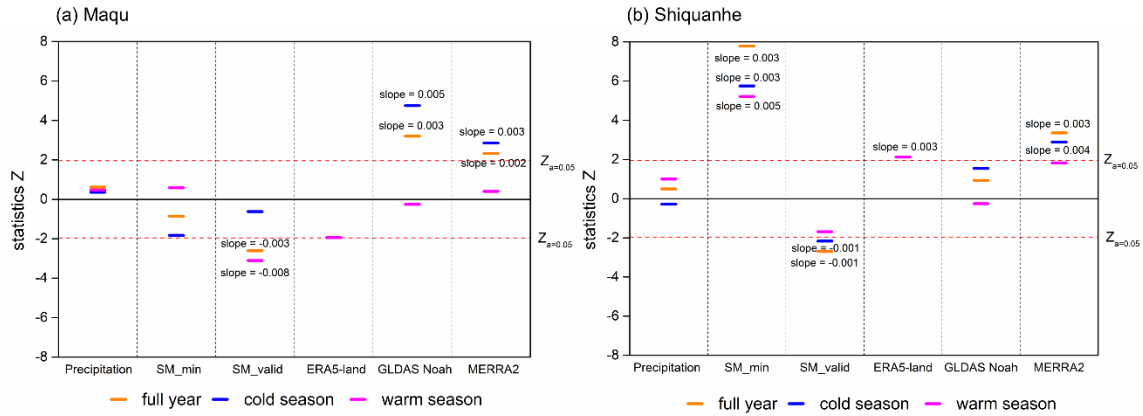
683

684 **Fig. 7. Comparisons of daily average SM for the (a) Maqu and (b) Shiquanhe networks produced by the four**
 685 **upscaling methods with input of the minimum number of available SM monitoring sites.**



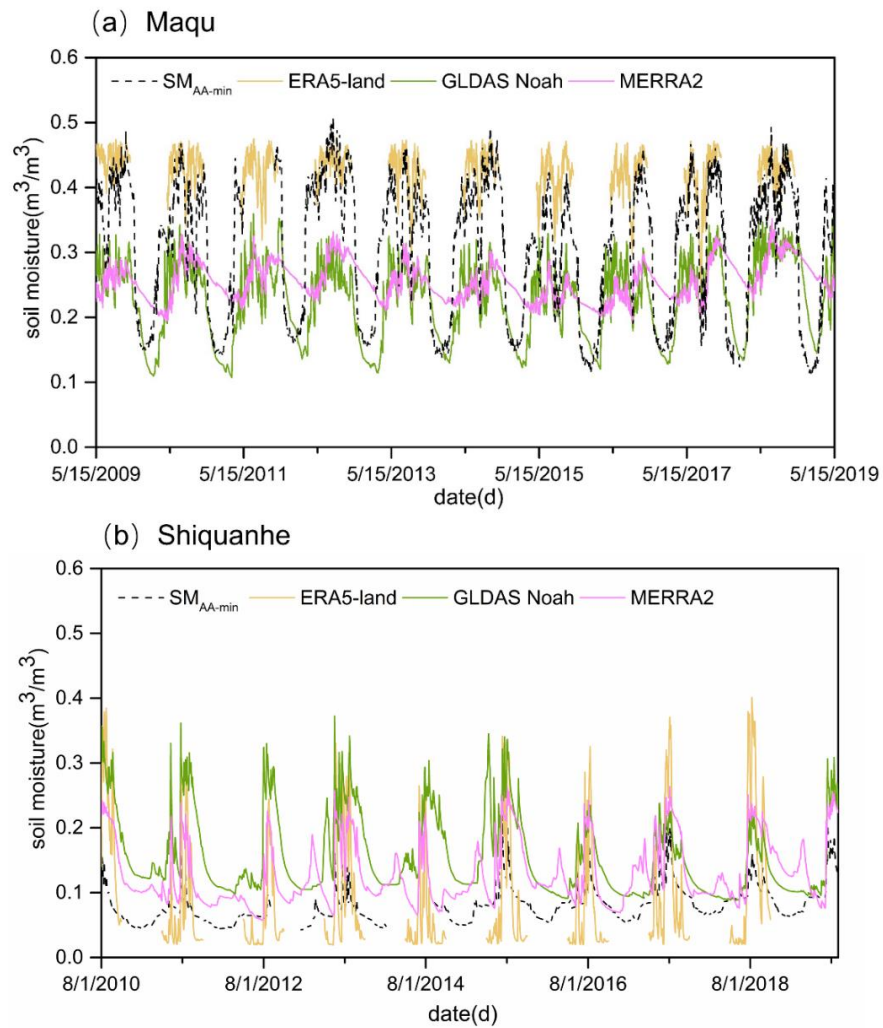
686

687 **Fig. 8. Temporal variation of SM_{AA-min} , $SM_{AA-valid}$, and precipitation for the (a) Maqu and (b) Shiquanhe networks**
 688 **in a 10-year period as well as the subplot with a 2-year period.**



689

690 **Fig. 9. Mann Kendall trend test and Sen's slope estimate for precipitation, SM_{AA-min} , $SM_{AA-valid}$, and model-based**
 691 **SM derived from the ERA5-land, GLDAS Noah, and MERRA2 for the (a) Maqu and (b) Shiquanhe networks in**
 692 **a 10-year period.**



693

694 **Fig. 10. Comparisons between the model-based SM derived from the ERA5-land, MERRA2, and GLDAS Noah**
 695 **products and the upscaled SM (SM_{AA-min}) for the (a) Maqu and (b) Shiquanhe networks in a 10-year period.**

Table 1. Summary of the main Tibet-Obs applications and corresponding findings.

| Literature | <i>In situ</i> data | Satellite- and/or model-based products | Key findings |
|----------------------|---|---|--|
| Dente et al. (2012a) | Maqu network, period between 2008 and 2009 | LPRM AMSR-E SM product, ASCAT SM product | i) The weighted average of SM depended on the percentage spatial coverage strata can be regarded as the ground reference. ii) The AMSR-E and ASCAT products are able to provide reasonable area SM during monsoon seasons. |
| Dente et al. (2012b) | Maqu network, period of 2010 | Soil Moisture and Ocean Salinity (SMOS) Level 2 SM product | The SMOS product exhibits a systematic dry bias ($0.13 \text{ m}^3 \text{ m}^{-3}$) at the Maqu network. |
| Zeng et al. (2015) | Maqu network, period between 2008 and 2010 | SMOS Level 3 SM product (version 2.45), Advanced Microwave Scanning Radiometer for Earth Observation System SM products (AMSR-E) SM products developed by National Aeronautics and Space Administration (NASA version 6), Land Parameter Retrieval Model (LPRM version 2), and Japan Aerospace Exploration Agency (JAXA version 700), AMSR2 Level 3 SM product (version 1.11), Advanced Scatterometer SM product (ASCAT version TU-Wien-WARP 5.5), ERA-Interim SM product (version 2.0), and Essential Climate Variable SM product (ECV version 02.0) | i) The ECV and ERA products give the best performance, and all products are able to capture the SM dynamic except for the NASA product. ii) The JAXA AMSR-E/AMSR2 products underestimate SM, while the ASCAT product overestimates it. iii) The SMOS product exhibits big noise and bias, and the LPRM AMSR-E product shows a significantly larger seasonal amplitude. |
| Zheng et al. (2015a) | Maqu network, period between 2009 and 2010 | Noah LSM (land surface model) simulations | The modified hydraulic parameterization is able to resolve the SM underestimation in the upper soil layer under wet conditions, and it also leads to better capture for SM profile dynamics combined with the modified root distribution. |
| Bi & Ma (2015) | Maqu network, period between 2008 and 2011 | GLDAS SM products produced by Noah, Mosaic CLM and Variable Infiltration Capacity (VIC) models | The SM simulated by the four LSMs can give reasonable SM dynamics but still show negative biases probably resulted from the high soil organic carbon content. |
| Li et al. (2018) | Maqu network, period between 2015 and 2016 | Soil Moisture Active Passive (SMAP) Level 3 standard (36km) and enhanced (9km) passive SM products (version 3), Community Land Model (CLM4.5) simulations | i) The standard and enhanced SMAP products have similar performance for SM spatial distributions. ii) The SM of enhanced SMAP product exhibits good agreement with the CLM4.5 SM simulation. |
| Zhao et al. (2017) | Maqu network, period between 2008 and 2010 | Downscaled SM from five typical triangle-based empirical SM relationship models | The model treating the surface SM as a second-order polynomial with LST, vegetation indices, and surface albedo outperforms other models. |
| Ju et al. (2019) | Maqu network, period of 2012 | VIC LSM simulations | The IEPFM (immune evolution particle filter with Markov chain Monte Carlo simulation) is able to mitigate particle impoverishment and provide better assimilation results. |
| Zheng et al. (2018b) | Ngari network, period between 2015 and 2016 | SMAP Level 2 radiometer SM product | Modifying surface roughness and employing soil temperature and texture information can improve the SMAP SM retrievals for the desert ecosystem of the TP. |
| Zhang et al. (2018) | Maqu and Ngari networks, period between 2010 and 2013 | ERA-Interim SM product, MERRA SM product, GLDAS_Noah SM product (version2.0 and version2.1) | All these products exhibit overestimation at the Ngari network while underestimation at the Maqu network except for the ERA-Interim product. |

| | | | |
|----------------------|---|--|--|
| Zheng et al. (2018a) | Maqu and Ngari networks, period between 2015 and 2016 | SMAP Level 1C radiometer brightness temperature products (version 3) | <ul style="list-style-type: none"> i) The SMAP algorithm underestimates the significance of surface roughness while overestimates the impact of vegetation. ii) The modified brightness temperature simulation can result in better SM retrievals. |
| Wei et al. (2019) | Maqu and Ngari networks, period between 2015 and 2016 | SMAP Level 3 SM passive product | The downscaled SM still can keep accuracy compared to the SM of original SMAP product. |
| Liu et al. (2019) | Maqu and Ngari networks, period between 2012 and 2016 | SMAP Level 3 SM products (version 4.00), SMOS-IC SM products (version 105), Fengyun-3B Microwave Radiation Image SM product (FY3B MWRI), JAXA AMSR2 Level 3 SM product, LPRM AMSR2 Level 3 SM product (version 3.00) | <ul style="list-style-type: none"> i) The JAXA AMSR2 product underestimates area SM while the LPRM AMSR2 product overestimates it. ii) The SMOS-IC product exhibits some noise of SM temporal variation. iii) The SMAP product has the highest accuracy among the five products while FY3B shows relatively lower accuracy. |
| Yang et al. (2020) | Maqu and Ngari network, period between 2008 and 2011 | AMSR-E brightness temperature product | The assimilated SM products exhibit higher accuracy than the AMSR-E product and LSM simulations for wet areas, whereas their accuracy is similar for dry areas. |
| Su et al. (2013) | Maqu and Naqu networks, period between 2008 and 2009. | AMSR-E SM product, ASCAT Level 2 SM product, ECMWF SM analyses i.e. optimum interpolation and extended Kalman filter products | <ul style="list-style-type: none"> i) The Naqu area SM is overestimated by the ECMWF products in monsoon seasons, while the Maqu area SM produced by the ECMWF is comparable to previous studies. ii) The SM estimate cannot be considerably improved by assimilating ASCAT data due to the CDF matching approach and the data quality. |
| Zeng et al. (2016) | Maqu, Naqu and Ngari networks, period between 2010 and 2011 | LPRM AMSR-E SM product, ERA-Interim SM product | The blended SM is able to capture temporal variations across different climatic zones over the TP. |
| Cheng et al. (2019) | Maqu, Naqu and Ngari networks, period of 2010 | European Space Agency Climate Change Initiative Soil Moisture SM product (ESA CCISM version 4.4), ERA5 SM product | <ul style="list-style-type: none"> i) The seasonal variation and spatial distribution of SM can be captured by all four products i.e., ESA CCI_active, ESA CCI_passive, ESA CCI_combined, and ERA5. ii) The ESA CCI_active and ESA CCI_combined products exhibit narrower magnitude than the ESA CCI_passive and ERA5 products. iii) The SM uptrend across the TP can be found from the ERA5 product. |

Table 2. Data records of all the SMST monitoring sites performed for the Maqu network. Blank cells represent that there is not measurement performed. Cells with hyphen represent that there is not data missing. The number in cells represents the month(s) when the data is missing for each year.

| | 2009 | 2010 | 2011 | 2012 | 2013 | 2014 | 2015 | 2016 | 2017 | 2018 | 2019 | Data length (months) |
|-------|-------|--------------|-------------|--------------|----------|-------|------|--------------|-----------|-------------|------|----------------------|
| CST01 | — | — | 10~12 | 1~6 10~12 | | | | | | | | 36 |
| CST02 | — | — | 5~12 | 1~10 | 6 | 7~12 | | | | | | 46 |
| CST03 | — | — | — | — | 6~12 | 1~10 | 7~12 | | | 1~9 | 5~12 | 68 |
| CST04 | 1~5 | — | 12 | 1~3 11~12 | 1~2 6 | 8~10 | 7~12 | | 1~6 | 7~12 | | 73 |
| CST05 | — | — | — | — | 6 | — | — | 5~7 | — | 1~2 | 6~12 | 119 |
| NST01 | 1~5 | — | — | — | 6 | — | — | 5~7 | — | — | 6~12 | 116 |
| NST02 | 1~3 | — | — | 7~8 10~12 | | | | | | | | 40 |
| NST03 | — | — | 5~10 | — | 6 | — | — | 5~7 | — | — | 6~12 | 115 |
| NST04 | — | — | 10~12 | | | | | | | | | 33 |
| NST05 | 3~5 | — | — | — | 6~12 | 1~7 | — | 5~7 | 7~12 | 1~7 | 6~12 | 92 |
| NST06 | — | 1~3 12 | 1~3 | — | 6 | — | — | 6~7 | 8~12 | 1~7 | 6~12 | 104 |
| NST07 | — | — | 3 | — | 6, 12 | 1 | 12 | 1~2 7, 12 | 1~2 12 | 1~3 9~12 | | 101 |
| NST08 | — | 2, 4 9~12 | 1~5 | — | 6~10 | 1~10 | — | 6~7 | — | — | 6~12 | 95 |
| NST09 | 1, 12 | 1~4 12 | 1~3 | — | 1~2 6 | 7~10 | 12 | 1~3 7, 12 | 1~2 7 | — | 6~12 | 99 |
| NST10 | — | 11~12 | 1~5 7~12 | 1~6 | 6~12 | | | | | 1~7 | 6~12 | 44 |
| NST11 | — | — | — | 7~8 | 6 | 7~12 | | | | | | 63 |
| NST12 | 10~12 | 1~9 | — | — | 6~12 | 1~10 | 7~12 | | | | | 49 |
| NST13 | — | — | — | — | 6 | — | 7~12 | | | | | 77 |
| NST14 | 6~9 | — | — | — | 6 | 10~12 | | | | | | 64 |
| NST15 | — | 10~12 | 1~5 | 6~12 | | | | | | | | 33 |
| NST21 | | | | | | 1~7 | 7~12 | | | | | 11 |
| NST22 | | | | | | 1~7 | 7~12 | | | | | 11 |
| NST24 | | | | | | 1~7 | 2~12 | 1~7 | — | — | 6~12 | 40 |
| NST25 | | | | | | 1~7 | — | 2~12 | 1~8 | — | 6~12 | 39 |
| NST31 | | | | | | | | | 1~8 | 7~12 | | 10 |
| NST32 | | | | | | | | | | 1~5 | 6~12 | 12 |

Table 3. Same as the Table 2 but for the Ngari network.

| | 2010 | 2011 | 2012 | 2013 | 2014 | 2015 | 2016 | 2017 | 2018 | 2019 | Data length (months) |
|--------------------------|--------------|------|------|------|----------|------|------|------|------|------|----------------------|
| Shiquanhe network | | | | | | | | | | | |
| SQ01 | 1-7 | — | — | — | 9-12 | 1-9 | | | | | 52 |
| SQ02 | 1-7 | — | — | — | 5-9 | — | — | — | — | 9-12 | 104 |
| SQ03 | 1-7 | — | — | — | 8-9 | — | — | — | — | 9-12 | 107 |
| SQ04 | 1-7 | — | 9-12 | | | | | | | | 25 |
| SQ05 | 1-7 | — | — | — | 5-12 | | | | | | 45 |
| SQ06 | 1-7 | — | 9-12 | 1 | 2-9 | — | — | — | — | 9-12 | 96 |
| SQ07 | 1-7 | — | — | 9-12 | 1-8 | — | 7-8 | 7-8 | — | 9-12 | 93 |
| SQ08 | 1-7 | 8-12 | | 1-8 | 8-9 | — | — | — | — | 9-12 | 82 |
| SQ09 | 1-7 | — | 9-12 | 1-8 | 9-12 | | | | | | 37 |
| SQ10 | | 1-8 | — | — | 7-12 | 1-9 | 7-12 | 1-8 | — | 9-12 | 67 |
| SQ11 | 1-7 | — | — | 9-12 | | | | | 1-8 | 9-12 | 49 |
| SQ12 | 1-7 | — | 9-12 | | | | | | | | 25 |
| SQ13 | 1-7 | 8-12 | | | | | | | | | 12 |
| SQ14 | 1-7 | — | — | — | 6 8-9 | — | — | — | — | 9-12 | 106 |
| SQ16 | 1-7 | 7-8 | — | — | 3-8 | 9-12 | | | | | 53 |
| SQ17 | | | | | | | 1-8 | — | — | 9-12 | 36 |
| SQ18 | | | | | | | 1-8 | 1 | 9-12 | | 23 |
| SQ19 | | | | | | | 1-8 | — | — | 9-12 | 36 |
| SQ20 | | | | | | | 1-8 | — | — | 9-12 | 36 |
| SQ21 | | | | | | | 1-8 | — | — | 9-12 | 36 |
| Ali network | | | | | | | | | | | |
| Ail | 1-7 | — | 9-12 | 1-8 | | | | 1-8 | 8-12 | | 40 |
| Ali01 | 1-7 | 8-12 | 1-8 | — | 8 | — | — | — | 8-12 | | 82 |
| Ali02 | 1-7 11-12 | 1-8 | — | — | 8 | — | — | — | 8-12 | | 85 |
| Ali03 | 1-7 | — | — | 3-12 | 1-8 | — | — | — | 8-12 | | 78 |

Table 4. Same as the Table 2 but for the Naqu network.

| | 2010 | 2011 | 2012 | 2013 | 2014 | 2015 | 2016 | 2017 | 2018 | 2019 | Data length (months) |
|------|------|------|------|------|------|------|------|------|------|------|----------------------|
| Naqu | 1-7 | — | — | 8-9 | 6-8 | 6-9 | — | 9-12 | 1-8 | 9-12 | 88 |
| East | | 1-8 | — | 9-12 | | | | | | | 24 |

| | | | | | | | | | | | |
|-------|-----|--------------|----------|------|--------------|-----|------|------|-----|------|----|
| West | 1~7 | 1~8 | — | 1~9 | 7~12 | 1~7 | 8~12 | | | | 42 |
| North | | 1~8 11~12 | 1~3 9 | 9~12 | | | 1~8 | 9~12 | 1~8 | 9~12 | 42 |
| South | | 1~8 | 9~12 | | | | | | | | 12 |
| Kema | | | | 1~9 | 3~9 | — | 8~12 | | | | 26 |
| MS | 1~7 | — | 10~12 | 1~9 | 8~9 11~12 | 1~5 | — | 9~12 | 1~8 | 9~12 | 76 |
| NQ01 | | | | | | | | | 1~8 | 9~12 | 12 |
| NQ02 | | | | | | | | | 1~8 | 9~12 | 12 |
| NQ03 | | | | | | | 1~8 | 9~12 | 1~8 | 9~12 | 24 |
| NQ04 | | | | | | | | | 1~8 | 9~12 | 12 |

705

Table 5. Error statistics computed between the SM_{AA-min} and the three model-based SM products for the Maqu and Shiquanhe networks.

| | Bias ($m^3 m^{-3}$) | RMSE ($m^3 m^{-3}$) | Bias ($m^3 m^{-3}$) | RMSE ($m^3 m^{-3}$) |
|------------|-----------------------|-----------------------|-----------------------|-----------------------|
| | Warm season | | Cold season | |
| Maqu | | | | |
| ERA5-land | 0.050 | 0.067 | - | - |
| GLDAS Noah | -0.112 | 0.125 | -0.049 | 0.088 |
| MERRA2 | -0.113 | 0.124 | 0.006 | 0.097 |
| Shiquanhe | | | | |
| ERA5-land | 0.002 | 0.079 | - | - |
| GLDAS Noah | 0.010 | 0.116 | 0.052 | 0.058 |
| MERRA2 | 0.054 | 0.069 | 0.049 | 0.053 |

Table 6. Percentages of each combination's RMSE fall into different levels of defined RMSE requirement.

| RMSE | 0.004 | 0.006 | 0.008 | 0.010 | 0.012 | 0.014 | 0.016 | 0.018 | 0.020 |
|--------------|-------|-------|-------|-------|-------|-------|-------|-------|-------|
| Maqu network | | | | | | | | | |
| n=1 (%) | | | | | | | | | |
| n=2 (%) | | | | | | | | 0.74 | 3.68 |
| n=3 (%) | | | | | | 0.44 | 1.32 | 3.97 | 7.79 |
| n=4 (%) | | | | | 0.21 | 1.05 | 3.74 | 9.16 | 16.93 |
| n=5 (%) | | | | 0.03 | 0.58 | 3.10 | 9.31 | 18.23 | 28.18 |
| n=6 (%) | | | | 0.09 | 1.87 | 8.27 | 19.18 | 31.22 | 42.36 |
| n=7 (%) | | | | 0.69 | 6.21 | 18.11 | 31.91 | 43.98 | 54.32 |
| n=8 (%) | | | 0.08 | 3.29 | 14.97 | 30.32 | 43.97 | 55.36 | 64.79 |
| n=9 (%) | | | 0.84 | 9.58 | 26.27 | 42.42 | 55.47 | 65.94 | 74.16 |
| n=10 (%) | | 0.01 | 3.91 | 19.74 | 38.94 | 54.41 | 66.13 | 75.21 | 82.23 |
| n=11 (%) | | 0.53 | 11.10 | 32.92 | 51.7 | 65.66 | 75.9 | 83.32 | 88.87 |

| | | | | | | | | | |
|-------------------|-------|-------|--------|--------|--------|--------|--------|--------|--------|
| n=12 (%) | | 3.52 | 23.95 | 47.3 | 64.03 | 75.87 | 84.45 | 90.14 | 94.30 |
| n=13 (%) | 0.29 | 13.82 | 39.87 | 61.81 | 75.67 | 85.38 | 91.55 | 95.38 | 97.77 |
| n=14 (%) | 3.68 | 32.35 | 57.79 | 74.85 | 86.47 | 92.79 | 96.91 | 98.82 | 99.41 |
| n=15 (%) | 21.32 | 56.62 | 75.00 | 88.97 | 95.59 | 98.53 | 99.26 | 100.00 | 100.00 |
| n=16 (%) | 52.94 | 82.35 | 94.12 | 94.12 | 100.00 | 100.00 | 100.00 | 100.00 | 100.00 |
| Shiquanhe network | | | | | | | | | |
| n=1 (%) | | | | | | | 8.33 | 16.67 | 25.00 |
| n=2 (%) | | 1.52 | 1.52 | 4.55 | 13.64 | 30.30 | 37.88 | 42.42 | 48.48 |
| n=3 (%) | | 6.82 | 21.36 | 25.45 | 33.18 | 42.73 | 53.18 | 59.55 | 65.00 |
| n=4 (%) | 1.62 | 11.31 | 29.7 | 41.41 | 51.11 | 57.37 | 63.23 | 70.51 | 77.58 |
| n=5 (%) | 3.66 | 23.11 | 36.87 | 49.12 | 60.23 | 68.18 | 76.14 | 82.32 | 88.26 |
| n=6 (%) | 11.36 | 30.95 | 44.37 | 59.85 | 70.24 | 79.11 | 85.28 | 90.15 | 93.29 |
| n=7 (%) | 20.20 | 39.77 | 56.06 | 68.31 | 77.90 | 86.87 | 93.43 | 96.84 | 98.48 |
| n=8 (%) | 29.29 | 50.51 | 62.63 | 77.58 | 89.09 | 96.57 | 97.98 | 98.99 | 99.60 |
| n=9 (%) | 33.64 | 59.55 | 82.73 | 91.36 | 96.36 | 98.18 | 99.55 | 99.55 | 100.00 |
| n=10 (%) | 48.48 | 78.79 | 92.42 | 96.97 | 96.97 | 100.00 | 100.00 | 100.00 | 100.00 |
| n=11 (%) | 83.33 | 91.67 | 100.00 | 100.00 | 100.00 | 100.00 | 100.00 | 100.00 | 100.00 |

710

Table 7. The combinations of monitoring sites ranked by RMSE values of average SM at the Maqu network.

| Rank | Site1 | Site2 | Site3 | Site4 | Site5 | Site6 | Site7 | Site8 | Site9 | Site10 | Site11 | Site12 | RMSE |
|------------|--------------|--------------|--------------|--------------|--------------|--------------|--------------|--------------|--------------|--------------|--------------|--------------|----------------|
| 1 | CST01 | CST02 | NST02 | NST03 | NST04 | NST05 | NST06 | NST07 | NST10 | NST13 | NST14 | NST15 | 0.00402 |
| 2 | CST01 | CST02 | CST04 | NST01 | NST02 | NST03 | NST04 | NST05 | NST06 | NST07 | NST13 | NST15 | 0.00417 |
| 3 | CST02 | NST01 | NST02 | NST03 | NST04 | NST05 | NST06 | NST07 | NST10 | NST13 | NST14 | NST15 | 0.00450 |
| 4 | CST01 | CST02 | NST01 | NST02 | NST03 | NST04 | NST05 | NST06 | NST07 | NST13 | NST14 | NST15 | 0.00450 |
| 5 | CST01 | CST02 | CST03 | NST02 | NST03 | NST04 | NST05 | NST06 | NST07 | NST10 | NST14 | NST15 | 0.00451 |
| 96 | CST01 | CST02 | CST03 | CST04 | CST05 | NST03 | NST06 | NST10 | NST11 | NST13 | NST14 | NST15 | 0.00555 |
| 97 | CST01 | CST02 | CST03 | NST01 | NST02 | NST04 | NST05 | NST06 | NST11 | NST13 | NST14 | NST15 | 0.00555 |
| 98 | CST01 | CST02 | CST03 | CST04 | CST05 | NST01 | NST02 | NST05 | NST06 | NST10 | NST11 | NST15 | 0.00556 |
| 99 | CST03 | NST02 | NST03 | NST04 | NST05 | NST06 | NST07 | NST10 | NST11 | NST13 | NST14 | NST15 | 0.00557 |
| 100 | CST02 | CST03 | CST05 | NST01 | NST03 | NST05 | NST06 | NST10 | NST11 | NST13 | NST14 | NST15 | 0.00557 |

Appendix A. Basic information of the Tibet-Obs

715 **Table A1. Site information of the Maqu network (site name, elevation, topography (TPG), land cover (LC), soil texture at 5-15 cm depth (STX), soil bulk density at 5cm depth (BD), soil organic matter content at 5-15cm depth (OMC), Not Available (NA), BD and OMC values are measured in the laboratory).**

| Site name | Elevation (m) | TPG | LC | STX | BD (kg m ⁻³) | OMC (g/kg) |
|-----------|---------------|--------------|---------|----------------|--------------------------|------------|
| CST01 | 3431 | River valley | Grass | NA | NA | NA |
| CST02 | 3449 | River valley | Grass | NA | NA | NA |
| CST03 | 3507 | Hill valley | Grass | NA | NA | NA |
| CST04 | 3504 | Hill valley | Grass | NA | NA | NA |
| CST05 | 3542 | Hill valley | Grass | NA | NA | NA |
| NST01 | 3431 | River valley | Grass | Silt loam | 0.96 | 18 |
| NST02 | 3434 | River valley | Grass | Silt loam | 0.81 | 18 |
| NST03 | 3513 | Hill slope | Grass | Silt loam | 0.63 | 49 |
| NST04 | 3448 | River valley | Wetland | Silt loam | 0.26 | 229 |
| NST05 | 3476 | Hill slope | Grass | Silt loam | 0.75 | 22 |
| NST06 | 3428 | River valley | Grass | Silt loam | 0.81 | 23 |
| NST07 | 3430 | River valley | Grass | Silt loam | 0.58 | 23 |
| NST08 | 3473 | Valley | Grass | Silt loam | 1.06 | 34 |
| NST09 | 3434 | River valley | Grass | Sandy loam | 0.91 | 17 |
| NST10 | 3512 | Hill slope | Grass | Loam-silt loam | 1.05 | 24 |
| NST11 | 3442 | River valley | Wetland | Organic soil | 0.24 | 136 |
| NST12 | 3441 | River valley | Grass | Silt loam | 1.02 | 39 |
| NST13 | 3519 | Valley | Grass | Silt loam | 0.67 | 29 |
| NST14 | 3432 | River valley | Grass | Silt loam | 0.68 | 30 |
| NST15 | 3752 | Hill slope | Grass | Silt loam | 0.78 | 56 |
| NST21 | 3428 | River valley | Grass | Silt loam | NA | NA |
| NST22 | 3440 | River valley | Grass | Silt loam | NA | NA |
| NST24 | 3446 | River valley | Grass | Silt loam | NA | NA |
| NST25 | 3600 | Hill slope | Grass | Silt loam | NA | NA |
| NST31 | 3490 | NA | NA | NA | NA | NA |
| NST32 | 3490 | Hill valley | Grass | NA | NA | NA |

720 **Table A2. Soil moisture with temporal persistence for the Maqu network. Light gray shaded cells represent that there is not data missing, dark gray shaded cells represent there is data missing with little influence.**

| Time | 2009.11~ 2010.11 | 2010.11.~ 2011.11 | 2011.11~ 2012.11 | 2012.11~ 2013.11 | 2013.11~ 2014.11 | 2014.11~ 2015.11 | 2015.11~ 2016.11 | 2016.11~ 2017.11 | 2017.11~ 2018.11 |
|-------|---------------------|----------------------|---------------------|---------------------|---------------------|---------------------|---------------------|---------------------|---------------------|
| CST05 | | | | | | | | | - |
| NST01 | | | | | | | | | |
| NST03 | | | | | | | | | |
| NST06 | | | | | | | | | |
| NST07 | | | | | | | | | |
| NST13 | | | | | | | | | |
| NST01 | | | | | | | | | |
| NST14 | | | | | | | | | |
| CST03 | | | | | | | | | |
| NST05 | | | | | | | | | |
| CST01 | | | | | | | | | |
| CST04 | | | | | | | | | |
| NST02 | | | | | | | | | |
| NST04 | | | | | | | | | |
| CST02 | | | | | | | | | |
| NST10 | | | | | | | | | |
| NST15 | | | | | | | | | |

Table A3. Same as the Table A1 but for the Ngari network (BD and OMC data are not available).

| Site name | Elevation (m) | TPG | LC | STX |
|-------------------|---------------|-------------------|-----------------------------|------------------------------------|
| Shiquanhe network | | | | |
| SQ01 | 4306 | Flat | Desert | Loamy sand |
| SQ02 | 4304 | Gentle slope | Desert | Sand |
| SQ03 | 4278 | Gentle slope | Desert (with sparse bushes) | Sand |
| SQ04 | 4269 | Edge of a wetland | Sparse grass | Loamy sand |
| SQ05 | 4261 | Edge of a marsh | Sparse grass | Sand |
| SQ06 | 4257 | Flat | Sparse grass | Loamy Sand |
| SQ07 | 4280 | Flat | Desert (with sparse bushes) | Sand |
| SQ08 | 4306 | Flat | Desert | Sand |
| SQ09 | 4275 | Flat | Desert/river bed | Sand |
| SQ10 | 4275 | Flat | Grassland | Fine sand with some thick roots |
| SQ11 | 4274 | Flat | Grassland with bushes | Loamy sand |
| SQ12 | 4264 | Flat | Edge of riverbed | Sandy loam |
| SQ13 | 4292 | Flat | Valley bottom | Sand |

| | | | | |
|-------------|------|-------------------|------------------|------------|
| SQ14 | 4368 | Slope | Desert | Sandy loam |
| SQ16 | 4288 | Flat | Desert/river bed | Loam |
| SQ17 | 4563 | NA | NA | NA |
| SQ18 | 4634 | NA | NA | NA |
| SQ19 | 4647 | NA | NA | NA |
| SQ20 | 4695 | NA | NA | NA |
| SQ21 | 4606 | NA | NA | NA |
| Ali network | | | | |
| Ali | 4288 | Flat | Grass | Loamy sand |
| Ali01 | 4262 | Flat | Sparse grass | Sand |
| Ali02 | 4266 | Flat | Sparse grass | Sand |
| Ali03 | 4261 | Edge of a wetland | Grass | Sand |

Table A4. Same as Table A2 but for the Shiquanhe network.

| Time | 2010.8~ 2011.8 | 2011.8~ 2012.8 | 2012.8~ 2013.8 | 2013.8~ 2014.8 | 2014.8~ 2015.8 | 2015.8~ 2016.8 | 2016.8~ 2017.8 | 2017.8~ 2018.8 | 2018.8~ 2019.8 |
|------|-------------------|-------------------|-------------------|-------------------|-------------------|-------------------|-------------------|-------------------|-------------------|
| SQ02 | | | | | | | | | |
| SQ03 | | | | | | | | | |
| SQ06 | | | | | | | | | |
| SQ14 | | | | | | | | | |
| SQ08 | | | | | | | | | |
| SQ07 | | | | | | | | | |
| SQ17 | | | | | | | | | |
| SQ19 | | | | | | | | | |
| SQ20 | | | | | | | | | |
| SQ21 | | | | | | | | | |
| SQ10 | | | | | | | | | |
| SQ11 | | | | | | | | | |

725

Table A5. Same as the Table A1 but for the Naqu network (BD and OMC data are not available).

| Site name | Elevation (m) | TPG | LC | STX |
|-----------|---------------|--------------------|-----------|------------|
| Naqu | 4509 | Plain | Grassland | Loamy sand |
| East | 4527 | Flat hill top | Grassland | Loamy sand |
| West | 4506 | Plain | Grassland | Loamy sand |
| North | 4507 | Slope on riverbank | Grassland | Loamy sand |
| South | 4510 | Slope of wetland | Wetland | Loamy sand |

| | | | | |
|------|------|--------------|-------|-----------|
| Kema | 4465 | River valley | Grass | Silt loam |
| MS | 4583 | NA | NA | NA |
| NQ01 | 4517 | NA | NA | NA |
| NQ02 | 4552 | NA | NA | NA |
| NQ03 | 4638 | NA | NA | NA |
| NQ04 | 4632 | NA | NA | NA |

Appendix B. Spatial upscaling methods

B.1 Arithmetic averaging

The arithmetic averaging method assigns an equal weight coefficient to each SM monitoring site of the network, which can be formulated as:

$$\bar{\theta}_t^{ups} = \frac{1}{N} \sum_{i=1}^N \theta_{t,i}^{obs} \quad (B1)$$

where i represents the i^{th} SM monitoring site.

B.2 Voronoi diagram

The Voronoi diagram method divides the network area into several parts according to the distances between each SM monitoring site. This approach determines the weight of each site (w_i [-]) based on the geographic distribution of all the SM monitoring sites within the network area, which can be formulated as:

$$\bar{\theta}_t^{ups} = \frac{\sum_{i=1}^N w_i \theta_{t,i}^{obs}}{\sum_{i=1}^N w_i} \quad (B2)$$

B.3 Time stability

The time stability method is based on the assumption that the spatial SM pattern over time tends to be consistent (Vachaud et al., 1985), and the most stable site can be regarded as the representative site of the network. For each SM monitoring site i within the time window (M days in total), the mean relative difference MRD_i [-] and standard deviation of the relative difference $\sigma(RD_i)$ [-] are estimated as:

$$\sigma(RD_i) = \sqrt{\frac{1}{M-1} \sum_{t=1}^M (RD_{t,i} - MRD_i)^2} \quad (B3)$$

$$MRD_i = \frac{1}{M} \sum_{t=1}^M \frac{\theta_{t,i}^{obs} - \bar{\theta}_t^{obs}}{\bar{\theta}_t^{obs}} \quad (B4)$$

$$RD_{t,i} = \frac{\theta_{t,i}^{obs} - \bar{\theta}_t^{obs}}{\bar{\theta}_t^{obs}} \quad (B5)$$

where $\theta_{t,i}^{obs}$ [$\text{m}^3 \text{m}^{-3}$] represents the SM measured on the t^{th} day at the i^{th} monitoring site, $\bar{\theta}_t^{obs}$ [$\text{m}^3 \text{m}^{-3}$] represents the mean SM measured at all available monitoring sites on the t^{th} day. MRD_i quantifies the bias of each SM monitoring site to identify a particular location is wetter or drier than regional mean, and $\sigma(RD_i)$

characterizes the precision of the SM measurement. Jacobs et al., (2004) combined above two statistical
 750 metrics as a comprehensive evaluation criterion (CEC_i [-]):

$$CEC_i = \sqrt{(MRD_i)^2 + \sigma(RD_i)^2} \quad (B6)$$

The most stable site is identified by the lowest CEC_i value.

B.4 Apparent thermal inertia

The apparent thermal inertia (ATI) method is based on the close relationship between apparent thermal inertia
 755 (τ [K^{-1}]) and SM (θ [$m^3 m^{-3}$]) (Van doninck et al., 2011; Veroustraete et al., 2012). If the true areal SM ($\bar{\theta}_t^{tru}$
 [$m^3 m^{-3}$]) is available, then the weight vector β can be derived by the ordinary least-squares (OLS) method
 that minimizes the cost function J as:

$$J = \sum_{t=1}^M (\theta_t^{tru} - \beta^T \theta_t^{obs})^2 \quad (B7)$$

However, the θ_t^{tru} [$m^3 m^{-3}$] is usually not available in practice, and the representative SM ($\bar{\theta}_t^{rep}$ [$m^3 m^{-3}$]) is
 760 thus introduced that contains random noise but with no bias. Since the OLS method may results in overfitting
 with usage of the $\bar{\theta}_t^{rep}$, a regularization term is introduced and Eq. (B7) can be re-formulated as (Tarantola,
 2005):

$$J = \sum_{t=1}^M (\bar{\theta}_t^{rep} - \beta^T \theta_t^{obs}) \sigma^{-2} (\bar{\theta}_t^{rep} - \beta^T \theta_t^{obs}) + R \beta^T \beta \quad (B8)$$

where σ [$m^3 m^{-3}$] represents the standard deviation of $\bar{\theta}_t^{rep}$, R [-] is the regularization parameter.

765 The core issue of the ATI approach is to obtain the $\bar{\theta}_t^{rep}$ and minimize the cost function of Eq. (B8) to obtain
 β and R . The $\bar{\theta}_t^{rep}$ can be retrieved from the apparent thermal inertia τ by the empirical regression $g(\tau)$, and
 τ has strong connection with the surface status, e.g. land surface temperature and albedo, which is defined
 as:

$$\tau = C \frac{1-a}{A} \quad (B9)$$

770 where C [-] represents the solar correction factor, a [-] represents the surface albedo, and A [K] represents
 the amplitude of the diurnal temperature cycle. The albedo and land surface temperature data obtained from
 the MODIS MCD43A3 and MYD11A1/MOD11A1 Version 6 products are used to derive the ATI according
 to Eq. (B9) in this study.

The solar correlation factor C in Eq. (B9) is computed as:

$$775 C = \sin\varphi \sin\delta (1 - \tan^2\varphi \tan^2\delta)^{1/2} + \cos\varphi \cos\delta \arccos(-\tan\varphi \tan\delta) \quad (B10)$$

with

$$\delta = 0.00691 - 0.399912 \cos(\gamma) + 0.070257 \sin(\gamma) - 0.006758 \cos(2\gamma) + 0.000907 \sin(2\gamma) -$$

$$0.002697 \cos(3\gamma) + 0.00148 \sin(3\gamma) \quad (B11)$$

and

$$780 \gamma = \frac{2\pi(n_d-1)}{365.25} \quad (B12)$$

where φ represents the latitude [rad], δ represents the solar declination [rad], and n_d represents the Julian
 day number.

The amplitude of the diurnal LST A is estimated as $LST_{\max} - LST_{\min}$ for a single day. Finally, we use the regression analysis between *in situ* SM measurements (θ) at each monitoring site and corresponding ATI (τ) to obtain the $g(\cdot)$ form.

785

There are 17 and 12 monitoring sites participate in the regression analysis for the Maqu and Shiquanhe networks during the periods of 11/2009-10/2010 and 8/2018-7/2019, respectively. The ATI cannot be obtained for each monitoring site in every day since the satellite-based LST data are contaminated by clouds. In order to make full use of the data, we make the ATI-SM pair for the 1st monitoring site on the 1st day as No. 1, the pair for the 17th (or 12th) monitoring site in the Maqu (or Shiquanhe) network on the 1st day as the No. 17 (or No. 12), the pair for the 1st monitoring site at the 2nd day as the No. 18 (No. 13), and so on. Later on, we select a certain number of ATI-SM pairs (e.g. 40, 50, 60, 70, 80, 90, and 100) as a group to compute the averaged ATI and SM and construct the most reasonable regression relationship between them. If the ATI or SM data at one day is missing, this pair is ignored. As shown in Fig. B1, the empirical relationship is generated from 80-pair-averaged ATI and SM for the Maqu and Shiquanhe networks.

790

795

When the empirical relationship $g(\cdot)$ is determined, the regional-average SM can be derived from grid-averaged ATI by the function $g(\cdot)$, which it is regarded as $\bar{\theta}_t^{rep}$ in Eq. (B8). Finally, the optimal β ($\hat{\beta}$) is obtained by minimizing the cost function (i.e. Eq. (B8)), and the upscaled SM can be estimated as:

$$\bar{\theta}_t^{ups} = \hat{\beta} \theta_t^{obs} \quad (B13)$$

800

The detailed description of the ATI method is referred to Qin et al. (2013).

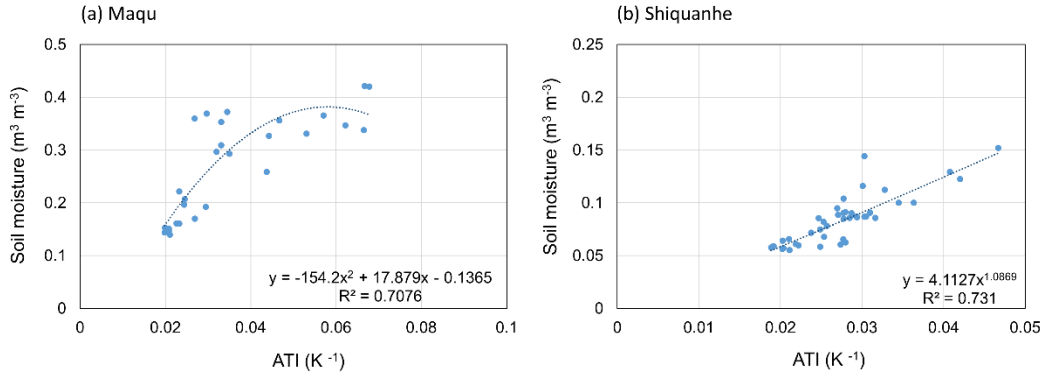
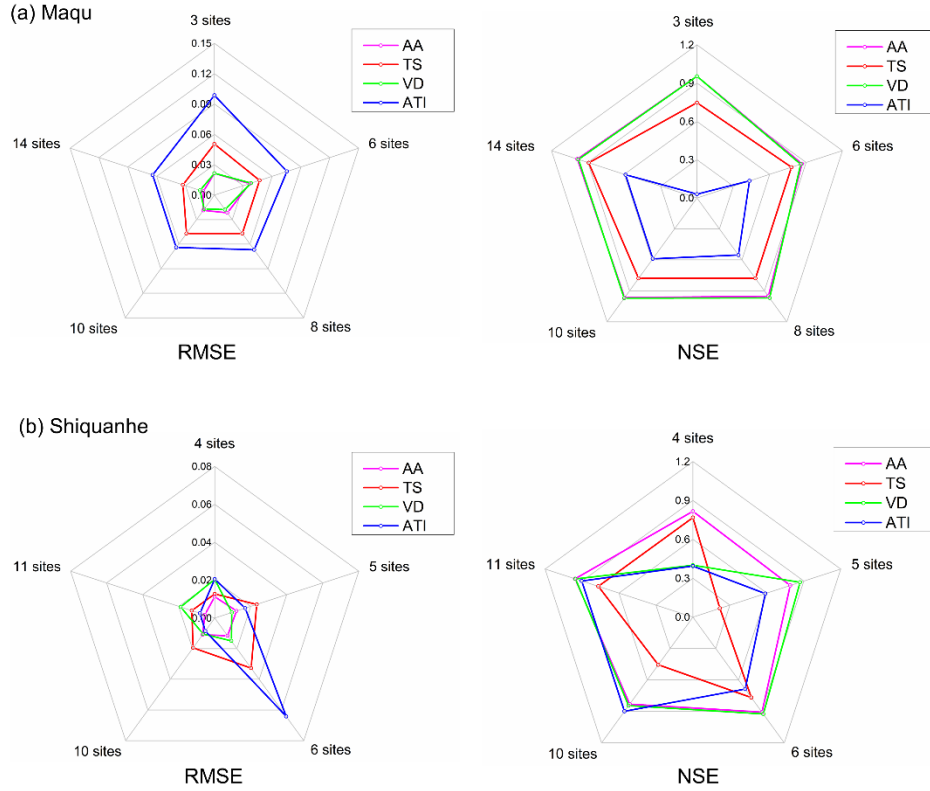


Fig. B1 Empirical relationship between 80-pair-averaged ATI and SM at the (a) Maqu and (b) Shiquanhe networks.



805

Fig. B2. Radar graph of error statistics (i.e. RMSE and NSE) computed between the SM_{truth} produced by the AA-max and the upscaled SM produced by the four upscaling methods with input of different number of available monitoring sites for the (a) Maqu and (b) Shiquanhe networks.

810

Table B1. Evaluated metrics computed for the upscaled SM produced by the four upscaling methods with input of the maximum available monitoring sites.

| Methods | Maqu | | | Shiquanhe | | |
|---------|--------|---------------------|--------------|-----------|---------------------|--------------|
| | MRD | $\sigma(\text{RD})$ | CEC | MRD | $\sigma(\text{RD})$ | CEC |
| AA-max | 0.009 | 0.054 | 0.055 | 0.012 | 0.046 | 0.047 |
| TS-max | 0.022 | 0.089 | 0.092 | 0.011 | 0.114 | 0.114 |
| VD-max | -0.026 | 0.064 | 0.069 | -0.042 | 0.033 | 0.053 |
| ATI-max | -0.005 | 0.145 | 0.145 | 0.016 | 0.068 | 0.070 |

Table B2. Error statistics computed between the SM obtained by the four upscaling methods with input of the minimum available monitoring sites and the SM_{truth} produced by the AA-max for the Maqu and Shiquanhe networks.

| | Bias ($\text{m}^3 \text{m}^{-3}$) | RMSE($\text{m}^3 \text{m}^{-3}$) | ubRMSE($\text{m}^3 \text{m}^{-3}$) | NSE |
|-----------|-------------------------------------|------------------------------------|--------------------------------------|-------|
| | Maqu | | | |
| AA-min | 0.005 | 0.022 | 0.021 | 0.954 |
| TS-min | 0.025 | 0.050 | 0.044 | 0.747 |
| VD-min | -0.007 | 0.022 | 0.020 | 0.954 |
| ATI-min | -0.052 | 0.099 | 0.084 | 0.030 |
| Shiquanhe | | | | |

| | | | | |
|---------|--------|-------|-------|-------|
| AA-min | 0.010 | 0.011 | 0.005 | 0.816 |
| TS-min | -0.001 | 0.013 | 0.013 | 0.768 |
| VD-min | 0.019 | 0.020 | 0.006 | 0.400 |
| ATI-min | -0.001 | 0.021 | 0.021 | 0.393 |

815