

Dataset of 1-km cropland cover from 1690 to 1999 in Scandinavia

Xueqiong Wei¹, Mats Widgren², Beibei Li³, Yu Ye^{4,5}, Xiuqi Fang^{4,5}, Chengpeng Zhang⁵,
Tiexi Chen¹

5 ¹ School of Geographical Sciences, Nanjing University of Information Science and Technology,
Nanjing 210044, China

² Department of Human Geography, Stockholm University, SE-106 91 Stockholm, Sweden

³ Division of Science and Technology, Nanjing University of Information Science and Technology,
Nanjing 210044, China

10 ⁴ Key Laboratory of Environmental Change and Natural Disaster, Ministry of Education, Beijing
Normal University, Beijing 100875, China

⁵ Faculty of Geographical Science, Beijing Normal University, Beijing 100875, China

Correspondence to: Xueqiong Wei (xueqiong.wei@nuist.edu.cn)

Abstract

15 Spatially explicit historical land cover datasets are essential not only for simulations of
climate and environmental dynamics but also for projections of future land use, food security,
climate, and biodiversity. However, widely used global datasets are developed for
continental-to-global scale analysis and simulations. Their accuracy depends on the
20 verification of more regional reconstruction results. This study collected cropland area data of
each administrative unit (parish/municipality/county) in Scandinavia from multiple sources.
The cropland area data were validated, calibrated, interpolated, and allocated into 1 km × 1
km grid cells. Then, we developed a dataset with spatially explicit cropland area from 1690 to
1999. Results indicated that the cropland area increased from 1.82 million ha to 6.71 million
ha from 1690 to 1950, then decreased to 5.90 million ha in 1999. Before 1810, cropland cover
25 expanded in southern Scandinavia and remained stable in northern Scandinavia. From 1810 to
1910, northern Scandinavia experienced slight cropland expansion. The cropland area
increased rapidly in the southern part of the study area before changing slightly. After 1950,
the cropland areas began to decrease in most regions, especially in eastern Scandinavia. When

删除了: and

删除了: their

删除了: ,

删除了: and t

comparing global datasets with this study, although the total Scandinavia cropland area is in agreement among [SAGE](#), HYDE 3.2, PJ, and this study, the spatial patterns show considerable differences, except for in Denmark between HYDE 3.2 and this study. The dataset can be downloaded from <https://doi.org/10.1594/PANGAEA.926591> (Wei et al., 2021).

1 Introduction

[Human-influenced land is a major component of anthropogenic global changes in the Earth System \(Verburg et al., 2016\). Thus, historical land use data is important for understanding the impact of land use and land cover change \(LUCC\) on global change. From fully natural vegetation state to the 20th century, it is likely that land use change led to an increase of the Earth albedo with a radiative forcing of \$-0.15 \pm 0.10 \text{ W m}^{-2}\$ \(Myhre et al., 2013\). Over the years 1980-2005, conversion of mid-latitude natural forests to cropland and pastures is accompanied by a reduction of latent heat flux and an increase of sensible heat flux in summertime \(Findell et al., 2017\). The global CO₂ emissions from land use and land cover change reached a cumulative total of about 206±57 PgC from 1750 to 2018 \(Gasser et al., 2020\). The above conclusions of climate and environmental dynamics were all made by using spatially explicit historical land cover datasets. Historical land cover change information is also essential as a baseline analysis for projections of future land use, food security, climate, and biodiversity \(Foley et al., 2011; Hurtt et al., 2011; Ellis et al., 2012; Brovkin et al., 2013; Fuchs et al., 2015; Mehrabi et al., 2018\).](#)

[SAGE, HYDE, PJ and KK10 datasets were produced as four representative datasets of global land use/cover \(Ramankutty and Foley, 1999, 2010; Klein Goldewijk, 2001, 2017; Pongratz et al., 2008; Kaplan et al., 2009, 2011\). These global datasets were widely used in simulations of global and regional climate change or carbon budget because of their spatial resolutions and long-term coverages \(Foley et al., 2005; Olofsson and Hickler, 2007; Strassmann et al., 2008; Pongratz et al., 2009b, 2010; Van Minnen et al., 2009; Arora and Boer, 2010; Hurtt et al., 2011; Kaplan et al., 2011; Brovkin et al., 2013; Yan et al., 2017; Zhang et al., 2017; Le Quéré et al., 2018\). However, global datasets were developed for continental-to-global scale analysis and simulation \(Klein Goldewijk 2001, Ramankutty and Foley 2010, Pongratz et al. 2009a\).](#)

设置了格式: 上标

设置了格式: 下标

设置了格式: 突出显示

删除了: [The Anthropocene has been defined as a new epoch of geologic time, partly because human-influenced land is a major component of anthropogenic global changes in the Earth System \(Crutzen and Stoermer, 2000; Lewis and Maslin, 2015; Verburg et al., 2016\). During AD 800–AD 1700, according to Pongratz et al. \(2008\), 5% of the area covered by natural vegetation was under human land use, compared to 44% in the following 300 years. Anthropogenic land cover change \(ALCC\) may have caused feedbacks to the climate system through modifying the surface roughness, surface albedo, latent heat flux, and river runoff, and through changing atmospheric CO₂ concentration \(Foley et al., 2005; Pongratz et al., 2009a, 2010; Houghton et al., 2012, 2018; Ciais et al., 2013; Myhre et al., 2013; Yang et al., 2015; Liu et al., 2016; Kaplan et al., 2017; Le Quéré et al., 2018\). The conclusions of climate and environmental dynamics were all made by using spatially explicit historical land cover datasets. Historical land cover change information is also essential as a baseline analysis for projections of future land use, food security, climate, and biodiversity \(Foley et al., 2011; Hurtt et al., 2011; Ellis et al., 2012; Brovkin et al., 2013; Fuchs et al., 2015; Mehrabi et al., 2018\).](#)

To produce spatially explicit land cover datasets covering long periods, researchers used multiple sources, such as satellite data, historical statistics, historical maps, and pollen records. ...

删除了: [Based on combined sources and hindcasting methods, the Center for Sustainability and the Global Environment \(SAGE\) \(Ramankutty and Foley, 1999, 2010\) and the History Database of the Global Environment \(HYDE\) \(Klein Goldewijk, 2001\) were produced as two representative datasets of global land use/cover. Based on SAGE and historical population data, the PJ dataset covers AD 800–AD 1700 \(Pongratz et al., 2008\). Subsequently, ALCC from 8000...](#)

删除了: [because of their spatial resolutions and long-term coverages \(Foley et al., 2005; Olofsson and Hickler, 2007; Strassmann et al., 2008; Pongratz et al., 2009b, 2010; Van Minnen et al., 2009; Arora and Boer, 2010; Hurtt et al., 2011; Kaplan et al., 2011; Brovkin et al., 2013; Yan et al., 2017; Zhang et al., 2017; Le Quéré et al., 2018\). However,](#)

There uncertainties were unneglectable in regional applications (Klein Goldewijk and Verburg 2013). Many regional land use reconstructions illustrated that global datasets had non-negligible discrepancies in reflecting regional spatial land use patterns historically, especially for cropland (Li et al., 2010; Zhang et al., 2013; Li et al., 2016, 2019; Kaplan et al., 2017; Yu and Lu, 2018; Wei et al., 2019). Uncertainties in global datasets could be transferred into higher uncertainties in quantifying the climate and ecological effects of ALCC at local and regional scales (Yang et al., 2018, Lejeune et al., 2018, Yu et al., 2019). Therefore, the PAGES LandCover6k and related projects aim to improve ALCC history at global and regional scale based on empirical data (Gaillard et al., 2015a; Widgren, 2018a).

Errors can be assessed or corrected using the regional quantitative reconstructed land cover data and regional agrarian history maps (Widgren, 2018b; Fang et al., 2020).

Quantitative reconstruction of historical regional cropland change is impossible without scrutinized and published historical records or datasets at high spatial resolutions. Scandinavia (Sweden, Norway, and Denmark) has detailed cropland area records for quantitative historical cropland data reconstruction. In Scandinavia, though arable land accounts for a small proportion of the land area, farmers are historically drivers of economic and social change (Gadd, 2011; Jansson, 2011). The cropland land area changed significantly over the past few centuries because of population growth, increasing food consumption, technology introduction, and land reforms (Anderberg, 1991; Almås, 2004; Vejre and Brandt, 2004; Jansson, 2011). Empirical studies at the regional level and historical documents from the government indicated Scandinavia experienced the rapid development of agriculture before the 20th century (Olsson and Svensson, 2010; Jansson, 2011; Nielsen et al., 2012; Cui et al., 2014). Then, agriculture became more intensive and specialized. Studies in Scandinavia have mainly concentrated on agricultural policy, agricultural economy, settlement and population, and landscape history (Anderberg, 1991; Olsson et al., 2000; Almås, 2004; Vejre and Brandt, 2004; Gustavsson et al., 2007; Olsson and Svensson, 2010; Jansson, 2011; Eriksson and Cousins, 2014; Levin et al., 2014; Mazier et al., 2015; Jacks, 2019).

Most results of agricultural history studies in Scandinavia cannot be directly input into climate and environmental models. The importance of historical LUCC with climate and

删除了: using population data to estimate historical land use may induce large uncertainties and limitations in presenting regional scale details (Klein Goldewijk and Verburg, 2013).
MM

设置了格式: 非突出显示

设置了格式: 非突出显示

设置了格式: 非突出显示

删除了: Historical document-based reconstructions concluded that SAGE, HYDE, and PJ had drawbacks in capturing the spatial distribution of historical cropland change in China (Li et al., 2010; Zhang et al., 2013; Li et al., 2016, 2019; Wei et al., 2019). In the US, the HYDE maps substantially underestimate crop density in high cropland coverage regions but overestimate it in the low-density areas for 1850–2016 (Yu and Lu, 2018). Neither KK10 nor HYDE captures the fine-scale spatial pattern of open land as inferred from the pollen-based land cover reconstructions in Europe for four preindustrial time points (Kaplan et al., 2017). Uncertainties in global datasets could translate into higher uncertainties in quantifying the climate and environmental effects of ALCC at both local and regional scales (Yang et al., 2018; Lejeune et al., 2018; Yu et al., 2019). ...

删除了: both

删除了: and global

删除了: s

删除了: However, due to the lack of scrutinized and

删除了: Scandinavia (Sweden, Norway, and Denmark) has

删除了: Over the past few centuries, agriculture in

设置了格式: 上标

删除了: and

删除了: subsequent

删除了: al

删除了: intensification and specialization

删除了: (Olsson and Svensson, 2010; Jansson, 2011;

删除了: onDuring the middle of the seventeenth century,

删除了: have

删除了: ,

删除了: which

删除了: These results (Anderberg, 1991; Olsson et al., 2000)

environment simulations could fail to be determined precisely without grid-based cropland maps (Ramankutty and Foley, 1999; Lin et al., 2009), which is also essential for the accuracy assessment of global datasets (Fang et al., 2020). However, there have been few attempts to develop grid-based historical cropland data in Scandinavia. Pollen-based quantitative reconstruction of Holocene regional vegetation cover in Europe presented a $1^{\circ} \times 1^{\circ}$ spatial scale dataset for climate modeling (Trondman et al., 2015) in Scandinavia. To facilitate simulation studies with high-precision regional input data, Li et al. (2013) developed the cropland cover change dataset from 1875 to 1999 in Sweden and Norway. Materials from mainly two sources were collected, including Swedish data from the official agricultural statistics and the data provided by Norwegian Social Science Data Services (NSD). Methods of seed-cropland conversion, data interpolation and allocation, and data gridding were used to produce the cropland dataset at the spatial resolution of 0.5 degrees. At present, the highest resolution of the existing historical cropland cover dataset for Scandinavia is still $5' \times 5'$ from the global dataset HYDE 3.2 (Klein Goldewijk et al., 2017).

This study's main objective is to provide a longer historical grid-based cropland dataset for 1690–1999 with high precision in Scandinavia, by reconstructing cropland area at the parish, municipality, and county levels and allocating cropland area into $1 \text{ km} \times 1 \text{ km}$ grid cells. Compared with existing datasets, our newly developed dataset of cropland cover will provide more detailed information on spatial patterns of historical cropland change in Scandinavia.

2 Data sources

In this study, cropland from multiple data sources were first gathered for further allocation. Meanwhile, administrative division maps and digital elevation model (DEM) data were also used. Land cover in 2000 based on remote sensing methods was selected to constrain historical cropland allocation. More details are as follows.

Besides the Scandinavian Peninsula (Sweden and Norway) cropland data after 1875 provided by Li et al. (2013), the cropland data used in this study were from different sources. Data sources in this study are shown in Table 1. For Sweden, all the data before 1875 were from the *Svensk Nationell Datatjänst* (Swedish National Data Service, termed SND,

删除了: However, spatially explicit historical land cover data for Scandinavia are scarce. ...

删除了:

删除了: The agricultural land data for five Holocene time points are available....

删除了:

删除了: gridded

删除了: 2.1 Cropland data

删除了:

<https://snd.gu.se/en/catalogue/study/SND0910>). Based on tax records, historical maps, land survey records, and farmer inventories, Palm et al. (2014) developed an agricultural database (The database Sweden 1570–1810: population, agriculture, land ownership), which covers all parishes within Sweden’s contemporary boundaries and the periods between 1570 and 1810.

5 In SND’s database, cropland was called “åker” in Swedish, which was also used in the data sources from 1875 to 1999 in Sweden. “Åker” from SND included land under temporary crops, land under temporary meadows and pastures, and land temporarily fallow. However, the unit of “åker” in the dataset referred to barrels of seeds and not hectares. For Norway,

删除了:

10 *Norges landdistrikter i det syttende og attende aarhundrede* (Statistical studies on population and agriculture: in the rural areas of Norway in the seventeenth and eighteenth centuries, Aschehoug, 1890). Cropland data in 1809 was from Hovland’s study (1978). In the above two sources, the volumes of different seed types, such as wheat, rye, barley, oat, peas, and potatoes were recorded (land under temporary crops). The volumes of seeds in each county

15 (*amt*) were presented. For Denmark, cropland data were from multiple sources. Data in 1688

删除了:

were based on the *Atlas over Denmark: Historisk-Geografisk Atlas* (Atlas over Denmark: Historical-Geographic Atlas, Dam and Jakobsen, 2008). Dam and Jakobsen’s map showed a cropland fraction of each “*ejerlav*” (area under a village, a manor, or a group of single farms) in Denmark. The cropland was called “*ager*” in Danish, referring to the total area under crop

20 rotation, including the lands under temporary crops, temporary meadows and pastures, and temporarily fallow land. Pia Frederiksen from Aarhus University provided the cropland data for 1800, 1881, and 1998, based on data developed by Jørgen Rydén Rømer, Aalborg, Bernd Münier, and Morten Stenak, Roskilde (Odgaard and Rømer, 2009). Data for 1800 were from

the map *Videnskabernes selskabs kort (VSK)* in 1762–1806 and further developed from agricultural statistics. The data for 1881 and 1998 were merged from maps and national statistics. They had the smallest spatial unit of “*sogn*” (parish). The cropland was called

25 “*agerjord*” and it could be divided into two subgroups, namely “*Besået areal*” (the lands annually sown with various one-year or two-year crops) and “*Græs i omdrift*” (the lands for temporary meadow or fallow before the land was again plowed for sowing). “*Besået areal*” and “*Græs i omdrift*” correspond to temporary cropland, and the lands with temporary

30

meadows and temporarily fallow in 1688, respectively. The cropland area data in 1907 were from *Statistisk Aarbog 1912* (Statistical Yearbook 1912, Danmarks Statistik, 1912) and its spatial resolution was the “amt” (county). The cropland area data in 1936, 1950, and 1980 were from agricultural statistics of *Statistiske Meddelelser* (Danmarks Statistik, 1936, 1950, and 1980). The spatial resolutions of cropland data in 1936, 1950, and 1980 were the “amt” (county), “amtsrådsreds” (county council), and “kommuner” (municipality), respectively. The areas under temporary crops, under temporary meadows, and temporarily fallows were listed in tables by Danmarks Statistik.

Table 1 Description of cropland data sources used in this study

Data sources	Spatial coverage	Years	Spatial Resolution	Categories included in recorded cropland	Reference
<i>Sockenvis jordbruksstatistik</i>	Sweden	1690, 1750, 1810	Parish	A, B, C (Åker)	SND
<i>Statistiske studier over folkemængde og jordbrug i Norges</i>	Norway	1665, 1723	County	A	Aschehoug, 1890
<i>Historisk Tidsskrift</i>	Norway	1809	County	A	Hovland, 1978
<i>Atlas over Danmark: Historisk-Geografisk Atlas</i>	Denmark	1688	<i>Ejervlav</i>	A, B, C (Ager)	Dam and Jakobsen, 2008
<i>Danske landbrugs-landskaber gennem 2000 år</i>	Denmark	1800, 1881, 1998	Parish	A, B, C (Agerjord)	Odgaard and Rømer, 2009
<i>Statistisk Aarbog 1912</i>	Denmark	1907	County	A, B, C, D	Danmarks Statistik, 1912
<i>Statistiske Meddelelser 1936, 1950 and</i>	Denmark	1936, 1950, 1980	County; County council;	A, B, C, D	Danmarks Statistik, 1936, 1950 and 1980

1980		Municipality	
<i>Cropland</i>	in Sweden,	1875, 1910,	County/0.5-d-
<i>Scandinavian</i>	Norway	1930, 1950,	egree
<i>Peninsula</i>		1980, 1999	
		Sweden: A, Li et al., 2013	
		B, C (<i>Åker</i>)	
		Norway: A,	
		B, C, D, E	

Notes: A—Areas under temporary crops; B—Areas under temporary meadows and pastures; C—Land temporarily fallow; D—Areas under permanent crops; E—Permanent grassland and meadow

The digital version of the administrative division maps of Sweden was initially developed at the National Archives of Sweden (*Riksarkivet*). It was later revised at the Department of Human Geography, Stockholm University. Ulf Jansson kindly provided the version used here. The administrative division maps of Norway were from Norwegian Centre for Research Data (termed NSD, <https://nsd.no/nsd/english/>). The base maps of Denmark were downloaded from the HisKIS network (http://hiskis2.dk/?page_id=110) and Danish Geodata Agency (<http://download.kortforsyningen.dk/>).

删除了: 2.2 Administrative division maps

Satellite-based land cover data 2000 were selected as a reference to constrain the spatial distribution of historical cropland allocation. There are several well developed and widely used land cover datasets (Zhang et al., 2019). The satellite-based land cover data in 2000 used in this study were provided by the CORINE Land Cover (CLC2000, <https://land.copernicus.eu/pan-european/corine-land-cover/>) (Büttner, 2014), which has been well evaluated in Europe (Feranec et al., 2010). Although CLC1990 data are also provided, only CLC2000 contains the earliest data covering our study region in the CLC data series. It consists of an inventory of land cover in 5 main categories and 44 classes. The details of CLC2000 application in our model are explained in Section 3.2.

删除了: 2.3 Satellite-based data

The DEM used in this study was from the NASA Shuttle Radar Topographic Mission (SRTM, <https://cgiarcsi.community/data/srtm-90m-digital-elevation-database-v4-1/>) 90 m DEMs.

3 Methods

There are two main steps to develop the 1 km spatial resolution [grid-based](#) cropland dataset for 1690 to 1999. 1) Original multiple-source cropland area data were collected to reconstruct the cropland area of each administrative unit. 2) Using an allocation model that featured the

删除了: gridded

use of remote sensing land cover data as a constraint, cropland in administrative units were further allocated into 1 km × 1 km grid cells. The flow chart of the methods is described in Figure 1.

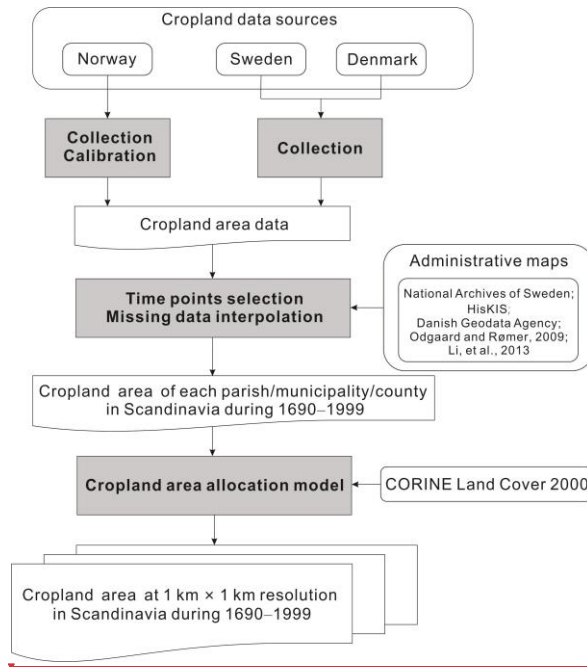


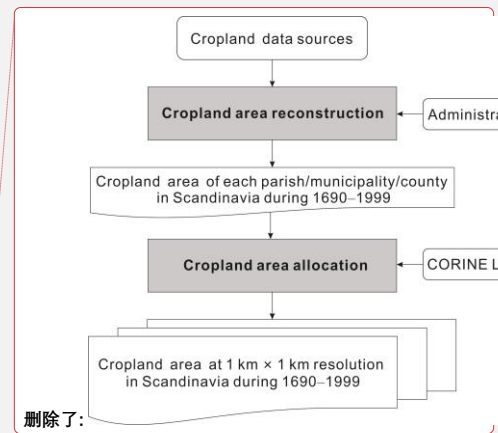
Figure 1 Flow chart of the methodology

3.1 Cropland area reconstruction at the parish/municipality/county levels

Based on the multiple sources, we collected cropland area data of each parish/municipality/county in Scandinavia from 1690 to 1999. Cropland data recorded as barrels of seeds were converted to cropland area in Sweden and Norway before 1875. By comparing between statistics and census in 1999, cropland area data from statistics were calibrated. After time points selection, missing data were interpolated, and the cropland area at the parish/municipality/county levels in Scandinavia from 1690 to 1999 was developed.

3.1.1 Cropland data collection and calibration

The category “cropland” defined by FAO (<http://www.fao.org/>) was used in this study. Thus, our cropland includes arable land (areas under temporary crops, temporary meadows and



删除了: (Figure 2)

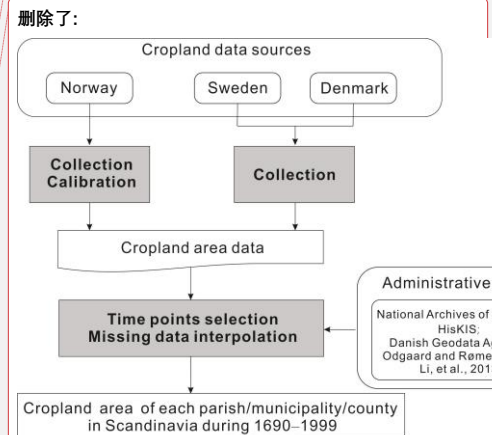


Figure 2 Flow chart of reconstructing the cropland area at the parish/municipality/county levels

pastures, land temporarily fallow) and areas under permanent crops. Non-cropland area, such as permanent meadows, were excluded.

Because the unit of Swedish data in 1690, 1750, and 1810 from SND was barrels of seeds and not area, we used the formula of 1 barrel of seeds = 4936 m² of cropland = 0.4936 hectare (ha) of cropland (Cardarelli, 2003) to obtain the cropland area of each parish. The Norwegian data in 1665, 1723, and 1809 also provided the volume of seeds but not the cropland area. We collected the relationships between the volume of seeds and the cropland area from four sources (Table 2). The values of liter per *maal* (1 *maal* = 0.1 ha) for seven types of seeds were close to each other, except for the value from NSD. The closest year to the three time points of 1665, 1723, and 1809 was 1835. Because agricultural development reduced the use of seeds per *maal* gradually, we chose the values of liter per *maal* in 1835 from *Statistiske Oversigter 1914* (Aschehoug, 1914). For data sources in the remaining years and in Denmark, area units were used, and we unified the area units as ha.

Table 2 Relation of *maal* to liter from different sources in Norway

Sources	<i>Oversigt over det norske landbruks utvikling siden 1750</i> (Klokk, 1920)			<i>Norges Landbrug i Dette Aarhundrede</i> (Smitt, 1888)	<i>Statistiske oversigter 1914</i> (Aschehoug, 1914)		NSD
	1896–1900	1901–1905	1907	1866–1875	1835	1865	
Liter per <i>maal</i> \Year							
<i>Hvete</i> (wheat)	29.0	27.8	28.2	26.4	25.0	25.2	39.2
<i>Rug</i> (rye)	20.4	20.8	22.5	19.5	19.5	19.3	31.2
<i>Byg</i> (barley)	32.8	31.9	32.2	33.4	34.8	34.7	44.8
<i>Havre</i> (oats)	46.9	45.5	45.2	51.4	52.8	53.2	62.9
<i>Blandkorn</i> (mix)	42.6	40.5	40.2	47.3	47.3	47.0	55.9
<i>Erter</i> (peas)	30.4	26.8	30.9	29.2	30.6	30.9	42.9
<i>Poteter</i> (potato)	302.2	306.8	302.7	290.5	290.5	290.3	420.7

Cropland data from SND were based on tax records, historical maps, land survey records, and farmer inventories. Cross-validation of data from multiple sources ensured data reliability. However, land under permanent crops were excluded in SND's data, which underestimated the total cropland area before 1875 in Sweden. However, no additional historical records were found regarding the size of land under permanent crops. Using the same coefficient in

different years to estimate land area under permanent crops will increase the discrepancy of the cropland area. Moreover, based on the Farm Structure Survey (FSS, <https://ec.europa.eu/>) in 1999 and 2010, the total land size under permanent crops accounted for only approximately 0.1% of all cropland area in Sweden. Thus, we used the converted area from the barrels of
5 seeds as the cropland area before 1875 in Sweden. For the collected cropland area data after 1875 in Sweden, Li et al. (2013) evaluated the statistics employed and ensured the data accuracy. Cropland area data of Denmark in 1688, 1800, and 1881 were also validated using historical maps when they were generated (Dam and Jakobsen, 2008; Odgaard and Rømer, 2009). As the census from the FSS showed that the area under permanent crops accounted for
10 less than 1% of all cropland in Denmark, we used “ager” and “agerjord” as cropland in 1688, 1800, 1881, and 1998. Danish statistics recorded the land use areas of all crops, temporary meadows and pastures, and fallow land. Therefore, we selected the land area categorized as cropland according to the FAO and calculated its total area.

The total cropland area collected by Li et al. (2013) from statistics in Norway was 1.04×10^6
15 ha in 1999, which was 38% larger than the total area of arable land and land under permanent crops in 2000 from the FSS census but was the same as the total area of arable land, land under permanent crops, and land under permanent grassland and meadow from the FSS. Thus, we re-collected the arable land area and land area under permanent crops from the 1999 statistics (NSD kommunedatabase, https://kdb.nsd.no/kdbbin/kdb_start.exe) used by Li et al.
20 (2013). We found the total cropland area provided by the FSS census in 2000 was 1.18 times larger than our collected statistics. Thus, a calibration coefficient of 1.18 was used to compensate for estimating the cropland area in Norway from official statistics from 1665 to 1999.

3.1.2 Time points selection and data interpolation

25 Based on the years when cropland area data are available in Sweden, Norway, and Denmark, we selected nine times to represent the cropland change trend from 1690 to 1999. Compared to the data sources in Norway and Denmark, the cropland data from Swedish data sources were the most abundant and complete. Thus, the nine time points were based on the data sources in Sweden, which were 1690, 1750, 1810, 1875, 1910, 1930, 1950, 1980, and 1999.

The years of 1690, 1750, and 1810 correspond to 1665, 1723, and 1809 from the data sources in Norway. In Denmark, 1690, 1810, 1910, 1930, 1950, 1980, and 1999 correspond to 1688, 1800, 1881, 1912, 1936, 1950, and 1998, respectively.

To map the spatial patterns of cropland distribution in Sweden before 1875, we used the parish level administrative map from 1750. We linked the datasets during 1690–1810 to the base map in 1750 based on parish code. Four cities (*stad*) in the datasets failed to connect with the corresponding base map, and fourteen parishes on the base map also lacked cropland data. After checking their administrative codes, a relationship between the four cities (*stad*) and fourteen parishes was found. Then, all the 2390 parishes were associated with their corresponding cropland area data.

For Denmark, cropland area data in 184 (total 8083) “*ejervlavs*” were missing in 1688. We assumed that neighboring “*ejervlavs*” with similar terrain had the same cropland fraction and cropland growth rate. Then, the missing data were interpolated based on the cropland fractions of their neighboring “*ejervlavs*” in 1688 and the cropland area changes from 1688 to 1800. Using the same method, we also interpolated 56 (total 1705) missing data in 1800 and 2 missing data (total 1719) in 1881. We selected the administrative map in 1688 from the HisKIS network as the cropland data base map. Cropland area data in 1800, 1881, and 1999 also had corresponding base maps (Odgaard and Rømer, 2009). The base maps for data in 1936, 1950, and 1980 were from the *Danish Geodata Agency* (<https://eng.gst.dk/>). There was no cropland area record of Denmark in 1750. Therefore, we assumed that the cropland area change rate from 1690 to 1810 was constant and computed each parish’s cropland area in 1750.

Because the cropland data before 1875 was at the county (*amt*) level and the administrative division did not change dramatically from 1690 to 1875 in Norway, the administrative map in 1875 from NSD’s *kommunedatabase* was used for data during 1690–1810 as the base map. Following the above steps, the cropland area of each administrative unit at the nine time points was connected to the corresponding administrative maps.

3.2 Cropland area allocation into grid cells

As the cropland area data of each parish/municipality/county cannot be used as input for the climate and environment simulations directly, we developed cropland area allocation models and allocated the cropland area into 1 km × 1 km grid cells. The allocation process included two essential parts, cropland distribution factors and the maximum extent constraints. In this work, elevation and slope were selected as the distribution factors, and the maximum extent constraints were defined based on the CLC2000 data.

We analyzed the factors affecting cropland distribution. In previous studies, elevation, slope, climate, soil, water, and population were used as causes related to the change in cropland spatial distribution (Klein Goldewijk et al., 2011; Li et al., 2016; Paudel et al., 2017). People tend to prefer starting from areas with lower elevations and gentler slopes when cultivating the land. Land with high elevations and slopes has negative characteristics that constrain cropland cultivation; therefore it will only be used after low-elevation and gentle-slope land has been cultivated. In Scandinavia, there is little climate difference in each parish/municipality/county. We assumed the impact of climate on cropland distribution had been included in the effects of elevation and slope in each parish/municipality/county. Soil properties such as texture, fertility, and organic-matter content impact suitability for growing crops, but it is not a limitation for land cultivation in most areas. According to statistics, Scandinavia's population constantly increased from the 17th century to the present (SCB, SSB, and Statistics Denmark), while the cropland area decreased after 1950. Population growth was an important reason for cropland area increase before 1950, especially in Sweden and Denmark. However, the spatial distribution of population data before 1950 at a high spatial resolution is hard to obtain. Thus, elevation and slope were selected as the factors in the cropland area allocation model. Using the NASA SRTM 90 m DEMs, we resampled the DEMs in Scandinavia to 1-km resolution. The values of elevation and slope were normalized using the following formulas:

$$E^*(i) = \frac{E_{\max} - E(i)}{E_{\max} - E_{\min}} \quad (1)$$

$$S'(i) = \frac{S_{\max} - S(i)}{S_{\max} - S_{\min}} \quad (2)$$

where $E'(i)$ and $S'(i)$ are the normalized elevation and slope value of grid i , $E(i)$ and $S(i)$ are original elevation and slope value of grid i , E_{\max} and S_{\max} are the maximum elevation and slope value of grid i in Scandinavia, and E_{\min} and S_{\min} are the minimum elevation and slope value of grid i in Scandinavia.

The value of land cultivation suitability $Suit(i)$ of grid i is calculated using the following formula:

$$Suit(i) = Mcrop(i) \times E'(i) \times S'(i) \quad (3)$$

where $Mcrop(i)$ refers the maximum extent of cropland, which is a crucial component for allocation models. In this study, $Mcrop(i)$ is defined using the CLC2000 data.

The weight of grid i for cropland area allocation ($w(i)$) and the cropland area of grid i ($Crop(i)$) become:

$$w(i) = \frac{Suit(i)}{\sum_{i=1}^n Suit(i)} \quad (4)$$

$$Crop(i) = w(i) \times Crop(p_n) \quad (5)$$

where $Crop(p_n)$ is the total cropland area of administrative unit (p_n). The total weight of each administrative unit for cropland area allocation is 1.

In previous studies, the maximum extents of cropland ($Mcrop$) in modern times have been used to allocate historical cropland area (Li et al., 2016; Wei et al., 2019) because usually the area of cropland in modern times is larger than that in historical periods. However, this is a source of error in Scandinavia as many croplands were converted to forest during the 20th century. Beyond the maximum extent of modern cropland, more marginal lands may have been cultivated. Considering Scandinavia's agricultural history and urbanization development, we used different maximum extents of cropland during 1690–1950, in 1980, and 1999.

Because urban land is usually built on rural and cultivated land, urban land cover maps from CLC2000 were also used to build the maximum cropland cover extent map. In Scandinavia, although industrialization accelerated after 1870, the urbanization rate was still less than 30% before 1930. After 1960, urbanization was even faster, and its rate reached over 50% in 1990 (Clark, 2009). Thus, the urban land cover map was only used during 1690–1950. The cropland area was allocated to grid cells following the process shown in Figure 2.

删除了: 3

(1) The maximum extent of cropland in the first step allocation is defined as the sum of “Arable land,” “Permanent crops,” and “Discontinuous urban fabric” from CLC2000. $Mcrop_I(i)$ and $Mcrop_I(P_n)$ refers to the maximum extent of cropland in grid i and the administrative unit P_n , respectively. We compared our collected cropland area of administrative unit P_n ($Crop(P_n)$) with $Mcrop_I(P_n)$. If $Crop(P_n) \leq Mcrop_I(P_n)$, $Crop(P_n)$ was allocated into grid cells using formulas (3), (4), and (5) mentioned above, where $Mcrop_I(i)$ is $Mcrop(i)$ in the formula (3). Otherwise, if $Crop(P_n) > Mcrop_I(P_n)$, $Mcrop_I(P_n)$ was allocated and the rest ($Rest1(P_n)$, calculated as $Crop(P_n) - Mcrop_I(P_n)$), went into the next step (Figure 2).

删除了: 3

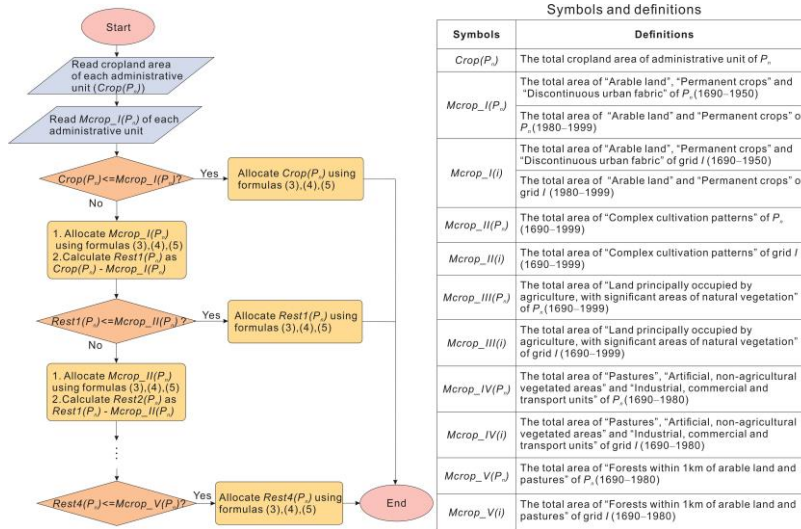
In the second step, $Rest1(P_n)$ was compared with $Mcrop_II(P_n)$. If $Rest1(P_n) \leq Mcrop_II(P_n)$, $Rest1(P_n)$ was allocated into grid cells using formulas (3), (4), and (5), where $Mcrop_II(i)$ is $Mcrop(i)$ in formula (3). Otherwise, $Mcrop_II(P_n)$ was allocated. The rest ($Rest2(P_n)$, calculated as $Rest1(P_n) - Mcrop_II(P_n)$), was compared with $Mcrop_III(P_n)$ and allocated following the same procedure as the first and second steps. $Mcrop_IV(i)$ and $Mcrop_V(i)$ were used in formula (3) in turn, until the cropland areas in all administrative units were allocated to grid cells.

For the cropland area in 1980, as the urbanization rate reached approximately 50%, more cropland was converted to urban land and the maximum extent of cropland in the first allocation step was defined as the sum of “Arable land” and “Permanent crops” from CLC2000. $Crop(P_n)$ was allocated to grid cells using the allocation model in Figure 2. For cropland area in 1999, following the allocation steps in Figure 2, $Crop(P_n)$ was allocated to $Mcrop_I(i)$ (defined as all “Arable land” and “Permanent crops” of grid i), $Mcrop_II(i)$

删除了: 3

删除了: 3

(defined as “Complex cultivation patterns” of grid i) and $Mcrop_{III}(i)$ (defined as “Land principally occupied by agriculture, with significant areas of natural vegetation” of grid i) in turn.



5 Figure 2 Flow chart of cropland area allocation model

删除了: 3

3.3 Cropland data comparison

Because global datasets were produced based on national level cropland area while cropland areas at the parish/municipality/county levels were used to spatialize cropland distribution by us, cropland datasets from this study could be used for assessing the accuracy of global datasets. As the total cropland area is small in Scandinavia, the relative difference ratio (RD) was used to identify the differences between different datasets as follows:

$$RD = \frac{C_{globe}(t) - C(t)}{C(t)} \times 100\% \quad (6)$$

where $C_{globe}(t)$ is the cropland area from global datasets and $C(t)$ is the cropland area from this study.

15 4 Results

Because the cropland area only accounted for less than 8% of Scandinavia's total land area in

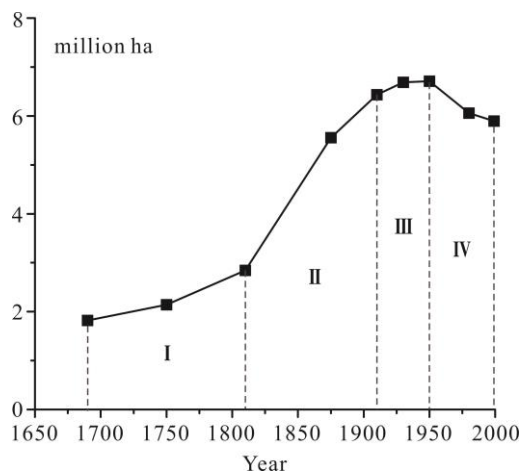
2000, small changes were difficult to observe from the 1 km × 1 km resolution cropland maps, especially in northern Scandinavia. However, we found the total cropland area from 1690 to 1999 showed a phased change. Significant changes in the spatial distribution of cropland in southern Scandinavia and northern cropland expansion were also shown clearly on our maps.

5 4.1 Changes in the total cropland area

The total cropland area change in Scandinavia during 1690–1999 is shown in Figure 3.

Overall, cropland area developed slowly before 1810, and kept developing rapidly or even increasing until the beginning of the 20th century, then remained stable for around 40 years before dropping in 1999. The cropland area change process could be divided into four stages:

- 10 (1) Slight increase in 1690–1810, with an annual growth rate of 0.37% on average. In 1690, the cropland area was 1.82 million ha, accounting for 2.07% of the land area. The cropland area rose steadily to 2.84 million ha in 1810.
- (2) Rapid increase during 1810–1910, with a growth rate of 0.82% on average annually. After 1810, the cropland area rose dramatically for the next century, reaching 6.43 million ha in 1910.
- 15 (3) Steady rise in 1910–1950, with 0.10% average annual growth rate. Between 1910 and 1950, a slight increase in the cropland area was experienced and the cropland area reached 6.71 million ha.
- (4) Gradual decrease in 1950–1999, with -0.26% average annual growth rate. After 1950, the cropland area declined and dropped to 5.90 million ha in 1999, constituting 6.71% of the land area.



删除了: in Scandinavia

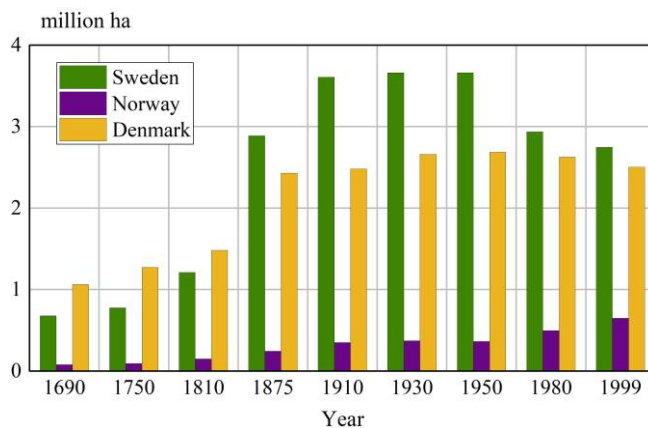
删除了: 4

Figure 3 Changes in the total cropland area in Scandinavia during 1690–1999

For Sweden, the cropland area was just 0.68 million ha in 1690 and rose slowly to 1.21 million ha in 1810. After 1810, Sweden had the largest cropland area in Scandinavia, growing from 2.89 million ha in 1875 to around 3.60 million ha in 1910. The next 40 years witnessed a slight growth in cropland area, reaching a peak in 1950 of 3.66 million ha and representing 52.57% of the total cropland area in Sweden. Then, the cropland area declined to 2.75 million ha by 1999.

For the first three time points, Denmark's cropland area grew gradually and accounted for 58.53%, 59.44%, and 52.17% of all cropland area in 1690, 1750, and 1810, respectively. The cropland area continued to rise at an average annual growth rate of 0.36% until 1950 when it reached its highest area of 2.68 million ha. After that, the figure slowly dropped to 2.63 million ha in 1999.

The cropland area difference between Sweden and Denmark narrowed after 1980. Compared with Sweden and Denmark, Norway had the smallest cropland area, which comprised only 6% of Scandinavia's total cropland area, on average. After a slow increase from 1690 to 1810, there was noticeable growth between 1810 and 1910. During 1690–1910 the cropland area increased by 4.5 times. Despite some slight fluctuations, the cropland area rose from 0.35 million ha in 1910 to 0.65 million ha in 1999, with an average annual growth rate of 0.70% (Figure 4).



删除了: 4

删除了: 4.2 Changes at the country level

删除了: 5

Figure 4 Changes in the total cropland area during 1690–1999 in Sweden, Norway and Denmark

删除了: 5

4.2 Spatial cropland distribution patterns

删除了: 3

The spatial patterns of cropland distribution from 1690 to 1999 in Scandinavia are shown in

Figure 5. Denmark and southern Sweden already had extensive cropland cover in 1690, which reflected their long historical agricultural practices. Before 1810, cropland cover expanded in southern Scandinavia and remained stable in the north. Grid cells with more than 5% cropland accounted for 9.79% and 12.58% of the total grids cells in 1690 and 1810, respectively, while the number of grid cells with more than 60% cropland increased approximately four times.

删除了: 6

After 1810, cropland in northern Scandinavia experienced slight expansion, and the cropland fractions increased rapidly. In 1910, grid cells with more than 5% cropland represented a proportion of around 17.05%, while the percentage of grid cells with more than 60% cropland grew to 6%. During 1910–1950, cropland area changed gradually; cropland proportion changes in most grid cells were between -20% and 20%. After 1950, cropland areas began to decrease in most regions, especially in eastern Scandinavia. In western Scandinavia, the cropland area increased gradually and expanded to the north. Grid cells with more than 60% cropland accounted for 5.53% of the total grid cells and 28.43% of the grid cells that had cropland in 1999.

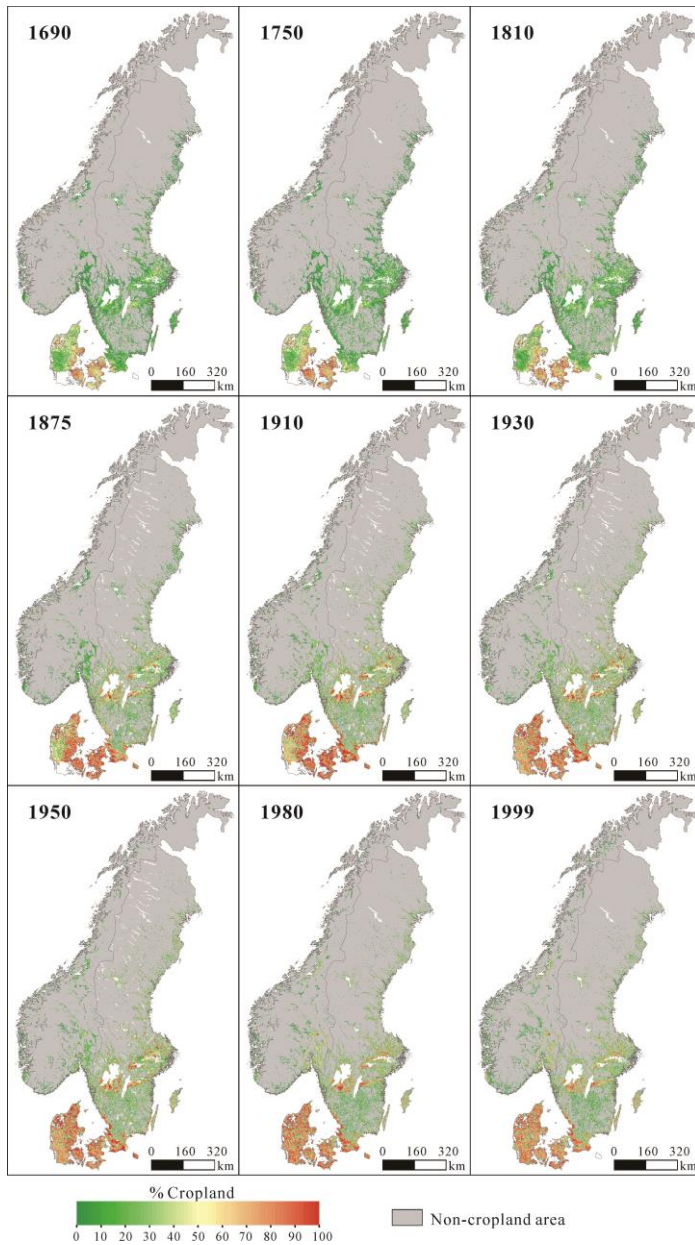


Figure 5 Spatial distribution of cropland area during 1690–1999 in Scandinavia

删除了: 6

In Sweden, about half of the area is covered by forest. Mountains, marshes, and lakes together cover approximately one third of the area. The cropland area has accounted for 1.50%–8.13%

删除了: 4.3.1 Sweden

of Sweden's total land area over the past 300 years. In 1690, croplands were especially dense in southern Sweden, especially around the lakes of Vänern, Vättern, Mälaren and Hjälmaren as well as in Skåne, reflective of the long cultivation history. After that, the cropland spatial patterns became more intensive in southern Sweden and began to spread northward. Several grid cells with more than 80% cropland were observed and increased in 1910. During 1910–1950, spatial patterns of cropland distribution remained stable, except for slight increases in Västerbotten and Norrbotten counties in the north, and minor changes in Skåne (Malmöhus and Kristianstad counties) and Gotland. In the following years, the cropland area declined in most regions and the percentage of grid cells with more than 80% cropland dropped in 1980 and 1999. However, the coastal areas of Halland and Skåne still maintained high cropland fractions.

Mountains, forests, open heathlands, and grasslands dominate Norway's landscapes, and only about 3% of the land surface is suited for cultivation or arable farming (FAO, <http://www.fao.org/family-farming/detail/en/c/358178/>). In 1690, a small amount of cropland in Norway was distributed around the two agricultural centers, Oslofjorden and Trondheimsfjorden. From 1750 to 1810, the cropland spatial patterns around the two fjords expanded and cropland appeared in Nordland County in northern Norway. Then, the cropland fraction increased in the two agricultural centers during 1810–1910, and cropland began to appear in the northernmost county, Finnmark. Cropland in the two agricultural centers stabilized and even decreased but increased in other regions from 1910 to 1950. After 1950, cropland around Oslofjorden and Trondheimsfjorden started growing again. The dramatic growth occurred in the southwestern area of Rogaland. Cropland area in low-elevation coastal regions also increased.

Denmark is among the most intensively cultivated countries in Europe. The long land cultivation history has included widespread cropland cover since 1690 in Denmark. Most high-fraction grid cells were distributed in eastern Denmark as soil conditions were more suitable for crop planting than in the western part of the country. The period between 1690 and 1810 experienced gradual growth, and the most rapid cropland increase occurred in eastern Denmark. During 1810 and 1910, a sharp increase in cropland area in both eastern and

删除了: 4.3.2 Norway

删除了: 4.3.3 Denmark

western Denmark was observed. Grid cells with more than 20% and 60% cropland accounted for 83.42% and 71.24% of the total grid cells in 1910. Since 1910, negative rates of change in cropland areas have dominated in northern and eastern Denmark, and positive rates in the western part, including Ribe, Ringkjøbing and Viborg counties. However, the changes in cropland areas of most grid cells were less than 20%. Although cropland areas in South Jutland, Ribe, Ringkjøbing, Viborg, and North Jutland counties increased moderately, those in other Danish counties declined from 1950 to 1999.

4.3 Validation of the dataset developed in this study

To validate the newly created dataset, we used the satellite-based modern cropland cover data.

Two sets of global land cover maps at 30-m resolution, from the Global Food Security Analysis-Support Data at 30 Meters (GFSAD30, <https://croplands.org/app/map?lat=0&lng=0&zoom=2>) Project and GlobeLand30 maps were found. However, GFSAD30 provides land cover map at 30-m resolution only for 2015 whereas GlobeLand30 has 30-m resolution maps in 2000, 2010, and 2020. Although there are differences among satellite-based maps of multiple time points in modern times, compared to the past 300 years, the period of 1985–2000 can be regarded as one time point. Thus, we choose the GlobeLand30 map for 2000 to validate our 1999 cropland dataset.

The images for land cover development classification and update of GlobeLand30 were mainly 30-m multispectral images, including TM5 ETM+ and OLI multispectral images from Landsat (USA) and HJ-1 (China Environment and Disaster Reduction Satellite). GlobeLand30 includes ten land-cover classes in total (Chen, et al., 2014); namely cultivated land, forest, grassland, shrubland, wetland, water bodies, tundra, artificial surface, bare land, and perennial snow and ice. Cultivated land refers to the land used for cultivating crops. Paddy fields, irrigated upland, rainfed upland, vegetable land, cultivated pasture, greenhouse land, land mainly planted with crops and rarely with fruit trees or other trees, tea plantations, coffee plantations, and other economic croplands are included in this category (Chen, et al., 2014). However, cropland in our datasets only includes arable land (areas under temporary crops, temporary meadows and pastures, land temporarily fallow) and areas under permanent crops.

删除了: 5 Discussion

5

删除了: 1

We compared the cropland area at the parish and county levels in 1999 in this study with cultivated land area from the 2000 GlobeLand30 map to validate our statistics. Then, we aggregated the 30-m resolution GlobeLand30 to 1 km and compared the result with our 1999 [grid-based](#) cropland dataset to validate our allocation method. Comparing the cropland area at the parish and county levels in 1999 in this study with the cultivated land from the 2000 GlobeLand30 map shows that the cultivated land area from GlobeLand30 is 1.4 times that of our cropland area (Figure 6).

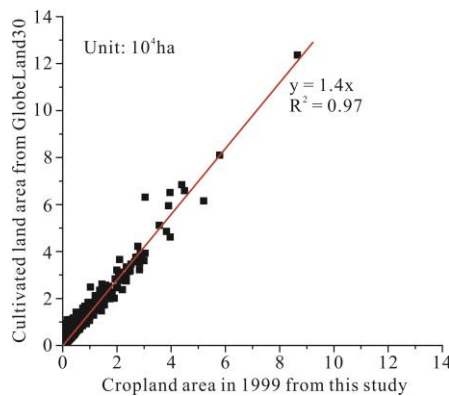


Figure 6 Comparison of the area at the parish and county levels between GlobeLand30 and this study

Comparison of the [grid-based](#) cropland area at 1 km resolution between GlobeLand30 and this study shows grids with differences between -20% and 20% account for 64.81% of the total number of grids with the cropland area > 0 (Figure 7). Because cultivated pasture, greenhouse land, gardens, and so on are included in cultivated land from GlobeLand30, whereas only arable land and permanent crops comprise cropland in this study, among all grids with cultivated land > 0, 79.44% of grids from GlobeLand30 have more cultivated land than this study.

删除了: gridded

删除了: 7

删除了: 7

删除了: gridded

删除了: 8

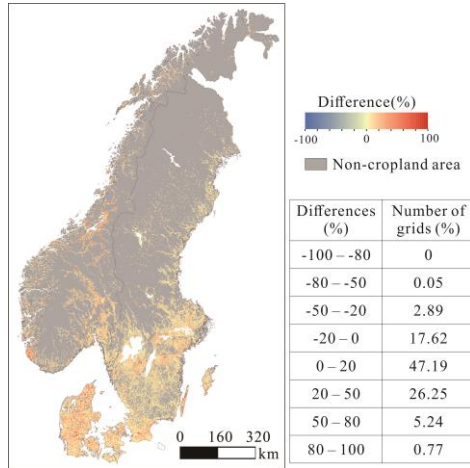


Figure 7 Comparison of the grid-based cropland area between GlobeLand30 and this study

Because CLC2000 provides more agricultural (cultivated) land classes (Büttner, 2014), we used CLC2000 to further validate our cropland dataset. In Scandinavia, CLC2000 divides agricultural areas into four categories: “Arable land” (including one class, “Non-irrigated arable land”), “Permanent crops” (including one class, “Fruit trees and berry plantations”), “Heterogeneous agricultural areas” (including two classes, “Complex cultivation patterns” and “Land principally occupied by agriculture, with significant areas of natural vegetation”), and “Pastures”. Comparison of the grid-based cultivated land area and agricultural areas at 1-km resolution between GlobeLand30 and CLC2000 shows the consistency of these two datasets. We compared the total area of “Arable land,” “Permanent crops,” and “Complex cultivation patterns” from CLC2000 with our cropland area for each parish and county (Figure 8). Figure 8 shows that the area from CLC2000 is 1.17 times that of our cropland area. Removing some marginal roads and natural lands included in “Arable land,” “Permanent crops,” and “Complex cultivation patterns” from CLC2000, our cropland areas at the parish and county levels are close to those from CLC2000.

删除了: 8

删除了: gridded

删除了: gridded

删除了: 9

删除了: 9

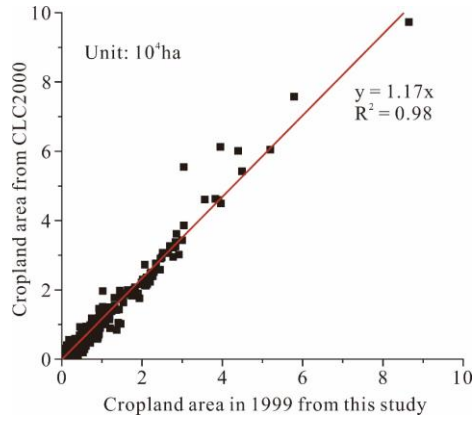


Figure 8 Comparison of the cropland area at the parish and county levels between CLC2000 and this study

删除了: 9

Comparison of the [grid-based](#) cropland area at 1-km resolution between CLC2000 and this study shows grids with differences between -20% and 20% account for 90.54% of the total number of grids with the cropland area > 0 (Figure 9). Our [grid-based](#) cropland area is close to that in CLC2000 overall, which indicates the reliability of our cropland dataset. However, around Stockholm and Trondheim, in southeastern Norway and northern Denmark, respectively, our cropland areas are slightly less than those from CLC2000.

删除了: gridded

删除了: 10

删除了: gridded

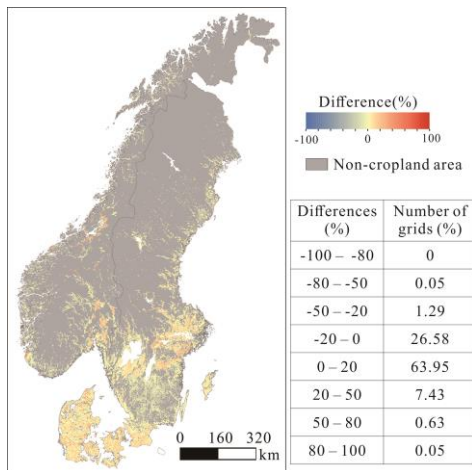


Figure 9 Comparison of the [grid-based](#) cropland area between CLC2000 and this study

删除了: 10

We also compared the total country level cropland area with that from previously published studies. Because many studies of historical agriculture in Norway and Denmark were also

删除了: gridded

statistically based, cropland areas before 1980 were available only in Sweden. This study's cropland area is similar to the data from previous studies ($R^2 = 0.967$, slope = 1.05), which indicates the reliability of the results in this study (Figure 10). Because the studies of Anderberg (1991), Lindstad (2002) and Groth, et al. (1998) provided the cultivated land area but not the cropland area, their data show slightly larger areas than the data observed in this study.

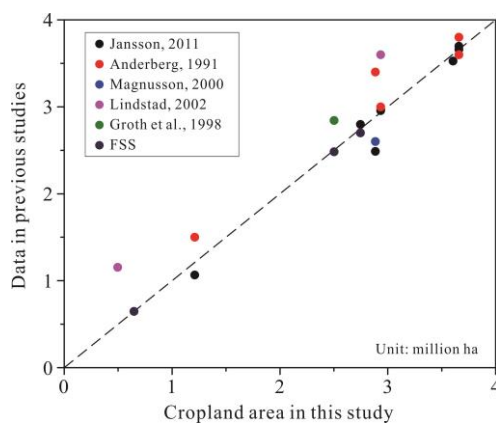


Figure 10 Comparison of the cropland data from previous studies and this study

Several missing data were interpolated in Denmark in 1688, 1750, 1800, and 1881 using the cropland fractions of their neighbors and the linear interpolation method. These interpolation methods were also used by Ramankutty and Foley (1999), Ye, et al. (2015), Wei, et al. (2016); He, et al. (2017), Li, et al. (2018), and Yu and Lu (2018); however, their interpolated data did not reduce the credibility of their datasets. As satellite-based data and survey data at the parish level were unavailable from 1688 to 1881, the interpolated data were impossible to validate using direct fitted observations. Based on the study of Fang et al. (2020), three methods could be used to assess the credibility of historical land cover datasets, including accuracy assessment (quantitative assessment based on quantitatively reconstructed regional land cover data), rationality assessment (qualitative assessment, including the regional historical facts-based rationality assessment and the expertise-based rationality assessment), and likelihood assessment (the credibility of the land cover data for given spatial or temporal units is inferred according to the degree of consistency in land cover data extracted from multiple

删除了: 11

删除了: 11

datasets). Because apart from the data sources we used, other quantitatively reconstructed regional land cover data in Denmark from 1688 to 1881 were unavailable, we employed a regional historical facts-based rationality assessment to analyze the reliability of our interpolated data in Denmark. The following Danish history suggests that linearly interpolated data are reasonable. The national tax system stipulated that each household in Denmark had 50 acres of cropland, no more and no less. The population of Denmark grew steadily from 1690 to 1881. During this period, wars did not cause sudden changes in cropland area in Denmark. The agricultural reform that began in 1789 changed the relationship between landlords and tenant farmers but did not cause a sudden change in cropland area (Jespersen, 2018).

5 Discussion

5.1 Comparison with global datasets

To show the improvement made by our dataset, three widely used global datasets HYDE 3.2 (Klein Goldewijk et al., 2017), SAGE (Ramankutty and Foley, 1999), PJ (Pongratz et al., 2007), and KK10 (Kaplan et al., 2011) were selected to compare with our results. As KK10 only provided the sum of cropland and pasture area data, it was much larger than the total cropland area from other studies (Figure 11). For Scandinavia, the total cropland area from this study was between that from the HYDE 3.2 and PJ results. However, differences are apparent at the country level, especially in Norway and Denmark. For Sweden, though cropland areas were close to those from different datasets before 1810, the PJ results were far less than those from HYDE 3.2 and this study after 1875. PJ dataset was close to SAGE dataset because the cropland data source in PJ dataset for Scandinavia was from SAGE dataset over the period of 1700–1992.

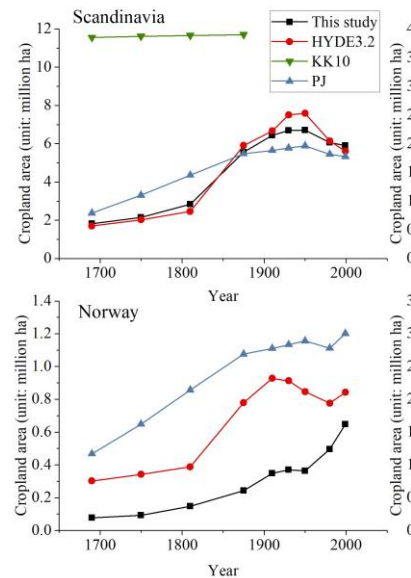
设置了格式: 字体: 13 磅, 加粗

带格式的: 2 级, 段落间距段前: 10 磅, 孤行控制, 与下段同页, 段中不分页

删除了: 2

删除了: 12

设置了格式: 字体: (中文) 等线, 五号



删除了:

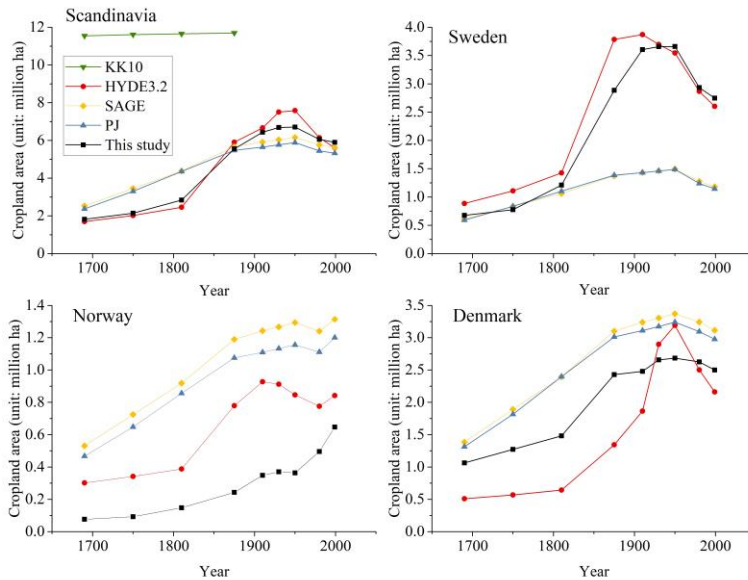


Figure 11 Comparison of the total cropland area among SAGE, HYDE3.2, PJ, KK10, and this study

删除了: 12

5 Compared with HYDE 3.2, large differences were found during 1690–1875 in Sweden and Denmark, and at all time points in Norway. Although the RD between PJ and this study was close before 1810 in Sweden and after 1875 in Denmark, it was even larger than that between HYDE 3.2 and this study in Norway. PJ datasets overestimated the total cropland area in Norway and Denmark, and after 1875 in Sweden. HYDE 3.2 also overestimated the total

10 cropland area in Norway but underestimated it before 1910 and after 1980 in Denmark, compared with this study (Table 3). Different definitions of cropland in Norway caused cropland area overestimation in Norway by HYDE 3.2 and PJ. Based on the FSS data, we inferred that some permanent meadow area was included in the cropland land area by HYDE 3.2 and PJ.

15 Table 3 Relative difference ratio (RD, unit: %) between global datasets and this study

Time points	Sweden		Norway		Denmark	
	RD(HYDE3.2)	RD(PJ)	RD(HYDE3.2)	RD(PJ)	RD(HYDE3.2)	RD(PJ)
1690	30.81	-12.51	290.74	504.51	-52.04	23.59

1750	42.97	7.67	269.80	599.98	-55.40	42.73
1810	17.84	-8.89	162.50	479.01	-56.62	61.85
1875	31.16	-51.98	220.43	342.24	-44.67	24.08
1910	7.40	-60.32	166.00	218.16	-24.79	25.42
1930	1.02	-60.10	146.19	205.73	9.00	19.44
1950	-3.12	-59.30	132.50	217.46	18.83	20.67
1980	-2.32	-57.71	56.38	124.03	-4.67	17.88
1999	-5.25	-58.33	30.04	85.42	-13.59	19.06

We selected time points with RDs < 30% to compare spatial patterns of cropland distribution from PJ, HYDE 3.2, and this study. PJ had a spatial resolution of $0.5^\circ \times 0.5^\circ$, but HYDE 3.2's resolution was $5' \times 5'$. To reduce the resampling error, cropland area data from this study were aggregated to $0.5^\circ \times 0.5^\circ$ and $10 \text{ km} \times 10 \text{ km}$ to compare with PJ and the resampled HYDE 3.2, respectively. For Sweden, although the differences in total cropland area during 1690–1810 from PJ and this study were small, the spatial patterns of cropland distribution varied substantially. Based on the PJ dataset, more cropland was shown in northern Sweden and Skåne, but the cropland area around lakes Vänern, Vättern, Mälaren, and Hjälmaren in southern Sweden was less than that in this study. For Denmark, more cropland area was allocated in western and southeastern Denmark by PJ, but cropland area in northern and southwestern was scarce (Figure 12), which is inconsistent with the facts. Because the land in eastern Denmark was more conducive to cultivation than that in the West, the eastern cropland area gradually decreased with urbanization development. Increased afforestation and the need for urban expansion steadily reduced the agricultural area in eastern Denmark (Pedersen and Møllenberg, 2017).

删除了: 13

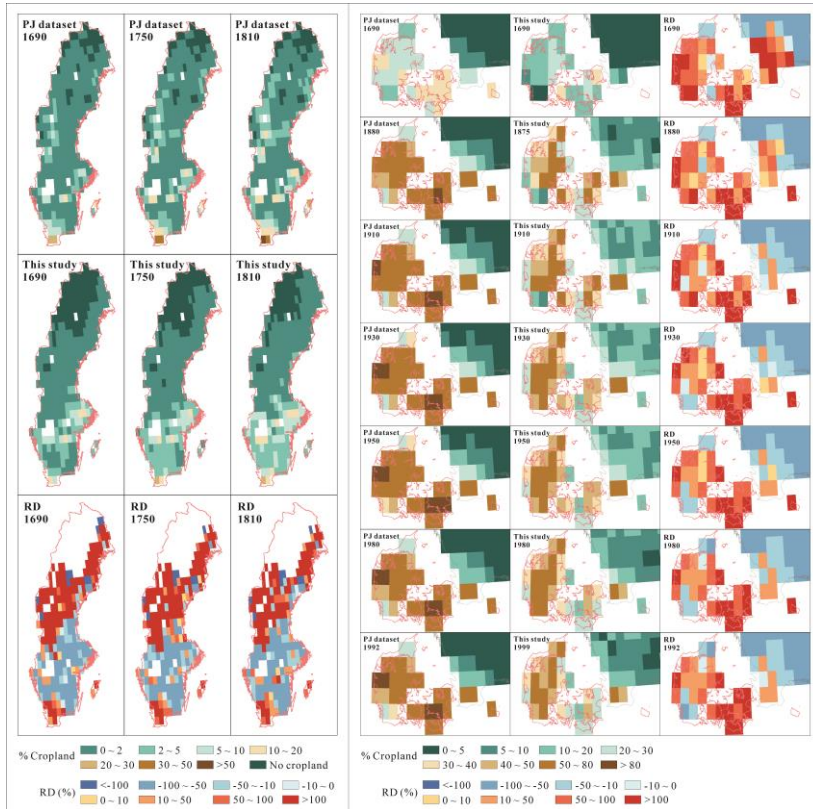


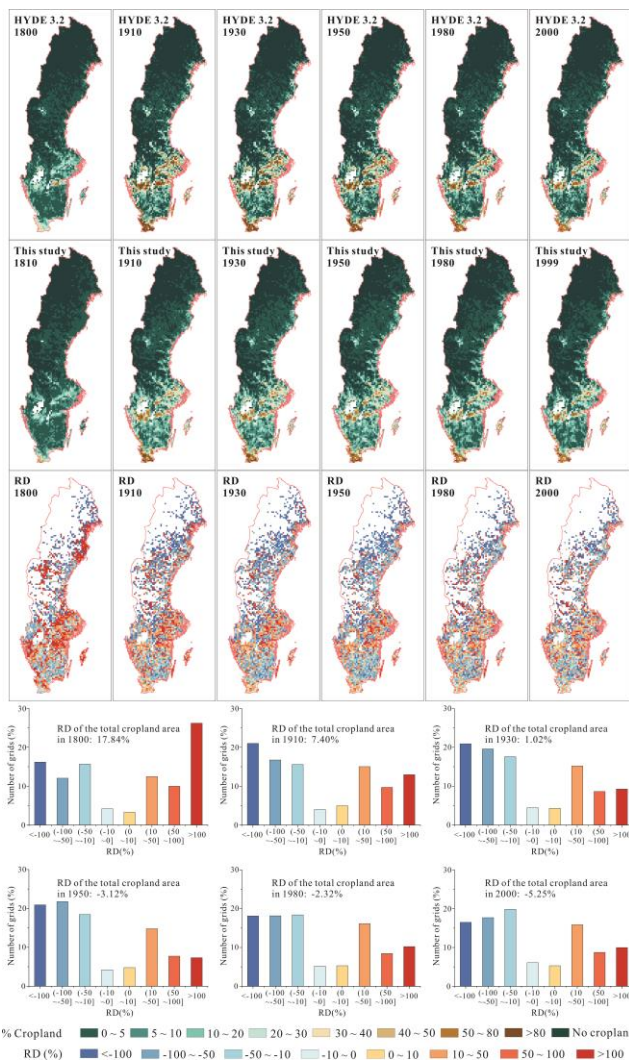
Figure 12 Comparison of the spatial distribution of cropland area between PJ and this study (The left figure is the comparison in Sweden and the right one is the comparison in Denmark). Although spatial cropland patterns were in agreement in Sweden between HYDE 3.2 and this study, around the lakes Vänern, Vättern, Mälaren, Hjälmaren, and in the northeast coastal area, there were significantly more cropland areas in HYDE 3.2 than in this study. However, in Blekinge, Hallands, Jönköping, Kalmar, and Kronoberg counties in southern Sweden, there were fewer cropland areas in HYDE 3.2 than in this study. Moreover, no cropland area was allocated in northern Sweden from HYDE 3.2, but statistics show that this area has cropland. The number of grid cells with RD more than 50% or less than -50% accounted for 53%–64% of the total grid cells from 1810 to 1999 (Figure 13). There was little difference in the spatial patterns of cropland from 1910 to 1999 for Denmark between HYDE 3.2 and this study (Figure 14). RDs of most grid cells were between -50% and 50%. The number of grid cells with RDs between -10%–10% accounted for approximately 40% of the total grid cells in 1980

删除了: 13

删除了: 14

删除了: 15

and 1999 because Denmark has a small land area and most land has been cultivated intensely. Moreover, the topographical differences within Denmark are relatively small. Thus, although HYDE 3.2 used the national cropland area, the cropland area allocation errors were small in Denmark.



5

Figure 13 Comparison of the spatial distribution of cropland area between HYDE 3.2 and this study in Sweden

删除了: 14

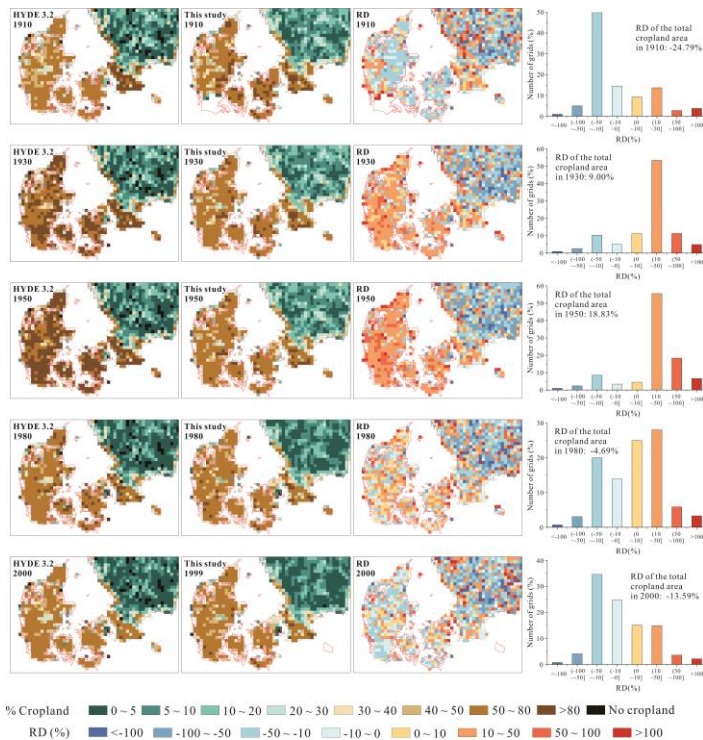


Figure 14 Comparison of the spatial distribution of cropland area between HYDE 3.2 and this study in Denmark

5.2 Uncertainties

5 To develop the cropland area dataset in Scandinavia from 1690 to 1999, we have used many methods to ensure data accuracy. However, there are still uncertainties in this work. [First, our](#) cropland is defined as the sum of arable land and land under permanent crops. Arable land comprises areas under temporary crops, temporary meadows and pastures, and land temporarily fallow. Although the temporarily fallow and permanent crop areas account for a small proportion of the total cropland area, the absence of records about the size of fallow land makes our cropland smaller than the real value before 1875 in Sweden and Norway. [Second,](#) we used elevation and slope as factors that affect the spatial distribution of cropland, which may allocate a smaller amount of cropland area to grids that could not have cropland historically. [It may induce the historical](#) spatial patterns of cropland insufficiently concentrated, [especially in northern Scandinavia. In Sweden and Denmark, the cropland area](#)

删除了: 15

删除了:

删除了: 3

删除了: Our

删除了: smaller than the real value

删除了: Moreover,

删除了: should

删除了: and

删除了: make

reached its maximum in 1950 and decreased after 2000. Because there ~~is~~ no satellite-based land use data in 1950, the maximum extent constraints ~~are~~ defined based on the CLC2000 data in our cropland area allocation model. The spatial pattern of cropland based on the CLC2000 data is smaller than the real maximum pattern. In ~~administrative units~~ where our reconstructed cropland area ~~are~~ larger than those from the CLC2000, we allocated the extra cropland area to “Pastures”, “Artificial, non-agricultural vegetated areas”, “Industrial, commercial and transport units” and “Forests within 1km of arable land and pastures” in turn. However, the current method ~~cannot~~ obtain grid-based cropland data that is ~~in agreement with~~ the real value in history. Failure to use settlements in the cropland area allocation model also introduces ~~s~~ errors in our ~~grid-based~~ dataset. Third, the land area of different levels of administrative units varies greatly. Especially in Sweden, even for the same level of administrative units, the land areas are much different. For example, the land area of Jokkmokk Parish (*socken*) is almost 500 times larger than that of Brunnby Parish (*socken*). Using the same model to allocate cropland area of different levels of administrative units to 1 km grid cells may also increase the error of cropland area allocation. Therefore, in future studies, according to different levels of administrative units, different cropland area allocation models should be used to improve the accuracy of historical cropland cover reconstruction in Scandinavia. Moreover, because the satellite-based land cover maps at 30-m resolution are only available in 2000, we validated our cropland data in 1999. Cultivated pasture, greenhouse land, and other economic croplands are included in the cultivated land of GlobeLand30, and it is 1.4 times that of our cropland area. CLC2000 cropland area is also larger than our cropland area in 1999, ~~reflecting~~ the underestimation of cropland data from statistics.

删除了: was

删除了: were

删除了: parish/municipality/county

删除了: is

删除了: cropland area

删除了: is still unable to

删除了: completely consistent

删除了: historical

删除了: d

删除了: gridded

删除了: which reflects

6 Data availability

All cropland data cover for 1690, 1750, 1810, 1875, 1910, 1930, 1950, 1980, and 1999 at a spatial resolution of 1 km are available in <https://doi.org/10.1594/PANGAEA.926591> (Wei et al., 2021).

7 Conclusions

Based on the collected cropland data of each administrative unit from statistics and previous studies and using a range of data processing and cropland area allocation methods, we developed the cropland area dataset at a spatial resolution of 1km in Scandinavia from 1690 to 1999. Our reconstruction indicated that the cropland area developed slowly before 1810, then increased rapidly until the beginning of the 20th century and remained stable for around 40 years before declining in 1999. At the country level, the cropland area change trends in Sweden and Denmark were almost identical to that in Scandinavia. The cropland areas of both Sweden and Denmark reached a peak in 1950. Norway had the least cropland area, which increased gradually from 1690 to 1999. The spatial patterns of cropland distribution showed that Denmark and southern Sweden already had extensive cropland cover in 1690. In the following 100 years, cropland expanded in southern Scandinavia and remained stable in the north. During 1910–1950 the cropland area changed slightly but began to decrease in southern and eastern Scandinavia after 1950.

The statistically based accuracy of our [grid-based](#) cropland dataset has been validated by comparison with satellite-based data (GlobeLand30 and CLC2000) in 2000, although our cropland area is slightly smaller than that from satellite-based data. Comparing our dataset and global datasets shows that KK10 has much larger total cropland area than this study in Scandinavia. Although the total cropland area is in agreement in Scandinavia among HYDE 3.2, PJ and this study, more considerable differences are found in cropland areas at the country level. The differences in cropland spatial patterns are also non-negligible, even at time points where the total cropland area differences are small in Sweden and Denmark between PJ and this study. HYDE 3.2 allocates more cropland area to highly cultivated regions in Sweden but has a lower cropland area between the highly cultivated regions in southern Sweden.

Although some cropland area allocation errors introduced uncertainties with our reconstruction, this study improved descriptions of historical cropland change in Scandinavia. Our cropland dataset is an essential reference for a better understanding of the complex climate system.

删除了: gridded

Acknowledgments

We thank Peder Dam from Odense City Museums and Pia Frederiksen from Aarhus University for providing us cropland data of Denmark in 1688, 1800, 1881 and 1998, and Ulf Jansson for providing an administrative map of Sweden in 1750. This research is supported
5 by National Key R&D Program of China (No. 2017YFA0603304), National Science
Foundation of China (No. 41807433), Basic Research Program (Natural Science Foundation)
of Jiangsu Province (No. K20180804), and the Fund of China Scholarship Council.

Author Contribution

WX, WM and LB designed the work. WX wrote the manuscript. FX, YY and CT provided
10 suggestions on structure and methods. ZC helped with downloading the data for cropland
allocation. All the authors contributed to the review of the manuscript.

Competing interests

The authors declare that they have no conflict of interest.

References

- 15 Almås, R.: Norwegian Agricultural History, Tapir Academic Press, Trondheim, 2004.
- Anderberg, S.: Historical Land Use Changes: Sweden, In: Brouwer, F., Thomas, A., Chadwick, M. (eds) Land Use Change in Europe, Processes of Change, Environmental Transformations and Future Patterns, Springer Science+Business Media, B.V., 1991.
- Arora, V. K., and Boer, G. J.: Uncertainties in the 20th century carbon budget associated with land use change, *Global Change Biology*, 16, 3327-3348, <https://doi.org/10.1111/j.1365-2486.2010.02202.x>,
20 2010.
- Aschehoug, T. H.: Statistiske oversigter 1914, Kristiania, 1914.
- Aschehoug, T. H.: Statistiske studier over folkemængde og jordbrug i Norges landdistrikter i det syttende og attende aarhundrede, Kristiania, 1890
- 25 Brovkin, V., Boysen, L., Arora, V. K., Boisier, J. P., Cadule, P., Chini, L., Claussen, M., Friedlingstein, P., Gayler, V., van den Hurk, B. J. J. M., Hurtt, G. C., Jones, C. D., Kato, E., de Noblet-Ducoudré, N., Pacifico, F., Pongratz, J., and Weiss, M.: Effect of Anthropogenic Land-Use and Land-Cover Changes on Climate and Land Carbon Storage in CMIP5 Projections for the Twenty-First Century, *Journal of Climate*, 26, 6859-6881, <https://doi.org/10.1175/JCLI-D-12-00623.1>, 2013.
- 30 Büttner, G.: CORINE land cover and land cover change products. In *Land use and land cover mapping in Europe* (pp. 55-74), Springer, Dordrecht, 2014.
- Cardarelli, F.: *Encyclopaedia of Scientific Units, Weights and Measures*, Springer, London, 2003.

Chen, J., Ban, Y. and Li, S.: Open access to Earth land-cover map, *Nature*, 514, 434, <https://doi.org/10.1038/514434c>, 2014.

[Clark, P. European Cities and Towns 400-2000, Oxford University Press, New York, 2009.](#)

5 [Cui, Q., Gaillard, M., Lemdahl, G., Stenberg, L., Sugita, S., and Zernova, G.: Historical land-use and landscape change in southern Sweden and implications for present and future biodiversity, *Ecology and Evolution*, 4, 3555-3570, <https://doi.org/10.1002/ece3.1198>, 2014.](#)

Dam, P., and Jakobsen, J. G. G.: *Atlas over Danmark: Historisk-Geografisk Atlas*, København: Det Kongelige Danske Geografiske Selskab, 2008.

Danmarks Statistik: *Statistisk Årbog 1912*, København: H. H. Thieles Bogtrykkeri, 1912.

10 Danmarks Statistik: *Statistiske Meddelelser 1936*, København: Bianco Lunos Bogtrykkeri A/S, 1936.

Danmarks Statistik: *Statistiske Meddelelser 1950*, København: Bianco Lunos Bogtrykkeri A/S, 1950.

Danmarks Statistik: *Statistiske Meddelelser 1980*, København: Bianco Lunos Bogtrykkeri A/S, 1980.

Ellis, E. C., Antill, E. C., and Kreft, H.: All is not loss: plant biodiversity in the anthropocene, *PLoS One*, 7, e30535, <https://doi.org/10.1371/journal.pone.0030535>, 2012.

15 Eriksson, O., and Cousins, S.: Historical Landscape Perspectives on Grasslands in Sweden and the Baltic Region, *Land*, 3, 300-321, 2014.

Fang, X., Zhao, W., Zhang, C., Zhang, D., Wei, X., Qiu, W., and Ye, Y.: Methodology for credibility assessment of historical global LUCC datasets, *Science China Earth Sciences*, <https://doi.org/10.1007/s11430-019-9555-3>, 2020.

20 Feranec, J., Jaffrain, G., Soukup, T. and Hazeu, G.: Determining changes and flows in European landscapes 1990–2000 using CORINE land cover data, *Applied geography*, 30, 19-35, <https://doi.org/10.1016/j.apgeog.2009.07.003>, 2010.

25 [Findell, K. L., Berg, A., Gentine, P., Krasting, J. P., Lintner, B. R., Malyshev, S., Santanello, Jr., J. A., and Shevliakova, E.: The impact of anthropogenic land use and land cover change on regional climate extremes, *Nature Communications*, 8, 989, <https://doi.org/10.1038/s41467-017-01038-w>, 2017.](#)

Foley, J. A., Defries, R., Asner, G. P., Barford, C., Bonan, G., Carpenter, S. R., Chapin, F. S., Coe, M. T., Daily, G. C., Gibbs, H. K., Helkowski, J. H., Holloway, T., Howard, E. A., Kucharik, C. J., Monfreda, C., Patz, J. A., Prentice, I. C., Ramankutty, N., and Snyder, P. K.: Global consequences of land use, *Science*, 309, 570-574, <https://doi.org/10.1126/science.1111772>, 2005.

30 Foley, J. A., Ramankutty, N., Brauman, K. A., Cassidy, E. S., Gerber, J. S., Johnston, M., Mueller, N. D., O'Connell, C., Ray, D. K., West, P. C., Balzer, C., Bennett, E. M., Carpenter, S. R., Hill, J., Monfreda, C., Polasky, S., Rockstrom, J., Sheehan, J., Siebert, S., Tilman, D., and Zaks, D. P.: Solutions for a cultivated planet, *Nature*, 478, 337-342, <https://doi.org/10.1038/nature10452>, 2011.

35 Fuchs, R., Herold, M., Verburg, P. H., Clevers, J. G., and Eberle, J.: Gross changes in reconstructions of historic land cover/use for Europe between 1900 and 2010, *Global Change Biology*, 21, 299-313, <https://doi.org/10.1111/gcb.12714>, 2015.

删除了: Ciais, P., Sabine, C., Bala, G., Bopp, L., Brovkin, V., Canadell, J., Chhabra, A., DeFries, R., Galloway, J., Heimann, M., Jones, C., Le Quéré, C., Myneni, R.B., Piao, S., and Thornton, P.: Carbon and Other Biogeochemical Cycles. In: *Climate Change 2013: The Physical Science Basis. Contribution of Working Group I to the Fifth Assessment Report of the Intergovernmental Panel on Climate Change* [Stocker, T.F., Qin, D., Plattner, G.-K., Tignor, M., Allen, S.K., Boschung, J., Nauels, A., Xia, Y., Bex, V., and Midgley, P. M., (eds.)]. Cambridge University Press, Cambridge, United Kingdom and New York, NY, USA, 2013.

设置了格式: 字体: 10 磅

删除了: Crutzen, P. J., and Stoermer, E. F.: The Anthropocene. In *IGBP Global Change Newsletter*, 17-18, 2000.

Gadd, C.: The Agricultural Revolution in Sweden, 1700-1870, In: Myrdal, J., Morell, M. (eds) The Agrarian History of Sweden, from 4000 bc to ad 2000, Nordic Academic Press, Lund, 2011.

Gaillard, M. J., and LandCover6k Interim Steering Group members: LandCover6k: Global anthropogenic land-cover change and its role in past climate, Past Global Change Magazine, 23, 38-39, 2015a.

[Gasser, T., Crepin, L., Quilcaille, Y., Houghton, R. A., Ciaia, P., and Obersteiner, M. Historical CO₂ emissions from land use and land cover change and their uncertainty, Biogeosciences, 17, 4075-4101, <https://doi.org/10.5194/bg-17-4075-2020>, 2020.](#)

Groth, N.B., Hedegaard, M.B., Holmberg, T., Höll, A., and Skov-Petersen, H.: Arealanvendelsen i Danmark 1995-2025. By- og Landsplanserien Nr. 2. Forskningscenter for Skov & Landskab, 1998.

Gustavsson, E., Lennartsson, T., and Emanuelsson, M.: Land use more than 200 years ago explains current grassland plant diversity in a Swedish agricultural landscape, Biological Conservation, 138, 47-59, <https://doi.org/10.1016/j.biocon.2007.04.004>, 2007.

He, F., Li, M. and Li, S.: Reconstruction of Lu-level cropland areas in the Northern Song Dynasty (AD976-1078), Journal of Geographical Sciences, 27(5): 606-618, 2017.

Hovland, E.: Åkerbruket i Norge i begynnelsen av 1800-tallet, Historisk Tidsskrift 57, 331-346, 1978.

Hurt, G. C., Chini, L. P., Frolking, S., Betts, R. A., Feddema, J., Fischer, G., Fisk, J. P., Hibbard, K., Houghton, R. A., Janetos, A., Jones, C. D., Kindermann, G., Kinoshita, T., Klein Goldewijk, K., Riahi, K., Shevliakova, E., Smith, S., Stehfest, E., Thomson, A., Thornton, P., van Vuuren, D. P., and Wang, Y. P.: Harmonization of land-use scenarios for the period 1500–2100: 600 years of global gridded annual land-use transitions, wood harvest, and resulting secondary lands, Climatic Change, 109, 117-161, <https://doi.org/10.1007/s10584-011-0153-2>, 2011.

Jacks, G.: Drainage in Sweden -the past and new developments, Acta Agriculture Scandinavica, Section B-Soil & Plant Science, 69, 405-410, <https://doi.org/10.1080/09064710.2019.1586991>, 2019.

Jansson, U. Agriculture and forestry in Sweden since 1900: a cartographic description. National atlas of Sweden, Royal Swedish Academy of Agriculture and Forestry, Stockholm, 2011.

Jespersen, K. J. V.: A history of Denmark (Macmillan essential histories), Red Globe Press, 2018.

Kaplan, J. O., Krumhardt, K. M., and Zimmermann, N.: The prehistoric and preindustrial deforestation of Europe, Quaternary Science Reviews, 28, 3016-3034, <https://doi.org/10.1016/j.quascirev.2009.09.028>, 2009.

Kaplan, J. O., Ruddiman, W. F., Crucifix, M. C., Oldfield, F. A., Krumhardt, K. M., Ellis, E. C., Ruddiman, W. F., Lemmen C., and Klein Goldewijk, K.: Holocene carbon emissions as a result of anthropogenic land cover change, The Holocene, 21, 775-791, <https://doi.org/10.1177/0959683610386983>, 2011.

[Klein Goldewijk, K., and Verburg, P. H.: Uncertainties in global-scale reconstructions of historical land use: an illustration using the HYDE data set, Landscape Ecology, 28, 861-877, <https://doi.org/10.1007/s10980-013-9877-x>, 2013.](#)

删除了:-

设置了格式: 下标

删除了: Gaillard, M.-J., Kleinen, T., Samuelsson, P., Nielsen, A. B., Bergh, J., Kaplan, J., Poska, A., Sandström, C., Strandberg, G., Trondman, A.-K., and Wramneby, A.: Causes of Regional Change-Land Cover, In: The BACC II Author Team (eds) Second Assessment of Climate Change for the Baltic Sea Basin, Regional Climate Studies. Springer, Cham, 453-477, https://doi.org/10.1007/978-3-319-16006-1_25, 2015b.

删除了: Houghton, R. A., House, J. I., Pongratz, J., van der Werf, G. R., DeFries, R. S., Hansen, M. C., Le Quéré, C., and Ramankutty, N.: Carbon emissions from land use and land-cover change, Biogeosciences, 9, 5125-5142, <https://doi.org/10.5194/bg-9-5125-2012>, 2012.
Houghton, R. A.: Interactions Between Land-Use Change and Climate-Carbon Cycle Feedbacks, Current Climate Change Reports, 4, 115-127, <https://doi.org/10.1007/s40641-018-0099-9>, 2018.

Kaplan, J., Krumhardt, K., Gaillard, M.-J., Sugita, S., Trondman, A.-K., Fyfe, R., Marquer, L., Mazier, F., and Nielsen, A.: Constraining the Deforestation History of Europe: Evaluation of Historical Land Use Scenarios with Pollen-Based Land Cover Reconstructions, *Land*, 6, 91, <https://doi.org/10.3390/land6040091>, 2017.

5 [Klein Goldewijk, K., Beusen, A., Doelman J., and Stehfest, E.: Anthropogenic land use estimates for the Holocene—HYDE 3.2, *Earth System Science Data*, 9, 927-953, <https://doi.org/10.5194/essd-9-927-2017>, 2017.](#)

Klein Goldewijk, K., Beusen, A., Van Drecht, G., and De Vos, M.: The HYDE 3.1 spatially explicit database of human-induced global land-use change over the past 12,000 years, *Global Ecology and Biogeography*, 20, 73-86, <https://doi.org/10.1111/j.1466-8238.2010.00587.x>, 2011.

Klein Goldewijk, K.: Estimating global land use change over the past 300 years: The HYDE Database, *Global Biogeochemical Cycles*, 15, 417-433, 2001.

Klokk, O.: Oversigt over det norske landbruks utvikling siden 1750, Kristiania, 1920.

15 Le Quéré, C., Andrew, R. M., Friedlingstein, P., Sitch, S., Hauck, J., Pongratz, J., Pickers, P. A., Korsbakken, J. I., Peters, G. P., Canadell, J. G., Arneeth, A., Arora, V. K., Barbero, L., Bastos, A., Bopp, L., Chevallier, F., Chini, L. P., Ciais, P., Doney, S. C., Gkritzalis, T., Goll, D. S., Harris, I., Haverd, V., Hoffman, F. M., Hoppema, M., Houghton, R. A., Hurtt, G., Ilyina, T., Jain, A. K., Johannessen, T., Jones, C. D., Kato, E., Keeling, R. F., Goldewijk Klein, K., Landschützer, P., Lefèvre, N., Lienert, S., Liu, Z., Lombardozzi, D., Metz, N., Munro, D. R., Nabel, J. E. M. S., Nakaoka, S.-i., Neill, C., Olsen, 20 A., Ono, T., Patra, P., Peregon, A., Peters, W., Peylin, P., Pfeil, B., Pierrot, D., Poulter, B., Rehder, G., Resplandy, L., Robertson, E., Rocher, M., Rödenbeck, C., Schuster, U., Schwinger, J., Séférian, R., Skjelvan, I., Steinhoff, T., Sutton, A., Tans, P. P., Tian, H., Tilbrook, B., Tubiello, F. N., van der Laan-Luijkx, I. T., van der Werf, G. R., Viovy, N., Walker, A. P., Wiltshire, A. J., Wright, R., Zaehle, S., and Zheng, B.: Global Carbon Budget 2018, *Earth System Science Data*, 10, 2141-2194, <https://doi.org/10.5194/essd-10-2141-2018>, 2018.

25 [Lejeune, Q., E. L. Davin, L. Gudmundsson, J. Winckler & S. I. Seneviratne: Historical deforestation locally increased the intensity of hot days in northern mid-latitudes, *Nature Climate Change*, 8, 386-390, <https://doi.org/10.1038/s41558-018-0131-z>, 2018.](#)

30 [Levin, G., Blemmer, M., Gyldenkerne, S., Johannsen, V., Caspersen, O., Petersen, H., Nyed, P., Becker, T., Bruun, H, Fuglsang, M., Münier, B., Bastrup-Birk, A., and Nord-Larsen, T.: Estimating land use/land cover changes in Denmark from 1990-2012, Technical Report from DCE-Danish Centre for Environment and Energy, 38, 2014.](#)

35 [Li, B., Fang, X., Ye, Y., and Zhang, X.: Accuracy assessment of global historical cropland datasets based on regional reconstructed historical data—A case study in Northeast China, *Science China Earth Sciences*, 53, 1689-1699, <https://doi.org/10.1007/s11430-010-4053-5>, 2010.](#)

Li, B., Jansson, U., Ye, Y., and Widgren, M.: The spatial and temporal change of cropland in the Scandinavian Peninsula during 1875–1999, *Regional Environmental Change*, 13, 1325-1336, <https://doi.org/10.1007/s10113-013-0457-z>, 2013.

Li, M., He, F., Li, S., and Yang, F.: Reconstruction of the cropland cover changes in eastern China

删除了: Klein Goldewijk, K., and Verburg, P. H.: Uncertainties in global-scale reconstructions of historical land use: an illustration using the HYDE data set, *Landscape Ecology*, 28, 861-877, <https://doi.org/10.1007/s10980-013-9877-x>, 2013.

删除了: Lejeune, Q., Davin, E. L., Gudmundsson, L., Winckler J., and Seneviratne, S. I.: Historical deforestation locally increased the intensity of hot days in northern mid-latitudes, *Nature Climate Change*, 8, 386-390, <https://doi.org/10.1038/s41558-018-0131-z>, 2018.

删除了: Lewis, S. L., and Maslin, M. A.: Defining the anthropocene, *Nature*, 519, 171-80, <https://doi.org/10.1038/nature14258>, 2015.

between the 10th century and 13th century using historical documents, *Scientific Reports*, 8: 13552, 2018.

Li, S., He, F., and Zhang, X.: A spatially explicit reconstruction of cropland cover in China from 1661 to 1996, *Regional Environmental Change*, 16, 417-428, <https://doi.org/10.1007/s10113-014-0751-4>, 2016.

Li, S., He, F., Zhang, X., and Zhou, T.: Evaluation of global historical land use scenarios based on regional datasets on the Qinghai-Tibet Area, *Science of the Total Environment*, 657, 1615-1628, <https://doi.org/10.1016/j.scitotenv.2018.12.136>, 2019.

[Lin, S., Zheng, J., He, F.: Gridding cropland data reconstruction over the agricultural region of China in 1820, *Journal of Geographical Sciences*, 19: 36-48, <https://doi.org/10.1007/s11442-009-0036-x>, 2009.](#)

Lindstad, B. H.: A comparative study of forestry in Finland, Norway, Sweden, and the United States, with special emphasis on policy measures for nonindustrial private forests in Norway and the United States, General Technical Report. PNW-GTR-538. Portland, OR: U.S. Department of Agriculture, Forest Service, Pacific Northwest Research Station, <https://doi.org/10.2737/PNW-GTR-538>, 2002.

Mazier, F., Broström, A., Bragée, P., Fredh, D., Stenberg, L., Thiere, G., Sugita, S., and Hammarlund, D.: Two hundred years of land-use change in the South Swedish Uplands: comparison of historical map-based estimates with a pollen-based reconstruction using the landscape reconstruction algorithm, *Vegetation History and Archaeobotany*, 24, 555-570, <https://doi.org/10.1007/s00334-015-0516-0>, 2015.

Mehrabi, Z., Ellis, E. C., and Ramankutty, N.: The challenge of feeding the world while conserving half the planet. *Nature Sustainability*, 1, 409-412, <https://doi.org/10.1038/s41893-018-0119-8>, 2018.

Myhre, G., Shindell, D., Bréon, F.-M., Collins, W., Fuglestedt, J., Huang, J., Koch, D., Lamarque, J.-F., Lee, D., Mendoza, B., Nakajima, T., Robock, A., Stephens, G., Takemura, T., and Zhang, H.: Anthropogenic and Natural Radiative Forcing. In: *Climate Change 2013: The Physical Science Basis. Contribution of Working Group I to the Fifth Assessment Report of the Intergovernmental Panel on Climate Change* [Stocker, T.F., Qin, D., Plattner, G.-K., Tignor, M., Allen, S.K., Boschung, J., Nauels, A., Xia, Y., Bex, V. and Midgley, P.M. (eds.)]. Cambridge University Press, Cambridge, United Kingdom and New York, NY, USA, 2013.

Nielsen, A. B., Giesecke, T., Theuerkauf, M., Feeser, I., Behre, K.-E., Beug, H.-J., Chen, S.-H., Christiansen, J., Dörfler, W., Endtmann, E., Jahns, S., de Klerk, P., Köhl, N., Latalowa, M., Odgaard, B. V., Rasmussen, P., Stockholm, J. R., Voigt, R., Wiethold, J., and Wolters, S.: Quantitative reconstructions of changes in regional openness in north-central Europe reveal new insights into old questions, *Quaternary Science Reviews*, 47, 131-149, <https://doi.org/10.1016/j.quascirev.2012.05.011>, 2012.

Odgaard, B., and Rømer, J. R.: *Danske Landbrugs-landskaber gennem 2000 år*, Gylling: Narayana Press, 2009.

Olofsson, J. and Hickler, T.: Effects of human land-use on the global carbon cycle during the last 6,000 years, *Vegetation History and Archaeobotany*, 17, 605-615, <https://doi.org/10.1007/s00334-007-0126-6>, 2007.

Olsson, E., Austrheim, G., and Grenne, S.: Landscape change patterns in mountains, land use and

删除了: Liu, J., Shao, Q., Yan, X., Fan, J., Zhan, J., Deng, X., Kuang, W., and Huang, L. : The climatic impacts of land use and land cover change compared among countries, *Journal of Geographical Sciences*, 26, 889-903, <https://doi.org/10.1007/s11442-016-1305-0>, 2016.

- environmental diversity, Mid-Norway 1960-1993, *Landscape Ecology*, 15, 155-170, 2000.
- Olsson, M., and Svensson, P.: Agricultural growth and institutions: Sweden, 1700–1860, *European Review of Economic History*, 14, 275-304, <https://doi.org/10.1017/S1361491610000067>, 2010.
- 5 Palm L. A.: Agrarhistorisk databas 1570-1810: befolkning, jordbruk, jordägande. Version 1.0, <https://snd.gu.se/en/catalogue/study/SND0910>, 2014.
- Paudel, B., Zhang, Y., Li, S. and Wu, X.: Spatiotemporal reconstruction of agricultural land cover in Nepal from 1970 to 2010, *Regional Environmental Change*, 17, 2349-2357, <https://doi.org/10.1007/s10113-017-1164-y>, 2017.
- 10 Pedersen, H. B., and Møllenberg, S.: Agriculture and Danish farm returns through 100 years 1916-2015, *Statistics Denmark*, 2017.
- Pongratz, J., Raddatz, T., Reick, C. H., Esch, M., and Claussen, M.: Radiative forcing from anthropogenic land cover change since A.D. 800, *Geophysical Research Letters*, 36, L02709, <https://doi.org/10.1029/2008GL036394>, 2009a.
- 15 Pongratz, J., Reick, C. H., Raddatz, T. and Claussen, M.: Effects of anthropogenic land cover change on the carbon cycle of the last millennium, *Global Biogeochemical Cycles*, 23, GB4001, <https://doi.org/10.1029/2009GB003488>, 2009b.
- Pongratz, J., Reick, C. H., Raddatz, T., and Claussen, M.: Biogeophysical versus biogeochemical climate response to historical anthropogenic land cover change, *Geophysical Research Letters*, 37, L08702, <https://doi.org/10.1029/2010GL043010>, 2010.
- 20 Pongratz, J., Reick, C., Raddatz, T., and Claussen, M.: A reconstruction of global agricultural areas and land cover for the last millennium, *Global Biogeochemical Cycles*, 22, GB3018, <https://doi.org/10.1029/2007GB003153>, 2008.
- 25 Pongratz, J., Reick, C., Raddatz, T., and Claussen, M.: Reconstruction of global land use and land cover AD 800 to 1992, *World Data Center for Climate (WDCC) at DKRZ*. https://doi.org/10.1594/WDCC/RECON_LAND_COVER_800-1992, 2007.
- Ramankutty, N., and Foley, J. A.: Estimating historical changes in global land cover: Cropland from 1700 to 1992, *Global Biogeochemical Cycles*, 13, 997-1027, 1999.
- Ramankutty, N., and Foley, J. A.: ISLSCP II Historical Croplands Cover, 1700-1992, ISLSCP Initiative II Collection: Hall, Forest G, 2010.
- 30 Smitt, J.: *Norges Landbrug i Dette Aarhundrede*, Kristiania, 1888.
- Strassmann, K. M., Joos, F., and Fischer, G.: Simulating effects of land use changes on carbon fluxes: past contributions to atmospheric CO₂ increases and future commitments due to losses of terrestrial sink capacity, *Tellus B: Chemical and Physical Meteorology*, 60, 583-603, <http://dx.doi.org/10.1111/j.1600-0889.2008.00340.x>, 2008.
- 35 Trondman, A.-K., Gaillard, M.-J., Mazier, F., Sugita, S., Fyfe, R., Nielsen, A. B., Twiddle, C., Barratt, P., Birks, H. J. B., Bjune, A. E., Bjrkman, L., Brostrm, A., Caseldine, C., David, R., Dodson, J., Drfler, W., Fischer, E., Geel, B. van, Giesecke, T., Hultberg, T., Kalnina, L., Kangur, M., Knaap, P.

- van der Koff, T., Kune, P., Lagers, P., Lataowa, M., Lechterbeck, J., Leroyer, C., Leydet, M., Lindbladh, M., Marquer, L., Mitchell, F. J. G., Odgaard, B. V., Peglar, S. M., Persson, T., Poska, A., Rsch, M., Sepp, H., Veski, S., and Wick, L.: Pollen-based quantitative reconstructions of Holocene regional vegetation cover (plant-functional types and land-cover types) in Europe suitable for climate modelling, *Global Change Biology*, 21, 676-697, <https://doi.org/10.1111/gcb.12737>, 2015.
- 5 Van Minnen, J. G., Klein Goldewijk, K., Stehfest, E., Eickhout, B., van Drecht G., and Leemans, R.: The importance of three centuries of land-use change for the global and regional terrestrial carbon cycle, *Climatic Change*, 97, 123-144, <http://dx.doi.org/10.1007/s10584-009-9596-0>, 2009.
- 10 Vejre, H., and Brandt, J.: Contemporary Danish landscape research, *Belgeo*, 2-3, 223-230, <https://doi.org/10.4000/belgeo.13532>, 2004.
- Verburg, P. H., Crossman, N., Ellis, E., Heinimann, A., Hostert, P., Mertz, O., Nagendra, H., Sikor, T., Erb, K.-H., Golubiewski, N., Grau, R., Grove, M., Konaté, S., Meyfroidt, P., Parker, D. C., Chowdhury, R. R., Shibata, H., Thompson, A., Zhen, L., Boillat, S., Scarpa, F., Fürst, C., Huang, H. Q., Wanatabe, T., and Lin, Y.-P.: Science plan and implementation strategy (2016-2021), GLP Science Plan and Implementation Strategy, 2016.
- 15 Wei, X., Widgren, M., Li, B., Ye, Y., Fang, X., Zhang, C., and Chen, T.: Cropland cover over the past 300 years in Scandinavia. *PANGAEA*, <https://doi.org/10.1594/PANGAEA.926591>, 2021.
- Wei, X., Ye, Y., Zhang, Q., and Fang, X.: Reconstruction of cropland change over the past 300 years in the Jing-Jin-Ji area, China, *Regional Environmental Change*, 16, 2097-2109, 2016.
- 20 Wei, X., Ye, Y., Zhang, Q., Li, B., and Wei, Z.: Reconstruction of cropland change in North China Plain Area over the past 300 years, *Global and Planetary Change*, 176, 60-70, <https://doi.org/10.1016/j.gloplacha.2019.01.010>, 2019.
- Widgren M.: Mapping Global Agricultural History: A Map and Gazetteer for Sub-Saharan Africa, c. 1800 AD, In: Mercuri A., D'Andrea A., Fornaciari R., Höhn A. (eds) *Plants and People in the African Past*, Springer, Cham, 2018b.
- 25 Widgren, M.: Towards a global history of agricultural systems, *Past Global Change Magazine*, 26, 18-19, <https://doi.org/10.22498/pages.26.1.18>, 2018a.
- Yan, M., Liu, J., and Wang, Z.: Global Climate Responses to Land Use and Land Cover Changes Over the Past Two Millennia, *Atmosphere*, 8, 64, <https://doi.org/10.3390/atmos8040064>, 2017.
- 30 [Yang, X., Jin, X., Xiang, X., Fan, Y., Liu, J., Shan, W., and Zhou, Y.: Carbon emissions induced by farmland expansion in China during the past 300 years, *Science China Earth Sciences*, 62, 423-437, <https://doi.org/10.1007/s11430-017-9221-7>, 2018.](#)
- [Ye, Y., Wei, X., Li, F. and Fang, X.: Reconstruction of cropland cover changes in the Shandong Province over the past 300 years, *Scientific Reports*, 5: 13642, 2015.](#)
- 35 Yu, Z., and Lu, C.: Historical cropland expansion and abandonment in the continental U.S. during 1850 to 2016, *Global Ecology and Biogeography*, 27, 322-333, <https://doi.org/10.1111/geb.12697>, 2018.
- [Yu, Z., Lu, C., Tian, H., and Canadell, J. G.: Largely underestimated carbon emission from land use and land cover change in the conterminous US, *Global Change Biology*, 25, 3741-3752.](#)

删除了: Yang, Q., Tian, H., Friedrichs, M. A. M., Liu, M., Li, X., and Yang, J.: Hydrological Responses to Climate and Land-Use Changes along the North American East Coast: A 110-Year Historical Reconstruction, *JAWRA Journal of the American Water Resources Association*, 51, 47-67, 2015.

Yang, X., Jin, X., Xiang, X., Fan, Y., Liu, J., Shan, W., and Zhou, Y.: Carbon emissions induced by farmland expansion in China during the past 300 years, *Science China Earth Sciences*, 62, 423-437, <https://doi.org/10.1007/s11430-017-9221-7>, 2018.

<https://doi.org/10.1111/gcb.14768>, 2019.

Zhang, B., Tian, H., Lu, C., Dangal, S. R. S., Yang, J., and Pan, S.: Global manure nitrogen production and application in cropland during 1860–2014: a 5 arcmin gridded global dataset for Earth system modeling, *Earth System Science Data*, 9, 667–678, <https://doi.org/10.5194/essd-9-667-2017>, 2017.

- 5 Zhang, C., Ye, Y., Fang, X., Li, H. and Wei, X.: Synergistic modern global 1 km cropland dataset derived from multi-sets of land cover products, *Remote Sensing*, 11, 2250, <https://doi:10.3390/rs11192250>, 2019.

- 10 Zhang, X., He, F., and Li, S.: Reconstructed cropland in the mid-eleventh century in the traditional agricultural area of China: implications of comparisons among datasets, *Regional Environmental Change*, 13, 969–977, <https://doi.org/10.1007/s10113-012-0390-6>, 2013.

删除了: Yu, Z., Lu, C., Tian, H., and Canadell, J. G.: Largely underestimated carbon emission from land use and land cover change in the conterminous US, *Global Change Biology*, 25, 3741–3752, <https://doi.org/10.1111/gcb.14768>, 2019.