

P³ - PetroPhysical Property Database – a global compilation of lab measured rock properties

Kristian Bär¹, Thomas Reinsch², Judith Bott²

Reviewer comments and [author responses](#)

5 **Anonymous Referee #1**

Received and published: 17 March 2020

Bär et al. have curated an excellent database that is of high value to the scientific community. The database structure is well organised, thorough, and I commend the authors for the attention to detail and retention of a large amount of information from the original sources, which is often difficult to organize and standardize when dealing with such varied data formats. The
10 manuscript is well written and extensive in its description of the methods and organisation.

A couple of clarifications/amendments that are required:

- Line 28, page 8: "The petrographic classification of a sample in P3 is based on the sample description within the original literature reference" - can this be clarified a bit more? Sometimes the recorded petrographic term is vague but their classifications vary. For example, petrographic terms of "?" or "Sediment" exist, but these have rock classification ranks
15 ranging from 2 up to 6. Is there any original comments for these types of samples preserved from the original publication? What was the information you used to determine these varied classifications beyond just the "?" or "Sediment"?
- Calculation type 2 for radiogenic heat production seems ambiguous at best and I wouldn't suggest it's inclusion in this database when compared to the quality of the rest of the database. That being said, from a quick check of one of the type 2 heat production entries, it doesn't seem to use that method in the original paper anyway? e.g. for Ashwal1987_1 – P3
20 database: Ashwal1987_1, HP: 6.09e-06, Uncertainty: 1.40e-07, 1 measurement, GRS, type 2 method – Original paper: Sample no 1, Leucogranite, 'granitic', 6.09+-0.14uW/m³, method used seems to be a variant similar to, but not the same as, method 3.

Some more minor suggestions and technical changes:

- A compressed version of the database would be good for download, as these sparse spreadsheets can often be very amenable
25 to it. Additionally I think the inclusion of the PDF version is not required as I doubt anyone will use it due to both its file size and ability to extract the data.

- Have you done any QC for duplicate entries? This can often be an issue when compiling various sources
- You suggest a number of extensions and inclusions in the manuscript - how long will this database be supported into the future? What kind of time scale would the online portal discussed be seen? I think this will do a lot for its longevity and accessibility.

5 • **Line 20, page 2**, close bracket

- **Figure 1 resolution**, although not of particular importance, is too low. This may just be a result of the draft version though?

• **Line 15 page 3** - I'd suggest moving the extensive bracketed section to the end of the sentence rather than 4 words from the end

10 • **Line 6 page 4** - Suggest reword to: "This shall ensure a reduction in bias introduced by : : :" or "This shall reduce bias introduced by : : :"

• **Line 14, page 11** - I find this sentence very confusing, I think it needs rewriting entirely. Sometimes along the lines of "In addition to the primary option of manual database quality control whereby/through ... , an automatic process of quality control was implemented" or similar. You may even want to delete this paragraph entirely as the second paragraph with some modification seems sufficient as an opening statement for this subheading.

15 **Authors response to reviewer comments #1**

Received and published: 24 March 2020

We would like to thank the anonymous referee #1 very much for the valuable comments and helpful suggestions to our manuscript. In the following, we would like to address the individual comments in detail.

20 **Comment 1, Line 28, page 8:** In the following section 2.5 quality control, page 12, Line 10ff we describe in more detail how the original petrographic description is transferred into our petrographic terms. Furthermore we describe, that the petrographic description of a sample has to allow at least for an allocation of a petrographic term of rank larger or equal to 2. Therefore, measurements of samples with undefined petrography ('?') or poorly defined petrography as 'Sediment' are not included in the database.

25 Additionally, the database itself contains a column to include the original petrographic description or classification 'Petrography (in detail, original)' (cf. Figure 2). In few cases, where '?' or 'Sediment' was given as petrographic term in the original reference together with more detailed description in other sections of the reference or with an exact location, which allowed to identify the geological units on geological maps, we have allocated a rock classification reflecting this additional information. We did not document any samples or literature data which did not make it into the database due to quality control restrictions.

Comment on calculation type 2 for radiogenic heat production: Thank you very much for this valuable comment. We are currently in discussion about how to include radiogenic heat production and if we include it at all in future versions of P³. With the newest publication of Gard et al. (2019) in ESSD and their 'Global whole-rock geochemical database' with more than 1.3 Mio. entries worldwide, which also includes the calculation of the radiogenic heat production based on the geochemistry, the values included in P³ might be obsolete in the future. But up to know, it is beyond us to check for double entries between P³ and Gard et al. (2019) and we would leave it to the experienced researcher which database to refer to. Referring to the manual quality check of Ashwal1987, it will always be possible, that some entries in P³ are not fully correct since errors as presented here are only to be found manually and not with our semiautomatic quality control implemented. Additionally, we needed to compile different specific methods into the more general methods described in the P³ Readme. We have checked this entry and would be happy to get notice about any other obvious error by the readers and users of our database to enhance the quality of future releases of P³.

Comment on compressed database version for download: We have created a .zip compressed version of the P³ excel version which is now also available for download with the submission of the revised manuscript. Additionally, we corrected the CSV version of the database with “;” as separator and “.” instead of “,” as decimal marker. The PDF version of the database has been removed according to the comments of both referees.

Comment on QC for double entries: We only quality checked duplicate entries by documenting both primary and secondary sources and additionally by geographic comparison of sample locations. So far, we are quite certain, that if at all, only a small number of duplicate entries might be included, e.g. where the coordinates were not given in sufficient detail in the references. It might well be that different authors sampled the same location. Such samples were not considered as duplicates.

Comment on suggested future extensions and inclusions of P³ and future support: The database in its current version will be permanently available and accessible via the doi and GFZ data services. The future development and extensions of the database as almost everywhere in the scientific world strongly depends on ongoing project funding and successful research proposals in the future. Funding for extensions is currently available until the end of 2022. The online portal is planned to be developed within the next four years. A research proposal for a project where this will be developed is currently under review.

We additionally would like to thank the anonymous referee #1 for pointing out some typos and sentences with problematic grammar and changed these in revised version of the manuscript.

Anonymous Referee #2

Received and published: 2 April 2020

In this paper the authors describe the P3 petrophysical database they developed thanks to the support of a EU funded project i.e., IMAGE. How the data were collected and organised and the content of the database are well described in the manuscript.

- 5 This topic is of interest for the scientific community aimed to a quick search for rocks petrophysical properties for different purposes. Moreover, the authors report about pre-upload data selection criteria and provide an interesting way to classify the content data in term of quality.

However, there are some general questions and others more related to the text and consequently in the dataset that have to be clarified:

- 10 - Did the authors consider the possibility to use the GeoSciML model of geological features to build the database? GeoSciML is a recognised international standard frame work aligned on INSPIRE. GeoSciML is useful for basic data exchange and it allows to easily extend the model to address more complex scenarios. Did the author consider a possible INSPIRE compliance of the database? If yes how? If no why?
- The dataset presented by the authors, follows almost all the FAIR (Findable Accessible Interoperable Reusable) requirements
15 (i.e., I checked the dataset with this online tool: <https://www.ands-nectar-rds.org.au/fair-tool>). It is worthwhile that this important fact is mentioned in the text.
- Regarding the datasets provided together with the manuscript, I would put more emphasis on the interoperable file format. Although a txt file is provided (which is readable by different computer machines), it would be formally better to have the database in a comma separated format (.csv) as specified in the file
20 “Reeadme_P_Petrophysical_Property_Database_V1_Release_2019.pdf” available in the repository. The pdf version can be avoided because it is a too large file and in my case it wasn’t visible.
- In the appended file named: “Reeadme_P_Petrophysical_Property_Database_V1_Release_2019.pdf”, downloadable from the repository reported in the manuscript (<ftp://datapub.gfzpotdam.de/download/10.5880.GFZ.4.8.2019.P3.s/>) in the section 4. ‘File format’ is mentioned that the dataset is published in comma separated ASCII file (csv, MS-DOS) with
25 columns delimited by “;”. However, there is no csv file in the linked repository (cfr. point above). It exists a txt file where column are separated by TABs. In the same txt file (but also in the xls spreadsheet) the decimal marker seems to be a comma “,” and not the dot “.” as stated. Please check it out and in adjust accordingly.
- Page 4 – Line 24 to 35 – The authors explain the choice to use a flat file instead of a relational database with the pros and cons. They built the database following a relational database system (Line 27), but this statement is not clear. I recommend
30 the rewording in order to clarify that point. What does it mean the sentence at Line 27? Did the author create an Entity-Relation (ER) model? The ER model is highly recom mended even if a flat file database is developed, so it would be good

to add the ER model into the paper describing at least the cardinalities among the different entities. At Line 30 the authors describe the positive aspects to have a relational database. Among them there are: i) data is uniquely stored just once and ii) eliminating data duplication that they can be referred to the important property named “referential integrity constraint”. How the authors guarantee this property? Did they perform any check on the xls file to guarantee the database consistency?

5 - Page 7 – Line 7 – It is mentioned that the latitude/longitude coordinates are UTM based. The UTM system is a projected system that implies planar coordinates (i.e., easting and northing). In the database the field related to coordinates report geographical coordinates as decimal degree. It is not clear which is finally the used coordinate system or why there is this difference between the text and the database. This has to be sort out. Beside that it would be good to explain also how the coordinates retrieved from literature were treated if samples had different coordinate typology.

10 Some more minor suggestions and technical changes:

- **Page 2 - Line 15-16** - a closing bracket is missing to the citation

- **Page 2 - Line 18** – substitute ‘hosted by the United States Geological Survey’ with ‘hosted by a federate infrastructure including national organization and academia (e.g., the United States Geological Survey, Southern Methodist University, Association of American State Geologists, U.S. Department of Energy’s Geothermal Data Repository,...)’

15 - **Page 3 – Figure 1** – the text inside the pictures are not well readable (mainly those where the text has a white border) – suggestion: if the text goes inside the picture, put text in filled white, black if text is located outside the picture.

- **Page 6 - Figure 2 (structure)** – in the table Magnetic susceptibility the blue is to dark and it hard to read the content of the box

- **Page 15 – Line 6** – probably a comma is missing after the word ‘rocks’

20 In the conclusions and perspectives the plan to develop a public accessible web-based interface is highly recommended for the future and should be prioritized, because the high number of rows (more than 75000) and columns (around 300) doesn’t make the database so easily query-able and browsable, even in the excel software package.

Authors response to reviewer comments #2

Received and published: 16 May 2020

25 We would like to thank the anonymous referee #2 very much for the valuable comments and helpful suggestions to our manuscript. In the following, we would like to address the general questions and questions more related to the text and consequently to the dataset and hope that our answers provide the requested clarification.

Referee question 1: Did the authors consider the possibility to use the GeoSciML model of geological features to build the database? (...)

Thank you very much for this question. We did indeed consider the possibility to use the GeoSciML model of geological features to build the database. However, the initial database of our own measurements was already based on the petrographic and stratigraphic classification schemes as published by Bär et al. (2019). Reason for that is the direct link to the well database of the federal Geological Survey of Hessen, Germany, where the majority of our initial samples originated from. Additionally, these classifications with their internal hierarchical structure allows for a much more detailed classification compared to the GeoSciML petrographic terms. For the next release of the P³ database however, we prioritize to implement a direct link of our classifications to the GeoSciML geological features to allow for the proposed future compliance with INSPIRE. Since for both classifications, our own and the GeoSciML the terms are defined by geological vocabularies, such a link is possible but will have no direct impact on the main contents of P³ - the petrophysical properties. For single entries, however, the conversion would have to be corrected on a case by case basis, as different vocabularies might not match one to one.

Referee comment 2: It is worthwhile to mention the important fact in the text, that the dataset presented by the authors, follows almost all the FAIR (Findable Accessible Interoperable Reusable) requirements (...).

Thank you for this comment. We fully agree and adapted the text accordingly.

New text: Page 3 line 13 (adapted): P³ is a publicly accessible database containing physical rock properties measured in laboratory experiments. It is licensed under a creative commons (CC-BY 4.0) license and its structure follows the FAIR guiding principles for scientific data management and stewardship (Wilkinson, M., Dumontier, M., Aalbersberg, I. et al. The FAIR Guiding Principles for scientific data management and stewardship. Sci Data 3, 160018 (2016). <https://doi.org/10.1038/sdata.2016.18>).

Referee comment 3 and 4: Regarding the datasets provided together with the manuscript, I would put more emphasis on the interoperable file format (...).

Thank you very much for this comment. We will remove the pdf-file of P³ since both referees have mentioned that it is not useable. Additionally, we have provided a new .csv file as interoperable file format with “;” as separator as specified in the P³ Readme. We have removed the TAB separated txt file and checked and implemented the correct use of the decimal marker as dot "." instead of ",",.

Referee comment 5: Page 4 – Line 24 to 35 – The authors explain the choice to use a flat file instead of a relational database with the pros and cons. (...) Did the author create an Entity-Relation (ER) model? (...) Did they perform any check on the xls file to guarantee the database consistency?

Thank you very much for this comment.

We reworded the sentence in order to clarify this point. We did create an Entity-Relation (ER) model already during the development of P³ but did not change the file format for this first release from excel to another one. In the revised manuscript, we added an Entity-Relationship-Diagram as Appendix.

We checked for duplicate entries manually and adjusted the paragraph in the manuscript accordingly:

- 5 'The database was developed as flat-file format using Microsoft Excel to keep it as simple and easy to handle even by the unexperienced user as possible. While other database structures are in comparison much more efficient, their database management schemes may render it too difficult for users not familiar with SQL to recover the desired data. However, the internal design of P³ with multiple sub-entities and tables is structured following a relational database management system (RDBMS, Codd, 1970) with an Entity-Relation (ER) model (see Appendix 1), so that it could easily be transferred to e.g. the
- 10 well-established structured query language (SQL, Chamberlin and Boyce, 1974). Following this ERM the database could easily be organised into multiple tables using the names of the tables as unique keys as links to other sub-tables. The main advantages of a relational database over a flat file format are that data is uniquely stored just once, eliminating data duplication, as well as performance increases due to greater memory efficiency and easy filtering and rapid queries (Gard et al., 2019). However, the current flat-file structure allows for easy modification and extensions as new requirements emerge, as for
- 15 example by adding more sub-tables for newly developed property measurements not fitting to any of the already included properties could be added at later stages. On the other hand, filtering and quality control to ensure that data is entered into the database only once and that no duplicates exist had to be done manually. In our case data duplicates were removed by checking the coordinates of each data point with a radius of uncertainty of 1 km and, if necessary, manually removing every double entry identified.'
- 20 **Referee comment 6: - Page 7 – Line 7** – It is mentioned that the latitude/longitude coordinates are UTM based. The UTM system is a projected system that implies planar coordinates (i.e., easting and northing). In the database the field related to coordinates report geographical coordinates as decimal degree. It is not clear which is finally the used coordinate system or why there is this difference between the text and the database. This has to be sort out. Beside that it would be good to explain also how the coordinates retrieved from literature were treated if samples had different coordinate typology.
- 25 Thank you very much for this valuable comment. Indeed the manuscript text is misleading at this point. It was planned in an earlier version to use UTM. However, in the final version we used latitude/longitude in decimal degrees with a WGS84 reference system. For a conversion from literature, we used either Google Earth (Web Mercator Projection) or ArcGIS to allocate a latitude/longitude value in decimal degrees and the associated uncertainty to each data point. We are aware that this 'Google maps method' is not accurate but exact geographic information is quite often not provided in the literature used for
- 30 this compilation. Typically in this case, only location names are provided. For all literature where both the exact coordinates and the reference system was given, or where the location of the datapoints was given on a georeferenced map with the required information on the coordinate system used, we used ArcGIS to digitize the position of the individual samples. Therein, we

used the same geographic projection as given in the original literature and either included the points as tabular values or we georeferenced the given maps accordingly and picked the points on the maps. Afterwards, the resulting coordinates were transferred to decimal degrees in the WGS84 reference with the transformation as suggested by ArcGIS. We have not documented the exact coordinate transformation used in each case in the database however.

- 5 We additionally would like to thank the anonymous referee #2 for pointing out some typos and sentences with problematic grammar as well as suggestions for improvements of the figures and we have changed these in the revised version of the manuscript.

- Last referee comment:** In the conclusions and perspectives the plan to develop a public accessible web-based interface is highly recommended for the future and should be prioritized, because the high number of rows (more than 75,000) and
10 columns (around 300) doesn't make the database so easily query-able and browsable, even in the excel software package.

- Thank you for the remark. We will prioritize this work in the future as recommended. Please be referred here to our answers to the comments of the first anonymous referee: 'The database in its current version will be permanently available and accessible via the doi and GFZ data services. The future development and extensions of the database as almost everywhere in the scientific world strongly depends on ongoing project funding and successful research proposals in the future. Funding for
15 extensions is currently available until the end of 2022. The online portal is planned to be developed within the next four years. A research proposal for a project where this will be developed is currently under review.'

P³ - PetroPhysical Property Database – a global compilation of lab measured rock properties

Kristian Bär¹, Thomas Reinsch², Judith Bott²

¹Department of Geothermal Science and Technology, Institute of Applied Geosciences, Technische Universität Darmstadt, Schnittspahnstr. 9, Darmstadt, 64287, Germany

²GFZ German Research Centre for Geosciences, Telegrafenberg, Potsdam, 14473, Germany

Correspondence to: Kristian Bär (baer@geo.tu-darmstadt.de)

Abstract. Petrophysical properties are key to populate local and/or regional numerical models and to interpret results from geophysical investigation methods. Searching for rock property values measured on samples from a specific rock unit at a specific location might become a very time-consuming challenge given that such data are spread across diverse compilations and that the number of publications on new measurements is continuously growing and data are of heterogeneous quality. Profiting from existing laboratory data to populate numerical models or interpret geophysical surveys at specific locations or for individual reservoir units is often hampered if information on the sample location, petrography, stratigraphy, measuring method and conditions are sparse or not documented.

Within the framework of the EC funded project IMAGE (Integrated Methods for Advanced Geothermal Exploration, EU grant agreement No. 608553), an open-access database of lab measured petrophysical properties has been developed (Bär et al., 20182019: P³ - Database, <http://dx.doi.org/10.5880/GFZ.4.8.2019.P3>). The goal of this hierarchical database is to provide easily accessible information on physical rock properties relevant for geothermal exploration and reservoir characterization in a single compilation. Collected data include ‘classical’ petrophysical, thermophysical and mechanical properties and, in addition, electrical conductivity and magnetic susceptibility. Each measured value is complemented by relevant meta-information such as the corresponding sample location, petrographic description, chronostratigraphic age, if available, and original citation. The original stratigraphic and petrographic descriptions are transferred to standardized catalogues following a hierarchical structure ensuring inter-comparability for statistical analysis (Bär et al., 2019: P³ - Petrography, <http://dx.doi.org/10.5880/GFZ.4.8.2019.P3.p>, Bär et al., 20182019: P³ - Stratigraphy, <http://dx.doi.org/10.5880/GFZ.4.8.2019.P3.s>). In addition, information on the experimental setup (methods) and the measurement conditions are listed for quality control. Thus, rock properties can directly be related to in-situ conditions to derive specific parameters relevant for simulating subsurface processes or interpreting geophysical data.

We describe the structure, content and status quo of the database and discuss its limitations and advantages for the end-user.

Keywords: relational database, rock physical properties, laboratory measurements, global data compilation.

1 Introduction

The characterisation and utilisation of subsurface reservoirs generally relies on applying geophysical investigation methods and/or numerical simulation codes – both requiring, in turn, the knowledge of physical rock properties at depth. The strategy of populating numerical models with petrophysical properties can differ. For local-scale models, laboratory data from individual samples collected from the geological unit of interest may exist. In this case, this direct information should be used together with sophisticated (physical and empirical) laws to populate the entire geological unit. For regional and continental-scale models, in contrast, parameters have to be generalised with respect to the spatial and physical variability of the investigated lithological units.

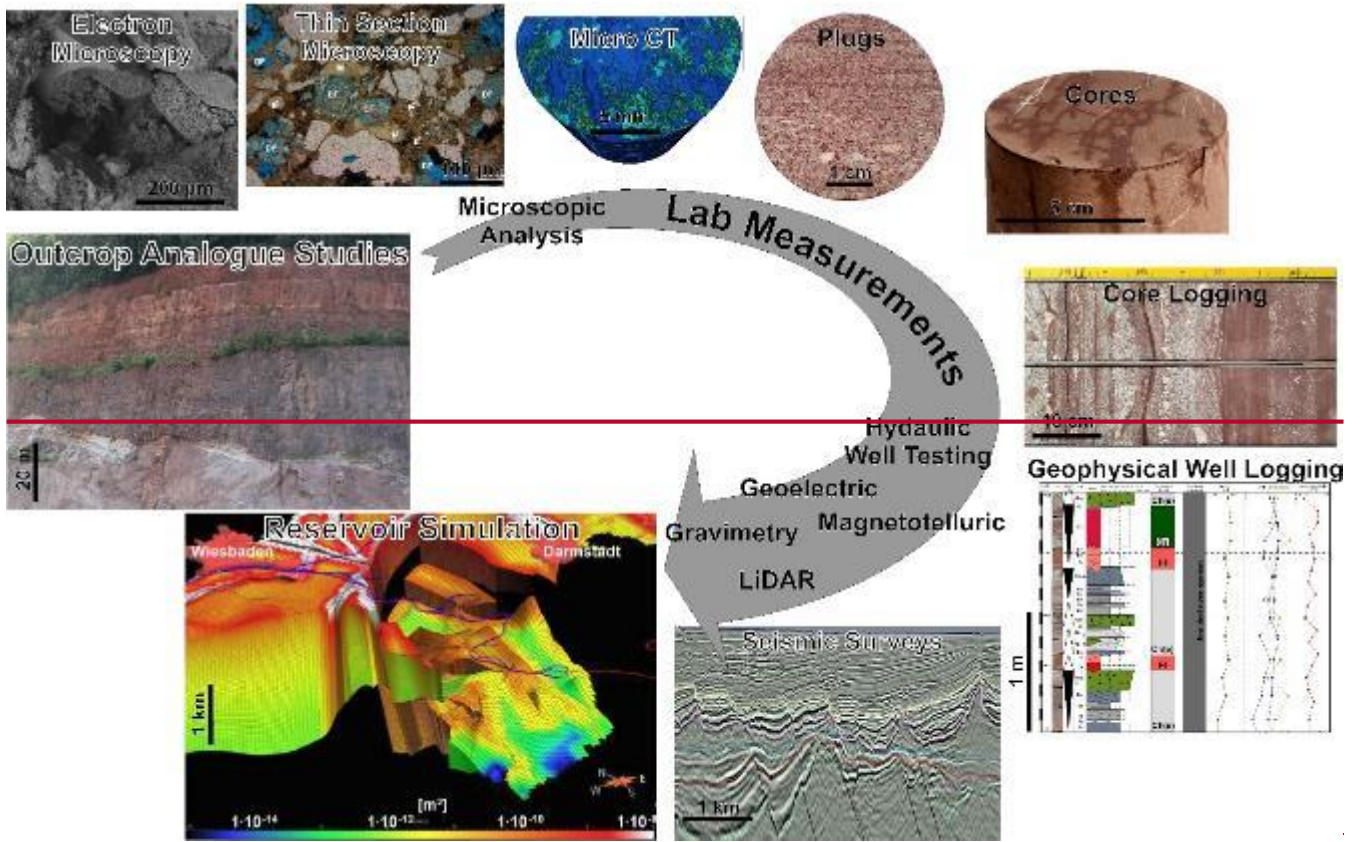
Individual rock types or petrographies typically exhibit a great variability in related properties due to heterogeneous mineral compositions, variable textures and differing porosity distribution (Schön, 2015). Existing rock properties compilations are both an example for the high variability and for the different purposes of such databases (e.g. Cermak and Rybach, 1982, Clark, 1966, Clauser and Huenges, 1995, Landolt-Börnstein, PetroMod, Schön, 2004, 2011, 2015, Mortimer, 2005, Hantschel and Kauerauf, 2009, Liliou and Exadaktylos, 2011, Descamps et al., 2013, Aretz et al., 2015). Since such compilations are mostly published with limited meta-information, it is difficult to extract data for formations of interest. This is even aggravated due to additional limitations like the focused coverage of certain rock types or geographic areas (e.g. Germany: FIS Petrophysik hosted by the Leibniz Institute of Applied Geophysics (LIAG) (<http://www.fis-geophysik.de>), Great Britain: BritGeothermal (<http://www.britgeothermal.org>) hosted by the British Geological Survey (BGS), USA: National Geothermal Data System (NGDS) hosted by a federate infrastructure including national organizations and academia (e.g., the United States Geological Survey, Southern Methodist University, Association of American State Geologists, U.S. Department of Energy's Geothermal Data Repository, hosted by the United States Geological Survey (USGS) (<http://geothermaldata.org>), Ireland: IRETherm project (<http://www.iretherm.ie/>), Australia: Rock Properties Explorer (<http://www.ga.gov.au/explorer-web/rock-properties.html>), New Zealand: PETLAB: National Rock and Geoanalytical database_ (<http://pet.gns.cri.nz/#/>), and many more).

In addition, different compilations do not provide a homogenised set of meta-information. Furthermore, exploration data availability often depends on national legislation. In some countries industrial resource exploration data, including petrophysical properties measured on cores of deep wells, may be public after a certain time period and then usually is incorporated in national information systems. In other cases exploration data remains confidential for longer time periods or even infinitely resulting in scarce data availability for the respective countries.

Due to the current publication policy of international research institutions where a high number of peer-reviewed publications become more and more important for the individual scientific career, the amount of petrophysical data recorded worldwide increased dramatically. These publications however are spread among many different geoscientific journals and dispersed in many hundreds of publications. Given the rate of newly published property data combined with the multitude of publishing journals, countries and authors, the research for and collection of data can be incredibly time-consuming. Recent studies show

that domain experts spend nearly 80% of their working hours into collecting, cleansing and managing their domain specific data (CrowdFlower, 2016). An effective, comprehensive collection, collation and dissemination of this data is deemed critical to promote rapid, creative and accurate research (Gard et al., 2019).

To facilitate (i) efficient search for and research on measured rock physical properties, (ii) further evaluation of the property data using complementing meta-information, and (iii) adequate property generalisation for specific units, a comprehensive database was developed within the framework of the EC funded project IMAGE (Integrated Methods for Advanced Geothermal Exploration, Grant Agreement No. 608553). The aim of this database is to compile, store and publicly provide petrophysical property data from published laboratory test results on rock samples of any kind including as much meta-information as possible. So far, literature data relevant for the IMAGE project and laboratory data collected during the IMAGE project were fed into this novel PetroPhysical Property Database (P³). Here, we present the current state of P³ and release version 1.0 in excel format (Bär et al., 2019: P³ - Database, <http://dx.doi.org/10.5880/GFZ.4.8.2019.P3>).



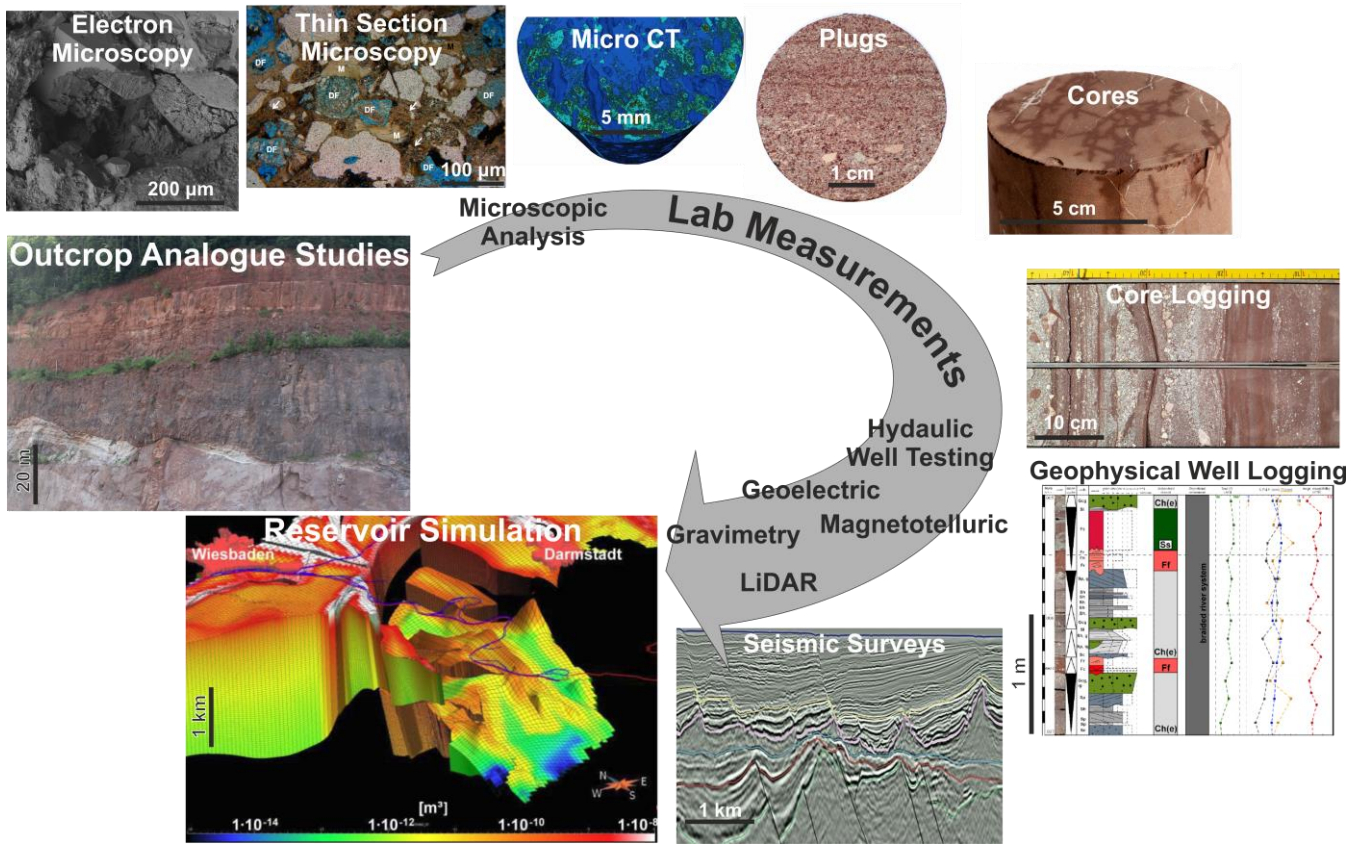


Figure 1: Concept of multiscale characterisation of geological reservoirs with (examples of) integrated petrological, petrophysical or geophysical methods bridging outcrop analogue studies to numerical reservoir simulations.

2 Contents and Structure of the Database

- 5 P³ is publicly accessible and contains physical rock properties measured in laboratory experiments. [It is licensed under a creative commons \(CC-BY 4.0\) license and its structure follows the FAIR guiding principles for scientific data management and stewardship \(Wilkinson et al. \(2016\)\).](#) All data are selected to represent the characteristic scale of rock samples of few centimetres to decimetres, depending on the measurement methods (as described by numerous norming institutions or committees as e.g. the International Society for Rock Mechanics and Rock Engineering (ISRM), European Committee for Standardization (C)EN, International Organization for Standardization (ISO), American Society for testing and Materials (ASTM international) and many more) for the different properties. Within P³ we aimed at homogenising measurement method descriptions to increase the inter-comparability between individual reported values. Larger-scale data from geophysical well logging, hydraulic well testing, integrating geophysical methods or other field-scale measurements, which integrate over larger rock volumes or several rock types are not yet included in the database (Figure 1). [This shall reduce bias introduced](#) ~~This shall~~
 15 ~~ensure to reduce bias introduced~~ by heterogeneities within larger geobodies including open or partly open discontinuities like

fissures, fractures, bedding or schistosity. In addition, judged based on the lithological description, we did not include data from very small scale samples, where the volume of interest is likely smaller than the minimum representative elementary volume (REV) (e.g. Ringrose and Bentley, 2015) for the investigated rock type. The full range of the scale-dependency of petrophysical properties as described in previous studies (e.g. Enge et al., 2007, Rühaak et al., 2015) is thus not yet reflected
5 by the database but is planned to be incorporated in future versions.

To ensure that source data is publicly available to researchers, only data from scientific publications (books or peer reviewed journals) or proceedings (e.g. IGA Geothermal Papers/Conference Database) as well as published research reports (e.g. dissertations or publicly available student's theses, project reports) were included in P³. The database only contains measurements with a minimum amount of meta-information to allow for reasonable interpretations, generalisations, or
10 simulations based on the collected data. The minimum associated meta-information is the reference to the data origin (citation) and information about the petrography to allow for a classification according to a certain lithotype. If available, additional meta-data were included, such as the sampling location (potentially including its type, e.g. outcrop, abandoned or active quarry, vertical or deviated well), the affiliation to a registered sample set (e.g. International Geo Sample Number (IGSN, cf. Devaraju et al., 2016, Lehnert et al., 2006)), stratigraphy, sample dimensions, measurement method or device and measurement
15 conditions (pressure, temperature, stress) including degree of saturation and type of saturating fluid. Conversion of published values to SI units as well as correction of some minor errors from published data or omissions from previous databases as they are identified is an ongoing process during the data curation.

The database was developed as flat-file format using Microsoft Excel to keep it as simple and easy to handle even by the unexperienced user as possible. While other database structures are in comparison much more efficient, their database
20 management schemes may render it too difficult for users not familiar with SQL to recover the desired data. However, the internal design of P³ with multiple sub-entities and tables is structured following a relational database management system (RDBMS, Codd, 1970) with an Entity-Relation (ER) model (see Appendix 2), so that it could easily be transferred to e.g. the well-established structured query language (SQL, Chamberlin and Boyce, 1974). Following this relational-structure/ERM the database could easily be organised into multiple tables using the names of the tables as unique keys as links to other sub-tables.
25 The main advantages of a relational database over a flat file format are that data is uniquely stored just once, eliminating data duplication, as well as performance increases due to greater memory efficiency and easy filtering and rapid queries (Gard et al., 2019). This-However, the current flat-file structure allows for easy modification and extensions as new requirements emerge, as for example by adding more sub-tables for newly developed property measurements not fitting to any of the already included properties could be added at later stages. On the other hand, filtering and quality control to ensure that data is entered
30 into the database only once and that no duplicates exist had to be done manually. In our case data duplicates were removed by checking the coordinates of each data point with a radius of uncertainty of 1 km and, if necessary, manually removing every double entry identified.

Following the minimum requirements, the database is structured into three main sections or super entities (Figure 2), which are sets of data tables (described in more detail in the following parts of the paper). The first, named 'meta information',

contains all meta-information on the sample including the sampling location, the sample type and dimensions as well as information on its petrography and stratigraphy and thus acts as primary table for unique sample identification. The second section or super entity contains the measured property value(s) of the unique rock samples. This section is sub-grouped into thermophysical properties, 'classical' petrophysical properties, mechanical properties as well electrical and magnetic properties and fields for property specific remarks. Finally, the third section or super entity named 'quality control' includes all information relevant for the quality assessment of each data record (property measurement of the unique samples). Here, especially information on the measurement conditions (methodology, pressure and temperature conditions, degree of saturation etc.) are documented and used for the implemented semi-automatic quality control and assessment.

The first super-entity 'meta-information' consist of five tables or entities: sample ID, reference, sampling location, sample information, petrography and stratigraphy. A description of each of these tables is included in the following sub-chapters. The tables for petrography and stratigraphy are available separately. The super-entity 'rock properties' contains 28 separate sub-tables for all properties included so far into the database each following a similar internal structure (see chapter 2.4). For many samples measurements of multiple properties were available and included into the database, which results in multiple documentation of the 'meta-information' of these samples in the current file structure. The super-entity 'quality control' contains two tables or entities, the first one for documentation of the measurement conditions and the second one for the automated quality assessment of the entries (see chapter 2.5).

2.1 Sample Information

To distinguish measurements of different properties on a single sample or of the same properties performed at varying measurement conditions, every measurement is listed in a separate row. To group measurement data from individual samples, every sample receives a unique sample ID, which acts the primary key of each record and links multiple measurements conducted on a single rock sample. The sample ID consists of the surname of the first author and the year of publication, together with a sequential number for the particular rock sample presented in the respective publication. In case of several references per author and year an additional letter (a,b,...) is introduced after the year.

For example, Fourier1822_1 stands for sample 1 within a publication of Fourier, J.B.J. (1822). In case of more than one publication per year Fourier1822a_1 would represent sample 1 within a publication of Fourier, J.B.J. (1822a). The sample ID is linked to an accompanying reference database, compatible to all major reference management tools (e.g. EndNote, Citavi, BibTeX, JabRef, etc.), which contains the full information (Co-Authors, full title, journal, volume, pages, etc.) on the reference. The references are abbreviated in a Bibtexkey according to the terminology used for individual samples. At best, only primary references are given. In case the primary reference is unavailable, while the data point is published as part of a review (or the like), a secondary reference was introduced.

Additionally, the date of input and the name of the person who generated the entry into the database (the editor, listed as contributors in chapter 6 team list) is documented.

META INFORMATION	ROCK PROPERTIES		QUALITY CONTROL
<p><i>sample ID</i></p> <p><i>reference</i></p> <ul style="list-style-type: none"> primary reference secondary reference date of input editor <p><i>sampling location</i></p> <ul style="list-style-type: none"> loc. type (area, outcrop, well) loc. name loc. country loc. state/region loc. longitude loc. latitude loc. elevation (m a.s.l.) radius of uncertainty (km) <p><i>sample information</i></p> <ul style="list-style-type: none"> original sample ID int. geo sample no. (IGSN) sample type (drillcore, etc.) sample length (m) sample height (m) sample width (m) sample diameter (m) sample longitude sample latitude sample elevation (m a.s.l.) sample depth (m b.g.l.) 	<p>Thermophysical Properties</p> <p><i>bulk thermal conductivity</i> [W/(m·K)]</p> <ul style="list-style-type: none"> value standard deviation minimum maximum inhomogeneity number of measurements measuring method remarks <p><i>matrix thermal conductivity</i> [W/(m·K)]</p> <p><i>specific heat capacity</i> [J/(kg·K)]</p> <p><i>volumetric heat capacity</i> [J/(m³K)]</p> <p><i>thermal diffusivity</i> [m²/s]</p> <p><i>radiogenic heat production</i> [W/m³]</p>	<p>Mechanical Properties</p> <p><i>p-wave velocity</i> [m/s]</p> <p><i>s-wave velocity</i> [m/s]</p> <p><i>Youngs modulus: dynamic</i> [MPa]</p> <p><i>Youngs modulus: static</i> [MPa]</p> <p><i>shear modulus: static</i> [GPa]</p> <p><i>bulk modulus: static</i> [GPa]</p> <p><i>Lamé's first parameter</i></p> <p><i>Lamé's second parameter</i></p> <p><i>Cohesion</i> [MPa]</p> <p><i>Coefficient of friction</i> [-]</p> <p><i>Poisson ratio</i> [-]</p>	<p><i>Quality indices</i></p> <ul style="list-style-type: none"> q_i geographic uncertainty q_i petrography q_i stratigraphy q_i measurement conditions q_i property mean value quality index (mean) quality class remarks on quality <p><i>measurement conditions</i></p> <ul style="list-style-type: none"> temperature (K) pressure (Pa) saturation fluid degree of saturation (%) σ₁ (MPa) σ₂ (MPa) σ₃ (MPa) pore pressure (MPa) strain rate (kN/s) strain rate (MPa/s) strain rate (mm/s) frequency (kHz)
<p><i>Petrography</i></p> <ul style="list-style-type: none"> petrographic ID petrographic parent ID pet. term (simplified) petrography (in detail) sample texture sample homogeneity sample layering direction of measurement sample consolidation remarks on sample <p><i>Stratigraphy</i></p> <ul style="list-style-type: none"> stratigraphic ID stratigraphic parent ID chronostratigraphic unit local stratigraphic unit 	<p>Petrophysical Properties</p> <p><i>grain density</i> [kg/m³]</p> <ul style="list-style-type: none"> value standard deviation minimum maximum number of measurements measuring method remarks <p><i>bulk density</i> [kg/m³]</p> <p><i>total porosity</i> [%]</p>	<p><i>Uniaxial compressive strength</i> [MPa]</p> <p><i>tensile strength</i> [MPa]</p> <p>Electrical Properties</p> <ul style="list-style-type: none"> rock conductivity [S/m] fluid conductivity [S/m] formation resistivity factor [-] standard deviation minimum maximum number of measurements measuring method remarks 	
	<p>Hydraulic Properties</p> <p><i>effective porosity</i> [%]</p> <p><i>apparent permeability</i> [m²]</p> <p><i>intrinsic permeability</i> [m²]</p> <p><i>hydraulic conductivity</i> [m/s]</p>	<p>Magnetic susceptibility</p> <ul style="list-style-type: none"> value standard deviation minimum maximum number of measurements measuring type remarks 	

META INFORMATION	ROCK PROPERTIES		QUALITY CONTROL
sample ID <i>reference</i> primary reference secondary reference date of input editor sampling location loc. type (area, outcrop, well) loc. name loc. country loc. state/region loc. longitude loc. latitude loc. elevation (m a.s.l.) radius of uncertainty (km) sample information original sample ID int. geo sample no. (IGSN) sample type (drillcore, etc.) sample length (m) sample height (m) sample width (m) sample diameter (m) sample longitude sample latitude sample elevation (m a.s.l.) sample depth (m b.g.l.) Petrography petrographic ID petrographic parent ID pet. term (simplified) petrography (in detail) sample texture sample homogeneity sample layering direction of measurement sample consolidation remarks on sample Stratigraphy stratigraphic ID stratigraphic parent ID chronostratigraphic unit local stratigraphic unit	Thermophysical Properties <i>bulk thermal conductivity</i> <i>[W/(m·K)]</i> value standard deviation minimum maximum inhomogeneity number of measurements measuring method remarks <i>matrix thermal conductivity</i> <i>[W/(m·K)]</i> <i>specific heat capacity</i> <i>[J/(kg·K)]</i> <i>volumetric heat capacity</i> <i>[J/(m³K)]</i> <i>thermal diffusivity [m²/s]</i> <i>radiogenic heat production</i> <i>[W/m³]</i> Petrophysical Properties <i>grain density [kg/m³]</i> value standard deviation minimum maximum number of measurements measuring method remarks <i>bulk density [kg/m³]</i> <i>total porosity [%]</i> Hydraulic Properties <i>effective porosity [%]</i> <i>apparent permeability [m²]</i> <i>intrinsic permeability [m²]</i> <i>hydraulic conductivity [m/s]</i>	Mechanical Properties <i>p-wave velocity [m/s]</i> <i>s-wave velocity [m/s]</i> <i>Youngs modulus: dynamic</i> <i>[MPa]</i> <i>Youngs modulus: static</i> <i>[MPa]</i> <i>shear modulus: static</i> <i>[GPa]</i> <i>bulk modulus: static</i> <i>[GPa]</i> <i>Lamé's first parameter</i> <i>Lamé's second parameter</i> <i>Cohesion [MPa]</i> <i>Coefficient of friction [-]</i> <i>Poisson ratio [-]</i> <i>Uniaxial compressive strength</i> <i>[MPa]</i> <i>tensile strength [MPa]</i> Electrical Properties rock conductivity [S/m] fluid conductivity [S/m] formation resistivity factor [-] standard deviation minimum maximum number of measurements measuring method remarks Magnetic susceptibility value standard deviation minimum maximum number of measurements measuring type remarks	Quality indices q _i geographic uncertainty q _i petrography q _i stratigraphy q _i measurement conditions q _i property mean value quality index (mean) quality class remarks on quality measurement conditions temperature (K) pressure (Pa) saturating fluid degree of saturation (%) σ ₁ (MPa) σ ₂ (MPa) σ ₃ (MPa) pore pressure (MPa) strain rate (kN/s) strain rate (MPa/s) strain rate (mm/s) frequency (kHz)

Figure 2: Schematic structure of P³ illustrating the three sections or super entities: ‘meta information’, ‘rock properties’ and ‘quality control’. Different input parameters (small font) are grouped according to entities or property sub-tables (italics) they belong to.

5 2.1.1 Sampling Location

The sub-section ‘sampling location’ contains all relevant information on the location where a sample was obtained. Generally, rock samples can be sampled in an outcrop, a quarry or a well. In case neither the sampling location is given as outcrop, quarry or well, nor any exact coordinates are given in the corresponding publication, the location type “area” is selected. Furthermore,

for every location type, a name, a country and state is given (e.g. location type: outcrop, location name: Fontainebleau, location country: France, location state/department: Seine-et-Marne).

2.1.2 Location Coordinates

5 The location coordinates describe the latitude and longitude ~~based on the UTM System (Universal Transverse Mercator)~~ with the reference system WGS84 of the sampling point at the surface in decimal degrees. Another category of entry is the elevation given in metres above sea level (m.a.s.l.). In the case of a core sample taken from a well, the latitude and longitude of the wellhead is given. In case of an area with undefined sampling point, e.g. “sample from the Rhenish Massif”, a midpoint from this geological province has been assessed and a radius of uncertainty (in km) for the sampling location is given/estimated. For elongated areas (e.g. the Red Sea, the Upper Rhine Graben etc.) the choice of a circular radius of uncertainty artificially increases the uncertainty. The introduction of polygons for the definition of an area is discussed to be included in future releases of the database. If no information is given for the location, the longitude and latitude are noted as 999 to avoid wrong map displays and half the circumference of the earth is used as uncertainty.

10 For a conversion of the sample coordinates retrieved from the literature we used either Google Earth (Web Mercator Projection) or ArcGIS to allocate a latitude/longitude value in decimal degrees and a rough estimation of the associated uncertainty to
15 each data point. We are aware that this 'Google maps method' is not accurate but exact geographic information is quite often not provided in the literature used for this compilation. Most common are the provision of location names or maps only. For all literature data points where both the exact coordinates and the reference system was given, or where the location was given on a georeferenced map with the required information on the coordinate system used, we used ArcGIS for transformation. Therein, we used the same geographic projection as given in the original literature and either included the points as tabular
20 values or we georeferenced the given maps accordingly and picked the points on the maps. Afterwards, the resulting coordinates were transferred to decimal degrees in the WGS84 reference with the transformation method for the specific projected coordination system as suggested by ArcGIS. We have not documented the exact coordinate transformation used in each case.

2.1.3. Original Sample ID

25 To allow for reviewing original publications, the primarily given sample identification numbers or names are documented in addition to the P³ sample ID. This makes it easier to search for a specific sample in a publication, which might have been used for further measurements or more detailed descriptions by other authors subsequently or individual users of the database.

2.1.4 International Geo Sample Number

30 The International Geo Sample Number (IGSN, cf. Devaraju et al., 2016, Lehnert et al., 2006) is a unique identifier for samples and specimens collected from the natural environment (<http://www.igsng.org/>). In order to enable locating, identifying, and citing physical samples, the IGSN number was listed if available. Furthermore, entries allow for cross-linking both, the P³ as

well as the IGSN database in order to ensure access to more meta-information like sampling methods, project related information, etc., currently not implemented in P³. As described by Strong et al. (2016) the adoption of IGSNs will ensure compatibility and interoperability with other international databases, including the promotion of standard methods to locate, identify and cite physical samples.

5 2.1.5 Sample Type

Samples can have different shapes that are particularly relevant for the measurement technique. Core samples do have different characteristics than rock blocks or drill cuttings, etc. so that P³ reserves a separate column for the sample type.

2.1.6 Sample Dimensions [m]

Together with the documentation of the sample type, if available, information about its length, height, width and for cores, diameter, all given in meters, are documented. If the rock property “density” is measured for any sample where the dimensions are given, sample volume and weight might be calculated as well. This additional information together with its petrography was essential to evaluate whether a sample reaches a Representative Elementary Volume (REV) or not.

2.1.7 Sample Coordinates

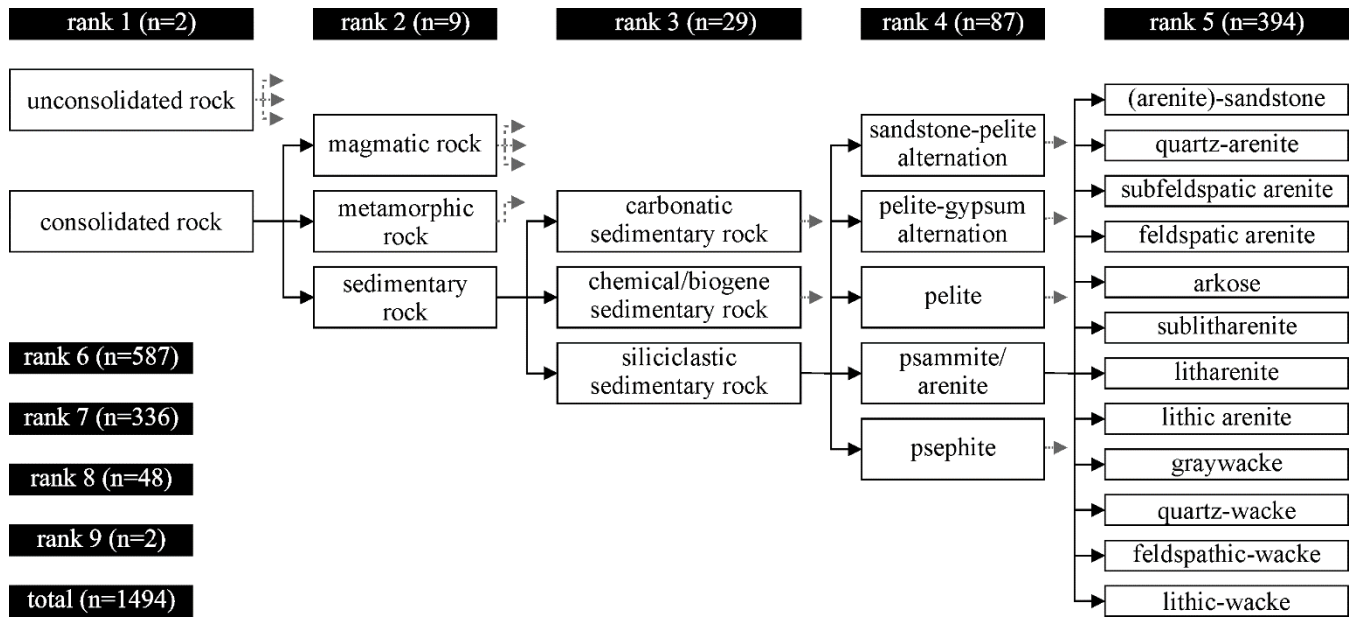
For several samples taken at a single sampling location (e.g. a large outcrop or quarry), eventually individual sample coordinates are given (longitude, latitude and elevation). For samples from a cored well, additionally, the depth of the sample is given in measured depth (MD) and, if available, in true vertical depth (TVD) referenced to the ground level (i.e. meters below ground level, m b.g.l.). If data on the geometry of deviated wells are available, it is optional to either enter the sample location relative to the wellhead or with its exact location and elevation (with respect to the sea level).

2.2 Petrography or Rock Type

The petrography or rock type classification scheme is defined in a complementary database (Bär et al., 2019: P³ - Petrography, <http://dx.doi.org/10.5880/GFZ.4.8.2019.P3.p>) directly published together with P³. Its internal structure is based on a hierarchical subdivision of rock types, where the rock description generally becomes more detailed with increasing rank of petrographic classification (based on the well database of the Geological Survey of Hessen, Germany: Hessisches Landesamt für Umwelt, Naturschutz, Umwelt und Geologie (HLNUG)). This hierarchical subdivision is based on international conventions (e.g. Bates and Jackson, 1987, Gillespie and Styles, 1999, Robertson, 1999, Hallsworth and Knox, 1999, Bas and Streckeisen, 1991, Schmid, 1981, Fisher and Smith, 1991). Furthermore, the classification corresponds to the subdivision provided by existing property data compilations such as e.g. Hantschel and Kauerauf (2009), Schön (2011), Rybach (1984) and Clauser and Huenges (1995).

Petrographic classifications from rank 1 to rank 4 can usually be identified from macroscopic descriptions of well logs, cores and geological mapping (Figure 3). The petrographic classifications from rank 5 to rank 9 require additional information on

the texture or grain size, the modal composition or the geochemistry etc., which can usually only be acquired by microscopic or comparable special investigations. Overall, there are nine ranks covering a total of 1494 petrographies. The petrographic classification of a sample in P³ is based on the sample description within the original literature reference. A petrographic ID and a corresponding petrographic parental ID directly correlate the different classifications and their ranks (Table 1). This allows for example, to integrate all petrographies with higher ranks to a corresponding general term of lower rank and statistically analyse the associated physical rock property values across petrographic definition boundaries (Figure 3).



10 **Figure 3: Hierarchical system of standardised petrographic terms used for the database. White boxes are an exemplarily chosen extract to illustrate the structure of the petrography classification. Black boxes document the number of rock type categories per rank for the entire classification scheme. These interconnected standardised terms allow for the connection of certain lithologies/petrographies to specific petrophysical properties and are thus the basis for statistical analysis. Black arrows show direct connections, while grey arrows indicate that there are additional terms not displayed here.**

15 In P³, the petrographic ID, the petrographic parent ID and the simplified petrographic term are documented. Additionally, for each sample original petrographic descriptions of the primary references can be presented if available. Details on the texture, homogeneity, layering, consolidation state of the sample and the direction of measurement with regard to internal structural features (such as bedding etc.) as well as degree of alteration or weathering can be documented together with specific remarks.

Table 1: Excerpt from the rock classification table used for P³. Different ranks and their interconnection by petrographic ID and petrographic parent ID as well as their connection to international definitions as indicated. QAPF = Quartz-Alkali feldspar-Plagioclase-Foids (Le Maitre and Streckeisen, 2003).

Petro-graphic ID	Petro-graphic parent ID	Rank	Petrographic term	Definition
10102		1	Consolidated rock	
10104	10102	2	Magmatic rock	Rock formed from magma
10105	10104	3	Plutonic rock	Igneous rock with phaneritic texture
52349	10105	4	Plutonic rock, modal (QAPF)	Intrusive igneous rock, nomenclature by QAPF-classification for plutonic rocks
10107	52349	5	Quartzolite (QAPF)	QAPF-classification for plutonic rocks, field 1a, Qz > 90 vol%
10110	52349	5	Granite (QAPF)	QAPF-classification for plutonic rocks, field 2, 3a, 3b, colour index < 90 %
10111	10110	6	Alkali-Feldspar-Granite	QAPF- classification for plutonic rocks field 2
10112	10110	6	Syenogranite	QAPF- classification for plutonic rocks field 3a
10113	10110	6	Monzogranite	QAPF- classification for plutonic rocks field 3b
10114	52349	5	Granodiorite (QAPF)	QAPF-classification for plutonic rocks, field 4, colour index < 90 %
10115	52349	5	Tonalite (QAPF)	QAPF-classification for plutonic rocks, field 5, colour index < 90 %
10127	52349	5	Syenite (QAPF)	QAPF-classification for plutonic rocks, field 7, colour index < 90 %
10128	52349	5	Monzonite (QAPF)	QAPF-classification for plutonic rocks, field 8, colour index < 90 %
10129	52349	5	Monzodiorite (QAPF)	QAPF-classification for plutonic rocks, field 9, An (PL) < 50 mol%, colour index < 90 %
10130	52349	5	Monzogabbro (QAPF)	QAPF-classification for plutonic rocks, field 9, An (PL) > 50 mol%, colour index < 90 %
10131	52349	5	Diorite (QAPF)	QAPF-classification for plutonic rocks, field 10, An (PL) < 50 mol%, 10 % < colour index < 90 %
10132	52349	5	Gabbro (QAPF)	QAPF-classification for plutonic rocks, field 10, An (PL) > 50 mol%, 10 % < colour index < 90 %

5 2.3 Stratigraphy

The stratigraphy of each sample was inserted into the database in two complementary ways. The first way is to use the definitions of the international chronostratigraphic chart of the IUGS v2016/04 (Cohen et al., 2013, updated) according to international standardisation. These chronostratigraphic units are also compiled in a complementary database (Bär et al., 2019: P³ - Stratigraphy, <http://dx.doi.org/10.5880/GFZ.4.8.2019.P3.s>) to ensure that formations of a certain age are connected to the corresponding stratigraphic epoch, period or erathem. Thus, the chronostratigraphic units are directly correlated to each other by their stratigraphic ID and stratigraphic parent ID, allowing for statistical analysis of the properties of certain stratigraphic

units (Table 2). In contrast, a more detailed description of the local stratigraphic unit can also be documented if provided in the primary reference.

5 **Table 2: Excerpt from the stratigraphic classification table used for P³ (based on Cohen et al., 2013, updated). Different ranks and their interconnection by stratigraphic ID and stratigraphic parental ID are indicated. Num. = numerical; SD = standard deviation; Phan. = Phanerozoic**

Strati-graphic ID	Strati-graphic parent ID	Eon	Era	Period	Series / Epoch	Stage / Age	Num. Age [Ma]	SD num. Age [Ma]	Chronostrati-graphical unit
129	102	Phan.	Mesozoic	Cretaceous			145		Cretaceous
130	129	Phan.	Mesozoic	Cretaceous	Lower		145		Lower Cretaceous
131	130	Phan.	Mesozoic	Cretaceous	Lower	Berriasian	145		Berriasian
132	130	Phan.	Mesozoic	Cretaceous	Lower	Valanginian	139.8		Valanginian
133	130	Phan.	Mesozoic	Cretaceous	Lower	Hauterivian	132.8		Hauterivian
134	130	Phan.	Mesozoic	Cretaceous	Lower	Barremian	129.4		Barremian
135	130	Phan.	Mesozoic	Cretaceous	Lower	Aptian	125		Aptian
136	130	Phan.	Mesozoic	Cretaceous	Lower	Albian	113		Albian
137	129	Phan.	Mesozoic	Cretaceous	Upper		100.5		Upper Cretaceous
138	137	Phan.	Mesozoic	Cretaceous	Upper	Cenomanian	100.5		Cenomanian
139	137	Phan.	Mesozoic	Cretaceous	Upper	Turonian	93.9		Turonian
140	137	Phan.	Mesozoic	Cretaceous	Upper	Coniacian	89.8	0.3	Coniacian
141	137	Phan.	Mesozoic	Cretaceous	Upper	Santonian	86.3	0.5	Santonian
142	137	Phan.	Mesozoic	Cretaceous	Upper	Campanian	83.6	0.2	Campanian
143	137	Phan.	Mesozoic	Cretaceous	Upper	Maastrichtian	72.1	0.2	Maastrichtian

2.4 PetroPhysical Properties

The properties included in P³ can be grouped into ‘classical’ petrophysical properties, thermophysical properties, mechanical properties as well as electrical and magnetic properties (Figure 2). Overall, 28 different rock properties are included so far and documented in separate sub-tables of the database following a similar internal structure. Based on the original reference, the measurement is given as a value, which if available is complemented by a standard deviation, a minimum and maximum value and the number of measurements. Thus, it is possible to either include single measurements or mean values while still offering the opportunity of statistical evaluation by incorporating the number of measurements corresponding to a mean value. Furthermore, the measurement method for each property value is presented by means of a common nomenclature documented in the supplementary report (Bär et al., 2019: P³ - Data Description, <http://dx.doi.org/10.5880/GFZ.4.8.2019.P3>). This is important for statistical analysis and comparability of the results of different methods. Particularly, the type of method might have a large impact on the quality and device-specific error of any measurement. Finally, specific remarks can be made for each value separately.

2.5 Quality Control

~~In addition to the primary option of manual database quality control~~~~As addition of the primary option of manual database quality control~~, which is by providing the information of the original data source, an automatic process of quality control was implemented~~an automatic quality control was implemented~~ in P³. Therefore minimum requirements for a value to be included

5 in the database were defined as already described in section 2.

To provide a quality estimate for each data entry in terms of provided meta-information, a set of key criteria is automatically analysed: (i) uncertainty of the geographic location, (ii) the rank of petrographic classification, (iii) the rank of stratigraphic classification, (iv) the completeness of information on measurement conditions and, (v) the statistical type of a value (e.g. single value, mean value etc.). For each key criterion, four different quality classes (excellent =1, average =2, poor = 3; and
10 minimum) are defined and computed to numerical quality indices (q_i , Table 3). A bulk quality index is calculated according to the arithmetic mean of the quality indices of the different criteria, where values < 1.5 are considered excellent, values $\geq 1.5 < 2.5$ are considered average and values ≥ 2.5 are considered poor and values > 3.5 only meet the minimum requirements.

2.5.1 Geographic Uncertainty

Concerning the location of the sample, a geodetic accuracy of less than 100 m is considered to be excellent quality, which
15 should always be the case for outcrop samples or drill cores. If the information on the location only contains a description of a geological unit in a certain region or area, the related size of this area is considered for the definition of the quality indices. If the location can be constrained to a region with a radius of less than 1 km the quality is considered average whereas if the radius of uncertainty is between 1 km and 100 km, it is considered poor. Larger radius of uncertainty is considered as quality class 4.

20 2.5.2 Petrography or Rock Type

If the original petrographic or lithological description allows for the allocation of a petrographic term with a rank of 6 or higher, the quality is considered excellent, for a rank of 5 it is considered average because these petrographic terms usually allow for a distinction of petrographies as used for reservoir- or site-scale geological models. For a rank of ≤ 4 the quality is considered poor (compare Figure 3 and Table 1). To enter the database at all, the petrographic description of a sample has to allow for an
25 allocation of a petrographic term of rank ≥ 2 . This classification at least allows for a distinction of petrographies on a level used for continental-scale geological models.

2.5.3 Stratigraphy

Concerning the stratigraphy of the sample, (i) information on the chronostratigraphic Stage or Age is considered to be excellent, (ii) information on the stratigraphic Series or Epoch is defined as average and (iii) if only the chronostratigraphic System or
30 Period is given, it is considered poor. To enter the database, there is no minimum requirement for the information on the

stratigraphic age, since (i) stratigraphy does not directly control physical properties and (ii) scientific users might retrospectively derive stratigraphic information from the sampling location in combination with the petrography of the sample and additional information such as geological maps.

2.5.4 Measurement Conditions

- 5 For every data point, the measurement conditions can be entered. These are the temperature (K), pressure (Pa), saturating fluid and the degree of saturation (%) as well as for the mechanical properties additional information about the ambient stress field, σ_1 , σ_2 , σ_3 (MPa), and the pore pressure of the sample (MPa). For the sonic velocities (v_p and v_s) the frequency of the sonic pulse and, for the uniaxial compressive strength and related mechanical properties, the strain rate can be given as additional measurement conditions.
- 10 The quality assessment of the measurement conditions is based on both the measurement conditions and the measurement device, which is needed to be able to quantify the specific measurement error typical for a certain method. Excellent quality is only provided if information is available on all these points. If only the measurement device and the temperature and pressure conditions or the degree of saturation is available, the data quality is defined as average. If only the device, or the temperature and pressure conditions, or the degree of saturation is described in the original reference the quality is considered to be poor.
- 15

Table 3: Quality indices defined by the input data available. (n = numbers of measurements, NA = not available)

<i>Parameter</i>	<i>1 = excellent</i>	<i>2 = average</i>	<i>3 = poor</i>	<i>4 = minimum requirement</i>
<i>Geographic uncertainty</i>	≤ 100 m	$> 100\text{m} \leq 1$ km	> 1 km ≤ 100 km	> 100 km
<i>Petrography</i>	Rank ≥ 6	Rank = 5	Rank = 4	Rank ≥ 2
<i>Stratigraphy</i>	Stage / Age or lower or numerical age (Rank ≥ 5)	Series / Epoch (Rank = 4)	System / Period or higher (Rank ≤ 3)	NA
<i>Measurement conditions</i>	Measurement device AND temperature and pressure AND degree of saturation available	Measurement device AND temperature and pressure OR degree of saturation available	Measurement device OR temperature and pressure OR degree of saturation available	NA
<i>Parameter value</i>	Single measurement	Mean value and number n of measurements AND standard deviation or Minimum and Maximum	Mean value and number n of measurements	(Value), NA

2.5.5 Measurement Parameter

The last criterion for the quality control is the type of value representing the property. In general, single measurement values for a sample are ranked higher in quality than mean values of various measurements applied to a sample. Accordingly, single measurements are considered as excellent and mean values as average or poor. If the mean value is not only accompanied by the number of measurements to calculate the mean value, but also by the minimum and maximum as well as the standard deviation from this set of measurements, the quality is defined as average. In contrast, a mean value accompanied only by a number of measurements is defined as poor. Values resulting from an unspecified number of measurements are not considered for quality control but still included into the database with NA (“not available”) in the respective column for number of measurements to enable the user to exclude these values in statistical analyses.

10 3 Status of the Database, Data Availability and Quality

Up to now, data that entered the database are either from published data collections, scientific papers, student’s theses and scientific project or technical reports (316 references altogether, see Appendix 1). So far, 75,573 data points from all over the world ([Figure 4](#)~~Figure 4~~ and [Figure 5](#)~~Figure 5~~), were collected. The data are not reasonably well around the globe but rather show a strong dominance of samples sourced from central Europe and the United States. This reflects the original purpose of the IMAGE project as well as public availability of existing databases. Data is only scarcely available for Africa, South America, Australia, Russia and China.

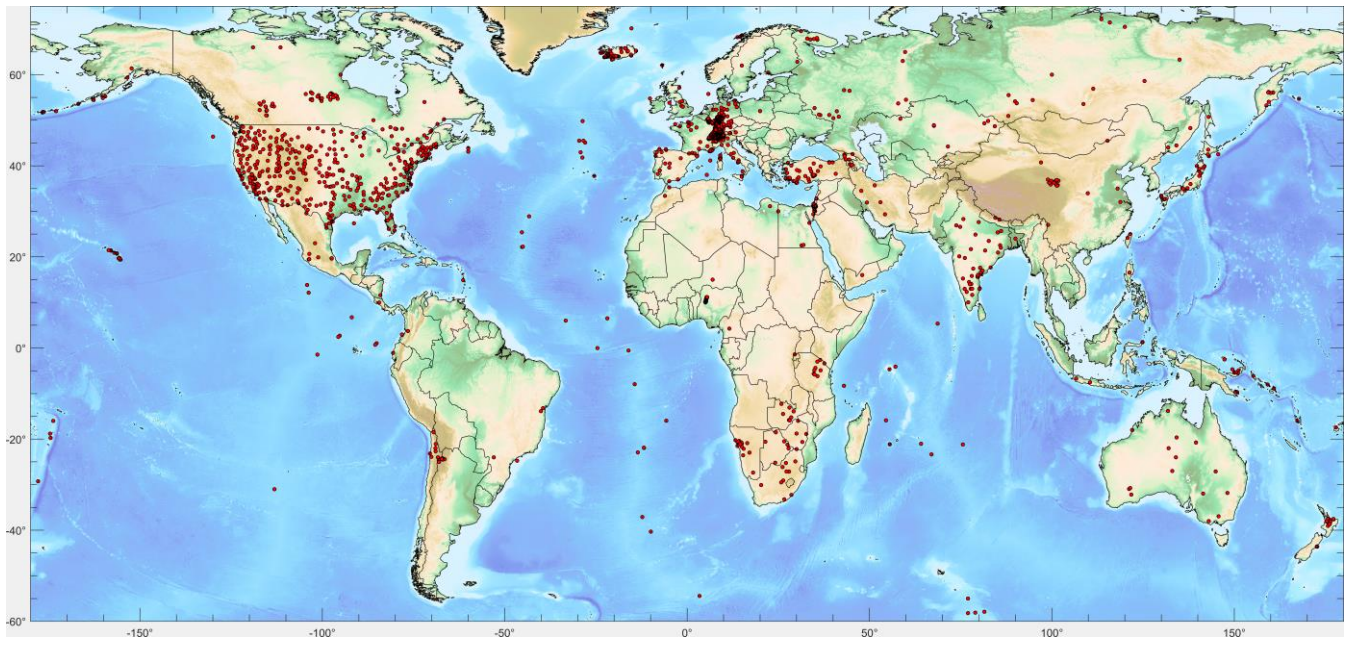


Figure 4: Locations of all data points currently included in P^3 (for references see Appendix 1). Topographic map is the ETOPO1 map (Amante and Eakins, 2009)

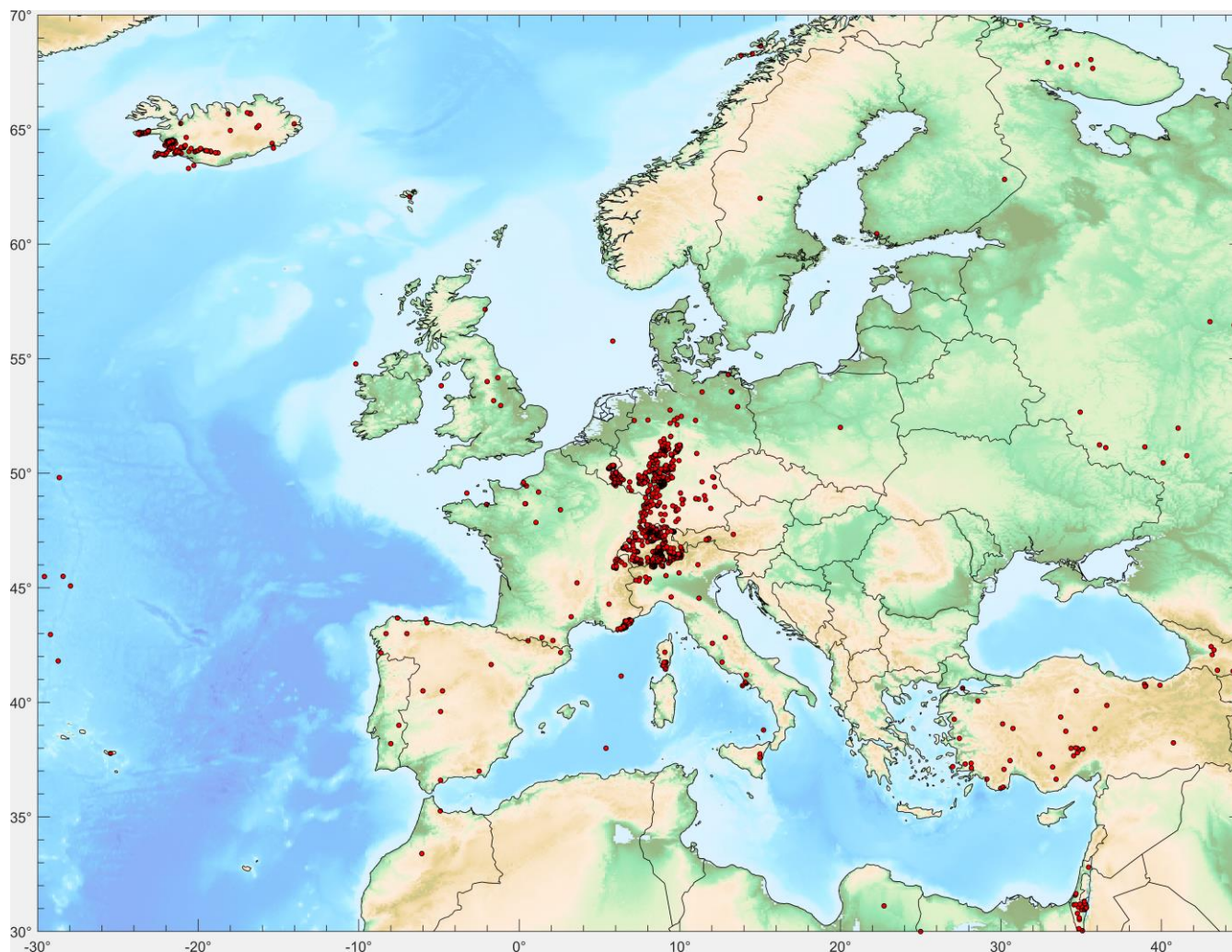


Figure 5: Locations of data points currently included in P³ for the Europe (for references see Appendix 1). Topographic map is the ETOPO1 map (Amante and Eakins, 2009)

5 The amount of data entries for different petrographies shows that all main consolidated rock types are well represented. With 38,219 property measurements from sedimentary rocks, 25,261 from magmatic rocks, 9,235 from metamorphic rocks, and 1,308 from unconsolidated rocks, petrographies usually considered as reservoir rocks are dominant making up more than 75% of the data.

10 Since P³ was collected to serve the goals of the IMAGE project and will always represent work in progress, its data entries are unevenly distributed among the different properties (Table 4) as well as regions. In its current version, the entries for some properties derive from only a few sources. For example, radiogenic heat production values contained in the database have mainly been derived from the compilation of Vilà et al. (2010). This compilation, which is based on many secondary references,

includes more than 2,100 representative U, Th and K concentrations from all over the world (originally published in 102 studies). Based on this chemical composition database, Vilà et al. (2010) calculated values of radiogenic heat production for a large variety of rock types. Of the original compilation (of Vilà et al., 2010), we have incorporated into the database only those values that were associated with sufficient metadata and based on actual lab investigations and not on spectral gamma ray and density data of borehole geophysical logs. Newer compilation on radiogenic heat production (e.g. Hasterock & Webb, 2017 and Hasterock et al., 2017) have not yet been included.

Table 4: Number of measurements of the different properties in P³.

Property	Number of Measurements
Grain and bulk density	12.615
Porosity	8.821
Permeability	5.299
Thermal conductivity	19.622
Specific heat capacity	5.684
Thermal diffusivity	3.167
Radiogenic heat production	2.049
P and S wave velocities	4.985
Electric conductivity	6.564
Uniaxial compressive strength	987
Tensile strength	318
Poisson Ratio	1850
<i>Additional properties</i>	...
Total	75.573

10 Concerning the data quality, the quality indices both for the bulk index as well as for the five indices defined in Table 3 show a wide dispersion over all quality classes. The quality indices for the petrography, the geographic uncertainty and the measurement parameter show mainly quality values of 1 to 3 representing a good quality of input data documentation in average. Only the quality indices for measurement conditions and for the stratigraphy, where quality index values of 3 and 4 are dominant show that the documentation of these metadata is not satisfactory for a large share of the compiled data.

15

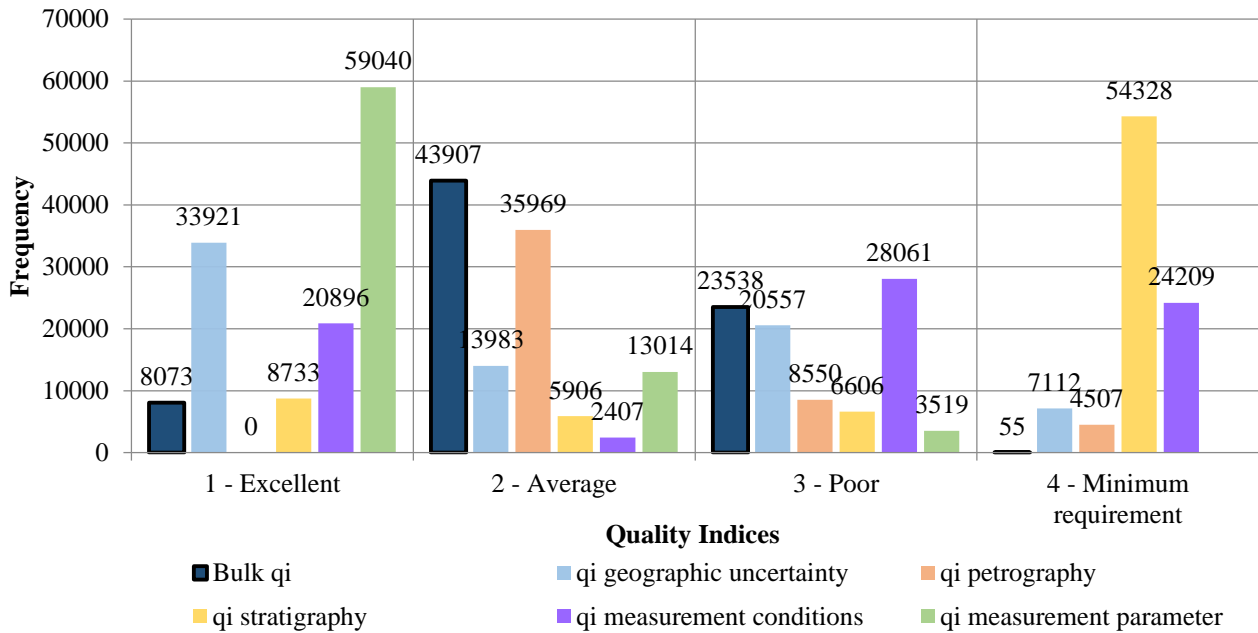


Figure 6: Overview of the quality index distribution of the P³ input data quality assessment. For the definition of the quality indices see Table 3.

4. Discussion

5 The current status of the database already shows a lot of benefits that such a compilation has automatically brings along, but also some limitations, which have to be addressed in future amendments. The defined minimum requirements for a datum to be integrated into P³ guarantee its usability in terms of statistical, spatial, petrographic and stratigraphic analyses. Since it also contains multiple properties measured on a single sample, direct correlations with other data and properties are facilitated. This may help identifying new relationships (formal, causal or statistical correlations), and contribute to a better understanding of

10 the limitations of generalisation or possibilities for upscaling approaches. The automatic quality assessment allows for a quick evaluation of a single datum within a group of selected entries. The possibility of correlating data also simplifies and accelerates the identification of key references for rock parameters in specific regions, for specific rock types, or stratigraphic units. Furthermore, the database allows to systematically analyse the dependency of property values on the corresponding measurement conditions. Thus, the most important added value of P³ compared to existent databases is its dimension (large

15 number of entries corresponding to a large number of petrophysical properties) as well as the documented meta-information. Despite all benefits, such a database can never be complete and is always prone to uncertainties. To identify errors in original publications (in terms of property values and meta-information, e.g. sample preparation, accuracy of measurements, sampling bias, lab worker bias, measurement methods, reference standards and many more) is beyond the scope of this compilation. In addition, data-input errors, errors concerning the interpretation or the petrographic and stratigraphic classification cannot be

excluded. We assume that the quality check of the original publications and the data therein has already been done by skilled reviewers or editors of the corresponding scientific journals, respectively theses. In addition to that, the quality indices developed as part of P³ allow the user to quickly evaluate the quality of each data point and thus help with the decision whether the original reference should be re-assessed or not.

5 Additionally, P³ includes values generated with different established or newly developed measurement methods, delivering data of different quality and uncertainty. Hence, data comparability is not necessarily granted and a statistic assessment can only be representative if these effects are considered. Due to the documentation of the original source, however, the related detailed information of a chosen sample set can be verified if necessary. For subsequent applications, such as modelling, the spatial distribution of the data has to be considered as well as the origin of the samples. Due to diverse effects (such as
10 temperature, pressure, weathering, diagenetic history, etc.), properties measured from outcrop analogue samples might differ considerably in quality from those of the same formation at in-situ conditions within a deep reservoir formation. It remains to the experienced user to evaluate if the tabulated datum is applicable and if sufficient meta-information is given. In case of doubt, the users are referred to the original publications.

5 Conclusions and Perspectives

15 We developed the P³ database of petrophysical rock properties measured on rock samples in various laboratories. P³ is designed to be as transparent and useful for various purposes as possible through the integration of multiple meta-information (including the original reference) for each data point. The database already comprises a great variety of properties, petrographies, stratigraphies etc. from samples investigated all over the world. In this first release, 75,573 data points from 316 publications were included. The current compilation of samples mainly reflects the project goals of the geothermal project IMAGE (van
20 Wees et al., 2015), while the applicability of P³ certainly can be seen in various geoscientific fields focusing on subsurface utilisation (e.g. oil and gas, CCS, hydrogeology, subsurface storage of radioactive waste etc.). The collected data will help researchers and users particularly in the early stages of new geothermal or any other projects to make a first assessment of the subsurface geothermal rock properties. This will help planning future exploration needs and, in areas where the existing data density is sufficient, even support direct modelling or exploitation projects. Additionally, the database will help improving
25 local and regional geoscientific studies with different focus on utilisation of the subsurface. A first release of this database (Bär et al 2019: P³ - Database, <http://dx.doi.org/10.5880/GFZ.4.8.2019.P3>) including a report and a reference list of all included publications is available as supplementary data to this publication.

Compiling the data from various sources, however, has shown that the general documentation of measured petrophysical properties is very heterogeneous and often the minimum requirements defined for our P³ were not fulfilled. We therefore
30 appeal to the reviewers and editors of scientific journals to ensure that any publication containing original measurements of petrophysical properties should come along with all the helpful and necessary meta-information as described here. Only if

these requirements are fulfilled, a published dataset is of added value for the scientific community and can be used for subsequent investigations or applications.

Since a database like P³ can never be complete, a further extension based on not yet considered publications, newly published data or own measurements is foreseen. Furthermore, we both hope to collaborate with existing compilation authors in the future to combine the collations into one more useful systems but also support the use of this version of the P³ database for other database initiatives as supplement of their own records. We plan to develop a publicly accessible web-based interface to facilitate external users to perform specific queries on petrophysical properties. In addition, such queries shall be feasible based on a web-based geographic information system, which may be connected to additional information such as worldwide geological maps (e.g. OneGeology, www.onegeology.org). With this system, external users shall be given the opportunity to contribute to the database and thereby simplifying the access to measurements, which may improve their visibility considerably. Thus, the database will be continuously updated and at certain stages newly released by the editors. For this purposes the database will be implemented using a relational database management system (RDBMS) following the third normal form (3NF) according to Codd (1970) and Maier (1983) to reduce the volume of stored data by elimination of multiple storage of the same information for a sampling location, which will strongly increase its flexibility, durability and applicability especially for the SQL-experienced user. This will facilitate to link P³ to similar databases in the future.

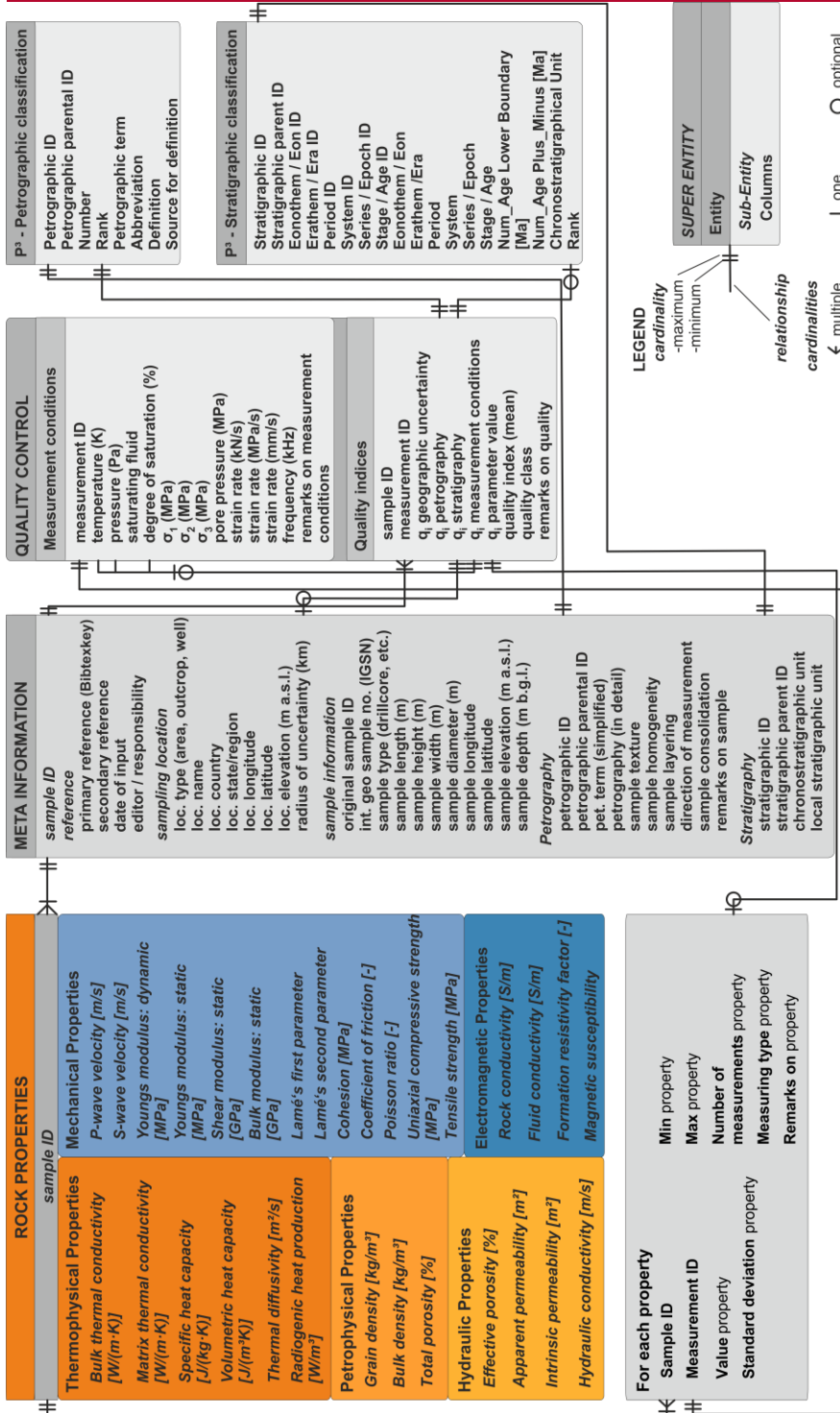
To broaden the applicability of P³ for reservoir characterisation in the future, the integration of lab measurement or geophysical exploration methods aiming at the determination of petrophysical reservoir properties on smaller or larger scale is currently in discussion and will allow to include information on the scale-dependence of petrophysical properties (e.g. Enge et al., 2007) which are of paramount importance for understanding of reservoir behaviour. This could include properties derived from geophysical well logging (Hartmann et al., 2005, Fuchs et al., 2015), hydraulic testing in wells (Achtziger-Zupančič et al., 2017 and references therein) or other integrating geophysical exploration methods e.g. seismics (Gu et al., 2017), gravimetry or electromagnetic methods (e.g. Munoz et al., 2010, Meqbel and Ritter, 2015). Furthermore, additional information on the sample like their geochemical or modal composition from XRF, ICP-MS or ICP-OES analyses, point counting of thin sections or electron microscopic investigation of e.g. cementation, pore geometry or microfractures, which can all act as controlling factors of petrophysical properties would be a helpful extension of the database. Therefore existing databases could be easily implemented (e.g. Lehnert et al., 2000, Mortimer et al., 2005, Strong et al., 2015 and Gard et al., 2019 and references therein). This will extend the opportunity to also use the database to derive phenomenological constitutive models for petrophysical rock properties from their chemical or mineralogical composition (Chopra et al., 2018, Gard et al., 2019) or from their microstructure (Pimienta et al., 2014) or to develop empirical correlations between distinct properties of certain rock types (Gegenhuber and Schön, 2012, Esteban et al., 2015, Mielke et al., 2017).

6 Appendix 1: List of references for Figures 4 and 5

- Adelinet et al. (2013), Alam et al. (2011), Altherr et al. (2000), Aretz (2015), Ashwal et al. (1987), Aswathanarayana (1986), Atal et al. (1978), Attoh (2000), Babaie et al. (2001), Bär (2008, 2012), Baker et al. (1997), Balakrishna & Ramana (1968), Ballard et al. (1987), Barrett & Aumento (1970), Bauluz et al. (2000), Bea & Montero (1999), Bemmlott (2014), Best & Christiansen (2002), Betten (2015), Bhatia & Crook (1986), Biewer (2014, 2017), Birch & Clark (1940), Birch (1942), Blackwell & Richards (2004), Brady et al. (2006), Brandt et al. (2004), Brehme et al. (2016a, b), Brettreich (2016), Bridgman (1924), Brigaud et al. (1992), Brown et al. (1981), Bullard (1939), Bultitude et al. (1978), Buntebarth (1980), Carroll (1969), Cebriá et al. (2000), Ceryan (2008), Ceryan et al. (2008), Chapman & Pollack (1977), Chappell (1999), Chung (1999), Chung et al. (1995, 2001), Clark (1957, 1961, 1966), Clauser (2001), Cocherie (1984), Cocherie et al. (1994), Condie (1993), Coster (1948), Côté & Konrad (2005), Crecraft et al. (1981), Creutzburg, H. (1965), Dahmani & Sawyer (2001), Damm et al. (1990), Dickson & Scott (1997), Diment (1964), Dodge et al. (1986), Dongmo (2016), Ducea & Saleeby (1998), Dupré & Echeverría (1984), Eberhard (2005), El Dakak (2015), Ensor (1931), Esteban et al. (2015), Ewart et al. (1973, 1977), Faridfar (2010), Farmer (2003), Farmer et al. (2002), Farquharson et al. (2016a, b), Förster & Förster (2000), Fountain et al. (1987), Fourcade & Allegre (1981), Fowler et al. (2005), Francois & Lemmet (1999), Franzson et al. (2010, 2011), Fridleifson & Vilmundardottir (1998), Fuji-ta et al. (2004, 2007, 2011), Gärtner (2017), Galán et al. (1996), Gangadharam & Aswathanarayana (1969), Gao et al. (1998), Garcia-Gutierrez & Contreras (2007), Gaunt et al. (2014), Gehlin (2002), Gehlin & Hellstrom (2003), Geist (2011), GeORG-Projektteam (2013), Ghazi & Hassanipak (1999), Gill (1981), Gill & Whelan (1989), Glover (1989), Glover & Vine (1992, 1994, 1995), Grecksch et al. (2003), Grunert (2007), Gu (2010), Gudmundsson et al. (1995), Gühne (2016), Guillot & Fort (1995), Guillou-Frottier et al. (1995), Gupta et al. (1991), Haack (1983), Haffen et al. (2012, 2013), Hartmann et al. (2005), Hauff et al. (2000), Heap et al. (2009, 2011, 2012, 2014a, b, 2015a, b, c, 2016), Herrin & Clark (1956), Hesse (2011), Hill et al. (1981), Hoffmann (2011, 2015), Hofmann (1988), Homuth (2014), Hooper & Hawkesworth (1993), Huber et al. (2001), Hückel & Kappelmeyer (1966), Hurtig & Brugger (1970), Hutt & Berg (1968), Hyndman & Jessop (1971), Inger & Harris (1993), Innocent et al. (1994), Islam (2010), Iyer et al. (1984), Jaupart et al. (1982), Jaya et al. (2010), Jensen (2014), Jeong et al. (2007), Jochum et al. (1983), Jodocy & Stober (2011), Johannes et al. (2003), John & Wooden (1990), Jones (1987, 1988), Kahraman (2007), Kalsbeek et al. (2001), Kappelmeyer & Haenel (1974), Kassab & Weller (2011, 2015), Kawada (1964, 1966), Kay & Kay (1994), Kay et al. (1990), Keen & Lewis (1982), Kelemen et al. (2007), Kemp & Hawkesworth (2003), Kendrick et al. (2013a, b), Kennedy & Russell (2012), Kennedy et al. (2009), Kerr (2003), Khitarov et al. (1959), Kidder et al. (2003), Kläske (2010), Klein (2003), Klug & Cashman (1996), Klumbach (2008, 2010), Knopoff (1968), Königsberger & Weiss (1911), Kolzenburg et al. (2012), Konzack (2015), Kramers et al. (2001), Kraus (2009), Kristinsdóttir et al. (2010), Kukkonen et al. (1997), Kumar & Reddy (2004), Kumari et al. (2017), Lambert (2016), Laštovičková et al. (1993), Ledesert (1993), Leonidov (1967), Leonidov et al. (1966), Lesquer et al. (1983), Leu et al. (2006), Linsell (2014), Loaiza et al. (2012), Luais & Hawkesworth (1994), Lucazeau & Mailhe (1986), Mack (2007), Mahood (1981), Maire (2014), Manghnani & Woollard (2013), Mareschal et al. (2000), Mariucci et al. (2008), Marzán Blas (2000), McDermott

et al. (1996), McDonough (1990), McKenna & Sharp (1998), McLaren et al. (1999), McLennan et al. (1990), Mengel et al. (2001), Mielke (2009), Mielke et al. (2015), Milicevic (2015), Milord et al. (2001), Misener et al. (1951), Mitchell (1995), Moiseenko (1968), Moiseenko & Sokolova (1965, 1968), Moiseenko et al. (1965, 1967), Montanini & Tribuzio (2001), Mossop & Gafner (1951), Mottaghy et al. (2005), Müller (2014), Munck et al. (1979), Murti (1980), Nabawy et al. (2009),
5 Nabawy et al. (2010), Narayanaswamy & Venkatasubramanian (1969), Nehler (2011), Nicolaysen et al. (1981), Noritomi & Asada (1955), Nyblade et al. (1990), Oelsner (1981), Orendt (2014), Pannike et al. (2006), Pannike (2005), Parkhomenko & Bondarenko (1972), Paslick et al. (1995), Peate (1997), Peccerillo & Taylor (1976), Pei (2009), Pereira et al. (1986), Pickett & Saleeby (1993), Plank & Langmuir (1998), Pola et al. (2012, 2014), Popov et al. (1999), Pribnow et al. (2000), Price et al. (1997), Priebs (2011), Rao & Rao (1979, 1983), Rao et al. (1972), Ray et al. (2015), Rebay & Spalla (2001), Reyer & Philipp
10 (2014), Reynaud et al. (1999), Roberts et al. (2000), Rogers et al. (1998), Rolandone et al. (2002), Rosener (2007), Rudnick & Fountain (1995), Rudnick et al. (1998), Rudnick (1992), Rütter (2011), Rummel (1991, 1992), Rummel & Schreiber (1993), Russell et al. (2001), Rybach et al. (2003), Sakvarelidze (1973), Salters et al. (1992), Salton (1999), Sandiford et al. (1 2002), Sandkühler (2015), Sanner & Anderson (2001), Sanner et al. (2000), Sass et al. (1971), Sawka & Chappell (1988), Schäffer (2012), Schärli & Kohl (2002), Schintgen (2015), Schön (1983, 1996, 1998), Schöpflin (2013), Schubert (2011), Schumann
15 (2008), Schütz (2013), Schwalb (2012, 2014), Shimojuku et al. (2012), Sighinolfi et al. (1981), Sikora (2015), Sims et al. (1984), Siratovich (2010), Siratovich et al. (2014, 2016), Sizun (1995), Smith & Johnson (1981), Smith et al. (2011), Stober & Bucher (2007), Stober & Jodocy (2009), Sun & McDonough (1989), Sundberg (1988), Surma (2003), Surma & Geraud (2003), Swanberg (1972), Taylor et al. (1983, 1994), Tchameni et al. (2000), Tejada et al. (1996, 2002), Thompson et al. (2001), Trautwein (2005), Ucok (1979), Ufondu (2012), VDI 4640 Blatt 1 (2010), Verdoya et al. (1998), Vernoux & Lambert
20 (1993), Vernoux et al. (1995), Vilà et al. (2010), Villaseca et al. (1999), Violay et al. (2010), Violay et al. (2012a, b), Vogel (2016), Volarovich (1968), Walters & Combs (1991), Wang et al. (2009), Weaver et al. (1987), Weber (2014, 2016), Weinert (2014), Welsch (2011, 2012), Welsch et al. (2015), Wenk & Wenk (1969), Weydt (2016), Whitford (1975), Wicke (2009), Wickham (1987), Wiesner (2014), Winkler (1952), Wittig (2017), Zhao et al. (2016), Zhu et al. (2011, 2016), Zilch (2011), Zoth (1986)

Appendix 2: Relational structure of the PetroPhysical Property database P³ as Entity-Relation-Diagram (ERD). Sub-entities are linked through the sample id, the Petrographic id or Stratigraphic id.



7 Copyright statement

The author(s) retain the copyright of the manuscript. Authors grant Copernicus Publications a licence to publish the article and identify itself as the original publisher. Authors grant Copernicus Publications commercial rights to produce hardcopy volumes of the journal for purchase by libraries and individuals. Authors grant any third party the right to use the article freely under the stipulation that the original authors are given credit and the appropriate citation details are mentioned.

8 Data availability – Supplement links

Supplement 1: Excel version of P³ Database (Bär, Kristian; Reinsch, Thomas; Bott, Judith (2019): P³ - PetroPhysical Property Database. V. 1.0. GFZ Data Services. Potsdam. <http://dx.doi.org/10.5880/GFZ.4.8.2019.P3>)

Supplement 2: Petrographic classification table (Petrography), included in P³ (Bär, Kristian, Mielke, Philipp, Knorz, Katharina (2019): Petrographic classification table (Petrography): P³ - Petrography. V. 1.0. GFZ Data Services. Potsdam. <http://dx.doi.org/10.5880/GFZ.4.8.2019.P3.p>)

Supplement 3: Stratigraphic classification table (Stratigraphy), included in P³ (Bär, Kristian, Mielke, Philipp (2019): Stratigraphic classification table (Stratigraphy): P³ - Stratigraphy. V. 1.0. GFZ Data Services. Potsdam. <http://dx.doi.org/10.5880/GFZ.4.8.2019.P3.s>)

9 Team list

Authors: Kristian Bär¹, Thomas Reinsch², Judith Bott²,

Contributors: Alexander Strom², Philipp Mielke¹, Jessica Freymark^{2,3}, Peter Wiesner¹, Ingo Sass^{1,4}

A. Strom and P. Mielke, reviewed and collected the literature, transferred the data from literature or own sources into the database and restructured the database where needed. A. Strom and P. Mielke J. Freymark, P. Wiesner, R. Schmidt, S. Krombach, C. Meeßen, C. Sikora, E. Reinosch, L. Dieck, P. Knöll and Benoît Gibert also collected and reviewed publications for the database. I. Sass contributed to develop the general concept of such a database in early discussions.

¹Department of Geothermal Science and Technology, Institute of Applied Geosciences, Technische Universität Darmstadt, Schnittspahnstr. 9, Darmstadt, 64287, Germany

²GFZ German Research Centre for Geosciences
, , Telegrafenberg, Potsdam, 14473, Germany

³Faculty of Georesources and Material Engineering, RWTH Aachen, Intzestr. 1, Aachen, 52056, Germany

⁴Darmstadt Graduate School of Excellence Energy Science and Engineering, Jovanka-Bontschits-Str. 2, Darmstadt, 64287, Germany

10 Author contribution

K. Bär, T. Reinsch and J. Bott defined the scope of this work, designed and structured the database and defined the criteria for the quality control. Furthermore, they collected and reviewed most of the referenced literature and supervised the team, who reviewed and collected the literature, transferred the data from literature or own sources into the database and restructured the database where needed. K. Bär did the major part of the quality control. K. Bär prepared the manuscript with significant contributions from T. Reinsch and J. Bott.

10 Disclaimer

The authors declare that they have no conflict of interest.

11 Acknowledgements

10 The research leading to these results has received funding from the European Community's Seventh Framework Programme under EU grant agreement No. 608553 (Project IMAGE). We thank all contributors and also our external cooperation partners for their support and work to fill the database with valuable data or by providing valuable reports or publications to be included in the compilation.

12 References

- 15 Achtziger-Zupančič, P., Loew, S., Mariethoz, G.: A new global data base to improve predictions of permeability distribution in crystalline rocks at site scale, *J. Geophys. Res. Solid Earth*, 122(5), 3513-3539, <http://dx.doi.org/10.1002/2017JB014106>, 2017.
- Adelinet, M., Fortin, J., Schubnel, A. and Guéguen, Y.: Deformation modes in an Icelandic basalt: From brittle failure to localized deformation bands. *Journal of Volcanology and Geothermal Research*, 255, 15-25. doi:10.1016/j.jvolgeores.2013.01.011, 2013.
- 20 Alam, M. M., Fabricius, I. L. and Prasad, M.: Permeability prediction in chalks. *AAPG Bulletin*, 95, 1991-2014. doi:10.1306/03011110172, 2011.
- Altherr, R., Holl, A., Hegner, E., Langer, C. and Kreuzer, H.: High-potassium, calc-alkaline I-type plutonism in the European Variscides: northern Vosges (France) and northern Schwarzwald (Germany). *Lithos*, 50, 51-73. doi:10.1016/S0024-25 4937(99)00052-3, 2000.
- Amante, C., Eakins, B.W.: ETOPO1 1 Arc-Minute Global Relief Model: Procedures, Data Sources and Analysis. NOAA Technical Memorandum NESDIS NGDC-24. National Geophysical Data Center, NOAA. <http://dx.doi.org/10.7289/V5C8276M> [2019/03/04]. 2009.

- Aretz, A., Bär, K., Götz, A.E., Sass, I.: Outcrop analogue study of Permocarboneous geothermal sandstone reservoir formations (northern Upper Rhine Graben, Germany): Impact of mineral content, depositional environment and diagenesis on petrophysical properties, *Int. J. Earth Sci. (Geol. Rundsch.)*, 135, 1431–1452, <http://dx.doi.org/10.1007/s00531-015-1263-2>, 2015.
- 5 Aretz, A.: Aufschlussanalogstudie zur geothermischen Reservoircharakterisierung des Permokarbons im nördlichen Oberrheingraben. PhD Thesis, TU Darmstadt. available at: <http://nbn-resolving.de/urn:nbn:de:tuda-tuprints-52485>, 2015.
- Ashwal, L. D., Morgan, P., Kelley, S. A. and Percival, J. A.: Heat production in an Archean crustal profile and implications for heat flow and mobilization of heat-producing elements. *Earth and Planetary Science Letters*, 85, 439-450. doi:10.1016/0012-821X(87)90139-7, 1987.
- 10 Aswathanarayana, U.: Principles of Nuclear Geology. Balkema Rotterdam. ISBN 90-619-1572-4, available at: https://inis.iaea.org/search/search.aspx?orig_q=RN:19076043, 1986.
- Atal, B. S., Bhalla, N. S., Lall, Y., Mahadevan, T. M. and Udas, G. R.: Radioactive Elemental Distribution in the Granjilite Terrains and Dearwar Schist Belis of Peninsular India. In B. F. Windley and S. M. Naqvi (Eds.), *Archean Geochemistry* (Bd. 1, S. 205-220). Elsevier. doi:10.1016/S0166-2635(08)70099-9, 1978.
- 15 Attoh, K.: Contrasting Metamorphic Record of Heat Production Anomalies in the Penokean Orogen of Northern Michigan. *The Journal of Geology*, 108, 353-361. doi:10.1086/314406, 2000.
- Australian Government – Geoscience Australia: Rock Properties Explorer Version 2.0.5: <http://www.ga.gov.au/explorer-web/rock-properties.html>, last access: 26 February 2020.
- Babaie, H. A., Ghazi, A. M., Babaei, A., Tour, T. E. and Hassanipak, A. A.: Geochemistry of arc volcanic rocks of the Zagros
- 20 Crush Zone, Neyriz, Iran. *Journal of Asian Earth Sciences*, 19, 61-76. doi:10.1016/S1367-9120(00)00012-2, 2001.
- Bär, K. M.: 3D-Modellierung des tiefengeothermischen Potenzials des nördlichen Oberrheingrabens und Untersuchung der geothermischen Eigenschaften des Rotliegend. Diplomthesis, TU Darmstadt, 2008.
- Bär, K. M.: Untersuchung der tiefengeothermischen Potenziale von Hessen. PhD Thesis, TU Darmstadt. available at: <http://nbn-resolving.de/urn:nbn:de:tuda-tuprints-30671>, 2012.
- 25 Bär, K., Reinsch, T., Bott, J. (2019): P³ - PetroPhysical Property Database. V. 1.0. GFZ Data Services. Potsdam. <http://dx.doi.org/10.5880/GFZ.4.8.2019.P3>
- Bär, K., Mielke, P., Knorz, K. (2019): Petrographic classification table (Petrography): P³ - Petrography. V. 1.0. GFZ Data Services. Potsdam. <http://dx.doi.org/10.5880/GFZ.4.8.2019.P3.p>
- Bär, K., Mielke, P. (2019): Stratigraphic classification table (Stratigraphy): P³ - Stratigraphy. V. 1.0. GFZ Data Services.
- 30 Potsdam. <http://dx.doi.org/10.5880/GFZ.4.8.2019.P3.s>
- Baker, J. A., Menzies, M. A., Thirlwall, M. F. and MacPherson, C. G.: Petrogenesis of Quaternary Intraplate Volcanism, Sana'a, Yemen: Implications for Plume-Lithosphere Interaction and Polybaric Melt Hybridization. *Journal of Petrology*, 38, 1359-1390. doi:10.1093/petroj/38.10.1359, 1997.

- Balakrishna, S. and Ramana, Y. V.: Integrated Studies of the Elastic Properties of Some Indian Rocks. In L. Knopoff, C. L. Drake and P. J. Heart (Hrsg.), *Geophysical Monograph 12: The Crust and Upper Mantle of the Pacific Area* (Bd. 12, S. 489-500). American Geophysical Union. doi:10.1029/GM012p0489, 1968.
- Ballard, S., Pollack, H. N. and Skinner, N. J.: Terrestrial heat flow in Botswana and Namibia. *Journal of Geophysical Research: Solid Earth*, 92, 6291-6300. doi:10.1029/JB092iB07p06291, 1987.
- Barrett, D. L. and Aumento, F.: The Mid-Atlantic Ridge near 45 N. XI. Seismic velocity, density, and layering of the crust. *Canadian Journal of Earth Sciences*, 7, 1117-1124. doi:10.1139/e70-105, 1970.
- Bates, R. L., Jackson, J. A.: *Glossary of geology*, Third Edition, American Geological Institute, Alexandria, Virginia, USA, 1987.
- 10 Bauluz, B., Mayayo, M. J., Fernandez-Nieto, C. and Lopez, J. M.: Geochemistry of Precambrian and Paleozoic siliciclastic rocks from the Iberian Range (NE Spain): implications for source-area weathering, sorting, provenance, and tectonic setting. *Chemical Geology*, 168, 135-150. doi:10.1016/S0009-2541(00)00192-3, 2000.
- Bea, F. and Montero, P.: Behavior of accessory phases and redistribution of Zr, REE, Y, Th, and U during metamorphism and partial melting of metapelites in the lower crust: an example from the Kinzigite Formation of Ivrea-Verbano, NW Italy. *Geochimica et Cosmochimica Acta*, 63, 1133-1153. doi:10.1016/S0016-7037(98)00292-0, 1999.
- 15 Bemmlott, J.: *Untersuchung der geothermischen Gesteinskennwerte von Kulmgrauwacke (Oberharz) und Tanner Grauwacke (Nordhessen)*. Masterthesis, TU Darmstadt, 2014.
- Best, M. G. and Christiansen, E. H.: *Igneous Petrology*. Blackwell Science. doi: 10.1017/S0016756802216507, 2002.
- Betten, I.: *3D-Laserscanning, DFN-Modellierung und Aufschlussaufnahme im Rotliegend des östlichen Saar-Nahe-Beckens*. Masterthesis, TU Darmstadt, 2015.
- 20 Bhatia, M. R. and Crook, K. A.: Trace element characteristics of graywackes and tectonic setting discrimination of sedimentary basins. *Contributions to Mineralogy and Petrology*, 92, 181-193. doi:10.1007/BF00375292, 1986.
- Biewer, H.: *Bestimmung der Temperaturabhängigkeit der Wärmekapazität und Wärmeleitfähigkeit von Karbonatgesteinen der Schwäbischen und Fränkischen Alb*. Bachelorthesis, TU Darmstadt, 2014.
- 25 Biewer, H.: *Vergleich von Eigenschaften petrothermaler Reservoirgesteine des Gonghe- Beckens und Tromm-Granits / Weschnitz-Plutons*. Masterthesis, TU Darmstadt, 2017.
- Birch, A. F. and Clark, H.: The thermal conductivity of rocks and its dependence upon temperature and composition. *American Journal of Science*, 238, 529-558. doi:10.2475/ajs.238.8.529, 1940.
- Birch, F.: *Handbook of physical constants*. In F. Birch, J. F. Schairer and H. C. Spicer (Hrsg.). Geological Society of America. doi: 10.1130/SPE36, 1942.
- 30 Blackwell, D. D. and Richards, M. C.: *Geothermal Map of North America: American Association of Petroleum Geologists*. Tulsa, Oklahoma, scale, 1. available at: https://www.smu.edu/-/media/Site/Dedman/Academics/Programs/Geothermal-Lab/Graphics/Geothermal_MapNA_7x10in.gif?la=en, 2004.

- Brady, R. J., Ducea, M. N., Kidder, S. B. and Saleeby, J. B.: The distribution of radiogenic heat production as a function of depth in the Sierra Nevada Batholith, California. *Lithos*, 86, 229-244. doi:10.1016/j.lithos.2005.06.003, 2006.
- Brandt, W., Hanschke, T. and Kaiser, H.: Zum Stand der Nutzung der oberflächennahen Geothermie in Norddeutschland. Proceedings 8. Geothermische Fachtagung, 2004.
- 5 Brehme, M., Blöcher, G., Cacace, M., Kamah, Y., Sauter, M. and Zimmermann, G.: Permeability distribution in the Lahendong geothermal field: A blind fault captured by thermal–hydraulic simulation. *Environmental Earth Sciences*, 75. doi:10.1007/s12665-016-5878-9, 2016a.
- Brehme, M., Deon, F., Haase, C., Wiegand, B., Kamah, Y., Sauter, M. and Regenspurg, S.: Fault controlled geochemical properties in Lahendong geothermal reservoir Indonesia. *Grundwasser*, 21, 29-41. doi:10.1007/s00767-015-0313-9, 2016b.
- 10 Brettreich, F.: Thermophysical and hydraulic rock properties of greywackes and andesites of the Taupo Volcanic Zone in New Zealand. Masterthesis, TU Darmstadt, 2016.
- Bridgman, P. W.: The thermal conductivity and compressibility of several rocks under high pressures. *American Journal of Science*, s5-7, 81-102. doi:10.2475/ajs.s5-7.38.81, 1924.
- Brigaud, F., Vasseur, G. and Caillet, G.: Thermal state in the north Viking Graben (North Sea) determined from oil exploration well data. *Geophysics*, 57, 69-88. doi:10.1190/1.1443190, 1992.
- 15 BritGeothermal: <http://www.britgeothermal.org/>, last access: 26 February 2020.
- Brown, G. C., Cassidy, J., Locke, C. A., Plant, J. A. and Simpson, P. R.: Caledonian plutonism in Britain: A summary. *Journal of Geophysical Research: Solid Earth*, 86, 10502-10514. doi:10.1029/JB086iB11p10502, 1981.
- Bullard, E. C.: Heat Flow in South Africa. *Proceedings of the Royal Society of London A: Mathematical, Physical and Engineering Sciences*. 173, S. 474-502. The Royal Society. doi:10.1098/rspa.1939.0159, 1939.
- 20 Bultitude, R. J., Johnson, R. W. and Chappell, B. W.: Andesites of Bagana volcano, Papua New Guinea: chemical stratigraphy, and a reference andesite composition. *BMR J. Aust. Geol. Geophys*, 3, 281-295. available at: <http://pid.geoscience.gov.au/dataset/ga/80971>, 1978.
- Buntebarth, G.: Geothermie. Springer Berlin Heidelberg. doi:10.1007/978-3-662-00910-9, 1980.
- 25 Carroll, R. D.: The determination of the acoustic parameters of volcanic rocks from compressional wave velocity measurements. *International Journal of Rock Mechanics and Mining Sciences*, 6, 557-579. doi:10.1016/0148-9062(69)90022-9, 1969.
- Cebriá, J. M., López-Ruiz, J., Doblas, M., Oyarzun, R., Hertogen, J. and Benito, R.: Geochemistry of the Quaternary alkali basalts of Garrotxa (NE Volcanic Province, Spain): a case of double enrichment of the mantle lithosphere. *Journal of Volcanology and Geothermal Research*, 102, 217-235. doi:10.1016/S0377-0273(00)00189-X, 2000.
- 30 Cermak, V., Rybach, L.: Thermal properties, in: Angenheister, G., Cermák, V., Hellwege, K.-H., Landolt, H. (Eds.), 310–314: Zahlenwerte und Funktionen aus Naturwissenschaft und Technik: Neue Serie. = Numerical Data and Functional Relationships in Science and Technology: New Series, c. Landolt-Börnstein - Group V Geophysics. Springer, Berlin, 1982.

- Ceryan, S.: New Chemical Weathering Indices for Estimating the Mechanical Properties of Rocks: A Case Study from the Kürtün Granodiorite, NE Turkey. *Turkish Journal of Earth Sciences*, 17, 187-207. available at: <http://journals.tubitak.gov.tr/earth/issues/yer-08-17-1/yer-17-1-8-0604-2.pdf>, 2008.
- Ceryan, S., Tudes, S. and Ceryan, N.: Influence of weathering on the engineering properties of Harsit granitic rocks (NE Turkey). *Bulletin of Engineering Geology and the Environment*, 67, 97-104. doi:10.1007/s10064-007-0115-0, 2008.
- 5 Chamberlin, D., Boyce, R.: Sequel: a structured English query language, *Proceedings of the 1974 ACM SIGFIDET(now SIGMOD) Workshop on Data Description, Access and Control*, New York, 149–264, 1974.
- Chapman, D. S. and Pollack, H. N.: Heat flow and heat production in Zambia: Evidence for lithospheric thinning in central Africa. *Tectonophysics*, 41, 79-100. doi:10.1016/0040-1951(77)90181-0, 1977.
- 10 Chappell, B. W.: Aluminium saturation in I- and S-type granites and the characterization of fractionated haplogranites. *Lithos*, 46, 535-551. doi:10.1016/S0024-4937(98)00086-3, 1999.
- Chopra, N., Ray, L., Satyanarayanan, M., Elangovan, R.: Evaluate best-mixing model for estimating thermal conductivity from mineralogy: A case study for the granitoids of the Bundelkhand craton, central India, *Geothermics*, 75, 1-14, <http://dx.doi.org/10.1016/j.geothermics.2018.03.011>, 2018.
- 15 Chung, S.-L.: Trace Element and Isotope Characteristics of Cenozoic Basalts around the Tanlu Fault with Implications for the Eastern Plate Boundary between North and South China. *The Journal of Geology*, 107, 301-312. doi:10.1086/314348, 1999.
- Chung, S.-L., Jahn, B.-M., Chen, S.-J., Lee, T. and Chen, C.-H.: Miocene basalts in northwestern Taiwan: Evidence for EM-type mantle sources in the continental lithosphere. *Geochimica et Cosmochimica Acta*, 59, 549-555. doi:10.1016/0016-7037(94)00360-X, 1995.
- 20 Chung, S.-L., Wang, K.-L., Crawford, A. J., Kamenetsky, V. S., Chen, C.-H., Lan, C.-Y. and Chen, C.-H.: High-Mg potassic rocks from Taiwan: implications for the genesis of orogenic potassic lavas. *Lithos*, 59, 153-170. doi:10.1016/S0024-4937(01)00067-6, 2001.
- Clark, S. P.: Heat flow at Grass Valley, California. *Transactions, American Geophysical Union*, 38, 239. doi:10.1029/tr038i002p00239, 1957.
- 25 Clark, S. P.: Heat Flow in the Austrian Alps. *Geophysical Journal International*, 6, 54-63. doi:10.1111/j.1365-246X.1961.tb02961.x, 1961.
- Clark, S. P.: *Handbook of physical constants (Bd. 97)*. Geological Society of America. doi: 10.1130/MEM97, 1966.
- Clauser, C.: Strukturelle, Advective und Paläoklimatische Einflüsse auf den Wärmetransport in der Kristallinen Oberkruste am Beispiel der Kola-Halbinsel. DFG Projekt-Nr.: Cl 121/4–2; Zwischenbericht für den Zeitraum 1. 1. 1998 - 31. 12. 2001. available at: <https://www.eonerc.rwth-aachen.de/go/id/dmwf/file/48298>, 2001.
- 30 Clauser, C., Huenges, E.: Thermal Conductivity of Rocks and Minerals. *American Geophysical Union*, 105 pp, <http://dx.doi.org/10.1029/RF003p0105>, 1995.
- Clauser, C. & Huenges, E.: Thermal Conductivity of Rocks and Minerals. – *Rock Physics and Phase Relations, A Handbook of Physical Constants*. AGU Reference Shelf 3: 105-126, American Geophysical Union, Washington, 1995.

- Cocherie, A.: Interaction manteau-croûte: son rôle dans la genèse d'associations plutoniques calo-alcalines, contraintes géochimiques (éléments en traces et isotopes du strontium et de l'oxygène). Ph.D. dissertation, CNRS-BRGM, 1984.
- Cocherie, A., Rossi, P., Fouillac, A. M. and Vidal, P.: Crust and mantle contributions to granite genesis - An example from the Variscan batholith of Corsica, France, studied by trace-element and Nd-isotope systematics. *Chemical Geology*, 115, 173-211. doi:10.1016/0009-2541(94)90186-4, 1994.
- Codd, E. F.: A Relational Model of Data for Large Shared Data Banks, *Communications of the ACM*, 13, 377-387, doi:10.1145/362384.362685, <http://dx.doi.org/10.1145/362384.362685>, 1970.
- Cohen, K.M., Finney, S.C., Gibbard, P.L. & Fan, J.-X.: The ICS International Chronostratigraphic Chart, *Episodes*, 36: 199-204, 2013, updated.
- 10 Condie, K. C.: Chemical composition and evolution of the upper continental crust: Contrasting results from surface samples and shales. *Chemical Geology*, 104, 1-37. doi:10.1016/0009-2541(93)90140-E, 1993.
- Coster, H. P.: The Electrical Conductivity of Rocks at High Temperatures. *Geophysical Supplements to the Monthly Notices of the Royal Astronomical Society*, 5, 193-199. doi:10.1111/j.1365-246X.1948.tb02935.x, 1948.
- Côté, J. and Konrad, J.-M.: Thermal conductivity of base-course materials. *Canadian Geotechnical Journal*, 42, 61-78. doi:10.1139/t04-081, 2005.
- 15 Crecraft, H. R., Nash, W. P. and Evans, S. H.: Late Cenozoic volcanism at Twin Peaks, Utah: Geology and petrology. *Journal of Geophysical Research: Solid Earth*, 86, 10303-10320. doi:10.1029/JB086iB11p10303, 1981.
- Creutzburg, H.: Bestimmung thermischer Stoffwerte von Salzgesteinen und Nebengesteinen. *Kali und Steinsalz*, 5, 170-172, 1965.
- 20 CrowdFlower, 2016, Data Scientist Report: https://visit-figure-eight.com/rs/416-ZBE-142/images/CrowdFlower_DataScienceReport_2016.pdf, 2016, last access: 26 February 2020.
- Dahmani, A. and Sawyer, E. W.: Variabilité géochimique des métapélites dans l'aurole métamorphique d'Oulmès (Maroc central). *Bulletin de l'Institut scientifique, section Sciences de la Terre*, 2001, n°23, 7-20. available at: [http://www.israbat.ac.ma/wp-content/uploads/2015/03/02-%20Dahmani%20et%20al.%20\(07-20\).pdf](http://www.israbat.ac.ma/wp-content/uploads/2015/03/02-%20Dahmani%20et%20al.%20(07-20).pdf), 2001.
- 25 Damm, K.-W., Pichowiak, S., Harmon, R. S., Todt, W., Kelley, S., Omarini, R. and Niemeyer, H.: Pre-Mesozoic evolution of the central Andes The basement revisited. *Geological Society of America Special Papers*, 241, 101-126. doi:10.1130/SPE241-p101, 1990.
- Descamps, F., Tshibangu, J.-P., da Silva, N., Regnard, s.: A Database to Manage Rock Mechanical Properties and Assess Formation Abrasiveness for Drilling, Conference paper: International Symposium of the International Society for Rock Mechanics, Eurock 2013, Wroclaw, Poland, <http://dx.doi.org/10.1201/b15683-39>, 2013.
- 30 Devaraju, A., Klump, J., Cox, S.J.D., Golodoniuc, P.: Representing and publishing physical sample descriptions, *Computers & Geosciences*, 96, 1-10, <http://dx.doi.org/10.1016/j.cageo.2016.07.018>, 2016.
- Dickson, B. L. and Scott, K. M.: Interpretation of aerial gamma-ray surveys-adding the geochemical factors. *Geoscience Australia*, 17, 187-200. available at: <http://pid.geoscience.gov.au/dataset/ga/81502>, 1997.

- Diment, W. H.: Thermal conductivity of serpentinite from Mayaguez, Puerto Rico, and other localities. National Academy of Sciences, National Research Council Publication, 1188, 92-106, 1964.
- Dodge, F. C., Calk, L. C. and Kistler, R. W.: Lower Crustal Xenoliths, Chinese Peak Lava Flow, Central Sierra Nevada. *Journal of Petrology*, 27, 1277-1304. doi:10.1093/petrology/27.6.1277, 1986.
- 5 Dongmo, C. L.: Outcrop Analogue Study of Geothermal Properties of the Southesk-Cairn Carbonate Complex in the Alberta Basin, Canada. Masterthesis, TU Darmstadt, 2016.
- Ducea, M. N. and Saleeby, J. B.: The age and origin of a thick mafic - ultramafic keel from beneath the Sierra Nevada batholith. *Contributions to Mineralogy and Petrology*, 133, 169-185. doi:10.1007/s004100050445, 1998.
- Dupré, B. and Echeverría, L. M.: Pb isotopes of Gorgona Island (Colombia): isotopic variations correlated with magma type. *Earth and Planetary Science Letters*, 67, 186-190. doi:10.1016/0012-821X(84)90113-4, 1984.
- 10 Eberhard, M.: Erdwärmesondenfeld Aarau. Heizen und Kühlen eines grossen Bürogebäudes mit teilweise wärmeisolierten Erdwärmesonden. Bundesamt für Energie. Schlussbericht Oktober, 1-18, 2005.
- El Dakak, W.: Influence of Temporal Variation of Water Saturation on Shallow Geothermal Systems Using Numerical Modeling. Masterthesis, TU Darmstadt, 2015.
- 15 Enge, H.D., Buckley, S.J., Rotevatn, A., Howell, J.A.: From outcrop to reservoir simulation model: workflow and procedures. *Geosphere*, 3, 469–490, <http://dx.doi.org/10.1130/GES00099.1>, 2007.
- Ensor, C. R.: The determination of thermal conductivity and its temperature-variation for medium conductors. *Proceedings of the Physical Society*, 43, 581-591. doi:10.1088/0959-5309/43/5/314, 1931.
- Esteban, L., Pimienta, L., Sarout, J., Plane, C. D., Haffen, S., Geraud, Y. and Timms, N. E.: Study cases of thermal conductivity prediction from P-wave velocity and porosity. *Geothermics*, 53, 255-269. doi:10.1016/j.geothermics.2014.06.003, 2015.
- 20 Ewart, A., Brothers, R. N. and Mateen, A.: An outline of the geology and geochemistry, and the possible petrogenetic evolution of the volcanic rocks of the Tonga-Kermadec-New Zealand island arc. *Journal of Volcanology and Geothermal Research*, 2, 205-250. doi:10.1016/0377-0273(77)90001-4, 1977.
- Ewart, A., Bryan, W. B. and J. B., G. I.: Mineralogy and Geochemistry of the Younger Volcanic Islands of Tonga, S.W. Pacific. *Journal of Petrology*, 14, 429-465. doi:10.1093/petrology/14.3.429, 1973.
- 25 Fachinformationssystem (FIS) Geophysik: <http://www.fis-geophysik.de>, last access: 19 October 2019.
- Faridfar, N.: Untersuchung und Bewertung der geothermischen Eigenschaften der Gesteine der Noerdlichen Pyllitzone, Vordertaunus. Bachelorthesis, TU Darmstadt, Goethe Universität Frankfurt am Main, 2010.
- Farmer, G. L.: Continental Basaltic Rocks. In H. D. . Holland and K. K. Turekian (Ed.), *Treatise on Geochemistry* (S. 85-121). Elsevier-Pergamon. doi:10.1016/B0-08-043751-6/03019-x, 2003.
- 30 Farmer, G. L., Glazner, A. F. and Manley, C. R.: Did lithospheric delamination trigger late Cenozoic potassic volcanism in the southern Sierra Nevada, California? *Geological Society of America Bulletin*, 114, 754-768. doi:10.1130/0016-7606(2002)114<0754:DLDTLT>2.0.CO;2, 2002.

- Farquharson, J. I., Baud, P. and Heap, M. J.: Inelastic compaction and permeability evolution in volcanic rock. *Solid Earth Discussions*, 166, 1-21. doi:10.5194/se-2016-166, 2016.
- Farquharson, J. I., Heap, M. J. and Baud, P.: Strain-induced permeability increase in volcanic rock. *Geophysical Research Letters*, 43, 11,603--11,610. doi:10.1002/2016GL071540, 2016.
- 5 Fisher, R. V., Smith, G. A.: *Volcanism, tectonics and sedimentation*, 1-5. *Sedimentation in volcanic settings*, Society for Sedimentary Geology, Special Publication No. 45, 1991.
- Förster, A. and Förster, H.-J.: Crustal composition and mantle heat flow: Implications from surface heat flow and radiogenic heat production in the Variscan Erzgebirge (Germany). *Journal of Geophysical Research: Solid Earth*, 105, 27917-27938. doi:10.1029/2000JB900279, 2000.
- 10 Fountain, D. M., Salisbury, M. H. and Furlong, K. P.: Heat production and thermal conductivity of rocks from the Pikwitonei–Sachigo continental cross section, central Manitoba: implications for the thermal structure of Archean crust. *Canadian Journal of Earth Sciences*, 24, 1583-1594. doi:10.1139/e87-154, 1987.
- Fourcade, S. and Allegre, C. J.: Trace element behaviour in granite genesis. The calc-alkaline plutonic association from the Querigut Complex (Pyrenees, France). *Contributions to Mineralogy and Petrology*, 76, 177-195. doi:10.1007/BF00371958, 15 1981.
- Fowler, C. M., Stead, D., Pandit, B. I., Janser, B. W., Nisbet, E. G. and Nover, G.: A database of physical properties of rocks from the Trans-Hudson Orogen, Canada. *Canadian Journal of Earth Sciences*, 42, 555-572. doi:10.1139/e05-006, 2005.
- Francois, D. and Lemmet, M.: Evolution of Mg/Fe Ratios in Late Variscan Plutonic Rocks from the External Crystalline Massifs of the Alps (France, Italy, Switzerland). *Journal of Petrology*, 40, 1151-1185. doi:10.1093/ptro/40.7.1151, 1999.
- 20 Franzson, H., Gudfinnsson, G. H., Frolova, J., Helgadóttir, H. M., Pauly, B., Mortensen, A. K. and Jakobsson, S. P.: Icelandic Hyaloclastite Tuffs - Petrophysical properties, alteration and geochemical mobility. Tech. rep., ISOR - Icelandic Geosurvey, 2011.
- Franzson, H., Guðfinnsson, G. H., Helgadóttir, H. M. and Frolova, J.: Porosity, density and chemical composition relationships in altered Icelandic hyaloclastites. In Birkle and Torres-Alvarado (Ed.), *Water-Rock Interaction (S. 199-202)*. CRC Press, 25 2010.
- Fridleifson, G. O. and Vilmundardóttir, E. G.: Reservoir Parameters TCP-Project A Thin-section Study of the Öskjuhlid Samples. Progress Report, ORKUSTOFNUN National Energy Authority Project No:720 105, 1998.
- Fuchs, S., Balling, N., Förster, A.: Calculation of thermal conductivity, thermal diffusivity and specific heat capacity of sedimentary rocks using petrophysical well logs, *Geophysc. J. Int.* 203 (3), 1977–2000, 2015.
- 30 Fuji-ta, K., Katsura, T. and Tainosho, Y.: Electrical conductivity measurement of granulite under mid- to lower crustal pressure-temperature conditions. *Geophysical Journal International*, 157, 79-86. doi:10.1111/j.1365-246X.2004.02165.x, 2004.
- Fuji-ta, K., Katsura, T., Matsuzaki, T., Ichiki, M. and Kobayashi, T.: Electrical conductivity measurement of gneiss under mid- to lower crustal P–T conditions. *Tectonophysics*, 434, 93-101. doi:10.1016/j.tecto.2007.02.004, 2007.

- Fuji-ta, K., Katsura, T., Ichiki, M., Matsuzaki, T. and Kobayashi, T.: Variations in electrical conductivity of rocks above metamorphic conditions. *Tectonophysics*, 504, 116-121. doi:10.1016/j.tecto.2011.03.008, 2011.
- Gard, M., Hasterock D., and Halpin, J.: Global whole-rock geochemical database compilation, *Earth Syst. Sci. Data Discuss.*, <http://dx.doi.org/10.5194/essd-2019-50>, 2019.
- 5 Gärtner, D.: Comparison of geothermal properties of the carbonatic aquifer systems in the Western Canada Sedimentary Basin and the South German Molasse Basin. Masterthesis, TU Darmstadt, 2017.
- Galán, G., Pin, C. and Duthou, J.-L.: Sr-Nd isotopic record of multi-stage interactions between mantle-derived magmas and crustal components in a collision context - The ultramafic-granitoid association from Vivero (Hercynian belt, {NW} Spain). *Chemical Geology*, 131, 67-91. doi:10.1016/0009-2541(96)00027-7, 1996.
- 10 Gangadharam, E. V. and Aswathanarayana, U.: Trace elements in the kimberlites of Andhra Pradesh, India. *Trans. Amer. Geophys.*, 1969.
- Gao, S., Luo, T.-C., Zhang, B.-R., Zhang, H.-F., Han, Y.-w., Zhao, Z.-D. and Hu, Y.-K.: Chemical composition of the continental crust as revealed by studies in East China. *Geochimica et Cosmochimica Acta*, 62, 1959-1975. doi:10.1016/S0016-7037(98)00121-5, 1998.
- 15 Garcia-Gutierrez and Contreras, E.: Measurement of Thermal Conductivity and Diffusivity of Drill Core Samples from the Los Humeros Geothermal Field, Mexico, by a Line-Source Technique. In G. Transactions (Hrsg.), *GRC Transactions*, 31, 2007.
- Gaunt, H. E., Sammonds, P. R. and Meredith, R. P.: Pathways for degassing during the lava dome eruption of Mount St. Helens 2004–2008. *Geology*, 42, 947-950. doi:10.1130/G35940.1, 2014.
- 20 Gegenhuber, N., Schoen, J.: New approaches for the relationship between compressional wave velocity and thermal conductivity. *J. Appl. Geophys.* 76, 50–55, 2012.
- Gehlin, S.: Thermal response test method development and evaluation. Luleå University of Technology. Luleå tekniska universitet, available at: <http://urn.kb.se/resolve?urn=urn:nbn:se:ltu:diva-18433>, 2002.
- Gehlin, S. E. and Hellstrom, G.: Comparison of Four Models for Thermal Response Test Evaluation. *ASHRAE Transactions-*
- 25 *American Society of Heating Refrigerating Airconditioning Engin*, 109, 131-142, 2003.
- Geist, O.: Geothermische und gesteinsmechanische Untersuchung an ausgewählten Standorten der Fraenkischen Alb. Bachelorthesis, TU Darmstadt, 2011.
- GeORG-Projektteam: Geopotenziale des tieferen Untergrundes im Oberrheingraben, Fachlich-Technischer Abschlussbericht des INTERREG-Projekts GeORG, Teil 1. Landesamt für Geologie, Rohstoffe und Bergbau. available at:
- 30 <http://www.geopotenziale.org/products/fta?lang=1>, 2013.
- Ghazi, A. M. and Hassanipak, A. A.: Geochemistry of subalkaline and alkaline extrusives from the Kermanshah ophiolite, Zagros Suture Zone, Western Iran: implications for Tethyan plate tectonics. *Journal of Asian Earth Sciences*, 17, 319-332. doi:10.1016/S0743-9547(98)00070-1, 1999.
- Gill, J.: *Orogenic Andesites and Plate Tectonics* (Bd. 16). Springer Berlin Heidelberg. doi:10.1007/978-3-642-68012-0, 1981.

- Gill, J. and Whelan, P.: Early rifting of an oceanic island arc (Fiji) produced shoshonitic to tholeiitic basalts. *Journal of Geophysical Research: Solid Earth*, 94, 4561-4578. doi:10.1029/JB094iB04p04561, 1989.
- Gillespie, M. R., Styles, M. T.: *Classification of igneous rocks, BGS Rock Classification Scheme, Volume 1*, British Geological Survey, Research Report Number RR 99-06, Nottingham, UK, 1999.
- 5 Glover, P. W.: *Electrical conductivity of rock samples subjected to high temperatures and pressures*. Ph.D. dissertation, University of East Anglia. available at: <http://ethos.bl.uk/OrderDetails.do?uin=uk.bl.ethos.236438>, 1989.
- Glover, P. W. and Vine, F. J.: *Electrical conductivity of carbonbearing granulite at raised temperatures and pressures*. *Nature*, 360, 723-726. doi:10.1038/360723a0, 1992.
- Glover, P. W. and Vine, F. J.: *Electrical conductivity of the continental crust*. *Geophysical Research Letters*, 21, 2357-2360. doi:10.1029/94GL01015, 1994.
- 10 Glover, P. W. and Vine, F. J.: *Beyond KTB - electrical conductivity of the deep continental crust*. *Surveys in Geophysics*, 16, 5-36. doi:10.1007/BF00682710, 1995.
- Grecksch, G., Ortiz, A. and Schellschmidt, R.: *HDR project Soultz - thermophysical study of GPK2 and GPK3 granite samples. ZIP Vorhaben "Hot-Dry-Rock-Project Soultz - Hydrogeothermische Modellierung des HDR-Wärmetauschers"* (Förderkennzeichen: 0327109B), "Hot Dry Rock Energy" (EC contract ENK5-CT-2000-00301), 2003.
- 15 Grunert, S.: *Der Elbsandstein: Vorkommen, Verwendung, Eigenschaften Elbe Sandstone: deposits, use, properties*. *Geologica Saxonia*, 52/53, 3-22, 2007.
- Gu, Y.: *Calculations of the optimized design for an existing multifunctional building with borehole heat exchangers*. Masterthesis, TU Darmstadt, 2010.
- 20 Gu, Y., Rühaak, W., Bär, K., Sass, I.: *Using seismic data to estimate the spatial distribution of rock thermal conductivity at reservoir scale*. *Geothermics* 66, 61-72, <http://dx.doi.org/10.1016/j.geothermics.2016.11.007>, 2017.
- Gudmundsson, A., Franzson, H. and Fridleifson, G. O.: *ForOafrceOistuOlar Sofnun syna AfangaskYrsla urn sarnvinnuverk Hitaveitu Reykjavfkur. Hitaveitu SuOurnesja og Orkustofnunar*. Tech. rep., ORKUSTOFNUN, 1995.
- Gühne, S.: *Petrographie und Petrophysik des Rotliegend der Forschungsbohrung Messel GA2*. Bachelorthesis, TU Darmstadt, 25 2016.
- Guillot, S. and Fort, P. L.: *Geochemical constraints on the bimodal origin of High Himalayan leucogranites*. *Lithos*, 35, 221-234. doi:10.1016/0024-4937(94)00052-4, 1995.
- Guillou-Frottier, L., Mareschal, J.-C., Jaupart, C., Gariépy, C., Lapointe, R. and Bienfait, G.: *Heat flow variations in the Grenville Province, Canada*. *Earth and Planetary Science Letters*, 136, 447-460. doi:10.1016/0012-821X(95)00187-H, 1995.
- 30 Gupta, M. L., Sundar, A. and Sharma, S. R.: *Heat flow and heat generation in the Archaean Dharwar cratons and implications for the Southern Indian Shield geotherm and lithospheric thickness*. *Tectonophysics*, 194, 107-122. doi:10.1016/0040-1951(91)90275-W, 1991.
- Haack, U.: *On the content and vertical distribution of K, Th and U in the continental crust*. *Earth and Planetary Science Letters*, 62, 360-366. doi:10.1016/0012-821X(83)90006-7, 1983.

- Haffen, S., Géraud, Y., Diraison, M. and Dezayes, C.: Determining major fluid-flow zones in a geothermal sandstone reservoir from thermal conductivity and temperature logs. EGU General Assembly Conference Abstracts, 14, 9043, 2012.
- Haffen, S., Géraud, Y., Diraison, M. and Dezayes, C.: Determination of fluid-flow zones in a geothermal sandstone reservoir using thermal conductivity and temperature logs. *Geothermics*, 46, 32-41. doi:10.1016/j.geothermics.2012.11.001, 2013.
- 5 Hallsworth, C. R., Knox, R. W. O'B.: Classification of sediments and sedimentary rocks, BGS Rock Classification Scheme, Volume 3, British Geological Survey, Research Report Number RR 99-03, Nottingham, UK, 1999.
- Hantschel, A.I. & Kauerauf, T.: Fundamentals of Basin and Petroleum Systems Modeling, 476 pp, Springer Verlag, Berlin Heidelberg, http://dx.doi.org/10.1007/978-3-5-540-72318-9_1, 2009.
- Hartmann, A., Rath, V. and Clauser, C.: Thermal conductivity from core and well log data. *International Journal of Rock*
- 10 *Mechanics and Mining Sciences*, 42, 1042-1055. doi:10.1016/j.ijrmms.2005.05.015, 2005.
- Hasterok, D. and Webb, J.: On the radiogenic heat production of igneous rocks, *Geoscience Frontiers*, 8, 919-940, <http://dx.doi.org/10.1016/j.gsf.2017.03.006>, 2017.
- Hasterok, D., Gard, M., and Webb, J.: On the radiogenic heat production of metamorphic, igneous, and sedimentary rocks, *Geoscience Frontiers*, 9, 1777-1794, <http://dx.doi.org/10.1016/j.gsf.2017.10.012>, 2018.
- 15 Hauff, F., Hoernle, K., van den Bogaard, P., Alvarado, G. and Garbe-Schönberg, D.: Age and geochemistry of basaltic complexes in western Costa Rica: Contributions to the geotectonic evolution of Central America. *Geochemistry, Geophysics, Geosystems*, 1, n/a--n/a. doi:10.1029/1999GC000020, 2000.
- Heap, M. J., Vinciguerra, S. and Meredith, P. G.: The evolution of elastic moduli with increasing crack damage during cyclic stressing of a basalt from Mt. Etna volcano. *Tectonophysics*, 471, 153-160. doi:10.1016/j.tecto.2008.10.004, 2009.
- 20 Heap, M. J., Faulkner, D. R., Meredith, P. G. and Vinciguerra, S.: Elastic moduli evolution and accompanying stress changes with increasing crack damage: implications for stress changes around fault zones and volcanoes during deformation. *Geophysical Journal International*, 183, 225-236. doi:10.1111/j.1365-246X.2010.04726.x, 2010.
- Heap, M. J., Baud, P., Meredith, P. G., Vinciguerra, S., Bell, A. F. and Main, I. G.: Brittle creep in basalt and its application to time-dependent volcano deformation. *Earth and Planetary Science Letters*, 307, 71-82. doi:10.1016/j.epsl.2011.04.035,
- 25 2011.
- Heap, M. J., Lavallee, Y., Laumann, A., Hess, K.-U., Meredith, P. G. and Dingwell, D. B.: How tough is tuff in the event of fire? *Geology*, 40, 311-314. doi:10.1130/G32940.1, 2012.
- Heap, M. J., Baud, P., Meredith, P. G., Vinciguerra, S. and Reuschlé, T.: The permeability and elastic moduli of tuff from Campi Flegrei, Italy: implications for ground deformation modelling. *Solid Earth*, 5, 25-44. doi:10.5194/se-5-25-2014,
- 30 2014a.
- Heap, M. J., Lavallée, Y., Petrakova, L., Baud, P., Reuschlé, T., Varley, N. R. and Dingwell, D. B.: Microstructural controls on the physical and mechanical properties of edifice-forming andesites at Volcán de Colima, Mexico. *Journal of Geophysical Research: Solid Earth*, 119, 2925-2963. doi:10.1002/2013JB010521, 2014b.

- Heap, M. J., Farquharson, J. I., Wadsworth, F. B., Kolzenburg, S. and Russell, J. K.: Timescales for permeability reduction and strength recovery in densifying magma. *Earth and Planetary Science Letters*, 429, 223-233. doi:10.1016/j.epsl.2015.07.053, 2015a.
- Heap, M. J., Kennedy, B. M., Pernin, N., Jacquemard, L., Baud, P., Farquharson, J. I., Dingwell, D. B.: Mechanical behaviour and failure modes in the Whakaari (White Island volcano) hydrothermal system, New Zealand. *Journal of Volcanology and Geothermal Research*, 295, 26-42. doi:10.1016/j.jvolgeores.2015.02.012, 2015b.
- 5 Heap, M. J., Farquharson, B. P., Lavallee, Y. and Reuschle, T.: Fracture and compaction of andesite in a volcanic edifice. *Bulletin of Volcanology*, 77. doi:10.1007/s00445-015-0938-7, 2015c.
- Heap, M. J., Russell, J. K. and Kennedy, L. A.: Mechanical behaviour of dacite from Mount St. Helens (USA): A link between porosity and lava dome extrusion mechanism (dome or spine)? *Journal of Volcanology and Geothermal Research*, 328, 159-177. doi:10.1016/j.jvolgeores.2016.10.015, 2016.
- 10 Herrin, E. and Clark, S. P.: Heat flow in west Texas and eastern New Mexico. *Geophysics*, 21, 1087-1099. doi:10.1190/1.1438306, 1956.
- Hesse, J.: Untersuchung des geothermischen Potentials der effusiven Vulkanite der permischen Donnersberg-Formation. Bachelorthesis, TU Darmstadt, 2011.
- 15 Hill, M., Morris, J. and Whelan, J.: Hybrid granodiorites intruding the accretionary prism, Kodiak, Shumagin, and Sanak Islands, southwest Alaska. *Journal of Geophysical Research: Solid Earth*, 86, 10569-10590. doi:10.1029/JB086iB11p10569, 1981.
- Hoffmann, H.: Bestimmung von geothermischen Kennwerten an Gesteinen des Kellerwaldes. Bachelorthesis, TU Darmstadt, Goethe Universität Frankfurt am Main, 2011.
- 20 Hoffmann, H.: Petrophysikalische Eigenschaften der Mitteldeutschen Kristallinschwelle im Bereich des Oberrheingraben. Masterthesis, TU Darmstadt, 2015.
- Hofmann, A. W.: Chemical differentiation of the Earth: the relationship between mantle, continental crust, and oceanic crust. *Earth and Planetary Science Letters*, 90, 297-314. doi:10.1016/0012-821X(88)90132-X, 1988.
- 25 Homuth, S.: Aufschlussanalogstudie zur Charakterisierung oberjurassischer geothermischer Karbonatreservoirs im Molassebecken. Ph.D. dissertation, TU Darmstadt. available at: <http://nbn-resolving.de/urn:nbn:de:tuda-tuprints-42094>, 2014.
- Hooper, P. R. and Hawkesworth, C. J.: Isotopic and Geochemical Constraints on the Origin and Evolution of the Columbia River Basalt. *Journal of Petrology*, 34, 1203-1246. doi:10.1093/petrology/34.6.1203, 1993.
- 30 Howell, J.A., Allard, W.M., Good, T.R.: The application of outcrop analogues in geological modeling: a review, present status and future outlook. *Geol Soc Lond Spec Publ*, 387, 1-25, 2014.
- Huber, A., Good, J., Widmer, P., Nussbaumer, T., Trüssel, D. and Schmid, C.: Gekoppelte Kälte- und Wärmeerzeugung mit Erdwärmesonden-Handbuch zum Planungsvorgehen. Tech. rep., 2001.

- Hückel, B. and Kappelmeyer, O.: Geothermische Untersuchungen im Saarkarbon. *Zeitschrift der Deutschen Geologischen Gesellschaft*, 117, 280-311, 1966.
- Hurtig, E. and Brugger, H.: Wärmeleitfähigkeitsmessungen unter einaxialem Druck. *Tectonophysics*, 10, 67-77. doi:10.1016/0040-1951(70)90098-3, 1970.
- 5 Hutt, J. R. and Berg, J. W.: Thermal and electrical conductivities of sandstone rocks and ocean sediments. *Geophysics*, 33, 489-500. doi:10.1190/1.1439946, 1968.
- Hyndman, R. D. and Jessop, A. M.: The Mid-Atlantic Ridge Near 45 N. XV. Thermal Conductivity of Dredge and Drill Core Samples. *Canadian Journal of Earth Science*, 8, 391-393. doi:10.1139/e71-040, 1971.
- Inger, S. I. and Harris, N. I.: Geochemical Constraints on Leucogranite Magmatism in the Langtang Valley, Nepal Himalaya. *Journal of Petrology*, 34, 345-368. doi:10.1093/petrology/34.2.345, 1993.
- 10 Innocent, C., Briquieu, L. and Cabanis, B.: Sr-Nd isotope and trace-element geochemistry of late Variscan volcanism in the Pyrenees: Magmatism in post-orogenic extension? *Tectonophysics*, 238, 161-181. doi:10.1016/0040-1951(94)90054-X, 1994.
- IRETHERM Project: Ireland's geoTHERMal potential: <http://www.iretherm.ie/>, last access 26 February 2020.
- 15 Islam, M. A.: Petrophysical evaluation of subsurface reservoir sandstones of Bengal Basin, Bangladesh. *Journal of the Geological Society of India*, 76, 621-631. doi:10.1007/s12594-010-0122-9, 2010.
- Iyer, S. S., Choudhuri, A., Vasconcellos, M. B. and Cordani, U. G.: Radioactive element distribution in the Archean granulite terrane of Jequié - Bahia, Brazil. *Contributions to Mineralogy and Petrology*, 85, 95-101. doi:10.1007/BF00380226, 1984.
- Jahn, F., Graham, M., Cook, M.: *Hydrocarbon Exploration & Production. - Volume 55, Second Edition (Developments in*
- 20 *Petroleum Science)*, Elsevier Science, 470 pp., 2008.
- Jaupart, C., Mann, J. R. and Simmons, G.: A detailed study of the distribution of heat flow and radioactivity in New Hampshire (U.S.A.). *Earth and Planetary Science Letters*, 59, 267-287. doi:10.1016/0012-821X(82)90131-5, 1982.
- Jaya, M. S., Shapiro, S. A., Kristinsdóttir, L. H., Bruhn, D., Milsch, H. and Spangenberg, E.: Temperature dependence of seismic properties in geothermal rocks at reservoir conditions. *Geothermics*, 39, 115-123.
- 25 doi:10.1016/j.geothermics.2009.12.002, 2010.
- Jensen, B.: Geothermische Untersuchung des Hauptrogenstein im suedlichen Oberrheingraben. Bachelorsthesi, TU Darmstadt, 2014
- Jeong, H.-S., Kang, S.-s. and Obara, Y.: Influence of surrounding environments and strain rates on the strength of rocks subjected to uniaxial compression. *International Journal of Rock Mechanics and Mining Sciences*, 44, 321-331.
- 30 doi:10.1016/j.ijrmms.2006.07.009, 2007.
- Jochum, K. P., Hofmann, A. W., Ito, E., Seufert, H. M. and White, W. M.: K, U and Th in mid-ocean ridge basalt glasses and heat production, K/U and K/Rb in the mantle. *Nature*, 306, 431-436. doi:10.1038/306431a0, 1983.
- Jodocy, M. and Stober, I.: Porositäten und Permeabilitäten im Oberrheingraben und Südwestdeutschen Molassebecken. *Erdöl, Erdgas, Kohle*, 127, 20-27, 2011.

- Johannes, W., Ehlers, C., Kriegsman, L. M. and Mengel, K.: The link between migmatites and S-type granites in the Turku area, southern Finland. *Lithos*, 68, 69-90. doi:10.1016/S0024-4937(03)00032-X, 2003.
- John, B. E. and Wooden, J.: Chapter 5: Petrology and geochemistry of the metaluminous to peraluminous Chemehuevi Mountains Plutonic Suite, southeastern California. *Geological Society of America Memoirs*, 174, 71-98.
5 doi:10.1130/MEM174-p71, 1990.
- Jones, M. Q.: Heat flow and heat production in the Namaqua Mobile Belt, South Africa. *Journal of Geophysical Research: Solid Earth*, 92, 6273. doi:10.1029/JB092iB07p06273, 1987.
- Jones, M. Q.: Heat flow in the Witwatersrand Basin and environs and its significance for the South African Shield Geotherm and lithosphere thickness. *Journal of Geophysical Research: Solid Earth*, 93, 3243. doi:10.1029/JB093iB04p03243, 1988.
- 10 Kahraman, S.: The correlations between the saturated and dry P-wave velocity of rocks. *Ultrasonics*, 46, 341-348. doi:10.1016/j.ultras.2007.05.003, 2007.
- Kalsbeek, F., Jepsen, H. F. and Jones, K. A.: Geochemistry and petrogenesis of S-type granites in the East Greenland Caledonides. *Lithos*, 57, 91-109. doi:10.1016/S0024-4937(01)00038-X, 2001.
- Kappelmeyer, O. and Haenel, R.: Geothermics with special reference to application. (O. Rosenbach and C. Morelli, Hrsg.)
15 Gebrüder Bornträger, 1974.
- Kassab, M. A. and Weller, A.: Porosity estimation from compressional wave velocity: A study based on Egyptian sandstone formations. *Journal of Petroleum Science and Engineering*, 78, 310-315. doi:10.1016/j.petro.2011.06.011, 2011.
- Kassab, A. and Weller, A.: Study on P-wave and S-wave velocity in dry and wet sandstones of Tushka region, Egypt. *Egyptian Journal of Petroleum*, 24, 1-11. doi:10.1016/j.ejpe.2015.02.001, 2015.
- 20 Kawada, K.: Studies of the Thermal State of the Earth. The 15th Paper: Variation of Thermal Conductivity of Rocks. Part 1. *Bulletin of the Earthquake Research Institute*, 42, 631-647, 1964.
- Kawada, K.: Studies of the Thermal State of the Earth. The 17th Paper: Variation of Thermal Conductivity of Rocks. Part 2. *Bulletin of the Earthquake Research Institute*, 44, 1071-1091, 1966.
- Kay, S. M. and Kay, R. W.: Aleutian magmas in space and time. In Plafker and e. Berg (Ed.), *The Geology of Alaska* (p. 687-
25 717). Geological Society of America. doi:10.1130/dnag-gna-g1.687, 1994.
- Kay, S. M., Kay, R. W., Citron, G. P. and Perfit, M. R.: Calc-alkaline plutonism in the intra-oceanic Aleutian arc, Alaska. *Geological Society of America Special Papers*, 241, 233-256. doi:10.1130/SPE241-p233, 1990.
- Keen, C. E. and Lewis, T.: Measured Radiogenic Heat Production in Sediments from Continental Margin of Eastern North America: Implications for Petroleum Generation: *Geologic Note. AAPG Bulletin*, 66, 1402-1407, 1982.
- 30 Kelemen, P. B., Hanghøj, K. and Greene, A. R.: One View of the Geochemistry of Subduction-Related Magmatic Arcs, with an Emphasis on Primitive Andesite and Lower Crust. *Treatise on Geochemistry*, 3, 1-70. doi:10.1016/b0-08-043751-6/03035-8, 2007.
- Kemp, A. I. and Hawkesworth, C. J.: Granitic perspectives on the generation and secular evolution of the continental crust. *Treatise on Geochemistry. Elsevier-Pergamon*, 3, 349-410. doi:10.1016/B0-08-043751-6/03027-9, 2003.

- Kendrick, J. E., Lavallée, Y., Hess, K.-U., Heap, M. J., Gaunt, H. E., Meredith, P. G. and Dingwell, D. B.: Tracking the permeable porous network during strain-dependent magmatic flow. *Journal of Volcanology and Geothermal Research*, 260, 117-126. doi:10.1016/j.jvolgeores.2013.05.012, 2013a.
- Kendrick, J. E., Smith, R., Sammonds, M. P., Dainty, M. and Pallister, J. S.: The influence of thermal and cyclic stressing on the strength of rocks from Mount St. Helens, Washington. *Bulletin of Volcanology*, 75, 728. doi:10.1007/s00445-013-0728-z, 2013b.
- Kennedy, L. A. and Russell, J. K.: Cataclastic production of volcanic ash at Mount Saint Helens. *Physics and Chemistry of the Earth, Parts A/B/C*, 45-46, 40-49. doi:10.1016/j.pce.2011.07.052, 2012.
- Kennedy, L. A., Russell, J. K. and Nelles, E.: Origins of Mount St. Helens cataclasites: Experimental insights. *American Mineralogist*, 94, 995-1004. doi:10.2138/am.2009.3129, 2009.
- Kerr, A. C.: Oceanic Plateaus. In *Treatise on Geochemistry* (Bd. 3, p. 659). Elsevier. doi:10.1016/B0-08-043751-6/03033-4, 2003.
- Khitarov, N. I., Lebedev, Y. B., Rengarten, Y. V. and Arsenyev, R. V.: Solubility of water in basaltic and granitic melts. *Geokhimiya*, 5, 1959.
- Kidder, S., Ducea, M., Gehrels, G., Patchett, P. J. and Vervoort, J.: Tectonic and magmatic development of the Salinian Coast Ridge Belt, California. *Tectonics*, 22, n/a--n/a. doi:10.1029/2002TC001409, 2003.
- Klāske, U.: Bestimmung des geothermischen Potenzials des Kristallinen Odenwaldes. Bachelorthesis, TU Darmstadt, 2010.
- Klein, E. M.: Geochemistry of the Igneous Oceanic Crust. In H. D. Holland and K. K. Turekian (Ed.), *Treatise on Geochemistry* (Bd. 3, p. 433-463). Elsevier. doi:10.1016/B0-08-043751-6/03030-9, 2003.
- Klug, C. and Cashman, K. V.: Permeability development in vesiculating magmas: implications for fragmentation. *Bulletin of Volcanology*, 58, 87-100. doi:10.1007/s004450050128, 1996.
- Klumbach, S.: Photogrammetrische und felsmechanische Untersuchungen am Piesberger Karbon-Quarzit. Bachelorthesis, Albert-Ludwigs-Universität Freiburg, 2008.
- Klumbach, S.: Petrophysical properties of geothermal reservoir rocks in the Upper Rhine Graben from surface outcrops. Masterthesis, Albert-Ludwigs-Universität Freiburg, 2010.
- Knopoff, L.: *Geophysical Monograph 12: The Crust and Upper Mantle of the Pacific Area*. (L. Knopoff, C. L. Drake and P. J. Hart, Ed.) American Geophysical Union. doi:10.1029/gm012, 1968.
- Königsberger, J. and Weiss, J.: Über die thermoelektrischen Effekte (Thermokräfte, Thomsonwärme) und die Wärmeleitung in einigen Elementen und Verbindungen und über die experimentelle Prüfung der Elektronentheorien. *Annalen der Physik*, 340, 1-46. doi:10.1002/andp.19113400602, 1911.
- Kolzenburg, S., Heap, M. J., Lavallee, M. P. and Dingwell, D. B.: Strength and permeability recovery of tuffisite-bearing andesite. *Solid Earth*, 3, 191-198. doi:10.5194/se-3-191-2012, 2012.
- Konzack, D.: Untersuchung des Einflusses der Wassersättigung auf die thermophysikalischen Eigenschaften von Buntsandstein. Bachelorthesis, TU Darmstadt, 2015.

- Kramers, J. D., Kreissig, K. and Jones, M. Q.: Crustal heat production and style of metamorphism: a comparison between two Archean high grade provinces in the Limpopo Belt, southern Africa. *Precambrian Research*, 112, 149-163. doi:10.1016/S0301-9268(01)00173-5, 2001.
- Kraus, E.: 3D Modellierung des tiefeingeothermischen Potentials und der Petrologie des west-lichen Taunus/Rheinisches Schiefergebirge. Diplomathesis, TU Darmstadt, 2009.
- Kristinsdóttir, L. H., Flóvenz, Ó. G., Árnason, K., Bruhn, D., Milsch, H., Spangenberg, E. and Kulenkampff, J.: Electrical conductivity and P-wave velocity in rock samples from high-temperature Icelandic geothermal fields. *Geothermics*, 39, 94-105. doi:10.1016/j.geothermics.2009.12.001, 2010.
- Kukkonen, I. T., Golovanova, I. V., Khachay, Y. V., Druzhinin, V. S., Kosarev, A. M. and Schapov, V. A.: Low geothermal heat flow of the Urals fold belt — implication of low heat production, fluid circulation or palaeoclimate? *Tectonophysics*, 276, 63-85. doi:10.1016/S0040-1951(97)00048-6, 1997.
- Kumar, P. S. and Reddy, G. K.: Radioelements and heat production of an exposed Archaean crustal cross-section, Dharwar craton, south India. *Earth and Planetary Science Letters*, 224, 309-324. doi:10.1016/j.epsl.2004.05.032, 2004.
- Kumari, W. G., Ranjith, P. G., Perera, M. S., Shao, S., Chen, B. K., Lashin, A., Rathnaweera, T. D.: Mechanical behaviour of Australian Strathbogie granite under in-situ stress and temperature conditions: An application to geothermal energy extraction. *Geothermics*, 65, 44-59. doi:10.1016/j.geothermics.2016.07.002, 2017.
- Lambert, A.-D.: Bestimmung der petrophysikalischen und felsmechanischen Kennwerte des Tromm- und Weschnitz-Plutons, Odenwald, Deutschland. Bachelorthesis, TU Darmstadt, 2016
- Landolt-Börnstein - Springer Materials: the Landolt-Börnstein database (www.springermaterials.com)
- Laštovičková, M., Losito, G. and Trova, A.: Anisotropy of electrical conductivity of dry and saturated KTB samples. *Physics of the Earth and Planetary Interiors*, 81, 315-324. doi:10.1016/0031-9201(93)90138-Y, 1993.
- Ledesert, B.: Fracturation et paléocirculations hydrothermales. Application au granite de Soultz-sous-Forêts. Ph.D. dissertation, 1993.
- Lehnert, K., Su, Y., Langmuir, C., Sarbas, B., Nohl, U.: A global geochemical database structure for rocks, *Gechem Geophys* 1, 1012, <http://dx.doi.org/10.1029/1999GC000026>, 2000.
- Lehnert, K., Vinayagamorthy, S., Djapic, B., J. Klump: The Digital Sample: Metadata, Unique Identification, and Links to Data and Publications, EOS, Transactions, American Geophysical Union, 87(52, Fall Meet. Suppl.), Abstract IN53C-07. 2006.
- Leonidov, Y.: Heat capacities of rocks at high temperatures. *Geochemistry International*, 4, 400, 1967.
- Leonidov, Y., Barskiy, Y. and Khitarov N., I.: Measurement of heat capacities of quartz, kyanite and granite at high temperatures. *Geochemistry International*, 2, 1966.
- Lesquer, A., Pagel, M., Orsini and Bonin, B.: Premières détermination du flux de chaleur et de la production de chaleur en Corse. *C.R. Acad. Sci.*, 491-494, 1983.

- Leu, W., Keller, G., Matter, A., Schärli, U. and Rybach, L.: Geothermische Eigenschaften Schweizer Molassebecken (Tiefenbereich 0-500m). Bundesamt für Energie, Bern. www.bfe.admin.ch/php/modules/enet/streamfile.php?file=000000009148.pdf&name=000000260067.pdf, 2006
- Le Bas, M. J., Streckeisen, A. L.: The IUGS systematics of igneous rocks, *J. Geol. Soc. London*, 148, 825- 833, 1991.
- 5 Le Maitre, R.W., Streckeisen, A.: *Igneous rocks: a classification and glossary of terms – recommendations of the International Union of Geological Sciences Subcommission on the Systematics of Igneous Rocks*. 2. Edition. Cambridge University Press, Cambridge 2003.
- Linsel, A.: *Lithofaziesanalyse der Forschungsbohrung Messel GA 1*. Bachelorthesis, TU Darmstadt, 2014.
- Liolios, P., and Exadaktylos, G.: A relational rock mechanics database scheme with a hierarchical structure, *Computers & Geosciences*, 37: 1192-1204, <http://dx.doi.org/10.1016/j.cageo.2011.02.014>, 2011.
- 10 Loaiza, S., Fortin, J., Schubnel, A., Gueguen, Y., Vinciguerra, S. and Moreira, M.: Mechanical behavior and localized failure modes in a porous basalt from the Azores. *Geophysical Research Letters*, 39, n/a--n/a. doi:10.1029/2012GL053218, 2012
- Luais, B. É. and Hawkesworth, C. H.: The Generation of Continental Crust: An Integrated Study of Crust-Forming Processes in the Archaean of Zimbabwe. *Journal of Petrology*, 35, 43-94. doi:10.1093/petrology/35.1.43, 1994.
- 15 Lucazeau, F. and Mailhe, D.: Heat flow, heat production and fission track data from the Hercynian basement around the Provençal Basin (Western Mediterranean). *Tectonophysics*, 128, 335-356. doi:10.1016/0040-1951(86)90300-8, 1986.
- Mack, C.: *Geothermische Untersuchungen in Calw*. Diplomathesis, TU Darmstadt, 2007.
- Mahood, G. A.: A summary of the geology and petrology of the Sierra La Primavera, Jalisco, Mexico. *Journal of Geophysical Research: Solid Earth*, 86, 10137-10152. doi:10.1029/JB086iB11p10137, 1981.
- 20 Maier, D.: *Theory of Relational Databases*, Computer Science Pr, Rockville, Maryland, USA, 640 pp., 1983.
- Maire, R.: *Investigation of thermo-physical and mechanical parameters of crystalline geothermal reservoir rocks of the Upper Rhine Graben (Germany)*. Masterthesis, LaSalle Beauvais, TU Darmstadt, 2014.
- Manghnani, M. H. and Woollard, G. P.: Elastic Wave Velocities in Hawaiian Rocks at Pressures to Ten Kilobars. In L. Knopoff, C. L. Drake and P. J. Heart (Ed.), *Geophysical Monograph 12: The Crust and Upper Mantle of the Pacific Area* (Bd. 12, S. 501-516). American Geophysical Union. doi:10.1029/GM012p0501, 2013.
- 25 Mareschal, J. C., Poirier, A., Rolandone, F., Bienfait, G., Gariépy, C., Lapointe, R. and Jaupart, C.: Low mantle heat flow at the edge of the North American Continent, Voisey Bay, Labrador. *Geophysical Research Letters*, 27, 823-826. doi:10.1029/1999GL011069, 2000.
- Mariucci, M. T., Pierdominici, S., Pizzino, L., Marra, F. and Montone, P. Looking into a volcanic area: An overview on the 350 m scientific drilling at Colli Albani (Rome, Italy). *Journal of Volcanology and Geothermal Research*, 176, 225-240. doi:10.1016/j.jvolgeores.2008.04.007, 2008.
- 30 Marzán Blas, I.: *Régimen térmico en la Península Ibérica. Estructura litosférica a través del Macizo Ibérico y el Margen Surportugués*. Ph.D. dissertation, Ph.D Universitat de Barcelona, 2000.

- McDermott, F., Harris, N. B. and Hawkesworth, C. J.: Geochemical constraints on crustal anatexis: a case study from the Pan-African Damara granitoids of Namibia. *Contributions to Mineralogy and Petrology*, 123, 406-423. doi:10.1007/s004100050165, 1965.
- McDonough, W. F.: Constraints on the composition of the continental lithospheric mantle. *Earth and Planetary Science Letters*, 5 101, 1-18. doi:10.1016/0012-821X(90)90119-I, 1990.
- McKenna, T. E. and Sharp Jr, J. M.: Radiogenic heat production in sedimentary rocks of the Gulf of Mexico Basin, south Texas. *AAPG Bulletin*, 82, 484-496, 1998.
- McLaren, S., Sandiford, M. and Hand, M.: High radiogenic heat-producing granites and metamorphism—An example from the western Mount Isa inlier, Australia. *Geology*, 27, 679. doi:10.1130/0091-7613(1999)027<0679:hrhpga>2.3.co;2, 1999.
- 10 McLennan, S. M., Taylor, S. R., McCulloch, M. T. and Maynard, J. B.: Geochemical and Nd-Sr isotopic composition of deep-sea turbidites: Crustal evolution and plate tectonic associations. *Geochimica et Cosmochimica Acta*, 54, 2015-2050. doi:10.1016/0016-7037(90)90269-Q, 1990.
- Mengel, K., Richter, M. and Johannes, W.: Leucosome-forming small-scale geochemical processes in the metapelitic migmatites of the Turku area, Finland. *Lithos*, 56, 47-73. doi:10.1016/S0024-4937(00)00059-1, 2001.
- 15 Meqbel, N. & Ritter, O.: Joint 3D inversion of multiple electromagnetic datasets, *Geophysical Prospecting*, 63(6), 1450-1467. <http://dx.doi.org/10.1111/1365-2478.12334>, 2015.
- Mielke, P.: Properties of the Reservoir Rocks in the Geothermal Field of Wairakai/New Zealand. Diplomathesis, TU Darmstadt, 2009.
- Mielke, P., Nehler, M., Bignall, G. and Sass, I.: Thermo-physical rock properties and the impact of advancing hydrothermal alteration - A case study from the Tauhara geothermal field, New Zealand. *Journal of Volcanology and Geothermal Research*, 20 301, 14-28. doi:10.1016/j.jvolgeores.2015.04.007, 2015.
- Mielke, P., Bär, K., Sass, I.: Determining the relationship of thermal conductivity and compressional wave velocity of common rock types as a basis for reservoir characterization, *J. Appl. Geophys.*, 140, 135-144, <http://dx.doi.org/10.1016/j.jappgeo.2017.04.002>, 2017.
- 25 Milicevic, M.: Untersuchung thermophysikalischer Eigenschaften an hessischen Zechstein- und Buntsandsteinproben. Bachelorthesis, TU Darmstadt, 2015.
- Milord, I., Sawyer, E. W. and Brown, M.: Formation of Diatexite Migmatite and Granite Magma during Anatexis of Semi-pelitic Metasedimentary Rocks: an Example from St. Malo, France. *Journal of Petrology*, 42, 487-505. doi:10.1093/petrology/42.3.487, 2001.
- 30 Misener, A. D., Thompson, L. G. and Uffen, R. J.: Terrestrial heat flow in Ontario and Quebec. *Transactions, American Geophysical Union*, 32, 729. doi:10.1029/tr032i005p00729, 1951.
- Mitchell, R. H.: *Kimberlites, Orangeites, and Related Rocks*. Springer US. doi:10.1007/978-1-4615-1993-5, 1995.
- Moiseenko, U. I.: Wärmeleitfähigkeit der Gesteine bei hohen Temperaturen. *Freiberger Forschungshefte*, 100, 89-94, 1968.
- Moiseenko, U. I. and Sokolova, L. S.: Thermal conductivity of some rocks of the East Sayan and Eastern Kazhakstan, 1965a.

- Moiseenko, U. I. and Sokolova, L. S.: Ergebnisse geothermischer Untersuchungen in Sibirien. Freiburger Forschungshefte, C238, 79, 1968.
- Moiseenko, U. I., Soloviev, S. A. and Kutolin, V. A.: Thermal conductivity of granite at high temperatures. Reports of the Academy of Sciences of the USSR, 165, 1965b.
- 5 Moiseenko, U. I., Solovyeva, Z. A. and Kutolin, V. A.: Heat capacities of eclogite and dolerite at high temperatures. Doklady Akademii Nauk SSSR, 173, 669-671, 1967.
- Montanini, A. and Tribuzio, R.: Gabbro-derived Granulites from the Northern Apennines (Italy): Evidence for Lower-crustal Emplacement of Tholeiitic Liquids in Post-Variscan Times. Journal of Petrology, 42, 2259-2277. doi:10.1093/petrology/42.12.2259, 2001.
- 10 Mortimer, N.: PETLAB: New Zealand's rock and geoanalytical database. Geological Society of New Zealand Newsletter 136, 27-31, 2005.
- Mossop, S. C. and Gafner, G.: The thermal constants of some rocks from the Orange Free State. J. Chem., Met. and Mining Soc. of S. Africa, 52, 61-76, 1951.
- Mottaghy, D., Schellschmidt, R., Popov, Y. A., Clauser, C., Kukkonen, I. T., Nover, G., Romushkevich, R. A.: New heat flow
- 15 data from the immediate vicinity of the Kola super-deep borehole: Vertical variation in heat flow confirmed and attributed to advection. Tectonophysics, 401, 119-142. doi:10.1016/j.tecto.2005.03.005, 2005.
- Müller, D.: Investigation on the spatial variability of petrophysical parameters of sandstone (Buntsandstein) in the Spessart, Germany. Bachelorthesis, TU Darmstadt, 2014.
- Munck, F., Walgenwitz, F., Maget, P., Sauer, K. and Tietze, R.: Synthèse géothermique du Fossé rhénan Supérieur,
- 20 Commission of the European Communities, 1979.
- Munoz, G., Bauer, K., Moeck, I., Schultze, A., Ritter, O.: Exploring the Gross Schönebeck (Germany) geothermal site using a statistical joint interpretation of magnetotelluric and seismic tomography models, Geothermics, 39, 35-45, <http://dx.doi.org/10.1016/j.geothermics.2009.12.004>, 2010.
- Murti, M.: Patterns of sedimentation in the southeastern part of the Chhattisgarh Basin. Ph.D. dissertation, University of
- 25 Saugar, India, 1980.
- Nabawy, B. S., Rochette, P. and Geraud, Y.: Petrophysical and magnetic pore network anisotropy of some cretaceous sandstone from Tushka Basin, Egypt. Geophysical Journal International, 177, 43-61. doi:10.1111/j.1365-246X.2008.04061.x, 2009.
- Nabawy, B. S., Rochette, P. and Géraud, Y.: Electric pore fabric of the Nubia sandstones in south Egypt: characterization and modelling. Geophysical Journal International, 183, 681-694. doi:10.1111/j.1365-246X.2010.04789.x, 2010.
- 30 National Geothermal Data System (NGDS): <http://geothermaldata.org/>, last access: 26 February 2020.
- Narayanaswamy, R. and Venkatasubramanian, V. S.: Uranium and thorium contents of coexisting gneisses, granites and pegmatites. Geochimica et Cosmochimica Acta, 33, 1007-1009. doi:10.1016/0016-7037(69)90111-2, 1969.
- Nehler, M.: Geothermische Untersuchungen des Zechsteins im Raum Sontra. Bachelorthesis, TU Darmstadt, 2011.

- Nicolaysen, L. O., Hart, R. J. and Gale, N. H.: The Vredefort radioelement profile extended to supracrustal strata at Carletonville, with implications for continental heat flow. *Journal of Geophysical Research: Solid Earth*, 86, 10653-10661. doi:10.1029/JB086iB11p10653, 1981.
- Noritomi, K. and Asada, A.: Studies on the Electrical Conductivity of a few Samples of Granite and Andesite. *Sci. Rep. Tohoku Univ. Ser. 5, 6*, 201-207, 1955.
- Nyblade, A. A., Pollack, H. N., Jones, D. L., Podmore, F. and Mushayandebvu, M.: Terrestrial heat flow in east and southern Africa. *Journal of Geophysical Research: Solid Earth*, 95, 17371. doi:10.1029/JB095iB11p17371, 1990.
- Oelsner, C.: *Grundlagen der Geothermik*. Sektion Geowissenschaften, Bergakademie, 1981.
- Orendt, R.: *Geothermisches Potenzial im Erlaubnisfeld Südaunus*. Diplomthesis, TU Darmstadt, 2014.
- 10 Pannike, D. G., Kölling, M., Schulz, H. D., Panteleit, B., Reichling, J. and Scheps, V.: Auswirkung hydrogeologischer Kenngrößen auf die Kältefahnen von Erdwärmesondenanlagen in Lockersedimenten. *Grundwasser*, 11, 6-18. doi:10.1007/s00767-006-0114-2, 2006.
- Pannike, S.: *Ausbreitung von Kältefahnen oberflächennaher Erdwärmesonden in Lockergestein*, 48 S. Ph.D. dissertation, Diplomarbeit, Universität Bremen, 2005.
- 15 Parkhomenko, E. I. and Bondarenko, A. T.: *Electrical conductivity of rocks at high pressures and temperatures*. Nauka Press, Moscow, 1972.
- Paslick, C., Halliday, A., James, D. and Dawson, J. B.: Enrichment of the continental lithosphere by OIB melts: Isotopic evidence from the volcanic province of northern Tanzania. *Earth and Planetary Science Letters*, 130, 109-126. doi:10.1016/0012-821X(95)00002-T, 1995.
- 20 Peate, D. W.: The Paraná-Etendeka Province. In *Large Igneous Provinces: Continental, Oceanic, and Planetary Flood Volcanism* (S. 217-245). American Geophysical Union. doi:10.1029/gm100p0217, 1997.
- Peccerillo, A. and Taylor, S. R.: Geochemistry of eocene calc-alkaline volcanic rocks from the Kastamonu area, Northern Turkey. *Contributions to Mineralogy and Petrology*, 58, 63-81. doi:10.1007/BF00384745, 1976.
- Pei, L.: *Analysis of initiation and propagation of hydraulically induced fracture*. Masterthesis, TU Darmstadt, 2009.
- 25 Pereira, E. B., Hamza, V. M., Furtado, V. V. and Adams, J. A.: U, Th and K content, heat production and thermal conductivity of São Paulo, Brazil, continental shelf sediments: A reconnaissance work. *Chemical Geology: Isotope Geoscience section*, 58, 217-226. doi:10.1016/0168-9622(86)90011-4, 1986.
- PetroMod - Petroleum systems Modeling Software: <http://www.slb.com/petromod>, last access: 26 February 2020.
- PETLAB: National Rock and Geoanalytical Database: <http://pet.gns.cri.nz/#/> or
 30 <https://www.gns.cri.nz/Home/Products/Databases/PETLAB-National-Rock-and-Geoanalytical-Database>, last access: 26 February 2020.
- Pickett, D. A. and Saleeby, J. B.: Thermobarometric constraints on the depth of exposure and conditions of plutonism and metamorphism at deep levels of the Sierra Nevada Batholith, Tehachapi Mountains, California. *Journal of Geophysical Research: Solid Earth*, 98, 609-629. doi:10.1029/92JB01889, 1993.

- Pimienta, L., Sarout, J., Esteban, L., Piane, C.D.: Prediction of rocks thermal conductivity from elastic wave velocities, mineralogy and microstructure. *Geophys. J. Int.* 197 (2), <http://dx.doi.org/10.1093/gji/ggu034>, 2014.
- Plank, T. and Langmuir, C. H.: The chemical composition of subducting sediment and its consequences for the crust and mantle. *Chemical Geology*, 145, 325-394. doi:10.1016/S0009-2541(97)00150-2, 1998.
- 5 Pola, A., Crosta, Fusi, N., Barberini, V. and Norini, G.: Influence of alteration on physical properties of volcanic rocks. *Tectonophysics*, 566-567, 67-86. doi:10.1016/j.tecto.2012.07.017, 2012.
- Pola, A., Crosta, G. B., Fusi, N. and Castellanza, R.: General characterization of the mechanical behaviour of different volcanic rocks with respect to alteration. *Engineering Geology*, 169, 1-13. doi:10.1016/j.enggeo.2013.11.011, 2014.
- Popov, Y. A., Pribnow, D. F., Sass, J. H., Williams, C. F. and Burkhardt, H.: Characterization of rock thermal conductivity by high-resolution optical scanning. *Geothermics*, 28, 253-276. doi:10.1016/S0375-6505(99)00007-3, 1999.
- 10 Pribnow, D. F., Kinoshita, M. and Stein, C. A.: Thermal Data Collection and Heat Flow Recalculations for ODP Legs 101-180: Hanover, Germany (Inst. Joint Geosci. Res., Inst. Geowiss. Gemeinschaftsauf.[GGA]), 2000.
- Price, R. C., Gray, C. M. and Frey, F. A.: Strontium isotopic and trace element heterogeneity in the plains basalts of the Newer Volcanic Province, Victoria, Australia. *Geochimica et Cosmochimica Acta*, 61, 171-192. doi:10.1016/s0016-15 7037(96)00318-3, 1997.
- Priebs, R.: Properties of geothermal reservoir rocks. Comparison between Ohaaki Field (NZ) and Saar-Nahe Basin (Germany). Diplomathesis, TU Darmstadt, 2011.
- Rao, G. V. and Rao, R. U.: Heat flow in Indian Gondwana basins and heat production of their basement rocks. *Tectonophysics*, 91, 105-117. doi:10.1016/0040-1951(83)90060-4, 1983.
- 20 Rao, R. U. and Rao, G. V.: Radiogeologic studies at NGRI - a review. *Geophysical research bulletin*, 17, 1979.
- Rao, V. D., Aswathanarayana, U. and Qureshy, M. N.: Trace element geochemistry of parts of the Closepet granite, Mysore State, India. *Mineral. Mag.*, 38, 678-686. doi:10.1180/minmag.1972.038.298.04, 1972.
- Ray, L., Förster, H.-J., Förster, A., Fuchs, S., Naumann, R. and Appelt, O.: Tracking the thermal properties of the lower continental crust: Measured versus calculated thermal conductivity of high-grade metamorphic rocks (Southern Granulite 25 Province, India). *Geothermics*, 55, 138-149. doi:10.1016/j.geothermics.2015.01.007, 2015.
- Rebay, G. and Spalla, M. I.: Emplacement at granulite facies conditions of the Sesia–Lanzo metagabbros: an early record of Permian rifting? *Lithos*, 58, 85-104. doi:10.1016/s0024-4937(01)00046-9, 2001.
- Reyer, D. and Philipp, S. L.: Empirical relations of rock properties of outcrop and core samples from the Northwest German Basin for geothermal drilling. *Geothermal Energy Science*, 2, 21-37. doi:10.5194/gtes-2-21-2014, 2014.
- 30 Reynaud, C., Jaillard, É., Lapierre, H., Mamberti, M. and Mascle, G. H.: Oceanic plateau and island arcs of southwestern Ecuador: their place in the geodynamic evolution of northwestern South America. *Tectonophysics*, 307, 235-254. doi:10.1016/s0040-1951(99)00099-2, 1999.
- Ringrose, P., and Bentley, M.: *Reservoir Model Design*, Springer Netherlands, 249 p., <http://dx.doi.org/10.1007/978-94-007-5497-3>, 2015

- Roberts, J. J., Bonner, B. P. and Duba, A. G.: Electrical resistivity measurements of andesite and hydrothermal breccia from the Awibengkok geothermal field, Indonesia. TwentyFifth Annual Stanford Geothermal Reservoir Engineering Workshop, (S. 339-344). available at: <http://www.geothermal-energy.org/pdf/IGAstandard/SGW/2000/Roberts.pdf>, 2000.
- Robertson S.: Classification of metamorphic rocks, BGS Rock Classification Scheme, Volume 2, British Geological Survey, Research Report Number RR 99-02, Nottingham, UK, 1999.
- 5 Rogers, N. W., James, D., Kelley, S. P. and Mulder, M. D.: The Generation of Potassic Lavas from the Eastern Virunga Province, Rwanda. *Journal of Petrology*, 39, 1223-1247. doi:10.1093/petroj/39.6.1223, 1998.
- Rolandone, F., Jaupart, C., Mareschal, J. C., Gariépy, C., Bienfait, G., Carbonne, C. and Lapointe, R.: Surface heat flow, crustal temperatures and mantle heat flow in the Proterozoic Trans-Hudson Orogen, Canadian Shield. *Journal of Geophysical Research: Solid Earth*, 107, ETG 7--1--ETG 7--19. doi:10.1029/2001jb000698, 2002.
- 10 Rosener, M.: Etude pétrophysique et modélisation des effets des transferts thermiques entre roche et fluide dans le contexte géothermique de Soultz-sous-Forêts. Ph.D. dissertation, Université Louis Pasteur-Strasbourg I. available at: <https://tel.archives-ouvertes.fr/tel-00202959/>, 2007.
- Rudnick, R. L. and Fountain, D. M.: Nature and composition of the continental crust: A lower crustal perspective. *Reviews of Geophysics*, 33, 267. doi:10.1029/95rg01302, 1995.
- 15 Rudnick, R. L., McDonough, W. F. and O'Connell, R. J.: Thermal structure, thickness and composition of continental lithosphere. *Chemical Geology*, 145, 395-411. doi:10.1016/s0009-2541(97)00151-4, 1998.
- Rudnick, R. O.: Xenolith-samples of the lower continental crust, *Continental lower crust*, 23, p. 269-316, Elsevier Amsterdam, 1992.
- 20 Rūhaak, W. Guadagnini, A., Geiger, S., Bär, K., Gu, Y., Aretz, A., Homuth, S., Sass, I.: Upscaling thermal conductivities of sedimentary formations for geothermal exploration, *Geothermics* 58, 49-61, <http://dx.doi.org/10.1016/j.geothermics.2015.08.004>, 2015.
- Rüther, J.: The Validation of the LMC device - Analysis of Icelandic basaltic rocks. Masterthesis, TU Darmstadt, RES - The School of Renewable Energy Science, Iceland, Akureyri, 2011.
- 25 Rummel, F.: Physical properties of the rock in the granitic section of borehole GPK1, Soultz-sous- Forêts. *Geotherm. Sci. & Tech.*, 3, 199-216, 1991.
- Rummel, F.: Physical properties of the rock in the granitic section of borehole GPK1, Soultz-sousforets. *Geothermal Energy in Europe: The Soultz Hot Dry Rock Project*, 199-216, 1992
- Rummel, F. and Schreiber, D.: Physical properties of the core K21, borehole GPK1, Soultz-sous-Forêts, depth interval 30 3522.58-3525.88 m. Yellow Report 12, Ruhr-Universität Bochum, 1993.
- Russell, J. K., Dipple, G. M. and Kopylova, M. G.: Heat production and heat flow in the mantle lithosphere, Slave craton, Canada. *Physics of the Earth and Planetary Interiors*, 123, 27-44. doi:10.1016/S0031-9201(00)00201-6, 2001.
- Rybach, L., Bassetti, S., Baumgärtner, R., Rohner, E. and Schärli, U.: Projekt Drahtloser Minidatenlogger für Temperaturmessungen in Erdwärmesonden. Schlussbericht, 2003.

- Sakvarelidze, E. A.: Verkhnyaya Mantiya. Izd. Nauka. 125, 1973.
- Salters, V. J., Storey, M., Sevigny, J. H. and Whitechurch, H.: Trace element and isotopic characteristics of Kerguelen-Heard Plateau basalts. Proc. Ocean Drill. Program Sci. Results, 120, 55-62, 1992.
- Salton, M.: Untersuchungen zum Verhalten von Erdwärmesonden. Masterthesis, Diplomarbeit an der Abt. für
5 Erdwissenschaften der ETH Zürich, 1999.
- Sandiford, M., McLaren, S. and Neumann, N.: Long-term thermal consequences of the redistribution of heat-producing elements associated with large-scale granitic complexes. Journal of Metamorphic Geology, 20, 87-98. doi:10.1046/j.0263-4929.2001.00359.x, 2002.
- Sandkühler, L.: Untersuchung des Einflusses der Wassersättigung auf die thermophysikalischen Eigenschaften von
10 Kernproben der Bohrungen Aura und Rosenthal. Bachelorthesis, TU Darmstadt, 2015.
- Sanner, B. and Anderson, O.: Drilling methods for shallow geothermal installations. Tech. rep., Germany: International Geothermal Days, 2001.
- Sanner, B., Reuß, M., Mands, E. and Müller, J.: Erfahrungen mit dem thermal response test in Deutschland. Tagungsband 6. Geothermische Fachtagung Herne, GtV, Geeste, 2000.
- 15 Sass, J. H., Lachenbruch, A. H. and Munroe, R. J.: Thermal conductivity of rocks from measurements on fragments and its application to heat-flow determinations. Journal of Geophysical Research, 76, 3391-3401. doi:10.1029/jb076i014p03391, 1971.
- Sawka, W. N. and Chappell, B. W.: Fractionation of uranium, thorium and rare earth elements in a vertically zoned granodiorite: Implications for heat production distributions in the Sierra Nevada batholith, California, U.S.A. Geochimica et
20 Cosmochimica Acta, 52, 1131-1143. doi:10.1016/0016-7037(88)90267-0, 1988.
- Schäffer, R.: Hydrogeologische und geothermische Untersuchungen der Heilquellen und Heil-brunnen Bad Soden-Salmuensters. Diplomathesis, TU Darmstadt, 2012.
- Schärli, U. and Kohl, T.: Archivierung und Kompilation geothermischer Daten der Schweiz und angrenzender Gebiete. Schweizerische Geophysikalische Kommission, 2002.
- 25 Schintgen, T. V.: The Geothermal Potential of Luxembourg. Ph.D. dissertation, University of Potsdam, Universität Potsdam. available at: <http://nbn-resolving.de/urn/resolver.pl?urn=urn:nbn:de:kobv:517-opus4-87110>, 2015.
- Schmid, R.: Descriptive nomenclature and classification of pyroclastic deposits and fragments: Recommendations of the IUGS Subcommission on the Systematics of Igneous Rocks, Geology, 9, 41- 43, 1981.
- Schön, J. H.: Petrophysik: Physikalische Eigenschaften von Gesteinen und Mineralen. F. Enke, 1983.
- 30 Schön, J.H.: Handbook of geophysical exploration. Physical Properties of Rocks: Fundamentals and Principles of Petrophysics. Pergamon Pr. 421 p., 1996.
- Schön, J. H.: Physical properties of rocks: fundamentals and principles of petrophysics (Bd. 18). Pergamon Pr., 1998.
- Schön, J.H.: Physical Properties of Rocks: Fundamentals and Principles of Petrophysics, In: Handbook of Geophysical Explorations, Section I, Seismic Exploration: V.18. - Redwood Books, Trowbridge, 2004.

- Schön, J.H.: Physical Properties of Rocks: A Workbook, In: Handbook of Petroleum Exploration and Production, 2011.
- Schön, J.H. (Ed.): Physical properties of rocks: Fundamentals and principles of petrophysics, Developments in petroleum science, 65. Elsevier, Amsterdam Netherlands, 1 online resource, 2015.
- Schöpfli, S.: Determination of Rockmechanical Properties of the Palatinate Forest's Buntsandstein. Master's thesis, Albert-Ludwigs-Universität Freiburg, 2013.
- 5 Schubert, K. O.: Geothermische Untersuchungen des Buntsandsteins des Odenwaldes. Bachelorthesis, TU Darmstadt, Goethe Universitaet Frankfurt am Main, 2011.
- Schumann, A.: GIS basierte Erdwaermepotenzialkarte Spielberg und Wart. Diplomathesis, TU Darmstadt, 2008.
- Schütz, F.: Surface heat flow and lithospheric thermal structure of the northwestern Arabian Plate. Ph.D. dissertation, University of Potsdam, University of Potsdam, Germany. available at: <https://nbn-resolving.org/urn:nbn:de:kobv:517-opus-69622>, 2013.
- 10 Schwalb, B.: Thermofazielle und petrophysikalische Untersuchung der Bohrung Solnhofen-Maxberg und weiterer Aufschlussproben der Fränkischen und Schwäbischen Alb. Bachelorthesis, TU Darmstadt, 2012.
- Schwalb, B.: Bestimmung geothermischer Kennwerte an Cuttings und Auswertung der bohrtechnischen Daten der Tiefbohrung Geretsried. Masterthesis, TU Darmstadt, 2014.
- 15 Shimojuku, A., Yoshino, T., Yamazaki, D. and Okudaira, T.: Electrical conductivity of fluid-bearing quartzite under lower crustal conditions. *Physics of the Earth and Planetary Interiors*, 198-199, 1-8. doi:10.1016/j.pepi.2012.03.007, 2012.
- Sighinolfi, G. P., Figueredo, M. C., Fyfe, W. S., Kronberg, B. I. and Oliveira, M. A.: Geochemistry and petrology of the jequie granulitic complex (Brazil): an archean basement complex. *Contributions to Mineralogy and Petrology*, 78, 263-271. doi:10.1007/bf00398921, 1981.
- 20 Sikora, C.: Strukturgeologische und geothermische Analogstudie verkarsteter Karbonatgesteine im Bereich der Tunnelbaustelle Widderstall. Masterthesis, TU Darmstadt, 2015.
- Sims, P. K., Peterman, Z. E., Prinz, W. C., Benedict, F. C. and Klasner, J. S.: Geology, geochemistry, and age of Archean and early Proterozoic rocks in the Marenisco-Watersmeet area, northern Michigan; and Geologic interpretation of gravity data, Marenisco-Watersmeet area, northern Michigan. Tech. rep., 1984.
- 25 Siratovich, P.: Thermal Stimulation of Icelandic High-Temperature Geothermal Systems. Mastersthesi, RES - The School of Renewable Energy Science, Iceland, Akureyri, 2010.
- Siratovich, P. A., Heap, M. J., Villeneuve, M. C., Cole, J. W., Kennedy, B. M., Davidson, J. and Reuschlé, T.: Mechanical behaviour of the Rotokawa Andesites (New Zealand): Insight into permeability evolution and stress-induced behaviour in an actively utilised geothermal reservoir. *Geothermics*, 64, 163-179. doi:10.1016/j.geothermics.2016.05.005, 2016.
- 30 Siratovich, P. A., Heap, M. J., Villeneuve, M. C., Cole, J. W. and Reuschlé, T.: Physical property relationships of the Rotokawa Andesite, a significant geothermal reservoir rock in the Taupo Volcanic Zone, New Zealand. *Geothermal Energy*, 2, 31. doi:10.1186/s40517-014-0010-4, 2014.

- Sizun, J. P.: Modification des structures de porosité de grès lors de transformations petrographiques dans la diagenese et l'hydrothermalisme. Ph.D. dissertation, Institut de Geologie Strasbourg, Université Louis Pasteur, Strasbourg, France, 1995.
- Smith, I. E. and Johnson, R. W.: Contrasting rhyolite suites in the Late Cenozoic of Papua New Guinea. *Journal of Geophysical Research: Solid Earth*, 86, 10257-10272. doi:10.1029/JB086iB11p10257, 1981.
- 5 Smith, R., Sammonds, P. R., Tuffen, H. and Meredith, P. G.: Evolution of the mechanics of the 2004–2008 Mt. St. Helens lava dome with time and temperature. *Earth and Planetary Science Letters*, 307, 191-200. doi:10.1016/j.epsl.2011.04.044, 2011.
- Stober, I. and Bucher, K.: Hydraulic properties of the crystalline basement. *Hydrogeology Journal*, 15, 213-224. doi:10.1007/s10040-006-0094-4, 2007.
- Stober, I., Jodocy, M.: Eigenschaften geothermischer Nutzhorizonte im Baden-Württembergischen und französischen Teil des
10 Oberrheingrabens. *Grundwasser*, 14, 127-137. doi:10.1007/s00767-009-0103-3, 2009.
- Strong, D., Turnbull, R., Haubrock, S., and Mortimer, N.: Petlab: New Zealand's national rock catalogue and geoanalytical database, *New Zealand J. Geol. Geophys.*, 53, 475–481, <http://dx.doi.org/10.1080/00288306.2016.1157086>, 2016.
- Sun, S.-s. and McDonough, W. F.: Chemical and isotopic systematics of oceanic basalts: implications for mantle composition and processes. *Geological Society, London, Special Publications*, 42, 313-345. doi:10.1144/GSL.SP.1989.042.01.19, 1989.
- 15 Sundberg, J.: Thermal properties of soils and rocks. Ph.D. dissertation, Chalmers University of Technology and University of Goetenburg, 1988.
- Surma, F.: Détermination de la porosité des zones endommagées autour des failles et rôle de l'état du matériau sur les propriétés d'échange fluides-roches: minéralogie, structures de porosité, caractéristiques mécaniques. Ph.D. dissertation, Université Louis Pasteur (Strasbourg), 2003.
- 20 Surma, F. and Geraud, Y.: Porosity and Thermal Conductivity of the Soultz-sous-Forêts Granite. In *Thermo-Hydro-Mechanical Coupling in Fractured Rock* (S. 1125-1136). Birkh_user Basel. doi:10.1007/978-3-0348-8083-1_20, 2003.
- Swanberg, C. A.: Vertical distribution of heat generation in the Idaho batholith. *Journal of Geophysical Research*, 77, 2508-2513. doi:10.1029/JB077i014p02508, 1972.
- Taylor, S. R., McLennan, S. M. and McCulloch, M. T.: Geochemistry of loess, continental crustal composition and crustal
25 model ages. *Geochimica et Cosmochimica Acta*, 47, 1897-1905. doi:10.1016/0016-7037(83)90206-5, 1983.
- Taylor, W. R., Tompkins, L. A. and Haggerty, S. E.: Comparative geochemistry of West African kimberlites: Evidence for a micaceous kimberlite endmember of sublithospheric origin. *Geochimica et Cosmochimica Acta*, 58, 4017-4037. doi:10.1016/0016-7037(94)90264-X, 1994.
- Tchameni, R., Mezger, K., Nsifa, N. E. and Poulet, A.: Neoarchæan crustal evolution in the Congo Craton: evidence from K
30 rich granitoids of the Ntem Complex, southern Cameroon. *Journal of African Earth Sciences*, 30, 133-147. doi:10.1016/S0899-5362(00)00012-9, 2000.
- Tejada, M. L., Mahoney, J. J., Duncan, R. A. and Hawkins, M. P.: Age and Geochemistry of Basement and Alkalic Rocks of Malaita and Santa Isabel, Solomon Islands, Southern Margin of Ontong Java Plateau. *Journal of Petrology*, 37, 361-394. doi:10.1093/petrology/37.2.361, 1996.

- Tejada, M. L., Mahoney, J. J., Neal, C. R., Duncan, R. A. and Petterson, M. G.: Basement Geochemistry and Geochronology of Central Malaita, Solomon Islands, with Implications for the Origin and Evolution of the Ontong Java Plateau. *Journal of Petrology*, 43, 449-484. doi:10.1093/petrology/43.3.449, 2002.
- Thompson, R. N., Gibson, S. A., Dickin, A. P. and Smith, P. M.: Early Cretaceous Basalt and Picrite Dykes of the Southern Etendeka Region, NW Namibia: Windows into the Role of the Tristan Mantle Plume in Paraná–Etendeka Magmatism. *Journal of Petrology*, 42, 2049-2081. doi:10.1093/petrology/42.11.2049, 2001.
- Trautwein, U.: Poroelastische Verformung und petrophysikalische Eigenschaften von Rotliegend Sandsteinen. Technische Universität Berlin. Technische Universität Berlin. doi:10.14279/depositonce-1240, 2005.
- Ucok, H.: Temperature dependence of the electrical resistivity of aqueous salt solutions and solution-saturated porous rocks. Master's thesis, University of Southern California, 1979.
- Ufundu, L. S.: The geothermal potentials of the Middle and Lower Benue Trough, Nigeria. Masterthesis, TU Darmstadt, 2012.
- University, S. M.: SMU Geothermal Lab Heat Flow and Western Geothermal Data Bases References. Tech. rep., Southern Methodist University, 2000.
- Van Wees, J.-D., Hopman, J., Dezayes, C., Vernier, R., Manzella A., Bruhn, D., Scheck-Wenderoth, M., Flovenz, O., Páll Hersir, G. Halldórsdóttir, S., Liotta, D.: IMAGE: the EU Funded Research Project Integrated Methods for Advanced Geothermal Exploration, Proceedings World Geothermal Congress 2015, Melbourne, Australia, 19-25 April, 2015.
- VDI 4640 Blatt 1 - Thermische Nutzung des Untergrundes - Grundlagen, Genehmigungen, Umweltaspekte. (2010).
- Verdoya, M., Pasquale, V., Chiozzi, P. and Kukkonen, I. T.: Radiogenic heat production in the Variscan crust: new determinations and distribution models in Corsica (northwestern Mediterranean). *Tectonophysics*, 291, 63-75. doi:10.1016/s0040-1951(98)00031-6, 1998.
- Vernoux, J. F. and Lambert, M.: Rapport BRGM SGN/IRG ARG 93 T37. Tech. rep., BRGM, 1993.
- Vernoux, J. F., Genter, A., Razin, P., Vinchon, C., Orléans, B. R. and Nord-Pas de Calais, B. R.: Geological and petrophysical parameters of a deep fractured sandstone formation as applied to geothermal exploitation. BRGM Report, 38622, 70. available at: <http://infoterre.brgm.fr/rapports/RR-38622-FR.pdf>, 1995.
- Vilà, M., Fernández, M. and Jiménez-Munt, I.: Radiogenic heat production variability of some common lithological groups and its significance to lithospheric thermal modeling. *Tectonophysics*, 490(3), 152-164. doi:10.1016/j.tecto.2010.05.003, 2010.
- Villaseca, C., Downes, H., Pin, C. and Barbero, L.: Nature and Composition of the Lower Continental Crust in Central Spain and the Granulite-Granite Linkage: Inferences from Granulitic Xenoliths. *Journal of Petrology*, 40, 1465-1496. doi:10.1093/etroj/40.10.1465, 1999.
- Violay, M., Gibert, B., Azais, P., Pezard, P. A. and Lods, G.: A New Cell for Electrical Conductivity Measurement on Saturated Samples at Upper Crust Conditions. *Transport in Porous Media*, 91, 303-318. doi:10.1007/s11242-011-9846-2, 2012.

- Violay, M., Gibert, B., Mainprice, D., Evans, B., Dautria, J.-M., Azais, P. and Pezard, P.: An experimental study of the brittle-ductile transition of basalt at oceanic crust pressure and temperature conditions. *Journal of Geophysical Research: Solid Earth*, 117, n/a--n/a. doi:10.1029/2011jb008884, 2012.
- Violay, M., Pezard, P. A., Ildefonse, B., Belghoul, A. and Laverne, C.: Petrophysical properties of the root zone of sheeted
5 dikes in the ocean crust: A case study from Hole ODP/IODP 1256D, Eastern Equatorial Pacific. *Tectonophysics*, 493, 139-152. doi:10.1016/j.tecto.2010.07.013, 2010.
- Vogel, B. C.: Petrophysikalische und felsmechanische Untersuchung kristalliner Gesteine des Weschnitz-Plutons. Bachelorthesis, TU Darmstadt, 2016
- Volarovich, M. P.: Geophysical Aspects of the Problems of Elastic and Electrical Properties of Rocks at Pressures Up to Tens
10 of Kilobars. In L. Knopoff, C. L. Drake and P. J. Heart (Ed.), *Geophysical Monograph 12: The Crust and Upper Mantle of the Pacific Area* (Bd. 12, S. 517-522). American Geophysical Union. doi:10.1029/gm012p0517, 1968.
- Walters, M. A. and Combs, J.: Heat flow in The Geysers-Clear Lake geothermal area of northern California, USA. *Monograph on the Geysers Geothermal Field*, 43-53. available at: <https://www.geothermal-library.org/index.php?mode=pubs&action=view&record=1005473>, 1991.
- 15 Wang, J.-H., Hung, J.-H. and Dong, J.-J.: Seismic velocities, density, porosity, and permeability measured at a deep hole penetrating the Chelungpu fault in central Taiwan. *Journal of Asian Earth Sciences*, 36, 135-145. doi:10.1016/j.jseaes.2009.01.010, 2009.
- Weaver, B. L., Wood, D. A., Tarney, J. and Joron, J. L.: Geochemistry of ocean island basalts from the South Atlantic: Ascension, Bouvet, St. Helena, Gough and Tristan da Cunha. *Geological Society, London, Special Publications*, 30, 253-
20 267. doi:10.1144/GSL.SP.1987.030.01.11, 1987.
- Weber, J. N.: Geothermische Aufschlussanalyse des Steinbruches Mainzer Berg, oestlich von Darmstadt. Bachelorthesis, TU Darmstadt, 2014.
- Weber, J. N.: Vorplanung einer geothermischen Nutzung der Tiefbohrung Rotenburg HKZ 1001. Masterthesis, TU Darmstadt, 2016.
- 25 Weinert, S.: Geomechanical Characterization of Volcanic Rocks of the Taupo and Coromandel Volcanic Zone, New Zealand. Masterthesis, TU Darmstadt, 2014
- Welsch, B.: Geothermische Untersuchungen an ausgewählten Standorten der Schwäbischen Alb. Bachelorthesis, TU Darmstadt, 2011.
- Welsch, B.: Forschungsbohrung Heubach: Untersuchungen zu den geothermischen Reservoireigenschaften des Odenwald
30 Kristallins. Diplomathesis, TU Darmstadt, 2012.
- Welsch, B., Baer, K., Schulte, D., Rühaak, W. and Chauhan, S.: Simulation und Evaluierung von Kopplungs- und Speicherkonzepten regenerativer Energieformen zur Heizwärmeversorgung. Final report, TU Darmstadt, 2015.

- Wenk, H.-R. and Wenk, E.: Physical constants of Alpine rocks (density, porosity, specific heat, thermal diffusivity and conductivity). *Schweizerische mineralogische und petrographische Mitteilungen*, 49, 343-357. available at: <http://nbn-resolving.de/urn:nbn:de:hebis:30-1096297>, 1969.
- Weydt, L. M.: Analogue Study of Geothermal Properties of the Rimbey-Meadowbrook Reef Trend in the Alberta Basin, Canada. Masterthesis, TU Darmstadt, 2016.
- Whitford, D. J.: Strontium isotopic studies of the volcanic rocks of the Saunda arc, Indonesia, and their petrogenetic implications. *Geochimica et Cosmochimica Acta*, 39, 1287-1302. doi:10.1016/0016-7037(75)90136-2, 1975.
- Wicke, H.: Faziesabhängigkeit geothermischer Kennwerte am Beispiel des Oberen Muschelkalk (Crailsheim, Baden-Württemberg). Diplomathesis, TU Darmstadt, 2009.
- 10 Wickham, S. M.: Crustal Anatexis and Granite Petrogenesis During Low-pressure Regional Metamorphism: The Trois Seigneurs Massif, Pyrenees, France. *Journal of Petrology*, 28, 127-169. doi:10.1093/petrology/28.1.127, 1987.
- Wiesner, P.: Modellierung einer mitteltiefen Erdwaermesonde zur Heiz-Grundlastabdeckung des Taunusgymnasiums Koenigstein. Masterthesis, TU Darmstadt, 2014.
- 15 [Wilkinson, M., Dumontier, M., Aalbersberg, I. et al.: The FAIR Guiding Principles for scientific data management and stewardship. *Sci Data* 3, 160018 doi: 10.1038/sdata.2016.18, 2016.](#)
- Winkler, H. G.: Landolt-Börnstein, Zahlenwerte und Funktionen Bd. III Astronomie und Geophysik. In J. Bartels and P. ten Bruggencate (Hrsg.). Springer-Verlag Berlin Heidelberg. ISBN: 978-3-662-41604-4, 1952.
- Wittig, T.: Charakterisierung der Aquifereigenschaften von Dolomiten der Wustkogel-Formation im Raum Tux, Tirol. Masterthesis, TU Darmstadt, 2017.
- 20 Zhao, X. G., Wang, J., Chen, F., Li, P. F., Ma, L. K., Xie, J. L. and Liu, Y. M.: Experimental investigations on the thermal conductivity characteristics of Beishan granitic rocks for Chinas HLW disposal. *Tectonophysics*, 683, 124-137. doi:10.1016/j.tecto.2016.06.021, 2016.
- Zhu, W., Baud, P., Vinciguerra, S. and Wong, T.-f.: Micromechanics of brittle faulting and cataclastic flow in Alban Hills tuff. *Journal of Geophysical Research*, 116. doi:10.1029/2010JB008046, 2011.
- 25 Zhu, W., Baud, P., Vinciguerra, S. and Wong, T.-f.: Micromechanics of brittle faulting and cataclastic flow in Mount Etna basalt. *Journal of Geophysical Research: Solid Earth*, 121, 4268-4289. doi:10.1002/2016JB012826, 2016.
- Zilch, D.: Geothermische Gesteinskennwerte der palaeozoischen Gesteine des Werra-Grauwacken-Aufbruchs. Bachelorthesis, TU Darmstadt, Goethe Universitaet Frankfurt am Main, 2011.
- Zoth, G.: Nordwestdeutschland im Tertiär. In Tobien, H. (Hrsg.). Gebrüder Bornträger, 1986.