

# A dataset of 30-meter annual vegetation phenology indicators (1985-2015) in urban areas of the conterminous United States

Xuecao Li<sup>1</sup>, Yuyu Zhou<sup>\*1</sup>, Lin Meng<sup>1</sup>, Ghassem R. Asrar<sup>2</sup>, Chaoqun Lu<sup>3</sup>, Qiusheng Wu<sup>4</sup>

5 <sup>1</sup>Department of Geological and Atmospheric Sciences, Iowa State University, Ames, IA, 50011, USA

<sup>2</sup>Joint Global Change Research Institute, Pacific Northwest National Lab, College Park, MD, 20740, USA

<sup>3</sup>Department of Ecology, Evolution, and Organismal Biology, Iowa State University, Ames, IA, 50011, USA

<sup>4</sup>Department of Geography, University of Tennessee, Knoxville, TN, 37996, USA

*Correspondence to:* Yuyu Zhou (yuyuzhou@iastate.edu)

10 **Abstract.** Medium-resolution satellite observations show great potential for characterizing seasonal and annual dynamics of vegetation phenology in urban domains, from local to regional and global scales. However, most previous studies were conducted using coarse resolution data, which are inadequate for characterizing the spatiotemporal dynamics of vegetation phenology in urban domains. In this study, we produced an annual vegetation phenology dataset in urban ecosystems for the conterminous United States (US), using all available Landsat images on the Google Earth Engine (GEE) platform. First, we

15 characterized the long-term mean seasonal pattern of phenology indicators of the start of season (SOS) and the end of season (EOS), using a double logistic model. Then, we identified the annual variability of these two phenology indicators by measuring the difference of dates when the vegetation index in a specific year reaches the same magnitude as its long-term mean. The derived phenology indicators agree well with *in-situ* observations from PhenoCam network and Harvard Forest. Comparing with results derived from the moderate resolution imaging spectroradiometer (MODIS) data, our Landsat derived

20 phenology indicators can provide more spatial details. Also, we found the temporal trends of phenology indicators (e.g., SOS) derived from Landsat and MODIS are consistent overall, but the Landsat derived results from 1985 offer a longer temporal span compared to MODIS from 2001 to present. In general, there is a spatially explicit pattern of phenology indicators from the North to the South in cities in the conterminous US, with an overall advanced SOS in the past three decades. The derived

phenology product in the US urban domains at the national level is of great use for urban ecology studies for its medium spatial resolution (30 m) and long temporal span (30 years). The data are available at <https://doi.org/10.6084/m9.figshare.7685645.v5>.

## 1 Introduction

Dynamics of vegetation phenology in urban ecosystems play an important role in influencing human activities such as energy use and public health. The change of vegetation greening and dormancy affects various ecological and environmental processes, such as carbon storage, energy use, water cycle, and climate change (Zhou et al., 2016;Keenan et al., 2014;Peng et al., 2013;Tang et al., 2016). These influences are amplified in urban ecosystems due to the notably altered urban environment by anthropogenic activities. For example, the urban heat island (UHI) results in an earlier start and a longer duration of the growing season than surrounding rural areas (White et al., 2002;Zhang et al., 2004b;Jochner et al., 2011). The change of vegetation phenology affects the start and duration of pollen season in urban domains, which has become a major concern by public health authorities for the potential risks of pollen-induced respiratory allergies (e.g., asthma) (Aas et al., 1997;Anenberg et al., 2017;Gong et al., 2012;Li et al., 2019b). Furthermore, the rapid pace of urbanization is expected to continue in the future, with more than 66% of the world's population residing in urban areas by 2050 (United Nations, 2018), which will result in a more notable effect of urban environment change. Also, changes in the urban environment due to atmospheric, soil, and light pollutions will affect the plant phenology (e.g., leaf senescence) (Escobedo et al., 2011), resulting in different phenology characteristics in urban ecosystems. However, our knowledge about the vegetation phenology response to urbanization under different urban morphology scenarios is still unclear, partly because of the difficulties in observing and mapping the dynamics of vegetation phenology at medium spatial and temporal resolutions in/around urban areas. Therefore, dynamics of vegetation phenology in urban domains is crucial for understanding the response of vegetation phenology to urbanization, and this further helps to develop process-based phenology models for prediction under the compound effect of global warming and urbanization (Jochner and Menzel, 2015;Jochner et al., 2011;White et al., 2002).

Coarse-resolution satellite observations are inadequate to support vegetation phenology studies in urban domains, although they have been extensively used for phenology mapping. Relevant studies include using the advanced very high-resolution radiometer (AVHRR) data (Moody and Johnson, 2001;White et al., 2002;Piao et al., 2006;Cong et al., 2012), and the moderate

resolution imaging spectroradiometer (MODIS) data (Zhang et al., 2004b; Zhou et al., 2016; Walker et al., 2012; Walker et al., 2015; Liu et al., 2016). The primary advantage of these datasets is their long-term observations with a fine temporal resolution. However, the relatively coarse (1-8 km) spatial resolution is limited to capture the spatial heterogeneity of phenology in urban domains (White et al., 2002; Hogda et al., 2002). In contrast, Landsat observations with a medium spatial resolution (30 m) and a long temporal span (since the 1980s) offer the opportunity to overcome this limitation (Zipper et al., 2016; Li et al., 2017b).

There are few attempts of mapping vegetation phenology in urban domains using Landsat observations at a regional (or global) scale due to complex vegetation compositions in urban ecosystems and the large dataset required for analysis. Despite the high spatial resolution and long-term record of Landsat, the 16-days revisit frequency and the cloud contamination make it difficult to collect adequate observations to composite the time series of vegetation indices for investigating vegetation phenology dynamics. Therefore, the long-term mean pattern of vegetation phenology using multi-year observations were generally investigated in most Landsat-based phenology studies. After that, the annual variability of phenology indicators can be identified through measuring the difference of dates when the vegetation index in a specific year reaches the same magnitude as its long-term mean (Fisher et al., 2006; Melaas et al., 2013). However, currently this approach was mainly used in natural ecosystems (e.g., deciduous forest) or at local scales (Fisher et al., 2006; Melaas et al., 2013; Li et al., 2017b). Therefore, there lack large-scale applications in urban domains. First, vegetation types and compositions in urban ecosystems are more complicated, and the floral species are more abundant in cities than surrounding rural areas (Luz de la Maza et al., 2002). The seasonal pattern of vegetation growth varies among different vegetation types, which requires a more generalized approach to filter out available Landsat observations for a specific year to measure its gap to the long-term mean (Li et al., 2017b). Second, an improved understanding of vegetation phenology in urban areas over different regions require massive Landsat observations and super-computational power. More than one thousand Landsat scenes need to process for mapping vegetation phenology dynamics in a given city, and this number is huge when expanding the mapping area at the national or global scales.

The advent of Google Earth Engine (GEE) platform provides the possibility to map vegetation phenology dynamics using the long-term Landsat data at the regional and global scales. GEE is a start-of-art platform for planetary-scale data analysis, mapping, and modelling, owing to free access to numerous global datasets and advanced computational capabilities (Gorelick

et al., 2017). There are several successful studies built on the GEE platform for mapping long-term dynamics of forest and water, using all available Landsat images at the global scale (Hansen et al., 2013; Pekel et al., 2016). It is convenient to composite time series data of vegetation index at the pixel level on the GEE, using all clear-sky pixels. Also, the capability of cloud-based computation offered by the GEE enables efficient and effective mapping practices at different spatial and temporal  
5 scales (Xiong et al., 2017).

To better support vegetation phenology studies in urban domains with required spatiotemporal details, for the first time, we mapped annual vegetation phenology (1985-2015) using long-term Landsat observations at a high spatial resolution in the US and characterized the dynamics of urban vegetation phenology. The remainder of this paper describes the study area and data (Section 2), the adopted method for mapping vegetation phenology indicators (Section 3), the results with discussion (Section  
10 4), and concluding remarks (Section 5).

## 2 Study area and data

Our study area includes all urban areas greater than 500 km<sup>2</sup> and their surrounding rural areas in the conterminous US. First, the urban extent was derived from nighttime light (NTL) observations (2013) (Zhou et al., 2018; Zhou et al., 2014). Then, a buffer zone with the same size as the urban area was identified as the surrounding rural area. The near equal size of urban and  
15 rural areas enables us to explore the response of vegetation phenology to urbanization through characterizing their phenology differences (Li et al., 2017a). In total, 148 urban clusters with different sizes were identified for deriving phenology indicators and their dynamics (Fig. S1).

Landsat surface reflectance data is the primary dataset used for vegetation phenology mapping. Images obtained from different sensors, i.e., Thematic Mapper (TM), Enhanced Thematic Mapper Plus (ETM+), and Operational Land Imager (OLI), were  
20 used to composite the time series of the enhanced vegetation index (EVI) of each pixel (Huete et al., 2002). The surface reflectance data have been corrected for the radiometric and topographic effects. The correction of atmospheric effect was performed using the Landsat ecosystem disturbance adaptive processing system (LEDAPS) (Masek et al., 2006), and clouds and shadows were removed using the function of mask procedure (Fmask) (Zhu and Woodcock, 2012) before compositing the EVI time series. Thus, all available clear-sky pixels during 1985-2015 were used in our analysis.

### 3 Method

We developed an automatic approach to map urban vegetation phenology indicators using long-term (1985-2015) Landsat images on the GEE platform (Fig. 1). First, we composited the EVI time series using all clear-sky observations at the pixel level, ordered by the day of year (DOY). A double logistic model was then applied on the derived EVI time series to obtain the long-term mean pattern of phenology indicators (start of season (SOS) and end of season (EOS) in Fig. 1a). Second, we derived the annual variability of phenology indicators in urban and surrounding rural areas (Fig. 1b), by measuring the difference of dates when the EVI in a specific year reaches the same magnitude as its long-term mean (Li et al., 2017b). Details of each step are presented in the following sections.

#### 3.1 Long-term mean phenology indicators

We composited EVI observations over the years to capture its seasonal change before the implementation of the double logistic model. First, we used all clear-sky observations of EVI and ordered them by their DOYs. This step allows us to retrieve the seasonal pattern of vegetation dynamics using multi-year data because the temporal distribution of Landsat data is uneven due to the satellite revisit time and sky conditions. Then, we applied a smoothing procedure using a moving average of continuous observations within 2 days to minimize the impact of abnormal observations. This procedure can keep the raw seasonal pattern of EVI (Fig. S2), and further helps to reduce the uncertainty of parameter estimation in the double logistic model.

We characterized the seasonal change of vegetation growth using a double logistic model. This model has several advantages when compared to other approaches such as the splines and harmonic models (Melaas et al., 2016b; Carrão et al., 2010): (1) it captures the green-up and senescence phases using different sigmoid functions; and (2) the physical meaning of parameters is related to the vegetation growth and senescence (Fisher et al., 2006; Li et al., 2017b). The derived EVI time series data were fitted using the double logistic model as Eq. 1.

$$f(t) = v_1 + v_2 \left( \frac{1}{1+e^{-m_1(t-n_1)}} - \frac{1}{1+e^{-m_2(t-n_2)}} \right) \quad (1)$$

where  $f(t)$  is the fitted EVI value at the day  $t$ ;  $v_1$  and  $v_2$  are the background and amplitude of EVI over the entire year, respectively; and  $m_1$  &  $n_1$ ,  $m_2$  &  $n_2$  are the pair-parameters that capture the trends of green-up and senescence phases of vegetation growth, respectively. That is,  $n_1$  and  $n_2$  are dates with maximum increasing and decreasing rates of green-up and senescence in sigmoid curves, and  $m_1$  and  $m_2$  are the slopes that determine the shape of sigmoid curves.

We developed a stepwise statistical approach to estimate the parameters of the double logistic model on the GEE platform for large-scale applications because currently the GEE platform does not support for optimization of parameters. Calculation of these parameters was presented in the Appendix. In general, the performance of this GEE-based double logistic model is robust for different land cover types, and the derived results are close to that from the optimization algorithm (Fig. 2). For example, although the magnitude of EVIs is relatively low in urban areas with low vegetation cover, a distinctive seasonal pattern of vegetation growth can be captured by the double logistic model. Also, sigmoid curves during green-up and senescence phrases are notably different across different vegetation cover types (e.g., forest and cropland). We evaluated the performance of the fitted double logistic model based on the correlation between the fitted and observed EVI observations. Pixels affected by land use/cover change during the study period or having weak vegetation signals (e.g., extremely high built-up area or barren land) could have a lower fitting performance (e.g., correlation coefficient), and these pixels can be excluded for specific applications. A more detailed explanation of this procedure is reported in Li et al. (2017b). This stepwise statistical approach can be implemented at the pixel level on the GEE platform in a parallel manner, which significantly improved our mapping efficiency at the large scale.

We derived phenology indicators of SOS and EOS using a half-maximum criterion method (Fisher et al., 2006). In this method, SOS and EOS were calculated as dates when the first derivative of EVI reaches the maximum increasing and decreasing rates during the green-up and senescence phases, respectively. Although there are other definitions of SOS and EOS such as inflection points (i.e., at the base of sigmoid curve) (Zhang et al., 2003), the criterion used in our study is more temporally stable and can be applied to plants with different canopy structures (Fisher and Mustard, 2007). The growing season length (GSL) was defined as the difference between EOS and SOS.

### 3.2 Annual variability of phenology indicators

We derived the annual variability of vegetation phenology indicators using the developed generalized Landsat phenology (GLP) approach (Li et al., 2017b). Considering the temporally uneven distribution of available Landsat observations over the years, the annual variability of phenology indicators was measured as the difference of dates when the EVI in a specific year reaches the same magnitude as its long-term mean (Fisher et al., 2006; Melaas et al., 2013). Only EVI observations in the rational ranges of DOY and EVI (empty circles in shaded frames) in a given year were used in the GLP approach (Fig. 3).

Observations outside this range (the shaded frames), which are either outliers or beyond the temporal ranges of green-up and senescence phases, were not used in calculating the annual variability. In the GLP approach, we also designed a self-adjusting strategy to derive the bounds of the shaded frames in the green-up and senescence phases (Fig. 3). For the green-up phase, the rational DOY ranges (two points on the long-term mean curve that intersected with the shaded green frame in Fig. 3) were defined as the dates when change rates (or derivative) of EVI reach the half-maximum before and after the date of SOS (i.e., the date with the maximum change rate). Thus, the corresponding EVI ranges were calculated based on the derived DOY ranges and the long-term mean curve. The rational ranges for the senescence phase were determined using the similar approach. This approach already showed its applications for different vegetation types (e.g., cropland or forest) with varying seasonal patterns of EVI. More details about this approach can be found in Li et al. (2017b).

## 10 **4 Results and discussion**

### **4.1 Performance of the GEE-based double logistic model**

The performance of the developed GEE-based double logistic model is reasonably good across different latitudes and different vegetation cover types in urban ecosystems. Take forest as an example, the seasonal pattern of EVI varies from the South to the North in the US, with notably different sigmoid curves for the green-up and senescence phrases (Fig. 4). Our fitting approach can well capture the diverse seasonal patterns of EVI for forest across space. At the city scale, the proposed double logistic model shows a good performance of fitting EVI time series from urban to rural areas (Fig. 5), where the vegetation composition and the seasonal pattern of EVI are more complicated compared to natural ecosystems. For sites in urban center, despite their low value of EVIs, a distinctive seasonal pattern of phenology is also captured by the proposed double logistic function, with a good fitting was observed.

### 20 **4.2 Comparison with PhenoCam data**

Overall, the derived phenology indicators (SOS and EOS) are spatially consistent with those from *in-situ* PhenoCam data at the large (e.g., national) scale (Fig. 6). PhenoCam is a regional-scale network of digital cameras that provide high temporal resolution vegetation canopy and phenology information (Richardson et al., 2018). The records in PhenoCam are observed green chromatic coordinate (GCC), which is used as the indicator of vegetation dynamics. We used all PhenoCam sites in the

US and compared the mean SOS and EOS with Landsat derived results. The definition of SOS and EOS we used in the PhenoCam data (i.e., the half-maximum criterion) is consistent with our result derived from Landsat data. Overall, correlations of the derived SOS and EOS from the Landsat and PhenoCam are 0.66 and 0.43, respectively. Most indicators are around the 1:1 line, indicating a close correspondence of phenology indicators derived from these two independent datasets. For those sites (blue or light blue dots) with large differences, the performance of fitting Landsat EVIs using the double logistic model is relatively low because these sites are mainly embedded in ecosystems that are dominated by shrubs, evergreen forests, or wetlands (Fig. S3). With correlation coefficients lower than 0.85 (worse fitting) excluded as suggested by Melaas et al. (2016b), the overall agreements between Landsat and PhenoCam derived results were notably improved to 0.86 and 0.94, for SOS and EOS, respectively. Discrepancies between these two sets of phenology indicators derived from Landsat and PhenoCam are mainly attributed to factors such as: (1) two different vegetation indices (i.e., EVI and GCC); and (2) the scale effect between *in-situ* PhenoCam and Landsat observations (Liu et al., 2017).

Overall, the annual variability of SOS derived from Landsat observations is consistent with that from the *in-situ* PhenoCam observations (Fig. 7). We selected 11 deciduous broadleaf forest sites for comparison with continuous observations of more than five years (Fig. 7a). Landsat pixels located within 500 m of each PhenoCam station were used to ensure adequate samples to reflect the vegetation phenology dynamic at the local scale for this comparison (Melaas et al., 2016a). The temporal dynamics of Landsat derived SOS and EOS generally follow the changes captured by PhenoCam observations (Fig. 7 b-c). A detailed illustration of the *Acadia* site indicates the SOS derived from the two datasets is notably advanced during period 2006-2010 and their corresponding EOS is delayed after 2011. Although magnitudes of SOS and EOS are different over the years, their temporal trends (i.e., advanced or delayed) are relatively consistent. The magnitude differences of SOS from Landsat and MODIS are likely attributed to scale effects, which determines different phenology patterns within a particular remotely sensed pixel. Overall, the annual SOS indicator derived from Landsat shows a better agreement (0.74) with the result obtained from *in-situ* PhenoCam observations (Fig. 7d). The agreement of annual variability of Landsat and PhenoCam EOS is relatively weaker (0.26) (Fig. 7e), which is consistent with previous results reported by Melaas et al. (2016a). The main reason for the weak agreement of annual variability of EOS is the difference in greening represented by GCC and EVI. That is, in the green-



up phase, both GCC and EVI are rapidly increasing. While in the senescence phase, the EVI detected by Landsat slightly decreases, which is notably different from the pattern reflected by GCC that rapidly decreases once the leaf color changes.

#### 4.3 Comparison with Harvard Forest phenology data

Our Landsat derived phenology indicators have a similar temporal pattern with that from the Harvard Forest (HF) over the  
5 past decades (Fig. 8). The HF data were collected by field observers in spring and fall seasons for more than 25 years  
(Richardson et al., 2006). Our Landsat derived indicators were compared with dates of SOS and EOS recorded in the HF data,  
in which SOS and EOS are defined as the dates when the leaf length reaches 50% of its final size and the leaf color reaches  
10% of the color change to the greenest, respectively (Melaas et al., 2016a). Three dominant species of deciduous forest in the  
HF, including red oak (*Quercus rubra*; *QURU*), red maple (*Acer rubrum*; *ACRU*), and yellow birch (*Betula alleghaniensis*;  
10 *BEAL*) in the HF, were used in our analysis. However, for other vegetation types (e.g., evergreen forest), discernible phenology  
patterns can be also captured using the proposed methodology (e.g. Fig. 4, Site 1). Overall, the SOS of the three-dominant  
species in the HF is similar and has a similar temporal trend with SOS derived from Landsat observations (Fig. 8a). The RMSE  
between Landsat SOS and the HF data is 3.5 day, and the correlation coefficient is 0.81 (Fig. 8c), indicating a comparable SOS  
and a relatively consistent temporal pattern. EOS shows a relatively larger gap among species (Fig. 8b), i.e., the EOS of red  
15 oak is notably later compared to other two species of red maple and yellow birch. The Landsat derived EOS is within the range  
of EOS of the three species, and the temporal variability of two data sources are similar, although their magnitudes are different.  
The RMSE between Landsat EOS and the HF data is 3.7 day, and the correlation coefficient is 0.51 (Fig. 8d).

#### 4.4 Comparison with MODIS data

Phenology indicators (e.g., SOS) derived from Landsat observations provide more spatial details in/around urban areas and  
20 are spatially consistent with those from MODIS (Fig. 9). Taking the Chicago metropolitan area as an example, we compared  
the Landsat derived SOS with that from MODIS in two ways. First, we estimated SOS from the MODIS EVI (16-day) using  
the same approach for Landsat. Second, we retrieved SOS from the widely used MODIS phenology product (MCD12Q2)  
(Zhang et al., 2003) for comparison with Landsat based SOS. It is worthy to note that the SOS defined in MCD12Q2 is the  
inflection point of EVI growth during the green-up phrase, and this definition is different from our half-maximum criterion

(Fisher and Mustard, 2007). Therefore, the SOS of MCD12Q2 is generally earlier than the other two. Also, there might be uncertainties in MCD12Q2 in highly urbanized regions with SOS above 180 days (Zhou et al., 2016) (Fig. 9a). Overall, more spatial details of SOS can be revealed in results derived from Landsat compared to MODIS (Fig. 9b). In highly urbanized regions, Landsat SOS can also capture the seasonal pattern of vegetation growth. Normalized SOSs derived from MODIS and Landsat show a relatively consistent trend along the gradient of developed areas (Fig. 9c), although their magnitudes are different (Fig. 9a).

Landsat derived phenology indicator of SOS exhibits a consistent temporal pattern compared to MODIS with a longer temporal span (Fig. 10). Although the temporal distribution of Landsat is uneven compared to MODIS, the annual variability of phenology indicators can be captured well using the clear EVI observations in a given year relative to the long-term mean pattern. For example, there is a notable advancement of SOS in 2012, and all three SOSs captured this variability at the pixel and regional levels (Fig. 10a and 10b). The magnitude difference of derived SOS between Landsat and MCD12Q2 is mainly due to their definitions, and the difference of SOS between Landsat and MODIS EVI is likely caused by scale effect (e.g., mixed pixels). It is worth noting that SOS derived from the half-maximum criterion in this study is consistently later compared to the MODIS product using the criterion of the inflection point.

#### 4.5 Spatiotemporal patterns of phenology indicators

Phenology indicators (SOS, EOS, and GSL) in urban domains exhibit a spatially explicit pattern from the North to the South in the conterminous US, with an overall advanced SOS in the past three decades (Fig. 11). SOS becomes earlier and EOS becomes later along the latitudinal gradient, although such spatial difference is more discernible in SOS compared to EOS at the national scale. As a result, GSL shows a generally extended trend from the North to the South (Fig. 11a). This spatial pattern of latitudinal change of phenology indicators (e.g., SOS) is also confirmed at the city level with more details (Fig. 11b), benefited from the higher spatial resolution of Landsat data. Meanwhile, the SOS in the last decade (P2: 2005-2015) is generally earlier than that in the first decade (P1: 1985-1995), although the temporal trend with an earlier SOS in past three decades is not significant for all cities. The spatiotemporal patterns of phenology indicators in the conterminous US reflect the response of vegetation phenology to regional differences of elevation, temperature, precipitation, vegetation type, as well as the global warming in past decades (Zhang et al., 2004a; Li et al., 2017a). In addition, changes in urban environment such as

impervious surface, air pollution, and the species compositions can affect the spatiotemporal pattern of vegetation phenology in urban ecosystems (Li et al., 2015;Escobedo et al., 2011).

## 5 Data availability

The derived vegetation phenology data in urban domains are available at <https://doi.org/10.6084/m9.figshare.7685645.v5>.(Li  
5 et al., 2019a).

## 6 Conclusions

This study generated the first national-scale dynamics of annual vegetation phenology in urban domains (all urban areas greater than 500 km<sup>2</sup> and their surrounding rural areas) using long-term (1985-2015) Landsat observations on the GEE platform. First, we mapped the long-term mean seasonal pattern of vegetation dynamics using a double logistic model. In this step, we  
10 proposed a stepwise statistical approach to estimate parameters in the double logistic model and implemented it on the GEE platform. Next, we identified annual dynamics of phenology indicators (i.e., SOS and EOS) by measuring the difference of dates when the EVI in a specific year reaches the same magnitude as its long-term mean. Finally, we developed the first medium spatial resolution (30 m) phenology product in urban areas in the conterminous US, over past three decades (1985-2015).

15 Overall, the Landsat based phenology indicators agree with those derived from independent *in-situ* observations (PhenoCam and HF) and another widely used satellite observations from MODIS. Overall, the phenology indicators derived from Landsat and PhenoCam are consistent for their long-term mean and annual variability. The comparison with field observations collected in the HF suggests the Landsat derived indicators can capture the temporal dynamics of vegetation phenology in this forest ecosystem. Besides, the Landsat derived phenology indicators can provide more spatial details in/around urban areas,  
20 compared to the coarse-resolution MODIS results. Also, the temporal trends of phenology indicator (e.g., SOS) derived from Landsat and MODIS are consistent overall, and Landsat additionally extends the temporal span than MODIS back to the past three decades.

The Landsat phenology product in urban areas is of great use in urban phenology studies such as phenology response to urbanization. There is a spatially explicit pattern of phenology indicators from the North to the South in US cities, with an overall advanced SOS in the past three decades. With this new phenology dataset (with a long temporal coverage and a high spatial resolution), the response of vegetation phenology to urbanization (e.g., UHI) can be further investigated, particularly for plants in the urban center or suburban areas with notably altered urban environment by anthropogenic activities, where most people reside (Zhang et al., 2004b; Alberti et al., 2017). This dataset, together with ground-based pollen concentration data, is also of help in decision making relevant to pollen-induced allergy diseases (Li et al., 2019b). In addition, the derived leaf on/off information in this dataset is potentially useful for many vegetation-air pollution deposition models (Escobedo and Nowak, 2009). However, it is worth noting that this dataset is most applicable for deciduous forest type. For grassland and evergreen forests in tropical areas, the uncertainty could be high in the derived phenology indicators. In addition, our phenology algorithm did not specifically consider pixels with land cover changes, which could be further improved when the product of annual urban dynamics becomes available.

## Appendix

The double logistic model used in the GLP approach includes two sigmoid curves indicating the green-up and senescence phases of vegetation growth (Eq. A1).

$$f(t) = v_1 + v_2 \left( \frac{1}{1+e^{-m_1(t-n_1)}} - \frac{1}{1+e^{-m_2(t-n_2)}} \right) \quad A1$$

where  $f(t)$  is the fitted EVI value at the day  $t$ ;  $v_1$  and  $v_2$  are the background and amplitude of EVI over the entire year, respectively; the first sigmoid ( $Sig_1: \frac{1}{1+e^{-m_1(t-n_1)}}$ ) with pair-parameters of  $m_1$  &  $n_1$  captures the green-up phase of vegetation growth; and the second sigmoid ( $Sig_2: \frac{1}{1+e^{-m_2(t-n_2)}}$ ) with pair-parameters of  $m_2$  &  $n_2$  captures the senescence phase of vegetation growth (Fig. A1).

We derived six parameters (i.e.,  $v_1$ ,  $v_2$ ,  $m_1$ ,  $n_1$ ,  $m_2$ , and  $n_2$ ) in the double logistic model using a statistics approach on the GEE platform. First, we estimated  $v_1$  and  $v_2$  based on the smoothed EVI time series, with abnormal observations (or noise) excluded. We calculated the quantile levels of 5<sup>th</sup> and 95<sup>th</sup> as the minimum  $v_1$  and maximum EVI  $v_{max}$  over the entire DOY range, to avoid possible biases caused by extreme values. Thus,  $v_2$  can be determined as Eq. A2.

$$v_2 = v_{max} - v_1 \quad A2$$

The first part ( $Sig_1$ ) of the double logistic model in the green-up phase (Eq. A3) can be translated to Eq. A4 by using the smoothed EVI time series only during the green-up phase before  $doy_{max}$  and converted into a logarithmic form as Eq. A5.

$$Sig_1 = \frac{f(t)-v_1}{v_2} = \frac{1}{1+e^{-m_1(t-n_1)}} \quad A3$$

$$5 \quad \frac{v_1+v_2-f(t)}{f(t)-v_1} = e^{-m_1(t-n_1)} \quad A4$$

$$\ln\left(\frac{v_1+v_2-f(t)}{f(t)-v_1}\right) = -m_1(t-n_1) \quad A5$$

where the left term in Eq. A5 can be calculated using  $v_1$  and  $v_2$ , together with the smoothed EVI time series  $f(t)$  only during the green-up phase before  $doy_{max}$ .  $m_1$  and  $n_1$  can be estimated using the least square regression approach.

Finally, based on the estimated parameters (i.e.,  $v_1$ ,  $v_2$ ,  $m_1$  and  $n_1$ ), the second part ( $Sig_2$ ) of the double logistic model in the  
10 senescence phase can be formulated as Eqs. A6-8, respectively. In a similar manner, the pair-parameters of  $m_2$  and  $n_2$  can be estimated using the least square regression approach, together with the smoothed EVI time series during the green-up and senescence phases together.

$$Sig_2 = \frac{v_1+v_2Sig_1-f(t)}{v_2} = \frac{1}{1+e^{-m_2(t-n_2)}} \quad A6$$

$$\frac{v_2(1-Sig_1)-v_1+f(t)}{v_1+v_2Sig_1-f(t)} = e^{-m_2(t-n_2)} \quad A7$$

$$15 \quad \ln\left(\frac{v_2(1-Sig_1)-v_1+f(t)}{v_1+v_2Sig_1-f(t)}\right) = -m_2(t-n_2) \quad A8$$

### Author contributions

ZY and LX designed the research; LX and ZY implemented the research and wrote the paper; GA, ML, LC, and WQ edited and revised the manuscript.

### Competing interests

20 The authors declare that they have no conflict of interest.

## Acknowledgments

This study was supported by the NASA ROSES INCA Program “NNH14ZDA001N-INCA”.

## References

- 5 Aas, K., Aberg, N., Bachert, C., Bergmann, K., Bergmann, R., and Bonini, S.: Allergic disease as a public health problem in Europe, *European allergy*, 1-46, 1997.
- Alberti, M., Correa, C., Marzluff, J. M., Hendry, A. P., Palkovacs, E. P., Gotanda, K. M., Hunt, V. M., Apgar, T. M., and Zhou, Y.: Global urban signatures of phenotypic change in animal and plant populations, *P Natl Acad Sci USA*, 114, 8951-8956, 10.1073/pnas.1606034114, 2017.
- 10 Anenberg, S. C., Weinberger, K. R., Roman, H., Neumann, J. E., Crimmins, A., Fann, N., Martinich, J., and Kinney, P. L.: Impacts of oak pollen on allergic asthma in the United States and potential influence of future climate change, *GeoHealth*, 1, 80-92, 2017.
- Carrão, H., Gonçalves, P., and Caetano, M.: A nonlinear harmonic model for fitting satellite image time series: Analysis and prediction of land cover dynamics, *IEEE Transactions on Geoscience and Remote Sensing*, 48, 1919-1930, 2010.
- 15 Cong, N., Piao, S., Chen, A., Wang, X., Lin, X., Chen, S., Han, S., Zhou, G., and Zhang, X.: Spring vegetation green-up date in China inferred from SPOT NDVI data: A multiple model analysis, *Agricultural and Forest Meteorology*, 165, 104-113, <http://dx.doi.org/10.1016/j.agrformet.2012.06.009>, 2012.
- Escobedo, F. J., and Nowak, D. J.: Spatial heterogeneity and air pollution removal by an urban forest, *Landscape Urban Plan*, 90, 102-110, 2009.
- Escobedo, F. J., Kroeger, T., and Wagner, J. E.: Urban forests and pollution mitigation: Analyzing ecosystem services and disservices, *Environmental pollution*, 159, 2078-2087, 2011.
- 20 Fisher, J. I., Mustard, J. F., and Vadeboncoeur, M. A.: Green leaf phenology at Landsat resolution: Scaling from the field to the satellite, *Remote Sens Environ*, 100, 265-279, <http://dx.doi.org/10.1016/j.rse.2005.10.022>, 2006.
- Fisher, J. I., and Mustard, J. F.: Cross-scalar satellite phenology from ground, Landsat, and MODIS data, *Remote Sens Environ*, 109, 261-273, <http://dx.doi.org/10.1016/j.rse.2007.01.004>, 2007.
- 25 Gong, P., Liang, S., Carlton, E. J., Jiang, Q., Wu, J., Wang, L., and Remais, J. V.: Urbanisation and health in China, *Lancet*, 379, 843-852, [http://dx.doi.org/10.1016/S0140-6736\(11\)61878-3](http://dx.doi.org/10.1016/S0140-6736(11)61878-3), 2012.
- Gorelick, N., Hancher, M., Dixon, M., Ilyushchenko, S., Thau, D., and Moore, R.: Google Earth Engine: Planetary-scale geospatial analysis for everyone, *Remote Sens Environ*, 202, 18-27, <http://dx.doi.org/10.1016/j.rse.2017.06.031>, 2017.
- Hansen, M. C., Potapov, P. V., Moore, R., Hancher, M., Turubanova, S. A., Tyukavina, A., Thau, D., Stehman, S. V., Goetz, S. J., Loveland, T. R., Kommareddy, A., Egorov, A., Chini, L., Justice, C. O., and Townshend, J. R. G.: High-Resolution Global Maps of 21st-Century Forest Cover Change, *Science*, 342, 850-853, 10.1126/science.1244693, 2013.
- 30 Hogda, K. A., Karlsen, S. R., Solheim, I., Tommervik, H., and Ramfjord, H.: The start dates of birch pollen seasons in Fennoscandia studied by NOAA AVHRR NDVI data, *Geoscience and Remote Sensing Symposium*, 2002. IGARSS'02. 2002 IEEE International, 2002, 3299-3301,
- Huete, A., Didan, K., Miura, T., Rodriguez, E. P., Gao, X., and Ferreira, L. G.: Overview of the radiometric and biophysical performance of the MODIS vegetation indices, *Remote Sens Environ*, 83, 195-213, [http://dx.doi.org/10.1016/S0034-4257\(02\)00096-2](http://dx.doi.org/10.1016/S0034-4257(02)00096-2), 2002.
- 35 Jochner, S., and Menzel, A.: Urban phenological studies – Past, present, future, *Environmental Pollution*, 203, 250-261, <http://dx.doi.org/10.1016/j.envpol.2015.01.003>, 2015.
- Jochner, S. C., Sparks, T. H., Estrella, N., and Menzel, A.: The influence of altitude and urbanisation on trends and mean dates in phenology (1980–2009), *International Journal of Biometeorology*, 56, 387-394, 10.1007/s00484-011-0444-3, 2011.
- 40 Keenan, T. F., Gray, J., Friedl, M. A., Toomey, M., Bohrer, G., Hollinger, D. Y., Munger, J. W., O'Keefe, J., Schmid, H. P., Wing, I. S., Yang, B., and Richardson, A. D.: Net carbon uptake has increased through warming-induced changes in temperate forest phenology, *Nature Clim. Change*, 4, 598-604, 10.1038/nclimate2253 <http://www.nature.com/nclimate/journal/v4/n7/abs/nclimate2253.html#supplementary-information>, 2014.
- 45 Li, X., Gong, P., and Liang, L.: A 30-year (1984–2013) record of annual urban dynamics of Beijing City derived from Landsat data, *Remote Sens Environ*, 166, 78-90, 10.1016/j.rse.2015.06.007, 2015.
- Li, X., Zhou, Y., Asrar, G. R., Mao, J., Li, X., and Li, W.: Response of vegetation phenology to urbanization in the conterminous United States, *Global Change Biology*, 23, 6030-6046, 10.1111/gcb.13562, 2017a.
- Li, X., Zhou, Y., Asrar, G. R., and Meng, L.: Characterizing spatiotemporal dynamics in phenology of urban ecosystems based on Landsat data, *Science of The Total Environment*, 605–606, 721-734, <https://doi.org/10.1016/j.scitotenv.2017.06.245>, 2017b.
- 50 Li, X., Zhou, Y., Meng, L., Asrar, G., Lu, C., and Wu, Q.: A dataset of 30-meter annual vegetation phenology indicators (1985-2015) in urban areas of the conterminous United States, 2019a.

- Li, X., Zhou, Y., Meng, L., Asrar, G. R., Sapkota, A., and Coates, F.: Characterizing the relationship between satellite phenology and pollen season: a case study of birch, *Remote Sens Environ*, 222, 257-274, [j.rse.2018.12.036](https://doi.org/10.1016/j.rse.2018.12.036), 2019b.
- Liu, Y., Wu, C., Peng, D., Xu, S., Gonsamo, A., Jassal, R. S., Altaf Arain, M., Lu, L., Fang, B., and Chen, J. M.: Improved modeling of land surface phenology using MODIS land surface reflectance and temperature at evergreen needleleaf forests of central North America, *Remote Sens Environ*, 176, 152-162, <http://dx.doi.org/10.1016/j.rse.2016.01.021>, 2016.
- 5 Liu, Y., Hill, M. J., Zhang, X., Wang, Z., Richardson, A. D., Hufkens, K., Filippa, G., Baldocchi, D. D., Ma, S., Verfaillie, J., and Schaaf, C. B.: Using data from Landsat, MODIS, VIIRS and PhenoCams to monitor the phenology of California oak/grass savanna and open grassland across spatial scales, *Agricultural and Forest Meteorology*, 237-238, 311-325, <https://doi.org/10.1016/j.agrformet.2017.02.026>, 2017.
- 10 Luz de la Maza, C., Hernández, J., Bown, H., Rodríguez, M., and Escobedo, F.: Vegetation diversity in the Santiago de Chile urban ecosystem, *Arboricultural journal*, 26, 347-357, 2002.
- Masek, J. G., Vermote, E. F., Saleous, N. E., Wolfe, R., Hall, F. G., Huemmrich, K. F., Gao, F., Kutler, J., and Lim, T.-K.: A Landsat surface reflectance dataset for North America, 1990-2000, *Geoscience and Remote Sensing Letters, IEEE*, 3, 68-72, 2006.
- Melaas, E. K., Friedl, M. A., and Zhu, Z.: Detecting interannual variation in deciduous broadleaf forest phenology using Landsat TM/ETM + data, *Remote Sens Environ*, 132, 176-185, <http://dx.doi.org/10.1016/j.rse.2013.01.011>, 2013.
- 15 Melaas, E. K., Sulla-Menashe, D., Gray, J. M., Black, T. A., Morin, T. H., Richardson, A. D., and Friedl, M. A.: Multisite analysis of land surface phenology in North American temperate and boreal deciduous forests from Landsat, *Remote Sens Environ*, 186, 452-464, <http://dx.doi.org/10.1016/j.rse.2016.09.014>, 2016a.
- Melaas, E. K., Wang, J. A., Miller, D. L., and Friedl, M. A.: Interactions between urban vegetation and surface urban heat islands: a case study in the Boston metropolitan region, *Environmental Research Letters*, 11, 054020, 2016b.
- 20 Moody, A., and Johnson, D. M.: Land-surface phenologies from AVHRR using the discrete Fourier transform, *Remote Sens Environ*, 75, 305-323, 2001.
- Pekel, J.-F., Cottam, A., Gorelick, N., and Belward, A. S.: High-resolution mapping of global surface water and its long-term changes, *Nature*, 540, 418-422, [10.1038/nature20584](https://doi.org/10.1038/nature20584)
- 25 <http://www.nature.com/nature/journal/v540/n7633/abs/nature20584.html#supplementary-information>, 2016.
- Peng, S., Piao, S., Ciais, P., Myneni, R. B., Chen, A., Chevallier, F., Dolman, A. J., Janssens, I. A., Penuelas, J., Zhang, G., Vicca, S., Wan, S., Wang, S., and Zeng, H.: Asymmetric effects of daytime and night-time warming on Northern Hemisphere vegetation, *Nature*, 501, 88-92, [10.1038/nature12434](https://doi.org/10.1038/nature12434)
- 30 <http://www.nature.com/nature/journal/v501/n7465/abs/nature12434.html#supplementary-information>, 2013.
- Piao, S., Fang, J., Zhou, L., Ciais, P., and Zhu, B.: Variations in satellite-derived phenology in China's temperate vegetation, *Global Change Biology*, 12, 672-685, [10.1111/j.1365-2486.2006.01123.x](https://doi.org/10.1111/j.1365-2486.2006.01123.x), 2006.
- Richardson, A. D., Bailey, A. S., Denny, E. G., Martin, C. W., and O'KEEFE, J.: Phenology of a northern hardwood forest canopy, *Global Change Biology*, 12, 1174-1188, 2006.
- Richardson, A. D., Hufkens, K., Milliman, T., Aubrecht, D. M., Chen, M., Gray, J. M., Johnston, M. R., Keenan, T. F., Klosterman, S. T., and Kosmala, M.: Tracking vegetation phenology across diverse North American biomes using PhenoCam imagery, *Scientific data*, 5, 180028, 2018.
- 35 Tang, J., Körner, C., Muraoka, H., Piao, S., Shen, M., Thackeray, S. J., and Yang, X.: Emerging opportunities and challenges in phenology: a review, *Ecosphere*, 7, 1-17, [10.1002/ecs2.1436](https://doi.org/10.1002/ecs2.1436), 2016.
- United Nations: World urbanization prospects: the 2018 revision, UN, 2018.
- 40 Walker, J. J., de Beurs, K. M., Wynne, R. H., and Gao, F.: Evaluation of Landsat and MODIS data fusion products for analysis of dryland forest phenology, *Remote Sens Environ*, 117, 381-393, <http://dx.doi.org/10.1016/j.rse.2011.10.014>, 2012.
- Walker, J. J., de Beurs, K. M., and Henebry, G. M.: Land surface phenology along urban to rural gradients in the U.S. Great Plains, *Remote Sens Environ*, 165, 42-52, <http://dx.doi.org/10.1016/j.rse.2015.04.019>, 2015.
- White, A. M., Nemani, R. R., Thornton, E. P., and Running, W. S.: Satellite Evidence of Phenological Differences Between Urbanized and Rural Areas of the Eastern United States Deciduous Broadleaf Forest, *Ecosystems*, 5, 260-273, [10.1007/s10021-001-0070-8](https://doi.org/10.1007/s10021-001-0070-8), 2002.
- 45 Xiong, J., Thenkabail, P., Tilton, J., Gumma, M., Teluguntla, P., Oliphant, A., Congalton, R., Yadav, K., and Gorelick, N.: Nominal 30-m Cropland Extent Map of Continental Africa by Integrating Pixel-Based and Object-Based Algorithms Using Sentinel-2 and Landsat-8 Data on Google Earth Engine, *Remote Sensing*, 9, 1065, 2017.
- Zhang, X., Friedl, M. A., Schaaf, C. B., Strahler, A. H., Hodges, J. C. F., Gao, F., Reed, B. C., and Huete, A.: Monitoring vegetation phenology using MODIS, *Remote Sens Environ*, 84, 471-475, [http://dx.doi.org/10.1016/S0034-4257\(02\)00135-9](http://dx.doi.org/10.1016/S0034-4257(02)00135-9), 2003.
- 50 Zhang, X., Friedl, M. A., Schaaf, C. B., and Strahler, A. H.: Climate controls on vegetation phenological patterns in northern mid-and high latitudes inferred from MODIS data, *Global Change Biology*, 10, 1133-1145, 2004a.
- Zhang, X., Friedl, M. A., Schaaf, C. B., Strahler, A. H., and Schneider, A.: The footprint of urban climates on vegetation phenology, *Geophysical Research Letters*, 31, L12209, [10.1029/2004GL020137](https://doi.org/10.1029/2004GL020137), 2004b.
- 55 Zhou, D., Zhao, S., Zhang, L., and Liu, S.: Remotely sensed assessment of urbanization effects on vegetation phenology in China's 32 major cities, *Remote Sens Environ*, 176, 272-281, <http://dx.doi.org/10.1016/j.rse.2016.02.010>, 2016.

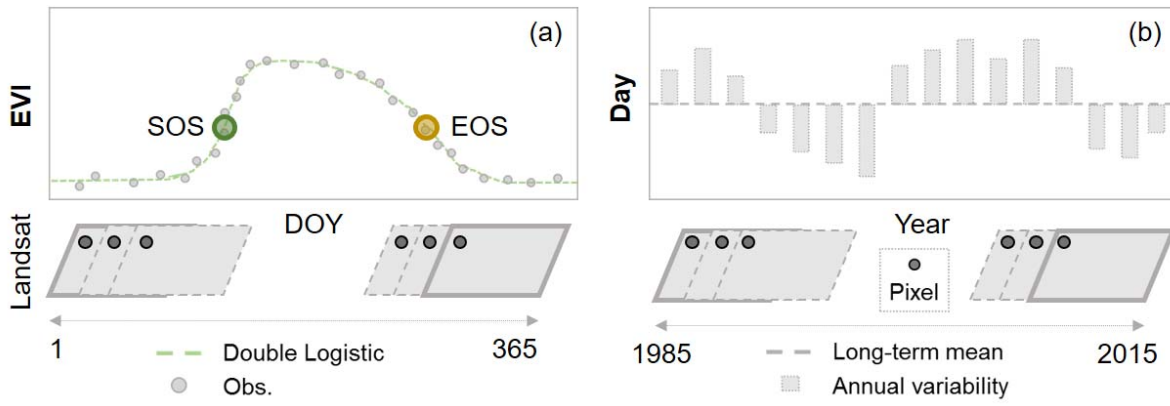
Zhou, Y., Smith, S. J., Elvidge, C. D., Zhao, K., Thomson, A., and Imhoff, M.: A cluster-based method to map urban area from DMSP/OLS nightlights, *Remote Sens Environ*, 147, 173-185, 10.1016/j.rse.2014.03.004, 2014.

Zhou, Y., Li, X., Asrar, G. R., Smith, S. J., and Imhoff, M.: A global record of annual urban dynamics (1992-2013) from nighttime lights, *Remote Sens Environ*, 219, 206-220, 2018.

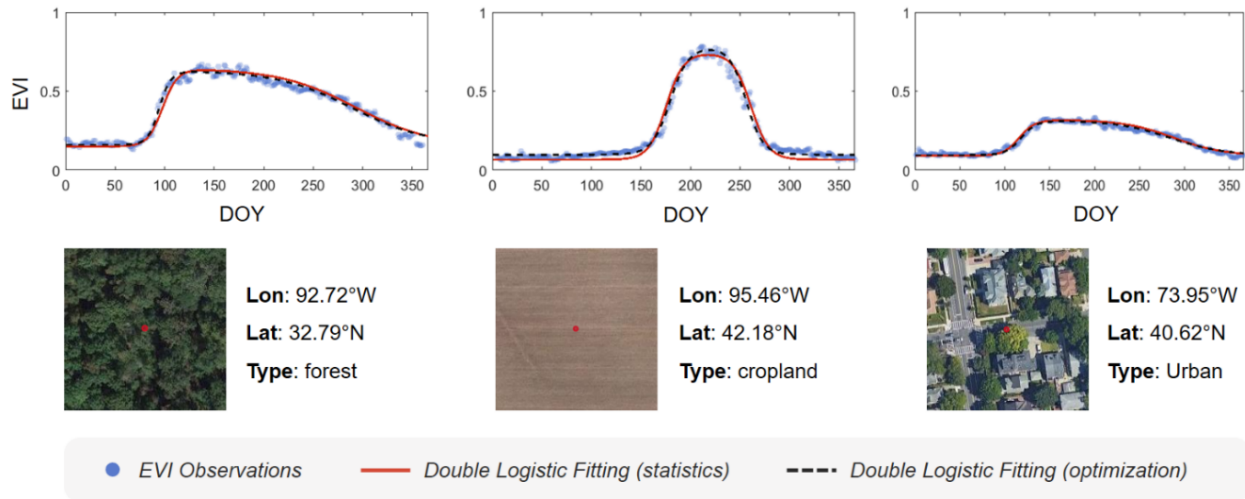
5 Zhu, Z., and Woodcock, C. E.: Object-based cloud and cloud shadow detection in Landsat imagery, *Remote Sens Environ*, 118, 83-94, <http://dx.doi.org/10.1016/j.rse.2011.10.028>, 2012.

Zipper, S. C., Schatz, J., Singh, A., Kucharik, C. J., Townsend, P. A., and Loheide, I., Steven P. : Urban heat island impacts on plant phenology: intra-urban variability and response to land cover, *Environmental Research Letters*, 11, 054023, 2016.

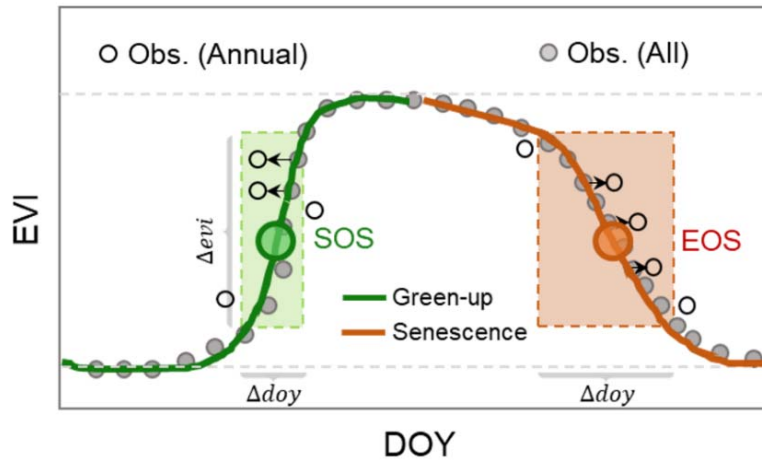




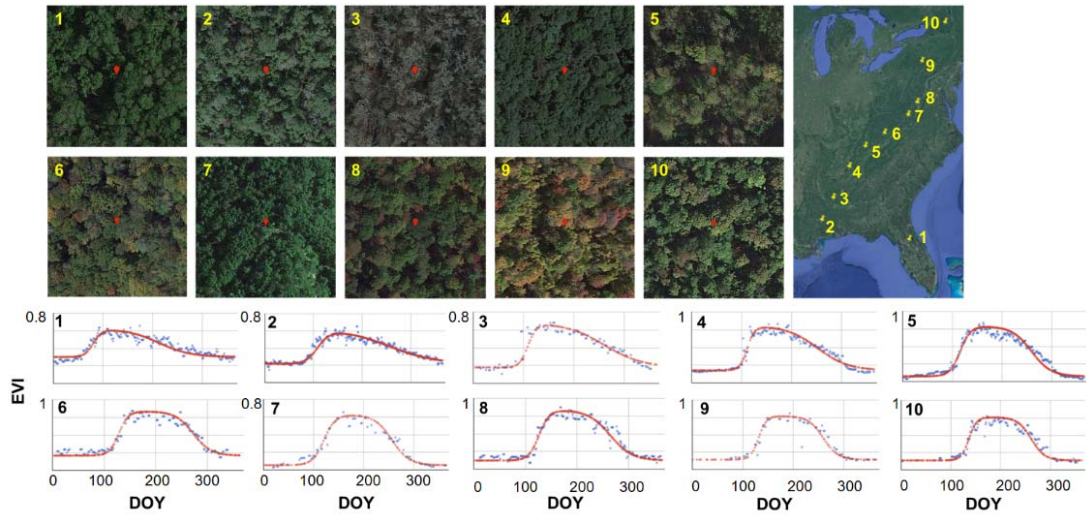
**Fig. 1:** The proposed framework for deriving long-term (1985-2015) mean vegetation phenology indicators (start of season-SOS and end of season - EOS) (a) and their annual variabilities (b).



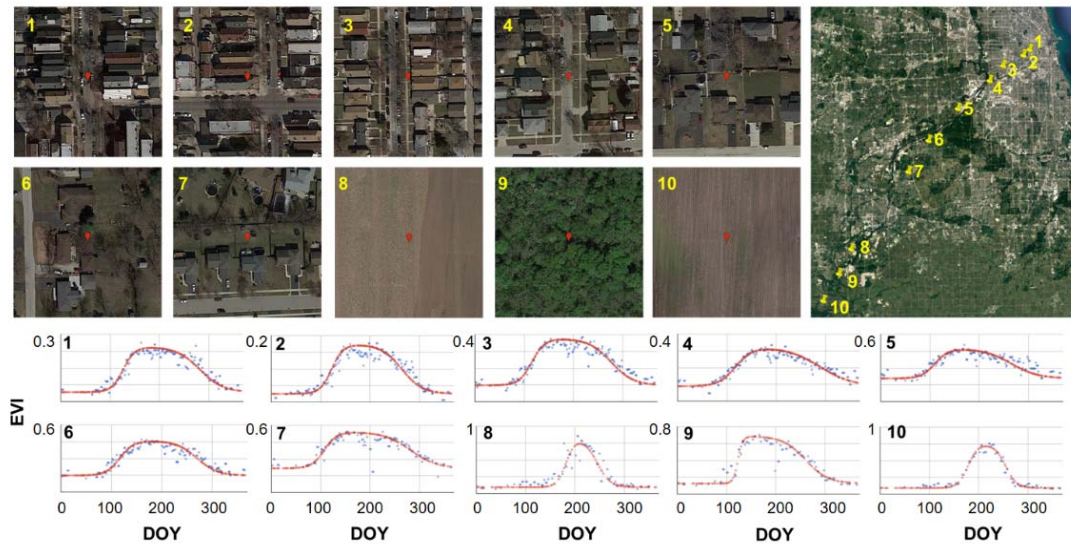
**Fig. 2:** Seasonal patterns of vegetation growth captured by the double logistic model for three distinctly different land cover types. The extent of a snapshot is  $100\text{m} \times 100\text{m}$ , and the red dot in the snapshot is the location of the Enhanced Vegetation Index (EVI) plot. EVI observations were composited using all clear-sky pixels during the past three decades (1985-2015).



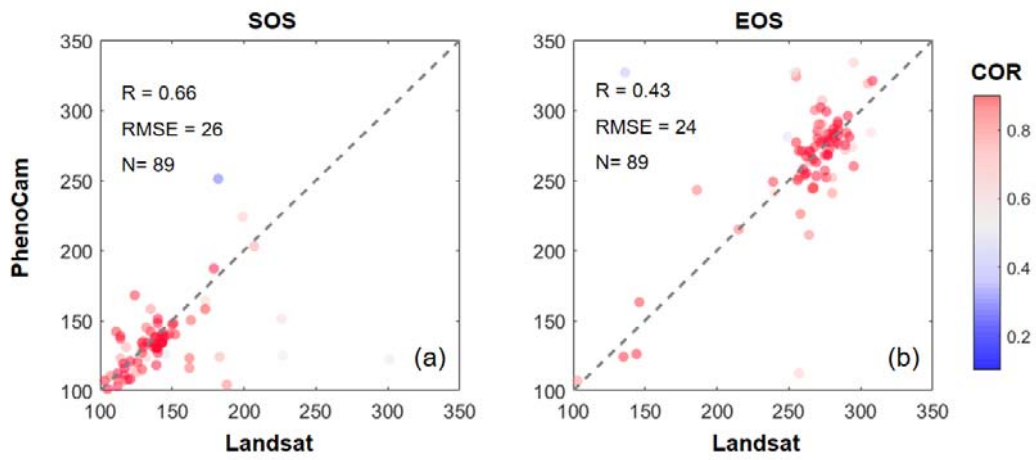
**Fig. 3:** Illustration of the generalized Landsat phenology (GLP) approach for identifying the annual variability of phenology indicators. The solid circles are long-term enhanced vegetation index (EVI) observations and the empty circles are observations at a specific year. The shaded frames colored as green and brown are the rational ranges of day of year (DOY) and EVI to be used during the green-up and senescence phases, respectively.



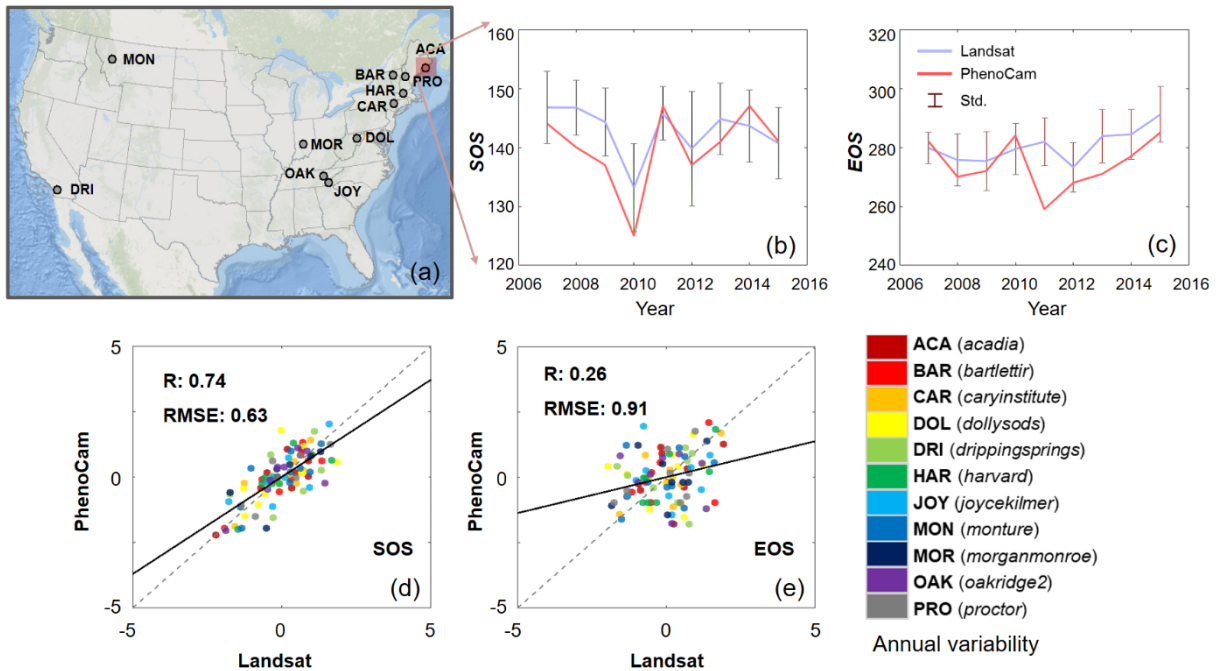
**Fig. 4:** Performance of the Google Earth Engine (GEE)-based double logistic model from the South to the North in the United States using forest as an example. Each snapshot indicates a 1km<sup>2</sup> square, and the red dot in the middle is the location (30m) of the enhanced vegetation index (EVI) time series fitting.



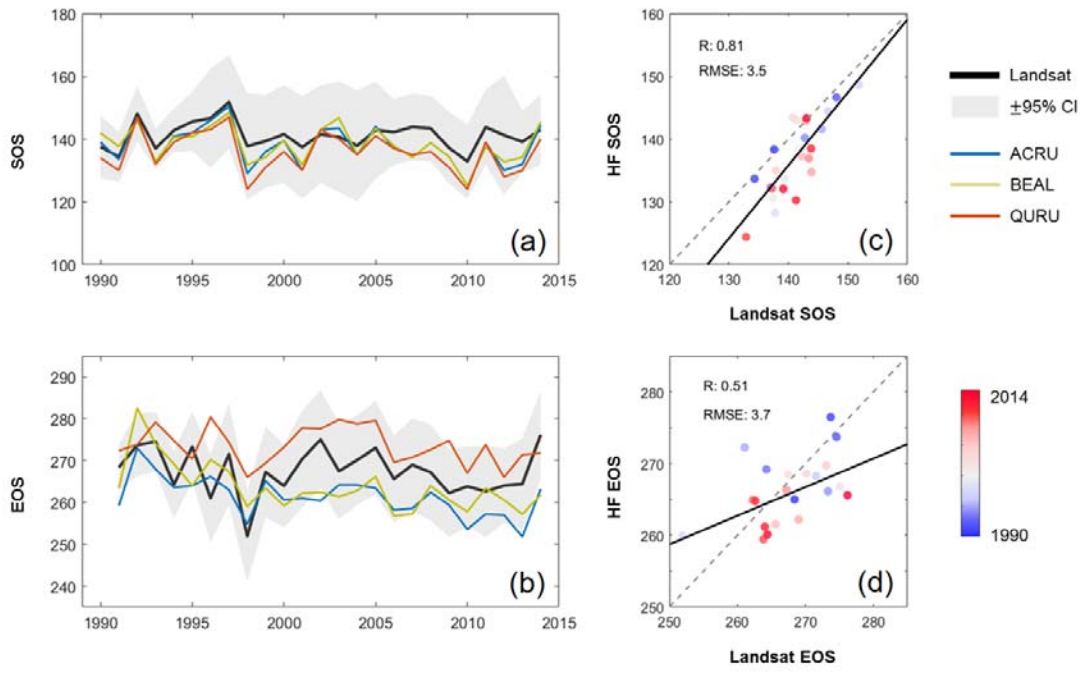
**Fig. 5:** Performance of the Google Earth Engine (GEE)-based double logistic model for sites from urban center to rural areas in the Chicago metropolitan area. Each snapshot indicates a 1km<sup>2</sup> square, and the red dot in the middle is the location (30m) of the enhanced vegetation index (EVI) time series fitting.



**Fig. 6:** Comparison of the period (2001-2015) mean phenology indicators of the start of season (SOS) (a) and the end of season (EOS) (b) derived from Landsat and PhenoCam observations. COR: the correlation coefficient between the raw and fitted EVIs using the double logistic model.

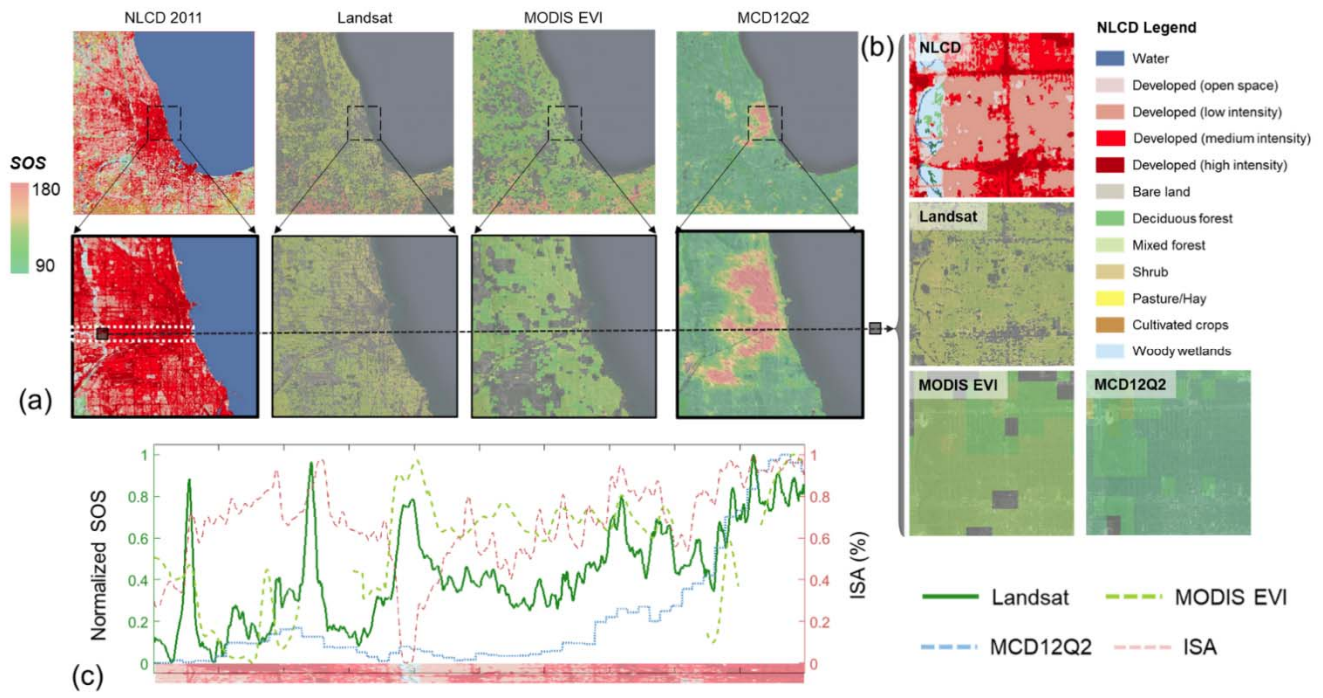


**Fig. 7:** Selected PhenoCam sites of deciduous broadleaf forest (a). Annual time series of phenology indicators in the station of *Acadia* for the start of season (SOS) (b) and the end of season (EOS) (c). Comparison of annual variability of SOS (d) and EOS (e) between Landsat and PhenoCam phenology indicators across all stations. The annual variability for each site is defined as  $(x - \mu)/\sigma$ , where  $x$  is the annual value of SOS and EOS,  $\mu$  and  $\sigma$  are mean and standard deviation of SOS or EOS over the years.

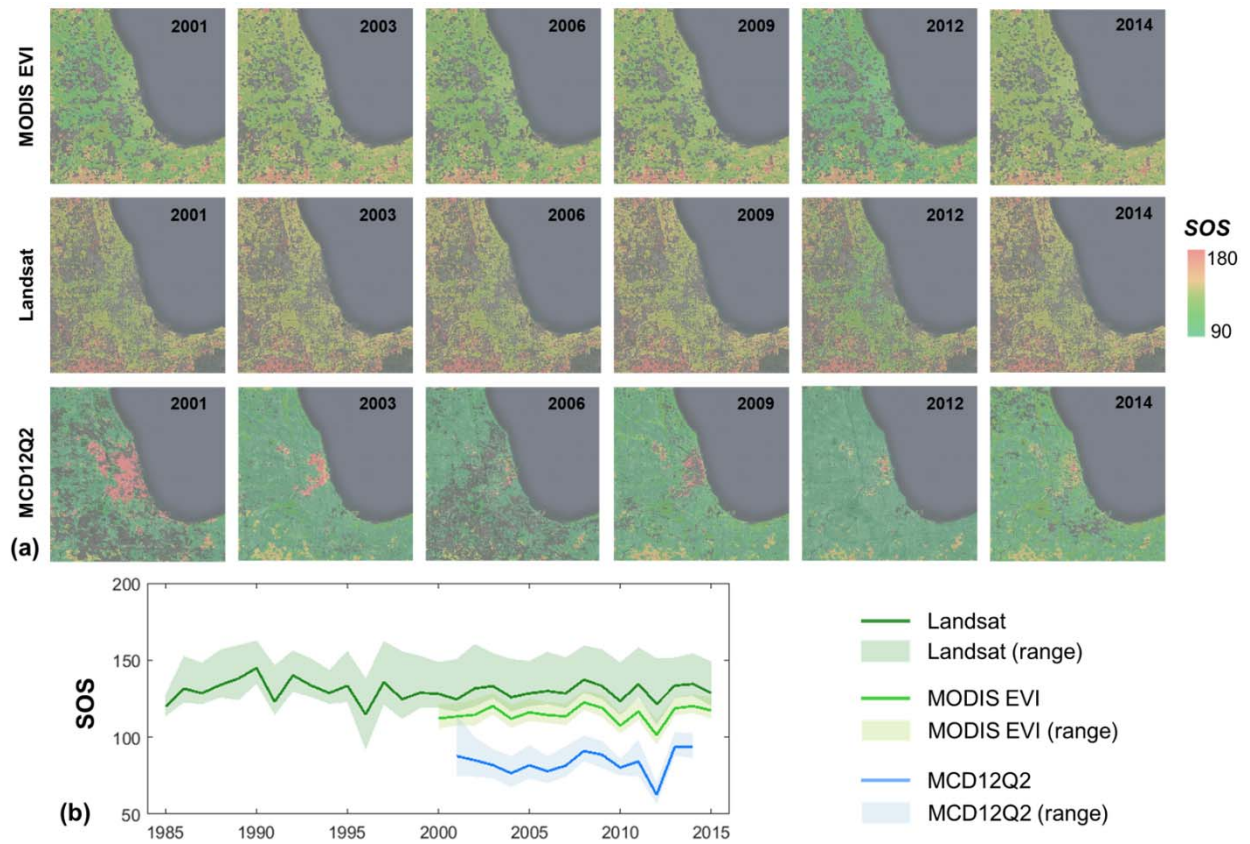


**Fig. 8:** Annual dynamics of the start of season (SOS) (a) and the end of season (EOS) (b) derived from Landsat and Harvard Forest (HF) observations and their scatter plots of SOS (c) and EOS (d) over the years.

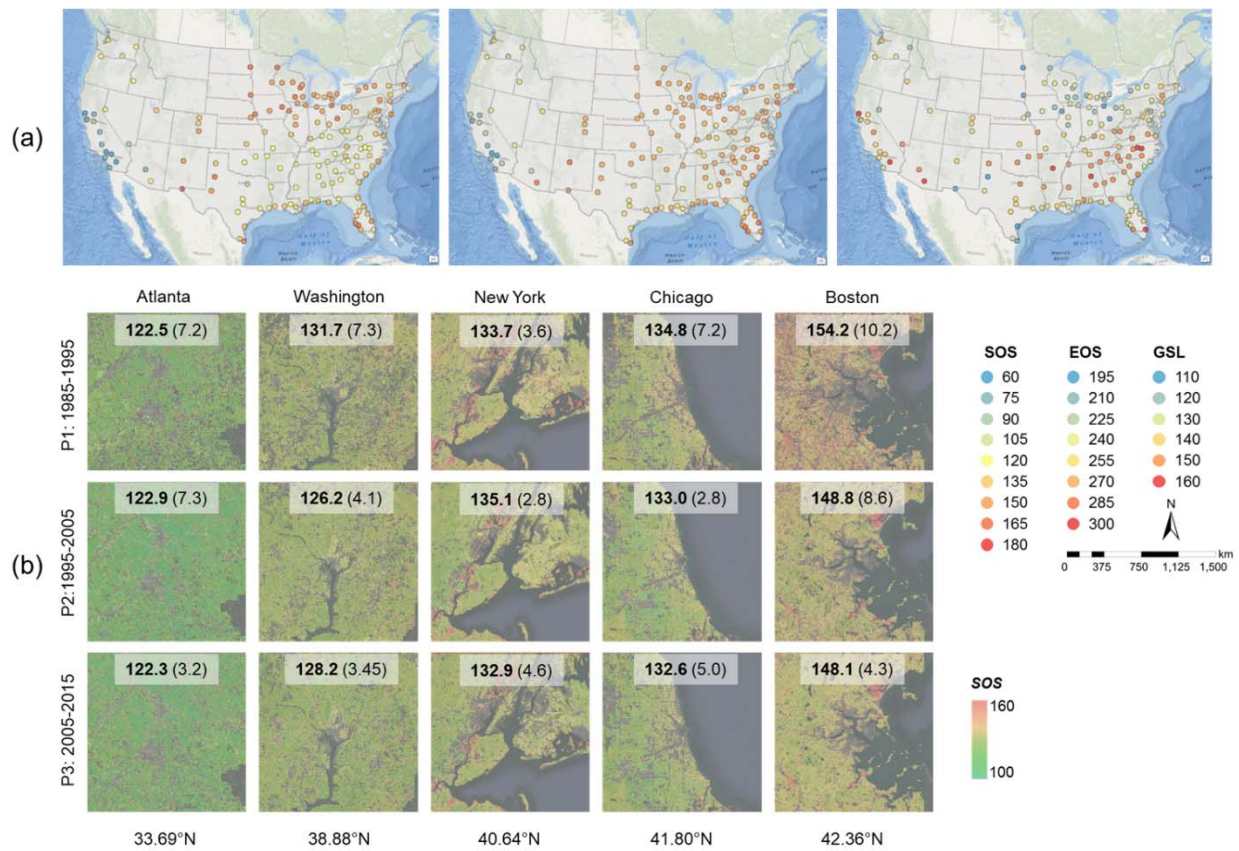




**Fig. 9:** Spatial patterns of the mean start of season (SOS) (2001-2014) derived from Landsat, the Moderate Resolution Imaging Spectroradiometer (MODIS) enhanced vegetation index (EVI), and MCD12Q2 and the land cover from the national land cover database (NLCD) (2011) in the Chicago metropolitan area (a). Enlarged views (b) at the location of the black square in (a). Change of normalized SOS and impervious surface area (ISA) (c) along the white rectangle in (a) (from left to right). Pixels without good fitting performance (i.e., the correlation coefficient is lower than 0.85) were removed in the derived SOS from Landsat and MODIS EVI.

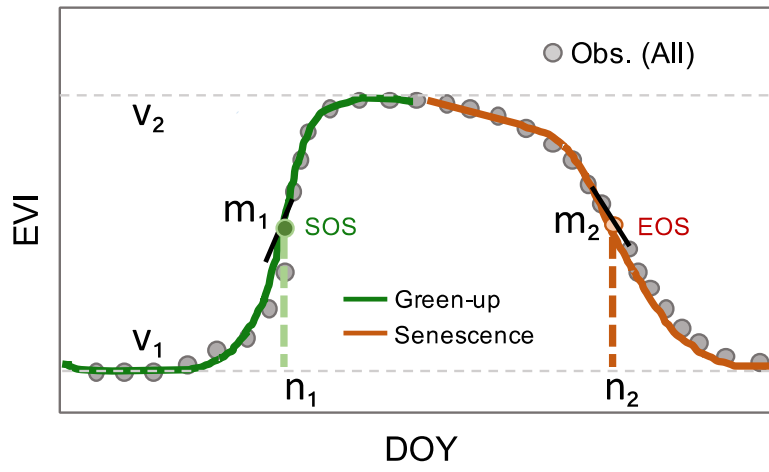


**Fig. 10:** Annual start of season (SOS) derived from Landsat, the Moderate Resolution Imaging Spectroradiometer (MODIS) enhanced vegetation index (EVI), and MCD12Q2 in the Chicago metropolitan area in representative years (a) and the temporal trend at the regional level (b). Solid lines are the mean SOSs at the regional level and shadowed frames indicate the range of SOS within the 25th and 75th 5 quantile levels. Pixels without good fitting performance (i.e., the correlation coefficient is lower than 0.85) were removed in the derived SOS from Landsat and MODIS EVI.



**Fig. 11:** Spatial patterns of the mean (1985-2015) vegetation phenology indicators (start of season - SOS, end of season - EOS, and growth season length - GSL) in the United States cities (a) and SOS in representative cities in the past three decades (b). Each dot in (a) represents the center of the urban cluster, and the spatial extent of selected cities in (b) is 25 km × 25 km. The mean SOS of each city and its standard deviation within each period (in parentheses) are provided in (b).

5



**Fig. A1:** Illustration of the double logistic model and corresponding parameters. EVI: enhanced vegetation index; DOY: day of year.