

Interactive comment on “Comprehensive aerosol and gas data set from the Sydney Particle Study” by Melita Keywood et al.

Referee 1

We would like to thank Referee 1 for his time taken to review this manuscript and for his comments which will result improvements to the manuscript. We have addressed the comments below.

Referee 1 comment

This paper presents itself as the metadata for two datasets from the Sydney Particle Study in 2011/12 available on the CSIRO servers. The two datasets are easily accessible following the links in the paper and easy to download. The paper itself is well written and is a good overview of the data. The descriptions of the data and accompanying plots are sufficiently detailed to inform potential users of the type and amount of data available.

There is no information on any quality assurance processing, which would add to confidence in the data.

Our response

The manuscript does include descriptions of the calibration processes used to ensure high quality data in the method description for each parameter and we have assigned an uncertainty associated with the check were possible. For example, the text for the PTR-MS description is reproduced below

The PTR-MS operates with the aid of a custom built auxiliary rack that regulates the flow of air in the sample inlet and controls whether the PTR-MS is sampling ambient or zero air or calibration gas. During this study zero readings and calibrations against certified gas standards were performed on the PTR-MS several times per day. Four calibration standards were used during the study, diluted to atmospheric concentrations using a set of mass flow controllers and a mixing chamber in the auxiliary rack. The PTR-MS was calibrated for: formaldehyde, acetaldehyde, acrolein, methacrolein, acetone, methyl ethyl ketone, methanol, ethyl acetate, benzene, xylene, trimethyl benzene, isoprene, α -pinene, 1,8 cineole, dimethyl sulphide, acetonitrile and the mono-, di- and tri-chlorobenzenes. Only m/z that were detected above the method detection limit (MDL) greater than 25% of the time and had peak to noise ratios greater than 5 (95th percentile/MDL) are reported. Further details are available in Galbally et al. (2007) and Dunne et al. (2012).

In addition, where possible we operated the instruments following an Australian or international standard method which are put in place to ensure high quality data. The standards followed and reported in the manuscript are

1. AS 3580.4.1-2008: Methods of sampling and analysis of ambient air Determination of sulfur dioxide - Direct reading instrumental method, 2008.
2. AS/NZ 3580.9.8-2008: Determination of suspended particulate matter — PM₁₀ continuous direct mass method using a tapered element oscillating microbalance analyser, 2008.
3. AS/NZS 3580.12.1:2001: Methods for sampling and analysis of ambient air - Determination of light scattering - Integrating nephelometer method, 2001.
4. AS/NZS 3580.14:2011: Methods for sampling and analysis of ambient air - Part 14: Meteorological monitoring for ambient air quality monitoring applications, 2011.
5. AS/NZS 3580:5.1:2011: Methods of Sampling and Analysis of Ambient Air – Determination of oxides of nitrogen- Direct reading instrumental method., 2011.

6. AS/NZS 3580:6.1:2011: Methods of Sampling and Analysis of Ambient Air – Determination of ozone- Direct reading instrumental method., 2011.
7. AS/NZS 3580:7.1:2011: Methods of Sampling and Analysis of Ambient Air – Determination of carbon monoxide- Direct reading instrumental method., 2011.

Referee 1 comment

There are a few typos, for example, NO_y in table 1 (page5) rather than NO_x but nothing serious - a final, good proofread required

Our response

We agree and have carried out a thorough proof read of the manuscript. We have corrected a number of minor mistakes in the text and in the reference list.

Interactive comment on “Comprehensive aerosol and gas data set from the Sydney Particle Study” by Melita Keywood et al.

Anonymous Referee #2 Received and published: 17 June 2019

We would like to thank Referee 2 for their time taken to review this manuscript and for their comments which will result improvements to the manuscript. We have addressed the comments below.

Referee 2 comment

The Comprehensive aerosol and gas data set from the Sydney Particle Study presents two sets of data collected in two seasons at the western Sydney location. The large number of variables and the easy accessibility of data will help various studies and the manuscript can be considered for publication. The text describes the data in detail, however, some improvements could help readers: In the text: L 70, table I should be described in more detail and in particular the content of the columns 'resolution' and 'reported resolution'.

Our response

We have changed the paragraph describing Table 1 to

“Table 1 provides a summary of the parameter measured and the instrument used to measure the parameter. The frequency at which the measurement of each parameter was made is also listed in the table ranging from continuous to one measurement every few minutes to the collection of a sample over several hours (integrated). The frequency at which the data are reported is also included in Table 1 as well as the units the measurements are reported in and whether the measurements were made during SPS-I, SPS-II or during both periods”. **Error! Reference source not found.** We have also changed the headings from resolution and reported resolution to frequency collected and frequency reported and have added a description of what these terms mean in the table heading (reproduced below).

Table 1. Measurements made at Westmead during SPS-I and SPS-II along with the instrument or analytical technique employed, the measurement and reporting resolution, and the measurement units. Frequency of measurement is the frequency with which the data are collected. Frequency reported is the frequency at which the data are reported (may be an average of the frequency of measurement).

Referee 2 comment

Table 1: could be organized with the variables in line according to the text flow.

Our response

While we acknowledge the benefit of organising the variables in Table 1 in line with the flow of the text, we believe that the benefit of the current order to the reader is greater. In particular, the text order discusses continuous measurements followed by integrated measurements. Included in the integrated measurement text are descriptions of the analytical procedures used to analyse the samples collected. We feel this provides a logical flow in the text. If we were to reorganise the variables in Table 1 to reflect the flow of the text, we would see a number of similar variables split e.g. VOCs across the table. Instead, we feel that ordering the table around variables is more useful to the reader. For example, the reader can easily determine all the methods that were used to measure VOCs at a glance rather than having to scroll across two pages of the table. Hence, we have chosen not to adopt this suggestion.

Referee 2 comment

Figures: when possible, for a better comparison (see fig.1 for example), the same vertical scale should be used for both data sets.

Our response

We have amended the vertical scales on the plots of Figure 1 to make them consistent

Comprehensive aerosol and gas data set from the Sydney Particle Study

Melita Keywood¹, Paul Selleck¹, Fabienne Reisen¹, David Cohen², Scott Chambers², Min Cheng¹, Martin Cope¹, Suzanne Crumeyrolle³, Erin Dunne¹, Kathryn Emmerson¹, Rosemary Fedele⁴, Ian Galbally¹, Rob Gillett¹, Alan Griffiths², Elise-Andree Guerette^{1,5}, James Harnwell¹, Ruhi Humphries¹, Sarah Lawson¹, Branka Miljevic⁶, Suzie Molloy¹, Jennifer Powell¹, Jack Simmons⁵, Zoran Ristovski⁶, Jason Ward¹

¹CSIRO Oceans and Atmosphere, PMB1 Aspendale, VIC 3195, Australia

²ANSTO, Environmental Research, Locked Bag 2001, Kirrawee DC, NSW 2232, Australia

³Univ. Lille, CNRS, UMR 8518 - LOA - Laboratoire d'Optique Atmosphérique, 59000 Lille, France

⁴EPA Victoria Melbourne Vic 3001 Australia

⁵University of Wollongong School of Chemistry University of Wollongong N.S.W. 2522 Australia

⁶School of Chemistry, Physics and Mechanical Engineering, Queensland University of Technology Brisbane QLD 4001 Australia

Correspondence to: Melita Keywood (melita.keywood@csiro.au)

Abstract.

The Sydney Particle Study involved the comprehensive measurement of meteorology, particles and gases at a location in western Sydney during February/March 2011 and April/May 2012. The aim of this study was to increase scientific understanding of particle formation and transformations in the Sydney airshed. In this paper we describe the methods used to collect and analyse particle and gaseous samples, as well as the methods employed for the continuous measurement of particle concentrations, particle microphysical properties and gaseous concentrations. This paper also provides a description of the data collected and is a meta data record for the data sets published in Keywood et al. (2016a) <http://doi.org/10.4225/08/57903B83D6A5D> and Keywood et al. (2016b) <http://doi.org/10.4225/08/5791B5528BD63>.

1. Introduction

Atmospheric particles adversely effect human health, impacting mortality and morbidity (Pope et al., 2002), and are a significant contributor to outdoor air pollution being recognised by the World Health Organisation as carcinogenic to humans (Lim et al., 2012). Atmospheric particles are derived from a wide range of natural and anthropogenic sources, and hence are made up of a range of sizes and chemical compositions. This makes reduction of particle concentrations in the atmosphere by source regulation very challenging. In particular, reduction of secondary particles, which can be an important component of total particle exposure (Brook et al., 2010), are generated by photochemical reactions in the atmosphere and hence require control mechanisms that consider the relevant gas-phase precursors to these particles.

In the most recent Australian State of the Environment report, air quality standards were most often exceeded for fine particles in the capital cities, whilst ozone and nitrogen dioxide standards were not exceeded (Keywood et al., 2017). Currently, the highest episodes of particle pollution in Sydney can be ascribed to the presence of bushfire and dust plumes in the Sydney airshed (e.g. Johnston et al., 2011). However, significant increases in the frequency of hot days, drought and high fire risk weather have been projected for New South Wales, Australia (Whetton et al., 2015). The increased frequency of hot and sunny days has been linked to photochemical smog severity (Schnell and Prather 2017). Thus projected warmer conditions are likely to have implications for air pollution and health in NSW.

Comprehensive chemical transport modelling tools can be used to assist in the development of a long term control strategy for particles in the Sydney airshed. Such models should encompass comprehensive three-dimensional simulations of the atmosphere, sources and multi-phase chemistry that occurs, and should be informed by understanding of the contribution made by both local and remote particle sources to total particle exposure within the region. Ultimately such understanding should be underpinned by detailed and high quality experimental studies.

The Sydney Particle Study (SPS) aimed to increase scientific knowledge of the processes leading to particle formation and transformations in Sydney through two comprehensive observation programs. The groups that contributed to these observation programs included CSIRO, NSW Office of Environment and Heritage, ANSTO, Queensland University of Technology, the Shanghai Institute of Applied Physics and University of Wollongong. Observation made included the collection of samples for chemical analysis (aerosol composition, acid/alkaline gases, speciated volatile organic compounds [VOCs] including alkanes, aromatics, carbonyls, isoprene and monoterpenes). In addition, continuous or semi-continuous measurements of aerosol number size distributions, aerosol mass, aerosol light scattering, aerosol composition, and the gaseous criteria pollutants, oxides of nitrogen, carbon monoxide, sulfur dioxide and ozone [NO_x , CO, SO_2 , O_3]). Measurements were also made of meteorological parameters (wind speed, wind direction, temperature, relative humidity, radiation, boundary layer height) and atmospheric Radon-222 (radon) concentration.

2 Measurement Site

Measurements were made at the Westmead air quality station operated by the New South Wales Office of Environment and Heritage, located 24 km to the west of the Sydney, Australia. The population of Sydney is 4.61 million in 2011 (ABS 2011), making Sydney the largest urban centre in Australia. Sydney is a coastal city with coastline to its east and elevated forested terrain (up to 1000 m) to the north, west and south. The climate is temperate with uniform rainfall, warm summers and cool winters.

The SPS observations occurred in two time periods; Summer 2011 (5 February - 7 March 2011 SPS-I) and autumn 2012 (16 April-14 May 2012 SPS-II).

3 Instruments and methods

The sampling program included the measurement of aerosols, criteria gases including NO_x, CO, SO₂ and ozone, acid/alkaline gases including NH₃, SO₂, HCl and HNO₃, speciated VOCs (including carbonyls), and meteorological parameters, including temperature, relative humidity (RH) and wind speed/direction and boundary layer height. Aerosols were measured with continuous or semi-continuous methods, including the measurement of aerosol mass, light scattering and number size distributions as well as integrated measurements of aerosol composition. Atmospheric radon concentration were also measured and provided as an indicator of transport and vertical mixing processes as described in [Scott-Chambers et al. \(2019\)](#).

Two integrated samples (particles, VOCs and acid/alkaline gas) were collected each day (morning 05:00 to 10:00 and afternoon 11:00 -19:00). Note that these times were local time (GMT+11 for SPS-I, GMT+10 for SPS-II). In addition, third a VOCs (adsorbent tube/DNPH sampling) sample was collected between 19:00 and 05:00 (i.e. overnight). [Table 1 summarises the parameter measured, the instrumentation used and frequency of the measurement for both SPS-I and SPS-II.](#)

[Table 1 provides a summary of the parameter measured and the instrument used to measure the parameter. The frequency at which the measurement of each parameter was made is also listed in the table ranging from continuous to one measurement every few minutes to the collection of a sample over several hours \(integrated\). The frequency at which the data are reported is also included in Table 1 as well as the units the measurements are reported in and whether the measurements were made during SPS-I, SPS-II or during both periods.](#)

Table 1. Measurements made at Westmead during SPS-I and SPS-II along with the instrument or analytical technique employed, the measurement and reporting resolution, and the measurement units. Frequency of measurement is the frequency with which the data are collected. Frequency reported is the frequency at which the data are reported (may be an average of the frequency of measurement).

Parameter	Instrument/ Analysis technique	Frequency of measurement	Frequency reported	Units	Study period
Number Size distribution 3-150 nm	Scanning mobility particle sizer (SMPS- Nano) with TSI 3085 DMA column and TSI 3776 Condensation Particle Counter (CPC)	5 min	5 min	dN/dLogdp particles cm ⁻³	SPS-I
Number Size distribution 15 – 750 nm	SMPS-Long with TSI 3071A DMA and TSI 3010 CPC	5 min	5 min	dN/dLogdp particles cm ⁻³	SPS-I

Parameter	Instrument/ Analysis technique	Frequency of measurement	Frequency reported	Units	Study period
Number Size distribution 15 – 750 nm	SMPS-Long with TSI 3081 DMA- 3 TSI 3010 CPC and TSI controller (3080)- 1	2.5 min	2.5 min	dN/dLogdp particles cm ⁻³	SPS-II
Total particle number concentration	CPC TSI 3772	continuous	1 minutemin	particles cm ⁻³	SPS-I & SPS-II
PM _{2.5} , OC/EC, sugars (incl. Levogluconan), water soluble ions	PM _{2.5} Ecotech 3000 high volume sampler / DRI Model 2001A Thermal-Optical Carbon Analyzer/Ion Chromatography	Integrated (2 samples per day) on all days	05:00-10:00, 11:00-19:00	µg m ⁻³	SPS-I & SPS-II
PM _{2.5} elemental analysis	PM _{2.5} ASP Sampler/ Ion beam analysis ANSTO STAR 2MV accelerator	Integrated (2 samples per day) on all days	05:00-10:00, 11:00-19:00	µg m ⁻³	SPS-II
TSP-mass	RAAS	Integrated (2 samples per day) on all days	05:00-10:00, 11:00-19:00	µg m⁻³	SPS-I
PM ₁₀	Thermo TEOM 1405	Continuous	hourly	µg m ⁻³	SPS-I & SPS-II
Radon	700 L dual flow- loop two-filter radon detector	Continuous	30 min and hourly	Bq m ⁻³	SPS-I & SPS-II
CO	Ecotech EC9830	Continuous	hourly	ppb	SPS-II
NO, NO ₂ , NO_x,NO_x	Ecotech EC9841	Continuous	hourly	ppb	SPS-I & SPS-II
Ozone	Ecotech EC9810	Continuous	hourly	ppb	SPS-I & SPS-II

Formatted Table

Formatted: Font: 11 pt, Bold, Font color: Auto, All caps

Formatted: Font: 11 pt, Bold, Font color: Auto, Subscript, All caps

Parameter	Instrument/ Analysis technique	Frequency of measurement	Frequency reported	Units	Study period
SO ₂	Ecotech EC9850	Continuous	hourly	ppb	SPS-I & SPS-II
NH ₃ , SO ₂ , HNO ₃	Gas filter sampler/ Ion Chromatography	Integrated (2 samples/day) on all days	05:00-10:00, 11:00-19:00	ppb	SPS-I & SPS-II
VOCs	Proton transfer reaction mass spectrometry (PTR- MS)	Continuous	hourly	ppb	SPS-I & SPS-II
VOCs	adsorbent tube/GCMS	Integrated (3 samples/day) on all days	05:00-10:00, 11:00-19:00, 19:00-05:00	ppb	SPS-I & SPS-II
Carbonyls	S10 DNPH sampling/HPLC	Integrated (3 samples/day) on all days	05:00-10:00, 11:00-19:00, 19:00-05:00	ppb	SPS-I & SPS-II
Wind speed & wind direction	Met-One MET505 G4056	Continuous	hourly	m s ⁻¹ & °	SPS-I & SPS-II
Temperature & humidity	Vaisala HMP 155	Continuous	hourly	°C & %	SPS-I & SPS-II
Solar	Middleton 8536	Continuous	hourly	W m ⁻²	SPS-I & SPS-II
Boundary layer height	Leosphere ALS 450 lidar	30 s	20 min	m	SPS-II

3.1 Continuous and semi-continuous measurements

3.1.1. Aerosol microphysical measurements

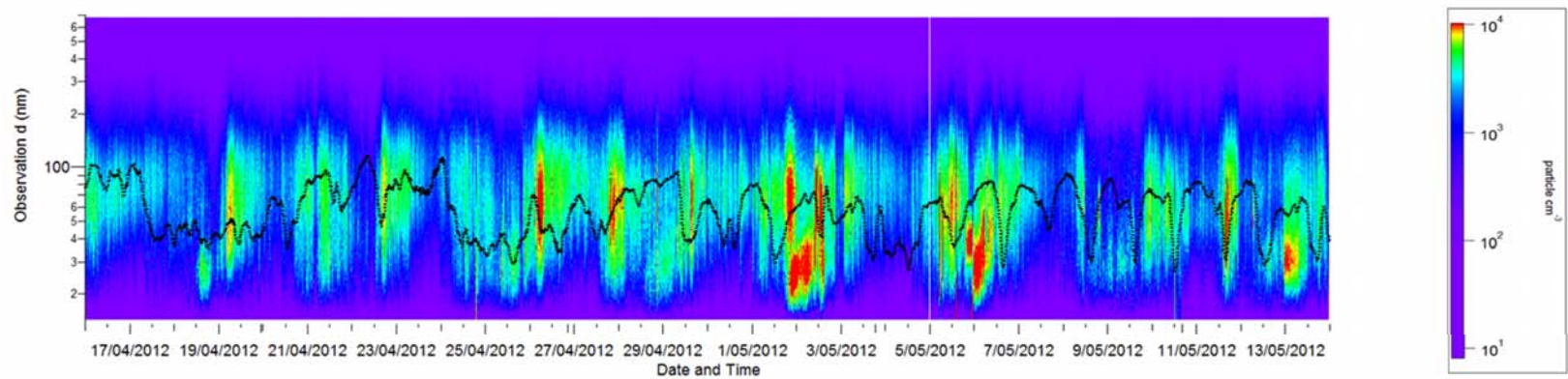
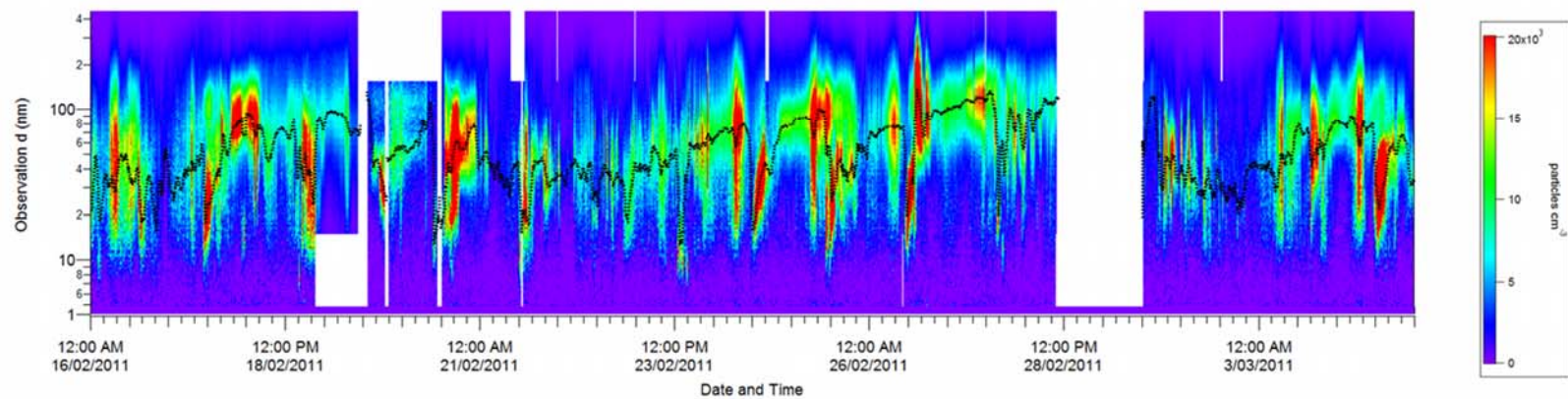
Aerosol size distributions were measured by different instruments during SPS-I and SPS-II. During SPS-I two instruments were used: a Scanning Mobility Particle Sizer (SMPS) which was custom built and included a long Differential Mobility Analyser (DMA, TSI 3071A) column and CPC (TSI 3010) (Long-SMPS) and a nano-SMPS which was also custom built and consisted of a short DMA (TSI 3085) column and CPC (TSI 3776) (Nano-SMPS). Both the Long-SMPS and Nano-SMPS were run with aerosol flows of 0.30 ± 0.03 L min⁻¹ and sheath flows of 3.0 ± 0.3 L min⁻¹ resulting in distribution of particles between 15 - 736 nm being measured with the Long-SMPS and the distribution of particles between 4.6-156 nm being measured with the Nano-SMPS. Size distribution scans occurred over 5 minute intervals and PolyStyrene Latex (PSL) spheres were used to determine the sizing accuracy of both SMPS systems (± 2 %). [Data were collected using TSI Aerosol Instrument](#)

[Manager Software and analysed and processed using SMPS Loading and Processing Functions Version 1.8.8 authored by Tim Onasch from Aerodyne Research, Inc.](#)

Comparison of the total number concentrations of particles greater than 10 nm measured with the Nano-SMPS to the particle number concentration measured using the CPC TSI3772 determined the counting efficiency of the Nano-SMPS and a scaling factor was determined which was then used to scale the Nano-SMPS size distributions. The Nano-SMPS and Long-SMPS had an overlap between 15 and 156 nm. The relationship between the concentrations measured in the overlapping size ranges was used to scale the Long-SMPS concentrations to the Nano-SMPS concentrations. Merging of the Long-SMPS and Nano-SMPS data sets produced a distribution between 4.6 nm to 736 nm.

During SPS-II aerosol size distributions were measured using an SMPS which included a long DMA column(DMA, TSI 3081) column and CPC (TSI 3010) and the TSI controller (3080). The SMPS was run with aerosol flows of $0.30 \pm 0.03 \text{ L min}^{-1}$ and sheath flows of $3.0 \pm 0.3 \text{ L min}^{-1}$ resulting in the distribution of particles between 15 - 736 nm. Size distributions scans occurred over 2.5 minute intervals PolyStyrene Latex (PSL) spheres were used to determine the sizing accuracy of both SMPS systems ($\pm 2 \%$). The counting efficiency of the SMPS was determined by comparing the total number concentration of particles greater than 14 nm with the particle number concentration measured using the CPC TSI3772 and a scaling factor determined. The SMPS concentrations were then scaled to the scaling factor.

Figure 1 shows the time series of particle concentration as a function of diameter (particle size distribution) for SPS-I and SPS-II.



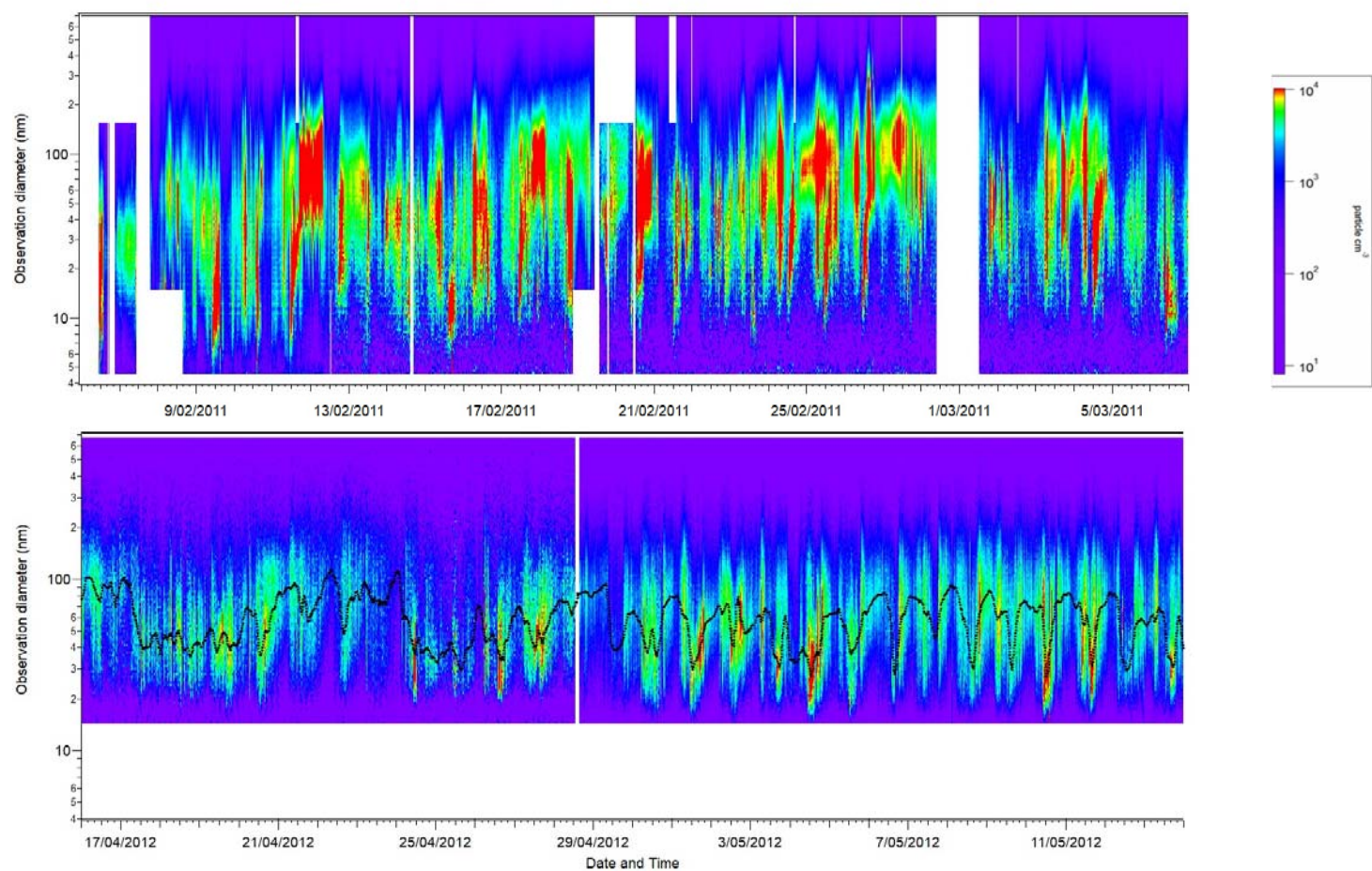


Figure 1 Time series of aerosol size distribution for SPS-I (top panel) and SPS-II (bottom panel). The black dotted line on each plot is the mode diameter

[. Contour plots were produced using SMPS Loading and Processing Functions Version 1.8.8 authored by Tim Onasch from Aerodyne Research, Inc.](#)

3.1.2 Aerosol scattering coefficient

120 During SPS-I and SPS-II light scattering was measured at 525 nm using an integrating nephelometer (Ecotech Aurora 1000G).
In this instrument, air is drawn into a chamber with a light beam at 525 nm and a photomultiplier detector set at right angles
to the light beam. Particles in the air scatter the light beam. The detector measures the scattered light beam in the forward and
backward direction. The nephelometer was operated according to the Australian Standard Method for integrated nephelometer
(AS/NZS 3580.12.1:2001). The inlet to the nephelometer was heated to ensure the relative humidity of the sample stream was
125 less than 40%. Daily zero air and span gas checks were carried out and the nephelometer was calibrated using CO₂ every three
months. Figure 2 shows the time series of aerosol scattering coefficient during SPS-I and SPS-II.

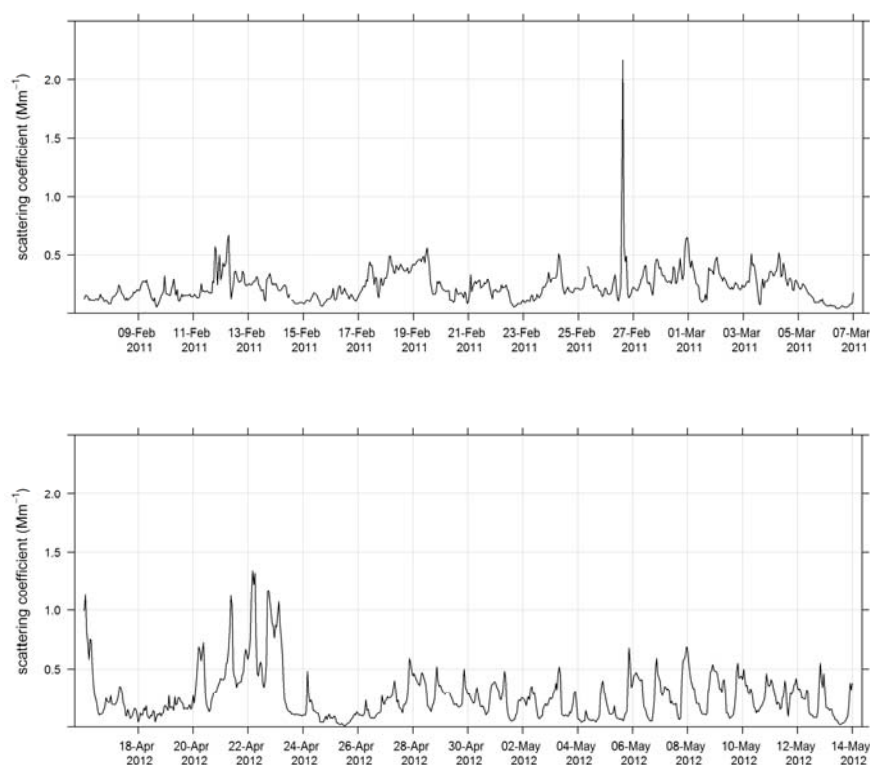


Figure 2 Time series of hourly averaged aerosol scattering coefficients during SPS-I (top panel) and SPS-II (bottom panel)

3.1.3 PM₁₀

During SPS-I and SPS-II the concentration of PM₁₀ was measured using a Tapered Element Oscillating Microbalance (Thermo TEOM1405). Air was drawn through a PM₁₀ impactor and a filter sitting on an oscillating microbalance. As mass loaded onto the filter, the frequency of oscillation changed and mass [iswas](#) recorded. The inlet to the TEOM was heated to 50 °C and the TEOM was operated according to Australian Standards for PM₁₀ continuous direct mass method using a tapered element oscillating microbalance analyser (AS/NZ 3580.9.8-2008). Figure 3 shows the time series of PM₁₀ during SPS-I and SPS-II.

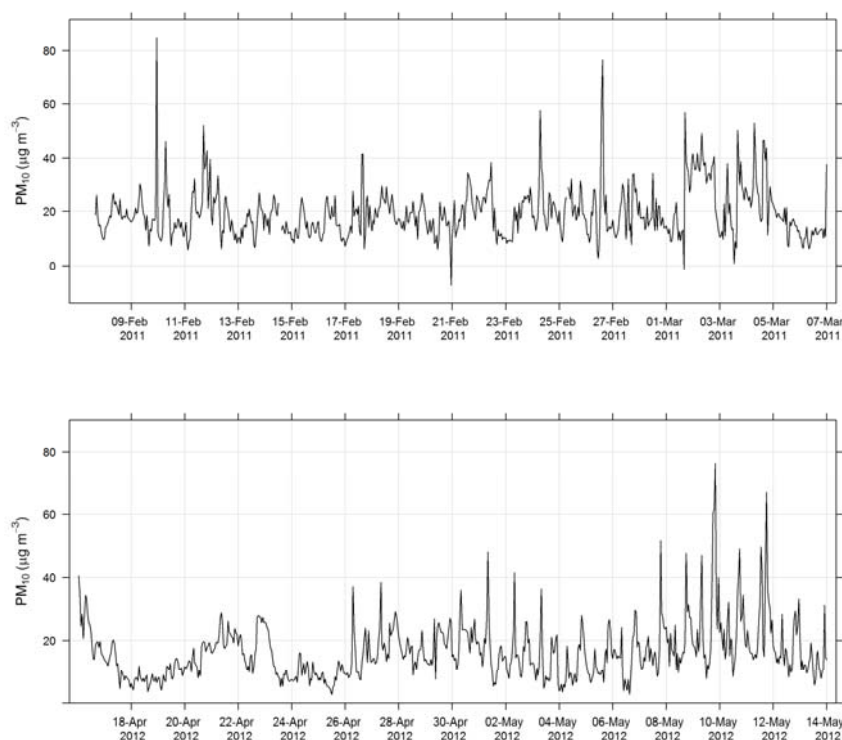


Figure 3 Time series of hourly averaged PM_{10} concentrations during SPS-I (top panel) and SPS-II (bottom panel)

3.1.4 Proton transfer reaction mass spectrometer

140 Proton transfer reaction mass spectrometry (PTR-MS) is a chemical ionization mass spectrometry technique capable of quantifying volatile organic compounds (VOCs) in a gaseous sample at time resolutions down to a fraction of a second. The permanent constituents of air, oxygen, nitrogen, etc., are not detected. PTR-MS is suitable for the measurement of a range of atmospheric VOCs including aromatics, oxygenates, organo-sulphurs and terpenes.

The PTR-MS operates with the aid of a custom built auxiliary rack that regulates the flow of air in the sample inlet and controls
 145 whether the PTR-MS is sampling ambient or zero air or calibration gas. During this study zero readings and calibrations against certified gas standards were performed on the PTR-MS several times per day. Four calibration standards were used during the

study, diluted to atmospheric concentrations using a set of mass flow controllers and a mixing chamber in the auxiliary rack. The PTR-MS was calibrated for: formaldehyde, acetaldehyde, acrolein, methacrolein, acetone, methyl ethyl ketone, methanol, ethyl acetate, benzene, xylene, trimethyl benzene, isoprene, α -pinene, 1,8 cineole, dimethyl sulphide, acetonitrile and the mono-, di- and tri-chlorobenzenes. Only m/z that were detected above the method detection limit (MDL) greater than 25% of the time, and had peak to noise ratios greater than 5 (95th percentile/MDL) [were](#) reported. Further details are available in Galbally et al. (2007) and Dunne et al. (2012).

The time series of benzene, α -pinene and formaldehyde measured during SPS-I and SPS-II are shown in Figure 4 and Figure 5.

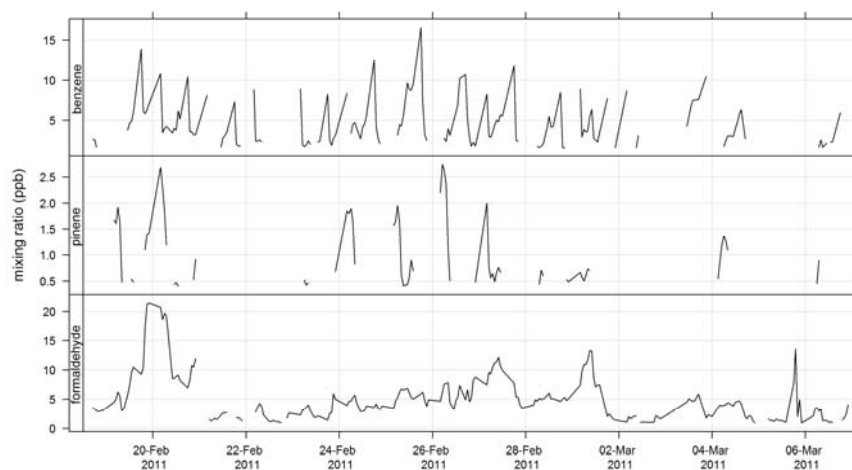


Figure 4 Time series of ambient benzene, α -pinene and formaldehyde mixing ratios during SPS-I measured with the PTR-MS

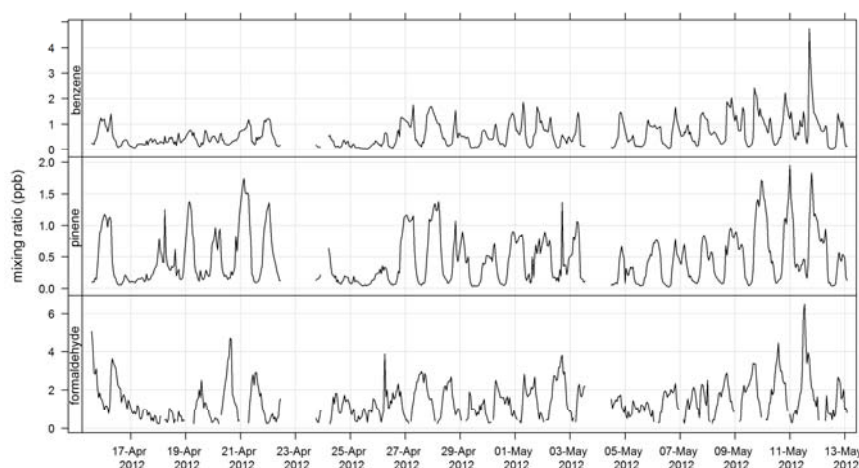


Figure 5 Time series of ambient benzene, α -pinene and formaldehyde mixing ratios during SPS-II measured with the PTR-MS

3.1.5 Radon

- Radon concentration was measured using a dual flow-loop two-filter detection method (Whittlestone and Zahorowski, 1998; Chambers et al., 2014). The detector used for SPS-I and SPS-II was a 700 L model, which [samplesampled](#) at 40 L min^{-1} from 2 m above ground level (45 minute response time, $40\text{--}50 \text{ mBq m}^{-3}$ lower detection limit). Operation followed the approach described by Chambers et al. (2011). An on-site calibration was carried out using a NIST traceable Pylon Ra-226 source ($118.19 \pm 4\% \text{ kBq}$), and instrumental background checks were carried out pre and post deployment.
- In addition to the raw detector output, a time series of the atmospheric radon concentration was computed by deconvolving the detector output, thereby correcting for the slow detector response (Griffiths et al., 2016). The deconvolved time series has larger statistical uncertainty than the uncorrected detector output, but is a better representation of the atmospheric radon concentration during periods when it is changing rapidly (e.g. during the morning transition between nocturnal and convective boundary layers). Figure 6 shows the time series of radon measured during SPS-I and SPS-II.

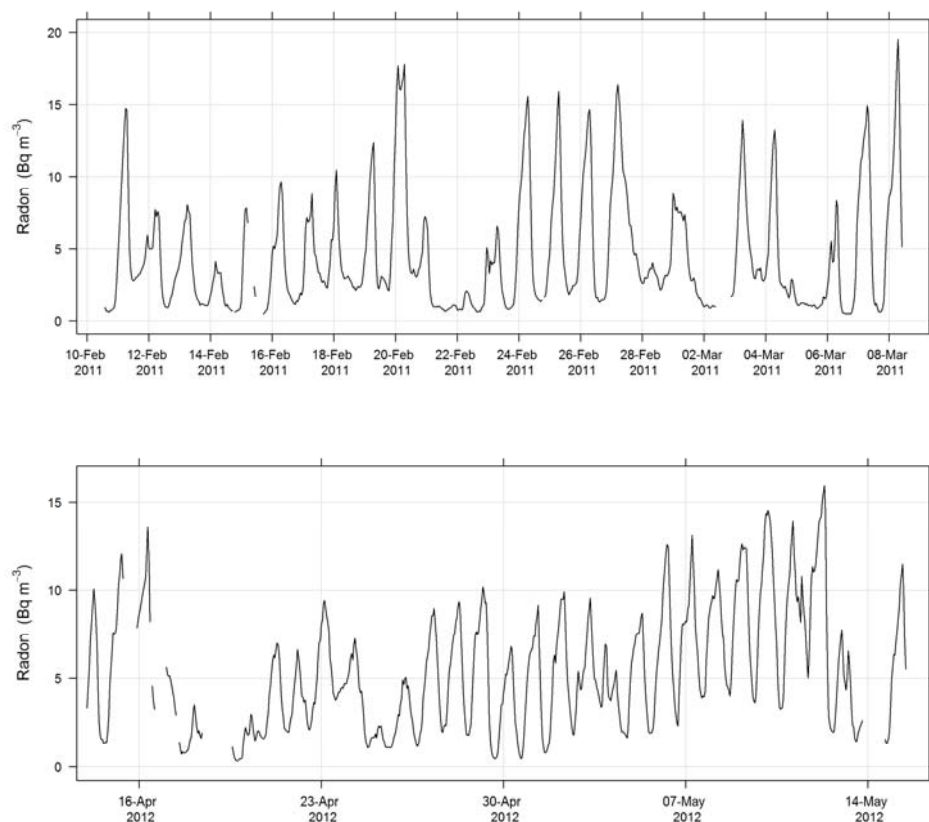


Figure 6 Time series radon concentrations during SPS-I and SPS-II.

3.1.6 Criteria Gases

Carbon Monoxide (CO) was measured using a nondispersive infrared CO analyser (Ecotech ML9830 CO trace gas analyser).

- 175 In this instrument, sample air is drawn into a cell where a beam of infrared light is passed through it to a photodetector. The amount of light absorbed by CO in the sample is proportional to the number of molecules present, and the concentration of CO is determined by comparing the intensity of light measured by the photodetector with a cell containing a reference gas.

The CO analyser was operated according to the Australian Standard method for the determination of CO by direct-reading instrumental method (AS/NZS 3580.7.1:2011).

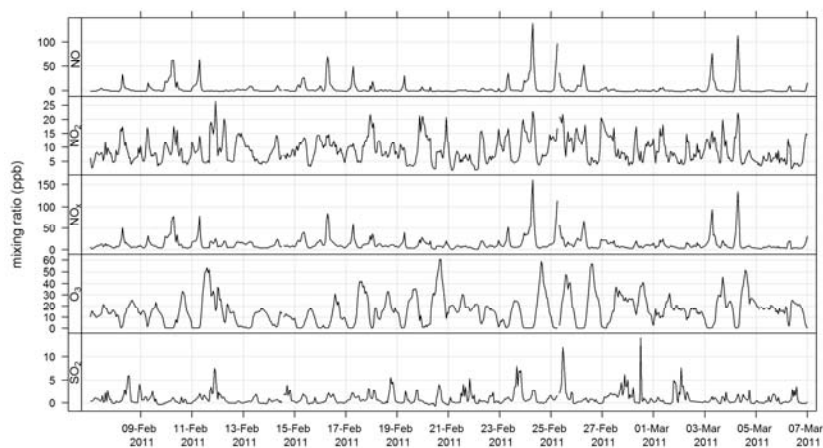
180 Oxides of Nitrogen were measured using a chemiluminescent analyser (Ecotech EC9841 NOx trace gas analyser). In this instrument, nitric oxide (NO) in the sample air reacts with ozone (produced from an ultraviolet light) within a reaction chamber, producing chemiluminescence in the wavelength range 600–3000 nm. The concentration of NO is proportional to the light intensity measured by a photomultiplier tube. In a second sample stream, total nitrogen oxides (NOx) are reduced to NO using a selective converter. The concentration of nitrogen dioxide (NO₂) is assumed to be the difference between total NOx and NO.

185 The analyser was operated according to the Australian standard method for the determination of oxides of nitrogen by direct-reading instrumental method (AS/NZS 3580.5.1:2011)

Ozone (O₃) was measured using an ultraviolet spectrometer (Ecotech EC9810). In this instrument, a beam of ultraviolet light is passed through the sample air within a cell containing an ultraviolet detector. The amount of light absorbed in the sample is proportional to the number of O₃ molecules present and the decrease in light intensity determines the O₃ concentration in the sample. The analyser was operated according to the Australian standard method for the determination of O₃ by direct-reading instrumental method (AS/NZS 3580.6.1:2011)

190 Sulfur dioxide (SO₂) was measured by pulsed fluorescence spectrophotometer (Ecotech EC9850). A stream of sample air is drawn through a cell where it is exposed to pulsed ultraviolet light, resulting in excitation of SO₂ molecules. These molecules subsequently fluoresce, by re-emitting light at a different wavelength. The intensity of the fluorescent light, as measured by a photomultiplier tube, is proportional to the concentration of SO₂ in the sample air. The analyser was operated according to the Australian standard method for the determination of SO₂ by direct-reading instrumental method ([\(AS/NZS 3580:5.1:2011, 2011;AS/NZS 3580:6.1:2011, 2011;AS/NZS 3580:7.1:2011, 2011\)](#))([AS/NZS 3580.4.1:2008](#)).

The time series for CO, NOx, O₃ and SO₂ for SPS-I and SPS-II are shown in Figure 7 and Figure 8.



200 Figure 7 Time series of hourly averaged mixing ratios of criteria gases NO, NO₂, NO_x, O₃ and SO₂ during SPS-I.

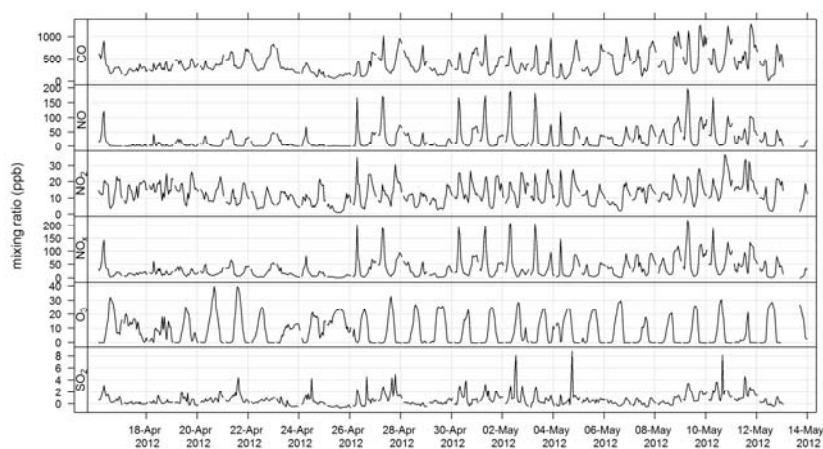


Figure 8 Time series of hourly averaged mixing ratios of criteria gases CO, NO, NO₂, NO_x, O₃ and SO₂ during SPS-II

3.1.7 Meteorology

205 An ultrasonic ensor (Met-One MET505) was used to measure wind speed and wind direction. Temperature and relative
humidity were measured using temperature and humidity probe (Vaisala HMP 155). Solar radiation was measured using a
pyranometer (Middleton 8536). All instruments were sited and operated according to the Australian standard method for
Meteorological monitoring for ambient air quality monitoring applications (AS/NZS 3580.14:2011).
The time series of temperature and relative humidity are shown for SPS-I in Figure 9, in additon solar radiation is also shown
210 for SPS-II in Figure 10. The frequencies of wind speeds as a function of wind direction for SPS-I and SPS-II are shown in
Figure 11.

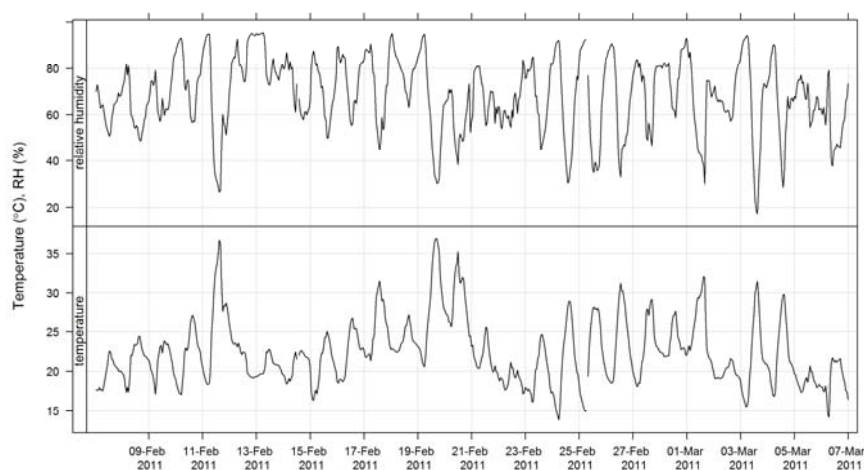
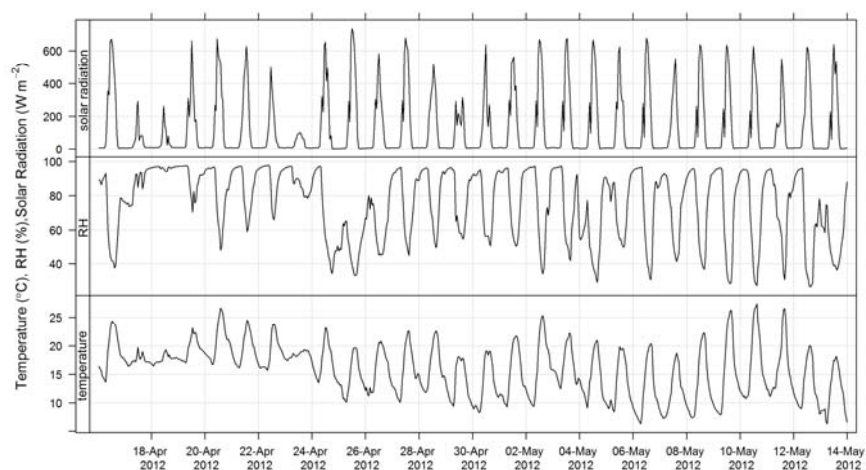


Figure 9 Time series of ambient temperature and relative humidity during SPS-I.



215 **Figure 10** Time series of ambient temperature, relative humidity and solar radiation during SPS-II

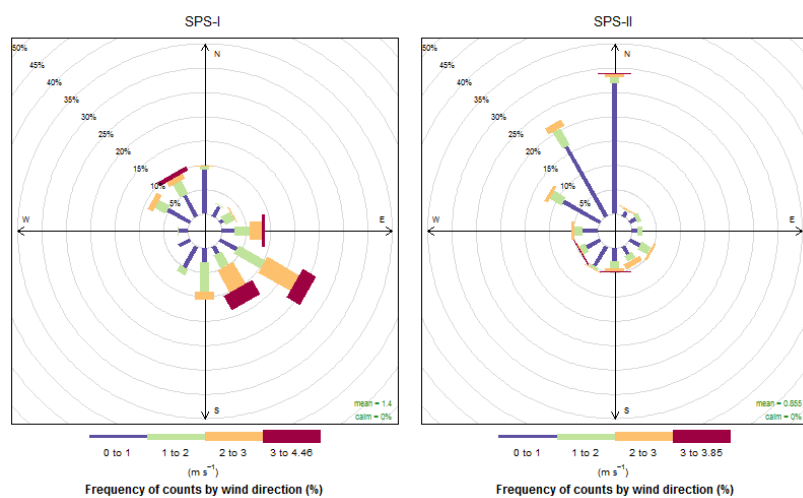


Figure 11 Wind roses during SPS-I in 2011 and SPS-II in 2012

3.1.8 Lidar and boundary layer detection

A Leosphere ALS 450 lidar was used to estimate cloud base, cloud top (for optically thin clouds) and the height of the boundary layer. The lidar incorporated a 355 nm UV laser that scattered light in the column of air back to a receiver. Raw data have a spatial resolution of 15 m, temporal resolution of 30 s covering a range from about 200 m to 20 km. The physical basis for lidar remote sensing is described by Weitkamp (2005).

The conditions under which the lidar could determine the depth of the boundary layer included 1) the top of the boundary layer being deeper than about 200 m, and 2) accompanied by a sudden decrease in aerosol concentration. These conditions were most often met during daylight hours with clear skies or some fair weather cumulus.

Two approaches were combined in order to filter out periods with ambiguous retrievals of the boundary layer depth. The first method was an automated method, called STRAT-2D (Haeffelin et al, 2012), that used the Canny edge detection algorithm to detect discontinuities in the backscatter signal as a function of time and range. It is implemented in the STRAT analysis toolkit (Morille et al., 2007). The second method was a manual technique, in which the boundary layer top was detected by visual identification of the inflection point in a plot of $\log(Sr^2) \sim r$, where S is the received backscatter and r is the range from the lidar.

Based on the two estimates above, the boundary layer depth was computed by taking the average of the two estimates and assigning an uncertainty given by the range between the two estimates. Figure 12 shows the diurnal cycle in boundary layer depth measured during SPS-II.

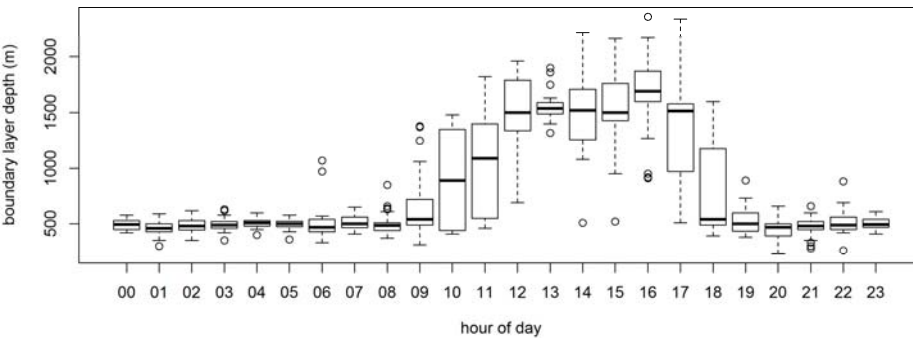


Figure 12 Boundary layer depth as a function of hour of the day for SPS-II.

3.2 Integrated measurements

3.2.1 High Volume Sampler

In both SPS-I and SPS-II aerosol samples were collected using an Ecotech 3000 high volume sampler with a PM_{2.5} size-selective inlet (flow rate 67.8 m³ hr⁻¹ controlled with a mass flow controller, ambient temperature and pressure monitored so that both the ambient volumetric and standard flow rates were determined). Quartz membrane filters (250 mm x 200 mm Pall tissuequartz p/n 7204 prebaked at 600°C for 4 hours to reduce adsorbed organic vapours) were used to collect samples and were stored in a freezer within sealed containers before and after sampling.

Throughout the study field blank samples (5 for SPS-I and 9 for SPS-II) were collected by running a pre-baked filter the high volume sampler for 1 minute. Filter handling and analysis procedures were consistent for the field blanks and sample filters. In addition, to correct for sampling artefacts on the OC and EC concentrations, two filters were placed in the filter holder in sequence (front filter and back filter) for 20 of the SPS-I samples. The adsorption of volatile gases onto the filter material results in positive artefacts, while degassing of semi-volatile compounds from the collected aerosol on the front filter which may be then absorbed onto the back filter, results in negative artefacts arise-(Chow et al., 2010). The filters were analysed for soluble ions using the method described in Section 3.3.1 and for organic-carbonOC, and the method described in Section 3.3.1 for elemental-carbonEC.

3.2.2 Low Volume sampler

PM_{2.5} samples were collected using a sampler from the ANSTO Aerosol Sampling Program which includes a PM_{2.5} cyclone (flow rate 22 l min⁻¹). The cyclone is the same as that used in the US EPA IMPROVE network (<http://vista.cira.colostate.edu/improve/>). Thin 25 mm stretched Teflon filter were used to collect samples coincidentally with the high volume sampler to allow comparison of data during SPS-II. Samples were analysed for elemental concentrations using the method described in Section 0-3.3.2.

3.2.3 VOC and Carbonyls Sequencer

The VOC and Carbonyls Sequencer is an automatic continuous air sampler for sampling of VOC and carbonyls simultaneously. It has two channels: one for VOC and the other one for Carbonyls. Each channel contains a sample inlet, 9 sampling ports, 4 solenoid valves and a sampling pump. A new sequencer was built for SPS-II that included a cooling system to keep the carbonyl tubes at 5-7 °C as well as extra sampling ports.

Samples were collected three times per day (05:00 – 10:00, 11:00 – 19:00 and 19:00 – 05:00) and during SPS-I a field blank (unopened tube) was collected each day. The new sequencer used in SPS-II incorporated extra sampling ports that were used to load extra sampling tubes that did not have any air sampled through them. These were then used as field blanks. The tubes

were analysed for VOC concentrations using the method described in Section 03.3.5 and for carbonyls using the method described in Section 03.3.4.

3.2.4 Acid/Alkaline Gas sampler

The acid/alkaline gas sampler drew air through a 3-stage 47mm filter pack at an ambient flow rate of 10 l min⁻¹. The first stage of the 3 stage filter pack contained a Teflon filter (Millipore fluoropore p/n FALP04700) to remove particles from the air stream, the second stage contained a sodium hydroxide coated quartz filter (Pall tissuequartz p/n 7202) to trap acidic gases and the final stage contained a citric acid coated quartz filter to trap alkaline gases. The filters were extracted in de-ionized water and analysed for soluble ion concentrations using the method described in Section 03.3.1.

3.3 Analysis methods

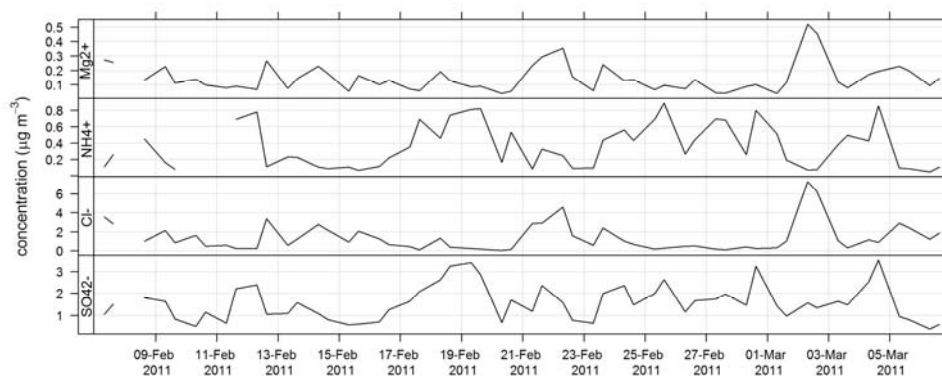
3.3.1 Ion chromatography

Suppressed ion chromatography (IC) and high-performance anion-exchange chromatography with pulsed amperometric detection (HPAEC-PAD) were used to measure water soluble ions and anhydrous sugars including levoglucosan (respectively) on a 6.25 cm² a portion of each quartz high volume sampler filter. De-ionized water (10 ml of 18.2 mΩ) was used to extract the quartz filter portions which were then preserved using 0.1 ml of chloroform. The acid and alkaline gas filter samples were also analysed by IC and the 47 mm filters were extracted in 3 ml of 18.2 mΩ de-ionized water and preserved with 0.03 ml of chloroform.

A Dionex ICS-3000 ion chromatograph was used to determine soluble ion (anion and cation) concentrations. The system included a a Dionex AS17c analytical column (2 x 250 mm), an ASRS-300 suppressor and a gradient eluent of 0.75 mM to 35 mM potassium hydroxide to separate the anions, and a Dionex CS12a column (2 x 250 mm), a CSRS-300 suppressor and an isocratic eluent of 20 mM methanesulfonic acid to separate the cations. The species analysed were

- | | |
|--|--|
| • Chloride (Cl ⁻) | • Sodium (Na ⁺) |
| • Nitrate (NO ₃ ⁻) | • Ammonium (NH ₄ ⁺) |
| • Sulphate (SO ₄ ²⁻) | • Magnesium (Mg ²⁺) |
| • Oxalate (C ₂ O ₄ ²⁻) | • Calcium (Ca ²⁺) |
| • Formate (HCOO ⁻) | • Potassium (K ⁺) |
| • Acetate (CH ₃ COO ⁻) | |
| • Phosphate (PO ₄ ³⁻) | |
| • Methanesulfonate (MSA ⁻) | |

The time series for Mg²⁺, Cl⁻, NH₄⁺ and SO₄²⁻ during SPS-I are shown in Figure 13 and those during SPS-II in Figure 14.



290 **Figure 13** Time series of Mg^{2+} , Cl^- , NH_4^+ and SO_4^{2-} during SPS-I in 2011

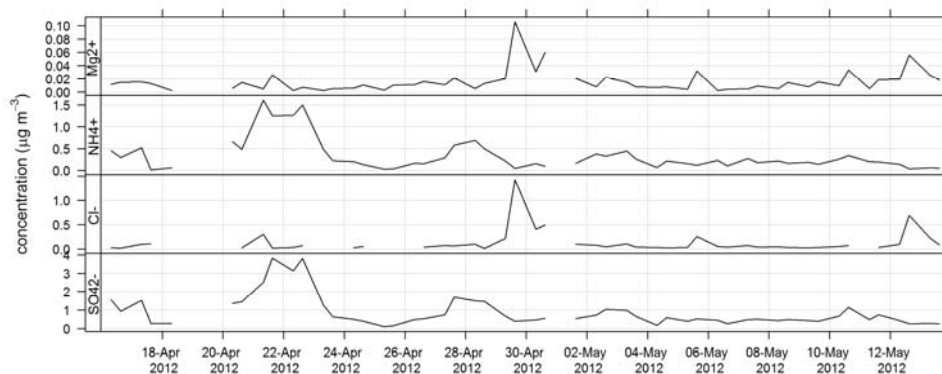


Figure 14 Time series of Mg^{2+} , Cl^- , NH_4^+ and SO_4^{2-} during SPS-II in 2012

An HPAEC-PAD with a Dionex ICS-3000 chromatograph with electrochemical detection was used to determine anhydrous sugar concentrations. The system was operated in the integrating (pulsed) amperometric mode using the carbohydrate (standard quad) waveform and utilizing disposable gold electrodes. A Dionex CarboPac MA 1 analytical column (4 x 250mm) with a gradient eluent of 300 mM to 550 mM sodium hydroxide was used to separate the anhydrous sugars (Iinuma et al.,

2009). The species analysed were levoglucosan ($C_6H_{10}O_5$, an anhydrous sugar - woodsmoke tracer) and Mannosan ($C_6H_{10}O_5$, an anhydrous sugar - woodsmoke tracer). The time series of levoglucosan during SPS-I and SPS-II are shown in Figure 15.

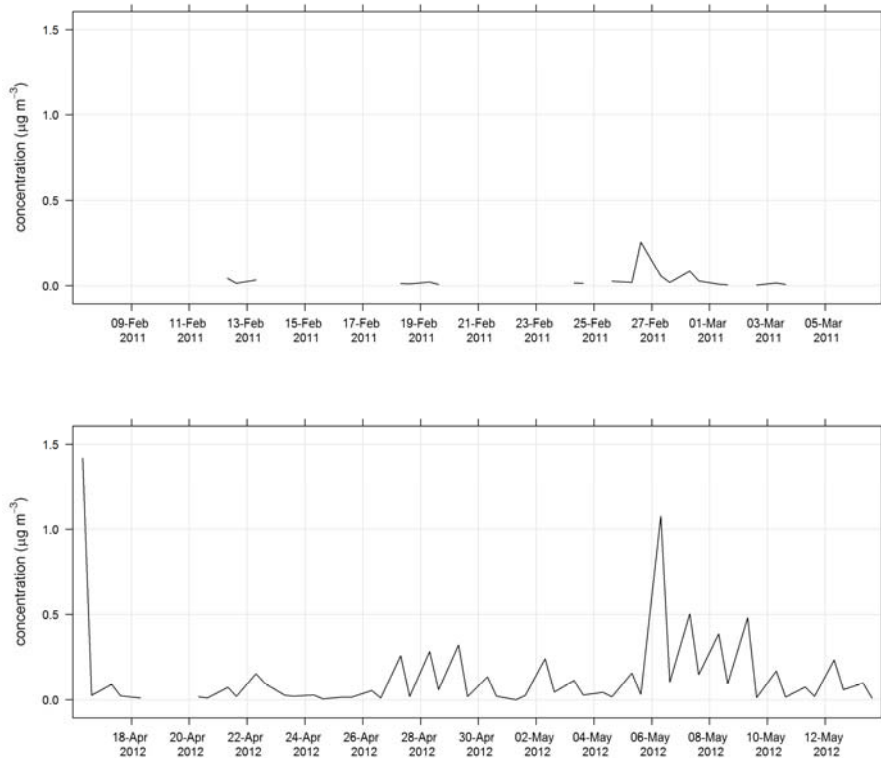


Figure 15 Time series of levoglucosan concentrations during SPS-I (top panel) and SPS-II (bottom panel)

3.3.2 Ion beam analysis

Nuclear ion beam analysis (IBA) techniques [suiingemploying](#) the non-destructively on the ANSTO STAR 2MV accelerator was used to determine the concetration of elements on the 25 mm Teflon filters collected by the low volume sampler. Analysis of aluminium to lead was carried out using Proton induced X-ray emission (PIXE see Cohen 1993 for details); analysis of

light elements such as fluorine and sodium was carried out by Proton induced gamma-ray emission (PIGE see 1998 for details) and analysis of hydrogen was carried out using Proton elastic scattering analysis (PESA see Cohen 1996 for details). [Key](#)

The elements determined were:

- | | |
|-------------------|------------------|
| • Hydrogen (H) | • Vanadium (V) |
| • Sodium (Na) | • Chromium (Cr) |
| • Aluminium (Al) | • Manganese (Mn) |
| • Silicon (Si) | • Iron (Fe) |
| • Phosphorous (P) | • Cobolt (Co) |
| • Sulfur (S) | • Nickel (Ni) |
| • Chlorine (Cl) | • Copper (Cu) |
| • Potassium (K) | • Zinc (Zn) |
| • Calcium (Ca) | • Bromine (Br) |
| • Titanium (Ti) | • Lead (Pb) |

The time series of Al and Si for SPS-II are shown in Figure 16.

310

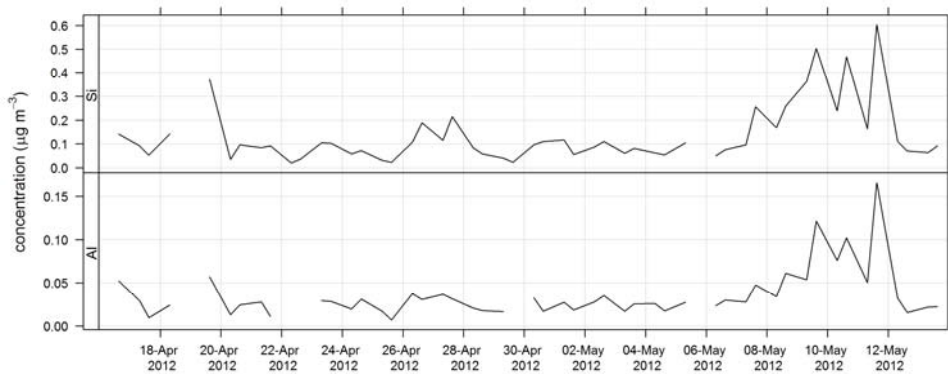


Figure 16 Time series of Al and Si during SPS-II

3.3.3 Organic carbon and Elemental carbon analysis

A DRI Model 2001A Thermal-Optical Carbon Analyzer was used to determine the concentration of elemental carbon (EC) and organic carbon (OC) on a portion of the quartz filters collected using PM_{2.5} high volume sampler. The IMPROVE-A temperature protocol (Chow et al., 2007) was employed and included using laser reflectance to correct for charring. Before analysis the oven was baked to 910°C for 10 minutes to remove residual carbon and system blank levels [arewere](#) then tested until < 0.20 µg C cm⁻² was reported (with repeat oven baking if necessary). Calibration checks were performed twice daily to

315

monitor possible catalyst degeneration. The analyser is reported to measure carbon concentrations between 0.05 – 750 $\mu\text{g C cm}^{-2}$, with uncertainties in OC and EC of $\pm 10\%$.

Four OC fractions at four non-oxidizing heat ramps (OC1 = 140°C, OC2 = 280°C, OC3 = 480°C, OC4 = 580°C) and three EC fractions at three oxidizing heat ramps (EC1 = 580°C, EC2 = 740°C, EC3 = 840°C) are measured in the IMPROVE-A carbon method. The sum of the different OC fractions and the OCpyro (the OC that was pyrolyzed which was measured from the reflectance of the filter) determined total OC. The sum of the EC fractions minus OCpyro determined total EC.

The time series for OC and EC during SPS-I are shown in Figure 17 and the time series for OC and EC during SPS-II are shown in Figure 18.

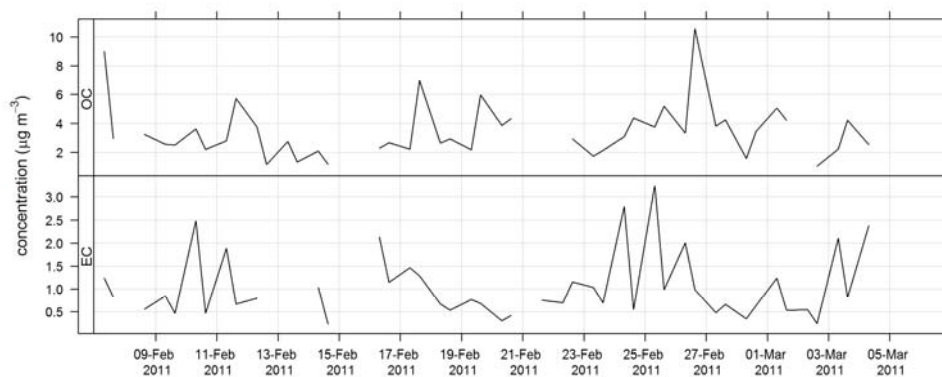


Figure 17 Time series of OC and EC during SPS-I in 2011

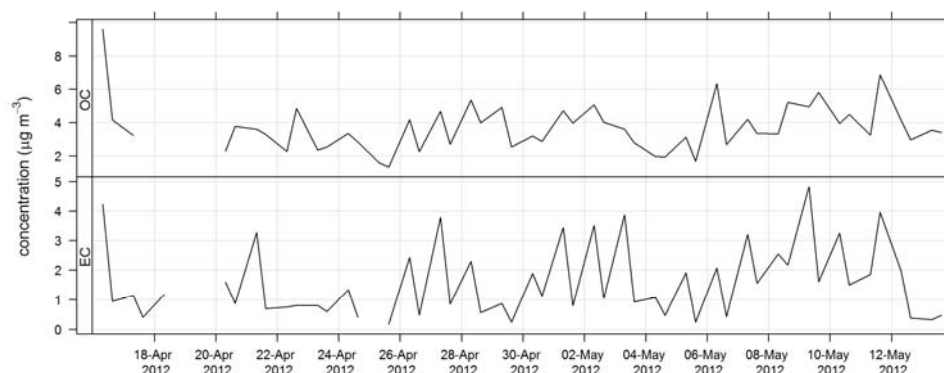


Figure 18 Time series of OC and EC during SPS-II in 2012

3.3.4 Carbonyls analysis

Carbonyls were collected by the sequencer onto cartridges (Supelco LpDNPH S10 p/n 21014) containing high-purity silica adsorbent coated with 2,4-dinitrophenylhydrazine (DNPH), where they were converted to the hydrazone derivatives. Samples were refrigerated immediately after sampling until analysis. The derivatives were extracted from the cartridge in 2.5 mL of acetonitrile and analysed by high performance liquid chromatography (HPLC) with diode array detection (DAD). The DAD enables the absorption spectra of each peak to be determined. The difference in the spectra highlights which peaks in the chromatograms are mono- or dicarbonyl DNPH derivatives and, along with retention times, allows the identification of the dicarbonyls glyoxal and methylglyoxal. Further details of this method can be found in Lawson et al. (2015).

The time series of methylglyoxal and formaldehyde for SPS-I is shown in Figure 19 and time series of methylglyoxal and formaldehyde during SPS-II are shown in Figure 20.

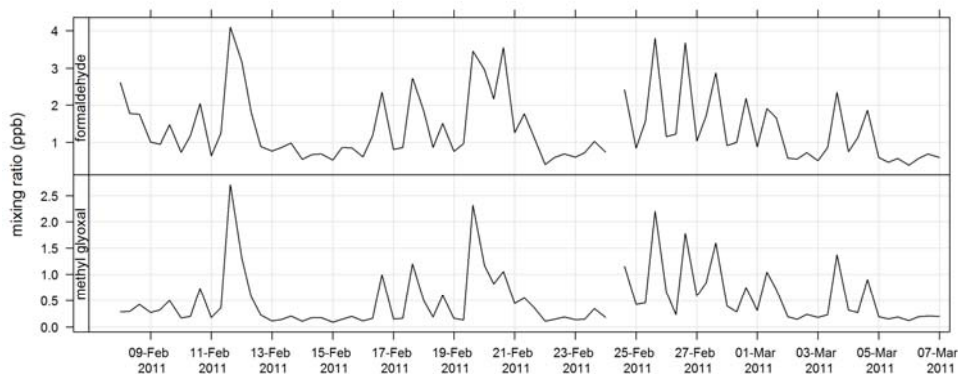
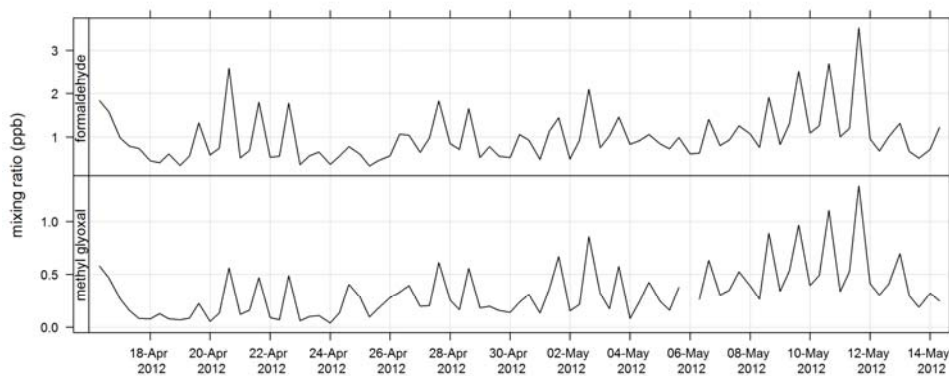


Figure 19 Time series of ambient formaldehyde and methylglyoxal mixing ratios during SPS-I.

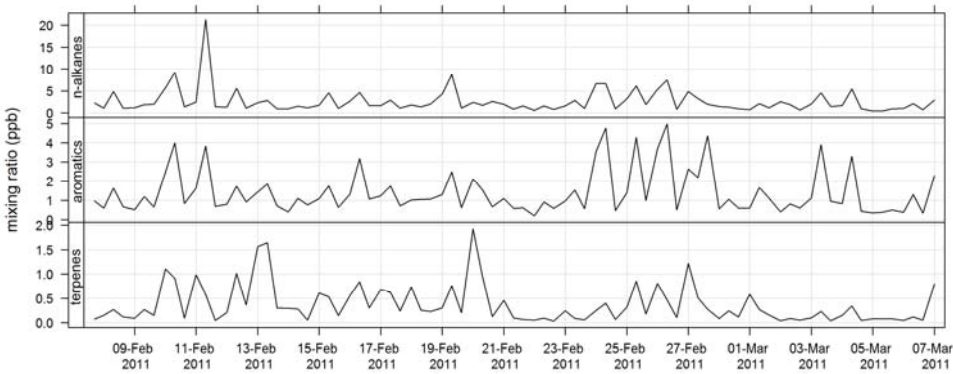


345 Figure 20 Time series of ambient formaldehyde and methylglyoxal mixing ratios concentrations during SPS-II.

3.3.5 Volatile organic compounds analysis

An automatic Volatile organic compound (VOC) sampler was used collect VOC samples by actively drawing air through two adsorbent tubes in series (Markes Carbograph 1TD / Carbopack X) which were then analysed by a PerkinElmer TurboMatrix™ 650 ATD (Automated Thermal Desorber) and a Hewlett Packard 6890A gas chromatograph (GC) equipped with a Flame

350 Ionization Detector (FID) and a Mass Selective Detector (MSD). Calibration was via certified BTEX (benzene, toluene, ethylbenzene and xylenes), TO 15/17, terpenes, alcohols and PAM gas standards (Cheng et al. 2016). The method of AT (adsorbent tube) VOC sampling and analysis in this study was compatible with ISO16017-1:2000 (ISO 2000) and according to USEPA Compendium method TO-17 (USEPA TO-17). The time series for total alkane, aromatic and terpene concentrations for SPS-I are shown in Figure 21 and for SPS-II in Figure 22.



355 Figure 21 Time series of total alkane, total aromatics and total terpene mixing ratios during SPS-I in 2011 measured on absorbent tubes.

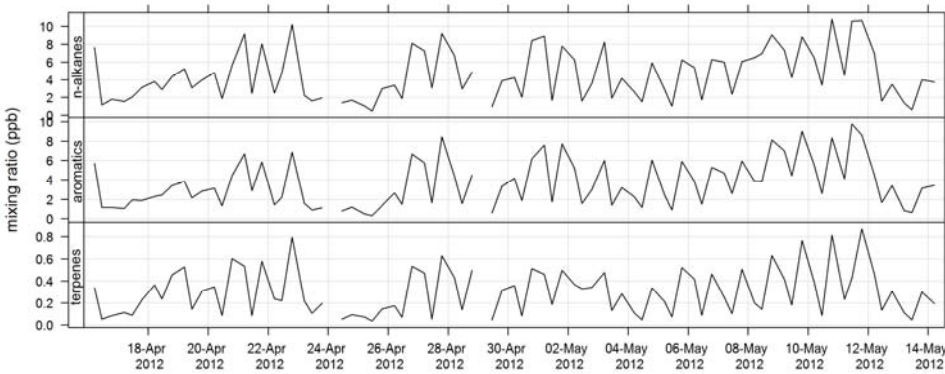


Figure 22 Time series of total alkane, total aromatics and total terpene mixing ratios during SPS-II in 2012 measured on absorbent tubes.

4. Aerosol composition

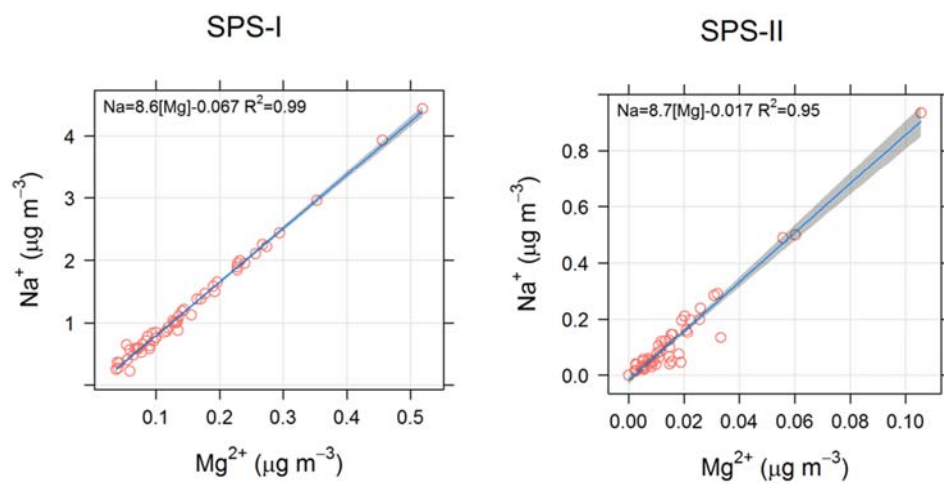
The factors that determine the composition of particles are the source of the particles (or precursor gases) and subsequent transformations that occur in the atmosphere or within the particles themselves. As such the sources of particles may be inferred from the chemical composition of the particle samples. A detailed analysis of the aerosol composition data is beyond the scope of a paper in this journal. Instead, presented here are the data for some species that can be used as markers for different aerosol sources.

Table 2 lists the markers that can be used to trace different aerosol sources. In some instances, a chemical species is a unique tracer for a source. For example, levoglucosan is a unique tracer for biomass burning (Simoneit et al., 1999; Simoneit, 2002). The time series of levoglucosan for both sampling periods is shown in Figure 15. Concentrations were generally greater in SPS-II than SPS-I, indicating more biomass burning (most likely woodheaters for domestic heating during autumn in Sydney in SPS-II).

In addition the ratios of different species may provide information about a particle source. For example a sea salts source may be indicated by a $[\text{Na}^+/\text{Mg}^{2+}]$ ratio close to 8.3 (Millero et al., 2008), and an Australian crustal dust source may be indicated by a $[\text{Si}/\text{Al}]$ ratio of close to 3.08 (Radhi et al., 2010). Figure 23 shows the relationship between Na^+ and Mg^{2+} for SPS-I and SPS-II, suggesting that the ratio of these species is close to that of sea-salt. Figure 24 shows the relationship between Si and Al for SPS-II. The slope of 4 shown in the regression line is similar to that measured by Radhi et al. (2010), indicative of Australian dusts.

Table 2. Sources and their indicator species

Source	Indicator Species
Soil	Non sea salt Calcium (SPS-I) Silicon, Iron, Aluminium , Titanium (SPS-II)
Organic Matter (OM) – Vehicles, Industry, Biomass Burning (BB), secondary organic aerosol (SOA)	Organic Carbon
Elemental Carbon (EC)- Vehicles, Industry, BB	Elemental Carbon
Sea Salt	Sodium, Chloride, Magnesium
Secondary Inorganic Aerosol (SIA)	Non sea salt Sulfate , Ammonium Nitrate
Biomass Burning (BB)	Levoglucosan



380 Figure 23 Scatter plot of Mg and Na for SPS-I (left) and SPS-II (right).

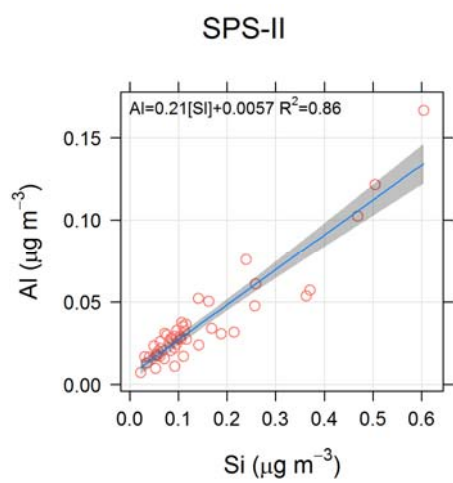


Figure 24 Figure 25 Scatter plot of Al and Si for SPS-II.

Many compounds, however, may be derived from more than one source (e.g., EC can be emitted by vehicle emissions, industrial emissions and biomass burning) and when sufficient sample numbers allow (generally more than 100) receptor modelling methodologies can be used to apportion sources to the aerosol loadings (Norris et al., 2008). During both SPS-I and SPS-II 30 samples were collected in the mornings and 30 in the afternoons. Hence with only 60 samples for each sampling period, we are restricted to a qualitative and rudimentary assessment of aerosol sources utilising information on relationships between some key marker species and the timing of their occurrence.

The time series for EC, OC, SO_4^{2-} , Mg^{2+} and Ca^{2+} are shown above. The average concentrations for SPS-I and SPS-II for each of these species are shown in Figure 26. A marker for sea-salt, Mg^{2+} and a marker for soil, non sea salt Ca^{2+} , show higher concentrations during SPS-I (summer). Higher non sea-salt sulfate concentrations, a marker for secondary aerosol during summer may indicate greater secondary aerosol production during summer. Levoglucosan (the marker for woodsmoke) and EC show highest concentrations during the SPS-II (autumn). The average OC concentration is not significantly different between SPS-I and SPS-II.

Higher sea-salt and soil marker species in summer than autumn may be due to higher wind speeds observed during SPS-I since both sea-salt and dust are mechanically produced aerosol. Figure 11 also showed there to be a greater recent oceanic fetch in summer; and during summer soils in rural regions are drier, and covered with less vegetation, so therefore more mobile. Higher secondary aerosol marker species in summer may indicate more photochemical aerosol production in summer, while higher biomass burning marker species in autumn may represent a greater contributions from woodheaters to the aerosol loading during this time of the year. Converse to the higher wind speeds during summer, the lower windspeeds during autumn are also conducive to the build-up of pollutants during autumn which will also influence the concentrations of EC and levoglucosan during autumn. As noted above, a quantitative assessment of aerosol sources influencing the airshed during SPS-I and SPS-II could be carried out using a receptor modelling approach if more samples had been collected.

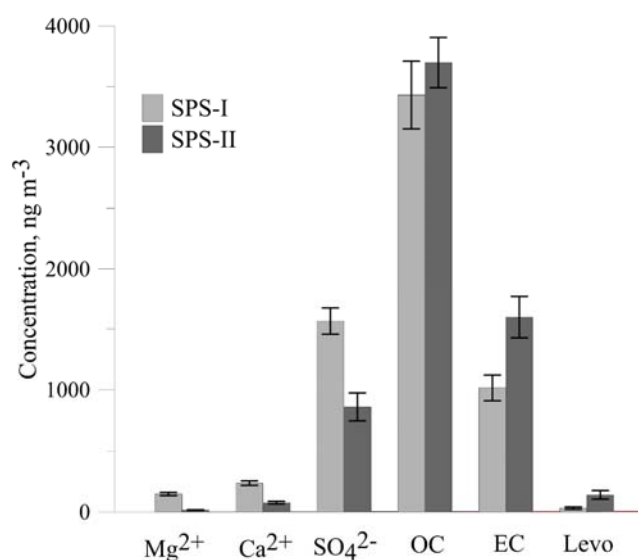


Figure 26 Comparison of average concentrations of Mg (a marker for sea-salt), Ca (a marker for soil), SO₄ (a marker for secondary aerosol), OC, EC and levo = levoglucosan (biomass burning marker) during SPS-I and SPS-II. Error bars represent standard error (standard deviation/square root of number of observations). Mg, Ca, and SO₄ are significantly greater during SPS-I ($p < 0.05$), OC is not significantly different between SPS-I and SPS-II ($p=0.4$), EC and levoglucosan are significantly greater during SPS-II ($p= 0.003$ EC and $p=0.004$ levoglucosan).

5 Data set repository and description

The data sets for both SPS-I and SPS-II are stored on the Commonwealth Scientific and Industrial Research Organisation (CSIRO) data access portal. The SPS-I data set is available at Keywood et al. (2016a) <http://doi.org/10.4225/08/57903B83D6A5D> and the SPS-II data set is available at Keywood et al. (2016b) <http://doi.org/10.4225/08/5791B5528BD63>.

6 Acknowledgements

Descriptive and statistical analyses were carried out using R statistical analysis version 3.5.1 (R Core Team, 2016). The main package used in R statistical analysis is known as “openair” version 2.4.2 (Carslaw and Ropkins, 2012). This work was funded by NSW Office of Environment and Heritage and CSIRO. These projects was partially funded by grants from the New South Wales Office of Environment.

7 References

- ABS: Product 3235.0 - Population by Age and Sex, Regions of Australia, 2011
<http://www.abs.gov.au/ausstats/abs@.nsf/Products/3235.0~2011~Main+Features~New+South+Wales?OpenDocument>, 2011.
- AS 3580.4.1:2008: Methods of sampling and analysis of ambient air—Determination of sulfur dioxide—Direct reading instrumental method., 2008.
- AS/NZ 3580.9.8:2008: Determination of suspended particulate matter—PM10 continuous direct mass method using a tapered element oscillating microbalance analyser, 2008.
- AS/NZS 3580.12.1:2001: Methods for sampling and analysis of ambient air - Determination of light scattering - Integrating nephelometer method, 2001.
- AS/NZS 3580.14:2011: Methods for sampling and analysis of ambient air - Part 14: Meteorological monitoring for ambient air quality monitoring applications, 2011.
- AS/NZS 3580.4.1:2008: Methods of Sampling and Analysis of Ambient Air – Determination of sulfur dioxide- Direct reading instrumental method., 2008.
- AS/NZS 3580.5.1:2011: Methods of Sampling and Analysis of Ambient Air – Determination of oxides of nitrogen- Direct reading instrumental method., 2011.
- AS/NZS 3580.6.1:2011: Methods of Sampling and Analysis of Ambient Air – Determination of ozone- Direct reading instrumental method., 2011.
- AS/NZS 3580.7.1:2011: Methods of Sampling and Analysis of Ambient Air – Determination of carbon monoxide- Direct reading instrumental method., 2011.
- Brook, R. D., Rajagopalan, S., Pope, C. A., Brook, J. R., Bhatnagar, A., Diez-Roux, A. V., Holguin, F., Hong, Y. L., Luepker, R. V., Mittleman, M. A., Peters, A., Siscovick, D., Smith, S. C., Whitsel, L., Kaufman, J. D., Amer Heart Assoc Council, E., Council Kidney Cardiovasc. D., and Council Nutr Phys Activity, M.: Particulate Matter Air Pollution and Cardiovascular Disease An Update to the Scientific Statement From the American Heart Association, *Circulation*, 121, 2331-2378, 10.1161/CIR.0b013e3181d8e1, 2010.
- Carslaw DC, and Ropkins K: openair — An R package for air quality data analysis.” *Environmental Modelling & Software*, 27–28(0), 52–61. ISSN 1364-8152, doi: 10.1016/j.envsoft.2011.09.008. , 2012.
- Chambers, S., Williams, A. G., Zahorowski, W., Griffiths, A., and Crawford, J.: Separating remote fetch and local mixing influences on vertical radon measurements in the lower atmosphere, *Tellus Series B-Chemical and Physical Meteorology*, 63, 843-859, 10.1111/j.1600-0889.2011.00565.x, 2011.
- Chambers, S. D., Hong, S. B., Williams, A. G., Crawford, J., Griffiths, A. D., and Park, S. J.: Characterising terrestrial influences on Antarctic air masses using Radon-222 measurements at King George Island, *Atmospheric Chemistry and Physics*, 14, 9903-9916, 10.5194/acp-14-9903-2014, 2014.
- Chambers, S. D., Guerette, E. A., Monk, K., Griffiths, A. D., Zhang, Y., Duc, H., Cope, M., Emmerson, K. M., Chang, L. T., Silver, J. D., Utembe, S., Crawford, J., Williams, A. G., and Keywood, M.: Skill-Testing Chemical Transport Models across Contrasting Atmospheric Mixing States Using Radon-222, *Atmosphere*, 10, 25 10.3390/atmos10010025, 2019.
- Cheng, M., Galbally, I. E., Molloy, S. B., Selleck, P. W., Keywood, M. D., Lawson, S. J., Powell, J. C., Gillett, R. W., and Dunne, E.: Factors controlling volatile organic compounds in dwellings in Melbourne, Australia, *Indoor Air*, 26, 219-230, 10.1111/ina.12201, 2016.
- Chow, J. C., Watson, J. G., Chen, L. W. A., Chang, M. C. O., Robinson, N. F., Trimble, D., and Kohl, S.: The IMPROVE-A temperature protocol for thermal/optical carbon analysis: maintaining consistency with a long-term database, *J. Air Waste Manage. Assoc.*, 57, 1014-1023, 10.3155/1047-3289.57.9.1014, 2007.
- Chow, J. C., Watson, J. G., Chen, L. W. A., Rice, J., and Frank, N. H.: Quantification of PM2.5 organic carbon sampling artifacts in US networks, *Atmospheric Chemistry and Physics*, 10, 5223-5239, 10.5194/acp-10-5223-2010, 2010.
- Cofinas, M., and Creighton, C.: *Australian Native Vegetation Assessment 2001 report*, National Land and Water Resources Audit, ISBN 0-642-37128-8, 2001.

- Cohen, D. D.: APPLICATIONS OF SIMULTANEOUS IBA TECHNIQUES TO AEROSOL ANALYSIS, *Nuclear Instruments & Methods in Physics Research Section B-Beam Interactions with Materials and Atoms*, 79, 385-388, 10.1016/0168-583x(93)95368-f, 1993.
- Cohen, D. D.: Elemental analysis by PIXE and other IBA techniques and their application to source fingerprinting of atmospheric fine particle pollution, *Nuclear instruments & methods in physics research. Section B, Beam interactions with materials and atoms*, 109-110, 218-226, 10.1016/0168-583x(95)00912-4, 1996.
- Cohen, D. D.: Characterisation of atmospheric fine particles using IBA techniques, *Nuclear Instruments & Methods in Physics Research Section B-Beam Interactions with Materials and Atoms*, 136, 14-22, 10.1016/s0168-583x(97)00658-7, 1998.
- Dunne, E., Galbally, I. E., Lawson, S., and Patti, A.: Interference in the PTR-MS measurement of acetonitrile at m/z 42 in polluted urban air-A study using switchable reagent ion PTR-MS, *International Journal of Mass Spectrometry*, 319, 40-47, 10.1016/j.ijms.2012.05.004, 2012.
- Galbally, I. E., Lawson, S. J., Weeks, I. A., Bentley, S. T., Gillett, R. W., Meyer, M., and Goldstein, A. H.: Volatile organic compounds in marine air at Cape Grim, Australia, *Environmental Chemistry*, 4, 178-182, 10.1071/en07024, 2007.
- Griffiths, A. D., Chambers, S. D., Williams, A. G., and Werczynski, S.: Increasing the accuracy and temporal resolution of two-filter radon-222 measurements by correcting for the instrument response, *Atmospheric Measurement Techniques*, 9, 2689-2707, 10.5194/amt-9-2689-2016, 2016.
- Haefelin, M., Angelini, F., Morille, Y., Martucci, G., Frey, S., Gobbi, G. P., Lolli, S., O'Dowd, C. D., Sauvage, L., Xueref-Remy, I., Wastine, B., and Feist, D. G.: Evaluation of Mixing-Height Retrievals from Automatic Profiling Lidars and Ceilometers in View of Future Integrated Networks in Europe, *Boundary-Layer Meteorology*, 143, 49-75, 10.1007/s10546-011-9643-z, 2012.
- Iinuma, Y., Engling, G., Puxbaum, H., and Herrmann, H.: A highly resolved anion-exchange chromatographic method for determination of saccharidic tracers for biomass combustion and primary bio-particles in atmospheric aerosol, *Atmospheric Environment*, 43, 1367-1371, 10.1016/j.atmosenv.2008.11.020, 2009.
- Johnston, F. H., Hanigan, I. C., Henderson, S. B., Morgan, G. G., Portner, T., Williamson, G. J., and Bowman, D. M. J. S.: Creating an Integrated Historical Record of Extreme Particulate Air Pollution Events in Australian Cities from 1994 to 2007, *Journal of the Air and Waste Management Association*, 61, 390-398, 10.3155/1047-3289.61.4.390, 2011.
- Keywood M D, Hibberd M F, and Emmerson K M: Australia state of the environment 2016: atmosphere, independent report to the Australian Government Minister for the Environment and Energy, Australian Government Department of the Environment and Energy, Canberra, doi:10.4226/94/58b65c70bc372., 2017.
- Keywood M, Selleck P, Galbally I E, Lawson S J, Powell J, Cheng M, Gillett R, Ward J, Harnwell J, Dunne E, Boast K, Reisen F, Molloy S, Griffiths A, Chambers S, Crumeyrolle S, Zhang C, Zeng J, and R, F.: Sydney Particle Study 1 - Aerosol and gas data collection v3. CSIRO. Data Collection. <https://doi.org/10.4225/08/57903B83D6A5D>, 2016a.
- Keywood M, Selleck P, Galbally I E, Lawson S, Powell J, Cheng M, Gillett R, Ward J, Harnwell J, Dunne E, Boast K, Reisen F, Molloy S, Griffiths A, Chambers S, Humphries R, Guerette E, and Cohen D: Sydney Particle Study 2 - Aerosol and gas data collection. v1. CSIRO. Data Collection. <https://doi.org/10.4225/08/5791B5528BD63>, 2016b.
- Lawson, S. J., Selleck, P. W., Galbally, I. E., Keywood, M. D., Harvey, M. J., Lerot, C., Helmig, D., and Ristovski, Z.: Seasonal in situ observations of glyoxal and methylglyoxal over the temperate oceans of the Southern Hemisphere, *Atmospheric Chemistry and Physics*, 15, 223-240, 10.5194/acp-15-223-2015, 2015.
- Lim, S. S., Vos, T., Flaxman, A. D., Danaei, G., Shibuya, K., Adair-Rohani, H., Amann, M., Anderson, H. R., Andrews, K. G., Aryee, M., Atkinson, C., Bacchus, L. J., Bahalim, A. N., Balakrishnan, K., Balmes, J., Barker-Collo, S., Baxter, A., Bell, M. L., Blore, J. D., Blyth, F., Bonner, C., Borges, G., Bourne, R., Boussinesq, M., Brauer, M., Brooks, P., Bruce, N. G., Brunekreef, B., Bryan-Hancock, C., Bucello, C., Buchbinder, R., Bull, F., Burnett, R. T., Byers, T. E., Calabria, B., Carapetis, J., Carnahan, E., Chafe, Z., Charlson, F., Chen, H. L., Chen, J. S., Cheng, A. T. A., Child, J. C., Cohen, A., Colson, K. E., Cowie, B. C., Darby, S., Darling, S., Davis, A., Degenhardt, L., Dentener, F., Des Jarlais, D. C., Devries, K., Dherani, M., Ding, E. L., Dorsey, E. R., Driscoll, T., Edmond, K., Ali, S. E., Engell, R. E., Erwin, P. J., Fahimi, S., Falder, G., Farzadfar, F., Ferrari, A., Finucane, M. M., Flaxman, S., Fowkes, F. G. R., Freedman, G., Freeman, M. K., Gakidou, E., Ghosh, S., Giovannucci, E., Gmel, G., Graham, K., Grainger, R., Grant, B., Gunnell, D., Gutierrez, H. R., Hall, W., Hoek, H. W., Hogan, A., Hosgood, H. D., Hoy, D., Hu, H., Hubbell, B. J., Hutchings, S. J., Ibeanusi, S. E., Jacklyn, G. L., Jasrasaria, R., Jonas, J. B., Kan, H. D., Kanis, J. A., Kassebaum,

Formatted: Indent: Left: 0 cm, Hanging: 1.27 cm

Formatted: Indent: Left: 0 cm, Hanging: 1.27 cm

- N., Kawakami, N., Khang, Y. H., Khatibzadeh, S., Khoo, J. P., Kok, C., Laden, F., Lalloo, R., Lan, Q., Lathlean, T., Leasher, J. L., Leigh, J., Li, Y., Lin, J. K., Lipshultz, S. E., London, S., Lozano, R., Lu, Y., Mak, J., Malekzadeh, R., Mallinger, L., Marcenies, W., March, L., Marks, R., Martin, R., McGale, P., McGrath, J., Mehta, S., Mensah, G. A., Merriman, T. R., Micha, R., Michaud, C., Mishra, V., Hanafiah, K. M., Mokdad, A. A., Morawska, L., Mozaffarian, D., Murphy, T., Naghavi, M., Neal, B., Nelson, P. K., Nolla, J. M., Norman, R., Olives, C., Omer, S. B., Orchard, J., Osborne, R., Ostro, B., Page, A., Pandey, K. D., Parry, C. D. H., Passmore, E., Patra, J., Pearce, N., Pelizzari, P. M., Petzold, M., Phillips, M. R., Pope, D., Pope, C. A., Powles, J., Rao, M., Razavi, H., Rehfuess, E. A., Rehm, J. T., Ritz, B., Rivara, F. P., Roberts, T., Robinson, C., Rodriguez-Portales, J. A., Romieu, I., Room, R., Rosenfeld, L. C., Roy, A., Rushton, L., Salomon, J. A., Sampson, U., Sanchez-Riera, L., Sanman, E., Sapkota, A., Seedat, S., Shi, P. L., Shield, K., Shivakoti, R., Singh, G. M., Sleet, D. A., Smith, E., Smith, K. R., Stapelberg, N. J. C., Steenland, K., Stockl, H., Stovner, L. J., Straif, K., Straney, L., Thurston, G. D., Tran, J. H., Van Dingenen, R., van Donkelaar, A., Veerman, J. L., Vijayakumar, L., Weintraub, R., Weissman, M. M., White, R. A., Whiteford, H., Wiersma, S. T., Wilkinson, J. D., Williams, H. C., Williams, W., Wilson, N., Woolf, A. D., Yip, P., Zielinski, J. M., Lopez, A. D., Murray, C. J. L., and Ezzati, M.: A comparative risk assessment of burden of disease and injury attributable to 67 risk factors and risk factor clusters in 21 regions, 1990-2010: a systematic analysis for the Global Burden of Disease Study 2010, *Lancet*, 380, 2224-2260, 10.1016/s0140-6736(12)61766-8, 2012.
- [535] Millero FJ, Feistel R, Wright D G, and McDougall TJ: The composition of Standard Seawater and the definition of the Reference-Composition Salinity Scale, *Deep-Sea Research* 55, 50–72., 2008.
- | Morille, Y., Haeffelin, M., Drobinski, P., and Pelon, J.: STRAT: An automated algorithm to retrieve the vertical structure of the atmosphere from single-channel lidar data, *Journal of Atmospheric and Oceanic Technology*, 24, 761-775, 10.1175/jtech2008.1, 2007.
- [540] Norris, G., Vedantham, R., and et, a.: EPA Positive matrix factorization (PMF) 3.0 - Fundamentals and User Guide. US EAP/600/R-08/108 , Accessed: 15/06/2017, Available: <https://www.epa.gov/air-research/positive-matrix-factorization-model-environmental-data-analyses>., 2008.
- | NZS 3580.4.1:2008: *Methods of Sampling and Analysis of Ambient Air—Determination of sulfur dioxide—Direct reading instrumental method*., 2008.
- [545] Pope, C. A., Burnett, R. T., Thun, M. J., Calle, E. E., Krewski, D., Ito, K., and Thurston, G. D.: Lung cancer, cardiopulmonary mortality, and long-term exposure to fine particulate air pollution, *Jama-Journal of the American Medical Association*, 287, 1132-1141, 10.1001/jama.287.9.1132, 2002.
- | Quennehen, B., Schwarzenboeck, A., Schmale, J., Schneider, J., Sodemann, H., Stohl, A., Ancellet, G., Crumeyrolle, S., and Law, K. S.: Physical and chemical properties of pollution aerosol particles transported from North America to Greenland as measured during the POLARCAT summer campaign, *Atmospheric Chemistry and Physics*, 11, 10947-10963, 10.5194/acp-11-10947-2011, 2011.
- [550] Radhi, M., Box, M. A., Box, G. P., Mitchell, R. M., Cohen, D. D., Stelcer, E., and Keywood, M. D.: Size-resolved mass and chemical properties of dust aerosols from Australia's Lake Eyre Basin, *Atmospheric Environment*, 44, 3519-3528, 10.1016/j.atmosenv.2010.06.016, 2010.
- [555] Schnell, J. L., and Prather, M. J.: Co-occurrence of extremes in surface ozone, particulate matter, and temperature over eastern North America, *Proceedings of the National Academy of Sciences*, 114, 2854-2859, 10.1073/pnas.1614453114, 2017.
- | Simoneit, B. R. T., Schauer, J. J., Nolte, C. G., Oros, D. R., Elias, V. O., Fraser, M. P., Rogge, W. F., and Cass, G. R.: Levoglucosan, a tracer for cellulose in biomass burning and atmospheric particles, *Atmospheric Environment*, 33, 173-182, 10.1016/s1352-2310(98)00145-9, 1999.
- [560] Simoneit, B. R. T.: Biomass burning - A review of organic tracers for smoke from incomplete combustion, *Applied Geochemistry*, 17, 129-162, 10.1016/s0883-2927(01)00061-0, 2002.
- | Weitkamp C: *Lidar: Range-Resolved Optical Remote Sensing of the Atmosphere*, Springer Series in Optical Sciences, Springer Science + Business Media, Boca Raton, USA, 2005., 2005.
- | Whetton P, Ekstrom M, Gerbing C, Grose M, SBhend J, Webb L, and Risby J (eds): *Climate change in Australia: projection for Australia's natural resource management regions -technical report* . CSIRO and BoM, Australia. https://www.climatechangeinaustralia.gov.au/media/ccia/2.1.6/cms_page_media/168/CCIA_2015_NRM_TR_Front_Index.pdf, 2015.

Formatted: Indent: Left: 0 cm, Hanging: 1.27 cm

Formatted: Indent: Left: 0 cm, Hanging: 1.27 cm

Whittlestone, S., Gras, J. L., and Siems, S. T.: Surface air mass origins during the First Aerosol Characterization Experiment (ACE 1), *Journal of Geophysical Research-Atmospheres*, 103, 16341-16350, 1998.

570 Whittlestone, S., and Zahorowski, W.: Baseline radon detectors for shipboard use: Development and deployment in the First Aerosol Characterization Experiment (ACE 1), *Journal of Geophysical Research-Atmospheres*, 103, 16743-16751, 10.1029/98jd00687, 1998.

Formatted: Indent: Left: 0 cm, Hanging: 1.27 cm