

Heat stored in the Earth system: Where does the energy go?

The GCOS Earth heat inventory team

Karina von Schuckmann¹, Lijing Cheng^{2,28}, Matthew D. Palmer³, James Hansen⁴, Caterina Tassone⁵, Valentin Aich⁵, Susheel Adusumilli⁶, Hugo Beltrami⁷, Tim Boyer⁸, Francisco José Cuesta-Valero^{7,27}, Damien Desbruyères⁹, Catia Domingues^{10,11}, Almudena García-García⁷, Pierre Gentine¹², John Gilson¹³, Maximilian Gorfer¹⁴, Leopold Haimberger¹⁵, Masayoshi Ishii¹⁶, Gregory C. Johnson¹⁷, Rachel Killick³, Brian A. King¹⁰, Gottfried Kirchengast¹⁴, Nicolas Kolodziejczyk¹⁸, John Lyman¹⁷, Ben Marzeion¹⁹, Michael Mayer^{15,29}, Maeva Monier²⁰, Didier Paolo Monselesan²¹, Sarah Purkey⁶, Dean Roemmich⁶, Axel Schweiger²², Sonia I. Seneviratne²³, Andrew Shepherd²⁴, Donald A. Slater⁶, Andrea K. Steiner¹⁴, Fiammetta Straneo⁶, Mary-Louise Timmermans²⁵, Susan E. Wijffels^{21,26}

¹Mercator Ocean International, France

²Institute of Atmospheric Physics, Chinese Academy of Sciences, China

³Met Office Hadley Centre, UK

⁴Columbia University Earth Institute, USA

⁵WMO/GCOS, Switzerland

⁶Scripps Institution of Oceanography, UCSD, San Diego, CA, USA

⁷Climate & Atmospheric Sciences Institute, St. Francis Xavier University, NS, Canada

⁸NOAA's National Centers for Environmental Information

⁹Ifremer, University of Brest, CNRS, IRD, Laboratoire d'Océanographie Physique et Spatiale, France

¹⁰National Oceanographic Centre, UK

¹¹ARC Centre of Excellence for Climate Extremes, University of Tasmania, Hobart, Tasmania, Australia

¹²Earth and Environmental Engineering in the School of Engineering and Applied Sciences, Columbia University, USA

¹³University of California, USA

¹⁴Wegener Center for Climate and Global Change and Institute of Physics, University of Graz, Austria

¹⁵Department of Meteorology and Geophysics, University of Vienna, Austria

¹⁶Department of Atmosphere, Ocean and Earth System Modeling Research, Meteorological Research Institute, Japan

¹⁷NOAA, Pacific Marine Environmental Laboratory, USA

¹⁸University of Brest, CNRS, IRD, Ifremer, Laboratoire d'Océanographie Physique et Spatiale, IUEM, France

¹⁹Institute of Geography and MARUM-Center for Marine Environmental Sciences, University of Bremen, Germany

²⁰CELAD/Mercator Ocean International, France

²¹CSIRO Oceans and Atmosphere, Hobart, Tasmania, Australia

²²Polar Science Center, Applied Physics Laboratory, University of Washington, Seattle, USA

²³Institute for Atmospheric and Climate Science, ETH, Switzerland

²⁴Center for Polar Observation and Modeling, University of Leeds, UK

²⁵Department of Earth and Planetary Sciences, Yale University, New Haven, USA

²⁶Woods Hole Oceanographic Institution, Massachusetts, United States

²⁷Environmental Sciences Program, Memorial University of Newfoundland, NL, Canada

²⁸Center for Ocean Mega-Science, Chinese Academy of Sciences, Qingdao, China, 266071

²⁹European Centre for Medium-Range Weather Forecasts, Reading, UK

Correspondence to: Karina von Schuckmann (karina.von.schuckmann@mercator-ocean.fr)

Abstract

Human-induced atmospheric composition changes cause a radiative imbalance at the top-of-atmosphere which is driving global warming. This Earth Energy Imbalance (EEI) is the most critical number defining the prospects for continued global warming and climate change. Understanding the heat gain of the Earth system – and particularly how much and where the heat is distributed – is fundamental to understanding how this affects warming ocean, atmosphere, and land; rising surface temperature; sea level; and loss of grounded and floating ice, which are fundamental concerns for society. This study is a Global Climate Observing System (GCOS) concerted international effort to update the Earth heat inventory, and presents an updated assessment of ocean warming estimates, and new and updated estimates of heat gain in the atmosphere, cryosphere and land over the period 1960-2018. The study obtains a consistent long-term Earth system heat gain over the period 1971-2018, with a total heat gain of 358 ± 37 ZJ, which is equivalent to a global heating rate of 0.47 ± 0.1 W/m². Over the period 1971-2018 (2010-2018), the majority of heat gain is reported for the global ocean with 89% (90%), with 52% for both periods in the upper 700m depth, 28% (30%) for the 700-2000m depth layer, and 9% (8%) below 2000m depth. Heat gain over land amounts to 6% (5%) over these periods, 4% (3%) is available for the melting of grounded and floating ice, and 1% (2%) for atmospheric warming. Our results also show that EEI is not only continuing, it is increasing: the EEI amounts to 0.87 ± 0.12 W/m² during 2010-2018. Stabilization of climate, the goal of the universally agreed UNFCCC in 1992 and the Paris agreement in 2015, requires that EEI be reduced to approximately zero to achieve Earth's system quasi-equilibrium. The amount of CO₂ in the atmosphere would need to be reduced from 410 ppm to 353 ppm to increase heat radiation to space by 0.87 W/m², bringing Earth back towards energy balance. This simple number, EEI, is the most fundamental metric that the scientific community and public must be aware of, as the measure of how well the world is doing in the task of bringing climate change under control, and we call for an implementation of the EEI into the global stocktake based on best available science. Continued quantification and reduced uncertainties in the Earth heat inventory can be best achieved through the maintenance of the current global climate observing system, its extension into areas of gaps in the sampling, as well as to establish an international framework for concerted multi-disciplinary research of the Earth heat inventory as presented in this study. This Earth heat inventory is published at DKRZ (<https://www.dkrz.de/>) under the doi: https://doi.org/10.26050/WDCC/GCOS_EHI_EXP_v2 (von Schuckmann et al., 2020).

Introduction

In the Paris Agreement of the United Nations Framework Convention on Climate Change (UNFCCC), article 7 demands that “Parties should strengthen [...] scientific knowledge on climate, including research, systematic observation of the climate system and early warning systems, in a manner that informs climate services and supports decision-making.” This request of the UNFCCC expresses the need of climate monitoring based on best available science, which is globally coordinated through the Global Climate Observing System (GCOS). In the current Implementation Plan of GCOS, main observation gaps are addressed and it states that “closing the Earth's energy balance [...] through observations remain outstanding scientific issues that require high-quality climate records of Essential Climate Variables (ECVs).” (GCOS, 2016). GCOS is asking the broader scientific community to establish the observational requirements needed to meet the targets defined in the GCOS Implementation Plan, and to identify how climate observations could be enhanced and continued into the future in order to monitor the Earth’s cycles and the global energy budget. This study addresses and intends to respond to this request.

The state, variability and change of Earth’s climate are to a large extent driven by the energy transfer between the different components of the Earth system (Hansen, 2005; Hansen et al., 2011). Energy flows alter clouds, and weather and internal climate modes can temporarily alter the energy balance on sub-annual to multi-decadal timescales (Palmer & McNeall, 2014; Rhein et al., 2013). The most practical way to monitor climate state, variability and change is to continually assess the energy, mainly in the form of heat, in the Earth system (Hansen et al., 2011). All energy entering or leaving the Earth climate system does so in the form of radiation at the top-of-the-atmosphere (TOA) (Loeb et al., 2012). The difference between incoming solar radiation and outgoing radiation, which is the sum of the reflected shortwave radiation and emitted longwave radiation, determines the net radiative flux at TOA. Changes of this global radiation balance at TOA - the so-called Earth Energy Imbalance (EEI) - determines the temporal evolution of Earth’s climate: If the imbalance is positive (i.e. less energy going out than coming in), energy in the form of heat is accumulated in the Earth system resulting in global warming - or cooling if the EEI is negative. The various facets and impacts of observed climate change arise due to the EEI, which thus represents a crucial measure of the rate of climate change (von Schuckmann et al., 2016). The EEI is the portion of the forcing that has not yet been responded to (Hansen, 2005). In other words, warming will continue even if atmospheric greenhouse gas (GHG) amounts are stabilized at today’s level, and the EEI defines additional global warming that will occur without further change in forcing (Hansen et al., 2017). The EEI is less subject to decadal variations associated with internal climate variability than global surface temperature and therefore represents a robust measure of the rate of climate change (von Schuckmann et al., 2016; Cheng et al., 2017).

The Earth system responds to an imposed radiative forcing through a number of feedbacks, which operate on various different timescales. Conceptually, the relationships between EEI, radiative forcing, and surface temperature change can be expressed as (Gregory & Andrews, 2016):

$$\Delta N_{TOA} = \Delta F_{ERF} - |\alpha_{FP}| \Delta T_S \quad (1)$$

where ΔN_{TOA} is Earth's net energy imbalance at the Top of the Atmosphere (TOA, in W m^{-2}), ΔF_{ERF} is the effective radiative forcing (W m^{-2}), ΔT_S is the global surface temperature anomaly (K) relative to the equilibrium state, and α_{FP} is the net total feedback parameter ($\text{W m}^{-2} \text{K}^{-1}$), which represents the combined effect of the various climate feedbacks. Essentially, α_{FP} in Equ. (1) can be viewed as a measure of how efficient the system is at restoring radiative equilibrium for a unit surface temperature rise. Thus, ΔN_{TOA} represents the difference between the applied radiative forcing and Earth's radiative response through climate feedbacks associated with surface temperature rise (e.g. Hansen et al., 2011). Observation-based estimates of ΔN_{TOA} are therefore crucial both to our understanding of past climate change and for refining projections of future climate change (Gregory & Andrews, 2016; Kuhlbrodt & Gregory, 2012). The long atmospheric lifetime of carbon dioxide means that ΔN_{TOA} , ΔF_{ERF} and ΔT_S will remain positive for centuries, even with substantial reductions in greenhouse gas emissions and lead to substantial committed sea-level rise (Cheng, Abraham, et al., 2019; Hansen et al., 2017; Nauels et al., 2017; Matthew D Palmer et al., 2018).

However, this conceptual picture is complicated by the presence of unforced internal variability in the climate system, which adds substantial noise to the real-world expression of this equation (Gregory et al., 2020; Marvel et al., 2018; Palmer & McNeall, 2014). For example, at time scales from interannual to decadal periods, the phase of the El Niño Southern Oscillation contributes to both positive or negative variations in EEI (Cheng, Trenberth, et al., 2019; Loeb et al., 2018; Johnson and Birnbaum, 2017; Loeb et al., 2012). At multi-decadal and longer time scales, systematic changes in ocean circulation can significantly alter the EEI as well (Baggenstos et al., 2019).

Time-scales of the Earth climate response to perturbations of the equilibrium Earth energy balance at TOA are driven by a combination of climate forcing and the planet's thermal inertia: The Earth system tries to restore radiative equilibrium through increased thermal radiation to space via the Planck response, but a number of additional Earth system feedbacks also influence the planetary radiative response (Lembo et al., 2019; Myhre et al., 2013). Time-scales of warming or cooling of the climate depend on the imposed radiative forcing, the evolution of climate and Earth system feedbacks with ocean and cryosphere in particular leading to substantial "thermal inertia" (Clark et al., 2016; Marshall et al., 2015). Consequently, it requires centuries for Earth's surface temperature to respond fully to a climate forcing.

Contemporary estimates of the magnitude of the Earth's energy imbalance range between about 0.4-0.9 W m^{-2} (depending on estimate method and period, see also conclusion), and are directly attributable to increases in carbon dioxide and other greenhouse gases in the atmosphere from human activities (Ciais et al., 2013, Myhre et al., 2013, Rhein et al., 2013, Hansen et al., 2011). The estimate obtained from climate models (CMIP6) as presented by (Wild, 2020) amounts to 1.1

$\pm 0.8 \text{ W m}^{-2}$. Since the period of industrialization, the EEI has become increasingly dominated by the emissions of radiatively active greenhouse gases, which perturb the planetary radiation budget and result in a positive EEI. As a consequence, excess heat is accumulated in the Earth system, which is driving global warming (Hansen et al., 2005; 2011). The majority (about 90%) of this positive EEI is stored in the ocean (Rhein et al., 2013) and can be estimated through the evaluation of ocean heat content (OHC, e.g. Abraham et al., 2013). According to previous estimates, a small proportion (~3%) contributes to the melting of Arctic sea ice and land ice (glaciers, the Greenland and Antarctic ice sheets). Another 4% goes into heating of the land and atmosphere (Rhein et al., 2013).

Knowing where and how much heat is stored in the different Earth system components from a positive EEI, and quantifying the Earth heat inventory is of fundamental importance to unravel the current status of climate change, as well as to better understand and predict its implications, and to design the optimal observing networks for monitoring the Earth heat inventory. Quantifying this energy gain is essential for understanding the response of the climate system to radiative forcing, and hence to reduce uncertainties in climate predictions. The rate of ocean heat gain is a key component for the quantification of the EEI, and the observed surface warming has been used to estimate the equilibrium climate sensitivity (e.g. Knutti & Rugenstein, 2015). However, further insight into the Earth heat inventory, particularly to further unravel on where the heat is going, can have implications on the understanding of the transient climate responses to climate change, and consequently reduces uncertainties in climate predictions (Hansen et al., 2011). In this paper, we focus on the inventory of heat stored in the Earth system. The first four sections will introduce the current status of estimate of heat storage change in the ocean, atmosphere, land and cryosphere, respectively. Uncertainties, current achieved accuracy, challenges, and recommendations for future improved estimates are discussed for each Earth system component, and in the conclusion. In the last chapter, an update of the Earth heat inventory is established based on the results of sections 1-4, followed by a conclusion.

1. Heat stored in the ocean

The storage of heat in the ocean leads to ocean warming (IPCC, 2019), and is a major contributor to sea-level rise through thermal expansion (WCRP, 2018). Ocean warming alters ocean stratification and ocean mixing processes (Bindoff et al., 2019), affects ocean currents (Hoegh-Guldberg, 2018; Monika Rhein et al., 2018; Yang et al., 2016), impacts tropical cyclones (Hoegh-Guldberg, 2018; Trenberth et al., 2018; Woollings et al., 2012) and is a major player in ocean deoxygenation processes (Breitburg et al., 2018) and carbon sequestration into the ocean (Bopp et al., 2013; Frölicher et al., 2018). Together with ocean acidification and deoxygenation, ocean warming can lead to dramatic changes in ecosystems, biodiversity, population extinctions, coral bleaching and infectious disease, as well as redistribution of habitat (García Molinos et al., 2016;

Gattuso et al., 2015; Ramírez et al., 2017). Implications of ocean warming are also widespread across Earth's cryosphere (Jacobs et al., 2002; Mayer et al., 2019; Polyakov et al., 2017; Serreze & Barry, 2011; Shi et al., 2018). Examples include the basal melt of ice shelves (Adusumilli et al., 2019; Pritchard et al., 2012; Wilson et al., 2017) and marine terminating glaciers (Straneo & Cenedese, 2015); the retreat and speedup of outlet glaciers in Greenland (King et al., 2018) and in Antarctica (Shepherd, Fricker, et al., 2018) and of tidewater glaciers in South America and in the High Arctic (Gardner et al., 2013).

Opportunities and challenges in forming OHC estimates depend on the availability of in situ subsurface temperature measurements, particularly for global-scale evaluations. Subsurface ocean temperature measurements before 1900 had been obtained from ship-board instrumentation, culminating in the global-scale Challenger expedition (1873–1876) (Roemmich & Gilson, 2009). From 1900 up to the mid-1960s, subsurface temperature measurements relied on ship-board Nansen-Bottle and mechanical bathythermograph (MBT) instruments (Abraham et al., 2013), only allowing limited global coverage and data quality. The inventions of the conductivity-temperature-depth (CTD) instruments in the mid-50s and the Expendable Bathythermograph Observing (XBT) system about ten years later increased the oceanographic capabilities for widespread and accurate (in the case of the CTD) measurements of in situ subsurface water temperature (Abraham et al., 2013; Goni et al., 2019).

With the implementation of several national and international programs, and the implementation of the moored arrays in the tropical ocean in the 1980s, the Global Ocean Observing System (GOOS, <https://www.goosoocean.org/>) started to grow. Particularly the global World Ocean Circulation program (WOCE) during the 1990s obtained a global baseline survey of the ocean from top-to-bottom (King et al., 2001). However, measurements were still limited to fixed point platforms, major shipping routes and Naval and research vessel cruise tracks, leaving large parts of the ocean under-sampled. In addition, detected instrumental biases in MBTs, XBTs and other instruments pose a further challenge for the global scale OHC estimate (Abraham et al., 2013; Ciais et al., 2013; M. Rhein et al., 2013), but significant progress has been made recently to correct biases and provide high-quality data for climate research (Boyer et al., 2016; Cheng et al., 2016; Goni et al., 2019; Gouretski & Cheng, 2020). Satellite altimeter measurements of sea surface height began in 1992, and are used to complement in situ derived OHC estimates, either for validation purposes (Cabanès et al., 2013), or to complement the development of global gridded ocean temperature fields (Guinehut et al., 2012; Willis et al., 2004). Indirect estimates of OHC from remote sensing through the global sea level budget became possible with satellite-derived ocean mass information in 2002 (Dieng et al., 2017; Llovel et al., 2014; Loeb et al., 2012; Meyssignac et al., 2019; von Schuckmann et al., 2014).

After the Oceanobs conference in 1999, the international Argo profiling float program was launched with first Argo float deployments in the same year (Riser et al., 2016; Roemmich &

Gilson, 2009). By the end of 2006, Argo sampling had reached its initial target of data sampling roughly every 3 degrees between 60°S-60°N. However, due to technical evolution, only 40% of Argo floats provided measurements down to 2000 m depth in the year 2005, but that percentage increased to 60% in 2010 (von Schuckmann & Le Traon, 2011). The starting point of Argo-based ‘best estimate’ for near-global-scale (60°S-60°N) OHC is either defined in 2005 (von Schuckmann and Le Traon, 2011), or in 2006 (Wijffels et al., 2016). The opportunity for improved OHC estimation provided by Argo is tremendous, and has led to major advancements in climate science, particularly on the discussion of the EEI (Hansen et al., 2011; Johnson, et al., 2018; Loeb et al., 2012; Trenberth & Fasullo, 2010; von Schuckmann et al., 2016, Meyssignac et al., 2019). The near-global coverage of the Argo network also provides an excellent test bed for the long-term OHC reconstruction extending back well before the Argo period (Cheng et al., 2017). Moreover, these evaluations inform further observing system recommendations for global climate studies, i.e. gaps in the deep ocean layers below 2000m depth, in marginal seas, in shelf areas and in the polar regions (e.g. von Schuckmann et al., 2016), and their implementations are underway, for example for deep Argo (Johnson et al., 2019).

Different research groups have developed gridded products of subsurface temperature fields for the global ocean using statistical models (Gaillard et al., 2016; Good et al., 2013; Ishii et al., 2017; Levitus et al., 2012) or combined observations with additional statistics from climate models (Cheng et al., 2017). An exhaustive list of the pre-Argo products can be found in for example Abraham et al., 2013; Boyer et al., 2016; WCRP, 2018; Meyssignac et al., 2019. Additionally, specific Argo-based products are listed on the Argo webpage (<http://www.argo.ucsd.edu/>). Although all products rely more or less on the same database, near-global OHC estimates show some discrepancies which result from the different statistical treatments of data gaps, the choice of the climatology and the approach used to account for the MBT and XBT instrumental biases (Boyer et al., 2016; Wang et al., 2018). Argo-based products show smaller differences, likely resulting from different treatments of currently under-sampled regions (e.g. von Schuckmann et al., 2016). Ocean reanalysis systems have been also used to deliver estimates of near-global OHC (Meyssignac et al., 2019; von Schuckmann et al., 2018), and their international assessments show increased discrepancies with decreasing in situ data availability for the assimilation (Palmer et al., 2017; Storto et al., 2018). Climate models have also been used to study global and regional ocean heat changes and the associated mechanisms, with observational datasets providing valuable benchmarks for model evaluation (Cheng et al., 2016; Gleckler et al., 2016).

International near-global OHC assessments have been performed previously (e.g. Abraham et al., 2013; Boyer et al., 2016; Meyssignac et al., 2019; WCRP, 2018). These assessments are challenging, as most of the gridded temperature fields are research products, and only few are distributed and regularly updated operationally (e.g. <https://marine.copernicus.eu/>). This initiative relies on the availability of data products, their temporal extensions, and direct interactions with the different research groups. A complete view of all international temperature products can be

only achieved through a concerted international effort, and over time. In this study, we do not achieve a holistic view of all available products, but present a starting point for future international regular assessments of near-global OHC. For the first time, we propose an international ensemble mean and standard deviation of near-global OHC (Fig. 1) which is then used to build an Earth climate system energy inventory (section 5). The ensemble spread gives an indication of the agreement among products and can be used as a proxy for uncertainty. The basic assumption for the error distribution is Gaussian with a mean of zero, which can be approximated by an ensemble of various products. However, it does not account for systematic errors that may result in biases across the ensemble and does not represent the full uncertainty. The uncertainty can also be estimated in other ways including some purely statistical methods (Levitus et al., 2012) or methods explicitly accounting for the error sources (Lyman & Johnson, 2013), but each method has its caveats, for example the error covariances are mostly unknown, so adopting a straightforward method with a “data democracy” strategy has been chosen here as a starting point.

However, future evolution of this initiative is needed to include missing and updated in situ-based products, ocean reanalyses, as well as indirect estimates (for example satellite-based). The continuity of this activity will help to further unravel uncertainties due to the community’s collective efforts on detecting/reducing errors, and then provides up-to-date scientific knowledge of ocean heat uptake.

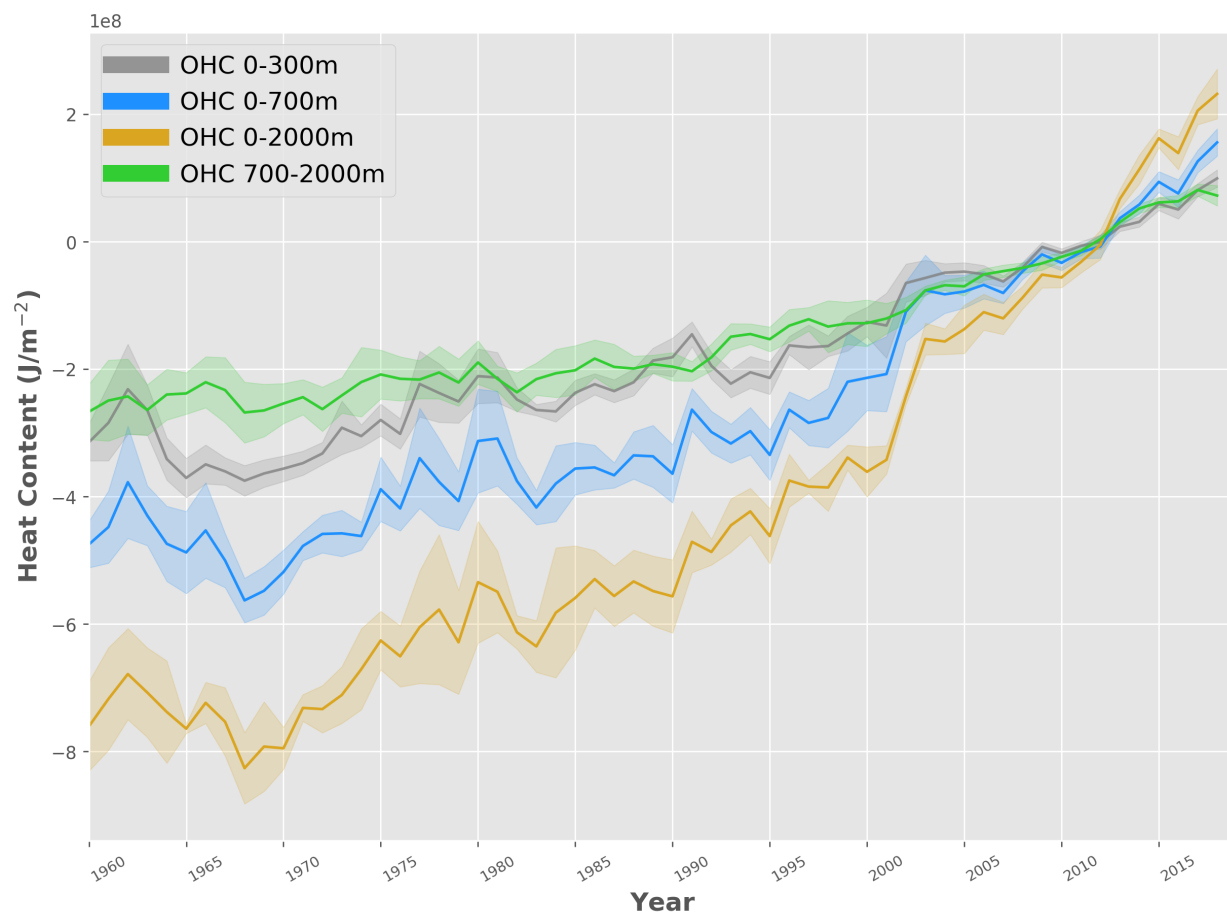


Figure 1: Ensemble mean time series and ensemble standard deviation (2-sigma, shaded) of global ocean heat content (OHC) anomalies relative to the 2005-2017 climatology for the 0-300m (grey), 0-700m (blue), 0-2000m (yellow) and 700-2000m depth layer (green). The ensemble mean is an outcome of an international assessment initiative, and all products used are referenced in the legend of Fig. 2. The trends derived from the time series are given in Table 1. Note that values are given for the ocean surface area between 60°S-60°N, and limited to the 300m bathymetry of each product, respectively.

| Period | 0-300m (W/m ²) | 0-700m (W/m ²) | 0-2000m (W/m ²) | 700-2000m (W/m ²) |
|-----------|-------------------------------|-------------------------------|--------------------------------|----------------------------------|
| 1960-2018 | 0.3 ± 0.03 | 0.4 ± 0.1 | 0.5 ± 0.1 | 0.2 ± 0.03 |
| 1993-2018 | 0.4 ± 0.04 | 0.6 ± 0.1 | 0.9 ± 0.1 | 0.3 ± 0.03 |
| 2005-2018 | 0.4 ± 0.1 | 0.6 ± 0.1 | 1.0 ± 0.2 | 0.4 ± 0.1 |
| 2010-2018 | 0.5 ± 0.1 | 0.7 ± 0.1 | 1.3 ± 0.3 | 0.5 ± 0.1 |

Table 1: Linear trends (weighted least square fit, see for example von Schuckmann and Le Traon, 2011) as derived from the ensemble mean as presented in Fig. 1 for different time intervals, and different integration depth. The uncertainty on the trend estimate is given for the 95% confidence level. Note that values are given for the ocean surface area between 60°S-60°N, and limited to the 300m bathymetry of each product, respectively. See text and Fig. 1 caption for more details on the OHC estimates.

Products used for this assessment are referenced in the caption of Fig. 2. Estimates of OHC have been provided by the different research groups under homogeneous criteria. All estimates use a coherent ocean volume limited by the 300m isobath of each product, and are limited to 60°S-60°N since most observational products exclude high latitude ocean areas because of the low observational coverage, and only annual averages have been used. 60°S-60°N constitutes ~91% of the global ocean surface area and limiting to 300m isobath neglects the contributions from coastal and shallow waters, so the resultant OHC trends will be underestimated if these ocean regions are warming. For example, neglecting shallow waters can account for 5-10% for 0-2000m OHC trends (von Schuckmann et al., 2014). A first initial test using Cheng et al., (2017) data indicates that OHC 0-2000m trends can be underestimated by ~10% if the ocean warming in the area polewards of 60° latitude is not taken into account (not shown). This is a caveat of the assessment in this review and will be addressed in the future.

The assessment is based on three distinct periods to account for the evolution of the observing system, i.e. 1960-2018 (i.e. ‘historical’), 1993-2018 (i.e. ‘altimeter era’) and 2005-2018 (i.e. ‘golden Argo-era’). In addition, ocean warming rates over the past decade are specifically discussed according to an apparent acceleration of global surface warming since 2010 (WMO, 2020; Blunden and Arndt, 2019). All time series reach the end in 2018 – which was one of the principal limitations for the inclusion of some products. Our final estimates of OHC for the upper 2000m over different periods are the ensemble average of all products, with the uncertainty range defined by the standard deviation (2-sigma) of the corresponding estimates used (Fig. 1).

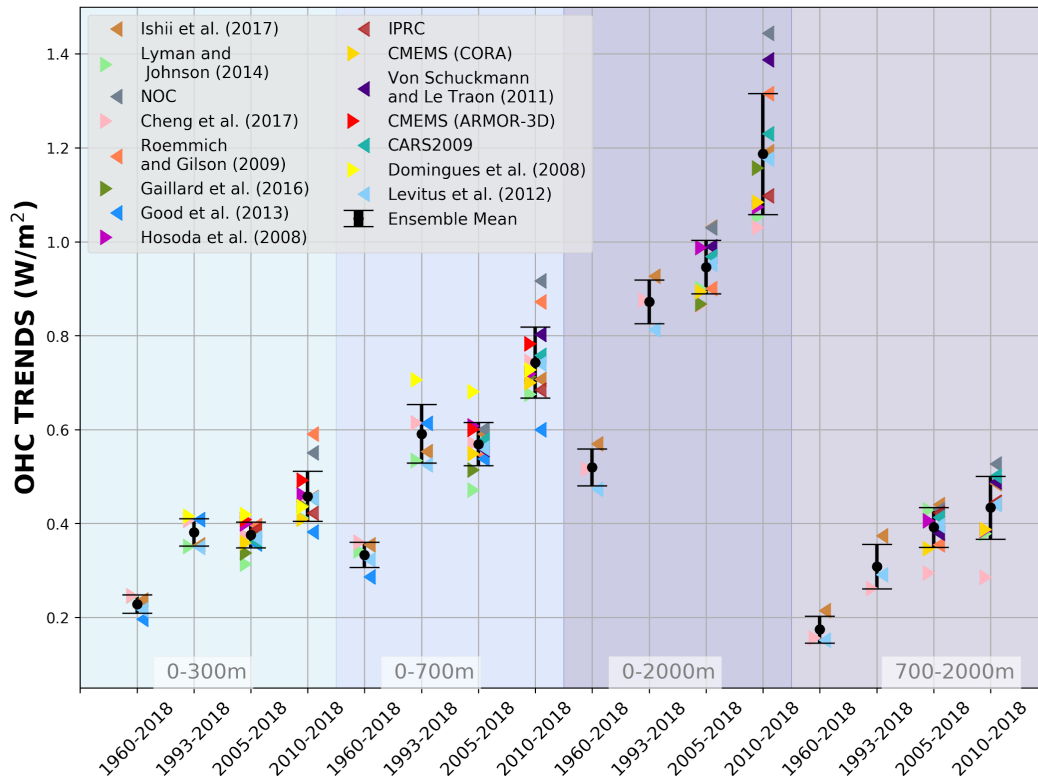


Figure 2: Linear trends of global ocean heat content (OHC) as derived from different temperature products (colors). References are given in the figure legend, except for IPRC (<http://apdr.c.soest.hawaii.edu/projects/Argo/>), CMEMS (CORA & ARMOR-3D, <http://marine.copernicus.eu/science-learning/ocean-monitoring-indicators>), CARS2009 (<http://www.marine.csiro.au/~dunn/cars2009/>) and NOC (National Oceanographic Institution, (D. G. Desbruyères et al., 2016). The ensemble mean and standard deviation (2-sigma) is given in black, respectively. The shaded areas show trends from different depth layer integrations, i.e. 0-300m (light turquoise), 0-700m (light blue), 0-2000m (purple) and 700-2000m (light purple). For each integration depth layer, trends are evaluated over the three study periods, i.e. historical (1960-2018), altimeter era (1993-2018) and golden Argo era (2005-2018). In addition, the most recent period 2010-2018 is included. See text for more details on the international assessment criteria. Note that values are given for the ocean surface area (see text for more details).

The first and principal result of the assessment (Fig. 1) is an overall increase of the trend for the more recent two study periods e.g., the altimeter era (1993-2018) and golden Argo era (2005-2018) relative to the historical era (1960-2018), which is in agreement with previous results (e.g. Abraham et al., 2013). The trend values are all given in Table 1. A major part of heat is stored in the upper layers of the ocean (0-300m and 0-700m depth). However, heat storage at intermediate depth (700-2000m) increases at a comparable rate as reported for the 0-300m depth layer (Table

1, Fig. 2). There is a general agreement among the 15 international OHC estimates (Fig. 2). However, for some periods and depth layers the standard deviation reaches maximal values up to about 0.3 W/m^2 . All products agree on the fact that ocean warming rates have increased in the past decades, and doubled since the beginning of the altimeter era (1993-2018 compared with 1960-2018) (Fig. 2). Moreover, there is a clear indication that heat sequestration into the deeper ocean layers below 700m depth took place over the past 6 decades linked to an increase of OHC trends over time (Fig. 2). In agreement with observed accelerated Earth surface warming over the past decade (WMO, 2020; Blunden and Arndt, 2019), ocean warming rates for the 0-2000m depth layer also reached record rates of $1.3 (0.9) \pm 0.3 \text{ W/m}^2$ for the ocean (global) area over the period 2010-2018.

For the deep OHC changes below 2000m, we adapted an updated estimate from (Purkey & Johnson, 2010) (PG10) from 1991 to 2018, which is a constant linear trend estimate ($1.15 \pm 0.57 \text{ ZJ/year}$, $0.07 \pm 0.04 \text{ W/m}^2$). Some recent studies strengthened the results in PG10 (D. G. Desbruyères et al., 2016; Zanna et al., 2019). Desbruyères et al., (2016) examined the decadal change of the deep and abyssal OHC trends below 2000m in 1990s and 2000s, suggesting that there has not been a significant change in the rate of decadal global deep/abyssal warming from the 1990's to the 2000's and the overall deep ocean warming rate is consistent with PG10. Using a Green Function method, Zanna et al. (2019) reported a deep ocean warming rate of $\sim 0.06 \text{ Wm}^{-2}$ during the 2000s, consistent with PG10 used in this study. Zanna et al. (2019) shows a fairly weak global trend during the 1990s, inconsistent with observation-based estimates. This mismatch might come from the simplified or misrepresentation of surface-deep connections using ECCO reanalysis data and the use of time-mean Green's functions in Zanna et al. (2019), as well as from the limited spatial resolution of the observational network for relatively short time-spans. Furthermore, combining hydrographic and deep-Argo floats, a recent study (Johnson et al., 2019) reported an accelerated warming in the South Pacific Ocean in recent years, but a global estimate of the OHC rate of change over time is not available yet.

Before 1990, we assume zero OHC trend below 2000m, following the methodology in IPCC-AR5 (Rhein et al., 2013). The zero-trend assumption is made mainly because there are too few observations before 1990 to make an estimate of OHC change below 2000m. But it is a reasonable assumption because OHC 700-2000m warming was fairly weak before 1990 and heat might not have penetrated down to 2000m (Cheng et al., 2017). Zanna et al. (2019) also shows a near zero OHC trend below 2000m from the 1960s to 1980s. The derived time series is used for the Earth energy inventory in section 5. A centralized (around the year 2006) uncertainty approach has been applied for the deep ($> 2000\text{m}$ depth) OHC estimate following the method of Cheng et al., (2017), which allows to extract an uncertainty range over the period 1993-2018 within the given [lower ($1.15 - 0.57 \text{ ZJ/year}$), upper ($1.15 + 0.57 \text{ ZJ/year}$)] range of the deep OHC trend estimate. We then extend the obtained uncertainty estimate back from 1993 to 1960, with 0 OHC anomaly.

2. Heat available to warm the atmosphere

While the amount of heat accumulated in the atmosphere is small compared to the ocean, warming of the Earth's near-surface air and atmosphere aloft is a very prominent effect of climate change, which directly affects society. Atmospheric observations clearly reveal a warming of the troposphere over the last decades (Santer et al., 2017; Steiner et al., 2020) and changes in the seasonal cycle (Santer et al., 2018). Changes in atmospheric circulation (Cohen et al., 2014; Fu et al., 2019) together with thermodynamic changes (Fischer & Knutti, 2016; Trenberth et al., 2015) will lead to more extreme weather events and increase high impact risks for society (Coumou et al., 2018; Zscheischler et al., 2018). Therefore, a rigorous assessment of the atmospheric heat content in context with all Earth's climate subsystems is important for a full view on the changing climate system.

The atmosphere transports vast amounts of energy laterally and strong vertical heat fluxes occur at the atmosphere's lower boundary. The pronounced energy and mass exchanges within the atmosphere and with all other climate components is a fundamental element of Earth's climate (Peixoto & Oort, 1992). In contrast, long-term heat accumulation in the atmosphere is limited by its small heat capacity as the gaseous component of the Earth system (von Schuckmann et al., 2016).

Recent work revealed inconsistencies in earlier formulations of the atmospheric energy budget (Mayer et al., 2017; Trenberth & Fasullo, 2018), and hence a short discussion of the updated formulation is provided here. In a globally averaged and vertically integrated sense, heat accumulation in the atmosphere arises from a small imbalance between net energy fluxes at the top of the atmosphere (TOA) and the surface (denoted s). The heat budget of the vertically integrated and globally averaged atmosphere (indicated by the global averaging operator $\langle . \rangle$) reads as follows (Mayer et al., 2017):

$$\left\langle \frac{\partial AE}{\partial t} \right\rangle = \langle N_{TOA} \rangle - \langle F_s \rangle - \langle F_{snow} \rangle - \langle F_{PE} \rangle, \quad (2)$$

where, in mean-sea-level altitude (z) coordinates used here for integrating over observational data, the vertically integrated atmospheric energy content AE per unit surface area [Jm^{-2}] reads

$$AE = \int_{z_s}^{z_{TOA}} \rho (c_v T + g(z - z_s) + L_e q + \frac{1}{2} V^2) dz. \quad (3)$$

In Equation 2, AE represents the total atmospheric energy content, N_{TOA} the net radiation at top-of-the-atmosphere, F_s net surface energy flux defined as the sum of net surface radiation and latent and sensible heat flux, and F_{snow} the latent heat flux associated with snowfall (computed as the product of latent heat of fusion and snowfall rate). Here, we take constant latent heat of vaporization (at 0°C) in the latent heat flux term that is contained in F_s but variations in latent heat flux arising from the deviation of evaporated water from 0°C are contained in F_{PE} , which additionally accounts for sensible heat of precipitation (referenced to 0°C). That is, F_{PE} expresses

a modification of F_s arising from global evaporation and precipitation occurring at temperatures different from 0°C.

Snowfall is the fraction of precipitation that returns originally evaporated water to the surface in a frozen state. In that sense, F_{snow} represents a heat transfer from the surface to the atmosphere: it warms the atmosphere through additional latent heat release (associated with freezing of vapor) and snowfall consequently arrives at the surface in an energetic state lowered by this latent heat. This energetic effect is most obvious over the open ocean, where falling snow requires the same amount of latent heat to be melted again and thus cools the ocean. Over high latitudes, F_{snow} can attain values up to 5 Wm⁻², but its global average value is smaller than 1 Wm⁻² (Mayer et al., 2017). Although its global mean energetic effect is relatively small, it is systematic and should be included for accurate diagnostics. Moreover, snowfall is an important contributor to the heat and mass budget of ice sheets and sea ice (see section 4).

F_{PE} represents the net heat flux arising from the different temperatures of rain and evaporated water. This flux can be sizable regionally, but it is small in a global average sense (warming of the atmosphere ~0.3 Wm⁻² according to Mayer et al., 2017).

Equation 3 provides a decomposition of the atmospheric energy content AE into sensible heat energy (sum of the first two terms, internal heat energy and gravity potential energy), latent heat energy (third term) and kinetic energy (fourth term), where ρ is the air density, c_v the specific heat for moist air at constant volume, T the air temperature, g the acceleration of gravity, L_e the temperature-dependent effective latent heat of condensation (and vaporization) L_v or sublimation L_s (the latter relevant below 0 °C), q the specific humidity of the moist air, and V the wind speed. We neglect atmospheric liquid water droplets and ice particles as separate species, as their amounts and especially their trends are small.

In the AE derivation from observational datasets based on Equation 3, we accounted for the intrinsic temperature dependence of the latent heat of water vapor by assigning L_e to L_v if ambient temperatures are above 0 °C and to L_s (adding in the latent heat of fusion L_f) if they are below -10 °C, respectively, with a gradual (half-sine weighted) transition over the temperature range between. The reanalysis evaluations similarly approximated L_e by using values of L_v , L_s , and L_f , though in slightly differing forms. The resulting differences in AE anomalies from any of these choices are negligibly small, however, since the latent heat contribution at low temperatures is itself very small.

As another small difference, the AE estimations from observations neglected the kinetic energy term in Equation 3 (fourth term), while the reanalysis evaluations accounted for it. This as well leads to negligible AE anomaly differences, however, since the kinetic energy content and trends at global scale are more than three orders of magnitude smaller than for the sensible heat (Peixoto and Oort, 1992). Aligning with the terminology of ocean heat content (OHC) and given the dominance of the heat-related terms in Equation 3, we hence refer to the energy content AE as atmospheric heat content (AHC) hereafter.

Turning to the actual datasets used, atmospheric energy accumulation can be quantified using various data types, as summarized in the following. Atmospheric reanalyses combine

observational information from various sources (radiosondes, satellites, weather stations, etc.) and a dynamical model in a statistically optimal way. This data type has reached a high level of maturity, thanks to continuous development work since the early 1990s (Hersbach et al., 2018). Especially reanalysed atmospheric state quantities like temperature, winds, and moisture are considered to be of high quality and suitable for climate studies, although temporal discontinuities introduced from the ever-changing observation system remain a matter of concern (Berrisford et al., 2011; Chiodo & Haimberger, 2010).

Here we use the current generation of atmospheric reanalyses as represented by ECMWF's fifth-generation reanalysis ERA5 (Hersbach et al., 2018, 2020), NASA's Modern-Era Retrospective analysis for Research and Applications version 2 (MERRA2) (Gelaro et al., 2017), and JMA's 55-year-long reanalysis JRA55 (Kobayashi et al., 2015). All these are available over 1980 to 2018 (ERA5 also in 1979) while JRA55 is the only one covering the full early timeframe 1960 to 1979. We additionally used a different version of JRA55 that assimilates only conventional observations also over the satellite era from 1979 onwards, which away from the surface only leaves radiosondes as data source and which is available to 2012 (JRA55C). The advantage of this product is that it avoids potential spurious jumps associated with satellite changes. Moreover, JRA55C is fully independent of satellite-derived Global Positioning System (GPS) radio occultation (RO) data that are also separately used and described below together with the observational techniques.

In addition to these four reanalyses, the datasets from three different observation techniques have been used for complementary observational estimates of the atmospheric heat content (AHC). We use the Wegener Center (WEGC) multi-satellite RO data record, WEGC OPSv5.6 (Angerer et al., 2017) as well as its radiosonde (RS) data record derived from the high-quality Vaisala sondes RS80/RS92/VS41, WEGC Vaisala (Ladstädter et al., 2015). WEGC OPSv5.6 and WEGC Vaisala provide thermodynamic upper air profiles of air temperature, specific humidity, and density from which we locally estimate the vertical AHC based on the first three integral terms of Equation 3 (Kirchengast et al., 2019). In atmospheric domains not fully covered by the data (e.g., in the lower part of the boundary layer for RO or over the polar latitudes for RS) the profiles are vertically completed by collocated ERA5 information. The local vertical AHC results are then averaged into regional monthly means, which are finally geographically aggregated to global AHC. Applying this estimation approach in the same way to reanalysis profiles sub-sampled at the observation locations accurately leads to the same AHC anomaly time series records as the direct estimation from the full gridded fields.

The third observation-based AHC dataset derives from a rather approximate estimation approach using the microwave sounding unit (MSU) data records (Mears & Wentz, 2017). Because the very coarse vertical resolution of the brightness temperature measurements from MSU does not enable integration according to Equation 3, this dataset is derived by replicating the method used in IPCC AR5 WGI Assessment Report 2013 (Rhein, M., et al., 2013; Chap. 3, Box 3.1 therein). We used the most recent MSU Remote Sensing System (RSS) V4.0 temperature dataset (Mears and Wentz, 2017), however, instead of MSU RSS V3.3 that was used in the IPCC AR5 (Mears & Wentz, 2009a, 2009b) (updated to version 3.3). In order to derive global time series of AHC anomalies, the approach simply combines weighted MSU lower tropospheric temperature and lower stratospheric temperature changes (TLT and TLS channels) converted to sensible heat content

changes via global atmospheric mass, and an assumed fractional increase of latent heat content according to water vapor content increase driven by temperature at a near-Clausius-Clapeyron rate (7.5 %/°C).

Figure 3 shows the resulting global AHC change inventory over 1980 to 2018 in terms of AHC anomalies of all data types (top), mean anomalies and time-average uncertainty estimates including long-term AHC trend estimates (middle), and annual-mean AHC tendency estimates (bottom). The mean anomaly time series (middle left), preceded by the small JRA55 anomalies over 1960-1979 is used as part of the overall heat inventory in Section 5 below. Results including MSU in addition are separately shown (right column), since this dataset derives from a fairly approximate estimation as summarized above and hence is given lower confidence than the others deriving from rigorous AHC integration & aggregation. Since it was the only dataset for AHC change estimation in the IPCC AR5 report, bringing it into context is considered relevant, however.

The results clearly show that the AHC trends have intensified from the earlier decades represented by the 1980-2010 trends of near 1.8 TW (consistent with the trend interval used in the IPCC AR5 report). We find the trends about 2.5 times higher over 1993-2018 (about 4.5 TW) and about three times higher in the most recent two decades over 2002-2018 (near 5.3 TW), a period that is already fully covered also by the RO and RS records (which estimate around 6 TW). Checking the sensitivity of these long-term trend estimates to ENSO interannual variations, by comparing trend fits to ENSO-corrected AHC anomalies (with ENSO regressed out via the Nino 3.4 Index), confirms that the estimates are robust.

The year-to-year annual-mean tendencies in AHC, reaching amplitudes as high as 50 to 100 TW (or 0.1 to 0.2 Wm⁻², if normalized to the global surface area), indicate the strong coupling of the atmosphere with the uppermost ocean. This is mainly caused by the ENSO interannual variations that lead to net energy changes in the climate system including the atmosphere (Loeb et al., 2012; Mayer et al., 2013) and substantial reshuffling of heat energy between the atmosphere and the upper ocean (Lijing Cheng, Trenberth, et al., 2019; Johnson & Birnbaum, 2017; Mayer et al., 2014, 2016).

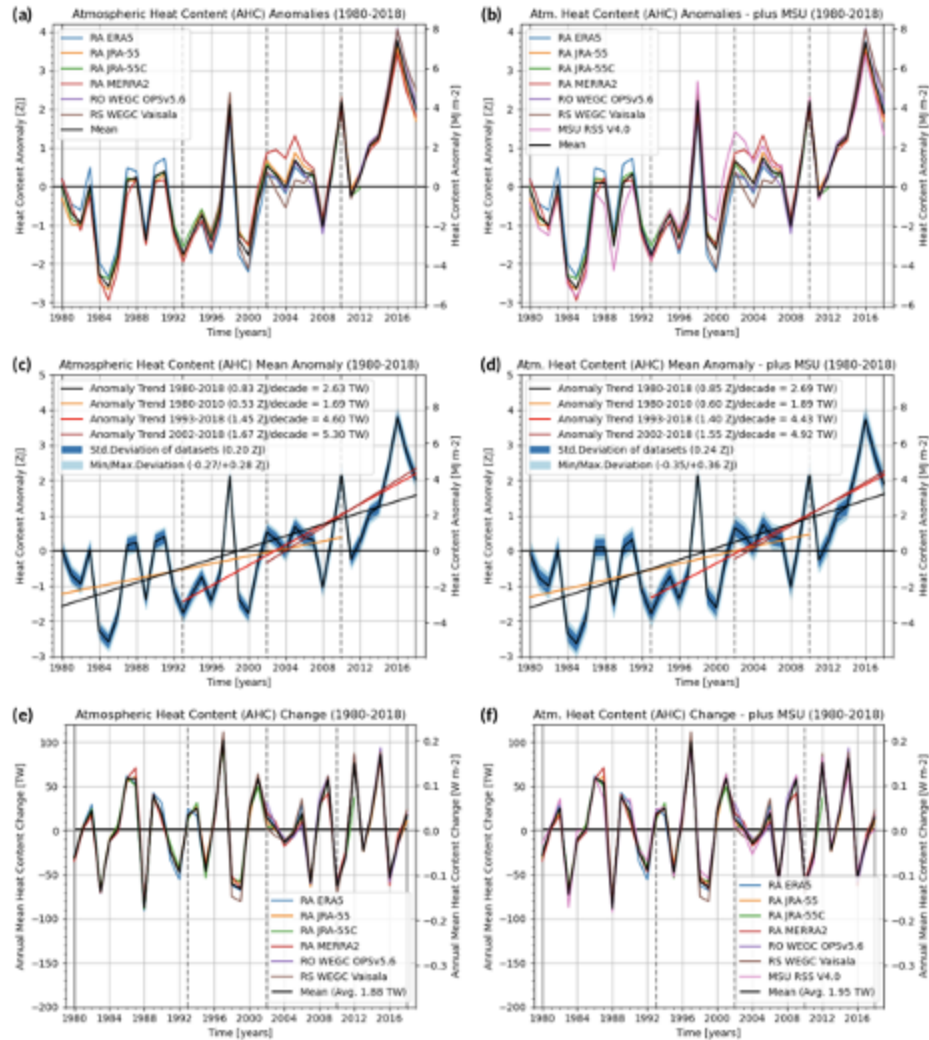


Figure 3: Annual-mean global AHC anomalies over 1980 to 2018 of four different reanalyses and two (left) or three (right, plus MSU) different observational datasets shown together with their mean (top), the mean AHC anomaly shown together with four representative AHC trends and ensemble spread measures of its underlying datasets (middle), and the annual-mean AHC change (annual tendency) shown for each year over 1980 to 2018 for all datasets and their mean (bottom). The in-panel legends identify the individual datasets shown (top and bottom) and the chosen trend periods together with the associated trend values and spread measures (middle), the latter including the time-average standard deviation and minimum/maximum deviations of the individual datasets from the mean.

3. Heat available to warm land

Although the land component of the Earth's energy budget accounts for a small proportion of heat in comparison with the ocean, several land-based processes sensitive to the magnitude of the available land heat play a crucial role in the future evolution of climate. Among others, the stability

and extent of the continental areas occupied by permafrost soils depend on the land component. Alterations of the thermal conditions at these locations have the potential to release long-term stored CO₂ and CH₄, and may also destabilize the recalcitrant soil carbon (Bailey et al., 2019; Hicks Pries et al., 2017). Both of these processes are potential "tipping points" (Lenton et al., 2019; Lenton, 2011; Lenton et al., 2008) leading to possible positive feedback on the climate system (Leifeld et al., 2019; MacDougall et al., 2012). Increased land energy is related to decreases in soil moisture that may enhance the occurrence of extreme temperature events (Jeong et al., 2016; S. Seneviratne et al., 2006, 2014; S. I. Seneviratne et al., 2010; Xu et al., 2019). Such extreme events carry negative health effects for the most vulnerable sectors of human and animal populations and ecosystems (Matthews et al., 2017; McPherson et al., 2017; Sherwood & Huber, 2010; Watts et al., 2019). Given the importance of properly determining the fraction of EEI flowing into the land component, recent works have examined the CMIP5 simulations and revealed that Earth System Models (ESMs) have shortcomings in modelling the land heat content of the last half of the 20th century (Francisco José Cuesta-Valero et al., 2016). Numerical experiments have pointed to an insufficient depth of the Land Surface Models (LSMs) (MacDougall et al., 2008, 2010; C. W. Stevens, 2007) and to a zero heat-flow bottom boundary condition (BBC) as the origin of the limitations in these simulations. An LSM of insufficient depth limits the amount of energy that can be stored in the subsurface. The zero heat-flow BBC neglects the small but persistent long-term contribution from the flow of heat from the interior of the Earth, that shifts the thermal regime of the subsurface towards or away from the freezing point of water, such that the latent heat component is misrepresented in the northern latitudes (Hermoso de Mendoza et al., 2018). Although the heat from the interior of the Earth is constant at time scales of a few millennia, it may conflict with the setting of the LSM initial conditions in ESM simulations. Modelling experiments have also allowed to estimate the heat content in land water reservoirs (Vanderkelen et al., 2020), accounting for 0.3 ± 0.3 ZJ from 1900 to 2020. Nevertheless, this estimate has not been included here because it is derived from model simulations and its magnitude is small in relation to the rest of components of the Earth's heat inventory.

Borehole Climatology

The main premise of borehole climatology is that the subsurface thermal regime is determined by the balance of the heat flowing from the interior of the Earth (the bottom boundary condition) and the heat flowing through the interface between the lower atmosphere and the ground (the upper boundary condition). If the thermal properties of the subsurface are known, or if they can be assumed constant over short-depth intervals, then the thermal regime of the subsurface can be determined by the physics of heat diffusion. The simplest analogy is the temperature distribution along a (infinitely wide) cylinder with known thermal properties and constant temperature at both ends. If upper and lower boundary conditions remain constant (i.e. internal heat flow is constant, and there are no persistent variations on the ground surface energy balance), then the thermal

regime of the subsurface is well known and it is in a (quasi) steady state. However, any change to the ground surface energy balance would create a transient, and such a change in the upper boundary condition would propagate into the ground leading to changes in the thermal regime of the subsurface (Beltrami, 2002a). These changes in the ground surface energy balance propagate into the subsurface and are recorded as departures from the quasi-steady thermal state of the subsurface. Borehole climatology uses these subsurface temperature anomalies to reconstruct the ground surface temperature changes that may have been responsible for creating the subsurface temperature anomalies we observe. That is, it is an attempt to reconstruct the temporal evolution of the upper boundary condition. Ground Surface Temperature Histories (GSTHs) and Ground Heat Flux Histories (GHFHs) have been reconstructed from borehole temperature profile (BTP) measurements at regional and larger scales for decadal and millennial time-scales (Barkaoui et al., 2013; Beck, 1977; Beltrami, 2001; Beltrami et al., 2006; Beltrami & Bourlon, 2004; Cermak, 1971; Christian Chouinard & Mareschal, 2009; Davis et al., 2010; Demezhko & Gornostaeva, 2015; Harris & Chapman, 2001; Hartmann & Rath, 2005; Hopcroft et al., 2007; Huang et al., 2000; Jaume-Santero et al., 2016; Lachenbruch & Marshall, 1986; Lane, 1923; Pickler et al., 2018; Roy et al., 2002; Vasseur et al., 1983). These reconstructions have provided independent records for the evaluation of the evolution of the climate system well before the existence of meteorological records. Because subsurface temperatures are a direct measure, which unlike proxy reconstructions of past climate do not need to be calibrated with the meteorological records, they provide an independent way of assessing changes in climate. Such records, are useful tools for evaluating climate simulations prior to the observational period (Beltrami et al., 2017; Cuesta-Valero et al., 2019; Cuesta-Valero et al., 2016; García-García et al., 2016; González-Rouco et al., 2006; Jaume-Santero et al., 2016; MacDougall et al., 2010; Stevens et al., 2008), as well as for assessing proxy data reconstructions (Beltrami et al., 2017; Jaume-Santero et al., 2016).

Borehole reconstructions have, however, certain limitations. Due to the nature of heat diffusion, temperature changes propagated through the subsurface suffer both a phase shift and an amplitude attenuation (Smerdon & Stieglitz, 2006). Although subsurface temperatures continuously record all changes in the ground surface energy balance, heat diffusion filters out the high frequency variations of the surface signal with depth, thus the annual cycle is detectable up to approximately 16 m of depth, while millennial changes are recorded approximately to a depth of 500 m. Therefore, reconstructions from borehole temperature profiles represent changes at decadal to millennial time scales. Additionally, borehole data are sparse, since the logs were usually recorded from holes of opportunity at mining exploration sites. As a result, the majority of profiles were measured in the Northern Hemisphere, although recent efforts have been taken to increase the sampling rate in South America (Pickler et al., 2018) and Australia (Suman et al., 2017). Despite this uneven sampling, the spatial distribution of borehole profiles has been able to represent the evolution of land surface conditions at global scales (Beltrami & Bourlon, 2004; Cuesta-Valero et al., 2020; González-Rouco et al., 2006, 2009; Pollack & Smerdon, 2004). Another factor that reduces the number of borehole profiles suitable for climate analyses is the presence of non-

climatic signals in the measured profiles, mainly caused by groundwater flow and changes in the lithology of the subsurface. Therefore, all profiles are screened before the analysis in order to remove questionable logs. Despite all these limitations, the borehole methodology has been shown to be reliable based on observational analyses (Bense & Kooi, 2004; C Chouinard & Mareschal, 2007; Pollack & Smerdon, 2004; Verdoya et al., 2007) and pseudo-proxy experiments (García Molinos et al., 2016; González-Rouco et al., 2006, 2009).

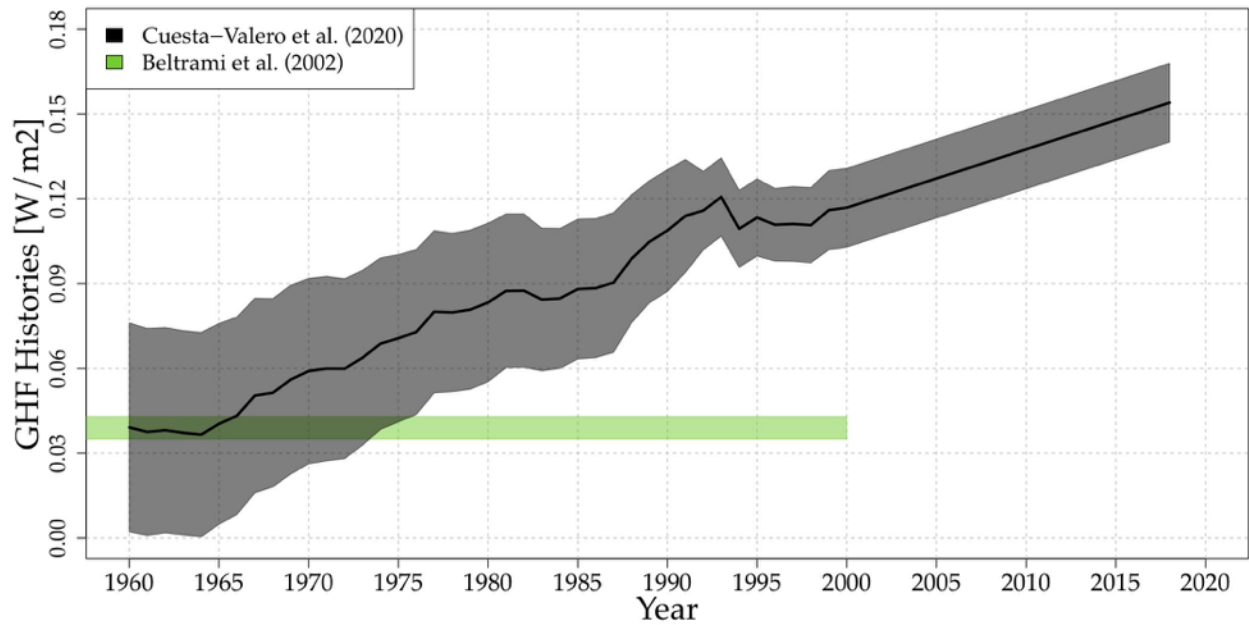
Land Heat Content Estimates

Global continental energy content has been previously estimated from geothermal data retrieved from a set of quality-controlled borehole temperature profiles. Ground heat content was estimated from heat flux histories derived from BTP data (Beltrami, 2002b; Beltrami et al., 2002, 2006). Such results have formed part of the estimate used in AR3, AR4 and AR5 IPCC reports (see Box 3.1, Chapter 3 (Rhein et al., 2013). A continental heat content estimate was inferred from meteorological observations of surface air temperature since the beginning of the 20th century (Huang, 2006). Nevertheless, all global estimates were performed nearly two decades ago. Since, those days, advances in borehole methodological techniques (Beltrami et al., 2015; Cuesta-Valero et al., 2016; Jaume-Santero et al., 2016), the availability of additional BTP measurements, and the possibility of assessing the continental heat fluxes in the context of the FluxNet measurements (Gentine et al., 2020) requires a comprehensive summary of all global ground heat fluxes and continental heat content estimates.

| Reference | Time period | Heat Flux (mWm^{-2}) | Heat Content (ZJ) | Source of Data |
|------------------------------|-------------|---------------------------------|-------------------|--------------------------|
| (Beltrami, 2002b) | 1950-2000 | 33 | 7.1 | Geothermal |
| Beltrami et al. (2002) | 1950-2000 | 39.1 (3.5) | 9.1 (0.8) | Geothermal |
| Beltrami et al. (2002) | 1900-2000 | 34.1 (3.4) | 15.9 (1.6) | Geothermal |
| (Beltrami, 2002b) | 1765-2000 | 20.0 (2.0) | 25.7 (2.6) | Geothermal |
| Huang (2006) | 1950-2000 | - | 6.7 | Meteorological |
| Gentine et al (2020) | 2004-2015 | 240 (120) | - | FluxNet, Geothermal, LSM |
| Cuesta-Valero et al (2020) | 1950-2000 | 70 (20) | 16 (3) | Geothermal |
| Cuesta-Valero et al (2020) | 1993-2018 | 129 (28) | 14 (3) | Geothermal |
| Cuesta-Valero et al., (2020) | 2004-2015 | 136 (28) | 6 (1) | Geothermal |

Table 2. Ground surface heat flux and global continental heat content. Uncertainties in parenthesis.

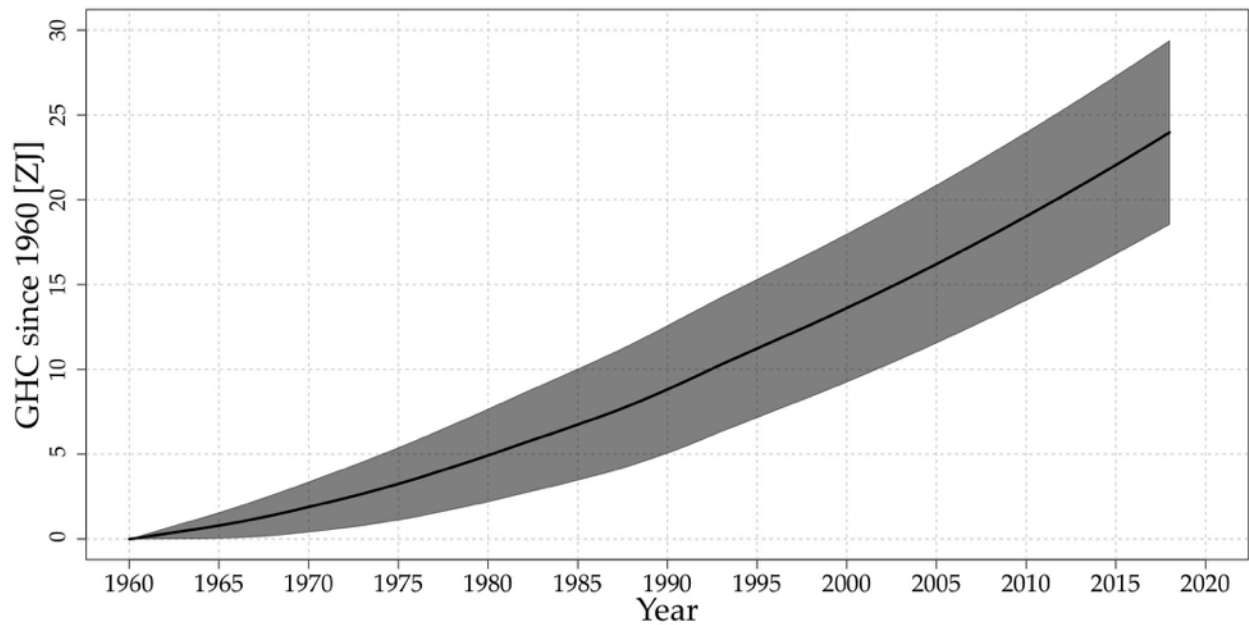
673



674

675 **Figure 4:** Global mean ground heat flux history (black line) and 95% confidence interval (gray shadow)
 676 from BTP measurements from Cuesta-Valero et al. (2020). Results for 1950-2000 from Beltrami et al.
 677 (2002) (green bar) are provided for comparison purposes.

678



679

680 **Figure 5:** Global cumulative heat storage within continental landmasses since 1960 CE (black line) and
 681 95% confidence interval (gray shadow) estimated from GHF results displayed in Fig.4. Data obtained from
 682 Cuesta-Valero et al. (2020).

The first estimates of continental heat content used borehole temperature versus depth profile data. However, the dataset in those analyses included borehole temperature profiles of a wide range of depths, as well as different data acquisition dates. That is, each borehole profile contained the record of the accumulation of heat in the subsurface for different time intervals. In addition, the borehole data were analyzed for a single ground surface temperature model using a single constant value for each of the subsurface thermal properties.

Although the thermal signals are attenuated with depth, which may partially compensate for data shortcomings, uncertainties were introduced in previous analyses that may have affected the estimates of subsurface heat change. A continental heat content change estimate was carried out using a gridded meteorological product of surface air temperature by (Huang, 2006). Such work yielded similar values as the estimates from geothermal data (see Table 2). This estimate, however, assumed that surface air and ground temperatures are perfectly coupled everywhere, and used a single value for the thermal conductivity of the ground. Studies have shown that the coupling of the surface air and ground temperatures is mediated by several processes that may influence the ground surface energy balance, and therefore, the air-ground temperature coupling (García-García et al., 2019; Melo-Aguilar et al., 2018; Stieglitz & Smerdon, 2007). In a novel attempt to reconcile continental heat content from soil heat-plate data from the FluxNet network with estimates from geothermal data and a deep bottom-boundary land surface model simulation, (Gentine et al., 2020) obtained a much larger magnitude from the global land heat flux than all previous estimates. Cuesta-Valero et al. (2020) has recently updated the estimate of the global continental heat content using a larger borehole temperature database (1079 logs) that includes more recent measurements and a stricter data quality control. The updated estimate of continental heat content change also takes into account the differences in borehole logging time and restricts the data to the same depth range for each borehole temperature profile. Such depth range restriction ensures that the subsurface accumulation of heat at all BTP sites is synchronous. In addition to the standard method for reconstructing heat fluxes with a single constant value for each subsurface thermal property, Cuesta-Valero et al. (2020) also developed a new approach that considers a range of possible subsurface thermal properties, several models, each at a range of resolutions yielding a more realistic range of uncertainties for the fraction of the EEI flowing into the land subsurface.

Global land heat content estimates from FluxNet data, geothermal data and model simulations point to a marked increase in the amount of energy flowing into the ground in the last few decades (Fig. 4, 5 and Table 2). These results are consistent with the observations of ocean, cryosphere and atmospheric heat storage increases during the same time period and with EEI at the top of the atmosphere.

4. Heat utilized to melt ice

The energy uptake by the cryosphere is given by the sum of the energy uptake within each one of its components: sea-ice, the Greenland and Antarctic ice sheets, glaciers other than those that are part of the ice sheets ('glaciers', hereafter), snow and permafrost. The basis for the heat uptake by

the cryosphere presented here is provided by a recent estimate for the period 1979 to 2017 (F. Straneo et al., 2020). This study concludes that heat uptake over this period is dominated by the mass loss from Arctic sea-ice, glaciers and the Greenland and Antarctic ice sheets. The contributions from thawing permafrost and shrinking snow cover are either negligible, compared to these other components, or highly uncertain. (Note that warming of the land in regions where permafrost is present is accounted for in the land-warming, however, the energy to thaw the permafrost is not). Antarctic sea-ice shows no explicit trend over the period described here (Parkinson, 2019). Here, we extend the estimate of Straneo et al. 2020 backwards in time to 1960 and summarize the method, the data and model outputs used. The reader is referred to Straneo et al. (2020) for further details.

Within each component of the cryosphere, energy uptake is dominated by that associated with melting; including both the latent heat uptake and the warming of the ice to its freezing point. As a result, the energy uptake by each component is directly proportional to its mass loss (Straneo et al., 2020). For consistency with previous estimates (Ciais et al., 2013), we use a constant latent heat of fusion of 3.34×10^5 J/kg, a specific heat capacity of 2.01×10^3 J/kg C and an ice density of 920 kg/m^3 .

For Antarctica, we separate contributions from grounded ice loss and floating ice loss building on recent separate estimates for each. Grounded ice loss from 1992 to 2017 is based on a recent study that reconciles mass balance estimates from gravimetry, altimetry and input-output methods from 1992 to 2017 (Shepherd, Ivins, et al., 2018). For the 1972-1991 period, we used estimates from (Rignot et al., 2019), which combined modeled surface mass balance with ice discharge estimates from the input/output method. Floating ice loss between 1994 and 2017 is based on thinning rates and iceberg calving fluxes estimated using new satellite altimetry reconstructions (Adusumilli et al., 2019). For the 1960–1994 period, we also considered mass loss from declines in Antarctic Peninsula ice shelf extent (Cook & Vaughan, 2010) using the methodology described in Straneo et al. (2020).

To estimate grounded ice mass loss in Greenland, we use the Ice Sheet Mass Balance Intercomparison Exercise for the time period 1992-2017 (Shepherd et al., 2020) and the difference between surface mass balance and ice discharge for the period 1979-1991 (Mankoff et al., 2019; Mouginot et al., 2019; Noël et al., 2018). Due to a lack of observations, from 1960-1978 we assume no mass loss. For floating ice mass change, we collated reports of ice shelf thinning and/or collapse together with observed tidewater glacier retreat (Straneo et al., 2020). Based on firm modeling we assessed that warming of Greenland's firn has not yet contributed significantly to its energy uptake (Ligtenberg et al., 2018; F. Straneo et al., 2020).

For glaciers we combine estimates for glaciers from the Randolph Glacier Inventory outside of Greenland and Antarctica, based on direct and geodetic measurements (Zemp et al., 2019), with

estimates based on a glacier model forced with an ensemble of reanalysis data (Marzeion et al., 2015) and GRACE based estimates (Bamber et al., 2018). An additional contribution from uncharted glaciers or glaciers that have already disappeared is obtained from (Parkes & Marzeion, 2018). Greenland and Antarctic peripheral glaciers are derived from Zemp et al., (2019) and Marzeion et al. (2015).

Finally, while estimates of Arctic sea-ice extent exist over the satellite record, sea-ice thickness distribution measurements are scarce making it challenging to estimate volume changes. Instead we use the Pan-Arctic Ice Ocean Modeling and Assimilation System (PIOMAS) (Schweiger et al., 2011; Zhang & Rothrock, 2003) which assimilates ice concentration and sea surface temperature data and is validated with most available thickness data (from submarines, oceanographic moorings, and remote sensing; and against multi-decadal records constructed from satellite, e.g. (Labe et al., 2018; Laxon et al., 2013; X. Wang et al., 2016). A longer reconstruction using a slightly different model version, PIOMAS-20C (Schweiger et al., 2019), is used to cover the 1960 to 1978 period that is not covered by PIOMAS.

These reconstructions reveal that all four components contributed similar amounts (between 2-5 ZJ) over the 1960-2017 period amounting to a total energy uptake by the cryosphere of 14.7 +/- 1.9 ZJ. Compared to earlier estimates, and in particular the 8.83 ZJ estimate from (Ciais et al., 2013), this larger estimate is a result both of the longer period of time considered and, also, the improved estimates of ice loss across all components, especially the ice shelves in Antarctica. Approximately half of the Cryosphere's energy uptake is associated with the melting of grounded ice, while the remaining half is associated with the melting of floating ice (ice shelves in Antarctica and Greenland, Arctic sea-ice).

5. The Earth heat inventory: Where does the energy go?

The Earth has been in radiative imbalance, with less energy exiting the top of the atmosphere than entering, since at least about 1970 and the Earth has gained substantial energy over the past 4 decades (Hansen, 2005; Rhein et al., 2013). Due to the characteristics of the Earth system components, the ocean with its large mass and high heat capacity dominates the Earth heat inventory (Cheng et al., 2016, 2017; Rhein et al., 2013; von Schuckmann et al., 2016). The rest goes into grounded and floating ice melt, and warming the land and atmosphere.

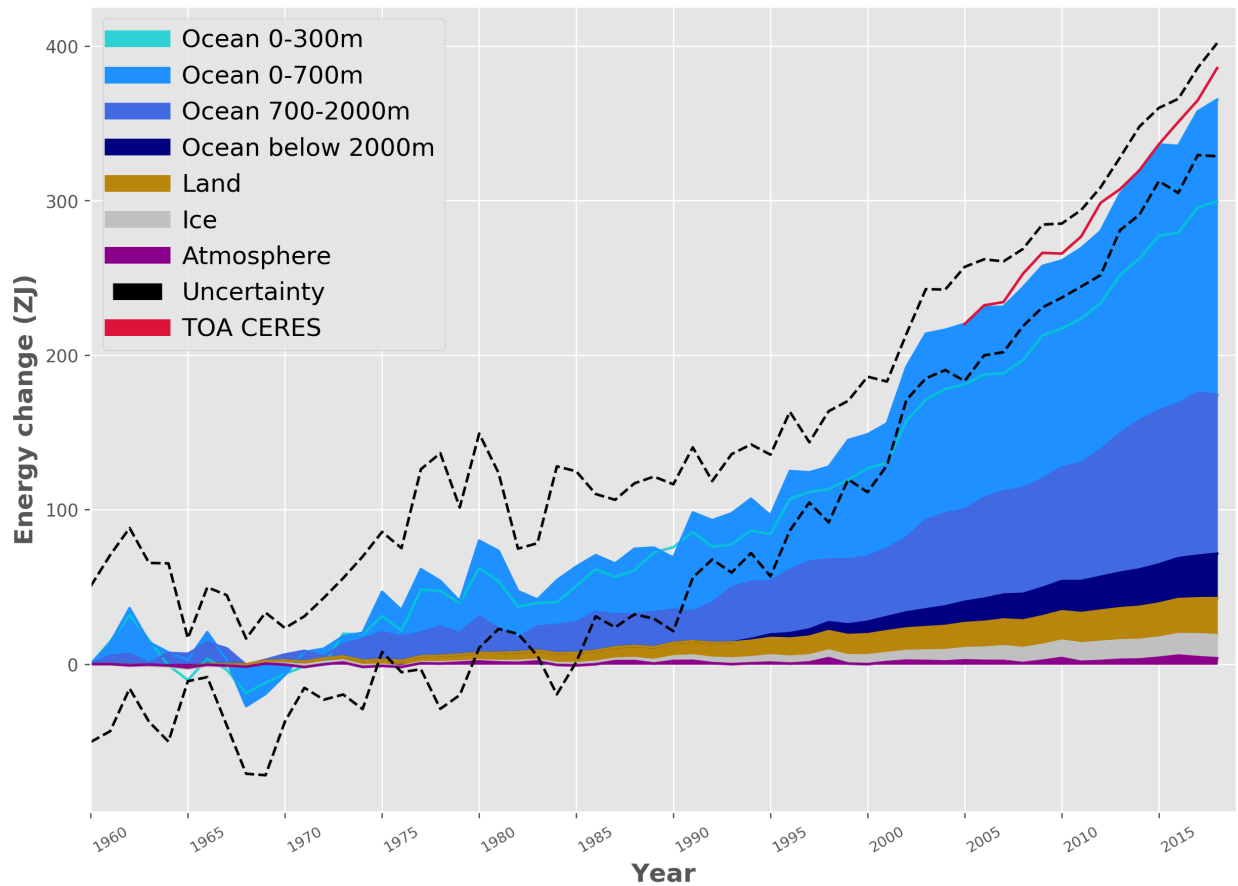


Figure 6: Earth heat inventory (energy accumulation) in ZJ ($1 \text{ ZJ} = 10^{21} \text{ J}$) for the components of the Earth's climate system relative to 1960 and from 1960 to 2018 (assuming constant cryosphere increase for the year 2018). See section 1-4 for data sources. The upper ocean (0-300m, light blue line, and 0-700m, light blue shading) account for the largest amount of heat gain, together with the intermediate ocean (700-2000m, blue shading), and the deep ocean below 2000m depth (dark blue shading). Although much lower, the second largest contributor is the storage of heat on land (orange shading), followed by the gain of heat to melt grounded and floating ice in the cryosphere (gray shading). Due to its low heat capacity, the atmosphere (magenta shading) makes a smaller contribution. Uncertainty in the ocean estimate also dominates the total uncertainty (dot-dashed lines derived from the standard deviations (2-sigma) for the ocean, cryosphere and land. Atmospheric uncertainty is comparably small). Deep ocean ($> 2000\text{m}$) are assumed zero before 1990 (see section 1 for more details). The dataset for the Earth heat inventory is published at DKRZ (<https://www.dkrz.de/>) under the doi: https://doi.org/10.26050/WDCC/GCOS_EHI_EXP_v2. The net flux at TOA from the NASA CERES program is shown in red (<https://ceres.larc.nasa.gov/data/>, see also for example Loeb et al., 2012) for the period 2005-2018 to account for the 'golden period' of best available estimates. We obtain a total heat gain of $358 \pm 37 \text{ ZJ}$ over the period 1971-2018, which is equivalent to a heating rate (i.e. the EEI) of $0.47 \pm 0.1 \text{ Wm}^{-2}$ applied continuously over the surface area of the Earth ($5.10 \times 10^{14} \text{ m}^2$). The corresponding EEI over the period 2010-2018 amounts to $0.87 \pm 0.12 \text{ Wm}^{-2}$. A weighted least square fit has been used taking into account the uncertainty range (see also von Schuckmann and Le Traon, 2011).

In agreement with previous studies, the Earth heat inventory based on most recent estimates of heat gain in the ocean (section 1), the atmosphere (section 2), land (section 3) and the cryosphere (section 4) shows a consistent long-term heat gain since the 1960s (Fig. 6). Our results show a total heat gain of 358 ± 37 ZJ over the period 1971-2018, which is equivalent to a heating rate of 0.47 ± 0.1 Wm^{-2} , and applied continuously over the surface area of the Earth (5.10×10^{14} m^2). For comparison, the heat gain obtained in IPCC AR5 amounts to 274 ± 78 ZJ and 0.4 Wm^{-2} over the period 1971-2010 (Rhein et al., 2013). In other words, our results show that since the IPCC AR5 estimate has been performed, heat accumulation has continued at a comparable rate. The major player in the Earth inventory is the ocean, particularly the upper (0-700m) and intermediate (700-2000m) ocean layers (see also section 1, Fig. 2).

Although the net flux at TOA as derived from remote sensing are anchored by an estimate of global OHC (Loeb et al., 2012), and thus does not provide a completely independent result for the total EEI, we additionally compare net flux at TOA with the Earth heat inventory obtained in this study (Fig. 6). Both rate of changes compare well, and we obtain 0.7 ± 0.1 Wm^{-2} for the remote sensing estimate at TOA, and 0.8 ± 0.1 Wm^{-2} for the Earth heat inventory over the period 2005-2018.

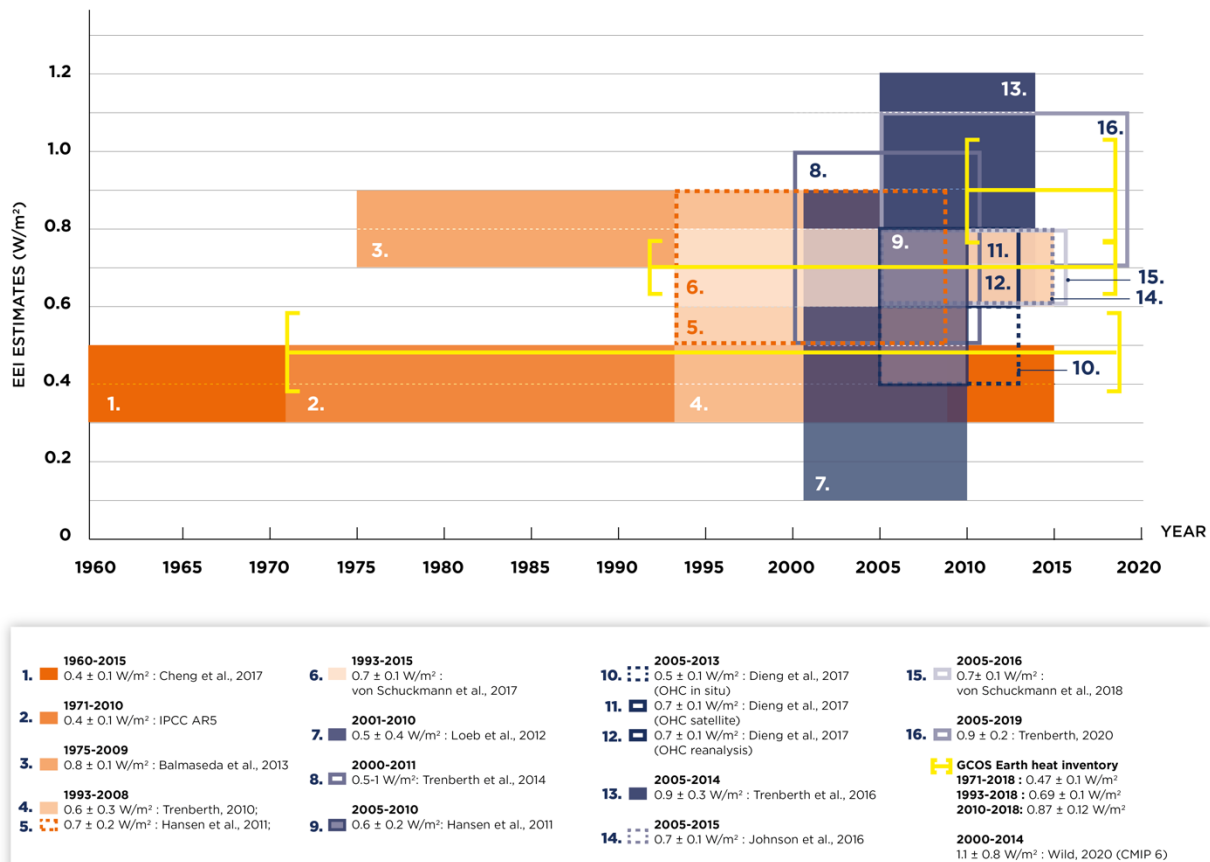


Fig. 7: Overview on EEI estimates as obtained from previous publications, and references are listed in the figure legend. For IPCC AR5, Rhein et al. (2013) is used. The color bars take into account the uncertainty ranges provided in each publication, respectively. For comparison, the estimates of our Earth heat inventory based on the results of Fig. 6 have been added (yellow lines) for the periods 1971-2018, 1993-2018 and 2010-2018, and the trends have been evaluated using a weighted least square fit (see von Schuckmann and Le Traon, 2011 for details on the method).

Rates of change derived from Fig. 6 are in agreement with previously published results for the different periods (Fig. 7). Major disagreements occur for the estimate of Balmaseda et al. (2013) which is obtained from an ocean reanalysis, and known to provide higher heat gain compared to results derived strictly from observations (Meyssignac et al., 2019). Over the last quarter of a decade this Earth heat inventory reports - in agreement with previous publications - an increased rate of Earth heat uptake reaching up to 0.9 W/m^2 (Fig. 7). This period is also characterized with an increase in the availability and quality of the global climate observing system, particularly for the past 2 decades. The heat inventory as obtained in this study reveals an EEI of $0.87 \pm 0.12 \text{ W/m}^2$ over the period 2010-2018 - a period which experienced record levels of Earth surface warming, and is ranked as the warmest decade relative to the reference period 1850-1900 (WMO, 2020). Whether this increased rate can be attributed to an acceleration of global warming and Earth system heat uptake (e.g. Cheng et al., 2018; WMO, 2020; Blunden and Arndt, 2019), or an induced estimation bias due to the interplay between natural and anthropogenic driven variability (e.g. Cazenave et al., 2014), or underestimated uncertainties in the historical record (e.g. Boyer et al., 2016) needs further investigation.

The new multidisciplinary estimate obtained from a concerted international effort provides an updated insight in where the heat is going from a positive EEI of $0.47 \pm 0.1 \text{ W/m}^2$ for the period 1971-2018. Over the period 1971-2018 (2010-2018), 89% (90%) of the EEI is stored in the global ocean, from which 52% (52%) is repartitioned in the upper 700m depth and 28% (30%) at intermediate layers (700-2000m), and 9% (8%) in the deep ocean layer below 2000m depth. Atmospheric warming amounts to 1% (2%) in the Earth heat inventory, the land heat gain with 6% (5%) and the heat uptake by the cryosphere with 4% (3%). These results show general agreement with previous estimates (e.g. Rhein et al., 2013). Over the period 2010-2018, the EEI amounts to $0.87 \pm 0.12 \text{ W/m}^2$, indicating a rapid increase in EEI over the past decade. Note that a near-global (60°N - 60°S) area for the ocean heat uptake is used in this study, which could induce a slight underestimation, and needs further evaluation in the future (see section 1). However, a test using a single dataset (Cheng et al., 2017) indicates that the ocean contribution within 1960-2018 can increase by 1% if the full global ocean domain is used (not shown).

6. Conclusion

The UN 2030 Agenda for Sustainable Development states that climate change is “one of the greatest challenges of our time...” and warns “...the survival of many societies, and of the biological support systems of the planet, is at risk” (UNGA, 2015). The outcome document of the Rio+20 Conference, *The Future We Want*, defines climate change as “an inevitable and urgent global challenge with long-term implications for the sustainable development of all countries” (UNGA, 2012). The Paris agreement builds upon the United Nations Framework Convention on Climate Change (UN, 1992) and for the first time all nations agreed to undertake ambitious efforts to combat climate change, with the central aim to keep global temperature rise this century well below 2°C above pre-industrial levels and to limit the temperature increase even further to 1.5°C (UN, 2015). Article 14 of the Paris Agreement requires the *Conference of the Parties serving as the meeting of the Parties to the Paris Agreement* (CMA) to periodically take stock of the implementation of the Paris Agreement and to assess collective progress towards achieving the purpose of the Agreement and its long-term goals through the so called global stocktake based on best available science.

The EEI is the most critical number defining the prospects for continued global warming and climate change (Hansen et al., 2011, von Schuckmann et al., 2016), and we call for an implementation of the EEI into the global stocktake. The current positive EEI is understood to be foremost and primarily a result of increasing atmospheric greenhouse gases (IPCC, 2013), which have - according to the IPCC special report on Global Warming of 1.5 °C - already ‘caused approximately 1.0°C of global warming above pre-industrial levels, with a likely range of 0.8°C to 1.2°C’ (IPCC, 2018). The IPCC special report further states with high confidence that ‘global warming is likely to reach 1.5°C between 2030 and 2052 if it continues to increase at the current rate’. The EEI is the portion of the forcing that the Earth’s climate system has not yet responded to (Hansen et al., 2005), and defines additional global warming that will occur without further change in forcing (Hansen et al., 2017). Our results show that EEI is not only continuing, it is increasing. Over the period 1971-2018 average EEI amounts to $0.47 \pm 0.12 \text{ W/m}^2$, but amounts to $0.87 \pm 0.12 \text{ W/m}^2$ during 2010-2018 (Fig. 8). Concurrently, acceleration of sea level rise (WCRP, 2018; Legelais et al., 2020), accelerated surface warming and record temperatures in the Arctic (Richter-Menge et al., 2019; WMO, 2020) and ice loss from the Greenland ice sheet (King et al., 2020), and intensification of atmospheric warming near-surface and in the troposphere (Steiner et al., 2020) have been - for example - recently reported. To what degree these changes are intrinsically linked needs further evaluations.

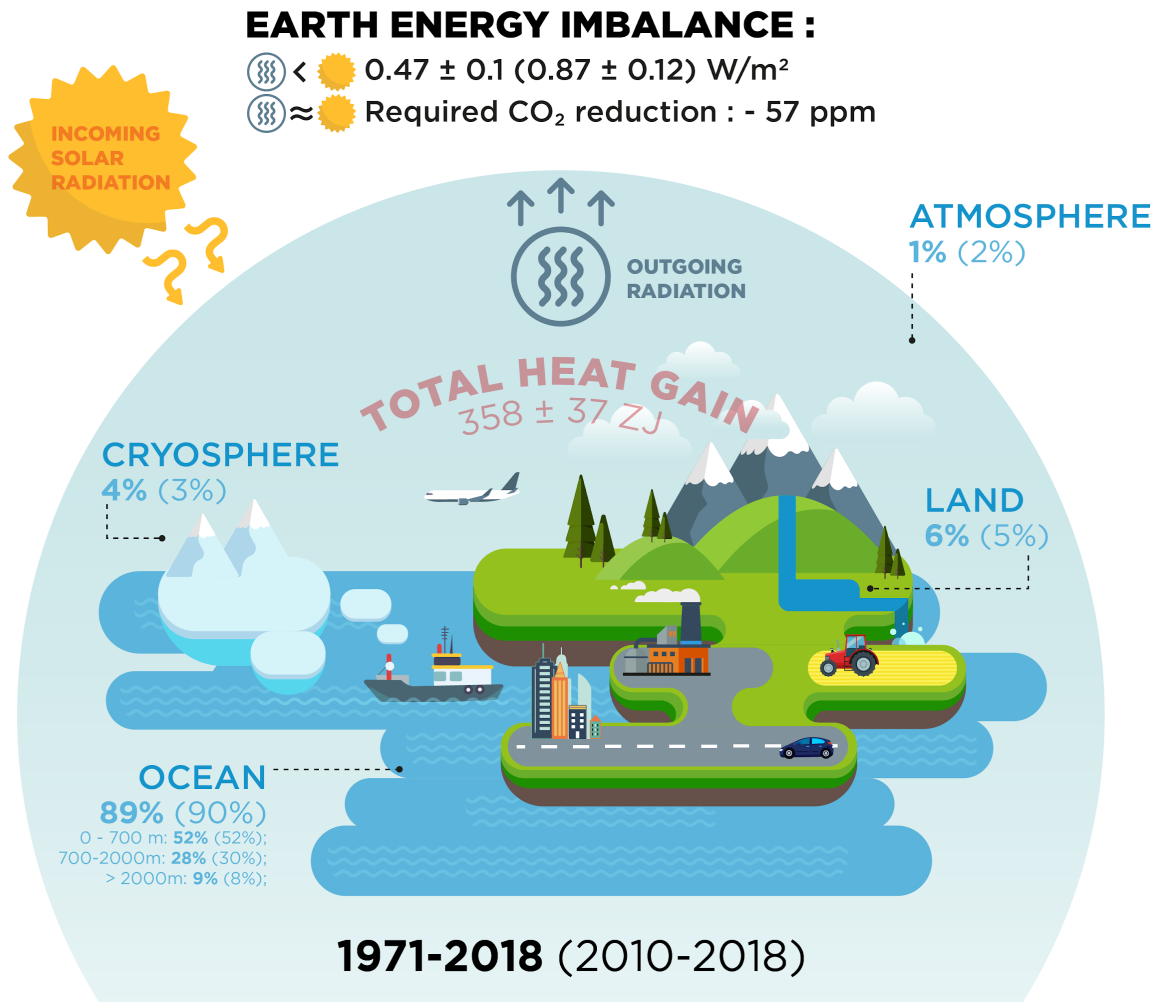


Figure 8: Schematic presentation on the Earth heat inventory for the current anthropogenic driven positive Earth energy imbalance at the Top Of the Atmosphere (TOA). Relative partition (in %) of the Earth heat inventory presented in Fig. 6 for the different components are given for the ocean (upper: 0-700m, intermediate: 700-2000m, deep: > 2000m), land, cryosphere (grounded and floating ice) and atmosphere, for the periods 1971-2018 and 2010-2018 (for the latter period values are provided in parentheses), as well as for the EEI. The total heat gain (in red) over the period 1971-2018 is obtained from the Earth heat inventory as presented in Fig. 6. To reduce the 2010-2018 EEI of $0.87 \pm 0.12 \text{ W/m}^2$ to zero, current atmospheric CO_2 would need to be reduced by $-57 \pm 8 \text{ ppm}$ (see text for more details).

Global atmospheric CO_2 concentration reached $407.38 \pm 0.1 \text{ ppm}$ averaged over 2018 (Friedlingstein et al., 2019). WMO (2020) reports CO_2 concentrations at the Mauna Loa measurement platform of 411.75 ppm in February 2019, and 414.11 ppm in February 2020. Stabilization of climate, the goal of the universally agreed UNFCCC (UN, 1992) and the Paris Agreement (UN, 2015), requires that EEI be reduced to approximately zero to achieve Earth's system quasi-equilibrium. The change of heat radiation to space for a given greenhouse gas change can be computed accurately. The amount of CO_2 in the atmosphere would need to be reduced from

410 ppm to 353 ppm (i.e. a required reduction of -57 ± 8 ppm) to increase heat radiation to space by 0.87 W/m^2 , bringing Earth back towards energy balance (Fig. 8), where we have used the analytic formulae of Hansen et al. (2000) for this estimation. Atmospheric CO_2 was last 350 ppm in the year 1988, and global Earth's surface temperature was then $+0.5^\circ\text{C}$ relative to the pre-industrial period (relative to the 1880-1920 mean) (Hansen et al., 2017; Friedlingstein et al., 2019). In principle, we could reduce other greenhouse gases, and thus require a less stringent reduction of CO_2 . However, as discussed by Hansen et al. (2017), some continuing increase of N_2O , whose emissions are associated with food production, seems inevitable, so there is little prospect for much net reduction of non- CO_2 greenhouse gases, and thus, the main burden for climate stabilization falls on CO_2 reduction. This simple number, EEI, is the most fundamental metric that the scientific community and public must be aware of, as the measure of how well the world is doing in the task of bringing climate change under control (Fig. 8).

This community effort also addresses gaps for the evolution of future observing systems for a robust and continued assessment of the Earth heat inventory, and its different components. Immediate priorities include the maintenance and extension of the global climate observing system to assure a continuous monitoring of the Earth heat inventory, and to reduce the uncertainties. For the global ocean observing system, the core Argo sampling needs to be sustained, and complemented by remote sensing data. Extensions such as into the deep ocean layer need to be further fostered (Desbruyères et al., 2017; Johnson et al., 2015), and technical developments for the measurements under ice and in shallower areas need to be sustained and extended. Moreover, continued efforts are needed to further advance bias correction methodologies, uncertainty evaluations and data processing of the historical dataset.

In order to allow for improvements on the present estimates of changes in the continental heat and to ensure that the database is continued into the future, an international, coordinated effort is needed to increase the number of subsurface temperature data from BTPs at additional locations around the world, in particular in the southern hemisphere. Additionally, repeated monitoring (after a few decades) of existing boreholes should help reduce uncertainties at individual sites. Such data should be shared through an open platform.

For the atmosphere, the continuation of operational satellite- and ground-based observations is important but the foremost need is sustaining and enhancing a coherent long-term monitoring system for the provision of climate data records of essential climate variables. GNSS radio occultation observations and reference radiosonde stations within the Global Climate Observing System (GCOS) Reference Upper Air Network (GRUAN) are regarded as climate benchmark observations. Operational radio occultation missions for continuous global climate observations need to be maintained and expanded, ensuring global coverage over all local times, as the central node of a global climate observing system.

For the cryosphere, sustained remote sensing for all of the cryosphere components is key to quantifying future changes over these vast and inaccessible regions, but must be complemented by in-situ observations for calibration and validation. For sea-ice, the albedo, the area and ice thickness are all essential, with ice-thickness being particularly challenging to quantify with remote sensing alone. For ice sheets and glaciers, reliable gravimetric measurements, ice thickness and extent, snow/firn thickness and density are essential to quantify changes in mass balance of grounded and floating ice. We highlight Antarctic sea-ice change and warming of firn as terms that are poorly constrained or have not significantly contributed to this assessment but may become important over the coming decades. Similarly, there exists the possibility for rapid change associated with positive ice dynamical feedbacks at the marine margins of the Greenland and Antarctic ice sheets. Sustained monitoring of each of these components will, therefore, serve the dual purpose of furthering understanding of the dynamics and quantifying the contribution to Earth's energy budget. In addition to data collection, open access to the data and data synthesis products as well as coordinated international efforts are key to the continued monitoring of the ice loss from the cryosphere and related energy uptake.

Sustained and improved observations to quantify Earth's changing energy inventory are also critical to the development of improved physical models of the climate system, including both data assimilation efforts that help us to understand past changes and predictions (Storto et al., 2019) and climate models used to provide projections of future climate change (Eyring et al., 2019). For example, atmospheric reanalyses have shown to be a valuable tool for investigating past changes in the EEI (Allan et al., 2014) and ocean reanalyses have proven useful in estimating rates of ocean heating on annual and sub-annual timescales by reducing observational noise (Trenberth et al., 2016). Furthermore, both reanalyses and climate models can provide information to assess current observing capabilities (Fujii et al., 2019) and improve uncertainty estimates in the different components of Earth's energy inventory (Allison et al., 2019). Future priorities for expanding the observing system to improve future estimates of EEI should be cognizant of the expected evolution of the climate change signal, drawing on evidence from observations, models and theory (Meyssignac et al., 2019; Palmer et al., 2019).

A continuous effort to regularly update the Earth heat inventory is important to quantify how much and where heat accumulated from climate change is stored in the climate system. The Earth heat inventory crosses multi-disciplinary boundaries, and calls for the inclusion of new science knowledge from the different disciplines involved, including the evolution of climate observing systems and associated data products, uncertainty evaluations and processing tools. The results provide indications that a redistribution and conversion of energy in the form of heat is taking place in the different components of the Earth system, particularly within the ocean, and that EEI has increased over the past decade. The outcomes have further demonstrated how we are able to evolve our estimates for the Earth heat inventory while bringing together different expertise and major climate science advancements through a concerted international effort. All of these

component estimates are at the leading edge of climate science. Their union has provided a new and unique insight on the inventory of heat in the Earth system, its evolution over time, as well as a revision of the absolute values. The data product of this effort is made available and can be thus used for model validation purposes.

This study has demonstrated the unique value of such a concerted international effort, and we thus call for a regular evaluation of the Earth heat inventory. This first attempt presented here has been focused on the global area average only, and evolving into regional heat storage and redistribution, the inclusion of various time-scales (e.g. seasonal, year-to-year), and other climate study tools (e.g. indirect methods, ocean reanalyses) would be an important asset of this much needed regular international framework for the Earth heat inventory. This would also respond directly to the request of GCOS to establish the observational requirements needed to monitor the Earth's cycles and the global energy budget. The outcome of this study will therefore directly feed into GCOS' assessment of the status of the global climate observing system due in 2021 which is the basis for the next implementation plan. These identified observation requirements will guide the development of the next generation of in-situ and satellite global climate observations by all national meteorological services and space agencies and other oceanic and terrestrial networks.

Data availability: The time series of the Earth heat inventory are published at DKRZ (<https://www.dkrz.de/>) under the doi: https://doi.org/10.26050/WDCC/GCOS_EHI_EXP_v2 (von Schuckmann et al., 2020). The data contain an updated international assessment of ocean warming estimates, and new and updated estimates of heat gain in the atmosphere, cryosphere and land over the period 1960-2018. This published dataset has been used to build the basis for Figure 6 of this manuscript. The ocean warming estimate is based on an international assessment of 15 different in situ data-based ocean products as presented in section 1. The new estimate of the atmospheric heat content is fully described in section 2, and is backboneed on a combined use of atmospheric reanalyses, multi-satellite data and radiosonde records, and microwave sounding techniques. The land heat storage time series as presented in section 3 relies on borehole data. The heat available to account for cryosphere loss is presented in section 4, and is based on a combined use of model results and observations to obtain estimates of major cryosphere components such as polar ice sheets, Arctic sea-ice and glaciers.

GCOS Earth heat inventory team: Author contributions

Coordination: Karina von Schuckmann¹, Lijing Cheng^{2,28}, Matthew D. Palmer³, Caterina Tassone⁵, Valentin Aich⁵

Ocean: Karina von Schuckmann¹, Lijing Cheng^{2,28}, Tim Boyer⁸, Damien Desbruyères⁹, Catia Domingues^{10,11}, John Gilson¹³, Masayoshi Ishii¹⁶, Gregory C. Johnson¹⁷, Rachel E. Killick³, Brian A. King¹⁰, Nicolas Kolodziejczyk¹⁸, John Lyman¹⁷, Maeva Monier²⁰, Didier Paolo Monselesan²¹, Sarah Purkey⁶, Dean Roemmich⁶, Susan E. Wijffels^{21,26}

Atmosphere: Gottfried Kirchengast¹⁴, Maximilian Gorfer¹⁴, Andrea K. Steiner¹⁴, Michael Mayer^{15,29}, Leopold Haimberger¹⁵

Land: Almudena García-García⁷, Francisco José Cuesta-Valero^{7,27}, Hugo Beltrami⁷, Sonia I. Seneviratne²³, Pierre Gentile¹²

Cryosphere: Fiammetta Straneo⁶, Susheel Adusumilli⁶, Donald A. Slater⁶, Mary-Louise Timmermans²⁵, Ben Marzeion¹⁹, Axel Schweiger²², Andrew Shepherd²⁴

Earth energy inventory: all authors, with specific contributions from Karina von Schuckmann¹, Almudena García-García⁷, Francisco José Cuesta-Valero^{7,27}, James Hansen⁴, Maeva Monier¹⁹

Conclusion: all authors, with specific contributions from Karina von Schuckmann¹, James Hansen⁴, Caterina Tassone⁵, Valentin Aich⁵, Lijing Cheng^{2,28}, Matthew D. Palmer³, Gottfried Kirchengast¹⁴, Andrea K. Steiner¹⁴, Almudena García-García⁷, Francisco José Cuesta-Valero^{7,27}, Hugo Beltrami⁷, Fiammetta Straneo⁶

¹Mercator Ocean International, France

²Institute of Atmospheric Physics, Chinese Academy of Sciences, China

³Met Office Hadley Centre, UK

⁴Columbia University Earth Institute, USA

⁵WMO/GCOS, Switzerland

⁶Scripps Institution of Oceanography, UCSD, San Diego, CA, USA

⁷Climate & Atmospheric Sciences Institute, St. Francis Xavier University, NS, Canada

⁸NOAA's National Centers for Environmental Information

⁹Ifremer, University of Brest, CNRS, IRD, Laboratoire d'Océanographie Physique et Spatiale, France

¹⁰National Oceanographic Centre, UK

¹¹ARC Centre of Excellence for Climate Extremes, University of Tasmania, Hobart, Tasmania, Australia

¹²Earth and Environmental Engineering in the School of Engineering and Applied Sciences, Columbia University, USA

¹³University of California, USA

¹⁴Wegener Center for Climate and Global Change and Institute of Physics, University of Graz, Austria

¹⁵Department of Meteorology and Geophysics, University of Vienna, Austria

1098 ¹⁶Department of Atmosphere, Ocean and Earth System Modeling Research, Meteorological Research Institute, Japan
 1099 ¹⁷NOAA, Pacific Marine Environmental Laboratory, USA
 1100 ¹⁸University of Brest, CNRS, IRD, Ifremer, Laboratoire d'Océanographie Physique et Spatiale, IUEM, France
 1101 ¹⁹Institute of Geography and MARUM-Center for Marine Environmental Sciences, University of Bremen, Germany
 1102 ²⁰CELAD/Mercator Ocean International, France
 1103 ²¹CSIRO Oceans and Atmosphere, Hobart, Tasmania, Australia
 1104 ²²Polar Science Center, Applied Physics Laboratory, University of Washington, Seattle, USA
 1105 ²³Institute for Atmospheric and Climate Science, ETH, Switzerland
 1106 ²⁴Center for Polar Observation and Modeling, University of Leeds, UK
 1107 ²⁵Department of Earth and Planetary Sciences, Yale University, New Haven, USA
 1108 ²⁶Woods Hole Oceanographic Institution, Massachusetts, United States
 1109 ²⁷Environmental Sciences Program, Memorial University of Newfoundland, NL, Canada
 1110 ²⁸Center for Ocean Mega-Science, Chinese Academy of Sciences, Qingdao, China, 266071
 1111 ²⁹European Centre for Medium-Range Weather Forecasts, Reading, UK

1112

1113 **Acknowledgements:**

1114

1115 This research benefited from long-term attention by GCOS and builds on initial work carried out under the
 1116 WCRP core projects CLIVAR, GEWEX, CliC and SPARC.

1117

1118 MDP and REK were supported by the Met Office Hadley Centre Climate Programme funded by the BEIS
 1119 and Defra.

1120

1121 Ocean: PMEL contribution number 5053; Funding: CMD was supported by an ARC Future Fellowship
 1122 (FT130101532). L.Cheng is supported by Key Deployment Project of Centre for Ocean Mega-Research of
 1123 Science, CAS (COMS2019Q01).

1124

1125 Atmosphere: The authors express their gratitude to SPARC for supporting this activity under sponsorship
 1126 of the WCRP. M. Gorfer was supported by WEGC atmospheric remote sensing and climate system research
 1127 group young scientist funds. M. Mayer was supported by Austrian Science Fund project P33177. We
 1128 acknowledge the WEGC EOPAC team for providing the OPSv5.6 RO data (available online at
 1129 <https://doi.org/10.25364/WEGC/OPS5.6:2019.1>) as well as quality-processed Vaisala RS data,
 1130 UCAR/CDAAC (Boulder, CO, USA) for access to RO phase and orbit data, RSS (Santa Rosa, CA, USA)
 1131 for providing MSU V4.0 data, ECMWF (Reading, UK) for access to operational analysis and forecast data,
 1132 ERA5 reanalysis data, and RS data from the ERA-Interim archive, JMA (Tokyo, Japan) for provision of
 1133 the JRA55 and JRA55C reanalysis data, and NASA GMAO (Greenbelt, MD, USA) for access of the
 1134 MERRA-2 reanalysis data.

1135

1136 Land: This work was supported by grants from the National Sciences and Engineering Research Council
 1137 of Canada Discovery Grant (NSERC DG 140576948) and the Canada Research Chairs Program (CRC
 1138 230687) to H. Beltrami. Almudena García-García and Francisco José Cuesta-Valero are funded by
 1139 Beltrami's CRC program, the School of Graduate Studies at Memorial University of Newfoundland and
 1140 the Research Office at St. Francis Xavier University

1141

Ice: This work was supported by CliC (Climate and Cryosphere Project of the World Climate Research Program). FS acknowledges support by NSF OCE 1657601. SA was supported by the NASA grant 80NSSC18K1424.

We also would like to thank Marianne Nail (<https://girlsmakesense.com/>) for her support to the graphical development of Fig. 7 and 8.

References

- Abraham, J. P., Baringer, M., Bindoff, N. L., Boyer, T., Cheng, L. J., Church, J. A., Conroy, J. L., Domingues, C. M., Fasullo, J. T., Gilson, J., Goni, G., Good, S. A., Gorman, J. M., Gouretski, V., Ishii, M., Johnson, G. C., Kizu, S., Lyman, J. M., Macdonald, A. M., ... Willis, J. K. (2013). A review of global ocean temperature observations: Implications for ocean heat content estimates and climate change. *Reviews of Geophysics*, 51(3), 450–483. <https://doi.org/10.1002/rog.20022>
- Adusumilli, S., Fricker, H. A., Medley, B., Padman, L., & Siegfried, M. R. (2019). Multi-year variability in ocean-driven melting of Antarctica's ice shelves. *Nature Geoscience*, under review.
- Allan, R. P., Liu, C., Loeb, N. G., Palmer, M. D., Roberts, M., Smith, D., & Vidale, P.-L. (2014). Changes in global net radiative imbalance 1985-2012 (I10, trans.). *Geophysical Research Letters*, 41(15), 5588–5597. <https://doi.org/10.1002/2014GL060962>
- Allison, L. C., Roberts, C. D., Palmer, M. D., Hermanson, L., Killick, R. E., Rayner, N. A., Smith, D. M., & Andrews, M. B. (2019). Towards quantifying uncertainty in ocean heat content changes using synthetic profiles. *Environmental Research Letters*, 14(8), 084037. <https://doi.org/10.1088/1748-9326/ab2b0b>
- Angerer, B., Ladstädter, F., Scherllin-Pirscher, B., Schwarz, M., Steiner, A. K., Foelsche, U., & Kirchengast, G. (2017). Quality aspects of the Wegener Center multi-satellite GPS radio occultation record OPSv5.6. *Atmos. Meas. Tech.*, 10(12), 4845–4863. <https://doi.org/10.5194/amt-10-4845-2017>
- Baggenstos, D., Häberli, M., Schmitt, J., Shackleton, S. A., Birner, B., Severinghaus, J. P., Kellerhals, T., & Fischer, H. (2019). Earth's radiative imbalance from the Last Glacial Maximum to the present. *Proceedings of the National Academy of Sciences*, 116(30), 14881. <https://doi.org/10.1073/pnas.1905447116>
- Bailey, V. L., Pries, C. H., & Lajtha, K. (2019). What do we know about soil carbon destabilization? *Environmental Research Letters*, 14(8), 083004. <https://doi.org/10.1088/1748-9326/ab2c11>
- Bamber, J. L., Westaway, R. M., Marzeion, B., & Wouters, B. (2018). The land ice contribution to sea level during the satellite era. *Environmental Research Letters*, 13(6), 063008. <https://doi.org/10.1088/1748-9326/aac2f0>
- Barkaoui, A. E., Correia, A., Zarhloule, Y., Rimi, A., Carneiro, J., Boughriba, M., & Verdoya, M. (2013). Reconstruction of remote climate change from borehole temperature measurement in the eastern part of Morocco. *Climatic Change*, 118(2), 431–441. <https://doi.org/10.1007/s10584-012-0638-7>
- Beck, A. E. (1977). Climatically perturbed temperature gradients and their effect on regional and continental heat-flow means. *Tectonophysics*, 41(1), 17–39. [https://doi.org/10.1016/0040-1951\(77\)90178-0](https://doi.org/10.1016/0040-1951(77)90178-0)
- Beltrami, H. (2001). Surface heat flux histories from inversion of geothermal data: Energy balance at the Earth's surface. *Journal of Geophysical Research: Solid Earth*, 106(B10), 21979–21993. <https://doi.org/10.1029/2000JB000065>
- Beltrami, H. (2002a). Earth's Long-Term Memory. *Science*, 297(5579), 206. <https://doi.org/10.1126/science.1074027>
- Beltrami, H. (2002b). Climate from borehole data: Energy fluxes and temperatures since 1500. *Geophysical Research Letters*, 29(23), 26-1-26-4. <https://doi.org/10.1029/2002GL015702>
- Beltrami, H., & Boulton, E. (2004). Ground warming patterns in the Northern Hemisphere during the last five centuries. *Earth and Planetary Science Letters*, 227(3), 169–177. <https://doi.org/10.1016/j.epsl.2004.09.014>
- Beltrami, H., Boulton, E., Kellman, L., & González-Rouco, J. F. (2006). Spatial patterns of ground heat gain in the Northern Hemisphere. *Geophysical Research Letters*, 33(6). <https://doi.org/10.1029/2006GL025676>
- Beltrami, H., Matharoo, G. S., & Smerdon, J. E. (2015). Impact of borehole depths on reconstructed estimates of

- ground surface temperature histories and energy storage. *Journal of Geophysical Research: Earth Surface*, 120(5), 763–778. <https://doi.org/10.1002/2014JF003382>
- Beltrami, H., Matharoo, G. S., Smerdon, J. E., Illanes, L., & Tarasov, L. (2017). Impacts of the Last Glacial Cycle on ground surface temperature reconstructions over the last millennium. *Geophysical Research Letters*, 44(1), 355–364. <https://doi.org/10.1002/2016GL071317>
- Beltrami, H., Smerdon, J. E., Pollack, H. N., & Huang, S. (2002). Continental heat gain in the global climate system. *Geophysical Research Letters*, 29(8), 8-1-8–3. <https://doi.org/10.1029/2001GL014310>
- Bense, V. F., & Kooi, H. (2004). Temporal and spatial variations of shallow subsurface temperature as a record of lateral variations in groundwater flow. *Journal of Geophysical Research: Solid Earth*, 109(B4). <https://doi.org/10.1029/2003JB002782>
- Berrisford, P., Kållberg, P., Kobayashi, S., Dee, D., Uppala, S., Simmons, A. J., Poli, P., & Sato, H. (2011). Atmospheric conservation properties in ERA-Interim. *Quarterly Journal of the Royal Meteorological Society*, 137(659), 1381–1399. <https://doi.org/10.1002/qj.864>
- Bindoff, N. L., Cheung, W. W. L., & Kairo, J. G. (2019). Changing Ocean, Marine Ecosystems, and Dependent Communities. In H. O. Pörtner, D. C. Roberts, V. Masson-Delmotte, P. Zhai, M. Tignor, E. Poloczanska, K. Mintenbeck, A. Alegria, M. Nicolai, A. Okem, J. Petzold, B. Rama, & N. M. Weyer (Eds.), *Special Report: The Ocean and Cryosphere in a Changing Climate Summary for Policymakers* (pp. 447–587). in press. <https://doi.org/https://www.ipcc.ch/report/srocc/>
- Blunden, J. and Arndt, D. S. (2019). State of the Climate in 2019. Bulletin of the American Meteorological Society, 100(9), Si–S305, doi:10.1175/2019BAMSStateoftheClimate.1.
- Bopp, L., Resplandy, L., Orr, J. C., Doney, S. C., Dunne, J. P., Gehlen, M., Halloran, P., Heinze, C., Ilyina, T., Séférian, R., Tjiputra, J., & Vichi, M. (2013). Multiple stressors of ocean ecosystems in the 21st century: projections with CMIP5 models. *Biogeosciences*, 10(10), 6225–6245. <https://doi.org/10.5194/bg-10-6225-2013>
- Boyer, T., Domingues, C. M., Good, S. A., Johnson, G. C., Lyman, J. M., Ishii, M., Gouretski, V., Willis, J. K., Antonov, J., Wijffels, S., Church, J. A., Cowley, R., & Bindoff, N. L. (2016). Sensitivity of Global Upper-Ocean Heat Content Estimates to Mapping Methods, XBT Bias Corrections, and Baseline Climatologies. *Journal of Climate*, 29(13), 4817–4842. <https://doi.org/10.1175/JCLI-D-15-0801.1>
- Breitbart, D., Levin, L. A., Oschlies, A., Grégoire, M., Chavez, F. P., Conley, D. J., Garçon, V., Gilbert, D., Gutiérrez, D., Isensee, K., Jacinto, G. S., Limburg, K. E., Montes, I., Naqvi, S. W. A., Pitcher, G. C., Rabalais, N. N., Roman, M. R., Rose, K. A., Seibel, B. A., ... Zhang, J. (2018). Declining oxygen in the global ocean and coastal waters. *Science*, 359(6371), eaam7240. <https://doi.org/10.1126/science.aam7240>
- Cabanes, C., Grouazel, A., Von Schuckmann, K., Hamon, M., Turpin, V., Coatanoan, C., Paris, F., Guinehut, S., Boone, C., Ferry, N., De Boyer Montégut, C., Carval, T., Reverdin, G., Pouliquen, S., & Le Traon, P. Y. (2013). The CORA dataset: Validation and diagnostics of in-situ ocean temperature and salinity measurements. *Ocean Science*, 9(1), 1–18. <https://doi.org/10.5194/os-9-1-2013>
- Cermak, V. (1971). Underground temperature and inferred climatic temperature of the past millenium. *Palaeogeography, Palaeoclimatology, Palaeoecology*, 10(1), 1–19. [https://doi.org/10.1016/0031-0182\(71\)90043-5](https://doi.org/10.1016/0031-0182(71)90043-5)
- Cheng, L., Trenberth, K., Fasullo, J., Boyer, T., Abraham, J., von Schuckmann, K., & Zhou, J. (2017). Taking the Pulse of the Planet. *Eos, Transactions American Geophysical Union*, 98(1). <https://doi.org/10.1029/2017EO081839>
- Cheng, L., Trenberth, K. E., Palmer, M. D., Zhu, J., & Abraham, J. P. (2016). Observed and simulated full-depth ocean heat-content changes for 1970–2005. *Ocean Sci.*, 12(4), 925–935. <https://doi.org/10.5194/os-12-925-2016>
- Cheng, Lijing, Abraham, J., Hausfather, Z., & Trenberth, K. E. (2019). How fast are the oceans warming? *Science*, 363(6423), 128. <https://doi.org/10.1126/science.aav7619>
- Cheng, Lijing, Trenberth, K. E., Fasullo, J., Boyer, T., Abraham, J., & Zhu, J. (2017). Improved estimates of ocean heat content from 1960 to 2015. *Science Advances*, 3(3), e1601545. <https://doi.org/10.1126/sciadv.1601545>
- Cheng, Lijing, Trenberth, K. E., Fasullo, J. T., Mayer, M., Balmaseda, M., & Zhu, J. (2019). Evolution of ocean heat content related to ENSO. *Journal of Climate*, 32(12), 3529–3556. <https://doi.org/10.1175/JCLI-D-18-0607.1>
- Chiodo, G., & Haimberger, L. (2010). Interannual changes in mass consistent energy budgets from ERA-Interim and satellite data. *Journal of Geophysical Research: Atmospheres*, 115(D2). <https://doi.org/10.1029/2009JD012049>
- Chouinard, C., & Mareschal, J.-C. (2007). Selection of borehole temperature depth profiles for regional climate reconstructions. *Clim. Past*, 3(2), 297–313. <https://doi.org/10.5194/cp-3-297-2007>

- Chouinard, Christian, & Mareschal, J.-C. (2009). Ground surface temperature history in southern Canada: Temperatures at the base of the Laurentide ice sheet and during the Holocene. *Earth and Planetary Science Letters*, 277(1–2), 280–289. <https://doi.org/10.1016/j.epsl.2008.10.026>
- Ciais, P., Sabine, C., Bala, G., Bopp, L., Brovkin, V., Canadell, J., Chhabra, A., DeFries, R., Galloway, J., Heimann, M., Jones, C., Quéré, C. Le, Myneni, R. B., Piao, S., & Thornton, P. (2013). The physical science basis. Contribution of working group I to the fifth assessment report of the intergovernmental panel on climate change. *Change, IPCC Climate*, 465–570. <https://doi.org/10.1017/CBO9781107415324.015>
- Clark, P. U., Shakun, J. D., Marcott, S. A., Mix, A. C., Eby, M., Kulp, S., Levermann, A., Milne, G. A., Pfister, P. L., Santer, B. D., Schrag, D. P., Solomon, S., Stocker, T. F., Strauss, B. H., Weaver, A. J., Winkelmann, R., Archer, D., Bard, E., Goldner, A., ... Plattner, G.-K. (2016). Consequences of twenty-first-century policy for multi-millennial climate and sea-level change. *Nature Climate Change*, 6(4), 360–369. <https://doi.org/10.1038/nclimate2923>
- Cohen, J., Screen, J. A., Furtado, J. C., Barlow, M., Whittleston, D., Coumou, D., Francis, J., Dethloff, K., Entekhabi, D., Overland, J., & Jones, J. (2014). Recent Arctic amplification and extreme mid-latitude weather. *Nature Geoscience*, 7(9), 627–637. <https://doi.org/10.1038/ngeo2234>
- Cook, A. J., & Vaughan, D. G. (2010). Overview of areal changes of the ice shelves on the Antarctic Peninsula over the past 50 years. *The Cryosphere*, 4(1), 77–98. <https://doi.org/10.5194/tc-4-77-2010>
- Coumou, D., Di Capua, G., Vavrus, S., Wang, L., & Wang, S. (2018). The influence of Arctic amplification on mid-latitude summer circulation. *Nature Communications*, 9(1), 2959. <https://doi.org/10.1038/s41467-018-05256-8>
- Cuesta-Valero, F J, García-García, A., Beltrami, H., González-Rouco, J. F., & García-Bustamante, E. (2020). Long-Term Global Ground Heat Flux and Continental Heat Storage from Geothermal Data. *Clim. Past Discuss.*, 2020, 1–27. <https://doi.org/10.5194/cp-2020-65>
- Cuesta-Valero, F J, García-García, A., Beltrami, H., Zorita, E., & Jaume-Santero, F. (2019). Long-term Surface Temperature (LoST) database as a complement for GCM preindustrial simulations. *Clim. Past*, 15(3), 1099–1111. <https://doi.org/10.5194/cp-15-1099-2019>
- Cuesta-Valero, Francisco José, García-García, A., Beltrami, H., & Smerdon, J. E. (2016). First assessment of continental energy storage in CMIP5 simulations. *Geophysical Research Letters*, 43(10), 5326–5335. <https://doi.org/10.1002/2016GL068496>
- Davis, M. G., Harris, R. N., & Chapman, D. S. (2010). Repeat temperature measurements in boreholes from northwestern Utah link ground and air temperature changes at the decadal time scale. *Journal of Geophysical Research: Solid Earth*, 115(B5). <https://doi.org/10.1029/2009JB006875>
- Demezhko, D. Y., & Gornostaeva, A. A. (2015). Late Pleistocene–Holocene ground surface heat flux changes reconstructed from borehole temperature data (the Urals, Russia). *Clim. Past*, 11(4), 647–652. <https://doi.org/10.5194/cp-11-647-2015>
- Desbruyères, D. G., Purkey, S. G., McDonagh, E. L., Johnson, G. C., & King, B. A. (2016). Deep and abyssal ocean warming from 35 years of repeat hydrography. *Geophysical Research Letters*, 43(19), 310–356, 365. <https://doi.org/10.1002/2016GL070413>
- Desbruyères, D., McDonagh, E. L., King, B. A., & Thierry, V. (2017). Global and Full-Depth Ocean Temperature Trends during the Early Twenty-First Century from Argo and Repeat Hydrography. *Journal of Climate*, 30(6), 1985–1997. <https://doi.org/10.1175/JCLI-D-16-0396.1>
- Dieng, H. B., Cazenave, A., Meyssignac, B., & Ablain, M. (2017). New estimate of the current rate of sea level rise from a sea level budget approach. *Geophysical Research Letters*, 44(8), 3744–3751. <https://doi.org/10.1002/2017GL073308>
- Eyring, V., Cox, P. M., Flato, G. M., Gleckler, P. J., Abramowitz, G., Caldwell, P., Collins, W. D., Gier, B. K., Hall, A. D., Hoffman, F. M., Hurtt, G. C., Jahn, A., Jones, C. D., Klein, S. A., Krasting, J. P., Kwiatkowski, L., Lorenz, R., Maloney, E., Meehl, G. A., ... Williamson, M. S. (2019). Taking climate model evaluation to the next level. *Nature Climate Change*, 9(2), 102–110. <https://doi.org/10.1038/s41558-018-0355-y>
- Fischer, E. M., & Knutti, R. (2016). Observed heavy precipitation increase confirms theory and early models. *Nature Climate Change*, 6(11), 986–991. <https://doi.org/10.1038/nclimate3110>
- Friedlingstein, P., Jones, M. W., O'Sullivan, M., Andrew, R. M., Hauck, J., Peters, G. P., Peters, W., Pongratz, J., Sitch, S., Le Quéré, C., Bakker, D. C. E., Canadell, J. G., Ciais, P., Jackson, R. B., Anthoni, P., Barbero, L., Bastos, A., Bastrikov, V., Becker, M., Bopp, L., Buitenhuis, E., Chandra, N., Chevallier, F., Chini, L. P., Currie, K. I., Feely, R. A., Gehlen, M., Gilfillan, D., Gkritzalis, T., Goll, D. S., Gruber, N., Gutekunst, S., Harris, I., Haverd, V., Houghton, R. A., Hurtt, G., Ilyina, T., Jain, A. K., Joetzjer, E., Kaplan, J. O., Kato, E., Klein Goldewijk, K., Korsbakken, J. I., Landschützer, P., Lauvset, S. K., Lefèvre, N., Lenton, A., Lienert, S., Lombardozzi, D., Marland, G., McGuire, P. C., Melton, J. R., Metzl, N., Munro, D. R., Nabel, J. E. M. S.,

- Nakaoka, S.-I., Neill, C., Omar, A. M., Ono, T., Peregon, A., Pierrot, D., Poulter, B., Rehder, G., Resplandy, L., Robertson, E., Rödenbeck, C., Séférian, R., Schwinger, J., Smith, N., Tans, P. P., Tian, H., Tilbrook, B., Tubiello, F. N., van der Werf, G. R., Wiltshire, A. J., and Zaehele, S.: Global Carbon Budget 2019, *Earth Syst. Sci. Data*, 11, 1783–1838, <https://doi.org/10.5194/essd-11-1783-2019>, 2019.
- Frölicher, T. L., Fischer, E. M., & Gruber, N. (2018). Marine heatwaves under global warming. *Nature*, 560(7718), 360–364. <https://doi.org/10.1038/s41586-018-0383-9>
- Fu, Q., Solomon, S., Pahlavan, H. A., & Lin, P. (2019). Observed changes in Brewer–Dobson circulation for 1980–2018. *Environmental Research Letters*, 14(11), 114026. <https://doi.org/10.1088/1748-9326/ab4de7>
- Fujii, Y., Rémy, E., Zuo, H., Oke, P., Halliwell, G., Gasparin, F., Benkiran, M., Loose, N., Cummings, J., Xie, J., Xue, Y., Masuda, S., Smith, G. C., Balmaseda, M., Germaineaud, C., Lea, D. J., Larnicol, G., Bertino, L., Bonaduce, A., ... Usui, N. (2019). Observing System Evaluation Based on Ocean Data Assimilation and Prediction Systems: On-Going Challenges and a Future Vision for Designing and Supporting Ocean Observational Networks . In *Frontiers in Marine Science* (Vol. 6, p. 417). <https://www.frontiersin.org/article/10.3389/fmars.2019.00417>
- Gaillard, F., Reynaud, T., Thierry, V., Kolodziejczyk, N., & von Schuckmann, K. (2016). In Situ–Based Reanalysis of the Global Ocean Temperature and Salinity with ISAS: Variability of the Heat Content and Steric Height. *Journal of Climate*, 29(4), 1305–1323. <https://doi.org/10.1175/JCLI-D-15-0028.1>
- García Molinos, J., Halpern, B. S., Schoeman, D. S., Brown, C. J., Kiessling, W., Moore, P. J., Pandolfi, J. M., Poloczanska, E. S., Richardson, A. J., & Burrows, M. T. (2016). Climate velocity and the future global redistribution of marine biodiversity. *Nature Climate Change*, 6(1), 83–88. <https://doi.org/10.1038/nclimate2769>
- García-García, A., Cuesta-Valero, F. J., Beltrami, H., & Smerdon, J. E. (2016). Simulation of air and ground temperatures in PMIP3/CMIP5 last millennium simulations: implications for climate reconstructions from borehole temperature profiles. *Environmental Research Letters*, 11(4), 044022. <https://doi.org/10.1088/1748-9326/11/4/044022>
- García-García, Almudena, Cuesta-Valero, F. J., Beltrami, H., & Smerdon, J. E. (2019). Characterization of Air and Ground Temperature Relationships within the CMIP5 Historical and Future Climate Simulations. *Journal of Geophysical Research: Atmospheres*, 124(7), 3903–3929. <https://doi.org/10.1029/2018JD030117>
- Gardner, A. S., Moholdt, G., Cogley, J. G., Wouters, B., Arendt, A. A., Wahr, J., Berthier, E., Hock, R., Pfeffer, W. T., Kaser, G., Ligtenberg, S. R. M., Bolch, T., Sharp, M. J., Hagen, J. O., van den Broeke, M. R., & Paul, F. (2013). A Reconciled Estimate of Glacier Contributions to Sea Level Rise: 2003 to 2009. *Science*, 340(6134), 852. <https://doi.org/10.1126/science.1234532>
- Gattuso, J.-P., Magnan, A., Billé, R., Cheung, W. W. L., Howes, E. L., Joos, F., Allemand, D., Bopp, L., Cooley, S. R., Eakin, C. M., Hoegh-Guldberg, O., Kelly, R. P., Pörtner, H.-O., Rogers, A. D., Baxter, J. M., Laffoley, D., Osborn, D., Rankovic, A., Rochette, J., ... Turley, C. (2015). Contrasting futures for ocean and society from different anthropogenic CO₂ emissions scenarios. *Science*, 349(6243), aac4722. <https://doi.org/10.1126/science.aac4722>
- GCOS. (2016). *The Global Observing System for Climate: Implementation needs*. <https://doi.org/https://doi.org/DOI:10.13140/RG.2.2.23178.26566>
- Gelaro, R., McCarty, W., Suárez, M. J., Todling, R., Molod, A., Takacs, L., Randles, C. A., Darmenov, A., Bosilovich, M. G., Reichle, R., Wargan, K., Coy, L., Cullather, R., Draper, C., Akella, S., Buchard, V., Conaty, A., da Silva, A. M., Gu, W., ... Zhao, B. (2017). The Modern-Era Retrospective Analysis for Research and Applications, Version 2 (MERRA-2). *Journal of Climate*, 30(14), 5419–5454. <https://doi.org/10.1175/JCLI-D-16-0758.1>
- Gentine, P., Garcia-Garcia, A., Meier, R., Cuesta-Valero, F., Hugo, B., Davin, E. L., & Seneviratne, S. I. (2020). Large recent continental heat storage. *Nature, under revi.*
- Gleckler, P., Durack, P., Ronald, S., Johnson, G., & Forest, C. (2016). Industrial-era global ocean heat uptake doubles in recent decades. *Nature Climate Change*, 6. <https://doi.org/10.1038/nclimate2915>
- Goni, G. J., Sprintall, J., Bringas, F., Cheng, L., Cirano, M., Dong, S., Domingues, R., Goes, M., Lopez, H., Morrow, R., Rivero, U., Rossby, T., Todd, R. E., Trinanes, J., Zilberman, N., Baringer, M., Boyer, T., Cowley, R., Domingues, C. M., ... Volkov, D. (2019). More Than 50 Years of Successful Continuous Temperature Section Measurements by the Global Expendable Bathythermograph Network, Its Integrability, Societal Benefits, and Future. *Frontiers in Marine Science*, 6, 452. <https://www.frontiersin.org/article/10.3389/fmars.2019.00452>
- González-Rouco, J. F., Beltrami, H., Zorita, E., & Stevens, M. B. (2009). Borehole climatology: a discussion based on contributions from climate modeling. *Clim. Past*, 5(1), 97–127. <https://doi.org/10.5194/cp-5-97-2009>

- González-Rouco, J. F., Beltrami, H., Zorita, E., & von Storch, H. (2006). Simulation and inversion of borehole temperature profiles in surrogate climates: Spatial distribution and surface coupling. *Geophysical Research Letters*, 33(1). <https://doi.org/10.1029/2005GL024693>
- Good, S. A., Martin, M. J., & Rayner, N. A. (2013). EN4: Quality controlled ocean temperature and salinity profiles and monthly objective analyses with uncertainty estimates. *Journal of Geophysical Research: Oceans*, 118(12), 6704–6716. <https://doi.org/10.1002/2013JC009067>
- Gouretski, V., & Cheng, L. (2020). Correction for Systematic Errors in the Global Dataset of Temperature Profiles from Mechanical Bathythermographs. *Journal of Atmospheric and Oceanic Technology*, 37(5), 841–855. <https://doi.org/10.1175/JTECH-D-19-0205.1>
- Gregory, J. M., & Andrews, T. (2016). Variation in climate sensitivity and feedback parameters during the historical period. *Geophysical Research Letters*, 43(8), 3911–3920. <https://doi.org/10.1002/2016GL068406>
- Gregory, J. M., Andrews, T., Ceppi, P., Mauritsen, T., & Webb, M. J. (2020). How accurately can the climate sensitivity to CO_2 be estimated from historical climate change? *Climate Dynamics*, 54(1), 129–157. <https://doi.org/10.1007/s00382-019-04991-y>
- Guinehut, S., Dhomp, A.-L., Larnicol, G., & Le Traon, P.-Y. (2012). High resolution 3-D temperature and salinity fields derived from in situ and satellite observations. *Ocean Sci.*, 8(5), 845–857. <https://doi.org/10.5194/os-8-845-2012>
- Hansen, J. (2005). Efficacy of climate forcings. *Journal of Geophysical Research*, 110(D18), D18104. <https://doi.org/10.1029/2005JD005776>
- Hansen, J., Sato, M., Kharecha, P., & von Schuckmann, K. (2011). Earth’s energy imbalance and implications. *Atmos. Chem. Phys.*, 11(24), 13421–13449. <https://doi.org/10.5194/acp-11-13421-2011>
- Hansen, J., Sato, M., Kharecha, P., von Schuckmann, K., Beerling, D. J., Cao, J., Marcott, S., Masson-Delmotte, V., Prather, M. J., Rohling, E. J., Shakun, J., Smith, P., Lacis, A., Russell, G., & Ruedy, R. (2017). Young people’s burden: requirement of negative CO₂ emissions. *Earth Syst. Dynam.*, 8(3), 577–616. <https://doi.org/10.5194/esd-8-577-2017>
- Hansen, James, Nazarenko, L., Ruedy, R., Sato, M., Willis, J., Del Genio, A., Koch, D., Lacis, A., Lo, K., Menon, S., Novakov, T., Perlwitz, J., Russell, G., Schmidt, G. A., & Tausnev, N. (2005). Earth’s Energy Imbalance: Confirmation and Implications. *Science*, 308(5727), 1431 LP – 1435. <https://doi.org/10.1126/science.1110252>
- Harris, R. N., & Chapman, D. S. (2001). Mid-latitude (30°–60° N) climatic warming inferred by combining borehole temperatures with surface air temperatures. *Geophysical Research Letters*, 28(5), 747–750. <https://doi.org/10.1029/2000GL012348>
- Hartmann, A., & Rath, V. (2005). Uncertainties and shortcomings of ground surface temperature histories derived from inversion of temperature logs. *Journal of Geophysics and Engineering*, 2(4), 299–311. <https://doi.org/10.1088/1742-2132/2/4/S02>
- Hermoso de Mendoza, I., Beltrami, H., MacDougall, A. H., & Mareschal, J.-C. (2018). Lower boundary conditions in Land Surface Models. Effects on the permafrost and the carbon pools. *Geosci. Model Dev. Discuss.*, 2018, 1–34. <https://doi.org/10.5194/gmd-2018-233>
- Hersbach, H., Rosnay, P. de, Bell, B., Schepers, D., Simmons, A., Soci, C., Abdalla, S., Alonso-Balmaseda, M., Balsamo, G., Bechtold, P., Berrisford, P., Bidlot, J.-R., de Boissés, E., Bonavita, M., Browne, P., Buizza, R., Dahlgren, P., Dee, D., Dragani, R., ... Zuo, H. (2018). Operational global reanalysis: progress, future directions and synergies with NWP. In *ERA Report Series* (ERA Report). <https://www.ecmwf.int/node/18765>
- Hersbach, H., Bell, B., Berrisford, P., Hirahara, S., Horányi, A., Muñoz-Sabater, J., Nicolas, J., Peubey, C., Radu, R., Schepers, D., Simmons, A., Soci, C., Abdalla, S., Abellan, X., Balsamo, G., Bechtold, P., Biavati, G., Bidlot, J., Bonavita, M., Chiara, G. D., Dahlgren, P., Dee, D., Diamantakis, M., Dragani, R., Flemming, J., Forbes, R., Fuentes, M., Geer, A., Haimberger, L., Healy, S., Hogan, R. J., Hólm, E., Janisková, M., Keeley, S., Laloyaux, P., Lopez, P., Lupu, C., Radnoti, G., Rosnay, P. de, Rozum, I., Vamborg, F., Villaume, S. & Thépaut, J.-N. (2020). The ERA5 global reanalysis. *Q. J. R. Meteorol. Soc.* <https://doi.org/10.1002/qj.3803>
- Hicks Pries, C. E., Castanha, C., Porras, R., & Torn, M. S. (2017). The whole-soil carbon flux in response to warming. *Science*, eaal1319. <https://doi.org/10.1126/science.aal1319>
- Hoegh-Guldberg, O., et al. (2018). *Global Warming on Natural and Human Systems. In: Global Warming of 1.5°C. An IPCC Special Report on the impacts of global warming of 1.5°C above pre-industrial levels and related global greenhouse gas emission pathways, in the context of strengthening the.*
- Hopcroft, P. O., Gallagher, K., & Pain, C. C. (2007). Inference of past climate from borehole temperature data using Bayesian Reversible Jump Markov chain Monte Carlo. *Geophysical Journal International*, 171(3), 1430–1439. <https://doi.org/10.1111/j.1365-246X.2007.03596.x>

- Huang, S. (2006). 1851–2004 annual heat budget of the continental landmasses. *Geophysical Research Letters*, 33(4). <https://doi.org/10.1029/2005GL025300>
- Huang, S., Pollack, H. N., & Shen, P.-Y. (2000). Temperature trends over the past five centuries reconstructed from borehole temperatures. *Nature*, 403(6771), 756–758. <https://doi.org/10.1038/35001556>
- IPCC Special Report on the Ocean and Cryosphere in a Changing Climate. (2019). In H. O. Pörtner, D. C. Roberts, V. Masson-Delmotte, P. Zhai, M. Tignor, E. Poloczanska, K. Mintenbeck, A. Alegria, M. Nicolai, A. Okem, J. Petzold, B. Rama, & N. M. Weyer (Eds.), *IPCC Intergovernmental Panel on Climate Change: Geneva, Switzerland*. <https://www.ipcc.ch/srocc/>
- Ishii, M., Fukuda, Y., Hirahara, S., Yasui, S., Suzuki, T., & Sato, K. (2017). Accuracy of Global Upper Ocean Heat Content Estimation Expected from Present Observational Data Sets. *SOLA*, 13, 163–167. <https://doi.org/10.2151/sola.2017-030>
- Jacobs, S. S., Giulivi, C. F., & Mele, P. A. (2002). Freshening of the Ross Sea During the Late 20th Century. *Science*, 297(5580), 386. <https://doi.org/10.1126/science.1069574>
- Jaume-Santero, F., Pickler, C., Beltrami, H., & Mareschal, J.-C. (2016). North American regional climate reconstruction from ground surface temperature histories. *Clim. Past*, 12(12), 2181–2194. <https://doi.org/10.5194/cp-12-2181-2016>
- Jeong, D. Il, Sushama, L., Diro, G. T., Khaliq, M. N., Beltrami, H., & Caya, D. (2016). Projected changes to high temperature events for Canada based on a regional climate model ensemble. *Climate Dynamics*, 46(9), 3163–3180. <https://doi.org/10.1007/s00382-015-2759-y>
- Johnson, G.C., Lyman, J.M., Boyer, T., Cheng, L., Domingues, C.M., Gilson, J., Ishii, M., Killick, R., Monselesan, D., Purkey, S.G., Wijffels, S. E. (2018). Ocean heat content [in State of the Climate in 2017]. *Bulletin of the American Meteorological Society*, 99(8), S72–S77.
- Johnson, G. C., & Birnbaum, A. N. (2017). As El Niño builds, Pacific Warm Pool expands, ocean gains more heat. *Geophysical Research Letters*, 44(1), 438–445. <https://doi.org/10.1002/2016GL071767>
- Johnson, G. C., Lyman, J. M., & Purkey, S. G. (2015). Informing Deep Argo Array Design Using Argo and Full-Depth Hydrographic Section Data*. *Journal of Atmospheric and Oceanic Technology*, 32(11), 2187–2198. <https://doi.org/10.1175/JTECH-D-15-0139.1>
- Johnson, G. C., Purkey, S. G., Zilberman, N. V., & Roemmich, D. (2019). Deep Argo Quantifies Bottom Water Warming Rates in the Southwest Pacific Basin. *Geophysical Research Letters*, 46(5), 2662–2669. <https://doi.org/10.1029/2018GL081685>
- King, B. A., Firing, E., & M.Joyce, T. (2001). Chapter 3.1 Shipboard observations during WOCE. *International Geophysics*, 77, 99–122. [https://doi.org/10.1016/S0074-6142\(01\)80114-5](https://doi.org/10.1016/S0074-6142(01)80114-5)
- King, M. D., Howat, I. M., Jeong, S., Noh, M. J., Wouters, B., Noël, B., & van den Broeke, M. R. (2018). Seasonal to decadal variability in ice discharge from the Greenland Ice Sheet. *The Cryosphere*, 12(12), 3813–3825. <https://doi.org/10.5194/tc-12-3813-2018>
- King, M.D., Howat, I.M., Candela, S.G. et al. Dynamic ice loss from the Greenland Ice Sheet driven by sustained glacier retreat. *Commun Earth Environ* 1, 1 (2020). <https://doi.org/10.1038/s43247-020-0001-2>
- Kirchengast, G., Ladstädter, F., Steiner, A. K., Gorfer, M., Lippl, F., & Angerer, B. (2019). *Climate trends and variability in atmosphere heat content and atmosphere-ocean heat exchanges: space geodesy is key*. (No. IUGG19-4651). https://www.czech-in.org/cmPortalV15/CM_W3_Searchable/iugg19/normal#!sessiondetails/0000119801_0
- Knutti, R., & Rugenstein, M. A. A. (2015). Feedbacks, climate sensitivity and the limits of linear models. *Philosophical Transactions of the Royal Society A: Mathematical, Physical and Engineering Sciences*, 373(2054), 20150146. <https://doi.org/10.1098/rsta.2015.0146>
- Kobayashi, S., Ota, Y., Harada, Y., Ebata, A., Moriya, M., Onoda, H., Onogi, K., Kamahori, H., Kobayashi, C., Endo, H., Miyaoka, K., & Takahashi, K. (2015). The JRA-55 Reanalysis: General Specifications and Basic Characteristics. *Journal of the Meteorological Society of Japan. Ser. II*, 93(1), 5–48. <https://doi.org/10.2151/jmsj.2015-001>
- Kuhlbrodt, T., & Gregory, J. M. (2012). Ocean heat uptake and its consequences for the magnitude of sea level rise and climate change. *Geophysical Research Letters*, 39(18). <https://doi.org/10.1029/2012GL052952>
- Labe, Z., Magnusdottir, G., & Stern, H. (2018). Variability of Arctic Sea Ice Thickness Using PIOMAS and the CESM Large Ensemble. *Journal of Climate*, 31(8), 3233–3247. <https://doi.org/10.1175/JCLI-D-17-0436.1>
- Lachenbruch, A. H., & Marshall, B. V. (1986). Changing Climate: Geothermal Evidence from Permafrost in the Alaskan Arctic. *Science*, 234(4777), 689–696. www.jstor.org/stable/1697932
- Ladstädter, F., Steiner, A. K., Schwärz, M., & Kirchengast, G. (2015). Climate intercomparison of GPS radio occultation, RS90/92 radiosondes and GRUAN from 2002 to 2013. *Atmos. Meas. Tech.*, 8(4), 1819–1834.

<https://doi.org/10.5194/amt-8-1819-2015>
 1474 Lane, A. C. (1923). Geotherms of Lake Superior Copper Country. *GSA Bulletin*, 34(4), 703–720.
 1475 <https://doi.org/10.1130/GSAB-34-703>
 1476 Laxon, S. W., Giles, K. A., Ridout, A. L., Wingham, D. J., Willatt, R., Cullen, R., Kwok, R., Schweiger, A., Zhang,
 1477 J., Haas, C., Hendricks, S., Krishfield, R., Kurtz, N., Farrell, S., & Davidson, M. (2013). CryoSat-2 estimates
 1478 of Arctic sea ice thickness and volume. *Geophysical Research Letters*, 40(4), 732–737.
 1479 <https://doi.org/10.1002/grl.50193>
 1480 Leifeld, J., Wüst-Galley, C., & Page, S. (2019). Intact and managed peatland soils as a source and sink of GHGs
 1481 from 1850 to 2100. *Nature Climate Change*, 9(12), 945–947. <https://doi.org/10.1038/s41558-019-0615-5>
 1482 Lembo, V., Folini, D., Wild, M., & Lionello, P. (2019). Inter-hemispheric differences in energy budgets and cross-
 1483 equatorial transport anomalies during the 20th century. *Climate Dynamics*, 53(1), 115–135.
 1484 <https://doi.org/10.1007/s00382-018-4572-x>
 1485 Lenton, T. M. (2011). Early warning of climate tipping points. *Nature Climate Change*, 1(4), 201–209.
 1486 <https://doi.org/10.1038/nclimate1143>
 1487 Lenton, T. M., Held, H., Kriegler, E., Hall, J. W., Lucht, W., Rahmstorf, S., & Schellnhuber, H. J. (2008). Tipping
 1488 elements in the Earth's climate system. *Proceedings of the National Academy of Sciences of the United States*
 1489 *of America*, 105(6), 1786–1793. <https://doi.org/10.1073/pnas.0705414105>
 1490 Lenton, T., Rockström, J., Gaffney, O., Rahmstorf, S., Richardson, K., Steffen, W., & Schellnhuber, H. (2019).
 1491 Climate tipping points — too risky to bet against. *Nature*, 575, 592–595. [https://doi.org/10.1038/d41586-019-](https://doi.org/10.1038/d41586-019-03595-0)
 1492 [03595-0](https://doi.org/10.1038/d41586-019-03595-0)
 1493 Levitus, S., Antonov, J. I., Boyer, T. P., Baranova, O. K., Garcia, H. E., Locarnini, R. A., Mishonov, A. V., Reagan,
 1494 J. R., Seidov, D., Yarosh, E. S., & Zweng, M. M. (2012). World ocean heat content and thermocline sea level
 1495 change (0–2000 m), 1955–2010. *Geophysical Research Letters*, 39(10).
 1496 <https://doi.org/10.1029/2012GL051106>
 1497 Ligtenberg, S. R. M., Kuipers Munneke, P., Noël, B. P. Y., & van den Broeke, M. R. (2018). Brief communication:
 1498 Improved simulation of the present-day Greenland firn layer (1960–2016). *The Cryosphere*, 12(5), 1643–
 1499 1649. <https://doi.org/10.5194/tc-12-1643-2018>
 1500 Llovel, W., Willis, J. K., Landerer, F. W., & Fukumori, I. (2014). Deep-ocean contribution to sea level and energy
 1501 budget not detectable over the past decade. *Nature Climate Change*, 4(11), 1031–1035.
 1502 <https://doi.org/10.1038/nclimate2387>
 1503 Loeb, N. G., Lyman, J. M., Johnson, G. C., Allan, R. P., Doelling, D. R., Wong, T., Soden, B. J., & Stephens, G. L.
 1504 (2012). Observed changes in top-of-the-atmosphere radiation and upper-ocean heating consistent within
 1505 uncertainty. *Nature Geoscience*, 5(2), 110–113. <https://doi.org/10.1038/ngeo1375>
 1506 Lyman, J. M., & Johnson, G. C. (2013). Estimating Global Ocean Heat Content Changes in the Upper 1800 m since
 1507 1950 and the Influence of Climatology Choice. *Journal of Climate*, 27(5), 1945–1957.
 1508 <https://doi.org/10.1175/JCLI-D-12-00752.1>
 1509 MacDougall, A. H., Avis, C. A., & Weaver, A. J. (2012). Significant contribution to climate warming from the
 1510 permafrost carbon feedback. *Nature Geoscience*, 5(10), 719–721. <https://doi.org/10.1038/ngeo1573>
 1511 MacDougall, A. H., Beltrami, H., González-Rouco, J. F., Stevens, M. B., & Bournon, E. (2010). Comparison of
 1512 observed and general circulation model derived continental subsurface heat flux in the Northern Hemisphere.
 1513 *Journal of Geophysical Research: Atmospheres*, 115(D12). <https://doi.org/10.1029/2009JD013170>
 1514 MacDougall, A. H., González-Rouco, J. F., Stevens, M. B., & Beltrami, H. (2008). Quantification of subsurface heat
 1515 storage in a GCM simulation. *Geophysical Research Letters*, 35(13). <https://doi.org/10.1029/2008GL034639>
 1516 Mankoff, K. D., Colgan, W., Solgaard, A., Karlsson, N. B., Ahlström, A. P., van As, D., Box, J. E., Khan, S. A.,
 1517 Kjeldsen, K. K., Mouginot, J., & Fausto, R. S. (2019). Greenland Ice Sheet solid ice discharge from 1986
 1518 through 2017. *Earth Syst. Sci. Data*, 11(2), 769–786. <https://doi.org/10.5194/essd-11-769-2019>
 1519 Marshall, J., Scott, J. R., Armour, K. C., Campin, J.-M., Kelley, M., & Romanou, A. (2015). The ocean's role in the
 1520 transient response of climate to abrupt greenhouse gas forcing. *Climate Dynamics*, 44(7), 2287–2299.
 1521 <https://doi.org/10.1007/s00382-014-2308-0>
 1522 Marvel, K., Pincus, R., Schmidt, G. A., & Miller, R. L. (2018). Internal Variability and Disequilibrium Confound
 1523 Estimates of Climate Sensitivity From Observations. *Geophysical Research Letters*, 45(3), 1595–1601.
 1524 <https://doi.org/10.1002/2017GL076468>
 1525 Marzeion, B., Leclercq, P. W., Cogley, J. G., & Jarosch, A. H. (2015). Brief Communication: Global reconstructions
 1526 of glacier mass change during the 20th century are consistent. *The Cryosphere*, 9(6), 2399–2404.
 1527 <https://doi.org/10.5194/tc-9-2399-2015>
 1528 Matthews, T. K. R., Wilby, R. L., & Murphy, C. (2017). Communicating the deadly consequences of global

- warming for human heat stress. *Proceedings of the National Academy of Sciences*, 114(15), 3861.
<https://doi.org/10.1073/pnas.1617526114>
- Mayer, M., Fasullo, J. T., Trenberth, K. E., & Haimberger, L. (2016). ENSO-driven energy budget perturbations in observations and CMIP models. *Climate Dynamics*, 47(12), 4009–4029. <https://doi.org/10.1007/s00382-016-3057-z>
- Mayer, M., Haimberger, L., & Balmaseda, M. A. (2014). On the Energy Exchange between Tropical Ocean Basins Related to ENSO*. *Journal of Climate*, 27(17), 6393–6403. <https://doi.org/10.1175/JCLI-D-14-00123.1>
- Mayer, M., Haimberger, L., Edwards, J. M., & Hyder, P. (2017). Toward Consistent Diagnostics of the Coupled Atmosphere and Ocean Energy Budgets. *Journal of Climate*, 30(22), 9225–9246.
<https://doi.org/10.1175/JCLI-D-17-0137.1>
- Mayer, M., Tietsche, S., Haimberger, L., Tsubouchi, T., Mayer, J., & Zuo, H. (2019). An Improved Estimate of the Coupled Arctic Energy Budget. *Journal of Climate*, 32(22), 7915–7934. <https://doi.org/10.1175/JCLI-D-19-0233.1>
- Mayer, M., Trenberth, K. E., Haimberger, L., & Fasullo, J. T. (2013). The Response of Tropical Atmospheric Energy Budgets to ENSO*. *Journal of Climate*, 26(13), 4710–4724. <https://doi.org/10.1175/JCLI-D-12-00681.1>
- McPherson, M., García-García, A., Cuesta-Valero Francisco, J., Beltrami, H., Hansen-Ketchum, P., MacDougall, D., & Ogden Nicholas, H. (2017). Expansion of the Lyme Disease Vector Ixodes Scapularis in Canada Inferred from CMIP5 Climate Projections. *Environmental Health Perspectives*, 125(5), 057008.
<https://doi.org/10.1289/EHP57>
- Mears, C. A., & Wentz, F. J. (2009a). Construction of the Remote Sensing Systems V3.2 Atmospheric Temperature Records from the MSU and AMSU Microwave Sounders. *Journal of Atmospheric and Oceanic Technology*, 26(6), 1040–1056. <https://doi.org/10.1175/2008JTECHA1176.1>
- Mears, C. A., & Wentz, F. J. (2009b). Construction of the RSS V3.2 Lower-Tropospheric Temperature Dataset from the MSU and AMSU Microwave Sounders. *Journal of Atmospheric and Oceanic Technology*, 26(8), 1493–1509. <https://doi.org/10.1175/2009JTECHA1237.1>
- Mears, C. A., & Wentz, F. J. (2017). A Satellite-Derived Lower-Tropospheric Atmospheric Temperature Dataset Using an Optimized Adjustment for Diurnal Effects. *Journal of Climate*, 30(19), 7695–7718.
<https://doi.org/10.1175/JCLI-D-16-0768.1>
- Melo-Aguilar, C., González-Rouco, J. F., García-Bustamante, E., Navarro-Montesinos, J., & Steinert, N. (2018). Influence of radiative forcing factors on ground–air temperature coupling during the last millennium: implications for borehole climatology. *Clim. Past*, 14(11), 1583–1606. <https://doi.org/10.5194/cp-14-1583-2018>
- Meyssignac, B., Boyer, T., Zhao, Z., Hakuba, M. Z., Landerer, F. W., Stammer, D., Köhl, A., Kato, S., L’Ecuyer, T., Ablain, M., Abraham, J. P., Blazquez, A., Cazenave, A., Church, J. A., Cowley, R., Cheng, L., Domingues, C. M., Giglio, D., Gouretski, V., ... Zilberman, N. (2019). Measuring Global Ocean Heat Content to Estimate the Earth Energy Imbalance. *Frontiers in Marine Science*, 6, 432.
<https://www.frontiersin.org/article/10.3389/fmars.2019.00432>
- Mouginot, J., Rignot, E., Bjørk, A. A., van den Broeke, M., Millan, R., Morlighem, M., Noël, B., Scheuchl, B., & Wood, M. (2019). Forty-six years of Greenland Ice Sheet mass balance from 1972 to 2018. *Proceedings of the National Academy of Sciences*, 116(19), 9239. <https://doi.org/10.1073/pnas.1904242116>
- Myhre, G., Shindell, D., Bréon, F.-M., Collins, W., Fuglestad, J., Huang, J., Koch, D., Lamarque, J.-F., Lee, D., Mendoza, B., Nakajima, T., Robock, A., Stephens, G., Takemura, T., & Zhang, H. (2013). Anthropogenic and natural radiative forcing. In *Climate Change 2013 the Physical Science Basis: Working Group I Contribution to the Fifth Assessment Report of the Intergovernmental Panel on Climate Change* (Vol. 9781107057, pp. 659–740). <https://doi.org/10.1017/CBO9781107415324.018>
- Nauels, A., Meinshausen, M., Mengel, M., Lorbacher, K., & Wigley, T. M. L. (2017). Synthesizing long-term sea level rise projections – the MAGICC sea level model v2.0. *Geosci. Model Dev.*, 10(6), 2495–2524.
<https://doi.org/10.5194/gmd-10-2495-2017>
- Noël, B., van de Berg, W. J., van Wessem, J. M., van Meijgaard, E., van As, D., Lenaerts, J. T. M., Lhermitte, S., Kuipers Munneke, P., Smeets, C. J. P. P., van Uft, L. H., van de Wal, R. S. W., & van den Broeke, M. R. (2018). Modelling the climate and surface mass balance of polar ice sheets using RACMO2 – Part 1: Greenland (1958–2016). *The Cryosphere*, 12(3), 811–831. <https://doi.org/10.5194/tc-12-811-2018>
- Palmer, M D, & McNeall, D. J. (2014). Internal variability of Earth’s energy budget simulated by CMIP5 climate models. *Environmental Research Letters*, 9(3), 034016. <https://doi.org/10.1088/1748-9326/9/3/034016>
- Palmer, M D, Roberts, C. D., Balmaseda, M., Chang, Y.-S., Chepurin, G., Ferry, N., Fujii, Y., Good, S. A.,

- Guinehut, S., Haines, K., Hernandez, F., Köhl, A., Lee, T., Martin, M. J., Masina, S., Masuda, S., Peterson, K. A., Storto, A., Toyoda, T., ... Xue, Y. (2017). Ocean heat content variability and change in an ensemble of ocean reanalyses. *Climate Dynamics*, 49(3), 909–930. <https://doi.org/10.1007/s00382-015-2801-0>
- Palmer, Matthew D, Durack, P. J., Chidichimo, M. P., Church, J. A., Cravatte, S., Hill, K., Johannessen, J. A., Karstensen, J., Lee, T., Legler, D., Mazloff, M., Oka, E., Purkey, S., Rabe, B., Sallée, J.-B., Sloyan, B. M., Speich, S., von Schuckmann, K., Willis, J., & Wijffels, S. (2019). Adequacy of the Ocean Observation System for Quantifying Regional Heat and Freshwater Storage and Change . In *Frontiers in Marine Science* (Vol. 6, p. 416). <https://www.frontiersin.org/article/10.3389/fmars.2019.00416>
- Palmer, Matthew D, Harris, G. R., & Gregory, J. M. (2018). Extending CMIP5 projections of global mean temperature change and sea level rise due to thermal expansion using a physically-based emulator. *Environmental Research Letters*, 13(8), 084003. <https://doi.org/10.1088/1748-9326/aad2e4>
- Parkes, D., & Marzeion, B. (2018). Twentieth-century contribution to sea-level rise from uncharted glaciers. *Nature*, 563(7732), 551–554. <https://doi.org/10.1038/s41586-018-0687-9>
- Parkinson, C. L. (2019). A 40-y record reveals gradual Antarctic sea ice increases followed by decreases at rates far exceeding the rates seen in the Arctic. *Proceedings of the National Academy of Sciences*, 116(29), 14414. <https://doi.org/10.1073/pnas.1906556116>
- Peixoto, J. P., & Oort, A. H. (1992). *Physics of climate*. New York, NY (United States); American Institute of Physics. <https://www.osti.gov/servlets/purl/7287064>
- Pickler, C., Fausto, E., Beltrami, H., Mareschal, Jean-claude, Suárez, F., Chacon-Oecklers, A., Blin, N., Calderón, M., Montenegro, A., Harris, R., & Tassara, A. (2018). Recent climate variations in Chile: Constraints from borehole temperature profiles. *Climate of the Past*, 14, 559–575. <https://doi.org/10.5194/cp-14-559-2018>
- Pollack, H. N., & Smerdon, J. E. (2004). Borehole climate reconstructions: Spatial structure and hemispheric averages. *Journal of Geophysical Research: Atmospheres*, 109(D11). <https://doi.org/10.1029/2003JD004163>
- Polyakov, I. V., Pnyushkov, A. V., Alkire, M. B., Ashik, I. M., Baumann, T. M., Carmack, E. C., Goszczko, I., Guthrie, J., Ivanov, V. V., Kanzow, T., Krishfield, R., Kwok, R., Sundfjord, A., Morison, J., Rember, R., & Yulin, A. (2017). Greater role for Atlantic inflows on sea-ice loss in the Eurasian Basin of the Arctic Ocean. *Science*, 356(6335), 285. <https://doi.org/10.1126/science.aai8204>
- Pritchard, H. D., Ligtenberg, S. R. M., Fricker, H. A., Vaughan, D. G., van den Broeke, M. R., & Padman, L. (2012). Antarctic ice-sheet loss driven by basal melting of ice shelves. *Nature*, 484(7395), 502–505. <https://doi.org/10.1038/nature10968>
- Purkey, S. G., & Johnson, G. C. (2010). Warming of Global Abyssal and Deep Southern Ocean Waters between the 1990s and 2000s: Contributions to Global Heat and Sea Level Rise Budgets. *Journal of Climate*, 23(23), 6336–6351. <https://doi.org/10.1175/2010JCLI3682.1>
- Ramírez, F., Afán, I., Davis, L. S., & Chiaradia, A. (2017). Climate impacts on global hot spots of marine biodiversity. *Science Advances*, 3(2), e1601198. <https://doi.org/10.1126/sciadv.1601198>
- Rhein, M., Rintoul, S., Aoki, S., Campos, E., Chambers, D., Feely, R., Gulev, S., Johnson, G., Josey, S., Kostianoy, A., Mauritzen, C., Roemmich, D., Talley, L., & Wang, F. (2013). *Observations: Ocean. In: Climate Change 2013: The Physical Science Basis. Contribution of Working Group I to the Fifth Assessment Report of the Intergovernmental Panel on Climate Change*].
- Rhein, M, Rintoul, S., Aoki, S., Campos, E., Change, D. C.-C., & 2013, undefined. (n.d.). *Observations: ocean (Contribution of Working Group I to the Fifth Assessment Report of the Intergovernmental Panel on Climate Change)*.
- Rhein, Monika, Steinfeldt, R., Huhn, O., Sültenfuß, J., & Breckenfelder, T. (2018). Greenland Submarine Melt Water Observed in the Labrador and Irminger Sea. *Geophysical Research Letters*, 45(19), 10, 510–570, 578. <https://doi.org/10.1029/2018GL079110>
- Richter-Menge, J., M.L. Druckenmiller, and M. Jeffries, Eds., 2019: Arctic Report Card, 2019. <https://www.arctic.noaa.gov/Report-Card>.
- Rignot, E., Mouginot, J., Scheuchl, B., van den Broeke, M., van Wessel, M. J., & Morlighem, M. (2019). Four decades of Antarctic Ice Sheet mass balance from 1979–2017. *Proceedings of the National Academy of Sciences*, 116(4), 1095. <https://doi.org/10.1073/pnas.1812883116>
- Riser, S. C., Freeland, H. J., Roemmich, D., Wijffels, S., Troisi, A., Belbéoch, M., Gilbert, D., Xu, J., Pouliquen, S., Thresher, A., Le Traon, P.-Y., Maze, G., Klein, B., Ravichandran, M., Grant, F., Poulain, P.-M., Suga, T., Lim, B., Sterl, A., ... Jayne, S. R. (2016). Fifteen years of ocean observations with the global Argo array. *Nature Climate Change*, 6(2), 145–153. <https://doi.org/10.1038/nclimate2872>
- Roemmich, D., & Gilson, J. (2009). The 2004–2008 mean and annual cycle of temperature, salinity, and steric height in the global ocean from the Argo Program. *Progress in Oceanography*, 82(2), 81–100.

<https://doi.org/https://doi.org/10.1016/j.pocan.2009.03.004>
 Roy, S., Harris, R. N., Rao, R. U. M., & Chapman, D. S. (2002). Climate change in India inferred from geothermal observations. *Journal of Geophysical Research: Solid Earth*, 107(B7), ETG 5-1-ETG 5-16.
<https://doi.org/10.1029/2001JB000536>
 Santer, B. D., Po-Chedley, S., Zelinka, M. D., Cvijanovic, I., Bonfils, C., Durack, P. J., Fu, Q., Kiehl, J., Mears, C., Painter, J., Pallotta, G., Solomon, S., Wentz, F. J., & Zou, C.-Z. (2018). Human influence on the seasonal cycle of tropospheric temperature. *Science*, 361(6399), eaas8806. <https://doi.org/10.1126/science.aas8806>
 Santer, B. D., Solomon, S., Wentz, F. J., Fu, Q., Po-Chedley, S., Mears, C., Painter, J. F., & Bonfils, C. (2017). Tropospheric Warming Over The Past Two Decades. *Scientific Reports*, 7(1), 2336.
<https://doi.org/10.1038/s41598-017-02520-7>
 Schweiger, A. J., Wood, K. R., & Zhang, J. (2019). Arctic Sea Ice Volume Variability over 1901–2010: A Model-Based Reconstruction. *Journal of Climate*, 32(15), 4731–4752. <https://doi.org/10.1175/JCLI-D-19-0008.1>
 Schweiger, A., Lindsay, R., Zhang, J., Steele, M., Stern, H., & Kwok, R. (2011). Uncertainty in modeled Arctic sea ice volume. *Journal of Geophysical Research: Oceans*, 116(C8). <https://doi.org/10.1029/2011JC007084>
 Seneviratne, S., Donat, M., Mueller, B., & Alexander, L. (2014). No pause in the increase of hot temperature extremes. *Nature Climate Change*, 4. <https://doi.org/10.1038/nclimate2145>
 Seneviratne, S. I., Corti, T., Davin, E. L., Hirschi, M., Jaeger, E. B., Lehner, I., Orlowsky, B., & Teuling, A. J. (2010). Investigating soil moisture–climate interactions in a changing climate: A review. *Earth-Science Reviews*, 99(3–4), 125–161. <https://doi.org/10.1016/J.EARSCIREV.2010.02.004>
 Seneviratne, S., Lüthi, D., Litschi, M., & Schär, C. (2006). Land-atmosphere coupling and climate change in Europe. *Nature*, 443, 205–209. <https://doi.org/10.1038/nature05095>
 Serreze, M. C., & Barry, R. G. (2011). Processes and impacts of Arctic amplification: A research synthesis. *Global and Planetary Change*, 77(1–2), 85–96. <https://doi.org/10.1016/J.GLOPLACHA.2011.03.004>
 Shepherd, A., Fricker, H. A., & Farrell, S. L. (2018). Trends and connections across the Antarctic cryosphere. *Nature*, 558(7709), 223–232. <https://doi.org/10.1038/s41586-018-0171-6>
 Shepherd, A., Ivins, E., Rignot, E., Smith, B., van den Broeke, M., Velicogna, I., Whitehouse, P., Briggs, K., Joughin, I., Krinner, G., Nowicki, S., Payne, T., Scambos, T., Schlegel, N., A. G., Agosta, C., Ahlström, A., Babonis, G., Barletta, V., ... team, T. I. (2018). Mass balance of the Antarctic Ice Sheet from 1992 to 2017. *Nature*, 558(7709), 219–222. <https://doi.org/10.1038/s41586-018-0179-y>
 Sherwood, S. C., & Huber, M. (2010). An adaptability limit to climate change due to heat stress. *Proceedings of the National Academy of Sciences*, 107(21), 9552. <https://doi.org/10.1073/pnas.0913352107>
 Shi, J.-R., Xie, S.-P., & Talley, L. D. (2018). Evolving Relative Importance of the Southern Ocean and North Atlantic in Anthropogenic Ocean Heat Uptake. *Journal of Climate*, 31(18), 7459–7479.
<https://doi.org/10.1175/JCLI-D-18-0170.1>
 Smerdon, J. E., & Stieglitz, M. (2006). Simulating heat transport of harmonic temperature signals in the Earth's shallow subsurface: Lower-boundary sensitivities. *Geophysical Research Letters*, 33(14).
<https://doi.org/10.1029/2006GL026816>
 Steiner, A., Ladstädter, F., Randel, W. J., Maycock, A. C., Claud, C., Fu, Q., Gleisner, H., Haimberger, L., Ho, S.-P., Keckhut, P., Leblanc, T., Mears, C., Polvani, L., Santer, B., Schmidt, T., Sofieva, V., Wing, R., & Zou, C.-Z. (2020). Observed temperature changes in the troposphere and stratosphere from 1979 to 2018. *Journal of Climate*. <https://doi.org/doi:10.1175/JCLI-D-19-0998.1>
 Stevens, C. W. (2007). *Subsurface investigation of shallow-water permafrost located within the near-shore zone of the Mackenzie Delta, Northwest Territories, Canada*. University of Calgary.
 Stevens, M. B., González-Rouco, J. F., & Beltrami, H. (2008). North American climate of the last millennium: Underground temperatures and model comparison. *Journal of Geophysical Research: Earth Surface*, 113(F1).
<https://doi.org/10.1029/2006JF000705>
 Stieglitz, M., & Smerdon, J. E. (2007). Characterizing Land–Atmosphere Coupling and the Implications for Subsurface Thermodynamics. *Journal of Climate*, 20(1), 21–37. <https://doi.org/10.1175/JCLI3982.1>
 Storto, A., Alvera-Azcárate, A., Balmaseda, M. A., Barth, A., Chevallier, M., Counillon, F., Domingues, C. M., Drevillon, M., Drillet, Y., Forget, G., Garric, G., Haines, K., Hernandez, F., Iovino, D., Jackson, L. C., Lellouche, J.-M., Masina, S., Mayer, M., Oke, P. R., ... Zuo, H. (2019). Ocean Reanalyses: Recent Advances and Unsolved Challenges. *Frontiers in Marine Science*, 6, 418. <https://doi.org/10.3389/fmars.2019.00418>
 Storto, A., Masina, S., Simoncelli, S., Iovino, D., Cipollone, A., Drevillon, M., Drillet, Y., Schuckman, K., Parent, L., Garric, G., Greiner, E., Desportes, C., Zuo, H., Balmaseda, M., & Peterson, K. (2018). The added value of the multi-system spread information for ocean heat content and steric sea level investigations in the CMEMS GREP ensemble reanalysis product. *Climate Dynamics*. <https://doi.org/10.1007/s00382-018-4585-5>

- Straneo, F., Adusumilli, S., Slater, D., Timmermanns, M., Marzeion, B., & Schweiger, A. (2020). Inventory of Earth's ice loss and associated energy uptake from 1979 to 2017. *Geophysical Research Letters*, submitted.
- Straneo, Fiamma, & Cenedese, C. (2015). The Dynamics of Greenland's Glacial Fjords and Their Role in Climate. *Annual Review of Marine Science*, 7(1), 89–112. <https://doi.org/10.1146/annurev-marine-010213-135133>
- Suman, A., Dyer, F., & White, D. (2017). Late Holocene temperature variability in Tasmania inferred from borehole temperature data. *Clim. Past*, 13(6), 559–572. <https://doi.org/10.5194/cp-13-559-2017>
- Trenberth, K. E., Cheng, L., Jacobs, P., Zhang, Y., & Fasullo, J. (2018). Hurricane Harvey Links to Ocean Heat Content and Climate Change Adaptation. *Earth's Future*, 6(5), 730–744. <https://doi.org/10.1029/2018EF000825>
- Trenberth, K. E., & Fasullo, J. T. (2010). Tracking Earth's Energy. *Science*, 328(5976), 316. <https://doi.org/10.1126/science.1187272>
- Trenberth, K. E., & Fasullo, J. T. (2018). Applications of an Updated Atmospheric Energetics Formulation. *Journal of Climate*, 31(16), 6263–6279. <https://doi.org/10.1175/JCLI-D-17-0838.1>
- Trenberth, K. E., Fasullo, J. T., & Shepherd, T. G. (2015). Attribution of climate extreme events. *Nature Climate Change*, 5(8), 725–730. <https://doi.org/10.1038/nclimate2657>
- Trenberth, K. E., Fasullo, J. T., von Schuckmann, K., & Cheng, L. (2016). Insights into Earth's Energy Imbalance from Multiple Sources. *Journal of Climate*, 29(20), 7495–7505. <https://doi.org/10.1175/JCLI-D-16-0339.1>
- UN. (1992). *United Nations Framework Convention on Climate Change*, FCCC/INFORMAL/84 GE.05-62220 (E) 200705. <https://unfccc.int/resource/docs/convkp/conveng.pdf>
- UN. (2015). *The Paris Agreement*. https://unfccc.int/sites/default/files/english_paris_agreement.pdf
- UNGA. (2012). *The future we want, Resolution adopted by the General Assembly on 27 July 2012, A/RES/66/288*.
- UNGA. (2015). *Transforming our world: the 2030 Agenda for Sustainable Development, Resolution adopted by the General Assembly on 25 September 2015, A/RES/70/1*.
- Vanderkelen, I., van Lipzig, N. P. M., Lawrence, D. M., Droppers, B., Golub, M., Gosling, S. N., Janssen, A. B. G., Marcé, R., Schmied, H. M., Perroud, M., Pierson, D., Pokhrel, Y., Satoh, Y., Schewe, J., Seneviratne, S. I., Stepanenko, V. M., Tan, Z., Woolway, R. I., & Thiery, W. (2020). Global Heat Uptake by Inland Waters. *Geophysical Research Letters*, 47(12), e2020GL087867. <https://doi.org/10.1029/2020GL087867>
- Vasseur, G., Bernard, P., Van de Meulebrouck, J., Kast, Y., & Jolivet, J. (1983). Holocene paleotemperatures deduced from geothermal measurements. *Palaeogeography, Palaeoclimatology, Palaeoecology*, 43(3–4), 237–259. [https://doi.org/10.1016/0031-0182\(83\)90013-5](https://doi.org/10.1016/0031-0182(83)90013-5)
- Verdoya, M., Chiozzi, P., & Pasquale, V. (2007). Thermal log analysis for recognition of ground surface temperature change and water movements. *Clim. Past*, 3(2), 315–324. <https://doi.org/10.5194/cp-3-315-2007>
- von Schuckmann, K., Sallée, J.-B., Chambers, D., Le Traon, P.-Y., Cabanes, C., Gaillard, F., Speich, S., & Hamon, M. (2014). Consistency of the current global ocean observing systems from an Argo perspective. *Ocean Science*, 10(3), 547–557. <https://doi.org/10.5194/os-10-547-2014>
- von Schuckmann, K., & Le Traon, P.-Y. (2011). How well can we derive Global Ocean Indicators from Argo data? *Ocean Sci.*, 7(6), 783–791. <https://doi.org/10.5194/os-7-783-2011>
- von Schuckmann, K., Palmer, M. D., Trenberth, K. E., Cazenave, A., Chambers, D., Champollion, N., Hansen, J., Josey, S. A., Loeb, N., Mathieu, P.-P., Meyssignac, B., & Wild, M. (2016). An imperative to monitor Earth's energy imbalance. *Nature Climate Change*, 6(2), 138–144. <https://doi.org/10.1038/nclimate2876>
- von Schuckmann, Karina, Le Traon, P.-Y., Smith, N., Pascual, A., Brasseur, P., Fennel, K., Djavidnia, S., Aaboe, S., Fanjul, E. A., Autret, E., Axell, L., Aznar, R., Benincasa, M., Bentamy, A., Boberg, F., Bourdallé-Badie, R., Nardelli, B. B., Brando, V. E., Bricaud, C., ... Zuo, H. (2018). Copernicus Marine Service Ocean State Report. *Journal of Operational Oceanography*, 11(sup1), S1–S142. <https://doi.org/10.1080/1755876X.2018.1489208>
- Wang, G., Cheng, L., Abraham, J., & Li, C. (2018). Consensuses and discrepancies of basin-scale ocean heat content changes in different ocean analyses. *Climate Dynamics*, 50(7), 2471–2487. <https://doi.org/10.1007/s00382-017-3751-5>
- Wang, X., Key, J., Kwok, R., & Zhang, J. (2016). Comparison of Arctic Sea Ice Thickness from Satellites, Aircraft, and PIOMAS Data. *Remote Sensing*, 8(9), 713. <https://doi.org/10.3390/rs8090713>
- Watts, N., Amann, M., Arnell, N., Ayeb-Karlsson, S., Belesova, K., Boykoff, M., Byass, P., Cai, W., Campbell-Lendrum, D., Capstick, S., Chambers, J., Dalin, C., Daly, M., Dasandi, N., Davies, M., Drummond, P., Dubrow, R., Ebi, K. L., Eckelman, M., ... Montgomery, H. (2019). The 2019 report of The Lancet Countdown on health and climate change: ensuring that the health of a child born today is not defined by a changing climate. *The Lancet*, 394(10211), 1836–1878. [45](https://doi.org/10.1016/S0140-</p>
</div>
<div data-bbox=)

- 6736(19)32596-6
- WCRP, G. S. L. B. (2018). Global sea-level budget 1993–present. *Earth Syst. Sci. Data*, 10(3), 1551–1590. <https://doi.org/10.5194/essd-10-1551-2018>
- Wijffels, S., Roemmich, D., Monselesan, D., Church, J., & Gilson, J. (2016). Ocean temperatures chronicle the ongoing warming of Earth. In *Nature Climate Change* (Vol. 6, Issue 2, pp. 116–118). Nature Publishing Group. <https://doi.org/10.1038/nclimate2924>
- Wild, M. (2020). The global energy balance as represented in CMIP6 climate models. *Climate Dynamics*. <https://doi.org/10.1007/s00382-020-05282-7>
- Willis, J. K., Roemmich, D., & Cornuelle, B. (2004). Interannual variability in upper ocean heat content, temperature, and thermosteric expansion on global scales. *Journal of Geophysical Research: Oceans*, 109(C12). <https://doi.org/10.1029/2003JC002260>
- Wilson, N., Straneo, F., & Heimbach, P. (2017). Satellite-derived submarine melt rates and mass balance (2011–2015) for Greenland’s largest remaining ice tongues. *The Cryosphere*, 11, 2773–2782. <https://doi.org/10.5194/tc-11-2773-2017>
- WMO. (2020). *WMO Statement on the State of the Global Climate in 2019*. https://library.wmo.int/doc_num.php?explnum_id=10211
- Woollings, T., Gregory, J. M., Pinto, J. G., Reyers, M., & Brayshaw, D. J. (2012). Response of the North Atlantic storm track to climate change shaped by ocean–atmosphere coupling. *Nature Geoscience*, 5(5), 313–317. <https://doi.org/10.1038/ngeo1438>
- Xu, C., McDowell, N. G., Fisher, R. A., Wei, L., Sevanto, S., Christoffersen, B. O., Weng, E., & Middleton, R. S. (2019). Increasing impacts of extreme droughts on vegetation productivity under climate change. *Nature Climate Change*, 9(12), 948–953. <https://doi.org/10.1038/s41558-019-0630-6>
- Yang, H., Lohmann, G., Wei, W., Dima, M., Ionita, M., & Liu, J. (2016). Intensification and poleward shift of subtropical western boundary currents in a warming climate. *Journal of Geophysical Research: Oceans*, 121(7), 4928–4945. <https://doi.org/10.1002/2015JC011513>
- Zanna, L., Khatiwala, S., Gregory, J. M., Ison, J., & Heimbach, P. (2019). Global reconstruction of historical ocean heat storage and transport. *Proceedings of the National Academy of Sciences*, 116(4), 1126. <https://doi.org/10.1073/pnas.1808838115>
- Zemp, M., Huss, M., Thibert, E., Eckert, N., McNabb, R., Huber, J., Barandun, M., Machguth, H., Nussbaumer, S. U., Gärtner-Roer, I., Thomson, L., Paul, F., Maussion, F., Kutuzov, S., & Cogley, J. G. (2019). Global glacier mass changes and their contributions to sea-level rise from 1961 to 2016. *Nature*, 568(7752), 382–386. <https://doi.org/10.1038/s41586-019-1071-0>
- Zhang, J., & Rothrock, D. A. (2003). Modeling Global Sea Ice with a Thickness and Enthalpy Distribution Model in Generalized Curvilinear Coordinates. *Monthly Weather Review*, 131(5), 845–861. [https://doi.org/10.1175/1520-0493\(2003\)131<0845:MGSIIWA>2.0.CO;2](https://doi.org/10.1175/1520-0493(2003)131<0845:MGSIIWA>2.0.CO;2)
- Zscheischler, J., Westra, S., van den Hurk, B. J. J. M., Seneviratne, S. I., Ward, P. J., Pitman, A., AghaKouchak, A., Bresch, D. N., Leonard, M., Wahl, T., & Zhang, X. (2018). Future climate risk from compound events. *Nature Climate Change*, 8(6), 469–477. <https://doi.org/10.1038/s41558-018-0156-3>