

Greenland Ice Sheet solid ice discharge from 1986 through ~~2017~~2019

Kenneth D. Mankoff¹, Anne Solgaard¹, William Colgan¹, Andreas P. Ahlstrøm¹, Shfaqat Abbas Khan², and Robert S. Fausto¹

¹Department of Glaciology and Climate, Geological Survey of Denmark and Greenland (GEUS), Copenhagen, Denmark

²DTU Space, National Space Institute, Department of Geodesy, Technical University of Denmark, Kgs. Lyngby, Denmark

Correspondence: Ken Mankoff (kdm@geus.dk)

Abstract. We present a 1986 through ~~2017~~2019 estimate of Greenland Ice Sheet ice discharge. Our data include all discharging ice that flows faster than 100 m yr⁻¹ and are generated through an automatic and adaptable method, as opposed to conventional hand-picked gates. We position gates near the present-year termini and estimate problematic bed topography (ice thickness) values where necessary. In addition to using annual time-varying ice thickness, our time series uses velocity maps that begin with sparse spatial and temporal coverage and ends with near-complete spatial coverage and ~~six-day~~twelve-day updates to velocity. The 2010 through ~~2017~~2019 average ice discharge through the flux-gates is ~~~488~~~487 ±49 Gt yr⁻¹. The 10 % uncertainty stems primarily from uncertain ice bed location (ice thickness). We attribute the ~50 Gt yr⁻¹ differences among our results and previous studies to our use of updated bed topography from BedMachine v3. Discharge is approximately steady from 1986 to 2000, increases sharply from 2000 to 2005, then is approximately steady again. However, regional and glacier variability is more pronounced, with recent decreases at most major glaciers and in all but one region offset by increases in the ~~NW-region~~northwest region through 2017, and the southeast 2017 through 2019. As part of the journal's living archive option and our goal to make an operational product, all input data, code, and results from this study will be updated as needed (when new input data are ~~accessible and made freely~~available, as new features are added, or to fix bugs) and made available at doi:10.22008/promice/data/ice_discharge (Mankoff, 2019a) and at http://github.com/mankoff/ice_discharge.

1 What's new in this version

The data has been updated repeatedly between the first version of this paper (Mankoff et al., 2019) and this version. The data will continue to be updated, often sub-monthly, although reference papers will only come out once or twice a year. Therefore users are encouraged to regularly check for data updates at doi:10.22008/promice/data/ice_discharge when using the data.

A post-peer-review website is available at https://github.com/mankoff/ice_discharge where we document changes to the paper and use the GitHub Issues feature to collect suggested improvements to the paper, document those improvements as they are implemented, document problems that made it through review, and mention similar papers that have been published since this was accepted. The git commit for this version of the paper is 3ff3e15 .

In this version the NSIDC 0478 ice velocity data (Joughin et al., 2015, updated 2018) have been updated from v2 to v2.1. These data are used for the baseline velocity and gate selection, and therefore gate locations have shifted slightly, and number

of gate pixels and number of gates have changed. The effect of this change is $< 2.5\%$ of the estimated discharge. In this version there are now 5830 pixels and 268 gates.

The NSIDC 0646 ice velocity data (Howat, 2017) have been updated from v2 to v2.1. This update increases coverage and discharge in the 1980s by ~ 25 to 40 Gt yr^{-1} (~ 6 to 10%) due to higher velocity estimates than the previous product that covered that time period with annual averages (Mouginot et al., 2018b, c). This change highlights that ice-sheet wide differences between velocity products can be non-trivial (c.f. Millan et al. (2019)). The time series has also been extended through both the updated NSIDC 0646 data and 59 Sentinel 1 velocity maps from 2018 through present (2020-01-17). We have also added 48 additional MEaSURES (Joughin (2018); Joughin (2010); Joughin (2018); hereafter NSIDC 0731) monthly average velocity maps from 2014-12-01 through 2018-11-30.

We have updated the time series graphics (Figures 4, 5, and 6) in the following manner: Any observation (gate-, region-, or ice-sheet wide) where coverage is $< 50\%$ is discarded from the graphic (low coverage data is still included in the downloadable data), and annual average is only computed if there are three or more samples in a year.

Finally, the supplemental material includes significantly more meta-data about the input data used in this work to aid in both reproducibility by third-parties, and in tracking the impact of additional and updated input data on future versions of this work.

Results show a continued steady total discharge. The contributions from the central west (CW) region continue to decrease, while the central east (CE) region continues to increase, and CE and CW are now approximately tied for the 3rd largest discharging region. The top three individual contributing glaciers remain dynamic - Sermeq Kujalleq (Jakobshavn Isbræ) continued its rapid discharge decline in 2017 and 2018 returning to approximately its discharge from year 2000, until increasing again in 2019. For some time in 2018 Helheim was the top Greenlandic glacier contributing to sea level rise.

2 Introduction

The mass of the Greenland ice sheet is decreasing (e.g. Fettweis et al. (2017); Fettweis et al. (2017); Fettweis et al. (2016); Fettweis et al. (2016)). Most ice sheet mass loss – as iceberg discharge, submarine melting, and meltwater runoff – enters the fjords and coastal seas, and therefore ice sheet mass loss directly contributes to sea-level rise (WCRP Global Sea Level Budget Group, 2018; WCRP Global Sea Level Budget Group, 2018). Greenland’s total ice loss can be estimated through a variety of independent methods, for example ‘direct’ mass change estimates from GRACE (Wiese et al., 2016) or by using satellite altimetry to estimate surface elevation change, which is then converted into mass change (using a firm model, e.g. Khan et al. (2016)). However, partitioning the mass loss between ice discharge (D) and surface mass balance (SMB) remains challenging (c.f. Rignot et al. (2008) and Enderlin et al. (2014)). Correctly assessing mass loss, as well as the attribution of this loss (SMB or D) is critical to understanding the process-level response of the Greenland ice sheet to climate change, and thus improving models of future ice-sheet changes and associated sea-level rise (Moon et al., 2018).

The total mass of an ice-sheet, or a drainage basin, changes if the mass gain (SMB inputs, primarily snowfall) is not balanced by the mass loss (D and SMB outputs, the latter generally meltwater runoff). This change is typically termed ice-sheet mass balance (MB) and the formal expression for this rate of change in mass is (e.g. [Cuffey and Paterson \(2010\)](#)),

$$\frac{dM}{dt} = \rho \int_A b dA - \int_g Q dg, \quad (1)$$

- 5 where ρ is the average density of ice, b is an area mass balance, and Q is the discharge flux. The left hand side of the equation is the rate of change of mass, the first term on the right hand side is the area A integrated surface mass balance (SMB), and the second term is the discharge D mass flow rate that drains through gate g . Equation 1 is often simplified to

$$MB = SMB - D \quad (2)$$

- where MB is the mass balance, and referred to as the "input-output" method (e.g. [Khan et al. \(2015\)](#)). Virtually all studies agree on the trend of Greenland mass balance, but large discrepancies persist in both the magnitude and attribution. Magnitude discrepancies include, for example, [Kjeldsen et al. \(2015\)](#) reporting a mass imbalance of -250 ± 21 Gt yr⁻¹ during 2003 to 2010, [Ewert et al. \(2012\)](#) reporting -181 ± 28 Gt yr⁻¹ during 2003 to 2008, and [Rignot et al. \(2008\)](#) reporting a mass imbalance of -265 ± 19 Gt yr⁻¹ during 2004 to 2008. Some of these differences may be due to different ice sheet area masks used in the studies. Attribution discrepancies include, for example, [Enderlin et al. \(2014\)](#) attributing the majority (64 %) of mass loss to changes in SMB during the 2005 to 2009 period but [Rignot et al. \(2008\)](#) attributing the majority (85 %) of mass loss to changes in D during the 2004 to 2008 period.

- Discharge may be calculated through several methods, including mass flow rate through gates (e.g. [Enderlin et al. \(2014\)](#); [Enderlin et al. \(2018\)](#)) or solving as a residual from independent mass balance terms (e.g. [Kjær et al. \(2012\)](#); [Kjær et al. \(2015\)](#)). The gate method that we use in this study incorporates ice thickness and an estimated vertical profile from the observed surface velocity to calculate the discharge. A typical formulation of discharge across a gate D_g is,

$$D_g = \rho V H w, \quad (3)$$

- where ρ is the average density of ice, V is depth-average gate-perpendicular velocity, H is the ice thickness, and w is the gate width. Uncertainties in V and H naturally influence the estimated discharge. At fast-flowing outlet glaciers, V is typically assumed to be equal at all ice depths, and observed surface velocities can be directly translated into depth-averaged velocities (as in [Enderlin et al. \(2014\)](#); [Enderlin et al. \(2018\)](#)). To minimize uncertainty from SMB or basal mass balance corrections downstream of a flux gate, the gate should be at the grounding line of the outlet glacier. Unfortunately, uncertainty in bed elevation (translating to ice thickness uncertainty) increases toward the grounding line.

- Conventional methods of gate selection involve hand-picking gate locations, generally as linear features (e.g. [Enderlin et al. \(2014\)](#)) or visually approximating ice-orthogonal gates at one point in time (e.g. [King et al. \(2018\)](#)). Manual gate definition is sub-optimal. For example, the largest discharging glaciers draw from an upstream radially-diffusing region that may not easily be

represented by a single linear gate. Approximately flow-orthogonal curved gates may not be flow-orthogonal on the multi-decade time scale due to changing flow directions. Manual gate selection makes it difficult to update gate locations, corresponding with glacier termini retreat or advance, in a systematic and reproducible fashion. We therefore adopt an algorithmic approach to generate gates based on a range of criteria.

5 Here, we present a discharge dataset based on gates selected in a reproducible fashion by a new algorithm. Relative to previous studies, we employ ice velocity observation over a longer period with higher temporal frequency and denser spatial coverage. We use ice velocity from 1986 through ~~2017 including six-day~~ 2019 including twelve-day velocities for the last ~500 days of the time series, and discharge at 200 m pixel resolution capturing all ice flowing faster than 100 m yr⁻¹ that crosses glacier termini into fjords.

10 3 Input data

Historically, discharge gates were selected along well-constrained flight-lines of airborne radar data ([Enderlin et al., 2014](#)). Recent advances in ice thickness estimates through NASA Operation IceBridge ([Millan et al., 2018](#)), NASA Oceans Melting Greenland (OMG; [Fenty et al. \(2016\)](#)), fjord bathymetry ([Tinto et al., 2015](#)), and methods to estimate thickness from surface properties (e.g. [McNabb et al. \(2012\)](#); [McNabb et al. \(2016\)](#)) have been combined into digital bed elevation models such as
15 BedMachine v3 ([Morlighem et al., 2017b, a](#)) or released as independent datasets ([Millan et al., 2018](#)). From these advances, digital bed elevation models have become more robust at tidewater glacier termini and grounding lines. The incorporation of flight-line ice thickness data into higher-level products that include additional methods and data means gates are no longer limited to flight-lines (e.g. [King et al. \(2018\)](#)).

Ice velocity data are available with increasing spatial and temporal resolution (e.g. [Vijay et al. \(2019\)](#)). Until recently, ice
20 velocity mosaics were limited to once per year during winter ([Joughin et al., 2010](#)), and they are still temporally limited, often to annual resolution, prior to 2000 (e.g. [Mouginot et al. \(2018b, c\)](#)). Focusing on recent times, ice-sheet wide velocity mosaics from the Sentinel 1A & 1B are now available every ~~six~~ twelve days (<http://PROMICE.org>). The increased availability of satellite data has improved ice velocity maps both spatially and temporally thereby decreasing the need to rely on spatial and temporal interpolation of velocities from annual/winter mosaics ([Andersen et al., 2015](#); [Andersen et al., 2018](#); [Andersen et al., 2019](#)).

25 The discharge gates in this study are generated using only surface speed and an ice mask. We use the MEaSURES Greenland Ice Sheet Velocity Map from InSAR Data, Version 2 ([Joughin et al., 2010, 2015, updated 2018](#)), hereafter termed "MEaSURES 0478" due to the National Snow and Ice Data Center (NSIDC) data set ID number. We use the BedMachine v3 ([Morlighem et al., 2017b, a](#)) ice mask.

For ice thickness estimates, we use surface elevation from GIMP ([Howat et al. \(2014, 2017\)](#); NSIDC data set ID 0715),
30 adjusted through time with surface elevation change from [Khan et al. \(2016\)](#) and bed elevations from BedMachine v3 replaced by [Millan et al. \(2018\)](#) where available. Ice sector and region delineation is from [Mouginot and Rignot \(2019\)](#). Ice velocity data are obtained from a variety of products including Sentinel 1A & 1B derived by PROMICE (see Appendix), MEaSURES 0478, MEaSURES 0646 ~~, , and~~ ([Howat, 2017](#)), [Mouginot et al. \(2018b\)](#), and [Mouginot et al. \(2018c\)](#). Official glacier names

come from Bjørk et al. (2015). Other glacier names come from Mouginot and Rignot (2019). See Table 1 for an overview of data sets used in this work.

This work uses ~~308-462~~ different velocity maps, biased toward ~~the last 500 days of the time series when six-day post-2015 when twelve-day~~ ice velocities become available from the Sentinel-1 satellites. The temporal distribution is ~~1-to-a-few-velocity~~
5 ~~map~10 maps~~ per year from 1986 to ~~2000, 9 to 13 velocity maps per year from 2000 through 2013, 14 in 2014, 25 in 2015, 24-36 in 2016, and 55 in 2017, 69 in 2017, 42 in 2018, and 24 in 2019.~~

Table 1. Summary of data sources used in this work.

Property	Name used in this paper	Reference
Basal Topography	BedMachine	Morlighem et al. (2017b, a)
Basal Topography for Southeast		Millan et al. (2018)
Surface Elevation	GIMP 0715	Howat et al. (2014, 2017)
Surface Elevation Change	Surface Elevation Change	Khan et al. (2016); Khan (2017)
Baseline Velocity	MEaSURES 0478	Joughin et al. (2015, updated 2018)
Velocity	Sentinel	Appendix
Velocity	MEaSURES 0646	Howat (2017)
Velocity	MEaSURES 0731	Joughin (2018); Joughin et al. (2010, 2018)
Velocity	pre-2000	Mouginot et al. (2018b, c)
Sectors & Regions	Sectors & Regions	Mouginot and Rignot (2019)
Names		Bjørk et al. (2015); Mouginot and Rignot (2019)

4 Methods

4.1 Terminology

We use the following terminology, most displayed in Fig. 1:

- 10
- "Pixels" are individual 200 m x 200 m raster discharge grid cells. We use the nearest neighbor when combining data sets that have different grid properties.
 - "Gates" are contiguous (including diagonal) clusters of pixels.
 - "Sectors" are spatial areas that have 0, 1, or > 1 gate(s) plus any upstream source of ice that flows through the gate(s), and come from Mouginot and Rignot (2019).
- 15
- "Regions" are groups of sectors, also from Mouginot and Rignot (2019), and labeled by approximate geographic region.
 - The "baseline" period is the average 2015, 2016, and 2017 winter velocity from MEaSURES 0478.

- "Coverage" is the percentage of total, region, sector, or gate discharge observed at any given time. By definition coverage is 100 % during the baseline period. From the baseline data, the contribution to total discharge of each pixel is calculated, and coverage is reported for all other maps that have missing observations (Fig. A2). Total estimated discharge is always reported because missing pixels are gap-filled (see "Missing and invalid data" section below).
- 5 – "Fast-flowing ice" is defined as ice that flows more than 100 m yr^{-1} .
- Names are reported using the official Greenlandic names from [Björk et al. \(2015\)](#) if a nearby name exists, then [Mouginot and Rignot \(2019\)](#) in parentheses.

Although we refer to solid ice discharge, and it is in the solid phase when it passes the gates and eventually reaches the termini, submarine melting does occur at the termini and some of the discharge enters the fjord as liquid water ([Enderlin and Howat, 2013](#)).

10 4.2 Gate location

Gates are algorithmically generated for fast-flowing ice (greater than 100 m yr^{-1}) close to the ice sheet terminus determined by the baseline-period data. We apply a 2D inclusive mask to the baseline data for all ice flowing faster than 100 m yr^{-1} . We then select the mask edge where it is near the BedMachine ice mask (not including ice shelves), which effectively provides grounding line termini. We buffer the termini 5000 m in all directions creating ovals around the termini and once again down-select to fast-flowing ice pixels. This procedure results in gates 5000 m upstream from the baseline terminus that bisect the baseline fast-flowing ice. We manually mask some land- or lake-terminating glaciers which are initially selected by the algorithm due to fast flow and mask issues.

We select a 100 m yr^{-1} speed cutoff because slower ice, taking longer to reach the terminus, is more influenced by SMB. For the influence of this threshold on our results see the Discussion section and Fig. 2.

20 We select gates at 5000 m upstream from the baseline termini, which means that gates are likely $> 5000 \text{ m}$ from the termini further back in the historical record ([Murray et al., 2015](#); [Murray et al., 2018](#)). The choice of a 5000 m buffer follows from the fact that it is near-terminus and thus avoids the need for (minor) SMB corrections downstream, yet is not too close to the terminus where discharge results are sensitive to the choice of distance-to-terminus value (Fig. 2), which may be indicative of bed (ice thickness) errors.

25 4.3 Thickness

We derive thickness from surface and bed elevation. We use GIMP 0715 surface elevations in all locations, and the BedMachine bed elevations in most locations, except southeast Greenland where we use the [Millan et al. \(2018\)](#) bed. The GIMP 0715 surface elevations are all time-stamped per pixel. We adjust the surface through time by linearly interpolating elevation changes from [Khan et al. \(2016\)](#), which covers the period from 1995 to 2016. We use the average of the first and last three years for earlier and later times, respectively. Finally, from the fixed bed and temporally varying surface, we calculate the time-dependent ice thickness at each gate pixel.

4.4 Missing or invalid data

The baseline data provides velocity at all gate locations by definition, but individual non-baseline velocity maps often have missing or invalid data. Also, thickness provided by BedMachine is clearly incorrect in some places (e.g. fast-flowing ice that is 10 m thick, Fig. 3). We define invalid data and fill in missing data as described below.

5 4.4.1 Invalid velocity

We flag invalid (outlier) velocities by treating each pixel as an individual time series, applying a 30 point rolling window, flagging values more than 2 standard deviations outside the mean, and repeating this filter three times. We also drop the 1972 to 1985 years from [Mouginot et al. \(2018b\)](#) because there is low coverage and extremely high variability when using our algorithm.

10 This outlier detection method appears to correctly flag outliers (see [Appendix Mankoff et al. \(2019\)](#) for un-filtered time series graphs), but likely also flags some true short-term velocity increases. The effect of this filter is a ~1% reduction in discharge most years, but more in years with high discharge – a reduction of 3.2 % in 2013, 4.3 % in 2003, and more in the 1980s when the data is noisy. Any analysis using this data and focusing on individual glaciers or short-term changes (or lack there-of) should re-evaluate the upstream data sources.

15 4.4.2 Missing velocity

We generate an ice speed time series by assigning the PROMICE, MEaSUREs 0478, MEaSUREs 0646, and pre-2000 products to their respective reported time stamps (even though these are time-span products), or to the middle of their time span when they cover a long period such as the annual maps from [Mouginot et al. \(2018b, c\)](#). We ignore that any individual velocity map or pixel has a time span, not a time stamp. Velocities are sampled only where there are gate pixels. Missing pixel velocities are linearly interpolated in time, except for missing data at the beginning of the time series which are back- and forward-filled with the temporally-nearest value for that pixel (Fig. A2). We do not spatially interpolate missing velocities because the spatial changes around a missing data point are most likely larger than the temporal changes. We visually represent the discharge contribution of directly observed pixels, termed coverage (Fig. A2) as time series graphs and opacity of dots and error bars in the figures. Therefore, the gap-filled discharge contribution at any given time is equal to 100 minus the coverage. Discharge is always reported as estimated total discharge even when coverage is less than 100 %.

4.4.3 Invalid thickness

The thickness data appear to be incorrect in some locations. For example, many locations have fast-flowing ice, but report ice thickness as 10 m or less (Fig. 3, left panel). We accept all ice thickness greater than 20 m and construct from this a thickness versus \log_{10} speed relationship. For all ice thickness less than or equal to 20 m thick we adjust thickness based this relationship (Fig. 3, right panel). We selected the 20 m thickness cutoff after visually inspecting the velocity distribution (Fig. 3, left panel). This thickness adjustment adds 20 Gt yr⁻¹ to our baseline-period discharge estimate with no adjustment. In the Appendix and

Table A2 we discuss the discharge contribution of these adjusted pixels, and a comparison among this and other thickness adjustments.

4.5 Discharge

We calculate discharge per pixel using density (917 kg m^{-3}), filtered and filled ice speed, projection-corrected pixel width, and adjusted ice thickness derived from time-varying surface elevation and a fixed bed elevation (Eq. 3). We assume that any change in surface elevation corresponds to a change in ice thickness and thereby neglect basal uplift, erosion, and melt, which combined are orders of magnitude less than surface melting (e.g. Cowton et al. (2012); Cowton et al. (2007)). We also assume depth-averaged ice velocity is equal to the surface velocity.

We calculate discharge using the gate-orthogonal velocity at each pixel and at each timestamp – all velocity estimates are gate-orthogonal at all times, regardless of gate position, orientation, or changing glacier velocity direction over time.

Annual averages are calculated by linearly interpolating to daily, then estimating annual. The difference between this method and averaging only the observed samples is $\sim 3\%$ median (5% average, and a maximum of 10% when examining the entire ice sheet and all years in our data). It is occasionally larger at individual glaciers when a year has few widely-space samples of highly variable velocity.

4.5.1 Discharge Uncertainty

A longer discussion related to our and others treatments of errors and uncertainty is in the Appendix, but here we describe how we estimate the uncertainty related to the ice discharge following a simplistic approach. This yields an uncertainty of the total ice discharge of approximately 10% throughout the time series.

At each pixel we estimate the maximum discharge, D_{\max} , from

$$D_{\max} = \rho(V + \sigma_V)(H + \sigma_H)W, \quad (4)$$

and minimum discharge, D_{\min} , from

$$D_{\min} = \rho(V - \sigma_V)(H - \sigma_H)W, \quad (5)$$

where ρ is ice density, V is baseline velocity, σ_V is baseline velocity error, H is ice thickness, σ_H is ice thickness error, and W is the width at each pixel. Included in the thickness term is surface elevation change through time (dH/dt). When data sets do not come with error estimates we treat the error as 0.

We use $\rho = 917 \text{ kg m}^{-3}$ because the gates are near the terminus in the ablation zone and ice thickness estimates should not include snow or firn, although regionally ice density may be $< 917 \text{ kg m}^{-3}$ due to crevasses. We ignore the velocity error σ_V because the proportional thickness error (σ_H/H) is an order of magnitude larger than the proportional velocity error (σ_V/V) yet both contribute linearly to the discharge. W is location-dependent due to the errors between our working map

projection (EPSG 3413) and a more accurate spheroid model of the earth surface. We adjust linear gate width by up to ~4% in the north and ~2.5% in the south of Greenland (area errors are up to 8%). On a pixel by pixel basis we used the provided thickness uncertainty except where we modified the thickness ($H < 20$ m) we prescribe an uncertainty of 0.5 times the adjusted thickness. Subsequently, the uncertainty on individual glacier-, sector-, region-, or ice sheet scale is obtained by summing, but not reducing by the square of the sums, the uncertainty related to each pixel. We are conservative with our thickness error estimates, by assuming the uncertainty range is from D_{\min} to D_{\max} and not reducing by the sum-of-squares of sectors or regions.

5 Results

5.1 Gates

Our gate placement algorithm generates ~~6002~~5830 pixels making up ~~276~~268 gates, assigned to ~~176~~174 ice-sheet sectors from Mouginit and Rignot (2019). Previous similar studies have used 260 gates (Mouginit et al., 2019), 230 gates (King et al., 2018), and 178 gates (Enderlin et al., 2014).

The widest gate (~47 km) is Sermersuaq (Humboldt Gletsjer), the 2nd widest (~34 km) is Sermeq Kujalleq (Jakobshavn Isbræ). 23 additional glaciers have gate lengths longer than 10 km. The minimum gate width is 3 pixels (600 m) by definition in the algorithm.

The average unadjusted thickness gates is ~~405~~401 m with a standard deviation of ~~260~~258. The average thickness after adjustment is ~~439~~436 m with a standard deviation of ~~225~~223. A histogram of unadjusted and adjusted thickness at all gate locations is shown in Fig. 3.

5.2 Discharge

Our ice discharge dataset (Fig. 4) reports a total discharge of ~~438~~460 \pm ~~43~~49 Gt in 1986, has a minimum of ~~421~~428 \pm ~~42~~44 Gt in 1995, increases to ~~452~~443 \pm ~~45~~44 in 2000, further to ~~504~~500 \pm ~~49~~50 Gt/yr in 2005, after which annual discharge remains approximately steady at ~~484 to 503~~483 to 505 \pm ~50 Gt/yr during the 2005 to 2017 period. Annual maxima in ice discharged occurred in 2005 (~~504~~ \pm 49 Gt/yr), 2011 (~~499~~ \pm 50 Gt/yr), and 2014 (~~503~~ \pm 51 Gt/yr). 2019 period.

At the region scale, the SE glaciers (see Fig. 1 for regions) are responsible for ~~139 to 167~~136 to 164 (\pm ~~11~~12 %) Gt yr⁻¹ of discharge (~~30 to 34 %~~approximately one third of ice-sheet wide discharge) over the 1986 to 2017-2019 period. By comparison, the predominantly land-terminating NO, NE and SW together were also responsible for ~~131 to 168 of discharge~~ (~~~31 % of about one third of total~~ ice-sheet ~~wide discharge~~) discharge during this time (Fig. 5). The discharge from most regions has been approximately steady or declining for the past decade. The NW is the only region exhibiting a persistent long-term increase in discharge – From ~89 to ~~113~~115 Gt yr⁻¹ (~~21~~23 % increase) over the ~~1998-1999~~ through 2017 period (+ ~~~1~~~1.4 Gt yr⁻¹ or + ~~~1.2~~ % yr⁻¹). This ~~persistent-1999 to 2017 annual average~~ increase in NW discharge offsets declining discharge from other regions, but the NW increase stopped in 2018 and discharge in the NW dropped by 5 Gt yr⁻¹ (4 %) in 2019. This NW decline

is then offset by a SE region increase. The largest contributing region, SE, contributed a high of $+167-164 \pm 19$ Gt in 2005-2004, but dropped to $+149(155) \pm \sim 150 \pm 18$ Gt in 2016(2017) yr^{-1} for the past decade.

Focusing on ~~the top eight contributors (mean of last year)~~ eight major contributors at the individual sector or glacier scale (Fig. 6), Sermeq Kujalleq (Jakobshavn Isbræ) has slowed down from an annual average high of $\sim 52-51$ Gt yr^{-1} in 2012 to ~ 45 Gt yr^{-1} in 2016 and $\sim 38-2013$ to ~ 34 Gt yr^{-1} in 2017-2018, likely due to ocean cooling (Khazendar et al., 2019). We exclude Ikertivaq from the top 8 because that gate spans multiple sectors and outlets, while the other top dischargers are each a single outlet. The 2013 to 2016 slowdown of Sermeq Kujalleq (Fig. 6) is compensated by the many glaciers that make up the NW region (Fig. 5). The large 2017 and 2018 reduction in discharge at Sermeq Kujalleq is partially offset by a large increase in the 2nd largest contributor, Helheim Gletsjer (Fig. 6) and a small increase in the 3rd largest contributor, Kangerlussuaq (Bevan et al., 2019).

6 Discussion

Different ice discharge estimates among studies likely stem from three categories: 1) changes in true discharge, 2) different input data (ice thickness and velocity), and 3) different assumptions and methods used to analyze data. Improved estimates of true discharge is the goal of this and many other studies, but changes in true discharge (category 1) can happen only when a work extends a time series into the future because historical discharge is fixed. Thus, any inter-study discrepancies in historical discharge must be due to category 2 (different data) or category 3 (different methods). Most studies use both updated data and new or different methods, but do not always provide sufficient information to disentangle the two. This is inefficient. To more quantitatively discuss inter-study discrepancies, it is imperative to explicitly consider all three potential causes of discrepancy. Only when results are fully reproducible – meaning all necessary data and code are available (c.f. Mankoff and Tulaczyk (2017); Mankoff and Tulaczyk (2017); Mankoff and Tulaczyk (2019)) – can new works confidently attribute discrepancies relative to old works. Therefore, in addition to providing new discharge estimates, we attempt to examine discrepancies among our estimates and other recent estimates. Without access to code and data from previous studies, it is challenging to take this examination beyond a qualitative discussion.

The algorithm-generated gates we present offer some advantages over traditional hand-picked gates. Our gates are shared publicly, are generated by code that can be audited by others, and are easily adjustable within the algorithmic parameter space. This allows both sensitivity testing of gate location (Fig. 2) and allows gate positions to systematically evolve with glacier termini (not done here). The total ice discharge we estimate is ~ 10 % less than the total discharge of two previous estimates (Mouginot et al., 2019; Mouginot et al., 2014), and similar to that of King et al. (2018), who attributes their discrepancy with Enderlin et al. (2014) to the latter using only summer velocities, which have higher annual average values than seasonally-comprehensive velocity products. The gate locations also differ among studies, and glaciers with baseline velocity less than 100 m yr^{-1} are not included in our study due to our velocity cutoff threshold, but this should not lead to substantially different discharge estimates (Fig. 2).

Our gate selection algorithm also does not place gates in northeast Greenland at Storstrømmen, Bredebræ, or their confluence, because during the baseline period that surge glacier was in a slow phase. We do not manually add gates at these glaciers. The last surge ended in 1984 (Reeh et al., 1994; Reeh et al., 2018a), prior to the beginning of our time series, and these glaciers are therefore not likely to contribute substantial discharge even in the early period of discharge estimates.

5 We instead attribute the majority of our discrepancy with Enderlin et al. (2014) to the use of differing bed topography in southeast Greenland. When we compare our top ten highest discharging glaciers in 2000 with those reported by Enderlin et al. (2014), we find that the Køge Bugt discharge reported by Enderlin et al. (2014) is ~31 Gt, but our estimate is only ~16 Gt (and ~17 Gt in King et al. (2018), and similar in Mouginit et al. (2019)). The Bamber et al. (2013) bed elevation dataset that likely uses the same bed data employed by Enderlin et al. (2014) has a major depression in the central Køge Bugt bed. This region of enhanced
10 ice thicknesses is not present in the BedMachine dataset that we and King et al. (2018) and Mouginit et al. (2019) employ (Fig. B1). If the Køge Bugt gates of Enderlin et al. (2014) are in this location, then those gates overlie Bamber et al. (2013) ice thicknesses that are about twice those reported in BedMachine v3. With all other values held constant, this results in roughly twice the discharge. Although we do not know whether BedMachine or Bamber et al. (2013) is more correct, conservation of mass suggests that a substantial subglacial depression should be evident as either depressed surface elevation or velocity
15 (Morlighem et al., 2016).

We are unable to attribute the remaining discrepancy between our discharge estimates and those by Enderlin et al. (2014). It is likely a combination of differing-different seasonal velocity sampling (King et al., 2018), our evolving surface elevation from Khan et al. (2016), or other previously-unpublished algorithmic or data differences, of which many possibilities exist.

Our ice discharge estimates agree well with the most recently published discharge estimate (King et al. (2018), also used by
20 Bamber et al. (2018)), except that our discharge is slightly less. We note that our uncertainty estimates include the King et al. (2018) estimates, but the opposite does not appear to be true. The minor differences are likely due to different methods. King et al. (2018) use seasonally varying ice thicknesses, derived from seasonally varying surface elevations, and a Monte Carlo method to temporally interpolate missing velocity data to produce discharge estimates. In comparison, we use linear interpolation of both yearly surface elevation estimates and temporal data gaps. It is not clear whether linear or higher-order statistical approaches
25 are best-suited for interpolation as annual cycles begin to shift, as is the case with Sermeq Kujalleq (Jakobshavn Isbræ) after 2015. There are benefits and deficiencies with both methods. Linear interpolation may alias large changes if there are no other observations nearby in time. Statistical models of past glacier behavior may not be appropriate when glacier behavior changes.

It is unlikely that discharge estimates using gates that are only approximately flow-orthogonal and time-invariant (King et al., 2018) have large errors due to this, because it is unlikely that glacier flow direction changes significantly, but our gate-orthogonal treatment may be the cause of some differences among our approach and other works. Discharge calculated using non-orthogonal
30 methodology would overestimate true discharge.

7 Data availability

This work in its entirety is available at [doi:10.22008/promice/data/ice_discharge](https://doi.org/10.22008/promice/data/ice_discharge) (Mankoff, 2019a). The glacier-scale, sector, region, and Greenland summed ice sheet discharge dataset is available at [doi:10.22008/promice/data/ice_discharge/d/v02](https://doi.org/10.22008/promice/data/ice_discharge/d/v02) (Mankoff, 2019c), where it will be updated as more velocity data become available. The gates can be found at [doi:10.22008/promice/data/ice_discharge/gates/v02](https://doi.org/10.22008/promice/data/ice_discharge/gates/v02) (Mankoff, 2019d), the code at [doi:10.22008/promice/data/ice_discharge/code/v0.0.1](https://doi.org/10.22008/promice/data/ice_discharge/code/v0.0.1) (Mankoff, 2019b), and the surface elevation change at [doi:10.22008/promice/data/DTU/surface_elevation_change/v1.0.0](https://doi.org/10.22008/promice/data/DTU/surface_elevation_change/v1.0.0) (Khan, 2017).

8 Conclusions

We have presented a novel dataset of flux gates and 1986 through 2017–2019 glacier-scale ice discharge estimate for the Greenland ice sheet. These data are underpinned by an algorithm that both selects gates for ice flux and then computes ice discharges.

Our results are similar to the most recent discharge estimate (King et al., 2018) but begin in 1986 - although there is low coverage and few samples prior to 2000. From our discharge estimate we show that over the past ~30 years, ice sheet discharge was ~430 Gt yr⁻¹ prior to 2000, rose to over 500 Gt yr⁻¹ from 2000 to 2005, and has held roughly steady since 2005 at near 500 Gt yr⁻¹. However, when viewed at a region or sector scale, the system appears more dynamic with spatial and temporal increases and decreases canceling each other out to produce the more stable ice sheet discharge. We note that there does not appear to be any dynamic connection among the regions, and any increase in one region that was offset by a decrease in another has likely been due to chance. If in coming years when changes occur the signals have matching signs, then ice sheet discharge would decrease or increase, rather than remain fairly steady.

The application of our flux-gate algorithm shows that ice-sheet wide discharge varies by ~30 Gt yr⁻¹ due only to gate position, or ~40 Gt due to gate position and cutoff velocity (Fig. 2). This variance is approximately equal to the uncertainty associated with ice-sheet wide discharge estimates reported in many studies (e.g. Rignot et al. (2008); Rignot et al. (2015); Rignot et al. (2015)). We highlight a major discrepancy with the ice discharge data of Enderlin et al. (2014) and we suspect this discharge discrepancy – most pronounced in southeast Greenland – is associated with the choice of digital bed elevation model, specifically a deep hole in the bed at Køge Bugt.

Transparency in data and methodology are critical to move beyond a focus of estimating discharge quantities, towards more operational mass loss products with realistic errors and uncertainty estimates. The convention of devoting a paragraph, or even page, to methods is insufficient given the complexity, pace, and importance of Greenland ice sheet research (Catania et al., 2019). Therefore the flux gates, discharge data, and the algorithm used to generate the gates, discharge, and all figures from this manuscript are freely available. We hope that the flux gates, data, and code we provide here is a step toward helping others both improve their work and discover the errors in ours.

~~Author Contribution:-~~

Author contributions. \ KDM conceived of the algorithm approach, and wrote the code. KDM , WIC, and RSF iterated over the algorithm results and methods. ASO provided the velocity data. SAK supplied the surface elevation change data. All authors contributed to the scientific discussion, writing, and editing of the manuscript. ~~We thank the reviewers for their constructive input that helped improve the paper.~~

5 *Competing interests.* \ The authors declare that they have no conflict of interest. ~~Data from~~

Acknowledgements. Funding was provided by the Programme for Monitoring of the Greenland Ice Sheet (PROMICE). Sentinel ice velocity maps were produced from Copernicus Sentinel-1 image data, processed by ESA data as part of PROMICE, and were provided by the Geological Survey of Denmark and Greenland (GEUS) at <http://www.promice.org>. Parts of this work were funded by the INTAROS project under the European Union's Horizon 2020 research and innovation program under grant agreement No. 727890. We thank the reviewers for

10 their constructive input that helped improve the paper.

References

- Andersen, M. L., Stenseng, L., Skourup, H., Colgan, W., Khan, S. A., Kristensen, S. S., Andersen, S. B., Box, J. E., Ahlstrøm, A. P., Fettweis, X., and Forsberg, R.: Basin-scale partitioning of Greenland ice sheet mass balance components (2007 – 2011), *Earth and Planetary Science Letters*, 409, 89–95, <https://doi.org/10.1016/j.epsl.2014.10.015>, 2015.
- 5 Bamber, J. L., Griggs, J. A., Hurkmans, R. T. W. L., Dowdeswell, J. A., Gogineni, S. P., Howat, I., Mouginot, J., Paden, J., Palmer, S., Rignot, E., and Steinhage, D.: A new bed elevation dataset for Greenland, *The Cryosphere*, 7, 499–510, <https://doi.org/10.5194/tc-7-499-2013>, 2013.
- Bamber, J. L., Westaway, R. M., Marzeion, B., and Wouters, B.: The land ice contribution to sea level during the satellite era, *Environmental Research Letters*, 13, 063 008, <https://doi.org/10.1088/1748-9326/aac2f0>, <http://dx.doi.org/10.1088/1748-9326/aac2f0>, 2018.
- 10 Bevan, S. L., Luckman, A. J., Benn, D. I., Cowton, T., and Todd, J.: Impact of warming shelf waters on ice mélange and terminus retreat at a large SE Greenland glacier, *The Cryosphere*, 13, 2303–2315, <https://doi.org/10.5194/tc-13-2303-2019>, 2019.
- Bjørk, A. A., Kruse, L. M., and Michaelsen, P. B.: Brief Communication: Getting Greenland’s glaciers right – a new dataset of all official Greenlandic glacier names, *The Cryosphere*, 9, 2215–2218, <https://doi.org/10.5194/tc-9-2215-2015>, 2015.
- Catania, G., Stearns, L., Moon, T., Enderlin, E., and Jackson, R.: Future Evolution of Greenland’s Marine-Terminating Outlet Glaciers, *Journal of Geophysical Research: Earth Surface*, <https://doi.org/10.1029/2018jf004873>, <http://dx.doi.org/10.1029/2018JF004873>, 2019.
- 15 Chen, X., Zhang, X., Church, J. A., Watson, C. S., King, M. A., Monselesan, D., Legresy, B., and Harig, C.: The increasing rate of global mean sea-level rise during 1993–2014, *Nature Climate Change*, 7, 492–495, <https://doi.org/10.1038/nclimate3325>, <http://dx.doi.org/10.1038/nclimate3325>, 2017.
- Cowton, T., Nienow, P., Bartholomew, I. D., Sole, A., and Mair, D. W. F.: Rapid erosion beneath the Greenland ice sheet, *Geology*, 40, 343–346, <https://doi.org/10.1130/G32687.1>, 2012.
- 20 Cuffey, K. M. and Paterson, W. S. B.: *The physics of glaciers*, Academic Press, fourth edn., 2010.
- Dall, J., Kusk, A., Nielsen, U., and Merryman Boncori, J. P.: Ice velocity mapping using TOPS SAR data and offset tracking, in: *FRINGE* 2015, vol. 731, 2015.
- Enderlin, E. M. and Howat, I. M.: Submarine melt rate estimates for floating termini of Greenland outlet glaciers (2000 – 2010), *Journal of Glaciology*, 59, 67–75, <https://doi.org/10.3189/2013JoG12J049>, 2013.
- 25 Enderlin, E. M., Howat, I. M., Jeong, S., Noh, M.-J., van Angelen, J. H., and van den Broeke, M. R.: An improved mass budget for the Greenland Ice Sheet, *Geophysical Research Letters*, 41, 866–872, <https://doi.org/10.1002/2013GL059010>, 2014.
- Ewert, H., Groh, A., and Dietrich, R.: Volume and mass changes of the Greenland ice sheet inferred from ICESat and GRACE, *Journal of Geodynamics*, 59-60, 111–123, <https://doi.org/10.1016/j.jog.2011.06.003>, <http://dx.doi.org/10.1016/j.jog.2011.06.003>, 2012.
- 30 Fenty, I., Willis, J., Khazendar, A., Dinardo, S., Forsberg, R., Fukumori, I., Holland, D., Jakobsson, M., Moller, D., Morison, J., Münchow, A., Rignot, E. J., Schodlok, M. P., Thompson, A. F., Tinto, K., Rutherford, M., and Trenholm, N.: Oceans Melting Greenland: Early Results from NASA’s Ocean-Ice Mission in Greenland, *Oceanography*, 29, 72–83, <https://doi.org/10.5670/oceanog.2016.100>, 2016.
- Fettweis, X., Box, J. E., Agosta, C., Amory, C., Kittel, C., Lang, C., Van As, D., Machguth, H., and Gallée, H.: Reconstructions of the 1900–2015 Greenland ice sheet surface mass balance using the regional climate MAR model, *The Cryosphere*, 11, 1015–1033, <https://doi.org/10.5194/tc-11-1015-2017>, 2017.
- 35

- Howat, I.: MEaSURES Greenland Ice Velocity: Selected Glacier Site Velocity Maps from Optical Images, Version 2.1, <https://doi.org/10.5067/VM5DZ20MYF5C>, used all subsets; Accessed 2019-09-24. NASA National Snow and Ice Data Center Distributed Active Archive Center, 2017.
- Howat, I., Negrete, A., and Smith, B.: MEaSURES Greenland Ice Mapping Project (GIMP) Digital Elevation Model, Version 1, <https://doi.org/10.5067/NV34YUIXLP9W>, used all subsets; Access date unknown. NASA National Snow and Ice Data Center Distributed Active Archive Center, 2015.
- Howat, I., Negrete, A., and Smith, B.: MEaSURES Greenland Ice Mapping Project (GIMP) Digital Elevation Model from GeoEye and WorldView Imagery, Version 1, <https://doi.org/10.5067/H0KUUYVF53Q8M>, used all subsets; Accessed 2018-10-28. NASA National Snow and Ice Data Center Distributed Active Archive Center, 2017.
- 10 Howat, I. M., Negrete, A., and Smith, B. E.: The Greenland Ice Mapping Project (GIMP) land classification and surface elevation data sets, *The Cryosphere*, 8, 1509–1518, <https://doi.org/10.5194/tc-8-1509-2014>, <http://dx.doi.org/10.5194/tc-8-1509-2014>, 2014.
- Hoyer, S. and Hamman, J. J.: xarray: N-D labeled Arrays and Datasets in Python, *Journal of Open Research Software*, 5, <https://doi.org/10.5334/jors.148>, 2017.
- Hunter, J. D.: Matplotlib: A 2D graphics environment, *Computing In Science & Engineering*, 9, 90–95, 2007.
- 15 James, W. H. M. and Carrivick, J. L.: Automated modelling of spatially-distributed glacier ice thickness and volume, *Computers & Geosciences*, <https://doi.org/10.1016/j.cageo.2016.04.007>, 2016.
- Joughin, I.: MEaSURES Greenland Monthly Ice Sheet Velocity Mosaics from SAR and Landsat, Version 1, <https://doi.org/10.5067/OPFQ9QDEUFFY>, updated 2019. Used all subsets; Accessed 2019-06-05. NASA National Snow and Ice Data Center Distributed Active Archive Center, 2018.
- 20 Joughin, I., Smith, B., Howat, I., and Scambos, T.: MEaSURES Greenland Ice Sheet Velocity Map from InSAR Data, Version 2, <https://doi.org/10.5067/OC7B04ZM9G6Q>, used all subsets; Accessed 2019-03-10. NASA National Snow and Ice Data Center Distributed Active Archive Center, 2015, updated 2018.
- Joughin, I., Smith, B. E., and Howat, I.: Greenland Ice Mapping Project: ice flow velocity variation at sub-monthly to decadal timescales, *The Cryosphere*, 12, 2211–2227, <https://doi.org/10.5194/tc-12-2211-2018>, 2018.
- 25 Joughin, I. R., Smith, B., Howat, I. M., Scambos, T. A., and Moon, T.: Greenland flow variability from ice-sheet-wide velocity mapping, *Journal of Glaciology*, 56, 415–430, <https://doi.org/10.3189/002214310792447734>, 2010.
- Khan, S. A.: Greenland Ice Sheet Surface Elevation Change, https://doi.org/10.22008/promice/data/DTU/surface_elevation_change/v1.0.0, GEUS Data Center, 2017.
- Khan, S. A., Wahr, J., Stearns, L. A., Hamilton, G. S., van Dam, T., Larson, K. M., and Francis, O.: Elastic uplift in southeast Greenland due to rapid ice mass loss, *Geophysical Research Letters*, 34, <https://doi.org/10.1029/2007gl031468>, <http://dx.doi.org/10.1029/2007GL031468>, 2007.
- 30 Khan, S. A., Aschwanden, A., Bjørk, A. A., Wahr, J., Kjeldsen, K. K., and Kjær, K. H.: Greenland ice sheet mass balance: a review, *Reports on Progress in Physics*, 78, 046 801, <https://doi.org/10.1088/0034-4885/78/4/046801>, <http://dx.doi.org/10.1088/0034-4885/78/4/046801>, 2015.
- 35 Khan, S. A., Sasgen, I., Bevis, M., van Dam, T., Bamber, J. L., Wahr, J., Willis, M., Kjær, K. H., Wouters, B., Helm, V., Csatho, B., Fleming, K., Bjørk, A. A., Aschwanden, A., Knudsen, P., and Munneke, P. K.: Geodetic measurements reveal similarities between post-Last Glacial Maximum and present-day mass loss from the Greenland ice sheet, *Science Advances*, 2, e1600931–e1600931, <https://doi.org/10.1126/sciadv.1600931>, 2016.

- Khazendar, A., Fenty, I. G., Carroll, D., Gardner, A., Lee, C. M., Fukumori, I., Wang, O., Zhang, H., Seroussi, H., Moller, D., Noël, B. P. Y., van den Broeke, M. R., Dinardo, S., and Willis, J.: Interruption of two decades of Jakobshavn Isbrae acceleration and thinning as regional ocean cools, *Nature Geoscience*, 12, 277–283, <https://doi.org/10.1038/s41561-019-0329-3>, <http://dx.doi.org/10.1038/s41561-019-0329-3>, 2019.
- 5 King, M. D., Howat, I. M., Jeong, S., Noh, M. J., Wouters, B., Noël, B., and van den Broeke, M. R.: Seasonal to decadal variability in ice discharge from the Greenland Ice Sheet, *The Cryosphere*, 12, 3813–3825, <https://doi.org/10.5194/tc-12-3813-2018>, <http://dx.doi.org/10.5194/tc-12-3813-2018>, 2018.
- Kjeldsen, K. K., Korsgaard, N. J., Bjørk, A. A., Khan, S. A., Box, J. E., Funder, S., Larsen, N. K., Bamber, J. L., Colgan, W., Broeke, M. v. d., Siggaard-Andersen, M.-L., Nuth, C., Schomacker, A., Andresen, C. S., Willerslev, E., and Kjær, K. H.: Spatial and temporal distribution
10 of mass loss from the Greenland Ice Sheet since AD 1900, *Nature*, 528, 396–400, <https://doi.org/10.1038/nature16183>, 2015.
- Kjær, K. H., Khan, S. A., Korsgaard, N. J., Wahr, J., Bamber, J. L., Hurkmans, R., Van Den Broeke, M. R., Timm, L. H., Kjeldsen, K. K., Bjørk, A. A., Larsen, N. K., Jørgensen, L. T., Færch-Jensen, A., and Willerslev, E.: Aerial Photographs Reveal Late 20th-Century Dynamic Ice Loss in Northwestern Greenland, *Science*, 337, 569 – 573, <https://doi.org/10.1126/science.1220614>, 2012.
- 15 Kluyver, T., Ragan-Kelley, B., Pérez, F., Granger, B., Bussonnier, M., Frederic, J., Kelley, K., Hamrick, J., Grout, J., Corlay, S., Ivanov, P., Avila, D., Abdalla, S., and Willing, C.: Jupyter Notebooks – a publishing format for reproducible computational workflows, 2016.
- Kusk, A., Boncori, J. P. M., and Dall, J.: An automated System for Ice Velocity Measurement from SAR, in: *EUSAR 2018; 12th European Conference on Synthetic Aperture Radar*, pp. 1–4, VDE, 2018.
- Mankoff, K. D.: Greenland Ice Sheet solid ice discharge from 1986 through 2019: All Code and Data, https://doi.org/10.22008/promice/data/ice_discharge, GEUS Data Center, 2019a.
- 20 Mankoff, K. D.: Greenland Ice Sheet solid ice discharge from 1986 through 2019: Code, https://doi.org/10.22008/promice/data/ice_discharge/code/v2, GEUS Data Center, 2019b.
- Mankoff, K. D.: Greenland Ice Sheet solid ice discharge from 1986 through 2019: Discharge, https://doi.org/10.22008/promice/data/ice_discharge/d/v2, GEUS Data Center, 2019c.
- Mankoff, K. D.: Greenland Ice Sheet solid ice discharge from 1986 through 2019: Gates,
25 https://doi.org/10.22008/promice/data/ice_discharge/gates/v2, GEUS Data Center, 2019d.
- Mankoff, K. D. and Tulaczyk, S. M.: The past, present, and future viscous heat dissipation available for Greenland subglacial conduit formation, *The Cryosphere*, 11, 303–317, <https://doi.org/10.5194/tc-11-303-2017>, 2017.
- Mankoff, K. D., Colgan, W., Solgaard, A., Karlsson, N. B., Ahlstrøm, A. P., van As, D., Box, J. E., Khan, S. A., Kjeldsen, K. K., Mouginot, J., and et al.: Greenland Ice Sheet solid ice discharge from 1986 through 2017, *Earth System Science Data*, 11, 769–786,
30 <https://doi.org/10.5194/essd-11-769-2019>, <http://dx.doi.org/10.5194/essd-11-769-2019>, 2019.
- McKinney, W.: Data Structures for Statistical Computing in Python, in: *Proceedings of the 9th Python in Science Conference*, edited by van der Walt, S. and Millman, J., pp. 51 – 56, 2010.
- McNabb, R. W., Hock, R., O’Neel, S., Rasmussen, L. A., Ahn, Y., Braun, M., Conway, H., Herreid, S., Joughin, I. R., Pfeffer, W. T., Smith, B., and Truffer, M.: Using surface velocities to calculate ice thickness and bed topography: a case study at Columbia Glacier, Alaska,
35 USA, *Journal of Glaciology*, 58, 1151–1164, <https://doi.org/10.3189/2012JoG11J249>, 2012.
- Millan, R., Rignot, E., Mouginot, J., Wood, M., Bjørk, A. A., and Morlighem, M.: Vulnerability of Southeast Greenland glaciers to warm Atlantic Water from Operation IceBridge and Ocean Melting Greenland data., *Geophysical Research Letters*, 45, 2688–2696, <https://doi.org/10.1002/2017gl076561>, <http://dx.doi.org/10.1002/2017GL076561>, 2018.

- Millan, R., Mouginot, J., Rabatel, A., Jeong, S., Cusicanqui, D., Derkacheva, A., and Chekki, M.: Mapping Surface Flow Velocity of
Glaciers at Regional Scale Using a Multiple Sensors Approach, *Remote Sensing*, 11, 2498, <https://doi.org/10.3390/rs11212498>, <http://dx.doi.org/10.3390/rs11212498>, 2019.
- 5 Moon, T., Ahlstrøm, A., Goelzer, H., Lipscomb, W., and Nowicki, S.: Rising Oceans Guaranteed: Arctic Land Ice Loss and Sea Level Rise, *Current Climate Change Reports*, <https://doi.org/10.1007/s40641-018-0107-0>, <http://dx.doi.org/10.1007/s40641-018-0107-0>, 2018.
- Morlighem, M., Rignot, E., and Willis, J.: Improving Bed Topography Mapping of Greenland Glaciers Using NASA's Oceans Melting
Greenland (OMG) Data, *Oceanography*, 29, 62–71, <https://doi.org/10.5670/oceanog.2016.99>, 2016.
- Morlighem, M., Williams, C., Rignot, E., An, L., Arndt, J. E., Bamber, J., Catania, G., Chauché, N., Dowdeswell, J. A., Dorschel, B., Fenty,
I., Hogan, K., Howat, I., Hubbard, A., Jakobsson, M., Jordan, T. M., Kjeldsen, K. K., Millan, R., Mayer, L., Mouginot, J., Noël, B.,
10 O'Cofaigh, C., Palmer, S. J., Rysgaard, S., Seroussi, H., Siegert, M. J., Slabon, P., Straneo, F., van den Broeke, M. R., Weinrebe, W.,
Wood, M., and Zinglensen, K.: IceBridge BedMachine Greenland, Version 3, <https://doi.org/10.5067/2CIX82HUV88Y>, used all subsets;
Accessed 2018-10-28, 2017a.
- Morlighem, M., Williams, C. N., Rignot, E., An, L., Arndt, J. E., Bamber, J. L., Catania, G., Chauché, N., Dowdeswell, J. A., Dorschel,
B., Fenty, I., Hogan, K., Howat, I. M., Hubbard, A., Jakobsson, M., Jordan, T. M., Kjeldsen, K. K., Millan, R., Mayer, L., Mouginot,
15 J., Noël, B. P. Y., Cofaigh, C. Ó., Palmer, S., Rysgaard, S., Seroussi, H., Siegert, M. J., Slabon, P., Straneo, F., van den Broeke, M. R.,
Weinrebe, W., Wood, M., and Zinglensen, K. B.: BedMachine v3: Complete bed topography and ocean bathymetry mapping of Greenland
from multi-beam echo sounding combined with mass conservation, *Geophysical Research Letters*, <https://doi.org/10.1002/2017gl074954>,
2017b.
- Mouginot, J. and Rignot, E.: Glacier catchments/basins for the Greenland Ice Sheet, <https://doi.org/10.7280/d1wt11>, [https://dash.lib.uci.edu/
20 stash/dataset/doi:10.7280/D1WT11](https://dash.lib.uci.edu/stash/dataset/doi:10.7280/D1WT11), 2019.
- Mouginot, J., Bjørk, A. A., Millan, R., Scheuchl, B., and Rignot, E.: Insights on the Surge Behavior of Storstrømmen and L. Bistrup Bræ,
Northeast Greenland, Over the Last Century, *Geophysical Research Letters*, 45, 11,197–11,205, <https://doi.org/10.1029/2018gl079052>,
2018a.
- Mouginot, J., Rignot, E., Millan, R., Wood, M., and Scheuchl, B.: Annual Ice Velocity of the Greenland Ice Sheet (1972-1990),
25 <https://doi.org/10.7280/d1mm37>, <https://dash.lib.uci.edu/stash/dataset/doi:10.7280/D1MM37>, v5, 2018b.
- Mouginot, J., Rignot, E., Scheuchl, B., Millan, R., and Wood, M.: Annual Ice Velocity of the Greenland Ice Sheet (1991-2000),
<https://doi.org/10.7280/d1gw91>, <https://dash.lib.uci.edu/stash/dataset/doi:10.7280/D1GW91>, v6, 2018c.
- Mouginot, J., Rignot, E., Bjørk, A. A., van den Broeke, M., Millan, R., Morlighem, M., Noël, B., Scheuchl, B., and Wood, M.: Forty-
six years of Greenland Ice Sheet mass balance from 1972 to 2018, *Proceedings of the National Academy of Sciences*, p. 201904242,
30 <https://doi.org/10.1073/pnas.1904242116>, <http://dx.doi.org/10.1073/pnas.1904242116>, 2019.
- Murray, T., Scharrer, K., Selmes, N., Booth, A. D., James, T. D., Bevan, S. L., Bradley, J., Cook, S., Llana, L. C., Drocourt, Y.,
and et al.: Extensive retreat of Greenland tidewater glaciers, 2000–2010, *Arctic, Antarctic, and Alpine Research*, 47, 427–447,
<https://doi.org/10.1657/aaar0014-049>, <http://dx.doi.org/10.1657/AAAR0014-049>, 2015.
- Nerem, R. S., Beckley, B. D., Fasullo, J. T., Hamlington, B. D., Masters, D., and Mitchum, G. T.: Climate-change-driven ac-
35 celerated sea-level rise detected in the altimeter era, *Proceedings of the National Academy of Sciences*, 115, 2022–2025,
<https://doi.org/10.1073/pnas.1717312115>, <http://dx.doi.org/10.1073/pnas.1717312115>, 2018.
- Neteler, M., Bowman, M. H., Landa, M., and Metz, M.: GRASS GIS: a multi-purpose Open Source GIS, *Environmental Modelling &
Software*, 31, 124–130, <https://doi.org/10.1016/j.envsoft.2011.11.014>, 2012.

- Oliphant, T. E.: A guide to NumPy, vol. 1, Trelgol Publishing USA, 2006.
- PROJ contributors: PROJ coordinate transformation software library, Open Source Geospatial Foundation, <https://proj4.org/>, 2018.
- Rathmann, N. M., Hvidberg, C. S., Solgaard, A. M., Grinsted, A., Gudmundsson, G. H., Langen, P. L., Nielsen, K. P., and Kusk, A.: Highly temporally resolved response to seasonal surface melt of the Zachariae and 79N outlet glaciers in northeast Greenland, *Geophysical Research Letters*, 44, 9805–9814, <https://doi.org/10.1002/2017gl074368>, 2017.
- Reeh, N., Bøggild, C., and Oerter, H.: Surge of Storstrømmen, a large outlet glacier from the Inland Ice of North-East Greenland, *Grønlands Geologiske Undersøgelse Rapport 162*, pp. 201–209, 1994.
- Rezvanbehbahani, S., Stearns, L. A., Kadivar, A., Walker, J. D., and van der Veen, C. J.: Predicting the Geothermal Heat Flux in Greenland: A Machine Learning Approach, *Geophysical Research Letters*, 44, 12,271–12,279, <https://doi.org/10.1002/2017gl075661>, <http://dx.doi.org/10.1002/2017GL075661>, 2017.
- Rignot, E. J., Box, J. E., Burgess, E. W., and Hanna, E.: Mass balance of the Greenland ice sheet from 1958 to 2007, *Geophysical Research Letters*, 35, <https://doi.org/10.1029/2008GL035417>, 2008.
- Schulte, E., Davison, D., Dye, T., and Dominik, C.: A multi-language computing environment for literate programming and reproducible research, *Journal of Statistical Software*, 46, 1–24, 2012.
- Seabold, S. and Perktold, J.: Statsmodels: Econometric and statistical modeling with python, in: 9th Python in Science Conference, 2010.
- Stallman, R. M.: EMACS the extensible, customizable self-documenting display editor, *Proceedings of the ACM SIGPLAN SIGOA symposium on Text manipulation -*, <https://doi.org/10.1145/800209.806466>, 1981.
- Strozzi, T., Luckman, A., Murray, T., Wegmuller, U., and Werner, C.: Glacier motion estimation using SAR offset-tracking procedures, *IEEE Transactions on Geoscience and Remote Sensing*, 40, 2384–2391, <https://doi.org/10.1109/tgrs.2002.805079>, 2002.
- Tange, O.: GNU Parallel - The Command-Line Power Tool, *login: The USENIX Magazine*, 36, 42–47, <https://doi.org/10.5281/zenodo.16303>, <http://www.gnu.org/s/parallel>, 2011.
- Tinto, K. J., Bell, R. E., Cochran, J. R., and Münchow, A.: Bathymetry in Petermann fjord from Operation IceBridge aerogravity, *Earth and Planetary Science Letters*, 422, 58–66, <https://doi.org/10.1016/j.epsl.2015.04.009>, 2015.
- van den Broeke, M., Box, J., Fettweis, X., Hanna, E., Noël, B., Tedesco, M., Van As, D., Van De Berg, W. J., and Van Kampenhout, L.: Greenland Ice Sheet Surface Mass Loss: Recent Developments in Observation and Modeling, *Current Climate Change Reports*, <https://doi.org/10.1007/s40641-017-0084-8>, 2017.
- Van Rossum, G. and Drake Jr, F. L.: Python reference manual, Centrum voor Wiskunde en Informatica Amsterdam, 1995.
- Vijay, S., Khan, S. A., Kusk, A., Solgaard, A. M., Moon, T., and Bjørk, A. A.: Resolving seasonal ice velocity of 45 Greenlandic glaciers with very high temporal details, *Geophysical Research Letters*, <https://doi.org/10.1029/2018gl081503>, <http://dx.doi.org/10.1029/2018GL081503>, 2019.
- WCRP Global Sea Level Budget Group: Global sea-level budget 1993–present, *Earth System Science Data*, 10, 1551–1590, <https://doi.org/10.5194/essd-10-1551-2018>, <http://dx.doi.org/10.5194/essd-10-1551-2018>, 2018.
- Wiese, D. N., Yuan, D.-N., Boening, C., Landerer, F. W., and Watkins, M. M.: JPL GRACE Mascon Ocean, Ice, and Hydrology Equivalent HDR Water Height RL05M.1 CRI Filtered Version 2, <https://doi.org/10.5067/TEMSC-2LCR5>, dataset accessed [2017-12-14], 2016.
- Wood, M., Rignot, E., Fenty, I., Menemenlis, D., Millan, R., Morlighem, M., Mouginot, J., and Seroussi, H.: Ocean-induced melt triggers glacier retreat in Northwest Greenland, *Geophysical Research Letters*, <https://doi.org/10.1029/2018gl078024>, <http://dx.doi.org/10.1029/2018GL078024>, 2018.

Zwally, H. J., Giovinetto, M. B., Beckley, M. A., and Saba, J. L.: Antarctic and Greenland Drainage Systems, http://icesat4.gsfc.nasa.gov/cryo_data/ant_grn_drainage_systems.php, GSFC Cryospheric Sciences Laboratory, 2012.

Figures

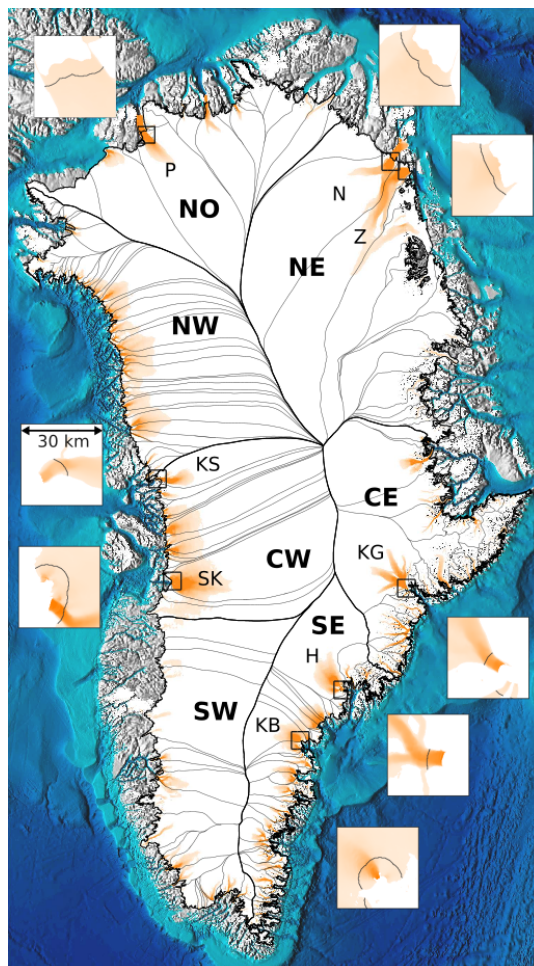


Figure 1. Overview showing fast-flowing ice (orange, greater than 100 m yr^{-1}) and the gates for ~~the-top~~ eight major discharging glaciers (Fig. 6). Gates are shown as black lines in inset images. Each inset is $30 \times 30 \text{ km}$ and all have the same color scaling, but different than the main map. Insets pair with nearest label and box. On the main map, regions from [Mouginot and Rignot \(2019\)](#) are designated by thicker black lines and large bold labels. Sectors (same source) are delineated with thinner gray lines, and ~~the-top~~ eight major discharging glaciers are labeled with smaller font. H = Helheim Gletsjer, KB = (Køge Bugt), KG = Kangerlussuaq Gletsjer, KS = Kangilliup Sermia (Rink Isbræ), N = (Nioghalvfjærdsbræ), P = Petermann Gletsjer, SK = Sermeq Kujalleq (Jakobshavn Isbræ), and Z = Zachariae Isstrøm. Basemap terrain (gray), ocean bathymetry (blues), and ice mask (white) come from BedMachine.

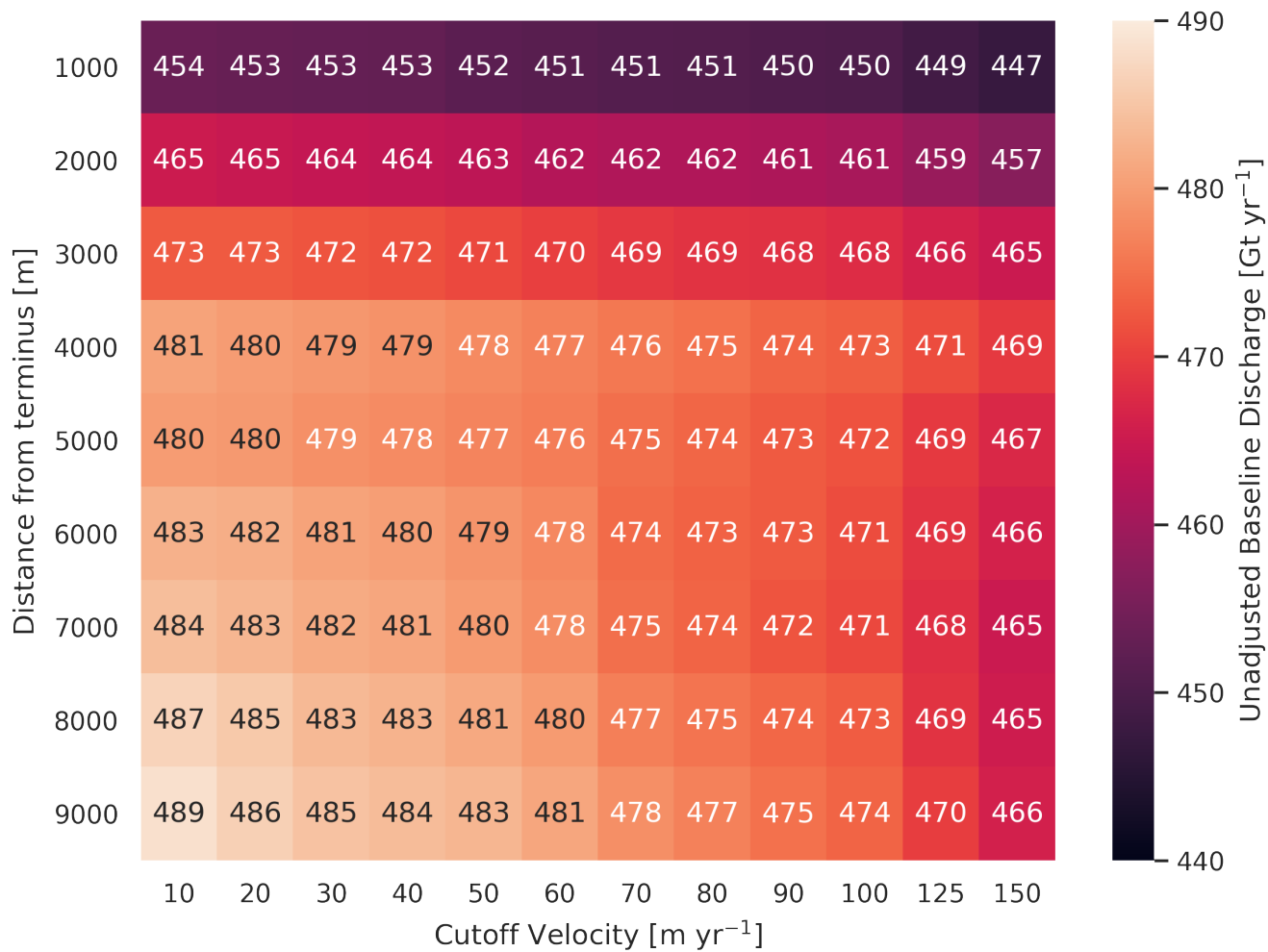


Figure 2. Heatmap and table showing ice sheet discharge as a function of gate buffer distance and ice speed cutoff. The colors of the numbers change for readability.

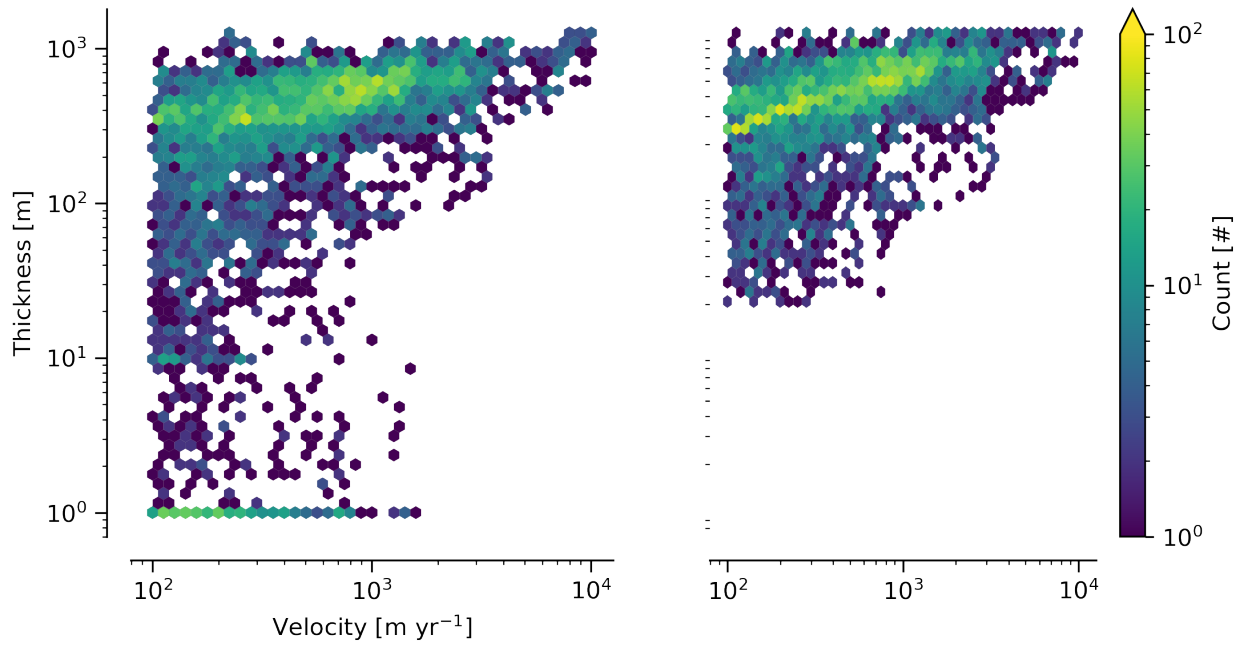


Figure 3. 2D histogram of velocity and thickness at all gate pixels. Left panel: Unadjusted (BedMachine & [Millan et al. \(2018\)](#)) thickness. Right panel: Adjusted (as described in the text) thickness.

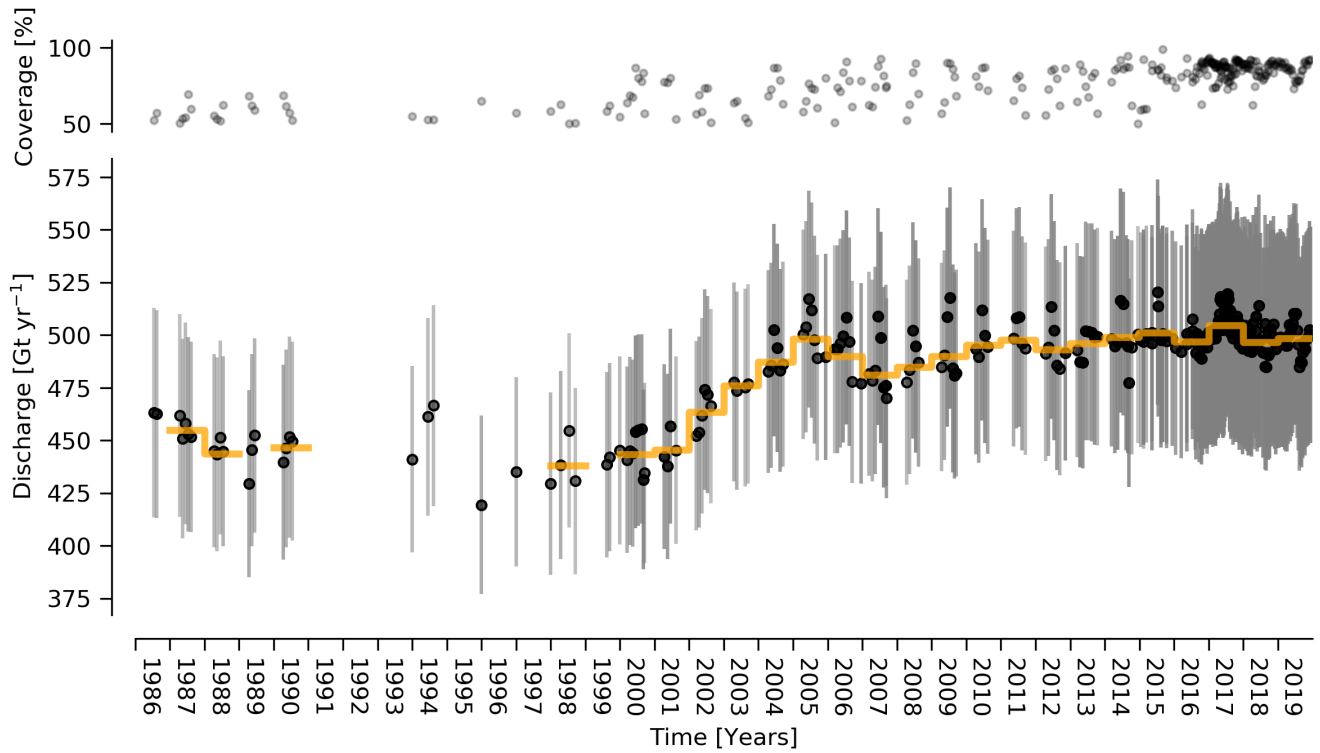


Figure 4. Bottom panel: Time series of ice discharge from the Greenland ice sheet. Dots represent when observations occurred ([limited to coverage > 50 %](#)). Orange stepped line is annual average ([limited to three or more observations in a year](#)). Coverage (percentage of total discharge observed at any given time) is shown in top panel, and also by opacity of dot interior and error bars on lower panel. When coverage is < 100 %, total discharge is estimated and shown.

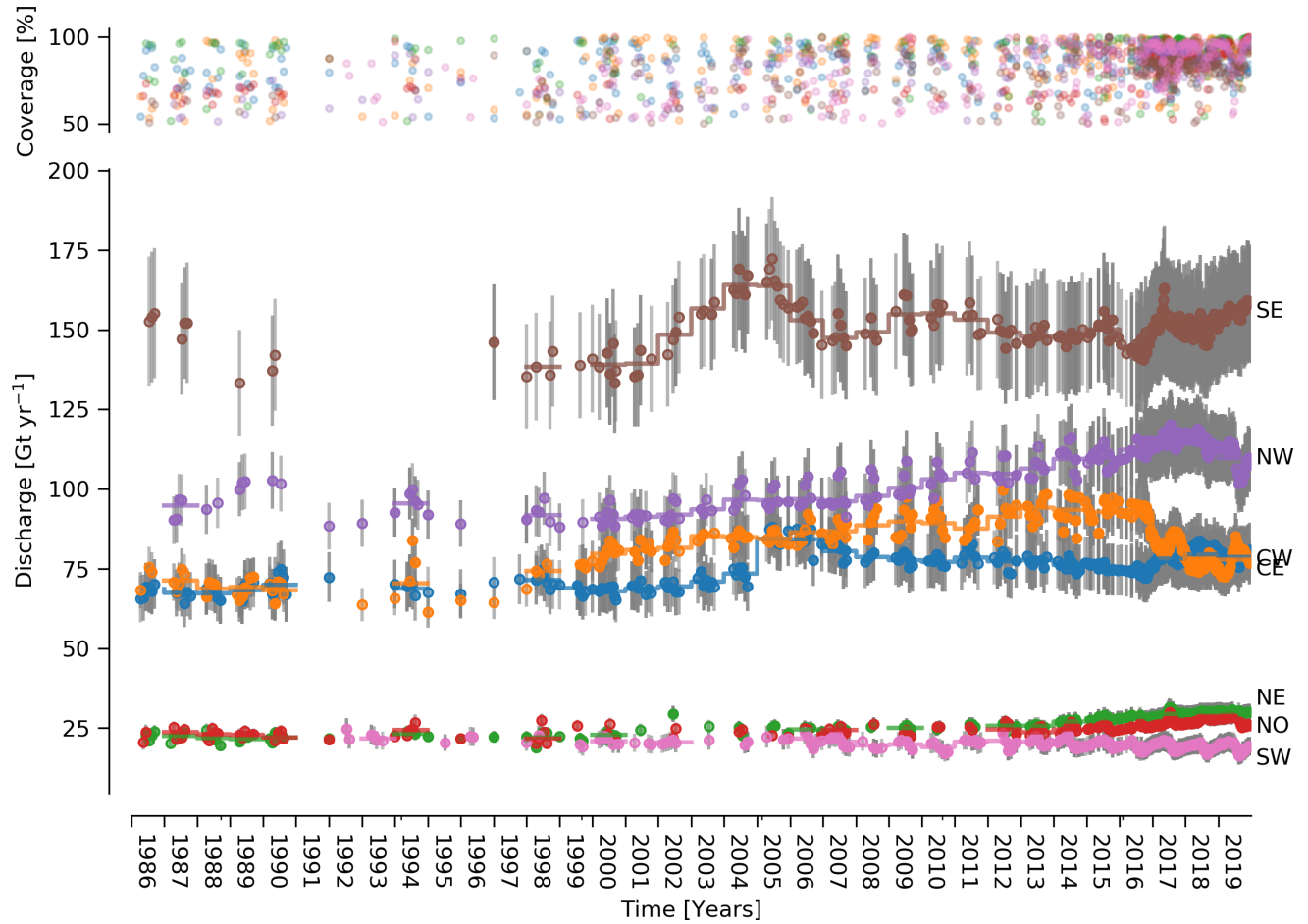


Figure 5. Bottom panel: Time series of ice discharge by region. Same graphical properties as Fig. 4. Top panel: The region with highest coverage (CE), lowest coverage (NE), and coverage for the region with highest discharge (SE) are shown. Coverage for other regions not shown to reduce clutter.

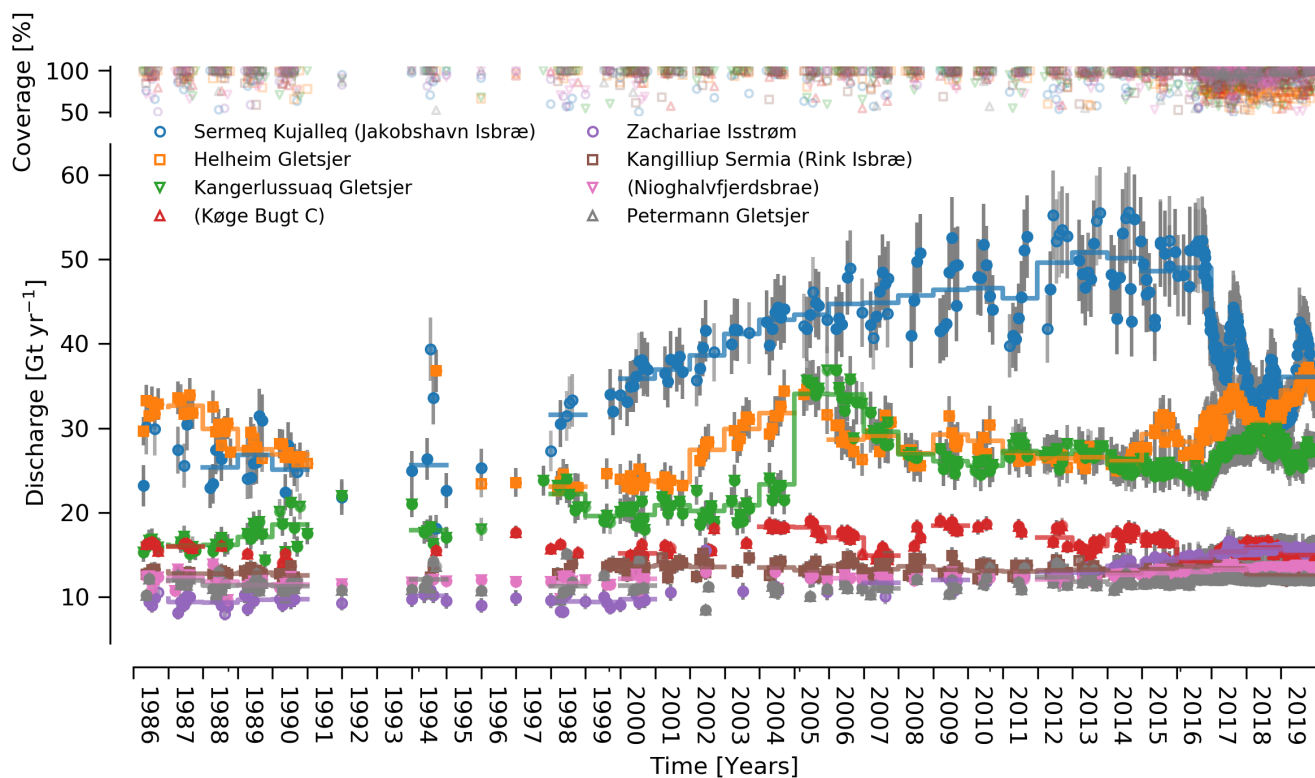


Figure 6. Bottom panel: Time series of ice discharge showing ~~top the~~ eight ~~(mean of last year)~~ major discharging glaciers from Figure 1. Same graphical properties as Fig. 4. ~~Only an example high (Kangerlussuaq Gletsjer) and low (Nioghalvfjærdsbræ) coverage shown to reduce clutter.~~

Appendix A: Errors and Uncertainties

Here we describe our error and uncertainty treatments. We begin with a brief philosophical discussion of common uncertainty treatments, our general approach, and then the influence of various decisions made throughout our analysis, such as gate location and treatments of unknown thicknesses.

- 5 Traditional and mathematically valid uncertainty treatments divide errors into two classes: systematic (bias) and random. The primary distinction is that systematic errors do not decrease with more samples, and random errors decrease as the number of samples or measurements increases. The question is then which errors are systematic and which are random. A common treatment is to decide that errors within a region are systematic, and among regions are random. This approach has no physical basis - two glaciers a few 100 m apart but in different regions are assumed to have random errors, but two glaciers 1000s of
10 km apart but within the same region are assumed to have systematic errors. It is more likely the case that all glaciers less wide than some width or more deep than some depth have systematic errors even if they are on opposite sides of the ice sheet, if ice thickness is estimated with the same method (i.e. the systematic error is likely caused by the sensor and airplane, not the location of the glacier).

- The decision to have R random samples (where R is the number of regions, usually ~ 18 based on [Zwally et al. \(2012\)](#)) is
15 also arbitrary. Mathematical treatment of random errors means that even if the error is 50 %, 18 measurements reduces it to only 11.79 %.

- This reduction is unlikely to be physically meaningful. Our 176 sectors, 276 gates and 6002 pixels means that even if errors were 100 % for each, we could reduce it to 7.5, 6.0, or 1.3 % respectively. We note that the area error introduced by the common EPSG:3413 map projection is -5 % in the north and +8 % in the south. While this error is mentioned in some other works (e.g.
20 [Joughin et al. \(2018\)](#)) it is often not explicitly mentioned.

We do not have a solution for the issues brought up here, except to discuss them explicitly and openly so that those, and our own, error treatments are clearly presented and understood to likely contain errors themselves.

A1 Invalid Thickness

- We assume ice thicknesses < 20 m are incorrect where ice speed is > 100 m yr⁻¹. Of ~~6002 pixels~~, ~~5366~~ [5830 pixels](#), [5205](#) have
25 valid thickness, and ~~636~~ ~~(12~~ [624](#) [\(12](#) %) have invalid thickness. However, the speed at the locations of the invalid thicknesses is generally much less (and therefore the assumed thickness is less), and the influence on discharge is less than an average pixel with valid thickness (Table [A1](#)).

When aggregating by gate, there are 276 gates. Of these, ~~187~~ ~~(68~~ [179](#) [\(67](#) %) have no bad pixels and ~~89~~ ~~(32~~ [88](#) [\(33](#) %) have some bad pixels, ~~65~~ ~~64~~ have > 50 % bad pixels, and ~~61~~ ~~(22~~ [62](#) [\(23](#) %) are all bad pixels.

- 30 We adjust these thickness using a poor fit (correlation coefficient: 0.3) of the \log_{10} of the ice speed to thickness where the relationship is known (thickness > 20 m). We set errors equal to one half the thickness (i.e. $\sigma_H = \pm 0.5 H$). We also test the sensitivity of this treatment to simpler treatments, and have the following five categories:

NoAdj No adjustments made. Assume BedMachine thickness are all correct.

Table A1. Statistics of pixels with and without valid thickness. Numbers represent speed [m yr⁻¹] except for the "count" row.

	Good Pixels	Bad Pixels
count	5205	624
mean	857	272
std	1117	239
min	100	100
25%	236	130
50%	506	181
75%	995	291
max	10044	1505

NoAdj+Millan Same as NoAdj, but using [Millan et al. \(2018\)](#) bed where available.

300 If a gate has some valid pixel thicknesses, set the invalid thicknesses to the minimum of the valid thicknesses. If a gate has no valid thickness, set the thickness to 300 m.

400 Set all thickness < 50 m to 400 m

5 **Fit** Use the thickness v. speed relationship described above.

Table [A2](#) shows the estimated baseline discharge to these four treatments:

```
/home/kdm/local/anaconda/envs/sci/lib/python3.6/site-packages/numpy/core/fromnumeric.py:2495:
    return ptp(axis=axis, out=out, **kwargs)
```

Table A2. Effect of different thickness adjustments on baseline discharge

Treatment	Discharge (Gt)
NoAdj	472 ± 49
NoAdj+Millan	481 ± 49
300	489 ± 49
400	495 ± 52
Fit	493 ± 51

Finally, Figure [A1](#) shows the geospatial locations, concentration, and speed of gates with and without bad pixels.

10 **A2 Missing Velocity**

We estimate discharge at all pixel locations for any time when there exists any velocity product. Not every velocity product provides velocity estimates at all locations, and we fill in where there are gaps by linear interpolating velocity at each pixel in

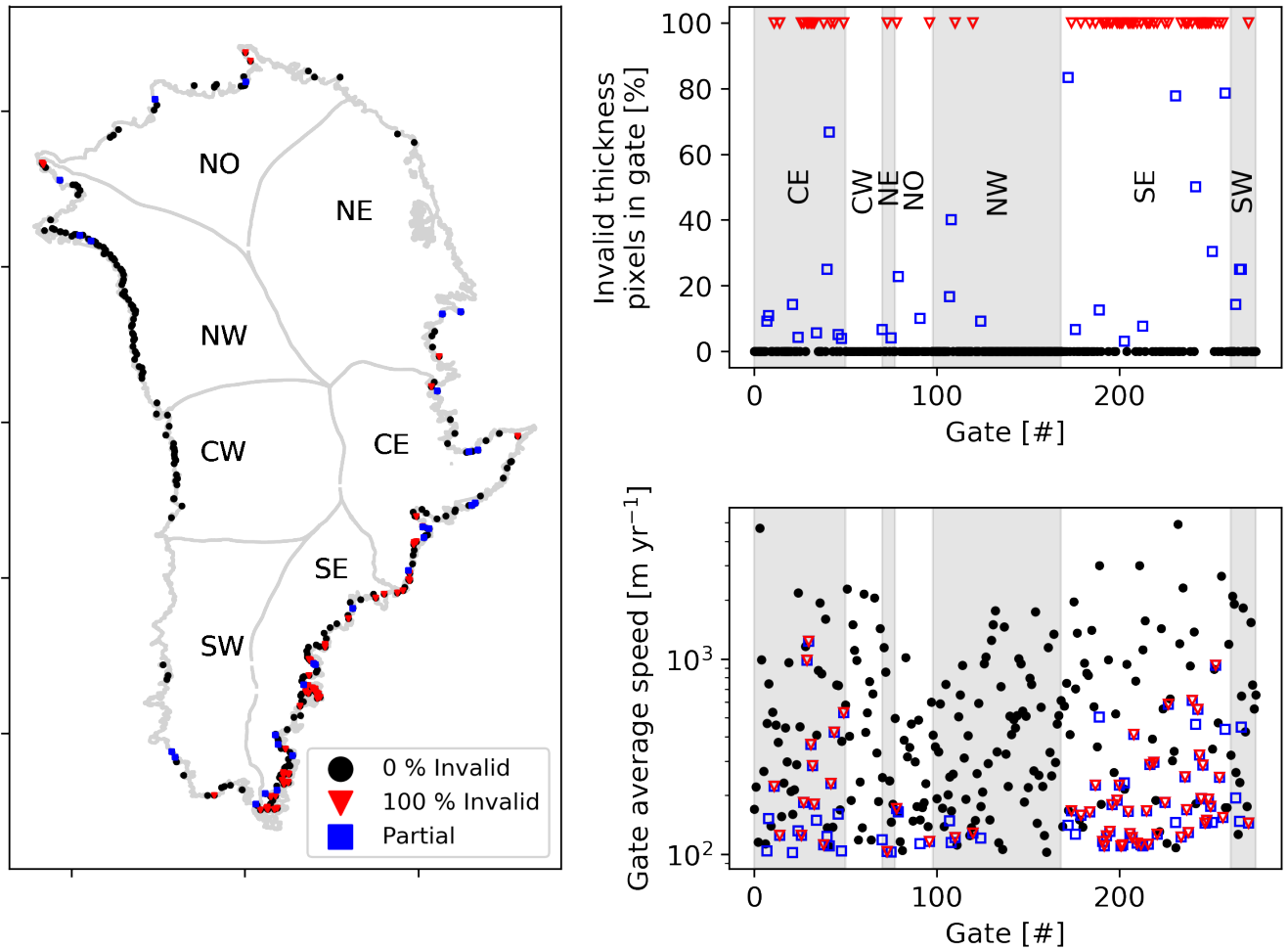


Figure A1. Gate locations and thickness quality. Left: locations of all gates. Black dots represent gates with 100 % valid thickness pixels, blue with partial, and red with none. Top right: Percent of bad pixels in each of the 276 gates, arranged by region. Bottom panel: Average speed of gates. Color same as left panel.

time. We calculate coverage, the discharge-weighted percent of observed velocity at any given time (Figure A2), and display coverage as 1) line plots over the time series graphs, 2) opacity of the error bars and 3) opacity of the infilling of time series dots. Linear interpolation and discharge-weighted coverage is illustrated in Figure A2, where pixel A has a velocity value at all three times, but pixel B has a filled gap at time t_3 . The concentration of valid pixels is 0.5, but the weighted concentration, or coverage, is 9/11 or ~ 0.82 . When displaying these three discharge values, t_1 and t_4 would have opacity of 1 (black), and t_3 would have opacity of 0.82 (dark gray).

This treatment is applied at the pixel level and then weight-averaged to the gate, sector, region, and ice sheet results.

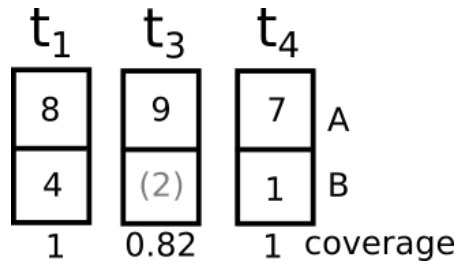


Figure A2. Schematic demonstrating coverage. Velocities are filled with linear interpolation in time, and coverage is weighted by discharge. t columns represent the same two gate pixels (A & B) at three time steps, where t_n are linearly spaced, but t_2 is not observed anywhere on the ice sheet and therefore not included. Numbers in boxes represents example discharge values. Gray parenthetical number is filled, not sampled, in pixel B at time t_3 . Weighted filling computes the coverage as $9/11 = 0.81$, instead of 0.5 (half of the pixels at time t_3 have observations).

A3 ~~Filtered Velocity~~

~~Here we show the same time series as in Figs. 4, 5, and 6 but without any velocity filtering applied.~~

~~Same as Fig. 4 but without the velocity filter. Note different y-axis~~

~~Same as Fig. 5 but without the velocity filter. Note different y-axis~~

5 ~~Same as Fig. 6 but without the velocity filter. Note different y-axis~~

Appendix B: Køge Bugt Bed Change between Bamber et al. (2013) and Morlighem et al. (2017b)

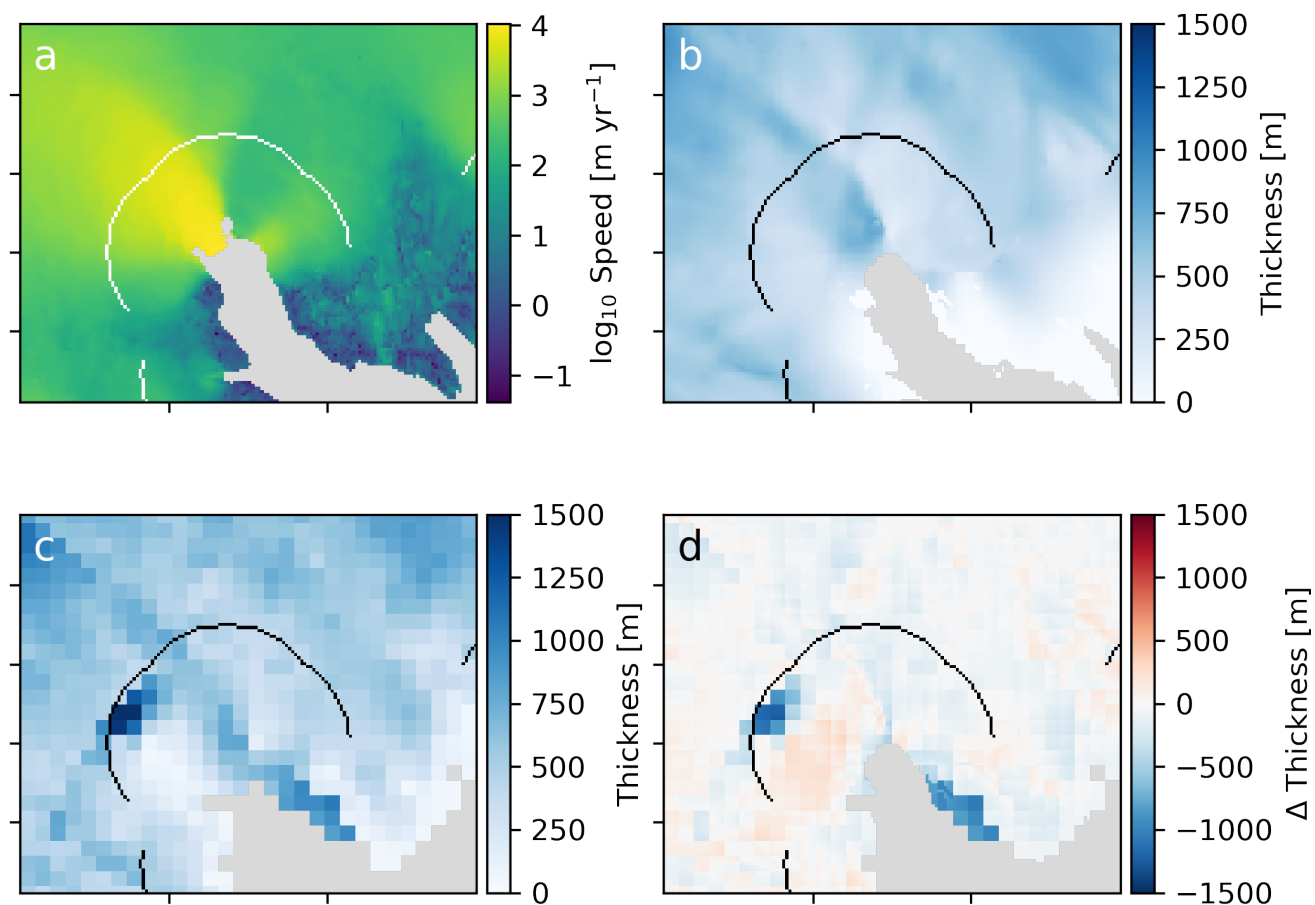


Figure B1. Differences between BedMachine (Morlighem et al., 2017b) and Bamber et al. (2013) near Køge Bugt. Panel (a) is baseline ice speed, (b) BedMachine thickness, (c) Bamber et al. (2013) thickness, and (d) difference computed as BedMachine - Bamber. Curved line is gate used in this work.

Appendix C: Sentinel-1 ice velocity maps

We use ESA Sentinel-1 synthetic aperture radar (SAR) data to derive ice velocity maps covering the Greenland Ice Sheet margin using offset tracking ([Strozzi et al., 2002](#)) assuming surface parallel flow using the digital elevation model from the Greenland Ice Mapping Project (GIMP DEM, NSIDC 0645) by [Howat et al. \(2014, 2015\)](#). The operational interferometric post processing (IPP) chain ([Dall et al., 2015; Dall et al., 2018](#)), developed at the Technical University of Denmark (DTU) Space and upgraded with offset tracking for ESA's Climate Change Initiative (CCI) Greenland project, was employed to derive the surface movement. The Sentinel-1 satellites have a repeat cycle of 12 days, and due to their constellation, each track has a ~~six-day~~-[twelve-day](#) repeat cycle. We produce a Greenland wide product that spans two repeat cycles of Sentinel-1 A. The product is a mosaic of all the ice velocity maps based on 12 day pairs produced from all the tracks from Sentinel-1 A and B covering Greenland during those two cycles. The product thus has a total time span of 24 days. ~~Six-day~~-[Twelve-day](#) pairs are also included in each mosaic from track 90, 112 and 142 covering the ice sheet margin in the south as well as other tracks on an irregular basis in order to increase the spatial resolution. ~~and~~ [Rathmann et al. \(2017\)](#) and [Vijay et al. \(2019\)](#) have exploited the high temporal resolution of the product to investigate dynamics of glaciers. The maps are available from 2016-09-13 and onward, are updated regularly, and are ~~freely-available from~~ [available from http://promice.org](http://promice.org).

Appendix D: Software

This work was performed using only open-source software, primarily GRASS GIS ([Neteler et al., 2012](#)) and Python ([Van Rossum and D](#)
in particular the Jupyter ([Kluyver et al., 2016](#)), pandas ([McKinney, 2010](#)), numpy ([Oliphant, 2006](#)), statsmodel ([Seabold and Per](#)
x-array ([Hoyer and Hamman, 2017](#)), and Matplotlib ([Hunter, 2007](#)) packages. The entire work was performed in Emacs
5 ([Stallman, 1981](#)) using Org Mode ([Schulte et al., 2012](#)). The parallel ([Tange, 2011](#)) tool was used to speed up process-
ing. We used proj4 ([PROJ contributors, 2018](#)) to compute the errors in the EPSG 3413 projection. All code used in this work
is available in the Supplemental Material.