

# Annual Dynamics of Global Land Cover and its Long-term Changes from 1982 to 2015

Han Liu<sup>1</sup>, Peng Gong<sup>1,2</sup>, Jie Wang<sup>2,3</sup>, Nicholas Clinton<sup>4</sup>, Yuqi Bai<sup>1</sup>, Shunlin Liang<sup>5,6</sup>

<sup>1</sup>Ministry of Education Key Laboratory for Earth System Modeling, Department of Earth System Science, Tsinghua University, Beijing, 100084, China

<sup>2</sup>AI for Earth Lab, Cross-Strait Institute, Tsinghua University, Beijing, 100084, China

<sup>3</sup>State Key Laboratory of Remote Sensing Science, Institute of Remote Sensing and Digital Earth, Chinese Academy of Sciences, Beijing, 100101, China

<sup>4</sup>Google LLC, 1600 Amphitheatre Parkway, Mountain View, CA 94043 USA

<sup>5</sup>Department of Geographical Sciences, University of Maryland, College Park, MD 20742 USA

<sup>6</sup>School of Remote Sensing Information Engineering, Wuhan University, Wuhan, 430072, China

*Correspondence to:* Peng Gong (penggong@tsinghua.edu.cn), Jie Wang (sohuwangjie@163.com)

**Abstract.** Land cover is the physical evidence on the surface of the Earth. As the cause and result of global environmental change, land cover change (LCC) influences the global energy balance and biogeochemical cycles. Continuous and dynamic monitoring of global LC is urgently needed. Effective monitoring and comprehensive analysis of LCC at the global scale are rare. With the latest version of GLASS (The Global Land Surface Satellite) CDRs (Climate Data Records) from 1982 to 2015, we built the first record of 34-year long annual dynamics of global land cover (GLASS-GLC) at 5 km resolution using the Google Earth Engine (GEE) platform. Compared to earlier global LC products, GLASS-GLC is characterized by high consistency, more detailed, and longer temporal coverage. The average overall accuracy for the 34 years each with 7 classes, including cropland, forest, grassland, shrubland, tundra, barren land and snow/ice, is 82.81 % based on 2431 test sample units. We implemented a systematic uncertainty analysis and carried out a comprehensive spatiotemporal pattern analysis. Significant changes at various scales were found, including barren land loss and cropland gain in the tropics, forest gain in northern hemisphere and grassland loss in Asia, etc. A global quantitative analysis of human factors showed that the average human impact level in areas with significant LCC was about 25.49 %. The anthropogenic influence has a strong correlation with the noticeable vegetation gain, especially for forest. Based on GLASS-GLC, we can conduct long-term LCC analysis, improve our understanding of global environmental change, and mitigate its negative impact. GLASS-GLC will be further applied in Earth system modeling to facilitate research on global carbon and water cycling, vegetation dynamics, and climate change. The GLASS-GLC data set presented in this article is available at <https://doi.pangaea.de/10.1594/PANGAEA.913496> (Liu et al., 2020).

Land cover (LC) is the physical evidence on Earth. It is the result of both natural and human forces (Running, 2008; Sterling et al., 2013; Tucker et al., 1985; Gong et al., 2013; Yang et al., 2013). It is an important source of information to understand the complex interaction between human activities and global changes (Lambin et al., 2006). LC data is one of the most important variables to bring about the nine large social benefits in the field of Global Earth Observation Systems (Herold et al., 2008).

35 Land cover change (LCC) is the cause and result of global environmental change (Turner et al., 2007), and it can change the energy balance and biogeochemical cycles (DeFries et al., 1999; Claussen et al., 2001), further affecting climate change and surface characteristics and the provision of ecosystem services (Pielke, 2005; Zhao et al., 2001; Gibbard et al., 2005; Meyers et al., 2009). Therefore, a long time series of LCC information is critical to the understanding of global environmental change (Matthews et al., 2004). LC and LCC information is also valuable to resource management, biodiversity conservation, food  
40 security, forest carbon, etc (Houghton et al., 2012; Achard et al., 2004; Andrew K et al., 2015). Therefore, more frequent land cover information at the global scale is highly desirable.

However, LC is highly dynamic due to changes in natural phenology and human activities (Lambin et al., 2001). This characteristic poses a huge challenge to mapping, monitoring (Verburg et al., 2009; Lepers et al., 2005; Rindfuss et al., 2004), and quantitative analyses of global LCC (Ramankutty et al., 2006). The traditional method of LC mapping based on field  
45 studies can hardly be applied to large areas due to the required amount of labor (Gong, 2012). In addition, any mapping results obtained in this way would be difficult to update in a timely manner. Satellite observations are the most economically feasible means of large-scale LC monitoring (Fuller et al., 2003; Rogan and Chen, 2004). Due to the development of satellite sensors, the continuous accumulation of historical satellite data, and the advancement of relevant image processing algorithms, LC monitoring can be effectively carried out (Cihlar, 2000; Pal, 2005; Gallego, 2004; Chen et al., 2018). However, previous  
50 monitoring mainly focuses on the mapping of a particular area (Liu et al., 2002; Brink and Eva, 2009; Yuan et al., 2005; Margono et al., 2012; Feng et al., 2018) or in a single time period (Homer et al., 2004), and because of the differences in data sources and mapping methods, the consistency of mapping results from different sources and times is poor and lacks comparability, making it difficult to quantify the changes effectively (Friedl et al., 2010).

Automatic mapping methods depend highly on the sample dataset for its representativeness, quantity and quality due to the  
55 considerable heterogeneity at the global level (Gong et al., 2013; Li et al., 2014). A combination of a comprehensive global sample dataset, professional interpretation, and support from mapping teams are needed (Li et al., 2017). In general, sample LC data are mainly collected from field visits or manual interpretation (Li et al., 2016; Hansen et al., 2000). Generalization from higher resolution LC map products can also be useful for coarser resolution mapping purposes (Song et al., 2018a). The former could be more accurate and effective but requires much manpower, resource, and effort (Li et al., 2016); the latter is a  
60 feasible option and is more efficient but largely depending on the accuracy of the parent product.

A number of global LC products exists. Some examples include Finer Resolution Observation and Monitoring of Global Land Cover product (FROM-GLC) in 2010, 2015 and 2017 (30 m and 10 m) (Gong et al., 2013;Gong et al., 2019), European Space Agency Climate Change Initiative (ESA-CCI) land cover product from 1992 to 2015 (300 m) (ESA, 2018b;GLASS, last access: 27 December 2018;ESA, 2018a), MODIS Land Cover Type (MLCT) series products from 2001 to 2016 (500 m) (Friedl et al., 2010;Sulla-Menashe et al., 2019), International Geosphere-Biosphere Programme Data and Information System Cover map (IGBP-DISCover) (1 km) circa 1992 (Loveland et al., 2000), University of Maryland (UMD) land cover map circa 1992 (1 km) (Hansen et al., 2000), Global Land Cover 2000 map (GLC2000) (1 km) (Bartholome and Belward, 2005). These mapping results tend to focus on a single or short period of time, and because of their different classification systems and resolutions, they are difficult to compare (Ban et al., 2015;Grekousis et al., 2015). However, high-resolution mapping results can be used as an effective reference for low-resolution mapping (Song et al., 2018a;DeFries et al., 1998). Therefore, when performing lower-resolution global mapping, it is possible to consider directly generating training samples from high-resolution global mapping results (Wang et al., 2016).

Long time-series LC mapping requires high consistency of data sources and also has certain requirements for multi-period samples (Huang et al., 2020). The commonly used satellite data that cover a long period of time (more than 30 years) include the Advanced Very High Resolution Radiometer (AVHRR) data and Landsat imagery (Giri et al., 2013;Franch et al., 2017;Wulder et al., 2018). Landsat data has a higher spatial resolution of 30 m with some restrictions including more serious cloud contamination problem owing to a low temporal frequency, and data inconsistency problem caused by multiple generations of sensors (Gómez et al., 2016;Wulder et al., 2008;Xie et al., 2018). AVHRR data has a low spatial resolution of 5 km, and the quality of the raw AVHRR data is poor. The requirements for pre-processing and consistency processing such as cloud removal and missing value filling are high. The GLASS CDRs based on AVHRR data tend to have better data consistency due to systematic data production (Liang et al., 2013). Using such data for LC mapping can significantly improve the consistency and comparability of mapping results, and thus can be effective in supporting change analysis. If the consistency of the original data source used is not good enough, it may be necessary to collect annual samples for classification to ensure the reliability of change analysis (Xu et al., 2018).

Recently, some attempts have been made to map global LC over a long time series, but these have focused on a single class (such as water bodies (Wood et al., 2011;Pekel et al., 2016;Ji et al., 2018), impervious surface (Schneider et al., 2010;Zhang and Seto, 2011;Gong et al., 2020), cropland (Pittman et al., 2010), etc.) or a few classes such as Vegetation Continuous Fields (VCF) (Song et al., 2018a), mainly depicting vegetation changes). General purpose multi-class land cover mapping over a period of over 30 years does not exist.

Due to the lack of long time-series general purpose global LC maps, using the Google Earth Engine (GEE) platform (Gorelick et al., 2017), we produced the first CDR set of consistent and reliable LC products, GLASS-GLC, covering the period from 1982 to 2015. The data used was primarily the 0.05 ° AVHRR-based GLASS CDRs. The classification system is adjusted from

the FROM-GLC according to the data characteristics. Below, we describe the methods used, results obtained with some preliminary change analyses.

## 95    **2 Data and methods**

The framework for mapping GLASS-GLC is shown in Fig. 1. It includes annual input data collection and construction, training sample generation, classification, and temporal consistency adjustment, accuracy assessment and product inter-comparison. The entire framework is implemented in the GEE. The GEE is a cloud-based platform for planetary-scale geospatial analysis that brings Google's massive computational capabilities to bear on a variety of high-impact societal issues including deforestation, drought, disaster, disease, food security, water management, climate monitoring and environmental protection (Gorelick et al., 2017). We uploaded GLASS data to GEE and did subsequent analysis in GEE.

### **2.1 Data sources**

The annual input data collection from 1982 to 2015 involves a variety of data products, the most important of which is the latest version of Global LAnd Surface Satellite (GLASS) Climate Data Records (CDRs) (Liang et al., 2013). CDRs require data with a long time series, high consistency and high continuity, which is not the same as the commonly-used remote sensing products (Hollmann et al., 2013; Cao et al., 2008). Derived from AVHRR data, the GLASS CDRs include a wide range of surface parameters that are important to LC classification (available at: <http://glass-product.bnu.edu.cn/>, last access: 27 December 2018). The products have a spatial resolution of 0.05 °, a temporal frequency of 8 days with a time span of 1982-2015. In our study, Normalized Difference Vegetation Index (NDVI), Leaf Area Index (LAI) (Xiao et al., 2016), Fraction of Absorbed Photosynthetically Active Radiation (FAPAR) (Xiao et al., 2015), Evapotranspiration (ET) (Yao et al., 2014), Gross Primary Production (GPP) (Yuan et al., 2010), Broadband Emissivity (BBE) (Cheng et al., 2016), White-sky Albedo in Visible band (ABD\_WSA\_VIS), White-sky Albedo in Near Infrared band (ABD\_BSA\_NIR) and White-sky Albedo in Shortwave band (ABD\_WSA\_shortwave) (Qu et al., 2014) are the variables used for subsequent classification.

To provide a further reference, VCF5kyrv001 MEaSURES Vegetation Continuous Fields (VCF) Yearly Global 0.05 Deg products (Hansen, 2020) are used to aid classification. The VCF products describe the surface as a combination of vegetation proportions according to information from remotely sensed data. To match the resolution of the GLASS CDRs, the VCF products used here (Song et al., 2018a) also have a spatial resolution of 0.05 °, and are obtained from the Land Processes Distributed Active Archive Center (LP DAAC; available at <https://lpdaac.usgs.gov/>, last access: 1 November 2018). These products are mainly based on AVHRR, and the interannual consistency has been maintained. Based on the training samples from Landsat products from around 2000 (Hansen et al., 2013; Ying et al., 2017), with a supervised regression tree model, the VCF products from 1982 to 2016 (data missing in 1994 and 2000) were generated and were composed of the percentages of tree canopy (TC), short vegetation (SV) and bare ground (BG) in each pixel.

In addition, in order to enhance the discriminating capacity, we also used terrain data from Global Multi-resolution Terrain Elevation Data 2010 (GMTED2010). Based on the elevation data, the slope information can be further calculated to reflect the terrain and help distinguish different vegetation types growing on steep slopes to those on level ground. The dataset comes from the GEE platform and contains Earth Elevation data collected from various sources (USGS, 2020). The primary source is the Shuttle Radar Topography Mission (SRTM) Digital Terrain Elevation Data (DTED) (void-filled) 1-arc-second data. Other sources are used for filling the gaps in areas outside the SRTM coverage. As the terrain is relatively stable over years, using the data as input for multiple years is plausible. The spatial resolution of the GMTED2010 data used is 7.5 arc seconds and it has been upsampled to 5 km in subsequent analyses.

## 2.2 Classification system

The classification system in FROM-GLC Version 2 (FROM-GLC\_v2) defines eleven main classes that can be easily mapped to the Food and Agricultural Organization of the United Nations (FAO) LC Classification System and the International Geosphere–Biosphere Programme (IGBP) classification system (Wang et al., 2015). This classification system evolved from the classification system of FROM-GLC Version 1 (Gong et al., 2013) with the addition of leaf information.

We adjusted some classes of the original classification system according to the spatial resolution and situation of the data used here. Our data are land surface products, where water surface has been masked out, the class of "water bodies" cannot be extracted from the GLASS dataset. Wetland is a highly variable class and impervious surface whose patches are small in size. They are difficult to identify at the spatial resolution of 0.05 ° (Wang et al., 2015). Thus, the water body, impervious surface, and wetland classes were not included in this work, and they shall be derived with more specialized methods. While water and impervious surface mapping have achieved satisfactory results (Ji et al., 2018; Gong et al., 2020), wetland mapping remains a great challenge (Gong et al., 2013). In addition, the "cloud" class was removed. The adjusted classification system consists of 7 classes, including cropland, forest, grassland, shrubland, tundra, barren land, snow/ice, as shown in Table 1, where the snow/ice class here refers to permanent snow or ice cover.

## 2.3 Training samples

In order to obtain the training samples, we adopted the majority-class synthesis strategy. First, we projected the 30m FROM-GLC\_v2 results, that were created using Landsat data acquired mainly from 2013-2015 (Li et al., 2017), into a 0.05 ° coordinate system. By calculating the area ratio of each class in each 0.05 ° pixel, the class with the greatest area ratio in each pixel was used as the new class label in the aggregated 0.05 ° mapping results. Subsequently, sample points were randomly generated with greater than 0.1 ° geographical distances away. The class label for each sample unit is obtained from the aggregated FROM-GLC\_v2 0.05 ° mapping result (adjusted to be consistent with the new classification system). Finally, 10,000 training sample units were obtained. The spatial distribution of training sample units is shown in Fig. 2 (a), and the percentage of

training sample in each class is shown in the inner pie chart.

## 2.4 Input data collection

155 We constructed an input data set with a strong discrimination ability to detect LC from multiple aspects such as terrain, phenology, spectrum, and spectral index, etc. The annual percentiles (including 0, 10, 25, 50, 75, 90, 100) of all bands of the GLASS CDRs and the mean and standard deviation of the NDVI between two adjacent percentiles are calculated, as an annual input data collection from GLASS CDRs. Among them, the percentile that represents specific phenological information can provide simplified time series information, reduce the noise of annual time series, and help improve the classification accuracy

160 (Hansen et al., 2013). By extracting the statistical information between adjacent percentiles, the time series information can be further supplemented. Due to the systematic deviation of AVHRR products (Song et al., 2018b), in order to ensure the inter-annual consistency of the GLASS data, we used the processing method developed for generating the VCF products, with the corresponding MODIS products for end-member correction, where desert and intact forest are regarded as the end-member of each pixel (Song et al., 2018a). After the correction, the inter-annual inconsistency of input data collection from the GLASS

165 CDRs is improved. Figure S1 shows the time series of the global median value of the GLASS ABD\_WSA\_VIS band, where the orange one represents the curve before the correction and the grey one is the result after the correction. It can be seen that after the correction, the fluctuations of the input data become smaller, and the individual abnormal values are also adjusted. Taking into account the time span of the GLASS CDR-based input data collection, the VCF products from 1982 to 2015 are used, with the missing 1994 and 2000 data supplemented by calculating the average of the adjacent years. The VCF consists

170 of percentages of tree cover (TC), short vegetation (SV), and bare ground (BG) for each year. Based on the GMTED2010 dataset, the slope information is calculated and finally included to obtain an average slope value for each 0.05 ° pixel. In addition, the central latitude and longitude information of each 0.05 ° pixel is also recorded as part of input data. Finally, an annual collection of 81 kinds of input for the period of 1982 to 2015 was constructed, including the annual GLASS CDR percentiles (7×9), the mean and standard deviation of the NDVI annual adjacent percentiles (6×2) and VCF percentages (3),

175 slope information (1), latitude (1), and longitude (1) information (Table 2).

## 2.5 Classification method and temporal consistency check

We used a random forest classifier for global LC mapping following the good performance of the random forest classifier in the machine learning field (Rodriguez-Galiano et al., 2012;Pal, 2005). The number of trees was 200 with out-of-bag mode turned on. The number of variables per split was set to 0, as the square root of the number of variables. The minimum size of

180 a terminal node, the fraction of input to bag per tree, and random seed were set to be 1, 0.5, and 0, respectively. The classifier was trained using the training sample with an annual data collection constructed as the input. The global LC maps from 1982 to 2015 were obtained using the trained classifier. The out of bag accuracy reached 87.12%.

In order to further ensure the temporal consistency of the mapping results, we used the “LandTrendr” method (Kennedy et al., 2010;Cohen et al., 2018) and implemented a linear regression-based algorithm for the constructed annual input data collection to find the breakpoints in the time series (Li et al., 2018). The class labels in the time series between adjacent breakpoints will be updated to the mode values of the class label time series for the time period. Through this strategy, we can smooth the time series of the mapping results, avoid noise interference as much as possible, and finally get the adjusted GLASS-GLC.

## 2.6 Accuracy assessment

To verify the reliability of GLASS-GLC CDR products from multiple perspectives, we performed accuracy assessments and uncertainty analyses. The test sample was extracted from the 30 m resolution FROM-GLC\_v2 (Li et al., 2017) to evaluate the 2015 LC mapping results. First, we dropped those sample units whose classes were not included in our classification system. The remaining test sample units were then overlapped with the abovementioned aggregated 0.05 ° FROM-GLC\_v2 mapping result, and only those whose class labels were consistent were kept. These were regarded as huge homogeneous sample units (H-homo sample) reserved as the final test sample. A total of 23459 H-homo test sample units from FROM-GLC\_v2 were obtained to test the 2015 global LC mapping result. In addition, another 525 test sample units from the FLUXNET site data (Gong, 2009) for 2015 were selected to supplement the test sample to test the 2015 result further. The distribution of the entire test sample in 2015 is shown in Fig. 2 (b), where the percentage of test sample for each class is shown in the inner pie chart. In addition to obtaining the classification confusion matrix in 2015 based on the above test sample, in order to identify regions where classification is difficult, an uncertainty analysis was carried out. The incorrect test sample locations are marked as 1, while the correct test sample locations are marked as 0. The spatial distribution map of the uncertainty of the LC mapping result in 2015 is depicted based on a Kriging interpolation method (Oliver and Webster, 1990). The search radius parameter of Kriging interpolation is set to 12 nearby sample units, the other parameters as default. The value of the uncertainty ranges from 0 to 1. A value near 0 indicates a lower uncertainty, while a value near to 1 indicates a higher uncertainty and a higher possibility of misclassification.

Other than these, we collected an independent test sample and performed accuracy assessment. Specifically, we collected 2431 randomly distributed 5 km sample points in different years around the world. According to the majority principle, we manually interpreted the land cover class of each sample as an independent test sample. To prove the impact of change detection, we further compared the accuracies with and without change detection. The geographical distribution of the independent test sample is shown in Fig. 2 (c), and the temporal distribution is shown in the inner chart.

## 2.7 Data inter-comparison

To better reflect the product quality, We inter-compared GLASS-GLC with other available global land cover products with

a relatively long time series. Land cover products from MODIS and the ESA-CCI were used. The MLCT global land cover products come from Collection 6 (C6) MLCT products (Sulla-Menashe et al., 2019), and are supervised classification results from 2001 to 2016. Considering the comparability to our classification system, the FAO-Land Cover Classification System land use (LCCS2) layer was used. The corresponding relationships of classes are listed as follows, and the class names we used are the latter: barren - barren land, permanent snow and ice – snow/ice, all kinds of forest – forest, forest/cropland mosaics and natural herbaceous/cropland mosaic – cropland, natural herbaceous and herbaceous cropland – grassland, shrubland - shrubland. The ESA-CCI land cover products (Bontemps et al., 2013) are 300m resolution yearly products ranging from 1992 to 2015. The products were developed using the GlobCover unsupervised classification chain and merging multiple available Earth observation products based on the GlobCover products of the ESA (Liu et al., 2018). Referring to the class relationships in (Liu et al., 2018), we cross-walked classes including cropland, forest, grassland, shrubland, barren land, and snow/ice.

Apart from land cover products, we also compared GLASS-GLC with the Food and Agricultural Organization of the United Nations statistical data (FAOSTAT) on cropland and forest (forest land) classes, which are the main sources of country-level land cover data for many applications. The annual FAOSTAT data set on cropland we used ranged from 1982 to 2015, and that on forest we used ranged from 1990 to 2015.

We made an inter-comparison between classes, including cropland, forest, grassland, shrubland, barren land and snow/ice. The main inter-comparison is the area corresponding to the top 50 countries in each class. Besides, to compare the accuracy of different products, test samples from FLUXNET site data in 2015 are given for independent accuracy assessment.

## 2.8 Statistical analysis of LCC

To extract the area of LCC, we estimated the trend of change through statistical analysis and avoided the influence of abnormal fluctuations from the obtained time series LC products. The annual area for each class on the scales of latitudinal zones, continents are summarized. A time series of the annual area for each class was generated. The boundary data of countries and continents were obtained from the Bureau of Surveying and Mapping of China. Eco-region data were obtained from the FAO global eco-region dataset (Simons et al., 2001;FAO, 2018).

Although the inter-annual consistency has been ensured as much as possible in the above mapping framework, the effects of inter-annual changes due to climate conditions and phenological changes may still exist. To estimate the long-term trend of change, we fitted a linear trend (Theil-Sen estimator (Sen, 1968)) in area for each class, where the slope of annual change and the 95 % confidence interval of the slope is given. In addition, a Mann-Kendall test (Mann, 1945) was used to test the trend of time series with a p-value given. If  $p < 0.05$ , it is considered that the trend of change is significant.

Further, we obtained the change mask where all pixels showed a significant change trend (Wang et al., 2016). First, we



downscaled the grid from 0.05 ° to 0.25 °, and the time series of the area ratio of all classes in each 0.25 ° grid was summed.

245 Using the Mann-Kendall test, those grids showing a significant change ( $p < 0.05$ ) were obtained. Then the slope of annual change based on area ratio for each grid with an increasing or decreasing trend was found using a Theil-Sen estimator. The change ratios were then summarized at regional scales to estimate the corresponding significant areas of change from 1982 to 2015.

In order to quantify the magnitude of global LCC between 1982 and 2015 and reveal the global temporal LCC pattern, we  
250 calculated the ratio of annual global LCC to the global total terrestrial LC area by different time periods. To ensure the quantified LCC to be non-accidental, we limited the computation area within the change mask in which all grids show a statistically significant loss or gain trend. We then summarized the annual LCC by 5-year and 10-year time intervals, respectively.

To further identify the direct causes of LCC, we assessed the LC conversion from 1982 to 2015. Based on the 0.05 ° LC  
255 mapping results for 1982 and 2015, a map of LC conversion can be obtained. The computation was also limited to the change mask to ensure statistical significance. The conversion sources and destinations of LC classes were separately computed, to assess the direct causes of change in various LC classes.

## 2.9 Human impact process

To further explore the role of human impact in regions with significant LCC, the results are evaluated based on data from the  
260 human impact campaign (Fritz et al., 2017) (available at <https://doi.pangaea.de/10.1594/PANGAEA.869680>, last access: 20 November 2018). The original study area was generated in the 2011 campaign to evaluate a map of land availability for biofuel production (Fritz et al., 2013), collected using a Geo-Wiki crowdsourcing platform. Pixels with a resolution of 1 km were randomly provided to volunteers. For each pixel, volunteers needed to point out the overall degree of human impact (HI, 0-100 %) which was visible from Google Earth's high-resolution satellite image and they were required to provide confidence  
265 levels in four categories: unsure; less sure; quite sure; and sure. Here, HI refers to the degree to which the landscape modified by humans visible from satellite images (Fritz et al., 2017). A total of 151942 point-records are available. To get the global distribution map of HI, we performed Kriging interpolation on the point records that had previously excluded the category of unsure confidence level. The search radius parameter of the Kriging interpolation was set to 12 nearby points and the other parameters as default. As shown in Fig. S2, we can see that the interpolation results reflect the global distribution of the  
270 intensity of human activity.

### 3 Results

#### 3.1 Reliability of the products

##### 3.1.1 Accuracy assessment

First of all, to evaluate the magnitude of the errors introduced by our training samples, we randomly selected 500 samples from the training sample for manual interpretation and evaluation, and the assessment accuracy was 92.26 %. It shows that the training sample we generate from 30m FROM-GLC\_v2 is sufficient for our data production.

The global LC mapping result in 2015 is shown in Fig. 6. Its accuracy was tested with the H-homo sample in 2015 to obtain a confusion matrix (Table 3). The overall accuracy for the year 2015 reached 86.51 %. As for each class, the accuracies for forest, barren land, and tundra are relatively high, where the user's accuracies and producer's accuracies are over 90 %. The accuracy of cropland is also high, with the user's accuracy and producer's accuracy reaching 73.54 % and 78.62 %, respectively. The user's accuracy of shrubland reached 83.62 %, while that of grassland is 67.58 %. Grassland is mainly mixed with cropland and shrubland. Table 4 shows the testing results of the FLUXNET test samples in which the number of sample units for shrubland, tundra, barren land, and snow/ice are relatively small. The overall accuracy of all classes is 82.10 % with the FLUXNET sample. Among them, the user's accuracy and the producer's accuracy for forest reach 91.01 % and 88.04 %, respectively. The producer's accuracy for cropland is 69.23 %, while its user's accuracy is 73.26 %.

Putting the test results from FROM-GLC\_v2 and FLUXNET together, a spatial distribution map of the uncertainty of the 2015 LC mapping result was generated. As can be seen from Fig. 7, most of the world is shown in green color, which means that the mapping result for most regions is most likely to be correct, and the result for 2015 is highly credible. There are still some regions showing a yellow or orange color, and a smaller number of regions showing red, representing those regions that may have been misclassified. Since there are no test samples in Greenland., the interpolation results are ignored. In general, the places with high uncertainty are Africa, East and South America, South Alaska, North and East Australia and Southwest Indonesia.

The assessment result with independent test samples is shown in Table 5 and Table 6. It shows that the overall accuracy of the GLASS-GLC without change detection is 81.28 %, and that with change detection is 82.81 %. This reflects the reliability of GLASS-GLC since the test samples are randomly distributed along the spatial and temporal dimensions, and also confirm the significance and effectiveness of the change detection method.

##### 3.1.2 Data inter-comparison

The assessment results of MLCT products and ESA-CCI land cover products based on test samples from FLUXNET site data are shown in Table 7 and Table 8, respectively. The overall accuracies of ESA-CCI products and MLCT products are 73.90 %

300 and 80.38 % in 2015, respectively. Compared to these, The overall accuracy of GLASS-GLC (82.10 %, Table 4) is better. Although the cross-walk of the different classification systems may be slightly different, It can still reflect the high accuracy of our GLASS-GLC products.

Figure 5 shows an inter-comparison with MLCT products, Figure 6 with ESA-CCI products, and Figure 7 with FAOSTAT. The scatter plots and the linear fit lines reflected the results in 2015, and the box plots represent the distribution of  $R^2$  of the annual linear fit lines for each class. It can be seen that various classes in several different products are relatively equivalent, although they are under different classification systems. In comparison with MLCT products, the results of 2001-2015 for cropland, forest, and snow/ice have high  $R^2$ . In comparison with ESA-CCI products, the mean  $R^2$  of the linear fit lines of forest, grassland, and snow/ice from 1992 to 2015 reach 0.99, 0.82, and 0.98, respectively, while the  $R^2$  for shrubland is low. The inter-comparison of some other classes is poor, which may be caused by differences in the class definition in various classification systems. For instance, our classification system incorporates tundra, while the other two did not. Compared with FAOSTAT, the mean  $R^2$  of the linear fit lines of cropland and forest is 0.82, and 0.87, respectively. In general, our GLASS-GLC products have a reasonable consistency with other products and statistics, and the difference is not significant. What is more, the duration of GLASS-GLC, 34 years, is much longer than MLCT and ESA-CCI land cover products (as shown in Fig. 8). The comparison with other data illustrates the reliability and accurateness of GLASS-GLC.

## 315 **3.2 Spatiotemporal patterns in LCC**

### **3.2.1 Global temporal patterns**

Figure 9 shows the temporal changes of the global area for various LC classes from 1982 to 2015, where dotted lines are the corresponding trend lines. Overall, the global area of forest increases significantly ( $p = 0.0000$ ) from 1982 to 2015. As for shrubland, although fluctuating, it shows a significant increasing trend ( $p = 0.0017$ ). The global area of grassland, tundra, barren land snow/ice significantly decreases with  $p = 0.0000$ ,  $p = 0.0019$ ,  $p = 0.0000$ , and  $p = 0.0003$ , respectively.

Figure 10 shows the annual ratio of the global LCC to the global total terrestrial area, shown and organized in different time periods, where Fig. 10 (a) shows the results with a 5-year interval and Fig. 10 (b) with a 10-year interval. Overall, the annual ratio ranges from 0.35 % to 0.70 %, with an average of 0.52 % between 1982 and 2015. 5-year interval ratios show a relatively fluctuating trend. The average ratio reaches 0.63 % in 1991-1995, the highest among the seven intervals. The ratios had relatively large fluctuations in 2006-2010. All in all, the ratios before 1995 are generally higher, and it gradually decreases since then. With 10-year interval, ratios after 2000 are generally lower, with an average of only 0.40 % in 2011-2015.

### **3.2.2 Patterns along latitudinal gradients**

The global distribution of 0.25 ° grids with significant LCC from 1982 to 2015 is shown in Fig. 11 and Fig. S3 for the whole world, where the color depth represents the estimated change in area ratio per year. The distribution of significant LCC along

latitudes is shown in the right, where the red curve represents a significant increase, green a significant decrease, and blue a net change.

The distribution pattern of LCC along latitudes is different, especially for cropland and forest, where it can be seen that cropland has increased significantly in the northern tropics and the southern hemisphere. It is confirmed that the significant increase in cropland has occurred mainly in the tropics and southern hemisphere (Gibbs et al., 2010). Forest has decreased significantly in the southern hemisphere and has increased significantly in the northern hemisphere, showing regional differences. In particular, in the high latitudes of the north, forest has increased significantly with a decrease of tundra. However, the increase in forest area in the northern hemisphere is significantly larger than that in the southern hemisphere, reflecting an overall increase in total forest area.

The grassland area has reduced at almost all latitudes. There might exist an increasing trend in global vegetation coverage, where shrubland and forest expansion led to a reduction in the grassland area. It can be seen that shrubland has increased significantly in the southern hemisphere, corresponding to the reduction in the grassland area there. The area of barren land is decreasing, especially in the middle and high latitudes of the north, which further reflects the increase in vegetation coverage. The area of snow/ice in the northern high latitudes has reduced.

### 3.2.3 Continental patterns

The statistical results for each class at the continental scale are shown in Table 9, Table 10, Table 11, Table 12, Table S1, Table S2, and Table S3, where the slope and p-values are estimated according to the class area time series. At the same time, gain and loss are the computed values from 0.25 ° grids with significant LCC.

Cropland significantly increased in South America, with a growth rate of  $9.1 \times 10^3 \text{ km}^2/\text{year}$  ( $p = 0.0108$ ). The area of significantly increased cropland in Asia and Africa reached  $67 \times 10^3 \text{ km}^2$  and  $23 \times 10^3 \text{ km}^2$ , respectively. Corresponding to the increase in cropland, forest decreased significantly in South America, at a rate of  $10.8 \times 10^3 \text{ km}^2/\text{year}$  ( $p = 0.0242$ ). Meanwhile, the area of forest in Africa has significantly decreased by  $29 \times 10^3 \text{ km}^2$ . The area of forest in Asia has increased at the fastest speed. The area of forest in Europe and North America has also increased significantly. Meanwhile, the tundra area in Asia, Europe, and North America decreased significantly by  $132 \times 10^3 \text{ km}^2$ ,  $12 \times 10^3 \text{ km}^2$  and  $22 \times 10^3 \text{ km}^2$ , respectively. Shrubland has increased significantly in Africa at a rate of  $47.4 \times 10^3 \text{ km}^2/\text{year}$  ( $p = 0.0030$ ). However, as shown in Fig. 3, the LC mapping result in 2015 in Africa is of high uncertainty, the trend here should be treated carefully. Shrubland also increased significantly in Oceania, by an area of  $38 \times 10^3 \text{ km}^2$ . The decrease of grassland in Asia is serious, and the area of grassland in Asia decreased significantly by  $315 \times 10^3 \text{ km}^2$ . Barren land in Asia also significantly decreased by  $82 \times 10^3 \text{ km}^2$ . The global snow/ice area has decreased significantly, at a speed of  $19.2 \times 10^3 \text{ km}^2/\text{year}$  ( $p = 0.0003$ ).

### 3.3 Characteristics of LC class conversion

We attempted to find out some high-frequency LC class conversions for the period 1982 to 2015 (Table 13). Besides, the conversion sources and destinations of each LC class are computed separately, as shown in Fig. 12.

Among land converted to cropland in 2015, grassland was the biggest source (Fig. 12 (b)), accounting for 67.58 %. 6.61 % of cropland was converted from forest (Fig. 12 (b)), showing the process of forest destruction. Among land converted to forest, the proportion of cropland reached 21.74 % (Fig. 12 (b)). Barren land and grassland were respectively the large sources of grassland and barren land (Fig. 12 (b)), reflecting the dynamic transformation between the two classes. Grassland accounted for 35.00 % of the increasing source of barren land (Fig. 12 (b)), indicating the process of grassland loss (Bai et al., 2008).

The most frequent direction of conversion from cropland in 1982 was forest (Fig. 12 (a)), which reached 78.22 %. At the same time, forest was also the main cause of loss of grassland and shrubland (Fig. 12 (a)). The conversion of forest to grassland accounted for 59.04 % of all conversions from forest (Fig. 12 (a)). The main conversion direction of tundra was forest, reaching 64.60 % (Fig. 12 (a)).

Overall, the increase in forest accounted for the highest proportion of all conversion processes, reaching 44.17 % (Table 13). The increase of grassland and cropland were second and third highest, reaching 19.79 % and 13.64 %, respectively (Table 13). In addition, the proportions of grassland to shrubland and barren land to grassland were 7.73 % and 5.75 %, respectively (Table 13). Cropland gain and vegetation gain were the main phenomena reflected by the changes in global LC from 1982 to 2015.

### 3.4 Human impact evaluation

Figure 13 (a) shows different human impact (HI) levels among different LCC areas. Overall, the average HI level in regions with significant changes in all LC classes is 25.49 %, indicating that human activity has a great impact on LCC. The highest HI level was found in those regions with significant increases in cropland, reaching an average value of 51.38 %. Meanwhile, the HI level of cropland loss reached 48.02 %, while the HI level for forest loss was 26.91 %. In addition, in any change of vegetation, such as forest, grassland and shrubland, the HI level in regions of vegetation loss is higher than that of gain.

The HI levels along continents can be found in Fig. 13 (b). The highest level of HI is found in Europe and the lowest in Oceania. The HI in Europe reached 46.86 %, indicating that human activity played a relatively important role in regions with significant LCC. Asia came second, with a HI level of 32.07 %. In South America and Oceania in the southern hemisphere, the overall HI level in the LCC regions is small.

As shown in Fig. 13 (c), the polar regions and the boreal conifer forest regions at high northern latitudes with significant LCC have lower HI levels. The level of HI in subtropical regions is high, among which HI levels in subtropical steppe and subtropical humid forest regions reached 38.23 % and 43.90 %, indicating that the role of LC conversion caused by human activity in subtropical climate areas is significant. In addition, in the temperate steppe regions, the HI level in the regions of significant LCC is also high, reaching 39.87 %. In the tropics, the average HI level in dry forest regions is highest among

390 regions of significant LCC, reaching 34.04 %.

### 3.5 Local hotspots of LCC

Regarding LC, more attention tends to be paid to global and regional LCC. At the local scale, we can further explore the hot spots of LCC. The main regions of LCC hotspots are shown in Fig. 14, where the depth of color represents a significant change. In the north of Eurasia, forest has increased significantly (Fig. 14 (a)), and that in Siberia has moved northward to the tundra regions. In northern North America, such as Alaska and the north of Canada, forest has also increased but the extent of the increase is weaker than that in North Eurasia. In the Great Plains of Central North America, grassland has decreased and cropland has increased (Fig. 14 (b)). In most countries of South America, croplands have expanded substantially (Fig. 14 (d)) and forests have decreased significantly (Fig. 14 (c)), especially in the southeastern part of the Amazon rainforest. In Southeast Asia, such as Cambodia, Vietnam, Indonesia, and Malaysia, forest has also decreased significantly, and cropland has increased. While our LCC analysis shows these trends in the Asian tropics, higher resolution data and more specific land cover mapping are needed to explicitly determine the reasons for LCC in this region (Cheng et al., 2018). In Africa, forest in the northern part of the Congo Basin has expanded while forest in the southern Miombo forest belt has decreased (Fig. 14 (e)). In China, forest has increased (Fig. 14 (f)). Some grassland in Mongolia and Inner Mongolia of China showed a trend of decrease (Fig. 14 (g)). There is an obvious increase in grassland areas in the eastern part of the Qinghai-Tibet Plateau (Fig. 14 (h)) and a decrease of grassland in central Asia and parts of Western Asia (Fig. 14 (i)). In some parts of the former Soviet Union in Eastern Europe, a decrease of cropland (Fig. 14 (j)) and an increase of forest can be observed.

## 4 Discussions

Based on the accuracy assessment and data inter-comparison results, it can be seen that the global LC mapping products of 1982-2015, GLASS-GLC are reliable with high accuracies, and the global long-term mapping framework we designed is effective. Using GLASS-GLC CDRs in change analysis of LC can reflect a 34-year global landscape change pattern. Many phenomena and patterns can be confirmed by existing research. In addition, we have assessed the impact of human effects within different LC classes, and have further explored local LCC hotspots.

However, there are still deficiencies in the design of the mapping framework. First, the large grid size of 0.05 °, can only reflect the average change state of LC in a large area; thus many small-area phenomena cannot be well reflected (Gómez et al., 2016). For example, the reduction of much cropland is due to urbanization, and the expansion of cities is usually sporadic. Although those changes are large at the global scale, they can hardly be reflected with 0.05 ° pixels. Moreover, due to the synthesis principle, the classification result of each pixel can only represent the class with the largest proportion in area, and the information of remaining classes is ignored even though they can sometimes be more than 50 % in total. Such a neglect, due to the famous “Scale Effect” (Turner et al., 1989) can also cause great deviations in the final statistical summary of the LC

area leading to uncertainties when compared with mapping results at finer resolutions.

Second, our sampling strategy for training has certain limitations. On the one hand, since the training sample is generated from 30m resolution maps of more than 73 % accuracy, this will inevitably propagate and accumulate error to 5 km resolution. Of course, due to the higher signal-to-noise ratio of the high-resolution data, the sampling is still satisfactory compared to the direct visual interpretation of the coarse resolution images. On the other hand, the training sample used is only from a single year of circa 2015. Although we have implemented a time series correction for the original input data and performed a time-consistent post processing on the classification results, the effects of inter-annual fluctuations in data cannot be completely avoided (Song et al., 2018a). On the other hand, according to the stable classification with limited sample theory (Gong et al., 2019), a representative sample collected in one year with less than 20 % in error should suffice in multiannual use at the global scale. Therefore, a multi-year sample set may not be as critical for multiannual classification provided the sample is better than 80 % accurate. In our case, although the source training data has an accuracy of 73.17 %, we are not certain if the aggregated sample set exceeds an accuracy of 80 %. While this needs further assessment, the expected loss of accuracy should be within a couple of percents (Cheng et al., 2018). According to the 92.26 % test accuracy reported in 3.1.1, the aggregated sample set can be satisfactory.

For the generation of test sample units in 2015, we have adopted the scale-up approach. That is to say, we first upscaled the 30m test sample set to 5 km by maximum area synthesis, which contains unavoidable errors because of scale transformation. Due to the difficulty of visual interpretation in coarse scale and field investigation (Gong et al., 2013), establishing a sample library at 5 km resolution is not easy. Thus, instead, we adopted the data aggregation method based on the 30m FROM-GLC\_v2 results. Since mixed pixel problems for remotely sensed data are unavoidable at any scale, choosing one category for mixed pixels is inevitable and the cost of simplification in a traditional classification process. The development of LC ratio mapping products (similar to VCF products), rather than hard classification, especially for the case of coarse resolution, should be considered and further assessed. However, the independent interpreted 5 km test sample set alleviates the problem.

We have eliminated wetland and impervious surface in our classification system. This is a tradeoff when working at the 5 km scale. Patches of wetland and impervious surface are usually small, and it is difficult to achieve a pixel size of 0.05 ° for many situations, so the classification of the two types is extremely difficult. However, both are important LC types. Wetland is a transitional zone between terrestrial ecosystems and aquatic ecosystems (Davidson, 2014). The impervious surface can represent the urban area. In recent years, urban expansion has been a relatively significant phenomenon in global environmental change (Seto et al., 2011). Urban expansion reflects an important type of human activity, so the impervious surface is also one of the essential components to reflect anthropogenic influence. However, the total area of its change is usually small.

It should be pointed out that at a coarse resolution of 0.05 °, our definition of forest is more inclined to the tree canopy cover. Thus the changes in internal density of trees can also be reflected in the area change of forest instead of just the stand-replacement type (Korhonen et al., 2006). In addition, the dominant-class synthesis strategy we adopted also makes it

unavoidable to include internal density change of various classes, which in turn will further affect the classification and change area calculation of forest class.

In addition, because we are mainly depicting the natural biophysical properties of vegetated areas with limitation in resolution, some artificial characteristics cannot be distinguished, such as plantations (rubber, oil palm, and various fruit trees) and natural forest, which are uniformly included as forest in our classification system.

In the statistical analysis, although we have already conducted post-classification time-consistency processing for the original LC mapping results as much as possible, it is inevitable that there are still large fluctuations and interferences from various unknown factors unfavorable to the extraction of long-term trend of LCC. In order to ensure that the trend of the resulting time series is significant, we have to scale up the classification result from  $0.05^{\circ}$  to  $0.25^{\circ}$ , converting the original class label of each  $0.05^{\circ}$  pixel to the class area ratio of  $0.25^{\circ}$  grid. The long-term time series of the area ratios are tested for statistical significance. However, in some cases, this procedure will also be influenced by the “Scale Effect”.

In the analysis of anthropogenic influences, indirect effects of many human activities were ignored because the main objective was to include the effects of directly visible human activities. For example, human activities increase the concentration of carbon dioxide in the atmosphere, which in turn affects the global climate, leading to higher temperature, and thus increasing vegetation coverage (Piao et al., 2006; Bonan, 2008). This pathway of action is indirect, but it is difficult to reflect in the human impact data we use, which results in an underestimation of the assessment of anthropogenic influences.

GLASS-GLCs contain more detailed LC classes, longer temporal coverage (34 years), high consistency, which meets the requirement for CDR. GLASS-GLC CDRs are the first collection of global LC dynamics of 5 km, and fill the existing gap for high-reliability and consistency of long-term general purpose global LC products. In addition, our strategy of generating samples from high-resolution classification products can greatly reduce the cost and investment of sample collection. It can flexibly and effectively be extended to other coarse-resolution LC mapping tasks in the future.

In the future, with the advancement of technology and the accumulation of remote sensing datasets, the use of remote sensing products for LC mapping with higher resolution and longer time series will undoubtedly better reflect the global LC and its changes. However, under limited conditions, we can consider using coarse-resolution satellite data to determine the locations of potential rapid change, and then use high-resolution data in these hotspots to accurately estimate the rate and mode of change. Moreover, it is necessary to establish a multi-year sample library to assess the impact of inter-annual fluctuations in input data on the accuracy of change characterization and analysis. Wetland and impervious surface are LC classes that have extremely high value. It would be useful to supplement the mapping and change analysis of these two classes when suitable data become available. For the analysis of global LCC, systematic and in-depth attribution analysis and research can be further carried out.



## 5 Data availability

GLASS-GLC products at 5 km resolution from 1982 to 2015 are available to the public in the GeoTIFF format at <https://doi.pangaea.de/10.1594/PANGAEA.913496> (Liu et al., 2020).

GLASS CDRs were provided by Beijing Normal University Data Center (available at <http://glass-product.bnu.edu.cn/>, last access: 27 December 2018). VCF products were obtained from LP DAAC (available at <https://lpdaac.usgs.gov/>, last access: 20 December 2018). GMTED2010 were acquired from Google Earth Engine (available at <https://code.earthengine.google.com/>, last access: 24 December 2018). Geo-Wiki points came from the human impact campaign (available at <https://doi.pangaea.de/10.1594/PANGAEA.869680>, last access: 30 November 2018). Eco-region data were obtained from the FAO global eco-region dataset (available at <http://www.fao.org/geonetwork/srv/en/metadata.show?CurrTab=simple&id=1255>, last access: 3 December 2018).

## 6 Conclusions

In order to better reflect the global land changes, continuous and dynamic monitoring of global LC is necessary. We built GLASS-GLC, the first CDRs for global LC on the GEE platform. It can capture the global LCC information from 1982 to 2015. Compared to previous global LC products, GLASS-GLC products cover a longer time period and have higher consistency and more detailed classes. Our entire mapping framework is based on FROM-GLC\_v2, including the classification system and high-quality H-homo sample generation.

Based on over ten thousand independent test samples units from both the FROM-GLC sample set and FLUXNET site data in 2015, the overall accuracy of GLASS-GLC was shown to exceed 80 %. With 2431 test sample units in different years, the overall accuracy of GLASS-GLC is also over 80 %, at 82.81 %. Using inter-comparisons with other global LC products of different resolutions from various data sources, we verified the effectiveness and reliability of GLASS-GLC from different perspectives. Systematic uncertainty analysis was also performed on a global scale based on the results of the accuracy assessment and its geographical distribution. This shows that GLASS-GLC CDR products have relatively low uncertainty in most parts of the world. Our results also indicate that GLASS CDRs have potential for multi-class LC mapping and can provide more than enough information to distinguish different LC classes, with relatively strong temporal and spatial consistency, which can produce extremely reliable change information.

Comprehensive spatiotemporal pattern analysis based on GLASS-GLC reflected and revealed many significant global LCC phenomena and patterns, such as forest loss and cropland gain in the tropics, forest gain in the northern regions, etc. An analysis of the global LC conversion pattern from 1982 to 2015 revealed hot spots of LCC.

Since anthropogenic influence has become one of the most important driving forces for LCC, especially after the industrial revolution, we quantified the level of human impact in areas of significant LCC. The results show that the average human

impact level in areas of significant LCC is about 25.49 %.

With increasing economic globalization, LCC has increased. Based on GLASS-GLC, effective global LC and change analysis could be conducted, enhancing our understanding of global environmental change, and even mitigating its negative impact to some extent, which is also beneficial to the achievement of sustainable development goals.

## 515 **Author contribution**

PG conceived the research. HL and JW designed the experiments, and HL carried out experiments. NC provided GEE support. SL provided data. HL prepared the manuscript with contributions from all co-authors.

## **Competing interests**

The authors declare that they have no conflict of interest.

## 520 **Acknowledgments**

This work is partially supported by the National Key Research and Development Program of China (NO.2016YFA0600103), a donation made by Delos Living LLC, and the Cyrus Tang Foundation.

## **References**

- 525 Achard, F., Eva, H. D., Mayaux, P., Stibig, H. J., and Belward, A.: Improved estimates of net carbon emissions from land cover change in the tropics for the 1990s, *Global Biogeochemical Cycles*, 18, <https://doi.org/10.1029/2003GB002142>, 2004.
- Andrew K, S., Nathalie, P., Nicholas C, C., Gary N, G., Matthew, H., Richard, L., Caspar A, M., Brian, O. C., Marc, P., and Henrique Miguel, P.: Environmental science: Agree on biodiversity metrics to track from space, *Nature*, 523, 403-405, <https://doi.org/10.1038/523403a>, 2015.
- 530 Bai, Z. G., Dent, D. L., Olsson, L., and Schaepman, M. E.: Proxy global assessment of land degradation, *Soil use and management*, 24, 223-234, <https://doi.org/10.1111/j.1475-2743.2008.00169.x>, 2008.
- Ban, Y., Gong, P., and Gini, C.: Global land cover mapping using Earth observation satellite data: Recent progresses and challenges, *ISPRS journal of photogrammetry and remote sensing*, 103, 1-6, <https://doi.org/10.1016/j.isprsjprs.2015.01.001>, 2015.
- 535 Bartholome, E., and Belward, A. S.: GLC2000: a new approach to global land cover mapping from Earth observation data, *International Journal of Remote Sensing*, 26, 1959-1977, <https://doi.org/10.1080/01431160412331291297>, 2005.
- Bonan, G. B.: Forests and climate change: forcings, feedbacks, and the climate benefits of forests, *Science*, 320, 1444-1449, <https://doi.org/10.1126/science.1155121>, 2008.
- Bontemps, S., Defourny, P., Radoux, J., Van Bogaert, E., Lamarche, C., Achard, F., Mayaux, P., Boettcher, M., Brockmann, C., and Kirches, G.: Consistent global land cover maps for climate modelling communities: Current achievements of the ESA's
- 540 land cover CCI, *Proceedings of the ESA Living Planet Symposium*, Edinburgh, 2013, 9-13,
- Brink, A. B., and Eva, H. D.: Monitoring 25 years of land cover change dynamics in Africa: A sample based remote sensing approach, *Applied Geography*, 29, 501-512, <https://doi.org/10.1016/j.apgeog.2008.10.004>, 2009.
- Cao, C., Xiong, X., Wu, A., and Wu, X.: Assessing the consistency of AVHRR and MODIS L1B reflectance for generating fundamental climate data records, *Journal of Geophysical Research: Atmospheres*, 113, <https://doi.org/10.1029/2007JD009363>,

- 2008.
- Chen, Y., Ge, Y., Heuvelink, G. B. M., An, R., and Chen, Y.: Object-based duperresolution land-cover mapping from remotely sensed imagery, *IEEE Transactions on Geoscience and Remote Sensing*, 56, 328-340, <https://doi.org/10.1109/TGRS.2017.2747624>, 2018.
- Cheng, J., Liang, S., Verhoef, W., Shi, L., and Liu, Q.: Estimating the Hemispherical Broadband Longwave Emissivity of Global Vegetated Surfaces Using a Radiative Transfer Model, *IEEE Transactions on Geoscience and Remote Sensing*, 54, 905-917, <https://doi.org/10.1109/TGRS.2015.2469535>, 2016.
- Cheng, Y., Yu, L., Xu, Y., Liu, X., Lu, H., Cracknell, A. P., Kanniah, K., and Gong, P.: Towards global oil palm plantation mapping using remote-sensing data, *International Journal of Remote Sensing*, 39, 5891-5906, <https://doi.org/10.1080/01431161.2018.1492182>, 2018.
- Cihlar, J.: Land cover mapping of large areas from satellites: status and research priorities, *International Journal of Remote Sensing*, 21, 1093-1114, <https://doi.org/10.1080/014311600210092>, 2000.
- Claussen, M., Brovkin, V., and Ganopolski, A.: Biogeophysical versus biogeochemical feedbacks of large-scale land cover change, *Geophysical research letters*, 28, 1011-1014, <https://doi.org/10.1029/2000GL012471>, 2001.
- Cohen, W. B., Yang, Z., Healey, S. P., Kennedy, R. E., and Gorelick, N.: A LandTrendr multispectral ensemble for forest disturbance detection, *Remote Sensing of Environment*, 205, 131-140, <https://doi.org/10.1016/j.rse.2017.11.015>, 2018.
- Danielson, J. J., and Gesch, D. B.: Global multi-resolution terrain elevation data 2010 (GMTED2010), US Department of the Interior, US Geological Survey, 2011.
- Davidson, N. C.: How much wetland has the world lost? Long-term and recent trends in global wetland area, *Marine and Freshwater Research*, 65, 934-941, <https://doi.org/10.1071/MF14173>, 2014.
- DeFries, R. S., Hansen, M., Townshend, J. R. G., and Sohlberg, R.: Global land cover classifications at 8 km spatial resolution: the use of training data derived from Landsat imagery in decision tree classifiers, *International Journal of Remote Sensing*, 19, 3141-3168, <https://doi.org/10.1080/014311698214235>, 1998.
- DeFries, R. S., Field, C. B., Fung, I., Collatz, G. J., and Bounoua, L.: Combining satellite data and biogeochemical models to estimate global effects of human - induced land cover change on carbon emissions and primary productivity, *Global Biogeochemical Cycles*, 13, 803-815, <https://doi.org/10.1029/1999GB900037>, 1999.
- ESA: Land Cover CCI Product User Guide Version 2.0, available at: [http://maps.elie.ucl.ac.be/CCI/viewer/download/ESACCI-LC-Ph2-PUGv2\\_2.0.pdf](http://maps.elie.ucl.ac.be/CCI/viewer/download/ESACCI-LC-Ph2-PUGv2_2.0.pdf), last access: 30 November 2018b.
- FAO: Global Ecological Zones, available at <http://www.fao.org/geonetwork/srv/en/metadata.show?CurrTab=simple&id=1255>, last access: 30 November 2018.
- Feng, D., Yu, L., Zhao, Y., Cheng, Y., Xu, Y., Li, C., and Gong, P.: A multiple dataset approach for 30-m resolution land cover mapping: a case study of continental Africa, *International Journal of Remote Sensing*, 39, 3926-3938, <https://doi.org/10.1080/01431161.2018.1452073>, 2018.
- Franch, B., Vermote, E. F., Roger, J.-C., Murphy, E., Becker-Reshef, I., Justice, C., Claverie, M., Nagol, J., Csiszar, I., Meyer, D., Baret, F., Masuoka, E., Wolfe, R., and Devadiga, S.: A 30+ Year AVHRR Land Surface Reflectance Climate Data Record and Its Application to Wheat Yield Monitoring, *Remote Sensing*, 9, 296, <https://doi.org/10.3390/rs9030296>, 2017.
- Friedl, M. A., Sulla-Menashe, D., Tan, B., Schneider, A., Ramankutty, N., Sibley, A., and Huang, X.: MODIS Collection 5 global land cover: Algorithm refinements and characterization of new datasets, *Remote Sensing of Environment*, 114, 168-182, <https://doi.org/10.1016/j.rse.2009.08.016>, 2010.
- Fritz, S., See, L., van der Velde, M., Nalepa, R. A., Perger, C., Schill, C., McCallum, I., Schepaschenko, D., Kraxner, F., and Cai, X.: Downgrading recent estimates of land available for biofuel production, *Environmental Science & Technology*, 47, 1688-1694, <https://doi.org/10.1021/es303141h>, 2013.
- Fritz, S., See, L., Perger, C., McCallum, I., Schill, C., Schepaschenko, D., Duerauer, M., Karner, M., Dresel, C., and Laso-Bayas, J.-C.: A global dataset of crowdsourced land cover and land use reference data, *Scientific data*, 4, 170075, <https://doi.org/10.1038/sdata.2017.75>, 2017.
- Fuller, R. M., Smith, G. M., and Devereux, B. J.: The characterisation and measurement of land cover change through remote sensing: problems in operational applications?, *International Journal of Applied Earth Observation and Geoinformation*, 4,

243-253, [https://doi.org/10.1016/S0303-2434\(03\)00004-7](https://doi.org/10.1016/S0303-2434(03)00004-7), 2003.

Gallego, F. J.: Remote sensing and land cover area estimation, *International Journal of Remote Sensing*, 25, 3019-3047, <https://doi.org/10.1080/01431160310001619607>, 2004.

595 Gibbard, S., Caldeira, K., Bala, G., Phillips, T. J., and Wickett, M.: Climate effects of global land cover change, *Geophysical Research Letters*, 32, <https://doi.org/10.1029/2005GL024550>, 2005.

Gibbs, H. K., Ruesch, A. S., Achard, F., Clayton, M. K., Holmgren, P., Ramankutty, N., and Foley, J. A.: Tropical forests were the primary sources of new agricultural land in the 1980s and 1990s, *Proceedings of the National Academy of Sciences*, 107, 16732-16737, <https://doi.org/10.1073/pnas.0910275107>, 2010.

600 Giri, C., Pengra, B., Long, J., and Loveland, T. R.: Next generation of global land cover characterization, mapping, and monitoring, *International Journal of Applied Earth Observation and Geoinformation*, 25, 30-37, <https://doi.org/10.1016/j.jag.2013.03.005>, 2013.

GLASS: Global LAnd Surface Satellite products, available at: <http://glass-product.bnu.edu.cn/>, last access: 27 December 2018.

Gómez, C., White, J. C., and Wulder, M. A.: Optical remotely sensed time series data for land cover classification: A review, *ISPRS Journal of Photogrammetry and Remote Sensing*, 116, 55-72, <https://doi.org/10.1016/j.isprsjprs.2016.03.008>, 2016.

605 Gong, P.: Accuracy assessment of global land cover datasets based on global field stations, *Progress in Natural Science*, 19, 754-759, 2009.

Gong, P.: Remote sensing of environmental change over China: A review, *Chinese Science Bulletin*, 57, 2793-2801, <https://doi.org/10.1007/s11434-012-5268-y>, 2012.

610 Gong, P., Wang, J., Yu, L., Zhao, Y., Zhao, Y., Liang, L., Niu, Z., Huang, X., Fu, H., and Liu, S.: Finer resolution observation and monitoring of global land cover: First mapping results with Landsat TM and ETM+ data, *International Journal of Remote Sensing*, 34, 2607-2654, <https://doi.org/10.1080/01431161.2012.748992>, 2013.

Gong, P., Liu, H., Zhang, M., Li, C., Wang, J., Huang, H., Clinton, N., Ji, L., Li, W., Bai, Y., Chen, B., Xu, B., Zhu, Z., Yuan, C., Suen, H. P., Guo, J., Xu, N., Li, W., Zhao, Y., Yang, J., Yu, C., Wang, X., Fu, H., Yu, L., Dronova, I., Hui, F., Cheng, X.,

615 Shi, X., Xiao, F., Liu, Q., and Song, L.: Stable classification with limited sample: transferring a 30-m resolution sample set collected in 2015 to mapping 10-m resolution global land cover in 2017, *Science Bulletin*, 64, 370, <https://doi.org/10.1016/j.scib.2019.03.002>, 2019.

Gong, P., Li, X., Wang, J., Bai, Y., Chen, B., Hu, T., Liu, X., Xu, B., Yang, J., and Zhang, W.: Annual maps of global artificial impervious area (GAIA) between 1985 and 2018, *Remote Sensing of Environment*, 236, 111510, <https://doi.org/10.1016/j.rse.2019.111510>, 2020.

620 Gorelick, N., Hancher, M., Dixon, M., Ilyushchenko, S., Thau, D., and Moore, R.: Google Earth Engine: Planetary-scale geospatial analysis for everyone, *Remote Sensing of Environment*, 202, 18-27, <https://doi.org/10.1016/j.rse.2017.06.031>, 2017.

Grekousis, G., Mountrakis, G., and Kavouras, M.: An overview of 21 global and 43 regional land-cover mapping products, *International Journal of Remote Sensing*, 36, 5309-5335, <https://doi.org/10.1080/01431161.2015.1093195>, 2015.

625 Hansen, M. C., DeFries, R. S., Townshend, J. R. G., and Sohlberg, R.: Global land cover classification at 1 km spatial resolution using a classification tree approach, *International journal of remote sensing*, 21, 1331-1364, <https://doi.org/10.1080/014311600210209>, 2000.

Hansen, M. C., Potapov, P. V., Moore, R., Hancher, M., Turubanova, S. A. A., Tyukavina, A., Thau, D., Stehman, S. V., Goetz, S. J., and Loveland, T. R.: High-resolution global maps of 21st-century forest cover change, *science*, 342, 850-853, <https://doi.org/10.1126/science.1244693>, 2013.

630 Hansen, M. C.: MEaSUREs Vegetation Continuous Fields ESDR Algorithm Theoretical Basis Document (ATBD) Version 2.0, available at [https://lpdaac.usgs.gov/documents/144/VCF5KYR\\_ATBD.pdf](https://lpdaac.usgs.gov/documents/144/VCF5KYR_ATBD.pdf), last access: 20 April 2020.

Herold, M., Mayaux, P., Woodcock, C. E., Baccini, A., and Schmullius, C.: Some challenges in global land cover mapping: An assessment of agreement and accuracy in existing 1 km datasets, *Remote Sensing of Environment*, 112, 2538-2556, <https://doi.org/10.1016/j.rse.2007.11.013>, 2008.

635 Hollmann, R., Merchant, C. J., Saunders, R., Downy, C., Buchwitz, M., Cazenave, A., Chuvieco, E., Defourny, P., de Leeuw, G., and Forsberg, R.: The ESA climate change initiative: Satellite data records for essential climate variables, *Bulletin of the American Meteorological Society*, 94, 1541-1552, <https://doi.org/10.1175/BAMS-D-11-00254.1>, 2013.

Homer, C., Huang, C., Yang, L., Wylie, B., and Coan, M.: Development of a 2001 national land-cover database for the United States, *Photogrammetric Engineering & Remote Sensing*, 70, 829-840, <https://doi.org/10.14358/PERS.70.7.829>, 2004.

Houghton, R. A., House, J. I., Pongratz, J., Van Der Werf, G. R., DeFries, R. S., Hansen, M. C., Quéré, C. L., and Ramankutty, N.: Carbon emissions from land use and land-cover change, *Biogeosciences*, 9, 5125-5142, <https://doi.org/10.5194/bg-9-5125-2012>, 2012.

Huang, H., Wang, J., Liu, C., Liang, L., Li, C., and Gong, P.: The migration of training samples towards dynamic global land cover mapping, *ISPRS Journal of Photogrammetry and Remote Sensing*, 161, 27-36, <https://doi.org/10.1016/j.isprsjprs.2020.01.010>, 2020.

Ji, L., Gong, P., Wang, J., Shi, J., and Zhu, Z.: Construction of the 500-m Resolution Daily Global Surface Water Change Database (2001–2016), *Water Resources Research*, 54, 10,270-210,292, <https://doi.org/10.1029/2018WR023060>, 2018.

Kennedy, R. E., Yang, Z., and Cohen, W. B.: Detecting trends in forest disturbance and recovery using yearly Landsat time series: 1. LandTrendr—Temporal segmentation algorithms, *Remote Sensing of Environment*, 114, 2897-2910, <https://doi.org/10.1016/j.rse.2010.07.008>, 2010.

Korhonen, L., Korhonen, K. T., Rautiainen, M., and Stenberg, P.: Estimation of forest canopy cover: a comparison of field measurement techniques, *Silva Fennica*, 40, 577-588, <https://doi.org/10.14214/sf.315>, 2006.

Lambin, E. F., Turner, B. L., Geist, H. J., Agbola, S. B., Angelsen, A., Bruce, J. W., Coomes, O. T., Dirzo, R., Fischer, G., and Folke, C.: The causes of land-use and land-cover change: moving beyond the myths, *Global environmental change*, 11, 261-269, [https://doi.org/10.1016/S0959-3780\(01\)00007-3](https://doi.org/10.1016/S0959-3780(01)00007-3), 2001.

Lambin, E. F., Geist, H., and Rindfuss, R. R.: Introduction: Local Processes with Global Impacts, in: *Land-Use and Land-Cover Change: Local Processes and Global Impacts*, edited by: Lambin, E. F., and Geist, H., Springer Berlin Heidelberg, Berlin, Heidelberg, 1-8, 2006.

Lepers, E., Lambin, E. F., Janetos, A. C., DeFries, R., Achard, F., Ramankutty, N., and Scholes, R. J.: A synthesis of information on rapid land-cover change for the period 1981–2000, *AIBS Bulletin*, 55, 115-124, [https://doi.org/10.1641/0006-3568\(2005\)055\[0115:ASOIOR\]2.0.CO;2](https://doi.org/10.1641/0006-3568(2005)055[0115:ASOIOR]2.0.CO;2), 2005.

Li, C., Wang, J., Wang, L., Hu, L., and Peng, G.: Comparison of classification algorithms and training sample sizes in urban land classification with Landsat Thematic Mapper Imagery, *Remote Sensing*, 6, 964-983, <https://doi.org/10.3390/rs6020964>, 2014.

Li, C., Gong, P., Wang, J., Yuan, C., Hu, T., Wang, Q., Yu, L., Clinton, N., Li, M., and Guo, J.: An all-season sample database for improving land-cover mapping of Africa with two classification schemes, *International Journal of Remote Sensing*, 37, 4623-4647, <https://doi.org/10.1080/01431161.2016.1213923>, 2016.

Li, C., Gong, P., Wang, J., Zhu, Z., Biging, G. S., Yuan, C., Hu, T., Zhang, H., Wang, Q., Li, X., Liu, X., Xu, Y., Guo, J., Liu, C., Hackman, K. O., Zhang, M., Cheng, Y., Yu, L., Yang, J., Huang, H., and Clinton, N.: The first all-season sample set for mapping global land cover with Landsat-8 data, *Science Bulletin*, 62, 508-515, <https://doi.org/10.1016/j.scib.2017.03.011>, 2017.

Li, X., Zhou, Y., Zhu, Z., Liang, L., Yu, B., and Cao, W.: Mapping annual urban dynamics (1985–2015) using time series of Landsat data, *Remote Sensing of Environment*, 216, 674-683, <https://doi.org/10.1016/j.rse.2018.07.030>, 2018.

Liang, S., Zhao, X., Liu, S., Yuan, W., Cheng, X., Xiao, Z., Zhang, X., Liu, Q., Cheng, J., and Tang, H.: A long-term Global Land Surface Satellite (GLASS) data-set for environmental studies, *International Journal of Digital Earth*, 6, 5-33, <https://doi.org/10.1080/17538947.2013.805262>, 2013.

Liu, H., Gong, P., Wang, J., Clinton, N., Bai, Y., and Liang, S.: Annual Dynamics of Global Land Cover and its Long-term Changes from 1982 to 2015, <https://doi.pangaea.de/10.1594/PANGAEA.913496>, 2020.

Liu, J., Liu, M., Deng, X., Zhuang, D., Zhang, Z., and Luo, D.: The land use and land cover change database and its relative studies in China, *Journal of Geographical Sciences*, 12, 275-282, <https://doi.org/10.1007/BF02837545>, 2002.

Liu, X., Yu, L., Li, W., Peng, D., Zhong, L., Li, L., Xin, Q., Lu, H., Yu, C., and Gong, P.: Comparison of country-level cropland areas between ESA-CCI land cover maps and FAOSTAT data, *International Journal of Remote Sensing*, 1-15, <https://doi.org/10.1080/01431161.2018.1465613>, 2018.

Loveland, T. R., Reed, B. C., Brown, J. F., Ohlen, D. O., Zhu, Z., Yang, L., and Merchant, J. W.: Development of a global land



- cover characteristics database and IGBP DISCover from 1 km AVHRR data, *International Journal of Remote Sensing*, 21, 1303-1330, <https://doi.org/10.1080/014311600210191>, 2000.
- Mann, H. B.: Nonparametric tests against trend, *Econometrica: Journal of the Econometric Society*, 245-259, <http://dx.doi.org/10.2307/1907187>, 1945.
- 690 Margono, B. A., Turubanova, S., Zhuravleva, I., Potapov, P., Tyukavina, A., Baccini, A., Goetz, S., and Hansen, M. C.: Mapping and monitoring deforestation and forest degradation in Sumatra (Indonesia) using Landsat time series data sets from 1990 to 2010, *Environmental Research Letters*, 7, 034010, <https://doi.org/10.1088/1748-9326/7/3/034010>, 2012.
- Matthews, H. D., Weaver, A. J., Meissner, K. J., Gillett, N. P., and Eby, M.: Natural and anthropogenic climate change: incorporating historical land cover change, vegetation dynamics and the global carbon cycle, *Climate Dynamics*, 22, 461-479, <https://doi.org/10.1007/s00382-004-0392-2>, 2004.
- 695 Oliver, M. A., and Webster, R.: Kriging: a method of interpolation for geographical information systems, *International Journal of Geographical Information System*, 4, 313-332, <https://doi.org/10.1080/02693799008941549>, 1990.
- Pal, M.: Random forest classifier for remote sensing classification, *International Journal of Remote Sensing*, 26, 217-222, <https://doi.org/10.1080/01431160412331269698>, 2005.
- 700 Pekel, J.-F., Cottam, A., Gorelick, N., and Belward, A. S.: High-resolution mapping of global surface water and its long-term changes, *Nature*, 540, 418, <https://doi.org/10.1038/nature20584>, 2016.
- Piao, S., Friedlingstein, P., Ciais, P., Zhou, L., and Chen, A.: Effect of climate and CO<sub>2</sub> changes on the greening of the Northern Hemisphere over the past two decades, *Geophysical Research Letters*, 33, <https://doi.org/10.1029/2006GL028205>, 2006.
- Pielke, R. A.: Land use and climate change, *Science*, 310, 1625-1626, <https://doi.org/10.1126/science.1120529>, 2005.
- 705 Pittman, K., Hansen, M. C., Becker-Reshef, I., Potapov, P. V., and Justice, C. O.: Estimating global cropland extent with multi-year MODIS data, *Remote Sensing*, 2, 1844-1863, <https://doi.org/10.3390/rs2071844>, 2010.
- Qu, Y., Liu, Q., Liang, S., Wang, L., Liu, N., and Liu, S.: Direct-estimation algorithm for mapping daily land-surface broadband albedo from MODIS data, *IEEE Transactions on Geoscience and Remote sensing*, 52, 907-919, <https://doi.org/10.1109/TGRS.2013.2245670>, 2014.
- 710 Ramankutty, N., Graumlich, L., Achard, F., Alves, D., Chhabra, A., DeFries, R. S., Foley, J. A., Geist, H., Houghton, R. A., and Goldewijk, K. K.: Global land-cover change: Recent progress, remaining challenges, in: *Land-use and land-cover change*, Springer, 9-39, 2006.
- Reyers, B., O'Farrell, P. J., Cowling, R. M., Egoh, B. N., Le Maitre, D. C., and Vlok, J. H. J.: Ecosystem services, land-cover change, and stakeholders: finding a sustainable foothold for a semiarid biodiversity hotspot, *Ecology and Society*, 14, <http://www.ecologyandsociety.org/vol14/iss1/art38>, 2009.
- 715 Rindfuss, R. R., Walsh, S. J., Turner, B. L., Fox, J., and Mishra, V.: Developing a science of land change: challenges and methodological issues, *Proceedings of the National Academy of Sciences*, 101, 13976-13981, <https://doi.org/10.1073/pnas.0401545101>, 2004.
- Rodriguez-Galiano, V. F., Ghimire, B., Rogan, J., Chica-Olmo, M., and Rigol-Sanchez, J. P.: An assessment of the effectiveness of a random forest classifier for land-cover classification, *ISPRS Journal of Photogrammetry and Remote Sensing*, 67, 93-104, <https://doi.org/10.1016/j.isprsjprs.2011.11.002>, 2012.
- 720 Rogan, J., and Chen, D.: Remote sensing technology for mapping and monitoring land-cover and land-use change, *Progress in planning*, 61, 301-325, [https://doi.org/10.1016/S0305-9006\(03\)00066-7](https://doi.org/10.1016/S0305-9006(03)00066-7), 2004.
- Running, S. W.: Ecosystem disturbance, carbon, and climate, *Science*, 321, 652-653, <https://doi.org/10.1126/science.1159607>, 2008.
- 725 Schneider, A., Friedl, M. A., and Potere, D.: Mapping global urban areas using MODIS 500-m data: New methods and datasets based on 'urban ecoregions', *Remote Sensing of Environment*, 114, 1733-1746, <https://doi.org/10.1016/j.rse.2010.03.003>, 2010.
- Sen, P. K.: Estimates of the regression coefficient based on Kendall's tau, *Journal of the American statistical association*, 63, 1379-1389, <https://doi.org/10.1080/01621459.1968.10480934>, 1968.
- 730 Seto, K. C., Fragkias, M., Güneralp, B., and Reilly, M. K.: A meta-analysis of global urban land expansion, *PloS one*, 6, e23777, <https://doi.org/10.1371/journal.pone.0023777>, 2011.

Simons, H., Soto, X., Zhu, Z., Singh, K. D., Bellan, M.-F., Iremonger, S., Hirvonen, H., Smith, B., Watson, V., and Tosi, J.: Global ecological zoning for the global forest resources assessment 2000-final report, 2001.

735 Song, X.-P., Hansen, M. C., Stehman, S. V., Potapov, P. V., Tyukavina, A., Vermote, E. F., and Townshend, J. R.: Global land change from 1982 to 2016, *Nature*, 560, 639, <https://doi.org/10.1038/s41586-018-0411-9>, 2018a.

Song, Z., Liang, S., Wang, D., Zhou, Y., and Jia, A.: Long-term record of top-of-atmosphere albedo over land generated from AVHRR data, *Remote Sensing of Environment*, 211, 71-88, <https://doi.org/10.1016/j.rse.2018.03.044>, 2018b.

740 Sterling, S. M., Ducharme, A., and Polcher, J.: The impact of global land-cover change on the terrestrial water cycle, *Nature Climate Change*, 3, 385, <https://doi.org/10.1038/nclimate1690>, 2013.

Sulla-Menashe, D., Gray, J. M., Abercrombie, S. P., and Friedl, M. A.: Hierarchical mapping of annual global land cover 2001 to present: The MODIS Collection 6 Land Cover product, *Remote sensing of environment*, 222, 183-194, <https://doi.org/10.1016/j.rse.2018.12.013>, 2019.

745 Tucker, C. J., Townshend, J. R. G., and Goff, T. E.: African land-cover classification using satellite data, *Science*, 227, 369-375, <https://doi.org/10.1126/science.227.4685.369>, 1985.

Turner, B. L., Lambin, E. F., and Reenberg, A.: The emergence of land change science for global environmental change and sustainability, *Proceedings of the National Academy of Sciences*, 104, 20666-20671, <https://doi.org/10.1073/pnas.0704119104>, 2007.

Turner, M. G., O'Neill, R. V., Gardner, R. H., and Milne, B. T.: Effects of changing spatial scale on the analysis of landscape pattern, *Landscape ecology*, 3, 153-162, <https://doi.org/10.1007/BF00131534>, 1989.

750 USGS: USGS Report 2011–1073 Global Multi-resolution Terrain Elevation Data 2010 (GMTED2010), available at <https://pubs.usgs.gov/of/2011/1073/pdf/of2011-1073.pdf>, last access: 20 April 2020.

Verburg, P. H., Van De Steeg, J., Veldkamp, A., and Willemen, L.: From land cover change to land function dynamics: a major challenge to improve land characterization, *Journal of environmental management*, 90, 1327-1335, <https://doi.org/10.1016/j.jenvman.2008.08.005>, 2009.

755 Wang, C., Gao, Q., Wang, X., and Yu, M.: Spatially differentiated trends in urbanization, agricultural land abandonment and reclamation, and woodland recovery in Northern China, *Scientific reports*, 6, 37658, <https://doi.org/10.1038/srep37658>, 2016.

Wang, J., Zhao, Y., Li, C., Yu, L., Liu, D., and Gong, P.: Mapping global land cover in 2001 and 2010 with spatial-temporal consistency at 250 m resolution, *ISPRS Journal of Photogrammetry and Remote Sensing*, 103, 38-47, <https://doi.org/10.1016/j.isprsjprs.2014.03.007>, 2015.

760 Wood, E. F., Roundy, J. K., Troy, T. J., Van Beek, L. P. H., Bierkens, M. F. P., Blyth, E., de Roo, A., Döll, P., Ek, M., and Famiglietti, J.: Hyperresolution global land surface modeling: Meeting a grand challenge for monitoring Earth's terrestrial water, *Water Resources Research*, 47, <https://doi.org/10.1029/2010WR010090>, 2011.

Wulder, M. A., White, J. C., Goward, S. N., Masek, J. G., Irons, J. R., Herold, M., Cohen, W. B., Loveland, T. R., and Woodcock, C. E.: Landsat continuity: Issues and opportunities for land cover monitoring, *Remote Sensing of Environment*, 112, 955-969, <https://doi.org/10.1016/j.rse.2007.07.004>, 2008.

765 Wulder, M. A., Coops, N. C., Roy, D. P., White, J. C., and Hermosilla, T.: Land cover 2.0, *International Journal of Remote Sensing*, 39, 4254-4284, <https://doi.org/10.1080/01431161.2018.1452075>, 2018.

Xiao, Z., Liang, S., Sun, R., Wang, J., and Jiang, B.: Estimating the fraction of absorbed photosynthetically active radiation from the MODIS data based GLASS leaf area index product, *Remote Sensing of Environment*, 171, 105-117, <https://doi.org/10.1016/j.rse.2015.10.016>, 2015.

770 Xiao, Z., Liang, S., Wang, J., Xiang, Y., Zhao, X., and Song, J.: Long-time-series global land surface satellite leaf area index Product Derived From MODIS and AVHRR Surface Reflectance, *IEEE Trans. Geoscience and Remote Sensing*, 54, 5301-5318, <https://doi.org/10.1109/TGRS.2016.2560522>, 2016.

775 Xie, S., Liu, L., Zhang, X., and Chen, X.: Annual land-cover mapping based on multi-temporal cloud-contaminated landsat images, *International Journal of Remote Sensing*, 1-23, <https://doi.org/10.1080/01431161.2018.1553320>, 2018.

Xu, Y., Yu, L., Zhao, F. R., Cai, X., Zhao, J., Lu, H., and Gong, P.: Tracking annual cropland changes from 1984 to 2016 using time-series Landsat images with a change-detection and post-classification approach: Experiments from three sites in Africa, *Remote Sensing of Environment*, 218, 13-31, <https://doi.org/10.1016/j.rse.2018.09.008>, 2018.

- 780 Yang, J., Peng, G., Rong, F., Zhang, M., Chen, J., Liang, S., Bing, X., Shi, J., and Dickinson, R.: The role of satellite remote sensing in climate change studies, *Nature Climate Change*, 3, 875-883, <https://doi.org/10.1038/nclimate1908>, 2013.
- Yao, Y., Liang, S., Li, X., Hong, Y., Fisher, J. B., Zhang, N., Chen, J., Cheng, J., Zhao, S., and Zhang, X.: Bayesian multimodel estimation of global terrestrial latent heat flux from eddy covariance, meteorological, and satellite observations, *Journal of Geophysical Research: Atmospheres*, 119, 4521-4545, <https://doi.org/10.1002/2013JD020864>, 2014.
- 785 Ying, Q., Hansen, M. C., Potapov, P. V., Tyukavina, A., Wang, L., Stehman, S. V., Moore, R., and Hancher, M.: Global bare ground gain from 2000 to 2012 using Landsat imagery, *Remote sensing of environment*, 194, 161-176, <https://doi.org/10.1016/j.rse.2017.03.022>, 2017.
- Yuan, F., Sawaya, K. E., Loeffelholz, B. C., and Bauer, M. E.: Land cover classification and change analysis of the Twin Cities (Minnesota) Metropolitan Area by multitemporal Landsat remote sensing, *Remote sensing of Environment*, 98, 317-328, <https://doi.org/10.1016/j.rse.2005.08.006>, 2005.
- 790 Yuan, W., Liu, S., Yu, G., Bonnefond, J.-M., Chen, J., Davis, K., Desai, A. R., Goldstein, A. H., Gianelle, D., and Rossi, F.: Global estimates of evapotranspiration and gross primary production based on MODIS and global meteorology data, *Remote Sensing of Environment*, 114, 1416-1431, <https://doi.org/10.1016/j.rse.2010.01.022>, 2010.
- Zhang, Q., and Seto, K. C.: Mapping urbanization dynamics at regional and global scales using multi-temporal DMSP/OLS nighttime light data, *Remote Sensing of Environment*, 115, 2320-2329, <https://doi.org/10.1016/j.rse.2011.04.032>, 2011.
- 795 Zhao, M., Pitman, A. J., and Chase, T.: The impact of land cover change on the atmospheric circulation, *Climate Dynamics*, 17, 467-477, <https://doi.org/10.1038/nclimate3004>, 2001.



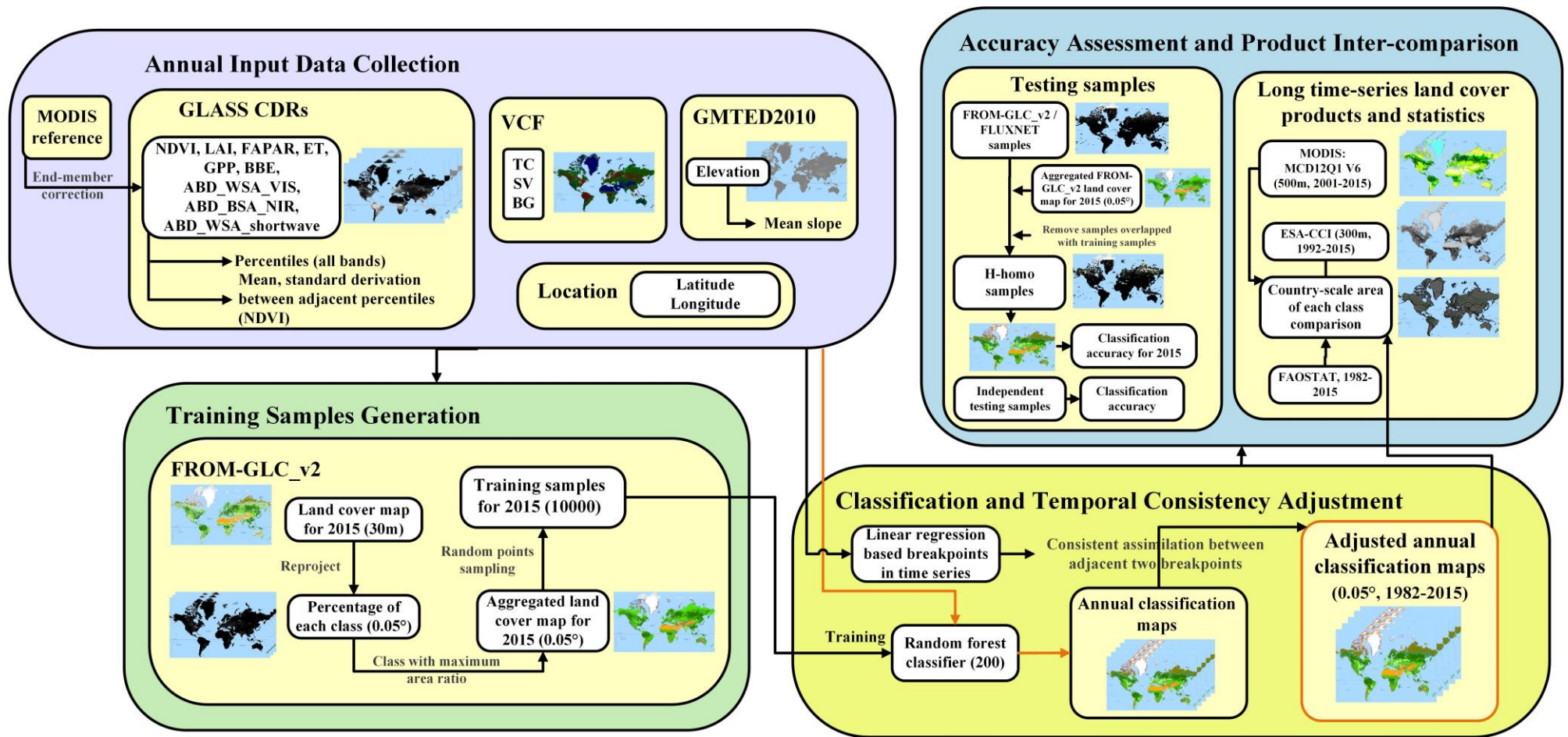
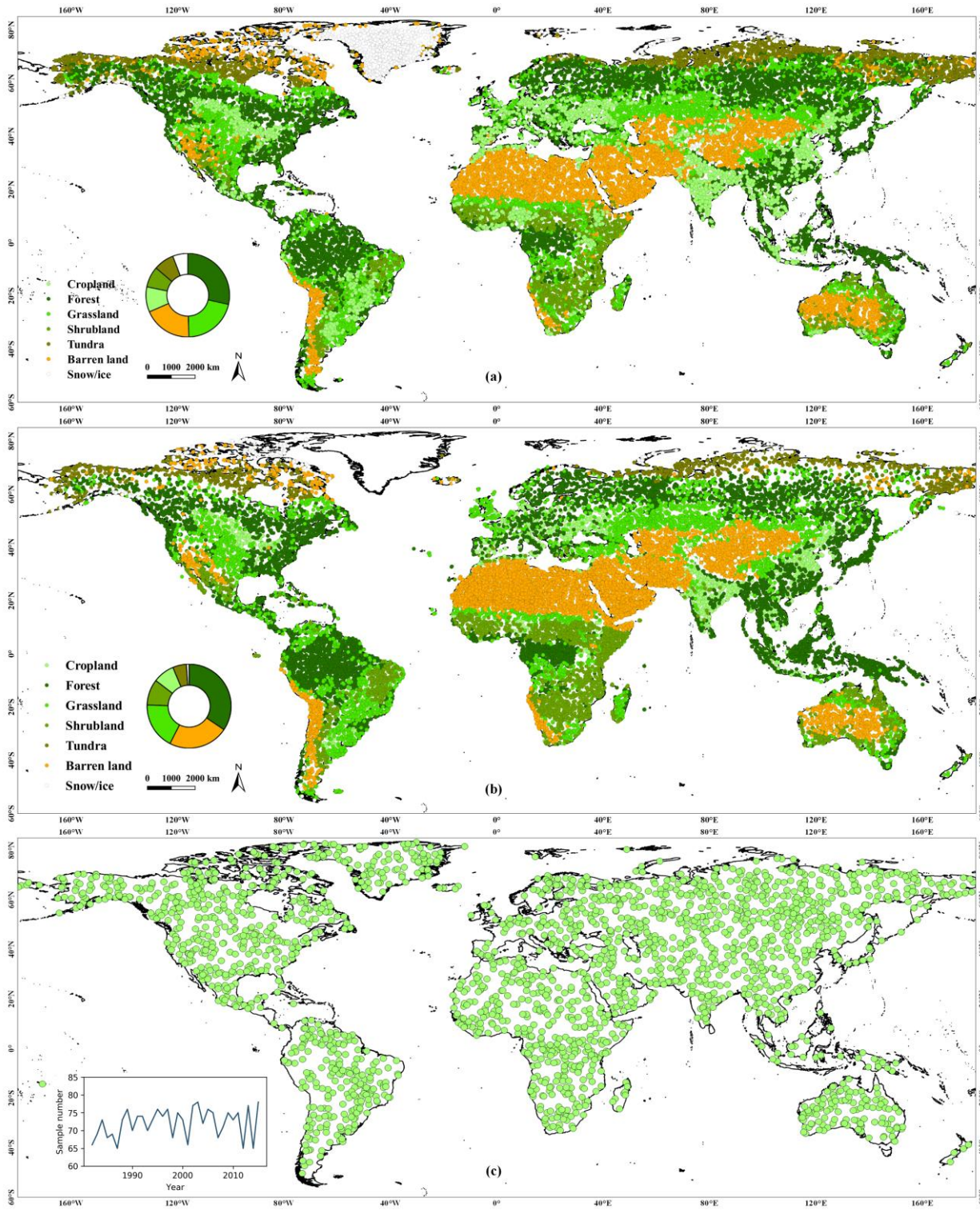


Figure 1: The framework for building GLASS-GLC (annual dynamics of global land cover) CDRs (Climate Data Records).

**Table 1: Classification system, with 7 land cover classes.**

Class	Subclass with reference to (Li et al., 2017)	Description
Cropland	Rice paddy Greenhouse Other farmland Orchard Bare farmland	
Forest	Broadleaf, leaf-on Broadleaf, leaf-off Needle-leaf, leaf-on Needle-leaf, leaf-off Mixed leaf type, leaf-on Mixed leaf type, leaf-off	Tree cover $\geq 10\%$ ; Height $> 5\text{m}$ ; For mixed leaf, neither coniferous nor broadleaf types exceed 60%
Grassland	Pasture, leaf-on Natural grassland, leaf-on Grassland, leaf-off	Canopy cover $\geq 20\%$
Shrubland	Shrub cover, leaf-on Shrub cover, leaf-off	Canopy cover $\geq 20\%$ ; Height $< 5\text{m}$
Tundra	Shrub and brush tundra Herbaceous tundra	
Barren land	Barren land	Vegetation cover $< 10\%$
Snow/Ice	Snow Ice	



**Figure 2: The geographical distribution training and test sample. (a) training sample in 2015, where different colors represent the different classes. (b) huge homogeneous test samples (H-homo sample) in 2015, where the different colors represent the source of the sample units, either FROM-GLC\_v2 or FLUXNET. (c) independent test sample in different years, where the temporal distribution is shown in the inner chart.**

**Table 2: The explanatory table of the constructed input data collection\*.**

Product	Band	Input	Number	Product reference
GLASS CDRs, 0.05 °, 8-day, dynamic, 1982-2015	NDVI	Percentiles [0, 10, 25, 50, 75, 90, 100] of all 9 bands	63	(Liang et al., 2013)
	LAI			(available at
	FAPAR			<a href="http://glass-product.bnu.edu.cn/">http://glass-product.bnu.edu.cn/</a>
	ET			, last access:
	GPP	Mean, standard derivation of NDVI between adjacent two percentiles of NDVI	12	27 December 2018)
	BBE			
	ABD_WSA_VIS			
VCF5kyrv001, 0.05 °, yearly, dynamic, 1982-2015	ABD_BSA_NIR			
	ABD_WSA_shortwave			
	TC	TC	3	(Song et al., 2018a; Hansen, 2020)
GMTED2010, 7.5 s, static	SV	SV		
	BG	BG		
Location, static	Elevation	Mean slope in each 0.05 ° pixel	1	(Danielson and Gesch, 2011; USGS, 2020)
	Latitude, longitude	Center latitude, longitude of each 0.05 ° pixel	2	
Total			81	

\*GLASS CDRs represent Global LAnd Surface Satellite (GLASS) Climate Data Records (CDRs). VCF5kyrv001 stands for VCF5kyrv001 MEaSUREs Vegetation Continuous Fields (VCF) Yearly Global 0.05 Deg products, and GMTED2010 refers to Global Multi-resolution Terrain Elevation Data 2010. NDVI, LAI, FAPAR, ET, GPP, and BBE are abbreviations for normalized difference vegetation index, leaf area index, fraction of absorbed photosynthetically active radiation, evapotranspiration, gross primary production, broadband emissivity, respectively. ABD\_WSA\_VIS, ABD\_BSA\_NIR, and ABD\_WSA\_shortwave represent white-sky albedo in visible band, near infrared band, and shortwave band, respectively. TC, SV, and BG stand for tree canopy, short vegetation, and bare ground cover, respectively.



820

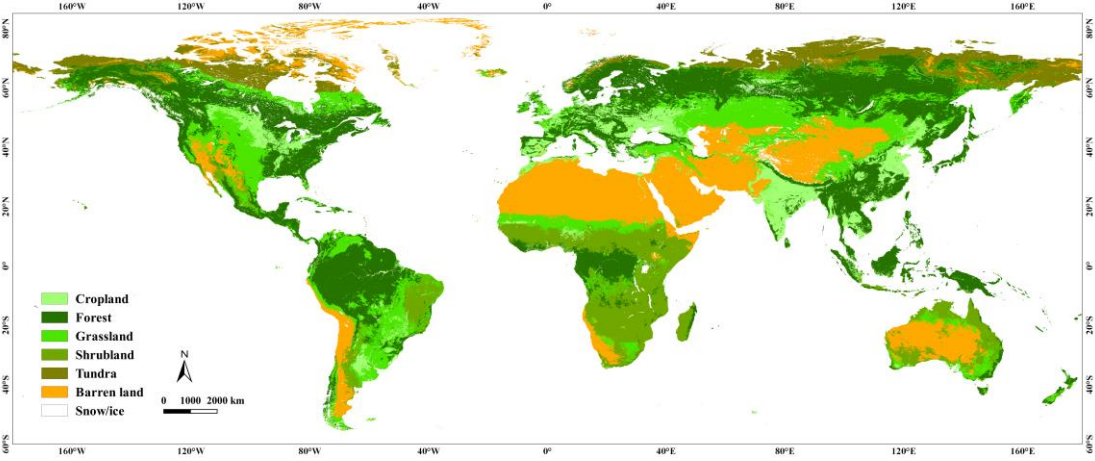


Figure 3: GLASS-GLC (annual dynamics of global land cover) CDRs (Climate Data Records) result in 2015.

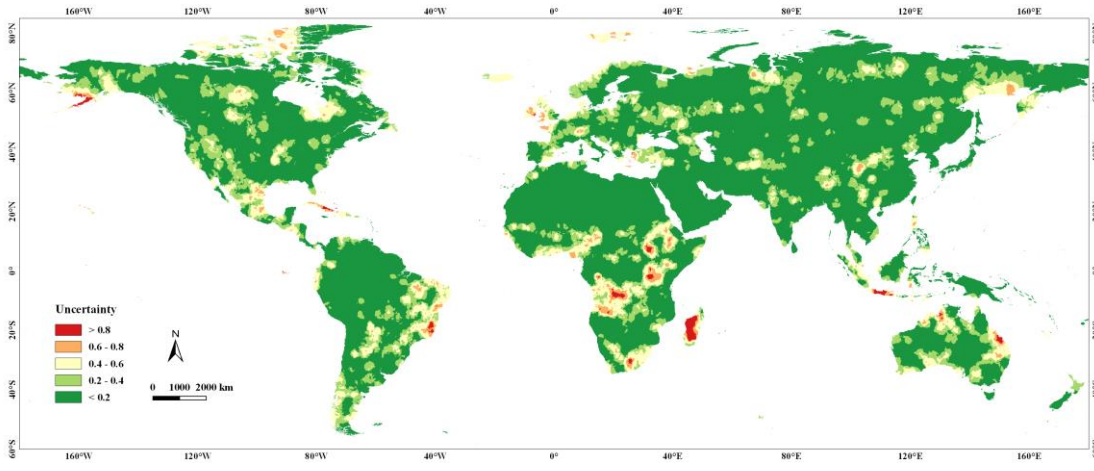
**Table 3: Classification accuracy of GLASS-GLC (annual dynamics of global land cover) in 2015 based on FROM-GLC\_v2 (Finer Resolution Observation and Monitoring of Global Land Cover product Version 2) test samples. (Overall accuracy = 86.51 %, UA = User's Accuracy and PA = Producer's Accuracy)**

Class	Cropland	Forest	Grassland	Shrubland	Tundra	Barren land	Snow/ice	Total	UA
Cropland	<b>1390</b>	166	221	101	0	12	0	1890	73.54 %
Forest	115	<b>7427</b>	279	145	18	0	3	7987	92.99 %
Grassland	199	431	<b>2820</b>	534	45	141	3	4173	67.58 %
Shrubland	47	65	185	<b>1986</b>	0	92	0	2375	83.62 %
Tundra	0	32	36	0	<b>1157</b>	24	2	1251	92.49 %
Barren land	17	5	91	27	48	<b>5336</b>	20	5544	96.25 %
Snow/ice	0	2	10	0	7	41	<b>179</b>	239	74.90 %
Total	1768	8128	3642	2793	1275	5646	207	<b>23459</b>	
PA	78.62 %	91.38 %	77.43 %	71.11 %	90.75 %	94.51 %	86.47 %		<b>86.51 %</b>

**Table 4: Classification accuracy of GLASS-GLC (annual dynamics of global land cover) in 2015 based on FLUXNET test samples.**

**(Overall accuracy = 82.10 %, UA = User's Accuracy and PA = Producer's Accuracy)**

Class	Cropland	Forest	Grassland	Shrubland	Tundra	Barren land	Snow/ice	Total number	UA
Cropland	<b>63</b>	5	17	1	0	0	0	86	73.26 %
Forest	13	<b>243</b>	9	2	0	0	0	267	91.01 %
Grassland	8	21	<b>91</b>	2	0	2	0	124	73.39 %
Shrubland	7	3	0	<b>19</b>	0	0	0	29	65.52 %
Tundra	0	3	0	0	<b>14</b>	0	0	17	82.35 %
Barren land	0	1	0	0	0	<b>1</b>	0	2	50.00 %
Snow/ice	0	0	0	0	0	0	<b>0</b>	0	-
Total number	91	276	117	24	14	3	0	<b>525</b>	
PA	69.23 %	88.04 %	77.78 %	79.17 %	100.00 %	33.33 %	-		<b>82.10 %</b>



**Figure 4:** The geographical distribution of uncertainty for GLASS-GLC (annual dynamics of global land cover) CDRs (Climate Data Records) in 2015, where regions in red represent higher uncertainty levels while those in green represent lower uncertainty levels.



835 **Table 5: Classification accuracy of GLASS-GLC (annual dynamics of global land cover) without change detection under independent test samples. (Overall accuracy = 81.28 %, UA = User's Accuracy and PA = Producer's Accuracy)**

Class	Cropland	Forest	Grassland	Shrubland	Tundra	Barren land	Snow/ice	Total number	UA
Cropland	<b>257</b>	21	34	15	0	31	0	358	71.79%
Forest	35	<b>620</b>	45	27	22	1	1	751	82.56%
Grassland	17	26	<b>248</b>	12	3	19	4	329	75.38%
Shrubland	7	6	10	<b>154</b>	9	12	0	198	77.78%
Tundra	0	9	11	12	<b>250</b>	3	0	285	87.72%
Barren land	4	1	13	14	5	<b>355</b>	6	398	89.20%
Snow/ice	0	4	3	0	0	13	<b>92</b>	112	82.14%
Total number	320	687	364	234	289	434	103	<b>2431</b>	
PA	80.31%	90.25%	68.13%	65.81%	86.51%	81.80%	89.32%		<b>81.28%</b>

**Table 6: Classification accuracy of GLASS-GLC (annual dynamics of global land cover) with change detection under independent test samples. (Overall accuracy =82.81 %, UA = User's Accuracy and PA = Producer's Accuracy)**

Class	Cropland	Forest	Grassland	Shrubland	Tundra	Barren land	Snow/ice	Total number	UA
Cropland	<b>262</b>	19	32	20	0	25	0	358	73.18%
Forest	33	<b>637</b>	29	28	24	0	0	751	84.82%
Grassland	24	24	<b>254</b>	6	13	8	0	329	77.20%
Shrubland	12	3	11	<b>159</b>	6	7	0	198	80.30%
Tundra	0	12	9	4	<b>250</b>	10	0	285	87.72%
Barren land	5	1	17	8	7	<b>357</b>	3	398	89.70%
Snow/ice	0	5	6	0	0	7	<b>94</b>	112	83.93%
Total number	336	701	358	225	300	414	97	<b>2431</b>	
PA	77.98%	90.87%	70.95%	70.67%	83.33%	86.23%	96.91%		<b>82.81%</b>

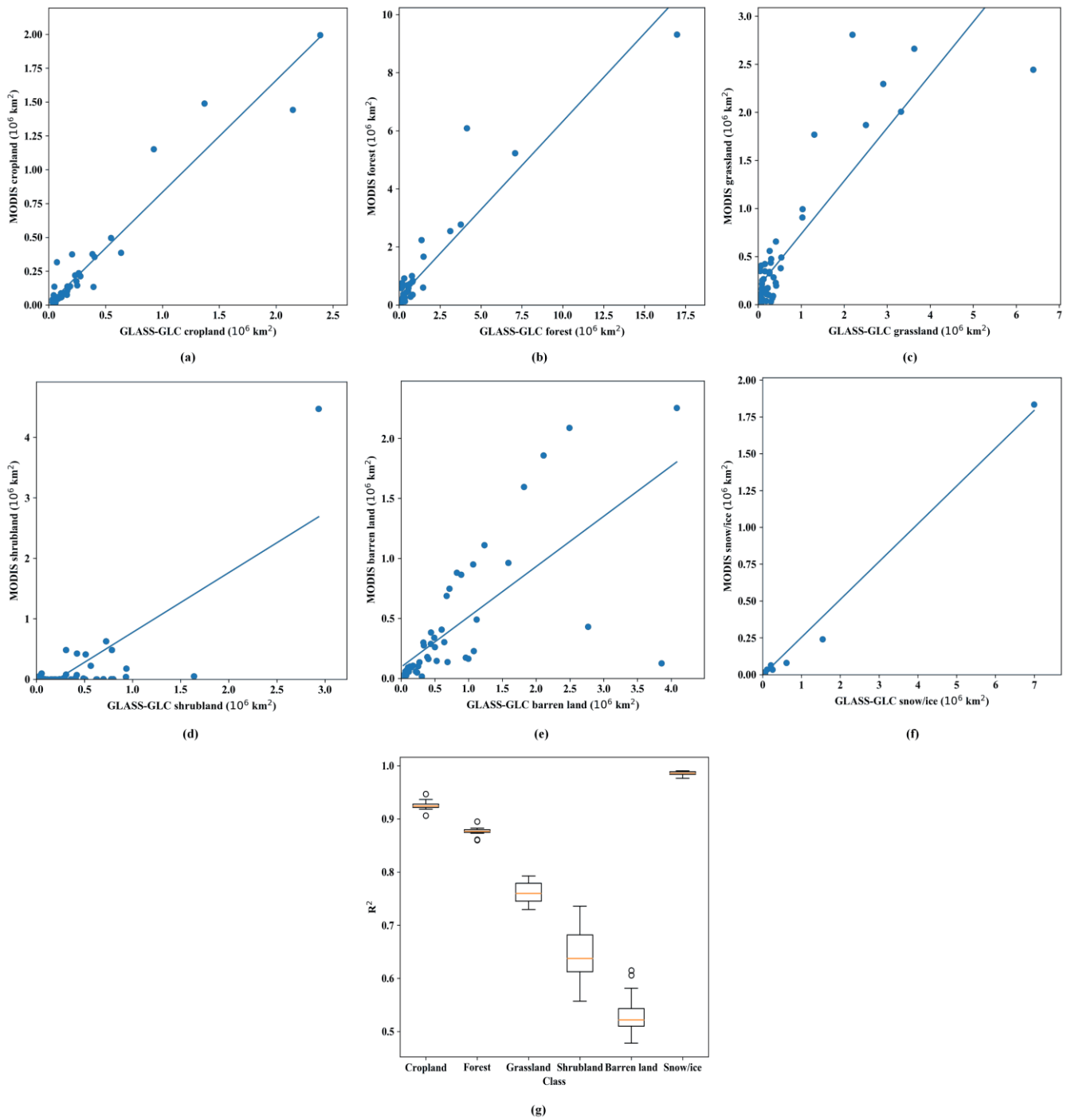
**Table 7: Classification accuracy of the MLCT (MODIS Land Cover Type) product in 2015 based on FLUXNET test samples.**

**(Overall accuracy = 82.10 %, UA = User's Accuracy and PA = Producer's Accuracy)**

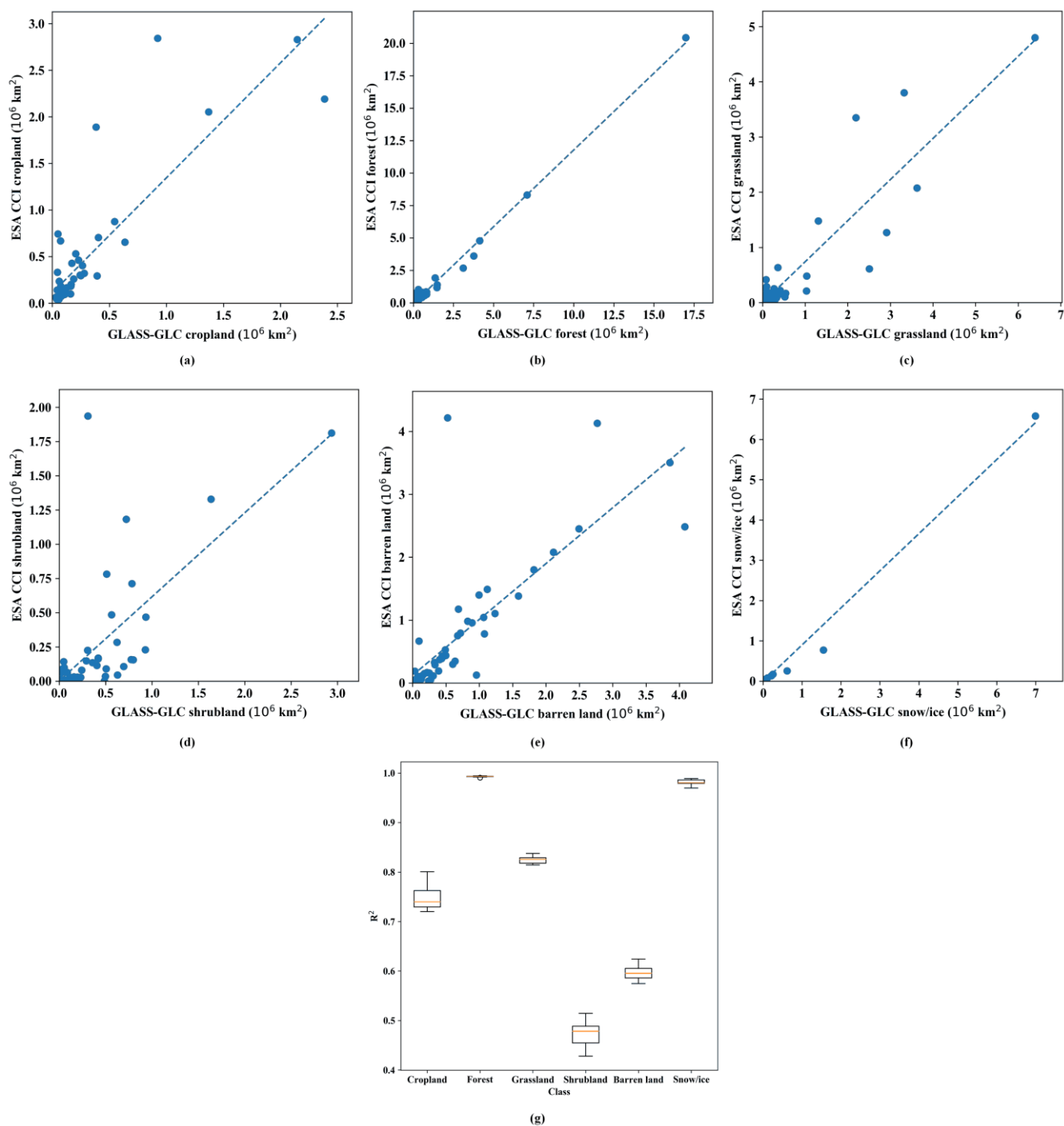
Class	Cropland	Forest	Grassland	Shrubland	Tundra	Barren land	Snow/ice	Total number	UA
Cropland	<b>7</b>	5	73	0	0	0	0	85	8.24%
Forest	1	<b>261</b>	5	0	0	0	0	267	97.75%
Grassland	1	15	<b>108</b>	1	0	0	0	125	86.40%
Shrubland	0	9	9	<b>11</b>	0	0	0	29	37.93%
Tundra	0	3	6	8	<b>0</b>	0	0	17	-
Barren land	0	0	1	0	0	<b>1</b>	0	2	50.00%
Snow/ice	0	0	0	0	0	0	<b>0</b>	0	-
Total number	9	293	202	20	0	1	0	<b>525</b>	
PA	77.78%	89.08%	53.47%	55.00%	-	100.00%	-		<b>73.90%</b>

**Table 8: Classification accuracy of the ESA-CCI (European Space Agency Climate Change Initiative) land cover product in 2015 based on FLUXNET test samples. (Overall accuracy = 82.10 %, UA = User's Accuracy and PA = Producer's Accuracy)**

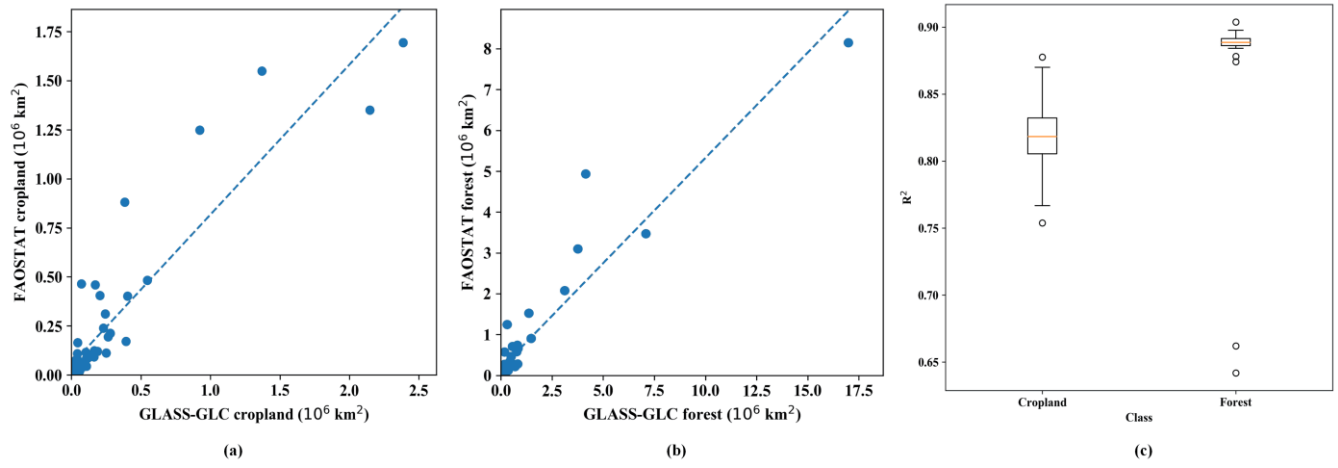
Class	Cropland	Forest	Grassland	Shrubland	Tundra	Barren land	Snow/ice	Total number	UA
Cropland	<b>81</b>	1	4	0	0	0	0	86	94.19%
Forest	11	<b>246</b>	4	5	0	1	0	267	92.13%
Grassland	28	7	<b>76</b>	5	0	8	0	124	61.29%
Shrubland	2	7	1	<b>19</b>	0	0	0	29	65.52%
Tundra	0	3	9	0	<b>0</b>	5	0	17	-
Barren land	0	0	2	0	0	<b>0</b>	0	2	0.00%
Snow/ice	0	0	0	0	0	0	<b>0</b>	0	-
Total number	122	264	96	29	0	14	0	<b>525</b>	
PA	66.39%	93.18%	79.17%	65.52%	-	0.00%	-		<b>80.38%</b>



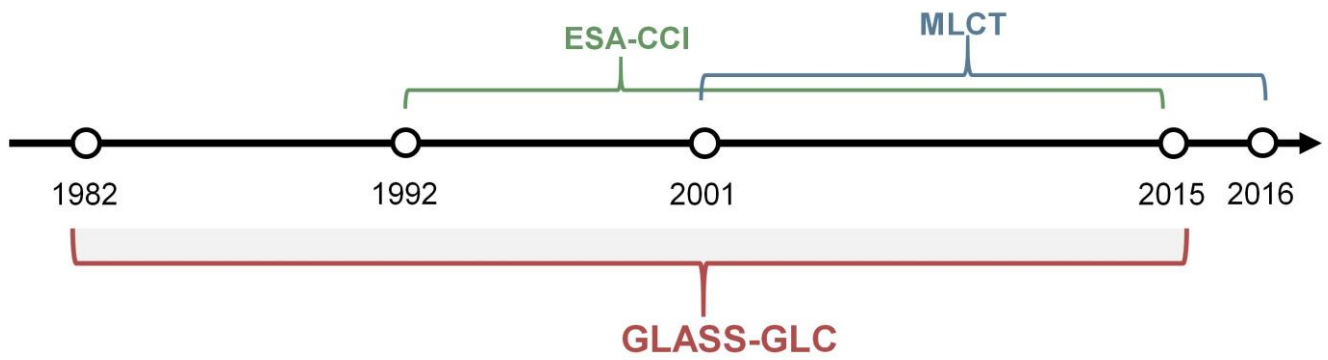
850 **Figure 5: Inter-comparison with the MLCT (MODIS Land Cover Type) product, (a) cropland circa 2015, (b) forest circa 2015, (c) grassland circa 2015, (d) shrubland circa 2015, (e) barren land circa 2015 and (f) snow/ice circa 2015; (g) mean  $R^2$  of the annual linear fit lines for all years (2001-2015).**



855 **Figure 6: Inter-comparison with the ESA-CCI (European Space Agency Climate Change Initiative) land cover product, (a) cropland circa 2015, (b) forest circa 2015, (c) grassland circa 2015, (d) shrubland circa 2015, (e) barren land circa 2015 and (f) snow/ice circa 2015; (g) mean  $R^2$  of the annual linear fit lines for all years (1992-2015).**



860 **Figure 7: Inter-comparison with the FAOSTAT data set, (a) cropland circa 2015, (b) forest circa 2015, (c) mean  $R^2$  of the annual linear fit lines of cropland for years 1982-2015 and forest for years 1990-2015.**



**Figure 8: The duration of different land cover products, including GLASS-GLC (annual dynamics of global land cover), MLCT (MODIS Land Cover Type), and ESA-CCI (European Space Agency Climate Change Initiative) land cover products.**



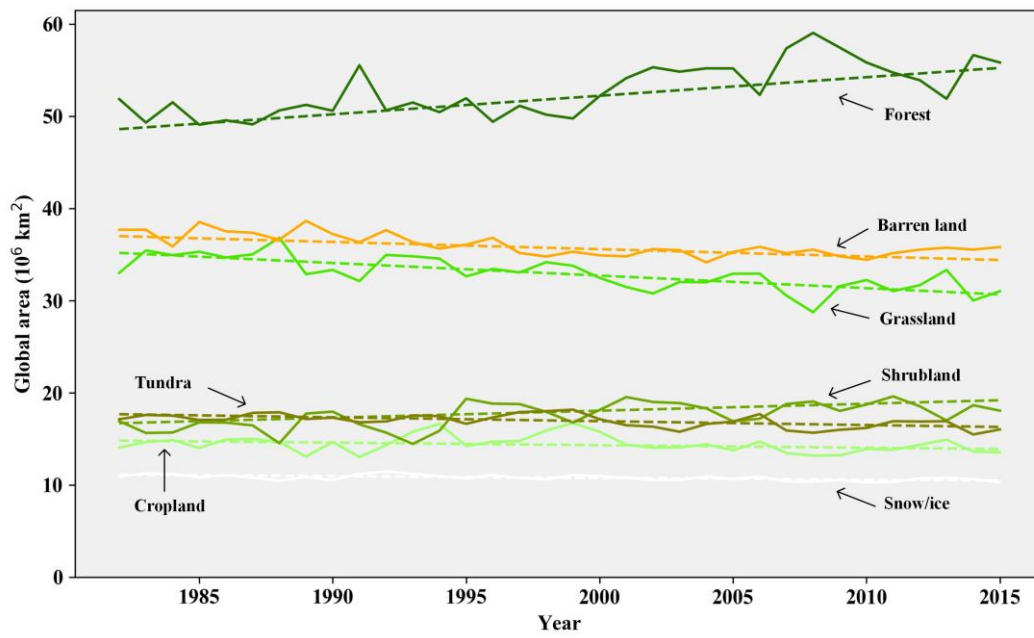


Figure 9: Area curves of global annual land cover change from 1982 to 2015.

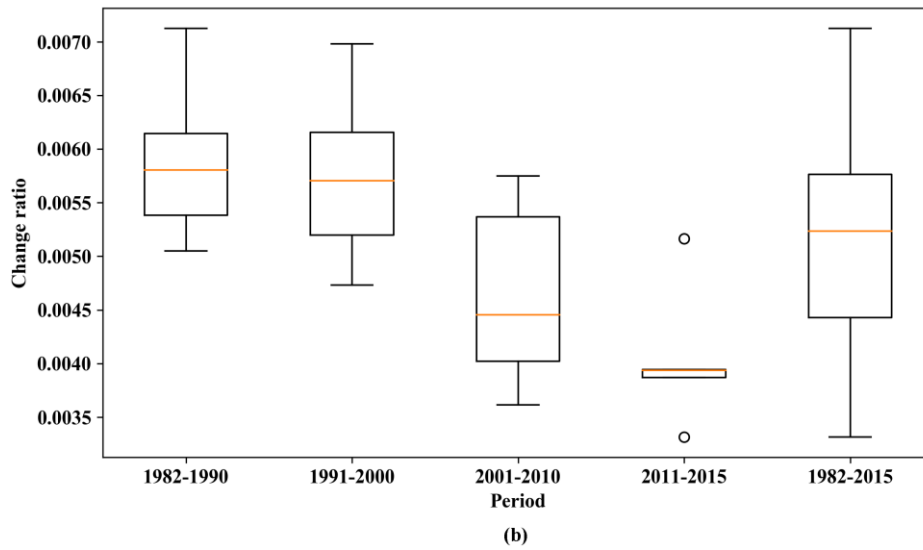
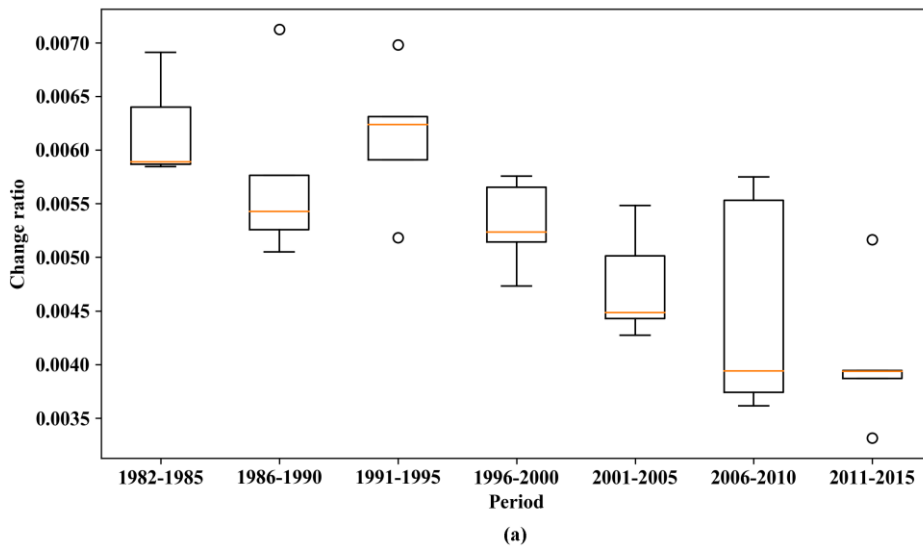
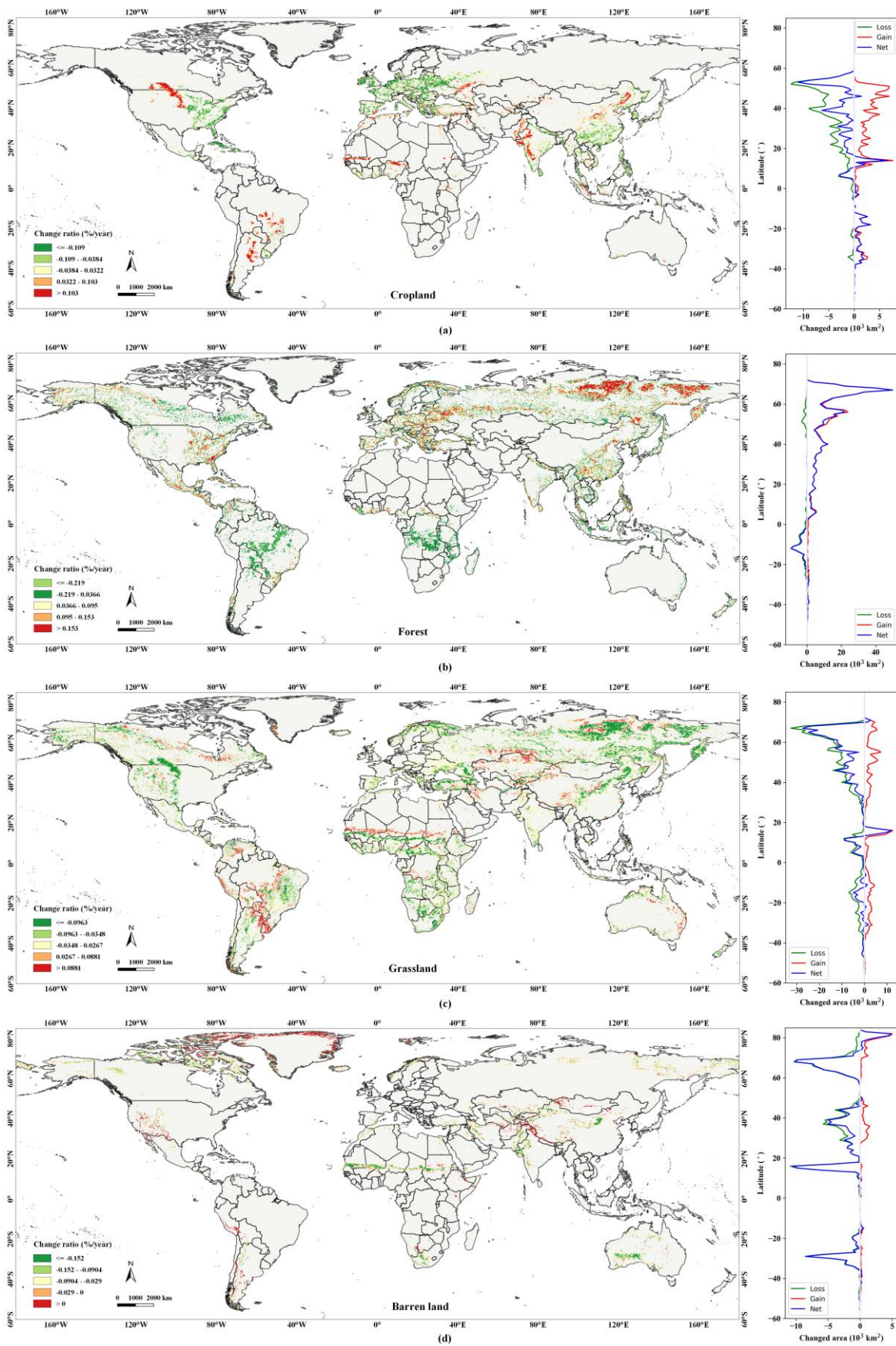


Figure 10: Comparison and distribution of ratios of annual global land cover change (LCC) to the global total terrestrial land cover (LC) area by different time periods and time intervals (a) 5-year interval, (b) 10-year interval. The box extends from the first quartile (Q1) to third quartile (Q3) values of the data, with an orange line at the median. The upper whisker extends to the last datum less than  $Q3 + 1.5 * IQR$ , and the lower whisker extends to the first datum greater than  $Q1 - 1.5 * IQR$ . Flier points are those past the end of the whiskers.



**Figure 11: The geographical distribution of global regions with significant land cover change during 1982-2015, and the summarized results along latitudinal gradients for each class, (a) cropland, (b) forest, (c) grassland, and (d) barren land.**

**Table 9: Statistical results of change analysis for cropland (on the scale of continents). Annual change slope and its 95 % confidence interval are given by Thei-sen estimator, p-value, and trend information from a Mann-Kendall test. Gain and Loss areas are summarized results relating to the whole time series.**

Continent	Slope ( $10^3$ km <sup>2</sup> /year)	Lower ( $10^3$ km <sup>2</sup> /year)	Upper ( $10^3$ km <sup>2</sup> /year)	p	Trend	Gain ( $10^3$ km <sup>2</sup> )	Loss ( $10^3$ km <sup>2</sup> )
Africa	5.3	1.5	10.0	0.0099	increasing	23	-6
Asia	-1.7	-9.2	7.1	0.6999	no trend	67	-70
Europe	-30.4	-43.6	-17.9	0.0005	decreasing	12	-99
North America	-4.9	-10.9	2.8	0.1635	no trend	37	-54
South America	9.1	2.1	19.3	0.0108	increasing	35	-4
Oceania	-0.5	-1.8	0.6	0.3580	no trend	1	-1
Global	-27.5	-54.7	3.1	0.0968	no trend	175	-238

**Table 10: Statistical results of change analysis for forest (on the scale of continents). Annual change slope and its 95 % confidence interval are given by Thei-sen estimator, p-value, and trend information from a Mann-Kendall test. Gain and Loss areas are summarized results relating to the whole time series.**

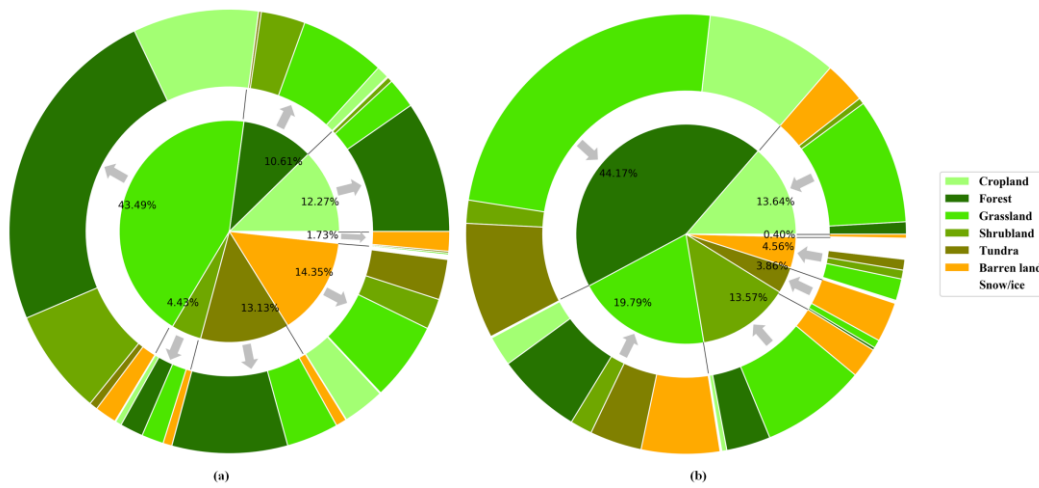
Continent	Slope ( $10^3$ km <sup>2</sup> /year)	Lower ( $10^3$ km <sup>2</sup> /year)	Upper ( $10^3$ km <sup>2</sup> /year)	p	Trend	Gain ( $10^3$ km <sup>2</sup> )	Loss ( $10^3$ km <sup>2</sup> )
Africa	-8.4	-18.6	2.6	0.1463	no trend	15	-29
Asia	128.6	86.8	165.0	0.0000	increasing	365	-12
Europe	53.1	34.9	67.4	0.0000	increasing	131	-1
North America	45.1	24.7	65.0	0.0000	increasing	132	-16
South America	-10.8	-19.6	-1.4	0.0242	decreasing	23	-49
Oceania	1.4	-0.1	2.6	0.0802	no trend	6	-1
Global	201.3	120.9	278.1	0.0000	increasing	680	-109

**Table 11: Statistical results of change analysis for grassland (on the scale of continents). Annual change slope and its 95 % confidence interval are given by Thei-sen estimator, p-value, and trend information from a Mann-Kendall test. Gain and Loss areas are summarized results relating to the whole time series.**

Continent	Slope ( $10^3$ km <sup>2</sup> /year)	Lower ( $10^3$ km <sup>2</sup> /year)	Upper ( $10^3$ km <sup>2</sup> /year)	p	Trend	Gain ( $10^3$ km <sup>2</sup> )	Loss ( $10^3$ km <sup>2</sup> )
Africa	-18.9	-36.4	3.0	0.0855	no trend	50	-108
Asia	-52.7	-67.1	-38.1	0.0000	decreasing	85	-315
Europe	-11.8	-21.7	-2.0	0.0207	decreasing	6	-59
North America	-39.6	-48.4	-26.9	0.0000	decreasing	25	-114
South America	-16.1	-29.0	-4.7	0.0070	decreasing	68	-54
Oceania	-4.6	-9.5	0.7	0.1029	no trend	9	-11
Global	-136.6	-172.9	-86.4	0.0000	decreasing	246	-663

**Table 12: Statistical results of change analysis for barren land (on the scale of continents). Annual change slope and its 95 % confidence interval are given by Thei-sen estimator, p-value, and trend information from a Mann-Kendall test. Gain and Loss areas are summarized results relating to the whole time series.**

Continent	Slope ( $10^3$ km <sup>2</sup> /year)	Lower ( $10^3$ km <sup>2</sup> /year)	Upper ( $10^3$ km <sup>2</sup> /year)	p	Trend	Gain ( $10^3$ km <sup>2</sup> )	Loss ( $10^3$ km <sup>2</sup> )
Africa	-26.1	-37.4	-17.7	0.0000	decreasing	2	-43
Asia	-28.3	-40.6	-18.1	0.0000	decreasing	12	-82
Europe	-2.8	-3.5	-1.8	0.0000	decreasing	0	-6
North America	-8.8	-21.3	-1.0	0.0353	decreasing	26	-49
South America	1.6	-2.3	5.3	0.3737	no trend	4	-5
Oceania	-16.8	-32.2	4.0	0.1161	no trend	0	-25
Global	-78.5	-116.4	-48.8	0.0001	decreasing	48	-213

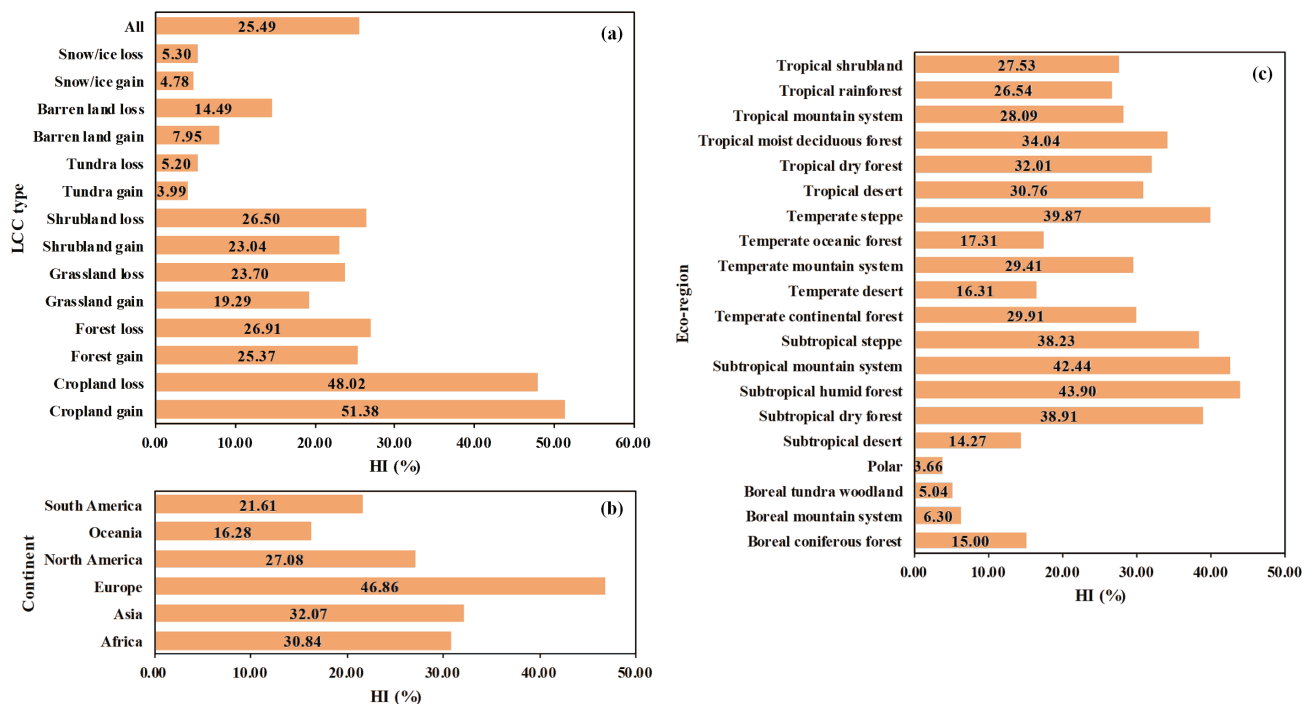


**Figure 12: Land cover conversions with significant land cover change (LCC) between 1982 and 2015, The inner pie in (a) shows the percentages of different gross gain for each land cover, and the outer ring indicates which land cover the gross gain came from. The inner pie in (b) shows the percentage of different gross loss for each land cover, and the outer ring indicates which land cover the gross loss went to.**

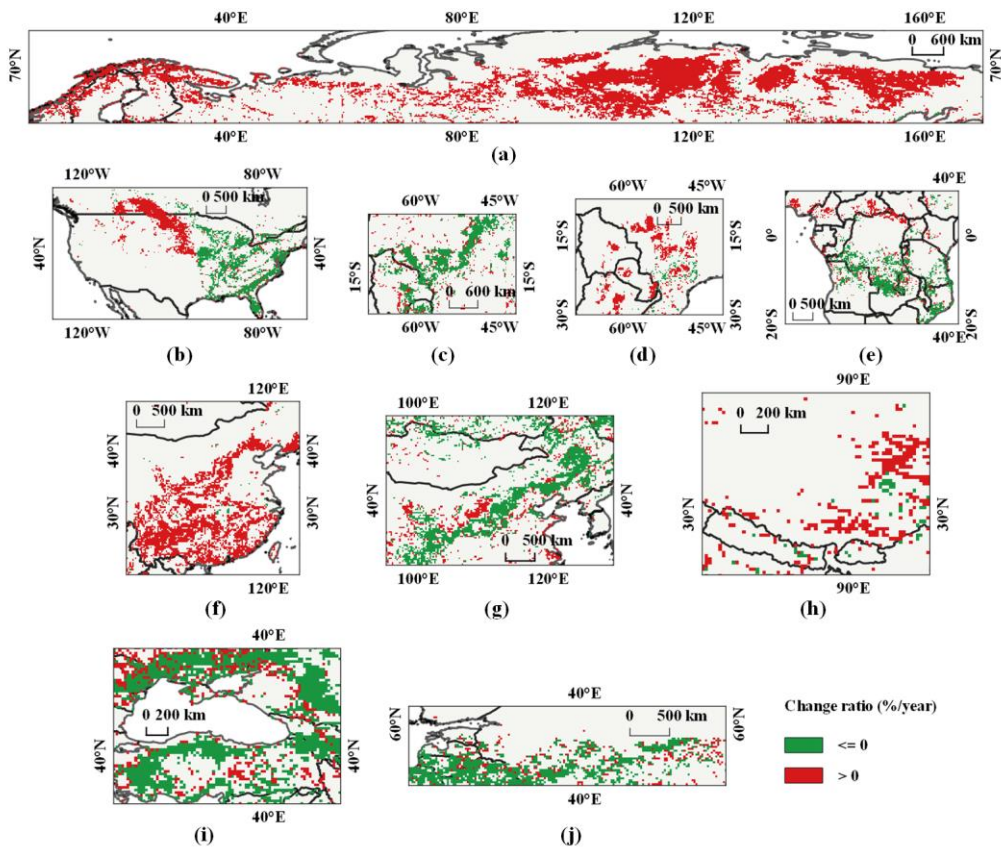


**Table 13: Area ratio (%) of land cover conversions from 1982 to 2015, where the red color denotes a higher ratio, and the blue color represents a lower ratio.**

Class		2015						
		Cropland	Forest	Grassland	Shrubland	Tundra	Barren land	Snow/ice
1982	Cropland	-	9.6	2.22	0.37	0	0.09	0
	Forest	0.9	-	6.26	3.24	0.19	0.01	0.01
	Grassland	9.22	24.27	-	7.73	0.6	1.6	0.06
	Shrubland	0.45	1.7	1.62	-	0	0.66	0
	Tundra	0	8.48	3.82	0	-	0.79	0.04
	Barren land	3.07	0.07	5.75	2.23	2.93	-	0.29
	Snow/ice	0	0.05	0.13	0	0.13	1.43	-



**Figure 13: The mean human impact (HI) of regions with significant land cover change on the scale of (a) LCC, (b) continents, and (c) eco-regions.**



915 **Figure 14: Visualization of local hotspots of land cover change, (a) north Eurasia, forest, (b) Great Plains of Central North America, cropland, (c) South America, forest, (d) South America, cropland, (e) Africa, forest, (f) China, forest, (g) Mongolia and Inner Mongolia of China, grassland, (h) Qinghai-Tibet Plateau, grassland, (i) central Asia, grassland, (j) the former Soviet Union in Eastern Europe, cropland.**