

The PROFOUND database for evaluating vegetation models and simulating climate impacts on European forests

Christopher P.O. Reyer¹, Ramiro Silveyra Gonzalez¹, Klara Dolos², Florian Hartig³, Ylva Hauf¹, Matthias Noack⁴, Petra Lasch-Born¹, Thomas Rötzer⁵, Hans Pretzsch⁵, Henning Meesenburg⁶, Stefan Fleck⁶, Markus Wagner⁶, Andreas Bolte⁷, Tanja GM Sanders⁷, Pasi Kolari⁸, Annikki Mäkelä⁸, Timo Vesala⁸, Ivan Mammarella⁸, Jukka Pumpanen⁹, Alessio Collalti^{10, 11}, Carlo Trotta¹¹, Giorgio Matteucci¹², Ettore D'Andrea¹², Lenka Foltýnová¹³, Jan Krejza¹³, Andreas Ibrom¹⁴, Kim Pilegaard¹⁴, Denis Loustau¹⁵, Jean-Marc Bonnefond¹⁵, Paul Berbigier¹⁵, Delphine Picart¹⁵, Sébastien Lafont¹⁵, Michael Dietze¹⁶, David Cameron¹⁷, Massimo Vieno¹⁸, Hanqin Tian¹⁹, Alicia Palacios-Orueta²⁰, Victor Cicuendez²⁰, Laura Recuero²⁰, Klaus Wiese²⁰, Matthias Büchner¹, Stefan Lange¹, Jan Volkholz¹, Hyungjun Kim²¹, Joanna A. Horemans²², Friedrich Bohn²³, Jörg Steinkamp²⁴, Alexander Chikalanov²⁵, Graham P. Weedon²⁶, Justin Sheffield²⁷, Flurin Babst^{28,29}, Iliusi Vega del Valle¹, Felicitas Suckow¹, Simon Martel¹⁶, Mats Mahnken¹, Martin Gutsch¹, Katja Frieler¹

¹Potsdam Institute for Climate Impact Research, Member of the Leibniz Association, P.O. Box 601203, D-14412 Potsdam, Germany

²Karlsruhe Institute of Technology (KIT), Karlsruhe, Germany

³University of Regensburg, Regensburg, Germany

⁴Fachagentur Nachwachsende Rohstoffe e.V. (FNR), Gülzow-Prüzen, Germany

⁵Technical University of Munich, Munich, Germany

⁶Northwest German Forest Research Institute, Göttingen, Germany

⁷Thünen Institute of Forest Ecosystems, 16225 Eberswalde, Germany

⁸University of Helsinki, Helsinki, Finland

⁹University of Eastern Finland, Kuopio, Finland

¹⁰National Research Council of Italy, Institute for Agriculture and Forestry Systems in the Mediterranean, Perugia (PG), Italy

¹¹Department of Innovation in Biological, Agro-food and Forest System, University of Tuscia, 01100 Viterbo, Italy

¹²National Research Council of Italy, Institute for Agriculture and Forestry System in the Mediterranean, Ercolano (NA), Italy

¹³Global Change Research Institute, Brno, Czech Republic

¹⁴Technical University of Denmark, Lyngby, Denmark

¹⁵French National Institute for Agricultural Research, Bordeaux, France

¹⁶Boston University, Boston, USA

¹⁷Centre for Ecology and Hydrology, Edinburgh, United Kingdom

¹⁸Centre for Ecology and Hydrology, Lancaster, United Kingdom

¹⁹Auburn University, Auburn, United States

²⁰Technical University of Madrid, Madrid, Spain

²¹University of Tokyo, Tokyo, Japan

²²Centre of Excellence PLECO, University of Antwerpen, Antwerpen, Belgium

²³Helmholz Center for Environmental Research, Leipzig, Germany

²⁴Senckenberg Biodiversity and Climate Research Centre, Senckenberg, Germany

²⁵University of Library Study and Information Technology, Sofia, Bulgaria

²⁶Met Office, Wallingford, UK

²⁷Princeton University, Dept. Civil & Environ. Eng., Princeton, NJ 08544, USA

²⁸W. Szafer Institute of Botany, Department of Ecology, Polish Academy of Sciences, Krakow, Poland

²⁹Swiss Federal Research Institute WSL, Birmensdorf, Switzerland

Correspondence to: Christopher P.O. Reyer (reyer@pik-potsdam.de)

Abstract

Process-based vegetation models are widely used to predict local and global ecosystem dynamics and climate change impacts. Due to their complexity, they require careful parameterization and evaluation to ensure that projections are accurate and reliable. The PROFOUND Database (PROFOUND DB) provides a wide range of empirical data on European forests to calibrate and evaluate vegetation models that simulate climate impacts at the forest stand scale. A particular advantage of this database is its wide coverage of multiple data sources at different hierarchical and temporal scales, together with environmental driving data as well as the latest climate scenarios. Specifically, the PROFOUND DB provides general site descriptions, soil, climate, CO₂, nitrogen deposition, tree and forest stand-level, as well as remote sensing data for nine contrasting forest stands distributed across Europe. Moreover, for a subset of five sites, time series of carbon fluxes, atmospheric heat conduction, and soil water are also available. The climate and nitrogen deposition data contain several datasets for the historic period and a wide range of future climate change scenarios following the Representative Concentration Pathways (RCP2.6, RCP4.5, RCP6.0, RCP8.5). We also provide pre-industrial climate simulations that allow for model runs aimed at disentangling the contribution of climate change to observed forest productivity changes. The PROFOUND DB is available freely as a ‘SQLite’ relational database or ‘ASCII’ flat file version (at <http://doi.org/10.5880/PIK.2020.006/>, Reyer et al., 2020). The data policies of the individual, contributing datasets are provided in the metadata of each data file. The PROFOUND DB can also be accessed via the ProfoundData R-package (<https://CRAN.R-project.org/package=ProfoundData>, Silveyra Gonzalez et al., 2020), which provides basic functions to explore, plot, and extract the data for model set-up, calibration and evaluation.

20 Keywords:

climate change, forest models, model validation, multiple constraints, process-based models, benchmarking, calibration

1. Copyright statement

To be included by Copernicus

2. Introduction

Process-based models are key tools for understanding systems and forecasting climate change impacts in ecology and Earth system science (Schellnhuber, 1999). Vegetation is a crucial component of the Earth system, and forests are particularly relevant through their influence on hydrological and biogeochemical cycles, biodiversity and ecosystem services. Process-based vegetation models are used as diagnostic tools to disentangle the influence of different environmental and human drivers on biogeochemical cycling as well as vegetation structure from local, plot-level (Eastaugh et al., 2011; Fontes et al., 2010; Pretzsch et al., 2015; Tiktak and van Grinsven, 1995) to global scales (Chang et al., 2017; Ito et al., 2017). At the same time these models are also the main tools to project climate change impacts on vegetation under changing environmental conditions, again from local (Reyer 2015; Rötzer et al., 2013) to global levels (Zhu et al., 2016).

With increasing model complexity, the inclusion of more and more processes and models being increasingly used to as tools for making quantitative projections for policy and management, there is a strong need to install some quality control on their performance. A basic requirement would be that models are actually able to match observed data. Moreover, while informal methods for calibration and model comparisons were often used in the past, the community has shifted in recent years towards more formal statistical methods for such tasks (Dietze et al., 2013; Hartig et al., 2012), which creates a need for systematic benchmarking data. For all these tasks, the availability of a wide range of data types crossing different spatial-temporal scales is generally viewed as beneficial (Grimm and Railsback, 2012).

The process of formal calibration, comparison and evaluation of complex vegetation models is often hindered by the availability and the harmonization of suitable data. The data necessary to drive a vegetation model is often complex, and needs to be compiled from different data sources (e.g. Bagnara et al., 2019). In particular for model comparisons, besides data for the evaluation of individual models, common input and driving data for process-based vegetation models are needed to ensure fair comparisons between the participating models. Although model comparisons have a long tradition in vegetation modeling (Cramer et al., 1999, 2001; Bugmann et al., 1996, Morales et al., 2005), they have often been limited by overall data availability and comparability. Common databases that are ready-to-use for thorough model evaluation would allow the community to gain a better appreciation of model differences, explore structural uncertainties, and provide a basis for more systematic ensemble projections of climate impacts.

Recently, several initiatives have started compiling model evaluation, input or driving data for a wide range of applications of process-based vegetation models (Huntzinger et al., 2013; Kelley et al., 2013; Warszawski et al., 2014; Sitch et al., 2015). Although these initiatives have leveraged important scientific progress, many of them have focussed on the global scale, mostly providing input and driving data from global products. Such global products generally lack the breadth and depth of process-level detail required to rigorously assess model performance. The database for the project “Towards robust PROjections of european FOrests UNDer climate change” (hereafter PROFOUND DB) described here, aims to bring together data from a wide range of data sources to evaluate vegetation models and simulate climate impacts at the forest stand scale. It has been designed to fulfil two objectives:

- To allow for a thorough evaluation of complex, process-based vegetation models using multiple data streams covering a range of processes at different temporal scales
- To allow for climate impact assessments by providing the latest climate scenario data.

The PROFOUND DB only provides data for individual forest stands but contains a number of elements that are designed to foster comparison of both global/regional models and local models. The climate data, for example, are provided locally (or bias-corrected using local data) in the same way that stand-scale vegetation models would need them and also extracted from global gridded datasets that global vegetation models would use. The PROFOUND DB is also designed to allow for disentangling of uncertainties that affect quantitative model predictions in ecology (cf. Lindner et al., 2014; Dietze, 2017 for an explanation of different uncertainty types), for example by facilitating standardized evaluations of structural or process uncertainties via model comparisons. Model input and driver uncertainty are addressed through a wide range of climate data from different sources, covering the full range of Representative Concentration Pathways (RCPs). Collalti et al. (2018, 2019) for example, have used the PROFOUND DB to study the effects of thinning on carbon use efficiency across a combination of all four RCPs and five Global Climate Models. Finally, parametric uncertainty can be assessed through the wide range of data that can be used for inverse calibration. In the following we describe the main components of the PROFOUND DB (Reyer et al., 2020) and an R-Package (Silveyra Gonzalez et al., 2020) developed to explore the database and allow rapid and easy access for modellers.

3. The PROFOUND database

3.1. Forest Site Selection and Concept

The forest sites featured in the PROFOUND DB were selected to provide a wide array of data sources across a European gradient. We focussed in particular on providing long time series of tree- and stand-level growth and yield as well as carbon cycle data available from eddy-flux measurements because these variables are most commonly in calibrating and evaluating process-based vegetation models. The selected sites spread along a wide climatic gradient across Europe (Figure 1, Table 3) and cover some of the most common European forest types, as well as the main central European forest management history of favouring mono-specific, even-aged forests or mixtures of two tree species.

We compiled the data from existing data sources and collected the definitions of variables, their units and information about the main measurement methods from the site principal investigators (PIs) and from official descriptions of the data to harmonize the variables as much as possible. The overall guiding principle for the compilation of the data was to provide data that can be easily used by modellers for setting up and evaluating their models. In order to allow for data uncertainty to be reflected in model calibration studies, we also included uncertainty estimates for the measured data, such as those available for carbon flux measurements (cf. Sect.3.2.9), wherever possible.

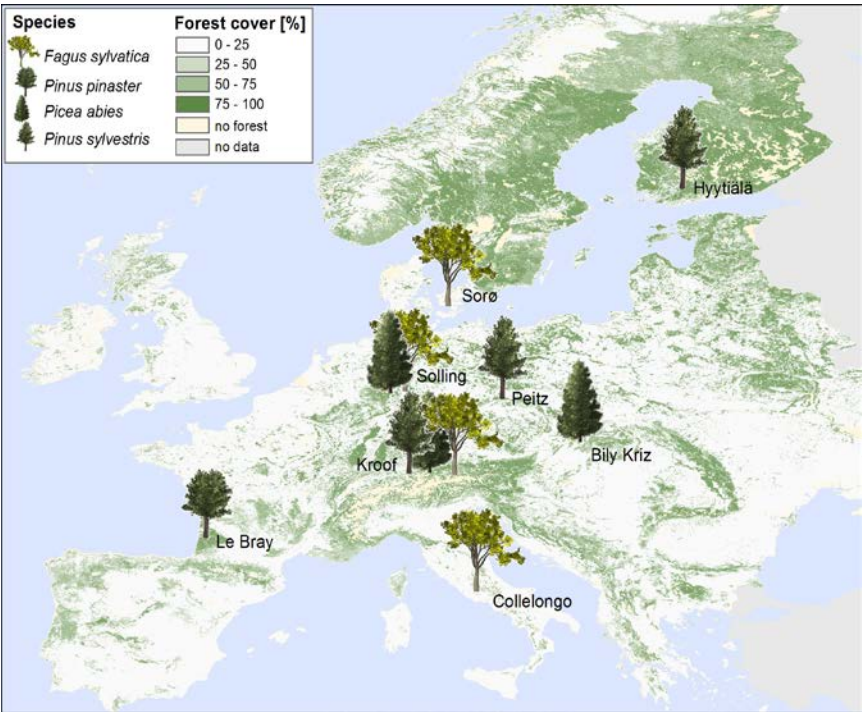


Figure 1: Location of forest sites and main tree species. Background shows the European forest cover after Brus et al. (2012).

3.2. Data sources

The PROFOUND DB provides information on the site, soil, and forest stand as well as data for climate, atmospheric CO₂ concentration, nitrogen deposition, carbon fluxes, atmospheric heat conduction, and remote sensing at a range of different temporal resolutions (i.e., from 30 minutes to decadal measurements). Table 1 provides an overview of the different data types and their temporal resolution available in the PROFOUND DB. All variables available are listed in the SOM tables 1-13. In the following we describe how the individual subdatasets of the PROFOUND DB have been brought together and describe the key variables and characteristics of each dataset.

Table 1: Overview of the data available in the PROFOUND DB. The years indicate the first and the last year for which data is available except for once-off measurements. The superscript letters indicate the temporal resolution of the data: O = one-off measurement(s), M = 30-min measurements; D = daily measurements; C = 8-day or 16-day composite, A = annual measurements.

	Bily Kriz	Collelongo	Hyttiälä	KROOF	Le Bray	Peitz	Solling	Sorø
Soil	2011 ^O	1995/2008 ^O	1995/1996 ^O	2003/2004 ^O	1995/2003/ 2004/2005 ^O	2011 ^O	2010 ^O	1997/2004/ 2006 ^O
Local climate	2000-2008 ^D	1996-2014 ^D	1996-2014 ^D	1998- 2010 ^D	1996-2008 ^D	1901-2010 ^D	1960-2013 ^D	1996- 2012 ^D
Reanalysis climate	1901-2012 ^D	1901-2012 ^D	1901-2012 ^D	1901-2012 ^D	1901-2012 ^D	1901-2012 ^D	1901-2012 ^D	1901- 2012 ^D
Climate scenarios (ISIMIP2b)	1661-2299 ^D	1661-2299 ^D	1661-2299 ^D	1661-2299 ^D	1661-2299 ^D	1661-2299 ^D	1661-2299 ^D	1661- 2299 ^D
Climate scenarios (ISIMIPFT)	1950-2099 ^D	1950-2099 ^D	1950-2099 ^D	1950-2099 ^D	1950-2099 ^D	1950-2099 ^D	1950-2099 ^D	1950- 2099 ^D
Atmospheric CO ₂	1765-2500 ^A	1765-2500 ^A	1765-2500 ^A	1765-2500 ^A	1765-2500 ^A	1765-2500 ^A	1765-2500 ^A	1765- 2500 ^A
Nitrogen deposition (ISIMIP2b)	1861-2100 ^A	1861-2100 ^A	1861-2100 ^A	1861-2100 ^A	1861-2100 ^A	1861-2100 ^A	1861-2100 ^A	1861- 2100 ^A
Nitrogen deposition (EMEP)	1980-2014 ^A	1980-2014 ^A	1980-2014 ^A	1980-2014 ^A	1980-2014 ^A	1980-2014 ^A	1980-2014 ^A	1980- 2014 ^A
Forest tree data	1997-2015 ^A	1992-2012 ^A	2001-2008 ^A	1997-2010 ^A	-	1948-2011 ^A	1967-2014 ^A	1994- 2017 ^A
Forest stand data	1997-2015 ^A	1992-2012 ^A	1995-2011 ^A	1997-2010 ^A	1986-2009 ^A	1937-2011 ^A	1967-2014 ^A	1994- 2017 ^A
MODIS	2000-2014 ^C	2000-2014 ^C	2000-2014 ^C	2000-2014 ^C	2000-2014 ^C	2000-2014 ^C	2000-2014 ^C	2000-2014 ^C
Flux	2000-2008 ^M	1996-2014 ^M	1996- 2014 ^M	-	1996- 2008 ^M	-	-	1996- 2012 ^M
Meteorologic al	2000-2008 ^M	1996-2014 ^M	1996- 2014 ^M	-	1996- 2008 ^M	-	-	1996- 2012 ^M
Atmospheric heat conduction	2000-2008 ^M	1996-2014 ^M	1996- 2014 ^M	-	1996- 2008 ^M	-	-	1996- 2012 ^M
Soil flux series	2000-2008 ^M	1996-2014 ^M	1996- 2014 ^M	-	1996- 2008 ^M	-	-	1996- 2012 ^M

3.2.1. Site information

For each forest site, the PROFOUND DB contains information on general site characteristics such as coordinates, elevation and forest type (Table 2). There is also information on the potential natural vegetation and main tree species belonging to the regional flora (not shown).

5 **Table 2: Overview of the main site characteristics provided for each forest site in the PROFOUND DB.**

Name	Lat	Lon	Country	Aspect (°)	Elevation (m.a.s.l.)	Slope (%)	FAO Soil type*	Main tree species
Bily Kriz	49.30	18.32	CZ	180	875	12.5	Haplic Podzol	<i>Picea abies</i>
Collelongo	41.85	13.59	IT	252	1560	10	Dystric Luvisol	<i>Fagus sylvatica</i>
Hyttiälä	61.85	24.29	FI	180	185	2	Haplic Podzol	<i>Pinus sylvestris</i> , <i>Picea abies</i>
KROOF	48.25	11.40	DE	1.8	502	2.1	Luvisol	<i>Picea abies</i> , <i>Fagus sylvatica</i>
Le Bray	44.72	-0.77	FR	-	61	0	Arenosol	<i>Pinus pinaster</i>
Peitz	51.92	14.35	DE	-	50	0	Dystric Cambisol	<i>Pinus sylvestris</i>
Solling (beech)	51.77	9.57	DE	225	504	1	Haplic Cambisol	<i>Fagus sylvatica</i>
Solling (spruce)	51.76	9.58	DE	90	508	1	Haplic Cambisol (dystric, densic)	<i>Picea abies</i>
Sorø	55.49	11.64	DK	-	40	0	Alfisols/Molisols**	<i>Fagus sylvatica</i>

*according to ISSS-ISRIC-FAO (1998).

**depending on base saturation under or over 50% with a 10-40 cm deep organic layer (cf. Pilegaard et al. 2003)

3.2.2. Soil data

The description of the soil profiles contains information about physical and chemical properties of each soil horizon including the organic layer. Unfortunately the soil data are very heterogeneous for the sites and considerable amounts of data are missing. In order not to lose the data that is available for only a subset of sites, we did not harmonize the individual variables but for each site provide the soil data in a consistent format. Despite these limitations, for most sites important soil data such as the

depth of horizons, soil texture, bulk density, field capacity, wilting point, carbon and nitrogen content and pH of the soil solution are available (cf. SOM Table 2).

3.2.3. Local climate

5 For every site we compiled the locally observed daily meteorological data, either from measurement towers or from nearby meteorological stations. These time series cover the main climatic variables required by vegetation models and different time periods for each site (Table 3). They represent the best possible climate information for each site and are most suitable for model simulations comparing simulation output to observations.

3.2.4. Reanalysis products

10 In order to cover longer historical time periods and to assess uncertainties due to the choice of different climate inputs, the PROFOUND DB also provides long historical daily climate time series for each of the sites extracted from four different global reanalysis/observational products:

- 15 • Princeton's Global Meteorological Forcing Dataset (PGMFD v.2, hereafter Princeton) from 1901-2012 by Sheffield et al. (2006)
- Global Soil Wetness Project Phase 3 (GSWP3) from 1901-2010 by Kim (Personal Communication, <http://hydro.iis.u-tokyo.ac.jp/GSWP3/>)
- Water and Global Change programme (WATCH) from 1901-2001 by Weedon et al. (2011)
- WATCH-Forcing-Data-ERA-Interim (WFDEI) from 1901-2010 by Weedon et al. (2014)

20 Climate variables for the forest stands were extracted from the $0.5^\circ \times 0.5^\circ$ grid cell of the global reanalysis/observational product in which the forest stand is located. The data is then kept at the original $0.5^\circ \times 0.5^\circ$ resolution to allow for comparing the effects of choosing climate inputs for a vegetation model from a global reanalysis product as opposed to the local data presented in Sect. 3.2.3. The difference between the local data and the reanalysis data is most obvious for those sites located in complex, hilly terrain such as Collelongo or KROOF (Table 2). In these hilly locations the grid box average heights of the reanalysis products differ substantially from the heights of the site measurements.

5 **Table 3. Averages of the daily maximum temperature (Tmax), daily minimum temperature (Tmin), daily mean temperature (Tmean), annual precipitation sum (P), daily mean relative humidity (RH), daily mean air pressure (AP), annual sum of global radiation (R, direct + diffuse shortwave radiation), and daily mean wind speed (W) for each of the sites in the PROFOUND DB from 5 different sources: a locally observed climate and four different global reanalysis/observational products (GSWP3, Princeton, WATCH, WFDEI). The column “Year” indicates the years for which the mean climates have been calculated for the different sources. Please note that the two Solling sites have the same climate.**

Site	Source	Years	Tmax [°C]	Tmean [°C]	Tmin [°C]	P [mm]	RH [%]	AP [hPa]	R [J cm ⁻²]	W [m s ⁻¹]
Bily Kriz	local	2000-2008	11.50	7.36	3.80	1434.56	81.99	913.19	378774.86	2.19
	GSWP3	2000-2008	12.65	7.66	3.03	1034.22	76.77	957.64	395464.73	3.71
	Princeton	2000-2008	12.47	7.67	2.85	914.89	78.77	960.22	402658.93	3.12
	WATCH	2000-2001	12.72	8.25	3.43	1124.52	75.08	948.34	322865.69	2.05
	WFDEI	2000-2008	12.43	7.66	2.81	1034.40	76.22	950.08	438978.13	3.25
Collelongo	local	1996-2014	11.46	7.24	3.46	1178.62	74.03	849.59	541888.38	1.73
	GSWP3	1996-2010	20.64	15.12	10.46	977.40	68.42	903.78	530247.74	3.83
	Princeton	1996-2012	20.28	15.17	10.09	757.99	73.76	944.66	539045.09	4.55
	WATCH	1996-2001	20.57	15.21	9.99	962.33	69.66	897.07	465115.41	2.11
	WFDEI	1996-2010	20.40	15.12	10.22	972.10	75.02	903.20	549826.57	2.40
Hyytiälä	local	1996-2014	7.40	4.36	1.13	604.01	77.95	991.08	309628.86	3.42
	GSWP3	1996-2010	8.03	4.00	-0.20	689.08	83.96	998.01	350511.52	3.42
	Princeton	1996-2012	7.88	4.06	-0.37	574.87	83.41	1007.97	330041.85	3.52
	WATCH	1996-2001	7.93	3.88	-0.17	690.02	81.29	993.85	280668.38	2.44
	WFDEI	1996-2010	7.97	4.00	-0.26	668.75	79.23	993.60	328551.11	2.12
KROOF	local	1998-2010	12.99	8.15	3.91	849.46	80.73	NA	391563.62	1.08
	GSWP3	1998-2010	14.43	9.65	5.23	1014.37	80.55	954.55	423260.65	3.04
	Princeton	1998-2010	14.15	9.66	4.95	772.08	82.05	935.11	433277.37	3.18
	WATCH	1998-2001	14.48	9.83	5.39	1061.27	76.35	959.58	337605.56	2.78
	WFDEI	1998-2010	14.41	9.65	5.22	976.78	76.67	954.13	431629.74	2.58
Le Bray	local	1996-2008	17.76	13.37	9.39	920.18	76.11	1005.81	472940.36	3.02
	GSWP3	1996-2008	19.06	14.23	9.63	918.76	73.90	1014.64	490253.28	4.90
	Princeton	1996-2008	18.62	14.24	9.19	951.01	80.41	989.70	484739.73	4.01

Site	Source	Years	Tmax [°C]	Tmean [°C]	Tmin [°C]	P [mm]	RH [%]	AP [hPa]	R [J cm ⁻²]	W [m s ⁻¹]
	WATCH	1996-2001	18.60	13.98	9.34	1095.65	74.66	1021.76	398738.50	4.28
	WFDEI	1996-2008	19.20	14.23	9.78	988.57	74.37	1011.63	512514.20	2.77
Peitz	local	1901-2010	13.50	9.02	4.93	533.10	76.37	1008.29	369794.74	2.35
	GSWP3	1901-2010	13.48	9.22	5.34	654.19	75.73	1007.39	365709.48	3.74
	Princeton	1901-2010	13.20	9.23	5.07	557.89	85.43	999.16	374370.83	3.51
	WATCH	1901-2001	13.36	9.06	5.20	601.44	76.93	1007.07	309797.89	2.79
	WFDEI	1901-2010	13.47	9.18	5.23	607.58	76.54	1006.45	335821.69	3.02
Solling	local	1960-2013	10.54	6.75	3.39	1113.06	85.56	NA	285026.90	1.01
	GSWP3	1960-2010	11.99	8.15	4.67	933.37	79.82	988.95	355905.60	3.95
	Princeton	1960-2012	11.76	8.20	4.42	734.76	85.55	995.05	364950.89	3.75
	WATCH	1960-2001	11.65	7.79	4.38	962.00	79.38	985.97	300414.77	2.74
	WFDEI	1960-2010	11.89	8.14	4.58	963.98	79.21	985.95	353096.37	3.36
Sorø	local	1996-2012	10.66	8.26	5.91	760.52	82.95	1007.71	360687.83	5.13
	GSWP3	1996-2010	11.56	9.00	6.58	773.57	78.73	1012.59	376613.02	5.86
	Princeton	1996-2012	11.45	9.03	6.44	584.58	81.19	1005.25	363852.90	4.98
	WATCH	1996-2001	11.08	8.46	6.26	560.00	82.54	1009.39	343133.71	5.66
	WFDEI	1996-2010	11.52	9.01	6.55	640.02	83.06	1009.50	408098.02	4.81

3.2.5. Climate scenarios

The PROFOUND DB provides climate scenarios based on simulations performed for CMIP5 (<https://cmip.llnl.gov/cmip5/>) that were bias-corrected and interpolated to a common grid resolution of $0.5^\circ \times 0.5^\circ$ according to Hempel et al. (2013). The climate variables for each site available were extracted from the grid cell of the downscaled climate forcing dataset in which the forest plot is located. The data can be used in very different ways by the vegetation modelling community:

- The ‘ISIMIP Fast Track’ scenarios (ISIMIPFT) consist of daily climate data available from five different Global Climate Models (GCMs) (HadGEM2-ES, IPSL-CM5A-LR, MIROC-ESM-CHEM, GFDL-ESM2M and NorESM1-M.) for all four RCPs (Warszawski et al. 2014). The historical period lasts from 1950-2005 and then splits up into the four RCPs from 2006-2099 for each model. The RCPs cover future warming ranges of about $0-9^\circ\text{C}$ in the late 21st century compared to the 1980-2005 average (Figure 2). These ISIMIPFT data are best suited for scenario studies that require a large ensemble of GCMs and RCPs.
- The ‘ISIMIP2b’ scenarios (ISIMIP2b) consist of daily climate data available from four different GCMs (IPSL-CM5A-LR, GFDL-ESM2M, MIROC5, HadGEM2-ES) for the RCP2.6 and RCP6.0 (Frieler et al. 2017, Lange 2018) as well as RCP4.5 and RCP8.5. The historical period lasts from 1861-2005 and then splits up into the four RCPs for each GCM from 2006-2099. The RCPs cover future warming ranges of about $1-9^\circ\text{C}$ in the late 21st century compared to the 1980-2005 average (Figure SOM 1). For RCP2.6, RCP4.5 and RCP8.5 from IPSL-CM5A-LR, HadGEM2-ES and MIROC5, additional data are also available for the period 2100-2299. These long-term climatic pathways stabilise at around $1-2^\circ\text{C}$ in the end of the 23rd century compared to 1980-2005 for RCP2.6, around $3-5^\circ\text{C}$ for RCP4.5 and rise up to 16°C for RCP8.5. For all four GCMs, there are also time series of pre-industrial climatic conditions available from 1661-2299 (or 1661-2099 for GFDL-ESM2M), the so-called pre-industrial control run. The pre-industrial climates from each GCM for the time period 1661-1860 can be combined with the historical climates from 1861-2005 and any future time periods from the corresponding GCM to create a long-term time series of climate data from 1661-2299 (or 2099 depending on the GCM/RCP combinations) without almost any resampling (Frieler et al. 2017). The ISIMIP2b data are best suited to test the implications of long-term stabilization pathways and different degrees of warming relative to pre-industrial conditions in vegetation models.
- The ‘ISIMIP2b locally bias-corrected’ scenarios (ISIMIP2bLBC) have the same structure as the ISIMIP2b data but have been bias-corrected using an improvement of the method of Hempel et al. (2013) as described in Frieler et al. (2017) and Lange (2017) and the local observed climatologies presented in Sect. 3.2.3. The ISIMIP2bLBC data are hence best suited for scenario studies that require climatic data to be as consistent as possible with the observational data (Figure 3).

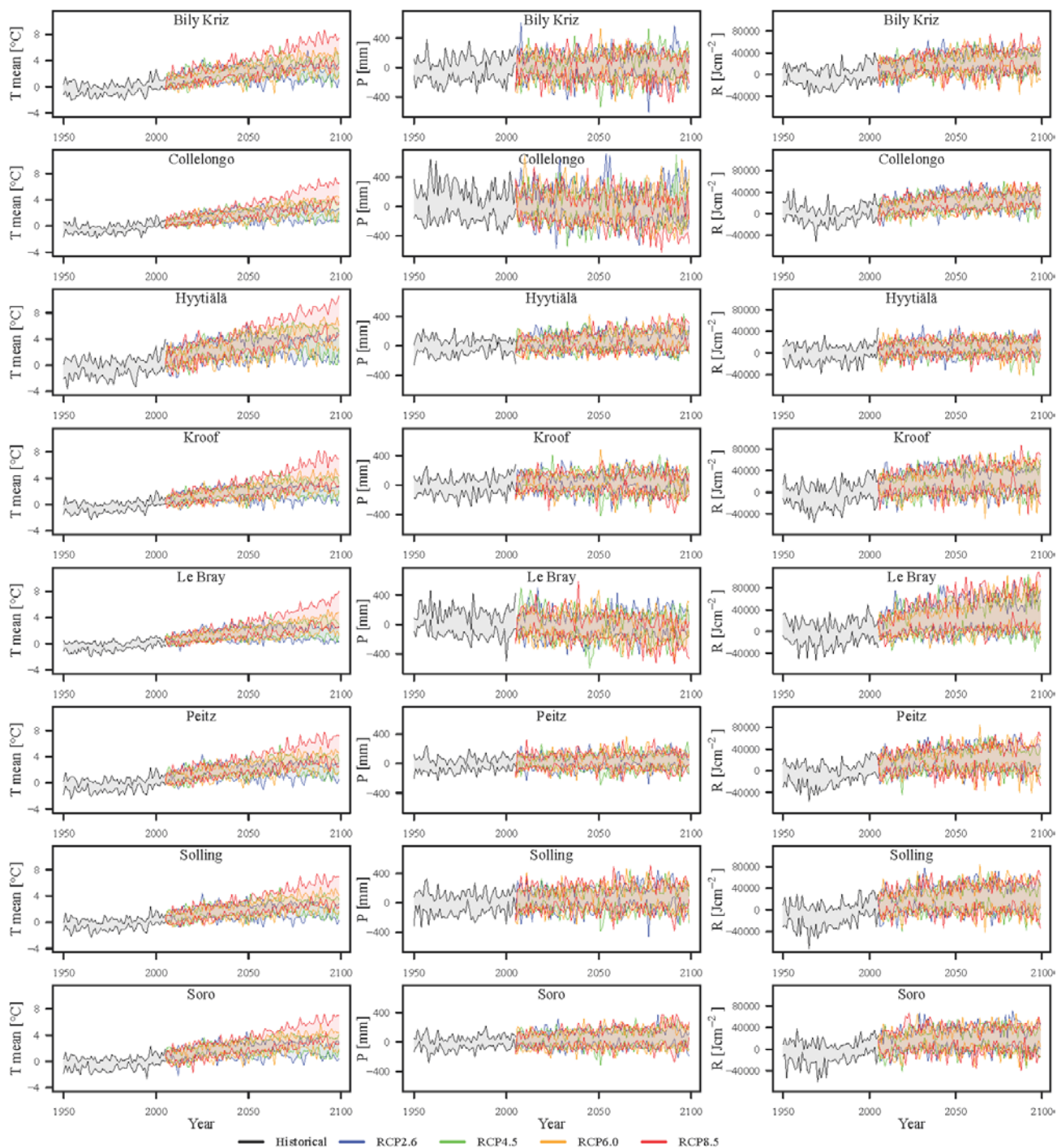


Figure 2. Change in mean annual temperature (T mean), annual precipitation sum (P) and annual sum of global radiation (R) over the time period 1950-2099 relative to the 1980-2005 average for the ISIMIPFT scenarios. Please note that the two Solling sites have the same climate.

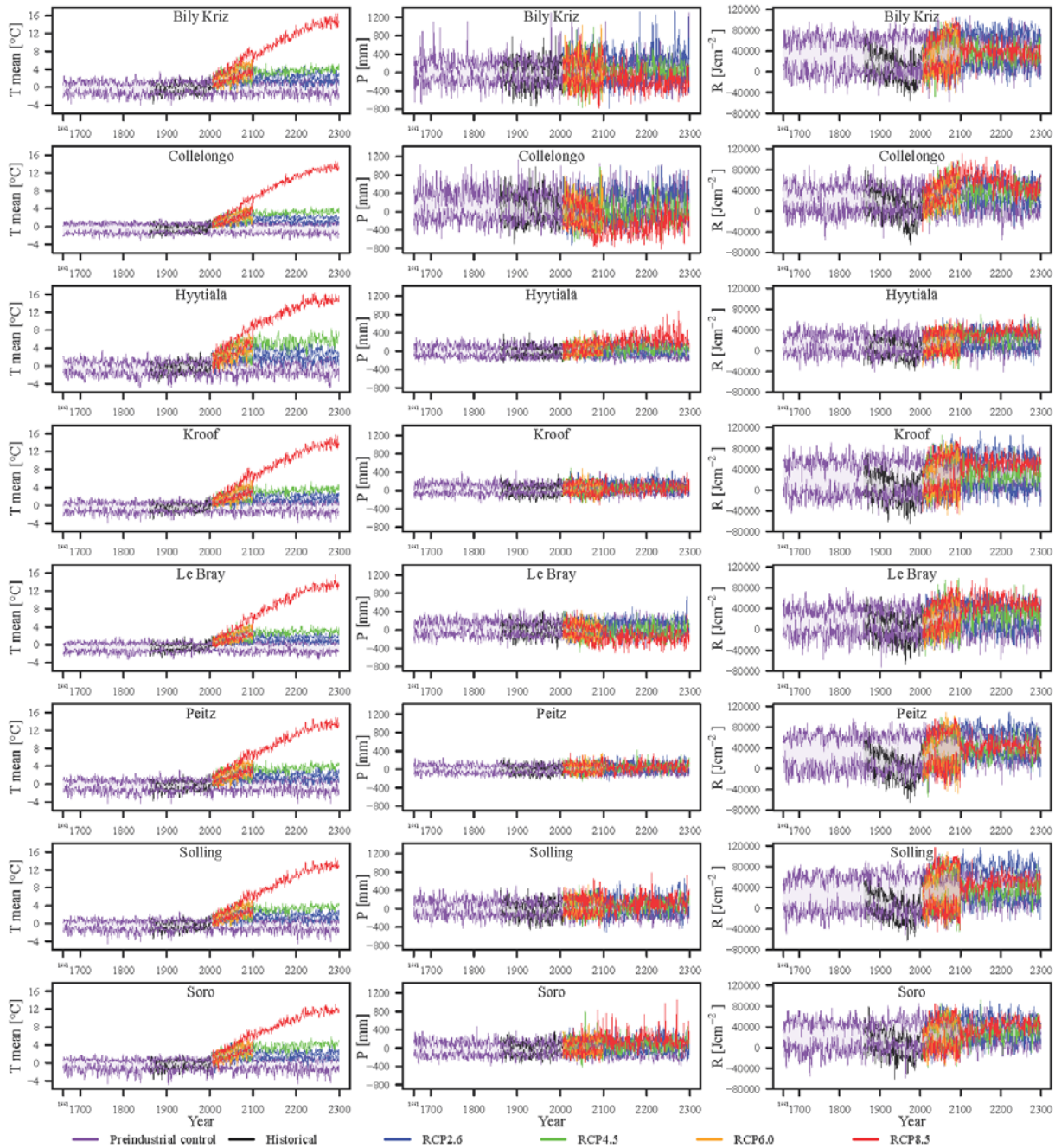


Figure 3. Change in mean annual temperature (T mean), annual precipitation sum (P) and annual sum of global radiation (R) over the time period 1661-2299 relative to the 1980-2005 average for the ISIMIP2b locally bias-corrected (ISIMIP2bLBC) scenarios. Please note that the two Solling sites have the same climate.

3.2.6. Atmospheric CO₂ concentrations

Time series of atmospheric CO₂ concentrations are provided as annual, global data, hence as one time series for all sites of the PROFOUND DB assuming a well-mixed atmosphere. The historical time series of atmospheric CO₂ are based on global atmospheric CO₂ concentrations from Meinshausen et al. (2011) from 1765-2005 and have been extended for the period 2006-2015 with data from Dlugokencky & Tan (2014). The future annual atmospheric CO₂ concentrations follow the four different Representative Concentration Pathways (RCPs, RCP2.6, RCP4.5, RCP6.0 and RCP8.5) from 2016-2500 from Meinshausen et al. (2011). Figure 4 shows the historical increase in CO₂ concentrations since 1765 and the projected future emissions according to the different RCPs. From RCP2.6 till RCP8.5 the total level of CO₂ increases strongly and also the date of stabilizing emissions is reached much later in RCP8.5. RCP2.6 is the only RCP that projects declining CO₂ levels in the long run.

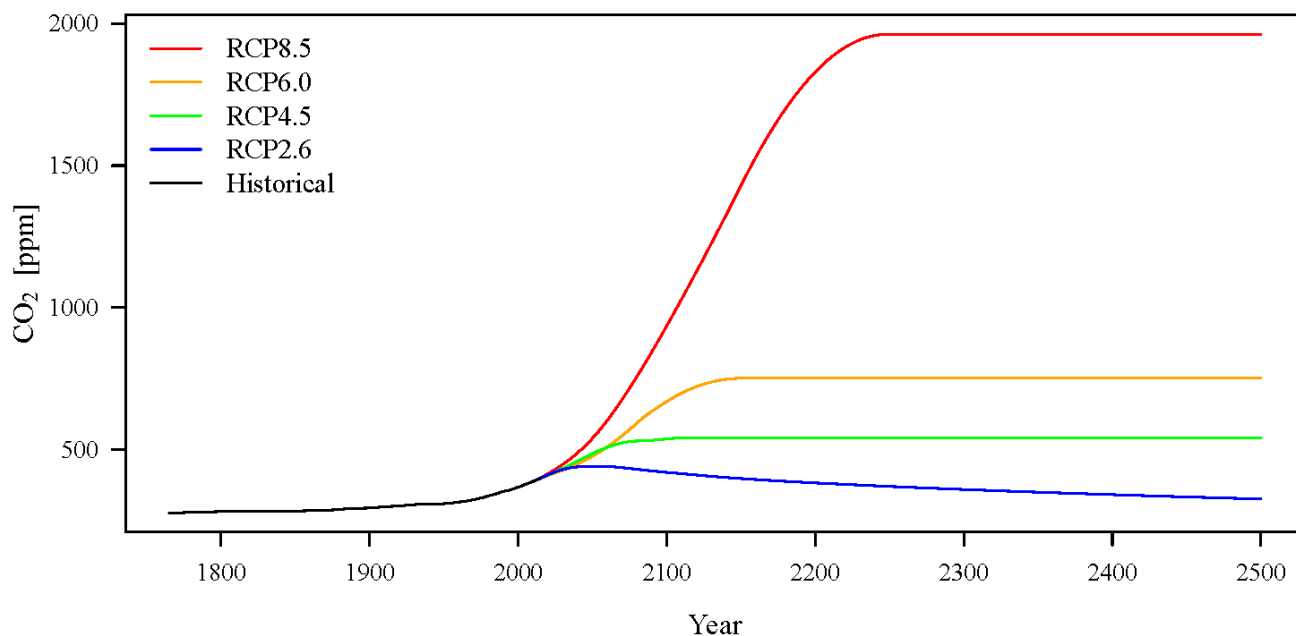


Figure 4: Global atmospheric CO₂ concentrations provided for all sites in the PROFOUND DB. The historical time period extends from 1765-2015 and the scenarios from 2005-2500 for each RCP.

3.2.7. Nitrogen deposition

The nitrogen deposition data, reported as total deposition of reduced and oxidized wet and dry nitrogen deposition, respectively, have been extracted for each site of the PROFOUND DB from two different datasets which serve different purposes.

- EMEP data: For detailed model evaluation studies that require the best possible estimates of local nitrogen deposition, we extracted data from the 'Co-operative programme for monitoring and evaluation of long-range transmission of air

pollutants in Europe' (EMEP) for the time period 1980-2014 (EMEP/CEIP 2014). Sea-salt corrected data are available from 1980-1995 in five years steps and from 1986-2014 at annual time step and are derived by atmospheric transport modelling (Simpson et al., 2012).

- ISIMIP data: For model simulation studies, we also provide nitrogen deposition estimates based on atmospheric chemistry modelling for a historical time period (1861-2005) and four future scenarios, where nitrogen deposition follow the four RCPs respectively. The data are further described in Lamarque et al. (2013a, 2013b), sea-salt corrected and consistent with the global nitrogen deposition data provided within ISIMIP (Frieeler et al. 2017). The data are taken from the global dataset without further corrections and hence are not intended to represent realistic, local forecasts but rather rough estimates of future nitrogen projections.

- 10 For the 1980-2014 time period, the ISIMIP data are typically lower and less dynamic than the EMEP estimates (Figure 5). However, while they do not seem suitable for historical model evaluations, they cover a much longer time period and are clearly interesting for scenario studies because they feature different nitrogen deposition pathways consistent with RCP climates and CO₂ pathways. It is also important to note that measured throughfall of NO₃ and NH₄ is on average lower than modelled total deposition, due to canopy uptake (Marchetto et al in prep.). Moreover, for the two Solling sites the data
- 15 presented here are identical while in reality total N deposition rates in the spruce stand should be higher because of higher dry depositions. Actually, the ratio between Solling spruce and Solling beech is 1.4 for NH₄ throughfall fluxes, 1.6 for NO₃ throughfall fluxes, 1.4 for NH₄ total deposition, and 1.4 for NO₃ total deposition, both using a canopy budget model (Ulrich 1994) for the period 1980-2014. However, these ratios are not constant and are showing an increasing trend over time.

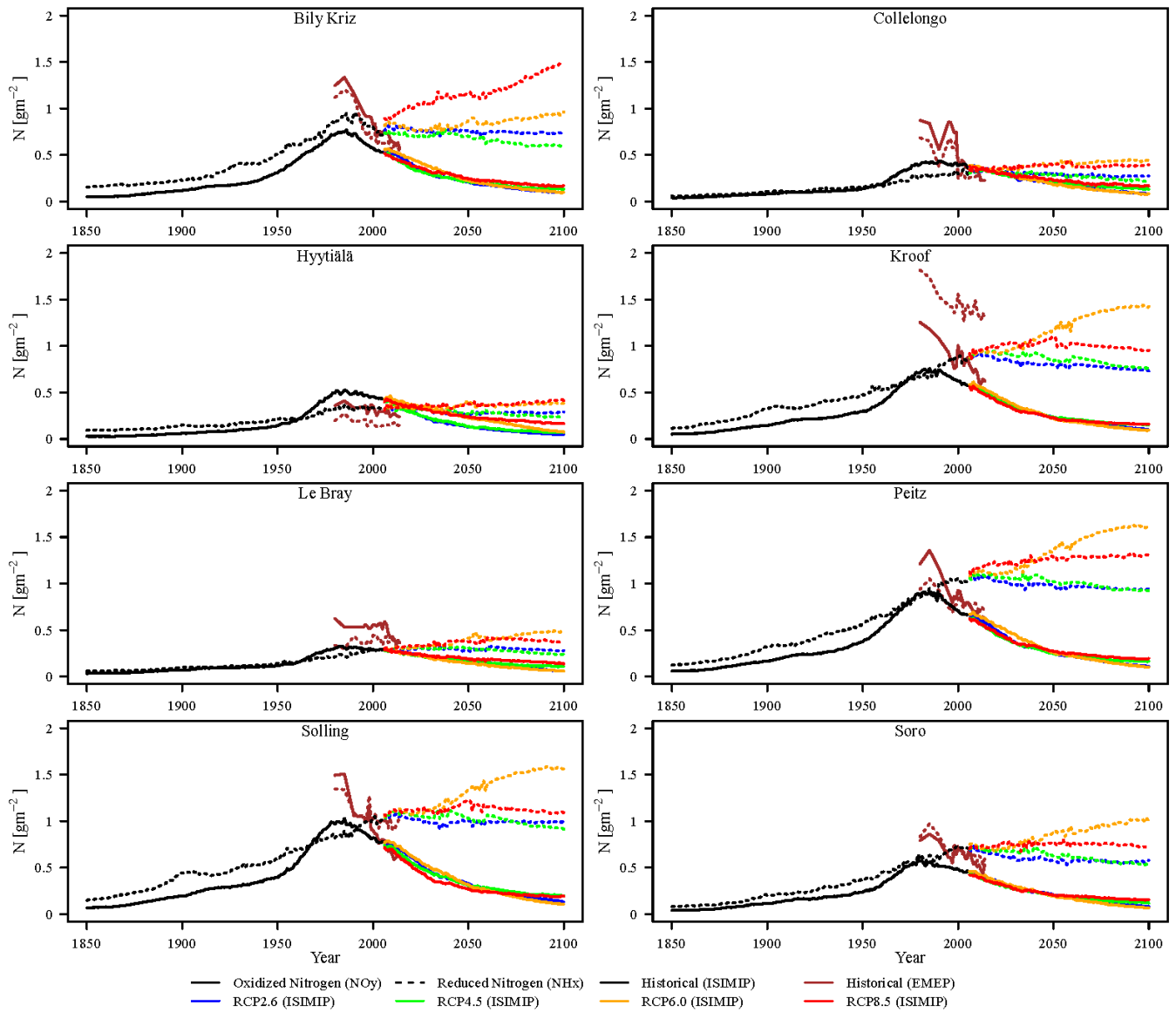


Figure 5: Total deposition of reduced (NHx) and oxidized (NOy) nitrogen (N) at each of the sites of the PROFOUND DB. The historical period for the EMEP data extends from 1980-2014 and for the historical ISIMIP data from 1861-2005. The future scenarios are available from 2006-2100 and follow the RCP2.6 and RCP6.0 scenarios. Please note that the two Solling sites have the same N depositions (see text for further explanations).

3.2.8. Forest inventory data

For each site, the PROFOUND DB provides information about the forest stand at tree and stand level. The data are available for different time periods and have different measurement intervals, but generally cover mostly the second half of the 20th century and the first decade of the 21st century (Table 1). The data also cover a wide array of height-age and DBH-age relationships (Figure 6-7). For 7 out of 9 sites individual tree diameter at breast height (DBH) and height measurements are available. The time series length ranges between 15 and 65 years within the time period 1948-2015. For the Sorø site, the DBH and heights have been reconstructed from tree-ring data (Babst et al., 2014) and the full stand reconstruction is available from 1996-2010 at annual resolution (cf Text SOM 1). Individual tree data allow analysis and comparison of model simulations with data on single tree growth. From the tree data, we calculated a range of widely used stand variables (cf SOM8). Additional stand-level data are available for some of the sites, such as leaf litter production or leaf area index, and have been included (cf SOM8).

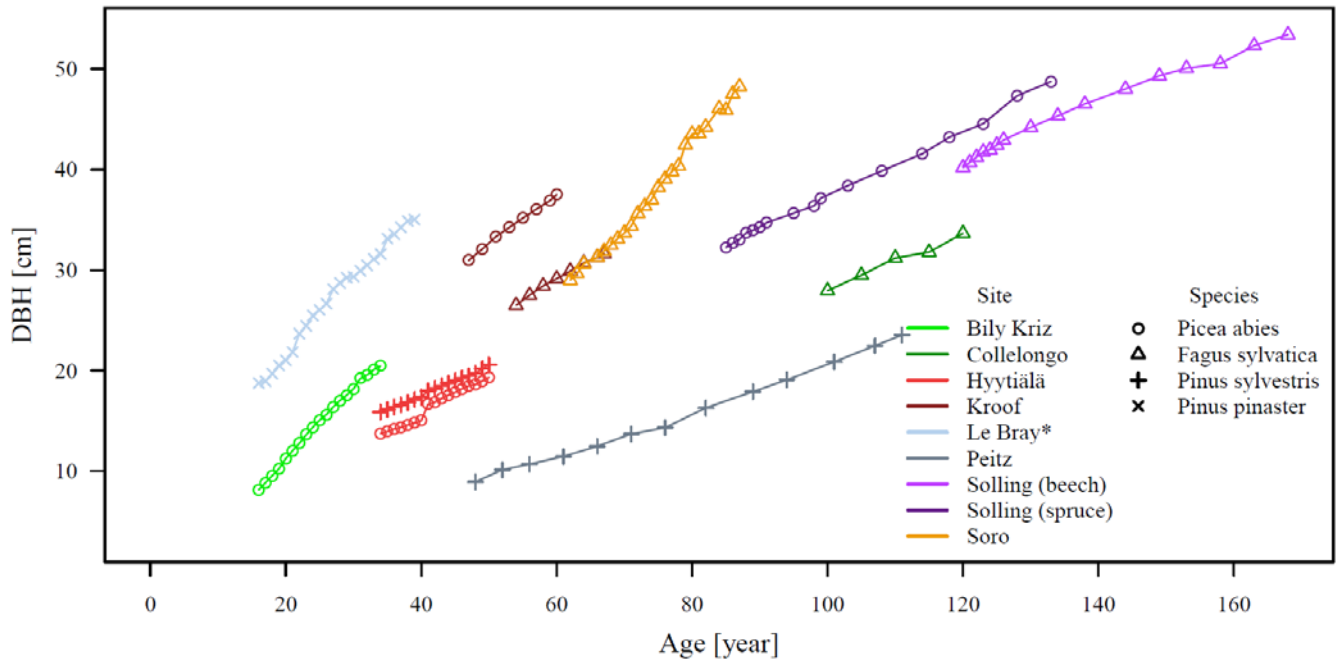


Figure 6: Time series of tree diameter at breast height (DBH) versus age of the forest stands in the PROFOUND DB. The basal area-weighted mean DBH is shown for all stands with the exception of Le Bray for which the arithmetic mean DBH is shown (marked by *). For Sorø, the DBHs have been reconstructed (see text in Sect. 4.9 and Text SOM 1).

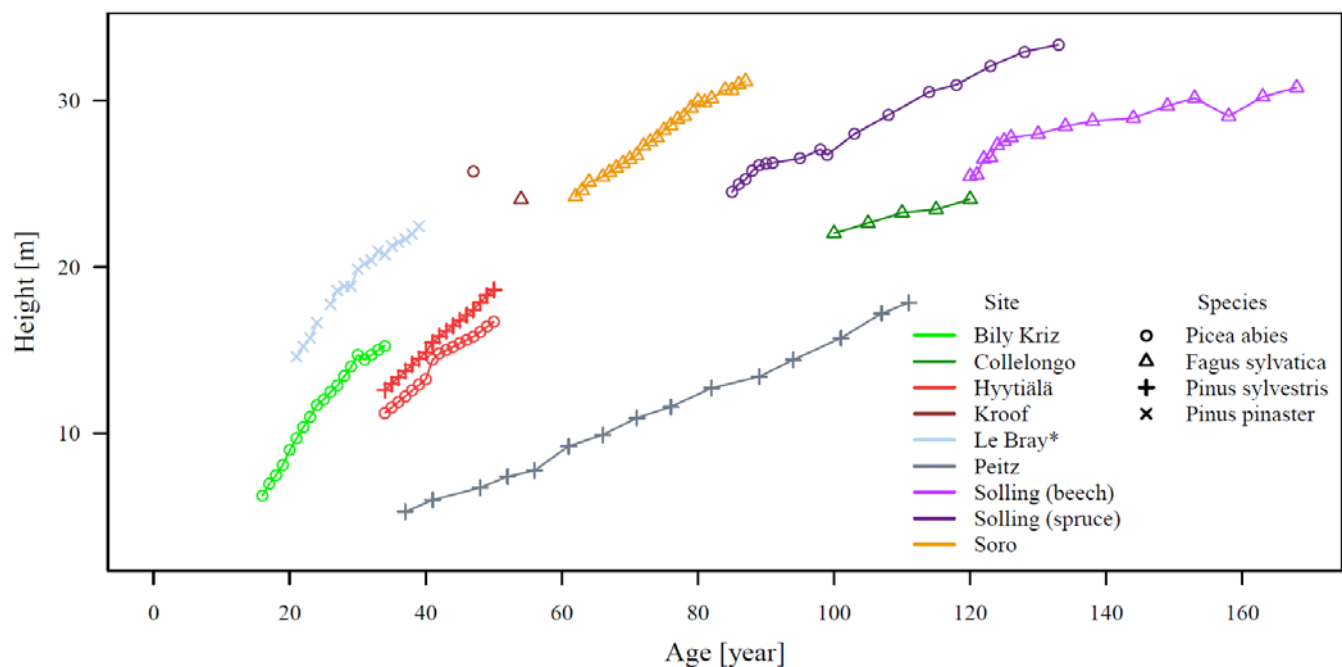


Figure 7: Time series of tree height versus age of the forest stands in the PROFOUND DB. The basal area-weighted mean height is shown for all stands with the exception of Le Bray for which the arithmetic mean height is shown (marked by *). For Sorø, the heights have been reconstructed (see text in Sect. 4.9 and Text SOM 1).

Table 4. Summary of the main stand variables for the forest stands in the PROFOUND DB. The first number in each cell indicates the value at the first measurement and the second number at the last measurement. The basal area-weighted mean height and DBH are shown for all stands with the exception of Le Bray for which the arithmetic mean height and DBH are shown (marked by *). The numbers in brackets indicate different data availability for height than for the other variables.

Name	Main species	# Obs	Year	DBH [cm]	Height [m]	BA [m ² *ha ⁻¹]	Age [year]	Stem density [ha ⁻¹]
Bily Kriz	<i>Picea abies</i>	19	1997-2015	8.16-20.47	6.26-15.26	10.33-36.96	16-34	2408-1252
Collelongo	<i>Fagus sylvatica</i>	5	1992-2012	27.95-33.65	22.03-24.08	32.25-43.76	100-120	905-740
Hyytiälä	<i>Picea abies</i>	17	1995-2011	13.74-19.32	11.24-16.7	2.96-3.8	34-50	965-770
Hyytiälä	<i>Pinus sylvestris</i>	17	1995-2011	15.89-20.58	12.61-18.62	12.64-18.33	34-50	870-684
KROOF	<i>Picea abies</i>	8 (1)	1997–2010 (1997)	30.96-37.49	 (25.73)	30.26-39.66	47-60	512-434
KROOF	<i>Fagus sylvatica</i>	8 (1)	1997–2010 (1997)	26.5-31.64	 (24.07)	12.44-13.2	54-67	324-220
Le Bray*	<i>Pinus pinaster</i>	24 (18)	1986-2009 (1991-2009)	18.76-35.01	 (14.61- 22.44)	23.3-19.19	16-39	819-195
Peitz	<i>Pinus sylvestris</i>	13	1948-2011	8.96-23.54	6.75-17.86	20.66-36.36	48-111	4150-886
Solling (beech)	<i>Fagus sylvatica</i>	16	1967-2014	40.19-53.4	25.45-30.78	26.99-25.52	120-168	245-130
Solling (spruce)	<i>Picea abies</i>	17	1967-2014	32.25-48.74	24.51-33.36	44-49.46	85-133	595-290
Sorø	<i>Fagus sylvatica</i>	24	1994-2017	28.99-48.25	24.23-31.15	18.50-29.76	62-87	407-199

5

3.2.9. Flux data

10

The carbon fluxes, i.e. net ecosystem exchange (NEE), ecosystem respiration (RECO) and gross primary production (GPP) are taken from the Tier One Fluxnet2015 dataset (<http://fluxnet.fluxdata.org/>). We provide estimates of fluxes calculated using different estimates for gap-filled/partitioned fluxes to give a rough estimate of the uncertainty added to the long-term budgets in the process. NEE data are filtered using two different methods to calculate UStar thresholds (Barr et al. 2013, and a modified version of Papale et al. 2006, see also Fluxnet2015 (2017)). Daytime (i.e. Lasslop et al. 2012) and nighttime (i.e. Reichstein et al. 2005) refer to whether ecosystem respiration parameters were estimated from only nighttime fluxes or using also daytime

data (zero intercept of GPP light response curve). In many cases the number of accepted nighttime fluxes is low and the temperature range is narrow, which leads to high uncertainty in the estimated respiration. This can be improved by using also daytime fluxes. On the other hand in the daytime method the uncertainties of photosynthetic light, temperature, and possible VPD responses may be attributed to respiration parameters. Further information about the daytime and nighttime methods is available in Lasslop et al. (2010) and Reichstein et al. (2005) and also Fluxnet2015 (2017). We also extracted different uncertainty estimates for each variable. Additionally, we provide time series of the sensible and latent heat flux, soil (soil water and soil temperature) and meteorological variables at a 30-min time resolution from the Fluxnet2015 database including measurement uncertainty estimates. Table 5 provides an overview of the main carbon fluxes at each of the sites featured in the PROFOUND DB. Table SOM9 and Table SOM11-13 provides the full list of available variables.

Table 5: Summary of the observed carbon fluxes at the sites in the PROFOUND DB. Shown is the range (min & max) and the average (in brackets) of the annual sums in the observational period. All data are estimates based on the CUTRef method with daytime data included for RECO and GPP. GPP is expressed with negative values because it is considered a downward flux from the atmosphere. Likewise, negative NEE values indicate a carbon sink and positive a carbon source.

Name	Years	NEE [t C ha ⁻¹]	RECO [t C ha ⁻¹]	GPP [t C ha ⁻¹]
Bily Kriz	2000 - 2008	-9.117 - -3.277 (-6.52)	5.478 – 10.295 (7.918)	-20.477 - -11.071 (-16.577)
Collelongo	1996 - 2014	-25.129 - -3.36 (-8.152)	4.495 – 15.936 (8.079)	-26.675 - -5.259 (-16.546)
Hyytiälä	1996 - 2014	-8.167 - -1.22 (-2.49)	1.668 – 11.511 (8.943)	-14.984 - -10.0 (-11.709)*
Le Bray	1996 - 2008	-7.396 – 0.104 (-3.915)	8.236 – 21.609 (14.569)	-23.651 - -12.648 (-19.455)*
Sorø	1996 - 2012	-8.245 – 0.892 (-1.92)	15.147 – 22.345 (17.335)	-23.832 - -15.873 (-19.163)

*year 2007 is without data for Hyytiälä and year 2002 for Le Bray

3.2.10. Remote sensing data

The PROFOUND DB includes remote sensing information at different spatial scales and temporal frequencies, specific for each product. We included five MODIS products (ORNL DAAC 2008a-e) and several vegetation indices calculated from the surface reflectance data for each of the forest sites. The original MODIS scenes are available at the NASA Land Processes Distributed Archive Center (LP DAAC) (<https://lpdaac.usgs.gov/>). The specific time series included in the PROFOUND DB were downloaded from the Land Product Subset Web Service of the Oak Ridge National Laboratory Distributed Active Archive Center (ORNL DAAC) (<https://daac.ornl.gov/MODIS/>). The ORNL DAAC MODIS subsetting Web service is implemented to allow users access to massive amounts of remote sensing data (Santhana-Vannan et al., 2011). In addition, a second set of vegetation indexes were calculated from the reflectance values. A summary of this information is shown in table 6. The full list of variables and how they were aggregated is provided in table SOM10.

5 **Table 6. Summary of the remote sensing data included in the PROFOUND DB. VIS, NIR and SWIR are the visible, near infrared and shortwave infrared regions of the electromagnetic spectrum. NDVI: Normalized Difference Vegetation Index, EVI: Enhanced Vegetation Index; FPAR: Fraction of Photosynthetically Absorbed Radiation; LAI: Leaf Area Index; GPP: Gross Primary productivity; NDWI: Normalized Difference Water Index; AR: Angle at Red; ANIR; Angle at NIR; AS1: Angle at Shortwave Infrared 1; AS2: Angle at Shortwave Infrared 2; SANI: Shortwave Angle Slope Index; SASI: Shortwave Angle Slope Index**

Variable	MODIS Source	Spatial Resolution [km]	Temporal Frequency [d]	Time period
Reflectance (%) at 7 spectral bands in the optical domain VIS-NIR-SWIR	MOD09A1	0.5	8	2000-2015
Land surface temperature (night & day, Kelvin)	MOD11A2	1	8	2000-2015
NDVI, EVI	MOD13Q1	0.25	16	2000-2015
FPAR·LAI (Dimensionless -1,1)	MOD15A2	1	8	2000-2015
GPP & Net Photosynthesis ($\text{gC m}^{-2} \text{day}^{-1}$)	MOD17A2	1	8	2000-2014
EVI, NDVI, NDWI (Dimensionless -1,1)	Ratio Indexes calculated from MOD09A1	0.5	8	2000-2015
AR, ANIR, AS1, AS2 (radians, 0-3.14)	Angular indexes calculated from MOD09A1	0.5	8	2000-2015
SANI (-3.14 – 3.14) SASI (-314-314))	Angular normalized indexes calculated from MOD09A1	0.5	8	2000-2015

The main difference among the forest sites is the data quality, which is highly dependent on the presence of clouds. When possible, low quality observations have been substituted by interpolated values, otherwise the cell was left blank. In any case the alteration of the original data was minimal. It is also important to note that the size of the pixel is large compared to the plot size of the forest stands, which means the pixel data also contain other vegetation than the ones present at the sites.

- 5 Three general types of data are included: (1) geophysical variables as measured from the MODIS sensor, i.e. reflectance and temperature, (2) spectral indexes derived directly from reflectance values at different wavelengths, and (3) vegetation properties (i.e. FPAR, LAI, GPP, and Net photosynthesis) as estimated from physical variables through a range of models.

Although the MODIS sensor acquires daily information, the PROFOUND DB includes only composite data, that is, for each pixel the best value during a period of time (8 or 16 days) is selected as being representative of that specific period. Spatial
10 resolution is also specific for each product and is dependent on the physical and technical limitations in the acquisition process of the variables involved in the product computation.

The NDVI and EVI at 250 m spatial resolution coming from the MOD13Q1 product were calculated from the visible and near infrared spectral regions. A temporal frequency (16-day composite) was chosen to minimize the effect of clouds. The EVI Index was developed to correct for atmospheric and background effects so that it shows a larger dynamic range in areas with
15 high vegetation density (Didan et al., 2015).

The spectral profiles in the whole optical domain (i.e. 459-2155 nm) for each 8-day composite are represented by the surface spectral reflectance at seven wavelengths coming from the MOD09A1 product at 500 m spatial resolution. The criteria for the compositing process are low cloudiness, cloud shadows and low solar zenith angle; when several of these criteria are fulfilled the selection is based on the minimum value in the blue band (Vermote et al., 2015).

- 20 The second set of spectral indexes was computed from the MOD09A1 product. The indices based on the spectral shape have the advantage of combining information on three bands instead of two, also when the bands used are located in the SWIR region relevant information related to water is captured (Palacios-Orueta et al., 2005; Khanna et al., 2007; Palacios-Orueta et al., 2012).

LAI is defined as the one-sided green leaf area per unit ground area in broadleaf canopies and as one-half the total needle surface area per unit ground area in coniferous canopies. The FPAR is the fraction of photosynthetically active radiation (400-
25 700 nm) that is absorbed by the canopy (Myneni, 2015). Gross primary productivity and net photosynthesis estimations are based on the light use efficiency (LUE) concept (Monteith, 1972) using satellite-derived FPAR (from MOD15) and independent estimates of PAR, besides other types of ancillary data. These are highly aggregated variables that have gone through several modelling steps already. Detailed information on the model and information sources used can be found in
30 Running and Zhao (2015).

4. Description of the forest sites

The most northern site is Hyytiälä in Finland with a boreal climate, while the most southern sites are Le Bray in France and Collelongo in Italy with an oceanic and Mediterranean montane climate, respectively. All other sites represent temperate climatic conditions ranging however, from oceanic (Belgium, Denmark), temperate (France, Germany) to sub-continental (Czech Republic). Unfortunately, sites representing more continental and (east)-Mediterranean forests from southern and south-eastern Europe are missing.

4.1. Bily Kriz (CZ)

The Bily Kriz site belongs to the ICP Forests Level II network and is a Fluxnet site located in the Moravian-Silesian Beskydy Mts, Czech Republic, at an altitude of 875 m.a.s.l. The climate is temperate with an annual mean temperature of 7.4°C and an annual precipitation sum of 1434 mm over the 2000-2008 period. The soil is classified as a Haplic Podzol. The site is typical for mountain regions of temperate Europe such as the Black Forest, Bohemian Forest Sumava and forested Carpathians (Hercynian (spruce-)fir-beech forests) but also the higher mountain belts in the (sub-)Mediterranean. Stand forming tree species for such sites are *Fagus sylvatica*, *Abies alba*, and *Picea abies*. Currently, a large part of mixed mountain forests are strongly managed for timber production. The main tree species occurring in Bily Kriz are *Picea abies* rarely with small proportion of *Fagus sylvatica*. The stand data represent an (even-aged) *Picea abies* monoculture with a mean DBH of 19 cm (year 2015). The potential vegetation belongs to the Geobiocoene type groups: Abieti-fageta (5AB3) - *Abies alba* Mill. + *Fagus sylvatica* L. with understory: *Calamagrostis arundinacea* (L.) Roth, *Oxalis acetosella* L., *Vaccinium myrtillus* L., *Deschampsia flexuosa* (L.) Trin. More information about the site can be found in Kratochvílová et al. (1989) and Meteorological yearbook (2012).

4.2. Collelongo (IT)

The experimental site of Collelongo is located in Selva Piana, a pure *Fagus sylvatica* forest in Collelongo (AQ, central Italy) at 1560 m.a.s.l. Located 100 km from Rome, it is one of the first Italian sites of the ICP network and also part of the ILTER international network. The climate is Mediterranean montane, with a mean annual temperature of 7.2°C and a mean annual precipitation of 1179 mm in the period 1996-2014. Bedrock consists of cretaceous limestone. Soil depth exhibits high spatial variability ranging from 40 to 100 cm and is classified as a Humic Alisol (Chiti et al. 2010) or Dystric Luvisol according to the FAO classification. The stand is a typical Apennine beech forests dominated by *Fagus sylvatica* with sporadic trees of *Taxus baccata*. The phytosociological association is Polysticho – Fagetum (Feoli & Lagonegro 1982). Currently, Collelongo constitutes a managed *Fagus sylvatica* stand with mean DBH of 25 cm in 2012. In the area around the eddy-flux tower there are only *Fagus sylvatica* trees. Moreover the footprint of the tower is totally included in the *Fagus sylvatica* forest. More information about the site can be found in Chiti et al. (2010), Collalti et al. (2016) and D'Andrea et al. (2019).

4.3. Hyytiälä (FI)

The most northern site included in the PROFOUND DB is the ICP Forests Level II site Hyytiälä, Finland. It is also a Fluxnet site and the coldest site with an annual temperature of 4.4°C and 604 mm annual precipitation during the 1996-2014 period and lies at 185 m.a.s.l. The soil is classified as a Haplic Podzol. *Picea abies* is the naturally dominant tree species building Fennoscandian moss-rich spruce forests with *Pinus sylvestris*. A *Pinus sylvestris* stand was sown in 1962, today with admixtures of *Picea abies* and hardwood species (*Betula pendula*, *Betula pubescens* and *Populus tremula*). Mean DBH were 17 cm for *P. sylvestris*, 5 cm for *P. abies* and 7 cm for hardwood species in the year 2008. More information about the site can be found in Haataja & Vesala (1997), Rannik et al. (2004), Vesala et al. (2005), Ilvesniemi et al. (2009), Mammarella et al. (2009) and Ilvesniemi et al. (2010).

4.4. KROOF (DE)

The KROOF forest belongs to the "Kranzberg Forest Roof Experiment" of the Technical University Munich (TUM) and the Helmholtz-Zentrum Munich. The site is located close to Freising, Germany, in the Kranzberger Forst in 502 m.a.s.l (wc-alt.). Mean annual temperature is around 8.2°C, annual rainfall around 849 mm during the period 1998-2010. The soil type, Luvisol, is typical for the region. The potential natural vegetation is (sessile oak-) beech forest (*Fagus sylvatica*, *Quercus petraea*, *Quercus robur*). The establishment of the research plot dates back to 1992. The mixed stand comprises large groups of *Fagus sylvatica* surrounded by *Picea abies* with mean DBH of 26 cm and 33 cm in 2010, respectively. Other occurring species are *Acer platanoides* (20 cm), *Pinus sylvestris* (31 cm), *Larix decidua* (26 cm) and *Quercus robur* (29 cm). More information about the site can be found in Pretzsch et al. (1998; 2014) and Matyssek et al. (2014).

4.5. Le Bray (FR)

The ICP Forests site Le Bray is located 20 km south-west of Bordeaux, France, at an altitude of 61 m.a.s.l. Mean annual temperature is about 13.4°C and precipitation 920 mm during the 1996-2008 period, constituting a moderate oceanic climate. The soil type is Arenosol (sandy and hydromorphic podzol), which is one of the most common soils in the region. The natural vegetation is formed by deciduous broadleaf forests such as pedunculate oak forests (*Quercus robur*), partly with *Quercus pyrenaica*, *Quercus suber* and *Pinus pinaster*. First measurements were made in 1986 in the monospecific planted *Pinus pinaster* stand. The site experienced a storm in 1999 and lost a large amount of trees. In 2009, the mean DBH was 35 cm. The final clear cut of the site occurred at the beginning of 2009. More information about the site can be found in Porté & Loustau (1998), Bosc et al. (2003) and Berbigier et al. (2001).

4.6. Peitz (DE)

Peitz is a long term research plot in eastern Brandenburg, Germany. The site lies at about 50 m.a.s.l. The annual rainfall amounts to more than 608 mm and annual mean temperature is around 9.2°C during the 1901-2010 period. The soil type is a Dystric Cambisol. The potential natural vegetation is a South Scandinavian-east Central European dwarf shrub- and lichen-rich pine forests (*Pinus sylvestris*), partly with *Quercus robur* in the understorey, with *Vaccinium vitis-idaea*, *Calluna vulgaris*, *Cladina spp.*, *Dicranum polysetum* on sandy soils and siliceous rocks. The forest is a pine forest (*Pinus sylvestris*) with a mean DBH of around 23 cm and a stand height of 17 m in 2011. The understorey consists partly of *Quercus robur*. Measurements were started in 1948. More information about this site can be found in Riek & Stähr (2004), Noack (2011; 2012) and about the climate data in Gerstengarbe et al. (2015).

4.7. Solling beech (DE)

Solling 304 is a long-term intensive forest monitoring plot (Level II) of the ICP Forests network in central Germany. The plot is also part of the LTER (site LTER_EU_DE_009) and of the permanent soil monitoring programme of the state of Lower Saxony. The site is situated in the center of the Solling plateau at an elevation of about 500 m a.s.l. The mean temperature was around 6.8°C and the mean annual rainfall amounted to 1113 mm during the period 1960-2013. The bedrock consist of Triassic sandstone covered with a 60 to 80 cm deep solifluction layer of loess material from which the soil, classified as an Haplic Cambisol, has developed. The humus type is a typical Moder. The tree layer consists only of European beech (*Fagus sylvatica* L.). *Oxalis acetosella* and *Luzula luzuloides* are the major species of the sparse ground vegetation. Actual vegetation was assigned to the Luzulo-Fagetum typicum and is close to the potential natural vegetation. The forest is a 168-year old stand with a mean DBH of 50 cm and a mean height of 30.7 m in 2016. More information about the site can be found in Meiwes et al. (2009), Meesenburg et al. (2009), Panferov et al. (2009), Le Mellec et al. (2010), Meesenburg et al. (2016) and Fleck et al. (2016).

4.8. Solling spruce (DE)

Solling 305 is also a long-term intensive forest monitoring plot of the ICP Forests Level II network in central Germany. As the Solling beech site it belongs to the LTER (site LTER_EU_DE_009) and is a permanent soil monitoring plot of the state of Lower Saxony. It is situated close to the Solling beech site at an elevation of about 508 m a.s.l and has similar site conditions as the Solling beech stand. Potential natural vegetation is a *Luzulo luzuloides* Fagetum. Dominant species of the actual ground vegetation are *Vaccinium myrtillus*, *Polytrichum formosum* and *Dechampsia flexuosa* (Bolte et al. 2004). The forest is a 133-year old Norway spruce (*Picea abies*) stand with a mean DBH of 46.6 cm and a mean height of 33.1 m in 2016. More information about the site can be found in Le Mellec et al. (2010), Bonten et al. (2011), Meesenburg et al. (2016), Fleck et al. (2016) and Wegehenkel et al. (2017).

4.9. Sorø (DK)

The ICOS site Sorø (DK-Sor in the FLUXNET and ICOS data bases) is located in Denmark at an elevation of 40 m.a.s.l.. The climate is warm temperate and fully humid with a mean annual temperature of 9°C and annual precipitation sum of 774 mm during the period 1996-2010. The soil has been classified as an Alfisols/Molisols. Potential natural vegetation is deciduous broad-leaved forest dominated by *Fagus sylvatica*. Other species occurring in the area are *Fraxinus excelsior*, *Larix decidua*, *Picea abies*, *Quercus spp.*, *Acer spp.* However, the region is mostly used as cropland. Data on tree DBH are reconstructed from tree ring measurement (Babst et al. 2014) and historical management information for the time period from 1994 to 2017. Stand data is derived from this data for the time period from 1994 to 2017 (see Text SOM1). The mean DBH of this *Fagus sylvatica* stand was 41 cm in the year 2017. More information about the site can be found in Ladekarl (2001), Pilegaard et al. (2003, 2011), and Wu et al. (2013). More information about the site can be found in Ladekarl (2001), Pilegaard et al. (2003, 2011), and Wu et al. (2013).

5. Forest management of the sites

The sites available in the PROFOUND DB are managed forests and the historic management can be derived from the tree and stand level data (in terms of reduction of stem numbers). However, for future scenario studies generic, simple management and planting guidelines are available (Table 7-8). This future management corresponds best to “intensive even-aged forestry” as defined by Duncker et al. 2012.

Table 7 Generic future management scenarios for the main tree species featured in the PROFOUND DB.

Species	Thinning regime	Intensity [% of basal area]	Interval [yr]	Stand age for final harvest	References
<i>Pinus sylvestris</i>	below	20	15	140	Pukkala et al. 1998; Fürstenau et al. 2007; González et al. 2005; Lasch et al. 2005
<i>Picea abies</i>	below	30	15	120	Pape 1999; Pukkala et al. 1998; Hanewinkel and Pretzsch 2000; Sterba 1987; Lähde et al. 2010
<i>Fagus sylvatica</i>	above	30	15	140	Schütz 2006; Mund 2004; Hein and Dhôte 2006; Cescatti and Piutti 1998
<i>Quercus robur/ petraea</i>	above	15	15	200	Hein and Dhôte 2006; Fürstenau et al. 2007; Štefančík 2012; Kerr 1996; Gutsch et al. 2011
<i>Pinus pinaster</i>	below	20	10	45	Loustau et al. 2005, De Lary 2015, Banos et al. 2016

Table 8 Planting information for the sites included in the PROFOUND DB. The numbers in brackets indicate plausible ranges (na = not available).

Name	Density [ha ⁻¹]	Age [years]	Height [m]	age when DBH is reached [years]	Remarks
Bily Kriz	4500	4	0.5	9	Historical planting density was 5000/ha but current practices are 4500/ha only
Collelongo	10000	4	1.3	4	Only a rough approximation, usually natural regeneration is the regeneration method. DBH = 0.1 cm at height 1.3m
Hyytiälä	2250 (2000-2500)	2	0.25 (0.2-0.3)	6 (5-7)	Regenerate as pure pine stand
KROOF (beech)	6000 (5000-7000)	2	0.6 (0.5-0.7)	5	The planting density is for single-species stands, hence when regenerating the 2-species-stand KROOF, the planting density of each species should be halved
KROOF (spruce)	2250 (2000-2500)	2	0.35 (0.3-0.4)	7	The planting density is for single-species stands, hence when regenerating the 2-species-stand KROOF, the planting density of each species should be halved
Le Bray	1250 (1000-14000)	1	0.2 (0.1-0.25)	3 (2-5)	These are the current practices (<i>De Lary, 2015</i>) and should be used for future regeneration. Historically, the site was seeded with 3000-5000 seedlings per ha and then cleared once or twice to reach a density of 1250 ha ⁻¹ at 7-year old when seedlings reach the size for DBH recruitment.
Peitz	9000 (8000-10000)	2	0.175 (0.1-0.25)	5	The “age when DBH is reached = 5” is an estimate
Solling (beech)	6000 (5000-7000)	2	0.6 (0.5-0.7)	5	The actual stand was established in 1847 from natural regeneration. Until begin of measurements in 1966, the stand was regularly thinned. All figures in table are estimates. Natural regeneration is the recommended regeneration method of stand establishment; stem count in 2014: 130
Solling (spruce)	2250 (2000-2500)	2	0.35 (0.3-0.4)	7	The actual stand was planted in 1891 on a former meadow. Until begin of measurements in 1966, the stand was regularly thinned. All figures in table are estimates.; stem count in 2014: 290
Sorø	6000	4	0.82	6	Planted in 1921, stem count in 288 ha ⁻¹ in 2010, (Wu et al. 2013)

6. The PROFOUND R-package (ProfoundData)

The ProfoundData R-package provides functions to access the PROFOUND DB (Figure SOM2 and SOM3). The ProfoundData package plus a detailed vignette explaining the functionalities are available on CRAN (<https://CRAN.R-project.org/package=ProfoundData>). The ProfoundData package serves as interface for users that want to access the

5 PROFOUND DB as a relational database via the R statistical software (R Core Team 2016). The following main functions are included to achieve this goal:

- “getData” to download data (data can be downloaded for one forest site and one underlying dataset at a time)
- “browseData” to check the available forest sites, datasets, variables for a dataset, datasets for a forest site as well as the database version, metadata, data policy, original data source
- 10 • “plotData” to quickly inspect any variable of the datasets visually.
- “summarizeData” to summarize data from the database.
- “queryDB” to pass self-defined queries
- “writeSim2netCDF” to write netCDF-files, can be used to convert data (and other files such as model simulation output) into netCDF-files.

15 While the ProfoundData R-package is meant to provide easy-access to the PROFOUND DB, the database is also fully functional without the R-package.

7. Data availability

The PROFOUND Database (<http://doi.org/10.5880/PIK.2020.006/>, Reyer et al. 2020) is available under the Creative Commons Attribution-NonCommercial 4.0 International license (CC BY-NC 4.0). The PROFOUND R-Package (ProfoundData, <https://CRAN.R-project.org/package=ProfoundData>, Silveyra Gonzalez et al., 2020) is available via a GLP3
20 license. An earlier version of the database, including an outdated reconstruction of the Soro tree data has been published as Reyer et al. (2019).

8. Conclusions

A wide range of data are needed to properly evaluate complex process-based vegetation models. The PROFOUND database
25 compiles data from soil, climate, stand and flux measurements with data from remote sensing, atmospheric nitrogen modelling and climate modelling. Moreover, by providing data at 0.5° x 0.5° grid level plus locally bias-corrected climate data, the datasets can be used to compare local forest models to global vegetation models. The PROFOUND database thus facilitates model evaluation, calibration, uncertainty analysis and model intercomparisons, highlighting the immense value of long-term environmental monitoring data for robust inferences about causal processes and future dynamics of forests.

30

9. Appendix: List of Fluxnet sites

Table A1: List of Fluxnet sites used in PROFOUND DB.

Flux sites	FLUXNET-ID	Data-years	Publication	Funding
Bily Kriz	CZ-BK1	2000-2008	Kratochvílová et al. (1989), Meteorological yearbook (2012)	Ministry of Education, Youth and Sports of CR within the CzeCOS program, grant number LM2015061
Collelongo	IT-Col	1996-2014	Chiti et al. 2010	EUROFLUX, CARBOEUROFLUX, CARBO EUROPE, CARBO AGE, CARBO EXTREME
Hyytiälä	FI-Hyy	1996-2014	Haataja & Vesala (1997), Rannik et al. (2004), Vesala et al. (2005), Ilvesniemi et al. (2009), Mammarella et al. (2009) and Ilvesniemi et al. (2010)	ICOS, EUROFLUX, CARBOEUROFLUX, CARBOEUROPE, CARBOEXTREME and by the Academy of Finland Centre of Excellence programme, projects 118615, 141135 and 272041
Le Bray	FR-LBr	1996-2008	Porté & Loustau (1998), Bosc et al. (2003) and Berbigier et al. (2001)	INRA, EUROFLUX, CARBOEUROFLUX, CARBO EUROPE, CARBO AGE, CARBO EXTREME
Sorø	DK-Sor	1996-2012	Ladekarl (2001), Pilegaard et al. (2003, 2011), and Wu et al. (2013)	EUROFLUX, CARBO-EUROPE, CARBO-EUROPE-IP, NITRO-EUROPE, CARBO-EXTREME and Risø-National Laboratory (DK) and technical University of Denmark (DTU)

10. Supplement Link

To be added by Copernicus

5 11. Author Contributions

CPOR and RSG contributed equally to the paper. CPOR & FH initiated the research. CPOR RSG, KD, FH designed the PROFOUND database. CPOR, RSG, YH, KD harmonized and prepared data for the PROFOUND database. RSG programmed the PROFOUND database and R package together with FH, FB and JS. LK and JK provided data for Bily Kriz. AC, GM, CT, EA provided data for Collelongo. PK, AM, TV, IM, JP provided data for Hyytiälä. TR, HP provided data for KROOF. DL, LMB, PB, DP, SL provided data for Le Bray. MN, PLB provided data for Peitz. HM, SF, MW provided data for the Solling sites. AI, KP, FB provided data for Sorø. DC, MV prepared the EMEP Nitrogen data. HT, MB prepared the ISIMIP Nitrogen data. AP, VC, RSG prepared the MODIS data. MB, JV, SL, HK prepared the climate data. SL bias-corrected the climate data. MM and MG checked the data and R-Package. All other authors provided expertise on individual datasets and how to prepare them. CPOR wrote the manuscript with the support of all authors.

12. Competing Interests

The authors declare that they have no conflict of interest.

13. Acknowledgements

The PROFOUND Database has been developed based on work from COST Action FP1304 PROFOUND (Towards Robust
5 Projections of European Forests under Climate Change), supported by COST (European Cooperation in Science and
Technology, www.cost.eu), the Intersectoral Impact Model Intercomparison project (ISIMIP) and the I-Maestro project
("Innovative forest management strategies for a resilient bioeconomy under climate change and disturbances, grant no 773324
and 22035418) funded by the ERA-NET Cofund ForestValue and benefited from discussions in the IUFRO Task Force on
Climate Change and Forest Health. We are grateful for the support of all contributing data entities: The climate scenarios have
10 been provided by ISIMIP (BMBF, grant no. 01L1201A1). The initial plot selection was supported with data from the
International Co-operative Programme on Assessment and Monitoring of Air Pollution Effects on Forests (ICP Forests)
operating under the UNECE Convention on Long-range Transboundary Air Pollution (CLRTAP). The data collection in Bily
Kriz was supported by the Ministry of Education, Youth and Sports of CR within the CzeCOS program, grant number
LM2015061. Data collection at the Collelongo site was supported by the projects EUROFLUX, CANIF,
15 CARBOEUROFLUX, FORCAST, CARBOEUROPE, PRIN-MIUR. Activity and data analysis at the site is currently funded
by resources available from Ministry of University and Research (FOE-2019), under projects CNR DTA.AD003.474 and CNR
DBA.AD003.139. The Hyytiälä data collection was supported by the projects EUROFLUX, CARBOEUROFLUX,
CARBOEUROPE, CARBOEXTREME and by the Academy of Finland Centre of Excellence programme, projects 118615,
141135 and 272041. The KROOF data were provided from TU Munich funded through the DFG - Sonderforschungsbereich
20 SFB 607 and the DFG - KROOF project „Interactions between Norway spruce and European beech under drought“ (PR
292/12-1, MA 1763/7-1 , MU 831/23-1) as well as by the Bavarian State Ministry for Nutrition, Agriculture and Forestry and
the Bavarian State Ministry for Environment and Health and BaySF (Bavarian State Forest Enterprise). The data for Le Bray
data is kindly provided by INRA funded through the projects EUROFLUX, CARBOEUROFLUX, CARBO EUROPE,
CARBO AGE, CARBO EXTREME. The Peitz data are kindly provided by Eberswalde Forestry State center of Competence.
25 We are grateful to the Northwest German Forest Research Institute, Göttingen for providing the Solling Data. Solling Data
from 1/2009 to 6/2011 were co-funded LIFE+ by the Regulation (EC) No.614/2007 of the European Parliament and of the
Council, project FutMon (Further Development and Implementation of an EU-level Forest Monitoring System). The Sorø data
collection has been funded through the EU-projects EUROFLUX, CARBOEUROPE, CARBOEUROPE-IP, NITROEUROPE,
CARBOEXTREME and Risø-National Laboratory (DK) and technical University of Denmark (DTU). This work used eddy
30 covariance data acquired and shared by the FLUXNET community, including these networks: CarboEuropeIP, CarboItaly and
ICOS. The FLUXNET eddy covariance data processing and harmonization was carried out by the ICOS Ecosystem Thematic
Center, AmeriFlux Management Project and Fluxdata project of FLUXNET, with the support of CDIAC, and the OzFlux,

ChinaFlux and AsiaFlux offices. Graham Weedon was supported by the Joint DECC and Defra Integrated Climate Program – DECC/Defra (GA01101). CPOR and RSG acknowledge support from the German Federal Office for Agriculture and Food (BLE, grant no. 2816ERA06S). F.B. acknowledges funding from the project “Inside out” (#POIR.04.04.00-00-5F85/18-00) funded by the HOMING programme of the Foundation for Polish Science co-financed by the European Union under the
5 European Regional Development Fund. We are also grateful to Kirsten Elger, Robert Gieseke, Katja Henning-Hofmann and Michael Flechsig for their support to make the database open access. We are grateful to the many unmentioned technicians and students for their substantial help to maintain the continuous long-term field observations.

14. References

- Babst, F., Bouriaud, O., Papale, P., Gielen, B., Janssens, I.A., Nikinmaa, E., Ibrom, A., Wu, J., Bernhofer, C., Köstner, B., Grünwald, T., Seufert, G., Ciais, P. and Frank, D.: Above-ground woody carbon sequestration measured from tree rings is coherent with net ecosystem productivity at five eddy-covariance sites, *New Phytologist*, 201, 1289–1303, <https://doi.org/10.1111/nph.12589>, 2014
- 5 Bagnara, M., Silveyra Gonzalez, R., Reifenberg, S., Steinkamp, J., Hickler, T., Werner, C., Dormann, C.F. and Hartig, F.: An R package facilitating sensitivity analysis, calibration and forward simulations with the LPJ-GUESS dynamic vegetation model, *Environmental Modelling & Software*, 111, 55–60, <https://doi.org/10.1016/j.envsoft.2018.09.004>, 2019
- Banos, V., Deuffic, P., Hautdidier, B. and Sergent, A.: A forward-looking approach to foster integrated forest development. A case study in the forests of the landes de gascogne, *Rev. For. Française*, 68, 231–243, doi:10.4267/2042/62005, 2016.
- 10 Barr, A. G., Richardson, A., Hollinger, D., Papale, D., Arain, M. A., Black, T. A., Bohrer, G., Dragoni, D., Fischer, M. L., Gu, L., Law, B., Margolis, H., McCaughey, H., Munger, J., Oechel, W. and Schaeffer, K.: Use of change-point detection for friction-velocity threshold evaluation in eddy-covariance studies, *Agric. For. Meteorol.*, 171, 31–45, ISSN: 0168-1923, doi:10.1016/j.agrformet.2012.11.023, 2013.
- 15 Berbigier, P., Bonnefond, J. M. and Mellmann, P.: CO₂ and water vapour fluxes for 2 years above Euroflux forest site, *Agric. For. Meteorol.*, 108(3), 183–197, doi:10.1016/S0168-1923(01)00240-4, 2001.
- Bolte, A., Lambertz, B., Steinmeyer, A., Kallweit, R. and Meessenburg, H.: Zur Funktion der Bodenvegetation im Stoffhaushalt von Wäldern – Studien auf Dauerbeobachtungsflächen des EU Level II-Programms in Norddeutschland, *Forstarchiv*, 75, 207–220, 2004.
- 20 Bonten, L.T.C., Groenenberg, J.E., Meessenburg, H. and de Vries, W.: Using advanced surface complexation models for modelling soil chemistry under forests: Solling forest, Germany. *Environ. Poll.*, 159, 2831–2839, doi:10.1016/j.envpol.2011.05.002, 2011.
- Bosc, A., de Grandcourt, A. and Loustau, D.: Variability of stem and branch maintenance respiration in a *Pinus pinaster* tree., *Tree Physiol.*, 23(4), 227–36, doi:10.1093/treephys/23.4.227, 2003.
- 25 Brus, D., Hengeveld, G., J. J. Walvoort, D., W. Goedhart, P., Heidema, A. H., Nabuurs, G.-J. and Gunia, K.: Statistical mapping of tree species over Europe, *Eur. J. For. Res.*, 131, 145–157, doi:10.1007/s10342-011-0513-5, 2012.
- Bugmann, H. M., Yan, X., Sykes, M., Martin, P., Lindner, M., Desanker, P. and Cumming, S.: A comparison of forest gap models: Model structure and behaviour, *Clim. Change*, 34(2), 289–313, doi:10.1007/BF00224640, 1996.

- Cescatti, A. and Piutti, E.: Silvicultural alternatives, competition regime and sensitivity to climate in a European beech forest, *For. Ecol. Manage.*, 102(2–3), 213–223, doi:10.1016/S0378-1127(97)00163-1, 1998.
- Chang, J., Ciais, P., Wang, X., Piao, S., Asrar, G., Betts, R., Chevallier, F., Dury, M., François, L., Frieler, K. and Steinkamp, J.: Benchmarking carbon fluxes of the ISIMIP2a biome models, *Environ. Res. Lett.*, 12, 45002, doi:10.1088/1748-9326/aa63fa, 5 2017.
- Chiti, T., Papale, D., Smith, P., Dalmonech, D., Matteucci, G., Yeluripati, J., Rodeghiero, M. and Valentini, R.: Predicting changes in soil organic carbon in mediterranean and alpine forests during the Kyoto Protocol commitment periods using the CENTURY model, *Soil Use Manag.*, 26(4), 475–484, doi:10.1111/j.1475-2743.2010.00300.x, 2010.
- Collalti, A., Marconi, S., Ibrom, A., Trotta, C., Anav, A., D’andrea, E., Matteucci, G., Montagnani, L., Gielen, B., Mammarella, I., Grünwald, T., Knohl, A., Berninger, F., Zhao, Y., Valentini, R. and Santini, M.: Validation of 3D-CMCC Forest Ecosystem Model (v.5.1) against eddy covariance data for 10 European forest sites, *Geosci. Model Dev.*, 9(2), 479–504, doi:10.5194/gmd-9-479-2016, 2016.
- Collalti, A., Trotta, C., Keenan, T., Ibrom, A., Bond-Lamberty, B., Grote, R., Vicca, S., Reyer, C.P.O., Migliavacca, M., Veroustraete, F., Anav, A., Campioli, M., Scoccimarro, E., Šigut, L., Grieco, E., Cescatti, A. and Matteucci G.: Thinning can 15 reduce losses in carbon use efficiency and carbon stocks in managed forests under warmer climate, *J. Adv. Model. Earth Syst.*, <https://doi.org/10.1029/2018MS001275>, 2018.
- Collalti, A., Thornton, P.E., Cescatti, A., Rita, A., Nolè, A., Borghetti, M., Trotta, C., Ciais, P., Matteucci, G.: The sensitivity of the forest carbon budget shifts between different parameters and processes along stand development and climate change. *Ecol. Appl.*, 29(2), 1-18, doi.org/10.1002/eap.1837, 2019.
- Cramer, W., Kicklighter, D. W., Bondeau, A., Iii, B. M., Churkina, G., Nemry, B., Ruimy, A., Schloss, A. L. and the 20 participants of the Potsdam NPP Model Intercomparison: Comparing global models of terrestrial net primary productivity (NPP): overview and key results, *Glob. Chang. Biol.*, 5(S1), 1–15, doi:10.1046/j.1365-2486.1999.00009.x, 1999.
- Cramer, W., Bondeau, A., Woodward, F. I., Prentice, I. C., Betts, R. A., Brovkin, V., Cox, P. M., Fisher, V., Foley, J. A., Friend, A. D., Kucharik, C., Lomas, M. R., Ramankutty, N., Sitch, S., Smith, B., White, A. and Young-Molling, C.: Global 25 response of terrestrial ecosystem structure and function to CO₂ and climate change: Results from six dynamic global vegetation models, *Glob. Chang. Biol.*, 7(4), 357–373, doi:10.1046/j.1365-2486.2001.00383.x, 2001.
- D’Andrea, E., Rezaie, N., Battistelli, A., Gravichkova, O., Kuhlmann, I., Matteucci, G., Moscatello, S., Proietti, S., Scartazza, A., Trumbore, S., et al. :Winter’s bite: Beech trees survive complete defoliation due to spring late frost damage by mobilizing old C reserves. *New Phyt.* nph.16047., 2019

- Didan, K., Munoz, A. B., Solano, R., and Huete, A.: MODIS Vegetation Index User's Guide (MOD13 Series). [online] Available from: https://vip.arizona.edu/documents/MODIS/MODIS_VI_UsersGuide_June_2015_C6.pdf, 2015.
- Dietze, M. C.: Prediction in ecology: a first-principles framework, *Ecol. Appl.*, 27(7), 2048–2060, doi:10.1002/eap.1589, 2017.
- Dietze, M. C., Lebauer, D. S. and Kooper, R.: On improving the communication between models and data, *Plant, Cell Environ.*, 36(9), 1575–1585, doi:10.1111/pce.12043, 2013.
- Dlugokencky, E. and Tans, P.: Trends in Atmospheric Carbon Dioxide, Natl. Ocean. Atmos. Adm. Earth Syst. Res. Lab. [online] Available from: (www.esrl.noaa.gov/gmd/ccgg/trends/), 2014.
- Duncker, P. S., Barreiro, S. M., Hengeveld, G. M., Lind, T., Mason, W. L. and Ambrozy, S.: Classification of Forest Management Approaches : A New Conceptual Framework and Its Applicability to European Forestry, *Ecol. Soc.*, 17(4), doi:10.5751/ES-05262-170451, 2012.
- Eastaugh, C., Pötzelsberger, E. and Hasenauer, H.: Assessing the impacts of climate change and nitrogen deposition on Norway spruce (*Picea abies* L. Karst) growth in Austria with BIOME-BGC, *Tree Physiol.*, 31, 262–274, doi:10.1093/treephys/tpr033, 2011.
- EMEP/ CEIP, Present state Emiss. data [online] Available from: http://www.ceip.at/webdab_emepdatabase/reported_emissiondata/ or http://www.ceip.at/status_reporting/2014_submissions/, 2014.
- Feoli, E. and Lagonegro, M.: Syntaxonomical analysis of beech woods in the Apennines (Italy) using the program package IAHOPA, *Plant Ecol.*, 50(3), 129–173, 1982.
- Fleck, S., Cools, N., De Vos, B., Meesenburg, H. and Fischer, R.: The Level II aggregated forest soil condition database links soil physicochemical and hydraulic properties with long-term observations of forest condition in Europe, *Ann. For. Sci.*, 73(4), 945–957, doi:10.1007/s13595-016-0571-4, 2016.
- Fluxnet 2015 (2017) FLUXNET2015 Release - Processing Pipeline document - Last revision 20170512., [online] Available from: <http://fluxnet.fluxdata.org/data/fluxnet2015-dataset/data-processing/>.
- Fontes, L., Bontemps, J. D., Bugmann, H., Oijen, M. V., Gracia, C., Kramer, K., Lindner, M., Rötzer, T. and Skovsgaard, J. P.: Models for supporting forest management in a changing environment, *For. Syst.*, 3(4), 8–29, doi:10.5424/fs/201019S-9315, 2010.

- Frieler, K., Lange, S., Piontek, F., Reyer, C. P. O., Schewe, J., Warszawski, L., Zhao, F., Chini, L., Denvil, S., Emanuel, K., Geiger, T., Halladay, K., Hurtt, G., Mengel, M., Murakami, D., Ostberg, S., Popp, A., Riva, R., Stevanovic, M., Ts, T. S., Volkholz, J., Burke, E., Ciais, P. and Ebi, K.: Assessing the impacts of 1.5 °C global warming – simulation protocol of the Inter-Sectoral Impact Model Intercomparison Project (ISIMIP2b), *Geosci. Model Dev.*, 1–25, doi:10.5194/gmd-10-4321-2017, 2017.
- Fürstenau, C., Badeck, F. W., Lasch, P., Lexer, M. J., Lindner, M., Mohr, P. and Suckow, F.: Multiple-use forest management in consideration of climate change and the interests of stakeholder groups, *Eur. J. For. Res.*, 126(2), 225–239, doi:10.1007/s10342-006-0114-x, 2007.
- Gerstengarbe, F., Hoffmann, P., Österle, H. and Werner, C.: Ensemble simulations for the RCP8.5-Scenario, *Meteorol. Zeitschrift*, 24(2), 147–156, doi:10.1127/metz/2014/0523, 2015.
- González, J. R., Pukkala, T. and Palahí, M.: Optimising the management of *Pinus sylvestris* L. stand under risk of fire in Catalonia (north-east of Spain), *Ann. For. Sci. Springer Verlag/EDP Sci.*, 62(6), 493–501, <hal-00883916>, 2005.
- Grimm, V. and Railsback, S.F.: Pattern-oriented modelling: a 'multi-scope' for predictive systems ecology. *Philosophical Transactions of the Royal Society B: Biological Sciences*, 367, 298–310, DOI: 10.1098/rstb.2011.0180, 2012.
- Gutsch, M., Lasch, P., Suckow, F. and Reyer, C.: Management of mixed oak-pine forests under climate scenario uncertainty, *For. Syst.*, 20(3), 453–463, doi:10.5424/fs/20112003-11073, 2011.
- Haataja, J. and Vesala, T.: SMEAR II. Station for Measuring Forest Ecosystem–Atmosphere Relation, Univ. Helsinki Dep. For. Ecol. Publ., 17, 1997.
- Hanewinkel, M. and Pretzsch, H.: Modelling the conversion from even-aged to uneven-aged stands of Norway spruce (*Picea abies* L. Karst.) with a distance-dependent growth simulator, *For. Ecol. Manage.*, 134(1–3), 55–70, doi:10.1016/S0378-1127(99)00245-5, 2000.
- Hartig, F., Dyke, J., Hickler, T., Higgins, S. I., O'Hara, R. B., Scheiter, S. and Huth, A.: Connecting dynamic vegetation models to data - an inverse perspective, *J. Biogeogr.*, 39(12), 2240–2252, doi:10.1111/j.1365-2699.2012.02745.x, 2012.
- Hein, S. and Dhôte, J.-F.: Effect of species composition, stand density and site index on the basal area increment of oak trees (*Quercus* sp.) in mixed stands with beech (*Fagus sylvatica* L.) in northern France, *Ann. For. Sci.*, 63(5), 457–467, doi:10.1051/forest:2006026, 2006.
- Hempel, S., Frieler, K., Warszawski, L., Schewe, J. and Piontek, F.: A trend-preserving bias correction - The ISI-MIP approach, *Earth Syst. Dyn.*, 4(2), 219–236, doi:10.5194/esd-4-219-2013, 2013.

- Huntzinger, D. N., Schwalm, C., Michalak, A. M., Schaefer, K., King, A. W., Wei, Y., Jacobson, A., Liu, S., Cook, R. B., Post, W. M., Berthier, G., Hayes, D., Huang, M., Ito, A., Lei, H., Lu, C., Mao, J., Peng, C. H., Peng, S., Poulter, B., Ricciuto, D., Shi, X., Tian, H., Wang, W., Zeng, N., Zhao, F. and Zhu, Q.: The North American Carbon Program Multi-Scale Synthesis and Terrestrial Model Intercomparison Project - Part 1: Overview and experimental design, *Geosci. Model Dev.*, 6, 2121–2133, doi:10.5194/gmd-6-2121-2013, 2013.
- Ilvesniemi, H., Levula, J., Ojansuu, R., Kolari, P., Kulmala, L., Pumpanen, J., Launiainen, S., Vesala, T. and Nikinmaa, E.: Long-term measurements of the carbon balance of a boreal Scots pine dominated forest ecosystem, *Boreal Environ. Res.*, 14, 731–753, 2009.
- Ilvesniemi, H., Pumpanen, J. and Duursma, R.: Water balance of a boreal Scots pine forest, *Boreal Environ. Res.*, 15, 375–396, 2010.
- ISSS-ISRIC-FAO: World Reference Base For Soil Resources World Soil Resource Reports 84. FAO, Rome, 1998.
- Ito, A., Nishina, K., Reyer, C., François, L., Henrot, A.-J., Munhoven, G., Jacquemin, I., Tian, H., Yang, J., Pan, S., Morfopoulos, C., Betts, R., Hickler, T., Steinkamp, J., Ostberg, S., Schaphoff, S., Ciais, P., Chang, J., Rafique, R. and Zhao, F.: Photosynthetic productivity and its efficiencies in ISIMIP2a biome models: Benchmarking for impact assessment studies, *Environ. Res. Lett.*, 12, 85001, doi:10.1088/1748-9326/aa7a19, 2017.
- Kelley, D. I., Prentice, I. C., Harrison, S. P., Wang, H., Simard, M., Fisher, J. B. and Willis, K. O.: A comprehensive benchmarking system for evaluating global vegetation models, *Biogeosciences*, 10(5), 3313–3340, doi:10.5194/bg-10-3313-2013, 2013.
- Kerr, G.: The effect of heavy or “free growth” thinning on oak (*Quercus petraea* and *Q-robur*), *Forestry*, 69(4), 303–317, doi:10.1093/forestry/69.4.303, 1996.
- Khanna, S., Palacios-Orueta, A., Whiting, M., Ustin, S., Riaño, D. and Litago, J.: Development of Angle Indexes for Soil Moisture Estimation, Dry Matter Detection and Land-cover Discrimination, *Remote Sens. Environ.*, 109, 154–165, doi:10.1016/j.rse.2006.12.018, 2007.
- Kratochvilova, I., Janous, D., Marek, M., Bartak, M. and Riha, L.: Production activity of mountain cultivated Norway spruce stands under the impact of air pollution. I. General description of problems, *Ekológia (CSSR)*, 8, 407–419, 1989.
- Ladekarl, U. L.: Soil moisture, evapotranspiration and groundwater recharge in forest and heathland, University of Aarhus, Denmark., 2001.

- Lähde, E., Laiho, O. and Lin, C. J.: Silvicultural alternatives in an uneven-sized forest dominated by *Picea abies*, *J. For. Res.*, 15(1), 14–20, doi:10.1007/s10310-009-0154-4, 2010.
- Lamarque, J. F., Dentener, F., McConnell, J., Ro, C. U., Shaw, M., Vet, R., Bergmann, D., Cameron-Smith, P., Dalsoren, S., Doherty, R., Faluvegi, G., Ghan, S. J., Josse, B., Lee, Y. H., Mackenzie, I. A., Plummer, D., Shindell, D. T., Skeie, R. B.,
5 Stevenson, D. S., Strode, S., Zeng, G., Curran, M., Dahl-Jensen, D., Das, S., Fritzsche, D. and Nolan, M.: Multi-model mean nitrogen and sulfur deposition from the atmospheric chemistry and climate model intercomparison project (ACCMIP): Evaluation of historical and projected future changes, *Atmos. Chem. Phys.*, 13(16), 7997–8018, doi:10.5194/acp-13-7997-2013, 2013a.
- Lamarque, J. F., Shindell, D. T., Josse, B., Young, P. J., Cionni, I., Eyring, V., Bergmann, D., Cameron-Smith, P., Collins, W.
10 J., Doherty, R., Dalsoren, S., Faluvegi, G., Folberth, G., Ghan, S. J., Horowitz, L. W., Lee, Y. H., MacKenzie, I. A., Nagashima, T., Naik, V., Plummer, D., Righi, M., Rumbold, S. T., Schulz, M., Skeie, R. B., Stevenson, D. S., Strode, S., Sudo, K., Szopa, S., Voulgarakis, A. and Zeng, G.: The atmospheric chemistry and climate model intercomparison Project (ACCMIP): Overview and description of models, simulations and climate diagnostics, *Geosci. Model Dev.*, 6(1), 179–206, doi:10.5194/gmd-6-179-2013, 2013b.
- 15 Lange, S.: Bias correction of surface downwelling longwave and shortwave radiation for the EWEMBI dataset, *Earth Syst. Dynam.*, 9, 627–645, <https://doi.org/10.5194/esd-9-627-2018>, 2018.
- De Lary, R.: Massif des Landes de Gascogne, II – ETAT DES CONNAISSANCES Tech. Bordeaux: CRPF Aquitaine, 2015.
- Lasch, P., Badeck, F. W., Suckow, F., Lindner, M. and Mohr, P.: Model-based analysis of management alternatives at stand and regional level in Brandenburg (Germany), *For. Ecol. Manage.*, 207(1–2 SPEC. ISS.), 59–74,
20 doi:10.1016/j.foreco.2004.10.034, 2005.
- Lasslop, G., Reichstein, M., Papale, D., Richardson, A., Arneeth, A., Barr, A., Stoy, P. and Wohlfahrt, G.: Separation of net ecosystem exchange into assimilation and respiration using a light response curve approach: critical issues and global evaluation. *Global Change Biology*, 16, 187–208, doi: 10.1111/j.1365-2486.2009.02041.x, 2010.
- Lasslop, G., Migliavacca, M., Bohrer, G., Reichstein, M., Bahn, M., Ibrom, A., Jacobs, C., Kolari, P., Papale, D., Vesala, T.,
25 Wohlfahrt, G. and Cescatti, A.: On the choice of the driving temperature for eddy-covariance carbon dioxide flux partitioning, *Biogeosciences*, 9, 5243–5259, doi:10.5194/bg-9-5243-2012, 2012.
- Le Mellec, A., Meessenburg, H. and Michalzik, B.: The importance of canopy-derived dissolved and particulate organic matter (DOM and POM) — comparing throughfall solution from broadleaved and coniferous forests, *Ann. For. Sci.*, 67, 411, doi:10.1051/forest/2009130, 2010.

- Lindner, M., Fitzgerald, J. B., Zimmermann, N. E., Reyser, C., Delzon, S., van der Maaten, E., Schelhaas, M. J., Lasch, P., Eggers, J., van der Maaten-Theunissen, M., Suckow, F., Psomas, A., Poulter, B. and Hanewinkel, M.: Climate change and European forests: What do we know, what are the uncertainties, and what are the implications for forest management?, *J. Environ. Manage.*, 146, 69–83, doi:10.1016/j.jenvman.2014.07.030, 2014.
- 5 Loustau, D., Bosc, A., Colin, A., Ogée, J., Davi, H., François, C., Dufrêne, E., Déqué, M., Cloppet, E., Arrouays, D., Le Bas, C., Saby, N., Pignard, G., Hamza, N., Granier, A., Bréda, N., Ciais, P., Viovy, N., Delage, F. and Bas, C. L. E.: Modeling climate change effects on the potential production of French plains forests at the sub-regional level., *Tree Physiol.*, 25(7), 813–23, doi:10.1093/treephys/25.7.813, 2005.
- Mammarella, I., Launiainen, S., Gronholm, T., Keronen, P., Pumpanen, J., Rannik, Ü. and Vesala, T.: Relative humidity effect on the high-frequency attenuation of water vapor flux measured by a closed-path eddy covariance system, *J. Atmos. Ocean. Technol.*, 26(9), 1856–1866, doi:10.1175/2009JTECHA1179.1, 2009.
- 10 Marchetto, A., Rogora, M., Waldner, P., Thimonier, A., Hansen, K., Karlsson, GP., Simpson, D., Fagerli, H., Sanders, TGM., Schmitz, A., de Vries, W. (in prep): How close are model estimates and field measurements of sulphur and nitrogen deposition to the European forests?
- 15 Matyssek, R., Schnyder, H., Oßwald, W., Ernst, D., Munch, J. and Pretzsch, H.: Growth and Defence in Plants Resource Allocation at Multiple Scales., *Ecological.*, Springer, <https://doi.org/10.1007/978-3-642-30645-7>, 2012.
- Meesenburg, H., Ahrends, B., Fleck, S., Wagner, M., Fortmann, H., Scheler, B., Klinck, U., Dammann, I., Eichhorn, J., Mindrup, M. and Meiwes, K. J.: Long-term changes of ecosystem services at Solling, Germany: Recovery from acidification, but increasing nitrogen saturation?, *Ecol. Indic.*, 65, 103–112, doi:10.1016/j.ecolind.2015.12.013, 2016.
- 20 Meesenburg, H., Brumme, R., Jacobsen, C., Meiwes, K.J. and Eichhorn, J.: Soil properties, Functioning and Management of European Beech Ecosystems, edited by R. Brumme, P.K. Khanna, *Ecol. Studies*, Springer, Berlin, Germany, 208, 49-63, 2009.
- Meinshausen, M., Smith, S. J., Calvin, K., Daniel, J. S., Kainuma, M. L. T., Lamarque, J.-F., Matsumoto, K., Montzka, S. A., Raper, S. C. B., Riahi, K., Thomson, A., Velders, G. J. M. and van Vuuren, D. P. P.: The RCP greenhouse gas concentrations and their extensions from 1765 to 2300, *Clim. Change*, 109(1), 213, doi:10.1007/s10584-011-0156-z, 2011.
- 25 Meiwes, K.J., Meesenburg, H., Eichhorn, J., Jacobsen, C. and Khanna, P.K.: Changes in C and N contents of soil under beech forests over a period of 35 years, *Functioning and Management of European Beech Ecosystems*, edited by R. Brumme, P.K. Khanna, *Ecol. Studies*, Springer, Berlin, Germany, 208, 49-63, 2009.

- Meteorological: Yearbook 2012: experimentální ekologické pracoviště Bílý Kříž (Moravskoslezské Beskydy), Ekosystémová stanice Štítná nad Vláří (Bíle Karpaty), Ekosystémová stanice Rájec (Drahanská vrchovina)., Brno: Centrum výzkumu globální změny AV ČR., 2015.
- Monteith, J. L.: Solar Radiation and Productivity in Tropical Ecosystems, *J. Appl. Ecol.*, 9, 747–766, doi:10.2307/2401901, 1972.
- Morales, P., Sykes, M. T., Prentice, I. C., Smith, P., Smith, B., Bugmann, H., Zierl, B., Friedlingstein, P., Viovy, N., Sabaté, S., Sánchez, A., Pla, E., Gracia, C. A., Sitch, S., Arneth, A. and Ogee, J.: Comparing and evaluating process-based ecosystem model predictions of carbon and water fluxes in major European forest biomes, *Glob. Chang. Biol.*, 11(12), 2211–2233, doi:10.1111/j.1365-2486.2005.01036.x, 2005.
- Mund, M.: Carbon pools of European beech forests (*Fagus sylvatica*) under different silvicultural management, Georg-August-Universität Göttingen., 2004.
- Myneni, R.: MODIS Collection 6 (C6) LAI/FPAR Product User's Guide. [online] Available from: https://lpdaac.usgs.gov/sites/default/files/public/product_documentation/mod15_user_guide.pdf, 2015.
- Noack, M.: Forstliche Langfristforschung für den Zukunftswald – welche Entwicklung vollzogen WIEDEMANN's schlechteste Kiefernbestände Ostdeutschlands., 2011.
- Noack, M.: Der langfristige Durchforstungsversuch „PEITZ 150“: Forschungsbeitrag zum Wachstum der Gemeinen Kiefer auf nährkraftschwachen Böden im Land Brandenburg unter dem Einfluss von Standortswandel und Durchforstung, *Eberswalder Forstl. Schriftenr.*, 49, 56–72, 2012.
- ORNL DAAC 2008a. MODIS Collection 5 Land Products Global Subsetting and Visualization Tool. ORNL DAAC, Oak Ridge, Tennessee, USA. Accessed June 25, 2016. Subset obtained for MOD09A1 product at various sites in Spatial Range: N=70.00N, S=35.00N, E=50.00E, W=10.00W, time period: 2000-02-18 to 2015-12-27, and subset size: 0.5 x 0.5 km. <http://dx.doi.org/10.3334/ORNLDAAC/1241>
- ORNL DAAC 2008b. MODIS Collection 5 Land Products Global Subsetting and Visualization Tool. ORNL DAAC, Oak Ridge, Tennessee, USA. Accessed June 25, 2016. Subset obtained for MOD11A2 product at various sites in Spatial Range: N=70.00N, S=35.00N, E=50.00E, W=10.00W, time period: 2000-03-05 to 2015-12-27, and subset size: 1 x 1 km. <http://dx.doi.org/10.3334/ORNLDAAC/1241>
- ORNL DAAC 2008c. MODIS Collection 5 Land Products Global Subsetting and Visualization Tool. ORNL DAAC, Oak Ridge, Tennessee, USA. Accessed June 25, 2016. Subset obtained for MOD13Q1 product at various sites in Spatial Range:

- N=70.00N, S=35.00N, E=50.00E, W=10.00W, time period: 2000-02-18 to 2015-12-19, and subset size: 0.25 x 0.25 km.
<http://dx.doi.org/10.3334/ORNLDAAAC/1241>
- ORNL DAAC 2008d. MODIS Collection 5 Land Products Global Subsetting and Visualization Tool. ORNL DAAC, Oak Ridge, Tennessee, USA. Accessed June 25, 2016. Subset obtained for MOD15A2 product at various sites in Spatial Range:
- 5 N=70.00N, S=35.00N, E=50.00E, W=10.00W, time period: 2000-02-18 to 2015-12-27, and subset size: 1 x 1 km.
<http://dx.doi.org/10.3334/ORNLDAAAC/1241>
- ORNL DAAC 2008e. MODIS Collection 5 Land Products Global Subsetting and Visualization Tool. ORNL DAAC, Oak Ridge, Tennessee, USA. Accessed June 25, 2016. Subset obtained for MOD17A2 product at various sites in Spatial Range:
- 10 N=70.00N, S=35.00N, E=50.00E, W=10.00W, time period: 2000-01-01 to 2014-12-27, and subset size: 1 x 1 km.
<http://dx.doi.org/10.3334/ORNLDAAAC/1241>
- Palacios-Orueta, A., Khanna, S., Litago, J., Whiting, M. and Ustin, S.: Assessment of NDVI and NDWI spectral indices using MODIS time series analysis and development of a new spectral index based on MODIS shortwave infrared bands, in 1st International Conference on Remote sensing and geoinformation processing in the assessment and monitoring of land degradation and desertification, Trier., 2005.
- 15 Palacios-Orueta, A., Huesca, M., Whiting, M., Litago, J., Khanna, S., Garcia, M. and Ustin, S.: Derivation of phenological metrics by function fitting to time-series of Spectral Shape Indexes AS1 and AS2: Mapping cotton phenological stages using MODIS time series, *Remote Sens. Environ.*, 126, 148–159, doi:10.1016/j.rse.2012.08.002, 2012.
- Panferov, O., Kreilein, H., Meesenburg, H., Eichhorn, J. and Gravenhorst, G.: Climatic condition at the three beech forest sites in Central Germany, *Functioning and Management of European Beech Ecosystems*, edited by R. Brumme, P.K. Khanna, *Ecol. Studies*, 208, 13-32, doi: 10.1007/b82392_3, 2009.
- 20 Papale, D., Reichstein, M., Aubinet, M., Canfora, E., Bernhofer, C., Kutsch, W. L., Bernard, L., Rambal, S., Valentini, R., T. V. and Yakir, D.: Towards a standardized processing of Net Ecosystem Exchange measured with eddy covariance technique: Algorithms and uncertainty estimation., *Biogeosciences*, 3, 571-583, doi: 10.5194/bg-3-571-2006, 2006.
- Pape, R.: Influence of Thinning and Tree Diameter Class on the Development of Basic Density and Annual Ring Width in *Picea abies*, *Scand. J. For. Res.*, 14(1969), 27–37, doi:10.1080/02827589950152269, 1999.
- 25 Pilegaard, K., Mikkelsen, T. N., Beier, C., Jensen, N. O., Ambus, P. and Ro-Poulsen, H.: Field measurements of atmosphere – biosphere interactions in a Danish beech forest, *Boreal Environ. Res.*, 8(December), 315–333 [online] Available from: <http://www.borenv.net/BER/pdfs/ber8/ber8-315.pdf>, 2003.

- Pilegaard, K., Ibrom, A., Courtney, M. S., Hummelshøj, P. and Jensen, N. O.: Increasing net CO₂ uptake by a Danish beech forest during the period from 1996 to 2009, *Agric. For. Meteorol.*, 151(7), 934–946, doi:10.1016/j.agrformet.2011.02.013, 2011.
- Porté, A. and Loustau, D.: Variability of the photosynthetic characteristics of mature needles within the crown of a 25-year-old *Pinus pinaster*, *Tree Physiol.*, 18(August 2017), 223–232, doi:10.1093/treephys/18.4.223, 1998.
- Pretzsch, H., Kahn, M. and Grote, R.: The mixed spruce-beech forest stands of the “Sonderforschungsbereich” “Growth or Parasite Defence?” in the forest district Kranzberger Forst, *Forstwissenschaftliches Cent. Ver. mit Tharandter Forstl. Jahrb.*, 117(1), 241–257, doi:10.1007/bf02832979, 1998.
- Pretzsch, H., Rötzer, T., Matyssek, R., Grams, T. E. E., Häberle, K. H., Pritsch, K., Kerner, R. and Munch, J. C.: Mixed Norway spruce (*Picea abies* [L.] Karst) and European beech (*Fagus sylvatica* [L.]) stands under drought: from reaction pattern to mechanism, *Trees - Struct. Funct.*, 28(5), 1305–1321, doi:10.1007/s00468-014-1035-9, 2014.
- Pretzsch, H., Forrester, D. and Rötzer, T.: Representation of species mixing in forest growth models. A review and perspective., *Ecol. Modelling*, 313, 276–292, doi: 10.1016/j.ecolmodel.2015.06.044, 2015.
- Pukkala, T., Miina, J., Kurttila, M. and Kolstrom, T.: A spatial yield model for optimizing the thinning regime of mixed stands of *Pinus sylvestris* and *Picea abies*, *Scand. J. For. Res.*, 13(1), 31–42, doi:10.1080/02827589809382959, 1998.
- R Core Team 2016: R: A language and environment for statistical computing. R Foundation for Statistical Computing, Vienna, Austria. URL <https://www.R-project.org/>
- Rannik, Ü., Keronen, P., Hari, P. and Vesala, T.: Estimation of forest-atmosphere CO₂ exchange by eddy covariance and profile techniques, *Agric. For. Meteorol.*, 126(1–2), 141–155, doi:10.1016/j.agrformet.2004.06.010, 2004.
- Reichstein, M., Falge, E., Baldocchi, D., Papale, D., Aubinet, M., Berbigier, P., Bernhofer, C., Buchmann, N., Gilmanov, T., Granier, A., Grünwald, T., Havránková, K., Ilvesniemi, H., Janous, D., Knohl, A., Laurila, T., Lohila, A., Loustau, D., Matteucci, G. and Valentini, R.: On the Separation of Net Ecosystem Exchange into Assimilation and Ecosystem Respiration: Review and Improved Algorithm, *Glob. Chang. Biol.*, 11, 1424–1439, doi:10.1111/j.1365-2486.2005.001002.x, 2005.
- Reyer, CPO., Silveyra Gonzalez, R., Dolos, K., Hartig, F., Hauf, Y., Noack, M., Lasch-Born, P., Rötzer, T., Pretzsch, H., Meesenburg, H., Fleck, S., Wagner, M., Bolte, A., Sanders, T., Kolari, P., Mäkelä, A., Vesala, T., Mammarella, I., Pumpanen, J., Matteucci, G., Collalti, A., D’Andrea, E., Foltýnová, L., Krejza, J., Ibrom, A., Pilegaard, K., Loustau, D., Bonnefond, J.-M., Berbigier, P., Picart, D., Lafont, S., Dietze, M., Cameron, D., Vieno, M., Tian, H., Palacios, A., Cicuendez, V., Recuero, L., Wieze, K., Büchner, M., Lange, S., Volkholz, J., Kim, H., Weedon, G.P., Sheffield, J., Vega del Valle, I., Suckow, F., Horemans,

- J., Martel, S., Bohn, F., Steinkamp, J., Chikalanov A. and Frieler, K.: The PROFOUND database for evaluating vegetation models and simulating climate impacts on forests, V.0.1.12. GFZ Data Services. <http://doi.org/10.5880/PIK.2019.008>, 2019.
- Reyer, CPO., Silveyra Gonzalez, R., Dolos, K., Hartig, F., Hauf, Y., Noack, M., Lasch-Born, P., Rötzer, T., Pretzsch, H., Meesenburg, H., Fleck, S., Wagner, M., Bolte, A., Sanders, T., Kolari, P., Mäkelä, A., Vesala, T., Mammarella, I., Pumpanen, J., Matteucci, G., Collalti, A., D’Andrea, E., Foltýnová, L., Krejza, J., Ibrom, A., Pilegaard, K., Loustau, D., Bonnefond, J-M., Berbigier, P., Picart, D., Lafont, S., Dietze, M., Cameron, D., Vieno, M., Tian, H., Palacios, A., Cicuendez, V., Recuero, L., Wieze, K., Büchner, M., Lange, S., Volkholz, J., Kim, H., Weedon, GP., Sheffield, J., Babst F., Vega del Valle, I., Suckow, F., Horemans, J., Martel, S., Bohn, F., Steinkamp, J., Chikalanov A., Mahnken M., Gutsch M., and Frieler, K.: The PROFOUND database for evaluating vegetation models and simulating climate impacts on forests, V.0.3.0. GFZ Data Services. <http://doi.org/10.5880/PIK.2020.006/>, 2020.
- Reyer, C.: Forest Productivity under Environmental Change—a Review of Stand-Scale Modeling Studies, Curr. For. Reports, 53–68, doi:10.1007/s40725-015-0009-5, 2015.
- Riek, W. and Stähr, F.: Eigenschaften typischer Waldböden im Nordostdeutschen Tiefland unter besonderer Berücksichtigung des Landes Brandenburg: Hinweise für die Waldbewirtschaftung, Eberswalder Forstl. Schriftenr., 19, 180, 2004.
- 15 Rötzer, T. and Goergen, K.: Modelling the impact of climate change on the productivity and water-use efficiency of a central European beech forest, Clim. Res., 58, 81–95, doi:10.3354/cr01179, 2013.
- Running, S. W. and Zhao, M.: Daily GPP and Annual NPP (MOD17A2/A3) products NASA Earth Observing System MODIS Land Algorithm - User’s guide V3, 28 [online] Available from: http://www.ntsg.umd.edu/sites/ntsg.umd.edu/files/modis/MOD17UsersGuide2015_v3.pdf, 2015.
- 20 Santhana-Vannan, S.-K., Cook, B., Y. Pan, J. and E. Wilson, B.: A SOAP Web Service for accessing MODIS land product subsets, Earth Sci. Informatics, 4, 97–106, doi:10.1007/s12145-011-0079-2, 2011.
- Schellnhuber, H.: “Earth system” analysis and the second Copernican revolution., Nature, 402, doi: 10.1038/35011515, 1999.
- Schütz, J.-P.: Modelling the demographic sustainability of pure beech plenter forests in Eastern Germany, Ann. For. Sci., 63, 93-100, doi:10.1051/forest:2005101, 2006.
- 25 Sheffield, J., Goteti, G. and Wood, E. F.: Development of a 50-year high-resolution global dataset of meteorological forcings for land surface modeling, J. Clim., 19(13), 3088–3111, doi:10.1175/JCLI3790.1, 2006.
- Silveyra Gonzalez R, CPO Reyer, F Bohn, M Mahnken, F Hartig, (2020) ProfoundData: Downloading and Exploring Data from the PROFOUND Database. <https://CRAN.R-project.org/package=ProfoundData>

- Simpson, D., Benedictow, A., Berge, H., Bergström, R., Emberson, L. D., Fagerli, H., Flechard, C. R., Hayman, G. D., Gauss, M., Jonson, J. E., Jenkin, M. E., Nyíri, A., Richter, C., Semeena, V. S., Tsyro, S., Tuovinen, J.-P., Valdebenito, Á., and Wind, P.: The EMEP MSC-W chemical transport model – technical description, *Atmos. Chem. Phys.*, 12, 7825-7865, <https://doi.org/10.5194/acp-12-7825-2012>, 2012.
- 5 Sitch, S., Friedlingstein, P., Gruber, N., Jones, S., Murray-Tortarolo, G., Ahlström, A., Doney, S., Graven, H., Heinze, C., Huntingford, C., Levis, S., Levy, P., Lomas, M., Poulter, B., Viovy, N., Zaehle, S., Zeng, N., Arneth, A., Bonan, G. and Peylin, P.: Recent trends and drivers of regional sources and sinks of carbon dioxide, *Biogeosciences*, 12, 653–679, doi:10.5194/bg-12-653-2015, 2015.
- Štefančík, I.: Growth characteristics of oak (*Quercus petraea* [Mattusch.] Liebl.) stand under different thinning regimes, *J. For. Sci.*, 58, 67–78, 2012.
- 10 Sterba, H.: Estimating Potential Density from Thinning Experiments and Inventory Data, *For. Sci.*, 33, 1022–1034, 1987.
- Tiktak, A. and Grinsven, H.: Review of Sixteen Forest-Soil-Atmosphere Models, *Ecol. Modell.*, 83, 35–53, doi:10.1016/0304-3800(95)00081-6, 1995.
- Ulrich, B.: Nutrient and acid-base budget of central European forest ecosystems. In: Godbold DL & Hüttermann A. (Eds) *Effects of Acid Rain on Forest Processes*, Wiley-Liss New York, USA, 1-50, 1994
- 15 Vermote, E. F., Roger, J. C. and Ray, J. P.: MODIS Surface Reflectance User's Guide. Collection 6. [online] Available from: <https://ladsweb.modaps.eosdis.nasa.gov/missions-and-measurements/products/land-surface-reflectance/MOD09A1>), 2015.
- Vesala, T., Suni, T., Rannik, Ü., Keronen, P., Markkanen, T., Sevanto, S., Grönholm, T., Smolander, S., Kulmala, M., Ilvesniemi, H., Ojansuu, R., Uotila, A., Levula, J., Mäkelä, A., Pumpanen, J., Kolari, P., Kulmala, L., Altimir, N., Berninger, F., Nikinmaa, E. and Hari, P.: Effect of thinning on surface fluxes in a boreal forest, *Global Biogeochem. Cycles*, 19(2), 1–11, doi:10.1029/2004GB002316, 2005.
- Warszawski, L., Frieler, K., Huber, V., Piontek, F., Serdeczny, O. and Schewe, J.: The Inter-Sectoral Impact Model Intercomparison Project (ISI-MIP): Project framework, *Proc. Natl. Acad. Sci.*, 111(9), 3228–3232, doi:10.1073/pnas.1312330110, 2014.
- 25 Weedon, G. P., Gomes, S., Viterbo, P., Shuttleworth, W. J., Blyth, E., Österle, H., Adam, J. C., Bellouin, N., Boucher, O. and Best, M.: Creation of the WATCH Forcing Data and Its Use to Assess Global and Regional Reference Crop Evaporation over Land during the Twentieth Century, *J. Hydrometeorol.*, 12(5), 823–848, doi:10.1175/2011JHM1369.1, 2011.

Weedon, G. P., Balsamo, G., Bellouin, N., Gomes, S., Best, M. J. and Viterbo, P.: The WFDEI meteorological forcing data set: WATCH Forcing Data methodology applied to ERA-Interim reanalysis data, *Water Resour. Res.*, 50, 7505–7514, doi:10.1002/2014WR015638, 2014.

5 Wegehenkel, M., Wagner, A., Tiziana, A., Fleck, S., Meesenburg, H. and Raspe, S.: Impact of stoniness correction of soil hydraulic parameters on water balance simulations of forest plots, *J. Plant Nutr. Soil Sci.*, 180(1), 71-86, doi:10.1002/jpln.201600244, 2016.

Wu, J., Larsen, K. S., van der Linden, L., Beier, C., Pilegaard, K. and Ibrom, A.: Synthesis on the carbon budget and cycling in a Danish, temperate deciduous forest, *Agric. For. Meteorol.*, 181, 94–107, doi:10.1016/j.agrformet.2013.07.012, 2013.

10 Zhu, Z., Piao, S., B. Myneni, R., H. M., Zeng, Z., G. Canadell, J., Ciais, P., Sitch, S., Friedlingstein, P., Arneth, A., Cao, C., Cheng, L., Kato, E., Koven, C., Li, Y., Lian, X., Liu, Y., Liu, R., Mao, J. and Zeng, N.: Greening of the Earth and its drivers, *Nat. Clim. Chang.*, 6, doi:10.1038/nclimate3004, 2016.