

Response to referee comments on “TephraKam: Geochemical database of glass compositions in tephra and welded tuffs from the Kamchatka volcanic arc (NW Pacific)” by Maxim V. Portnyagin et al..

We appreciate receiving comments on our manuscript. All the comments have been addressed during revision and helped us to improve the quality of this work.

Bärbel Sarbas (Referee #1)

b.sarbas@mpic.de

Received and published: 2 December 2019

The term database refers to sets of related data. In the case of TephraKam, there are four individual tables (volcanoes, samples, major elements and trace elements) which are not related. Thus, the comprehensive and unique data collection should not be called database but dataset.

Thanks for this comment, but we disagree with the referee.

1) According to Wikipedia, "A database is an organized collection of data, generally stored and accessed electronically from a computer system." (<https://en.wikipedia.org/wiki/Database>). Our data collection satisfies this definition of a database. More importantly, the four tables in the .xlsx file (volcanoes, samples, major elements and trace elements) ARE linked (related) using unique sample number and/or volcano name. If one changes, for example, the age of sample in the "Table 2 - Samples" spreadsheet, the age will be automatically changed in the tables with major and trace elements. All interlinked cells are identified in the database description.

2) This is correct that our data collection has format, which is different from that of a true relation database (Access, SQL etc.). Our goal was to make the files as friendly for potential users as possible. Therefore, we provided the tables in MS Excel format, which is well known to most potential users. In the future, we would like to continue supporting the Excel based version, and our goal is certainly to release a web-based multi-user version of this database.

3) Depending on the editor's decision, we can change description of this data collection to as "dataset"; the wording is not of primary importance for us. However, we would prefer to keep its definition as "database" because it consists of linked data – a major feature of true database.

Anonymous Referee #2

Received and published: 13 January 2020

I believe that this is a paper that is worthy of publication. It is the culmination of a thorough analysis of many of the tephra and weld tuff deposits produced by volcanoes in Kamchatka. This original data will prove invaluable to researchers working in the region and also on a wider global scale, where ultradistal tephtras are now being found. The geochemical data is of a high quality and detailed explanations are provided on the analytical conditions of the instruments used to produce the results.

The issues I have with this paper that need to be addressed are as follows and I have also highlighted them in the attached PDF file.

We appreciate the positive comments from the reviewer and thorough reading of our manuscript. All points of criticism and proposed corrections were taken into account during revisions.

1. There is no mention of Miocene samples in the Abstract. A minor point, but needs correcting.

We do have one Miocene (5.7 Ma) sample in the collection.

The abstract has been corrected.

2. The discussion on tephra sample preparation for analysis on page 4 needs to include some reference to other studies. This has been widely discussed in the literature, but there is no reference to any other sources. Whilst the preparation of samples is thorough, it is not necessarily innovative and some acknowledgement of others is required here.

Indeed, there are many papers addressing separation of dispersed tephra particles from marine and continental sediments using chemical and physical methods, and their preparation for geochemical analyses. Preparation of proximal tephra samples in the course of this study has not required special sophisticated techniques. The technique described in section 3.1 is our original approach, which is based on the first author's 30+ years experience with studying glasses, melt inclusions and minerals from volcanic rocks. The detailed description was required by the ESSD rules, and it maybe helpful for other scientists looking for details of tephra preparation for analysis.

The following sentence has been added at the beginning of section 3.1 (p.4) to clarify the point raised by reviewer:

"Tephra samples have been prepared using our original technique developed in the past 20 years in GEOMAR (Kiel) and Vernadsky Institute (Moscow). The technique aims at uncomplicated, time- and material-effective preparation of many tephra samples for microanalytical work. The technique applies no strong heating (>50°C) and no acid leaching, which may cause chemical modification of tephra glasses (e.g. Hunt and Hill 1996). All materials used for preparation were thoroughly tested to exclude those causing chemical contamination of polished glass surface."

3. Page 4 discusses electron microprobe analysis and again there is no inclusion of any citations to other published work on this subject, other than some of the glass standards. This subject has been discussed in detail in the literature and some inclusion of this is needed.

In the revised paper, we included citations of works, which were influential for developing of our EPMA technique. The section 3.2 (p.5) begins with the following paragraph now.

"In this study, EPMA data have been obtained following published recommendations for the analytical conditions, primary and secondary reference materials, the number of analyses and other factors and procedures, which may influence the quality of EPMA data on tephra glasses and their interpretation (Froggatt, 1992; Morgan and London, 1996; 2005; Hunt and Hill, 2001; Turney et al., 2001). Particularly influential study was an intercomparison of electron microprobe data for volcanic glasses between different labs (Kuehn et al., 2011), which confirmed a high quality of our data (GEOMAR lab is #12 in paper by Kuehn et al. (2011) and allowed us to further improve our EPMA protocol."

A few more modifications have been made in all section 3.2. to include quotations of previous studies.

4. Page 6 onwards discusses LA-ICP-MS analyses and there is more inclusion of published work on this subject here, although I would expect to see more.

We agree that there were many excellent works on LA-ICP-MS tephra studies, which influenced our views and helped to achieve the best results. To acknowledge the previous studies, the beginning of the section 3.3 was modified as follows:

"In the past 25 years LA-ICP-MS became a common technique to quantify concentrations of a wide range of trace elements in tephra glasses (e.g. Westgate et al., 1994; Pearce et al., 1996; 2007; 2014; Tomlinson et al., 2010; Kimura and Chang, 2012; Maruyama et al., 2016;

Lowe et al., 2017). The LA-ICP-MS technique adopted for this study and its development were based on the principle results and recommendations from the previous works, and our own experimental results. All the trace element analyses were obtained at the Institute of Geosciences, CAU Kiel, Germany. Conditions of analysis are summarized in TephraKam Table 1d (Portnyagin et al., 2019).”

Some additional references were included in the following text.

5. I am not suggesting that this is done for the publication of this paper, but it would be good to see this data housed in a proper relational database. This would allow more complex searching than is currently possible with the Excel spreadsheets. Some mention of this as at least a possibility would be good.

We addressed this issue in the response to the reviewer #1. Although in our opinion, Excel allows very complex searching and filtering the data covering all needs for tephra studies, we do plan to release a web-based version of this database in near future. A note about this plan has been made in section 5 (p. 14).

6. Although not badly written, there are a lot of minor English issues with the text. I have tried to highlight these in the PDF file (Supplement) and I hope the authors find this useful. I do appreciate the difficulties in writing a paper in another language and I feel that they have done a good job, but the quality of the writing needs to be more consistent. I would hope the editors/publishers would also contribute to this. Please also note the supplement to this comment:
<https://www.earth-syst-sci-data-discuss.net/essd-2019-202/essd-2019-202-RC2-supplement.pdf>

We appreciate very much these corrections and do find them useful. We have read the manuscript thoroughly and made a number of corrections to the style and grammar. We hope that the writing meets the journal requirements now.

References were formatted following ESSD rules in the revised version.

In addition, we performed the following important work on the data files:

- 1) A few misprints were corrected in the sample description table.
- 2) The analytical conditions were verified and corrected in few parts.
- 3) Major element contents normalized to 100% were corrected to account for halogen substitution of oxygen.
- 4) The link to updated database (version 2020.01.30) was placed on ResearchGate under the same address (DOI) as before.

TephraKam: Geochemical database of glass compositions in tephra and welded tuffs from the Kamchatka volcanic arc (NW Pacific)

Maxim V. Portnyagin^{1,2}, Vera V. Ponomareva³, Egor A. Zelenin⁴, Lilia I. Bazanova³, Maria M. Pevzner⁴, Anastasia A. Plechova², Aleksei N. Rogozin³, Dieter Garbe-Schönberg⁵

5 ¹GEOMAR Helmholtz Centre for Ocean Research Kiel, Kiel, 24148, Germany

²V.I. Vernadsky Institute for Geochemistry and Analytical Chemistry, Moscow, 119991, Russia

³Institute of Volcanology and Seismology, Petropavlovsk-Kamchatsky, 683006, Russia

⁴Geological Institute, Moscow, 119017, Russia

10 ⁵~~Institute of Geosciences, Kiel University, Institut für Geowissenschaften, Christian-Albrecht-Universität zu Kiel, Kiel, 24118, Germany~~

Formatted: English (United States)

Formatted: English (United States)

Correspondence to: Maxim V. Portnyagin (mportnyagin@geomar.de)

Abstract. Tephra layers produced by volcanic eruptions are widely used for correlation and dating of various deposits and landforms, for synchronization of disparate paleoenvironmental archives, and for reconstruction of magma origin. Here we present our original database TephraKam, which includes chemical compositions of volcanic glass in tephra and welded tuffs from the Kamchatka volcanic arc. The database contains 7049 ~~single-shard~~ major element analyses obtained by electron microprobe and 738 trace element analyses obtained by laser ablation inductively coupled plasma mass spectrometry (~~LA-ICP-MS~~) on 487 samples collected in proximity of their volcanic sources in all volcanic zones in Kamchatka. The samples characterize about 300 explosive eruptions, which occurred in Kamchatka from the ~~Pliocene-Miocene~~ until historic times. Precise or estimated ages for all samples are based on published ³⁹Ar/⁴⁰Ar dates of rocks and ¹⁴C dates of host sediments, statistical age modelling and geologic relationships with dated units. All data in TephraKam ~~is-are~~ supported by information about source volcanoes and analytical details. Using the data, we present an overview of geochemical variations of Kamchatka volcanic glasses and discuss application of this data for precise identification of tephra layers, their source volcanoes, temporal and spatial geochemical variations of pyroclastic rocks in Kamchatka. The data files described in this paper are available on ResearchGate at <https://doi.org/10.13140/RG.2.2.23627.13606> (Portnyagin et al., 2019).

1 Introduction

Tephra layers are widely used for correlation and dating of various deposits and landforms, for the synchronization of disparate paleoenvironmental archives, and for reconstruction of magma origin and temporal evolution. These applications are in high demand in paleoclimatology, paleoseismology, archaeology and other Quaternary science disciplines (e.g. (Lowe, 2011)), as well as in petrology and geochemistry (e.g. Cashman and Edmonds, 2019; Ponomareva et al., 2015a; Straub et al., 2015). Tephra is composed ~~by-of~~ minerals, volcanic glass (melt rapidly quenched upon eruption) and rock fragments in different

Formatted: English (United States)

Formatted: English (United States)

proportions. A major modern approach for correlation of tephra layers between different locations is using major and trace element composition of volcanic glass (e.g. Cashman and Edmonds, 2019; Lowe, 2011; Ponomareva et al., 2015a). The composition of volcanic glasses has been shown to vary significantly on spatial scale ranging from volcanic region to a single volcano, reflecting a large variability of thermodynamic conditions of magma storage and fractionation, and the composition of crustal and mantle sources of magmas (e.g. Bachmann and Bergantz, 2008; Cashman and Edmonds, 2019; Frost et al., 2001; Pearce, 1996; Pearce et al., 1984; Schattel et al., 2014).

Tephra often dominates the erupted products in terms of volume, eruption frequency, and variety of compositions, some of which may never occur in lava. It is particularly true for highly explosive volcanic arcs where the vast majority of the magma is erupted as tephra (e.g. Kutterolf et al., 2008). Therefore, tephra studies have a large, still only partly explored, potential to trace temporal and spatial variations of magma compositions in volcanic arcs (e.g. Clift et al., 2005; Kimura et al., 2015; Straub et al., 2004; Straub et al., 2015).

The Kamchatka Peninsula (Fig. 1) hosts more than 30 recently active large volcanic centers and a few hundred of monogenetic vents comprising the northwestern segment of the Pacific Ring of Fire. Kamchatka volcanism is highly explosive. According to some estimates, Kamchatka has the largest number of Quaternary calderas per unit of arc length in the world (Hughes and Mahood, 2008). Kamchatka tephra layers provide chronological control for deposits and events over large areas, both in Kamchatka and farther afield, up to Greenland and North America, which is critical for many studies (e.g. Cook et al., 2018; Hulse et al., 2011; Kozhurin et al., 2014; Mackay et al., 2016; Pendea et al., 2016; Pinegina et al., 2013; Pinegina et al., 2014; Pinegina et al., 2012; Plunkett et al., 2015; van der Bilt et al., 2017). However, geochemical characterization of Kamchatka volcanic glasses is still in a developing phase. In the Kamchatka volcanic arc, the Holocene tephrochronological framework until recently has been based mainly on direct tracing of tephra layers, bulk composition of tephra, and bracketing radiocarbon dates (e.g. Bazanova et al., 2005; Braitseva et al., 1998; Braitseva et al., 1996; Braitseva et al., 1995; Braitseva et al., 1997; Pevzner, 2010; Pevzner et al., 1998; Pevzner et al., 2006). A significant progress towards creating geochemical database of Kamchatka tephra has been achieved in the past 10 years (Dirksen et al., 2011; Kyle et al., 2011; Plunkett et al., 2015; Ponomareva et al., 2013a; Ponomareva et al., 2013b; Ponomareva et al., 2017; Ponomareva et al., 2015b). However, the published geochemical data is mostly restricted to the Holocene and does not include data on trace element composition of volcanic glasses.

In this paper, we present TephraKam - our original, internally consistent and so far, the most complete database of [single-shard](#) glass composition from tephra and welded tuffs of Kamchatka volcanoes covering the period from the Pliocene until present (Portnyagin et al., 2019). The data has been collected during the past 10 years and includes major element compositions obtained by electron microprobe and trace element compositions of representative samples by laser-ablation inductively coupled plasma mass-spectrometry (LA-ICP-MS). Ages based on published radiocarbon and Ar-Ar dates, as well as on the age models and stratigraphy, are provided for all samples. Using this data, we present an overview of geochemical variations of Kamchatka volcanic glasses and suggest some key geochemical parameters and diagrams, which permit precise identification of tephra layers and their sources, and assessing regional geochemical variations in Kamchatka. The resulting

high-resolution tephrochronological framework will help decipher the temporal and spatial complexity of archaeological records, tectonic outbursts, volcanic impact, and environmental change for this highly dynamic area. In addition, identification of tephra layers contributes to a better understanding of regional eruptive histories, magnitudes of past eruptions, volcanic hazards, and magma origin in Kamchatka.

5 2 Volcanoes of Kamchatka and studied samples

The Kamchatka Peninsula overlies the northwestern margin of the subducting Pacific plate and is one of the most volcanically and tectonically active regions in the world (e.g. Gorbatov et al., 1997). Kamchatka hosts more than 30 large active volcanoes, 40 calderas, and hundreds of monogenetic vents grouped into two major volcanic belts running NE-SW along the peninsula: Eastern volcanic belt and Sredinny Range (SR) (Fig. 1). Eastern volcanic belt includes the Eastern volcanic front (VF), rear-arc (RA) in the southern (51-53-°N) and central segments (53-55-°N), and the volcanic zone of the Central Kamchatka depression (CKD) in the north (55-57-°N). Definition of VF and RA volcanoes varies in published studies. In this work, VF volcanoes are defined as those located at the closest distance to the deep-sea trench along the volcanic arc. RA volcanoes are located behind the frontal volcanoes. The current configuration of the volcanic belts is believed to have existed since c. 2.5 Ma (Avdeiko et al., 2007; Lander and Shapiro, 2007; Legler, 1977; Volynets, 1994).

The products of the continuous explosive volcanism in Kamchatka during the last 2.5 Ma are not equally represented in the depositional record. Holocene tephra layers mantle the topography and, being interlayered with paleosol or peat horizons, form a sequence that provides a nearly continuous record of the Holocene explosive activity (e.g. Bazanova and Pevzner, 2001; Braitseva et al., 1998; Braitseva et al., 1996; Braitseva et al., 1995; Braitseva et al., 1997; Kyle et al., 2011; Pevzner, 2010; Pevzner et al., 1998; Ponomareva et al., 2015a; Ponomareva et al., 2017; Ponomareva et al., 2015b). Earlier, pre-Holocene pyroclastic products are mostly ignimbrite (pumiceous or welded tuffs), which survived through glacial stages better than loose pyroclastics and in many cases experienced alteration (Bindeman et al., 2019; Bindeman et al., 2010; Ponomareva et al., 2018; Seligman et al., 2014). These deposits are partly eroded by glacial processes, buried by younger deposits, and/or covered with dense vegetation, which hampers their identification.

TephraKam database provides data on volcanic glass composition from 65 volcanic centers in Kamchatka. Of these centers, 43 have been active in Holocene, and the remaining 22 centers have ceased their activity prior to the Holocene time. Some volcanic centers are individual volcanic cones (e.g. Iliinsky), calderas (e.g. Kurile Lake caldera), monogenetic lava fields (e.g. Tolbachik lava field) or monogenetic vents (cinder cones and craters), while other centers combine several volcanoes or/and calderas (e.g. Karymsky center). The latter approach was used in cases when thick local pyroclastic deposits could not have been unambiguously assigned to a certain volcano within the volcanic cluster. We refine-define the source vent within the volcanic center where possible (e.g. Karymsky / Polovinka caldera). Eight ignimbrite units come from unknown sources so we use coordinates of their samples instead of vent coordinates.

We have analyzed glass from 487 samples, including 11 replicate samples marked as “-rep” in the database. Overall, our samples characterize about 300 individual explosive eruptions. 298 samples come from tephra fall deposits, 187 - from ignimbrite units (42 of them welded), and two are from lava. Our sampling covers all the Quaternary volcanic belts: 25% of the samples are from VF, 27% - from RA, 40% - from CKD, and 8% - from Sredinny Range. The coverage among the volcanic centers is not uniform: some volcanoes are characterized by only one sample while others are densely sampled and analyzed. The sampling density partly reflects the amount of large explosive eruptions from a certain volcano. The analyzed samples span an age interval from Miocene (c. 6 Ma) to historical times (Fig. 2). About 60% of samples and data presented in this database are of the Holocene age and characterize all large explosive eruptions in Kamchatka during this time (Braitseva et al., 1995; Braitseva et al., 1997; Ponomareva et al., 2013b; Ponomareva et al., 2015b) as well as many moderate-size ones. Ages, tephra dispersal areas and volumes for most of the Holocene eruptions were published earlier (Braitseva et al., 1998; Braitseva et al., 1996; Braitseva et al., 1997; Kyle et al., 2011; Ponomareva et al., 2017; Zaretskaya et al., 2007). Pre-Holocene record of explosive eruptions is spotty, and its representativeness decreases with increasing rock age (Fig. 2). Most of the pre-Holocene samples characterize ignimbrites associated with large (diameter 5-40 km) collapse calderas. Sixty nine of ~200 Pleistocene samples characterize 38 eruptions dated with the help of radiocarbon, Ar-Ar, or age modelling while the rest of the samples provide information on earlier unreported eruptions. Analyzed samples were collected between 1975 and 2016 by 22 contributors; the largest collections come from the authors of this paper.

3 Methods and database structure

3.1 Sample preparation

Tephra samples have been prepared using our original technique developed in the past 20 years in GEOMAR (Kiel) and Vernadsky Institute (Moscow). The technique aims at uncomplicated, time- and material-effective preparation of many tephra samples for microanalytical work. The technique applies no strong heating (>50°C) and no acid leaching, which may cause chemical modification of tephra glasses (e.g. Hunt and Hill 1996). All material used for preparation were thoroughly tested to exclude those causing chemical contamination of polished glass surface.

The samples have been cleaned in water to wash out clay and the finest (<5 µm) fraction and dried. Fine and medium grained ash has been mounted without splitting into fractions and additional crushing. Lapilli and welded tuffs have been carefully crushed in hand mortar and then mounted. The samples were mounted in 25 mm diameter, 4 mm thick Plexiglas holders with 12 or 16 of, respectively, 3 or 2 mm cells (holes through holder). Before mounting the holders were attached to a hard plate using 25 mm double sided glue tape rings from Plano GmbH for electron microscopy from Plano GmbH, which have a thin but strongly adhesive glue layer and very flat surface with unevenness in the range of c. 10 µm over the entire ring. Two component epoxy resin, EpoThin from Buehler has been used in the course of this study. We found this type of epoxy was particularly suitable for tephra studies as the epoxy has sufficiently low viscosity to impregnate fine grained samples and has very good vacuum properties. In addition, the epoxy is relatively hard allowing good polishing, transparent and colourless.

Formatted: English (United States)

Formatted: English (United States)

Formatted: Superscript

This type of epoxy also contains analytically negligible (below analytical detection limit) amounts of most major and trace elements, except ~3 wt% chlorine. After hardening, the mounts were removed from the glue tape, cleaned with ethanol and water, and then ground wet using 600-1200 grit SiC sand paper and polished by hand on stiff paper (unused punch computer card from mid-20th century), placed on hard surface using KEMET diamond pastes of 6, 3 and 1 μm grain size. Final polishing was done with 0.05 μm Buehler Al_2O_3 suspension in water on soft ~~ring during~~ tissue disk for 1 min. Polishing on a hard surface is crucial for the preparation of very fine tephra as it ~~provides-creates maximal a maximum~~ flatness of small single glass shards, ensuring high quality of analysis of small glass particles by electron probe. The samples were finally washed by brush in deionized water, dried and photographed under optical microscope.

3.2 Electron probe ~~microprobe~~ analysis (EMPMA)

In this study, EPMA data have been obtained following published recommendations for the analytical conditions, primary and secondary reference materials, the number of analyses and other factors and procedures, which may influence the quality of EPMA data on tephra glasses and their interpretation (Froggatt, 1992; Morgan and London, 1996; 2005; Hunt and Hill, 2001; Turney et al., 2001; Kuehn et al., 2011; Lowe et al., 2017). Particularly influential study was an intercomparison of electron microprobe data for volcanic glasses between different labs (Kuehn et al., 2011), which confirmed a high quality of our data (GEOMAR lab is #12 in paper by Kuehn et al. (2011)) and allowed us to further improve our EPMA protocol.

The high quality of the data has been also confirmed by the intercomparison of electron microprobe data for volcanic glasses between different labs (Kuehn et al., 2011, GEOMAR lab is No.12). The glasses were analyzed at GEOMAR (Kiel, Germany) using JEOL JXA 8200 electron microprobe equipped with 5 wavelength dispersive spectrometers including 3 high-sensitivity ones (2 PETH and TAPH). The analytical conditions were 15 kV accelerating voltage, 6 nA current and 5 μm electron beam size for all analyses. The current/size conditions correspond to the current density of 0.076 nA μm^{-2} , which is within the recommended range (<0.1 nA μm^{-2}) to minimize the Na loss during analysis, especially in a combination with short counting time for Na (Morgan and London, 1996; 2005; Kuehn et al., 2011). Counting times in the latest version of the program are 5/10 s (peak/background) for Na, 20/10s for Si, Al, Mg, Ca, P, 30/15 s for Fe, K, Ti Cl, S, 40/20 s for F and 60/20 s for Mn. The counting times have been optimized several times in the course of this study. The ~~time record of these changes is-are~~ reported in TephraKam Table 1a. The changes have not affected the data accuracy for most elements, but the precision of single point analyses has ~~been~~ improved. Decreasing counting time for Na from 20 s to 5 s in 2010, which was aimed at minimizing loss of this element during analysis, resulted in ~~slightly about 2-times lower~~ worse analytical precision for single point Na analyses (Morgan and London, 1996), but the accuracy of Na analysis was ~~has been~~ improved and became less dependent on the reference material for standardization.

Basaltic glass (USNM 113498/1 VG-A99) for Ti, Fe, Mg, Ca, P, rhyolitic glass (USNM 72854 VG568) for Si, Al, Na, K, scapolite (USNM R6600-1) for S and Cl, all from the Smithsonian collection of natural reference materials (Jarosewich et al., 1980), ~~rhyolitic glass~~ comendite obsidian KN-18 (Nielsen and Sigurdsson, 1991; Mosbah et al., 1991) for F and synthetic rhodonite for Mn were used for calibration and monitoring of routine measurements. Two to three analyses of all standard

Formatted: English (United States)

Formatted: English (United States)

Formatted: English (United States)

Formatted: English (United States)

Formatted: Superscript

glasses and scapolite were performed at the beginning of analytical session, after every 50-60 analyses and at the end. The data reduction included on-line CITZAF correction and small drift correction for systematic deviations (if any) from the reference values obtained on standard materials. The latter correction has not exceeded a few relative percent for all elements and allowed to achieve the best possible accuracy and precision. The correction resulted in a very minor change of the mean concentrations, but allowed 20-40% improvement of the analytical precision (2SD; SD is sample standard deviation) and the shape of data distribution, making it closer to Gaussian distribution (~~TephraKam materials in~~ Ponomareva et al., 2017, [Supplementary files](#)). The glass analyses used in this study were obtained in the period from 2009 to 2019. The summary of data for reference materials collected over this period of time is presented in TephraKam Table 1b (Portnyagin et al., 2019). The data includes results obtained on major reference glasses and minerals, which were used in calibration of quantitative microprobe measurements (USNM 72854 VG568, USNM 113498/1 VG-A99, USNM R6600-1, KN18), and also results obtained for other reference materials analyzed as unknown in the course of our study. The latter include natural glasses USNM 111240/52 VG-2 (Jarosewich et al., 1980), Lipari obsidian ([Hunt and Hill, 1996](#)), Mt. Ediza Sheep Track tephra, Laki 1783 AD tephra, Old Crow tephra (Kuehn et al., 2011) and glasses made of natural rock powders ATHO-G, BM90/21-G, GOR128-G, KL2-G, StHs60/8-G, ML3B-G (Jochum et al., 2006) and artificial glass SRM NIST-612 (Jochum et al., 2011). The data demonstrates remarkable agreement with recommended concentrations for all elements and thus excellent accuracy of our data, which reproduce reference concentrations within the reported 2 SD in nearly all cases. The latter is also true for concentrations, which exceed significantly the concentrations in reference glasses used for calibration. This is illustrated, for example, by analyses of Na₂O in NIST-SRM612 glass (13.70±0.30 wt% recommended vs. 13.73±0.40 wt% measured) and MgO in GOR128-G glass (26.00±0.30 wt% recommended vs. 25.66±0.68 wt% measured). ~~The high quality of the data has been also confirmed by the intercomparison of electron microprobe data for volcanic glasses between different labs (Kuehn et al., 2011, GEOMAR lab is No.12).~~

Precision of single point analyses depends ~~of-on the~~ element concentration and analytical conditions for every element. Assuming that the reference materials used in this study were perfectly homogeneous (~~which~~ may be not true for natural glasses containing microlites of minerals), the precision of single point analysis of typical rhyolite can be assessed from 2SD of the long-term mean concentrations obtained for glass USNM 72854 VG568 or Lipari obsidian. Precision of single point basaltic glass analysis can be evaluated from the data on glasses USNM 113498/1 VG-A99 or USNM 111240/52 VG-2. For more precise determination of a single point analytical precision, we provide TephraKam Table ~~2e-1c~~ (Portnyagin et al., 2019) ~~containing electronic spreadsheet~~, where the precision for every element is calculated based on element concentration in glass taking into account ~~long-term an 11 yrs reproducibility- of reproducibility of~~ reference materials. Correlation of the oxide concentrations in reference materials plotted against long-term relative standard deviation (2 RSD, %) allows estimating analytical detection limits – element concentration, at which 2 RSD approach 100% (TephraKam Table 1c).

During the subsequent data reduction, we excluded analyses with the totals lower than 90 wt%, which resulted from possible unevenness of sample surface, entrapment of voids or epoxy during analysis of very small glass fragments. The latter has been also identified by unusually high measured chlorine concentrations, resulting from entrapment of epoxy resin during analysis

(see section 3.1). Analyses contaminated by occasional entrapment of crystal phases, usually microlites of plagioclase, pyroxene or Fe-Ti oxides, were mostly identified and excluded on the basis of excessive concentrations of Al₂O₃, CaO or FeO (and TiO₂), respectively, compared to the prevailing composition of glasses in every sample. Because volcanic glasses can be hydrated over time during post-magmatic interaction with meteoric or sea water or contain significant but variable amount of H₂O, not completely degassed during eruption, all analyses were then normalized to anhydrous basis, accounting for the presence of halogens (Cl, F) substituting for O.

3.3 Laser-ablation inductively-coupled plasma mass-spectrometry (LA-ICP-MS)

In the past 25 years LA-ICP-MS became a common technique to quantify concentrations of a wide range of trace elements in tephra glasses (e.g. Westgate et al., 1994; Pearce et al., 1996; 2007; 2014; Tomlinson et al., 2010; Kimura and Chang, 2012; Maruyama et al., 2016; Lowe et al., 2017). The LA-ICP-MS technique adopted for this study and its development were based on the principle results and recommendations from the previous works, and our own experimental results. All the trace element analyses were obtained at the Institute of Geosciences, CAU Kiel, Germany. Conditions of analysis are summarized in TephraKam Table 1d (Portnyagin et al., 2019).

Trace element analyses were performed using laser ablation LA-ICP-MS at the Institute of Geosciences, CAU Kiel, Germany. Conditions of analysis are summarized in TephraKam Table 1d (Portnyagin et al., 2019). Before 2017, analyses were performed using a quadrupole-based (QP)-ICP-MS (Agilent 7500s) and a Coherent GeoLas ArF 193 nm Excimer LA system. In-situ microsampling was done with 24-50 µm pit size and 10 Hz pulse frequency at 5-10 J cm⁻² fluence. Analyses were performed using a large volume ablation cell (ETH Zürich, Switzerland) (Fricker et al., 2011). The generated aerosol was transported with 0.75 L min⁻¹ He and mixed with 0.6 L min⁻¹ Ar prior to introduction into the ICP. The ICP-MS was operated under standard conditions at 1500W and optimized for low oxide formation (typically ThO/Th ≤ 0.4%) and robust plasma (U/Th ≈ 1). Ca, Ti, Si and 30 trace elements were analyzed. The calibration was based on SRM-NIST612 glass standard (Jochum et al., 2011) and matrix corrected using ATHO-G and KL2-G glasses (Jochum et al., 2006). The measured intensities were converted to element concentrations using conventional approach (Longerich et al., 1996; Pearce et al., 1996), with ⁴³Ca as the internal standard and the anhydrous normalised CaO from EMPAEPMA data. Initial data reduction was performed in Glitter software (Griffin et al., 2008) setting integration windows of time resolved data for background (20 s) and variable times depending on signal duration from individual tephra shards. Si and Ti concentrations obtained by LA-ICP-MS were compared to microprobe data, and the LA-ICP-MS analyses with that deviation of LA-ICP-MS and from EMPAEPMA data for these elements by more than 20% relative were rejected. The threshold value of 20% corresponds to ~3RSD obtained for Si and Ti on reference glasses using 24 µm pit size (TephraKam Table 1e).

Beginning from January 2017, the analyses were obtained using a new ICP-MS Agilent 7900s and a Coherent GeoLas ArF 193 nm Excimer LA system operated with a fluence of 5 J cm⁻², at a repetition rate of 10 Hz and a 15-24 µm ablation craters. Analyses were performed using the same a modified for rapid wash-out large volume ablation cell as before (ETH Zürich, Switzerland) but modified for fast washout, in a flow of Helium (0.7 L min⁻¹) with addition of 14 mL min⁻¹ H₂. was

Formatted: Superscript

used as carrier gas. The carrier gas was mixed with Ar (~1 L min⁻¹) prior to introduction to the ICP-MS. Ten major elements (Si, Ti, Al, Fe, Mn, Mg, Ca, Na, K, P) and 31 trace elements were analyzed. Analyses included 20 s background (laser-off) and 30 s signal (laser-on) measurements. Dwell time for different elements varied from 5 to 20 ms depending on their abundance. One complete measurement cycle lasted 0.607 ms and initial data reduction was performed in Glitter software (Griffin et al., 2008), that included manual selection of integration windows and preliminary calibration. The typical integration intervals for tiny tephra shards were 6-10 s and included 10-17 cycles. The intensities corrected for background and averaged over the selected intervals were normalized to the intensity of ⁴³Ca isotope and converted to concentrations by matching the sum of major element oxides to 100 wt% (Liu et al., 2008; Pettke et al., 2004). The calibration and correction of instrumental drift used data on ATHO-G reference glass, which was measured in duplicate after every 18 points on unknown samples. The reference concentrations of all elements, except Na, in ATHO-G were used after (Jochum et al., 2006). Na concentrations was accepted to be 4.1 wt%, ca. 10% relative higher than reported by (Jochum et al., 2006) to reproduce Na in other reference glasses analyzed by LA-ICP-MS in this study (TephraKam Table 1d, e) and better comply with Na obtained by electron microprobe (TephraKam Table 1b). Sc concentrations were corrected for SiO₄⁺ interference using reference glasses with known Sc and variable SiO₂ content. The data was further filtered for inclusion of phenocryst phases by comparison of major element concentrations with those obtained by EMPA/EPMA and obvious outliers were rejected to leave only glass analyses. During all period of data collection from 2011 to 2019, BCR2-G, KL2-G and STHS60/8-G glasses (Jochum et al., 2006) were analyzed as unknown in one series with the samples (TephraKam Table 1e). The data confirms good consistency of the entire data set and no bias related to periodic instrumental upgrades. Based on this data, the analytical precision and accuracy are typically between ±2-8 % for 20 s long analyses, but the precision might be reduced for very short analyses of tiny glass shards and for elements occurring at concentrations below 0.1 ppm. Overall, the data obtained since 2017 using the very sensitive modern instrument Agilent 7900 and after implementation of additional improvements (modified cell, addition of H₂ in carrier gas) are more accurate compared to earlier data for the same spot size of 24 μm. Older data obtained with 50 μm spot has comparable precision with the most recent data. However, some former data could have been affected by entrapment of crystal phases (e.g. Pearce et al., 2014) that was impossible to identify by only using data on Ti and Si concentrations. Thus, outliers in pre-2017 data should be considered with care. Besides a smaller laser beam, the post-2017 data were quantified using a more efficient approach by normalizing oxides to 100%. This data is directly comparable with EMPA/EPMA data for all elements except volatiles F, Cl and S. Thus, contamination of these analyses by occasional entrapment of crystal phases is excluded. The recent LA-ICP-MS data also provides accurate concentrations of Ti, Mn and P, occurring in silicic glasses in concentrations approaching and below the detection limit of our EMP analyses (0.02-0.03 wt% for these elements).

3.4 Tephra ages

Knowledge of tephra ages or at least approximate age ranges is crucial for their use as marker horizons. For many tephra in our database, the age estimates are available from published data (Auer et al., 2009; Bazanova and Pevzner, 2001; Bazanova

Formatted: Superscript

et al., 2019; Bindeman et al., 2019; Bindeman et al., 2010; Braitseva et al., 1998; Braitseva et al., 1991; Braitseva et al., 1995; Churikova et al., 2015; Cook et al., 2018; Dirksen, 2009; Dirksen and Bazanova, 2009; Dirksen and Melekestsev, 1999; Florensky, 1984; Kozhurin et al., 2006; [Masurenkov, 1980](#); Melekestsev et al., 1992; Melekestsev et al., 1995; Pevzner, 2015; Plechova et al., 2011; Ponomareva et al., 2018; Ponomareva et al., 2013b; Ponomareva et al., 2017; Ponomareva et al., 2015b; Ponomareva, 1990; Ponomareva et al., 2006; Seligman et al., 2014; Volynets et al., 1998; Zaretskaia et al., 2001; Zaretskaya et al., 2007; Zelenin et al., 2019). In this case, we report bibliographical references and details on the age estimates and dating techniques. The majority of previously reported tephra ages were obtained by radiocarbon dating of host sediments. The ages are usually published as uncalibrated ¹⁴C dates. In the TephraKam database (Portnyagin et al., 2019), the published ¹⁴C dates have been recalculated to calibrated ages before present (cal yr BP) with 95% error interval using the most recent IntCal13 calibration curve (Reimer et al., 2013). Some calibrated ages are based on poorly documented ¹⁴C dates and reported as approximate ages (“~” symbol) or as an age range. Holocene tephra in Northern Kamchatka, as well as some Holocene marker tephra, were dated with the help of Bayesian age model combining 223 individual ¹⁴C dates (Ponomareva et al., 2017). One Holocene tephra (KHG from Khangar volcano) was found in the Greenland ice and dated with the help of the Greenland Ice Core Chronology 2005 (GICC05, Cook et al., 2018; Rasmussen et al., 2006; Vinther et al., 2006). Twenty-one welded tuff units were dated by Ar/Ar (Bindeman et al., 2019; Bindeman et al., 2010; Seligman et al., 2014). For undated samples, the age estimates were derived from their stratigraphic relationships with the dated ones. Designated age group is provided for all samples according to the geologic time scale.

3.5 Database structure

The TephraKam database is provided in Excel 2016 file (.xlsx) and consists of 6 [pages-folders](#) (TephraKam Tables 2a-f, Portnyagin et al., 2019): a) Comments, b) Volcanoes, c) Sample description, d) Major elements, e) Trace elements, and f) Discrimination diagrams. Table 2a – Comments – explains abbreviations of columns in the data tables. Table 2b – Volcanoes – contains information about volcanic centers of Kamchatka, from which volcanic glass data exists and is presented in the database. Table 2c – Sample description – includes coordinates, information of sample age, outcrop, type of material (ash, pumice, and welded tuff), collector’s name and other information including data for source volcano via link to Table 2b. Table 2d – Major elements contains [EMPA/EPMA](#) data on individual glass shards from samples studied and related information. Table 2e – Trace elements – contains LA-ICP-MS major and trace element data on single glass shards, information on date and conditions of LA-ICP-MS analysis, trace element concentrations normalized to mantle composition and some element ratios for plotting the data. The tables are linked to each other so that any changes in volcano or sample description will be seen in geochemical data tables. Table 1f – Discrimination diagrams – contains sample plots and coordinates of corner points to draw compositional fields of the modern volcanic zones in Kamchatka using coordinates Nb/Y vs. La/Y and Nb/Y vs. Th/Y.

4 Data overview

4.1 Spatial and temporal variations of volcanic glass compositions

Major element data is available for all samples and comprises 7049 individual analyses. Trace elements are available for 114 samples and include 738 individual analyses. About 30% of the major element data has been already published, e.g. for Shiveluch (Ponomareva et al., 2015b); Ushkovsky (Ponomareva et al., 2013b); a part of Bezymianny and Tolbachik eruptions (Ponomareva et al., 2017). Majority of the trace element data is presented here for the first time.

An overview of the available major element data is shown in Fig. 3, a common classification diagram for island-arc rocks in coordinates SiO_2 vs. K_2O (Gill, 1981; Le Maitre et al., 2002; Peccerillo and Taylor, 1976). In this diagram, lines dividing low- K_2O , medium- K_2O and high- K_2O compositions are drawn along typical trends of magma fractionation from basalts to rhyolites. Thus, this diagram is useful to access the extent of magma fractionation and relative enrichment in K_2O of parental magma and/or source rock. Basaltic glasses are very rare in tephra from Kamchatka. The vast majority of glasses have basaltic andesite, andesite, dacite and rhyolite low- to high- K_2O compositions. The compositions are not uniformly distributed in SiO_2 - K_2O coordinates. Some compositions are more common; the others are rather rare. For example, dacite and rhyolite tephra glasses with $\text{K}_2\text{O} \sim 2$ wt% and $\text{SiO}_2 = 68-72$ wt%, very low- K_2O rhyolites and alkali rhyolites with $\text{K}_2\text{O} > 5$ % are extremely rare or unknown in Kamchatka. In turn, medium- K_2O rhyolite glasses with $\text{K}_2\text{O} \sim 3$ wt% and $\text{SiO}_2 \sim 75$ wt% are very common and characterize many eruptions from all volcanic zones.

The compositions of glasses are grouped in Fig. 3 according to their source volcano location in Kamchatka (Fig. 3a), age (Fig. 3b), type of volcano (Fig. 3c) and type of sample (Fig. 3d). Figs. 3a-c show glasses only from tephra; Fig. 3d compares glasses from tephra and welded tuffs. Glasses from VF are represented by full range of compositions from basaltic andesites to rhyolites and belong to low- K_2O and medium- K_2O series. RA glasses have medium- and high- K_2O compositions and overlap only marginally with VF glasses. CKD glasses have similar range of compositions with RA glasses, although medium- K_2O rhyolite glasses similar to VF glasses are abundant in CKD (e.g. Shiveluch volcano). SR glasses exhibit compositional bimodality. Compositions with SiO_2 from 65 to 72 wt% are not known in SR. The glasses have medium- K_2O (some SR rhyolites) and predominantly high- K_2O compositions. The glass compositions do not exhibit clear temporal variability, suggesting similar composition of erupted magmas since at least Middle Pleistocene (Fig. 3b). The compositions of tephra glasses from complex volcanoes and calderas are similarly variable and cover all compositional range. Tephra glasses from monogenetic volcanoes tend to have either the most mafic, basaltic andesite compositions (basaltic cinder cones) or rhyolitic compositions (explosive craters). Some intermediate compositions are also known, but are not as abundant as previously mentioned types (Fig. 3c). In addition to tephra glasses, the database includes glasses from welded tuffs and obsidians, which are important to characterize the oldest explosive eruptions in Kamchatka. In comparison with tephra glasses, welded tuff glasses tend to have SiO_2 -rich dacite and rhyolite compositions, although sample with some andesitic glasses are also present (Fig. 3d). Many welded tuffs have compositions with $\text{K}_2\text{O} > 5$ wt%, which is higher than in the majority of tephra glasses. This K_2O enrichment is most likely related to secondary alteration of glass as discussed in more details in section 4.3.

Data on concentrations of trace elements in glasses adds significant information, which is highly valuable for precise identification of volcanic sources as well as for petrological and geochemical applications of this database. The data for Ti, Mn and P obtained by LA-ICP-MS is generally of higher precision in comparison to EMPAEPMA data, particularly for glasses with concentrations of these elements below 500 ppm (0.05 wt%) approaching the detection limit of EMPAEPMA.

5 Trace elements provided in this database belong to different groups with contrasting geochemical properties in magmatic systems, and, therefore, provide different geochemical information. Behaviour of Sr, Ti, V, Sc, P, Zr, Hf, and heavy REE is strongly controlled by solid crystalline phases. When plagioclase (Sr), Fe-Ti oxides (Ti, V), pyroxene (Sc), apatite (P), zircon (Zr, Hf) and amphibole (heavy REE: e.g. Dy, Er, Yb) crystallize from magmas, these elements behave as “compatible elements”, and their concentrations decrease in residual melts. In contrast, elements Rb, Ba, Th, Nb, Ta, Pb, light REEs (La, 10 Ce, Pr, Nd) behave as “incompatible elements” in most magmas of Kamchatka, because they are not concentrated in solid phases and enrich in residual melt. Systematics of incompatible elements can be informative of the magma source composition and subduction related parameters, such as, for example, the distance from volcano to subducting plate (e.g. Volynets et al., 1994; Churikova et al., 2001; Duggen et al., 2007). The ratios between incompatible elements do not change as magma fractionates and are instructive to identify the source volcano of variably fractionated melts. This information is quite unique 15 in comparison to the systematics of major elements, which, in contrast to incompatible trace elements, is largely related to the conditions of magma storage and also to syneruptive crystallization and magma mixing (Cashman and Edmonds, 2019; Ponomareva et al., 2015a).

Although detailed evaluation of trace element systematics in Kamchatka glasses is beyond the scope of this work, we illustrate in Fig. 4 some regularity in trace element composition of tephra glasses from different volcanic zones in Kamchatka, which 20 can help identify source volcano or at least volcanic zone for tephra of unknown provenance. In this diagram, we show only Holocene and Late Pleistocene samples as their source volcanoes are reliably constrained, and the available data is the most representative compared to older volcanic rocks.

(Nb/Y)_N and (La/Yb)_N ratios in glasses (N denotes values normalized to primitive mantle after McDonough and Sun (1995)) reflect source enrichment in highly incompatible elements (La, Nb) relative to less incompatible elements (Yb, Y) (Pearce et al., 1995; Pearce et al., 1984). These ratios are also strongly influenced by amphibole crystallization in evolved magmas, which 25 is important host for heavy REE and Y, but not for La and Nb (Brophy, 2008). Tephra glasses from frontal Kamchatka volcanoes have relatively low (Nb/Y)_N <1.3 and (La/Yb)_N <5. This is distinctive compositional feature of VF tephra in comparison with glass compositions from the other volcanic zones in Kamchatka. RA glasses have (Nb/Y)_N =1.1-3.6 and (La/Yb)_N = 3.1-10.9. Glasses from the SR tephra have even higher (Nb/Y)_N >4.5 and (La/Yb)_N = 5.5-11.8 mostly overlapping 30 with RA compositions. Both ratios increase with increasing the distance from the deep-sea trench. CKD glasses have (Nb/Y)_N similar to those in RA glasses and (La/Yb)_N >3 overlapping with RA and SR glasses.

(Ba/Th)_N and (Th/La)_N ratios are informative-indicative of magma source composition and related, respectively, to contributions from slab fluid and sediment melts in source of magmas (e.g. Elliott et al., 1997; Pearce et al., 1995; Plank, 2005). Both ratios exhibit significant variations along volcanic arc and range from mantle-like values ~1 up to 4-6 times higher

than in primitive mantle. On a regional scale, VF tephra tend to have higher $(\text{Ba}/\text{Th})_N$ and lower $(\text{Th}/\text{La})_N$ than RA tephra: $(\text{Ba}/\text{Th})_N = 1.5\text{--}6.2$ and $1.2\text{--}3.3$, $(\text{Th}/\text{La})_N = 0.8\text{--}2.7$ and $1.0\text{--}4.4$ in VF and RA, respectively). At a given distance along volcanic arc, VF tephra always have higher $(\text{Ba}/\text{Th})_N$ and lower $(\text{Th}/\text{La})_N$ in comparison with RA tephra. SR tephra have a relatively low $(\text{Ba}/\text{Th})_N < 2$ and high $(\text{Th}/\text{La})_N > 2$ in the range of RA tephra. CKD tephra has these ratios similar to VF tephra.

5 To sum up the overview of geochemical data, compositions of glass in Kamchatka tephra are very variable, enabling **effective robust** correlation of tephra layers as well as identification of source volcano and volcanic zone, from which unknown tephra could come from.

4.2 Using composition of glasses for fingerprinting ash layers in Kamchatka

TephraKam was initially created for tephrochronological needs to enable reliable identification and dating of tephra layers in Kamchatka and neighbouring areas and for identification of their sources. The data has been used in a number of publications (Cook et al., 2018; Derkachev et al., 2019; Plunkett et al., 2015; Ponomareva et al., 2018; Ponomareva et al., 2013a; Ponomareva et al., 2013b; Ponomareva et al., 2017; Ponomareva et al., 2015b; Zelenin et al., 2019). Our experience showed that ash layers produced by the largest explosive eruptions in Kamchatka can be recognized using major element systematics of tephra glasses. Diagram of SiO_2 vs. K_2O is useful for primary identification (Fig. 3), because it utilizes elements of contrasting geochemical properties, reflecting mantle or crustal source enrichment in incompatible elements (K_2O) and extent of magma fractionation (SiO_2). In this respect, the diagram is more informative compared to other diagrams widely used in tephrochronology such as FeO vs. CaO or FeO vs. TiO_2 , utilizing elements whose concentrations are largely controlled by crystallization processes and strongly correlate with each other. More detailed discrimination of ash layers requires additional geochemical constraints. For example, low- K_2O tephra glasses from Ksudach and Avachinsky volcanoes are well distinguished using CaO vs. SiO_2 systematics; medium- K_2O glass from Bezmianny volcano tephra has lower Na_2O compared to Shiveluch glasses; high- K_2O glass from Ushkovsky tephra has distinctively higher P_2O_5 compared to glass from high- K_2O basaltic tephra SH#28 from Shiveluch (Ponomareva et al., 2017).

In rare cases, tephra glasses from different volcanoes have hardly distinguishable major element composition. In this case minor elements determined by EMPAEPMA (P, Cl) and trace elements by LA-ICP-MS are useful to identify source volcanoes.

25 In Fig. 5, we illustrate this case using compositions of tephra glasses from **the Baranii Amphitheater Crater at the foot of Opala** volcano (eruption OP 1356 BP) and Khangar volcano (eruption KHG6600 7490 BP). Although these tephra have very different ages, this comparison is instructive to illustrate the value of minor and trace element data to distinguish compositionally similar compositionally close tephra. The difference in major elements is very subtle and mostly within long-term analytical uncertainty: Khangar glass has about 0.5 wt% lower Al_2O_3 , ≤ 0.2 wt% higher CaO , ≤ 0.5 wt% higher K_2O at given SiO_2 and otherwise completely overlapping TiO_2 , FeO , CaO and Na_2O contents (Fig. 5 a-c). The two tephra have however clearly different Cl content (Fig. 5d) and very different shapes of normalized trace elements patterns (Fig. 5e), enabling clear discrimination between source volcanoes. Summarizing our experience to date, **we were not able to identify any identical all** tephra from different volcanic sources in Kamchatka **have characteristic and unique chemical compositions.**

Distinguishing tephra layers from the same volcano is a more difficult task. However, there is a number of examples from Kamchatkan volcanoes ~~when-where~~ tephra compositions are different even on short intervals of time (e.g. Kyle et al., 2011; Ponomareva et al., 2013b; Ponomareva et al., 2017; Ponomareva et al., 2015b). For example, Ponomareva et al. (2015b) showed that even compositionally similar tephra layers of ~~the~~ frequently erupting Shiveluch volcano can be distinguished using major element systematics in tephra glasses, particularly when the time period of eruption can be narrowed using marker layers from other volcanoes. The cases of compositionally identical products of different eruptions from the same volcanic center are also known. For example, Derkachev et al. (~~2019~~2020) reported two late Pleistocene layers produced by large eruptions from Gorely caldera, which have ~~hardly-barely~~ distinguishable major and trace element composition of glass. On a longer time scale of hundred thousand years, the products of the Gorely caldera eruptions are more variable (Seligman et al., 2014), enabling their identification using glass composition in tephra and welded tuffs.

4.3 Effects of alteration on major and trace elements in glass from welded tuffs

TephraKam contains abundant data for glasses in welded tuffs of Miocene to Pleistocene age from different parts in Kamchatka. These rocks clearly represent products of large caldera-forming eruptions during Kamchatka history. Identification of their sources, age and ash distribution is of great interest. However, some welded tuff glasses in the database have signs of secondary alteration that hampers their direct interpretation as compositions representative for native glass – quenched melt. Typically, the alteration results in characteristic “spaghetti”-like textures, precipitates of tiny magnetite crystals in glassy matrix followed by complete glass replacement by microcrystalline aggregate, and development of concentric perlite texture (Fig. 6). The process of devitrification is also associated with chemical modification of welded tuffs. Spot analyses usually reveal a large and correlated variability of alkalis and alkali earth elements within single samples, which typically is not observed in volcanic glasses from pumice fragments or ash layers. Representative trace element composition of variably altered glasses from the same unit of Karymsky / Stena-Sobolinaya caldera welded tuffs is shown in Fig. 7. A major feature of the glass alteration is enrichment in K_2O , Rb, Li (all are monovalent alkaline elements) that is inversely correlated with depletion in Na_2O , CaO, Sr. Elements Ba, U, Th, Pb, Nb, Ta, Zr, Hf, Ti, P, Y, and REEs exhibit small variability and are relatively immobile during alteration. Concentrations of the immobile elements are informative of the initial concentrations in glass and can be used for correlations between different ignimbrite units and with pristine tephra glasses. An example of geochemical fingerprinting of completely devitrified samples from Pauzhetka caldera in South Kamchatka is provided by Ponomareva et al. (2018). These authors noted that elements B, Ba, Eu, and V also reveal mobility in strongly altered tuffs and should be interpreted with caution.

4.4 Discrimination of glasses from different volcanic zones in Kamchatka using immobile trace elements

In comparison with major elements, concentrations of some trace elements in Kamchatka glasses are more variable and exhibit characteristic regional distribution (Fig. 4). This makes it possible to use trace elements for identification of volcanic zones - sources of distal tephra. Ideally, these criteria should use immobile elements, which are unaffected by alteration of glasses in

welded tuffs and ancient tephra buried in marine sediments and other deposits. We performed a search for the most effective criteria based on trace element concentrations in glasses from this database. Based on this search, diagrams using trace element ratios Nb/Y, Nb/Y and Th/Y provide the most robust discrimination of glass compositions from different volcanic zones in Kamchatka (Fig. 8, TephraKam Table 2f). The fields of different volcanic zones are initially drawn using data on glasses from robustly identified sources of the Holocene and Late Pleistocene ages (Fig. 8 a, b). Glasses from volcanic front, rear-arc and Sredinny Range form separate fields in these diagrams, which should be related to systematically changing conditions of magma generation with increasing distance from volcano to deep-sea trench and to subducting plate. Glasses from the Central Kamchatka Depression volcanoes largely overlap with rear-arc glasses and partly with volcanic front samples that is in agreement with geodynamic position of CKD (Fig. 1). Figure 8 c, d shows that glasses of middle and early Pleistocene age have compositions falling closely within the corresponding fields of different volcanic zones. Although Th/Y and La/Y are somewhat scattered at given Nb/Y, the volcanic zones can be still be precisely identified in most cases. This consistency of compositions suggests that Kamchatka has not been affected by major tectonic reorganization, at least during Pleistocene and Holocene (c. 2.5 Ma), and the present position of ancient volcanic centres corresponds closely to their initial position. Older, Miocene-Pliocene samples are relatively rare in this database (Figure 8 e-f). However, we notice that glasses in Neogene rocks from the Sredinny Range have distinctive compositions that plot outside the range of Pleistocene-Holocene SR compositions and are more similar to modern rear-arc and volcanic front samples. This might indicate that conditions of magma generation under Sredinny Range during the Pliocene were more similar to the present-day volcanic front and rear-arc, and that Sredinny Range volcanoes were located closer to the deep-sea trench and subducting plate at that time. This conclusion is in agreement with the proposed major tectonic reorganization in Kamchatka in the Neogene and shifting of volcanic front from the Sredinny Range to its present position in Eastern Kamchatka (Avdeiko et al., 2007; Lander and Shapiro, 2007; Legler, 1977; Volynets, 1994). Thus, the diagrams in Figure 8 can be successfully used to identify tephra erupted from different volcanic zones during the Holocene and Pleistocene. The proposed criteria are likely not valid for the Neogene time, when the Kamchatka subduction zone had a different configuration. The diagrams can be particularly useful to identify the provenance of distal tephra in marine sediments offshore Kamchatka, for analysis of synchronicity of activity in different zones, and for analysis of temporal geochemical variability of volcanism.

5 Data availability

The archive .zip file containing tables of this database ~~set~~ is available on ResearchGate: <https://doi.org/10.13140/RG.2.2.23627.13606> (~~last access: 21 October 2019~~) (Portnyagin et al., 2019). ~~Updates will be available under the same web address or can be requested directly from the first two authors of this manuscript. A web-based version of this database. The authors leave rights to update this database (correct misprints, add new data, refine ages etc.). The initially released version of TephraKam is 2019.10.21 (the number refers to the date of release in format YYYY.MM.DD).~~

Formatted: English (United States)

The latest version can be downloaded from ResearchGate or requested directly from the two first authors of this manuscript will be released in near future.

6 Conclusions

TephraKam is the largest and most comprehensive collection of internally consistent high quality chemical analyses of major and trace elements in glasses of pyroclastic rocks of Kamchatka volcanoes. Precise or estimated ages are is provided for every sample. Use of this database opens the possibility for reliable identification and correlation of tephra layers in Kamchatka and neighbouring areas, enables dating of sedimentary archives on- and offshore Kamchatka, as well as allows the multi-component petrological and geochemical analysis of composition and origin of magmatic melts, preserved as quenched glass in tephra. The latter application is straightforward for rhyolite glasses, which have been shown to preserve the composition of magmas at depths (except for volatiles) and thus are informative of magma composition and its storage conditions at depth in Kamchatka (Ponomareva et al., 2015a). The amount of presented data is comparable and exceeds that available from published sources on the composition of volcanic rocks in Kamchatka (e.g. GEOROC database). For silicic compositions, this database is a major source of information.

Author contributions. MP and VP designed the study and wrote the paper. MP, VP, LB, MP, and AR conducted the fieldwork and collected most of the samples. MP developed protocols of the EMP and LA-ICP-MS analyses and designed the database structure. MP, VP, AP, and AR produced the EMP and LA-ICP-MS data. EZ compiled all the age data. DGS managed the laser-ablation ICP-MS analyses. All authors discussed the results and participated in preparation of the paper.

Competing interests. The authors declare that they have no conflict of interest.

Acknowledgements. The authors cordially thank all colleagues who donated their samples for this research. The field efforts of I.N. Bindeman, T.G. Churikova, O.V. Dirksen, N.V. Gorbach, B.N. Gordeichik, S.A. Khubunaya, N.A. Kim, S.P. Krashennikov, P.R. Kyle, I.V. Melekestsev, N.L. Mironov, A.B. Perepelov, P. Rinkleff, and O.B. Seliangin are highly appreciated. We are deeply grateful to late O.A. Braitseva and V.L. Leonov for providing their samples and for long-term support of our research. We appreciate the Kronotsky Reserve help in acquiring the samples from Uzon caldera and Kronotsky Lake. We thank Mario Thöner and Ulrike Westernströer for all their efforts in managing laboratory work and many-year excellent assistance with electron probe and LA-ICP-MS. Constructive comments from Bärbel Sarbas and anonymous referee helped us to improve the quality of this presentation.

Financial support. This research was supported by the Russian Science Foundation grant #16-17-10035 (partial funding of fieldwork, data processing, work on the database and manuscript). All laboratory costs related to electron microprobe and LA-ICP-MS analyses were covered by the GEOMAR Helmholtz Centre for Ocean Research (Kiel, Germany).

References

- 5 Auer, S. L., Bindeman, I., Wallace, P., Ponomareva, V. V., and Portnyagin, M.: The Origin of Hydrous, high- $\delta^{18}\text{O}$ voluminous volcanism: Diverse Oxygen Isotope Values and High Magmatic Water Contents within the Volcanic Record of Klyuchevskoy Volcano, Kamchatka, Russia, *Contrib. Mineral. Petrol.*, 157, 209-230, doi:210.1007/s00410-00008-00330-00410, 2009.
- Avdeiko, G. P., Saveleyev, D. P., Palueva, A. A., and Popruzhenko, S. V.: Evolution of the Kurile-Kamchatkan Volcanic Arcs and Dynamics of the Kamchatka-Aleutian Junction. In: *Volcanism and Subduction: The Kamchatka Region*, Eichelberger, J., Gordeev, E., Kasahara, M., Izbekov, P., and Lees, J. (Eds.), American Geophysical Union, Washington D.C., 2007.
- 10 Bachmann, O. and Bergantz, G. W.: Rhyolites and their source mushes across tectonic settings, *J. Petrol.*, 49, 2277-2285, doi: 2210.1093/petrology/egn2068, 2008.
- Bazanova, L. I., Braitseva, O. A., Dirksen, O. V., Sulerzhitskii, L. D., and Danhara, T.: Ashfalls due to great Holocene eruptions along the Ust-Bolcheretsk-Petropavlovsk-Kamchatskii geotraverse: sources, chronology, rate of occurrence, *Volcanol. Seismol.*, 6, 2005.
- 15 Bazanova, L. I. and Pevzner, M. M.: Khangar: One more active volcano in Kamchatka, *Transactions (Doklady) of the Russian Academy of Sciences, Earth Sciences*, 377A, 307-310, 2001.
- Bazanova, L. I., Ponomareva, V. V., Portnyagin, M. V., and Perepelov, A. B.: Age and scale of the largest explosive eruptions in the Paltsevskaia caldera area (eastern Kamchatka). In: *Volcanism and Related Processes: Proceedings of the XXII All-Russian Scientific Conference on Volcanologist's Day, March 28-29, IVS FEB RAS, Petropavlovsk-Kamchatsky*, 2019.
- 20 Bindeman, I. N., Leonov, V. L., Colón, D. P., Rogozin, A. N., Shipley, N., Jicha, B., Loewen, M. W., and Gerya, T. V.: Isotopic and Petrologic Investigation, and a Thermomechanical Model of Genesis of Large-Volume Rhyolites in Arc Environments: Karymshina Volcanic Complex, Kamchatka, Russia, *Frontiers in Earth Science*, 6, 2019.
- Bindeman, I. N., Leonov, V. L., Izbekov, P. E., Ponomareva, V. V., Watts, K. E., Perepelov, A. B., Bazanova, L. I., Singer, B. S., Jicha, B., Schmitt, A. K., Portnyagin, M. V., and Chen, C. H.: Large-volume silicic volcanism in Kamchatka: Ar-Ar and U-Pb ages, isotopic, and geochemical characteristics of major pre-Holocene caldera-forming eruptions, *J. Volcanol. Geotherm. Res.*, 189, 57-80, <http://dx.doi.org/10.1016/j.jvolgeores.2009.1010.1009>, 2010.
- 25 Braitseva, O. A., Bazanova, L. I., Melekestsev, I. V., and Sulerzhitsky, L. D.: Largest Holocene eruptions of Avachinsky volcano, Kamchatka, *Volcanol. and Seismol.*, 20, 1-27, 1998.
- 30 Braitseva, O. A., Melekestsev, I. V., Bogoyavlenskaya, G. E., and Maksimov, A. P.: Bezymianny volcano: eruptive history and activity dynamics, *Volcanol. Seismol.*, 12, 165-194, 1991.

- Braitseva, O. A., Melekestsev, I. V., Ponomareva, V. V., and Kirianov, V. Y.: The caldera-forming eruption of Ksudach volcano about cal. AD 240, the greatest explosive event of our era in Kamchatka, *J. Volcanol. Geotherm. Res.*, 70, 49-66, 1996.
- Braitseva, O. A., Melekestsev, I. V., Ponomareva, V. V., and Sulzerzhitsky, L. D.: The ages of calderas, large explosive craters and active volcanoes in the Kuril-Kamchatka region, *Bull. Volcanol.*, 57, 383-402, 1995.
- Braitseva, O. A., Ponomareva, V. V., Sulzerzhitsky, L. D., Melekestsev, I. V., and Bailey, J.: Holocene key-marker tephra layers in Kamchatka, Russia, *Quaternary Research*, 47, 125-139, 1997.
- Brophy, J.: A study of rare earth element (REE)-SiO₂ variations in felsic liquids generated by basalt fractionation and amphibolite melting: a potential test for discriminating between the two different processes, *Contrib. Mineral. Petrol.*, 156, 337-357, doi: 310.1007/s00410-00008-00289-x, 2008.
- Cashman, K. V. and Edmonds, M.: Mafic glass compositions: a record of magma storage conditions, mixing and ascent, *Philosophical Transactions of the Royal Society A: Mathematical, Physical and Engineering Sciences*, 377, 20180004, 2019.
- Churikova, T., Dorendorf, F., and Worner, G.: Sources and fluids in the mantle wedge below Kamchatka, evidence from across-arc geochemical variation, *J. Petrol.*, 42, 1567-1593, 2001.
- Churikova, T. G., Gordeychik, B. N., Edwards, B., Ponomareva, V. V., and Zelenin, E.: The Tolbachik volcanic massif: a review of the petrology, volcanology and eruption history prior to the 2012-2013 eruption, *J. Volcanol. Geotherm. Res.*, 307, 3-21, 2015.
- Clift, P. D., Chan, L.-H., Blusztajn, J., Layne, G. D., Kastner, M., and Kelly, R. K.: Pulsed subduction accretion and tectonic erosion reconstructed since 2.5 Ma from the tephra record offshore Costa Rica, *Geochem. Geophys. Geosyst. Geochemistry, Geophysics, Geosystems*, 6, 2005.
- Cook, E., Portnyagin, M., Ponomareva, V., Bazanova, L., Svensson, A., and Garbe-Schönberg, D.: First identification of cryptotephra from the Kamchatka Peninsula in a Greenland ice core: implications of a widespread marker deposit that links Greenland to the Pacific northwest, *Quaternary Science Reviews*, 181, 200-206, <https://doi.org/210.1016/j.quascirev.2017.1011.1036>, 2018.
- Derkachev, A. N., Gorbarenko, S. A., Ponomareva, V. V., Portnyagin, M. V., Malakhova, G. I., and Yanguang, L.: Middle to late Pleistocene record of explosive volcanic eruptions in marine sediments offshore Kamchatka (Meiji Rise, NW Pacific), *Journal of Quaternary Science*, 35, 362-379, <https://doi.org/10.1002/jqs.3175>, 2019. ~~in revision, 2019.~~
- Dirksen, O., van den Bogaard, C., Danhara, T., and Diekmann, B.: Tephrochronological investigation at Dvuh-yurtochnoe lake area, Kamchatka: Numerous landslides and lake tsunami, and their environmental impacts, *Quaternary International*, 246, 298-311, 2011.
- Dirksen, O. V.: Late Quaternary Areal Volcanism of Kamchatka. Dissertation of candidate of geographic sciences, 2009. Saint Petersburg State University (in Russian). 2009.

Dirksen, O. V. and Bazanova, L. I.: Late Quaternary Volcanism of the Sedankinsky Dol, Sredinny Range, Kamchatka. In: Volcanism and geodynamics. Proceedings of the IV All-Russian Symposium on Volcanology and Paleovolcanology, Petropavlovsk-Kamchatsky, September 22-27, Petropavlovsk-Kamchatsky, [1, 355-358 \(in Russian\)](#), 2009.

Dirksen, O. V. and Melekestsev, I. V.: Chronology, evolution and morphology of plateau basalt eruptive centers in Avacha River area, Kamchatka, Russia, *J. Volcanol. Seismol.*, 21, 1-27, 1999.

Duggen, S., Portnyagin, M., Baker, J., Ulfbeck, D., Hoernle, K., Garbe-Schönberg, D., and Grassineau, N.: Drastic shift in lava geochemistry in the volcanic-front to rear-arc region of the Southern Kamchatkan subduction zone: Evidence for the transition from slab surface dehydration to sediment melting, *Geochim. Cosmochim. Acta*, 71, 452-480, 2007.

20 Elliott, T., Plank, T., Zindler, A., White, W., and Bourdon, B.: Element transport from slab to volcanic front at the Mariana arc, *J. Geophys. Res.*, 102, 14991-15019, 1997.

Farr, T. G., Rosen, P. A., Caro, E., Crippen, R., Duren, R., Hensley, S., Kobrick, M., Paller, M., Rodriguez, E., Roth, L., Seal, D., Shaffer, S., Shimada, J., Umland, J., Werner, M., Oskin, M., Burbank, D., and Alsdorf, D.: The Shuttle Radar Topography Mission, *Rev. Geophys.*, 45, 2007.

Florensky, I. V.: On the age of Uzon and Krashenninnikov calderas, *Volcanol. Seismol.*, 1, 1984.

15 [Froggatt, P. C.: Standardization of the chemical analysis of tephra deposits. Report of the ICCT Working Group. *Quat. Int.*, 13-14, 93-96, 1992.](#)

Frost, B. R., Barnes, C. G., Collins, W. J., Arculus, R. J., Ellis, D. J., and Frost, C. D.: A Geochemical Classification for Granitic Rocks, *J. Petrology*, 42, 2033-2048, 2001.

20 Fricker, M. B., Kutscher, D., Aeschlimann, B., Frommer, J., Dietiker, R., Bettmer, J., and Gunther, D.: High spatial resolution trace element analysis by LA-ICP-MS using a novel ablation cell for multiple or large samples, *Int. J. Mass. Spectrom.*, 307, 39-45, 2011.

Gill, J. B.: *Orogenic andesites and plate tectonics*, Springer-Verlag, Berlin-Heidelberg, 1981.

Gorbatov, A., Kostoglodov, V., Suarez, G., and Gordeev, E.: Seismicity and structure of the Kamchatka subduction zone, *J. Geophys. Res.*, 102, 17833-17898, 1997.

25 Griffin, W., Powell, W., Pearson, N., and O'reilly, S.: GLITTER: data reduction software for laser ablation ICP-MS, *Laser Ablation-ICP-MS in the earth sciences. Mineralogical association of Canada short course series*, 40, 204-207, 2008.

[Hughes, G. R. and Mahood, G. A.: Tectonic controls on the nature of large silicic calderas in volcanic arcs, *Geology*, 36, 627-630, 2008. Hughes, G. R. and Mahood, G. A.: Tectonic controls on the nature of large silicic calderas in volcanic arcs. 8, 2008.](#)

30 [Hunt, J. B. and Hill, P. G.: An inter-laboratory comparison of the electron probe microanalysis of glass geochemistry, *Quat. Int.*, 34-36, 229-241, 1996.](#)

[Hunt, J. B. and Hill, P. G.: Tephrological implications of beam size—sample-size effects in electron microprobe analysis of glass shards, *Journal of Quaternary Science: Published for the Quaternary Research Association*, 16, 105-117, 2001.](#)

Hulse, E., Keeler, D., Zubrow, E., Korosec, G., Ponkratova, I., and Curtis, C.: Preliminary report on archaeological fieldwork in the Kamchatka region of Russia, *Sibirica: Interdisciplinary Journal of Siberian Studies*, 10, 48-74, 2011.

Formatted: English (United States)

- Jarosewich, E. J., Nelen, J. A., and Norberg, J. A.: Reference samples for electron microprobe analysis, *Geostandards Newsletter*, 4, 43-47, 1980.
- Jochum, K. P., Stoll, B., Herwig, K., Willbold, M., Hofmann, A. W., Amini, M., Aarburg, S., Abouchami, W., Hellebrand, E., Mocek, B., Raczek, I., Stracke, A., Alard, O., Bouman, C., Becker, S., Dücking, M., Brätz, H., Klemm, R., de Bruin, D., Canil, D., Cornell, D., de Hoog, C.-J., Dalpé, C., Danyushevsky, L., Eisenhauer, A., Gao, Y., Snow, J. E., Groschopf, N., Günther, D., Latkoczy, C., Guillong, M., Hauri, E. H., Höfer, H. E., Lahaye, Y., Horz, K., Jacob, D. E., Kasemann, S. A., Kent, A. J. R., Ludwig, T., Zack, T., Mason, P. R. D., Meixner, A., Rosner, M., Misawa, K., Nash, B. P., Pfänder, J., Premo, W. R., Sun, W. D., Tiepolo, M., Vannucci, R., Vennemann, T., Wayne, D., and Woodhead, J. D.: MPI-DING reference glasses for in situ microanalysis: New reference values for element concentrations and isotope ratios, *Geochem. Geophys. Geosyst.*, 7, doi:10.1029/2005GC001060, 2006.
- Jochum, K. P., Weis, U., Stoll, B., Kuzmin, D., Yang, Q. C., Raczek, I., Jacob, D. E., Stracke, A., Birbaum, K., Frick, D. A., Gunther, D., and Enzweiler, J.: Determination of Reference Values for NIST SRM 610-617 Glasses Following ISO Guidelines, *Geostand. Geoanalytical Res. Geostandards and Geoanalytical Research*, 35, 397-429, 2011.
- Kimura, J.-I. and Chang, Q.: Origin of the suppressed matrix effect for improved analytical performance in determination of major and trace elements in anhydrous silicate samples using 200 nm femtosecond laser ablation sector-field inductively coupled plasma mass spectrometry. *J. Anal. At. Spectrom.*, 27, 1549-1559, doi: 1510.1039/C1542JA10344C, 2012.
- Kimura, J.-I., Nagahashi, Y., Satoguchi, Y., and Chang, Q.: Origins of felsic magmas in Japanese subduction zone: Geochemical characterizations of tephra from caldera-forming eruptions <5 Ma, *Geochemistry, Geophysics, Geosystems*, doi: 10.1002/2015GC005854, 2015. ~~n/a-n/a, 2015.~~
- Kozhurin, A., Acocella, V., Kyle, P., Lagmay, A. M., Melekestsev, I. V., Ponomareva, V., Rust, D., Tibaldi, A., Tunesi, A., Corazzato, C., Rovida, A., Sakharov, A., Tengonciang, A., and Uy, H.: Trenching studies of active faults in Kamchatka, eastern Russia: Palaeoseismic, tectonic and hazard implications, *Tectonophysics*, 417, 285-304, 2006.
- Kozhurin, A. I., Pinegina, T. K., Ponomareva, V. V., Zelenin, E. A., and Mikhailyukova, P. G.: Rate of collisional deformation in Kamchatsky Peninsula, Kamchatka, *Geotectonics*, 48, 122-138, 2014.
- Kuehn, S. C., Froese, D. G., and Shane, P. A. R.: The INTAV intercomparison of electron-beam microanalysis of glass by tephrochronology laboratories: Results and recommendations, *Quaternary International*, 246, 19-47, 2011.
- Kutterolf, S., Freundt, A., and Pérez, W.: Pacific offshore record of plinian arc volcanism in Central America: 2. Tephra volumes and erupted masses, *Geochem. Geophys. Geosyst.*, 9, Q02S02, 2008.
- Kyle, P. R., Ponomareva, V. V., and Schluep, R. R.: Geochemical characterization of marker tephra layers from major Holocene eruptions, Kamchatka Peninsula, Russia, *Int. Geol. Rev. International Geology Review*, 53, 1059-1097, DOI: 10.1080/00206810903442162, 2011.
- Lander, A. V. and Shapiro, M. N.: The origin of the modern Kamchatka subduction zone. In: *Volcanism and Subduction: The Kamchatka Region*, Eichelberger, J., Gordeev, E., Kasahara, M., Izbekov, P., and Lees, J. (Eds.), American Geophysical Union, Washington D.C., 2007.

- Le Maitre, R. W., Streckeisen, A., Zanetti, B., Le Bas, M. J., Bonin, B., Bateman, P., Bellieni, G., Dudek, A., Efremova, S., Keller, J., Lameyre, J., Sabine, P. A., Schmid, R., Soerensen, H., and Wooley, A. R. (Eds.): Igneous rocks. A classification and glossary of terms, Cambridge University Press, 2002.
- Legler, V. A.: Evolution of Kamchatka from plate tectonic theory (sources of energy for tectonic processes and plate dynamics) (in Russian). In: Tectonics of the lithosphere plates, Inst. of oceanology, Acad. Sci. USSR, Moscow, 1977.
- 5 Liu, Y., Hu, Z., Gao, S., Günther, D., Xu, J., Gao, C., and Chen, H.: In situ analysis of major and trace elements of anhydrous minerals by LA-ICP-MS without applying an internal standard, *Chem. Geol.*, 257, 34-43, 2008.
- Longerich, H. P., Jackson, S. E., and Günther, D.: Laser ablation inductively coupled plasma mass spectrometric transient signal data acquisition and analyte concentration calculation, *Journal of Analytical Atomic Spectrometry*, 11, 899-904, 1996.
- 10 Lowe, D. J.: Tephrochronology and its application: A review, *Quat. Geochronol.*, 6, 107-153, 2011.
- [Lowe, D. J., Pearce, N. J. G., Jorgensen, M. A., Kuehn, S. C., Tryon, C. A., and Hayward, C. L.: Correlating tephras and cryptotephra using glass compositional analyses and numerical and statistical methods: Review and evaluation. *Quat. Sci. Rev.*, 175, 1-44, 2017.](#)
- Mackay, H., Hughes, P. D., Jensen, B. J., Langdon, P. G., Pyne-O'Donnell, S. D., Plunkett, G., Froese, D. G., Coulter, S., and Gardner, J. E.: A mid to late Holocene cryptotephra framework from eastern North America, *Quat. Sci. Rev., Quaternary Science Reviews*, 132, 101-113, <https://doi.org/10.1016/j.quascirev.2015.1011.1011>, 2016.
- 15 [Maruyama, S., Hattori, K., Hirata, T., and Danhara, T.: A proposed methodology for analyses of wide-ranged elements in volcanic glass shards in widespread Quaternary tephra. *Quat. Int.*, 397, 267-280, 2016.](#)
- [Masurenkov, Y. P. \(Ed.\): Volcanic Center, structure, dynamics, and erupted material \(Karymsky structure\), Nauka Press Moscow, 1980.](#)
- 20 McDonough, W. F. and Sun, S. S.: The Composition of the Earth, *Chem. Geol.*, 120, 223-253, 1995.
- Melekestsev, I. V., Litasova, S. N., and Sulzerzhitsky, L. D.: On the age and scale of the directed-blast catastrophic eruption of the Avachinsky volcano (Kamchatka) in the Late Pleistocene, *Volcanology and Seismology*, 13, 135-146, 1992.
- Melekestsev, I. V., Ponomareva, V. V., and Volynets, O. N.: Kizimen volcano, Kamchatka - A future Mount St. Helens?, *J. Volcanol. Geotherm. Res.*, 65, 205-226, doi:10.1016/0377-0273(1094)00082-R, 1995.
- 25 [Morgan, G. B. and London, D.: Optimizing the electron microprobe analysis of hydrous alkali aluminosilicate glasses, *Am. Mineral.*, 81, 1176-1185, 1996.](#)
- [Morgan, G. B. and London, D.: Effect of current density on the electron microprobe analysis of alkali aluminosilicate glasses, *Am. Mineral.*, 90, 1131-1138, 2005.](#)
- 30 [Mosbah, M., Metrich, N., and Massiot, P.: PIGME fluorine determination using a nuclear microprobe with application to glass inclusions, *Nucl. Instrum. Methods Phys. Res. Nuclear Instruments and Methods in Physics Research*, B58, 227-231, 1991.](#)
- [Nielsen, C. H. and Sigurdsson, H.: Quantitative methods for electron microprobe analysis of sodium in natural and synthetic glasses, *Am. Mineral.*, 66, 547-552, 1981.](#)

Formatted: Justified, Line spacing: 1.5 lines, Adjust space between Latin and Asian text, Adjust space between Asian text and numbers

Formatted: Font: (Default) Times New Roman, 10 pt, English (United States)

Formatted: English (United States)

Formatted: English (United States)

Pearce, J.: Sources and settings of granitic rocks, *Episodes*, 19, 120-125, 1996.

Pearce, J. A., Baker, P. E., Harvey, P. K., and Luff, I. W.: Geochemical Evidence for Subduction Fluxes, Mantle Melting and Fractional Crystallization Beneath the South Sandwich Island Arc, *J. Petrol.*, 36, 1073-1109, 1995.

Pearce, J. A., Harris, N. B. W., and Tindle, A. G.: Trace-Element Discrimination Diagrams for the Tectonic Interpretation of Granitic-Rocks, *J. Petrol.*, 25, 956-983, 1984.

[Pearce, N. J., Westgate, J. A., and Perkins, W. T.: Developments in the analysis of volcanic glass shards by laser ablation ICP-MS: quantitative and single internal standard-multielement methods, *Quat. Int.*, 34, 213-227, 1996.](#)

[Pearce, N. J. G., Denton, J. S., Perkins, W. T., Westgate, J. A., and Alloway, B. V.: Correlation and characterisation of individual glass shards from tephra deposits using trace element laser ablation ICP-MS analyses: current status and future potential, *J. Quat. Sci.*, 22, 721-736, 2007.](#)

[Pearce, N. J. G.: Towards a protocol for the trace element analysis of glass from rhyolitic shards in tephra deposits by laser ablation ICP-MS, *J. Quat. Sci.*, 29, 627-640, 2014.](#)

Peccerillo, A. and Taylor, S. R.: Geochemistry of eocene calc-alkaline volcanic rocks from the Kastamonu area, Northern Turkey, *Contrib. Mineral. Petrol.*, 58, 63-81, 1976.

Pendea, I. F., Harmsen, H., Keeler, D., Zubrow, E. B., Korosec, G., Ruhl, E., Ponkratova, I., and Hulse, E.: Prehistoric human responses to volcanic tephra fall events in the Ust-Kamchatsk region, Kamchatka Peninsula (Kamchatsky Krai, Russian Federation) during the middle to late Holocene (6000–500 cal BP), *Quaternary International*, 394, 51-68, <https://doi.org/10.1016/j.quaint.2015.1007.1033>, 2016.

Pettke, T., Halter, W. E., Webster, J. D., Aigner-Torres, M., and Heinrich, C. A.: Accurate quantification of melt inclusion chemistry by LA-ICPMS: a comparison with EMP and SIMS and advantages and possible limitations of these methods, *Lithos*, 78, 333-361, 2004.

Pevzner, M. M.: Holocene volcanism of the Sredinny Range of Kamchatka, GEOS, Moscow, 2015.

Pevzner, M. M.: The northern boundary of volcanic activity of Kamchatka in Holocene, *Bulletin of Kamchatka Regional Association "Educational-scientific Center". Earth Sciences.*, 1, 117-144, http://www.kscnet.ru/kraesc/2010/2010_2015/ann2011.html, 2010.

Pevzner, M. M., Ponomareva, V. V., and Melekestsev, I. V.: Chernyi Yar - reference section of the Holocene ash markers at the northeastern coast of Kamchatka, *Volcanology and Seismology*, 19, 389-406, 1998.

Pevzner, M. M., Ponomareva, V. V., and Sulerzhitsky, L. D.: Holocene soil-pyroclastic covers in the Central Kamchatka depression: age, structure, specifics of sedimentation, *Volcanology and Seismology*, 1, 24-38 (In Russian), 2006.

Pinegina, T. K., Bourgeois, J., Kravchunovskaya, E. A., Lander, A. V., Arcos, M. E., Pedoja, K., and MacInnes, B. T.: A nexus of plate interaction: Vertical deformation of Holocene wave-built terraces on the Kamchatsky Peninsula (Kamchatka, Russia), *Geol. Soc. Amer. Bull.*, 125, 1554-1568, 2013.

Pinegina, T. K., Kozhurin, A. I., and Ponomareva, V. V.: Active tectonics and geomorphology of the Kamchatsky Bay coast in Kamchatka, *Russ. J. Pac. Geol.*, 8, 65-76, 2014.

Formatted: English (United States)

Pinegina, T. K., Kozhurin, A. I., and Ponomareva, V. V.: Seismic and tsunami hazard for Ust'-Kamchatsk village, Kamchatka, based on paleoseismological data, Bull. Kamchatka Regional Assoc. "Educational-scientific Center". Earth Sci., 1, 138-159 [In Russian] http://www.kscnet.ru/kraesc/2012/2012_2019/2012_2019_eng.html, 2012.

Plank, T.: Constraints from Thorium/Lanthanum on Sediment Recycling at Subduction Zones and the Evolution of the
5 Continents, *J. Petrology*, 46, 921-944, 2005.

Plechova, A. A., Portnyagin, M. V., and Bazanova, L. I.: The Origin and Evolution of the Parental Magmas of Frontal
Volcanoes in Kamchatka: Evidence from Magmatic Inclusions in Olivine from Zhupanovsky Volcano, *Geochem. Inter.*, 49,
743–768, DOI: 710.1134/S0016702911080064, 2011.

Plunkett, G., Coulter, S. E., Ponomareva, V. V., Blaauw, M., Klimaschewski, A., and Hammarlund, D.: Distal
10 tephrochronology in volcanic regions: Challenges and insights from Kamchatkan lake sediments, *Global and Planetary
Change*, 134, 26-40, 2015.

Ponomareva, V., Bubenshchikova, N., Portnyagin, M., Zelenin, E., Derkachev, A., Gorbarenko, S., Garbe-Schönberg, D., and
Bindeman, I.: Large-magnitude Pauzhetka caldera-forming eruption in Kamchatka: Astrochronologic age, composition and
tephra dispersal, *J. Volcanol. Geotherm. Res.*, 366, 1-12, <https://doi.org/10.1016/j.jvolgeores.2018.1010.1006>, 2018.

15 Ponomareva, V., Portnyagin, M., and Davies, S.: Tephra without borders: Far-reaching clues into past explosive eruptions,
Frontiers in Earth Science, 3, 2015a.

Ponomareva, V., Portnyagin, M., Derkachev, A., Juschus, O., Garbe-Schönberg, D., and Nürnberg, D.: Identification of a
widespread Kamchatkan tephra: a mid-Pleistocene tie-point between Arctic and Pacific paleoclimatic records, *Geophysical
Research Letters*, 40, 3538-3543, DOI: 3510.1002/grl.50645, 2013a.

20 Ponomareva, V., Portnyagin, M., Derkachev, A., Pande, I. F., Bourgeois, J., Krashennikov, S., Garbe-Schönberg, D., and
Nürnberg, D.: Early Holocene M-6 explosive eruption from Ushkovsky volcano (Kamchatka) and its tephra as a link between
terrestrial and marine paleoenvironmental records, *International Journal of Earth Sciences*, 102, 1673-1699, DOI:
1610.1007/s00531-00013-00898-00530, 2013b.

Ponomareva, V., Portnyagin, M., Pende, I. F., Zelenin, E., Bourgeois, J., Pinegina, T., and Kozhurin, A.: A full Holocene
25 tephrochronology for the Kamchatsky Peninsula region: applications from Kamchatka to North America, *Quaternary
Science Reviews*, 168, 101-122, <http://dx.doi.org/10.1016/j.quascirev.2017.1004.1031>, 2017.

Ponomareva, V., Portnyagin, M., Pevzner, M., Blaauw, M., Kyle, P., and Derkachev, A.: Tephra from andesitic Shiveluch
volcano, Kamchatka, NW Pacific: chronology of explosive eruptions and geochemical fingerprinting of volcanic glass,
International Journal of Earth Sciences, 104, 1459-1482, 2015b.

30 Ponomareva, V. V.: The history of Krashennikov volcano and the dynamics of its activity, *Volcanol. Seismol.*, 9, 714–741,
1990.

Ponomareva, V. V., Melekestsev, I. V., and Dirksen, O. V.: Sector collapses and large landslides on Late Pleistocene–Holocene
volcanoes in Kamchatka, Russia, *J. Volcanol. Geotherm. Res.*, 158, 117-138, 2006.

- Portnyagin, M. V., Ponomareva, V. V., Zelenin, E. A., Bazanova, L. I., Pevzner, M. M., Plechova, A. A., Rogozin, A. N., and Garbe-Schönberg, D.: TephraKam: Geochemical database of glass compositions in tephra and welded tuffs from the Kamchatka volcanic arc (NW Pacific). Data files (~~Version 2019.10.21~~), <https://doi.org/10.13140/RG.2.2.23627.13606>, 2019.
- Rasmussen, S. O., Andersen, K. K., Svensson, A., Steffensen, J. P., Vinther, B. M., Clausen, H. B., Siggaard-Andersen, M. L., Johnsen, S. J., Larsen, L. B., and Dahl-Jensen, D.: A new Greenland ice core chronology for the last glacial termination, *Journal of Geophysical Research: Atmospheres*, 111, <https://doi.org/10.1029/2005JD006079>, 2006.
- Reimer, P. J., Bard, E., Bayliss, A., Beck, J. W., Blackwell, P. G., Ramsey, C. B., Buck, C. E., Cheng, H., Edwards, R. L., and Friedrich, M.: IntCal13 and Marine13 radiocarbon age calibration curves 0–50,000 years cal BP, *Radiocarbon*, 55, 1869–1887, <https://doi.org/10.1029/2013JD019341>, 2013.
- Schattel, N., Portnyagin, M., Golowin, R., Hoernle, K., and Bindeman, I.: Contrasting conditions of rift and off-rift silicic magma origin on Iceland, *Geophysical Research Letters*, 41, 5813–5820, 2014.
- Seligman, A., Bindeman, I., Jicha, B., Ellis, B., Ponomareva, V., and Leonov, V.: Multi-Cyclic and Isotopically Diverse Silicic Magma Generation in an Arc Volcano: Gorely Eruptive Center, Kamchatka, Russia, *J. Petrol.*, <https://doi.org/10.1093/ptology/egu034>, 2014.
- Smith, W. H. F. and Sandwell, D. T.: Global seafloor topography from satellite altimetry and ship depth soundings, *Science*, 277, 1956–1962, 1997.
- Straub, S. M., Layne, G. D., Schmidt, A., and Langmuir, C. H.: Volcanic glasses at the Izu arc volcanic front: New perspectives on fluid and sediment melt recycling in subduction zones, *Geochemistry and Geophysics*, 5, 2004.
- Straub, S. M., Woodhead, J. D., and Arculus, R. J.: Temporal Evolution of the Mariana Arc: Mantle Wedge and Subducted Slab Controls Revealed with a Tephra Perspective, *J. Petrol.*, 56, 409–439, 2015.
- Tomlinson, E. L., Thordarson, T., Müller, W., Thirlwall, M., and Menzies, M. A.: Microanalysis of tephra by LA-ICP-MS — Strategies, advantages and limitations assessed using the Thorsmörk ignimbrite (Southern Iceland), *Chem. Geol.*, 279, 73–89, 2010.
- Turney, C. S., Lowe, J. J., Davies, S. M., Hall, V., Lowe, D. J., Wastegård, S., Hoek, W. Z., and Alloway, B.: Tephrochronology of Last Termination sequences in Europe: a protocol for improved analytical precision and robust correlation procedures (a joint SCOTAV–INTIMATE proposal), *J. Quat. Sci.*, 19, 111–120, 2004.
- van der Bilt, W. G., Lane, C. S., and Bakke, J.: Ultra-distal Kamchatkan ash on Arctic Svalbard: towards hemispheric cryptotephra correlation, *Quaternary Science Reviews*, 164, 230–235, <https://doi.org/10.1016/j.quascirev.2017.1004.1007>, 2017.
- Vinther, B. M., Clausen, H. B., Johnsen, S. J., Rasmussen, S. O., Andersen, K. K., Buchardt, S. L., Dahl-Jensen, D., Seierstad, I. K., Siggaard-Andersen, M. L., and Steffensen, J. P.: A synchronized dating of three Greenland ice cores throughout the Holocene, *Journal of Geophysical Research: Atmospheres*, 111, 2006.
- Volynets, O. N.: Geochemical types, petrology, and genesis of the late Cenozoic volcanic rocks from the Kurile-Kamchatka island-arc system, *International Geology Review*, 36, 373–403, 1994.

Formatted: English (United States)

Volynets, O. N., Melekestsev, I. V., Ponomareva, V. V., and Yogodzinski, J. M.: Kharchinskii and Zarechnyi volcanoes, unique centers of Late Pleistocene magnesian basalts in Kamchatka: tectonic setting, morphology, age and geologic structure, *Vulkanologiya i Seismologiya*, 4-5, 5-18 (in Russian), 1998.

5 [Westgate, J., Perkins, W., Fuge, R., Pearce, N., and Wintle, A.: Trace-element analysis of volcanic glass shards by laser ablation inductively coupled plasma mass spectrometry: application to tephrochronological studies, *Appl. Geochem.*, 9, 323-335, 1994.](#)

Zaretskaia, N. E., Ponomareva, V. V., Sulerzhitsky, L. D., and Dirksen, O. V.: Radiocarbon dating of the Kurile Lake Caldera eruption (South Kamchatka, Russia), *Geochronometria*, 20, 95–102, 2001.

10 Zaretskaya, N. E., Ponomareva, V. V., and Sulerzhitsky, L. D.: Radiocarbon dating of large Holocene volcanic events within South Kamchatka (Russian Far East)–, *Radiocarbon*, 49, 1065-1078, 2007.

Zelenin, E., Kozhurin, A., Ponomareva, V., and Portnyagin, M.: Tephrochronological dating of paleoearthquakes in active volcanic arcs: A case of the Eastern Volcanic Front on the Kamchatka Peninsula (NW Pacific), *Journal of Quaternary Science*, 35, 349-361, <https://doi.org/10.1002/jqs.3145>, DOI: 10.1002/jqs.3145, 2019.

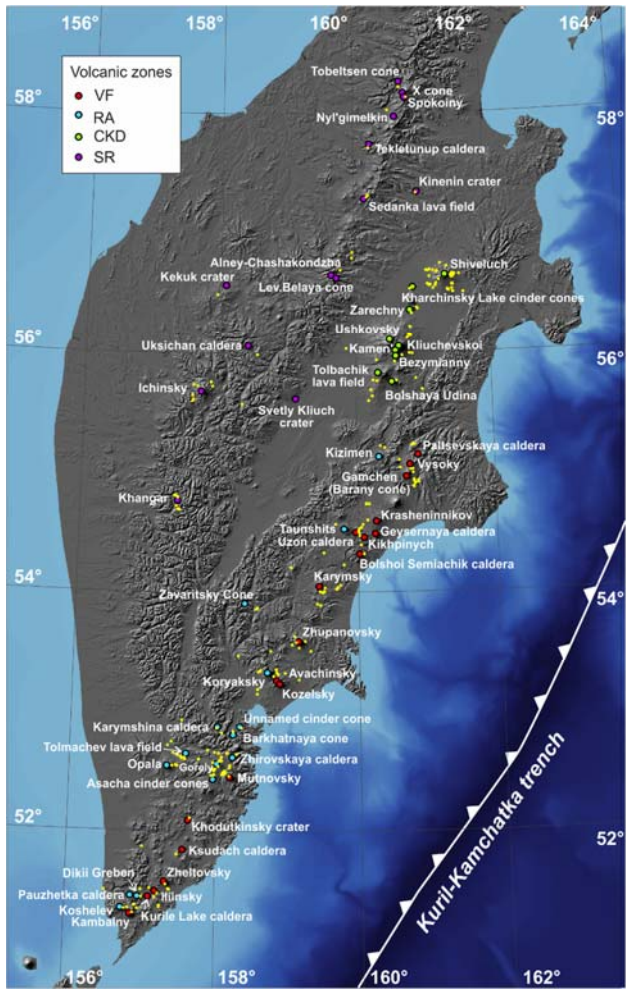


Figure 1 Volcanoes and samples presented in TephraKam. Large red circles with labels – volcanic centers; yellow circles – sample locations. Note that Kamchatka hosts more presently inactive volcanic centers than shown on the map, but tephra samples from these extinct volcanoes were not available for this study. The background image is drawn by the authors using public domain datasets SRTM for landmass (Farr et al., 2007) and GEBCO for ocean floor (Smith, Sandwell, 1997).

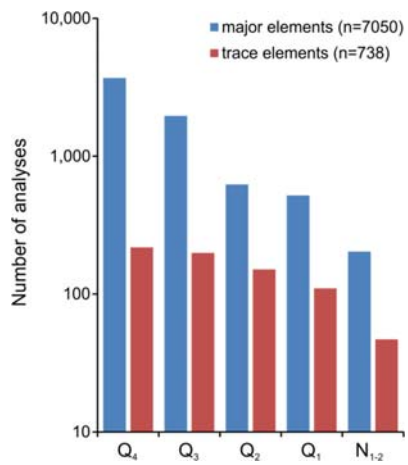


Figure 2 Number of single spot major and trace element analyses of glass from tephra and welded tuffs of different age groups included into the TephraKam database. Note logarithmic vertical scale.

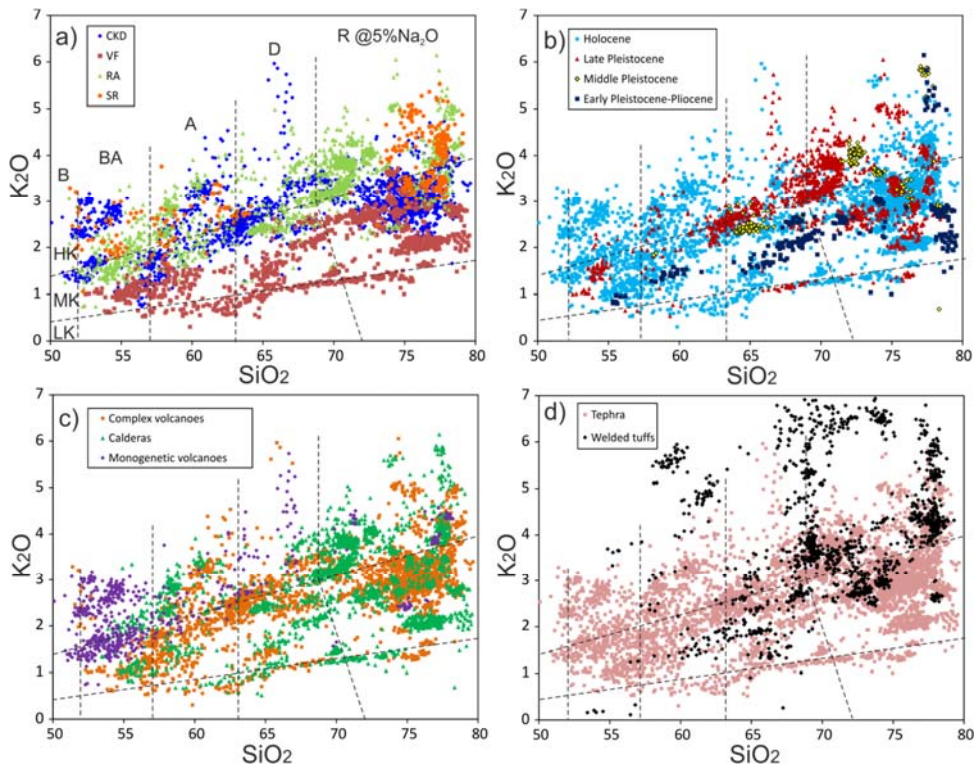


Figure 3 $\text{SiO}_2 - \text{K}_2\text{O}$ variations in glasses. The glasses are grouped according to volcanic zone (a), age (b), type of volcano (c), and rock type (d). Dashed lines divide fields of low- K_2O (LK), medium- K_2O (MK), and high- K_2O (HK) basalts (B), basaltic andesites (BA), andesites (A), dacites (D) and rhyolites (R) after Le Maitre et al. (2002). The line dividing fields of dacite and rhyolite is drawn for the case of Na_2O content of 5 wt%, which is typical for high-silica glasses from Kamchatka.

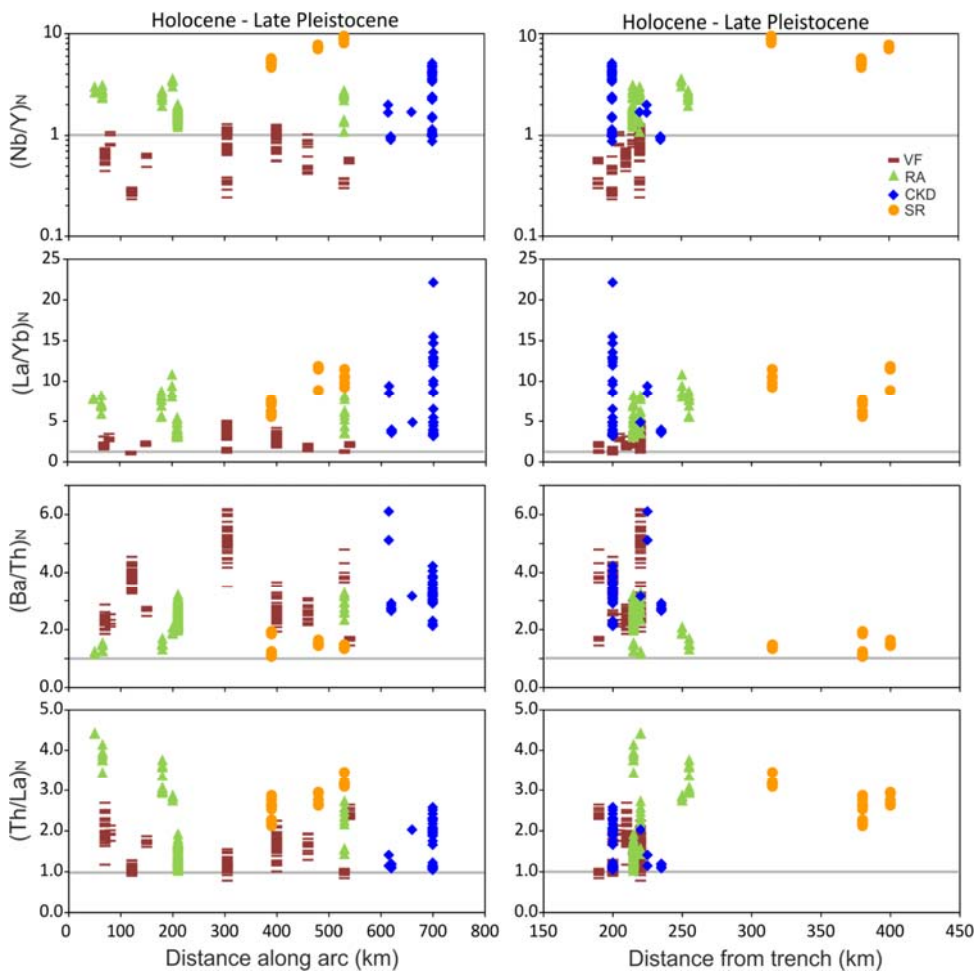


Figure 4 Trace element variations in Holocene-late Pleistocene tephra glasses south to north (left) and across (right) the Kamchatka volcanic belts. Trace element ratios are normalized to primitive mantle values (McDonough and Sun, 1995). Nb/Y and La/Yb ratios reflect mantle source depletion/enrichment (e.g. Pearce et al., 1995) and also the extent of amphibole fractionation (e.g. Brophy, 2008); Ba/Th is a function of slab-derived fluid contribution to the source of magmas; Th/La is related to the amount of subducted sediments involved in magma generation (e.g. Elliott et al., 1997; Pearce et al., 1995; Plank, 2005).

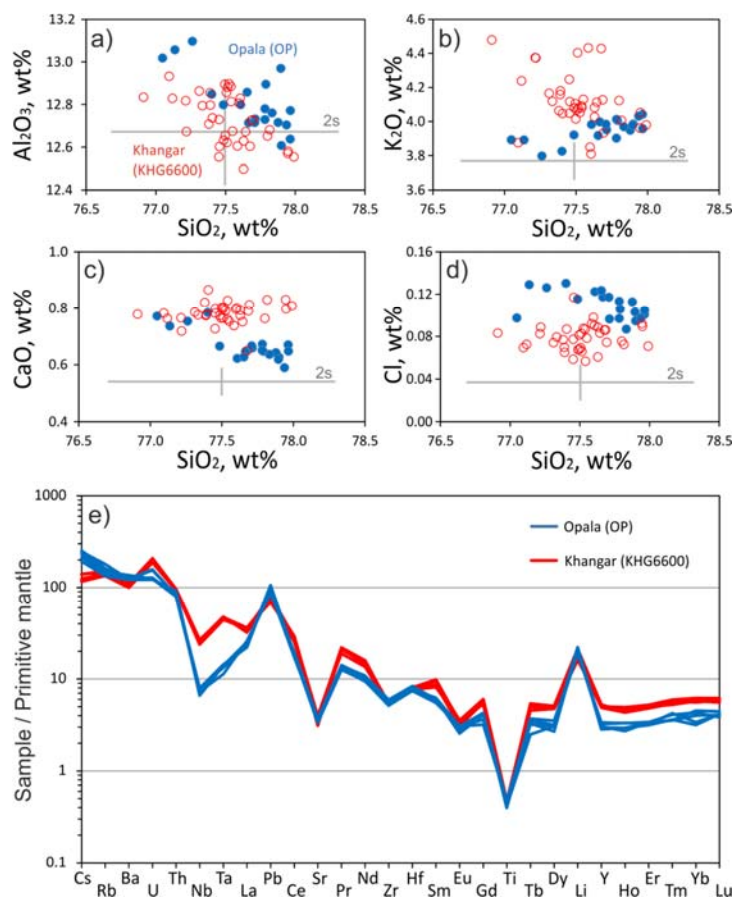


Figure 5 Example of using minor and trace element data to precisely identify source volcanoes for glasses with very similar major element composition: the case of tephra from Opala (eruption OP) and Khangar volcanoes (KHG6600) volcanic centers. Uncertainty of single points corresponds to 2 standard deviation (2s) as calculated for average KHG6600 composition using TephraKam Table 1c.

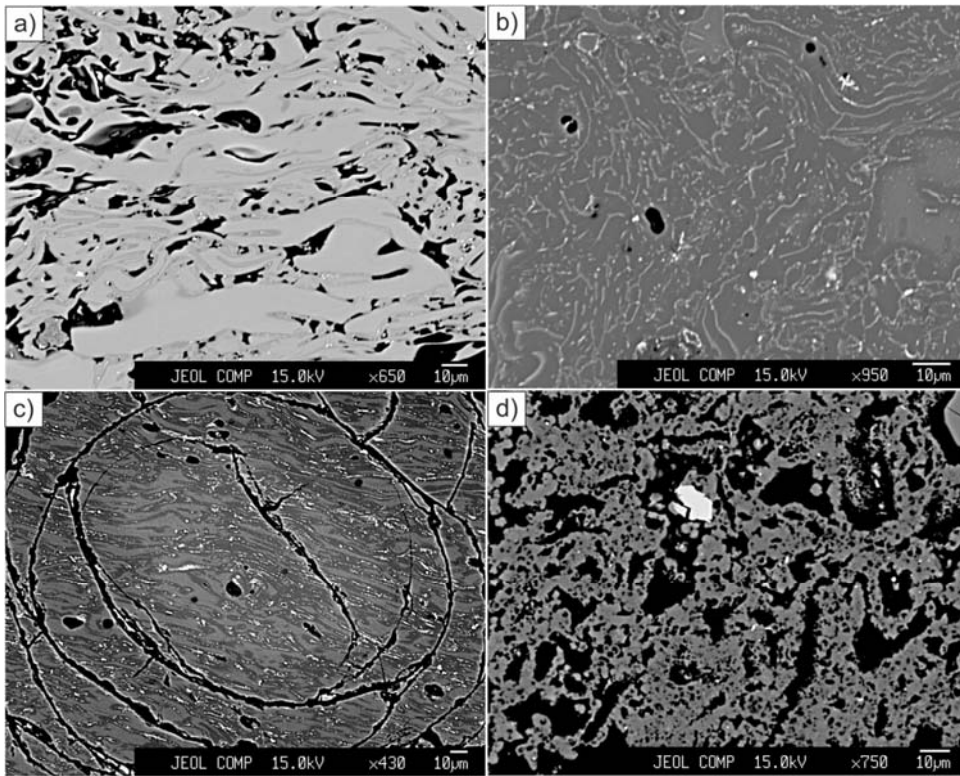


Figure 6 Back-scattered electron images of glass devitrification in welded tuffs: a) Slight alteration along welded glass particles (Sample 198-75, Karymsky/Stena-Sobolinaya caldera); b) More advanced alteration, precipitation of magnetite (sample 169-75, Karymsky/Stena-Sobolinaya caldera); c) Strong devitrification, developed perlite texture (sample 1989L-97b, unknown source/Alney-Chashakondzha?); d) Complete devitrification (sample PAU-8; Pauzhetka caldera, no glass preserved).

5

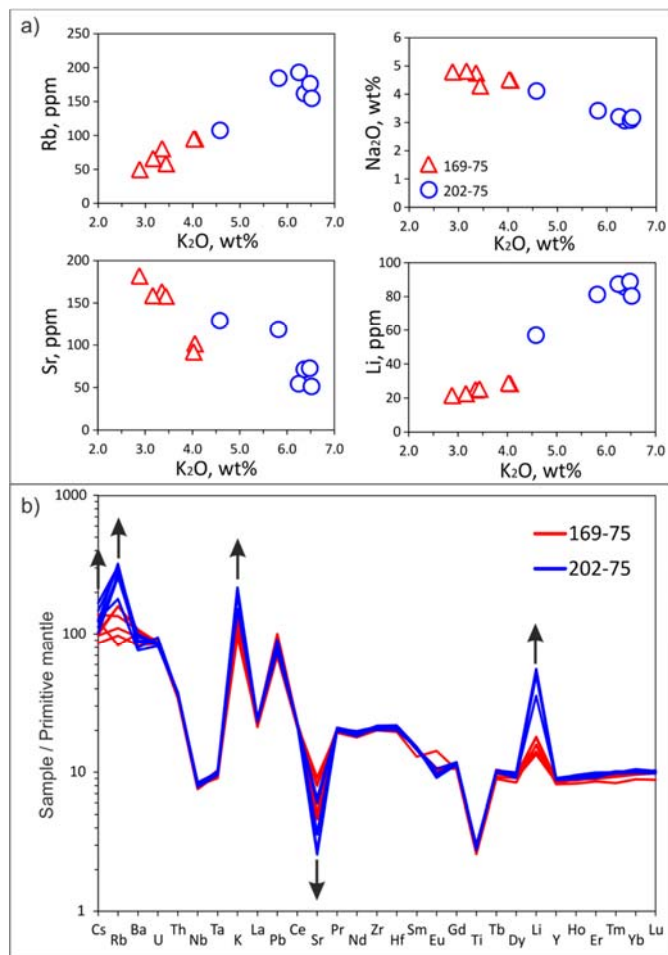


Figure 7 Illustration of chemical effects of secondary alteration on major and trace element composition of glass from welded tuffs: a) Covariations of mobile elements; b) Trace elements normalized to primitive mantle composition (McDonough and Sun, 1995). Arrows denote effect of alteration. Samples 169-75 (less altered) and 202-75 (more altered) are from Stena-Sobolinaya caldera and likely belong to the same unit judging from very close concentrations of immobile elements.

5

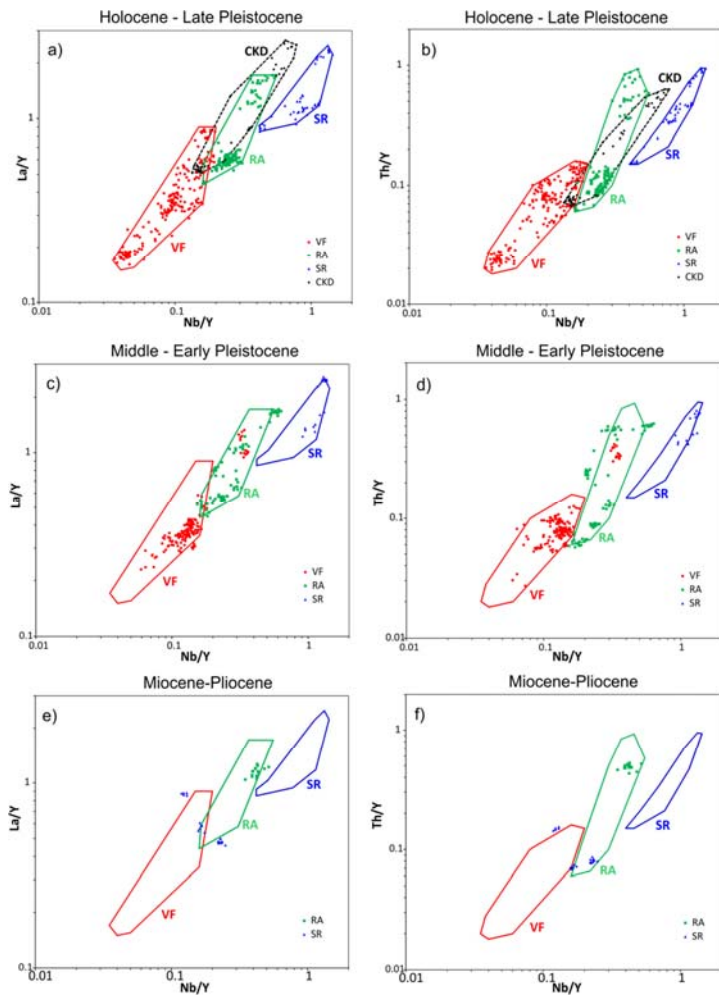


Figure 8 Discrimination diagrams for different volcanic zones in Kamchatka. The fields are drawn based on Holocene-late Pleistocene compositions. Coloured symbols show compositions of glasses according to their estimated ages and present-day location: 5 Holocene-late Pleistocene (a, b), middle-early Pleistocene (c-d), and Miocene-Pliocene (e-f).