

Editor comments:

Thank you for the tremendous work you have invested. I think it was worth the effort. I am very happy to accept your contribution to our special issue.

I just spotted a couple of minor technical issues, I ask you to resolve before handing the MS to the copy editing and typesetting.

Authors: Thank you very much for the comments. We address the specific comments point by point.

SPECIFIC COMMENTS:

P3L20: RF is used for the first time here. I suggest to simply drop it. I still find the list of topics in the paper difficult to comprehend due to the shift in sentence structure. Moreover this paragraph sets off to give the structure of the paper but only drafts the next section 2. Pls. check.

Authors: We decided to remove the paragraph as to not confuse the reader. Alternatively spelling out that we derive the parameters in section 2, describe and evaluate the results in section 3 and discuss in section – we found to be superfluous.

P3L25: There appears to be a reference error of Latex.

Authors: fixed

P14L11: the last number is with comma as thousand separator. I do not know what is the house standard at copernicus but I think it is given in the author guidelines. Pls. check.

Authors: Actually, no explicit statement is to be found in the guidelines. Very large numbers are supposed to be written out like 1 Billion elements, but a 1043 was written as a plain number. We decided to stick with a space as thousand separator for consistency and removed the comma.

Fig 5: There are comma instead of dots as decimal separators...

Authors: fixed

P21L18: improvement > improved?

Authors: fixed

EstSoil-EH: A high-resolution eco-hydrological modelling parameters dataset for Estonia

Alexander Kmoch¹, Arno Kanal^{1,†}, Alar Astover², Ain Kull¹, Holger Virro¹, Aveliina Helm³, Meelis Pärtel³, Ivika Ostonen¹ and Evelyn Uuemaa¹

5 ¹Department of Geography, Institute of Ecology and Earth Sciences, University of Tartu, Vanemuise 46, Tartu, 51003, Estonia

²Chair of Soil Science, Institute of Agricultural and Environmental Sciences, Estonian University of Life Sciences, Fr.R. Kreutzwaldi 5, Tartu, 51014, Estonia

³Department of Botany, Institute of Ecology and Earth Sciences, University of Tartu, Lai 40, Tartu, 51005, Estonia

[†] deceased, 07th of May, 2019

10 Correspondence to: Alexander Kmoch (alexander.kmoch@ut.ee)

Abstract. To understand, model and predict landscape evolution, ecosystem services and hydrological processes the availability of detailed observation-based soil data is extremely valuable. For the EstSoil-EH dataset, we synthesized more than 20 eco-hydrological variables on soil, topography and land use for Estonia (Kmoch et al., 2019a; doi:10.5281/zenodo.3473289) as numerical and categorical values from the original Soil Map of Estonia, the Estonian 5m Lidar DEM, Estonian Topographic Database and EU-SoilHydroGrids layers.

15 The Soil Map of Estonia maps more than 750 000 soil units throughout Estonia at a scale of 1:10 000 and forms the basis for EstSoil-EH. It is the most detailed and information-rich dataset for soils in Estonia, with 75% of mapped units smaller than 4.0 ha, based on Soviet era field mapping. For each soil unit, it describes the soil type (i.e. soil reference group), soil texture, and layer information with a composite text code, which comprises not only of the actual texture class, but also of classifiers for rock content, peat soils, distinct compositional layers and their depths. To use these as eco-hydrological process properties in modelling applications we translated the text codes into numbers. The derived parameters include soil layering, soil texture (clay, silt and sand content), coarse fragments and rock content of the soil layers within the soil profiles. In addition, we aggregated and predicted physical variables related to water and carbon cycle (bulk density, hydraulic conductivity, organic carbon content, available water capacity).

25 The developed methodology and dataset will be an important resource for the Baltic region, but possibly also all other regions where detailed field-based soil mapping data is available. Countries like Lithuania and Latvia have similar historical soil records from the Soviet era that could be turned into value-added datasets such as the one we developed for Estonia.

1 Introduction

30 Soil has remarkable complexity and through its various functions plays a key role in Earth's ecosystems. It provides multiple ecosystem services to humans, such as food, and clean water. Recent studies have highlighted the role of properly functioning soils that can provide their ecosystem services for the achievement of the United Nations (UN) adopted the Sustainable

Development Goals (SDGs) (Keesstra et al., 2018, 2016). Therefore an accurate quantitative description and prediction of soil processes and properties is essential in understanding the impacts of climate and land use changes on ecosystem services (Van Looy et al., 2017). For this purpose, spatially accurate maps of soil properties are needed where detailed soil survey data is available. But unfortunately, these are either missing for many countries and regions in the world or exist with insufficiently fine spatial resolution (Nussbaum et al., 2018). However, for many countries still field-based data on soil properties are available. Moreover, the recent increase of spatial environmental data created by remote sensing (climatic, terrain variables etc.) can be used for deriving the desired soil properties at fine resolution. There are several useful approaches to combine, or fuse, several datasets into one and obtain desired complete spatial coverage of the soil properties needed for modelling.

At the global level, two main soil databases are available. The first was made available by the United Nations Food and Agricultural Organisation (FAO): the Harmonized World Soil Database (HWSD) v1.2 (Fischer et al., 2008). The dataset is a 30-arc-second raster database (approx. 100 ha resolution) with more than 15 000 different soil mapping units. It combines existing regional and national updates of soil information from around the world. Another global level soil database is SoilGrids250m (Hengl et al., 2017), which provides harmonized gridded soil data with values for sand, silt, clay, and rock fractions, and organic carbon and carbon stocks at several depths with a resolution of approx. 6.5 ha and can be used as inputs for eco-hydrological models e.g. SWAT (Abbaspour et al., 2019). SoilGrids250m has been derived with machine learning methods and using environmental variables, such as terrain properties, as predictor variables and field-based soil profiles as training set (Hengl et al., 2017). This approach takes advantage of recent abundance of high resolution environmental spatial data mostly obtained from remote sensing (e.g. terrain, climatic variables, soil moisture), and employs these datasets as explanatory variables to model soil properties at fine spatial resolution (Nussbaum et al., 2018). Analogously, EU-SoilHydroGrids (Tóth et al., 2017) provides a 3D soil hydraulic database for Europe (available in 250m and 1km resolution) based on SoilGrids250m and trained pedotransfer functions (PTFs). In other words, they use machine-learning regression as specialised PTFs.

PTFs are predictive functions of certain soil properties, such as organic carbon content or bulk density, using data from field-based soil surveys (e.g. sand, silt and clay content). However, the potential of available PTFs has not fully been exploited and integrated into eco-hydrological modelling and ecosystem services provided by soils (Van Looy et al., 2017). For example, soil organic carbon (SOC) is an important indicator of soil health and plays a key role in the global carbon cycle and therefore it is crucial to adequately quantify and monitor SOC changes (Vitharana et al., 2017). However, reliable estimates for SOC have been difficult to obtain due to a lack of measured soil profile data to train the model (Eswaran et al., 1993). Very few SOC datasets are available for many countries or regions. For example, the Northern Circumpolar Soil Carbon Database (Tarnocai et al., 2009) was developed to describe the SOC pools in soils of the northern circumpolar permafrost region. SOC stocks were also predicted under future climate and land cover change scenarios using a geostatistical model for predicting current and future SOC in Europe (Yigini and Panagos, 2016). Prévost (2004) described predictions of soil properties from the SOC content, and found that SOC was closely related to soil bulk density (BD) and porosity. Suuster et al. (2011) emphasized the importance of BD as an indicator of soil quality, site productivity, and soil compaction and proposed a PTF for the organic

horizon in arable soils in Estonia. Abdelbaki (2018) evaluated the predictive accuracy of 48 published PTFs for predicting BD using State Soil Geographic (STATSGO) and Soil Survey Geographic (SSURGO) soil databases from the United States.

However, these regional datasets are often not detailed enough for country-level applications nor do they benefit fully from local high-resolution field-based soil data, as is the case for Estonia. There is no national scale dataset of measurements or predictions of SOC or BD for Estonia, and no large-scale high-resolution soil database is currently available with numerical data for a range of typical eco-hydrological process-based models or to monitor SOC changes. However, Estonia has a national highly detailed digitized soil map (1:10 000) with 75% of mapped units smaller than four ha. It was created based on extensive field mapping during the Soviet-era and can serve as an excellent basis for PTFs and robust models to predict soil properties at any given location (Minasny and Hartemink, 2011).

The objective of the present study was to develop a numerical soil database, EstSoil-EH, for modelling and for predicting eco-hydrological processes in Estonia and to provide a solid basis to estimate ecosystem services. The foundation of EstSoil-EH is the Soil Map of Estonia, which includes information about soil type, layering of the soil profile, textures (clay, silt, and sand contents), coarse fragments and rock content. We derived numerical values for the key characteristics for the whole of Estonia. High-resolution environmental data available nowadays allow to develop improved PTFs, and modern advanced methods (e.g. machine learning, geostatistics) extrapolation and upscaling (Gunarathna et al., 2019; Van Looy et al., 2017). We employed machine learning and PTFs to derive and aggregate additional soil variables related to the water and carbon cycle based on high-resolution field-survey soil data and other environmental covariates (e.g. terrain variables).

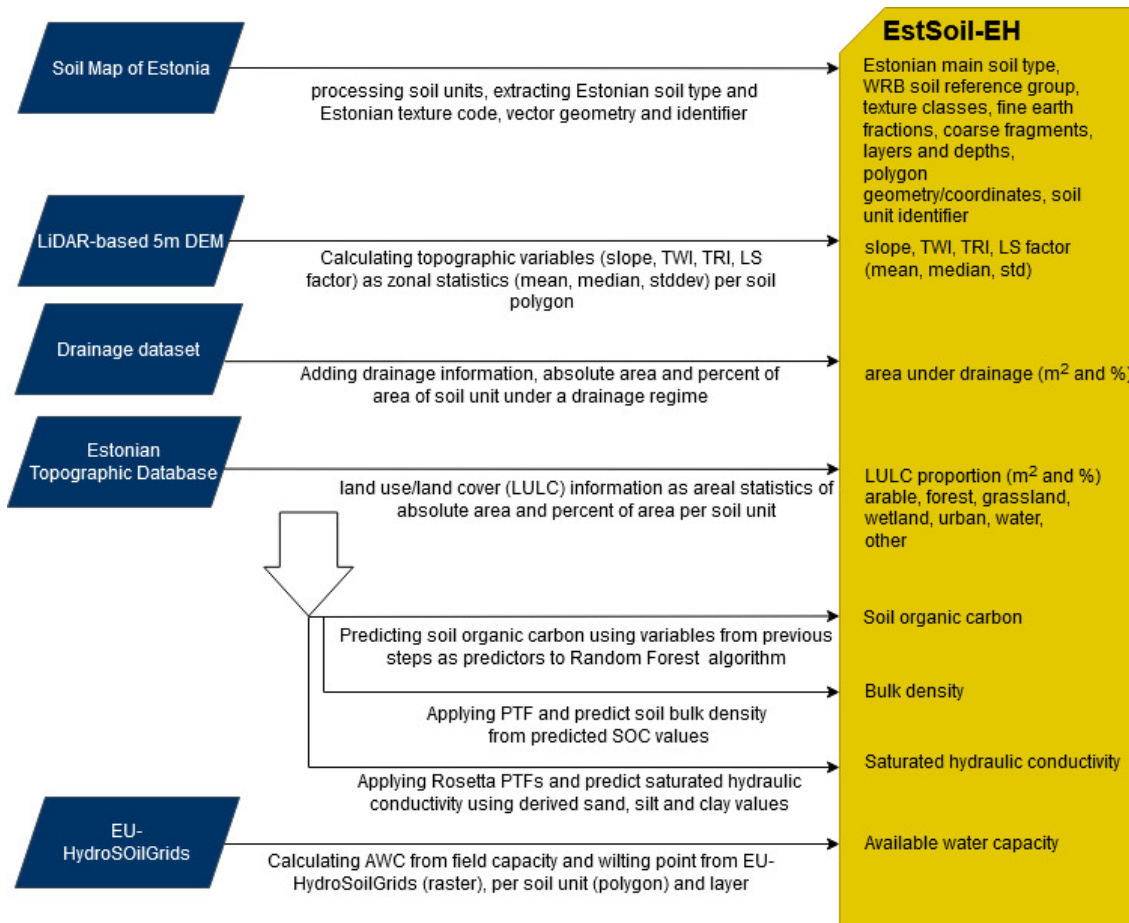
2 Materials and Methods

2.1 Background on the Soil Map of Estonia

We performed extensive database standardisation on the original Soil Map of Estonia as the working basis and synthesise all further variables based on the standardised dataset sequentially. Figure 1 illustrates the major working packages and their inputs and outputs of eco-hydrological parameters.

The base dataset - the original Soil Map of Estonia - is based on observed data (e.g. texture, soil profile depth, rockiness, presence of organic layer etc). Systematic mapping of Estonian soils to produce a paper-based soil map in scales 1:5 000 and 1:10 000 was started in 1954 (Reintam et al., 2005), with most intensive field surveys in the period 1965-1969, for the main purposes of land evaluation and assessing potential for agricultural use. Generally, field mapping was carried out in scale 1:10 000 but in hilly or undulating areas with higher soil diversity in scale 1:5000, which resulted in mapped units with areas as small as 2500 m². During 1982-1988 older mapping data was updated and new areas were included with full-area soil quality assessment (primarily fertility, rockiness, water regime, texture, erodability). During 1988-1990 soil field surveys were performed for non-arable lands and ameliorated lands. Forest soils were mapped during 1976-1989. During these large-scale field-mapping activities, soil texture was determined in situ based on organoleptic methods (feel methods) and for

reference profiles laboratory analyses were performed. This enabled calibration between texture defined by organoleptic method by each researcher participating in field survey and texture determined in the laboratory (Estonian Landboard, 2017).



5 **Figure 1: Flowchart for executed processing steps outlining the work packages, input datasets and derived eco-hydrological modelling parameters on soil, topography and land use**

As the result of large-scale soil mapping, 119 soil varieties have been distinguished in the Estonian national classification system and more than 500 combinations of texture type description have been collated. About 10 000 profiles up to 1-meter depth (1 profile per 330ha) have been sampled and analysed for characterisation of mineral soils (Reintam et al., 2003, 2005). Thus, the texture codes and soil types assigned to the ca. 750 000 mapped soil units (polygons) are based on many decades of in-situ land surveying practices.

Between 1997 and 2001, the soil map was digitized and attribute data was inserted into the database, resulting in the official National Soil Map of Estonia, a GIS vector dataset containing 750 000 soil units. It is available from the Estonian Land

Board in several formats under a permissive open data license (Estonian Landboard, 2017). A copy with the original shapefile dataset, the related required documentation and checksums has been archived for reference (Estonian Landboard, 2017).

The Estonian soil map contains the following used attribute fields:

- Soil type: a designation of the soil name, the Estonian analogue to the WRB soil reference groups
- 5 - Texture: combination of texture classes defined for fine and coarse fragments, and to which depths the same texture and coarse fragments are observed (layer)

These attributes are encoded as “string” values, which include both letters and numbers. The important fields soil type and texture, are not just stored as standardised class values, but are instead a coded description based on abbreviations that are then combined with numbers for example depths and indicators for level of erosion, and are grouped together for different depths
10 within the same attribute field. These description-based attribute values make it difficult to derive the foundational numerical values for sand, silt, clay and coarse fragments from the codes and to make them more consistent and usable in calculations and statistical analyses.

2.2 Extraction of texture classes, soil reference groups, and deriving basic physical and textural values

There are detailed studies on reference soil profiles in Estonia, Latvia and Lithuania that relate original soil texture,
15 so called Katchinsky texture system (Kachinsky, 1965) to USDA soil system (Calhoun et al., 1998) and erosion modelling case studies where based on laboratory analyses transfer functions from Katchinsky to USDA texture classes were developed (Laas and Kull, 2003). The relationship between the Katchinsky and Atterberg systems were provided by R. Kask (2001).

The USDA soil taxonomy and World Reference Base soil classification systems use 12 textural classes, which are defined based on the sand, silt, and clay fractions (Ditzler et al., 2017). However, the USDA system defines fine particles as
20 having a diameter ≤ 2 mm, whereas the Soviet-era maps use a diameter of ≤ 1 mm. The Soviet soil classification also mostly ignores the silt fractions, and focuses on the clay fraction (diameter ≤ 0.001 mm).

The Soil Map of Estonia’s “texture” field encodes the texture and general soil layer structure for each mapped soil unit in a structured, rule-based format (based on old Soviet-era paper maps). The original observations were classified into the Estonian texture code system based on Katchinsky (1965) soil particle size standards at the time of observation (not by us).
25 Regarding uncertainties related to that process - as we take these as observed data - achieving 5% accuracy in organoleptic determination of clay content for lower value classes while possible error increased in case of heavy texture classes.

We developed a computer program that converts the encoded texture codes into an intermediate data structure, which extracts again Estonian texture classes, coarse fragment classes, into separate layers including depth information. Subsequently, we derived all defined numerical texture values using a lookup table (Table 1) that represents our best efforts
30 to account for the size difference between the USDA and Soviet systems and lack of silt data in the Soviet system. The foundational numerical values for fine earth fractions and coarse fragments of the soil are solely derived from the extracted processed Estonian texture classes as demonstrated in Table 1.

In addition we introduced two more classes beyond the well-known USDA textures classes, i.e. “PEAT” and “GRAVELS”. The former states that this soil unit is a peatland, where the peat layer thickness is at least 30 cm. For hydrological modelling reasons we decided to still assign sand, silt and clay fractions to these units in order to provide soil data coverage as little interrupted as possible. To soil units with the class “PEAT” a high clay content was assigned in order to represent the low vertical conductivity at the bottom these peat bogs. However, for applications that critically evaluate clay content for soil units, the additional “PEAT” texture class can be used to apply additional rules to mask these soil units accordingly. The latter class “GRAVELS” is intended to demark soil units or discrete layers therein, where only a coarse fragment type but no fine textures have been coded in the original texture codes. In these cases, depending on the type of the coarse fragment the layer can consist of gravels, large rocks or massive rock.

10

Table 1: Example of the basic rules for deriving numerical values for texture (sand, silt, and clay contents) from the Estonian texture codes and assigned new English and USDA texture classes. These rules were selected by the authors. The full table is provided as a supplemental Excel spreadsheet (“texture_rules_lookup.xlsx”)

Estonian texture code	Estonian name	English name	USDA texture code	Proportion (%) of total weight		
				Sand	Silt	Clay
1	Liiv	sand	S	90	5	5
1 ₁	sõre liiv	coarse sand	S	95	5	0
1 ₂	sidus liiv	fine sand	S	90	3	7
sl	saviliiv	loamy sand	LS	82	9	9
sl ₁	saviliiv	loamy sand	LS	82	9	9
ls	liivsavi	loam	L	55	30	15
ls ₁	kerge liivsavi	sandy loam	SL	65	20	15
ls ₂	keskmine liivsavi	loam	L	55	30	15
s	Savi	clay	C	25	30	45

15

Similar to the Estonian texture classes there exist Estonian stoniness classes that describe a certain type of coarse fragments within the soil profile. An additional number in connection with this rock type identifier indicates the amount/volume of these rocks in 1kg of soil. We used this indicator number to designate numerical values for the coarse fragments. Table 2 shows how we derived the rock content from the coarse fragments indicator that we obtained from the soil map encoding.

20

A base assumption is that most soils in Estonia were sampled to a depth of 1 m, as this is the case for a default soil profile. There is only one vertical profile defined per mapped soil unit. If larger or smaller depth information was encoded in the original soil texture code, then this would be used for the overall depth of that soil sample. For each of the layers, we

collated depth from the soil surface to the bottom of each layer. The data model is relational and each soil unit is represented as one row, with its polygon geometry, identifier and all collected parameters as attributes. The maximum number of distinctly defined layers was 4, and layer dependent parameter values (at different depths) are only meaningful where the variable's number suffix is smaller or equal the number of defined layers.

5

Table 2: The relationship between the coarse fragments (rock content and shape) indicator from the soil map encoding and the rock content as a % of the total volume. We used the average of each defined range.

	Scale of conversion for rock content					
“Skeleton” indicator number	1	2	3	4	5	6
Inferred rock content (% of volume)	6	15	25	40	60	85

We compared the encoded Estonian soil type from the original soil map in order to find the most appropriate soil type from the main Estonian soil types from the soil reference list. The soil types and the Estonian soil names were then related to the FAO World Reference Base (WRB) soil reference groups (FAO, 2015) after the data have been corrected and standardised for each map unit in the extended soil dataset based on expert input (Hiederer et al., 2011). The full table that relates the Estonian and WRB soil reference groups is provided with the supplemental materials.

This first and fundamental step concluded with a set of variables for each mapped soil unit that include now separate standardised Estonian and English/USDA texture classes per soil layer, number and depths of layers of the mapped soil unit and numerical values for fine earth and coarse fragments fractions per layer, and a WRB soil designation group.

2.3 Adding topographic variables as predictor variables

For the subsequent step of SOC prediction via the Random Forest machine-learning model, we calculated mean, median and standard deviation of several topographic and environmental variables as additional predictor variables. Topographic variables slope, Topographic Wetness Index (TWI), Terrain Ruggedness Index (TRI), and slope Length - Steepness factor (LS) were all calculated by using SAGA-GIS software based on a digital elevation model (Conrad et al., 2015). The LiDAR-based Digital Elevation Model with resolution 5 m was obtained from Estonian Land Board.

The TWI is a topo-hydrological factor proposed by Beven and Kirkby (Beven and Kirkby, 1979) and is often used to quantify topographic control on hydrological processes (Michielsen et al., 2016; Uemaa et al., 2018) which also are relevant in the soil evolution. TWI represents the spatial pattern of saturated areas, which directly affect hydrological processes at the watershed scale (Mokarram et al., 2015).

It is a function of both the slope and the upstream contributing area:

$$TWI = \ln \left(\frac{a}{\tan b} \right) \quad (1)$$

where a is the specific upslope area draining through a certain point per unit contour length ($\text{m}^2 \text{m}^{-1}$), and b is the slope gradient (in degrees).

TRI reflects the soil erosion processes and surface storage capacity which again is relevant from a soil evolution perspective. The TRI expresses the amount of elevation difference between neighbouring cells, where the differences between the focal cell and eight neighbouring cells are calculated:

$$TRI = Y[\sum(x_{ij} - x_{00})^2]^{1/2} \quad (2)$$

where x_{ij} is the elevation of each neighbour cell to cell (0,0). Flat areas have a value of zero, while mountain areas with steep ridges have positive values.

The potential erosion in catchments can be evaluated using LS as used by the Universal Soil Loss Equation (USLE). LS is length-slope factor that accounts for the effects of topography on erosion and is based on slope and specific catchment area (as substitute for slope length). In SAGA-GIS the calculation is based on (Moore et al., 1991):

$$LS = (n + 1)(A_s/22.13)^n(\sin \beta/0.0896)^m \quad (3)$$

where $n=0.4$ and $m=1.3$.

In addition, we calculated the area per mapped soil unit in m^2 and in percent of area, which is under drainage. The drainage regime considered both underground tile drainage and ditch based drainage systems. Analogously, we summarised land use/land cover proportions into arable land, forest, grasslands, wetland, urban areas, water and other also as area per mapped soil unit in m^2 and in percent of area. The drainage and land use/land cover information was derived from the Estonian Topographic Database (ETAK) and the official register of drainage systems by the Agricultural Board of Ministry of Rural Affairs of Estonia.

2.4 Predicting Soil Organic Carbon (SOC) and Bulk Density (BD)

The main information retrievable from the Soil Map of Estonia are only the soil type and the soil texture. However, soil hydraulic properties and SOC data are needed for many different applications in soil hydrology, ecology and eco system services modelling. Pedotransfer functions (PTFs) have proven to be useful to indirectly estimate these parameters from more easily obtainable soil data (Van Looy et al., 2017). Therefore, several soil parameters like soil organic carbon, bulk density and saturated hydraulic conductivity must be derived via PTFs and other data assimilation methods. To apply PTFs and other data-assimilation methods, third-party datasets can be used as secondary sources. In the previous steps we have prepared a wide set of input variables, including the numerical fractions for the textural properties, standardised classes for soil type and soil textures, and additional topographic variables, which we can apply as predictor variables to model the value distribution for SOC and BD. We develop these two extended soil physical input parameters as organic carbon content in % soil weight and dry bulk density in Mg/m^3 or g/cm^3 .

In order to map the spatial distribution of SOC in Estonia a random forest (RF) model was used to predict SOC based on parameters derived from the soil map. RF was preferred to more advanced machine learning algorithms (e.g., neural networks) because it has shown to be relatively resilient towards data noise (Breiman, 2001; Caruana and Niculescu-Mizil, 2006). In addition, feature importances can be extracted from the model to determine the most influential predictor variables.

5 For training, we used measurements of soil organic matter (SOM) or soil organic carbon (SOC) from forest areas (samples sizes: n=100), 4 datasets of samples from Estonian open and overgrown grasslands and alvars - a type of calcareous grassland on a limestone plain with thin or no soil(n: 94, 137, 146, 69), peatlands (n=175) and from arable soils transects (n=8964) resulting in 3373 distinct point locations (Kriiska et al., 2019; Noreika et al., 2019; Suuster et al., 2011). Where
10 necessary, the SOM values were translated into SOC via: $SOC = SOM / 1.724$. Many samples from peatlands and arable fields were often sampled within the same mapped soil unit. For these soil units (polygons) the respective soil measurement data was averaged and joined to the respective soil units to reduce the bias of the prediction. After joining the sample size reduced to the 397 distinct training samples for machine learning (Figure 2).



Figure 2: Distinct soil unit polygons including all sampling locations for the ML training sample.

This data was then randomly split into training (60%) and test (40%) sets and the model was evaluated by predicting SOC based on the predictor variables of the test set. Finally, the model was applied to soil map polygons without available SOC measurements to predict SOC content in Estonian soils.

Subsequently, we calculated soil bulk density based on predicted soil organic carbon for each layer in each mapped soil unit polygon, with following PTF (Adams, 1973; Kauer et al., 2019), which has been successfully applied in Estonia:

$$BD = 1 / (0.03476 \times SOM + 0.6098) \quad (4)$$

$$\text{where: } SOM = SOC \times 1.724$$

The conversion factor of 1.724 is a widely used universal value. However, we acknowledge that the real value varies slightly between soils.

10 2.5 Assimilation of additional hydrological variables

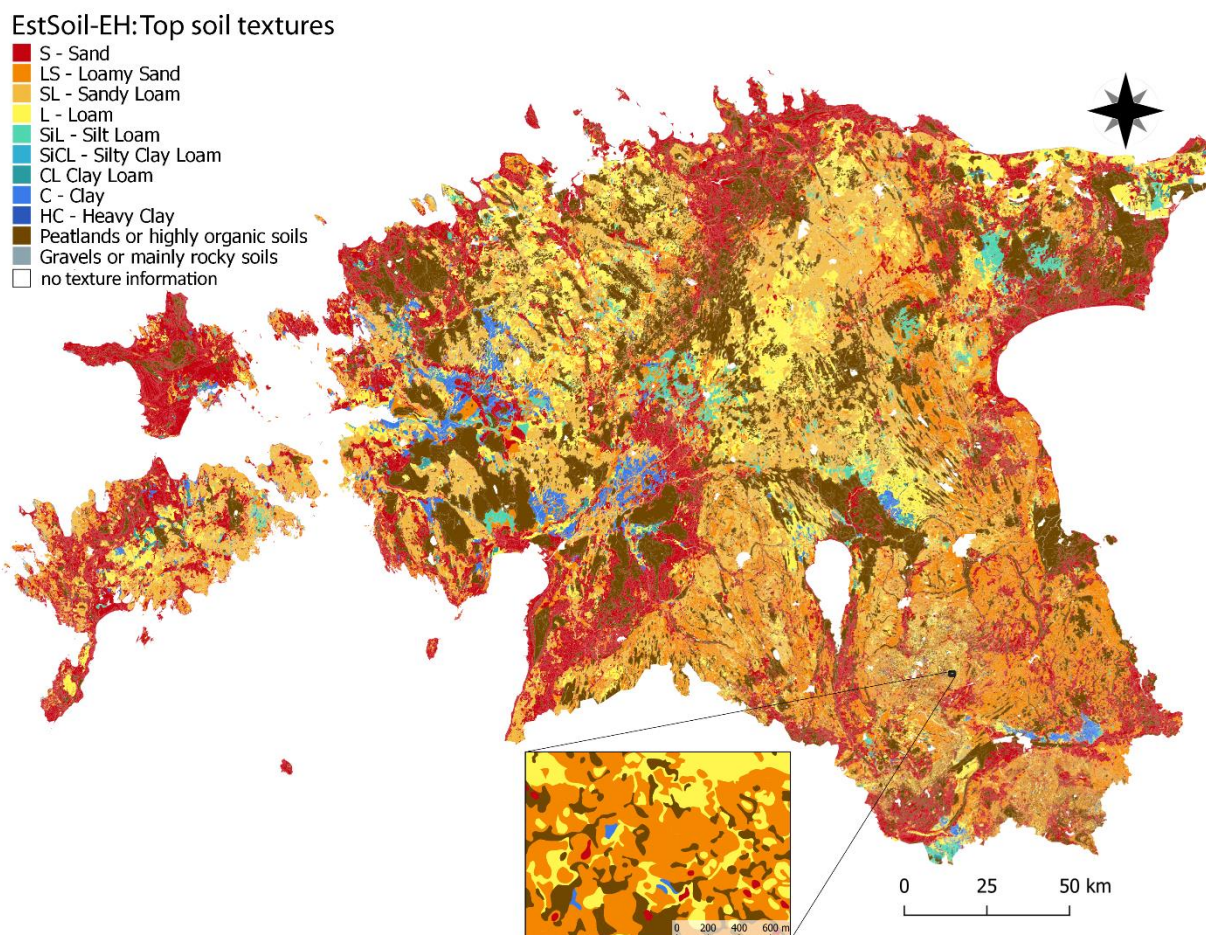
In order for this dataset to be more useful in eco-hydrological modelling we developed and added two additional hydrological variables. Saturated hydraulic conductivity (K_{sat}) is quantitative measure of water movement through a saturated soil. In addition to the ability of transmitting water along a hydraulic gradient we also add available water capacity (AWC) as a variable. AWC describes the soil's ability to hold water and quantifies how much of that water is available for plants to grow. We develop two variables saturated hydraulic conductivity (mm/hr), and available water capacity of the soil layer (mm H₂O/mm soil). We calculated K_{sat} using the improved Rosetta3 software, which relates soil texture to a hydraulic gradient and implements a pedotransfer model with improved estimates of hydraulic parameter distributions (Zhang and Schaap, 2017). It is based on an artificial neural network (ANN) for the estimation of water retention parameters, saturated hydraulic conductivity, and their uncertainties. For each standardised texture class, we used the numerical fine earth fractions for sand, silt and clay as inputs for the Rosetta3 software and calculated K_{sat} for each layer in each mapped soil unit polygon. Table 5 demonstrates the predicted values for several texture classes.

In order to calculate available water capacity, we summarized the field capacity (FC, at -330 cm matric potential) and wilting point (WP, at -15,848 cm matric potential) variables of the 7 soil depths of the EU-SoilHydroGrids 250m resolution raster datasets (Tóth et al., 2017) for each mapped soil unit for the provided depths of 0, 5, 15, 30, 60, 100, and 200 cm. The available water capacity is then calculated for each of the 7 depths: $AWC = FC - WP$ (Dipak and Abhijit, 2005). The resulting 7 AWC raster layers are then averaged into the respective depth ranges for each of the discrete layers of the Estonian mapped soil units.

3 Results

In this study, we developed the EstSoil-EH database, which includes standardised soil type and soil texture data from the official Soil Map of Estonia, related to the World Reference Base and FAO soil classes and USDA texture descriptions.

Figure 3 shows a map of the classified topsoil texture classes derived from the original Estonian texture codes. In addition, it shows the peat soils that cover up to 20% of Estonia, and are an important soil type in such northern countries.



5 **Figure 3: EstSoil-EH dataset: USDA topsoil textures derived from the original Estonian texture codes by the software developed in the present study, including additional classes “PEAT” and “GRAVELS”. Lower image is a zoom-in to a small region to visualize the high-level of detail.**

We synthesised additional information usable in an eco-hydrological modelling context for each of the soil units. These values include the number of discretized soil layers – up to a maximum of 4 separate vertical distinct soil layers where described in the original texture codes –the depth of each layer, and the maximum depth of the sampled profile for each mapped soil unit. Based on the layer information and the texture classes we defined the percent fractions per volume of sand, silt, clay, and coarse fragments per layer. We also added topographical and land use/land cover information and used these as predictors for SOC. Subsequently, predicted SOC, BD and hydraulic conductivity, and assimilated AWC values were added. Table 3 contains the full list of variable and parameters per mapped soil unit contained in the EstSoil-EH dataset.

10

Table 3: Description of variables and parameters available in the EstSoil-EH dataset

name of variable per mapped soil unit	data_type	description
est_soiltype	string	Estonian soil type
wrb_code	string	FAO WRB soil reference group (1st and 2nd level)
wrb_main	string	FAO WRB main soil reference group (1st level)
est_txcode	string	reconstructed error-free interpretation of Estonian texture encoding description
nlayers	number	number of recognized layers/horizons
zmx	float64	depth in mm: max depth of the sample analysed soil profile in the mapped soil unit
z1-4	float64	depth of each layer mm (referring to bottom #)if nlayers indicates defined
est_txt1-4	string	Estonian texture class per layer #
lxtype1-4	string	USDA texture class
est_crs1-4	string	Estonian coarse fragment type
sand1-4	int64	% mass of Sand in fine earth fraction
silt1-4	int64	% mass of Silt in fine earth fraction
clay1-4	int64	% mass of Clay in fine earth fraction
rock1-4	int64	% volumetric m ³ /m ³ soil
soc1-4	float64	Soil organic carbon content % soil weight
bd1-4	float64	Bulk density g/cm ³
k1-4	float64	Saturated hydraulic conductivity mm/hr
awc1-4	float64	mm H ₂ O/mm soil
slp_mean	float64	mean slope (degrees), from DEM (also median and stddev)
twi_mean	float64	mean terrain wetness index (also median and stddev)
ls_mean	float64	ls-factor, (also median and stddev)
tri_mean	float64	terrain roughness index, (also median and stddev)
area_drain	float64	area m ² per unit under a (e.g. tile-)drainage regimen
drain_pct	float64	percent of the area of the soil unit under drainage
area_arable	float64	area m ² of LULC arable (6 add. LULC types)
arable_pct	float64	% of area is LULC arable (6 add. LULC types)
geometry	geometry	polygon, EPSG:3301 Estonian National Grid

3.1 Validation of soil type and texture classes extraction and standardisation

For the main soil types, we achieved 97.7% agreement between the software's result and the manual classification.

- The manual verification of the validation revealed several re-labelling issues from the error lookup table. A visual assessment by two soil sciences senior research staff asserted that the level of similarity of the soil types that were selected by the automated

process were closely related. However, the mismatches (1943 records, equivalent to 2.3% of the total records) indicated that the soil experts tended to interpret “errors” based on personal knowledge that may not be reproducible in a strictly automated fashion. For example, some landforms (e.g. eroded material filling low slopes or collapsed cliffs) were originally classified as exceptions to the general classification rule based on the local knowledge of the landscape. When standardising these expert interpretations with the same more general soil type, we reduced the number of mismatched soil type identifiers to 0. We consider the high accuracy (97.7%) to be a very good result for a manual approach.

For the validation of textures, we used several steps. First, given the high agreement between the software-generated codes and the human-generated codes, we accepted the software’s texture codes for use in our subsequent evaluations. Next, we compared the extracted main texture for each layer with the manually coded value:

- 77 870 of 83 364 records (93.4%) showed identical parsing of the full texture code
- 71 635 of the records (85.9%) showed identical interpretation of the first layer’s texture type (10 312 records were differently coded, and 1417 produced “no value” errors, in which either the source or validation dataset contained no value, preventing a comparison with the other dataset’s value)
- 65 000 of the records (78.0%) showed identical interpretation of the second layer’s texture (with 2325 differently coded textures, and 16 038 “no value” errors, of which 15 461 occurred in the automated processed new dataset, and only 577 occurred in the validation dataset)
- 82 507 of the records (99.0%) showed identical interpretation of the third layer’s texture (with most errors caused by a non-existent third layer, 334 differently coded, and 523 with a “no value” error)

For sand, silt and clay fractions we could obtain laboratory analysis only for 84 forest soil samples. We calculated the root mean squared error (RMSE) and chose the normalized Median Absolute Deviation (nMAD) as an additional measure of dispersion of error for non-gaussian distributed data:

- RMSE for sand: 13.1 %
- nMAD for sand: 9.68 %
- RMSE for silt: 10.7 %
- nMAD for silt: 7.0 %
- RMSE for clay: 6.5 %
- nMAD for clay: 3.9 %

Our manual assessment of the mismatches indicated the same problem that occurred with the soil types. The expert assessments aimed to keep as much information as possible available in their decoded classification, and this did not always agree with the automated processing rules. In addition, to derive the grammar rules, we added a few simplifying elements, such as omitting some rarely used additional information in the soil texture descriptions. For example, the Estonian rules allow

specification of several soil parts, but as a horizontal distribution within the same mapped soil unit rather than as vertical layers. This is understandably complex, making it difficult to classify this variable soil as a single soil unit. Consequently, it is inevitable that some of these descriptions will not agree with the software's classification.

3.2 SOC prediction and validation of Random Forest model

5 We also calculated several extended soil properties, i.e. *SOC* content and *BD*. The RF regression model was implemented with the RandomForestRegressor function from the Scikit-learn Python library (Pedregosa et al., 2011). The model was evaluated by predicting SOC based on the predictor variables of the test set for the 60:40 split. Figure 4 illustrates the cross-validation scatterplots of observed vs. predicted SOC values for the test/validation sample splits. Following characteristics are reported for the chosen RF model:

- 10
- coefficient of determination (R^2) score: 0.69
 - score of the training dataset with out-of-bag estimate (oob score): 0.58
 - Pearson's *r correlation coefficient*, training: 0.90, validation: 0.83

RF feature importances, top 6:

- 15
- Clay content (SOL_CLAY1): 0.65
 - Terrain Roughness Index, standard deviation (tri_stdev): 0.04
 - Sand content (SOL_SAND1): 0.03
 - LS-factor, median (ls_median): 0.028
 - Area under drainage in percent (drain_prct): 0.027
 - Coarse fragments rock content (SOL_ROCK1): 0.024

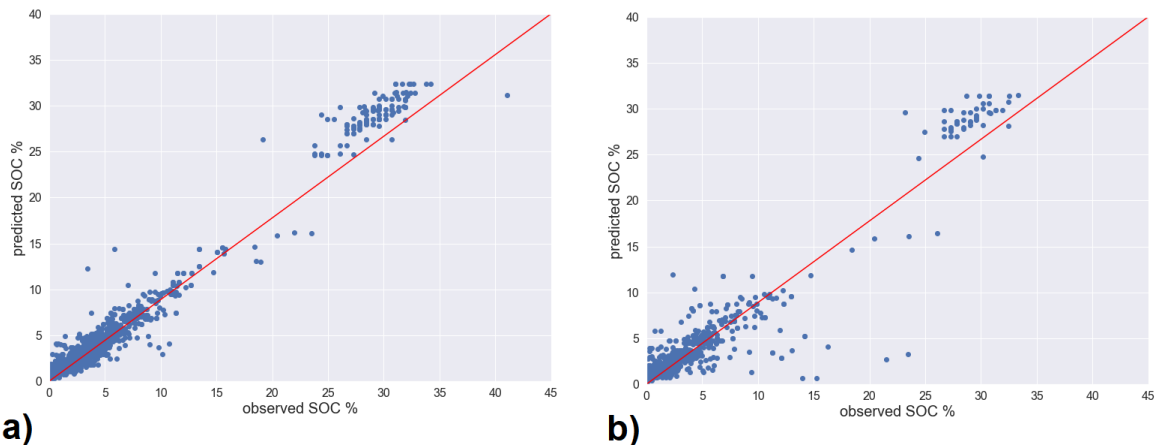


Figure 4: Random Forest model cross-validation scatterplot of observed vs. predicted SOC values for the test/validation sample splits: a) training subsample and b) validation subsample

Figure 5 shows the predicted values of SOC for the top layer. On visual inspection the spatial distribution for the SOC content matches comparatively well with known agricultural areas, where low carbon content prevails, as well as with the peat land areas, which have a very high carbon content.

5 For further description and guidance on errors in the predictions for SOC and BD we calculated the RMSE and nMAD as an additional measure of dispersion of error for non-gaussian distributed data. BD observed data was only available for arable lands and forest soil samples, and should be treated accordingly.

- RMSE for SOC predictions: 2.95 %
- nMAD for SOC: 1.44 %
- RMSE for the subsequent BD predictions with PTF: 0.33 g/cm³
- Normalized Median Absolute Deviation (nMAD) for BD: 0.15 g/cm³

15 However, due to the small number and distribution of input samples over four distinct land cover types, namely arable lands, wetlands, forests and open/grass lands, we evaluated the error distribution for each land form in Table 4. The prediction error characteristics differ, with the smallest errors for arable lands, then wetlands and the largest for open grasslands and forest.

Table 4: Statistical description of SOC prediction error per land form

landform	count	min	mean	median	max	std	nMAD	RMSE
wetland	150	-5.22	1.74	1.71	8.09	2.73	2.15	3.23
arable	6675	-21.2	-1.54	-1	6.82	1.78	1.12	2.35
forest	1299	-24.56	-2.08	-1.52	25.65	4.46	2.79	4.92
grassland	74	-8.47	1.06	0.52	11.78	4.28	3.21	4.38

20

EstSoil-EH: Predicted Soil Organic Content in Topsoil

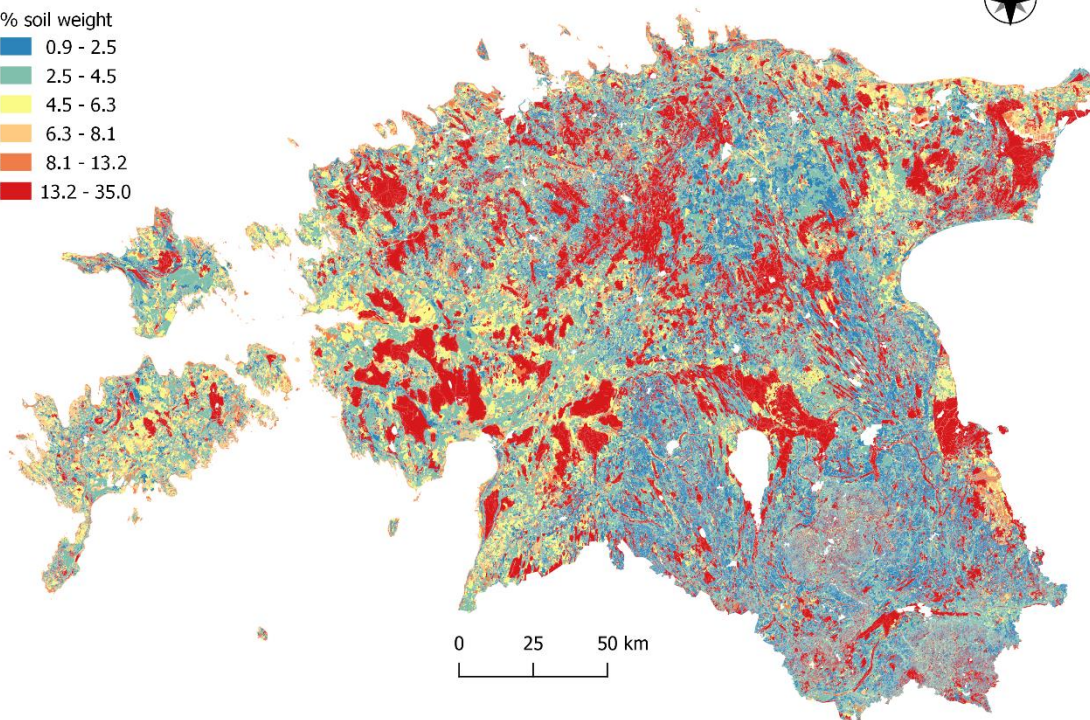
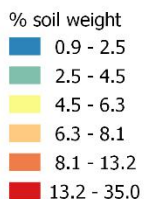


Figure 5: Predicted soil organic carbon (SOC) of the top soil layer

3.3 Hydrological variables results

5 Based on the variables derived in previous steps, we could calculate saturated hydraulic conductivity (K_{sat}) based on the sand, silt and clay content. Rosetta reports the standard deviation for its internal prediction process, which draws many samples for the same input of sand, silt and clay content and then provides the mean as the predicted value for K. The summary of the predicted K_{sat} values and the standard deviation are summarized in Table 5. For peat areas and wetlands the predicted values also corresponds with ranges reported in the literature for the sand-silt-clay ratios provided (Gafni et al., 2011).

10

 Available water capacity (AWC) was calculated solely by aggregating EU-SoilHydroGrids data for field capacity and wilting point (Tóth et al., 2017). We compiled all parameters into a dataset that can now be easily used with SWAT or other eco-hydrological and land-use-change models. As we are not changing the general geometry or underlying spatial data model of the original soil map, all parameters are only added to the existing mapped soil units and thus, all original soil polygons

15 remain discernible.

Table 5: Predicted K sat values in mm/h and reported standard deviation from Rosetta3

texture class	sand	silt	clay	k_sat	k_sat_std
GRAVELS	100	0	0	645.68	1.29
S (coarse sand)	95	5	0	362.25	1.19
S (sand)	90	5	5	133.21	1.13
S (fine sand)	90	3	7	113.71	1.17
LS (Estonian 'sl1-3' classes)	82	9	9	37.54	1.15
LS (Estonian 'tsl1' class)	80	14	6	40.2	1.18
SL	65	20	15	11.02	1.18
L (Estonian 'ls2' class)	55	30	15	9.04	1.21
CL	50	15	35	3.67	1.3
L (Estonian 'tls1' class)	40	45	15	8.16	1.37
SiL	35	50	15	8.89	1.35
SiCL	30	40	30	3.97	1.34
PEAT (Estonian 't1' class)	25	25	50	5.09	1.53
HUMUS	25	25	50	5.09	1.53
HC	25	30	45	4.29	1.43
C	25	30	45	4.29	1.43
PEAT (Estonian 't2' class)	20	20	60	7.24	1.81
PEAT (Estonian 't3' class)	15	15	70	9.2	2.45

4 Discussion and Future Work

5 For EstSoil-EH, we derived numerical values for the following data in all of the mapped soil units in soil map: soil type (i.e. soil reference group), texture class, soil profiles (e.g., layers, depths), texture (clay, silt, sand components, and coarse fragments), rock content, and physical variables related to the water and carbon cycle (organic carbon content, bulk density, hydraulic conductivity, available water capacity). Before our analysis, a large amount of the information of the high-resolution Soil Map of Estonian was not readily usable beyond the field or farm-scale because of the need to manually interpret the specialised soil types and the complexity of the rules that describe the texture or other characteristics of the soil units. We provide an extended ready-to-use dataset containing additional parameters. We also describe the development of a reproducible method for deriving these numerical values from a national survey-based soil map to support modelling and prediction of eco-hydrological processes and ecosystem services. Thus, our presented dataset holds the potential to further improve our understanding of eco-hydrological processes in the landscape through the use of advanced statistical (e.g. machine learning) and process-based models. The derived information is much more spatially related to the landform/landuse observed there than any other dataset covering soil information for Estonia. Furthermore, the textures and SOC/BD values are directly derived

10

15

from reliable observed data samples from Estonia. This is unique in the case of Estonian soil datasets and does not hold true for many other reported soil datasets that cover the area of Estonia. However, the complexity of the Estonian texture rules and the reliance on human judgement creates high uncertainty in some cases, even for human interpretation. For example, it is not possible to retrospectively redefine minor differences in boundaries between different classes between texture systems, but we consider natural variation of texture within the soil mapping unit in scale 1:10 000 more significant than that of different texture systems.

Our reproducible workflow and the open access availability and transparency of measurement data can provide a reliable building block for advancing studying soil and hydrological processes in Estonia into temporal aspects. Especially, properties such as SOC and BD will vary extensively depending on the land use and land cover. In combination with developments that capture also the dynamics of land use change and adaptations under climate change, the evolution of the soils in Estonia could more readily be investigated.

One challenge in SOC modelling was that the number of field-based samples that was used for training the Random Forest model was relatively small for the whole country. Even though the samples covered four main land cover types (agricultural, forests, wetlands, grasslands), there was still significant spatial heterogeneity that might have not been captured. Moreover, in addition to field-based validation data, we used lower resolution modelled datasets, e.g. SoilGrids and EU-SoilHydroGrids, for a comparative validation. These datasets are not necessarily more accurate than the results of our classification. Although we accounted for this problem by providing additional comparisons, the scale mismatch between continuous raster datasets and polygon-based data inevitably introduced errors and trade-offs into the comparison. One solution to these problems would be to perform supplemental field sampling to ground-truth the source data and confirm the accuracy of our model's classification based on the field data.

From the point of end-user, the first layer is not a default 30 cm deep top soil layer. A direct interpretation of the derived discrete layer information as soil horizons should not be generalized but checked on per case basis. All physical, chemical and hydraulic properties are based on the analysis of the original texture code per mapped soil units and the resulting discrete layers per unit. This is an important usage constraint, for example in sense of biological activity, as 30 cm soil layer is most active, but for each soil unit it needs to be checked which layers extend into which actual depths. Also the SOC content and BD are not modelled in a vertical continuum but per discrete values per unit and layer. However, fertile soils, like Luvisols contain a lot of SOC also in deeper layers. But such additional expert knowledge is not encoded in original Soilmap of Estonia, nor in the processing algorithms that derived the extended parameters for this newly generated dataset. However, such additional knowledge, as well as more appropriate models for peatland areas, could be included as additional rules in a subsequent improvement of this dataset.

Kõlli et al. (2009) published estimates of the SOC stocks for forests, arable lands, and grasslands and for all of Estonia. Nevertheless, they constrained their finding by noting that their estimates were calculated based on the mean SOC stock for each soil type and the corresponding area in which the soil type was distributed. Putku (2016) used the large-scale Soil Map of Estonia at the polygon level for SOC stock modelling for mineral soils in arable land of Tartu county. Carbon content

calculations in Estonia have historically been predominantly made for soils in agricultural areas. Existing literature and our results in summary are in line with SOC distribution per soil type in mineral soils in arable lands (Suuster et al., 2011).

The original purpose of this dataset was to derive values for hydrological modelling purposes and at the same time to stay as close to the original data as possible. From that perspective peat soil units are currently modelled with assumptions to have a similar behaviour to clay hydrologically. Therefore, the spatial distribution of clay percentage in particular, but also the concurrent physical fractions of sand and silt do not make scientific sense for these areas where peat is prevalent. In order to make the dataset as useful as possible and to identify peatland areas, we introduced the additional class “PEAT” into the USDA classification. While sand, silt, clay and rock content are directly derived values from the original texture codes, *SOC* and *K_{sat}* are modelled via statistical machine-learning algorithms, which include additional uncertainty. This should be considered when evaluating *BD*, which are calculated using *SOC* as an input variable. In addition, it would be possible to use *BD* as an additional predictor for Rosetta. However, we decided that this would introduce too much uncertainty as *BD* in EstSoil-EH is based on a PTF function of *SOC*, which in return was also predicted via statistical modelling.

The only variable which we did not model based in dependence of already modelled parameters was *AWC*. Here we summarised the EU-SoilHydroGrids 250m (Tóth et al., 2017) raster datasets for *FC* and *WP* as inputs an external data integration. This is not ideal and can be considered a trade-off between introducing too much uncertainty and an external unrelated data source.

In the future, we foresee step-wise improvement of our software by developing better PTFs to estimate parameters and to better integrate the presence of peat soils and other specific landscapes and environments in Estonia. Furthermore, statistical machine-learning or neural network and deep learning methods could be tested in order to improve soil classifications and express more complex relationships between soil types and textures. Currently, one specificity of the newly created EstSoil-EH dataset is its discrete nature, as we are only adding derived numerical variables to the existing mapped soil units (polygons). We do not predict a continuous surface in this study, thus, comparisons with continuous surface parameters predictions such as in SoilGrids (Hengl et al., 2017) or EU-SoilHydroGrids (Tóth et al., 2017), are not directly possible. However, the workflow could potentially be extended also for creating continuous surface. With appropriate modification (e.g., to use the soil characteristic codes more consistently for a different country), our methodology could also be applied in other countries such as Lithuania or Latvia that share similar historical land- and soil surveying practices.

Code and data availability.

The described “EstSoil-EH” dataset including all supplemental tables and figures is deposited on Zenodo, doi:10.5281/ZENODO.3473289 (Kmoch et al., 2019a). Supplemental software and codes that were used, e.g. the texture-code parsing scripts, the machine learning model and the parameter calculation Jupyter notebooks are maintained on GitHub (https://github.com/LandscapeGeoinformatics/EstSoil-EH_sw_supplement/releases) and were also deposited on Zenodo, doi:10.5281/zenodo.3473209 (Kmoch et al., 2019b). The original National Soil Map of Estonia

(<https://geoportaal.maaamet.ee/est/Andmed-ja-kaardid/Mullastiku-kaart-p33.html>) was archived for reference on the DataCite- and OpenAire-enabled repository of the University of Tartu, DataDOI, doi:10.15155/re-72 (Estonian Landboard, 2017).

Author contributions.

- 5 A. Knoch designed the experiments and code. A. Knoch, E. Uuemaa, A. Astover, A. Kanal validated soil types and texture values. E. Uuemaa completed terrain analysis and statistics. A. Kull, A. Helm, M. Pärtel, I. Ostonen cleaned and organized the input SOC datasets. H. Virro developed the SOC RF machine-learning code and experiment. A. Knoch and E. Uuemaa drafted the manuscript and created the figures, and all authors contributed to the paper writing.

Competing interests.

- 10 The authors declare that they have no conflict of interest.

Special issue statement.

This article is part of the special issue “Linking landscape organisation and hydrological functioning: from hypotheses and observations to concepts, models and understanding”. It is not associated with a conference.

Acknowledgements.

- 15 The authors would like to thank the reviewers and the editor for the constructive feedback and the insightful comments on the manuscript which greatly improved the work.

Financial support.

- This research has been supported by the Marie Skłodowska-Curie Actions individual fellowships under the Horizon 2020 Programme grant agreement number 795625, the Mobilitas Plus Postdoctoral Researcher Grant numbers MOBJD233 and 20 PRG352 of the Estonian Research Council (ETAG), the European Regional Development Fund (Centre of Excellence EcolChange), the NUTIKAS programme of the Archimedes foundation, and by the Estonian Environmental Investment Centre.

References

- Abbaspour, K. C., Vaghefi, S. A., Yang, H. and Srinivasan, R.: Global soil, landuse, evapotranspiration, historical and future weather databases for SWAT Applications, *Sci. Data*, 6(1), 263, doi:10.1038/s41597-019-0282-4, 2019.
- Abdelbaki, A. M.: Evaluation of pedotransfer functions for predicting soil bulk density for U.S. soils, *Ain Shams Eng. J.*, 9(4), 1611–1619, doi:10.1016/j.asej.2016.12.002, 2018.
- Adams, W. A.: The Effect of Organic Matter on the bulk and true Densities of some Uncultivated Podzolic Soils, *J. Soil Sci.*, 24(1), 10–17, doi:10.1111/j.1365-2389.1973.tb00737.x, 1973.
- Beven, K. J. and Kirkby, M. J.: A physically based, variable contributing area model of basin hydrology, *Hydrol. Sci. Bull.*, 24(1), 43–69, doi:10.1080/02626667909491834, 1979.
- Breiman, L.: Random Forests, *Mach. Learn.*, 45(1), 5–32, doi:10.1023/A:1010933404324, 2001.
- Calhoun, T. E., Ellermäe, O., Kölli, R., Lemetti, I., Penu, P. and Smith, C. W.: Benchmark Soils of Estonia Researched thru Baltic –American Collaboration. Problems of Estonian Soil Classification, *Trans. Est. Agric. Univ.*, 198, 76–114, 1998.
- Caruana, R. and Niculescu-Mizil, A.: An Empirical Comparison of Supervised Learning Algorithms, in Proceedings of the 23rd International Conference on Machine Learning, pp. 161–168, ACM, New York, NY, USA, 2006.
- Conrad, O., Bechtel, B., Bock, M., Dietrich, H., Fischer, E., Gerlitz, L., Wehberg, J., Wichmann, V. and Böhner, J.: System for Automated Geoscientific Analyses (SAGA) v. 2.1.4, *Geosci. Model Dev.*, 8(7), 1991–2007, doi:10.5194/gmd-8-1991-2015, 2015.
- Dipak, S. and Abhijit, H.: *Physical and Chemical Methods in Soil Analysis*, New Age International Ltd., New Delhi., 2005.
- Ditzler, C., Scheffe, K. and Monger, H. C.: *Soil survey manual*. USDA Handbook 18, Soil Science Division. Government Printing Office, Washington, D.C., 2017.
- Estonian Landboard: Soilmap of Estonia - Mullastiku kaart, doi:http://dx.doi.org/10.15155/re-72, 2017.
- Eswaran, H., Van Den Berg, E. and Reich, P.: Organic Carbon in Soils of the World, *Soil Sci. Soc. Am. J.*, 57(1), 192, doi:10.2136/sssaj1993.03615995005700010034x, 1993.
- FAO: World reference base for soil resources, 2014 International soil classification system, Rome, Italy, 2015.
- Fischer, G., Nachtergaele, F., Prieler, S., van Velthuizen, H. T., Verelst, L. and Wiberg, D.: Global Agro-ecological Zones Assessment for Agriculture (GAEZ 2008), in IIASA, Laxenburg, Austria and FAO, Rome, Italy, 2008.
- Gafni, A., Malterer, T., Verry, E., Nichols, D., Boelter, D. and Päivänen, J.: Physical Properties of Organic Soils, in *Peatland Biogeochemistry and Watershed Hydrology at the Marcell Experimental Forest*, edited by R. Kolka, S. Sebestyen, E. S. Verry, and K. Brooks, pp. 135–176, CRC Press, Boca Raton, FL., 2011.
- Gunarathna, M. H. J. P., Sakai, K., Nakandakari, T., Momii, K. and Kumari, M. K. N.: Machine learning approaches to develop pedotransfer functions for tropical Sri Lankan soils, *Water (Switzerland)*, doi:10.3390/w11091940, 2019.
- Hengl, T., Mendes de Jesus, J., Heuvelink, G. B. M., Ruiperez Gonzalez, M., Kilibarda, M., Blagotić, A., Shangquan, W., Wright, M. N., Geng, X., Bauer-Marschallinger, B., Guevara, M. A., Vargas, R., MacMillan, R. A., Batjes, N. H., Leenaars,

- J. G. B., Ribeiro, E., Wheeler, I., Mantel, S. and Kempen, B.: SoilGrids250m: Global gridded soil information based on machine learning, edited by B. Bond-Lamberty, PLoS One, 12(2), e0169748, doi:10.1371/journal.pone.0169748, 2017.
- Hiederer, R., Michéli, E. and Durrant, T.: Evaluation of the BioSoil DemonstrationProject, Ispra, 2011.
- Kachinsky, N.: Fizika potchv. Soil physics. In Russian, Vol. 1., Moscow University Press, Moscow, 1965.
- 5 Kask, R.: On the English Equivalents of the Estonian Terms for the Textural Classes of Estonian Soils, J. Agric. Sci., 14, 93–96 [online] Available from: http://agrt.emu.ee/pdf/proceedings/toim_2001_14_kaskr.pdf, 2001.
- Kauer, K., Astover, A., Viiralt, R., Raave, H. and Kätterer, T.: Evolution of soil organic carbon in a carbonaceous glacial till as an effect of crop and fertility management over 50 years in a field experiment, Agric. Ecosyst. Environ., 283, 106562, doi:10.1016/j.agee.2019.06.001, 2019.
- 10 Keesstra, S., Mol, G., de Leeuw, J., Okx, J., Molenaar, C., de Cleen, M. and Visser, S.: Soil-related sustainable development goals: Four concepts to make land degradation neutrality and restoration work, Land, doi:10.3390/land7040133, 2018.
- Keesstra, S. D., Bouma, J., Wallinga, J., Tittonell, P., Smith, P., Cerdà, A., Montanarella, L., Quinton, J. N., Pachepsky, Y., Van Der Putten, W. H., Bardgett, R. D., Moolenaar, S., Mol, G., Jansen, B. and Fresco, L. O.: The significance of soils and soil science towards realization of the United Nations sustainable development goals, SOIL, doi:10.5194/soil-2-111-2016, 15 2016.
- Kmoch, A., Kanal, A., Astover, A., Kull, A., Virro, H., Helm, A., Pärtel, M., Ostonen, I. and Uuemaa, E.: EstSoil-EH: An eco-hydrological modelling parameters dataset derived from the Soil Map of Estonia (data deposit), doi:10.5281/zenodo.3473289, 2019a.
- Kmoch, A., Virro, H. and Uuemaa, E.: EstSoil-EH software supplement, doi:10.5281/ZENODO.3473210, 2019b.
- 20 Kõlli, R., Ellermäe, O., Köster, T., Lemetti, I., Asi, E. and Kauer, K.: Stocks of organic carbon in Estonian soils, Est. J. Earth Sci., 58(2), 95, doi:10.3176/earth.2009.2.01, 2009.
- Kriiska, K., Frey, J., Asi, E., Kabral, N., Uri, V., Aosaar, J., Varik, M., Napa, Ü., Apuhtin, V., Timmus, T. and Ostonen, I.: Variation in annual carbon fluxes affecting the SOC pool in hemiboreal coniferous forests in Estonia, For. Ecol. Manage., 433, 419–430, doi:10.1016/j.foreco.2018.11.026, 2019.
- 25 Laas, A. and Kull, A.: Sustainable Planning and Development, edited by A. G. K. E. Beriatos, C.A. Brebbia, H. Coccossis, Boston: Wessex Institute of Technology Press, Southampton, 2003.
- Van Looy, K., Bouma, J., Herbst, M., Koestel, J., Minasny, B., Mishra, U., Montzka, C., Nemes, A., Pachepsky, Y. A., Padarian, J., Schaap, M. G., Tóth, B., Verhoef, A., Vanderborght, J., van der Ploeg, M. J., Weihermüller, L., Zacharias, S., Zhang, Y. and Vereecken, H.: Pedotransfer Functions in Earth System Science: Challenges and Perspectives, Rev. Geophys., 30 55(4), 1199–1256, doi:10.1002/2017RG000581, 2017.
- Michielsen, A., Kalantari, Z., Lyon, S. W. and Liljegren, E.: Predicting and communicating flood risk of transport infrastructure based on watershed characteristics, J. Environ. Manage., doi:10.1016/j.jenvman.2016.07.051, 2016.
- Minasny, B. and Hartemink, A. E.: Predicting soil properties in the tropics, Earth-Science Rev., 106(1–2), 52–62, doi:10.1016/j.earscirev.2011.01.005, 2011.

- Mokarram, M., Roshan, G. and Negahban, S.: Landform classification using topography position index (case study: salt dome of Korsia-Darab plain, Iran), *Model. Earth Syst. Environ.*, doi:10.1007/s40808-015-0055-9, 2015.
- Moore, I. D., Grayson, R. B. and Ladson, A. R.: Digital terrain modelling: A review of hydrological, geomorphological, and biological applications, *Hydrol. Process.*, doi:10.1002/hyp.3360050103, 1991.
- 5 Noreika, N., Helm, A., Öpik, M., Jairus, T., Vasar, M., Reier, Ü., Kook, E., Riibak, K., Kasari, L., Tullus, H., Tullus, T., Lutter, R., Oja, E., Saag, A., Randlane, T. and Pärtel, M.: Forest biomass, soil and biodiversity relationships originate from biogeographic affinity and direct ecological effects, *Oikos*, oik.06693, doi:10.1111/oik.06693, 2019.
- Nussbaum, M., Spiess, K., Baltensweiler, A., Grob, U., Keller, A., Greiner, L., Schaepman, M. E. and Papritz, A.: Evaluation of digital soil mapping approaches with large sets of environmental covariates, *SOIL*, doi:10.5194/soil-4-1-2018, 2018.
- 10 Pedregosa, F., Varoquaux, G., Gramfort, A., Michel, V., Thirion, B., Grisel, O., Blondel, M., Prettenhofer, P., Weiss, R., Dubourg, V., Vanderplas, J., Passos, A., Cournapeau, D., Brucher, M., Perrot, M. and Duchesnay, É.: Scikit-learn: Machine Learning in Python, *J. Mach. Learn. Res.*, 12(85), 2825–2830, doi: 10.5555/1953048.2078195, 2011.
- Prévost, M.: Predicting Soil Properties from Organic Matter Content following Mechanical Site Preparation of Forest Soils, *Soil Sci. Soc. Am. J.*, 68(3), 943, doi:10.2136/sssaj2004.9430, 2004.
- 15 Putku, E.: Prediction models of soil organic carbon and bulk density of arable mineral soils, Doctoral Thesis, Estonian University of Life Sciences., 2016.
- Reintam, L., Kull, A., Palang, H. and Rooma, I.: Large-Scale Soil Maps and a Supplementary Database for Land Use Planning in Estonia, *J. Plant Nutr. Soil Sci. Fur Pflanzenernahrung Und Bodenkd.*, 166(2), 225–231, 2003.
- Reintam, L., Rooma, I., Kull, A. and Kölli, R.: Soil information and its application in Estonia, Research report, Vol. 9, 20 European Soil Bureau, pp. 121–132., 2005.
- Suuster, E., Ritz, C., Roostalu, H., Reintam, E., Kölli, R. and Astover, A.: Soil bulk density pedotransfer functions of the humus horizon in arable soils, *Geoderma*, 163(1–2), 74–82, doi:10.1016/j.geoderma.2011.04.005, 2011.
- Tarnocai, C., Canadell, J. G., Schuur, E. A. G., Kuhry, P., Mazhitova, G. and Zimov, S.: Soil organic carbon pools in the northern circumpolar permafrost region, *Global Biogeochem. Cycles*, 23(2), doi:10.1029/2008GB003327, 2009.
- 25 Tóth, B., Weynants, M., Pásztor, L. and Hengl, T.: 3D soil hydraulic database of Europe at 250 m resolution, *Hydrol. Process.*, 31(14), doi:10.1002/hyp.11203, 2017.
- Uuemaa, E., Hughes, A. O. and Tanner, C. C.: Identifying feasible locations for wetland creation or restoration in catchments by suitability modelling using light detection and ranging (LiDAR) Digital Elevation Model (DEM), 10(4), doi:10.3390/w10040464, 2018.
- 30 Vitharana, U. W. A., Mishra, U., Jastrow, J. D., Matamala, R. and Fan, Z.: Observational needs for estimating Alaskan soil carbon stocks under current and future climate, *J. Geophys. Res. Biogeosciences*, doi:10.1002/2016JG003421, 2017.
- Yigini, Y. and Panagos, P.: Assessment of soil organic carbon stocks under future climate and land cover changes in Europe, *Sci. Total Environ.*, 557–558, 838–850, doi:10.1016/J.SCITOTENV.2016.03.085, 2016.
- Zhang, Y. and Schaap, M. G.: Weighted recalibration of the Rosetta pedotransfer model with improved estimates of hydraulic

parameter distributions and summary statistics (Rosetta3), *J. Hydrol.*, 547, 39–53, doi:10.1016/j.jhydrol.2017.01.004, 2017.