



Fig. S1: APWS points across Asia Pacific

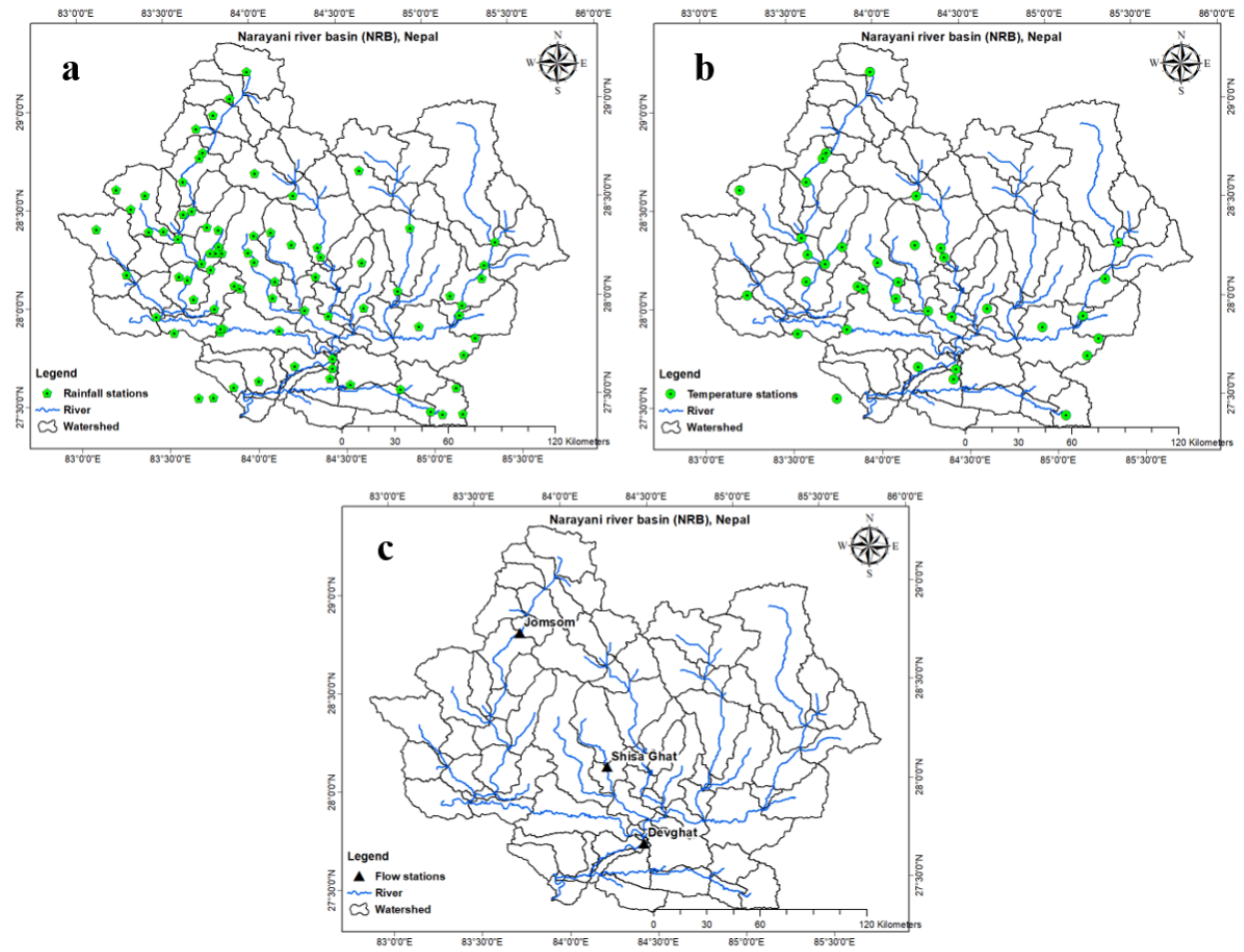


Fig. S2: Rainfall (a), temperature (b) and flow (c) stations located in Narayani river basin, Nepal

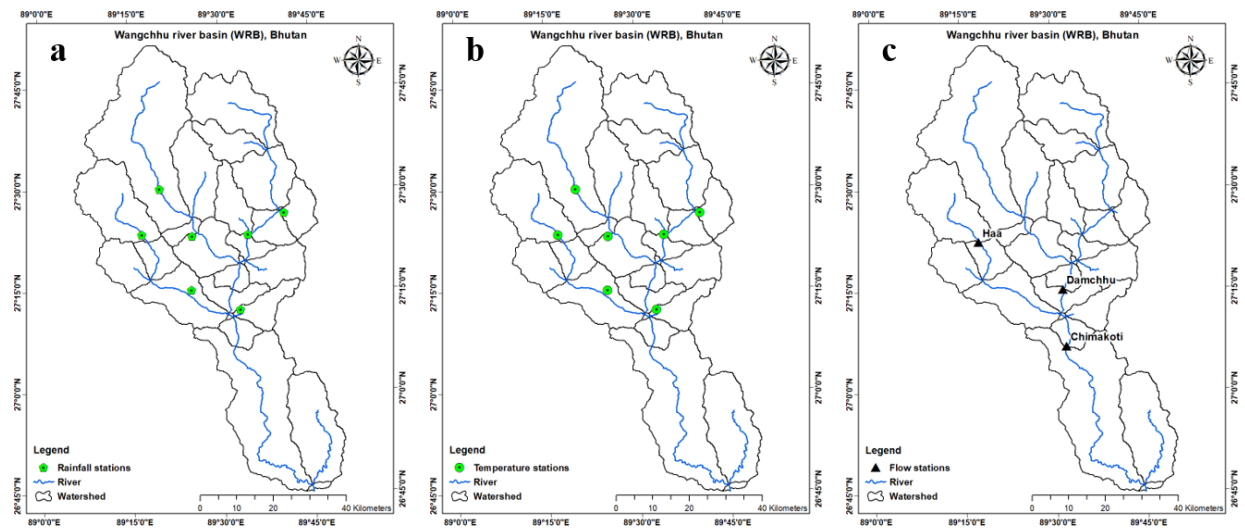


Fig. S3: Rainfall (a), temperature (b) and flow (c) stations located in Wangchhu river basin, Bhutan

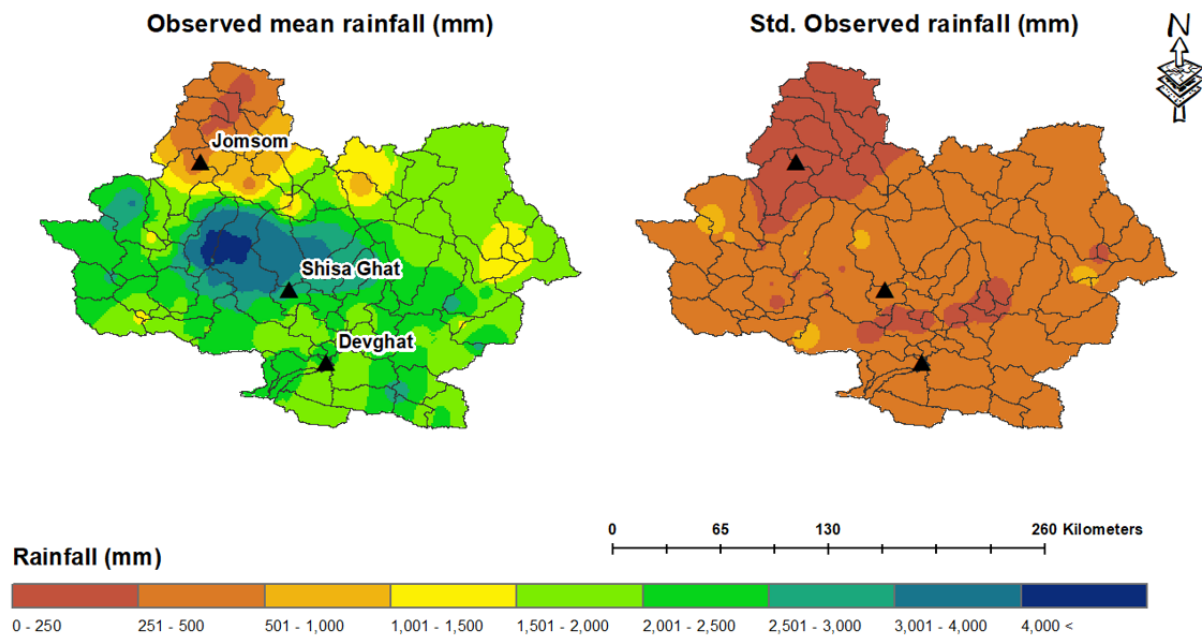


Fig. S4: Mean and standard deviation of observed rainfall in Narayani river basin

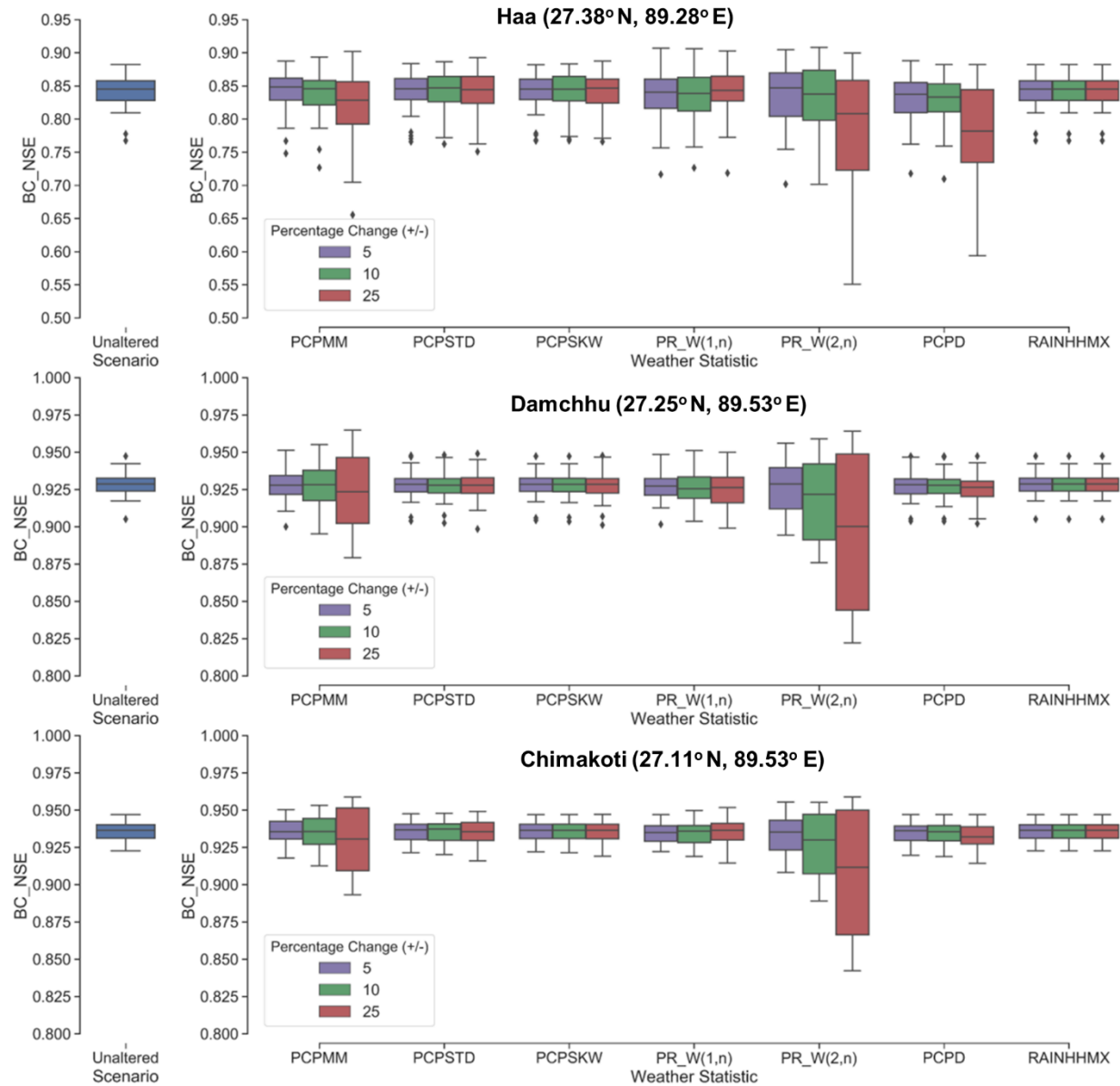


Fig. S5: Sensitivity analysis of weather statistics in terms of NSE in Wangchhu river basin, Bhutan