

Interactive comment on “Spatio-temporal assessment of the PCB sediment contamination in the four main French River Basins (1945–2018)” by André-Marie Dendievel et al.

André-Marie Dendievel et al.

andre-marie.dendievel@entpe.fr

Received and published: 27 February 2020

We are grateful to RC2 for his constructive remarks that helped us improving some methodology aspects and developing the discussion. To address your questions, we will clarify the methodology employed for the calculation of PCB_i fluxes (based on monitored flow rates and suspended matter transported by each river). We will also expand the text with the interpretations of the spatial and temporal trends of the PCB dispersion from upper to lower catchment parts, especially in the Seine and Rhône Rivers. We also add as supplementary data a comparison of two maps displaying the evolution of maximal concentrations in PCBs in fluvial sediments from 1945 to the 2000–2018 pe-

Printer-friendly version

Discussion paper



riod along each river (see fig. 1 attached to this reply). Finally, following your advice, in the second part of the discussion, we will include other threshold effect concentrations such as the OSPAR EAC (Environmental Assessment Criteria) to discuss the spatial and temporal relationships between PCBis in sediment and their accumulation in the biota.

Interactive comment on Earth Syst. Sci. Data Discuss., <https://doi.org/10.5194/essd-2019-167>, 2019.

Printer-friendly version

Discussion paper



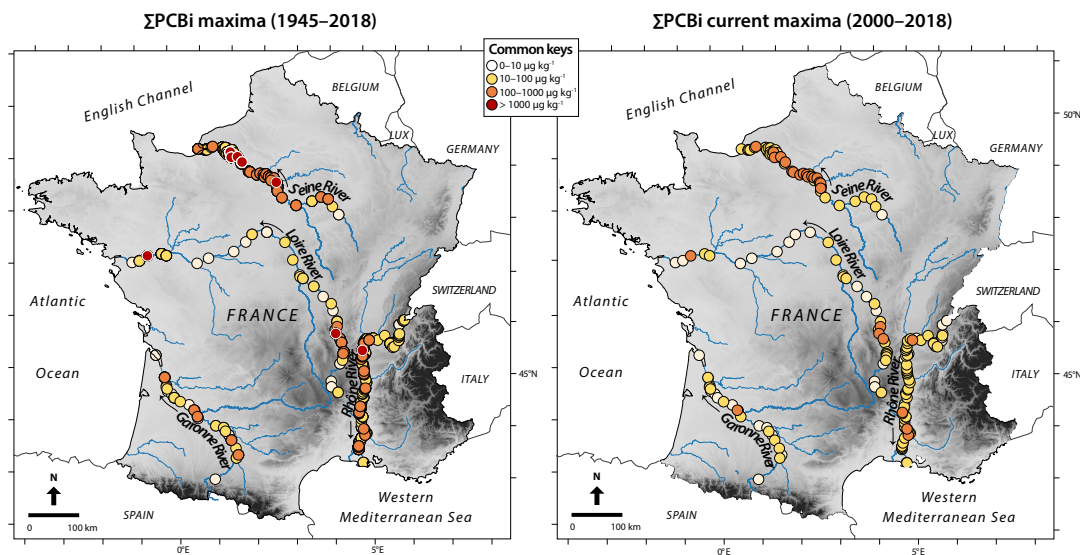


Fig. 1.

Printer-friendly version

Discussion paper

