

AUTHOR RESPONSE

Dear ESSD Editors,

I am submitting the revised manuscript ESSD-2019-139 entitled “Integrated dataset of deformation measurements in fractured volcanic tuff and meteorological data (Coroglio coastal cliff, Naples, Italy)” by Matano Fabio, Caccavale Mauro, Esposito Giuseppe, Fortelli Alberto, Scepi Germana, Spano Maria, Sacchi Marco. In the followings, a point-by-point response to the reviews with a list of all relevant changes made in the manuscript is included. A marked-up manuscript version, where our revisions have been highlighted using the "Track Changes" function in Microsoft Word has been also provided, so that they are easily visible to the editor and reviewer.

dr. Fabio Matano
(corresponding author)

REPLY TO REVIEWERS

We would like to thank all reviewers for their positive comments towards our work and their constructive suggestions that aided in improving the manuscript.

Reviewer 1

We thank Reviewer 1 for the encouraging comments and suggested revisions.

> “General comments: This research paper presents a dataset of deformation measurements carried out in five fractured volcanic tuff blocks at the Coroglio coastal cliff (Naples, Italy). Multiple tuff deformation parameters were obtained from crackmeters and tiltmeters during ~4 years. These values were correlated with numerous meteorological variables from a weather station in order to detect possible relationships between the two data sets. It is concluded that (1) the deformation mainly increases if temperature increases and (2) fractures deform both synchronously and in a delayed way with temperature. The work is well written and illustrated with figures and tables, and their conclusions seem to be consistent with the results of deformation measurements and their correlation with numerous meteorological variables. However, a restructuring of some parts of the paper is considered appropriate (see ‘line-by-line commentary’). In some cases, authors included data, methods and results in the same section. Therefore, define independent sections for ‘Data and

methods' and 'Results' may be appropriate. On the other hand, the number of tables and figures seems excessive. Select the most relevant figures and tables to be included in the manuscript and put the rest in a 'Supplementary information' section."

Following the reviewer's suggestion, we have rearranged some parts of the paper. Independent sections have been created for 'Data and methods' and 'Results' in the revised manuscript, avoiding confusion between collected data and obtained results. All figures have been upgraded following the reviewer's comments. Moreover, we have reduced the number of figures (from 31 to 25): e.g. see new histograms grouping previous figures from 6 to 9, and 10 - 11, new diagrams grouping previous multi-part figures 14 and 15, and new figures grouping previous figures from 25 to 30.

> "Line-by-line commentary: Page 1, line 17: Freezing conditions in the southwestern coast of Italy? Page 2, line 6: It may be more appropriate 'mass wasting' instead of 'mass movement'. Page 2, lines 11-18: References indicated in these lines seem to be examples (indicate 'e.g.' before references). Page 2, line 25: 'relicts' instead of 'relics'. Page 3, line 23: It may be better to say 'structural instability'. Page 4, line 7: 0.07 m/yr in that time period? Page 4, line 12: Consider to define a 'Data and methods' section here with sub-sections (e.g., 3.1 The monitoring system, 3.2 Tuff deformation data, and 3.3 Meteorological data). Page 6, line 7: 'max-min value ranges' instead of 'max-min values'. Page 6, lines 7-32 and Page 7, lines 1-8: These lines correspond to 'Results' section. Page 6, line 11: code; 04F1? Page 6, line 18: Add a space between 'F2' and 'sensor'. Page 6, line 26: -0.20° and -0.30°. Page 7, lines 1-29: These lines correspond to 'Data and methods' section. Page 7, line 25: It suggests to define the expression $1 \text{ as } P_n = 0.613v_n^2$. Page 7, line 27: Replace '*' by '·' in the equation (i.e., $N \cdot m^2$). Page 8, line 8: ...the difference between the minimum and maximum temperatures (ΔT). Page 8, line 24: ...daily values, probably associated with the proximity to the sea. Page 9, lines 9 and 10: Are these high rain rates associated with late summer storms? Page 10, line 12: The wind rose diagram... Page 10, line 13: ...from the II and IV quadrants of the rose diagram. Page 12, line 11: ... (e.g., 0-0.54...)? Page 12, lines 13-15: Why authors do not use F19I3 too? Page 13, line 7: ...acting on the cliff (e.g., F16F2)."

We have made all corrections requested in the reviewer's line-by-line comments. More in detail, referring to Page 1, line 17 comment, temperature data show that freezing conditions very rarely occur in the study area, so the text has been changed in *"Among the triggering mechanisms, the most relevant are related to meteorological factors, such as precipitation and thermal expansion due to solar heating of rock surfaces."* Referring to Page 3, line 23 comment, as the instability on the cliff is due to both structural and geomorphological causes we suggest to use a more general definition as *"cliff instability"*. Referring to Page 9, lines 9-10 comment, these high rain rates are usually associated with late summer storms. Referring to Page 12, lines 13-15 comment, in this section (lines 13-15) we are analysing the correlations between the variables measuring temperature and the variables measuring the wind pressure, so the tiltmeter data (F19I3) are not considered here.

> "Figures: Figure 1: Add coordinate grid in Fig. 1a and indicate the source of the orthophoto in Fig. 2b. Figure 2: It would be recommendable to indicate upper, middle and lower parts in this figure. Figure 3: Add x- and y-axis labels (i.e., Horizontal distance (m) and Elevation (m a.s.l.)). Figures 6-12, 22, 25-30: Add x- and y-axis labels. Define 'a' and 'b' in Fig. 15. Page 34: Indicate the figure number."

5 We have made all corrections requested in the Figures comments. All figures have been redrawn. Older figures 6 to 9, 10-11, 18, 25-26, 27-28 and 29-30 have been grouped or deleted.

Reviewer 2

10

We thank Reviewer 2 for the valuable comments and suggestions.

> "The manuscript represents an interesting interdisciplinary local case study of a tuff sea cliff. Data are well presented and each to other integrated, as well as discussed with the aim of understanding the possible triggering of rockfalls. Figures, diagrams and tables are congruent and support the conclusions well, although some figures may seem redundant.

15 This manuscript is a good example of monitoring aimed at determining the rockfall hazard of an eroding cliff located in an urbanized area of the periphery of a city."

Following the reviewer's suggestion, we have reduced the number of figures (from 31 to 25). Older figures 6 to 9, 10-11, 18, 25-26, 27-28 and 29-30 have been grouped or deleted.

20

Reviewer 3

We thank Reviewer 3 for the fulfilling comments and the suggested revisions.

25 > "This is an interesting paper about the assessment of cliff erosion processes after applying a number of techniques for measuring mainly atmospheric/climatic and deformational variables. The article is well structured and written, and incorporates a big number of data, from which results and conclusions seem very consistent. Perhaps there is a high number of figures; some of them could be considered as Supplementary material and remain a selection of them. In fact,

some of the figures seem somewhat repetitive. Anyway, I recommend publication with only minor changes related to small mistakes detected along the text: Page 6, line 4: Table 6; Page 6, line 12: the beginning of the sentence should better be “Parameters of block 05 ...”; Page 6, line 15: a reference to Fig. 8 must be included after “16F1 sensor”; Page 6, line 23 at the end: consider “during the time to some preferred ...”; Page 6, line 25: “shown” instead of “shows”; Page 6, line 26: “by angle values between ...”; Page 7, line 13: instead of “are more large”, consider “are larger”; Page 11, line 4: “This is a direct consequence ...”; There is no reference to Fig. 23 along the text. Be careful with the style. Mind the verb tenses. For example, in the second paragraph of page 11 present tense and past perfect alternate without any justification; Conclusions: too brief in my opinion. The last sentence cites the influence of human action and volcano-tectonic activity, which are not considered along in this work. The citation of Furlani et al., 2014 (page 2, line10) is not included in the Reference list. Two references in the list are not cited along the text: Bakun-Mazor et al. (2013), and Fortelli et al. (2018)."

Following the reviewer’s suggestion, we have reduced the number of figures (from 31 to 24). Older figures 6 to 9, 10-11, 18, 25-26, 27-28 and 29-30 have been grouped or deleted. All requested corrections have been added to the text. We have checked and corrected the verb tenses in section 5. Conclusions have been extended and modified. In the last sentence, the reference to the influence of human action and volcano-tectonic activity has been deleted because these factors are not discussed in our manuscript.

Reviewer 4

We thank Reviewer 4 for the suggested revisions and the thorough comments.

> “It is an interesting paper on the effects of external forcing factors (mainly temperature, rainfall and wind) on the deformation of a rocky cliff, based on in situ measurement of the meteorological and deformation data for a considerable time period (4 years). This provides an important contribution for the knowledge on the generation of cliff instability phenomena. The paper has a clear structure, is well written and deals with large datasets, which enabled consistent, if somewhat scarce, conclusions. Figures 6 to 11 (bar plots) could be grouped, since they are somewhat repetitive, and could be presented with smaller size. Page 6, line 8 – Instead of “max-min values” it is better “value ranges”; please indicate units in the numbers. Fig. 6, 7a, 8, 9 10, 11 – Instead “sensors” it would be clearer to indicate “crackmeters”."

Following the reviewer's suggestion, we have reduced the number of figures (from 31 to 24). Older figures 6 to 9, 10-11, 18, 25-26, 27-28 and 29-30 have been grouped or deleted. All requested corrections have been inserted in the text. Conclusions have been modified and extended.

Integrated dataset of deformation measurements in fractured volcanic tuff and meteorological data (Coroglio coastal cliff, Naples, Italy).

Matano Fabio¹, Caccavale Mauro¹⁻², Esposito Giuseppe¹⁻³, Fortelli Alberto⁴, Scepi Germana⁵, Spano Maria⁵, Sacchi Marco¹

¹Istituto di Scienze Marine (ISMAR), Consiglio Nazionale delle Ricerche (CNR), Naples, 80133, Italy

²Istituto Nazionale di Geofisica e Vulcanologia (INGV), Osservatorio Vesuviano, Naples, 80124, Italy

³Istituto di Ricerca per la Protezione Idrogeologica (IRPI), Consiglio Nazionale delle Ricerche (CNR), Rende, 87030, Italy

⁴Centro Interdipartimentale di Ricerca, Laboratorio di Urbanistica e di Pianificazione Territoriale "Raffaele d'Ambrosio (LUPT), Federico II University, Naples, 80132, Italy

⁵Dipartimento di Economia e Statistica, Federico II University, Naples, 80126, Italy

Correspondence to: Fabio Matano (fabio.matano@cnr.it)

Abstract. Along the coastline of the Campi Flegrei volcanic district, near Naples (Italy), severe retreat processes affect a large part of the coastal cliffs, mainly made of fractured volcanic tuff and pyroclastic deposits. Progressive fracturing and deformation of rocks can lead to hazardous sudden slope failures on coastal cliffs. Among the triggering mechanisms, the most relevant are related to meteorological factors, such as precipitation and thermal expansion due to solar heating of rock surfaces. In this paper, we present a database of measurement time series taken over a period of ~ 4 years (Dec 2014-Oct 2018), referred to the deformations of selected tuff blocks in the Coroglio coastal cliff. The monitoring system is implemented on five unstable tuff blocks and is formed by nine crackmeters and two tiltmeters equipped with internal thermometers. The system is coupled with a total weather station, measuring rain, temperature, wind and atmospheric pressure operating since January 2014 up to Dec 2018. A measurement frequency of 10 and 30 minutes has been respectively set for meteorological and deformation sensors. The aim of the measurements is to assess the magnitude and temporal pattern of rock block deformations (fracture opening and block movements) before block failure and their correlation with selected meteorological parameters. The results of a multivariate statistical analysis of the measured time series suggest a close correlation between temperature and deformation trends. The recognized cyclic, sinusoidal changes in the width (opening/closing) of fractures and tuff blocks rotations are ostensibly linked to multiscale (i.e. daily, seasonal and annual) temperature variations. Some trends of cumulative multi-temporal changes have been also recognized. The full databases are freely available online at <https://doi.pangaea.de/10.1594/PANGAEA.896000> (Matano et al., 2018) and <https://doi.org/10.1594/PANGAEA.899562> (Fortelli et al., 2019).

Eliminato: ,

Eliminato: freezing conditions,

1 Introduction

Rocky coastal cliffs are located at the transition zone between subaerial and marine geomorphic systems. They represent a very dynamic environment influenced by complex geological evolution on both regional and local scales (Emery and Kuhn, 1982; Bird, 2016; Sunamura, 1992). In fact, the evolution of rocky coasts often occurs as a progressive retreat of the cliff landward induced by a complex combination of marine (i.e. wave action) and subaerial processes (i.e. weathering, erosion and mass wasting) (Sunamura, 2015). Future cliffs recession could be more intense in the next decades under the ongoing accelerating sea-level rise thought likely to result from global warming (Bray and Hooke, 1997). In this context, sea cliff failures represent a serious hazard for population living in coastal settlements. Severe retreat processes, mainly occurring with landslides and erosion, are affecting, for instance, many of the coastal cliffs forming the Italian rocky coastline in various geological contexts (Iadanza et al., 2009; Furlani et al., 2014). Here, failures may affect cliff formed by carbonate rocks (e.g. Andriani and Walsh, 2007; Ferlisi et al., 2012), arenaceous-pelitic or calcareous-pelitic flysch (e.g. Budetta et al., 2000; De Vita et al., 2012), sandstones (e.g. Sciarra et al., 2015), shales (e.g. Raso et al., 2017), or volcanic rocks (e.g. Barbano et al., 2014).

The use of systems aimed at monitoring the slope stability is becoming a standard practice to assess and prevent geological and geotechnical hazards, and plan effective actions for hazard analysis and risk mitigation. Several on site cliff monitoring systems are operative in mountainous environments (Pecoraro et al., 2018), as for example in the Swiss Alps (Spillmann et al., 2007), Bohemia (Zvelebil and Moser, 2001), Spain (Janeras et al., 2017) and Northern Apennines (Salvini et al., 2015). These systems have the purpose of detecting and measuring small-scale rock deformations that can be regarded as precursors of slope failures. A more limited number of monitoring systems is used for the analysis of coastal cliffs and early warning purposes (Clark et al., 1996; Cloutier et al., 2015; Devoto et al., 2013). In our research (Matano et al., 2015, 2016; Esposito et al., 2017, 2018; Caputo et al., 2018), we focus on the in situ measurements of deformations affecting rocky blocks that form part of a volcanoclastic coastal cliff located along the coastal sector of the Campi Flegrei, a densely urbanized volcanic area in southern Italy (Fig. 1a). In this area, marine coastal cliffs are engraved in different volcanoclastic deposits (mainly tuff and weakly welded ash and pumice layers), representing, in many cases, erosional relics of volcanic edifices formed during explosive eruptions occurred at Campi Flegre in the last 15 ka. In detail, we present the database of measurements obtained by an integrated monitoring system implemented at the Coroglio coastal tuff cliff, located in the highly urbanized coastal area of Naples (Italy) (Fig. 1a). The main aims of the research are to identify range and patterns of deformation during a potential pre-failure stage of rock blocks, and to assess eventual relationships between meteorological factors (temperature, rain, wind, humidity, atmospheric pressure, etc.) and deformation of rocks. Besides, the statistical analysis of multi-temporal datasets we present in this study may provide an experimental basis for the appropriate definition of tuff failure early-warning systems set-up.

Eliminato: movement

2 Site description

The analyzed sector of the Coroglio cliff (Figs. 1b and 2) is ~ 140 m high and 250 m wide, with aspect towards the SW. Different geological units and slope angles characterize the cliff (Fig. 3). The upper part displays slope angles varying from 35° to 45° and is formed by stiff to loose Holocene pyroclastic deposits (LP unit) about 30 m in thickness, including a 2-3 m thick layer formed by very loose, reworked volcaniclastic deposits and soils at the top of the succession exposed on the cliff surface.

The median part of the cliff is characterized by almost vertical slope and is formed by two tuffaceous units, separated by an angular unconformity. The Neapolitan Yellow Tuff (NYT) formation is a lithified ignimbrite deposit dated at ~15 ka BP (Deino et al., 2004). The NYT represents the upper unit in the outcrop and is formed by alternating coarse-grained, matrix-supported breccia, thin-laminated lapilli beds and massive ash layers. The NYT displays a relatively homogeneous texture with several sub-planar surfaces likely controlled by structural discontinuities, and can be classified as weak to moderately weak rock (Froldi, 2000). The Trentaremi (TTR) formation forms an older tuff cone dated ~ 22.3 ka BP and represents the lower unit, consisting of slightly welded to welded, whitish to yellow, coarse-grained pumiceous fragments embedded in a sandy ash matrix and lapilli beds. Diffused dm-scale vesicles and vacuoles due to differential erosion, markedly controlled by the bedding of the pyroclastic deposits, characterize the TTR rockface. These forms are typically related to the weathering due to salty seawater and wind erosion (Ietto et al., 2015).

The tuff units cropping out at the Coroglio cliff are characterized by a complex system of mostly steep and planar structural discontinuities and fractures (Matano et al., 2016) showing highly variable spacing, well-developed NE–SW and NW–SE directions, and subordinate N-S and E-W trends. The base of the cliff is covered by slope talus breccia (dt), partly occurring directly along the shoreline. These deposits are produced by the frequent failures occurring along the cliff. The cliff instability is due to several causes, such as the complex volcano-tectonic evolution, the severe anthropic modifications (i.e. excavations, tunnelling, and so on) of the coastline since Roman times and weathering and erosion processes occurring at the boundary between coastal and marine environment. The last relevant tuff failures occurred around 1990 (Froldi, 2000) along the southern sector of the cliff (Fig. 2). Due to the severe instability conditions, the upper part of the northern sector of the tuff cliff has been subject to reinforcement works (Fig. 2) at the beginning of the 2000s. These consisted in a wire mesh and steel cable network applied to the tuff wall steel reinforced with bars anchored and bolted to the rock.

During the first phase of the research, we have integrated the results of long-range terrestrial laser scanner (TLS) surveys with structural field mapping to obtain a detailed geostructural analysis and classification of the slope (Fig. 4) (Matano et al., 2016). Repeated TLS surveys have been used for obtaining detailed multi-temporal DTM of the cliff (Caputo et al., 2018) that allowed mapping the landslides occurred during the period between 29 April 2013 and 4 March 2015 (Fig. 3).

Eliminato: geomorphological

Eliminato: .

Eliminato: -

In detail, four types of landslides (rock fall, debris fall, earth flow, and soil slip) have been recognized in the different sectors of the cliff (Fig. 3). These have caused a total eroded/fallen volume of about 3500 m³ of volcanic material (rock and soil) and the related short-term retreat rate of the entire cliff has been assessed in about 0.07 m/yr during 2013-2015 (Caputo et al., 2018). Based on a geomorphological analysis, including cliff inspections carried out by climber geologists and interpretation of the multi-temporal DTMs, an area with several unstable tuff blocks (Fig. 2) have been recognized in the NYT unit sector of the cliff (Fig. 3). This area has been selected for implementing the monitoring system.

Eliminato: during the 2013-2015 time period. The

3. Data and methods

Eliminato: The monitoring system

3.1 The monitoring system

Formattato: Titolo 2

Based on the results of the geo-structural and geomorphological surveys, a series of prismatic tuff blocks, bounded by open fractures, have been selected for the instrumental monitoring (Figs. 4 and 5). The accurate detection of structural discontinuities and morphometric parameters of the selected tuff blocks resulted in the understanding of the possible failure mechanism and their kinematic analysis. Volumes of the selected tuff blocks range between 4 and 15 m³, and the possible failure kinematics are toppling, planar and wedge sliding (Tab. 1).

Eliminato: ¶

The installed monitoring system consists of both standard geotechnical instruments, such as crackmeters and tiltmeters equipped with near-rock-surface thermometer, installed in correspondence of the 5 selected unstable tuff blocks, and a weather station equipped with thermometer, barometer, hygrometer, anemometer and rain gage sensors. The used instrumentation forms hence two linked separate sub-systems: the Coroglio cliff Monitoring System (CC-MoSys) and the Denza Meteorological Station (DeMS) (Fig. 1b).

Specifically, the CC-MoSys is formed by 9 mono-axial electric crackmeters (model BOVIAR BTS LWG 100), 1 external thermistor (model BOVIAR NTC/A 10K) and 2 biaxial tiltmeters (model BOVIAR BIAX-B/T) equipped with internal thermistors (model BOVIAR NTC/A 10K) (Tab. 2). The geotechnical sensors have been installed across or on the face of the fractures bounding the five unstable tuff blocks in order to provide an accurate monitoring of displacements and rotations. Each sensor is individually cabled to the acquisition unit (model BOVIAR eDAS 16ch; see at <https://www.boviar.com/public/pdf/636489456594961401eDAS%2016-32%20CH.pdf>), located at the top of the cliff.

The DeMSys is formed by a meteorological station (DAVIS, model Vantage Pro2 – wireless; see at <https://www.davisinstruments.com/support/vantage-pro2-wireless-stations/>), located less than 1 km away from the cliff (Fig. 1b), characterized by a wireless Integrated Sensor Suite (ISS) including barometer, hygrometer, pluviometer and thermometer integrated sensors and by an anemometer (Tab. 3). The CC-MoSys tuff monitoring unit records 16 parameters (Tab. 4) with a frequency set up to 30 minutes for 48 daily measures. The weather station unit records 9

parameters (Tab. 5) with a frequency of measurements set up to 10 minutes for 144 daily measures. Continuous data recording of geotechnical sensors has been active since December 2014 to October 2018, whereas the weather station is still active since January 2014. The meteorological time series analyzed in this work are updated to December 2018. Monitoring system has been regularly controlled and maintained so to ensure a fully accuracy in measures, even if some missing data intervals are present due to the occurrence of some functional interruptions of the acquisition units.

Overall, the monitored parameters include both deformation and meteorological ones:

- Variation of the cracks opening and Displacement (sliding) along tuff cracks,
- Slope angle variations (rotation) of tuff block surfaces,
- Air temperature and Near-rock-surface air temperature,
- Humidity,
- Wind (velocity and direction),
- Barometric pressure,
- Rainfall (rain quantity and rate).

The data acquisition and broadcasting system is fully remotely controlled. Rechargeable batteries and a solar panel provide the power supply for the monitoring system. Twice a day, the measured data are transferred via GSM (Global System for Mobile Communications) network to a master station located in the ISMAR (Istituto di Scienze Marine) Research Institute, where data are directly stored in a dedicated NAS (Network Attached Storage) system and converted to open access files for our data repository.

3.2 Tuff deformation data

The deformation data consist of measurements of displacement across the fractures bounding tuff blocks along the direction of the crackmeters axis and of both horizontal and vertical angles associated with rotation of the rock blocks (Tab. 2). The instruments have collected measurements every 30 minutes for a period of about 4 years. These measurements are expressed for each sensor as relative measurements with respect to the initial measurement, considered as a reference zero value. We also measured near-rock-surface air temperature (as a proxy for surface rock temperature) using some thermistors installed at three locations on the cliff (i.e. near the acquisition unit and near the tiltmeter boxes). In this way the CC-MoSys database encompasses a total of 67355 measurements acquired during 1404 days (from 3 Dec. 2014 to 6 Oct. 2018). Some missing data intervals are present due to the occurrence of some functional interruptions of the eDAS acquisition unit; for two sensors (F04F1 and F16F2) missing data intervals are larger (Table 6) due to the occurrence of mass movements on the cliff that damaged the two sensors.

Formattato: Titolo 2

Eliminato: 4

We compute some descriptive statistics for summarizing the different features of the deformation measurement dataset (Table 6). These statistics are the results of a univariate analysis, describing the distribution of each single variable, including its central tendency (mean and median) and data dispersion (including minimum and maximum values, quartiles and standard deviation).

3.3 Meteorological data

The database of DeMSys measurements (Fortelli et al., 2019) encompasses 262944 measures acquired with a 10 minutes interval during 1826 days spanning from January 2014 to December 2018.

Some missing data intervals are present due to the occurrence of some functional interruptions of the DAVIS acquisition unit; only for the anemometric sensor (Wi_speed and HiWi_spe) missing data intervals are larger (Table 7) due to a technical issue of the sensor during 2018. The descriptive statistics resulting from a univariate analysis of the acquired dataset, with the exception of wind and gust direction, is shown in Table 7.

We added to the database two numeric parameters that take into account the direction of wind and gust, i.e. wind pressure (Wi-P_norm) and gust pressure (HiWi-P_norm), expressed in Nm^{-2} . They are referred to the normal component to the cliff of the pressure exerted by the wind/gust on the rock face. We calculated the normal component to the cliff of the wind velocity by considering the angle between cliff average aspect orientation, that is towards WSW (i.e. 247.5°) and the wind/gust direction. Winds blowing from direction of 337.5° to 360° and from 0° to 157.5° do not produce pressure on the rock surface as they are sheltered from the cliff itself. Winds blowing from directions between 157.5° and 337.5° produce a normal component of pressure that varies under the cosine of the incidence angle with the cliff (ranging from 0° to 90°). Once calculated the vertical component of the wind/gust, we may calculate the wind/gust pressure normal to the cliff with the simplified formula (ASCE, 2013):

$$P_n = 0.613 \text{ vel}_n^2 \quad (1)$$

where:

P_n = wind/gust pressure normal to the cliff expressed in $\text{N}\cdot\text{m}^{-2}$

vel_n = wind velocity normal to the cliff expressed in $\text{m}\cdot\text{s}^{-1}$

0.613 = coefficient based on average values of air density and gravitational acceleration, expressed in $\text{kg}\cdot\text{l}\cdot\text{m}^{-1}$

4 Results

4.1 Deformation trends

Eliminato: s

Eliminato: Crackmeters data usually show max-min values between 0.48 and 1.98, with the two relevant exceptions of 04F1 and 05F2, respectively with ranges of 5.56 and 4.31. Tiltmeter data show a lower variability as max-min value intervals range between 0.38° and 0.78° (Tab. 6). More in detail, the data distribution analysis show some different trends for the data of the different sensors. Data of 03F1 sensor shows an asymmetric distribution with modal value around -1 mm and a higher coda values up to 3 mm. The 04F data show a uniform distribution between -0.1 and 3 mm (Figure 6). The block 05 have a very large range of variability, with a well-defined main value only for F2 sensor (Figure 7a). F1 and F3 sensors show a very high correlation (Figure 7b), suggesting a uniform behavior of the crack in the section covered by them. All the three sensors recorded large distribution of both positive and negative values, indicating a strong dynamic behavior. On the other hand, the 16F1 sensor shows a mono-modal distribution well centered around 0.2 mm (with an oscillation of ± 0.1 mm). The stability of the values across the time could highlight a stable dynamic position reached from the block. The 16F2 sensor worked for a very short time compared with the others. However, the data distribution shows two main values 0.0 and 0.2 mm (Figure 8). The F1 and F2 sensors, located on the tuff block 19, show a quite identical behavior. (Figure 9). The similarity in recorded values suggest a uniform behavior of the lateral crack.¶
The tiltmeter data has been reported in Fig. 10 and Fig. 11 for 04I2 and 19I3 sensors, respectively. From both plots, the X (horizontal) components recorded prevalently negative variation, while the Y (vertical) components positive one over the entire time interval of the datasets. Those evidences show how the rock block moves and turns during the time and some preferred position (the higher histogram bar). For the 19I3 sensor, a small range of variability has been observed, about 0.4 degree, and a tiny distribution around 0.3-0.4 degree for the Y component. A similar behavior is shown by component X where the equilibrium position is characterized by angle value between -0.20 and -0.30 ¶
The temperature values distribution of the three thermistors appear coherent and well centered in a range between $+13$ and $+25$ Celsius degree (Fig. 12). If we compared those temperature data with air temperature measurements provided by the weather station installed in the vicinity (Fig. 13), time series show as usual for this clim ... [1]

Eliminato: 5

Formattato: Titolo 2

Eliminato: more

Eliminato: *

Eliminato: *

Formattato: Non Apice / Pedice

Formattato: Tipo di carattere: Non Grassetto

Formattato: Inglese (Regno Unito)

Formattato: Titolo 2

Formattato: Inglese (Regno Unito)

Formattato: Inglese (Regno Unito)

Crackmeters data usually show value ranges between 0.48 mm and 1.98 mm, with the two relevant exceptions of 04F1 and 05F2, respectively with ranges of 5.56 mm and 4.31 mm. Tiltmeter data show a lower variability as value intervals range between 0.38° and 0.78° (Tab. 6). More in detail, the data distribution analysis show some different trends for the data of the different sensors (Fig. 6). Data of 03F1 sensor shows an asymmetric distribution with modal value around -1 mm and a higher coda values up to 3 mm. The 04F1 data show a uniform distribution between -0.1 mm and 3 mm. Parameters of block 05 have a very large range of variability, with a well-defined main value only for F2 sensor. F1 and F3 sensors show a very high correlation (Fig. 7), suggesting a uniform behavior of the crack in the section covered by them. All the three sensors recorded large distribution of both positive and negative values, indicating a strong dynamic behavior. On the other hand, the 16F1 sensor (Fig. 6) shows a mono-modal distribution well centered around 0.2 mm (with an oscillation of ± 0.1 mm). The stability of the values across the time could highlight a stable dynamic position reached from the block. The 16F2 sensor worked for a very short time compared with the others. However, the data distribution shows two main values 0.0 mm and 0.2 mm. The F1 and F2 sensors, located on the tuff block 19, show a quite identical behavior (Fig. 6). The similarity in recorded values suggest a uniform behavior of the lateral crack. The tiltmeter data has been reported in Fig. 8 for 04I2 and 19I3 sensors. The X (horizontal) components recorded prevalently negative variation, while the Y (vertical) components positive one over the entire time interval of the datasets. Those evidences show how the rock block moves and turns during the time to some preferred position (the higher histogram bar). For the 19I3 sensor, a small range of variability has been observed, about 0.4°, and a tiny distribution around 0.3°-0.4° for the Y component. A similar behavior is shown by component X where the equilibrium position is characterized by angle values between -0.2° and -0.3°.

The temperature values distribution of the three thermistors appear coherent and well centered in a range between +13 and +25 Celsius degree (Fig. 9). If we compared those temperature data with air temperature measurements provided by the weather station installed in the vicinity (Fig. 10), time series show as usual for this climatic region a clear seasonal variation patterns and annual cyclicity with some little differences. In detail, near-rock-surface air temperatures show minimum values from 2.8 to 3.7 °C higher and maximum values from 4.4 to 9.7 °C higher than air temperatures (Tab. 6). Amplified near-rock-surface air temperatures could result in consequent increases in crack deformation forces.

If we consider the time distribution of measured data, both crackmeters and tiltmeters show several evidences of tuff deformation through time. The time series of the measured crack aperture and plane rotation data reveal a deformation pattern characterized by both diurnal and seasonal cyclical deformation (Figs. 11 and 12). Data plot referred to a single year of measurements show a similar repetitive pattern with lower values in late winter and higher values in late summer (Fig. 13) showing significant correlation with seasonal temperature trends. Some trends of cumulative multi-annual changes, based on about four consecutive years of data (December 2014 to October 2018), can be also recognized.

Crackmeters show from +0.1 mm to +1.2 mm cumulative deformation (Fig. 11), while tiltmeters show from 0.1° to 0.4° cumulative angle variation (Fig. 12).

4.2 Thermal trends

Temperature time series data (Fig. 10) show a clear seasonal cyclicality and inter-annual variation patterns. Air temperature values range between -2.9°C and 33.8°C throughout the five years of measurements.

Temperature average values of the 5-year period have been plotted referring to the Average daily values analysis, referred to daily minimum temperature (Tmin) and daily maximum temperature (Tmax) in order to observe the annual trends and detect the most significant surplus or deficit thermal phases (Fig. 14). Diagrams also report interpolation curves relative to minimum and maximum daily values (4th grade polynomial equation); we also computed the difference between the minimum and maximum temperatures (ΔT).

In detail, we have evaluated the thermal increase between late winter minimum and summer maximum and the autumn thermal decrease between summer maximum and late December minimum. From the analysis of 4th grade polynomial equations of annual thermal trend, relative to daily Tmin and Tmax, the following values have been derived:

Tmin(1) (min) =	8.0°C (05/02)	Tmax (1) (min) =	12.3°C (04/02)
Tmin (max) =	21.9°C (30/07)	Tmax (max) =	27.5°C (02/08)
Tmin(2) (min) =	7.9°C (31/12)	Tmax (2) (min) =	12.2°C (31/12).

Thermal yearly excursions are therefore equal to:

spring thermal increase: $\Delta T+ (min) = Tmin (max) - Tmin(1) (min) = 13.9^{\circ}C$
 $\Delta T+ (max) = Tmax (max) - Tmax(1) (min) = 15.2^{\circ}C$
autumn thermal decrease: $\Delta T- (min) = Tmin (max) - Tmin(2) (min) = 14.0^{\circ}C$
 $\Delta T- (max) = Tmax (max) - Tmax(2) (min) = 15.3^{\circ}C$

The main features highlighted by the analysis are the following:

- an annual trend showing a wave characterized by a weak thermal excursion, both for minimum and maximum daily values, probably associated with the proximity to the sea;
- a summer season with only a few days with daily maximum temperature above the threshold value of 30°C;
- an extremely mild winter season, with only a few days with minimum temperatures below 5°C;
- a weak daily thermal excursion, with values are generally ~ 5°C and only a few days with a daily thermal excursion > 10°C.

Eliminato: 5.1

Eliminato: 13

Eliminato: (Figs. 17 and 18),

Eliminato: ¶

Formattato: Normale, Nessun elenco puntato o numerato

Eliminato: 17

Eliminato: <#>Average monthly values analysis, referred to daily monthly minimum (MTmin) and daily monthly maximum values (MTmax) and extremes for both minimum and maximum (Tmin-Tmax) (Fig. 18).¶

In detail, the annual thermal trend in the analyzed period is characterized by three years (2016-18) with values close to the average values of the investigated period, and two years with significant differences during the summer season. In detail, summer 2014 had values significantly lower than the average values, and summer 2015 had values characterized by a clear thermal surplus during the months of July and August, when the threshold value of 30°C has been exceeded in 22 days. During the winter there weren't any long periods characterized by significantly low temperatures, with the two exceptions of the period between 5 and 15 January 2017, (with values close to zero and minima of -1.6°C) that also caused weak snow falls), and a very cold and snowy phase at the end of February 2018.

4.3 Rainfall trends

Rain and rain rate data time series are plotted in Fig. 15. Rainfall is characterized by a considerable irregularity, with sometimes extremely high accumulation values and rates (October 2015, September 2017) usually associated with late summer storms, alternating with periods of modest rainfall even in seasonal phases in which rainfall is generally abundant (December 2015 and 2016). Rainfall (measured at intervals of 10 minutes) reached a maximum value of 17.6 mm on 12/09/2014, corresponding to a rain rate of 105.6 mm/h. The maximum rain rate of 292.6 mm/h was recorded on 19/09/2016.

We plotted the average values referred to the whole 5-year period of the monthly total rainfall amounts (Fig. 16). In order to evaluate the occurrence of rainfall *surplus* or *deficit* periods, these values are compared with the monthly average values of rainfall, referred to 1872-2005 time period, measured at the Meteorological Observatory (MOUF) of the University of Napoli "Federico II" (Mazzarella, 2006). It is worth noting that the monthly precipitation average values over the analysed 5-years period (2014-2018) tend to converge towards those values of climatological relevance recorded in Naples at MOUF (Mazzarella, 2006), thus reflecting the strong pluviometric characterization of the site. Data analysis highlights some peculiarities in the rainfall conditions that affect the area. The average annual rainfall amount of 759.6 mm is below the amount of climatological reference of 866.0 mm. In detail, the summer rainfall amount is almost equal to MOUF climatologic reference (69.0 mm vs 75.7 mm), while spring (149.3 mm vs 181.4 mm), autumn (281.9 mm vs 317.6 mm) and winter (259.4 mm vs 290.9 mm) rainfall amounts are slightly below MOUF climatologic reference. The winter precipitation deficit is due to strong negative rain anomaly observed at Denza during December 2015 (0.3 mm) and 2016 (9.5 mm). During 2015, a rainfall regime with a large prevalence of dry months was compensated by three very rainy months, January, February and October, the last one characterized by a rainfall amount of 195.5 mm. Year 2017 has been characterized by a severe rainfall *deficit* with a total annual precipitation amount of 536.8 mm; particularly, summer 2017 rainfall amount was of only 4.1 mm, suggesting extremely dry conditions for this season. Instead, year 2018 has been characterized by a total annual rainfall amount of 902.1 mm, slightly above MOUF climatologic values.

Eliminato: 5

Eliminato: .2

Eliminato: 19

Eliminato: 20

Eliminato: ,

Eliminato: ,

Eliminato: ,

4.4 Wind trends

Wind and gust speed data time series are plotted in Fig. 17. Wind velocity and gust velocity (both measured at 10-minutes intervals) reached the maximum values of 40.9 knots (11.8 m/s) and 61.7 knots (31.7 m/s), respectively (Tab. 7).

The wind regime indicates considerable consistency, both in terms of anemoscopic regime (wind provenance direction), and in terms of average intensity. The seasonal regimes are characterized by the repetition of the anemometric patterns, highlighting the occurrence of local structural factors that, even if in interaction with the meteorological conditions on a synoptic (cyclonic) scale, are able to control the wind regime in the considered coastal sector. Tables 8 and 9 summarize the annual and monthly average values of average wind speed (m/s), dominant direction of the wind (sector of 22.5°) and maximum wind gust (m/s). Wind average speed usually can be referred to level 2 in Beaufort scale, while gust maximum speeds can be referred to levels from 9 to 11 in Beaufort scale.

The wind rose diagram of Fig. 18 shows the frequency distribution of wind and gust directions, which are mainly from SSE, NE e WSW. During spring the synoptic winds blow with greater frequency from the II and IV quadrants of the rose diagram, with the SE direction reaching the maximum percentage weight. The direction associated with the maximum average wind speed values is the SE - SSE directions. Therefore we may infer that the spring season is characterized by the alternation of south-eastern and north-western winds, that are also associated with the greatest average intensities. The polar diagram shows that summer winds blow with a prevalence from the III and IV quadrants, with the WSW direction reaching the maximum percentage weight. The direction associated with the maximum average wind speeds are the westerly ones. It is therefore possible to state that the summer season is dominated by breeze regime winds, typical of the coastal Mediterranean areas. However, it is worth underlining that the occurrence of SSE relatively high average intensities is not infrequent. In the autumn season winds blow in a well distributed in all sectors, with the SE-SSE direction reaching the maximum percentage weight; also the directions associated with the maximum average wind speeds are the direction SE and SSE. It is therefore possible to state that the autumn season is normally dominated by Scirocco-like anemometric events, with associated very rough sea. During winter season, the polar diagram highlights an anemoscopic regime very similar to the autumn one. In fact, it may be observed that the synoptic winds blow in a well distributed way involving I, II and IV quadrants, with the SE and NE directions reaching the maximum percentage weight. The provenance directions associated with the maximum average wind speeds are namely SE and SSE.

By considering the angle between wind/gust direction and Coroglio cliff aspect, we have calculated the values of the normal component of the wind/gust pressure with respect to the rock face exposed on the cliff, i.e. wind normal pressure (Wi-P_norm) and gust normal pressure (HiWi-P_norm) (Fig. 19). Wind and gust normal pressure reached the maximum values of 185.6 N/m² and 1400.6 N/m², respectively.

Eliminato: 5

Eliminato: .3

Eliminato: 21

Eliminato: 22

4.5 Humidity and barometric pressure trends

Humidity and barometric pressure data time series are plotted in Fig. 20. Relative humidity values range between 24.7 % and 98.0 % with mean values around 72.8 % (Tab. 7). The monthly, seasonal and annual trends are characterized by similar, repetitive patterns with usually high values between 70-80%. This is a direct consequence of the closeness to the sea surface, and of forced lifting of air masses due to the orographic factor, leading to a cooling with associated increase in relative humidity. The barometric pressure values range between 983.2 mm and 1036.7 mm with mean values around 1015.6 mm (Tab. 7). The seasonal and annual trends are characterized by similar, repetitive patterns, showing a high variability of values during the six-months cold period and a lower one during warm period, this due to the synoptic scale meteorological perturbations frequently affecting the area.

Eliminato: 5.4.

Eliminato: 24

Eliminato: a

5 Correlation and regression analysis of data

Tuff deformation measurements have been collected at 30 minutes intervals whereas the meteorological data have been recorded at 10 minutes intervals. Successively, we have analyzed the correlations among the time series of the different parameters. Therefore, we have aggregate the data into 1826 daily records (from 1 Jan. 2014 to 31 Dec 2018). We have referred to the daily average values for all deformation data and partly for meteorological data; in detail, we have referred to the highest daily value for "Rain_rate", "HiWi_spe" and "HiWi_P_norm" variables, to the cumulative daily value for "Rain" variable and to the daily average values for the others. The daily descriptive statistics are shown in Table 10.

Eliminato: 6

Eliminato: ¶

Eliminato: were

Eliminato: were

In a multivariate perspective, we have examined the correlation among tuff deformation parameters and meteorological variables in order to detect possible relationships between the two data sets. We have computed the correlation matrix, where the Pearson correlation coefficient is the generic element. This coefficient varies between -1 (maximum negative correlation) to +1, (maximum positive correlation). Particularly, correlations greater than |0.5| are regarded as highly significant, whereas coefficient between |0.33| and |0.5| are considered slightly significant.

Table 11 shows a part of this matrix related to the correlations. We have observed that the highest positive correlations are between **F04F1** and **Temp** (0.73), and anyway all the correlations between **F19I3-X** and the temperature variables are very high. Other two deformation variables (**F04F1**, **F19I3-Y**) are very positively correlated with all the temperature variables. On the other hand, the variable **F16F2** shows a high negative correlation with two meteorological variables related to the measure of wind **Wi-P_norm** (-0.56) and **HiWi_P_norm** (-0.60). Moreover it can be observed that most of the other variables associated with the deformation of the tuffaceous rocks show a correlation (even if lower) with the temperature variables, while the other meteorological variables displays no correlation at all with the tuff deformation parameters (with the exception of a slight correlation with barometric pressure).

We [have](#) further investigated the relationship between the deformation and the temperature variables. Therefore, we have computed the correlation at different lags in order to evaluate the effect of the temperature over time. In particular, we [have shown](#) in Table 12, the correlation among all the deformation variables and the air temperatures "Temp" at different lags (from 7 to 63 days, i.e. 1 to 9 weeks of delay), where the lag is expressed in number of days prior to the measurement of the deformation. It can be noted that the variables **F04F1**, **F19I3-X** and **F19I3-Y** show a positive correlation with the air temperature almost at all different lags. Therefore, we [have suggested](#) that there is a long-delayed time effect among them. Moreover, when we observe the different lags, a correlation between the **F05F2** and **F16F2** variables and the air temperature becomes evident. Overall, the correlation results increased within lags of 14-35 days.

Based on the observation on the daily sample, we [have](#) decided to test the dependency of the deformation from the two meteorological factors: temperature and wind pressure. The correlations between the variables measuring temperature and the variables measuring the wind pressure show negative and very low values (e.g. **-0.54** between **Temp** and **Wi-P_norm** and **-0.08** between **Temp** and **HiWi-P_norm**). Obviously, all variables measuring both temperature and the wind effects are internally consistent and highly self-correlated. Therefore, we can perform a regression model where the dependent variable is the deformation measured by the variable **F04F1** and the explicative variables are **Temp** and **Wi-P_norm**.

The model shows (Table 13) an adjusted R square of 0.63, so the linear model displays a high goodness-of-fit. Furthermore, the model is statistically significant (as p-values show). In Table 14 we [have reported](#) the estimates of model coefficients. Both the coefficients are significant as shown by the p values. We [have](#) also observed a positive effect of both variables on the deformation at a daily level. Therefore, we [have inferred](#) that the deformation increases if temperature and wind effect increase and the variation is defined by the values of the two-regression coefficients.

[6 Discussion](#)

Rock deformations involving five tuff blocks have been monitored for about 4 years (Dec. 2014 - Oct. 2018) along the Coroglio coastal cliff, together with local meteorological parameters, whose measurements began in January 2014. The selected unstable tuff blocks, characterized by a volume of 4 - 15 m³, can be affected by toppling, planar and wedge sliding failure kinematics. The used sensors (9 mono-axial crackmeters and 2 biaxial tiltmeters) captured several signs of tuff deformation through time as measured expansion and contraction of the fracture sheets and plane rotations above their accuracy (Tab. 2). Near-rock-surface air temperature (used as a proxy for surface rock temperature) and air temperature (together with other meteorological parameters) were measured respectively by three thermistors on the cliff and a weather station installed at a distance of ~ 1 km from the cliff. The whole dataset collected during the five years of

Eliminato: ed

Eliminato: -0

Eliminato: ,

Eliminato: 7

monitoring activity has been described; the data distribution (Figs. 6, 8 and 9) and the temporal trends of the different parameters (Figs. 10 to 20) have been analyzed.

Based on a multivariate statistical analysis, we have recognized the relations between daily average values of tuff deformations and meteorological variables. Several positive correlations exist among rock deformation parameters and temperature data (Tab. 12). Positive correlations increase if we introduce a time lag of 2 to 5 weeks for temperature variables (Tab. 13), suggesting that there is a delayed time effect between thermal oscillations and rock deformations. In some cases, the tuff deformation is negatively correlated to wind pressure intensity acting on the cliff (e.g., F16F2). The regression analysis shows that if temperature and wind effect increase of 1 unit, deformation increases of 0.0114 and 0.0008, respectively. The coefficients of the model are significantly different from zero as the values of p-value shows.

The detected cyclic changes in opening of fractures and rock face rotations appear linked to seasonal and annual temperature variations (Fig. 21). Crack aperture data reveal a deformation pattern characterized by seasonal cyclical deformation trends with strong temporal temperature coupling. In detail, when maximum temperatures level out (July-August), deformation continues to increase up to 30-40 days and reaches the maximum values during late August-September, each year. Minimum deformation values usually occur during winter - early spring (from January to April), after the seasonal cooling period. Some crackmeters show secondary peaks during autumn-winter period, uncorrelated to temperature variation.

Similarly, we found comparatively little influence between rain and wind with the fracture deformation (Figs. 21-23). The rain seems to cause only sudden decreases in fracture opening during intense rainstorm (see events around 27/01/2015, 27/10/2015, 27/08/2017 and 27/09/2017, Figs. 21-22). On the contrary, humidity and barometric pressure seem to exert no influence on fracture deformation (Fig. 24).

The temperature exerts the dominant role in driving daily average values of deformation, as the fracture deforms both synchronously and in a delayed way with temperature. Deformation of rocks measured by crackmeter sensors are partly linked to the bulk volume variation of the tuff, as a response to temperature changes. Tiltmeters measurement are also strongly forced by temperature annual cycles showing a cumulate increase from 2015 to 2018 (Fig. 25).

The direct result of heating rock is expansion, a process well studied and quantified in several environmental conditions (Chau and Shao, 2006; Collins and Stock, 2016; Eppes, 2016; Richter and Simmons, 1974). Cumulative fracture growth and opening can occur under typical present-day meteorological conditions in many settings (Eppes and Keanini, 2017; Lamp et al., 2017). Several diurnal and seasonal cycles of heating and cooling may lead to deformation and crack opening and propagation. Both increasing temperature and temperature fluctuations may also produce and enhance fracturing.

On a seasonal cycle, cumulative positive deformation peaks occur during the warmest months (June throughout September) yielding values up to 4 mm higher than the maximum negative deformation occurring during the coolest months (December through March; Fig. 21). This suggests that some rockfalls might be more likely during hot summer

Eliminato: - 12

Eliminato: 13

Eliminato: -

Eliminato: 24

Eliminato: 25

Eliminato: 26

Eliminato: 28

Eliminato: 26

Eliminato: s

Eliminato: 29-3

Eliminato: 0

Eliminato: 31

Eliminato: 25

months, when crack sheets are at their maximum opening along the cliffs. Nevertheless fracture opening is known to be a nonlinear process (Lawn, 1993), so we cannot simply use our measured deformation rates to predict future detachments of fracture sheets.

Our results have important implications for the triggering of rockfalls in cliffed landscapes. In fact, our measurements indicate that seemingly static tuffaceous landscapes are actually dynamic slopes. Along the Coroglio cliff tuff blocks can deform in and out of a near-vertical cliff face by up to 1 mm on daily basis and up to 4 mm on annual scale. These data demonstrate the inherent instability of studied tuff cliffs as well as other rocky cliffs worldwide (Collins and Stock, 2016), mainly during summertime (Ishikawa et al., 2004; Gunzburger et al., 2005; Hasler et al., 2012; Vargas et al., 2012; Stock et al., 2013; Collins & Stock, 2016).

7 Data availability

The databases presented and discussed in this article are available for downloading from PANGAEA Repository. Deformation and meteorological datasets are respectively provided in separated files in tab format at <https://doi.pangaea.de/10.1594/PANGAEA.896000> (Matano et al., 2018) (deformation data with frequency sampling of 30 minutes) and at <https://doi.pangaea.de/10.1594/PANGAEA.899562> (Fortelli et al., 2019) (meteorological data with frequency sampling of 10 minutes).

8 Conclusions

The Coroglio cliff shares broad characteristics with several tuff cliff from the Campi Flegrei coastal area affected by severe retreat processes, and elsewhere in the world. In our research, we have focused on in situ measurements of deformations affecting tuff blocks. The Coroglio CC-MoSys monitoring system, installed in December 2014, has captured some of the tuff deformation behavior under the different meteorological conditions occurred during about 5 years. Our results indicate that seemingly static tuffaceous landscapes are quite dynamic cliffs.

The data recorded by the Coroglio MoSys have contributed to our understanding of temperature-tuff deformation relationships in the analyzed cliff. Micro-deformation of rocks measured by geotechnical sensors reveals a general cyclic trend, possibly linked to the bulk volume variation of the rocks, as a response to seasonal and daily temperature variations.

On an annual cycle, the cumulative positive deformation peaks occurring during summertime may yield values up to 1 to 4 mm higher than the most negative deformation occurring during wintertime.

More in general, this research provides a first contribute to the knowledge about the generation of tuff block instability phenomena and the understanding of the rates of geomorphic evolution of coastal tuff cliff. The analysis of the

Eliminato: 8

Eliminato: 9

Eliminato: ,

Eliminato: T

Eliminato: and

Eliminato: its

relationships [between deformation and meteo-marine](#) forcing factors [may be also very useful](#) in the perspective of early-warning actions and policies, [also due to the location of the study site in a densely urbanized area](#).

Eliminato: with

Eliminato: (e.g. meteo-marine weathering, human actions, volcanic tectonic activity)

Eliminato:

Author contribution

Data collection was done by FM, MC, AF and MSa. Analysis of the data was done by FM and AF. Statistical analysis was done by GS and MSp. The initial draft of the paper was written by FM with contributions by AF (sect. 5), GS and MSp (sect. 6). All authors contributed to the final version of the text.

Competing interests

The authors declare that they have no conflict of interest.

Acknowledgements

- 10 Financial support for this research was provided by the Programma Operativo Nazionale (PON) funded by the Italian Ministry of University and Research-Project PON-MONICA (grant PON01_01525).

References

- Andriani, G. F. and Walsh, N.: Rocky coast geomorphology and erosional processes: A case study along the Murgia coastline South of Bari, Apulia - SE Italy, *Geomorphology*, 87, 3, 224-238, doi: 10.1016/j.geomorph.2006.03.033, 2007.
- 15 ASCE: Minimum Design Loads for Buildings and Other Structures, American Society of Civil Engineers, SEI/ASCE 7-02, 2nd Edition, 376 pp., ISBN 0- 7844-0624-3, 2013.
- [Barbano, M. S., Pappalardo, G., Pirrotta, C. and Mineo, S.: Landslide triggers along volcanic rock slopes in eastern Sicily \(Italy\), *Nat Hazards* 73, 1587–1607, doi: 10.1007/s11069-014-1160-1, 2014.](#)
- Bird, E.: Coastal cliffs: Morphology and Management, Switzerland, Springer, ISBN 978-3-319-29083-6, 2016.
- 20 Bray, M. J. and Hooke, J. M.: Prediction of soft-cliff retreat with accelerating sea-level rise, *Journal of Coastal Research*, 13 (2), 453-467, 1997.
- Budetta P., Galiotta, G. and Santo, A.: A methodology for the study of the relation between coastal cliff erosion and the mechanical strength of soils and rock masses, *Engineering Geology*, 56, 3–4, 243-256, doi:10.1016/S0013-7952(99)00089-7, 2000.

Eliminato: Bakun-Mazor, D., Hatzor, Y. H., Glaser, S. D. and Santamarina, J. C. Thermally vs. seismically induced block displacements in Masada rock slopes, *Int. J. Rock Mech. Min. Sci.* 61, 196-211, doi: 10.1016/j.ijrmms.2013.03.005, 2013.¶

- Caputo, T., Marino, E., Matano, F., Somma, R., Troise, C. and De Natale, G.: Terrestrial Laser Scanning (TLS) data for the analysis of coastal tuff cliff retreat: application to Coroglio cliff, Naples, Italy, *Annals of Geophysics*, 61, 1, SE110, doi: 10.4401/ag-7494, 2018.
- Chau, K. T. and Shao, J. F.: Subcritical crack growth of edge and center cracks in façade rock panels subject to periodic surface temperature variations, *Int. J. Solids Struct.*, 43, 807–827, doi: 10.1016/j.ijsolstr.2005.07.010, 2006.
- Clark, A. R., Moore, R. and Palmer, J. S.: Slope monitoring and early warning systems: application to coastal landslide on the south and east coast of England, UK, In: Senneset K (ed) *Landslides*, 7th International Symposium on Landslides, Balkema, Rotterdam, 1531–1538, 1996.
- Cloutier, C., Locat, J., Charbonneau, F. and Couture, R.: Understanding the kinematic behavior of the active Gascons rockslide from in-situ and satellite monitoring data, *Engineering Geology*, 195, 1–15, doi: 10.1016/j.enggeo.2015.05.017, 2015.
- Collins, B. D. and Stock, G. M.: Rockfall triggering by cyclic thermal stressing of exfoliation fractures, *Nat. Geosci.*, 9, 395–400, doi: 10.1038/ngeo2686, 2016.
- De Vita, P., Cevasco, A. and Cavallo, C.: Detailed rock failure susceptibility mapping in steep rocky coasts by means of non-contact geosstructural surveys: the case study of the Tigullio Gulf (Eastern Liguria, Northern Italy), *Nat. Hazards Earth Syst. Sci.*, 12, 867–880, doi:10.5194/nhess-12-867-2012, 2012.
- Deino, A. L., Orsi, G., de Vita, S. and Piochi, M.: The age of the Neapolitan Yellow Tuff caldera-forming eruption (Campi Flegrei caldera–Italy) assessed by 40 Ar/39 Ar dating method, *Journal of Volcanology and Geothermal Research*, 133(1), 157–170, doi: 10.1016/S0377-0273(03)00396-2, 2004.
- Devoto, C., Forte, E., Mantovani, M., Mocnik, A., Pasuto, A., Piacentini, D. and Soldati, M.: Integrated Monitoring of Lateral Spreading Phenomena Along the North-West Coast of the Island of Malta. In: Margottini et al. (eds.), *Landslide Science and Practice*, 2, 235–242, Springer-Verlag Berlin Heidelberg, doi: 10.1007/978-3-642-31445-2_30, 2013.
- Emery, K. O. and Kuhn, G. G.: Sea cliffs: Their processes, profiles and classification, *Geological Society of America Bulletin* 93, 644–654, doi: 10.1130/0016-7606(1982)93<644:SCTPPA>2.0.CO;2, 1982.
- Eppes, M. C., Magi, B., Hallet, B., Delmelle, E., Mackenzie-Helnwein, P., Warren, K. and Swami, S.: Deciphering the role of solar-induced thermal stresses in rock weathering, *Geol. Soc. Am. Bull.*, 128, 1315–1338, doi: 10.1130/B31422.1, 2016.
- Eppes, M. C. and Keanini, R.: Mechanical weathering and rock erosion by climate dependent subcritical cracking, *Rev. Geophys.* 55, 470–508, doi: 10.1002/2017RG000557, 2017.
- Esposito, G., Salvini, R., Matano, F., Sacchi, M., Danzi, M., Somma, R. and Troise, C.: Multitemporal monitoring of a coastal landslide through sfm-derived point cloud comparison, *The Photogrammetric Record*, 32(160), 459–479, doi: 10.1111/phor.12218, 2017.

- Esposito, G., Salvini, R., Matano, F., Sacchi, M. and Troise, C.: Evaluation of geomorphic changes and retreat rates of a coastal pyroclastic cliff in the Campi Flegrei volcanic district, southern Italy, *Journal of Coastal Conservation* 22, 957-972, doi: 10.1007/s11852-018-0621-1, 2018.
- Ferlisi, S., Cascini, L., Corominas, J. and Matano, F.: Rockfall risk assessment to persons travelling in vehicles along a road: The case study of the Amalfi coastal road (southern Italy). *Natural Hazards*, 62 (2), 691-721, doi: 10.1007/s11069-012-0102-z, 2012.
- Fortelli, A., Matano, F. and Sacchi, M.: Continuous meteorological monitoring at Cape Posillipo (Denza Institute weather station - Naples - Campania Region - Italy) during the period January 2014 - December 2018, PANGAEA, <https://doi.org/10.1594/PANGAEA.899562>, 2019.
- 10 Frolidi, P.: Digital terrain model to assess geostructural features in near-vertical rock cliffs. *Bulletin of Engineering Geology and the Environment*, 59, 201–206, doi: 10.1007/s100640000073, 2000.
- [Furlani, S., Pappalardo, M., Gomez-Pujol, L., Chelli, A.: The rock coast of the Mediterranean and Black Seas. In: Rock Coast Geomorphology: A Global Synthesis \(Kennedy, D.M., Stephenson, W.J., Naylor, L.A., Eds\). Geological Society, London Memoirs 40, 89-123, 2014.](#)
- 15 Gunzburger, Y., Merrien-Soukatchoff, V. and Guglielmi, Y.: Influence of daily surface temperature fluctuations on rockslope stability: case study of the Rochers de Valabres slope (France). *Int. J. Rock Mech. Min. Sci.*, 42, 331-349, doi: 10.1016/j.ijrmms.2004.11.003, 2005.
- Hasler, A., Gruber, S. and Beutel, J.: Kinematics of steep bedrock permafrost, *J. Geophys. Res.*, 117, F01016, doi: 10.1029/2011JF001981, 2012.
- 20 Iadanza, C., Trigila, A., Vittori, E. and Serva, L.: Landslides in coastal areas of Italy, *Geological Society Special Publication*, 322, 121-141, doi: 10.1144/SP322.5, 2009.
- Ietto, F., Perri, F. and Filomena, L.: Weathering processes in volcanic tuff rocks of the "Rupe di Coroglio" (Naples, southern Italy): Erosion-rate estimation and weathering forms, *Rendiconti Online della Società Geologica Italiana*, 33, 53-56, doi: 10.3301/ROL.2015.13, 2015.
- 25 Ishikawa, M., Kurashige, Y. and Hirakawa, K.: Analysis of crack movements observed in an alpine bedrock cliff, *Earth Surf. Process. Landf.*, 29, 883-891, doi: 10.1002/esp.1076, 2004.
- Janeras, M., Jara, J. A., Royán, M. J., Vilaplana, J. M., Aguasca, A., Fàbregas, X., Gili, J. A. and Buxò, P.: Multi-technique approach to rockfall monitoring in the Montserrat massif (Catalonia, NE Spain). *Engineering Geology*, 219, 4–20, doi: 10.1016/j.enggeo.2016.12.010, 2017.
- 30 Lamp, J. L., Marchant, D. R., Mackay, S. L. and Head, J. W.: Thermal stress weathering and the spalling of Antarctic rocks, *J. Geophys. Res. Earth Surf.*, 122, 3–24, doi: 10.1002/2016JF003992, 2017.

Eliminato: Fortelli, A., Matano, F., Caccavale, M. and Sacchi, M.: Meteorological data of Capo Posillipo weather station (Naples, Italy) during Dec. 2013 - Oct. 2018. Istituto di Scienze Marine - CNR, PANGAEA, <https://doi.org/10.1594/PANGAEA.896272>, 2018.¶

Formattato: Inglese (Stati Uniti)

Eliminato: ¶

- Lawn, B.: *Fracture of Brittle Solids* 2nd ed., Cambridge Univ. Press, Cambridge Solid State Science Series, doi: 10.1017/CBO9780511623127, 1993.
- Matano, F., Caccavale, M. and Sacchi, M.: Measurements of deformation in fractured volcanic tuffs, Coroglio coastal cliff, Naples, Italy. *Istituto di Scienze Marine - CNR, PANGAEA*, <https://doi.pangaea.de/10.1594/PANGAEA.896000>, 5 2018.
- Matano, F., Pignalosa, A., Marino, E., Esposito, G., Caccavale, M., Caputo, T., Sacchi, M., Somma, R., Troise, C. and De Natale, G.: Laser scanning application for geostructural analysis of tuffaceous coastal cliffs: the case of Punta Epitaffio, Pozzuoli Bay, Italy, *European Journal of Remote Sensing*, 48, 1, 615–637, doi: 10.5721/EuJRS20154834, 2015.
- Matano, F., Iuliano, S., Somma, R., Marino, E., Del Vecchio, U., Esposito, G., Molisso, F., Scepi, G., Grimaldi, G. M., 10 Pignalosa, A., Caputo, T., Troise, C., De Natale, G. and Sacchi, M.: Geostucture of Coroglio tuff cliff, Naples (Italy) derived from terrestrial laser scanner data. *Journal of Maps*, 12(3), 407–421, doi: /10.1080/17445647.2015.1028237, 2016.
- Mazzarella, A.: *Sul Clima di Napoli. Osservatorio Meteorologico "San Marcellino"*, <http://www.meteo.unina.it/clima-di-napoli>, 2006.
- Pecoraro, G., Calvello, M. and Piciullo, L.: Monitoring strategies for local landslide early warning systems, *Landslides*, 15 16, 2, 213–231, doi: 10.1007/s10346-018-1068-z, 2018.
- Raso, E., Brandolini, P., Faccini, F., Realini, E., Caldera, S. and Firpo, M.: Geomorphological evolution and monitoring of San Bernardino-Guvano landslide (Eastern Liguria, Italy), *Geografia Fisica e Dinamica Quaternaria*, 40, 197–210, doi 10.4461/GFDQ.2017.40.12, 2017.
- Richter, D. and Simmons, G.: Thermal expansion behavior of igneous rocks, *Int. J. Rock Mech. Min. Sci. Geomech. Abstr.*, 11, 403–411, doi 10.1016/0148-9062(74)91111-5, 1974.
- 20 Salvini, R., Vanneschi, C., Riccucci, S., Francioni, M. and Gulli, D.: Application of an integrated geotechnical and topographic monitoring system in the Lorano marble quarry (Apuan Alps, Italy), *Geomorphology*, 241, 209–223, doi 10.1016/j.geomorph.2015.04.009, 2015.
- Sciarra, N., Marchetti, D., D'Amato Avanzi, G. and Calista, M.: Rock slope analysis on the complex livorno coastal cliff 25 (Tuscany, Italy), *Geografia Fisica e Dinamica Quaternaria*, 37, 2, 113–130, doi: 10.4461/GFDQ.2014.37.11, 2015.
- Spillmann, T., Maurer, H., Green, A. G., Heincke, B., Willenberg, H. and Husen, S.: Microseismic investigation of an unstable mountain slope in the Swiss Alps, *Journal of Geophysical Research*, 112, B07301, doi: 10.1029/2006JB004723, 2007.
- Stock, G. M., Collins, B. D., Santaniello, D. J., Zimmer, V. L., Wiczorek, G. F., and Snyder, J.B.: *Historical Rock Falls in Yosemite National Park, California (1857–2011)*, US Geological Survey Data Series, 746, <http://pubs.usgs.gov/ds/746>, 30 2013.
- Sunamura, T.: *Geomorphology of Rocky Coasts*. John Wiley and Sons Ltd., Chichester, UK, ISBN: 0 471 91775 3, 1992.

Sunamura, T.: Rocky coast processes: with special reference to the recession of soft rock cliffs. *Proceedings of the Japan Academy-Series, B* 91, 9, 481-500, doi: 10.2183/pjab.91.481, 2015.

Vargas, E. A. Jr, Velloso, R. Q., Chávez, L. E., Gusmão, L. and Amaral, C. P.: On the effect of thermally induced stresses in failures of some rock slopes in Rio de Janeiro, Brazil, *Rock Mech. Rock Eng.* 46, 123-134, doi: 10.1007/s00603-012-0247-9, 2012.

Zvelebill, J. and Moser, M.: Monitoring based time-prediction of rock falls: Three case-histories. *Physics and Chemistry of the Earth, Part B: Hydrology, Oceans and Atmosphere*, 26, 2, 159-167, doi: 10.1016/S1464-1909(00)00234-3, 2001.

Figures

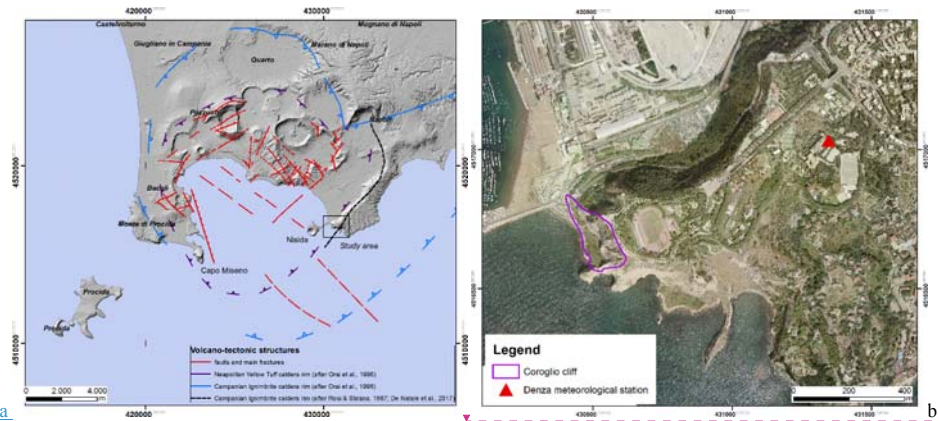


Figure 1: a - Study area location and Campi Flegrei area. b - Study area detailed orthophoto (2004) (<https://sit2.regione.campania.it/content/ortofoto-campania-20042005>).

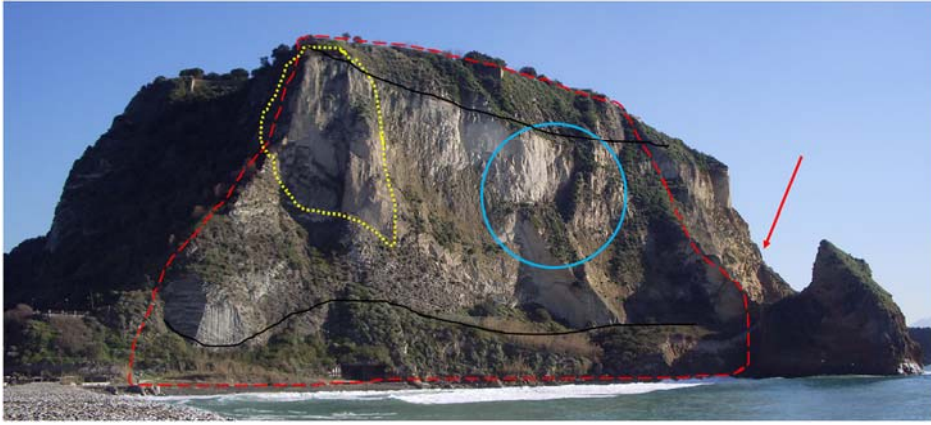


Figure 2: Coroglio cliff view from WSW. Red dashed line shows the area mapped in Fig. 3; yellow dotted line shows the area involved by reinforcement works; light blue circle shows the area with unstable tuff blocks; red arrow shows the detachment area of the failure occurred around 1990, located outside the area mapped in Fig.3. Black lines separate upper, median and lower parts of the cliff.

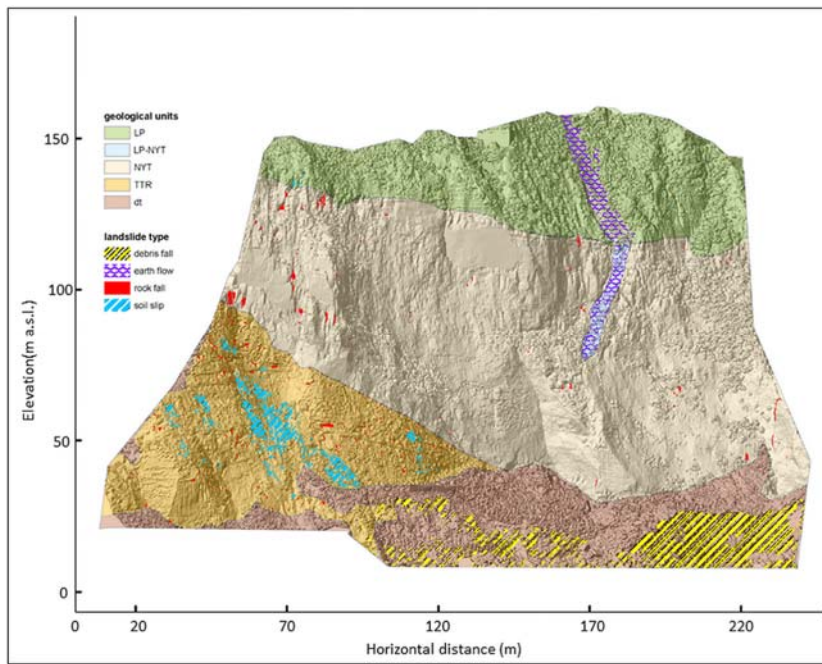


Figure 3: Geological vertical map of the Coroglio cliff (modified after Matano et al., 2016). Landslide types occurred during 2013-2015 interval (Caputo et al., 2018) are also showed. Geological units: LP, stiff to loose recent pyroclastic deposits and soils; LP-NYT, thin layer of LP deposits on NYT unit; NYT, Neapolitan Yellow Tuff; TTR, Trentaremi Tuff; dt, slope talus breccia and gravelly beach deposits.

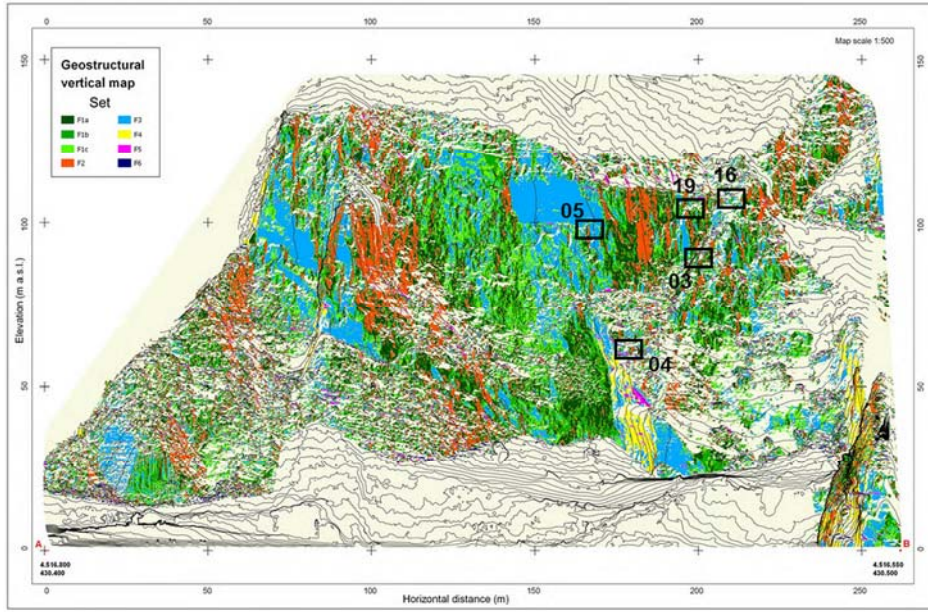


Figure 4: Geostructural vertical map (modified by Matano et al., 2016). Black boxes show location of the monitored unstable tuff blocks. Set legend (dip/dip direction): F1a ($>65^{\circ}/30-50^{\circ}$ and $220-235^{\circ}$), F1b ($>65^{\circ}/50-60^{\circ}$ and $235-245^{\circ}$), F1c ($>65^{\circ}/55-65^{\circ}$ and $245-255^{\circ}$), F2 ($>65^{\circ}/0-30^{\circ}$ and $180-220^{\circ}$), F3 ($>70^{\circ}/60-110^{\circ}$ and $255-280^{\circ}$), F4 ($>70^{\circ}/110-180^{\circ}$ and $300-355^{\circ}$), F5 ($20-65^{\circ}/50-195^{\circ}$), F6 ($<20^{\circ}/0-360^{\circ}$).

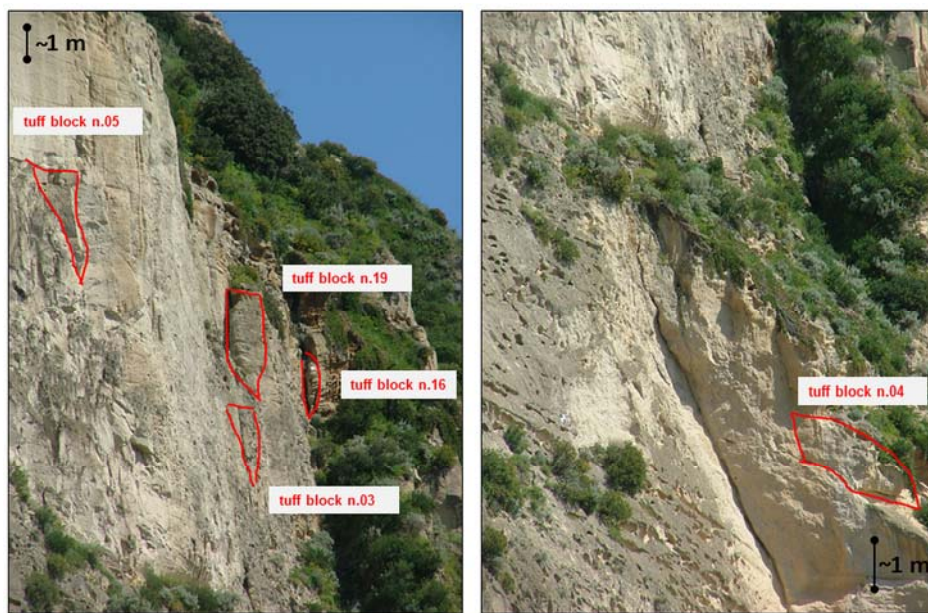


Figure 5: Unstable tuff blocks of the NYT unit selected for monitoring activity (red lines).

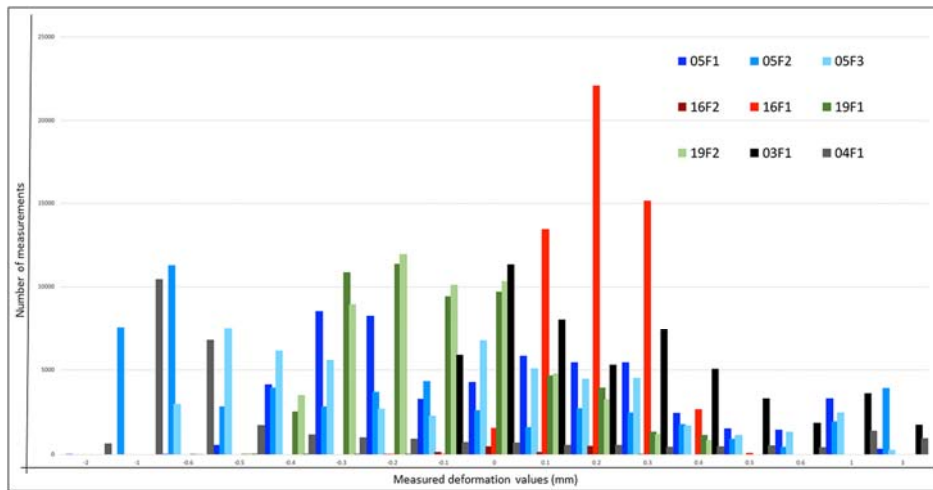
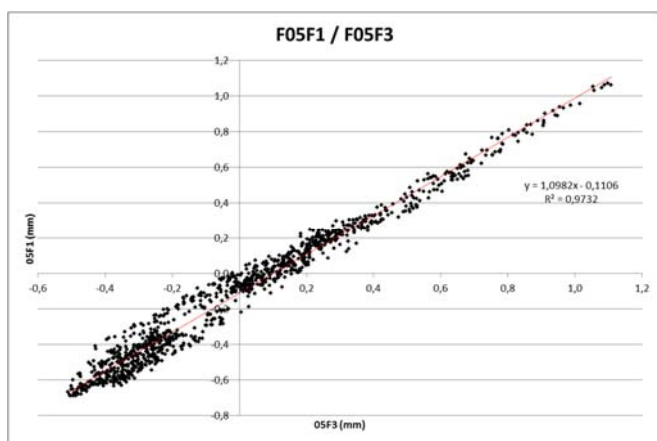


Figure 6: Data distribution of measurements of crackmeters (03F1, 04F1, 05F1, 05F2, 05F3, 16F1, 16F2, 19F1 and 19F2).

Eliminato: -9

Eliminato: sensors

Eliminato: The number of measurements is reported on y axis, and the value of deformation (in mm) on x axis.



Eliminato: b

Figure 7: Correlation plot between 05F1 and 05F3 data.

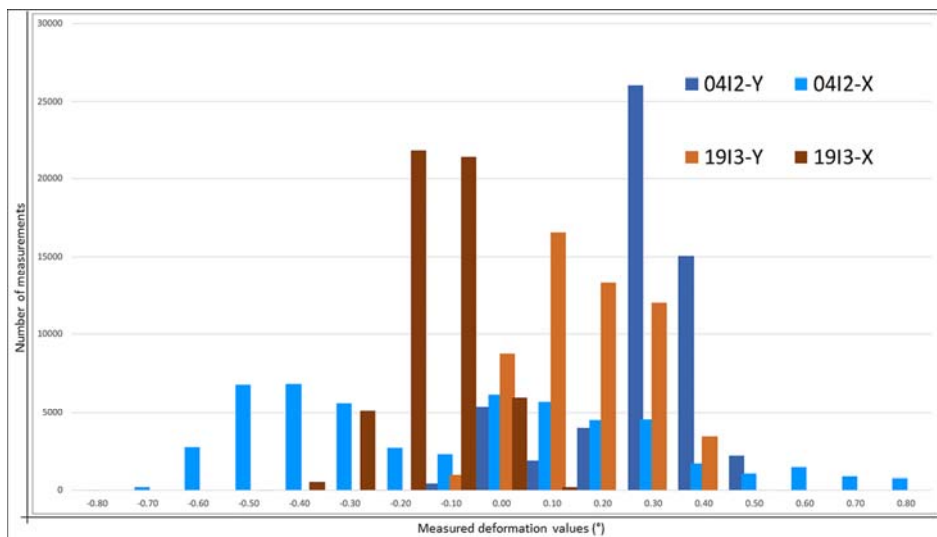


Figure 8: Data distribution of measurements of tiltmeters (04I2-X, 04I2-Y, 19I3-X and 19I3-Y).

Eliminato: 10-11

Eliminato: sensors

Eliminato: The number of measurements is reported on y axis, and the value of deformation (in degree) on x axis.

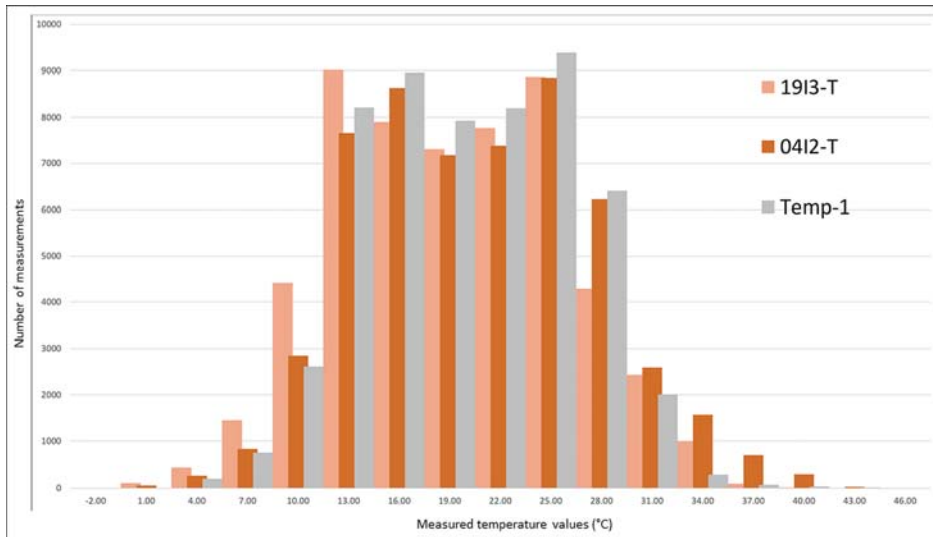


Figure 9: Data distribution of measurements of thermistors (19I3-T, 04I2-T and Temp-1).

Eliminato: 12

Eliminato: The number of measurements is reported on y axis, and the value of deformation (in degree Celsius) on x axis.

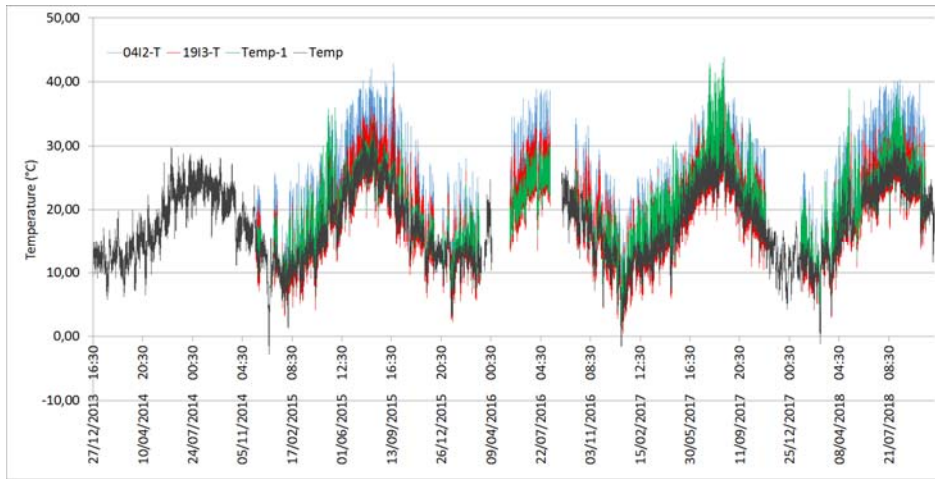


Figure 10: Temperature time series showing daily, seasonal and annual variation patterns. Long-term trends, based on about five consecutive years of data, show annual cyclicality. Air temperature and near-rock-surface air temperature are fully synchronous; peaks in near-rock-surface air temperatures (19I3-T, 04I2-T and Temp-1) are sometimes higher than those of air temperature (Temp). Data are incomplete in some months.

Eliminato: 3

Eliminato: (daily average data)

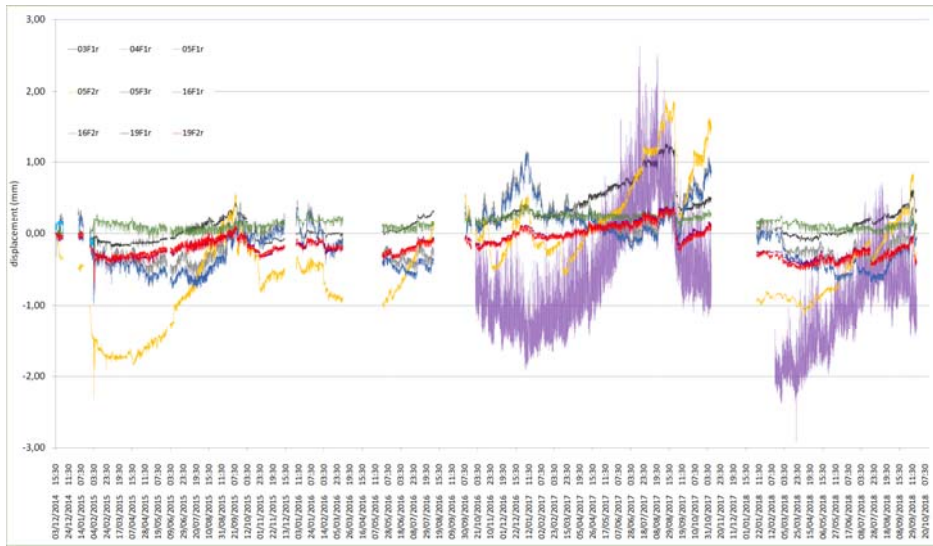


Figure 11: Crack aperture variation time series showing daily, seasonal and annual deformation patterns. Long-term trends, based on about four consecutive years of data (December 2014 to October 2018), show from +0.1 to +1.2 mm cumulative deformation. Data are incomplete in some months.

Eliminato: 4

Eliminato: data

Eliminato: ,

Eliminato: ,

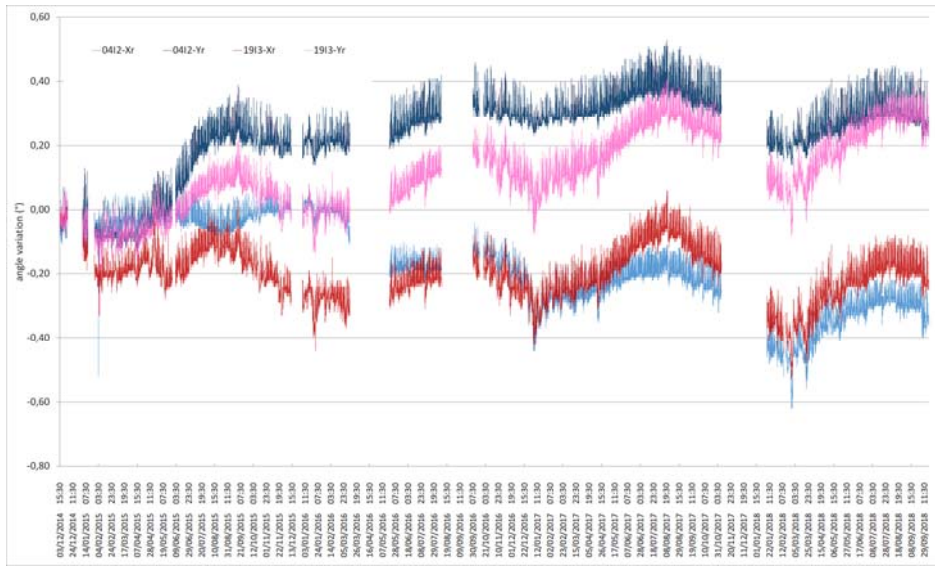


Figure 12: Angle variation time series data showing daily, seasonal and annual deformation patterns. Long-term trends, based on about four consecutive years of data (December 2014 to October 2018), show from 0.1° to 0.4° cumulative angle variation. Horizontal and vertical angle variation show opposite evidences for each block. Data are incomplete in some months.

Eliminato: 5

Eliminato: ,

Eliminato: ,

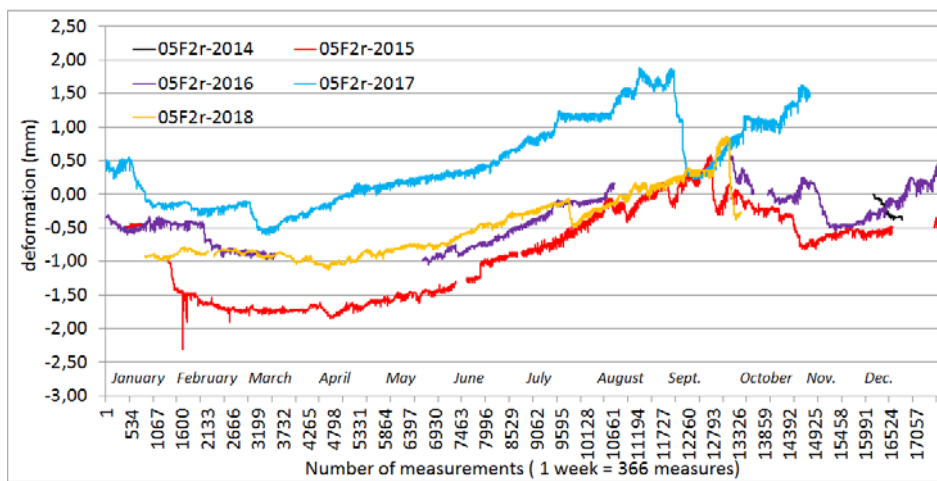


Figure 13: Annual time series plots of 05F2 crackmeter showing partly repetitive seasonal deformation patterns.

Eliminato: 6

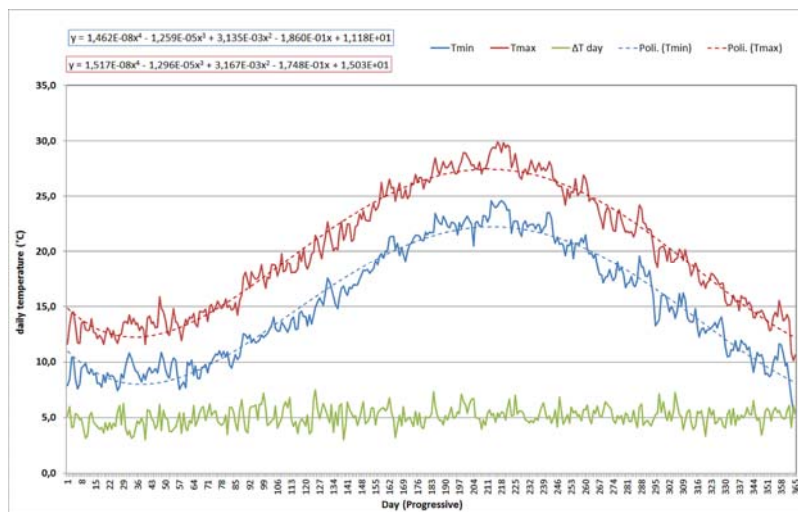


Figure 14: Average daily thermal trend, referred to 2014-2018, recorded by Denza weather station with 4th grade polynomial equation. Maximum temperature values are indicated with red line, minimum values with blue line and daily temperature range with green line.

Eliminato: 7

Eliminato: interruzione pagina

Figure 18: Average monthly thermal trend, referred to 2014-2018, recorded by Denza weather station. Maximum temperature values are shown with red line and dots, minimum values with blue line and dots.

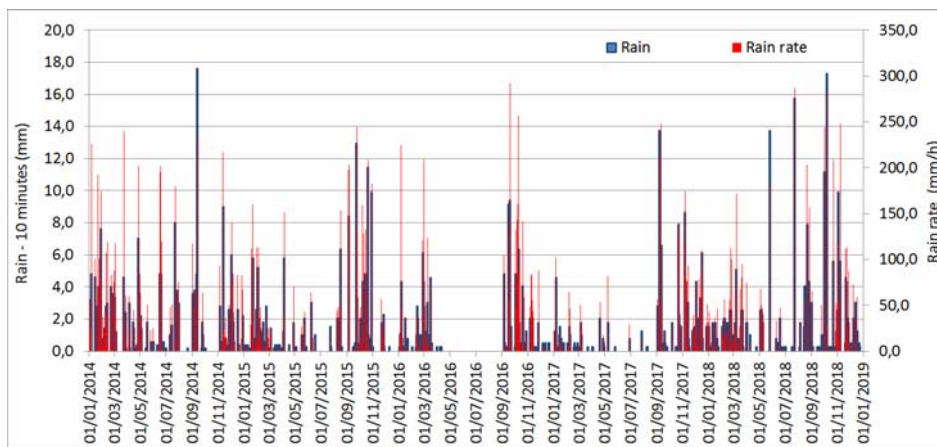


Figure 15: Rain amount (10 minutes) and rain rate time series data showing daily, seasonal and annual variation patterns in the Denza station during 2014-2018.

Eliminato: 9



Figure 16: Average cumulative monthly rainfall data histogram referred to 2014-2018. Diagram reports also average monthly values of rainfall, measured at Meteorological Observatory of University of Naples “Federico II” since 1872 (Mazzarella, 2006). Rainfall values are reported, respectively, in blue squared cells and red squared cells.

Eliminato: 20

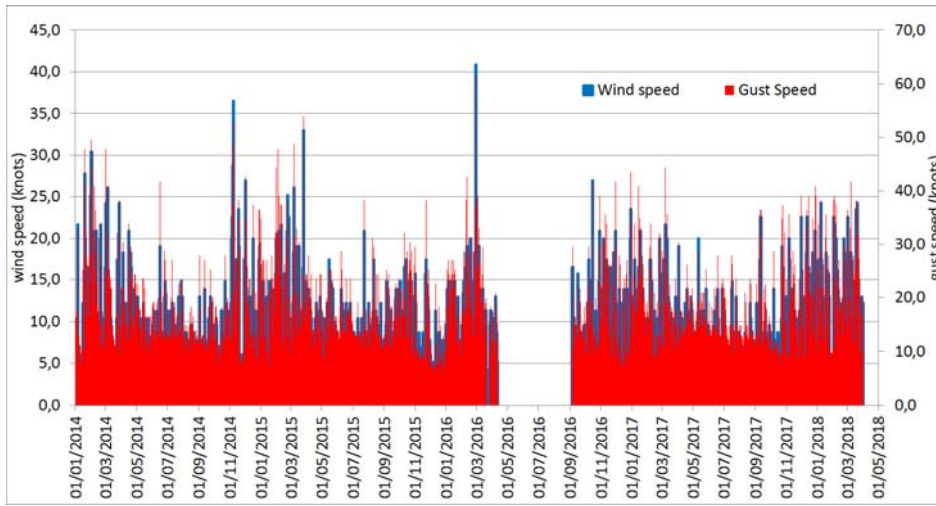


Figure 17: Wind and gust speed time series data showing daily, seasonal and annual variation patterns in the Denza station during 2014-2018.

Eliminato: 2

Eliminato: (Wi_speed)

Eliminato: (HiWi_spe)

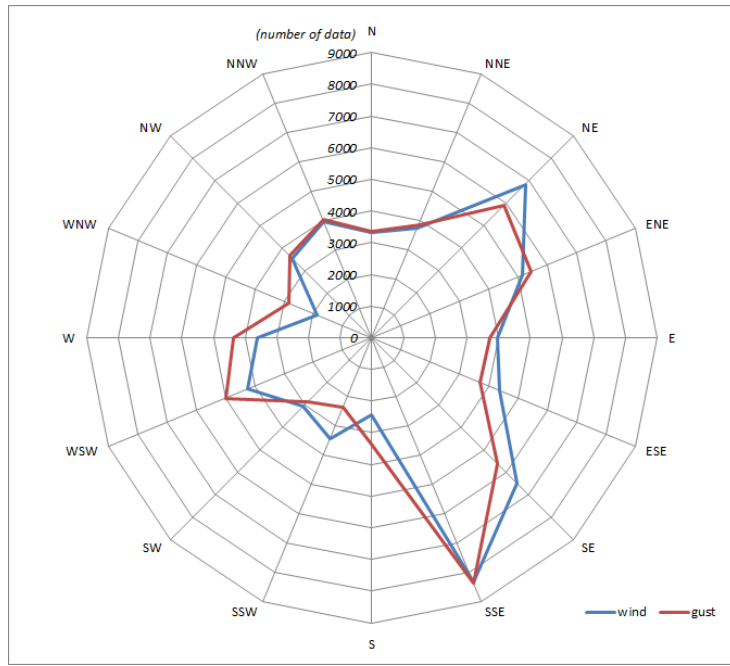


Figure 18: Frequency distribution of wind and gust directions measured during 2014-2018.

Eliminato: 22

Eliminato: W

Eliminato: (Wi_dir)

Eliminato: (HiWi_dir)

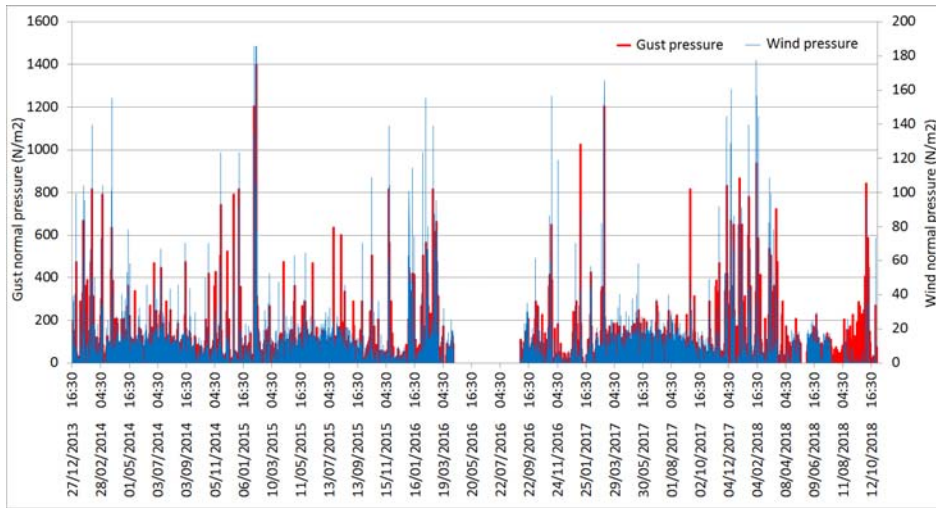


Figure 19: Wind and gust normal pressure time series data showing daily, seasonal and annual variation patterns in the Denza station during 2014-2018.

Eliminato: 23

Eliminato: (Wi-P_norm)

Eliminato: (HiWi-P_norm)

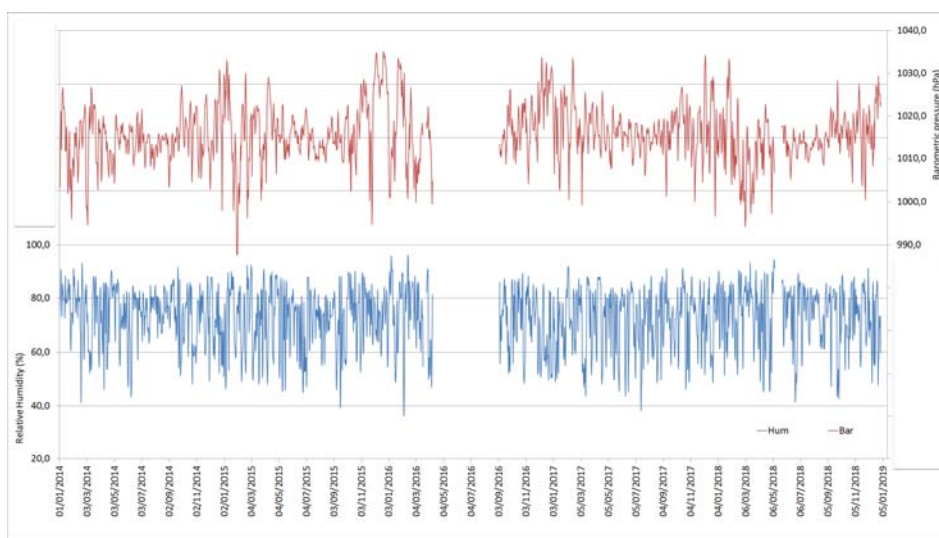


Figure 20: Barometric pressure and humidity time series data showing seasonal and annual variation patterns in the Denza station during 2014-2018.

Eliminato: 4

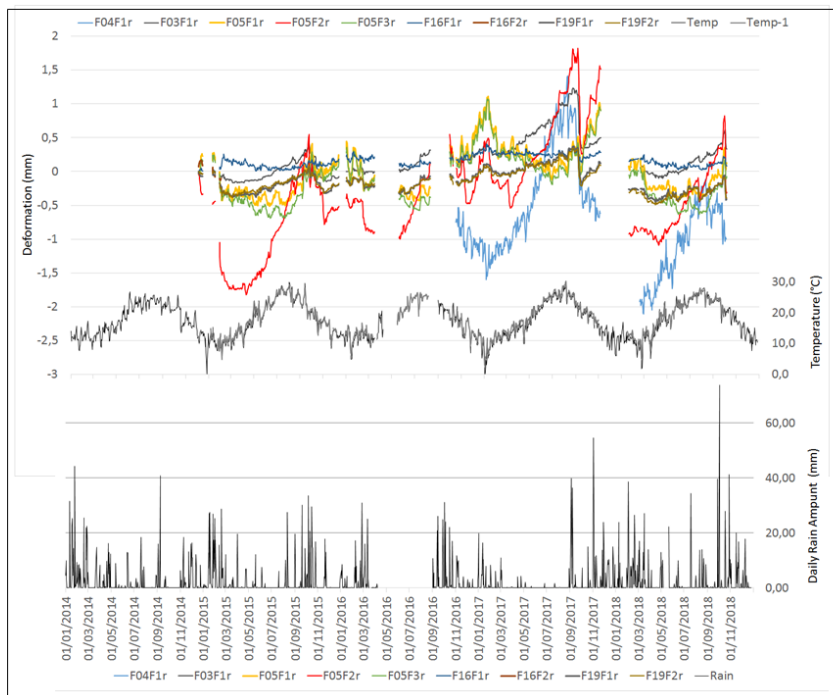


Figure 21: Comparison between crackmeter measurements, rain amount and temperature daily data time series.

Eliminato: 5

Eliminato: (expressed in mm, left vertical axis)

Eliminato: (expressed in °C, right vertical axis)

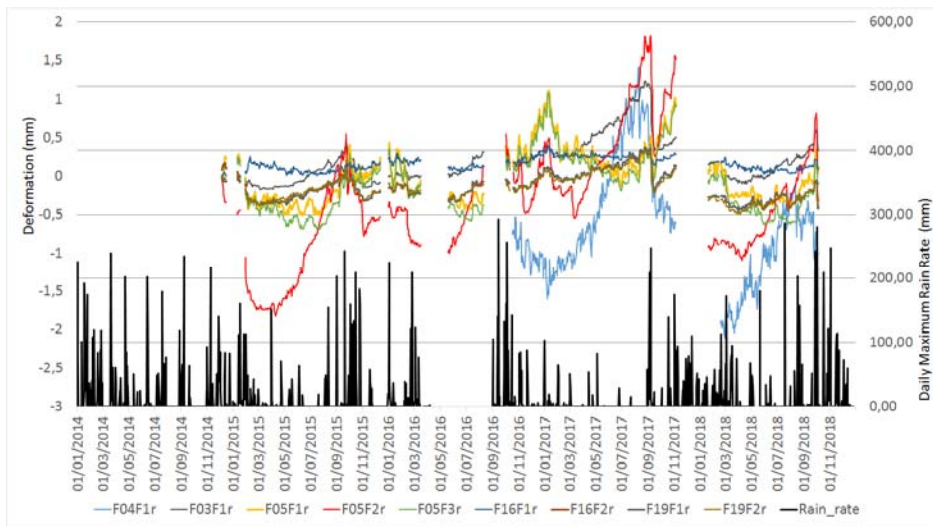


Figure 22: Comparison between crackmeter measurements and maximum rain rate daily data time series.

Eliminato: 6

Eliminato: (expressed in mm, left vertical axis)

Eliminato: fall amount (expressed in mm, right vertical axis)

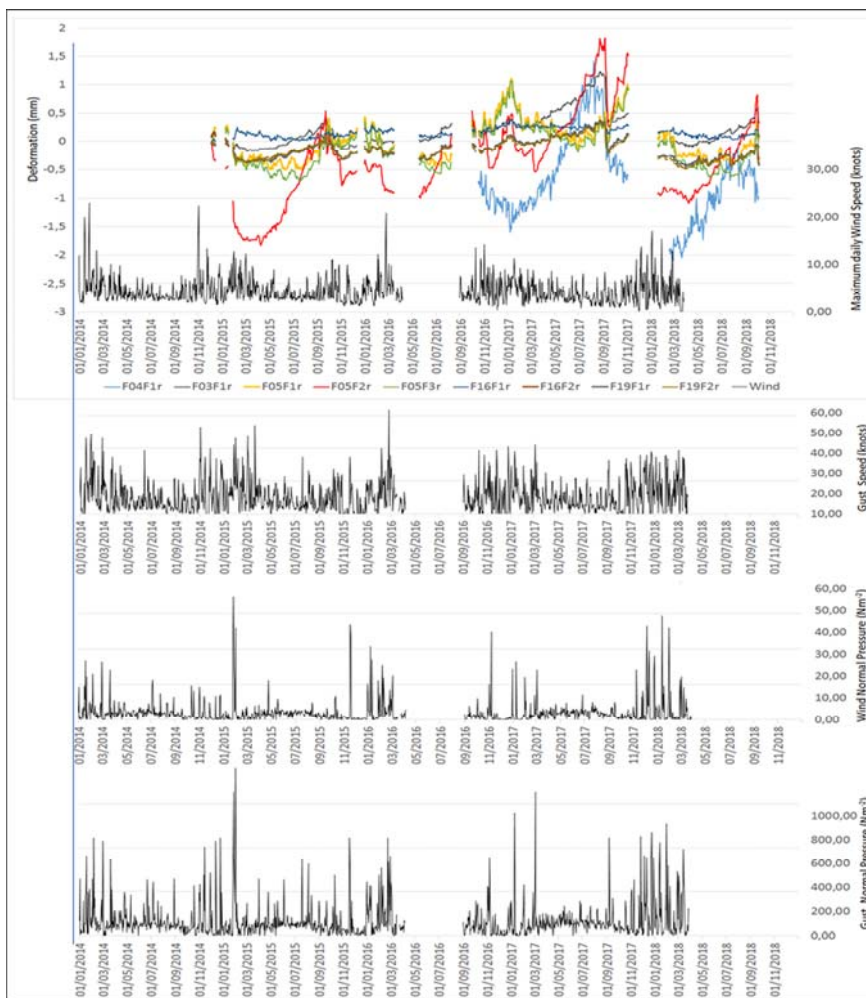


Figure 23: Comparison between crackmeter measurements and wind (wind speed, gust speed, wind normal pressure, gust normal pressure) daily data time series.

Eliminato: 7

Formattato: Didascalia

Eliminato: (expressed in mm, left vertical axis)

Eliminato: speed

Eliminato: expressed in knots, right vertical axis

Eliminato: ¶

—interruzione pagina—

Figure 28: Comparison between crackmeter measurements (expressed in mm, left vertical axis) and wind normal pressure (expressed in Nm^2 , right vertical axis) daily data time series.¶

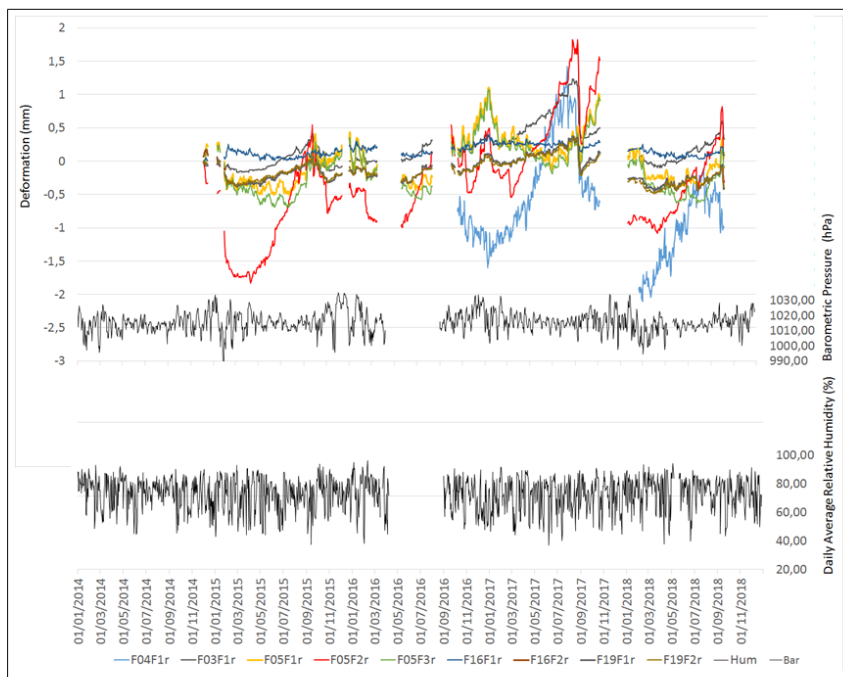


Figure 24: Comparison between crackmeter measurements, relative humidity and barometric pressure) daily data time series.

Eliminato: 30

Eliminato: (expressed in mm, left vertical axis)

Eliminato: (expressed in hPa, right vertical axis

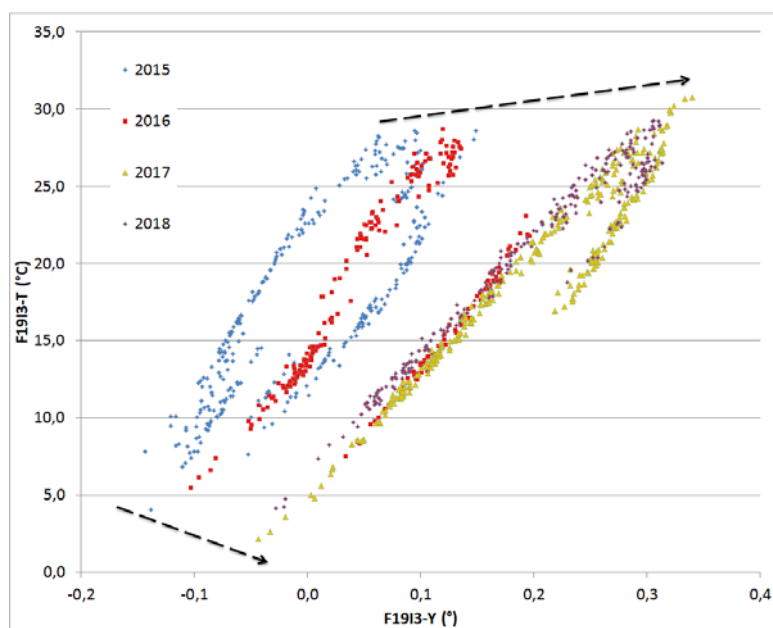
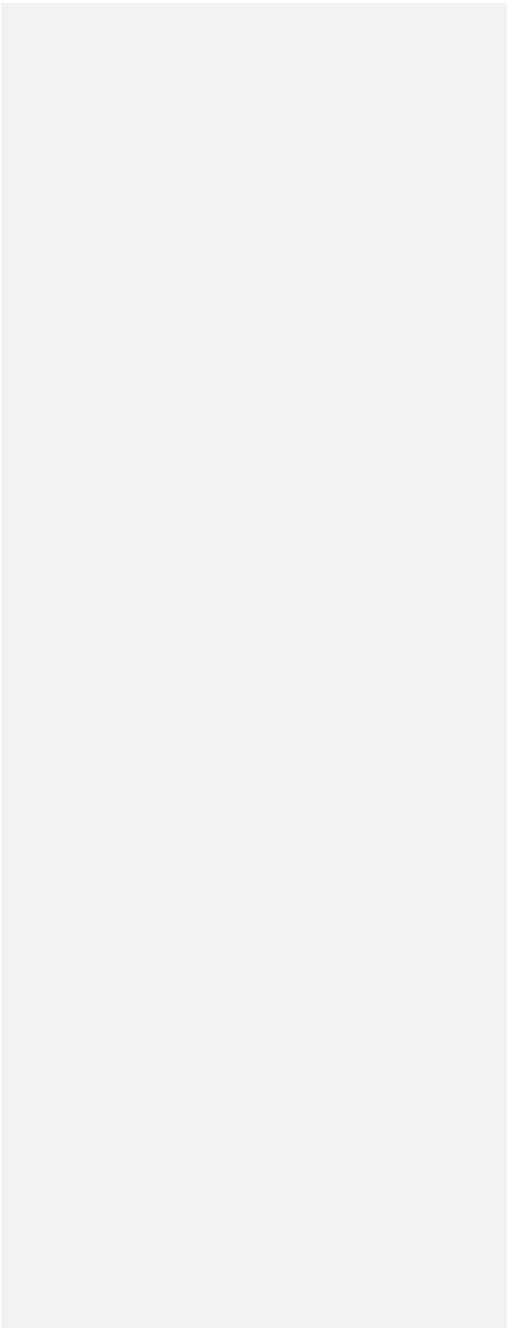


Figure 25: Progressive increase of tiltmeter F1913-Y measurements values (see dashed arrows) from 2015 to 2018 referred to local temperature.

Eliminato: 31

Tables



nb.	size (width, length, height; volume)	cliff local orientation*	joint sets*	kinematics	ID crackmeter	ID tiltmeter
3	4.0, 2.0, 1.5 m; 12.0 m ³	235N85°	100N82°, 05N80°, 90N85°	wedge sliding, toppling	03F1	--
4	1.5, 5.0, 1.0 m; 7.5 m ³	255N88°	240N35°, 20N85°, 290N15°	planar sliding	04F1	04I1
5	2.0, 2.0, 1.5 m; 6.0 m ³	275N85°	100N80°, 20N75°, 230N75°	wedge sliding, toppling	05F1, 05F2, 05F3	--
16	2.0, 2.0, 1.0 m; 4.0 m ³	330N80°	05N70°, 350N80°, 205N78°	wedge sliding	16F1, 16F2	--
19	5.0, 2.0, 1.5 m; 15.0 m ³	250N87°	60N88°, 240N85°, 05N48°	toppling	19F1, 19F2	19I1

Table 1: Geostructural characteristics of the monitored tuff blocks (* orientation is expressed with dip direction-dip values).

sensor	parameter	sensitivity	operational range	accuracy	update interval
crackmeter	displacement	0.01 mm	-50.0 to 50.0 mm	+/- 0.05 % (-30 to 100 °C)	30 minutes
tiltmeter	angle	0.01 °	- 10.0 to 10.0 °	+/- 1 % (-20 to 80 °C)	30 minutes
thermistor	temperature	0.1 °C	-30.0 to 70 °C	+/- 2.5 °C (-20 to 70 °C)	30 minutes

Table 2: Technical specifications of the sensors in CC-MoSys cabled with the acquisition unit - model eDAS 16ch (see at <https://www.boviar.com/public/pdf/636489456594961401eDAS%2016-32%20CH.pdf>).

- Eliminato: ,
- Eliminato: ,
- Eliminato: ,
- Eliminato: ,
- Eliminato: ,
- Eliminato: ,
- Eliminato: ,
- Eliminato: ,
- Eliminato: ,

sensor	parameter	data resolution and unit	range	accuracy	sampling rate
anemometer	wind speed	0.5 m/s (or 0.97 knots)	0-89 m/s	+/- 1-m/s or 5%	3 seconds
anemometer	wind direction	1°	0-360°	+/- 3°	3 seconds
barometer	barometric pressure	0.1 hPa	540 - 1100 hPa	+/- 1 hPa	1 minute
hygrometer	relative humidity	1 %	1-100%	+/- 2%	1 minute
rain gauge	rainfall amount	0.25 mm	0 – 999.8 mm	+/- 4%	20-24 seconds
rain gauge	rainfall rate	0.1 mm/h	0-2438 mm/h	+/- 5%	20-24 seconds
thermometer	air temperature	0.1°C	- 40 to 65°C	+/- 0.3°C	10-12 seconds

Table 3: Technical specifications of the sensors of the used meteorological station - model DAVIS Vantage Pro2 wireless (see at <https://www.davisinstruments.com/support/vantage-pro2-wireless-stations/>) in DeMSys.

Eliminato: ,

Eliminato: ,

Eliminato: ,

Eliminato: ,

Eliminato: ,

Eliminato: ,0

Eliminato: ,

parameter code	short name	parameter name	unit	sensor type	tuff block	description of measured parameter
03F1	DIS	displacement	[mm]	crackmeter	03	displacement measured across crack F1 bounding tuff block nb. 03 during last 30 minutes
04F1	DIS	displacement	[mm]	crackmeter	04	displacement measured across crack F1 bounding tuff block nb. 04 during last 30 minutes
05F1	DIS	displacement	[mm]	crackmeter	05	displacement measured across crack F1 bounding tuff block nb. 05 during last 30 minutes
05F2	DIS	displacement	[mm]	crackmeter	05	displacement measured across crack F2 bounding tuff block nb. 05 during last 30 minutes
05F3	DIS	displacement	[mm]	crackmeter	05	displacement measured across crack F3 bounding tuff block nb. 05 during last 30 minutes
16F1	DIS	displacement	[mm]	crackmeter	16	displacement measured across crack F1 bounding tuff block nb. 16 during last 30 minutes
16F2	DIS	displacement	[mm]	crackmeter	16	displacement measured across crack F2 bounding tuff block nb. 16 during last 30 minutes
19F1	DIS	displacement	[mm]	crackmeter	19	displacement measured across crack F1 bounding tuff block nb. 19 during last 30 minutes
19F2	DIS	displacement	[mm]	crackmeter	19	displacement measured across crack F2 bounding tuff block nb. 19 during last 30 minutes
04I2-X	Angle	angle	[°]	tiltmeter	04	variation of horizontal angle measured in tuff block nb. 04 during last 30 minutes
04I2-Y	Angle	angle	[°]	tiltmeter	04	variation of vertical angle measured in tuff block nb. 04 during last 30 minutes
04I2-T	T tech	temperature	[°C]	thermistor	04	external temperature close to sensor I2 (average on 30 min)
19I3-X	Angle	angle	[°]	tiltmeter	19	variation of horizontal angle measured in tuff block nb. 19 during last 30 minutes
19I3-Y	Angle	angle	[°]	tiltmeter	19	variation of vertical angle measured in tuff block nb. 19 during last 30 minutes
19I3-T	T tech	temperature	[°C]	thermistor	19	external temperature close to sensor 19 (average on 30 min)
Temp-1	TTT	temperature	[°C]	thermistor	--	external air temperature near acquisition unit (average on 30 min)

Table 4: List of measured tuff deformation parameters in CC-MoSys.

parameter code	short name	parameter name	unit	sensor type	description of measured parameter
Temp	TTT	air temperature	[°C]	thermometer	air temperature (average on 10 min)
Hum	RH	relative humidity	[%]	hygrometer	relative humidity (average on 10 min)
Wi-spe	ff	wind speed	[m/s]	anemometer	wind speed (average on last 10 min)
Hi-Wi-spe	ff gust	gust speed	[m/s]	anemometer	maximum gust speed during last 10 minutes
Wi-dir	Wind dir descr	wind direction	[°]	anemometer	prevalent direction of wind during last 10 minutes
Hi-Wi-dir	Wind dir descr	gust direction	[°]	anemometer	direction of maximum gust during last 10 minutes
Bar	PPPP	barometric pressure	[hPa]	barometer	site atmospheric pressure (average on 10 min) adjusted to sea level atmospheric pressure
Rain	Precip	rainfall amount	[mm]	pluviometer	rainfall amount (cumulated on 10 minutes)
Rain-rate	Precip	rainfall rate	[mm/h]	pluviometer	maximum instantaneous rainfall rate during last 10 minutes

Table 5: List of measured meteorological parameters in DeMSys.

	Minimum	1st Quartile	Median	Mean	3rd Quartile	Maximum	Standard deviation	Num. of measures
F03F1	-0.53	-0.01	0.13	0.201	0.34	1	0.302	53618
F04F1	-2.92	-1.21	-0.79	-0.68	-0.27	2.64	0.783	29551
F05F1	-0.85	-0.29	-0.04	-0.001	0.22	1	0.345	55058
F05F2	-2.31	-0.84	-0.32	-0.316	0.13	2	0.758	55058
F05F3	-0.98	-0.44	-0.1	-0.112	0.14	1	0.382	55058
F16F1	-0.29	0.09	0.15	0.16	0.24	0.43	0.091	55058
F16F2	-0.28	-0.08	0	0.02	0.13	0.2	0.113	1339
F19F1	-0.79	-0.29	-0.17	-0.142	-0.02	0.39	0.182	55058
F19F2	-0.84	-0.28	-0.17	-0.151	-0.04	0.39	0.177	55058
F04I2-X	-0.62	-0.28	-0.19	-0.179	-0.04	0.08	0.137	55058
F04I2-Y	-0.26	0.2	0.27	0.234	0.31	0.53	0.129	55058
F19I3-X	-0.53	-0.25	-0.2	-0.205	-0.15	0.06	0.082	55058
F19I3-Y	-0.33	0.03	0.1	0.112	0.21	0.41	0.119	55058
F04I2-T	-0.01	13.65	19.04	19.18	24.23	42.79	6.844	55058
F19I3-T	-1.36	12.5	17.72	17.84	22.93	38.58	6.584	55058
Temp-1	0.86	13.6	18.6	18.54	23.5	43.86	6.012	55058
Temp *	-2.8	12.6	16.5	17.27	22.27	34.20	5.877	79473

Table 6: Descriptive statistics of tuff deformation data and temperatures measured by CC-MoSys. * "Temp" data, measured by DeMSyS from 1 Jan. 2013 to 31 Dec. 2018, have been aggregated to 30 minutes for comparison with CC-MoSys temperature data.

	Minimum	1st Quartile	Median	Mean	3rd Quartile	Maximum	Standard deviation	num. of measures
Temp	-2.9	12.6	16.5	17.2	22.1	33.8	5.8	238422
Hum	23.0	64.0	75.0	72.8	83.0	98.0	13.4	238418
Bar	982.7	1011.9	1015.6	1015.8	1019.7	1036.8	6.9	238793
Rain	0.0	0.0	0.0	0.0	0.0	17.6	0.2	238500
Rain_rate	0.0	0.0	0.0	0.3	0.0	292.6	4.3	238500
Wi_speed	0.0	1.7	3.5	4.4	6.1	40.9	3.5	200945
HiWi_spe	0.0	4.3	7.8	8.7	11.3	61.7	6.0	200945

Table 7: Descriptive statistics of temperature and meteorological data measures by DeMSyS.

	2014	2015	2016	2017	2018
Avg. Wind Speed	2.3	2.2	2.5	2.1	2.3
Dominant direction	SSE	SSE	SSE	SSE	SSE
Maximun gust	23.7	27.8	31.8	22.8	28.2

Table 8: Annual average values of wind measures during 2014-2018.

	JAN	FEB	MAR	APR	MAY	JUN	JUL	AUG	SEP	OCT	NOV	DEC
Avg. Wind Speed	2.8	2.8	2.5	2.2	2.0	1.9	1.7	1.5	2.0	2.2	2.5	2.1
Dominant direction	WSW	SSE	SSE, WSW	WSW, SSE	NE, SE	W, SE, NE	SW, NE	SW, NE	WSW, SSE	WSW, NNE	WSW, NE, SE	SSE
Maximun gust	25.5	31.8	27.8	17.5	15.7	21.5	19.7	16.1	18.8	28.2	27.3	22.4

Table 9: Monthly average values of wind measures during 2014-2018.

Eliminato: ,

Eliminato: ,

Eliminato: ,

Eliminato: ,

Eliminato: ,

Eliminato: ,

Eliminato: ,

Eliminato: ,

Eliminato: ,

Eliminato: ,

	Min.	1st. Qu.	Median	Mean	3rd Qu.	Max	St. dev.	Var.	NA's
F03F1r	-0.17	-0.01	0.14	0.20	0.34	1.23	0.30	0.09	657
F04F1r	-2.10	-1.13	-0.79	-0.68	-0.36	1.42	0.73	0.54	1150
F05F1r	-0.51	-0.29	-0.03	0.00	0.21	1.11	0.34	0.12	628
F05F2r	-1.83	-0.84	-0.32	-0.31	0.13	1.83	0.76	0.58	628
F05F3r	-0.69	-0.45	-0.10	-0.11	0.15	1.07	0.38	0.15	628
F16F1r	-0.03	0.09	0.15	0.16	0.24	0.40	0.09	0.01	628
F16F2r	-0.13	-0.06	0.06	0.03	0.13	0.17	0.11	0.01	1739
F19F1r	-0.46	-0.29	-0.17	-0.14	-0.02	0.37	0.18	0.03	628
F19F2r	-0.49	-0.29	-0.17	-0.15	-0.03	0.35	0.18	0.03	628
F04I2_Xr	-0.57	-0.28	-0.18	-0.18	-0.04	0.03	0.13	0.02	628
F04I2_Yr	-0.11	0.21	0.27	0.24	0.31	0.43	0.13	0.02	628
F19I3_Xr	-0.48	-0.25	-0.20	-0.21	-0.15	-0.01	0.08	0.01	628
F19I3_Yr	-0.14	0.03	0.10	0.11	0.22	0.34	0.12	0.01	628
F04I2_T	2.16	13.77	19.34	19.20	24.71	30.79	6.07	36.83	628
F19I3_T	1.06	12.66	17.73	17.86	23.39	29.51	5.95	35.37	628
Temp_1	2.41	13.63	18.35	18.56	23.60	30.36	5.65	31.95	628
Temp	-0.31	12.53	16.70	17.26	22.20	30.10	5.71	32.60	174
Hum	36.50	65.02	75.20	72.79	81.37	96.11	11.26	126.73	174
Bar	987.60	1011.80	1015.40	1015.60	1019.40	1035.10	6.75	45.54	171
Wi_speed	0.00	2.38	3.34	4.02	5.27	23.03	2.75	7.54	171
Wi-P_norm	0.00	0.43	1.65	2.79	3.21	56.25	4.83	23.30	171
Rain	0.00	0.00	0.00	1.81	0.40	79.00	5.24	27.50	171
Rain_rate	0.00	0.00	0.00	10.07	0.00	240.00	30.66	939.94	172
HiWi_spe	5.20	12.20	16.50	18.27	22.50	67.60	8.29	68.73	171
HiWi_P_norm	0.00	42.87	78.27	112.87	118.76	1400.61	135.93	18476.16	193

Table 10 Descriptive statistics of daily tuff deformation and meteorological data.

	F04I2-T	F19I3-T	Temp-1	Temp	Hum	Bar	Wi-speed	Wi-P_norm	Rain	Rain-rate	HiWi-i-spe	HiWi-P_norm
F03F1	0.36	0.37	0.40	0.40	-0.11	0.04	-0.20	-0.04	-0.09	-0.04	-0.15	-0.03
F04F1	-0.57	-0.57	-0.58	-0.58	-0.08	-0.05	0.20	0.00	0.13	0.03	0.23	0.04
F05F1	-0.39	-0.38	-0.37	-0.34	-0.23	0.37	-0.04	-0.14	-0.06	-0.06	-0.08	-0.15
F05F2	0.38	0.38	0.40	0.41	-0.08	0.11	-0.21	-0.07	-0.05	0.00	-0.19	-0.07
F05F3	-0.46	-0.45	-0.44	-0.42	-0.17	0.33	0.00	-0.11	-0.01	-0.03	-0.03	-0.12
F16F1	-0.43	-0.42	-0.39	-0.39	-0.19	0.17	0.04	-0.07	-0.01	-0.04	0.09	-0.04
F16F2	0.31	0.36	0.31	0.40	-0.23	0.36	-0.20	-0.56	-0.25	-0.09	-0.42	-0.60
F19F1	0.13	0.14	0.17	0.17	-0.14	0.15	-0.15	-0.05	-0.07	-0.04	-0.17	-0.07
F19F2	0.15	0.16	0.18	0.19	-0.16	0.18	-0.16	-0.06	-0.11	-0.07	-0.20	-0.09
F04I2-X	0.07	0.08	0.07	0.09	0.01	0.13	0.05	0.04	-0.01	0.02	-0.10	-0.03
F04I2-Y	0.42	0.43	0.43	0.41	-0.01	0.05	-0.19	-0.04	-0.09	-0.02	-0.16	-0.04
F19I3-X	0.68	0.69	0.69	0.73	-0.04	0.08	-0.22	-0.05	-0.13	-0.05	-0.30	-0.10
F19I3-Y	0.62	0.62	0.64	0.65	0.02	-0.01	-0.27	-0.05	-0.11	-0.03	-0.22	-0.05

Table 11. Correlation matrix of tuff deformation and meteorological data; the correlations greater than |0.5| or |0.33| are highlighted.

	Temp	Temp-7	Temp-14	Temp-21	Temp-28	Temp-35	Temp-42	Temp-49	Temp-56	Temp-63
F03F1	0.40	0.43	0.43	0.44	0.44	0.42	0.40	0.39	0.36	0.33
F04F1	0.75	0.71	0.70	0.69	0.67	0.64	0.60	0.55	0.51	0.47
F05F1	-0.34	-0.25	-0.18	-0.11	-0.04	0.01	0.07	0.15	0.21	0.25
F05F2	0.41	0.47	0.50	0.54	0.57	0.58	0.59	0.60	0.60	0.59
F05F3	-0.42	-0.33	-0.25	-0.18	-0.11	-0.05	0.01	0.09	0.16	0.22
F16F1	-0.39	-0.30	-0.27	-0.25	-0.22	-0.20	-0.18	-0.14	-0.11	-0.08
F16F2	0.40	0.72	0.63	0.83	0.80	0.91	0.35	0.50	0.96	0.70
F19F1	0.17	0.22	0.24	0.27	0.29	0.28	0.28	0.30	0.30	0.30
F19F2	0.19	0.25	0.26	0.28	0.30	0.29	0.29	0.30	0.31	0.30
F04I2-X	0.09	0.09	0.09	0.11	0.12	0.12	0.13	0.14	0.17	0.19
F04I2-Y	0.41	0.40	0.42	0.43	0.43	0.44	0.43	0.41	0.39	0.35
F19I3-X	0.73	0.68	0.65	0.66	0.65	0.63	0.59	0.56	0.54	0.49
F19I3-Y	0.66	0.61	0.61	0.61	0.59	0.58	0.56	0.51	0.48	0.42

Table 12 Correlation matrix between tuff deformation data and air temperature for different time lags (expressed in number of days).

	DF	SumSQ	MeanSQ	F
Temp	1	3.9286	3.9286	1463.13***
Wi-P_norm	1	0.0174	0.174	6.4817*
Residuals	861	2.3118	0.0027	
Multiple R-squared	0.6306	Adjusted R-squared	0.6297	734.8***

Table 13 Analysis of variance (ANOVA). p values: 0 **** 0.001 *** 0.01 ** 0.05 *, 0.1 ‘ ‘ 1

	Estimate	Standard error
(Constant)	-0.3881***	0.0053
Temp	0.0114***	0.0003
Wi-P_norm	0.0008*	0.0003

Table 14 Parameters estimation in the regression model. p values: 0 '****' 0.001 '***' 0.01 '**' 0.05 ',' 0.1 ' ' 1

Crackmeters data usually show max-min values between 0.48 and 1.98, with the two relevant exceptions of 04F1 and 05F2, respectively with ranges of 5.56 and 4.31. Tiltmeter data show a lower variability as max-min value intervals range between 0.38° and 0.78° (Tab. 6). More in detail, the data distribution analysis show some different trends for the data of the different sensors. Data of 03F1 sensor shows an asymmetric distribution with modal value around -1 mm and a higher coda values up to 3 mm. The 04F data show a uniform distribution between -0.1 and 3 mm (Figure 6). The block 05 have a very large range of variability, with a well-defined main value only for F2 sensor (Figure 7a). F1 and F3 sensors show a very high correlation (Figure 7b), suggesting a uniform behavior of the crack in the section covered by them. All the three sensors recorded large distribution of both positive and negative values, indicating a strong dynamic behavior. On the other hand, the 16F1 sensor shows a mono-modal distribution well centered around 0.2 mm (with an oscillation of ± 0.1 mm). The stability of the values across the time could highlight a stable dynamic position reached from the block. The 16F2 sensor worked for a very short time compared with the others. However, the data distribution shows two main values 0.0 and 0.2 mm (Figure 8). The F1 and F2 sensors, located on the tuff block 19, show a quite identical behavior. (Figure 9). The similarity in recorded values suggest a uniform behavior of the lateral crack.

The tiltmeter data has been reported in Fig. 10 and Fig. 11 for 04I2 and 19I3 sensors, respectively. From both plots, the X (horizontal) components recorded prevalently negative variation, while the Y (vertical) components positive one over the entire time interval of the datasets. Those evidences show how the rock block moves and turns during the time and some preferred position (the higher histogram bar). For the 19I3 sensor, a small range of variability has been observed, about 0.4 degree, and a tiny distribution around 0.3-0.4 degree for the Y component. A similar behavior is shows by component X where the equilibrium position is characterized by angle value between -0.20 and -0.30.

The temperature values distribution of the three thermistors appear coherent and well centered in a range between +13 and +25 Celsius degree (Fig. 12). If we compared those temperature data with air temperature measurements provided by the weather station installed in the vicinity (Fig. 13), time series show as usual for this climatic region a clear seasonal variation patterns and annual cyclicity with some little differences. In detail, near-rock-surface air temperatures show minimum values from 2.8 to 3.7 °C higher and maximum values from 4.4 to 9.7 °C higher than air temperatures (Tab. 6). Amplified near-rock-surface air temperatures could result in consequent increases in crack deformation forces.

If we consider the time distribution of measured data, both crackmeters and tiltmeters show several evidences of tuff deformation through time. The time series of the measured crack aperture and plane rotation data reveal a deformation pattern characterized by both diurnal and seasonal cyclical deformation (Figs. 14 and 15). Data plot referred to a single year of measurements show a similar repetitive pattern with lower values in late winter and higher values in late summer (Fig. 16) showing significant correlation with seasonal temperature trends. Some trends of cumulative multi-annual changes, based on about four consecutive years of data (December 2014 to October 2018), can be also recognized. Crackmeters show from +0.1 to +1.2 mm cumulative deformation (Fig. 14), while tiltmeters show from 0.1° to 0.4° cumulative angle variation (Fig. 15).