

Title page:

Supplementary Information

**A national dataset of 30-m annual urban extent dynamics (1985-2015) in the conterminous
United States**

Xuecao Li¹, Yuyu Zhou^{*1}, Zhengyuan, Zhu², Wenting, Cao¹

¹Department of Geological and Atmospheric Sciences, Iowa State University, Ames, IA, 50011, USA

²Department of Statistics, Iowa State University, Ames, IA 50011, USA

*Corresponding author:

Department of Geological and Atmospheric Sciences

Iowa State University

Ames, Iowa, 50011, USA

Phone: (515) 294-2842

Fax: (515) 294-6049

yuyuzhou@iastate.edu

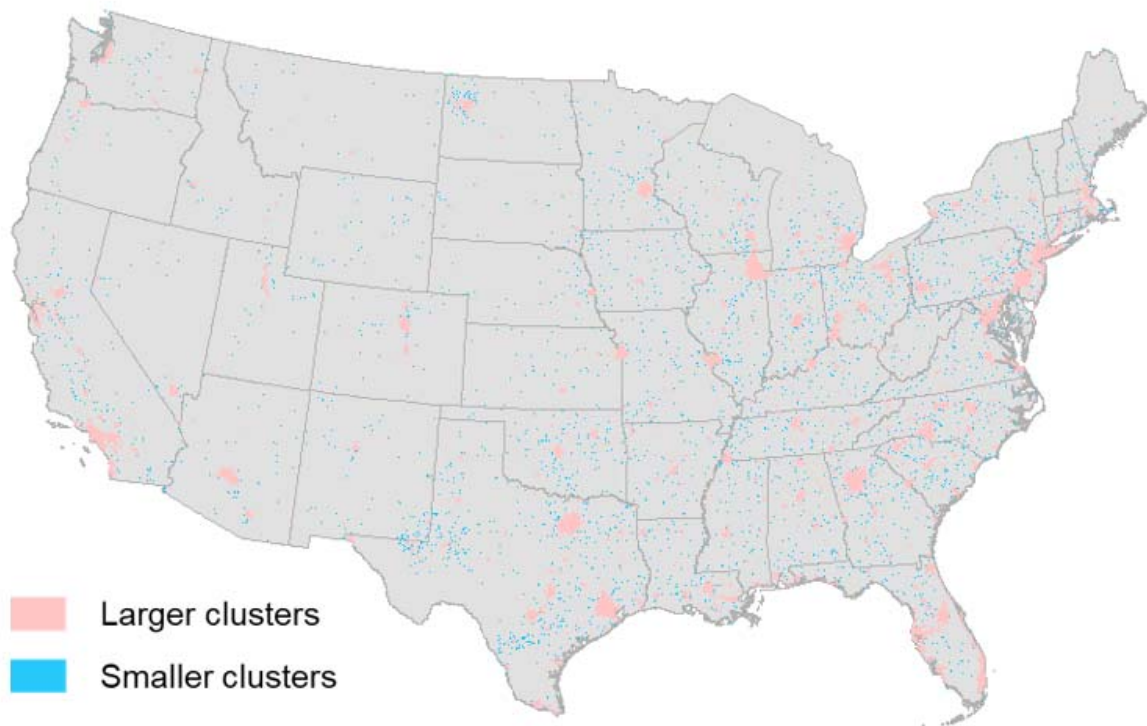


Fig. S1. An illustration of derived potential urban clusters with different sizes. Urban clusters were derived from the VIIRS data in 2015.

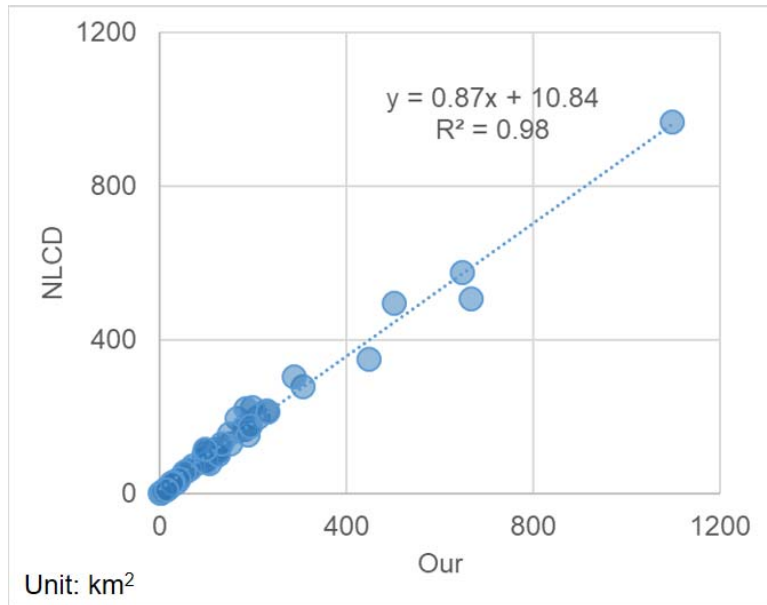


Fig. S2. Comparison of urban area growth between our result and NLCD during period 2001-2006 in the US states.

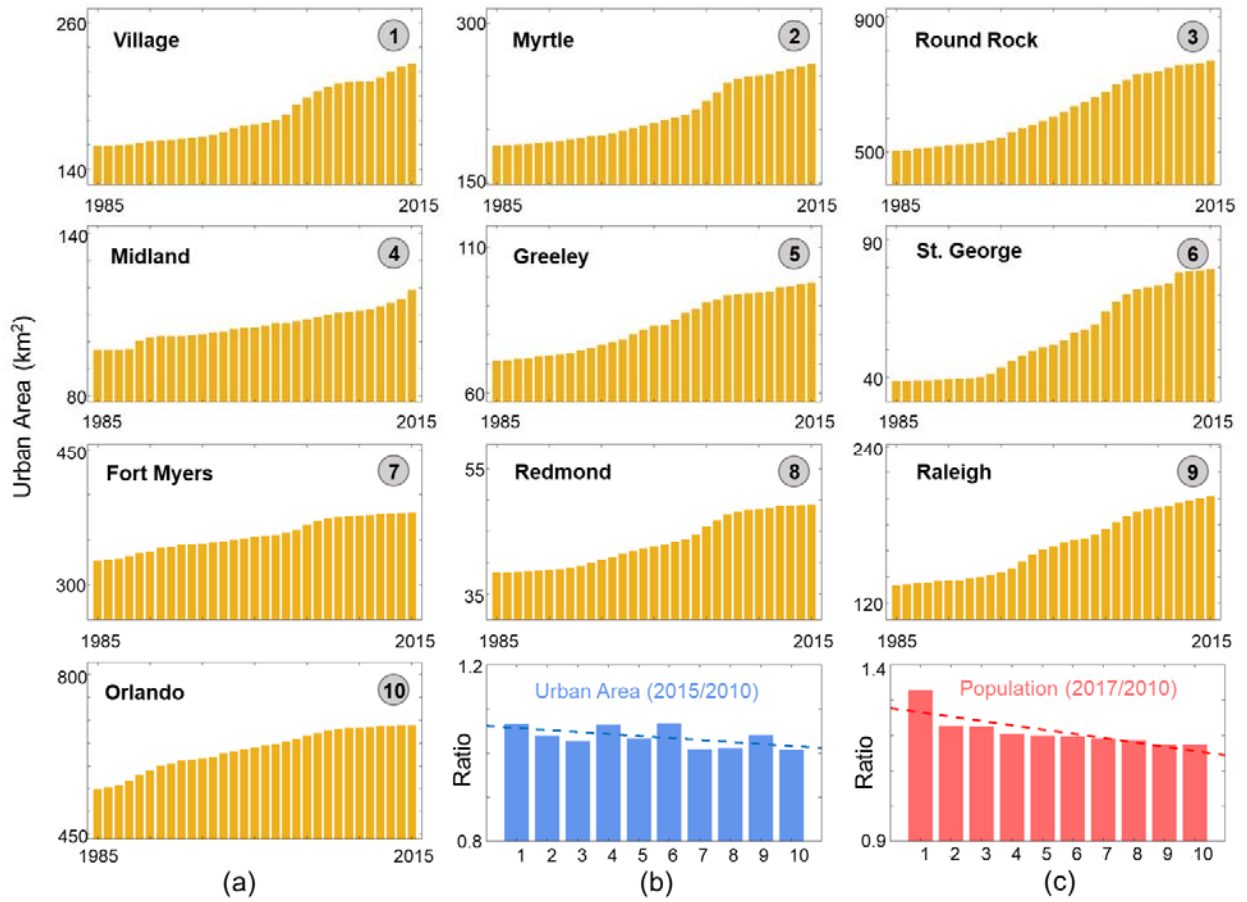


Fig. S3. Annual growth of urban areas in the top 10 cities over the past three decades (a) and the ratio of urban areas in 2015 (b) and population in 2017 (c) relative to the base year of 2010.

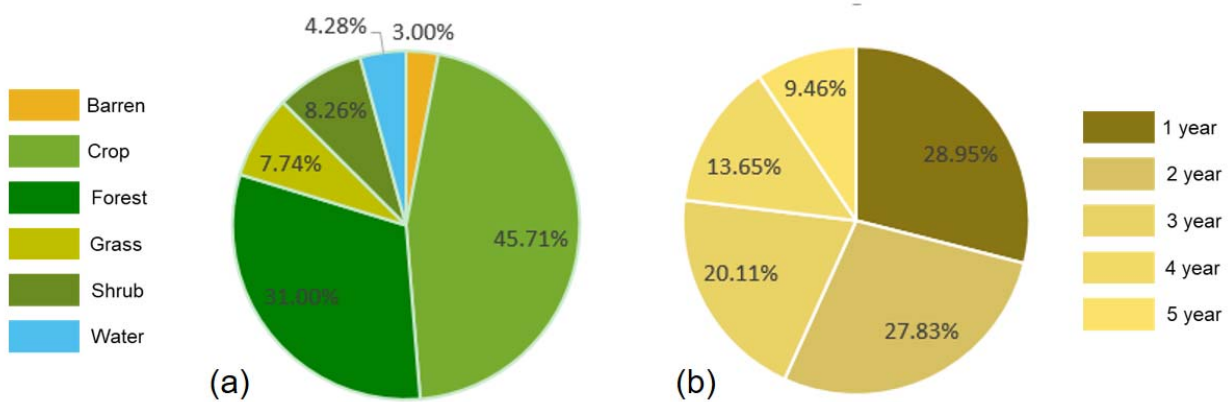


Fig. S4. Conversion sources of urbanized areas at the national level (a) and the duration of changes (b).

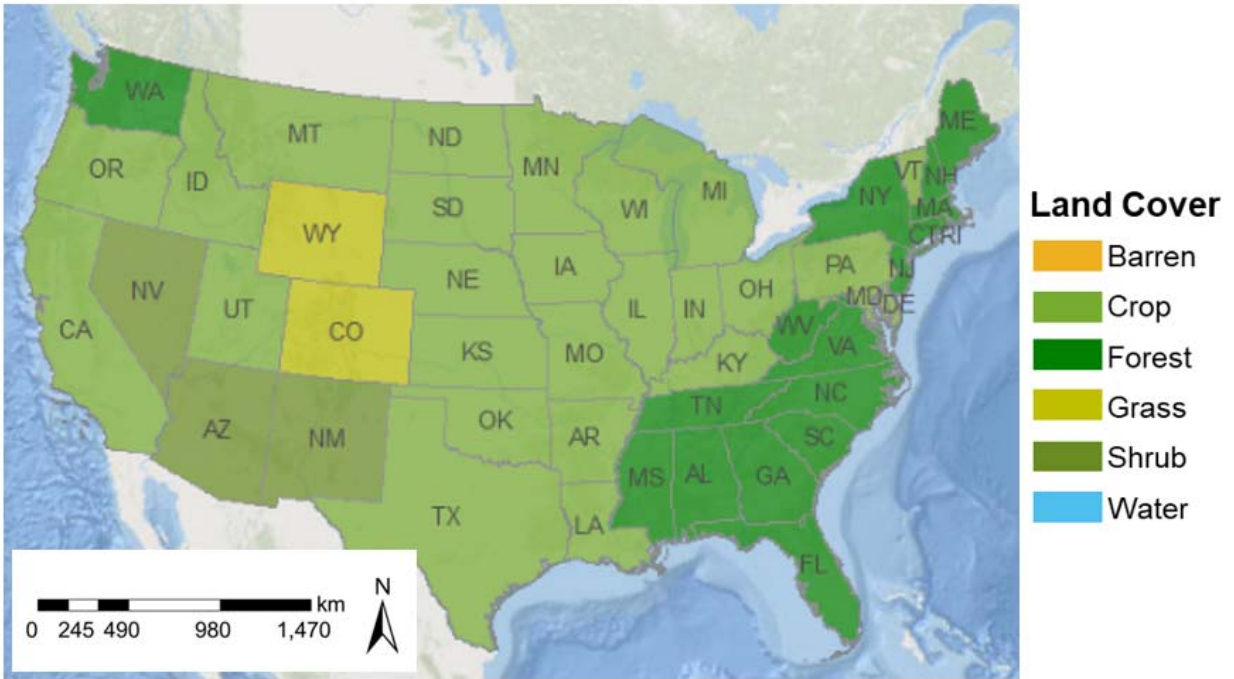


Fig. S5. The primary conversion sources of urbanized areas in the US states during 1992-2015.

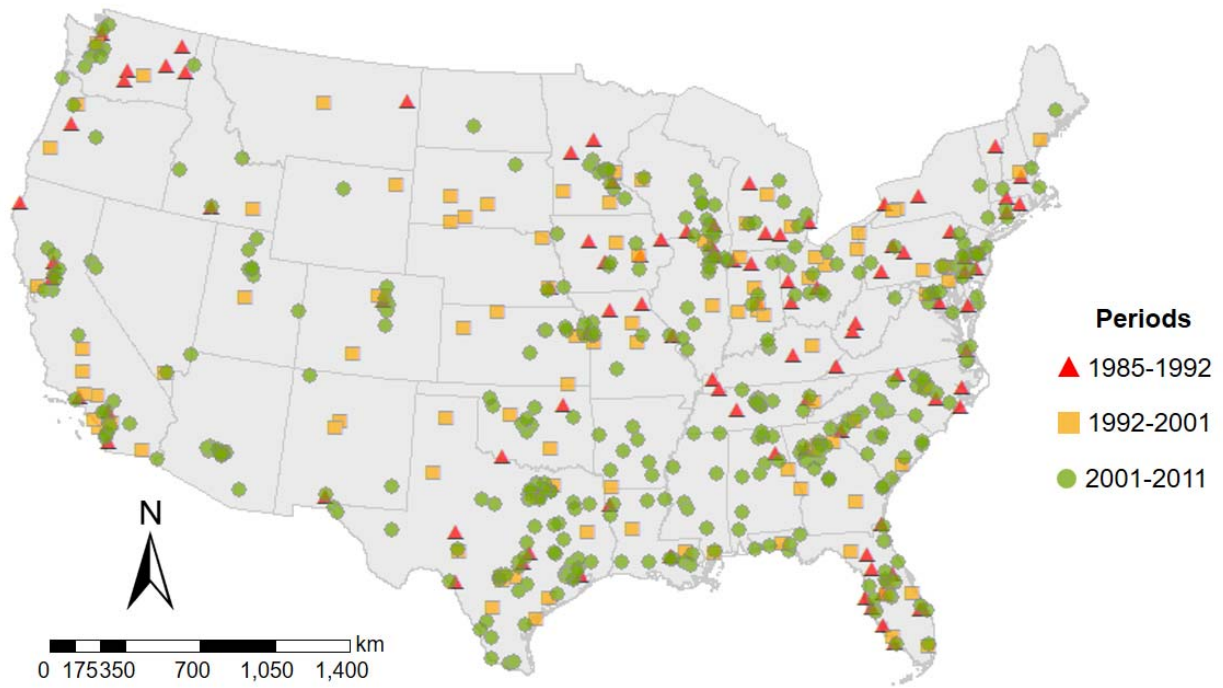


Fig. S6. Samples for validating mapped turning years in the periods of B1 (1985-1992), B2 (1992-2001), and B3 (2001-2011).

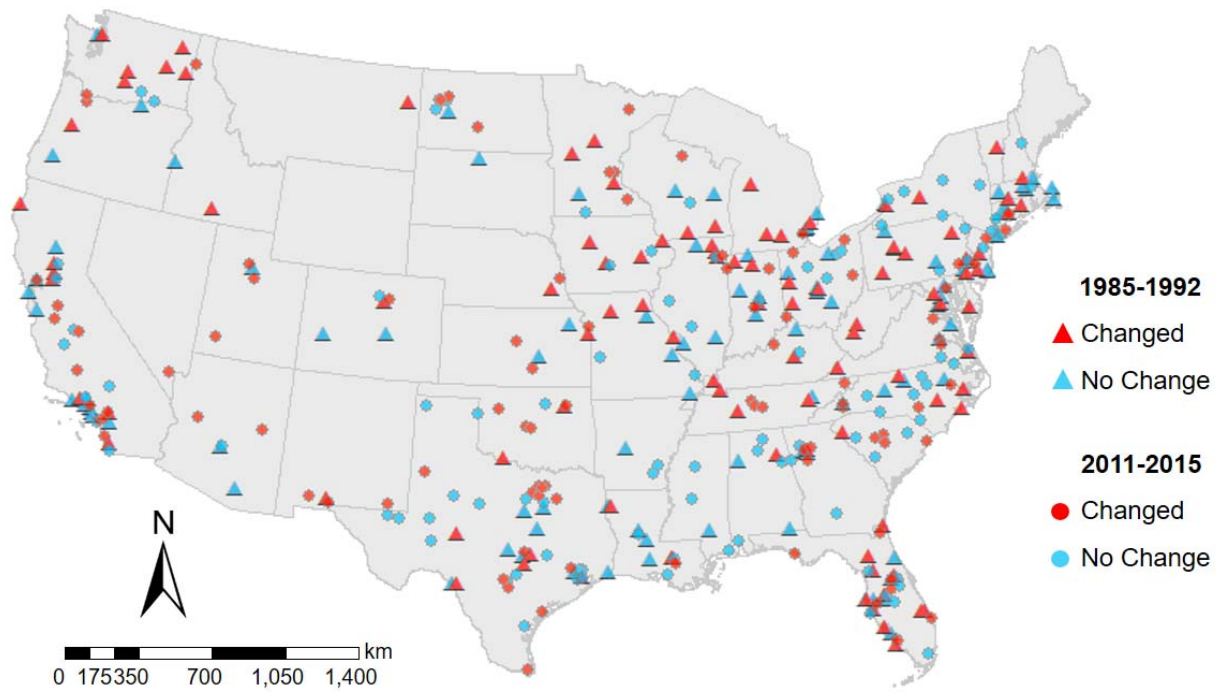


Fig. S7. Samples for validating urbanized areas in the periods of B1 (1985-1992) and F1 (2011-2015).