

The review is cited underlined; answers of authors are formatted with indents:

We thank Mauri Pelto and Andreas Bauder for their important comments and suggestions, which helped us to improve this manuscript. We fully agree with the comments and we considered them point by point.

Regarding the 1919 velocity on HEF: The velocity increased to the maximum within a few years and decreased very quickly until 1922 (m/a 1915-1922: 28, 38, 50, 80, 125max (1919), 70, 43, 24) resulting in an advance of the glacier tongue by about 60 m (Span et al. 1997). We will add this information in more detail.

We consider the direct velocity measurements plausible. They were performed, despite of WWI, by the same team of observers twice a year. Although measurements in the firn area could not be done during war, the measurements in the ablation area have been continued. The measurements include deep drilling holes as well as stone lines (see Tab. 6 from Hess, 1924). The observers (Hess, 1924) did use the same network of fixed points as before and after the acceleration. They critically reflected the velocity increase and found additional points showing that the velocity increase is plausible.

In 1914, Kesselwandfener lost connection to Hintereisferner, but advanced again afterwards. The terminus position was mapped in 1917, 1918, 1919 and 1920. The velocity increase, which was also found remarkably by Hess, triggered a cartographic survey of the glacier surface with 6 stereo pairs, using the fixed point network. Hess (1924) found indications for increasing glacier mass potentially triggering the velocity increases in 1919. The lowering of the surface elevation at the terminus coincides with the decreasing velocities.

With respect to the state of science at the time of measurements, the time series can be considered amongst the most reliable and best documented world wide. We will add additional data and information from Hess (1924) to the text.

Tab. 6 Geschwindigkeiten in Meter/Jahr.

	Höhe	1913/14	1914/15	1915/16	1916/17	1917/18	1918/19	1919/20	1920/21	1921/22
40-m-Loch	2408	11,5	23,0	18,3	25,7	45,8	—	—	—	—
Untere ziegelrote Linie, Punkt 7 .	2438	20,0	29,0	25,7	29,9	51,3	—	—	—	—
Grüne Linie, Punkt 8	2527	28,9	44,2	41,4	55,5	77,8	109,1	68,8	49,4	13,5
Untere rote Linie, Punkt 9	2564	33,9	90,2	64,1	84,3	126,6	72,7	44,1	21,8	—
153-m-Loch	2557	30,8	85,6	63,4	83,8	124,8	60,1	36,5	23,2	—
214-m-Loch	2570	29,4	90,4	65,1	82,2	121,5	64,0	44,0	22,3	—
Mittlere blaue Linie, Punkt 8 . .	2600	33,1	103,8	63,4	—	—	—	48,2	—	—
Obere ziegelrote Linie, Punkt 10 .	2635	35,0	← 189,5	→	296,2	→	—	—	—	—
Blaugrüne Linie, Punkt 9	2689	37,8	109,0	80,8	94,7	123,0	91,1	46,5	14,2	—
Bohrloch von 1910	2685	—	—	—	75,1	97,5	112,0	70,2	46,1	13,8
Obere blaue Linie, Punkt 9	2720	←	240,3	→	302,2	→	—	—	—	—
Stange β	2747	37,1	← 187,8	→	81,5	118,6	77,9	—	—	—
Dreikant II	2811	44,6	←	379,3	→	—	—	57,5	—	—

Hess, H.: Der Hintereisferner 1893 bis 1922. Ein Beitrag zur Lösung des Problems der Gletscherbewegung. Zeitschrift für Gletscherkunde, 13, 145-2013, 1924.

Span, N., Kuhn, M., and Schneider, H.: 100 years of ice dynamics of Hintereisferner, Central Alps, Austria, 1884-1994. Annals of Glaciology, 24, 297-302. doi:10.1017/S0260305500012349, 1997.

Referee #1: Mauri Pelto

Stocker-Waldhuber et al (2019) provide the context for a rare long term glacier velocity record in the Ötztal Alps. Because mass balance records exist on some of the glaciers for significant periods it is evident that velocity change is useful for identifying responses to climate caused mass balance change. This type of record is an important data set to report. The specific comments below are focused primarily on clarity. I encourage more scrutiny of the stone line velocity error assessment on HEF. Also the 1919 velocity on HEF is that plausible?

2-6: "...and estimates of the state of regional glacier inventories are needed, glacier flow velocities which can be derived from remote sensing data are an important parameter that provides essential information on dynamic response, which is part of the mass balance evolution of a glacier."

Done, as suggested

2-21: Replace "but" with "that"

Done, as suggested

2-31: provide a descriptive sentence on KWF similar to that for GPF, the main glacier rests on a wide but hilly plateau and the tongue descends through a narrow valley.

Done, as suggested

3-10: provide a descriptive sentence on TSF similar to that for GPF.

We added the descriptive information on KWF and TSF.

3-30: What is the size range of the stones?

The stones are flat with a diameter ranging from 0.15 m to a maximum of 0.3 m. We added this information.

4-11:...calculated to the lower end of the stake, its base point."

Done, as suggested

4-24: define better what is "lower cm-level" 5-10 cm?

We added "(0.05 to 0.1 m)"

5-17: The error assessment on HEF should be better stated. That 5% is used is okay, what is this in terms of cm per year for the most rapid areas of motion? I do wonder if the 5% is realistic for stone slippage, or too large at areas of rapid motion, slippage should not be that different based on velocity alone for example stone slippage in 1980 at 5 m per year is much different than for the 1920's maximum of 120 m, yet the stone slippage mechanism should have changed little.

The slipping motion mainly depends on the ablation rate and the surface slope. We added this information.

5-24: Is this maximum velocity for a point or a line?

This is given for a line, added.

5-25: The increase in velocity implies a major mass balance change, based on other observed and reported changes in this record, and would suggest more than a minor advance would occur. Here or in the discussion could you identify why the terminus change or mass balance changes was not as significant as the velocity change would imply. What was the velocity in 1918 and 1920? If the change to 1919 is really large is that acceleration plausible or the ensuing deceleration?

For point measurements and the mean value for line 3 (Fig. 3). (cf. comments above and table 6 by Hess (1924)). We added this information in the results and discussion sections

6-8: The two following sentences conflate actual velocity and temporal velocity change. Be consistent in reporting the difference in the second sentence. "The surface velocity of the glacier increased, but with decreasing magnitudes from the terminus (L10) to the uppermost stake (L1) within the accumulation area. This means an increased velocity gradient along the glacier, with maximum of about 90 m per year at the terminus declining to a few metres per year at the highest elevations."

Done, as suggested

6-14: Worth commenting on the velocity response in Figure 4 where terminus velocity response was large simply to declining positive mass balance after 1978, and a significant change in velocity near the ELA at L6 did not occur until negative mass balances occurred around 1985.

We added these comments on the different responses.

6-16: Reference for the higher ELA, should provide a quantity for this shift as well.

We gave values on the rising ELA on KWF (Fischer et al. 2014; Strasser et al. 2018)

Fischer, A., Markl, G., Schneider, H., Abermann, J., and Kuhn, M.: Glacier mass balances and elevation zones of Kesselwandferner, Ötztal Alps, Austria, 1952/1953 to 2012/2013. PANGAEA, doi:10.1594/PANGAEA.818757, 2014.

Strasser, U., Marke, T., Braun, L., Escher-Vetter, H., Juen, I., Kuhn, M., Maussion, F., Mayer, C., Nicholson, L., Niedertscheider, K., Sailer, R., Stötter, J., Weber, M., and Kaser, G.: The

Rofental: a high Alpine research basin (1890–3770 m a.s.l.) in the Ötztal Alps (Austria) with over 150 years of hydrometeorological and glaciological observations, Earth Syst. Sci. Data, 10, 151-171, <https://doi.org/10.5194/essd-10-151-2018>, 2018.

6-21: There is an insignificant velocity decline through time on TSF (54-56) which is contrast to the other glaciers, why?

This is related to the specific topographic conditions of TSF. We added this information to the discussion.

6-26: "...with a larger decline in velocity at the upper profile (71-75) than at the terminus."

We wrote "...with a larger decline in velocity at the terminus than at the upper cross-profile (71-75)."

7-22: To identify state is it not the deviations in velocity that identify changes in state, simply the actual velocity measurements at a moment in time would not be useful in determining the state of an unknown glacier "This means that changes in observed velocity, especially at ablation stakes....."

We changed to "... changes in observed velocity..."

7-32: The conclusion of peak in velocity in the summer deserves closer definition and referencing. Most alpine glaciers have a velocity peak sometime early-mid summer as the drainage network matures, and a decline late in summer. The extent to which any of these four differ from this is important to note. Given the annual data for HEF and KWF is may only be GPF and TSF where such comment can be made.

We added details on the summer peak at GPF and TSF and added the following references: Iken, 1977 or Gudmundsson, 2002 (c.f. comment below by A. Bauder)

8-5: The rapid response in terms of velocity is documented in studies that look at terminus response time of glaciers which lag both velocity and mass balance. There is useful response time data for the Alps that can be cited here ie. Huss (2012). This would enhance the value of the statement and the methods applied here.

Thank you, we added this citation.

8-5: The following statement is incomplete and not accurate, please modify. In fact ELA is sometime above the summits, surface mass balance observations still provide an accurate measure. The date that the transient snow line goes above the glacier is also a measure that provides value. "As conventional parameters like ELA tend to be above summit for the investigated glaciers under current conditions and specific mass balance is affected by rapid changes in area."

We deleted the rest of the sentence ("...monitoring of ice flow can be recommended as additional surveyed parameter at mountain glaciers").

Figure 4-6: Each of these figures have numerous time series that simply are hard to distinguish with gray scale lines. A color scheme is recommended which can be based on zone of the glacier as well.

We changed to colour schemes

Huss, M.: Extrapolating glacier mass balance to the mountain-range scale: the European Alps 1900–2100, The Cryosphere, 6, 713– 727, doi:10.5194/tc-6-713-2012,2012

Referee #2: Andreas Bauder

The paper presents a data-set of surface flow velocities measurements on 4 glaciers in Austria ranging from more than 100 years of observations on Hintereisferner to a decade on Gepatsch- and Taschachferner. Velocity fluctuations are interpreted in terms of glacier wide mass balance and length fluctuations.

General comments:

Indeed, ice flow is an important property of glacier and this parameter has got surprisingly low attention in monitoring programs. Ice flow velocity depends on ice thickness and surface slope. So ice thickness change is most suitable for interpretation of velocity variations. I do understand that surface elevation was measured as long with the position of the flow markers, and thickness change can be determined (as an example see Fig 5.3 of the latest Glaciological Report http://doi.org/10.18752/glrep_137-138). Sure the surface topography is a result of mass balance but with some dynamical response and local ice thickness is more appropriate than glacier wide balance quantities. Moreover, I would recommend - if shown - to plot the cumulative mass change rather than annual values.

We added the cumulative specific mass balance to Figure 3 (HEF) and Figure 4 (KWF).

The method sections suffers from two shortcomings. (1) A systematic bias results when calculating a mean of a variable number of measurements. I see two potential alternatives - central or maximum value as well as average of a constant, fixed subset of measurements. (2) Although the difference of emergence/submergence and the vertical component of the velocity vector are introduced in detail, throughout the paper (e.g. Fig.5) a misleading terminology of vertical velocity for the emergence/submergence motion. Vertical velocity is only valid with regard to a fixed coordinate system. Emergence/submergence is the motion relative to the surface resulting as a an apparent vertical displacement.

ad 1: We added comments on the number of stones and gave the current number of stones in the profiles. Naturally, when a glacier tends to become narrower, with the same distance between stones the number of stones reduces. This is not necessarily a shortcoming. Keeping the number of stones constant by reducing the distance between the stones would not end up necessarily in a higher accuracy, as the variability between neighbouring stones is low, as the stones are not positioned in a crevasse zone.

ad 2: We rephrased the figure 5 caption. We added the information on the fixed coordinate system in the methods section.

The effect of melting in and tipping over of flow markers is not addressed. Important with regard for the accuracy/uncertainty is the fact that vertical movement is one order of magnitude lower than the horizontal component and moreover of the same order as the counteracting processes of mass balance and thickness change. So any uncertainty of any of these may affect all. Your interpretation and

discussion makes extensive use of length variation. It would be more convincing for the reader if you would plot this information - at least for some glaciers (e.g. HEF) General quality of the Figures is relatively poor and therefore hard to read. Probably this is just a minor problem of Figures generated in vectorized format that have been transformed with a poorly resolved raster format when inserted to the manuscript? Labels are all fuzzy, rather small and gradients between different lines difficult to separate.

Duraluminium stakes are used against tipping over, wood wool underneath and at the downhill side is used against melting in. We added the information to the accuracy section. Tipping over may occur at wooden ablation stakes, therefore vertical motion is not calculated at these stakes.

We improved the Figures resolution and script sizes.

Checking of the online data-set prepared for download on pangea.de was not possible, because access was denied. I made several unsuccessful attempts.

The dataset is now published open access.

Detailed/minor points (indicated by page.line):

1.12: Ice age theory was earlier established by Agassiz (Alps) or Lyell (UK) already back in the first half of 19th century. Penck & Brueckner may have confirmed the theory later on.

It is an old discussion in science theory if a hypothesis is a valid theory before being confirmed by empirical evidence. We agree that there has been a bunch of discussions with respect to fluvial and glacial transport, and left more space for important earlier contributions to the idea of glacial transport. We added the Reference on Agassiz (1847) and that the theory was confirmed by Penck and Brückner (1909).

1.18: I miss proper references of first systematic ice flow measurements in the Alps in the 1840s on Unteraargletscher and Mer de Glace (Agassiz, 1847; Forbes, 1846).

Thank you, we added these references.

1.21: I recommend to use the official spelling of 'Rhonegletscher' to be consistent with all the other mentioned glaciers

Done, as suggested

1.21: Berthiere -> Berthier

Done

2.10: I do not agree this paper presents 2 long-term series and 2 series of only about a decade.

We changed to "two long-term series and two series of about a decade"

2.11: Acronym ALS was not yet introduced

Done

3.14: Acronym DGPS not introduced

Done

5.2: rod level -> level rod

Done

7.3: Unclear what is the 'expected inverse process'? Surface elevation change may result from both processes melting or a dynamic adjustment.

We deleted the sentence "A comparison with the geodetic elevation change..." and wrote in the next sentence: "During winter months the elevation change of the surface from geodetic measurements is close to zero..."

7.11-12: This statement is not correct - velocity variation is a direct response to thickness change as a result of the climatic forcing where as the terminus fluctuations is delayed and damped by the dynamic adjustment. Both are sensitive!

Thank you. It is true that both are sensitive. We deleted this sentence.

7.31-32: The reason for summer speed-up has been well investigated e.g. Iken, 1978 or Gudmundsson, 2002

We added this information and the two references, Iken 1977 and Gudmundsson 2002.

Fig.1: Replacing the GI 1, GI 2 and GI 3 labels with the respective years would be more reader friendly.

We added the respective years to the Figure legend.

15.5: pint mass balance is the right terminology for delta a and more appropriate.

We added "point mass balance"

Fig.3: are you sure that the individual, extremely high value of 1919 is correct? Are there any arguments against an outlier?

This Peak was also observed at boreholes, stakes and stones (Hess, 1924); we added this information. See the extensive material above.

Fig.7: awkward ticks / tick interval -> using quarters would be easy to read

We changed the tick interval to quarters

References:

Agassiz (1847), *Système glaciaire ou recherches sur les glaciers, leur mécanisme, leur ancienne extension et le rôle qu'ils ont joué dans l'histoire de la terre. Première partie: Nouvelles études et expériences sur les glaciers actuels, leur structure, leur progression et leur action physique sur le sol*, V. Masson, Paris.

Forbes (1846), *Illustrations of the viscous theory of glacier motion*, Philosophical Transactions of the Royal Society, 136(1), 143-210.

Gudmundsson, G. (2002), *Observations of a reversal in vertical and horizontal strain-rate regime during a motion event on Unteraargletscher, Bernese Alps, Switzerland*. Journal of Glaciology, 48(163), 566-574. doi:10.3189/172756502781831043

Iken (1978), *Variations of surface velocities of some Alpine glaciers measured at intervals of a few hours. Comparison with Arctic Glaciers*, Zeitschrift Gletscherkunde, 13(1/2): 23-35.

Long-term records of glacier surface velocities in the Ötztal Alps (Austria)

Martin Stocker-Waldhuber^{1/2}, Andrea Fischer¹, Kay Helfricht¹, Michael Kuhn³

¹Institute for Interdisciplinary Mountain Research, Austrian Academy of Sciences, Innsbruck, 6020, Austria

²Department of Geography, Physical Geography, Catholic University of Eichstätt-Ingolstadt, 85072, Germany

³Institute of Atmospheric and Cryospheric Sciences, University of Innsbruck, Innsbruck, 6020, Austria

Correspondence to: Martin Stocker-Waldhuber (martin.stocker-waldhuber@oeaw.ac.at)

Abstract. Climatic forcing affects glacier mass balance, ~~which causes changes in-and~~ ice flow dynamics ~~on different time scales, resulting in-and~~ glacier length changes on different time scales. Mass ~~B~~balance and length changes are operationally used for glacier monitoring, whereas only a few time series of glacier dynamics have been recorded. With more than 100 years of measurements of ice flow velocities at stakes and stone lines on Hintereisferner and more than 50 years on Kesselwandferner, annual velocity and glacier fluctuation records have similar lengths. Subseasonal variations of ice flow velocities have been measured on Gepatschferner and Taschachferner for nearly a decade. The ice flow velocities on Hintereisferner and especially on Kesselwandferner show great variations between advancing and retreating periods, with magnitudes increasing from the ~~highest to the lowest~~ stakes at higher elevations to the lower elevated stakes, making ice flow records at ablation stakes a very sensitive indicator of glacier state. Since the end of the latest glacier advances from the 1970s to the 1980s, the ice flow velocities have decreased continuously, a strong indicator of the negative mass balances of the glaciers in recent decades. The velocity data sets of the four glaciers are available at <https://doi.pangaea.de/10.1594/PANGAEA.896741>.

1 Introduction

The fluctuation of glaciers has become an icon of climate change, after ~~Agassiz (1847)Penck and Brückner (1909)~~ established the theory of ice ages, confirmed by Penck and Brückner (1909), later confirmed by isotope analysis on polar ice cores and theoretically explained by Milankovitch. First monitoring efforts focused on recording the changing positions of glacier termini, starting in the 17th century and systematically organized in the late 19th century. In the case of catastrophic glacier advances, as reported several times during the Little Ice Age, for instance, for Vernagtferner in the Ötztal Alps (Nicolussi, 2012), local observers often reported the velocity of terminus advances over short periods. At that stage of development, glaciological theory and monitoring techniques, the monitoring of horizontal ice flow velocities was already well established for Alpine glaciers, with 5 glaciers with stone line velocity records among 20 glaciers regularly monitored for length changes in the Eastern Alps, for example, at the glaciers of Pasterze (Nicolussi and Patzelt, 2001), Vernagtferner (Braun et al. 2012) or

Hintereisferner (Span et al., 1997), or in the Western Alps at Rhone ~~gletscher-glaeier~~ (Mercanton, 1916; Roethlisberger, 1963) or Mer de Glace (Berthiere and Vincent, 2012). At the glaciers Unteraargletscher and Mer de Glace, ice flow was already measured during the 1840s (Forbes, 1846; Agassiz, 1847).

For Alpine glaciers, monitoring of velocity records received less attention after the turbulent decades of the First and Second World War. Development of glaciological programmes focused on hydrological programmes and mass balance programmes, as the understanding of glacier flow was advanced by deformation measurements on Hintereisferner and in the theoretical work of Finsterwalder (1907) and Hess (1924).

Nowadays, when estimates of the global glaciers' contribution to sea level rise is one of the urgent topics of research (e.g. Jacob et al., 2012), and estimates of the state of ~~large glacier ensembles~~ regional glacier inventories are needed, glacier flow velocities, ~~as potentially which can be derived from~~ remote-sensing ~~data based glacier~~ are an important parameters, ~~that provides essential important additional information on dynamic response, which is part of the especially when conventional~~ mass balance ~~parameters fail~~ evolution of a glacier. For example ELA (Equilibrium Line Altitude), which played a major role in large-scale data collections on global climate change, has been observed to be above summits and thus undefined for Eastern Alpine glaciers for much of the last decade (WGMS, 2017).

In this paper, ~~four two~~ long-term time series and two series of about a decade of ice flow velocities are revisited and compared with classical in situ mass balance measurements (Hoinkes, 1970) and ALS (Airborne Laser Scan) data (Abermann et al., 2010). On these four glaciers, ice flow velocities are measured in situ at stone lines (horizontal velocities) or at stakes (3D velocities), with stakes annually set back to their original position. Long-term velocity data are recorded at annual resolution, shorter time series also reveal seasonal variabilities. The four glaciers are also part of a net of long-term measurements of glacier fluctuations (Groß, 2018); area and volume change have been recorded in inventories from LIA (Little Ice Age) maximum onwards (Patzelt, 1980; Groß, 1987; Kuhn et al., 2012; Fischer et al., 2015).

Without further discussion of the potential and limitations of different remote-sensing sensors and techniques, this paper focuses on presenting ice flow velocity records on well investigated mountain glaciers and their relation to other in situ monitoring parameters.

25 **2 Glacier sites and data**

The ice flow velocities have been recorded on four of the largest glaciers in the Ötztal Alps. Hintereisferner (HEF), Kesselwandferner (KWF), Gepatschferner (GPF) and Taschachferner (TSF) are neighbouring glaciers (Fig. 1) ~~but that~~ differ in size, aspect and elevation ranges (Tab. 1).

HEF, a typical valley glacier, has a long tradition of hydrological, meteorological, geophysical and glaciological investigations (e.g. Blümcke und Hess, 1899; Förtsch and Vidal, 1956; Hoinkes and Steinacker, 1975; Kuhn et al., 1999; Fischer, 2010; Helfricht et al., 2014; Strasser et al., 2018). Ice flow velocities on HEF have been sporadically measured at ablation stakes but almost annually for more than 100 years at stone lines (Span et al., 1997). Line 3 on HEF is the oldest stone line, started in

1895 and lasted until 1985 when the glacier retreated behind the location of the profile. Records at Line 6 were started in 1932/33 and at Line 7 in 2013/14. In situ mass balances have been measured since 1952 (Hoinkes, 1970; Fischer, 2010; Fischer et al. 2013; Strasser et al., 2018).

The investigations on KWF are historically linked to those on HEF (e.g. Kuhn et al., 1985) with the same long-term investigations of length variations since 1884 and mass balances since 1952 (Fischer et al., 2014). The terminus of KWF detached from the tongue of HEF in 1914. KWF is a plateau glacier and covers a small elevation range compared to HEF, GPF and TSF, especially since the terminus retreated to the top of a steep terrain level and detached from the dead ice body in the front of this step in 2012. Velocity measurements ~~at this plateau glacier~~ were started in 1965 by Schneider (1970) at ablation stakes and at accumulation stakes along the centre flow line of the glacier. A comparison between direct glaciological and geodetic measurements on KWF as well as on HEF was ~~presented~~made by Fischer (2011).

GPF is the second largest glacier of the Austrian Alps. The main glacier rests on a wide but hilly plateau and the tongue descends through a narrow valley. After early first mappings (Sonklar, 1860; Finsterwalder, 1928), GPF was subject to geophysical investigations (Giese, 1963), photogrammetric analyses (Keutterling and Thomas, 2006) and is one of the Eastern Alpine key research sites, with extensive knowledge on its Holocene fluctuations (Nicolussi and Patzelt, 2001). Recently, Gepatschferner became part of a detailed study on geomorphodynamics (Heckmann et al., 2012; Heckmann and Morche, 2019). In this study, the stake network at the glacier tongue was extended from three stakes, where velocities have been measured since 2009, to 16 stakes in 2012. TSF is similar to GPF a plateau and valley glacier with a wide accumulation area and a narrow glacier tongue. The stake velocity records on TSF were started together with those on GPF in 2009 at three positions at the glacier tongue.

On both glaciers, GPF and TSF, the positions of the stakes ~~is~~are measured several times during summer months, allowing a discussion of the seasonal variability. In contrast, the velocity records at HEF and KWF were performed once a year and can be discussed in relation to their long-term mass balance records.

3 Methods

Based on the historical development of geodetic techniques, different methods came into operation on these glaciers during the past century. Trigonometric networks were installed in 1894 on HEF (Blümcke and Hess, 1899) and in 1965/66 on KWF (Schneider, 1970) to determine glacier surface velocities with a theodolite at stone lines on HEF and ablation stakes on both glaciers (Fig. 1). On HEF and KWF, stake velocities were measured using a theodolite and tachymeter until 2009, when DGPS (Differential Global Positioning System) measurements came into operation. On GPF and TSF, the full series was measured by DGPS.

The velocity records are compared to direct glaciological and geodetic mass balance measurements from Hoinkes (1970), Schneider (1970), Fischer (2010), Fischer et al. (2013), Stocker-Waldhuber et al. (2017) and Strasser et al. (2018) on HEF, KWF and GPF. In these publications, the surface mass balances were derived from stakes and snow pits by using the direct

glaciological method (Hoinkes, 1970). Additionally, DEMs (Digital Elevation Models) and DODs (DEMs of Difference) from photogrammetric or high-resolution ALS (~~Airborne Lase Scan~~) data came into operation to determine volume and elevation changes (Abermann et al. 2010).

3.1 Velocity measurements at stone lines

5 The method of stone lines (Heim, 1885; Hess, 1904) was used only on HEF at three cross-profiles. The position of several stones and their distance to each other is fixed within a defined cross-profile. The number of stones depends on the glacier width and thus varies in time with any expansion or reduction of the glacier. The position of the stones was measured initially with tachymetric systems and since 2009 with DGPS. The stones are flat with a diameter ranging from 0.15 m to a maximum of 0.3 m. The distance between the original defined position of the stone within the profile and the position in the subsequent
10 year is measured using a measuring tape. The horizontal displacement is calculated in consideration of the elevation change or the slope of the surface at each stone. The stones are then moved to their original position. From 2009, the displacement was calculated from the measured DGPS positions, but the measuring tape is still used for control. The annual velocities at the stone lines are given as the mean annual values of the stones in the profile and thus depends on the number of stones. Velocity records from ablation stakes complemented earlier data for Line 6 (before 1932/33) and Line 7 (before 2013/14) for
15 periods when the stakes were reinstalled at their original position. The stakes are located at the central flow line of the glacier, thus representing the maximum flow velocity at the profile. A ratio of 80% between the mean velocity from the stone line and the maximum velocity at stakes located at the centre of profile (Span and Kuhn, 2003) was taken to compare the stake values with the mean values from the stone lines.

3.2 Velocity measurements at stakes

20 Velocity measurements are performed at ablation stakes and at accumulation stakes ~~are used~~ on KWF, GPF, TSF and complement the stone lines on HEF. The position of the stakes and their motion on KWF is measured at the top of the stake and calculated to the lower end of the stake, its base point. ~~The base point is the lower end of the stake.~~ This has the advantage that the measured velocity is not affected by surface changes of accumulation or ablation. Figure 2 by Schneider (1970) shows the components of the velocity vector (d) at the base point of the stake within the accumulation area (left side) and the ablation
25 area (right side) between two points in time (t_1 , t_2) depending on submergence (negative value of v) and emergence (positive value of v). This definition coincides with the definition of submergence and emergence in Cogley et al., (2011). The vertical motion can be calculated as the remainder of the absolute elevation change of the surface (Δd) and the accumulation or ablation (Δa) or from the elevation change due to the sloping surface (Δh) and the vertical component (Δz) of the velocity vector (d) (Schneider, 1970). The difference between the actual flow path (d), which is the length of the velocity vector, to the horizontal
30 motion (Δs), which is the projected velocity, results from the vertical component (Δz). Annual values of the horizontal flow velocity ($\Delta s/a$) as well as the vertical motion values of submergence and emergence were calculated for 365 days and on the

basis of a fixed coordinate system. The horizontal velocity component (s) and the vertical component (v) in Schneider (1970) correlate to the definitions of (u) and (w) in Cuffey and Paterson (2010).

4 Accuracies and uncertainties

5 The investigations on KWF aim at very high accuracies, which are in the lower cm-level (0.05 to 0.1 m) for the horizontal and the vertical stake position determined with theodolite and tachymeter. Beside the instrumental properties, these accuracies can be achieved by the statistical adjustment of the resection and intersection and especially the statistical adjustment of the trigonometric network (Schneider, 1970). In 2009, DGPS measurements with RTK (real time kinematic) procedure came into operation. During these measurements, the base-station is located in close proximity to the glacier at fix-points of the trigonometric network, allowing a staking-out of the stake position with a comparable accuracy in the lower cm-level. The overall accuracies depend on a proper implementation of the measurement methods. The precision requirements on KWF are in the range of ± 5 cm per single measurement or at least ± 10 cm for the period between the two readings for the horizontal and the vertical displacement. The stakes are reinstalled annually at their initial (xy) position. Redrillings and measurements are conducted with a level rod-level for exact perpendicular conditions. The reflector or the DGPS antenna is directly mounted to the top of the stake. Therefore duraluminium stakes with rigid connection are used on KWF as ablation stakes ($\varnothing = 2$ cm) and thicker accumulation stakes with a diameter of 5 cm for the necessary resistance against snow pressure. Tipping over and melting in may lead to errors in measuring the vertical motion. On KWF, a tipping over of the stakes is avoided by the use of duraluminium stakes. Wood wool underneath the stake and at the downhill side of the stake protects against melting in.

15 In contrast to the stakes on KWF, ice flow velocities at GPF and TSF are measured at wooden ablation stakes with DGPS and post-processing procedure, the measured positions refer to the glacier surface. The minimum occupation time for DGPS with post-processing is 10 minutes but is mostly in the range of 30 to 60 minutes. The nearest base station, which provides basic data within the GPS and GLONASS satellite system, is located in Malles (STPOS-MABZ, $46^{\circ}41'9.55''$ N, $10^{\circ}33'3.73''$ E, South Tyrol, Italy). The linear distance to the stakes on GPF is about 26 km and about 32 km to the stakes on TSF. The accuracies from the post-processing procedure on these glaciers are ± 10 cm per single measurement or ± 20 cm for the period between two readings at its best. Additionally, the distance to the base station and shading effects of the surrounding topography lead to higher uncertainties for the DGPS measurements in the lower decimetre to metre-level. Stake positions are measured several times during summer seasons, allowing a comparison of shorter, sub-seasonal time scales.

20 The uncertainty of the stone line measurements on HEF, determined with a measuring tape, can only be estimated. They depend on the measuring distance, surface roughness and possible slipping of stones on the ice surface. The number of stones in the profile varies in time, which leads to a systematic error to the mean velocity of the lines. The number of stones at Line 7 decreased from initially 19 stones to 17 stones and at Line 6 to 4 stones in 2017. The velocities of the stone lines refer to the horizontal component of the velocity vector (Δs) and are calculated from theodolite and tachymeter measurements until 2009 and with RTK-DGPS since then. An estimated uncertainty of the mean stone line velocity of 5% of the annual displacement

25

30

is higher in contrast to the measurements on KWF due to the possible slipping-motion of stones in the profile. The slipping error mainly depends on the surface slope and the annual surface ablation and depends less on the surface velocity. This means, the higher the ablation rate and the steeper the surface slope, the higher the slipping error. Consequently, this error becomes more important at low velocities (Blümcke and Finsterwalder 1905). Generally, the glacier surface velocities will be overestimated by stone velocity measurements especially at low velocities and high ablation rates. This difference is shown by Hess (1924) for the period between 1913/14 and 1921/22 with measured surface velocities at neighbouring stones and boreholes.

5 Results

5.1 Hintereisferner

10 Three stone line records on HEF display the variation of glacier surface velocities for different periods, in total for more than 100 years (Fig. 3). Three periods with increasing surface velocities were recorded on HEF. The first and most extensive acceleration of surface velocity happened before 1920, with a maximum mean stone line velocity of more than 120 m per year at line 3 in 1919 (Hess, 1924). The velocity increased to this maximum within a few years and decreased very quickly until 1922 resulting in~~This acceleration caused~~ a small advance of the glacier terminus in subsequent years of around 60 m (Span et al. 1997). The second period was recorded from 1935 to the early 1940s and the most recent one during the 1970s. During that time, the mass balance of the glacier was positive for several years (Fig. 3). Since 1980, surface velocities on HEF have continuously decreased at the stone lines to about 4 m per year in the most recent years at Line 6, and to about 7-8 m per year at Line 7. This continuous decrease is accompanied by strong negative mass balances in the most recent decades.

5.2 Kesselwandferner

20 On KWF measurements were started ~~infor~~ the hydrological year 1965/66, including horizontal and vertical ice flow velocities (Fig. 4 and Fig. 5). These long-term investigations document different glacier states at a longitudinal profile of up to ten accumulation and ablation stakes. There are two main contrasting periods, the first one from the start of the measurements to 1985, and the second period since then. During the first period the glacier was in an advancing state because of positive mass balances. During that time 75% of the measured glaciers in Austria and Switzerland presented positive length changes, caused by positive mass balances as a result of decreasing summer temperature and increasing annual precipitation (Patzelt, 1985). The surface velocity of the glacier increased, but with decreasing magnitudes from the terminus (L10) to the uppermost stake (L1) within the accumulation area. This means an increased large-velocity gradient along the glacier, with maximum annual velocities of about 90 m per year at the terminus declining to, in contrast with a few metres per year at the highest elevations. The gradient of the vertical velocities was also large, with a submergence of up to 3 m per year within the accumulation zone to an emergence of up to 5 m per year at the lowermost stake. During that time the ELA (equilibrium line altitude) shifted to lower elevations which can be seen as the transition from submergence to emergence from stake to stake.

The advancing state of the glacier ended in 1985, followed by a sharp decrease of the surface velocities and a reduction of the velocity gradients along the flow line. The terminus velocity response was large due to the positive mass balances. A significant change in velocity near the ELA at L6 did not occur until negative mass balances occurred around 1985. Negative vertical velocities became gradually positive around 1990 at stakes L8 and L7; and in 2005 at L6 ~~and in 2016 at L5~~, representing a shift of the ELA to higher elevations. During that time, ELA shifted from 3130 m (mean value from 1985 to 1990) to 3214 m during the period 2005-2010 and even above the crest level in 2003 for the first time since the beginning of the mass balance measurements (Fischer et al. 2014; Strasser et al. 2018). At the lowermost stake L10, velocity decreased rapidly to almost nil because of the decreasing mass supply to the terminus. This area became ice-free in 2010 (Fig. 4 and Fig. 5). The latest positive mass balance occurred in 2015, with an immediate response in the horizontal and vertical velocities. ~~At the lowermost stake L10, velocity decreased rapidly to almost nil because of the decreasing mass supply to the terminus. This area became ice free in 2010.~~

5.3 Gepatschferner and Taschachferner

The measurements of ice flow velocities and ablation on GPF and TSF were started in 2009/10. The stake network on GPF was extended in 2012. During these measurements, interannual velocity fluctuations were small, especially at the three stakes on TSF (54, 55 and 56). At the lowermost stake 54, the horizontal velocities were less than 10 m per year during the whole period. The two higher-altitude points 55 and 56 returned velocities of 30 to around 40 m per year. The higher values at 55 compared to 56 are caused by topographic effects, with a steepening of the glacier tongue and a narrowing of the cross section from stake 56 towards stake 55 (Fig. 6).

On GPF a general trend of decreasing surface velocities was found at all stakes, with a larger decline in velocity at the terminus than higher rates from the stakes at the upper cross-profile (71-75) ~~to the terminus~~. At stake 62, a funnel-shaped surface depression, caused by an evacuation of subglacial sediments due to a heavy precipitation event, led to a spatially limited increase of surface velocity in that area and a later decrease to almost nil (Stocker-Waldhuber et al., 2017). In total, a general slowdown of velocities at the tongue of GPF was found since the beginning of the measurements.

An example of subseasonal fluctuations in surface velocity is given in Figure 7 for stake 65 at GPF, which has been measured from 2009 with least data gaps since then. The velocities are given as mean values per day to make the different time periods of the stake readings comparable. During the winter seasons velocities generally decrease. Maximum values were typically found in August each year, except for the years 2013 and 2014 with earlier peaks in July. ~~A comparison with the geodetic elevation change at the stake shows an expected inverse process.~~ During winter months the elevation change of the surface from geodetic measurements is close to zero or even positive, while surface velocity is decreasing. The opposite process is found during the summer season, when the highest surface velocities go along with the most negative elevation change.

6 Discussion and conclusions

The long-term investigations of the surface velocities at these glaciers document the state of each glacier and its response to a climate signal. Three periods with accelerating velocities caused by positive mass balances were found in the longest time series on HEF. A time shift of the maximum values from higher to lower stone line profiles indicates the response time of the tongue. Despite the increase in surface velocities during these three periods, mass gain on HEF was insufficient for the terminus to advance, except for a small advance during the 1920s. The 1920s peak velocity at line 3 was also confirmed by measurements at boreholes, stakes and additional stones within the ablation area (Hess, 1924). Therefore responses of velocity fields are more sensitive to climate forcing than terminus fluctuations for this glacier. In contrast to HEF, the terminus of KWF advanced by more than 250 m from the 1970s to the 1980s (Patzelt, 1985; Fischer et al., 2018). KWF presents an immediate response at all profiles concurrently, which means that a mass gain or increase of the thickness within the accumulation area causes an increase of the emergence at the lowermost stakes within one year.

During glacier retreat the transition from submergence to emergence shifts to higher elevations, as was found on KWF from 1986 to the present. As a consequence, the magnitude of the vertical velocities decreases, which leads to increasing retreat rates of the terminus but at the same time to an increase of the thickness at higher elevations in case of a positive mass balance. Apart from the effect of the mass balance, according to the continuity equation, local thickness changes can also be caused by convergent or divergent glacier flow.

The investigations show that the magnitude of the fluctuations of the surface velocities is higher at the ablation stakes compared to those within the accumulation area and even higher at the lowermost stakes. This means that changes in observed velocity measurements, especially at ablation stakes, are very well suited for documenting the glacier state, even more so at a fast reacting glacier like KWF. This is supported by a linear regression of annual mean specific balance (b) of the total glacier area of HEF and KWF versus the mean specific balance of their accumulation areas (bc) for the period 1965/66 – 1999/00 by Span and Kuhn (2003). They found nearly identical correlation coefficients for the two balances, while the standard deviation $\sigma(b)$ was twice as high as $\sigma(bc)$, documenting the higher sensitivity of the ablation areas to mass balance changes of the two glaciers. On GPF and TSF these measurements were conducted exclusively at stakes at the tongue where the decreasing velocity rates represent the retreating state of the glacier. The decreasing velocities were found especially on GPF, in contrast to TSF, where the flow rates remained almost constant during these investigations. This is caused by the specific topographic conditions of the TSF glacier tongue, which is steeper and shorter, and the terminus is located at a higher altitude compared to the tongue of GPF.

The subseasonal fluctuations on GPF (Fig. 7) represent the typical acceleration of the glacier during summer months, which is well known and was, for example, already measured on HEF between the end of July and mid-September from 1900 to 1904 by Blümcke and Finsterwalder (1905). The summer peaks on GPF and TSF were found mainly during August each year. These subseasonal fluctuations depend on the drainage network which is driven by the amount of melt water, seasonal and extreme weather conditions (Iken, 1977; Gudmundsson, 2002). The accuracy of the measurements on GPF varies over time and depends

on shading effects of the surrounding topography. The peak in 2013 shows the greatest uncertainty and is thus not representative for the actual surface velocity. The peaks look like jerky movements of the glacier but cannot be clearly identified as such.

For the investigated temperate mountain glaciers, ice flow velocity is a glaciological parameter that reacts very quickly to changes in the forcing as for example the glacier mass balance variability (Huss, 2012). As conventional parameters like ELA tend to be above summit for the investigated glaciers under current conditions and specific mass balance is affected by rapid changes in area, ~~monitoring of ice flow can be recommended as additionally surveyed parameter at mountain glaciers~~. Modern methods like DGPS and remote sensing need only limited extra effort, so that this should be feasible and increases the information available on the currently quickly receding mountain glaciers in a transient state.

10 Data availability

Velocity data of the four glaciers Hintereisferner, Kesselwandferner, Gepatscherner and Taschachferner are available at <https://doi.pangaea.de/10.1594/PANGAEA.896741> (Stocker-Waldhuber et al., 2018). New data will be added every year.

Competing interests

The authors declare that they have no conflict of interest.

15 Acknowledgements

Maintaining long-term monitoring is always a challenging task and requires financial support and the help of numerous people, to whom we would like to gratefully express our thanks. Terminus variations of the glaciers and the velocity records on HEF relate to the annual measurements of the Austrian Alpine Club. Mass balance terms are provided by the World Glacier Monitoring Service (WGMS) and the Institute of Atmospheric and Cryospheric Sciences (ACINN). Research (project PROSA) on GPF was funded by DFG (SCHM 472/16-1, SCHM 472/17-2 and BE 1118/33-3) and FWF (I 894-N24 and I 1646-N19) and funding continues from glacier ski resort Kaunertaler Gletscher GmbH and Tiroler Wasserkraft AG (TIWAG), which also supports the measurements on TSF. We want to thank H. Schneider who started the velocity records on KWF and continued them for more than 50 years. These records are now supported by the non-profit organisation Glacier and Climate. We want to thank B. Scott for editing the English. We thank Reinhard Drews (Ed.) and the reviewers Mauri Pelto and Andreas Bauder, who gave us useful comments, which helped us to improve this paper.

References

- Abermann, J., Fischer, A., Lambrecht, A., and Geist, T.: On the potential of very high resolution repeat DEMs in glacial and periglacial environments. *The Cryosphere* 4, 53-65, 2010.
- 5 [Agassiz, L.: *Système glaciaire ou recherches sur les glaciers, leur mécanisme, leur ancienne extension et le rôle qu'ils ont joué dans l'histoire de la terre. Première partie: Nouvelles études et expériences sur les glaciers actuels, leur structure, leur progression et leur action physique sur le sol.* V. Masson, Paris, 1847.](#)
- Berthier, E., and Vincent, C.: Relative contribution of surface mass-balance and ice-flux changes to the accelerated thinning of Mer de Glace, French Alps, over 1979-2008. *Journal of Glaciology*, 58/209, 501-512, doi:10.3189/2012JoG11J083, 2012.
- 10 Blümcke, A., and Finsterwalder, S.: Zeitliche Änderung der Geschwindigkeit in der Gletscherbewegung. Sitzungsbericht der math.-phys. Kl. der Kgl. Bayer. Akademie der Wissenschaften. Bd.35/1, 109-131. In: *Zeitschrift für Gletscherkunde*, 1 (1906-07), 73-75. 1905.
- Blümcke, A., and Hess, H.: Untersuchungen am Hintereisferner. *Wissenschaftliche Ergänzungshefte zur Zeitschrift des Deutsch-Österreichischen Alpenvereins*, 1(2), 1-87, 1899.
- 15 Braun, L., Reinwarth, O., and Weber, M.: Der Vernagtferner als Objekt der Gletscherforschung. *Zeitschrift für Gletscherkunde und Glazialgeologie*, 45/46, 85-104, 2012
- Cogley, J. G., Hock, R., Rasmussen, L. A., Arendt, A. A., Bauder, A., Braithwaite, R. J., Jansson, P., Kaser, G., Möller, M., Nicholson, L., and Zemp, M.: *Glossary of Glacier Mass Balance and Related Terms*, IHP-VII Technical Documents in Hydrology, No. 86, IACS Contribution No 2. UNESCO-IHP, Paris, 2011.
- 20 Cuffey, K. M., and Paterson, W. S. B.: *The Physics of Glaciers*. Academic Press, Amsterdam, 4th ed. 704pp, 2010.
- Finsterwalder, S.: Die Theorie der Gletscherschwankungen. *Zeitschrift für Gletscherkunde und Glazialgeologie*, 1, 81-103, 1907.
- Finsterwalder, S.: Begleitworte zur Karte des Gepatschferners. *Zeitschrift für Gletscherkunde*, 16, 20-41, 1928.
- Fischer, A.: Glaciers and climate change: Interpretation of 50 years of direct mass balance of Hintereisferner. *Global and Planetary Change*, 71(1-2), 13-26. doi:10.1016/j.gloplacha.2009.11.014, 2010.
- 25 Fischer, A.: Comparison of direct and geodetic mass balances on a multi-annual time scale. *The Cryosphere*, 5, 107-124, 2011.
- Fischer, A., Markl, G., and Kuhn, M.: Glacier mass balance and elevation zones of Hintereisferner, Ötztal Alps, Austria, 1952/1953 to 2010/2011. *PANGAEA*, doi:10.1594/PANGAEA.818898, 2013.
- Fischer, A., Markl, G., Schneider, H., Abermann, J., and Kuhn, M.: Glacier mass balances and elevation zones of Kesselwandferner, Ötztal Alps, Austria, 1952/1953 to 2012/2013. *PANGAEA*, doi:10.1594/PANGAEA.818757, 2014.
- 30 Fischer, A., Patzelt, G., AchRAINER, M., Groß, G., Lieb, G., and Keller-Pirkelbauer-Eulenstein, A.: *Gletscher im Wandel, 125 Jahre Gletschermessdienst des Alpenvereins*. Springer Spektrum, 135pp, 2018.

- Fischer, A., Seiser, B., Stocker Waldhuber, M., Mitterer, C., and Abermann, J.: Tracing glacier changes in Austria from the Little Ice Age to the present using a lidar-based high-resolution glacier inventory in Austria, *The Cryosphere*, 9, 753-766, doi:10.5194/tc-9-753-2015, 2015.
- 5 [Forbes, J.D.: Illustrations of the viscous theory of glacier motion. Philosophical Transactions of the Royal Society, 136\(1\), 143-210, 1846.](#)
- Förtsch, O., and Vidal, H.: Die Ergebnisse seismischer Messungen auf dem Hintereisferner in den Ötztaler Alpen 1954. *Gerlands Beiträge zur Geophysik*, 65, 131-156, 1956.
- Giese, P.: Some results of seismic refraction work at Gepatsch Glacier in the Ötztal Alps. *IAHS Publications*, 61, 154-161, 1963.
- 10 Groß, G.: Der Flächenverlust der Gletscher in Österreich 1850-1920-1969. *Zeitschrift für Gletscherkunde und Glazialgeologie*, 23/2, 131-141, 1987.
- Groß, G.: Die Geschichte der Gletscherbeobachtungen und -messungen in den Österreichischen Alpen. Kapitel 5, In: *Gletscher im Wandel, 125 Jahre Gletschermessdienst des Alpenvereins*. Eds: A. Fischer, G. Patzelt, M. AchRAINER, G. Groß, G. Lieb, A. Kellerer-Pirklbauer-Eulenstein, G. Bendler. Springer Spektrum. 53-93, 2018.
- 15 [Gudmundsson, H.: Observations of a reversal in vertical and horizontal strain-rate regime during a motion event on Unteraargletscher, Bernese Alps, Switzerland. Journal of Glaciology, 48 \(163\), 566-574, 2002.](#)
- Heckmann, T., Haas, F., Morche, D., Schmidt, K. H., Rohn, J., Moser, M., Leopold, M., Kuhn, M., Briese, C., Pfeiffer, N., and Becht, M.: Investigating an Alpine proglacial sediment budget using field measurements, airborne and terrestrial LiDAR data. *IAHS Press, Wallingford IAHS Publication 356*, 438-447, 2012.
- 20 Heckmann, T., and Morche, D. (Eds): *Geomorphology of Proglacial Systems – Landform and Sediment Dynamics in Recently Deglaciated Alpine Landscapes*. Springer International Publishing, Basel, 2019.
- Heim, A.: *Handbuch der Gletscherkunde*. Verlag von J. Engelhorn, Stuttgart, 560pp, 1885.
- Helfricht, K., Kuhn, M., Keuschnig, M., and Heilig, A.: Lidar snow cover studies on glaciers in the Ötztal Alps (Austria): comparison with snow depths from GPR measurements. *The Cryosphere*, 8, 41-57, doi:10.5194/tc-8-41-2014.
- 25 Hess, H.: *Die Gletscher*. F. Vieweg und Sohn, Braunschweig, 426pp, 1904.
- Hess, H.: Der Hintereisferner 1893 bis 1922. Ein Beitrag zur Lösung des Problems der Gletscherbewegung. *Zeitschrift für Gletscherkunde*, 13, 145-203, 1924.
- Hoinkes, H.: Methoden und Möglichkeiten von Massenhaushaltsstudien auf Gletschern. *Zeitschrift für Gletscherkunde und Glazialgeologie*, 6, 37-90, 1970.
- 30 Hoinkes, H., and Steinacker, R.: Hydrometeorological implications of the mass balance of Hintereisferner, 1952-53 to 1968-69. *Snow and Ice Symposium-Neiges et Glaces (Proceedings of the Moscow Symposium, August 1971)*. IAHS-AISH Publ. 104, 1975.
- [Huss, M.: Extrapolating glacier mass balance to the mountain-range scale: the European Alps 1900-2100. The Cryosphere, 6, 713-727, 2012.](#)

Iken, A.: Variations of surface velocities of some Aline glaciers measured at intervals of a few hours. Comparison with Arctic glaciers. *Zeitschrift für Gletscherkunde und Glazialgeologie*, 13 (1/2), 23-35, 1977.

- Jacob, T., Wahr, J., Pfeffer, W. T., and Swenson, S.: Recent contributions of glaciers and ice caps to sea level rise. *Nature*, 482, 514, doi:10.1038/nature10847, 2012.
- 5 Keutterling, A., and Thomas, A.: Monitoring glacier elevation and volume change with digital photogrammetry and GIS at Gepatschferner glacier, Austria. *International Journal of Remote Sensing*, 27/19, 4371-4380. doi:10.1080/01431160600851819, 2006.
- Kuhn, M., Kaser, G., Markl, G., Nickus, U., and Pellet, F.: Fluctuations of climate and mass balance: Different responses of two adjacent glaciers. *Zeitschrift für Gletscherkunde und Glazialgeologie*, 21, 409-416, 1985.
- 10 Kuhn, M., Dreiseitl, E., Hofinger, S., Markl, G., Span, N., and Kaser, G.: Measurements and Models of the Mass Balance of Hintereisferner. *Geografiska Annaler*, 81 A (4): 659-670, 1999.
- Kuhn, M., Lambrecht, A., Abermann, J., Patzelt, G., and Groß, G.: The Austrian glaciers 1998 and 1969, area and volume changes. *Zeitschrift für Gletscherkunde und Glazialgeologie*, 43, 3-107, 2012.
- Mercanton, P. L.: Vermessungen am Rhonegletscher. Mensurations au glacier du Rhone 1874-1915. Gletscher-Kommission der Schweizerischen Naturforschenden Gesellschaft. Band LII, Vol. LII. Kommissions-Verlag Georg & Co, Basel, Genf, Lyon. 191pp, 1916.
- 15 Nicolussi, K.: Die historischen Vorstöße und Hochstände des Vernagtferners 1600-1850 AD. *Zeitschrift für Gletscherkunde und Glazialgeologie*, 45/46, 9-23, 2012.
- Nicolussi, K., and Patzelt, G.: Untersuchungen zur holozänen Gletscherentwicklung von Pasterze und Gepatschferner (Ostalpen). *Zeitschrift für Gletscherkunde und Glazialgeologie*, 36, 1-87, 2001.
- 20 Patzelt, G.: The Austrian Glacier Inventory: Status and First Results. IAHS Publication, 126, 181-183, 1980.
- Patzelt, G.: The period of glacier advances in the Alps, 1965 to 1980. *Zeitschrift für Gletscherkunde und Glazialgeologie*, 21, 403-407, 1985.
- Penck, A., and Brückner, E.: Die Alpen im Eiszeitalter. Tauchnitz, Leipzig, 1909.
- 25 Roethlisberger, H.: The Rhone glacier surveys, *Hydrological Sciences Journal*, 8:2, 119-121, doi:10.1080/02626666309493319, 1963.
- Schneider, H.: Die Grundlagen der Vermessung am Kesselwandferner (Ötztaler Alpen) und die Bewegung dieses Gletschers in den Haushaltsjahren 1965/66, 1966/67 und 1967/68. Dissertation an der philosophischen Fakultät der Universität Innsbruck. 186 pp, 1970.
- 30 Sonklar, K.: Die Oetzthaler Gebirgsgruppe mit besonderer Rücksicht auf Orographie und Gletscherkunde. Justus Perthes, Gotha, 1860.
- Span, N., and Kuhn, M.: Simulating annual glacier flow with a linear reservoir model. *Journal of Geophysical Research*, 108, D10, 4313. doi:10.1029/2002JD002828, 2003.

- Span, N., Kuhn, M., and Schneider, H.: 100 years of ice dynamics of Hintereisferner, Central Alps, Austria, 1884-1994. *Annals of Glaciology*, 24, 297-302. doi:10.1017/S0260305500012349, 1997.
- Stocker-Waldhuber, M., Fischer, A., Helfricht, K., Kuhn, M., Schneider, H., and Span, N.: Glacier surface velocities in the Ötztal Alps (Austria). PANGAEA, <https://doi.pangaea.de/10.1594/PANGAEA.896741> (dataset in review), 2018.
- 5 Stocker-Waldhuber, M., Fischer, A., Keller, L., Morche, D., and Kuhn, M.: Funnel-shaped surface depressions – indicator or accelerant of rapid glacier disintegration? A case study in the Tyrolean Alps. *Geomorphology*, 287, 58-72, doi:10.1016/j.geomorph.2016.11.006, 2017.
- Strasser, U., Marke, T., Braun, L., Escher-Vetter, H., Juen, I., Kuhn, M., Maussion, F., Mayer, C., Nicholson, L.,
10 Niedertscheider, K., Sailer, R., Stötter, J., Weber, M., and Kaser, G.: The Rofental: a high Alpine research basin (1890 m – 3770 m a.s.l.) in the Ötztal Alps (Austria) with over 150 years of hydro-meteorological and glaciological observations. *Earth System Science Data*, 10, 151-171. doi:10.5194/essd-2017-85, 2018.
- WGMS: Global Glacier Change Bulletin No. 2 (2014-2015). Eds: M. Zemp, S.U. Nussbaumer, I. Gärtner-Roer, J. Huber, H. Machguth, F. Paul, M. Hoelzle, ICSU(WDS)/IUGG(IACS)/UNEP/UNESCO/WMO, World Glacier Monitoring Service, Zurich, Switzerland, 244pp. publication based on database version: doi:10.5904/wgms-fog-2017-10, 2017.

Table 1: Geographic location and characteristic numbers of GPF, HEF, KWF and TSF from Austrian Glacier Inventory 3 of 2006 (Fischer et al. 2015) and the year of the start of velocity measurements (meas. since). exp: exposition, Sc: accumulation area, Sa: Ablation area.

name	location	exp. Sc	exp. Sa	altitude range [m]	area [km ²]	meas. since
GPF	46.85°N, 10.75°E	NE	N	2068 <u>2116</u> -353 <u>501</u>	16.62	2009/10
HEF	46.79°N, 10.75°E	E	NE	2399 <u>436</u> -3715	7.49	1894/95
KWF	46.84°N, 10.79°E	SE	E	2698 <u>754</u> -3496	3.82	1965/66
TSF	46.90°N, 10.86°E	N	NW	2208 <u>424</u> -3756	5.71	2009/10

Figure Captions

- 5 Figure 1: Location of the stone lines (3, 6 and 7) on Hintereisferner (HEF) and stakes on Kesselwandferner (KWF),
Taschachferner (TSF) and Gepatschferner (GPF). On Gepatschferner, stakes 60 to 66 are longitudinal stakes from the
glacier snout upwards to the first cross profile including the stakes 67 to 70 (from the orographic right to the left). Stakes
71 to 75 are located in a cross profile at the root zone of the tongue. The glacier area was taken from the Austrian Glacier
Inventories (GI) from LIA (little ice age) around 1850, GI1 from 1969, GI2 from 1998 and GI3 from 2006 (Fischer et al.,
10 2015). Background: Orthophoto from 2015; data source: Land Tirol – data.tirol.gv.at.
- Figure 2: Drawings by Schneider (1970) of the motion of a stake and changes at the glacier surface (Oberfl.) between two time
steps (t1, t2) within the accumulation area (left) and the ablation area (right). d: flow path (length of the velocity vector),
v: vertical velocity, Δs : horizontal velocity (projected velocity), Δd : absolute surface elevation change, Δa : point mass
balance (relative surface elevation change from accumulation or ablation).
- 15 Figure 3: The mean annual velocities of the stones at lines 3, 6 and 7 on Hintereisferner since 1894/95 (= 1895). Data series
extended since Span et al. (1997) and annual specific surface mass balance (b direct) since 1953 (Strasser et al., 2018;
WGMS, 2017; original data: Hess, 1924) as well as the geodetic balances from DoDs (b geodetic) by Fischer (2011).
Location of the stone lines s. Fig. 1.
- Figure 4: Annual horizontal flow velocities ($\Delta s/a$) at the accumulation and ablation stakes on Kesselwandferner (e.g. the year
20 2015 refers to the hydrological year 2014/2015) and the specific surface mass balance (b direct) (Strasser et al., 2018;
WGMS, 2017) as well as the geodetic balances from DoDs (b geodetic) by Fischer (2011). Location of the stakes s. Fig. 1.
- Figure 5: Annual vertical velocities ($\Delta v/a$) at the accumulation and ablation stakes on Kesselwandferner (e.g. the year 2015
refers to the hydrological year 2014/2015). Positive values ~~are defined as~~represent emergence flow, negative ones ~~as
represent~~ submergence flow. Location of the stakes s. Fig. 1.
- 25 Figure 6: Annual horizontal flow velocities ($\Delta s/a$) on Gepatschferner and Taschachferner and L9 at Kesselwandferner for
comparison (e.g. the year 2015 refers to the hydrological year 2014/2015). GPF (a): Selection of the longitudinal stakes at

the tongue of Gepatschferner. GPF (b): Three stakes at the cross profile; location s. Fig. 1: 71: orogr. left, 73: centre, 75: orogr. right.

5 Figure 7: Mean daily horizontal velocities ($\Delta s/\text{day}$) at stake 65 on Gepatschferner between the measurements as an example of the subseasonal fluctuation of surface velocity. The peak in July 2013 shows the highest uncertainty, very likely because of few satellites due to shading effects of the surrounding topography, which depends on the time of the measurements. Additional information is given by the mean elevation change per day from ALS DoDs at the position of the stake (data extended from Stocker-Waldhuber et al. (2017)).

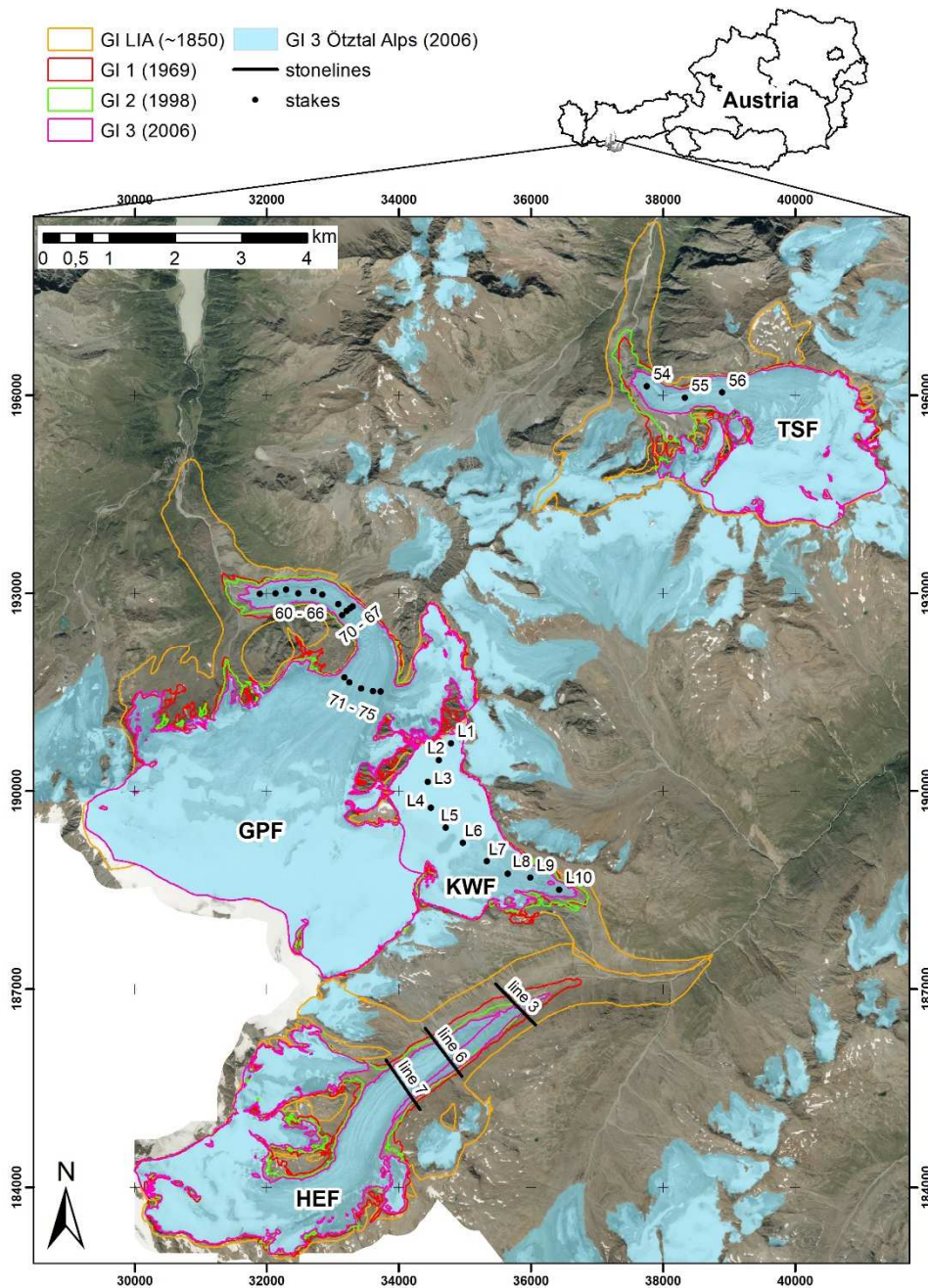


Figure 1: Location of the stone lines (3, 6 and 7) on Hintereisferner (HEF) and stakes on Kesselwandferner (KWF), Taschachferner (TSF) and Gepatschferner (GPF). On Gepatschferner, stakes 60 to 66 are longitudinal stakes from the glacier snout upwards to the first cross profile including the stakes 67 to 70 (from the orographic right to the left). Stakes 71 to 75 are located in a cross profile at the root zone of the tongue. The glacier area was taken from the Austrian Glacier Inventories (GI) from LIA (little ice age) around 1850, GI1 from 1969, GI2 from 1998 and GI3 from 2006 (Fischer et al., 2015). Background: Orthophoto from 2015; data source: Land Tirol – data.tirol.gv.at.

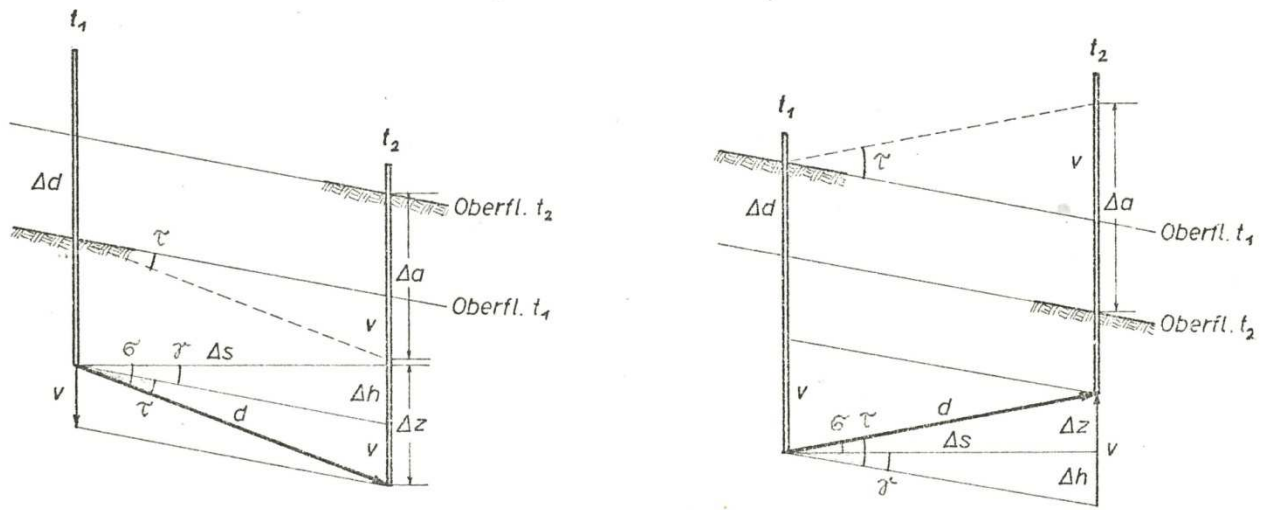


Figure 2: Drawings by Schneider (1970) of the motion of a stake and changes at the glacier surface (Oberfl.) between two time steps (t_1 , t_2) within the accumulation area (left) and the ablation area (right). d : flow path (length of the velocity vector), v : vertical velocity, Δs : horizontal velocity (projected velocity), Δd : absolute surface elevation change, Δa : point mass balance (relative surface elevation change from accumulation or ablation).

5

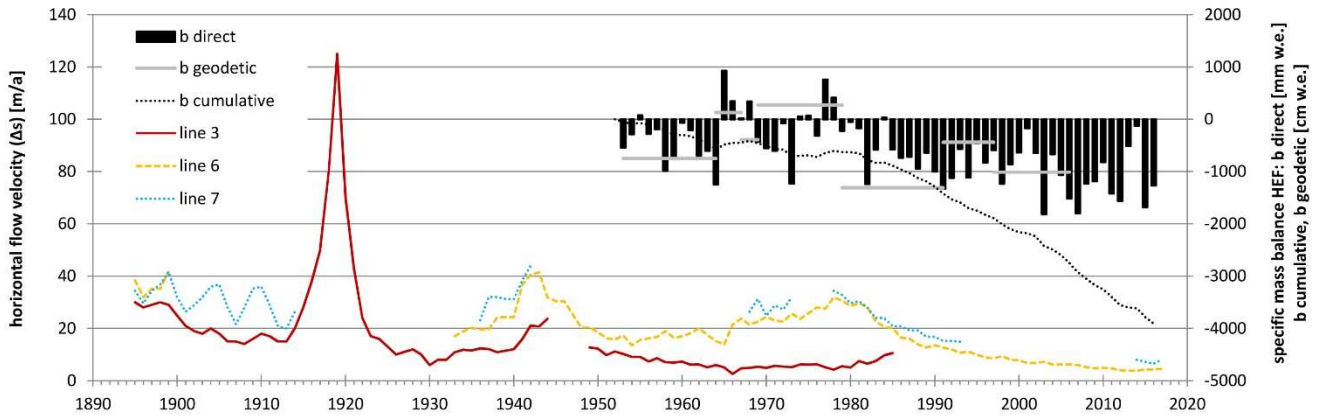


Figure 3: The mean annual velocities of the stones at lines 3, 6 and 7 on Hintereisferner since 1894/95 (= 1895). Data series extended since Span et al. (1997) and annual specific surface mass balance (b direct) since 1953 (Strasser et al., 2018; WGMS, 2017; original data: Hess, 1924) as well as the geodetic balances from DoDs (b geodetic) by Fischer (2011). Location of the stone lines s . Fig. 1.

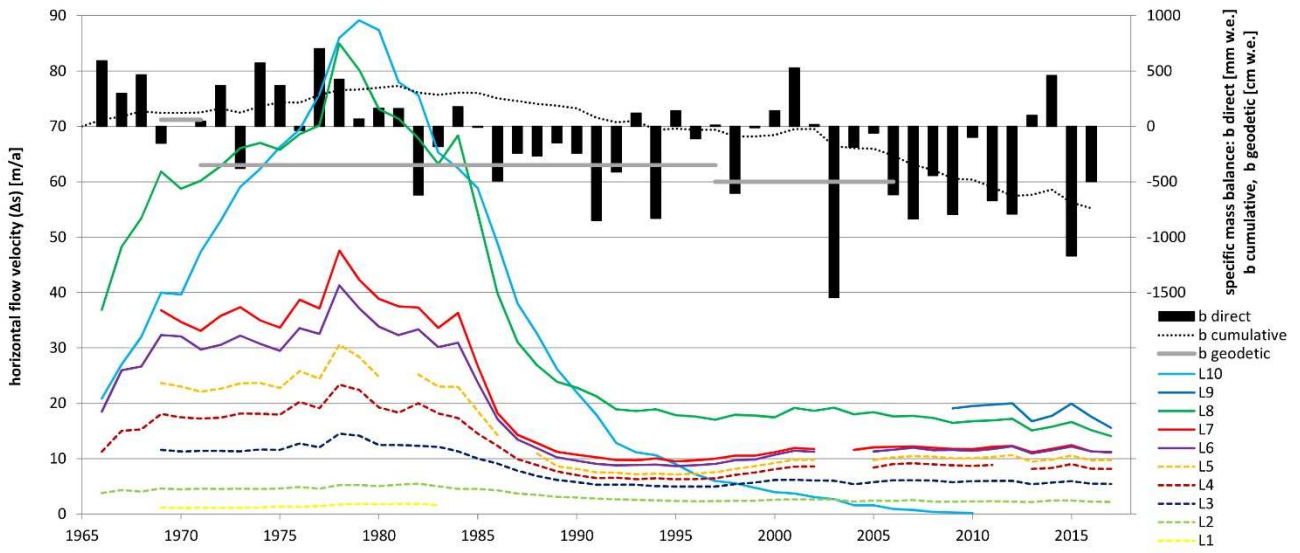
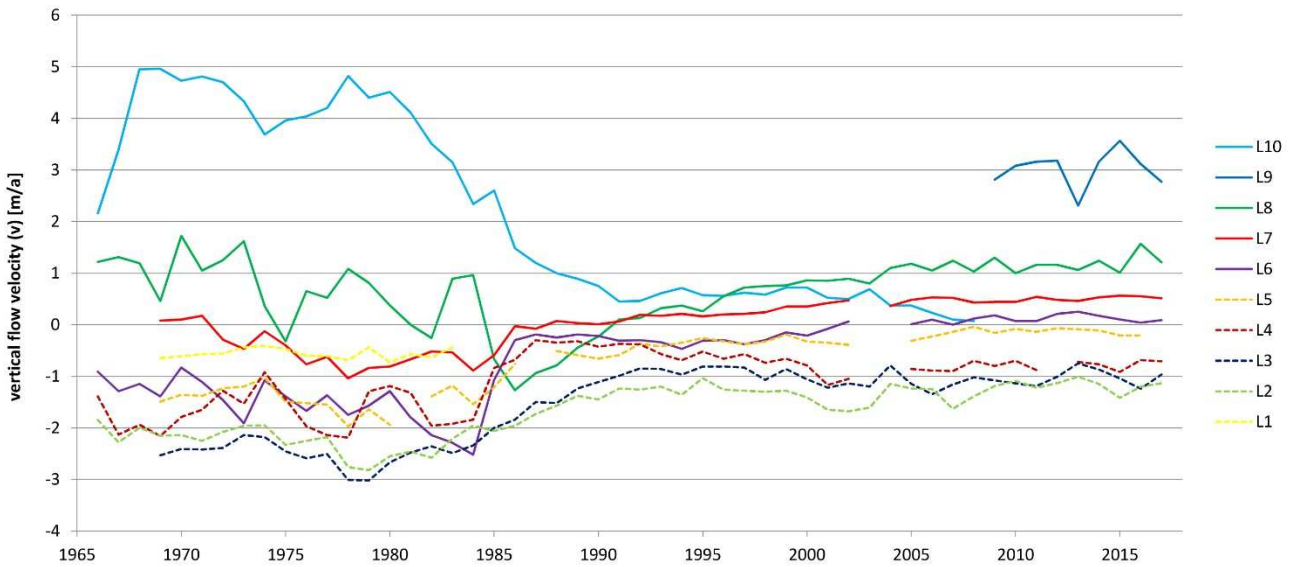


Figure 4: Annual horizontal flow velocities ($\Delta s/a$) at the accumulation and ablation stakes on Kesselwandferner (e.g. the year 2015 refers to the hydrological year 2014/2015) and the specific surface mass balance (b direct) (Strasser et al., 2018; WGMS, 2017) as well as the geodetic balances from DoDs (b geodetic) by Fischer (2011). Location of the stakes s. Fig. 1.



5

Figure 5: Annual vertical velocities ($\Delta v/a$) at the accumulation and ablation stakes on Kesselwandferner (e.g. the year 2015 refers to the hydrological year 2014/2015). Positive values ~~are defined as~~ represent emergence flow, negative ones ~~as~~ represent submergence flow. Location of the stakes s. Fig. 1.

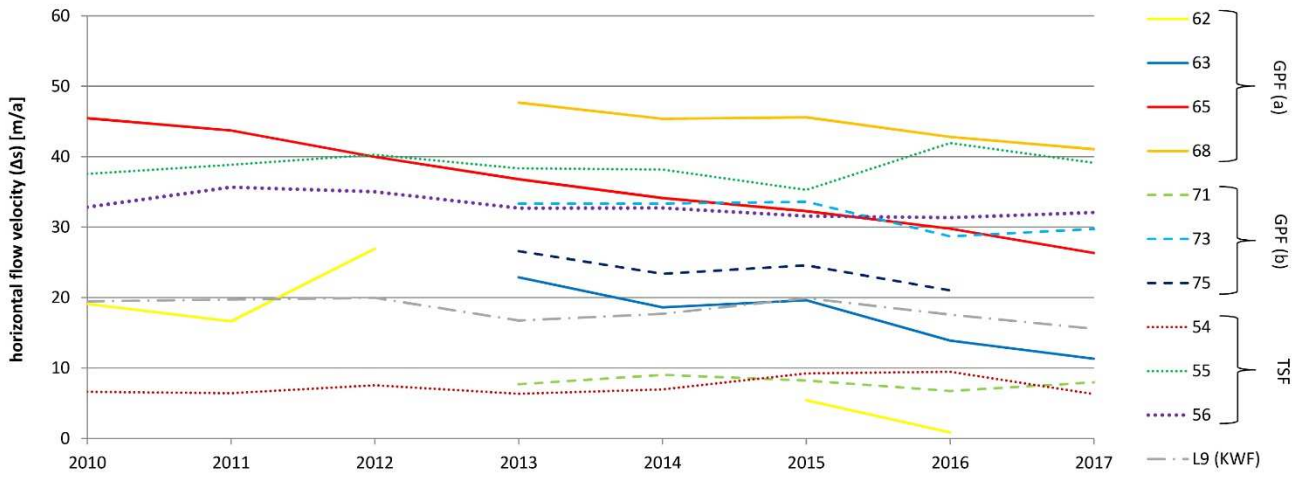
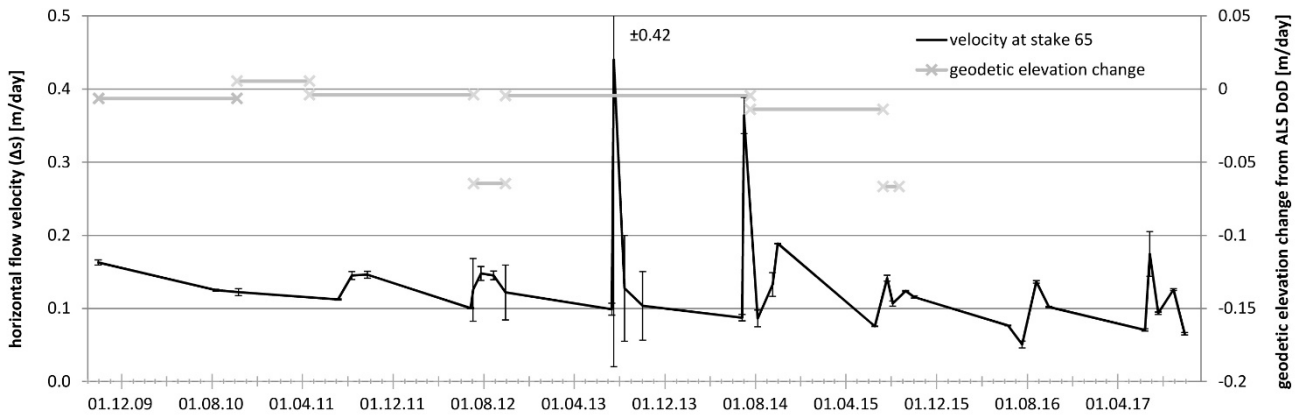


Figure 6: Annual horizontal flow velocities ($\Delta s/a$) on Gepatschferner and Taschachferner and L9 at Kesselwandferner for comparison (e.g. the year 2015 refers to the hydrological year 2014/2015). GPF (a): Selection of the longitudinal stakes at the tongue of Gepatschferner. GPF (b): Three stakes at the cross profile; location s. Fig. 1: 71: orogr. left, 73: centre, 75: orogr. right.



5

Figure 7: Mean daily horizontal velocities ($\Delta s/day$) at stake 65 on Gepatschferner between the measurements as an example of the subseasonal fluctuation of surface velocity. The peak in July 2013 shows the highest uncertainty, very likely because of few satellites due to shading effects of the surrounding topography, which depends on the time of the measurements. Additional information is given by the mean elevation change per day from ALS DoDs at the position of the stake (data extended from Stocker-Waldhuber et al. (2017)).

10