

# Djankuat Glacier Station in the North Caucasus, Russia: A Database of glaciological, hydrological, meteorological observations and stable isotopes sampling results during 2007-2017

Ekaterina P. Rets<sup>1</sup>, Viktor V. Popovnin<sup>2</sup>, Pavel A. Toropov<sup>2,8</sup>, Andrew M. Smirnov<sup>3</sup>, Igor V. Tokarev<sup>4</sup>, Julia N. Chizhova<sup>5</sup>, Nadine A. Budantseva<sup>2</sup>, Yuriy K. Vasil'chuk<sup>2</sup>, Maria B. Kireeva<sup>2</sup>, Alexey A. Ekaykin<sup>6,7</sup>, Arina N. Veres<sup>6</sup>, Alexander A. Aleynikov<sup>2</sup>, Natalia L. Frolova<sup>2</sup>, Anatoly S. Tsyplenkov<sup>2</sup>, Alexei A. Poliukhov<sup>8</sup>, Sergey R. Chalov<sup>2</sup>, Maria A. Aleshina<sup>9</sup>, Ekaterina D. Kornilova<sup>2</sup>

<sup>1</sup>Water Problems Institute, Russian Academy of Sciences, Moscow, 119333, Russia

<sup>2</sup>Faculty of Geography, Lomonosov Moscow State University, Moscow, 119991, Russia

<sup>3</sup>Laboratory of Glaciology, Institute of Geography, Russian Academy of Sciences, Moscow, 119017, Russia

<sup>4</sup>St. Petersburg State University, Geomodel Resource Center, St. Petersburg, 199034, Russia

<sup>5</sup>Institute of Geology of Ore Deposits, Petrography, Mineralogy and Geochemistry, Russian Academy of Science, Moscow, 109017, Russia

<sup>6</sup>Arctic and Antarctic Research Institute, Climate and Environmental Research Laboratory, St. Petersburg, 199397, Russia

<sup>7</sup>Institute of Earth Sciences, Saint Petersburg State University, St. Petersburg, 199034, Russia.

<sup>8</sup>Hydrometeorological Research Center of Russian Federation, Moscow, 123242, Russia

<sup>9</sup>Laboratory of Climatology, Institute of Geography, Russian Academy of Science, Moscow, 119017, Russia

Correspondence to: Ekaterina P. Rets (retska@mail.ru)

**Abstract.** The study presents a dataset on long-term multidisciplinary glaciological, hydrological, meteorological observations and isotopes sampling in sparsely monitored alpine zone of the North Caucasus in the Djankuat research basin. The Djankuat glacier which is the largest in the basin, was chosen as representative of the central North Caucasus during the International Hydrological Decade and is one of 30 'reference' glaciers in the world which has annual mass balance series longer than 50 years (Zemp et al., 2009). The dataset features a comprehensive set of observations from 2007–2017 and contains the yearly measurements of snow depth and density; dynamics of snow and ice melting; water runoff, conductivity, turbidity, temperature,  $\delta^{18}\text{O}$ ,  $\delta\text{D}$  at the main gauging station (844 samples in total) with an hourly or sub-daily time step depending on the parameter; data on  $\delta^{18}\text{O}$  and  $\delta^2\text{H}$  sampling of liquid precipitation, snow, ice, firn, groundwater in different parts of the watershed taken regularly during melting season (485 samples in total); precipitation amount, air temperature, relative humidity, shortwave incoming and reflected radiation, longwave downward and upward radiation, atmospheric pressure, wind speed and direction – measured at several automatic weather stations within the basin with 15 min to one-hour step; gradient meteorological measurements to estimate turbulent fluxes of heat and moisture, measuring three components of wind speed at a frequency of 10 hertz to estimate the impulse of turbulent fluxes of sensible and latent heat over the glacier surface by the eddy covariance method. Data was collected during the ablation period (June–September). The observations were halted in winter. The dataset is available from Pangaea (doi:10.1594/PANGAEA.894807) and will be further updated. The dataset can be useful for developing and verifying hydrological, glaciological and meteorological models for alpine areas, to study the impact of climate change on hydrology of mountain regions using isotopic and hydrochemical

Отформатировано: слева: 1.27 см, справа: 1.27 см, сверху: 1.27 см, снизу: 1.27 см

Удалено: ,

Удалено: ve

Удалено: variables

Удалено: observations

Удалено: and

Удалено: ,

approaches in hydrology. As the dataset includes the measurements of hydrometeorological and glaciological variables during the catastrophic proglacial lake outburst in the neighboring Bashkara valley in September 2017, it is a valuable contribution to study lake outbursts.

## 1 Introduction

5 Mountain areas are highly sensitive to climate change (Dyurgerov, 2003, Weingartner et al., 2007, Auer et al., 2007, Viviroli et al., 2011, Pachauri et al., 2014, Zemp et al., 2015). However, it is widely recognized that there is still a significant lack of observational data on climate, glaciers, and hydrology of mountain areas (Gietl, 1990, Barry, 1992, Singh et al., 1999, Schaeffli et al., 2005, Bales et al., 2006). The density of hydrological stations in the world's mountainous regions is from 3 (in Europe) to 100 (in Asia) times lower than those recommended by the World Meteorological Organization (Viviroli et al., 2011, Bobrovitskaya and Kokorev, 2014).

10 The majority of field observations in mountainous catchments are conducted in Scandinavia, the Alps and the mountains of the USA, while vast Asian territories and the Southern Hemisphere are sparsely monitored (Barry, 1992, Dyurgerov, 2003, Meier et al., 2003, Zemp et al., 2009, Viviroli et al., 2011, Immerzeel et al., 2012). The Great Caucasus used to have a developed observational network during the Soviet Union period. But recently, it became a poorly instrumented terrain lacking high quality glaciological and hydrometeorological data (Barry, 1992, Dyurgerov, 2003, Shahgedanova et al., 2005, Bobrovitskaya and Kokorev, 2014).

15 The specificity of this dataset is a relatively long measurement period of 10 years (2007–2017) including several high discharge events covered in a multi-site measurement program and the extensive set of measured variables, which is unique for the North Caucasus area.

The Djankuat research basin, 9.1 km<sup>2</sup> in area, is located at 43.2°N and 42.75°E in the alpine zone of the North Caucasus (Russia), between 2600 and 4000 m (Fig. 1). Djankuat glacier, covering 27% of its area, was chosen as representative of the central North Caucasus during the International Hydrological Decade (IHD) - research program on water problems launched by UNESCO in 1965 (Boyarsky, 1978). The mass-balance measurements have been carried out on Djankuat glacier since 1967 till now regularly (www.wgms.ch) based on standard methods (Østrem and Brugman, 1992, Boyarsky, 1978). Detailed hydrological and meteorological measurements were included in the monitoring program of the station during the IHD and came to an end in the late 1970s (Boyarsky, 1978). The comprehensive hydrometeorological observation was resumed in the Djankuat research basin under the initiative of the collective of the authors since 2007. Hydrometeorological measurements were done during the ablation season every year since 2007, and the observational program gradually expanded during 2007–2017 and now goes beyond the standard network hydrological and meteorological observations. The relative cutting of the program in 2011–2012 happened due to a special military regime in Kabardino-Balkaria republic.

Automatic Weather Stations (AWS) are installed in 4 main locations in the basin (see Fig. 1, Table 1). All the meteorological stations operate only during the ablation season of each year. Two Campbell AWS are located in the central part of the Djankuat glacier above the ice surface (AWS1) and the debris of the glacier (AWS2). AWS1 operated through the period 2007–2017 (excluding 2011). The second Campbell station, located over the debris (AWS2), operated for three years (2007–2009). Both stations provide

Удалено: there

Удалено: great

Удалено:

Удалено: also

Удалено:

Удалено: on a regular basis

Удалено: were

Удалено:

Удалено: was

Удалено: ing

Удалено: The b

measurements of air temperature, relative humidity, downward and upward shortwave radiation, downward and upward longwave radiation, wind speed, wind direction, atmospheric pressure. A Davis weather station operated at Base Camp (Base Camp AWS) through 2007–2009 and 2013–2017. The second Davis (AWS3) station was placed on the upper part of the Djankuat glacier in 2017. A Davis Gradient mast was placed in the central part of the Djankuat glacier (AWS1) in 2015 to obtain long-term meteorological data series in the surface layer. Turbulent pulsations of wind and acoustic temperature were measured in 2013, 2014 and 2016 with a 3-axis GILL WindMaster sonic anemometer in the central part of the Djankuat glacier (AWS1). Hydrological measurements at the Djankuat gauging station (see Fig. 1, see Table 1) started from measuring runoff with one-hour step during 2007–2010 ablation seasons. In 2013 the first test measurements of water conductivity, water salinity, water turbidity, and stable isotopes (18O and 2H), as well as first samplings of liquid precipitation, snow, ice, firn in the basin on water conductivity, water salinity,  $\delta^{18}O$ , and  $\delta^2H$  were carried out. A total amount of 1329 samples on stable isotopes were collected during 2014–2017 in the Djankuat River basin, including 844 samples of the streamflow and 485 samples of snow, ice, firn, groundwater, and liquid precipitation. At the outlet of Djankuat River, turbidity was recorded from 2015–2017, water conductivity – from 2014–2017, water temperature – from 2015–2017.

The dataset was published on a long-term data repository (doi:[10.1594/PANGAEA.894807](https://doi.org/10.1594/PANGAEA.894807)) and will be updated. Outcomes of the research included studies of glacier mass balance (Zemp et al., 2009, Rets and Kireeva, 2010, Lambrecht et al., 2011, Zemp et al., 2011, Zemp et al., 2015, Popovnin and Pylayeva, 2015) water transport processes and dangerous hydrological phenomena (Rets et al., 2017, Toropov et al., 2017, Chernomorets et al., 2018) and sediment budget issues (Chalov et al., 2017).

## 2 Study Area

The Greater Caucasus stretches 1300 km along the borders between Russia and Georgia from the Black Sea to the Caspian Sea. The alpine zone extends above the orographic snowline approximately 2000 m above sea level. The Elbrus Mountain has the peak elevation in the Greater Caucasus reaching 5642 m. The climate is moderate continental to high-alpine. The precipitation decreases both southeastwards and with a decrease in elevation. Annual precipitation sum varies from 200–400 mm in Eastern plain part and 600–800 mm in Western plain part to 800–1300 mm and more in mountainous part (Rets et al., 2018). The water supply in the North Caucasus is strongly dominated by runoff formed in the high mountains, a unit of area at an elevation of 3000–4000 m can be ten times more productive in terms of water yield than the lowlands. In the most alpine zone of the North Caucasus annual unit discharge varies from 600–900 to 1500–1800 mm. In the foothills mean annual runoff unit discharge sharply declines to 150–500 mm (Rets et al., 2018).

The Djankuat research basin is situated on the northern slope of the central part of the Main Caucasian Ridge (see Fig. 1). It is a typical alpine watershed of 9.1 km<sup>2</sup> with the elevation range of 2600 – 4000 m, with steep slopes (more than 20° on average) and nival-glacial landscape (see Fig. 1). The overall aspect of the basin is north-northwest. In the 2017 glaciers occupied 27% of the territory of the basin. The main glacier with the same name – Djankuat glacier – is the source of the Djankuat River. It is a valley glacier, with the lowest point of the tongue at approximately 2750 m, the elevation of the bergschrund is at 3600 m. The mean

Удалено: the

Удалено: DAVIS

Удалено: From 2014 to 2017 the stable isotopes sampling, conductivity measurements were done on a regular basis on the Gauging Station and on the watershed.

Удалено: 844

Удалено:

Удалено: on the Djankuat River Gauging station

Удалено: manually using portable turbidimeter 5–7 times a day in

Удалено: during

Удалено: during

Удалено: during

Удалено: 10

Удалено: 20–30

Удалено: 50–60 liters/km<sup>2</sup>.s

Удалено: 5–15 liters/ km<sup>2</sup>.s

Удалено: in

Удалено: An

Удалено: exposition

Удалено: the North-North-West

elevation of the glacier is 3210 m, the area is 2.42 km<sup>2</sup>, and its length is 3.0 km. The maximum measured thickness of the glacier is 105 m, and the average thickness is 31 m (Lavrentiev et al., 2014). The Djankuat River basin also contains three small glaciers with areas less than 0.5 km<sup>2</sup>: Koyavgan, Via-Tau, and Visyachiy. These glaciers contribute runoff to the Djankuat River upstream, the main gauging station (see Fig. 1). The Djankuat River is a source of the Adul-Su River – a tributary of the Baksan River which drains into the Caspian Sea via the Terek River.

The uppermost gauging station on the Baksan River was situated 12 km from its source in Usengi. The river basin area at the gauging station is 180 km<sup>2</sup>. The mean annual discharge of the Baksan River at Usengi gauging station is 9.9 m<sup>3</sup>/sec that amounts to mean annual runoff of 1700 mm (Rets and Kireeva, 2010). The water-abundant period of the Baksan River in the upstream is prolonged and steady, it extends from May to September–October. The river hydrograph has a sawtooth form due to the rain flash-floods overlapping the general snow and ice melting wave. The maximum water levels are usually recorded in July. A stable winter low-flow period with minimum monthly discharge of 2.4 m<sup>3</sup>/sec is observed from February to March (Rets and Kireeva, 2010). Annual river runoff in the mountainous part of the North Caucasus shows a slightly positive trend during 1940–2010. In the most elevated areas, the long-term mean value of annual runoff remains stable (Rets et al., 2018).

A distinct seasonality in temperature characterizes the climate of the Djankuat research basin. The mean monthly air temperatures at the Terskol, the closest to the research basin all-year meteorological station, situated 16 km northwest of the study area at an altitude of 2146 m goes below zero during November–December. The warmest months are July and August with mean monthly temperatures above 12 °C (Fig. 2). Monthly precipitation totals are 40–50% higher in the warm period of the year (May–September) than during winter (Fig. 2). The annual precipitation at the Terskol weather station varied from 590 to 1330 mm with a mean annual value of 950 mm. Daily precipitation maxima occur from July to September in response to convective activity triggered by a combination of intense insolation and depressions developing on the Polar front and enhanced by the orographic uplift (Shagedanova, 2002).

The observations in the Djankuat research basin, included in the presented dataset, were carried out under the conditions of slightly warmer summer periods in comparison to the long-term average, and substantially higher amounts of precipitation, especially during the spring period – from March to May (Fig. 2). The strong influence of spring snowfalls during the observation period also is reflected in the results of Djankuat glacier snow sampling for stable isotopes (Rets et al., 2017). The outlined tendency is likely to be the consequence of climate change in the region.

According to the majority of studies (Alekseev et al., 2014, Toropov et al., 2018a, Rets and Kireeva, 2010), a statistically significant positive trend in air temperature amounting to 0.7 – 1 °C per decade is observed during the summer period in the North Caucasus. A slight positive trend in the mean temperature in the ablation period (May to September), 0.3 °C per decade, is observed at the Terskol meteorological station since the end of 1970th. In the winter period, the observed tendencies in air temperature in the North Caucasus are very inhomogeneous: Alekseev et al. (2014) report a statistically insignificant positive trend. In the study by Rets and Kireeva (2010), a decrease in air temperature of the winter period was revealed in the mountainous part of the North Caucasus. According to the Terskol meteorological station, the value of mean air temperature during the accumulation season (October to April) remains stable in the study area.

Удалено:

Удалено: unit

Удалено: discharge

Удалено: 55 liters per sec. per km<sup>2</sup>

Удалено: ,

Удалено: ,

Удалено: The general wave of runoff hydrograph, formed by

Удалено: , is overlain with sharp peaks of rain floods.

Удалено: in

Удалено: ,

Удалено: The climate of the Djankuat research basin is characterized by a distinct seasonality in temperature

Удалено: in

Удалено: strong

Удалено: ,

Удалено: <sup>th</sup>

Удалено: the on

According to different studies, a positive trend in annual precipitation sum of 5% per decade is reported by Alekseev et al. (2014), and no statically significant trend is reported for the most of the North Caucasus by Toropov et al. (2018a). An increase in annual precipitation sum was revealed for the majority of mountainous stations and several foothills located in the central part of Northern Caucasus (Rets, Kireeva, 2010). At the Terskol meteorological station, the amount of precipitation has been constantly rising during the whole observational period. The increase in annual sum of 3.5% per decade is different for the ablation (2.1% per decade) and accumulation (5% per decade) period. The most intensive rise in precipitation is observed in spring (8.6% per decade in March, 7% per decade in April) and autumn (10.3% per decade in October). This result is consistent with the result reported by Alekseev et al. (2014) for the whole territory of the North Caucasus.

An intensive deglaciation is observed in the North Caucasus (Shahgedanova et al., 2014, Zemp et al., 2015). The area of glaciers in the North Caucasus dropped by 12.6% during 1970–2000 (Voitkovskiy et al., 2004), and by 4.7% between 2000 and 2010/2012 (Shahgedanova et al., 2014), amounting to approximately 17% in total during 1970–2012. The glaciers terminus retreat increased from the 1987–2000/2001 period to the 2000/2001–2010 period by the factor 2.5–3.8. (Shahgedanova et al., 2014). Glacier retreat and the increase in supraglacial debris cover is also accompanied by the emergence and growth of proglacial lakes and related increase in proglacial lake outburst floods (Stokes et al., 2007). On the 1<sup>st</sup> of September 2017, an outburst of Bashkara lake in the upstream neighboring to the Djankuat basin valley gave rise to catastrophic mudflow that led to major destructions and human casualties (Chernomorets et al., 2018).

### 3 Methods and results

#### 3.1 Hydrological measurements

##### 3.1.1 Discharge measurements

Water discharge of the Djankuat River at the gauging station (see Fig. 1, see Table 1) was calculated from the water level using a rating curve  $Q=f(H)$  (Table 2a). The water level was recorded with 10 min to hourly time step (depending on the year of observation) by means of an automatic water level logger with a pressure sensor (ADU-02 during 2007–2013, Solinst Level logger in 2014–2017). The level logger was placed with a ripple shield in an artificial bay constructed at the river bank (Fig. 3b). Additionally, manual water level measurements were made 6–7 times a day. Rating curves were drawn for each month on a yearly basis. Dilution method using NaCl as a tracer was used for discharge metering as turbulent flow conditions make it impossible to apply the current meter (Dobriyal et al., 2017).

As there was a possibility of erroneous results due to the loss or incomplete mixing of the tracer arising from the difference in velocity in the upper and lower layers of the stream (Dobriyal et al., 2017), every discharge measurement was repeated twice. The value was accepted if the difference between the two simultaneous measurements does not exceed 10%. For most of the discharge measurements at the Djankuat gauging station, this difference was less than 5%. 50–80 water discharges were measured every ablation season to draw a rating curve.

Удалено: a number of

Удалено: is

Удалено: is

Удалено: The

Удалено: degradation of glaciation

Удалено: of

Удалено: a

Удалено: is

Удалено: is

Удалено: the

Удалено: is

Удалено: is

Удалено: is

Удалено: .

Удалено: id

Удалено: oes

Удалено: the

Удалено: are

Water discharge at the Djankuat gauging station was observed within a range of 1 to 2 m<sup>3</sup>/s in 2007-2017 (Fig. 4a), the mean value of water discharge was 1.39 m<sup>3</sup>/s (Table 3). During high discharge events (1% probability) streamflow rates ranged from 3.5 to 8.46 m<sup>3</sup>/s. The maximum discharge, 8.46 m<sup>3</sup>/s, was observed on the 1<sup>st</sup> of July 2015 at 9:00 due to heavy rain flood caused by 227 mm of precipitation in some, over 7 days superimposed on intensive snow and ice melting in the river basin.

Удалено: is

Удалено: um

Удалено: an

The inter-annual fluctuations of the Djankuat River runoff can be quite substantial (Fig. 5). The Djankuat River was the most abundant in water during 2015–2016, the least in 2013. Mean water discharge for June to September in 2015 (1.88 m<sup>3</sup>/s) was twice as large as in 2013 (0.97 m<sup>3</sup>/s). The Djankuat River is most abundant in water in July (Fig. 5). Mean monthly discharge in this month is 1.3–2.8 m<sup>3</sup>/s. June and August are comparable in terms of mean discharge, 0.93 to 1.8<sub>s</sub> and 1.0 to 2.0 m<sup>3</sup>/s, respectively. In September, runoff due to ice and firm melting decreases with the decrease in the incoming solar radiation, the seasonal meltwater is gradually drained from the Djankuat River basin. Mean monthly discharge is 0.6–1 m<sup>3</sup>/s. At the end of September, the ablation period ends with the first stable fresh snow cover on the glacier.

Удалено:

The Djankuat River hydrograph has a saw-tooth shape with a pronounced daily maximum and minimum typical for glacial rivers (Fig. 6). A diurnal fluctuation of discharge is great and can be compared with the overall seasonal fluctuation: up to 1.5–2 m<sup>3</sup>/s on a day without rain. The rise of rain flash-flood can be very intensive: more than 1 m<sup>3</sup>/s per hour.

Удалено: a

### 3.1.2 Electrical Conductivity and Salinity

Water salinity was calculated from the conductivity measurements (Table 2a), using a dependency Salinity=f(Cond). The dependency was drawn in 2013 using the data on simultaneous measurement of electrical conductivity and complete chemical analysis in 19 samples with conductivity from 4.2 to 87.5 μS/cm. The Djankuat River water is low-mineralized, the value of electrical conductivity stayed in the range of 55–85 μS/cm for 90% of the time (Table 3, Fig. 4d). The electrical conductivity value strongly depends on the percentage of snow and ice meltwater in the total river runoff. During long periods without rain with intensive melting the water of the Djankuat River can be diluted up to 40–50 μS/cm during day time. On the daily minimums of water discharge in the early morning, the electrical conductivity rises by 10–30 μS/cm. At the end of the ablation season, when melting is strongly reduced, the electrical conductivity of the Djankuat River reaches values of 110 to 115 μS/cm during night–morning hours, which is close to the value of electrical conductivity of groundwater in the basin.

Удалено: is

Удалено: ,

Удалено:

### 3.1.3 Water Temperature

Water temperature has a close to uniform distribution on the duration curve and is mostly within the ranges of 1.2–4.5 °C (Fig. 4c). Water temperature of the Djankuat River has a diurnal variation up to 4°C. Diurnal maximum of temperature is usually observed at day time before the beginning of an intensive rise of diurnal wave of meltwater flow. Mean daily values of water temperature generally rise through the ablation season (Fig. 6). The maximum value (6.63 °C) was registered on 18<sup>th</sup> of September 2016 at midday. The minimum values (0.1 °C) were observed during the night in the beginning of the ablation period (Fig. 6).

Удалено: a

Удалено: great

Удалено: s

Удалено: are

### 3.1.4 Water Turbidity

The regularity of turbidity measurement was defined for each month according to the shape of a diurnal hydrograph of the Djankuat River. The measurement Station was done manually using a portable turbidity meter. During heavy rainfall events, the measurements were performed every 15 minutes and averaged in the database of hourly time step. Additionally, water samples were taken manually under various turbidity conditions (in total 19 samples within a range from 66.7 to 36400 NTU) and filtered using 0,45 µm Millipore membrane filters to compute initial suspended sediment concentration (SSC; mg L<sup>-1</sup>). The values of turbidity were converted to SSC using the above-mentioned lab samples using quadratic regression (Belozeroва, Chalov, 2013). The total amount of 1991 measurements is included in the database (Table 3). The Djankuat River turbidity has an extremely uneven distribution (Fig 4b): staying less than 400–500 NTU (250–350 g/m<sup>3</sup>) most of the time, water turbidity abruptly rose to 1000–5000 NTU (750–4000 g/m<sup>3</sup>) and 30 000 – 40 000 NTU (25 000–33 000 g/m<sup>3</sup>) within short periods of heavy rainfalls (more than 20 mm/day) (Fig. 6). Observed values close a gap in alpine sediment transport observations and correspond to extreme sedimentation processes registered in the world (e.g. Cohen et al., 2014) and are similar to conditions observed in the most unstable volcanic environments (Chalov et al., 2017b); The maximum value of turbidity (45 060 NTU or 37 200 g/m<sup>3</sup>) was measured on 1<sup>st</sup> of September 2017 after 87 mm of rain with average intensity of 30 mm/hour. The same rain event triggered an outburst of Bashkara lake in the upstream of a neighboring valley, that gave rise to a catastrophic mudflow (Chemomoret's et al., 2018).

### 3.1.5 Stable isotopes

Sampling of stable isotopes content in the Djankuat River was carried out during 2013-2017 (Table 2a). The concentrations of <sup>18</sup>O and D expressed in the values of δ:  $\delta D = [(^2H/^1H)_{sample} - (^2H/^1H)_{standard}] / (^2H/^1H)_{standard} \times 1000\%$ ;  $\delta^{18}O = [(^{18}O/^{16}O)_{sample} - (^{18}O/^{16}O)_{standard}] / (^{18}O/^{16}O)_{standard} \times 1000\%$ . In 2013 all samples were processed in the Stable Isotope Laboratory of the Geography Department of Lomonosov Moscow State University on a Finnigan Delta-V mass spectrometer. For the measurement, international standards were used: V-SMOW (Vienna Standard Mean Ocean Water):  $\delta^{18}O = 0\%$ ,  $\delta D = 0\%$ , GISP (Greenland Ice Sheet Precipitation):  $\delta^{18}O = -24.76\%$ ,  $\delta D = -189.5\%$ , SLAP (Standard Light Antarctic Precipitation):  $\delta^{18}O = -55.5\%$ , own laboratory standard MSU (Moscow State University) snow from the Garabashi glacier,  $\delta^{18}O = -15.60\%$ ,  $\delta D = -110.0\%$ . The measurement precision for  $\delta^{18}O$  was  $\pm 0.1\%$ .

From 2014 to 2016, all samples were processed in Saint Petersburg State University Resource Center for Geo-Environmental Research and Modeling (GEOMODEL) on Picarro L-2120i. In 2014 50 control samples were processed independently by two laboratories: a) Saint Petersburg State University Resource center for Geo-Environmental Research and Modeling (GEOMODEL) on Picarro L-2120i; b) the Stable Isotope Laboratory of the Geography Department of Lomonosov Moscow State University on a Finnigan Delta-V mass spectrometer. The difference in the definition for the same sample did not exceed 0.2%.

In 2017, the samples were measured at Climate and Environmental Research Laboratory (CERL) of Arctic and Antarctic Research Institute on laser analyzer Picarro L2140-i that uses Cavity Ring-Down Spectroscopy (CRDS) technique to define the  $\delta D$  and  $\delta^{18}O$  ratios in water samples. After every 5 samples, we measured our work standard "SPB" (distilled Saint Petersburg tap water)

Удалено: ,

Удалено: was

Удалено: W

Удалено: of

Удалено: a

Удалено: (

Удалено: )

Удалено: (

Удалено: )

Удалено: (

Удалено: )

Удалено: (

Удалено: )

Удалено: Garabashi

Удалено: :

Удалено: )

Удалено: In

Удалено: c

Удалено: s

Удалено: each

calibrated against the IAEA standards, in order to obtain accurate values of the samples' isotopic composition. 23 % of randomly chosen samples were re-measured in order to estimate the reproducibility of the results, accordingly 0.06 per mil for  $\delta^{18}\text{O}$  and 0.4 per mil for  $\delta\text{D}$ , which is 2 orders of magnitude less than the natural variability of the isotopic composition of the studied samples.

In course of the first test sampling in 2013, a needed regularity of sampling to get a representative mean daily value of  $\delta^{18}\text{O}$  and  $\delta\text{D}$  was defined. As the daily variation of  $\delta^{18}\text{O}$  and  $\delta\text{D}$  turned out to be low compared to other hydrological parameters of the Djankuat River, sampling was done twice a day in 2014–2017: on the maximum and minimum of water level.

The values of  $\delta^{18}\text{O}$  and  $\delta\text{D}$  in the Djankuat River waters have a relatively even duration curve (Fig 4 e,f). The value of  $\delta^{18}\text{O}$  stayed in range of -13.5...-11.5‰ most of the time,  $\delta\text{D}$  in -95...-80‰. The mean values of  $\delta^{18}\text{O}$  and  $\delta\text{D}$  are -12.5‰ and -86.2‰ correspondingly. The concentration of  $^{18}\text{O}$  and D decreases with an increase in the share of ice and firn melt in total river flow as shown at the beginning of June and July–August 2017 on Figure 6. Pronounced rises in  $\delta^{18}\text{O}$  and  $\delta\text{D}$  were driven by precipitation events (Fig. 6). The maximum value of  $\delta^{18}\text{O}$  amounting to -6.7‰ (the content of  $\delta\text{D}$  in this sample was -72 ‰) was observed on 16<sup>th</sup> of June 2016 at 22:00 at the beginning of an ablation season after a heavy rain that doubled the mean daily runoff of the Djankuat River. The minimum values of  $\delta^{18}\text{O}$  (-14.7‰) was observed on the 17<sup>th</sup> of July 2016 at 21:00 in the course of intensive snow and ice melting period.

A clear-cut difference in the isotopic composition of ice/snow meltwater and liquid precipitation (see the 3.1.6 section of the paper) makes it possible to estimate the ratio of these components in the total river flow. A series of articles were published from the beginning of 1970<sup>s</sup>, describing runoff hydrograph separation by nourishment sources with the use of  $^{18}\text{O}$  and D (see for example Dincer et al., 1970, Martinec et al., 1974, Fritz et al., 1976, Hermann et al., 1978, Cable, 2011).

A mixing model approach was tested for the Djankuat River to conduct river hydrograph separation in the study (Rets et al., 2017).

Two equation systems were drawn: 1) in terms of water routing with salinity as an indicator; 2) in terms of runoff genesis with  $\delta^{18}\text{O}$  as a tracer. In terms of water routing the Djankuat River hydrograph was separated into surface routed and subsurface routed waters. In terms runoff genesis the Djankuat River hydrograph was separated into liquid precipitation and meltwaters. Some 70% of the Djankuat River runoff in August–September 2014 was formed by ice and firn meltwater. Rainwater is mostly subsurface routed; surface runoff of liquid precipitation is formed only during the most intensive rainfall (more than 20 mm on average). Ice and firn meltwater partly percolates to the glacier bottom and comes through a sub-surface layer. The fast (responsive to weather fluctuations) and regulated components of sub-glacier runoff can be distinguished. Sub-glacier runoff contributed 20–30% to the Djankuat River melt runoff in August 2014 and up to 100% of the Djankuat River melt runoff at the end of September 2014, when ablation stopped (Rets et al., 2017).

### 3.1.6 Sampling snow, ice, firn, liquid precipitation and groundwater in the basin for stable isotopes and electrical Conductivity

Regular sampling of snow, ice, firn, liquid precipitation, and groundwater in the Djankuat basin was carried out during 2014–2017. The first test sampling was performed in 2013. Liquid precipitation was sampled on every significant occasion of rainfall (more than 1 mm) that amounts to 25–30 samples a year at the Base camp weather station (Table 1). The snow, ice, and firn sampling

Удалено: true

Удалено: to

Удалено: coarse

Удалено: s

Удалено: correspondingly

Удалено: Concentration

Удалено: s

Удалено: d

Удалено: in

Удалено: are

Удалено: in

Удалено: an

Удалено: was

Удалено: -

Удалено:

Удалено:

Удалено: of



points were evenly distributed on the Djankuat basin area, the coordinates are given in the database. Samples were taken regularly during the ablation season, 40–150 samples a year. Snow samples were taken from the surface, on different depth of the snowpack. The groundwater was sampled: 1) after the end of ablation season in the Djankuat River stream when the total runoff is assumed to be provided by groundwater in 2014; 2) out of the sub-glacial waters spring in 2015; 3) A groundwater-fed spring on the slope of the Djankuat River basin in 2017.

The total amount of samples taken was: 113 samples of liquid precipitation, 218 samples of snow, 116 samples of ice, 22 samples of firm, and 16 samples of groundwater. The values of  $\delta^{18}\text{O}$  and  $\delta\text{D}$  were measured in each sample. The proceeding of the samples was the same for the stable isotopes samples taken at the gauging station (see section 3.1.5). Relative concentrations of  $^{18}\text{O}$  and D in precipitation are strongly correlated and defined to a great extent by air temperature, which is called the “seasonal isotope phenomenon” (Dansgaard, 1964). The highest concentrations of  $^{18}\text{O}$  and D among the samples collected in the Djankuat River basin are characteristic of liquid precipitation (Table 3, Fig. 7). The  $\delta^{18}\text{O}$  value lies mostly between -0.5 and -7‰ with a mean value of -4.9‰, The  $\delta\text{D}$  value – between 0 and -40‰, the mean value is -26‰. The lowest concentrations of  $^{18}\text{O}$  and D were registered in winter snow ( $\delta^{18}\text{O}=-28.3\text{‰}$ ,  $\delta\text{D}=-216\text{‰}$ ) and Djankuat glacier ice ( $\delta^{18}\text{O}=-22.0\text{‰}$ ,  $\delta\text{D}=-159\text{‰}$ ). The amount of stable isotopes in snow cover formed during spring snowfalls is higher and closer to the corresponding values in liquid precipitation ( $\delta^{18}\text{O}=-9\text{‰}$ –-5‰,  $\delta\text{D}=-28\text{‰}$ –-70‰). The mean concentration of  $^{18}\text{O}$  and D is quite similar: the mean  $\delta^{18}\text{O}$  is -12.2‰ in snow samples, -14.3‰ in ice samples and -11.3‰ in firm; mean  $\delta\text{D}$  is -85.5‰, -99.3‰ and -77.1‰ respectively. The surface of a glacier ablation area is always formed by ice layers of different ages, while firm samples represent the climatic conditions of the last 5–10 years. A generally warmer mean isotopic composition of firm and snow compared to ice can indicate total warming of the climate. Groundwater is a mixture of all the stated above sources. Accordingly, the points of groundwater samples lie in the middle of the  $\delta^{18}\text{O}$  vs.  $\delta\text{D}$  graph (Fig. 7). The mean concentration of  $^{18}\text{O}$  and D in groundwater samples (-13.3‰ and -91‰ correspondingly) indicates a bigger role of meltwater than of summer precipitation in the replenishment of groundwater layers.

The ice, snow, and firm samples are ultra-fresh (Table 3). Groundwater is enriched with dissolved salts up to 105 mg/L (114  $\mu\text{Sm/cm}$ ).

### 3.2 Glaciological measurements

Glaciological observations were carried out by standard methods during 2007–2017 (Østrem and Brugman, 1992, Boyarsky, 1978). The data on snow depth, snow density, and ablation is included in the presented database (Table 2b).

Snow depth on the Djankuat glacier was measured at 250–300 points evenly distributed in all zones of the glacier (Fig. 8). The snow measurement survey usually started in late May – early June and ended at the end of June. The mean value of measured snow thickness was 3.6 m, the maximum was 11.5 m.

Snow density was measured in 2–4 snowpits placed in different elevation belts of the Djankuat glacier (Fig. 1). Density was measured in each 40–50 cm layer of a snowpack (Fig. 3d). The measurements were repeated 2–5 times during the ablation season. The integral density of snowpack had a low variance; total range of variation was less than 0.2 g/cm<sup>3</sup>. The density in the layers of the snowpack greatly varied – from 0.23 to 0.92 g/cm<sup>3</sup> according to the 2007–2017 measurements. The overall mean measured

Удалено: ,

Удалено: and

Удалено: as

Удалено: a

Удалено: , a

Удалено: is

Удалено: s

Удалено: s

Удалено: is

Удалено: is

Удалено: is

Удалено: is

Удалено: are

Удалено: Integral

Удалено: s

Удалено: is

Удалено: can

Удалено: y

value of snow density in the snowpack,  $0.57 \text{ g/cm}^3$ , greatly exceeds the density of fresh snow, as the database includes measurements carried out in the midsummer and at the end of the ablation period (Table 3).

35–45 ablation stakes were placed on the Djankuat glacier surface every year (Fig. 8). The time-step between measurements depended on the accessibility of each stake and ranged from 1–5 to 30 days. The values included in the dataset are counted from the measured depth of melted snow/firm/ice in cm and corresponding values of density of melting material.

The Djankuat glacier has experienced a general mass loss since the beginning of observation in 1968 ([www.wgms.ch](http://www.wgms.ch)). Until 2005, negative mass balance years alternated with positive mass balance years (Fig. 9). After 2006 and during all period that was presented in the dataset, the annual mass balance of Djankuat glacier was negative. The annual mass balance values ranged from -2010 mm w.e. in 2007, that was the lowest value since the beginning of the observation in 1968, to -230 mm w.e. in 2009. The mean value of annual mass balance during 2007–2017 was -900 mm w.e. During 2007–2017 the area of the Djankuat glacier decreased from 2.68 to 2.42 km<sup>2</sup> that amounts to almost 10% of loss (Fig. 8). The front of the glacier retreated by 60–300 m in different measurement profiles during 2010–2016 (Fig. 8), that amounts to 8.5–42.9 m/year retreatment rate. The main reason for the Djankuat glacier retreating during the long-term period is an intensive decrease in summer balance, while accumulation shows a slightly positive trend (Fig. 9).

The information on Djankuat glacier mass balance, calculated from the presented dataset, is being published in the Glacier Mass Balance Bulletin, which is issued by the World Glacier Monitoring Service (wgms) at 2-year intervals, and in Fluctuations of Glaciers along with other standardized data on changes in glaciers throughout the world at 5-yearly intervals (see for ex. Popovnin, 2012, 2013).

Some of the glacial measurements data presented in this article were used in global studies on evolution of the Earth's cryosphere (Zemp et al., 2009, Zemp et al., 2011, Zemp et al., 2015). In Popovnin and Pylayeva (2015) snow thickness measurements on Djankuat glacier were used to work out a methodology of estimation of avalanche feeding of a glacier from the total mass of snow accumulation.

### 3.3 Meteorological measurements

The main purpose of meteorological measurements in the Djankuat research basin is to provide the data needed for calculating the components of the heat balance (Toropov et al., 2017, 2018b), which is a necessary input for physically-based hydrological models. As an example, the presented meteorological data was successfully used to model the melting regime of the Djankuat glacier in 2007 by the A-Melt model of ice and snow melt in alpine areas (Rets, Kireeva, 2010).

The program of meteorological observations in the Djankuat research basin during 2007–2017 included meteorological and radiation measurements and by means of two Campbell AWS placed above ice surface (Gjankuat Glacier AWS1 in Table 1-2, Fig.1, Fig. 3a) and over the debris-covered surface (Gjankuat Glacier AWS2 in Table 1-2, Fig.1). In order to measure the ablation rate at both sites by a Sonic Ranger, the sensor was located on a construction drilled into the body of the glacier and measured the distance from the sensor to the ice or snow surface. Standard meteorological characteristics were monitored at the Base Camp by means of a Davis

Удалено: s

Удалено: s

Удалено: is

Удалено: of

Удалено: was

Удалено: are

Удалено: AVIS

AWS (Base Camp AWS in Table 1-2, Fig.1, Fig. 3c). In 2017 a Davis AWS was also placed in the upper part of the glacier (Djankuat Glacier AWS 3 in Table 1-2, Fig.1).

Number of experimental observations were carried out at the Gjankuat Glacier AWS1: Gradient observations to obtain turbulent heat fluxes estimations with the Monin–Obukhov method in 2015, that included 4 temperature and humidity sensors and 4 wind sensors located at 0.25, 0.5, 1 and 2 m above the glacier surface; measurements of high frequency turbulent pulsations of wind and acoustic temperature (Fig. 3c).

Figure 10 shows an example of the course of the average daily values of the basic meteorological variables during the ablation season of 2007 measured by Campbell AWS 1. It is clearly seen that changes in air temperature associated with synoptic events are expressed quite well, their average amplitude is 3 °C. The average temperature during the ablation period was around 8 °C, while the minimum values almost reached 0 °C annually, and the maximums were 16 to 18 °C. The variability of the radiation balance is determined mainly by cloudiness, which has primarily a pronounced daily variation. The albedo effect was also clearly manifested – especially in June and September when fresh snow frequently fell on the surface of the glacier. The maximum values of incoming shortwave radiation can reach 1100 W/m<sup>2</sup>. The wind regime is stable to a great extent and varies little from year to year. The average wind speed over the tongue of the glacier was fairly stable at 4-6 m/s. Above the glacier, stable katabatic winds blow, which is characterized by a pronounced diurnal course. The most probable value of the maximum gusts was 10-12 m/s. The absolute maximum for the period under review was 16.6 m/s above the surface of the glacier and 21 m/s above the moraine ridge. The strongest glacial wind was observed in the lower part of the glacier, in the area of the weather station AWS-1, where the maximum slope angle and density contrast between glacial and valley air were combined. The wind decreases down the valley, and in the area of the base camp, its gusts rarely exceeded 10 m/s. The maximum speed values were associated with foehn winds, observed 3–4 times per season. Table 4 shows the average July values of the main meteorological characteristics.

Figure 11 gives an example of the variability of the main meteorological characteristics in the Djankuat River valley, in the area of the base camp at an altitude of 2640 meters above sea level (Table 1, Fig. 1). The average daily temperature is about 12 °C, the average wind speed is about 2 m/s, even though the maximum gusts were stronger over the glacier and reach 18 m/s. This is due to the density difference between the cold air flowing from the glacier and the local air mass forming over the heated alpine meadows and rocks. Heavy rains can be observed in the study area. For example, in 2017, the daily precipitation of about 20 mm was observed 6 times. From August 31 to September 1, about 48 mm of precipitation fell within 48 hours, which is a very high amount. This rainfall caused the above-mentioned outburst of the Bashkara glacial lake in the neighboring valley and the formation of a catastrophic mudflow (Chernomorets et al., 2018).

#### 4 Conclusion

With the detailed measurement program described here, the Djankuat basin is expected to serve as a highly valuable benchmark for evaluating, calibrating, and further developing glaciological and hydro-sedimentological catchment models of the alpine catchments. Of the North Caucasus and Russian Federation as a whole (Kononov et al., 2018, Stokes et al., 2006, Shagedanova

Удалено: The

Удалено: (the same values were observed the other years)

Удалено: is

Удалено: are

Удалено: is

Удалено: ,

Удалено: a

Удалено: s

Удалено: is

Удалено: is

Удалено: is

Удалено: are

Удалено: are

Удалено: despite the fact that

Удалено: are

Удалено: than

Удалено: above

Удалено: o

Удалено: f

et al., 2005, Hagg et al., 2010). The aim of the multidisciplinary monitoring in the Djankuat basin is not only to fill a “blind-spot” in extremely underreported North Caucasus alpine territories but to provide data for detailed studies of hydrometeorological processes in mountain areas (Rets et al., 2017, Toropov et al., 2017).

The dataset presented here covers the period of 2007–2017 and can be useful to researchers developing and verifying hydrological, glaciological and meteorological models for mountainous territories, studying the recent climate and its impact on the cryosphere and hydrology, using isotopic and hydrochemical approaches to study the source areas of runoff.

## 5 Acknowledgments

This work was supported by the Russian Foundation for Basic Research (project No. 16-35-60042 – in part of hydrological observations, project No. 18-05-00420 – in part of glaciological observations, 17-05-00771 – in part of meteorological observations, project No. 18-05-60272 – in part of isotope analysis) [and the Grant of the President of the Russian Federation for young scientists MK-2936.2019.5 – in part of the Djankuat glacier mass balance dynamics analysis.](#)

We want to give our gratitude to all members of the glacial party of Moscow State University, who were working on the Djankuat glacier station during 2007–2017, amounting to more than 100 people in total. It would [have not been possible to collect the data](#) presented in this paper if it were not for them. Especially we would like to thank Fedor Andryushchenko, Elena Astafyeva, Anna Avilova, Varvara Bazilova, Egor Belozеров, Victoriya Bychkova, Vasily Efimov, Natalia Ezerova, Maria Gaydamukha, Aphanasy Gubanov, Valera Ivanov, Maria Kaminskaya, Nickolay Kovalenko, Ekaterina Kuzmina, Nadezhda Loshakova, Pavel Lysenok, Ilya Marchuk, Tatiana Matveeva, Polina Morozova, Evgenia Panchenko, Valentin Pastukhov, Alexey Rezepkin, Alexander Rostiashvili, Yana Sergievskaya, Anna Shestakova, Maria Tereshina, Denis Zakharhenko, and Irina Zheleznova,

## References

- Alekseev, G.V., Ananicheva, M.D., Anisimov, O.A., Ashik, I.M., Bardin, M.Yu., and E.G. Bogdanova: The second assessment report of Roshydromet on climate change and its consequences on the territory of the Russian Federation, State Scientific Center of the Russian Federation "Arctic and Antarctic Research Institute" Federal Service of Russia for Hydrometeorology and Environmental Monitoring, Moscow, Russia, 2014.
- Auer, I., Böhm, R., Jurkovic, A., Lipa, W., Orlik, A., Potzmann, R., Schöner, W., Ungersböck, M., Matulla, C., Briffa, K., Jones, P., Efthymiadis, D., Brunetti, M., Nanni, T., Maugeri, M., Mercalli, L., Mestre, O., Moisselin, J., Begert, M., Müller-Westermeier, G., Kveton, V., Bochnicek, O., Stastny, P., Lapin, M., Szalai, S., Szentimrey, T., Cegnar, T., Dolinar, M., Gajic-Capka, M., Zaninovic, K., Majstorovic, Z. and Nieplova, E. (2007), HISTALP—historical instrumental climatological surface time series of the Greater Alpine Region. *Int. J. Climatol.*, 27: 17-46. doi:10.1002/joc.1377
- Bales, R. C., Molotch, N. P., Painter, T. H., Dettinger, M. D., Rice, R., and Dozier, J.: Mountain hydrology of the western United States, *Water Resour. Res.*, 42, 8, W08432, doi: 10.1029/2005WR004387, 2006.

Удалено: e

Удалено: able

- Barry, R. G.: Mountain Climatology and Past and Potential Future Climatic Changes in Mountain Regions: A Review, *Mountain Research and Development* 12, 1, 71-86, doi:10.2307/3673749, 1992.
- Belozerova E.V., Chalov S.R. Assessment of river water turbidity using the optic methods, *Vestnik Moskovskogo Universiteta, Seriya 5: Geografiya* 6, 39-45, 2013
- 5 Bobrovitskaya, N. N. and Kokorev, A. V.: Current problems of hydrological networks design and optimization, Background material for the fourteenth session of the Commission for Hydrology (CHy-14), Geneva, Switzerland, 2014.
- Boyarsky, I. Y. (Ed.) *Lednik Djankuat (Djankuat Glacier)*, Gidrometeoizdat, Saint Petersburg, Russia, 1978.
- Cable, J., Ogle, K., and Williams, D.: Contribution of glacier meltwater to streamflow in the Wind River Range, Wyoming, inferred via a Bayesian mixing model applied to isotopic measurements, *Hydrol. Process.*, 25(14), 2228–2236, doi: 10.1002/hyp.7982, 2011.
- 10 Chalov S., Golosov V., Tsyplenkov A., Theuring P., Zakerinejad R., Märker M., Samokhin M. A toolbox for sediment budget research in small catchments, *Geography, environment, sustainability*. 10(4):43-68. DOI:[10.24057/2071-9388-2017-10-4-43-68](https://doi.org/10.24057/2071-9388-2017-10-4-43-68), 2017a
- Chalov, Sergey R, Tsyplenkov, Anatolii S, Pietron, Jan, Chalova, Aleksandra S, Shkolny, Danila I, Jahsjö J. Maerker, Michael Sediment transport in headwaters of a volcanic catchment—Kamchatka Peninsula case study // *Front. Earth Sci. Frontiers of Earth Science* 11( 3), pp 565–578 DOI 10.1134/S0097807812010022, 2017b
- 15 Chernomorets, S. S., Petrakov, D. A., Aleynikov, A. A., Bekkiev, M. Y., Viskhadzhieva, K. S., Dokukin, M. D., Kalov, R. K., Kidyayeva, V. M., Krylenko, V. V., Krylenko, I. V., Krylenko, I. N., Rets, E. P., Savernyuk, E. A., and Smirnov, A. M.: The outburst of Bashkara glacier lake (central Caucasus, Russia) on september 1, 2017, *Earth's Cryosphere*, 22, 2, 70–80, doi: 10.21782/kz1560-7496-2018-2(70-80), 2018.
- 20 Cohen S., Kettner A.J., Syvitski J.P.M. Global suspended sediment and water discharge dynamics between 1960 and 2010: Continental trends and intra-basin sensitivity // *Glob. Planet. Change*. 115. 44–58. 2014
- Dansgaard, W.: Stable isotopes in precipitation, *Tellus*, 16, 4, 436–468, 1964.
- Dincer, T., Payne, B. R., Flowkowski, T., Martinec, J., and Tongiorgi, E.: Snowmelt runoff from measurements of tritium and oxygen-18, *Water Resour. Res.*, 6, 110–124, doi:10.1029/WR006i001p00110, 1970.
- 25 Dobriyal, P., Badola, R., Tuboi, C., and Hussain, S. A.: A review of methods for monitoring streamflow for sustainable water resource management, *Appl. Water Sci.*, 7(6), 2617-2628, doi:10.1007/s13201-016-0488-y, 2017.
- Dyurgerov, M.: Mountain and subpolar glaciers show an increase in sensitivity to climate warming and intensification of the water cycle, *Journal of Hydrology*, 282(1-4), 164-176, doi: 10.1016/S0022-1694(03)00254-3, 2003.
- Fritz, P., Cherry, J., Weyer, K., and Sklash, M.: Storm runoff analyses using environmental isotopes and major ions, in *Interpretation of Environmental Isotope and Hydrochemical Data in Groundwater*, Panel Proc. Ser. – Int. Atomic Energy Agency, Vienna: Int. Atomic Energy Agency, 111–130, 1976.
- 30 Frolova, N. L., Kireeva, M. B., Nesterenko, D. P., Agafonova, S. A., and Tersky, P. N.: Up-to-date climate forced seasonal flood changes (the case study for European part of Russia), *IAHS Publ*, 363, 113–118, 2014.

- Gietl, G.: Collection and processing of hydrometeorological and hydrological data in mountainous areas, *Hydrology of Mountainous areas, Proceedings of the atrbske Pleso Workshop, Czechoslovakia, June 1988, IAHS Publ, 190, 1990.*
- Hagg, W., Shahgedanova, M., Mayer, C., Lambrecht, A., and Popovnin, V.: A sensitivity study for water availability in the Northern Caucasus based on climate projections, *Global and Planetary Change, 73(3-4), 161-171, doi: 10.1016/j.gloplacha.2010.05.005,*
- 5 2010.
- Hermann, A., Martinec, J., and Stichler, W.: Study of snowmelt-runoff components using isotope measurements, In: Colbeck S C, Ray M, eds. *Proceedings of Modeling of Snow Cover Runoff, U.S. Army CRREL Special Report, 79-36, 288–296, 1978.*
- Immerzeel, W. W., van Beek, L. P. H., Konz, M., Shrestha, A. B., and Bierkens M. F. P.: *Climatic Change, 110, 721, doi: 10.1007/s10584-011-0143-4, doi:10.1007/s10584-011-0143-4, 2012.*
- 10 Kireeva M., Frolova N., Rets E. Telegina, E. A., Telegina, A. A., and Ezerova, N. N.: The role of seasonal and occasional floods in the origin of extreme hydrological events, *Proc. IAHS, 369, 37–41, 2015.*
- Konovalov V. G., Rets E. P., and Pimankina N. A.: Hydrological essence of glacier's summer mass balance in mountain river basins, *Collective monograph on materials of the annual International scientific and practical conference LXXI Gertsensovsky readings, to the 155 anniversary since the birth of Vladimir Ivanovich Vernadsky, Geography: development of science and education, 1, St.*
- 15 *Petersburg, RSPU of A.I. Herzen, on April 18-21, 2018, V.P. Solomin, V.A. Rummyantsev, D.A. Subetto, N.V. Lovelius (eds.), St. Petersburg, RSPU of name A.I. Herzen publishing house, Russia, 2018.*
- Lambrecht, A., Mayer, C., Hagg, W., Popovnin, V., Rezekin, A., Lomidze, N., and Svanadze, D.: A comparison of glacier melt on debris-covered glaciers in the northern and southern Caucasus, *The Cryosphere, 5, 525-538, doi: 10.5194/tc-5-525-2011, 2011.*
- Lavrentiev I. I., Kutuzov S. S., Petrakov D. A., Popov G. A., and Popovnin V. V.: Ice thickness, volume and subglacial relief of
- 20 *Djankuat Glacier (Central Caucasus), Ice and Snow, 54(4), 7-19, doi: 10.15356/2076-6734-2014-4-7-19, 2014.*
- Martinec, J., Siegenthaler, U., Oeschger, H., and Tongiorgi, E.: New insights into the run-off mechanism by environmental isotopes, *Proc. Sympos. Isotope Tech. in Groundwater Hydrol., Vienna: Int. Atomic Energy Agency, 4, 129–143, RN:38048670, 1974.*
- Meier, M. F., Dyurgerov, M. B., and McCabe, G. J.: *Climatic Change, 59, 123, doi: 10.1023/A:1024410528427, 2003.*
- Østrem, G. and Brugman, M.: *Glacier Mass–Balance Measurements. A manual for field and office work, NHRI Science Report No.*
- 25 *4, 1991.*
- Pachauri, R. K., Allen, M. R., Barros, V. R., Broome, J., Cramer, W., Christ, R., Church, J. A., Clarke, L., Dahe, Q., Dasgupta, P., Dubash, N. K., Edenhofer, O., Elgizouli, I., Field, C. B., Forster, P., Friedlingstein, P., Fuglestedt, J., Gomez-Echeverri, L., Hallegatte, S., Hegerl, G., Howden, M., Jiang, K., Jimenez Cisneroz, B., Kattsov, V., Lee, H., Mach, K. J., Marotzke, J., Mastrandrea, M. D., Meyer, L., Minx, J., Mulugetta, Y., O'Brien, K., Oppenheimer, M., Pereira, J. J., Pichs-Madruga, R., Plattner,
- 30 *G. K., Pörtner, H. O., Power, S. B., Preston, B., Ravindranath, N. H., Reisinger, A., Riahi, K., Rusticucci, M., Scholes, R., Seyboth, K., Sokona, Y., Stavins, R., Stocker, T. F., Tschakert, P., van Vuuren, D. and van Ypserle, J. P.: Climate Change 2014: Synthesis Report. Contribution of Working Groups I, II and III to the Fifth Assessment Report of the Intergovernmental Panel on Climate Change. R. Pachauri and L. Meyer (editors), Geneva, Switzerland, IPCC, 151, ISBN: 978-92-9169-143-2, 2014.*

- Petrakov, D. A., Popovnin V. V.: Accumulation field of a mountain glacier and its stability in time, *Earth's Cryosphere*, 4, 2, 67-76, 2000.
- Popovnin, V. V.: Djankuat, *Glacier Mass Balance Bulletin*, 12, 3, 8, 14, 89–89, 99, 105, 2013.
- Popovnin, V. V.: Djankuat, *Fluctuations of Glaciers*, 10, 8, 55, 129, 164, 196–197, 261, 2012.
- 5 Popovnin V. V. and Pylayeva T. V.: Avalanche feeding of the Djankuat Glacier, *Ice and Snow*, 55 (2), 21-32, doi:10.15356/2076-6734-2015-2-21-32, 2015.
- Rets, E., Chizhova, J. N., Loshakova, N., Tokarev, I., Kireeva, M. B., Budantseva, N. A., Vasil'chuk, Y. K., Frolova, N., Popovnin, V., Toropov, P., Terskaya, E., Smirnov, A. M., Belozero, E., and Karashova, M.: Using isotope methods to study alpine headwater regions in the northern Caucasus and Tien Shan, *Frontiers of the Earth Science*, 11, 3, 531–543, doi: 10.1007/s11707-017-0668-6,
- 10 2017.
- Rets E.P., Dzhamalov R.G., Kireeva M.B., Frolova N.L., Durmanov I.N., Telegina A.A., Telegina E.A., and Grigoriev V.Y.: Recent trends of river runoff in the North Caucasus. *Geography, Environment, Sustainability*, 11, 3, 61–70, doi:10.24057/2071-9388-2018-11-3-61-70, 2018.
- Rets E. and Kireeva M.: Hazardous hydrological processes in mountainous areas under the impact of recent climate change: case study of Terek River basin, *Global Change: Facing Risks and Threats to Water Resources: proc. of the Sixth World FRIEND Conference*, IAHS Publ, 340,126–134, 2010.
- 15 Rets, E. Popovnin, V., Toropov, P., Smirnov, A., Tokarev, I., Budantseva, N., Vasil'chuk, Y., Kireeva, M., Ekaykin, A., Veres, A., Aleynikov A., Frolova, N., Tsyplov, A., Polukhov, A., Chalov S., Aleshina, M., and Kornilova, E.: Glaciological, hydrological, meteorological observations and isotopes sampling results during 2007-2017 at Djankuat Glacier Station in the North Caucasus, Russia. *PANGAEA*, <https://doi.org/10.1594/PANGAEA.894807>, 2018.
- 20 Shahgedanova, M.: Climate at present and in the historical past, *The Physical Geography of Northern Eurasia*, edited by M. Shahgedanova, Oxford Univ. Press, New York, 70–102, 2002.
- Shahgedanova, M., Stokes, C. R., Gurney, S. D. and Popovnin, V. V.: Interactions between mass balance, atmospheric circulation and recent climate change on the Djankuat glacier, *Caucasus Mountains, J. Geophys. Res.*, 110(D4), D04108. doi: 10.1029/2004JD005213., 2005.
- 25 Shahgedanova, M., Nosenko, G., Kutuzov, S., Rototseva, O., and Khromova, T.: Deglaciation of the Caucasus Mountains, Russia/Georgia, in the 21st century observed with ASTER satellite imagery and aerial photography, *The Cryosphere*, 8, 2367-2379, doi: 10.5194/tc-8-2367-2014, 2014.
- Schaeffli, B., Hingray, B., Niggli, M., Musy, A.: A conceptual glacio-hydrological model for high mountainous catchments, *Hydrol. Earth Syst. Sci.*, 9, 95-109, 2005.
- 30 Singh, P., Bhatnagar, N. K., and Kumar, N.: Status and problems related with mountain hydrology, National Institute of Hydrology, 1999.
- Stokes, C., Gurney, S., Shahgedanova, M., and Popovnin, V.: Late-20th-century changes in glacier extent in the Caucasus Mountains, Russia/Georgia, *Journal of Glaciology*, 52(176), 99-109, doi:10.3189/172756506781828827, 2006.

- Stokes, C. R., Popovnin, V., Aleynikov, A., Gurney, S. D., and Shahgedanova, M.: Recent glacier retreat in the Caucasus Mountains, Russia, and associated increase in supraglacial debris cover and supra-/proglacial lake development, *Annals of Glaciology*, 46, 195-203, doi: 10.3189/172756407782871468, 2007.
- Toropov, P. A., Aleshina, M. A., Kislov, A. V., and Semenov, V. A. Trends of climate change in the Black sea – Caspian region in the last 30 years, *Moscow University Vestnik, Series 5, Geography*, 2, 67-77, 2018.
- Toropov, P. A., Shestakova, A. A., and Smirnov, A. M.: Methodological aspects of heat balance components estimation on mountain glaciers, *Russian Journal of Earth Sciences*, ES4002, 1–9, doi:10.2205/2017ES000605, 2017.
- Toropov P. A., Shestakova A. A. , Smirnov A. M. , and Popovnin V.V.: Evaluation of the components of the heat balance of the Djankuat glacier (Central Caucasus) during the period of ablation in 2007-2015, *Earth's Cryosphere*, 22, 4, 42–54, 2018.
- Viviroli, D., Archer, D. R., Buytaert, W., Fowler, H. J., Greenwood, G. B., Hamlet, A. F., Huang, Y., Koboltchnig, G., Litaor, M. I., López-Moreno, J. I., Lorentz, S., Schädler, B., Schreier, H., Schwaiger, K., Vuille, M., and Woods, R.: Climate change and mountain water resources: overview and recommendations for research, management and policy, *Hydrol. Earth Syst. Sci.*, 15, 471-504, doi:10.5194/hess-15-471-2011, 2011.
- Weingartner, R., Viviroli, D., and Schädler, B.: Water resources in mountain regions: a methodological approach to assess the water balance in a highland-lowland-system, *Hydrological Processes: An International Journal*, 21(5), 578-585, doi:10.1002/hyp.6268, 2007.
- Zemp, M., Hoelzle, M., and Haeblerli, W.: Six decades of glacier mass-balance observations: a review of the worldwide monitoring network, *Annals of Glaciology*, 50(50), 101-111, doi:10.3189/172756409787769591, 2009.
- Zemp, M., Frey, H., Gärtner-Roer, I., Nussbaumer, S., Hoelzle, M., Paul, F., ... and Vincent, C.: Historically unprecedented global glacier decline in the early 21st century. *Journal of Glaciology*, 61(228), 745-762, doi:10.3189/2015JoG15J017, 2015.
- Zemp, M., Paul, F., Andreassen, L., M., Arino, O., Bippus, G., Bolch, T., Braithwaite, R., Braun, L., Cáceres, B. E., Casassa, G., Casey, K. A., Ceballos, C. L., Citterio, M., Delgado, H., Demuth, M., Espizua, L. E., Farokhnia, A., Fischer, A., Foppa, N., Frey, H., Fujita, K., Gärtner-Roer, I., Glowacki, P., Haeblerli, W., Hagen, J. O., Hoelzle, M., Holmlund, P., Giesen, R. H., Kääb, A., Khromova, T., Kotlarski, S., Le Bris, R., Li, Z., Meier, M., Meneghel, M., Mool, P., Nussbaumer, S. U., Peduzzi, P., Plummer, S., Popovnin, V., Prinz, R., Rack, W., Rastner, P., Raup, B., Rinne, E., Seifert, F. M., Seiz, G., Severskiy, I., Shepherd, A., Sigurðsson, O., Strozzi, T., Vincent, C., Wheate, R., and Yakovlev, A.: Summary of international glacier monitoring summit, *The Earth Observer*, 23, 4, 28–31, 2011.



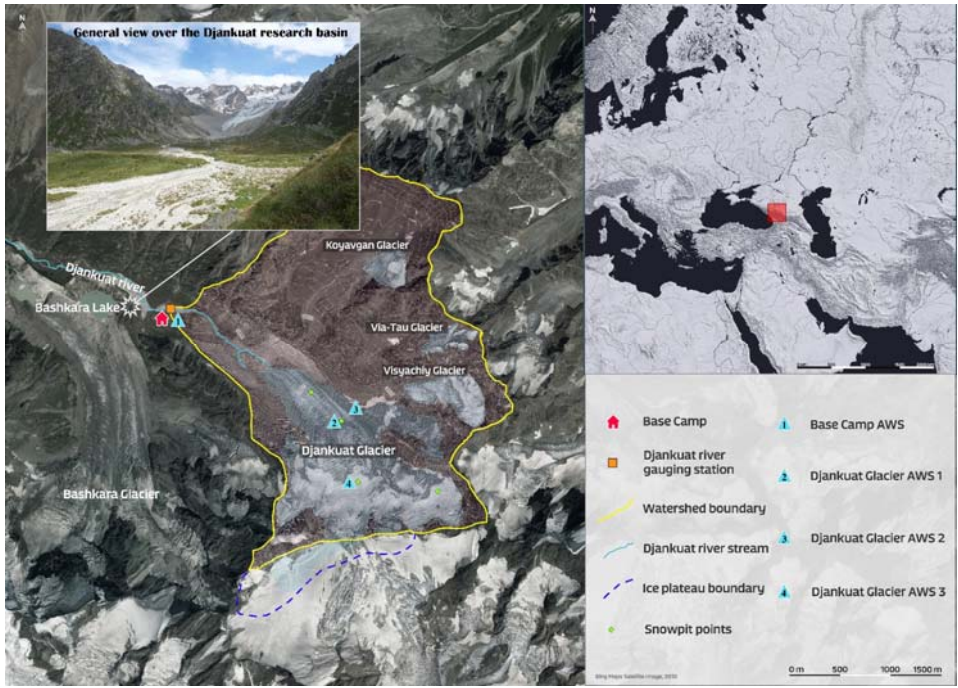
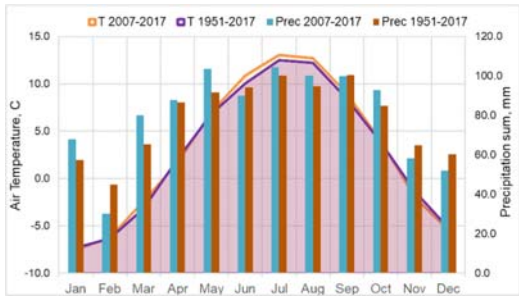


Figure 1: The Djankuat River basin with the depicted location of the Base camp, main weather stations, snowpits and the Djankuat River gauging station.

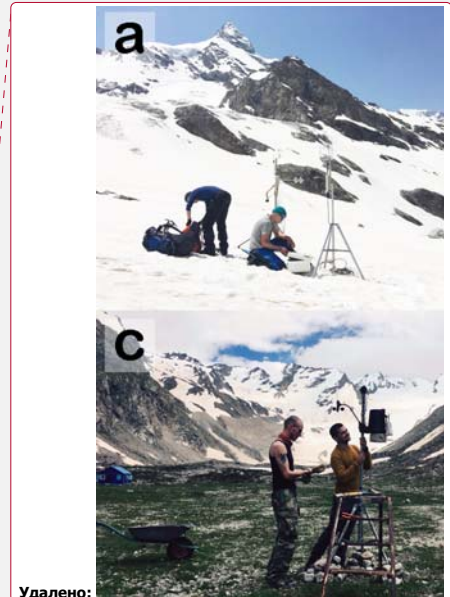


5

Figure 2: Monthly distribution of air temperature and precipitation for the period of the dataset (2007–2017) compared to the long-term period (1951–2017) on the nearest to the Djankuat research basin all-year weather station Terskol (2146 m).



Figure 3: (a) Campbell meteorological complex with a set of Kip & Zonen radiometers and GILL three-component acoustic anemometer at the Djankuat GlacierAWS1 location; (b) the construction of the Djankuat Gauging Station; (c) Djankuat Base Camp AWS - Davis meteorological station; (d) Snow density measurement in a snowpit at the stake 49.



Удалено:

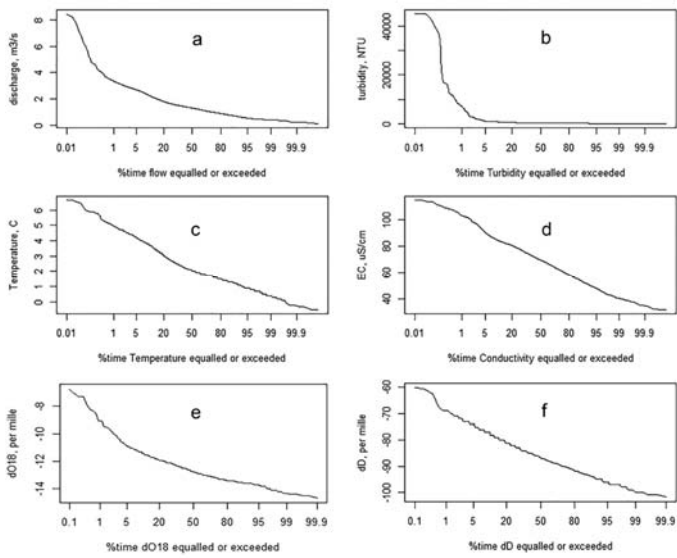
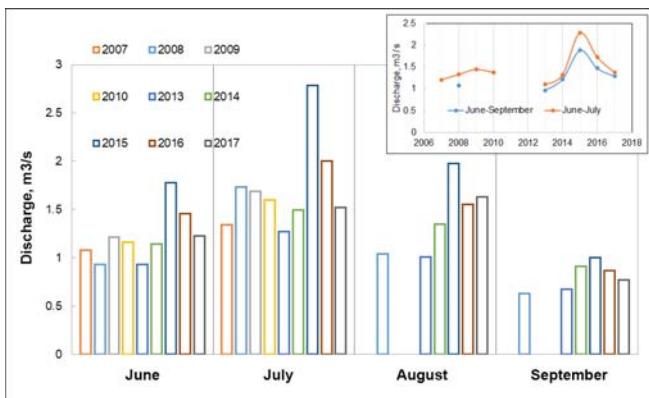


Figure 4: Duration curves of the parameters measured during 2007–2017 on the Djankuat Gauging Station: (a) Water discharge, (b) Optical turbidity, (c) Water temperature, (d) Water Electrical Conductivity, (e)  $\delta^{18}\text{O}$ , (f)  $\delta\text{D}$ .



5 Figure 5: Fluctuations of mean monthly and mean seasonal runoff of Djankuat River during the whole period of observation (2007–2017).

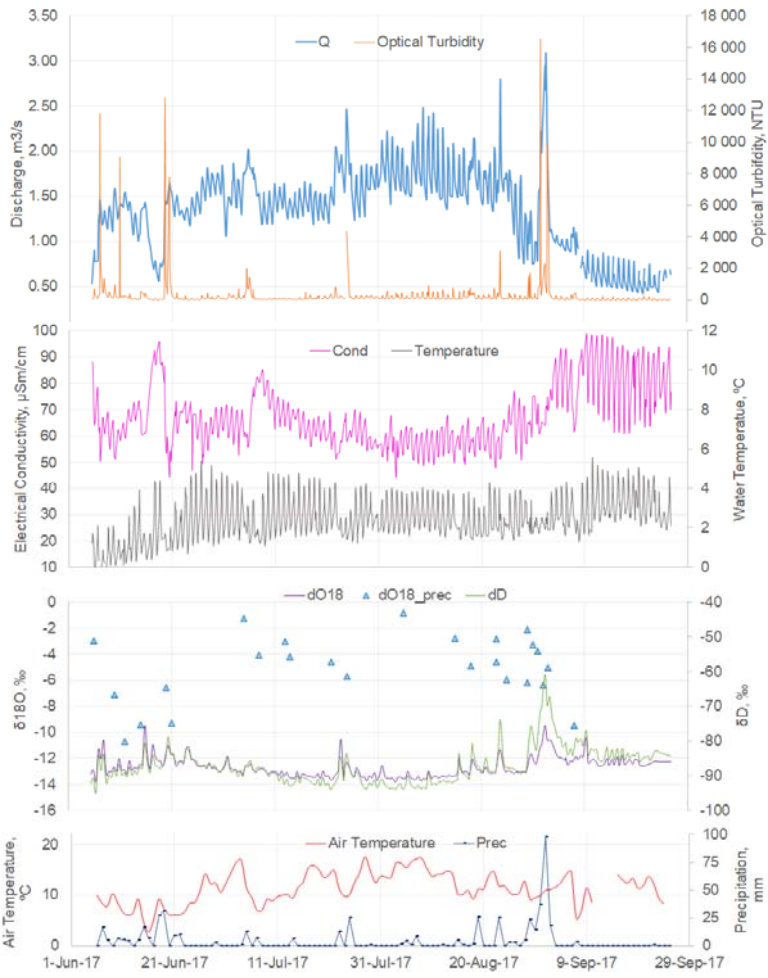


Figure 6: Example of the fluctuations of the water discharge (Q), optical turbidity (Optical Turbidity), electrical conductivity (Cond), water temperature (Temperature),  $\delta^{18}\text{O}$  (dO18),  $\delta\text{D}$ , (dD) in Djankuat River during the ablation season accompanied with mean daily air temperature (Air Temperature), precipitation amount (Prec) and  $\delta^{18}\text{O}$  in liquid precipitation (dO18\_prec). Drawn using the observational data for June–September 2017.

5

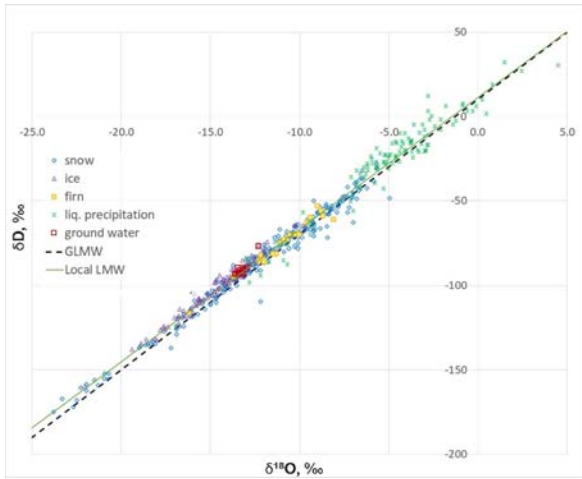
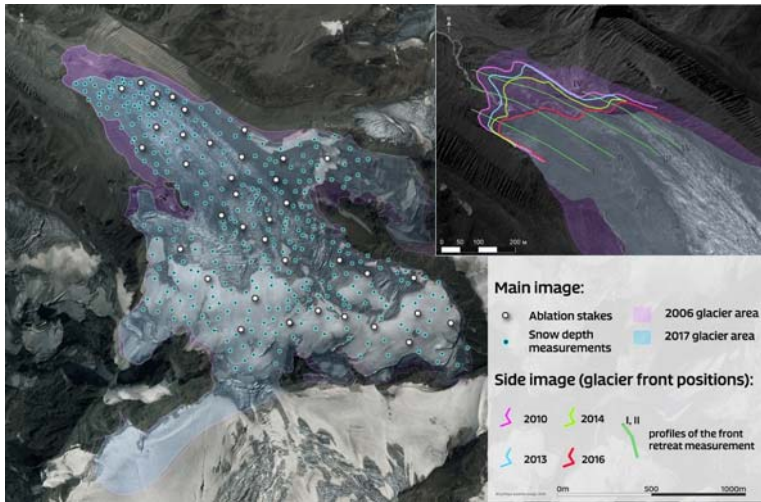


Figure 7:  $\delta^{18}\text{O}$  vs.  $\delta\text{D}$  graph for the samples of snow, ice, firn, liquid precipitation and groundwater collected in the Djankuat River basin in 2013–2017, plotted with a global and local meteoric water line.



5 Figure 8: The spatial distribution of ablation stakes and snow thickness measurement points, change in the Djankuat glacier area during the study period and glacier front position.

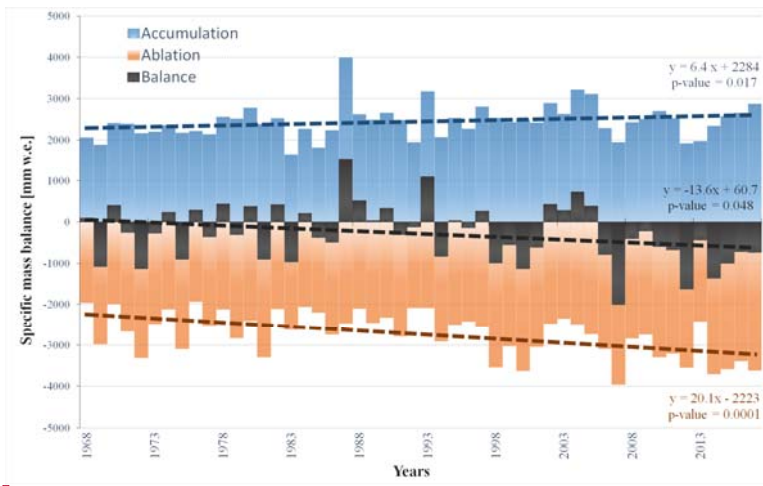
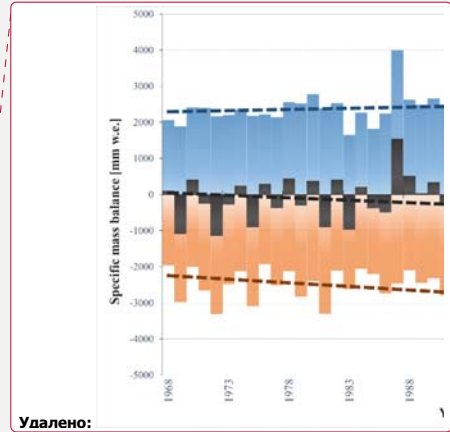


Figure 9: Fluctuations of the Djankuat glacier mass balance components in mm of water equivalent (mm w.e.) since the beginning of the observations in 1968 (www.wgms.ch).



Удалено:

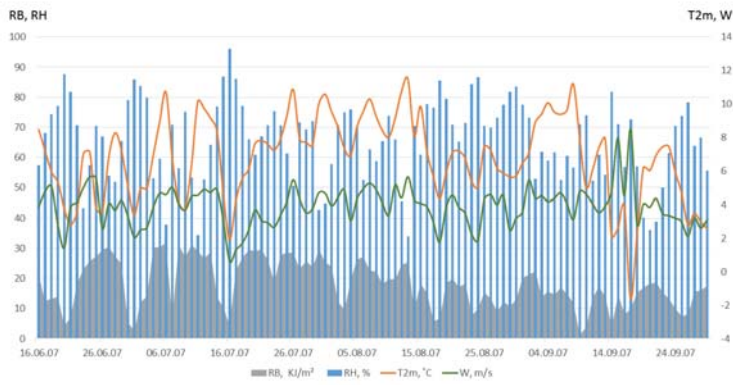


Figure 10: An example of temporal variability of average daily values on the Djankuat glacier (measured at Djankuat glacier AWS-1 location) in 2007: RB – radiation balance, KJ/m<sup>2</sup>, RH – relative humidity, % T2m – air temperature, °C, W – wind speed, m/s.

Удалено: in

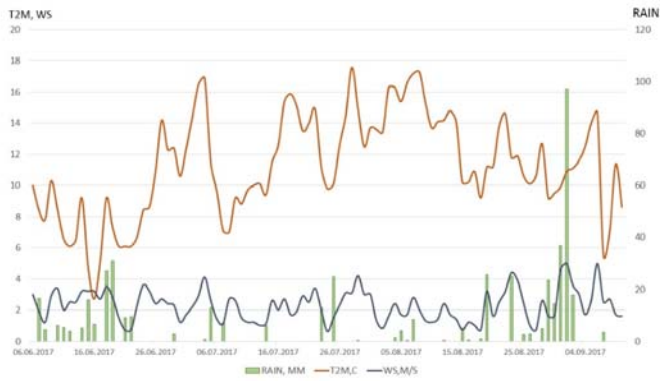


Figure 11: An example of temporal variability of average daily temperature, wind speed and precipitation sum on base camp (point AWS-«base camp»): RAIN –precipitation, mm/day, T2m – air temperature, °C, WS – wind speed, m/s.

5 Table 1: Location of main Sites within the Djankuat research basin

#	Name	x (longitude), decimal degrees	y (latitude), decimal degrees	Elevation, m
1	Djankuat Base Camp	42.735	43.208	2635
2	Djankuat Base Camp AWS	42.736	43.208	2640
3	Djankuat Glacier AWS 1	42.757	43.198	3000
4	Djankuat Glacier AWS 2	42.759	43.2	3050
5	Djankuat Glacier AWS 3	42.759	43.193	3200
6	Djankuat River Gauging Station	42.736	43.209	2630

Table 2a: Hydrological characteristics measured in the Djankuat research basin and included in the database

#	Site	Characteristic	Unit	Sampling intervals	Accuracy modulus	Method	Period of measurements (with number of days in brackets)
1	Djankuat River Gauging Station	Water Discharge	m <sup>3</sup> /s	1 hour	<10%	Calculated from water level measurements (see in the text)	15.06.07 – 12.07.07 (28) 06.06.08 – 15.09.08 (102) 15.06.09 – 19.07.09 (35) 14.06.10 – 14.07.10 (31) 10.06.13 – 26.09.13 (109) 08.06.14 – 30.09.14 (115) 09.06.15 – 19.09.15 (103) 14.06.16 – 27.09.16 (106) 03.06.17 – 25.09.17 (115)

#	Site	Characteristic	Unit	Sampling intervals	Accuracy modulus	Method	Period of measurements (with number of days in brackets)
2		Water Temperature	°C	1 hour step or 6-7 times daily	0.5	Electrical conductivity meter Econics Expert-002	28.06.08 – 26.07.08 (29) 15.06.09 – 19.06.09 (5) 09.06.15 – 19.09.15 (70) 09.06.16 – 18.09.16 (74) 03.06.17 – 25.09.17 (115)
3		Water Electrical Conductivity	µS/cm		2%		28.06.08 – 26.07.08 (29) 15.06.09 – 19.06.09 (5) 10.06.13 – 19.09.13 (4) 19.06.14 – 30.09.14 (104) 09.06.15 – 19.09.15 (67) 09.06.16 – 18.09.16 (74) 03.06.17 – 25.09.17 (115)
4		Water Salinity	mg/L		-		Calculated from Electrical conductivity (see in the text)
5		Optical Turbidity	NTU	6-7 times daily	2%+0.02 NTU	Portable turbidity meter HACH 2100P	28.06.08 – 17.07.08 (20) 10.06.13 – 20.06.13 (5) 31.08.14 – 08.09.14 (9) 08.06.15 – 19.09.15 (104) 09.06.16 – 19.09.16 (103) 03.06.17 – 25.09.17 (115)
6		Turbidity in weight units	SSC		-	Calculated from Turbidity measured in NTU (see in the text)	
7			<sup>18</sup> O concentration as δ-notation	‰	2 times daily	0.06-0.1	2013:mass spectrometer, 2014-2016:laser-based spectrometer; 2017 - Cavity Ring-Down Spectroscopy (see text for details)
8		<sup>2</sup> H concentration as δ-notation	‰	0.4-2		2014-2016:laser-based spectrometer; 2017 - Cavity Ring-Down Spectroscopy (see text for details)	08.06.14 – 30.09.14 (115) 08.06.15 – 18.09.15 (98) 06.06.16 – 18.09.16 (105) 03.06.17 – 25.09.17 (115)
9	Snow, Ice, Firn, Ground water, Liquid precipitation samples in different parts of the watershed	Water Electrical Conductivity	µS/cm	60-200 samples of each Snow, Ice, Firn, Ground water, Liquid precipitation a year	2%	Electrical conductivity meter Econics Expert-002	8 samples in 2013 104 samples in 2014 64 samples in 2015 100 samples in 2016 209 samples in 2017
10		Water Salinity	mg/L		-	Calculated from Electrical conductivity (see in the text)	
11		<sup>18</sup> O concentration as δ-notation	‰		0.06-0.1	2013:mass spectrometer, 2014-2016:laser-based spectrometer; 2017 - Cavity Ring-Down Spectroscopy (see text for details)	
12		<sup>2</sup> H concentration as δ-notation	‰		0.4-2	2014-2016:laser-based spectrometer; 2017 - Cavity Ring-Down Spectroscopy (see text for details)	

Table 2b: Glaciological characteristics measured in the Djankuat research basin and included in the database

#	Site	Characteristic	Unit	Sampling intervals	Accuracy modulus	Method	Period of measurements of
1	At 250–300 evenly distributed points on the Djankuat Glacier Surface	Snow thickness	cm	1 time yearly	5	Probe poles	12.06.07 – 30.06.07 12.06.08 – 07.07.08 08.06.09 – 07.07.09 19.05.10 – 10.07.10 04.06.12 – 06.07.12 05.06.13 – 01.07.13 04.06.14 – 04.07.14 04.06.15 – 12.07.15



							26.05.16 – 15.07.16 04.06.17 – 11.07.17
2	At 35–45 evenly distributed points on the Djankuat Glacier Surface	Ablation	mm of water equivalent	1-30 days	2	Ablation stakes	12.06.07 – 10.09.07 16.05.08 – 07.10.08 08.06.09 – 25.09.09 18.06.10 – 02.10.10 03.06.12 – 04.10.12 05.06.13 – 21.09.13 04.06.14 – 30.09.14 04.06.15 – 20.09.15 26.05.16 – 20.09.16 03.06.17 – 24.09.17
3	Stake 9, 18, 49, 65/68	Snow density	g/cm <sup>3</sup>	1-5 times in each snowpit yearly	0.01	Snow sampling cylinder	19.05.07 – 13.06.07 16.05.08 – 14.07.08 03.06.09 – 01.09.09 21.05.10 – 06.07.10 04.06.12 – 06.07.12 06.06.13 – 22.06.13 05.06.14 – 02.09.14 05.06.15 – 04.09.15 29.05.16 – 07.10.16 06.06.17 – 10.08.17

Table 2c: Meteorological characteristics measured in the Djankuat research basin and included in the database

#	Site	Characteristic	Unit	Sampling intervals	Accuracy modulus	Method	Period of measurements (with number of days in brackets)
1	Djankuat Glacier AWS 1	Air temperature at 2 m	°C	15 min	0.2	Campbell AWS - Vaisala MT300 sensor	15.06.07 – 30.09.07 (107) 17.06.08 – 30.09.08 (105) 01.07.09 – 30.09.09 (91) 09.07.10 – 29.09.10 (82) 10.07.12 – 05.08.12 (26) 07.07.13 – 09.09.13 (64) 19.06.14 – 30.09.14 (103) 07.07.15 – 04.09.15 (59) 20.06.16 – 05.09.16 (77) 19.06.17 – 02.09.17 (75)
2		Relative humidity at 2 m	%		5		
3		Wind speed at 2 m	m/s		(0.5+0.05W)	Campbell AWS - wind sensor	
4		Wind direction at 2 m	°		10		
5		Atmospheric pressure	hPa		1	Campbell AWS - Vaisala pressure sensor	
6		Incoming shortwave radiation	Wt/m <sup>2</sup>		15	Campbell AWS - KEEP & ZONNEN radiometers	
7		Reflected shortwave radiation	Wt/m <sup>2</sup>				
8		Downward longwave radiation	Wt/m <sup>2</sup>				
9		Upward longwave radiation	Wt/m <sup>2</sup>				
10		Sensor-surface distance	m	0.01	Campbell AWS - Sonic Ranger sensor		
11		Air temperature at 0.25, 0.5, 1 and 2 m	°C	15 min	±0.4	DAVIS AWS	05.07.15 – 15.08.15 (41)
12		Relative humidity at 0.25, 0.5, 1 and 2 m	%		±10		
13		Mean wind speed at 0.25, 0.5, 1 and 2 m	m/s		±0.5 – 2		
14		Maximum wind speed at 0.25, 0.5, 1 and 2 m	m/s				
15		Wind direction at 0.25, 0.5, 1 and 2 m	rhumb		-		
16		Three components of wind speed	m/s	10 Hz	0.05 – 0.1	Sonic anemometer	12.07.13 – 03.08.13 (22) 09.08.13 – 16.08.13 (7)
17		T - acoustic temperature	°C			GILL	26.08.13 – 06.09.13 (42)

#	Site	Characteristic	Unit	Sampling intervals	Accuracy modulus	Method	Period of measurements (with number of days in brackets)
							30.06.14 – 30.07.14 (30) 17.06.16 – 01.08.16 (45)
18	Djankuat Glacier AWS 2	Air temperature at 2 m	°C	15 min	0.2	Campbell AWS - Vaisala MT300 sensor	17.06.07 – 07.09.07 (82) 02.07.08 – 26.09.08 (86) 23.06.09 – 02.10.09 (101)
19		Relative humidity at 2 m	%		5		
20		Wind speed at 2 m	m/s		(0.5+0.05W)		
21		Wind direction at 2 m	°		10		
22		Atmospheric pressure	hPa		1		
23		Incoming shortwave radiation	Wt/m <sup>2</sup>		15	Campbell AWS - KEEP & ZONNEN radiometers	
24		Reflected shortwave radiation	Wt/m <sup>2</sup>				
25		Downward longwave radiation	Wt/m <sup>2</sup>				
26		Upward longwave radiation	Wt/m <sup>2</sup>				
27		Sensor-surface distance	m		0.04-0.06	Campbell AWS - Sonic Ranger sensor	
28		Air temperature	°C		0.4	DAVIS AWS	
29	Relative humidity	%	10				
30	Wind speed	m/s	(0.6+0.06W)				
31	Wind direction	°	15				
32	Air temperature	°C	0.4	DAVIS AWS	17.06.07 – 14.09.07 (90) 12.06.08 – 20.09.08 (101) 26.06.09 – 04.10.09 (101) 08.06.13 – 07.09.13 (92) 09.06.14 – 01.10.14 (115) 09.06.15 – 18.09.15 (102) 09.06.16 – 01.10.16 (115) 06.06.17 – 25.06.17 (112)		
33	Relative humidity	%	10				
34	Wind speed	m/s	(0.6+0.06W)				
35	Wind direction	°	15				
36	Atmospheric pressure	hPa	1				
37	Liquid precipitation	mm	24 hours	5% of total	Rain Gauge		

Table 3: Mean value and range of some of the parameters measured in the Djankuat research basin

Parameter	Site	Unit	Number of values	Mean	Max	Min
Water Discharge	Djankuat River Gauging Station	m <sup>3</sup> /s	16971	1.39	8.46	0.11
Water Temperature		°C	3259	2.26	6.63	0.1
Optical Turbidity		NTU	1991	468	45060	6.9
Weight Turbidity		g/L	1991	368	37164	28
Water Electrical Conductivity	Djankuat River Gauging Station	µS/cm	3464	56.76	115	31.7
	Snow samples		218	9.3	37.2	0.3
	Ice samples		116	14.8	63.7	0.7
	Firn samples		22	13.7	23	4.1
	Groundwater samples		16	109	115	104
δ <sup>18</sup> O	Djankuat River Gauging Station	‰	844	-12.6	-6.7	-14.7
	Snow samples		218	-12.2	-5	-28.3
	Ice samples		116	-14.3	-9.8	-22
	Firn samples		22	-11.3	-8.1	-16.2
	Liquid precipitation samples		113	-4.9	5.6	-16.9
Groundwater samples	16	-13.3	-12.3	-13.6		

	Djankuat River Gauging Station		842	-86.2	-60	-102
	Snow samples		218	-85.5	-28	-216
	Ice samples		116	-99.3	-64	-160
	Firn samples		22	-77.1	-53	-116
	Liquid precipitation samples		113	-26.2	32	-124
$\delta D$	Groundwater samples	%	16	-91.1	-77	-93.5
Snow thickness		Cm	2932	360	1155	7
Ablation		mm w.e./day	5045	47	387	0
Mean snow density for the snowpack		g/cm <sup>3</sup>	66	0.57	0.64	0.46
Snow density by layers of the snowpack	Djankuat Glacier	g/cm <sup>3</sup>	434	0.57	0.92	0.23
	Base Camp AWS		5340	10.2	24.2	-1.10
	Djankuat Glacier AWS 1		17551	6.60	17.6	-8.97
	Djankuat Glacier AWS 2		4901	6.37	15.8	-4.22
Air temperature at 2 m hourly		°C				
	Base Camp AWS		5340	65.0	95.0	12.5
	Djankuat Glacier AWS 1		17526	68.4	100.0	13.9
	Djankuat Glacier AWS 2		4901	68.0	100.0	10.5
Relative humidity at 2 m hourly		%				
	Base Camp AWS		5095	1.93	10.8	0.10
	Djankuat Glacier AWS 1		17469	3.95	16.6	0.00
	Djankuat Glacier AWS 2		6095	5.50	21.1	0.01
Wind speed at 2 m hourly		m/s				
	Djankuat Glacier AWS 1		13728	273.8	1150.0	0.0
	Djankuat Glacier AWS 2		3706	330.2	1160.0	0.0
Incoming shortwave radiation hourly		Wt/m <sup>2</sup>				
	Djankuat Glacier AWS 1		16920	295.4	407.9	161.5
	Djankuat Glacier AWS 2		6466	286.6	382.5	156.0
Downward longwave radiation hourly		Wt/m <sup>2</sup>				
	Djankuat Glacier AWS 1		17548	313.7	408.9	171.7
	Djankuat Glacier AWS 2		6466	353.1	494.9	156.8
Upward longwave radiation hourly		Wt/m <sup>2</sup>				
	Djankuat Glacier AWS 1		17548	313.7	408.9	171.7
	Djankuat Glacier AWS 2		6466	353.1	494.9	156.8
Liquid precipitation daily sum	Base Camp AWS	mm/day	232	11.2	97.2	0.1

Table 4. July daily averaged meteorological variables on Djankuat glacier from 2007–2017 (with RMS in brackets)

Удалено: in

Year	Air temperature, °C			Relative humidity, %		Wind speed, m/s		Components of radiation balance, Wt/m <sup>2</sup>					A, %
	Mean	Min	Max	Mean	Min	Mean	Max	SW+	SW-	LW+	LW-		
2007	8.0(±2.6)	0.4	13.5	66(±19)	13	3.8(±1.7)	8.4	247(±99)	68(±39)	280(±27)	314(±3)	19	
2008	8.1(±2.1)	2.3	13.9	72(±15)	24	4.2(±1.8)	9.3	237(±105)	88(±58)	291(±26)	315(±4)	32	
2009	6.0(±2.5)	-0.5	14.2	76(±13)	36	3.8(±1.7)	9.0	225(±88)	71(±48)	286(±29)	313(±8)	23	
2010	8.3(±2.2)	2.9	15.2	68(±14)	31	4.2(±1.3)	8.5	265(±84)	43(±15)	293(±21)	317(±5)	18	
2012	7.7(±2.0)	1.7	15.2	71(±15)	31	3.9(±1.6)	7.9	267(±104)	57(±25)	290(±19)	323(±3)	21	
2013	5.0(±2.2)	-0.7	10.7	77(±12)	40	3.5(±2.0)	10.5	225(±98)	53(±30)	300(±22)	325(±4)	24	
2014	7.6(±2.1)	2.4	14.7	67(±16)	18	3.6(±1.6)	8.3	274(±111)	47(±18)	306(±18)	293(±6)	19	

2015	8.8(±2.8)	-0.1	17.9	65 (±17)	15	4.0 (±1.8)	8.9	308(±78)	75(±22)	357(±10)	332(±5)	24
2016	7.6(±2.8)	0.2	15.1	69 (±16)	24	3.8 (±1.9)	9.0	235(±92)	65(±23)	305(±15)	315(±6)	23
2017	8.3(±2.3)	0.5	17.6	63 (±15)	20	4.2 (±2.0)	10.1	224(±98)	54(±30)	301(±22)	324(±4)	25
<b>Mean</b>	7.6(±2.3)	1.1	14.5	68 (±17)	25	3.9 (±1.7)	8.9	231(±94)	63(±25)	300(±10)	317(±5)	24